

Inside

At the Movies	2	Out at the Lake	6
Lunch Menus	2	Football Contest	8 & 9
Among the Neighbors	3	For the Short of It	9
City Lites	5	Classifieds	13

HONOR ROLLS

WEATHER FOR WEEK OF 10-13 THRU 10-19

Day	Hi	Lo	Precip	Day	Hi	Lo	Precip
Thu	77	44	.00	Mon	75	63	.29
Fri	63	47	.00	Tue	74	45	.00
Sat	71	50	.03	Wed	--	42	.00
Sun	78	59	.05	Total Precipitation 18.23			

HANSFORD COUNTY LIBRARY
0120 MAIN ST.
SPEARMAN, TX 79081-2064
EXPIRES 04/15/1995 THANK YOU

The Hansford County

Reporter-Statesman

Serving Hansford County Since 1907

Volume 86 • Issue 52

213 Main • Spearman, Texas 79081

Thursday • October 20, 1994

North Plains Electric Cooperative to buy out Texas-New Mexico Co.

(TNP Release)

North Plains Electric Cooperative, Inc. General Manager Pat McAlister announced today that the Cooperative has submitted a proposal to purchase the Panhandle properties of Texas-New Mexico Power Company. In response to the solicitation, the Cooperative proposes to acquire the electrical transmission and distribution system and other properties located within Hansford, Ochiltree and Lipscomb counties of the Texas Panhandle. This Phase I proposal is subject to amendment based upon the results of the Due Diligence Analysis to be performed during Phase II pursuant to the schedule established by TNP.

NPEC proposes to pay TNP in cash for the Panhandle properties on the date of sale an amount based upon its preliminary analysis. This proposed payment is subject to increase or decrease at NPEC's sole discretion following the Phase II Due Diligence Analysis.

NPEC will assume the obligation of TNP under the wholesale power contract with Southwestern Public Service Company (SPS Contract) pursuant to an assignment of that contract to NPEC. The SPS Contract contains language similar to language in a contract between NPEC and SPS that deemed assignable by the Federal Energy

Regulatory Commission (FERC) in a proceeding involving the assignment of the NPEC contract to Golden Spread Electric Cooperative (Golden Spread). The FERC, and on an appeal, the United States Court of Appeals for the 10th Circuit, held that the contract could be assigned without the consent of SPS. "Acceptance of assignment of the SPS Contract by NPEC will remove uncertainty concerning TNP's continuing obligations to SPS and will assure continued bulk power supply to TNP's Panhandle area customers," McAlister said.

According to McAlister, all TNP Panhandle area personnel will be offered continued employment with NPEC.

Service will be provided to TNP Panhandle area customers pursuant to cost based rates filed with the Public Utility Commission of Texas (PUCT). "Based on preliminary analysis, the purchase of the Panhandle area properties will not require any increases in NPEC's existing retail rates," McAlister said. Application of NPEC's existing rates to the Panhandle area customers will result in an overall rate decrease of 18% (approximately \$2 million) from the rate levels now paid by those customers.

NPEC is a non-profit, consumer-owned electric distribution coop-

erative headquartered in Perryton, Texas. NPEC has operated a distribution utility system in the panhandle area for over 50 years. NPEC now employs 30 panhandle area residents to serve approximately 5,000 customers located in seven counties, including all of the counties in which the TNP Panhandle area properties are located. NPEC has the personnel, equipment, and business knowledge to maintain a high level of reliability in the continued supply of electricity to the Panhandle area residents. The NPEC offers of employment to the existing TNP Panhandle area employees is intended to further enhance the reliability of service in this area.

According to McAlister, NPEC proposes to locate customer service support capabilities in Higgins, Follett and Spearman, in addition to existing support services centers.

NPEC is a member/owner of the National Rural Utilities Cooperative Finance Corporation (CFC) and has been provided assurances by that organization that funding for the acquisition will be made available. The proposed purchase will increase the gross book value of NPEC by approximately 60%, the customer base will increase by 149%, and revenues at NPEC's existing rates by approximately 100%.

As a non-profit, consumer-owned, locally governed cooperative and a member of the panhandle area community, NPEC's interest in acquiring the panhandle area properties is to assure the availability of reasonable priced electric power to all consumers. NPEC is uniquely positioned to realize economies of scale that will result in savings passed on to its member/owners. NPEC also is willing to explore with the Panhandle area municipalities now served by TNP, power supply arrangements that could provide for the establishment of municipal electric systems now or in the future.



ANNIVERSARY ACTIVITIES
Gillespie Auto in Spearman celebrated its 10th anniversary last Saturday with a full day of fun-filled activities. Throughout the day, races were conducted using the mini-monster trucks and other games were played. In the photo above, several clowns guide a youngster through the race course during one of the races. In the photo to the side, the 'Rocking Horse Cowboy' gives it a try in the roping contest. (Photos by Daniel Ramos)



Hansford Happenings

Meals-On-Wheels Service

To sign up for Meals-On-Wheels Service or to receive information, call Ernestina Salgado at 659-2535, ext. 226 between 8 a.m. and 5 p.m.

Spearman High School Blood Drive

The Student Council of Spearman High School will be sponsoring a blood drive Monday, October 24 from 9 a.m. to 3 p.m. in the High School Auditorium. All eligible donors please help our cause.

Troy Alkman Jersey Raffle

The Spearman Senior Class will be holding a raffle for an autographed Troy Alkman Dallas Cowboy Jersey. Tickets are \$1.00 per ticket. The drawing will be during halftime of the Spearman/Gruver game October 21, 1994. The ticket must be present to win (can send it with someone). For tickets contact any SHS Senior or go by the Spearman Chamber of Commerce Office during regular working hours Monday through Friday.

Dad-Lad Cake Bake

Spearman Cub Scout Pack #578 will host its annual fund-raiser, the Dad-Lad Cake Bake, on Saturday, Oct. 22 at the O'Loughlin Community Center. Cake check-in time is at 6 p.m., with judging to begin at 6:30 p.m. and an auction of the cakes to follow at 7 p.m. This year's theme is "Under the Big Top." All cub scouts and their parents are encouraged to participate. For more information, please contact Andy Scarborough at 659-3887.

Gruver PTA Public Meeting

The Gruver PTA will hold a public meeting on Tuesday, October 25, 1994 at 7 p.m. in the Gruver High School Auditorium to meet the high school football players.

Gruver Music Club Guest Day

The Gruver Music Club will host the Amarillo Opera presenting "Dear Doctor" by Gene Murray, who played Uncle Henry in "Texas," Oct. 25th at 7 p.m. in the Gruver Methodist Church. The admission is free. The one-act opera was written for Jerry Williams, who played the role of Tucker Yelldell in over 1600 performances of "Texas." Come meet these men and enjoy the opera.

Girl Scouts Selling Nuts

The Girl Scouts are selling nuts door to door for \$3 a can. For more information call Carolyn Cummings at 659-2529 or 659-2106 for your nuts.

Pringle-Morse School Activities

Monday, October 17 PTA School Bus Safety Program will be at 8:30 a.m. in the school auditorium. Thursday, October 20 Pringle-Morse PTA Executive Committee will have its meeting at 5:30 p.m., in the school auditorium. Monday, October 24 Miss Texas Assembly will be at 2:00 p.m. in the school auditorium and the public is invited. Thursday, October 27 the Fall Carnival will be in the school gym at 7:00 p.m.

Pringle-Morse CISD held regular session

The Pringle-Morse Consolidated Independent School District Board of Trustees met in regular session Tuesday, October 11. Action items included: appointment of Hansford County Appraisal District Board Members, 7th and 8th grade budgets, 1994-95 Textbook Committee, and Local Policy Update 46.

Life Management Skills teacher Martha Davis and class representatives John Papay and Natalie Tarango presented their plans for a community service project for the class. The students reported that they polled students and decided that the school's outdoor basketball court is in need of immediate

repairs. The students reported that the outdoor court is used daily by a majority of the Pringle-Morse students. They also asked the Board to consider a new surface for the tennis court. Since the service project was on the agenda as a discussion item, the Board informed the students that the project will be placed on the November agenda as an action item.

Seventh grade class sponsor Judy Bouldin presented the class projected budget and class fund raisers. The projected budget of \$2,740 was approved. Eighth grade class sponsor Dana Coldiron presented the eighth grade budget of \$3,635.

The budget includes \$1,223 for graduation expenses and \$2,500 for eighth grade class trip.

Jon Jarvis of Morse was appointed to serve another term as the Pringle-Morse CISD representative on the Hansford County Appraisal District Board. Mark Irwin of Gruver was nominated to represent the City of Gruver and Gruver ISD.

The 1994-95 Pringle-Morse Textbook Committee was approved. The Textbook Committee members are Denise Hutchinson, Kenton Johnson, Carla Martin, and Patti Oefelein. Superintendent Beryl F. Sears will chair the Committee.

Textbook and learning systems up for adoption are Prekindergarten, Kindergarten, General Music grades 1-8, Science II, and 8th grade Earth Science.

Local Policy Update 46 was approved. Update 46 contains policy dealing with sexual harassment, drug testing of bus drivers, and expulsion of students bringing a firearm on school property.

Superintendent Sears reports that the District received approval of the 1994-95 Senate Bill 7 Plans from Texas Commissioner of Edu-

See PRINGLE-MORSE page 4

SBA Tree Grant approved by PDRA

The Palo Duro River Authority met in regular session on Tuesday, October 11, 1994.

The Palo Duro River Authority meeting was called to order at 2:00 pm in the board room of the Palo Duro River Authority. The minutes of the last meeting were read

and approved. The treasurer's report was read and bills were paid.

The audit report for the Fiscal Year 1993-94 was read by Holly Simpson and approved by the board.

A resolution for an SBA Tree Grant was approved, this will allow trees to be obtained for the picnic area of

the lake.

A Panhandle Eastern Pipeline representative, Cliff Green, presented a proposal to run a pipeline through section 64 and 65. The proposal was approved subject to review by Palo Duro Authority's lawyer.

There was also a discussion about the Arkansas River Skimmer (a minnow) possibly an endangered species. The minnow may in some ways affect the lake it is unknown as to what extent. This will be looked into further.

The meeting was adjourned.

School Lunch Menus

Spearman School Lunch Menu

Monday, October 24
Fish nuggets, tartar sauce (opt.), green beans, new potatoes, banana bread squares, pears, and milk.

Tuesday, October 25
Char-broiled meatball with spaghetti and sauce, sweet peas, bread sticks, purple plums, and milk.

Wednesday, October 26
Chicken pattie, gravy (opt.), whole kernel corn, bread, mixed fruit, and milk.

Thursday, October 27
Meat and cheese nachos, pinto beans, Spanish rice, cornbread, peaches, and milk.

Friday, October 28
Hamburger, french fries, shredded lettuce, sliced tomato, pickle, onions, applesauce, and milk.

SISD Breakfast
(Junior High and Elementary)
Monday - Two pancakes, fruit juice, and milk.
Tuesday - Toast, sausage, fruit juice, jelly-butter, and milk.
Wednesday - Breakfast pizza, fruit juice, and milk.
Thursday - Cereal, toast, fruit juice, and milk.
Friday - Toast, scrambled egg, fruit juice, and milk.
High School Daily Breakfast - cereal (two boxes), fruit juice, and milk.

Gruver School Lunch Menu

Monday, October 24
Chicken fried steak, mashed potatoes with gravy, mixed vegetables, pudding, hot roll, and milk.

Tuesday, October 25
Baked potato, pinto beans, sour cream/butter, cheese, diced peaches, blueberry muffin, and milk.

Wednesday, October 26
Chicken with gravy, rice, green

beans, apple cobbler, biscuit, and milk.

Thursday, October 27
Taco salad (edible bowl), lettuce, cheese, pineapples, and milk.

Friday, October 28
Hot dog, tator tots, frozen fruit juice bar, Halloween cupcake, and milk.

GISD Breakfast

Monday - Cereal, cowboy bread, orange juice, and milk.
Tuesday - Two pancakes, apple juice, syrup, and milk.
Wednesday - Two slices of toast, peaches, and milk.
Thursday - Biscuit, sausage, orange juice, and milk.
Friday - Two cinnamon rolls, fruit cocktail, and milk.

Pringle-Morse School Lunch Menu

Monday, October 24
Tacos or soft burrito, refried beans, salad, cornbread, chocolate chip cookie, and milk.

Tuesday, October 25
Chicken, mashed potatoes, gravy, corn, rolls, fruit cocktail, and milk.

Wednesday, October 26
Spaghetti, green beans, Italian bread, pears, and milk.

Thursday, October 27
Sandwiches, tomato soup, salad, peaches, and milk.

Friday, October 28
Fish sticks, scallop potatoes, salad, biscuits, ice cream, and milk.

PMISD Breakfast

Monday - Eggs, toast, juice, and milk.
Tuesday - Muffins, toast, juice, and milk.
Wednesday - Pancakes, sausage, juice, and milk.
Thursday - Oatmeal, cinnamon toast, juice, and milk.
Friday - Toast, cheese toast, juice, and milk.

Spearman elementary At the movies...

students make lists

Spearman Elementary is off to a good start on the second six weeks now that the first six weeks is behind them.

The Spearman students who made the honor for the 1994-95 first six weeks are:

- ALL-A HONOR ROLL**
First grade - Abbie Aderholt, Christopher Allen, Maria Brisen, Jessica Brown, Jeremy Burch, Cory Cook, Jarry Francis, Callie Hargis, Lance Henderson, Jarick Howard, Kaylee Miesner, Maribel Moreno, Melissa Pape, Silvia Pinon, Garrett Rex, Melissa Richards, Mike Rodriguez, Travis Sanders, Tarsia Stephens, Brooke Thomas, Britta Vandenburg, Steven Vaquera, Jeffrey Whitworth, Joey Winchell, Abby Winegarner, Lynette Woodward, and Andrew Young.
- AVERAGE HONOR ROLL**
First grade - Holly Baker, Jena Cherry, Brian Close, Andrew Correll, Tyson Dettman, Daisy Fraire, Rebekah Goodson, Cathana Hernandez, Janet Mayo, Alejandro Rios, and Jose' Vargas Jr.
- Second grade - Joelin Baca, Jessica Blan, Jessica Freeman, Wayne Gibson, Isaac Herndon, Melissa Quillin, Clete Vandenburg, Roy Wilmeth, and Linzi McCubbin.
- Third grade - Keilee Goodheart, and Phillip Lozano.
- Fourth grade - Samantha Baker, Briane Burkhammer, Paul Bynum, Matthew Francis, Mindee Gillaspie, Sandra Gutierrez, Wesley Hathaway, Dustin Mackie, Colton Miller, David Pipkin, Nicole Ramon, Zachary Renteria, and Kallie Smith.
- Fifth grade - Tanner Beedy, Laura Comacho, Matthew Dunning, Amber Elliott, Sarah George, Steven Haney, Marty Miesner, Tashiana Schumann, and Jessica Volden.
- Third grade - Jentry Edwards, Ashlee Flowers, Garrett Martin, Tatum Rice, Russell Sheets, and Claudia Vaquera.
- Fourth grade - Daniel Baker, Kevin Beedy, Travis Brown, Adam Cherry, Jessica Crossland, Michael

Showing at the Lyric Theatre in Spearman Friday, October 21, through Tuesday, October 25, are "Corrina, Corrina" on screen #1 at 7:45 p.m. and "Forrest Gump" on screen #2 at 7:30 p.m.

In "Corrina, Corrina" Ray Liotta plays a widower in the 1950's who hires a housekeeper to care for his home and young daughter. Whoopi Goldberg plays the woman who enhances both of their lives.

"Corrina, Corrina" is rated PG. In "Forrest Gump" Tom Hanks stars as an ordinary man who accomplishes some extraordinary feats, from winning the Medal of Honor in Vietnam to becoming a

world-champion pingpong player. Not bad for a guy with an IQ of 75. Sally Field, Gary Sinise and Robin Wright co-star.

"Forrest Gump" is rated PG-13.

DON'T MISS IT!
MINI BAZZAR
SATURDAY OCT. 22
9 a.m. to 6 p.m.
PERRYTON EXPO CENTER

At The Lyric Theatre...

Friday, Oct. 21 - Tuesday, Oct. 25

Bargain Nights Mon. & Tue. Adults - \$4
Fri., Sat., Sun., Adult \$5 - Child \$3 every night
Closed Wednesday & Thursday

SCREEN 1 • 7:45 PM **SCREEN 2 • 7:30 PM**

Corrina, Corrina

(PG)

Forrest Gump

(PG-13)

113 Main • Spearman

Gruver JHS students make honor rolls

Gruver Jr. High School students have finished their first six weeks of the 1994-95 school year. The first six weeks honors have been calculated.

Named to the Gruver Jr. High School District honor rolls for this year are as follows:

ALL-A HONOR ROLL
Fifth grade - Kade Carthel, Britany Morris, and Jennifer Renteria.
Sixth grade - Casie Bridwell, Chris Lusk, Cory Schneider, Tessa Yanke, Holly Hart, Brad Holt, DeAnna Johnson, Brooke Salmans, Gisela Soto, Miranda Thoreson, and Brooke Bevell.

Seventh grade - Candice Casdorff, Derik Grottegut, Mary Puebla, Sandra Sanchez, Dallas Henson, Cayla Simon, and Janae Watley.

Eighth grade - Jennifer Duggan, Luke Johnson, Holly McCloy, Lauren Miller, Wesley Miser, Ja-

Pringle-Morse honor rolls announced

The first six-weeks of the 1994-95 school year has been completed and several students have been named to their school honor rolls.

Named to the Pringle-Morse School District honor rolls for the first time this year are the following students.

All-A Honor Roll
Second grade - Chase Phillips.
Third grade - Crystal Martinez, Amanda Apodaca, Bonson Odell, Douglas Singer, and Sara Martin.
Fourth grade - Ross Womble and Allison Behney.
Fifth grade - Evan Schmidt, Andrew Martin, Mikala Reisinger, and Monica Behney.
Sixth grade - Donnie Davis and Kirby Johnson.
Seventh grade - Tap Giblin.
Eighth grade - Stephanie Delacruz and Ashley Phillips.

A-Average
Second grade - Seth Clemmons, Brennan Eudy, and Krystal Sage.

Third grade - Kenneth Wolfe.
Fourth grade - Josiah Vasquez, Jeffery Evans, and Elizabeth Papay.
Fifth grade - Shawna Odneal and August Schuman.
Sixth grade - Katie Papay, Feliz Delacruz, and Hugo Hernandez.
Eighth grade - Brittini Sampley and Brenda Hernandez.

AB-Average
Second grade - Bailey Reid.
Fifth grade - Erika Mendoza.
Sixth grade - Jason Shoulders.
Seventh grade - John Papay.
Eighth grade - Shelby Reisinger, Phillip Creel, Stephanie Bowling, and Earl Wattier.

Superintendent's Honor Roll
Third grade - Sarah Martin, Douglas Singer, and Bronson Odell.
Fourth grade - Ross Womble and Allison Behney.
Fifth grade - Mikala Reisinger and Monica Behney.
Sixth grade - Donnie Davis.

GISD elementary honor rolls

It's that time already, the first six weeks is over and it is time to list the honor roll students for the 1994-95 school year.

The Gruver Elementary honor roll students are:

KINDERGARTEN
Rebecca Abernathy, Alicia Barkley, Pake Eckhardt, Mason Fletcher, Bonnie Frick, Baldomero Garcia, Drew Grottegut, Brian Johnson, Travis McDowell, Britney Montgomery, Charles Slough, Justin Thompson, Victoria Vela, Tucker Williams, and Courtney Wood.

FIRST GRADE
Timber Barkley, Lauren Bergin, Lacci Fitzgerald, Colby Griffin, Earl Griffin, Rachelle Holt, Tanner Irwin, Kelly Jones, Lizette Lopez, Mary Jane Lopez, Matt Messer, Samantha Myatt, Sarah Mireles, Cesar Ortiz, Rafael Perez, Allison Reid, Stephen Salazar, Tyson Sparks, Jose Torres, Jessica Vela, Steve Villegas, and Reid Winger.

SECOND GRADE
Christopher Abernathy, Valerie

GET THE ALCO Advantage



FREE EVERY TUESDAY!

SECOND SET OF PRINTS

Receive a second set of 3" prints FREE with any exposure roll of 35mm, disc, 110 or 126 color print film left for developing and printing at our everyday prices! C-41 process only. Excludes larger 4" size prints, and photo galaxy.



The Hansford County Reporter-Statesman
Serving all of Hansford County
Spearman • Gruver • Morse

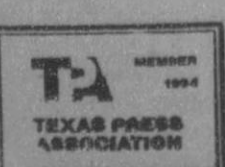
USPS 509660 • 213 Main, Box 458 • Spearman, Tx. 79081
(806) 659-3434 • 1-800-395-9482 • FAX (806) 659-3368
Published weekly at 213 Main, Spearman, Texas
Owned & Operated by
Texas Independent Newspapers, Inc.
16607 Blanco Road #100 • San Antonio, Tx. 78232
(210) 492-8907

Second class postage paid at Spearman, Texas 79081
Any erroneous reflection upon the character of any person or firm will be gladly and promptly corrected upon being brought to the attention of the management.

Publisher - Daniel Ramos
Office Manager - Deziree Torres
Staff Writer - Cora Thompson
Staff Writer - Chad Davis

The publisher reserves the right to revise or reject at its option any advertisement which it deems objectionable, either in subject or phraseology, or which it may deem detrimental to its business.

Subscription Rate: Hansford County, \$19.95; out of county, \$24.95 annually.
Postmaster: Send address changes to Hansford County Reporter-Statesman, Box 458, Spearman, Tx. 79081
Advertising & Story Deadlines
Monday, 5:00 p.m.



DUKE'S CHIROPRACTIC CENTER

EVENING HOURS AVAILABLE

- Headaches / TMJ
- Neck Pain / Stiffness
- Low Back Pain
- Shoulder / Arm Pain
- Hip / Leg Pain


- Family Health Care
- Pediatrics
- Athletic Injuries
- Numbness
- Gentle Treatment

AUTO ACCIDENTS • WORK INJURIES
(Most Insurance Accepted)

New Hours:
2-6 p.m. Mon. thru Fri.

659-5505

11 W. Kenneth • Spearman, Tx.



Darrell D. Duke DC

PUBLICATION COPY - COMMERCIAL AND SAVINGS BANKS
CONSOLIDATED REPORT OF CONDITION INCLUDING DOMESTIC AND FOREIGN SUBSIDIARIES

LEGAL TITLE OF BANK: Gruver State Bank
P.O. Box 978
Gruver, TX 79040
COUNTY: Hansford
STATE: Texas
ZIP CODE: 79040
CLOSE OF BUSINESS DATE: September 30, 1994

ASSETS	Liabilities	Equity
1 Cash and balances due from depository institutions	1173	
2 Securities	3,418	
3 Federal funds sold & securities purchased under agreements to resell	800	
4 Loans and lease financing receivables	13,122	
5 Assets held in trading accounts	244	
6 Other real estate owned	10	
7 Investments in unconsolidated subsidiaries and associated companies	0	
8 Customers' liability to this bank on acceptances outstanding	0	
9 Intangible assets	0	
10 Other assets	0	
11 Total assets (sum of items 1 through 11)	26,575	
12 Liabilities	22,980	
13 Deposits	22,980	
14 Federal funds purchased and securities sold under agreements to repurchase	0	
15 Demand notes issued to the U.S. Treasury	0	
16 Other borrowed money	0	
17 Mortgage indebtedness and obligations under capitalized leases	0	
18 Bank's liability on acceptances executed and outstanding	0	
19 Subordinated notes and debentures	0	
20 Other liabilities	0	
21 Total liabilities (sum of items 12 through 20)	22,980	
22 Liabilities - deferred stock and related surplus	0	
23 Perpetual preferred stock and related surplus (if of shares outstanding)	0	
24 Common stock (if of shares authorized)	6,000	
25 Other equity	0	
26 Total equity	6,000	
27 Total liabilities and equity (sum of items 12 and 24)	28,980	
28 Total assets (sum of items 1 through 11)	28,980	

MEMORANDA - Amounts outstanding as of report of condition date

1. Assets, liabilities of other banks

2. Amount of deposits, notes of credit in transit

3. Other

4. Other

5. Other

6. Other

7. Other

8. Other

9. Other

10. Other

11. Other

12. Other

13. Other

14. Other

15. Other

16. Other

17. Other

18. Other

19. Other

20. Other

21. Other

22. Other

23. Other

24. Other

25. Other

26. Other

27. Other

28. Other

DATE SIGNED: October 11, 1994
BY: SUSAN A. RENICK, Secretary

DATE SIGNED: October 11, 1994
BY: SUSAN A. RENICK, Secretary

Among The Neighbors

by Helen Fisher

Freda Sheets and Olive Pendergraft had an enjoyable time the previous weekend when they drove to Ulysses, Kansas. On Saturday morning Freda's sister, Nina Taylor, met them there and Freda spent the rest of the weekend in Lakin with the Taylors.

Olive visited with old friend, Vera Gray. On Sunday they drove to Syracuse to attend the 60th wedding anniversary of friends.

On Monday they returned home.

The Dalhart Daily Texan recently carried a most interesting and lengthy article regarding the late Ora Ralston including his picture in his Marine uniform.

Seth Ralston, son of Ora and Reba (Hunter) is now the Hartley County Extension Agent with an office in Dalhart. Earlier this summer, Seth had been in contact with Robert E. Lee of San Diego concerning his long ago friendship with Ora.

Mr. Lee, born and raised in Stratford, had moved to San Diego when he was 16. He had medical discharge from the military and had generously opened his home to military men from the small towns in the Panhandle. Sometimes he had housed as many as 12 at a time of those battle-worn and homesick young men, offering them relaxation and a home atmosphere.

Early this July he began a quest to link the past with the present and came across his picture of Ora Ralston. Ora was just 17 at the time and as an infantryman with the Marine Sixth Division, had suffered head injuries during combat in the South Pacific. Lee stated to Seth, "Ora came back through San Diego after combat duty. He was admitted to the Naval Hospital in San Diego and got weekend passes to come visit." After getting his discharge in 1944, Ora gave a picture of himself to Lee and returned to Spearman.

The article further stated that Ralston died a few years later from complications arising from his war time injuries.

Seth was most grateful to Mr. Lee for his kindness to his father and especially for the picture as it is the only one he has of his father.

Seth and his sister, Lillian Cooksey, grew up in Hansford County where their mother Reba and Bill Hunter still live. They



EDGAR NAVA

Nava based overseas/Haiti

Since the start of the Haitian conflict, many families in the United States, as well as Texas, have turned their attention to the conflict. When their husbands, wives, daughters, sons, and other family members are sent there, many people in the family realize how close to home the issue hits.

One such family in Spearman now realizes how close to home it has hit for them, as there son Edgar Nava of Spearman, was just recently stationed there. Edgar, a former Spearman native, joined the army almost immediately after his graduation from Spearman High School.

The family of Edgar hopes he will here from many of his friends and loved ones while he is there. If anyone wishes to contact Edgar to give encouragement, prayers, or just to say they appreciate what he is doing they may write him at the following address:

PFC Nava, Edgar
101st M.P. Co. 4th PLT
Unit #0950
APO AEO 9381-0950

are graduates of Gruver High School. Seth is married to Anita, daughter of Mr. and Mrs. Preston Smith. She is employed by HUD in Dalhart. They have two children.

It is remembered that Ora's brother, Jesse Ralston, was one of three Hansford County men who went down the Lipscomb Bay in the Pacific.

Gloria and Don Knox returned late Friday from a relaxing week-long trip to Branson and Eureka Springs. Their main activity was attending the shows and they were fortunate in seeing some of the big names.

They were pleasantly surprised to run into Norma (Holland) and Art Daniel now of Fritch.

Don and Lyanne Maize returned the latter part of last week from a week in San Diego. They visited his brother Clyde and Martha Maize, former residents of Spearman. Guy Shield, brother-in-law of Satanta, Kansas came to Spearman and flew out with them.

Former residents of Spearman for many years visited in Spearman early in the week. John Will Van Cleave and his sister, Ruth Jane Lee, were checking on business interests here as they still own land. The family farmed southwest of Spearman and the children attended school here. John Will now lives in Grand Junction, Colorado, and Ruth Jane in Portales.

Among old friends delighted by their unexpected visit were June and Wayman Edwards, Virginia Head, Blondine Edwards, Helen and Raye Gibson, and Charles and Lola Newcomb.

Congratulations, possibly tinged with a little envy, are due to Bill Watts, Meat Manager of Lowe's Market. Bill was a winner in a contest with his outstanding display featuring Wilson Meats. He won a trip to Dallas and to the Cowboys game a week ago Saturday. He and the other Meat Market Managers were flown down and had excellent seats for the game, close to the goal line just where Irvin caught that long pass for the touchdown.

For 21 years customers of the post office in Spearman have had the efficient and accommodating services of Bill Turner. On Tuesday past Bill sold the most stamps in one day of his 21 years. His stamp sale amounted to \$2905 consisting of single stamps, and individual books. It would represent many, many customers. He attributes the sale to the office being closed the day before a holiday, following the week-end. The amount of sales for all the personnel is not known.

No one could have been more delighted and surprised than was Phillis Owens on Sunday afternoon when she returned to her home after a drive with Bill Elliott, her son-in-law, his mother and a cousin. She discovered many parked cars and her home filled with guests to honor her with a surprise 80th birthday party. Her daughter Judy had the serving table already. In addition to the many local friends, out of town guests were Eula Gassner and a friend from Amarillo; Carl and Sylvia Owens, Beaver; Phillis' niece and family of Perryton; her nephew and family from Booker; Maude Elliott and a cousin of Bird City, Kansas.

Phillis has lived in Spearman since 1936. She and Claude Owens were married in 1938 and owned

TDH to hold screening

An Adult Screening will be held at the Texas Department of Health - Spearman Office, 720 S. Archer Street, Wednesday, October 26, 1994 from 9:00 a.m. to 12:00 noon and 1:00 p.m. to 6:00 p.m. Health Screening available will be blood pressure, blood sugar, cholesterol, colo-rectal kits for home use and adult tetanus (lock jaw) which includes diphtheria. It is recommended that people should repeat their Td's at least every ten years. A Nutritionist will be present to discuss your dietary needs and ef-

fective ways of meeting those needs. A \$4.00 fee will be charged to cover the cost of the supplies used, however, no one will be turned away due to inability to pay. The same screening will be available at the Gruver School on Thursday, October 27, 1994 from 9:00 a.m. to 2:00 p.m. If you have not participated in these screenings recently please take advantage of this opportunity.

Mary Baker and son, Kevin, accompanied by friends, Kristina and Kaitlyn Poole, spent the long weekend at College Station. They visited Melissa Baker, student at A & M and attended the football game. They left Sunday before the deluge started.

Vernon and Marsha Pipkin also enjoyed the Baylor game, visiting their son, Cody, also a student. They were not in any hard rain until they reached home late Sunday night, and received 1.7 inches on their farm southeast of Spearman.

There were other parents at College Station over the week-end; their names were not immediately available.

According to the news by noon Monday, College Station had received 14.82 inches of rain in the 24 hour period.

Hansford County students, already adjusting from attending a 200 student school to one of 43,00 students, will have to adjust from a drought area to one of cloud bursts and floods. Most of them will probably have to learn how to use an umbrella.

With the politicians promising to equalize everything-the one who promises to equalize rain fall would be a shoo-in.

Among the Hansford County students at A & M wondering if another Noah's Ark is in the future are: Pat Shields, Joel Shields, Chance Jackson, Leslie Latta, Randy Renner, Matt Archer, Clint Schnell, Melissa Baker, Cody Pipkin, Robert Needham, Darin Hawkins, Ross Jarvis, Holly Jarvis, Carly Riethmayer, Haley Shieldknight, Wynn Maupin, Shana Jarvis, and Lee Bob Harper.

With American military in several hot spots in the world and others in faraway bases, the friends of the Hansford County men and women in service is interested in their locations.

Anyone wanting to make the information available are welcome to call 659-3468, and it will be carried in this column.

Bud and Leona King, for many years in business in Spearman, now of Tucson, Arizona visited Spearman the early part of the week. They were accompanied by their daughter, Rowena Day.

They were guests in the home of Leona's sister, Alta and Peter Fisher. They went to Cash, Oklahoma to be with her mother and their son, Buddy. Rowena was going on to Ft. Worth to visit her daughter who is in the Baptist Seminary there.

To all the neighbors who have been wondering about Ora Lee Blackburn yes, she finally returned from her two months' visit to Alaska. She is glad to be home and is hard at work in her yard.

She visited in the home of her daughter, Elaine and Bill Cessnum, in Kenai. She didn't take part in all the rigorous activities she has on her previous visits, but just relaxed and enjoyed seeing her old friends. Watching the running of the whales and fish was interesting. They did go to Homer, Alaska. Bill killed two moose and she helped put meat up. She enjoyed her granddaughter Julie and Matt Neel of Anchorage. They had just returned from an unusual trip-with two other couples, they rode two passenger bicycles from Anchorage to San Francisco. The trip was 903 miles, and they were glad to fly back.

So, welcome home, Ora Lee.



WE'VE GOT OUR PRICES SO LOW... IT'S SPOOKY!!

HERE'S SOME GREAT PRICES ON A PARTIAL LIST OF OUR FORD FACTORY PROGRAM CARS & USED CARS & TRUCKS!

TRUCKS

- *94 Ford 1/2 Ton XLT Lariat Supercab - Tobago Green (Grey Cloth)**
Only 3,700 miles! 351 EFI V8, windows, locks, tilt, cruise, AM/FM cass, chrome mags. Save thousands over new!..... Only..... **\$18,500**
- 92 Ford 1/2 Ton 4x4 XLT Lariat Supercab - Silver/Red (Grey Cloth)**
Only 54,000 miles! 351 EFI V8, captain chairs, windows, locks, tilt, cruise, AM/FM cass, chrome mags & Michelins..... Only..... **\$16,900**
- *92 Chevy 1/2 Ton Silverado - White/Ice Blue (Blue Cloth)**
Only 30,000 miles! 350 EFI V8, windows, locks, tilt, cruise, AM/FM cass, Rally wheels..... Only..... **\$14,900**
- 91 Ford Ranger XLT Supercab - Maroon / Silver (Grey Cloth)**
3.0 EFI V6, 5 speed, new steel radials, mags, tilt, cruise, AM/FM cass. High mileage but looks & drives great!..... Only..... **\$6,900**
- 89 Chevy 1/2 Ton - Silverado - 2 Tone Blue (Blue Cloth)**
350 EFI V8, windows, locks, tilt, cruise, AM/FM cass, Rally wheels, new steel radials, high mileage but looks & drives great!..... Only..... **\$7,900**
- 88 Chevy 1/2 Ton Extended Cab - Silverado - Silver/Blue (Blue Cloth)**
Only 57,000 miles! 350 EFI V8, windows, locks, tilt, cruise, AM/FM cass. This is a sharp truck!..... Only..... **\$9,900**
- 88 Chevy 1/2 Ton 4x4 Suburban - Silverado - Dark Brown/Tan (Tan Cloth)**
350 EFI V8, Buckets, center & 3rd seat, rear air, windows, locks, tilt, cruise, AM/FM cass., running boards. High mileage but mechanically sound!..... Only..... **\$10,900**
- 77 Chevy 1/2 Ton 4x4 Suburban - Silverado - Bronze/Tan (Tan Cloth)**
350 V8, Rear air, tilt, cruise, AM/FM, running boards, Rally wheels, HD Trailer Special. This would make an ideal crew or hunting rig..... Only..... **\$3,500**

CARS

- *94 Mercury Grand Marquis LS 4 dr. - Electric Red (Red Cloth)**
Only 15,000 miles! Power seat, windows, locks, tilt, cruise, AM/FM cass, Michelins & mags..... Only..... **\$18,900**
- *94 Mercury Sable GS 4 dr. - Silver (Red Cloth)**
Only 16,000 miles! 3.8 V6, Anit-lock brakes, dual air bags, power seat, windows, locks, tilt, cruise, AM/FM cass, defogger, mags..... Only..... **\$15,500**
- *94 Ford Tempo GL 4 dr. - Brilliant Blue (Blue Cloth)**
Only 13,000 miles. Power seat, windows, locks, tilt, cruise, AM/FM-cass, defogger, mags..... Only..... **\$9,950**
- *93 Lincoln Town Car Signature - Opal Silver (Red Leather)**
Only 18,000 miles! Keyless entry, light dimmers, dual power seats, defogger, Michelins & mags..... Only..... **\$24,900**
- *93 Lincoln Town Cars - 2 To Pick From!**
China Blue (Blue Leather) 11,100 miles. Mocha Frost (Saddle Leather) 17,900 miles. Both have keyless entry, light dimmers, dual power seats, Michelins & mags..... Your Choice Only..... **\$23,900**
- *93 Lincoln Town Car - Electric Red / White Convertible Top**
Only 28,000 miles, chrome package, red leather, power seats, keyless entry, light dimmers, Michelins & mags..... Only..... **\$22,900**
- *93 Ford Taurus GL 4 Dr. - White (Red Cloth)**
Only 15,000 miles! 3.8 V6, dual air bags, power seat, windows, locks, tilt, cruise, defogger & mags..... Only..... **\$14,250**
- *93 Ford Tempo GL - Light Pastel Blue (Blue Cloth)**
Only 8,000 miles! Power seat, windows, locks, tilt, cruise, AM/FM cass., defogger & mags..... Only..... **\$9,250**
- *91 Lincoln Town Car 4 dr. - Light Crystal Blue (Blue Leather)**
Only 46,000 miles! Power seat, windows, locks, tilt, cruise, AM/FM cass, turbine mags..... Only..... **\$15,900**
- 91 Mercury Topaz 4 Dr. - Met. Blue (Grey Cloth)**
Power windows, tilt, cruise, AM/FM cass., mags. High mileage but mechanically sound..... Only..... **\$3,900**
- 90 Mercury Sable LS 4 Dr. - Light Crystal Blue (Blue Leather)**
Only 52,000 miles! 3.8 V6, Power seat, windows, locks, tilt, cruise, AM/FM cass., defogger, keyless entry & mags..... Only..... **\$8,900**
- 89 Ford Mustang LX Hatchback - Dove Grey (Grey Cloth)**
Only 63,000 miles! 4 cyl. EFI, windowsm locks, tilt, cruise, AM/FM cass. This would make a good economical school car!..... Only..... **\$4,900**

Check Out Our Year-End Prices On Our Remaining 94's!
We Need To Make Room For The 95's!

Cars

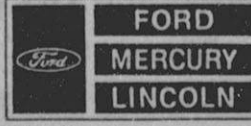
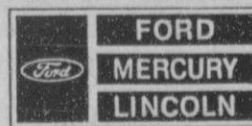
- Lincoln Town Car Signature - Dark Portofino Blue (Grey Leather)
- Mercury Grand Marquis LS - White (Grey Leather)
- Ford Taurus GL - Electric Red (Red Cloth)

Trucks

- Ranger Splash - Vibrant Red (Grey Cloth)
- Explorers - 3 To Pick From! Black, Opal Grey, White
- F150 1/2 4x4 XLT Lariat Supercab - Opal Grey/Red
- F150 1/2 Ton XL Reg. Cab - Desert Copper
- F250 3/4 Ton XL -Reg. Cab - Bright Red
- F250 3/4 Ton XLT Lariat Supercab - Turbo Diesel - Electric Red/White

*Have New Car Warranty Remaining

Don, Donnie, Darl Hergert



Before you buy, give us a try!



"Where You Deal Directly With The Dealer"

Panhandle Crisis Center Report

by Mary Frances Ellzey

You readers familiar with us may skip this paragraph and start with the next one. The PCC offers services free of charge to men or women who are victims of domestic violence, whether physical or "merely" verbal. We give counseling, support, and information to these victims. Plus a shelter to those who feel themselves to be in danger at home. We are available for help 24 hours a day, at 435-5008. If you want information only, call us from 9 a.m. to 5 p.m. For those who must call us long distance, use the toll-free number: 1-800-753-5308.

On Wednesday past I, along with Beehive DayCare, gave a talk to the Exxon people, as part of the last

weeks of the Ochiltree County United Way drive. (By-the-way the Exxon people provided a delicious roast pork lunch!) A week or two ago, my granddaughter took my place as car-hop at the Sonic on the day that all the tips were to go to the crisis center. I told her that on this occasion she could flirt to her heart's content, so she jumped at the chance. Did a good job, too.

Did you know that October is Domestic Violence Awareness Month? Here with are some pertinent statistics: Battering is accountable for the vast majority of birth defects. Across the nation, more women suffer injuries from domestic violence than from rape, auto-

mobile accidents, and muggings combined. Each day four women are battered to death by their live-in companion. Three-quarters of these battered women had no idea that the men they married would be guilty of battering.

October is also the month of our Tenth Anniversary. From our humble beginnings with no shelter of our own, and having to rent a room at one or another of the motels for those of our clients who were afraid to return home, we now have (and have had since our second year of operation) a shelter of our own. Last August we sheltered nine women and 10 children. A shelter is necessary to help the woman (and her children) to recover from the trauma brought on by their victimization, and to get to a state of mind that will be conducive to right thinking and good judgment. The national average is seven stays in a shelter for women to gain the courage to take steps to change their situation, and to recognize the imperative nature that necessity. However, it seems to me that the number of "repeaters" at the PCC in this cycle or shelter residence is not nearly that large.

To inform you again of how we are funded, the answer is that about 50% of our funding comes from government grants: federal money is

supported through the Victims of Crime Act (VOCA). State money comes through the Department of Human Services. The other 50% comes from donations. One of our major sources of donations is the Ochiltree County United Way. We've also benefited by a grant from Amarillo Area Foundation - they bought our current four-bedroom shelter; and The Meadows Foundation - they paid for extensive repairs a couple years ago. Various communities and individuals have given generously. And there are those other contributions such as food for the freezer, blankets, clothing, bedding, even toiletries - you name it. Then, of course, there are the fund-raisers we have each year: the Mexican pile-on in February, the Amarillo Little Theatre presentation in April or May. They all of them add up to our successful administration of Panhandle Crisis Center.

Can you believe that occasionally a letter from a client of several years ago comes to us, expressing appreciation for the help we've been able to render. Not everyone is that articulate, but the appreciation is just as wholehearted.

So we're very proud of our service to our community, and of the warmth of the community's response to our needs. Many thanks.



NEW CHAIRMAN- Each year the Gruver PTA holds its annual Halloween Carnival. In order to have the carnival, a chairman must be elected to oversee and plan events. The Gruver PTA Halloween Carnival Chairman for this year is Mrs. Todd Parker. She is assisted by Co-Chairmen Roy Neal Barkley, Neal Williams (right) and Tim Barkley (left). (Photo by Cora Thompson)

Parker chosen as PTA carnival chairperson

By TERESA BARKLEY

Gwen Parker, has been chosen chairman of this year's PTA Halloween Carnival. She will be assisted by co-chairmen Tim Barkley, Neal Williams and Randy Reid.

Parker is the wife of Gruver's band director, Tod Parker. They have two sons, David and Gage. They are members of the First Baptist Church of Gruver. Gwen Parker attended High School in Spur, Texas, and is a graduate of West Texas at Canyon. She taught high school English at Dimmitt, Texas, before moving to Gruver where she is a full-time mother.

The Gruver PTA is also proud to have Gwen serving as the secretary on the executive board. She is the President of Alpha Mu Psi Chapter of Beta Sigma Phi, which is the leading serving organization of Gruver! Gwen is indeed proof that

"the busiest people are the best volunteers". She is a delight to work with and we appreciate her hard work, expertise and commitment to children and families.

Dads are parents too! Randy Reid, Neal Williams and Tim Barkley are active participants in the Gruver PTA. These men have lived in Hansford County all their lives and now wish to give back to their children and community that which their parents gave to them.

Randy's parents are Mr. and Mrs. Charles Reid of Morse. His wife is Lavonne Kunselman Reid and they have two daughters, Allison and Mallory. They attend the First Baptist Church of Gruver.

Neal's parents are L. A. and Jayrene Williams. He is married to Julie Sparks Williams and they

See CARNIVAL page 6

Gruver ISD holds regular board session

The Gruver ISD met in a regular meeting last Wednesday October 12, to discuss issues concerning the Gruver schools.

The first issue the board discussed was the improvement of the campus. The plans, which were

approved by the trustees and were written by the principals of each school, included strategies for increasing student achievement at each campus during the year.

Another issue the board discussed was to appoint a new seat to the Board of Directors for the Hansford County Appraisal District. The seat, which was formerly held by Randy Brown, was nominated to be given to Mark Irwin. The board

See GRUVER ISD page 12

Pringle-Morse

CONTINUED FROM PAGE 1

provides for the District to comply with Senate Bill 7 by purchasing attendance credits from Gruver and Spearman ISD's. The estimated cost to the District is \$375,00. Last year Pringle-Morse sent approximately \$350,00 to the partner and another \$27,528 to the Texas Education Agency.

Miss Texas Arian Archer will be at Pringle-Morse School Monday, October 24 to present the Red Ribbon Week War on Drug Program. The public is invited to the assembly at 2:00 p.m.

OSGOOD MONUMENT CO.

Amarillo, Texas

Dealers of Rock of Ages Granite, as well as all colored granites, marble and bronze memorials.

Represented by Boxwell Bros. Funeral Home

519 S. Evans
659-3802

Gordon's BRUG Bridal Gift Registry

COME BY & LET US HELP YOU SET UP YOUR SPECIAL GIFT TABLE

Couples Currently Registered

Ronda (Gibson) & George Jennings *Nov. 5
Mandy Spencer & Ryan Wells *Dec. 12
Tammy Thomas & Jason Sutterfield

* Date of the Bridal Shower

314 MAIN
PHONE
659-2141

Gordon's BRUG

SPEARMAN TEXAS

Order Early for Halloween

DEBBIE'S READY OR NOT
has cookies, cupcakes, party favors,
& balloons for your school party,
secret pal, or masquerade party!



315 1/2 Main
Spearman, TX
806/659-3328



SACRED HEART CATHOLIC CHURCH

ANNUAL MEXICAN DINNER

FRIDAY, OCTOBER 21, 1994
11 A.M. TO 1:30 P.M.

MENU: Meat and Cheese
Enchiladas
Pinto Beans
Spanish Rice
Tostadas and Hot Sauce
Dessert

COST: Adults--\$5.50
Children 6-12--\$3.75
Under 6--Free

FOR HOME AND BUSINESS DELIVERIES CALL 659-3841

Please join us for a **BABY SHOWER**
in honor of

Nora (Garcia) Saenz & Erynn Rynee
Saturday, October 29, 1994
1:30 - 3:00 p.m.

Hospitality Room • First State Bank

Given by Hostesses:

Grace Rios(Dumas)
Pura Rivera (Dumas)
Alice Saenz (Dumas)
Lupe Sotello (Dumas)
Sylvia Rangel Stratford)
Ruby Ochoa (Amarillo)
Melody Garcia (Sweetwater)
Emma Garcia (Abilene)
Grace Garcia (Abilene)
Sara Perez (Abilene)

Vera Dominguez
Maria Pacheco
Anna Pacheco
Missie Sumner
Maria Sumner
Maria Robledo
Vicki Stewart
June Day
JoLinda Hutchison
Roseann Hernandez



*Selections at Kids' Stuff



1- 10x13
(Wall Photo)

1- 8x10

2- 5x7

2- 3x5

16- King Size Wallets

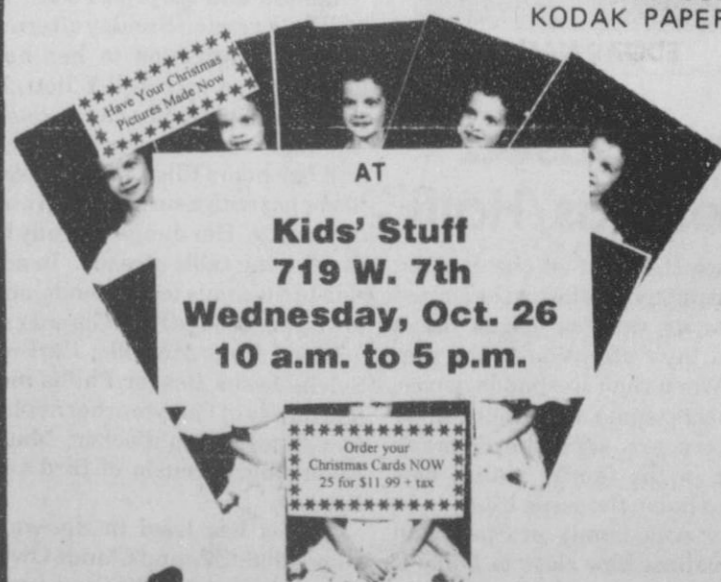
8- Regular Size Wallets

30
Color
Photos

99¢ Deposit
\$11.00 Due at
Pick up
(plus tax)

\$11.99

WE USE
KODAK PAPER



Shugart's inc.®

Group charge
99¢ per person

We use
Kodak PAPER
for a Good Look

FOR L-RATIVE COLOR PORTRAITS

Picnic Place Restaurant

11 a.m. - 8 p.m.

Monday - Saturday

Serving:

Hot & cold sandwiches,
many flavors of ice cream
and baked potatoe pile-on

HAPPY HOUR: 3:30-4:30 p.m. (special prices)

Saturday Night Special

Senior Citizens Discount Night

(65 years & older)

Discounts on everyting (except pie)

5 p.m. - 8 p.m.

Mexican Fiesta Plate - Friday

BBQ Plate - Wednesday



217 Main

For Take-Out Call 659-3864

Club News

Kathleen Sutton was hostess for the Gladiola Flower Club on October 6.

Margarette Evans called the meeting to order. Roll call of "My favorite soup" was answered by members. Minutes of the previous meeting were read and approved.

Virginia Head and Estelle Jackson gave a progress report on the Home Tour that will be held on December 4.

Officers for the coming year were elected. Margarette Evans - President, June Jackson - Vice President, Rose Cummings - Secretary, Estelle Jackson - Treasurer, Jo Larson - Historian, Mike Hergert - Flower Chairman and Dorothy Buzzard - Project Chairman.

Flower winners were: Gwen Smith - Home Grown Arrangement, and Virginia Head - Specimen.

The program on Butterfly Gardens was given by June Jackson. She noted that 120 species are common to the Panhandle area.

Present were: Charlsie Baker, Wanda Brown, Dorothy Buzzard, Rose Cummings, Betty Jean Davis, Margarette Evans, Ann Flowers, Virginia Head, Mike Hergert, Fay Holt, Estelle Jackson, June Jackson, Lorene Kunselman, Jo Larson, Gwen Smith, and Kathleen Sutton.

The next meeting will be with June Jackson on October 20.

Bazaar to be held in Perryton

By JEAN GURLEY

The Fifth Annual Mini Bazaar will be held on Saturday, October 22, 1994 at the Ochiltree County Exposition Building in Perryton, Tx. Open to the public from 9:00 am to 6:00 pm. No admission charge.

You sure don't want to miss this event. The not-so Mini Bazaar offers an exceptional amount of quality items, with over 70 exhibitors attending. It is getting bigger and better each year.

This event is open to craftsman, hobbyists, collectors, entrepreneurs, bakers, candy makers, woodworkers, or whatever your special interest or hobby may be.

Come and enjoy a relaxing fun day sponsored by Waka Women's Fellowship of The Church of the Brethren of Waka, Tx. Food will be available - served by the Home Extension Ladies.

Mark your calendars and plan now to join us. If you need information call: 806-435-4515 or 806-435-2104.

Dad-Lad Cake Bake set

Spearman Cub Scout Pack #578 will host its annual Dad-Lad Cake Bake Saturday, October 22 at the O'Loughlin Community Center.

"This is a creative fund-raiser and it has been very successful in the past," said Pack Leader Andy Scarborough.

All Cubs and their parents are encouraged to bake and decorate cakes using this year's theme, "Under the Big Top". Bear Cub Leader Jamie Deakin reminded participants that all these "circus" cakes' decorations must be edible, and that no store-bought cakes can be entered in the contest.

The check-in time is 6 p.m. at the Center, with judging to begin at 6:30 p.m. The cakes will be auctioned at 7 p.m. All proceeds from the fund-raiser will go to the local cub scout operating fund.

Scarborough said Cheryl Sander is collecting donations from area businesses and individuals for the Cake Bake. Contributing business people are invited to come to bid on the cakes, but if they cannot attend, cub leaders will do it for them. Family and community members may also bid on the cakes. Sander can be contacted at 659-2989 by interested donors. Those wishing further details about the contest can call Scarborough at 659-3882.



MAN OF THE HOUR - John R. Collard, Jr. (center) was the man-of-the-hour last week during the weekly Rotary Club meeting. Collard was honored for his 23 years of service to the club. The former Spearman resident now resides in Amarillo. He ventured back to Spearman to receive his award from current District Governor Charles Labarr (left) from Pampa. Labarr also presented current Spearman Rotary Club president Rick Sander (right) with a certificate for his work in the organization. (Photo by Daniel Ramos)

Sutton enrolled in OSU at Okmulgee

Brandon Sutton from Spearman is among 2,188 students enrolled for the fall semester at Oklahoma State University in Okmulgee.

OSU-Okmulgee offers college-level technical/occupational programs of study in 11 major disciplines.

Students graduating from OSU-Okmulgee earn the Associate of

Applied Science degree and are certified by the college's unique Graduate Performance Guarantee.

Students enrolled for the fall semester represent 76 of Oklahoma's 77 counties, 22 other states and 2 foreign countries.

Sutton, of 620 S. Roland, is enrolled in diesel and heavy equipment technology.

Biggs performs at OPSU

Oklahoma Panhandle State University's Concert Choir presented a fall program on Tuesday, October 4 at 8 P.M. in the Student Union Ballroom on the OPSU campus.

The Choir performed two classical arrangements, "America the Beautiful" and the spiritual, "Great Day."

Among members from Texas are: Robert Back, Stinnett; Jodi Barker,

Dalhart; Vanessa Biggs, Spearman; Clay Cleaver, Jacksonville; Lacie Friesen and Joe Stepp, Perryton; Stephen Lehew, Boys Ranch; Brenda Sale, White Deer; and LaQuita Vaughn, Stratford.

Vanessa is on scholarship at the University. She has been a Spearman native nearly all her life, and she also enjoys choir and the fellowship of other talented musicians like her.

HENSON CHIROPRACTIC

410 S. Davis • Spearman, Tx.

Call for Appointment • 659-5603

OFFICE HOURS:

Monday, Wednesday & Friday 9:00 to 5:00
Tuesday & Thursday 9:00 to 11:30

Spearman City Lites

by Kelvin Knauf,
Spearman City Manager

Halloween Safety Tips

Halloween is a fun time for children, but parents should take steps to keep Halloween safe as well. Here are some tips for a safe and enjoyable Halloween.

Choose light-colored and fire-retardant material for costumes. It also helps to place reflective tape on costumes. Make sure that the mask does not interfere with the child's vision. Encourage your child

to carry the mask between houses and put the mask on at the door. If weapons are part of the costume, make them out of cardboard. Never use a toy weapon, especially toy guns, that looks like the real thing.

Always carry a flashlight when trick or treating after dark. Give children small bags in which to carry candy; large bags often cause children to trip. Know what homes your child will visit. Children should only go to lighted homes. Know your child's companions; young children should be accompanied by an adult. Teenagers supervising children can get careless with safety rules. Know what time your child will be home.

Children should stay off lawns because of hazards and sprinklers that could cause a child to fall. Children should stay away from

stray dogs. Teach your children to respect other people's property. Throwing eggs, fruit and other items is dangerous and illegal.

Once the child has returned from trick-or-treating, an adult should inspect all the candy and other treats the child has received. Throw away candy with torn or loose wrapping, and discard homemade treats such as cake, cookies, popcorn, and fudge unless you know who made them. Fruit should be washed and cut into small pieces.

If you follow these rules, your child will have a safe and happy Halloween.

Messenger to serve another term

Pat Messenger of Amarillo has been re-elected by the Board of Directors of Amarillo Production Credit Association for a second three year term. He fills the board position for a non-stockholder director.

Other board members of the stockholder-owned agricultural lending corporation are: Mike McLain, Gruver, Board Chairman; Charles Hoover, Hereford, Vice Chairman; Joe Everett, Stratford; J. D. Kelly, Jr., Panhandle; and Howard Beauchamp, Jr., Dumas.

★★★★★★★★★★★★★
★ Jackson Welding Service ★
★ Agricultural & Oil Field ★
★ Welding ★
★ 17 Years Pipe Welding ★
★ Experience ★
★ Fully Insured ★
★ Contact Roy Jackson ★
★ 659-2137 or 659-5129 ★
★★★★★★★★★★★★★

The Right One

for quality drycleaning and laundry service.

Shirts-Jeans Starched.

PERRYTON CLEANERS &

LAUNDRY

1-800-232-5370

CJ'S X+TRA

Dimensions

Latest Fashions in Plus Sizes

806/274-9406

518 N. Main

Borger, TX

10% OFF

any one item

Redeemable at

CJ's Xtra Dimensions

518 N. Main • Borger, TX

NOTICE

Over 5 years ago when I opened Mark Sheets Truck and Automotive, I believed a car and truck shop could co-exist under one roof. I was wrong.

There are many conflicts between car and truck repair including scheduling, tools, facility design, and technicians training. For these reasons, I WILL NO LONGER PERFORM REPAIRS OR SERVICE ON CARS OR MINIVANS. By taking this action, I will be able to do faster, more complete service on pickups, 4 x 4's, suburbans, and trucks of all types.

I realize this will cause inconvenience for many loyal customers, but because of overwhelming growth in our truck repair area, I am forced to make this decision.

I appreciate the patronage I have received over the years.

Mark Sheets



With Call Forwarding, he only has to know one number to find you any number of places.

It's not impossible for someone to learn the phone numbers of all the places you might be. But it is unnecessary. Because with Call Forwarding from Southwestern Bell, you can have your home phone number ring wherever you go. And when your number keeps up with you, it's easier for your family and friends to do the same. To order, or for more information on this and other EasyOptions™ calling services, call 1-800-234-BELL.

Southwestern Bell Telephone

"The One to Call On"

School Bell Program

From now until April 28, 1995, Southwestern Bell Telephone will donate \$2 to the board of trustees of your local high school when you purchase the Call Forwarding service. Your school can earn up to \$1,500 to help purchase anything from fine arts programs to computer software to band uniforms.



DISTRICT/ALL-REGION CHOIR - These seven Spearman High School students recently competed at the District/Region Auditions in Pampa. Pictured (front row, from left) are Carol Alvarado and Amanda Lomeli. Second row (from left) are Carl Babitzke and Cary Alvarado. And standing on the back row are Jose Tarango, Amy Schoenhals and Gabriel Rodriguez. Schoenhals took first place honors at the regional level and Carol Alvarado placed second. Both qualify for Pre-Area Tryouts at Randall High School in Canyon on Dec. 3. They will also perform at the Region Concert on Nov. 12 at WT A&M. Cary Alvarado and Babitzke also placed in the District Choir competition. (Photo by Daniel Ramos)



ALL-REGION CHOIR - Several Spearman Junior High School students recently tried out for All-Region honors at Canyon. And after a full day of competition six of the eight were selected to the all-star group. Pictured (from left, front row) are Britni Beedy and Kristal Burkhammer. Standing on the second row (from left) are Marie Vela and Randi Burch. Third row (same order) are Dawn Loomis, Landree Woodward and Felipe Navarrete. Not pictured is Jennifer Laxson. Making All-Region were Burkhammer, Vela, Loomis, Woodward, Navarrete and Laxson. (Photo by Daniel Ramos)

Gruver H.S. kids place at rodeo

The Gruver Tri-State High School Rodeo Team had a successful weekend at Wellington, Oct. 15.

Jana McCloy won the goat tying event with a time of 7.766. Manchie Light of Randall was second with a time of 8.688.

In the calf roping event, Lee Gable won the event with a time of 12.301. Quentin Harper was second with a time of 13.722.

Sahala McCloy placed fifth in the breakaway roping with a time of 5.629. Misty Meyer of Vega won with a time of 4.161.

The saddle broncs competition was won by Lance Gaillard of Texhoma, he also placed third in the team roping event with partner Shane Elliott.

Jason Griswold of the Gruver Team placed sixth in the bull riding behind Matt Duck of Pampa who won the event.

The Gruver Team will compete this week at the River Road High School Rodeo on Saturday, Oct. 22 at the Range Riders Arena in Amarillo. Performances start at 10 a.m. and 3 p.m. with team roping between performances.

Out at the Lake

Lake Depth-- 21 feet and 11 inches.

Continuation of the George Aitkin Story:

So far the record we have is cloudy about what happened after George Aitkin was killed. His brother Tom was at the house that Sunday morning, June 30, 1907 and undoubtedly reached Janet Aitkin in Scotland by telephone or telegram. The probate records show a casket was bought at The Star Mercantile in Guymon for \$75, but we do not know if the burial took place in the area or if the body was sent to Scotland. Neither do we know if Janet Aitkin brought baby Alexander back with her or left him behind with relatives. The records do show that she wrote Judge Hays, asking to be appointed administrator of her deceased husband's estate and that she initiated a civil suit for \$25,000 against J.M. Simmons. The criminal trials of which there were two moved at their own slow pace.

The records in the Hansford County Courthouse in the George Aitkin Probate file deal with the

letters to Judge Hays trying to help him decide who the administrator would be, and then how the administrator handled the estate until it was finally settled as to the last paper signed in 1915. The civil suit was sent to Ochiltree County and the criminal suit and its appeal were heard at Miami in Roberts County.

Applying to be administrator besides Janet Aitkin were Tom Aitkin, Huff Wright, and W. J. Herman. Huff Wright, President of the First National Bank of Guymon, was put forward by the chief creditors as a man who had broad experience with cattle, and as a man who would best serve the legal heirs and the creditors. This group felt that Mr. Herman was young and inexperienced. Mr. Herman's backers felt that 65 year old Huff Wright was too old for the job and lived too far away. No one wrote down why Janet Aitkin and Tom Aitkin were not considered. Judge Hays had appointed Bert O. Cator as temporary administrator. Despite Janet Aitkin's filing and ap-

peal bond to have him removed--with W.E. Caldwell and Tom Aitkin her sureties--Bert Cator was made the administrator, and she then dropped the appeal.

Girl Scouts win Merit Badges at Amarillo

By CAROLYN CUMMINGS

Session 2 of the Atomic Energy Merit Badge was last Saturday at Amarillo College for Girl Scout Troop 127.

The girls took their tests on vocabulary words, and on the scientist. The atomic hazard symbols and the diagrams on nuclear fission and critical mass were turned in.

Their assignments for next Saturday are to do atom models of hydrogen, deuterium and tritium. They need to turn in their irradiated growing plants and the radiographs. Those students that didn't go to the hospitals for the tours of the x-ray areas and those that didn't work with Geiger counters will do that this Saturday.

Group pictures were also taken this last Saturday. We had a demonstration from the RAT Team (Radioactive Accident Team). They were in their protective suits and did various activities that they learn during their training.

After classes we went to Llano Cemetery to the Vietnam War Wall. We placed flags and took chalk rubbings of various friend's names including Hansford County Veterans and others. The girls and myself were moved by the many displays of respect and remembrances left by the Wall. It also gave them an opportunity to learn something about those difficult and sad times. Kelli learned that her daddy, Wayne, did two of duty on the USS Topeka in Vietnam.

Later in the evening we attended the Lone Star Ballet. Ballet Oklahoma presented 'Patsy Cline - Sweet Dreams' and 'Fractured Fairy Tales'. When the first notes of 'Sweet Dreams' came through that sound system it gave you cold chills. The 'Fractured Fairy Tales' were various comic ballets of 'The Three Bears', 'Cinderella', 'Sleeping Beauty' and other fairy tales. It was delightful. I can't think of anyone who wouldn't have enjoyed this evening even if they say that they don't like ballet.

After a late night snack we stayed the night at the Radisson Hotel and came home Sunday morning.

Junior Troop 126 is still working on the Puzzlers Badge. They did mazes and word puzzles this last week. Then we went down to Gordon's for refreshments.

This week you'll see us drawing off different forms of hopscotch games. If you see us come join us no matter how old you are. My daughter, Kelli, swears that I'm going through my second childhood. Oh well, it's fun and it keeps you young. (Well most of the time.)

GHS fares in THS top three

By ANDY JONES
Gruver High School Senior

"For many years, the Gruver community has taken pride in its excellent schools," says Gruver superintendent, Barry Haenisch. Mr. Haenisch is referring to the Texas Successful Schools Award System (TSSAS) Exemplary Status Certificate of Acknowledgment that Gruver High School has received from the Texas Education Agency. The award is based on the results of College Admissions tests such as the SAT or ACT. Mr. Haenisch goes on to say that "the award is a reaffirmation of the faith the community has in the students and teachers."

The award is especially gratifying due to the fact that only 39 of the 1,339 Texas High School campuses met the standards for Exemplary Status. Mr. Haenisch states, "The recognition is deserved and we are proud of the hard work the students show."

A ceremony to acknowledge the campuses qualifying for Exemplary Status will be held on January 30, 1995, and invitations to the ceremony should be received by Gruver Superintendent Barry Haenisch and by Gruver High School Principal Lloyd Loper sometime in December. Mr. Haenisch concludes by saying, "It is rewarding to work in a school system and a community that values learning."

Carnival

CONTINUED FROM PAGE 4

have two children, Ben and Emily. They attend the Church of Christ in Gruver. Be sure to trick or treat at Neal's grandmother's house. She is Charmian Lyle known to be the best cook in Gruver!

Tim's parents are Howard and the late Verna Barkley. His wife is Teresa Beck Barkley and they have one daughter, Timber. They are members of the Church of Christ. Timber says if you plan on trick or treating her granddad, you better

try the golf course.

The Gruver PTA Halloween Carnival on October 29th is the place to be! A BIG thank-you to the people at Cargill, Inc., known in Gruver as Caprock Feedlot, for the donation of a packaged beef. The proceeds of a raffle will go towards the expense, of funding this event. All booths for the elementary students' games are free and prizes awarded every time! If you would like to donate, please give Gwen a call at 733-2606.

HANSFORD HOME CARE

- Experienced RN/LVN's
- Physical Therapy
- Respiratory Therapy
- Social Worker
- Certified Nurses Aides
- Medical Equipment and Supplies
- 24 Hour Call



720 Roland • Spearman, TX
806/659-2457
806/659-2535 ext 340
806/733-2954--Gruver

YEAR END SAVINGS

Genuine Chevrolets
3-1994 Chevrolet 1/2 Ton Extended Cab 4x4's

JUST ARRIVED

- 2-1995 Lumina
- 2-1995 Monte Carlos
- 1-1995 4 Door Blazer 4x4



ROBERT CARTER CHEVROLET • 823 E. 12TH • GUYMON, OK

405/338-5802

PUMPKIN PATCH SPECIALS

(Find the pumpkin, find the specials!)
Inventory Reduction Sale!

JG's

306 Hancock • Spearman, TX
806/659-3424

Treats & Eats

Extra-Long Chili Cheese Dog Combo!

\$2.59

Hot dog! Get an Extra-Long Chili Cheese Dog, fries and a soft drink for just \$2.59! But hurry, it's only here for a limited time...at Dairy Queen!

On Sale at Dairy Queen® October 17-30, 1994.

®Reg. TM Am. D.Q. Corp. ©Tx. D.Q. Op. Coun. At participating Dairy Queen stores

Sports

Former SHS Lynx player now making news at Abilene High

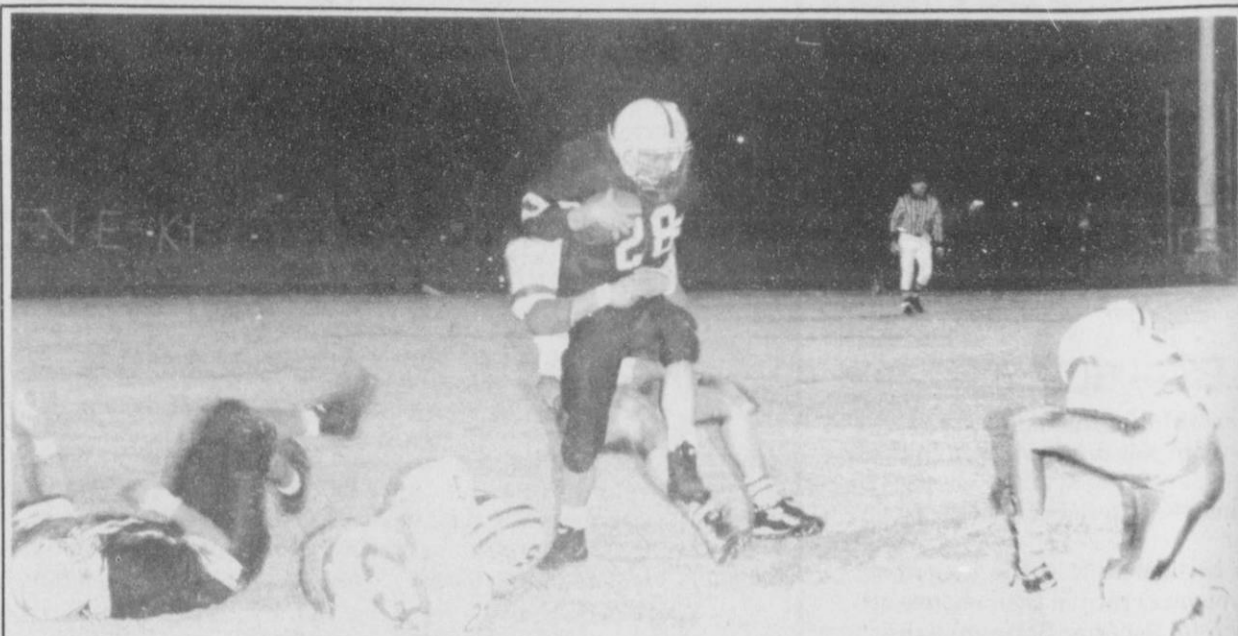
Ex-Spearman native, Radar Garcia, was big news last September 22 in The Abilene Reporter-News. With a fairly large picture, and an interview to match, Garcia made front page of the paper's sport section, and according to the paper, he is one of the greatest players to play at Abilene High.

In the article, Garcia discussed his new hometown of Abilene and the rivalry between his school, Abilene High, and Cooper. However, he did have several things to say about his former small town,

and the people he grew up with. "During the three years there (Spearman), we went to the playoffs twice," Garcia said. He also went on to say, "Yes, Spearman is smaller, but we won a lot of games. And when we did, it was usually by a large margin." Garcia was a member of the Lynx in the 1990-91 football seasons. He helped the team, as a freshman and sophomore, to make it to the playoffs both years. Unfortunately, the Lynx were defeated the first season by Wellington in the Bi-district game, and they were defeated again by

Albany in the Regional game the following year.

At Abilene High, Garcia as of yet does not run the ball as much as he would like, but he is one of the main players of their defense; a starting linebacker. His coach, Gary Gaines, had this final word on Radar, "He's been playing mostly on the defensive side of the ball in the last two games, but that might change in the game against Cooper. He fits in great with all the other players. In other words, he is just an all around great player."



GOING FOR A RIDE - Gruver's Jace Dawson gives an unidentified Stratford tackler a ride during first half action last Friday night in a key District 1-2A showdown between GHS and the Elks. Dawson had a nice run and managed to finish the night with the Greyhounds only touchdown as they went down to defeat by a final of 14-6. (Photo by Daniel Ramos)

Hounds lose heartbreaker to Elks in big district game, 14-6

By BOB BORT

We all know it's only a game. There are much more important things in this life, as Coach Tim Garland would say, "First God and then family." Ask Jimmy Johnson and Barry Switzer about it, and you might even get an argument!

But coaches become coaches, and they want to win. And the young men become athletes, and they want to win. And it has been 10 years since the Gruver Greyhounds have made the playoffs in football competition, and then only once in the past 26 years. Enough is enough. Isn't it time?

The 14-6 loss by the Hounds to the Stratford Elks this past Friday night October 14 at Greyhound Stadium was not easy for the Hounds to take. Yes, they still have an excellent chance to make the playoffs. Victories in their last two games, against Spearman and West Texas, would mean the Hounds would either finish in a three-way tie for first place in district 1-AA, or they would finish in second place, with a playoff position outright. Losing the coin flip in the three-way tie would be the only way they would be knocked from the playoffs. If they beat Spearman and West Texas...

But a victory over Stratford was almost expected, as the Hounds were playing so well of late. And they had their chances against the Elks. They got some breaks, and couldn't take advantage of them.

"Both teams played hard," said Gruver Hounds head coach Doug Frick this past Saturday morning. "We didn't cash in when we needed

to," he continued. "But the kids played really hard, and the team that executed the best won it."

And then there were the referees. They simply weren't consistent with their calls, and the Hounds were hurt. And the Hounds were also hurt by the loss of running back Jarrod Hoel to knee damage the week before.

In the end, Elks running back Clint Vincent was too much. He scored two touchdowns, and if he had been stopped, the Hounds would have won the game.

In the first quarter, Gruver couldn't move on their first drive, gaining 16 yards from the 17 to the 33 yard line. Jace Dawson, starting at running back, had one nice run of 8 yards. Rosalio Arreola punted.

Stratford took over on their 48 yard line. It took them two plays, runs by quarterback T.D. Baskin of nine yards, and Vincent for the touchdown of 43 yards, where he broke through the front line, and was like a bullet through the secondary. In everyone's mind was the thought that it could be a long night for the Hounds, if Vincent was that good. The kick by Oscar Baeza was good, and with 7:55 left in the first quarter, the Elks led 7-0.

Gruver came up with a nice drive on their ensuing possession however, and covered 32 yards on 9 plays, with two first downs. They moved from their 30 yard line to the Elks 38 yard line. There was some decent gains by the backs, and two nice passes from starting quarterback Bailey Barkley to Dawson. But Barkley was intercepted at the

Stratford 28, and the Elks took over.

Stratford moved only to their 49 this time, and their punter, Ben Pigman, got off a beautiful punt with the wind in the first quarter, of 51 yards into the end zone. The Hounds took over at the 20.

The Hounds' good solid defense against the Elks was expected. The Elks' awesome defense, smothering the Hounds' offense, was not expected.

The Hounds tried to drive, and had a good 14 burst by Travis Ferguson, but a penalty, and a big loss on a successful pass completion that would have been better incomplete, left the Hounds in a punting situation. Arreola punted.

The Elks took over at their 40. Two plays, and the first big Hounds' break. The Elks' back was hit hard, and linebacker Sammy Renteria of the Hounds was there to recover the bobbled miscue. The Hounds took over on the Elks' 38.

But they just couldn't take advantage of their chances on this night. Successive losses of 7 and 2 yards, after an incomplete pass, and the Hounds had to punt on 4th and 19 from the Elks 47.

It was a good punt, and Stratford took over on their own 10 yard line, in trouble. The Hounds simply blew the chances that were to come their way.

A nine yard loss on a bad pitch to Vincent on first down put the ball on the 1 yard line. The ball went into the end zone, and Vincent got there first. A Hound could have gotten to the ball first for the touchdown. Gruver's second big break was foiled.

The Elks were now desperate. On second down, Vincent was stuffed, and it was third and 19 from the 1 yard line. The Hounds nearly had the third down play stuffed. It had been the Hounds third big break, as Baskin went into the end zone, was nearly sacked and the tackle for the safety was nearly made, but not quite, and Baskin managed to pass to Baeza for 9 yards to the 10. It was fourth-and-ten from the 10 yard line.

Football is a game of inches. Daniel Bort had the legs of Baskin within his grasp in the end zone, and he almost made the tackle for the safety, but Baskin was too slippery and he eluded the grasp and passed it out of the end zone.

Then the fourth big break. The on-charging Gruver rush intimidated the punter, Pigman, and Dawson did get a piece of the ball. But also likely, Pigman just botched the punt, under the pressure, and it went straight up in the air, backwards, and to the right against the wind toward the sideline. The net was -6 yards. It was Gruver's ball See HEARTBREAKER page 10

Lynx sub-varsity teams sweep Bobcats

By CHAD DAVIS
REPORTER-STATESMAN
STAFF WRITER

All three of the Spearman Lynx 7th, 8th, and Junior Varsity teams traveled to Sunray last Thursday to take on the Bobcats.

The 7th grade team won again for the second straight week in row, by defeating Sunray 24-0. The 7th grade improved to an impressive record of 3-1-1.

As for the 8th grade team, they, of course, did the normal thing and beat the Bobcats by a huge margin of 34-18. With this win, the 8th grade moved up to a 5-0 record. This team has the best record of any Lynx team.

The JV definitely tormented the Bobcats, as they destroyed them 40-0.

Frankie Dominguez struck like

lighting again, to give Spearman its first score from 2 yards out. Unfortunately the 2 point conversion pass failed.

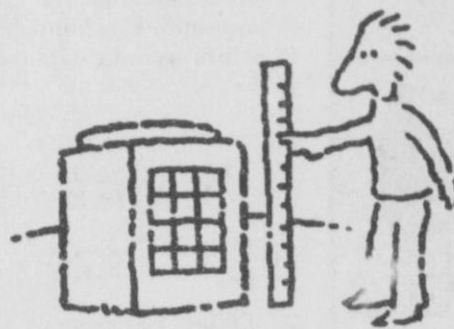
Dominguez hit hard again from 3 yards out to give Spearman another score. This time Jamie Townsen kicked the ball through the uprights for the extra point.

The next score for the Lynx was a tremendous run of 70 yards by Michael Witten. Witten is normally a varsity player, but since he is only a sophomore, the Lynx coaches thought it might be good for him and 4 or 5 more Lynx varsity players to get the practice, since the varsity was open this week and did not have a game. The two point conversion by Coyt Tigrett, also one of those varsity players who came down for the week, scored the two

See SUB-VARSITY page 7

Sizable Ways To Save Energy.

At Texas-New Mexico Power Company, we deliver reliable electric power, plus we help you determine the right size air-conditioning and heating equipment for your home. ★ Equipment that is too large or small won't heat and cool your house efficiently. ★ If you're planning to build a new home or replace an existing system, call your local Texas-New Mexico Power Company office for assistance.



Texas-New Mexico
Power Company.

Happy Haunting

Prices Effective October 16-22, 1994
Gruver & Spearman Only

<p>SAVE ON COCA-COLA 6 pk. • 12 oz. cans</p> <p>\$1.99</p>	<p>COOKED FOOD SPECIAL OF THE WEEK</p> <p>ALLSUP'S CORN DOG & 20 OZ. NR COKE FOR ONLY</p> <p>99¢</p>
<p>SAVE ON SAUSAGE ON A STICK FOR ONLY</p> <p>99¢</p>	<p>ALLSUP'S SAUSAGE & BISCUIT FOR ONLY</p> <p>79¢</p>
<p>DECKER CHOPPED HAM 10 OZ. PKG.</p> <p>\$1.49</p>	<p>SAVE ON BBQ BEEF SANDWICH FOR ONLY</p> <p>99¢</p>
<p>SHURFINE FRUIT RINGS 15 OZ. BOX</p> <p>\$1.99</p>	<p>SAVE ON TIDE DETERGENT 98 OZ. BOX</p> <p>\$7.99</p>
<p>ASSORTED SUNNY COOKIES 5 OZ. PKG.</p> <p>2 FOR \$1</p>	<p>SHURFINE WHOLE TOMATOES 16 OZ. 49¢</p> <p>SHURFINE FANCY SWEET PEAS 17 OZ. 39¢</p> <p>ALLSUP'S 69¢ EACH OR SANDWICH BREAD 1.5 LB. LOAF 2 FOR \$1.00</p>

1994 SPEARMAN LYNX FOOTBALL SCHEDULES

Varsity

Sept. 2 - Panhandle, H, 8 p.m.	Oct. 7 - *Stratford, T, 7:30 p.m.
Sept. 9 - Memphis, T, 8 p.m.	Oct. 14 - OPEN
Sept. 16 - Clarendon, T, 8 p.m.	Oct. 21 - *Gruver, H, 7:30 p.m.
Sept. 23 - Perryton, H, 8 p.m.	Oct. 28 - *West Texas, T, 7:30 p.m.
Sept. 30 - **Fritch, H, 8 p.m.	Nov. 4 - *Boys Ranch, H, 7:30 p.m.

**Homecoming *District Games

Junior Varsity

Sept. 1 - Stratford, T, 5 p.m.	Oct. 6 - Stratford, H, 8 p.m.
Sept. 8 - Sunray, H, 5 p.m.	Oct. 13 - Sunray, T, 8 p.m.
Sept. 15 - Gruver, H, 8 p.m.	Oct. 20 - Gruver, T, 8 p.m.
Sept. 22 - West Texas, T, 8 p.m.	Oct. 27 - West Texas, H, 8 p.m.
Sept. 29 - Boys Ranch, H, 8 p.m.	Nov. 3 - Boys Ranch, T, 8 p.m.

Junior High

Sept. 15 - Gruver, H, 5 p.m.	Oct. 13 - Sunray, T, 5 p.m.
Sept. 22 - West Texas, T, 5 p.m.	Oct. 20 - Gruver, T, 5 p.m.
Sept. 29 - Boys Ranch, H, 5 p.m.	Oct. 27 - West Texas, H, 5 p.m.
Oct. 6 - Stratford, H, 5 p.m.	Nov. 3 - Boys Ranch, T, 5 p.m.

The Hansford County Reporter-Statesman

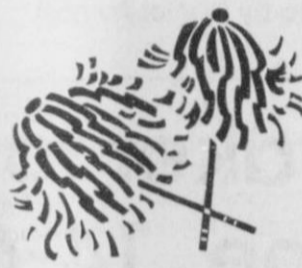
Serving Hansford County Since 1907
213 Main • Spearman, Texas 79081

1994 FOOTBALL CONTEST

--- RULES --- RULES --- RULES ---

1. In each advertiser's box you will find the name of a team playing this weekend. Place the team you think will win in the entry form below.
2. Fill in your name, address and phone number (please print) and sign the entry.
3. Entries in Spearman may be turned in at the Reporter-Statesman Office. Gruver Residents may turn in their entries at the Gruver City Hall or mail them to: Reporter-Statesman, Box 458, Spearman, Tx. 79081. Deadline for entries is 5 p.m. Friday and mailed entries must have an official U.S. Post Office postmark dated no later than Friday. Winners will be picked on Monday mornings after mail delivery.
4. No photocopies will be accepted.
5. The tie-breaker will be used to break ties. In the event of entries having the same tie-breaker then the winner will be determined by blind draw. The tie-breaker is the total number of points scored (combined - both teams) on the game of the week.

1st Prize - \$25
2nd Prize - \$15
3rd Prize - \$5



1994 GRUVER GREYHOUNDS FOOTBALL SCHEDULES

Varsity

Sept. 2 - Wheeler, T, 7:30p.m.	Oct. 7 - Boys Ranch, T, 7:30p.m.
Sept. 9 - Texhoma, T, 8 p.m.	Oct. 14 - Stratford, H, 7:30p.m.
Sept. 16 - Highland Park, H, 7:30p.m.	Oct. 21 - Spearman, T, 7:30p.m.
Sept. 23 - *Booker, H, 7:30p.m.	Oct. 28 - OPEN
Sept. 30 - Panhandle, H, 8 p.m.	Nov. 4 - West Texas, H, 7:30p.m.

*Homecoming

Junior Varsity

Sept. 1 - Boys Ranch, T, 6 p.m.	Oct. 6 - Boys Ranch, H, 6 p.m.
Sept. 8 - Stratford, H, 6 p.m.	Oct. 13 - Stratford, T, 6 p.m.
Sept. 15 - Spearman, T, 6 p.m.	Oct. 20 - Spearman, H, 6 p.m.
Sept. 22 - Sunray, H, 6 p.m.	Oct. 27 - Sunray, T, 6 p.m.
Sept. 29 - West Texas, H, 6 p.m.	Nov. 3 - West Texas, T, 6 p.m.

Junior High

Sept. 15 - Spearman, T, 5 p.m.	Oct. 13 - Stratford, T, 5 p.m.
Sept. 22 - Sunray, H, 5 p.m.	Oct. 20 - Spearman, H, 5 p.m.
Sept. 29 - West Texas, H, 5 p.m.	Oct. 27 - Sunray, T, 5 p.m.
Oct. 6 - Boys Ranch, H, 5 p.m.	Nov. 3 - West Texas, T, 5 p.m.

Chicago Bears at Detroit Lions



MARKETPLACE - JOLLY ROGER - PAY-N-SAVE
CONVENIENCE STORES

1804 Hall Avenue
Littlefield, Texas 79339
In Spearman at 505 Plains Shopping Center

TCU at Houston



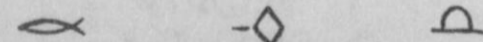
GRUVER STATE BANK

3 Main Plaza
Gruver, Tx. (806) 733-5061
Member FDIC



DEAN CLUCK CATTLE CO., LTD.

HCR 3, Box 47
Tulia at Perryton Gruver, Tx. 79040
(806) 733-5021



Pittsburgh Steelers at New York Giants

GILLASPIE

AUTO & TRUCK CENTER, INC.
CHEVROLET, OLDS, BUICK, PONTIAC
CHRYSLER, PLYMOUTH, DODGE
Highway 207 South • P.O. Box 430
Spearman, Texas 79081
(806) 659-2541

See us for all your automotive needs:

**Sales
Service
Parts**

Lone Star Service Center

HCR 3, Box 39
Gruver, Tx. 79040
(806) 733-5263

Sanford-Fritch at Childress



West Texas A&M at Abilene Christian Univ.



506 Main Gruver, Tx. 733-5040

L&M Water Well Service



Box 933 Gruver, Tx. 79040
Shop - (806) 733-2991 or 733-2996

Domestic Pumps & Well Supplies
Windmill Repair

Lubbock Tascosa at Plainview

Los Angeles Rams at New Orleans Saints

Tires • Flats • Oil & Lube • Wash • Brakes & Motor Repairs • Front End Alignments

J & M Service Center

24 Hour Road Service

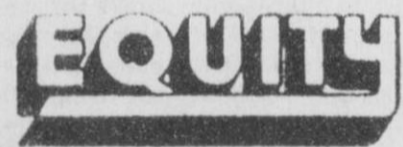
DAVID PEARSON - Owner
(806) 659-5519



415 Collard
Spearman, TX 79081
24 Hr. Service
(806) 659-3352

Spearman
659-2420

Gruver
733-2280



Grain Handling - Farmland Feeds
Fertilizer Application

Holt
659-2390

Baylor at Texas Tech

Morse
733-2318

Little Tiffanies

DIAMONDS - FINE JEWELRY
BRIDAL REGISTRY



Canyon at Dumas

103 E. Broadway
Gruver, Tx. 79040

(806) 733-5290
(806) 733-2759

Gruver

Leon O. "Corky" Chapman

Insurance Agency

120 Main
Nite (806) 733-5194
Office (806) 733-2422

GRUVER, TEXAS

- Federal Crop
- Crop Hail
- Life
- Health

Dalhart at River Road



For The Sborot Of It

by Bob Bort

Well, after the Hounds' disappointing loss to the Stratford Elks this past Friday, October 14 at Greyhound Stadium, 14-6, one can say they are in for a tough time to make the playoffs. They are 5-2, 1-1 in district play, and didn't match the 6-1 start of 1988 or the 7-1 start of 1984, the last time they made the playoffs. They also started 7-1 in 1976 under Stocky Lamberson, the year before he moved to Panhandle. They lost their last two games in 1976, and failed to win district and make the playoffs.

I had predicted the Hounds' defense would shine, and they would hold the Elks to one touchdown. But the Elks scored two touchdowns, one too many. The Hounds had their chances. It was a disappointing loss.

The loss of Jarrod Hoel this past week in the Boys Ranch game hurt the Hounds. Jarrod has speed and he has the moves, and the Hounds sorely needed him in the backfield against the Elks', to counter the Elks' fine running back, Clint Vincent. Jarrod tore his anterior cruciate ligament and his medial collateral ligament, and had cartilage damage, to his knee. He had surgery this past Monday, October 17.

There are three possibilities for the Hounds in the District 1-2A race. There could be a three way tie. If that happens and all three (Gruver/West Texas/Stratford) finish with 3-1 records in district, and Gruver loses a coin flip, I will really freak out! It has been so long, and Gruver deserves the playoffs.

1. Stratford could beat West Texas this week, Gruver beat Spearman, and Gruver beat West Texas

on November 4, and Stratford would finish first, with the Hounds second. That could be a blessing, as the Hounds would avoid Springlake-Earth in the playoffs. It is safest to root for Stratford to beat West Texas this week. Then Gruver would control their own destiny in the playoff picture. They would be shooting for the runner-up spot, and would need only to beat West Texas on November 4.

2. West Texas could beat Stratford this week, Gruver beat Spearman, and Gruver beat West Texas on November 4, and that would mean the three-way tie. Gruver would finish either first, second or third. Either in the playoffs, or out. It would be up to fate.

3. Gruver could get beat by West Texas on November 4, and they would be out regardless of who wins the West Texas-Stratford game.

About this Friday night's big game with Spearman. If any of you out there don't think Spearman can upend the Hounds, you must be residing in outer space. The all-time record for the Hounds against the Lynx is 11-16, 407, and read on....

FACT: The Lynx have won the last four encounters with the Hounds (1986-87-92-93), including last year's 28-0 at Greyhound Stadium.

FACT: The Lynx have won seven of the last eight encounters with the Hounds since they resumed play after a long pause in 1980. The only victory for the Hounds since 1982 was in 1985, 26-6 at Greyhound Stadium. It has been nine years since the last Hounds victory. Even in 1984, when the Hounds went to the state quarter-finals, they lost to

the Lynx 26-7 at Spearman.

FACT: The Lynx have won 14 of the last 16 encounters with the Hounds since 1968. Even super-coach Bill Mayfield had problems with the Lynx, going 1-2 against them. The only two victories over the Lynx for the Hounds since 1966 were in 1981 under Rick Nix, 21-6, and in 1985 under Barry Haenisch, 26-6. Both those games were in Greyhound Stadium.

After the 1966 game, the Hounds held a 9-2 all-time advantage over the Lynx, and then the tide really turned, as the Lynx hold a 14-2 advantage over the last 16 games. Even in 1968 when the Hounds advanced to the area game at Borger, they lost to the Lynx earlier in the year 29-12.

The last two times the Hounds made the playoffs, 1968 and 1984, the Hounds lost to the Lynx at Lynx Stadium.

FACT: The last time the Hounds beat the Lynx at Lynx Stadium was Bill Mayfield's first year in 1966, 12-6. They are 0-8 since 1966 at Lynx Stadium. It has been 28 years since the Hounds beat the Lynx at Lynx Stadium. Lyndon Johnson was President. Vietnam there and Hippies here....

And one other thing...Hounds' linebacker coach Jim Davis was there at Lynx Stadium! He was junior at GHS, and he played in the 12-6 game. The Lynx had quite a passing attack, but they succeeded on one, and failed on two.

Coach Davis remembers, both Hounds touchdowns were scored on interceptions returned all the way, and the Lynx score was on a successful pass reception for a touchdown. The two Hounds scores

were interceptions by senior John Cooksey and junior George Odom. How about that!

1966 was a big year. The Hounds had three straight shutouts this year, they had five straight shutouts in 1966 under Mayfield, and did not make the playoffs, losing out to White Deer. That was in the era when only the district champions went to the playoffs, and the Hounds finished second with a 7-2-1 record.

During that five game span in 1966, Gruver outscored the opposition exactly 100-0. The wins were over Dumas "B", Perryton "B", Stratford, Sunray and Canadian (0-0 tie). Gruver only gave up 68 points that entire year, and lost to White Deer big, 35-0. This year they have given up only 53 points and have scored 190, with only two games to go.

Will the Hounds be favored over the Lynx? Yes. But you know what can happen, right? Need I say more?

The Hounds had better be ready for a game as tough as that against either Stratford or West Texas. Forget the Harris Ratings. Forget Jim Lexa. You would think that now I would predict that Gruver will win 17-14 on an Aaron Frick field goal. And yes, that somehow, as if by magic, the Lynx can manage to score two touchdowns on the vaunted Hounds defense, like Stratford did.

But no. Do I hope it is the Hounds 42-0? Yes, of course. But am I wary of what might happen? You got it! So what am I predicting?

I am predicting that this year - not just the Year of the Dog 4692 on

See BORT page 10

Sub-varsity

CONTINUED FROM PAGE 7

point conversion.

A familiar face to the JV, Blake Beedy, was the next back who scored on a 30 yard run. Once again the kick by Townsen sailed through perfect for the extra point.

Varsity star Tigrett was the next to score for Spearman. This time Tigrett ran for 42 yards on a fabulous run. The kick by Townsen this time failed, but the Lynx were killing the Bobcats, 34-0.

Witten, who scored the third

touchdown for Spearman, was once again the superstar of Spearman's next touchdown. He ran for 54 yards with his road runner like legs. The 2 point conversion failed, and the game ended with a big defeat by the Lynx, 40-0.

The 7th, 8th, and JV teams will travel again this week to have a rematch with Gruver. Last time these teams met the Lynx 7th grade lost in a heartbreaker, but the 8th and JV won their games.



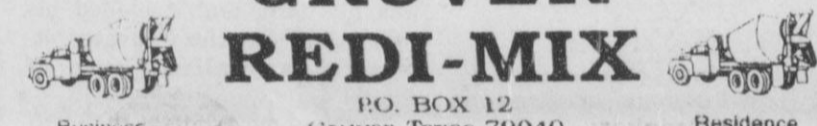
RUSHING FOR THE BALL- Last week the Spearman Lynx Junior Varsity played the Stratford Elks in the first game of district play. In the picture above, a Lynx player bats down a would-be pass from the Elks' quarterback. (Photo by Chad Davis)

Wellington at Highland Park



Bartlett's
ACE Hardware
Gruver Lumber Company
105 W. Broadway, Gruver, Tx. (806) 733-2404

GRUVER REDI-MIX



P.O. BOX 12
Gruver, Texas 79040
Business 733 2907 Residence 733 2583

*Small Enough To Know You...
But Large Enough To Serve You...*

Amarillo High at Amarillo Palo Duro

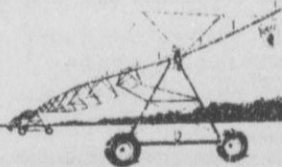
GATES
Mens & Boys Wear



221 Main • Spearman
659-3426
212 S. Main • Perryton
435-4261

Samnorwood at Higgins

Game of the Week
Gruver at Spearman



Paschel Irrigation Inc.
Richard & Arlene Paschel
(806) 659-5228
Hwy 15 W. • P.O. Box 69
Spearman, TX 79081

Reinke is the leader in
Innovation in the Pivot Industry.

REINKE
THE FIRST NAME IN IRRIGATION

"We Support Our Local Teams"

CAPROCK #1 & #2

Mike Heard, General Manager
(806) 733-5025

"Custom Cattle Feeding"



Canadian at Memphis

HANSFORD SUPPLY, INC.

210 Main
Gruver, Tx.
(806) 733-2469
(806) 733-2340
Fax: (806) 733-5102



Borger at Hereford

West Texas at Stratford



Larry's Welding
Box 933 Gruver, Tx.
Shop - (806) 733-2991 or 2996

Full Service Shop - Custom Pen Building
Underground Line - Irrigation Supplies
Ditching & Backhoe Service

KRDF - fm
98.3 STEREO




Follett at Miami

(806) 659-2529
FAX (806) 659-3421
605 E. Kenneth Ave. • P. O. Box 307
Spearman, Texas 79081



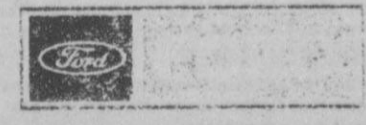
White Deer at Wheeler



G&G FOODLINER

516 Main • Gruver
733-2471


GRUVER FORD, INC.



Panhandle at Clarendon

531 Main Street
P.O. Box 767 Gruver, Tx. 79040 (806) 733-2431

Shamrock at Booker




KERMIT MCKEE
Gruver Branch Manager

North Highway 136
P.O. Box 91
Gruver, Texas 79040

Branch Office: (806) 733-2481
Phone: (806) 948-4121
Fax: (806) 948-5606

Sunray at Groom



Palo Duro Feeders, Inc.

Gruver, Tx. (806) 733-2416

Obituaries

Janice A. Ward

SPEARMAN- Janice A. Ward, 51, died Monday, October 17, 1994. Services were conducted Wednesday, October 19 at 2:00 P.M. at the Faith Lutheran Church with the Reverend Beverly Cook officiating. Burial was at Gruver Cemetery by Boxwell Brothers Funeral Home.

Mrs. Ward was born in Castlewood, South Dakota in 1943. She had lived in Spearman for 12

years, moving from Gruver. She married Glen Ward in 1963 at Oslo Lutheran Church in northern Hansford County.

Mrs. Ward was a homemaker and a member of the Faith Lutheran Church in Spearman.

Survivors include a husband, Glen Ward, one son, Daniel Ward, and a sister, Sharla Hamen.

Memorials are to be sent to the Hansford Hospice, 702 Roland, Spearman, TX 79081.

Gruver ISD CONTINUED FROM PAGE 4

also voted to support the reappointment of Jon Jarvis to the other vacant seat on the Appraisal District's Board of Directors.

The third, and probably the most important issue the board discussed dealt with the program Goals 2000. The program covers a wide array of topics, but the Gruver board was mainly interested in the issue of making all school facilities smoke-free. Since the gym is considered a part of the campus, the board had no choice but to make it

smoke-free.

The board also did the usual paying of the bills, and voted to pay the total of \$115,121.45.

Last, the board recognized the student of the month for Gruver High School. Janyth Hart was this month's winner. Janyth selected Glenda Renner, junior high librarian, to present her to the board. Janyth has served as a National Honor Society officer as well as being involved in U.I.L. academic and athletic events.

Mammography facility approved

Hansford County Hospital District is proud to announce that its mammography facility has been certified by the FDA and is accredited by the American College of Radiologists. The District also meets all guidelines for Texas Bureau of Radiation Control and Medicare. A new mammography suite has been completed and includes a TV/VCR for viewing of American Cancer Society films on Breast Self-Examination, Fibrocystic Breast Disease, and Mammography. The Breast Self-Examination and Mammography films are also available in Spanish.

of breast cancer, and never had children or had children late in life.

Recent advances in genetic research have brought breast cancer again to the forefront of the national discussions about health and disease. But while a true test for genetic predisposition toward breast cancer may be years away, education and early detection can greatly increase the chance of survival for breast cancer patients today.

The American Cancer Society recommends that women have a screening mammogram by age 40; women 40-49 should have a mammogram every one-two years, depending on the findings and the doctor's recommendations; women age 50 and over should have a mammogram every year. The American Cancer Society also recommends that a doctor should conduct a breast examination every three years for women 20-40 and every year for women over 40. Monthly breast self examinations should begin by age 20.

"Are you up to date with your mammogram schedule?" asks Sue April, radiographer. Hansford County Hospital District would like to encourage you to take good care of your health by offering 30% discounts on mammograms during the month of October. "We hope you will take time to take care of yourself and call, Sue April, RTBS, at Hansford County Hospital to schedule an appointment," she said.

The American Cancer Society has declared October to be "Breast Health Awareness Month." The best weapon against breast cancer in early detection and that's why mammography is so important. A mammogram is a low-dose x-ray of the breast that helps your doctor "see" breast cancer before there's a lump, when the cure rates are near 100%.

Breast cancer is the most prevalent form of cancer among women, second only to lung cancer in its deadliness. The American Cancer Society estimates that about one of every nine American women will develop breast cancer by age 85. An estimated 9,200 new cases of breast cancer will be diagnosed in Texas women during 1994. About 2,300 Texas women will die of the disease this year. Risk factors include: age over 40, personal or family history

Hounds CONTINUED FROM PAGE 10

immediately bogged down, and the Hounds had to punt.

The Hounds punted on 4th and 11, but they may have just as well gone for it, as the punt netted only 8 yards, into the teeth of the wind. It was Stratford's ball on the Hounds' 40.

Stratford could do nothing, and fumbled on 4th and 2, and the Hounds had the ball back.

This was the touchdown march. It started slowly, but boy did it blossom! Starting at the Hounds 33, they moved to the 44, then thrown back to the 41. From there, Frick broke off a beautiful blast of 16 yards, then Ferguson for 24, then Dawson for the TD for 19 yards, on three successive plays! With 4:41 left in the game, it was 14-6. The pass for two points had failed to convert.

Stratford ran nine plays on the ensuing drive, enough to really run down the clock. A 16 yard pass play on 2nd and 13 really hurt the Hounds, as Baskin hit Dusty Stewart. But despite a face mask penalty on the Hounds, the Elks were forced to punt with 1:35 left.

There was a lot of confusion over the time, and a long delay with no action. The Hounds had tried to call time-out with two minutes left, but that seems to have been ignored, and the Elks let the clock

run down, and took the delay of game penalty with 1:29 left. But the referees in the end finally put six seconds back on the clock to make it 1:35.

The Hounds took over on their own 40, couldn't move, and suffered their second interception of the game. The game was over.

Here are some bad stats. Stratford out-rushed Gruver 183-111. They out-gained Gruver in total offense 241-137. Penetrations were tied 2-2. The Elks out-gained Gruver in first downs 13-10. Each team lost one fumble. Gruver had two passes intercepted, and their passing attack just didn't click as it was expected to do, completing only 4-17 for only 26 yards.

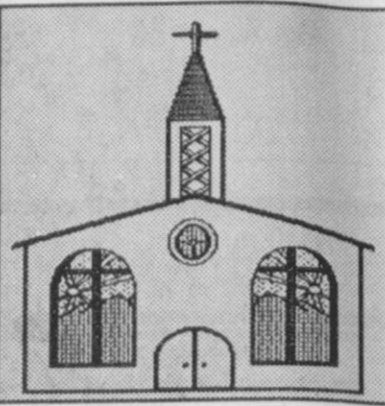
Vincent had 26 carries for 136 yards rushing.

Frick had 13 carries for 51 yards. Ferguson had 10 carries for 59 yards. And Dawson had 6 carries for 16 yards. Various other yardage was accumulated for -15 yards.

In penalties, Gruver had 6 for 45 yards - all in the second half, and Stratford had 7 for 50 yards.

The Hansford County championship game will be played this week, Friday, October 21 with the Gruver Greyhounds travelling to Lynx Stadium in Spearman. What an important battle now for the Hounds! Game time is 7:30 p.m.

Let us replenish the seed of faith through... REGULAR CHURCH ATTENDANCE, DAILY BIBLE READING & PRAYER



HI-PLAINS AUTO SUPPLY, INC.
Mobile Oil for Irrigation & Industrial Purposes
118 Main • Spearman
659-2506 • (800)657-8742

Palo Duro Supper Club
22 S. Archer
659-2232

C.O.'S SUPPLY CO.
Plumbing & Tire Sales & Service
421 W. Kenneth • Spearman
659-3781 or 659-3555

Bartlett's Ace Hardware
105 W. Broadway
733-2404

GILLASPIE
AUTO & TRUCK CENTER, INC.
CHEVROLET • OLDS • PONTIAC • BUICK
CHRYSLER • PLYMOUTH • DODGE
Hwy 207 South • P.O. Box 430 (800)659-2541
SPEARMAN, TEXAS 79081

Deakin TELECENTRICK
OILFIELD • RESIDENTIAL • COMMERCIAL
519 Plains Shopping Center
Spearman, TX 79081
1-800-999-1506 (806)659-5016

REINKE IRRIGATION SYSTEMS
Paschel Irrigation
(806)659-5228 • 1-800-659-6580
Corner Airport Rd. & Hwy 15 West
Spearman, Tx.

Gruver Cablevision
Quality Family Entertainment with
"the Disney Channel"
308 Main • 733-5295

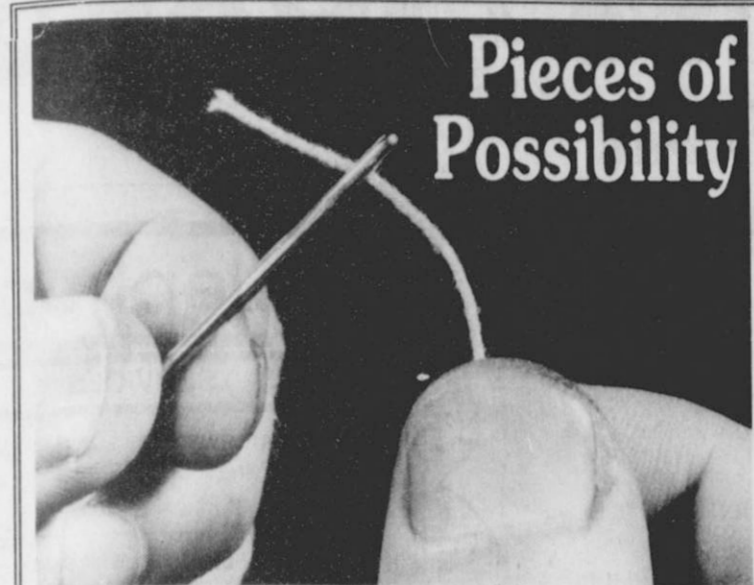
Morse Implement Company
"Join us in church this week"

Boxwell Bros. Funeral Home

THE HANSFORD COUNTY REPORTER-STATESMAN
Serving The Communities Of Spearman, Gruver & Morse
213 Main • 659-3434
1-800-395-9482

CORONADO HOSPITAL
Pampa, Texas
(806)665-3721

Compliments of
G&G FOODLINER
516 Main • Gruver
733-2471



Pieces of Possibility

Clouds of red velvet fabric, sparkling buttons of diamond and pearl, scarlet satin lining, lace for a hem...all pieces patterned for a lovely creation. What could be missing?

There is no thread.

It matters not how the gems glisten nor that the fabric is fine. Without thread running through the fabric, there is no creation, only scattered pieces of possibility.

So it is with life. All of us are born with possibility. How soft the tiny fingers and toes. Bright eyes glisten with innocence. As God's Word threads through the fabric of our lives, each individual becomes a divine creation. Growing continually centered in His love, possibilities become probabilities and finally reality.

Discover your creator as you worship this Sabbath, "...for all things are possible with God" (Mark 10:27).

Sunday Mark	Monday Mark	Tuesday Psalm	Wednesday Isaiah	Thursday Isaiah	Friday Isaiah	Saturday Isaiah
7:1-13	7:14-23	85	3:1-15	4:2-6	5:1-7	5:8-30

Scriptures Selected by The American Bible Society
Copyright 1994, Keister-Williams Newspaper Services, P. O. Box 8005, Charlottesville, VA 22906

In Spearman...

- Apostolic Faith Church**
822. S. Dressen • 659-2870
Sunday School: 10 a.m.
Worship: 11 a.m.
Evening Worship: 6 p.m. Sun.
Wed. Prayer Meeting: 7:30 p.m.
Pastor James Brown
- Trinity Community Church**
717 W. 7th Ave. • 659-2671
Celebration of Praise 10:15
Worship Service and Children's Church 10:30
Sunday Evening 6:30 p.m.
Wednesday evening: 7 p.m.
Pastor Dan Carter
- First Assembly of God**
401 N. Bernice • 659-2295
Sunday School: 9:45 a.m.
Worship: 11 a.m.
Evening Worship: 7 p.m.
Wednesday Worship: 7:30 p.m.
Youth: 7:30 Wednesday
Pastor Todd Lillard
- Faith Lutheran Church (ELCA)**
1101 Bernice • 659-2252
(Worships with First Presbyterian Church)
- First Presbyterian Church**
(Worships with Faith Lutheran Church)
1021 Cotter • 659-2033
Sunday School: 9:45 a.m. at Lutheran Church
Worship: 11 a.m. (alternates monthly between addresses above)
Pastor Beverly Cook
- First United Methodist**
407 S. Haney • 659-5503
Sunday School: 9:45 a.m.
Worship: 11 a.m.
Jr. High Youth: 5 p.m. Sun.
High School: 6 p.m. Sun.
Pastor Jeff Lust
- Union Church**
31 S. Endicott • 659-2644
Sunday School: 9:45 a.m.
Worship: 10:45 a.m.
Evening Worship: 6:00 p.m.
Bible Study & Prayer Meeting: 7:00 p.m. Wed.
Pastor Billy Stanford
- Sacred Heart Catholic Church**
901 Roland • 659-2792
Sat. Night Mass: 7 p.m.
Sunday Mass: 8:45 a.m. - English (8:45a.m. Service on KRDF 98.3 FM) 11:15 a.m. - Spanish
1:30 p.m. - Gruver - Christo Renditor Mass - Spanish Rev. Fernand Couture
- Fellowship Baptist**
1102 S. Archer • 659-2783
Sunday School: 10 a.m.
Worship: 11 a.m.
Evening Worship: 6 p.m. Sunday Youth & Adult Serv.: 7:30 Wed.
Pastor Rick Fincher
- Primera Mission Bautista**
502 E. 7th • 659-3991
Sunday School: 9:45 a.m.
Worship: 11 a.m.
Pastor Guadalupe Carranza, Jr.
- Church of Christ**
121 S. Haney • 659-3244
Sunday Bible Class: 9:45 a.m.
Worship: 10:30 a.m.
Evening Worship: 6 p.m.
Bible Study Wed. 7:30 p.m.
KRDF Radio Program
Living With Christ 7:50 a.m. M-F
Minister Arnis Pape

In Gruver...

- First Baptist Church**
402 E. Broadway • 733-2411
Sunday School: 9:45 a.m.
Worship: 10:50 a.m.
Disciple Training: 6 p.m. Sunday
Prayer Meeting: 7:30 p.m. Wednesday
Pastor Larry Miller
- Church of Christ**
209 King • 733-2760
Sunday School: 9:30 a.m.
Worship: 10:20 a.m.
Evening Worship: 6 p.m.
Wed. Evening Worship: 7:30 p.m.
Minister Bob Setliff
- First Christian Church**
510 King • 733-2960
Sunday School: 9:45 a.m.
Worship: 11 a.m.
Wed. Bible Study: 7:30 p.m.
Youth: 6:30 Wednesday
Pastor Gary Gumfory
- Oslo Lutheran Church (ECLA)**
West of Gruver on Hwy 15 & N. FM 1162
339-7646
Sunday School: 9:45 a.m.
Worship: 11 a.m.
Morning Prayer: 9 a.m. Wed.
Pioneer Clubs (Grades 1-6): 4-5:30 p.m. Wednesday
Pastor John R. Chandler

In Morse...

- Community Bible Church (Interdenominational)**
Hwy. 15 • 733-2443
Sunday School: 10 a.m.
Worship: 11 a.m.
Wed. Prayer Meeting: 7 p.m.
- First United Methodist**
Broadway & Garrett • 733-2651
Sunday School: 9:45 a.m.
Worship: 8:30 a.m. & 10:50 a.m.
Evening Worship: 7 p.m.
Pastor Lewis Holland
- Morse Baptist Church**
Pastor Mike Martin
733-2757

Henton & Co., P.C.
Certified Public Accountants
221 Sanders • Spearman • 659-2518

BERRY CLEANERS
DAN DESIMONE - OWNER
Phone 659-3122 • P.O. Box 1017
207 Main St. • Spearman, Tx. 79081

GRUVER FORD
531 Main • Gruver • 733-2431

Interstate Savings & Loan
322 Main • Spearman • 659-2559

Hagerman Services
Backhoe • Dozer • Welding
North Hwy. 15 • Spearman
659-5131

Gordon Drugs
Dependable Prescription Service
314 Main • Spearman
659-2141
Jim Evans

Compliments of...
AGCO
of Spearman, Inc.
"See you in Church"
659-3751

"WE SUPPORT OUR LOCAL CHURCHES"
CAPROCK #1 & #2
Mike Heard, Gen. Mgr.
(806)733-5043 or 733-5025
"Custom Cattle Feeding"

