

NEWS  
SPORTS  
PICTURES

HANSFORD COUNTY LIBRARY  
0120 S. MAIN ST.  
SPEARMAN TX 79081  
04/97 Expires

50¢

THE HANSFORD COUNTY

# Reporter-Statesman

Serving Hansford County Since 1907

Look for Spearman on the Internet at <http://www.webtex.com/Spearman>

THURSDAY, NOVEMBER 13, 1997

213 MAIN • SPEARMAN, TEXAS, 79081

VOLUME 90, ISSUE 46

## Happy Birthday To Us!

by Harletta Carthel

Happy 90th birthday to the Hansford County Reporter-Statesman. The county's grand lady of journalism not only marks a milestone in publication this month but also has the distinction of being the oldest continuous business in Hansford County.

The Reporter-Statesman traces its beginning to the Hansford Headlight which was first published in old Hansford the first Thursday of November in 1907. The earliest known copies of the Headlight date back to 1917 and are on microfilm in the Hansford County Library. In these early editions, Hansford is a thriving town with at least two banks, the 1st. National Bank of

Hansford and the Guaranty State Bank. Both have advertisements in the publication. Many other businesses also have advertising, including the Truax Hardware Store and the Palo Duro Hotel. The Palo Duro Hotel proclaims its accessibility just north of the Hansford town square. There are also advertisements from Texhoma and Guymon, Oklahoma. Wrigley's Gum, taunting its fame with the quote "the flavor lasts," is the only currently existing product advertised.

Other features of the early years of the Headlight are weekly installments of a book by Robert Ames Bennett called the *Quarterbreed, A Modern Indian*

*Reservation Story*. A later book, *The Real Adventure*, is also published in parts in the weekly tabloid. Due to the absence of television news, much of the body of the paper is devoted to national news. In the May 11, 1917, edition, an article under the heading "You Believe in God, Then Outwardly Manifest It by Coming to Church" is featured on the front page. In a November edition of the same year, a letter written by a former Hansford resident, Tom Burges, stationed at Camp Bowie, Company 6 of the 142nd Infantry in Fort Worth, Texas is prominently displayed on the front page. In the letter, Burges states "the Hansford Headlight is a welcome visitor. It is just like getting a letter from home."

The Hansford Headlight became known as the Hansford Reporter when the paper was moved to Spearman in 1919. In searching the microfilm of the Hansford Headlight's last edition on December 12, 1919 and the microfilm of the Hansford

Reporter's first edition on December 19, 1919; no mention is made of the name change. The newspaper simply changed locations and names with no public explanation given.

The newspaper continued under the name of the Hansford Reporter until April 5, 1990 when the Gruver Statesman, which had been published as a separate entity, merged with the Spearman paper to become the Hansford County Reporter-Statesman.

In the Reporter-Statesman's 90 years of publication, enormous strides have been made in the technology and machinery used to compile and print the weekly publication, but the basic purpose of the newspaper remains unchanged. The Hansford County Reporter-Statesman continues to be the chronicle of Hansford County and its people, a weekly capitation of news in the time capsule of the county, and hopefully, as Tom Burges related in 1917, "a welcome visitor ... a letter from home."

### IS YOUR SUBSCRIPTION EXPIRING?

John Q. Public  
Box 12345  
Spearman, TX 79081  
11/97 Expires

Expiration dates are printed on the bottom line of all mailing labels. Our readers can help us hold the cost of subscriptions down by mailing in renewals in the appropriate month.

Thank you! Catherine Smith

The Hansford County Reporter-Statesman  
213 Main St. • Spearman, TX 79081

Annual Subscription Rates  
In Hansford County, \$20.00 • Out of County, \$25.00

## Hansford Happenings

### "Caught In The Act" Talent Show

The 1st Annual "Caught In The Act" Talent Show will be presented on Thurs., Nov. 13th at 7:00 p.m. in the Spearman High School Auditorium. There will be three age categories for the competition. They are: 1st-4th grade, 5th-8th grade, and 9th-12th grade. 1st, 2nd, and 3rd place will be awarded in each category.

### An Evening Of Fashion

An Evening of Fashion will be presented by the Women's Division, Spearman Chamber of Commerce, on Thursday, November 13, 1997. It will be held at 6:00 p.m. in the O'Loughlin Center. Come join the fun as we get ready to celebrate the fall season and all the fun holidays. Enjoy a wonderful evening of the latest fashions presented by our very own Spearman merchants. Lots of great door prizes, a wonderful meal and a chance to win a \$300.00 Spearman Shopping Spree. Tickets for the show are \$7.50 and may be purchased from any WDSCC member, the chamber office, or at the door. Shopping spree chances may be purchased in the same manner, prices are 1 for \$3.00, or 2 for \$5.00. For more information, please contact Diane Maxwell at 659-5507 or Jodie Hight, WDSCC President, at 659-3720.

### Spearman Economic Development Corporation Agenda

The Spearman Economic Development Board will hold a Public Hearing on Thursday, November 13, 1997 at 10:00 a.m. at the Spearman Chamber of Commerce Office, 211 Main Street. They will receive comments from the public and take any action necessary concerning the expenditure of economic development funds on the following projects: 1. Spearman Connection - Web Site. 2. Retail Merchants - Christmas lighting display at courthouse. 3. Hire someone to complete housing survey - apartments, rent houses and houses for sale including price ranges. 4. Other Business a. Corporate minutes b. Corporate budget c. Additional potential projects. 5. Adjournment.

### CRP Sign-Up Ends

CRP Sign-up ends Friday, November 14th at 4:00 p.m. Anyone with contracts expiring in 1997 or 1998 need to come in and discuss their situation with the FSA or NRCS. Call 659-3630 or 659-2330 for an appointment. Anyone offering new land should also call or come by.

### Prairie Holidays

Gruver Federated Music Club's Annual Stew and Cornbread dinner will be Tuesday, Nov. 18th from 11:00 a.m. to 1:30 p.m. Admission will be \$5.00. Selections from the pie kitchen will be \$1.00. Tickets may be purchased from Music Club members or at the door. Several artists will be showing and selling their works during the dinner. Proceeds will benefit the music scholarships.

### FUMC Chancel Choir's Thanksgiving Dinner

The Spearman First United Methodist Church's Chancel Choir will host their Community Thanksgiving Dinner on Thursday, November 20th from 11:30 a.m.-1:30 p.m. Tickets are available from any choir member, or may be purchased at the door. They are \$6.00 each for adults, and under six free. Carry-outs need to call 659-5503 by 10:30, and may pick up their orders at the double glass doors.

### Spearman Community Thanksgiving Service Set

A Community Thanksgiving Service will be held on Sunday, November 23, 1997 at 7:00 p.m. at the First Methodist Church in Spearman. Pastor Joe Weeks will present the sermon.

### Gladiola Flower Club Home Tours

The Gladiola Flower Club will host their Home Tours on December 7, 1997 between 2:00 and 5:00 p.m. The homes scheduled for the tour are: Randy & Linda Coombs, 613 E. Kenneth Ave.; Hazel Shieldknight, 3 miles South on Hwy. 207; Mark & Carla Brown, 316 S. Bernice; Victor & Debbie Schumann, Hwy. 759 East, 7 miles to Co. Rd. 2, turn South 3 1/2 miles. Proceeds from the tour are donated to community projects and a scholarship.

### SISD To Offer Adult ESL & GED Classes

English as a Second Language and GED classes are held at Spearman High School from 6:30-9:30 p.m. on Monday evenings. Call Elodia Bravo at 659-2710 after 5:00 p.m., or Cindy Blackman at 659-3233 between 8:00-4:00 daily for more information. There is no charge for these classes.

### Weatherization Assistance Program

The Texas Department of Housing and Community Affairs provides services to make homes warmer in the winter and cooler in the summer through the Weatherization Assistance Program of Panhandle Community Services. Other grants are leveraged with these funds and could assist in repairs such as: caulking, weather-stripping, insulation, repairing/replacing door/windows, plumbing, roofing, etc. These weatherization services are for low-income families. Each eligible applicants house is assessed on a prioritized basis for allowable repairs. Call Panhandle Community Services' office at 435-2478 to see if you qualify.

## Lynx Bash Boys Ranch

The Spearman Lynx earned their berth at the Bi-District playoffs with their defeat over Boys Ranch last Friday night. The Lynx dominated Boys Ranch throughout the game, with the final score being 47-9.

The Lynx earned 335 rushing yards and 10 passing yards, for a total of 345, compared to the Roughriders' 156 total yards.

Michael Lusby scored three touchdown runs and five extra point kicks. Aaron Winegarner scored two touchdowns runs, Brian Black had one touchdown reception, and Dusty Barber had a touchdown run, for a total of 47 points.

Offensive players of the week were Aaron Winegarner, 165 lb. sophomore quarterback, and Landon Miller, 185 lb. junior tight end.

Winegarner rushed for 48 yards on seven carries and scored two

touchdowns. He completed one pass for 10 yards and one touchdown. He scored 97% on the film.

Miller scored 94% on the film grade.

Defensive players of the week were Brian Howell, 185 lb. senior linebacker, and Clint Goodman, 175 lb. senior safety.

Howell had six unassisted tackles, eight assisted tackles and one pass interception.

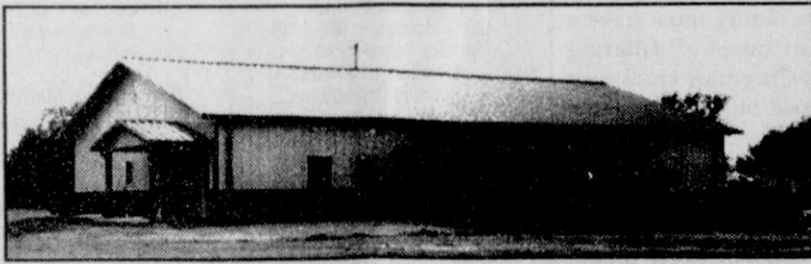
Goodman had one unassisted tackle, six assisted tackles, and forced one fumble.

Michael Lusby added 132 yards on 22 carries, giving him a total of 1837 yards on 248 carries for the year.

The Lynx ended their regular season with 2922 rushing yards, 411 passing yards, for a total of 3333 total yards. They allowed a total of 990 rushing yards, 1396

Continued on Page 6

## Pringle-Morse Community Building



Pringle-Morse Community Building

by Vicki Urban

The communities of Pringle and Morse are very proud of a big accomplishment! On Sunday, November 16, 1997 at 12:30 p.m., everyone is invited to bring a dish and come join us as we celebrate the official opening of the long awaited, new Community Building.

This building project began back in 1993. The location of the new building is on the south side of Main Street in Morse. It has a generous 3800 square feet plus a modern kitchen and ample storage areas.

Morton Buildings erected the shell, and Mike Curry was the contractor. Curry allowed the community to finish up the inside work with volunteer labor. Many people in the community helped by pouring cement, insulating, painting, staining woodwork, putting cabinets together, mopping and waxing, cleaning,

working on the parking area. Local electrician, Emit Schmidt did all the electric work, saving the board much money. Thane McCloy, Howard Perry, Betty Morton Rutledge, and Elvogene Dixon Thuett donated the land for the building.

Carolyn Shields worked many hours applying for private grants. The Haun and the Meadows Foundations both gave us grant money to get started. Many individuals gave generous donations, and the money raised in our various fund raisers contributed a great deal.

We would like to say *Thank You* to the boards who have served many hours, to the volunteers who gave time and money, to Mike Curry for his advise and skill, and to anyone else who helped make this a reality.

We now have a beautiful building that we can use for many years to come!

## Greyhounds Corral Mustangs

by Wesley Miser

Gruver goes to the playoffs! The Gruver Greyhounds severely totaled the Mustangs last Friday night in Claude and ensured themselves a trip to a playoff game.

Claude couldn't touch Gruver. They only scored once near the end of the game. In the first quarter, Jim Potts made a surprise 12-yard run and scored a touchdown for the Greyhounds. Brant Armes followed Potts' touchdown with one of his own off a 50-yard run. In the second quarter, Potts also threw a 40-yard scoring pass to Buster McLain in the end zone giving Gruver a 21 point lead at the end of the first half.

The Greyhounds didn't let up in the second half either. Jim Potts continued to throw well and got in a 20 yard pass to Brant Armes to give Gruver yet another touchdown. Gruver ended their scoring triumph in the fourth quarter as Bray Armes kicked a 20-yard field goal to give Gruver 3 more points. The Mustangs managed to score one time during the game in the fourth quarter due to a fumble by the Greyhounds

(they recovered it on Gruver's 20), but that victory was short lived as the attempt for extra points was stopped. The score ended at 31-6.

Gruver left Claude in the dust. The Greyhounds had 206 yards rushing. Half of those yards go to Brant Armes as he ran 97 yards on 14 carries. Jim Potts threw a total of 114 yards for the entire game and helped a big part in scoring. Total offensive yards for Gruver amounted to 320 yards compared to Claude's 177. It wasn't even close.

Gruver will play Springlake-Earth on Friday at Tulia. Gruver's overall record is 5-5 while Springlake-Earth's is 9-1. Though they may seem like a good team from their record, Gruver has a really good chance of winning. The Greyhound coaches commented that Springlake-Earth has a great quarterback, but they also said quarterbacks alone can't win games. Enough said. Come to Tulia to support Gruver on Friday night and you'll see what they mean.

## Farm & Ranch Show

submitted by Burt Williams

The 13th annual Amarillo Farm and Ranch Show will open on December 2, giving agricultural producers an opportunity to view and sample the latest products that the national and regional agricultural manufacturers have to offer.

National manufacturers displaying equipment will include: AGCO, Buffalo, CASE, Caterpillar, DMI, John Deere, Massey Ferguson, New Holland, Orthman, Priefert, Sunflower and Wylie. There will be a special pavilion of Canadian manufacturers from Alberta, Manitoba and other parts of Canada.

Attendees will benefit from the opportunity to meet with numerous manufacturers and

dealers in the same day. Meetings by the Texas Wheat Producers, Texas Agricultural Extension Service and many other associations will take place during the three days of the event. Many will offer CEUs for pesticide applicator license holders.

The 1997 Amarillo Farm & Ranch Show, considered "one of the top five farm shows in the country," is scheduled for December 2-4 in the Amarillo Civic Center.

Show hours are 9:00 am - 6:00 pm. Sponsors include the High Plains Journal, KFDA-TV, KGNC-Radio, Texas Agricultural Extension Service and Texas Wheat Producers.

Admission to the show is free. For more information call 612-894-8007.



# Laugh and Live

by Gary C. Smith



A few weeks ago I published a little ditty called *YOU MIGHT BE A FARMER IF.....*. This week, I happened upon a whole new set of "you might be a farmer ifs." I now proudly present to you....

## YOU MIGHT BE A FARMER IF (2).....

You use a lot of baling wire... but never on bales.

You think a wheelbarrow is an implement used by Uncle Henry to haul his income tax papers to the CPA.

Dinner is called supper and it occurs sometime after 9:00 P.M.

Your idea of a new vehicle is one with less than 100,000 miles on it.

Your gas cap is a red grease rag.

Your idea of going formal is tucking in your shirt.

You think that "DAIRY QUALITY HAY" is substance suitable to eat with a glass of milk.

Over 50% of your clothing came from a seed dealer.

You put on bibs and you are not at an Italian restaurant.

YOU KNOW FARMING IS THE GREATEST OCCUPATION IN THE WORLD!!!!

Until Next Time,  
May God Bless  
GCS

*Your place for*

## Bridal Registry

Michelle Elliott & Kyle Janzen - November 15  
Cari Babitzke & Brandon Baker - November 30  
Mandi Lusby & Jason Vernon - December 7  
Josie Holt & Logan Hudson  
Melisa Upchurch & Alan Hutchison  
Randie Renner & David Baumann  
Kristina Poole & Robert Howell

### Celebrate

Gifts for all your celebrations!  
203 Main St • Spearman, TX  
(806) 659-3350 1-800-663-8026



Josie Mae Holt Hudson

Josie Mae Holt and Logan Ross Hudson were united in marriage on Saturday, November 8, 1997 at 6:00 p.m. in the Trinity Fellowship Church of Spearman. Officiating was Pastor Richard Humphries of Trinity Fellowship Church, Amarillo, and Pastor Johnny Taylor of Trinity Fellowship Church, Spearman, assisting.

The bride is the daughter of Larry and Jan Holt of Spearman. Parents of the groom are Stan and Patti Hudson of Pampa.

The maid of honor was the bride's sister, Betsy Holt. The bridal attendant was Abbe Steger, cousin of the bride, of Graham, Texas.

The best man was Cliff Hudson (groom's brother) of Pampa. The groomsman was John Holt (bride's brother) of Spearman.

Guests were seated by the ushers David Holt, Bryce Hudson, and Tyler Hudson. The flower girl was Nikki Boyd of Spearman. The ring bearer was Barrett Holland (groom's cousin)

## Holt/Hudson Wed

Prelude music was presented by Angie Wilkinson of Washington, Iowa. Pianist for the ceremony was Janie Kunselman of Spearman. Solos were presented by Frank Humphrey, "Keeper of the Stars", and Lesa Miesner "If You Could See What I See", "Lord's Prayer", and also sang a prayer while the couple lit the unity candle.

The bride wore a long fitted designer gown of raw silk with an off the shoulder neckline, French chevron sleeves, and full length cathedral train. Her bouquet was made of porcelena, bridal white,

and bridal pink roses. The bridal attendants and flower girl wore full length pink satin and chiffon dresses and carried a long stem roses. The groomsmen, ring bearer, and ushers wore black tuxedos.

Following the ceremony, a reception was held at the Holt School.

A bridal luncheon was hosted by Janie Kunselman and Karla Acton on the wedding day.

After a honeymoon cruise to Ensenada, the couple will be at home in Perryton, Texas where the groom is employed in the sheriff's department.



by Dorothy Hudson

Lake Depth--Nov. 10, 1997--37 ft. 9 in. - 46'

The picture Jim Derington snapped of one of the park squirrels solved a mystery for many of us that have wondered what animal ate parts of the hedge apples from the bois d'arc tree in Johnny's Park at the area north of the dam. This tree, also called an osage orange, had a good crop of fruit this year.

Our park does not have the nut and oak trees that squirrels like, but they supplement their diet from the corn that is kept in the feeder across from the covered group shelter. Leona Stavlo cleaned up a little dump of corn from in front of Charmaine's Beauty Shop on Broadway in Gruver and gave it to the park for the deer, turkey, and squirrels.

Thanks to everyone who has brought corn for the feeding program.

A good way to see the bald eagles is from the scope in the office. Jim will often have it on an eagle perching in one of the dead trees out in the Lake. Sybil and Billy Miller shared a "memorable moment" story with me of watching ducks flying last winter. They noticed bald eagles flying among the ducks and that it didn't seem to frighten the ducks. One of the eagles grabbed a duck in its talons and flew to a dead tree where the duck became the main course for a dinner.

That brought to mind the story that has been on television and in the news paper of the man in a light plane that was guiding a group of sandhill cranes and some whooping cranes to a refuge in New Mexico. One of the whooping cranes was attacked by a golden eagle. Injured, the big bird rode the rest of the way in a trailer.

I have a report that 19 of the big white cranes were seen flying over Berger. One of these time some one will report seeing them in Hansford County.

*You are invited to attend a*  
**Bridal Shower**  
*honoring*  
**Kyle & Michelle (Elliott) Janzen**  
*on Saturday, November 15, 1997*  
*from 2:30-3:30 p.m.*  
*at the home of Sally Desimone*  
*701 Steele Drive*  
*Given by Hostesses*

*You are invited to attend a*  
**Bridal Shower**  
*honoring*  
**Michelle Cox**  
*(daughter of Debbie Coates)*  
**bride-elect of Michael Isham**  
*on Saturday, November 16, 1997*  
*from 2:00-4:00 p.m.*  
*at the First State Bank Hospitality Room*  
*Given by Hostesses*

## At the Lyric Theatre . . .

113 Main St • Spearman  
Friday, Saturday & Sunday (Closed Monday through Thursday)

<b>Kiss The Girls</b> R Morgan Freeman & Ashley Judd	<b>Rocket Man</b> PG Juvenile Humor
Screen 1 • 7:30 p.m.	Screen 2 • 7:45 p.m.

Adults - \$5.00, Children - \$3.00

## Hansford County Community Calendar

### November 13-23

**Thursday, November 13**  
10:00 a.m. - Spearman Economic Development Meets - Chamber Office  
12:00 p.m. - Spearman Chamber Board Meets  
7:00 p.m. - Hansford County Hospital Board Meets  
7:00 p.m. - Spearman Volunteer Fire Department Meets  
6:00 p.m. - Women's Division "Evening of Fashion" - O'Loughlin Center  
7:00 p.m. - "Caught In The Act" Talent Show - SHS Auditorium

**Friday, November 14**  
7:30 p.m. - Spearman vs. Quanah - Canyon High School Stadium  
7:30 p.m. - Gruver vs. Springlake-Earth - Tulia High School Stadium

**Saturday, November 15**  
5:00 p.m. - Spearman Cub Scouts Dad/Lad Cake Bake

**Sunday, November 16**  
12:30 p.m. - Open House & Potluck Dinner - Pringle-Morse Community Building.  
3:00 p.m. - Hansford Manor Church Service

**Monday-Thursday**  
8:00-9:00 a.m. - Aerobics Class at The O'Loughlin Center

**Tuesday, Thursday & Friday**  
6:00-7:00 a.m. - Aerobics Class at The O'Loughlin Center

**Monday, November 17**  
12:00 p.m. - Spearman Rotary Club Meets - Ivey's Hungry Cowboy  
2:00 p.m. - Games and Crafts at Hansford Manor  
6:30 p.m. - ESL & GED Classes at Spearman High School  
7:00 p.m. - Spearman PTA Meets

**Tuesday, November 18**  
11:00 a.m.-1:30 p.m. - Gruver Music Club Stew Lunch  
12:00 p.m. - Spearman Lions Club Meets - Ivey's Hungry Cowboy  
6:30 p.m. - Bingo at Hansford Manor  
7:00 p.m. - Spearman Booster Club Meets - Spearman High School  
7:30 p.m. - Spearman City Council Meets

**Wednesday, November 19**  
10:00 a.m. - Bible Study at Hansford Manor  
12:00 p.m. - Women's Division Meets  
2:00 p.m. - Games and Crafts at Hansford Manor

**Thursday, November 20**  
11:30 a.m.-1:30 p.m. - FUMC Choir Turkey Dinner  
7:00 p.m. - Spearman Volunteer Fire Department Meets

**Saturday, November 22**  
8:00 p.m. - Gruver High School Play, *Ten Little Indians* - Auditorium

**Sunday, November 23**  
3:00 p.m. - Hansford Manor Church Service  
7:00 p.m. - Community Thanksgiving Service - Spearman Methodist Church

## For The Bride & Groom

*Come by and let us help you set up your special gift table*

### Couples Currently Registered

Cari Babitzke & Brandon Baker - Nov. 30th\*  
Mandi Lusby & Jason Varnon - Dec. 7th\*  
Jonathan & Maria (Mendoza) Gonzales  
Michelle Elliott & Kyle Janzen  
David & Anne Turner  
Josie Holt & Logan Hudson  
Robert Howell & Kristina Poole  
Alan Hutchison & Melisa Upchurch  
Randie Renner & David Baumann

\*Date of Shower

314 Main  
659-2141

Spearman,  
Texas

The Hansford County  
**Reporter-Statesman**  
213 Main St. • Spearman, TX 79081  
Phone - (806) 659-3434 • Fax - (806) 659-3368  
Open Monday-Thursday, 9:00 a.m.-12:00 p.m. & 1:00 p.m.-5:00 p.m.

*Serving Spearman, Gruver and Morse and all of Hansford County*  
Published weekly in Spearman, TX  
*Owned and operated by Gary and Catherine Smith*

**Gary Smith - Publisher • Catherine Smith - Editor**  
Karen Babitzke - Assistant Editor  
Harletta Carthel - Assist. Pub. (Gruver) /Sales Rep.

Periodical Postage Permit USPS 509660  
Postage paid in Spearman, TX

**MEMBER**  
1995

**TA**

**TEXAS PRESS ASSOCIATION**

Annual Subscription Rates  
In Hansford County, \$20.00  
Out of County, \$25.00

Advertising and Story Deadlines  
Monday - 5:00 p.m.



Waid & Katherine Griffin

## 60th Anniversary Celebrated

Waid and Katherine Griffin will celebrate their 60th wedding anniversary during Thanksgiving with families of their siblings and children, Carol St. John of Fort Worth, Tiseha McCoy of Colleyville, Peny Bagwell of Austin, Waid Griffin Jr. of Albuquerque, NM, and Jane Stewart of Montreal, Quebec. They have 12 grandchildren.

The Griffins were married November 25, 1937, at McAdoo. She is the former Katherine Ward of McAdoo and Whitney. Before retiring, Waid pastored Methodist churches in Peacock, Golden Pond, Swenson, Goree,

Bushland, Clyde, White Settlement, Follett, Wheeler, Albany, Spearman, Sweetwater, Lubbock and Muleshoe.

He is a 32nd degree Mason, former Chaplin of Amarillo's Kiva Shrine Temple and former Trustee of Texas Wesleyan University. Katherine is a retired school teacher and former member of both Texas State Teachers Association and Order of the Eastern Star. Both are TWU alumni and have lived their entire lives in Texas. Correspondence may be sent to them at RR 4, Box 4455-103, Donna Tx 78537.



## Gladiola Flower Club's Home Tour

by Wanda Brown

The Gladiola Flower Club will host their annual home tour on Sunday, December 7, 1997 and this is one of the four homes that will be toured. This attractive home of Mark and Carla Brown is the original home of Virgil and Elsie Matthews. The home was built in 1950. Virgil and Elsie later sold the home to Edgar Womble for his daughter, Fay Lynch.

It has four bedrooms, an office and two baths with 2,366 square feet and is located at 316 S. Bernice.

Mark and Carla, along with Allison and Beau are looking forward to opening their home to family and friends to see the changes they've made.

Proceeds of the home tour will go to the community projects and a scholarship for a graduating senior.

## Hansford Hospice Met

by LoRee Booth

Hansford Hospice met at Gruver State Bank on Monday, October 20, 1997. Verna Lee Shirley conducted the meeting. Doyle Jackson read the minutes and Muriel Boyd gave the treasurer's report.

The election of officers was held. New officers will be: President - Sandy Russell, Vice-President - Doyle and June Jackson; Secretary - Jolinda Hutchison; Reporter - Jack and Dolly McWhirter; Treasurer - Anna Beth Wood; Historian - Tanya Close.

Plans were completed for the Memorial Service. It will be held on Sunday, November 2nd at 3:00 p.m. in the First Presbyterian Church in Spearman. The Lights of Love service is to be held on Monday, December 1, 1997 at 6:00 p.m. at Hansford Hospital.

Cherri Sherrill reported on the Hospice training class in

Amarillo; it was attended by 16 volunteers. Karen Thompson reported that the new Hospice class will be completed this month.

The door prize was won by Cherri Sherrill.

The next meeting will be held on Monday, November 17th at the First State Bank of Spearman. The new officers will be installed at this meeting.

Those in attendance were: Cherri Sherrill, Karen and Ricky Thompson, Carrie Gammorill, Opal Wallin, Anna Beth Wood, Jack and Dolly McWhirter, Eloise Renner, Edith Womble, Mike Hergert, Beth Phelps, LoRee Booth, Verna Lee Shirley, Rosetta Barrera, Mary K. Harbour, Carolyn Cummings, Tanya Close, Doyle and June Jackson, Rodney McDowell, Muriel Boyd, Jolinda Hutchison and J.C. Harris.

## Brown Joins Real Estate & Rental



by Harletta Carthel

Real Estate and Rental of Perryton announces the association of Dawn (McCullough) Brown of Spearman

as a sales associate in their branch office at 423 Main in Gruver. Brown is a 1994 graduate of Gruver High School and the daughter of Benny and Melinda McCullough. She is a 1996 graduate of Frank Phillips College with an associates degree in business.

Brown recently received her Texas Real Estate license and is looking forward to serving the people of Hansford County. She is married to Troy Brown, a Spearman native. The couple lives in Spearman and attends the First Christian Church of Gruver.

Brown welcomes the community of Hansford County and surrounding areas to contact her with their real estate needs.

## Thank You

The family of Dan E. Archer would very much like to thank each of you for all your prayers and support. Your kind gifts of excellent food and gorgeous flowers touched our hearts. We are thankful for the many phone calls and beautiful flowers we have received.

We would especially like to thank the Ladies of the Church of Christ for a wonderful lunch, the honorary pall bearers, and ministers, Terry Danley and J.R. Collins.

Sincerely,  
Opal Archer

Danna Kay Archer

Scott and Shirley Archer

and grandchildren Cathy, Scott, Joshua,  
Nicholas, Daniel and Michael!

Dick Gillaspie says,

# "We'll Meet or Beat Any Deal!!"



"Bring us any advertised price on any new Chevrolet, Buick, Pontiac, Oldsmobile, Chrysler, Plymouth, or Dodge and we'll meet or beat that price. That's right, we'll meet or beat them all! Come see us and we'll show you how **EASY** it is to do business here at **GILLASPIE'S in SPEARMAN!**"



'98 Dodge Ram 1500

**\$197<sup>85</sup>/Month\***

\*24 month Gold Key Plus. 9.75% APR requires \$1524<sup>00</sup> down payment plus tax, title & license fees. Amount financed \$14486<sup>00</sup> total of payments 17317<sup>00</sup>. 12,000 miles per year W.A.C. through Chrysler Financial. TOL package.

## Don't Delay - Won't Last

'97 Chevrolet Cavalier

2 Dr. Coupe, 2900 Miles, Auto, A/C, Cassette

WAS \$13,495<sup>00\*</sup> - NOW \$12,488<sup>00\*</sup>



Stock #98008C



'97 Chevrolet C1500  
Extended Cab Silverado

List Price - \$24,824<sup>00</sup>

Sale Price - \$21,534<sup>00</sup>

Savings - \$3,290<sup>00\*</sup>

\*Plus tax, title & license fees. After all rebates and incentives. Stock #97035 & Stock #97041

'93 Buick Park Avenue

Very Clean & Very Loaded

**\$12,475<sup>00\*</sup>**

Stock No. - 97189A

'96 GMC Suburban 4WD

SLT Package w/Leather, 39,000 Miles & Loaded

**\$29,785<sup>00\*</sup>**

Stock No. - 98046A

'93 Mercury Cougar XR7

Loaded, 2Dr, Sporty Car

**\$8,995<sup>00\*</sup>**

Stock No. - 97159B

"IF YOU DON'T COME SEE US TODAY"  
-GILLASPIE-  
Auto & Truck Center  
"WE CAN'T SAVE YOU ANY MONEY"

Highway 207 South  
Spearman, TX 79081  
(806) 659-2541

**1-800-692-4657**

Chevrolet • Pontiac • Oldsmobile • Buick • Chrysler • Plymouth • Dodge Trucks

\*All prices + TTL, subject prior to sale

Hours:

Mon.-Fri.: 8 a.m.-6 p.m.

Sat.: 8 a.m.-12 p.m.

Sun.: Closed

'95 Chevy C1500 Silverado

Leather Interior & Custom Wheels, Extra Clean Truck

**\$16,885<sup>00\*</sup>**

Stock No. - 98031A

'94 Ford Explorer Limited 4WD

All the options with Leather and Glass Sunroof.

Priced to sell at only

**\$17,655<sup>00\*</sup>**

Stock No. - 98053A

'87 Chevy Astro Van

7 Passenger, Dual, A/C, Low Miles and One Owner

**\$6,455<sup>00\*</sup>**

Stock No. - 97028A



# Good Luck, Lynx and Hounds!!



1997 Varsity Lynx

1997 Varsity Hounds

The following businesses wish you much luck in your Bi-District game!

<b>Gruver Greyhound Mothers</b>	<b>John L. Hutchison, Atty.</b> Spearman, TX • 659-3703	<b>Watley Seed Co.</b> Spearman, TX • 659-3838	<b>Hansford Supply</b> Gruver, TX • 733-2469	<b>Gruver State Bank</b> Gruver, TX • 733-5061 Member FDIC
<b>First National Bank</b> Spearman, TX • 659-5544 Member FDIC	<b>Pizza Hut</b> Spearman, TX • 659-2547	<b>Interstate Bank</b> Spearman, TX • 659-2559 Member FDIC	<b>Murmurs</b> Spearman, TX • 659-3580	<b>First State Bank</b> Spearman, TX • 659-5565 Member FDIC
<b>CellularOne</b> Spearman, TX • 659-3762	<b>Rocking F Boot &amp; Saddle Shop</b> Spearman, TX • 659-3342	<b>Debbie's Ready Or Not</b> Spearman, TX • 659-3328	<b>Kid's Stuff &amp; Lady Fair</b> 659-2608 • 659-3215 Spearman, Texas	<b>Gillaspie Auto</b> Spearman, TX • 659-2541
<b>Lyric Theatre</b> Spearman, TX • 659-2812	<b>C.O.'s Supply Co.</b> Spearman, TX • 659-3781	<b>Cates Men &amp; Boys Wear</b> Spearman, TX • 659-3426	<b>Hi Plains Auto</b> Spearman, TX • 659-2506	<b>J&amp;M Services</b> Spearman, TX • 659-5519
<b>Lowe's</b> Spearman, TX • 659-2522	<b>Spearman Booster Club</b> Spearman, TX	<b>Spearman Chamber of Commerce</b> Spearman, TX • 659-5555	<b>Boxwell Brothers</b> Spearman, TX • 659-3802	<b>Dr. Earl Novak, DDS</b> Spearman, TX • 659-3315
<b>Frontier Feedyard</b> Spearman, TX • 882-4251	<b>Northern Natural Gas</b> <i>An Enron Company</i> Spearman Team • 659-5582	<b>Cinderella Beauty Salon &amp; Unique Touch</b> Spearman, TX • 659-3413	<b>D&amp;D Cattle Hauling</b> Spearman, TX • 659-2174	<b>White House Lumber</b> Spearman, TX • 659-3792
<b>Hansford Hospital</b> Spearman, TX • 659-2535	<b>Palo Duro Supper Club</b> Spearman, TX • 659-2232	<b>Dairy Queen</b> Gruver, TX • 733-2913	<b>Golden Spread Sales Co.</b> Spearman, TX • 659-3776	<b>Gordon's Drug</b> Spearman, TX • 659-2141
<b>Berry Cleaners</b> Spearman, TX • 659-3122	<b>Bennie Wilson Electric</b> Gruver, TX • 733-2080	<b>Sunray Co-Op Gruver Branch</b> Gruver, TX • 733-2481	<b>Greyhouhd Booster Club</b> Gruver, TX	<b>City of Spearman &amp; Spearman Police Dept.</b> Spearman, TX • 659-2524
<b>Little Tiffanies</b> Gruver, TX • 733-5290	<b>B&amp;B Farm Industries</b> Spearman, TX • 659-5507	<b>G&amp;G Foodliner</b> Gruver, TX • 733-2471	<b>Cargill Inc.</b> Spearman, TX • 659-3554	<b>Celebrate</b> Spearman, TX • 659-3350
<b>Hansford County Vet Clinic Inc.</b> Spearman, TX • 659-2100	<b>Charlotte Ford Trunks</b> Spearman, TX • 659-3027	<b>Sparks Brothers Spraying, Inc.</b> Gruver, TX • 733-2972	<b>Gruver Farm Supply</b> Gruver, TX • 733-2427	<b>Gruver Cablevision</b> Gruver, TX • 733-5294
<b>West Texas Gas Inc.</b> Spearman, TX • 659-2723	<b>Beedy Furniture</b> Spearman, TX • 659-3701	<b>Hansford Implement Co.</b> Spearman, TX • 659-2568	<b>Five Star Equipment</b> Spearman, TX • 659-3743	<b>B&amp;B Sales Co.</b> Spearman, TX • 659-2662
<b>Spearman Auto Supply</b> Spearman, TX • 659-2588	<b>Prairie Garden Flowers</b> Spearman, TX • 659-3329	<b>Sergio's Body Shop</b> Spearman, TX • 659-5217	<b>Ivey's Hungry Cowboy</b> Spearman, TX • 659-5151	<b>Main Street Store</b> Gruver, TX • 733-5040
<b>Mark Sheets Truck</b> Spearman, TX • 659-2773	<b>Gigot Agra Products Inc.</b> Spearman, TX • 659-3121	<b>Hansford County Reporter-Statesman</b> Spearman, TX • 659-3434	<b>All Occasion Flowers</b> Spearman, TX • 659-5180	<b>Athena Energy Inc.</b> Spearman, TX • 659-2952



Alberto Vargas breaks up a pass for the Spearman Lynx in their game against Boys Ranch on Friday night.



Dusty Barber picks up a yardage for the Lynx.

## Lynx Bash Boys Ranch

Continued from Page 1  
passing yards, for a total of 2386 yards.

"We were pleased with the effort given by the Lynx players on Friday night against Boys Ranch," stated Coach Ric Smith. "We are looking forward to playing the Bi-District game in Canyon against Quanah. The

players and coaches are excited. "Quanah has a very good senior ball club. They are 10-0 for the season. We look forward to the challenge."

Show your support for the Lynx by attending the Bi-District game in Canyon at the Canyon High School Stadium this Friday night at 7:30 p.m.

## A Center Piece

by Garland Hopper

The "Evening of Dance" by the Lone Star Ballet was a great success. Men and women alike expressed how much they enjoyed the production.

The cast was superb, performing dances from the "Charleston" to modern day. American Indian and other ethnic dances were also a part of the program. The vocalists were very good and had not been mentioned in prior printings.

Thank you, Kathy Bryant, the Spearhead Corporation, and the Golden Spread Senior Center for such fine entertainment!

On November 18th, the Golden Spread Senior Citizens will be guests of the First National Bank. The bank always serves the senior citizens a delicious Thanksgiving dinner. No more of a program is needed for that evening! It will be enjoyed by all who attend.

May God Bless Our Country!



Clint Goodman



Landon Miller



Aaron Winegarner



Brian Howell

## Happy Sixtieth - Moonlighter



Love,  
Kids &  
Grandkids

## "Name Your Dealership Contest"

Dick Gillaspie and Jeff Beedy have shaken hands in partnership and they want your help in naming their new dealership.

Suggestions will be accepted through November 26th at Gillaspie Auto & Truck Center.

The person who submits the winning name will receive a \$100 savings bond, a high country jacket, a full detail on their vehicle, along with an oil change.

*Holiday Open House*

**Celebrate With Us!**

November 16th  
2:00-5:00 p.m.

Come and explore all we have to offer. There will be refreshments and a prize drawing.

You'll see a wide array of bright and festive floral arrangements to make the holidays special.

join us for this special holiday event.

*Prairie Garden Flowers*  
209 Main Street • Spearman, TX  
659-2212 • 659-3329

# First State Bank

announces another  
**"FIRST"**  
for Hansford County

First State Bank Christmas Cash Loans up to  
\$500 **"INTEREST FREE"** for 12 Months\*

Strength Is Our Tradition  
**SERVICE** our Goal  
Serving Hansford County Since 1917



\* Gruver



First State Bank  
Spearman

\* Morse

Proceeds are issued in the form of  
**"First State Bank Christmas Cash Certificates"**  
redeemable at participating Hansford County Merchants

Call or stop by for details  
**(806) 659-5565**

Member FDIC

\*\$500, 0% APR, 11 monthly payments of \$41.66 and one payment of \$41.74, with approved credit

Foundation of Fine Jewelry

222 S. Main  
Perryton, Texas 79070  
806-435-2495



721 W. 7th  
Spearman, Texas 79081  
806-659-3566

1-800-800-1716

*You're Invited*  
*To the Biggest Sale in Our 50 Years of Business*  
*in the Texas Panhandle*

Dear Preferred Customer,

**To help us celebrate our 50th Anniversary,** we have made a special buying trip to purchase an exquisite collection of Fine Jewelry. We personally hand selected this unique assortment of men's and ladies' jewelry from an inventory of Fine Jewelry valued at over \$40 million dollars.

*In honor of our 50th year in business*  
*we're turning back prices.*

*This sale includes our entire store-wide inventory*  
*at savings of 25% to 50% off.*

Because this special collection includes many one-of-a-kind pieces at extraordinary prices, we encourage you to shop early. Please don't miss this rare opportunity to own Fine Jewelry at unbelievable prices.

**Please join us!**

**Friday, November 14th from 9:00am to 9:00pm**  
**and Saturday, November 15th from 9:00am to 5:30pm.**

Sincerely,  
Liz and Frosty Hickerson



## Among The Neighbors

by Helen Fisher

Virginio and Frances Ortega returned Saturday from a weeks trip to California. They visited his brothers and sisters at Delano, Rich Grove and Decou. On their return flight they had a lay-over in Phoenix, and their son Raul and wife Debbie, who live in Tucson, drove over for a visit with them.

Becky Porter, Spearman junior, was quoted in the Generation Y issue last week answering the question of the week. It was "What important issue do you think society doesn't pay enough attention to?" Becky felt that teen suicide is the issue. She is the daughter of Bill and Fern Porter.

DeLinda McLaughlin and LaNell Beard of Borger attended a one day seminar at Albuquerque last Wednesday. They are representatives of the Creative Memories company which conducted the seminar. Much interesting and useful information was presented. They returned Thursday evening.

Many motorists on Highway 207 south of Spearman on Saturday afternoon were alarmed by the billowing smoke. The Spearman Fire Department was standing by a controlled burn of 200 acres near the intersection of highways 207 and 520. During the burn, the fire created fire storms which jumped the pavement and burned some grass along the highway right-of-way. Since there was little wind, it was soon contained, but the smoke could be seen for miles.

Carolyn Cummings is back from a very crowded four day trip. On Friday she drove to Oklahoma City, flew to Nashville, Tennessee, then drove to Knoxville. Her daughter, Kelli, is a student at Maryville College.

Carolyn's mother, Mrs. Jane Simpson, lives there and joined them as they attended a lecture at the American Sign Language Club. Kelli is majoring in American Sign language as she plans to teach the deaf. They were much impressed by the speakers, a deaf woman and her husband, who had been teaching the deaf in Russia.

Carolyn especially enjoyed the drives in the mountains and the brilliant fall foliage - a sight she hadn't seen in 27 years. Kelli's parents can be assured her spare time won't get her into mischief.

In addition to her college courses, she is involved in the Prisoner Outreach program, she

works at Sears, and is teaching dancing classes at a studio.

She teaches ballet, tap and jazz. Even with her crowded schedule, she is enjoying college life.

Weatherman Dwayne Smith's records show for the week of November 3 to 10 that the high was 74 on November 4, low was 24 on the 10th - moisture .02 derived from 1 inch snow. Total moisture for November - .08.

It has been said that men who are afraid they will be ruined by the success of always being right, get a job with the weather department. But not so for Dwayne.

Davonna Daharsh reports that her father, Bill Cator, had stabilized by Sunday evening and the family is encouraged. He was diagnosed with acute leukemia and has been hospitalized at Baptist St. Anthony's since October 27.

He is in the bone marrow unit and undergoing chemotherapy. Since he is seriously ill only members of the immediate family have been in the unit.

Mrs. Cator is staying in Amarillo and Davonna and their son, Loyd Cator, of Lubbock have been taking turns to be with her.

Kenneth Evans underwent

surgery for two heart by-passes on Wednesday, November 5, at Baptist St. Anthony's hospital in Amarillo. He made rapid recovery and is expected to be released Monday or Tuesday.

Mrs. Ruth Hill, who has been in Hansford Hospital, was transferred to Baptist St. Anthony's. She was taken by ambulance on Friday suffering from congestion. Her daughter Betty Jean Gwen of Angel Fire was expected on Saturday. Friends report that Mrs. Hill may be return to Spearman in a few days.

High school rodeo placements from Saturday's rodeo at Vega from the Gruver Club were: David Moore - ribbon roping-10th; Rowdy Thomas - bull riding-2nd; Shawna Mitchell - barrel racing-9th. Monty Eakin was the only qualified steer wrestler. This was the final rodeo for this semester as the schedule resumes March 14th at Tulia.

A couple of college cowboys known to Hansford County helped WTA&M win first at the Texas Tech intercollegiate rodeo the past week-end. Trevor Brazile was all-around cowboy; also 3rd in calf roping, and with partners won 3rd and 4th in team roping. Matt Eakin won 1st in steer wrestling.

To report local information, call 659 3468.

## City/School Meet

by Robert Patrick

The City of Spearman and the Spearman Independent School District engaged in a combined meeting Wednesday October 22nd to discuss a possible joint venture utilizing Texas Parks and Wildlife grant money. Twenty four interested parties came with much discussion on park needs and interests in Spearman.

Garrett Adkinson with the Panhandle Regional Planning Commission discussed the need for a parks master plan using survey information from residents to further develop Spearman's future growth. Mr. Adkinson pointed out that Parks and Wildlife must have financial commitments and plans before consideration would be given. Organizations showing interest in financial or labor commitments include the Spearman Lions Club, Spearman Chamber of Commerce, Historical Commission, Spearman Industrial Foundation, Southwestern Pioneer Windmill Association, the school board and city council.

The area for consideration, donated to the City of Spearman by C. Ralph Blodgett, is located between the high school and Highway 760 on 11<sup>th</sup> Avenue. Area development ideas include renovating the tennis courts, developing a windmill historic site, a walking-hiking trail and a pond system.

Also a joint committee was appointed by Mayor Burl Buchanan consisting of Bob Boxwell, Roger Buchanan, Steve Benton and Robert Patrick. This committee has approved a survey

for citizens to give their input about our park project.

A copy of this survey is included in this week's edition of the Hansford County Reporter-Statesman. Please fill out a survey and return to the City Hall by November 20th.

If you need another copy of the survey it can be picked up at

following locations: City Hall, Chamber of Commerce office, O'Loughlin Center, or the Hansford County Library.

It is ESSENTIAL that this project receives area wide support to ensure its success. If you have any questions about this project, call Robert Patrick at 659-2524.

1 - 10x13 (Wall Photo)  
1 - 8x10  
2 - 5x7  
2 - 3x5  
16 - King Size Wallets  
8 - Regular Size Wallets

**30**  
Color  
Photos

99¢ Deposit  
\$11.00 Due at  
Pick up  
(plus tax)

**\$11.99**



During this promotion  
you will receive  
4 FREE 3X5's  
with each \$11.99  
package purchased.



Shugart's  
inc.

**Introducing The New**  
**123 Success**

Join us and find out how  
our new weight loss  
plan is as easy as  
one, two, three.

**1. Easy POINTS™ System**  
**2. No Complicated Counting**  
**3. No Food's A No-No**

Join now. 10 weeks for \$79  
(with 20 or more participants.\*)  
Call 1-800-651-6000

**WEIGHT WATCHERS®**

COME SEE WHAT WEIGHT WATCHERS IS ALL ABOUT!  
ATTEND A FREE MEETING AT SPEARMAN!

**MONDAY, NOVEMBER 17TH - 6:00 P.M.**  
THE O'LOUGHLIN CENTER • 520 BRANDT • SPEARMAN

Pre-registration required on Monday, November 17th for the next series beginning Monday, November 24 at 6:00 p.m.

\*8 weeks for only \$79 with 15-19 participants. 6 weeks for only \$79 with 12-15 participants. WEIGHT WATCHERS is a registered trademark of Weight Watchers International, Inc. ©Weight Watchers International, Inc. 1997. Offer valid only for Community Meeting listed above.

**MARY-KAY**  
Beauty Consultant  
**Leann Gillaspie**  
659-3889  
America's best selling brand

**BUY THIS.**  
**GET THIS.**

Control your pivot without stepping foot in the field with Zimmatic's R-MAC (Remote Monitor Alarm and Control.) With your cellular phone or business band radio, you can:

- Start, stop and change speed or direction of your pivot
- Run your pivot wet or dry
- Check operating condition
- Receive instant alarm if your pivot has trouble

Your Zimmatic dealer's best R-MAC deals through December 31, 1997.

- FREE R-MAC with the purchase of an AIMS Advance panel on a new Zimmatic system, OR
- \$200 rebate on the purchase of an R-MAC for a AIMS Basic panel or competitive system

\* Certain restrictions and conditions apply. Free RMAC does not include installation cost or communication device (cellular phone or business band radio).

**Five Star Equipment, Inc.**  
Spearman, Texas ★★★★★ (806) 659-3743

**ZIMMATIC®**  
Leadership and strength you can depend on today and tomorrow.

**ALCO**  
YOU'RE INVITED TO  
**CUSTOMER APPRECIATION NIGHT**  
SUNDAY, NOVEMBER 16  
5:00 P.M. TO 8:00 P.M.  
We're offering special savings to you on our entire selection of merchandise!

**SAVE 10%**  
ON PURCHASES OF  
\$1 TO \$150

**SAVE 15%**  
WHEN YOU PURCHASE  
OVER \$150

Discounts do not apply to tobacco products.  
Sorry, no rainchecks.

**START YOUR HOLIDAY SHOPPING AT ALCO... THE MORE YOU BUY... THE MORE YOU SAVE!**

**LAYAWAYS WELCOME!**  
Discounts do not apply to prior layaways.

**REGISTER TO WIN A \$100 GIFT CERTIFICATE!**  
DRAWING AT CLOSING TIME  
Need not be present to win.

**PLAY SHOPPING CART BINGO THROUGHOUT THE EVENING**





# Morse Morsels

by Mildred Lewis

The Pringle-Morse CISD Cougars played their first basketball game of the season. The girls lost 40 to 10 at the end.

Teresa Sage scored four times, and Erika Mendoza scored five points. The score was 18-4 in favor of the St. Andrew's Broncos of Amarillo at the half. This game was held on Monday, November 10th.

The boys also played St.

Andrew's Broncos. They were 5-29 at the half. The final score was 8-59, in favor of the Broncos. The Cougars played a very good game.

Andrew Martin scored five of the eight points, including one three-pointer. Jason also made a three-pointer.

Evan Schmidt has his hand in a cast. He is going to get it off pretty soon; then look out for the Cougars!

This weekend the Cougars will travel to Hartley to participate in their tournament. I hope they win. Go Cougars!

Shelby Reiswig, a former Pringle-Morse basketball player, will be playing for West Texas this year. They begin play next Tuesday at Clarendon High School. He is on the varsity team.

Felix Delacruz will be playing on the West Texas Freshmen team. Tap Giblin plays on the West Texas JV team.

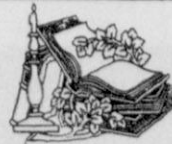
Pringle-Morse CISD held their Fall Carnival on Thursday, October 30, 1997. It was a great success.

The students at school wore red ribbons during the last week of October for Red Ribbon Week.

Stinnett High School will be hosting their Annual Dinner Theatre on Saturday, November 15th at 6:00 p.m. The play will begin at 7:30 p.m. They will present *Green Pastures*. There are several previous Pringle-Morse students participating in this.

The Pringle-Morse Community Building will have an open house on Sunday, November 16th at 12:30 p.m. It will be celebrated with a covered dish dinner, so bring a dish and come on out and see our new community building. It's great!

Gene Thuet and I went to Gruver to the Golden Age Center on Monday. We had a real good Thanksgiving lunch and played dominoes. We had a very good time.



## Library Booknotes

by Sheri Benton

Thanks to the Tocker Grant that the Hansford County Library received recently, we have a brand new set of Encyclopedia Britannica on the reference shelf and about 250-275 new Accelerated Reader titles in the children's section of our library. This foundation has been wonderful to the small rural libraries of Texas, and we feel fortunate to have received a grant from them for each of the last three years.

We also have full Internet access now thanks to Perryton Equity. There is no charge for using the Internet in our library, and no charge to print off information that you may find there. We will reserve a time for you on our Internet computer if you will call ahead and ask us to do so. Times may be reserved in 30 minute increments from 10:00 a.m. until 2:30 p.m. on weekdays and from 9:00 a.m. until 1:00 p.m. on Saturdays. From 3:00 p.m. until closing, time may be reserved in 15 minute increments. No more than two consecutive time slots may be reserved in advance. If you do not call ahead and reserve a time, the Internet computer is available on a first come, first served basis.

Those using the Internet terminal will not have a time limit assigned, but agree, as a condition of use, that if anyone else is waiting to use the Internet, they will make the terminal available within 20 minutes of being informed that another patron is requesting the computer.

We are asking parents to come in with their children when the children want or need to use the Internet. There is a lot of material out there and readily available. The library staff cannot legally control what your child accesses - only you can do that!

Another question that comes up frequently is about sending or receiving E-mail via our Internet access at the library. This option is not available since it would be extremely time consuming and confusing if we allowed all of our patrons to use E-mail through the library account.

With colder weather arriving, it's a good time to curl up with the latest book. Some of our recent arrivals include *Flood Tide* by Cussler, *Homecoming* by Plain, *Comanche Moon* by McMurtry, *Reign in Hell* by Diehl, *Timequake* by Vonnegut, 10 Lb.

*Penalty* by Francis and *Skeleton Canyon* by Jance.

Some of your favorite authors that are coming out with new books in the next month or two include Danielle Steel, LaVyrle Spencer and Sandra Brown. We will be glad to add your name to a waiting list for any of our popular titles to make sure you have a chance to read the ones you want. Just call the library and tell us which lists you would like to be added to, and we will do the rest!

If there is a book that you are interested in reading that we do not have in our collection, we will be happy to order it for you through interlibrary loan. This usually takes about five to seven working days, and the only charge is postage (one-way only).

We order about 500 to 600 books each year for our patrons so please let us know if we can help you in this way. Even though we have over 22,500 volumes, we cannot buy everything we would like to, and this service provides those that we do not have in-house.

If you haven't visited your public library in a while, come by and see how we have changed! I often tell people that the library is the best bargain in town so come by and take advantage of it!

## Spearman ISD School Menu

**Breakfast**  
Monday, November 17  
Cereal & Toast or Elfin Loaves,  
Fruit or Juice; Milk  
Tuesday, November 18  
Cereal & Toast or Pancakes;  
Fruit or Juice; Milk  
Wednesday, November 19  
Cereal & Toast or Scrambled Eggs &  
Biscuits; Fruit or Juice; Milk  
Thursday, November 20  
Cereal & Toast or Breakfast Pizza;  
Fruit or Juice; Milk  
Friday, November 21  
Cereal & Toast or Cinnamon Toast;  
Fruit or Juice; Milk

**Lunch**  
Monday, November 17  
Submarine Sandwich, Tomato Soup,  
Lettuce, Tomato, Dill Pickle Spear,  
Pineapple Tidbits, Cookie, Milk  
Tuesday, November 18  
Lasagna, Sweet Peas, Bread Stick, JH -  
Apple Crisp, HS - Cherry Crisp, Milk

Wednesday, November 19  
French Bread Pizza, Whole Kernel Corn,  
Mixed Fruit, Birthday Cake, Milk  
Thursday, November 20  
Chicken Strips, Gravy, Whipped  
Potatoes, Peaches, Hot Rolls, Milk  
Friday, November 21  
Beef Stew, Grilled Cheese Sandwich,  
Pears, Crackers, Milk  
**Specialty Bar**  
Monday, November 17  
Hamburger, French Fries, Lettuce,  
Pineapple Tidbits, Cookie, Milk  
Tuesday, November 18  
Burrito, Potato Sticks, Lettuce,  
JH - Apple Crisp, HS - Cherry Crisp, Milk  
Wednesday, November 19  
Corn dog, Potato Wedges, Lettuce, Mixed  
Fruit, Birthday Cake, Milk  
Thursday, November 20  
Pizza, Lettuce, Peaches, Cookies, Milk  
Friday, November 21  
Cheeseburger, Potato Tri's, Lettuce,  
Pears, Cookie, Milk

## Gruver ISD School Menu

**Breakfast**  
Monday, November 17  
Cereal, Muffin, Juice, Milk  
Tuesday, November 18  
Pancakes, Juice, Milk  
Wednesday, November 19  
Cereal, Muffin, Juice, Milk  
Thursday, November 20  
Pizza, Juice, Milk  
Friday, November 21  
Cinnamon Roll, Juice, Milk

**Lunch**  
Monday, November 17  
Sausage Pizza, Salad, Fruit, Pudding, Milk  
Tuesday, November 18  
Beef Stew, Cheese Sticks, Carrot &  
Broccoli, Ranch Dressing, Cornbread, Milk  
Wednesday, November 19  
Beef Taco Pie, Corn, Cornbread, Fruit, Milk  
Thursday, November 20  
Pigs-n-Blanket, Tater Tots, Ranch Style  
Beans, Fruit, Milk - Salad Bar  
Friday, November 21  
Cheeseburger Pocket, Fries,  
Fruit, Jell-O, Milk

## Pringle-Morse CISD School Menu

**Breakfast**  
Monday, November 17  
Biscuits & Gravy, Toast, Juice, Milk  
Tuesday, November 18  
Oatmeal, Toast, Juice, Milk  
Wednesday, November 19  
Cinnamon Toast, Toast, Juice, Milk  
Thursday, November 20  
Cereal, Toast, Juice, Milk  
Friday, November 21  
Scrambled Eggs, Toast, Juice, Milk

**Lunch**  
Monday, November 17  
Cheeseburger Casserole or Burrito  
w/Chili, Salad, Fruit, Cornbread, Milk  
Tuesday, November 18  
Oven Fried Chicken or Fish Nuggets, Corn,  
Salad, Fruit, Rolls, Milk  
Wednesday, November 19  
Sloppy Joe or Grilled Cheese, Tater Tots,  
Pork 'n' Beans, Fruit, Milk  
Thursday, November 20  
Thanksgiving Dinner  
Friday, November 21  
Nachos or Baked Potato, Chili,  
Broccoli & Cheese, Salad, Cornbread,  
Ice Cream, Milk

We listen to

# KRDF

98.3 FM

Hot Country  
Stereo 'Till  
Midnight

For All Your Alignment, Front End Work,  
Brakes, CV Joints, Shocks, Struts  
Talk to Joe Close, Our Full-Time Mechanic

---

## Hunting Supplies

# C.O.'S SUPPLY CO.

421 W. Kenneth • (806) 659-3555 • (806) 659-3781 • Spearman, TX 79081

♣ ♠ ♥

## SPEARMAN CHAMBER OF COMMERCE

1997

# CASINO NIGHT

& AUCTION  
Saturday, November 15, 1997

7:00-8:00 p.m. - Steak Dinner, Catered by the Spearman Volunteer Fire Department  
8:00-10:00 p.m. - Casino Style Gambling  
10:00-? - Auction

THE O LOUGHLIN CENTER • 502 S. BRANDT STREET  
\$40<sup>00</sup>/Couple - Chamber Member • \$50<sup>00</sup>/Couple - Non Member

GRAND PRIZE  
Southwest Airlines Tickets & \$100<sup>00</sup> Cash

DOOR PRIZES

## Automobile Insurance

In life, you've got enough to worry about.

But as automobile owners, it's up to you to make important choices for your family. Remember, no matter which road you choose, you'll always have a friend along for the ride with Farm Bureau Auto Insurance.

For quality coverage and fast fair claims service, give us a call.

# Protecting...

what matters most

Auto • Home • Life

Phone today ...  
**(806) 659-3133**

Texas Farm Bureau Underwriters • Southern Farm Bureau Casualty Insurance Co.  
Texas Farm Bureau Mutual Insurance Co. • Southern Farm Bureau Life Insurance Co.

# Grand Openings.



EXPRESSIONS  
FROM  
  
Hallmark

Announcing our  
Expressions From Hallmark  
department, opening this Friday.

Some cards are just better than others. Like Expressions From Hallmark. It's the latest collection of greeting cards, gift wrap and more from the name you've known and trusted for years. Which means every time you open these cards, it will be grand.

**ALCO**

Expressions From Hallmark available at participating Alco stores.



