



THURSDAY  
FEBRUARY 27, 2003

# REPORTER STATESMAN

COMP 1  
HANSFORD COUNTY LIBRARY  
0122 MAIN ST  
SPEARMAN TX 79081  
66/00 EXPDRES

5¢

213 MAIN ST • SPEARMAN, TX 79081

VOL. 96 • ISSUE 9

NEWS • SPORTS • PICTURES

PROUDLY SERVING HANSFORD COUNTY SINCE 1907

### Cooley in Dumas for Book Signing

Loralee Cooley will be at Hastings Book Store in Dumas on Saturday, March 1st from 2-4 p.m. to sign her new release *Word Filly Spoken*.

This book is a collection of essays written by 26 current or former residents of Gray County, Texas. It was published recently to help celebrate the county's centennial (1902-2002).

The contributors range from Bonnie Clark, an 86-year-old former school teacher in Lubbock, to a Lefors high school senior, Sarah Schwab. Other contributors include Lynn Hart, the new director of the play *Texas: Legacies* in Canyon, and Anne Dingus, Senior Editor for the *TEXAS MONTHLY* magazine in Austin.

Loralee Cooley's connection with Dumas comes from her time as interim organist at the First Presbyterian Church, from 1996 through 1997. She's also a professional storyteller, and has lived in Pampa since 1994, when her husband became pastor of the First Presbyterian Church. She has done storytelling in such area schools as Dalhart, Stratford, Pringle-Morse, Spearman and Borger, entertained at a credit union banquet in Dumas in 1996, and presented a Valentine's Day storytelling concert at Dalhart's La Rita Theatre in 1999.

The book will be available at the Dumas Hastings store in paperback, and retails for \$8.95.

For more information, contact the Dumas Hastings store (806-934-9553), at 1414 Guy Lane Plaza, or Loralee Cooley (806-665-7321), or e-mail [lcooleystoryspinning@hotmail.com](mailto:lcooleystoryspinning@hotmail.com).

### Registration Deadline March 7 For Next ACT

College-bound high school students can take the ACT Assessment on April 12, 2002, the next nationwide test date. The postmark registration deadline is Friday, March 7. There is also a late registration postmark deadline on March 21 (an additional fee is required for late registration). Students can get information from their school counselor or register online at [www.act.org](http://www.act.org).

ACT scores are accepted by virtually all colleges in the nation, including all Ivy League schools. The test fee is \$25.

For more information, including registration forms and test locations, contact your high school guidance counselor or register online on ACT's website ([www.act.org](http://www.act.org)). The website also has helpful information, sample tests and the opportunity to order test prep materials.

### World Day of Prayer

World Day of Prayer 2003 will be held Friday, March 7th at Sacred Heart Church, 901 Roland.

Registration will be from 9:30 - 10:00 a.m. with the service at 10:00 a.m.

This year's theme for the service is "Holy Spirit, Fill Us." The service has been written by the women of Lebanon, which is sponsored by Church Women United. Everyone is invited to attend.

For questions, call Anita Sumner, 659-5046.

### Breast Cancer Screening

The Don and Sybil Harrington Cancer Center Comprehensive Breast Center will conduct a Breast Cancer Screening Clinic at Hansford County Hospital, 707 S Roland, in Spearman on March 24, 2003.

Funding is available through the Texas Department of Health for Texas residents who qualify for assistance. All exams are done by appointment only.

Call (806) 356-1905 or 1-800-377-4673 for more information or to schedule an appointment.



The Gruver Lady Hounds celebrate after defeating Lipan to earn a chance to play in the State 1-A Basketball Tournament. Gruver (30-2) will take on LaRue La Poynor (31-6) of District 22 for the state championship Thursday, February 27, at 10:00 a.m. in the Frank Irwin Center in Austin. If the Lady Hounds win the state title, they will play for the Texas Cup at 8:30 a.m. Saturday, March 1, also in Frank Irwin Center.

## 2003 Gruver Lady Hounds

- 10 - Teal Armes
- 20 - Christi Clift
- 21 - Amy Watley
- 22 - Laina Grotegut
- 23 - Brandi Griffin
- 24 - Blythe Finley
- 25 - Lisa Johnson
- 30 - Meagan Knight
- 33 - Ashleigh Sherrill
- 40 - Cassie Myatt

Head Coach - Steve Myatt;  
Asst. Coach - Jim Davis,  
Wynn Essler; Managers -  
Christie McDowell, Katie  
Jones, Madeline Reed

# Lady Hounds - State Bound!

## Lady Hounds Tune Pipers

by Harletta Carthel

Like a well-scripted Hollywood movie, the Lady Hounds took a nail-biting, heart-stopping 68-66 win and the regional championship from the Hamlin Lady Pipers.

Although a Brandi Griffin steal and layup at the four-second mark in overtime brought pandemonium to Gruver fans, it was only one exclamation point in a game destined for the annals of unbelievable comebacks.

Finding themselves 18 points down in the second quarter, the Lady Hounds faced a 12 point deficit going into the fourth quarter.

Chipping away at the Lady Pipers' lead, Gruver dropped the margin to 8 in the final period with a Teal Armes' three-pointer at 6:29. Another three by Armes at 3:25 knocked Hamlin's lead to 5. Twice the Lady Hounds cut the Lady Pipers advantage to three points with successful sets of free throws, once by Griffin and once by Amy Watley.

At 2:10, Gruver chopped Hamlin's lead, to 2, the lowest margin since the first quarter, with a pair of free throws. At the 45 second mark, Griffin again brought Gruver within 2, picking up the first shot of a one-and-one opportunity.

Seconds later Armes' shot under the basket knotted the game at 56. A bobbled in-bounds play by Hamlin stopped any Lady Piper last second shot and sent the game into overtime.

With Lisa Johnson and Armes playing with four fouls and Gruver down by six in the opening minute of overtime, the Lady Hounds' perils continued.

Two three-pointers, one by Griffin at 2:15 cut Hamlin's lead to three while another by Watley at one minute brought

the Lady Hounds within two.

Gruver would again narrow the difference to two with an under the basket shot by Armes with 55 seconds remaining.

After a 10-second call on Hamlin, Gruver was able to tie the game with a Johnson basket.

With the clock at four seconds and ticking down to a possible second overtime, Griffin, anticipating a Hamlin pass, tipped the ball with a fast-break for the game-winning layup which left Hamlin fans standing stunned and Gruver fans pouring onto the court in celebration.

Score By Quarter: Gruver 10 21 35 56 68, Hamlin 14 35 47 56 66

Individual Scoring: Lisa Johnson 17, Teal Armes 18, Christi Clift 4, Blythe Finley 1, Amy Watley 6, Brandi Griffin 17, Cassie Myatt 3

## Lady Hounds Leave White 'Face Down'

Feasting on Antelope, Gruver's meeting with Whiteface was more like a picnic than a game.

A foreboding of what was to come, the Lady Hounds held a 12-3 lead by mid-first quarter. Bombing in four three-pointers in the first quarter, two by Brandi Griffin and two by Christi Clift with Lisa Johnson and Amy Watley joining in the scoring, Gruver led 20-3 at the period's end.

With only eight points scored in the third period, four by each team, Gruver held its dominance at halftime.

While the Lady Hounds anticipated an invigorated Whiteface team in the third quarter, it was Gruver who

proved to be the energized team, racking up their lead to 23 points by the stanza's end.

The Lady Hound celebration continued in the fourth quarter with all ten Lady Hounds taking part in the festivities.

Score By Quarters: Gruver 20 24 36 47, Whiteface 3 7 13 24

Individual Scoring: Teal Armes 9, Christi Clift 8, Lisa Johnson 8, Amy Watley 2, Brandi Griffin 16, Blythe Finley 2, Cassie Myatt 2, Laina Grotegut 0, Ashleigh 0, Meagan Knight 0

## Gruver Ousts Lipan

With just one game blocking a trip to Austin, and possible state title, the Lady Hounds' hit hard inside to eliminate Lipan 66 - 54.

Gaining a nine-point advantage in the first quarter, the Lady Hounds saw their lead slip away in the second quarter as they ended the half two points down.

A combination of defensive pressure which resulted in 18 turnovers and a relentless attack by posts Lisa Johnson and Teal Armes, broke the game open in the third quarter. Going into the final period with a 45-38 lead, Gruver's momentum was unstoppable.

Score By Quarters: Gruver 19 27 45 66, Lipan 10 29 38 54

Individual Scoring: Teal Armes - 17, Christi Clift 4, Amy Watley - 1, Brandi Griffin - 6, Blythe Finley - 2, Lisa Johnson - 21, Cassie Myatt - 15. Three point goals: Griffin - 1, Myatt - 2

Laugh  
and  
Live



by Catherine R. Smith  
CathyRSmit@aol.com

The following "Prescription for Happiness" was sent to me from a dear friend. It is attributed to Robert Louis Stevenson, and bears remembering and repeating.

### Prescription for Happiness

- \* Make up your mind to be happy. Learn to find pleasure in simple things.
- \* Make the best of your circumstances. No one has everything and everyone has something of sorrow intermingled with the gladness of life. The trick is to make the laughter outweigh the tears. Don't take yourself too seriously.
- \* You can't please everybody; don't let criticism worry you.
- \* Don't let your neighbor set your standards.
- \* Do the things you enjoy doing, but stay out of debt.
- \* Don't borrow trouble. Imaginary things are harder to bear than the actual ones.
- \* Since hate poisons the soul, do not cherish enmities and grudges.
- \* Don't hold post-mortems. Don't spend your life brooding over sorrows and mistakes. Don't be one who never gets over things.
- \* Do what you can for those less fortunate than yourself.
- \* Keep busy at something. A very busy person never has time to be unhappy.

For maximum effectiveness, this prescription should be taken as often as needed. Unlimited refills available.

May God bless and keep you; May He make his face to shine upon you, and be gracious to you; May the Lord lift up his countenance upon you, and give you peace.

Numbers 6:24-26

Catherine :)

## National FFA Week

The local Spearman FFA recently celebrated National FFA Week (February 15-22).

This year we have made two signs that now stand outside of Spearman (one as you enter from Stinnett and one as you enter from Gruver). These signs were hand-made by the Spearman metal fabrication classes. We are currently making flag holders for the American Legion to fly flags on the graves of veterans at the local cemetery. Spearman FFA has also made a bookcase for the Crisis Center in Spearman. At this time we are working on a grill for our FFA chapter, and planning the construction of an ATV trailer.

The freshman greenhand class

attended the Greenhand Leadership Workshop at Canadian in September. To go along with our other activities, Spearman hosted this year's Livestock Show on February 7th and 8th at the Spearman County Barn.

Following the Hansford County Stock Show, the Spearman FFA traveled to San Antonio for their annual livestock show. Our chapter has also taken heifers and steers to the Fort Worth Stock Show, and plans to attend the Houston Livestock Show and Rodeo March 5-15.

In March our livestock, land, wildlife, dairy and meat-judging teams will travel to Stephenville, Clarendon and Canyon for judging

contests. In April we will attend the Area-1 contest in Lubbock. Those teams qualifying will be eligible to attend the state competition to be held in Hamilton, Stephenville and Lubbock. We will also be sending our best candidate to run for a district office on April 23rd in Pampa.

In early May, the Spearman FFA Chapter will hold our annual banquet. We will honor specific FFA members for their achievements, our four-year Ag students, appoint the new FFA officer team, and induct an honorary FFA member. In June we will travel to the state FFA Leadership Camp in Stephenville and in July we will attend the State Convention in

Houston.

The Spearman FFA would like to thank everyone who has supported our chapter. We are having a great year, due to the support we have received. We would like to extend a special thank you to: Burt Williams, Mr. Sumner, Mr. Belger, Mark Murray, Matt Souder, Texas Beef, the Spearman ISD School Board, Mike Cudd, and all the parents who have helped out with our local projects. We greatly appreciate everything that everyone has done for us this year.

We would also like to thank all of our supporters from the years past. We hope everyone is as excited about the rejuvenation of the Spearman FFA Chapter as we are.

### SERVANTEZ ESTATE REPAIR

**Tree Service**

Topping, Pruning  
Cleaning, Removal

**Carpenter Work**

Painting, Siding,  
Metal & Shingle Roofing  
Porches, Fences & Decks  
Remodel Work

Lorne Servantez  
Cell (806) 886-7885

Home (806) 659-5073

Listen to

## KRDF - 98.3 FM

Hot Country Stereo  
'Till Midnight

Let us replenish the seed of faith through . . .  
DAILY BIBLE READING, PRAYER & REGULAR CHURCH ATTENDANCE

**Spearman**

**Apostolic Faith Church**  
822 S. Dressen • 659-2870  
Sunday School: 10 a.m.  
Worship Service: 11 a.m.  
Sun. Eve: 8 p.m.  
Wed. Prayer Mtg: 7 p.m.  
Pastor - Roland Haney

**First Assembly of God**  
401 N. Bernice • 659-2295  
Sunday School: 9:30 a.m.  
Worship: 10:35 a.m.  
Kids Church: 10:35 a.m.  
Evening Worship: 7 p.m.  
Wed. Prayer: 7:30 p.m.  
Youth: 7:30 Wednesday  
Pastor - Walter Greaser, Jr.

**First Christian Church**  
(Disciples of Christ)  
29 S. Bernice • 659-2036  
Sunday School: 9:45 a.m.  
Worship: 10:50 a.m.  
Minister - Gary Smith

**First Baptist Church**  
123 N. Bernice • 659-5557  
Sunday School: 9:45 a.m.  
Worship: 11 a.m.  
Evening Worship: 7 p.m.  
Wed. Fellowship Meal: 6 p.m.  
Wed. Disc. Time: 6:30 p.m.  
Wed. Youth Mtg: 8 p.m.  
Pastor - Patrick Six

**Church of Christ**  
121 S. Haney • 659-3244  
Sunday Bible Class: 9:45 a.m.  
Worship: 10:30 a.m.  
Evening Worship: 6 p.m.  
Bible Study Wed: 7:30 p.m.  
KRDF Radio Program  
Living W/Christ: 7:50 a.m.  
Minister - Leonard Harper

**Sacred Heart Catholic Church**  
901 Roland • 659-2792  
Sat. Night Mass: 5:30 p.m.  
Sun. Mass: 9 a.m. - English  
(aired on KRDF-FM 98.3)  
Sun. Mass: 11:30 - Spanish  
1:30 p.m. - Gruver - Christo  
Rendenter Mass - Spanish  
Rev. Guillermo Morales

**First United Methodist**  
407 S. Haney • 659-5503  
Sunday School: 9:45 a.m.  
Worship: 8:30 & 11 a.m.  
Jr. High Youth: 5 p.m. Sunday  
High School: 6 p.m. Sunday  
Kids Club: 3 p.m. Wed.  
Pastor - Ken Cole

**First Presbyterian Church**  
(Worships with Lutheran)  
1021 Cotter • 659-2033  
Sunday School: 9:45 a.m.  
Worship: 11 a.m.  
(alternates monthly between Lutheran & Presbyterian Church Bldg.)  
Pastor - Beverly Cook

**Faith Lutheran Church (ELCA)**  
1101 Bernice • 659-2252  
(Worships with First Presbyterian Church)

**Union Church**  
31 S. Endcott • 659-2644  
Sunday School: 9:45 a.m.  
Worship: 10:45 a.m.  
Evening Worship: 6 p.m.  
Bible Study: 7 p.m. Wed.  
Pastor - Bill Sparks

**Fellowship Baptist**  
1102 S. Archer • 659-2783  
Sunday School: 10 a.m.  
Worship: 11 a.m.  
Sun. Evening Worship: 6 p.m.  
Youth/Adult Serv.: 7:30 Wed.  
Pastor - Gene Foster

**Primera Mision Bautista**  
502 E. 7th • 659-3991  
Sunday School: 9:45 a.m.  
Worship: 11 a.m.  
Evening: 6 p.m.  
Wed. Prayer Meeting: 7 p.m.  
Thurs. Visitation: 7 p.m.

**El Aposento Alto U.P.C.I.**  
1105 S. Roland Domingos  
Escuela-Dominical - 10 a.m.  
Culto Evangelistico - 7 p.m.  
Jueves Oracion - 8 p.m.  
Mier. Estudio Biblico - 7 p.m.  
Pastor - A.G. Martell  
(806) 659-2153

**Gruver**

**First Baptist Church**  
402 E. Broadway • 733-2411  
Sunday School: 9:45 a.m.  
Worship: 10:50 a.m.  
Disciple Training: 8 p.m. Sunday  
Prayer Meeting: 7:30 p.m. Wednesday  
Pastor - Scott Curry

**Church of Christ**  
209 King • 733-2760  
Sunday School: 9:30 a.m.  
Worship: 10:20 a.m.  
Evening Worship: 6 p.m.  
Wed. Worship: 7:30 p.m.

**First Christian Church**  
510 King • 733-2960  
Sunday School: 10:00 a.m.  
Sunday Worship: 11 a.m.  
Youth: 7:30 Sunday  
Adult Bible Study: 7:30 Sun  
Wed. Bible Study: 8:00 p.m.  
Pastor - Gary Gurfory

**Oslo Lutheran Church (ELCA)**  
6 Miles West & 12 Miles  
North of Gruver  
339-7709  
Sunday School: 9:45 a.m.  
Worship: 11 a.m.  
Pastor - Paul Fiske

**Gruver United Methodist**  
Broadway & Garrett  
733-2651  
Sunday School: 9:45 a.m.  
Worship: 8:30 & 10:50 a.m.  
Eve. Worship & UMY: 6 p.m.  
Pastor - Jerry Moore

**Spanish Cristo Redentor Church**  
Sunday Mass: 1:30 p.m.  
Friday Evening Mass  
Summer - 8:00 p.m.  
Fall/Winter - 7:30 p.m.

**The Hansford County Reporter-Statesman**

213 Main Street  
Spearman, TX 79081  
Phone - (806) 659-3434  
Fax - (806) 659-3368  
CathyRSmit@aol.com  
Mon.-Thurs. (Closed Fridays)  
9 a.m.-12 p.m. & 1-5 p.m.

Gary Smith - Publisher  
Catherine Smith - Editor  
Harletta Carthel - Assist. Editor  
Contrib. Writers: Helen Fisher, Jeff Beedy,  
Dorothy Hudson, Dwayne Mitchell  
Contrib. Photographer: Charlie Johnson

**Subscription Rates**  
In Hansford Co. - \$25.00  
Out of County - \$30.00

**The Hansford County Reporter-Statesman (USPS 529660)** is published weekly in Spearman, TX. Periodical postage paid in Spearman, TX. POSTMASTER: Send address changes to The Hansford County Reporter-Statesman, 213 Main Street, Spearman, TX 79081.

**Publication Policy**

The deadline to submit news and advertising to The Hansford County Reporter-Statesman is Monday at 5:00 p.m. Items accepted after the deadline will be published at a later date, as time and space permit. Publication of all items is at the discretion of the editor.

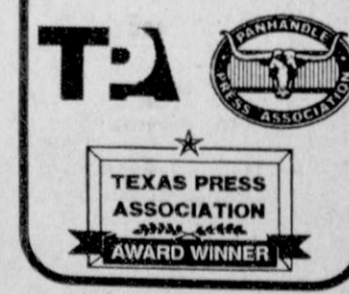
**Letter Policy**

The Hansford County Reporter-Statesman welcomes letters to the editor on any subject. All letters must be signed and will be published with the name of the writer. Letters must include an address and telephone number for verification. Letters should be kept at a reasonable length. The editor reserves the right to edit all letters. Any letter may be rejected for publication without reason. Letters that are libelous and/or slanderous will not be published. The deadline to submit letters is noon on Monday. Letters in support or opposition to political candidates will not be published. Persons wishing to publically support political candidates in this newspaper are invited to purchase an ad.

**Advertising**

Open Display rates are \$4.00 per column inch. Classified Ads are \$5 for the first 25 words and 10¢ per word for each additional word. (Additional charge for boxed classifieds.)

Member of  
Texas Press Association and  
Panhandle Press Association



### CORNER SERVICE STATION

your full-service station!

- Gasoline
- Oil Changes
- Battery Service
- Flat Tire Service
- Car Washing & Cleaning
- Tire Rotation & Balancing
- Free Pick Up & Delivery!

101 Main Street • Spearman, Texas  
(806) 659-2722 • Joe & Nita Bynum

Send  
a  
little  
refreshment  
to someone  
special with a  
floral arrangement  
from  
**All Occasion Flowers**

202 N. Bernice (across from the Post Office)  
**659-5180**

**This feature is made possible through the sponsorship of these civic minded businesses.**

Compliments of . . .

### AGCO

of Spearman, Inc.  
"See you in Church"  
659-3751

**PRAIRIE MOTORS INC.**

Hwy. 207 South • P.O. Box 430  
Spearman, TX 79081 • (806) 659-2541  
www.prairiemotors.com

**BOXWELL BROS. FUNERAL HOME**

Compliments of

### G&G FOODLINER

516 Main • Gruver, TX  
733-2471

**COLUMBIA Medical Center of Pampa**

One Medical Plaza  
Pampa, Texas 79065  
(806) 665-3721

**Palo Duro Supper Club**

22 S. Archer • Spearman  
659-2232

**Bartlett's Lumber & Hardware**

105 W. Broadway • Gruver, Texas  
(806) 733-2404

**BERRY CLEANERS**

Ann & Vernon Pipkin - Owners  
Phone 659-3122 • P.O. Box 1017  
207 Main St. • Spearman, TX

**Morse Implement & Auto Supply**

"Join us in church this week"

Tom Dortch 733-2668  
P.O. Box 89 • Morse, TX 79062

**Gruver Cablevision**

308 Main  
Gruver, TX 79040  
733-5295

**Deakin ELECTRIC**

OILFIELD • RESIDENTIAL • COMMERCIAL  
321 S. MAIN • SPEARMAN  
1-800-999-1506  
806) 659-5016 Chris Deakin  
President

**Interstate Bank, ssb**

322 Main • P.O. Box 146  
Spearman, TX • 659-2559



## Out At The Lake

by Dorothy Hudson

Lake Level--February 24, 2003--29.11 feet

Jim reported seeing 2 eagles in the trees out in the Lake this morning. When it is cold, the birds perch at a lower level in the trees. They seem to get some heat from the Lake surface. Saturday morning early he saw the bobcat that he frequently sees coming from west to east across the highway.

He was able to see the cat with his binoculars and see that he was lightly spotted.

Saturday was a beautiful day for February, and several took advantage of it by boating, fishing, or just driving around looking. Charley Laxton and Max Taylor were among those fishing. They fished several hours, but Charley only caught 3 and Max 2 fish.

Using the scope, Jim looked over some snow geese and found that a few had a tan color on their backs. With the help of a bird book, he read these were immature birds. He has also spotted a merlin this winter. Kenneth Seyffert writes that they are rare to uncommon winter visitors and have not been reported as seen in Hansford County. These falcons are just a little larger than the American Kestrel, also known as a sparrow hawk, and whereas the kestrel has a reddish cast to its back, the merlin is gray-blue.

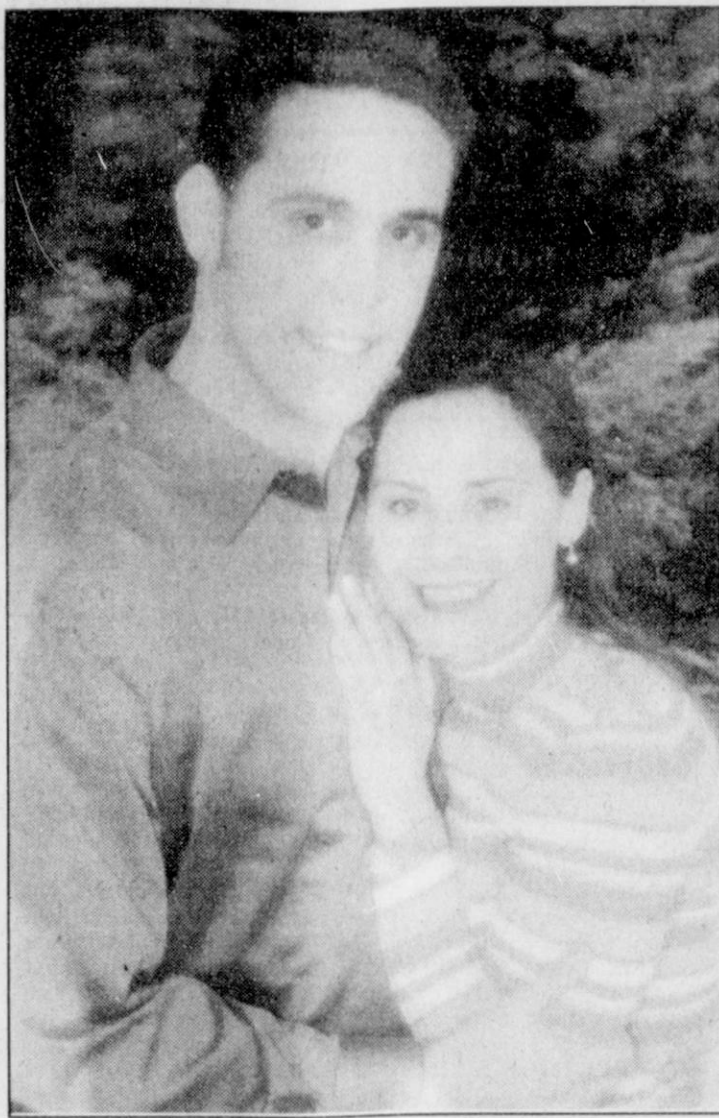
During medieval days when falconry was an important sport, the

merlins were considered a good bird for the ladies to use.

The name merlin comes from merle or blackbird, which was considered a delicacy. If you were to provide dinner, you took your trusty merlin out and hunted the "four and twenty blackbirds for a pie."

I used two Cator family stories from a great granddaughter of Bob Cator in a recent column. I want to emphasize that family stories are frequently distorted and sometimes completely wrong. For example, Mindy Cator had her grandfather about 10 years old when Charley Cator came to visit and let Os have his loaded gun to look at. I have that Osbaldeston Cator was born July 2, 1890 in Hansford County, Texas. If the date is correct that Charley arrived to visit in 1906, it is quite likely Os was 16 and Charley would have supposed that a son of Bob Cator would know never to point a gun at anyone.

Her story said Bob died of gangrene from the wound, and another story says he died of lockjaw from the wound. If we get the story right sometime, it is going to take some digging. The family stories are the start and always neat to get. Sometimes they are how the family thinks this incident, maybe a 100 years ago, should have happened.



### Engagement Announcement

Mr. and Mrs. Kerry Foster of Gruver wish to announce the engagement of their daughter, Kaisi Foster of Canyon, to Andy Cunningham of Gulf Breeze, Florida.

Kaisi received a Bachelor of Art in Communication from McMurry University, and a Master of Divinity from Asbury Theological Seminary. She is currently finishing work on a Master of Counseling degree, and serves as the Director of the Wesley Foundation at West Texas A&M University in Canyon.

Andy received a Bachelor of Arts in English and History from the University of Mississippi. He will receive a Master of Divinity from Asbury Theological Seminary in May of 2003. Andy is the Worship Leader and Youth Director at Gulf Breeze United Methodist Church.

The couple will marry on May 10, 2003 at Polk Street United Methodist Church in Amarillo. They plan to reside in Gulf Breeze, Florida.

### Thank You

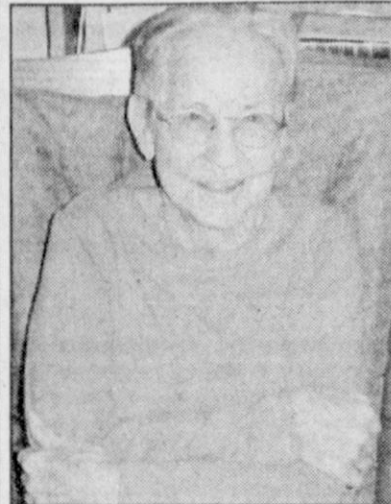
We would like to say Thank You to all our Friends, family, & customers for all the prayers, visits and food these past months.

And especially to Tommy Russell for trips to the doctor and help at the station. To Gary Smith and our family for their presence at the hospital each time. Hopefully Joe will be back going strong soon.

Thanks again for all your prayers.

Joe & Nita Bynum

## THE HANSFORD COUNTY REPORTER-STATESMAN proudly presents the Hansford Manor Resident of the Month



Bonnie Smith  
Manor Resident of the Month

Bonnie Smith was recently elected "Resident of the Month" for February. This is an honor that is voted on by Hansford Manor Residents.

Bonnie was born in Hanna, Oklahoma. She had one brother and one sister.

She moved to the Texas Panhandle with her husband, where they reared four children - one boy and three girls. Her husband worked for Phillips as a driller and then as a tool pusher later on. The family moved with the oil fields.

Bonnie has been a resident at Hansford Manor for quite some time now. She is seen many times throughout the day helping the other residents. She loves to work jigsaw puzzles and play bingo. She also loves the music programs where she can be seen singing and dancing in her chair. It makes for a pleasant day to see Bonnie's bright smile coming down the halls. She has told her daughter (Peggy Frick) that she loves living at the Manor. Her cheery attitude and willingness to help others make her a popular resident.

**Congratulations, Bonnie!**

THE HANSFORD COUNTY REPORTER-STATESMAN  
Proudly Serving Hansford County Since 1907  
213 Main Street • Spearman, TX • (806) 659-3434

You are invited to a  
**90th Birthday Celebration**

honoring  
**Olive "Babe" Pendergraft**

on Sunday, March 2, 2003  
from 1:00 - 2:30 p.m.

at the First Christian Church Fellowship Hall

29 S Bernice • Spearman, TX

no gifts please



### Meet Your Fitness Goals!

- Sauna
- Hot Tubs
- Treadmills
- Elliptical Trainers
- Recumbent Bikes
- 4-Station Protrainer Weight Machine



Hours: M-T, 6 a.m.-8 p.m.; Friday, 6 a.m.-4 p.m.  
Saturday, 9 a.m.-12 noon

#### Annual Memberships

Individual - \$125

Family - \$175

#### Quarterly Memberships

Individual - \$40

Family - \$50

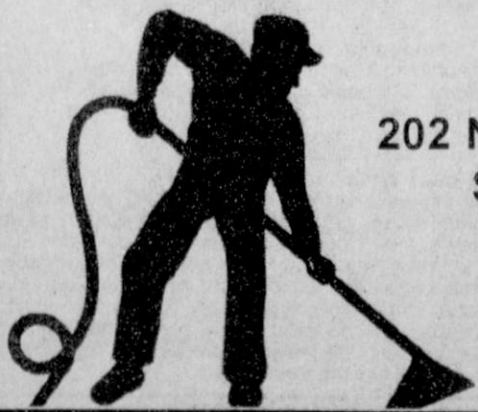
Single Usage Fee - \$4<sup>99</sup>

(\*\$3 for fitness center only without sauna & hot tub)

The O'Loughlin Center  
502 S. Brandt • Spearman, TX  
(806) 659-3030

## Golden Spread Carpet Cleaning

Carpet Sales • Installation  
Service • Cleaning



202 N. Bernice  
Spearman  
659-3068

## Spice up your morning

with these new breakfast specials

beginning Mon., March 3rd

#### Breakfast Wrap

Eggs • Hashbrowns  
Ham, Bacon or Sausage

#### Combo Plate

Eggs • Biscuit  
Hashbrowns  
Ham, Bacon or Sausage

#### Breakfast Sandwich

Eggs • Ham, Bacon or Sausage  
served on a Biscuit  
with Hashbrowns

Drive-Thru for  
Breakfast at the

Also available for dine-in

## HUNGRY COWBOY

1020 Hwy. 207 S. • Spearman • (806) 659-5151

Open Monday-Saturday

Breakfast served 6 a.m.-9 a.m.

Lunch & Dinner served 11 a.m.-8 p.m.

Make yours a  
**A Wedding to Remember**  
with flowers from  
**Prairie Garden Flowers**  
209 Main St. • 659-2212 • 659-3329 • Spearman, TX

## Bridal Registry

Kristen Beedy & Robert Whitehead - March 22

Jerry Bass & Cathy Lander

Korin Mercer & Derrick Burnett

Alyson Lee & Jace Dawson

## Celebrate

Gifts for all your celebrations!

203 Main St. • Spearman, TX

(806) 659-3350

1-800-663-8026

## For The Bride & Groom

Come by and let us help you set up your special gift table

### Couples Currently Registered

Kristin Beedy & Robert Whitehead - March 22

Amanda Smith & Josh Brown

Christopher & Laura Cummings

314 Main  
659-2141

**Gordon's**  
DRUG

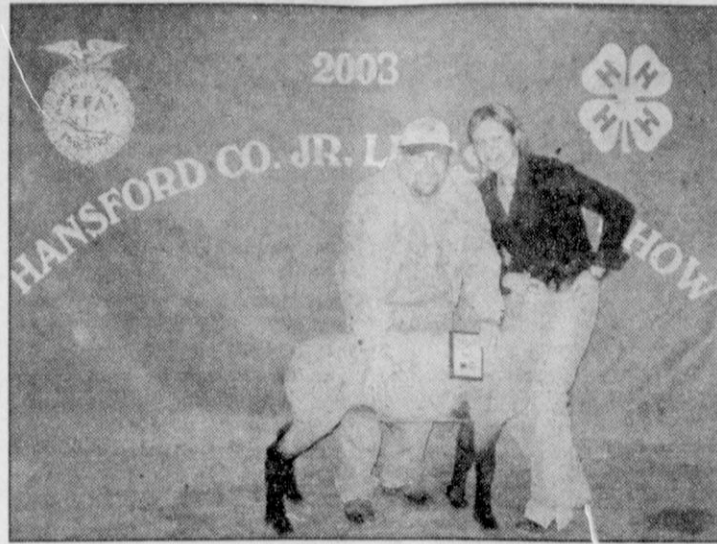
Spearman,  
Texas



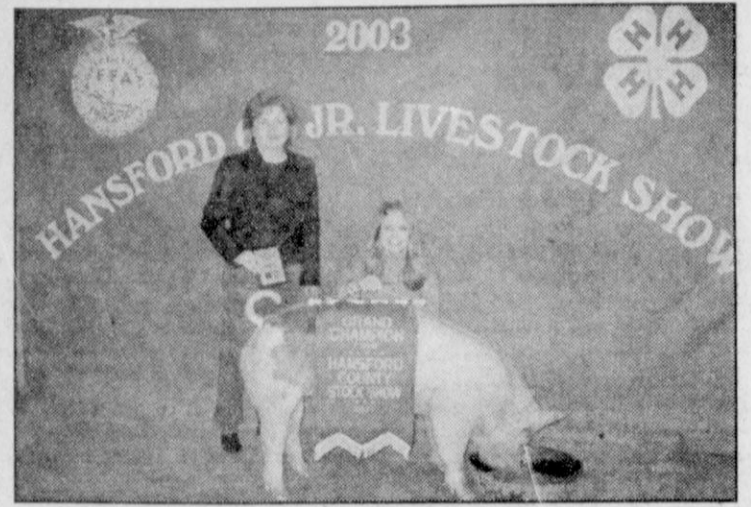
# 2003 Hansford County Stock Show



Grand Champion Steer  
Taylor Williams



Grand Champion Lamb  
Teal Armes



Grand Champion Swine  
Kalli Smith



Showmanship winners in the Hansford County Stock Show are (L-R), Tara Shields, junior lamb showman; Kyna Shields, senior lamb showman; Casey Cator, junior swine showmanship; Travis Brown, senior steer showmanship; Tucker Williams, junior steer showmanship; and Rachelle Holt, senior swine showmanship



Commercial Steer  
Reserve Champion Travis Brown (left)  
and Grand Champion Taylor Williams (right)

We salute all the participants of the 2002 Hansford County Livestock Show

**B&B Sales Co.**  
205 Dillon • 659-2662 • Spearman

**We're Proud Of You!**

We are proud of the young people -- FFA and 4-H youths -- adults and sponsors who participated in and helped with the 2002 Hansford County Livestock Show.

**Five Star Equipment, Inc.**  
Spearman, Texas ★★★★★ (806) 659-3743

Proud supporter of the Hansford County Junior Livestock Show and Sale and the bonds it builds.

**FARM BUREAU INSURANCE**  
Farm Bureau  
307 W. Davis  
Spearman  
659-3133

**CONGRATULATIONS!**

*We Are Proud To Support Our Area Youngsters Who Showed In the Hansford County Livestock Show!*

**CARGILL Ag Horizons**

**Cargill, Inc.**  
Hwy. 15 West • 659-3554 • Spearman, TX

**CONGRATULATIONS**  
*4-H & FFA Members!*

First State Bank is proud to be involved in various community activities, such as The Hansford County 4-H & FFA Livestock Show. We would like to congratulate all of the participants.

**FSB**

from  
**First State Bank**  
"The Good Ag Bank"  
1 NE Court • 806-659-5565 • Spearman, Texas 79081  
member FDIC

**CONGRATULATIONS**  
*FFA & 4-H Members!*

*We salute you on all your hard work!*

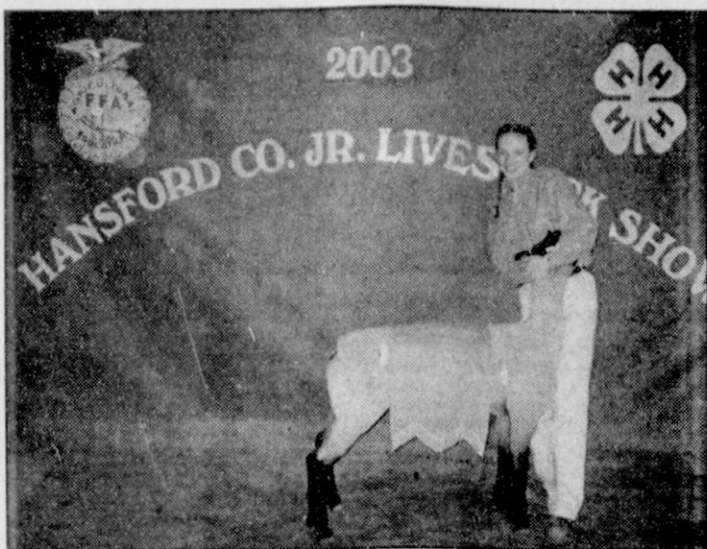
from the employees, officers and directors of

**GSA**  
**Gruver State Bank**  
3 Main Plaza • (806) 733-5061 • Gruver, TX  
member FDIC

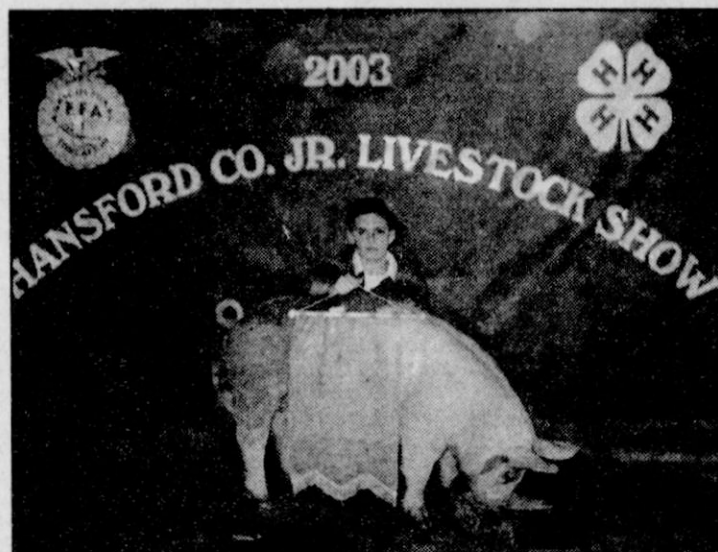
# 2003 Hansford County Stock Show



Reserve Champion Steer  
Kyna Shields



Reserve Champion Lamb  
Kyna Shields



Reserve Champion Swine  
Orie Cooksey

### Commercial Steers

1st - Taylor Williams - Gruver 4-H; 2nd - Travis Brown - Spearman 4-H; 3rd - Rachelle Holt - Gruver 4-H; 4th - Tabatha Shields - Spearman 4-H; 5th - Tara Shields - Spearman 4-H; 6th - Tracy Brown - Spearman 4-H; 7th - Zack Murray - Spearman FFA; 8th - Rhett Renner - Spearman 4-H; 9th - Megan Stedje - Gruver 4-H

### Livestock Judging Contest - Team

1st - Hansford Co. 4-H (Fat Boys) - Clete Vanderburg, Dustin Mackie, Bailely Reid, Nick Slough - 725; 2nd - Texhoma FFA (Senior) - Justin James, Ole Dahl, Troy Shore - 665; 3rd - Texhoma FFA (Junior) - Pete Dahl, Derek Blaine, Shawn Stone - 654; 4th - Hansford County - Cody Benton, Matthew Jarvis, Dakota Cator, Sol Pittman - 641; 5th - Hansford County (Conquistadors) - Austin Benton, Casey Cator, Charlie Slough, Brenna Reid - 626; 6th - Hansford County (Rhinstone Cowgirls) - Preslee Baker, Malory Martin, Lexi Batton, Mabry Sutterfield - 577; 7th - Hansford County - Tate Batton, Trent Goodheart, Jeffrey Rice, Sawyer Sutterfield - 575

### Livestock Judging Contest - Individual

1st - Ole Dahl - Texhoma FFA (Senior) - 246; 2nd - Clete Vanderburg - Hansford County 4-H (Fat Boys) - 245; 3rd - Nick Slough - Hansford County 4-H (Fat Boys) - 243; 4th - Justin James - Texhoma FFA (Senior) - 241; 5th - Dustin Mackie - Hansford County 4-H (Fat Boys) - 237; 6th - Bailey Reid - Hansford County 4-H (Fat Boys) - 236; 7th - Pete Dahl - Texhoma FFA (Junior) - 231; 8th - Kali Shields - Hansford County 4-H - 227; 9th - Derek Blaine - Texhoma FFA (Junior) - 225; 10th - Dakota Cator - Hansford 4-H - 225

## Speartex Grain Co. Salutes

the 4-H and FFA youth for demonstrating personal responsibility, exhibiting high standards in animal care and promoting production agriculture.

### Speartex Grain Co.

405 Collard • Spearman, TX  
659-3711

## Way To Go, Hansford County Exhibitors!

Congratulations to the participants of the 2002 Hansford County Livestock Show!

Hansford Supply Inc.  
210 Main Ave. • Gruver, Texas  
733-2469



Proud to support events like the Hansford County Livestock Show that promote strong family ties.

Hansford County Vet Clinic

Spearman, TX • 659-2100

## Congratulations to all participants in the Hansford County Junior Livestock Show and Sale.



We are proud of the good things our kids do!



Spearman Independent School District and Board of Trustees

## CONGRATULATIONS!

WE ARE PROUD TO SUPPORT OUR AREA YOUNGSTERS!



## Congratulations



4-H and FFA on a job well done!

### H&H Water Well Service Inc.

Gruver Highway • Spearman, TX  
659-5577

PHILLIPS 66 Phillips 66 Farm Lubricants

## Changing the Way You Farm.

Simplify and reduce your maintenance inventory by taking advantage of Phillips 66 "universal" applications. Phillips 66 Super HD II multi-viscosity oil works in both gas and diesel applications - taking the worry out of using the wrong type.

HG Tractor Fluid eliminates the need for multiple fluids. HG works in hydraulic systems, transmissions, differential and wet brakes.

You can feel confident using Super HD II and HG fluids because they meet or exceed the warranty requirements of farm engines and transmissions.



HG Tractor Fluid Super HD II MOTOR OIL

Available at:  
Golden Spread Sales Co.  
414 S. Hwy 207 • Spearman  
(806) 659-3776

Congratulations to all of the Hansford County 4-H and FFA members who participated in the Hansford County Livestock Show!

# 2003 Hansford County Stock Show

## Lambs

**Grand Champion** - Teal Armes  
**Reserve Grand Champion** - Tabatha Shields  
**Junior Showmanship** - Tara Shields  
**Senior Showmanship** - Kyna Shields

### Class I

1st - Nicholas Slough - Gruver 4-H; 2nd - Seth Thompson - Gruver 4-H; 3rd - Jessica Schmidt - Morse 4-H; 4th - Sheldon Field - Morse 4-H; 5th - Justin Bass - Gruver 4-H; 6th - Sammi Johnson - Gruver 4-H; 7th - Kaysha Bass - Gruver 4-H; 8th - Blayne Baker - Spearman 4-H; 9th - Sawyer Sutterfield - Spearman 4-H

### Class II

1st - Tyler Lane - Morse 4-H; 2nd - Justin Thompson - Gruver 4-H; 3rd - Brian Johnson - Gruver 4-H; 4th - Lauren Ferguson - Spearman 4-H; 5th - Lorissa Buschman - Spearman 4-H; 6th - Preslee Baker - Spearman 4-H; 7th - Makenzie Crane - Gruver 4-H; 8th - Malissa Montgomery - Spearman 4-H

### Class III

1st - Brenna Reid - Morse 4-H; 2nd - Cody Benton - Spearman 4-H; 3rd - Addam Ferguson - Spearman 4-H; 4th - Dani Wheelock - Gruver 4-H; 5th - Austin Benton - Spearman 4-H; 6th - Jessica Montgomery - Spearman 4-H; 7th - Tiffany Hand - Spearman FFA

### Class IV

1st - Kali Shields - Spearman 4-H; 2nd - Rachele Holt - Gruver 4-H; 3rd - Ryan Buschman - Spearman 4-H; 4th - Joey Pearson - Spearman 4-H; 5th - Charlie Slough - Gruver 4-H; 6th - Nathan Buschman - Spearman 4-H; 7th - Jeffrey Rice - Spearman 4-H

### Class V

1st - Sonny Parker - Spearman FFA; 2nd - Noemi Rodriguez - Spearman 4-H; 3rd - Cory Graves - Gruver 4-H; 4th - Amanda Pearson - Spearman 4-H; 5th - Britney Montgomery - Spearman 4-H; 6th - Lanie Graves - Gruver 4-H; 7th - Trent Goodheart - Spearman 4-H

### Class VI

1st - Tabatha Shields - Spearman 4-H - Reserve Grand Champion; 2nd - Kyna Shields - Spearman 4-H - Senior Showmanship; 3rd - Kellyn King - Gruver 4-H; 4th - Seth Clemmons - Morse 4-H; 5th - Matthew Jarvis - Spearman 4-H; 6th - Justin Parker - Spearman FFA; 7th - Christian Patrick - Spearman 4-H

### Class VII

1st - Teal Armes - Gruver 4-H - Grand Champion; 2nd - Christen Ferguson - Spearman 4-H; 3rd - Tara Shields - Spearman 4-H - Junior Showmanship; 4th - Dustin Mackie - Spearman 4-H; 5th - Eric Flores - Spearman 4-H; 6th - Bailey Reid - Morse 4-H; 7th - Matti Wheelock - Gruver 4-H; 8th - Jessica Jarvis - Spearman 4-H

## Steers

**Grand Champion** - Taylor Williams  
**Reserve Grand** - Bailey Reid  
**Junior Showmanship** - Tucker Williams  
**Senior Showmanship** - Travis Brown

### Class I - Light

1st - Kali Shields - Spearman 4-H; 2nd - Britta Vanderburg - Spearman 4-H; 3rd - Tate Batton - Spearman 4-H; 4th - Nicholas Slough - Spearman 4-H

### Class II - Light Medium

1st - Bailey Reid - Morse 4-H - Reserve Grand Champion; 2nd - Tucker Williams - Gruver 4-H - Junior Showmanship; 3rd - Lance Williams - Gruver 4-H; 4th - Clete Vanderburg - Spearman 4-H

### Class III - Medium

1st - Taylor Williams - Gruver 4-H - Grand Champion; 2nd - Brenna Reid - Morse 4-H; 3rd - Kyna Shields - Spearman 4-H; 4th - Rhett Renner - Spearman 4-H; 5th - Lexi Batton - Spearman 4-H

### Class IV - Medium Heavy

1st - Travis Brown - Spearman 4-H - Senior Showmanship; 2nd - Rachele Holt - Gruver 4-H; 3rd - Tracy Brown - Spearman 4-H; 4th - Chase Schubert - Spearman 4-H

## Heifers

1st - Nicholas Slough - Gruver 4-H; 2nd - Clete Vanderburg - Spearman FFA; 3rd - Britta Vanderburg - Spearman 4-H; 4th - Kali Shields - Spearman 4-H

## Swine

**Grand Champion** - Kalli Smith  
**Reserve Grand** - Reagan Karlin  
**Junior Showmanship** - Casey Cator  
**Senior Showmanship** - Rachele Holt

## DUROC

**Breed Champion** - Michael Torres  
**Reserve Breed** - Zack Nollner

### Class I

1st - Zack Nollner - Spearman 4-H - Reserve Breed Champion; 2nd - Justin Bass - Gruver 4-H; 3rd - Austin Benton - Spearman 4-H; 4th - Jessica Montgomery - Gruver FFA; 5th - Sheldon Field - Morse 4-H; 6th - Malissa Montgomery - Spearman 4-H

### Class II

1st - Michael Torres - Spearman FFA - Breed Champion; 2nd - Tara Shields - Spearman 4-H; 3rd - Jessica Schmidt - Morse 4-H; 4th - Jordan Hicks - Gruver FFA; 5th - Lori Swink - Gruver FFA; 6th - Casey Cator - Spearman 4-H - Junior Showmanship

## HAMPSHIRE

**Breed Champion** - Blayne Baker  
**Reserve Breed** - Lance Williams

### Class III

1st - Keilee Goodheart - Spearman 4-H; 2nd - Kyna Shields - Spearman 4-H; 3rd - Travis Boyd - Spearman 4-H; 4th - Hutch Reed - Gruver FFA

### Class IV

1st - Eric Vasquez - Spearman FFA; 2nd - Hudson Williams - Gruver FFA; 3rd - Colt Cluck - Gruver FFA; 4th - Lance Huddleston - Spearman 4-H; 5th - Kaysha Bass - Gruver 4-H

### Class V

1st - Lance Williams - Gruver 4-H - Reserve Breed Champion; 2nd - Brock Irwin - Gruver 4-H; 3rd - Bailley Reid - Morse 4-H; 4th - Cody Benton - Spearman 4-H; 5th - Tate Batton - Spearman 4-H; 6th - Nicholas Slough - Gruver FFA

### Class VI

1st - Blayne Baker - Spearman 4-H - Breed Champion; 2nd - Trent Goodheart - Spearman 4-H; 3rd - Cory Graves - Gruver 4-H; 4th - Chase Schubert - Spearman FFA; 5th - Kyler Cator - Spearman 4-H

### Class VII

1st - Joey Pearson - Spearman 4-H; 2nd - Orie Cooksey - Spearman FFA; 3rd - Katie Jones - Gruver FFA; 4th - Stuart Martin - Spearman 4-H; 5th - Dustin Mackie - Spearman 4-H

## YORKS

**Breed Champion** - Seth Salgado  
**Reserve Breed** - Zack Murray

### Class VIII

1st - Justin Parker - Spearman FFA; 2nd - Jacob Lieb - Morse 4-H; 3rd - Pres'ee Baker - Spearman 4-H; 4th - Ali Tyler - Gruver 4-H; 5th - Hunter Bevell - Gruver FFA; 6th - Britney Montgomery - Spearman 4-H; 7th - Kali Shields - Spearman 4-H

## Class IX

1st - Seth Salgado - Spearman 4-H - Breed Champion; 2nd - Zack Murray - Spearman FFA - Reserve Breed Champion; 3rd - Lindy Weldon - Gruver 4-H; 4th - Garrett Martin - Spearman 4-H; 5th - Taylor Williams - Gruver 4-H; 6th - Cody Mac Been - Gruver FFA; 7th - Kellyn King - Gruver 4-H

## CROSS

**Breed Champion** - Kallie Smith  
**Reserve Breed** - Reagan Karlin

### Class X

1st - Amanda Pearson - Spearman 4-H; 2nd - Brenna Reid - Morse 4-H; 3rd - Jared George - Spearman FFA; 4th - Megan Stedje - Gruver 4-H; 5th - Tanner Hand - Spearman FFA; 6th - Marshall Hearon - Spearman FFA

### Class XI

1st - Jacob Jones - Spearman FFA; 2nd - Seth Thompson - Gruver 4-H; 3rd - Charles Oltman - Spearman 4-H; 4th - Shelby Jack Karlin - Gruver Jr. FFA; 5th - T Jay Sherrill - Gruver FFA; 6th - Isaac Herndon - Spearman FFA

### Class XII

1st - Rily Urban - Morse 4-H; 2nd - Tanner Irwin - Gruver 4-H; 3rd - Lexi Batton - Spearman 4-H; 4th - Teal Armes - Gruver FFA; 5th - Jeffrey Rice - Spearman 4-H; 6th - Gabi Boyd - Spearman 4-H

### Class XIII

1st - Emily Hood - Spearman 4-H; 2nd - Tucker Williams - Gruver 4-H; 3rd - Tabatha Shields - Spearman 4-H; 4th - Sydney Been - Gruver 4-H; 5th - Seth Clemmons - Gruver FFA; 6th - Tyler Lane - Morse 4-H

### Class XIV

1st - Kallie Smith - Spearman 4-H - Breed Champion & Overall Grand; 2nd - Malory Martin - Spearman 4-H; 3rd - Sawyer Sutterfield - Spearman 4-H; 4th - David Pipkin - Spearman 4-H; 5th - Clete Vanderburg - Spearman FFA; 6th - Lynn Vela - Gruver 4-H

### Class XV

1st - Reagan Karlin - Gruver Jr. FFA - Reserve Breed & Overall Reserve; 2nd - Dakota Cator - Spearman 4-H; 3rd - Lanie Graves - Gruver 4-H; 4th - Ricky Garcia - Spearman 4-H; 5th - Victoria Vela - Gruver 4-H; 6th - Justin Thompson - Gruver 4-H

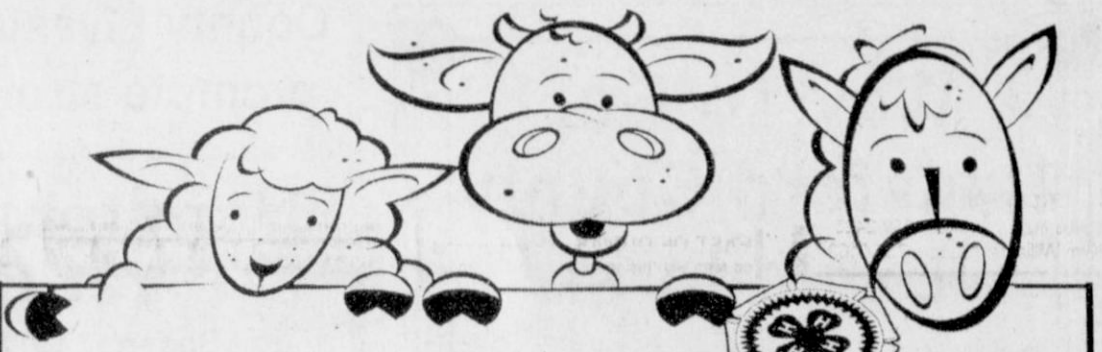
### Class XVI

1st - Rachele Holt - Gruver FFA - Senior Showmanship; 2nd - Cara Gwin - Spearman 4-H; 3rd - Timber Barkley - Gruver FFA; 4th - Charlie Slough - Gruver 4-H; 5th - Rhett Renner - Spearman 4-H



**HATS OFF**  
to all the boys and girls in 4-H & FFA!

The Hansford County  
**Reporter-Statesman**  
213 Main Street  
Spearman, Texas  
(806) 659-3434



We are proud to support  
Hansford County youth involved  
in the Livestock Show and Sale.

**North Plains Electric Co-op**  
14585 N. Hwy. 83 • Perryton, Texas  
(806) 435-5482 • 1-800-272-5482

**Congratulations!**  
to all the youth who participated in the Hansford County Junior Livestock Show & Sale.

*We believe in the future of Farming & Ranching!*



**FNBANK**  
First National Bank

Spearman, Texas 79081    Dumas, Texas 79029  
806-659-5544    806-934-8455  
800-583-4196    866-583-4196


**"The bank that always puts you first."**  
Member FDIC

**Working For The FUTURE**

Supporting the Youth of Hansford County

We want to take this opportunity to recognize the farming and ranching youths of our area.

Your hard work was very evident when you displayed your animal projects at the Hansford County Livestock Show.



**#INTERSTATE BANK, ssb**

322 Main Street • 659-2559 • Spearman, TX  
FDIC Insured





## Letter To The Editor

Dear Ms. Smith,

My mother received the February 6th edition of the paper this week. We were so happy to see the story on the chamber banquet. I would like to add my gratitude and congratulations in a public way to Jim and Laquita Evans and to Virginia Young.

My dad was Gordon Parrish of Gordon's Drug. Our family loved the drug store and the people of Spearman. Even though he has been gone for 25 years, and my mother has not lived in Spearman for over 20 years, it is still home. I love to come back for the school reunions (haven't missed one yet.) The first place I go is to Gordon's Drug.

Jim, Laquita, and Virginia were three wonderful blessings to our family. It is hard to imagine someone as hard-working and loyal as Virginia. I remember her as a quiet, efficient, smiling young woman who won the hearts of my parents. What can I say about Jim and Laquita!!! They have always been family. My dad loved Jim and was so glad to know his store was in such good hands when he retired.

All of the family have felt so honored down through the years that the name "Gordon's Drug" is still there. To me, it is a great tribute to my parents. So, in this public way, I want to say thank you to Jim and Laquita not only for what you have meant to my family, but what you have meant to all the people of Spearman down through the years. It's a wonderful place, and you have certainly contributed to the community in many ways.

Sincerely,  
Estelle (Parrish) Maxwell

Dear Editor,

I would like to say how pleased I am with the Lady Hounds this year. I have had the privilege to work-out with them and everyday they come out ready to play. They are a great group of girls and have a large amount of talent. They get along like best friends, which is probably one of the leading reasons they have had such a successful season.

I have seen them on and off the court, both of which were a pleasure. Teal - always working on her post moves and always trying to improve.

Amy - shooting, shooting and shooting.  
Lisa - getting everyone on their toes, excited about the game.  
Brandi - she's doing everything, never the same thing two days in a row.

Cassie - trying to do all those crazy drives.  
Laina - being super fancy and brushing up on her moves.  
Meagan - always smiling, making everyone have a much better day.  
Ashleigh - shooting those baseline shots and laughing.  
Blythe - laughing always to talk to before workout, she gives you a different look about it.

Christi - free throws (29 of 30 at Slaton just won't cut it for her).  
Coach Myatt is a great coach and very intelligent about the game of basketball.

This group of girls is one of a kind. Not only do they love basketball, they love having fun (which is what they do when they are on the court). I love these girls and I want to wish them the best of luck. I hope you go and get 'em at State!

God bless,  
Lindsey Clift

## SISD Students Excel in Choir Contest

Spearman High School and junior high students took honors in the Solo and Ensemble Contest held on the campus of West Texas A&M University.

High school students receiving Division I Superior ratings and medals for their solos were Lorena Lopez, Maribel Moreno, and Mark Navarrete. Brandon Nava was awarded a Division II Excellent rating for his solo.

Members of the high school mixed ensemble who received a Division I Superior rating and medals were Brian Close, Samantha Cummings, Anthony Gonzales, Lorena Lopez, Felicia Martinez, Sonya Mendoza, Maribel Moreno, Brandon Nava, Mark Navarrete, Hernandez Perez, Ashlee Pillow, Adriana Pinion, and Ashley Swan.

Junior high students awarded a Division I Superior and medals for

their solos were Lisa Espinosa, Clara Kern, Claribel Hernandez, and Natalie Quintero.

Members of the seventh and eighth grade girls ensemble who received Division I Superior ratings and medals were Lisa Espinosa, Claribel Hernandez, Karina Hernandez, Miriam Mendoza, Mirna Ortiz, Heriselda Perez, Natalie Quintero, and Noemi Rodriguez.

The choir students and Mrs. Hoffman, Spearman choir director, would like to thank bus driver Edwin Percy, accompanist Janelle Buschman, Becky Byers for her help, and chaperones Eva Espinosa and Veronica Quintero.

"I am very proud of these students and all their hard work," Mrs. Hoffman said. Their determination to do their best, paid off at contest this year. Congratulations to all of them!

## Spearman Chamber of Commerce Board

On Thursday, February 13, 2003, the Spearman Chamber of Commerce held their regular meeting at noon at the Panhandle Deli and Diner.

Members present were Missie Bates, Rosi Martinez, Jason Cantrell, Cindy Scribner, Martina Miller, Debbie Eslick, Rosalee Bueno, Justin Boyd, and Gina Gillispie. Absent were Robert Patrick, Rod Sumner, Lenny Pecha, Paulette Laxon, Mark Murray, and Frosty Hickerson.

President Missie Bates called the meeting to order. Minutes of the last meeting and financial report were approved as presented.

Missie presented the 2003 budget for approval. Cindy made the motion with a second from Martina to accept the budget as presented.

Missie presented the 2003 calendar for approval. After some discussion, the calendar was approved. Each event will need the entire board to participate, but we'll have a planning committee as well. The first upcoming event will be a Cinco de Mayo Celebration to be held Saturday, May 3, 2003.

Committee members will be Missi, Rosi, Martina, Cindy, Debbie, Rosalee, and Gina. Rosi will have the initial details on KRDF Sunday, and the committee will meet at noon at the Chamber office on Tuesday to finalize the plans for publicity. Jason made a suggestion to incorporate the sale of the Spearman-opoly games into the contest.

Jason will review the insurance quotes and report the best course of action for the Chamber to take for liability, building, and contents.

Stephanie Crossland had asked the Chamber if they might use their tax ID # for Project Graduation. It was discussed that if Brown Graham thought it was ok, the board agreed to do it.

Missie reported that the banquet was a great success. There was discussion about food, etc. but all felt it was a very good banquet.

Missie let everyone read a letter from the Diner declining to continue Chamber membership. With no further business, the meeting was adjourned.



by Jacey Neal

## Supporting Those Who Serve -

Several people have inquired about the mailing address for Hansford County servicemen and women. Several school classes and individuals are wishing to offer their support and thanks to these people during this time of conflict.

The Hansford County Reporter-Statesman is asking family members of military men and women to submit the name, branch of service, rank, address, e-mail, and location (if possible) for their loved ones. This list will be published and will also be distributed to the schools in Hansford County.

Please submit names even if the address has not changed. Names will not be released without permission from a family member.

Thank you in advance for your help.

### MARINES

L.Cpl. Jacobs, Andrew J/USMC  
MWCS 38 "A" Co.  
UIC 41057  
FPO AP 96613-1057  
JacobsAJ@as.3mawdm.usmc.mil  
Stationed in Middle East

### ARMY

Stephanie Bynum-Cousineau  
1946 NE Loop 410  
Apt. 205  
San Antonio, TX 78217  
email scousineau2002@yahoo.com

### Staff Sergeant Edgar Nava

HHD 36th Signal Battalion  
unit #15026 Box 141  
APO AP 96218-5026  
email edgar.nava@us.army.mil

### COAST GUARD

Petty Officer Clinton N. Townsen  
5735 NE 16th Ave.  
Portland, Oregon 97211  
email ctownsen@yahoo.com

If you have a name or address that you would like added to this list, please contact Catherine Smith at the Hansford County Reporter Statesman, 213 Main Street, Spearman TX 79081, (806) 659-3434, or e-mail to CathyRSmit@aol.com.

## It's A Girl!

Misti and Brandon Babitzke of Tulsa, Oklahoma proudly announce the birth of their daughter Haley Alexis.

Born Friday, February 21, 2003, at 12:53 p.m., the little miss weighed seven pounds and four ounces.

Her grandparents are Buford and Karen Babitzke Her great grandparents are Henry and Christina Babitzke and Chuck Harris



Looking for a great place to lunch with business associates or friends?

**You've found it.**

### Panhandle Diner & Deli

217 Main Street • 659-3864 • Spearman, TX  
Hours: Mon., Tues. & Wed.: 8 a.m.-2 p.m.; Thurs. & Fri.: 8 a.m.-8 p.m.; Sat.: 8 a.m.-2 p.m.; Sun.: 11 a.m.-2 p.m.

Join Us Every Friday from 4-6 p.m. for **Hap-Pie Hour**

Biti Pies & Cakes - 2 for \$5<sup>00</sup>

**It's A Pity Not To Buy A Biti!**

Subscribe to the Reporter-Statesman. Call 659-3434 for details.

Subscription Rates  
In Hansford Co. - \$25.00  
Out of County - \$30.00

## FINAL MARKDOWN!!

Winter Sale Ends Soon

**Kid's Stuff & Lady Fair**

719 W. 7th  
Spearman

**Great Selection of Merchandise on Sale**

**Betty's Footprints**

**Jackie's Leprechaun**

Downtown Perryton

Up To 70% Off

Mark Your Calendar!  
St. Patrick's Day  
"Pot O' Gold"  
Dinner, Danoo & Paloutta  
Sat., March 29, 2002 • 7 p.m.  
The O'Loughlin Center  
502 S. Brandt • Spearman, TX  
Call 659-3434 for more information

**Community Education Classes Spring 2003**

**Basic Conversational Spanish**  
Now you can learn basic phrases to converse with fellow employees, neighbors and business acquaintances that speak Spanish. Kelly Chambers will guide you through the basics of this popular language. (ages 18+)  
Thursday Classes 6-8:30 p.m.  
March 20 & 27 & April 3, 10, 17 & 24  
\$45 Spearman High School

**Sponging/Stenciling/ Glazing/Texturing Class**  
Want to change the look of your walls but money is a problem? Let Gina Gillispie show you some tricks of the trade. Students will learn sponging to blend colors and how to shade stencils. Add texture to your walls to dramatically change the look. Students will practice on poster board and go home ready to attack their walls!  
Saturday, April 12th • 10 a.m. \$20 Spearman High School

To register for classes call the Community Resource Office at 659-3233