

The Hansford County

# Reporter Statesman

PROUDLY SERVING HANSFORD COUNTY SINCE 1907

reporter@spearmanreporter.com

SCR2  
COMP  
HANSFORD COUNTY LIBRARY  
0122 MAIN ST  
SPEARMAN TX 79081-2064

VOLUME 102 • ISSUE 31

THURSDAY, JULY 30, 2009

## Closed Notice

The Hansford County Reporter-Statesman will be closed August 5th-16th. The office will reopen at 9 a.m. on Monday, August 17th.

The deadline for the August 6th and August 13th issues is Thursday, July 31st at 5 p.m. Items submitted after the deadline will be published at a later date, as time and space permit.

Items may be submitted by phone (806-659-3434), fax (806-398-9080), mail (Reporter-Statesman, 213 Main Street, Spearman TX 79081), in person (310 Barkley Street, Spearman) or e-mail (reporter@spearmanreporter.com).

Items submitted after July 31st for the August 6th and 13th issues MUST be submitted by phone, fax or e-mail ONLY.

The August 13th issue will be delivered to the stores and post office on Saturday, August 15th. Local subscribers should expect their newspapers to be delivered either on Saturday, August 15th, or Monday, August 17th.

If you have any questions, please contact Cathy Smith at (806) 659-3434.

## Weather Forecast

**THURSDAY NIGHT** - Mostly cloudy with a 20 percent chance of showers and thunderstorms. Lows around 60. North winds around 10 mph in the evening becoming light and variable.

**FRIDAY** - Mostly cloudy with a 20 percent chance of showers and thunderstorms. Highs in the upper 80s. South winds 10 to 15 mph.

**FRIDAY NIGHT** - Mostly cloudy with a 20 percent chance of showers and thunderstorms. Lows in the lower 60s. South winds 10 to 15 mph.

**SATURDAY** - Mostly cloudy with a 20 percent chance of showers and thunderstorms. Highs around 90.

**SATURDAY NIGHT** - Partly cloudy with a 20 percent chance of showers and thunderstorms. Lows in the lower 60s.

**SUNDAY** - Partly cloudy with a 20 percent chance of showers and thunderstorms. Highs in the lower 90s.

**SUNDAY NIGHT** - Partly cloudy in the evening then becoming mostly cloudy. A 20 percent chance of showers and thunderstorms. Lows in the mid 60s.

**MONDAY** - Mostly cloudy with a 20 percent chance of showers and thunderstorms. Highs in the mid 90s.

**MONDAY NIGHT** - Mostly cloudy in the evening then becoming partly cloudy. A 20 percent chance of showers and thunderstorms. Lows in the upper 60s.

**TUESDAY** - Partly cloudy. Highs in the mid 90s.

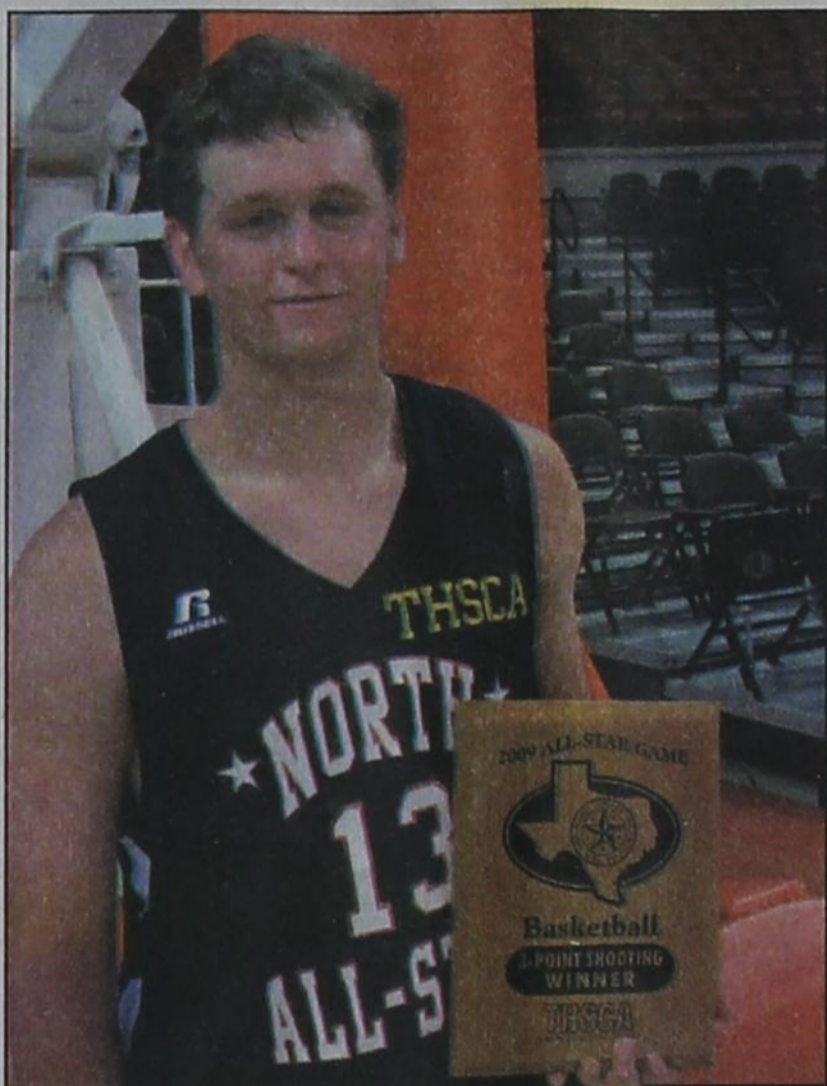
**TUESDAY NIGHT** - Partly cloudy. Lows in the upper 60s.

**WEDNESDAY** - Partly cloudy. Highs in the mid 90s.

## Texas Crop & Weather

The following specific livestock, crop and weather conditions were reported by Panhandle Extension directors: Scattered showers and cooler temperatures were seen across the region. All irrigated crops were in good shape. Dryland crops were still in need of rain in the eastern counties and some sorghum crops may be lost if there is no moisture soon. Corn was helped by the cooler temperatures and showers. Cotton was 100 percent squared with 20 percent to 25 percent of the crop setting bolls. Peanuts were 100 percent pegged. Soybeans were 100 percent bloomed and in good condition. Sunflowers were 100 percent planted. Rangeland needed moisture in the east, but looked better in the west. Cattle were good shape. The cooler temperatures were welcomed at the feed yards.

# Ashmore Excels in THSCA All-Star Game



Above: Jordan Ashmore, a 2009 graduate of Spearman High School.

Right: Coach Jr. Ashmore, Jordan Ashmore and Cindy Ashmore at the Texas High School Coaches Association All-Star Basketball Game in Austin, TX.

On Monday, July 20, 2009, Jordan Ashmore, a 2009 graduate of Spearman High School, played in the Texas High School Coaches Association All-Star Basketball Game in Austin, Texas.

Jordan was selected to be a part of the North All-Star team and was the only boy basketball player selected north of Interstate 40. The only other player from the Panhandle was Nicky Rowland of Nazareth. To be considered for selection, a player has to be nominated and then selected by a selection committee made up of basketball coaches from the north. Only twelve players were selected from both regions to participate in this prestigious event.

As a senior at Spearman High School, Jordan averaged over 26 points per game, and was also named the MVP in District 1-AA along with many other post district accolades.

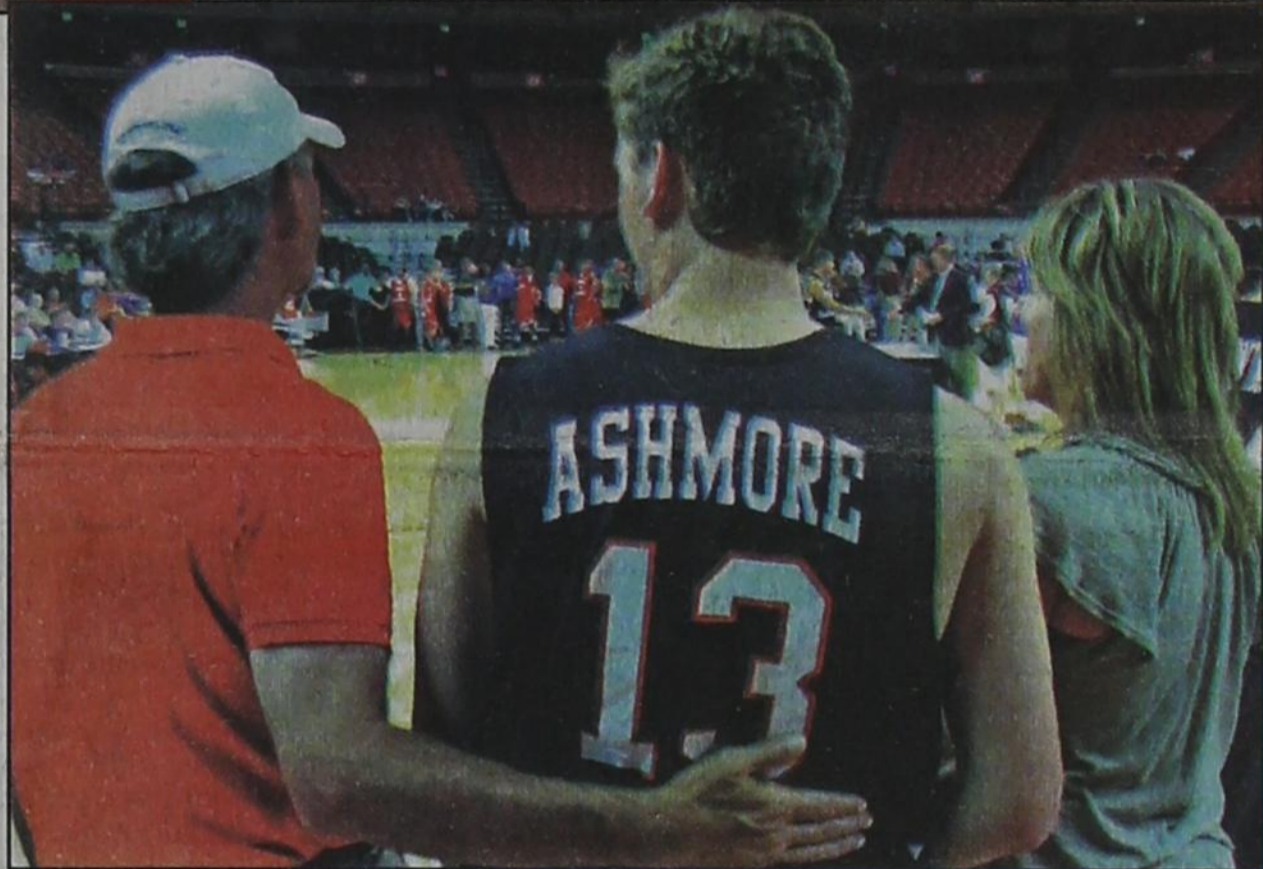
At the All-Star game, Jordan won the three point shooting contest having beat out two other competitors from the north team and three other competitors from the south. During the game Jordan hit three three-pointers and a clutch game winning free

throw at the end of the game to give the north a one point win over the south. He scored a total of ten points in the game.

According to Superintendent Rodney Sumner, who attended the game, Jordan had a great game and represented Spearman and the Lynx basketball program with much poise and distinction. He was matched up against some very good players from the south who had signed with some high profile universities. He played tenacious defense and held his ground with these players. Late in the game with a tie score, it was uncertain who would step up to make the winning shot. Mr. Sumner said there was no doubt that he knew Jordan wanted the ball and was going to make the winning shot.

Mr. Sumner further added that he was extremely proud of Jordan, and it was a thrill to have watched him play in the All-Star game and as a Lynx for the past five years. Jordan has signed to play basketball in the fall with West Texas A&M University in Canyon.

Jordan, a 2009 graduate of Spearman High School, is the son of Cindy and Jr. Ashmore of Spearman.



# Disaster Assistance Available for Small Businesses

Small, non-farm businesses in the Texas county of Ochiltree and the neighboring counties of Hansford, Hutchinson, Lipscomb and Roberts in Texas and Beaver and Texas counties in Oklahoma are now eligible to apply for low-interest disaster loans from the U. S. Small Business Administration (SBA). "These loans offset economic losses because of reduced revenues caused by the blizzard that occurred in Ochiltree County from March 27-28, 2009," announced Alfred E. Judd, Director of SBA's Disaster Field Operations Center - West.

"SBA eligibility covers both the economic impacts on businesses dependent on farmers and ranchers that have suffered agricultural production losses caused by the disaster," Judd said.

Small, non-farm businesses, small agricul-

tural cooperatives and most private, non-profit organizations of any size may qualify for Economic Injury Disaster Loans (EIDLs) of up to \$2 million to help meet financial obligations and operating expenses which could have been met had the disaster not occurred.

"Eligibility for these working capital loans is based on the financial impact of the disaster only and not on any actual property damage. These loans have an interest rate of 4%, a maximum term of 30 years, and are restricted to small businesses without the financial ability to offset the adverse impact without hardship," Judd added.

By law, SBA makes EIDLs available when the U. S. Secretary of Agriculture designates an agricultural disaster. Secretary Tom Vilsack declared this disaster at the request of Governor Rick Perry.

Businesses primarily engaged in farming or

ranching are not eligible for SBA disaster assistance. Agricultural enterprises should contact the Farm Services Agency (FSA) about the U. S. Department of Agriculture (USDA) assistance made available by the Secretary's declaration.

Information and application forms are available from SBA's Customer Service Center by calling (800) 659-2955, emailing disastercustomerservice@sba.gov, or visiting SBA's Web site at www.sba.gov/services/disasterassistance. Hearing impaired individuals may call (800) 877-8339.

Applicants may also apply online using the Electronic Loan Application (ELA) via SBA's secure Web site at https://disasterloan.sba.gov/ela.

The deadline to apply for these loans is March 15, 2010.

For more information, visit SBA's Web site at www.sba.gov/services/disasterassistance. SBA Field Operations Center - West, P.O. Box 419004, Sacramento, CA 95841

## Circle of Friends To Host Annual Membership Party

The Hansford County Circle of Friends will host a membership party in support of The Don & Sybil Harrington Cancer Center on Saturday, August 29, 2009 at 7:00 p.m. The party will be held at the O'Loughlin Center at 502 South Brandt in Spearman, Texas. Come and join us for a great time for a great cause. The cost is \$20/single and \$35/couple.

The Circle of Friends is a non-profit organization dedicated to helping cancer patients and their families in times of need. Through its affiliation with Harrington Cancer Center, the Circle of Friends develops and implements fund raising activities to provide financial assistance and patient care and support programs for those affected by cancer. The Circle of Friends also works with Harrington Cancer Center to provide cancer educational opportunities for people throughout the region. Examples of Circle of Friends support of Harrington Cancer Center patients includes:

- Two furnished apartments for out-of-town patients to use when going through treatment

- Pediatric Patient/Family Gatherings (a day at Wonderland Park, Christmas Party, etc.)

- Supplies for weekly support groups

- Materials for chemotherapy classes, new patient books

- Refreshments for patients during treatment

- Assistance with patients' travel, insurance premiums, rent or mortgage payments, medication, nutritional supplements, utilities and breast prosthesis

We are currently looking for committee members to help with this event. For more information on the Hansford County Circle of Friends or if you are interested in attending and/or volunteering to help with the event please contact Holly McLain (806) 733-2268 (hollymclain13@yahoo.com) or Tonni Yanke (806) 733-2008.



Spearman Chamber of Commerce's

## Yard of the Week

Scot Martin  
703 Gibner  
Isabel Martinez  
619 Evans  
Phillip Renner  
900 Barkley St.

If you have a yard you would like to nominate, please contact the Spearman Chamber of Commerce at 659-5555.

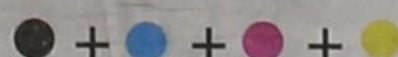
**AVAILABLE NOW!**  
**E-SUBSCRIPTION**

to the  
**Hansford County Reporter-Statesman**

Delivered to your e-mail each Thursday for only \$35/year.

Purchase online at  
www.spearmanreporter.com

Call 806-659-3434 or e-mail  
reporter@spearmanreporter.com  
for details.





# Happy Birthday!

**July 30**  
**Birthday** - John Reed, Pat Tucker, Jim Nicholson, Lynn Ann Sanders, Ronda Cook, Pamela Cates, Sandra Cummings, Kara Pipkin, Raquel Saldivar, Alec Cenicerros, Alice Cook, Katie Gibson, Johnny Bennett, Joanne Graves.  
**Anniversary** - M/M Davin Winger, M/M Hoyle Holliday

**July 31**  
**Birthday** - Mary Ruth Connolly, Bonnie Jones, Kathy Vanlandingham, Danna Close, Sherry Brand, Jessie Burke, Jody Harnish, Hector Nava, Mike Slater, Ronnie Lusby, Cary Collier, Cecil Biggers, Jennifer Marrs, Cody Reynolds, Nancy Garcia.  
**Anniversary** - Doug & Shannon Barnes, Jason & Amber TeBeest

**August 1**  
**Birthday** - Lisa Link, Kyle Irwin, Frankie Leatherman, Annie Mayhew, Gyene Spivey, Benjamin Williams, Johnnie Williams, Ronnie Williams, Tommy Lovett, Jo Brown, Leann Swan, Yvonda Stokes, Anita Clemmons, Kevin Kirk, Rob Barber, Kelli McWhirter, David Swan, Jim Scarborough, Kiki West, Hershey Martin, Joyce Crooks, Alfonso Cenicerros, Larry Trosper, Patricia Quillin, Gabriel Lopez, Sara Wright, Chance Swan  
**Anniversary** - M/M Mike Minter, M/M Tommy Cathey, Jr.

**August 2**  
**Birthday** - Eadie Clemmons, Mary Brock, Frosty Hickerson, Dirk Umphress, Colby Griffin, Earl Griffin, Daniel Bort, Yuki Bort, Misty Vera, Roland Graeber, Neely Hicks, Ryan Wells, Hanna Bates  
**Anniversary** - M/M Billy Kelly, M/M Larry Hays, M/M Dan Ralston

**August 3**  
**Birthday** - Clay Gillispie, Tyson Sparks, Mary Wisinger, Laurie Swenn, Kent Guthrie, Kenneth Coates, Olivia Salgado, Sam Abston, Dibrell Kirk, Racheal Garza, Tencha Cazares, Olivia DeSantiago, Maxine Little  
**Anniversary** - M/M Don Schroder, M/M Shane Reagan

**August 4**  
**Birthday** - Jim Derington, Marjorie Hendricks, Penny Gammil, Mrs. Dick Kilgore, Cindy McGhee, Jeanetta Montgomery, Billy Joe Rhea, Mike Riley, V.L. Williamson, Nikki Swenn, Misty Pointer, Shelly Rook, Ramon Rosales, Renee Allen, Joe Allen Bullard, Bond Grace Pittman, Lee Bevins, Lane Salmans, Rachel Abernathy, Ronnie Cogdill, Karen Hartgraves  
**Anniversary** - M/M Joe Vanderburg, M/M Joe Bravo, M/M E.A. Williams, M/M Ronnie E. Williams

**August 5**  
**Birthday** - Chase Reagan, Beth Ann Holt, Tina Adams, Billy Miller, Shirley Stafford, Erin Boxwell, Stephen Poole, Emidia Borunda, Paul Winn, Maria A. Parra, Susan Renick, Rodney Sumner  
**Anniversary** - M/M J Garnett, M/M Roy Flowers, M/M Samuel Sanchez, Danny & Debby Herrington

**August 6**  
**Birthday** - Paul Winn, Scott Pipkin, Ladd Gafford, Carolyn Hahn, Raymie Porter, Hoyt Biles, Kathy White, Sharon Swan, Eoldia Bravo, Monica Lara, Susan Rason, Heather Gallimore, Debra McNeely, Marlyn Pecha  
**Anniversary** - M/M Murl Pearson, M/M Rocky Sharp, M/M Tim Stedje, M/M Mack Hoel

**August 7**  
**Birthday** - Brandon Casdorph, Scott Duncan, Roy Don Gammon, Elwyn Young, Roger Odegaard, Mark Sheets, David Thomas, Marie Sparks, Cassandra Papay, Hilary Biggers, Jean Holland, Patty Sparks

**August 8**  
**Birthday** - Billy Pat Underwood, Ed Berner, Junior Vela, Hosa Casas, George Young, Frankie Dominguez, Kathy Boyd, Jenna Abernathy, Ryan Schnell  
**Anniversary** - M/M Leonard Garrard

**August 9**  
**Birthday** - Christopher Layton, Reba Miser, Inell Trahan, Roy Dunaway, Karla Latta, Anita Garrard, Bob Rylant, Holly Pipkin  
**Anniversary** - M/M Buddy Dossett, M/M Steve Reagan

## Words from Faith & Grace



by Cecil R. Biggers, Lutheran Lay Minister  
 In the ninth week of Pentecost, we study Exodus 16:2-4, 9-15, Psalm 78: 23-29.

Ephesians 4: 1-16, and John 6: 24-35. The Israelites are in the wilderness; they have endured thirst, now they are hungry. The people grumble at Moses and Aaron. They remember the food of Egypt, not the slavery of Egypt. God hears the complaint of the people and sends manna for bread and a flight of quail for meat. We learn that complaining by itself is not a sin. It is in fact a reason for turning to God. When we are ill, when we are alone, when we are depressed, when we lack necessities of life, we turn to God in prayer. Sin, which is defined as that which separates us from God, occurs when we complain and look to the strength of this world for our help. Note that when the Israelites look to the Wilderness, through which the Lord wanted them to go, they see the glory of God.

Our Psalm 78 is a "makil" of Asaph. Asaph was a musician at the temple during the time of David and Solomon and a "makil" was a teaching song. Here we see in verse form the teaching of the history of God's provision to his people in the wilderness. Note that the meaning of the word, "manna", literally translated is "What is it?", "it" is explained to the people as being the "grain of heaven".

Last week the crowd called Jesus a Prophet, then they wanted to make him 'King' because they were fed; this week the crowd addresses him as "Rabbi" (teacher). Jesus tells the crowd that they have followed him because they 'ate their fill of the loaves'. As the discussion continues, the people are looking backward to the time of Moses and the "grain from heaven" which fed the people in the wilderness. Jesus tells them that it was God, not Moses who fed their ancestors. Jesus tells them not to work for the food that perishes but for the food that endures for eternal life. The desire for food to satiate physical hunger is contrasted with the desire for food to satisfy our spiritual hunger. Jesus says, "I AM the bread of life. Whoever comes to me will never be hungry and whoever believes in me will never be thirsty." In this saying, Jesus reveals who He is.

May the Holy Spirit feed you with the Bread of Life and satisfy you with the Living Water.

**FREE DIRECTV 5 MONTHS!**  
 ALL 265+ DIGITAL CHANNELS!  
 130 HD CHANNELS!  
 Plus HBO, Cinemax, Showtime & Starz!  
 ALL FREE FOR 5 MONTHS!  
 Ask How  
 FREE DVR/HD  
 We're Local Installers!  
 Toll Free 800-214-7110  
 DirectStarTV

**HOME PHONE SERVICE**  
**1st Month FREE with Lifeline**  
 Starting at \$13.49/mo • \$0 Deposit  
**NO Credit Check • NO Contracts**  
**Everyone Approved!**  
*Restrictions May Apply.*  
**NEWTALK 866.934.3448**

**Weatherford Construction**  
 Septic Systems  
 Kirk Weatherford (806) 336-2820  
 8125 FM 3385 Toll Free: 1-800-585-6047  
 Sanford, TX 79078 Email: kirk@weatherford-construction.com

## Our Sympathy

### C. RALPH BLODGETT

**SPEARMAN** - C. Ralph Blodgett, age 88, died July 28, 2009. Services will be Friday July 31, at 2 PM in the Spearman First Christian Church with Reverend Beverly Cook officiating. Burial will be in Hansford Cemetery under arrangement of Boxwell Brothers Funeral Home of Spearman.

Ralph was born August 23, 1920 in Ochiltree County. He married Johanne Studer on December 27, 1946 in Canadian Texas.

Mr. Blodgett served as Mayor of Spearman from 1976 until 1988, served as President of the Texas Municipal League in 1984, and past president of the Texas Tech ex-students association. He owned and operated B & B Grain and B & B Farm Industries for 50 years, was a staunch Democrat, and had three generations of Texas Tech graduates in his family. He was a pilot and owned his own plane for many years, was a member of the Grace Presbyterian Church in Spearman and was a World War II veteran serving in the Army Air Corps.

Johanne Blodgett, his wife, a son DVM Glenn Blodgett and wife Karen of Guthrie Texas, and a daughter, Marilyn Cline of Spearman survive him. Three granddaughters, Buffie and husband Michael Guynes of Keller, Texas, Brandie and husband Mike Mustian of Weatherford, Texas, and Bethany Cline of Keller, Texas, Shelby Sasser, Cambry Cline, Myla Mustian of Weatherford and one great-grandson, Rhys Cline of Elkhart survive him as well.

The family request memorials to Hansford Library, 122 Main, Grace Presbyterian Church, P. O. Box 156, Spearman, Texas 79081 or one's favorite charity.

### MELANIE MARIE HOWELL

**BORGER** - Melanie Marie Howell, 40, died Sunday, July 26, 2009.

Services will be at 10 a.m. Friday in Gateway Baptist Church with the Rev. Chris Rawlinson, pastor, officiating and Steven Tarpley, youth minister, assisting. Burial will be in Highland Park Cemetery by Minton/Chatwell Funeral Directors of Borger.

Mrs. Howell was born Dec. 5, 1968, in Borger. She married Jesse Howell on Dec. 31, 1988, in Porterville, Calif.

Survivors include her mother, Helen Sibley of Borger; her husband; a son, Kyle Howell of Borger; two daughters, Britney Howell of Oklahoma City and Candice Howell of Borger; and two brothers, Shannon Sibley of Borger and Damon Sibley of Spearman.

The family suggests memorials be to American Diabetes Association, P.O. Box 11454, Alexandria, VA 22312; or a favorite charity.

**MONUMENTS**  
**Boxwell Brothers**  
**Funeral Home**  
 519 Evans • Spearman  
 659-3802

Dear friends,  
 When you buy a monument from us we make sure it is exactly what you want at a price you can afford. If it is not right, we will make it right. And you will not have to search the countryside to find us. We are here when you have a need.  
 Sincerely,  
 Bob Boxwell

**Peaches Tell your friends!**  
**Colorado Peaches from Palisade!**  
 Straight from grower to you! Tree ripe, juicy and bursting with flavor. From tree to box, to bring you the BEST quality available. Refrigerated fresh.  
**Cunningham Peaches - 970-314-1469**  
**Equity Town & Country - Hwy. 83 S., Perryton**  
**Wednesday, August 5th**  
**www.CunninghamPeaches.com**

**WANTED**

**We are looking for a few good dogs!**

If you have a well mannered dog that you would agree to show at Hansford Manor, call the Activities Dept. (659-5849) by Friday, August 14th.

We are looking for dogs to organize a dog show at the Manor on Friday, Aug. 21.

### Replenish the seed of faith through . . .

**DAILY BIBLE READING, PRAYER & REGULAR CHURCH ATTENDANCE**

<p><b>Spearman</b></p> <p><b>Apostolic Faith Church</b>                  822 S. Dressen • 659-2870                  Sunday School: 10 a.m.                  Worship Service: 11 a.m.                  Sun. Eve.: 6 p.m.                  Wed. Prayer Mtg.: 7 p.m.                  Pastor - Roland Haney</p> <p><b>First Assembly of God</b>                  401 N. Bernice • 659-2295                  Sunday School: 9:30 a.m.                  Worship: 10:40 a.m.                  Evening Worship: 6 p.m.                  Wed. Worship: 7 p.m.                  Wed. Youth: 7                  Pastor - Jerry Pollard</p> <p><b>First Christian Church</b>                  (Disciples of Christ)                  29 S. Bernice • 659-2038                  Sunday School: 9:45 a.m.                  Worship: 10:50 a.m.                  Minister -</p> <p><b>First Baptist Church</b>                  123 N. Bernice • 659-5557                  Sunday School: 9:45 a.m.                  Worship: 11 a.m.                  Evening Worship: 7 p.m.                  Men's Bible Study - Wed. 7 a.m.                  Children's Choir - Wed. 6 p.m.                  Adult Choir - Wed. 7 p.m.                  Wed. Bible Study: 7 p.m.                  Pastor - Jim Medley</p> <p><b>Church of Christ</b>                  121 S. Haney • 659-3244                  Sunday Bible Class: 9:45 a.m.                  Worship: 10:30 a.m.                  Evening Worship: 6 p.m.                  Bible Study Wed.: 7:30 p.m.</p>	<p><b>Sacred Heart Catholic Church</b>                  901 Roland • 659-2792                  Sat. Night Mass: 5:30 p.m.                  Sun. Mass: 9 a.m. - English                  Sun. Mass: 11:30 - Spanish                  1:30 p.m. - Gruver - Christo Rendoritor Mass - Spanish                  Rev. Guillermo Morales</p> <p><b>First United Methodist</b>                  407 S. Haney • 659-5593                  Sunday School: 9:45 a.m.                  Worship: 8:30 &amp; 11 a.m.                  Jr. High Youth: 5 p.m. Sunday                  High School: 6 p.m. Sunday                  Kids Club: 3 p.m. Wed.                  Pastor - Neely Landrum</p> <p><b>Grace Presbyterian Church</b>                  (Worships with Faith Lutheran Church)                  1101 Bernice • 659-2033</p> <p><b>Faith Lutheran Church (ELCA)</b>                  1101 Bernice • 659-2252                  Sunday School: 9:45 a.m.                  Worship: 11 a.m.                  (Worships with Grace Presbyterian Church)                  Pastor - Cecil Biggers, PLM</p> <p><b>Union Church</b>                  31 S. Endicott • 659-2644                  Sunday School: 10:00 a.m.                  Worship: 11:00 a.m.                  Bible Study: 7 p.m. Wed.                  Youth Service: 6 p.m. Wed.                  Pastor - Don Baltazor</p> <p><b>Fellowship Baptist</b>                  1102 S. Archer • 659-2783                  Sunday School: 10 a.m.                  Worship: 11 a.m.                  Sun. Evening Worship: 6 p.m.                  Sun. Evening Spanish Worship: 7 p.m.                  Youth/Adult Service: 7:30 Wed.                  Pastor - Philip Hudson</p>	<p><b>Primera Mision Bautista</b>                  502 E. 7th • 659-3991                  Sunday School: 9:45 a.m.                  Worship: 11 a.m.;                  Evening: 6 p.m.                  Wed. Prayer Meeting: 7 p.m.                  Thurs. Visitation: 7 p.m.                  Pastor Joe Garcia Jr.</p> <p><b>El Aposento Alto U.P.C.I.</b>                  1105 S. Roland                  Domingos: Escuela Dominical - 10 a.m.                  Culto Evangelistico - 7 p.m.                  Jueves: Oracion - 8 p.m.                  Mier: Estudio Biblico - 7 p.m.                  Pastor - A.G. Martell                  (806) 659-2153</p> <p><b>Gruver</b></p> <p><b>First Baptist Church</b>                  402 E. Broadway • 733-2411                  Sunday School: 9:45 a.m.                  Worship: 10:50 a.m.                  Disciple Training: 6 p.m. Sunday                  Prayer Meeting: 7:30 p.m. Wednesday                  Pastor - Scott Curry</p> <p><b>Church of Christ</b>                  209 King • 733-2760                  Sunday School: 9:30 a.m.                  Worship: 10:20 a.m.                  Evening Worship: 6 p.m.                  Wed. Worship: 7:00 p.m.                  Minister - Gaylord Cook</p> <p><b>First Christian Church</b>                  510 King • 733-2960                  Sunday School: 10:00 a.m.                  Sunday Worship: 11 a.m.                  Youth: 7:30, Sunday                  Adult Bible Study: 7:30, Sun.                  Wed. Bible Study: 8:00 p.m.                  Pastor - Gary Gumfory</p>	<p><b>Gruver United Methodist</b>                  Broadway &amp; Garrett                  733-2651                  Sunday School: 9:45 a.m.                  Worship: 8:30 &amp; 10:50 a.m.                  Eve. Worship &amp; UMY: 6 p.m.                  Pastor - George Price</p> <p><b>Spanish Cristo Redentor Church</b>                  Sunday Mass: 1:30 p.m.                  Friday Evening Mass                  Summer - 8:00 p.m.                  Fall/Winter - 7:30 p.m.</p> <p><b>Oslo</b></p> <p><b>Oslo Lutheran Church (ELCA)</b>                  6 Miles West &amp; 12 Miles                  North of Gruver                  339-7646                  Sunday School: 9:45 a.m.                  Worship: 11 a.m.                  Pastor - Arlen Lloyd</p> <p><b>Morse</b></p> <p><b>Morse Baptist Church</b>                  733-2757                  Pastor - Mike Martin</p> <p><b>Waka</b></p> <p><b>Church of Christ</b>                  300 Rogers Ave.                  202-7126                  Sunday Worship: 6 p.m.                  Wednesday Bible Study: 6 p.m.                  Preacher - James Gordon</p>
---	---	---	--

He has showed you, O man, what is good. And what does the LORD require of you? To act justly and to love mercy and to walk humbly with your God.  
 Micah 6:8

This feature is made possible through the sponsorship of these civic minded businesses:

<p><b>Deakin ELECTRIC</b>                  OILFIELD • RESIDENTIAL • COMMERCIAL                  321 S. MAIN • SPEARMAN                  1-800-999-1506 Chris                  Deakin                  (806) 659-5016 President</p>	<p><b>Bartlett's Lumber &amp; Hardware</b>                  105 W. Broadway • Gruver, TX                  (806) 733-2404</p>	<p><b>BERRY CLEANERS</b>                  Ann &amp; Vernon Pipkin - Owners                  Phone 659-3122 • P.O. Box 1017                  207 Main St. • Spearman, TX</p>	<p><b>Morse Implement &amp; Auto Supply</b>                  "Join us in church"                  Tom Dortch 733-2668                  Box 89 • Morse, TX 79062</p>
<p><b>PRAIRIE MOTORS INC.</b>                  Hwy. 207 South • P.O. Box 430                  Spearman, TX 79081 • (806) 659-2541                  www.prairiemotors.com</p>	<p><b>MurMur's Cafe</b>                  100 Roland St                  Spearman, TX.                  659-3580</p>	<p><b>Hansford County Reporter-Statesman</b>                  "Proudly Serving Hansford County Since 1907"                  (806) 659-3434                  310 Barkley • Spearman, TX</p>	<p><b>INTERSTATE BANK, ssb</b>                  www.interstatebank.net                  322 Main • P.O. Box 146                  Spearman, TX • 659-2559</p>



*Uniquely Yours...*





**Hours: M-S 9-8 • Sun 1-6**  
118 NW 4th St • 338.3332  
Guymon, OK

# Brighton® Your Day

Men's, Women's, and Kid's Clothing

*a*  
**CHARMED**  
*life...*



## Wolf Creek Heritage Museum Notes

### MUSEUM HAPPENINGS

Writing this column on Monday, we are enjoying a nice rain with hopes of rain all week. The moisture is welcomed and needed badly. The reduction in the temperature is also welcomed.

My journey to Plainview last week was to attend a workshop on emergency plans for museums. Our instructor provided us with a great outline for preparing for emergencies, which endanger our collections and building. An emergency disaster plan is just one of many policies that our museum needs to develop.

The workshop also instructed us on a disaster kit that we can develop that will assist us in responding to an emergency. We were also introduced to techniques on how to conserve books and textiles after they have gotten wet. Another good workshop.

This week will be full of activities to get ready for our garage sale on Saturday, August 1st. I hope all of you will either attend or participate. You can have your own table for \$10. The sale promises to be full of some great stuff. See you there - Darrouzett Legion Hall, Saturday, August 1, 8:30 a.m. - 5 p.m. (We will be setting up on Friday.)

### HISTORICAL MUSINGS

I enjoy browsing through our collection of books to find items for this column.

I recently found a scrapbook of the Booker Home Demonstration Club from 1936 to 1953. If you think scrapbooking is a new trend, you need to come in and see this book.

The art of stenciling, stickers, and journaling is wonderful. The club dedicated the book to Roberta Pugh, home demonstration agent. She be-

came the agent in 1947, and was the agent in 1953 when this was book was created. Roberta's page is decorated with apples to denote that she was the "apple of the club's eye." Her pet peeve was recorded as "being late for an appointment," hobby was "Homemaking."

January 5, 1953 - The club met at the home of Kate and Lewis Blau. President was Marie Fitzgerald. News clipping from the meeting reported that Kate Blau and Estelle Lehman were appointed as delegates for the craft training school and Bessie Robertson and Edra Bowdle were appointed as delegates for Clothing Training School.

The scrapbook has a page for each of the following Ladies of Lipscomb County: Kate Bau ("we've loaned Kate to Lewis for a while"), Marie Fitzgerald ("lovely so-

prano voice"), Eva Conley ("who lives for others"), Edra Bowdle ("talented musician"), Lizzie Hibbs ("Avon Girl"), Nellie John ("expert seamstress"), Gladys Harbour ("wonderful mother, christian, neighbor, club member, and friend"), Erma Weinett ("Little Angel"), Dora Lee ("mother of a large

family with that rare natural talent of warm friendliness that always makes you want to return"), Willene Lee ("busy girl"), Estelle Lehman (seamstress), Anna Smith (homemaking as hobby "Result: three lovely daughters"), Ella Paine (authority on floriculture), and Bessie Robertson ("power behind the

throne", red cross nursing chairman with hobby of playing with sewing machine and electric saw). An admirable group of ladies.

Several of the ladies had photos of their husbands wearing hand puppets made from bass heads. What was that all about?

Enjoy the week.

## Spearman ISD Kids Kamp 2009

### Students in Spearman, Gruver, Morse and Hansford County are invited to participate in the following:

**August 4-6: We've Got Spirit Cheer Camp** is sponsored by Spearman High School Cheerleaders. Registration is the first day of camp at 8:30am in the Spearman High School Cafeteria. The other two days of camp start at 9 a.m. and end at 11:45. Spirit sticks will be handed out each day at 11:45. \$10 per day or \$25 for all three days

**August 12: Lyric Matinee** will begin at 10:30 a.m. The movie will be an age appropriate for grades K-5. The price is \$6 and includes admission, coke and popcorn.

For more information, or to register, contact  
Cindy Blackman, Community Resource Coordinator, at 659-3233.

### 2009 Property Tax Rates in Hansford Hospital District

This notice concerns 2009 property tax rates for Hansford Hospital District. It presents information about three tax rates. Last year's tax rate is the actual rate the taxing unit used to determine property taxes last year. This year's effective tax rate would impose the same total taxes as last year if you compare properties taxed in both years. This year's rollback tax rate is the highest tax rate the taxing unit can set before taxpayers can start tax rollback procedures. In each case these rates are found by dividing the total amount of taxes by the tax base (the total value of taxable property) with adjustments as required by state law. The rates are given per \$100 of property value.

#### Last year's tax rate:

Last year's operating taxes	\$ 1,731,235
Last year's debt taxes	\$ 0
Last year's total taxes	\$ 1,731,235
Last year's tax base	\$ 753,257,800
Last year's total tax rate	0.229833 /\$100

#### This year's effective tax rate:

Last year's adjusted taxes (after subtracting taxes on lost property)	\$ 1,729,658
+ This year's adjusted tax base (after subtracting value of new property)	\$ 727,435,309
= This year's effective tax rate	0.237774 /\$100

(Maximum rate unless unit publishes notices and holds hearings.)

#### This year's rollback tax rate:

Last year's adjusted operating taxes (after subtracting taxes on lost property and adjusting for any transferred function, tax increment financing, state criminal justice mandate, and/or enhanced indigent health care expenditures)	\$ 1,729,658
+ This year's adjusted tax base	\$ 727,435,309
= This year's effective operating rate	0.237774 /\$100
x 1.08 = this year's maximum operating rate	0.256795 /\$100
+ This year's debt rate	0.000000 /\$100
= This year's total rollback rate	0.256795 /\$100

#### Statement of Increase/Decrease

If Hansford Hospital District adopts a 2009 tax rate equal to the effective tax rate of \$0.237774 per \$100 of value, taxes would increase compared to 2008 taxes by \$2,526.

#### Schedule A - Unencumbered Fund Balances

The following estimated balances will be left in the unit's property tax accounts at the end of the fiscal year. These balances are not encumbered by a corresponding debt obligation.

Type of Property Tax Fund	Balance
Maintenance & Operations	\$6,338,146

#### Schedule F - Enhanced Indigent Health Care Expenditures

The Hansford Hospital District spent \$31,060 from 07012008 to 06302009 on enhanced indigent health care at the increased minimum eligibility standards, less the amount of state assistance. For the current tax year, the amount of increase above last year's enhanced indigent health care expenditures is \$0.

This notice contains a summary of actual effective and rollback tax rates' calculations. You can inspect a copy of the full calculations at 14 NW Court, Spearman, Texas 79081.

Name of person preparing this notice: Linda Cummings  
Title: Tax Assessor-Collector  
Date Prepared: July 24, 2009

### 2009 Property Tax Rates in Hansford County

This notice concerns 2009 property tax rates for Hansford County. It presents information about three tax rates. Last year's tax rate is the actual rate the taxing unit used to determine property taxes last year. This year's effective tax rate would impose the same total taxes as last year if you compare properties taxed in both years. This year's rollback tax rate is the highest tax rate the taxing unit can set before taxpayers can start tax rollback procedures. In each case these rates are found by dividing the total amount of taxes by the tax base (the total value of taxable property) with adjustments as required by state law. The rates are given per \$100 of property value.

Last year's tax rate:	General Fund	Special Road/ Bridge Fund
Last year's operating taxes	\$ 2,000,432	\$ 478,428
Last year's debt taxes	\$ 0	\$ 0
Last year's total taxes	\$ 2,000,432	\$ 478,428
Last year's tax base	\$ 753,259,781	\$ 750,593,034
Last year's total tax rate	0.265570 /\$100	0.063740 /\$100

#### This year's effective tax rate:

Last year's adjusted taxes (after subtracting taxes on lost property)	\$ 1,998,610	\$ 477,934
+ This year's adjusted tax base (after subtracting value of new property)	\$ 727,435,309	\$ 724,769,964
= This year's effective tax rate for each fund	0.274747 /\$100	0.065942 /\$100

Total effective tax rate 0.340689 /\$100

(Maximum rate unless unit publishes notices and holds hearings.)

#### This year's rollback tax rate:

Last year's adjusted operating taxes (after subtracting taxes on lost property and adjusting for any transferred function, tax increment financing, state criminal justice mandate, and/or enhanced indigent health care expenditures)	\$ 1,998,610	\$ 477,934
+ This year's adjusted tax base	\$ 727,435,309	\$ 724,769,964
= This year's effective operating rate	0.274747 /\$100	0.065942 /\$100
x 1.08 = this year's maximum operating rate	0.296726 /\$100	0.071217 /\$100
+ This year's debt rate	0.000000 /\$100	0.000000 /\$100
= This year's rollback rate for each fund	0.296726 /\$100	0.071217 /\$100
This year's total rollback rate	0.367943 /\$100	

#### Statement of Increase/Decrease

If Hansford County adopts a 2009 tax rate equal to the effective tax rate of \$0.340689 per \$100 of value, taxes would increase compared to 2008 taxes by \$3,562.

#### Schedule A: General Fund - Unencumbered Fund Balances

The following estimated balances will be left in the unit's property tax accounts at the end of the fiscal year. These balances are not encumbered by a corresponding debt obligation.

Type of Property Tax Fund	Balance
Maintenance & Operations	\$3,687,000

This notice contains a summary of actual effective and rollback tax rates' calculations. You can inspect a copy of the full calculations at 14 NW Court, Spearman, Texas 79081.

Name of person preparing this notice: Linda Cummings  
Title: Tax Assessor-Collector  
Date Prepared: July 24, 2009

**Lynx/Lynxettes Booster Club**

The Lynx/Lynxettes Booster Club is doing our membership and sponsorship a little different this year. Instead of a phone call, letters are being sent out this year. There are not enough active people to do all the phone calling, so we have come up with an alternative method of contacting interested members/supporters. Quentin Shieldknight is the voice of the Spearman Lynx / Lynxettes and will be doing the broadcast again this year. Please let me know by August 20th if you are interested in any of these sponsorships, so that we can set the business ads up for the first game on September 4th. This is for anyone who wants to participate. Letters will be mailed this week, but if you do not receive one, please cut this out and send or bring it by the Hansford County Courthouse basement and give it to Tammy Benton.



SPEARMAN BOOSTER CLUB  
PO BOX 343  
SPEARMAN, TX 79081

SCHOOL YEAR 2009-2010

BUSINESS / NAME: \_\_\_\_\_  
MAILING ADDRESS: \_\_\_\_\_  
PHONE NUMBER: \_\_\_\_\_  
EMAIL: \_\_\_\_\_  
(If possible please provide email - easier to communicate with your family or business)

**MEMBERSHIP DUES:**

Businesses: \$25.00 \_\_\_\_\_  
Individuals / Families: \$10.00 \_\_\_\_\_

FOOTBALL PROGRAM ADS: sold Friday at the home games \$25.00 \_\_\_\_\_

FOOTBALL / BASKETBALL POSTER: \$10.00 \_\_\_\_\_  
(Receive poster with ad)

1X2 AD \$45.00 \_\_\_\_\_  
2X2 AD \$65.00 \_\_\_\_\_  
2X3 AD \$105.00 \_\_\_\_\_

BASKETBALL BOOK: (Receive basketball book with ad)  
SIGNATURE AD (list what you want) \$20.00 \_\_\_\_\_  
1/16th PAGE AD \$50.00 \_\_\_\_\_  
1/8th PAGE AD \$70.00 \_\_\_\_\_  
1/4th PAGE AD \$100.00 \_\_\_\_\_  
HALF PAGE \$185.00 \_\_\_\_\_  
FULL PAGE \$300.00 \_\_\_\_\_

SELLER'S SIGNATURE \_\_\_\_\_ PURCHASER'S SIGNATURE \_\_\_\_\_

DATE: \_\_\_\_\_

Questions please call Kellye Buchanan - please sign and return with payment need a fast turn around - **so please return by August 15<sup>th</sup>**.



SPEARMAN BOOSTER CLUB  
PO BOX 343  
SPEARMAN, TX 79081

**SPORTS SPONSORSHIP PACKAGES FOR 2009-2010**

SPONSORS: \_\_\_\_\_ (1)  
\$2000.00 a YEAR

(A) 60 SECOND TAPED COMMERCIALS DURING LIVE BROADCAST  
(B) OWN INDIVIDUAL PAGE LISTED ON CABLE  
(C) LIVE BROADCAST PROMOTION

BOOSTERS: \_\_\_\_\_ (2) SUPER  
\$1000.00

(A) OWN INDIVIDUAL PAGE LISTED ON CABLE  
(B) 30 SECOND ADVERTISEMENT READ FROM INDEX CARDS DURING LIVE BOARDCAST

BOOSTERS: \_\_\_\_\_ (3)  
\$500.00

(A) LISTED ON CABLE RUNNING ACROSS BOTTOM OF SCREEN  
(B) 15 SECOND ONE LINER DURING LIVE BROADCAST

SIGNATURE ADS: \_\_\_\_\_ (4)  
\$50.00 TO \$200.00 A YEAR

Family name only: \_\_\_\_\_ (5)  
\$20 a year

This is used for scholarships only.

MAKE CHECKS PAYABLE TO SPEARMAN LYNX & LYNXETTES BOOSTER CLUB  
PO BOX 343  
SPEARMAN, TX 79081

FOR MORE INFORMATION CALL TAMMY BENTON 659-3071 or 330-0193 cell or work 659-4130

THANKS FOR YOUR SUPPORT!!!!

MILAM COMMUNITY THEATRE  
**AUGUST 1 & 2, 8 & 9**  
CAMERON CISD PERFORMING ARTS CENTER  
Visit our website for details on our Weekend Getaway Special in historic Cameron, Texas!  
www.MilamCommunityTheater.com

ROGERS & HAMMERSTEIN'S  
THE  
**SOUND OF MUSIC**

**SIGN UP FOR A FREE SCOOTER**  
One Scooter Given Away Each Month  
Toll Free **800-606-9860**  
Med Care MEDICAL SUPPLY  
www.medcaremedicalsupply.com

**FAMILY POOL FUN.COM**  
• Our pools create Generations of Memories everyday, vacations never end!  
• Aboveground & Inground pools at WHOLESALE PRICING  
• SIMPLE DIY Pool Kit Assembly  
• SAVE MONEY on All Pool Supplies & Accessories. Ships Fast  
Call Today! **800-250-5502**

**Prices Good Thru 8/8/09**

**6 PACK DR PEPPER 2 \$5.00 FOR**

**2 LITER BOTTLE DR PEPPER 3 \$5.00 FOR**

**16 OZ. CAN RED BULL 2 \$6.00 FOR**

305 W. Kenneth Spearman • 659-3135  
101 Main Ave. Gruver • 733-2953

**WALNUT OR CHOCOLATE CHIP BROWNIE BAKER BROWNIES \$1.69 EACH OR 2 \$3.00 FOR**

**BUY ONE LANA'S GREEN CHILI CHICKEN ROLL GET ONE FREE**

**DELICIOUS CHICKEN TENDER BASKET \$1.89**

**FAMOUS ALLSUP'S BEEF AND BEAN BURRITO \$1.19 EACH OR 2 \$1.79 FOR**

**More Specials**

SHURFINE DRINK MIX CHERRY, PUNCH OR GRAPE ALL FLAVORS 10 FOR \$1.00

JACK LINK'S JERKY ALL VARIETIES 3.25-3.65 2 FOR \$7.99

BLUE BUNNY TWIRLIX FUDGE POPS EACH 59¢

BLUE BUNNY JOLLY RANCHER ICE POPS EACH 59¢

LIPTON FAMILY TEA BAGS 24 CT. BOX \$2.99

ALLSUP'S SANDWICH BREAD 24 OZ. / 79¢ OR 2 FOR \$1.29

ALLSUP'S WHEAT BREAD 24 OZ. / 99¢ OR 2 FOR \$1.49

FOLGERS COFFEE 11.3 OZ. \$3.49

**Combo Meals**

1 BACON/EGG BISCUIT & 16 OZ. COFFEE \$2.09

2 SAUSAGE/EGG BISCUIT & 16 OZ. COFFEE \$2.09

3 BBQ SANDWICH & 32 OZ. TALLSUP \$2.09

4 HOMESTYLE POPCORN CHICKEN & 32 OZ. TALLSUP \$2.79

5 SPICY POPCORN CHICKEN & 32 OZ. TALLSUP \$2.79

6 3 TAMALES, HOWLERS & 32 OZ. TALLSUP \$2.69

7 2 HOT LINKS WITH BREAD & 32 OZ. TALLSUP \$2.59

8 2 CORN DOGS & 32 OZ. TALLSUP \$2.69

9 CHIMICHANGA & 32 OZ. TALLSUP \$2.49

10 2 BEEF & BEAN BURRITOS & 32 OZ. TALLSUP \$2.69

**BUY 12 GALLONS OF FRESH ALLSUP'S MILK... GET ONE FREE!**

Collect 12 Milk "Moo" Stamps Today! If You Could Win FREE Milk For A Year!



**Spearman ISD Registration - 2009-2010**

**HIGH SCHOOL:** Returning Students Pickup Schedule: Friday, August 14, 2009  
 • 9th Grade - 8:00 - 8:45 a.m. • 10th Grade - 8:45 - 9:30 a.m.  
 • 11th Grade - 9:30 - 10:15 a.m. • 12th Grade - 10:15 - 11:00 a.m.  
 New Student Registration: Friday, August 14, 2009 @ 11:00 a.m. - Noon (New students need to bring a copy of shot record and current transcript.)

**JUNIOR HIGH:** Spearman Junior High will hold registration for both new and returning students on Wednesday, August 19th from 9:00 a.m. - Noon and 1:00 p.m. - 4:00 p.m. Returning students will be able to pick up their schedules at this time, and students that are new to the District will be able to register at SJH.

**ELEMENTARY SCHOOL:** Gus Birdwell Elementary School will have registration for new students on Monday, August 17 and Tuesday, August 18 from 8:30 a.m. - Noon and 1:00 p.m. - 3:00 p.m. (New students will need to bring birth certificate, social security card and immunization record.)

Ask about our **NEW E-Subscriptions!**

reporter@spearman-reporter.com

806-659-3434



Guymon, Oklahoma

FRESH POPCORN EVERYDAY!

-PARTY ROOM & ARCADE-

Call for Showtimes  
580-338-3281

www.northridge8.com



Palace Theatre

MOVIE SHOW TIMES  
Friday-Thursday - 7 p.m.  
Sunday - 2 p.m.  
Closed Sunday Night

FRESH POPCORN & DRINKS!  
PARTY ROOM & ARCADE  
MOVIE RENTALS

Palace Theatre  
210 Main Street  
Canadian TX 79014  
806-323-5133  
www.palacetheatre.com

The Palace Theatre meets Lucasfilm THX specifications for site and sound quality.

See us for:  
AUTO • HOME • CROP HAIL • FARM & RANCH • MULTIPERIL • LIVESTOCK

**INSURANCE**

**BORT AGENCY, INC.**  
510 Main St. • Gruver, TX  
(806) 733-2456

**2nd Annual Big Fun Run 5K Race and Family Fun Walk Benefits Big Brothers Big Sisters**

The Wheatheart Satellite of Big Brothers Big Sisters of the Texas Panhandle will hold a 5K race and Family Fun Walk in conjunction with Perryton's Wheatheart Celebration on Saturday, August 22nd. All of the proceeds will benefit the program which serves Perryton, Spearman and Gruver.

The 2nd Annual Big Fun Run will start at 8 am at Perryton High School; a one mile walk will begin at 8:30.

There will be four divisions for the race: 14 and under, 15-25, 26-40 and 41-50+. Prizes will be awarded to male and female first and second place winners in each division.

The deadline to pre-register is August 10th but registration will be available the morning of the event. The entry fee for individual runners is \$25; members of the Lone Star Runners Club or SWFTR pay only \$20. Individual walkers pay \$25. Entry

fees include a t-shirt. T-shirts will be guaranteed to the first 75 registrants. The shirt features an original illustration of Hank the Cowdog designed specifically for this event.

The 5K route will begin at PHS and move south down Jefferson; runners will turn West onto 24th Street. The race will wind through the Wheatheart subdivision on Texas, 23rd and Vallejo finally turning onto Loop 143 from 22nd Street. Participants will tour through the Bintree subdivision entering on Utica and exiting onto 24th from Sequoia. A trip back down 24th and Jefferson brings racers to the finish line at PHS. The community is encouraged to come out and cheer on the racers.

The Family Fun Walk Package is \$90 and includes four t-shirts. The route will follow the perimeter of the high school grounds.

The event sponsor is BP

America - Anadarko Asset. The Lemon Law Firm has also underwritten some expenses.

This year is Perryton's 90th birthday celebration. In addition to the 5K race there will be many other fun activities including free breakfast at United Supermarket, a Main Street parade featuring 10 area high school bands, Museum of the Plains Pioneer Days, Demolition Derby and much more. Contact the Chamber of Commerce for more information at 435-6575.

The local Big Brothers Big Sisters' office serves Perryton, Spearman and Gruver. Over 110 children have been matched with caring mentors in school and community based programs this year. For more information about the program or to register for the race call BBBS at 806-434-0016 or email bbbswheatheart1@ptsi.net for a registration form.

**Spirit of Sedona**

**L.L.P. - Massage**

Therapy by Michael L. Cook, R.M.T.

**90 Minute Massage - \$60.00**  
**30 Minute Massage - \$30.00**

Call for appointment - 806-886-1125 (cell)  
\*in-home chair massage now available

You are invited to attend a reception honoring **Bob Hill**

as he retires as Spearman ISD Transportation Director on Thursday, July 30, 2009 from 5:00 p.m. - 6:30 p.m. in the High School Library.

**CASE IH AGRICULTURE**

**GET INTO ZERO%**

**GET INTO MAGNUM TRACTORS**

**0% INTEREST ON ALL MAGNUM TRACTORS OR A FREE GPS RECEIVER VALUE UP TO \$5,000**

**OR \$4,000 CASH OPTION**

With models ranging from 150 to 275 PTO hp, selecting a Magnum tractor for your row crop operation is easy. Which offer to choose? Well, Magnum tractors are available with AFS AccuGuide™ systems factory-installed. So, buy the AFS receiver, add the navigation controller and AFS Pro 600 display, finance it all at 0% and reap the benefits of auto-guidance accuracy this season. Come in today to select your Magnum tractor and take advantage of these great offers!

**OPENING AUG. 4TH!**

**M.A.L.'S 2**

Formerly Panhandle Deli & Diner

217 Main St. Spearman

**Good Home Cooking**

Come join us where friends meet to eat.

**Monday-Saturday 11 a.m.-8 p.m.**  
**Sunday 10 a.m.-3 p.m.**

**GET IN TO SEE US TODAY!**  
OFFER ENDS JULY 31, 2009.

**FIVE STAR EQUIPMENT, INC.**  
Highway 15 West • Box 658 • Spearman TX 79081  
(806) 659-3743 • 800-978-2759

\* Receive an AFS 252 receiver with a value of up to \$5,000 when you purchase a new Magnum tractor. Offer not valid in combination with 0% financing or cash option. Offer good at participating dealers.  
 † 0% interest for 12 months, followed by 5.9% interest for 60 months. For commercial use only. Customer participation subject to credit qualification and approval by CNH Capital America LLC.  
 ‡ See your Case IH dealer for details and eligibility requirements. Down payment may be required. Offer good through July 31, 2009. Not all customers or applicants may qualify for this rate or term. CNH Capital America LLC standard terms and conditions will apply. Taxes, freight, setup, delivery, additional options or attachments not included in suggested retail price. Offer subject to change or cancellation without notice.

**CNH CAPITAL**