

The Hansford County Reporter-Statesman

Serving Hansford County Since 1907

12 PAGES

VOL. 85, NO. 4

213 Main Spearman, Texas

50¢ THURSDAY, NOVEMBER 19, 1992

WEATHER

Day	Hi	Lo	Precip
Thu	52	32	.14
Fri	57	26	.00
Sat	69	30	.00
Sun	72	35	.00
Mon	71	35	.00
Tue	59	36	.00
Wed	--	--	.00
1992 Precip			19.90

INSIDE

Society Pages	4, 5
Sports	6, 7, 8
Spiritually Speaking	2
Hansford Happenings	2
Want Ads	11
Obituaries	12

Man shot in residence

by Angela Jones
Editor

Editors Note: In cooperation with the Spearman Police Department and pending charges the names in the following story have been withheld.

A white male was shot in a residence in the 200 block of Archer on Wednesday, Nov. 11.

According to Spearman Police Chief Joe Raper, his department received a 911 call from a woman reporting a man was in her house. An officer, Sergeant

Schmidtwitche, was dispatched to the scene and upon arrival he saw a white 62-year-old male was inside the residence, said Raper. He added, "the officer had been told that the man had been shot and he (the officer) found that the man had been shot once in each leg."

Raper continued, "the weapon that was used was seized and the woman that fired the shots has been identified."

The man was transported to Hansford Hospital and held overnight. Upon his release he went to

a hospital in Amarillo, said Raper. He returned to Spearman. Then on Monday he turned himself in, said Raper.

The only charges that have been filed so far are against the man. "He was in violation of a Protective Order," explained Raper. He added that this was the fourth violation of this order.

The shooting is still under investigation and will be presented to the Grand Jury.



Members of the Station Master's House Museum, the Spearman Chamber of Commerce and the 20th Century Federated Study Club for a ribbon cutting to open the Little School display at the Museum. Some of those present were Mathilde Entrekln, Cindy Blackman, Randy Kirk, Larry Butler, Dick Gillaspie, and Pat Dear.

Gruver I.S.D....

receives \$226,587 from CED

Business Manager Margaret Fry reported that G.I.S.D. had received checks from the CED totaling \$226,587 and from the local collector for \$186,703 at the Gruver I.S.D. Board meeting held Wednesday, Nov. 11.

"This revenue will allow us to operate past the first of the year without borrowing money," said Superintendent Barry Haenisch. He added that the bulk of their revenue comes to them in January and February.

In other business the board entered into executive session to discuss personnel and school property. Upon the return to open session the board review the appraisal by Dennis Nelson of school property. After reviewing the appraisal, the board passed a resolution calling for the sell of the property located at 405 Richardson. The resolution passed unanimously. The property will be sold by sealed bids on December 9, 1992.

Mr. Looper reported on a waiver request to the Commissioner of Education. The request relates to a high school student who has credit for a math class, but does not have the background to successfully complete the next course. Superintendent Haenisch stated in his report, "We are requesting permission from the Commissioner to repeat the earlier course and grant another credit for retaking the course." The board voted unanimously to support the waiver request.

Gruver City Commission casts vote for Risk Pool Trustee

by Angela Jones
Editor

The Gruver City Commission voted on a Board of Trustee for the Texas Municipal League Group Benefits Risk Pool at the regular meeting held at 7 p.m. on Wednesday, Nov. 11.

Commissioner Mark Irwin made the motion that the City of Gruver cast their vote for Glen Metcalf for the Board of Trustees of Texas Municipal League Group Benefit Risk Pool. Buster Davis, commissioner, seconded the motion and it carried.

Regular business conducted at the meeting was the reading and approval of the minutes from the last meeting. The commission also approved the payment of the bills for the month of October 1992.

Having a short agenda, the meeting was adjourned.

**Dear Santa
letters due by
Wednesday,
Dec. 9**

quest. Haenisch reported that a request had been made by a citizen for salary and benefit information for administrators and the highest and lowest paid teachers. He stated that he had checked with the district's attorney and revealed that the information had to be provided. The information was presented to the board and then released to the individual.

In other business, the second reading of policy EAB (local) was presented and approved. Haenisch explained, "EAB (local) spells out

the makeup of the campus committees and the length of the representatives' terms."

The principals presented the Textbook Committee for each campus and their recommendations were approved.

The Gruver High School Student of the Month, Justin Carthel, was recognized at the meeting.

Superintendent Haenisch gave a report. He stated that a new bus has been ordered. The bid has been awarded by the state and the bus is scheduled to be delivered in April.

See Gruver page 9



In a brief ceremony at Spearman City Hall on Monday, Nov. 16, Mayor Burl Buchanan signed a proclamation proclaiming November as National Hospice month. Present at the signing were (l-r) Vera Domingus, Sue Watts, Al LaRochelle, Beth Phelps, Burl Buchanan, Brenda Wall, Carole Stumpf, Ruth Bryan, Pam Schnell.

Hansford County rebates, up 2.37 percent for November

Hansford County Sales Tax rebate checks for the month of November in the amount of \$21,772.74 were recently mailed from State Comptroller John Sharp.

According to the release this figure is up by 2.37 percent, compared to this same period in 1991. The amount received for November 1991 was \$21,269.32.

The report also showed that the

year-to-date rebates are up in 1992. Thus far in 1992 \$197,647.74 in rebates have been sent, compared to the \$187,686.05 in 1991. This is an increase of 5.31 percent.

The sales tax rebates checks in November 1992 for Spearman total \$17,361.71, which is up 3.55 percent from that received in 1991. In November 1991, \$16,767.30 in rebate checks were sent.

The year-to-date rebates are

\$153,913.36 in 1992. This is a 6.50 percent increase over the \$146,620.50 in sales tax rebates in 1991.

Although the November 1992 sales tax rebate checks are up in Spearman, they are down in Gruver.

Gruver sales rebates are \$4,411.03, compared to the \$4,502.02 received in November 1991. This is a decrease of 2.02 percent for the month.

Despite this decrease, the year-to-date rebates for Gruver in 1992 are still up by 6.5 percent. Thus far in 1992 Gruver has received \$43,734.38 in rebates, as compared to the \$41,065.55 in 1991.

According to the release a total of \$162.2 million in November sales tax rebates were sent to 1068 Texas cities and 106 counties. It is reported that this is a 5.8 percent increase over the payment one year ago.

The release also states that Texas cities received \$147.8 million, up 7.7 percent over the \$137.2 million they received last November. Counties received a total of \$14.3 million for their November 1992 rebates. This dropped 10.5 percent from the November 1991 payments to the counties of \$16 million.

Pringle-Morse C.I.S.D. adopts policy for school facility use

The Pringle-Morse C.I.S.D. Board of Trustees developed a local policy for the use of school facilities by non-school organizations at the regular meeting held Tuesday, Nov. 10, 1992.

The policy allows individuals and non-school organizations to use school facilities without charge provided the facilities are left in satisfactory condition. If the facilities are left in unsatisfactory condition, the user will pay school personnel

for cleaning and repairs.

In other business, Holly Simpson and Travis Wolf, the school auditors from Brown, Graham and Company of Spearman, presented the annual audit report for the year ending August 31, 1992. Wolf, chief accountant of the audit, reported that books for the district were in excellent condition with only a minor violation with the Chapter I program that has been corrected. Wolk also complimented bookkeeper Paige Speck for her excellent work.

A report was given on the district's Site-Based Decision Making Committee. The committee will meet in December to discuss district goals. The committee consist of school representatives Monica Schmidt, Kenton Johnson and Sue Schick. Parent representatives are Kerry Phillips, Nanelle Kiser, Lovida Giblin and Milana Reiwig. Business/community representatives are Carolyn Shields, Tom Dortch, and John Tollison. The district's plan was approved by the Texas Education Association last month.

School employee Cindy Knox was given Monday, November 23rd

to attend the state PTA conference in Houston.

The legal services of R. James George, Jr. were terminated. George was an attorney representing the Budget Balanced Schools Association and Pringle-Morse.

In regular business, the board approved the minutes from the October 13 meeting and approved the November operating expenditures. The expenditures for the month were \$20,592.96.

Then Superintendent's report was given.

Pringle-Morse has a current enrollment of 74 students.

The Pringle-Morse Cougars begin basketball Thursday at the Hartley tournament. The girls will play at 7 p.m. and the boys at 8:30 p.m. against Hartley. Then on Friday, the girls will play at 4 p.m. and the boys will play at 5:30 p.m. against Channing. On Saturday, they play against Felt. The girls play at 1 p.m. and the boys play at 2:30 p.m.

The annual Thanksgiving Dinner was served today, Nov. 19.

Editors Note: The above information was taken from a report by Superintendent Beryl Sears.

Palo Duro River Authority... awards paving bid

by Angela Jones
Editor

The Palo Duro River Authority accepted paving bids at the meeting held at 2 p.m. on Friday, Nov. 13.

Two paving bids were received for the area behind the dam. Ed Baker of Borger was awarded the bid for project. Baker's bid was \$40,582 and he was the low bidder, said Johnnie C. Lee, general manager. The other bid was from Lewis Construction in Dumas in the amount of \$52,962.

In other business the Debt Service Budget for fiscal year 1992-1993 was approved in the amount of \$1,891,496.25.

Regular business conducted was the approval of the minutes, treasurer's report and payment of

claims.

The final item on the agenda was the discussion of the project. On Tuesday Lee reported that many on the projects have been completed. Projects which have been completed are the restrooms, the water system and the boat ramp on the north side was completed Monday. He added that they are about to complete the R.V. Parking lot behind the dam. There are 26 hookups ready and Lee said that he already has 10 reservations for December. Other projects nearing completion are the family shelter which only lacks the floor and some children's playground equipment is up.

"It looks like they are coming along pretty good at trying to open it up next year," state Lee.

Deadline change:

Because of the Thanksgiving holiday on Thursday, Nov. 26, *The Hansford County Reporter-Statesman* will be published on Wednesday, Nov. 25. Due to the early printing date, next week's deadline will be moved UP to MONDAY, Nov. 24 at NOON. Readers and advertisers are asked to make a note of the earlier deadling. *The Reporter-Statesman* office will be closed on Thursday and Friday, Nov. 26 and 27, in observance of Thanksgiving. We appreciate your cooperation and wish everyone a happy and safe holiday.



The Gruver FHA sponsored a blood drive Thursday, Nov. 12, at the Gruver High School library. Coffee Memorial Blood Drive personnel reported that about 40 people had donated. Pictured above is Gruver High School Principal Lloyd Looper donating. A Coffee Memorial employee is standing by.



RADICAL LIVING

By Dan Carter, Pastor
Trinity Community Church

HOW TO BE HAPPY
Matthew 5:3-11

Probably not too many church-goers consider faith as a means to be, or to get happy. Most Christians that I've encountered in my almost 20 years of believing, don't count their faith as a source of happiness at all. As a friend of mine says, many of them are "sucking of lemons for Jesus."

People are always looking for something to tickle their fancy, to make them happy. One of the great ticklers of our age is entertainment - movies, TV, games, sports, etc. Much of our service-based economy is aimed at scratching the itch of a deep-seated desire to be happy. The problem is that happiness is often undefined or ill-defined.

A lot of people, Christians included, define happiness as always feeling good, never being discouraged, always having what you want just when you want it, and many other self-oriented concepts. Jesus turned things around. He taught, and lived as though happiness was not an end in itself, but rather a by-product of obedience.

Though not translated as such in most Bible versions, blessed, the word prefacing Jesus' statements in Matthew 5:3-11, could well be interpreted as happy. If these things are true about you, He says, you will be happy.

The night before His crucifixion, Jesus models His love and service by washing the disciples' feet. When He is finished He says, "If you know these things (what He had lived and taught), you are blessed (happy) if you do them," (John 13:17).

Jesus was the happiest and most fulfilled person to ever walk the earth. His desire is for us to know that same happiness. As the old hymn says, "Trust and obey, for there's no other way, to be happy in Jesus, but to trust and obey."

Sponsored by: Trinity Community Church
1105 S. Roland

Moderation, not abstinence key to weight control

FORT WORTH—If you are worried about gaining extra weight during the holiday season, forget about denying yourself all those tempting foods, said a Texas Christian University nutrition expert.

"The holidays are a time to enjoy, and food is a part of it," said Dr. Connie Peraglie, Registered Dietitian. "You can't tell people they can't have food because that just doesn't work." She explained that eating smaller portions is the key to not gaining the average five to 10 pounds during the holiday season.

The major problem with traditional holiday foods is their high fat content, Peraglie noted. The fat portion of food contains more than twice as many calories per serving as do the carbohydrate and protein portions. "It doesn't take an enormous volume of fatty food to gain weight," she said.

Peraglie suggested some recipes can be modified to lower the fat content. Stuffing made with low-calorie margarine and cooked outside the turkey contains half the fat found in the traditional preparation.

Gravy made with evaporated skim milk rather than the traditional fatty meat drippings contains nine to 10 times less fat, she said.

In addition to reducing the portions of foods consumed, Peraglie suggested eating more slowly and consuming fewer appetizers to trim the holiday weight gain.

Peraglie said people mistakenly believe appetizers contain fewer calories because they are small. Often they have more calories than an entree because of their fat content.

"The trick is to have a wide variety of foods but eat them in moderation," she commented.

Lookin' Back - Spearman

5 years ago
Gary Ellsworth as president of Families in Action, attended a 3-day seminar in Boerne. He brought back material from the Texas War on Drugs to assist in his continued effort to make the local public aware of the drug and alcohol problems facing teenagers.

A portion of scheduled salary increases was reinstated to the Hansford County Hospital District's budget. The 1987-88 budget had been cut by \$51,698, but the board of directors reinstated \$37,035. Administrator LaRochelle gave the explanations for the reinstated funds.

The Lynx varsity basketball season opened in a edge-of-the-seat thriller. The Perryton Rangers took the game 48-46.

"Robo Cop" was showing at the Lyric Theatre.

10 years ago
The med-evac helicopter for health emergencies in the Panhandle stopped at Hansford Hospital to familiarize Spearman EMT and hospital personnel with the helicopter procedures. Three major Amarillo hospitals and Amarillo Aircraft Sales were in a three month-trial period of using a med-evac helicopter. Patients transported by the Aerospatiale Star helicopter were billed \$525 per hour for flying time from the time the helicopter left the pad at Northwest Texas Hospital.

15 years ago
Highlighting the 1977 Hansford The difficulty in life is the choice.

—George Moore

Bankers Award program was the naming of Joel Lackey as the Outstanding Conservation Farmer of the Year.

The Lynx lost bi-district to Childress 20-3.

Jay Naaman presented the Farmers Union charter to the local chapter. Dennis Nelson and Mike McLain were nominated for president of the Farmers Union in Hansford County.

Karen's Kozy Korner

by Karen Babitzke
Extension Agent

PLAN FOR A SAFE HOLIDAY BIRD

Whether a novice or an experienced turkey cooker, plan ahead and follow these steps to make the process of preparing and serving the holiday turkey safe and worry-free:

- Decide how much turkey you will need before you shop. You'll need about one pound per person, or one and one-half pounds per person if you want plenty of leftovers.

- Make sure you have the equipment needed. Do you have a roasting pan for a large turkey? If not, an alternative would be to roast two small birds instead of one large one. For best results, plan to use a meat thermometer to register internal cooking temperature.

- Decide whether to buy a fresh or frozen turkey. A frozen turkey can be purchased well in advance, but a fresh bird should be bought only one to two days ahead.

- If you have a frozen bird, plan for enough days to refrigerator-defrost it. A rule of thumb is about 24 hours of defrost time for each 5 pounds of turkey.

- When handling the bird, wash hands, sink, counter, utensils and platter thoroughly with soap and water before and after handling. This will help prevent contamination and potential food safety problems.

- If you plan to serve stuffing, the safest alternative is to cook the stuffing in a separate pan. Stuffing inside a bird can remain at temperatures that encourage bacteria growth. If you choose to stuff the bird, do it right before roasting, not ahead of time.

- Preheat the oven to 325 degrees to 350 degrees F. Place the turkey breast-side up in a shallow roasting pan. Insert a meat thermometer in an inner thigh of the bird.

Allow 15 to 18 minutes per pound cooking time for an unstuffed bird and 18 to 24 minutes for a stuffed bird. A whole turkey is done when the internal temperature reaches 180 degrees F. in the inner thigh (dark meat). A turkey breast should reach 170 degrees F. internal temperature. Stuffing should reach at least 165 degrees F.

- Allow the cooked turkey to sit for 20 minutes before carving.
- It's very important to refrigerate leftovers immediately after the meal. Carve leftovers from the bone and refrigerate immediately. Cooked turkey and stuffing should not remain at room temperature for more than two hours.

- If you choose to roast the turkey ahead of time, it needs to be deboned after cooking and refrigerated in shallow containers. The meat can be reheated in the oven or microwave before serving.

Following these tips to keep the holiday fun, not frantic.

Plans are being finalized for the Emergency Medical Service to teach CPR and First Aid to the faculty and staff at the Elementary School. Michelle Davis will direct the workshop, which will result in those who pass the test being carded through The American Red Cross.

Spearman E.M.S.... to teach at elementary

Plans are being finalized for the Emergency Medical Service to teach CPR and First Aid to the faculty and staff at the Elementary School. Michelle Davis will direct the workshop, which will result in those who pass the test being carded through The American Red Cross.

The Elementary School personnel, feel that the training will help them and the community. Think about it, potentially 32 more citizens of the community ready and able to assist if the need arises. The training will take place after school hours and any member of the community who would also like to take this training are welcome.

Police Files

Spearman Police Report

The Spearman Police Department received 23 calls during the reporting period running from Monday, Nov. 9, to Sunday, Nov. 15.

On Monday, Nov. 9, the police department received one report of theft.

The following day, Tuesday, the department received one traffic complaint, two miscellaneous calls and assisted one lockout.

Then on Wednesday officers answered one 911 call and conducted one follow-up investigation.

On Thursday, Nov. 12, a simple assault was reported. This involved a 17-year-old girl that alleging that she'd been assaulted by two male juveniles. The case has been referred to juvenile probation, said Police Chief, Joe Raper.

Also on Thursday, there was an accident reported. The accident occurred in the 10 block of E. Second at approximately 2:50 p.m., said Raper. According to the report Sonya Frances Tindell was backing a 1981 Chevy Citation from a parking space and struck a 1978

Chrysler New Yorker which was travelling west on Second. Rhonda Estelle Reichen was driving the New Yorker. No injuries were reported and no citations were given, according to Raper.

On Friday, Nov. 13, a woman's purse was reported stolen from her vehicle while it was parked in the 100 block of S. Brant.

Then on Saturday, there was a report of a D.W.I. When it was investigated it was unfounded. There was also one disorderly conduct and responded to one alarm.

On Sunday, Nov. 15, the following calls were reported: one vandalism, one traffic complaint, two suspicious, one alarm and two miscellaneous.

There were three animal control calls during the week.

Gruver Fire Report

During the reporting period running from Monday, Nov. 2, to Sunday, Nov. 15, the Gruver Volunteer Fire Department responded to four fires.

Two fires were reported on Saturday, Nov. 7. According to Fire Chief, Sam Gruver, both of these fires were grass fires. One of the fires was located 3 1/2 miles south on the county road that goes by the landfill. The other was located 4 miles south on Hwy. 136 and 2 miles west on 2018.

Then on Monday, Nov. 9, a fire was reported. It was also a grass fire located 4 miles south on Hwy. 136 and 2 miles west on 2018.

"All three of these fires were started by farmers burning stubble and it got away from them," said Gruver. He added, "the only property damage was to fences. Some of the posts got burnt."

The final fire in the reporting period occurred on Tuesday, Nov. 10. It was a grass fire located 6 miles south on Hwy. 136. Gruver said that this fire started in the ditch and no property damage was reported.

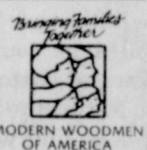
CAREER SALES

We're looking for honest, hard-working reliable men and women who want to build sales careers. We will make a substantial investment to train you.

Excellent income while you receive classroom and on the job training.

For personal interview call or write stating qualifications.

Kevin D. Felix, FICF
District Manager
Box 96
22 6th Avenue S.E.
Perryton, Texas 79070



Phone: (806)435-6606



The Spearman Knights of Columbus were at the Catholic Parish Hall Friday night, Nov. 13 to hand out the prizes won by the kids that participated in the St. Jude's Bike-a-Thon. The boy and girl who earned the most money over \$100 received bicycles. They are Harbor and Laura Gillaspie (far right). The other kids in the picture and the stuff they earned are (back:l-r) Chuck Grayson, B.J. Hues and Josef Sinbos. On the front row are (l-r) Jennifer Delacruz, Julie Bravo, Megan Jones, Tanner Beedy, Anthony Renteria and Brandon Jones. The Kids raised \$1,949.

THE FALL TREND IS...

THE WHITE BLOUSE. j. Winston knows that the white blouse is the trend for Fall '91. It's a must this year. The blouse... the white blouse. The piece of your wardrobe that's the quiet, understated center of attention. White space... the designer's dream. Now it's in your wardrobe. Experience the j. Winston difference. See for yourself why we are the women's fashion store of Amarillo.

j. Winston
of amarillo

2701 PARAMOUNT 358-2457 VISA*MC*A-EX

JOIN THE MEXICAN FIESTA

ON SALE AT DAIRY QUEEN NOV. 9-22, 1992

3 BIG, ALL-BEEF TACOS \$1.49

TACO SALAD \$2.49

Dairy Queen

© Reg. U.S. Pat. & Tm. Off. Am. D.Q. Corp. © 1x D.Q. Op. Coun. At participating Dairy Queen stores.

Hansford Happening

The Hansford County Gun Club will have a meeting at Spearman City Hall on Thursday, November 19, at 7 p.m.

On Tuesday, Nov. 24, Mrs. Howard and Mrs. Butler's Kindergartners will present a Thanksgiving play, "Everybody's Invited," at the Gus Birdwell Elementary School. There will be a 9 a.m. performance for parents, relatives and friends. The musical play is a tribute to the beloved children's author Hans Christian Anderson, and will include the songs "Thumbelina," "Inchworm," and "The Ugly Duckling."

The Sacred Heart Ladies Guild will have a bake sale at Lowe's from 8 a.m. until noon on Wednesday, Nov. 25.

A six foot Christmas tree decorated with handcrafted angels and silver bows, plus two handcrafted angels to stand by the tree—all made by Golden Spread Center Crafters will be raffled December 1st at the covered dish dinner. Raffle tickets are \$2.00 each available at the Center or from members. Join Crafters at the Center on Thursday at 10 A.M. for crafts and enjoy the covered dish lunch.

Hansford County Rotary Club is sponsoring a clothing drive for our community and Mexico. The Rotary is asking for serviceable (washed or cleaned and mended) clothing. The clothing will be accepted by any Rotary member or can be dropped off at the Hansford County Extension Homemakers office located in the basement of the courthouse. Clothing will be made available to organizations or charitable groups for individuals in our community needing assistance.

The Annual Ministerial Alliance Community Thanksgiving Service will be held at 7 p.m. Sunday, Nov. 22, at the First United Methodist Church. James Brown of the Apolistic Church will be the Speaker.

Oklahoma Panhandle State University... announces spring registration

Oklahoma Panhandle State University announces registration for the Spring, 1993 semester. Open registration for all students will take place from November 9 until December 4, 1992.

Pre-registration for new students

will be open from January 4 through January 11. New students include students who are seeking admission to OPSU for the first time and former OPSU students seeking readmission after a break in enrollment.

Spring semester classes are scheduled to begin on Tuesday, January 12, 1993. A late registration fee is charged beginning the first day of classes.

For more information on registration, contact OPSU Admissions office, Sewell-Loofbourrow, room #126, or call (405) 349-2611, ext. 375.



Spiritually Speaking

by Rev. Gary Gumfory,
First Christian Church in Gruver

It has been revealed in years past that the Bible has out sold any other book in the world, and yet I venture to say that this same best seller is probably the less read book in the world.

In the book of John chapter eight, Jesus said, "If you abide in My word, then you are truly disciples of Mine; and you shall know the truth, and the truth shall make you free." In these verses we find that one of the prerequisites to being a disciple of Jesus is abiding in His word. This abiding leads one to the truth and freedom. In the first chapter of this same book, John recorded that Jesus was the Word and that He became flesh and dwelt among us. It must be a hard concept to believe, that this same Bible we read is Jesus, but if Jesus is the Word and this Bible is the word of God the two must be one. What Jesus is saying to us is that He wants us to abide in Him. It is Jesus who will lead us to the truth. In the fourteenth chapter of this same book Jesus proclaims that He is the way, the truth, and the life. Here we find that Jesus

is truth. Isn't it amazing that Jesus is wanting to lead us to Himself. Yet what is even more amazing to me is the fact that so many in our world simply do not want to know the truth. If they did the Bible would be the most read book in the world. What is even more frightening to me is the fact that people prefer to stay in a position of bondage rather than freedom. Jesus said that the truth would make us free. That freedom is for all of humanity and it, like the freedom we enjoy in America, came with a very high price.

By choosing not to read and abide in the word, we in effect are choosing to believe a lie. It is that choice that puts us in danger of Judgment. Paul said in II Thessalonians chapter two that it will be because people refuse to receive the love of the truth and be saved that God Himself will send a strong deluding influence so that they might believe that lie and enter into judgment.

It is my home and prayer for you today that you will take the time to abide in the word, find the truth, and be set free.



Pictured above are the Hansford County Extension Home-maker Council Officers: Chair Carma Dorton, Vice Chair - Jettie Davis (pictured is alternate Verna Brown.), Treasurer - Cheryl Sander, Secretary - Patty Sheppard (pictured is alternate Janie Kunselman.), TEHA Chair - Elsie Watley, TEHA Vice Chair - Ethel Wagner and Parliamentarian - Marguerite Nelson.

E.H. council holds meeting

What a Halloween of a good time! The Hansford County Extension Homemakers held their annual meeting and membership drive. All enjoyed a creative night in costume.

After the meal was served by 4-Hers Ashley Brown, Kara Pipkin, Candice Pipkin, Texana Clyburn, and Leah Mackie, the program of awards was presented.

Elsie Watley welcomed the group and presented the special awards for the evening. Woman of the Year for Happy Homes was Verna Brown and for the Town & Country the award went to Annetta McIver. Carma Dorton was presented the plaque for her dedication of service to the Council and Clubs. She will be featured in the women's year-book.

The program was given by Karen Babbitzke on Paper Caper figurines. They were later given as door prizes along with the table decorations.

Mrs. Babbitzke installed the Council officers for the 1993 year. They are: Chairman - Carma Dorton, Vice Chairman - Jettie Davis, Secretary - Patty Sheppard, Treasurer - Cheryl Sander, TEHA Chair - Elsie Watley, TEHA Vice Chair - Ethel Waggoner, and Parliamentarian - Marguerite Nelson.

Special guests for the evening were the spouses of the Homemakers, Joe T. and Linda Venneman, B.J. and Glenda Renner, Wanda Wagner, Byrnic and E.J. Calloway, Ronda Baker, Mellie Burgess and Channing. Everyone was escorted through the spook house that the ladies had put together special for the evening of fun.

A man travels the world over in search of what he needs and returns home to find it.

—George Moore

GTE to award grants to teachers

Secondary school math and science teachers in (Texas) are eligible for a \$12,000 grant from the GTE Foundation—\$7,000 for a school enrichment project and \$2,500 each to pursue personal development.

The program, called GIFT (Growth Initiatives for Teachers), makes grants available to selected GIFT teams made up of one math

teacher and one science teacher from the same school. Both must have a minimum of three years teaching and experience in their current school district.

Grant applications are available now from GTE. The application deadline is January 15, 1993. Teachers interested in more details may contact GTE's Community Affairs Manager, Mail Code TXD1911A, 500 Carpenter Freeway, Suite 700, Irving, Texas, 75062.

More than \$5 million in grants have been awarded since the program began in 1983. Teachers in 32 states and the District of Columbia are eligible to apply for the grants.

Michael B. Esstman, president of GTE Telephone Operations - Central Area, said GIFT's objectives are to support and sustain excellence and innovation in the teaching of secondary mathematics and science, and to provide rec-

ognition and new opportunities for outstanding, experienced teachers.

In addition to the grants, teachers selected as GIFT Fellows attend a seminar the last week of June at GTE Laboratories near Boston. The group also visits Washington, D.C.

The seminar allows teachers exposure to the cutting edge of technology during visits with scientists and also meetings with other outstanding teachers, education policy makers and government leaders. The grants are funded by GTE Foundation on behalf of GTE area operating companies.

As one of GTE's four operating areas, GTE Central Area — headquartered in Irving, Texas—serves 2.5 million customer access lines in 13 states: Arizona, Arkansas, Iowa, Kansas, Minnesota, Missouri, Nebraska, New Mexico, North Dakota, Oklahoma, South Dakota, Utah and Texas.

At the movies . . .

Beginning Friday, Nov. 20, and showing through Tuesday, Nov. 24, at the Lyric Theatre in Spearman is "The Last of the Mohicans" on screen 1 at 7:45 p.m. "The Last of the Mohicans" is the only film playing at the Lyric Theatre this week.

This film stars Daniel Day-Lewis and Madeleine Stowe and is directed by Michael Mann.

"The Last of the Mohicans" is an action packed adventure set during the 1757 war between France and Britain in the Ameri-

can colonies.

Nathaniel Poe (Day-Lewis) is a white man nicknamed Hawkeye by the Mohican tribe that raised him. Hawkeye has an unlikely love interest, Cora Munro (Stowe). Cora is the head-strong daughter of a British officer.

Cora and her younger sister, played by Jodhi May, are trying to get to their father, a British officer at Fort William Lewis. On their journey to the fort a vindictive Huron-turned-Mohawk warrior Magua is their scout. Little do they know that Magua is bent on revenge and blames the British for the death of his family.

Mann casts Native American activist Russell Means as Chingachcook. He plays Hawkeye's Mohican father.

The scenery in this film is magnificent. "The Last of the Mohicans" was filmed in the North Carolina wilderness. Don't miss this film.

"The Last of the Mohicans" is Rated R.

MARY KAY
FACE TO FACE BEAUTY ADVICE™
Leann Gillaspie
Beauty Consultant
659-3889

At The Lyric Theatre . . .

Friday, Nov. 20 - Tuesday, Nov. 24
Bargain Nights Mon. & Tue. All Seats \$3
Closed Wednesday & Thursday

SCREEN 1 • 7:45 p.m.

LAST OF THE MOHICANS

Stars Daniel Day-Lewis & Madeleine Stowe

RATED R

113 Main, Spearman

Panhandle's
Oldest
Jewelry
Store

Zellers
JEWELERS

Diamond
Merchants
Since
1948

AFTER 44 YEARS RETIREMENT SALE

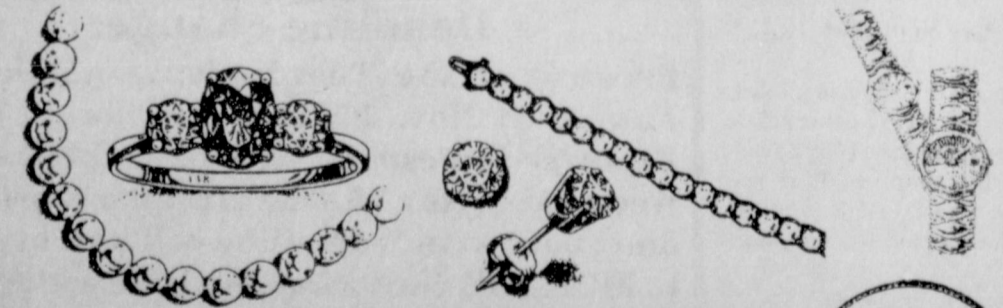
\$1,000,000 INVENTORY To Be Sold At Sacrifice Prices

Dear Friends,
After all these years, I've decided to retire. Since I've been a compulsive jewelry and gift buyer for so long, I have tucked away many unique pieces. Now, I must empty my safes and warehouse and sell my collection of beautiful jewelry and gifts with tremendous savings off my original tickets. This is a once-in-a-lifetime opportunity to take advantage of my never-before-open-to-the-public warehouse full of accumulated treasures including crystal, china, flatware, holloware and giftware. Come in now while the selection is at its greatest.



Helma Zellers

LONGINES	SEIKO	BELLEEK	GORHAM
BULOVA	LENOX	WALLACE	HUMMEL
WITTNAUER	NORITAKE	REED-AND-BARTON	ONEIDA



A Certificate of Appraisal accompanies every diamond & precious gem purchase.

Zellers
JEWELERS
415 N. Main Guymon
Mon. - Fri. 9:30 a.m.-8:00 p.m., Sat. 9:30 a.m.-6:00 p.m.
Sun. 1:00 p.m.-6:00 p.m.
Short Term Lay-A-Way

The Hansford County Reporter-Statesman

"Serving All Of Hansford County"

USPS 509660
213 Main, Box 458, 659-3434
Spearman, TX 79081
Published Weekly at
213 Main, Spearman, Texas
Owned and Operated by:
Texas Independent Newspapers, Inc.
15915 Alsace
San Antonio, TX 78232
(512) 545-1739

Second Class postage paid at Spearman, Texas 79081.

Any erroneous reflection upon the character of any person or firm appearing in these pages will be gladly and promptly corrected upon being brought to the attention of the management.

Publisher - Robert M. Hulett
Editor - Angela Jones
Bookkeeper - Sheila LaRochelle

Subscription Rate: Hansford County, \$19.95; out of county, \$24.95 annually.

Postmaster: Send address changes to Hansford County Reporter-Statesman, Box 458, Spearman, TX 79081.

The publisher reserves the right to revise or reject at its option any advertisement which it deems objectionable, either in subject or phraseology, or which it may deem detrimental to its business.

Advertising and Story Deadlines: Tuesday, 12:00 p.m.

MEMBER
TEXAS PRESS ASSOCIATION

On The Go With Joy

by Joy Henderson

Our community lost another citizen to the dreaded disease, cancer. Gordon Stedje was a gentle, soft spoken man who along with his wife Anna Marie, took me under their wing when I was a young bride of sixteen. Later on, some of to drive 20-30 miles to see a movie.

On another visit, even though we had eaten supper before going to the Stedje's, they made their supper, which included potato pancakes and black-eyed peas, sound so delicious that I was wishing I could have some, but we declined their invitation since we were full already. But the next thing I knew, Gordon had fixed me a plate with the peas and potato pancakes and got me by the hand and guided me to the dining room, I guess he had seen me smacking my lips.

Even though the Hendersons and Stedjes were now residents of Gruver, the hustle and bustle of our everyday lives kept us from

when we woke up in the middle of the night and found ourselves in a pitch black dust storm. About 9 o'clock the next morning we made it over to the Stedje's where the air was clearer and the breathing easier. I had experienced a little bit of the "Dirty 30's" but since I was so young, it did not seem such a disaster as we were having with this storm in the '50's. There was a lot more farm land in the Oslo area than we had in the Spring Creek location.

Another memory is being invited to their home for a night of watching a new fangled invention called television. I had always enjoyed movies so this thing called T.V. fit into my life just fine. One of the best programs we watched that night was called "Life With Elizabeth" starring Betty White. I laughed till I ached and it wasn't long until we bought a T.V. to keep us entertained so we wouldn't have

our children were able to be guided in school by Anna Marie who had become a teacher.

What a surprise it was to learn that one of my favorite teachers while a fourth grader and then a short time in eighth grade at Spring Creek, Marie Stedje, sister to Gordon, James and Clifford Stedje, was a part of the Oslo community that I moved into in the late forties. All of the Stedje's welcomed us with open arms. However it was Gordon and Anna Marie that we seemed to have more in common since we had children close to the same age.

I can remember some of the special times when M.H. decided after having the first daughter that perhaps I needed to learn how to use a sewing machine and get some tips on cooking. After a few visits, I began the dressmaking career when M.H. bought my first sewing machine, a converted Singer portable that would run on electricity. Another memory we have, is

close contact and the last memory of Gordon's activity was for us to be having our morning walk at the activity center. I was trying to keep myself going when a stroke after heart surgery occurred and I needed re-hab. Gordon was the first person I had heard of that had undergone heart surgery and he was walking as a preventative for other heart problems. So we had opportunity for chats as we passed each other along the way.

It doesn't seem fair that we lose our best citizens to cancer, but it may make us work harder to help those who are involved in finding cures or extending support. This month of November is designated as Hospice month and the Hansford County Hospice organization has done a lot to establish a place in our Spearman hospital for families to be able to be near their loved ones. They have had many fund raising activities to be able to finance these projects.

Also, at this time of year, the American Cancer Society is promoting their annual Great American Smokeout Day and I've told you several times, the meaning of GASO and I hope those concerned will be wanting to participate. Our Hansford County Unit of volunteers will have a few more meetings this year and then we will be getting ready for our Cancer Crusade held in April. Both of these organizations are deserving of our help and support and would welcome new members.

Well, a lot of the harvest have been completed and those that haven't finished should be able to come to an end if the weather holds out. Now, on to basketball and shortly have Thanksgiving to enjoy. Very little traveling going on right now but will soon be on the increase.

Troy and Jennifer Morris traveled to Tulsa this past weekend but Jennifer was attacked by the virus and spent her time sight-seeing in her motel room. Troy's mother Marjorie kept the children which could have made for a fun weekend but we hope you have better luck next time, Jennifer.

Josephine Ayers was able to spend a few hours at home this weekend and visit her friends at church. If things go as scheduled, she may come home this Wednesday and hopefully she will continue to improve.

While visiting our Gruver kin and friends at the manor, we learned that Pearl Shapley was transferred temporarily to an Amarillo hospital for some surgery. They were hoping to wait until George Paul could complete harvest so that they could give Pearl their undivided attention.

I become more and more disenchanted with this job of giving you the news of our sick etc. Last week, I reported that Amanda Walters was home from N.W.T.H. when in fact, she was still over there. I can see where our enemies know more what is going on with us than we do. Our communication is terrible! I learned very early in the newspaper game that you can never rely on your news being up to date. Some times the stories are several weeks, or months old and some are based on "I heard" or "Maybe this happened to so and so." That is the case of Amanda Walters and her problems. She is really having a lot of complications, but her doctor wants to keep her in the hospital until the problems are solved.

Oscar Lee was transferred from Perryton to High Plains Baptist in Amarillo. He is still having heart problems. I believe he is in room 564 if any of you would like to send cards. I imagine Violet is staying close by or with relatives.

While we were at the Hansford Manor, we ran across Theodore and Allene Bayless who were there visiting his mother Edna Bayless. Allene's Mom, Myrtle Bernstein accompanied them from Amarillo and as I inquired how she liked being there, she replied "fine." So I guess home is where the heart is and when you can make trips back to Gruver to visit friends once in awhile, that makes it okay. The Baylesses filled us in on the condition of Edith Wright. She is having heart problems and will be having tests run and a possible heart cath.

in the future.

Some of the out of town visitors lately were here to help Lil Fletcher celebrate her 85th birthday. Some did double visits such as those who are related to others such as Judy Fletcher who visited Winnie Vernon. Judy is from Amarillo, and include also Kellie and Lee Ann from Amarillo. Ben and Bertha Mieth who spoke at First Baptist Church and were guests of Larry and Camille Miller and the Fletchers. They are from Arlington. Jim and Joanne Slinchum visited from Tijeros, New Mexico. Visiting with Virginia Taylor were Rachel Taylor, Jeff Coats and family of Spearman. Shelly Crawford of Goodwell, guest of Ty Seagler and Mark Washburn had guest Jennifer Oakley of Stratford.

Brent Adams of Canyon was guest of Bill and Sylvia Duncan after he spoke at the morning services of Church of Christ while minister Bob Setliff is in Atlanta, Georgia attending a Christian Counselor's Conference. Frank and Lucy Pittman are also attending the conference.

We have been enjoying several visits from Mike and Pat Burnam who were here for the annual Gruver Pig Sale held the first weekend in November. Also Dan Carthel and family have had several visits from brothers Dave and family of Friona and Doug Carthel of Guymon.

Visitors and news from United Methodist Church include Nancy and Tiffany Smith of Guymon - also Scot Dahl of Guymon. Christy Brown who attends Baylor Law School in Waco had as guest, Steven Sims of Hereford. Anne Potts attending law school at Baylor and sister Jeanne Potts who attends school at W.T.S.U. were here visiting Joe and Cathy Potts and brother Jim. Visiting parents the Lewis Hollands were son Jody and his fiancée Renae Clark. They attend school at San Angelo State.

New grandson added to the list for June Barkley is a boy born to daughter Julie Stedje on November 10th. No other information available at this time.

Cathy Minter...

to play Maisie in "Love On The High Seas"



Standing (l/r) Mykala Hall of Shamrock, Cathy Minter of Gruver, Cory Collins of Muleshoe. Below (l/r) Renea Robinson of Claude, MI Sung Ho of Clarendon and Billy Lefevre of Roaring Springs.

Cathy Minter of Gruver is one of the cast members of "Love On The High Seas" being presented by the Clarendon College Theatre Department.

Minter will play the part of Maisie in the production.

"Love On The High Seas" is a comedy for all audiences. It is a "...hilarious 1920's comedy that takes place on a steam ship. This special ship is a place of romance, marriage, spying, intrigue, mistaken identities, lots of love and laughter."

It will be presented at 7 p.m. November 20, 21, 22 and 23 at the Harmed Sisters Fine Arts Center at Clarendon College.

Clarendon College students will also be performing 1920's music and dancing in the production.

Gruver music club holds meeting

The Gruver Music Club met November 10, 1992. The meeting was called to order by vice-president Trixie Holt. She led members in the Collect for National Federation of Music Clubs. The minutes were read and the roll was called with 22 members and 8 guests present.

Those planning to go to the District I Convention on November 14 are: Janet Irwin, Vireta Knight, Juanita Logsdon, Delphine Etling, Jean Holland, Barbara Cluck and Trixie Holt.

Etling gave her treasurer's report.

Our COWBOY CHRISTMAS FEAST (stew, cornbread & pie) for December 8 was discussed. Rosemary McKee is in charge of the event and we will be selling tickets soon.

The current musical note was given by Merle Arthur.

Irwin presented the Hymn of the month, "Come, Ye Thankful People, Come," accompanied by Barbara Cluck.

Holt introduced our program: Kermit and Rosemary McKee, accompanied on the piano by Carolyn Fletcher, presented a vocal duet, "There's Something About That Name," and "His Name is Wonderful," written by Kathy Gillispie.

Brianne Stedje and Lauree Beth Stedje played "Winter Wind" as a piano Duet. Brianne played "Rockin

Rabbits," "Indian Drums," and "Spot." Lauree Beth played "Melody," "Starry Night," and "Minuet."

Del and Barbara Cluck presented two piano and organ duets: "Thou Art Worthy" and "How Great Thou Art."

The meditation was given by Jennie TeBeest.

The meeting was adjourned. Hostesses for the occasion were Holt, Faye Harris, Rita Williams and Kathy Logsdon.

The families of Gina Hoel would like to take this opportunity to thank the wonderful communities of Gruver and Spearman, the many friends from near and far, the Gruver Police Department, Hansford County Sheriff's Department, Hansford Ambulance Service, Boxwell Brothers and the ministers for the beautiful service. We would also like to express our appreciation for your prayers, visits, calls, food, flowers, memorials and concern for all our needs during this sad and tragic time of our life. Our loss of Gina will never go away, but with the love, support and prayers from all our friends it will make it a little easier.

With love and thanks to you all.

Andy, Phyllis, Jill, Jarrod & Lauren Hoel

Idella Randall * Cecelia Randall

Mr. & Mrs. James Scroggs

Mr. & Mrs. Earl Spencer

Mr. & Mrs. Larry Evans

Agnes Hoel * Mr. & Mrs. Mac Hoel

CHRISTMAS SEALS®
THE #1 HOPE FOR
THE #3 KILLER:
LUNG DISEASE.

Put them everywhere.

AMERICAN LUNG ASSOCIATION

THE AWE-INSPIRING STORY OF ONE MAN'S RELENTLESS PURSUIT OF THE AMERICAN DREAM.

Tonight, Homer J. Simpson goes into the snow plow business.

FOX 14 THE SIMPSONS

7:00

CABLE CH. 22 GRUVER / 14 SPEARMAN

You're Invited To A ...

Holiday Open House

Sunday, November 22

Please come by and enjoy ...

- * Holiday Refreshments
- * Special Give -a- way Drawings
- * Special Sale Prices

El Vaquero Restaurant

Opens at 11 a.m. for Lunch

425 Main • Gruver

Little Tiffanies

Open 1 - 5 p.m.

103 E. Broadway • Gruver

MAIN STREET

506 Main Av. Gruver, Texas

BJ's Petal Patch

Open 1 - 5 p.m.

502 Main • Gruver

Among the Neighbors

by Helen Fisher

Ethel and Bernard Byers were pleased to have Betty Bursleson with them from Tuesday through Friday. She is the widow of Ethel's son, Duane Bursleson and lives at Burnet, Texas.

Duane, 57, passed away in the Veterans Hospital in San Antonio on November 1. Memorial services were held in Burnet on November 5. Due to her ill health, Ethel and Bernard were unable to attend. However the other family members went down for the funeral. They were Ardell Black, Shallow Water, Jerry Black, Lafayette, Louisiana; Nedra Gray, Quitman, Texas and Monte Black, Spearman. Duane lived here until he enlisted in the Navy from high school, and also later for awhile.

Sympathy is extended to Ethel and other family members.

Linda and Lonnie Hiller announce the arrival of a new daughter, Chase Marie. She arrived by way of Ochiltree General Hospital on October 22, weighing 7 lb. 3 oz. and 19 inches long.

She joins a sister, Amanda, who is a student at the University of Texas, San Antonio.

Her grandparents are Alma and Allen Ricketts and Evelyn Hiller of Spearman.

Spearman and Lonnie are well settled in Dalhart now after moving from Gruver and inform their friends that their address is 1906 Shawnee Drive, Dalhart, 79022.

Olive and Owen Pendergraft were in Ulysses, Kansas last Monday and Tuesday with an old friend, Helen Gray. The six ladies who attended college together in the 1930s planned their annual reunion for that time. However only four of them were able to attend.

A week ago Sunday, Jean Ann Behney, accompanied by her family, spoke to the congregation at the First Methodist Church in Panhandle at the morning service. Later, they enjoyed touring the Square House Museum then drove to the airport in Amarillo. Dr. Behney flew to Denver to attend the seminar of the Continuing Medical Education for Certified Practitioners of American Academy of Family Physicians. He received recertification.

In the rare leisure time, he and a colleague toured the Museum of Natural History.

Naturally, he had been gone only a short time when two of their children fell ill. However, they had recovered by the time he returned

late Friday.

Karen Countiss was in Spearman Saturday greeting old friends and met many of them at the style show. She drove over from Amarillo where she spent a few days. The Countiss family now live in Houston.

Dear me, these political jokes are getting stale, especially since a couple of them were—elected.

Edith and John Pipkin hosted a double anniversary dinner on Sunday at the Palo Duro Club. Their son, Richard and Lisa Pipkin, observed their 17th and her parents, Frank Leona Armstrong, of Perryton, their 43rd. Theirs was actually on November 5th.

Elizabeth Holton and Helen Etter returned Sunday evening from several days in New York City. They left on Wednesday with a tour group, mainly to see some of the Broadway shows. Among the plays they saw were Phantom of the Opera, Lost in Yonkers, Will Rogers Follies, Miss Saigon and Secret Garden.

Some of the group enjoyed the Rockettes at Rockefeller Center, and some took a tour which included the Statue of Liberty.

The tour group included several from near-by towns including Joyce Lackey, Lou Chapman, Frances Murrell and Shirley Lowe, all of Gruver.

During their stay in the city, the weather was fine, and their flights were smooth and the entire time was most enjoyable.

Ann and James Nagle of Albuquerque spent a recent weekend in Spearman. They were here to visit her mother, Vi Whitson, resident of Hansford Manor. The Nagles were guests of an old friend, Helen Etter.

Frances and Gene Cudd, to make sure they realized they had been married for half a century, had a double observance of their 50th. Their children, Genette and Bob Henderson and two children together with Pat and Mike Cudd and their three children honored them with dinner at Steak and Ale in Amarillo. This was in October on the eve of their departure for a South American tour.

Frances Sheets and Gene Cudd were married in Borger at the First Christian parsonage. Her sister Zola Mitchell, brother Floyd and Laverne Sheets and friend Colleen Yearly were present.

As a surprise for the anniversary,

the children had received letters from many old friends filled with reminiscences and good wishes and compiled a book of them.

They emplaned for South America the next morning accompanied by Dorothy and Max Baggerly, and Johanne and Ralph Blodgett.

Aware that their actual anniversary, October 28, would be while they were in Montevideo, Uruguay, these friends arranged a surprise for the Cudds.

Ralph, whose good friend is the head of the Peace Corps in Uruguay, made the arrangements with him. First there was a cocktail reception at the palatial home of the U.S. Ambassador where the honor guests were made to feel like VIPs.

Ora Lee Blackburn... honored at celebration

On Saturday, Nov. 7th, the home of Ora Lee Blackburn was the setting for a grand celebration of her 80th birthday. 80 pink roses were presented to her.

Many friends and family came by during the evening to wish her well. Grace Simpson registered the guests. Punch, hors d'oeuvres and cake was served to guest throughout the celebration.

Guests at the party were: granddaughters Jobey Blackburn and mom, Vicki, of Brownwood; Lisa and Rocky Popejoy and family - Suzanne, Sally Beth and Rustin from Amarillo; Sarah Blackburn and Adrian Robison from Amarillo; Susan and Jim Steve Ownbey and Sarah of Venita, Okla.; Denise and Carey Bridges of Spearman.

Grandsons attending the celebra-

This was followed by a bar-b-que, Uruguay style, at the home of the Assistant Ambassador in the landscaped backyard. So many carefully planned details made the occasion outstanding—from the mass of yellow roses, the Uruguay guest book autographed by the guests, the photographers, and the introduction and toast by Ralph Blodgett. The guests were from the Peace Corp and the diplomatic corps.

The Cudds went from surprise to Amazement—no doubt, Gene, dreading the onslaught of the "B" phase (that is bi-focals, bridgework and bulge) now feels that they are ready for the next fifty.

Congratulations to this fine couple.

tion were: Joe and Judy Hutchison, Chester, Jennifer and Codey of Clarendon.

Great-granddaughter Anna and Lee Blum and great-great grandson, Dakota, came from Memphis; and Liz Ownbey from Oklahoma City.

Great-nieces attending were Mary Smith, Gwen Reed and Melinda Hopper.

Nephew, Bobby Ray and Donna Smith from Kansas were also in attendance.

Others in attendance were her children: Bodil and Jack Bradley of Hereford; J.E. Blackburn, Ed and Betty Blackburn, all of Midland; and Elaine and Bill Cessnun of Kenai, Alaska. Everyone was surprised by Elaine and Bill's visit.

Hansford Heart Association... holds November meeting

The Hansford Heart Association met Tuesday, Nov. 10th, in Gruver. Jim and Rose Mary Brown, co-presidents, called the meeting to order.

The minutes from the October meeting were read and approved.

A report was given on the booth at the Halloween Carnival in Spearman.

The Jump Ropes for Heart will be done in the Gruver, Spearman and Morse schools this year.

Most of the meeting was spent on plans for the Big Ticket Event. It is going to be "Celebrity Waiters." The theme is "Hearts of Gold." It will be held Feb. 6, 1993, in Gruver. There will be a live and silent auction.

The committee chairperson will meet in Spearman, Dec. 10th, at Ivey's, at 7 p.m.

Those attending were Debbie Wright and Joe Rogers from the Amarillo office. Jim and Rose Mary

Brown, Barbara Stavlo, Carla Gumfory, Lorene Fulce and Darlene Pierce.

School menu

Spearman School Menu
November 23 - November 24
Lunch

Monday—Pizza burger, sweet peas, steamed carrots, brownies, milk

Tuesday—Ham and cheese sandwich, potato chips, lettuce-tomato, dill pickle spears, pork 'n beans, fruit, milk

Have a safe Thanksgiving Break!

To love for the sake of being loved is human, but to love for the sake of loving is angelic.

—Alphonse de Lamartine

Thank You

THE TWENTIETH CENTURY CLUB would like to thank all those who made possible their project of securing and moving the Palo Duro Schoolhouse to the grounds of the Stationmaster Museum located in Spearman.

The members of the club felt that this little school building should be preserved and located where it could be observed by today's children and maintained as a small and lasting remnant of the early school system in Hansford County.

The school was originally located just south of where the Palo Duro Dam is now located, on land now owned by the Lasater family. It is 12' by 16', of wooden construction, and was built probably in the 1920's. Among the teachers were Mathilde Entekin and the late Edith Sheets.

Sometime in the late 1940's or early 1950's, the school was moved to Waka, and for a time served as a post office. Later, it was sold to the O.E. Drakes.

Because of the generosity of the Drakes, who donated the building to the Museum, our Club undertook the task of raising the money to build a foundation, and move the school building to Spearman. Archie Smith poured the foundation.

The club wishes to thank the following who contributed to moving the building:

- | | |
|----------------------------|-------------------------------------|
| Johnnie C. and Jo Ann Lee | Georgianne Hutchison |
| Jack and Melba Oakes | Marjorie Curtis |
| S. B. Sheets | Audene and Verlin Beck |
| J. D. and Rubyjo Wilbanks | Anita and Lawrence Anthony |
| First State Bank, Spearman | Jimmy and Lois Shieldknight |
| Frances Stump | Ruth Baker |
| Karen and Buford Babitzke | Willis Boyd |
| Wren and Fred Holt | Clarence Mitchell and his employees |
| Dorothy and Walter Woolley | Don Reed |
| Kathleen and Tom Sutton | Verna Gail Kelm |
| Mac and Roy Wilmeth | |

Our club hopes the Palo Duro School will be a lasting reminder of the country schools of the past, and will be a favorite place for our present school children to visit.

The Twentieth Century Club
Verna Gail Kelm, Chairman
Mac Wilmeth
Marjorie Curtis

Fowler and Bodey... exchange wedding vows

Susan DeAnn Fowler of Longview and Karey Drew Bodey of Spearman exchanged wedding vows November 7th at the Cherokee Club of Longview. Brother David Lawson officiated.

Ken and Martha Lewis, and Marion and Linda Fowler of Longview are parents of the bride. The bridegroom is the son of Calvin and Linda Bodey of Spearman.

The matron-of-honor was Lavada Nelson and the bridesmaid was Cindy Coppedge. The best man was Vince Elliot and Edward Cheney was the first groomsman.

The bride is a communications student attending the University of Texas at Arlington.

The groom is a 1987 honors graduate from Texas Tech and is presently an engineer with Texas Instruments.

The couple will reside in Singapore for two years.



"The Foundation"... readies for awards

by Richard D. Partney

Gus Birdwell Elementary School's "Foundation" is gearing up for presentations of the Awards for the Second Six Weeks. Awards during the First Six Weeks were met with much pride and many of the students are still wearing their buttons, incentives given for hard work and good citizenship.

The criteria for awarding nominations to "The Foundation" was set by the entire Faculty and Staff at the Elementary School. A-Honor and A-B Honor students are the easiest to nominate because grade constitute the criteria. Perfect Attendance is based upon a single criteria and attendance every day is something every student can do, unless illness or family situations keep them from school.

Nominations for the Good Citizens Awards are based upon the teachers' criteria of citizenship in the various classrooms. Students can be nominated by any teacher or staff member based upon observation of sterling citizenship. Nominations for the B.U.G. Award is contingent upon a student raising his/her grade in all of the core subjects (excluding A and A-B Honor roll students who are already being recognized), those subjects being Language Arts, Reading, Math, Science and Social Studies. Nominations for The Principal's List is based upon the criteria of citizenship, campus and community involvement above and beyond the sterling qualities of the Good Citizens Awards. These nominations may be made by any faculty, staff member or from input from any community member who verifies the criteria with the nomination. The Principal also keeps a sharp eye for students who succeed in ways that are not academically related for his personal nominations.



The first known English dictionary was compiled in 1604 by Robert Cawdrey.

Birth announcement

Tori Diane Sheets

Mark and Charlotte Sheets are proud to announce the birth of their daughter, Tori Diane, who was born Nov. 15, 1992. She weighed 8 lbs. 2 oz. and was 21" long. She joins her two big brothers, Russell (7) and Elliott (2) at home.

Her grandparents are Claude and JoNell Sheets and Robert and Cleavene Elliott of Spearman.

Hometown news

November 12 (FHTNC)—Marine Capt. Tal H. Jackson, son of George D. and Scarlett G. Jackson of Spearman, TX, was recently promoted to his present rank while serving with Marine Attack Squadron-214, 3rd Marine Aircraft Wing, Marine Corps Air Station, Yuma, AZ.

The 1981 graduate of Spearman High School, Spearman, and 1987 graduate of Texas Technical University, with a Bachelor of Arts degree, joined the Marine Corps in December 1987.

You are cordially invited to attend the Lighting of Hansford Hospice

Lights of Love Tree and Open House

on Monday, November 30, 1992, 5:30 p.m.
First State Bank
1 N.E. Court
Spearman, Texas

Adela's Flowers

invites everyone to their

Holiday Open House

Sunday, November 22 • 1 - 5 p.m.

PLUS New Location - New Owners

Grand Opening

Monday, November 23 • 9 a.m. - 5 p.m.

Come By and Enjoy

Holiday Refreshments

Register for FREE GIFTS

20% off on Selected

Thanksgiving Arrangements

See New Christmas Decorating Ideas and a selection of Christmas Plants

Christmas Cactus • Garland • Wreaths

Poinsettias • Swags

FLOWERS SAY IT BEST

ADELA'S FLOWERS

Mary Moore Owner and Operator

North of ALCO • Plains Shopping Center

afw FLOWERS-BY-WIRE



Greyhounds crush the Warriors

by Bob Bort
Granted, the Miami Warriors are not Perryton (the Hounds will play the Rangers later this year) - but Houndball is back as the Hounds crushed the Warriors in Greyhound Gym this past Tuesday, Nov. 17, to the tune of 82-26. The Hounds raced up and down the court in their fast paced ball-

hawking style, and Miami never knew what hit them.

One thing about head coach Tim Garland. He gets the most out of his players. The Hounds are returning only 3 lettermen from last year, yet all 14 on the varsity looked super. If the Hounds make the playoffs for the fifth consecutive year, it will be Tim Garland's best coaching performance in his five years as head coach.

pull away. They did their most damage late in the second quarter and continuing through the 3rd quarter and into the 4th quarter, with a 25 point run, turning a 28-17 game into a 53-17 lead. The Warriorettes were simply overmatched. It was a good outing for head coach Steve Myatt's crew.

Mika McLain and Maupin had outstanding games, with 18 and 16 points, respectively.

No need to dwell on these games. They were openers, and there is room for improvement for both the Hounds and Lady Hounds. The games versus Sanford-Fritch this Friday night will provide a better gauge of what fans can expect this

season from our varsity basketball teams.

Here are the linescores:
Varsity Girls vs. Miami Gruver 60-Miami 27
3-Pointer-Traci Crawford McLain-18, Maupin-16, Venneman-8, Crawford-5, Julie Meyer-5, Tisha Ralston-4, Sara Jones-2, Wendy Rodriguez-2.

Varsity Boys vs. Miami Gruver 82-Miami 26
3-Pointers-Spivey (3), Odom, Price.

Spivey-21, Price-16, Odom-13, Dawson-10, Carey Kauffman-7, Aaron Frick-5, Ryon Atwood-2, Cody Barkley-2, Matt Etheredge-2, Tek Ferguson-2, Brady Pool-2.



The Hounds and Lady Hounds dominated the Miami teams and came away with their first victories of the new season.

Basketball roundup

7th Grade Boys vs. Spearman Gruver (Red) 22-Spearman 31
Brant Armes-14; Juan Bravo-4; Roland Herrera-2; Kyle McNett-2; Cesar Garcia-1; Buster McLain-1.

7th Grade Boys vs. Spearman Gruver (Whi) 18-Spearman 8
Keith Cassidy-10; Jody Robinson-6; Justion Kent-2.

8th Grade Boys vs. Spearman Gruver 45-Spearman 35
3-Pointer-Jarroed Hoel Hoel-23; Josh Mayhew-15; Heath Tolleson-4; Tucker Henson-3.

9th Grade Boys vs. Spearman Gruver 36-Spearman 26
Wylee Maupin-11; Phil DeLaCruz-6; Sammy Renteria-6; Daniel Bort-4; Travis Ferguson-4; Max Frick-4; Scott Jarvis-1.

7th Grade Girls at Spearman Gruver 30-Spearman 22
Autumn Bateman-14; Weslyn Maupin-9; Jill Odom-6; Davida Nash-1.

8th Grade Girls at Spearman Gruver 34-Spearman 16
Amber Murrell-13; Kaysha Cluck-12; Cara Hathaway-5; Erin Derington-2; Mary Henson-2.

Gruver Basketball 11/17/92
Gruver JV Boys vs. Miami Gruver 42-Miami 23

Fabian Salazar-13; Grant Odom-6; Ricardo Soto-6; Jake McCullough-5; Andy Jones-4; Victor Lopez-4; Kevin McNett-4.

Gruver JV Girls vs. Miami Gruver 69-Miami 18

Molly McLain-13; Kiki Carthel-11; Kayce Haenisch-11; Shanna Jarvis-8; Jana McCloy-8; Hailey Lamb-6; Josie Pool-6; Tara Shapley-6.

Lady hounds... place sixth, Georgetown

by Bob Bort
The Gruver Lady Hounds cross country team certainly was disappointed with their showing at the State Cross Country Meet at Georgetown this past Saturday, November 14—hoping to win the state championship, but settling for sixth place in the 12-team field. However, Coach Steve Myatt put the best light on the subject.

"I was disappointed, and the girls were too," says Myatt. "But we had a good year, relying on new people, fighting injuries, and it was good that we got to the state meet. We just didn't run well, and just got beat. I don't know what it was—we just didn't run well, and we have no excuses. We ran inconsistently this year, and at Georgetown we were running like we did in the middle of the year. Why we didn't run like we did at Lubbock last week, I don't know."

the State Meet at Georgetown—three years in class A, and this year in class AA. Gruver won the class A state championship in 1990, finished 2nd in 1991, and 3rd in 1989, their first year of competition in cross country.

Here are the final standings and times:

1. Hamilton 63
 2. Stratford 66
 3. Springlake-Earth 97
 4. Schulenburg 108
 5. Little Elm 118
 6. Gruver 147
 7. LaVilla 212
 8. Celina 223
 9. Liberty Hill 241
 10. Somerville 243
 11. Dilley 245
 12. Winnie East Chambers 258
- Individuals finishes were as follows: 19. Cora Meyer, 12:59; 47. Tisha Ralston, 13:47; 49. Joni Hart, 13:53; 50. Julie Meyer, 13:56; 60. Wendy Rodriguez, 14:10; 61. Kasey Davis, 14:11; and 69. Myriam Alvarez, 14:20.

This was the fourth consecutive year that Gruver has qualified for

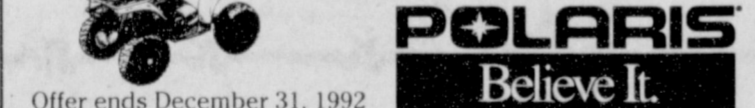
\$100 Boss Check Bonus... Your Ticket to Ride.

Get \$100 in FREE Polaris Clothing and Accessories When You Order Your 1993 Polaris ATV by December 31, 1992.



It's as easy as 1-2-3...

1. Reserve any new 1993 Polaris ATV with a \$200 non-refundable deposit by December 31, 1992. Polaris will guarantee availability of the model you choose.
2. Take delivery by March 31, 1993 and your Polaris dealer will deduct your \$200 deposit PLUS you will get a BOSS CHECK BONUS of \$100 in FREE Polaris clothing or accessories.
3. You will also qualify for any programs in effect at the time of delivery, which is offered by Polaris or your Polaris dealer, providing the purchase is completed by March 31, 1993.



Warning: ATVs can be hazardous to operate. These full-size machines are designed to be ridden only by adults who are 18 and older. For your safety always wear a helmet, eye protection and protective clothing. Be particularly careful on difficult terrain. Polaris recommends that all ATV riders take a training course. For safety and training information, see your dealer or call Polaris at 1-800-POLARIS.

*Boss Check bonus payments are not available to principals or employees of Polaris Industries, authorized Polaris distributors or dealerships. Available at participating dealer. Void where prohibited by law. ATVs purchased under the Boss Check program must be registered in the customer's name as shown on the Boss Check. Maximum 3 Boss Checks per customer. © 1992 Polaris Industries, L.P.

Hansford Implement
Highway 207 South
Spearman, Texas
659-2568 733-2088

Turn on energy savings by switching to high efficiency lighting

Brighten your home — and the outlook for your energy budget — by replacing your ordinary light bulbs with compact fluorescent bulbs. They use only one fourth of the electricity and last about 10 times as long as incandescent bulbs.

Lighting typically isn't a home's biggest energy user, but you still can reduce your total energy needs by making the switch — particularly on lights that are used more than two hours a day.

For more ways to save energy, call or visit your local Texas-New Mexico Power Company office and ask for the free brochure, "Energy Management Guide."

Texas-New Mexico Power Company.

PRICES EFFECTIVE
NOV. 15-21, 1992

305 W. KENNETH, SPEARMAN
101 MAIN, GRUVER
SPEARMAN 659-3135
GRUVER 733-2953

ALLSUP'S

HOT FOODS MENU

BARBECUE BEEF SANDWICH	99¢	3 PIECE BOX CHICKEN	\$5.99
BARBECUE PORK RIBS (LB.)	\$3.99	BEEF & CHEESE CHIMICHANGA	\$1.19
BARBECUE WHOLE CHICKEN	\$3.99	(MEAT) CORN DOG	69¢
ALL SUP'S BURRITO	79¢	DELICIOUS HAMBURGER	69¢
BREAKFAST BURRITO	99¢	WILSON HOT LINKS	99¢
BURRITO BEEF & SALSA	\$1.19	SAUSAGE ON A STICK	\$1.38
DELICIOUS CHEESEBURGER	89¢	SAUSAGE & BISCUIT	79¢
CHICKEN FRIED STEAK	\$1.59	SAUSAGE, EGG & BISCUIT	\$1.09
3 COUNT. CHICKEN STRIPS	\$4.49	SAUTEYA SAUSAGE	99¢
W/POTATO WEDGES/CHICKEN (2 PC.) BISCUIT	\$1.99	4 COUNT. STEAK FINGERS	\$1.00

CALL IN ORDERS WELCOME

COMBO OF THE MONTH

2 SAUSAGE, EGG & BISCUIT AND A 22 OZ. CUP OF COKE FOR ONLY

\$1.59

GOTTA HAVE IT ALL TYPES PEPSI-COLA 6 PACK 12 OZ. CANS **\$1.89**

SHURFINE 10 TO 14 LB. WITH POP-UP TIMER

YOUNG TURKEY HENS PER POUND **59¢**

ALLSUP'S 1 1/2 LB. LOAVES

SANDWICH BREAD 60¢ EACH OR **2 \$1** FOR

ALL VARIETIES LAY'S®

POTATO CHIPS REGULAR \$1.49 FOR ONLY **99¢**

3 CHICKEN STRIPS, 3 JOJO WEDGES & BISCUIT

CHICKEN STRIPS DINNER FOR ONLY **\$1.99**

DRUMSTICK SUNDAY CONES EACH ONLY **49¢**

SHURFINE BATHROOM TISSUE 4 ROLL PKG **89¢**

WILSON HAMS 2 LB. **\$4.99** reg. \$7.99 while supplies last

Libbys Vienna Sausage 5 oz. cans 3/\$1
Libbys Potted Meat 3 oz. can 4/\$1
Mello Crisp Bacon 1 lb. 79¢
Surf Detergent 39 oz. box \$1.79

Lightning can light up the world, but it can't warm up a stove.

—Friedrich Hebbel

PUBLIC NOTICE

GTE Southwest Incorporated (GTE) and Contel of Texas Inc. (Contel) have filed an application with the Public Utility Commission of Texas to seek approval to provide two new private line services and to change rates for existing services. GTE's intraxchange DS1 Service will be offered pursuant to the rates proposed with this filing and will no longer be available through concurrence with GTE's interLATA access tariff rates which are lower. Contel's intraxchange DS1/DDS Service will be offered pursuant to the rates proposed with this filing and will no longer be available through Contel's current private line tariff rates. Existing customers with DS1/DDS Services will not be affected by these rate changes. DS1 1.544 Megabits per second (Mbps) Service and Digital Data Service (DDS) will normally be used for the transmission of data communications or large volumes of voice communications between two locations. These services are optional and will not affect the existing rates of customers who do not order these services. The estimated annual effect on GTE-SW's revenues in the first year is \$1,080,567. The estimated annual effect on Contel's revenues in the first year are \$42,383.

DS1 Service

DS1 Service is an intraLATA Private Line Service which provides a dedicated, high capacity channel which may be used for simultaneous two-way transmission of voice data or other digitally encoded customer information signals. DS1 Service provides a transmission speed of 1.544 Mbps and is designed to provide an average performance of at least 95 percent error-free seconds of transmission over a continuous 24-hour period.

DS1 Service is available in and between all exchanges of GTE-SW and Contel where digital facilities exist. DS1 Service is available on a point-to-point intraLATA basis between two Customer Designated Locations (CDL) and a point of connection with another service provider or between two SWCs.

IntraLATA DS1 Private Line Service is comprised of three rate elements: DS1 Local Loop, DS1 Transport and DS1 Transport Termination. Each element is described below.

DS1 Local Loop

This rate element is for the cable facilities from the CDL to the SWC. The customer has two payment options for the purchase of DS1 Local Loops. There is a month-to-month plan or term contract Optional Payment Plan (OPP).

The month-to-month payment basis allows the customer to establish and disconnect DS1 Services, without penalty, other than to meet the minimum service interval of one month's service, as needed. Under the month-to-month service, the additional DS1 Local Loop rate applies only when the additional DS1 Local Loop (s) is (are) ordered at the same time and between the same two CDLs as the first DS1 Local Loop.

The OPP plan allows the customer to select a term of service (1 YR, 3 YR and 5 YR) with lower monthly rates associated with longer term contracts. If the customer selects an OPP, additional DS1 Local Loops may be ordered and installed at the Additional DS1 Local Loop rate between any SWC and CDL covered by the OPP, at any time during the term of that OPP.

DS1 Transport

This rate element is for the mileage sensitive charges for transporting a DS1 signal between Serving Wire Centers. Transport occurs only when the two CDLs being connected are served by two different SWCs.

DS1 Transport Termination

This rate element is for the equipment to terminate DS1 Transport at the SWCs. This charge applies only when DS1 Transport is required for the service configuration of the customer. One transport termination charge applies at each end of the DS1 Transport.

Proposed Rates and Charges for DS1 Service are as follows:

	Nonrecurring Charge	Monthly Rates
DS1 Local Loop		
Month-to-Month		
First System	\$ 1,000.00	\$ 298.00
12-month term		
First System	-	\$ 283.00
36-month term		
First System	-	\$ 255.00
60-month term		
First System	-	\$ 226.00
Additional System	\$ 130.00	\$ 130.00
DS1 Transport		
Per airline mile	-	\$ 16.00
DS1 Transport Termination		
Per Termination	-	\$ 40.00

Digital Data Service

Digital Data Service (DDS) is an intraLATA Private Line service which supports synchronous, full-duplex transmission between the CDL and the SWC or the point of connection with another telephone company at transmission speeds of 2.4, 4.8, 9.6, 19.2 and 56 kilobits per second (Kbps). DDS provides a transmission path for digital data signals within the same LATA.

DDS Service is available in and between all exchanges of GTE-SW and Contel where digital facilities exist. DDS Service is available on a point-to-point intraLATA basis between two CDLs or between a CDL and a point of connection with another service provider.

IntraLATA DDS Private Line Service is comprised of three rate elements: DDS Local Loop, DDS Transport and DDS Transport Termination. Each element is described below.

DDS Local Loop

This rate element is for the cable facilities from the CDL to the SWC. The customer may establish and disconnect DDS Local Loops without penalty other than the minimum service interval of one month's service, as his/her needs demand.

DDS Transport

This rate element is for the mileage sensitive charges for transporting a DDS signal between SWCs. Transport occurs only when the two CDLs being connected are served by two different SWCs.

DDS Transport Termination

This rate element is for the equipment to terminate DDS Transport at the SWCs. This charge applies only when DDS Transport is required for the service configuration of the customer. One transport termination charge applies at each end of the service.

Proposed rates and charges for DDS are as follows:

	Nonrecurring Charge	Monthly Rates
DDS Local Loop		
2.4, 4.8, 9.6, & 19.2 Kbps	\$ 85.00	\$ 85.00
56 Kbps	\$ 85.00	\$ 95.00
DDS Transport		
Per airline mile		
2.4, 4.8, 9.6 & 19.2 Kbps	-	\$ 1.60
56 Kbps	-	\$ 3.20
DDS Transport Termination		
2.4, 4.8, 9.6, 19.2 & 56 Kbps	-	\$ 20.00

This filing has been assigned Consolidated Docket Nos. 11408/11435. The deadline to intervene in this docket is January 1, 1993.

Persons who wish to intervene or otherwise participate in these proceedings should notify the Commission. A request to intervene, participate, or for further information, should be mailed to the Public Utility Commission of Texas, 7800 Shoal Creek Boulevard, Suite 400N, Austin, Texas, 78757. Further information may also be obtained by calling the Public Information Division of the Public Utility Commission at (512) 458-0256, or (512) 458-0221 teletypewriter for the deaf.



Spearman Varsity... split two with Perryton

The Spearman Varsity Basketball teams went 1 and 1 as they hosted Perryton for their first games of the 92-93 season Tuesday night, Nov. 16.

The Lynxettes overcame a little pre-game nervousness, according to Richard North, Lynxette coach, to defeat the Perryton Rangerettes 48-36. In the second game the Lynx lost 46-77 to what Wendell Neff, Lynx coach, described as, "the best ball club I have ever seen."

Starting for the Lynxettes were Laura Pearson, Michelle Garnett, Jill Lusby, Kimbre Townsend and Holly Jarvis. Pearson led the Lynxettes in scoring with 14 points. Freshman, Kara Townsen came off the bench and contributed 9 points. She was the second high point scorer for the Lynxettes.

Defense and not offense was the key to the game according to North. He particularly liked the way the girls communicated when the team would switch defenses. "We played real aggressive and mixed up defenses, we even played a little zone," said North.

In the second game the Lynx ran into a Perryton Ranger team that played like it was the post season playoffs, according to Neff. He went on to say that the Lynx players played hard but "They were just bigger and faster than us," said Neff.

Starting for the Lynx were Troy Law, Brady Reed, Russell Shaver, Wes Dyess and Cody Pipkin. Shaver led the Lynx in scoring with 14 points. He was followed by Reed with 10.

The Lynx and Lynxettes will next travel to Borger Friday, Nov. 20 for their second games of the season.

Varsity Lynx

Spearman 46—Perryton 77
Toby Thompson-2; Wess Dyess-8; Jason Varnon-6; Brady Reed-10; Cody Pipkin-4; Russell Shaver-14. (Shaver with 2 three pointers).

Varsity Lynxettes

Spearman 48—Perryton 36
Jill Lusby-6; Mary Cook-3; Michelle Garnett-6; Kimbre Townsend-6; Kara Townsen-9; Holly Jarvis-3; Laura Pearson-14; Carrie Pearson-1.



The Lynxettes play under the boards and an aggressive defense gave them the victory over the Perryton Rangerettes.

S.I.S.D. Basketball Roundup

8th Grade Girls vs. Gruver Faries-5.
Spearman 16—Gruver 34
Samantha Beasley-6; Mandi Lusby-4; Angie Johnson-6.
7th Grade Girls vs. Gruver
Spearman 22—Gruver 30
Lindsey Smith-2; Jenifer Neff-2; Micha Davis-6; Rebecca Howard-6; Brooke Trantham-2; Keisha O'Quin-4.
7th Grade Boys at Gruver
Spearman 31—Gruver 22
Gedes Munoz-2; Jamie Townsend-9; Cody Williams-2; Allen Huddleston-14; Derek Kuehl-4.

9th Grade Boys at Gruver
Spearman 26—Gruver 36
Heath Archer-4; Jeremy Blan-2; Brent Collins-14; Jarod Huddleston-6.
Spearman Basketball 11/17/92
JV Boys vs. Perryton
Spearman 31—Perryton 46
Cass Lasater-4; Chad Wilderson-5; Brad Law-2; Allen Hutchinson-2; Chuck Cook-5; Dee Mayfield-4; Clint Schnell-4; Matt Archer-3; Brandon Vanderburg-2
3 Pointer—Wilkerson

JV Girls vs. Perryton
Spearman 32—Perryton 18
Telle O'Quinn-6; Nikki Strawn-3; Tiffany Bruning-8; Carey Beatty-9; Kelly Shieldknight-2; Tommi Latta-4

Southwest Outdoors

with Mel Phillips
WINTER CHECK LIST
It's a ritual that happens every winter. The first blue norther roars in from the Arctic wastelands and suddenly the old car develops a series of problems. This year could be different; you can be ready for those frosty mornings.
If you can still find a full service gas station, they are like an oasis to a thirsty traveler. Shadtree Sam, my trusty mechanic, recommends the following items be checked before winter tightens her icy grip.

Battery—check each cell because a bad cell waits until that extra cold morning to finally quit.

Tires—inflate to the recommended pressure and check for any uneven tire wear or traces of shiny steel belts. Investing in a tire rotation, balance and alignment is cheap insurance and prolongs the life of your tires. Find your spare tire and check the pressure. Now is also a good time to see if all the parts of the jack are intact.

Antifreeze—All new cars now use antifreeze as a summer coolant so most cars are in good shape. Winters in our region rarely see overnight lows below zero but antifreeze is cheap compared to a new block. Shadtree says, "protect down to -20 degrees." Make sure that the windshield water is re-filled with proper fluid.

Belts and Hoses—Visually check them for any cracks or signs of wear. If you do any out-of-town driving, an extra fan belt is better than money in the bank.

Oil and Air Filter—Change both according to the owner's manual. If you plan to keep the car an extra year, an oil change is your best investment.

Fluid Levels—Steering, brake, and transmission all need to be checked. If you don't know the source of any new leaks on the garage floor, use a white paper towel to present the evidence to your service agent.

Mel's bargain of the year. Costing less than \$10.00, the following emergency supplies will fit in a corner of the trunk and can save your life during a blast of arctic air: an aluminum-coated plastic space blanket (\$2.00 at discount stores), six candles, an old flashlight with new batteries, 3/4 gallon of water in a plastic jug, a dozen food bars, a pack or two of safety matches, an old coat, and an old blanket.

Good News—all my camping buddies are now non-smokers; **Bad News**—we occasionally forget to bring any matches to start our stoves, lanterns or camp fires. Not having any matches on a camping trip is inconvenient, but not having any matches while stranded on the side of the road can be cause for real concern.

AUCTION

Sat., Nov. 21, 1992 - 10 a.m.

Residential properties to be sold on site starting with #1 and moving to each location in numerical order. If you are interested in any of these properties, please start with us at parcel #1 (414 W. Center) and follow us from site to site.
Financing Available Upon Prior Approval -
For More Information call Auctioneer.

- #1 - 414 W. Center — 2 bedroom house, detached garage.
- #2 - 210 S. Baylor — 3 Units - 1-2 bedroom house with loft and attached garage, 2-1 bedroom houses.
- #3 - 920 S. Fordham — 1 bedroom house, corner lot.
- #4 - 114 N. Elm — 2 bedroom house, detached garage.
- #5 - 514 S.E. 9th — 2 bedroom house, detached garage.

Terms: 20% down w/balance due upon closing or within 30 days.
All properties being sold as is and subject to owner's confirmation of high bid.
For more information or inspection appointments please call:

DENZEL TEVIS (806) 435-2768
P.O. Box 861
AUCTION & REALTY Perryton, TX 79070
TXS 7498

We're Expanding to Better Serve Your Auto Service Needs . . .

LEE & HANCOCK
AUTO & TRUCK TIRES
GOODYEAR TRUCK TIRE
Car & Truck Flats Fixed

FRONT END ALIGNMENTS
SHOCKS & BRAKE SERVICE

AIR CONDITIONER SERVICE
TRANSMISSION SERVICE
REGULAR MAINTENANCE

COMPLETE LINE OF MOBIL & CHEVRON
OIL PRODUCTS

HI - PLAINS AUTO SHOP

402 HANCOCK • SPEARMAN, TEXAS
659-2506 • (800)659-8742



Carole Stumpf, representing ALCO, hands over the proceeds from the stores cutest baby contest to members of the Hansford Hospice club.

TDPS urges safety for holiday

"As we approach Thanksgiving Day weekend, all of us are making plans for observance of this traditional season of the year," stated Major V.J. Cawthon, Commander of the Texas Department of Public Safety Region 5. Many Department of Public Safety Officers will be making plans of a different kind, they will be on duty to stimulate safety consciousness throughout this festive holiday.

Major Cawthon also said, "the Department of Public Safety wants you to have a safe and pleasant holiday. If you are planning a trip out of town check your car, the road conditions, the weather conditions, and your driving habits." Remember, that the early darkness and heavy traffic calls for more caution and less speed. If we think safety first and drive defensively, then a safe and pleasant Thanksgiving is almost certain. The Major urges Texas motorists to use safety belts on all occasions when operating a motor vehicle.

Remember, no matter how good a driver we may be, we can not control the driver that we are meeting. We have no guarantee that that driver is not tanked up on booze or hopped up on pills. Let's drive as if each driver will always do the unexpected and in this manner we can enjoy another holiday.

Lookin' Back - Gruver

5 years ago
Jolene Thompson received the Quality of Life award from the American Cancer Society. The award, the highest honor bestowed upon a volunteer worker, was presented to Mrs. Thompson by Mozelle McClellan at a meeting of the Hansford Unit of the American Cancer Society.

Brian Gillispie was named Mr. GHS and Holly Meyer was honored as Miss GHS during the Gruver High School student body elections.

10 years ago
Mr. and Miss GHS honors went to Lonnie Burnam and Cappi Cooper.

Rex Shapley of Gruver was presented the Outstanding Conserva-

tion Farmer of the Year award at the Bankers Award Banquet.

Rick Nix ended his five year coaching tenure. The Greyhounds defeated Sunray to close out Nix's final season on a victory note.

15 years ago
Mary and I.W. Ayers visited with friends in Dallas. The high point of their visit was attending a wedding—it wasn't just any wedding—it was Craig Morton of the Denver Broncos and Susie Sirmen, a Dallas model. Groomsmen included Dan Reeves, Dave Manders and Billy Bob Harris formerly of Gruver.



Gruver from page 1

1993.
He then reported that the Dozier family gave a gift of money to the district. The money was spent on the junior high.

The Supreme Courts' ruling on prayer at commencement exercises and the effect on Gruver graduation was then brought up. Haenisch said, "In a nut shell, the court banned clergy led prayers at commencement." He added, "All commencement prayers in Gruver are

student led, so the courts' decision does not effect out graduation ceremony."

It was also reported that the boiler in the high school is not operating. A heat exchanger was ordered and will be operating early next week, said Haenisch.

The final item in the superintendent's report was the Governor's Fair Share Plan. "Each principal has a summary of the plan and an impact report for our district," said Haenisch. He added, "See your principal for more information."

In regular business, the board voted to pay bills totaling \$58,008.52.

The meeting was adjourned.

JV & 9th in action at Perryton tourney

JV Boys—Thurs. Nov 19

Gruver vs. Fritch—2:30

Ranger Gym

Spearman vs. Follett—4:00

Rangerette Gym

JV Girls—Thurs. Nov 19

Gruver vs. Fritch—4:00

Ranger Gym

Spearman vs. Follett—2:30

Rangerette Gym

9th Boys—Thurs. Nov. 20

Gruver vs. Booker—4:00

Raider Gym

Spearman Game #5—Fri. 2:30

Raider Gym

9th Girls—Thurs. Nov 19

Gruver vs. Booker—2:30

Kelly Gym

Spearman Game #5—Fri. 2:30

Kelly Gym

School menu

Gruver School Menu
November 23-November 25
LUNCH

Monday—Fish nuggets, macaroni and cheese, green beans, cobbler, corn bread and milk.

Tuesday—Chicken noodle soup, crackers & pickle spears, fruit, cookies and milk.

Wednesday—Corn dogs, beans, fruit and milk.

Thursday & Friday—Thanksgiving Holidays

BREAKFAST

Monday—Cereal, juice, muffins and milk.

Tuesday—Toast, peanut butter & jelly, fruit and milk.

Wednesday—Cereal, muffins, milk and fruit.

Pringle-Morse School Menu
November 23-November 25
LUNCH

Monday—Tacos, soft burritos, salad, pinto beans, fruit and milk.

Tuesday—Chicken strips, potatoes, gravy, corn, trols, raw vegetables, cake and milk.

Wednesday—Sandwiches, chips, carrots, fruit, ice cream and milk.

Thursday & Friday—Thanksgiving Holiday

BREAKFAST

Monday—Muffins, cinnamon toast, grape juice and milk.

Tuesday—Donuts, cheese toast, apple juice and milk.

Wednesday—Biscuits, sausage, orange juice and milk.



Americans give about \$120 billion to charity a year.

WANTED

Five homeowners in this area will be given the opportunity to have their homes restyled and rebeautified with the all new wood grained UNITED STATES STEEL siding, finished with VYNASOL VINYL U.S. Steel Vynasol siding can be applied to your home with optional decorative work at a very low cost. This amazing new product has captured the interest of homeowners throughout the United States who are fed up with constant painting and other maintenance costs. It is maintenance free, virtually indestructible, carries a 50 year guarantee, provides full insulation summer and winter as well as fire protection and is highly hail-resistant. Our new product can be applied to every type of home including frame, concrete block and stucco with amazing rebeautifying results. It comes in several colors and is now going to be introduced. For information Write:

Siding
P.O. Box 581383
Tulsa, OK 74148

REPORT OF CONDITION

Consolidating domestic subsidiaries of the

FIRST NATIONAL BANK of SPEARMAN City

in the state of Texas, at the close of business on September 30, 1992, published in response to call made by Comptroller of the Currency, under title 12, United States Code, Section 161. Charter Number 18609 Comptroller of the Currency Southwestern District

Statement of Resources and Liabilities

ASSETS

	Thousands of dollars
Cash and balances due from depository institutions:	
Noninterest-bearing balances and currency and coin	1,304
Interest-bearing balances	6,831
Securities	7,268
Federal funds sold	525
Securities purchased under agreements to resell	0
Loans and lease financing receivables:	
Loans and leases, net of unearned income	21,359
LESS: Allowance for loan and lease losses	282
LESS: Allocated transfer risk reserve	0
Loans and leases, net of unearned income, allowance, and reserve	21,077
Assets held in trading accounts	0
Premises and fixed assets (including capitalized leases)	585
Other real estate owned	83
Investments in unconsolidated subsidiaries and associated companies	0
Customers' liability to this bank on acceptances outstanding	0
Intangible assets	0
Other assets	712
Total assets	38,385
Losses deferred pursuant to 12 U.S.C. 1823(j)	N/A
Total assets and losses deferred pursuant to 12 U.S.C. 1823(j)	38,385

LIABILITIES

Deposits:	
In domestic offices:	
Noninterest-bearing	2,377
Interest-bearing	32,869
Federal funds purchased	0
Securities sold under agreements to repurchase	0
Demand notes issued to the U.S. Treasury	0
Other borrowed money	0
Mortgage indebtedness and obligations under capitalized leases	0
Bank's liability on acceptances executed and outstanding	0
Subordinated notes and debentures	0
Other liabilities	233
Total liabilities	35,479
Limited-life preferred stock and related surplus	0

EQUITY CAPITAL

Perpetual preferred stock and related surplus	0
Common stock	1,000
Surplus	1,000
Undivided profits and capital reserves	906
LESS: Net unrealized loss on marketable equity securities	0
Total equity capital	2,906
Losses deferred pursuant to 12 U.S.C. 1823(j)	N/A
Total equity capital and losses deferred pursuant to 12 U.S.C. 1823(j)	2,906
Total liabilities, limited-life preferred stock, equity capital and losses deferred pursuant to 12 U.S.C. 1823(j)	38,385

We, the undersigned directors, attest to the correctness of this statement of resources and liabilities. We declare that it has been examined by us, and to the best of our knowledge and belief has been prepared in conformance with the instructions and is true and correct.

Billy Ruth Harris
Donna Brown
Sue D. Lott
Directors

I, LYNANNE MAIZE
Name
VICE PRESIDENT AND CASHIER
Title

of the above-named bank do hereby declare that this Report of Condition is true and correct to the best of my knowledge and belief.

Lynanne Maize
Signature
OCTOBER 29, 1992
Date

ABSOLUTELY THE LOWEST CLOSE OUT PRICES ON 1992 CARS & TRUCKS IN STOCK

Oldsmobile Eighty Eight Royal
4 dr. Sedan White/Blue Cloth
MSRP \$20,787
Close Out Price \$18287
Factory Rebate \$750
\$17,537

Buick Park Avenue
4 dr. Sedan
Blue Firemist/Blue Cloth
MSRP \$28,196
Close Out Price \$24535
Factory Rebate \$1250
\$23,285

Buick Roadmaster
4 dr. Sedan Ice Blue/Blue Cloth
MSRP \$24,410
Close Out Price \$21464
Factory Rebate \$1000
\$20,464

Dodge 3/4 Ton diesel Pickup
Regular Cab 2 wd. 5 sp.
LeDecor Red/White
MSRP \$20,946
Close Out Price \$18313
Factory Rebate \$500
\$17,813

Dodge 3/4 ton Diesel Pickup
Regular Cab 4 wd. 5 sp
LeDecor Dark Blue
MSRP \$23,012
Close Out Price \$20004
Factory Rebate \$500
\$19,584

Chevrolet 3/4 Pickup
2 wd. 6.5 Liter Diesel
Silverado Auto Trans.
MSRP \$22,236
Close Out Price \$19649
Factory Rebate \$300
\$19,349
White/Crimson Red or
Gray/Silver-w- Chrome Rear Bumper

Chevrolet 1/2 Ton Short Bed
Ext. Cab Silverado
Loaded 350 Auto Trans.
Crimson Red/Silver
MSRP \$19,599
Close Out Price \$17,191

Chevrolet 1/2 Ton Pickup
2 wd. Ext. Cab Red/Slate Gray 350
Auto Trans. Silverado
MSRP \$19,215
Close Out Price \$16,911

Chevrolet 1/2 Ton Pickup
Sport Side 5 sp. V6
Travel Quest Conversion
MSRP \$18,469
Close Out Price \$16657
Factory Rebate \$300
\$16,357

Astro Passenger Van Demo
Fully Loaded
MSRP \$22,114
Close Out Price \$19906
Factory Rebate \$500
\$19406

* Prices do not include State Sales Tax, License or Registration Fees.
* Special Financing Rates can be used in lieu of Factory Rebates on most vehicles.



GILLASPIE

AUTO & TRUCK CENTER, INC.
CHEVROLET * OLDS * PONTIAC * BUICK
CHRYSLER * PLYMOUTH * DODGE
Highway 207 South - P.O. Box 427 (806)659-2541
SPEARMAN, TEXAS 79081

Hansford County Football Roundup

Spearman Football Summary 1992 Season

TEAM POINTS SUMMARY						DEFENSE-ALLOWED						
OFFENSE-SCORED												
	1	2	3	4	OT	Total	1	2	3	4	OT	Total
Scott City	7	0	0	0	0	7	0	14	14	7	0	35
Memphis	0	2	0	0	0	2	13	6	8	0	0	27
Wheeler	6	0	0	6	0	12	8	0	0	0	0	8
*Stratford	0	3	0	0	0	3	2	0	8	8	0	18
*West Texas	0	13	0	7	0	20	7	0	9	7	0	23
*Gruver	0	7	6	0	0	13	0	3	7	0	0	10
*Sunray	0	0	15	0	0	15	0	7	0	11	0	18
*High Park	0	0	0	0	0	0	7	14	0	0	0	21
*Boys Ranch	7	7	7	6	0	27	0	0	6	0	0	6
Total Points	20	32	28	19	0	99	37	44	52	33	0	166
Average	2	4	3	2	0	11	4	5	6	4	0	18
Difference	-17	-12	-24	-14	+0	-67						
Season Record:	3-7	2-4	District									
*District 1-2A District Opponents												

LYNX PLAYER SCORING SUMMARY

Player	Total Pts.	Touchdowns			Xta Pts.	Fld	Saf	Thrw
		Run	Pass	Kick				
11 Jason Varnon	18	2	0	0	0	0	0	0
12 Roman Arnold	14	1	1	0	0	0	0	0
20 Toby Thompson	6	0	1	0	0	0	0	0
33 Brandon Vanderburg	24	3	1	0	0	0	0	0
40 Dee Mayfield	11	1	0	0	0	8	1	0
44 Lonny Gallegos	12	1	2	0	0	0	0	0
52 Matt Archer	6	0	0	1	0	0	0	0
66 Chad Gardiner	2	0	0	0	0	0	0	1
85 Brady Reed	6	0	1	0	0	0	0	0
Team Totals	99	11	9	4	1	1	8	1

LYNX PLAYER OFFENSIVE REPORT

Player	Rushing				Passing				Receiving				
	Rushes	Yds	Avg.	TD	Cmp	Pass %	TD Int.	Yds	Rec	Yds	Avg	TD	
11 Jason Varnon	82	141	1.7	3	24	89	27.0	4	12	314	0	0	0
12 Roman Arnold	55	284	5.2	1	0	0	0.0	0	0	0	6	81	13.5
20 Toby Thompson	0	0	0.0	0	2	2	100.0	0	0	18	4	46	11.5
30 Radar Garcia	10	32	3.2	0	0	0	0.0	0	0	0	0	0	0
33 Brandon Vanderburg	159	746	4.7	3	1	1	100.0	0	0	17	1	37	37.0
37 Ricky Garrard	3	23	7.7	0	0	0	0.0	0	0	0	0	0	0
40 Dee Mayfield	1	1	1.0	0	0	0	0.0	0	0	0	0	0	0
44 Lonny Gallegos	109	588	5.4	2	0	0	0.0	0	0	0	5	49	9.8
81 Cory Lesly	0	0	0.0	0	0	0	0.0	0	0	0	7	88	12.6
85 Brady Reed	0	0	0.0	0	0	0	0.0	0	0	0	4	48	12.0
Team Total	419	1815	4.3	9	27	92	29.3	4	12	349	27	349	12.9

LYNX PLAYER DEFENSE REPORT

Player	Games	Assisted Fumble				QB	Sacks	Forces Blks
		Tackles	Tackles	Recovery	Intercep			
11 Jason Varnon	9	24	51	3	0	0	1	0
12 Roman Arnold	9	24	46	0	1	2	3	0
20 Toby Thompson	9	2	5	1	0	0	0	0
30 Radar Garcia	2	1	3	0	1	0	0	0
33 Brandon Vanderburg	9	8	19	0	0	0	0	0
37 Ricky Garrard	9	5	15	1	1	0	1	0
40 Dee Mayfield	9	1	12	0	0	0	0	0
44 Lonny Gallegos	9	21	46	1	0	0	0	1
51 Kory Brown	6	2	4	0	0	0	0	0
52 Matt Archer	9	10	33	5	0	3	5	0
58 Jimmy Healey	9	1	6	0	0	0	0	0
61 Dustin Loomis	9	14	68	3	0	0	2	0
64 Sammy Graham	8	1	6	0	0	0	0	0
66 Chad Gardiner	9	8	33	2	0	1	1	1
74 Nick Renteri	8	7	35	0	0	0	2	0
78 Landon Swan	9	9	44	2	0	0	1	0
80 Jason Swink	9	0	7	0	0	0	0	0
81 Cory Lesly	9	19	57	0	0	0	2	1
85 Brady Reed	9	6	10	2	0	0	0	0
65 Clay Scribner	9	2	4	0	0	0	1	0
45 Brad Law	9	12	22	0	0	0	0	0
TEAM TOTAL	9	177	526	20	3	6	19	3

LYNX PLAYER RETURNS REPORT

Player	Punts			Kick Off			Intercepts	Total
	Ret.	Yds.	Avg.	Ret.	Yds.	Avg.		
12 Roman Arnold	6	54	9.0	18	371	20.6	1	8
20 Toby Thompson	0	0	0.0	2	15	7.5	0	2
30 Radar Garcia	0	0	0.0	0	0	0.0	1	0
33 Brandon Vanderburg	6	111	18.5	9	149	16.6	0	15
37 Ricky Garrard	0	0	0.0	1	0	0.0	1	0
44 Lonny Gallegos	2	14	7.0	1	13	13.0	0	3
TEAM TOTAL	14	179	12.8	31	548	17.7	3	8

To the Lynx Football Team,

You boosted us and we are proud of our Lynx.

Spearman Booster Club

Lonny, Roman, Brady, Landon, Sammy and Dustin,

Thanks for a great season—Good luck to each of you.

The Varnon's & The Hardy's

You made the season very exciting!

We're proud of you, Jason and the whole Lynx Team!

Allen, Peggy, Eric & Richard Varnon

Matt, watching you and the team play football is always

exciting. Good luck and play tough next year!

Bobby and Tom

Chad, you played great this year and we were proud of the

"92" Lynx team. Looking forward to "93".

Mom and Bob

To Cory Lesly,

We are very proud of you and your team for the good work you

did this year. We love you.

Dad & Mamaw

Dustin and Team mates,

We felt your frustration over the losses and rejoiced with you on

the victories. A dull season it was not.

Duane, Kay & Travis Loomis

Never a dull moment—Clay & the Guys

Jerald Ray, Cindy, Traci, Rae Lynn & Stephen

GREYHOUND PLAYER SCORING SUMMARY

Player	TD	PAT	FG	S	TOTAL
29 A. Frick	7	17	3		68
1 Lopez	6	2			38
4 Spivey	4				24
20 B. Pool	2		1		14
6 Etheredge	1			2	8
7 Odom	1				6
9 Royval	1				6
43 M. Frick	1				6
22 C. Barkley			4		4

GREYHOUND PLAYER RETURNS REPORT

Player	Punts		Kick Off	
	Ret.	Yds.	Ret.	Yds.
1 Lopez	12	205	17	1
29 A. Frick	6	569.3	2	1
4 Spivey	2	73.5		
12 Price			12	205
20 B. Pool			6	112
6 Etheredge			5	59
43 M. Frick			1	8

GREYHOUND PLAYER OFFENSIVE SUMMARY

Player	Rushing				Passing				Receiving			
	Rushes	Yds	Avg.	TD	Cmp	Pass %	TD Int.	Yds	Rec	Yds	TD	
1 Lopez	97	561	5.8	6	3	4	2	33	3	39		
29 A. Frick	113	460	4.1	6	2	3	1	80	4	107	1	
20 B. Pool	79	425	5.4	2	1	1		13	1	7		
6 Etheredge	68	385	5.7	1	2	13		29				
43 M. Frick	9	26										
12 Price	3	6			0	3		1	0	2	63	
30 Atwood	1	2										
4 Spivey	2	1			1	1		29	12	175	4	
28 Dawson	27	-20			25	58	.431	5	4	488		
7 Odom										6	142	
9 Royval										4	113	

GREYHOUND PLAYER DEFENSE REPORT

Player	Unassisted		Assisted		Total	Fumble Recovery	Interceptions
	Tackles	Tackles	Tackles	Tackles			
29 A. Frick	38	47			85	3	
22 C. Barkley	21	53			74	1	1
28 Dawson	23	42			65	5	
35 Stork	14	45			59	1	
56 Kauffman	24	33			57	2	
1 Lopez	27	26			53		3
58 Whitaker	14	38			52		1
20 B. Pool	18	33			51	1	2
6 Etheredge	18	29			47	1	
12 Price	9	24			33	1	5
52 Bartimus	8	20			28	3	
43 M. Frick	11	14			25	1	
4 Spivey	11	6			17	1	5
55 Gross	2	6			8		
50 Gaines	0	5			5		

GREYHOUND PLAYER KICKING REPORT

Player	Punts		Kick Off	
	No.	Avg.	No.	Avg.
1 Lopez	35	34.3		
29 A. Frick			36	44.1



If You have a story to tell,

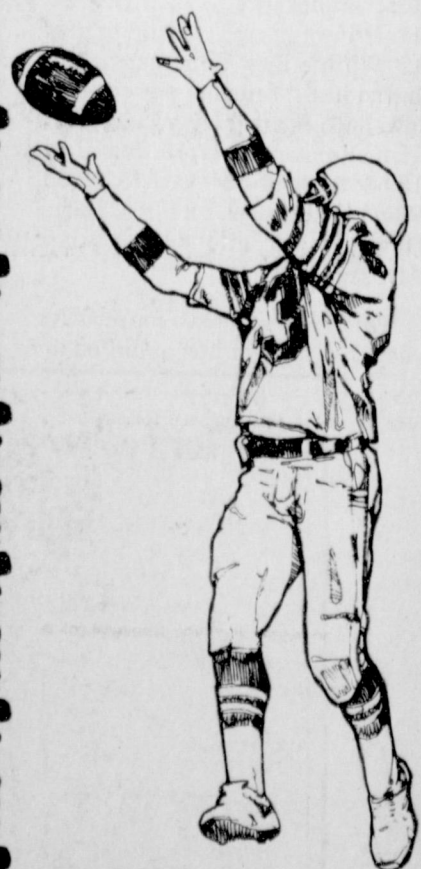
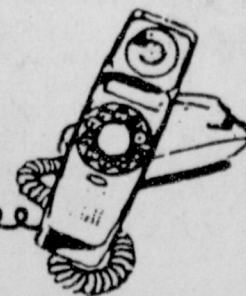
Call us TOLL-FREE!

The Hansford County
Reporter-Statesman

213 Main Spearman, Hansford County, Texas 25*

1-800-395-9482

Dial 659-3434 in Spearman



WANT ADS WORK WONDERS!

Reporter-Statesman CLASSIFIEDS 659-3434

NOTICE: Deadline to place of cancel classified line ads is Tuesday noon for Thursday insertion. CLASSIFIED RATE: \$4.00 first insertion, \$3.00 each additional insertion (30 words or less)...

REAL ESTATE

Old Post Office Building in Spearman - \$10,000. Call Gene E. Steed (806)435-6330 S03-4tp

3 bedroom house (2700 sq. ft.), 6 miles W. Spearman, TX. Cent. Air/Heat; Fireplace, 42.5 acres, barns, corrals, bigarena \$137,500 (806)659-3445 or 525-4221, Jim Eakin. S03-1tcRTN

Good Ranchland for Sale: 320 acres - Stinnett, TX 5 miles NE Lake Meredith \$200/acre; 151 acres - Stinnett, TX 1 mile W, 1/2 mile N, 2 miles W \$210/acre. (806)659-3445 or 638-6739, Jim Eakin. S03-1tcRTN

4 Bedroom, 2 1/2 bath, 3 car attached garage with electric opener both ends, 2 story, cellar, brick, new carpet throughout, 1 refinished hardwood floor, central air & heat, huge kitchen, laundry, family, bath. Approx. 2800 sq. ft. Abundant storage, dust-stopper windows & doors. Must see. Asking \$68,000. Call 659-2918. S04-2tp

Reduced, Reduced, Reduced to sell. Very nice office complex building with completely finished living area in back. 2400 sq. ft. on Main, Gruver. Call 659-2441. S04-3tp

2 bedroom, 1 bath house for sale. Ceiling fans throughout on big lot with small storage building and storm cellar. Priced to sell. Call after 5 p.m. at 659-3915. Ask for Robbie or leave a message. S52-1tpRTN

4 BRM 1 1/2 bath home on large corner lot near school. Has detached garage, car port, basement, central heat. Priced in mid 40's. 659-3944 after 5 p.m. S46-1tc RTN

House and Barn for Sale 3 bedroom, 2 bath house - 2340 sq. ft. Plus 2500 sq. ft. barn on 3.4 acres. Located on Spearman-Gruver Highway. Asking \$65,000. Contact FNB Spearman - Brian Gillispie. 659-5544 S46-1tc

MISC. FOR SALE

Hay for sale. Good Deal! Call Tim Barkley 733-2395. S04-2t

For Sale: Sturdy wood bookcase headboard bunkbeds. \$100 or best offer. Call 659-3461 after 6 p.m. S03-1tnc

Whirlpool Refrigerator with Ice Door-\$350, washer & dryer-\$300; Jukebox-\$250, Couch-\$100, Recliner-\$50, King Waterbed-\$50, Pinball machine or Space Invaders-\$100 each, 501 Bose speakers-\$100, Barbecue grill-\$75, 2 ceiling fans-\$25 each, Answer machine-\$25, B&W TV-\$25. Call 659-2918. S04-1tp

JAN'S ETC. NEW & USED & ANTIQUES TOO Everything for home and family. Plains Shopping Center in Spearman. Open Monday - Saturday 10 a.m. til 6:00 p.m.

LAYAWAY FOR CHRISTMAS 2 - 14 ft. Trampolines For Sale TRAMPOLINE REPAIR & SERVICE Mats & springs. Resew mats MAKE NEW BOAT COVERS. CALL (806)659-2109 Harry Stumpf 301 W. 12th Spearman, Texas

RVs & CAMPERS

Motor Homes and van rentals - Low winter rates. Vehicle towing-special rates. Call Smith's Auto Sales and Wrecker Service, Perryton, 435-5844 or toll free 1-800-753-6330. S02-4tc

SERVICES

HANDYMAN - You want it done and can't or don't want to do it yourself!!! Call Uncle Ed (Pearson), 659-3328 - Anytime - Anything!! House, yard, fence, car, garage, etc. (Cleanup, repair, paint, trim trees & bushes, etc.) S15-1tcRTN

Smith's Propane of Perryton offers watchdog (keep full service), tanks, vehicle conversion systems, parts, service, 30 day terms with good credit. 5% discount for cash with customer owned tanks. Call 435-5844 or 1-800-753-6330. S02-4tc

IS DRINKING AFFECTING your life negatively? Join us at AA or Al-Anon. Tuesdays at 8 p.m. at 30 Hwy 760 (Three blocks south of the Moose). Alateen meets Tuesdays at 7 p.m. at the same location. S50-13tp

HANDY MAN: We do anything and everything Painting, tree trimming, mowing, yard work & clean up, landscaping, roofing, fence building (all types). You need it done, call David Pearson at 659-3352. S43-1tcRTN

CALL YOUR LOCAL Used Cow Dealer for 7 days a week stock removal. 659-3544 or 1-800-692-4043. Serving Cattlemen for the past 20 years. G51-RTN

BICHSEL HOME BUILDERS Remodel, repair, additions, cabinets-tops, and window replacements. 406 W. Brillhart, Perryton. 435-2364 or 435-0125. S37-1tcRTN

REDUCE; Burn off fat while you sleep. Take OPAL, available at Gordon's Drug. S02-5tp

Buff & Shine, Full Maintenance, specializing in stripping & waxing. Floor maintenance and carpet cleaning. Free estimates. (806) 435-5845. S02-4tp

CERTIFIED NURSE AIDE CLASS Hansford Manor will begin classes for certified nurse aides November 30, 1992, at 8:30 AM. Classes will be daily 8:30-5:30, Monday through Friday, November 30-December 16. Applications must be placed no later than November 25. For more information or to apply, contact Karen Lair, Personnel Director, Hansford County Hospital District, 707 S. Roland, Spearman, TX, 79081, 806-659-2535. EOE. S04-1tc

OSGOOD MONUMENT CO. Amarillo, Texas Dealers of Rock of Ages Granite, as well as all colored granites, marble and bronze memorials. Represented by BOXWELL BROS. FUNERAL HOME 519 S. EVANS 659-3802

ADVERTISING PROVISIONS

1. Publisher reserves the right to reject, edit, revise and properly classify any advertisement at his sole discretion. 2. Advertiser assumes all liability for advertisements printed pursuant to his instruction and shall indemnify and hold the publisher harmless from and against any and all claims and damages, including all costs incurred by publisher in connection therewith. Advertiser represents that all advertising copy is truthful and not misleading. Advertiser shall indemnify and hold publisher harmless from any claim against publisher arising out of or in connection with publication of advertising (except for modifications made by publisher without Advertiser's approval) including, but not limited to, claims for libel, invasion of privacy, commercial appropriation of one's name or likeness, copyright infringement, trademark, trade name or patent infringement, commercial defamation, false advertising, or any other claim whether based in tort or contract, or on account of any state or federal statute, including state and federal deceptive trade practices acts. If advertiser claims copyright ownership in any of the advertising published, advertiser must include proper notice of its copyright claim in the body of the advertisement, otherwise copyright ownership shall remain in the publisher. 3. Advertiser agrees to check advertisement in the first issue in which it appears and report any error at once as publisher assumes no responsibility for errors after the first insertion. For any error which is the fault of the publisher and of which publisher has been timely notified, publisher will reprint the corrected advertisement for one extra insertion or refund the proportionate cost of the advertisement containing the error. Publisher shall have no responsibility for errors appearing in the copy submitted by advertiser.

AUTOMOBILES

One Owner, Exceptionally nice 1984 Olds 98 Regency 4 door. All power and air - Electric windows and power seats. \$3,095. See at 803 Wilmetth Drive after 6 p.m. S03-1tcRTN

'79 Chevy Caprice Classic; '86 Bronco II V-6 4X4 XLT; '77 Chevrolet Wagon; '76 fullsize Chevy pickup; all clean, run good and priced low. Smith's Auto Sales, Perryton. Call 435-5844 or toll free 1-800-753-6330. S02-4tc

1982 Honda V45 motorcycle. Call 659-5134. S03-2tp

HELP WANTED

The HANSFORD COUNTY ASCS Office will be taking applications for a full time program assistant. Knowledge of farm programs and computer operations are beneficial. Applications will be accepted until November 24, 1992, from 8 a.m. to 5 p.m., Monday-Friday. Applicants can apply at the Hansford County ASCS Office at 711 West 7th, Spearman, Texas. The Hansford County is an equal opportunity employer established under law without regard to race, color, religion, age, sex, handicaps, national origin, marital status, political affiliation or other non merit factors. ASCS is an Equal Employment Opportunity Employer. S03-2tc

Truck Driver needed - must have or can get CDL License. Must be dependable. Call 659-2634 before 7 a.m. or after 7 p.m. and ask for Dennis Baker. S03-2tp

Experienced roustabout with backhoe experience and commercial drivers license (CDL) to work in Beaver, Oklahoma. Call 405-625-4855 and ask for Mr. Eudey. S03-2tc

Park Rangers Game wardens, security, maintenance, etc. No exp. necessary. For info call (219)769-6649 EXT 9851, 8 a.m. to 8 p.m. 7 days. S03-2tp

REPORTER-STATESMAN CLASSIFIEDS WORK!

TREVA COOK 659-2670/659-3781

COMPARE BEFORE YOU BUY

Fletcher's Monuments MARBLE & GRANITE MONUMENTS & MARKERS GRANITE, OK 73547

Stay in touch! with G & G ELECTRONICS Cellfone USA

*2-way Radio - *Mobile Telephones \$35/month No Air Time *Repeater Spaces *Pagers *Satellite Work Call Bruce Duncan (806)659-3673

HomeLite Products Trash pumps, generators, and chain saws. Dewalt Power Tools Commercial electric drills, cordless drills & sanders. C.O. SUPPLY CO. 301 S. Davis - Spearman 659-3781

PETS

LOST: Large white male cat from 622 S. Townsend. If found call 659-2891. S04-1tp

MUSICAL INSTRUMENTS

REPO PIANO FOR SALE - Oak Finish - Like New - Low monthly payments available - Can see locally - for details Phone 1-800-658-1724 - Brier & Hale Music, Liberal S02-3tc

PUBLIC NOTICE

Notice of Sheriff THE STATE OF TEXAS, COUNTY OF HANSFORD NOTICE IS HEREBY GIVEN that by virtue of a certain order issued out of the Honorable 84 District Court, Hansford County, 2 day of Sept. 1992 by Dist. Clerk of said Hansford County for the sum of \$7,891.00 and the costs of suit, under a Judgement, in favor of Pacesetter Corporation in a certain cause in said Court, No. 3901 and styled Pacesetter Corp. vs. Tom & Marilyn Cain placed in my hands for service, I, Dennis Cline as Deputy of Hansford County, Texas, did, on the 12 day of Oct. 1992 levy on certain Real Estate, situated in Hansford County, Texas, described as follows, to Wit: Lot 11 & 12, Block 57 of 1st

C.O. SUPPLY CO. Tire Service Center Servicing Major Brands and offering tire repair 301 S. Davis 659-3781

HOUSE FOR SALE BY OWNER

713 Cotter Drive - Spearman Over 2400 sq. ft. of Living Area & Double Car Garage on 2 Lots. 4 BEDROOMS, 2 1/2 baths, formal living room & den -w- fireplace. LARGE KITCHEN & DINING ROOM. LARGE Screened in patio, sprinkler system, storage building & wood fence. This house is tastefully decorated with too many AMENITIES TO LIST. PRICED FOR IMMEDIATE SALE! CALL DONNIE OR CAROL HERGERT FOR APPOINTMENT AT 659-3317 or 659-2535.

TexSCAN Statewide Classified Advertising Network Advertise in 299 Texas newspapers for only \$250. Reach 3 MILLION Texans. Call this newspaper for details.

DEER HUNTERS SPECIAL: 25 acres, 795/acre, wooded, excellent hunting, adjoins large ranch. Texas Veteran or owner financing, prime acreage. Fox Realty, 500 Buchanan Dr., BURNET, TX 78611, 1-800-725-3699. FRESH OREGON CHRISTMAS trees. Cut/ shipped same day via UPS. Hand cultured 6-8 ft. Douglas fir. Order now while supplies last. MasterCard/ Visa accepted, \$44.95. Call today 1-800-582-8372 Ext. 560 or write The Family Tree, 19039 S. Beaver Creek Rd. 163, Oregon City, OR 97045. PIONEER STEEL BUILDINGS: 24x30x10, \$3,428; 30x40x10, \$4,650; 36x60x12, \$6,538; 40x75x12, \$8,895 and 50x100x14, \$13,595. All sizes available. Mini-storage/RVs. Call today. 1-800-637-5414. CASINO MAGIC: The casino that's a cut above! Non-stop Vegas style gaming! Just 40 miles from New Orleans in scenic Bay St. Louis, Mississippi. 1-800-5-MAGIC-5. HAROLD IVES TRUCKING hiring drivers. Earn up to 29¢ per mile. Assigned tractors with Motorola Communication, rider program, students welcome, insurance, bonuses, call: 1-800-842-0853. OTR DRIVERS TIRED of the same old garbage? Want to drive a nice tractor? Work with good people and get good benefits? Call 1-800-285-8267 E.O.E. DRIVERS: EXPERIENCED OTR flatbed, benefits, assigned new conventional equipment, sign on bonus, rider program, flexible time off. Run 48 states. Call immediately. Roadrunner trucking 1-800-677-5468. AIRCRAFT MECHANIC TRAINING - Become FAA Certified A & P Mechanic. Day/night classes. Financial aid available. Job placement assistance. Pica Aviation 1-800-776-7423, 1-713-644-6616 Houston. AIRCRAFT TIRE SUPERMARKET. All sizes surplus heavy-ply aircraft tires for farm use. Flat-free savings. Free brochure. 1-800-828-3350. GENSICO, Box 14628, Houston, TX 77221-4628. TRUCK OWNER OPERATORS - Tuition-free training available for those with no experience \$2,000 sign-on bonus for safe, qualified drivers with OTR exp. Guaranteed money-home, and lease-purchase programs available. Relocation Services Division of North American Van Lines 1-800-348-2147, Dept. DS-48. PIZZAINSEEKING qualified franchisees. *Carry-out/delivery & full service restaurants. *Easy to open & operate. *110 franchises sold in the last 12 months. For information call 1-800-890-9955. CHALLENGES IN YOUR LIFE? Free brochure teaches an Ancient Technique for Spiritual Insight. Call ECKANKAR, Religion of the Light and Sound of God, 1-800-762-4888 Dept. 621. ADDRESS YOUR CHILD'S letter to Santa at the North Pole. Santa will respond to your child on his personal stationery. Call today for details. 713-778-4183. STEEL BUILDINGS, TRUCKLOAD sale on unclaimed inventory. 40x30, 40x78 & 50x94. 1st come, 1st served. Available immediately. Can deliver in Texas. 1-800-292-0111. SELLING AT COST turkey roaster, mountainous desert, Texas Big Bend, fifty acres, two homes.

PUBLIC NOTICE

Edition, Hansford County and levied upon as the property of Tom & Marilyn Cain and that on the first Tuesday on December 1992, the same being the 1 day of said month, at the Court House door, of Hansford County, in the City of Spearman Texas, between the hours of 10 a.m. and 4 p.m., by virtue of said levy and said Judgement I will offer for sale and sell at public vendue, for cash, to the highest bidder, all the right, title and interest of the said property. And in compliance with law, I give this notice by publication, in the English language, once a week for three consecutive weeks immediately preceding said day of sale, in the Hansford Reporter, a newspaper published in Hansford County. Witness my hand, this 9 day of November 1992. R.L. McFarlin Jr., Sheriff Hansford County, Texas. By Dennis Cline Deputy S03-3tc

Paul Moore Construction Your Building Contractor for Hansford County Remodeling, additions, framing, roofing, painting, and many other things. ALL work Guaranteed. Free Estimates. Please call 659-5298.

NOTICE Wallace Monument Co. Monuments, Curbing, Grave Covers 1-800-999-9506 Local Representative LEONARD JAMESON Spearman, Texas

AA Realty Allen Alford-Broker-659-3034 Julie Martin-Sales-659-2425 Dennis Nelson-Sales-659-3608 Larry Trosper-Sales-3491 714 Wilbanks-3/2- single car garage 1108 S. Archer-3/2-2-Nice! 712 Collier-2/2-REDUCED! 717 S. Steele-3-1 3/4-2, NICE! 703 E. 2nd-3-1 1/2 710 Lee Dr- 3 bedroom, 2 car garage 1115 S. Haney-3 Br-1 1/2 Bath, \$30,000 706 Collier-3-1 1/2-1. Nice shop! 717 Cotter-3/1/1. Very Cheap!!! 1114 Barkley- 3 BR, 1 3/4 bath Homes to Show Not Listed Just Call For Showings FOR QUALITY & SERVICE CALL US TODAY Equal Housing Opportunity

Century 21 GOLDEN SPREAD REALTY Janey Helton Polnter, Broker Owner, 435-5444 621 Roland - 3/2, Owners will pay \$1500 toward buyers closing cost! 207 James - Large bonus room with basement for play area! 322 Hazelwood - 3/1, hard to beat the price! 501 Oklahoma UNDER CONTRACT...! hardwood floor. 206 Lonita - 2/1, Large kitchen, steel siding and cellar! 315 1/2 N. Bernice - Lot for sale! GRUVER 102 Maupin - 3-1 3/4 large lot. Nice older home Equal Housing Opportunity

REPORTER-STATESMAN CLASSIFIEDS WORK!

FOR RENT

For Rent: Large 3 bedroom, 2 living areas, 2 bathrooms, 1 car garage, central heat and lots of closets. Across from the grade school. \$350. Call 405/338-5683 or 817/696-0433. S47-1tcRTN

For Rent: Very nice 3 bedroom, unfurnished house, 224 N. Snider, Carpet, 2 storage buildings, fenced yard, \$300.00 month, \$150.00 deposit, no inside pets. 2 bedroom furnished house close to grade school. Nice. Will rent with bills paid or you pay. Deposit required. No pets. 214 S. Dresden. Available approximately Nov. 15th. Call 659-3657 or 659-3469. S02-1tc-RTN

For Rent: 2 Bedroom unfurnished house. 813 S. To RENTED 659-2090 or 659-2183. S04-1tcRTN

FOR LEASE: 10 acres on north edge of city. \$600 per year. Call 806/935-7405. S04-2tp

Are You A Victim of Physical Abuse? Call Toll Free 1(800)753-5308 We are in Spearman on the 1st, 3rd & 5th Wednesdays of each month at the 1st Presbyterian Church, 1021 Cotter. On the 2nd & 4th Wednesdays we are at the 1st Christian Church at 510 King-Gruver. We can come to Spearman & Gruver any time upon request. We operate a safe place for victims & their children to stay in times of crisis. Panhandle Crisis Center Serving Hansford, Lipscomb & Ochiltree Counties 317 S. Main Perryton, TX.

Minding Your Own Business

by Don Taylor, Director, PSBDC

Growing Jobs "Tall oaks from little acorns grow." - David Everett

During the last weeks of the recent presidential election campaign there was a great deal of focus on the economy and creating jobs. All three front running candidates spoke of the actions they would take, if elected. "Yes sir, we'll pass a bill, create a program, put together a plan, get our best people right on it, etc." they said.

Unfortunately, the very last thing our nation needs is more bills, programs, plans and bureaucrats meddling in the free enterprise system. Left alone, American busi-

nesses can tackle the job of rebuilding the economy very well, thank you. The key words here are "left alone."

I urge you to demand that our newly elected representatives - from the President on down - keep the government out of the way of our entrepreneurs. You see, governments don't create jobs. Neither do government programs, tax giveaways, economic plans, legislative bills, regulations or job training. All productive, economy building, basic income jobs come from the private sector businesses. Most of them come from small businesses. Perhaps, that is because most busi-

nesses are small businesses or maybe it's because all businesses start small.

From small beginnings

Just like tall oaks from little acorns, big businesses grow from small businesses. Small businesses sprout from the seeds of ideas formed in the minds of bright men and women who desire profit, recognition and fulfillment.

They nurture those seeds with sacrifice and long hours of hard work. They stimulate the roots with small amounts of capital and often fertilize the growth with debt.

With luck, they will survive and grow into statuesque giants of industry. It is likely that some of tomorrow's Fortune 500 leaders, are small businesses today.

Recent "acorns to oaks" would include Apple Computer, Inc., Wal-Mart Stores, Inc., Electronic Data Systems, Inc., Micro-Soft Computer and Nike Shoes. In fact, there are several "little acorn" success stories worth sharing.

Success stories

The mighty IBM computer company had humble beginnings as a purveyor of meat scales and time clocks. This "little acorn" grew and changed to meet changing customer needs. IBM, is now known best for its state-of-the-art computers. The company employs more than 400,000 men and women throughout the world.

Apple Computer, Inc., was

founded in 1976, in a garage. It wasn't even the founder's garage. The garage belonged to the parents of Steve Jobs, who along with Steve Wozniak, built the company into a "tall oak" in the computer industry.

Harland Sanders, who founded Kentucky Fried Chicken, started his company out of his car. In the early days when sales were slow, Sanders, also slept in his car. Now the chain has more than 7,000 stores worldwide and is recognized as a "mighty oak" in the fast food industry.

J.C. Hall was an even smaller start. Hall started Hallmark Card Company out of a shoe box. The company now has worldwide sales of nearly \$3 billion. Recently, Hallmark introduced a series of cards, titled the "Shoe Box" series, in honor of their founder's humble beginnings.

Multi-level marketer Amway, Inc., chocolate candy king Hershey Foods and tennie runner maker Nike Shoes, all started as home-based businesses. Electronics manufacturer, Hewlett-Packard, music industry giant, A&M Records, and La-Z-Boy Chair Company, were all founded in garages. These were small, seedlike companies with growth aspirations.

Now I hope you can see why I believe that our free enterprise system can create jobs. It works. Left alone, free from excessive government meddling, entrepreneurs will innovate, create and perpetuate the American dream.

Let's put entrepreneurs in charge of growing new jobs. Let's put the government in charge of...uh...on second thought, let's put entrepreneurs in charge of the government too!



Spearman Chamber of Commerce

"CASINO NITE"

Saturday, November 21, 1992

7:00 p.m.

403 Airport Road

TICKETS AVAILABLE
Spearman Chamber of Commerce Office
Or
At The Door

\$50 per Couple - \$25 Single



The Chamber Would Like to Thank These Members For Their Generous Donations That Will Make This Event A Success!!

- Gillaspie Auto & Truck Center — 1993 Car
- Gruver Ford — 1993 Truck
- Hansford Implement — Polaris 4-wheeler
- J.G.'s Ladies Wear — Holiday sweater
- Cate's Men & Boys Wear — 2 Arrow shirts
- Gordon's Drug — Wall hanging
- Jo's This n' That — 2 T-shirts
- Barb's Beauty Salon — 3 Haircuts
- Beady Furniture Company — Wooden Bird Cage & Sports Chair
- Hi-Plains Auto — Tire balance by Napa
- A Kut Above — Haircut
- Henson Chiropractic — Vitamin analysis
- C.O.'s Supply — Remington 870 youth express-shotgun 20 gauge
- White House Lumber — Tools
- Lowe's Marketplace — Gift Certificate
- The Bunkhouse — Coat
- Country Stitches — Christmas wall hanging
- Kid's Stuff/Lady Fair — Merchandise
- Earl's TV and Appliance — Clock radio
- B&B Sales — Coolers
- Ivey's Hungry Cowboy — 2 Dinners
- Pizza Hut — Dinners
- Knack Shoppe — Movie Rental
- Mur-Mur's — 2 Dinners
- Video Hut — 3 Rentals
- Charolette Ford Trunks — Wreath
- Cinderella Beauty Salon — Permanent
- Mission Cable — 4 Cable Hookups
- Amarillo Daily News — 3 Month Subscription
- Sandy's Beauty Shop — Hair care products
- Celebrate — Brass stool
- El Vaquero Restaurant — Dinner for Two
- Ned's Pro Shop — 2 Putters
- Southern Office Supply — 2 Pen sets
- Cellular Communications — Mobil
- Golden Spread Sales — Case of Oil
- Hickerson Jewelers — Gold Nugget
- Lifts West of Red River New Mexico — Weekend getaway
- Spearman Booster Club — Sports package
- Brown, Graham & Co. — Golf Balls
- Five Star — Tricycle & wagon
- Palo Duro Supper Club — Steak dinner for Two
- Hansford County Reporter-Statesman — 2 One-year subscriptions & 1/2 page feature advertising
- City of Spearman — Swim pass for family of 5
- Alco — Decorations
- Debbie's Ready or Not — Decorations
- Gruver Printing — Printing
- Catering by Randy Hendrickson



It's Like A Whole Other Country.

THANK YOU FOR HELPING...

Hi - Plains Conoco prosper for the past 34 years. Your business has been greatly appreciated. Come by and visit with Murl and Ann during their final close out.

Final day of business is Nov. 25.

ALL INVENTORY TO BE SOLD AT REDUCED PRICES. ALL SALES CASH.

THANK YOU TO OUR NOVEMBER SUBSCRIBERS

We would like to take this opportunity to thank these people for their continued support of the newspaper and to remind them that their subscription expires in November. If you would like to renew your subscription by mail, please cut out the coupon at the bottom of this thank you and return it with a check to the newspaper. Subscriptions cost \$19.95 for Hansford County residents and \$24.95 for residents outside of Hansford County.

Names of people who's subscriptions expire in November:

Howard Barkley
Joe Cummings
Del Cluck
J.C. Cluck
Max Clawson
Mr. or Mrs. Elmo J. Dahl
Golden Spread Reality
Sharon Hannon
Mary Harmon

J.H. Myatt
V.B. Morris
Steve Myatt
Victor Schumann
Grover Taylor
B.R. Upchurch

Subscription renewal for:

Name: _____
Address: _____
City: _____ State: _____
Zip: _____

DEAR KIDS,

HELLO TO ALL MY GOOD FRIENDS IN HANSFORD COUNTY! RUDOLPH, MRS. CLAUS AND THE ELVES SEND SEASON'S GREETINGS!

THE ELVES AND I ARE WORKING HARD ON THE TOYS I'LL SOON BE PACKING INTO MY SLEIGH FOR MY CHRISTMAS TREK THROUGH SPEARMAN, GRUVER AND MORSE.

I'M ALSO WORKING ON MY LIST, AND SELECTING GIFTS FOR YOU.

MY HELPERS AT THE REPORTER-STATESMAN HAVE AGREED TO SEND YOUR LETTERS TO ME AT THE NORTH POLE. JUST WRITE YOUR LETTER AND SEND IT TO ME IN CARE OF THE NEWSPAPER AT P.O. BOX 458, SPEARMAN, TX 79081. OR BRING IT BY THE OFFICE AT 213 MAIN STREET IN SPEARMAN AND DROP IT OFF.

DON'T FORGET, THOUGH, YOUR LETTERS MUST BE RECEIVED IN THE REPORTER-STATESMAN OFFICE BEFORE NOON ON WEDNESDAY, DECEMBER 9.

YOUR LETTERS WILL BE PUBLISHED IN THE REPORTER-STATESMAN, THURSDAY, DECEMBER 17, AND THEN FORWARDED TO ME SO I CAN CHECK MY LIST TWICE.

I'M LOOKING FORWARD TO HEARING FROM YOU SOON.

LOVE, SANTA CLAUS



When a young penguin is born, its father feeds the chick through his mouth with a milklike substance produced in his throat.



A Delicious Gift Idea To Last The Whole Year

THE COOKIE OF THE MONTH CLUB

A different cookie or assortment delivered each month of the year

Gift packages starting at \$60

CALL OR COME BY TODAY

Debbie's Ready Or Not

3151/2 Main • Spearman
659-3328

The Annual
Ministerial Alliance

Community Thanksgiving Service

will be held on
Sunday, November 22 at 7 P.M.

at the
First United Methodist Church

James Brown of the Apostolic Church will be the speaker

Nursery Provided

Fellowship following in fellowship hall.

Obituaries

ANDREW P. SANDERS
LOCKNEY - Andrew P. "Shorty" Sanders, 94, died Tuesday, Nov. 10, 1992.

Services were held at 2 p.m. Thursday, Nov. 12, in First United Methodist Church with the Rev. Tommie Beck, pastor, officiating. Burial was in Lockney Cemetery by Moore-Rose-White Funeral Home.

Mr. Sanders was born in Pontotoc, Miss., and moved to Floyd County in 1957. He married Inez Gordon in 1923 at Lockney. Mr. Sanders was a retired farmer. He served on the school board in South Plains and was a member of the

First United Methodist Church. He was preceded in death by his wife and a son, C.W. Sanders.

Survivors include two daughters, Eulalia Blankenship of Spearman and Twilla Morris of Petersburg; two sons, Joe Sanders of Lubbock and Hansel Sanders of South Plains; two brothers, Nelson Sanders of Ruidoso, N.M., and Eck Sanders of Elida, N.M.; nine grandchildren; and 17 great-grandchildren.

GEORGE ROBERT FANNING
SAYRE, OKLA. - George Robert Fanning, 86, died Tuesday, Nov. 10, 1992.

Graveside services were held at 10:30 a.m. Thursday, Nov. 12, at Lone Oak Cemetery with Kevin Ballard of Sayre Church of Christ officiating. Arrangements were by Rose Chapel Funeral Service.

Mr. Fanning married Corrine Thornton in 1931 at Hollis Okla. They farmed west of Sayre until 1977 when they moved to Sayre. They moved to Spearman in 1990.

Survivors include a son, Odell Fanning of Spearman; two grandchildren; and five great-grandchildren.

GORDON RAYMOND STEDJE
GRUVER - Gordon Raymond Stedje, 78, died Sunday, Nov. 15, 1992.

Services were held at 2 p.m. Tuesday, Nov. 17, in Oslo Lutheran Church with the Rev. John R. Chandler, pastor, officiating. Burial was in Oslo Lutheran Cemetery by Henson Funeral Home of Guymon, Okla.

Mr. Stedje was born in Leland, Iowa and moved to Hansford County in 1922. He married Anna

Marie Spivey in 1940 in Gruver. He was a farmer and rancher. He was a member of the Oslo Lutheran Church and had served on the Gruver School Board and the Palo Duro River Authority board. He was preceded in death by a daughter, Beverly Stedje, in 1949.

He was preceded in death by his parents, Clara and Michael Jens Stedje; a sister, Marie Stedje; a brother, Clifford Stedje; and a daughter, Beverly Stedje.

Survivors include his wife, Anna Marie Stedje of the home; two daughters, Barbara Wise of Tucson, Ariz. and Diane Battles of Duncan, Okla.; a son, Dennis Stedje of Gruver; a sister, Cora Knutson of Amarillo; a brother, James Stedje of Gruver; and six grandchildren.

A Gordon Stedje Memorial has been established at Oslo Lutheran Church. Memorials may be sent to Oslo Lutheran Church, HCR3, Box 143, Gruver 79040 or to Henson Funeral Home, Box 1306, Guymon, Okla. 73942.

PUBLIC NOTICE

NOTICE TO BIDDERS

Sealed bids will be received by the Gruver School Board of Trustees for the school owned property at 405 Richardson, Gruver, Texas.

Bids can be made for the house AND lots or bids can be made for EITHER the house OR the lots separately. If the bid is for the house only, the purchaser will be responsible for its removal from the site.

The house and four lots are located at 405 Richardson (Lots 27-30, Blk 61, OT) Gruver, Texas. Property to the north and south is owned by the First Baptist Church. All bids will be received until 4:00 p.m. on December 8, 1992. Any bid received after that time and date will be returned unopened and not considered. Bidders are invited to be present at the bid opening at the regular Board Meeting, December 9, 1992, at 1:00 p.m. in the Board Room in the Gruver High School building. Please mail or deliver all bids to:

Gruver I.S.D. Business Office
 P.O. Box 650
 Gruver, TX 79040

The District reserves the right to reject any bid and/or all bids, to make awards as they may appear to be advantageous to the District and to waive all formalities in bidding.

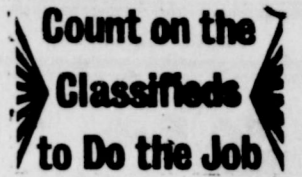
The award will be made without regard for race, color, sex, religion, sect, or creed. S04-2tc

NOTICE TO BIDDERS

Sealed bids for the purchase of two hundred domestic gas meters for the Gas Department will be received by the City of Spearman, Texas, up until 10:00 a.m., December 8, 1992, then publicly opened and read.

The City reserves the right to reject any or all bids, to waive informalities and to accept the bid deemed to be the most advantageous to the City. All bids received after the above closing hour will be returned unopened. All bids shall be sealed and marked on the outer envelope of the type of bid being submitted.

Specifications and bidding documents may be secured from City Hall, P.O. Box 37, Spearman, Texas 79081. S04-2tc



HENSON CHIROPRACTIC

410 S. Davis • Spearman, TX
 Call for Appointment • 659-5603

Office Hours: Mon, Wed, Fri - 9:00 to 5:00
 Tue, Thu - 9:00 to 11:30

LET US REPLENISH THE SEED OF FAITH THROUGH... REGULAR CHURCH ATTENDANCE, DAILY BIBLE READING AND PRAYER

IN SPEARMAN

Apostolic Faith Church
 822 S. Dressen 659-2870
 Sunday School: 10 a.m.
 Worship: 11 a.m.
 Evening Worship: 6 p.m. Sun.
 Wed. Prayer Meeting: 7:30 p.m.
 Pastor James Brown

First Assembly of God
 401 N. Bernice 659-2295
 Sunday School: 9:45 a.m.
 Worship: 11 a.m.
 Evening Worship: 7 p.m.
 Wednesday Worship: 7:30 p.m.
 Youth: 7:30 Wednesday
 Pastor Ray Cook

First Christian Church (Disciples of Christ)
 29 S. Bernice 659-2036
 Sunday School: 9:45 a.m.
 Worship: 10:50 a.m.
 Women's Bible Study: 2 p.m. Wed.
 Youth: Wed. 6 p.m. & Sun. 5 p.m.
 Pastor LaVern Draper

First Baptist Church
 123 N. Bernice 659-5557
 Sunday School: 9:45 a.m.
 Worship: 11 a.m.
 Evening Worship: 7 p.m.
 Jr. High Youth: 6 p.m. Wed.
 High School Youth: 7 p.m. Wed.
 Youth Choir: 6 p.m. Sun.
 Pastor Kyle Henderson

Trinity Community Church
 1105 S. Roland 659-2671
 Sunday School: 9:45 a.m.
 Worship: 10:45 a.m.
 Sunday Evening: 6:30 p.m.
 Wednesday evening: 7 p.m.
 Pastor Dan Carter

Union Church
 31 S. Endicott 659-2644
 Sunday School: 9:45 a.m.
 Worship: 10:45 a.m.
 Evening Worship: 6:30 p.m.
 Bible Study: 7:30 p.m. Wed.
 Youth: 7:30 p.m. Wed.
 Pastor Jeff L. Burress

Sacred Heart Catholic Church
 901 Roland 659-2166
 Sat. Night Mass: 7 p.m.
 Sunday Mass: 9:30 a.m.
 C.C.D.: 10:30 a.m. Sun.
 Father Al Bruening

Primera Mission Bautista
 502 E. 7th 659-3991
 Sunday School: 9:45 a.m.
 Worship: 11 a.m.
 Pastor Guadalupe Carranza, Jr.

IN GRUVER

First Baptist Church
 402 E. Broadway 733-2411
 Sunday School: 9:45 a.m.
 Worship: 10:50 a.m.
 Disciple Training: 6 p.m. Sun.
 Youth Happening: 6:30 p.m. Wed.
 Prayer Meeting: 7:30 p.m. Wed.
 Pastor Larry Miller

Oslo Lutheran Church (ECLA)

West of Gruver
 On Hwy 15 & N. FM 1162
 339-7646
 Sunday School: 9:45 a.m.
 Worship: 11 a.m.
 Morning Prayer: 9 a.m. Wed.
 Pioneer Clubs (Grades 1-6):
 4-5:30 p.m. Wed.
 Pastor John R. Chandler

Church of Christ
 121 S. Haney 659-3244
 Sunday Bible Class: 9:45 a.m.
 Worship: 10:30 a.m.
 Evening Worship: 6 p.m.
 Bible Study Wed. 7:30 p.m.
 KRDF Radio Program
 Living With Christ 7:50 a.m. M-F
 Minister Annis Pape

Faith Lutheran Church (ELCA)
 1101 Bernice 659-2252
 worships with
First Presbyterian Church
 1021 Cotter 659-2033
 Sunday School: 9:45 a.m. at Lutheran
 Worship: 11 a.m. (alternates monthly between addresses above)
 Pastor Beverly Cook

Church of Christ
 209 King 733-2760
 Sunday School: 9:30 a.m.
 Worship: 10:20 a.m.
 Evening Worship: 6 p.m.
 Wed. Evening Worship: 7:30 p.m.
 Minister Bob Setcliff

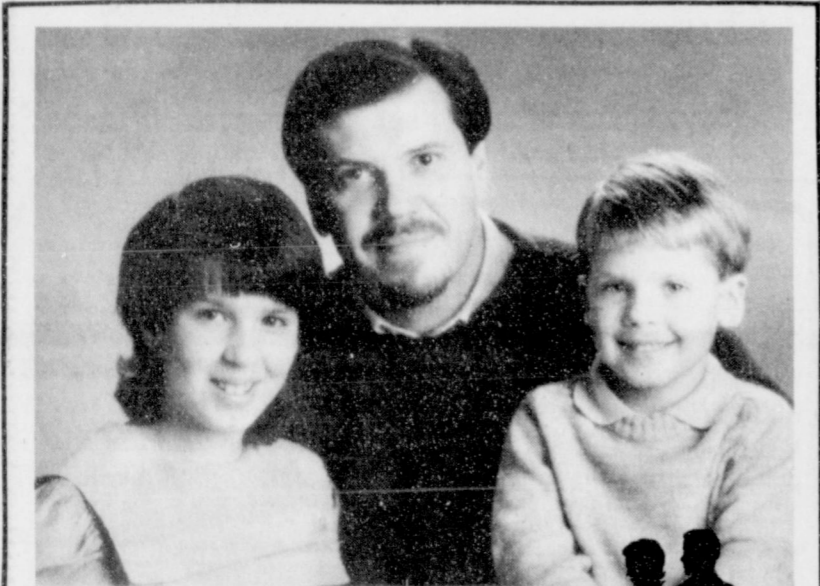
Community Bible Church (Interdenominational)
 Hwy. 15 733-2443
 Sunday School: 10 a.m.
 Worship: 11 a.m.
 Evening Worship: 7 p.m.
 Wed. Prayer Meeting: 7 p.m.
 Pastor Zane Gray

Fellowship Baptist
 1102 S. Archer 659-2448
 Sunday School: 10 a.m.
 Worship: 11 a.m.
 Evening Worship: 7:30 p.m. Wed.
 Youth: 7:30 Wed.
 Pastor Rick Fincher

First United Methodist
 407 S. Haney 659-5503
 Sunday School: 9:45 a.m.
 Worship: 11 a.m.
 Jr. High Youth: 5 p.m. Sun.
 High School: 6 p.m. Sun.
 Pastor Todd Dyess

First Christian Church
 510 King 733-2960
 Sunday School: 9:45 a.m.
 Worship: 11 a.m.
 Wed. Bible Study: 7:30 p.m.
 Youth: 6:30 Wed.
 Pastor Gary Gumfory

Gruver United Methodist
 Broadway & Garrett 733-2651
 Sunday School: 10:50 a.m.
 Worship: 8:30 a.m. & 10:50 a.m.
 Sunday Evening: 6 p.m.
 UMY: 6 p.m.
 Pastor Lewis Holland



On to Maturity

The writer of Hebrews' phrase, "let us... go on to maturity" (Hebrews 6:1) has meaning for all people, especially that long suffering group of people known as parents. Mark Twain put his finger on what causes parents to suffer when he said,

"When I was fourteen I thought my dad was the most ignorant man in the world. But when I became twenty-one, I was amazed how much the old man had learned in seven short years."

That reality of such an experience not only causes pain in parents, it also produces maturity. Maturity comes from being able to survive some of the frustrations that come from parenting children, especially during teenage years.

Yet, when the children follow Hebrews' advice and "go on to maturity," then the parents experience a growing maturity that comes precisely because they have hung in there with the growing children.

And both children and parents ultimately come to know the joy of being family and more importantly of being a "maturing family."

Sunday Mark	Monday Acts	Tuesday Acts	Wednesday Psalm	Thursday Isaiah	Friday Psalm	Saturday Acts
9:14-29	14:21-15:21	15:22-41	17	56:1-8	6	9:1-19

Copyright 1992, Keister Williams Newspaper Services, P.O. Box 8005, Charlottesville, VA 22906
 Scriptures selected by the American Bible Society

This Feature is made possible through the Sponsorship of these Civic Minded Businesses.

They deserve your support.

"WE SUPPORT OUR LOCAL CHURCHES"

CAPROCK #1
 Richard Winter, Manager
 (806)733-5043

CAPROCK #2
 Jeff Rudolph, Manager
 (806)733-5025

QUALITY BRAND

"Custom Cattle Feeding"

HELP SPONSOR THIS ENCOURAGING MESSAGE CALL ...

THE **Hansford County Reporter-Statesman**
 659-3434 • (800)395-9482

SPEARTEX GRAIN COMPANY
 405 Collard • Spearman
 659-3711

GSB
GRUVER STATE BANK
 FDIC
 Gruver, Texas 79070
 733-5061

COMPLIMENTS OF...

ATHENA ENERGY INC.

HI-PLAINS AUTO SUPPLY, INC.
 NAPA
 Mobile Oil For Irrigation & Industrial Purposes
 118 Main • Spearman
 659-2506 • (800)657-8742

LADIES READY TO WEAR
 306 Hancock • Spearman
 659-3424

CO'S SUPPLY CO.
Plumbing & Tire Sales & Service
 301 S. Davis • Spearman
 659-3781

GILLASPIE
 AUTO & TRUCK CENTER, INC.
 CHEVROLET • OLDS • PONTIAC • BUICK
 CHRYSLER • PLYMOUTH • DODGE
 Highway 207 South • P.O. Box 427 • (800)659-2641
 SPEARMAN, TEXAS 79081

Compliments of...

Texas-New Mexico Power Company.
 300 Hancock • Spearman, TX.
 79081
 659-2336

"Compliments of..."
GOLDEN SPREAD CARPET CLEANING
 Don & Mary Moore
 659-3068
 "Not Forsaking The Assembling of Ourselves Together"
 HEBREWS 10:25

GRUVER CABLEVISION
 Quality Family Entertainment With
 "The Disney Channel"
 308 Main • Gruver
 733-5295

TRUE VALUE HARDWARE

B and B
 205 DILLON SPEARMAN, TX.
 SALES (806)659-2662
 FARM AND HOME SUPPLIES

Attend The Church of Your Choice

BOXWELL BROS. FUNERAL HOME

HELP SPONSOR THIS ENCOURAGING MESSAGE CALL ...

THE **Hansford County Reporter-Statesman**
 659-3434 • (800)395-9482

Compliments of...

AGCO
 of Spearman, Inc.
 "See you in Church"
 659-3751

GORDON DRUGS
 Dependable Prescription Service
 314 Main • Spearman
 659-2140
Jim Evans

Lemon, Shearer, Ehrlich, Phillips and Good
 "Attorneys and counselors at Law"
 Box 1066 • Perryton 79070
 (806)435-6544

Advertising Pays \$\$\$\$\$\$
 Call 659-3434
 or
 1-800-395-9482