



THE HANSFORD COUNTY

Reporter - Statesman

Serving Hansford County Since 1907

Look for Spearman on the Internet at <http://www.webtex.com/Spearman>

HANSFORD COUNTY LIBRARY
0120 S. MAIN ST.
SPEARMAN TX 79081
1 comp

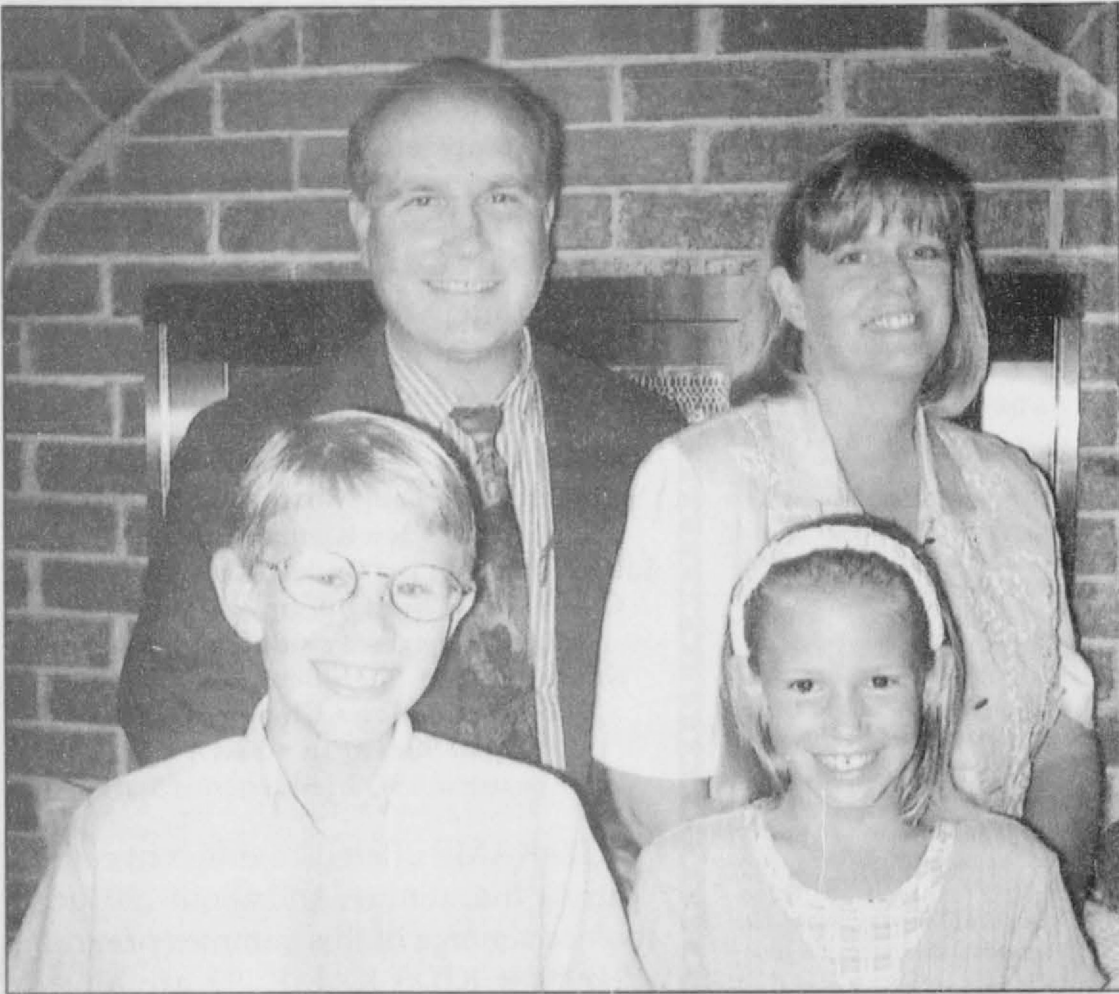
0¢

THURSDAY, AUGUST 13, 1998

213 MAIN • SPEARMAN, TEXAS, 79081

VOLUME 90, ISSUE 33

Spearman Welcomes New MD



Dr. and Mrs. Steve Boynton and children, Tyler and Alyssa

Steve Boynton, M.D. has joined the staff of the Hansford County Hospital District. He is a 1976 graduate of Borger High School, a 1980 graduate of Texas Tech with a Bachelor of Arts in Chemistry, and a 1987 graduate of the University of North Texas in Denton with an MBA in Finance. In 1995, Dr. Boynton graduated from Texas Tech Medical School, and spent three years in residency in Amarillo.

Dr. Boynton's father served in the United States Navy and was often transferred. So, while he was in high school, Steve went to Borger to live with his grandparents, Foster & Clara Harris. His paternal grandparents, William & Lola Boynton lived in Spearman in the mid '50's.

He married Karen Kinard of Columbus, Mississippi in October of 1982. Karen is a 1980 graduate of Mississippi State and has a Bachelor of Science degree in Child Development. She took a training course from the Scottish Rite Learning Center of West Texas in Lubbock and became a Certified Language Therapist in 1992.

Steve decided to pursue a career in medicine after he was involved in a plane crash in Dallas in 1988. At the time, he had been a Flight Attendant for Delta Airlines for about 10 years.

Steve and Karen have two children, Tyler, a 9 year old fourth grader and Alyssa who is 8 years

old and in the second grade. The Boyntons said that they are happy to be in Spearman, "Our children like it here and everyone is friendly. We want to settle down here and make it our home town."

Said Dr. Boynton, "I have always liked the Panhandle. It feels like home."



Politicians and distant cousins (by marriage), Senator Kay Bailey Hutchison and County Attorney John Hutchison share a laugh at the expense of local newspaper publisher. Senator Hutchison came to Spearman on Saturday, August 8th for a town meeting concerning drought relief.

Spearman ISD Excels

Commissioner of Education Mike Moses recently announced that a record number of Texas school districts and campuses earned an exemplary rating, the highest rating possible, from the state's accountability system.

The number of low-performing campuses also hit a record low, even though more stringent performance standards are in place. No school has been on the low-performing list for three consecutive years.

"We raised the bar for Texas

schools again this year. They not only met the challenge, most exceeded it. The ratings show the strong improvement that is occurring in Texas public schools," Moses said. "Improvement of this magnitude doesn't happen easily.

This is a direct result of students, teachers and administrators working hard each and every school day to improve academic performance."

The accountability ratings are based on the percentage of students passing the reading, writing and mathematics sections of the Texas

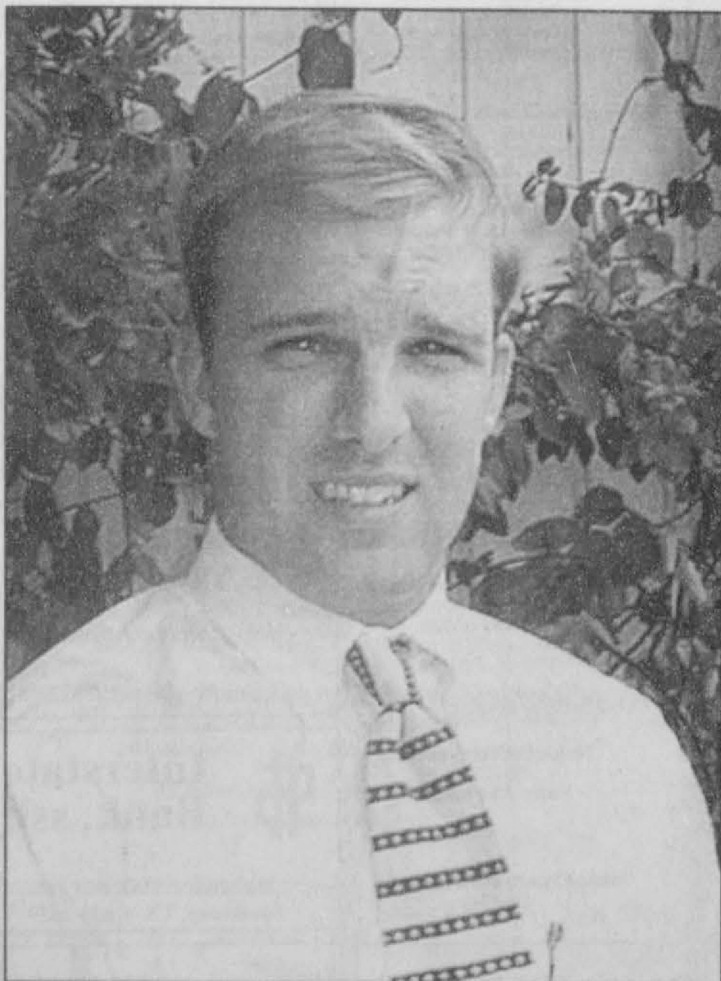
Assessment of Academic Skills examination, the dropout rate and attendance rate. Districts can earn one of four ratings: exemplary, recognized, academically acceptable, and academically unacceptable.

Spearman ISD and Pringle-Morse CISD were among the 20 districts in Region 16 and the 120 state-wide districts to earn the exemplary rating for 1998. This is up from the 65 districts earning exemplary rating in 1997. Spearman ISD is the largest district, student wise, in Region 16 to obtain this achievement.

Exemplary ratings were earned by

1,042 campuses in 1998, compared to 683 last year. Spearman Elementary was among the campuses on the Exemplary list.

To earn an exemplary rating this year, at least 90 percent of all the students and each student group (African American, Hispanic, white and economically disadvantaged) had to pass the reading, writing and mathematics sections of the TAAS test. A dropout rate of less than 1 percent for all students and each student group and an attendance rate of at least 94 percent were also required.



K. Kyle Irwin

Irwin Named VP

The Board of Directors of the Gruver State Bank, Gruver, announces the election of K. Kyle Irwin as Vice President of the Gruver Bank. Irwin comes to the bank from NationsBank, Amarillo where he served in the Commercial Banking Group for the past 4 years.

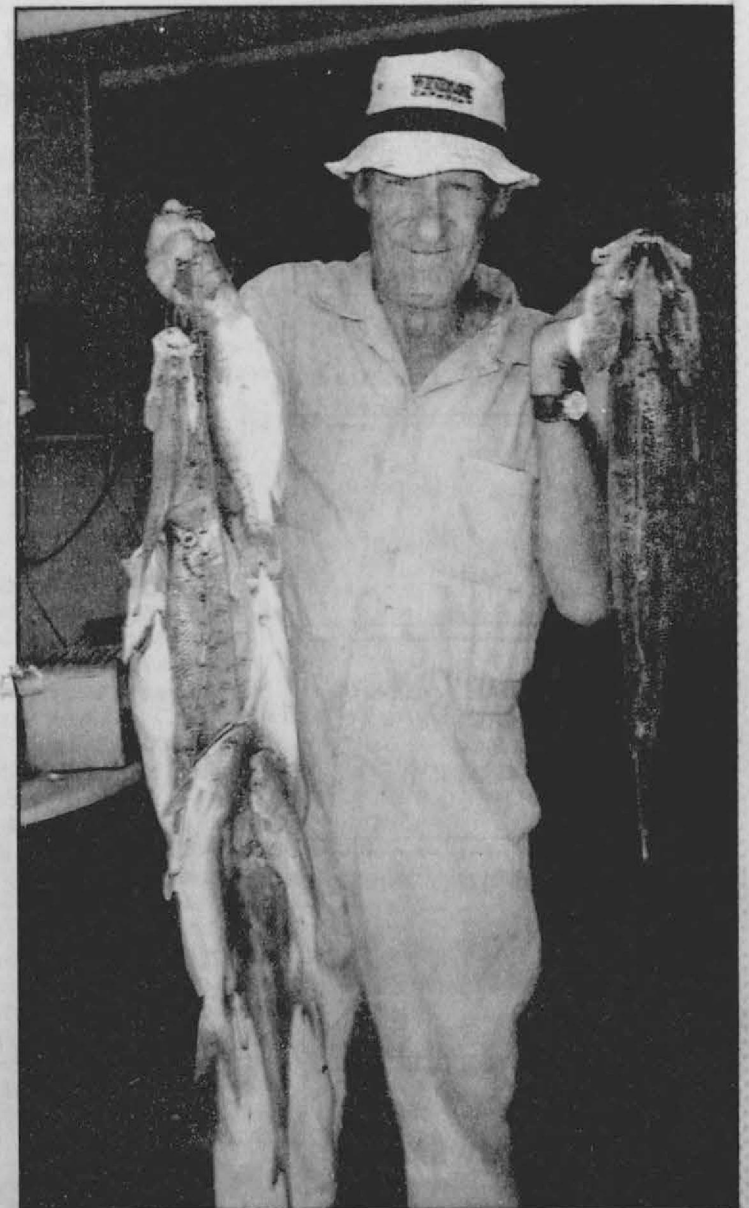
Irwin is a Gruver native, a graduate of Gruver High School and Texas Tech University with a degree in Banking and Finance.

He and his wife Kimberly and their two sons will be residing in Gruver.

Don Smith Memorial Golf Tournament

The Hansford Golf Club held the Don Smith Memorial Golf Tournament this weekend. The format was a two man partnership and was played scramble on Saturday and low-ball on Sunday.

The winners of the flights are: **Championship Flight:** First Place - Danny Womble and Neal Pack with a score of 64 - 63 (total - 127), Second Place - Troy James and Ray Gressett - 64 - 65 (total - 129). **First Flight:** First Place - Billy Kelly and Bob Hardy - 71 - 67 (total - 138), Second Place - Charlie Little and Keith Hight - 69 - 76 (total - 145). **Second Flight:** First Place - Eddy Clemmons and Noal Clemmons - 74 - 74 (total - 148), second Place - Butch Baker and Latham - 76 - 80 (total - 156).



R.L. Easley of Spearman is pictured above with a 5 1/2 lb. Walleye, 8 Crappie (weighing 2 1/2-3 pounds each), and 6 Channel Cat. The fish were caught on Lake Palo Duro on Friday, August 7th. For further information on Lake Palo Duro, see *Out at the Lake* on page 6.

Laugh and Live



by Gary C. Smith

gcs@ren.net

In 1996 a list of wierd American laws was printed in Spy magazine. I don't know how many of these laws are still on the books, but I found them rather humorous.

The Law In Arkansas

A man can legally beat his wife, but not more than once a month. (That should be enough.)

In Fayetteville, it is illegal to kill "any living creature." (I wonder if **Raid** is an illegal substance?)

Schoolteachers who bob their hair may forfeit their pay raises.

Flirtation between men and women on the streets of Little Rock may result in a 30-day jail term. (Mr. President had better stay in Washington.)

The Law In California

In Los Angeles, a man may legally beat his wife with a leather strap, as long as it is less than two inches wide, or she may give him permission to use a wider strap. (No comment.)

It is a misdemeanor to shoot at any kind of game from a moving vehicle, unless the target is a whale. (I think we have the same law in Texas.)

In Pacific Grove, "molesting" butterflies can result in a \$500 fine.

In Pasadena, it is illegal for a secretary to be alone in a room with her boss. (Mr. President had better stay in Washington.)

It is illegal to set a mousetrap without a hunting license. (This one is pretty hard to believe.)

In Long Beach, it is illegal to curse on a mini-golf course. (That does away with most "real" golfers.)

In San Francisco, it is illegal to wipe one's car with used underwear. (That's understandable.)

It is illegal to cry on the witness stand in Los Angeles courts. (Mr. President had better stay in Washington.)

The Law In Colorado

In Durango, it is illegal to go out in public dressed in clothing "unbecoming" one's sex.

In Logan County, it is illegal for a man to kiss a woman while she is asleep. (Mr. President had better stay in Washington.)

In Pueblo, it is illegal to let a dandelion grow within city limits.

The Law In Connecticut

In Hartford, it is illegal to educate a dog.

It is illegal to dispose of used razor blades.

In New Britain, the speed limit for fire trucks is 25 m.p.h., even when going to a fire.

In Hartford, it is illegal for a man to kiss his wife on Sunday. (Mr. President might do O.K. in Connecticut.) More at a later date...

Until Next Time,
May God Bless
GCS

Engagement Announcement

Zetha Blackburn of Tulsa, OK and the Honorable and Mrs. J.E. Blackburn of Houston, TX wish to announce the engagement of their daughter, Sara Blackburn, to Chris Deuillet, son of Mr. and Mrs. George Deuillet II.

The couple will exchange wedding vows on Saturday, October 3, 1998 at North Park Presbyterian Church in Dallas, TX.

Sara is a 1988 graduate of Spearman High School. She graduated from West Texas A&M University in 1992 with Interdisciplinary Studies. She is a 3rd Grade teacher in Arlington.

Chris is a 1989 graduate of W.T. White High School. He graduated from Baylor University in 1993 with a BA in Journalism and Foreign Service. He earned an MBA from the University of Texas in Arlington in 1998. He is a marketing analyst for IBM.

At the Lyric Theatre . . .

113 Main St • (806) 659-2812 • Spearman

50 Years At This Location!

Friday, Saturday, Sunday, Monday & Tuesday

Armageddon

PG-13
**Bruce Willis
Ben Affleck**

Mask of Zorro

PG-13
**Antonio Banderas
Anthony Hopkins**

Screen 1 • 7:30 p.m.

Screen 2 • 7:45 p.m.

Adults - \$6.00, Children & Senior Citizens - \$4.00

Check us out on the web at: hollywood.com



Jason and Cindy Duvall are proud to announce the birth of their son, Cameron Jay Duvall. He arrived on Friday, August 7, 1998 at 2:59 p.m. He weighed 7 pounds, 1 1/2 ounces and was 20 3/4 inches long.

Proud grandparents are Vernon and Del Raye Ollenberger of Balko, OK and Jim and Mary Duvall of Pampa.

Great-grandparents are Bessie Ollenberger of Enid, OK, Mary Graham of Pampa, Jim and Birdie Duvall of Carrollton, Missouri, and Lucille Ward of Henderson, Nebraska.

He was welcomed home by his three-year-old brother, Bradley Duvall.

Bridal Registry

Dionne Patterson & Tim Kizziar - August 22

Sara Blackburn & Chris Deuillet - August 22

J.J. Pollard & Tobe Shields - August 23

Jana Ellsworth and Chad Knowlton

Shelley Sansing & Carson Womble

Celebrate

Gifts for all your celebrations!

203 Main St • Spearman, TX

(806) 659-3350

1-800-663-8026



Come by and let us help you set up your special gift table

Couples Currently Registered

Tim Kizziar & Dionne Patterson - August 22nd*

Sara Blackburn & Chris Deuillet - August 22nd*

Tobe Shields & J.J. Pollard - August 23rd*

Anna Villareal & Raul Villegas

Florinda Vasquez & Pablo Anchondo

Heather & Grady Cline

Carson Womble & Shelley Sansing

*Date of Shower

314 Main
659-2141



Spearman,
Texas

HANSFORD HAPPENINGS

Win A Handmade Quilted Wall Hanging

A beautiful wall hanging was handmade by the ladies of the Golden Spread Senior Citizen Center and will be given away on December 17, 1998. Chances are \$2.00 each or 3 for \$5.00. All proceeds will go to the Golden Spread Senior Citizen Center. To see the wall hanging or purchase tickets, please come by the center at 502 S. Brandt, or ask any participating member.

Understanding Your Worth

A Ladies Tuesday Bible Study kick-off luncheon will be held on Tuesday, August 18th from 9:30 a.m. to 2:30 p.m. at the home of Rhodora Alberty, 702 Bernice. Special guest will be Muriel Fields of Amarillo. If you plan to attend, please RSVP at 659-2671.

Back To School Kick-Off

Recording artist Roger Hodges and Heart's Desire will perform songs from their newest CD release "Pressin On" on Friday, August 14, 1998 at 7:00 p.m. in the Spearman High School Auditorium. Admission is free and is open to all ages. This event is being sponsored by "The Master's House" Youth Activity Center for the Northern Panhandle of Texas.

Panhandle Community Services Offers Help With Electric Bills

Panhandle Community Services would like to help anyone who is having problems with high electric bills due to the extreme weather we had in June. The program is for low-income and elderly. If you have any questions regarding this program, call Johanna Dear at (806) 435-2478.

Hansford Hospice Needs Items For Garage Sale

Hansford Hospice will be having a garage sale in September. We will begin accepting donations of garage sale items now. If you have items to donate, please call Doyle Jackson at 659-2384, Jo Linda Hutchison at 659-2285, or Carolyn Hicks at 733-2335. We need good used clothing, kitchen items, furniture, tools, exercise equipment, lawn and yard items, books, etc.

Golden Spread Senior Citizens To Attend Texas

All Senior Citizens (55+) are invited to join the Golden Spread Senior Citizens for an exciting evening. We will leave at 3:00 p.m. for dinner in Amarillo, then travel to Canyon to see the "Texas" musical drama. Please call Sherry at 659-3866 to reserve your ticket by Monday, August 10th, or for more information.

"Developing Wildlife Recreational Enterprises"

Gene T. Miller of Texas Parks and Wildlife will present a slide show entitled "Developing Wildlife Recreational Enterprises." This slide show includes a consideration for networking within communities (landowners, businesses, Chamber, etc.). The public is invited to this presentation, which will be held on Monday, August 17th at 12:00 noon at Ivey's Hungry Cowboy. It is being sponsored by the Spearman Chamber of Commerce.

Oslo Lutheran Church "Back To School" Sunday

The Oslo Lutheran Church is hosting a "Back-To-School" Sunday on Sunday, August 23, 1998. Ginger Ingram Brown and the Littlefolks will present puppets, stories, prizes and songs at 11 a.m. and again at 2:00 p.m. A potluck dinner will be held at noon. All are invited to attend. The Oslo Lutheran Church is located 18 miles northwest of Gruver.

Computer Class

An office '97 computer class covering Power Point, Excel, and Microsoft Word on Saturday, August 22nd from 8 a.m. to 5 p.m. Class size is limited. For more information or to register, call Cindy Blackman at 659-3233.

Wheatheart of the Nations Days Sand Volleyball Tourney

The Wheatheart of the Nations Days Sand Volleyball Tourney has been set for Saturday, August 22, 1998 at Leatherman Park in Perryton. This is a 3-Man Open Sand Volleyball Tournament. The pre-entry fee is \$10.00 per person. The entry fee for the day of the tournament is \$12.00 per person. Cash and prizes will be announced the day of the tournament. To sign up, call Brian or Ruth Farney at (806) 435-5733.

Spearman Blood Drive

A Spearman Blood Drive will be held on Monday, August 17th from 3:30-7:30 p.m. at the First United Methodist Church Fellowship Hall.

Interested In Playing Soccer?

There will be a meeting on Friday, August 21st at 12:00 noon at the Palo Duro Cafe to determine if there is enough interest to form a soccer program for the youth of Hansford County. The program will be sponsored through North Texas Soccer Association. The teams will practice in Spearman, and games will be played in Perryton on Saturdays. Anyone interested in coaching a team is also encouraged to attend or call. Training and help will be available for anyone interested. For more information, call Cindy Blackman at 659-3233, or Mechelle Curry at 659-3611.

FPC Off-Campus Fall Registration

Frank Phillips College Off-Campus Fall Registration is at Canadian, Dalhart and Perryton fall schools on Monday, August 17, 1998, from 5-7 p.m. On-Campus Fall Registration is in the Classroom Learning Complex, Frank Phillips College, Borger, Texas, on Wednesday and Thursday, August 19th & 20th, from 8 a.m. to 6 p.m. Classes begin on Monday, August 24th, and open registration continues Monday-Thursday, August 24th-27th, from 8 a.m.-7 p.m., and Friday, August 28th, from 8 a.m.-5 p.m. Call today for more information, 274-5311 or 1-800-687-2056!

Hansford Golf Club Scrambles

For the next two weeks, Hansford Golf Club's regularly scheduled Tuesday Night Scrambles will be held on Thursdays. The next scramble will be held on August 20th with an estimated pot of over \$300. For more information, call the Golf Club at 659-2233.

IS YOUR SUBSCRIPTION EXPIRING?

John Q. Public
Box 12345
Spearman, TX 79081
08/98 Expires

Expiration dates are printed on the bottom line of all mailing labels. Our readers can help us hold the cost of subscriptions down by mailing in renewals in the appropriate month.

Thank you! Catherine Smith

The Hansford County Reporter-Statesman
213 Main St. • Spearman, TX 79081

Annual Subscription Rates
In Hansford County, \$20.00 • Out of County, \$25.00

The Hansford County Reporter-Statesman

213 Main St. • Spearman, TX 79081

Phone - (806) 659-3434 • Fax - (806) 659-3368

Open Monday-Thursday, 9:00 am-12:00 p.m. & 1:00 pm-5:00 p.m.

Serving Spearman, Gruver and Morse and all of Hansford County

Published weekly in Spearman, TX

Owned and operated by Gary and Catherine Smith

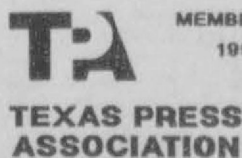
Gary Smith - Publisher • Catherine Smith - Editor

Karen Babbitzke - Assistant Editor

Harletta Cartheil - Assist. Pub. (Gruver) / Sales Rep.

Periodical Postage Permit USPS 509660

Postage paid in Spearman, TX



MEMBER
1998

Annual Subscription Rates
In Hansford County, \$20.00
Out of County, \$25.00

Advertising and Story Deadlines
Monday - 5:00 p.m.

Cook/Kotara Exchange Vows



Mary Catherine Cook Kotara

Mary Catherine Cook and Stanley Joseph Kotara were united in marriage July 11th at St. Theresa's Catholic Church in Panhandle, Texas with Rev. Jim Hutzler officiating. Mary Catherine is the daughter of Mr. and Mrs. Ron Cook of Ennis, Texas. Stan is the son of Mr. and Mrs. Ronald Kotara of Panhandle.

Given in marriage by her father, the bride wore a white satin princess style gown. The bodice was sleeveless with a round neck which was covered with hand sewn pearls. At the waist in the back was a bow with streamers and a chapel length detachable train. Her fingertip veil was attached in the back to a small bun ring of pearls that belonged to the bride's grandmother. The bride carried a cascading bouquet of white, coral and yellow roses that were accented with purple statice and ivy. Attached to the bridal bouquet was the Cook family Bible, which was carried by

James Cook, a chaplain in the British Army during the Revolutionary War. The bride also carried a blue and white handkerchief that belonged to her great-grandmother.

Bridal attendants wore a rich royal purple satin gown that were similar in style to the bridal gown. Their gowns composed of a round neck and sleeveless bodice in the princess style with straps that crossed in the back to a bow with long sleeves. The girls carried arm bouquets of purple, coral, yellow and white wild flowers. The junior bridesmaid also wore a purple satin gown similar in style and carried a smaller version of the arm bouquet. She also wore a wreath of tiny flowers in the bride's chosen colors.

The matron of honor was Kaci McBryde of Stratford, life-long friend and sorority little sister of the bride. Attendants were: Michelle Kaman of San Antonio, sister of the bride; Wendy Chesser

of Clovis, New Mexico, college friend and sorority sister of the bride; Dawn DeBerry of Washington, DC, college friend of the bride; Allison Rix of Fort Worth, college friend of the bride; and Marci Barnes of Dallas, lifelong friend and sorority big sister of the bride. Junior Bridesmaid was Kara Looten of Panhandle, niece of the groom.

Tom Kotara of Amarillo, brother of the groom, served as best man. Groomsmen were: Glen Frick of Dallas, life-long friend and fraternity brother of the groom; Stephen Hermesmeyer of Voca, Texas, life-long friend of the groom; Jeremy Britten of Houston, life-long friend of the groom; Brent Coker, college friend and fraternity brother of the groom, both of Lubbock.

Ushers were Tony Cook of Dallas, James Lusby of Amarillo, Zach Johnson of Arlington, and Louis Zona of Lubbock, all college friends and fraternity brothers. Flower girls were: Lindsey Schadeegg of Port St. Lucie, Florida, niece of the bride, Kalli Looten of Panhandle, and Kaitlyn Cassidy of Plano, both nieces of the groom. Ring Bearer was Hunter Cassidy of Plano, nephew of the groom.

Participants in the mass were readers Kathleen Kotara of Dallas, sister of the groom, Jay Cassidy of Plano, brother-in-law of the groom, and Stacey Define of Covington, Kentucky, sister of the bride.

Commentator was Dan Looten of Panhandle, brother-in-law of the groom. Alter boys were Tyler Smith and Matt Bednorz, both of Panhandle. Offertory bearers were the godparents of the bride and groom, Mr. and Mrs. Phillip Renner of Spearman, and Mr. and Mrs. Raymond Conrad of Claude. The organist was Carolyn Rapstine of White Deer, and the flutist was Dieta Pope of Pampa. The soloist was Jason Jones of Dallas, cousin of the bride, who sang "Ave Maria" and "Wherever You Go". "The Wedding Song" and the Mass of Creation was sung by Shelly Schadeegg of Port St. Lucie, Florida, sister of the bride.

Members of the house party included Holly Gifford of Amarillo, life-long friend of the bride, Kim Venneman of Lubbock life-long friend of the bride, Randie Baumann of Dart, life-long friend of the bride, Wendie Murfee of Lubbock, college friend and sorority sister of the bride, Mikella Liner of Lubbock, college friend of the bride, and Breck DeWees Coker of Lubbock, college friend of the bride and groom.

The pre-wedding activities included a rehearsal dinner hosted by the groom's parents at the Panhandle Country Club, followed by a surprise Christmas in July party for the bride, hosted by Dawn DeBerry of Washington, DC. On Saturday a bridal luncheon was hosted by the groom's sister, Alison Cassidy of Plano, and by Mrs. Ann Cassidy of Panhandle at her beautiful home. The groom and

friends enjoyed Saturday morning playing golf at the Panhandle Country Club.

After the wedding ceremony, guests were invited to a reception with a buffet dinner at St. Theresa's Parish Hall. The dance began with a traditional Polish Toast and the Grand March.

Mary Catherine is a 1993 graduate of Spearman High School. She attended Texas Tech University where she was a member of Pi Beta Phi Sorority and Mortar Board National Senior Honor Society. December 1997, she graduated Cum Laude from Texas Tech University with a Bachelor of Interior Design degree. She is currently employed by Duncan & Miller Design of Dallas.

Stan is a 1992 graduate of Panhandle High School. He attended Texas Tech University where he was a member of Beta Theta Pi Fraternity. In May of 1998, he graduated Summa Cum Laude from the Texas Tech University Health Sciences Center - School of Allied Health with a Bachelor of Science degree in Clinical Laboratory Science. Stan is currently employed by Carter BloodCare of Dallas-Ft. Worth. The couple now makes their home in Arlington.

Gladiola Flower Club Meets

by Wanda Brown

The Gladiola Flower Club met August 6th in the home of Estelle Jackson.

President Virginia Trindle called the meeting to order with roll call by giving our "Favorite Charity." Minutes were read and approved.

Michelle Davis gave an interesting program regarding the EMT's and Paramedics in our community. Estelle Jackson was in charge of the program.

Plans were made for the club picnic to be on August 13th. Discussion was held for the Home Tours in December.

Flower Winners were: Specimen - Virginia Trindle, Home Grown - Virginia Trindle, Borrowed - Margarette Evans, Potted Plant - Estelle Jackson.

Refreshments were served to: Charles Baker, Verna Brown, Wanda Brown, Dorothy Buzzard, Betty Davis, Margarette Evans, Ann Flowers, Virginia Head, Estelle Jackson, June Jackson, Lorene Kunselman, Judy Martin, Gwen Smith and Virginia Trindle.

The next meeting will be August 13th at 6:30 p.m. with Virginia Trindle.

Spearman Lions Club Spirit Flags

Now On Sale \$45 for one year's service

Lions Club members put flags in yard for every home football and basketball game, district tennis, district track and district golf competition, and for all UIL competitions.

Call James Cunningham at 659-3549 or any other Lions Club member.

Proceeds go to the Lions Club to help purchase eye glasses for the youth of Spearman and other community supported projects.

ESTATE AUCTION

Mrs. Jane Meek Estate
515 S. Barkley • Spearman, TX
Saturday, August 15, 1998 • 10:00 a.m.

This is only a partial listing

- Schiller Upright Piano • W.W. Putnam & Co. Pump Organ • 2 Oriental Rugs • Arrowheads & Stone Axe
- Adv. & Coke Memorabilia • 6 Heywood Wakefield Chairs • Duncan Phyfe Drop Leaf Table • 3 Gallon Whiskey Crock • Cast Iron • Old Toys • Leigh Ware • Fenton • Pink Opalescent Vases • Pink Depression Glass • Gibson Defroster Jar • 35 Collector Plates w/Proper Work & Boxes 1973-1981 - Various Artists
- DeGrazia, Hedi Keller, Etc. • Furniture • Household • Kitchen • Lawn & Garden Tools •

BOZEMAN AUCTION Co. & Appraisal Service
Kenneth Bozeman - Owner
TX License 9275 - Certified Appraiser

P.O. Box 786 Days (806) 435-6377
Perryton, TX 79070 Nights (806) 435-4472

DEBBIE C. TE, M.D., F.A.A.P.
• Certified American Board of Pediatrics
• Pediatrics (Infant-Child-Adolescent)
• Endocrinology - Diabetes
• Thyroid

TE CLINIC 1221 N. May
P.O. Box 1948
Guymon, OK 73942
(580) 338-1580

HIANTO T. TE, M.D., F.A.C.S., S.A.G.E.S.
• Certified American Board of SURGERY
• Society of American Gastrointestinal Endoscopic Surgeons
• Laparoscopic Surgery
• Gastrointestinal Endoscopy

Let's Do Lunch

Monday - August 17 Baked Ham
Tuesday - August 18 Bacon-Wrapped Sirlion
Wednesday - August 19 Fried Chicken
Thursday - August 20 Enchilada Chicken Breasts
Friday - August 21 Chicken Fried Steak

Looking for a great place to lunch with business associates or friends?
You've found it.

We're open from 11 a.m. to 5 p.m. Monday through Friday for the lunch crowd.
Don't miss our \$5.00 (plus tax) lunch buffet every day.

Picnic Place
217 Main Street • Spearman, Texas
659-3864

Buy a **NEW POLARIS ATV**
GET A RIFLE OR SHOTGUN
by Remington.

Right now, when you pull the trigger on a new Polaris Sportsman 500, we'll give you a coupon for a 12 gauge Remington 870™ shotgun or Remington Model 700™ ADL 30.06 rifle. Buy any other new Polaris ATV and the all-new Remington 597™ auto-loading .22 rifle is yours, or consider one of these options.

\$250 IN FREE ACCESSORIES
OR
ZERO DOWN
ZERO FINANCING CHARGE
ZERO PAYMENTS FOR 90 DAYS*

Offer ends October 31, 1998. See your nearest participating Polaris dealer for details.

POLARIS
RIDE THE BEST

Major restrictions apply. Remington is a registered trademark of the Remington Arms Company, Inc. Does not include firearm registration fees. *Offer valid 8/1/98-10/31/98. 90 days free financing on qualified customers on the Polaris Start and program at participating U.S. dealers. After 90 days financing at 9.9% APR. A \$5.00 monthly financing charge is \$5.00. Viewing ATVs can be hazardous to operate. Never carry passengers. Be especially careful on difficult terrain. Remove fire on paved or public roads. Always wear a seat belt and proper tie clothing. Polaris ATVs may not be ridden by anyone under 18 and never should take a beverage. Please use safety and training when you ride. For more information call Polaris at 1-800-342-7564. For the name of your nearest Polaris ATV dealer, call 1-800-342-7564. © 1998 Polaris Industries Inc.

Hansford County Community Calendar August 13-24

Thursday, August 13
Staff Development at Gruver ISD
Staff Development for Spearman ISD
10:00 a.m. - Golden Spread Senior Citizens - Arts & Crafts & Covered Dish Lunch
12:00 p.m. - Spearman Chamber of Commerce Board Meets
3:00 p.m. - Golden Spread Senior Citizens leave for dinner in Amarillo & "Texas" Musical Drama

Friday, August 14
First Day of School for Spearman ISD
Teacher Preparation for Gruver ISD
9:30 a.m. - Golden Spread Senior Citizens - Exercise
1:00-4:00 p.m. - Golden Spread Senior Citizens - Bridge
7:00 p.m. - Roger Hodges Performs at Spearman High School Auditorium,

Sunday, August 16
3:00 p.m. - Hansford Manor Church Service - First Baptist Church of Gruver
7:30 p.m. - Young Adult Bible Study - Gruver First Christian Church

Monday, August 17
First Day of School for Gruver ISD
First Day of School for Pingle-Morse CISD
9:30 a.m. - Golden Spread Senior Citizens - Exercise
12:00 p.m. - Joint Rotary/Lions Club meeting - Gene T. Miller will present
"Developing Wildlife Recreational Enterprises"
12:00 p.m. - Golden Spread Senior Citizens - Covered Dish Lunch
1:00-4:00 p.m. - Golden Spread Senior Citizens - Progressive Pitch
2:00 p.m. - Games and Crafts at Hansford Manor
3:30-7:30 p.m. - Spearman Blood Drive, FUMC of Spearman

Tuesday, August 18
9:30 a.m. - Kick-off Luncheon for Ladies Tuesday Bible Study, 702 Bernice
12:00 p.m. - Spearman Lions Club Meets - Ivey's
6:30 p.m. - Bingo at Hansford Manor

Wednesday, August 19
8:00 a.m. Golden Spread Senior Citizens - Attend Quilting Seminar in Amarillo
9:30 a.m. - Golden Spread Senior Citizens - Exercise
9:45 a.m. - Trinity Fellowship Bethesda Outreach Center Food Service
10:00 a.m. - Bible Study at Hansford Manor
12:00 p.m. - Women's Division Meets
1:00-4:00 p.m. - Golden Spread Senior Citizens - "42"
2:00 p.m. - Games and Crafts at Hansford Manor

Thursday, August 20
10:00 a.m. - Golden Spread Senior Citizens - Arts & Crafts & Covered Dish Lunch
Hansford Golf Club Scrambles

Friday, August 21
9:30 a.m. - Golden Spread Senior Citizens - Exercise
12:00 p.m. - Soccer Organization Meeting - Palo Duro Cafe
1:00-4:00 p.m. - Golden Spread Senior Citizens - Bridge

Sunday, August 23
3:00 p.m. - Hansford Manor Church Service - Fellowship Baptist, Spearman
7:30 p.m. - Young Adult Bible Study - Gruver First Christian Church

Monday, August 24
9:30 a.m. - Golden Spread Senior Citizens - Exercise
10:00 a.m. - Hansford County Commissioners Court Meets
12:00 p.m. - Spearman Rotary Club Meets
12:00 p.m. - Golden Spread Senior Citizens - Covered Dish Lunch
1:00-4:00 p.m. - Golden Spread Senior Citizens - Progressive Pitch
2:00 p.m. - Games and Crafts at Hansford Manor

Townsen/Neidhart Wed



Kimbre Sue Townsen Neidhart

Kimbre Sue Townsen and Christopher Thomas Neidhart were united in holy matrimony on Saturday, August 8, 1998 at the Richland Bible Fellowship Church in Richardson, TX. Joe Jones of Richardson, TX. Joe Jones of Lawton, OK, Kimbre's tennis coach from Cameron University, officiated.

Kimbre is the daughter of Don and Barbara Townsen of Spearman. Christopher is the son of Craig and Carol Neidhart of Garland, TX. The bride was given in marriage by her father, Don Townsen. The Maid of Honor was Kara Townsen of Canyon, sister of the bride. The Matron of Honor was Tamri Savage of Tulsa, OK, sister of the bride. Bridesmaids were Jill Lusby of Spearman, high school friend of the bride; Michelle Garff of Spearman, high school friend of the bride; Tiffany Pyle of Tulsa, OK, college friend of the bride; and May Lee of MA, college tennis partner of the bride.

The flower girl was Rachel

Townsen of Lubbock, cousin of the bride and Kaycee Neidhart of Dallas, niece of the groom.

The Best Man was Jason Shoulders of Dallas, friend of the groom. Groomsmen were Craig Neidhart, Jr. of Dallas, brother of the groom; Keith Neidhart of Garland, brother of the groom; Clinton Townsen of Spearman, brother of the bride; Jamie Townsen of Spearman, brother of the bride; and Brian Check of Richardson, friend of the groom.

Candlelighters were Emily Speir of Dallas, cousin of the bride and Whitney Townsen of Lubbock, cousin of the bride.

White roses made up the bride's bouquet and bridesmaids flowers. Two spiral candelabras were decorated with roses and greenery. The unity candle was decorated with a large arrangement.

The bride wore a sleeveless satin dress with very detailed beading on the bodice, skirt and train of the dress. She also wore a floor-length veil.

A reception followed the ceremony at the Spring Park Sports Club and Community Center in Garland, TX.

Kimbre graduated from Spearman High School in 1993. She graduated from Cameron University in May of 1997 with an BA degree in Business Finance. She is currently attending the University of Texas at Dallas, working towards an MBA in Finance. She is a financial analyst II for First Plus Financial.

Chris is a 1992 graduate of Berkner High School. He graduated from Cameron University in May of 1997 with a degree in Business Management. He is a professional golfer on the NGA Hooter's Golf Tournament.

Following a wedding trip to the Grand Cayman Islands, the couple will reside in Plano, TX.



Basic bath pure & simple

- BATH AND BODY COLLECTION
- Foaming Bath Seeds - \$2.95
 - Shower Gel - \$7.50
 - Body Lotion - \$8.50
 - Sunflower Wild Berry
 - Raspberry Almond
 - Wild Jasmine
 - Fragrance Candles - \$12.50
 - Fresh Lilac
 - Wild Jasmine
 - Vanilla Bean

available at
Hair Connections
315 Main St. • Spearman, TX • 659-1752

THE ORIGINAL
BLIZZARD
Flavor Treat

\$1.29
(12-oz.)

ON SALE!
AUGUST 10-30, 1998

The one and only DQ® Blizzard® Flavor Treat—often imitated, never duplicated—is now on sale for \$1.29! And while others may try and copy its success, the original is still the only one that's thick and rich enough to be served upside down or it's FREE! Made with delicious, creamy DQ® soft serve mixed with your choice of candy, fruit or nuts. There's nothing else like it! For the taste that can't be beat, head for your neighborhood Dairy Queen® store and get one today!

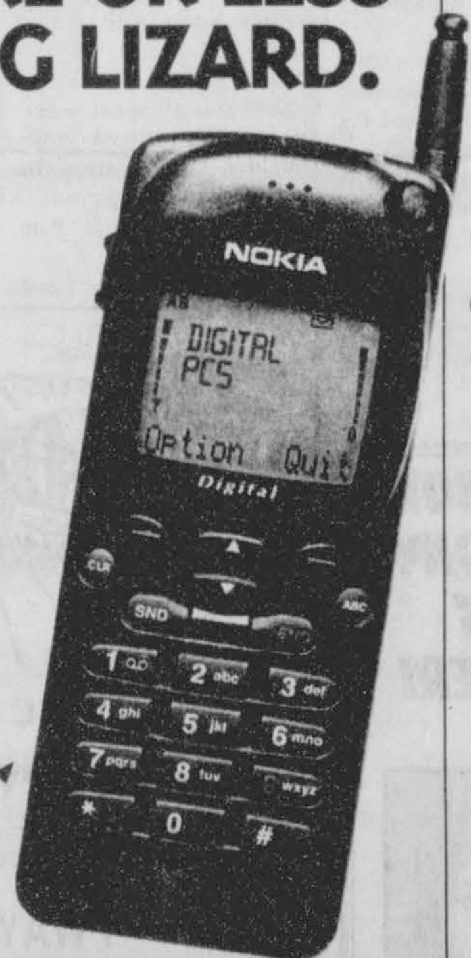
Served Upside Down Or It's FREE!

NEW DIGITAL PCS TECHNOLOGY IS HERE!



MORE OR LESS A BIG LIZARD.

MORE OR LESS A BETTER PHONE.



For these or other great offers, call or visit:

Cellular Communications in Spearman at 659-3762

or Gruver Ford in Gruver at 733-2431

MORE THAN YOU THOUGHT POSSIBLE.

- Caller ID where available
- Longer Battery Life
- Message Waiting Indicator
- Greater Privacy
- Better Sound Quality
- One-Touch Call Back

LESS THAN YOU'D EXPECT TO PAY.

It's a good thing you know you can count on Dobson Cellular for an honest, straightforward deal every time—because this one might be hard to believe. With new digital PCS, you can get more of what you want for less than you'd expect. And Dobson Cellular digital PCS can be used virtually anywhere you travel coast to coast—with one national rate. So hurry in and see the newest and best in cellular service today!

MORE MINUTES FOR YOUR MONEY!

- 250 minutes of airtime for just \$39.95 A MONTH!
- 500 minutes of airtime for just \$59.95 A MONTH!
- 1000 minutes of airtime for just \$99.95 A MONTH!

DOBSON CELLULAR SYSTEMS



The Difference Maker

1-800-882-4154

NEW DIGITAL PCS TECHNOLOGY IS HERE!



Win a new Beetle, with a Nokia 252 car phone!

Stop by Dobson Cellular or a participating agent to register for your chance to win this and other great prizes including a Hewlett Packard computer! Hurry! Limited time!

This contest is open to legal residents of the United States who are at least 18 years old at the time of registration. The contest ends on August 31, 1998. The prize is a new 1998 Ford Beetle. The contest is open to legal residents of the United States who are at least 18 years old at the time of registration. The contest ends on August 31, 1998. The prize is a new 1998 Ford Beetle. The contest is open to legal residents of the United States who are at least 18 years old at the time of registration. The contest ends on August 31, 1998. The prize is a new 1998 Ford Beetle.

1998 Property Tax Rates

In PALO DURO RIVER AUTHORITY

This notice concerns 1998 property tax rates for PALO DURO RIVER AUTHORITY. It presents information about three tax rates. Last year's tax rate is the actual rate the taxing unit used to determine property taxes last year. This year's effective tax rate would impose the same total taxes as last year if you compare properties taxed in both years. This year's rollback tax rate is the highest tax rate the taxing unit can set before taxpayers can start tax rollback procedures. In each case these rates are found by dividing the total amount of taxes by the tax base (the total value of taxable property) with adjustments as required by state law. The rates are given per \$100 of property value.

Last year's tax rate:	
Last year's operating taxes	\$205,524
Last year's debt taxes	\$2,211,906
Last year's total taxes	\$2,417,430
Last year's tax base	\$1,708,430,986
Last year's total tax rate	0.141500 / \$100
This year's effective tax rate:	
Last year's adjusted taxes (after subtracting taxes on lost property)	\$2,414,718
This year's adjusted tax base (after subtracting value of new property)	\$1,672,080,796
This year's effective tax rate	0.144413 / \$100
This year's rollback tax rate:	
Last year's adjusted operating taxes (after subtracting taxes on lost property and adjusting for transferred function)	\$205,478
This year's adjusted tax base	\$1,672,080,796
This year's effective operating rate	0.012289 / \$100
x 1.08 = this year's maximum operating rate	0.013272 / \$100
+ This year's debt rate	0.130421 / \$100
= This year's rollback rate	0.143693 / \$100
+ Additional rate for pollution control	0.022365 / \$100
= Rollback tax rate	0.166058 / \$100

Schedule A

Unencumbered Fund Balances

The following estimated balances will be left in the unit's property tax accounts at the end of the fiscal year. These balances are not encumbered by a corresponding debt obligation.

Type of Property Tax Fund	Balance
MAINTENANCE & OPERATING	\$104,160
INTEREST & SINKING	\$1,906,206

Schedule B

1998 Debt Service

The unit plans to pay the following amounts for long-term debts that are secured by property taxes. These amounts will be paid from property tax revenues (or additional sales tax revenues, if applicable).

Description of Debt	Principal or Contract Payment to be Paid from Property Taxes	Interest to be Paid from Property Taxes	Other Amounts to be Paid	Total Payment
GEN OBLIGATION BONDS	\$1,165,000	\$958,706	\$285	\$2,123,991
Total required for 1998 debt service				\$2,123,991
- Amount (if any) paid from funds listed in Schedule A				\$0
- Excess collections last year				\$0
= Total to be paid from taxes in 1998				\$2,123,991
+ Amount added in anticipation that the unit will collect only 96.00% of its taxes in 1998				\$88,500
= Total debt levy				\$2,212,491

This notice contains a summary of actual effective and rollback tax rates calculations. You can inspect a copy of the full calculations at HANSFORD COUNTY TAX OFFICE - COURTHOUSE.

Name of person preparing this notice: HELEN DRY RTA

Title: TAX ASSESSOR-COLLECTOR

Date prepared: AUGUST 04 1998

Among The Neighbors

by Helen Fisher

Don Maize, Trustee for Hansford Cemetery has been working constantly at the cemetery trying to kill the multitude of moles that are swarming over the grounds. He has tried every treatment that he knew; that advisors knew; that exterminators knew; treatments that were guaranteed to kill the pesky varmints. He watches in awe and amazement when the DEAD moles just move to a nearby space and start burrowing.

So if anyone can give him the answer - he will welcome it, as will every one involved.

Newcomers to this area may not know the ownership and operation of the Hansford Cemetery. Different from most it is not owned by any company or entity - that is a county, city, church or for-profit company. Ownership is vested entirely in the association of people who have used it and who are interested in it.

There is no legal requirements for membership. The trustees are selected from interested volunteers and serve without pay. The only paid employee is the caretaker.

Income is from the sale of lots and contributions. Current trustees are Don Maize, Freeman Barkley, Ray Phelps, Paul Hazlewood, Helen Fisher, Secretary-Treasurer.

More information will come next week.

Friday's Generation Y issue included an opinion by and picture of Amber Ramon, Spearman High Junior. Her answer to the weekly question showed thoughtfulness and was well worded. She is the daughter of the Tindle Ramons.

Chance and Debra Jackson spent from Wednesday to Sunday here with his parents, Charlotte and Pat Jackson. He is attending Texas A&M at College Station and she is employed by the college. She received her degree in Animal Science in the spring.

While they were here his sister Tammie and Todd Lawrence came over from Amarillo for a week-end visit.

HAPPY 40TH BIRTHDAY MISS JENNIFER!



DOWNTOWN PRODUCE MARKET
Weekend Special
5 lb. bg. #1 Potatoes - 69¢
Lg. Hot House Tomatoes - 3/1⁰⁰
Texas Limes - 15/1⁰⁰
Red or Golden Delicious Apples - 10/1⁰⁰
303 Main • Spearman • 659-5137
10 a.m. - 6 p.m., Mon.-Sat.

Monogramming
available at
Jo's This 'N' That
214 Main St. • Spearman
Personalization & Custom
Computer Designs Available

Several members of the United Methodist Women enjoyed a special day last week when they attended a United Methodist Women's conference on Bible study. It was held in Miami and Judy Nelson was the leader. There were many representatives from all over the Pampa District. Others attending the day long event were Marie Beck, Patty Sheppard, Kathleen Sutton and Virginia Head.

R.L. McClellan feels that he is fully recovered from gall bladder removal which was accomplished by use of a laproscope at Scott & White, Temple. He has already noticed an improvement in his health. He was visiting his son and daughter-in-law, Dr. David and Ginger, and their five children. They have built a rural home on the banks of the Leon river near Temple.

R.L. has decided to attend the reunion of his military unit in Boston next week. It was the Naval U.S.S. Landing Craft Support 1-130. R.L. mentioned that his seeing the new movie "Saving Private Ryan" sure refreshes his memory of his war time service in the Pacific, Solomon Islands, Okinawa, Phillipines, and finally as the war ended-service in Tokyo Bay.

The descendants of the W.B. and Garrett Allen family held a reunion at Red River, New Mexico, recently. There were 53 attending, some coming from as far as South Carolina. Those family members from Spearman were Verna Gail Keim, Dee and Winnie Allen, Don and Mary Allen, Barbara and Louis Schnell, James and Karen Schnell with Jenifer, and Jenifer Keim with Ashley and Klara.

Sara Dossett spent a few days last week in Lubbock visiting her daughter, Diana Carter. She had accompanied her grandson, Ricky Neely and his wife Pam and children.

They had come from Omaha and

spent some time here with Sara before going to Lubbock. Sara returned Wednesday and said the good rain in Lubbock made her visit complete.

Sara had been distressed since learning that her son, Buddy Dossett, of Harlingen was injured in an accident Thursday. He was trimming a limb from a tall tree at their home when the limb flopped around and knocked him from the ladder. He suffered a broken collar bone, broken rib, broken right wrist, and a punctured lung.

Mary Schumann's guests are from several directions, some enjoying the cooler weather - those from Marvel, Colorado - Lee and Melva Nichols - are not so impressed. Other guests are Lee's sister, Juanita Eubanks of Ft. Worth; her daughter, Marilyn Davis, and her three daughters from Conway, Arkansas.

Mary's family from the Spearman area joined them at her home on Sunday, total of 27 people. There is a pond at her rural home and the guests will long remember their hilarity with their boating on it.

Jordon Cole of Panhandle spent last week here with his grandparents, the Ken Coles. Their son, Michael Cole, of Plainview joined them for the week-end.

Bob and Candy Boxwell returned from a pleasant, relaxing and cool several days at Red River, New Mexico on Saturday. They were chaperoned by daughter, Erin, and her friend, Cheryl Gibson.

The Sunday Amarillo Daily News carried a brief interview with Gregg and Shonda Odegaard regarding their use of the Ronald McDonald House while their baby son is hospitalized.

Another item of interest in the same issue was the picture of Chris White and a friend and the 40 pound catfish they caught from Lake Meredith. Chris now lives in

Fritch.

From weather reports in Dwayne Smith's office there was a total of 1.81 inches of moisture from three different dates for the week of August 3-August 10th. The high was 101 on the 8th; the low was 60 on the 6th.

Anybody who thinks Americans have no imagination doesn't know the members of the weather bureau.

Janice Phelps of Dallas came up to see that her Dad, Ray Phelps, properly celebrated his birthday on August 6th. Beth gets the idea he thinks it is his 39th (remember Jack Benny) Whether it is his 39th or his 89th. Many Happy Returns, Ray!

Margaret and Robert Novak were elated that every member of their family was able to attend their family reunion the past week-end.

On Friday the family enjoyed a cook-out at the home of Mary Ellen and Larry Sager at Balko. Then all day Saturday was a fun day at Palo Duro Lake-with much picture taking and other activities.

Those present, which was 100 % of the family, were: Sharon and Cliff David, San Antonio; Carolyn and Mike Steiner, Joshua and Hannah, St. Petersburg, Florida; Jeff Sheets, Lisa and Mike Landers, Austin; Lee Sheets, Deanna Sparks, Spearman; Stethie and James Faust with Nicholas and Braxton, Bryan, Texas; Dr. Mike and Cristie Goodden, San Antonio; Mary Ellen and Larry Sager with Nathan, Balko; Annette & Cris Bower with Cassidy and Paityne, Norman; Patricia and Monte Gabriel Crown Point, Indiana; Dr. Kyle Waugh, Weatherford, OK; Marjorie Gabriel, Los Angeles; and John and Lisa Barbee, Douglas, TX.

Out At The Lake

by Dorothy Hudson

Lake Depth - August 10, 1998 - 31 ft. 8 in.

Gary Smith shot the picture on the front page of the 5.5 lb. walleye caught on a minnow by R. L. Easley of Spearman on August 7th. On Saturday R. L. also brought in a fine catch of crappie. The fishing was good last week with the best catches, mainly crappie, caught from boats out in the dead trees.

There were 4 RVs at the hookups, 2 in the Park, and several out around the Lake this weekend. With the hot weather many of the fishermen fish from lighted boats at night. I learned that it was against the law to fish from an unlighted boat after dusk.

Robert and Margaret Novak had the shelter for a family reunion all day Saturday. Their daughters Sharan, Mary Ellen, and Patricia were all home with their families for the celebration. There were 32 in the group that ranged in age down to a toddler and 2 crawling babies. Robert Novak has served on the Palo Duro River Authority

Board for 22 years.

Sunday the families of Gilbert and Nadine Brandvik had an all day reunion at the shelter. Three sons, Ray, who lives between Gruver and Sunray, Gay of Texhoma, and Jay of Arkansas, with families were there.

Jim reports the deer are much more visible now in early morning and evening. The bucks are just coming out of the velvet stage with their new antlers. Jim has noticed again a favorite short-eared doe. Two years ago she was the fawn with the short ear, and last year she was a young doe. This year she has a fawn of her own.

My oldest daughter Jackie and I made a trip out to the Lake today, mainly to see the ducks and their house on the children's fishing pond. The neat little duck house is on the south end out in the water. The ducks are grown and were swimming happily around. If you like cattails in your dried flower arrangements, you can find some beauties around the pond. I am sure they would be glad to see them picked. I don't know at what stage they are ready to be cut.

Blood Drive

On Monday August 17th, Coffee Memorial Blood Center will be in Spearman for a blood drive. We will be in the Methodist Church Fellowship Hall from 3:30-7:30 p.m.

As summer ends, we at the Blood Center realize that everyone has a busy schedule and that blood

donation is not on their mind. We have had a busy schedule as well, with numerous calls for blood for numerous reasons. The summer months for us do not always mean fun and relaxation. Our blood supply is not low, but it is not where we would prefer it to be in order to feel comfortable.

Notice of Public Hearing on Tax Increase

The Hansford County Commissioners' Court will hold a public hearing on a proposal to increase total tax revenues from properties on the tax roll by 8.19 percent. Your individual taxes may increase or decrease, depending on the change in the taxable value of your property in relation to the change in taxable value of all other property and the tax rate that is adopted.

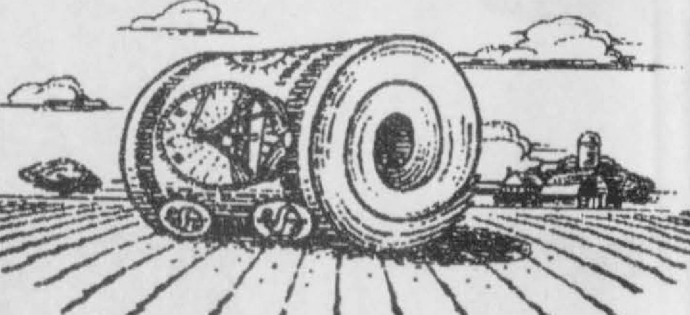
The public hearing will be held on August 24, 1998 at 10:00 AM at in the Law Library of the Hansford County Courthouse, Spearman, Texas.

FOR the proposal:	Jim D. Brown	Ira G. Reed
	Joe T. Venneman	Kent Guthrie
	Danny Henson	
AGAINST the proposal:	None	
PRESENT and not voting:	None	
ABSENT:	None	

The following table compares taxes on an average home in this taxing unit last year to taxes proposed on the average home this year. Again, your individual taxes may be higher or lower, depending on the taxable value of your property.

	Last Year	This Year
Average residence homestead value	\$34,155	\$34,720
General exemptions available	\$6,830	\$6,945
<small>(amount available on the average homestead, not including senior citizen's or disabled person's exemptions)</small>		
Average taxable value	\$27,325	\$27,775
Tax rate	0.396030	0.405930
Tax	\$108.22	\$112.75

Under this proposal, taxes on the average homestead would increase by \$4.53 or 4.19 percent compared with last year's taxes. Comparing tax rates without adjusting for changes in property value, the tax rate would increase by \$0.0099 per \$100 of taxable value or 2.50 percent compared to last year's tax rate. These tax rate figures are not adjusted for changes in the taxable value of property.



Save a bundle on a new Zimmatic.

See us now for big savings on the new Zimmatic irrigation system you'll need next season. But hurry, all offers end Sept. 30, 1998.

4 WAYS to SAVE:
Take your choice of these money-saving options:

- \$2,000 CASH REBATE**
on systems delivered in August/September 1998. Cash rebate* up to \$1,600 on systems delivered in October/November 1998. *Based on new 8-tower Zimmatic.
----- OR -----
- 6.5% LOW INTEREST**
With 5% down get a 5-year loan or lease with first payment due on January 1, 2000.
----- OR -----
- NO PAYMENT UNTIL JANUARY 1, 2001**
Receive 9.25% financing with 20% down.
----- OR -----
- INTEREST-FREE FINANCING**
No finance charge with 10% down. Balance due on June 1, 1999.
(Certain restrictions and conditions apply to each of these options.)

Five Star Equipment, Inc.
Spearman, Texas ★★★★★ (806) 659-3743

ZIMMATIC
Leadership and strength you can depend on today and tomorrow.

The Gruver Grapevine

by Harletta Carthel

School Bells to Ring
Gruver Schools will begin the 1998-99 school year on Monday, August 17. Junior high and high school will start each day at 8:15 a.m. while elementary school will begin at 8:30 a.m.

School Lunches
Lunch prices set for the school year include prekindergarten through fourth grade - \$1.25 per day, fifth through eighth grade - \$1.50, high school - \$1.75, and breakfast - \$1.00. For those qualifying, reduced lunches will be \$.40 per day and breakfast, \$.30 per day.

Lunch tickets may be purchased on the first day of school in the cafeteria, or students may bring money to purchase a ticket at their lunch time. Cost for a monthly lunch ticket (20 lunches) is \$25.00 for pre k- fourth grade, \$30.00 per month for junior high, and \$35.00 per month for high school. Monthly breakfast tickets are \$20.00 for all students.

New School Personnel Profile

Although not a new comer to Gruver, Darla Myatt is a new employee of Gruver Schools. Darla will be the educational diagnostician for all Gruver schools and will assess students to determine their educational needs. Darla will then work with teachers to implement the educational goals and needs of students. Her office is

located in the high school building. Darla is a graduate of Sherman High School. She received her bachelor of science degree in elementary education and special education at Texas Tech and her masters degree in education with educational diagnostician certification from West Texas A&M University.

Darla's husband Steve is the girls head basketball coach and a teacher at GHS. The couple has two children, Cassie, a seventh grader, and Samantha, a fifth grader.

Darla is an avid Hound and Lady Hound supporter and enjoys needlework and reading.

Sports

Coach Frick was elated to have 54 young men report for two-a-day football drills last week. This number is up seven from last year's first week of practice. Workouts continue this week culminating in an intrasquad scrimmage on Friday

afternoon at a time to be announced. Greyhound fans are most welcome to cheer the Hounds on in their first scrimmage of the season.

Players reporting in for the football season are seniors Jeff Gruver, Jeff McClure, T.J. McClure, Jason Pool, Jim Potts, Clayton Henson, Lucas Johnson, Greg Slough, and Jason TeBeest.

Juniors include Bray Armes, Kyler Barkley, Josh Blount, Jared Christian, Derik Grotgut, Daniel Hernandez, Dallas Henson, Colby Hunt, Dan Odom, Sean Cone, Brian Murry, and Jesus Rodriguez.

Sophomores are Clayton Acker, Chad Clift, Bradley Duncan, Greg Ehrenberg, Kirby Johnson, Chase Lamb, Manuel Luciano, John Lopez, Garrett Pool, Jason Shoulders, Chase Stapleton, Chad TeBeest, Allan Thomas, Anthony Villalobos, Cory Schneider, David Villegas, Aaron Weller, and Taos Weldon.

Freshmen players are Josh Abernathy, Ryan Abernathy, Israel Azarte, Kade Carthel, Zach Christian, Aaron Cookenhour, Oscar Cruz, James Duggan, Chad Howe, Colton King, Tyrel King, Steven Salazar, Oswaldo Santillan, Evan Schmidt, and Nathan Watkins.

New Arrival

Welcome to the world, William Braxton Crane, the newborn son of Tifanee and Will Crane. Braxton was born July 20, 1998 in Northwest Texas Hospital in Amarillo at 9:40 a.m. He weighed 7 pounds and 1/2 ounce and was 20 1/2 inches long.

Little Braxton's grandparents are Jack and Genie Crane of Gruver and Wayne and Carolyn Moses of Ralls. His great grandparents include Ina Terrell of Ralls, Bernice Moses of Ralls, and Edith Travis of Booker.

Miss Makenzie Crane, 5, is the proud big sister.

Youth Rally Slated
The First Baptist Church will

host a youth rally on Saturday, August 15, at 7 p.m. in the city park. There will be a fajita and ice cream supper with games and a special speaker to follow.

Back Tracking

When I checked in on the cheerleading camp last week, Dominique Barrera was unable to make the camp, and I missed including her name on the seventh grade cheerleader list.

Update

The Reporter/Statesman received a subscription renewal from Brenda and Alfred Bayless this week. Brenda included a note to tell us that it has been hot and humid in Adair, Oklahoma, but the

countryside is beautiful.

Condolences

The Gruver Community was saddened to learn of the death of Alfred Ralston. Alfred was the son of Cecil and Margaret Ralston and the brother of Dan Ralston. Alfred grew up in the Gruver area and is fondly remembered and loved by the community.

TV Trivia

We baby boomers have lost many of our childhood entertainers, Roy Rogers, Shari Lewis, and now Buffalo Bob. Does anyone recall the term used to refer to the live audience of youngsters viewing the Howdy Doody show? Answer at end of column.

NEWCOMB HOUSE BED & BREAKFAST
122 S. Hazelwood • (806) 659-3123

Now taking reservations for NEWCOMB HOUSE BED & BREAKFAST - Call for available time and prices. Great place to stay for family reunions, graduations, weddings, wedding night, anniversaries, etc. Available also for small club meeting, dinner parties, etc. Special arrangements available upon request. NEWCOMB HOUSE has three bedrooms, kitchen (fully equipped), bath, living and dining room - great for home away from home with room to move about. Also a special plus is storm shelter with access through the utility room. Call Linda Latta at 659-3123 for reservations or more information.

Great Deals Open, Fast & Friendly

ALLways

PRICES EFFECTIVE AUGUST 12-18, 1998

THE GROCERY STORE FOR PEOPLE ON THE GO!

305 W. Kenneth Spearman • 659-3135
101 Main Ave. Gruver • 733-2953

PEPSI 6 Pack - \$1.49
32 oz. All-Sport 99¢

Shurfine Towels 2 PLY ROLL 79¢

Arizona Teas 20 OZ. 99¢

Eye Drops BOX \$1.99

Chopped Ham 10 OZ. PKG. \$1.49

Little Sizzlers 12 OZ. PKG. 99¢

Eye Drops WESTERN FAMILY EYE REDNESS RELIEVER \$1.99

Arizona 16 OZ. PKG. \$1.59

Little Sizzlers HORMEL SAUSAGE \$1.99

Corn Flakes 18 OZ. BOX \$1.39

Mr. Cluster Twin Big Bar 2 FOR 89¢

Fudge Graham's 16 OZ. PKG. \$1.59

Saltine Crackers 1 L.B. BOX 89¢

FREE MILK

Mr. Cluster 1 L.B. BOX \$1.39

Fudge Graham's 16 OZ. PKG. \$1.59

Saltine Crackers 1 L.B. BOX 89¢

ALLSUP'S Petal Soft or Soft & Gentle BATH TISSUE 4 Roll Pkgs. 2/99¢	ALLSUP'S SPAM 2/29	ALLSUP'S Bolo DOG FOOD 13.2-14 oz. Cans Assorted Flavors 5/100	ALLSUP'S Cuddles DIAPERS 24 Count & 18 Count 2/99
--	-----------------------	---	--

PLAY

EASY MONEY

WIN INSTANTLY!
CASH, PRODUCTS, OR FOOD!
No Purchase Necessary!

THOUSANDS

of Prizes & Dollars to be Given Away

YOU COULD WIN THE GRAND PRIZE
1998 F-150 XLT SUPERCAB PICKUP

Plus You Could Win Instant Cash up to \$1,000, or try your luck at our second chance sweepstakes for 1 of 8 gas for a year winnings, or 1 of 8 weekend trips for four people to SIX FLAGS!

Come In And WIN!

Elementary Bargains

NO HAZZLE - NO HAGGLE!

NEW VEHICLE REBATE PROGRAM	PRE-OWNED
<p>'98 Olds Bravada Stock # 98038 \$26,875^{10*}</p> <p>'98 Buick Park Avenue Stock # 98165 \$29,400^{55*}</p> <p>All Chevy 1/2 Tons have \$750⁰⁰ REBATE <i>For A Limited Time Only</i></p>	<p>'95 Pontiac Grand Am \$8,995⁰⁰</p> <p>'94 Cutlass Supreme \$8,995⁰⁰</p> <p>'95 Mercury Mystique \$8,995⁰⁰</p> <p>'91 Pontiac Grand Am \$4,995⁰⁰</p>

All Prices Plus TT&L
* After \$2,000 Rebate

CALL OR COME BY FOR OUR
ONE LOW PRICE quote.

1-800-692-4657

"IF YOU DON'T COME SEE US TODAY"

PRAIRIE MOTORS INC.

"WE CAN'T SAVE YOU ANY MONEY"

Highway 207 South
Spearman, TX 79081
(806) 659-2541
www.prairiemotors.com

Hours:
Mon.-Fri.: 8 a.m.-6 p.m.
Sat.: 8 a.m.-12 p.m.
Sun.: Closed

CHEVROLET • PONTIAC • OLDS • BUICK • CHRYSLER • PLYMOUTH • DODGE TRUCKS

Morse Morsels

by Mildred Lewis

She is doing great.

Well, guess all the kids are all ready to start back to school. Vacation time is over, and study begins. The teachers will start In-Service Training on August 12th, and students will start on August 17th. Won't that be fun?

The teachers, staff, and board members, and wives are invited to a get-together dinner on August 14th.

We have another first grade teacher. She is Brenda Dahl Hopkins from Gruver. Welcome to our school. We always hate to see one of our teachers leave us. Mrs. Burnam will be a teacher in Gruver schools. We will also have a Meet the Teacher night on the 20th of August at 7 p.m. Come on out, and let's get behind our new teachers and others.

The Blankenship Family Reunion was Sunday August 2, at Canyon. Those present from Morse were Lynn, Martha, Susan, and Donnie Davis; Tom and Beth Dorch, Gary; Vicki, Laurane, and Riley Urban; Sonny and Jennie Blankenship; Bill Blankenship and Beau from Gruver; and Randy, Teresa, Tom, and Dib Kirk from Spearman. They enjoyed lots of swimming, eating and just visiting. They had about 37 people present.

The Womble Reunion was at Morse the week before last. They had this in our new community building. They had a great day visiting. There were 123 present that included lots of the Wombles from Morse and around.

Linda Preston's mother had surgery recently. Her name is Beverly Shepherd from Channing.

Laverne Parks had as her guests last week, Sharon Kurklin from Petersburg, TX and Sylvia Farris from Louisville, KY, her two daughters. She also had Florence Moore from Mexico, MO, her sister-in-law and Lorraine Henderson from Springfield, MO

Lorraine and Florence drove their car up here together. She also had Jeanie Bennett from Stratford, Suzanne Gillispie, and Gena and Elvagne Thuett over for a visit. Rosemary Parks joined them for a visit. Sharon, Sylvia, Suzanne, and Jenny were all classmates from Morse High School. They really had a ball together again. Lots of memories.

Monty, Amber, Taryn, and Tray Dixon had a three week vacation to Ely, Minnesota. They went to visit Amber's mother and daddy, Manfred and Kathy Dobbs. While there, Tray went to a boys camp. He got his name on a plaque for swimming one-half mile. There were five of 35 boys that swam one-half mile. He stayed at camp for two weeks. Every year at Ely Minnesota, they have a Blueberry Arts Festival Drawing. Taryn drew the State of Texas and a bluebonnet. She got her name and picture in the Echo paper at Ely.

Monty, Amber, and Taryn went walleye fishing while there. Monty caught a fish that got away. It weighed 20 pounds. That a way, Monty.

Recently Amber, Monty, and children had lots of company from all over. There were 21 people present. Amber and Monty cooked 50 pounds of beef ribs. They really

had an enjoyable time. We are sure proud to add Amber to our small community.

Amber has a new office, it will be open August 10th. She is a ophthalmologist. She will be associated with Panhandle Eye Group out of Amarillo. Her office will be in Berger. She is a glaucoma specialist. Her new office will be under the name Amber Dobbs Dixon.

Carla, Mike, Sarah Elizabeth, and Andrew Martin went to Glorieta this last week to a church meeting. This is close to Santa Fe, New Mexico. Rex McCloy was the preacher for last week at church.

We are having our Morse Community Celebration at the First Baptist Church August 14. Dinner will be at 5 p.m. We will have pit barbecue, children's games, and lots of fun and visiting. This is free to the whole community. Friends and neighbors, come out and join us.

Virginia Poole will be home soon. She has been doing mission work in England. Sue McCloy, Craig and Jenny will be leaving for Moscow, Russia soon. They are going down to help James and Susan Bied join their work at Russia.

Video Garden's
New Movie Releases

for this week are:
Rage (R)
Switchback (R)
Fallen (R)

Videos of Books on Junior & Senior High English Required Reading List available at

Video Garden
210 Main • Spearman
Hours: Mon.-Thurs., 1-9 p.m.;
Fri. & Sat., 1-10 p.m.;
Sun., 1-8 p.m.

THANK YOU

The Golden Spread Senior Citizens would like to thank the following donors for making their Annual Radio Auction such a success!

- | | | |
|------------------------------------|-----------------------------|----------------------|
| Linda Coombs | Helen Etter | D&C Nursery |
| Irvin & Susan Delk | Sara Shufeldt | Alco |
| Mozelle Sparks | Olga Gafford | The Mutt Hutt |
| Scott Fleck | Wanda Archer | Spearman Equity |
| BG's Upholstery | Claudine Clark | Sergio's Body Shop |
| Bob Stottern | Bob Boxwell | Hansford Vet Clinic |
| Angela Torres | Debbie's Ready or Not | Grace Simpson |
| Janet Scarborough | Hansford Home Health | Erin Boxwell |
| Edith Womble | First State Bank | Gwen Smith |
| Dickie Allen | Five Star Equipment | Anita Clemmons |
| Clay & Shela Fewell | KRDF-FM | Velma Sanders |
| D'dee Ellis | All Occasion Flowers | Yvette McAmmond |
| Vicky Bullard | C.O.'s Supply Co. | Myrtle DeArmond |
| Ethel Byers | Prairie Motors Inc. | Christina Babitzke |
| Jettie Davis | Lady Fair | Candi Delozier |
| Melissa Taylor | Palo Duro Cafe | Margaret Evans |
| Karen Babitzke | J&M Service Center | Bill Turner |
| Dortha Keys | Jo's This 'N' That | Dora Womble |
| Freeman Barkley | JK Farm Supply | Annalee Pittman |
| Eloise Renner | Hamilton & Son | Barb's Beauty Salon |
| I.W. Ayers | Lyric Theatre | Adalyn Barnes |
| John Trindle | Golden Spread Sales | Rosa Lee Butt |
| Noreen Sutton | Ivey's Hungry Cowboy | Sibyl Powell |
| Jo Larsen | Safety Glass | Billy Steward |
| Gigot Agra Products | Sam's Shoe Clinic | Ethel Waggoner |
| Gordon's Drug | Saddleshop | Kathryn Murphy |
| Sandy's Beauty Shop | Farber Livestock | Irene Edwards |
| Celebrate | Prairie Garden flowers | Tom & Linda Latta |
| First Parts & Supply | Hansford Implement | Ray Gibson |
| Kountry Donut | Lowe's Marketplace | Mike & Pat Cudd |
| Kid's Stuff | Pizza Hut of Spearman | Bob & Jackie Pearson |
| Video Hutt | Hickerson Jewelers | Carolyn Cummings |
| B&B Farms | Jan's Bakery & Deli | Roscoe Nelson |
| Watley Seeds | Charlotte Ford Trunks | Helen Etter |
| S&L Feed | Circle B Pest Control | L&L Coffee |
| Cellular Communications | Mountain Man Basket | Judy Irlbeck |
| White House Lumber Co. | Travis & Lana Patterson | |
| Stephen's Carpet Cleaning | North Plains Home Health | |
| Downtown Produce Market | Texas Rangers Baseball Club | |
| High Plains Auto Supply | Cinderella Beauty Salon | |
| Eugene & Judy Yarbrough | Duncan & Boyd Jewelers | |
| Phillip & Lynna Renner | Cate's Men 7 Boys Wear | |
| Hansford County Reporter-Statesman | Larry & Marsha Murphy | |

Special thanks to KRDF-FM, the telephone operators, and all the ladies who provided the wonderful food!

BACK TO SCHOOL

BACK TO SCHOOL SPECIALS!

We have a very good selection of used cars and trucks that would make great transportation for you!!
BEFORE YOU BUY, GIVE US A TRY!!

- *1997 MERCURY COUGAR XR7 • WHITE (Tan Buckets) Only 12,000 miles! 3.8 V-6, power seat, windows, locks, tilt, cruise, AM/FM cass., mags **ONLY \$13,900**
- *1997 FORD TAURUS GL 4-DR. • 2 TO PICK FROM! White (10,000 miles) Pacific Green (13,000 miles). Both have power seat, windows, locks, tilt, cruise, AM/FM cass., mags, anti-lock brakes **YOUR CHOICE ONLY \$14,500**
- 1997 CHEVY MONTE CARLO 2-DR. • BRIGHT RED Only 38,000 Miles! V-6, power buckets, tilt, cruise, windows, locks and super clean! **ONLY \$12,900**
- *1996 MERCURY COUGAR XR7 • DENIM BLUE/ WHITE TOP Only 13,000 miles, 3.8 V-6, leather, power seats, windows, locks, tilt, cruise, AM/FM cass, mags **ONLY \$12,900**
- 1996 MERCURY GRAND MARQUIS LS 4-DR. • PRAIRIE TAN Leather, power seats & loaded with equipment .. **ONLY \$15,900**
- *1995 FORD T-BIRD LX • SILVER (Grey Buckets) Only 29,000 miles! 4.6 EFI V-8, power seat, windows, locks, tilt, cruise, AM/FM cass., mags, power sunroof **ONLY \$11,900**
- *1995 SATURN SL2 4-DR. • MET. RED (Grey Cloth) Only 50,000 miles! 4 cyl. EFI, sunroof, windows, locks, tilt, cruise, AM/FM cass., mags **ONLY \$9,900**
- *1995 FORD AEROSTAR XLT MINI VAN • BRILLIANT BLUE Only 31,000 miles! 4.0 EFI V-6, ext. length, rear air, windows, locks, tilt cruise, AM/FM cass., Michelins, mags **ONLY \$13,900**
- 1993 FORD MUSTANG LX CONVERTIBLE • LIGHT MET. GREEN Only 41,000 miles! 4 cyl. EFI, auto, air, tilt, cruise, AM/FM cass, mags! THIS WILL TURN EVERYONE'S HEAD! **ONLY \$7,900**
- 1993 CHEVY CORSICA 4-DR. • MET. BLUE (Grey Cloth) Only 42,000 miles! V-6, auto, air, tilt, cruise, THIS WOULD BE GOOD & ECONOMICAL! **ONLY \$5,900**
- 1993 MAZDA PROTEGE LX 4-DR. • MET. RED 4 cyl., 5 speed, air, tilt, cruise, AM/FM cass **ONLY \$5,900**
- 1993 FORD TAURUS GL WAGON • DARK MET. BLUE 3.8 V-6 & loaded with equipment! **ONLY \$6,900**
- 1993 LINCOLN CONTINENTAL SIGNATURE • SILVER Only 75,000 miles! Dual power seats & loaded with equipment! **ONLY \$9,900**
- 1993 FORD EXPLORER EDDIE BAUER • DARK GREEN/ TAN Leather, power seats & LOADED, LOADED! **ONLY \$9,900**
- 1992 FORD 1/2 TON XLT SUPERCAB • FLARESIDE • BURGUNDY Only 63,000 miles! 302 V-8, windows, locks, tilt, cruise, AM/FM cass., fiberglass running boards, chrome wheels! THIS TRUCK HAS LOTS OF EYE APPEAL! **ONLY \$9,900**
- 1992 OLDS BRAVADA AWD • BURGUNDY (Tan Leather) V-6, Michelins, mags & lots of equipment! **ONLY \$8,900**
- 1992 FORD AEROSTAR AWD MINI VAN • MET. RED 4.0 V-6, rear air, windows, locks, tilt, cruise, AM/FM cass., mags **ONLY \$7,500**
- 1992 LINCOLN TOWN CAR • WHITE/ BURGUNDY Has chrome package, convertible roof, keyless entry, new steel radials! **ONLY \$6,900**

BARGAIN CORRAL

- 1991 LINCOLN CONTINENTAL • SILVER ROSE **ONLY \$6,900**
- 1991 CHEVY 1/2 TON SILVERADO • WHITE/ CHARCOAL **ONLY \$7,900**
- 1991 CHEVY ASTRO VAN • WHITE **ONLY \$3,900**
- 1990 FORD LTD CROWN VICTORIA LX • SILVER **ONLY \$3,900**
- 1989 OLDS CUTLASS SUPREME INTER. 2-DR. • RED **ONLY \$5,900**
- 1989 CADILLAC FLEETWOOD • TAN, ONLY 68K! **ONLY \$6,900**
- 1989 FORD TAURUS GL 4-DR • DARK RED **ONLY \$3,900**
- 1989 DODGE CARAVAN • CHARCOAL/ BLACK **ONLY \$2,900**
- 1988 CHRYSLER NEW YORKER • LIGHT MET. BLUE **ONLY \$2,900**
- 1988 CHEVY 1/2 4X4 SUBURBAN • BLUE **ONLY \$3,500**
- 1987 CADILLAC FWD FLEETWOOD D'ELEGANCE • BURGUNDY **ONLY \$2,900**
- 1987 CADILLAC RWD BROUGHAM • SILVER **ONLY \$2,900**
- 1987 CHEVY CONVERSION VAN • TEAL/ TAN **ONLY \$3,900**
- 1985 LINCOLN CARTIER • WHITE/ SILVER **ONLY \$2,900**
- 1985 FORD 3/4 460 4 SPEED • RED/ TAN **ONLY \$1,900**
- 1984 FORD BRONCO II 4X4 • RED **ONLY \$1,250**
- 1983 BUICK PARK AVE. 4-DR. • CREME/ DARK BROWN **ONLY \$1,250**

*Have new car warranty remaining



420 S. Main • 435-7676 • Perryton, TX



Darl Hergert



Dan Hoover



Donnie Hergert

BACK TO SCHOOL

Public Notice

NOTICE TO BIDDERS

Sealed bids for the City of Spearman's bulk fuel for the 1998-99 fiscal year will be received up until 10:30 a.m., September 1, 1998, then publicly opened and read.

The City reserves the right to reject any or all bids, to waive informalities and to accept the bid deemed to be the most advantageous to the City. All bids received after the above closing hour will be returned unopened.

Specifications and bidding documents may be secured from City Hall, P.O. Box 37, Spearman, Texas 79081.

2(8-6-98)B

NOTICE TO BIDDERS

Sealed bids for the sale of real property being described as Lots 5 and 7, Block 14, Original Town, City of Spearman, Hansford County, Texas, addresses being 301 and 305 1/2 Main Street, will be received by the City of Spearman, Texas, until September 1, 1998, at 11:00 a.m. and then publicly opened and read.

The City reserves the right to reject any or all bids, to waive informalities and to accept the bid deemed to be the most advantageous to the City. All bids received after the above closing hour will be returned unopened.

Further information and bidding documents may be secured from City Hall, P.O. Box 37, Spearman, Texas 79081.

2(8-6-98)B

NOTICE TO BIDDERS

Sealed proposals for a Janitorial Service Contract on City Hall and the Police Department will be received by the City of Spearman, Texas, until 11:30 a.m., September 2, 1998, then publicly opened and read.

The City reserves the right to reject any or all bids, to waive informalities and to accept the bid deemed to be the most advantageous to the City. All bids received after the above closing hour will be returned unopened.

All bids shall be sealed and marked on the outer envelope "Janitorial Service Contract."

Specifications and bidding documents may be secured from P.O. Box 37, Spearman, Texas 79081.

TEXAS EDUCATION AGENCY DIVISION OF CAREER AND TECHNOLOGY EDUCATION

PUBLIC NOTIFICATION OF NONDISCRIMINATION IN CAREER AND TECHNOLOGY EDUCATION PROGRAMS

Spearman I.S.D. offers career and technology education programs in vocational agriculture, vocational homemaking, and vocational business programs. Admission to these programs is based on interest, aptitude, age appropriateness, and class space.

It is the policy of Spearman I.S.D. not to discriminate on the basis of race, color, national origin, sex, or handicap in its vocational programs, services, or activities as required by Title VI of the Civil Rights Act of 1964, as amended; Title IX of the Education Amendments of 1872; the Age Discrimination Act of 1975, as amended; and Section 504 of the Rehabilitation Act of 1973, as amended.

Spearman I.S.D. will take steps to assure that lack of English language skills will not be a barrier to admission and participation in all educational and vocational programs.

For information about your rights or grievance procedures, contact the Title IX and Section 504 Coordinator, Jim Jones, 315 W. 5th, (806) 659-2563.

FORMA DE MUESTRA

Spearman I.S.D. ofrece programas vocacionales en vocational agriculture, vocational homemaking, y vocational business programs. La admision a estos programas se basa en aptitude de estudiante, clasificacion, experiencia, y espacio disponible.

Es norma de Spearman I.S.D. no discriminar por motivos de raza, color, origen nacional, sexo o impedimento, en sus programas.

servicios o actividades vocacionales, tal como lo requieren el Titulo VI de la Ley de Derechos Civiles de 1964, segun enmienda; el Titulo IX de las Enmiendas en la Educacion, de 1972, y la Seccion 504 de la Ley de Rehabilitacion De 1973, segun enmienda.

Es norma de Spearman I.S.D. no discriminar por motivos de raza, color, origen nacional, sexo, impedimento o edad, en sus procedimientos de empleo, tal como lo requieren el Titulo VI de la Ley de Derechos Civiles de 1964, segun enmienda; el Titulo IX de las Enmiendas en la Educacion, de 1972, la Ley de Discriminacion por Edad, de 1975, segun enmienda, y la Seccion 504 de la Ley de Rehabilitacion de 1973, segun enmienda.

Spearman I.S.D. tomara las medidas necesarias para asegurar que la falta de habilidad en el uso de la lengua ingles no sea un obstaculo para la admision y participacion en todos los programas educativos y vocacionales.

Para informacion sobre sus derechos o procedimientos para quejas, comuniquese con el Coordinador del Titulo IX, Title IX and Section 504 Coordinator, Jim Jones, 315 W. 5th, (806) 659-2563.

RAILROAD COMMISSION OF TEXAS OIL AND GAS DIVISION

DISTRICT 10
DATE OF ISSUANCE: July 14, 1998

RULE 37/38
CASE NO. 0219786

NOTICE OF APPLICATION
NOTICE IS HEREBY GIVEN THAT THE RICKS EXPLORATION, INC., 5600 N. MAY STE 350, OKLAHOMA CITY, OK 73112-4299, has made application for a spacing and density exception permit under the provisions of the Railroad Commission Statewide

Rules 37 and 38 (16 Tex. Admin. Code section 3.37 and 3.38). Applicant seeks exception to the lease line and between well distances and to the density of the subject field(s) to drill Well No. 57A on the Holmes Lease, 605 Acres, Sec. 57, Blk. 4T, T & NO RR Co Survey A-394, Hansford (Morrow Upper), Hansford (Morrow Middle) and Hansford (Morrow Lower) Field(s), Hansford County, being 1 mile northeast of Spearman, Texas. The location of this well is as follows:

660' from the west line and 620' from the northerly southeast line of lease.

660' from the west line and 1330' from the south line of survey.

Field rules for the Hansford (Morrow Upper), Hansford (Morrow Middle) and Hansford (Morrow Lower) fields are 1250/2500, 640 acres.

As part of this application, Applicant also seeks permit authority in the Wildcat and Spearman (Oswego) fields. No Rule 37 (38) exception is necessary pursuant to field rules for these fields.

Field rules for the Wildcat and Spearman (Oswego) fields are 467/1200, 40 acres.

This well is to be drilled to an approximate depth of 8500 feet.

PURSUANT TO THE TERMS OF Rule 37 (h) (2) (A) and 38 this application may be granted without a hearing if no protest to the application is received. An

affected person is entitled to protest this application. Affected persons include owners of record and the operator or lessees of record of adjacent tracts and tracts nearer to the proposed well than the minimum lease line spacing distance. If a hearing is called, the applicant has the burden to prove the need of an exception.

A protestant should be prepared to establish standing as an affected person, and to appear at the hearing either in person or by qualified representative and protest the applicant with cross-examination or presentation of a direct case. The rules of evidence are applicable in the hearing. If you have questions regarding this application, please contact the Applicant's representative Glenn E. George, P.E., Cons. Petro. Engr., at (405) 840-9099. If you have any questions regarding the hearing procedure, please contact the Commission at (512) 463-6748.

IF YOU WISH TO REQUEST A HEARING ON THIS APPLICATION, AN INTENT TO APPEAR IN PROTEST MUST BE RECEIVED IN THE COMMISSION'S AUSTIN OFFICE BY August 20, 1998 at 5:00 p.m. IF NO PROTEST IS RECEIVED WITHIN SUCH TIME, THE REQUESTED PERMIT MAY BE GRANTED ADMINISTRATIVELY.

THIS NOTICE OF APPLICATION REQUIRES PUBLICATION.
4(7-23-98)B

Dahl

PEST CONTROL

Insects & Rodents

• Free Estimates • State Certified •

Scot Dahl, Owner
Phone - 405-338-5665 • Mobile - 405-651-9406
RR 3, Box 32NB
Guymon, Oklahoma 73942

AUCTION

FARM EQUIPMENT - O.C. HOLT, OWNER

FRIDAY, AUGUST 21, 1998 - 10:00 A.M.

Storm Date - Friday, August 28

Location: From Spearman, TX. Go 14 Mi. S On Hwy 207 To Blinking Light, Then Go 3 Mi. E On Hwy 281, Then 1 Mi. N, Then 1 Mi. E. From Stinnett, TX. Go 15 Mi. N On Hwy 207, To Blinking Light, Then Go 3 Mi. E On Hwy 281, Then 1 Mi. N, Then 1 Mi. E.

TRACTORS - COMBINE
1982 JD 4840, PS, DH, PTO, Duals, Approx 500 Hrs On New Short Block, SN 17303
1968 JD 5020, 3 Pt, DH, PTO, Duals, Egg-ing Cab, SN 21411
1967 JD 5020 w/9' Dozer Blade, 3 Pt, DH, PTO, Egging Cab, 24.5x32 Rubber, SN 17468
FORD 9N, Recent OH, New Rubber, 3 Pt, PTO
AC WD 45, 3 Pt, PTO, SH
IH 660, Salvage
IH 1530, Salvage
1976 JD Turbo 7700 Combine 24' Hdr, 3458 Hrs, SN 214952, One Owner, Shredded

1980 WHITE COE Truck Tractor, Sleeper, 400 Cummins, 1 3/4 Sp, Twin Saddle Tanks
1972 MACK FS 7000L COE Truck Tractor, Sleeper, Mack 865 V8, 5 Sp, Twin Saddle Tanks
1979 MERRITT 50' Alum Cattle Pot, Punchside
1969 TRAILCO 40' Van Trailer

7 Farrowing Crates
5 Hay Feeders
3 Hay Bunks
13 Roundbale Feeders
HARRISON Loose Hay Wagon
2 Whl Roundbale Mover w/Elec Winch
3 Pt Roundbale Fork
Pop Up Bale Loader
12 - 12' Roundbottom Troughs
3 - 6' Roundbottom Troughs
6 - 12' Flatbottom Troughs
3 - 14' Flatbottom Troughs
8 - 16' Portable Bulk Feeders
15 - 12' Portable Panels
Squeeze Chute
Calf Chute
Several Rolls Galv. Barb Wire
560 Elec Fence Posts & Insulators
3 - Stock Tanks, 2 - 8' & 1 - 10'
2200 gal Water Hauling Tank, Skidded
2 - 500 gal Water Hauling Tanks
Old Feed Mill
100 - 5/8" Sucker Rods
Asst. Pipe

EQUIPMENT
RICHARDSON 30' Sweep Plow, Coulters, Pickers, FW
MILLER 16' Offset Disc, Dual Carriers, Scrapers
KRAUSE 20' Tandem Disc, Needs Repair
3 - JD VB Model SS High Whl 1610 Disc Drills, PW
2 - 3 Section Sets DEMPSTER 21 Hoe Drills
2 - 4 Row Lister Planters, Needs Repair
Antique 2 Row Lister Planter
2 - DEMPSTER Lister Planter Units
5 Row Middle Buster
Shopmade 14' Chisel
4 - HOEME Chisels, 15' to 25'
JEOFFROY 15' Chisel
Framework for Fert/Chisel Rig
4 Section & 5 Section Drag Harrows
3 - 3 Section Drag Harrows
DANUSER 3 Pt PHD w/9" Auger
12' PHD Auger
MARVIN 12' Landplane w/Wide Flotation Steel Wheels, 40' Long
ADAMS Leaning Grader w/12' Moldboard
ARK VALLEY 18' Oneway, Good Discs
2 - ARK VALLEY 15' Oneways, Disassembled
MM 10' Oneway
7 Shank Sweep Plow w/36" Sweeps
KUKER Spray Rig, DT, 500g Poly Tank, PTO Pump, 34' Boom
Grasshopper Treater Spreader, DT
JD Sickle Mower
5' 3 Pt Mower
4 JD Paddle Type Grain Loaders, 2 w/IH LB Engines

GRAIN TRUCKS - PICKUP'S - BRONCO
1974 GMC 2 1/2 T, TA TRUCK, 366 V8 (Fresh Factory F rebuilt), Working 5 Sp, 22' Bed, 52" Sides, Twin Saddle Tanks, Good Rubber
1951 CHEVY 2T Truck, 5 Window Cab, 6 Cyl, 4 Sp/2 Sp, 13 1/2' Bed Hoist
1948 IH KB7 1 1/2 T Truck, 6 Cyl, 5 Sp/2 Sp, 16' Bed, 36" Sides, Hoist
Late 40's GMC Flatbed Truck, 5 Window Cab, 6 Cyl, 4 Sp/2 Sp, 16' Bed
IH Truck Chassis
1981 CHEVY 1/2 T Pickup 250 6 Cyl, A/T, LWB
1980 FORD 1/2 T Pickup 302 V8, A/T, LWB
1980 FORD 1/2 T Pickup 300 6 Cyl, A/T, LWB
1976 CHEVY 1/2 T Pickup, 350 V8, A/T, LWB
1971 CHEVY 1/2 T Pickup, 350 V8, 4 Sp, LWB
1964 CHEVY 1/2 T Pickup, 6 Cyl, 3 Sp, SWB
1951 WILLYS Jeep Pickup, 4 WD, Small Ford V8, 3 Sp
1980 FORD Bronco, V8, A/T

SHOP
JD 310 Portable Steam Cleaner
Continental 30 Ton Shop Press
Old Belt Drive Hack Saw
Cement Mixer w/IH LB Engine
Pipe Rack

ANTIQUES - NON CLASSIFIED
MAGIC CHEF Art Deco Woodburning Cookstove w/Chrome, Black & White Enamel
MAYTAG Square Tub Wringer Washer
9 Rooftop Barn Louvers
Open Top Oilfield Tank, 5' Hx10' D
500 & 560 gal OH Fuel Tank & Stands
520 gal Propane Tank
2 - 500 gal Propane Tanks
3 - Pickup Bed LPG Tanks - 46 to 50 gal
Several Tractor Wheel Weights
Truck, Trailer & Implement Tires & Wheels
Lot Used Sweep Blades & Discs
Centrifugal Pumps, Elec & Gas
Asst. Angle Iron
Several Lots Scrap Iron
3 - Cat 3 OH's
Lot HC Chisel Shanks

IRRIGATION
MM 605 Engine
2 - AC 8MO Engines, Salvage
Engine Guard
Wellhouse
50 Jts 6"x20" Alum Gated Pipe, 38" & 40"
10 Jts 6"x30" Alum Gated Pipe, 40"
6" Hydrants, T's, L's, Ext's, Etc.
Gas Meter

WINDMILLS - LIVESTOCK - SUCKER ROD - PIPE
10' AEROMOTOR Mill, Rebuilt, w/Tail, Fan & Stubtower
8' AEROMOTOR Mill
Windmill Tower, Approx 30'
14' Stock Trailer

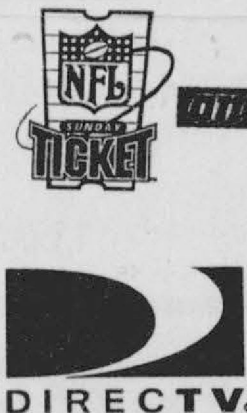
TRUCK TRACTORS - CATTLE POT - VAN TRAILER
1974 MARMON 3 1/2 T Truck Tractor, 350 Cummins, 13 Sp, Step Up Saddle Tanks

TERMS AND CONDITIONS: Cash, Cashiers' Check, Personal or Company Check with proper I.D. All descriptions of items in this sale are believed to be correct and have been conscientiously set forth by the OWNERS and DENZEL TEVIZ AUCTION & REALTY, however, the description and condition as set forth on each item is in NO WAY a warranty or guarantee, actual or implied. All purchases are made as is, where is based entirely on the personal inspection and/or opinion of the purchaser. This notice along with all printed matter regarding this sale, is hereby a guide and subject to additions and/or deletions. All announcements at sale time will take precedence. If you have not established yourself with Auction Company, please bring bank letter. NOT RESPONSIBLE FOR ACCIDENTS

For More Information, Call:
DENZEL TEVIZ
AUCTION & REALTY
Auctioneer & Real Estate Broker

107 S. Main
Perryton, Texas 79070
(806) 435-2768
TL-7498

18" Digital Satellite System



\$129.95

(New Activations Only.)

You'll get 4 months of Total Choice PLATINUM PLUS over \$8.00 worth of DIRECTTV® Programming Certificates FREE - a \$200 value! NFL SUNDAY TICKET - We've Got Your Game™! Up to 13 games a Sunday - \$159.00 for the '98 regular season. (Local blackout rules apply.)

Hurry! Offers ends September 21!

SCORE \$200

OF FREE* PROGRAMMING

Just get a system and subscribe to '98 NFL SUNDAY TICKET™ and Total Choice® PLATINUM!

Don't Forget We Ship via UPS

NFL SUNDAY TICKET automatically renews at a special rate each year, provided DIRECTTV carries this service, unless subscriber calls to cancel prior to start of season. *Limited-time offer for DIRECTTV residential subscribers who purchase a system from authorized retailer between 8/5/98 and 9/20/98, subscribe to '98 NFL SUNDAY TICKET (\$159.00) and Total Choice PLATINUM (\$47.99/mo), and activate by 10/4/98. FREE programming consists of 4 months of Total Choice PLATINUM and over \$8.00 worth of DIRECTTV programming certificates. Offer must be accepted at activation to receive 4 full months of programming. Offer void where prohibited. Blackout restrictions and other conditions apply to sports programming. Programming, pricing, terms and conditions subject to change. Hardware and programming sold separately. NFL Sunday TICKET is a registered trademark of NFL Enterprises, LP. DIRECTTV and Total Choice are registered trademarks of DIRECTTV, Inc.

EARL'S TV & APPLIANCE INC.

Hometown Service with Big City Prices
Sales & Service
106 E. Kenneth • (806) 659-2121 • Spearman, TX

CLASSIFIED ADS

CALL TODAY! (806) 659-3434
or Fax us at: (806) 659-3368

GARAGE SALE

GARAGE SALE: One Day Only - 1119 S. Haney, Saturday, August 15th, 8 a.m.-7 p.m. (8-13-98)B
2-FAMILY BACK-TO-SCHOOL GARAGE SALE: 1108 S. Archer, Saturday, August 15th, 9 a.m.-1 p.m. Lots of bargains. 1/2 price from 12-1 p.m. (8-13-98)P
LARGE 3-FAMILY GARAGE SALE: 1 clarinet & many other items too numerous to list. Friday, August 14th from 5-7 p.m. and Saturday, August 15th from 8 a.m.-1 p.m. at 302 Airport Road (in back of Lynn's Bait & Tackle Shop) - come to back! (8-13-98)P

AGRICULTURE

PASTURE NEEDED: Year-round pasture needed for 100-500 head of mother cows. Call (806) 423-1008. (8-13-98)B
CUSTOM N-TILL DRILLING & FERTILIZING behind fall crops (corn, milo, soy beans, sunflowers). Call Panhandle Implement at 435-6508. Also custom tillage. (8-13-98)B

MARTIN & ASSOCIATES REALTY
Hansford County's ONLY locally owned and operated Realty.
Julie Martin: Broker - 659-2425
Kym Williams: Assoc. - 733-5163

IN SPEARMAN
160 Acres - SE of County Lots: build your own home.
611 S. Evans - 3/1 1/1
1002 S. Bernice - 2BR, 1B
908 S. Haney - 2/1 1
515 S. Haney - 2/1 1/1

IN GRUVER
403 Cluck St. - 3BR, 2B

We'd Like Your Listing
FOR QUALITY & SERVICE CALL US TODAY!
Equal Housing Opportunity

Real Estate & Rental
Spearman Property
103 S. Coble - 2BR w/Storm Cellar
1108 Linn - 3BR, 1 3/4B, Garage
Rural Home - w/ Acreage
13 S. Brandt - 3BR, 2 1/2B, Garage
112 Wanda Dr. - 3BR, 1B, Garage
217 S. Barkley - 2BR, 1B
811 S. Roland - 3BR, 1B
1115 S. Haney - 3BR, 1 1/2B

Gruver Property
424 W. Hwy. 15 - Trailer Lots
101 N. Cooper - 3BR, 2 1/2B, 2 Car Gar.
810 Womble - 2BR, 1B, 2 Car Garage
208 King - 2BR, 1B, 1CG, Shop
602 Womble - 2BR, 1 1/2B, 1CG, Central H/A
906 King - 4BR, 1B

Commercial Property
434 Main, Gruver - Corner Location
432 Main, Gruver - Priced to Sell
417 Main, Gruver - Good Location
418 Main, Gruver - Office Space for Rent

Real Estate & Rental
for all your real estate needs!
Melinda McCullough (806) 733-5678
Dawn Brown (806) 659-3053

HOMES/LAND FOR SALE

FOR SALE: 3BR, 1B, 1 car detached garage w/office, corner lot, privacy fence, central H/A, close to elementary, 702 S. Bernice. Call 659-2409. TFN(4-9-98)B
NOW AVAILABLE: Nice brick home, 4BR, 3B, den w/big fireplace, living room, double garage and basement. Located at 702 Gibner. Call 659-3838 or 733-5555. TFN(7-23-98)B
FOR SALE: House on extra large lot. Huge driveway - 4BR, 1 1/2B, living room, study - located at 727 Wilbanks. Call 659-3838 or 733-5555. TFN(7-23-98)B
FOR SALE: Charming brick home with 3 bedrooms, 2 full baths and single car garage. Don't miss this one. 714 Wilbanks Drive. For private showing, call Julie Martin at 659-2425. (8-13-98)

FOR RENT

FOR RENT: 1BR apartment, or 2BR house. Call 659-3260. TFN(11-20-97)B

EMPLOYMENT

MECHANIC NEEDED: Certified and experienced. Tools required; 40 hours a week; uniform provided. Mail resume to P.O. Box 163, Perryton, TX 79070. TFN(5-7-98)B
HELP WANTED: Full-time bookkeeper, oversee counter transactions, computer experience necessary. Call C.O.'s Supply at 659-3781. TFN(8-6-98)B

Tuesday Night Scrambles
The Hansford County Golf Club held its Tuesday Night Scrambles on Tuesday, August 10th, with one of the best crowds all year. The money in the pot was over \$250, and will be even larger next week because it tied again this week. The estimated pot for next week is \$350.
Three teams tied with a score of 8 under par, 28 on the front nine.
The tying teams were: Billy Kelly, Ross Donahue, Melissa Donahue, Clay Schnell; Troy James, Richey Thompson, Earl Goodheart, Mike Wilson; and Cass Lasater, Butch Baker, Charlie Salgado, Tindle Ramon.

HELP WANTED: Full-time bookkeeper, oversee counter transactions, computer experience necessary. Apply in person at C.O.'s Supply Company. TFN(8-13-98)B
HELP WANTED: Experienced person needed. Computer/feed lot background a plus, but not necessary. For more information, call 733-2416, ask for Tim or Brenda. 2(8-13-98)B

NOTICE

WEIGHT WATCHERS is now meeting every Monday in Spearman. For more information, please call 1-800-359-3131. TFN(9-18-97)B

SERVICES

DOWNTOWN PRODUCE MARKET: 303 Main, Spearman, TX, 659-5137, open 10 a.m. to 6 p.m., Monday-Saturday. Lots of home-grown items arriving regularly - including okra, squash and plums. Watch for fresh peaches. TFN(7-2-98)B
HOUSE SETTLING? Cracks in brick or walls? Doors won't close? Call Childers Brothers Stabilizing & Foundation Leveling. 1-800-299-9563. 52(3-12-98)P
TAKING ORDERS for Colorado peaches, nectarines, pears & honey. Call Bobby Smith at 659-3816 or 659-2786. 4(7-23-98)B

FOR SALE

FOR SALE: 7-seat metal pews w/oak wood ends and burgundy fabric seats. Call 659-2036 for more information.
FOR SALE: 8" Meade telescope - has sun filter and equatorial map; 4" Meade telescope - has azimuth map. Call 659-3130. 2(7-30-98)

HOME OF THE WEEK



222 Townsend

What Is Your Offer? Two bedrooms, 1 bath and a double car garage. Priced for a quick sale!

Golden Spread Realty
200 S. Main • Perryton, Texas
806-435-5444

©1992 and TM Century 21 Real Estate Corporation. Equal Housing Opportunity. INDEPENDENTLY OWNED AND OPERATED.

You are cordially invited to attend
Sunday Morning Worship
at the

Church of the Brethren
Waka, Texas

11:00 a.m.

MONEY'S

BBQ & STEAK HOUSE
FEATURING
Home Smoked BBQ Ribs, Brisket, Ham & Sausage
All You Can Eat Catfish • Fried Shrimp
Certified Angus Beef Steaks • Burgers
Daily Luncheon Specials
Fri. & Sat. Nite Prime Rib Specials

NOW OPEN: Monday-Saturday
11:00 a.m. - 9:00 p.m.
14 S.E. Third in Perryton • 534-3945
(Directly behind Interstate Savings & Loan)

LAST CHANCE SALE
Starts Thursday, August 13th - 9:30 a.m.

UP TO 80% OFF

New Fall Merchandise Arriving. Layaway Now!

Kid's Stuff & Lady Fair
719 West 7th Spearman

Great Selection Of Merchandise On Sale
Betty's • Jackies • Leprechaun
Downtown • Perryton, TX

Sale Ends Soon

Swathing & Baling

Josh Raguse - (806) 898-8680
Warren Raguse - (806) 898-7298

TEXAS STATEWIDE CLASSIFIED ADVERTISING NETWORK

TexSCAN

TextSCAN Week of Aug 9, 1998
Note: It is illegal to be paid for anything beyond medical and legal expenses in Texas adoption.

ADOPTION
A BRITISH/ AMERICAN family would love to adopt a newborn to share a loving, secure and exciting life in London, England. Call Jane and Neil, 1-800-648-1807.

BUSINESS OPPORTUNITIES
ALL CASH HOME Business-Currency Trading. Immediate income, no selling, no experience. We train! Average \$500/ 3 hours per day w/PC system. \$5k Required. 1-800-263-3329. www.welcome.to/computerizedtrading.
ATTENTION INVESTORS! 200% return from recent 30 day period. \$5,000 Foreign Currency investment could have returned \$15,000. Free information. Capital Management International. \$5,000 minimum investment 1-800-380-3211.
AGENT: AVON NEEDS representatives. Earn up to 50%. No door to door. Start your own business in 98'. Must be 18. Independent Rep. Call 1-888-339-2866.
AVON PRODUCTS - START your own business. Work flexible hours. Enjoy unlimited earnings. Call toll free 1-888-561-2866.
DISTRIBUTOR: OFFICIALY LICENSED sports products, Nascar, NFL, NBA, MLB, NHL, MLS, & NCAA Sports. Limited offer. The Sports Shop, 1-800-998-1011. Minimum invest., \$15K.
LOCAL CANDY ROUTE. 30 vending machines. Earn approximately \$800/day. All for \$9,995. Call 1-800-998-VEND. Multi-Vend, Inc.
NEW LEASE ALTERNATIVE program. Drive a new car for \$100 per month. By referring others to the club you can earn \$1,000's of dollars per month. Call Saurus Resources, Inc. @ 1-800-775-0712 ext. 0236. Membership \$395.00.
DRIVERS WANTED
CARRIER PAID TRAINING. Conwell Corp. is providing free CDL training. Must have high school diploma or equivalent. Must be able to pass drug screen. Call today 1-800-569-9232.
COMPANY DRIVERS (FLAT/Van) *Top pay for experience. *Assigned conventionals. *Full benefits. Owner/Operators (Flat/Van). *New mileage contract *Free plates/permits. *Tractors purchased program. 1-800-241-8787-Anderson Trucking Service.
CONTINENTAL EXPRESS NEEDS OTR & Regional drivers. Voted among the top 10 small carriers. Paid benefits. 90-95% no-touch freight. 1-800-727-4374. EOE. 1-800-695-4473
DRIVER - \$10,000 BONUS! Raise every six months plus bonuses and benefits. Assigned conventionals hauling dry van freight. Flexible home time. Owner/operators welcome, too. Vernon Sawyer, 1-888-829-9565
DRIVER - Flatbed MILES, MONEY & Respect. Glass haulers. 34-37/miles. Great benefits. Consistent miles. Run midwest. 3 years OTR + 1 year flatbed experience. Combined Transport, 1-800-637-4407.
DRIVER - O/O, CLASS A CDL, Hazmat. Regional opportunities within our hiring area! Great pay, benefits packages & home time! Arnold Transportation, 1-800-454-2887.
DRIVER: OTR BONUS, Benefits, miles, equipment, pay. Covenant Transport has it all! *Teams start 35c-37c *\$1,000 sign-on bonus for experienced Company Drivers. 1-800-441-4394, experienced drivers and owner operators. 1-800-338-6428, for graduates
DRIVERS: NATIONALLY KNOWN Carriers are offering free Truck Driver Training with no contracts & no gimmicks. For more details call 1-888-209-0617.
DRIVERS - TEAMS & SOLOS. 3 months + school minimum experience. Drop & hook, no touch freight, assigned conventional freight liners, excellent pay & miles. Incredibly benefits & miles, miles, miles. Cetedon Trucking, 1-800-729-9770.
FREE TRAINING & FIRST year income \$30K - Stevens Transport - OTR truck drivers wanted! Non-experienced or experienced 1-800-333-8595.
INEXPERIENCED! FREE CDL Training *Pre-hired by company * Guaranteed job if qualified * Based out of your area * \$500-\$700 weekly * Benefits package * 1-800-455-4682, ext. 200.
OWNER/ OPERATORS, ARE you averaging \$1.13 cpm? FFE offers 90% loaded miles, free base plates & permits, and \$1,000 sign-on bonus. 1-800-569-9298.
RAPID FREIGHT OF TEXAS is seeking OTR drivers. Minimum 1 year experience. Class A CDL with HazMat required. Call recruiting 1-800-299-7274, ext. 21 or ext. 41.
TRI-STATE SEMI Driver Training, Inc. *Job placement assistance before training *Tuition loans available, no credit check. * 17 day training* 3001 N I-45, Palmer, Tx. *Call 1-888-854-7364.
EMPLOYMENT
AIR FORCE TRAINING, experience and education can help you reach your goals. Find out more. For a free information packet, call 1-800-423-USA4.
MEDICAL BILLERS: WORK processing health insurance claims on your computer. FT/PT. Excellent \$\$\$! Full training, PC required. United Medical Associates, 1-800-550-5042, ext. 401.
FINANCIAL SERVICES
NO DOWN PAYMENT? PROBLEM Credit? Own the home you need now, without a big down payment. Complete financing if qualified. DeGeorge Home Alliance, 1-800-343-2884.
A DEBT-FREE LIFE! Confidential help. Cut monthly payments. Reduce interest. Stop collection calls. Avoid bankruptcy. Nation's largest nonprofit: Genus Credit Management. 1-800-317-9971.
ARE YOU DROWNING in Debt? Debt relief, free, immediate, confidential. Consolidate payments, lower interest. Call 1-888-BILL-FREE or 1-888-245-5373. American Credit Counselors, Non-profit.
****CREDIT CARD PROBLEMS?*** Debt consolidation. Avoid bankruptcy. Stop creditor calls. Cut interest. No credit check. One low payment. National Consolidators. 1-800-270-9894.
!!GET OUT OF Debt Free!! Credit Counseling Centers of America (Member NFCC). Free debt consolidation, lower payments, interest. Stop collector calls Non-profit. 1-877-936-2222 Toll free.
\$\$\$WE BUY \$\$ *Seller settlements *Insurance settlements *Land note portfolios. Colonial Financial. 1-800-969-1200, ext. 42.
FOR SALE
EZ FINANCE, NO \$\$ down! Complete Pentium II computer systems. Fast approvals. All credit types welcome. Bankruptcy OK. From \$74/month! Call 1-888-248-1791.
KMM METAL BUILDINGS: 24x30x10, \$3100. 30x40x12, \$4500. 40x75x12, \$7900. 50x100x14, \$13,150.

Mini-warehouses: 20x120 with doors, \$8300., 30x120 with doors \$10,800. Call for other sizes 1-972-283-9300. www.kmmbuildings.com
POOL CITY'S KAYAK Pools, demo homesites wanted to display new maintenance free pool. Save thousands w/ this unique opportunity! 100% financing. 1-800-338-9919.
WEIGHT LIFTING EQUIPMENT factory direct. Huge savings on Home Gyms, Smith Workout Centers, Leg Presses, much more. Gym quality. U.S. made. Free brochure. Toll-free 1-888-387-9277.
WOLFF TANNING BEDS. Tan at home. Buy direct and save! Commercial/Home units from \$199.00. Low monthly payments. Free color catalog. Call today, 1-800-842-1310.
HEALTH
GREAT NEWS DIABETICS! Medicare pays for testing supplies. You've seen us on TV. Liberty Medical Supply. No up front cost. Satisfaction guaranteed. Free shipping. 1-800-543-0808.
PETS/LIVESTOCK
FOR A FEW Pennies more, get latest technology in liquid wormers. HAPPY JACK LIQUI-VICT delivers actives better than older formulas. TSC Stores & County Coops. www.happyjackinc.com
REAL ESTATE
100-300 ACRES 45 minutes west of Kerrville, Trophy White Tails, Axis, Fallows, Hogs, Turkey, Quail and Dove. Electricity, Tanks, Windmills. \$595-\$695/Acre. Terms. 1-830-792-4935.
84.84 ACRES: EDWARDS County Easy access, electricity available, great hunting, fishing near Texas Vet or Owner financing. \$445/acre. 1-830-896-2825.
SOUTHWEST COLORADO MOUNTAINS. 6 acres - Mesa Verde - \$39,000. 35 acres - Ute Mountain & BLM border - \$69,000. (All utilities & water included!) Durango - Cortez region. Several mountain ranges. Cedar & Pine wood very private. Financing - new lower rates. No closing costs. Redstone Land. 1-970-882-7707.
WE BUY TEXAS Real Estate, farms, ranches, vacant land, oil, gas interests, etc. Land Resources Corporation. Established 1969. 105 South St. Mary's Street, Suite 1506, San Antonio, TX. 78205-2898. 1-210-224-4455. Fax: 210-224-6430.

Call this newspaper for details on how to advertise statewide.