



The Hansford County Reporter Statesman

PROUDLY SERVING HANSFORD COUNTY SINCE 1907

reporter@spearmanreporter.com

VOLUME 101 • ISSUE 17 WWW.SPEARMANREPORTER.COM

THURSDAY, APRIL 24, 2008

SURZ
COMP
HANSFORD COUNTY LIBRARY
0122 MAIN ST
SPEARMAN TX 79081-2064

O'Loughlin Center Tenderloin Dinner & Calcutta

The O'Loughlin Center (502 S. Brandt, Spearman) will hold their annual Tenderloin Dinner and Calcutta on Saturday, April 26th at 7 p.m. Tickets are \$60 each and may be purchased from any board member, or by calling 659-3030. Cash and prizes will be given away throughout the evening. Enjoy and dance to the music of Insufficient Funds. Everyone is invited to come be a part of the fun!

There will be three ways to win money at the upcoming Pot O' Gold Dinner and Dance at the O'Loughlin Center on April 26th! Tickets will be \$60 per person and will go into the pot to win...Grand Prize is \$2,500.00, 2nd Prize is \$250, and there will be 3 \$100 prizes.

Take a chance on the lucky ones by purchasing them on the calcutta boards...the amount of this prize will be determined at the end of the evening!

Because this is the 10th Anniversary of the Pot O' Gold, you can purchase a chance for \$10 for your name to go into the Winner's Prize Box! The entire contents of this box will be won by one person and drawn for at the end of the night!

For further information, contact any board member or call the center at 806-659-3030!

O'Loughlin Center Board to Host "Thank-You" Event for Kathy Bryant

Kathy Bryant has submitted her resignation as Executive Director of The O'Loughlin Center in Spearman. The O'Loughlin Center Board of Directors has scheduled an Appreciation Reception on Thursday, May 1, 2008, from 4-6 p.m. in The Golden Spread Center at The O'Loughlin Center.

Kathy has served the O'Loughlin Center and the Hansford County community for over 14 years. She moved to Spearman from Guymon, Oklahoma, in March, 1994, to begin her position as Director of the soon-to-open facility. She helped over-see the final stages of the construction and furnishing of the building, and she facilitated the establishment of guidelines for the daily operations, rentals and programming.

Her tireless devotion to the center has been important in making The O'Loughlin Center a true asset to the Hansford County area.

The Board of Directors invites everyone to join them on Thursday, May 1, 2008, from 4-6 p.m. at the center to say "thank-you" to Kathy and to wish her well as she continues to deal with her recent health issues. The Board of Directors will have a "Money Tree" at the reception as an expression of their thanks and appreciation to Kathy. Anyone wishing to make a donation may do so.

Weather Forecast

THURSDAY NIGHT - Partly cloudy. Breezy. Lows in the lower 30s. North winds 15 to 25 mph becoming west around 10 mph after midnight.

FRIDAY - Mostly sunny. Warmer. Highs around 70. West winds 10 to 15 mph.

FRIDAY NIGHT - Mostly clear. Lows in the upper 30s. South winds around 10 mph.

SATURDAY - Mostly sunny. Highs in the mid 80s. Southwest winds 10 to 15 mph shifting to the south around 20 mph in the afternoon.

SATURDAY NIGHT - Mostly clear. Lows in the mid 40s.

SUNDAY - Mostly sunny. Highs in the lower 80s.

SUNDAY NIGHT - Mostly clear. Lows in the lower 40s.

MONDAY - Mostly sunny. Highs in the upper 70s.

MONDAY NIGHT - Mostly clear. Lows in the lower 40s.

TUESDAY - Partly cloudy. Highs in the mid 70s.

TUESDAY NIGHT - Partly cloudy. Lows in the lower 40s.

WEDNESDAY - Mostly cloudy. Highs in the upper 60s.

Deadline Notice

The deadline to submit news and advertising to the Hansford County Reporter-Statesman is Monday at 5 p.m. Items submitted after the deadline will be published at a later date, as time and space permit.

Items may be submitted by phone (806-659-3434), fax (806-398-9080), mail (Reporter-Statesman, 213 Main Street, Spearman TX 79081), or e-mail (reporter@spearmanreporter.com).

Hansford County Library Receives Grant

The 75th annual Texas Library Association convention held in Dallas in mid April proved to be very beneficial to Hansford County Library.

While attending the Opening Author Session luncheon where Jenna Bush, daughter of President George and Laura Bush, was a featured speaker, co-directors Maria Carbajal and Margaret Ruttman were awarded a prestigious J. Frank Dobie Trust award in the amount of \$10,000. Hansford County Library was one of four Texas libraries to be honored in this manner. The luncheon was sponsored by Library Friends, Trustees and Advocates.

In presenting the grant to be spent entirely on books, James Stewart said, "My only request is that these libraries have fun with the funds."

At Hansford County Library, plans are in motion to update neglected areas including reference, large print and nonfiction sections. It is estimated that 500+ books can be added to existing collections.

"This is an awesome award and we are

honored," said Carbajal. Ruttman added, "We accept this grant as a great obligation and will do our best to purchase as many books as possible to the benefit of all our patrons."

Both, accustomed to operating the library with limited funds, agreed that acquiring books to update the pinpointed areas will indeed be fun.



Hansford County Co-Directors Margaret Ruttman (left) and Maria Carbajal (right) are pictured with James Stewart, who presented the library with the J. Frank Dobie Trust Award in the amount of \$10,000 during the 75th annual Texas Library Association Convention.

Hansford County Burn Ban

Order No. 01-2008

Executive Order of Hansford County Judge

WHEREAS, by proclamation issued November 20, 2007 the County Judge of Hansford County declared a state of disaster for Hansford County, resulting from:

the potential threat of wildfires due to drought and adverse weather conditions.

WHEREAS, said state of disaster requires that certain emergency measures be taken pursuant to the Texas Disaster Act of 1975 relating to Emergency Management;

the Commissioner's Court of Hansford County, Texas now therefore, orders the following regulations shall take effect immediately upon issuance of this order and shall remain in effect until the state of disaster is terminated:

1. The sale of "restricted fireworks" is prohibited. Restricted fireworks include "sky-rockets with sticks" and missiles with "fins" as provided in 352.051, Texas Local Government Code.

a. A person selling any type of fireworks including restricted fireworks, shall at every location at which the person sells fireworks in the county, provide reasonable notice of the order.

2. The use of combustible materials in an outdoor environment by any person is prohibited.

a. Any individual gainfully employed in a trade or profession that involves the use of combustible materials or use of possible fire sources in the outdoor environment directly related to the successful operation of the business's goals and/or objectives may continue to conduct business as usual utilizing the materials and/or potential fire sources in the outdoor environment as they deem necessary; provided that the individual shall take all necessary safety precautions to prevent the ignition of any fire or fires that are not essential to the conducting of day to day business activities. Any business owner, operator or individual involved in any business operation citing this section of this order that has not taken the necessary safety precautions and as a result, damage occurs from a fire caused by their business operations, shall be liable for any and all damages that may occur and they shall be issued a citation and fined as allowed by law.

In an effort to combat high diesel prices, the Hansford County Commissioners Court will allow control burns with the following conditions:

a. Control burns permitted only for planting or harvesting of agriculture crops.

b. Prior to burn, Sheriff's Office Central Dispatch must be notified with precise directions to the field to be burned plus a return phone number.

c. Dispatch will then page all three Fire Departments about the proposed control burn.

d. Farmer should call back 30 minutes after initial call (806-659-4140). If no protest by any Fire Chief or Next-In-Command, then the control burn may be initiated.

3. This order shall not apply to an officially authorized public display.

In accordance with the Local Government Code, a person who knowingly or intentionally violates this order commits a Class C Misdemeanor, punishable by a fine of up to \$500.00.

The purpose of this order is the mitigation of the public safety hazard posed by wildfires during the current drought and severe weather drought and severe weather conditions by curtailing the use of all combustible materials.

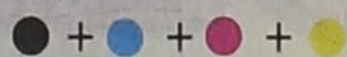
Burn Ban extended as of April 14, 2008. Benny Wilson, Hansford County Judge

Jetton Celebrates 100th Birthday



Dimple Peek Jetton celebrated her 100th birthday on April 17, 2008. Dimple was born in Goree, Knox County, Texas on April 17, 1908 to Jeff and Alice Peek. She married Sam "S.B." Jetton in Goree in 1946. He was a farmer and she was a homemaker. Following his death in 1982, Dimple moved to Spearman in 1985. She has one daughter, Lynell and husband Burt Williams of Spearman, two grandchildren, Lynette Babcock of Mineral Wells and Kevin Williams of Goodwell, OK and his fiancée Meghan Blaneck of Lubbock, TX, and one great-granddaughter, Kaitlyn.

Dimple is pictured with a birthday greeting she received from President George and First Lady Laura Bush. The card says: "Happy 100th Birthday! We are pleased to add our congratulations to your celebration. You have led a remarkable life, and your experiences have contributed to the strength of our Nation. We join your family and friends in wishing you all the best on your special day."



Lullabies, Legends & Lies

by Parson Smith, the Prime Minister of Laughter

I ran across this story and thought it was funny. My wife, Cathy, didn't think it was quit as funny as I did. I hope you enjoy it.

ATM

A new sign in the Bank Lobby reads:
"Please note that this Bank is installing new Drive-through ATM machines enabling customers to withdraw cash without leaving their vehicles. Customers using this new facility are requested to use the procedures outlined below when accessing their accounts."

After months of careful research, MALE and FEMALE procedures have been developed.

Please follow the appropriate steps for your gender:

MALE PROCEDURE

1. Drive up to the cash machine.
2. Put down your car window.
3. Insert card into machine

4. Enter amount of cash required and withdraw.
5. Retrieve card, cash and receipt.
6. Put window up.
7. Drive off.

FEMALE PROCEDURE

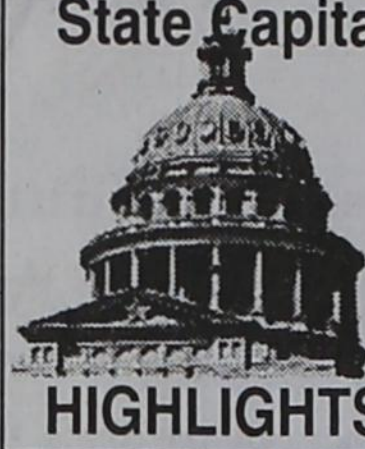
1. Drive up to cash machine.
2. Reverse and back up the required amount to align car window with the machine.
3. Set parking brake, put the window down.
4. Find handbag, remove all contents on to passenger seat to locate card.
5. Tell person on cell phone you will call them back and hang up.
6. Attempt to insert card into machine.
7. Open car door to allow easier access to machine due to its excessive distance from the car.
8. Insert card.
9. Re-insert card the right way.
10. Dig through handbag to find diary with your PIN

written on the inside back page.

11. Enter PIN.
12. Press cancel and re-enter correct PIN.
13. Enter amount of cash required.
14. Check makeup in rear view mirror.
15. Retrieve cash and receipt.
16. Empty handbag again to locate wallet and place cash inside.
17. Write debit amount in check register and place receipt in back of checkbook.
18. Re-check makeup.
19. Drive forward 2 feet.
20. Reverse back to cash machine.
21. Retrieve card.
22. Re-empty hand bag, locate card holder, and place card into the slot provided.
23. Give dirty look to irate male driver waiting behind you.
24. Restart stalled engine and pull off.
25. Redial person on cell phone.
26. Drive for 2 to 3 miles.
27. Release Parking Brake.

Until the next time,
May God Bless.

State Capital



HIGHLIGHTS

AUSTIN - A task force of volunteer lawyers traveled to San Angelo to assist in the YFZ Ranch child protection cases, the Texas Supreme Court press office reported April 18.

The volunteers were in San Angelo for an April 17 custody hearing concerning the 416 children taken from YFZ Ranch, a polygamist settlement owned by the Fundamental Church of Jesus Christ of Latter Day Saints. The church is not affiliated with The Church of Jesus Christ of Latter-day Saints, or the Mormon Church.

In early April, state agencies entered the ranch near Eldorado in Schleicher County and took the children into custody after an anonymous caller said she had been beaten and sexually abused at the site.

"Overwhelmed court staff in Schleicher and Tom Green counties have been assisted by Carl Reynolds, executive director of the Texas Office of Court Administration, in what is being called the largest child-custody case in U.S. history," according to the report.

The Texas Supreme Court's Permanent Judicial Commission for Children, Youth and Families is engaged in the process, helping channel resources and train lawyers, child-protection social workers and other staff involved with courts handling child-protection cases.

The volunteers responded to an appeal by the Texas Access to Justice Commission and the State Bar of Texas for qualified family lawyers across Texas to volunteer their time to represent parents and children in the case.

Perry declares reelection plan

Texas voters aren't scheduled to elect a governor again until November 2010, but Gov. Rick Perry, said April 17 he plans to seek reelection.

Republican U.S. Sen. Kay Bailey Hutchison, regarded as a strong potential candidate to be the next governor, said she is only focused on the present since it's kind of early to be declaring.

Lt. Gov. David Dewhurst, also a Republican and a potential candidate for governor, said he is working on the 2009 legislative session, which convenes in January.

VOLUNTEERS RUSH TO SAN ANGELO TO ASSIST IN YFZ CASES



by Ed Sterling

In 2000, then-Lt. Gov. Perry took over as governor when then-Gov. George W. Bush became president. Perry was elected to a full term in 2002 and reelected in 2006.

Communities get tobacco money

Texas Comptroller Susan Combs announced her agency has distributed \$92.3 million to Texas communities from the Tobacco Settlement Permanent Trust Account.

The money, released April 16 to two cities, 159 counties and 135 hospital districts, is to help cover costs of indigent health care provided during 2007.

"This year the state is sending 12 percent more money to communities responsible for providing indigent care," Combs said. "This money comes from Texas' settlement with tobacco companies and will help communities offset the costs of providing medical care for those who cannot pay."

Since the first distribution of funds in April 2001, local entities have received nearly \$430 million from the trust fund.

In other news, Combs said local law enforcement agencies and schools may apply for block grants of up to \$40,000 to help enforce state laws prohibiting sale or distribution of tobacco products to minors.

The application deadline for schools is May 1. The deadline for police departments, sheriffs, constables

and district attorneys to apply for grants is May 9.

"Texas minors illegally buy or smoke 67.6 million packs of cigarettes each year," Combs said. "These grants help our communities enforce the law and educate violators about the risks of teen smoking."

Metal purchases are reportable

It is legal to recycle metals, but theft of pipe, tubing, fittings and wire made of copper and other valuable metals is on the increase.

Businesses that pay cash for metal are required by law to report their purchases and file paper reports. But now, there is an easier way to file the report.

Purchases may be reported electronically by using the new "Metal Recycling Entity Registration" link on the Texas Department of Public Safety home page, txdps.state.tx.us.

Corridor ad spending is noted

Advertising helped stimulate interest in public forums the Texas Department of Transportation hosted across the state on the proposed trans-Texas corridor projects.

Chris Lippincott of TxDOT said \$590,064 has been spent on TV ads, \$60,000 on Internet banner ads and \$154,766.77 on newspaper ads for a total of \$804,830.77.

TEXAS Health Matters

Why Not Me? Adopt or Foster an Older Child

"Why not me?" It's a question that many older children awaiting adoption ask themselves each day.

While adoptions at the Texas Department of Family and Protective Services (DFPS) are up almost 17 percent, the number of children awaiting adoption continues to grow. It's the older children who wait the longest. There are more than 4,000 abused or neglected children who need loving adoptive families in Texas. More than 1,700 of these children are 10 years of age or older.

At 12 years old, Reginald loves to play outside with other children, running and laughing. He likes sports, especially basketball, and he's very good at going to new levels when playing video games. Reginald would love to go to a new level in his family life from a foster home to a permanent home.

"Some people think teens automatically become adults at 18 and outgrow the need for parents," says Carey Cockerell, DFPS Commissioner. "The truth is, regardless of their age, teens draw on the relationship with their families for strength and support long after they turn 18. Without the bonds of adoption, a young adult has no such safety net."

Children like Reginald never out grow the need for parents. For thousands of Texas children without permanent, loving homes, the wait to be adopted may be long and discouraging. But these children still hold out hope that someday someone will open their heart and give them a place they can call their own.

Here are a few tips to start the adoption and foster parent process: Read the requirements for becoming an adoptive or foster parent on DFPS's "Adoption: Why Not You?" website (www.dfps.state.tx.us/Adoption_and_Foster_Care/default.asp).

Learn about the issues facing children who have come into the state's care due to abuse or neglect by clicking on the "Adoption & Foster Care" link at www.dfps.state.tx.us.

Search for children available for adoption at www.adoptchildren.org. The website also tells you how to start the process to become an adoptive or foster parent. It includes a form you can fill out that will be sent to adoption recruitment staff in your area.

Attend an informational meeting in your area. There's a schedule of meetings on the www.adoptchildren.org website.

Being an adoptive parent or foster family isn't easy,

but just as in birth families, adults get through with a good sense of humor and tolerance. Anyone who adopts or fosters an older child must be comfortable with the fact that they will make mistakes. It takes love, courage, endurance, commitment, and faith. Most of all, it takes someone who cares and can advocate for that child.

To find out more about adoption and foster parenting, visit www.adoptchildren.org or call 1-800-233-3405.

Related Links:

- Council of Adoptable Children of Texas "Why Not Me?"; www.texas-coac.org
- Texas Foster Family Association, Becoming a Foster Parent; www.tffa.org/articles.asp?id=147
- Child Welfare Information Gateway Adoption; www.childwelfare.gov/adoption/index.cfm
- AdoptUSKids Resource Center; www.adoptuskids.org/resourcecenter
- North American Council on Adoptable Children, How to Adopt; www.nacac.org/howtoadopt/howtoadopt.html
- National Child Welfare Resource Center for Adoption; www.nrcadoption.org
- National Adoption Center; How to Adopt; <http://adopt.org/servelet/page?pageid=67&dad=portal30&schema=PORTAL30>

FOR BREAKFAST

ACROSS

1. Military group
5. Ballet step
8. Not wanted in your orange juice
12. Asian food thickener
13. Former New York mayor
14. New Zealand minority
15. End of year school dance
16. Halo
17. Deprive of wit
18. Beaten egg
20. Heroin (informal)
21. Shows off
22. By way of
23. Undo a bustle, e.g.
26. Start of football game
30. Done to debt?
31. On Queen's head
34. Good's counterpart
35. Inclined to fall over easily
37. Intense mournfulness
38. Japanese sabre guard
39. Black and white treat
40. Breakfast toast
42. A dark meat
43. Meanly
45. Helpers
47. "___ Which Way You Can"
48. Fruit with large, hairy seed
50. "Scared out of my ___"
52. Mexican country-style breakfast
56. Confused with a kayak?
57. Fencer's weapon
58. Often first to go after much walking
59. Eight performers
60. Relating to the axil
61. Botticelli's Venus, e.g.
62. Unwelcome reception
63. For every
64. She was a d'Urberville

DOWN

1. Extremely busy on April 15
2. Narcotics lawman
3. Composer
4. Juice in Bloody Mary
5. Young chicken
6. 43,560 square feet, pl.
7. Herring-like food fishes
8. Served in short and tall stacks
9. Home of the Hawkeyes
10. Snob
11. Dog command
13. Japanese theater
14. "___ to my ears!"
19. "The ___ Blues" rock band
22. Vigor
23. "The Jungle" author
24. Nigerian monetary unit
25. Ballyhoo, pl.
26. Incisive or nifty
27. Immature ovum

These games are brought to you by the Hansford County Reporter-Statesman

CROSSWORD

1	2	3	4	5	6	7	8	9	10	11		
12				13				14				
15				16				17				
18				19				20				
			21					22				
23	24	25				26			27	28	29	
30				31		32	33			34		
35		36				37				38		
39				40				41		42		
43				44				45		46		
				47				48	49			
	50	51				52				53	54	55
56						57				58		
59						60				61		
62						63				64		

PRESENTED BY



Where volunteering begins.

SUDOKU

PRESENTED BY

Where volunteering begins.

	9	8	3					
	5		4			1		
	3		5			7	8	6
1		9				8		4
8	4			2			6	
9	5	8		2		6		
		6		7		2		
				9	5	4		

© 2008, StatePoint Media, Inc. answer on classified page
Fill in the blank squares in the grid, making sure that every row, column and 3-by-3 box includes all digits 1 through 9.

The Hansford County Reporter-Statesman

213 Main Street • Spearman, TX 79081
Phone - (806) 659-3434 • Fax - (806) 398-9080
www.spearmanreporter.com
reporter@spearmanreporter.com
cathysmith@valornet.com

Mon.-Thurs. 9 a.m.-12 p.m., Mon.-Wed. & 1-5 p.m.
Closed Thurs. afternoon and all day Fri., Sat. & Sun.

Gary Smith - Publisher Catherine Smith - Editor
Contributing Writers: Dorothy Hudson, Jim Derington, Merry Sparks, Cecil Biggers
Contributing Photographer: Charlie Johnson

Subscription Rates
In Hansford County - \$30.00 • Out of County - \$40.00

The Hansford County Reporter-Statesman (USPS 529660) is published weekly in Spearman, TX. Periodical postage paid in Spearman, TX. POSTMASTER: Send address changes to: The Hansford County Reporter-Statesman, 213 Main Street, Spearman, TX 79081.

Publication Policy
The deadline to submit news and advertising to The Hansford County Reporter-Statesman is Monday at 5 p.m. Items submitted after the deadline will be published at a later date, as time and space permit. Publication of all items is at the discretion of the editor.

Advertising
Open Display rates are \$4.00 per column inch. Classified Ads are \$6 for the first 25 words and 10¢ per word for each additional word. (Additional charge for boxed classifieds.) There is a \$1 charge per week if billed.

Member of
Gruber Chamber of Commerce
Spearman Chamber of Commerce
Texas Press Association and Panhandle Press Association

Happy Birthday!

Editor's Note: This Happy Birthday list is run as a public service by the Hansford County Reporter-Statesman. We apologize if any names are misspelled. If you know of a name that needs to be changed, added or deleted, please call 659-3434.

Thank you, Catherine

April 24
Birthday - Kerri Barkley, Jenna Beth Kiser, Bart Shapley, Greg Slough, Marl Pearson, Josephine Salgado, Wendy Woolley, Odell Fanning
Anniversary - M/M Wayne Bayless

April 25
Birthday - Jerry Orr, Robert Hagerman, Keith Lewis, Pat Underwood, Donna Hill, Meagan (Burrell) Miller, Mia Burrell, Greg Breland, Mary Bayless, Jodi Martin, Joe Ruhlin
Anniversary - M/M Lewis Hill Jr.

April 26
Birthday - DeeDee Johnson, Juanita Logsdon, Benny McClenagan, Angie Rimmel, Kenny Slough, Lyndee Ferguson, Linda Garcia, Ricky Ellsworth, Bob Marsh, Juan Rojas, Summer Riggins, Donna Duggan, Larry Ross
Anniversary - Pete & Kim Vera

April 27
Birthday - Hart Derington, Tek Ferguson, Archie Nelson, Beatrice "Sis" Stayton, Mitzzy Myers, Jerry Ross Jr., Marie Snider, Simona Rayes, April Tennessee, Elva Sullivan, Jean Burgess, Veronica Favela, Wilma Reese, Alan Hutchinson, John Michael Duncan, Kathy Floyd, Christy Harris
Anniversary - M/M Victor White

April 28
Birthday - Kade Carthel, Wade Dahl, Jerry Duncan, Pat Harris, Jody Irwin, Krysanne Johnson, Shirley Lowe, Scott Swan, Kerry McMullan, Tammy Savage, Vernon Tindell, John Henry Hughes, Sambo Connelly, Clark Bridges, Victoria Vela, Jessica Mayo, Janet Morales, Brad Renick, Jimmy Morley, Kyle Sumner
Anniversary - M/M Roy Riley, James & Linda Owens, Robbie & Valerie Shield

April 29
Birthday - Jill Garrett, Clay Hobbs, Betty Roberts, Estelle Jackson, Britton Benge, Burton Williams, Robbie Shields, Christine Harnish, Dora Alvarez, Greg Odgaard, Ila Willis, Randi Atwood, John Haynes, Madison McLain, Bailey Stedje
April 30
Birthday - Golda Mae Dunning, Debra Cook, Shawn

Martin, M.A. Brand, Robert Cantu, Cora Lee Jarvis, Hector Hermosillo, James E. Johnson, Zachery Renteria

Anniversary - M/M Kyle Irwin

May 1
Birthday - Josie Kiser, Cori Cox, Marti Garnett, Jarrett Swan, April Jarvis, Gina Hamilton, Earl Spencer, James Sterling, Floydean Shook, Ryon Atwood, Christine States, Angela Coombs, Devin Delozier, Victoria Renteria, Allan Thompson, Jason Ward, Aaron Weller, Dani Wheelock
Anniversary - M/M Bobby Don Smith, Ronnie & Coleen Schaefer

May 2
Birthday - Michael Booth, Whitney Lilley, Chad Logsdon, Marsha Shaver, Carolyn Gressett, Melodie Kelp, Bryan Gresham, Dalene Baker, Nick Renteria, Rex Shook, Lynn Davis, Keith Gibson, Connie Pape, Annie Torres
Anniversary - M/M Jose Vaquera

May 3
Birthday - Gilbert Perez, Jon Tolleson, Patty Sheppard, Cruz Garcia, Rita Reed, Kendra Ivy, Linda Deluna, Derek George, Jason Harnish, April LaFarr, Michael Sparkman, Jewel Thomas, Haley Young
Anniversary - Ric & Sandee Smith, Virginia & John Trindle

May 4
Birthday - David Slater, Dwayne Mitchell, Pat Sutterfield, Buford Babitzke, Tina Rex, Victor Rios Sr., Terri Dewberry, Patrick Sparkman, Stan Fletcher, Pat Bratton, Colby McKinley, Keith Winegarner
Anniversary - Angie & Willie Salgado, Stephen & Jerri Lane

May 5
Birthday - Olivia Cazares, Kevin Spivey, Joan Lee, Buena Lyons, Mrs. W.W. Weaver, Becky Hutchison, Debbie Fletcher, Debbie Evans, Jim Shields, Wallace Price, Melva Nichols, Venita Womack, Sawyer Sutterfield, DeeDee Longoria, Marva Roselius, Gary Gumfory

May 6
Birthday - Mike O'Connell, Robin Hargis, Cecil Fryer Jr., Andrea Archer, Raymond Jenkins, Audrey Regen, Joan Dahl, Sybil Vera, Dr. Darrell Duke, Angie McCarney, Tim Smith, Tyler Schnell

May 7
Birthday - Allan Beasley, Bette Burk, Chris Deakin, Ashley Gammon, Helen Holt, Adelaida Vela, Stephanie Bayless, Scott McCloy, Carley Coomer, Becky Reagan
Anniversary - Ramon & Trish Rosales

Words from Faith & Grace

by Cecil R. Biggers, Lutheran Lay Minister



During the final week of Easter, we study Acts 17: 22-31, Psalm 66: 8-20, 1 Peter 3: 13-22 and John 14: 15-21. We see Paul in Athens awaiting the arrival of his companions. Many years earlier Athens was gripped by a plague that killed many. The Athenians assumed they had offended some god, but they could not decide which one. So they turned a herd of starving sheep loose on the temple mount to graze and where a sheep lay down without eating, they constructed an altar. On these altars was the inscription to the "unknown god". The Athenians were religious in the sense that they were always interested in hearing someone else's views on the gods. The Athenians had the best university, the best philosophers in the first century. Paul preaching Jesus Christ is asked to set forth his views of God, to entertain these Epicurean and Stoic academics. Paul tells them that God is the maker, not made by human hands. God is the guiding force of history. Man is created to seek God. Philosophy cannot save your immortal soul. The time for ignorant groping for God is past. Judgment is coming. Repent and believe in Christ because he is true God; the proof is in His resurrection.

The Psalmist sings a communal hymn of praise to God for his testing and purifying, and his steadfast love of His people; the Psalmist then sings of the steadfast love for him as an individual. God loves His people collectively and individually.

Peter again speaks to the persecuted Christians. He exhorts them to zealously love all that is good. He shows them that in human suffering—physical suffering, ill health, sorrow, and distress—God is with them. That if we suffer "Christian" suffering because of our belief in Christ and our life in Him, then we can bear unpopularity, persecution, sacrifice for principles sake because so Christ also suffered. When confronted with suffering we must with reverence for Christ, reasonableness toward our accusers, and always with gentleness share our faith.

Christ tells his disciples, "If you love me, you will keep my commandments". He promises to send them a helper, an advocate, a counselor, a paraclete (Greek). A good counselor cares for others, empathizes with the problems of others, is congruent (mentally healthy and wholesome), and is non-judgmental. The purpose of the counselor is to strengthen and allow the one being counseled to grow and develop. This describes the mission of the Holy Spirit. Christ tells the disciples that He will not leave them orphaned. In the first century an orphan had no one to protect him and could not expect charity or kindness from others. We are told that if we love Jesus, God, the Father, will love us and Christ will reveal himself to us.

May the Holy Spirit be with you in all of your joy and suffering.

Our Sympathy

ALICE JANE GOODMAN

SPEARMAN - Alice Jane Goodman, 70, died Thursday, April 17, 2008.

Services will be at 2 p.m. today in First Christian Church with the Rev. Jim Reeves officiating. Burial will be in Hansford Cemetery by Boxwell Brothers Funeral Home of Spearman.

Mrs. Goodman was born Feb. 14, 1938, in Kerman, Calif. She worked for 25 years at the elementary school as a custodian and kept the nursery at First Christian Church.

Survivors include four daughters, Janice Marshburn of Perryton, Cynthia Heavener of Carnegie, Okla., and Lelia Bynum and Dana Younger, both of Spearman; two sons, Keith Goodman of Follett and Ronald Goodman of El Paso; a sister, Marie Anderson of Modesto, Calif.; a brother, Russell Miller of Franklin, Tenn.; 15 grandchildren; and 26 great-grandchildren.

The family suggests memorials be to Christmas stocking fund, Hansford Manor, 707 S. Roland St., Spearman, TX 79081.

SIGN UP FOR A FREE SCOOTER

One Scooter Given Away Each Month

Toll Free **800-606-9860**



Med Care
MEDICAL SUPPLY

www.medcaremedicalsupply.com



APRIL 26 7 P.M.

O'LOUGHLIN CENTER
 502 BRANDT, SPEARMAN

TICKETS - \$60 EACH

DANCE TO INSUFFICIENT FUNDS

CASH & PRIZES

Tenderloin Dinner & CALCUTTA

Contact any board member or call 659-3030 for tickets

MONUMENTS Boxwell Brothers Funeral Home

519 Evans • Spearman
 659-3802

Dear friends,
 When you buy a monument from us we make sure it is exactly what you want at a price you can afford. If it is not right, we will make it right. And you will not have to search the countryside to find us. We are here when you have a need.

Sincerely,
 Bob Boxwell

Replenish the seed of faith through . . . DAILY BIBLE READING, PRAYER & REGULAR CHURCH ATTENDANCE

Spearman

Apostolic Faith Church
 822 S. Dressen • 659-2870
 Sunday School: 10 a.m.
 Worship Services: 11 a.m.
 Sun. Eve.: 6 p.m.
 Wed. Prayer Mtg.: 7 p.m.
 Pastor - Roland Hanev

First Assembly of God
 401 N. Bernice • 659-2295
 Sunday School: 9:30 a.m.
 Worship: 10:35 a.m.
 Kid's Church: 10:35 a.m.
 Evening Worship: 6 p.m.
 Wed. Worship: 7 p.m.
 Wed. Youth: 7 p.m.
 Pastor - Bob Elder

First Christian Church
 (Disciples of Christ)
 29 S. Bernice • 659-2036
 Sunday School: 9:45 a.m.
 Worship: 10:50 a.m.
 Minister -

First Baptist Church
 123 N. Bernice • 659-5557
 Sunday School: 9:45 a.m.
 Worship: 11 a.m.
 Evening Worship: 7 p.m.
 Men's Bible Study - Wed., 7 a.m.
 Children's Choir - Wed., 6 p.m.
 Adult Choir - Wed., 7 p.m.
 Wed. Bible Study: 7 p.m.
 Pastor - Jim Medley

Church of Christ
 121 S. Haney • 659-3244
 Sunday Bible Class: 9:45 a.m.
 Worship: 10:30 a.m.
 Evening Worship: 6 p.m.
 Bible Study Wed.: 7:30 p.m.

Sacred Heart Catholic Church
 901 Roland • 659-2792
 Sat. Night Mass: 5:30 p.m.
 Sun. Mass: 9 a.m. - English
 Sun. Mass: 11:30 - Spanish
 1:30 p.m. - Gruver - Christo
 Rectorial Mass - Spanish
 Rev. Guillermo Morales

First United Methodist
 407 S. Haney • 659-5503
 Sunday School: 9:45 a.m.
 Worship: 8:30 & 11 a.m.
 Jr. High Youth: 5 p.m. Sunday
 High School: 6 p.m. Sunday
 Kids Club: 3 p.m. Wed.
 Pastor - Neely Landrum

Grace Presbyterian Church
 (Worships with Faith Lutheran Church)
 1101 Bernice • 659-2033
 Pastor - Beverly Cook
Faith Lutheran Church (ELCA)
 1101 Bernice • 659-2252
 Sunday School: 9:45 a.m.
 Worship: 11 a.m.
 (Worships with Grace Presbyterian Church)
 Pastor - Beverly Cook

Union Church
 31 S. Endicott • 659-2644
 Sunday School: 9:45 a.m.
 Worship: 10:45 a.m.
 Evening Worship: 6 p.m.
 Bible Study: 7 p.m. Wed.
 Pastor - Dr. Timothy Minor

Fellowship Baptist
 1102 S. Archer • 659-2783
 Sunday School: 10 a.m.
 Worship: 11 a.m.
 Sun. Evening Worship: 6 p.m.
 Youth/Adult Service: 7:30 Wed.
 Pastor - James Washburn

Primera Mision Bautista
 502 E. 7th • 659-3991
 Sunday School: 9:45 a.m.
 Worship: 11 a.m.;
 Evening: 6 p.m.
 Wed. Prayer Meeting: 7 p.m.
 Thurs. Visitation: 7 p.m.
 Pastor Joe Garcia Jr.

El Aposento Alto U.P.C.I.
 1105 S. Roland
 Domingos: Escuela-Domical - 10 a.m.
 Culto Evangelistico - 7 p.m.
 Jueves: Oracion - 8 p.m.
 Mier: Estudio Biblico - 7 p.m.
 Pastor - A.G. Martell
 (806) 659-2153

Gruver
First Baptist Church
 402 E. Broadway • 733-2411
 Sunday School: 9:45 a.m.
 Worship: 10:50 a.m.
 Disciple Training: 6 p.m. Sunday
 Prayer Meeting: 7:30 p.m. Wednesday
 Pastor - Scott Curry

Church of Christ
 209 King • 733-2760
 Sunday School: 9:30 a.m.
 Worship: 10:20 a.m.
 Evening Worship: 6 p.m.
 Wed. Worship: 7:00 p.m.
 Minister - Gaylord Cook

First Christian Church
 510 King • 733-2960
 Sunday School: 10:00 a.m.
 Sunday Worship: 11 a.m.
 Youth: 7:30 Sunday
 Adult Bible Study: 7:30 Sun.
 Wed. Bible Study: 8:00 p.m.
 Pastor - Gary Gumfory

Gruver United Methodist
 Broadway & Garrett
 733-2651
 Sunday School: 9:45 a.m.
 Worship: 8:30 & 10:50 a.m.
 Eve. Worship & UMY: 6 p.m.
 Pastor - George Price

Spanish Cristo Redentor Church
 Sunday Mass: 1:30 p.m.
 Friday Evening Mass
 Summer - 8:00 p.m.
 Fall/Winter - 7:30 p.m.

Oslo
Oslo Lutheran Church (ELCA)
 6 Miles West & 12 Miles
 North of Gruver
 339-7646
 Sunday School: 9:45 a.m.
 Worship: 11 a.m.
 Pastor - Arlen Lloyd

Morse
Morse Baptist Church
 733-2757
 Pastor - Mike Martin

He has showed you, O man, what is good. And what does the LORD require of you? To act justly and to love mercy and to walk humbly with your God.
 Micah 6:8

Med Care MEDICAL SUPPLY

Ask us if you qualify for a **POWER CHAIR** at little or no cost to you.

In most cases, Medicare, Medicaid & Insurance will cover 100% of the cost for your Power Chair.

Toll Free 800-606-9860 *Se Habla Espanol*

www.medcaremedicalsupply.com

GRAND OPENING - COMING SOON!

The Premiere of Copper Ridge

- 1 to 2 Acre Ridgeview Homesites from the \$80's
- New Braunfels Distinctive Acreage Community
- \$5,000 Off Purchase Price
- No Closing Costs
- Golf Membership at Nearby River Crossing Club

Accepting appointments for Grand Opening now!
 Call 800-539-8051
 www.land.copperridgetx.com

FREE DIRECTV 4 ROOM SYSTEM!

NOW 92 HD CHANNELS!

265+ CHANNELS!
 Pkgs. start at \$29.99

FREE Showtime + Starz

FREE DVR/HD!
 No Start up costs!
 We're Local Installers!
1-800-214-7110

Mesothelioma

EXPERIENCE COUNTS
 Lawyers with over 85 years combined experience.

may occur 30 to 50 years after exposure to asbestos. Many workers were exposed from the 1940s through the 1970s. Industrial maintenance and operators are among those at risk for mesothelioma, throat cancer or lung cancer. Call us for professional insight.

Ryan A. Krebs, M.D., J.D.
 Doctor-Lawyer in Full-time Law Practice
 Richard A. Dodd, L.C.
 Timothy R. Cappolino, P.C.
 Board Certified Forward Injury Trial Litigator (2008) Law by the Texas Board of Legal Specializations
 NO FEE FOR FIRST VISIT
 CAMERON, TEXAS

1-800-MESO-FIRM
 www.AsbestosLaw.com

Deakin

ELECTRIC

OILFIELD • RESIDENTIAL • COMMERCIAL
 321 S. MAIN • SPEARMAN
 1-800-999-1506 Chris Deakin
 (806) 659-5016 President

Bartlett's Lumber & Hardware

105 W. Broadway • Gruver, Texas
 (806) 733-2404

BERRY CLEANERS

Ann & Vernon Pipkin - Owners
 Phone 659-3122 • P.O. Box 1017
 207 Main St. • Spearman, TX

Morse Implement & Auto Supply

"Join us in church"

Tom Dortch 733-2668
 Box 89 • Morse, TX 79062

PRAIRIE MOTORS INC.

Hwy. 207 South • P.O. Box 430
 Spearman, TX 79081 • (806) 659-2541
 www.prairiemotors.com

MurMur's Cafe

100 Roland St
 Spearman, TX.
 659-3580

Hansford County Reporter-Statesman

"Proudly Serving Hansford County Since 1907"

(806) 659-3434
 310 Barkley • Spearman, TX

INTERSTATE BANK, sssb

www.interstatebank.net
 322 Main • P.O. Box 146
 Spearman, TX • 659-2559

HYI

FOR YOUR INFORMATION

O'Loughlin Center Tenderloin Dinner & Calcutta
The O'Loughlin Center (502 S. Brand, Spearman) will hold their annual Tenderloin Dinner and Calcutta on Saturday, April 26th at 7 p.m. Tickets are \$60 each and may be purchased from any board member, or by calling 659-3030. Cash and prizes will be given away throughout the evening. Enjoy and dance to the music of Insufficient Funds. Everyone is invited to come be a part of the fun!

Timeless Treasures Quilt Guild
The Timeless Treasures Quilt Guild will hold their regular meeting on Saturday, April 26th at the First Christian Church Disciple Center (9th and Quinn Streets) in Guymon. The meeting will begin at 10 a.m. with the featured speaker being Louisa L. Smith of Loveland, CO who will teach two workshops from her book "A New Twist on Strips 'n Curves." Anyone wanting more information on the classes should contact Phyllis Stephens at 338-0036.

Abilene Writer's Guild Spring Fling
The Abilene Writer's Guild Spring Fling FREE Workshop will be held on Saturday April 26, 2008, at the Center For Contemporary Arts, 220 Cypress Street, from 10 a.m. to 1 p.m. Linda Kirkpatrick will present "How to Write the Range the Cowboy Poet Way." Linda was in the Top 5 Female Cowboy Poets with the Academy of Western Artists in 2005 and a top five Female Cowboy Poet with the Western Music Association in 2006. Pat Parker will present "Thinking Maps: Tools to Make Your Writing Sizzle, Not Fizzle." For more information, contact Karen at k.rileybish-op@gmail.com.

Breast Cancer Screening Clinic
The Don and Sybil Harrington Cancer Center Comprehensive Breast Center will conduct a Breast Cancer Screening Clinic at Hansford County Hospital, 707 S Roland, in Spearman on May 29, 2008. Breast cancer affects one in eight women. The key to winning the battle against cancer is early detection by having an annual breast exam, mammogram and performing a breast self-exam each month. Funding is available through the Texas Department of Health for Texas residents who qualify for assistance. All exams are done by appointment only. Call (806) 356-1905 or 1-800-377-4673 for more information or to schedule an appointment.

Hansford County Scholarship Pageant
Calling All Girls ages 4-21! The Hansford County Scholarship Pageant has been scheduled for June 3, 2008. Entry Forms can be picked up at and returned to: Spearman - Dreamer's, Chamber of Commerce & City Hall; Gruver - City Hall. The deadline to turn forms in is May 2, 2008. Entry fees must be turned in with the form. For additional information contact Donna McCubbin @ 659-2516, Tami Kunselman @659-5544 or Cheryl Salgado @659-2524.

Free Booklet from Narconon
Narconon reminds you that there is hope for those struggling with addiction and recovery is possible. Call today to receive a free booklet entitled The Life Cycle and Mechanics of Addiction. We offer free counseling, assessments and referrals to centers nationwide. Log on to www.stopaddiction.com or call 800-468-6933 before it's too late.

Perryton ISD Students Seeking Memories of World War II
Students in Perryton are seeking individuals to interview for the KACV WWII/Texas Panhandle Outreach Project. Participants who are eligible to be interviewed are those that have memories from 1938-1946, especially World War II Veterans. Persons who would like their stories from WWII to be recorded on film should contact Lauren Carroll at (806) 434-0389.

Tri-City Community Concert Association
Janie Kunselman is the representative for the Tri-City Community Concert Association of Borger, and is selling memberships to attend five special concerts in the 2008-2009 season. Contact Janie Kunselman at 659-2631 for more information.

Liberal Community Concert Association
Janie Kunselman is the representative for the Liberal Community Concert Association of Liberal, KS. The Liberal Community Concert Association is selling memberships to attend five special concerts in the 2008-2009 season. Contact Janie Kunselman at 659-2631 for more information.

Gruver Elementary Collecting Register Tapes
Gruver Elementary is again participating in the Lowe's Supermarket Register Tapes for Education program. Please help us earn free educational equipment by collecting register tapes from Lowe's. Only tapes dated September 1, 2007 through March 31, 2008 are eligible. You can deposit your tapes in boxes in the Gruver Elementary Lobby, Gruver Library, Gruver City Hall, Nite & Day Beauty Salon and Hitchin' Nails. Jo Alice Clawson is also collecting tapes at 711 Womble, or they may be mailed to PO Box 488, Gruver. Please call 733-2247 if you have tapes you would like to have picked up, or for more information.

Project Graduation
The parents of the Spearman High School Senior Class of 2008 will sponsor and host a "Project Graduation Party" following commencement exercises Friday May 23rd. To encourage the graduates to stay the entire night, door prizes are awarded throughout the evening. In addition, graduates can earn paper monies through their participation in various games so that prizes can be purchased. The graduation party will culminate with the distribution of grand prizes. Prizes, gift certificates, and cash are needed for the evening's gifts. If you, the community, who supported and encouraged these seniors these past 13 years of school, would be willing to share in this final "Class of 2008" memory, making this project "special", please call Bonnie Bergan at 659-5529, Tammy Benton at 659-3071, or Gina Gillispie 659-5341. Contributions can be mailed to: Project Graduation Gina Gillispie, P.O. Box 633, Spearman, TX. 79081 Thank you in advance, for your support!

You're Never Alone - Narcotics Anonymous Group
Each year individuals struggling with drug and alcohol addiction make the resolution to quit using drugs. For many of them it is a resolution that they cannot keep. Narcotics Anonymous can help. Open meetings are held on Monday and Thursday nights from 8-9 p.m. at the First Christian Church (29 S. Bernice in Spearman) for the "You're Never Alone" group of Narcotics Anonymous. Anyone interested is invited to attend. Drug addiction can leave you feeling helpless and out of control - we can help.

THE CROSSING AT SPRING CREEK **1 to 2+ Acre Creek Front & Creek Access Homesites**
10+ acre private park with scenic hiking trails, fishing, playground, volleyball, pool and pavilion. Transferable memberships available to River Crossing Club. Underground utilities & quality covenants. 20 minutes from San Antonio & 50 minutes from Austin. Buy now, build when ready, starting in the \$40's. Call today for free details!
800-514-0062
Visit www.southerlandrealty.net

PAID CDL TRAINING! **YOUR FUTURE BEGINS HERE**
NO EXPERIENCE NEEDED!
Stevens Transport, the premier refrigerated carrier in the US, sponsors the total cost of your CDL training! In 17 short days you will earn your CDL and begin your paid on-the-job training! Earn \$40K first year and up to \$150K fifth year! Excellent benefits and 401K!
For more information, call **800-333-8595**
www.becomeadrivers.com

Woman wins State Hopping Contest after using Thera-Gesic®
BEXAR COUNTY- Mary Ann W. applied Thera-Gesic® to her aching hip and one day later went on to win the State Hopping Contest. When asked what she likes most about entering hopping contests, she painlessly replied, "None of your dang business!"
Stay tuned for another Thera-Gesic® moment!



Engagement Announcement

Bill and Bethany Blanek of San Angelo, Texas announce the engagement and upcoming marriage of their daughter, Meghan to Kevin Williams, son of Burt and Lynell Williams of Spearman, Texas.
Meghan is the granddaughter of Margaret Blanek and Beth Wells of Sterling City, Texas. She is a graduate of San Angelo Lake View High School and received her Bachelor's and Master's degrees from Texas Tech University. Meghan is employed as the Agricultural Project Coordinator with CEV Multimedia in Lubbock, Texas.
Kevin is the grandson of Dean Williams of Hamilton, Texas and Dimple Jetton of Spearman, Texas. He is a graduate of Spearman High School and received his Bachelor's, Master's and Doctorate degrees from Texas Tech University. He is employed as the Director of Agricultural Education at Oklahoma Panhandle State University.
Kevin and Meghan will be married July 12, 2008 at the Legrand Alumni and Visitors Center at Angelo State University in San Angelo, Texas.

You are invited to a **Bridal Shower** honoring **Claudia Vaquera** bride-elect of Scott Sauer on **Saturday, April 26, 2008** from **2:00-3:30 p.m.** in the home of **Linda Latta** 101 Barkley St. Spearman

www.spearmanreporter.com
www.spearmantexas.biz

Gordon's
Your place for **Bridal Registry**
Couples Currently Registered
Claudia Vaquera & Scott Sauer - April 26
Brittanie Osbourne & Cody Eslick - April 26
Meghan Blanek & Kevin Williams - May 17th
Cortney Chambers & Keith Winegarner - May 31
Naomi McCullar & Heath Archer - June 7th
Brooke Bevill & Andrew McMurry - June 21st
Kendra Hicks & Jason Cantrell - TBA
Jennifer Ferrel & Jeff Coates - TBA
Megan Dorton & Justin Raymer - TBA
Heather Jumper & Jared Mahan
Brooke Winters & Wade Stewart
Shad & Betsy (Holt) Kalisiak
Christen Imhof & Michael Lozano
John & Brianne Thomas
Miranda Barnhill & Travis Brown
Jaqueta Dunn & Drew Clyburn
Baby Registry
Jessica Villarreal & Isaac Herndon - TBA
Radar & Betty Garcia - TBA
Jeffery & Danielle Jackson - TBA
Gordon's 659-2141
314 Main Spearman

Texas AgriLife Extension to Offer Food Manager Certification Training Course

The typical American household spends an average of \$2,634 on food away from home each year. To assist area food establishments in providing food that is safe for their customers, Texas AgriLife Extension Service officials from Sherman and Potter counties are offering a two-day food manager certification training course. "Food Safety: It's Our Business" will be offered June 3-4 at First State Bank, 500 E. 1st St., Dumas. The deadline for signing up to attend is May 20. Food establishments are required by law to have one certified food manager employed, said Sue Church, AgriLife Extension family and consumer science agent in Potter County. If successfully completed, this course meets the state requirement. Included with the training will be materials and the state food manager certification examination. Cost of the course is \$89. For those individuals wanting to test only, the cost is \$50. Food-borne illnesses affecting an establishment are estimated to cost thousands of dollars in lost wages, insurance and medical bills, Church said. By attending the course, foodservice managers will learn about:
- Identifying potentially hazardous foods and common errors in food handling;
- Preventing contamination and cross-contamination of food;
- Teaching and encouraging personal hygiene for employees;
- Complying with government regulations;
- Maintaining clean utensils, equipment and surroundings; and
- Controlling pests.
For more information about the Food Manager Certification Training course, call Susie Spurlock, AgriLife Extension family and consumer science agent in Sherman County at 806-366-2081 or Church at 806-373-0713.

You are invited to a **Meet & Greet Tea** honoring **Suzee Shae Johnson** daughter of David & Sandi Johnson on **Sunday, April 27, 2008** from **2:00-3:30 p.m.** at the **Clementine Bed & Breakfast** 822 Evans St. Spearman

Celebrate
Gifts for all your celebrations!
Bridal Registry
Shower Dates
Claudia Vaquera & Scott Sauer - 4/26
Brittanie Osbourne & Cody Eslick - 4/26
Meghan Blanek & Kevin Williams - 5/17
Cortney Chambers & Keith Winegarner - 5/31
Jentry Edwards & Clinton Williams - 6/7
Naomi McCullen & Heath Archer - 6/7
Megan Dorton & Justin Rayner - 6/27
Brooke Bevill and Andrew McMurry - 6/21
Tobi Barrera & Chris Guana - 6/21
Kendra Hicks & Jason Cantrell - TBA
Laura Geer & Cory Jumper
Heather Jumper & Jared Mahan
Brooke Winters & Wade Stewart
Christen Imhof & Michael Lozano
Miranda Barnhill & Travis Brown
Jaqueta Dunn & Drew Clyburn
Baby Registry
Danielle (Close) & Jeff Jackson - TBA
Jessica Villarreal & Isaac Herndon - TBA
Radar & Betty Garcia - TBA
Amy Travis - TBA
Farrell & Garrett Griffin
Celebrate
203 Main St. Spearman, TX
(806) 659-3350 1-800-663-8026

Wolf Creek Heritage Museum Notes

by Virginia Scott

MUSEUM HAPPENINGS

Busy week with a trip for me to our Texas Plains Trail Regional Board meeting in Slaton, Texas. We stayed at the recently renovated Harvey House on the Santa Fe Railroad line. We were the only guests and it was like the movie "Night at the Museum." Fun!

This Board promotes the top 52 counties for Heritage Tourism through our literature, posters, and representing each county at different trade fairs, etc. We have new posters that I will have on display at the museum. There are three different scenes - wildflowers, cattle grazing, and sunflowers. The Plains region has a website that has an event calendar. Please post any upcoming event. Our website is linked with the state and many other sites. An easy way to advertise your events.

There are only two weeks left in April and the Lipscomb County Student Art show. This year as always, the kids have proven that they are creative, artis-

tic, and capable of producing wonderful works of art. Please come see their art and let them know how great they are. Thanks, for participating in the show.

Lovella is in the process of collecting area artists and photographing of bluebonnets, wildflowers, and garden flowers. If you have a photograph of your garden, etc that is framed; Bring it to the museum for our May/June art show. We will also be exhibiting our collection of floral art by local artists.

A special thanks to Mr. Jack Gill who visited the museum Sunday and corrected the arrangement of the wooden cross that he has donated to the museum. The cross is carved from one piece of wood and is interlocking crosses that become a 3-D display. We had it flat and he showed Anna Lee Barton how it should be displayed in 3-D. Thanks, Mr. Gill, the cross is beautiful and really makes an impressive display.

Believe or not, Lovella, Dorothy, and LaVaun are still reviewing old newspa-

pers for obituaries, stories, and organizing the papers in preparation for binding them into volumes. We have two sets being bound, now. This will allow us a lot of storage space when complete. This week they discovered an obituary of a lady that they needed her death date for the cemetery book and her marker. They celebrated all week, another mystery solved.

HISTORICAL MUSINGS

This week's funny from the old newspapers is the result of an editor for a Missouri newspaper receiving a bottle of home brew on the day he published his newspaper which contained the following about a wedding announcement and a notice for an auction sale.

"Wm. Smith and Miss Lucy Anderson were disposed of at public auction at my farm one mile east of a beautiful cluster of roses on her breast and two white calves, before a background of farm implements too numerous to mention in the presence of about 70 guests, including 2 milch cows, six mules, and one

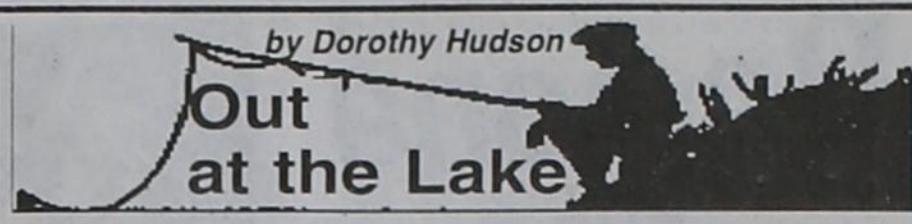
bobsled. Rev. Jackson tied the nuptial knot with 200 feet of hay rope and the bridal couple left on one good John Deere gang for an extended trip with terms plow to suit the purchaser. They will be at home to their friends with one good baby carriage and a few kitchen utensils after 10 months from date of sale to respectable parties and some chickens."

Have a good week.

Wolf Creek Heritage Museum

Museum Hours: Monday thru Friday 10 a.m. to 4 p.m., Sunday 2 to 4 p.m. Special hours upon request.

Museum Information: 13310 Hwy 305, Box 5, Lipscomb TX 79056; telephone: 806-852-2123; e m a i l : wolferk@amaonline.com; website: www.wolfcreekheritagemuseum.com



April 21, 2008
Lake Level--18.01 feet (-0.24)

The rain this week netted .08 in the office gauge, but we who are always hopeful note that the weather forecasts are showing two possibilities for this week.

Despite the lower lake level, quite a few fishermen are out. The ones hoping for a nice mess of catfish are doing well. It was not a good week, however, for those who were fishing for record-breaking fish, although Jim did see some 5- to 6-pound catfish.

There were 2 RVs on each side of the dam this weekend. The Baptist Church in Stinnett brought up a group of youngsters on Saturday. They had fun at the Children's Pond.

This morning three pelicans were all that remained of the large group that has been here for a while. We can expect them to go north soon.

In contrast to the pelicans, some of the other April arrivals will spend the summer. These are the distinctive Scissor-tailed Flycatchers, Cardinals, and

the Mississippi Kites that usually nest in Dedication Park.

Don't forget the wild Rio Grande Turkeys that are quite numerous. The gobblers are strutting and fanning their tails. They know how to show off to try winning a harem of the turkey hens.

The Prairie Horned Lark, the newsletter of the Panhandle Bird Club, recently ran an article from the Borger News Herald on a new exhibit at the Lake Meredith Aquatic and Wildlife Museum in Fritch. According to Brooke Huff of the Herald the exhibit (Playas: Gems of the Plains) has traveled the country for the last 5 years. The museum added 630 feet of space to house the Playas exhibit which is designed to be viewed in the round.

Artifacts from the Alibates National Monument are another one of the museum's drawing cards. There is no admission cost but donations are accepted. The museum is open from 12 to 5 p.m. Monday through Friday and 10 a.m to 5 p.m. on Saturday.



Allen Campus News and Information

Start Here... Go Anywhere!

Frank Phillips Colleges wishes to thank the Perryton Rodeo Association for hosting the 2008 FPC NIRA Rodeo. Over 400 contestants from 17 colleges and universities competed for points in hopes of winning a trip to the College National Finals Rodeo this summer in Casper, Wyoming.

Since September, the start of our fiscal year, the Allen Campus has served 2394 students and other members of Perryton and the surrounding area. Academic classes account for 267 students, Continuing Education classes have served 429 students, and Community Service classes and events make up the remaining 1698 persons served.

The featured event for the Allen Campus this month is the Art Before Your

Eyes exhibit. Four accomplished artists are exhibiting their work at a reception Thursday, April 24, 7-9 p.m. and doing demonstrations all day Friday, April 25, for adults and for student groups. Kathleen Marie Wilson, from Johnson City, Texas, will introduce art appreciators in our area to Pyrography, a word meaning "fire drawing". Kathleen Wilson is a nationally recognized artist and was selected as one of only ten artists to exhibit work at the 2001 Inaugural in Washington, D.C.

A favorite artist from Perryton is Karen Reimer. Her latest media is collage/mixed media, which results in ethereal pieces like "Mystery", which was selected for the Watercolor Societies Exhibition in

Tubac, AZ, a special honor. Two artists from Pampa will also exhibit and demonstrate their work. Lois Minnick works in pastels, and Kay Crouch works in watercolors; both are award winners in their own right.

Sign Language will be taught by Jessica Schrepel beginning on April 22. It will be held on Tuesdays and Thursdays for 8 weeks from 5:30-6:30 p.m. Classes will be taped for those who have to miss a night.

We still need two more paid participants for both the Excel and the Photoshop Elements 6 class for the classes to begin. Please call very soon if you are interested!

In addition, the Anger Resolution Seminar is available each month, and the Crisis Center Employment

Professional Training is continuing and open for more students; there is no cost. Call 648-1450 to ask about any class!

With March comes the Water Wonders Festival at the Allen Campus. This event, our 3rd annual, is sponsored by North Plains Water Conservation District and will bring over 100 area 4th grade students to the campus on March 28th to spend the day learning about the importance of water and its conservation.

Since September, the start of our fiscal year, the Allen Campus has served 2214 students and other members of Perryton and the surrounding area. Academic classes account for 267 students, Continuing Education classes have served 407 students, and Community Service classes and events make up the remaining 1540 persons served.


The Allen Campus has several new classes in the works! We need six paid people to set a date and a few are signed up for each

class. The Photoshop Elements 6 class, by Kim Herring, includes advanced techniques in photo retouching and manipulation and requires excellent computer skills. Microsoft Excel, taught by Ron Bishop, used for organizing information, is used by a wide number of businesses. He also teaches a Web Design class. A class combining GPS information with Google Earth is on Saturday, March 29. New people are welcome at our Country and Western Dance class which meets Thursday nights from 7:00 to 9:30 at the Perryton Club. Class cost is only \$20 for experienced dancers and \$50 for instruction and lasts until April 24 excluding March 20 and April 17. You can sign up at the class. Call 648-1450 for more information on any class.

A major event at the campus is "Art Before Your Eyes", an exhibit of four artists April 23 and 24. The artists include Karen Reimer from Perryton, showing her mixed media/collage pieces, Lois Minnick, pastel, and Kay Crouch, watercolor, from Pampa. The headline artist is Kathleen Wilson from Johnson City, TX, who does Pyro-engraving, an artistic use of wood-burning techniques that uses the grain of wood as part of the composition. See examples of her work at <http://www.kathleenmariestudio.com>. The artists will have works for sale. Education is the event theme, so teachers are invited to call 648-1450 to reserve a time to bring their classes, but everyone is welcome!

imagine the destruction
5 MINUTES
of hail can do to your crops

Let us tell you how crop hail insurance can be a lifesaver for your farming operation.



Jim D. Hubbard, CIC
114 S. Trice
Claude, TX 79019
cell 806.679.9457
office 800.658.2122
jhubbard@neely.com

NEELY, CRAIG & WALTON L.L.P.
INSURANCE SINCE 1926

May 1st School Principals' Day
May 6th National Teacher Day
May 7th National School Nurse Day
May 11th Mother's Day
May 15th Peace Officer Memorial Day
May 17th Armed Forces Day

All Occasion Flowers
202 N. Bernice (across from the Post Office)
659-5180 • Spearman

Spearman Prom - May 3rd

All new floral designs & ideas - From the traditional to the extraordinary!

May 1 - School Principals Day
May 6 - National Teacher Day
May 7 - National School Nurse Day
May 11 - Mother's Day

Spearman Prom
May 3rd

Prairie Garden Flowers
209 Main St. • Spearman, TX
659-2212 • 659-3329



Palace Theatre

MOVIE SHOW TIMES
Friday-Thursday - 7 p.m.
Sunday - 2 p.m.
Closed Sunday Night

FRESH POPCORN & DRINKS!
PARTY ROOM & ARCADE
MOVIE RENTALS

Palace Theatre
210 Main Street
Canadian TX 79014
806-323-5133
www.palacetheatre.com

The Palace Theatre meets Lucasfilm THX specifications for site and sound quality.

You'd Better Hang On!
PTCI's Internet speeds will blow you away!

Up to **6 Meg!**

Faster Downloads
Online Gaming
Video Streaming



PTCI
Communication & Broadband Solutions

www.ptci.net

721 W 7th in Spearman 1-800-562-2556

DIGITAL TV

Some restrictions apply.

Ramona THE PEST



Beverly Cleary

Chapter 7: Seat Work, Part 2

The story so far: Miss Binney asks Ramona and her classmates to draw pictures of their houses. To make her picture interesting, Ramona adds what looks like black scribbles

The next day seat work got harder. Miss Binney said that everyone had to learn to print his name. Ramona saw right away that this business of names was not fair. When Miss Binney handed each member of the class a strip of cardboard with his name printed on it, anyone could see that a girl named Ramona was going to have to work harder than a girl named Ann or a boy named Joe. Not that Ramona minded having to work harder - she was eager to learn to read and write. Having been the youngest member of her family and of the neighborhood, however, she had learned to watch for unfair situations.

Carefully Ramona printed R the way Miss Binney had printed it. A was easy. Even a baby could print A. Miss Binney said A was pointed like a witch's hat, and Ramona was planning to be a witch for the Halloween parade. O was also easy. It was a round balloon. Some people's O's looked like leaky balloons, but Ramona's O's were balloons full of air.

"I like the way Ramona's O's are fat balloons full of air," Miss Binney said to the class, and Ramona's heart filled with joy. Miss Binney liked her O's best!

Miss Binney walked around the classroom looking over shoulders. "That's right, boys and girls. Nice pointed A's," she said. "A's with nice sharp peaks. No, Davy, D faces the other way. Splendid, Karen. I like the way Karen's K has a nice straight back."

Ramona wished she had a K in her name, so that she could give it a nice straight back. Ramona enjoyed Miss Binney's descriptions of the letters of the alphabet and listened for them while she worked. In front of her Susan played with a curl while she worked. She twisted it around her finger, stretched it out, and let it go. Being, thought Ramona automatically.

"Ramona, let's keep our eyes on our work," said Miss Binney. "No, Davy, D faces the other way."

Once more Ramona bent over her paper. The hardest part of her name, she soon discovered, was getting the right number of points on the M and N. Sometimes her name came out RANOMA, but before long she remembered that two points came first. "Good work, Ramona," said Miss Binney, the first time Ramona printed her name correctly. Ramona hugged herself with happiness and love for Miss Binney. Soon, she was sure, she would be able to join her letters together and write her name in the same rumply grown-up way that Beezus wrote her name.

Then Ramona discovered that some boys and girls had an extra letter followed by a dot. "Miss Binney, why don't I have a letter with a dot after it?" she asked.

"Because we have only one Ramona," said Miss Binney. "We have two Erics. Eric Jones and Eric Ryan. We call them Eric J. and Eric R., because we don't want to get our Erics mixed up."

Ramona did not like to miss anything. "Could I have another letter with a little dot?" she asked, knowing that Miss Binney would not think she was pestering.

Miss Binney smiled and leaned over Ramona's table.

Beverly Cleary was born in McMinnville, Oregon, and, until she was old enough to attend school, lived on a farm in Yamhill, a town so small it had no library. Her mother arranged with the State Library to have books sent to Yamhill and acted as librarian in a lodge room upstairs over a bank. There Mrs. Cleary learned to love books. When the family moved to Portland, where Mrs. Cleary attended grammar school and high school, she soon found herself in the low reading circle, an experience that has given her sympathy for the problems of struggling readers.

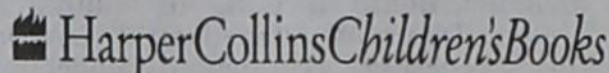
By the third grade she had conquered reading and spent much of her childhood either with books or on her way to and from the public

library. Before long her school librarian was suggesting that she should write for boys and girls when she grew up. The idea appealed to her, and she decided that someday she would write the books she longed to read but was unable to find on the library shelves, funny stories about her neighborhood and the sort of children she knew. And so Ramona Quimby, Henry Huggins, Ellen Tebbits, and her other beloved characters were born.

When children ask Mrs. Cleary where she finds her ideas, she replies, "From my own experience and from the world around me." She included a passage about the DEAR program in Ramona Quimby, Age 8 (pages 40-41) after she received numerous letters from readers who

mentioned the great reading program they were doing in class. It seemed like something Ramona's class would do, too, so she put it in the book.

Mrs. Cleary's books have earned her many prestigious awards, including the 1984 John Newbery Medal for Dear Mr. Henshaw, for the most distinguished contribution to American literature for children in 1983. Her Ramona and Her Father and Ramona Quimby, Age 8 were named 1978 and 1982 Newbery Honor Books, respectively.



"Of course you may. This is the way to make a Q. A nice round O with a little tail like a cat. And there is your little dot, which is called a period." Then Miss Binney walked on, supervising seat work.

Ramona was charmed by her last initial. She drew a nice round O beside the one Miss Binney had drawn, and then she added a tail before she leaned back to admire her work. She had one balloon and two Halloween hats in her first name and a cat in her last name. She doubted if anyone else in the morning kindergarten had such an interesting name.

The next day at seat-work time Ramona practiced her Q while Miss Binney walked around helping those with S in their names. All the S's were having trouble. "No, Susan," said Miss Binney. "S stands up straight. It does not lie down as if it were a little worm crawling along the ground."

Susan pulled out a curl and let it spring back. Being, thought Ramona.

"My, how many S's we have that are crawling along like little worms," remarked Miss Binney.

Ramona was pleased that she had escaped S. She drew another Q and admired it a moment before she added two little pointed ears, and then she added two whiskers on each side so that her Q looked the way the cat looked when crouched on a rug in front of the fireplace.



How pleased Miss Binney would be! Miss Binney would say to the kindergarten, "What a splendid Q Ramona has made. It looks exactly like a little cat."

"No, Davy," Miss Binney was saying. "A D does not have four corners. It has two corners. One side is curved like a robin redbreast."

This conversation was so interesting that Ramona was curious to see Davy's D for herself. She waited until Miss Binney had moved away before she slipped out of her seat and over to the next table to look at Davy's D. It was a great disappointment. "That D doesn't look like a robin," she whispered. "It doesn't have any feathers. A robin has to have feathers." She had watched robins pulling worms out of her front lawn many times. They all had feathers on their breasts, little soft feathers mussed by the wind.

Davy studied his work. Then he scrubbed out half his D with his eraser and drew it in a series of little jags. It did not look like Miss Binney's D, but it did look, in Ramona's opinion, more

like the front of a robin with feathers mussed by the wind, which was what

Miss Binney wanted, wasn't it? A D like a robin redbreast.

"Good work, Davy," said Ramona, trying to sound like her teacher. Now maybe Davy would let her kiss him.

"Ramona," said Miss Binney, "in your seat, please." She walked back to look at Davy's seat work. "No, Davy. Didn't I tell you the curve of a D is as smooth as a robin redbreast? Yours is all jagged."

Davy looked bewildered. "Those are feathers," he said. "Feathers like a robin."

"Oh, I'm sorry, Davy. I didn't mean ..." Miss Binney behaved as if she did not know quite what to say. "I didn't mean you to show each feather. I meant you to make it smooth and round."

"Ramona told me to do it this way," said Davy. "Ramona said a robin has to have feathers."

"Ramona is not the kindergarten teacher," Miss Binney's voice, although not exactly cross, was not her usual gentle voice. "You make your D the way I showed you and never mind what Ramona says."

Ramona felt confused. Things had such an unexpected way of turning out all wrong. Miss Binney said a D should look like a robin redbreast, didn't she? And robins had feathers, didn't they? So why wasn't putting feathers on a D all right?

Davy glared at Ramona as he took his eraser and scrubbed out half his D a second time. He scrubbed so hard he rumbled his paper. "Now see what you did," he said.

Ramona felt terrible. Dear little Davy whom she loved so much was angry with her, and now he would run faster than ever. She never would get to kiss him.

And even worse, Miss Binney did not like D's with ears and whiskers either. Hoping her teacher would not see what she was doing, Ramona quickly and regretfully erased the ears and whiskers from her Q. How plain and bare it looked with only its tail left to keep it from being an O. Miss Binney, who could understand that Santa Claus in the chimney would make a fireplace smoke, might be disappointed if she knew Ramona had given her Q ears and whiskers, because lettering was different from drawing pictures.

Ramona loved Miss Binney so much she did not want to disappoint her. Not ever. Miss Binney was the nicest teacher in the whole world.



Drop Everything and Read!
On April 12, 2007

In honor of **Beverly Cleary's** Birthday

HarperCollins Children's Books; the National Education Association;
National Parent Teacher Association; the Association for Library Service
to Children; a division of the American Library Association; and

Ramona Quimby
invite families, friends, and communities
to come together for 30 minutes and read!

DEAR

For more information visit
www.dropeverythingandread.com

Brought to you by these sponsors

AeroFlight Tech Data
AeroFlight Tech Data
P. O. Box 854
Gruver, Texas 79040
sales@aftd.com support@aftd.com
Telephone 1-800-756-0650
Telephone 1-806-733-2483
Fax 1-806-733-5205

FNBANK
First National Bank
Spearman, Texas 79081 Dumas, Texas 79029
806-659-5544 806-934-8455
800-583-4196 866-583-4196
Member FDIC

hchd
Hansford County Hospital District
Dr. Mark Garnett, DO Michelle Davis, PA-C
707 S. Roland • Spearman, TX
(806) 659-2535

SPEARTEX GRAIN CO.
405 Collard St • Spearman, TX 79081
806-659-3711

HANSFORD COUNTY'S ONLY NEWSPAPER

100 YEARS

The Hansford County Reporter Statesman

PROUDLY SERVING HANSFORD COUNTY SINCE 1907

WWW.SPEARMANREPORTER.COM reporter@spearmanreporter.com

CASE iii Zimmatic®

FIVE STAR EQUIPMENT, INC.
HIGHWAY 15 WEST • BOX 558
SPEARMAN, TEXAS 79081
PHONE # (806) 659-3743
HOME # (806) 659-3846
CELL # (806) 330-0051
800-978-2759

RICHEY THOMPSON
MANAGER

Frank Phillips College
Allen Campus - Perryton, Tx.

2314 S. Jefferson
(806) 648-1450
www.fpc.tx.edu

FPC
Frank Phillips College

Start here...
...Go anywhere

Ramona THE PEST



Beverly Cleary

Chapter 8: The Substitute, Part 1

Before long Mrs. Quimby and Mrs. Kemp decided the time had come for Ramona and Howie to walk to school by themselves. Mrs. Kemp, pushing Willa Jean in her stroller, walked Howie to the Quimbys' house where Ramona's mother invited her in for a cup of coffee.

"You better put all your stuff away," Howie advised Ramona, as his mother lifted his little sister out of the stroller. "Willa Jean crawls around and chews things."

Grateful for this advice, Ramona closed the door of her room.

"Now Howie, you be sure to look both ways before you cross the street," cautioned his mother.

"You, too, Ramona," said Mrs. Quimby. "And be sure you walk. And walk on the sidewalk. Don't go running out in the street."

"And cross between the white lines," said Mrs. Kemp.

"And wait for the traffic boy near the school," said Mrs. Quimby.

"And don't talk to strangers," said Mrs. Kemp.

Ramona and Howie, weighed down by the responsibility of walking themselves to school, trudged off down the street. Howie was even gloomier than usual, because he was the only boy in the morning kindergarten who wore jeans with only one hip pocket. All the other boys had two hip pockets.

"That's silly," said Ramona, still inclined to be impatient with Howie. If Howie did not like his jeans, why didn't he make a great big noisy fuss about them?

"No, it isn't," contradicted Howie. "Jeans with one hip pocket are babyish."

At the cross street Ramona and Howie stopped and looked both ways. They saw a car coming a block away so they waited. They waited and waited. When the car finally passed, they saw another car coming a block away in the opposite direction. They waited some more. At last the coast was clear, and they walked, stiff-legged in their haste, across the street. "Whew!" said Howie, relieved that they were safely across.

The next intersection was easier because Henry Huggins, in his red traffic sweater and yellow cap, was the traffic boy on duty. Ramona was not awed by Henry even though he often got to hold up cement and lumber trucks delivering material for the market that was being built across from the school. She had known Henry and his dog Ribsy as long as she could remember, and she admired Henry because not only was he a traffic boy, he also delivered papers.

Now Ramona looked at Henry, who was standing with his feet apart and his hands clasped behind his back. Ribsy was sitting beside him as if he were watching traffic, too. Just to see what Henry would do, Ramona stepped off the curb.

"You get back on the curb, Ramona," Henry ordered above the noise of the construction on the corner.

Ramona set one foot back on the curb.

"All the way, Ramona," said Henry.

Ramona stood with both heels on the curb, but her toes out over the gutter. Henry

could not say she was not standing on the curb, so he merely glared. When several boys

and girls were waiting to cross the street, Henry

marched across with Ribsy prancing along beside him.

"Beat it, Ribsy," said Henry between his teeth.

Ribsy paid no attention.

Directly in front of Ramona Henry executed a sharp about-face like a real soldier. Ramona marched behind Henry, stepping as close to his sneakers as she could. The other children laughed.

On the opposite curb Henry tried to execute another military about-face, but instead he tripped over Ramona. "Doggone you, Ramona," he said angrily. "If you don't cut that out I'm going to report you."

"Nobody reports kindergarteners," scoffed an older boy.

"Well, I'm going to report Ramona if she doesn't cut it out," said Henry. Obviously Henry felt it was his bad luck that he had to guard an intersection where Ramona crossed the street.

Between crossing the street without a grown-up

and getting so much attention from Henry, Ramona felt that her day was off to a good start. However, as she and Howie approached the kindergarten building, she saw at once that something was wrong. The door to the kindergarten was already open. No one was playing on the jungle gym. No one was running around the playground. No one was even waiting in line by the door. Instead the boys and girls were huddled in groups like frightened mice. They all looked worried and once in a while someone who appeared to be acting brave would run to the open door, peer inside, and come running back to one of the groups to report something.

"What's the matter?" asked Ramona.

"Miss Binney isn't there," whispered Susan. "It's a different lady."

"A substitute," said Eric R.

Miss Binney not there! Susan must be wrong. Miss Binney had to be there. Kindergarten would not be kindergarten without Miss Binney. Ramona ran to the door to see for herself. Susan was right. Miss Binney was not there. The woman who was busy at Miss Binney's desk was taller and older. She was as old as a mother. Her dress was brown and her shoes were sensible.

Ramona did not like what she saw at all, so she ran back to a cluster of boys and girls. "What are we going to do?" she asked, feeling as if she had been deserted by Miss Binney. For her teacher to go home and not come back was not right.

"I think I'll go home," said Susan.

Ramona thought this idea was babyish of Susan. She had seen what happened to boys and girls who ran home from kindergarten. Their mothers marched them right straight back again, that's what happened. No, going home would not do.

"I bet the substitute won't even know the rules of our kindergarten," said Howie.

The children agreed. Miss Binney said following the rules of their kindergarten was important. How could this stranger know what the rules were? A stranger would not even know the names of the boys and girls. She might get them mixed up.

Still feeling that Miss Binney was disloyal to stay away from school, Ramona made up her mind she was not going into that kindergarten room with that strange teacher. Nobody could make her go in there. But where could she go?

She could not go home, because her mother would march her back. She could not go into the main building of Glenwood School, because everyone would know a girl her size belonged out in the kindergarten. She had to hide, but where?

When the first bell rang, Ramona knew she did not have much time. There was no place to hide on the kindergarten playground, so she slipped around behind the little building and joined the boys and girls who were streaming into the red-brick building.

"Kindergarten baby!" a first-grader shouted at Ramona.

"Pieface!" answered Ramona with spirit. She could see only two places to hide - behind the bicycle racks or behind a row of trash cans. Ramona chose the trash cans. As the last children entered the building she got down on her

hands and knees and crawled into the space between the cans and the red-brick wall.

The second bell rang. "Hup, two, three, four! Hup, two, three, four!" The traffic boys were marching back from their posts at the intersections near the school. Ramona crouched motionless on the asphalt. "Hup, two, three, four!" The traffic boys, heads up, eyes front, marched past the trash cans and into the building. The playground was quiet, and Ramona was alone.

Henry's dog Ribsy, who had followed the traffic boys as far as the door of the school, came trotting over to check the odors of the trash cans. He put his nose down to the ground and whiffled around the cans while Ramona crouched motionless with the rough asphalt digging into her knees. Ribsy's busy nose led him around the can face to face with Ramona.

"Wuf!" said Ribsy.

"Ribsy, go away!" ordered Ramona in a whisper.

"R-r-r-wuff!" Ribsy knew Ramona was not supposed to be behind the trash cans.

"You be quiet!" Ramona's whisper was as ferocious as she could make it. Over in the kindergarten the class began to sing the song about the dawnzer. At least the strange woman knew that much about kindergarten. After the dawnzer song the kindergarten was quiet. Ramona wondered if the teacher knew that Show and Tell was supposed to come next. She strained her ears, but she could not hear any activity in the little building.

The space between the brick wall and the trash cans began to feel as cold as a refrigerator to Ramona in her thin sweater. The asphalt dug into her knees, so she sat down with her feet straight out toward Ribsy's nose. The minutes dragged by.

Among Mrs. Cleary's other awards are the American Library Association's 1975 Laura Ingalls Wilder Award, the Catholic Library Association's 1980 Regina Medal, and the University of Southern Mississippi's 1982 Silver Medallion, all presented in recognition of her lasting contribution to children's literature. In addition, Mrs. Cleary was the 1984 United States author nominee for the Hans Christian Andersen Award, a prestigious international award.

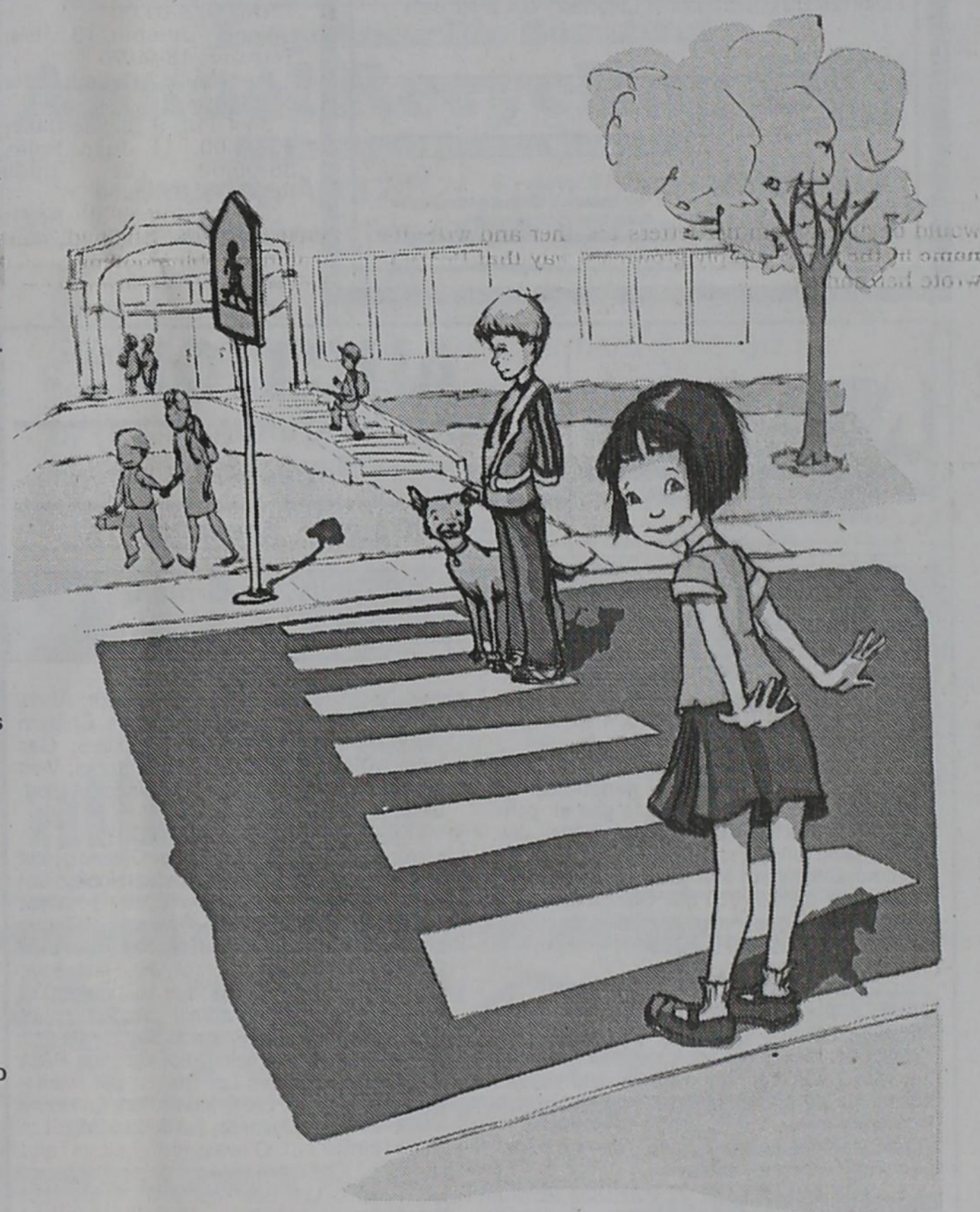
Equally important are the more than 35 statewide awards Mrs. Cleary's books have received based on the direct votes of her young readers. In 2000, to honor her invaluable contributions to children's literature, Beverly Cleary

was named a "Living Legend" by the Library of Congress. This witty and warm author is truly an international favorite. Mrs. Cleary's books appear in over twenty countries in fourteen languages and her characters, including Henry Huggins, Ellen Tebbits, Otis Spofford, and Beezus and Ramona Quimby, as well as Ribsy, Socks, and Ralph S. Mouse, have delighted children for generations. There have been Japanese, Spanish, and Swedish television programs based on the Henry Huggins series, PBS-TV aired a ten-part series based on the Ramona stories, and one-hour adaptations of the three Ralph S. Mouse books have been shown on ABC-TV. All of Mrs. Cleary's adaptations still can

be seen on cable television, and the Ramona adaptations are available in video stores. In addition, The Beverly Cleary Sculpture Garden for Children featuring bronze statues of Ramona Quimby, Henry Huggins, and Ribsy, was recently opened in Portland, Oregon.

You can read more about Mrs. Cleary in her memoirs, *A Girl from Yamhill and My Own Two Feet* and by visiting www.harpercollinschildrens.com.

HarperCollinsChildrensBooks



Brought to you by these sponsors

AeroFlight Tech Data
AeroFlight Tech Data
P. O. Box 854
Gruver, Texas 79040
sales@aftd.com support@aftd.com
Telephone 1-800-756-0650
Telephone 1-806-733-2483
Fax 1-806-733-5205

FNBANK
First National Bank
Spearman, Texas 79081 Dumas, Texas 79029
806-659-5544 806-934-8455
800-583-4196 866-583-4196
Member FDIC

hchd
Hansford County Hospital District
Dr. Mark Garnett, DO Michelle Davis, PA-C
707 S. Roland • Spearman, TX
(806) 659-2535

SPEARTEX GRAIN CO.
405 Collard St • Spearman, TX 79081
806-659-3711

HANSFORD COUNTY'S ONLY NEWSPAPER
100 YEARS
The Hansford County Reporter Statesman
PROUDLY SERVING HANSFORD COUNTY SINCE 1907
WWW.SPEARMANREPORTER.COM reporter@spearmanreporter.com

CASE iii Zimmatic®
FIVE STAR EQUIPMENT, INC.
HIGHWAY 15 WEST • BOX 658
SPEARMAN, TEXAS 79081
PHONE # (806) 659-3743
HOME # (806) 659-3846
CELL # (806) 330-0051
800-978-2759
RICHEY THOMPSON
MANAGER

Frank Phillips College
Allen Campus - Perryton, Tx.
2314 S. Jefferson
(806) 648-1450
www.fpctx.edu
Start here...
...Go anywhere
FPC
Frank Phillips College

Hansford County 4-H Junior Livestock District Contest

The Hansford County 4-H Junior Livestock teams competed in District Contest on April 11, 2008 at West Texas A&M University in Canyon.

The Senior Team qualified for the State Contest, which will be held in June at Texas A&M University in College Station.

Hansford County Senior Team placed as follows: 3rd Overall, 3rd in Reasons, 3rd in Cattle and 4th in Swine. Brenna Reid placed 8th Overall, 5th in Cattle and 6th in Reasons. Jacob Lieb placed 12th Overall and Dakota Cator placed 14th Overall.

The Hansford Junior Team 2 placed 8th Overall and 5th in Sheep. Team members included Jaci Burgin, Colton Cator, Dustyn Kelley and Tate Tyler.

Junior Team 3 placed 9th Overall, 3rd in Swine and 4th in Cattle. Team members included Kyler Cator, Jennifer Crow, Michaela Davis and Audrey Lieb.

Junior Team 1 placed 15th Overall, 6th in Sheep and 7th in Swine. Team members included Taos Anderson, Rayel Anderson, Bailey Stedje and Callie Stedje.

Junior Team 4 placed 31st, and consisted of Jace Lane. Junior Team 5 placed 33rd, and consisted of Blaise Davis.

Junior individual placings were as follows:
 Jaci Burgin - 13th Overall, 7th in Cattle
 Audrey Lieb - 14th Overall
 Colton Cator - 20th Overall, 5th in Cattle
 Michaela Davis - 33rd Overall, 8th in Swine
 Rayel Anderson - 41st Overall
 Taos Anderson - 44th Overall, 10th in Swine
 Callie Stedje - 45th Overall, 4th in Sheep
 Kyler Cator - 52nd Overall
 Jennifer Crow - 56th Overall
 Bailey Stedje - 62nd Overall
 Jace Lane - 64th Overall
 Dustyn Kelley - 66th Overall
 Tate Tyler - 70th Overall
 Blaise Davis - 101st Overall

Spring Sports

Amarillo Globe-News Girls Track Honor Roll 4/11/08

Discus - Kendall Schneider, 104-9
Triple Jump - Kylie Howard, 34-4
Pole Vault - Christy Lang, 10-0; Bond Pittman, 10-0; Makenzie Crane, Gruver 8-6

Amarillo Globe-News Girls Track Honor Roll 4/16/08

300 Hurdles - Bond Pittman, 47.75
Discus - Kendall Schneider, 104-9
Triple Jump - Kylie Howard, 34-4
Pole Vault - Christy Lang, 10-0; Bond Pittman, 10-0

Amarillo Globe-News Boys Track Honor Roll 4/11/08

110 Hurdles - Jeremy Frost, 15.35

SHS Lynx Track Results

3200 Meter Run: 3 Jesus Mendoza, 11:06.87; 7 Jesus Carrasco, 11:50.14
800 Meter Run: 2 Jose Mendoza, 2:11.45
110 Meter Hurdles: 1 Jeremy Frost, 15.66 14.76
4x200 Meter Relay: 5 Spearman 'B' 1:38.50 (Ivan Terrazas, Jeremy Frost, Blayne Baker, Chase Farrar - Jesus Mendoza, Kegan Garnett)
400 Meter Dash: 2 Fernando Flores, 55.99 54.23
1600 Meter Run: 2 Jesus Mendoza 4:58.39; 4 Jesus Carrasco, 5:04.43
4x400 Meter Relay: 4 Spearman 'C' 3:38.37 (Jose Mendoza, Cameron Meddock, Dakota Cator, Fernando Flores - Kegan Garnett, Jesus Mendoza)
Discus Throw: 10 Kegan Garnett, 113-02; 12 Chance Pack, 105-09
High Jump: 8 Ivan Terrazas, 5-04.00
Long Jump: 13 Ivan Terrazas, 18-00.75
Pole Vault: 3 Dakota Cator, 11-00.00
Shot Put: 9 Blayne Baker, 40-05.00, 11 Juan Rojas, 38-05.00, 12 Eddie RegalaJo, 35-06.50
Triple Jump: 1 Kegan Garnett, 42-01.50; 7 Jeremy Frost, 40-06.25; 9 Fernando Flores, 37-02.50

SHS Lynxette Track Results

3200 Meter Run: 3 Suttan Garnett, 12:40.26, 4 Tara Shields, 13:02.27
4x100 Meter Relay: 5 Spearman 55.06 (Leanna Espinosa, Preslee Baker, Delores Delarosa, Shi-Ann Bates - Joselyn Terrazas)
800 Meter Run: 3 Tara Shields, 2:32.62; 4 Jessica Diaz, 2:32.65
100 Meter Hurdles: 3 Kylee Howard, 17.15 17.11
100 Meter Dash: 1 Bond Pittman, 13.35 12.76
4x200 Meter Relay: 5 Spearman 'B' 1:59.28 (Delores Delarosa, Shi-Ann Bates, Leanna Espinosa, Britani Vasquez - Courtney Chambers, Jessica Diaz)
400 Meter Dash: 4 Joselyn Terrazas, 1:06.55 1:05.88; 5 Christy Lang, 1:06.80 1:07.52 1:09.46
300 Meter Hurdles: 3 Bond Pittman, 49.40 47.75; 6 Kylee Howard, 50.83 51.61 1
1600 Meter Run: 2 Suttan Garnett, 5:44.39; 5 Jessica Diaz, 6:11.65 2
4x400 Meter Relay: 2 Spearman 'C' 4:22.89 16) Preslee Baker, Jessica Diaz, Christy Lang, Bond Pittman - Kylee Howard, Joselyn Terrazas)
Discus Throw: 2 Kendall Schneider, 104-09; 12 Whitney Maestas, 74-04; 14 Dedee Vaquera, 67-11

High Jump: 7 Haley Smith, 4-08.00; 9 Amy Boyd, 4-06.00

Long Jump: 1 Kylee Howard, 16-04.50; 4 Bond Pittman, 15-10.25; 6 Leanna Espinosa, 14-11.75
Pole Vault: 1 Christy Lang, 10-00.00; 2 Bond Pittman, J10-00.00; 4 Jessica Diaz, J7-06.00

Shot Put: 9 Andi-Linn Scarborough, 25-11.50; 10 Charity Burton, 25-00.50
Triple Jump: 1 Kylee Howard, 34-04.75; 5 Christy Lang, 31-08.75; 8 Leanna Espinosa, 30-07.00

Team Rankings
 1) Spearman 140 2) Stratford 135
 3) Canadian 118 4) West Texas 94
 5) Sanford-Fritch 75 6) Panhandle 53

SHS JV Lynx Track Results

3200 Meter Run JV: 1 Everardo Flores, 11:46.72; 2 Sol Pittman, 11:57.95;
100 Meter Dash JV6 Carlos Erives, 12.72 12.19
4x200 Meter Relay JV: 2 Spearman 'B' 1:42.61 16 (Michael Avila, Everardo Flores, William Boyer, Luis Almanza - Alberto Comacho, Carlos Erives)
400 Meter Dash JV: 6 Howard Worley, 58.27 58.32
200 Meter Dash JV: 5 Carlos Erives, 25.86 25.47; 6 William Boyer, 25.55 25.84
1600 Meter Run JV: 1 Everardo Flores, 5:26.35; 4 Sol Pittman, 5:39.13
4x400 Meter Relay JV: 3

Spearman 'C' 3:57.57 (Howard Worley, Joel Kern, Micheal Avila, Luis Almanza - William Boyer, Carlos Erives)

Discus Throw JV: 10 Ramon Garcia, 98-05; 11 Zackary Hughes, 97-05
High Jump JV: 2 Stephen Batton, 5-10.00; 3 Sawyer Sutterfield, 5-08.00
Long Jump JV: 5 Carlos Erives, 17-02.00
Shot Put JV: 7 Josue Hernandez, 34-05.50; 13 Ruben Carbajal, 31-02.25; 15 Gustavo Lopez, 25-10.50
Triple Jump JV: 5 Sawyer Sutterfield, 33-09.50

Russell Graham Memorial Regional Qualifiers Meet Friday, at Panhandle

Boys
High Jump: 3. Urban, Gruver, 6-0;
Pole Vault: 6. Cator, Spearman, 11-0.
400 M Relay: 6. Gruver, 45.85.
800 M Run: 5. Mendoza, Spearman, 2:12.89
110 M Hurdles: 3. Frost, Spearman, 15.18
100 M Dash: 5. Mendoza, Gruver, 12.09
Girls
Triple Jump: 2. Reynolds, Gruver, 33-11
Pole Vault: 1. Crane, Gruver, 9-0
1600 M Run: 5. Gibson, Gruver, 6:20.31.

Lend a helping hand



Christmas In Action has two projects in the works for this spring. We are looking for workers for one project, while the other has already started. We urgently need additional funding for both, though, and are urging those who can to fill out and send in the form below, along with a contribution. Thank you.

Enclosed please find my check for \$ _____ made out to CIA, Hansford County, TX, (with the option that I may designate it in honor or in memory of a loved one).

My name: _____

My address: _____

Mail to: Beverly Cook
 1011 Archer
 Spearman, Texas 79081

*Your contributions to Christmas In Action, Hansford County, Texas, are fully tax-deductible. For more information, call Beverly Cook at 686-6755.

COMMUNITY CALENDAR APRIL 2008

- 23-24 - 2A Regional Tennis Tournament, Abilene; 1A Regional Tennis Tournament, Levelland
- 24-26 - State FFA Land/Range/Pasture/Dairy Contest, Stephenville
- 24 - Spearman Fire Departments meets; Harrington Cancer Center Breast Cancer Screening Clinic at HCHD (800-377-4673); Frank Phillips College Summer & Fall 2008 Registration, 10 a.m.-1 p.m., Allen Campus, 2314 S. Jefferson, Perryton
- 25-26 - 2A Regional Track Meet, Abilene; 1A Regional Track Meet, Levelland
- 25 - State Ag Mechanic Contest, Huntsville
- 26 - State CDE's Contest, College Station; Dalhart 5th Grade & Jr. High Band Music Festival; O'Loughlin Center 10th Anniversary Pot O' Gold Tenderloin Dinner, Dance & Calcutta, 7 p.m.
- 27 - First Baptist Church Spearman Senior Supper, Spearman Baptist Church, 6:30 p.m.
- 28 - First State Bank Spearman Senior Supper, First State Bank, 6 p.m.; GHS Academic Banquet, 6 p.m., Gruver Baptist Activity Center; Hansford County Commissioners Court meets, 10 a.m.
- 29 - TAKS Test: 3rd, 4th, 6th, 7th, 10th Grade - Math; 12 Grade - Reading/ELA Retest
- 30 - TAKS Test: 3rd, 5th, 8th Grade - Reading Retest, 4th, 6th, 7th Grade - Reading, 11th Grade - Math, 12 Grade - Math Retest

Are You A Victim of Domestic Violence, Sexual Abuse or Physical, Emotional or Sexual Assault?

Call Toll Free Hotline
 1-800-753-5308

Battering Intervention & Anger Management Available

Panhandle Crisis Center
 Serving Hansford, Lipscomb & Ochiltree Counties
 301 S. Ash - Perryton, TX
 Memorials Accepted



Rt. 1, Box 65 (580) 646-3548, Balco, OK 73931

AUCTION

SATURDAY
 May 3, 2008

10:00 a.m. • Spearman, TX

SELLER: DeWitt Lumber Yard, 306 Davis, Spearman, TX
Real Estate: Two Tracts, Remaining Business Inventory

VEHICLES

1981 2 Ton Chevy Truck, 20' bed, 4 sp, 2 sp
 1978 2 Ton Chevy Truck, 18' bed, 4 sp, 2 sp
 1981 Chevy 1/2 Ton Pickup

YARD EQUIPMENT

Miller Roughneck welder, generator; 98 Mitsubishi Fork Lift; 3 portable gas air compressors; Elect. air compressor; Panel saw; Pallet jack; Antique radial arm saw; Large bolt cutters; Chain saw; 500 gal. plastic tank; Roof saw, Roof blower, 320 gal. Galock tar kettle; 650 gal. Blackwell tar kettle; Skill-saw

HAND TOOLS

Shovels, Spades, Bars, Rakes
OFFICE FURNITURE & EQUIPMENT
 2 desks, chairs, P.O.S. computer system, phone system, storage cabinets, fixtures, antique safe, coat rack, table and chair, paint computer with 2 shakers, key machine and keys, 3 cash registers, candelabras, wrought iron & concrete decor, fire screen, wall pieces, concrete planters, concrete bench, Mexico wooden shelf, concrete fountain

LARGE SELECTION OF HARDWARE

Carriage bolts, Wood bolts, Anchors, Washers, Machine bolts, Steel bolts, Nuts, Steel sinks

PIPE FITTINGS

Galv. and Blk. steel pipe fittings - 1/2"-2"
 Galv. and Blk. steel pipe joints

PVC PIPE FITTINGS

3/8" to 4" fittings - large selection
 PVC pipe

DOORS & WINDOWS

Wood - Int. and Ext.; Steel Door; Screen Doors; Bi-Fold Doors; Attic Stair-well; Assorted windows

WOOD

Cedar 1x8; Cedar pickets; Pressure treated 2x4; Doug fir studs; Colonial siding (16x1")

ROOFING

250 sw. act. shingles - all colors; 100 sq. 3-tab shingles - all colors; 20 sq. Imperial tile, all clay; 40 pieces ridge row; Metal R&U panel - 150 sheets mixed 30' to 4' - all colors; Metal trim - 250 pieces rake-edge ridge row - all colors; Skylights - assorted sizes (lens & frames)

SIDING

Vinyl Soflett - mixed colors; Trim pieces, J clips & starters

GUTTERING

Brown and white - 500' of each; Guttering acces. - clips, corners, end caps, straps, spikes, ferrrels, etc.

MISC.

Assort. moldings and trim; Jam stock; Alum. screen - 28"-48"; Hardware cloth; Chicken wire; Hand sprayers; Bird brooders; Gas cans; 10 sp. bike; Assort. dowel sticks; Vent pipe; Caps and collars; Turbines; Assort. wood & plastic letters

LUMBERYARD INVENTORY

Lot Wooden Handles; Lot Carpet Cleaners; Lot Shelf Brackets; Lot Peg Board Hooks; Lot Gate Hardware; Lot Screw Eyes, S-Hooks; Lot Hinges - Door, Strap, Pocket; Lot Tarps; Lot Drill Bits - Metal, Wood, Masonry; Lot Saw Blades - Respicating, Scroll, Jig, Hack Saw, Circular; Lot Door Locks; Lot Hammers; Lot Wrenches; Lot Windmill Acces.; Lot Household Cleaning Products; Lot Glues and Adhesives; Lot Plumbing; Lot Sanding Belts and Pads; Lot Tape; Lot Stains; Lot Paint - Gal. & Qts. - Ext.; Lot Grinders; Lot Tin Horns - 8' to 24"; Lot Quikrete; Lot Mortar Mix; Lot Hand tools; Lot Gloves; Lot Letters and Numbers; Lot Sash Locks - Door Stripping; Lot Levels; Lot Brackets and Hasps; Lot Wood Planes; Lot Bolts; Lot Screw Bits; Lot Wire Brushes; Lot Clamps; Lot Fencing Supplies; Lot Weather Stripping; Lot Fittings - Brass & Copper; Lot Lawn & Garden Supplies; Lot Electrical; Lot Trowels; Lot Spray Paint; Lot Varnishes; Lot Paint - Gal. & Qts. - Int.; Lot Paint Colorants; Lot AC Filters; Lot Lime; Lot 50 lb. Boxes Nails; Lot Rolls Chain; Lot Rolls Rope

REAL ESTATE - SELLS AT 1 P.M.

Tract 1 - DeWitt Lumber and Hardware, 306 Davis St., Spearman, TX, Lot 1-6, Block 9, Prime property close to downtown Spearman. Main store fronting Davis St., with many other buildings on 6 lots with fence around the perimeter.

Tract 2 - 209 Hancock St., Spearman, TX, This property has two buildings. The first is 4,292 sq. ft. The other building is 1,440 sq. ft. Lots of storage space here.

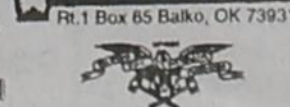
TERMS & CONDITIONS

Upon approval by the seller of the highest bid, 10% down will be placed in escrow. Title Commitment will be furnished by the seller. 2008 taxes will be prorated to the date of closing. This Real Estate auction is not contingent on financing. Property sells in its present condition.

NOT RESPONSIBLE FOR ACCIDENTS



FOR MORE INFORMATION CALL:
 Dale Naylor
 Owner/Broker



OK 107486 - TX 7285
 580-646-3548
 806-435-1994 (cell)

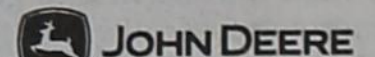
See how John Deere precision can turn into payday for you.

Great financing options!



WE MAKE PRECISION PAY

There's never been a better time to put the time, money, and fuel saving advantages of a John Deere GreenStar™ Guidance System to work for you. Stop in and see just how easy and affordable it is to put the power of a guidance system to work in your operation!



Nothing Runs Like A Deere

GREENSTAR™ 2 GUIDANCE SYSTEMS



Let Hansford Implement Company put together a hands-free guidance system that's right for your operation and your budget.

HELPFUL GUIDANCE



Start saving on fuel and other input costs while reducing wear and tear on your equipment. Start being more productive and less worn out.

Superior Innovation

Features That Matter

VISIT HANSFORD IMPLEMENT COMPANY TODAY!

www.JohnDeere.com/Homeowners

12098 East Frederic Ave.
 Pampa, TX 79065
 (806) 665 - 1888

939 North Dumas Ave.
 Dumas, TX 79029
 (806) 935 - 7720



South Loop Rd.
 Perryton, TX 79070
 (806) 435 - 4036

South Highway 207
 Spearman, TX 79081
 (806) 659 - 2568

John Deere's green and yellow color scheme, the leaping deer symbol, and JOHN DEERE are trademarks of Deere & Company. 07481/020002 AM5 HANS100424HCR Irv 00278472

FOR SALE/RENT/LEASE

FOR RENT: 2BR apartment, \$375.00 per month, water paid. Call Larry O'Neal at 580-772-5617 or 580-819-0007. TFN(7-06-06)B

WANTED

COUPLE LOOKING FOR HOUSE TO RENT: Teacher looking for 2/3 bdr home to rent in Spearman. No kids, no pets, non-smokers with steady income. Call 806-644-5969, please leave message. TFN(4-17-08)

HELP WANTED

HELP WANTED: Nursanickle Motel is seeking a housekeeper. Call 659-3737, or stop by the Nursanickle Motel for more information. 4(4-3-08)B

HELP WANTED: Frontier Feedyard, 25 miles north of Spearman, TX has job opening for qualified Feed-Truck Driver. We offer excellent benefits, health insurance and competitive starting pay. EOE Phone 806-882-4251. Ask for Ben. TFN(4-17-08)B

HELP WANTED: The Frank Phillips College Allen Campus in Perritt currently has an opening for a receptionist. If you have interpersonal skills, a meet-the-public personality, plus general clerical and computer skills, then send letter of application, resume, and the names and addresses of three references to Gloria Rummel, Executive Assistant, Frank Phillips College, P.O. Box 5118, Borger, Texas 79008. EOE. 1(4-24-08)B

HELP WANTED: First United Methodist Church is accepting applications for a maintenance/janitorial employee. Job requires a minimum of 20 hours per week, with flexibility for more hours at certain times. Salary will be based on applicant's skills and experience. Please apply in person at First United Methodist Church, 501 S. Haney, Spearman, or by mail at First United Methodist Church, P.O. Box 547, Spearman, TX, 79081. TFN(4-10-08)B

HELP WANTED: The Hansford County Sheriff's Office has an opening for a jailer/dispatcher. Must have a high school diploma or

GED. Apply at Sheriff's Office, 806-659-4140. TFN(4-17-08)B
HELP WANTED: First State Bank, Spearman, has a full time position open for a teller and a full time position in bookkeeping. Applicant must have a high school diploma or equivalent, typing and some tenkey skills required, customer relation and telephone skills are very important. Background in accounting, word processing and spreadsheets is helpful but not required. Benefit program includes group hospitalization insurance, retirement, vacation pay, sick leave pay and holiday pay. Apply with Ginger Turner at First State Bank, PO Box 247, Spearman, TX, 79081, telephone #(806) 659-5565. An Equal Opportunity Employer. 1(4-24-08)B

SERVICES

HOOCY POOCY PARLOR Call us for all your pet's grooming and boarding needs. Call now for reservations! 806-273-2724. TFN(11-2-07)

FOR SALE OR TRADE

FOR SALE: Priced below Blue Book! 1999 Grand Prix GT w/sunroof - \$4500, OBO. Call 806-435-3884. 1(4-17-08)B
FOR SALE: Full Size mattress set, Brand New, still in package. Sell for \$125, 806-341-6233 TFN(1-31-08)B
FOR SALE: Brand Name King pillow top mattress set, new in plastic w/warranty. Must sell - \$250. 806-341-6233 TFN(1-31-08)B
FOR SALE: All new QUEEN pillow top set - \$150. NEW in plastic. 806-341-6233 TFN(1-31-08)B
FOR SALE: QUEEN ORTHOPEDIC Mattress Set. New, still in plastic w/warranty - \$140. 806-341-6233 TFN(1-31-08)B
FOR SALE: A great deal! NASA memory foam mattress set. Never used. Sacrifice for \$350. 806-341-6233

TFN(1-31-08)
FOR SALE: Twin mattress set new w/warranty - \$100. 806-341-6233 TFN(1-31-08)

YARD SALE

YARD SALE: 206 S. Bernice, Spearman; Fri., April 25, 9 a.m.-5 p.m.; Sat., April 26, 10 a.m.-4 p.m.; Grill, washer, dryer, gas stove, 32" color TV, old computer, Epson printer, college computer books, toys, movies, chest of drawers, records, clothes (0-5T girls, women's & men's), dishes, candle holders, linens, Barbie dolls, collectable dolls, puzzles, frames, etc. 2(4-17-08)B
GARAGE SALE: Saturday, April 26th from 8 am-7??, at 905 Wilmet Dr. KMC 16 in. wheels with tires, scarlet prom dress sz 5/6, great full size bed spread set w/sheets, and much more. 1(4-24-08)B

PUBLIC NOTICE

LEGAL NOTICE

Spearman I.S.D. is accepting sealed bids for painting three walls in the auxiliary (rubber) gymnasium. The bid is to provide for labor, material, and equipment to perform the following items of work: (1) cover floor and bleachers, (2) seal and repair water damage and other cracks in existing gymnasium walls, (3) paint walls of three sides of gym with two-tone paint as specified by owner, and (4) install new vinyl base along all walls in gym. Paint specifications and products should be as recommended and furnished by Sherman Williams. Project to start and be completed during the month of June.

All sealed bids are due by noon on Friday, May 9, 2008. Send bids to Attn: Larry Murphy, Spearman I.S.D., 403 East 11th Avenue, Spearman, Texas, 79081. Successful bidders must furnish certificates of insurance showing coverage of General Liability, Workers' Compensation and Commercial Automobile Liability and Umbrella Liability in amounts acceptable by Spearman I.S.D. before commencing with work. Spearman I.S.D. reserves the right to accept or reject any or all bids or parts of bids, and to waive any for-

malities and technicalities. 2(4-17-08)B

LEGAL NOTICE

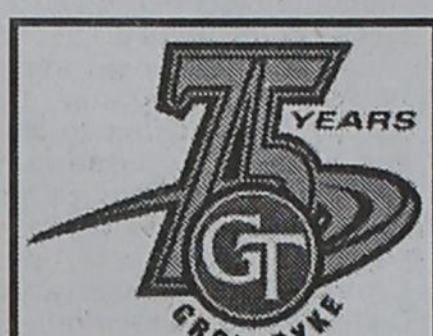
Spearman I.S.D. is accepting sealed bids for painting tile wainscot in varsity gym. The bid is to provide for labor, material, and equipment to perform the following items of work: (1) cover floor and bleachers, (2) prepare and paint tile wainscot using Zolatone multicolor/apply urethane clear coat over Zolatone, (3) prepare & paint tile wainscot in area by girl's coaching office (including door jams, etc.). Paint specifications and products should be as recommended and furnished by Sherman Williams. Project to start and be completed during the month of June.

All sealed bids are due by noon on Friday, May 9, 2008. Send bids to Attn: Larry Murphy, Spearman I.S.D., 403 East 11th Avenue, Spearman, Texas, 79081.

6	7	9	8	3	1	5	4	2
2	8	5	7	4	6	1	9	3
1	4	3	2	5	9	7	8	6
5	1	7	9	6	3	8	2	4
3	6	2	4	8	7	9	1	5
8	9	4	5	1	2	3	6	7
9	5	8	3	2	4	6	7	1
4	3	6	1	7	8	2	5	9
7	2	1	6	9	5	4	3	8

UNIT	PAS	PIPS
SAGO	KOCH	MAORI
PROM	AURA	UNWIT
SCRAMBLED	SCAG	
TOUTS	VIA	
UNHOOK	KICKOFF	
PAY	DIADEM	EVIL
TIPPY	WOE	TSUBA
OREO	FRENCH	LEG
NASTILY	AIDERS	
ANY	MANGO	
WITS	RANCHEROS	
CANOE	EPEE	SOLE
OCTET	ALAR	NUDE
BOOS	PER	TESS

Successful bidders must furnish certificates of insurance showing coverage of General Liability, Workers' Compensation and Commercial Automobile Liability and Umbrella Liability in amounts acceptable by Spearman I.S.D. before commencing with work. Spearman I.S.D. reserves the right to accept or reject any or all bids or parts of bids, and to waive any for-malities and technicalities. 2(4-17-08)B



Professional Drivers, why look further? Groendyke Transport offers you:

- 75 years of stability
- The highest average pay in the area
- Flexible Home Time Plan
- Medical, Dental, Health Insurance
- 401(K) with company match
- Paid vacation
- Paid holidays
- Paid uniforms
- Quarterly safety bonus

GROENDYKE'S BORGER TERMINAL NOW HAS OPENINGS FOR OUT & BACK, REGIONAL & LONG HAUL.

LIVING IN BORGER IS NOT REQUIRED!
 800.657.8784 (M-F, 8-5)
 www.groendyke.com

NOTICE OF PUBLIC HEARING PLANNING AND ZONING BOARD OF THE CITY OF GRUVER
 The Planning & Zoning Board of the City of Gruver will hold a Public Hearing to discuss an addition to permissible uses in MH, Mobile Home District to include Travel Trailer Parks.
 The Public Meeting will be held on May 12, 2008 at 5:00 p.m. at the Gruver City Hall, 201 E. Broadway, 2(4-24-08)B



Looking For a Sweet Job?

Dairy Queen opportunities include day and evening positions with full and part time hours. Employees earn competitive pay plus benefits including health insurance, life insurance, free stock ownership, paid vacation time, and flexible scheduling. Please stop by the Spearman DQ to apply.

MARTIN & ASSOCIATES REALTY
 Serving Hansford County for 14 years
 Julie Martin, Broker - 659-2425
IN SPEARMAN
 1111 S. Townsend - Split level, 3/2/1 Are you looking for a home with that brand new feeling? This home has been redone throughout: all new flooring, paint, fixtures, baths, remodeled kitchen w/new appliances, granite countertops; split level deck. \$134,000
 703 Collier - 3/1/1 investment property, subject to lease
 1005 S. Bernice - 3 bed 2 bath, 2100 sq ft w/fireplace
 We'd Like Your Listing FOR QUALITY & SERVICE CALL US TODAY!
 Equal Housing Opportunity

Blankenship Real Estate
 659-3052 - 670-3774
 3/1/1 - Lots of storage inside & out, close to schools.
 3/2/1 - Brick, 2 living areas, fenced w/storage
 2/2/1 - Brick, 2 living areas, storage
NEW LISTINGS WANTED!
 Eulalia Blankenship - Sales
 Eschol Blankenship - Broker

hchd
 Hansford County Hospital District
Openings at Hansford Hospital
Maintenance Person:
 Performing duties for maintenance of the building, grounds, including carpentry, painting, plumbing, electrical work, air conditioning, gardening, furniture repair, welding, etc.
Home Health RN: Must be licensed in the State of Texas
Openings at Hansford Manor
Certified Nurse Aide: Assisting RN and LVN with the care of our residents.
LVN: Must be licensed in the State of Texas
 Great working environment and staff, quality facility providing opportunities for professional growth. Great benefit package. Apply at 707 S. Roland, Spearman, TX or contact Jackie Nelson at 806-659-5841. Download application at www.hchd.net
 EEOE
 2(4-3-08)B

Century 21
Golden Spread Realty
 32 N. James, SPEARMAN - 2BR, 1B, 1 detached garage.
 Gina Deal, Broker/Owner (806)435-5444
 www.century21.com
 INDEPENDENTLY OWNED & OPERATED.
 ©1992® and "Century 21 Real Estate Corporation, Equal Housing Opportunity. EOW(2-14-08)B

Shirley Howard
Gruver Property
 310 Cluck - 3BR, 2B, fenced yard, 2CG, apartment in back.
Spearman Property
 EX- 504 Roland - 3BR, 2B, storm shelter, stg bldg.
 24 Archer/501 W. Kenneth - Restaurant - ready to open
 115 Nelson Rd - 2/2/2 - 1,900 sq. ft. 1/2 acre land - Country & City all at once!
Shirley Howard, Realtor
 806-886-6536, Cell
Melinda McCullough, Realtor
 (806) 733-5678
 We would LOVE to sell your HOUSE!
 Call US!

"e-waste"
 How should I handle my old electronics?
DONATE E-WASTE & PROTECT YOUR IDENTITY
Keep Amarillo Beautiful
Annual Recycling Day
All Panhandle Resident Welcome!
 Saturday, April 26th - From 10 am - 2 pm
Amarillo Recycling Center @ 27th and Hays
 (North of Llano Cemetery)
 By donating your old computers and other electronics to Goodwill Industries, your computer hard drive will be "scrubbed" with the same security program used by NASA and the US Department of Defense helping protect you from identity thieves.
 Goodwill Industries will accept e-waste and other donations during all regular business hours
 Goodwill also accepts the following Electronic waste items:
 Monitors - Keyboards - Mouse - Laptops
 Cell Phones - Printers - Network Equipment
 Fax Machines - DVD/VCR - Working Televisions
 Speakers - Game Systems - Radios
 Cameras - Batteries - Cords - Remotes
 Project in coordination with the Panhandle Regional Planning Commission's Regional Services

TEXAS STATEWIDE CLASSIFIED ADVERTISING NETWORK
TexSCAN

FSB First State Bank
 P.O. Box 247 Spearman, TX 79081
 Telephone 806-659-5565
 Member FDIC
Planning to buy a home, but not sure if you can get an affordable mortgage?
Interest too high on your present mortgage?
Want to do business with a local bank?
We can help!
Come by First State Bank, Spearman.
 Check out our competitive fixed and adjustable rate mortgages for terms up to 30 years.
 We can work with you to find a mortgage that fits your needs and help you buy or refinance your home. Contact Ginger Turner and find out more.

TexSCAN Week of April 20, 2008
BUSINESS OPPORTUNITIES
 ALL CASH CANDY ROUTE. Do you earn \$800 in a day? Your own local candy route. 30 machines and candy. All for \$9,995. 1-888-625-5481. Multi Vend, LLC.
 UP TO \$3000+ for envelopes! Receive \$4-\$6 for every envelope stuffed with our sales brochures. Guaranteed! Postage and supplies furnished. Call Mesa Marketing now! 1-800-307-7131
DRIVERS
DRIVERS- CDL-A The grass is Greener at PTL. Students welcome - excellent training program. Company drivers earn up to 46¢/cpm. Owner Operators earn \$1.21 cpm. meet age requirement, 12 mos. OTR. No forced north! Company drivers call: 1-866-606-6200. Owner operators call: 1-877-774-5533. www.pdl-inc.com
DRIVER: O/O'S: NEW pay scale/plus fuel surcharge. Company drivers \$5000 signing bonus for minimum 1 year experience. Let's drop & hook! www.aacal.com. Guy at 1-800-387-1011.
DRIVERS: ACT NOW! Sign-On Bonus 35-42 cpm. Earn over \$1000 weekly. Excellent benefits. Need CDL-A and 3 months OTR. Melton Truck Lines, 1-800-635-8069.
DRIVERS- IMMEDIATE OPENING for regional & OTR drivers! CDL-A with tanker required. Premium pay & benefits. Call 1-877-810-1041, or visit www.oakleytransport.com
DRIVERS STUDENTS: START your new career with sponsored training or tuition reimbursement! Possible \$40K 1st year. Experienced drivers, ask about \$5000 sign-on! www.ifcinc.com. 1-800-569-9232
TRUCK DRIVERS: CDL training. Up to \$20,000 bonus. Accelerate your career as a soldier. Drive out terrorism by keeping the Army National Guard supplied. 1-800-GO-GUARD.com/trucks
 NOTICE: While most advertisers are reputable, we cannot guarantee products or services advertised. We urge readers to use caution and when in doubt contact the Texas Attorney General at 1-800-621-0508 or the Federal Trade Commission at 1-877-FTC-HELP. The FTC web site is www.ftc.gov/adv

EDUCATION
INCREASE YOUR RAILROAD hiring potential. Train at NARS in Overland Park, KS will teach you the skills in 4-8 weeks. Average salaries \$63K. Lender in available. Conductor-Mechanical-Welder-Signal. 1-800-228-3378. www.railroadtraining.com
HOMES FOR SALE
7BR/4BA HUD \$12,882! 3BR/2BA only \$10,000! 5BR/3BA only \$10,886! FORECLOSURES & BANK REPOS! These Homes Will Sell For local BNL listings call 1-800-544-6258 Ext. 9847
ACT NOW! 6BR/3BA HUD \$199,000! Or buy for \$21,900! Must sell fast! 5% down. 20yrs @ 8% for BNL listings call 1-800-544-6258 Ext. 5633
WHY RENT? BUY HUD Homes! 4BR/3BA for \$19,500! 7BR/4BA only \$12,900! Great Deals! More Homes from \$10,000! For local BNL listings call 1-800-544-6258 Ext. 5830.
NEW MANUFACTURED HOMES, now wholesale prices direct to the public. Save thousands guaranteed. Free information packet. Toll free 1-866-457-3811/ para español llame ext. seiscientos cuatro.
STOP RENTING! GOVT & Bank foreclosures! Consumer Resource Network, HUD, VA, FHA, call now. 1-800-224-2318.
7BR/4BA \$12,882 or \$210/Mo! 5BR/3BA \$10,900 or \$199/Mo! Bus. Foreclosures, HUDs, Reposs! 5% down, 20yrs @ 8%! Must see! For BNL listings call 1-800-544-6258 x 1303
MEDICAL SUPPLIES
SCOOTERS & POWER WHEELCHAIRS. Did you know in most cases Medicare, Medicaid and Insurance pay 100% of the cost? Call Melissa or Jan for details. 1-800-695-9860. www.medicaremedicalsupplies.com
MISCELLANEOUS
ATTEND COLLEGE ONLINE from home. Medical, Business, Paralegal, Computers, Criminal Justice. Job placement assistance. Computer available. Financial aid if qualified. Call 1-866-858-2121. www.CenturyOnline.com

AIRLINES ARE HIRING - Train for high paying aviation maintenance career. FAA approved program. Financial aid if qualified. Job placement assistance. Call Aviation Institute of Maintenance. 1-888-349-5377
REAL ESTATE
5.02 ACRES North of Brady, Texas. Country living, central water, electricity. Seasonal creek, oaks, mesquite trees. Newer manufactured homes allowed. Owner or TX Vet financing. 1-325-456-4678. www.hillcountryranches.com
NEAR RUDDOSO NEW MEXICO. 140 acre ranch parcels from \$995/acre. Great views, excellent horse property. Power & gravel roads. Borders national forest, may split. 1-877-289-6650. www.swproperties.com
OWNER SACRIFICE LAKEFRONT land, \$79,900. 3rd largest lake in Texas. Views, trees, easy highway access from DEW. Must sell! EZ terms. Call 1-888-316-5253.
SOUTHERN COLORADO RANCH Sale. 35 acres - \$29,900. Spectacular rocky mountain views, year round access, electricity, telephone included. Excellent financing available with low down payment. Call Red Creek Land Co. Today! 1-866-596-5263 x.3473.
18.79 ACRES, JUNCTION/ Harper. Thick live oak/cedar cover. Electricity, borders large ranch. \$100/acre, owner or TX Vet financing. 1-800-876-9720. www.hillcountryranches.com
Run Your Ad In TexSCAN!
 Statewide Ad \$450
 303 Newspapers, 1,917,914 Circulation
 North Region Only \$195
 89 Newspapers, 275,853 Circulation
 South Region Only \$195
 103 Newspapers, 488,823 Circulation
 West Region Only \$195
 102 Newspapers, 252,398 Circulation
 To Order: Call This Newspaper direct, or call Texas Press Service at 1-800-749-4793 Today!

Extend your advertising reach with TexSCAN, your Statewide Classified Ad Network.

Public Asked to Comment on Desired Future Conditions for the Ogallala Aquifer

The Board of Directors and staff of North Plains Groundwater Conservation District recently held stakeholder meetings in three towns within the District. A meeting was held in Perryton on March 25, in Dalhart on March 31, and in Dumas on April 1. The public was invited to attend to give input on setting the Desired Future Condition (DFC) for the Ogallala aquifer in fifty

years. The District is required by the state of Texas to set the DFC for the entire District, which will guide measures to be taken to manage the aquifer and attempt to conserve the groundwater resources of the aquifer into the future. The District must also work with three other Groundwater Conservation Districts in the Panhandle in the development of the DFC

for the aquifer. Public input is being sought to ensure that the wishes of the people of the District are taken into consideration in the development of the management plan and the DFC.

The Board of Directors is currently considering setting two different DFC's for the District, one for the western four counties and one for the eastern four counties, due to the differences in both the amount of groundwater available and differences in the amount of groundwater being pumped. The proposed DFC for the Eastern four counties of Ochiltree, Lipscomb, Hutchinson & Hansford Counties would be to have 60% of the currently available groundwater still available in fifty years. Those counties have a greater saturated thickness of the Ogallala, as well as much less pumping of groundwater for agricultural irrigation. The proposed DFC for the Western four counties of Dallam, Hartley, Sherman and Moore Counties is to have 40% of the currently available groundwater still available in fifty years. These counties currently have less saturated thickness and are experiencing a much higher rate of groundwater withdrawal for agriculture. Comments received at the stakeholder meetings indicated that some were in favor of the separate management areas idea, and some felt that the DFC should be the same across the District. Also being considered is whether the current allowable annual production rate of 2 acre-feet of water per acre of land surface should be lowered to prolong the useable life of the aquifer.

The District's Board of Directors is seeking input and ideas from the public about how much water they would like to see left in fifty years and possible measure that could be taken to achieve those goals. The three public meetings are the first in a series of meetings to be held, with more meetings being tentatively scheduled for August. At that time, the groundwater production information and water well level measurements will have been compiled for 2007, giving an even more accurate picture of the groundwater usage and depletion that are occurring within the District.

Anyone wishing to make comment on the process of deciding the DFC can contact the District's General Manager, Steve Walthour, at 806-935-6401 or by e-mailing to swalthour@npwd.org.

Students Are Invited to Apply for Texas State Water Camp

The District invites high school students who are interested in learning more about water and water conservation to the Texas State Water Camp held in Monahans, Texas. Texas Agri-life Extension's 16th annual Texas State Youth Water Camp is set for July 13-17 in the George and Opal Bentley 4-H Center in Monahans. The District will pay for the \$150 registration fee and travel expenses for students who live within the District that are accepted to attend the camp.

Derek Scasta, Extension agent in Ward County and the camp's coordinator, said the five-day camp helps older Texas youth learn about water issues. "We strive to build an appreciation among the campers of the implications water management has on agriculture, industry, municipalities and homes," Scasta said. "The camp is an excellent opportunity for high school boys and girls from across the state to learn more about our water resources."

The camp will be conducted by Extension agents and specialists, U.S. Department of Agriculture Natural Resources Conservation Service personnel and other water resource experts.

Applications are currently being accepted for the camp. Information about the camp can be found at <http://ward-tx.tamu.edu/> or by calling the Extension office in Ward County at (432) 943-2682 or 943-4112. Students who are accepted to the camp should contact Rhonda Artho at North Plains Groundwater Conservation District at 806-935-6401 or by e-mailing to artho@npwd.org to arrange to have their travel and registration paid.

Students Invited to Participate in Annual Water Conservation Artwork Competition

Fourth, Fifth and Sixth grade students who live within the District are invited to enter the annual Water Conservation Artwork Contest. The District will feature the winning artwork in its annual calendar which is free to the public. The first place winner will receive a \$50 cash prize, a certificate of recognition and will have their artwork featured on the cover of the calendar. Twelve second place winners will each receive a \$25 cash prize, a certificate of recognition, and will have their artwork featured on one month inside the calendar. Children can draw, paint or use any other medium to depict water conservation. The deadline for submission of artwork to the District for the 2009 calendar is May 23, 2008. Artwork should be sent to District with the entry form, which can be downloaded from the District's website at www.npwd.org/art_contest.htm.

Free Newsletter Keeps Citizens Informed on Groundwater in the Panhandle

With concerns about the future of our groundwater supplies in the public eye right now, there is a way for citizens to stay informed on the activities and services of the North Plains Groundwater Conservation District.

The North Plains Water News is published quarterly, and contains information on District events and programs, current research in groundwater and water conservation, as well as helpful tips to conserve water for home owners and businesses. In addition, information on water legislation at the state level is covered. The newsletter is one program of the District intended to provide timely and useful groundwater information to the citizens of the District.

The newsletter is free to the public, and all interested persons are urged to contact Rhonda Artho at 806-935-6401 or artho@npwd.org to be placed on the mailing list.

GHS National Honor Society Induction



Fifteen sleepy students were kidnapped from their beds on Tuesday morning. These deserving students were inducted into the National Honor Society and enjoyed an early morning breakfast in the High School Library. To be eligible for induction, the students must have an overall 90 average. Then they are voted on by the high school faculty committee.

The inductees are (L-R): Caleb Miller, Megan Stedje, Katie Gibson, Mattie Yanke, Drew Mireles, Saul Hernandez, Eva McCloy, Mary Beth Hargis, Mary Barron, Carmen Dahl, Fatma Borunda, Dalila Santillan, and Gabriel Mendoza. Not pictured are Cory Graves and Leigh Ann Winger. They were in Lubbock at Regional Golf.

Fire Escape Plan Helps Protect Kids in Case of Emergency

SAFE KIDS Week April 26-May 4 Serves as Reminder to Make Time for Fire Safety

While a significant number of Americans believe they have more than six minutes to safely get out of a home once a smoke alarm sounds, statistics indicate there can be as little as two minutes before a fire can become life-threatening. Since children are among those at greatest risk, National SAFE KIDS Week, April 26-May 4, serves as an important reminder to families to practice an escape plan, according to safety experts from First Alert.

Although properly installed and maintained smoke alarms provide an early signal to your household of a fire emergency, it's just as essential to make sure your kids know what to do once the alarm sounds.

According to safety experts, it is crucial to develop and practice a home escape plan in case a real fire should occur - especially if children are in the home.

Here are the key considerations when preparing your escape plan:

Consider the particular characteristics of each member of the family including age, physical conditions, sleeping habits and hearing ability.

If children or others do not readily hear the alarm, assign someone to assist them during a fire drill or emergency.

Identify two exits for each room and each level of the residence and teach children not to hide in a closet or under beds.

Feel if a door is hot before opening. If it is hot, do not open it. If you can use the door, close it behind you. A closed door may help stall a fire.

Stay low to the ground when exiting.

Once outside the home, go to a designated meeting place so all family members can be accounted for. Make sure the location is a safe distance and away from other structures or trees that could also catch on fire.

Dial 911 from a neighbor's home or a cell phone.

Never, under any circumstance, approach or re-enter the home until fire crews arrive and assess the situation.

Practice the escape plan at least twice a year, making sure everyone is involved, from kids to grandparents. It is also recommended to hold a fire drill at night in order to determine the response of family members.

"Just as every home should have a first aid kit in case of a fall or cut, every family should also create and practice an escape plan in case of a fire emergency," said Deborah Hanson, director of external communications, First Alert. "Practicing a safe exit out of your home could be the most important time you spend together as a family."

To learn more about protecting your family from smoke, fire and carbon monoxide, visit the First Alert Web site at <http://www.firstalert.com>.



MITCHELL THEATRES
NORTHDRIDGE CINEMA 8
Guymon, Oklahoma

Movies beginning 4/25

- 21 PG-13 -- Kate Bosworth, Kevin Spacey
FORBIDDEN KINGDOM
- PG-13 -- Jet Li, Jackie Chan
STOP LOSS
- R -- Ryan Phillippe
PROM NIGHT
- PG-13 -- Brittany Snow
NIM'S ISLAND
- PG -- Jodie Foster, Abigail Breslin
LEATHERHEADS
- PG-13 -- George Clooney, Renee Zellweger
NEVER BACK DOWN
- PG-13 -- Dijon Hounsou
DRILLBIT TAYLOR
- PG-13 -- Owen Wilson
HORTON HEARS A WHO
- G -- Animated (Jim Carey)

FRESH POPCORN EVERYDAY!
-PARTY ROOM & ARCADE-

Call for Showtimes
580-338-3281
www.northridge8.com
Office -- 580-338-8969
CASH & CREDIT CARDS ONLY

ANY KUBOTA'S A GOOD CHOICE!



\$0 DOWN 0% A.P.R. FINANCING FOR UP TO 42* MONTHS



PANHANDLE IMPLEMENT CO

710 NORTH MAIN STREET
PERRYTON, TX
806-435-6508

*APR. Interest is available to customers if no dealer documentation preparation fee is charged. Dealer charge for document preparation fee shall be in accordance with state law. Not available for Rental, Reduced Accounts or Governmental customers. Financing is available through Kubota Credit Corporation, U.S.A., subject to credit approval. Some exceptions apply. Offer expires June 30, 2008. See your local Kubota dealer for details on these and other Kubota options or go to www.kubota.com for more information. †\$400 in used as example only.



WHEN DOES YOUR SUBSCRIPTION EXPIRE?

SCR1
04/08 EXPIRES
JOHN Q. PUBLIC
PO BOX 123
SPEARMAN TX 79081

Expiration dates are printed on the top of all mailing labels. Our readers can help keep the cost of subscriptions down by mailing in renewals in the appropriate month.

Thank you, Catherine Smith

THE HANSFORD COUNTY REPORTER-STATSMAN
213 Main Street • Spearman, TX 79081
Annual Subscription Rates
In Hansford County - \$30
Out of County - \$40

KIDNEY FAILURE LINKED TO DRUG USED DURING SURGERY

Trasylol®, a drug used to control bleeding during surgery, has been linked to kidney failure, dialysis and death. If you or a loved one had surgery and then developed kidney failure, call us now at 1-800-THE-EAGLE for a free consultation. We practice law only in Arizona, but associate with lawyers throughout the country.

GOLDBERG & OSBORNE
1-800-THE-EAGLE
(1-800-843-3245)
www.1800theeagle.com

Open 7 days a week