

Celebrating 100 Years of
Service to Hansford County

The Hansford County

REPORTER STATE

SCR2
COMP
HANSFORD COUNTY LIBRARY
0122 MAIN ST

213 Main St • Spearman TX 79081
reporterstatesman@valornet.com

(806) 659-3434

SPEARMAN TX 79081-2064

Proudly Serving Hansford County Since 1907

VOLUME 100 • ISSUE 12

THURSDAY, MARCH 22, 2007

Spearman Jr. High students travel to Washington, D.C.

Twenty students from Spearman Jr. High School traveled to Washington, D. C. during the first few days of Spring Break. They were able to visit many important places in Washington and learn many new things about our history. One of the highlights of the trip was Arlington National Cemetery. The group selected Matthew Jarvis and Brody Hargrove to participate in an official wreath laying ceremony at the Tomb of the Unknown Soldier. The group was also given a tour of the Capitol building by staff members of Texas congressman Louie Gohmert.

The Spearman group also visited Mount Vernon, Ford's Theater, the Smithsonian Air and Space Museum, the Smithsonian Natural History Museum, F.D.R. Memorial, Jefferson Memorial, the National Archives, the Holocaust Memorial Museum, Vietnam Veteran's Memorial, Lincoln Memorial, the Kennedy Center, Iwo Jima Memorial, the National Cathedral, the White House, and the National Zoo. This trip is for Spearman Jr. High 7th and 8th graders and is taken every other year during Spring Break. Spearman Jr. High staff members Jay Pack and Tami Hargrove served as chaperones for the group this year.

2007 Elections

Spearman ISD, the City of Spearman and the City of Gruver will all hold elections on May 12, 2007. Gruver ISD and Pringle-Morse CISD will not hold elections at this time.

Spearman ISD has five candidates vying for three positions. Bob Boxwell and Will Jarvis have refiled and Stephanie Crossland has not filed for reelection. Other candidates filing are Dr. Mark Garnett, Travis Patterson and Jimmy Kenney. (Other board members are Dwayne Mitchell, Carol Dunnihoo, Maria Sibley and Glen Ray Mackie.)

The City of Spearman has three positions open. Incumbents Kathy Boyd and Ron Antalek have filed for reelection, but Alfred Avila did not file. Other candidates filing include Mike Schnell and Craig Schumann. (Other councilmen are Charles Elliott and Jon Garnett, and Mayor Brian Gillaspie.)

The City of Gruver will hold an election for Mayor. Mark Irwin has filed for reelection, with one opponent, Kyle McNett. Johnnie Williams has also filed, with no opponent. (Chad Logsdon is the other councilman.)

Gruver ISD are not having an election. Paul Stavlo, Curt Fitzgearld and Jeff Graves are up for reelection. Fitzgearld and Graves have refiled; Stavlo has not. Jeff Purvines has filed, and will take the place of Stavlo. (Other board members are Lee Bob Harper, Dwayne Thompson, Brent Stedje and Traci Venneman.)

Pringle-Morse CISD has moved their election to coincide with the November election, due to state legislation. The current board consists of Jerry Hart, Jon Mark Tolleson, Robin Wilson, Clyde McCloy, James Lieb, Carolyn Shields and Jerry Crowl.

The election will be held on May 12, 2007. The last day to register to vote for this election is April 12, 2007. Applications for early voting may be filed between April 30th and May 4th. Early voting will be held between April 30th and May 8th.

DEADLINE NOTICE

The deadline to submit news and advertising to the Hansford County Reporter-Statesman is Monday at 5 p.m. Items submitted after the deadline will be published at a later date, as time and space permit.

For more information, please contact Catherine Smith at 659-3434, or e-mail me at cathysmith@antden.com.

We will be CLOSED Tuesday afternoon, March 27th, from 1-5 p.m.

Kelly, Baker retire from First State Bank

First State Bank held a retirement reception for Nancy Kelly and Butch Baker on Tuesday, March 20, 2007 from 1-3 p.m.

Nancy Kelly has been employed at First State Bank for 18 years. She started in the drive-up before moving to the position of teller, where she continued to serve until her retirement.

Nancy is married to Coy. They have four children, Rick Kelly of Spearman, Mike and Nancy Kelly, who live between Dumas and Amarillo, Karla and Marvin Henderson of Stinnett and Fred and Julie Kelly of Borger.

Nancy said what she enjoyed most about her job were the people. She looks forward to spending time with her family upon her retirement.

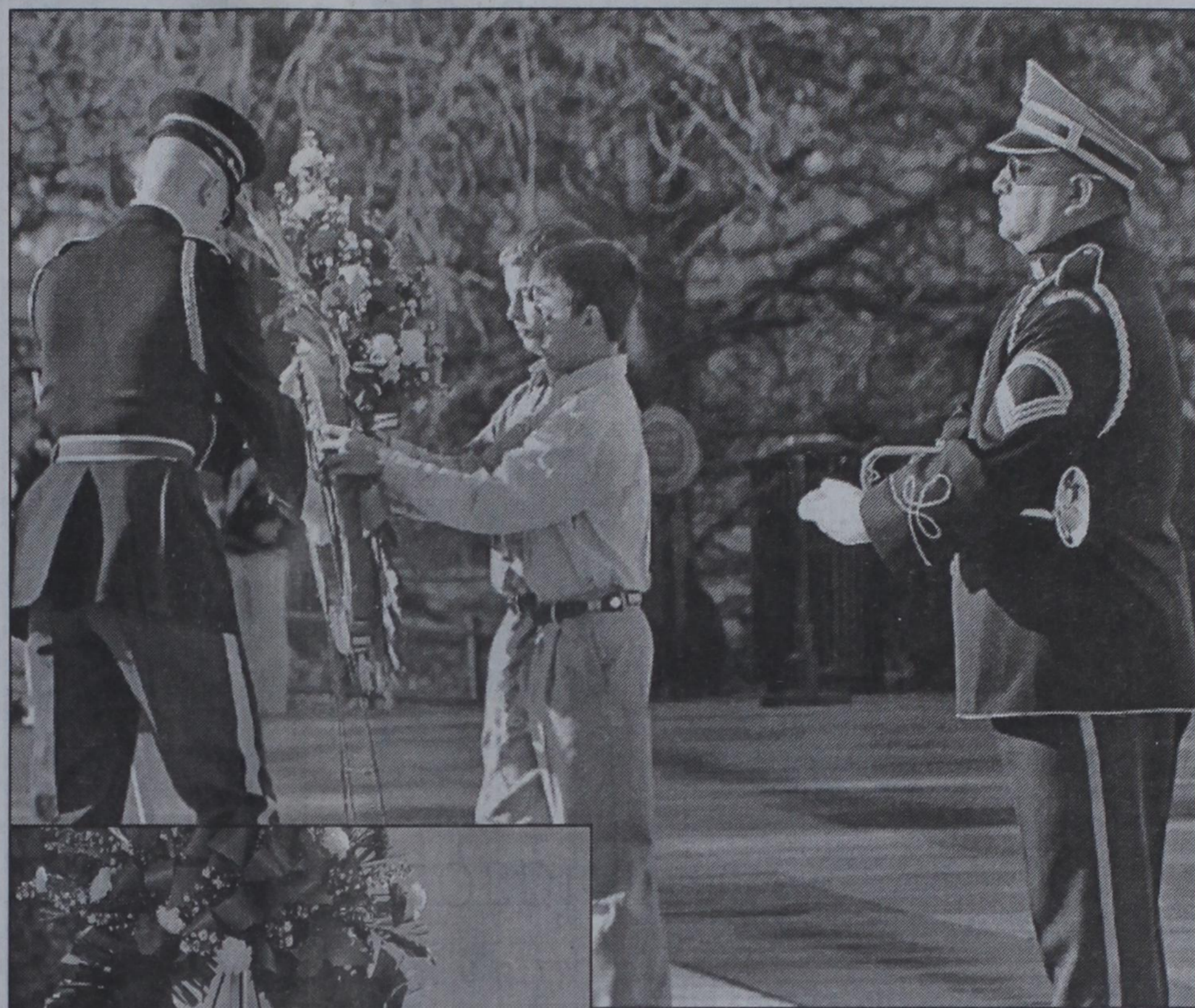
Nancy enjoys reading and camping. She and her husband attend the Spearman Church of Christ.

"I will really miss everyone," stated Nancy. "It will be really hard to not do what I have been doing for so long."

Butch Baker has been employed at First State Bank for 22 1/2 years, where he has been in charge of maintenance.

Butch is married to Irene, who is an assistant cashier at First State Bank. They have three children, Deanne and Terry Latham of Kingfisher, OK, Denae and Doug Chandler of Dallas and Nita and Johnny Hudson of Stratford.

Prior to working at First State Bank, Butch was a customer har-



Matthew Jarvis and Brody Hargrove place a wreath at the Tomb of the Unknowns in Arlington National Cemetery.



Spearman students in front of the White House. (Back row, l-r: Tami Hargrove, Matthew Jarvis, Sawyer Sutterfield, Shi-Ann Bates, Stevie Couch, Gabi Boyd, Bryce Jarvis, Brody Hargrove, Kevin Ruiz, Blaine Pack, Trent Goodheart, Blayne Schroeder, Cody Benton, Jay Pack. Front row, l-r: Stefan Cook, Jace Lang, Tyler Cator, Justin Rindlbacher, Iris Villa, Nikki Boyd, Cassie Bowers, Morgan Ashmore.



Upon their retirement, Nancy Kelly and Butch Baker were presented with clocks from the Board of Directors and employees of First State Bank.

LOCAL WEATHER FORECAST

THURSDAY NIGHT - Mostly cloudy with a 20 percent chance of showers and thunderstorms. Lows in the mid 50s. South winds 10 to 15 mph.

FRIDAY - Mostly cloudy with a 50 percent chance of showers and thunderstorms. Highs in the lower 70s. Southwest winds 10 to 15 mph.

FRIDAY NIGHT - Showers and thunderstorms likely. Some thunderstorms may produce heavy rainfall. Lows in the mid 50s. South winds 10 to 15 mph. Chance of precipitation 70 percent.

SATURDAY - Showers and thunderstorms likely. Highs in the upper 60s. South winds 10 to 15 mph. Chance of precipitation 70 percent.

SATURDAY NIGHT - Mostly cloudy with a 40 percent chance of showers and thunderstorms. Lows

in the upper 40s. SUNDAY - Mostly cloudy with a 20 percent chance of showers and thunderstorms. Highs in the lower 70s.

SUNDAY NIGHT - Partly cloudy. Lows in the mid 40s.

MONDAY - Partly cloudy. Highs in the lower 70s. MONDAY NIGHT - Partly cloudy. Lows in the lower 40s.

TUESDAY - Partly cloudy. Breezy. Highs in the mid 70s.

TUESDAY NIGHT - Partly cloudy. Breezy. Lows in the mid 40s.

WEDNESDAY - Partly cloudy with a 20 percent chance of showers and thunderstorms. Breezy. Highs in the mid 70s.

Lullabies Legends and Lies

by Parson Smith, The Prime Minister of Laughter

Newspaper editors often have a way of stating (and over stating) the obvious. There have been a number of headlines in the Reporter-Statesman that have been bloopers.

Other papers are not immune to the occasional headline slip. Here are a few newspaper headlines that have appeared in newspapers throughout the country.

- If strike isn't settled quickly it may last a while
- War dims hope for peace
- Cold wave linked to temperatures
- Child's death ruins couple's holiday
- Blind woman gets new kidney from dad she hasn't seen in years
- Man is fatally slain
- Something went wrong in jet crash, experts say
- Death causes loneliness, feeling of isolation



Ralph Depee,
D.D.S.

Member American Association
of Orthodontists

Orthodontics For
Children and Adults

- Free exam and estimate of cost
- Free second opinion
- Insurance filed



821 S. Amherst
Perryton, Texas
1-800-521-0831
(806) 435-2320

Tong's Chinese Restaurant

511 S. Hwy. 207 • 659-2838 • Spearman

All-You-Can-Eat Buffet Specials

- Tuesday - Steak \$7.99
- Thursday - BBQ Ribs \$6.50
- Friday - Shrimp \$6.50
- Saturday - Catfish \$6.50
- Mon., Wed. & Sat. \$5.50

Buffet Hours: 11 a.m.-2:30 p.m.
and 5:30-Close

SIGN UP FOR A FREE SCOOTER

One Scooter Given Away Each Month



Toll Free 800-606-9860

Med Care MEDICAL SUPPLY
www.medcaremedicalsupply.com

The Heritage Society of Austin

CIRCA

ANTIQUES SHOW

Austin Convention Center • April 13-15 • www.circantiques.org

NO CREDIT CARD REQUIRED!



250+ CHANNELS!
STARTS \$29.99
OR, Dial Network
Lowest Price Ever!

\$19.99 / month!
FREE 1-4 ROOM SYSTEM!
FREE INSTALLATION!
FREE MOVIE CHANNELS!
FREE DVR OR HD RECEIVER!

Call Now 1-800-574-1938



STOP LEG CRAMPS BEFORE THEY STOP YOU.

Calcet's triple calcium formula is designed to help stop low calcium leg cramps. Just ask your pharmacist.



CA-010904 Rev 02/05 © 2005 Mission Products Company. All rights reserved.

YOUR ROAD TO A NEW CAREER!

- Paid CDL Training!
- No Experience Needed!
- Earn \$40 - \$75K Yearly!

Stevens Transport offers the best comprehensive training program for new drivers! Care your career rolling and enjoy exceptional earnings and great benefits from the #1 premier transportation carrier!



For more information, call 800-333-8595
www.stevenstransport.com

SUDOKU
PRESENTED BY
VolunteerMatch.org
Where volunteering begins.

9				2	4	6			
	7		1	9				3	
3	4				9				1
	9	5	7	4		1			3
6			2	5					9
8	7		1	3	5	2			
1	9				3				4
	8			7	1			9	
	6	3	4						8

© 2007, StatePoint Media, Inc. answer on classified page
Fill in the blank squares in the grid, making sure that every row, column and 3-by-3 box includes all digits 1 through 9.

These games are brought to you by the
Hansford County Reporter-Statesman

CROSSWORD

1	2	3	4	5	6	7	8	9	10	11		
12				13				14				
15				16				17				
18			19					20				
			21					22				
23	24	25				26			27	28	29	
30				31		32	33			34		
35		36				37			38			
39				40				41		42		
43			44					45		46		
			47			48	49					
	50	51				52				53	54	55
56						57				58		
59						60				61		
62						63				64		

PRESENTED BY
VolunteerMatch.org
Where volunteering begins.

© 2007, StatePoint Media, Inc. answer on classified page

PRESENTED BY
VolunteerMatch.org
Where volunteering begins.

© 2007, StatePoint Media, Inc. answer on classified page

PLANTS

- ACROSS**
- Brawl
 - Resistant to corrosion
 - Kudrow or Presley
 - Oaf
 - Thumb for it
 - Assistants
 - Antonym of is
 - Having the necessary means
 - Shirt type
 - Stone forest
 - Dollar bills
 - Smidgens
 - Descendant of OSS
 - Anti-cruelty society
 - Third wheel of a cycle
 - Lennon's partner
 - Van Gogh flower painting
 - Sea lettuce
 - Whitman's famous flower reference
 - Black ___ event
 - Chinese and Japanese
 - ___ anise, used in Indian food
 - Containing iron
 - Russian fighter
 - Tb
 - Kids' soap amusement
 - Hockey player Bobby
 - Everyone but clergy
 - "For" in Spanish
 - Lawn enemy?
 - African prairie
 - Ancient Germanic alphabet character
 - Devil finds work for such hands
 - Lake scum
 - Starch from cuckoopint root
 - ___ contender, law
 - Remain in a place
 - 4 qts.
 - Panache
- DOWN**
- Toss a coin
 - Enchanted flower in "Beauty and the Beast"
 - Your father's sister
 - Yttrium oxide
 - Shinbone
 - Runs in neutral
 - Necessary but lacking
 - Father of modern taxonomy
 - Idea in France
 - Abbreviated seconds
 - Inquire about
 - Under a roof
 - Stay clear
 - Involving ions
 - Commonwealth of Independent States
 - "The Planets" composer
 - "Workers of the world, ___!"
 - Adults have 12, in 4 groups of 3
 - Nostradamus, e.g.
 - How to get to the top?
 - "To no ___"
 - Wolf in a kitchen
 - One part of the whole
 - Male equivalent of madam
 - Tree-planting holiday
 - Less than 90 degrees
 - Opposed by PETA
 - In the same place
 - Very angry
 - Reference to the writer
 - Wilder, author
 - Declare invalid
 - Dressed animal coat
 - Singular for #59 Across
 - Draw slowly
 - Taylor Hicks in '06
 - Used in India for writing paper
 - Glowing gas
 - Hospitals for military personnel

TEXAS PRESS ASSOCIATION
State Capital

HIGHLIGHTS
By Ed Sterling

INTERIM DIRECTOR TAKES CHARGE OF YOUTH COMMISSION

AUSTIN - The Texas Youth Commission board of directors resigned March 16 under pressure from the Texas Legislature.

The board's final act was to submit a plan to fix problems at the agency that led to recent reports of sex abuse, beatings and neglect of confined youths. After submitting the plan at an emergency meeting, the board turned over its duties to the agency's acting director, Ed Owens.

Even before lawmakers gave the board votes of no-confidence and filed related legislation addressing failures of the agency to meet its obligations, perhaps the loudest voice for swift change was that of Lt. Gov. David Dewhurst.

"I believe the resignation of the Texas Youth Commission board and the submission of a rehabilitation plan will finally allow us to begin making real progress toward reforming the TYC," Dewhurst said.

The lieutenant governor, who is co-chair of the Legislative Audit Committee, said the plan will be reviewed, as will the just-released state auditor's report on the TYC.

Officials will take "whatever action is necessary to protect the children and restore the public trust in this agency," Dewhurst said.

Owens publicized a list of pledges he intends to fulfill as interim director. A few of those pledges are these:

- To centralize human resource functions to include criminal background checks for new hires and to collaborate with the Department of Public Safety in conducting monthly notifications of employee arrest;
- To make it so new employees are hired through a central hiring office instead of at TYC facilities.
- To demand that abuse, neglect and exploitation, and complaint policies be redrafted to include review and approval by designated executive staff with notification to the executive director; and
- To restructure programs to be age appropriate and match the psycho-social stage of confined youths.

Speaker creates education panel

House Speaker Tom Craddick on March 16 announced the formation of the House Select Committee on Higher and Public Education Finance.

The nine-member, bipartisan committee's task will be to improve public and higher education finance policy so Texas will do a better job of preparing students for college and entering the workforce.

Craddick said improving college and workforce readiness "is immensely important for increasing Texas' competitiveness in the global market."

Committee Chairman Dan Branch, R-Dallas, said, "It's critical that we get this right. We must continue to supply an educated workforce, so employers will keep relocating to Texas."

Senate passes utility reforms

The state Senate on March 15 approved a package of electric utility reforms lawmakers hope will bring more affordable rates to many Texas households.

The legislation, authored primarily by Sen. Troy Fraser, R-Marble Falls, also discourages market price manipulation and has safeguards to protect low-income, elderly and critical-care customers from having their power cut off.

"Electric rates are out of control and we need to reel them back in," said Sen. Eddie Lucio, D-Brownsville.

The Senate passed a Lucio amendment that would require power companies to refund any unfair overcharges to customers, pending review by the Public Utility Commission and the state attorney general.

Customers reportedly paid \$70 million in overcharges because of market manipulation by power company TXU in 2005.

The legislation next moves to the House for consideration.

Effects foreseen in CHIP funding

The way some House budget writers see it, increasing funding for the Children's Health Insurance Program by \$78 million means cutting other programs that mostly benefit the needy.

According to figures by the House Appropriations Committee, cuts of about \$25 million to Medicaid, plus cuts to breast and cervical cancer programs, community mental health crisis centers, substance abuse programs, foster care programs, and independent living centers would make up the difference.

The Hansford County Reporter-Statesman

213 Main Street • Spearman, TX 79081
Phone - (806) 659-3434 • Fax - (806) 659-3368
cathysmith@antden.com

Mon.-Thurs. (Closed Fridays) 9 a.m.-12 p.m. & 1-5 p.m.

Gary Smith - Publisher Catherine Smith - Editor

Contributing Writers: Dorothy Hudson, Jim Derington,

Merry Sparks, Cecil Biggers

Contributing Photographer: Charlie Johnson

Subscription Rates

In Hansford County - \$30.00 • Out of County - \$40.00

The Hansford County Reporter-Statesman (USPS 529660) is published weekly in Spearman, TX. Periodical postage paid in Spearman, TX. POSTMASTER: Send address changes to: The Hansford County Reporter-Statesman, 213 Main Street, Spearman, TX 79081.

Publication Policy

The deadline to submit news and advertising to The Hansford County Reporter-Statesman is Monday at 5 p.m. Items submitted after the deadline will be published at a later date, as time and space permit. Publication of all items is at the discretion of the editor.

Advertising

Open Display rates are \$4.00 per column inch. Classified Ads are \$6 for the first 25 words and 10¢ per word for each additional word. (Additional charge for boxed classifieds.) There is a \$1 charge per week if billed.

Member of

Gruver Chamber of Commerce

Spearman Chamber of Commerce

Texas Press Association and Panhandle Press Association

2000

Our Sympathy

RAYMOND FAY SAVAGE

PERRYTON - Raymond Fay Savage, 86, died Saturday, March 17, 2007.

Services were at 11 a.m. Tuesday, March 20, 2007 in Community Worship Center with the Rev. Michael Waterbury and Brent Thornton officiating. Arrangements were by Boxwell Brothers Funeral Home of Perryton.

Mr. Savage was born May 2, 1920, in Cedarvale, Kansas. He married Betty Clark on August 23, 1941 in the Baptist parsonage in Pampa, and the love story spanned 65 years.

They moved to the Notla community in 1946. The center of activities for the Notla community was an old school house. On Sunday mornings people would worship and lift up their voices in song. It was shortly after one of the Sunday morning services that Mrs. Ed Savage, Betty, Fay, Betty Fay, Donald and some neighbors were all baptized and became members of First Baptist Church in Perryton.

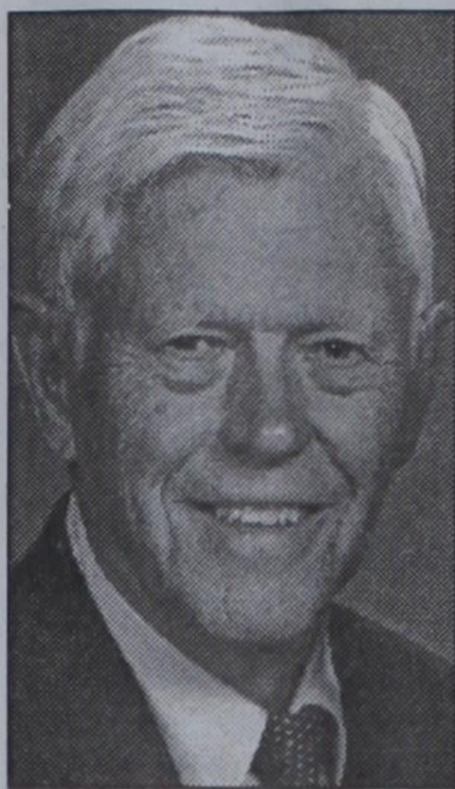
After the kids were grown, Betty and Fay moved to their farm south of Waka. Fay was a farmer, raising wheat, milo and corn. His greatest love was always raising cattle. His farming expertise was known in the area, and he was awarded the Soil Conservationist Farmer of the Year. The last years Fay had enjoyed farming with his sons Donald and Russ, seeing all the grandkids, great-grandkids, and great-great-grandkids, and spending time with Betty at The Seasons. Coffee and meals were often with Sue Ann, and they could be seen laughing around the table.

Fay was greatly loved by his family and those who knew him greatly respected him.

He was preceded in death by his parents, Edgar Lawrence and Anna Ellen Savage; a sister, Glennas Owens; a daughter Betty Fay Savage; and a son, Dustin Savage.

Survivors include his wife; a daughter Sue Ann Kile and husband Jack of Perryton; two sons, Donald Savage and wife Carolyn of Spearman and Russ Savage of Perryton; five granddaughters, Glynda Sell of Amarillo, Cindy Turner and husband Lewis of Perryton, Tammy Harlan and husband Tim of Buffalo, Okla., Michèle Goodheart and husband Damon of Spearman and Misty Martin and husband Shawn of Quitman Ark.; and two grandsons, Robby Kile of Perryton and Britt Savage and wife Lindsey of Rockwell.

MAX WAYNE BAGGERLY



AMARILLO - Max Wayne Baggerly died in Amarillo, Sunday, March 18, 2007. Private family graveside services were at 1:00 p.m. Tuesday, March 20, at Pioneer Cemetery in Beaver, Okla. Memorial service was at 1:00 p.m. Wednesday, March 21 at St. Luke's Presbyterian church in Amarillo directed by Boxwell Bros. Funeral Home of Spearman.

Mr. Baggerly, son of Lou & Lin Baggerly, was born in Liberal, Kansas, Aug. 13, 1927. His early years were spent in Booker, Tx and Beaver, Ok, where he made friendships which lasted a lifetime and graduated from Beaver High school. After service in the U. S. Navy, Max graduated from Oklahoma State University.

Max married his childhood sweetheart and love of his life, Dorothy Beegle in 1948 in Beaver, Ok, where they lived until moving to Spearman, tx in 1955.

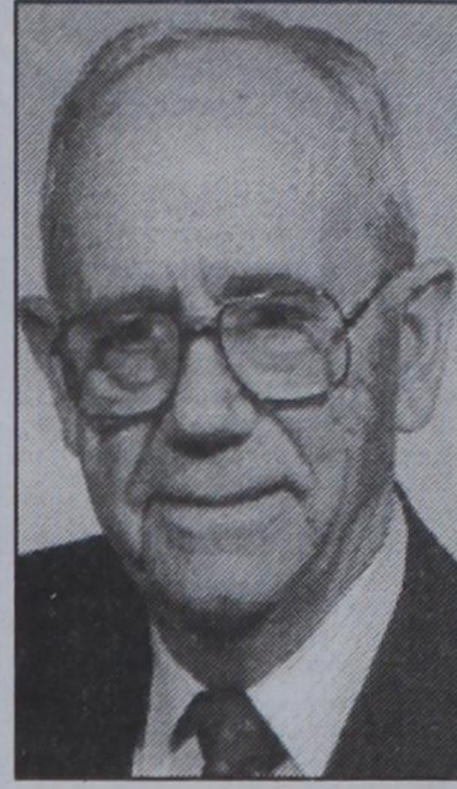
He owned & operated B&B Sales Co. stores in Spearman, Perryton, and Guymon. Out of dedication to his community and its youth, he opened Bowl Mor Lanes in Spearman also. During his 40 years in Spearman, Max served as president of the Spearman School Board, and also the Hansford County Hospital District for many years. He and Dorothy were charter members of the First Presbyterian Church where he served faithfully for many years as a deacon & elder. Max was a lifelong supporter of education and established the Max & Dorothy Baggerly Scholarship Fund as well as being named Distinguished Contributors to Oklahoma Panhandle State University. After moving to Amarillo in 1994, Max & Dorothy became dedicated members of St. Luke's Presbyterian Church. At the time of his death, Max was serving as a director of First National Bank of Spearman and Bank of the Panhandle in Guymon.

Max loved to travel with his wife and good friends. They enjoyed many places and countries. He was an avid golfer, fisherman, and Texas Tech fan. He took much pride in his beloved children, and they, along with his wife of 58 years will greatly miss him.

Survivors include: Dorothy, his wife of Amarillo; his son, Steve Baggerly and wife Becky of Guymon; his daughters, Karen Baggerly of Lubbock, and Camille Williamson & husband Marc of Fredericksburg, TX; his granddaughters, Shana Fields & husband Ronnie of Waco, Stacy Roseberry & husband Jed of Dallas, and Matthew Williamson of Lubbock, Kristen Williamson of St. Louis, MO; and one great-granddaughter, Haley Roseberry of Dallas. He also survived by his brother, Jerry Baggerly of Elmwood, OK.

Memorials may be made to St. Luke's Presbyterian Church, 3001 S. Bell, Amarillo, TX. , the Max & Dorothy Baggerly Scholarship Fund, or favorite charity.

GENE CUDD



SPEARMAN - Gene Cudd, 85, died Wednesday, March 14, 2007.

Services were at 3 p.m. Sunday, March 18, 2007 in First United Methodist Church in Spearman with the Rev. Neely Landrum officiating. Burial was in Ochiltree Cemetery in Perryton by Boxwell Brothers Funeral Home of Spearman.

Mr. Cudd was born August 28, 1921, in Ochiltree County to India Mattie Belle Jackson and Jesse E. Cudd. In 1942, he married Frances Sheets. They lived for 28 years on a farm near Perryton before moving to Spearman in 1971, where he lived until his death.

At the age of 18, Mr. Cudd started his career in the farm equipment business with the John Deere dealership in Booker. He continued his career at Perryton Implement Co., beginning as a mechanic and

advancing to salesman with part ownership. In 1953, he founded Hansford Implement Co. in the former location of Womble Hardware in Spearman. The business expanded to its current location in Spearman with branches in Pampa, Perryton and Dumas. During his career, Mr. Cudd was recognized by Deere and Co. numerous times as a Signature Dealer for his outstanding level of performance and customer service. His honesty, work ethic and dedication to his employees and customers will be his legacy in the business.

As an active supporter of his community, Mr. Cudd served as president of the Spearman Chamber of Commerce, the Chamber Ambassadors, the Hansford County Shrine Club and the Southwest Association of Farm Equipment Dealers. He also served as a Spearman city councilman, director of the Yucca Council of Girl Scouts, charter sponsor of Boy Scouts, director of the National Agricultural Equipment Dealers Association and was a founding director of First National Bank of Spearman. In addition, he had been recognized as Citizen of the Year in Spearman and as having the Business of the Year. A loyal supporter of both the Ochiltree and Hansford County livestock shows, Mr. Cudd also was a 50-year Mason, a longtime Rotarian, an active member of the United Methodist Church and a former member of the Golden Spread Senior Citizens Association Board.

An avid fan of Texas Tech University and a scholarship donor to the Red Raider Club, Mr. Cudd enjoyed attending both Red Raider and Lady Raider events with his wife, Frances. He will always be remembered by his family as a loving and giving father and grandfather.

He was preceded in death by his beloved wife; a son, Donnie; his parents; his stepmother, Garnett Hampton Cudd; two sisters, Lucille Witt and Esther Overbey; and a brother, Warren Cudd.

Survivors include a daughter, Genette Henderson and husband Bob of Winston-Salem, N.C.; a son, Mike Cudd and wife Pat of Spearman; five grandchildren, Ryan Henderson and wife Jenni of Durham, N.C., Eric Cudd and wife Tisha of Spearman, Evan Cudd of Dallas, Diane Henderson of Washington, D.C., and Chris Cudd of Lubbock; a half brother, Coke Cudd of Perryton; and a half sister Betty Neal of Perkins, Okla.

The family suggests memorials be to First United Methodist Church, 407 Haney St., Spearman, TX 79081; The O'Loughlin Center, 502 S. Brandt, Spearman, TX 79081; The Hansford Manor, 707 S. Roland, Spearman, TX 79081; or The Museum of the Plains, 1200 N. Main St., Perryton, TX 79070.

JERRY LYNN SPARKS

AMARILLO - Jerry Lynn Sparks, 65, of Amarillo died Friday, March 16, 2007.

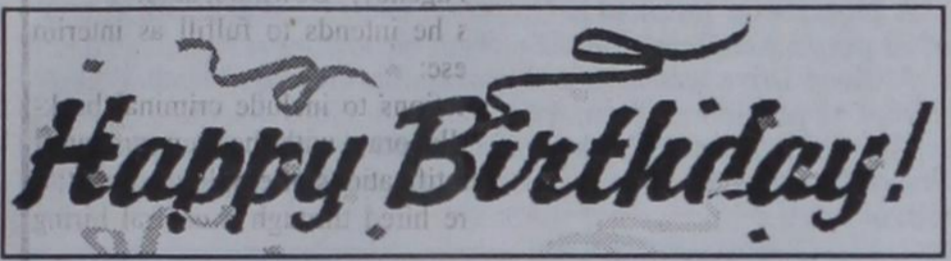
Memorial services were at 3 p.m. Monday, March 20, 2007 in N.S. Griggs & Sons Funeral Directors Pioneer Chapel, 2615 Paramount Blvd., with Mark Urquhart, chaplain of Hospice of the Southwest, officiating.

Mr. Sparks was born March 17, 1941, in Perryton. He graduated from Spearman High School and West Texas State University with a degree in music education. Mr. Sparks taught band and music in public schools throughout the Texas Panhandle. He was an accomplished musician, singer and songwriter. He was well known in West Texas for his contribution to music. Mr. Sparks married Shelley in November 1993. He will be greatly missed by all who knew him.

He was preceded in death by his father, James Sparks.

Survivors include his wife; a daughter, Abbie Williams of Wichita, Kan.; a stepson, Christopher Bennett of St. Louis; his mother, Lometa Sparks of Amarillo; two brothers, Larry Sparks of Canyon Lake and Evan Sparks of San Antonio; and a grandson, James Wisdom of Lawrence, Kan.

The family suggests memorials be to the American Kidney Fund, 6110 Executive Blvd., Suite 1010, Rockville, MD 20852.



Editor's Note: This Happy Birthday list is run as a public service by the Hansford County Reporter-Statesman. We apologize if any names are misspelled. If you know of a name that needs to be changed, added or deleted, please call 659-3434.

Thank you, Catherine

March 22

Birthdays - Veta Allaway, Charmaine Gross, Maggie Key, Bob Miller, Payton Mitchell, Marty McCloy, Kelly Rauscher, Randie (Renner) Baumann, Roy Garrard, Rosalinda Vela, Tim Kizzar, Alice Miller, Michael Burke, Doug Gumfory, Tavo Borunda, Jorge Soto, Carla Jones, Debbie Clement, Andy Lindsey, Reid Wilson, J.J. Gallegos

Anniversary - Mr. and Mrs. Benny Wilson

March 23

Birthdays - Tanner Irwin, Mercedes Perez, Dwayne TeBeest, Annie Houghton, Jamie Sterling, Beth Ann Flowers, Angela Craig, Teresa Russell, Marvin G. Wilson, Christopher Turner, Ramon Garcia Jr., Bernice Flores, Jason Evans, Carter Strawn, Wilbur Hull

Anniversary - Mr. and Mrs. Tony Cazares

March 24

Birthdays - Dillion Payne, Marie Bell, Mike Floyd, Charles Haight, Frank Sursa, Lesa Deakin, Karie Coates, Patricia Pool, Lera Deakin, Jeri Diane Sterling, Chandra Lee, Carla James, Rebecca Garza, Corry Haight, Ruth Bryan, Beth Phelps

Anniversary - Mr. and Mrs. Mike Babbs, Mr. and Mrs. John Smith, Mr. and Mrs. Greg Breland, Mr. and Mrs. Blair Traham

March 25

Birthdays - Rosalie Grotogut, Scott Jarvis, Jason Ward, Nellie Albrect, Oscar Rojas Jr., Kendra Kay Burke, Mike Dixon, Donna Brogdo, Jean Schaffer, Michael Covington, Joe Baca, Amy Bridges, Chad Howe, Mario Soto, LuAnn Hunter

Anniversary - M/M Josh Reed

March 26

Birthdays - Keith Dillard, Jamie Smith, George Jackson, Tanda Taylor, James Brown, Judy Irlbeck, Greg Holladay, Ruth Baker, John Paul Molina, Danny Bass, Joann Reynolds, Kristi Ann Balderrama, Sabrina Cantu, Joanna Myers

Anniversary - Mr. and Mrs. Andy Riley, M/M Jimmy Morley

March 27

Birthdays - Tommy Boone, Diana Stork, Carol Scroggs, Ylanda DeLuna, Bill Stevens, Wanda Wagner, Anthony Wilkerson, Clark Dunaway, Gary Urban, Debbie Herrington, Michael McCamey, J.D. Schick

Anniversary - Steve and Debbie Rogers, Mr. and Mrs. Louis Schnell, Mr. and Mrs. Harold Boyd

March 28

Birthdays - Ryan Renteria, Roma Tomlinson, Janet Cudd, Mandi Lair, Ray Hawkins, Jarrett Hendricks, Ross Jarvis, Byrnice Callaway, Rick Riggins, Carlos Castillo, Janet Scarborough, Mickey Schoenhals, Mark Hodges, Verna Strawn, Colten King, Tyrell King

Anniversary - M/M Larry Clawson, M/M Howard Hefley, M/M Jerry Tipps, M/M Richard Carter

March 29

Birthdays - Lacy Barkley, Dixie Karlin, Joshua Kirby, Jessica Stork, Josephine Salgado, Scott Beedy, Melissa Taylor, Wanda Burke, Tiki Farrar, Chad Guthrie, David West, Marg Cook, Janis Maupin, Josh Harris, Jeann Thompson, Scot Martin, Ruth Shields, Ramon Garcia Jr., Greyson Karlin

March 30

Birthdays - Jesus Favela, Loni Lamb, Vi Hornsby, Mrs. Elmer Longley, Nikki Strawn, Grady Cline, Denae Baker, Jimmy Blan, Heather Cline, Krystal Burkhammer, Shane Atwood, Mike Schick, Marvin Sparks, Dorothy Longley

Anniversary - M/M Ruben De Santiago

MONUMENTS

Boxwell Brothers

Funeral Home

519 Evans • Spearman
659-3802

Dear friends,
When you buy a monument from us we make sure it is exactly what you want at a price you can afford. If it is not right, we will make it right. And you will not have to search the countryside to find us. We are here when you have a need.

Sincerely,
Bob Boxwell

Replenish the seed of faith through . . .

DAILY BIBLE READING, PRAYER & REGULAR CHURCH ATTENDANCE

<p>Spearman</p> <p>Apostolic Faith Church 822 S. Dressen • 659-2870 Sunday School: 10 a.m. Worship Service: 11 a.m. Sun. Eve.: 6 p.m. Wed. Prayer Mtg.: 7 p.m. Pastor - Roland Haney</p> <p>First Assembly of God 401 N. Bernice • 659-2295 Sunday School: 9:30 a.m. Worship: 10:35 a.m. Kid's Church: 10:35 a.m. Evening Worship: 6 p.m. Wed. Worship: 7 p.m. Wed. Youth: 7 p.m. Pastor - Bob Elder</p> <p>First Christian Church (Disciples of Christ) 29 S. Bernice • 659-2036 Sunday School: 9:45 a.m. Worship: 10:50 a.m. Minister -</p> <p>First Baptist Church 123 N. Bernice • 659-5557 Sunday School: 9:45 a.m. Worship: 11 a.m. Evening Worship: 7 p.m. Men's Bible Study - Wed., 7 a.m. Children's Choir - Wed., 6 p.m. Adult Choir - Wed., 7 p.m. Wed. Bible Study: 7 p.m. Pastor - Jim Medley</p> <p>Church of Christ 121 S. Haney • 659-3244 Sunday Bible Class: 9:45 a.m. Worship: 10:30 a.m. Evening Worship: 6 p.m. Bible Study Wed.: 7:30 p.m.</p>	<p>Sacred Heart Catholic Church 901 Roland • 659-2792 Sat. Night Mass: 5:30 p.m. Sun. Mass: 9 a.m. - English Sun. Mass: 11:30 - Spanish 1:30 p.m. - Gruver - Christo Renditor Mass - Spanish Rev. Guillermo Morales</p> <p>First United Methodist 407 S. Haney • 659-5503 Sunday School: 9:45 a.m. Worship: 8:30 & 11 a.m. Jr. High Youth: 5 p.m. Sunday High School: 6 p.m. Sunday Kids Club: 3 p.m. Wed. Pastor - Neely Landrum</p> <p>Grace Presbyterian Church (Worships with Faith Lutheran Church) 1101 Bernice • 659-2033 Pastor - Beverly Cook</p> <p>Faith Lutheran Church (ELCA) 1101 Bernice • 659-2252 Sunday School: 9:45 a.m. Worship: 11 a.m. (Worships with Grace Presbyterian Church) Pastor - Beverly Cook</p> <p>Union Church 31 S. Endicott • 659-2644 Sunday School: 9:45 a.m. Worship: 10:45 a.m. Evening Worship: 6 p.m. Bible Study: 7 p.m. Wed. Pastor - Dr. Timothy Minor</p> <p>Fellowship Baptist 1102 S. Archer • 659-2783 Sunday School: 10 a.m. Worship: 11 a.m. Sun. Evening Worship: 6 p.m. Youth/Adult Service: 7:30 Wed. Pastor - James Washburn</p>	<p>Primera Mision Bautista 502 E. 7th • 659-3991 Sunday School: 9:45 a.m. Worship: 11 a.m. Evening: 6 p.m. Wed. Prayer Meeting: 7 p.m. Sun. Visitation: 7 p.m. Pastor: Joe Garcia Jr.</p> <p>El Aposento Alto U.P.C.I. 1105 S. Roland Domingos: Escuela-Dominical - 10 a.m. Culto Evangelistico - 7 p.m. Jueves: Oracion - 8 p.m. Mier: Estudio Biblico - 7 p.m. Pastor - A.G. Martell (806) 659-2153</p>	<p>Gruver United Methodist Bradway & Garrett 733-2651 Sunday School: 9:45 a.m. Worship: 8:30 & 10:50 a.m. Eve. Worship & UMY: 6 p.m. Pastor - George Price</p> <p>Spanish Cristo Redentor Church Sunday Mass: 1:30 p.m. Friday Evening Mass Summer - 8:00 p.m. Fall/Winter - 7:30 p.m.</p>
--	---	---	--

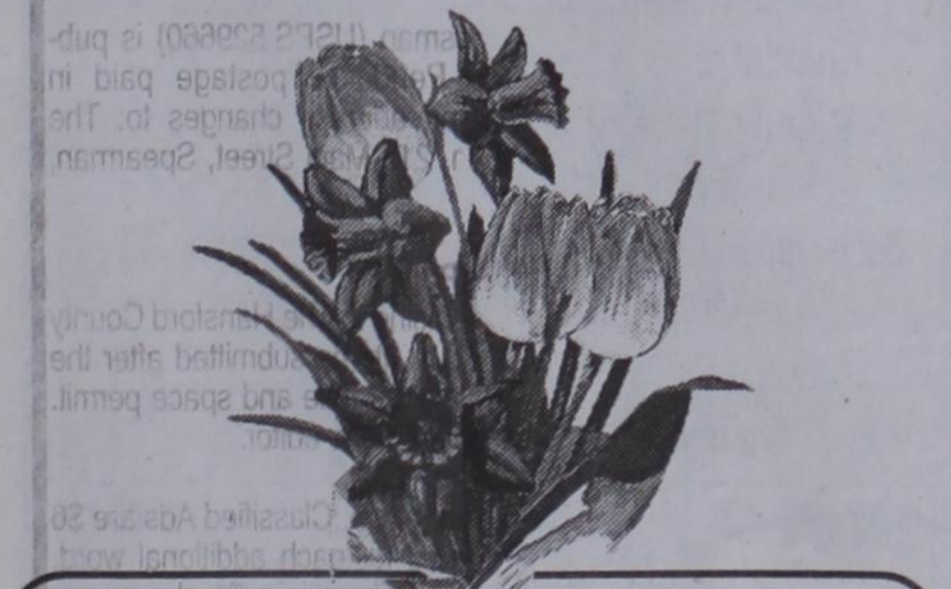
Oslo

Oslo Lutheran Church (ELCA)
6 Miles West & 12 Miles
North of Gruver
339-7646
Sunday School: 9:45 a.m.
Worship: 11 a.m.
Pastor - Arlen Lloyd

Morse

Morse Baptist Church
733-2577
Pastor - Mike Martin

He has showed you, O man, what is good. And what does the LORD require of you? To act justly and to love mercy and to walk humbly with your God. Micah 6:8



Come in early for the best selection of beautiful, fragrant lilies. Order a dramatic centerpiece or floral basket for your Easter. And don't forget to check out our plush Easter bunnies!

All Occasion Flowers
202 N. Bernice (across from the Post Office)
659-5180 • Spearman

Deakin

ELECTRIC

OILFIELD • RESIDENTIAL • COMMERCIAL
321 S. MAIN • SPEARMAN
1-800-999-1506 Chris Deakin
806) 659-5016 President

Bartlett's Lumber & Hardware

105 W. Broadway • Gruver, Texas
(806) 733-2404

BERRY CLEANERS

Ann & Vernon Pipkin - Owners
Phone 659-3122 • P.O. Box 1017
207 Main St. • Spearman, TX

Morse Implement & Auto Supply

"Join us in church this week"

Tom Dortch 733-2668
P.O. Box 89 • Morse, TX 79062

PRAIRIE MOTORS INC.

Hwy. 207 South • P.O. Box 430
Spearman, TX 79081 • (806) 659-2541
www.prairiemotors.com

Gruver Cablevision

308 Main
Gruver, TX 79040
733-5295

Hansford County Reporter-Statesman

"Proudly Serving Hansford County Since 1907"

(806) 659-3434
213 Main Street • Spearman, TX

Interstate Bank, ssb

322 Main • P.O. Box 146
Spearman, TX • 659-2559

HYI

FOR YOUR INFORMATION

You're Never Alone - Narcotics Anonymous Group
 Each year individuals struggling with drug and alcohol addiction make the resolution to quit using drugs. For many of them it is a resolution that they cannot keep. Narcotics Anonymous can help. Open meetings are held on Monday and Thursday nights from 8-9 p.m. at the First Christian Church (29 S. Bernice in Spearman) for the "You're Never Alone" group of Narcotics Anonymous. Anyone interested is invited to attend. Drug addiction can leave you feeling helpless and out of control - we can help.

Spearhead AA Group

The Spearhead AA Group meets every Tuesday at 8 p.m. in the Pittman-Shieldknight building. Alcoholics Anonymous is a fellowship of men and women who share their experience, strength and hope with each other that they may solve their common problem and help others to recover from alcoholism. The only requirement for membership is a desire to stop drinking. There are no dues or fees for AA membership; we are self-supporting through our own contributions. Our primary purpose is to stay sober and help other alcoholics to achieve sobriety. For more information, call 662-1111.

Panhandle Crisis Center Outreach Office

Panhandle Crisis Center (PCC) has an Outreach Office and Resale Store at 306 Hancock, in Spearman. In case of emergencies, please continue to call the hotline, 1-800-753-5308. To schedule an appointment with a worker in Hansford County, please call 659-3391 to leave a message, or call the hotline number above. Panhandle Crisis Center serves victims of domestic violence and sexual assault. Please call for more information regarding PCC's services. Hours for the Resale Store in Spearman are: Monday, Tuesday, Thursday & Friday from 10 a.m.-5 p.m.

Breast Cancer Screening Clinic

The Don and Sybil Harrington Cancer Center Comprehensive Breast Center will conduct a Breast Cancer Screening Clinic at Hansford County Hospital, 707 S. Roland, in Spearman on March 26, 2007. Breast cancer affects one in eight women. The key to winning the battle against cancer is early detection by having an annual breast exam, mammogram and performing a breast self-exam each month. Funding is available through the Texas Department of Health for Texas residents who qualify for assistance. All exams are done by appointment only. Call (806) 356-1905 or 1-800-377-4673 for more information or to schedule an appointment.

Project Graduation

The parents of the Spearman High School Senior Class of 2007 will sponsor and host a "Project Graduation Party" following commencement exercises Friday, May 25th. Graduates will be provided with food, games, activities, and fun! In addition, to encourage the graduates to stay the entire night, door prizes are awarded throughout the evening. The graduation party will culminate with the distribution of grand prizes. Prizes, gift certificates, and cash are needed for the evening's gifts. If you, the community, who supported and encouraged these seniors these past 13 years of school, would be willing to share in the final "Class of 2007" memory, making this project special, please contact Teresa Maestas, 659-1025, or Lynna Renner, 659-3587. Contributions can be mailed to: Teresa Maestas, PO Box 337, Spearman, TX. 79081. Thank you, in advance, for your support.

Blood Drive

The Coffee Memorial Blood Center is hosting a blood drive in Spearman on Monday, March 19th, from 1-7 p.m. at The O'Loughlin Center, 502 S. Brandt. Every donor who presents to donate will receive a T-shirt and a stress basketball. In addition, they will be entered into a drawing to win a 42" flat screen TV. (Drawing will be March 31st.) To schedule an appointment, call 1-877-574-8800.

Gruver College Fund

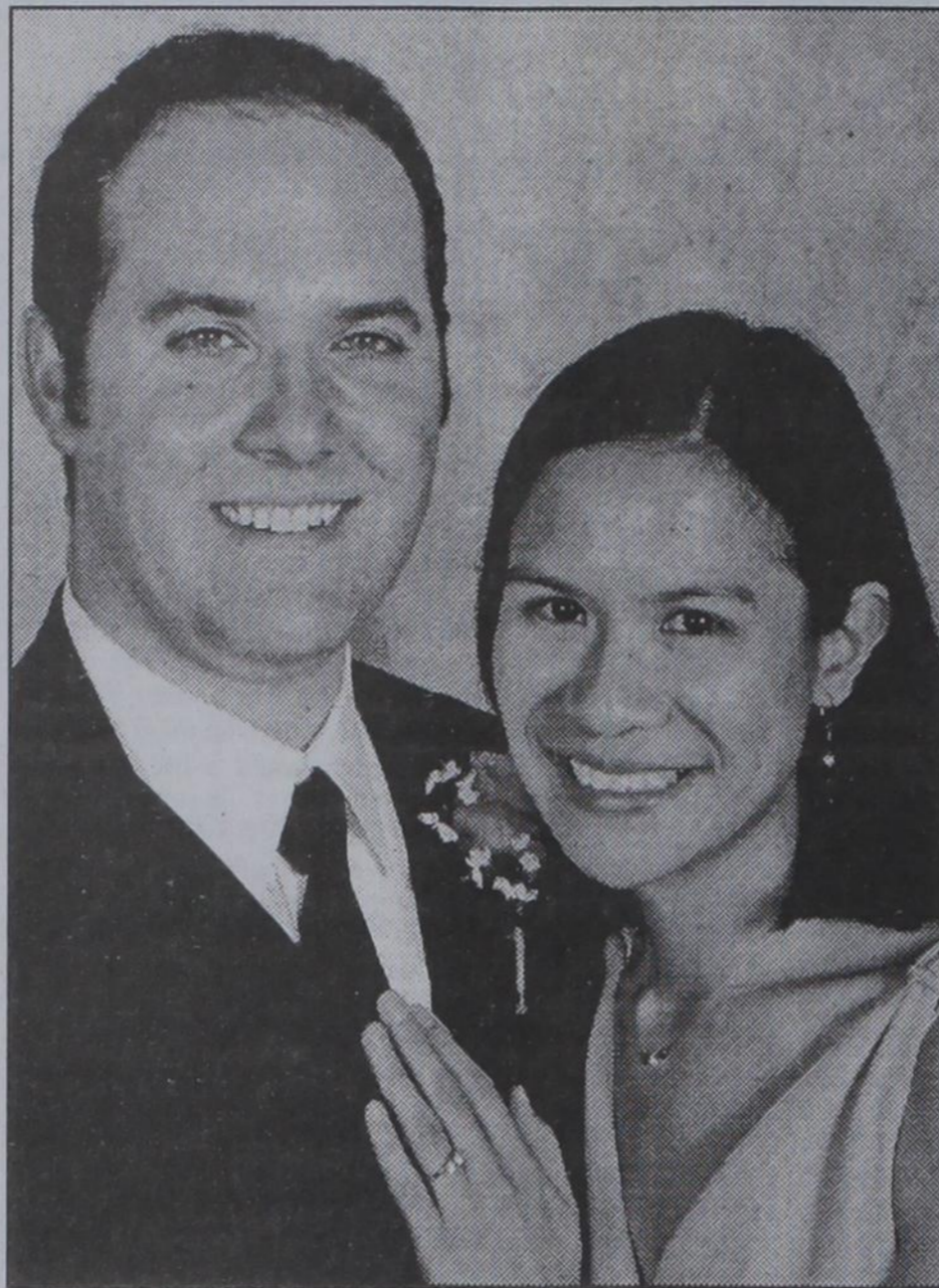
The Gruver Lion's Club is in charge of the Gruver College Fund, which raises money for scholarships for Gruver graduates. The gifts are tax-deductible and no amount is turned away. The committee will try to contact every potential donor by phone, but some will be missed. So don't wait if you would like to make a contribution send your check today to: Gruver Lion's Club, PO Box 566, Gruver, Texas 79040 or see one of the committee members: Benny Wilson, Terry Sherrill, Kermit McKee or Bob Gillispie.

Knights of Columbus Annual Fish Fry

The Spearman Council of the Knights of Columbus (#5552) will host their annual fish fry on Friday, March 23 from 6-8 p.m. at the Sacred Heart Parish Hall, 905 S. Roland, in Spearman. Plates will be \$6 each, with no charge for children under 9. Carry-outs will be available.

Hansford County Library Spring Sale

The sun is out, the snow is gone, and the temperature is rising, so naturally it's spring cleaning time. To celebrate, the Hansford County Library staff has begun to clean the store room and is eager to share its many valuable finds with the public. For an indefinite time, paperback grab bags and individual surplus hardback books will be on sale at the library. Grab bags, sorted into Romance, Fiction and Western categories, are on sale for \$5 each. Each grab bag contains approximately 20 books. Hardback books are priced at \$1 each. Plan now for vacation reading time, or for a quick escape from outdoor chores. Come by soon for the best selections.



Engagement Announcement

Ruel and Teresita Apacible of Corpus Christi, Texas wish to announce the engagement of their daughter, Rowena May, to Dustin Wade Parks of Austin. Dustin is the son of Wade and Rosemary Parks of Morse.

Rowena is the granddaughter of Esperidiona Apacible and the late Dominador of Panorama, California and the late Bernardo and Isabel Oserraos. Dustin is the grandson of the late H.B. and LaVerne Parks and the late Gerald S. and Grace M. OBrennan.

The couple plan a June 8, 2007 wedding at the St. Patrick Catholic Church in Corpus Christi.

Rowena is a 2002 graduate of the University of Texas in Austin, with a B.A. in math. She is an assistant editor at Options Publishing in Austin.

Dustin is a 2001 graduate of the University of Texas with a B.A. in Theatre Arts. He completed one year of post-graduate work at Catholic Seminary in Dallas and has a Texas Teaching Certificate in Drama. He is currently a religion and communication teacher at St. Teresa School in Austin.

A reception will be held following the ceremony at the Congressman Solomon P. Ortiz International Center.

The couple will honeymoon in Rome and Assisi, Italy.



Engagement Announcement

Mike and Carla Johnson of Morse announce the engagement of their daughter, Julie Gumfory, to Greg Sherrrod. Julie is also the daughter of the late Tommy Gumfory.

Greg is the son of Ronnie and Billye Sue Sherrrod of Hale Center. The wedding will take place on Saturday, April 21st at Creekhaven Inn in Wimberley, Texas.

Julie is a 1997 graduate of Gruver High School, a 2001 graduate of Texas Tech University and a 2005 graduate of Wayland Baptist University. Greg is a 1991 graduate of Hale Center High School and a 2000 graduate of Texas Tech University.

Blood Drive

A Blood Drive was held in Gruver on Tuesday, March 13th. A total of 32 people were seen, with 22 units of blood drawn.

A Blood Drive was held in Spearman on Monday, March 19th. A total of 41 people were seen, with 33 units of blood drawn.

The Coffee Memorial Blood Center and the patients of the High Plains Region would like to thank everyone for their support. Give the Gift of Life!

You are invited to a Bridal Shower honoring Brooke Trantham

bride-elect of Jesse Allen
 on Saturday, March 31, 2007
 from 10:00-11:30 a.m.
 in the home of Stephanie Brock
 901 Barkley Spearman

You are invited to a
Baby Shower
 honoring
Alexis Crum
 daughter of Jill (Clement) & Steve Crum
 on Saturday, March 24, 2007
 from 2:30-4:00 p.m.
 in the home of Kristina Howell
 620 Endicott Spearman

You are invited to a
Bridal Shower
 honoring
Staci Leonhard
 bride-elect of Lee Jarvis
 on Saturday, March 24, 2007
 from 2:00-3:30 p.m.
 in the home of Jon & Johnette Jarvis
 9207 County Road E, south of Spearman
 (Call Mary or Carol at First Baptist Church,
 659-5557 for directions)

give spring.

teleflora's crazy for daisies bouquet

What could be more charming than a big bunch of cheerful white daisies, presented in a green glass vase with hand-painted daisies? It's simple and sweet, and will make someone's week. For nationwide same-day delivery, call or visit our shop.

Easter is Sunday, April 8

Prairie Garden Flowers

209 Main Street • Spearman, TX
 659-2212 • 659-3329

teleflora

Celebrate

Gifts for all your celebrations!

Bridal Registry

Shower Dates

Staci Leonhard & Lee Jarvis - 3/24
 Julie Gumfory & Greg Sherrrod - 3/24
 Lynsee Williams & Ross Womble - 3/24
 Brooke Trantham & Jesse Allen - 3/31
 Rowena Apacible & Dustin Parks - 3/31
 Jenni Beck & Josh Winegarner - 4/28
 Mindee Gillaspie & Trampus Woodward - 4/28
 Brooke Salmans & Michael Condry - 4/28
 Janae Watley & Kyle Igo - 5/15
 Kristi Carbajal & David Valdez - 5/26
 Daniele Catron & Randy Duffy - 6/9

Allison Haney & Matt Rodgers - TBA
 Charlotte Proctor & Tim Bynum - TBA
 Wendy Woolley & Daniel James - TBA
 Jennifer Watts & Jay Tracy - TBA
 Bethany Harris & Nicholas Peterson - TBA
 Kara (Pipkin) & Jon Taylor
 Reagan (Davis) & Mickey Schoenhals
 Shelby (Phillips) & Dusty Vinson

Baby Registry

Jill (Clement) & Steve Crum - 3/24
 Jonna & Doug Gumfory - 3/24
 Robin & Jake McCullough - 3/31

Celebrate

203 Main St. Spearman, TX
 (806) 659-3350 1-800-663-8026

Gordon's DRUG

Your place for

Bridal Registry

Couples Currently Registered

Shelby Phillips & Dusty Vinson - 3/10
 Staci Leonhard & Lee Jarvis - 5/24
 Brooke Trantham & Jesse Allen - 3/31
 Rowena May Apacible & Dustin Wade Parks - 3/31
 Janae Watley & Kyle Igo - 5/15
 Kristi Carbajal & David Valdez - 5/26
 Daniele Catron & Randy Duffy - TBA
 Julie Gumfory & Gregory Sherrrod - TBA
 Charolotte Procter & Tim Bynum
 Wendy Woolley & Daniel James
 Allison Haney & Matt Rodgers
 Reagan Davis & Mickey Schoenhals
 Kara (Pipkin) & Jonathan Taylor
 Dottie (Rickman) & Teddie Whitefield

Baby Registry

Doug & Jonna Gumfory - 3/24
 Steve & Jill Crum - 3/24

659-2141
 314 Main Spearman

Gordon's DRUG

Words from Faith & Grace

by Cecil R. Biggers, Lutheran Lay Minister

We continue to reflect on our lives and need for repentance in the fifth week of Lent as we study Isaiah 43:16-21, Psalm 126, Philippians 3:4-14, and John 12:1-11. Isaiah is portraying the return from Exile as a new "exodus", filled with hope and joy. God's liberation of Israel is accompanied by revival and renewal. God is always leading us forth to new paths and for some of us this is disconcerting. We are not in control, we cannot predict. Our Christian life is one which involves a struggle to "know" and worship God as the One who is gracious. The Psalmist sings of the joy of the restored Israel.

Paul is answering those who would return to the requirements of the law that he was born a Jew, that both his parents were Jewish, that he is a descendent of Jacob (Israel), that he was a Pharisee, that he was zealous for God to the extent he persecuted the early church, that he was blameless under the law for sins of omission. Yet, Paul did not find a right relationship with God through his heritage or through the law. Paul found righteousness, a right relationship with God, through grace and faith in Jesus Christ. For Paul the resurrection of Jesus is not merely an event, it is a dynamic enabling power. Paul speaks to those who believe that once they are Christian they do not have to worry about how they live by noting that the Christian life is a race in which the Christian, like an athlete, must press on toward the goal.

Jesus is staying at Bethany (2 1/2 miles from Jerusalem) as Passover approaches. He is a dinner guest at the home of Lazarus. Martha, Lazarus' sister, is serving the guests, her sister is at Jesus' feet. Mary takes a costly perfume and anoints Jesus' feet, wiping the excess with her hair. We are told that the value of the perfume was 300 denarii (a year's wage for a working man). Judas criticizes this "waste" of a valuable asset for the poor. Jesus praises Mary's love and says that she has bought it so that she would have it for His burial. This story shows us the character of Mary's extravagant love. Of all the disciples, Mary may have understood more clearly that Jesus was going to die in Jerusalem. She gives up a precious possession without hesitation. She does not presume to anoint Jesus' head, but anoints his feet. She expresses her love without concern for the thoughts of others, a Jewish woman did not appear in front of men with her hair undone, Mary wipes Jesus' feet with her hair. Consider dear Christian, if one you love is dying do you not apply a cool cloth, adjust their clothing, touch them, be there for them? Dear Christian do you love Jesus enough to give up your precious possession, to give up your pride and dignity?

May the Holy Spirit enable you through grace and faith to possess an extravagant love for Jesus Christ.

Out At The Lake

by Dorothy Hudson



Lake Level--March 19, 2007--20.75 feet (-0.17)

Today Jim shared an unusual experience that he had a week ago Sunday when we were having foggy mornings. He had gone to Spearman early to buy the Sunday paper. On his way back to the Lake, he was running in and out of fog, when he came on a set of cattle on wheat pasture. They were standing in a ground hugging fog that only came half way up on their bodies. Then next he found a herd of deer in a pasture also wading belly deep in the fog.

With the spring like weather this week, activity has picked up at the Lake. He even saw two boats on the water. The boaters are launching their boats from a caliche bank down from the shop on the north side. A 4 wheel drive vehicle is needed.

Getting a big blue catfish is still eluding the fishermen, although they are catching smaller ones.

One man, who was fishing from the bank for catfish, caught a 5 or 6 pound bass to his surprise.

The eagles have gone. The turkey vultures, better known as buzzards, are listed as arriving on March 10, but Jim said he still had not seen them. The turkeys have not worked up to the park either.

Jim enjoyed the Scouts from Hooker this weekend. On the weekend of March 24th a number of Scout groups are to gather for the annual clean up of the Park area. Their work is really appreciated.

Some of you may remember John Seamers who worked at building the dam several years ago. John, retired and now living at Longview, stopped for a visit as he returned from a trip to Colorado. He had spent 40 years in dam construction and told Jim our dam had been his favorite one. His reason was that the people were all so nice.

SHS Track

Wildcat Relays at Canadian

Team totals: 1. Canadian 124. 2. Perryton 107. 3. Sunray 100. 4. Pampa 90. 5. River Road 50. 6. Clarendon 39. 7. Samnorwood 31. 8. White Deer 28. 9. Wheeler 31. 10. Panhandle 20. 11. Friona 6. 12. Spearman
1600: 5. Jesus Mendoza, Spearman, 5:17.59.
3200: 6. Jesus Mendoza, Spearman, 11:48.53

Ladycat Relays at Canadian

Team: 1. Sunray 120. 2. White Deer 95. 3. Perryton 93. 4. Spearman 86. 5. River Road 78. 6. Canadian 43. 7. Clarendon 36. 8. Lefors 25. 9. Wheeler 6. 10. Samnorwood 2.
100: 2. Bond Pittman, Spearman, 13.34.
800: 4. Tara Shields, Spearman, 2:41.72. 5. Jessica Diaz, Spearman, 2:44.60
800 relay: 5. Spearman 1:57.05
1600 relay: 6. Spearman 4:48.32
100 hurdles: 3. Kylee Howard, Spearman, 17.56
300 hurdles: 1. Bond Pittman, Spearman, 5:10.3
Long jump: 2. Kylee Howard, Spearman, 15-0; 5. Bond Pittman, Spearman, 14-3 3/4
Discus: 1. Jordanna Lozano, Spearman, 105-4
Triple jump: 2. Kylee Howard, Spearman, 31-11 1/4
Pole vault: 1. Christy Lang, Spearman, 8-6. 2. Bond Pittman, Spearman, 8-6. 4. Jessica Diaz, Spearman, 7-6



Steve and Jill Crum of Amarillo wish to announce the birth of their daughter, Alexis DeAnn. Alexis was born on February 23, 2007 at 5:30 a.m. in Amarillo. She weighed 7 pounds, 15 ounces and was 19 inches long.

Paternal grandparents are Terry and Linda Crum of Amarillo. Maternal grandparents Joe and Debbie Clement of Spearman.

Great-grandparents are Joe and June Crum of Perryton, Idotha Poling of Amarillo, Willie Clement of Spearman and Curley and Ann Boyd of Comanche.

PUBLIC NOTICE

BRIEF EXPLANATORY STATEMENT
CONSTITUTIONAL AMENDMENT
SPECIAL ELECTION MAY 12, 2007

PROPOSITION 1 (SJR 13)

SJR 13 would amend the Constitution to authorize the legislature to adjust the public school ad valorem tax or tax rates for taxpayers who are aged 65 or older, or are disabled, and who are owners of an exempted homestead. The amendment would thereby allow the legislature to provide tax relief to such elderly or disabled taxpayers who did not receive tax relief as a result of the school tax rate reduction passed in the 79th Legislature, 3rd called session.

The proposed amendment will appear on the ballot as follows: "The constitutional amendment authorizing the legislature to provide for a reduction of the limitation on the total amount of ad valorem taxes that may be imposed for public school purposes on the residence homesteads of the elderly or disabled to reflect any reduction in the rate of those taxes for the 2006 and 2007 tax years."

Published by Secretary of State Roger Williams.

Secure Network ~ PTCI ~ Protection from Intruders ~ PTCI ~ Secure Network

Safely share your wireless Internet connection throughout your home!

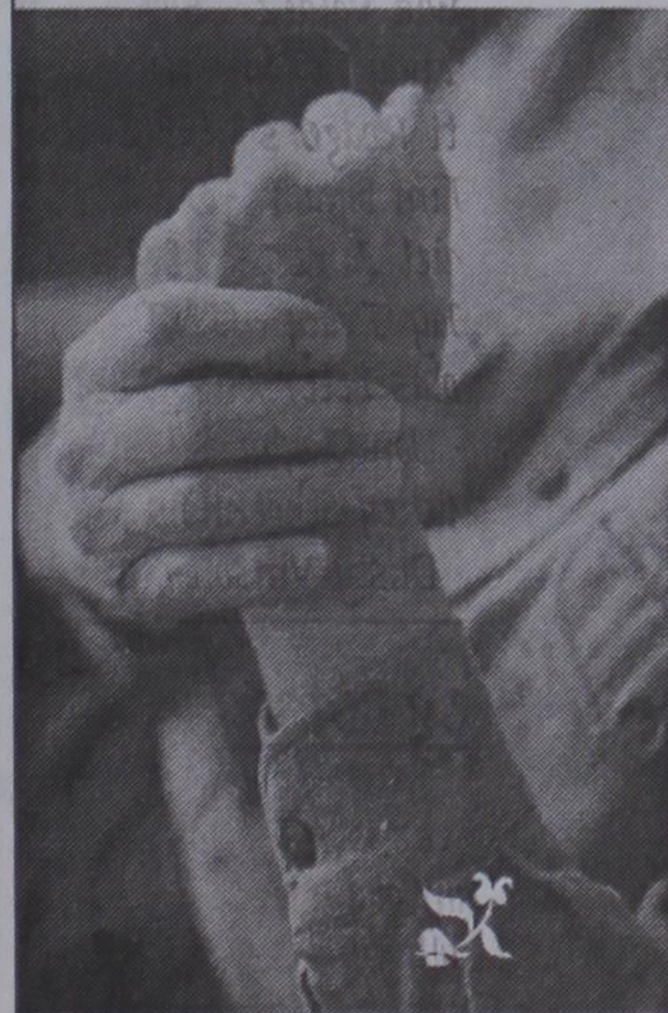
PTCI takes care of everything, including FREE installation.

721 W. 7th Spearman
1-800-562-2556
www.ptci.net

Bringing Your World...Home.

Some restrictions apply.

Not 1, not 4, not 7, not 11 but...



44 Nurses and aides trained with the most up-to-date knowledge and skills associated with Alzheimer's and dementia care -- are devoting their lives to care for your loved one at the Windflower.

Why have we invested in so many highly skilled caregivers to care for your loved one?

Because when the loved one is your Mother, your Father, your husband, your wife -- you want them to be safe, secure and surrounded by people who understand that dignity and love should never be forgotten.

Dementia and Alzheimer's doesn't mean that quality of life ends. It begins again at the Windflower.

Windflower
Nursing Center
352.7244
5500 W. 9th Ave.

A Division of the Craig Methodist Retirement Community
A faith-based community

Thank you for your business!

Best prices in town!

oil change
brake job
minor repairs
tune-up
transmission work
clutch work
all car models
FREE ESTIMATES

JIM'S Speedy Lube



Hwy. 15 West
Spearman
659-2323

SHS Tennis

The Spearman Tennis Team competed in the Floydada Tennis Tournament in Plainview on Saturday, March 17th.

Following are the results.
Girls Doubles: *Destiny Fisher & Ashley Close* lost to Terrell-Rainwater (Floydada) 6-0, 6-0 and lost to Hicks-Kerfoot (Panhandle) 8-4

Boys Singles: *Gabriel Moreno* lost to Brandon Rainwater (Floydada) 6-0, 6-0 and lost to Chance (Panhandle) 8-6

Mixed Doubles: *Brooke Barton and T.J. Worley* defeated Huseman-Wilhelm (Nazareth) 7-5, 6-3 and lost to Gerber-Hockstein (Memphis) 6-2, 6-1

The Spearman Tennis Team competed in the Panhandle Tennis Tournament in Panhandle on Monday, March 19th.

Following are the results.

Girls Doubles: *Kelcee Rex & Kendall Schneider* defeated Young-Burns (Canadian) 8-4 and lost to Brittner-Holcomb (Childress) 8-0; *Destiny Fisher & Ashley Close* lost to Rodriguez-King (Panhandle) 8-1, defeated King-Hopkins (Groom) 8-4 and lost to Branc McArty (Borger) 9-7

Boys Singles: *Gabriel Moreno* lost to Young (Panhandle) 8-2 and lost to Barkley (Groom) 8-0

Girls Singles: *Sara Barnes*

defeated Powers (Panhandle) 8-1 and lost to Meadows (Ft. Elliott) 8-1

Mixed Doubles: *Brooke Barton & T.J. Worley* defeated Tomkins-Reagan (Panhandle) 9-7 and lost to Baumgardner-Langford (Wellington) 8-5; *Brittney Bradley & Blaine Barton* lost to Garland-Reeves (Perryton) 8-3, defeated Clugy-Brorman (Dalhart) 8-5 and

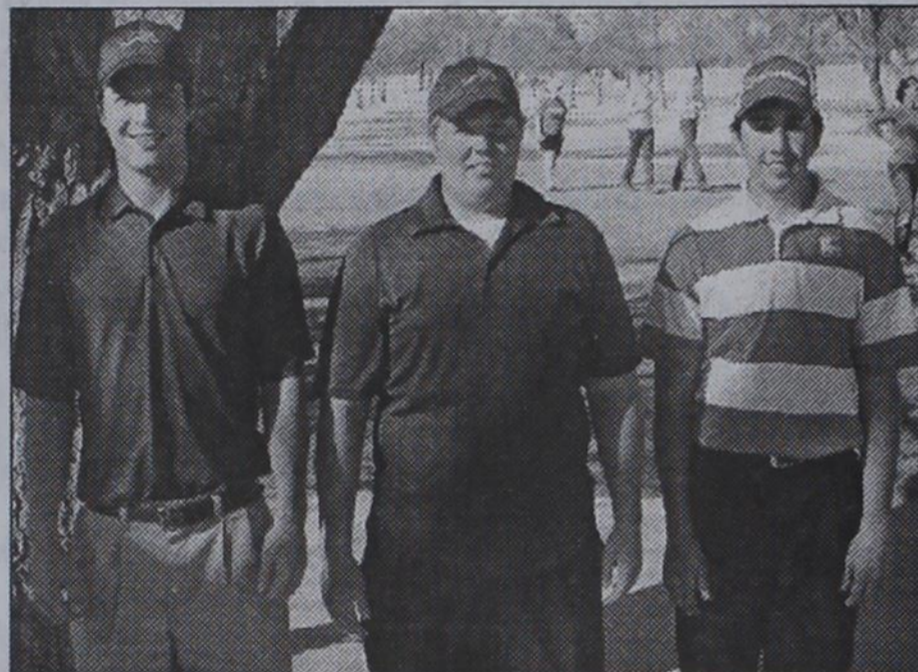
lost to Kreis-Dorris (Canadian) 8-1; *Saylee Flowers & Brynn Garnett* defeated Miner-McCloy (Gruver) 8-0, defeated Baumgardner-Langford (Wellington) 8-3 and lost to Ashley-Fletcher (Canadian) 6-2, 5-7, 6-3

The Spearman Tennis Teams will host the Spearman Tennis Tournament on Monday, March 26th.

The Spearman JV will compete against Perryton and Canadian in Perryton on Thursday, March 22nd.



TEAM TITLE! - Claiming the team title at the Booker Golf Tournament Tuesday afternoon were the Spearman Lynx, who turned in a score of 312 to win the event. Pictured here (from left) and their scores are Tyler Harper - 93, Collin Gillaspie - 83, Rhett Renner - 77, Jordan Ashmore - 83, and Stuart Martin - 69.



BOYS MEDALISTS! - The Spearman Lynx not only won the team title at this week's Booker Golf Tournament, but also took the top two spots in the medalist competition. Medalists pictured here are (from left) Stuart Martin, who took the top spot with a 69; Rhett Renner, who had a 77; and Derek Manross of Perryton, who finished with a 78.

Photos courtesy of the Booker News

HANSFORD COUNTY HOSPITAL DISTRICT proudly presents the Employees of the Month



July 2006 - Deatta Sparks
 DEATTA SPARKS, CNA, was named Employee of the Month for July 2006.

Deatta Sparks has been the Hospice CNA since March 31, 2000. Prior to that she had worked several years as a Manor CNA. Deatta is known for her special smile for her patients, and the patients and their families grow to love her quickly.

August 2006 - Olivis Lopez

OLIVIA LOPEZ, was named Employee of the Month for August 2006.

Olivia Lopez, who has worked in Hospital Housekeeping since November 1, 2002, was nominated for this honor by one of her coworkers. "Olivia enjoys being a District employee and loves the patients, residents, and working with the other employees. She has a positive attitude and does not complain. Ms. Lopez takes pride in keeping our Hospital clean and sanitary. Olivia has difficulty with speaking English, but she has a goal to be able to communicate more effectively. We find Olivia cooperative and happy to bring food to District functions -- many request her cream of chicken casserole!"



September 2006 - Jan Ellsworth

JAN ELLSWORTH, RN, was named Employee of the Month for September 2006.

Jan Ellsworth, R.N. at Hansford Manor, has worked for HCHD since December 27, 2001. She is very loyal to the District and to the Manor Residents. Jan is known for finding the way to a good solution in bad circumstances; she is so devoted to her duties that she has taken it on herself to initiate the acquisition of a motorized wheelchair for a needy resident. Jan is known for being helpful to visitors and staff members and is a front-line helper when it's time to volunteer.



Hansford County Hospital District

707 S. Roland • (806) 659-2535 • Spearman, TX

HANSFORD COUNTY HOSPITAL DISTRICT proudly presents the Employees of the Month



October 2006 - Mitzhi Mires & Carla Willimon

MITZI MIRES AND CARLA WILLIMON share the honor of Employee of the Month for October 2006.

Mitzi Mires has been employed by the Physical Therapy Department as a Physical Therapy Assistant since June 22, 1992. She is proud and supportive of the District. Mitzi comes to work with a positive attitude and she delivers quality care to patients. Ms. Mires is professional in her behavior toward everyone.

Carla Willimon MT (ASCP)

has worked in HCHD's Laboratory since September 7, 2005. She is known to be loyal to both the District and her patients. Carla is smiling and professional at all hours of the day, making certain her patients are comfortable with the procedures. She is especially great with children and speaks to everyone she meets.

November 2006 Laurel Lane & Gina Biggers

Laurel Lane & Gina Biggers share the honor of Employee of the Month for November 2006.

Laurel Lane has been employed as a CNA at Hansford Manor since April 25, 2005. She loves her job and is willing to come in when she's called and offers to work overtime. Laurel is interested in doing anything she can to help improve the environment of care at the Manor. She offers to help train new students -- she's so patient and thorough with them. Thank you, Laurel!

Gina Biggers is an R.N. at the Hospital and has worked for HCHD since May 9, 2000. Gina is dependable and can be counted on to come to work with a smile on her face when she's scheduled. She has a great sense of humor, provides excellent patient care, and is willing to help co-workers and ancillary department staff. Thank you, Gina, for taking care of the night shift for us!



December 2006 - Janice Gerard

JANICE GARRARD is Employee of the Month for December 2006.

Janice is known for her friendly smile and loyalty to the District and coworkers. We never hear her complain about anyone or any task that is asked of her. Janice has worked hard to learn the DME billing process and regulations. She is always willing to call Medicare if we have a question or concern. We appreciate her courteous attitude and participation in District functions.

Other nominees during 2006 include: Kenda Boyd, Linda Dodson, Hope Lopez, Jannia Mobley, Sam Morrow, Rosa Ortiz, Rita Vasquez, Tanja Whitefield



Hansford County Hospital District

707 S. Roland • (806) 659-2535 • Spearman, TX

FYI

Spearman Little League

The Spearman Little League will hold registration on March 22nd and 23rd at 6:30 p.m. at Simple Simon's in Spearman. Registration will be for children ages 6-15 who are interested in playing T-ball, baseball and softball. For more information, call Sharon Swan at 659-1734 or Sandy White at 898-4601.

Adobe Walls Cotton Meeting

Adobe Walls will hold a cotton meeting on March 30, 2007 in the Morse Community Building. 3 CEU's will be given. Registration will be held 8:30-9 a.m. A welcome and overview will be given by Tom Benton, CEA-AG, of Hutchinson County. The schedule is as follows: 9-9:45 a.m. - Cotton Insects and BT Cotton, Carl Patrick, Entomologist, Texas Cooperative Extension; 9:45-10:30 a.m. - Cotton Irrigation Management, Leon New, Irrigation Specialist, Texas Cooperative Extension; 10:30-10:45 a.m. - Break; 10:45-11:30 a.m. - 2007 Cotton Production update, Randal Boman, Agronomist, Texas Cooperative Extension, Lubbock; 11:30-12 noon - Area Update, Gerald Key, Adobe Walls Gin Manager; 12 noon - Lunch.

AUCTION

FARM EQUIPMENT SCHUBERT FARMS INC

Lee Schubert - Phone 806-662-2999 Evening

Friday March 30, 2007 10:00 AM • Storm Date April 6

Location: Spearman, TX From Hansford Implement on Hwy 207 (South Edge Of Spearman), Go E 1/2 mi. On Co Rd W, Then S 1 mi

TRACTORS - COMBINE - GRAIN CART	SPRINKLERS	EQUIPMENT	3pt D'cker Filter
1985 CASE IH 2594, 300 hrs on OH, 4879 hrs Showing, 3 Pto's, SN 9839747	Note: Sprinklers are Located 2 mi S of Hansford Implement in Spearman, TX On Hwy 207, Sprinklers Sell Subject To Prior Sale	FLEX KING KM SX5 Saver, Pickers	3pt Lift w/Hyd Cyl
1984 IH 548E, 8237 hrs Showing, 3 Remotes, Water In Oil, SN 3280	2003 ZIMMATIC 5 Tower Sprinkler, Towable, 857', 1057 hrs, Drop Nozzles, Auto Reverse	CASE IH 486 27 Tandem Disc	Front End Loader For Small Ford Tractor
1983 IH 548E, 3 Remotes, Water In Oil, SN 2901	2002 ZIMMATIC 7 Tower Sprinkler, Towable, 1253', 5254 hrs, 2 Hi-Rise Towers, Drop Nozzles, Auto Reverse	KRAUSE 4950 27' Double Offset Disc	CONTINENTAL PHD, Undermount, 9' Auger
1964 JD 4020, LP, Syncro, 2 Remotes	2002 ZIMMATIC 7 Tower Sprinkler, Towable, 1253', 5254 hrs, 2 Hi-Rise Towers, Drop Nozzles, Auto Reverse	MILLER 20' offset Disc, 3 Bar	2 - EVERSMAN V - Ditchers, 1 Disassembled
1986 CASE IH 1880 Combine, 30' Platform, 3809 hrs, 162 hrs on Remain Eng, 53 hrs on Shaker Bushings, SN 44602	IRRIGATION	SUNFLOWER 9431 30' Minimum Till Drill, DD, 71/2", Fold Forward, 3pt Hookups	2 WH Pound Bale Buggy
A & L 650T Grain Cart	2 - CAT 3406 Engines	JD 7100 10R-30' Planter, Kinze Brun Meters, Starter Fertilizer Tank, Hyd Meters	1000 g Water Hauling Tank
TRUCKS - PICKUPS	IH 605 Engine, OH, Never Run	JD 7100 8R - 40' Planter, Kinze Brun Meters	11-12 Galvanized Gates
1995 White/GMC Truck Tractor, 400 Volvo Eng, 9 sp, Skeeper	FAIRBANKS MORSE Elec Motor, 200 hp	TYE 3 pt Drill, 28", DD, 8", Big Box	2 - Banding Stoves
1982 IH C09670 Truck Tractor, 400 Cummins, 3 sp	Pump Panel For 200 hp Motor	TYE 3 pt Drill, 22", Set 4R On Top - 60' Beds	Lot Old Crochets Posts
1976 CHEVY C65 4 1/2 T Grain Truck, 427 V8, 5 sp/2ap, TA, 22" Bar, 52" Sides, Hyd Drill FH Auger, Follower, 70,500 mi, Good Rubber	AMARILLO Gearhead, 225 hp, Twin Motor, 4:3	SASSER 21' Toolbar w/6 IH 185 Planters	SHOP
1999 DODGE 3/4 T 4WD Pickup, Ext Cab, Dst, Auto, LWB, 1:5.840 mi, Loaded	3 - AMARILLO Gearheads, 200 hp, 3.2 & 1:1	IH 7100 Deephole Drills, 27'	3 - Standing Rollaround Toolboxes
1998 DODGE 3/4 T 4WD Pickup, Ext Cab, Dst, Auto, LWB 207, 112 mi, Loaded	AMARILLO gearhead, 150 hp	DEMPESTER 21 Drills, 3 Section, Rubber Tire	CENTURY ACDC 250 amp Welder
1996 DODGE 3/4 T 4WD Pickup, Ext Cab, Dst, Auto, Flattened w/Hyd Bale Spears, 131,689 mi	20 - 30"X40" JTS Alum Pipe, Slide Gates	CALDWELL 4R-40" Shredder, DT	LINCOLN 200 amp Welder, Wisconsin V4 Hand Crank, Trailer Mounted
80's - 70's CHEVY 2 T Cab & Chassis, OH On Engine & Trans, Never Run	20 - 30"X40" JTS Alum Pipe, Screw & Butterfly Gates	JD Mod 27 15' Fall Shredder, DT, 1000 PTO	7' Band Saw
TRAILERS - SALVAGE TRAILER HOUSE	Lot 112" Alum Tubes	IH Mod 50 4R-40" Fall Shredder, DT, 1000 PTO	8 sp Drill Press
1994 NEVILLE 32' Steel Grain Trailer, 1000 bu, Slide Gate Hoppers, Rollover Tarp	Lot 6X10 & 8X12 Hydrants	JD 940 12 Land Leveler	Small Shop Press
24' GN Enclosed Car/Cargo Trailer, 3 Axle, Elec Fold Down Car Ramp, 7 Storage Over Tongue	Pipe Trailer	SHOPMADE 18' Land Leveler	Parts Washer
22' Utility Trailer, Steel Bed, Surge Brake, Dove Tail	380 - 8" Well Column Pipe, Scrap	CALDWELL 3 PT 8' Blade, 4 Way	Vise & Stand
10'X28' DONAHUE Trailer	Lot Tubing & Shifting, Scrap	CALDWELL 21' Toolbar, 3 Bar w/Chisels & Tire Harrows	Grinder & Stand
16' Shopmade Trailer, TA, Needs Repair	SPRAYER - NURSE TRAILER	CALDWELL 36" TOOLBAR, 2 Bar, w/9-40" Sweeps	Bit Sharpener & Stand
8' Trailer, SA	1997 PATRIOT Tyler XL 4 Wheel Sprayer, Dst, 72 Folding Boom, 700 g Tank, 3383 hrs, SN 7722679 KOI	ULLISTON Rolling Cultivator, Big Bar, Incomplete	Chop Saw & Table
Welding Trailer, SA	LARSON 6000 Versatrac Hicy Ropznick, Onan 6436 Gas Engines, 27' Boom, Wheels On 120"	HAMBY 21' Toolbar, 2 Bar w/Cultipacker	Shop Bin & Bots
2 - Shopmade Fuel Trailers, 300g Tanks, Pumps, TA	1500 g Nurse Tank, Pump & Mixer Mounted On 28' GN, TA Flatbed Trailer, Set Up & Trailer Othered Separately & Together	HAMBY 27' Toolbar, 3 Bar w/Pto/Reducer	Bob Berch
12'X56' Trailer House, Salvage		HAMBY 3pt 9 Shank V Ripper	Large Lot Hand Tools
		YETTER 28' 3PT Rotary Hoe, Needs Some Wheels	A Frame
		MARLESS Toolbar Carrier w/25' Coulter Caddy, 17 Coulters, 300 g Feri Tank	Motor Stand
		8R-30" Toolbar Cultivator w/4 Dikers	ONAN Generator, 2 cyl, Elec Start 110v
		TYE 8R-30" Toolbar, 3 Bar, Small Sweeps, NIS	1500 W Generator, LPG, Trailer Mounted, 112v
		2 - 6R-40" Bod Rollers	9' Table Saw
			10' Radial Arm Saw
			6 7/8" Joiner
			FUEL TANKS - FLATBED NON - CLASSIFIED
			2 - 1100 g Welded Surplus Diesel Tanks
			2 - Fuel Dispensers
			9' Flatbed for P/U
			Yamaha 175 & Suzuki 185 Dirt Bikes, Parts
			Propane Tanks - 82 & 130 g
			300 g Propane Tank, 2 WH Mounted
			Large Lot Scrap Pipe & Iron
			100' - 8" X 12' Galvanized Channel Iron
			42" TV Tower, 3 Leg
			9 - HDV 2 Drawer Filing Cabinets, Ball Bearing Tacks

TERMS AND CONDITIONS: Cash, Cashier's check, Personal or Company Check with proper I.D. All descriptions of items in this sale are believed to be correct and have been conscientiously set forth by the OWNERS and DENZEL TEVIS AUCTION & REALTY, however, the description and condition as set forth on each item is IN NO WAY a warranty or guarantee, actual or implied. All purchases are made as is, where is based entirely on the personal inspection and/or opinion of the purchaser. This structure along with all printed matter regarding this sale, is merely a guide and subject to additions and/or deletions. All announcements at sale time will take precedence. If you have not established yourself with Auction Company, please bring bank letter. Auction Company acts as agents and agents only.

NOT RESPONSIBLE FOR ACCIDENTS

DENZEL TEVIS
 AUCTION & REALTY
 Auctioneer & Real Estate Broker

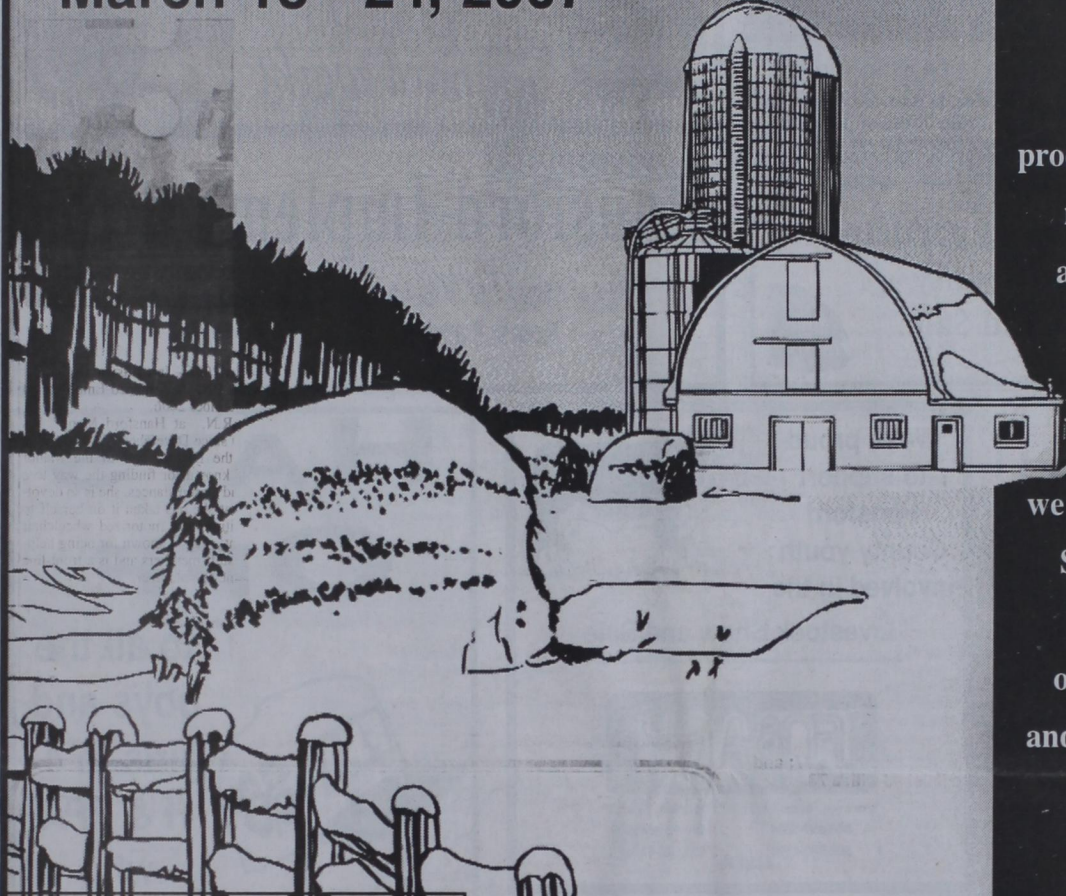


914 SW 9th
 Perryton, Texas 79070
 (806) 435-2788
 Cell (806) 202-0024
 TL-7498
 BKR - 0246841

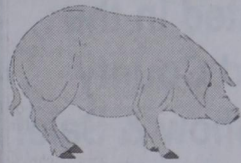
NATIONAL AG WEEK



March 18 - 24, 2007



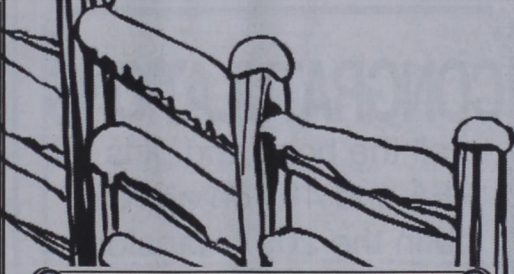
Family farmers and ranchers are the backbone of our community. Through summer's heat and winter's cold, they battle mother nature, high production costs, and depressed market prices to provide an abundance of the finest food and fiber in the world at reasonable costs to the consumer. With gratitude, we salute these "Soldiers of the Soil" for a job well done. We would also like to take this opportunity to also recognize and encourage the participants of the Hansford County Livestock Show & Sale.



Proud to support events like the Hansford County Livestock Show that promote strong family ties.

Celebrate

203 Main St. Spearman, TX
 (806) 659-3350 1-800-663-8026



We salute all the participants of the 2007 Hansford County Livestock Show

B&B Sales Co.

205 Dillon • 659-2662 • Spearman



We're proud to support

Hansford County youth involved in the Livestock Show and Sale

Palo Duro Supper Club

22 S Archer & Hwy. 15 • 659-2232 • Spearman

Phillips 66 Farm Lubricants

Changing the Way You Farm.

Simplify and reduce your maintenance inventory by taking advantage of Phillips 66 "universal" applications. Phillips 66 Super HD II multi-viscosity oil works in both gas and diesel applications - taking the worry out of using the wrong type. HG Tractor Fluid eliminates the need for multiple fluids - HG works in hydraulic systems, ball bearings, transmissions, differentials and front end axles and wet brakes.

You can feel confident using Super HD II and HG Fluids because they meet or exceed the warranty requirements of farm equipment manufacturers.



HG Tractor Fluid Super HD II MOTOR OIL

Available at:
 Golden Spread Sales Co.
 414 S. Hwy 207 • Spearman
 (806) 659-3776

Congratulations to all of the Hansford County 4-H and FFA members who participated in the Hansford County Livestock Show!



Gigot Agra Products, Inc.

"Committed to making things better in and out of the field."

Congratulations to all the exhibitors in the Hansford County Livestock Show & Sale.

Gigot Agra Products, Inc.
 506 Hwy. 207 South
 Spearman, Texas
 (806) 659-3121

Authorized Dealer



Performance. Period.

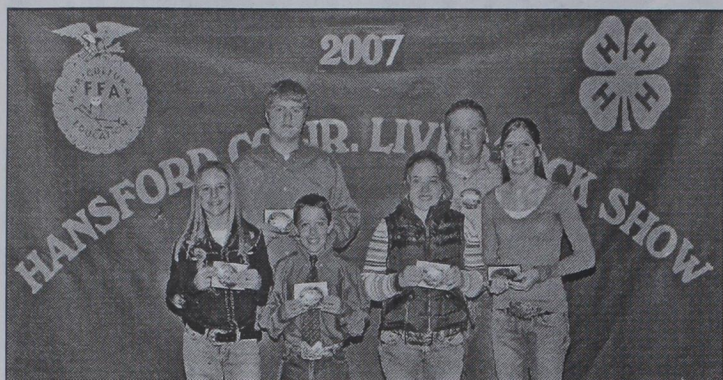
CONGRATULATIONS!
 We are proud to support our area youngsters who showed in the Hansford County Livestock Show!



Hi-Plains Auto

Spearman • 659-2506

Congratulations!



2007 Hansford County Livestock Show Showmanship Winners

(Back, L-R) Swine, Sr. Showmanship - Charles Slough; Steer, Sr. Showmanship - Rhett Renner; (Front, L-R) Lamb, Jr. Showmanship - Callie Stedje; Steer, Jr. Showmanship - Jace Lane; Swine, Jr. Showmanship - Brenna Reid; Lamb, Sr. Showmanship - Tara Shields

CONGRATULATIONS FFA & 4-H Members!

We salute you
on all your
hard work!



Hansford Implement Co.

Hwy 207 • Spearman, TX • 659-2568
Hours: 8 a.m. to 6 p.m. Monday-Friday

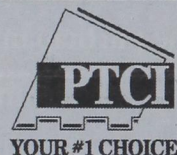


Congratulations to all participants
in the Hansford County
Junior Livestock Show and Sale.



CONGRATULATIONS!

WE ARE PROUD TO SUPPORT
OUR AREA YOUNGSTERS!



1-800-562-2556
ptci.net

YOUR #1 CHOICE

We're proud
to support
Hansford
County youth
involved in the



Livestock Show and Sale



First National Bank
Spearman, Texas 79081 Dumas, Texas 79029
806-659-5544 806-934-8455
800-583-4196 866-583-4196
Member FDIC

HATS OFF



to all the
boys and
girls in 4-
H & FFA
who

participated in the
Hansford County
Livestock Show & Sale!



Amarillo 806-353-6688
Pampa 806-669-1126

Perryton 806-435-4319
Plainview 806-296-5579

Supporting
all the
participants
in the Hansford County
Livestock Show



Lowe's Marketplace

Plains Shopping Center • Spearman
(806) 659-2522

CONGRATULATIONS

to all the boys and girls in
FFA and 4-H on a great
job in the 2007 Hansford
County Livestock Show.

Hungry Cowboy

Hwy. 207 S. • Spearman
659-5151

Congratulations!

to all the youth who
participated in the
Hansford County Junior
Livestock Show & Sale.



We believe in the future
of farming and ranching!

from the employees, officers and directors of



Gruver State Bank

3 Main Plaza • (806) 733-5061 • Gruver, TX
member FDIC



We are proud to support
Hansford County youth involved
in the Livestock Show and Sale.

North Plains Electric Co-op

14585 N. Hwy. 83 • Perryton, Texas
(806) 435-5482 • 1-800-272-5482



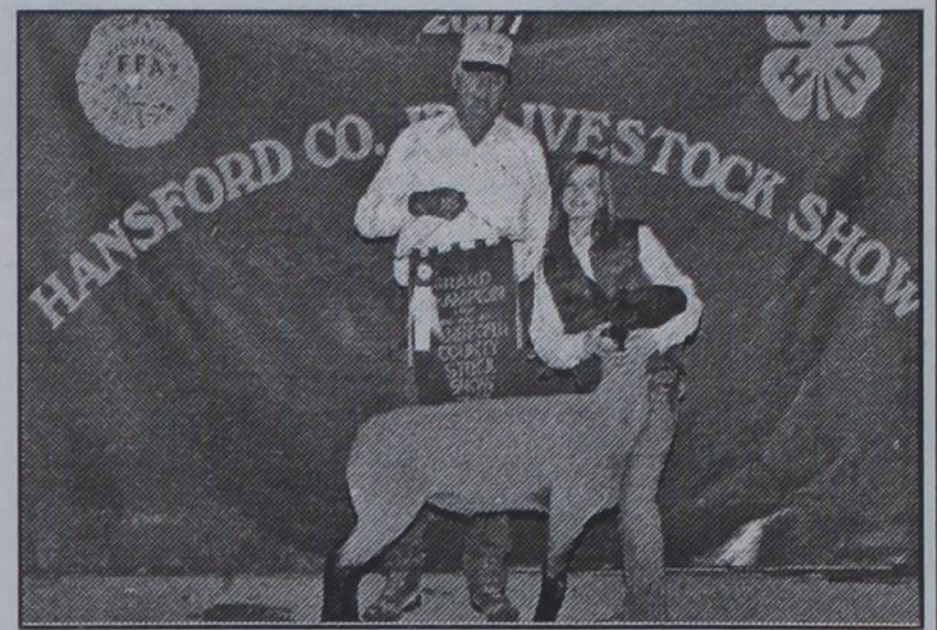
Grand Champion Steer

Callie Stedje
Buyer - Willis Boyd Dirt Service, Willis & Amy Boyd



Grand Champion Swine

Stuart Martin
Buyer - Willis Boyd Dirt Service, Willis & Amy Boyd



Grand Champion Lamb

Jessica Jarvis
Buyer - Britt & Linda Jarvis

2007 Hansford County Stock Show

THANK YOU!

LAMBS

Grand Champion - Jessica Jarvis
Hansford 4-H
Reserve Grand Champion - Addam
Ferguson - Hansford 4-H
Junior Showmanship - Callie Stedje -
Gruver 4-H
Senior Showmanship - Tara Shields -
Hansford 4-H

Class I

Jennifer Crowl - Hansford 4-H
Kelsey DeLuna - Hansford 4-H
Reese Clark - Hansford 4-H
Travis Stedje - Hansford 4-H
Shakota Field - Hansford 4-H
Casey Cator - Spearman FFA
Beau Brown - Hansford 4-H

Class II

Cason Finley - Hansford 4-H
Samantha Ward - Hansford 4-H
Romero Rivera - Hansford 4-H
Sheldon Field - Hansford 4-H
Makayla Wheelock - Hansford 4-H
Megan Stedje - Hansford 4-H
Matthew Jarvis - Hansford 4-H

Class III

Tara Shields - Hansford 4-H
Blayne Baker - Hansford 4-H
Kevin Ruiz - Hansford 4-H
Makenzie Crane - Hansford 4-H
Charles Slough - Hansford 4-H
Preslee Baker - Hansford 4-H
Saira Rivera - Hansford 4-H

Class IV

Seth Thompson - Hansford 4-H
Emily Hood - Spearman FFA
Lexi Batton - Hansford 4-H
Allison Brown - Hansford 4-H
Brenna Reid - Hansford 4-H
Trenton Finley - Hansford 4-H
Bailey Stedje - Hansford 4-H

Class V

Addam Ferguson - Hansford 4-H
Callie Stedje - Hansford 4-H
Tate Batton - Hansford 4-H
Bailey Rae Poer - Hansford 4-H
Sabrina Butman - Hansford 4-H
Dani Wheelock - Hansford 4-H
Richard Jarvis - Hansford 4-H

Class VI

Jessica Jarvis - Hansford 4-H
Justin Thompson - Hansford 4-H
Jace Lane - Hansford 4-H
Lauren Ferguson - Hansford 4-H
Macy McLennan - Hansford 4-H
Tyann Hight - Hansford 4-H
Cory Graves - Gruver FFA

STEERS

Grand Champion - Callie Stedje -
Hansford 4-H
Reserve Grand Champion - Tucker
Williams - Hansford 4-H
Junior Showmanship - Jace Lane -
Hansford 4-H
Senior Showmanship - Rhett Renner -
Hansford 4-H

Light Weights

Jimmilee McCloy - Hansford 4-H
Taylor Williams - Hansford 4-H
Ali Tyler - Hansford 4-H

Medium

Tucker Williams - Hansford 4-H
Rhett Renner - Hansford 4-H
Brenna Reid - Hansford 4-H
Audrey Lieb - Hansford 4-H

Light Heavy Weights

Callie Stedje - Hansford 4-H
Jace Lane - Hansford 4-H
Eva McCloy - Hansford 4-H

Heavy

Jacob Lieb - Hansford 4-H
Jessica Jarvis - Spearman FFA
Wil McCloy - Hansford 4-H
Sabrina Butman - Hansford 4-H

SWINE

Grand Champion - Stuart Martin -
Hansford 4-H
Reserve Grand Champion - Tucker
Williams - Hansford 4-H
Junior Showmanship - Brenna Reid -
Hansford 4-H
Senior Showmanship - Charles Slough -
Hansford 4-H

Duroc

Breed Champion - Colton Cator -
Hansford 4-H
Reserve Breed Champion - Kyler Cator -
Hansford 4-H

Class I

Jake Liecht - Spearman FFA
Molly Lieb - Hansford 4-H
Cooper DeArmond - Hansford 4-H
Tyrel Etchison - Spearman FFA
Jordan Hicks - Gruver FFA

Class II

Kyler Cator - Hansford 4-H
Seth Thompson - Hansford 4-H
Chandler Miner - Gruver FFA
Hunter Kenney - Hansford 4-H

Class III

Colton Cator - Hansford 4-H
Allison Brown - Hansford 4-H
Mabry Sutterfield - Hansford 4-H
Justin Thompson - Hansford 4-H
Sheldon Field - Hansford 4-H

Class IV

Dax Haight - Gruver Jr. FFA
Lauren Patterson - Hansford 4-H
Rily Urban - Hansford 4-H
Makenzie Crane - Hansford 4-H

Hampshire

Breed Champion - Hudson Williams -
Hansford 4-H
Reserve Breed Champion - Blayne
Baker - Spearman FFA

Class V

Jace Lane - Hansford 4-H
Madison Williams - Gruver Jr. FFA
Maci Forrest - Hansford 4-H
Reagan Haynes - Gruver Jr. FFA
Cory Graves - Gruver FFA

Class VI

Preslee Baker - Spearman FFA
Bailey Rae Poer - Hansford 4-H
Tara Shields - Hansford 4-H
Taylor Williams - Hansford 4-H
Brock Schroeder - Hansford 4-H
Carson Williams - Gruver Jr. FFA

Class VII

Blayne Baker - Spearman FFA
Tylo Farrar - Hansford 4-H
Chyenne Evans - Hansford 4-H
Dustin Kelley - Hansford 4-H
Coley Ruebush - Hansford 4-H

Class VIII

Hudson Williams - Hansford 4-H
Beau Brown - Hansford 4-H
Trenton Finley - Hansford 4-H
Greyson Karlin - Gruver Jr. FFA

YORK

Breed Champion - Cara Gwin -
Spearman FFA
Reserve Breed Champion - Malory
Martin - Hansford 4-H

Class IX

Cara Gwin - Spearman FFA
Charles Slough - Hansford 4-H
Skyler Sumner - Spearman FFA
Reagan Karlin - Gruver FFA
Trent Goodheart - Hansford 4-H
Travis Stedje - Hansford 4-H

Class X

Malory Martin - Hansford 4-H
Tanner Baird - Hansford 4-H
Hadlee Spivey - Gruver Jr. FFA
Seth Salgado - Hansford 4-H
Trace Patterson - Hansford 4-H

CROSSES

Breed Champion - Stuart Martin -
Hansford 4-H
Reserve Breed Champion - Tucker
Williams - Hansford 4-H

Class XI

Callie Stedje - Hansford 4-H
Ashley Williams - Gruver Jr. FFA
Bryce Jarvis - Hansford 4-H
Miles Messer - Gruver FFA
Kevin Ruiz - Hansford 4-H
Carson Pearson - Hansford 4-H

Class XII

Casey Cator - Spearman FFA
Audrey Lieb - Hansford 4-H
Sawyer Sutterfield - Hansford 4-H
Reese Clark - Hansford 4-H
Seth Carson - Hansford 4-H
Richard Jarvis - Hansford 4-H

Class XIII

Jennifer Crowl - Hansford 4-H
Addie Williams - Hansford 4-H
Lauren Williams - Hansford 4-H
Tanner Sherrill - Gruver FFA

Class XIV

Stuart Martin - Hansford 4-H
Jaci Burgin - Hansford 4-H
Caleb Miller - Gruver FFA

Chase Farrar - Spearman FFA
Lexi Batton - Hansford 4-H
Travis McDowell - Gruver FFA

Class XV

Brenna Reid - Hansford 4-H
Seth Coates - Spearman FFA
Sabrina Butman - Hansford 4-H
Tyann Hight - Hansford 4-H
Jacob Lieb - Hansford 4-H
Jordan Snider - Spearman FFA
Lindy Weldon - Gruver FFA

Class XVI

Tate Batton - Spearman FFA
Allayne Schroeder - Hansford 4-H
Dakota Cator - Spearman FFA
Emily Hood - Spearman FFA
Shakota Field - Hansford 4-H

Class XVII

Zack Nollner - Hansford 4-H
Matthew Jarvis - Hansford 4-H
Bailey Stedje - Hansford 4-H
Kate Lieb - Hansford 4-H
Sarah Snider - Hansford 4-H
Rhett Renner - Hansford 4-H

Class XVIII

Tucker Williams - Hansford 4-H
Cason Finley - Gruver FFA
Blake Fitzgerald - Gruver FFA
Jesus Mendoza - Spearman FFA
Megan Stedje - Hansford 4-H

Commercial Steer Results

Grand Champion - Brenna Reid -
Hansford 4-H
Reserve Grand Champion - Jacob Lieb
- Hansford 4-H
Wil McCloy - Hansford 4-H
Bailey Stedje - Hansford 4-H
Callie Stedje - Hansford 4-H
Tucker Williams - Hansford 4-H
Audrey Lieb - Hansford 4-H
Megan Stedje - Hansford 4-H
Travis Stedje - Hansford 4-H
Jimmilee McCloy - Hansford 4-H
Eva McCloy - Hansford 4-H

Livestock Judging Contest Results

High Individual

Savannah Pugh - Texhoma 4-H
Pete Dahl - Texhoma 4-H
Brenna Reid - Hansford 4-H
Callie Stedje - Hansford 4-H
Jimmilee McCloy - Hansford 4-H
Jacob Lieb - Hansford 4-H
Audrey Lieb - Hansford 4-H
Jaci Burgin - Hansford 4-H
Wil McCloy - Hansford 4-H
Ryan Dahl - Texhoma 4-H

High Team

Texhoma 4-H - Savannah Pugh, Pete
Dahl, Corey Lomax, Ryan Dahl
Hansford 4-H - Jimmilee McCloy, Eva
McCloy, Wil McCloy, Brenna Reid
Hansford 4-H - Dakota Cator, Callie
Stedje, Jace Lane, Hadlee Spivey
Morse 4-H - Audrey Lieb, Jacob Lieb,
Jennifer Crowl
Hansford 4-H - Jaci Burgin, Tyann Hight,
Trenton Baird
Hansford 4-H (John Wayne) - Tanner
Baird, Beau Brown, Richard Jarvis,
Trace Patterson
Hansford 4-H - Bailey Stedje, Travis
Stedje, Dax Haight, Reagan Haney

The Hansford County 4-H,
Spearman - Gruver FFA, The
Hansford County Stock Show Board
would like to thank all the individuals
and businesses for their support.

2007 CONTRIBUTORS

3-J Cattle, Inc.
4-S Farms
7 R Cattle Trucking
Adobe Walls Cotton Gin
Aeroflight Publications
Agco of Spearman
Aqua Magic/Chip Daniel
Arkoma Transport
B&B Sales Company
Badger Resources
Barbara Cluck
Bartlett's Lumber & Hardware
Bill & Ginger Pittman
Billy & Joan Brown
Bob & Carol Tolleson
Bob Cluck Pens
Bort Insurance Agency
Boxwell Brothers
Brent Lawrence
Britt & Linda Jarvis
Brock Insurance
Brown, Graham & Co. PC
Buzzard Farms
C&B Feeders

North Plains Electric
North Plains Insurance Agency, Inc.
Nutrina Showmaster Feeds
Omar Sutton
Palo Duro Feeders
Panhandle Implement Co.
Panhandle Health Care
Pat & Cathy Patterson
Pat & Georgia Holt
Perryton Equity Exchange
Perryton Feeders
Phil Sanders
Phillip & Lynna Renner
Pittman & Sons
PTCI
Quentin & Kelly Harper
Rick & Thane McCloy
Rhonda Baker
Richey & Karen Thompson
Rick & Kara Harrell
Ricky Thompson
Ronnie & Donna Williams
Roy Byrd
Ruby Slough
S & H Gas Association
Sandi Pearson
Schneider Welding
Scott & Erika Stedje
Shufeldt Rig Service
Sonny Nollner
Sparks Brothers Spraying
Spearman Cattle Feeders
Spivey Farms
Stallion Energy
State Farm Insurance, Aaron Ghanhar
Stedje Brothers
Stedje Livestock
Stephen & Tammy Kay Batton
Steve & LuAnn Shields
Steve & Mary Lou Matthews
Sutterfield Services
Swift & Company
Terry & Patty Butt
Terry Sherrill, CPA
Texas Beef Producers
Texas Farm
Texhoma Livestock Auction
The Grocery Store
Tim & Lexi Glass
Tim & Teresa Barkley
Todd & Krista Baird
Tom & Linda Latta
Travis Patterson
USA Feeders
Val Winger
Victor & Debbie Schumann
Warner Corn Seed
Warren Caterpillar of Amarillo
Wayne Garrett
West Texas Gas
Weston & Kristin Born
Wiechman Pig Company, Inc.
Williams Brothers
Willis Boyd Dirt Service
Woodward Livestock Auction, Inc.

BUCKLE DONORS

Donor of Grand Champion Buckle,
Steer - Gruver State Bank
Donor of Reserve Grand Champion
Buckle, Steer - Gruver Ford
Donor of Grand Champion Buckle,
Swine - Farm Supply, Inc.
Donor of Reserve Grand Champion
Buckle, Swine - Lowe's Market Place
Donor of Grand Champion Buckle,
Lamb - First National Bank
Donor of Reserve Grand Champion
Buckle, Lamb - Brock Insurance Agency
Donor of Steer Senior Showmanship
Buckle - First State Bank
Donor of Steer Junior Showmanship
Buckle - B&B Sales Company
Donor of Lamb Senior Showmanship
Buckle - Gruver Agri Industries
Donor of Lamb Junior Showmanship
Buckle - Terry Sherrill, CPA
Donor of Swine Senior Showmanship
Buckle - Gruver Parts & Supply
Donor of Swine Junior Showmanship
Buckle - Phillip Renner
Donor of Grand Champion
Commercial Steer Buckle - Bort Agency
Donor of Reserve Grand Champion
Commercial Steer Buckle - Rick & Kara
Harrell

FLOOR BUYER

Stedje Livestock-----Steers
Wiechman Pig Co.-----Barrows
Diamond L. Farms, Dale Lanham-Lambs

COMMERCIAL STEER SHOW SPONSOR

Texas Beef Producers
Stedje Livestock
Hansford County Feeders, LP
Palo Duro Feeders
Morris Stock Farms
Frontier Feedyard
Spearman Cattle Feeders, USA
Flint Rock Feeders, Ltd.

Congratulations!



Reserve Grand Champion Lamb
Addam Ferguson
Buyer - Hansford Implement, Eric Cudd



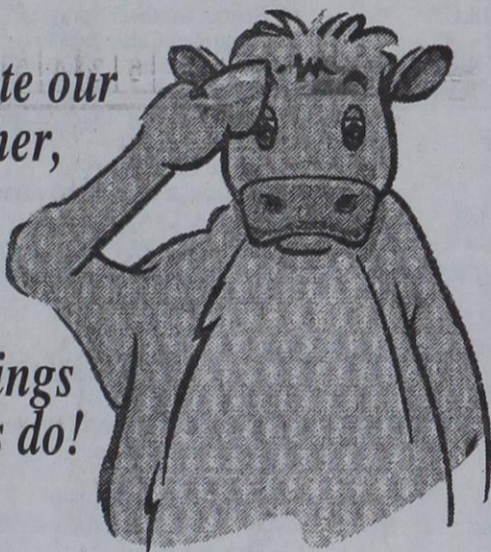
Reserve Grand Champion Swine
Tucker Williams
Buyer - Johnson Enterprises, Brent Thornton



Reserve Grand Champion Steer
Tucker Williams
Buyer - Quentin, Kelly & Lanie Harper

Congratulations to all participants in the Hansford County Junior Livestock Show and Sale.

We salute our ag teacher, Scott Stedje, and the good things our kids do!



Spearman Independent School District and Board of Trustees

Thank You!

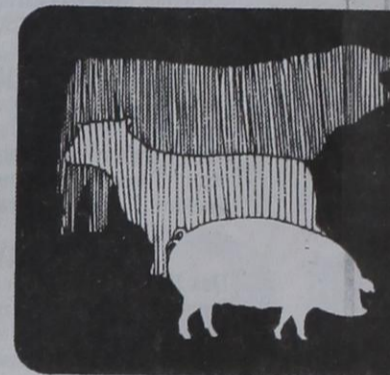
The Hansford County Reporter-Statesman would like to thank Rick Barkley for the use of his pictures from the Hansford County Livestock Show.

CONGRATULATIONS!

WE ARE PROUD TO SUPPORT OUR AREA YOUNGSTERS!



Congratulations



4-H & FFA on a job well done!

H&H Water Well Service Inc.
Gruver Highway • Spearman TX
659-5577

We're Proud Of You!

We are proud of the young people -- FFA and 4-H youth -- adults and sponsors who participated in and helped with the 2006 Hansford County Livestock Show.

Five Star Equipment, Inc.
Spearman, Texas ★★★★★ (806) 659-3743

The Bunkhouse Restaurant Salutes

the 4-H and FFA youth for demonstrating personal responsibility, exhibiting high standards in animal care and promoting production agriculture.

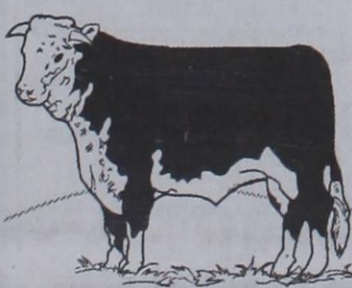
The Bunkhouse Restaurant
212 Main Street • Spearman
(806) 659-2089

Working For The FUTURE

Supporting the Youth of Hansford County

We want to take this opportunity to recognize the farming and ranching youths of our area.

Your hard work was very evident when you displayed your animal projects at the Hansford County Livestock Show.



The Hansford County

REPORTER STATESMAN

213 Main St • Spearman TX 79081
reporterstatesman@valomet.com



Celebrating 100 Years of Service to Hansford County

(806) 659-3434 • (806) 659-3368 fax
Proudly Serving Hansford County Since 1907

CONGRATULATIONS

4-H & FFA Members!

First State Bank is proud to be involved in various community activities, such as The Hansford County 4-H & FFA Livestock Show. We would like to congratulate all of the participants.



First State Bank

"The Good Ag Bank"

1 NE Court • 806-659-5565 • Spearman, Texas 79081

member FDIC

REAL ESTATE FOR SALE
FOR SALE 712 Wilbanks Dr., Spearman: 3BR, 2B, 2CG, newly fenced backyard wished. Call 605-484-1705.
 TFN(1-18-07)B
FOR SALE 907 Archer Spearman: 3BR, 1B home. Call Larry O'Neal at 580-772-5617.
 TFN(02-08-07)B

FOR RENT/LEASE
FOR LEASE: 729 Acres of Land in Ochiltree County - taking offers - dryland or irrigated, section 23, west Ochiltree County. Call 903-725-6733, Howard Swink.
 TFN(9-28-06)B
OFFICE SPACE FOR RENT, SPEARMAN: Pittman-Shieldknight building - all sizes available. Call 659-5588 or 659-3399 for more information.
 TFN(01-27-05)B
FOR RENT: 2BR apartment, \$375.00 per month, water paid. Call Larry O'Neal at 580-772-5617.
 TFN(7-06-06)B
FOR RENT: 1BR apartment - \$300/month, \$300 deposit. Call 940-631-0894.
 TFN(12-07-06)B

EMPLOYMENT
HELP WANTED: Pen rider, feedmill, personnel, general maintenance and cattle processors needed. Apply in person at Dean Cluck Feedyard, 105 Dean Cluck Ave., Gruver.
 TFN(09-07-06)B
HELP WANTED: General mechanic for automotive, irrigation work and tire repair. Tools provided. Apply at Morse Implement and Auto Supply in Morse, Call 06-733-2668. Ask for Tom or Gary. Good pay and working conditions.
 TFN(3-1-07)NC
HELP WANTED: H&H Water Well is seeking rig hands. Apply in person at H&H Water Well on Hwy. 15 West in Spearman, or call 659-5577.
 TFN(3-1-07)B

SHERMAN COUNTY SECTIONS: three sections, 3 phase electricity, two nice homes and landscaping, Quonset barn, ir. wells, sprinklers, 3 miles hwy. front. + caliche - WILL DIVIDE!
HORSEMAN'S PLEASURE/CATTLEMAN'S DELIGHT - NW OF GRUVER: 80 acres +/-, nice 4,000 sq. ft. brick home, metal roof, fireplace, two car garage, ir. well 1/2 mile sprinkler, Quonset barn, pipe-rail pens, covered working area.
HWY. 152 BETWEEN STINNETT & DUMAS: 767 acres +/-, 4,000 sq. ft. +/- home & a 1,700 sq. ft. +/- home, beautiful homes and landscaping, large metal barn with office, ir. wells, sprinkler, strong water, hwy. front. + caliche road - CONSIDER DIVIDING!
SHERMAN COUNTY X SECTION WITH PERMIT: plus 1 1/2 sections, hwy. front, nice brick home, Quonset barn, pens, ir. wells, sprinklers.
 Choice milk processing and dairy sites available in Dallam, Hartley, Moore, Oldham, Sherman and Hutchinson Counties.
 SEE OUR WEBSITE OR GIVE US A CALL!
 www.scottilandcompany.com
 Shawn Gillispie 806/922-5532
 Ben G. Scott, Broker
 1-800-933-9698 day/eve
 2/3-08-07

HELP WANTED: Gigot Agra Products, Valley center pivot dealer, is seeking an additional service technician at our Spearman location. Experience desired, but not required. Benefit package is available. Send resume to PO Box 95, Spearman TX 79081 or call (806) 659-3121.
 TFN(12-14-06)B
HELP WANTED: Experienced oil and gas Lease Pumper/Gauger to inspect, monitor and manage the operation of assigned wells to ensure equipment is maintained in operating condition and well is producing. Responsible for checking meters, daily production reports, gauging tanks and overall care and maintenance of the well site and equipment. Experience with plunger lift systems, compressors, diagnosing casing leaks and other malfunctions desired. Requires experience with word processing and Internet/Email. High school diploma and two years oilfield experience is required. Excellent opportunity with stable, growing regional company. Benefits include company provided vehicle, attractive compensation package including profit-sharing bonus, paid healthcare and dental, \$401(k) plan with up to 8% matching contribution, vacation and time off. Please send resumes or letters of interest to Attn: Human Resources, PO Box 7995, Tyler TX 75711.
 TFN(2-8-07)B
HELP WANTED: Experienced Natural Gas Compressor Mechanic to maintain, install, troubleshoot, repair and overhaul compressors and other well site equipment. Responsible for monthly and annual preventative maintenance, emergency repairs on engines, compressors and pumping units. High school diploma or Technical School Degree. Excellent opportunity with stable, growing regional company. Benefits include company provided vehicle and tools, attractive compensation package including profit-sharing bonus, paid healthcare and dental, \$401(k) plan with up to 8% matching contribution, vacation and time off. Please send resumes or letters of interest to Attn: Human Resources, PO Box 7995, Tyler TX 75711.
 TFN(2-8-07)B

HELP WANTED: Now seeking a temporary full/part-time dependable salesperson to operate spearman store. Duties assisting customers, maintaining plants and operating cash register. Starting pay - \$7.00/hour - 40 hour work week. No experience necessary. Hiring begins April 1st. Send resume to D&C Greenhouse, 36 Nelson Drive, Spearman TX 79081. 6(3-8-07)B
HELP WANTED: Taylor Petroleum is now hiring managers, asst. managers and CSR's. Apply online at taylorfoodmart.com or contact HR at 800-725-3000, ext. 213. Opening soon in Spearman.
 2(3-15-07)B
HELP WANTED: Groendyke Transport - Borger, TX has openings for experienced drivers. Residing in Borger is not a requirement. Must be at least 23 years of age with CDL hazmat endorsement. Excellent pay package, paid vacation, paid holidays, paid uniforms, group health insurance, 401(k) plan with company match, quarterly safety bonus program, out & back - regional & long haul, frequent home time. M-F, 8 a.m.-5 p.m. Call 1-800-657-8784. EOE 3(3-15-07)B

SERVICES
WANTED: Will pick up junk cars and haul them off - free of charge. (806) 435-4323, Bob Lewis. 4(2-22-07)P

PUBLIC NOTICE
THE STATE OF TEXAS
 TO: THE UNKNOWN HEIRS OF THE ESTATE OF CESAR F. ORTIZ FEBELA, Defendant, Greeting:
NOTICE TO DEFENDANT: "You have been sued. You may employ an attorney. If you or your attorney do not file an answer with the clerk who issued this citation by 10:00 a.m. on the Monday next following the expiration of forty-two days after the date of issuance of this citation and petition, a default judgment may be taken against you." You are commanded to appear by filing a written answer to the

LEGAL NOTICE
 Plaintiff's First Amended Original Petition at or before ten o'clock a.m. of the Monday next after the expiration of forty-two days after the date of service of this citation before the Honorable 84th Judicial Court of Ochiltree County, Texas at the courthouse of said County in Perryton, Texas. This makes the appearance date Monday, April 9, 2007, on or before 10:00 a.m.
 Said Plaintiff's First Amended Original Petition was filed in said court, by Kristi Weaver, whose address is 320 S. Polk, Ste. 400, Amarillo TX 79101 on 02-15-2007, in this case, numbered 11,589 on the docket of said court, and styled, RHONDA GARTON, INDIVIDUALLY AND AS REPRESENTATIVE OF THE ESTATE OF GARY GARTON, SHELLEY GARTON, SHANNON GARTON AND SHEA GARTON, PLAINTIFFS, the nature of which suit is a request to RECOVER DAMAGES.
 The officer executing this writ shall promptly serve the same according to the mandates hereof, and make due return as the law directs.
 Issued and given under my hand and seal of said Court, at office in Perryton, Ochiltree County, Texas, on 02-15-2007.
 Shawn Bogard, District Clerk
 511 S. Main
 Perryton, Texas 79070
 84th Judicial District Court
 Ochiltree County, Texas
 by: Charlotte S. Deputy Clerk
 4(02-22-07)B

LEGAL NOTICE
 Hansford County Hospital District will receive sealed bids marked "Pharmacy Renovation, ATTN Steve Hartgraves, CEO," at our administrative offices located at 707 Roland Street, Spearman, TX 79081 until 12:00 noon on Monday, March 26, 2007.
 Contact Rees Associates, Inc. 214-522-7337. Drawings and specs can be obtained at McGraw Hill/Dodge Plan Rooms in Oklahoma City, OK, Amarillo, Lubbock and Dallas/Ft. Worth, TX and Lanier Professional Services, Dallas, TX. Scope of work consists of 2,300 s.f. interior renovation of lobby and retail pharmacy and the addition of an exterior drive-thru canopy.
 HCHD encourages HUB participation. Sealed bids will be opened at the regular March meeting of the Board of Directors on March 28, 2007 at 6:30 pm in the Board Room at Hansford Hospital, 707 S. Roland Street, Spearman, TX.
 2(03-15-07)B

LEGAL NOTICE
 In accordance with Section 116, Local Government Code of Texas Revised Civil Statutes, the Commissioner's Court of Hansford County will select an official depository for County funds handled by the County for 2007-2009 at their regular meeting on May 14, 2007 at 10:00 a.m. in the Law Library in the Hansford County Courthouse, Spearman, Texas.
 Applications will be received until

Blankenship Real Estate
 659-3052 - 670-3774

NEW LISTING - 3/2/1 brick home - central h/a, hard wood floors, large lot. Nice home! PRICE REDUCED 2ND TIME!
UNDER CONTRACT
 Crawford Addition - Seller Anxious - 3/2/2 with fire UNDER CONTRACT large lot. Nice home! PRICE REDUCED 2ND TIME!
 Crawford Addition - 3/2 oversized detached 2-car garage, stormshelter!
BRICK 3/1/1 - new carpet, new paint. Ready to move in!

Eulalia Blankenship - Sales
 Eschol Blankenship - Broker
NEW LISTINGS WANTED!

LEGAL NOTICE
 Customers of Panhandle Telecommunication Systems, Inc.
 "Effective April 1, 2007, the amount of the Federal Universal Service Charge (FUSC) appearing on your bill each month will increase as a result of an increase in the Federal Communications Commission's (FCC's) universal service fund contribution factor from 9.7% to 11.7%. The new FUSC amount is calculated by multiplying the FCC's universal service contribution factor against your interstate access service charges. The federal universal service fund program is designed to help keep local telephone service rates affordable for all customers, in all areas of the United States."
 Panhandle Telecommunication Systems, Inc.
 Ron Strecker, CEO
 PO Box 511
 2224 NW Hwy 64
 Guymon, OK 73942
 580-338-7525
 1-800-327-7525
 1(03-22-07)B

LEGAL NOTICE
 Customers of Panhandle Telecommunication Systems, Inc.
 "Effective April 1, 2007, the amount of the Federal Universal Service Charge (FUSC) appearing on your bill each month will increase as a result of an increase in the Federal Communications Commission's (FCC's) universal service fund contribution factor from 9.7% to 11.7%. The new FUSC amount is calculated by multiplying the FCC's universal service contribution factor against your interstate access service charges. The federal universal service fund program is designed to help keep local telephone service rates affordable for all customers, in all areas of the United States."
 Panhandle Telecommunication Systems, Inc.
 Ron Strecker, CEO
 PO Box 511
 2224 NW Hwy 64
 Guymon, OK 73942
 580-338-7525
 1-800-327-7525
 1(03-22-07)B

LEGAL NOTICE
 Customers of Panhandle Telecommunication Systems, Inc.
 "Effective April 1, 2007, the amount of the Federal Universal Service Charge (FUSC) appearing on your bill each month will increase as a result of an increase in the Federal Communications Commission's (FCC's) universal service fund contribution factor from 9.7% to 11.7%. The new FUSC amount is calculated by multiplying the FCC's universal service contribution factor against your interstate access service charges. The federal universal service fund program is designed to help keep local telephone service rates affordable for all customers, in all areas of the United States."
 Panhandle Telecommunication Systems, Inc.
 Ron Strecker, CEO
 PO Box 511
 2224 NW Hwy 64
 Guymon, OK 73942
 580-338-7525
 1-800-327-7525
 1(03-22-07)B

LEGAL NOTICE
 Customers of Panhandle Telecommunication Systems, Inc.
 "Effective April 1, 2007, the amount of the Federal Universal Service Charge (FUSC) appearing on your bill each month will increase as a result of an increase in the Federal Communications Commission's (FCC's) universal service fund contribution factor from 9.7% to 11.7%. The new FUSC amount is calculated by multiplying the FCC's universal service contribution factor against your interstate access service charges. The federal universal service fund program is designed to help keep local telephone service rates affordable for all customers, in all areas of the United States."
 Panhandle Telecommunication Systems, Inc.
 Ron Strecker, CEO
 PO Box 511
 2224 NW Hwy 64
 Guymon, OK 73942
 580-338-7525
 1-800-327-7525
 1(03-22-07)B

LEGAL NOTICE
 Customers of Panhandle Telecommunication Systems, Inc.
 "Effective April 1, 2007, the amount of the Federal Universal Service Charge (FUSC) appearing on your bill each month will increase as a result of an increase in the Federal Communications Commission's (FCC's) universal service fund contribution factor from 9.7% to 11.7%. The new FUSC amount is calculated by multiplying the FCC's universal service contribution factor against your interstate access service charges. The federal universal service fund program is designed to help keep local telephone service rates affordable for all customers, in all areas of the United States."
 Panhandle Telecommunication Systems, Inc.
 Ron Strecker, CEO
 PO Box 511
 2224 NW Hwy 64
 Guymon, OK 73942
 580-338-7525
 1-800-327-7525
 1(03-22-07)B

LEGAL NOTICE
 Customers of Panhandle Telecommunication Systems, Inc.
 "Effective April 1, 2007, the amount of the Federal Universal Service Charge (FUSC) appearing on your bill each month will increase as a result of an increase in the Federal Communications Commission's (FCC's) universal service fund contribution factor from 9.7% to 11.7%. The new FUSC amount is calculated by multiplying the FCC's universal service contribution factor against your interstate access service charges. The federal universal service fund program is designed to help keep local telephone service rates affordable for all customers, in all areas of the United States."
 Panhandle Telecommunication Systems, Inc.
 Ron Strecker, CEO
 PO Box 511
 2224 NW Hwy 64
 Guymon, OK 73942
 580-338-7525
 1-800-327-7525
 1(03-22-07)B

LEGAL NOTICE
 Customers of Panhandle Telecommunication Systems, Inc.
 "Effective April 1, 2007, the amount of the Federal Universal Service Charge (FUSC) appearing on your bill each month will increase as a result of an increase in the Federal Communications Commission's (FCC's) universal service fund contribution factor from 9.7% to 11.7%. The new FUSC amount is calculated by multiplying the FCC's universal service contribution factor against your interstate access service charges. The federal universal service fund program is designed to help keep local telephone service rates affordable for all customers, in all areas of the United States."
 Panhandle Telecommunication Systems, Inc.
 Ron Strecker, CEO
 PO Box 511
 2224 NW Hwy 64
 Guymon, OK 73942
 580-338-7525
 1-800-327-7525
 1(03-22-07)B

LEGAL NOTICE
 Customers of Panhandle Telecommunication Systems, Inc.
 "Effective April 1, 2007, the amount of the Federal Universal Service Charge (FUSC) appearing on your bill each month will increase as a result of an increase in the Federal Communications Commission's (FCC's) universal service fund contribution factor from 9.7% to 11.7%. The new FUSC amount is calculated by multiplying the FCC's universal service contribution factor against your interstate access service charges. The federal universal service fund program is designed to help keep local telephone service rates affordable for all customers, in all areas of the United States."
 Panhandle Telecommunication Systems, Inc.
 Ron Strecker, CEO
 PO Box 511
 2224 NW Hwy 64
 Guymon, OK 73942
 580-338-7525
 1-800-327-7525
 1(03-22-07)B

LEGAL NOTICE
 Customers of Panhandle Telecommunication Systems, Inc.
 "Effective April 1, 2007, the amount of the Federal Universal Service Charge (FUSC) appearing on your bill each month will increase as a result of an increase in the Federal Communications Commission's (FCC's) universal service fund contribution factor from 9.7% to 11.7%. The new FUSC amount is calculated by multiplying the FCC's universal service contribution factor against your interstate access service charges. The federal universal service fund program is designed to help keep local telephone service rates affordable for all customers, in all areas of the United States."
 Panhandle Telecommunication Systems, Inc.
 Ron Strecker, CEO
 PO Box 511
 2224 NW Hwy 64
 Guymon, OK 73942
 580-338-7525
 1-800-327-7525
 1(03-22-07)B

LEGAL NOTICE
 Customers of Panhandle Telecommunication Systems, Inc.
 "Effective April 1, 2007, the amount of the Federal Universal Service Charge (FUSC) appearing on your bill each month will increase as a result of an increase in the Federal Communications Commission's (FCC's) universal service fund contribution factor from 9.7% to 11.7%. The new FUSC amount is calculated by multiplying the FCC's universal service contribution factor against your interstate access service charges. The federal universal service fund program is designed to help keep local telephone service rates affordable for all customers, in all areas of the United States."
 Panhandle Telecommunication Systems, Inc.
 Ron Strecker, CEO
 PO Box 511
 2224 NW Hwy 64
 Guymon, OK 73942
 580-338-7525
 1-800-327-7525
 1(03-22-07)B

LEGAL NOTICE
 Customers of Panhandle Telecommunication Systems, Inc.
 "Effective April 1, 2007, the amount of the Federal Universal Service Charge (FUSC) appearing on your bill each month will increase as a result of an increase in the Federal Communications Commission's (FCC's) universal service fund contribution factor from 9.7% to 11.7%. The new FUSC amount is calculated by multiplying the FCC's universal service contribution factor against your interstate access service charges. The federal universal service fund program is designed to help keep local telephone service rates affordable for all customers, in all areas of the United States."
 Panhandle Telecommunication Systems, Inc.
 Ron Strecker, CEO
 PO Box 511
 2224 NW Hwy 64
 Guymon, OK 73942
 580-338-7525
 1-800-327-7525
 1(03-22-07)B

LEGAL NOTICE
 Customers of Panhandle Telecommunication Systems, Inc.
 "Effective April 1, 2007, the amount of the Federal Universal Service Charge (FUSC) appearing on your bill each month will increase as a result of an increase in the Federal Communications Commission's (FCC's) universal service fund contribution factor from 9.7% to 11.7%. The new FUSC amount is calculated by multiplying the FCC's universal service contribution factor against your interstate access service charges. The federal universal service fund program is designed to help keep local telephone service rates affordable for all customers, in all areas of the United States."
 Panhandle Telecommunication Systems, Inc.
 Ron Strecker, CEO
 PO Box 511
 2224 NW Hwy 64
 Guymon, OK 73942
 580-338-7525
 1-800-327-7525
 1(03-22-07)B

LEGAL NOTICE
 Customers of Panhandle Telecommunication Systems, Inc.
 "Effective April 1, 2007, the amount of the Federal Universal Service Charge (FUSC) appearing on your bill each month will increase as a result of an increase in the Federal Communications Commission's (FCC's) universal service fund contribution factor from 9.7% to 11.7%. The new FUSC amount is calculated by multiplying the FCC's universal service contribution factor against your interstate access service charges. The federal universal service fund program is designed to help keep local telephone service rates affordable for all customers, in all areas of the United States."
 Panhandle Telecommunication Systems, Inc.
 Ron Strecker, CEO
 PO Box 511
 2224 NW Hwy 64
 Guymon, OK 73942
 580-338-7525
 1-800-327-7525
 1(03-22-07)B

LEGAL NOTICE
 Customers of Panhandle Telecommunication Systems, Inc.
 "Effective April 1, 2007, the amount of the Federal Universal Service Charge (FUSC) appearing on your bill each month will increase as a result of an increase in the Federal Communications Commission's (FCC's) universal service fund contribution factor from 9.7% to 11.7%. The new FUSC amount is calculated by multiplying the FCC's universal service contribution factor against your interstate access service charges. The federal universal service fund program is designed to help keep local telephone service rates affordable for all customers, in all areas of the United States."
 Panhandle Telecommunication Systems, Inc.
 Ron Strecker, CEO
 PO Box 511
 2224 NW Hwy 64
 Guymon, OK 73942
 580-338-7525
 1-800-327-7525
 1(03-22-07)B

LEGAL NOTICE
 Customers of Panhandle Telecommunication Systems, Inc.
 "Effective April 1, 2007, the amount of the Federal Universal Service Charge (FUSC) appearing on your bill each month will increase as a result of an increase in the Federal Communications Commission's (FCC's) universal service fund contribution factor from 9.7% to 11.7%. The new FUSC amount is calculated by multiplying the FCC's universal service contribution factor against your interstate access service charges. The federal universal service fund program is designed to help keep local telephone service rates affordable for all customers, in all areas of the United States."
 Panhandle Telecommunication Systems, Inc.
 Ron Strecker, CEO
 PO Box 511
 2224 NW Hwy 64
 Guymon, OK 73942
 580-338-7525
 1-800-327-7525
 1(03-22-07)B

LEGAL NOTICE
 Customers of Panhandle Telecommunication Systems, Inc.
 "Effective April 1, 2007, the amount of the Federal Universal Service Charge (FUSC) appearing on your bill each month will increase as a result of an increase in the Federal Communications Commission's (FCC's) universal service fund contribution factor from 9.7% to 11.7%. The new FUSC amount is calculated by multiplying the FCC's universal service contribution factor against your interstate access service charges. The federal universal service fund program is designed to help keep local telephone service rates affordable for all customers, in all areas of the United States."
 Panhandle Telecommunication Systems, Inc.
 Ron Strecker, CEO
 PO Box 511
 2224 NW Hwy 64
 Guymon, OK 73942
 580-338-7525
 1-800-327-7525
 1(03-22-07)B

LEGAL NOTICE
 Customers of Panhandle Telecommunication Systems, Inc.
 "Effective April 1, 2007, the amount of the Federal Universal Service Charge (FUSC) appearing on your bill each month will increase as a result of an increase in the Federal Communications Commission's (FCC's) universal service fund contribution factor from 9.7% to 11.7%. The new FUSC amount is calculated by multiplying the FCC's universal service contribution factor against your interstate access service charges. The federal universal service fund program is designed to help keep local telephone service rates affordable for all customers, in all areas of the United States."
 Panhandle Telecommunication Systems, Inc.
 Ron Strecker, CEO
 PO Box 511
 2224 NW Hwy 64
 Guymon, OK 73942
 580-338-7525
 1-800-327-7525
 1(03-22-07)B

LEGAL NOTICE
 Customers of Panhandle Telecommunication Systems, Inc.
 "Effective April 1, 2007, the amount of the Federal Universal Service Charge (FUSC) appearing on your bill each month will increase as a result of an increase in the Federal Communications Commission's (FCC's) universal service fund contribution factor from 9.7% to 11.7%. The new FUSC amount is calculated by multiplying the FCC's universal service contribution factor against your interstate access service charges. The federal universal service fund program is designed to help keep local telephone service rates affordable for all customers, in all areas of the United States."
 Panhandle Telecommunication Systems, Inc.
 Ron Strecker, CEO
 PO Box 511
 2224 NW Hwy 64
 Guymon, OK 73942
 580-338-7525
 1-800-327-7525
 1(03-22-07)B

LEGAL NOTICE
 Customers of Panhandle Telecommunication Systems, Inc.
 "Effective April 1, 2007, the amount of the Federal Universal Service Charge (FUSC) appearing on your bill each month will increase as a result of an increase in the Federal Communications Commission's (FCC's) universal service fund contribution factor from 9.7% to 11.7%. The new FUSC amount is calculated by multiplying the FCC's universal service contribution factor against your interstate access service charges. The federal universal service fund program is designed to help keep local telephone service rates affordable for all customers, in all areas of the United States."
 Panhandle Telecommunication Systems, Inc.
 Ron Strecker, CEO
 PO Box 511
 2224 NW Hwy 64
 Guymon, OK 73942
 580-338-7525
 1-800-327-7525
 1(03-22-07)B

LEGAL NOTICE
 Customers of Panhandle Telecommunication Systems, Inc.
 "Effective April 1, 2007, the amount of the Federal Universal Service Charge (FUSC) appearing on your bill each month will increase as a result of an increase in the Federal Communications Commission's (FCC's) universal service fund contribution factor from 9.7% to 11.7%. The new FUSC amount is calculated by multiplying the FCC's universal service contribution factor against your interstate access service charges. The federal universal service fund program is designed to help keep local telephone service rates affordable for all customers, in all areas of the United States."
 Panhandle Telecommunication Systems, Inc.
 Ron Strecker, CEO
 PO Box 511
 2224 NW Hwy 64
 Guymon, OK 73942
 580-338-7525
 1-800-327-7525
 1(03-22-07)B

LEGAL NOTICE
 Customers of Panhandle Telecommunication Systems, Inc.
 "Effective April 1, 2007, the amount of the Federal Universal Service Charge (FUSC) appearing on your bill each month will increase as a result of an increase in the Federal Communications Commission's (FCC's) universal service fund contribution factor from 9.7% to 11.7%. The new FUSC amount is calculated by multiplying the FCC's universal service contribution factor against your interstate access service charges. The federal universal service fund program is designed to help keep local telephone service rates affordable for all customers, in all areas of the United States."
 Panhandle Telecommunication Systems, Inc.
 Ron Strecker, CEO
 PO Box 511
 2224 NW Hwy 64
 Guymon, OK 73942
 580-338-7525
 1-800-327-7525
 1(03-22-07)B

LEGAL NOTICE
 Customers of Panhandle Telecommunication Systems, Inc.
 "Effective April 1, 2007, the amount of the Federal Universal Service Charge (FUSC) appearing on your bill each month will increase as a result of an increase in the Federal Communications Commission's (FCC's) universal service fund contribution factor from 9.7% to 11.7%. The new FUSC amount is calculated by multiplying the FCC's universal service contribution factor against your interstate access service charges. The federal universal service fund program is designed to help keep local telephone service rates affordable for all customers, in all areas of the United States."
 Panhandle Telecommunication Systems, Inc.
 Ron Strecker, CEO
 PO Box 511
 2224 NW Hwy 64
 Guymon, OK 73942
 580-338-7525
 1-800-327-7525
 1(03-22-07)B

FSB
First State Bank
 P.O. Box 247
 Spearman, TX 79081
 Telephone 806-659-5565

Member FDIC

Planning to buy a home, but not sure if you can get an affordable mortgage?
 Interest too high on your present mortgage?
 Want to do business with a local bank?

We can help!

Come by First State Bank, Spearman.
 Check out our competitive fixed and adjustable rate mortgages for terms up to 30 years.
 We can work with you to find a mortgage that fits your needs and help you buy or refinance your home.
 Contact Ginger Turner and find out more.

MARCH MADNESS
Gordon's
DRUG
SPRING SALE

5:39
 03

Come in and let us help you SCORE a great deal!

Saturday, March 24th
 3:00-5:00 p.m.

Sunday, March 25th
 1:00-5:00 p.m.
 (The Easter Bunny will be here to take pictures with the kids!)

ALL clearance items will be \$10 or less with other sales throughout the gift department. Customers will receive a free gift with purchase.

Gordon's
 DRUG

314 Main Street • Spearman
 (806) 659-2141

Put a Shine On Spearman!

The Spearman Chamber of Commerce is excited to present the S.O.S. project Shine On Spearman.

Everyone is encouraged to come together on April 21, 2007 and work side-by-side to clean up Spearman in one day. This is a community-wide clean up project that will coincide with The Great American Cleanup™, the nation's largest community improvement program, which is being held March 1-May 31, 2007.

The landfill will be open, and no fees will be charged for that day. Tickets will be given for every load taken to the Spearman Landfill during April.

Everyone is invited to take a picnic basket and meet at Swimming Pool Park at 7 p.m. on April 21st for food, fellowship and fun. A drawing will be held at this time from all the landfill tickets given out during April.

Citizens are encouraged to cleanup, fix-up, paint-up, green-up to help keep our community beautiful.

This is a great opportunity to clean up Spearman in a community effort.

If you are in need of assistance (elderly or handicapped) at your home, please contact Keith Hight at the Spearman Chamber of Commerce (659-5555). (You must be elderly or handicapped to receive assistance.)

Pringle-Morse CISD students receive honors

Six Pringle-Morse Junior High students received honors in the UIL Solo/Ensemble competition in February. Those receiving a Superior or I rating were Maci Forrest, trumpet solo; Haden Hart, trumpet solo; and Sol Pittman, snare drum solo. Those receiving an Excellent or II rating were: Kaitlyn Poole, flute solo; Jesus Lopez, baritone solo; and Tori Sheets, trumpet solo. The contest was held in Canyon and included students from the entire Texas Panhandle area.

Superintendent Kent Hargis commended Director Anna Marie Holland and the students on their success. Mrs. Holland said, "This is a difficult contest and the students should be congratulated on their hard work and accomplishments."

Are You A Victim of Domestic Violence, Sexual Abuse or Physical, Emotional or Sexual Assault?

Call Toll Free Hotline
1-800-753-5308

We can see individuals from Hansford County anytime upon request. Call 435-5008 or 1-800-753-5308 to set up an appointment in Hansford County. We operate a safe place for victims and their children to stay in times of crisis.

Battering Intervention & Anger Management Available

Panhandle Crisis Center
Serving Hansford, Lipscomb & Ochiltree Counties
301 S. Ash • Perryton, TX
Memorials Accepted

See us for:
AUTO • HOME • CROP HAIL • FARM & RANCH • MULTIPERIL • LIVESTOCK

INSURANCE



BORT AGENCY, INC.
510 Main St. • Gruver, TX
(806) 733-2456



MITCHELL THEATRES
NORTHBRIDGE CINEMA 8

Guymon, Oklahoma
Movies beginning 3/16

TMNT PG -- Ninja Turtles
SHOOTER R -- Mark Wahlberg
THE LAST MIMZY PG -- Timothy Hutton
HILLS HAVE EYES 2 R -- Jessica Stroup
PREMONITION PG-13 -- Sandra Bullock
300 R -- Gerard Butler
THE ULTIMATE GIFT PG -- James Garner
WILD HOGS PG-13 -- Tim Allen, John Travolta

FRESH POPCORN EVERYDAY!
-PARTY ROOM & ARCADE-

Call for Showtimes
580-338-3281
www.northridge8.com
Office -- 580-338-8969
CASH & CREDIT CARDS ONLY
THANK YOU!

Hansford Implement Co.

POWERFUL, PRACTICAL, PRODUCTIVE!

John Deere 5000 Series Tractors

- Up to 99 engine hp
- Versatile, maneuverable, powerful
- Legendary John Deere hydraulics deliver dependable power and fast cycle times



John Deere 8 Series Round Balers

- New roller baffle on the MegaWide Plus™ pickup improves crop flow
- Heavier, stronger drive chains and sprockets increase service life



3.9% financing for 36 months*
on select John Deere equipment

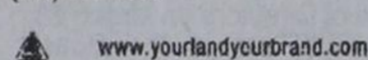
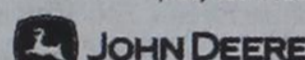
Stop by the location nearest you!

South Hwy 207
Spearman, TX
(806) 659-2568

South Loop Road
Perryton, TX
(806) 435-4036

939 N. Dumas Ave.
Dumas, TX
(806) 935-7720

12098 East Frederic Ave.
Pampa, TX
(806) 665-1888



*Offer Expires 4/30/07. Subject to approved credit on John Deere Credit Installment Plan. Some restrictions apply; other special rates and terms may be available; so see your dealer for details and other financing options.

YOUR LAND YOUR BRAND

The **BEST** of The **BEST**

The Bunkhouse Restaurant

Spearman's place for steak!

Steaks, Salads & Sandwiches
Fri. & Sat. - Prime Rib by reservation

Come & Get It!

DAILY LUNCH SPECIAL

Tues.-Sat., 11:00 a.m. to 1:30 p.m.

Sunday Lunch Buffet

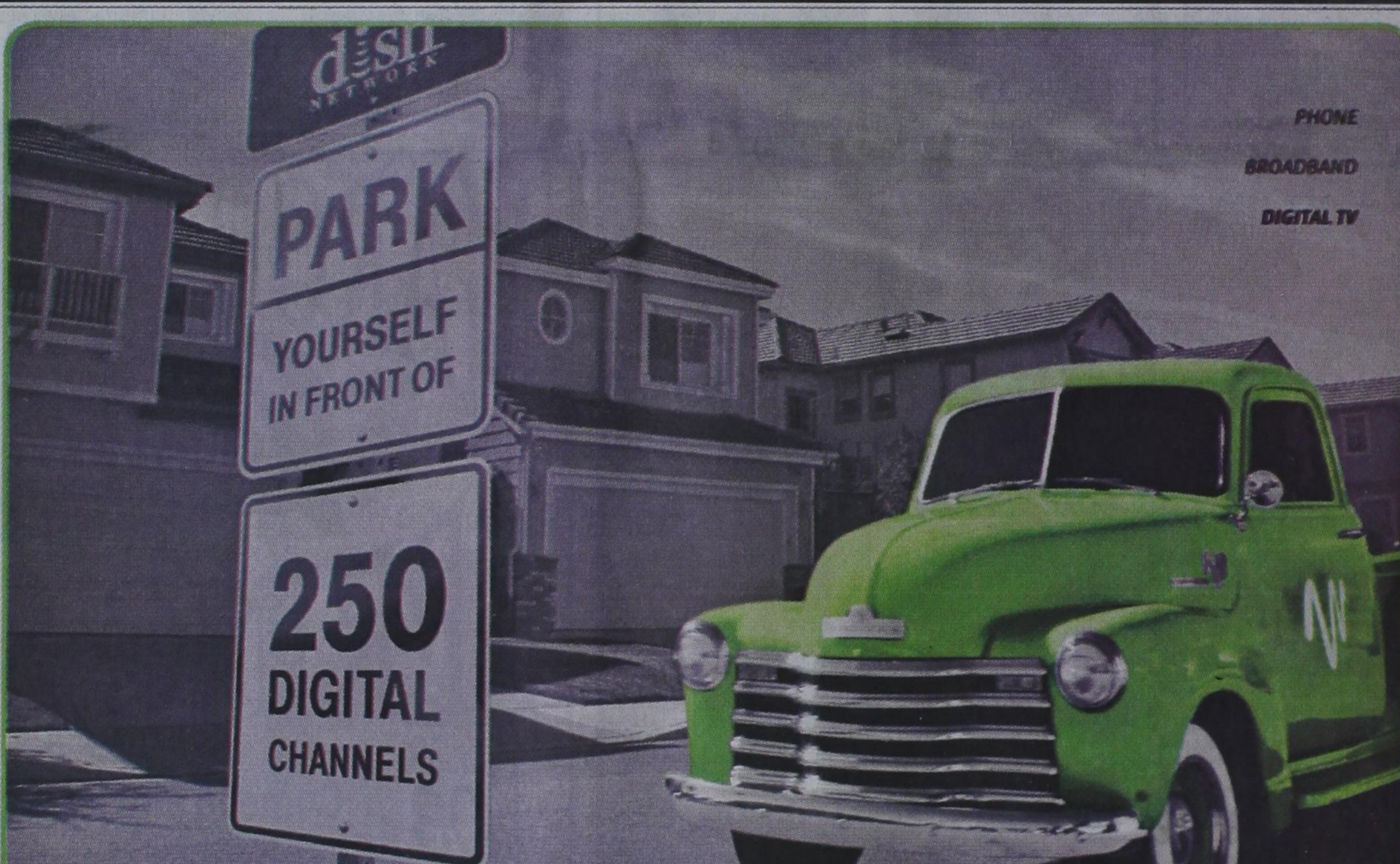
11:30 a.m. to 1:30 p.m.

The Bunkhouse Restaurant

212 Main Street • Spearman • (806) 659-2089

Hours: Tues.-Thurs. 11 a.m.-8 p.m.;

Fri. & Sat. 11 a.m.-9 p.m.; Sun 11 a.m.-2 p.m.; Mon. Closed



PHONE
BROADBAND
DIGITAL TV

PACKAGES STARTING AT:

DishFAMILY
\$24.99
PER MONTH

OFFER INCLUDES:

- FREE HBO cinemax SHOWTIME OR STARZ (FOR FIRST THREE MONTHS)
- FREE STANDARD PROFESSIONAL INSTALLATION ON UP TO 4 TVs
- LOCAL CHANNELS (WHERE AVAILABLE)

HOP ON TODAY!
1.877.312.WIND | windstream.com

windstream
grow places

VISIT THESE WINDSTREAM LOCATIONS:

MISSOURI
BOLIVAR
1705 S. Lillian
417.326.1013

ESPANOLA
2000 N. Riverside Drive
505.747.6200

OKLAHOMA
BROKEN ARROW
929 N. Elm Place
918.259.8255

TEXAS
ANDREWS
112 S.W. 1st Street
432.523.3323

DUMAS
401 W. 1st Street
806.935.1681

POST
410 N. Broadway
806.495.3864

NEW MEXICO
CARLSBAD
906 W. Pierce Street
505.887.8100

HOBBS
320 N. Shipp Street
505.397.0912

BROKEN ARROW
2449 W. Kenosha
918.258.4769

BOERNE
215 W. Bandera Road, Suite 104
830.248.1111

FREDERICKSBURG
1425 E. Main, Suite 100A
830.990.9299

SEYMOUR
400 N. Main Street
940.888.1220

RUIDOSO
721 Mechem Drive (Sierra Mall)
505.257.9000

KERRVILLE
955 Water Street
830.257.9100

DALHART
310 Rock Island Avenue
806.249.1100

PERRYTON
301 S. Amherst Street
806.435.2050

SUGAR LAND
8306 Highway 90A
281.490.9412

TEXARKANA
2315 Richmond Road,
Suite 101
903.223.4688



RELIABLE
SAFE • SECURE

Offer ends 5/31/07 and is available in the continental United States for new, first-time DISH Network residential customers. Subject to availability in certain locations. 3 free months of qualifying movie package requires participation in Digital Home Advantage. After 3-month period, customer must call to downgrade or then-current price for selected package will apply. Digital Home Advantage: Pay \$49.99 Activation Fee. Restrictions apply, including credit approval, qualifying programming purchase and monthly fees for receivers. DISH Network retains ownership of equipment. Limit 4 tuners per account. Lease upgrade fee may apply for a second DVR receiver (based on model). Additional Information: All prices, packages and programming subject to change without notice. Local and state sales taxes may apply where applicable, equipment rental fees and programming are taxed separately. All DISH Network programming, and any other services that are provided, are subject to the terms and conditions of the promotional agreement and Residential Customer Agreement, available at www.dishnetwork.com or upon request. Social Security Numbers are used to obtain credit scores and will not be released to third parties except for verification and collection purposes only or if required by governmental authorities. Local channels available in over 370 television markets and 96% of TV households. All service marks and trademarks belong to their respective owners. DISH Network is a registered trademark of EchoStar Satellite L.L.C. Windstream: Windstream reserves the right to cancel or discontinue this plan at any time. Other restrictions may apply. Offers are subject to the Windstream Terms & Conditions for Communications Services available at any Windstream store or at windstream.com. Contact a Windstream representative for details.