

Hansford County Library
120 Main
Spearman, Tx 79081-2064

INSIDE

Hansford Happenings 2
Basketball 6,7
Want Ads 9
Obituaries 10

The Hansford County Reporter-Statesman

Serving All Of
Hansford County

10 pages

Vol. 83, No. 18

213 Main

Spearman, Hansford County, Texas

25°

Thursday, February 28, 1991

Users must put up \$50 . . .

County barn deposit required

by JoAnn Morton
Editor

A \$50 cleaning deposit will now be required from everyone using the Spearman county barn, including non-profit organizations, following a decision made Feb. 25 by the Hansford County Commissioners' Court.

The deposit will be returned if the building is cleaned satisfactorily after use, according to Hansford County Judge Jim Brown. The cleaning deposit rule is among a newly written set of rules recently adopted by the commissioners' court.

Fifteen rules for use of the county barn were approved by commissioners, including:

1. No alcohol
2. All old tables must be stacked against walls
3. Building must be swept
4. Building should be mopped if necessary
5. All trash bags must be carried

First week ends . . .

Candidates file for election

by JoAnn Morton
Editor

After the first week of the filing period for the May 4 city and school board elections, four persons have indicated their intentions to run for office.

Ed Garner, incumbent, filed Feb. 20 for election to the position of alderman on the Spearman City Council. His was the only filing reported by Spearman City Secretary Cheryl Gibson as of Monday, Feb. 25.

There are three positions up for grabs in the Spearman city election,

out

6. Trash bags must be replaced in receptacles
 7. No food or drink should be left uncovered in kitchen area
 8. Chairs should be stacked against walls
 9. All doors must be locked
 10. No one should be allowed to enter barn area
 11. Lights must be turned off
 12. Key is to be returned by noon the day after usage except on Friday and Saturday. In that case, key will be turned in by noon Monday
 13. Deposit of \$50 will not be returned until building has been checked and meets approval of custodian
 14. Middle partition doors will be locked separately from other doors. Access can be obtained through the county custodian at the courthouse.
 15. Restrooms must be checked
- Commissioners also discussed the Gruver ag barn at their meeting. An overhead door at the Gruver barn is damaged and the commissioners'

court received bids Monday for repairs to the door. Judge Brown noted the repairs could be costly, so he and the commissioners will personally check the door to see what repairs are necessary in order to hold down costs.

A decision on awarding a repair contract will be made at a future date.

The Hansford County Fair Board was authorized to furnish a stock show tent for use at the Hansford County Junior Stock Show in Spearman next month. The tent is used to hold animals if no room is available in the county barn.

Road easements were approved for Bill Logsdon and for Phillips 66 Natural Gas Company.

Regular business for the commissioners' court included approval of minutes of the previous meeting; approval of the treasurer's report and report of investments; and payment of claims.



Michele Davis, Hansford County Justice of the Peace (third from left) was among 104 newly elected justices of the peace from across Texas who attended a 40-hour basic school Jan. 27-Feb. 1 in Austin. The school is held in compliance with Texas law which requires newly elected or appointed justices of the peace to at-

tend a 40-hour course within one year of taking office. Some of those attending in addition to Davis were (l-r) Ann Kennedy of Donley County; Phyllis Tyler of Carson County; Jim Tipton of Potter County; Margie Prestidge of Gray County; and J. Byron Young of Hall County.

Liability insurance canceled . . .

Activity center closed Friday

by JoAnn Morton
Editor

"Center is closed," says the sign on the door of the Hansford County Activity Center.

The activity center closed Friday, Feb. 22 because liability insurance coverage for the building is no longer available, according to activity center board members.

In a statement released Tuesday, Feb. 26, board president Stephen Poole said, "We, the Board of Directors of the Hansford County Activity Center, would like to say a big 'thank you' to everyone who has supported our organization over the years. Everyone has worked hard and

donated many dollars to help provide many activities for the youth of our community, and it is with deep sadness that we are having to announce the closing of the activity center."

The activity center's liability insurance carrier canceled its coverage as of Friday, according to Poole. He noted the building's age was a deciding factor in the company's decision to cancel coverage.

The activity center, located at 5th and Hazelwood in Spearman, was constructed in the late 1940s as a Memorial Building, dedicated to the memory of those who had served in

the United States military.

The activity center board is attempting now to locate an insurance carrier which will write a liability policy at an affordable price. But until another insurance company can be found, the activity center doors will remain locked.

Board members say they will continue to coordinate youth programs and will do "what we can" for adults. Any activities or programs, however, must be conducted outside the building.

According to board members, an announcement will be made if insurance coverage is obtained in the future and the building can be reopened.

Unemployment rate up from December 1990

by JoAnn Morton
Editor

The January unemployment rate for Hansford County was 3.7 percent, up from the 2.6 percent rate announced in December by the Texas Employment Commission.

TEC figures for January show that Hansford County had a total civilian labor force of 3,588. Of that number 3,454 persons were employed during the month and 134 were jobless.

The statewide unemployment rate is also on the rise, according to TEC Commissioner Mary Scott Nabers. The unemployment rate rose in January to 6.9 percent.

"Although the increase is slight compared to last month's rate of 6.5 percent, it is considerably higher than the 5.8 percent of January 1990," Nabers said.

The increase is due to the fact that the statewide total of employed in-

dividuals was down by almost 126,000 and the fact that the state had an increase in the number of unemployed job seekers as well.

"That's the bad news in brief but there is, fortunately, good news as well," Nabers said. "When we look at annual averages it appears that the economy was definitely better than that of 1989. Perhaps that is where we should keep our focus as we look at the statistics for the first month of 1991."

On an annual average basis, the state's unemployment rate moved downward from 6.7 percent in 1989 to 6.2 percent in 1990. The average number of jobless Texans dropped by 46,000 over the year, while total employment rose by 63,000. On average in 1990, total employment was estimated at 7,922,000 and unemployment averaged 521,000, for a civilian labor force totaling 8,443,000.

Since school was not in session this week, filing will resume Monday, March 4 for those elections.

The last day of the filing period for the May 4 election is Wednesday, March 20. Absentee voting begins Monday, April 15 and runs through Tuesday, April 30.

Those wishing to file for the Spearman City Council should do so at Spearman City Hall. Filing for the Gruver City Commission can be done at Gruver City Hall. Filing for the various school boards can be done at the business office of each school district.

GRUVER CAPTURES THIRD AREA TITLE

See story and photos, page 7

WEATHER

Day	Hi	Lo	Precip
Thu	73	30	0.00
Fri	65	32	0.00
Sat	67	32	0.00
Sun	53	31	0.00
Mon	51	22	0.00
Tue	53	28	0.00

Council discusses wastewater

by JoAnn Morton
Editor

Spearman's wastewater treatment plant came under discussion at the Feb. 19 meeting of the Spearman City Council.

Jim McWilliams, director of public works for Spearman, presented a video recording of wastewater treatment facilities at Canyon, Friona and Adrian. Those facilities were visited by Dwight Brandt, engineer for the city's wastewater treatment project, along with Wilson McClellan and R.L. McClellan of Spearman.

McWilliams described for the council each plant's benefits and advantages. The council discussed the possibility of changing Spearman's wastewater treatment plant to a lagoon and irrigation treatment process, but took no action.

The council received bids for a used tractor and a new rotary mower. Five bids for the tractor were received, with the purchase contract awarded to the low bidder, Renner Brothers of Spearman. That bid was for a 90-horsepower 1983 John Deere Model 4010 tractor with 2,030 hours on a 1987 overhaul. Purchase amount is \$3,350.

Three bids for a mower received, with the purchase contract awarded to Five Star Equipment of Spearman. That bid was for a 15-foot mower with a three-spool hydraulic control valve. Purchase amount is \$3,100.

McWilliams pointed out to the council that a total of \$14,000 had been budgeted for the combination of both items.

In other business, the council considered a bill from Hansford County for crack sealing and repairs to county roads adjacent to the city limits. Jim Murray, city manager, explained an invoice had been received from the county in the amount of \$2,224.96. The bill was for repairs to the road in front of the county precinct barn and the road referred to as "13th Street."

Murray said these roads are not dedicated public roads and the burden of proof rests with the county. After discussion, the council voted to

deny payment of the invoice.

The council voted to contract with Hansford County to detain city prisoners in the county jail. The contract proposed a daily fee increase from \$15 to \$20, and an increase per meal from \$4 to \$4.25. The contract covers the period from Feb. 1, 1991 to Jan. 31, 1992.

Approval was given to an agreement between Spearman and Hut-

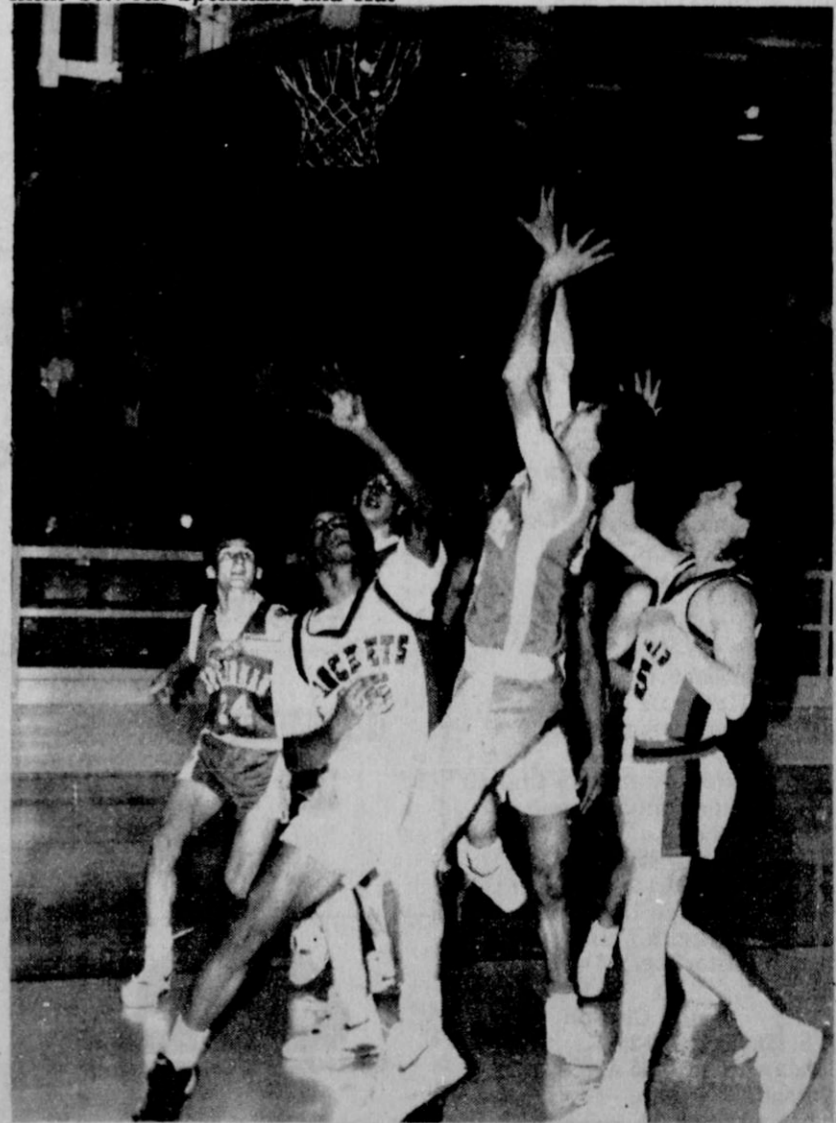
chinson County for fire protection and rescue services, in the amount of \$400 per call.

Murray told council members that Mission Cable of Spearman would give a status report on its rebuilding project. The report was to be presented at a special city council meeting, set for Tuesday, Feb. 26.

See council page 10



Spearman elementary students gathered around the tree purchased with funds they raised themselves. The tree was planted last week at the west corner of the school yard.



Dallas Trosper finished off a baseline drive with a lay up for two points. (photo by Anthony Wilkerson)

Hansford Happenings

A re-certification class for CPR will be conducted Monday, March 11 at 6 p.m. at Hansford Manor. Interested persons should contact Michele Davis at 659-3578 or 659-3411.

A fund has been established at First State Bank of Spearman to help defray expenses of Sue Guthrie after the loss of her husband, Lawton Guthrie. Contributions to the fund may be sent to Sue Guthrie Special Account in care of First State Bank, Spearman.

The Hansford County Unit of the American Cancer Society needs trained volunteer drivers to transport cancer patients to Amarillo for treatments. In order to qualify for the Cancer Society's insurance, all drivers must be trained. If enough volunteers sign up, a training session may be scheduled in Spearman. For more information or to volunteer, contact Clementine Renner at 659-2335.

Parenting Classes in Spearman are offered by the Panhandle Crisis Center of Perryton. The sessions will be from 3 to 5 p.m. on consecutive Sundays, at First Christian Church in Spearman. Babysitting services and textbooks will be provided. There is no charge for the classes. Interested persons are invited to begin with the second session, set for Sunday, March 3.

The Dr. Kit Show will be presented Monday, March 4 at 7:30 p.m. in the Spearman High School auditorium. Advance tickets, available from Spearman Lynx Band members, are \$2.50 each. At the door, tickets will be priced at \$3 for adults and students, and \$2.50 for grade school age. Proceeds from the show will help finance a trip for the Spearman Lynx Band.

Hansford Showtime Car Club will meet Monday, March 4 at 7:30 p.m. at 222 S. Hazelwood in Spearman.

Spearman Church Women will meet Friday, March 1 at 9:30 a.m. at First Christian Church, 29 S. Bernice in Spearman. Visitation and refreshments will be from 9:30 to 10 a.m. The World Day of Prayer program "On the Journey Together" by the women of Kenya, East Africa will be given by women from various Spearman churches. The offering will be divided between the local hospice organization and the Church Women United organization. The public is invited, and a nursery will be provided.

SISD Sayso

by Eddie Gage
Spearman Elementary Principal

Spearman Elementary recognized first semester Honor Roll students at a short assembly Friday, Feb. 22. The assembly was held in the activity gym.

In addition to the Honor Roll, a new academic award was announced. Students, whose grades in the previous six weeks remained the same or improved, received the BUG Roll award. BUG stands for Bringing Up Grades.

On the first grade Honor Roll are Chad Scarborough, Priscilla Reichen, Tanner Beedy, Eddie LaFarr, Audrey Winegarner, Monica Behney, Jessica Volden, Clare Shieldknight, K'Lynn Hataway, Randa Morris, Bethanie Flores, Sarah George, Kris Cummings, Stephanie Kirby, Sara Olsen, Marty Miesner, Matt Duniho, Monica Cantu, Erin Boxwell, Aaron Benson, Annabell Velasquez, Laura Gillaspie and John Brock.

On the first grade BUG Roll are Laura Camacho, Jared Lozano, Misti Hand, Osiel Flores and Amber Moore.

On the second grade Honor Roll are Cary Cates, Jared Freeman, Natasha Kirby, Michelle Laughlin, Nicole Lozano, Sally Pittman, Brad Woolley, Timmy Bynum, Chelsey Villines, Adrienne Simpson, Daniel

Ellis, Richard Varmon, Ammanda Adams, Dib Kirk, Robyn McClure, Junior Moreno, Chelsea Nollner, Kara Pipkin, Dusty Vinson, Ty West, Jenn Schnell and Brandon Clyburn.

On the second grade BUG Roll are Andrew Cummings, Martin Robledo and Jacob Harbour.

On the third grade Honor Roll are Kelsey Henton, Kathryn Murphey, Reagan Renner, Janae Watley, Camille Smith, Halee Beesley, Jordan Brock, Ryan Gibbs, Jeremy Mackie and Brace Scroggs.

On the third grade BUG Roll are Chris Schmehr and Aaron Hernandez.

On the fourth grade Honor Roll are Julie Scroggs, Grace Davis, Mandy Kenny, Chrissy Bensinger, Quentin Shieldknight, Texana Clyburn, Clancy Vanderburg, Lisa Swink, Holly Pipkin, Leslie Holton and Kristin Beedy.

On the fifth grade Honor Roll are Tara Bruning, Jana Brock, Mike Butts, Misha Davis, Lena Harbor, Brian Howell, Mannuel Vasquez, Brooke Trantham, Lindsey Smith, Maribell Martinez, Jocelyn Edwards and Ashley Brown.

On the fifth grade BUG Roll are Amber Morgan and Krista Mocaby.

Spiritually Speaking

By Harold Sneed
Gruver Church of Christ

Have you lost a loved one? Specially a lifelong mate? You may find yourself with great difficulty trying to fit into a world mostly designed for couples. That is natural. You have been part of a couple perhaps for years. So, what do you do now to get on with life?

Don't isolate! Circulate! First reaction may be to avoid people. A natural decision may be to avoid longtime friends. That is because your association with them was always basically as a couple. They have the same difficulty associating with you now because of the drastic change. New friendships may be advisable. But, never totally eliminate longtime friends. They and you will adjust to the new conditions if you leave avenues of communication open.

Talk! To anyone with whom you are comfortable. Someone with past similar experiences can be very valuable to reassure you that this too will pass. Isolation and silence increases your misery and the discomfort of those who would like to help.

How does anyone know what you are feeling? Some of us do. We have been there. After the emptiness comes the feeling like "a fifth-wheel" in crowds, "a third leg" in a two-legged race, "a non-fitting extra" in most group situations. You often look around for that partner who is no longer there. You start to dress and wonder if your mate would have approved what you have selected to wear. You wake up nights and feel across the bed for that familiar form that was there for so long.

You hear the phrase, "time will heal this" and you want to scream, "How do you know?" If I may add the phrase one more time, it will heal if you allow it. Much of the healing process rests in your attitude of acceptance of your new situation. Isolation prolongs that acceptance. Your world will not be the same any more, but remember you have adjusted to change all your life. Adjust to this one, too.

Look at David's attitude when his son died. "Then David arose from the earth, and washed, and anointed himself, and changed his apparel; and he came into the house of Jehovah, and worshipped: then he came to his own house; and when he required, they set bread before him,

and he did eat. 23 But now he is dead, wherefore should I fast? Can I bring him back again? I shall go to him, but he will not return to me" (II Samuel 12:20,23). The Bible does not tell us if this happened in two hours or two months. It doesn't matter! The point is: David got up and got on with life as soon as possible. For some this will come sooner than others. For all it must come reasonably soon.

When Sarah died Abraham bought a place of burial and made this statement: "Give me a possession of a burying-place with you, that I may bury my dead out of my sight" (Genesis 23:4). Harsh and hardhearted? No! Just facing reality. Sarah was dead. He acknowledged that, buried her and got on with life. Sarah was ever with him in memory, but he had to face the reality that she was not there in person, nor could she be again.

Talking to God may now be your toughest task. Resentment will cause that to continue. Faith will cause it to diminish. The apostle Paul in the New Testament is such good example of that faith. In face of great difficulties and approaching death, he wrote Timothy: "For which cause I suffer all these things: yet I am not ashamed; for I know him whom I have believed, and am persuaded that he is able to guard that which I have committed unto him against that day" (II Timothy 1:12). Faith is accepting God at His word, perhaps doubting sometimes through human nature, but always knowing He is able to understand. Remember, He watched a Son die, too.

Life goes on! Death closes one chapter and opens a new one. If we choose to remain in the old chapter, we and all those around us suffer unduly. Don't isolate! Circulate! You will be better for it.

Pringle-Morse school menu

- MARCH 4-8 LUNCH**
Monday - Burritos, chili, corn dogs, beans, salad, fruit, cookie, milk
Tuesday - Turkey, dressing, potatoes/gravy, salad, green beans, Jello with fruit, Jello salad, milk
Wednesday - Hamburger, trimmings, tater tots
Thursday - Salisbury steak, potatoes/gravy, pea salad, vegetable tray, hot rolls, apple pie, milk
Friday - Sandwich, soup, fruit, chips, ice cream, milk
BREAKFAST
Monday - Toast, cereal, juice, milk
Tuesday - Donuts, toast, juice, milk
Wednesday - Pancakes, sausage, juice, milk
Thursday - Muffins, toast, juice, milk
Friday - Eggs, bacon, juice, milk

Now Playing At The Lyric Theatre
 Fri. - Tue. Nights
 Bargain Nights Mon. & Tue. All Seats \$3
 Screen 1 - 8:00
 Screen 2 - 7:45


113 Main, Spearman

At the movies . . .

Arnold Schwarzenegger stars in "Kindergarten Cop," an action comedy about a tough detective who has to go undercover as a kindergarten teacher.

The hulking detective meets his match on his undercover assignment, spying on the wife and child of a vicious drug kingpin.

The film reunites Schwarzenegger and director Ivan Reitman, who last teamed on 1988's "Twins."

A young man with industrial sewing shears where his hands should be has difficulty adjusting when he moves in with a typical American family in "Edward Scissorhands."

Johnny Depp, the teen idol from TV's "21 Jump Street," stars in the title role as a humanoid creation whose inventor's death leaves him with shears where his hands should be.

HENSON CHIROPRACTIC
 410 S. Davis Spearman, TX
 Call For Appointment 659-5603
 Office Hours: Mon., Wed., Fri. 8:30-5:00
 Tue., Thu. 8:30-11:30


Attend the Church of YOUR Choice!

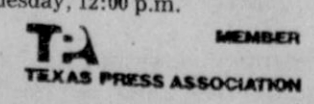
- | | | | | |
|--|---|--|---|---|
| <p>In Spearman</p> <p>Primera Mission Bautista
502 E. 7th 659-3991
Sunday School 9:45 a.m.
Worship 11:00 a.m.
Pastor Jose Rauda Perez</p> <p>First Assembly of God
401 N. Bernice 659-2295
Sunday School 9:45 a.m.
Worship 10:45 a.m.
Evening Worship 7 p.m.
Wednesday Worship 7 p.m.
Pastor Ray Cook</p> <p>Church of Christ
1101 S. Bernice 659-2252
(Faith Lutheran Church)
Sunday Bible Class 9:45 a.m.
Worship 10:30 a.m.
Bible Study Wed. 7:30 p.m.
KRDF Radio Program
Living With Christ 7:50 a.m. M-F
Minister John Scott</p> <p>First Baptist Church
123 N. Bernice 659-5557
Sunday School 9:45 a.m.
Worship 11:00 a.m.
Evening Worship 7:00 p.m.
24 Hr. Prayer 659-2911
Pastor Russ Gibbs</p> <p>Faith Lutheran Church
1021 Cotter 659-2033
Sunday School 9:45 a.m.
Worship 11:00 a.m.
KRDF Program Sun. 9 a.m.</p> <p>First Presbyterian Church
1021 Cotter 659-2033
Sunday School 9:45 a.m.
Worship 11:00 a.m.
KRDF Program Sun. 9 a.m.</p> <p>Word of Life Community Church (Interdenominational)
1105 S. Roland
Sunday School 9:45 a.m.
Sun. Morning Service 10:45 a.m.
Sun. Eve. Service 6:30 p.m.
Wed. Eve. Service 7 p.m.
Interim Pastor Merle Davis</p> <p>Union Church
31 S. Endicott 659-2544
Sunday School 9:45 a.m.
Worship 10:45 a.m.
Sun. Evening 6:30
Pastor Tim Christenson</p> | <p>Fellowship Baptist
1102 S. Archer 659-2783
Sunday School 9:45 a.m.
Worship 11:00 a.m.
Evening Worship 7:30 p.m.
Wed. Evening 7:30
Pastor Ron Fox</p> <p>First United Methodist Church
407 S. Haney 659-5503
Sunday School 9:45 a.m.
Worship 11:00 a.m.
Worship/Study 7:00 p.m.
Youth Wed. 7 p.m. & Sun. 6 p.m.
Pastor Todd Dyess</p> <p>Apostolic Faith Church
822 S. Dressen 659-2870
Sunday School 10:00 a.m.
Worship 11:00 a.m.
Sunday Evening 6:30 p.m.
Wed. Prayer Meeting 7 p.m.
Pastor Lealand Grimmer</p> | <p>First Christian Church
Disciples of Christ
29 S. Bernice 659-2036
Sunday School 9:45 a.m.
Worship 10:50 a.m.
Women's Bible Study Wed. 2 p.m.
Youth Wed. 6 p.m. & Sun 5 p.m.
Pastor LaVern Draper</p> <p>Sacred Heart Catholic Church
901 Roland 659-2166
Sat. Night Mass 7:00 p.m.
Sunday Mass 9:30 a.m.
C.C.D. Sunday 10:30 a.m.
Spanish Bible Study Fri. 8 p.m.
Father Norbert Kieferle</p> | <p>Devotional</p> <p>For Those Who Are Troubled:
But the Comforter, which is the Holy Ghost, whom the Father will send in my name, he shall teach you all things, and bring all things to your remembrance, whatsoever I have said unto you.

Peace I leave with you, my peace I give unto you: not as the world giveth, give I unto you. Let not your heart be troubled, neither let it be afraid.

<i>John 14:26-27</i></p> | <p>In Gruver</p> <p>Church of Christ
209 King 733-2760
Sunday School 9:45 a.m.
Worship 10:20 a.m.
Sunday Evening 6:00 p.m.
Wed. Eve. 7:30 p.m.
Minister Harold Sneed</p> <p>Community Bible Church (Interdenominational)
Hwy. 15 733-2838
Sunday School 10 a.m.
Worship 11 a.m.
Sunday Evening 6:30
Wednesday 7 p.m.
Pastor Zane Gray</p> <p>First Christian Church
510 King 733-2960
Sunday School 10 a.m.
Worship 11 a.m.
Wed. Bible Study 7:30 p.m.
Youth Wed. 6:30 p.m.
Pastor Gary Gumfory</p> |
|--|---|--|---|---|

Brought to you by these Fine Hansford Businesses

<p>Boxwell Brothers Funeral Directors 519 Evans Spearman</p>	<p><i>Berry Cleaners</i> DAN DESIMONE - OWNER P.O. Box 1017 • 207 Main St. Phone 659-3122 SPEARMAN, TEXAS 79081</p>	<p>Dr. Charles Ridge 721 S. Archer 659-3395 Dr. Laurence Behney 702 S. Roland 659-2846 After Hours 659-2535</p>
<p>Hagerman's Service 1213 Hwy. 15 659-5131</p>	<p>Kerry L. Henton</p>	<p>Stand Firm Christian Book Store 322 Main Gruver 733-5124</p>
<p> GRUVER STATE BANK Box 978</p>	<p><i>The Gift Registry</i> 103 E Broadway 733-2914</p>	<p>Hansford County Reporter-Statesman</p>

The Hansford County Reporter-Statesman
 "Serving All Of Hansford County"
 USPS 509660
 213 Main, Box 458, 659-3434
 Spearman, TX 79081
 Published Weekly at 213 Main, Spearman, Texas
 Owned and Operated by: Texas Independent Newspapers, Inc. 15915 Alsace San Antonio, TX 78232 (512) 545-1739
 Second Class postage paid at Spearman, Texas 79081.
 Any erroneous reflection upon the character of any person or firm appearing in these pages will be gladly and promptly corrected upon being brought to the attention of the management.
 Publisher - Robert M. Hulett
 Copy Editor - JoAnn Morton
 Bookkeeper - Colleen Burkhammer
 Subscription Rate: Hansford County, \$19.95; out of county, \$24.95 annually.
 Postmaster: Send address changes to Hansford County Reporter-Statesman, Box 458, Spearman, TX 79081.
 The publisher reserves the right to revise or reject at its option any advertisement which it deems objectionable, either in subject or phraseology, or which it may deem detrimental to its business.
 Advertising and Story Deadlines: Tuesday, 12:00 p.m.


Show results listed

Results of the Swine Show at the Feb. 16 Spearman Practice Junior Livestock Show included:

- Class I (Berkshire)**
 1. Brandon Close
 2. Kacey Smith
 3. Jason Harnish
 4. Chris Brooks

- Class II (Durocs Lt. Wt.)**
 1. Cody Brooks
 2. Jeremy Mackie
 3. Eddie Herrington
 4. Reagan Renner
 5. Clint Schnell
 6. Brandon Sutton
 7. Carla Green

- Class III (Durocs Heavy Wt.)**
 1. Travis Brown

2. Mark Eakin
 3. Tracy Martin
 4. Shane Goodson
 5. Grady Cline
 6. Lindsey Smith

- Class IV (Lt. Wt. Hamps)**
 1. Matt Eakin
 2. Cinda Turner
 3. Leah Mackie
 4. Mandy Kenney
 5. Texana Clyburn

- Class V (Med. Wt. Hamps)**
 1. Mia Sasser
 2. Mike Cook
 3. Mandy Kenney
 4. Dustin Mackie
 5. Lana Martin

- Class VI (Med. Hvy. Hamp)**
 1. Cinda Turner
 2. Tracy Scribner
 3. Lance Smith
 4. Clay Scribner

See show page 8

Hospital Notes

ADMISSIONS

Thursday, Feb. 21 - Sarah Hamilton, Mavis Collins, Courtney Baca, Marguerite Jenkins

Friday, Feb. 22 - Vicente Garcia, Dorothy Bryan, Donnette Cates

Saturday, Feb. 23 - None

Sunday, Feb. 24 - None

Monday, Feb. 25 - D.O. George

Tuesday, Feb. 26 - Clyde Jackson, Maudine Patterson

DISMISSALS

Thursday, Feb. 21 - Sarah Hamilton, Phyllis Cummings

Friday, Feb. 22 - Margaret Rook, Courtney Baca

Saturday, Feb. 23 - Rose Arnold

Sunday, Feb. 24 - None

Monday, Feb. 25 - Dorothy Bryan, Mae Wilmeth

Tuesday, Feb. 26 - Vicente Garcia, Marguerite Jenkins

Patients in hospital Tuesday, Feb. 26 - Mavis Collins, Maudine Patterson, D.O. George, Donette Cates

Karen's Kozy Korner

by Karen Babitzke

SMART CHOICES TO LOWER SALT INTAKE

You may help to control your high blood pressure by eating less salt. It's not that difficult to select low-salt foods when you know what the right choices are.

Replace the salt shaker on your table with one of the commercial herb blends. These products are available in the spice and herb section of grocery stores.

Skip the cold cuts and hot dogs at lunch. Instead, try plain sliced turkey, chicken, or lean roast beef, pork or lamb.

Rediscover fresh or unsalted frozen vegetables instead of canned ones. If you have to use canned foods in a pinch, drain the liquid and rinse the vegetables to remove some of the salt.

IRRADIATION

In May 1990, the Food and Drug Administration (FDA) approved the

use of irradiation to control some food-borne pathogens such as Salmonella, Campylobacter and Yersinia in uncooked poultry. The administration has determined that the use of gamma radiation, electron radiation and X-ray to treat poultry or its parts is safe at levels between 150 and 300 kilorads. Irradiation increases public health protection from food-borne illness by greatly reducing the levels of bacteria present on raw poultry.

VITAMIN SAFETY

Each vitamin has a specific function in the body and each is needed in relatively small amounts. Large doses of vitamin C does not prevent colds; nor does vitamin E exert any effect against a variety of ills for which it has been touted. Beyond being ineffective in disease prevention or treatment, extra doses of vitamins or minerals can be dangerous.



Mike Schnell (left) of First State Bank of Spearman hands a coupon to Kenneth and Margarete Evans. The coupon is good for a dinner for two at any Hansford County restaurant.



Galileo invented one of the earliest thermometers in the late 1500s.



Some of the 25 Spearman senior citizens who attended a financial seminar at First State

Bank of Spearman are pictured here.

HICKERSON JEWELERS

SPECIAL SPRING REMOUNT EVENT

MARCH 14, 15, 16 1991

Winners announced

Three Spearman youngsters are winners in District 8 PTA's Cultural Arts Reflection Program.

According to information from Teresa Phillips, District 8 cultural arts chairman, the winners are Monica Behney, Jordan Brock and Jeffrey Brock.

Behney, daughter of Dr. Laurence and Jean Ann Behney, was the Literature winner in the Primary age division.

Jordan Brock, son of Kim and Stephanie Brock, was the Music winner in the Primary age division.

Jeffrey Brock, son of Kim and Stephanie Brock, was the Visual Arts winner in the Preschool age division.

Students preschool through 12th grade were encouraged to participate in four different categories in

the Reflections program: Visual Arts, Music, Literature and Photography.

The theme "If I Had a Wish" was used to encourage the students to be creative.

The purpose of the Reflections program is to provide an opportunity for children and youth to use their creative talents by expressing themselves through their own original works.

Sponsors of the National PTA program are Ronald McDonald Children's Charities; QSP, Inc., the fundraising subsidiary of Reader's Digest; The Reader's Digest Association; World Book Inc.; and Binney and Smith, makers of Crayola Crayons.



Monica Behney



Jordan Brock



Jeffrey Brock

A SYMBOL OF RESPONSIBILITY

LEARN MORE ABOUT MASONRY

Texas' 180,000 Masons join in demonstrating what Masonry is all about.

The 3.5 million Masons in the United States use the tools of the medieval stonemasons, the builders of the great Gothic Cathedrals. They are reminders of a Mason's duty to live by the highest moral standards, in reverence to God, to practice brotherly love, and to affirm loyalty to his country. While Masons do not solicit members, men of good character may ask to become members.

YOU ARE INVITED
PUBLIC OPEN HOUSE
ALL MASONIC LODGES
2-5 P.M., SUNDAY, MARCH 10, 1991

A message from:
THE MASONIC GRAND LODGE OF TEXAS

CRIME PREVENTION

Texas-New Mexico Power Company

Floodlighting from Texas-New Mexico Power Company is a bright way to prevent crime at your business

Brown's Shoe Fit

CLASSIC

SESTA

SAS TRUNK SHOW...

Factory Representative, Don Smith, will be in the store **ONE DAY ONLY — THURSDAY, FEB. 28TH** to answer any of your questions and show samples of SAS' complete line of men's and women's shoes.

... AND SALE

IN CONJUNCTION WITH THIS EVENT WE'RE PUTTING ALL OUR SAS SHOES AND HANDBAGS ON SALE NOW THRU MARCH 9TH.

LADIES' SHOES & SANDALS

\$10⁰⁰ OFF

MEN'S SHOES

\$15⁰⁰ OFF

STOP IN & REGISTER FOR FREE PAIR

Ladies' & Men's Shoes To Be Given Away Feb. 28

DUO

WINK

ACE

SOFTIE

AMIGO

Brown's

Open M-F 9-6 Sat. 9-5

516 N. Main
Shoe Fit Co., Downtown Borger
273-7841

Among the Neighbors

by Helen Fisher

Another name has been added to that fast dwindling number of old-timers with the passing of Floyd Mitts. He lacked one month of being 90 years old. He was the son of the late George and Lucy Mitts and came to the county in the early 1920s. He married Lucy Russell who died a number of years ago.

They were owners of the Western Auto Store here for years. He married Dorothea Taylor, also of Spearman, and had lived in Guymon for years. Floyd had been in ill health a long time and was in the hospital the last month.

He is survived by a son, Jerry, of Guymon; two grandsons; a sister, Grace Kirk of Spearman; and a brother, Lewis Mitts, of Avilla, Mo.

Clint Patterson continues to merit admiration by his achievements. He is a freshman at the prestigious Rice University, where academic excellence is a requirement and has made the President's Honor Roll with a 3.75 grade point.

Ollie and Owen Pendergraft hosted a reunion for six of her college friends on Friday. They were her roommates at Panhandle State University in the 1930s, and beginning in 1933, they have held a reunion every year.

They spent the day reminiscing and came into Spearman for the noon lunch.

Those attending were Mr. and Mrs. Paul Mendenhall, Liberal; Mr. and Mrs. Clyde Kile, Beaver; Mrs. Ruby Blair, Gray; Mrs. Lura Adams, Hooker; Mrs. Vera Gray, Ulysses; and her mother, Mrs. Lillian Ottaway, Tyrone. Mrs. Ottaway is now the only surviving parent of the original six girls. Mrs. Gray and her mother spent Friday night with the Pendergrafts.

Sandy and James Atkinson of Lipscomb with her son Jim and Monica Clements of Ft. Worth visited friends and relatives in Spearman Sunday. Jim will be entering the Marine Corps in San Diego within a few days.

Don and Lynanne Maize spent a long weekend in the Hill Country in

Fredericksburg. They enjoyed visiting with longtime Spearman resident Charlie Cox and his wife Mary. They live at Lake Buchanan, and Charlie is still fairly active.

Guests of Lana and Travis Patterson for the weekend were Stacey Wilks of Irvin and Tim Ross of Grandbury. Stacey and Lana were college, high school and childhood friends.

Another of Spearman's outstanding youth was headlined in the Amarillo newspaper last week in a column by Bryan Painter. This time Mark Eakin, who is the leader of the boys all around standings in the Tri-state High School Rodeo Association. The spring season is due to open soon and Mark stands second in calf roping; seventh in ribbon roping; tied for fifth in team roping and second in saddle bronc with a total of 106 points.

Mark is a junior and his rodeo achievements were detailed in the article. Mark was quoted as giving a great deal of credit to his parents, Wanda and Jim. He is the grandson of Blanche Greene.

Good luck and a good draw, Mark!

Mrs. Eva Adkison was pleased that her daughter Eva and R.E. Lee of Hobbs could spend a long weekend with her.

The previous weekend her son Harrell and Connie Adkison of Dallas with sons Bryan and Micah were here for the weekend.

It was a time of elation and joy for Mrs. Adkison to see how well and normal Bryan, 18, is at this time. A few years back Bryan was diagnosed as having malignancy of lymph glands. During the long treatments three times the condition was considered terminal. But finally he is well and back in school and welcoming every day. Three recent and thorough examinations revealed no trace of malignancy and the doctors consider him to be cured.

Burt and Julia Wofford of Boys Ranch announce the arrival of a daughter on Feb. 25. She weighed 8 pounds, 2 ounces and was 21 1/2 inches long, and was named Holly Jenae. She has two sisters, Erin and Audrey. Her grandparents are Mae and Dale Wofford, Spearman; and Al and Virginia Schmuck, Portales.

Great-grandparents are Lella and Leonard Ditzler and Rosa Wofford, all of Portales; and Floris Cotton, Roswell.

She is the 10th grandchild for Mae and Dale, and the oldest is 10 years old.

Shannon Scroggs, son of Marilyn and James Scroggs, in the Army Reserves and who has been attending Frank Phillips College, has been reactivated. He is now in Grasenverve, Germany for additional training.

Norman Hill, the son of Betty Evans and Vancile Hill, also in the Army Reserves and who was living in Midland, is also in Grasenverve.

The boys, cousins, were first assigned to Fort Benning, Ga., then to Germany. They are with the Army Infantry and are both Bradley Tank drivers. They will be taking addi-

tional training before being reassigned.

Norman became the father of a son, born Feb. 25, in Midland where his wife lives.

On Feb. 25, June Spencer spoke with son Jeff at Frankfort, Germany. Jeff had a two hour layover, than on to Riyadh, Saudi Arabia.

Jeff had been stationed at Fort Gordon, Ga. and is in Army Communications.

Jeff's recent bride is also in Army Communications but remains at Ft. Gordon, at least for now. More about his wedding in a later issue.

Jeff, 19, is the son of June and Earl Spencer. All three of the boys in the above item are grandsons of Idela Randall.

Winnie Allen and Wynn Paine drove to Portales on Friday and spent the weekend with Winnie's sister, Della Dacus. They returned on Monday.

Brenda Serfina and two year old son of Dallas visited over the weekend with her grandmother, Maudine Patterson, and also her father John and June Patterson and other relatives.

Notes from the medical section:

Neighbors are relieved to learn that Earl Riley successfully underwent surgery for arterial blockage Monday. He is at Scott and White Hospital in Temple and at this writing is in I.C.U. Hollie and daughter, Anne Northcutt, are with him and are hopeful that they can return in a few more days.

Millard Tucker is recovering from cataract surgery performed in Panama last Wednesday.

Relatives report that Linda Jarvis is expected back home in the next few days if her rapid recovery continues. She was a surgical patient in High Plains Baptist Hospital last Thursday.

Derrick Burnett, 13 year old son of Craig and Denise Schumann, is back at home after undergoing surgery for the removal of a bone tumor Feb. 19 at St. Anthony's Hospital.

After spring break Derrick will be returning to his studies as a 7th grader and fully expects to participate in sports.

Word was received late Monday of the death of Iva French McElhaney in St. Anthony's Hospital. She had undergone surgery for an arterial blockage last week, which was successful. Later she suffered a massive stroke and never recovered. Her sister, Maida Bailey of Shawnee, Okla. was with her.

Dr. Kit Show rescheduled

After scheduling changes, the Dr. Kit Show will travel to Spearman Monday, March 4 for a 7:30 p.m. performance in the Spearman High School auditorium.

The show was originally set for Feb. 14 but was rescheduled due to a conflict with basketball playoffs.

The Dr. Kit Show will provide an evening of family oriented fun while benefiting the Spearman Lynx Band, according to Jerry Sparks, band director.

A portion of the show's proceeds will help fund a trip for the Spearman Lynx Band, he said.

Dr. Kit is billed as an internationally famous hypnotist and magician whose stage presentation is "delightfully amazing and hilariously funny." The two-hour show has received acclaim from print, radio and television media in many countries around the world.

The Dr. Kit Show is family entertainment described as "The most laugh packed stage show extravaganza of hypnotic fantasy you will ever witness."

Tickets for the show are available in advance from members of the Spearman Lynx Band at a cost of \$2.50 each. Tickets will also be available at the door on the night of the show. Adult and student tickets will be priced at \$3 each, with tickets for grade school age priced at \$2.50 each that night.

Hometown News

Lt. Tal Jackson of Spearman, serving in the U.S. Armed Services, would appreciate correspondence from area residents. His address is:

Lt. Tal Jackson
Cherry Pt. Marine Air St.
Tryon Park - Apt. F7
Havelock, N.C. 28532

Adela Lopez of Spearman has provided the Reporter-Statesman with updated addresses for those wishing to correspond with her sons Daniel and Paul Jr., serving in the U.S. Armed Services.

Lopez Daniel G
450-57-5613
USS McClusky
FPG 41-OD-Div
A.P.O. San Francisco, CA 96672

SPC Lopez Paulino Jr.
450-57-7155
Operation Desert Shield
42nd FAB
Svc Btry 2/29 FA
APO NY 09631-7350

Club News

WAKA LIONS CLUB

The Waka Lions Club has scheduled its annual Anniversary Banquet for Saturday, March 2 at 7:30 p.m. It will be held in the Waka School cafeteria.

Entertainment will be furnished by the Amarillo Singing Lions Club. All Lions and friends are invited. Tickets will be sold at the door. Cost of the meal is \$6.00. Ed Gilliland of Lefors will be speaker and honored guest.

The Waka Lions Club meets twice monthly on the second and fourth Saturday mornings at 7:00 a.m. Under the leadership of Boss Lion O.E. Drake, the club sponsors several projects. They collect used glasses which are given to the High Plains Eyebank for distribution to

the underprivileged. They have collected approximately 100 pairs in the past year. They have also bought three pairs of glasses for children this year. Along this same line, the club is involved in the Leader Dogs For The Blind program.

During the past year the club has supported the Crippled Children's Camp Kerrville, contributed to the Girlstown Christmas Shopping Spree and also keeps two miles of highway trash picked up on each side of Waka.

Recently, Doug Smith of Panhandle spoke to the club. He is probably better known as "Pokey, the Clown." He is very active in the Make A Wish Foundation. He gave an informative talk on what this foundation does and how it functions.

THANK YOU

Thanks for all the cards, phone calls, prayers, food, prayergrams and other expressions of concern. Thanks also for the cards at Christmas time and telephone calls even when I was in Virginia visiting my son and his family, and for the food that has been brought in since I have been home.

This is such a caring community. I would not want to be anywhere else. I pray that the Lord will continue to bless this community. Thanks again for your concern.

Altha Kirk



(photo courtesy Cindy Clyburn)

Sandy Russell, president of the American Heart Association, made a recent visit to Spearman Elementary School to speak with first graders. According to Aaron Benson, Erin Boxwell and Monica Behney, Russell talked to the class in honor of the AHA's "Take Care of Your Heart Day."

Spearman school menu

March 4 - March 8

HIGH SCHOOL MENU

Monday: Pizza, sweet peas, salad bar, birthday cake, milk.

Tuesday: Tacos, pinto beans, salad bar, sopapilla/honey, milk.

Wednesday: Corn dogs, macaroni-cheese, broccoli, salad bar, fruit cobbler, milk.

Thursday: Chicken pattie, mashed potatoes/gravy, opt., salad bar, hot rolls, butter, milk.

Friday: Hamburger, fries, salad bar, cookie, milk.

Jr. High/Elementary Menu

Monday: Pizza, raw vegetables with ranch dressing, sweet peas, birthday cake, milk.

Tuesday: Tacos, pinto beans, lettuce-tomato salad, seasoned spinach, sopapilla-honey, milk.

Wednesday: Corn dogs, macaroni-cheese, broccoli, fruit cobbler, milk.

Thursday: Chicken pattie, mashed potatoes/gravy opt., green beans, hot rolls, butter, fruit, milk.

Friday: Hamburgers, fries, lettuce-tomato, pickle-onion, cookie, milk.

Hearts & Hands meets

Hansford County Hearts and Hands, an auxiliary for certified hospice patient care volunteers, held its monthly meeting Feb. 18 in the First State Bank hospitality room in Spearman.

The proposed by-laws were distributed and will be voted on at the March 18 meeting in Gruver. There will be a 50 cent fine for members who do not wear their name tags to the monthly meetings.

Jim Miller, pharmacist from the Hansford Hospital Pharmacy,

presented the program on different types of medications used for pain control for the terminally ill patient.

Those attending the meeting were Alta Groves, Cleo Denman, Doris Wilde, Brenda Wall, Frances Williams, Jo Linda Hutchison, Karen Thompson, Jeanette Allen, Kay Vernon, Edith Womble, Carolyn Hicks, Connie Gammill, Jo Alice Clawson, J.C. Harris, Muriel Boyd, Garland Hopper, Beth Phelps, Wanda Stewart, Betty Davis, Verna Lee Shirley, Opal Wallin and Eloise Renner.

Lookin' Back

5 YEARS AGO...

Thursday, Feb. 13, 1986
The Stationmaster's House Museum Board is asking for financial help for the installation of a fence estimated to cost around \$2,500.

Hansford County received 12 inches of snow for one inch of moisture just in time to boost the wheat crop.

10 YEARS AGO...

Thursday, Feb. 12, 1981
Mrs. Susie J. Hand, Manager of the Credit Bureau of Hansford County, Inc. has been selected as a winner of a Gold Key Leadership Award by the Associated Credit Bureaus, Inc.

15 YEARS AGO...

Thursday, Feb. 12, 1976
The First State Bank now has two 700 computers and will have two drive-up windows upon the completion of the expansion and remodeling of the bank.

20 YEARS AGO...

Thursday, Feb. 11, 1971
Larry Fryer, son of Mrs. Muriel

Fryer, and a junior at SHS won first place in the D.E.C.A. competition at Odessa. He competed in the Marketing and Distribution category.

Club News

SERVITORS

Servitors met in the home of Julie Moore Feb. 22.

Old and new business was discussed and the treasurer's report was given.

New members Melissa Vera, Brenda Vera, Julie Moore and Sally Vasquera, standing in for Lori Downing were installed. The evening was finished with a meal.

Those present included Kim Vera, Cheryl Gibson, Julie Moore, Hope Moore, Ann Rook, Lee Schubert, Donna McCubbin, Melissa Vera, Brenda Vera, Sally Vasquera, Paulina Close and Eva Baca.

Still
Lookin'
Good...
Happy
25th
Slim!!!

Love,
Your Big Sister



Bridal Shower
in honor of
Brian & Connie Davis
Saturday, March 9
From 2:00 to 3:30 p.m.
At the home of
Mrs. Jeff Hawkins
900 S. Townsend
Spearman
Gift selections at
Chalor's & Sacks Third Ave.

It's Bargain Hunting Time at Chalor's
savings up to **70%**
Ladies & Little girls Evening wear starting at \$10
All Colored glassware in stock **25% off**
Selected pottery 1/2 price
Buy 2 get 1 Free Gift Bags
Close Out on Majestic Plastic Ware
Chalor's
Store Hours 9:30 to 5:30 M-S
214 Main Spearman 659-2767

Higher fuel costs impacts food prices

by Mary Mahoney
Texas Agricultural
Extension Service

COLLEGE STATION—Texas consumers will find some supermarket discounts on meats, fish and frozen foods in March, but higher fuel costs stemming from the Persian Gulf War will continue to impact some food prices.

Dr. Dick Edwards, a food marketing specialist with the Texas Agricultural Extension Service, said the fuel surcharge imposed by trucking companies several months ago means higher costs for imported and certain other foods at checkout counters.

But some new produce items, including strawberries, will be arriving at markets in March as a reminder that spring and its fresh fruits and vegetables are very near, Edwards said.

"March is National Frozen Food Month, and special sales with coupons will be in progress every week," Edwards said. "Some fish products will be discounted during Lent, and beef and pork prices will continue to favor consumers at the beginning of the month. Poultry prices also will remain attractive."

Frozen foods discounted in March will include desserts and toppings, vegetables, breads, pizza, juices and breakfast items, he said.

"Orange juice prices continue to drop, driven by the California freeze that caused frozen fruit to be diverted into juice. Also, the price of imported concentrate from Brazil has been reduced, resulting in some chilled juice sales each week."

March marks the end of winter weather, and large numbers of strawberries will appear in produce sections, Edwards said.

"The Florida strawberry crop will be in full swing by mid-month, and

large supplies mean that prices will be down around 39 to 49 cents a pint," he predicted.

A hint of better things to come, he said, will be arrival of first shipments of domestic cantaloupes and honeydew melons. Also making spring appearances will be pineapples, zucchini, yellow squash and green beans.

"Many winter produce items will continue to be advertised, with grapefruit the best buy," Edwards said. "Although the winter freeze reduced California's crop, the Florida crop is well above average both in quality and quantity."

Fresh vegetables that will be on sale, Edwards said, are broccoli, brussels sprouts, cucumbers, egg plant, bell peppers, tomatoes and green peas. Apples, pears and potatoes also will be marked down.

Consumers have been enjoying lower beef prices as a result of an oversupply of fed cattle during the past three months.

"But in March red meat prices will begin creeping upward, and pork prices traditionally follow," Edwards said. "Poultry prices, however, will moderate much of a rise in beef prices."

Turkeys will be heavily advertised as an alternative to ham and beef for Easter dinner, he said.

"Prices ranging from 59 to 69 cents a pound can be expected for turkeys," Edwards said. Steaks—sirloin, round and cubed—will be discounted. Pork sales will be on loins, chops and sausage.

Expect sales on domestic catfish and the more expensive orange roughy, Edwards said.

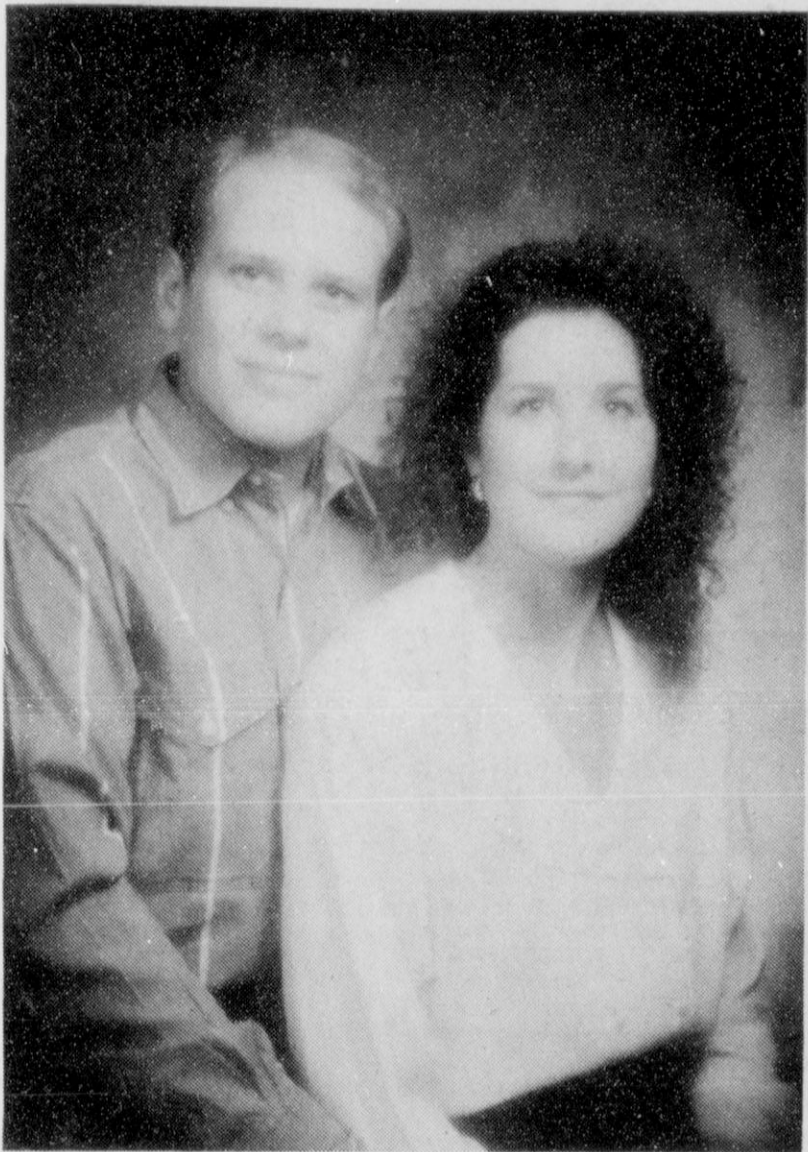
"Prices for catfish filets will be in the area of \$2.75 per pound, with the roughy prices expected at \$3.99 to \$4.29 per pound," he said. "Shrimp also remains an excellent buy at \$3.29 per pound for the medium-sized, imported variety. Frozen seafood on sale will include fish sticks, nuggets and meals that feature seafood entrees."

Many supermarkets are planning promotional sales around three March observances: St. Patrick's Day on March 17, Passover on March 30 and Easter, March 31.

Products on sale for St. Patrick's Day will include cabbage, split pea soup and the fixings for Reuben sandwiches: corned beef, sauerkraut, rye bread and swiss cheese. To compete with Irish beers at this time, American brewers will have green cans and discounted prices.

"Easter promotions all month will feature such Lenten items as seafood, pasta and cheeses," Edwards said.

Retailers will provide discounts on several food items for Passover, including wines, matzos, herring in sour cream, gefilte fish and a host of other kosher products."



Mr. and Mrs. George Lewis of Midlothian, Texas announce the engagement and approaching marriage of their daughter, Karen Lynn, to John Iven Hinton, son of Mr. and Mrs. Howard Hinton of Dumas, Texas. The bride-elect was graduated from Texas Tech University in 1989, with a degree in business administration. She is presently employed by John Hancock Insurance in Dallas. The prospective groom, also a 1989 Texas Tech graduate, holds a master's degree in business administration. He is employed by TEAM Bank of Midland. The couple plans a Saturday, March 9 wedding, at 7 p.m. in Oak Crest Baptist Church of Midlothian. They will make their home in Midland.



Public school art classes at Panhandle State University, Goodwell, Okla. help prepare student teachers for future teaching. Participants in one recent class included (standing, l-r) Kim Pruitt of Boise City, Okla.; Mona Rivera,

sophomore of Gruver; Dee Dee Shelton, sophomore of Gruver; (sitting, l-r) Kacey Wells, Krystal Moore, Dana'e Grayson and Cassie Margrave, all of Goodwell.

(photo courtesy PSU)

On The Go With Joy

by Joy Henderson

This week, teachers, students and other personnel are having a Spring Break while others are on their way to Houston for the Stock Show and others (especially Moms) are having nervous breakdowns because the kids are home and underfoot.

Some will be making plans for the Boys' Basketball game and reservations for a State Championship in the near future. Me - I'm hoping this Spring-like weather will hold out for a complete housecleaning. It all started umpteen years ago when M.H. and Dennis left for Houston and I was left at home with a 2 year old granddaughter from North Carolina and a small son too young for stock shows.

The weather was gorgeous and I tore around the house and yard completely overhauling everything. But as is my habit of the mouse (me) playing while the cat is away (M.H.) I spent too much time away from home visiting relatives, etc. out of town.

M.H. came home from the Stock Show a week later and found his house in the Spring Break mess. Astounded, he asked me what happened and I calmly explained, "You're always wondering what I do all day. Well now you know - today I didn't do it." Anyhow, I told him, I was sick.

While I was sick, a woman called to find out how I was feeling. "Rotten" was the reply. "My headache is killing me, my back

aches, my sinus is acting up and what's worse, the house is a mess and the kids are driving me bananas. Besides M.H. and Dennis are due in from Houston tomorrow."

"Don't worry about a thing," said the woman. "You lie down and rest and I'll be right over to help with the house and the kids. Also I'll bring a pan of my homemade soup for your supper. By the way, how's Sam?"

"Sam?" I said. "Yes?" said the woman, "Sam your husband."

"My husbands name isn't Sam. Its Lewis," I said.

"Oh, gracious," said the caller. "I've got the wrong number."

There was a long pause. Finally I said, "Does this mean you're not coming over?"

Well, we are still having lots of reports of people suffering with various types of infections and viruses. Some have missed some days on the job, some have been hospitalized and are now home, some are in hospitals, with diagnosis unknown.

Those known sick this past week are Pat Morley, Mildred Hindergrat, Mozell McClellan, now home from Perryton Hospital but will be taking other tests in Amarillo, and Clea Casdorff who was hospitalized in Guymon when her blood pressure became extremely high.

Hometown News

Air Force Senior Airman Oscar Herrera has deployed to the Middle East with American military forces participating in Operation Desert Storm. He recently re-enlisted in the U.S. Air Force for four years.

Desert Storm, the largest deployment of U.S. military forces since Vietnam, is in response to Iraq's invasion of Kuwait and threat to Saudi Arabia.

"It is the presence of (our) dedicated military people that brings America's principles to life and gives them strength and meaning," President Bush said.

Turner, a public affairs division chief at Barksdale Air Force Base, La., is the son of retired Air Force Lt. Col. David W. and Jane D. Turner, Rogers.

The captain is a 1970 graduate of Annandale High School, Va. He received a bachelor's degree in 1974 as a graduate of the College of the Ozarks, Clarksville.

Air Force Capt. David G. Turner has deployed to the Middle East with American military forces participating in Operation Desert Storm.

Panhandle Events

COMMUNITY CONCERT

BORGER - Local members of the Community Concert Association of Borger are reminded of the upcoming concert to be given at the Borger High School auditorium March 5 at 7:30 p.m.

The Jose' Gruco Company, a prestigious group of 35 dancers, singers and musicians with the Spanish dancer, his son and daughter, will all be dancing on stage.

CLASSIFIED ADS PAY OFF!

THE SATURDAY SALE

fall and winter final. 75% and more off at

j-winston's first saturday of the month sale.

j-winston of amarillo

feminine fashion 2701 paramount visa - mastercard

Lookin' Back

5 YEARS AGO...

Thursday, Feb. 27, 1986
Four Lady Greyhounds made District Class A this year. They are Joby White, Anne Potts, Sharon Reynolds and Dala Shapley. The Lady Greyhounds will move to District 1-AA next year.

10 YEARS AGO...

Thursday, Feb. 26, 1981
Local Texas Tech University students qualified for the dean's honor roll. They are Julie Barkley, Tracy Bevil, Bradley Cluck, Lisa Ellis, Shelley Hinton, Stephanie Nelson and Darin Winger.

15 YEARS AGO...

Thursday, Feb. 26, 1976
Officers for the 1975-76 FFA year include David Bergin, president; Brian McMellian, vice president; Joe Fulfer, secretary; Rusty Gibson, treasurer; Kenneth Dahl, reporter; Bob Griffin, sentinel; and FFA Sweetheart Dee Dorman.

Members of the Junior Class Play

"Meet You In St. Louis," are Jimmy Finley, Bobby Hicks, Teresa Chisum, Russel Dahl, Sherry Morris, Wade Dahl, Paul Brealand and Jerry Curlee.

Panhandle Events

CANYON - The Panhandle-Plains Historical Museum will host its third Dinosaur Day Saturday, March 2, from 10:00 a.m. to 3:00 p.m. Activities are planned for children ages 3-10 years. According to John Greene, education director, dinosaur activities will take place throughout the museum and will be ongoing throughout the day.

In addition to the activities mentioned above, dinosaur cake and cookies will be served. Admission will be \$.50 per child. Children must be accompanied by an adult. All activities associated with Dinosaur Day are supported by special volunteers and members of the Museum Auxiliary.

Count on the Classifieds to Do the Job

Jo's This 'N' That GRAND OPENING MARCH 8 & 9

Hours: Monday-Friday 9:30-5:30 Saturday 9:30-5:00

HARLEM GLOBETROTTERS 65th ANNIVERSARY

ON SALE NOW

TUESDAY, MARCH 12 7:30 PM THE AMARILLO CIVIC CENTER \$11.00 & \$9.50 (Special VIP Seating Available) Tickets on Sale at The Amarillo Civic Center Box Office and Music Mart. CHARGE TICKETS by phone with VISA or MC CALL: (806) 378-3096 (Service Charges May Apply)

Area Eye Center Dr. Billy Nowlin Optometrist 206 Main 659-3109 Hours: Tuesday 9-12 & 1-5 Friday 9-12 Selection of Frames and contact lenses serving this area for 13 years.

Your Authorized SEARS Catalog Agent will be at C.O.'S SUPPLY CO. Effective March 1 For Catalog Orders, call 659-2573 or come by 301 S. Davis Spearman

Lynx defeat Wellington 69-45

"Everything went the way we hoped it would go," said Lynx coach Wendell Neff about the Lynx' bi-district win over Wellington. The Lynx beat Wellington 69-45 Thursday, Feb. 21 at the Amarillo High School gym.

According to Neff, there were four things that went right for the Lynx team. First Wellington got off to a very slow start. Second, the Lynx guards were able to handle the Wellington pressure and get the ball down court without too many turnovers. Once the guards got the ball across half court, they got the ball in to the Lynx post men, who were able to score down low. The fourth thing on the list was the ability of the Lynx players to control the boards. They out-rebounded the Wellington team on both the offensive and defensive boards.

"We had a little better start than they did," said Neff. "The first

quarter was about even, both teams were pretty nervous," he concluded.

With the Lynx leading 11-6 going into the second quarter, Neff indicated that this is where the Lynx began to pull away from Wellington. "They got into foul trouble," Neff elaborated. "We would take it inside and they tried to block the shot and would get called for the foul." This pattern led to two of Wellington's key players having to sit out the rest of the quarter.

"When those two players sat down, we went to a press," said Neff. The Lynx press led to turnovers by Wellington which led to a 15-0 Lynx scoring spree. "This gave us the biggest part of our lead and we were able to maintain it through the second half," Neff concluded.

The defensive play of Joel Shields and Alan Howell on Wellington's best offensive player, McIntosh, help the Lynx to maintain that lead. Shields

and Howell held McIntosh to only five points. McIntosh averages 16 points per game.

On offense it was the ball handling of starting guard Khris Kelp that beat the Wellington press. He then caused problems for their half court defense by beating his man and driving to the basket for a lay up or a foul. Neff indicated that the off-the-bench play of Dallas Trooper contributed to the Wellington defensive problems. Like Kelp, he would beat his man and drive along the baseline from his wing position and either draw the foul or score two points with an easy basket.

The last thing Neff mentioned was the outstanding inside play of Cody Pipkin. He scored down low off of passes from his teammates. His rebounding got the Lynx many second and third scoring opportunities. His defensive rebounding limited the Wellington team to only one shot per

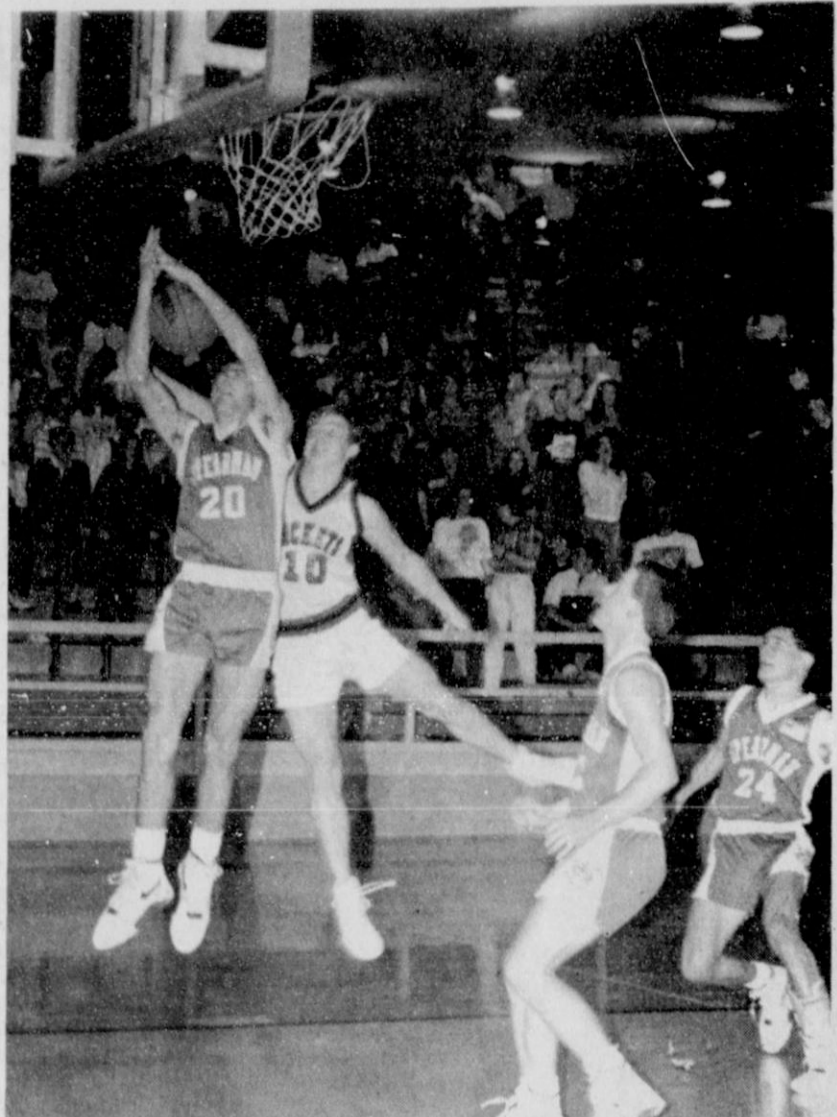
offensive trip down the floor.

Neff and the Lynx team were hoping that fortune would smile on them again as they headed for Tascosa High School to play their area championship game against Abernathy Tuesday night. She did not, and the Lynx lost 56-48. According to reports it was a close game all the way to the end.

There was some confusion which led to the Reporter-Statesman not getting details or pictures in time to meet its press deadline for this issue. The Reporter-Statesman will have details and pictures in next week's paper.

LYNX BI-DISTRICT Vs. Wellington, Thurs.

Score: Spr. 69 - Wel. 45
Scoring: Khris Kelp-16, Cody Pipkin-14, Dallas Trooper-11, Tim Kizzier-9, Brian Beck-8, Joel Shields-5, Shawn Tanner-4, Ross Jarvis-2.



(photo by Anthony Wilkerson)
Shawn Tanner (20) pulls in a rebound away from a Wellington player. Alan Howell (22) and Brian Beck (24) get in position for an outlet pass.

Lynxette tracksters headed for Perryton

The Lynxettes team participating in the Perryton track meet Saturday, March 2 will be a smaller version of what coach Richard North hopes the team will become. "We haven't worked out much and with spring break, I am making this meet optional," said North.

There were no formal track practices this week but North indicated that he expected the girls to work

out on their own. "With most of the girls playing basketball, we're in pretty good shape," North said.

North indicated the following girls will be competing in Perryton: Joy Gafford will be running the 100m and 300m hurdles and the mile relay. She will also be participating in the high jump. Joining Gafford in the mile relay will be Sonya Nitschke. She is also running in the 200m dash.

Bonnie Thompson is running the 100m dash and the 400m relay, as well as the long jump. Joining her on the 400m relay will be Trixie Pearson. Pearson is on the 800m relay and participating in the triple jump.

Shannon Holton will join the 800 relay team and the mile relay team. Holly Jarvis will round out the 400m and 800m relay teams and will long jump for her field event. Kellie Butts will round out the 200m

and 400m relay teams.

Lisa Lilliard will run the 100m and 300m hurdles and triple jump. Joining her in the triple jump will be Christie Taylor. Taylor will high jump and run the 400m run as well. Also in the 400m will be Mary Cook. She is competing in the 800m run also.

The Lynxettes will be loading up for Perryton at 7:30a.m. Saturday, March 2.



The first man-made fiber produced commercially in the U.S. was rayon made from wood pulp in 1910.



An elephant's trunk has about forty thousand muscles.



(photo by Anthony Wilkerson)
Khris Kelp completes a fast break and scores two of his team-leading 16 points.

First State Bank of Spearman Wishes to congratulate Tom, Clay and Ginger.



FIRST State Bank is pleased to announce the appointment of Tom Dortch as Advisory Director. Tom is a life long resident of Morse and owner of Morse Implement for 25 years. He is past President of Morse School Board, Past President of Morse Lions Club and 1989 Lion's "Man of the Year." His present activities include Adobe Walls Boy Scout Council, Pringle-Morse 4-H Club, and First Baptist Church, Morse.

First State Bank would like to announce the promotion of Robert Clay Schnell to Bank Director. Clay attended SMU and the University of Colorado in Boulder and is now continuing his graduate studies at SMU-Dallas. He has been in banking since 1979. His current activities include Chamber of Commerce Director and the Spearman Lions Club.



Also promoted at First State Bank is Ginger Turner as Assistant Vice President. Ginger currently specializes in agricultural lending and FMHA Guaranteed loans. She has 22 years of "hands-on" experience in the agricultural industry. She is a member of the Spearman Church of Christ.



FSB
First State Bank
One NE Court Spearman
(806) 659-5565
MEMBER FDIC

Lynx thinclads run at Canyon Relays

Coach Rick Smith took mostly a J.V. Lynx track team to Canyon Saturday, Feb. 23 to compete in the Canyon Relays.

The only two varsity runners going were Chad Riggins and Jeff Hutchison. Riggins ran in the 3200m run and the 1600m run. In the 3200, Riggins' time was a 12:28. He ran a 5:13 for the 1600m.

Hutchison also ran in the 1600m and 3200m races. He turned in times of 5:42 and 12:57.

Two of the J.V. Lynx participating in the meet came away with first place finishes. Lyn Garrod finished first in the 1600m and 3200m runs. His times were 5:11 and 11:12.

Joining Garrod with first place honors was Ramon Lozano. He finished first in the discus event with a throw of 101'-7".

Other J.V. team members finished as follows:

- Ernesto Puentes 800m 5th 2:18
- Jason Varnon 110m Hurdles 2nd 16:76
- 300m Hurdles 4th 46:1
- Landon Swan Shot Put 2nd 36'1"
- Clay Scribner 200m 6th 25:8
- 100m 12:51
- Ernesto Puento 1600m 5:29
- Dee Mayfield 110 High Hurdles 7th 19:63
- 300 Int. Hurdles 51:23

The Lynx track team will be traveling to Perryton Saturday to run in the Perryton meet.

OPENING SOON

B & J Chiropractic Clinic

Dr. Darrell D. Duke
1122 S. Main, Perryton
435-5361

(Taking Appointments March 4)

Hounds take third area crown



(photo by Bob Bort)

With the score 41-41, two minutes of intense basketball were played, with neither Gruver nor Hartley able to score. Finally, with 2:07 left in the third quarter, Trent Seagler (30) broke the ice with two clutch free throws to put the Hounds up 43-41. Marty McCloy (10), Shannon Pool (22) and Matthew Hoel (34) are prepared to rebound. Gruver beat Hartley in a thriller, 70-66.



(photo by Bob Bort)

According to coach Tim Garland, Geronimo Ortega (24), shown here shooting his patented 3-pointer, provided the senior leadership necessary to get the job done. He was Gruver's leading scorer in both the Hartley game, with 18 points, and the Miami game, with 16 points.

For trip to Austin . . . Chances look good

The two top ranked teams in Region I brackets have been upset in the area round of the playoffs, leaving the Hounds a much better chance of advancing through the three games to Austin. Nazareth upset top ranked Chillicothe 55-54, and Gruver's opponent, Paducah, upset Farwell.

If the Hounds manage to beat Paducah Friday night, they would play Saturday morning against Whiteface-Meadow, or the four teams who make up districts 13-16.

If they make it to the finals Saturday night, it would be against Vega-Nazareth-Plains-Petersburg, or, again, against the teams from districts 13-16.

The teams from the Amarillo area that are in the regional tourney are Vega (defending regional champ), Gruver, Paducah and Nazareth. The other four teams would come from the teams listed above.

Gruver played a game at Vega in non-district competition in December and did not play well, but still managed to take the game into double overtime before losing on their

by Bob Bort

For the third time in as many years, the Gruver Greyhounds under head coach Tim Garland have garnered the Class A Area Championship and with it, a third straight trip to the Region I tournament at the Texan Dome on the campus of South Plains College at Levelland.

The Hounds, again for the third straight year, will be matched with the Paducah Dragons in their first game there at 8:30 p.m. Friday, March 1. Paducah lost to Gruver in 1989 and again in 1990. They will be primed for their game with the Hounds, with revenge in mind.

Hounds 70, Tigers 56

Gruver thought they would blow Hartley off the court in this class A bi-district game, just as they had devastated Adrian's Matadors in this game for the past two years. The Hounds were wrong. Two quick three-pointers, one by Geronimo Ortega and another by Matthew Hoel, and Gruver had an 8-2 lead. This one looked easy. The Hounds hustled on offense, they hustled on defense. Gruver threw the best they had to offer at Hartley. They were wrong.

Hartley's Tigers just kept coming back. Gruver put up their best - then they matched it. They led by eight points, 35-27, with 1:19 left in the first half, and it looked like a bitter night. Then the Hounds would come back. Over and over. Gruver, then Hartley.

The Tigers led 41-34 at one point in the third quarter, when the game was tied 41-41 with seven unanswered points. Surely the Hounds had finally put it together, and this would be a romp from here on in. What followed, with the score 41-41, was 2:13 of some of the most intense basketball action ever witnessed, with neither team able to convert a point. Finally, Trent Seagler hit two clutch free throws with 2:07 left in the third quarter, to give Gruver a 43-41 lead. More importantly, 6-5 center Ken Hormel of the Tigers, who had scored 15 of the Tigers' 21 first quarter points himself, drew his fourth personal foul 38 seconds later. Hoel converted one of the two free throws, and the Hounds led 44-41. A Kauffman jumper put Gruver up 46-43, but Eddie Blanco drilled his first of two three-pointers and it was tied again, 46-46. The Hounds couldn't put it away.

Then it was the Tigers' turn. They took a 52-47 lead early in the fourth quarter and the Gruver fans began to really worry.

It wasn't until Hoel tied the game 60-60 with a lay-up with 4:07 left, that Gruver caught the Tigers. Then came Ortega's 3-pointer, which should have broken their back, but Hormel scored and was fouled, and matched it. Then Trent Seagler hit three straight clutch free throws for the Hounds, and it was 66-63 Hounds. But more importantly, with 2:43 left in the game to put Seagler at the foul stripe, their big center Hormel fouled out. That would later contribute to perhaps the key play of the game.

The three free throws by Seagler were matched quickly by Blanco's second 3-pointer, and it was 66-66. Then came two "make or break" plays. Brady Pool, a true ball-hawker, tied up the Hartley player on a defensive gem and the arrow was pointed the Hounds' way. 1:31 was left in the game, Hounds' ball.

With 1:16 left, Seagler was fouled and went to the free throw line. But this time the front end of the one-and-one rolled off the rim, and there was a battle for the ball. Little Geronimo

Ortega (with big Hormel on the bench) came up with the loose offensive rebound and put it up and in, for a 68-66 Hounds lead.

Hartley took the ball down the court but couldn't put the ball in. Gruver brought it back, eating up a little time, but got the ball in the paint to Hoel who turned and had the guts to put up a 10-foot jumper with 1:03 left, giving Gruver a two point lead. His confidence in his abilities paid off. Rather than trying to run off the last minute of the clock, Hoel had the nerve to try to make it a four-point lead. He did, as the shot was perfect.

The last minute ticked off with the Tigers unsuccessful from 3-point range, and the Hounds' Shannon Pool ran out the clock.

1-A G (22-8) 22 32 47 70
2-A H (20-8) 21 37 48 66

3-point shots: Geronimo Ortega-3, Matthew Hoel-1, Eddie Blanco-2.
GR-Geronimo Ortega-18, Matthew Hoel-14, Shannon Pool-14, Trent Seagler-11, Carey Kauffman-7, Marty McCloy-2, Brady Pool-2, Kevin Spivey-2.

HA-Ken Hormel-20, Eddie Blanco-14, Jerry Don Thompson-10, B. Thompson-10, Kelly Weatherford-5, Kemp-3, Banks-2, Paul Thompson-2.

Coach Garland's Comments

"I am big on senior leadership, and it was Geronimo Ortega, our only senior on the floor, who provided the leadership to get it done with eight fourth quarter points. Our boys really hustled - Hartley just played a really good ball game.

"Hormel scored 15 points in the first quarter, as we couldn't get the rebounds and keep him from those second and third shots, by Hartley players. The rest of the game, we did a good job of keeping him off the boards, leaving them just the one shot. Defensively, we played outstanding ball, especially the second half.

"They didn't score the last two minutes of the ball game. With the 68-66 lead, and the ball, I told the kids to work for the best shot, and we thought they would try to foul us if we attempted to run out the clock, and we're not the best at the foul line.

Matthew Hoel got that good shot in the paint, and hit it.

"We will now play Miami Tuesday, Feb. 26, again at Berger at 7 p.m. We beat them at Miami on Dec. 7 by 25 points, 79-54, but that was a different ball game. They were undergoing a coaching change, and they have gotten better and better. Now, we won't have as easy a job with them as the time in December."

Hounds 89, Warriors 49

The Gruver Greyhounds destroyed the Miami Warriors 89-49 in a Class A area playoff basketball game Tuesday, Feb. 26 at the Tex Hanna Fieldhouse at Berger.

The Hounds jumped to an early lead, but the Warriors came back to tie it at 5-5. Then, with 4:32 left in the first quarter Matthew Hoel hit a 3-pointer, and the Hounds had an 8-5 lead. They never were tied again. But they simply weren't playing good basketball. They missed clutch shot after clutch shot under the basket and they were not handling the ball well.

Gruver had a 10-point lead at the end of the first quarter, and a 15-point lead at halftime. But coach Tim Garland was far from happy.

The Hounds played better in the second half and stormed to a 40-point victory. They did do some things right. For example, five players (Geronimo Ortega, Shannon Pool, Brady Pool, Marty McCloy and Trent Seagler) scored in double figures. Coach Garland played everyone on the team, and he did it early. And the Hounds, not noted for being a good free throw team, hit 16-19 in the second half.

Other highlights: Luke Miller ram-

med home a 3-pointer, and senior J.J. Renteria received two standing ovations from his teammates after scoring buckets.

GR (23-8) 22 43 67 89
MI (17-10) 12 28 38 49

3-point shots: Geronimo Ortega-2, Brady Pool-2, Matthew Hoel-1, Luke Miller-1, Matthew Neighbors-1

GR - Geronimo Ortega-16, Brady Pool-12, Shannon Pool-12, Marty McCloy-10, Trent Seagler-10, Kevin Spivey-9, Luke Miller-8, Matthew Hoel-7, J.J. Renteria-5

MI - Matthew Neighbors-13, Aaron McReynolds-10, Andrew Neighbors-7, Melvin Seymour-7, Chris Early-6, Jim Locke-2, Gerg Kauk-2, Jason Stauff-2

Coach Garland's Comments

"There had been rumors all week that their seniors wouldn't be there, and it really hurt our practices. We played poorly the first half - our intensity level was terrible. We were hurt by the rumors, and then the truth, and I told the kids at halftime if we played at regionals like we had played that first half against Miami, that we would get embarrassed by either Paducah or Farwell.

"In order to compete at regionals with the teams that are going to be there, we are going to have to do things like hitting 16-19 at the foul line in the second half. That's the kind of shooting from the field and from the line that it will take to beat Paducah."

Way to go Hounds!

HICKERSON JEWELERS

SPECIAL SPRING REMOUNT EVENT

MARCH 14, 15, 16 1991



SHOP OUR EVERYDAY LOW PRICES.....

WE APPRECIATE YOU!

FEBRUARY 24 - MARCH 2
WHILE QUANTITIES LAST
305 W. KENNETH SPEARMAN
101 MAIN, GRUVER

6 PACK/
12 OZ. CANS
\$2.39



ALLSUP'S BREAD
1 1/2 lb. LOAF
2/99¢

FRITO SANTITAS
reg. \$1.99
\$1.49

ALLSUP'S CORN DOGS
2/99¢

GOLD MEDAL FLOUR
5 lb. BAG
69¢

HAM, EGG & BISCUIT
79¢

ShurSavng Bathroom Tissue
4 roll pkg. **2/\$1.00**

Folger's Coffee Auto. Drip Reg. Perk 13 oz. can **\$2.19**

Page Paper Towels 2/\$1.00

Sunny Cookies Variety Flavors 5 oz. pkg. **2/\$1.00**


CORNER FROM 35 W. A. BAY

HOT FOODS MENU		AVAILABLE AT ALL ALLSUP'S LOCATIONS
BARBECUE BEEF SANDWICH	99¢	5 PRICE BOX CHICKEN \$4.99
BARBECUE PORK RIBS (L.B.)	\$3.99	BEF & CHEESE CHURCHMANNA \$1.19
BARBECUE WHOLE CHICKEN	\$3.99	BREAD CORN DOG 69¢
ALLSUP'S BURRITO	79¢	DELICIOUS HAMBURGER 59¢
BREAKFAST BURRITO	99¢	WILSON HOT LINKS 99¢
BURRITO BEEF & SALSA	\$1.19	SAUSAGE ON A STICK \$1.59
DELICIOUS CHEESEBURGER	79¢	SAUSAGE & BISCUIT 79¢
CHICKEN FRIED STEAK	\$1.59	SAUSAGE, EGG & BISCUIT \$1.09
3 COUNT CHICKEN STRIPS	\$1.49	SAUTEYA SAUSAGE \$1.09
W/POTATO WEDGES/CHICKEN Q PCO BISCUIT	\$1.99	4 COUNT STEAK FINGERS \$1.00

CALL-IN ORDERS WELCOME CHECK OUR WEEKLY SPECIALS

Action Paint & Tile
the Place to Save!

New Store Hours
M-F 7:30 a.m. to 6:00 p.m.
Sat. 9:00 a.m. to 3:00 p.m.



CABIN CRAFTS CARPETS

(In Stock)
as low as **\$4.99** per yard

In 2 gal. Re-Usable Pails

NEW - IN - STOCK
WALLPAPER & BORDERS
\$ 8.99 per double roll

BEHNE ELECTRIC & CONSTRUCTION

Electrical Repairs
& Handy Man Service
Reasonable Rates

CALL 659-3404



WE ACCEPT FOOD STAMPS AND WIC CARDS.
GOOD THRU MARCH 5 IN PERRYTON ONLY.

PRICES GOOD THRU TUES. MAR. 5TH						
WED.	THUR.	FRI.	SAT.	SUN.	MON.	TUES.
27	28	1	2	3	4	5

VALU
EASY AS



Flame Red Seedless Grapes



.98
lb.

Thompson White Seedless Grapes lb. **\$1.19**

Starkist Tuna



In Oil or Water

.59
6 1/8 oz.

Betty Crocker Layer Cake Mix




Assorted Regular or Lite

.79
18.5 oz.

Betty Crocker Ready to Spread Frosting Assorted 16 oz. **\$1.09**

United Sugar



\$1.69
5 lb. bag

United Extra Lean Super Valu Pak Boneless Shoulder Roast



\$1.88
lb.

Single Pak lb. **\$1.98**

Charmin Bath Tissue



Assorted 4 Roll

.99

United Extra Lean Boneless Rib Eye Steak



\$4.49
lb.

USDA Choice Rib Eye Steak lb. **\$4.79**

DOUBLE COUPONS
7 DAYS A WEEK!

the personal touch



Armando Borunda (center), employed at Caprock 2, has received the quality employee of the year award for the cattle department. Borunda received the award after being nominated by his peers for his work during the past year, ending in January 1991. His fellow employees felt his workmanship and attitude best represented the principles of the quality improvement process at Caprock 2. Presenting Borunda's award are (left) Jeff Rudolph, cattle superintendent, and Pat O'Connell, manager at Caprock 2.

- Show from page 3
- 5. Camille Smith
 - 6. Coyt Tigrett
 - 2. Melinda Tigrett
 - 3. Clint Sasser
 - 4. Chad Gardiner
 - 5. Carrie Burton
- Class VII (Heavy Hamps)**
- 1. Bethany Cline
 - 2. Carla Burton
 - 3. Mark Brown
 - 4. Jason Harnish
 - 5. Jennifer Schnell
 - 6. Joshua Schuman
- Class VIII (OPB)**
- 1. Jeryme Hunter
 - 2. Eddie Herrington
 - 3. Melissa Baker
- Class IX (Spot)**
- 1. Kevin Williams
 - 2. Kevin Williams
 - 3. Kevin Williams
 - 4. Mandy Kenney
- Class X (Lt. Wt. Cross)**
- 1. Ronda Renner
- Class XI (Med. Wt. Cross)**
- 1. Jeryme Hunter
 - 2. Randie Renner
 - 3. Catrina Brooks
 - 4. Troy Brown
 - 5. Beverly Burton
- Class XII (Med. Hvy. Cross)**
- 1. Reagan Renner
 - 2. Kacee Smith
 - 3. Meagan Sasser
 - 4. Brandon Clyburn
 - 5. Kallie Smith
- Class XIII (Hvy. Cross)**
- 1. Cody Brooks
 - 2. Cody McLeod
 - 3. Candice Pipkin
 - 4. Carrie Burton
 - 5. Tracy Brown



A professional perfume tester is known in the trade as a "nose".

DON'T GET THE SUMMER TIME BLUES!



Be ready when the grass starts growing! Let us give your lawnmower a complete tune-up now.

We service most brands and types of lawn and garden equipment.

Free Pick Up & Delivery in Spearman

For More Information
CALL 435-6862

SKINNERS
717 Main
Perryton 435-6862

PLANT OPERATOR

Air Products Manufacturing Corporation, a Fortune 250 Company and major producer of chemicals and industrial gases, is seeking a Plant Operator for its Helium Plant in Hansford County, 18 miles south of Guymon, Oklahoma.

Qualifications include:

- * High School diploma or equivalent
- * Good mechanical aptitude and solid work history
- * Prior plant operator experience helpful

We offer an excellent starting salary and comprehensive benefits package.

We will be accepting applications on Monday, March 4th, 2pm-7pm and Tuesday, March 5th, 8am-12 Noon at the Best Western Ambassador Inn located at Highway 64 and 21st Street in Guymon, OK.

AIR PRODUCTS

Equal Opportunity Employer M/F



Honorees at the recent Valentine Party held at Hansford Manor included (l-r) Richard Shedeck, first runner up; Will Douglas, Mister Manor; Grace Bennett, Miss Manor; and Dorothy Bryan, first runner up.

Obituaries

Iva French McElhany
Iva French McElhany, 75, of Spearman died Monday, Feb. 25.

Mrs. McElhany was born in Trousdale, Kan. She had lived in the Spearman area for 55 years, moving from Ochiltree County. She married Arthur McElhany in 1944 at Ochiltree County. He died in 1960. She was a retired bookkeeper. She was a member of the Eastern Star, V.F.W. Auxiliary and World War I Veterans' Auxiliary.

Survivors include a sister, Maida Bailey of Shawnee, Okla.; and a brother, George French of Kalispell, Mont.

Graveside services were conducted Wednesday, Feb. 27 in Hansford Cemetery with the Rev. Ray Cook, pastor of First Assembly of God Church, officiating.

Floyd E. Mitts
GUYMON, Okla. - Floyd E. Mitts, 89, died Sunday, Feb. 24.

Mr. Mitts was born and raised in Alva, Okla. He attended mechanics school in Kansas City, Mo. He married Lucy Russell in 1923 at Palo Pinto, Texas. She died in 1976. He married Dortha Taylor in 1977 at Guymon. He was a troubleshooter for Baldwin-Harvester for several years.

Mr. Mitts operated Phillips Wholesale in Spearman and had

served as a Hansford County deputy sheriff. He owned and operated Spearman Western Auto from 1948 until his retirement in 1963. He moved to Guymon from Spearman in 1974. He was a member of First Christian Church and of Hansford Masonic Lodge No. 1040 AF&AM, where he held the degree of Master Mason for 66 years.

Survivors include his wife; a son, Jerry Mitts of Guymon; a stepdaughter, Jeanie Thorn of Woodward, Okla.; a brother, Lewis Mitts of Avilla, Mo.; a sister, Grace Kirk of Spearman; two grandsons; six step-grandchildren; and two great-grandchildren.

Funeral services were conducted Tuesday, Feb. 26 at First Christian Church in Guymon with Dr. Jere Wells, pastor, officiating. Interment was in Elmhurst Cemetery.

The family requests memorials be to Memorial Hospital of Texas County or to a favorite charity.

Council from page 1

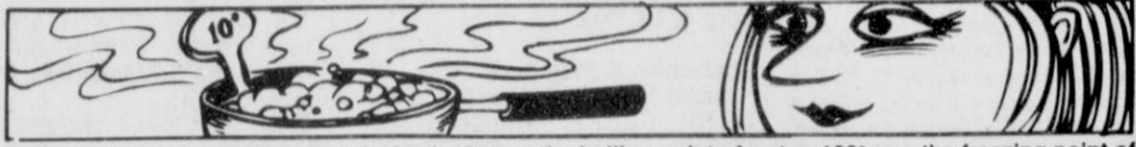
Murray then gave the council a short status report on the Texas-New Mexico Power Company rate case.

Spearman residents Kay Hamilton, Donna Hendrickson and Gus McLain attended the meeting to inquire about the high consumption of gas on the city utility bills due Feb. 10. No action was taken.

Regular business for the council included approval of minutes of the Jan. 15 council meeting; approval of monthly fire, ambulance, police, municipal court and animal control reports; and approval of monthly bills payable in the amount of \$379,968.08.



results you want? you want classifieds!



When the Celsius scale was first devised, 10° was the boiling point of water, 100° was the freezing point of water.

Congratulations Varsity Lynxettes On A Winning Season



(photo by Anthony Wilkerson)

The Lynxettes and their coaches gather around to celebrate their Bi-district trophy.

(back row: l-r) Jim Kirkland (head coach), Richard North (asst. coach)

(middle row: l-r) Laura Pearson (soph.), Michelle Garnett (soph.), Cindy Melton (sen.),

Melodie Schumann (soph.), Mendy Lasater (jr.), Joy Gafford (jr.), Sue Davis (asst. coach)

(front row: l-r) Bonnie Thompson (sr.), Gwen Benson (soph.), Tamri Townsen (jr.), Jill Lusby (soph.), Kyla Nelson (sr.)

Season Record 23-8

Undefeated District Champs

Bi-District Champs

Team and Individual Statistics

(Based on 30 games)

NAME	2PT FIELD GOALS			3PT FIELD GOALS			SHT PCT	FREE THROWS			SCORING TOTAL AVE	***** REBOUNDS *****			***** GAME AVE	TURN OVERS	STEAL	ASSIST	BLOCKED SHOTS	FOULS				
	ATTEMP	MADE	PCT	ATTEMP	MADE	PCT		ATTEMP	MADE	PCT		GP	OFF	AVE							DEF	AVE		
Bonnie Thompson	21	9	43	17	10	53	47	10	7	70	55	2.6	21	2	.1	7	.3	9	.4	20	11	7	0	24
Mendy Lasater	107	29	27	7	1	14	25	60	27	45	88	2.9	30	16	.5	17	.6	33	1.1	44	50	57	1	28
Jill Lusby	114	35	31	25	8	32	31	41	22	54	116	3.9	30	29	1	30	1	59	2	63	25	77	0	49
Gwen Benson	64	19	30	6	2	33	30	17	11	65	55	1.8	30	23	.8	27	.9	50	1.7	32	23	52	1	27
Michelle Garnett	56	19	34	2	0	0	33	23	15	65	53	1.9	28	20	.7	23	.8	43	1.5	17	13	18	1	33
Joy Gafford	185	71	38	127	38	30	35	75	45	60	301	10.4	29	40	1.4	83	2.9	123	4.2	37	41	55	5	82
Cindy Melton	21	9	43	4	1	25	40	14	8	57	29	1.5	20	9	.5	6	.3	15	.8	12	2	3	0	11
Melodie Schumann	39	11	28	0	0	0	28	17	6	35	28	1.3	22	18	.8	20	.9	38	1.7	10	8	4	1	20
Tamri Townsen	278	127	46	0	0	0	46	90	59	66	313	10.4	30	55	1.8	70	2.3	125	4.2	45	22	17	0	65
Laura Pearson	172	70	41	0	0	0	41	81	34	42	174	5.8	30	58	1.9	72	2.4	130	4.3	45	25	16	1	62
Kyla Nelson	110	48	34	0	0	0	34	72	43	60	139	4.6	30	37	1.2	45	1.5	82	2.7	25	11	18	0	55
TEAM TOTAL	1197	447	37	190	60	32	37	500	277	55	1351	45	30	307	10.2	400	13.3	707	23.6	350	251	324	10	456
OPP. TOTAL	985	358	36	104	19	18	35	518	295	57	1068	35.6	30	139	4.6	431	14.4	570	19	503	141	194	52	425

Good for You Lifting Up the Youth of Hansford County

Hours: Mon. - Fri. 7:30 - 3:00
Thursday 4:00 - 6:00



729 W. 7th Spearman

659-5544