



HANSFORD COUNTY

★ THE REPORTER-STATESMAN ★

THURSDAY,
APRIL 8, 2010

CELEBRATING 103 YEARS OF SERVICE TO HANSFORD COUNTY
HANSFORD COUNTY'S ONLY NEWSPAPER

75¢

WWW.SPEARMANREPORTER.COM

VOLUME 103 • ISSUE 14

reporter@spearmanreporter.com

Republican Run-Off Election

Monday, April 5th is the first day of early voting for the Republican Run-Off Election. April 6th is the last day to apply for a ballot by mail, and the 9th is the last day of early voting.

The Republican Run-Off election will be held on Tuesday, April 13th from 7 a.m. to 7 p.m. at the following locations: Precincts 1 & 5 - City Hall, 30 SW Court, Spearman TX; Precinct 6 - Spearman High School, 403 11th Street, Spearman; Precincts 2, 3 & 7 - Cristo Redentor Catholic Church, 202 Hwy. 15, Gruver; Precincts 4 & 9 - City Hall, 201 E. Broadway, Gruver.

GHS Band Earns Sweepstakes Award



The Gruver High School band received the Sweepstakes award this year for outstanding achievement in both field marching and concert contest.

The band, under the direction of Sandy Cross, received straight ones in regional field marching and on to area marching, where they ranked in the top seven with the best bands throughout the state. The

band just competed in Panhandle, TX and received straight ones in concert and sight reading. This is a very prestigious award and it has been many years since the Gruver band has received this honor. One of the judges commented, "These kids have an understanding of music that is just remarkable and captivating!"

The Gruver band was under the field

direction of senior Leigh Anne Winger, lead drummer, and junior Will McCoy, tuba and trombone player.

As a reward for such honors, the band will be travelling to Branson, MO to tour and perform at Silver Dollar City in May. The band would like to thank all the community and administration for supporting the arts!

What's the Buzz?

By Laura Hays

It's The 25th Annual Putnam County Spelling Bee, the spring musical production at Oklahoma Panhandle State University. The Tony Award-winning one-act play will be presented April 9, 10, and 11 in OPSU's Centennial Theatre located inside Hughes-Strong Hall.

The hysterically funny, fast-paced play depicts 6 middle school misfits who feel normal at this scholarly contest where they have a chance to spell their way to a championship. As they discover themselves, they learn life may not always be fair, but they can find what makes them happy.

The cast includes Alexander Anderson, Michael Ask, Tito Aznar, Theresa Brott, Emily Dye, Angelena Reed, Sara Jane Richter, Josiah Royse, and Jacob Whiteley.

This sophisticated comedy will appeal to those with a mature sense of humor and may not be appropriate for younger audiences.

Performances are scheduled for Friday, April 9 at 7:30 p.m.; Saturday, April 10 at 7:30 p.m.; and a matinee performance at 3 p.m. on Sunday, April 11. General admission is \$6. Thanks to the OPSU Student Senate, OPSU students with a student ID are admitted free.

Plan to spend about 1-1/2 hours laughing at The 25th Annual Putnam County Spelling Bee!

The 25th Annual Putnam County Spelling Bee: Music and lyrics by William Finn, book by Rachel Sheinkin, and conceived by Rebecca Feldman. The 25th Annual Putnam County Spelling Bee is presented through special arrangements with Music Theatre International (MTI), New York, NY

Weather Forecast

THURSDAY NIGHT - Clear. Lows in the mid 30s. South winds around 10 mph.

FRIDAY - Mostly sunny. Highs in the mid 70s. Southwest winds 10 to 20 mph.

FRIDAY NIGHT - Mostly clear. Lows in the lower 40s. South winds around 15 mph.

SATURDAY - Mostly sunny. Breezy. Highs in the upper 70s.

SATURDAY NIGHT - Partly cloudy. Breezy. Lows in the mid 40s.

SUNDAY - Partly cloudy. Highs in the lower 80s.

SUNDAY NIGHT - Partly cloudy in the evening then becoming mostly cloudy. Lows in the upper 40s.

MONDAY - Mostly cloudy with a 20 percent chance of showers and thunderstorms. Breezy. Highs in the upper 70s.

MONDAY NIGHT - Mostly cloudy with a 30 percent chance of showers and thunderstorms. Windy. Lows in the upper 40s.

TUESDAY - Partly cloudy with a 20 percent chance of showers and thunderstorms. Highs around 70.

TUESDAY NIGHT - Partly cloudy. Lows in the lower 40s.

WEDNESDAY - Partly cloudy. Highs around 70.

Read more: <http://www.city-data.com/forecast/w-Spearman-Texas.html#ixzz0kTxc6Gf>

Texas Crop & Weather

The following specific livestock, crop and weather conditions were reported by Panhandle Extension directors: Conditions were warm, dry and windy. Producers were finally able to get into fields to fertilize wheat, spray for weeds and finish field preparations for spring planting. Wheat was in fair to good condition, showing growth with the warmer days and good soil moisture. Spring calving began. Warmer grasses began to come out of dormancy. After a long winter of just holding in place, cattle exhibited some weight gain.

Last Minute Tax Tips

submitted by Brown Graham & Company, PC, Certified Public Accountants

The April 15 tax filing deadline is right around the corner and if you have not filed your taxes here are a few tips to help with those last minute decisions:

What Ever You Do - Don't Miss the Deadline

If you haven't filed a tax return by April 15 and have a balance due, you must pay interest on the unpaid taxes as well as a failure-to-file penalty. If you can't file by April 15th, request an extension to file either by e-filing or mailing Form 4868, Automatic Extension of Time to File.

If you file on time or request an extension but don't or can't pay all or some of the balance due by the deadline, you will incur interest on the unpaid amount and a failure-to-pay penalty. You can minimize interest and penalties by paying as much as possible by the deadline date.

Take Advantage of Recovery Tax Breaks

The following tax breaks were implemented by the American Recovery and Reinvestment Act and can be claimed on tax returns right now: The Homebuyer Credit; Making Work Pay Credit; American Opportunity Credit; Home Energy Credit; and New Car Tax and Fee Deduction.

Check with a Certified Public Accountant or your tax preparer to see if you qualify. You may also check IRS.gov/recovery.

File Electronically

The IRS encourages taxpayers to file electronically because:

E-file is accurate: Most available tax preparation programs check for errors and missing information, reducing the chances of delayed refunds or follow-up correspondence from the IRS.

E-file is fast: With most tax software, you can file a state tax return at the same time you file your federal return. Once a return is accepted for processing, the IRS electronically acknowledges receipt of the return. And refunds take only about half the time of a paper return. If you choose direct deposit, you will get your refund in even less time.

Try Free File

Free electronic filing is available to everyone through the IRS Web site, IRS.gov. Free File is software with step-by-step help available to anyone whose 2009 adjusted gross income was \$57,000 or less.

For those whose incomes exceed \$57,000, there is Free File Fillable Forms which can also be found at IRS.gov. These forms allows a taxpayer to fill out and file tax forms online. You enter the necessary information, sign electronically, print the return for recordkeeping and then e-file the return right to the IRS. Remember there is no step-by-step help, therefore Free File Fillable Forms should only be used if you are comfortable with the tax law and know which forms to choose.

Choose Direct Deposit for Refunds

Whether you file electronically or on paper, your refund can be automatically deposited into your bank or financial account and is much faster than a paper check. Direct deposit is also more secure than a paper check since a direct deposit goes directly into your account and cannot be lost in the mail or stolen.

Split Refund: Refunds can be direct-deposited into as many as three different

accounts. Most e-file and tax preparation software allow you to "split" your refund this way. Paper return filers need to file Form 8888, Direct Deposit of Refund to More Than One Account, to split a refund among two or three accounts.

Buy Savings Bonds: This year, for the first time, you can buy Series I U.S. Savings Bonds with your refund. Issued by the Treasury Department, a Series I bond is a low-risk investment that grows in value for up to 30 years.

Check for Errors

Tax software finds common errors on electronically prepared returns. However, if you file on paper, you can avoid delays in processing and follow-up questions from the IRS by: Double-checking all figures; Ensuring Social Security numbers are correct; Signing forms where required; Attaching required schedules and forms; Mailing returns or request extensions by the April 15 filing deadline.

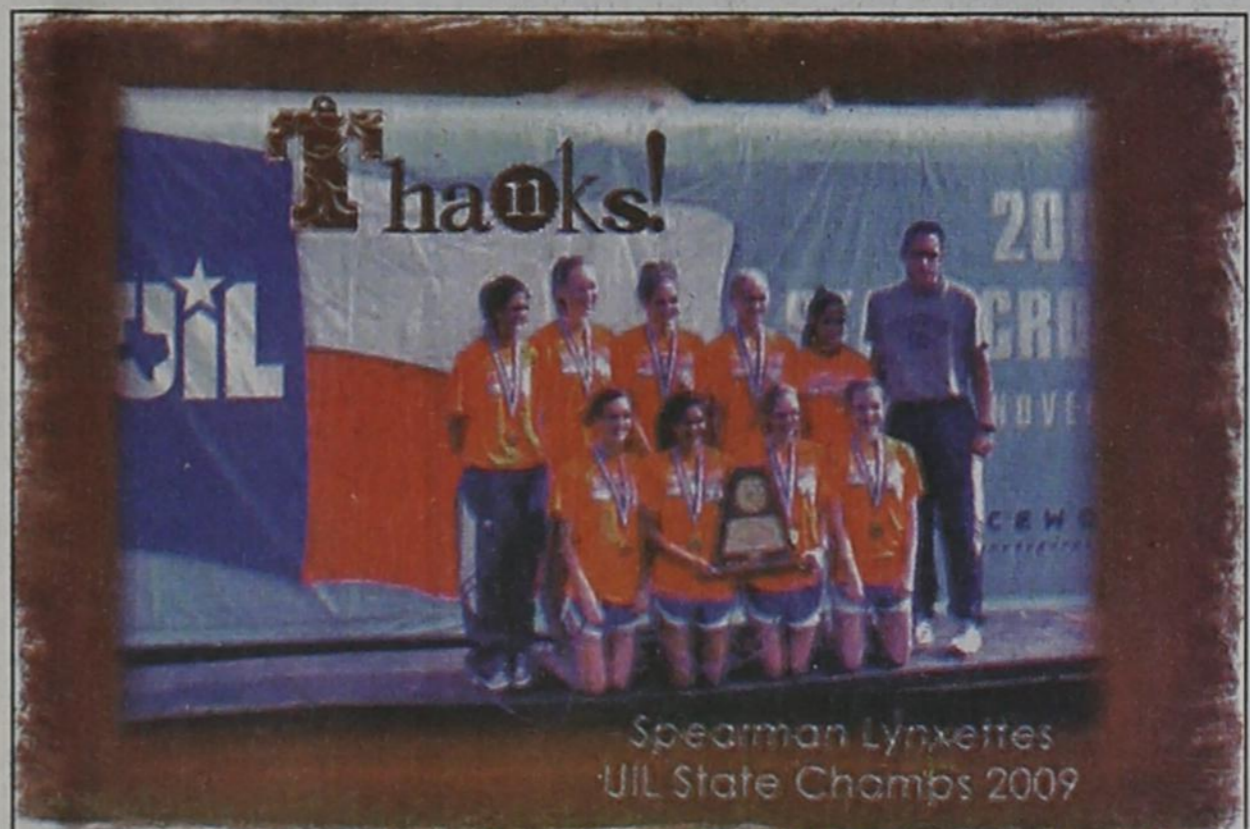
Pay Electronically

Electronic payment options are safe and secure methods for paying taxes or user fees. You can pay online, by phone using a credit or debit card, or through the Electronic Federal Tax Payment System.

You may also pay by check made out to the "United States Treasury" using Form 1040-V, Payment Voucher, which must be included along with your tax return. If you have already filed but still need to pay all or some of your taxes, mail the check to the IRS with Form 1040-V.

Request an Extension of Time to File

If you can't meet the April 15 filing deadline, get an automatic six-month extension of time to file by filing Form

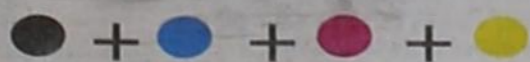


The Lynxettes held a silent auction featuring a Lynx wooden puzzle made by Wayne Cope of Canyon. It was in memory of Waurayne Cope, a longtime resident and teacher here in Spearman. John Woodward had the highest bid and the proceeds went to the Cross Country Girls State Ring Fund.

The Lynxettes have reached their goal with generous donations from businesses and individuals; sales from Spearman apparel; and a movie which was well attended. They want to thank all of the people in our community who helped them achieve this. A special thanks goes to Gary Ellsworth for letting us use the movie theater.

Here is a list of the donors: The Sport Zone (Chad Riggins); Dr. Mark and Karen Garnett; Brock Insurance Agency; Mike and Patti Schnell; Hansford Drug Co.; Ed Hansen; First National Bank; First State Bank; Mr. and Mrs. George Jackson; Frank White; H&H Water Well Service; Sparks Brothers; Lyric Theater; John Woodward; Rick and Kara Harrell; Mr. and Mrs. Ray Johnson; Lee and Karlon Brandon; Hansford Agency; Linda Wilkerson; Verlin and Audene Beck; Billy and Joan Brown; James and Faye Cunningham; Ray and Judy Martin; Travis and Kandi Wolf; Slade Knowlton; and Luis Puentes.

All of the girls' parents participated by purchasing Lynxette apparel and selling t-shirts to benefit the cause!



Wolf Creek Heritage Museum Notes

MUSEUM HAPPENINGS

Stories, stories, everywhere with pictures flying. The museum is overflowing with family stories. We are at 275 and counting. My email box is full and my printer is hot. Every computer is smoking with the typing stories as they arrive. We have had to order more envelopes and more keep coming in. This is great and you still have time. The deadline is the 10th, which is a Saturday, so you have until Monday the 12th. At that time we will decide about an extension based on how many of

you say you are going to submit if we do. Get to work and try for the 12th, or at least call us and say you would submit if we extended.

The BRA TALK exhibit left on Monday and we are taking the month of April off so we can use the art room for organizing and working on the book project.

We need to extend a special thanks to three special guys in Darrouzett that run a hunter's paradise named THE LAST BUFFALO. Josh and Jerod Robertson with Jordon Shearer organ-

ized an open house with a silent auction at their lodge as a fundraiser for the museum. The event took place last Tuesday with an excellent crowd and raised over \$2500 for our building fund. So, when you see the boys or Charmaine Robertson, please congratulate and thank them for the excellent job they did.

Fun, food, and good conversation was had by all who attended. To those of you who bid and bought one of the auction items, thanks for your generosity. To those of you who donated an item to the auction, thanks for your generosity. We are on the last leg of fund raising for the new building, so please consider a donation.

HISTORICAL MUSINGS

In the last issue of the first LCHC newsletter in the fall of 1992, there were three descriptions of Lipscomb County residents and their occupations. The first was the Circuit Rider Minister. Rev. O.F. Gragg came to Lipscomb County in early 1900 as a missionary with his wife, Lucinda. They helped establish the First Baptist Church in Higgins.

Mrs. Lawton was remembered by Eddie Kaatz in an article about her teaching techniques at the Lipscomb School in 1924. He described Mrs. Lawton as a plumpish, not very tall and portrayed a motherly way. She always had projects for her students such as taking the half shell of an egg, filling it with soil and placing one flower seed in the soil. Placing the shell on the window sill to watch them grow (a good idea to do with those Easter egg shells).

He also recalled a song they would sing to a late comer to class. "A birdie with a yellow bill, Hopped upon my window sill, Cocked his shiny eye and said, Aren't you ashamed, you Sleepy Head." This was sung as they pointed and shook their finger at the student who arrived late.

Lastly he described the Thomas family of two brothers and a sister who lived south of Lipscomb. The men always wore overalls and had thick mustaches, and the sister was a neat and prim lady who wore her hair in a bun on top of her head. Always wore glasses and long dresses.

He relates that the Thomases never discussed their past, but were good people and he was glad to have known them. That is all we can ask for.

Lipscomb County is full of good people with interesting stories and we are proud to document this history for future generations. Get your story in and have a great week.



STATE CAPITAL HIGHLIGHTS



Officials foresee funding increases to meet growth in health care

The federal government's passage of health care reform legislation in late March will have a big impact on Texas, as an estimated 6 million Texans have been going without health care insurance.

Reforms are expected to return billions of dollars to Texas through health insurance tax credits for middle class and low-income Texans and Medicaid coverage for the poorest citizens.

"Medicaid expansion to cover working poor parents of children on Texas Medicaid today will be 100 percent federally funded for three years, with the state getting nine federal dollars for each state dollar from 2020 on forward," said Anne Dunkelberg of the Center for Public Policy Priorities, a non-partisan, Austin-based research and advocacy group.

"Twice as many now-uninsured Texans will gain coverage by purchasing affordable private insurance through the new Health Insurance Exchange as will gain Medicaid, bringing even more federal dollars to Texas with no state matching dollars required."

The reform keeps in place Texas' private insurance and health care delivery sector, while filling the gaps that have left too many Texans lacking care or overwhelmed by debt, she added.

Meanwhile, the Senate State Affairs Committee had a March 31 interim meeting, taking testimony from officials on the impact of health care reform here in Texas.

Insurance Commissioner Mike Geeslin suggested the fiscal impact on his agency would be large but uncertain, as there has not been a such a large policy undertaking in decades. He said the Department of Insurance will prepare for a range of scenarios and develop a consumer education effort.

Health and Human Services Commissioner Tom Suehs said expansions required by health care reform increase Medicaid eligibility up to 130 percent of the federal poverty level, potentially adding more than 2 million Texans to the Medicaid rolls.

H1N1 shots still recom-

mended

Overall, flu activity in Texas is classified as sporadic but the state health department is continuing to encourage people to get the H1N1 flu vaccination now to protect themselves.

More than 50 hospitalizations and at least three deaths related to H1N1 influenza were reported in the month of March in Texas.

Health Commissioner Dr. David Lakey on March 31 said, "There is plenty of vaccine to go around. People who have not been vaccinated should do so now."

Hutchison to finish Senate term

U.S. Sen. Kay Bailey Hutchison announced March 31 that she will complete her term in the Senate, which expires in 2012.

In her announcement delivered at San Antonio airport, Hutchison said, "For family reasons, I had planned to begin making a transition home to Texas this spring, but it is clear to me that the stakes in our nation's Capitol have never been higher. President Obama's victory on health care legislation has emboldened those who want an even bigger and more intrusive federal government."

Hutchison, the ranking member of two powerful committees, had planned to resign from the Senate whether she won or lost in her bid to be the Republican nominee for governor of Texas.

Incumbent Gov. Rick Perry, who won the GOP nomination for governor, praised Hutchison's decision to remain in the Senate.

Judge denies request to intervene

A Travis County state district judge on March 31 denied Texas Attorney General Greg Abbott's request to intervene in the county's first same-sex divorce case.

Abbott's deputies had filed court papers arguing that the two women, who had legally married in Massachusetts, could not legally be granted a divorce in Texas.

Judge Scott Jenkins, who granted the divorce in February, said a Dallas divorce case currently under appeal could provide precedent on the legality of same-sex divorce. In that case, which involves two men, the Dallas County state district judge rejected Abbott's attempt to intervene. The Texas 5th District Court of Appeals in Dallas is scheduled to hear arguments in that case on April 21.

In 2005, Texas voters passed a constitutional amendment defining marriage as between one man and one woman.

Rebate program to launch April 7

Texans may call (877) 780-3039 or visit www.TexasPowerfulSmart.org, beginning at 7 a.m. April 7, to reserve rebates under a program promoted by the state comptroller's office. The rebates may be used to buy "Energy Star" energy-efficient appliances and replace the same type of old, functional appliance. The purchase period start date for all appliances is April 16 and the program will end "when all funds are exhausted."

Words from Faith & Grace

by Cecil R. Biggers, Lutheran Lay Minister



In the second week of the Season of Easter, we study Acts 5: 27-32, Psalm 150, Revelation 1: 4-8, and John 20: 19-31.

The apostles having been arrested by the Temple Police and brought by them to the Sanhedrin, are placed in jail. They are freed (perhaps divinely) and go immediately to the temple where they are teaching Jesus' resurrection. They are arrested again and brought before the Sanhedrin. Peter answers the High Priest that "We must obey God rather than any human authority". Peter then tells those assembled that God raised Jesus from the dead, that this Jesus is Leader and Savior that brings repentance to Israel and the forgiveness of sins. The Sadducees on the Sanhedrin immediately wanted to kill the apostles, but are restrained by the words of Rabban Gamaliel, who is a Pharisee. Gamaliel assures the Sanhedrin that if the apostles are false teachers, they will fail, but he warns them that if they are from God, then the Sanhedrin should not be opposing them. Taking this advice, the Sanhedrin orders the apostles beaten and then released with the injunction not to teach anymore in the name of Jesus. Note that men who were too afraid to be present at Jesus' crucifixion now testify about him publicly, and are happy to be found worthy to suffer for their Lord.

The Psalmist sings a doxology which is a praise to God. In Hebrew, the Psalms are known as "Tehillim" which means 'praises'. All prayers of the Psalmist end in praise. God answers the prayers, but they are answered in God's time. We can learn from this that God hears our prayers and answers them, in time; and, we should praise God for his grace to us.

John of Patmos writes to the seven churches of Asia (Western Turkey) to Ephesus, Smyrna, Pergamum, Thyatira, Sardis, Philadelphia and Laodicea. He writes to them in the name of Him who is, who was and who is to come. (This is a way of saying, God. See Exodus 3:13-14). John references the seven spirits before the throne (some think these are the 'arch-angels', others note that there were seven gifts of the Holy Spirit). He then tells of Jesus Christ who is the "Faithful Witness", the one who showed who God is and what God is like to mankind. He calls Jesus the first born of the dead for as He is risen, so shall those who believe in him arise. John calls Jesus the king of the kings of earth. We believers are all citizens of Jesus' kingdom and he has made us priests, servants of God and a nation of royalty. The theme is, Christ is coming again!

The spirit of Easter is being sent into a hostile world empowered to preach the Good News. The disciples are in hiding for fear of the Jewish authorities; Jesus appears among them saying, "Peace be unto you". Jesus gives them the Holy Spirit and sends them forth. Thomas was not present and when he is told states, "Unless I see the mark of the nails in his hands, and put my hand in his side, I will not believe." Jesus appears again a week later and tells Thomas to feel his hands and side. Thomas declares, "My Lord and my God!" Jesus does not berate Thomas for a lack of faith, but reminds all that "Blessed are those who have not seen and yet have come to believe". The Gospel of John was written not as a historic document but that all might come to believe that Jesus is the Messiah, the Son of God; and, in believing all may have life in His name.

May the Holy Spirit empower the hope of Easter in your heart that you may believe.

The Hansford County Reporter-Statesman
Mailing Address - 213 Main Street • Spearman TX 79081
Physical Address - 310 Barkley Street • Spearman TX 79081
Phone - (806) 659-3434 • Fax - (806) 398-9080
www.spearmanreporter.com • reporter@spearmanreporter.com
Mon.-Thurs. 9 a.m.-12 p.m., Mon.-Wed. & 1-5 p.m.
Closed Thurs. afternoon and all day Fri., Sat. & Sun.
Gary Smith - Publisher Catherine Smith - Editor
Contributing Writers: Dorothy Hudson, Jim Derington, Merry Sparks, Cecil Biggers
Contributing Photographers: Charlie Johnson, Lisa Johnson Tammy Batton, Bonnie Bergan
Subscription Rates
In Hansford County - \$30.00 • Out of County - \$40.00
E-Mail Subscription - \$35.00
The Hansford County Reporter-Statesman (USPS 529660) is published weekly in Spearman, TX. Periodical postage paid in Spearman, TX. POSTMASTER: Send address changes to: The Hansford County Reporter-Statesman, 213 Main Street, Spearman, TX 79081.
Publication Policy
The deadline to submit news and advertising to The Hansford County Reporter-Statesman is Monday at 5 p.m. Items submitted after the deadline will be published at a later date, as time and space permit. Publication of all items is at the discretion of the editor.
Advertising
Open Display rates are \$4.00 per column inch. Classified Ads are \$6 for the first 25 words and 10¢ per word for each additional word. (Additional charge for boxed classifieds.) There is a \$1 charge per week if billed.
Member of
Gruber Chamber of Commerce
Spearman Chamber of Commerce
Texas Press Association and Panhandle Press Association

MYTHICAL CREATURES

- CROSSWORD
1. Boy Scout's collectible
2. Fake tooth
...
DOWN
1. High school ball
2. First-rate
...
36. Kronos to Zeus' wife
37. Hera
38. There you are!
39. English homework?
40. Preceded violin family
41. *The Phoenix burns to death in this
42. Small island
43. Cubic meter
44. *Hercules' nine-headed opponent
45. Jason Lee's TV character
46. A ship's small boat
47. Openly distrustful
48. Female title
49. Second person pronoun
50. Pertaining to magic or witchcraft
51. Speak like Pericles
52. River in North Germany
53. "Goodbye" to Sophia Loren
54. Dame
55. Lice eggs
56. Civil wrong
57. Wrap up in cecreloth
58. Football great Graham
59. Play object
60. Of sound mind
61. *Goat man

SUDOKU PRESENTED BY VolunteerMatch.org Where volunteering begins.
Grid with numbers and empty cells.

CROSSWORD PRESENTED BY VolunteerMatch.org Where volunteering begins.
Grid with numbers and empty cells.

HWYI

FOR YOUR INFORMATION

Medical Fund for Bruce Duncan

A medical fund has been established for Bruce Duncan at First National Bank, Spearman. If you would like to make a donation you may make a deposit with any teller or mail a donation to First National Bank, Bruce Duncan Medical Fund, PO Box 337, Spearman TX 79081.

O'Loughlin Center Announces New Hours

Beginning March 1, 2010, The O'Loughlin Center will be open for the following hours: Monday-Thursday, 6:00 a.m.-8:00 p.m.; Friday, 6:00 a.m.-6:00 p.m.; and Saturday, 9:00 a.m.-12:00 p.m. (noon). For more information, contact Jada Breen, Manager, The O'Loughlin Center, 502 S. Brandt, PO Box 733, Spearman TX 79081, 806-659-3030.

Perryton Area Parkinson's Disease Support Group

The Perryton Area Parkinson's Disease Support Group will meet Friday April 9, 2010 at the Perryton Mennonite Church, 2821 S. Ash. Lunch will be provided for the noon meeting. For more information, call Bev Burger at 435-3437.

Spearman ISD Community Resource Program

Spearman ISD Community Resource Program is considering starting beginner and intermediate computer classes. I am trying to get an indication of interest around the area for these classes. Please send an email or call the office to let me know if you would be interested in one of these classes. (Cindy Blackman - 659-3233 or cindy.blackman@region16.net)

Gruver 4-H Club Meeting

The Gruver 4-H Club will meet on Monday, April 12, 2010 from 7-8 p.m. at the Gruver County Barn. This will be a "Make and Take" meeting featuring a leatherwork project.

Gruver Blood Drive

Coffee Memorial Blood Center is hosting a blood drive in Gruver on Tuesday, April 13, 2010 from 2-7 p.m. in the La Casita Room of Gruver State Bank, 3 Main Plaza. Please bring a photo ID or donor ID card. To schedule an appointment, please call 1-877-574-8800. APRIL IS T-SHIRT CLEANOUT MONTH! Every eligible donor who presents to donate will receive a t-shirt! ALL BLOOD TYPES ARE CURRENTLY NEEDED! The need is real. There is no substitute for blood. It can only come from volunteer blood donors. Please support the patients of the High Plains Region...Give the Gift of Life!

April RW Community Meeting

The Rushing Wind Emmaus Community will meet on Saturday, April 10 at 6 p.m. in the Follett United Methodist Church in Follett, Texas. (Stay on Highway 15 and the church is located across from the schools.) Bring your favorite dish to share in a potluck supper. SPONSORS TRAINING will be offered and a nursery will be provided for all children during the worship service. Bring your families and friends for an evening of fellowship, praise and worship.

High Plains A&M Club Aggie Muster

The High Plains A&M Club will be having Aggie Muster on Wednesday, April 21 at The Headquarters in Spearman at 6:30 pm. The cost is \$10 per person. Please RSVP to Cody Pipkin at 659-9858 or cspipkin@gmail.com.

SHS Class of 1960 Reunion

The SHS Class of 1960 will hold our class reunion on July 1, 2010 at the Country Barn in Amarillo starting at 5 p.m. The next day we will travel to Spearman for the All School Reunion. Contact Mickey Davis Gribble at mickeydg@comcast.net to RSVP. You may also contact Zack Fisher at zbfmem@windstream.net or Penny Dollar Cupp at cupstr4@aol.com for additional information.

Panhellenic Mother/Daughter Recruitment Meeting

Amarillo Panhellenic will host a Mother/Daughter Recruitment Information Meeting/Tea on Sunday, April 11, 2010 at 2 p.m. at Westminster Presbyterian Church, 2525 Wimberly Road, Amarillo TX. (Please use the Wimberly Road entrance to Everheart Hall.) All Amarillo area high school senior women, who are interested in going through Recruitment for membership in college sororities, should attend this meeting to receive information on Recruitment packets and deadlines. A short discussion will be part of the meeting. For information, please call or email Claudia Shelton at 806-352-58853 or bravocrew@gmail.com.

SHS Classes of 1960-1966

The SHS Classes of 1960-1966 will be meeting at The Hungry Cowboy on Friday night, July 2, 2010. The cost of the meal and other things will be \$12.00 per person. (The meal will start at 6:30 p.m.) We will need your RSVP by June 15, 2010 to Sharon Cook or Mary Dixon at 659-3711 or Diane Maxwell at 659-2987. Thank you and we look forward to seeing everyone at the Reunion.

High Plains Public Radio Spring Membership Drive

High Plains Public Radio (HPPR) is holding their Spring Membership Drive. This is your chance to show your support for High Plains Public Radio. We need to raise \$75,000 this Spring to keep your public radio station strong! If you're ready to make a pledge, call 800-670-7444, go to www.hppr.org, or e-mailing jbreeden@hppr.org. The amount of your contribution is up to you. You might think of your annual contribution in terms of an amount per month that you believe public radio service is worth to you and your community. Thanks to listener support, High Plains Public Radio has been in touch with the world and at home on the High Plains for nearly 30 years!

FREE SCOOTER MONTHLY!

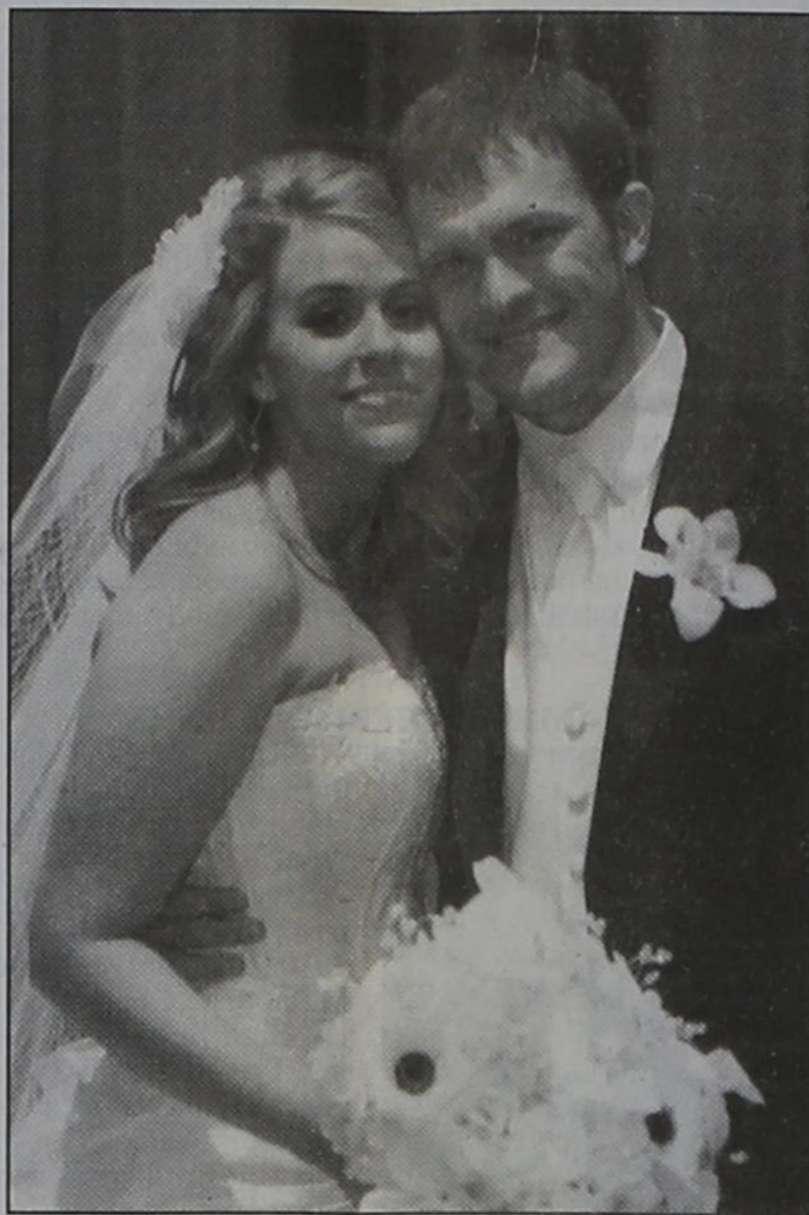
Toll Free
1-877-POWER17
(1-877-769-3717)

"Sign up for Monthly Scooter Give-Away"

Med Care MEDICAL SUPPLY Se Habla Espanol 8am-6pm M-F

February Winner
Linda Love Springtown, Tx.

Miesner and Cox Wed



Marty Miesner and Teela Cox, both of Amarillo, were married Saturday February 20, 2010, at Westminster Presbyterian Church in Amarillo, TX. Pastor Jimmy Witcher of Trinity Fellowship Church officiated.

The bride is the daughter of Sherwin and Jenny Cox of Amarillo.

The groom is the son of Jed and Lesa Miesner formerly of Spearman, now residing in Amarillo.

Matrons of Honor were Michelle Wieneke of Bentonville, Arkansas, and Joy Olson of Amarillo. Bridal attendants were Sloane Merrick of Tulsa, Oklahoma, Kaylee Miesner of Amarillo, sister of the groom, and Lacey Salgado of Amarillo, sister of the groom.

Best man was Stephen Salgado of Amarillo, brother-in-law of the groom. Grooms attendants were David Pipkin of Amarillo, Michael Lozano of Lubbock, and Travis Hancock of Victoria.

Bell ringer was Ben Salgado, nephew of the groom.

Ushers were Ty Cox of Ft Worth, brother of the bride and Broc Carter of Canyon, grooms soon to be brother-in-law.

The wedding reception was held at the Amarillo Civic Center Grand Plaza.

The bride graduated from Trinity Fellowship Christian School in Amarillo and Oral Roberts University in Tulsa, Oklahoma. She is the granddaughter of Preston and Ora Lee Cox of Pampa, now residing in Amarillo and the late Warren and the late Sue Hardin of Pampa.

Marty is a graduate of Spearman High School and the University of North Texas in Denton. He is the grandson of F.W. and Betty Thomas of Spearman, and Mary Miesner and the late Louis Miesner of Spearman.

After the honeymoon to Cancun, Mexico, the couple is residing in Amarillo.

Sports, Fun, Food, and Culture at OPSU on April 10

By Scott Puryear

This coming Saturday is going to be a very fun day as well as a very big day at Oklahoma Panhandle State University and there will be events for the entire family.

For sports fans — there will be football, softball and baseball. For those who are fans of the arts, a riotous musical — The 25th Annual Putnam County Spelling Bee — will be presented in the Centennial Theatre on the OPSU campus. In addition, there will be plenty of food thanks to an open-to-the-public tailgate party.

Things will get started for the day at 11:00 a.m. when the Aggie baseball team takes the field for a game against a strong Heartland Conference rival from the University of the Incarnate Word.

At noon, the Lady Aggie softball team will be in action against their own Heartland Conference rival from Lincoln University.

From 12:30 – 2:30 p.m., the public is also invited to a tailgate party sponsored by the OPSU President's Office. The event will feature plenty of food and will take place at the George and Juanita Gilmore Patio, behind the Science and Ag Building.

The annual Spring Football game will get started at 3:00 p.m. and the intra-squad scrimmage will give fans their first look at what should be the makings of a very exciting football team that will take the field this fall. The Aggies were 5-6 in 2009 and head coach Mike Wyatt is very optimistic about what he has seen in spring drills.

At 7:30 p.m. in the Centennial Theater (Hughes-Strong Auditorium), The 25th Annual Putnam County Spelling Bee will be presented. The musical comedy is a Tony Award winner and centers around a fictional spelling bee presented in a unique way that includes audience participation. "The Bee" will also be presented on Friday evening at 7:30 and Sunday afternoon at 3:00 p.m., and the admission charge to the public is \$6. (Please note that this production is for mature audiences.)

OPUS Golfers Compete in Kansas

By Scott Puryear

The Oklahoma Panhandle State men's and women's golf teams were in action on Monday and Tuesday in the Central Christian College Spring Invitational Tournament.

In men's play, 15 schools were represented and the Aggies finished in a respectable fifth place. Over 80 golfers competed and OPSU's Brandt Gear and Shane Rice tied for 13th place in the individual competition with 36-hole totals of 153. Their teammate, Julian Figueroa was right behind at 154. Other Aggies in the competition were Tyler Harper (165) and Jake Strain (176).

The Lady Aggies were also in competition in a five team event and finished fourth. Erica Sharkey earned the tournament runner-up honors with a 36-hole total of 182 (92-90). Other Lady Aggie finishers were Chelsea Vaught (220), Chancey Moffett (235), and Audrey Whittler (248).

You are invited to a
Wedding Shower
honoring
Sarah George Wright
on Saturday, April 17, 2010
from 10:30-11:30 a.m.
at the home of Kristi Ramon
721 Cotter Dr. Spearman TX

You are invited to a
Wedding Shower
honoring
Julie Bravo & Evan Cudd
on Saturday, April 10, 2010
from 10:00-11:30 a.m. at the home of
Brenda Winegarner
321 Barkley Spearman TX

You are invited to a
Wedding Shower
honoring
Crystal Boyd & Doug Walls
on Saturday, April 10, 2010
from 10:00-11:30 a.m. at the home of
Lyn Woolley
1021 Cotter Dr. Spearman TX

LEARN more about the world!
Become a host family for a high school exchange student.
Call AISE, 1-800-SIBLING or visit www.aise.com

American Intercultural Student Exchange

PUBLIC ANNOUNCEMENT
Program Offers New Computers to First 225 172 Callers for \$179

Finally... A new program makes computers affordable. Act now to claim your new portable computer loaded with programs used for email, internet, web surfing etc. Great for students, grandparents, small business or anyone. These Windows powered PCs sell for up to \$600 in stores, but call now and claim up to two for just one payment \$179 each through this special program. Phone lines open today at 9am. When they're gone, they're gone!

1-877-774-3520
www.ezbookpc.com
*Have Visa or Mastercard Ready

One Time Public Offer

Visit... **FAMILY POOL FUN.COM**

- Our pools create Generations of Memories everyday, vacations never end!
- Aboveground & Inground pools at **WHOLESALE PRICING**
- SIMPLE DIY Pool Kit Assembly**
- SAVE MONEY on All Pool Supplies & Accessories. Ships Fast**

Call Today! **800-250-5502**

MONUMENTS
Boxwell Brothers
Funeral Home
519 Evans • Spearman
659-3802

Dear friends,
When you buy a monument from us we make sure it is exactly what you want at a price you can afford. If it is not right, we will make it right. And you will not have to search the countryside to find us. We are here when you have a need.
Sincerely,
Bob Boxwell

HOME PHONE SERVICE
1st Month FREE
Starting at \$3.99/mo
\$14/mo including appropriate taxes and fees
\$0 Deposit • NO Credit Check
NO Contracts • Everyone Approved!
Restrictions May Apply.
NEWTALK 866.934.3448

PAID CDL TRAINING! YOUR FUTURE BEGINS HERE

NO EXPERIENCE NEEDED!
Stevens Transport, the premier refrigerated carrier in the US, sponsors the cost of your CDL training! In 17 short days you will earn your CDL and begin your paid on-the-job training! Potential to earn up to \$40K first year! Excellent benefits and 401K!

For more information, call
800-333-8595
www.becomeadrivers.com



Canadian River Music Festival

 May 8, 2010 • Canadian, Texas • Featuring Stoney LaRue

www.canadianrivermusicfestival.com

School News

Highland Park Track Meet
 Team: 1. Canyon 101; 2. Tascosa 95; 3. Clovis 85; 4. Randall 69; 5. Hereford 56; 6. Plainview 41; 7. Spearman 40; 8. Levelland and Amarillo High 35; 10. Dumas 33; 11. Friona 28; 12. Palo Duro 23; 13. Shamrock 20; 14. Caprock 12; 15. San Jacinto 7.
 3200: 1. LeeAnn Cardona, Levelland, 12:28.0; 2. Melina Morantes, Hereford, 12:28.72; 3. LeeAnn Cardona, Levelland, 5:52.03; 4. Suttin Garnett, Spearman, 12:42.68; 4. Brittany Collins, Clovis, 12:42.74; 5. Daisy Guerrero, Plainview, 12:42.80; 6. Nancy Zubia, Dumas, 12:56.0.
 Long jump: 1. Anteisha Brown, Clovis, 16-9; 2. Kendra Wilhelm, Dumas, 16-3; 3. Caitlin Gilmore, Canyon, 15-10; 4. Gately Garnett, Spearman, 15-10; 5. Chelsea Lee, Caprock, 15-5; 6. Kinjita Kelley, Tascosa, 15-1.
 High jump: 1. Libby Strickland, Randall, 5-2; 2. Kendra Wilhelm, Dumas, 5-0; 3. Cydney Swain, Palo Duro, 4-8; 4. Karlie Scott, Amarillo High, 4-8 and Sasha Watson, Palo Duro, 4-8; 6. Carlee Huffstедler, Amarillo High, 4-8.
 100 hurdles: 1. Gately Garnett, Spearman, 16:10; 2. Abby Behrens, Canyon, 16:22; 3. Megan Modoytets, Amarillo High, 16:25; 4. Amber Rossetes, Amarillo High, 16:75; 5. Regan Anthony, Friona, 17:32; 6. Lauren Morrow, Levelland, 17:37.
 800 relay: 1. Canyon 1:47.82; 2. Clovis 1:48.03; 3. Tascosa 1:48.09; 4. Palo Duro 1:49.19; 5. Randall 1:49.53; 6. Levelland

1:52.12.
 400: 1. Rachel Dickson, Friona, 1:00.82; 2. Sarah Snider, Spearman, 1:01.50; 3. Kryssalee Saucedo, Hereford, 1:01.81; 4. Karissa Kinsey, Hereford, 1:02.68; 5. Kateland Maddox, Canyon, 1:02.94; 6. Rebecca Ratliff, San Jacinto, 1:03.63.
 1600: 1. Melissa Velazco, Shamrock, 5:26.03; 2. Melina Morantes, Hereford, 5:49.63; 3. LeeAnn Cardona, Levelland, 5:52.03; 4. Suttin Garnett, Spearman, 5:53.53; 5. Olivia Martinez, Canyon, 5:55.56; 6. Nancy Zubia, Dumas, 5:59.35.
 1600 relay: 1. Canyon 4:12.15; 2. Friona 4:16.03; 3. Tascosa 4:16.84; 4. Clovis 4:17.69; 5. Levelland 4:26.16; 6. Spearman 4:29.71.
 Pole vault: 1. Lauren Hill, Plainview, 9-0; 2. Alex White, Tascosa, 9-0; 3. Gately Garnett, Spearman, 8-6; 4. (tie) Alexis Allen, Dumas, 8-0 and C.J. Frizzell, Canyon, 8-0; 6. Melanie Blakemon, Canyon, 8-0.
Junior varsity: 1. Amarillo High 136; 2. Bushland 97; 3. Tascosa 89; 4. Palo Duro 88; 5. Hereford 54; 6. Canyon 34; 7. Plainview 28; 8. Caprock 24; 9. Spearman 18; 10. San Jacinto 13; 11. Randall 12; 12. Dumas 10; 13. Levelland and River Road 8.
Spearman, Gruver Jr. High Track
 The Spearman Jr. High Lynx and Lynxettes and the Gruver Jr. High Greyhounds and Lady Hounds competed in the West Texas Relays in Stinnett on Friday,

March 26th.
 The 7th Grade Lynxettes came in 1st place with a team total of 198, followed by West Texas with 126.5, Stratford with 97, and Gruver with 71.5.
 The 7th Grade Greyhounds came in 1st place with 184 points, followed by Stratford with 125 and Spearman with 121 points.
 The 8th Grade Lynxettes came in third with 78.3 points. Fritch came in first with 146.3 points and Stratford came in second with 126 points. Gruver came in fourth place with 76 points.
 The 8th Grade Greyhounds came in third with 109 points. West Texas came in first with 157 points, followed by Boys Ranch with 111 points and Spearman at fourth with 92.5 points.
2010 Hereford Track Meet
 The 2010 Hereford Invitational Track Meet was held on Friday and Saturday, April 2nd and 3rd, 2010.
 Following are the results for the Spearman competitors.
JV Lynxettes
 100 M Dash Prelims - 23rd Erynn Saenz, 14.72; 34th Crystal Cantu, 16.09
 200 M Dash Prelims - 21st Cynthia Mendoza, 31.06; 35th Crystal Cantu, 34.87
 400 M Dash Prelims - 21st Yesenia Romero, 1:28.40; 23rd Leslie Hernandez, 1:39.56
 800 M Run Prelims - Shelby Hanna Spearman NT
 100 M Hurdles Prelims - 7th Kyla Walker Spearman 18.93
 100 M Hurdles Finals - Kyla Walker Spearman NT

4x100 M Relay Prelims - 9th, Spearman 'A', 56.83 (Shelby Hanna, Erynn Saenz, Cynthia Mendoza, Kyla Walker)
 4x200 M Relay Prelims - 9th Spearman 'A', 2:07.22 (Cynthia Mendoza, Erynn Saenz, Shelby Hanna, Kyla Walker)
 Long Jump Finals - 4th Shelby Hanna, 13-09.50; Kyla Walker, ND; Cynthia Mendoza, ND
 Triple Jump Finals - 3rd Kyla Walker, 29-10.50; 4th Shelby Hanna, 29-10.00; 11th Cynthia Mendoza, 26-10.50
 Shot Put Finals - Dedee Vaquera, ND; Lexi Batton, ND
 Discus Finals - 4th Lexi

Batton, 87-06; Dedee Vaquera, ND
Varsity Lynxettes
 200 M Dash Prelims - Joselyn Terrazas, NT 4
 400 M Dash Prelims - 1 Sarah Snider, 1:04.32; Joselyn Terrazas, NT
 400 M Dash Finals - 2nd Sarah Snider, 1:01.50
 800 M - 7th Sarah Snider, 2:34.28; Tylo Farrar, NT
 1600 Meter - 4th Suttin Garnett, 5:53.53; Tylo Farrar Spearman NT
 3200 Meter - 3rd Suttin Garnett, 12:42.68
 100 M Hurdles - Prelims - 1st Gately Garnett, 16.44; 13th Malory Martin, 19.25
 2
 100 M Hurdles Finals - 1st Gately Garnett, 16.10

300 M Hurdles - 7th Gately Garnett, 53.69; 12th Malory Martin, 55.72
 300 Meter Hurdles Finals - 7th Gately Garnett, 52.34
 4x400 M Relay Prelims - 4th Spearman 'A', 4:23.60 (Tylo Farrar, Gately Garnett, Malory Martin, Sarah Snider)
 4x400 M Relay Finals - 6th Spearman 'A', 4:29.71
 High Jump - 9th Malory Martin, J4-08.00; 10th Sarah Snider, 4-06.00
 Pole Vault - 3rd Gately Garnett, 8-06.00; Joselyn Terrazas, NH
 Long Jump - 4th Gately Garnett, J15-10.00; Suttin Garnett, ND
 Triple Jump - 15th Sarah Snider, 29-00.50

VOTE DAVID THOMAS FOR COUNTY COMMISSIONER, PRECINCT 2

- I live and work in Hansford County, Precinct 2.
- I own and operate a farm in Precinct 2. It is vital to my business and yours to keep tax rates low.
- I travel roads every day that are maintained by Precinct 2. It is in the best interests of all who live in the precinct to keep them well maintained. I will do just that.
- I live within sight of the wind turbines northwest of Spearman. I will make every effort to encourage further development of wind energy and other resources.
- I will listen to your concerns. I know I will be working for you.

IF IT MATTERS TO YOU-IT MATTERS TO ME.

I would appreciate your vote on April 13th.

Vote David Thomas for County Commissioner, Precinct 2

Political Ad Paid for by David Thomas



ALLSUP'S

Prices Good Thru 4/17/10

BLUE BUNNY ASST. FLAVORS 56 OZ. ICE CREAM
\$3.99 SQ.



BLUE BUNNY TURTLE SUNDAE BAR OR BIG BOPPER ICE CREAM SANDWICH
BLUE BUNNY NOVELTIES
 \$1.99 EACH OR
2 \$3.00 FOR 3



305 W. Kenneth
Spearman • 659-3135

101 Main Ave.
Gruver • 733-2953

MTN. DEW OR 8 PKs. PEPSI
2 \$5.00 FOR 5



MTN DEW OR 20 OZ. BTL. PEPSI
2 \$2.50 FOR 2

MTN DEW OR 2 LITER BTL. PEPSI
2 \$3.00 FOR 3

LANCE'S ASSORTED SUNFLOWER SEEDS OR NUTS
2 \$1 FOR 1



CORN CHIPS, HOT FRIES, NACHO TORTILLA, BACON CHEDDAR FRIES, NACHO RINGS, PUFFED CHEEZERS AND SMOKIN HOT BBQ FRIES.
TOM'S SNACKS
 REGULAR \$2.49
2 \$4 FOR 4



ORIG. HOT, PUFFS OR JALAPENO CHEETOS®
 REGULAR \$1.29
99¢



32 OZ. FOUNTAIN DRINK
TALLSUP
89¢



REGULAR OR SUGAR FREE 12 OZ. CAN RED BULL ENERGY DRINK
 1 AT REG. PRICE OR
2 \$5.00 FOR 5



ALLSUP'S "MOO" BUY 12 GALLONS OF FRESH ALLSUP'S MILK... GET ONE FREE!



MORE SPECIALS

ALLSUP'S SANDWICH BREAD 24 OZ. / 79¢ OR	2 for \$1.29
ALLSUP'S WHEAT BREAD 24 OZ. / 99¢ OR	2 for \$1.49
ALL CANDY BARS REGULAR SIZE	79¢
CHEEZ-ITS ORIGINAL OR WHITE CHEDDAR 3 OZ. PKG.	99¢
SHURFINE GRADE A EGGS DOZEN	\$1.39
ORBIT MIST ASSORTED FLAVORS REGULAR \$2.19	\$1.59
WRIGLEY'S 5 ASSORTED FLAVORS EACH	\$1.59
PLAINS FRUIT DRINK GALLON	\$1.29
JACK LINK'S JERKY ASSORTED 3.25 OZ. BAG	\$5.99
COLORTEX BATHROOM TISSUE 4 ROLL PKG.	99¢
COLORTEX MOPPER TOWELS SINGLE ROLL PKG.	99¢

2010 Super Team

On Sunday, April 4, 2010, the Amarillo Globe-News named the 2010 Super Team.

Local basketball players named to the Super Team were:

Rily Urban, Gruver, 6-3, Senior, Forward: Led the Greyhounds to the state tournament after they lost in the regional final a year earlier. Averaged more than 19 points and nine rebounds.

Mattie Yanke, Gruver, 5-11, Senior, Forward: Averaged more than 17 points and 10 rebounds for the Lady Greyhounds as they captured the district title and advanced to the regional quarterfinals.

Morgan Ashmore, Spearman, 5-6, Sophomore, Guard: After averaging more than 16 points as a freshman, she stepped it up by averaging just less than 20 this season as the Lynxettes won 24 games and reached the regional quarterfinals.

Morgan Ashmore was also named the Class 3A-2A Golden Spread Team Player of the Year. The 5'6" Sophomore averaged just more than 20 points per game and was the floor leader for the Lynxettes, who finished second in District 1-2A.

Globe-News Boys Track Honor Roll

April 1, 2010

High Jump: Logan Brittain, Randall 6-6; **Sawyer Sutterfield, Spearman** 6-6; Chris Austin, Caprock 6-4; Rhett Martin, Bushland 6-4; Kelby Price, Panhandle 6-2; Westin Williams, Wellington 6-2; Isiah Dorsey, Tascosa 6-2; D. Castillo, Wellington 6-2; Wesley Shannon, Amarillo High 6-2; Tobias Milton, Caprock 6-0; James Richardson, San Jacinto 6-0; Dalton Koller, Amarillo High 6-0; Ivan Castaneda, Amarillo High 6-0; Michael Patterson, Palo Duro 6-0; Mason Bray, Dumas 6-0

Pole Vault: Chase Wolfe, Amarillo High 15-0; Westin Williams, Wellington 14-0; Quinton Travis, Tascosa 13-6; Colton Buchanan, Tascosa 13-0; Jordan Yankovich, River Road 13-0; **Dakota**

Cator, Spearman 13-0; Colton Wilson, Sunray 12-6; Blake Rittenberry, Tascosa 12-6; Aaron Ricketts, Amarillo High 12-6; Blake Boyer, Canyon 12-0; Alex Casias, Tascosa 12-0; Tyler Graber, Randall 12-0

SHS Football Honors

The Texas High School Coaches Association Academic 2A All-State Football Team includes Spearman Lynx Chance Pack - 1st Team and Zack Hughes - Honorable Mention.

GHS Basketball Honors

Madison McLain - District Offensive MVP, TABC All-Region, TGCA All-State

Mattie Yanke - District MVP, TABC All-State, TABC Academic All-State, TGCA All-State, TGCA Academic All-State, TGCA All-Star Game, Golden Spread All-Star Game, Globe-News 1A Super Team

SHS Golf

The Lynx competed in the Canadian Golf Tournament on Wednesday, March 31, 2010. They came in 5th place with a team total of 345.

Blayne Schroeder led the Lynx with a score of 83. Sawyer Sutterfield shot 86, Trent Goodheart 87, Jake Willimon 89 and Blaine Pack 92.

The Lynxettes played in the Canadian Golf Tournament on Tuesday, March 30, 2010. The team came in 1st place with a team total of 425.

The Lynxettes were led by Morgan Ashmore with a score of 98, followed by Amber Martinez with 102, Malory Martin 107, LeAnna Espinosa 118 and Mabry Sutterfield 123. Ayana Rosales, competing as an individual, shot 108.

SHS District Golf

Blayne Schroeder was the first place medalist in the District 2A Golf Tournament April 5th and 7th in Borger with a score of 73. Blayne also made a hole-in-one on the par three number 9 hole.

The Lynx came in first

place with a total of 340, followed by River Road with 348, Bushland with 375 and Panhandle with 379.

Trent Goodheart was the second lowest scorer for Spearman with an 86 (tied for 4th), followed by Sawyer Sutterfield with 90, Blaine Pack with 91 and Jake Willimon with 90.

JV Lynx Brent Hansen shot 106, followed by Brody Hargrove with 126.

The Spearman Lynxettes came in 2nd with a score of 431 behind River Road with a score of 409. They were followed by Panhandle with 460 points.

Malory Martin led the Lynxettes with her 2nd place medal by shooting a 93. She was followed by Morgan Ashmore with 101 for 4th place, Amber Martinez with 115, Mabry Sutterfield with 122, and LeAnna Espinosa with 123.

Ayana Rosales competed for the JV Lynxettes, and shot a 137.

GHS District Golf

Gruver High School competed in the 1st round of the District Golf Tournament. Reagan led the Greyhounds with 77, followed by Blake with 81, Parker with 75, Cory with 85, Zach with 93, Drew with 94, and Korbin with 106.

The Greyhounds led the first round with a score of 318.

The Gruver Lady Hounds came in 2nd place at the District Golf Tournament with a score of 440, behind Shamrock with 413. They were followed by Wheeler with 468.

SHS Tennis

On March 31st and April 1st, Spearman High School hosted the annual Spearman Tennis Tournament.

On the first day of the tournament, fifteen schools competed in 86 matches - boys singles, boys doubles and mixed doubles.

Swann from Highland Park defeated Kramer King from Gruver 8-6 in boys singles. McCloy (Gruver) defeated Bradshaw (Panhandle) 8-1 for third place. There were 24 singles players participating in the boys division.

The mixed doubles draw

was won by Saul/Saul (Canadian). They defeated Lopez/Cooper (Gruver) 8-2 for their title. Third place winners were Urbanczyk/Friemel (Panhandle) over Sanchez/Vazquez (Sunray) 8-4. There were 25 mixed doubles teams competing.

Baker/Hansen (Fort Elliott) defeated Story/Auldridge (White Deer) 8-3 for the Championship in boys doubles. Sumner/Odegaard (Spearman) defeated Wise/Barthlow (Panhandle) 9-7 for third place medals. There were a total of 24 boys doubles teams competing.

(Consolation games were only played through two rounds on the first day due to the number of competitors and matches.)

On the second day of the tournament, the girls singles players and girls doubles teams competed in 55 matches before the wind hit Spearman.

In girls singles, Martin (White Deer) defeated Alvarado (Booker) 8-2 to win the tournament. Lovelace (Fort Elliott) defeated Mc-Gaughy (Sunray) 8-0 for the third place medal. Walker (Spearman) and Sheets (Spearman) will finish their consolation championship match on Monday. (It was postponed because of the wind.) Their were 16 girls who competed in the girls singles meet.

Strawn/Rickwartz (Claude) and Maxfield/Lamborn (Claude) will finish the girls doubles championship on their home court on Monday (it was also postponed because of wind.) Summers/Frost (WT) defeated Winters/Reis (Fort Elliott) for the third place medals and Brown/Floyd (Booker) defeated Snider/Frost (WT) for the consolation championship. 21 girls doubles teams competed in the tournament.

Spearman participants

were Rosa Ortiz, Jessica Pinon, Andi Linn Scarborough, Shelby Hanna, Cassidy Odegaard, ShiAnn Bates, Natalie Saldivar, Isvy Acosta, Katy Miser, Paige Pierson, Maria Pena, Tori Sheets, Kyla Walker, Kylee Hegstrom, Nayeli Sigala, Araceli Lujan, Samantha Ward, Joselyn Terrazas, Nikki Boyd, Tate Batton, Fernando Flores, Antonio Hernandez, Caleb Odegaard, Skyler Sumner, Chance Pack, Alberto Camacho, Jesus Anaya, Jesus Carrasco, Roy Moreno, Francisco Camacho, Edgar Castillo and Gil Molina.

GHS Cheerleader Tryouts

Gruver High School held tryouts for the 2010-2011 cheerleaders on Tuesday, March 25, 2010.

The cheerleaders for 2010-2011 will be Cambry Cooper, Mary Hart, Brianne Mitchell, Alex Logsdon, Evelyn Pastrana, Ashley Williams.

Is your car leaving you stranded? Have we got the perfect car for you!

Prairie Motors, Inc.
Hwy. 207 S, Spearman TX

CALL FOR INFO
(806) 659-2541
www.prairiemotors.com

Spend Your Tax Refund Check With Us!

2009 Buick Enclave CXL - Leather interior, 2nd row bucket seats, third row flat folding 60/40 split bench, 7-passenger, heated seats, XM satellite radio, electric air & heat, radio controls on steering wheel. Great Storage Space! Must Have Vehicle!
24,600 Miles WAS: \$35,995 NOW: \$33,995

2009 Chevrolet Silverado Crew 4x4 - Cloth interior, split bench seat, power windows & locks, AM/FM/XM stereo w/CD player & MP3, remote keyless entry, electric air & heat. Good Pickup with Low Miles and Factory Warranty!
4,500 Miles WAS: \$32,500 NOW: \$30,995

2009 Chevrolet Silverado Crew 4x4 - Cloth interior, split bench seat, power windows & locks, AM/FM/XM stereo w/CD player & MP3, remote keyless entry, electric air & heat, bed liner. Good Pickup with Low Miles and Factory Warranty!
5,720 Miles WAS: \$32,500 NOW: \$30,995

2009 Chrysler Aspen Limited 4x2 - Cloth interior, power windows & locks, AM/FM stereo w/CD, radio controls on steering wheel, MP3 input jack, 8 passenger, universal garage door opener. Great Family Vehicle! Awesome Room!
24,500 Miles WAS: \$26,300 NOW: \$24,495

2008 Dodge Quad Cab 2500 4x4 - Cloth interior, 4 doors, 3/4 ton, 40/20/40 front split bench seat, rear bench seat, power windows & locks, AM/FM stereo w/CD, MP3 input jack, 6.7 liter Cummings diesel engine. Tough Pickup! Low Mileage!
46,412 Miles WAS: \$32,700 NOW: \$30,995

2008 Toyota RAV4 Sport (AWD) - Charcoal cloth interior, front bucket seats, 10 cup & bottle holders, AM/FM stereo w/CD, bright aluminum wheels, remote keyless entry on key. REDUCED! MUST GO!
28,346 Miles WAS: \$20,995 NOW: \$18,400

2007 Ford Edge SEL Plus - Khaki leather interior, front bucket seats, front heated seats, 2nd row 40/20/40, electric folding 2nd row seats, electric sunroof, AM/FM stereo w/CD, MP3 input jack, Navigation system. Very Well Equipped! Luxurious!
48,161 Miles WAS: \$25,495 NOW: \$22,995

2007 Dodge Nitro 4x4 - Cloth interior, front bucket seats, 60/40 split-folding rear seat, power windows and locks, AM/FM stereo w/CD player & MP3 playback, Power 4-wheel anti-lock disc brakes w/brake assist, Remote Keyless Entry. Fantastic Reviews!
60,937 Miles WAS: \$16,995 NOW: \$14,995

2006 Chevrolet Suburban LT 4x2 - Cloth interior, front bucket seats, 60/40 split-folding rear seat, 3rd row bench seat, 8 passenger, power windows & locks, AM/FM/XM stereo w/CD player & MP3 playback, Remote Keyless. Great Buy! Will Enjoy
66,080 Miles WAS: \$20,500 NOW: \$18,995

2006 Buick Rendezvous - Gray leather interior, front bucket seats, front heated seats, rear Multi-Flex 60/40 split bench, 3rd row bench, 6 passenger, AM/FM stereo w/CD, radio controls on steering wheel. One Owner! Must Go!
118,713 Miles WAS: \$9,995 NOW: \$7,995

2004 GMC Yukon XL 4x4 - Cloth interior, front bucket seats, 60/40 split-folding rear seat, power windows and locks, AM/FM stereo w/CD player & MP3 playback, Power 4-wheel anti-lock disc brakes w/brake assist, Remote Keyless Entry. Fantastic Reviews!
60,937 Miles WAS: \$16,995 NOW: \$14,995

2002 Chevrolet Silverado Ext 4x2 - Cloth interior, 1/2 ton, 40/20/40 front split bench seat, rear bench seat, power windows & locks, AM/FM stereo w/CD, driver message center, electric air and heat, keyless entry. Only One Owner! Local Trade!
141,125 Miles WAS: \$9,300 NOW: \$7,995

Prairie Motors, Inc.
Hwy. 207 South • Spearman TX
1-800-692-4657 • www.prairiemotors.com

Vote for
Carson

WOMBLE

for County Commissioner, Precinct 2

- Hansford County Native
- Conservative
- Hard Working
- Common Sense Leadership
- I would like to ask for your vote

VOTE

April 13th Run-Off Election
Early Voting Starts April 5th

Political Ad Paid for by Shelley Womble, Treasurer

Living Life to the Fullest

HANSFORD HOSPICE

Spring 2010 Hospice Volunteer Training

Hospice Volunteer Classes will begin in April. These classes are for anyone interested in becoming a Hospice volunteer, learning more about hospice care, and/or desiring personal growth.

The class schedule will be decided by those who attend. Classes are free.

For more information, or to enroll, please call the Hospice Office at 659-5811.

REAL ESTATE

FOR RENT: 1BR furnished apartment and 2BR furnished apartment. Bills paid, free laundry services. Call 659-2247.

Blankenship Real Estate

4BR/2B/2CG Home - Basement, pool, central H/A, fireplace

NEW LISTINGS WANTED!



We NEED listings! Call us now to help YOU sell your home for top dollar!

113 N. Brandt - Spearman: Spacious 3BR - 2148 sq. ft. home.

902 9th - Gruver: Horse Stables FOR SALE! 18 pens, circular training pen, arena, & 4500 sq ft barn on 10.42 acres!

712 Womble - Gruver: 1070sq. 3 BR, 1 B, Central Heat, Lrg Corner Lot!

We would LOVE to sell your HOUSE! CALL US!

This ad is just a small sample of the properties that we currently have for sale.

Please check our Web site and give us a call! We need your listings both large and small, all types of ag properties (ESPECIALLY CRP).

DALLAM CO. - Three adj. sections of dryland, some native grass, irrigation in area (two new wells across the road).

SWINE PRODUCTION FACILITY - Moore Co., TX. - 1200 sow capacity, capable of running 28,000 pigs annually, computerized feed mill, flex-flow feeding system, management in place. PRICED TO SELL!

RITA BLANCA RANCH - Dallam Co. TX. - 4,055 acres, 4 circles, 375 acres CPR, good fencing, pens and water. Priced to sell.

DALLAM CO. - 2 1/2 sections CRP.

HARTLEY CO, TX - 640 ac. 10 miles to Hillmar Cheese plant, on pvt. land, dairy permit, 3 pivots, home, barn, grain storage.

OCEANS OF WATER II - Hansford Co., Texas - 4 sections, strong water, dev. with sprinklers, wells, feedyard, home, barns, pvt. land, 2 mi. hwy. frontage.

SEE OUR WEBSITE OR CALL US! www.scotllandcompany.com

HELP WANTED

HELP WANTED: First United Methodist Church, Spearman is currently taking applications for a nursery worker.

4(2/4/10)B HELP WANTED: Now seeking a temporary full/part time dependable salesperson to operate Spearman store.

HELP WANTED: The Hansford County Sheriff's Office has an opening for a jailer/dispatcher. Must have a high school diploma or GED.



HELP WANTED We are looking for an energetic person to work in a fast paced environment. Taylor Petroleum Co. is now hiring for a manager position.



hchd Hansford County Hospital District Openings at Hansford Hospital

MT/MLT: Generalist for hours 4 p.m. - 2 a.m. weekdays. This position will also be responsible for 24 hr ER coverage on week-ends.

CNA: CNA certification required. Must be able to provide assigned residents with routine daily nursing and services in accordance with the resident's assessment and care plan, and as may be directed by your supervisor.

Great working environment and staff, quality facility providing opportunities for professional growth. Great benefit package. Apply at 707 S. Roland, Spearman, TX or contact Jackie Nelson at 806-659-5841.

SERVICES

CLICK PAINTING & HOME REPAIR Painting, Texturing, Drywall Repair, Fencing & General Carpentry.

HOOCY POOCY PARLOR Call us for all your pet's grooming and boarding needs.

AUTOMOBILE

FOR SALE: 1997 Ford F100 Pickup. Refurbished with new motor. Good work truck.

GARAGE SALE

GARAGE SALE - Spearman: Saturday, April 10th, 8 a.m. - 2 p.m. 615 Barkley Street.



Grid of numbers from a crossword puzzle.

Alva Monument Co. Formerly Liberal Monument & Memorial Company. New Location: m Tucker Road Liberal, Kansas. Serving Kansas, Oklahoma & Texas for 93 years.

Why settle for less? 4.07% APY INSURED CD. Ask About IRA/401K Specials! FIRST FIDELITY Financial Group, LLC.



FOR SALE 2001 Pontiac Trans-Am WS6 - Pewter with blue pin stripe, black leather interior (good condition).

BORT AGENCY, INC. See us for: AUTO • HOME • CROP HAIL • FARM & RANCH • MULTIPERIL • LIVESTOCK INSURANCE.

NAYLOR AUCTION and REALTY, INC. Saturday April 17th, 2010 10:00 a.m. • Perryton, TX.

PERRYTON AREA FARMERS - CONSIGNMENT AUCTION. LOCATION: From intersection of Hwy. 83 and Hwy. 15. ROLLING STOCK, CATTLE EQUIPMENT & TRAILERS, TRACTORS, EQUIPMENT.

NORTHRIDGE 8 Guymon, Oklahoma www.northridge8.com 580-338-3281

SOUTHGATE 6 Liberal, Kansas www.southgate6.com 620-624-5573

CHISHOLM TRAIL 8 Newton, Kansas www.chisholmtrail8.com 316-283-0555

SEQUOYAH 8 Garden City, Kansas www.sequoyah8.com 620-275-7707

FRESH POPCORN EVERYDAY! -PARTY ROOM & ARCADE-

MARTIN & ASSOCIATES REALTY. Serving Hansford County for 15 years. Julie Martin: Broker - 659-2425.

PTCI advertisement featuring a woman's photo and text: 'I use PTCI's Internet for online orders I receive through my home-based business.' 'At PTCI, they're always helpful and easy to talk to.'

by Dorothy Hudson

Out at the Lake

Jim Derington
Palo Duro River Authority
P.O. Box 99
Spearman, TX 79081
806-882-4401
pdra@dishmail.net



A lone Pelican at Lake Pao Duro

April 6, 2010 - Lake level - 15.19 feet - New record low level

Lake Palo Duro was alive with activity over the weekend, especially Easter Sunday afternoon. My favorite part of working here at the lake is seeing families enjoy it. That was certainly the case on Sunday afternoon, as families gathered on a beautiful day, for food, fun, fellowship, Easter egg hunts, and even fishing. There were five R.V. campers in the park behind the dam. The shelter was reserved on Sunday afternoon. Most of the regular picnic spots were used, and several groups found other places to gather. The public restrooms are now open, and the showers will be open, soon.

The picture shows one Pelican, resting at the lake. As I go down each morning to check the lake level, I try to be observant for wildlife. This morning I saw the pelican, an immature bald eagle perched in

the trees, an American Kestrel, and four white tail deer. What a way to start the day! I am in awe many times here, constantly reminded of nature's beauty, and thank God for it, continually.

I thought the bald eagles were gone, but I was corrected by one of our campers, who saw a pair of eagles, behind the dam. She was right, as I saw a mature eagle flying over the dam Monday, and one today.

The lake continues to shrink each warm, windy day. Officially, the elevation of the top of the water is the correct lake level. For public use, it is reported in feet of water. The elevation of the original streambed, at the centerline of the dam, is subtracted from the elevation of the water, to get feet of water. This point is downstream of the lake (lower), and any sedimentation that has occurred, is not considered. Consequently, the actual feet of water, is less than reported. Those of

you with depth finders on your boats already know this.



Palace Theatre

MOVIE SHOW TIMES
Friday-Thursday - 7 p.m.
Sunday - 2 p.m.
Closed Sunday Night

FRESH POPCORN & DRINKS!
PARTY ROOM & ARCADE
MOVIE RENTALS

Palace Theatre
210 Main Street
Canadian TX 79014
806-323-5133

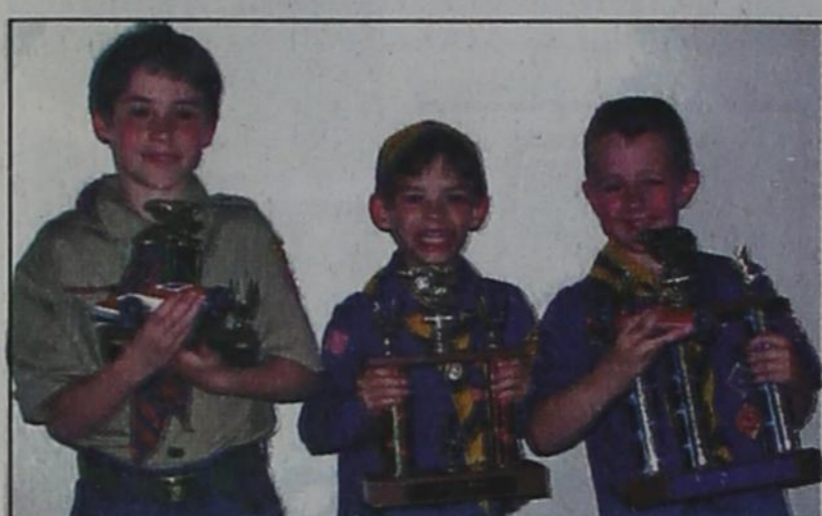
www.palacetheatre.com

The Palace Theatre meets Lucasfilm THX specifications for site and sound quality.

Pinewood Derby Held



Jake, Holloway, Chris Lugo, Hagen Puentes and John Kunselman wait in anticipation to see whose car will win this heat.



Orion Kunselman 3rd, Wyatt Womble 2nd, Waylan Keim 1st

submitted by Jennifer Keim

Cub Scout troop 578 held their annual Pinewood Derby on Thursday April 2 at the First Christian Church.

There was much action and excitement to be had as 20 derby cars competed in speed as well as appearance. Computer generated heats allow each car to race an equal number of times as well as placing them in all the lanes an equal number of times.

After each car ran all its preliminary races, the six cars winning the most races advanced to the finals where the process was repeated to determine the winner.

This year's 1st place winner was Waylan Keim, 2nd place went to Wyatt Womble, and 3rd place went to Orion Kunselman. 4th place was won by Hagen Puentes, 5th Charles Pearson and 6th was Dillon Kemp.

Various awards were given for appearance with



Charles Pearson Best in Show

Charles Pearson taking "Best in Show" with his replica of a 1930's race car.

Lots of hotdogs were consumed and lots of fun was had. Look for some of these boys and their cars again as several of them compete at the district Pinewood Derby in Perryton on April 24th.




25th Anniversary

Thursday April 22, 2010

Come join us under the Big Top

Location: 729 W 7th, Spearman
Time: 4:30 p.m. - 7:00 p.m.

Food **Entertainment**



FNBANK
First National Bank

Spearman 806-659-5544 Dumas 806-934-8455

Member FDIC

Spring Is Coming... will you be ready?



M5040

- 50.5 HP, 4-Cylinder Kubota Diesel Engine
- Fully Synchronized Transmission
- Hydrostatic Power Steering
- Category I & II, 3-Point Hitch

Panhandle Implement has the Kubota for you!

L2800



L3240



L4400



\$0 down, 0% A.P.R. financing for 60 months on select new Kubotas!

PANHANDLE IMPLEMENT CO., INC.
710 NORTH MAIN STREET • PERRYTON, TX
806-435-6508



EVERYTHING YOU VALUE

*\$0 down, 0% A.P.R. financing for terms up to 60 months on purchases of select new Kubota equipment from available inventory of participating dealers through 5/31/2010. Example: A 60-month monthly installment agreement term at 0% A.P.R. requires 60 payments of \$16.67 per \$1,000 borrowed. 0% A.P.R. interest is available to customers if no dealer documentation preparation fee is charged. Dealer charge for document preparation fee shall be in accordance with state law. Only Kubota and selected Kubota performance model Land Prep equipment is eligible. Inclusion of multiple equipment may result in a higher blended A.P.R. Not available for Rural, National Accounts or Governmental customers. 0% A.P.R. and low rate financing may not be available with certain tractor models (L12, L14). Financing is available through Kubota Credit Corporation, U.S.A., 3401 3rd Ave Blvd, Torrance, CA 90503, subject to credit approval. Some exceptions apply. Offer expires 5/31/2010. See us for details on these and other low-rate options or go to www.kubota.com for more information. *MSRP shown in example only. K952-04-03060-2