

100 YEARS



The Hansford County Reporter Statesman

PROUDLY SERVING HANSFORD COUNTY SINCE 1907

SCR2
COMP
HANSFORD COUNTY LIBRARY
0122 MAIN ST
SPEARMAN TX 79081-2064

reporter@spearmanreporter.com

VOLUME 101 • ISSUE 49 WWW.SPEARMANREPORTER.COM THURSDAY, DECEMBER 4, 2008

Deadline Notice!

The deadline to submit news and advertising to the Hansford County Reporter Statesman is Monday at 5 p.m. Items submitted after the deadline will be published at a later date, as time and space permit.

The deadline for the December 18th and December 25th issues will be Monday, December 15th at 5 p.m. The deadline for the January 1st issue will be Wednesday, December 17th at 5 p.m.

Items may be submitted by phone (806-659-3434), fax (806-398-9080), mail (Reporter Statesman, 213 Main Street, Spearman TX 79081), or e-mail (reporter@spearmanreporter.com).

For more information, please contact Catherine Smith at 659-3434, or e-mail to reporter@spearmanreporter.com

Merry CHRISTMAS Operation Christmas Greeting

The Hansford Hospital Auxiliary has begun their yearly fundraiser - Operation Christmas Greeting. Instead of mailing greeting cards, individuals who wish to, may donate money to the Hansford Hospital Auxiliary and have their greeting published in this paper. The money is used to purchase equipment and supplies that are not budgeted at the Hospital and Manor.

If you would like to participate in this holiday greeting, please mail your donation to: Operation Christmas Greeting, Chairman Judy Nelson, 130 Nelson Road, Spearman, Texas 79081. Checks should be made to Hansford Hospital Auxiliary and marked Operation Christmas Greeting. Thank you so much for supporting this fundraiser.



SOS Helps at the Manor

On Monday, December 1st, crew members of the Spearman Junior High SOS organization began the Christmas season by giving of their time to help decorate the Hansford Manor. Crew members participating in this endeavor were Alfredo Barajas, Gil Molina, Raymond Russell, Lalo Juarez, Sabrina Lopez, Ambar Yohe, Clayton Getz, Carlos Molina, Gilbert Flores, Kelsi Sumner, Kreisun Domingues, and Emily Miser.

Weather Forecast

THURSDAY NIGHT - Mostly cloudy. Lows around 17. Southeast winds around 10 mph.

FRIDAY - Partly cloudy. Highs in the mid 40s. South winds 10 to 15 mph.

FRIDAY NIGHT - Partly cloudy. Lows in the mid 20s. South winds 10 to 15 mph shifting to the west after midnight.

SATURDAY - Partly cloudy. Highs in the upper 50s.

SATURDAY NIGHT - Partly cloudy. Lows around 30.

SUNDAY - Partly cloudy. Highs in the upper 50s.

SUNDAY NIGHT - Partly cloudy. Lows in the lower 30s.

MONDAY - Mostly cloudy. Highs in the lower 60s.

MONDAY NIGHT - Mostly cloudy. Lows in the upper 20s.

TUESDAY - Partly cloudy. Highs in the upper 40s.

TUESDAY NIGHT - Partly cloudy. Lows in the mid 20s.

WEDNESDAY - Partly cloudy. Highs around 60.

Texas Crop & Weather

The following specific livestock, crop and weather conditions were reported by Panhandle Extension directors: Some counties received moisture. Soil moisture varied from very short to surplus with most areas reporting adequate. The corn and sorghum harvests were wrapping up in some counties. The cotton harvest was ongoing, but there were many immature bolls due to a late-to-mature crop at first freeze. Some wheat was still being planted. Wheat ratings varied from poor to excellent with most areas reporting fair to good. Rangeland was rated from very poor to fair with most areas reporting fair. Cattle were in good condition.

Gladiola Flower Club Home Tour



MR. & MRS. CHAD KNOWLTON
501 S. BARKLEY

Chad and Jana invite you to their home on December 7th. Their home is now known as 501 Barkley, but before that it held a 5th Street address. This house has been home to many people and is known to most as the "old Womble place." Chad and Jana aren't sure exactly when this house was built, but Jana says that her dad, Gary Ellsworth, remembers playing in the house, and Margarette Evans remembers visiting there in her teens for church youth group.

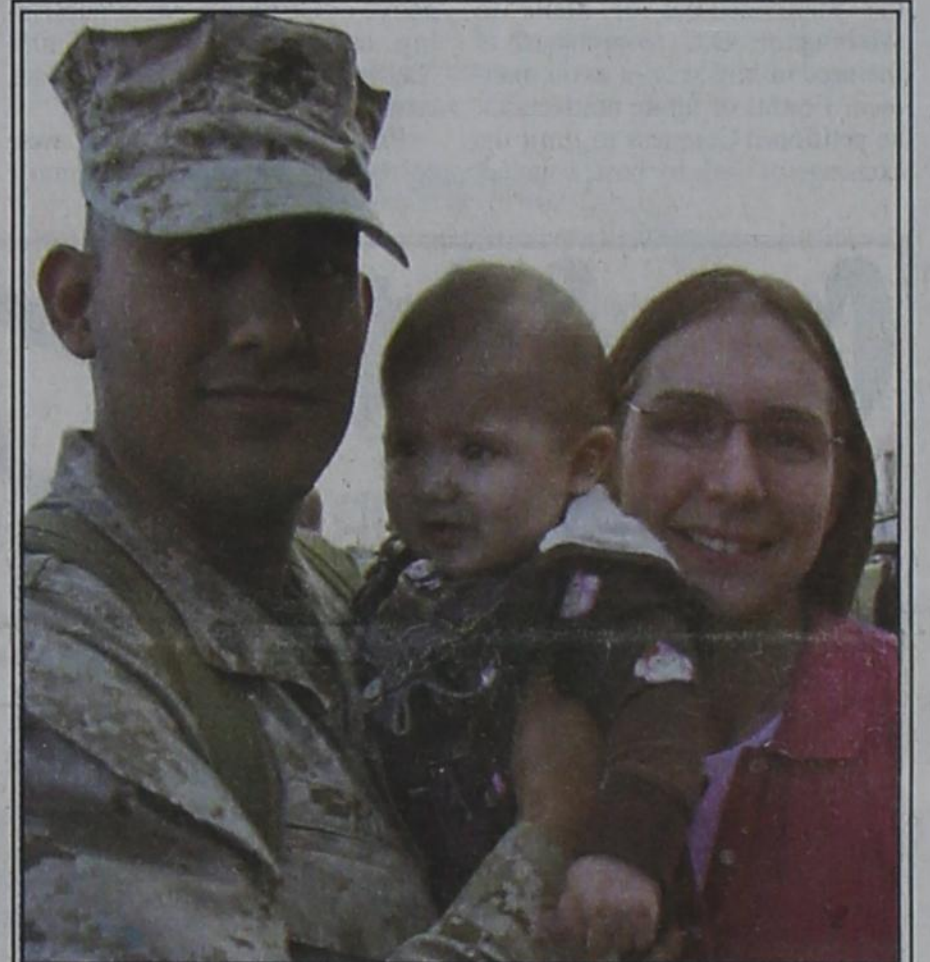
Most people are interested to know how the Knowltons got themselves into the project. The answer is Chad. He had a vision that this run down, abandoned home could be great. So, in December of 2005, they bought the "old Womble place."

Nothing in the house is the same as it was. They gutted it down to the studs, moved walls, added walls, and even added square footage. The home now has 3 bedrooms upstairs with 2 baths, and a basement with a TV room, a playroom and a guest room. Chad handmade all of the cabinetry, door and window trim, kitchen floor, kitchen island and dining room table. Jana did most of the painting and decorating, and the kids have added all the dirt!

This is a dream family home for the Knowltons. They carefully thought out placement of every room, wall, door and window. To most, their home seems complete, but for the Knowltons, it will never be finished!

The Gladiola Flower Club sponsors the Home Tour each December. Tickets are \$5 each and may be purchased from any Flower Club member, or at the door.

The Knowlton home is one of the four homes featured in this year's Gladiola Flower Club Home Tour, which will be held on December 7th from 2-5 p.m. Other homes on the tour include: Mr. & Mrs. Joey Woolley, 1021 Cotter Dr.; Mr. & Mrs. Robert Howell, 620 S. Endicott; and Mr. & Mrs. Tim Cooper, 801 Walter Willmeth Dr.



Rojas Returns Home to Meet Daughter

Recently promoted Staff Sgt. Juan Rojas, son of Eddie and Barbara Rojas of Spearman, Tx. returned home to Richlands, NC from his third tour in Iraq on October 8, 2008. His wife, Amy, and their precious baby daughter, Hannah, were at the airport anxiously awaiting for his safe arrival!

His family feels very blessed and thankful that Juan made it back to the States safe and sound. One of the greatest blessings of Juan's homecoming was meeting his daughter for the first time!

Juan and his family would like to thank everyone for all of their thoughts, prayers, care packages and cards while he was in Iraq. They meant a lot to him and his platoon. They all appreciated everything!

COME TO THE GAME

Spearman Lynx/Lynxettes

12/04-6 VG, VB at Miami Varsity Tournament

12/04-6 JVG, JVB at Gruver JV Tournament

12/08 7thG (5), 8thG (6), 9thG (7:30) vs Sanford-Fritch

12/08 7thB (5), 8thB (6), 9thB (7:30) at Sanford-Fritch

12/09 JVG (5), JVB (5), VG (6:30), VB (8) at Canadian

12/11-13 VG, VB at Vernon Varsity Tournament

12/11-13 JVG at Spearman Tournament

12/16 JVG (5), JVB (5), VG (6:30), VB (8) at Stinnett vs West Texas

12/18-20 JVB at River Road Tournament

12/19 JVG (5), VG (6:30), VB (8) vs Gruver

12/29-31 VG, VG at Caprock Tournament - Lubbock

Gruver Greyhounds/Lady Hounds

12/04-6 JVG, JVB at Gruver JV Tournament

12/04-6 VG, VB at Fritch Varsity Tournament

12/08 7thG (5), 8thG (6), JVG Red (7) vs Sunray

12/08 7thB (5), 8thB (6), JVB Red (7) at Sunray

12/09 JVG (4), JVB (5:15, VG (6:30), VB (8) vs. White Deer

12/11-13 VG, VB at Hugoton KS Tournament

12/11-13 JVG at Spearman Tournament

12/15 7thG (5), 8thG (6), JVG Red (7) vs Boys Ranch

12/15 7thB (5), 8thB (6), JVB Red (7) at Boys Ranch

12/16 JVG (4), JVB (5:15, VG (6:30), VB (8) at Canadian

12/19 JVG (5), VG (6:30), VB (8) at Spearman

12/29-31 VB at Canadian Tournament

12/29-31 VG at Caprock Tournament - Lubbock



Letters to Santa

The Hansford County Reporter Statesman will print Letters to Santa from children in Hansford County in our annual Christmas edition, which will be published on December 25th.

Letters may be mailed to: Santa Letter, % Reporter Statesman, 213 Main Street, Spearman, TX 79081, or dropped by the Reporter Statesman office. Office hours are Mon.-Thurs., 9 a.m.-12 noon and Mon.-Wed., 1-5 p.m. (There is a drop-slot located in the window to the right of the door.) Letters may also be dropped off at the new home of the Reporter Statesman, 310 Barkley Street, Spearman.

In order for your letter to appear in the Christmas issue, it must be at the Reporter Statesman office by 5 p.m. on Thursday, December 18th. All letters will be forwarded to Santa. (Letters received after the deadline may not have time to reach the North Pole by Christmas.)



Panhandle District 4-H Nutrition Quiz Bowl

More than 50 youth from 21 Panhandle counties gathered at First Baptist Church in Pampa for the Texas AgriLife Extension Service Panhandle District 4-H Nutrition Quiz Bowl on November 25.

The Hansford Nutrition Quiz bowl team of (L-R) Brantley Shields, Finley Garnett, Maren Garnett and Lilly Patterson competed in the Junior division, winning second place.

Nutrition Quiz Bowl helps participants increase their knowledge of basic nutrition, consumer information, food and kitchen safety, food preparation skills and storage, and nutrition and health.

Want to help with the 'Spirit of Christmas'?

Plans and preparations are already underway for this year's 'Spirit of Christmas' dinner. Turkeys have been purchased by 'Friends of Spearman.' volunteers are needed to cook and prepare the turkeys.

Volunteers are also needed to provide transportation. For more information, to make a donation, or volunteer, please call Linda Latta at 659-3584 or Lyn Woolley at 659-3550.

Wolf Creek Heritage Museum Notes

We had a quiet week with out of town visitors in the area for Thanksgiving.

On Wednesday, only three core members came - Dorothy, Ann and me. Ann Wright loves to clean and organize and with only me and Dorothy present, she started in our back work area and had us loading stuff in the car for storage at the school. She also filled a trash can and recycle box. We can now walk, see, and work in the back area.

I need to mention here an overdue Thank you from the museum to Guery Wright. He finished our cabinets in the work/kitchen area this fall. So a double thanks to the Wrights for making our work area prime and proper again.

Ann and Guery are leaving this week for their winter retreat in Fredericksburg. We will miss them and will try to keep the place organized until Ann returns. Have a save trip Ann and Guery.

We will begin our Christmas decorating this week. We will set up the aluminum tree again, so if you grandparents want to show your grandkids the kind of trees that we had in the 50's and 60's, bring them by.

The Christmas Quilts, wall hangings, etc are beautiful and will brighten our decorations.

HISTORICAL HAPPENINGS

My goal for December is to write about a Holiday tradition in each week's column. This week it's "Christmas Cards."

In the late 1700's and early 1800's, people exchanged handwritten holiday greetings. First in person, then they began to mail homemade greetings to each other. By 1822, homemade Christmas cards had become a major challenge to the U.S. Postal system. That year, the Superintendent of Mails in Washington, D.C. complained of the need to hire sixteen extra mailmen. Fearful of future bottlenecks, he petitioned Congress to limit the exchange of cards by post, concluding, "I don't know what we'll do if it keeps on."

Boy, was that an understatement. Not only did it keep on, but with the marketing of attractive commercial cards the postal burden worsened. The first Christmas card designed for sale was by London artist John Calcott Horsley in 1843. A respected illustrator of the day, Horsley was commissioned by Sir Henry Cole, a wealthy British businessman, who wanted a card he could proudly send to friends and professional acquaintances to wish them a "Merry Christmas."

Sir Henry Cole was a prominent innovator in the 1800s. He had modernized the British postal system, arranged for the Great Exhibition in 1851, and oversaw the inauguration of the Victoria and Albert Museum. Most of all, Cole sought to "beautify life," and in his spare time he ran an art shop on Bond Street, specializing in decorative objects for the home. In the summer of 1843, he commissioned Horsley to design an impressive card for that year's Christmas.

Horsley produced a trifold. The side panels depicted a good deed - clothing the naked and feeding the hungry. The centerpiece featured a party of adults and children, with plentiful food and drink (there was severe criticism from the British Temperance Movement).

The first Christmas Card's inscription read: "Merry Christmas and a Happy New Year to you". "Merry" was then a spilt word meaning "blessed," as in merry old England." Of the original one thousand cards printed for Henry Cole, twelve exist today.

Printed cards soon became the rage in England and then in Germany. It was not until 1875, that printed cards began in America. Boston lithographer Louis Prang, a native of Germany, began publishing cards, and earned the title "father of the American Christmas card."

Prang's high-quality cards were costly, and not affordable by most Americans and he was forced out of the business in 1890. It was the cheap penny Christmas postcards imported from Germany that remained the vogue until WWI. By war's end, America's modern greeting card industry had been born.

Today more than two billion Christmas cards are exchanged annually, just within the United States. Christmas is the number one card-selling holiday of the year.

The Current Postal Service has found a way to meet our needs through their publishing of schedules, etc. and now they have their own line of products from stamps to cards to special packaging needs. So get to it and start making out those cards. It is fun to do and to receive.

Note Of Condolence: It is with sadness that we said good bye to one of our museum angels, Mary Fry. Mary lost her battle with an illness and she will be missed. The museum sends their condolences to her family. We also send our regrets to Sandy Adkinson who lost her mother. Our thoughts are with all our families who have lost a loved one recently.

Museum Hours: Monday thru Friday 10 a.m. to 4 p.m., Sunday 2 to 4 p.m. Special hours upon request.

Museum Information: 13310 Hwy 305, PO Box 5, Lipscomb TX 79056; telephone: 806-852-2123; email: wolferk@amaonline.com; website: www.wolfcreekheritagemuseum.org



HIGHLIGHTS

GOVERNOR WARNS NEW CLEAN AIR RULES WOULD 'CRIPPLE' TEXAS



by Ed Sterling

AUSTIN - Gov. Rick Perry on Nov. 24 urged the U.S. Environmental Protection Agency not to pass a proposed framework that would toughen regulations on greenhouse gas emissions.

Examples of greenhouse gases are carbon dioxide, ozone and methane.

Perry said the EPA is planning to reinterpret the federal Clean Air Act in ways that would "cripple the Texas economy."

Concerned that the EPA will take action before President George W. Bush's term of office ends in January, Perry and a group of other governors scheduled a Dec. 2 meeting with president-elect Barack Obama to discuss regulatory concerns.

Perry on Nov. 24 proposed:

- Making alternative energy technologies less expensive to encourage commercial use.
- Removing barriers to innovation and competition.
- Modernizing the national energy grid to support wind and solar energy transmission.
- Facilitating investments in the development of carbon capture and sequestration technologies.
- Removing barriers to investment in nuclear generation that would reduce carbon emissions.
- Encouraging competitiveness, innovation and growth in alternative energy sources.

Filing of early bills continues

Jan. 13 is the start date for the 81st session of the Texas Legislature and March 13 is the deadline for the filing of major bills, so there is plenty of time for every Texan's state rep and senator to attempt to make new laws or repeal or amend existing ones.

As of Nov. 30, Texas lawmakers had filed more than 700 bills to be considered in the coming session. Here are a couple of bills that were filed Thanksgiving week.

SB 321 by Elliot Shapleigh, D-El Paso, would require the filing and posting on the Internet of reports of school board candidates' political contributions and expenditures.

HB 345 by Gary Elkins, R-Houston, would require businesses to do more to protect sensitive personal information contained in customer records. SB 327 by Leticia Van de Putte, D-San Antonio, is the same as HB 345.

Board limits state budget
The Texas Constitution requires the Legislature to pass a state budget that does not exceed the projected growth of the state economy.

In mid-November, the 10-member Legislative Budget Board unanimously adopted a rate of 9.14 percent for fiscal 2010-11.

The rate reflects the estimated growth rate in the state economy from the 2008-2009 biennium to the 2010-2011 biennium as projected by the Texas Comptroller.

The LBB is required to meet and

set the constitutional spending limit prior to every legislative session. It is co-chaired by Lt. Gov. David Dewhurst and House Speaker Tom Craddick, and includes certain automatic appointed members.

They include Steve Ogden, R-College Station, chair of the Senate Finance Committee, Warren Chisum, chair of the House Appropriations Committee, and Jim Keffer, chair of the House Committee on Ways and Means; and appointed members, Sens. Judith Zaffirini, D-Laredo, Robert Duncan, R-Lubbock, John Whitmire, D-Houston; and Reps. Dan Branch, R-Dallas, and Sylvester Turner, D-Houston.

TEA chief joins task force
The Texas Education Agency announced Nov. 25 that Texas Commissioner of Education Robert

Scott has been selected to serve on a 10-member presidential transition task force to develop education recommendations that could be carried out during the first 100 days of the Obama administration.

The task force was created by the Council of Chief State School Officers, a geographically and politically diverse group that will forward its recommendations to the next U.S. secretary of education.

Mattox buried in state cemetery
Former Texas Attorney General Jim Mattox, 65, died of a heart attack in his sleep at his home in Dripping Springs on Nov. 19. His body lay in repose in the Texas House Chamber on Nov. 24, and thousands paid their respects. Mattox was buried in the Texas State Cemetery in Austin on Nov. 25.

Editors Note...

Freedom of speech is one of the guarantees of the First Amendment of our Constitution, so we encourage readers to express themselves, even if we don't agree with what is said. However, freedom involves responsibility. Therefore, the only letters we will consider publishing are from individuals who are willing for their names to appear with the letter. Letters must contain the telephone number, address and a personal signature of the writer. We will not knowingly publish any letter containing libelous statements.

In the event that numerous letters are received concerning the same subject, letters can be limited to one pro and one con letter per publication. Eligible letters will be published in the order in which they were received.

"Letters To The Editor," like all materials submitted to this newspaper, are subject to editing for space and clarity. The publication of any letter or article is the decision of the Editor and Publisher. Deadline for all news, as well as "Letters To The Editor," is 5 p.m. on Monday.

The Hansford County Reporter-Statesman

SUDOKU

PRESENTED BY



		2			1	8	3		
								4	6
7		6	3			2			
5		1	6	9	7			8	2
2	6		4		5			7	1
9	7		1	8	2	4			5
		5			3	1			4
3	1								
		9	4	5			7		

© 2008, StatePoint Media, Inc. answer on page 7
Fill in the blank squares in the grid, making sure that every row, column and 3-by-3 box includes all digits 1 through 9.

Come & Get It!

HAPPY HOUR

3-5 p.m., Monday-Friday

ALL FOUNTAIN DRINKS 69¢

MURMUR'S CAFE

100 S. Roland • 659-3580 • Spearman

The Jays of Summer

SNOW CONE STAND

1:30-8 p.m., Monday-Friday

MURMUR'S CAFE

100 S. Roland • Spearman

659-3580

STARS ABOVE

- ACROSS**
- Baby powder ingredient
 - Follows Sun.
 - John Dillinger's girlfriend, e.g.
 - Aroma
 - *Relating to air
 - Barbs or jeers
 - *Astrologists believe celestial bodies influence it
 - Eight
 - Middle name of famous architect
 - *Great Bear
 - Augments with great effort
 - Desired sheets
 - *The Space Shuttle has a large payload
 - President of Nicaragua
 - Gun rest on old ships
 - "Rider" by War
 - *Solar system model
 - Seawards
 - Faulkner's "As I Lay"
 - carte
 - Print mistakes
 - Light brown
 - With hands out hips and elbows out
 - The point opposite west southwest
 - *Farthest planet from sun in our solar system
 - To breed within
 - "Quantum of Solace" protagonist
- DOWN**
- Vegan's protein choice
 - Sixth month of civil year
 - Land parcels
 - Pleat, e.g.
 - Emperor of Japan, 1868-1912
 - *Belted starman
 - Dark, as in movie
 - *Sweet galaxy?
 - Double reed woodwind
 - Grazing lands
 - Popular '60s drug
 - Virtual you, e.g.
 - Harvest what's left
 - Gog's partner
 - As opposed to sell
 - *In these days they thought Sun revolved around Earth
 - Cruella de Vil's

These games are brought to you by the Hansford County Reporter-Statesman

CROSSWORD

1	2	3	4	5	6	7	8	9	10	11							
12				13				14									
15				16				17									
18				19				20									
			21					22									
23	24	25				26			27	28	29						
30				31		32	33				34						
35				36				37			38						
39						40			41		42						
43						44			45		46						
						47			48	49							
						50	51				52			53	54	55	
56									57					58			
59									60					61			
62									63					64			

PRESENTED BY

VolunteerMatch.org

Where volunteering begins.

© 2008, StatePoint Media, Inc. answer on page 7

The Hansford County Reporter-Statesman

213 Main Street • Spearman, TX 79081

Phone - (806) 659-3434 • Fax - (806) 398-9080

www.spearmanreporter.com

reporter@spearmanreporter.com

cathysmith@valornet.com

Mon.-Thurs. 9 a.m.-12 p.m., Mon.-Wed. & 1-5 p.m.
Closed Thurs. afternoon and all day Fri., Sat. & Sun.

Gary Smith - Publisher Catherine Smith - Editor
Contributing Writers: Dorothy Hudson, Jim Derington, Merry Sparks, Cecil Biggers
Contributing Photographer: Charlie Johnson

Subscription Rates
In Hansford County - \$30.00 • Out of County - \$40.00

The Hansford County Reporter-Statesman (USPS 529660) is published weekly in Spearman, TX. Periodical postage paid in Spearman, TX. **POSTMASTER:** Send address changes to: The Hansford County Reporter-Statesman, 213 Main Street, Spearman, TX 79081.

Publication Policy
The deadline to submit news and advertising to The Hansford County Reporter-Statesman is Monday at 5 p.m. Items submitted after the deadline will be published at a later date, as time and space permit. Publication of all items is at the discretion of the editor.

Advertising
Open Display rates are \$4.00 per column inch. Classified Ads are \$6 for the first 25 words and 10¢ per word for each additional word. (Additional charge for boxed classifieds.) There is a \$1 charge per week if billed.

Member of
Gruber Chamber of Commerce
Spearman Chamber of Commerce
Texas Press Association and Panhandle Press Association

TEXAS PRESS ASSOCIATION AWARD WINNER

Happy Birthday!

December 4
Birthday - Chris Spivey, Lynn Stedje, Denise Ferguson, Heather Gikas, Kristy Easley, Imogene Baker, Joyce Duncan, Tim Fletcher, Amber Newman, Kristina Christian, Aleta Jackson
Anniversary - Kent & Tammy Benton, Crockett & Melinda Tidwell

December 5
Birthday - Martha Haden, Billy Dearmond, Mike Skinner, Arbeta Nobels, Gwen Smith, Norman Scroggs, Susie Oakley, Beatrice Comp, Cory Marrs, Brayden Bynum
Anniversary - Alfonso & Carrie Cenicerros

December 6
Birthday - Ryan Ramon, Penny Kruse, Coleen Brummett, Ed Dear, Mrs. Johnny Gaither, Cecelia Randall, Mayleea Castillo, Carolyn Harnden, Kelli Cummings, Lisa Keetch, Mary Venneman, Chevy Smith, Jerald Ray Scribner, Jenna McElroy
Anniversary - Burl & Nellie Buchanan, Bill & Ginger Pittman

December 7
Birthday - Sheldon Atwood, Brenda Bayless, Janell Haefner, Bret Hobbs, Cynthia Williams, Emily Williams, C.L. Pierce, Sue Bowling, Carlee Dixon, H.E. Jenkins, Thane McCloy, Zach Gallimore, Dusty Hodge, Beth Dudley, Beverly Antalek
Anniversary - M/M Willard McCloy

December 8
Birthday - Stan TeBeest, Reynaldo Garza, Lawrence Tindell, Scott Slater, Hershel Jones, Carmen Arjona, Jason Holton, Michelle Cook Kaman, Theresa Davis, Tim Weldon, Bruce Stinson, Morgan Lackey, LaVerne Parks
Anniversary - Vicki & Rodney Nickel

December 9
Birthday - Clayton Smith, Grant Odom, Matt Overbey, Marlene Winger, J.H. Campbell Jr., Gail Vanlandingham, Elodia Flores, Melana Papay, Shawn Cook, Juan Garcia Jr., Elda DeSantiago, Maddie Rose Stork
Anniversary - M/M John Sprigg, M/M Mark Irwin

December 11
Birthday - Kasey Davis, Manella Kiser, Dana Steele, Phillip Renner, Maria Martinez, Florence Fletcher, Jim Evans, Betty Dunaway
Anniversary - M/M Jess Wood, Irene & Butch Baker

December 12
Birthday - Gene Fletcher, Kaisi Foster, Claudia Barton, Olga Cantu, Mary Ann Martin, Jana (Pittman) Ivey, Barbara

Ring, Daniel Ochoa, Don Reed, Chance Johnson, Ivin Boyd, Christine Brandvik, Omar Favela, Guadalupe Trejo, Freddy Walton, Marvin Wilkerson, Justin Boyd, Brandon Sauz
Anniversary - M/M Jon King, M/M John Lopez, Charles & Melanie Elliott

December 13
Birthday - Betty Burk, James Burk Jr., Holly McCloy, Barbara Schnell, Muriel Boyd, Linda Butt, Bobby Smith, Jack Reed, Georgena Hart, Dan Roach, Dana Wattier, Robert Zamora, Marilyn Cline, Blythe Finley, Leaha Smith
Anniversary - M/M Kurt Bynum

December 14
Birthday - Bradley Clawson, Ray Etter, Todd Parker, Penny Ralston, Barbara Stavlo, Elaine Odegaard, Ron Schmeier, Bradley Sanders, Lynn Cook, Sandra Grover, Eddie Herrington, Cale Curry, Amy Gift, Betty Redwine, KelliAnne Bynum
Anniversary - M/M Don Maize, M/M Chris Stork

December 15
Birthday - Dallas Henson, Harvey Proffitt, Hal Shufeldt, April Davis, Bob Pearson, Abbe Steger, Clarence Eller, Rosa Pierce, Stephanie Crossland, Donny Davis, Maria Ortiz, Jennie Jones, Jose Vargas, Jim Norton, Joey Bynum, Randall Sauer, LeAnn Shields, Eric Vasquez, April DeLaRosa

December 16
Birthday - Linda Lackey, Clint Patterson, Marty Bennett, Melanie Clausen, Jennifer Hughes
Anniversary - M/M Byron Kenney, M/M George P. Odom, M/M John Purvins

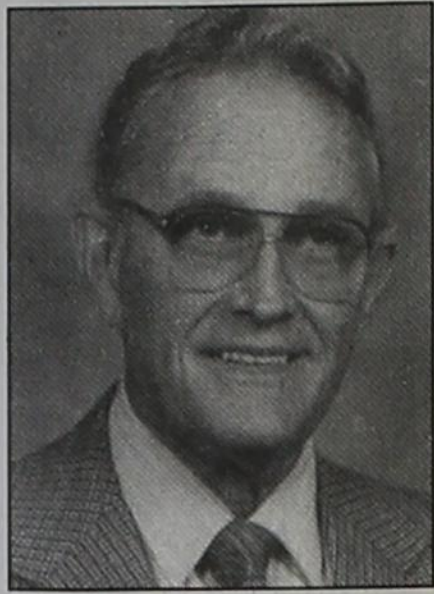
December 17
Birthday - Bobbie Novak, Patsy Beville, Sergio Favela, Charles Kruse, Stephanie TeBeest, Brandy Urban, Lupe Gueroer, Francis Floyd, Viola Hutton, Russell Shaver, Lorene Raiz, Charles Layton, Sandi Rich, Michael Park, Pam Cassidy, Jimmy Traylor, Stephanie Tyler, Art Maestas
Anniversary - M/M Bill Park, M/M Rick Finley, Steve & Karen Hartgraves

December 18
Birthday - Jimmy Faren, Ronnie Schaefer, Cassie Butt, Malory Martin, Ben Gruver, Monalisa Garcia, Juanita Vera
Anniversary - Tom & Rita Reed, M/M Dwayne Hart, M/M Dave Karlin

December 19
Birthday - Steve Beville, Jim Norton, Steve Watkins, Fausto Ruiz, Betty Vernon, Georgia Gaither, Nan Nicholson, Irene Reed, Sara Dosssett, Pat Dear, Gwen McLain, Ford McIntyre, Zachary Brelans, Billy Jo Miesner, Delphine Etling, Cindy Walton, Ruby Katherine Thornton
Anniversary - Frank & Carol Lemons, Earl & June Spencer, M/M Roy Diaz, Kyle & Jennifer Nollner

Our Sympathy

REV. JAMES E. TIDWELL



LAMPASAS - The Rev. James E. Tidwell, 90, died June 28, 2008. Memorial services were at 2 p.m. Saturday, November 29, 2008 in Boxwell Brothers Funeral Home Chapel in Perryton.
 "Brother Jimmy" was born Jan. 28, 1918, in Dallas to Jackson T. and Madeline Maloney Tidwell. He married Cornelia Farren Tidwell in March 1947. She preceded him in death in July 1993.

Brother Jimmy will be remembered as an energetic man, who touched many lives in his ministry as a Methodist preacher, serving the local First United Methodist Church in Perryton from 1962 to 1973. He wore many "hats" in the community, a volunteer fireman, a Rotarian, a member of Kiwanis, a "scrub-tech" at the hospital, and a 32nd Degree Master Mason.

He also was preceded in death by his twin brother, Jack M. Tidwell, during World War II.

Survivors include his wife, Jimmie Jean Ryan Tidwell; his children, Paul Tidwell and wife Phyllis of Dallas, Jackie Pearson and husband Bob of Spearman, Marilyn Callihan and husband Sam of Bastrop and Sarah Susan Wocieszyn and husband John of Smithville; six stepchildren; 25 grandchildren; 13 great-grandchildren; and a sister, Mary Frances Mims McCubbin of Steilacoom, Wash.

The family suggests memorials be to any hospice; a local United Methodist Church; or the building fund of Spearman United Methodist Church, 407 Haney St., Spearman, TX 79081.

LYNDLE LEE COOK

Spearman, TX - Lyndle Cook, 91, died Thursday, November 27, 2008.

Memorial services were at 11:00 a.m. Tuesday, December 2, 2008 at the First Baptist Church of Morse, with Rev. Mike Martin officiating. Burial followed in Lieb Cemetery.

On Thursday, November 27, 2008 Lyndle Cook put off this corruptible world. He put on incorruption, and beheld the Glory of the Lord of his life, and the Savior of his soul, Jesus, and began eternity with Him.

Lyndle was born January 27, 1917 in Kiefer, Okla. to George Burton and Mamie Bessie Lovett Cook. He attended Seminole High School. He then worked for Tulsa Iron Works.

He served in the U.S. Army and survived the heaviest battle of WW II, the Ardennes (Battle of the Bulge), Rhineland Watch and Central Europe Campaign.

He returned from the war and married Agnes Lucille Smirl on August 17, 1945 in Borger, TX. She preceded him in death April 14, 1997.

Lyndle attended Southwestern Assembly of God Bible College in Waxahachie, TX. He was an ordained minister and lay preacher. He spread the Gospel in church services, street services, jail services and everyday life.

He worked in the oil fields in the Borger area, at Stinnett ISD, and retired from Morse ISD in 1975. After retirement Lyndle was the community and area Mr.-Fix-It.

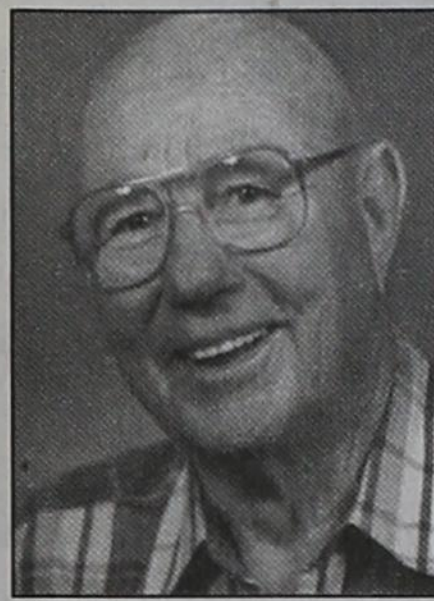
His gracious wisdom, knowledge, caring and love will be missed by all who met him.

He was preceded in death by his parents, wife, grandson, two daughters, two brothers and one sister.

Survivors include one son, Mickey Lee and wife Elaine of Spearman; one daughter Carolyn Lucille Taylor and husband Max of Hot Springs, AK; one sister, Lucile Munday of Odessa, TX; ten grandchildren, five great-grandchildren and two great-great-grandchildren.

Mr. Cook will be in state from 12:00 PM Sunday until service time at Brown's Memorial Chapel in Stinnett, TX

Arrangements entrusted to Brown Funeral Directors of Borger, TX. Send personal condolences to www.brownfuneraldirectors.net



PEARL SPARKS
 STINNETT - Pearl Sparks, 83, died Wednesday, November 26, 2008. Services were at 10:30 a.m. Saturday, November 29, 2008 in First Christian Church in Stinnett with the Rev. Billy Holland and the Rev. Jim West officiating. Burial was in Hansford Cemetery in Spearman by Boxwell Brothers Funeral Home of Spearman.
 Pearl was born July 24, 1925, in Strong City, Okla. She married Litch Sparks Jr. on Dec. 16, 1943, in Spearman.
 She was valedictorian of Spearman High School in 1943.
 She was a homemaker and a member of First Christian Church of Stinnett.
 Survivors include her husband, Litch Sparks Jr.; a daughter, Zontee Morgan and husband David of Flower Mound; a brother, Lowell Robertson of Perryton; and two grandchildren.
 The family suggests memorials be to Gideons International, P.O. Box 2304, Amarillo, TX 79105.

VIRGINIA BUCHANAN CATES
 SPEARMAN - Virginia Buchanan Cates, 84, died Friday, November 28, 2008.
 Graveside services will be at 2 p.m. Monday, December 1, 2008 in Hansford Cemetery with Burl Buchanan officiating. Arrangements were by Boxwell Brothers Funeral Home of Spearman.
 Mrs. Cates was born May 29, 1924, in Hansford County. She married Pat Cates on June 9, 1953, in Spearman. He preceded her in death in 1984.
 She was a member of Trinity Baptist Church in Amarillo, started Spearman Music Club in 1955, was a former member of Hansford County Historical Commission, a member of Daughters of the American Republic and taught Sunday school for many years at First United Methodist Church in Spearman and San Jacinto United Methodist in Amarillo.
 Survivors include a daughter, Sandy Atkinson of Lipscomb; a son, Charles Pat Cates of Austin; two sisters, Louise Vaught of Amarillo and Edna Bassel of Spearman; a granddaughter, Cristine Raincrow of Joshua; a grandson, Jim Clements of Amarillo; and six great-grandsons, Justin Hines and Shawn and Joe Bates, all of Joshua, and Koltan, Derek and Tanner Clements of Amarillo.
 The family suggests memorials be to Alzheimer's Unit, Coldwater Manor, 1111 Beaver Road, Stratford, TX 79084.

Weatherford Construction
 Septic Systems

Kirk Weatherford (806) 338-2820
 8125 FM 3395 Toll Free: 1-800-585-6047
 Sanford, TX 79078 Email: kirk@weatherford-construction.com

MONUMENTS
Boxwell Brothers
Funeral Home
 519 Evans • Spearman
 659-3802

Dear friends,
 When you buy a monument from us we make sure it is exactly what you want at a price you can afford. If it is not right, we will make it right. And you will not have to search the countryside to find us. We are here when you have a need.
 Sincerely,
 Bob Boxwell

KICK BACK. RELAX. AND EXPERIENCE NORMAN'S NEWEST HOTEL.

With spacious two-room suites, exceptional dining and unrivaled amenities, the new Embassy Suites Norman is the area's premier place to spend the night. Plus, we're located right where you want to stay - minutes from downtown Oklahoma City and only five miles from the University of Oklahoma. Book our Drive & Stay Package and you'll save 10%.

Call 1-800-EMBASSY and ask for the Drive & Stay Package.

- Spacious two-room suites
- Complimentary cooked-to-order breakfast
- Evening Manager's Reception!

Drive & Stay Package
 Save 10%*

*Must present this ad to receive promotional rate. Based on availability. Not available on special event dates. Offer good through 12/31/09.

EMBASSY SUITES®
 Norman - Hotel & Conference Center
 2501 Conference Drive, Norman, OK 73069
 Tel: 405-364-8040
 Fax: 405-364-3377
 norman.embassysuites.com

Replenish the seed of faith through . . .

DAILY BIBLE READING, PRAYER & REGULAR CHURCH ATTENDANCE

- Spearman**
- Apostolic Faith Church**
 822 S. Drexler • 659-2870
 Sunday School: 10 a.m.
 Worship Service: 11 a.m.
 Sun. Eve.: 6 p.m.
 Wed. Prayer Mtg: 7 p.m.
 Pastor - Roland Haney
 - First Assembly of God**
 401 N. Bernice • 659-2295
 Sunday School: 9:30 a.m.
 Worship: 10:40 a.m.
 Evening Worship: 6 p.m.
 Wed. Worship: 7 p.m.
 Wed. Youth: 7
 Pastor - Jerry Pollard
 - First Christian Church**
 (Disciples of Christ)
 29 S. Bernice • 659-2036
 Sunday School: 9:45 a.m.
 Worship: 10:50 a.m.
 Minister -
 - First Baptist Church**
 123 N. Bernice • 659-5557
 Sunday School: 9:45 a.m.
 Worship: 11 a.m.
 Evening Worship: 7 p.m.
 Men's Bible Study - Wed., 7 a.m.
 Children's Choir - Wed, 6 p.m.
 Adult Choir - Wed, 7 p.m.
 Wed. Bible Study: 7 p.m.
 Pastor - Jim Medley
 - Church of Christ**
 121 S. Hanev • 659-3244
 Sunday Bible Class: 9:45 a.m.
 Worship: 10:30 a.m.
 Evening Worship: 6 p.m.
 Bible Study Wed.: 7:30 p.m.
 - Sacred Heart Catholic Church**
 901 Roland • 659-2792
 Sat. Night Mass: 5:30 p.m.
 Sun. Mass: 9 a.m. - English
 Sun. Mass: 11:30 - Spanish
 1:30 p.m. - Gruver - Christo
 Rectoritor Mass - Spanish
 Rev. Guillermo Morales
 - First United Methodist**
 407 S. Hanev • 659-5503
 Sunday School: 9:45 a.m.
 Worship: 9:30 & 11 a.m.
 Jr. High Youth: 5 p.m. Sunday
 High School: 6 p.m. Sunday
 Kids Club: 3 p.m. Wed.
 Pastor - Neely Landrum
 - Grace Presbyterian Church**
 (Worships with Faith Lutheran Church)
 1101 Bernice • 659-2033
 - Faith Lutheran Church (ELCA)**
 1101 Bernice • 659-2252
 Sunday School: 9:45 a.m.
 Worship: 11 a.m.
 (Worships with Grace Presbyterian Church)
 Pastor - Cecil Biggers, PLM
 - Union Church**
 31 S. Endicott • 659-2644
 Sunday School: 10:00 a.m.
 Worship: 11:00 a.m.
 Bible Study: 7 p.m. Wed.
 Youth Service: 6 p.m. Wed.
 Pastor - Don Baltazor
 - Fellowship Baptist**
 1102 S. Archer • 659-2783
 Sunday School: 10 a.m.
 Worship: 11 a.m.
 Sun. Evening Worship: 6 p.m.
 Youth/Adult Service: 7:30 Wed.
 Pastor - James Washburn
 - Primera Mision Bautista**
 502 E. 7th • 659-3991
 Sunday School: 9:45 a.m.
 Worship: 11 a.m.
 Evening: 6 p.m.
 Wed. Prayer Meeting: 7 p.m.
 Thurs. Visitation: 7 p.m.
 Pastor Joe Garcia Jr.
 - El Aposento Alto U.P.C.I.**
 1105 S. Roland
 Domingos: Escuela-Domical - 10 a.m.
 Culto Evangelistico - 7 p.m.
 Jueves: Oracion - 8 p.m.
 Mier. Estudio Biblico - 7 p.m.
 Pastor - A.G. Martell
 (806) 659-2153
 - Gruver**
 - First Baptist Church**
 402 E. Broadway • 733-2411
 Sunday School: 9:45 a.m.
 Worship: 10:50 a.m.
 Disciple Training: 6 p.m. Sunday
 Prayer Meeting: 7:30 p.m. Wednesday
 Pastor - Scott Curry
 - Church of Christ**
 209 King • 733-2760
 Sunday School: 9:30 a.m.
 Worship: 10:20 a.m.
 Evening Worship: 6 p.m.
 Wed. Worship: 7:00 p.m.
 Minister - Gaylord Cook
 - First Christian Church**
 510 King • 733-2960
 Sunday School: 10:00 a.m.
 Sunday Worship: 11 a.m.
 Youth: 7:30, Sunday
 Adult Bible Study: 7:30, Sun.
 Wed. Bible Study: 8:00 p.m.
 Pastor - Gary Gumflory
 - Gruver United Methodist**
 Broadway & Garrett
 733-2651
 Sunday School: 9:45 a.m.
 Worship: 8:30 & 10:50 a.m.
 Eve. Worship & UMY: 6 p.m.
 Pastor - George Price
 - Spanish Cristo Redentor Church**
 Sunday Mass: 1:30 p.m.
 Friday Evening Mass
 Summer - 8:00 p.m.
 Fall/Winter - 7:30 p.m.
 - Oslo**
 - Oslo Lutheran Church (ELCA)**
 6 Miles West & 12 Miles
 North of Gruver
 339-7646
 Sunday School: 9:45 a.m.
 Worship: 11 a.m.
 Pastor - Arlen Lloyd
 - Morse**
 - Morse Baptist Church**
 733-2757
 Pastor - Mike Martin
 - Waka**
 - Church of Christ**
 300 Rogers Ave.
 202-7126
 Sunday Worship: 6 p.m.
 Wednesday Bible Study: 6 p.m.
 Pastor - Mike Martin

He has showed you, O man, what is good. And what does the LORD require of you?
 To act justly and to love mercy and to walk humbly with your God.

Micah 6:8

This feature is made possible through the sponsorship of these civic minded businesses:

<p>Deakin</p> <p>ELECTRIC</p> <p>OILFIELD • RESIDENTIAL • COMMERCIAL 321 S. MAIN • SPEARMAN 1-800-999-1506 Chris Deakin 806) 659-5016 President</p>	<p>Bartlett's Lumber & Hardware</p> <p>105 W. Broadway • Gruver, Texas (806) 733-2404</p>	<p>BERRY CLEANERS</p> <p>Ann & Vernon Pipkin - Owners Phone 659-3122 • P.O. Box 1017 207 Main St. • Spearman, TX</p>	<p>Morse Implement & Auto Supply</p> <p>"Join us in church"</p> <p>Tom Dortch 733-2668 Box 89 • Morse, TX 79062</p>
<p>PRAIRIE MOTORS INC.</p> <p>Hwy. 207 South • P.O. Box 430 Spearman, TX 79081 • (806) 659-2541 www.prairiemotors.com</p>	<p>MurMur's Cafe</p> <p>100 Roland St Spearman, TX. 659-3580</p>	<p>Hansford County Reporter-Statesman "Proudly Serving Hansford County Since 1907"</p> <p>(806) 659-3434 310 Barkley • Spearman, TX</p>	<p>INTERSTATE BANK, sss</p> <p>www.interstatebank.net 322 Main • P.O. Box 146 Spearman, TX • 659-2559</p>



Medical Fund for Krystal Puentes

An emergency medical fund has been established for Krystal (Burkhammer) Puentes at First National Bank, Spearman. If you would like to make a contribution you may make a deposit with any teller or mail a donation to First National Bank, Krystal Puentes Medical Fund, PO Box 337, Spearman TX 79081.

Medical Fund for Rene Griffin

A medical fund has been established for Rene Griffin at First State Bank, Spearman. If you would like to make a contribution you may make a deposit with any teller or mail a donation to First State Bank, Rene Griffin Medical Fund, PO Box 247, Spearman TX 79081.

Medical Fund for Bruce Duncan

An emergency medical fund has been established for Bruce Duncan at First National Bank, Spearman. If you would like to make a donation you may make a deposit with any teller or mail a donation to First National Bank, Bruce Duncan Medical Fund, PO Box 337, Spearman TX 79081.

Medical Fund for Nancy DeLuna Jernberg

An emergency medical fund has been established for Nancy DeLuna Jernberg of Stinnett. Nancy was recently diagnosed with a rare malignant brain tumor and will be undergoing treatment. If you would like to make a contribution you may make a deposit with any teller or mail a donation to H&H Federal Credit Union, 104 Main Street, Stinnett TX 79083.

P.T.O. Angel Tree Reminder

We have 56 angels to bless this Christmas season. Please stop by the Amazing Vase for your angel. We need the community's help so no one is left out. Remember wrapped gifts are due back to City Hall by December 10th. Thanks for your support!

Cub Scout Troop 578 Father, Son Gingerbread Cake Bake

Cub Scout Troop 578 would like to invite the community to their Father Son gingerbread cake bake and auction on Saturday, December 6th at 7 p.m. at the Elementary Cafeteria. Cakes will be judged and awards given in various categories such as most original theme, tallest, shortest, and best overall. Prize winning cakes will be sold at auction and all other cakes will sell for \$10 each. Proceeds will go to support the activities and events of our local Cub Scout Troop so come out and see what our cubs and their dads will come up with and support our Cub Scouts.

Holiday Home Tour

The Gladiola Flower Club will host their Holiday Home Tour on Sunday, December 7, 2008 from 2-5 p.m. All proceeds from the Home Tour go to scholarships for local graduates.

Alpha Mu Psi Pheasant Hunter's Breakfast

The Annual Alpha Mu Psi Pheasant Hunter's Breakfast will be held on Saturday, December 6th, 2008 from 5:30-7:30 a.m. in the Gruver School Cafeteria. The cost is \$5.00 for Adults and \$3.00 for Ages 12 and Under which will include a Homemade Breakfast of Breakfast Burritos, Sausage Wraps, Hot Coffee, Juice and Milk. Door Prizes will be given away every 15 minutes, along with a Raffle for Gift Certificates to Academy, Gander Mountain, and Wal-Mart. Tickets for the Raffle can be purchased from any Alpha Mu Psi Member or by calling Angela Barton at 733.2356 or Janyth Davis at 733.5566. Thank you in advance for supporting Alpha Mu Psi, and we look forward to seeing all of you hunters bright and early!

Remember When

Christmas memories... aren't they great? Hillside Christian Church, 6100 Soncy, Amarillo, invites you and your family to make a memory this year as you join us for a light-hearted look at Christmas traditions of the past. Sped an evening with us celebrating all the fun traditions that make the holidays special while enjoying your favorite holiday music, from traditional Christmas hymns to lighter holiday favorites. Performances will be held at 7 p.m. each evening, December 11-14. Doors open at 6:30. A Matinee performance will be held at 3 p.m. on Sunday, December 14, with doors opening at 2:30 p.m. Complimentary tickets are available Monday through Thursday from 12 noon-5:30 p.m., and any Sunday morning at church. For more information, please call (806) 457-4960 or visit the church Web site at www.hillsidewired.com.

Region 16 ESC offers Free GED Preparation Software

Region 16 ESC is offering free GED preparation software for students interested in obtaining a GED. You will also have access to a free online GED prep program through the public library. If you are interested in finding out more information about these services, please contact: Cindy Blackman at 659-3233, Maria Carbajal or Margaret Ruttman at 659-2231 or stop by the Hansford County Library.

Spearman Lynx Basketball Fundraiser

The Spearman Lynx Varsity basketball players are painting paws on driveways (\$15 each or 2 for \$25) to raise money for tournament expenses this year. If you are interested in purchasing paws, please contact Coach Jr. Ashmore or any member of the Lynx basketball team.

SHS Band Selling Discount Cards

Spearman HS Band is selling the discount band cards for \$10 ea. Good for 1 yr. The Band has a trip in the spring and needs your support. Contact Jerry at 659-2563 ext. 3005 or Sherrie at 659-2584 ext. 2202.

GISD Offering Reward for Information

Gruver Independent School District is offering a \$1,000 reward for information that leads to the arrest and conviction of the person or persons who burglarized two Gruver teachers homes between October 17-19 2008. If you have any information, contact: Troy Seagler at 806-733-2477, Micah Davis at 806-733-2081, David Teal at 806-733-2001 or the Hansford County Sheriff's Office at 806-733-2901.

Web Page Development - Level 1 Class

There have been some inquiries expressing an interest in a "Web Page Development" class. If you are interested in taking this class, contact Cindy Blackman, Community 659-3233 or cindy.blackman@region16.net.

Annual Festival of Arts & Crafts

Wesley United Methodist Church will be holding its 28th Annual Festival of Arts & Crafts on December 6, 2008, from 9 a.m.-5 p.m. at the community Center in Hereford. Only a limited number of booths are available, with applications being screened. The booth fee is \$10. Applications may be obtained by writing or calling any of the following names or numbers: Ellen Collins, 801 Miles St, Hereford TX 79045, 806-364-0774; Jane Eggen, 126 Aspen, Hereford TX 79045, 806-364-5789; or Wesley United Methodist Church, PO Box 1743, Hereford TX 79045, 806-364-4419.

Child Find

Your school district is looking for children ages 3-21 years who may be slow in developing communication skills, social interactions, walking skills and/or have major physical disabilities. We want to give your child the chance to receive the extra help he/she needs, if the disability interferes with his/her education. Please call your elementary campus to get more information or call Perryton SSA, 435-4412. Our staff will answer your questions about early intervention.

Gruver Elementary Collects Register Tapes for Education

Gruver Elementary is participating in the Lowe's Marketplace Register Tapes for Education. Gruver Elementary is also collecting the pink Box Tops for Education and the yellow UPC bar code Labels for Education from Campbell and Swanson products. You can deposit your register tapes, pink Box Tops and UPC Bar Codes in the Elementary School Lobby, City Library, City Hall, Night & Day Beauty Salon or Hitchin' Nails Salon. Jo Clawson will also collect them at 711 Womble. Please help us earn free education equipment by collecting these items.

Don't Wait to Find Help for Someone Who is Addicted

Trying to help someone who's having a problem with drugs or alcohol? Substance abuse all too often leads to accidents, arrest, illness, financial hardship and even homelessness and death. Don't wait to find help for someone you love. Call Narconon Arrowhead drug rehabilitation and education center for a free addiction consultation or referral to treatment in your area. Call 1-800-468-6933 or visit www.stopaddiction.com.

Thriftshop Policy

Hansford County Library has a policy barring children under 12 from the Thriftshop and the surrounding area outside. No strollers or buggies of any type are allowed in the Thriftshop. This policy is due to overcrowding in a small area and continuing discipline problems. Shoppers are asked to be considerate of the volunteers as well as other shoppers, and leave children under 12 at home.

Beware of FAFSA Web Scam

Seniors, senior parents, and parents of college students should use the web site www.fafsa.ed.gov when filling out their Free Application for Federal Student Aid (FAFSA) online. There is currently a website that has found an interesting way to get in the college-bound's pocket. Known as fafsa.com, the website charges a fee for submitting the application. There is no fee for submitting the fafsa form on the www.fafsa.ed.gov site.

Our Sympathy

ALVINO C. PEREZ

Alvino C. Perez, 71, of Amarillo died Sunday, November 30, 2008. Rosary was said and services were at 2 p.m. Wednesday, December 3, 2008 in Schooler Funeral Home Brentwood Chapel, 4100 S. Georgia St., with Davelyn Duesterhaus, chaplain of BSA Hospice, officiating.

Alvino was born June 8, 1937, in Melvin to Pablo and Geneva Perez. In 1960, he married the light of his life, Paula Enriquez, in Friona. In younger years, Alvino worked in the farming industry and was a member of Our Lady of Guadalupe Catholic Church.

His family was precious to him, and he could often be heard saying, "I am the richest man in the world," as he considered his children to be treasures and his grandchildren his sunshine. He delighted in his family and never met a stranger. Truly to know him was to love him and be loved by him.

Survivors include his wife, Paula E. Perez; three daughters, Emerensiana P. De Leon and husband Eugene, Lydia P. Carey and husband Robert and Isabel P. Camarillo and husband Frank, all of Amarillo; three sons, Alvino C. Perez Jr. and wife Kathy of Grass Valley, Calif., David E. Perez and Gabriel E. Perez and wife Stephanie, all of Amarillo; five sisters, Nelia Garza and Sally Zapata, both of San Angelo, Emma Davila of Friona, Jenny Vasquez of Missouri and Irene Perez of Bovina; three brothers, Guillermo Perez of Amarillo, Pablo Perez Jr. of Spearman and Benny Perez of San Angelo; 19 grandchildren; and 18 great-grandchildren.

The family suggests memorials be to Olivia's Angels, P.O. Box 950, Amarillo, TX 79109.

MARY ALICE THOMAS CATES

GRUVER - Mary Alice Thomas Cates, 82, died Tuesday, December 2, 2008, in Spearman.

Graveside services will be at 2 p.m. Thursday, December 4, 2008 in Gruver Cemetery with the Rev. Gary Gumfory, pastor of Gruver First Christian Church, and the Rev. Neely Landrum, pastor of Spearman First United Methodist Church, officiating. Arrangements were by Henson-Novak Funeral Directors of Guymon, Okla.

The daughter of Lois Lowe and Horace S. Hays, she was born Sept. 30, 1926, east of Gruver. She was married to Jack Thomas on Sept. 2, 1942. She was a Methodist and had lived in Hansford County her entire life.

She was preceded in death by her husband; a sister, Beatrice "Sis" Stayton; and two brothers, H.S. Hays Jr. and E.C. Hays.

Survivors include a daughter, Sadie Goodall and husband Jim of Gruver; a son, Jack "Toby" Thomas and wife Sally of Spearman; and four grandchildren, Tracy and Jason Sutterfield of Benbrook and Candice and Jeremy Sutterfield of College Station.

The family suggests memorials be to Hansford Hospice, 707 S. Roland St., Spearman, TX 79081.

Sign the online guest book at www.hensonnovak.com.

GRACE MARGARET KIRK

SPEARMAN - Grace Margaret Kirk 96, died on Wednesday, December 3, 2008.

Services will be held on Saturday, December 6, 2008 at 2 p.m. in the First Christian Church of Spearman with Rev. Jim Reeves officiating. Interment will be held at Hansford Cemetery under the direction of Boxwell Brothers Funeral Home of Spearman.

Grace was born in Alva, OK on July 23, 1912. She had lived in the area since 1923.

She married Woodie Davis on October 31, 1937. He preceded her in death in 1956. She married Raymond M. Kirk on April 9, 1971. He preceded her in death in 1999.

Grace graduated from Spearman High School in 1930. She worked in the Spearman school lunch room for a number of years. She worked at the two dry cleaning establishments and the shoe store prior to her marriage to Raymond.

Survivors include her son, Roger and Joyce Davis of Oklahoma City, OK; three granddaughters, Laurel Corbett of Denver, CO, Alicia Zabin of Plano, TX and Deanna Zabin of Frisco, TX; a grandson, David Zabin of Lubbock, TX; and four great-grandchildren, Sydney and Hanna Corbett of Denver, CO, Collin Kent of Plano, and Macy Robinson of Plano.

She was preceded in death by her parents, George and Lucy Mitts; both of her husbands; her daughter, Jeanette Kirk; four brothers, Floyd, M.L. "Buster", Chester and Lewis Mitts; and two sisters, Elsie Doctor and Myrtle Miller.

The family requests memorials be to the First Christian Church, 29 S. Bemice St., Spearman TX 79081.

Words from Faith & Grace



by Cecil R. Biggers, Lutheran Lay Minister

In this second week of Advent we prepare for celebrating Christ's birth and His return with a meditation on Peace as we study Isaiah 40:1-11, Psalm 85: 1-2, 8-13, 2 Peter 3:8-15, and Mark 1:1-8.

The prophet Isaiah gives a message of comfort to his people. The word "comfort" is spoken to the angelic host surrounding God; an order to tell the people that their war is over and their sin is pardoned! The four "calls or cries" convey the image of God returning to Jerusalem as a returning warrior and convey the image of God as the shepherd of his people. We are all in need of comfort. The act of comforting requires one willing to share experienced pain and another willing to listen. This is something that God does for us, if we ask Him.

The Psalmist sings of God's restoration of His people and he says, "Let me hear what God the Lord will speak, for he will speak peace to his people, to his faithful, to those who turn to him in their hearts."

Peter addresses the first century Christians' concern with the "slowness" of Christ's return by telling them that time is not the same with God as with man. A thousand years are as a day to the Lord. Peter counsels Christians to be at peace, without spot or blemish. The "slowness" of the Lord in returning may be viewed as an opportunity. God does not wish any to perish; therefore, use the time of waiting to convey the joy of the gospel to others. We can hasten that Day of Our Lord by prayer, preaching, penitence and obedience.

Mark starts his story of the good news of Jesus Christ with a quote from Isaiah and a message of John the Baptist. John was preparing the way for the Messiah by his message of repentance. Repentance involves admitting our sin first to ourselves, then to the ones whom we have wronged, and finally to God. We must then make restitution and amend our lives. We are in need to daily repentance. But when we have made repentance, we find forgiveness in our Lord, Jesus Christ. We are at peace.

This season of advent can be defined in the Greek word, "Maranatha." Maranatha is translated "Our Lord Has Come" or as "Come Our Lord!" This is the concept of Advent exactly.

May the Holy Spirit comfort you and calm your fears that you may be at peace.

Thank You!

Dear members of PTO,

Thank you so much for the loaves of pumpkin bread you placed in our lounge for every staff member. It was delicious and a gesture that made us all feel valued. We are all so thankful to be a part of Gruver ISD and this community.

Thank you again,
The Staff at Gruver Elementary

You are invited to
F.A. Shapley's 90th Birthday
on Sunday, December 7, 2008
from 2:00-4:00 p.m.
at the
Gruver United Methodist Church
Broadway & Garrett Gruver, TX
Cards may be mailed to:
PO Box 133, Gruver TX 79040
No Gifts Please

Celebrate
Gifts for all your celebrations!
Bridal Registry
Madeline Reed & Jeremy Schank - 12/7
Lisa Espinosa & Dave Pope
Lauren Payne & Steven Haney
Macy Harbour & Kevin Beedy

Baby Registry
Kelci & Jordan Brock - 12/28
Courtney & John Brock - 12/28
Christen (Ferguson) & Bradley Brown
Janae (Watley) & Kyle Igo

Celebrate
203 Main St. Spearman, TX
(806) 659-3350 1-800-663-8026

You are invited to the
40th Anniversary Party
honoring
Don & Lynanne Maize
on Sunday, December 14, 2008
from 2:00-4:00 p.m.
at the
First United Methodist Church
407 S. Haney Spearman, TX

Hoochy Poochy Parlor
Professional Award
Winning Stylist
Carmon Baker

Are you going out of town? Call Carmon today to make reservations for your pets at Hoochy Poochy Parlor. (It's more like camp)

Hoochy Poochy Parlor
421 E. 10th St.
Borger, TX 79007
806-273-2724
hoochypoochy@att.net
www.hoochypoochy.net
Hours:
Mon.-Fri., 8 a.m. until done
Saturday by appointment only
Please visit us for a free estimate on your pet care needs.

and Missy
"The Hoochy Poochy"

WTAMU Broadcasting Students Take 11th Consecutive Regional Title

West Texas A&M University proved its dominance again by taking the regional crown for the 11th consecutive year at the National Broadcasting Society (NBS) Region IV Convention Nov. 22 on the WTAMU campus. The University's broadcasting program hosted this year's event and won more than 40 regional awards along with the right to advance to national NBS competition in spring 2009.

"WTAMU broadcasters represented the University with much grace as their talents won them yet another regional production title," Dr. Leigh Browning, associate professor of mass communication and director of broadcasting, said. "They continue to prove year after year just how talented they are."

WTAMU is part of Region IV which includes colleges and universities from Texas, New Mexico, Oklahoma, Louisiana and

Arkansas. The annual Region IV NBS competition represents work on student-produced audio, video, script and web design projects. In all, the WTAMU students earned 18 first-place awards, 14 second-place awards and 9 third-place awards along with 3 honorable mentions.

Student winners from Hansford County were:

Gruver
Victoria Vela, sophomore broadcasting major—honorable mention in feature package for "The Man Behind the Wheel"

Spearman - Jarick Howard, junior broadcasting major—first in promo for "The One 91.1 Spot" and first in station imaging for "107.9 Legal ID"

The 2008 National Broadcasting Society (NBS) Convention is in March in New York City.

Support the Troops in Afghanistan

Jeff Matsler, an elder of the Northwest Texas Conference of the United Methodist Church, is a Chaplain with the US Army stationed in Afghanistan. He contacted the Northwest Texas Conference office about sending packages to the troops.

Mail travel time is hit or miss - sometimes mail gets there in 10 days, sometimes in 3 weeks. Because of the way the troops are spread out around the country, they will be celebrating Christmas for a week or so afterwards in far out places, so it's OK if some packages arrive later.

The things that are best received are snacks. Homemade cookies (etc.) are probably the most popular, but everything is appreciated: beef jerky, Oreos, etc. Powdered drink packs in the single bottle

size are really appreciated as they drink LOTS of water over there.

The soldiers love personal letters and cards, too.

The soldiers also enjoy watching movies, so if you want to send some movies or TV shows on DVD.

Anything you send will be appreciated and Chaplain Jeff Matsler will see to it that it goes to soldiers who are not getting much mail from home. It will truly make their day and their Christmas.

Please include a return address when you send packages, as we will make sure that the folks know how much they are appreciated.

Here is the mailing address:
JEFF S. MATSLER
HHD, 53RD TRANS BN (MC)
APO, AE 09354



Wingers Celebrate Golden Anniversary

The children and grandchildren of Val and Marlene Winger met Saturday, November 22nd to honor and celebrate their 50th anniversary. The family began the day together in the Silo room at The Country Barn restaurant in Amarillo. Afterwards the family met at the Home of Marva Roselius in Panhandle. A photographer was present to take family and group pictures. Tanya Winger arranged the serving table. The table included brownies, baked by Zachary Winger, that were arranged on a gold serving plate given to Tanya by Grandmother Winger. This same plate was used at the 50th wedding anniversary of Grandmother and Granddad Ayres. The table also included punch, cookies, cake, and a beautiful flower arrangement. The cake was adorned with the bridal topper from Val and Marlene's original wedding cake. The table also included a "memory" photo album that was compiled by Manda Simmons. It contained writings and pictures from each and every one of their children and grandchildren. The family enjoyed watching the Texas Tech vs. OU football game together, in spite of the outcome. Their family is honored and blessed by their 50 year commitment to each other and a great day of fellowship was enjoyed by all.

Winter Hours

MurMur's is going back to their winter hours. We will be open Monday-Friday, from 11 a.m.-7 p.m.

MURMUR'S CAFE
100 S. Roland
Spearman
(806) 659-3580

Spearman Lynx & Lynxettes

<http://spearmansports.smugmug.com/>

Photos available of Spearman Lynx and Lynxette athletic events.

the SPIRIT of Christmas

12th Annual Community Christmas Dinner

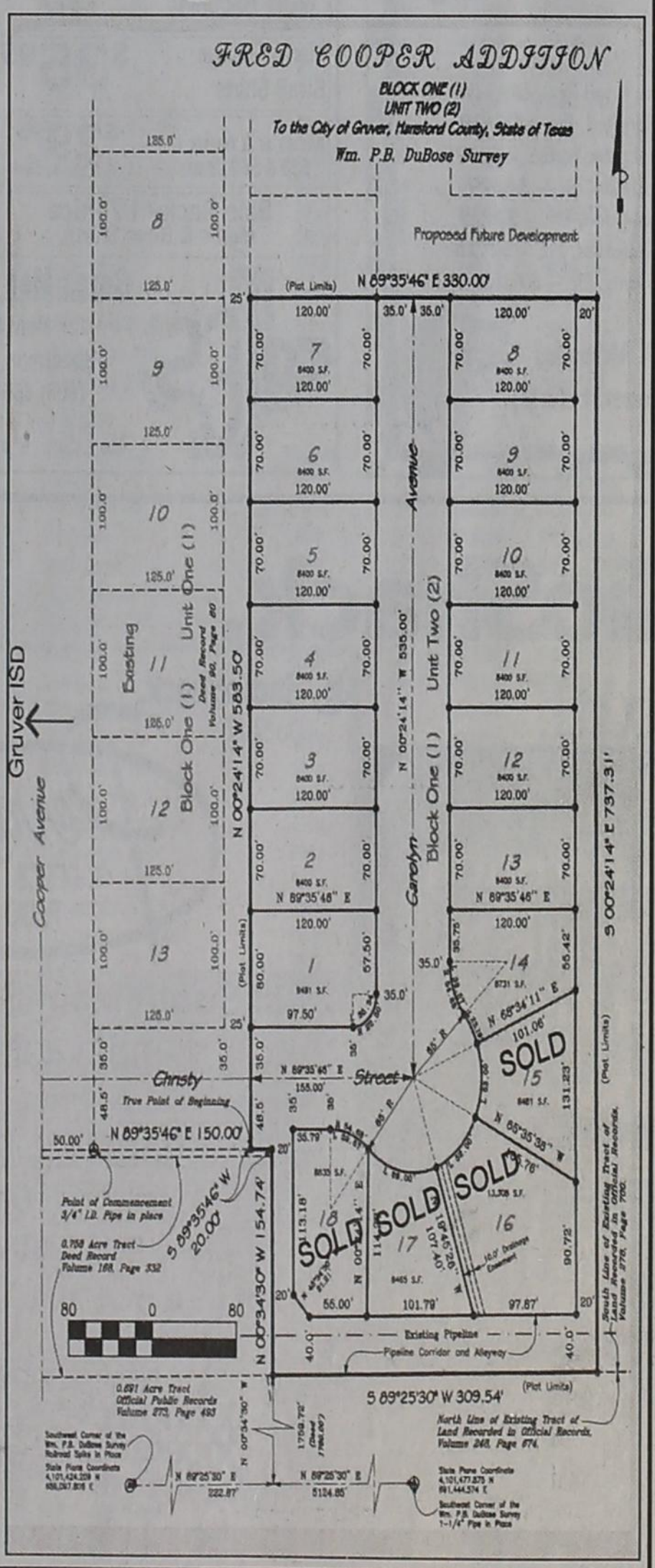
Where: The O'Loughlin Center
When: December 25th • 12:00-1:30 p.m.
What: A free dinner will be provided for anyone in the community who would like to share the Christmas spirit with food and fellowship.

Everyone is invited for this special occasion.

Rides will be available to and from the O'Loughlin Center.
Call 659-3550, 659-3584 or 659-3434 and leave message if you need transportation.

The Fred Cooper Addition

- All city utilities provided
- Across the street from exceptional school district
- Single Family Dwellings
- Various lot sizes
- Only new construction houses permitted
- Take advantage of extremely low interest rates to build your dream home now
- 14 lots still available



Call today!
Craig Cooper
806-736-8235

Specializing in Steak & Seafood.

For the best good ole country cooking around, don't drive out of town - get it right here at home!

Daily Lunch Buffet (11 a.m.-2 p.m., Tuesday-Friday, 11 a.m.-3 p.m., Sunday)
Includes 2-3 meats, 5-6 vegetables, homemade rolls and homemade desserts

Jeffrey's Steaks & More
(806) 644-0953
Hours: Tues.-Thurs., 11 a.m.-9 p.m.; Fri., 11 a.m.-10 p.m.; Sat., 2-10 p.m.; Sun. 11 a.m.-3 p.m.

We will be closed Thanksgiving Day and Friday, November 28th.
We are now taking orders for fried turkeys and the fixings.

Douglas Walker, Host

2 Medium 2-Topping Pizzas \$14.99

3 Large Pizzas \$19.99 (6-8 p.m. Only)

Mon.-Fri. - 11:30 a.m.-10 p.m.
Sat. - 12 noon - 10:00 p.m.
Sun. - 3-10 p.m.
Deliveries Available 5-9 p.m.

312 Main Street
Spearman, TX
(806) 659-9991

Due to gas prices, a minimum order of \$10 is required for delivery. Please remember to tip our drivers.

Basketball News

GRUVER ISD

11/21/08
Junior Varsity Hounds
 Gruver JV Boys 43, Booker 18
 Wil McCloy 9 pts, Justin Bass 8
 pts, Jesus Lopez 6 pts; Record 2-0

11/24/08
8th Grade, 7th Grade Lady Hounds
 The 7th and 8th grade Lady Hounds opened up their seasons Monday night, November 24th against West Texas at the Greyhound gym. Both teams had close games and emerged victoriously!

11/25/08
Varsity Hounds
 Gruver 45, Panhandle 60
 Haden Hart pts., Jesus Lopez pts.; Record 2-1

Varsity Lady Hounds
 Gruver 16 26 39 57, Panhandle 11 28 48 68
 G-Urban 10, Gasper 10, P-Matt Smith 24, Jacob Cameron 16, Matt Ewing 11. Records: Panhandle 2-0, Gruver 2-1.

Junior Varsity Lady Hounds
 JV Lady Hounds - Panhandle 60, Gruver 45

7th Grade Lynxettes
 7th Grade Lynxettes 27, Bushland 9

8th Grade Lynxettes
 8th Grade Lynxettes 42, Bushland 10

Junior Varsity Lynx
 JV White Lynx 47, Bushland 22

7th Grade Lynx
 7th Grade Lynx 27, Bushland 21

8th Grade Lynx
 8th Grade Lynx 30, Bushland 11

12/01/08
Junior Varsity Lynxettes
 JV White Lynxettes 43, River Road 14

7th Grade Lynxettes
 7th Grade Lynxettes 22, River Road 8

8th Grade Lynxettes
 8th Grade Lynxettes 53, River Road 6

12/02/08
Junior Varsity Lynx
 Lynx 49, Texhoma OK 24

Junior Varsity Lynxettes
 Lynx 58, Texhoma OK 18

Varsity Lynx
 Lynx 62, Texhoma OK 46

Varsity Lynxettes
 Lynx 57, Texhoma OK 41

Athlete of the Week
 Morgan Ashmore of Spearman was named to the Amarillo Globe-News Athlete of the Week Honor Roll on Monday, November 25, 2008. Ashmore helped the Lynxettes improve to 2-0 with 22 points in a 52-19 victory against Boys Ranch.

LUBBOCK CORONADO
 Tanner Mac Hester, son of 1968 Spearman High graduate Tony Hester and wife, Sandra, is participating on 2-5A Lubbock Coronado Mustangs Varsity Basketball team. The 6'4.5" junior is the grandson of the late E.H. (Jimmie) and Caia Hester.

Gruver Elementary Takes 2nd at District Academic UIL Meet

Gruver Elementary participated in the District UIL Meet in Borger on November 14th. Gruver Elementary finished 2nd among 9 districts entered. The final results for that event were:

1st - Stinnett, 341.3 Points; 2nd - Gruver 262.7 Points; 3rd - Canadian 229.25 Points; 4th - Stratford 181 Points; 5th - Sunray 83.5 Points; 6th - White Deer 81.75 Points; 7th - Claude 51 points; 8th - Shamrock 35.5 Points; 9th - Wheeler 32 Points
 Teams and Coaches were: **2nd Grade:** Reid Anderson, Mrs. Cooper, Mrs. Finley; **3rd Grade:** Kaycee Anderson, Mrs. King, Mrs. Connor Haynes, Cristal Alvarez, Denise Hernandez, Maupin, Kaitlyn Stedje, K.D. McCloy, Aneth Jaedon Seagler, Fernando Villalobos, Jimenez, Klaire Irwin, Anna Campos, Cole Logsdon; **4th Grade:** Macy Haight, Cristina Ayala, Ramiro Hernandez, Mrs. Stedje, Mrs. Grotegut, Randi Jines, Braxton Crane, Abigail Trejo, Liz Tarango, Wyatt Poer, Katie McLennan. Mrs. Spivey was the 4th Grade Oral Reading Coach and Kambree Desmond and Kylie

Thomas also participated in the contest. Not pictured is Kennedy Venneman a 4th grade participant. Following are the individual results.

2nd Grade
 2nd Creative Writing - Cristal Alvarez, 5th

3rd Grade
 3rd Creative Writing - Klaire Irwin, 1st
 3rd Spelling - Cole Logsdon, 1st
 3rd Music Memory - Klaire Irwin, tied for 1st; Aneth Jimenez, 3rd
 3rd Music Memory - Gruver, 1st
 3rd Story Telling - Klaire Irwin, 1st

4th Grade
 4th Art - Gruver, 2nd
 4th Number Sense - Christina Ayala, 2nd; Kennedy Venneman, 5th
 4th Art - Macy Haight and Abigail Trejo, tied for 3rd
 4th Oral Reading - Macy Haight, 6th
 4th Music Memory - Macy Haight and Braxton Crane, tied for 3rd; Randi Jines, 5th

4th Music Memory - Gruver, 1st
 4th Ready Writing - Kennedy Venneman, 5th

5th Grade
 5th Art - Gruver, 2nd
 5th Music Memory - Gruver, 1st
 5th Music Memory - Trenton Finley, 3rd; Nicolas Rivera, 5th; Nicholas Key, 6th
 5th Spelling - Marshall Thomson, 1st; Kennedy King, 4th
 5th Art - Kennedy King, tied for 5th
 5th Maps, Graphs, & Charts - Karsten Irwin, tied for 3rd
 5th Number Sense - Karsten Irwin, 1st; Nick Rivera, 6th
 5th Grade Dictionary - Trenton Finley, 3rd; Nicholas Rivera, 5th
 5th Social Studies - Nicholas Key, 6th

6th Grade
 6th Calculator Applications - Michaela Davis, 1st; Reagan Haynes, 2nd; Carson Williams, 3rd
 6th Mathematics - Carson Williams, 1st; Reagan Haynes, 3rd
 6th Dictionary - Bailey Stedje, 4th
 6th Ready Writing - Bailey Rae Poer, 2nd
 6th Maps, Graphs, & Charts - Mason McLain, 3rd; Carson Williams, 6th
 6th Number Sense - Reagan Haynes, 1st; Carson Williams, 2nd; Oziel Reyes, 5th
 6th Music Memory - Noemy Guereca, 5th
 6th Music Memory - Gruver, 3rd
 6th Spelling - Michaela Davis, 5th
 6th Social Studies - Brett Wills, 4th; Bailey Rae Poer, 5th

7th Grade
 7th Spelling - Zoe Cantrell, 1st; Niki Brown, 4th
 7th Modern Oratory - Travis Stedje, 1st; Rachel Teal, 3rd
 7th Dictionary Skills - Niki Brown, 1st; Zoe Cantrell, 3rd
 7th Impromptu Speaking - Travis Stedje, 1st; Beau Blankenship, 3rd
 7th Maps, Graphs, & Charts - Travis Stedje, 1st
 7th Social Studies - Madi Teal, 2nd; Marti Frazier, 4th; Zoe Cantrell, 6th
 7th Number Sense - Travis Stedje, 2nd
 7th Science I - Travis Stedje, 1st
 7th Listening - Zoe Cantrell, 2nd

8th Grade
 8th Modern Oratory - Nikki Beasley, 1st; Korbin Irwin, 4th
 8th Mathematics - Nikki Beasley, 1st; Korbin Irwin, 2nd; Maggie Key, 4th
 8th Science II - Taos Anderson, 2nd
 8th Social Studies - Damien Pierce, 2nd
 8th Impromptu - Korbin Irwin, 4th
 8th Calculator App. - Korbin Irwin, 1st; Nikki Beasley, 2nd; Alex Logsdon, 4th
 8th Dictionary - Nikki Beasley, 1st; Maggie Key, 6th
 8th Spelling - Nikki Beasley, 1st; Dallas Reynolds, 3rd
 8th Number Sense - Nikki Beasley, 1st; Maggie Key, 4th
 8th Listening - Damien Pierce, tied for 3rd
 8th Maps, Graphs, & Charts - Nikki Beasley, 3rd

Committee Members Needed for SISD Site-Based Committee

Spearman ISD is looking for individuals interested in serving on the District Education Improvement Committee (DEIC); the District needs (two) parents, (one) business representative, and (one) community member. These positions are defined by policy as: PARENT - parent or guardian of a student currently enrolled in Spearman ISD (cannot be a school employee); BUSINESS REPRESENTATIVE - an individual from the business community (employee or owner). The business does not have to be located in the school district; COMMUNITY MEMBER - must reside in the District and be at least 18 years old, and is not a parent of a student currently enrolled in Spearman ISD.
 One parent position is for a one-year term; all other positions are for a two-year term. Meetings are held on Wednesday afternoons from 4-6 p.m.
 There will be approximately 6 meetings held during the school year. Interested individuals should submit their names to Rod Sumner, Superintendent of Schools at (806) 659-3233 or e-mail at rod.sumner@region16.net. Those selected by the DEIC to serve will be notified as soon as the selection process is completed.

SPEARMAN ISD

11/21/08
Junior Varsity Lynx
 Lynx 56, Memphis 36

Varsity Lynxettes
 Lynxettes 72, Memphis 27

Varsity Lynx
 Lynx 71, Memphis 44

11/24/08
Varsity Lynxettes
 Lynxettes 8 18 30 41, Lubbock Roosevelt 10 21 23 32
 S-Morgan Ashmore 13, Bond Pittman 7.

Varsity Lynx
 San Jacinto 6 22 28 39, Spearman 17 36 51 62
 S-Jordan Ashmore 23, Tyler Schnell 9. Records: Spearman 2-0

Junior Varsity Lynxettes
 JV White Lynxettes 35, Bushland 41

See us for:
 AUTO • HOME • CROP HAIL • FARM & RANCH • MULTIPERIL • LIVESTOCK
INSURANCE

BORT AGENCY, INC.
 510 Main St. • Gruver, TX
 (806) 733-2456

MITCHELL THEATRES
NORTHBRIDGE CINEMA 8
 Guymon, Oklahoma
 FRESH POPCORN EVERYDAY!
 -PARTY ROOM & ARCADE-
 Call for Showtimes
 580-338-3281
 www.northridge8.com

Tong's Chinese Restaurant
 (806) 644-2838
 22 Archer Street • Spearman
Buffet Specials
Monday: Chicken w/Spiced Salt, Mongolian Beef, Sweet & Sour Chicken, Fried Rice, Etc. - \$6.75
Tuesday: Grilled Pork Chop, Black Pepper Chicken, Rice Noodles, Egg Roll, Etc. - \$6.99
Wednesday: Fried Shrimp, BBQ Chicken, Pork Sub Gum, Chop Suey, Lo Mein, Etc. - \$6.99
Thursday: BBQ Pork Ribs, Pepper Chicken, Won Ton Soup, Seafood Bun, Etc. - \$6.99
Friday: Shrimp w/Spiced Salt, Sesame Chicken, Broccoli Chicken, Rangoon, Etc. - \$7.25
Saturday: Catfish, Pepper Steak, Egg Drop Soup, Stir-Fry Mixed Vegetables, Etc. - \$7.25
Sunday: Roast Beef, Grilled Shrimp, Biscuits, French Fries, Mushrooms, Etc. - \$7.25
 Lunch Buffet 11 a.m.-2:30 (7 Days A Week)
 Dinner Buffet 5:30-9 P.M. (Monday-Saturday)

WHY WISH FOR SAVINGS?
 Get them here.
Christmas Sale 2008
 Sale Prices Good From December 8-24

Men's L/S Dress Shirts Arrow, Van Heusen, Valcon Bay, Chaps, Siegfried 25% OFF	Men's Fashion Jeans Tommy, Chaps, Company 81 \$39.95	All Men's & Boys Shoes Adidas, Reebok, etc. 25% OFF
Men's Cinch Shirts Men's Cinch Black Label (Medium & Dark Denim), Blue Label & White Label Jeans \$39.95	Men's Wrangler Riatas Assortment of sizes and colors \$29.95	Boys Carhartt L/S & S/S Knit Shirts - 25% Off
Men's 20X Shirts \$35.95	Men's George Strait Shirts \$35.95	Boys Carhartt Jeans - 25% Off
Men's Levis 550 & 560 Jeans - Light, Medium, Dark \$29.95	Sale Rack - 1/2 Price Men's & Boys Shirts	Boys 20X Shirts & 20X Jeans - \$19.95
Cates Men & Boys 221 Main Street Spearman, Texas (806) 659-3426 Mon.-Sat., 9 a.m.-6 p.m.	Christmas Countdown Sale	Boys L/S George Strait Shirts - \$19.95
		Boys Cinch Shirts & Jeans - \$24.95
		Boys Jeans - 20% Off Wrangler, Levi, Denim & Colored
		Boys Fashion Jeans - \$29.95 Tommy, Union Bay

Dec. 5-12 Hanukkah
Dec. 6 St. Nicholas Day
Dec. 7 Pearl Harbor Day
Dec. 10 Human Rights Day
Dec. 12 Poinsettia Day
Dec. 13 Ice Cream Day
St. Lucy Day
All Occasion Flowers
 202 N. Bernice (across from the Post Office)
 659-5180 • Spearman

RadioShack
 Do Stuff.[™]
 Check out the RadioShack & Perryton Office Supply in this week's issue of The Hansford County Reporter-Statesman.
Merry Christmas!

Perryton OFFICE SUPPLY RADIO SHACK
 123 South Main St, Perryton TX
 (806) 435-4812
Holiday Hours:
 Through Dec. 24th
 Mon.-Fri., 8:30 a.m.-7 p.m.
 Sat., 9 a.m.-5 p.m.; Sun., 1-5 p.m.

HELP WANTED

HELP WANTED: Gigot Agra Products, Valley Center Pivot Dealer, is seeking additional service technicians at our Spearman location. Experience desired, but not required. Benefit package is available. Send resume to PO Box 1413, Guymon OK 73942, or call 580-338-2536 or 806-659-3121. TFN(9-18-08)B

HELP WANTED: General mechanic for automotive, irrigation work and tire repair. Tools provided. Apply at Morse Implement and Auto Supply in Morse. Call 06-733-2668. Ask for Tom or Gary. Good pay and working conditions. TFN(10-02-08)

HELP WANTED: Part-time Custodian Needed to work 12 hours a week at the Hansford County Courthouse. Apply at Hansford County Judge's Office. TFN(10-16-08)B

HELP WANTED: Hansford County Library is now accepting resumes for part-time employment. Position includes working with the public and some computer knowledge. Must be able to multitask. Send resumes to 122 Main, Spearman TX 79081. TFN(11-13-08)B

HELP WANTED: Hansford County Sheriff's Office is taking applications for a dispatcher/jailer. Will train. Apply in person at Sheriff's Office. TFN(11-27-08)B

HELP WANTED: Shop man to perform oil changes and minor mechanical repairs. Apply at Frontier Feedyard or phone 806 882-4251, and ask for Ben. ESOP, Benefits, and ESOP. TFN(12-04-08)B

HELP WANTED: First State Bank is now taking applications for a full time building and yard maintenance person. Applicant should be self-motivated, have mechanical skills and be in good health and physical condition. A strong work ethic is a must. Benefit program includes group hospitalization insurance, retirement, paid vacation and a sick leave program. Contact Ginger Turner, 659-5565. An Equal Opportunity Employer. 2(12-04-08)B

HELP WANTED: Are you looking for a new career? We are seeking a self-motivated individual for a full-time position to add to our growing practice. No experience necessary, we will train the right person. Please deliver your resume including references in person to Dr. Zoel G. Allen II, 19 Southeast 5th Avenue, Perryton TX. 2(12-04-08)B

SERVICES

FREE DIRECTV 4 ROOM SYSTEM!
265+ ALL DIGITAL CHANNELS!
130 HD CHANNELS!
FREE HBO, Showtime & Starz for 3 Months!
Channel Pkgs. Start \$29.99 / mo
Packages Start only \$29.99
FREE DVR/HD
No Start Up Costs!
We're Local Installers!
Toll Free 800-214-7110

HOCHY POOCHY PARLOR Call us for all your pet's grooming and boarding needs. Call now for reservations! 806-273-2724. TFN(11-2-07)

FOR SALE OR TRADE

FOR SALE: Cured elm firewood. \$80/ric or \$150/cord. You haul. Call 806-273-7705. Borger. 2(11-27-08)B

PUBLIC NOTICE

PUBLIC NOTICE
Gruver Independent School District is accepting proposals for a Construction Manager Agent. Proposals are due by 3:00 p.m.

on December 16, 2008. For more information contact: David H. Teal, Superintendent, Gruver Independent School District, 601 Garrett, Gruver, TX 79040. 2(11-27-08)B

PUBLIC NOTICE
Coordinator of Extended Education
Frank Phillips College - Allen Campus

Duties include developing, scheduling, organizing, and promoting Continuing Education and Community Service classes and events, as well as cross training to provide staff support for other areas of Allen Campus operations. This position will require an understanding of the comprehensive community college system. Full-time. Associate's degree required. Bachelor's degree preferred. Salary commensurate with experience and education. Mail resume including references, application (available at www.fpctx.edu), and transcript(s) by December 10, 2008 to Gloria Rummel, Executive Assistant, Frank Phillips College, P.O. Box 5118, Borger, TX 79008-5118. 4(11-20-08)B

PUBLIC NOTICE
Student Resource Center Coordinator
Frank Phillips College - Allen Campus

Duties include all areas of monitoring and maintaining the Student Resource Center. Providing career and counseling, financial aid, and academic support services; administering college entrance examinations; planning and implementing campus wide student activities; and managing greenhouse operations. This position will require an understanding of the comprehensive community college system. Full-time. Associate's degree required. Bachelor's degree preferred. Salary commensurate with experience and education. Mail resume including references, application (available at www.fpctx.edu), and transcript(s) by December 10, 2008 to Gloria Rummel, Executive Assistant, Frank Phillips College, P.O. Box 5118, Borger, TX 79008-5118. 4(11-20-08)B

T	A	L	C		M	O	N		M	O	L	L			
O	D	O	R		A	E	R	O		G	I	B	E	S	
F	A	T	E		V	I	I		L	L	O	Y	D		
U	R	S	A	M	A	J	O	R		E	K	E	S		
					S	A	T	I	N		B	A	Y		
O	R	T	E	G	A				G	U	N	W	A	L	E
L	O	W		O	R	R	E	R	Y		A	S	E	A	
D	Y	I	N	G		A	L	A		T	Y	P	O	S	
E	C	R	U		A	K	I	M	B	O		E	N	E	
N	E	P	T	U	N	E		I	N	B	R	E	D		
					S	P	Y		S	P	R	E	E		
O	O	H	S		T	E	L	E	S		G	O	P	E	
A	G	R	E	E		O	V	U	M		A	R	I	A	
D	E	A	L	T		M	E	T	E		L	E	N	S	
D	E	L	L		B	R	O		M	O	T	E			

4	5	2	9	6	1	8	3	7
1	3	9	7	2	8	5	4	6
7	8	6	3	5	4	2	1	9
5	4	1	6	9	7	3	8	2
2	6	8	4	3	5	9	7	1
9	7	3	1	8	2	4	6	5
6	2	5	8	7	3	1	9	4
3	1	7	2	4	9	6	5	8
8	9	4	5	1	6	7	2	3

Shirley Howard Properties
Shirley Howard
We're out of houses!
We NEED listings!
Call us now to help YOU sell your home for top dollar!
Shirley Howard, Broker/Owner 806-886-6536, Cell
Melinda McCullough, Realtor (806) 733-5678
We would LOVE to sell your HOUSE!
CALL US!

Mesothelioma EXPERIENCE COUNTS
Lawyers with over 85 years combined expertise.
may occur 30 to 50 years after exposure to asbestos. Many workers were exposed from the 1940s through the 1970s. Industrial maintenance and operators are among those at risk for mesothelioma, throat cancer or lung cancer. Call us for professional insight.
Ryan A. Krebs, M.D., J.D. Doctor-Lawyer in Full-time Law Practice
Richard A. Dodd, L.C.
Timothy R. Cappolino, P.C.
Board Certified Personal Injury Trial Law and Civil Trial Law by the Texas Board of Legal Specialization
NO FEE FOR FIRST VISIT
CAMERON, TEXAS
1-888-MESO-FIRM (1-888-637-6347)
www.AsbestosLaw.com

Go Painlessly™
Mary Ann W. Tom W.
PENETRATING PAIN RELIEF
THERA-GESIC
Dunce for Ounce - Compare and Save!
The top-quality & top-value pain creme

Blankenship Real Estate
659-3052 - 670-3774
Beauty Salon (Spearman) - 1-3 Bays, fixtures & inventory included.
3BR/1B Home (Spearman) - 2 living areas, nice backyard, storage, close to school and hospital!
NEW LISTINGS WANTED!
Eulalia Blankenship - Sales
Eschol Blankenship - Broker

Cattleman's Livestock Comm. Co.
Proverbs 16:3
Hwy 54 W Box 58 Dalhart, Tx 79022
Fax: (806) 249 - 4800 (806) 249 - 5505
www.cattlemanslivestock.net
Sale Held Every Thursday at 11:00 a.m.

11/13/08		Head	Weight	Amount
Heifers-				
Canyon TX	By hd	5	234#	\$300.00
Dalhart TX	By hd	40	258#	\$305.00
Pampa TX	By hd	11	260	\$300.00
Clovis NM	Bwf	10	338#	\$113.00
Concho AZ	Mix	37	407#	\$103.50
Borger TX	Mix	17	421#	\$100.50
Clovis NM	Mix	46	446#	\$101.00
Estancia NM	Blk	9	495#	\$98.00
Lefors TX	Mix	35	525#	\$91.75
Pampa TX	Blk	31	531#	\$93.00
Boise City OK	Red	31	542#	\$87.00
Borger TX	Char	11	555#	\$89.00
Channing TX	Blk	44	570#	\$97.25
San Jon NM	Mix	29	634#	\$86.50
Borger TX	Mix	5	656#	\$90.50
Bovina TX	Red	3	682#	\$89.00
Texhoma OK	Mix	2	718#	\$94.00
Channing TX	Mix	19	739#	\$90.50
Amarillo TX	Blk	12	778#	\$88.00
Dalhart TX	Char	56	840#	\$92.75
Steers-				
Canyon TX	Byhd	38	255#	\$380.00
Lefors TX	Blk	2	270#	\$140.00
Clovis NM	Mix	9	352#	\$134.00
Pampa TX	Blk	8	383#	\$131.00
Borger TX	Blk	22	417#	\$125.00
Umbarger TX	Mix	40	496#	\$117.00
Briscoe TX	Bwf	52	502#	\$120.00
Borger TX	Blk	17	522#	\$113.50
Lefors TX	Mix	40	551#	\$109.75
Channing TX	Blk	22	561#	\$109.75
Pampa TX	Blk	30	568#	\$110.85
San Jon NM	Mix	49	628#	\$98.50
Channing TX	Blk	86	684#	\$103.60
Tucumcari NM	Blk	48	688#	\$98.25
San Jon NM	Mix	73	729#	\$97.00
Dalhart TX	Mix	76	741#	\$99.50
Channing TX	Blk	61	767#	\$100.25
Tucumcari NM	Bwf	55	664#	\$97.00
Sunray TX	Blk	14	906#	\$95.25
Laveen AZ	Blk	19	933#	\$94.50
Cows- \$32.00-\$45.00 Holsteins- \$35.00-\$44.50				
EARLY CONSIGNMENTS 11/20/08				
44 mix 450-500# weaned shots angus source Dalhart				
230 mix 4-500# weaned shots grass only Mt Dora NM				
68 hrs 700# most blk age source verified micro pvp Satanta KS				
70 hrs 750# no implants Liberal KS				
75 mix 450-650# char x weaned shots Stratford TX				
28 mix 500# angus source shots Pampa TX				
700 fdr str 800# grass only no implants Sunray TX				
Matt & Jeana Wing Jo Wing				
Matt's Cell- 806-333-2522				
Field Representatives				
Clayton Ward (806)333-2199	Craig Lawrence (806)384-2153	Lanny Cook (806)267-2251		
Don Prather (580)426-2416	Ted Allen (806)333-4361	Hannah Grice (806)339-2920		

hchd
Hansford County Hospital District
Openings at Hansford Hospital
Home Health RN: Must be licensed in the State of Texas
Openings at Hansford Manor
Dietary: Cooks, cooks helper and dishwasher
LVN: Must be licensed in the State of Texas
Housekeeper Full Time: Keeping our manor clean and sanitary for our residents, patients and family members
Housekeeper: Nights 4:00 - ? Keeping our manor clean and sanitary for our residents, patients and family members
Great working environment and staff, quality facility providing opportunities for professional growth. Great benefit package. Apply at 707 S. Roland, Spearman, TX or contact Jackie Nelson at 806-659-5841. Download application at www.hchd.net
EEOE
2(11-27-08)B

MARTIN & ASSOCIATES REALTY
Serving Hansford County for 14 years
Julie Martin - Broker - 659-2425
IN SPEARMAN
1111 S. Townsend - Split level, 3/2/1 Are you looking for a home with that brand new feel- ing? This home has been redone throughout: all new flooring, paint, fixtures, baths, remod- eled kitchen w/new appliances, granite counter tops, split level deck. REDUCED!
703 Collier - 3/1/1 - Let's Make a Deal!!
1005 S. Bernice - 3 bed 2 bath, 2100 sq ft w/fireplace
We'd Like Your Listing FOR QUALITY & SERVICE CALL US TODAY!
Equal Housing Opportunity

Celebrate the Holiday Season with Family, Friends and First State Bank
Eat Lunch With Us
Wednesday, December 10th
19th Annual Christmas Hot Dog Cookout
11 a.m.-1:30 p.m.
Pictures with Santa 11:30 a.m. to 1:30 p.m.
FSB
First State Bank
Strength is our Tradition... Service our Goal
1 NE Court Spearman 659-5565
Member FDIC

by Jim Derington

Out at the Lake



Jim Derington
Palo Duro River Authority
P.O. Box 99
Spearman, TX 79081
806-882-4401
pdra@dishmail.net

December 1, 2008 - Lake level - 22.82 feet

Lake Palo Duro is lonesome this time of year. Holidays, ball games, hunting, and the cold weather, keep most people away. Those who do come, may catch a nice Blue Cat, or see a big Buck that is not visible most of the year. We did have one camper behind the dam, for the Thanksgiving weekend. We see an occasional fisherman or mountain biker, on the nicer days. Mickey Kern, Spearman High School Spanish teacher, walks his dogs here, and may see things that are not visible from a vehicle.



The warm weather and open water in the playa lakes are keeping the ducks and geese away. An extended cold spell, that freezes the shallow water, will probably bring them to the lake. We do see a few ducks, in the creeks.

Recent sightings include a beaver, numerous bucks, several American Kestrels or sparrow hawks, Bald eagles, Cardinals, and Juncos, skunks, raccoons, porcupines, and a coyote.

Sunday night, around 8:00 PM, I was emptying trash into the dump-

ster, near the office. I looked to the sky, over the dam, and saw something fall from the sky. It was green, and tear shaped, with an orange glow behind it. It fell behind some low clouds, and seemed to glow more, until it disappeared. It was not just a falling star. Did anyone else see it, or should I talk to a therapist?

December 6 is opening day of

pheasant season. Many hunters will be in the area. Please welcome these folks. They bring a lot of "out of town money" to our communities. Remember, if you have to wait in line at the store or the gas pump, these people are helping to fund scholarships for our youth, support our community center, and leave money here that could be spent elsewhere.



The Lynx and Lynxettes both defeated the Texhoma Red Devils on Tuesday, December 2nd. Final scores were: Spearman Lynxettes 57, Texhoma Lady Red Devils 41 and Spearman Lynx 62, Texhoma Red Devils 46

Above Left: Tyler Schnell adds his two points to the Lynx victory over the Texhoma Red Devils.

Above: Bond Pittman takes it to the basket for 2 points for the Lynxettes.

Far Left: Morgan Ashmore drives the lane against a tough Texhoma defense.

Left: Josue Hernandez lays it in for 2 for the Lynx.

(Photos by Tami Hargrove, <http://spearmansports.smugmug.com>)

Three Falls COVE

You are invited to a
Christmas Open House at the Inn
Wine and Cheese

Sunday, December 7, 2008 from 3 - 6 p.m.

For map, go to www.threefallscove.com

From Sanford, take Hwy. 1319 across the Lake Meredith Dam. About 1/2 mile after crossing the dam, turn left on Hwy. 3395. Go 2 miles until you see a pond surrounded by beautiful cottonwood trees.

We hope to see you there!

Merry Christmas!



Shopping items and Gift Certificates available.

Mark and Rebecca Weatherford
8025 FM 3395
Sanford TX 79078
806-878-2366

Some dates still available for Christmas Parties!



First National Bank
cordially invites
you to attend
a retirement reception
in honor of
Don Townsen
Celebrating 42 years in banking
Friday, December 12, 2008
3:00 p.m. to 4:30 p.m.
O'Loughlin Center




Palace Theatre

MOVIE SHOW TIMES
Friday-Thursday - 7 p.m.
Sunday - 2 p.m.
Closed Sunday Night

FRESH POPCORN & DRINKS!
PARTY ROOM & ARCADE
MOVIE RENTALS

Palace Theatre
210 Main Street
Canadian TX 79014
806-323-5133
www.palacetheatre.com

*The Palace Theatre meets
Lucasfilm THX specifications for
site and sound quality.*



PTCI
DIGITAL TV

Get Local

Weather Central
Amarillo Networks
OKC News

721 W 7th - Spearman
1-800-562-2556 www.ptci.net

New Customers!

- FREE installation - up to 2 set-top boxes
- One month FREE expanded basic pkg

Your name will go into drawing for a
~FREE 40" LCD HDTV!~

Drawing will be held Dec. 31



PTCI
Communication & Broadband Solutions

Services not available in all areas. Some restrictions apply.