



100 YEARS

The Hansford County Reporter



SCR2
COMP
HANSFORD COUNTY LIBRARY
0122 MAIN ST
SPEARMAN TX 79081-2064

Statesman

PROUDLY SERVING HANSFORD COUNTY SINCE 1907

reporter@spearmanreporter.com

VOLUME 102 • ISSUE 41

THURSDAY, OCTOBER 8, 2009

COME TO THE GAME

SPEARMAN LYNX VS Tulia 10/2 7:30 p.m.

Gruver Greyhounds at Texhoma, OK 10/2 7:00 p.m.



Jace Lang-Swan maneuvers around a Tulia Hornet during Friday's game in Tulia. Jace was named the Amarillo Globe-News 3A-2A Player of the Week. He scored the Lynx's first two TDs on runs of 18 and 5 yards in the opening quarter of a 35-6 victory against Tulia. He carried 20 times for 119 yards. (Photo by Tami Hargrove. Pictures available at <http://spearmansports.smugmug.com>)

Weather Forecast

FRIDAY - Partly cloudy. Highs in the upper 50s. Northeast winds 10 to 15 mph.
FRIDAY NIGHT - Partly cloudy. Lows in the upper 30s. Southeast winds around 10 mph.
SATURDAY - Mostly cloudy. Slight chance of rain showers and drizzle in the morning - then a slight chance of rain showers in the afternoon. Breezy. Highs in the upper 40s. Chance of showers 20 percent.
SATURDAY NIGHT - Mostly cloudy with a 20 percent chance of rain showers and drizzle. Lows in the lower 30s.
SUNDAY - Mostly cloudy. Slight chance of rain showers and drizzle in the morning - then a slight chance of showers in the afternoon. Highs in the mid 50s. Chance of precipitation 20 percent.
SUNDAY NIGHT - Mostly cloudy. Lows in the mid 30s.
COLUMBUS DAY - Mostly cloudy. Highs in the mid 50s.
MONDAY NIGHT - Mostly cloudy. Lows around 40.
TUESDAY - Partly cloudy. Highs in the upper 60s.
TUESDAY NIGHT - Mostly clear. Lows in the mid 40s.
WEDNESDAY - Mostly sunny. Highs in the mid 70s.

Texas Crop & Weather

The following specific livestock, crop and weather conditions were reported by Panhandle Extension directors: Topsoil moisture was short with no rain reported. Cooler temperatures came to most of the area with low-lying areas showing frost. The corn harvest got off to a slow start because of wet fields. Cotton was in good condition with bolls from 25 percent to 90 percent open. Growers continued to defoliate some fields in preparation for harvest. The peanut harvest started in some areas. Sorghum continued to mature. Soybeans were 50 percent harvested in some areas. Wheat was 60 percent to 80 percent planted. What wheat that was planted was 25 percent to 60 percent emerged. Cattle were in good condition, and the weaning of calves was expected to begin soon. Rangeland was in fair condition.



Mandi's Miracle T-Shirts

The community of Spearman is selling Mandi's Miracle T-shirts. All the proceeds are going to Mandi Lusby's Miracle Fund at First National Bank Spearman. The money will then be sent directly to Mandi in Houston to help cover some of her costs while recovering from her double-lung and heart transplant.

The T-Shirts say, "Life is good with a new heart and lung" on the front (with a happy face below the words) and "Mandi's Miracle, September 13, 2009" on the back. They are available as T-shirts - \$10, long sleeve - \$13, hoodie - \$20 and sweatshirt - \$15. Colors available are chocolate brown, black, hot pink and stonewash green. (not all colors and styles available in all sizes.)

All checks should be payable to FUMC-Mandi's Miracle Fund, and may be mailed to: Mandi's Miracle Fund, PO Box 331, Spearman TX 79081. (Anyone ordering outside of Hansford or Ochiltree County, please include an additional \$2 for shipping.)

It would be a great surprise and celebration for Mandi to come home see the whole town of Spearman proudly wearing

in her honor.

For more information, please contact Haley at 806-659-3751, or email agcohalley@ptsi.net or chad.riggins@thesportzone.net.

Donations for Mandi may be sent to First National Bank Spearman, c/o Mandi Lusby Miracle Fund, PO Box 331, Spearman TX 79081.



Mandi Lusby (right) with her daughter, Taylor Varnon.

"Life is Good with a New Heart & Lungs"

The Lord has been good and prayers have been answered as Mandi Lusby has received her new heart and lungs! Her recovery will continue in Houston and we want to show our support by sporting a T-shirt rejoicing her successful and long awaited transplant. T-shirts are being made to celebrate Mandi's future. All proceeds from the t-shirt sale will go directly to Mandi Lusby as she recovers in Houston. If you are interested, please fill out the form below and proudly wear your T-shirt!



Name: _____ Phone: _____
Address: _____

	2-4	6-8	10-12	14-16	Small	Medium	Large	X-Large	2X	3X	4X	SUBTOTAL
\$10.00 CHOCOLATE T-Shirt												
\$13.00 CHOCOLATE-Long-Sleeve												
\$20.00 CHOCOLATE-Hoodie												
\$10.00 BLACK T-Shirt												
\$13.00 BLACK-Long-Sleeve												
\$15.00 BLACK-Sweatshirt												
\$20.00 BLACK-Hoodie												
\$10.00 HOT PINK T-Shirt												
\$10.00 STONWASH GREEN T-Shirt												
\$13.00 STONWASH GREEN LS-Shirt												
												TOTAL:

Make checks payable to Mandi's Miracle Fund.
Please return forms back to the school or mail to PO Box 331, Spearman, TX 79081.

Stranger Danger

Local law enforcement officers would like to remind parents of the importance to be aware of the dangers facing their family and to warn their children to avoid situations where they are alone with a stranger.

If a stranger were to come up and engage in a dialogue with your child, the child should remove him or herself from a situation where they are alone with that person. They should leave the scene and go wherever they see people.

While stranger abductions are "extremely rare" in the Texas Panhandle, authorities are warning parents to use caution after a recent report of suspicious activity on Tuesday, October 6, 2009. A man approached a Perryton elementary student in a small red pickup and offered her a ride home.

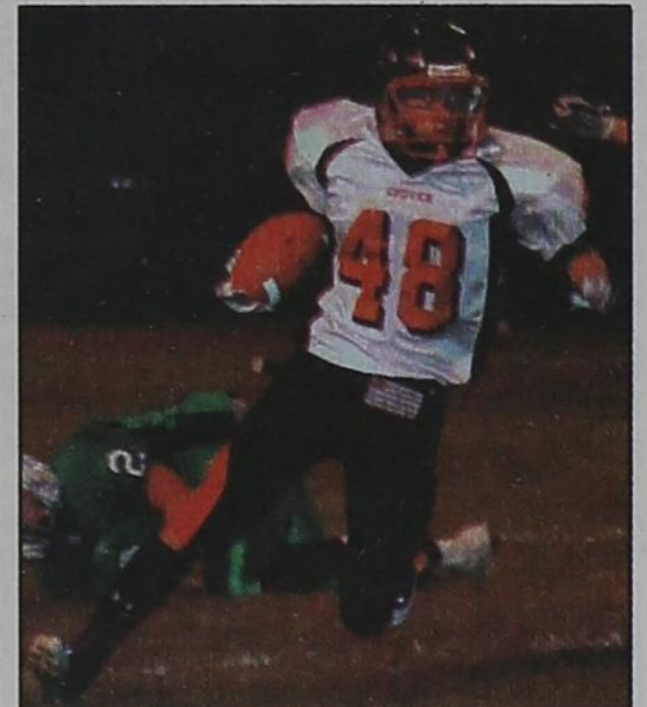
Ochiltree County Chief Deputy Frank Humphrey said the girl told her mother that the truck approached her on her way home from school. She did not recognize the man and said, "No." The man then put the vehicle in park and started to get out, and at this point the girl fled the scene.

No overt attempts were made to abduct the girl, and the man in question has not been located by police. Even so, the incident is being investigated as suspicious.

In response to this incident, law enforcement officers are asking that parents speak to their children about avoiding strangers and using caution in situations like this.

The State of Texas operates an extensive Sex Offender Registry Web site where concerned parents and residents can check on the location of registered sex offenders in their cities and neighborhoods. The Web site is located at https://records.txdps.state.tx.us/DPS_WEB/SorNew/index.aspx.

To report suspicious activity, contact the Spearman Police Department at (806) 659-3707, the Gruver Police Department at (806) 733-2424, or the Hansford County Sheriff's Office at (806) 659-4140. If the activity rises to the level of a genuine threat or emergency, call 911.



Jarrod Collier carried the ball 21 times for 148 yards and a touchdown, intercepted a pass, and made 13 tackles in Gruver's 21-12 loss to the Wolverines. He was named to the Amarillo Globe-News Athlete of the Week Honorable Mention. (Photo by Charlie Johnson)

Gruver PTO Holds Silent Auction

The Gruver Parent Teacher Organization is excited to offer our first annual Gift-Basket Silent Auction.

Local businesses from Gruver, Spearman, Guymon & even Amarillo have donated money toward purchases of items as well as prizes, gift certificates, & goodies for the baskets. This brings the opportunity for your generous donations to be rewarded with wonderful gifts and prizes.

With the holidays just around the corner we have prepared incredible gift baskets that could supply several Christmas presents or just make it one wonderful gift for a loved one. These baskets are a way we can give back to the community for their loving donations.

Baskets will be placed in area businesses & rotated every few days so new bids can be made. Each basket will have a bidding sheet with it for those who want to put in their bid to win a basket. They will be available through October 31st at the Gruver Halloween carnival. Bidding closes at 8:00 that evening. Baskets will go to the highest bidder.

Baskets available for bidding are: Boys Treasure Chest (valued at \$350), Family Basket (valued at \$400), Girls Basket (valued at \$342), Gruver Spirit Basket (valued at \$244), Spearman Spirit Bas-

ket (valued at \$240), Guymon Entertainment Basket (valued at \$125), Men's Basket (valued at \$235), Starbucks Basket (valued at \$200), John Deere Basket (valued at \$120), Lap of Luxury Basket (valued at \$342), Woman's Basket (valued at \$230), Automotive Basket (valued at \$80), Amarillo Basket (valued at \$250), and Case Collectibles & Wagon (valued at \$235).

Baskets will be at Gruver State Bank, El Vaquero, Farm Supply, Gruver Elementary, Gruver Parts & Supplies, Gruver Agri, CJ's, Dairy Queen, Gordon's Drug, First State Bank, First National Bank, Five-Star Equipment, The Bunkhouse, and Hansford Implement. If you are unable to visit a business & still want to put in a bid, please contact Sheila at sheilam@ptsi.net with which basket you would like to bid for & your bid amount.

The purpose of Gruver PTO is to support our schools by using funds raised to bring in educational programs for students, buy equipment for the schools, Angel Tree, and teacher appreciation.

Gruver PTO would like to thank the businesses that donated toward this exciting fund raiser and the support from our local communities.

Panhandle Community Services "Utility Blitz"

Panhandle Community Services will be hosting a "Utility Blitz" on Thursday, October 22nd from 10 a.m. until 3 p.m. at the Spearman County Barn.

Anyone needing funds to help pay for their utility bills is encouraged to attend.

Those applying for funds should bring the following documents: Last 30 days income for everyone in the household; Current utility bills (Electricity and gas only); Social Security numbers for everyone in the household (If there is a member in the household that does not have a SS number you will still qualify); and Birthdates for everyone in the household.

Panhandle Community Services will also be qualifying people for their monthly food giveaway as well.

Panhandle Community Service is a private company categorized under Community Development Groups and located in Amarillo, TX. They are located at 1300 N Hughes Street. For more information, you may call (806) 376-5947.

Benefit for Baby Abbott Wyatt

On October 10th, the Darrouzett Chapter of "Soldiers for Christ" will be having a "Benefit for Abbott" at Wiggam Park in Perryton (9th & Main Street/Hwy. 83). Abbott is the 15-month-old son of Casey and Heidi Wyatt of Amarillo, and grandson of Stan and Donna Zepp of Perryton (owners of Money's). He was diagnosed with Atypical teratoid rhabdoid tumor or ATRT, a rare form of brain cancer.

This special day will include a "Scripture Run" at 9 a.m., a bicycle run at 9:30 a.m., a 3-on-3 Basketball Tournament beginning at 10 a.m. along with food, games and fun for children and adults. Auctions will be held throughout the day, with donations being accepted for the auction. Money's will be selling Steak-On-A-Stick, and Soldiers for Christ will be selling drinks. (More information will be in next week's edition of The Hansford County Reporter-Statesman.)

For more information about the "Benefit for Abbott," please call Carol Lewis at 806-434-2915.


Wolf Creek Heritage Museum Notes

MUSEUM HAPPENINGS
A busy week and I am off to Cheyenne, WY. so this column is short for this week.
We exchanged exhibits on Wednesday. A quartet of us journeyed to Arnet, OK to collect the ceramic creations of Lela Vincent. The Ladies that stayed at the museum began hanging the needlework of Jeri Pundt. She also brought pieces of her mother, Evelyn. Both collections are wonderful.
We also received two

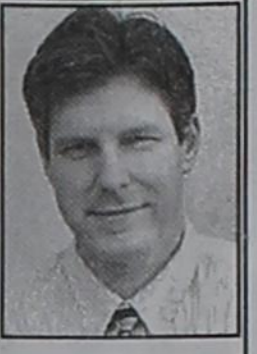
lovely surprises. The first was a 16 X 20 color portrait of the museum ladies by Rene Heil. I must admit he made us look pretty good. We will be on display in the work room.
The second surprise was two notebooks on Lipscomb created by Peg Herriague. She has loaned them to the museum for a limited time. They are great. Peg has researched and documented the history of Lipscomb homes from the 1800's to present. A wonderful piece of work.

Our next event will be the fall foliage on the third Saturday of October. We will be open on Saturday and our regular time on Sunday.
Hope your week is full of joy and good weather.

Wolf Creek Heritage Museum
Museum Hours: Monday thru Friday 10 a.m. to 4 p.m., Sunday 2 to 4 p.m. Special hours upon request.
Museum Information: 13310 Hwy 305, PO Box 5, Lipscomb TX 79056; telephone: 806-852-2123; e-mail: wolfcreek@amaonline.com; website: www.wolfcreekheritagemuseum.org

TEXAS PRESS ASSOCIATION
State Capital

HIGHLIGHTS
By Ed Sterling

H1N1 'SWINE' FLUE VACCINE TO ARRIVE IN TRICKLE, NOT FLOOD



by Ed Sterling

AUSTIN -- Be patient, the state Department of State Health Services urged Texans on Sept. 30, because the supply of H1N1 "swine" flu vaccine over the next few weeks will be low.

"We've been told that we'll have about 15 million doses for Texas after all is said and done, but it won't be available all at once," said Dr. David Lakey, state health commissioner. "The vaccine will trickle in week to week, especially at first. It's a fluid situation driven primarily by how much vaccine the manufacturers produce each week."

Some 3.4 million doses of the vaccine had been projected for Texas by mid-October, but the latest estimates are that no more than 1.7 million doses will be available by then.

Comptroller comments on study

A study by the Selig Center for Economic Growth at the University of Georgia shows Hispanic households contributed more than \$171 billion to the Texas economy in 2008.

The study also shows Texas Hispanics' annual buying power is expected to grow to nearly \$252 billion by 2013 -- a 47 percent increase in five years.

"We expect to see significant growth in Hispanic-owned businesses," Texas Comptroller Susan Combs said.

Figures compiled by the U.S. Census Bureau show that Texas was home to 8.9 million Hispanics in 2008, 37 percent of the state's population. And, in the 2008 Hispanic Business 500, the Top 20 Hispanic businesses in Texas produced revenues of nearly \$4 billion and employed 14,617 people.

Combs said Hispanic companies can benefit from state certification as Historically Underutilized Businesses.

HUB certification, plus registration on the state's Centralized Master Bidders List, can help businesses win contracts with state agencies which are required to make a good faith effort to purchase goods and services from minority- and woman-owned businesses.

"The nation is currently observing Hispanic Heritage Month, which celebrates the rich history and culture of Hispanic people," Texas Comptroller Susan Combs said. "Here in Texas, Hispanic Heritage Month is also a time to reflect on the enormous

contribution Hispanic families and Hispanic-owned businesses make to our economy."

Program's food list improves

A policy switch took effect Oct. 1 that makes it possible for WIC program participants to receive a wide variety of fruits and vegetables, whole grain products and baby foods in an effort to reduce obesity and encourage breastfeeding.

WIC is the federal Special Supplemental Nutrition Program for Women, Infants and Children.

"The purpose is to provide healthier, more diverse food choices," state health commissioner Lakey said Sept. 28. "The new foods give participants more nutritional variety and value, less fat and more fiber."

Food choices before the policy change included milk, infant formula, cheese, cereals, dried beans, canned tuna, peanut butter, canned or frozen concentrate fruit juice and fresh or canned carrots.

All Texas participants will be transitioned to the new food choices by January.

AG to appeal same-sex case

A Dallas state district judge on Oct. 1 ruled that two men who were married in another state could get a divorce in Texas, The Dal-

las Morning News reported.

The legal argument behind the ruling is that the Texas law and state constitution banning same-sex marriage violate the U.S. Constitution's equal protection clause.

Texas Attorney General Greg Abbott said he would file an appeal to the ruling, saying, "The laws and constitution of the State of Texas define marriage as an institution involving one man and one woman."

Long-imprisoned man is pardoned

Gov. Perry on Sept. 30 granted a pardon for innocence to James Lee Woodard after DNA testing proved he did not sexually assault or murder Beverly Ann Jones in 1980.

Woodard was sentenced to prison in 1981. He was released in April 2008 after serving more than 27 years.

Budget board OKs hiring of 250

The Legislative Budget Board on Oct. 3 decided to allow the state Health and Human Services Commission to hire 250 more workers at an annual cost of \$11 million to process food stamp applications.

Current enrollment stands at 2.8 million in the Supplemental Nutrition Assistance Program, but applications have increased dramatically in the current economic downturn.

BBBS Volunteer of the Month



Big Brothers Big Sisters is proud to announce that Trisha Fitzgearld has been named out Volunteer of the Month for September.

Fitzgearld has been matched with her Little Sis, Sabrina, since February 2009. Since that time, she has done an outstanding job! Fitzgearld is matched through our Community Based program. She meets with her Little Sis for a few hours each week. They have enjoyed such activities as cooking,

playing the Wii, practicing golf and tennis, and visiting together. The pair recently celebrated the sixth month anniversary of their match with an overnight trip to Oklahoma City where they were joined by Trisha's college age daughter for a girls' weekend in the city!

"Spending time with Sabrina has truly been a blessing," says Fitzgearld. "It's a joy to watch her grow and mature."

"I love spending time with my Big Sis!" Sabrina enthusiastically comments.

Fitzgearld works for Gruver State Bank. She is married to Curt and they have two children. Trisha is very active in her church where she teaches a Sunday school class and works with the youth group. Fitzgearld has made a determined effort to make a

positive impact in her community and in the lives of those around her.

The Volunteer of the Month Award recognizes a volunteer Big Brother/Big Sister who has connected with their Little Brother/Sister in a special way or who has gone above and beyond to establish and nurture the relationship. It is designed to communicate appreciation for the difference the volunteer is making in the life of a child. Fitzgearld is one of more than 100 volunteers who are matched with children through the BBBS school and community based programs in Perryton, Spearman, and Gruver. Anyone who is interested in learning more about the BBBS programs may call Kimberley Lopez at 434-0016 or Julie Stedje at 338-0180.

BBBS New Match



Big Brothers Big Sisters volunteer, Lisa Pipkin, was matched with a Little Sister, Pheobe, on August 18th.

Big Brothers and Big Sisters are, foremost, friends to children. As friends, they share everyday activities with their Little Brothers and Sisters like planting flowers, baking cookies, going to a ball game or just hanging out and experiencing the fun that simple moments of friendship can bring.

"The best way to understand what it means to be a Big is to think back on your own childhood," Kimberley Lopez, agency case manager, said. "Growing up, who brought a little joy into your life, who made you feel special and important? A Big Brother or Big Sister can

be that person for a kid right here in our community."

Pipkin and her Little Sister will spend an hour or two together every week. So far the match has baked zucchini bread and gone to the movies to celebrate Pheobe's birthday.

Pheobe had been matched through Bigs in Schools, the school based mentoring program of Big Brothers Big Sisters, since kindergarten. Her parents were interested in the opportunity for a community based match because they feel a Big Sister can help boost their daughter's self-confidence, give her an additional positive role model and help her discover the many things the world has to offer.

"Things are great!" her mother said about the match. "I think Pheobe calls her every day! They meet on Mondays and Pheobe looks forward to it all week. It's all she talks about!"

Pheobe described her Big Sister as nice and kind.

"She is an extremely smart little girl!" Pipkin said of her Little Sister. She is looking forward to

sharing her love of music, gardening, pets and crafts with Pheobe.

Pipkin is an aide at Spearman High School. She is married, has three grown children and is an active volunteer in her church.

There have been over 100 children matched through the school and community based programs of Big Brothers Big Sisters in Perryton, Spearman and Gruver this year. There are two Little Brothers ready to be matched in the community program in Spearman. For more information about becoming a friend to a child call 434-0016.

Big Brothers Big Sisters
Little Moments. Big Magic.




For more information on BBBS, contact Kimberley Lopez at 434-0016 or Julie Stedje at 338-0180.

IN THE BAKERY

- ACROSS**
- Wash out with solvent
 - "___ City"
 - Composer Johann
 - Return punch, especially by boxer
 - Female reproductive cell, pl.
 - Nilotic language of East Africa
 - October edition of "Vogue," e.g.
 - One in a green pod
 - Liquors from molasses
 - *Jewish Sabbath bread
 - *English muffin
 - Hitherto
 - October birthstone
 - *Food regulator
 - Mummy's home
 - Type of swimming race
 - Totes or tugs
 - Suggestive look
 - Talk in a monotone voice
 - Spanish earthen pot
 - Popular spring flower
 - Verdi's popular opera
 - Service patrons, especially on Internet

- DOWN**
- Homer's "Illiad," e.g.
 - Eye hair
 - ___ Major or ___ Minor
 - Sincerely
 - Hole for a lace
 - Short for sophomore
 - I have
 - Civil rights organization
 - Intersecting nerves or vessels
 - *Old World leavening agent
 - Please do not delay
 - *Lucky if you can have it and eat it too
 - Hush, archaic
 - Mangled, as if by a dog
 - Coral reef island
 - Player in St. Louis
 - Pointy monument
 - *Main ingredient of bread
 - Edible red seaweed
 - End of shoelace
 - Chow ___
 - Her clothes on him
 - Cuts of meat between ribs and rump
 - Empower
 - *Bakery raiser
 - *___ Lee, known for its treats
 - Risque and naughty
 - "If it don't make dollars, it don't make ___"
 - Actor Poitier
 - Hawaiian welcome
 - *Type of monster on "Sesame Street"
 - Sans-___ font
 - Even best-laid ones can go awry
 - Radar object

These games are brought to you by the Hansford County Reporter-Statesman

SUDOKU
PRESENTED BY

Where volunteering begins.

			1				7	
6	7	5	8				4	
3	4			7		6	8	
8	3	1	9		2	5		
		5				2		
		9	1		5	4	8	3
1	4		8			7	2	
9				2	4	8	5	
5				7				

CROSSWORD

1	2	3	4	5	6	7	8	9	10	11	12	
13					14			15				
16					17			18				
19					20			21	22			
23					24							
25	26	27	28		29			30	31	32	33	34
35					36			37		38		39
40					41			42		43		
44					45			46		47		
48					49			50		51		52
53					54			55		56		
57	58	59	60		61			62	63	64		
65					66	67		68				
69					70			71				
72					73			74				

PRESENTED BY

Where volunteering begins.
© 2009, StatePoint Media, Inc. answer on classified page

The Hansford County Reporter-Statesman
213 Main Street • Spearman, TX 79081
Phone - (806) 659-3434 • Fax - (806) 398-9080
www.spearmanreporter.com
reporter@spearmanreporter.com
cathysmith@valornet.com
Mon.-Thurs. 9 a.m.-12 p.m., Mon.-Wed. & 1-5 p.m.
Closed Thurs. afternoon and all day Fri., Sat. & Sun.

Gary Smith - Publisher Catherine Smith - Editor
Contributing Writers: Dorothy Hudson, Jim Derington, Merry Sparks, Cecil Biggers
Contributing Photographer: Charlie Johnson


Subscription Rates
In Hansford County - \$30.00 • Out of County - \$40.00

The Hansford County Reporter-Statesman (USPS 529660) is published weekly in Spearman, TX. Periodical postage paid in Spearman, TX. **POSTMASTER:** Send address changes to: The Hansford County Reporter-Statesman, 213 Main Street, Spearman, TX 79081.

Publication Policy
The deadline to submit news and advertising to The Hansford County Reporter-Statesman is Monday at 5 p.m. Items submitted after the deadline will be published at a later date, as time and space permit. Publication of all items is at the discretion of the editor.

Advertising
Open Display rates are \$4.00 per column inch. Classified Ads are \$6 for the first 25 words and 10¢ per word for each additional word. (Additional charge for boxed classifieds.) There is a \$1 charge per week if billed.

Member of
Gruver Chamber of Commerce
Spearman Chamber of Commerce
Texas Press Association and Panhandle Press Association



Happy Birthday!

October 8
Birthday - Harvey Atwood, Candice Casdorff, Gary Evans, Amber Gross, Wilma Holland, Tamara Seal, Letha Stewart, Kimberly Wagoner, Debbie Avila, William Jarvis, Paulina Nava, JoAnn Eaton, Bert Wofford, Maria Gonzales, Kathy Gillispie, Ella Raye Carter, Jill Hodge, Helen Sanders
Anniversary - Mike & Pat Cudd

October 9
Birthday - Angie Lopez, Tammie Osbourne, Rhonda Ward, Rosa Rojas, Shea Crawford, Jerry Hunt, Monty Black, Joe Archer Jr., Ronnie McCammond, Chris Cummings, Suellen Dahl, Liz Lopez, Joyce Johnson, Mark Matthews, Gary Flowers
Anniversary - Steve & Sheri Benton, M/M David Armes

October 10
Birthday - Matthew Brown, Jake Barkley, Kim Blevins, Steve Duncan, Jase Rudolph, Darrell Scroggs, Sherri Cook, Don McLain, Kortny Henton, Edwin Molina, Gary Flowers, Maribel Moreno, Mike Darnell, Jesse Tindell, Cason Finley, McCaully Jo Hart, Verlin Hagerman, Lyn Woolley, Toby Thomas, Kevin Kenney
Anniversary - M/M Mario Molina, M/M Darrell Messer, M/M Randy Karlin

October 11
Birthday - Marco Favela, Kadie Grotegut, Rod Holland, George C. Lowe, Jim Ratliff, Eleanor Davis, Steve Mathews, Sonny Nollner, Kathy Lou Biggs, Sara Williamson, Jimmie Harris, Jim Ladd, Eddie Largent, Daniel Gonzales, Dick Smith, Jimmie Harris, Rosa Blan, Jason Blan, Adam Ferguson
Anniversary - M/M Del Roy Gammon

October 12
Birthday - Erica Alvarez, Lee Bort, Sue Henson, Pat Holt, Jan Jarvis, Kathy Taylor, James Reed Jr., Mendy Riggins, Misty Crooks, Danny Hamilton, Cody Mauldin, Marvin Byers, Louis Nava, Jimmy Garrard, Allen Howell, Paula Clemmons, Veronica Cenicerros, Donna Taylor, Jesus Briones, Hazel Lesly
Anniversary - M/M Mack McLain, M/M Mike Yanke

October 13
Birthday - Hunter Novak, Andrea Mires, David Grotegut, Carrie Close, Burnell Kjos, Mrs. Albert Hahn, Sonny Parker, Joel Shields
Anniversary - M/M Jon Jarvis, M/M Don Evans

October 14
Birthday - Jerry Hunt, Jennifer Morris, Jeanne Swink, Crockett Tidwell, Kristi Pearson, Roy Lynn Garrard, Jesse Lyn Cowan, Jimmy Snider, Melinda Davis, Michelle Graham Foster, Kyla Nelson Sell, Bert Sheppard, Eddie Whitefield, Gilbert Salgado, Anthony Bravo, Jim Brown, Sue White, Monty George, Charline Laxson, Carlos Trejo, Adrienne Simpson, Bert Sheppard
Anniversary - M/M Bert Wofford

October 15
Birthday - Jess Wood, Jeffrey Miller, David Martin, Billy Martin, Verna Lee Shirley, Brandi Schneider, Chris Hornsby, Ann Martin, Martha Donahue, Anne Marie Pearson, Bonnie Woolan, Randy Janzen, Joe Garcia III, Allen Varnon, Betsy Holt, Irene Baker, Steve Krug, Sarah Snider
Anniversary - M/M Odell Genn, M/M Lee Nichols, M/M Mike Stedje, M/M David Miner, M/M Tim Fletcher, Paige & Bret Burgen

October 16
Birthday - Buster Davis, Troy Miller, Tammy Benton, Virginia Fowler, Sammy Graham, Lola Newcomb, Joey Avila, Landree Woodward, Julie Payne, Meghan Stork
October 17
Birthday - George B. Odom, Jackie Smith, Brad Beedy, Jeff Beedy, Carol Short, Erica Garrison, Misha Davis, Joe Paul, Oscar Ortiz, Carolyn McLeod, Jacob Burch, Sandra Soto, Hugo Villa Jr., Joyce Sparks, Debbie Jacobs, Regina Vernon, John Crawford
Anniversary - Sharon & David Swan

October 18
Birthday - Taos Weldon, Don Knox, Wilson McClellan, Jeff Hutchison, Angelica Arjona, Floyd Dean Gatlin, Chris Williamson, Elaine Swan, David Parker, Jan Howard, Marla Bullard, Courtney Baca, Kristian Faith Burke, Ramiro Morales, Mike Gift
Anniversary - M/M Dave Christian

Words from Faith & Grace



by Cecil R. Biggers, Lutheran Lay Minister

In the nineteenth week of Pentecost, we consider what it means to be a Christian as we study Amos 5: 6-7, Psalm 90: 12-17, Hebrews 4: 12-16, and Mark 10: 17-31. Amos, a herdsman and grower of sycamore fig trees, lives in a small village called Tekoa in the southern Kingdom of Judah. He is called by God to be a prophet to Israel, arrives at the city of Bethel, the King's favorite place to worship God, and brings a message of imminent judgment of the King, the politically powerful, the rich, and the religious establishment. The opening verses of Amos 5 are a funeral dirge. Yet, the message of Amos is seek the Lord and live. Israel is called to seek the Lord in a new way, not in ceremony but by action. Israel fails to heed the call of Amos.

Psalm 90 is a prayer. The Psalmist sings that our only hope for today and our only hope for strength tomorrow is in turning to God. The prayer ends, "O prosper the work of our hands." This ending is a prayer and a promise. We have limited days to serve God in this world let us learn to use these days wisely.

When we utter a word, its vibrations in the universe continue forever. God's word is living, penetrating, judging. Before the word of God we are "laid bare". This phrase literally means we are grasped by the throat. We must face our Creator, we cannot run and hide. Yet, we as baptized believers should approach the Throne of Grace boldly; not because of our merit, but because Jesus our most excellent high priest intercedes for us, sympathizes with our weakness, and allows us to receive mercy and grace.

In Mark's gospel, we see a rich young man prostrate himself in front of Jesus and ask "What must I do to inherit eternal life?" Jesus reminds him of the commandments which deal with relationships with other people. The young man says I have kept these from my youth. We are told that Jesus looks at him and loves him. Jesus says, "You lack one thing, go sell what you own, and give the money to the poor". We want to soften this teaching. Surely Jesus did not mean that we have to give up all that we have to follow him! Let us look at the young man. He has done nothing to hurt anybody. Yet, the Christian life is not lived to 'not harm anybody'; the point in living the Christian life is the good things we are doing for others. To attain the gift of eternal life requires us to surrender our whole self to Jesus. The young man went away grieving. Jesus was sorry that a young man with great potential chose to be less than he could be. The disciples are concerned that if someone as great as the young rich man cannot be saved, who can be? Jesus answered that with man it is impossible, but with God all things are possible. If our salvation depended on us, we would all be lost; thanks be to God for His grace! May the Holy Spirit prosper the work of your hands that is done in Christ's name.

Gladiola Flower Club News

July 2, 2009
 The Gladiola Flower Club met at The Bunkhouse with Norma Jean Mackie serving as hostess. The meeting was presided by Chairman Dorothy Buzzard.

Peggy Winegarner gave a program entitled "Saving Some Green by Going Green."

Roll call was answered by "State or country you've enjoyed visiting."

Minutes of the previous meeting were read and approved.

Project Chairman Estelle Jackson began the sign-up for Manor Bingo in August.

A Thank You note was read from June Jackson.

Judy Yarbrough gave a report on her project ConKerr Cancer.

Pam Schnell reported the Picnic will be held August 20th at 6:30 p.m. at First State Bank.

The flower winner was Norma Jean.

The next meeting will be hosted by Sabrina Landrum.

Members present were: Muriel Boyd, Dorothy Buzzard, Margarette Evans, Anne Flowers, Helen Holt, Estelle Jackson, June Jackson, Norma Jean Mackie, Eloise Renner, Pam Schnell, Gwen Smith and Judy Yarbrough.

July 16, 2009
 The Gladiola Flower Club met at the Methodist Church parlor, with Sabrina Landrum serving as hostess.

Chairman Dorothy Buzzard presided.

Mary VanWinkle, Massage Therapist of Ceiling, OK, presented the program.

Roll Call was answered by "My Favorite Recipe." Minutes were read and approved. Kathleen Sutton gave a treasurer's report.

Margarette Evans presented the book Herb Garden Gourmet."

The Manor Bingo list

was reviewed. Flower winner was Virginia Trindle for specimen.

The hostess for the next meeting will be Estelle Jackson.

Members present were Muriel Boyd, Dorothy Buzzard, Betty Jean Davis, Margarette Evans, June Jackson, Sabrina Landrum, Kathleen Sutton, Virginia Trindle and Judy Yarbrough.

August 6, 2009
 The Gladiola Flower Club met in the home of Estelle Jackson.

The program was given by Verna Strawn and Celia Krug.

Chairman Dorothy Buzzard presided. Roll call was answered with "Love Your Neighbor As Yourself."

Treasurer's report was given by Kathleen Sutton. Scholarship money for the first semester was sent to Sabrina Cantu (\$500).

Project Chairman Estelle Jackson continued sign-up for Manor Bingo.

Judy Yarbrough reported 190 pillow cases made for cancer patients in Amarillo hospitals.

Betty Jean presented plans for the August 20th Social.

Discussion was held on the Nut Sale. June Jackson will get the information. Home Tour was discussed. Muriel Boyd made a motion to have it November 15th.

Flower winners were: Home Grown - Muriel Boyd, Specimen - Estelle Jackson, Plant - Estelle Jackson.

Members present were: Muriel Boyd, Dorothy Buzzard, Betty Jean Davis, Margarette Evans, Ann Flowers, Helen Holt, Estelle Jackson, June Jackson, Sabrina Landrum, Gwen Smith, Kathleen Sutton, Virginia Trindle and Judy Yarbrough.

The next meeting will be the Social on August 20th at First State Bank.

MONUMENTS

Boxwell Brothers Funeral Home

519 Evans • Spearman
659-3802

Dear friends,
 When you buy a monument from us we make sure it is exactly what you want at a price you can afford. If it is not right, we will make it right. And you will not have to search the countryside to find us. We are here when you have a need.

Sincerely,
 Bob Boxwell

We will be closed on Monday
 October 12th in observance of

Columbus Day

INTERSTATE BANK, ssb

P.O. Box 947
 PERRYTON, TEXAS 79070

A Full Service Bank FDIC Insured

322 Main Street • Spearman, TX 79081
 Phone - (806) 659-2559 • Fax - (806) 659-3276

STOP LEG CRAMPS BEFORE THEY STOP YOU.

Calcet® is designed to help stop low calcium leg cramps. Just ask your pharmacist.

Helps fight leg cramps For those with milk allergies Fights osteoporosis

Mission

FREE DIRECTV'S BEST PACKAGE 5 MONTHS!

ALL 265+ DIGITAL CHANNELS!
 130+ HD CHANNELS!
 Plus HBO, Cinemax, Showtime & Starz!

With NFL Sunday Ticket Order! Here!!!

FREE DVR/HD RECEIVER UPGRADE With Choice XTRA™ and Above

Local Installations Available!

FOR DETAILS CALL DIRECTV NOW
 800-214-7110

Truck Wrecks

Trucker negligence is the major contributing factor in many fatalities nationwide. Maybe they were distracted or didn't adjust for road conditions. Maybe they were late, sleepy or did not maintain the rig. If you have been in a truck collision or other automobile collision, call us for professional insight.

Ryan A. Krebs, M.D., J.D.
 Doctor-Lawyer in Full-time Law Practice
 Richard A. Dodd, L.C.
 Timothy R. Cappolino, P.C.
 Board Certified Personal Injury-Trial Law and Civil Trial Law by the Texas Board of Legal Specialization
 NO FEE FOR FIRST VISIT
 CAMERON, TEXAS

1-800-460-0606
 www.YourCarWreck.com

Visit us at... **FAMILYPOOLFUN.COM**

- WHOLESALE PRICES on Quality Winter Pool Supplies, Pool Kits & Accessories
- DEEP DISCOUNTS on Inground Safety Covers
- SAVE MONEY on all Aboveground & Inground Mesh and Winter Covers

Call Today! **800-250-5502**

HOME PHONE SERVICE

NO Pre-Payment or Deposit Required

Rates from **\$1.99/mo.**

FREE 1st Month for ALL customers
 FREE Call Waiting and Caller ID Included**
 FREE Installation

NEWTALK
 866.934.3448

Replenish the seed of faith through . . .

DAILY BIBLE READING, PRAYER & REGULAR CHURCH ATTENDANCE

<p>Spearman</p> <p>Apostolic Faith Church 822 S. Drexler • 659-2870 Sunday School: 10 a.m. Worship Service: 11 a.m. Sun. Eve.: 6 p.m. Wed. Prayer Mtg.: 7 p.m. Pastor - Roland Haney</p> <p>First Assembly of God 401 N. Bernice • 659-2295 Sunday School: 9:30 a.m. Worship: 10:40 a.m. Evening Worship: 6 p.m. Wed. Worship: 7 p.m. Wed. Youth: 7 Pastor - Jerry Pollard</p> <p>First Christian Church (Disciples of Christ) 29 S. Bernice • 659-2036 Sunday School: 9:45 a.m. Worship: 10:50 a.m. Minister -</p> <p>First Baptist Church 123 N. Bernice • 659-5557 Sunday School: 9:45 a.m. Worship: 11 a.m. Evening Worship: 7 p.m. Men's Bible Study - Wed., 7 a.m. Children's Choir - Wed, 6 p.m. Adult Choir - Wed, 7 p.m. Wed. Bible Study: 7 p.m. Pastor - Jim Medley</p> <p>Church of Christ 121 S. Haney • 659-3244 Sunday Bible Class: 9:45 a.m. Worship: 10:30 a.m. Evening Worship: 6 p.m. Bible Study Wed.: 7:30 p.m.</p>	<p>Sacred Heart Catholic Church 901 Roland • 659-2792 Sat. Night Mass: 5:30 p.m. Sun. Mass: 9 a.m. - English Sun. Mass: 11:30 - Spanish 1:30 p.m. - Gruver - Christo Rector: Rev. Guillermo Morales</p> <p>First United Methodist 407 S. Haney • 659-5503 Sunday School: 9:45 a.m. Worship: 8:30 & 11 a.m. Jr. High Youth: 5 p.m. Sunday High School: 6 p.m. Sunday Kids Club: 3 p.m. Wed. Pastor - Neely Landrum</p> <p>Grace Presbyterian Church (Worships with Faith Lutheran Church) 1101 Bernice • 659-2033</p> <p>Faith Lutheran Church (ELCA) 1101 Bernice • 659-2252 Sunday School: 9:45 a.m. Worship: 11 a.m. (Worships with Grace Presbyterian Church) Pastor - Cecil Biggers, PLM</p> <p>Union Church 31 S. Endicott • 659-2644 Sunday School: 10:00 a.m. Worship: 11:00 a.m. Bible Study: 7 p.m. Wed. Youth Service: 6 p.m. Wed. Pastor - Don Baltazor</p> <p>Fellowship Baptist 1102 S. Archer • 659-2783 Sunday School: 10 a.m. Worship: 11 a.m. Sun. Evening Worship: 6 p.m. Sun. Evening Spanish Worship: 7 p.m. Youth/Adult Service: 7:30 Wed. Pastor - Philip Hudson</p>	<p>Primera Mision Bautista 502 E. 7th • 659-3991 Sunday School: 9:45 a.m. Worship: 11 a.m. Evening: 6 p.m. Wed. Prayer Meeting: 7 p.m. Thurs. Visitation: 7 p.m. Pastor Joe Garcia Jr.</p> <p>El Aposento Alto U.P.C.I. 1105 S. Roland Domingos: Escuela-Dominical - 10 a.m. Culto Evangelistico - 7 p.m. Jueves: Oracion - 8 p.m. Mier: Estudio Biblico - 7 p.m. Pastor - A.G. Martell (806) 659-2153</p> <p>Gruver</p> <p>First Baptist Church 402 E. Broadway • 733-2411 Sunday School: 9:45 a.m. Worship: 10:50 a.m. Disciple Training: 6 p.m. Sunday Prayer Meeting: 7:30 p.m. Wednesday Pastor - Scott Curry</p> <p>Church of Christ 209 King • 733-2760 Sunday School: 9:30 a.m. Worship: 10:20 a.m. Evening Worship: 6 p.m. Wed. Worship: 7:00 p.m. Minister - Gaylord Cook</p> <p>First Christian Church 510 King • 733-2960 Sunday School: 10:00 a.m. Sunday Worship: 11 a.m. Youth: 7:30, Sunday Adult Bible Study: 7:30, Sun. Wed. Bible Study: 8:00 p.m. Pastor - Gary Gumfroy</p>
<p>Gruver United Methodist Broadway & Garrett 733-2651 Sunday School: 9:45 a.m. Summer - 8:30 & 10:50 a.m. Eve. Worship & UMY: 6 p.m. Pastor - George Price</p> <p>Spanish Cristo Redentor Church Sunday Mass: 1:30 p.m. Friday Evening Mass Summer - 8:00 p.m. Fall/Winter - 7:30 p.m.</p>	<p>Oslo</p> <p>Oslo Lutheran Church (ELCA) 6 Miles West & 12 Miles North of Gruver 339-7646 Sunday School: 9:45 a.m. Worship: 11 a.m. Pastor - Arlen Lloyd</p>	<p>Morse</p> <p>Morse Baptist Church 733-2757 Pastor - Mike Martin</p>
<p>Waka</p> <p>Church of Christ 300 Rogers Ave. 202-7126 Sunday Worship: 6 p.m. Wednesday Bible Study: 6 p.m. Preacher - James Gordon</p>		

He has showed you, O man, what is good. And what does the LORD require of you? To act justly and to love mercy and to walk humbly with your God.

Micah 6:8

This feature is made possible through the sponsorship of these civic minded businesses:

<p>Deakin ELECTRIC</p> <p>OILFIELD • RESIDENTIAL • COMMERCIAL 321 S. MAIN • SPEARMAN 1-800-999-1506 Chris Deakin (806) 659-5016 President</p>	<p>Bartlett's Lumber & Hardware</p> <p>105 W. Broadway • Gruver, TX (806) 733-2404</p>	<p>BERRY CLEANERS</p> <p>Ann & Vernon Pipkin - Owners Phone 659-3122 • P.O. Box 1017 207 Main St. • Spearman, TX</p>	<p>Morse Implement & Auto Supply</p> <p>"Join us in church" Tom Dortch 733-2668 Box 89 • Morse, TX 79062</p>
<p>PRAIRIE MOTORS INC.</p> <p>Hwy. 207 South • P.O. Box 430 Spearman, TX 79081 • (806) 659-2541 www.prairiemotors.com</p>	<p>MurMur's Cafe</p> <p>100 Roland St Spearman, TX. 659-3580</p>	<p>Hansford County Reporter-Statesman "Proudly Serving Hansford County Since 1907" (806) 659-3434 310 Barkley • Spearman, TX</p>	<p>INTERSTATE BANK, ssb</p> <p>www.interstatebank.net 322 Main • P.O. Box 146 Spearman, TX • 659-2559</p>

H&H

FOR YOUR INFORMATION

Medical Fund for Krystal Puentes
A medical fund has been established for Krystal (Burkhamer) Puentes at First National Bank, Spearman. If you would like to make a contribution you may make a deposit with any teller or mail a donation to First National Bank, Krystal Puentes Medical Fund, PO Box 337, Spearman TX 79081.

Medical Fund for Rene Griffin
A medical fund has been established for Rene Griffin at First State Bank, Spearman. If you would like to make a contribution you may make a deposit with any teller or mail a donation to First State Bank, Rene Griffin Medical Fund, PO Box 247, Spearman TX 79081.

Medical Fund for Bruce Duncan
A medical fund has been established for Bruce Duncan at First National Bank, Spearman. If you would like to make a donation you may make a deposit with any teller or mail a donation to First National Bank, Bruce Duncan Medical Fund, PO Box 337, Spearman TX 79081.

Medical Fund for Nancy DeLuna Jernberg
A medical fund has been established for Nancy DeLuna Jernberg of Stinnett. Nancy was diagnosed with a rare malignant brain tumor and will be undergoing treatment. If you would like to make a contribution you may make a deposit with any teller or mail a donation to H&H Federal Credit Union, 104 Main Street, Stinnett TX 79083.

Rushing Wind Emmaus Community
Rushing Wind Emmaus Community will meet Saturday, October 10, at 6 p.m. at the Waka Christian Center. A potluck meal will be served followed by sponsors training and a praise and worship service. Friends and families are welcome and a nursery will be provided. RW will sponsor a men's "Walk to Emmaus" weekend on October 22-25 at the WCC.

Perryton Area Parkinson's Disease Support Group
The Perryton Area Parkinson's Disease Support Group will be meeting Friday, October 9, 2009 at the Mennonite Church, 2821 S. Ash in Perryton. Lunch will be provided for the 12:00 noon meeting. Jo Bidwell from the West Texas Parkinson's Society in Lubbock will give the program. Anyone who has PD or has a family member with it, is welcome to attend the meeting. For more information, call Bev Burger 435-0579

GISD Homecoming Schedule
A Chili Supper will be held from 5-6:30 on Friday, October 9th in the Gruver School Cafeteria. The Alumni Court, honoring the GHS classes of 2009, 1999, 1989, 1979, 1969, 1959, 1949 and 1939, will be introduced at 6:45 p.m. at the Greyhound Stadium. The crowning of the GHS Homecoming Queen and Alumni Queen will be held at 7 p.m. Kick-off for the Gruver vs. Booker Homecoming game will be at 7:30 p.m.

Spaghetti Supper
The Spearman High School is hosting a Spaghetti Supper on Tuesday, October 23th from 5-7 p.m. Tickets are \$5 for adults and \$3 for kids 5 and under, and \$6 for adults at the door. Tickets are available from any Choir member. The money raised from this fundraiser will go to benefit the Spring Choir Trip. Your support in this worthy endeavor is greatly appreciated. Following the Spaghetti Supper is a home football game against River Road. Everyone is invited to come out and show their support for the students and athletes of Spearman High School.

Going Green with 4-H
The Spearman 4-H Club will meet on Monday, October 12, 2009 from 7-8 p.m. in the Spearman County Barn. The Gruver 4-H Club will meet on Tuesday, October 13, 2009 from 7-8 p.m. in the Gruver County Barn. The topic for the meetings is "Going Green with 4-H." Don't miss this Biofuel Blast!

GHS Yard Dogs
The GHS Yard Dogs are finished and may be picked up at Kyle & Kimberly Irwin's house, 807 Cluck. Those who ordered, need to pay Greyhound Boosters \$10 upon pickup. If you did not order a Yard Dog, but would like to have one for your High School Athlete, please contact Kimberly Irwin by email: Kimberly.Irwin@region16.net or 806-733-5012.

4-H Smoked Meat Sale
4-H members across Hansford County (Spearman, Gruver & Morse) are selling smoked meats for their annual fund raising efforts. Products available include smoked & spiral hams, turkey, peppered turkey breasts, smoked or peppered bacon, beef or chicken fajitas, chicken tenders, tamales, pork patties, sausage links, pecan cobbler, chopped beef bar-b-que, little porkies Wraps, Hunters Package (pancake mix, Canadian bacon, peppered pork loin, & jalapeno cheese summer sausage) and cinnamon bread. Funds benefit the awards program, contest and recognition banquet for all 4-H members. Orders must be received by October 16th, with a delivery date before Thanksgiving. Please contact a 4-H member, or call the County Extension Office 659-4130 or 733-2901, or email hansford@ag.tamu.edu.

Stationmaster's House Museum Seeks Donations
The Stationmaster's House Museum is planning a Garage Sale on Saturday, October 17, 2009 from 8 a.m.-5 p.m. in the Museum Annex Building (30 S. Townsend, Spearman). The Museum is holding this fundraiser to raise money for operations and repairs to the existing buildings. The Museum is in need of donated items for th sale. (No clothing, please!) Donations will be accepted at the Museum during regular business hours, Tuesday-Saturday, from 1-5 p.m. For more information, contact Doris Breeden at the Museum, 659-3008.

First State Bank
will be closed
on Monday, October 12th
in observance of
Columbus Day
The Bank that has
the Tradition of
Strength and Service
One NE Court
Spearman, TX
(806) 659-5565
member FDIC

We will be closed on Monday,
October 12th in observance of
Columbus Day
Discover
Columbus Day
FN BANK
First National Bank
Spearman, Texas 79081 Dumas, Texas 79029
806-659-5544 806-934-8455
800-583-4196 866-583-4196
Member FDIC

King George Makes Journey to Springfield, MO

submitted by Dean Coates
Wednesday evening King George was bundled up for a 500 mile journey to Springfield, MO. It was kind of like he won the blue ribbon at a state fair, only better! King George is a 320 lb. 9'7" alligator who resided at the Texas Alligator Ranch in Spearman, Tx. King George was chosen to be the living species of alligators exhibited at the oldest Bass Pro Shop Outdoor World in Springfield, MO. This Bass Pro Shop has 4,000,000 people a year visit their store. They are opening a new Swamp Exhibit with King George from Spearman as the center of attention!
The King was picked for his magnificent coloring and



King George was bundled up for a 500 mile journey to Springfield, MO, where he will be the living species of alligators exhibited at the oldest Bass Pro Shop Outdoor World in Springfield, MO.



Prince George and four other alligators were rescued from an alligator farm and delivered to Spearman.

was chosen from alligators all the way from Colorado to Florida.

After delivering King George to Springfield. We traveled south to load up a Prince. Yes, Prince George, (little brother of King George) is a 6'10" gator we rescued from an alligator farm along with 4 other gators.

Thanks to Bobby Lesley for providing the transportation. It was nice and cozy for the three of us and the 5 alligators, all in his suburban! We unloaded all 5 gators Friday evening, October 2, 2009 at the Texas Alligator Ranch.

Campus
Allen Campus
News and Information
Start Here...
...Go Anywhere!

The 2009-2010 academic year began August 24th with the start of the fall semester, and it marked the beginning of the fifth year of operations at the Frank Phillips College Allen Campus. During the 2008-2009 academic year that just ended, the Allen Campus served 4,704 students and other residents of Perryton and the surrounding area. Academic classes accounted for 265 students, Continuing Education classes served 1,330 students, and Community Service classes and events made up the remaining 3,109 persons served.
In October of this year, we will be undergoing our 10-year accreditation and reaffirmation process. Every 10 years the Southern Association of Colleges and Schools (SACS) evaluates how each of its member colleges is performing. It is a very in-

depth process and is conducted to help colleges and universities become better at what they do. As part of this process they look at how well each school has developed what is known as a Quality Enhancement Plan, or QEP. A QEP must be developed as part of the accreditation process and must address an area in which the member school feels students need additional help in to be successful in college and beyond. This year, Frank Phillips College has chosen writing as the emphasis for its QEP. We are calling the plan "WRITING MATTERS."
The SACS committee will be in Perryton to assess the Allen Campus on Monday, October 5th. We are very excited to show off all that we offer here at the Northernmost Facility of Higher Education in Texas! You can become a part of this process. On October 5th, if you happen to see an FPC Allen Campus employee with a group of people you do not know, it is probably the SACS committee. If you witness this and one of the people says to you, "What is FPC's QEP?", all you need to say is... "WRITING MATTERS." The reason you might be asked is that SACS expects each college and university in their region to have communicated with the community what they are doing to support students and help them be more successful.
So remember, if you see us out on October 5th, and some total stranger comes up to you and says, "What's FPC's QEP?", all you need to answer back is... "WRITING MATTERS!"
If you would like more information on our QEP or any other information on the Allen Campus, please stop by anytime, and we will be glad to visit with you; and remember, at Frank Phillips College you can truly... START HERE... GO ANYWHERE!

See us for:
AUTO • HOME • CROP HAIL •
FARM & RANCH • MULTIPERIL •
LIVESTOCK
INSURANCE
BORT AGENCY, INC.
510 Main St. • Gruver, TX
(806) 733-2456

MESOTHELIOMA
Asbestos - Lung Cancer - Free Case Review
Mesothelioma is a form of cancer that develops in the cells in the linings of the lungs, heart and stomach. These tissues are called mesothelial cells and they become infected by inhaling dust from asbestos fibers. Mesothelioma may occur to workers that were exposed to asbestos from the 1940's through the 1980's.
If you or a loved one have been diagnosed with mesothelioma, asbestos lung or throat cancer, please call to discuss your legal rights. Filing deadlines do apply, so don't wait. Cases taken on a Contingency Fee. Call for a Free Case Consultation.
WILLIS LAW FIRM
HOUSTON, TEXAS
BOARD CERTIFIED
PERSONAL INJURY TRIAL LAWYER
Texas Board of Legal Specialization
DAVID R. WILLIS - ATTORNEY AT LAW
1-800-883-9858
www.Meso-Lawsuits.com

Celebrate
Gifts for all your celebrations!
Bridal Registry
Tessa Thoreson & Hunter Martin - T&A
Amber Ramon & Dustin King
Kristina Ortiz & Andy Jones
Blythe Finley & Aaron Boyd
Donia Henderson & Jason Varnon

Baby Registry
Heather Hamilton & Art Maestas - 10/10
Shawna & Josh Mayhew - 10/17
Alexis & Ryon Atwood - 10/17
Grandmother Shower - Linda Cummings - 10/25
Jessica Bates & Justin Estes - 11/28
Misha (Davis) & Duane Dorsey - T&A
Krystle (Deeds) & Brian Haggard
Shelby & Dusty Vinson

Celebrate
203 Main St. Spearman, TX
(806) 659-3350 1-800-663-8026

UNITED STATES POSTAL SERVICE® (All Periodicals Publications Except Requester Publications)

1. Publication Title: The Hansford County Reporter-Statesman
2. Issue Frequency: Weekly
3. Issue Date for Circulation Data Below: 10/06/09
4. Annual Subscription Price: \$42.00 - Out of County
5. Number of Issues Published Annually: 52
6. Annual Subscription Price: \$42.00 - Out of County
7. Complete Mailing Address of Known Office of Publication (Not printer) (Street, city, county, state, and ZIP+4®):
The Hansford County Reporter-Statesman
213 Main Street
Spearman, TX 79081
8. Complete Mailing Address of Headquarters or General Business Office of Publisher (Not printer):
The Hansford County Reporter-Statesman
213 Main Street
Spearman, TX 79081
9. Full Names and Complete Mailing Addresses of Publisher, Editor, and Managing Editor (Do not leave blank):
Publisher (Name and complete mailing address):
Gary Smith
213 Main Street
Spearman, TX 79081
Editor (Name and complete mailing address):
Catherine Smith
213 Main Street
Spearman, TX 79081
Managing Editor (Name and complete mailing address):
Catherine Smith
213 Main Street - Spearman, TX 79081
10. Owner (Do not leave blank. If the publication is owned by a corporation, give the name and address of the corporation immediately followed by the names and addresses of all stockholders owning or holding 1 percent or more of the total amount of stock. If not owned by a corporation, give the names and addresses of the individual owners. If owned by a partnership or other unincorporated firm, give its name and address as well as those of each individual owner. If the publication is published by a nonprofit organization, give its name and address.):
Full Name Complete Mailing Address
Gary Smith 213 Main Street - Spearman, TX 79081
Catherine Smith 213 Main Street - Spearman, TX 79081
11. Known Bondholders, Mortgagees, and Other Security Holders Owning or Holding 1 Percent or More of Total Amount of Bonds, Mortgages, or Other Securities. If none, check box:
Full Name Complete Mailing Address
12. Tax Status (For completion by nonprofit organizations authorized to mail at nonprofit rates) (Check one):
The purpose, function, and nonprofit status of this organization and the exempt status for federal income tax purposes:
 Has Not Changed During Preceding 12 Months
 Has Changed During Preceding 12 Months (Publisher must submit explanation of change with this statement)
13. Publication Title: The Hansford County Reporter-Statesman
14. Issue Date for Circulation Data Below: 10/06/09
15. Extent and Nature of Circulation
Average No. Copies Each Issue During Preceding 12 Months No. Copies of Single Issue Published Nearest to Filing Date
a. Total Number of Copies (Net press run) 1600 1600
b. Paid or Nominal Rate Outside-County Copies (Include all PS Form 3841 (Includes paid distribution above nominal rate, advertiser's proof copies, and exchange copies)) 300 285
c. Paid or Nominal Rate In-County Copies (Include all PS Form 3841 (Includes paid distribution above nominal rate, advertiser's proof copies, and exchange copies)) 410 397
d. Total Paid Distribution (Sum of 15b (1), (2), (3), and (4)) 1110 1082
e. Free or Nominal Rate Outside-County Copies (Include all PS Form 3841) 18 18
f. Free or Nominal Rate In-County Copies (Include all PS Form 3841) 7 7
g. Total Free or Nominal Rate Copies Mailed or Other Classes Through the USPS (Include all PS Form 3841) 0 0
h. Total Free or Nominal Rate Distribution Outside the Mail (Carriers or other means) 80 80
i. Total Free or Nominal Rate Distribution (Sum of 15e (1), (2), (3), (4) and (6)) 105 105
j. Total Distribution (Sum of 15d and 15i) 1215 1187
k. Copies Not Distributed (See Instructions to Publishers on page #30) 385 413
l. Total (Sum of 15j and 15k) 1600 1600
m. Paid or Nominal Rate (PS Form 3841) 92% 91%
n. Free or Nominal Rate (PS Form 3841) 8% 9%
16. Publication of Statement of Ownership:
 If the publication is a general publication, publication of this statement is required. Will be printed in the 10/06/09 issue of this publication. Publication not required.
17. Signature and Title of Editor, Publisher, Business Manager, or Owner: Catherine Smith 10/06/09
I certify that all information furnished on this form is true and complete. I understand that anyone who furnishes false or misleading information on this form or who omits material or information requested on the form may be subject to criminal sanctions (including fines and imprisonment) and/or civil sanctions (including civil penalties).

Uniquely Yours...





Hours: M-S 9-8 • Sun 1-6
118 NW 4th St • 338.3332
Guymon, OK

Brighton. Your Day

Men's, Women's, and Kid's Clothing

a
CHARMED
life...



Larry Love Named Artist of the Year for 2009 by Pampa Art Association

Larry Love was named Artist of the Year for 2009 by the Pampa Art Association.

An art show featuring the artwork of Larry Love and a reception will be held November 8th at 2 p.m. in the White Deer Land Museum, located at 116 S. Cuyler in Pampa. The art exhibit will continue through the month of November.

He retired in January of 2007, and spends a lot of time painting (oils, acrylics, water colors) and drawing (pencil and colored pencil). His artwork will be priced to sell at the showing, and he also does painting for consignment.

Larry placed 2nd with "The Red Bull" and honorable Mention with "By the Water's Edge" in drawing category, and an Honorable Mention with his acrylic painting of "The Big One" at the Amarillo Art Association Spring Contest in May 2009.

Larry is the son of Lilly Love of Spearman, and the late Aaron Love. He was a member of the 1965 Spearman Senior Class, and lives in Pampa.



Larry painted this picture of Laura, his granddaughter, who lives in Maine, in 2008. He sent the painting to his daughter and her husband for Christmas last year. (It will not be on display during the art show.)



Larry Love is pictured below with his drawings at the Amarillo Art Association Spring Contest. Below left is his acrylic painting of "The Big One."

Alternative Energy Institute to Host Windy Land Owners Seminar

Wind energy and its many possibilities will be the topic of a Windy Land Owners Seminar Saturday, Oct. 17 at West Texas A&M University.

The Alternative Energy Institute (AEI) at WTAMU will host the half-day seminar in Room 101 of the Agriculture and Natural Sciences Building on campus. Registration begins at 12:30 p.m., and the day's program will focus on wind energy basics and the steps and considerations needed to develop a wind farm.

Seminar speakers include windy land owner Mac Etheredge, who will share his experiences from the resource assessment to project completion of his own wind farm. Brad Christopher, a wind farm supervisor, will explain what a working wind farm means to landowners and its expected benefits. Other

speakers scheduled for the seminar are Dr. Vaughn Nelson, director of AEI, Ken Starcher, assistant director of AEI training, education and outreach, and David Carr, assistant director of AEI testing and resource assessment.

"Everyone has questions about wind energy so we have pulled together some great speakers and interesting topics to get the answers people need," Starcher said. "It's just a half-day seminar, but the information will definitely be beneficial to all who attend."

A schedule of the seminar and a registration form can be found at www.windenergy.org/wlo. Seating is limited to the first 150 paid attendees. Cost of the seminar is \$30 for those who pre-register online or \$40 at the door to cover handout and reference materials. Beverages

will be provided.

The Alternative Energy Institute was established at WTAMU in 1977 as an outgrowth of wind energy research begun in 1970. AEI's mission is to conduct research and development in the use of alternative sources of energy including wind, solar and biomass. AEI's program includes data collection, research and feasibility studies, developing and testing prototype systems, establishing a center for collection and distribution of information and education of students and others through research, seminars and courses.

For more information about AEI or the upcoming seminar, call 806-651-2295 or visit www.windenergy.org/wlo for the agenda and online registration.

Scottish Celtic Heritage Society Concert and Dinner

The Scottish Celtic Heritage Society is hosting an evening with Sara Grey and Kieron Means.

The High Plains Scottish Heritage Society and the League of Celtic Nations have merged and formed the Scottish Celtic Heritage Society having a larger but more efficient organization with 501(3)c status. We are looking forward to serving the public with many events and lots of fun.

To kick off the Society, we are bringing you the music of Sara Grey and Kieron Means on Tuesday, October 13th at the Ambassador Hotel in Amarillo. The Cash Bar and Silent Auction will be from 6:30-7:15 p.m., followed

by dinner at 7:15. The concert will begin at 8 p.m. The cost is \$25 per person. Advance tickets only may be purchased by October 7th. For more information, contact Don Jackson, 806-355-6493, jjackson@sbcglobal.net, or Lillian Cooksey, 806-733-2786, lilliancooksey@hotmail.com

The dinner will be a traditional Celtic fare so plan on attending for a new and different experience. There will be a silent auction, raf-

fle drawings and door prizes awarded.

The SCHS meets monthly on the third Friday at 7 p.m. in the St. Luke Presbyterian Church Fellowship Hall. We have a dinner and a program ranging from films on Scotland to live entertainment. These meetings are open to everyone. We love having visitors and enjoy getting to know you. Please feel free to join us at one of our events.

Zero down!

plus 100% financing and no payments for 6 months! Quality, custom-built homes on your land... you're practically home free! Now with 14 Sales Offices in Texas.

United-Bilt Homes
800.756.2506

Ask about our NEW E-Subscriptions!
reporter@spearman-reporter.com
806-659-3434

ATTENTION FARMERS

WANTED:
COTTON TO PICK
3-6 ROW JD PICKERS

CALL
JOHNNY PORCH 731-432-9124
GRANT PORCH 731-432-9123
MATT PORCH 731-432-9125
WES PORCH 731-432-0871

LOWER CHEM & GIN COST
BETTER GIN TURNOUT

4.15% CD 1 Year CD
FDIC Insured

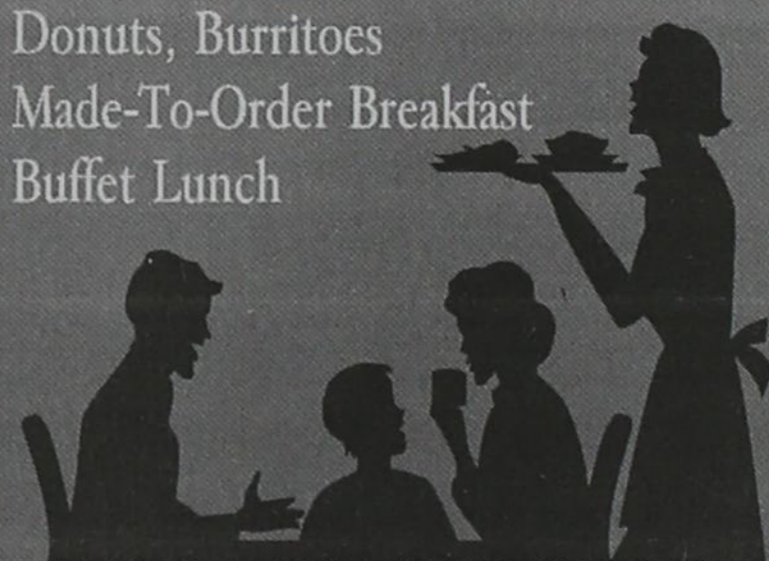
Act Now Rate Won't Last Long!

FIRST FIDELITY
Financial Group, LLC
Your Safe Money Solution
1-800-371-9201
By appointment only
1800 Washington, Suite 110 - Amarillo, TX

806-659-2224

Jeanie's Cafe & Donuts

Donuts, Burritos
Made-To-Order Breakfast
Buffet Lunch



417 Hwy. 207 S.
Spearman TX
(806) 330-0676

Hours:
4 a.m. to
2 p.m.
Daily

Palace Theatre

MOVIE SHOW TIMES
Friday-Thursday - 7 p.m.
Sunday - 2 p.m.
Closed Sunday Night

FRESH POPCORN & DRINKS!
PARTY ROOM & ARCADE
MOVIE RENTALS

Palace Theatre
210 Main Street
Canadian TX 79014
806-323-5133
www.palacetheatre.com

The Palace Theatre meets Lucasfilm THX specifications for site and sound quality.

Claire is One Happy Camper

...now that she's saving money with her services on ONE BILL in a myCustom Pak!

Dependable home phone service
Up to 6 MB secure Internet
Digital TV with HD/DVR
Local Support
ONE LOW PRICE!



721 W 7th in Spearman
800-562-2556
www.ptci.net
Some restrictions may apply.



PTCI
Communication & Broadband Solutions

School News

Lynxettes Claim 2nd at McNeil Invitational

The Spearman Lynxettes finished 2nd in the McNeil Invitational (1-3A Division) in Round Rock on Saturday, October 3rd out of 36 teams. The Lynxettes had a team total of 151, behind Antonian College Prep with a team total of 111. The average time for Antonian College Prep was 12:32.64, and 12:43.42 for Spearman. East Bernard took third place with a team total of 236 and an average time of 12:52.01.

Tylo Farrar, a Sophomore, led the Lynxettes in 13th place with a time of 12:23.84. She was followed by Suttan Garnett, Senior, 20th, 12:31.28; Gately Garnett, Sophomore, 26th, 12:43.68; Sarah Snider, Sophomore, 42nd, 12:57.04; Shelby Hanna, Sophomore, 50th, 13:01.26; Leanna Espinosa, Senior, 91st, 13:28.22; Kylee Hegstrom, Freshman, 103rd, 13:36.47; Malory Martin, Sophomore, 13:58.91; Cynthia Mendoza, Freshman, 13:59.35; and Kyla Walker, Sophomore, 14:19.57.

Tylo Farrar was named to the Amarillo Globe-News Athlete of the Week Honorable Mention on Tuesday, October 6, 2009 for her 13th place finish at the McNeil Invitational.

The Spearman JV Girls, Varsity Boys and Jr. High Boys and Girls Cross Country teams competed in the Canadian Cross Country meet on Saturday, October 3, 2009.

The JV Girls finished in second place with the following individual placings: Itzel Meza, 1st place medalist with a time of 13:12; Preslee Baker, 3rd, 13:39; Erynn Saenz, 8th, 13:50; Rosa Ortiz, 20th, 14:46; Whitney Maestas, 28th, 15:19; Andi Scarborough, 49th, 16:52; and Allysa Comp, 41st, 16:12.

Devil Sibley was the only Varsity Boy runner, and he finished 7th with a time of 17:39.

The Jr. High Lynxettes finished third with a score of 87 behind Borger (65) and Canadian (72).

Slade Garnett led the Lynxettes in 8th place.

The Jr. High Boys finished in 2nd place with 52 points behind Pampa with 44.

Peyton Garnett led the Lynx in 9th place.

The Spearman High School Cross Country teams will be running in Canyon this weekend, and then at West Texas A&M University on the 17th.

The Jr. High will not compete this week.

October 26th is the District Cross Country Meet at Palo Duro Lake. Times are: JV Girls - 2 p.m., JV Boys - 2:30 p.m., Varsity Girls - 3 p.m., Varsity Boys - 3:30 p.m., Jr. High Girls - 4 p.m., and Jr. High Boys 4:30.

Lynx Defeat Hornets 35-6

Jace Lang-Swan rushed for 119 yards on 20 carries to lead the Spearman Lynx (2-3) to a 35-6 home win against the Tulia Hornets (0-5).

The sophomore ran in Spearman's first two touchdowns in the first quarter, while senior quarterback Blayne Schroeder ran in another in the third and threw the final touchdown to junior running back Cameron Meddock, who also had a rushing touchdown.

Lynx kicker Francisco Comacho was perfect on the night with five extra points.

The Spearman 7th Grade Lynx tied Tulia with a score of 6-6.

The Spearman 8th Grade Lynx lost 8-35 against Tulia.

The Spearman JV Lynx defeated Tulia 22-6.

The Spearman 7th Grade will play at Highland Park at 5 p.m. on Thursday, the 8th Grade will lay at 6:15, and the JV will play at 7:30.

The Varsity Lynx will play at Highland Park on October 9, 2009 at 7:30 p.m.

	TH	SL
First Downs	14	24
Rushing Yards	79	270
Passing Yards	118	112
Total Yards	197	382
Comp-Att-INT	11-28-2	6-11-0
Punts-Avg.	4-34	1-63
Fumbles-Lost	3-1	3-2
Penalties-Yards	4-25	11-75

Class 3A-2A Statistics

Team Offense: 9th - Spearman: Rushing - 508, Passing - 200, Total - 708, Average - 177.0

Team Defense: 2nd - Spearman: rushing -861, Passing - 67, Total - 928, Average - 232.0

Individual Rushing: 10th - Meddock - 241 Yards, 1 Touchdown

Individual Passing: 9th - Schroeder - 21-67-5 C-A-I, 194 Yards, 1 Touchdown

Amarillo Globe-News Player of the Week

Jace Lang-Swan was named the Amarillo Globe-News 3A-2A Player of the Week on Wednesday, October 7, 2009.

Jace is a running back/defensive back for the Spearman Lynx.

Jace, a sophomore, scored the Lynx's first two TDs on runs of 18 and 5 yards in the opening quarter in a 35-6 victory against Tulia. He carried 20 times for 119 yards as Spearman won its second game.

"Going into the season, Jace was really our third tailback," head coach Steve Rodman said. "But because of injuries, we have had to use him at running back as well as in the secondary on defense. He played some two weeks ago at tailback but against Tulia started for the first time. Needless to say he has been a pleasant surprise for us there. He ran hard and got a lot of extra yards on second and third effort. He has also played defensive end and is our backup quarterback."

Cameron Meddock was named to the Amarillo Globe-News Player of the Week Honorable Mention on Wednesday, October 7, 2009.

Greyhounds Fall to Wolverines

Gruver (1-4) lost 21-12 at Texico, N.M., (5-0) despite a 153-yard rushing performance on 21 carries from sophomore running back Jerrod Collier.

Collier scored one of Gruver's two touchdowns on the ground. The Greyhounds were shut out in the second half after gaining a 12-7 lead by halftime.

Jerrod Collier carried 21 times for 148 yards and a touchdown, intercepted a pass, and made 13 tackles in Gruver's 21-12 loss to the Wolverines. He was named to the Amarillo Globe-News Athlete of the Week Honorable Mention on Wednesday, October 7, 2009.

Tyler Wills and Colton Moffett both had 14 tackles each from their linebacker positions. Cory Graves had 2 fumble recoveries and 8 tackles. Safeties, Jerrod Collier and Parker Grotegut, both had over 12 tackles each.

The 7th grade team increased its record to 4-0 on the season with a 32-0 victory over Canadian. Jacob Collier scored 3 TDs and Carson Williams scored the other.

The 8th grade team continues to improve every week. The 8th graders lost to a much bigger Canadian team 36-20. Victor Serano scored 2 TDs on the night, and Manuel Borunda added a TD of his own.

The JV team beat the West Texas Comanches during the open week. Cole Wills and Lupe Pena both scored in the win.

The 7th & 8th Grade teams (combined) will play Booker at 5 p.m. on Thursday. The JV will not play this week.

The Greyhounds next take on the Booker Kiowas in their first district game of the year, which is also Homecoming. The Hounds should be ready for district play after playing 4 teams ranked in the top 30 during non-district play.

	GG	TW
First Downs	13	13
Rushing Yards	149	239

Passing Yards	61	19
Total Yards	210	258
Comp-Att-INT	10-19-2	3-7-2
Punts-Avg.	5-31.4	4-29.75
Fumbles-Lost	3-2	4-3
Penalties-Yards	7-65	6-52

Passing - 501, Total - 991, and Average - 247.7

Individual Rushing: 10th - Collier - 286 Yards, 1 Touchdown

Individual Passing: 6th - Thoreson - 41-86-6 C-A-I, 288 Yards, 1 Touchdown

Individual Receiving: 4th - Urban - 311 Yards

SHS Students of the Month

The September Students of the Month at Spearman High School are seniors, Preslee Baker and Tate Batton.



Preslee is the daughter of Bart and Rhonda Baker. She has one older brother, Blayne Baker, and one younger sister, Baylee Baker. Preslee is a member of the Spearman Lynxette Cross Country team, cheerleading squad, track, and tennis teams, National Honor Society, Student Council, and is currently serving as the secretary/treasurer for the senior class. Preslee was a team member on the 2007 State Runner-Up cross country team, and the 2008 State Championship cross country team. She has been named academic All-District in cross country and track for three years, received the US History Top Student of the Year award, was named head cheerleader, and most recently, was named the 2009 Spearman High School football homecoming queen. In her spare time, Preslee loves to swim, shop, watch football, text, drive the combine for her Papa, and make road trips with her friends. Her future plans include attending West Texas A&M University and majoring in pre-pharmacy. Preslee states the best thing about Spearman is, "you can get anywhere in less than three minutes." The best thing about Spearman High School is, "Block Schedule and Mr. Kern's Spanish class!" Preslee's most influential teachers during her school years are Ms. Sandra Blankenship, Mrs. Sandee Smith, and Mrs. Linda Wilkerson.

Tate is the son of Stephen and Tammy Kay Batton. He has one younger sister, Lexi Batton. Tate is active in 4-H, FFA, National Honor Society, currently serving as treasurer, Junior Class Student Council representative, Varsity boys cross country, basketball, track, and tennis. Tate has been named Honorable Mention All-District in basketball in 11th grade, received the Greenhand Award in FFA, and has been named Academic All-District for two years in basketball, tennis, and track. In his spare time, Tate likes basketball, high-jumping, tennis, Swim Team, farming, and ranching. Tate plans on graduating from Spearman High School as an honor student. He would also like to play basketball in college. He plans on attending college at Oklahoma State University and majoring in veterinary medicine. Tate states the best thing about Spearman is, "It is a small community that cares about and supports the youth." Tate says the best thing about Spearman High School is, "It's a small school where you know everyone." Tate's most influential teachers during his school years are Mrs. Mollie Holton, Mr. Scott Stejle, and Mr. Richard Trantham.

Congratulations to Preslee and Tate on being named the Spearman High School September Students of the Month.

NOTICE OF PUBLIC MEETING TO DISCUSS

GRUVER ISD

STATE FINANCIAL ACCOUNTABILITY RATING

The Gruver Independent School District will hold a public meeting on October 19, 2009 at 6:45 p.m. in the Gruver High School Library, 601 Garrett Street, Gruver. The purpose of this meeting is to discuss the school district's performance under each of the 21 indicators of the Financial Integrity Rating System of Texas (FIRST). Public participation in the discussion is invited.

The FIRST ratings are based upon analysis of staff and student data reported for the 2008-2009 school year, and budgetary and actual financial data for the 2009 fiscal year (ending August 31, 2009). The FIRST rating system was developed by the Texas Education Agency in response to Senate Bill 875 of the 76th Texas Legislature in 1999. The primary goal of the FIRST is to achieve quality performance in the management of the school district's financial resources.

PUBLIC HEARING

Date: October 19, 2009
Time: 6:45 p.m.
Location: Gruver High School Library
 601 Garrett St., Gruver
Subject: Financial Accountability Rating

NOTICE OF PUBLIC MEETING TO DISCUSS

PRINGLE-MORSE CISD

STATE FINANCIAL ACCOUNTABILITY RATING

The Pringle-Morse Consolidated Independent School District will hold a public meeting on October 15, 2009 at 7:00 p.m. in the Pringle-Morse CISD Boardroom, 100 Fifth Street, Morse. The purpose of this meeting is to discuss the school district's performance under each of the 21 indicators of the Financial Integrity Rating System of Texas (FIRST). Public participation in the discussion is invited.

The FIRST ratings are based upon analysis of staff and student data reported for the 2008-2009 school year, and budgetary and actual financial data for the 2009 fiscal year (ending August 31, 2009). The FIRST rating system was developed by the Texas Education Agency in response to Senate Bill 875 of the 76th Texas Legislature in 1999. The primary goal of the FIRST is to achieve quality performance in the management of the school district's financial resources.

PUBLIC HEARING

Date: October 15, 2009
Time: 7:00 p.m.
Location: Pringle-Morse CISD Boardroom
 100 Fifth Street, Morse
Subject: Financial Accountability Rating

REAL ESTATE

FOR SALE OR RENT: 1108 Drensen, Spearman. 1400 sq. ft. 3BR, 1B, bonus room for office or 4th bedroom! Two outdoor storage buildings, underground tornado shelter and carport. Nice Brick home. Must see! **Reduced to \$64,500. Rent for \$600/month.** 806-330-1179 or 806-330-1180 after 4 p.m. (3/9/10/09)

FOR LEASE: Available Soon - 2 Bedroom Apartment, \$400.00 month, water paid, NO PETS! Call Larry O'Neal at 405-285-8782 or 580-819-0007. TFN(6/25/09)B

WINDMILL COURTYARD APARTMENTS: Available August!! 4 - 2 bedroom / 1 bath unfurnished apartments. Central heat and Air. All units include new appliances. Pets are allowed with additional deposit. Utilities are not included. \$500/month rent with a \$500 deposit. Inquire about applications at Deakin Electric 321 Main St. Spearman. TFN(7/16/09)B

HELP WANTED

HELP WANTED: Panhandle Health Care, Inc. is seeking applicants for the following position: home health FT LVN for Spearman and surrounding area. For more information, or to apply, please call our office at (806) 659-3110. 2(10/1/09)B

HELP WANTED: Morse Implement and Auto Supply, located in Morse, is seeking help for tire repair and auto mechanics. Tools provided. Good starting salary and working conditions. Call 733-2668 for Tom or Gary to make application. 4(10/08/09)B

HELP WANTED: First State Bank, Spearman, has full time positions open for a Teller. Applicant must have a high school diploma or equivalent, typing and some ten-key skills required, customer relation and telephone skills are very important. Computer skills in word-processing and spreadsheets is helpful but not required. Benefit program includes group hospitalization insurance, retirement, vacation pay, sick leave pay and holiday pay. Apply with Ginger Turner at First State Bank, PO Box 247, Spearman, TX. 79081, telephone #(806) 659-5565. An Equal Opportunity Employer. TFN(9/3/09)B

HELP WANTED: Experienced Automotive Technician. Must have own tools. Good working environment. Paid Holidays. Call Prairie Motors at 659-2541, ask for Mike. 4(9/10/09)B

SERVICES

PUMPKINS! Wieck's Maze & Pumpkins - Walk-through maze is open daily through November 1st. Mon.-Thurs., 9 a.m.-7 p.m., Fri. 9 a.m.-8 p.m., Sat. 10 a.m.-8 p.m., Sun. 1-7 p.m. For directions, call 806-922-3720. www.wiecksmazeandpumpkins.com 1(10/8/09)

HOOCHY POOCHY PARLOR Call us for all your pet's grooming and boarding needs. Call now for reservations! 806-273-2724. TFN(11/2/07)

PUBLIC NOTICE

NOTICE TO CONTRACTORS OF PROPOSED TEXAS DEPARTMENT OF TRANSPORTATION (TxDOT) CONTRACTS
Sealed proposals for contracts listed below will be received by TxDOT until the date(s) shown below, and then publicly read.
CONSTRUCTION/ MAINTENANCE/BUILDING FACILITIES CONTRACT(S)
Dist/Div: Amarillo
Contract 6199-70-001 for CLEANING AND SWEEPING HIGHWAYS IN HANSFORD County, etc will be opened on October 28, 2009 at 2:00 pm at the District Office for an estimate of \$200,000.00.

Plans and specifications are available for inspection, along with bidding proposals, and applications for the TxDOT Prequalified Contractor's list, at the applicable State and/or Dist/Div Offices listed below. If applicable, bidders must submit prequalification information to TxDOT at least 10 days prior to the bid date to be eligible to bid on a project. Pre-qualification materials may be requested from the State Office listed below. Plans for the above contract(s) are available from TxDOT's website at www.txdot.gov and from reproduction companies at the expense of the contractor.
NPO: 30791

State Office Constr/Maint. Division
hchd
Hansford County Hospital District
Openings at Hansford Hospital
RN: 7pm-7am. Graduate of an accredited School of Professional Nursing. Currently licensed in the State of Texas. BCLS, ACLS and TNCC preferred. CPR required.
Openings at Family Medical Clinic
LVN: Graduate of an approved LPN/LVN program. Provide general nursing care to patients in clinical setting.
Openings at Hansford Manor
LVN: Graduate of an approved LPN/LVN program. Must be able to make independent decisions when circumstances warrant. Must possess the ability to deal tactfully with residents, family and public.
Medication Aide: MA certification required. Must be able to provide assigned residents with routine daily nursing and services in accordance with the resident's assessment and care plan, and as may be directed by your supervisor.
CNA: CNA certification required. Must be able to provide assigned residents with routine daily nursing and services in accordance with the resident's assessment and care plan, and as may be directed by your supervisor.
Great working environment and staff, quality facility providing opportunities for professional growth. Great benefit package. Apply at 707 S. Roland, Spearman, TX or contact Jackie Nelson at 806-659-5841. Download application at www.hchd.net
EEOE (10-8-09)B

200 E. Riverside Dr. Austin, TX 78704 Phone: 512-416-2540

Dist/Div Office(s) Amarillo District District Engineer
5715 Canyon Dr Amarillo, TX 79105-2708 Phone: 806-356-3283

Minimum wage rates are set out in bidding documents and the rates will be part of the contract. TxDOT ensures that bidders will not be discriminated against on the grounds of race, color, sex, or national origin.
2(10/01/09)B

NOTICE TO CONTRACTORS OF PROPOSED TEXAS DEPARTMENT OF TRANSPORTATION (TxDOT) CONTRACTS
Sealed proposals for contracts listed below will be received by TxDOT until the date(s) shown below, and then publicly read.
CONSTRUCTION/ MAINTENANCE/BUILDING FACILITIES CONTRACT(S)
Dist/Div: Amarillo
Contract 0030-06-053 for SEAL COAT in HEMPHILL County, etc will be opened on October 21, 2009 at 1:00 pm at the State Office.

Plans and specifications are available for inspection, along with bidding proposals, and applications for the TxDOT Prequalified Contractor's list, at the applicable State and/or Dist/Div Offices listed below. If applicable, bidders must submit prequalification information to TxDOT at least 10 days prior to the bid date to be eligible to bid on a project. Pre-qualification materials may be requested from the State Office listed below. Plans for the above contract(s) are available from TxDOT's website at www.txdot.gov and from reproduction companies at the expense of the contractor.
NPO: 30720

State Office Constr/Maint. Division
200 E. Riverside Dr. Austin, TX 78704 Phone: 512-416-2540

Dist/Div Office(s) Amarillo District District Engineer
5715 Canyon Dr Amarillo, TX 79105-2708 Phone: 806-356-3283

Minimum wage rates are set out in bidding documents and the rates will be part of the contract. TxDOT ensures that bidders will not be discriminated against on the grounds of race, color, sex, or national origin.
2(10/01/09)B

NO. P02580
In the Matter of the Estate Of Sammy D. Jones, Deceased
In the County Court In and For Hansford County, Texas
NOTICE TO CREDITORS
Notice is hereby given that original Letters Testamentary upon the Estate of SAMMY D. JONES, Deceased, were issued to October 1, 2009, in Cause No. P02580, pending in the County Court of Hansford County, Texas, to:

EDRIE M. JONES
The residence of such Independent Executrix is Hansford County, Texas. The address for purposes of presenting claims is:
1101 South Archer Spearman TX 79081
All persons having claims against this Estate which is currently being administered are required to present them within the time and in the manner prescribed by law.
DATED this the 2nd day of October, 2009.
CRAIG, TERRILL, HALE & GRANTHAM, L.L.P.
PO BOX 1979
LUBBOCK TX 79408-1979
Phone: (806) 744-3232
Fax: (806) 744-2211
By: BENNETT G. COOK
State Bar No. 04721600

HOLLY HASELOFF
State Bar I.D. No. 24044199
1(10/8/09)B

PUBLIC NOTICE
Notice is hereby given that on October 5, 2009, there was filed with the Federal Communications Commission in Washington, D.C. an application by Amarillo Junior College District for a new Digital TV Translator Broadcast Station to operate on Channel 36 and to serve Gruver, Texas. The transmitter site is located at Gruver, Texas, and the proposed transmitter power is 420 watts.
1(10/8/09)B



FOR SALE: 08 Milan 1-4 Premier 22094 miles, Leather Black interior, Silver Exterior. Call 580-461-7164.

Quality Seed Wheat available at
Stratford Grain Co.
806-396-5541

MITCHELL THEATRES
NORTHBRIDGE CINEMA
Guymon, Oklahoma

FRESH POPCORN EVERYDAY!
-PARTY ROOM & ARCADE-
Call for Show Times
580-338-3281
www.northridge8.com

MARTIN & ASSOCIATES REALTY
Serving Hansford County for 15 years
Julie Martin: Broker - 659-2425
PRICE REDUCED ON BOTH 804 & 806 Wilbanks
New Construction. Call for your private showing!
We'd Like Your Listing!
FOR QUALITY & SERVICE CALL US TODAY!
Equal Housing Opportunity

Shirley Howard
We NEED listings!
Call us now to help YOU sell your home for top dollar!

1030 Townsend - Spearman: 3 bed, 1 3/4 bath, 1600 sq. ft. CACH, 1 carport, Corner Lot, VENT Nice!
501 Barkley - Spearman: 2,490sf, 3-4 BR, 1 3/4 B, CACH, 2 att gar, includes 700 sq ft basement, plus wood shop! VERY modern and updated!
902 9th - Gruver: Horse Stables FOR SALE! 18 pens, circular training pen, arena, & 4500 sf barn on 10.42 acres!
712 Womble - Gruver: 1070sf, 3 BR, 1 B, Central Heat, Lrg Corner Lot!

Shirley Howard, Broker/Owner
806-886-6536, Cell
Melinda McCullough, Realtor
(806) 733-5678

We would LOVE to sell your HOUSE!
CALL US!

Blankenship Real Estate
659-3052 - 670-3774

4BR/2B/2CG Home - Basement, pool, central H/A, fireplace

4BR/3B Home - 3 living areas, carpet & flooring, storm shelter.

3BR/2B Home - 1500 sq. ft, brick, 2CG, patio, walk-in closets

3BR/2B Home - 1460 sq. ft, patio, walk-in closets.

NEW LISTINGS WANTED!
Eulalia Blankenship - Sales
Eschol Blankenship - Broker

HARTLEY CO., TX - 640 ac., 10 miles to Hilmar Cheese plant, on pvmt, dairy permit, 3 pivots, home, barn, grain storage.

HANSFORD CO - 640 acres, approx. 1/2 dryland 1/2 breaks of Coldwater Creek, pavement

HANSFORD CO - 2 1/2 miles from town, on pvmt., 640 acres, choice land, 1/2 mile sprinkler, excellent location for dairy.

READY TO RANCH & DEVELOP (wind energy, comm., res.) Potter Co., TX - 4872.8 acres of beautiful ranch country four miles north of loop 335, Amarillo, TX, pvmt. on four sides (3 mi. - hwy 287, 1 mi. - Westerm St., 1 mi. - Givens Rd., 1 mi. - Rivera Park Rd.) Well watered by pumps powered by solar energy (state of the art) and windmills. Deer, quail & dove. Talk to us about dividing (640 ac. min.).

OCHILTREE CO - Choice dairy location, strong water area, three phase electricity, 776.5 acres more or less of choice land (Pullman Clay Loam - almost all "A" slope) with two pivot points for sprinklers, two irrigation wells, preconditioning pens with indoor working area, grain, hay and fuel storage.

OCEANS OF WATER II - Hansford Co., Texas - 4 sections, strong water, dev. with sprinklers, wells, feedyard, home, barns, pvmt., 2 mi. hwy. frontage.

SEE OUR WEBSITE OR CALL US!
www.scottlandcompany.com
Shawn Gillispie 806/922-5532
Ben G. Scott, Broker
1-800-933-9698 day/eve
TFN(7-30-09)

State Office Constr/Maint. Division

hchd
Hansford County Hospital District
Openings at Hansford Hospital

RN: 7pm-7am. Graduate of an accredited School of Professional Nursing. Currently licensed in the State of Texas. BCLS, ACLS and TNCC preferred. CPR required.

Openings at Family Medical Clinic
LVN: Graduate of an approved LPN/LVN program. Provide general nursing care to patients in clinical setting.

Openings at Hansford Manor
LVN: Graduate of an approved LPN/LVN program. Must be able to make independent decisions when circumstances warrant. Must possess the ability to deal tactfully with residents, family and public.

Medication Aide: MA certification required. Must be able to provide assigned residents with routine daily nursing and services in accordance with the resident's assessment and care plan, and as may be directed by your supervisor.

CNA: CNA certification required. Must be able to provide assigned residents with routine daily nursing and services in accordance with the resident's assessment and care plan, and as may be directed by your supervisor.

Great working environment and staff, quality facility providing opportunities for professional growth. Great benefit package. Apply at 707 S. Roland, Spearman, TX or contact Jackie Nelson at 806-659-5841. Download application at www.hchd.net
EEOE (10-8-09)B

ELUTE	SIN	BACH	2	9	8	4	1	6	3	5	7
PARRY	OVA	MASAI	6	1	7	5	8	3	9	2	4
ISSUE	PEA	ARAKS	3	5	4	2	9	7	1	6	8
CHALLAH	CRUMPET	YET	8	3	1	9	4	2	5	7	6
FDA	TOMB	MEDLEY	4	6	5	7	3	8	2	9	1
LUGS	LEER	DRONE	7	2	9	1	6	5	4	8	3
OLLA	LILAC	AIDA	1	4	6	8	5	9	7	3	2
USERS	NICE	GNUS	9	7	3	6	2	4	8	1	5
RETAIL	SYNC	SET	5	8	2	3	7	1	6	4	9
BROWNIE	RUB	KASHA									
ITALY	IRE	INKER									
PELT	FIX	ESSEN									

Annual Community Health Fair

Thursday October 15, 2009 7:00 a.m. -- 1:00 p.m.
The O=Loughlin Center 502 S. Brandt, Spearman TX

Flu Shot \$20.00
Bring your Medicare Card
We will bill Medicare for the flu shot.

Screening Lab Tests (at Greatly Reduced Prices!)

Fasting for 10 hours prior to test is recommended. We can accept cash or check for payment of blood work. Results will be mailed to the patient.

Thyroid Panel	Thyroid Function
Lipid Profile	Cholesterol Level, Cardiac Risk Profile The identification and treatment of individuals who may be at risk for heart disease at an earlier age offers the possibility to prevent or delay the progression of the disease.
Prostate Specific Antigen (PSA)	Prostate Health
Comprehensive Metabolic Profile	Screens for Several Diseases, Including Diabetes
Complete Blood Count (CBC)	Screens for Many Conditions, Including Anemia and Infection

Health Fair Price
Men \$45.00 Women \$35.00

In addition to flu shots and laboratory tests, there will be opportunities to talk with Hansford County Hospital District Healthcare Providers, As well as many providers of health-related services in the area.

Coffee Memorial Blood center will be here taking your blood donation
Co-sponsored by

hchd
Hansford County Hospital District
and

GOLDEN SPREAD SENIOR CITIZENS CENTER
PRE-REGISTRATION - 806-659-5833

TEXAS STATEWIDE CLASSIFIED ADVERTISING NETWORK
TexSCAN

TexSCAN Week of October 4, 2009

AUTOS
\$500! POLICE IMPOUNDS & Repost! 1999 Toyota Camry \$1000! 2000 Dodge Intrepid \$500, 2001 Dodge Ram \$600! Fee for BNI listings 1-800-544-1092 x 1750

BUSINESS OPPORTUNITIES
ALL CASH VENDING! Do you earn \$800 a day? Your own local candy route. 25 machines and candy. All for \$9,995. 1-888-625-5481. Multi Vend, LLC.

CABLE PROVIDERS
DISH NETWORK \$19.99/ Month. Free Activation, free HBO and free Showtime. Ask about our no-credit promo. 48 hr. free install - Call now: 1-888-929-2580 www.BuyDishToday.com

DRIVERS
QUALITY DRIVE-AWAY seeks Independent Contractor drivers to deliver trucks out of southern Texas to points across the U.S. Competitive rate plus fuel surcharge, paid tolls and permits. No force dispatch. Call recruiting at 1-866-761-1601 or 1-866-764-1603 or check us out at www.qualitydriveaway.com. We are coming to San Antonio Oct. 12-15 to hire CDL drivers.

EQUIPMENT FOR SALE
SAWMILLS FROM ONLY \$2,990.00! Convert your logs to valuable lumber with your own Norwood portable band sawmill. Log skidders also available. norwoodmills.com/3000. Free information. 1-800-578-1363, Ext300-N.

HOMES FOR SALE
AFFORDABLE, \$360/MONTH, 6Bed/3Bath Foreclosure. \$286/month, 4Bed/4Bath bank Repo! Will not last! Must see. 5% down, 15 yrs @ 8% Fee For BNI listings, 1-800-544-6258 x 7664

5 BEDROOM, 3 BATH only \$200/month or \$13,000! Will sell fast! 5% down, 15 yrs @ 8% Fee For listing, 1-800-544-6258 ext. 5850

INTERNET PROVIDERS
HUGHESNET HIGH SPEED internet-Available anywhere by satellite. Free installation \$100 cash back rebate. No phone lines or dialing-in. Call now! Toll free. 1-866-750-8623.

MISCELLANEOUS
AIRLINES ARE HIRING, Train for high paying aviation maintenance career. FAA approved program. Financial aid if qualified. Housing available. Call Aviation Institute of Maintenance, 1-888-349-5387.

ATTEND COLLEGE ONLINE from home Medical, Business, Paralegal, Accounting, Criminal Justice. Job placement assistance. Computer available. Financial aid if qualified. Call 1-888-205-8920. www.CenturaOnline.com

REAL ESTATE
ABSOLUTELY THE BEST VIEW Lake Medina/ Bandera 1/4 acre tract, central W/SE, RV/motor home/house, OK only \$830 down \$235 month (12.91% 10yr), Guaranteed financing. More information call 1-830-460-8354

5106 MONTH BUYS land for RV/motor home/house, pier, boat ramp, pool, clubhouse, gated entry, on Lake Fork. \$690 down (\$6900/10.91%/7yr) Guaranteed financing. 1-214-696-2315

10-20 ACRES, SOUTH TEXAS brush, Duval County. Electricity, paved road. Dper, hogs, quail, turkey \$2450-\$2950/acre, owner or TX Vet financing. Toll-free 1-866-286-0199. www.westernmexland.com

68.77 ACRES, Sonora/Del Rio, corners large ranch. Electricity, oak, cedar cover. Native and exotic game. \$1295/acre, long term owner or TX Vet financing. 1-800-876-9720. www.hillcountryranch.com

676 ACRES-REEVES County, 15 Miles North Pecos. River frontage. Call Jack 1-214-755-6224

WEST TEXAS, 191.28 acres at \$325 per acre. Meyers Canyon Ranch # 15A, hunting property, nice draw. Owner financed or TX Vet. 1-866-286-0199. www.westernmexland.com

Run Your Ad In TexSCAN!
Statewide Ad\$500
307 Newspapers, 1,018,298 Circulation
North Region Only\$230
99 Newspapers, 270,048 Circulation
South Region Only\$230
107 Newspapers, 501,589 Circulation
West Region Only\$230
101 Newspapers, 246,561 Circulation
To Order: Call This Press Service at 1-800-749-4793 Today!

NOTICE: While most advertisers are reputable, we cannot guarantee products or services advertised. We urge readers to use caution and when in doubt, contact the Texas Attorney General at 1-800-621-0508 or the Federal Trade Commission at 1-877-FTC-HELP. The FTC web site is www.ftc.gov/biztop

Extend your advertising reach with TexSCAN, your Statewide Classified Ad Network.

by Jim Derington

Out at the Lake



Jim Derington
Palo Duro River Authority
P.O. Box 99
Spearman, TX 79081
806-882-4401
pdra@dishmail.net



Contrasting fall colors in a canyon west of the shop building at Palo Duro Lake.

October 5, 2009 - Lake level - 18.12 feet

October is bringing real changes to the lake area. The leaves are turning some. The native trees tucked back in the canyons, are the first to turn. This weeks' picture shows the contrasting colors in a canyon, west of the shop building. The cottonwoods have patches that have turned, but are still mostly green. A light freeze turned the Johnson grass and sunflowers brown. We are mowing for the last time, this year.

R. V. camping has

slowed down, but those that are coming, are pleased with the quiet relaxation and cooler weather. This weekend, three campers stayed on each side, at least for one night. The fishermen are not catching the big ones, as far as I know. They continue to try, though. Fall fishing has been very productive, in some years.

A group of twelve Pelicans is resting at the lake today. I would bet that they catch some fish while they are here. The Cormorants are gone for the year, I think. There is no telling how many fish they con-

sume. Some buzzards are still visible today.

I routinely check the lake level, each morning. This week, during that ten or fifteen minute trip, I have seen does and fawns, grazing near the lake. I saw a bobcat, that was caught out in the open, where we mow. Of course, he did not stay long. I saw a great egret, slowly wading and watching for breakfast. There is so much to see here at Lake Palo Duro! Bring your camera and binoculars the next time you come.

Chase Farrar Named Texas Cowboys Rodeo Association Bull Riding Champion

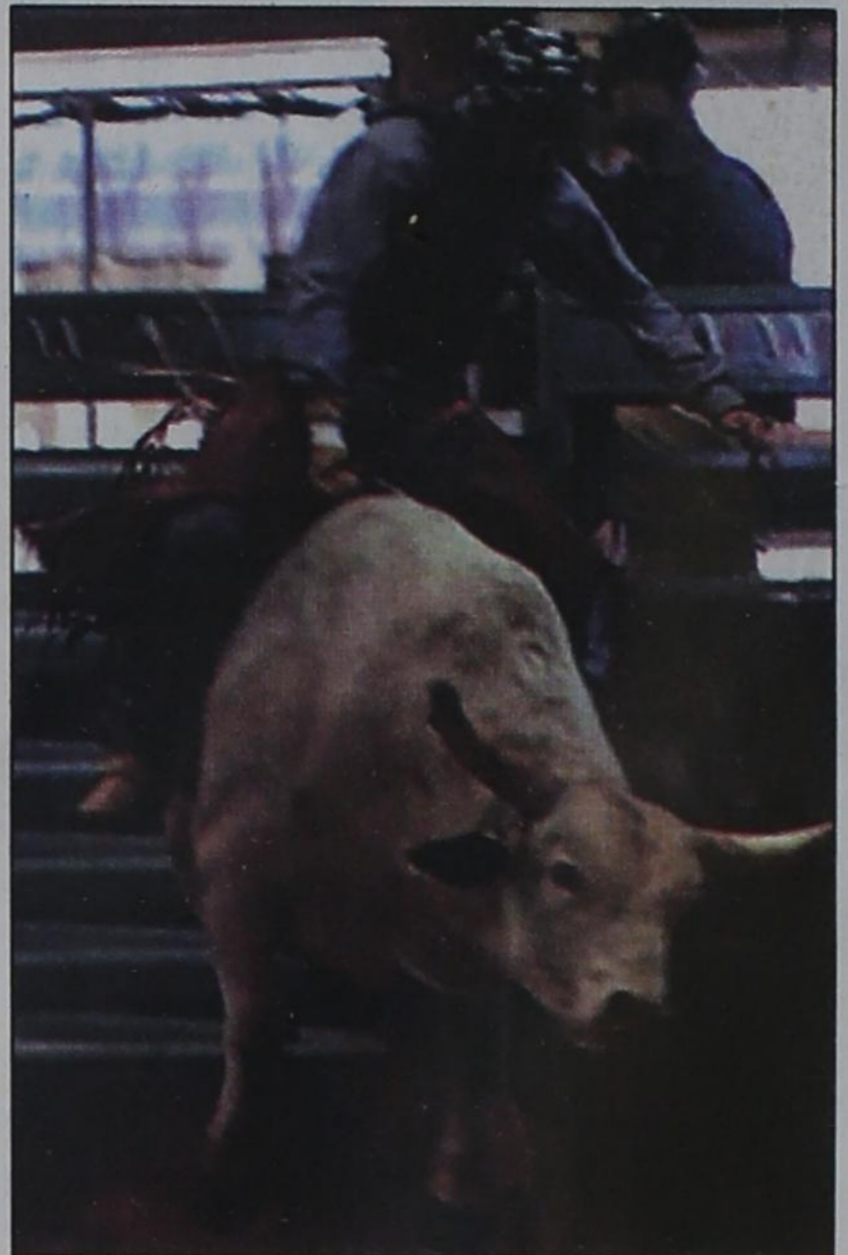
Chase Farrar competed in the Texas Cowboy Rodeo Association Finals September 25-27 in Vernon, TX.

Chase has been competing in TCRA all summer and went into the final leading the bull riding.

It was a tough finals, though. Chase won the first go on Friday night, second in the finals average, and was the year-end bull riding champion. Chase took the first go and the second average money, a saddle, and two buckles.

Chase is currently enrolled at Ranger College and is on the Ranger College Rodeo Team.

A special thanks goes to D&D Cattle Hauling, Crop Chasers, John Woodward, and all those who supported him.



OPSU Golfers Compete in Wichita Tourney

By Scott Puryear of OPSU Sports

On Monday and Tuesday, nearly twenty college golfers competed in the Newman University Fall Invitational Men's Tournament in Wichita, Kansas.

Julian Figueroa was the top finisher for Oklahoma Panhandle State with rounds of 76 (on Monday) and 83 (Tuesday) for a 36-hole total of 159, which was good for eighth place.

Other OPSU finishers were Tyler Harper at 181 (90-91), Shane Rice at 184 (95-89), and Jake Strain who scored 201 (102-99).

Tri State Fair Results

Eight exhibitors from Hansford County 4-H competed in the Tri State Fair in Amarillo.

Brenna Reid, Hansford 4-H member from Morse, won Reserve Champion Steer in the Angus division. She placed 5th in her class with her Shorthorn Steer and Jacob Lieb of Morse placed 10th in the class.

Callie Stedje from Gruver placed first in her class with a Crossbreed Steer and Bailey Stedje from Gruver placed 6th in the class. Audrey Lieb of Morse placed 10th in her class of Crossbreed Steers. Sabrina Butman of Gruver showed a 12th place Crossbreed Steer in her class and Tyler Stedje of Gruver showed a 10th place Crossbreed Steer in his class.

Jonathan Crowl of Morse placed seventh in his class in the Medium Wool division with his market lamb.

Spearman Lynx & Lynxettes

<http://spearmansports.smugmug.com/>

Photos available of Spearman Lynx and Lynxette athletic events.

KUBOTA MAKES FALL CHORES FUN!

RTV1140

- 24.8 HP, 3-Cylinder, Diesel Engine
- Variable Hydro Transmission (VHT)
- Standard 18.4 x 11.7 Cu. Ft. Cargo Bed With Hydraulic Lift
- Two and Four-Seat Configurations
- 4WD

RTV1140CPX

\$0 DOWN, 0% A.P.R. FINANCING FOR UP TO 60 MONTHS* ON SELECT NEW KUBOTAS!

PANHANDLE IMPLEMENT CO., INC.
710 NORTH MAIN STREET • PERRYTON, TX
806-435-6508

*\$0 down, 0% A.P.R. financing for terms up to 60 months on purchases of new Kubota RT, B (excluding B2300/B2300, B21/26), L Series, M (excluding M945/M1085 and M1082/M1102/M1262/M1352), K2171, K2161-3 and M59 T18 models from available inventory at participating dealers through 10/31/2009. Example: A 60-month monthly installment repayment term at 0% A.P.R. requires 60 payments of \$1,667 per \$1,000 borrowed. 0% A.P.R. interest is available to customers if no dealer documentation preparation fee is charged. Dealer charge for document preparation fee shall be in accordance with state laws. Only Kubota and select Kubota performance-matched Land Pride equipment are eligible. Inclusion of ineligible equipment may result in a higher blended A.P.R. Not available for Rental, National Accounts or Governmental customers. 0% A.P.R. and low rate financing may not be available with customer instant rebate (C.I.R.) offers. Financing is available through Kubota Credit Corporation, U.S.A., subject to credit approval. Some exceptions apply. Offer expires 10/31/2009. See us for details on these and other low-rate options or go to www.kubota.com for more information.

NOTICE OF SPECIAL ELECTION (AVISO DE ELECCION ESPECIAL)

To the registered voters of the County of Hansford, Texas:

(a los votantes registrados del Condado de Hansford, Texas:

Notice is hereby given that the polling places listed below will be open from 7:00 a.m. to 7:00 p.m., November 3, 2009, for voting in a special election to adopt or reject the proposed Constitutional Amendment as submitted by the 81st Legislature, Regular Session, of the State of Texas.

(Notifiquese, por las presente, que las casillas electorales citadas abajo se abrirán desde las 7:00 a.m. hasta las 7:00 p.m. el 3 de Noviembre de 2009 para votar en Elección Especial para adoptar o rechazar la enmiendas propuestas constitucional asi como fueron sometidas por la 81a Legislatura Sesion Regular, de la Estado de Texas.)

LOCATION(S) OF POLLING PLACES

(DIRECCION(ES) DE LAS CASILLAS ELECTORALES)

Voting Precinct 1 & 5 - City Hall, City of Spearman, 30 SW Court St., Spearman. (Oficina de la Ciudad de Spearman)

Voting Precinct 2, 3 & 7 - Cristo-Redentor Catholic Church in Gruver (202 Hwy. 15, Gruver). (Cristo Redentor Iglesia Catolica en Gruver)

Voting Precinct 4 & 9 - Gruver City Hall, 201 E. Broadway, Gruver. (Oficina de la Ciudad de Gruver)

Voting Precinct 6 - Spearman High School, 403 11th, Spearman. (la escuela secundaria de Spearman)

Voting Precinct 8 - Early Voting, County Courthouse, 15 NW Court St., Spearman and Gruver City Hall. (La Casa de corte de Spearman y Oficina de la Ciudad de Gruver)

Early voting by personal appearance will be conducted each weekday at:

(La votación adelantada en persona se llevará a cabo de lunes a viernes en:)

Hansford County Courthouse and at Gruver City Hall

(location) (sitio)

between the hours of 8:00 a.m. and 5:00 p.m., beginning on October 19, 2009 and ending on October 30, 2009.

(entre las 8:00 del a mañana y las 5:00 de la tarde emperzando el Octubre 19, 2009 y terminando el Octubre 30, de 2009.

Applications for ballot by mail shall be mailed to:

(Las solicitudes para boletas que se votarán adelantada por correo deberán enviarse a:)

Kim V. Vera

(Name of Early Voting Clerk)

(Nombre del Secretario de la Votacion Adelantada)

15 Northwest Court

(Address) (Dirección)

Spearman, Texas 79081-2051

(City) (Ciudad) (Zip Code) (Zona Postal)

Applications for ballots by mail must be received no later than the close of business on:

(Las solicitudes para boletas que se votarán adelantada por correo deberán recibirse para el fin de las horas de negocio el:)

October 27, 2009

(date) (fecha)

Issued this the 1st day of October, 2009

(Emitada este día 1st de Octubre 2009)

Benny D. Wilson

Signature of County Judge (Firma del Juez del Condado)