



Democratic candidate for Attorney General David Van Os will be at the Hansford County Courthouse on Tuesday, September 12th at 4 p.m.

The Kilgore native, with his cowboy hat and vest, plans to visit all 254 Texas counties before the November election in what he is calling a "whistle-stop tour."

Local Weather Forecast

FRIDAY - Mostly cloudy with a 40 percent chance of showers and thunderstorms. Highs in the upper 70s. South winds around 10 mph.

FRIDAY NIGHT - Mostly cloudy with a 50 percent chance of showers and thunderstorms. Some thunderstorms may produce heavy rainfall. Lows around 60. South winds 10 to 15 mph.

SATURDAY - Mostly cloudy with a 40 percent chance of showers and thunderstorms. Some thunderstorms may produce heavy rainfall. Highs in the upper 70s. South winds around 10 mph.

SATURDAY NIGHT - Mostly cloudy with a 30 percent chance of showers and thunderstorms. Some thunderstorms may produce heavy rainfall. Lows in the upper 50s.

SUNDAY - Mostly cloudy in the morning then becoming partly cloudy. A 20 percent chance of showers and thunderstorms. Highs in the upper 70s.

SUNDAY NIGHT - Partly cloudy with a 30 percent chance of showers and thunderstorms. Lows in the upper 50s.

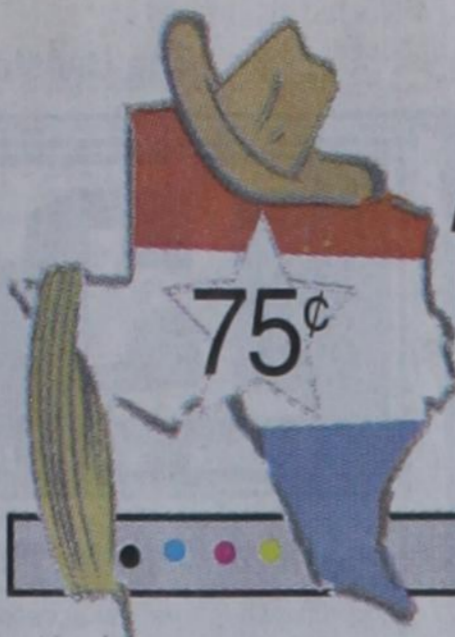
MONDAY - Partly cloudy. Highs around 80.

MONDAY NIGHT - Partly cloudy with a 20 percent chance of showers and thunderstorms. Lows in the upper 50s.

TUESDAY - Partly cloudy with a 20 percent chance of showers and thunderstorms. Highs in the upper 70s.

TUESDAY NIGHT - Partly cloudy with a 20 percent chance of showers and thunderstorms. Lows in the upper 50s.

WEDNESDAY - Partly cloudy. Highs in the upper 70s.



The Hansford County Reporter-Statesman

PROUDLY SERVING HANSFORD COUNTY SINCE 1907

VOLUME 99 • ISSUE 36

THURSDAY, SEPTEMBER 7, 2006

The Mayfield Brothers release CD after 50 years

Patuxent Music has released a new CD of vintage recordings from 1948-1956 entitled "The Mayfield Brothers - Herb, Smokey & Edd."

The CD, produced by Tom Mindte, includes twenty-one songs. Six of the songs were originally recorded at Norman Petty's studio in Clovis, New Mexico circa 1955-56 (Poison Love, The Old Hometown, Mother Was Called Away, When You Go, Don't Write to Me, Lonely Heart Blues, Pardon My Whiskers While I Kiss You Goodnight). The remaining material presented here was recorded on a reel-to-reel tape recorder in the living room of Lorena Curtis, sister of the Mayfield Brothers, between 1948 and 1956.

All of these recordings had been transferred to cassette tapes at some point in the past. When the time arrived for this project, the original tapes and/or discs had been lost, damaged, destroyed, or were otherwise unavailable, so it is these cassette tapes that serve as the actual source recordings for this CD. The cassette material was subsequently remastered by Bill Wolf at Wolf Productions.

As observed in the biographical notes, each of the Mayfield Brothers had learned to play mandolin and guitar while growing up. Various songs and tunes on this CD feature brothers Herb and Smokey on rhythm guitar, in addition to the rhythm and lead guitar work of Edd Mayfield. As was more common in his day, Edd played rhythm guitar with a thumbpick. Edd was way ahead of his contemporaries, however, when it came to playing lead guitar, almost unheard of in bluegrass music at the time.

Remarkably, Edd's lead guitar playing was done with a thumbpick. Herb Mayfield remembers that Edd would "clamp the bottom edge of that thumbpick with his finger and play it like a straight pick," returning to the thumb-style rhythm at the end of the guitar solo. Interestingly, at times on the CD, Edd's guitar sounds almost like an electric or amplified guitar; on those songs, Edd was actually playing a Dobro guitar that had a regular Spanish-style guitar neck.

CD's are available at Prairie Garden Flowers and MurMur's in Spearman for \$13.50 each.

Following are the songs included on "The Mayfield Brothers" CD.

1. *I'm Knockin' On Your Door* (by Edd Mayfield) Kentucky Colonel Music, BMI; Edd Mayfield - Guitar, Vocal; Herb Mayfield - Mandolin; Smokey Mayfield - Fiddle; Raeford Shirley - Bass

2. *Arizona Moon* (Raeford Shirley & George Green) Patuxent Music, BMI; Edd Mayfield - Guitar, Vocal; Herb Mayfield - Mandolin; Delmar Shirley - Fiddle; George Green - Bass

3. *Midnight Ramble* (Ruby Rakes) Fort Knox Music/Trio Music, BMI; Edd Mayfield - Guitar, Vocal; Herb Mayfield - Mandolin; Smokey Mayfield - Fiddle

4. *When You Go, Don't Write to Me* (Smokey Mayfield) Patuxent Music, BMI; Edd Mayfield - Guitar, Lead Vocal, Tenor Vocal on Chorus; Herb Mayfield - Mandolin; Smokey Mayfield - Fiddle, Lead Vocal on Chorus; George Green - Bass

5. *Poison Love* (Anglin/Wright) Rightsong Music, BMI; Edd Mayfield - Guitar, Tenor Vocal; Herb Mayfield - Mandolin, Lead Vocal; Smokey Mayfield - Fiddle; George Green - Bass

6. *Cotton Eyed Joe* (P.D.) Edd Mayfield - Guitar, Lead Vocal; Herb Mayfield - Mandolin; Smokey Mayfield - Fiddle

7. *The Old Hometown* (Flatt) APRS, BMI; Edd Mayfield - Guitar, Tenor Vocal; Herb Mayfield - Mandolin, Local Vocal on Verse, Baritone Vocal on Chorus; Smokey Mayfield - Fiddle, Lead Vocal on Chorus

8. *Mother Was Called Away* (Smokey Mayfield) Patuxent Music, BMI; Edd Mayfield - Guitar, Tenor Vocal; Herb Mayfield - Mandolin, Baritone Vocal; Smokey Mayfield - Fiddle, Lead Vocal

9. *Lonely Heart Blues* (Edd Mayfield) Patuxent Music, BMI; Edd Mayfield - Guitar, Lead Vocal; Herb Mayfield - Mandolin; Smokey Mayfield - Fiddle; George Green - Bass

10. *My One and Own* (Smokey Mayfield) Patuxent Music, BMI; Herb Mayfield - Guitar; Smokey Mayfield - Fiddle, Lead Vocal

11. *High Plains Breakdown* (Smokey Mayfield) Patuxent Music, BMI; Smokey Mayfield - Fiddle; Edd Mayfield - Lead Guitar; Herb Mayfield - Rhythm Guitar

12. *On and On* (Bill Monroe)

Hill & Range Songs; Edd Mayfield - Guitar, Lead Vocal, Tenor Vocal on Chorus; Herb Mayfield - Mandolin, Baritone vocal; Smokey Mayfield - Fiddle, Lead Vocal on Chorus

13. *Rocky Mountain Goat* (Herb Mayfield) Herb Mayfield - Mandolin; Smokey Mayfield - Guitar

14. *Just a Little Talk With Jesus* (Derricks) Bridge Building Music, Inc., BMI; Edd Mayfield - Lead Guitar, Tenor Vocal; Herb Mayfield - Mandolin, Baritone Vocal; Smokey Mayfield - Rhythm Guitar, Lead Vocal; Reuben Mayfield - Bass Vocal

15. *Pardon My Whiskers While I*

Kiss You Goodnight (Wayne Raney) Fort Knox Music/Trio Music, BMI; Edd Mayfield - Guitar; Herb Mayfield - Mandolin; Smokey Mayfield - Fiddle, Lead Vocal; George Green - Bass

16. *Sawing on the Strings* (Compton) Lewis Compton Music, BMI; Edd Mayfield - Lead Guitar, Vocal; Herb Mayfield - Rhythm Guitar; Smokey Mayfield - Fiddle

17. *Bill Cheatum* (P.D.) Edd Mayfield - Guitar; Herb Mayfield - Mandolin

18. *Holiday for Love* (Peggy/Pierce/Walker) Universal Cedarwood Publishing, BMI; Edd Mayfield - Lead Guitar, Lead Vocal; Herb Mayfield - Mandolin;

Smokey Mayfield - Rhythm Guitar

19. *Black Mountain Rag* (P.D.) Edd Mayfield - Lead Guitar; Herb Mayfield - Rhythm Guitar; Smokey Mayfield - Fiddle

20. *Where Could I Go But to the Lord?* (Coats) Bridge Building Music, Inc., BMI; Edd Mayfield - Lead Guitar, Tenor Vocal; Herb Mayfield - Baritone Vocal; Smokey Mayfield - Rhythm Guitar, Lead Vocal

21. *I Have Found the Way* (Charlie Monroe) Berwick Music Corp. BMI; Edd Mayfield - Lead Guitar, Tenor Vocal; Smokey Mayfield - Rhythm Guitar, Lead Vocal



Mayfield Brothers release CD

Youth receive top awards



Hansford County 4-H presents Rhett Renner (left) and Jessica Jarvis (right) with the Gold Star Award

The annual Hansford County 4-H Awards Banquet was held Sunday in Spearman. Gold Star Award was presented to Jessica Jarvis and Rhett Renner. The Gold Star is the highest award presented in 4-H and may be awarded only one time in a member's 4-H career.

Jessica is the 17 year old daughter of Will and Kristi Jarvis of Spearman.

Rhett is the 17 year old son of Phillip and Lynna Renner of Spearman.

These winners will receive special recognition at a district banquet at WTAMU to be held in their honor on November 4th in Canyon.



Quarterback Collin Gillaspie gains yardage for the Lynx as Bryn Garnett blocks a Wheeler Mustang in their 42-0 win over Wheeler.

Gillaspie and Garnett were named the Spearman Lynx Offensive Players of the Week. Defensive Player of the Week was Roberto Flores.

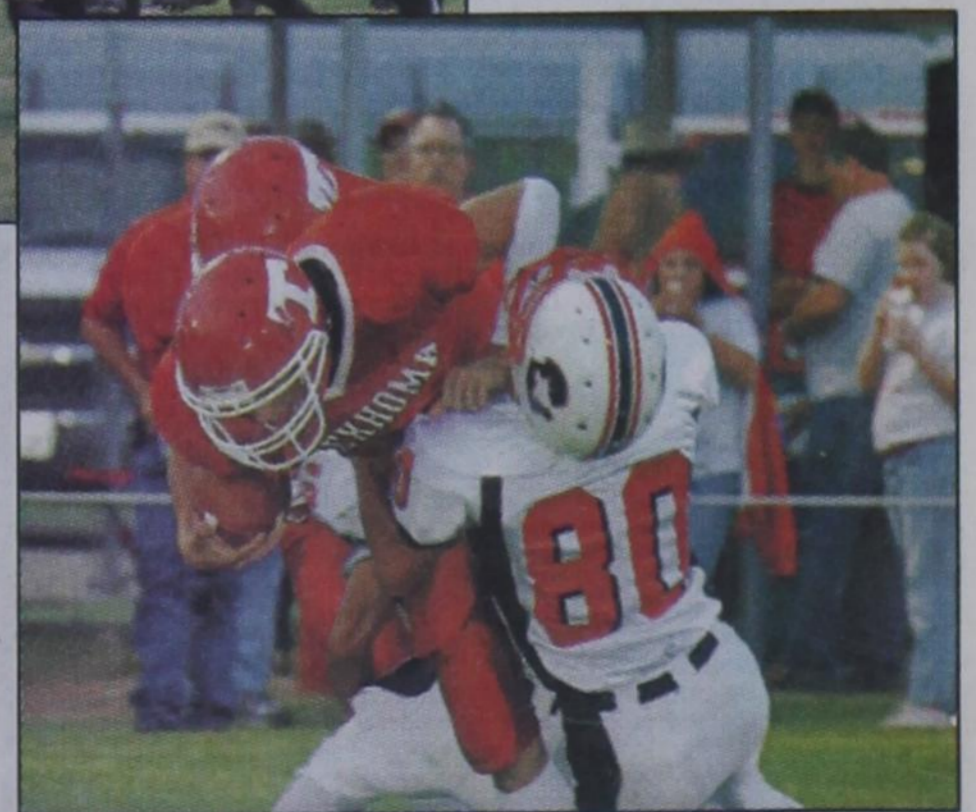
The Lynx will host Boys Ranch Friday, September 8th. Kickoff will be at 7:30 p.m. in Lynx Stadium.

photo by Gary Smith

Gruver Greyhound Drew Grotegut latches onto a Texhoma Red Devil. Grotegut made the only score for the Hounds on a 6-yard pass from Diego Luciano.

The Gruver Greyhounds will host the Wheeler Mustangs this Friday, September 8th. Kickoff will be at 7:30 p.m. in Greyhound Stadium.

photo by Charlie Johnson



County Extension Agent Centennial

In the fall of 2006, Texas Extension will be celebrating the centennial of the appointment of the first Extension agent in the nation to serve a single county: W.C. Stallings, appointed in Smith County in November 1906. In honor of 100 years of growing, teaching and leading, Hansford

County 4-H recognized county Extension agents at their Awards Banquet who have served Hansford County in the past and are presently serving in positions of leadership.

Those recognized were: Burt Williams was appointed in 1984 and currently serves as Agriculture

Agent, Robert Adamson 1957-1972, Joe VanZandt 1972-1976, Karen Babitzke 1981-1994, Barbara Kenney 1957-1963, Nelle Evans 1971-1976, Peggy Winegarner 1976-1981 and 1994- to present as Family & Consumer Science Agent.



Hansford County Extension Agents - Burt Williams was appointed in 1984 and currently serves as Agriculture Agent, Robert Adamson 1957-1972, Joe VanZandt 1972-1976, Karen Babitzke 1981-1994, Barbara Kenney 1957-1963, Peggy Winegarner 1976-1981 and 1994- to present as Family & Consumer Science Agent. (Not pictured is Nelle Evans 1971-1976).

Live,
Laugh &
Love



by Catherine R. Smith
cathysmith@antden.com

Remember September 11

Just five years ago, our lives were turned upside down with horrendous attacks on U. S. soil. This event has changed us: our sense of security, our understanding of God, our commitment to peacemaking, our relationships in our congregations and communities. Many lives were senselessly lost and we feel the continuing grief of family members and friends. For these reasons, taking time to grieve and remember is appropriate.

Many people re-examined their lives and made huge commitments and changes. Some of these people joined Christian Peacemaker Teams. Some people sought their own security. Some offered to walk beside Moslem sisters and brothers. Some people made and sent comforters to Afghanistan. Others sent school kits to Iraq. Some protested against war. Some searched for the truth and told it publicly.

In your Sunday school class or small group, spend time thinking how September 11, 2001, has changed you, your congregation, your community and your country. People have made choices. Take some time to think how you came to make decisions that have created a different life for you. Wonder how your relationship with God has influenced them.

Prayerfully evaluate your current actions and choices, rejoicing and repenting as appropriate.

Remember that it is not your job to save the world—that is the job of Jesus, our Savior. However, risks that you take in response to God's call to justice and peace strengthen your own faith and commitment to Jesus and shine a light to people around you who are searching for alternatives to violence and fear.

As we mourn this senseless loss of life, let's not forget that people are killed daily due to various forms of terrorism and war. Let us use these days of remembrance to also rededicate ourselves to peace and to provide tools to invite others to do so.

May God bless and keep you; May He make his face to shine upon you, and be gracious to you; May the Lord lift up his countenance upon you, and give you peace.
Numbers 6:24-26

Catherine :)

The Hansford County Reporter-Statesman
213 Main Street • Spearman, TX 79081
Phone - (806) 659-3434 • Fax - (806) 659-3368
cathysmith@antden.com
Mon.-Thurs. (Closed Fridays) 9 a.m.-12 p.m. & 1-5 p.m.

Gary Smith - Publishers
Catherine Smith - Editor • Clayton Smith - Asst. Editor
Contributing Writers: Dorothy Hudson and Merry Sparks
Contributing Photographer: Charlie Johnson

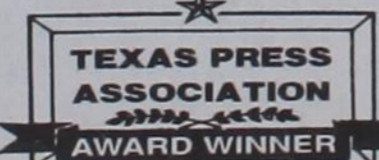
Subscription Rates
In Hansford County - \$30.00 • Out of County - \$40.00

The Hansford County Reporter-Statesman (USPS 529660) is published weekly in Spearman, TX. Periodical postage paid in Spearman, TX. POSTMASTER: Send address changes to: The Hansford County Reporter-Statesman, 213 Main Street, Spearman, TX 79081.

Publication Policy
The deadline to submit news and advertising to The Hansford County Reporter-Statesman is Monday at 5 p.m. Items submitted after the deadline will be published at a later date, as time and space permit. Publication of all items is at the discretion of the editor.

Advertising
Open Display rates are \$4.00 per column inch. Classified Ads are \$6 for the first 25 words and 10¢ per word for each additional word. (Additional charge for boxed classifieds.) There is a \$1 charge per week if billed.

Member of
Gruver Chamber of Commerce
Spearman Chamber of Commerce
Texas Press Association and Panhandle Press Association



STATEPOINT SUDOKU

PRESENTED BY



Enter Vic's Daily Giveaway
To Win Luxurious Travel Prizes!

www.Qantas.com/us

6		3	5						
7	2					1			
		1							5
3			7				5	8	
1	8				4			3	
8						4			
		4				2	1		
					2	9		6	

© 2006, StatePoint Media, Inc. answer on classified page

Fill in the blank squares in the grid, making sure that every row, column and 3-by-3 box includes all digits 1 through 9.

These games are brought to you by the
Hansford County Reporter-Statesman

STATEPOINT CROSSWORD

1	2	3	4		5	6	7	8	9	10	11	
12				13				14				
15				16				17				
18				19				20				
			21				22					
23	24	25				26			27	28	29	
30			31		32	33			34			
35			36			37			38			
39				40				41		42		
43				44				45		46		
			47			48	49					
	50	51				52				53	54	55
56						57				58		
59						60				61		
62						63				64		

PRESENTED BY



© 2006, StatePoint Media, Inc. answer on classified page

THE SIXTIES

ACROSS

DOWN

- | | |
|--|--|
| 1. Pig feed | 1. Expel |
| 5. Mentally quick and resourceful | 2. Left in Russian |
| 8. Bay of _____, site of 1961 attempt to overturn Castro | 3. Black and white cookie |
| 12. Heart of Inca empire | 4. Political expert |
| 13. Period in cricket | 5. Par _____, indicates air mail |
| 14. Plant fiber used for rope-making | 6. One hundredth of English pound |
| 15. Fifty-fifty | 7. "Star _____" TV show created in 1966 |
| 16. Prong of a fork | 8. Often found inside a green olive |
| 17. Movie "The _____ville Horror" | 9. Osiris' sister and wife |
| 18. Famous 1960s rock festival | 10. Area of airport terminal |
| 20. "_____ and shine!" | 11. "_____ and The Family Stone" |
| 21. Mindless | 13. Capital of Canada |
| 22. Hollywood legend West | 14. Abraham's wife |
| 23. Gain favor by flattering | 19. Australian mountains |
| 26. U.S. President from 1963 to 1969 | 22. Word in French |
| 30. Frozen H2O | 23. Soviet battlecruiser |
| 31. Nut with wrinkled shell | 24. Round opening in architecture |
| 34. Spanish for bull | 25. Slice of apple |
| 35. Healthy reddish color | 26. Twelve angry men, e.g. |
| 37. Propels a rowboat | 27. Type of probe |
| 38. World in Italian | 28. "_____ in the court!" |
| 39. Soviet Olympic gold medalist | 29. Nobody |
| Korbut | 32. Type of rich soil |
| 40. Plural of papyrus | 33. Siesta |
| 42. Bear's hibernation place | 36. Without a date |
| 43. Controversial flash point of 1960s | 38. "In the _____ of the crowd" |
| 45. Stick firmly | 40. Pen _____ |
| 47. Snake-like fish | 41. Kidnapper's demand |
| 48. "Je _____, donc je suis" ("I think, therefore I am") | 44. Under _____ or be _____ |
| 50. Western cord necktie | 46. What shepherd did to sheep |
| 52. First man to set foot on the moon | 48. Prefix indicating first or earliest |
| 56. Michael Jackson's sister | 49. Host at formal occasions |
| 57. Pioneering fashion designer | 50. Resort island in Indonesia |
| Chanel | 51. Smallest whole number, pl. |
| 58. Don't let it hit you on your way out | 52. Turns blue litmus red |
| 59. "_____ and blood" | 53. What goo will do |
| 60. One thing on a list | 54. Best-selling American romance author Roberts |
| 61. Poet Pound | 55. Alum |
| 62. Gene Simmons' rock band | 56. U.S. President assassinated in 1963 |
| 63. Clarice in "Rudolph, the Red-Nosed Reindeer" | |
| 64. This "Grateful" band formed in 1965 | |

HYI

FOR YOUR INFORMATION

Gruver Cemetery Seeking Donations for Improvements

In the near future, the Gruver Cemetery Association will be adding roads and driveways to allow access and expansion in the new section of the cemetery. We are asking area citizens and those with loved ones interred in the Gruver Cemetery to make donations and memorials to help the committee complete the work that is needed and to maintain the cemetery in such a way that reflects the honor and respect our loved ones deserve. For more information, contact Rick Barkley, President of the Gruver Cemetery Association, at (806) 733-2500. Please make all donations and memorials payable to the Gruver Cemetery Association, and mail them to Margaret Ralston, Treasurer of the Gruver Cemetery Association, at P.O. Box 629, Gruver, Texas 79040.

Benefit Fund Established for Shelley Jean Pledger

An account has been set up at First State Bank in Spearman to help the family of Shelley Jean Smith Pledger. Donations may be made at First State Bank.

Medical Fund Established for William Bettis

A medical fund has been established at Gruver State Bank in Gruver for the William Bettis family. William was seriously injured in an automobile accident. Any donations would be greatly appreciated.

Panhandle Crisis Center offers new Online Hotline

The Panhandle Crisis Center is joining a new Online Hotline, where individuals seeking help due to sexual assault can chat live with trained volunteers giving secure crisis support to victims, their families and friends. The Panhandle Crisis Center is seeking volunteers for this Online Hotline. For more information, call Janice at 435-5008 or 1-800-753-5308.

Breast Cancer Screening Clinic

The Don and Sybil Harrington Cancer Center Comprehensive Breast Center will conduct a Breast Cancer Screening Clinic at Hansford County Hospital, 707 S Roland, in Spearman on September 25, 2006. Funding is available through the Texas Department of Health for Texas residents who qualify for assistance. All exams are done by appointment only. Call (806) 356-1905 or 1-800-377-4673 for more information or to schedule an appointment. Breast cancer affects one in eight women. The key to winning the battle against cancer is early detection by having an annual breast exam, mammogram and performing a breast self-exam each month.

Pringle-Morse & Campbell's Team Up

Pringle-Morse CISD School is asking parents, teachers and friends in the community to collect Campbell product labels that can be redeemed for free educational merchandise. For more information on how to be a part of Pringle-Morse CISD School's Labels for Education contact VeAnn Clark, at 806-733-2507 or mail labels to Pringle-Morse CISD, Box 109, Morse, Texas 79062. Pringle-Morse ISD appreciates your support.

Free GED Classes

FREE CLASSES! For adults who want to prepare for the GED test (High School Equivalency). Classes will be every Tuesday night through May. GED classes will be held in the video conference room at Spearman High School, 6:30 - 9:00pm. For more information you can contact Cindy Blackman 659-3233, ext. 1005 or Claudine Hardy, 659-2563, ext. 3001.

Rushing Wind Emmaus Community

Rushing Wind Emmaus will meet in the First Baptist Church, Morse, Texas, on Saturday, September 9, at 6 p.m. Bring your family and friends for a potluck supper and a praise and worship service. There will be a sponsors training session and a nursery will be provided.

Spearman Booster Club

Spearman Booster Club meets Tuesday nights at 7 p.m. in the High School library. Everyone is invited to attend the meeting. The first home game is September 8th against Boys Ranch and is parent night.

Spearman Lynx & Lynxette Booster Club have sports sponsorship packages available for 2006-2007. If you are interested in year sponsor, super booster, booster, signature ads or cable listing please contact Lynna Renner at 659-3587 or Tammy Benton 659-3071. These ads are used for broadcasting and cable listings. Individuals are welcome to have signature ads not just for businesses!

Alva Monument Co.

Formerly Liberal Monument
& Memorial Company

New Location:
111 Tucker Road
Liberal, Kansas

North of the New Wal-mart

Serving Kansas, Oklahoma & Texas for 93 years
(316) 624-4211 toll free # 888-654-9318

Homecoming '06

Specializing in
one-of-a-kind mums.
Matching mums and armbands,
custom-made for you and your date.
Spearman Homecoming September 29
Gruver Homecoming September 29

All Occasion Flowers
202 N. Bernice • Spearman
(across from the Post Office)

659-5180

Don't Forget Grandparent's Day
Sunday, September 10th.

Happy Birthday!

Editor's Note: This Happy Birthday list is run as a public service by the Hansford County Reporter-Statesman. We apologize if any names are misspelled. If you know of a name that needs to be changed, added or deleted, please call 659-3434.

Thank you, Catherine

September 7

Birthday - Alice Peddy, Kim Boone, Teal Armes, J.L. Brock, Richard Montgomery, Juanita Terceo, Melvin Willis, Kermit McKee, Jennifer Whitefield, Mardell Strawn

Anniversary - M/M Charlie West, M/M Jim Davis, M/M Ronnie Bullard

September 8

Birthday - Kevin Hart, Vernon Edens, Teresa Byrd, Richard Davis, Cindy Scarborough, Macy Holton, Suzanne Sanders, Beronica Borounda, Wynette Mullins, Monica Ceniceros, Linda West, Justin Tucker, Bill Miller

Anniversary - M/M Roger Odegaard, M/M Clarence Zable

September 9

Birthday - Jantzen Dahl, Brian Kaugman, Dora Salgado, Doug Hohertz, Daiana Arjona, Kitty Edwards, Joyce Frost, Krystal Lackey, Debbie Abston, Jeannie Swan, Brian Payne, Merle Arthur, Alvin Byers, Tina Baumgardner, Nikki Boyd, Kitty Edwards, Dynell Vera Moore

Anniversary - M/M Kyle Williams, Brad & Dodie Beedy, Al & Jean Smith

September 10

Birthday - Donnie Osborne, Michael Minter, Derek Kuehl, Lil Turner, Rosa Alexander, Don Moore, Jeff Hand, Makala Weakly, Scott Wilkerson, Rosa Rodriguez, Susan Harnish, Chris Lopez, Janet Trospen, Quentin Shieldknight, Jarick Howard, Brent Collins, Kami Hammonds

Anniversary - M/M Pedro Garza

September 11

Birthday - Erika Stedje, Gary Lynn Evans, Ginger Pittman, DaVonna Daharsh, Jimmy Jackson, Jim Davis, Teresa Pipkin, Clarence Mitchell, Tony Pacheco Jr., Julia Wofford, Everette Layton, Angela Lomeli, Janice Watley, Jean Laughlin, Trey Duke

Anniversary - Rusty & Judy Tindell, Buck & Beatrice Self

September 12

Birthday - Linda Haight, Evi Meyer, Carrie Ann Guthrie, Deanne Gilley, Connie Shields, Issabella Hermostello, Peggy Varnon, Ty Martin, Quincy Graber, Roland Graber, Chasidy Thomas, Charles Elliott

Anniversary - M/M Wayne Kruse

September 13

Birthday - Alice Alvarez, Mindy Davis, Aaron Frick, Pam Harris, Kevin Holt, B.J. Renner, Jimmy Beeson, Carol Hergert, Hadley Reed, Terry Cook, Jim Baker, Burt Williams, Charolette Jackson, Keri Holt, Kalib Nash

Anniversary - M/M Wayne Kruse

September 14

Birthday - Max Clawson,

Justin Duncan, William O'Connell, Johnny Dunning, Allen Hart, Robin Snider, Ken Schneider, Gregg VanBuskirk, Clayton Williams, Velma Sanders, Doug Holmes, Steven Salazar, Joel Stark, Debbie Canto

Anniversary - M/M Bob Meek, Karen & Buford Babitzke

September 16

Birthday - Marcia Kuehl, Terrell Evans, Jarret Warren, Oscar Rojas Jr., Jason Evans, Leticia Salazar, Frank Galvin, Pauline Winger, Silvia Lopez, Margy Schoenhals

Anniversary - M/M Charles Greenwood

September 17

Birthday - Hugh Bell, Krystle Deeds, Pablo Perez, Glenda Renner, Johnny White, Jan Allen, Helen Melton, Joe Wattier, Teresa Ford, Myrtle Eller, Janna Brock, Robbie Cochran, R.D. McLain, Judy Fredrick, Mario Molina, Dale Wofford, Andrew Cummings, Kayla Swink

Anniversary - M/M Larry Kennedy, M/M Ray Gressett

September 18

Birthday - Betty Davis, Alton Ellsworth, Pat Jackson, Scarlett Jackson, Cary Gates, Mrs. Don Ladd, Donna Phillips, Van Hamilton, David Baca, Jamie Townsen

Anniversary - M/M Scott Swan

September 19

Birthday - Sally Holt Meek, Carol Hester, Sue Jackson, Tildon Sparks, Don Kunselman, Jim Jones, Amadita Vargas, Alberto Vargas, Randy Kirk, Tammy Woodward, Julie Pittman, Cassidy Taylor

Anniversary - M/M Dennis Nelson, M/M Tindle Ramon

September 20

Birthday - Tiffanee Crane, Jerry Overbey, Karen Archer, Charles Shieldknight, Mrs. Jimmy Watson, Dee Mayfield, Edrie Jones, Jessie Francis, Lance McMahan, Dora Salgado, Chris Womble, Beverly Vinson, Pedro Garza

Anniversary - M/M Wayne Kruse

September 21

Birthday - Amber Murrell, Teresa Sue Dodson, Mrs. Ola Davis, Lisa Pipkin, Sharon Craig, Millie Craig, Gary Thomas, Karen Goodman, Arthur Cantu, Cathy Brown, Paul Mahaffey, Ashlee Cazares, Allene Bayless, Callie Cazares, Francis Murrell, Jacie Baker, Mike Ladd

Anniversary - M/M John Williams, M/M Pat Jackson

September 22

Birthday - Charlotte Bergin, Chelsie Beth Hicks, Leon Wilson, Robert Womble, Bobby Evans, Ray Brewer, Junior Avila, Terry Delozier, Lance Harnish, Sterling Alana Brown, Amber Conley, Janice Riley, Bonnie Cox, Haylee Miesner

Anniversary - M/M John Williams, M/M Pat Jackson

Our Sympathy

BETTY FRANCES SCRIBNER

SPEARMAN - Betty Frances Scribner, 81, died Thursday, August 31, 2006.

Services were at 2 p.m. Saturday, September 2, 2006 in First Christian Church with the Rev. Bob Elder and the Rev. Gary Smith officiating. Burial was in Hansford Cemetery by Boxwell Brothers Funeral Home of Spearman.

Mrs. Scribner was born February 9, 1925, in Hutchinson County. She married Jerald Scribner on May 15, 1943, in Mobeetie. He died in 1991.

She attended Lackey School and graduated from Spearman High School and Amarillo College of Business. She was a member of First Christian Church.

She was also preceded in death by a son, Roy Scribner; and a grandson, Clint Davis.

Survivors include two sons, Jerald Ray Scribner of Spearman and Johnny Scribner of Perryton; two daughters, Judy Peoples of Henryetta, Okla., and Vickie Millsap of Perryton; three sisters, Joyce Crum, Doris Beck and Dorothy Buzzard, all of Spearman; a brother, J.D. Hester of Texline; nine grandchildren; and 18 great-grandchildren.

The family suggests memorials be to Hansford Hospice, 707 Roland, Spearman, TX 79081.

Lois Marie Coates

SPEARMAN - Lois Marie Coates, 86, died Monday, September 4, 2006.

Services were at 2 p.m. Wednesday, September 6, 2006 in First Assembly of God Church with the Rev. Bob Elder officiating. Burial followed in Waka Cemetery by Boxwell Brothers Funeral Home of Spearman.

Mrs. Coates was born on December 28, 1919, in Medicine Lodge, Kan. She married Kenneth Coates on July 8, 1941, in Liberal, Kansas.

She grew up in Waka where her grandparents managed the Whitehouse Lumber Co. She was a member of the First Assembly of God Church.

She was preceded in death by her husband; and a son, Harold Lynn "Pete" Coates.

Survivors include three sons, Kenneth Coates of Waka, Dean Coates and Galen Coates, both of Spearman; two sisters, Bucky Dunning of Spearman and Lilly Mae Heinz of Hobbs, N.M.; a brother, Billy Newingham of Alexandria, La.; 16 grandchildren; and 19 great-grandchildren.

The family requests memorials to Hansford Manor, 707 Roland, Spearman TX 79081.

Words from Faith & Grace

by Cecil R. Biggers, Lutheran Lay Minister

Who is welcome in the house of the Lord? What is the relation of Faith to Works? Our lessons are in Isaiah 35:1-10, Psalm 146, James 2:1-7, and Mark 7: 24-37. The prophet foresees a time when the faithful shall see the glory of God, when the desert will be barren no more, when the blind shall see and the "stammerers" sing for joy, and there will be a highway, the Holy Way. The psalmist sings that he will praise the Lord for as long as he lives, for the Lord watches over strangers, widows and orphans and will reign forever; he warns us not to trust in princes (politicians) in whom there is no help.

James emphasizes that we should love our neighbor as ourselves. But he reminds the faith community that the poor are as welcome in God's house as the rich, and we must beware the tendency to welcome those who can "contribute" to our community while we discourage those who need our community. James takes to task the problem of the Christian well-wisher, who does nothing to assist those in need. Consider this, if you separate the body from the spirit, you have a corpse. Likewise, if you separate faith from works, you also have a corpse. Understand too, that the demons are intellectually convinced of the existence of God, yet their "belief" does not change their character in the slightest. So dear Christian, with our faith in Jesus, we are not "saved" by works, but we are "saved" for works.

Mark shows us one of two times that Jesus ventured outside of Palestine. In the City of Tyre, a gentile woman beseeches Jesus to cast a demon out of her daughter. Jesus answered that the children (the Jews) should be fed first, the woman replied even the dogs (pets) eat the crumbs the children drop. Jesus healed her daughter. The dog was an unclean animal to the Jew and offensive to the Greek, but the word used by Jesus was one for a lap-dog, a house pet. Jesus' banter with the woman is not as "hostile" as some translations might indicate. By this act Jesus wiped out the concept of "clean" and "un-clean" people. As Jesus takes a circuitous route back to Galilee, He encounters a gentile man who is deaf and stammered of speech. In a dramatic manner, Jesus heals the man. [Only two times is the term "stammerer" used in our Bible, Isaiah 35:3-6 and this passage in Mark.] Jesus in the gospels includes in the faith community outsiders--tax collectors, lepers, non-Jews and gives all of them access to His kingdom. Can we do any less?

May the Holy Spirit keep you from partiality and guide you on the Holy Way.

REGINALD "REG" ROBERTSON

SPEARMAN - Reginald "Reg" Robertson, 68, died Saturday, September 2, 2006.

Graveside services were at 11 a.m. Monday, September 4, 2006 in Hansford Cemetery with the Rev. Neely Landrum officiating. Arrangements were by Boxwell Brothers Funeral Home of Spearman.

Mr. Robertson was born Aug. 21, 1938, in Lakeview. He married Jody Melton on August 27, 1956, in Memphis. Reg moved to Spearman in 1957 and worked as a mail carrier at the Spearman Post Office from 1962 to 1999.

He was preceded in death by a son, Reggie Robertson; a daughter, Melissa Vasquez; and his father, L.B. Robertson.

Survivors include his wife; a daughter, Tammy White and husband Chris of Fritch; his mother, Irene Smith of Clinton, Okla.; two brothers, Donald Robertson of Midland and Skip Robertson of Wichita, Kan.; a son-in-law, Willie Vasquez of Spearman; four grandchildren, T.J. Vasquez and wife Katrina and Marcus Vasquez, all of Spearman, Eric Vasquez and wife Lori of Scott City, Kan., and Christa White of Fritch; and two great-granddaughters, Patience Vasquez and Tessa Vasquez, both of Spearman.

The family suggests memorials be to Hansford Hospice, 707 Roland, Spearman, TX 79081.

MONUMENTS

Boxwell Brothers

Funeral Home

519 Evans • Spearman

659-3802

Dear friends,

When you buy a monument from us we make sure it is exactly what you want at a price you can afford. If it is not right, we will make it right. And you will not have to search the countryside to find us. We are here when you have a need.

Sincerely,
Bob Boxwell

HOME SCHOOLING?

Come see why over 1,500,000 students use ...

<ul style="list-style-type: none"> A Beka Book • Character-Building Textbooks • Time-Saving Parent Materials <ul style="list-style-type: none"> A Beka Academy • Master Teachers on DVD • Complete K-12 Programs 	<ul style="list-style-type: none"> Amarillo—September 11 Odessa—September 12 San Antonio—September 19 San Antonio—September 20 San Antonio—September 21
--	--

Display info: ☎ 1-800-874-3597, ext. 406 • abeka.org/406

LYRIC Cinema

113 Main Spearman, Texas (806) 659-2812

Sept. 8-12 - 7 p.m.

Screen 1 Remember the
World Trade Center Heroes of 9/11 as
PG-13 we approach the
Nicholas Cage 5th anniversary.

www.lyriccinema.com

Make Your Selections NOW!

Homecoming Mums & Garters
Mother's Mums • Children's Mums
Spirit Banners

SPEARMAN	GRUVER
HOMECOMING	HOMECOMING
SEPTEMBER 29	SEPTEMBER 29

We have all the add-ons to customize your mum for that someone special.

Prairie Garden Flowers

209 Main St. • Spearman, TX
659-2212 • 659-3329

Remember Grandparent's Day is
Sunday, September 10th!

Replenish the seed of faith through ...

DAILY BIBLE READING, PRAYER & REGULAR CHURCH ATTENDANCE

<p>Spearman</p> <p>Apostolic Faith Church 822 S. Dresden • 659-2870 Sunday School: 10 a.m. Worship Service: 11 a.m. Sun. Eve.: 6 p.m. Wed. Prayer Mtg.: 7 p.m. Pastor - Roland Haney</p> <p>First Assembly of God 401 N. Bernice • 659-2295 Sunday School: 9:30 a.m. Worship: 10:35 a.m. Kid's Church: 10:35 a.m. Evening Worship: 6 p.m. Wed. Worship: 7 p.m. Wed. Youth: 7 p.m. Pastor - Bob Elder</p> <p>First Christian Church (Disciples of Christ) 29 S. Bernice • 659-2036 Sunday School: 9:45 a.m. Worship: 10:50 a.m. Minister - Gary Smith</p> <p>First Baptist Church 123 N. Bernice • 659-5557 Sunday School: 9:45 a.m. Worship: 11 a.m. Evening Worship: 7 p.m. Men's Bible Study - Wed., 7 a.m. Children's Choir - Wed., 6 p.m. Adult Choir - Wed., 7 p.m. Wed. Bible Study: 7 p.m. Pastor - Jim Medley</p> <p>Church of Christ 121 S. Haney • 659-3244 Sunday Bible Class: 9:45 a.m. Worship: 10:30 a.m. Evening Worship: 6 p.m. Bible Study Wed.: 7:30 p.m.</p>	<p>Sacred Heart Catholic Church 901 Roland • 659-2792 Sat. Night Mass: 5:30 p.m. Sun. Mass: 9 a.m. - English Sun. Mass: 11:30 - Spanish 1:30 p.m. - Gruber - Christo Rendtorf Mass - Spanish Rev. Guillermo Morales</p> <p>First United Methodist 407 S. Haney • 659-5503 Sunday School: 9:45 a.m. Worship: 9:30 & 11 a.m. Jr. High Youth: 5 p.m. Sunday High School: 6 p.m. Sunday Kids Club: 3 p.m. Wed. Pastor - Derrel Evins</p> <p>Grace Presbyterian Church (Worships with Faith Lutheran Church) 1101 Bernice • 659-2033 Pastor - Beverly Cook</p> <p>Faith Lutheran Church (ELCA) 1101 Bernice • 659-2252 Sunday School: 9:45 a.m. Worship: 11 a.m. (Worships with Grace Presbyterian Church) Pastor - Beverly Cook</p> <p>Union Church 31 S. Endicott • 659-2644 Sunday School: 9:45 a.m. Worship: 10:45 a.m. Evening Worship: 6 p.m. Bible Study: 7 p.m. Wed. Pastor - Dr. Timothy Minor</p> <p>Fellowship Baptist 1102 S. Archer • 659-2783 Sunday School: 10 a.m. Worship: 11 a.m. Sun. Evening Worship: 6 p.m. Youth/Adult Service: 7:30 Wed. Pastor - James Washburn</p>	<p>Primera Mision Bautista 502 E. 7th • 659-3991 Sunday School: 9:45 a.m. Worship: 11 a.m.; Evening: 6 p.m. Wed. Prayer Meeting: 7 p.m. Thurs. Visitation: 7 p.m. Pastor Joe Garcia Jr.</p> <p>El Aposento Alto U.P.C.I. 1105 S. Roland Domingos: Escuela-Domical - 10 a.m. Culto Evangelistico - 7 p.m. Jueves: Oracion - 8 p.m. Mier: Estudio Biblico - 7 p.m. Pastor - A.G. Martell (806) 659-2153</p>	<p>Gruber United Methodist Broadway & Garrett 733-2651 Sunday School: 9:45 a.m. Worship: 8:30 & 10:50 a.m. Eve. Worship & UMY: 6 p.m. Pastor - George Price</p> <p>Spanish Cristo Redentor Church Sunday Mass: 1:30 p.m. Friday Evening Mass Summer - 8:00 p.m. Fall/Winter - 7:30 p.m.</p>
---	--	---	---

<p style="text-align: center; margin: 0;">Deakin</p> <p style="text-align: center; margin: 0;">ELECTRIC</p> <p style="text-align: center; margin: 0;">OILFIELD • RESIDENTIAL • COMMERCIAL</p> <p style="text-align: center; margin: 0;">321 S. MAIN • SPEARMAN</p> <p style="text-align: center; margin: 0;">1-800-999-1506 Chris Deakin 806) 659-5016 President</p>	<p style="text-align: center; margin: 0;">Bartlett's Lumber & Hardware</p> <p style="text-align: center; margin: 0;">105 W. Broadway • Gruver, Texas (806) 733-2404</p>	<p style="text-align: center; margin: 0;">BERRY CLEANERS</p> <p style="text-align: center; margin: 0;">Ann & Vernon Pipkin - Owners</p> <p style="text-align: center; margin: 0;">Phone 659-3122 • P.O. Box 1017 207 Main St. • Spearman, TX</p>	<p style="text-align: center; margin: 0;">Morse Implement & Auto Supply</p> <p style="text-align: center; margin: 0;">"Join us in church this week!"</p> <p style="text-align: center; margin: 0;">Tom Dortch 733-2668 P.O. Box 89 • Morse, TX 79062</p>
<p style="text-align: center; margin: 0;">PRAIRIE MOTORS INC.</p> <p style="text-align: center; margin: 0;">Hwy. 207 South • P.O. Box 430 Spearman, TX 79081 • (806) 659-2541 www.prairiemotors.com</p>	<p style="text-align: center; margin: 0;">Gruver Cablevision</p> <p style="text-align: center; margin: 0;">308 Main Gruver, TX 79040 733-5295</p>	<p style="text-align: center; margin: 0;">Hansford County Reporter-Statesman</p> <p style="text-align: center; margin: 0;">"Proudly Serving Hansford County Since 1907"</p> <p style="text-align: center; margin: 0;">(806) 659-3434 213 Main Street • Spearman, TX</p>	<p style="text-align: center; margin: 0;">Interstate Bank, sss</p> <p style="text-align: center; margin: 0;">322 Main • P.O. Box 146 Spearman, TX • 659-2559</p>



Wedding Announcement

Jim and Donna Murray of Vernon, Texas and Gianni and Ornella Ferrara are proud to announce the marriage of their children Amy Murray and Marco Ferrara on March 27, 2006 in Rome, Italy.

The couple are residing in Rome where Marco is a pilot in the Italian Air Force. Amy is currently tutoring English while Peyton attends pre-school to learn Italian.

Marco is a graduate of the NATO pilot training program at Sheppard Air Force Base in Wichita Falls, Texas. Amy is a graduate of Midwestern State University with a Bachelors of Art.

Senior Day set at Tri-State Fair

Senior citizens attending the Texas Ford Dealers Tri-State Fair and Rodeo can tap their feet to the beat of the music and get their health checked out all for free on Sept. 18.

Senior Citizen's Day at the fair is sponsored by Texas Cooperative Extension in Potter County; the Panhandle Geriatric Education Program, a part of the Amarillo College Division of Nursing; Potter Extension Education Association; Potter County Coalition on Aging; and Tri-State Fair.

Free gate admission is offered from 8 a.m. to 6 p.m. on Sept. 18. A special program will be held from 9 a.m. to 1 p.m. in the Amarillo National Center, where there will be entertainment, refreshments and door prizes (cash prize for oldest male and female plus door prizes from exhibitors.)

The Health Fair will include screenings for glucose, cholesterol, blood pressure, body mass index, memory, balance, depression and bone density.

Participants include: Amarillo College "Geriatrics on the Go",

Texas Tech Medical Science Center, Alzheimer's Association, Area Agency on Aging of the Panhandle, Panhandle Area Health Education Center, Panhandle Council for the Deaf, Retired Senior Volunteers Program, Division for Blind Services, Extension - "Emergency Preparedness", Craig Methodist Retirement Center, Progressive Steps Rehabilitation, Northwest Texas Hospital- Senior Advantage, Panhandle Eye Group, Claimont Retirement Community, Home Instead Senior Care, Baptist-St.

Anthony's Home Care and Hospice, VistaCare Hospice, Something Special, Home Instead Senior Care, The Cottages - Certified Alzheimer's Care, Senior Ambassadors Coalition - Vials for Life at Your Feet, Panhandle Independent Living Center and National Home Health Care.

Entertainment by local country western songwriter and singer Ed Montana will begin at 10 a.m., followed by ventriloquist Terry Fator.

For more information contact the Potter Extension office at (806) 373-0713.

You are invited to attend a Baby Boy Shower

honoring
Cleo Hughes

on Saturday, September 9th
at 3:00 p.m.

in the home of Jan Ellsworth
1006 Barkley Spearman

You are invited to attend a Wedding Shower

honoring

Halee (Beasley) & Steve Scott

on Saturday, September 9th

from 10:00-11:20 a.m.

in the home of Karen Thompson

1104 Linn Dr. Spearman



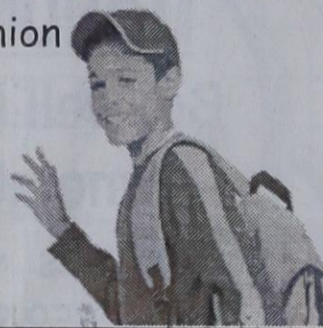
Ralph Depee, D.D.S.

Member American Association of Orthodontists

Orthodontics For Children and Adults

- Free exam and estimate of cost
- Free second opinion
- Insurance filed

821 S. Amherst
Perryton, Texas
1-800-521-0831
(806) 435-2320



Celebrate
Gifts for all your celebrations!
Bridal Registry

Shower Dates

- Halee Beasley & Steve Scott - Sept. 9
- Christen Ferguson & Bradley Brown - Sept. 9
- Sarah Martin & Brad Newman - Oct. 14
- Courtney Edwards & John Brock - Nov. 19
- Marcy Cherry & Taos Weldon
- Alexis Adams & Ryon Atwood
- Laurie Soane & Chris Strawn
- Kassandra Drennan & Donnie Davis

Baby Registry

Sara (Jones) & Jeremy Farmer - Oct. 28

Celebrate

203 Main St. Spearman, TX
(806) 659-3350 1-800-663-8026

Rall's Appliance

New Load of Refrigerators!
Dent & Scratch Discounted!
from 2 cu. ft. up to 22 cu ft.

Rall's Appliance
We Service What We Sell!
800 Weatherly - Borger TX - 274-5269
We accept VISA, MasterCard & Discover
Hours: Mon.-Fri. 8:30 a.m.-5:30 p.m.; Sat. 9 a.m.-2 p.m.

Tong's Chinese Restaurant

511 S. Hwy. 207 • 659-2838 • Spearman

All-You-Can-Eat Buffet Specials

- Tuesday - Steak \$7.99
- Friday - Shrimp \$6.50
- Saturday - Catfish \$6.50
- Mon., Wed., Thurs. & Sat. \$5.50

Buffet Hours: 11 a.m.-2:30 p.m.
and 5:30-Close

Gordon's DRUG

Your place for
Bridal Registry

Couples Currently Registered

- Halee Beasley & Steve Scott - Sept. 9
- Christen Ferguson & Bradley Brown - Sept. 9
- Courtney Edwards & John Brock - Nov. 19
- Kassandra Drennan & Donnie Davis
- Jessica (Crossland) & Matt Dunning
- Micha (Lewis) & Brandon Casdorff
- Andie (Hager) & John Stafford
- Laura (Long) & Kolby Sumner
- Farrell (Farley) & Garrett Griffin
- Lori (Green) & Eric Vasquez
- Marcy Cherry & Taos Weldon
- Kassi Wilson & Steven Foster
- Laurie Soane & Chris Strawn

Baby Registry

- Sara (Jones) & Jeremy Farmer - Nov. 19
- Leonard & Ronda (Renner) Haynes
- Luis & Maria Carbajal

Gordon's DRUG 659-2141
314 Main Spearman

HIGH PLAINS PUBLIC RADIO



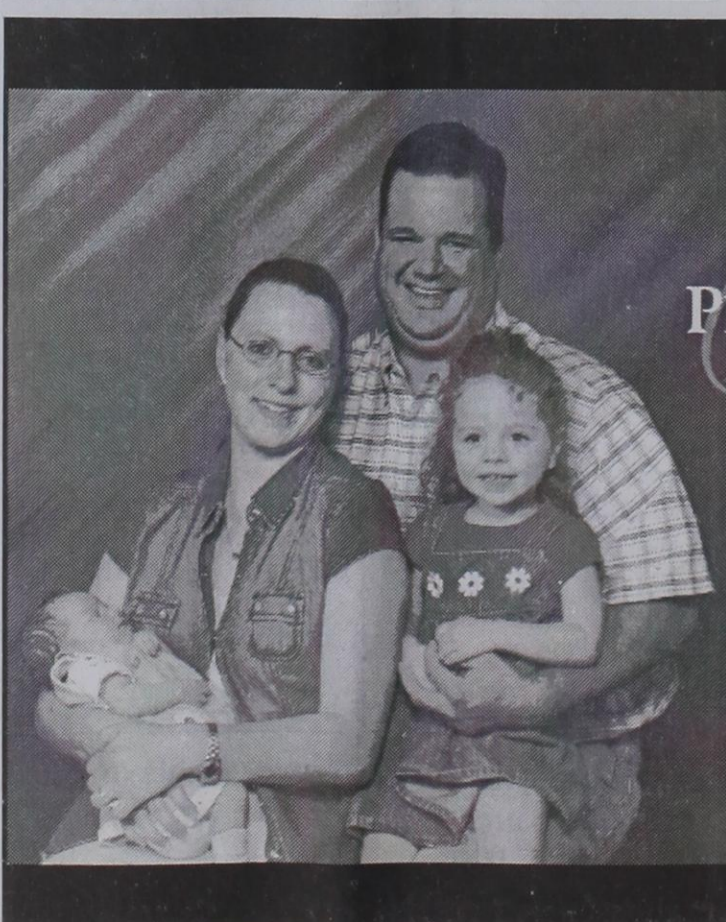
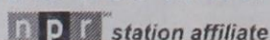
89.5
KTOT

Top O' Texas @ 89.5
Spearman-Borger-Canadian- Dumas-Pampa-Perryton

Washburn, Claude, Panhandle @ 91.3

Amarillo @ 94.9

Listen on the web at www.hppr.org



Join us in welcoming
Dr. Jennifer McGaughy
to the
PERRYTON HEALTH CENTER

Welcome
1-3 p.m. Sunday, Sept. 17
at the Perryton Health Center
3101 Garrett
Perryton, Texas

cake and punch will be served



Gruver Greyhounds

Texhoma 34, Gruver 6
Ben Mitchell ran for 158 yards and two touchdowns as Texhoma rolled past Gruver in the season-opener for both teams.
"For most of the players it was their first varsity experience," said Coach Terry Felderhoff. "We made a lot of mistakes and turned the ball over 4 times, 3 of which gave Texhoma a short field and 3 TD drives of 15, 25, & 30 yards. We are a young ball team and will get better every week. I told the boys it doesn't matter what our record is come district as long as we improve each week and are playing well come October 13 when district play starts."

SCORING
T - Blake Perkins 53 run (Tim Moore kick).
T - Perkins 53 punt return (kick failed).
G - Grotegut, 6 pass from Diego Luciano (kick failed).
T - Ben Mitchell 1 run (Moore kick)
T - Mitchell 15 run (Moore kick)

STATISTICS

	GG	TRD
First Downs	9	14
Rushing Yards	32	197
Passing Yards	131	31
Total Yards	163	228
Comp-Att-INT	9-27-2	3-11-1
Punts-Avg.	5-34	4-30
Fumbles-Lost	3-2	0-0
Penalties-Yards	3-20	9-66
Touchdowns	1	5
PAT (Att-Comp)	1-0	5-4

SCORE BY QUARTERS

	1	2	3	4	Final
Gruver	0	0	0	0	0
Texhoma	13	7	0	14	34

Spearman Lynx

Spearman 42, Wheeler 0
The Spearman Lynx gave Wheeler a rude welcome back to 11-man with a blowout win over the Mustangs in the season-opener for both teams.
Brynn Garnett was the big-play man for Spearman. He caught four passes for 81 yards, including touchdown receptions of 15 and 25 yards. Collin Gillaspie threw both scoring passes. Garnett also returned a punt 60 yards for a score.
Roberto Flores led the Lynx ground attack, running for 81 yards and the game's opening score, a 1-yard run.
Chuckie Rivera led Wheeler with 61 yards on the ground.

SCORING
S - Roberto Flores 1 run (Brynn Garnett kick)
S - Garnett 15 pass from Collin Gillaspie (Lance Huddleston rec from Gillaspie)
S - Blayne Baker 28 fumble recovery (Garnett kick)
S - Gillaspie 1 run (Garnett kick)
S - Garnett 25 pass from Jordan Ashmore (Garnett kick)
S - Garnett 60 punt return (kick failed)

STATISTICS

	SL	WM
First Downs	17	5
Rushing Yards	251	90
Passing Yards	109	0
Total Yards	360	90
Comp-Att-INT	7-16-2	0-4-0
Punts-Avg.	1-44	8-33
Fumbles-Lost	0	5-2
Penalties-Yards	6-45	6-35
Touchdowns	5	0
PAT (Att-Comp)	4-4	0-0
2-Pt. Conv.	1-1	0-0

SCORE BY QUARTERS

	1	2	3	4	Final
Spearman	15	7	14	6	42
Wheeler	0	0	0	0	0

2006 LYNX AND LYNXETTE CROSS COUNTRY

DATE	LOCATION	TEAMS
9/9	Wolf Creek Classic	HS & JH
9/16	Amarillo Invitational	HS Only
9/16	Follett CC Meet	JH Only
9/23	Sunray Invitational	HS & JH
9/30	Lubbock Meet	HS VG Only
10/7	Canadian CC Meet	HS & JH
10/14	Canyon Invitational	HS & JH
10/23	District Meet	HS & JH
11/4	Thompson Park, Amarillo Region I	HS Only
11/11	Mae Simmons Park, Lubbock State	HS Only
	Round Rock	

2006 HOUND AND LADY HOUND CROSS COUNTRY

DATE	LOCATION	TEAMS
8/26	Guymon	HS
9/2	Borger	JH/HS
9/9	Perryton	JH/HS
9/16	Amarillo	HS
9/23	Sunray	JH/HS
9/30	Lubbock	HS
10/7	OPEN	
10/16	District Meet	JH/HS
	Thompson Park, Amarillo	
10/4	Regional Meet	HS
	Mae Simmons Park, Lubbock	
10/11	State Meet	HS only
	Round Rock	

LYNX & LYNXETTE BOOSTER CLUB

Friday Night against Boys Ranch is Parent Night starting at 6:50 p.m.
Booster Club meets every Tuesday night at 7:00 p.m. at the High School Library.
The Booster Club is taking orders for black jackets and shirts call Patti Schnell 659-2919.
The Booster Club is selling CD's with your child's sports season. This is for everyone that wants all the pictures taken of your JV or Varsity players. The cost is \$25 per CD that is ready to print or viewing. Pictures can still be purchased of Varsity and viewed on Friday mornings at Ivey's from 7:15 - 7:45 a.m. or call Tami Hargrove after 5 p.m. at 659-5235. JV purchase at the end of season, but turn your name in now if interested.

Are You A Victim of Domestic Violence, Sexual Abuse or Physical, Emotional or Sexual Assault?
Call Toll Free Hotline 1-800-753-5308

We can see individuals from Hansford County anytime upon request. Call 435-5008 or 1-800-753-5308 to set up an appointment in Hansford County. We operate a safe place for victims and their children to stay in times of crisis.

Battering Intervention & Anger Management Available

Panhandle Crisis Center
Serving Hansford, Lipscomb & Ochiltree Counties
301 S. Ash • Perryton, TX - Memorials Accepted

SCHOOL EMPLOYEES & FEDERAL CREDIT UNION
www.hhsefcu.org

Does this Certificate Rate look interesting to you?
5.15% APY*

*Annual Percentage Yield

800-882-1740 or 878-2452

PO Box 1187 • 102 N. Main Stinnett • www.hhsefcu.org
(806) 878-2452 • 1-800-882-1740

We Do Business in Accordance With the Federal Fair Housing Law and Equal Credit Opportunity Act.

NCUA
National Credit Union Administration
a U.S. Government Agency

My Touch With You

Dream Big

Small Taxing Unit Notice

The City of Spearman will hold a meeting at 7:00 AM on September 19, 2006, at the City Hall Council Chambers; 30 SW Court; Spearman, Texas, to consider adopting a proposed tax rate for tax year 2006. The proposed tax rate is \$0.4999 per \$100 of value.

The proposed tax rate would increase total taxes in the City of Spearman by 5.821338 percent.

JAMAICA SUNDAY
for the entire family!
Sponsored by Sacred Heart Catholic Church

JAMAICA
Sunday, September 17, 2006
11:30 a.m - 7:00p.m
Swimming Pool Park
216 East 7th Spearman, Texas

Raffle tickets / #3 each
1st prize Freezer with \$250.00 meat package
2nd prize \$200.00 gas card
3rd prize \$150.00 gift card

Bingo Dunking booth Fajitas Volleyball Nachos
Funnel cakes Tacos Fun games Sweet corn
Cake walk Ice cold drinks gorditas Live music

Featured bands include:
Ritmo Loco, and Aguacero del Norte

HUGE garage SALE
Little Tiffanies & Others
Gifts, Furniture, Clothing & Much More!

Golden Age Center - Gruver
Saturday, September 9th
8 a.m. - 4 p.m.

Cindy Blackman Announces Write-In Candidacy for Justice Of Peace



I would like to announce that I am a write-in candidate for the office of Justice of the Peace of Hansford County.

As a life-long resident of the county, I am committed to representing a fair and impartial office and to be available to perform the duties of the office. I think there is a real opportunity through the Justice of the Peace office to implement programs that address underage drinking that involves students and their parents.

I have previously served the community through my work as Executive Vice-President of the Spearman Chamber of Commerce for seven years and currently serve as a director of the Economic Development Corporation. I have been the Community Resource Coordinator for Spearman ISD for ten years. My community involvement includes Lions Club, Beta Sigma Phi sorority, Hansford County Historical Committee, Stationmaster's House Museum board, Texas Community Education Board of Directors, Big Brothers and Big Sisters, and Leadership Spearman.

For a write-in vote to count, voters are required to check the box and write in the candidate's name in the space provided.

I look forward to earning your vote in the November 7th election and continuing to serve Hansford County.

Sincerely,
Cindy Blackman

by Jim Derington

Out At The Lake

September 4, 2006 - Lake level - 18.70 feet

Lake Palo Duro is up a little, from last week. The office gauge caught a fast 1.93 inches, Friday evening. Horse Creek ran into the lake, though it was not running near Spearman. Saturday morning, the lake level was up five inches from Friday's reading. Farwell creek was running from Friday night rain around Gruver. This flow did not make it to the lake, however. The lake level is the same as the July 25 reading. It is good to be going up slightly. The recent rains have kept the lake above the all-time low of 17.75 feet, in 1995. The rain gauge at the office has received 8.81 inches, since August 1.

Labor Day weekend was a pleasant surprise, to me. Cool and wet weather made it a little uncomfortable at first, but Sunday and Monday were nice. The Labor Day holiday has not been as busy as in the past. The mud probably kept some from fishing and camping at the water's edge. The R.V. camping was fairly busy. We had as many as eighteen in the park behind the dam, and eight on the office side.

I noticed probably one hundred and fifty buzzards, or Turkey vultures, shortly before nightfall, in two areas. This seemed like more than usual. Perhaps they are grouping for migration, though I think it is a little early. I counted six Mississippi kites in the park Sunday evening. A mysterious woodpecker was on the post that holds our bird feeder, Monday. In the second bird book I checked, it showed a juvenile red headed woodpecker. I believe that is what I saw.

In the past, Labor Day weekend

marked the end of the season for recreation. The cooler weather and the change of the seasons, makes for a great time to visit Lake Palo Duro. It is a beautiful time to camp, and the fish are still biting. There are still a couple of months to enjoy the outdoors, before it gets uncomfortable!

Arrests made in house fire

Three arrests were made in the Tim Flores fire on August 1, 2006. Sealed indictments were returned by the 84th Judicial Court Grand Jury on Tuesday, August 29, 2006 for the arrest of three men. Two men were arrested in Ochiltree County - one for burglary and one for burglary and arson. Another man was arrested in Hansford County for burglary.

The home of Tim Flores caught on fire in the early morning hours of August 1, 2006, and subsequently burned to the ground.

The Hansford County Sheriff's Department took statements following the investigation and presented them to the Grand Jury on August 1, 2006. They are now waiting for a trial date to be set by the District Attorney's office.

The Hansford County Sheriff's Department would like to thank the Spearman Fire Department and the State Fire Marshal's Office for their assistance.

THANK YOU!

The annual Hansford County Circle of Friends Membership Party held on August 17, 2006 was a wonderful success! Circle of Friends is a non-profit volunteer organization founded to support the philosophy and goals of the Don and Sybil Harrington Cancer Center. The purpose of the Circle of Friends is to provide cancer patients and their families with financial assistance in times of crisis and to support programs in cancer treatment, education and research. With your generosity, Hansford County Circle of Friends will present a check for \$21,000.00 to the Circle of Friends for cancer patients and their families! A very special THANK YOU to the Circle of Friends Hosts and the following individuals and businesses for their donations, time and extra effort in making this a grand event!

- Abbi Yanke
- Linda Coombs
- Diane McLain
- Traci Venneman
- Roxie Ralston
- Richard & Wanda Wagner
- Paul & Barbara Stavlo
- Joe T & Linda Venneman
- Linda & Dwain Weller
- Carrie McLain
- Dorothy Cator
- Bill & Ginger Pittman
- Bob & Jackie Pearson
- Kyle & Kimberly Irwin
- Pat Irwin
- Sadie Goodall
- Rick Barkley
- Lenny Pecha
- Bob & Cathy Davis
- Ronda Holt
- Julie Logsdon
- Lisa Salmans
- Anchor Heart Leather
- David Grotegut
- Dusty's Mane Attraction
- Farm Supply
- Bartlett's Lumber
- Gruver Parts
- Eva Spivey
- Sparky Stewart
- Comfort Winders
- Holly McLain, Pampered Chef

- Gordon's Drug
- 3 J Beef
- Kathy Logsdon-Snazzie
- Zulu Art Academy
- Hansford Implement
- The Hansford County Reporter-Statesman
- 5 Star Equipment
- The O'Loughlin Center
- High Plains Observer
- Celebrate
- The Bunkhouse
- The Lyric Theater
- Simple Simon's
- Sweets and Antiques
- Cates
- Farm Supply and Service
- Pizza Hut
- Graham Brothers Jewelers - Amarillo
- Duncan & Boyd Jewelers- Amarillo
- Ambassador Hotel-Amarillo
- Leal's Restaurant-Amarillo
- Lone Star Ballet-Amarillo
- Gorillas Hockey-Amarillo
- Amarillo Little Theatre-Amarillo
- Riley Blue-Amarillo
- Miller Distribution-Amarillo
- Western Leather Craft-Amarillo
- Cash for Gold and Jewelry-Amarillo
- New Wine-Amarillo
- Happenings by Elaine-Amarillo
- Arrington Ranch House Lodge-Canadian
- The Cattle Exchange-Canadian
- Cottonwood Springs Guest Ranch-Pampa

WHEN DOES YOUR SUBSCRIPTION EXPIRE?

SCR1
09/06 EXPIRES
JOHN Q. PUBLIC
PO BOX 123
SPEARMAN TX 79081

Expiration dates are printed on the top of all mailing labels. Our readers can help keep the cost of subscriptions down by mailing in renewals in the appropriate month.

Thank you, Catherine Smith

THE HANSFORD COUNTY REPORTER-STATESMAN
213 Main Street • Spearman, TX 79081
Annual Subscription Rates
In Hansford County - \$25
Out of County - \$30

Are You A Victim of Domestic Violence or Sexual Abuse?

The Panhandle Crisis Center Can Help
Call Toll Free - Hotline
1-800-753-5308
301 S. Ash - Perryton
435-5008
Battering Intervention & Anger Management Available
Memorials Accepted

NOTICE OF VOTE ON TAX RATE

The Hansford County Commissioners Court conducted public hearings on a proposal to increase the total tax revenues for Hansford County from properties on the tax roll in the preceding year by 7.97 percent on August 28, 2006 at 10:00 a.m. and September 11, 2006 at 10:00 a.m.

The Hansford County Commissioners Court is scheduled to vote on the tax rate that will result in a tax increase at a public meeting to be held on September 18, 2006, at 10:00 a.m. in the Hansford County Law Library.

NOTICE OF PUBLIC MEETING TO DISCUSS GRUVER INDEPENDENT SCHOOL DISTRICT'S STATE FINANCIAL ACCOUNTABILITY RATING

Gruver Independent School District will hold a public meeting at 6:30 p.m., September 19, 2006 in the High School Board Room, 601 Garrett Street, Gruver, Texas

The purpose of this meeting is to discuss Gruver Independent School District's rating on the state's financial accountability system

Gruver ISD Greyhound News

National Honor Society
The elementary would like to recognize and thank the NHS members who served as babysitters during our Open House for Pre K - 1st grade last night on Tuesday, September 5, 2006 from 6:00-8:00 p.m.

Members helping were: Abbi Yanke, Emily Williams, Morgan Ross, Whitney Moffet, Diana Solis, and Sydney Been.
Mrs. Gillispie is their sponsor and helped with the organization of this project.

The girls did a wonderful job. In fact, the kids were having so much fun, parents could hardly get them to go home!

The members of the 2006-07 National Honor Society of Gruver High School have adopted a project which will recognize and encourage those students who make the Honor Roll for each six weeks. Students on the Honor Roll will put their names in a drawing for a grand prize which will be purchased by the NHS officers. Students receiving all A's on their report card will receive special individual prizes.

Members of the 2006-07 National Honor Society are: Sydney Been, Bonnie Frick, Mayra Hernandez, Jimmiee McCloy, Justin Thompson, Lauren Urban, Victoria Vela,

Conrad Curry, Brian Johnson, Charlie Slough, Tucker Williams, Yadira Garcia, Chandler Miner, Whitney Moffet, Maydeli Ortiz, Morgan Ross, Diana Solis, Andriana Soto, Seth Thompson, Emily Williams, Abbi Yanke, and sponsor, Kathy Gillispie.

Officers for the upcoming year are: Vicki Vela, President; Justin Thompson, Vice President; and Lauren Urban, Secretary/Treasurer.

JH Cross Country
Gruver Junior High Student athlete, Jerrod Collier competed in the Guymon cross country meet winning first place in the Jr High division running the two mile course in an impressive 12:52!

Yard Dogs
Gruver Booster Club will be taking orders for Yard Dogs at "Meet The Hounds" on Aug. 31st. The cost is \$10.00 for painted dogs, \$7.00 if parents come and help paint.

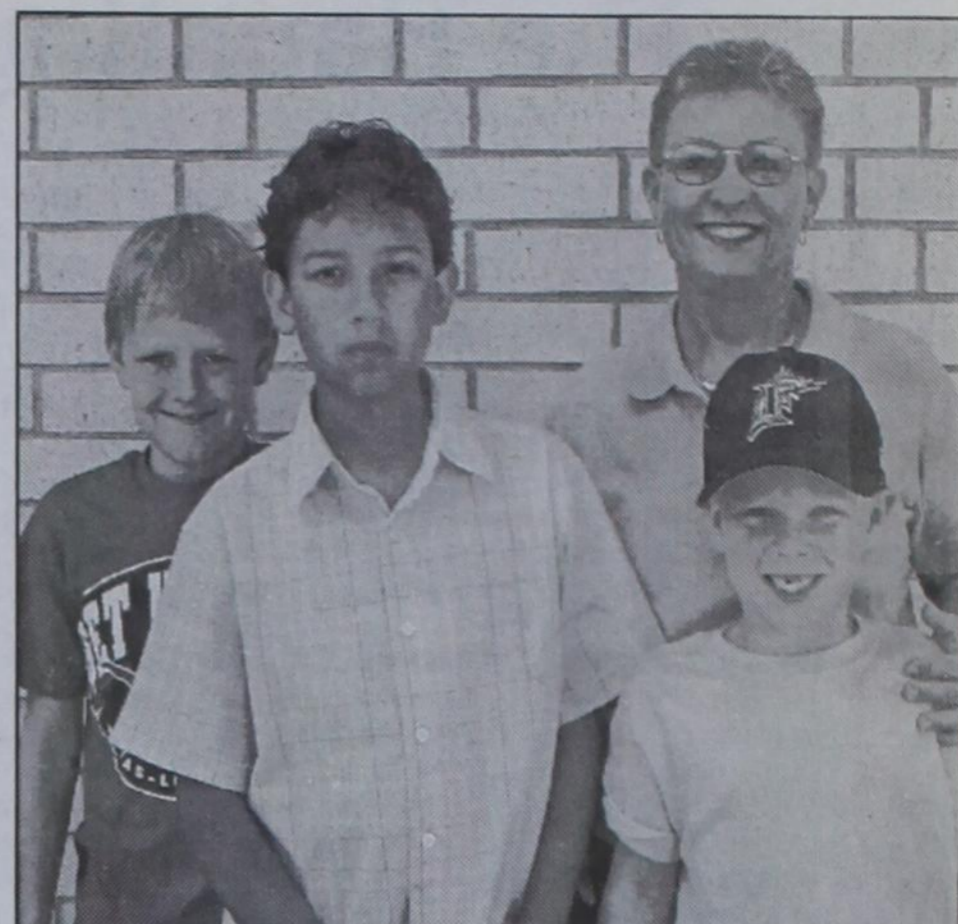
These are just for athletes of GHS.

If you have old yard dogs that you don't want anymore, please bring them to Vicki Urban at Gruver UMC so we can recycle them.



Barbara Belger was the winner of the \$250 Spearman Buck given away by the Spearman Little League. She was presented the winning certificate by Sharron Swan, coordinator for the Spearman Little League fundraiser.

Erin Wiggins (right) sold the winning ticket and received a free show pass and refreshments to the Lyric Cinema, compliments of Gary Ellsworth.



The Spearman Little League held a raffle fundraiser for \$250 Spearman Bucks. The top sellers were (L-R) Devin Wills (3rd place - sold 7 books), Kevin Ruiz (2nd place - sold 8 books), and Reid Swan (1st place - sold 15 books). Sharron Swan (back right) was coordinator for the fundraiser. These guys worked very hard selling tickets and the Spearman Little League would like to thank everyone who purchased tickets for their support. Your donations and support are greatly appreciated.

BENZENE ALERT

If you or a loved one has been diagnosed with **Acute Myelogenous Leukemia (AML)** or **Myelodysplastic Syndrome (MDS)**, please call us today toll free at 1-866-369-3476 to discuss your legal rights.

THE FOX LAW FIRM, P.C. 1-866-FOX-FIRM
Principal Office-- Dallas, Texas WWW.FOXFIRM.COM

Car Wrecks

are not accidents. Someone was not paying attention. Maybe they were distracted or didn't adjust for road conditions. Maybe the trucker was late, sleepy or did not maintain his rig. Many injuries, like head trauma, are not readily apparent. Apparent injuries, like burns, paralysis or death, have many underlying and life altering consequences for you and your family. Our experience can help you now and your family's future. Call us for professional insight.

EXPERIENCE COUNTS
Lawyers with over 80 years combined expertise and staff with over 90.

Ryan A. Krebs, M.D., J.D.
Doctor-Lawyer in Full-time Law Practice
Richard A. Dodd, L.C.
Craig W. Brown, P.L.L.C.
Timothy R. Cappolino, P.C.
Board Certified Personal Injury Trial Law and Civil Trial Law by the Texas Board of Legal Specialization
NO FEE FOR FIRST VISIT
Cameron, TX

1-800-460-0606
www.headtraumalaw.com

YOUR ROAD TO A NEW CAREER!

- Paid CDL Training!
- No Experience Needed!
- Earn \$35 - \$75K Yearly!

Stevens Transport offers the best comprehensive training program for new drivers! Get your career rolling and enjoy exceptional earnings and great benefits from the #1 premier transportation carrier!

For more information, call **800-333-8595**
www.stevenstransport.com

Urgent news for people who took SEROQUEL.

Seroquel, an antipsychotic drug also known as Quetiapine, has been linked to diabetes, pancreatitis, diabetic ketoacidosis (DKA) and even death. If you or a loved one have experienced any of these health problems, call us now toll free at 1-800-THE-EAGLE for a free consultation. We practice law only in Arizona, but associate with lawyers throughout the U.S.

GOLDBERG & OSBORNE
1-800-THE-EAGLE
(1-800-843-3245)
www.1800theeagle.com

Open 7 days a week

★ RANCH AUCTION ★

HISTORIC 116+/- ACRE • T. L. AUTRY RANCH
FRIDAY • SEPTEMBER 22 • 11 A.M.
1730 CR 234 • TIOGA, TEXAS

Horse Ranch, Executive Retreat or Family Residence in the Heart of "Horse Country, USA" once owned by Singing Cowboy Gene Autry's Family. Offered in tracts and as a whole.

MIKE JONES AUCTION GROUP • M. Jones, CAI, GPPA, TX6756
W.S. Swenson, Broker
GO TO WWW.MJACTIONS.COM ★ 972-387-1110
Oct. 7 • Outdoor Bar & Kitchen Mfg. Co.

NO CREDIT CARD REQUIRED!

- BEST DEAL EVER -
Get ALL 250+ Channels FREE for 4 months with NFL Sunday Ticket Includes ALL Movie Channels

DIRECTV.

FREE 1-4 Room System
FREE Installation
FREE DVR (Ask How)

Call Now 1-800-574-1938

HOST FAMILIES NEEDED

Make this year the most exciting, enriching year ever for you and your family. Share your world with a young foreign visitor from abroad. Welcome a high school student, 15-18 years old, from France, Spain, Germany, Thailand, Mexico, Denmark, Japan, or Italy as part of your family for a school year and make an overseas friend for life.

For more program information or to select your own exchange student from applications with photos, please call

Marcy at 1-800-888-9040 WORLD HERITAGE IS A PUBLIC BENEFIT, NON-PROFIT ORGANIZATION
www.world-heritage.org

KUBOTA CURRENT FORECAST

ORANGE HOT DEALS

L3130

RTV900

ZD25

B7800

NO MONEY DOWN
0% A.P.R.
FINANCING FOR UP TO 36 MONTHS

PANHANDLE IMPLEMENT CO

710 NORTH MAIN STREET • PERRYTON, TX • 806-435-6508

Kubota
EVERYTHING YOU VALUE

*\$0 down, 0% A.P.R. financing for terms up to 36 months available through September 30, 2006. Example: A 36-month repayment term at 0% A.P.R. requires 36 monthly payments of \$27.78 per \$1,000 borrowed. Financing is available through Kubota Credit Corporation, U.S.A., subject to credit approval. Some exceptions apply. Eligible products: ZG, ZD, BX, B, L, M (except M40 series) and CE equipment. See your dealer for complete details.

SAFETY
K693-21-63065-4

The Haunting War: A Civil War Melodrama

Sunday, September 10, 2006
3 pm
Lipscomb School Auditorium

"We have shared the incommunicable experience of war, we have felt, we still feel, the passion of life to its top ... In our youths, our hearts were touched by fire."
Oliver Wendell Holmes

The great catastrophe of the 19th century is known to us today by many names: "The War Between the States", "The War of Northern Aggression", "The War of Southern Independence", "The Second Revolution", "The Brothers War", etc., but most commonly "The Civil War". Yet, regardless of what it is called, the mere mention of this terrible period of unparalleled upheaval in our

national past summons up deep emotions in Americans across a span of nearly one hundred and fifty years. This historical memory which is the Civil War... this "haunting war" lives on in the searing imprint of courage, fear and dedication of a bygone era, and lingers in the words and music of a people who bore witness to its horror.

"The Haunting War" presents a rare glimpse through the eyes of these valiant Americans, by summoning their memories and emotions of a war that reached out well beyond the four years of its duration, influencing the lives of those who not only experienced it, but those who are touched even today by it.

William Coleman acts as narrator and program host, guiding the

audience through a series of historical vignettes outlined by original and traditional music of the period. Popular songs written before, during and after the Civil War express much of the history and humor of the period, as well as the deep emotional turmoil so prevalent at the time.

Carla Coleman expertly portrays the haunted lives of several historical characters who were changed forever by the Civil War including: Roberta Corbin, mother of the little girl who stole the heart of the great "Stonewall" Jackson, and then was tragically struck down in her youth by an unseen enemy brought to her very doorstep by the army charged with protecting her; Mary Todd Lincoln, wife of the great emancipator, whose extravagant into a deep dementia

with the loss of two sons and eventually her husband; and the mother of the famed South Carolina avenger, Manson Jolly, who single handedly took the lives of well over a hundred Union soldiers as recompense for his five lost brothers, and then attempted to escape punishment by fleeing to Texas, only to find that one never escapes

the final judgment; and several other interesting figures.

"The Haunting War" written over the winter of 2004, is the latest presentation in the Coleman's catalogue of performances. This special presentation at the Wolf Creek Heritage Museum will also feature selections from their previously released collection of music

and readings: "The Last Roses", "Chantilly Remembrance", "Tunes of Glory", and their Gospel collection, "Turn Your Radio ON!" Their recordings will be available for purchase at the performance.

Tickets are available at Museum and will be available at the door. Price is \$10.00 per person.

WOLF CREEK HERITAGE MUSEUM

FUNDRAISER
"The Haunting War"
Sunday, September 10th
3pm
Lipscomb School



For many Americans the intensity of the war experience left marks that would remain long after the fury and fever had died away. Those who survived would long remain haunted by the horror and madness. Caught in a desperate attempt to somehow justify the terrible, immeasurable loss of life and property their stories of courage and hope echo across the ages. Step into the lives of a few who were daily touched by a war that simply would not end... Step into "The Haunting War"

WILLIAM & CARLA COLEMAN
Cold Comfort Productions
Woodburn, OR 97071

TICKETS

\$10 /person
Available at the museum
Or board member

WOLF CREEK HERITAGE MUSEUM

PO BOX 5
LIPSCOMB, TEXAS 79856
Phone: 806-852-2123
Fax: 806-852-2172
Email: wolfcreek@comcast.net

PUBLIC NOTICE OF NONDISCRIMINATION IN CAREER & TECHNOLOGY EDUCATION

2006 - 2007

The Gruver Independent School District offers Career & Technology Education programs in Agricultural Science, Business Education, Career Orientation, Family & Consumer Science Education, Marketing Education, Ready Set Teach, Skills for Living and Technology Applications. Admission to these programs is based on classification of student, age or prerequisites in some programs.

It is the policy of Gruver ISD not to discriminate on the basis of race, color, national origin, sex or handicap in its educational and vocational programs, service or activities as required by the Title VI of the Civil Rights Act of 1964, as amended; Title IX of the Education Amendments of 1972; and Section 504 of the Rehabilitation Act of 1973, as amended.

It is the policy of Gruver ISD to support districts as they provide a free, appropriate education to all students consisting of regular and special education and related aides and services in career and technology education programs that are designed to meet individual educational needs of disabled persons as adequately as the need of non-disabled persons are met and are based upon adherence to provisions set forth in 34 CFR 104.33-104.36; 34 CFR 104.31-104.40; (see also standards under V-C, V-D, V-E, V-F, V-G, and V-H).

It is the policy of Gruver ISD not to discriminate on the basis of race, color, national origin, sex, handicap, or age in its employment practices as required by Title VI of the Civil Rights Act of 1964, as amended; Title IX of the Education Amendments of 1972; the Age Discrimination Act of 1975, as amended; and Section 504 of the Rehabilitation Act of 1973, as amended.

Gruver ISD will take steps to assure that lack of English language skills will not be a barrier to admission and participation in all educational and vocational programs.

For information about your rights or grievance procedures, contact the Title IX Coordinator, David Teal, at 601 Garrett, Gruver, Texas 79040, (806) 733-2001, and/or the Section 504 Coordinator, David Teal, at 601 Garrett, Gruver, Texas 79040, (806) 733-2001.

FORMA DE MUESTRA

El Distrito Independiente de Gruver ofrece programas vocacionales en Agricultural Science, Business Education, Career Orientation, Family & Consumer Science Education, Marketing Education, Ready Set Teach, Skills for Living and Technology Applications. La admisión a estos programas esata basada en la edad y la prebia preparacion del estudiante en aread relacionadas con los ya mencionados oficios.

Es norma de Gruver ISD no discriminar por motivos de raza, color, origen nacional, sexo, impedimento o edad, en sus procedimientos de empleo, tal como lo requieren el Título VI de la Ley de Derechos Civiles de 1964, según enmienda; al Título IX de las Enmiendas en la Educación, de 1972, la ley de Discriminación por Edad, de 1975, según enmienda, y la Sección 504 de la Ley de Rehabilitacion de 1973, según enmienda.

Está escrito en el reglamento de Gruver ISD el proveer educación adecuada y gratuita a todos los alumnos que son parte del programa de education especial o regular y que reciben ayuda o servicios en programas educativos relacionados con educación vocacional y tecnológica, diseñados para cumplir con las necesidades educativas individuales de personas incapacitadas del mismo modo en que cumplen las necesidades de personas no incapacitadas y esto está basado en las provisiones señaladas en 34 CFR 104.33-104.36; 34 CFR 104.31-104.40; (también ver bajo V-C, V-D, V-E, V-F, V-G, V-H).

Gruver ISD tomará las medidas necesarias papa asegurar que la falta de habilidad en el uso de las lengua inglés no sea un obstáculo para la admisión y participación en todos los programas educativos y vocacionales.

Para información sobre sus derechos o procedimientos para quejas, comuníquese con el Coordinador del Título IX, David Teal, en 601 Garrett, Gruver, Texas 79040, (806) 733-2001, y/o el Coordinador de la Sección 504, David Teal, en 601 Garrett, Gruver, Texas 79040, (806) 733-2001.



Have you checked your long distance bill lately?

Do all those fees keep growing month after month, until that horrifying long distance bill consumes your home?

You have to change... change now... change to PTCI®!

Call today and pay no transfer fee!

721 W. 7th Spearman 1-800-562-2556 www.ptci.net



PUBLIC NOTICE OF NONDISCRIMINATION IN CAREER & TECHNOLOGY EDUCATION

2006 - 2007

The Spearman Independent School District offers Career & Technology Education programs in Agricultural Science, Business Education, Career Orientation, Family & Consumer Science Education, Marketing Education, Ready Set Teach, Skills for Living and Technology Applications. Admission to these programs is based on classification of student, age or prerequisites in some programs.

It is the policy of Spearman ISD not to discriminate on the basis of race, color, national origin, sex or handicap in its educational and vocational programs, service or activities as required by the Title VI of the Civil Rights Act of 1964, as amended; Title IX of the Education Amendments of 1972; and Section 504 of the Rehabilitation Act of 1973, as amended.

It is the policy of Spearman ISD to support districts as they provide a free, appropriate education to all students consisting of regular and special education and related aides and services in career and technology education programs that are designed to meet individual educational needs of disabled persons as adequately as the need of non-disabled persons are met and are based upon adherence to provisions set forth in 34 CFR 104.33-104.36; 34 CFR 104.31-104.40; (see also standards under V-C, V-D, V-E, V-F, V-G, and V-H).

It is the policy of Spearman ISD not to discriminate on the basis of race, color, national origin, sex, handicap, or age in its employment practices as required by Title VI of the Civil Rights Act of 1964, as amended; Title IX of the Education Amendments of 1972; the Age Discrimination Act of 1975, as amended; and Section 504 of the Rehabilitation Act of 1973, as amended.

Spearman ISD will take steps to assure that lack of English language skills will not be a barrier to admission and participation in all educational and vocational programs.

For information about your rights or grievance procedures, contact the Title IX Coordinator, Shane Whiteley, at 505 S. Townsend, Spearman, Texas 79081, (806) 659-2563, and/or the Section 504 Coordinator, Shane Whiteley, at 505 S. Townsend, Spearman, Texas 79081, (806) 659-2563.

FORMA DE MUESTRA

El Distrito Independiente de Spearman ofrece programas vocacionales en Agricultural Science, Business Education, Career Orientation, Family & Consumer Science Education, Marketing Education, Ready Set Teach, Skills for Living and Technology Applications. La admisión a estos programas esata basada en la edad y la prebia preparacion del estudiante en aread relacionadas con los ya mencionados oficios.

Es norma de Spearman ISD no discriminar por motivos de raza, color, origen nacional, sexo, impedimento o edad, en sus procedimientos de empleo, tal como lo requieren el Título VI de la Ley de Derechos Civiles de 1964, según enmienda; al Título IX de las Enmiendas en la Educación, de 1972, la ley de Discriminación por Edad, de 1975, según enmienda, y la Sección 504 de la Ley de Rehabilitacion de 1973, según enmienda.

Está escrito en el reglamento de Spearman ISD el proveer educación adecuada y gratuita a todos los alumnos que son parte del programa de education especial o regular y que reciben ayuda o servicios en programas educativos relacionados con educación vocacional y tecnológica, diseñados para cumplir con las necesidades educativas individuales de personas incapacitadas del mismo modo en que cumplen las necesidades de personas no incapacitadas y esto está basado en las provisiones señaladas en 34 CFR 104.33-104.36; 34 CFR 104.31-104.40; (también ver bajo V-C, V-D, V-E, V-F, V-G, V-H).

Spearman ISD tomará las medidas necesarias papa asegurar que la falta de habilidad en el uso de las lengua inglés no sea un obstáculo para la admisión y participación en todos los programas educativos y vocacionales.

Para información sobre sus derechos o procedimientos para quejas, comuníquese con el Coordinador del Título IX, Shane Whiteley, en 505 S. Townsend, Spearman, Texas 79081, (806) 659-2563, y/o el Coordinador de la Sección 504, Shane Whiteley, en 505 S. Townsend, Spearman, Texas 79081, (806) 659-2563.

REAL ESTATE FOR SALE

FOR SALE: 416 Haney, Spearman - 4BR, 2 B, CH & A, new carpet, new paint, close to school, Call 330-0364 TFN(06-08-06)B

EMPLOYMENT

HELP WANTED: Taking applications for a part-time church nursery worker. Sunday morning and other various times. Fun job, good pay. Please call 659-5503 or come by 407 S. Haney for information/application.

Contract 1258-02-029 for CONCRETE BRIDGE DECK REHAB. AND BENT CAP SPALL REPAIR in FORT BEND County will be opened on October 05, 2006 at 1:00 pm at the State Office.

Contract 6143-34-001 for ASPHALT PAVEMENT REPAIR in HARRIS County will be received on October 17, 2006 until 1:00 pm and opened on October 17, 2006 at 1:30 pm at the District Office for an estimate of \$174,850.00.

Contract 6149-75-001 for PUMP STATION AND DRAINAGE SYSTEMS CLEANING in FORT BEND County will be received on October 17, 2006 until 1:00 pm and opened on October 17, 2006 at 1:30 pm at the District Office for an estimate of \$95,340.00.

Contract 6150-72-001 for FLEXIBLE PAVEMENT STRUCTURE REPAIR in HARRIS County will be received on October 17, 2006 until 1:00 pm and opened on October 17, 2006 at 1:30 pm at the District Office for an estimate of \$95,280.00.

Contract 6151-09-001 for DITCH CLEANING AND RESHAPING in HARRIS County will be received on October 17, 2006 until 1:00 pm and opened on October 17, 2006 at 1:30 pm at the District Office for an estimate of \$257,000.00.

Plans and specifications are available for inspection, along with bidding proposals, and applications for the TxDOT Prequalified Contractor's list, at the applicable State and/or Dist/Div Offices listed below. If applicable, bidders must submit prequalification information to TxDOT at least 10 days prior to the bid date to be eligible to bid on a project. Prequalification materials may be requested from the State Office listed below. Plans for the above contract(s) are available from TxDOT's website at www.dot.state.tx.us and from reproduction companies at the expense of the contractor. NPO: 21119

State Office Constr./Maint. Division 200 E. Riverside Dr. Austin, Texas 78704 Phone: 512-416-2540

Dist/Div Office(s) Houston District District Engineer 7721 Washington Ave Houston, Texas 77251-1386 Phone: 713-802-5000

Minimum wage rates are set out in bidding documents and the rates will be part of the contract. TXDOT ensures that bidders will not be discriminated against on the grounds of race, color, sex, or national origin. 2(09-07-06)B

NOTICE OF PUBLIC HEARING PUBLIC NOTICE The Hansford County Hospital District is requesting proposals for the audit of its annual financial statements and the preparation of the annual cost report for the fiscal year ending September 30, 2006. Proposal information may be obtained by contacting Scott Beedy at 806-659-2535 or by email at scotbeedy@msn.com. 1(09-07-06)B

Sealed proposals for contracts listed below will be received by TxDOT until the date(s) shown below, and then publicly read. CONSTRUCTION/MAINTENANCE/BUILDING FACILITIES CONTRACT(S)

Dist/Div: Houston Contract 0500-04-116 for LANDSCAPE DEVELOPMENT in GALVESTON County will be opened on October 04, 2006 at 1:00 pm at the State Office.

Contract 0523-02-035 for RESHAPING AND STABILIZE EROSION AT MILLER DRAINAGE in WALLER County, etc will be opened on October 04, 2006 at 1:00 pm at the State Office.

Immediate Full-Time Openings Maintenance person with a wide knowledge of the maintenance field in carpentry, painting, plumbing, electrical H/A, grounds care and welding.

Medical Records person needed at Hansford Manor. Responsibilities include providing and protecting health care information on all residents care.

Phlebotomist needed at HCHD Laboratory. Responsibilities include obtaining blood specimens from in-patient, out-patient and emergency room patients of all ages.

X-Ray Tech needed. MRT license required. ARRT license preferred. AS degree or higher, 1-2 years experience preferred, but not required.

Great working environment and staff, quality facility providing opportunities for professional growth. Apply at 707 S. Roland, Spearman, TX or contact Jackie Nelson, HR Mgr., 806-659-5841. Download application at www.hchd.net Equal Employment Opportunity Employer 2(08-31-06)B

OWNERS - WE NEED LISTINGS on ranches and farms of any size in Texas, Oklahoma and New Mexico (especially ranches of the caprock in Texas or Oklahoma and large or small ranches in New Mexico). Please call us to set up a time to visit about or view your property.

SLOP APT PIGS PERU OVER SISAL EVEN TIME AMITY WOODSTOCK RISE INANE MAE KOWTOW JOHNSON ICE WALNUT TORO RUDDY OAR MONDO OLGA PAPYRI DEN VIETNAM ADHERE EEL PENSE BOLA ARMSTRONG JANET COCO DOOR FLESH ITEM EZRA KISS DOE DEAD

4 6 9 3 5 1 8 7 2 5 7 2 9 6 8 1 4 3 3 8 1 2 4 7 6 9 5 9 3 6 7 1 2 5 8 4 7 4 5 6 8 3 9 2 1 2 1 8 5 9 4 7 3 6 8 2 3 1 7 6 4 5 9 6 9 4 8 3 5 2 1 7 1 5 7 4 2 9 3 6 8



The Bunkhouse Restaurant Spearman's place for steak! Steaks, Salads & Sandwiches • Prime Rib by reservation

Daily Lunch Buffet

Tues.-Fri., 11:00 a.m. to 1:30 p.m. Tuesday - TexMex; Wednesday - Baked Potato Bar; Thursday - Home-Cooking; Friday - Fried Chicken Sunday Lunch Buffet - 11:30 a.m. to 1:30 p.m. Lunch menu available Tuesday-Saturday

The Bunkhouse Restaurant

212 Main Street • Spearman • (806) 659-2089

Hours: Tues.-Thurs. 11 a.m.-8 p.m.; Fri. & Sat. 11 a.m.-9 p.m.; Sun 11 a.m.-2 p.m.; Mon. Closed



TEXAS STATEWIDE CLASSIFIED ADVERTISING NETWORK



TexSCAN Week of September 3, 2006

ADOPTION

Note: It is illegal to be paid for anything beyond medical and legal expenses in Texas adoption.

ADOPTION MAKES A family. Loving couple with open hearts are ready to provide lifetime of love and happiness for your newborn. Expenses paid. Call 1-800-613-8785.

PREGNANT? CONSIDERING ADOPTION? Talk with caring people specializing in matching birthmothers with families nationwide. Expenses paid. Toll free 24/7. Abby's One True Gift Adoptions, 1-866-413-6292.

AUCTIONS

1967 PONTIAC GTO to be auctioned at the 25th Annual Cox Collector Car Auction, Branson Missouri, October 20-21. Consignment or bidding information: 1-800-335-3063, bransonauction.com

DIGBY HAS FB and Dry Van positions. New '05 equipment, high miles, \$1,000 bonus potential in first year, paid orientation and great home time! Call 1-800-270-3284.

DRIVER CDL TRAINING with \$0 down, financing by Central Refrigerated. Drive for Central and earn up to \$40k plus first year! 1-800-727-5865, Ext. 4314. www.centraldrivingjobs.net.

DRIVER - COVENANT TRANSPORT has opportunities for CDL-A drivers in your area! No matter what your experience level is, we have what you're looking for. Now hiring Students, Solos, Teams, Lease Purchase and O/O's. Call today. 1-866-684-2519. EOE.

DRIVER: TAKE CARE of your family. Join ours. Consistent miles, regional and dedicated runs. Company paid Commercial Drivers License training. www.SwiftTruckingJobs.com, 1-866-205-9881.

DRIVERS - CDL-A True lease to own program. Low payments/short term lease. High revenue freight. 100% Fuel Surcharge to you. No Hazmat. No forced dispatch. FFE, 1-888-864-0012.

DRIVERS: S O/O's needed w/Reef experience. Paid percentage. Run Southern/Midwest Lanes. No East Coast. 12 months OTR experience required. Call Charlie, Vance Sammons Trucking, 1-614-274-3700.

DRIVERS - \$5,000 SIGN-ON for experienced! Guaranteed income for first year. Example: 1 yr. OTR & drive 120,000 miles = \$44,300.00 GUARANTEED. Call FFE, 1-800-569-9232.

O/O DRIVER - THE F/S is higher here. Zero down lease/low payments. \$1.11 average, \$2,000 Productivity Bonus, \$2,600 Referral Bonus. Base Plate provided. FFE, 1-800-569-9298.

EXAM PREP

"POSTAL EXAMS". The average postal employee earns \$18/hour starting, average pay \$57K/year. Federal benefits, paid training and vacations. No experience needed. 1-800-584-1775, Ref#P4701. Fee required. (Not affiliated with the USPS.)

FOR SALE

SAWMILLS FROM ONLY \$2,990.00. Convert your logs to valuable lumber with your own Norwood portable band sawmill. Log skidders also available. www.norwoodindustries.com. Free information: 1-800-578-1363, Ext. 300-N.

HELP WANTED

MECHANICS: UP TO \$20,000 bonus. Keep the Army National Guard rolling. Fix Humvees, Strykers, etc. Expand your skills through career training. Be a soldier. 1-800-GO-GUARD.com/mechanic.html

MISCELLANEOUS

AIRLINE MECHANIC - Rapid training for high paying aviation career. FAA predicts severe shortage. Financial aid if qualify - job placement assistance. Call AJM 1-888-349-5387.

ATTEND COLLEGE ONLINE from home. Medical, Business, Paralegal, Computers, Criminal Justice. Job placement assistance. Computer provided. Financial aid if qualified. 1-866-858-2121. www.OnlineTidewaterTech.com

CHANGE A LIFE...Become a Surrogate. If you're already a parent, 23 to 39, healthy and a non-smoker, you could become a surrogate. www.SurrogateWeb.com

NOTICES

HIGH SCHOOL EXCHANGE STUDENTS in need of host families. Have own insurance and spending money. Promotes World Peace! American Intercultural Student Exchange. 1-800-SIBLING, (1-800-742-5464) - www.aisc.com

VOLUNTEERS NEEDED to host international teens. Students speak English, have spending money and insurance. Volunteers provide bed, meals and a caring environment. Call 1-800-941-3738. www.sharesouthwest.org

REAL ESTATE

A BARGAIN - 75 Acres - \$39,900. Rolling hills, good brush, rock outcroppings. Trophy deer habitat. Good highway access. Easy terms. Perfect for hunting retreat. Texas Land & Ranches, 1-877-542-6642.

AFFORDABLE HILL COUNTRY land. Native, exotic game, hogs. Owner terms or Texas Vet financing, 1-800-876-9720. www.ranchenterprisesllc.com

MASTER PLANNED OCEAN FRONT COMMUNITY, homes starting mid-\$300K. Gulf front lots \$595K, on beautiful Mustang Island, near Corpus Christi, www.cinamamshore.com, 1-866-551-0347.

NEW MEXICO - FIRST time offer. Abandoned Farming/Mining Settlement less than 2 hours Albuquerque. 20 acres - \$17,900. Old Farming & Mining Community. Incredible setting, including frequently running river, spring, views and diverse topography. Excellent financing. Call NML&R, Inc., 1-866-354-5263 or visit www.SantaRitaRanches.net

RANCH LIQUIDATION 100 Acres. Reduced price. Perfect for hunting retreat. Big buck area, plus turkey, dove, quail and more. Very private w/EZ highway access. \$49,900 w/financing. Texas Land & Ranches, 1-866-899-5263.

STEEL MY LAND. 2 acres with private boat dock on 44,752 acre lake. Central water, paved streets, electricity. Steal it today, \$44,900. Call Texas Land & Lakes, 1-888-773-5253.

STEEL BUILDINGS

STEEL BUILDINGS - FACTORY deals. Save \$\$\$ 40'x60' to 100' x 200'. Example: 50'x100'x12' = \$3,600/sq.ft. 1-888-467-4443. www.rigidbuilding.com

WATERFRONT PROPERTIES PRE-CONSTRUCTION SALE on 10/7. Large acreage tracts just 30 minutes from Telluride, CO. Breathtaking views of the Wilson Mountains and level building sites. Starting in the low \$500s. McKeough Land Company. 1-800-583-2985.

Run Your Ad In TexSCAN!

Statewide Ad \$450 299 Newspapers, 1 Million+ Circulation North Region Only \$195 100 Newspapers, 320,814 Circulation South Region Only \$195 99 Newspapers, 449,964 Circulation West Region Only \$195 100 Newspapers, 246,648 Circulation

To Order: Call This Newspaper direct, or call Texas Press Service at 1-800-749-4793 Today!

Blankenship Real Estate 659-3052 - 670-3774

NEW LISTING - 3BR, multi-bath, 2 living areas, office, hobby room. 2 single-car garages and workshop on two lots.

Crawford Addition - 3/22 with fireplace and storm cellar on large lot. Nice home!

Crawford Addition - 3/2 oversized detached 2-car garage, stormshelter!

Close to High School - 3/22 in move-in condition. UNDER CONTRACT

2165 sq. ft. Country Home with basement, barn & pond. UNDER CONTRACT at extra! PRICE REDUCED!

Eulalia Blankenship - Sales Eschol Blankenship - Broker NEW LISTINGS WANTED!

Real Estate & Rental HOME OF THE WEEK

Spearman Property EX-504 Roland - 3BR, 2B, storm shelter, stg bldg.

Gruver Property EX-505 King - 3BR, 1 3/4 B, carport, newly remodeled 813 Richardson - 2BR, 1B - BIG REDUCTION! 806 Richardson - 2BR, 1B, 5 lots

802 Womble - 2-3BR, carport, corner lot House for Rent in Gruver - 3BR, 2B

Real Estate & Rental for all your real estate needs! Melinda McCullough, Assoc. (806) 733-5678

John Graves, Broker Toll Free: 1-877-664-5050

MARTIN & ASSOCIATES REALTY

Serving Hansford County for 14 years Julie Martin, Broker - 659-2425

IN SPEARMAN 722 Wilbanks - 3/1/1 nice home in nice neighborhood and close to move into. Free-standing fireplace.

1109 Haney - 3/1/1 - SOLD! Beautiful property 701 Wilmetth - 5/2 - SOLD! Beautiful corner lot

We'd Like Your Listing FOR QUALITY & SERVICE CALL US TODAY! Equal Housing Opportunity

hchd Hansford County Hospital District

Hansford Manor is taking applications for training classes for Nurse Aide Certification. Good benefits package including retirement, vacations/holidays, sick leave, and health insurance. Contact Lelia Bynum, DON, at 806-659-5850 or apply at 707 S. Roland, Spearman, TX. Download application at www.hchd.net

Equal Employment Opportunity Employer 2(08-24-06)B

PROPERTY OF THE WEEK



306 Davis Wonderful Business Opportunity! Great store front in a desirable location with a lot of warehouse space. The possibilities with this property are endless! Call us today for an appointment

Real Estate & Rental (806) 435-4623 • Perryton, TX

Extend your advertising reach with TexSCAN, your Statewide Classified Ad Network.

St. John's Lutheran Cemetery holds dedication for historical marker

A dedication ceremony to commemorate the historic designation of the St. John's Lutheran Cemetery was held on Sunday, September 3, 2006. The Sunday afternoon unveiling of the Texas Historical Commission Cemetery medallion was held at the entrance to the cemetery.

Kellie Koch Kjos hosted the event. Ms. Kjos is the great granddaughter of Jacob and Amalia Koch who donated the land for the cemetery. Ron Schneider provided the invocation with Scotty Schilling, County Commissioner, spoke of the history of the cemetery and related a historical perspective on how cemetery's originated and funeral rituals began.

Ervin Koch and Linda Weiderstein unveiled the historical marker. Mr. Koch is the grandson of Jacob and Amalia and Ms. Weiderstein is the youngest daughter of the Kochs. Dorothy Schoenhals read the historical description to the group of over 60 who attended the afternoon event.

The St. John's Cemetery was started in 1916 when Jacob and Amalia Koch allowed church members to bury family members on their land. The land was finally deeded to the church in 1950. The first burial was baby Hildegard Schilling, January 11, 1916. Three other Schilling children were buried in the next six years. There are fifteen children's burials in the cemetery during the 1920's and the depression years of the 1930's. These deaths reflect the hard times suffered by the early Lipscomb settlers.

Fiels, Herbers, Kappel, Koch, Meller, Stable, Babitzke are some of the many German Russian names marked on the tombstones. Victor Bom, a charter member of the Church, made the welded iron name of the cemetery in approximately 1949. There are 94 graves in the beautiful rural cemetery and each grave has a permanent marker. The Lipscomb County Historical Commission volunteers, Dorothy Schoenhals and LaVaun Kraft contact family members and other parties to solicit funds to ensure that all unmarked graves receive a marker. Contact the museum or these ladies if you are interested in the cemetery project.

The designation of a Historic Texas cemetery is reserved for cemeteries that are at least 50 years old and are deemed worthy of

recognition for its historical association. St. John's is the fourth Lipscomb County Cemetery to have its marker dedicated. Six cemeteries have received historic designation with Viewpoint and

Heart to receive markers in 2007. The last three cemeteries will be finished in 2007-2008.

The event was part of a Koch family reunion held in Lipscomb.



Ervin Koch and Linda Weiderstein unveil the Historical Marker with Kellie Kjos looking on.



Kellie Kjos introduces Dorothy Schoenhals, County Cemetery Project chairperson.



County Commissioner, Scotty Schilling, relates the history of the cemetery.

Eat & Be Merry At

MONEY'S

BBQ & STEAK HOUSE

Hotline for Friday & Saturday Nights - 435-3945

We offer Priority Seating!
Give us a call before leaving, and we will save you a place in the seating line. When you arrive, check in with the hostess.

New Menu (10 new items)
Wed. Night - All-You-Can-Eat Catfish

14 SE 3rd Ave. Perryton, TX

We Are THPLC-2-B

Are You A Victim of Domestic Violence, Sexual Abuse or Physical, Emotional or Sexual Assault?

Call Toll Free Hotline
1-800-753-5308

We can see individuals from Hansford County anytime upon request. Call 435-5008 or 1-800-753-5308 to set up an appointment in Hansford County. We operate a safe place for victims and their children to stay in times of crisis.

Battering Intervention & Anger Management Available

Panhandle Crisis Center
Serving Hansford, Lipscomb & Ochiltree Counties
301 S. Ash - Perryton, TX
Memorials Accepted



Mitchell Theatres
NORTHDRIDGE CINEMA 8
Guymon, Oklahoma

Movies beginning September 8

THE COVENANT PG-13 -- Steven Strait

MATERIAL GIRLS PG -- Hilary & Haylie Duff

WICKER MAN PG-13 -- Nicholas Cage

INVINCIBLE PG -- Mark Wahlberg

ACCEPTED PG-13 -- Justin Long

STEP UP PG-13 -- Channing Tatum

TALLEDEGA NIGHTS PG-13 -- Will Ferrell

BARNYARD PG -- Animated

FRESH POPCORN EVERYDAY!
-PARTY ROOM & ARCADE-

Call for Showtimes
580-338-3281

www.northridge8.com

Office -- 580-338-8969

CASH & CREDIT CARDS ONLY

THANK YOU!

BIG SPEED ON CAMPUS. WE BRING IT ALL HOME.

BROADBAND

\$14.99

FIRST 3 MONTHS
PER MONTH

GREAT VALUE!

OFFER INCLUDES:
FREE MODEM (AFTER REBATE)
FREE ACTIVATION
FREE SELF-INSTALL KIT
FREE E-MAIL VIRUS & SPAM PROTECTION

30-DAY MONEY BACK GUARANTEE

LIMITED-TIME OFFER.
HOP ON TODAY.

1.800.978.2567 | WINDSTREAM.COM

PHONE
BROADBAND
DIGITAL TV

windstream
communications
grow places

Limited-time offer. Subject to availability in certain locations. Broadband price shown requires a qualified service and does not include taxes, fees and other surcharges. In areas where a Windstream Value Line is available, the referenced Broadband price reflects Broadband packaged with a Value Line. After first 3 months, Broadband price will revert to standard monthly pricing. Offer does not guarantee service availability on your individual phone line. Broadband price shown reflects up to 38.4 Kbps download speed and up to 128 Kbps upload speed. Broadband speeds may vary based on throughput conditions. Free Broadband modem after instant credit of \$49.95 and \$50 mail-in rebate. To qualify for free modem, you must: (1) activate new Windstream Broadband service with a 22-month service agreement; (2) maintain your Broadband service for at least 90 days from service agreement start date; and (3) submit a fully completed rebate certificate by postmark date of 45 days from Broadband service activation date to the address shown on the rebate certificate. Applicable Broadband modem charges, sales tax, shipping and handling fees added to bill statement. Other restrictions and conditions may apply. 30-day Satisfaction Guarantee applies to monthly Broadband service charges, exclusive of taxes, fees and surcharges. Customer must return modem in order to receive money-back credit. A \$100 fee will be assessed to Windstream accounts if Broadband service is terminated after the first 30 days of service and before the 22-month term. Broadband service and Broadband modem provided by Windstream Broadband Services. Additional information: Credit approval required, & pre-payment may be required. Taxes, fees & other charges, including Universal Service Fund, apply. Windstream reserves the right to cancel or discontinue this plan at any time. If any required bundle component is disconnected, all remaining components convert to the regular tariffed monthly rate. Other restrictions may apply. Offers are subject to the Windstream Terms & Conditions for Communications Services available at any Windstream store or at windstream.com. Contact a Windstream representative for details.