

# REPORTER STATESMAN

COMP  
HANSFORD COUNTY LIBRARY  
0120 N MAIN ST  
SPEARMAN TX 79081

50¢

VOL. 93 • ISSUE 48

NEWS • SPORTS • PICTURES

SERVING HANSFORD COUNTY SINCE 1907.

## At A Glance

### Spearman Merchant's Association Christmas Promotion Winner

This week's winner of the Spearman Retain Merchant's Association Christmas Promotion Drawing was: Butch Tigrett.

### Hansford Hospital Auxiliary Plans December Activities

The Hansford Hospital Auxiliary members are asked to bring items for the Hansford Manor Bazaar that will be held on December 1 at the Manor.

The Auxiliary Christmas Luncheon will be held at 11:30 a.m. on December 4 at the Palo Duro Club dining room. Afterwards, they will decorate the hospital and manor for Christmas.

On December 15, Auxiliary members are to bring cookies for the Hansford Manor Christmas Party.

### Christmas Pageant To Be Held In Amarillo

The Annual Christmas Pageant presented by Paramount Terrace Christian Church at the Civic Center Auditorium has established itself as one of the premiere family-oriented holiday traditions in the entire tri-state area.

The Christmas Pageant portrays the true meaning of Christmas by telling the life story of Jesus Christ with the spectacular use of music and drama. Dramatic lighting and special effects enhance the audience's experience, but it is a simple message of the love, forgiveness and acceptance that Christ brought to this world that touches their hearts and souls.

The Pageant takes the audience back 2,000 years to experience the life of Christ. Featuring new music and a completely new script every year, the Pageant always remains fresh and exciting. This year the Pageant is entitled "Freedom" and is told from the viewpoint of Barrabas and a couple of modern day convicts.

The dates for this year's presentations are Friday, December 15 through Monday, December 18 at 7:30 p.m. with Saturday and Sunday afternoon matinees at 3 p.m.

Tickets are free and can be obtained from the Music Ministry Office located at the east entrance of the church at 4000 Mays Ave beginning Monday, November 27. For more information, call the Music Ministry office at (806)353-6615 or check out the website at [www.ChristmasPageant.com](http://www.ChristmasPageant.com).

### Harrington Cancer Center's December Schedule

**Dialogue meets** on Thursdays from 12-1:30 p.m. in the Harrington Cancer Center Amphitheater - 2nd Floor. It is a patient/family education support group sponsored by the Harrington Cancer Center and the American Cancer Society.

**7th "Hope and a Prayer: Attitudinal Healing"** (an interview with Dr. Bernie Siegel). Video presentation and discussion in the HCC Boardroom.

**14th "Open Forum."** Open discussion of any cancer-related topic facilitated by Gerry Kelly, MDiv and Stan McKeever, LMSW-LCP.

**Pathways meets** on Tuesdays from 1:30 - 3 p.m. in the Harrington Cancer Center Amphitheater - 2nd Floor. It is a support series for those who have lost a loved one.

**5th "The Four Tasks of Grieving"**

**12th "Surviving the Season"**

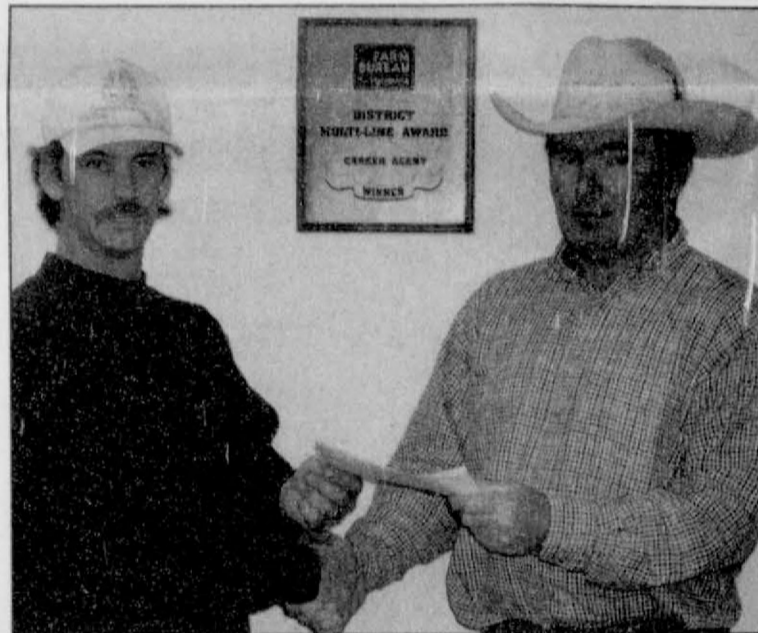
**19th "Looking Beyond the Season"**

For more information call Gerry Kelly at 359-4673 ext. 235 or Stan McKeever at 359-4673 ext. 141 or by calling 1(800) 274-4673.



Hansford Hospice volunteers (left to right) Anna Beth Wood, Connie Gammill, J.C. Harris, Reba Hunter, and Anita Marquez observe the signing of a proclamation declaring November as National Hospice Month by Gruver Mayor Mark Irwin.

## Farm Bureau Sponsors Fireman's Training



Arnie Hunt of the Spearman Fire Department receives a \$495 sponsorship from Danny Womble of Hansford County Farm Bureau.

Texas Farm Bureau recently sponsored local fireman, Arnie Hunt to attend municipal firemen training school held the last week in July.

The week-long training was held at Texas A&M in College Station.

Each year, Texas Farm Bureau pays for the training of one fireman from each county. The Gruver and Spearman fire departments trade off each year.

"We wanted people to realize the Texas Farm Bureau is doing something to help farming and ranching communities," said Danny Womble, President of Hansford County Farm Bureau.

## Crisis Center To Increase Aid Thanks To Grant

Panhandle Crisis Center recently announced it received a \$7,000 *Doors of Hope* Direct Services grant to provide emergency financial assistance and legal aid to victims of family violence.

*Doors of Hope*, a partnership between the Philip Morris Companies and the National Network to End Domestic Violence Fund, provides food and meals, counseling, shelter, outreach and training programs, as well as community awareness programs for victims and survivors.

According to Cindy Smith, executive director of Panhandle Crisis Center, the grant will continue to let the center offer rent subsidy and utility assistance to those who are struggling financially as well as legal representation for those in abusive situations.

"It will also allow us to contract with attorneys to represent victims in civil cases," she said. "Many victims will return to their abusive partners rather than risk losing custody of their children."

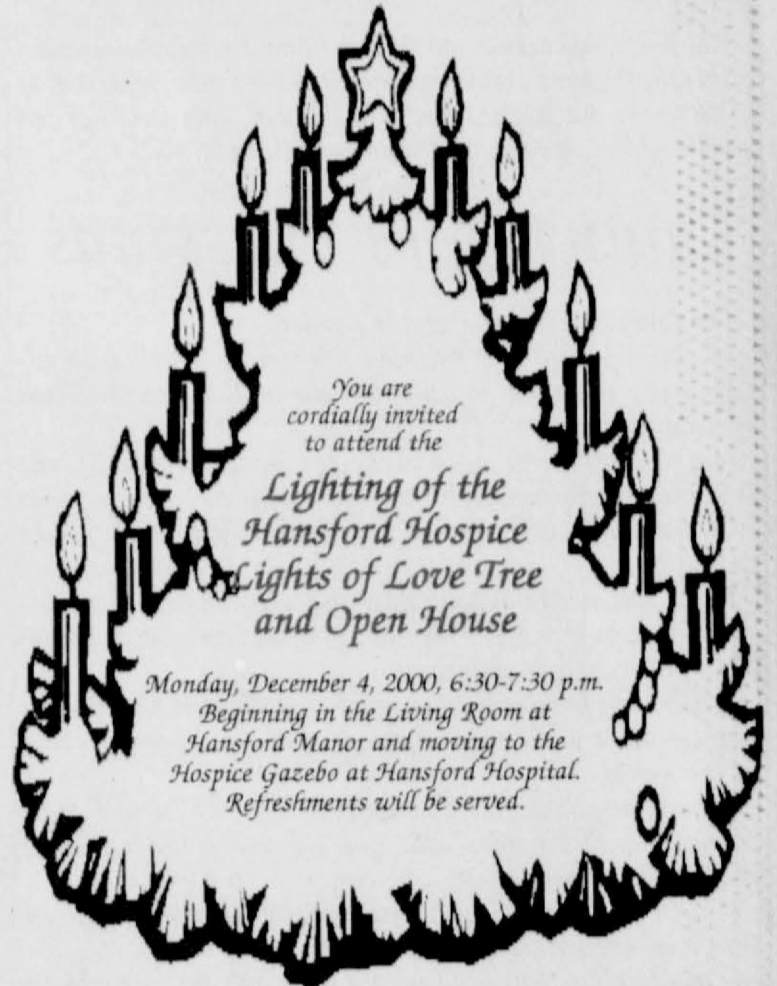
Stephanie French, vice president of Corporate Contributions at Philip Morris Companies said that her company is responding to a need they have heard voiced across the country.

"Through *Doors of Hope*, we are supporting crucial services that help victims and we are working together to end the abuse," she said.

The Philip Morris family of companies - Kraft Foods, Miller Brewing Company, Philip Morris

International and Philip Morris U.S.A. - has been supporting programs in the public interest for more than 40 years. Through **The Philip Morris Campaign Against Domestic Violence**, the company helps meet the needs of victims and

survivors of domestic violence by funding direct service programs and supporting public awareness campaigns and employee volunteerism efforts. For more information on *Doors of Hope*, visit the Philip Morris' web site at [www.philipmorris.com](http://www.philipmorris.com)



You are cordially invited to attend the Lighting of the Hansford Hospice Lights of Love Tree and Open House

Monday, December 4, 2000, 6:30-7:30 p.m.  
Beginning in the Living Room at Hansford Manor and moving to the Hospice Gazebo at Hansford Hospital.  
Refreshments will be served.

Hansford Hospice gives thanks to all that gave to the

## LIGHTS OF LOVE

Thanks to the following:

W.R. and Lalaine Greever, Evin Wright, Claude and JoNeli Sheets, Blanch Greene, Charles Dahl, Martha Haden, Mrs. N.F. Renner, J.L. Brock, Don and Gloria Knox, Louella McClellan, Sandy Drake, Leona Harris, Hoyt and Francis Biles, Maude McClellan, Ora Lee Blackburn, Orville Latham, Lee Roy Mitchell, Don and Lynne Maize, Crady and Heather Cline, Monica Blackman, Norman and Holly Brack, James and Tommye Wiers, Kerry Henton, Rosalie Crotegut, Mary K. and David Harbour, Rosa Rojas, Irvin and Betty Jean Davis, Mrs. Dortha Key, B&B Sales Co., Dwayne and Shawn Thompson, Steve and Celia Krug, Hazel Bradfield, Burl and Nelle Buchanan, J.D. and Ruby Jo Willbanks, Lawrence and Sue Tindell, Rachel and Karen Thompson, Woodrow and Fern Fulkerson, Lynn and Peggy Thompson

## Panhandle 4-H Members Compete, Qualify for Round-up

Panhandle 4-H members from 19 of 21 counties in Extension Panhandle District 1 qualified on November 18 to compete in the Texas 4-H Roundup at College Station June 11-15 2001. Kyna Shields won 1st place in senior division Sheep category qualifying for state.

Over 160 boys and girls competed in the 23 activities including speaking events, illustrated talks, method demonstrations and performing arts. Recognition awards were given in ceremonies at the West Texas A&M University Activity Center in Canyon.

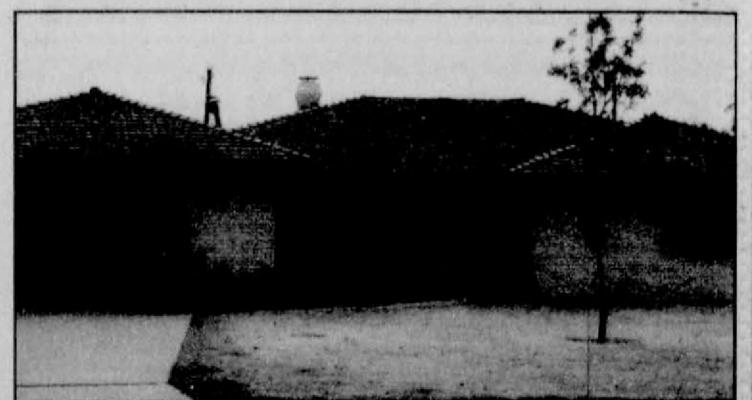
Taking 1st place in junior division Share-the-Fun Dance competition was the Hansford team of Britta Vanderburg and Callie Hargis. Sharon Haney won 3rd place in the Share-the-Fun Vocal category. Abby Winegarner placed 1st in Public Speaking and Timber Barkley gave an excellent performance in the junior division Share-the-Fun Poet category.

This year's program and award medallions were sponsored by New Century Energies Foundation on behalf of Southwestern Public Service.

## Gladiola Flower Club Annual Home Tour



The home of Roy Lee and Betty Uptergrove, 11 Glover Place, will be shown in this year's Gladiola Flower Club Home Tour on December 3rd. Shade trees and bird houses in the front yard invite you to watch birds year-round. Roy Lee finished their home in 1979 and then told Betty, "Let's sell this and build another one." This had happened twice since he was a contractor. Betty told him that if it didn't sell in a month, they were going to move in. Needless to say, they are still there. This is a comfortable 3-bedroom home with a storage shed and second garage in the back.



Dickie Allen will show her house located at 8 Golden Circle Dr. This spacious three bedroom home was built in 1982 for Jewel Pearson by Roscoe Nelson.

Newell and Dickie Allen purchased the house in 1989 while Charles Eaton was remodeling two small bedrooms into a larger one and the kitchen-dining area.

You will enjoy seeing the Santa Claus collection, many family heirlooms as well as other collectibles.

Three other homes will be on display during the annual home tour including: The Pat and Ann Northcutt residence, located one mile north on Hwy. 760 (Airport Road) and one mile west; Hansford Bed & Breakfast, located five miles west on Hwy. 15 and the residence of Everett and Dixie Tracey at 607 Endicott.

Come and visit December 3 from 2-5 p.m.

*Laugh  
and  
Live*



by Catherine R. Smith  
CathyRSmit@aol.com

The following article was given to me by Eulalie Greever. Her son, Marcus Adair, who is the Apostolic Minister at West Texas A&M University in Canyon, gave it to her and she passed it along to me. I hope you enjoy it.

## Count Your Blessings

The following is something to ponder...

If you woke up this morning with more health than illness... you are more blessed than the million who will not survive the week.

If you have never experienced the danger of battle, the loneliness of imprisonment, the agony of torture or the pangs of starvation... you are ahead of 500 million people in the world.

If you can attend a church meeting without fear of harassment, arrest, torture, or death... you are more blessed than three billion people in the world.

If you have food in the refrigerator, clothes on your back, a roof overhead and a place to sleep... you are richer than 75% of the world.

If you have money in the bank, in your wallet and spare change in a dish somewhere... you are among the top 8% of the world's wealthy.

If your parents are still alive and still married... you are very rare, even in the United States.

If you hold up your head with a smile on your face and are truly thankful... you are blessed because the majority can, but most do not.

If you can hold someone's hand, hug them or even touch them on the shoulder... you are blessed because you can offer God's healing touch.

If you can read this message, you just received a double blessing in that someone was thinking of you, and furthermore, you are more blessed than over two billion people in the world that cannot read at all.

Have a good day, count your blessings, and pass this along to remind everyone else how blessed we all are.

May God bless and keep you; May He make his face to shine upon you, and be gracious to you; May the Lord lift up his countenance upon you, and give you peace.

Numbers 6:24-26

Catherine :)

# Minding Your Own Business

by Don Taylor

Don Taylor is the co-author of *Up Against the Wal-Mart's*. You may write to him in care of *Minding Your Own Business*, P.O. Box 67, Amarillo, TX 79105.



## Heart of the Matter: Satisfied Customers

If you study business writings, you'll learn that every author has a few pet strategies for business success. Some may focus on technology, branding or positioning. Others may champion quality control, financial management or personnel skills.

If you record all the great writers' "must-do" tips, the list would be a mile long. Most items on the list would qualify as good advice and would help you succeed in business.

I have a "must-do" for that list. I believe satisfying customers should be at the top. You see, satisfied customers are the heart of the matter.

### The Wrong Focus

The line was long, and the customers were growing restless. One customer asked if there had been a death behind the counter. Another wondered how you could tell - no one was moving. I heard one harried worker tell another to hang on because the owner was on her way.

Sure enough, the owner appeared in moments. She immediately surveyed the lines and went to an order station. I expected the owner to open the register and get things moving. Instead, she ran the register totals to see what volume of business the store had done for the day. After repeating the action on the

drive-through register, she disappeared into her office.

A few moments later, she came out of the office and began picking up trash and restocking inventory. I wanted to yell, "Please wait on customers, we're all tired of waiting."

For this small-business owner, other elements were more important than caring for customers. Customers came after procedures. Customers came after seeing what kind of day the store was having. Customers weren't the heart of the matter, they were just an unwanted by-product of doing business. This business wouldn't exist if the competition was stronger.

### Getting to the Heart

There are many ways to keep your customers satisfied. Here are a few quick tips to help you get to the heart of the matter.

- Focus. From the top down the emphasis of every organization must be to serve the customer. When the owner has other priorities, employees aren't at fault when the system breaks down.

- Training. Personnel experts cite stress as a major cause of employee turnover. One major cause of stress is the lack of a thorough training program. Businesses are so desperate for warm bodies to go to work that they just stick the newly hired folks into a slot and hope they can help.

- Make One Sale at a Time. It may sound trite, but you really can't do two things at one time. Therefore, put all of your energy into serving one customer and serving that customer well.

- Ignore Distractions. Recently, while traveling, I stopped at a well-known ice cream chain to enjoy one

of the chain's cool treats. There were only two others in line so I assumed it would be a brief wait. That's when I noticed two store folks were talking, which left only one working.

I waited. Finally, the manager noticed I was watching his visit and approached the counter to take my order. Just then the phone rang. The manager excused himself and hurried to the phone. He turned his back to me and began a lengthy conversation. I waited a full minute, then left. As I backed out, the manager came

to the window and gestured to me that I was still number one in his book.

• You're Only as Good as Your Last Customer Moment. You can never relax. Customers are like elephants; their memories are good. Every customer service moment must be a positive one, because customers really are the heart of the matter.

## New Winter Hours

Cafe - 5 a.m.-8 p.m., Monday-Friday;  
5 a.m. to 2 p.m., Saturday & Sunday  
Club - 4 p.m. to midnight, Monday-Friday



## Fun Family Dances Every 2nd and 4th Friday

No cover charge. Children under 18 must be accompanied by their parents.

## Palo Duro Supper Club

22 S. Archer • 659-2232 • Spearman, TX  
Kitchen Closes at 8:00 p.m.

## Let us replenish the seed of faith through . . . DAILY BIBLE READING, PRAYER & REGULAR CHURCH ATTENDANCE

### Spearman

**Apostolic Faith Church**  
822 S. Drensen • 659-2870  
Sunday School: 10 a.m.  
Worship Service: 11 a.m.  
Sun. Eve.: 7 p.m.  
Wed. Prayer Mtg.: 7:30 p.m.  
Pastor - Roland Haney

**First Assembly of God**  
401 N. Bernice • 659-2295  
Sunday School: 9:30 a.m.  
Worship: 10:35 a.m.  
Kid's Church: 10:35 a.m.  
Evening Worship: 7 p.m.  
Wed. Worship: 7:30 p.m.  
Youth: 7:30 Wednesday  
Pastor - Walter Greaser, Jr.

**First Christian Church**  
(Disciples of Christ)  
29 S. Bernice • 659-2036  
Sunday School: 9:45 a.m.  
Worship: 10:50 a.m.  
Minister - Gary Smith

**First Baptist Church**  
123 N. Bernice • 659-5557  
Sunday School: 9:45 a.m.  
Worship: 11 a.m.  
Evening Worship: 7 p.m.  
Wed. Fellowship Meal: 6 p.m.  
Wed. Disc. Time: 6:30 p.m.  
Wed. Youth Mtg.: 8 p.m.  
Pastor - Rick Patrick  
Youth/Ed. Min. - Brian Foster

**Church of Christ**  
121 S. Haney • 659-3244  
Sunday Bible Class: 9:45 a.m.  
Worship: 10:30 a.m.  
Evening Worship: 6 p.m.  
Bible Study Wed.: 7:30 p.m.  
KRDF Radio Program  
Living W/Christ: 7:50 a.m.  
Minister - Leonard Harper

**Sacred Heart Catholic Church**  
901 Roland • 659-2792  
Sat. Night Mass: 5:30 p.m.  
Sun. Mass: 9 a.m. - English  
(aired on KRDF-FM 98.3)  
Sun. Mass: 11:30 - Spanish  
1:30 p.m. - Gruver - Christo  
Renditor Mass - Spanish  
Rev. Scott Raef

**Trinity Fellowship Church**  
717 W. 7th Ave. • 659-2671  
Sunday School: 9:30 a.m.  
Worship Service &  
Children's Church: 10:30 a.m.  
Pastor - Dennis Alger

**First Presbyterian Church**  
(Worships with Lutheran)  
1021 Cotter • 659-2033  
Sunday School: 9:45 a.m. at  
Lutheran Church  
Worship: 11 a.m. (alternates monthly between  
Lutheran & Presbyterian Church Bldg.)  
Pastor - Beverly Cook

**Faith Lutheran Church (ELCA)**  
1101 Bernice • 659-2252  
(Worships with  
First Presbyterian Church)

**First United Methodist**  
407 S. Haney • 659-5503  
Sunday School: 9:45 a.m.  
Worship: 8:30 & 11 a.m.  
Jr. High Youth: 5 p.m. Sunday  
High School: 6 p.m. Sunday  
Kids Club: 3 p.m. Wed.  
Pastor - Ken Cole

**Union Church**  
31 S. Endicot • 659-2644  
Sunday School: 9:45 a.m.  
Worship: 10:45 a.m.  
Evening Worship: 6 p.m.  
Bible Study: 7 p.m. Wed.  
Pastor - Bill Sparks

**Fellowship Baptist**  
1102 S. Archer • 659-2783  
Sunday School: 10 a.m.  
Worship: 11 a.m.  
Sun. Evening Worship: 6 p.m.  
Youth/Adult Serv.: 7:30 Wed.  
Pastor - Gene Foster

**Primera Mision Bautista**  
502 E. 7th • 659-3991  
Sunday School: 9:45 a.m.  
Worship: 11 a.m.,  
Evening: 6 p.m.  
Wed. Prayer Meeting: 7 p.m.  
Thurs. Visitation: 7 p.m.

**Maranta Elm. Iglesia de Cristo**  
303 N. Bernice  
Worship: Thursday - 7:30 p.m.  
For questions, call  
Raymond Godinez at  
(316) 624-1057

**El Aposento Alto U.P.C.I.**  
1105 S. Roland  
Domingos:  
Escuela-Domical - 10 a.m.  
Culto Evangelistico - 7 p.m.  
Jueves: Oracion - 8 p.m.  
Mier. Estudio Biblico - 7 p.m.  
Pastor - A.G. Martell  
(806) 659-2153

### Gruver

**First Baptist Church**  
402 E. Broadway • 733-2411  
Sunday School: 9:45 a.m.  
Worship: 10:50 a.m.  
Disciple Training: 6 p.m. Sunday  
Prayer Meeting: 7:30 p.m. Wednesday  
Pastor - Scott Curry

**Church of Christ**  
209 King • 733-2960  
Sunday School: 9:30 a.m.  
Worship: 10:20 a.m.  
Evening Worship: 6 p.m.  
Wed. Worship: 7:30 p.m.

**First Christian Church**  
510 King • 733-2960  
Sunday School: 10:00 a.m.  
Sunday Worship: 11 a.m.  
Youth: 7:30 Sunday  
Adult Bible Study: 7:30 Sun.  
Wed. Bible Study: 8:00 p.m.  
Pastor - Gary Gurfory

**Oslo Lutheran Church (ELCA)**  
6 Miles West & 12 Miles  
North of Gruver  
339-7709  
Sunday School: 9:45 a.m.  
Worship: 11 a.m.

**Gruver United Methodist**  
Broadway & Garrett  
733-2651  
Sunday School: 9:45 a.m.  
Worship: 8:30 & 10:50 a.m.  
Eve. Worship & UMY: 6 p.m.  
Pastor - Jerry Moore

**Spanish Cristo Redentor Church**  
Sunday Mass: 1:30 p.m.  
Friday Evening Mass  
Summer - 8:00 p.m.  
Fall/Winter - 7:30 p.m.

### Morse

**Morse Baptist Church**  
733-2757  
Pastor - Mike Martin

### Waka

**Waka Church of the Brethren**  
435-4598



*This feature is made possible  
through the sponsorship of these  
civic minded businesses.*

Compliments of . . .  
**AGCO**  
of Spearman, Inc.  
"See you in Church"  
659-3751

**PRAIRIE  
MOTORS INC.**  
Hwy. 207 South • P.O. Box 430  
Spearman, Texas 79081 • (806) 659-2541  
www.prairiemotors.com

**BOXWELL BROS.  
FUNERAL HOME**

Compliments of  
**G&G  
FOODLINER**  
516 Main • Gruver, TX  
733-2471

**COLUMBIA  
Medical Center of Pampa  
One Medical Plaza  
Pampa, Texas 79065  
(806) 665-3721**

**Palo Duro  
Supper Club**  
22 S. Archer • Spearman  
659-2232

**Bartlett's Ace  
Hardware**  
105 W. Broadway • Gruver, Texas  
(806) 733-2404

**BERRY CLEANERS**  
DAN DESIMONE - OWNER  
Phone 659-3122 • P.O. Box 1017  
207 Main St. • Spearman, TX

**Morse Implement  
& Auto Supply**  
"Join us in church this week"  
Tom Dortch 733-2668  
P.O. Box 89 • Morse, TX 79062

**Gruver Cablevision**  
308 Main  
Gruver, TX 79040  
733-5295

**Deakin  
ELECTRIC**  
OILFIELD • RESIDENTIAL • COMMERCIAL  
321 S. MAIN • SPEARMAN  
1-800-999-1506 Chris Deakin  
806) 659-5016 President

**Interstate  
Bank, sss**  
322 Main • P.O. Box 146  
Spearman, TX • 659-2559

**The Spearman  
Band Boosters  
are taking orders  
for window decals.**

Decals are approximately 12"x8" and are \$15.00 each. They are personalized with the student's name, instrument, uniform number, etc. These decals are available with any single music or sport activity, or in multi-talent (up to three activities).

An SHS Lynx/Lynxette decal is also available for \$10.00. This decal is approximately 8"x6".

For ordering information, contact Linda Cummings at 659-3942, Carma Dorton at 659-3634, or Debbie George at 659-2301. All decal orders must be paid for at the time of ordering.

**Corner Service Station**

**We pay  
attention  
to Details!**

**Oil & Filter Changes  
Minor Repairs  
Vehicle Details (by appointment)  
Free pick up & delivery**

101 Main Street • Spearman, Texas  
(806) 659-2722 • Joe & Nita Bynum

**The  
Hansford County  
Reporter-  
Statesman**

213 Main Street  
Spearman, TX 79081  
Phone - (806) 659-3434  
Fax - (806) 659-3368

**Hours:  
Mon.-Thurs. (Closed Fridays)  
9 a.m.-12 p.m. & 1-5 p.m.**

**Gary Smith - Publisher  
Catherine Smith - Editor  
Sara Eisfeld - Assist. Editor  
Harletta Carthel - Assist. Editor**

Contrib. Writers:  
Helen Fisher, Dorothy Hudson,  
Mildred Lewis & Jeff Beedy  
Contrib. Photographers:  
Mark Schoenhals, Allen Varmon  
& Charlie Johnson

**Subscription Rates  
In Hansford County - \$20.00  
Out of County - \$25.00**

*The Hansford County Reporter-Statesman (USPS 529660) is published weekly in Spearman, TX. Periodical postage paid in Spearman, TX. POSTMASTER: Send address changes to The Hansford County Reporter-Statesman, 213 Main Street, Spearman, TX 79081.*

**Publication Policy**  
The deadline to submit news and advertising to The Hansford County Reporter-Statesman is Monday at 5:00 p.m. Items accepted after the deadline will be published at a later date, as time and space permit. Publication of all items is at the discretion of the editor.

**Letter Policy**  
The Hansford County Reporter-Statesman welcomes letters to the editor on any subject. All letters must be signed and will be published with the name of the writer. Letters must include an address and telephone number for verification. Letters should be kept at a reasonable length. The editor reserves the right to edit all letters. Any letter may be rejected for publication without reason. Letters that are libelous and/or slanderous will not be published. The deadline to submit letters is noon on Monday.

**Advertising**  
Open Display rates are \$4.00 per column inch. Classified Ads are \$5 for the first 25 words and 10¢ per word for each additional word. (Additional charge for boxed classifieds.)

Member of  
Texas Press Association and  
Panhandle Press Association



# Happy Birthday!

**Editor's Note:** This Happy Birthday list is run as a public service by the Hansford County Reporter-Statesman. We apologize if any names are misspelled. If you know of a name that needs to be changed, added or deleted, please call 659-3434. Thank you, Catherine

**November 30**  
 Birthday - Cass Cooper, Roxane Holt, Rosie McClenagan, Judy Stedje, Miranda Thoreson, Adalyn Barnes, Dan Desimone, Don Maize, Jed Meisner, Jo Larson, Mark Nelson, Judy Speck, Steve Harnish, Ernest Bowen, Eulalia Reyes, Mary Reyes, Marion Mitchell, Lisa Payne, David Reid  
 Anniversary - Mr. & Mrs. Lee Roy Mitchell, Mr. & Mrs. Ross Walker, Mr. & Mrs. Rick Harvey, Mr. & Mrs. Luis Salazar

**December 1**  
 Birthday - Georgia Davidson, Robert Stayton, Peggy Archer, Debra Dennis, Peggy Ellsworth, Bill Martin, Brian Paul, Shane Vela, Eileen Wright, Sha Lynn Harris, Lynn Vela, Jennifer Neff  
**December 2**  
 Birthday - Audrey Beasley, Don Dillow, Paul Stavio, Mike Close, Sharon Freeman, Kristin Dunnahoo, Lucille McClellan, Ginger McClellan, Dora Womble, Jana Price, James Terry, Amanda Gaines, Blare Title, Christi Cooper, Cecilia Favela

**December 3**  
 Birthday - Shell Haynes, Bethany Harris, Mrs. Mike Hergert, Kevin Harris, Francisco Lozano, Jewell King, Alvin Auld, Mark Taylor, Jenny Neff  
 Anniversary - Mr. & Mrs. Joe Baca, Mr. & Mrs. Bob Skinner, Mr. & Mrs. Dave Hand, Mr. & Mrs. Elbert Dorton, Mr. & Mrs. John Haynes

**December 4**  
 Birthday - Chris Spivey, Lynn Stedje, Denise Ferguson, Heather Gikas, Kristy Easley, Imogene Baker, Joyce Duncan, Tim Fletcher, Amber Newman, Kristina Christian, Jeff McClure, T.J. McClure, Aleta Jackson  
 Anniversary - Kent & Tammy Benton, Mr. & Mrs. Cecil Ralston

**December 5**  
 Birthday - Martha Haden, Billy Dearmond, Mike Skinner, Dale Randall, John Pipkin, Arbeta Nobels, Gwen Smith, Norman Scroggs, Susie Oakley, Beatrice Comp, Cory Marrs, Betty McWilliams

Anniversary - Alfonso & Carrie Cenicerros, Mr. & Mrs. Don Kuniseman

**December 6**  
 Birthday - Ryan Ramon, Penny Kruse, Coleen Brummett, Ed Dear, Mrs. Johnny Gaitner, Cecelia Randall, Mayleea Castillo, Carolyn Harnden, Kelli Cummings, Lisa Keetch, Mary Venneman, Chevy Smith, Jerald Ray Scribner  
 Anniversary - Burl & Nellie Buchanan, Bill & Ginger Pittman

**December 7**  
 Birthday - Sheldon Atwood, Brenda Bayless, Del Cluck, Janell Haefner, Bret Hobbs, Cynthia Williams, Emily Williams, C.L. Pierce, Sue Bowling, Carlee Dixon, H.E. Jenkins, Thane McCloy, Zach Gallimore, Dusty Hodge, Beth Dudley, Beverly Antalek  
 Anniversary - Mr. & Mrs. Willard McCloy

**December 8**  
 Birthday - Stan TeeBeest, Reynaldo Garza, Lawrence Tindell, Scott Slater, Hershel Jones, Carmen Arjona, Matilda Entrekun, Jason Holton, Michelle Cook Kaman, Theresa Davis, Tim Weldon, Bruce Stinson, Morgan Lackey, LaVerne Parks, Fern Fulkerson  
 Anniversary - John & Sammie Bishop

**December 9**  
 Birthday - Clayton Smith, Verna Finley, Grant Odom, Matt Overbey, Marlene Winger, J.H. Campbell, Jr., Gail Vanlandingham, Elodia Flores, Melana Papay, Shawn Cook, Juan Garcia Jr., Elda DeSantiago, Maddie Rose Stork  
 Anniversary - Mr. & Mrs. Don Knox

**December 10**  
 Birthday - Pat Barkley, Akiko Bort, Marilynn Hart, Harold King, Brent Pittman, Aaron Jackson, Kayla Pletcher, Donald Piatt, Kay Barnes, Lelia Bynum, Phyllis Collins, Linda Bartz, Bryce Reed Jarvis, Serina Diaz, Brent Wagner  
 Anniversary - Mr. & Mrs. Ladell Scroggs, Mr. & Mrs. John Sprigg, Mr. & Mrs. Perry Lamb, Mr. & Mrs. Mark Irwin

**December 11**  
 Birthday - Kasey Davis, Manella Kiser, Dana Steele, Phillip Renner, Maria Martinez, Florence Fletcher, Jim Evans, Betty Dunaway, Steve Boynton  
 Anniversary - Mr. & Mrs. Jess Wood, Irene & Butch Baker

## Our Deepest Sympathy

### Jenna V. Ownbey

Jenna V. Ownbey, 81-year-old resident of Vinita, OK, former resident of Spearman and Amarillo, TX, and widow of Robert James Ownbey died Thursday, November 23, 2000 at the Craig General Hospital in Vinita.

Mrs. Ownbey was born on January 1, 1919 in Lipscomb County, TX, the daughter of Earl and Lena (Hill) Stevenson. She graduated from Dalhart High School, and received a Bachelor of Science Degree in Education from West Texas State College in Canyon, TX in 1946. She married Robert James Ownbey on November 10, 1941 in Clayton, NM. Mr. Ownbey preceded her in death in 1967. She made her home in Spearman, TX for 21 years before moving to Amarillo in 1968.

She was a member of the Colonial Dames of the 17th Century, United Daughters of the Confederacy, and Daughters of the American Revolution. She was a member of the Order of Eastern Star, Friends of the Library, Amarillo Genealogical Society, Social Order of Beaucent, and Daughters of the Nile. Mrs. Ownbey was a past-president of the Texas Women's Press Association, a member of the Panhandle Pen Women, and managing editor of the Gruver News, a correspondent for Amarillo Globe-Times and Borger News-Herald. Mrs. Ownbey also worked in the Amarillo Public Library. She was a member of Wolfelin Avenue Baptist Church in Amarillo and attended Vineyard Christian Church in Vinita.

She is survived by two daughters and their husbands, Nancy and James C. Archer of Orange, TX, and Robbie and Larry D. Butts of Spearman, TX; a son and his wife, Dr. Jimmie and Susan E. Ownbey of Vinita, OK; two adopted daughters and their husbands, Donna and Bob Williamson of Santa Rosa, CA and Jane and Glen McNatt of Graham, TX; two adopted sons, Dr. James Ownbey of Lubbock, TX and Bill Ownbey of Round Rock, TX; 13 grandchildren; and 7 great-grandchildren.

Graveside services for Mrs. Ownbey will be held 11:00 a.m. on Monday, November 27, 2000 on the family plot of the Holt Cemetery in Spearman, TX with Rev. Eddie Fontanez officiating.

Memorials have been established with the Vineyard Christian Church in Vinita, OK and First United Methodist Church of Spearman, TX in her memory.

**Dr. Rick Sheppard, D.D.S.**  
**1-800-687-2010**  
 •Family Dentistry •Braces  
 146 Pioneer • Booker, TX  
**TEETH FOR A LIFETIME**

*At the Lyric Theatre . . .*  
 113 Main St. • (806) 659-2812 • Spearman  
**\*\*Showing All Week\*\***  
 Check us out on the web at: [hollywood.com](http://hollywood.com)

|  |  |
|--|--|
| <b>Charlie's Angels</b><br>PG-13<br>Drew Barrymore<br>Cameron Diaz | <b>Meet The Parents</b><br>PG-13<br>Robert Denero • Teri Pole<br>Ben Stiller |
| Screen 1 - 7:00 p.m.   | Screen 2 - 7:00 p.m.   |

Adults - \$6.00; Children & Senior Citizens - \$4.00  
 No one under 17 admitted to "R" rated movies without parent or legal guardian

### Ruby Edith May

Ruby Edith May, 82, died on Saturday, November 25, 2000 in Amarillo, TX.

Funeral services were held at 2:00 p.m. on Tuesday, November 28, 2000 at First Baptist Church in Pampa, with Rev. Randy White, pastor, officiating.

Ruby was born on April 13, 1918 in May, Oklahoma. She graduated from Spearman High School in 1936. She married J.F. May on August 29, 1960 in Stinnett. She attended West Texas State College in Canyon, graduating in 1960. She was a teacher at Borger Schools and Plemmons Schools, retiring in 1975. She has been a resident of Pampa for 7 years, moving from Borger. She was a member of First Baptist Church in Pampa and a member of the WTSU Alumni Association. She was preceded in death by 1 brother, Howard Flint, and a half-brother, Vernon Crooks.

Survivors include her husband, J.F. May of the home; two daughters, Barbara Nichols and Martha Baggerman, both of Pampa; one son, Jerry Don May of Clarendon; a half-sister, Joy Mitchell of Albuquerque, NM; a half-brother, Harold Crooks of Spearman; 9 grandchildren; and 21 great-grandchildren.

Memorials have been established at the American Heart Association, 2404 West Seventh, Amarillo, TX 79106; BSA Hospice, PO Box 950, Amarillo, TX 79176; or a favorite charity.

### Lenor "Nora" Baca

Lenor "Nora" Baca, 60, died on Saturday, November 25, 2000.

Funeral services were held at the Spearman Church of Christ on Tuesday, November 28, 2000 at 2:00 p.m. with the Rev. Leonard Harper officiating. Interment was in Hansford Cemetery under the direction of Boxwell Brothers Funeral Home of Spearman.

Nora was born in Vaughn, NM in 1940. She had lived in Spearman for 38 years, moving from Clovis, NM. She married Jose G. Baca in 1956 at Clovis, NM.

She was a homemaker and a member of the Church of Christ. She was preceded in death by her husband in 1999. She was also preceded in death by her parents, a brother and a sister.

Survivors include six daughters, Molly Rivas of Littlefield, TX, Florida Anchondo of Ulysses, KS, and Vera Dominguez, Joann Chavez, Eva Espinosa and Julie Etchison, all of Spearman; one son, Davida Baca of Spearman; a sister, Inez Lopez of Vaughn, NM; a brother, Felix Sandoval of Spearman; 15 grandchildren; and 2 great-grandchildren.

The family requests memorials be to the American Heart Association, or the American Diabetes Association.

## HANSFORD HAPPENINGS

### ESL/Spanish Classes Offered

The Community Resource Program is giving those persons interested in ESL, English Second Language, or Conversational Spanish I or II an opportunity to sign up for these classes. Mary Ontiveros will be the instructor. Classes will be offered if there is enough interest. For more information about how Community Education can serve you, contact Cindy Blackman at 659-3233.

### Frank Phillips College Classes At Spearman High School

Many individuals in this area are working toward an Associates Degree or accumulating hours toward a Bachelors Degree. If there are specific classes that you would like to see offered at Spearman High School for either the Winter or Spring semesters, please call the Community Resource office soon as those schedules will be submitted to Frank Phillips College in the near future. Many classes are available through the teleconferences system at Spearman High School and Frank Phillips College also offers web-based classes. For more information, call Cindy Blackman, Community Resource Coordinator, at 659-3233.

### Musical Jam Session At Golden Spread Senior Center

The Golden Spread Senior Center, 502 S. Brandt, is hosting musical jam sessions on the first Thursday night of every month from 7 - 9:30 p.m. All musicians and singers are welcome as well as those who like to just come and listen. And yes, toe-tapping and clapping are allowed. Come on down - you won't be sorry you came. Call Kathy at 659-3866 with any questions.

### 20th Annual Festival of Arts & Crafts

Wesley United Methodist Church will be hosting its 20th Annual Festival of Arts & Crafts on December 2, 2000 from 9 a.m. to 5 p.m., at the Community Center in Hereford, TX. Only a limited number of booths are available, with applications being screened. Booth fee is \$10.00. Applications may be obtained by writing to Ellen Collins, 801 Miles St., Hereford, TX 79045 or by calling (806) 364-0774.

### Lights Of Love

The Christmas Season is celebrated around the world with Lights - big lights and little lights, bright lights and colored lights, lights of warmth, hope, joy and especially lights of love. During this year's holiday season, sparkling lights will adorn our Christmas tree, courtyard and gazebo at Hansford Hospital, giving a festive air to the grounds and adding a touch of cheer for everyone who passes by. You can help Hansford Hospice turn on the Christmas lights and at the same time, honor and remember special people by making a gift to illuminate the Lights of Love. Names of all honorees will be displayed on the Christmas tree and acknowledgement of the gift will be sent to donors, honorees and/or their families. The lighting of the Lights of Love tree will take place on Monday, December 4 from 6:30 - 7:30 p.m.

### Fresh Start Stop Smoking Seminar

A Fresh Start Stop Smoking Seminar is being planned by First National Bank. This seminar will consist of two 1-1/2 hour sessions, taught by Casey McCann. These sessions are sponsored by the American Cancer Society, and will be held at First National Bank. Anyone interested should contact Tammi Kunselman at 659-5644 or 659-3775.

### Frank Phillips College 2001 Teleconference Class Schedule

Listed below is the Frank Phillips College 2001 Teleconference Class Schedule. **Monday & Wednesday, 5:30 - 6:45 p.m.**, Intermediate Algebra; **Monday & Wednesday, 7 - 9:45 p.m.**, Psychology; **Tuesday & Thursday, 5:30 - 6:45 p.m.**, College Algebra; **Wednesday, 7 - 9:45 p.m.**, Accounting. All classes will be held at Spearman High School via teleconference. For more information, call Cindy Blackman, Community Resource Program at 659-3233. Registration will be Monday, January 8, 2001 from 5-7 p.m. at Spearman High School.

### Hansford Hospital Auxiliary Annual Christmas Luncheon

The Hansford Hospital Auxiliary Annual Christmas Luncheon will be held at 11:30 a.m. on December 4 at the Palo Duro Club dining room. Anyone interested in joining the Auxiliary is urged to come to the luncheon. On December 15th, Auxiliary members are to bring cookies for the Hansford Manor Christmas Party.

### North Panhandle Chapter of Widowed Persons Service

The North Panhandle Chapter of Widowed Persons Service will hold a social evening for widowed men and women on Saturday, December 2nd in the community room of the Bank of the Southwest. We ask you to bring your favorite finger foods and share potluck with us at 6:30 p.m. We play games and get to know each other better.

### Spearman Boys Basketball Program Sign Up

Sign up for the Spearman Boys Basketball Program will be held on Wednesday, December 6th and Thursday, December 7th from 5-6 p.m. in the First State Bank Hospitality Room. The deadline to sign up for the 2001 season will be on December 7th. If you cannot attend one of the sign up meetings, please call Patti Schnell at (806) 659-2919 before December 7th. A training session is being planned to help boys learn some of the basic drills, such as dribbling, passing, shooting, lay-ups, etc. Leann Gillaspie has volunteered her time to teach this training session on December 16, 2000. 3rd and 4th grade will be held from 10 a.m.-12 p.m., and 5th and 6th grade will be held from 1-3 p.m. All players are strongly urged to attend. The 2001 season will be played January 13th and 27th, and February 3rd and 17th.



# Super Santa Savings



**2001 BUICK LeSABRE CUSTOM SEDAN**  
 #21079, Sterling Silver, Luxury Package, Fully Loaded. List \$26,072.00  
**Prairie Motors Price '23,825.56\***  
**You Save \$2,246.44**



**2001 CHEVY SILVERADO 1500 2WD REG. CAB**  
 #21088, Summit White, TK/OK Regional Pkg. Automatic. List \$18,580.00  
**Prairie Motors Price '17,308.28\***  
**You Save \$1,271.72**



**2001 PONTIAC MONTANA EXTENDED VAN 4-DOOR**  
 #21046, Arctic White/Taupe 2-Ton, 3.4 V6, Onstar, Power Door. List \$29,855.00  
**Prairie Motors Price '26,932.84\***  
**You Save \$2,922.16**

Financing as low as **1.9%** on all **2001 Chevrolet Silverado 1/2 ton Extended Cabs!**

**2001 PONTIAC GRAND PRIX GT SEDAN**  
 #21066, Champagne Beige, Sunroof, 3800 V6, Onstar. List \$25,312.00  
**Prairie Motors Price '23,125.84\***  
**You Save \$2,186.16**

**2000 CHEVY SILVERADO LS 1500 4-DOOR 4WD**  
 #21209, Medium Charcoal Gray, 5300 V8, Power Seats, Z71 Pkg. List \$32,269.00  
**Prairie Motors Price '28,134.52\***  
**You Save \$4,134.48**

**2000 VOLKSWAGON BEETLE**  
 #2740, Yellow, Fully Loaded  
**CUTE AS A BUG!!**

**2000 BUICK REGAL CUSTOM SEDAN**  
 #2042, Bright White, V6  
**LOADED!!**

**1997 CHEVY SILVERADO 1500 EXT. CAB**  
 #2104A, Lt. Autumnwood, 4WD, Z71 Pkg., 5.7 V8  
**VERY NICE!!**

Great Selection Of Pre-Owned Vehicles

"IF YOU DON'T COME SEE US TODAY"

Check Out Our Website! [www.prairiemotors.com](http://www.prairiemotors.com)



**PRAIRIE MOTORS INC.**



"WE CAN'T SAVE YOU ANY MONEY"  
**1-800-692-4657**

Hours:  
 Mon.-Fri. 8 a.m.-6 p.m.  
 Sat. 8 a.m.-12 p.m.  
 Sunday Closed

Highway 207 South  
 Spearman, TX 79081  
 (806) 659-2541  
[www.prairiemotors.com](http://www.prairiemotors.com)

CHEVROLET • PONTIAC • OLDS • BUICK



Kari and Sean Polk

### Schneider-Polk Wed

Kari Schneider and Sean Polk were married on November 9, 2000 at Wailea, Hawaii on the island of Maui.  
 The bride is the daughter of Terry Schneider of Perryton and Trudie Gordon of Spearman.  
 The bridegroom is the son of Jim M. Polk of Abilene and Barbara Missingill of Eastland.  
 The bride attended Spearman High School and McMurry University. She is employed at Hendrick Health System.  
 The bridegroom attended Cooper High School and McMurry University. He is self-employed.  
 The couple lives in Abilene.

## Blowin' In The Wind

by Dwayne Mitchell

Plans are moving ahead for how the J. B. Buchanan Windmill Park will be developed in its location on the southern approach to Spearman. A landscape committee is needed to begin the landscaping. Particularly important now is a person or persons to head that committee. If you have an interest in landscaping, working with windmills and the public, please contact Roger Buchanan or Gina Gillispie.

Commemorative brick and tile are presently for sale and will be a part of the landscaping plan. If you want to buy a commemorative tile or brick, contact Gina Gillispie at the Chamber Office. Seventy brick and tile have been sold, but plans are to sell at least 200.

The SPWA's annual meeting is planned for sometime in January, 2001. The SPWA presently has 114 members and more members are needed. Please make plans to join the SPWA or renew your present membership and attend the annual meeting.

One of the important tasks of restoring a windmill is the lettering on the vanes (tails) of the mills. Wanda Reed has done that for the mills, particularly the OK, the Star Zephyr and the Leader. Her work is painstaking and professional, but she is in need of help in this area. If you have an interest or talent in lettering mills, contact Wanda or Gina for information. The lettering on the tail of a mill is the final touch and adds immeasurably to the beauty of the restoration of a mill.

If weather permits and there is no recount or dimpled ballots, by the time that this column appears in print, we should have a Leader. The Leader is a mill with a fixed wooden wheel on a wooden tower and is from the J. B. Buchanan collection. Also, very close to being put up is the Star mill that has been displayed by SPWA in various parades. It is going to be permanently located at a site near the

SPWA barn.

The SPWA's mill to be displayed in parades to replace the Star is going to be a Monitor open-gear mill. It is presently being restored and will be mounted on the SPWA's trailer for entry into area parades. The Leader, Star and Monitor will be discussed in detail in future columns.

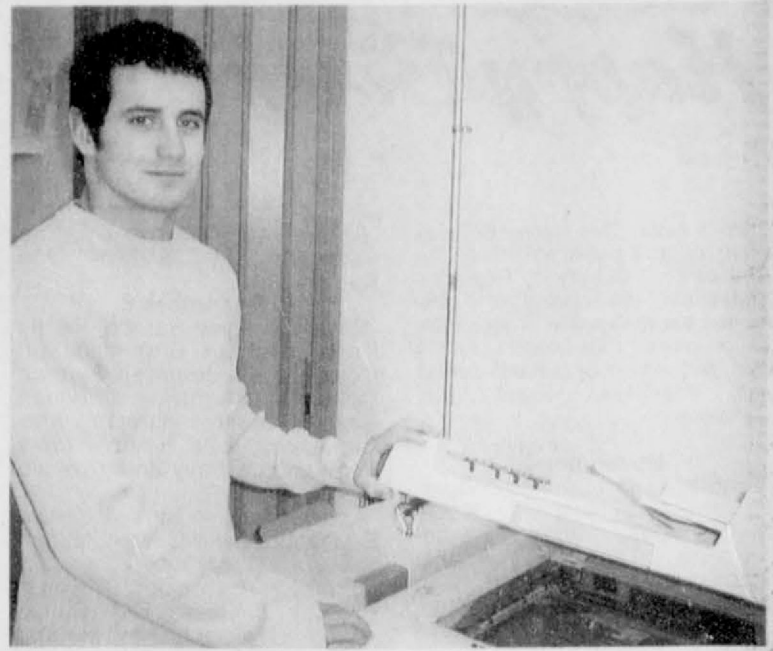
### CURRIE MILLS

Presently in the J. B. Buchanan Park, and two of the first mills erected in the park, are two Currie Mills. Both are from Mr. Buchanan's collection and both are steel wheel mills. Both mills are in the south row of mills, separated by a Butler mill.

The Currie mills are distinctive by virtue of a steel band that runs around the outside of the wheel. These mills are also interesting because the Currie Company advertised "our mills are bolted together, wheel sails fastened with bolts, vane bolted together, in fact, there is not one rivet in the mill." So in case any part gets damaged, it can be replaced with a screwdriver or wrench. An attractive idea when you consider trying to deal with a rivet 20-25 feet in the air where one hand is required to hang on, second hand is required for the hammer, third hand is---you get the picture. One other characteristic of the Currie Mill is that it has wooden bearings that were advertised never to wear out. Also, both mills are open-gear mills.

Currie Mills are very popular for another reason, they were cheap costing in 1911, for example, \$14.00 and in 1934 \$28.00. Even as late as 1950, a six-foot open-gear model cost less than \$40.00.

The wheels of the two mills in the park are an 8-foot and a 6-foot. The 8-foot mill is a swallow tail because of its distinctively shaped tail. The tail on each mill when shut off angles up at about a 45 degree angle. Both of these mills came from Francis Sackett's ranch northwest of Cleo Springs, Oklahoma. Mr. Sackett is J. B. Buchanan's brother-in-law.



Senior Aaron Weller has been named the Gruver High School October Student of the Month. Weller competes in football, basketball, and track. He was named to the all-district football team as a junior last year and was an area, regional, and state qualifier in track. He is active in Gruver FFA where he has served as an officer and is currently an office aide. He is the son of Dwain and Linda Weller.

You are invited to a  
**Baby Shower**  
 honoring  
**Caleb Murray**

son of Howard and Christy Murray, on  
 Tuesday, December 5, 2000 at 7:00 p.m.  
 in the Spearman Church of Christ  
 121 S. Haney • Spearman, TX

**Dr. Rick Sheppard, D.D.S.**

**1-800-687-2010**

•Family Dentistry •Braces

146 Pioneer • Booker, TX

**TEETH FOR A LIFETIME**

## Hunter's Feed

Opening Day of  
 Pheasant Season  
 Saturday, December 9th  
 11 a.m. to 2 p.m.

**All You Can Eat  
 \$6.00**

Fellowship Hall  
 Church of the Brethren  
 Waka, Texas

Everyone is invited to enjoy stew, beans,  
 cornbread, dessert and drinks.

Listen to  
**KRDF-FM**  
**98.3**

**Hot Country Stereo  
 'Till Midnight**

## Bridal Registry

Roxie Johnson & Rex Ralston

Katie Black & Josh Bynum

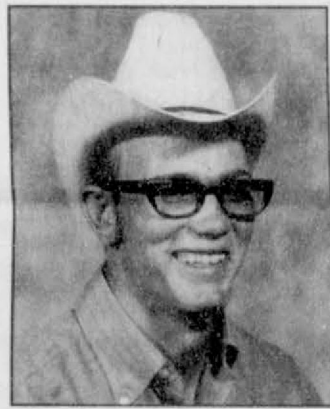
## Celebrate

Gifts for all your celebrations!  
 203 Main St. • Spearman, TX

(806) 659-3350

1-800-663-8026

He's so cute, He's so fine,  
 Mike's no  
 longer 49!



Love,  
 Carole, Pam  
 & Rhonda

### Alva Monument Co..

Formerly Liberal Monument  
 & Memorial Company

New Location:  
 111 Tucker Road  
 Liberal, Kansas

North of the New Wal-mart

Liberal

Alva

1-888-654-9138

1-800-344-4605

Christmas  
 Decorating  
 Ideas

Christmas  
 Arrangements



See Us Today!

**All Occasion Flowers**

202 N. Bernice (across from the Post Office)  
 659-5180

We Carry

The Original  
**BEAN ANGEL**  
 Collectibles

Every angel represents a virtue.  
 Love, Hope, Friendship, Courage, Wisdom, Faith,  
 Strength, Charity and Christmas Love.

## Holiday Open House

Saturday, December 2nd  
 9:30 a.m.-5:30 p.m.

Sunday, December 3rd  
 1:00-5:00 p.m.



721 W. 7th • Spearman • 659-3566

## For The Bride & Groom

Come by and let us help you  
 set up your special gift table.

Couples Currently Registered

Josh Bynum & Katie Black  
 Amy & Tanner Barnes - Dec. 3rd

314 Main

**Gordon's**

Spearman, TX

# Among The Neighbors

by Helen Fisher

A large colored picture of Jennifer Laxson was in last Wednesday's Amarillo Daily News showing her in deep concentration, bowling using a frozen turkey as a bowling ball. Jennifer, a sophomore at WTAMU, was competing in WT's Annual Turkey Bowl contest.

Jennifer, the daughter of Paulette Laxson, is the Tuesday evening DJ host on station KWTS FM radio. It is on 91.0 FM but does not reach Spearman.

Sympathy is extended to the families of Robbie Butts on the death of her mother, Jenna V. Ownbey.

Jenna, widow of Robert Ownbey, was an active community resident of Spearman and the community for many years. Their children finished high school here.

How about that picture in the Farm and Ranch section of the Sunday Amarillo News Globe showing a truck at sunset on the prairie with the quote underneath, "Tom Burtler harvests sunflowers on his father's farm between Waka and Farnsworth in Collingsworth County."

All these years Waka and Farnsworth were considered in Ochiltree County. Will their votes be thrown out if they voted there?

Funeral services for Lenor "Nora" Baca were held Tuesday with interment at Hansford. Mrs. Baca, 60, passed away enroute to Amarillo via medicav on Saturday. She had been a resident of Spearman for 38 years. She and her husband, who died last year, had raised their family here. All attended school here.

Condolences are extended to all the family.

Such a complimentary article that was one day last week in the Amarillo News about Kevin Beedy, sophomore quarterback, and his parents, Scott and Becky. The outstanding tennis records of Kevin and his sister, Kristen were reviewed. Scott and Becky also had athletic records in high school in Spearman.

This community is indeed fortunate in having the Beedy family as citizens.

### Thanksgiving Notes:

Maxine Banister, now of Amarillo, is spending the current week in Spearman. She came over on Thanksgiving with her grandson, Brent Banister and family of Brady. She is spending the week in the home of Terrell and Cheryl Evans and greeting Spearman friends.

John Mac and Leslie Annen of Spearman-Stinnett had as guests his parents, Brenda and Claude Annen and Sage of Nazareth, his brother, Howard and Cindy Annen of Dallas and Billy and Sybill Miller. Junior Sparks came from Stinnett.

Ronnie and Della Head of Carlsbad spent the weekend here with her parents, Butch and Maryann Lasaters. Other weekend guests were their daughter Mendy and Chad Riggins and son Cadon of Lubbock. Cass Lasater shared in the hosts duties.

From Monday through Friday, guests of Betty and Chalmers Porter were her mother, Clea Douglas of Garfield, Arkansas and sister Glenda and Bill Hanna of Quitman, Arkansas. The week was the birthday time for the three ladies which was properly observed. The candle on the cake for Mrs. Douglas showed 93 years, but turned around showed 39 for the other celebrants.

Betty and Chalmers had returned a few days earlier from an absence of two weeks. They had gone to Olathe, Kansas to watch two women's basketball games, both of which were won by the team of

their son Doug. He coaches at Olivetta College in Kankakee, Illinois.

From Olathe, Betty and Chalmers went to Grand Rapids, Michigan and stayed with the children of their son, Raymie and Natalie. They were attending the national convention of his association that week.

Next Betty and Chalmers went to Fargo, North Dakota for a week with son William and his wife Laura.

Kay and Bob Evans spent from Wednesday through Sunday at Lakin, Kansas. They shared the holidays with their children and grandchildren.

Mary and Buford Baker enjoyed the traditional Thanksgiving with their children all gathering. Melissa and James Jansky and two children from Houston: Brandon and Carl Baker from Lubbock and Kevin from WTAMU in Canyon.

Janice Phelps of Dallas spent the entire week here with her parents, Ray and Beth Phelps.

Joe Michael and Bee Bryan came over from Amarillo and were here the weekend with his mother, Ruth Bryan.

Mark and Sara Eisfeld headed north to southwest Minnesota for a couple of days over the Thanksgiving holiday to visit family and friends.

Jimmy Kunkle who grew up in Spearman and finished high school here, died in Amarillo on November 19. His mother, Grace Bruce Kunkle Farmer now lives in Apache Junction, Arizona. His brother, Bobby and sister, Vickie also formerly of Spearman now live in Amarillo.

Thanksgiving was a sad time for the families of Joyce and Benny Byers due to the passing of their grandson, Jeremy Mach, 24.

His death occurred on Monday, November 20, due to an aneurism.

Joyce accompanied Alvin and Becky Byers, with Haley and Marvin, to the services in Houston on Friday. Graveside services at Eden were on the 25th.

In addition to his parents, Donnie and Sharon Mach of Houston, he is survived by his wife, a son and a brother.

Dwayne Smith, weather recorder, managed a fine Thanksgiving week-end with the weather: from November 20 through November 27 at 7 a.m. - the highest temp was on the 21st at 67; the lowest on the 27th at 24; precipitation - not a drop nor a flake.

# The Gruver Grapevine

by Harletta Carthel

### Ex Gruverite to Run for Congress

Gruver graduate, Michael Parks, will be making a run in 2001 for a U.S. congressional seat in Virginia.

Since graduation from college, Parks has been a member of the corporate world, obtained a Juris Doctorate from Regent University in Virginia Beach, and has even had his own conservative radio talk show, on the nation's largest Christian radio broadcasting company.

Having helped in the election of others to both state and federal offices, Parks will now pursue his own election as a conservative under the Republican banner.

For friends of Parks wishing to aid in his congressional effort, donations may be sent to Michael Parks for Congress, P.O. Box 1564, Chesapeake, VA 23327. Parks' internet address is parkforcongress@cs.com or phone (757) 548-5706.

### Christmas Musicals Scheduled

The Gruver United Methodist Church will offer two Christmas programs. A children's Christmas musical, "A Christmas Tree," will be presented Sunday, December 17, 2000 at 10:50 a.m. with the annual Christmas Cantata slated for the same day at 6:00 p.m.

A Christmas Eve Communion Service will be on Sunday, December 24, 2000 at 5:00 p.m.

### Get Well Wishes

Georgia Hite is recovering at home following her recent surgery.

Louella Andrews, the sister of Mavis Floyd, is recovering in Guymon following surgery to remove a kidney.

### Little Miss Schad Arrives

Leslie Victoria Schad made her debut on Wednesday, November 8, 2000.

Weighing eight pounds and 15 ounces, the little miss was 21 inches long. Her proud parents are Richard and Jessica Schad. Her grandparents are Dorsey and Lucille Schad and Jed Ledbetter, all of Gruver. She is blessed with older sisters Whitney, Madison, and Suzanne.

### Basketball Roundup

Seventh Grade Girls (11-20-00)  
Gruver 30, Stratford 29  
Lindsay Clift 4, Allison Reid 2, Katie Jones 2, Samantha Myatt 2, Liz Lopez 18, and Jessica Vela.

Seventh Grade Girls (11-27-00)  
Gruver 43  
Boys Ranch 12  
Allison Reid 11, Samantha Myatt 4, Ortisabel Flores 6, Timber Barkley 7, Rochelle Holt 4, Liz

Lopez 5, Lauren Bergin 2, and Jessica Vela 4.

Eighth Grade Girls (11-20-00)

Gruver 22, Stratford 30  
Blythe Finley 6, Laina Grotegut, Angelica Huerta 2, Valerie Burman 8.

Eighth Grade Girls (11-27-00)

Gruver 44, Boys Ranch 14  
Blythe Finley 8, Yolanda Hernandez 2, Laina Grotegut 11, Angela Huerta 6, Brittanie Osbourne 2, Valerie Burman 24, and Chelsie Reid 3.

Junior Varsity Lady Hounds (11-20-00)

Gruver 43, Spearman 40  
Bryn Lowe 2, Jenny Hart 8, Krystle Christian 3, Julie May 4, Lori Swink 2, Kasey Cazares 7, Sammy Johnson 13, Carley Bryson 4.

Junior Varsity Girls (11-20-00)

Gruver 57, Texhoma 17  
Bryn Lowe 4, Jenny Hart 8, Ashley Sherrill 4, Krystle Christian 4, Julie May 1, Kayce Howe, Lori Swink 3, Sammy Johnson 16, and Carley Bryson 10.

Fifth and Sixth to Attend Pageant

Gruver fifth and sixth graders will be treated to the Friday, December 8th performance of the "Nutcracker" in Amarillo.

### UIL Contest Scheduled

Gruver Junior High and Elementary students will compete in UIL academic contests on Tuesday, December 5th, in Stratford, in both individual and team events.

### Junior High Announces Award

Gruver Junior High has announced the Citizens of the Six Weeks for each junior high class. Students were selected for exemplifying the qualities necessary to be good citizens.

Chosen were Tony Lora in fifth grade, Gloria Lora in sixth grade, Lauren Bergin in seventh grade, and Cody Mac Been in eighth grade.

### Tournaments Scheduled

Gruver students will be involved

in two basketball tournaments this weekend.

Varsity girls and boys will compete in the Lake Meredith Classic in Fritch while junior varsity girls and boys will be hosting the Gruver Junior Varsity Tournament (which has been snowed out for two consecutive years).

The varsity Hounds will have a 4:15 p.m. rematch with their Tuesday night opponent, Panhandle, in the opening round of the Lake Meredith Classic. Their second game will be on Friday at either 11 a.m. or 4:15 p.m.

In the Gruver Junior Varsity Tournament, the Gruver JV will take on the West Texas Comanches at 8 p.m. in the varsity gym with the Gruver JV girls playing West Texas at 6:40 p.m. in the varsity. The Gruver boys will play their second game at 8 p.m. on Friday in either the varsity gym or the activity center. The Gruver girls' second game will be at 6:40 p.m. Friday in either the varsity gym or the activity center.

Both the Varsity Hounds and Lady Hounds will be playing in the Sunray Tournament December 7-9. The Hounds will open with a 1 p.m. game with Vega in gym 1 while the Lady Hounds will play Hartley at 8:30 a.m. in gym 2.

### District Football Honors Announced

Eleven members of the 2000 Greyhound football team were chosen for district 1-A honors.

First team offensive honors went to seniors Aaron Weller, running back; Jason Shoulders, split end; and Chad Clift, offensive line.

Second team offensive honorees were seniors Cory Schneider, running back; and Chase Lamb, center.

First team defensive honors went to seniors Chad Clift, defensive lineman, and Kirby Johnson. Second team honor named seniors Anthony Villalobos, defensive tackle; Chase Lamb, defensive lineman; and junior Kade Carthel, defensive end.

The honorable mention list included Anthony Villalobos and Bradley Duncan on offense and Greg Ehrenberg, Bradley Duncan, Jason Shoulders, and Manuel Luciano.

### Words

Words I hope to never hear again: "the will of the people," "voter intent," and "dimpled chad."

I also never knew that "recount" was an infinite number.

## NOW EVERYDAY

# 2nd Set!

# FREE

PHOTO PROCESSING

3" ALCO Prints  
OR  
4" or 5" Kodak Prints

ALCO

DAILY: 9 a.m.-8 p.m. SUNDAY: 12-5 p.m.  
521 Hwy. 207 S. • 659-2600 • Spearman, Texas

Don't Forget to buy Kodak Film!



Offer available on 3" Alco Advantage Processing or 4" or 5" Kodak Premium Processing prints. 3" prints from 110, 126, disc and 35mm film. 4" or 5" prints from 35mm film only. C-41 Process only. Not available on (Advanced Photo System - Advantix), Panoramic or 1/2 frame 135 film. Cannot be combined with any other offer.

# First State Bank

*"Showing community support, dedication and service."*

First State Bank Christmas Cash Loans up to \$500 "INTEREST FREE" for 12 Months\*

Strength Is Our Tradition  
**SERVICE** Our Goal  
*Serving Hansford County Since 1917*



\* Gruver

First State Bank  
Spearman

\* Morse

Proceeds are issued in the form of  
**"First State Bank Christmas Cash Certificates"**  
redeemable at participating Hansford County Merchants

# FSB

First State Bank  
Call or stop by for details  
**(806) 659-5565**  
Member FDIC

\*\$500, 0% APR, 11 monthly payments of \$41.66 and one payment of \$41.74, with approved credit

**Just in time for CHRISTMAS**

Christmas Open House  
Premier Designs High-Fashion Jewelry

Saturday, December 2nd • 1:00 p.m.  
O'Loughlin Center • Spearman, TX

**50% Off Sample Sale**

Making room for new jewelry designs.  
Come early for best selection. Limited edition items (only one of each available at sale).

Anita Clemmons

## Now 'Til Christmas...

Buy any item from Fall & Winter Fashions & get a 2nd item of equal or lessor value for 1/2 PRICE

# Buy 2 & Save!!!

*Lady Fair*  
659-3215

*Kid's Stuff*  
659-2608

719 W 7th St. • Spearman, TX

Free Gift Wrap - Discover, MC & VISA  
(Sale includes fall & winter clothing only)

## Out At The Lake

by Dorothy Hudson



Lake Depth--November 27, 2000--48.12 feet

It is encouraging to see that the lake level is holding better than formerly. Last week it was down 3 inches and this week it is only down 2.5 inches.

Jim's picture is of the unusual deer with the one antler mentioned two weeks ago in the column. Sunday Jim took the scope and drove around scouting for deer. He saw about 40 of them--both does and bucks.

The regulars (whose numbers are now smaller) are catching a few catfish, but the fishing is still on the slow side.

The duck population on the Lake keeps growing, but the number of geese has fallen off. Northwest of Gruver they are thick on playa lakes, and farmers are grumbling about their wheat being destroyed by these voracious birds. East of Spearman, it is the sandhill cranes that are doing the damage.

A few weeks ago the Amarillo Daily News had a piece by David Stevens on the Muleshoe CraneFest, and I learned that there were lesser sandhill cranes and the greater sandhill cranes. The ones east of Spearman seem so big that I am supposing they are of the greater tribe. Does anyone know? The lessers stand 3 feet high and weigh

about 12 pounds.

David's research also said that these cranes mate for life and each year raise one baby called a colt, because it looks like a little horse.

This Sunday News-Globe had a mention of Margaret Kirk of Spearman in Mary Kay Tripp's Editor's notes. She wrote that "Margaret Kirk, herself a pioneer, was especially good at ferreting out unusual details about pioneer life and people. Margaret could make people laugh, as her story of a lady who must have been one of the first settlers of the North Plains and had hated the country every cursed year."

I found some of Margaret Kirk's stories in the W. P. A. files in the Archives of the Panhandle-Plains Museum at Canyon. I would like to find a complete set of her work. I don't know if her family kept them or if they are in the Museum under some other category.

Do you think she was referring to Jennie Ludlow Cator (Mrs. Bob) or to some other pioneer woman? Jennie accompanied Clara Cator to Hansford County in 1879. Usually in a write-up on Bob Cator you find that they moved to Oregon in 1892, because Jennie didn't like this country.

# Cargill AgHorizons to Offer New Contracting Program

Cargill AgHorizons will launch a new grain contract that will take the futures hedging burden out of the hands of producers and put it in the hands of hedging experts. The new contract, called ProPricing, will offer farmers five professional hedging choices managed by grain marketing experts. The final contract futures price is based on the hedging activities of these experts.

"We're excited to offer our customers a new solution to the challenge of grain marketing," said Mike Hansen, Farm Service Center (FSC) Manager. "Our customers tell us they don't have time to watch the markets everyday, so this is another way we can help."

Farmers participating in the ProPricing contract may choose from five hedging choices and bushels contracted may be split between the various choices. Cargill AgHorizons manages three hedging choices and non-Cargill grain marketing professionals manage two. The final contract futures price is based on the hedging activities of these groups.

Cargill AgHorizons Pros utilizes Cargill's trading experience to formulate futures and options strategies. The goal is to achieve a price in the top third of the market trading range. A service charge applies and an additional performance premium is charged if the team reaches the top third of the market goal.

Cargill AgHorizons Average Plus (A+) is a continuation of the previously successful A+ contract. Farmers are guaranteed a minimum of the average futures price during a set period plus two-thirds of any amount by which Cargill AgHorizons hedging activities exceed that average. A service

charge applies. The A+ contract is now part of the ProPricing contract.

Cargill AgHorizons Max Average offers a lower-risk choice. Farmers receive the average futures price during a set period, typically the highest seasonal period. Participants also agree to a maximum futures price, creating a price cap. No service charges or performance premiums apply to this choice.

Market advisor Richard Brock through Brock Associates manages a fourth choice. Brock will utilize futures and options strategies with a goal to achieve a price in the top third of the futures range. A service charge applies and an additional performance premium is charged if the price is within the top third.

Alan Kluis, founder of Northstar Commodity, will manage the fifth choice. Kluis will utilize a slightly more conservative strategy, keeping the same price goal of the upper third of the trading range in mind. Like the Brock and Cargill AgHorizons choices, a service charge and additional performance premium for the top third price apply.

Each hedging choice offers a guaranteed minimum price, helping to reduce risk producers face in grain marketing. Participants may set the contract basis at any time prior to delivery.

The ProPricing contract will offer producers a choice of futures offering months.

Current choices are:

**Corn Futures Month**  
December 2001  
March 2002

**Soybean Futures Month**  
November 2001  
January 2002

**Wheat Futures Month**  
Chicago - July 2001  
Kansas City - July 2001  
Minneapolis - September 2001

Participants will receive periodic updates on the hedging activities through Cargill AgHorizons' customer-only Internet site - [www.cargillaghorizons.com](http://www.cargillaghorizons.com).

Cargill AgHorizons is a customer-focused organization working to bring farm product service solutions to producers.

### Thank You

I would like to thank you for your help in our fund raising for the Hansford County 4-H. I would especially like to thank the ones who helped me raise money for our club.

Happy eating, and see you next year.

Hannah Haddock

### Thank You

We would like to express our appreciation to everyone for the flowers, cards and calls. Your many kindnesses made our 25th anniversary so special. We also thank our children and grandchildren for the delightful video and lovely reception.

Don and Lorene Kunselman

### Thank You

Words seem very inadequate in expressing our appreciation to our many friends from church, school and the community who offered so many expressions of love and concern during the time of Chance's surgery and recovery. Your prayers sustained us and your many acts of kindness and thoughtfulness lifted us up with sweet encouragement. Brother John and Eulis Denton, Mary Baker, Brian Foster and Troy James stayed with us on surgery day; Chance's teachers, both at school and church, sent messages and "care" packages that thrilled his heart (and ours, too), and the many calls and inquiries about his condition and the test results let us know his many friends were "keeping watch" with care. We are grateful from the depths of our hearts and pray God's richest blessings on each of you who has helped us through this time. We praise God for Chance's speedy recovery and for good pathology reports.

Jay Pack, Chance, Blayne & Jayme; Carol & Neil Pack; Mike & Teresa Pack

## Hospice Volunteers Meet

Hansford Hospice Volunteers met at the Gruver State Bank in Gruver on November 13, 2000. Verna Lee Shirley, president, called the meeting to order.

Roberta Cole read the minutes of the last meeting. They were approved as read. Pat Sutterfield gave the treasurer's report.

The motion was made by Mary Kay Harbour and seconded by Dolly McWhirter to not have installation of officers. These officers are the same as for this year. They were installed last year. Carolyn Hicks asked that she be given program suggestions at the January meeting.

"Lights of Love" was discussed. The lights will be lit on December 4, 2000. The program will begin at 6:30 p.m. in the living room of the Manor. The lights will be lit at the gazebo after the program. The date for decorating will be November 27 at 1 p.m.

Charla reported that attendance was down a little from last year at the Health Fair. Everyone enjoyed the "Survival Kits" given out at the Hospice booth.

A new volunteer class will begin February 5. Time and location will be announced later.

The meeting was adjourned for the fellowship time. The following attended the meeting: Reba Hunter, Connie Gammill, Dolly McWhirter, Jack McWhirter, J.C. Harris, Charla Hargis, Rosetta Barrera, Anita Marquez, Carolyn Hicks, Roberta Cole, Ken Cole, Verna L. Shirley, Pat Sutterfield, June Jackson, Doyle Jackson, LoRee Booth, Beth Phelps, Betty Davis and Mary K. Harbour.

## T·N·T ELECTRIC

Commercial • Residential • Oilfield

24 Hours - Seven Days A Week

Soon to be located at 205 Main Street in Spearman

P.O. Box 752 • Spearman, TX 79081

Mobile (806) 930-8102 - Local Call

Tom Temple

### Monogramming

available at

Jo's This 'N' That

214 Main St. • Spearman

659-3999

Personalization & Custom Computer Designs Available

## financing that fits

- Operating Financing
- Name Brand Crop Inputs
- Insurance
- Agronomic Advice
- Leasing

Contact your local sales representative:

Jerry Criswell  
Canyon, TX  
806-655-6911

All from one source...

Ag Services of America, Inc.  
1-800-395-8505  
[www.agservices.com](http://www.agservices.com)

721 W. 7th  
Spearman  
(86) 659-3566



222 S. Main  
Perryton  
(806) 435-2495

## Holiday Sale

Pay only **70%** of the Regular Retail Price  
Now through December 24th

All purchases will automatically register you for our free Christmas Drawing for a \$100 Gift Certificate and a pair of 1/4 kt. Diamond Earrings.

## Holiday Sale

Pay only **70%** of the Regular Retail Price  
Now through December 24th

### Special Holiday Hours

Monday-Saturday, 9:30 a.m.-5:30 p.m.  
Sunday, 1:00-5:00 p.m.

Now through December 24th



JE. Financing Available  
Some Exclusions Apply



Enjoy Christmas Music

Eat Hot Dogs



Celebrate the Holiday Season with Tradition  
Family, Friends &

## First State Bank

Eat Lunch With Us

Wednesday, December 6th

12th Annual Christmas

Hot Dog Cookout

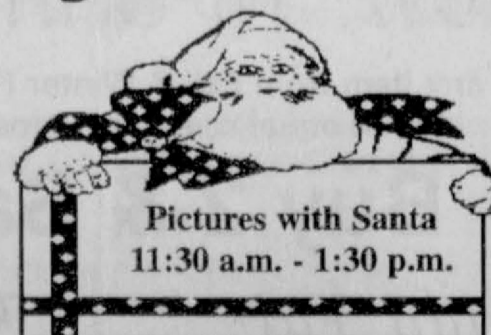
11 a.m.-1:30 p.m.

Come Join In The Fun!

**FSB**

First State Bank

Strength is our Tradition...  
Service our Goal



Member FDIC



# CONGRATULATIONS! SPEARMAN LYNX



## The following businesses congratulate you on a great 2000-2001 Football Season!

|   |  |   |  |  |
|---|--|---|--|--|
| <p><b>First National Bank</b><br/>Spearman, TX • 659-5544<br/>member FDIC</p> | <p><b>Debbie's Ready or Not</b><br/>Spearman, TX • 659-3328</p>    | <p><b>Interstate Bank, sssb</b><br/>Spearman, TX • 659-2559<br/>member FDIC</p> | <p><b>Golden Spread Sales Co.</b><br/>Spearman, TX • 659-3776</p>  | <p><b>First State Bank</b><br/>Spearman, TX • 659-5565<br/>member FDIC</p> |
| <p><b>Watley Seed Co.</b><br/>Spearman, TX • 659-3838</p>                     | <p><b>Speartex Grain Co.</b><br/>Spearman, TX • 659-3711</p>       | <p><b>Rocking F Boot &amp; Saddle Shop</b><br/>Spearman, TX • 659-3342</p>      | <p><b>Cargill Inc.</b><br/>Spearman, TX • 659-3554</p>             | <p><b>Celebrate</b><br/>Spearman, TX • 659-3350</p>                        |
| <p><b>Lyric Theatre</b><br/>Spearman, TX • 659-2812</p>                       | <p><b>Hansford Abstract</b><br/>Spearman, TX • 659-2516</p>        | <p><b>Cates</b><br/>Spearman, TX • 659-3426</p>                                 | <p><b>Clark Aerial Spraying</b><br/>Spearman, TX • 659-2344</p>    | <p><b>Perryton &amp; Spearman Redi-Mix</b><br/>Perryton, TX • 435-6836</p> |
| <p><b>Palo Duro Supper Club</b><br/>Spearman, TX • 659-2232</p>               | <p><b>Prairie Garden Flowers</b><br/>Spearman, TX • 659-3329</p>   | <p><b>Spearman Equity</b><br/>Spearman, TX • 659-2420</p>                       | <p><b>Five Star Equipment</b><br/>Spearman, TX • 659-3743</p>      | <p><b>Main Street Barber</b><br/>Spearman, TX • 659-2280</p>               |
| <p><b>H&amp;H Water Well</b><br/>Spearman, TX • 659-5577</p>                  | <p><b>Spearman Booster Club</b><br/>Spearman, TX</p>               | <p><b>L&amp;D Spraying</b><br/>Spearman, TX • 659-5950</p>                      | <p><b>IV's Hungry Cowboy</b><br/>Spearman, TX • 659-5151</p>       | <p><b>Athena Energy Inc.</b><br/>Spearman, TX • 659-2952</p>               |
| <p><b>Lowe's Marketplace</b><br/>Spearman, TX • 659-2522</p>                  | <p><b>Gigot Agra Products Inc.</b><br/>Spearman, TX • 659-3121</p> | <p><b>Safety Glass Co.</b><br/>Spearman, TX • 659-2090</p>                      | <p><b>Hi-Plains Auto</b><br/>Spearman, TX • 659-2506</p>           | <p><b>Dr. James Pinkerton, DDS</b><br/>Spearman, TX • 659-3315</p>         |
| <p><b>Spearman Farm &amp; Auto Supply</b><br/>Spearman, TX • 659-2588</p>     | <p><b>Sergio's Body Shop</b><br/>Spearman, TX • 659-5217</p>       | <p><b>Dairy Queen</b><br/>Spearman, TX • 659-3324</p>                           | <p><b>Corner Service Station</b><br/>Spearman, TX • 659-2722</p>   | <p><b>D&amp;C Greenhouse</b><br/>Spearman, TX • 659-5171</p>               |
| <p><b>Frontier Feedyard</b><br/>Spearman, TX • 882-4251</p>                   | <p><b>Kid's Stuff</b><br/>Spearman, TX • 659-2608</p>              | <p><b>Berry Cleaners</b><br/>Spearman, TX • 659-3122</p>                        | <p><b>J&amp;M Service Center</b><br/>Spearman, TX • 659-5519</p>   | <p><b>Prairie Motors, Inc.</b><br/>Spearman, TX • 659-2541</p>             |
| <p><b>Spearman Chamber of Commerce</b><br/>Spearman, TX • 659-5555</p>        | <p><b>Lady Fair</b><br/>Spearman, TX • 659-3215</p>                | <p><b>Hansford Implement Co.</b><br/>Spearman, TX • 659-2568</p>                | <p><b>MurMur's Cafe</b><br/>Spearman, TX • 659-3580</p>            | <p><b>Pizza Hut</b><br/>Spearman, TX • 659-2547</p>                        |
| <p><b>Hansford County Reporter-Statesman</b><br/>Spearman, TX • 659-3434</p>  | <p><b>Transpetco I</b><br/>Spearman, TX • 659-2596</p>             | <p><b>Boxwell Brothers</b><br/>Spearman, TX • 659-3802</p>                      | <p><b>John L. Hutchison, Atty.</b><br/>Spearman, TX • 659-3703</p> | <p><b>Dreamers' Salon</b><br/>Spearman, TX • 659-9907</p>                  |
| <p><b>Martin &amp; Associates Realty</b><br/>Spearman, TX • 659-2425</p>      | <p><b>Rod Sumner</b><br/>Spearman ISD<br/>Superintendent</p>       | <p><b>Panhandle Diner &amp; Deli</b><br/>Spearman, TX • 659-3864</p>            | <p><b>White House Lumber</b><br/>Spearman, TX • 659-3792</p>       | <p><b>Edward's Tractor Repair</b><br/>Spearman, TX • 659-9883</p>          |
| <p><b>Shufeldt Rig Service, Inc.</b><br/>Spearman, TX • 659-3635</p>          | <p><b>D&amp;D Cattle Hauling</b><br/>Spearman, TX • 659-2174</p>   | <p><b>Mark Sheets Truck</b><br/>Spearman, TX • 659-2773</p>                     | <p><b>Gordon's Drug</b><br/>Spearman, TX • 659-2141</p>            | <p><b>H&amp;H Credit Union</b><br/>Stinnett, TX • 878-2452</p>             |
|   |  |   | <p><b>Simple Simon's Pizza</b><br/>Spearman, TX • 659-9991</p>     |  |

# Hansford County Sports



## A Winning Tradition!



Thanks to the fine sponsors below, you can follow the Lynx, Lynxettes & Hounds & Lady Hounds in 2000-2001!

### Hamlin Takes Win From Lynx

by Jeff Beedy

When you get in the high school playoffs, you have to be good and you need some breaks to go your way. Both teams had a fine football team. Hamlin had the breaks go their way and that was the difference in the game. Both teams played well and it was an exciting game to watch. But in the end, it was Hamlin that made the big play that took the game away from the Lynx. Early in the third quarter, Hamlin had to punt, but Spearman was called for too many men on the field taking Spearman's field position away the entire second half. Spearman did have a chance to go ahead late in the fourth quarter, when they had the ball on Hamlin's 18 yard line with the score 14-13 in favor of Hamlin. Spearman threw a pass over the middle and Hamlin's Jared May was there to intercept it and ran it back 85 yards for a touchdown. The Lynx had another chance late in the game, but were stopped short on 4th down and that sealed the victory for Hamlin. Hamlin ended up scoring again late in the game and the final score was Hamlin 28 Spearman 13.

The Lynx had a great season and the community is very proud of the way they played all year long. They advanced a lot farther than anyone expected. This is a

positive to build on for next year. Yes, we will miss those seniors that will graduate, but the future looks bright for the Lynx. These kids played their hearts out and they played well as a team all year-long. We always feel a part of the team when we win and we all need to feel a part of the loss when we lose. We can't look back and single out one or two plays because you have to play the whole game and these kids, coaches, and fans did everything they could to win and we are proud of all of them. This win was just not meant to be for the Lynx and we want to wish Hamlin the best of luck next week against Stanton.

This was a good day for football as the temperature was in the low 50's with the wind out of the north at 15-20 mph and a bright sunny day. Both teams had a good crowd on hand to cheer their team on to victory. Hamlin won the toss and deferred to the second half, so the Lynx got the ball first. On their first possession, the Lynx could not move the ball and went three and out.

Hamlin got on the board on their first possession. They started on their own 41 and a few plays later they drove to the Spearman 22. On 3rd and 8, quarterback Clint Powell threw to tight end Michael Green over the middle for the touchdown. The PAT kick was good and Hamlin led 7-0.

Both teams exchanged punts on their next possessions and the Lynx started their 3rd possession from their own 33 yard line. After converting on 4th and inches from the Hamlin 44, the Lynx drove the length of the field. The drive was capped off by a QB sneak by Kevin Beedy from 1 yard out. Eduard Lopez' PAT kick was good and the score was tied at 7 apiece.

The Lynx held Hamlin on their next possession and the Lynx started their next drive from their

own 11 yard line with 5:36 left in the 2nd quarter. Spearman drove the ball out to the 50 yard line. On 2nd and 10, Beedy threw to Miller out in the flat who then threw a lateral pass to tailback John Brock. Brock ran to the Hamlin 34 before being shoved out of bounds. On 2nd and 10 from the 34, Beedy handed off to Brock who handed off to Miller and then Miller tossed the ball back to Beedy on the flea flicker. Beedy found cousin Tanner Beedy, who got behind the defenders, and Kevin through a perfect pass to Tanner for the touchdown. The PAT kick failed and Spearman led 13-7. Neither team could move the ball and that is how the first half ended.

Hamlin got the ball to start the second half. They started on their own 25 and after making one 1st down, the Lynx defense held and they had to punt. But on the punt, Spearman was penalized 15 yards for having too many men on the field. That penalty gave Hamlin the ball back with a first and ten. They drove to the Spearman 16 yard line. The Lynx defense held when Hamlin went for it on 4th and 1 from the 7 yard line. The Lynx took over on downs, but they were unable to move the ball. They to punt back to the Pied Pipers who would get good field position. Jared May would return the punt 18 yards to the Spearman 27 yard line. A few plays later, Hamlin drove to the Lynx 1 yard line where tailback Henry White ran off tackle and into the end zone for the score. The PAT was good and Hamlin led 14-13 with 3:11 left in the 3rd quarter.

Spearman kept the ball on the ground on their next possession. They started on their own 26 yard line and moved the ball down to the Hamlin 47 before the drive stalled and they had to punt. Hamlin started on their own 27 and moved the ball to the Lynx 47. On 2nd and 9, Miller inter-

cepted a Powell pass and returned it to the Hamlin 41 with 8:33 left in the game. Spearman drove the ball down to the Pied Piper's 18 yard line. On 1st and 10, Beedy tried to find John Brock over the middle, but Jared May was there to pick it off and he ran 85 yards for the touchdown with 5:27 left in the game. The PAT was good and Hamlin led 21-13.

The Lynx had another chance to try and tie the game as they started from their own 28 yard line. They tried to convert on 4th and 2 from the Hamlin 47, but came up about 3 inches short and Hamlin took over on downs. Hamlin went three and out and punted back to the Lynx with 1:17 left in the game. The Lynx started from their own 8 yard line without any timeouts left. On 4th and 1, Beedy tried to throw a screen pass to Brock, but Hamlin's Michael Brown was there to intercept running it into the end zone for the TD. The PAT was good and the score was Hamlin 28 Spearman 13 and that is how the game ended.

Like I said earlier, you guys had a great year and we as a community feel loss with you. The seniors had a great year and were great leaders for this team. Steven Vasquez, Richard Varnon, Clayton Vanderburg, Kolby Sumner, Ty West, Jimmy Gaytan, Timmy Bynum, Junior Moreno, Ismail Hernandez and Eduardo Lopez will be missed next year. You guys did a great job and I wish you the best of luck in whatever you do!

As for the rest of you that will be back next year, I hope you will not forget what this loss feels like and use this in a positive way to build for next year. Work hard in the off-season and start getting ready now for next year and let's win a state championship! I believe you can do it and I hope you believe you can, too! Once again, congratulations a fine year!

### Spearman Basketball News

by Jeff Beedy

Basketball season got into full swing this week with a number of games and tournaments on tap for the Lynx and Lynxettes.

The varsity Lynx and Lynxettes will be in the Miami Invitational Tournament starting on Thursday. The Lynxettes will play Follett Thursday morning at 9:00 followed by the Lynx at 10:30 who will also be playing Follett.

The JV teams will travel to Gruver for the Gruver JV Tournament also starting on Thursday. The JV Lynxettes will play Canadian at 4:00 p.m. on Thursday in the Activity Gym, followed by the Lynx at 5:20 also in the Activity Gym playing Canadian. Good luck to all the teams this week!

#### Lynxette Basketball

Date: 11-20-00  
Place: Spearman  
Season Record: 1-2  
Lynxettes - 48, Gruver - 54  
Coach's Comments: We played from behind the whole game, making some good runs at various times during the game. Their free throw shooting made a comeback tough. We had some bright spots that we will try to build on.

Date: 11-21-00  
Place: Stratford  
Season Record: 1-3  
Lynxettes - 39  
Stratford - 53

Coch's Comments: We got off to a slow start, but went from 9 down to having the lead at halftime. This was our best basketball of the season. A 10-0 run at the end of the 3rd quarter was the difference.

#### JV Lynxette Basketball

Date: 11-16-00  
Place: Perryton JV Tourney  
Season Record: 1-1  
Lynxettes - 37  
Fritch JV - 27  
Coach Walker's comments: The girls played a little better team defense against Fritch. In the 4th quarter, we forced many turnovers and created easy shots. The Lynxettes finished the game with an 18-2 run.

Date: 11-18-00  
Place: Perryton JV Tourney  
Season Record: 1-2  
Lynxettes - 31  
Pampa JV - 33  
Coach Walker's comments: The JV girls kept their composure in the final minute as Laura Gillaspie passed to Jentry Edwards for the tying basket in regulation. Had we played a little better team defense on 1 or 2 possessions, OT might not have been necessary. The game ended on a questionable technical foul called against the Lynxettes.

Date: 11-20-00  
Place: Perryton JV Tourney  
Season Record: 1-3  
Lynxettes - 19, Dumas JV - 69

Coach Walker's Comments: Dumas had a very good JV team. They were easily the second best team in the tournament. They shot well and their half court traps hurt us. We will get better at handling pressure the more we face it. We've got to be more aggressive from the tip.

Date: 11-20-00  
Place: Spearman  
Season Record: 1-4  
Lynxettes - 40  
Gruver JV - 44  
Coach Walker's Comments: We made some bad decisions in the second quarter with the ball. We are still learning when to stretch the floor and when to help and give reads up the court. Defense is improving. The girls didn't quit when they fell behind by 10 late in the game.

Date: 11-22-00  
Place: Stratford  
Season Record: 1-5  
Lynxettes - 26, Stratford JV - 30  
Coach Walker's Comments: This was our best effort bringing the ball up the court vs. pressure. We played 3 solid quarters of basketball. Just couldn't score in the fourth quarter.

JV Lynx Basketball  
Date: 11-14-00  
Place: Spearman  
Opponent: Perryton  
JV Lynx - 55, Perryton - 59

Date: 11-18-00  
Place: Follett  
Opponent: Follett  
JV Lynx - 63, Follett - 51

Date: 11-20-00  
Place: Spearman  
Opponent: Gruver  
JV Lynx - 53  
Gruver - 76

Date: 11-21-00  
Place: Fritch  
Opponent: Fritch  
JV Lynx - 24  
Fritch - 69

### Lady Hounds Stay Perfect, Hounds Split Games

by Harletta Carthel

**Lady Hounds Nip Lynxettes**  
The Lady Hounds upped their wins to three in road games last week, with Spearman and Texhoma.

In a Hansford County showdown on Monday night, November 20, the Lady Hounds set the pace for the evening with a 15 - 9 first quarter lead over the Spearman Lynxettes.

Senior Sammy Stavlo had a big night for the Lady Hounds with 22 points that included two three-pointers, five field goals, and six foul shots.

Other Lady Hounds scoring were Tessa Yanke 4, Amy Watley 10, Teal Armes 4, Kaylee Holt 3, Courtney Goad 4, Lisa Johnson 4, Brandi Griffin 2, and Cassie Myatt 2.

Scores by quarter  
Gruver 15 29 43 54  
Spearman 9 20 37 48

#### Lady Dominate Devils

The Lady Hounds began their Thanksgiving celebration early with a 75-38 pounding of the Texhoma Lady Red Devils on Tuesday night, November 21.

With the halftime score 35 - 20, Gruver, all the Lady Hounds enjoyed good playing time. Four Lady Hounds scored in double figures: Tessa Yanke 11, Sammy Stavlo 10, Brandi Griffin 14, and freshman Courtney Goad 10, who had a good night with strong play under the basket.

Aiding in the winning effort were Amy Watley 6, Lisa Johnson 7, Teal Armes 7, Cassie Myatt 5, and Christi Clift. 2.

Score by halves  
Gruver 35 75  
Texhoma 20 38

#### Hounds Cruise Past Lynx

After a sputtering first quarter that ended in a 7-6 Gruver lead, the Hounds shifted into overdrive, to top the Spearman Lynx, 75 - 53, on Tuesday night, November 21.

Four Hounds scored in double figures to lead the Hounds, Jason Shoulders 14, Cory Schneider 10, Hugo Hernandez 10, and Kasey Harris 10.

Adding to the victory were Brady hart 8, Kade Carthel 7, Anthony Villalobos 6. Clint Swink 3, Chad Howe 4 and James Crow 3.

Score by quarters  
Gruver 7 37 56 75  
Spearman 6 24 35 53  
Fouled out Anthony Villalobos, Brady Hart, and Chad Clift.

#### Devils Torment Hounds

The Devils were hot, and the Hounds were not, and the result was a Texhoma lead of 34-17 at halftime.

Scoring in the third quarter was nearly even with the hounds scoring 10 points, and the Red Devils, 12. In the fourth quarter, the Hounds closed the gap to seven points at one point before falling victim to near perfect free throw shooting by Texhoma.

Scoring for the Hounds were Brady Hart 10, Jason Shoulders 12, Cory Schneider 9, Anthony Villalobos 7, Kade Carthel 2, Aaron Weller 6, and Hugo Hernandez 9.

One Texhoma player and three Hounds, Shoulders, Hernandez, and Anthony Villalobos.

Score by halves  
Gruver 17 58  
Texhoma 34 68



Lisa Johnson (25) watches Jenn Schnell as she prepares to move to the basket, while Amy Watley (21) guards Mindee Gillaspie. (Photo by Charlie Johnson)

**SERVICE**  
Shufeldt Rig Service, Inc.  
Shufeldt Machine Shop  
(806) 659-3635

**G&G FOODLINER**  
516 Main Street  
Gruver, TX  
(806) 733-2471

**Athena Energy, Inc.**  
P.O. Box 100  
Spearman, TX 79081  
(806) 659-2952  
Fax: (806) 659-2332  
Lenis Simpson - President

**Interstate Bank, ssb**  
A Full Service Bank  
Branch Office  
322 Main Street  
Spearman, TX 79081  
Phone - (806) 659-2559  
Fax - (806) 659-3276  
FDIC Insured

**Your Local Case-IH Dealer**  
Five Star Equipment, Inc.  
P.O. Box 658 • Hwy. 15 West  
Spearman, Texas 79081  
(806) 659-3743 • 800-978-2759

**FNBANK**  
First National Bank Spearman  
A Full Service Bank  
24 Hour Banking  
ATM Machine  
729 W. 7th • Spearman  
(806) 659-5544  
www.fnb Spearman.com  
Member FDIC

**Gordon's & Photo**  
314 Main Street • Spearman, TX  
(806) 659-2141  
Jim & Laquita Evans - Owners

**HANSFORD IMPLEMENT COMPANY**  
Mike Cudd - General Manager  
Hwy. 207 S. • P.O. Box 518  
Spearman, Texas 79081  
(806) 659-2568 • 1-800-753-1511  
A full-service John Deere Dealership.  
Nothing Runs Like a Deere

**SIMPLE SIMON'S PIZZA & ANITA'S VIDEO MADNESS**  
312 Main St. • Spearman  
(806) 659-5046 • Fax (806) 659-5196  
Pizza • Movie Rental • VCR's  
• Video Games • Game Units  
• Pool Tables • Arcade Games  
• Snacks • Drinks  
FAX Service  
ARNET Internet Service

**HI-PLAINS AUTO SUPPLY, INC.**  
Auto • Industrial • Offroad Supplies  
Wholesale & Retail • Irrigation Parts  
Feedyard Supplies • Mobil Oil & Greases  
OPEN 7 a.m. - 6 p.m., Monday-Friday  
7 a.m. - 5 p.m., Saturday  
P.O. Box 116 • 118 N. Main  
Spearman, TX 79081  
(806) 659-2606 • 1-800-657-8742

**FSB First State Bank**  
The Bank that has the Tradition of Strength & Service  
(806) 659-5565 • Fax: 659-5292  
One NE Court • P.O. Box 247  
Spearman, TX 79081  
member FDIC





# Letter To The Editor

Dear Cathy,

I appreciate your efforts in getting a correct list of Hansford County Veterans. I did a brief review of your lists published on November 9 and 16, 2000 and came up with the following additional persons who either are from Hansford County or have been from Hansford County:

Edgar D. McMurray, Clyde F. Thompson, R.L. McFarlin, Leroy Farris, Jim Brown, Cecil Biggers, Britt Jarvis, Billy Jarvis, Jon Jarvis, Richard Abner Jarvis, Wiley Sheets, Glenn Ayers, Howard Golden Garnett, J. Travis Garnett, Lynn Cook, Carson McCloy, Ed Garner, Dennis Cline.

I commend you for having the courage to attempt this list. The list cannot help but be incomplete because of the many people who have moved in and out of the county, and in relation to the population that was drafted or volunteered at various times, the number will be nearly staggering if you could get a totally complete list. Many of these people have moved on and are no longer connected with our community. Some will have no way of knowing that a list is being compiled and may not have any interest in it. I know that there will be some people whose names are missed and who may be very brazen and ugly about the fact that they were missed. I commend you for being willing to put up with their abuse and thank you for publishing it.

Sincerely yours,  
Britt Jarvis

Dear Editor,

Once again, I am writing to the people of Spearman to first of all thank Cathy, the editor of this paper for her help and patience with me and my business.

I also would like to thank Carolyn and everybody at KRDF for their cute ads. I would also like to thank Tashi Schumann and my daughter, Dawn, for doing some spots on the radio. But I have to say that Spearman is not a big enough town for my business. My specialty is nail art, and I do it very well.

At this time, I have decided to move my business to Jan's Hair Fashion on 7th. Street in Perryton. It's too bad that a small business is "so so" risky in Spearman, Texas! For someone like me who had great expectations and faith that those of you who kept promising you would come, but never had the time.

I had ladies who visit their relatives, here in Spearman, that looked forward to a pedicure from Netta. They paid me well and even tipped.

Special thanks to Kay at the Palo Duro, and to Kathy at Dairy Queen.

A very special thank you to my dear friend Janie Kunselman, for all her support and love! Thank you Charlie for your support and love for me and all the money you spent helping me buy products, gas, and whatever was needed. Thank you Olivia for giving me a chance.

And to end my letter, I would like to say: Please, please quit gossiping about everyone in town. I was asked if I am getting a divorce because that is the new rumor now!

The answer is no- Charlie and I will have been married 18 years in December. And although we have had some bad times, we are shocked

at this new rumor. People drive the streets to see what is going on all over town. If you do that all day long, why?

Let's set the record straight, if you want to know something, why don't you go straight to the source and ask? I just can't believe this town, and I must say I am truly disappointed.

Sincerely,  
Annetta McIver

### Panhandle Community Services To Administer USDA Grant

Panhandle Community Services has been selected by USDA Rural Development to administer a Housing Preservation Grant in the amount of \$83,432 to renovate existing housing within the 26 counties of the Texas Panhandle. Recipients must come from communities of less than 10,000 population and whose incomes are considered low to very low in relation to the incomes within the county.

This money must be used in conjunction with the home weatherization program of Panhandle Community Services. Persons who feel they qualify and would like to inquire about this assistance should contact the Perryton Center at (806)435-2678 or Margaret Wolf at (800)372-2531.

## Gruver State Bank

would like to take this opportunity to thank each customer for their continued patronage.

Please join us for our  
**Christmas Open House**

Thursday, December 14th

4:00-6:00 p.m.

## Armstrong County Fall Producers Meeting

The Armstrong County Extension Service and the Armstrong County Agriculture Industries Committee will host the Fall Producers meeting Thursday, December 7, 2000 at the Armstrong County Activities Building, located 1 mile south of 287 on highway 207. The program will offer five CEU's. Registration will be from 8-8:30 a.m. with the program starting at 8:30. A ribeye steak lunch will be served sponsored by different companies. The program will wrap up about 3:30 or 4 that afternoon.

In addition to the program, we will have commercial exhibitors representing different companies

from seed dealerships to implement companies. The exhibitors will donate door prizes and be on hand to answer any questions you may have about their products. Come get the CEU's you need, a ribeye steak and have the opportunity to win some valuable door prizes.

This meeting will include producers from Armstrong, Briscoe, Carson, Donley, Gray, Potter and Randall counties. Anyone interested is more than welcome to attend. Please call and RSVP by Monday, December 4, 2000 so we will have plenty of steak. If you have any questions or would like to RSVP, call (806) 226-3021.

## 4-H Producers Reminded to Check License Expiration

Producers that have private applicator's license should look to see if your license expires this year. They do so at the end of the year. This would be a good way to get some CEU credits. You need 2 - Laws & Regulations and 2-IPM. The rest can be in General or Drift. You will be 15 altogether.

### Ochiltree CEU Meeting

Ochiltree County Extension Office will offer producer's meeting December 6th at the County Expo Center in Perryton.  
•The fee is \$35 from 9 a.m. -

noon.

• Three CEU's will be given - 1-Laws and Regs; 1 - IPM and 1-Drift

### Hansford County CEU Meeting

• Hansford County Extension and Equity will sponsor a producer's meeting December 7th at 9 a.m. - 3 p.m. at the Hansford County Barn.

• Five CEU credits will be given: 1- Law & Regs; 1- IPM and 3-General.

If you have questions, please call Burt Williams, CEA-AG at 659-4130 or 733-2901.

## Hansford County Veterans

Listed below are the names of some of the Hansford County Veterans who were inadvertently left off of last week's list. If you know of others, please call the Hansford County Reporter-Statesman office at 659-3434.

Thank you, Catherine Smith

Doug Connelly

Jesus (Jesse) Renteria

## GOING OUT OF BUSINESS SALE!

All fishing and tackle supplies on sale now!

We have really enjoyed all the friends we have made during our 4 years in business. Come in and see what you can use before we close the doors for the last time. Last sale day will be Sunday, December 10, 2000.

### Lynn's Bait & Tackle

302 Airport Road • Spearman, Texas  
659-5377

All sales final.

## Shop Your Christmas Headquarters

# SPEARMAN MERCHANT'S ASSOCIATION ANNUAL CHRISTMAS PROMOTION

NOVEMBER 27TH-DECEMBER 19TH

For every \$10.00 purchase, each customer will receive one ticket to enter the drawing for gifts and prizes. Double tickets will be awarded each Saturday.

Drawings will be held on Wednesday mornings, November 29th, December 6th, 13th & 20th.

Winners will be announced on KRDF-FM radio station and in the Hansford County Reporter-Statesman newspaper.

## Participating Merchants:

- Cates Clothing
- Celebrate
- Dollar General
- Gordon's Drug
- Hickerson's Jewelry
- Kid's Stuff
- KRDF-FM
- Lady Fair