

SPECIAL TWO WEEK EDITION

★ HANSFORD COUNTY ★

THE REPORTER-STATESMAN

CELEBRATING 104 YEARS OF SERVICE TO HANSFORD COUNTY
 HANSFORD COUNTY'S ONLY NEWSPAPER

REPORTER@SPEARMANREPORTER.COM

75¢



WWW.SPEARMANREPORTER.COM

VOLUME 105 • ISSUE 14

THURSDAY, APRIL 12, 2012

Solar Eclipse To Occur May 20th



The May 20 new Moon will produce a solar eclipse visible over the western half of the U.S. Those in a narrow band from the Texas panhandle to northern California will see a rather rare annular eclipse while the rest of us will see an impressive sunset partial eclipse.

As the Moon orbits our planet each month, new Moon is the point at which it passes between the Sun and Earth. If the plane of the Moon's orbit around Earth was exactly the same as the plane of the Earth's orbit around the Sun, we would see a total solar eclipse every new Moon (and a total lunar eclipse every full Moon). But since the two orbital planes aren't exactly the same, solar (and lunar) eclipses occur far less frequently than monthly.

When the Moon does pass exactly between the Sun and Earth, it creates a total solar eclipse, temporarily blocking out the Sun and casting a moving shadow across part of Earth. If it passes partly, but not quite exactly, between and blocks out part of the Sun, it creates a partial solar eclipse.

The Sun is 400 times larger than the Moon, and by coincidence, is also 400 times further away, thus they appear the same size. However, since the orbits of the Earth and Moon are elliptical rather than circular, the distances between the Earth and Sun, and between Moon and Earth, vary making their apparent sizes also vary.

Since the Moon's orbit around Earth is more eccentric (less circular) than Earth's orbit around the Sun, the change in the Moon's apparent size is more pronounced. When solar eclipses occur with the Moon further from Earth, the Moon isn't large enough to cover the entire Sun, leaving a "ring of fire" around the Moon's silhouette. What would otherwise be a total eclipse becomes an annular eclipse.

Image: When an eclipsing Moon isn't large enough to cover the entire Sun, the result is the "ring of fire" of an annular

eclipse. (Credit: sancho_panza / Wikimedia Commons)

This is what those within a narrow band less than 200 miles wide from Texas to California will see, weather permitting. At the extreme eastern end of this band in Texas, the eclipse will reach annularity as the sun is evening setting. The further west from which on views, the earlier before sunset the eclipse begins and the longer it will be visible.

Image: Area from which the May 20 annular eclipse can be seen. (Credit: Fred Espenak and Sky & Telescope)

The rest of the western U.S. not within the area of annularity will see a partial eclipse of the Sun where the Moon covers part of the Sun. The nearer one is to the area of annularity, the greater the percentage of the Sun will be eclipsed.

Image: Increasing amounts of partial eclipse leading toward an annular eclipse. (Credit: Fred Espenak)

In Central Texas the partial eclipse begins at 7:35 p.m. with the Sun less than a fist-width (held at arm's length) from the western horizon. By sunset (8:21 p.m. in Waco), the Moon will be covering more than half of the Sun. Further east, the show will be shorter with less coverage; further west, longer and more coverage.

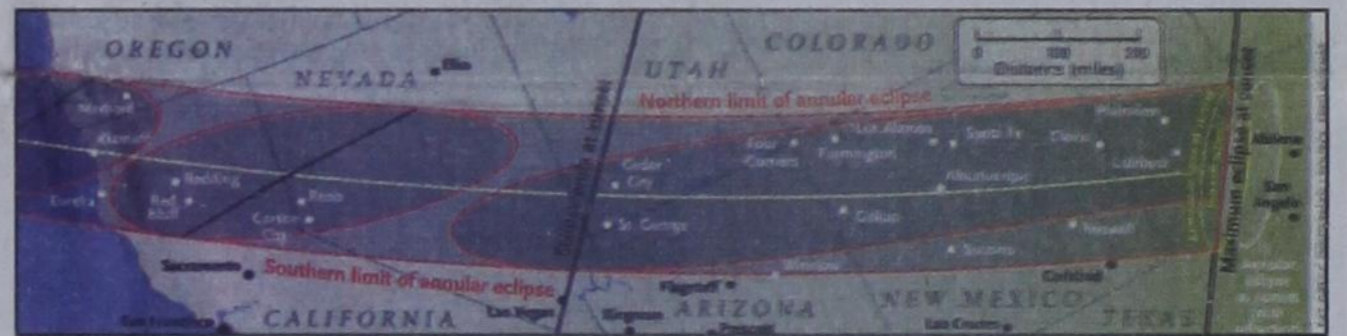
At the extreme eastern end, in the Lubbock, TX, area, the partial eclipse reaches annularity just as the Sun is setting. Further west, like in Albuquerque, NM, the entire 4-minute period of annularity occurs just before the Sun sets. For points beyond

the Nevada-Arizona-Utah border area, the entire eclipse - partial and annularity - will be visible before sunset.

It is essential to view this event safely. Even when partly eclipsed and near the horizon, the Sun can produce serious and permanent eye damage if viewed with without proper protection. Make-shift devices like stacked sunglasses, soot-covered glass, and CDs are not adequate; while they block out visible light, they don't protect against invisible but more dangerous ultraviolet and infrared radiation. For direct viewing use approved solar glasses or #14 welders glass. Even safer is indirect viewing of projected images of the Sun using "pin-hole" projectors or binocular images cast on a sheet of white paper. Never look at the Sun with binoculars (or a telescope) without using a proper solar filter.

Here's hoping for a cloudless western horizon May 20 before sunset. But even if you're clouded out, the event should generate some exceptional photos of the eclipsed Sun near the horizon, so watch the media for postings the next day.

Paul Derrick is an amateur astronomer who lives in Waco. Stargazer appears twice monthly. Paul's website (www.stargazerpaul.com) contains an archive of past Stargazer columns, a schedule of his upcoming programs, star parties and classes, and other basic stargazing information. Contact him at paulderrickwaco@aol.com or 254-723-6346 or 918 N. 30th St., Waco, TX, 76707.



Weekly Update

Texas, April 9- Average retail gasoline prices in Texas have risen 0.4 cents per gallon in the past week, averaging \$3.83/g yesterday. This compares with the national average that has increased 1.4 cents per gallon in the last week to \$3.91/g, according to gasoline price website TexasGasPrices.com.

Including the change in gas prices in Texas during the past week, prices yesterday were 16.5 cents per gallon higher than the same day one year ago and are 20.3 cents per gallon higher than a month ago. The national average has increased 16.8 cents per gallon during the last month and stands 17.2 cents per gallon higher than this day one year ago.

"Gasoline prices in the hardest hit areas have finally shown signs of relief, with gasoline prices falling now in Chicago as they have for a few weeks in California," said GasBuddy.com Senior Petroleum Analyst Patrick DeHaan. "We're beginning to see refinery utilization rise, indicating refineries are coming out of maintenance and boosting production. If we continue to see utilization rise at domestic refineries, we may see an earlier peak than we have in prior years," DeHaan said.

GasBuddy operates, TexasGasPrices.com, and over 225 other local gasoline pricetracking websites that follow prices at over 125,000 gasoline stations in the United States and Canada. GasBuddy also uses Facebook (facebook.com/gasbuddy) Twitter (twitter.com/gasbuddy), and phone apps to keep motorists ahead of changing gasoline prices.

Weather Forecast

WEDNESDAY - Mostly cloudy with a 40 percent chance of showers and thunderstorms. Highs in the upper 60s. East winds 10 to 15 mph.

WEDNESDAY NIGHT - Mostly cloudy with a 50 percent chance of showers and thunderstorms. Lows in the mid 50s. Southeast winds 10 to 20 mph.

THURSDAY - Partly cloudy with a 20 percent chance of showers and thunderstorms. Breezy. Highs in the upper 70s.

THURSDAY NIGHT - Mostly clear. Lows in the upper 40s.

FRIDAY - Mostly sunny. Breezy. Highs in the upper 70s.

FRIDAY NIGHT - Partly cloudy. Lows in the upper 40s.

SATURDAY - Partly cloudy. Windy. Highs in the lower 70s.

SATURDAY NIGHT - Partly cloudy. Lows in the lower 40s.

SUNDAY - Mostly cloudy. Highs in the upper 60s.

SUNDAY NIGHT - Mostly cloudy. Breezy. Lows in the lower 40s.

MONDAY - Cloudy - breezy. Highs in the mid 60s.

Read more: <http://www.city-data.com/forecast/w-Spearman-Texas.html#ixzz1raCJX99B>

Important Election Dates

May 29th Primary Election

The last day to file for a place on the May 29th Primary Election ballot was Friday, March 9th.

The first day to apply for a ballot by mail is March 30th and the last day to apply for a ballot by mail is May 22nd. The last day to register to vote is April 30th.

The first day of early voting is May 14th and the last day of early voting is May 25th.

Local offices on the ballot and those filing include: District Judge - William D. "Bill" Smith; District Attorney - Mark Snider; Sheriff - Tim Glass; Tax Assessor/Collector - Linda Cummings; County Attorney - John L. Hutchison; County

Commissioner - Precinct 1 - Butch Reed; and County Commissioner - Precinct 3 - Tim Stedje.

May 12th Limited Election

The May 12th limited uniform election date will be held as usual. (This election is for cities and schools only). The last day to file for a place on the ballot was Monday, March 5th.

The City of Spearman has two Alderman positions up for reelection - Jon Garnett and Charles Elliott, as well as the Mayor. As of Monday, March 5, 2012, the following have filed: Mayor Brian Gillispie has filed for re-election. Alderman Jon Garnett has filed for re-election.

Also filing for Alderman are Armando Martinez and Bryce Williams. Alderman Charles Elliott did not file.

Spearman ISD has two terms up this year for School Board. At this time no one has filed. The two terms expiring are Maria Sibley and Glen Ray Mackie.

Gruver ISD has two positions on the ballot this year for School Board. The two candidates up for reelection are Dwayne Thompson and Brent Steeds. The first day to apply for a ballot by mail is March 13th, and the last day to apply for a ballot by mail is May 4th. The last day to register to vote is April 12th.

The first day of early voting will be April 30th and the last day of early voting will be May 8th.

Spearman FFA Livestock Judging Team Places 4th at Lubbock

Congratulations to the Spearman FFA Livestock Judging Team on their 4th place finish at the Texas Tech Practice Contest in Lubbock this past weekend. And congratulations to Jennifer Crowl, finishing 3rd high individual and receiving a \$250 scholarship to Texas Tech University. Other team members are Trayse Heater, Richard Jarvis, and Lexie Jackson.

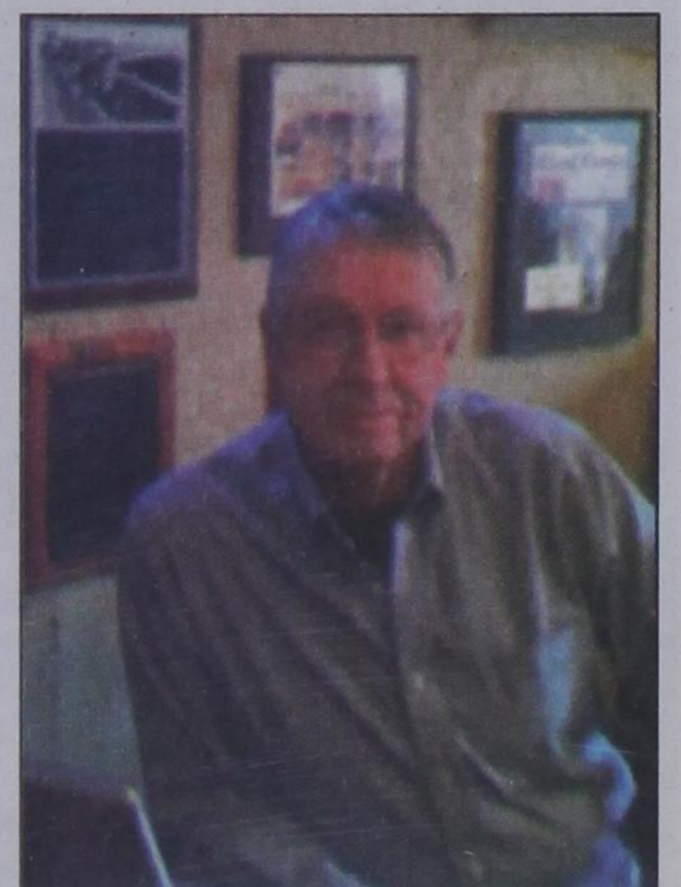


Dr. Latta Serving as President of Academy of Veterinary Consultants

June of 1968, upon graduating from Oklahoma State university, Dr. Tom Latta and his family moved to Spearman, TX. Dr. Latta went to work for Panhandle Veterinary Clinics under the mentorship of Dr. H.B. Rinker. Dr. Rinker was a pioneer in the feedlot consulting business.

Dr. Latta has been a feedlot consultant for the past 30 years and now has the privilege of serving as the President of Academy of Veterinary Consultants. The Academy of Veterinary Consultants is an international organization of veterinarians, established in 1972, whose primary practice focus is on beef productions. With over 800 members in the United States, Canada, Australia and Mexico, they influence herd health, well-being and production of over 80% of the beef cattle in the United States. It is recognized as one of the most science-based veterinary medical organizations.

Dr. Latta is in phase three of a four-year term of office. In 2004 Dr. Latta was awarded Consultant of the Year. This year's spring meeting will be held in Washington, DC with Thursday's meeting



Dr. Tom Latta

being a reception-meeting with congressional representatives.

Deadline Notice!

The deadline to submit news and advertising to the Hansford County Reporter-Statesman is Monday at 5 p.m. Items submitted after the deadline will be published at a later date, as time and space permit.

The Hansford County Reporter-Statesman will be closed April 10-22, 2012. We will resume regular business hours on Monday, April 23rd. (Regular hours are Monday-Wednesday, 9 a.m.-12 noon and Monday-Tuesday, 1-5 p.m. We are closed on Wednesday afternoon through Friday.) The deadline for the April 29th issue is Monday, April 23rd at 5 p.m.

Items may be submitted by phone (806-659-3434), fax (806-398-9080), mail (Reporter-Statesman, 213 Main Street, Spearman TX 79081), or by e-mail (reporter@spearmanreporter.com).

For more information, please contact Catherine Smith at 806-659-3434, 806-584-4879, or reporter@spearmanreporter.com

AVAILABLE NOW!
E-SUBSCRIPTION NEWS
 to the Hansford County Reporter-Statesman
 Delivered to your e-mail each Thursday for only \$28/year.
 Purchase online at www.spearmanreporter.com
 Call 806-659-3434 or e-mail reporter@spearmanreporter.com for details.

Wolf Creek Heritage Museum Notes

by Virginia Scott

MUSEUM HAPPENINGS

What a beautiful and wonderful Easter week! I hope you took the time to hide and hunt Easter eggs and attend the church of your choice to celebrate the season. Today (Monday) is cloudy and windy, so I guess we are back to normal!

The museum has been active with processing new items and trying to rearrange the exhibits so we can include the new items. We have a new desk from the original Hill ranch house in the ranch room and a photo of the ranch homestead. We will also be exchanging the exhibit in the front display case this week.

On Tuesday of last week, a group of us went to Woodward to a presentation by Carol Headrick. She presented the biography of Emily Post as if she were Emily. It was a wonderful

program which gave me a whole new perspective on the book of etiquette that she authored. We had a great time, as we always do on our field trips.

REMINDER: You only have three weeks left to come see Rebecca Ashley's art exhibit. She has beautiful paintings so enjoy an afternoon drive and take a break from your routine and come enjoy!

HISTORICAL MUSINGS

This is the time of year that we start thinking of planting our flower and vegetable gardens and the ranches start branding, etc. Our regional ranches plan their activities together so they can help each other with their branding. These traditions have been preserved in the series of books by Rene Heil entitled "Dust and Smoke." Each volume includes photographs of the regional ranches performing the roundups, branding, and or-

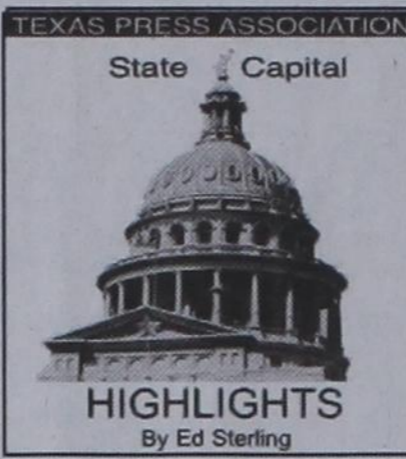
ganized group shots of the families of our ranches. This tradition has existed since this part of the country was settled.

In our *Panhandle Interstate 1887-1888* newspaper, there are many reports of group roundups. In the July 8, 1887 issue the editor, W.G. McDonald reported "Last week we accepted the invitation of Logon Smith, foreman for the Box T, to go with him on a round-up into the Indian territory, which we accepted. The outfit consisted of one wagon, about fifty head of horses and eight men. Charly King, Jessie Cupp and Sam Wilson represented the Box T, and John Caloway and Henry Snyder the KH ranch. John Malone was "coosie" and Eddie Wells horse rustler. We traveled as far east as the mouth of Turkey Creek on the south Canadian river, and then drifted back up to Texas, a distance of fifty miles. We found no cattle until we were close the Texas line, and there being no work for the boys, the trip was a picnic for them, as well as ourselves. The rides and the camps were romantic and interesting, and were sorry, Friday morning, after six days out with the boys to have to leave them and return to the settlement. We will remember that trip and the kindness of Mr. Smith and the boys that were with him for many long years."

I need to know what a "coosie" was or is. I will try to research this week.

A quote for your thoughts: *If you don't know history, you don't know anything. You're a leaf that doesn't know it's part of a tree.*

Michael Crichton, *Timeline*.



DFW-area counties hit hard by tornadoes

AUSTIN — Gov. Rick Perry on April 3 issued a disaster declaration for the North Texas counties of Dallas, Tarrant and Kaufman after system of tornadoes passed through, causing widespread damage to homes, businesses and infrastructure.

According to an early count by the American Red Cross about 650 structures were affected, with 200 destroyed and more than 100 sustaining major damage. The scope of the damage is still being estimated.

Texas Attorney General Greg Abbott posted a reminder that state law prohibits price gouging in the wake of the disaster declaration. Vendors are prohibited from charging exorbitant prices for necessities such as groceries, clothing, medical supplies, lodging, repair work and fuel during and after the crisis, Abbott said.

Court rules in open beaches case

On a vote of 5-3, the Texas Supreme Court on April 4 reaffirmed its ruling in favor of a Galveston landowner seeking to prevent public access to her beach properties.

Land Commissioner Jerry Patterson said the ruling "gives a pretty big club to anyone who wants to challenge the Texas Open Beaches Act anywhere along the coast."

In an April 4 news release, Patterson's office said the plaintiff, California resident Carole Severance, claimed that public access to the beach where her properties are located violated her constitutional rights.

Patterson, whose agency was a defendant in the case, said, "In 2010, the Texas Supreme Court issued an opinion in the case that called into question the public beach easement, a key provision of the Texas Open Beaches Act. The court ruled that despite centuries of public use, a public beach easement does not exist on West Galveston Island because the original Republic of Texas land patent from 1840 failed to reserve the public's right to use the beach."

Survey on health reform law

A survey of members of the Texas Association of Business shows business owners are "concerned about federal health care

legislation," Texas Comptroller Susan Combs said April 3.

Combs released results of the survey by the National Federation of Independent Businesses, which she said shows "nearly two-thirds of business owners responding to our survey said federal health care reform would be bad for business, while only about 3.5 percent said it would be good for business."

"I am very concerned the burden that businesses feel will in turn stifle our economic growth," Combs added.

More than 900 owners of large and small businesses responded to the survey titled "Texas Business Attitudes Toward Federal Health Care Reform." Results can be found at cpa.state.tx.us.

Program to help Texans vote

Secretary of State Hope Andrade on April 4 rolled out "Make Your Mark on Texas," a program answering questions about voting and the voting process for Texans in the 2012 election cycle.

"I urge Texans to visit VoteTexas.gov to find out if they're registered to vote, and if not, find out how to register." The site will also be regularly updated with new information, the state's chief elections officer said.

The last day to register to vote is April 30 for the 2012 Primary Election on May 29.

Cities among fastest-growing

Kennewick-Pasco-Richland, Wash., and Austin-Round Rock-San Marcos, Texas, were the nation's two fastest-growing metro areas between 2010 and

2011, with population increases of 4.3 percent and 3.9 percent, respectively. McAllen-Edinburg-Mission, Texas, was 4th with 3.0 percent.

The figures are among data collected by the U.S. Census and compiled in a report released April 5 naming the 50 fastest-growing metro areas in the nation. Counted among the 50 fastest growing with populations of at least 1 million in 2011 were Austin, 2nd; San Antonio, 16th; Dallas-Fort Worth, 17th; and Houston, 18th.

Numerically, Dallas-Fort Worth and Houston added more people between 2010 and 2011 than any other metro area (155,000 and 140,000, respectively). "These two metro areas were the biggest numeric gainers during the 2000 to 2010 period (with Houston gaining more than Dallas-Fort Worth over the decade)," the report stated. Also, third among the 10 Fastest Growing Micro Areas from April 1, 2010, to July 1, 2011, was Andrews, Texas, with an increase of 4.5 percent.

Gang suspects arrested

The Texas Department of Public Safety on April 4 announced it and other agencies had arrested 11 alleged Texas Mexican Mafia gang members in the San Antonio and Pleasanton areas that morning in connection with federal search warrants and state arrest warrants related to a South Padre Island assault.

Executed warrants reportedly resulted in the seizure of narcotics, U.S. currency, weapons, cell phones, laptop computers, gang paraphernalia, documents, recovery of a stolen motorcycle and the arrests.



by Ed Sterling

WHEN DOES YOUR SUBSCRIPTION EXPIRE?

SCR1
07/11 EXPIRES

JOHN Q. PUBLIC
PO BOX 123
SPEARMAN TX 79081

Expiration dates are printed on the top of all mailing labels. Our readers can help keep the cost of subscriptions down by mailing in renewals in the appropriate month.

Thank you, Catherine Smith

THE HANSFORD COUNTY REPORTER-STATESMAN
213 Main Street • Spearman, TX 79081

Annual Subscription Rates
In Hansford County - \$30
Out of County - \$40
E-Subscription - \$35 (sent through e-mail)

Editors Note...

Freedom of speech is one of the guarantees of the First Amendment of our Constitution, so we encourage readers to express themselves, even if we don't agree with what is said. However, freedom involves responsibility. Therefore, the only letters we will consider publishing are from individuals who are willing for their names to appear with the letter. Letters must contain the telephone number, address and a personal signature of the writer (for verification purposes only).

We will not knowingly publish any letter containing libelous or slanderous statements, or factually incorrect information. Letters containing language or content that we feel is inappropriate will not be published.

Examples of content that will cause letters to be rejected include the following: Confusing or unclear points; Crude language; Poor taste; Disrespectful comments regarding a group's or individual's ethnicity, gender, religion, culture, sexual orientation or race; Other incendiary language or remarks; Endorsements for or complaints about individually named commercial products or services.

"Letters To The Editor," like all materials submitted to this newspaper, are subject to editing for space and clarity. The publication of any letter or article is the decision of the Editor and Publisher.

We welcome your input. You may write to us by using the online form, e-mail - reporter@spearmanreporter.com; fax - 806-398-9080; or regular mail - Letters to the Editor, c/o Hansford County Reporter-Statesman, 213 Main Street, Spearman TX 79081.

Wolf Creek Heritage Museum

Museum Hours: Monday thru Friday 10 a.m. to 4 p.m., Special hours upon request.

Museum Information:
13310 Hwy 305, PO Box 5,
Lipscomb TX 79056; telephone: 806-852-2123; e-mail: wolferk@amaonline.com; website: www.wolfcreekheritagemuseum.org

See us for:
AUTO • HOME • CROP HAIL • FARM & RANCH • MULTIPERIL • LIVESTOCK

INSURANCE

BORT AGENCY, INC.
510 Main St. • Gruver, TX
(806) 733-2456

UNDER THE SEA

These games are brought to you by the **Hansford County Reporter-Statesman**

ACROSS

- One who pretends to be something he is not
- Cruise or Hanks, e.g.
- A tropical South American monkey
- Far beyond norm
- Bleat
- Floor covering
- Slanted or listed
- Bow shape
- Tripod
- Pinching crustacean
- Underwater flower
- Make lacework
- Go cold turkey
- International Monetary Fund
- Holier than who?
- A hand tool for drawing angles, pl.
- "Yes, ___!"
- "Layla" singer-songwriter
- Roman king's abode
- A fit of shivering
- On fishing pole, pl.
- "Coal Miner's Daughter"
- Whatchamacallit
- Relating to the ear
- Caricatured
- *Octopuses
- On top of
- Put to the test
- Duds or threads
- Wound fluid
- Ancient wind instrument

DOWN

- Door sign
- Margarine
- Back wound?
- German surrealist Max
- Knocks on the door, e.g.
- Ski lift
- *Rowboat propeller
- Reverted to China in '99
- Now Thailand
- In addition
- Type of eye?
- ___ of Man
- Move unsteadily
- Olden days anesthetic
- Writing point of pen
- Eternal sleep
- Idealized image
- Ex-Laker Johnson

27. He sold his soul to Mephistopheles

29. Popular dunking cookie

31. A sails-shaped constellation

32. It borders Mediterranean and Red seas

33. *The Titanic was one of these

34. *Spongebob's air-breathing friend

38. Office communique

42. *A peri___ lets a submariner see above water

45. Light studies

49. Charged particle

51. Florence Nightingale and the like

54. Thief, Yiddish

56. New show with Debra Messing

57. *Black and white killer?

58. Independent unit of life

59. Obama to Harvard Law School, e.g.

60. Barbequed anatomy

61. Carte du jour

62. Not in favor

63. Individual unit

64. Sleep in a convent place

67. *It can be electric

CROSSWORD

1	2	3	4	5	6	7	8	9	10	11	12
13											
16											
19											
25	26	27	28	29	30	31	32	33	34		
35											
40											
44											
48											
57	58	59	60								
65											
69											
72											

VolunteerMatch.org
Where volunteering begins.

The Hansford County Reporter-Statesman

Mailing Address - 213 Main Street • Spearman TX 79081
Physical Address - 310 Barkley Street • Spearman TX 79081
Phone - (806) 659-3434 • Fax - (806) 398-9080
www.spearmanreporter.com • reporter@spearmanreporter.com
Mon.-Thurs. 9 a.m.-12 p.m., Mon.-Wed. & 1-5 p.m.
Closed Thurs. afternoon and all day Fri., Sat. & Sun.

Gary Smith - Publisher Catherine Smith - Editor
Contributing Writers: Dorothy Hudson, Jim Detriton, Merry Sparks, Cecil Biggers, Virginia Scott, Ed Sterling, Rod Sumner
Contributing Photographers: Lisa Johnson, Tami Hargrove, Tammy Batton, Bonnie Bergan, Rod Sumner

Subscription Rates
In Hansford County - \$30.00 • Out of County - \$40.00
E-Mail Subscription - \$35.00

The Hansford County Reporter-Statesman (USPS 529660) is published weekly in Spearman, TX. Periodical postage paid in Spearman, TX. **POSTMASTER:** Send address changes to: The Hansford County Reporter-Statesman, 213 Main Street, Spearman, TX 79081.

Publication Policy
The deadline to submit news and advertising to The Hansford County Reporter-Statesman is Monday at 5 p.m. Items submitted after the deadline will be published at a later date, as time and space permit. Publication of all items is at the discretion of the editor.

Advertising
Open Display rates are \$4.00 per column inch. Classified Ads are \$7 for the first 20 words and 15¢ per word for each additional word. (Additional charge for boxed classifieds.) There is a \$1 charge per week if billed.

Member of
Gruver Chamber of Commerce
Spearman Chamber of Commerce
Texas Press Association and Panhandle Press Association

Happy Birthday!

April 12 Birthdays - Jennifer Lopez, Alice Slough, Mary TeBeest, Earl Taylor, Chance Jackson, Lelia Reyes, Paul Lopez Jr., Tara Butt, Sonya Messer, Tammy Red, Keith Hight, Helen Soto, Lilla Villa, Lauren Ferguson
Anniversary - M/M Sonny Nollner

April 13 Birthdays - Lindsay Barkley, Ashley (Wagner) Bezner, Chad Clawson, Norma Jean Mackie, Elaine Morris, Robbie Randall, Maria Cole, Greg Black, Rebecca Cruse, Sarah Miser, Paula Labrier, Cleve Vanderberg, Billy Logsdon, Dedee Ellis, Sara Paschel, Shelby Reiswig, Gaylord Cook
Anniversary - M/M Rey Burgess

April 14 Birthdays - Ross Bulls, Cynthia Floyd, Verla Kunsleman, Dorsey Perez, Ryan Perez, Cameron Meddock
Anniversary - M/M Ronnie Lusby, M/M Daniel Harvey

April 15 Birthdays - Cathy Boone, Jim Roberts, Danny Knox, Dorothy Faye Baggerly, Michelle Beedy, Eva Mae Reger, Kenneth Pierce, Emma Garcia, Margie Crockett, Stephanie Campbell, Nicole Ramon Neumeier, Jeff Coates, Austin Gross, Wesley Thompson, Skyler Sumner
Anniversary - M/M Victor Soto, M/M Wally Berner, Monte & Jennifer Beck

April 16 Birthdays - Rod Barkley, Amber Knight, Anise Renner, Clayton Thompson, Cathy Patterson, David Knox, Edward Beck, Walter Jones, Alice Rodriguez, Tylan Pearce, Vernon Morris, G.W. Robinson, Jim Tucker, Joann Baca, Dorsey Perez, Matt Anderson
Anniversary - M/M Mitch Hoover

April 17 Birthdays - Tim Garland, Gary Smith, Bill Porter, Linda Mosier, Anissa Ryan, Edgar Nava, Cheryl Hill, Kendra Jones, Jimmy Tope, Alfred Avila, Albert Avila, Tavo Hermissillo, Jenifer DeLaCruz, Norma Reis, Maurine Stenson, Ann Pape, Callie Stedje, John Smith, Katie Reed, Wendy Frick, Cassie Swan
Anniversary - M/M Julian Rodriguez, M/M Bruce Bailey, M/M Tim Garland, M/M Henry Garcia, M/M Bill Hunter

April 18 Birthdays - Billy Kelly Jr., J.D. McCoy, Gregg Farr, Victor Rios Jr., Cacy Vaughn, Jena Cherry, Cha'tae Avila, Jennifer Gonzales, Elmo Dahl, Jeb Lee, Israel Arzate
Anniversary - M/M Steve TeBeest

April 19 Birthdays - Hunter Bevell,

Opal Barnes, Bobby Snider, Landon Swan, Sterling True, Norman Gilmore, Lori Diffie Johnson, Blare Dudley, Jessica Blake, Victoria Temple, Crystal Gross, Socoyyo Tarango, Hortencia Trejo, Elizabeth Castillo, Jocelyn Whitefield, Jamie Haruch
Anniversary - John & Tammy Woodward

April 20 Birthdays - Mickey Maupin, Reid Winger, Dorothy Lusby, Ed Pearson, Nita Baker, Leann Carson, Denise Rojas, Gary Easley, Matt Zachary, Gary Koons, Jared Harrison, Valarie Perez, Inez Arzate, Ethan Novak
Anniversary - M/M Terry Sherrill

April 22 Birthdays - Chelcie Davis, David Link, Shelly Stedje, Sharon Wilson, James Martin, Bonnie Garnett, Loyd Cator, Clifford Hornsby, Rosalinda Vela, Mary Parker, Mary Ojeda, Margie Galvan, David Roy Martin, Cindy Womble, Lisa Tarango, Troy TeBeest, Donna Cook, Velma De-weese, Debbie Hornsby, Janice Fulce, Hannah Speck, Karen Babitzke, Brendon Carter
Anniversary - M/M Pablo Perez, M/M Brad Renick, M/M Joe Lopez, M/M Victor Lopez

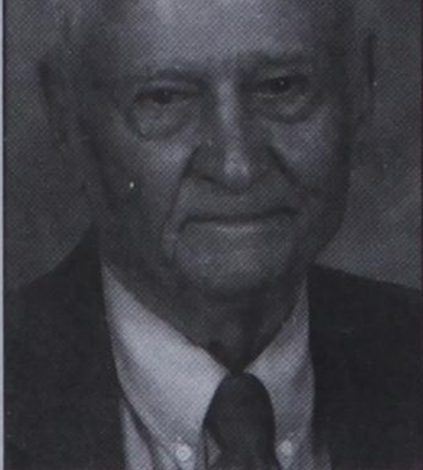
April 23 Birthdays - Sam Garnett, Juan Renteria, Rosa Linda Vela, Brea Archer, Dustin Barber, Stacy Poole, Patricia Dunaway, Sharon Coble, Frank Prouty, Seth Blane, John David Brown, Curtis Covington, Shonda Odegaard, George Aquero, Macy Jones, Stephen Cook, Ramsey Jenschke, Kaylee Miesner
Anniversary - M/M Wayne Bayless

April 25 Birthdays - Jerry Orr, Robert Hagerman, Keith Lewis, Pat Underwood, Donna Hill, Meagan (Burrell) Miller, Mia Burrell, Greg Breland, Mary Bayless, Jodi Martin, Joe Ruhlin
Anniversary - M/M Lewis Hill Jr.

April 26 Birthdays - DeeDee Johnson, Juanita Logsdon, Benny McClenagan, Angie Rimmel, Kenny Slough, Lyndee Ferguson, Linda Garcia, Ricky Ellsworth, Bob Marsh, Juan Rojas, Summer Riggins, Donna Duggan, Larry Ross

Our Sympathy

WILLIAM F.D. "BILL" ETLING
 GRUVER - William F.D. "Bill" Etling, 97, of Gruver died Friday, April 6, 2012.



Services will be at 2 p.m. Tuesday in First Baptist Church in Gruver with the Rev. Scott Curry officiating. Burial will be in Gruver Cemetery. Arrangements are by Boxwell Brothers Funeral Home of Spearman.

Bill was born Jan. 9, 1915, in Lewis, Kan. He came to Hansford County in 1917 at the age of 2. They moved to the "home place," two miles south of the Oklahoma line, near Hitchland. He attended McBride School, 11 miles north of Gruver. He rode in a buggy or walked three miles before he was allowed to ride a horse to school. When his brother, Glendon "Buddy" Etling started school, their father bought a buggy for their transportation.

Bill attended McBride School through two years of high school and then transferred to Gruver after the two schools were consolidated. He finished high school in 1931 at the age of 16. There were five in his class — the second graduating class of Gruver High School. After staying home a year, he attended Panhandle A&M College in Goodwell, graduating in 1936 with a degree in economics. He married Maurine "Pinkie" DeBerry in 1937.

At age 27, he bought his first farm north of Gruver, which he always called "the poor farm." In the 1950s, he started Etling Inc., the ammonia fertilizer business, and later sold it; the business became North Plains Chemicals.

Also in the 1950s, he bought an elevator in Bernstein and later purchased the Hitch Grain Elevator in Bernstein. He served on the Gruver School Board for 15 years, during which time his three children, Janice, Jim and Mary graduated from GHS. He served as president of the school board for 12 years, and as president, he signed all three of their diplomas. He was also treasurer of First Baptist Church for four years, member of the Hansford County Hospital district board and a trustee of the Gruver Cemetery board.

Bill continued to live in the home he and Pinkie built in 1965 until February 2012, when he went to Hansford Manor in Spearman. During the years since Pinkie died in 1983, he had very special caretakers. Kurt Etling, his nephew, was his business manager for 11 years. The family also would like to express gratitude to Sandi Foster, Gloria Perez, Virginia Taylor, Denis Rojas, Victoria Scroggins and others for providing care and companionship during those years.

He was preceded in death by his parents, William F.C. Etling and Minda Etling; his wife, Maurine; and a brother, Glendon Etling.

Survivors include two daughters, Janice Adams and husband Robert of Gruver and Mary Batzel and husband Joe of Arlington; a son, Jim Etling and wife Judy of Newcastle; six grandchildren; five great-grandchildren; and a nephew, Kurt Etling of Gruver.

The family suggests memorials be to Gruver High School Alumni Scholarship Fund, in care of Gruver Independent School District, P.O. Box 650, Gruver, TX 79040

Words from Faith & Grace



by Cecil R. Biggers, Lutheran Lay Minister

In the second week of the Season of Easter, we study Acts 4: 23-37, Psalm 33, 1 John 1:1-2:5, and John 20: 19-31. We begin to see the works of the Holy Spirit after the resurrection of Jesus The Christ.

Peter and John are arrested for preaching and healing in Christ's name; they are released. Upon release they reported to the other believers what had happened to them and prayed, whereupon the Holy Spirit came upon them. We see that the new disciples believed and with one accord, so that each shared with the others their possessions so that there were none among them who were in need. Those who had property sold it and brought the proceeds and laid them at the feet of the Apostles. To experience the risen Christ causes us to live as he lived. Do not wait to take harp lessons in heaven; use what God has given you to help others today.

The Palmist sings a song of Ascent (sung when going to the temple in Jerusalem). Full harmony among believers is possible because such harmony comes from God. The harmony of belief does not distinguish between persons. When one reads that "kindred" live together in unity, consider that the original language could be translated "kindred spirits". We as believers may not always agree on all things; but, we do all agree that Jesus The Christ is Lord.

In First John, John declares to those who believe what he has seen, what he has heard, what he has touched; yes, what he has experienced in this life of the Word. In our liturgy we quote, "If we say that we have no sin, we deceive ourselves, and the truth is not in us. If we confess our sins, He who is faithful and just will forgive us our sins and cleanse us from all unrighteousness." Learn that it is not our righteousness or merit that saves us, but Christ's. Whoever obeys His Word, truly in that person the love of God has reached perfection.

John tells us of the disciples hiding in the upper room. Jesus appears to them through the locked doors and says, "Peace be with you." Jesus breathes on them and says, "Receive the Holy Spirit". When the disciples tell this to Thomas, who was absent, Thomas does not believe. A week later Jesus appears again to all of them including Thomas. Jesus displays his hands and side to Thomas. Thomas replies, "My Lord and my God!" Jesus does not chide but says, "Have you believed because you have seen me? Blessed are those who have not seen and yet have come to believe." Learn from this that Jesus give us what we need to believe and serve him.

May the Holy Spirit open these things to you so that you may believe in Jesus The Christ and believe you may have life in His name.

MONUMENTS

Boxwell Brothers

Funeral Home

519 Evans • Spearman
659-3802

Dear friends,
When you buy a monument from us we make sure it is exactly what you want at a price you can afford. If it is not right, we will make it right. And you will not have to search the countryside to find us. We are here when you have a need.

Sincerely,
Bob Boxwell

Replenish the seed of faith through . . .

DAILY BIBLE READING, PRAYER & REGULAR CHURCH ATTENDANCE

<p>Spearman</p> <p>Apostolic Faith Church 822 S. Dressen • 659-2870 Sunday School: 10 a.m. Worship Service: 11 a.m. Sun. Eve.: 6 p.m. Wed. Prayer Mtg: 7 p.m. Pastor - Jack Cornell</p> <p>First Assembly of God 401 N. Bernice • 659-2295 Sunday School: 9:30 a.m. Worship: 10:40 a.m. Evening Worship: 6 p.m. Wed. Youth: 7 p.m. Pastor - Brad Smith</p> <p>First Christian Church (Disciples of Christ) 29 S. Bernice • 659-2036 Sunday School: 9:45 a.m. Worship: 10:50 a.m. Minister -</p> <p>First Baptist Church 123 N. Bernice • 659-5557 Sunday School: 9:45 a.m. Worship: 11 a.m. Evening Worship: 7 p.m. Men's Bible Study - Wed., 7 a.m. Children's Choir - Wed, 6 p.m. Adult Choir - Wed. 7 p.m. Wed. Bible Study: 7 p.m. Pastor - Jim Medley</p> <p>Church of Christ 121 S. Haney • 659-3244 Sunday Bible Class: 9:45 a.m. Worship: 10:30 a.m. Evening Worship: 6 p.m. Bible Study Wed.: 7:30 p.m.</p>	<p>Sacred Heart Catholic Church 901 Roland • 659-2166 Sat. Night Mass: 5:30 p.m. Sun. Mass: 9 a.m. - English Sun. Mass: 11:30 a.m. - Spanish Rev. Gregory Bunyan</p> <p>First United Methodist 407 S. Haney • 659-5503 Sunday School: 9:45 a.m. Worship: 8:30 & 11 a.m. Jr. High Youth: 5 p.m. Sunday High School: 6 p.m. Sunday Kids Club: 3 p.m. Wed. Pastor - Toni Bailey</p> <p>Grace Presbyterian Church (Worships with Faith Lutheran Church) 1101 Bernice • 659-2033</p> <p>Faith Lutheran Church (ELCA) 1101 Bernice • 659-2252 Sunday School: 9:45 a.m. Worship: 11 a.m. (Worships with Grace Presbyterian Church) Pastor - Cecil Biggers, PLM</p> <p>Union Church 31 S. Endicott • 659-2644 Sunday School: 10:00 a.m. Worship & Kid's Church: 11:00 a.m. Wednesday Evening Worship and Bible Study Service: 7 p.m. Wed. Pastor - Steve Hinshaw www.unionchurchonline.org</p> <p>Fellowship Baptist 1102 S. Archer • 659-2783 Sunday School: 10 a.m. Worship: 11 a.m. Sun. Evening Worship: 6 p.m. Sun. Evening Spanish Worship: 7 p.m. Youth/Adult Service: 7:30 Wed. Pastor - Phillip Hudson</p>	<p>Primera Mision Bautista 502 E. 7th • 659-3991 Sunday School: 9:45 a.m. Worship: 11 a.m.; Evening: 6 p.m. Wed. Prayer Meeting: 7 p.m. Thurs. Visitation: 7 p.m. Pastor Joe Garcia Jr.</p> <p>El Aposento Alto U.P.C.I. 1105 S. Roland Domingos: Escuela-Domical - 10 a.m. Culto Evangelistico - 7 p.m. Jueves: Oracion - 8 p.m. Mier: Estudio Biblico - 7 p.m. Pastor - A.G. Martell (806) 659-2153</p>	<p>Gruver United Methodist Broadway & Garrett 733-2651 Sunday School: 9:45 a.m. Worship: 8:30 & 10:50 a.m. Eve. Worship & UMY: 6 p.m. Pastor - George Price</p> <p>Spanish Cristo Redentor Church Hwy 15 806-659-2166 Gruver, TX Sun. Mass: 1:30 p.m. - Spanish Rev. Gregory Bunyan</p> <p>Oslo</p> <p>Oslo Lutheran Church (ELCA) 6 Miles West & 12 Miles North of Gruver 339-7646 Sunday School: 9:45 a.m. Worship: 11 a.m. Pastor - Arlen Lloyd</p> <p>Gruver</p> <p>First Baptist Church 402 E. Broadway • 733-2411 Sunday School: 9:45 a.m. Worship: 10:50 a.m. Disciple Training: 6 p.m. Sunday Prayer Meeting: 7:30 p.m. Wednesday Pastor - Scott Curry</p> <p>Church of Christ 209 King • 733-2760 Sunday School: 9:30 a.m. Worship: 10:20 a.m. Evening Worship: 6 p.m. Wed. Worship: 7:00 p.m. Minister - Gaylord Cook</p> <p>First Christian Church 510 King • 733-2960 Sunday School: 10:00 a.m. Sunday Worship: 11 a.m. Youth: 7:30 Sunday Adult Bible Study: 7:30 Sun. Wed. Bible Study: 8:00 p.m. Pastor - Gary Gumfory</p>
--	---	---	---

He has showed you, O man, what is good. And what does the LORD require of you? To act justly and to love mercy and to walk humbly with your God. Micah 6:8

This feature is made possible through the sponsorship of these civic minded businesses:

<p style="text-align: center;">Deakin ELECTRIC</p> <p style="text-align: center;">OILFIELD • RESIDENTIAL • COMMERCIAL 321 S. MAIN • SPEARMAN</p> <p style="text-align: center;">1-800-999-1506 Chris Deakin 806-659-5016 President</p>	<p style="text-align: center;">Bartlett's Lumber & Hardware</p> <p style="text-align: center;">105 W. Broadway • Gruver, TX (806) 733-2404</p>	<p style="text-align: center;">Money's</p> <p style="text-align: center;">Stan & Donna Zepp - Owners Phone 435-3945 14 SW 3rd Ave, Perryton TX</p>	<p style="text-align: center;">Morse Implement & Auto Supply</p> <p style="text-align: center;">"Join us in church" Tom Dortch 733-2668 Box 89 • Morse, TX 79062</p>
<p style="text-align: center;">PRAIRIE MOTORS INC.</p> <p style="text-align: center;">Hwy. 207 South • P.O. Box 430 Spearman, TX 79081 • (806) 659-2541 www.prairiemotors.com</p>	<p style="text-align: center;">MurMur's Cafe</p> <p style="text-align: center;">100 Roland St Spearman, TX. 659-3580</p>	<p style="text-align: center;">Hansford County Reporter-Statesman</p> <p style="text-align: center;">"Proudly Serving Hansford County Since 1907"</p> <p style="text-align: center;">(806) 659-3434 310 Barkley • Spearman, TX</p>	<p style="text-align: center;">INTERSTATE BANK, ssb</p> <p style="text-align: center;">www.interstatebank.com</p> <p style="text-align: center;">322 Main Street • Spearman, TX (806) 659-2559</p>

dish
AUTHORIZED RETAILER

30 premium movie channels for 1 mo.

PLUS **FREE**

\$19.99 3 months for 1 mo. (Reg. price \$24.99/mo.)

1-800-298-4509 www.INFINITYDISH.COM

FAMILY POOL FUN.COM

Our pools create Generations of Memories everyday, vacations never end!

Aboveground & Inground pools at WHOLESALE PRICING

SIMPLE DIY Pool Kit Assembly

SAVE MONEY on All Pool Supplies & Accessories. Ships Fast

Call Today! **800-950-2210**

8th Annual Tour de Cypress Ride & Run
Mount Vernon, Texas

Saturday, April 21, 2012
10, 30, 47 Mile and 100K Rides
5K and 10K Runs

Beautiful New Routes past Exotic Animal Farm and Lake Cypress Springs

Enjoy a Franklin County weekend of activities:
Bike Ride & Run, Bluegrass Festival and Kite Fest. www.tourdycypress.com

THERA-GESIC
Go Painlessly with THERA-GESIC.

Maximum strength analgesic creme for temporary relief from:

- Back pain
- Muscle pain
- Arthritis pain
- Joint pain

FBI

FOR YOUR INFORMATION

Medical Fund for Francis Scroggs Pond
A Medical Fund that has been set up at FNB for Francis (Scroggs) Pond, she has been Diagnosed with cancer and will begin chemotherapy in Amarillo (and possibly surgery in Dallas in the near future).

Gruver ISD Picture Day
Gruver ISD's next picture day will be Thursday, April 12. We will be photographing Pre-K through 8th memory mates; spring sports; remaining organizational pictures; homecoming queen court; and whatever else is left! Please dress accordingly!

2011-2012 Yearbooks On Sale
The 2011-2012 yearbooks are now on sale! Reserve your book at the low rate of \$40.00 before April 27th. Any orders after that will be \$50.00. Contact Kelly Hart at 733-2477 ext 1110 or pick up an order form in the business office or the high school principal's office.

Rushing Wind Emmaus Community Meets
Rushing Wind Emmaus Community will meet Saturday, April 14 at the Waka Christian Center starting at 6 p.m. Friends and families are welcome to come to the potluck dinner followed with a praise and worship service. A nursery will be provided, and training will be available for new sponsors.

Spearman Food Bank 1st Thursday
If you would like to help the Spearman Food Bank, they need help unloading the truck at 11:30 each 1st Thursday of each month. Contact Cecil Biggers for more information.

Hansford Co. Library Thrift Shop Accepting Donations
Alley Katz (Library Thrift Shop) is accepting donations of quality items. You may ask for the key to the Thrift Shop at the library desk during regular hours (9:30 a.m.-5 p.m., Monday-Friday). Alley Katz is open from 10 a.m.-4 p.m. each Wednesday.

Perryton Area Parkinson's Disease Support Group
The Perryton Area Parkinson's Disease Support Group will meet April 13 at the Perryton Mennonite Church, 2821 S. Ash. The meeting will start at 12 noon and lunch will be provided. The program will be given by Speech Therapist Renita Logan from Accolade Home Health. Anyone who has Parkinson's or who has a family member/friend with it is welcome to attend. Call Bev Burger at 435-3437 or 435-0579 for more information.

Coffee Memorial Blood Drive
Coffee Memorial Blood Center will hold a Community Blood Drive in Spearman on Tuesday, April 17, 2012 from 1-7 p.m. in The O'Loughlin Center Gym, 502 S. Brandt Street. Every eligible donor who presents to donate will receive a Coffee Memorial umbrella, t-shirt or lunch bag. Photo ID or Donor Card Required to Donate. MUST BE 17 YEARS OLD TO DONATE BLOOD. WALK-INS WELCOME! For appointments, please call 331-8800 or 1-877-574-8800. Find us on facebook * Follow us on Twitter * www.thegiftoflife.org. ALL BLOOD TYPES ARE CURRENTLY NEEDED! The need is real. There is no substitute for blood. It can only come from volunteer blood donors. Please support the patients of the High Plains Region...Give the Gift of Life!

Camp Cards for Spearman Cub Pack & Boy Scout Troop
Camp Cards are being sold by the Spearman Cub Pack and Boy Scout Troop. Each card is \$5. A single use will pay for the cost of the card. Spearman will be selling the cards until April 24, 2012. Call Britt or Linda Jarvis at 806.659.2554 or contact any Boy Scout or Cub Scout.

Our Diamond Miss Pageant
Our Diamond Miss will be hosting their annual preliminary pageant in Borger on Saturday, April 14, at the Borger Johnson Park Youth Center. The pageant is currently in its 31st year and has served many young ladies in the community. The pageant is open to young ladies ages 0-19 years old. Babies are divided into three age divisions for competition: 0-12 months, 13-24 months, and 25-35 months. The baby contestants are eligible to compete in World of Babies, Beautiful Baby, Sportswear, Photogenic, and Portfolio. Contestants 3-19 years old are divided into six age divisions: Tiny Miss (3-4), Petite Miss (5-6), Junior Miss (7-9), Young Miss (10-12), Teen Miss (13-15), and Elegant Miss (16-19). Contestants in Tiny through Elegant Miss compete in the age group based on their age as of January 1, 2012. Categories for these young ladies include Modeling in party dress and sportswear, Talent, Glamour, Photogenic, and Portfolio. You are not required to enter all the categories to be in the pageant. No experience is necessary. For more information, please call 275-0455 or 274-4536.

Firefighters Wanted
The Spearman Volunteer Fire Department is actively recruiting new members. Both men and women age 18 and over are welcome. The number of volunteers has dropped to dangerously low levels and the roster needs to be increased. If you have an interest in helping to keep your community safe, the SVFD would like to talk to you. All new candidates will have access to the best training available. All interested parties should either come to the fire station located at 513 S Hazelwood or call Kimmi Rivera at 806-202-6374. The SVFD meets every Thursday night at 7 PM. Bring a friend and come join the team.

Voter Registration Cards
Due to the redistricting issues, every voter in Texas is currently holding an expired voter registration card. Once the maps are drawn and approved and the primary date set, voter registration cards will be mailed out. However you may vote, this year, with the expired card. For further information please call 806 659-4120.

Hansford Hospice
Volunteering for Hospice is very flexible and easy to work into your schedule. Our volunteers provide important services to the people we serve, whether it is: providing companionship to patients and their families; helping with clerical duties in the office; helping with special projects such as cooking food, baking, running or helping with community outreach. If you are interested in being a Hansford Hospice Volunteer, please contact us at 806-659-5811.

Texas SNAP Benefits Assistance
Need help applying for SNAP benefits? We can help! High Plains Food Bank is providing application assistance for Texas SNAP benefits (Food Stamps) in your area. Telephone application assistance is available. If you need to apply for benefits, please call us today at 806374-8562 or 1-800-774-8564.

Don't Text and Drive Decals
If you would like to purchase a lime green 'AMT 1994-2009 Don't Text and Drive' window decal in memory of Ali Tyler, please contact Stephanie Tyler at 806-736-0019. All proceeds go to the Ali Tyler Memorial Scholarship Fund. Decals are also available at Hansford County Floral Company on Main Street in Spearman.

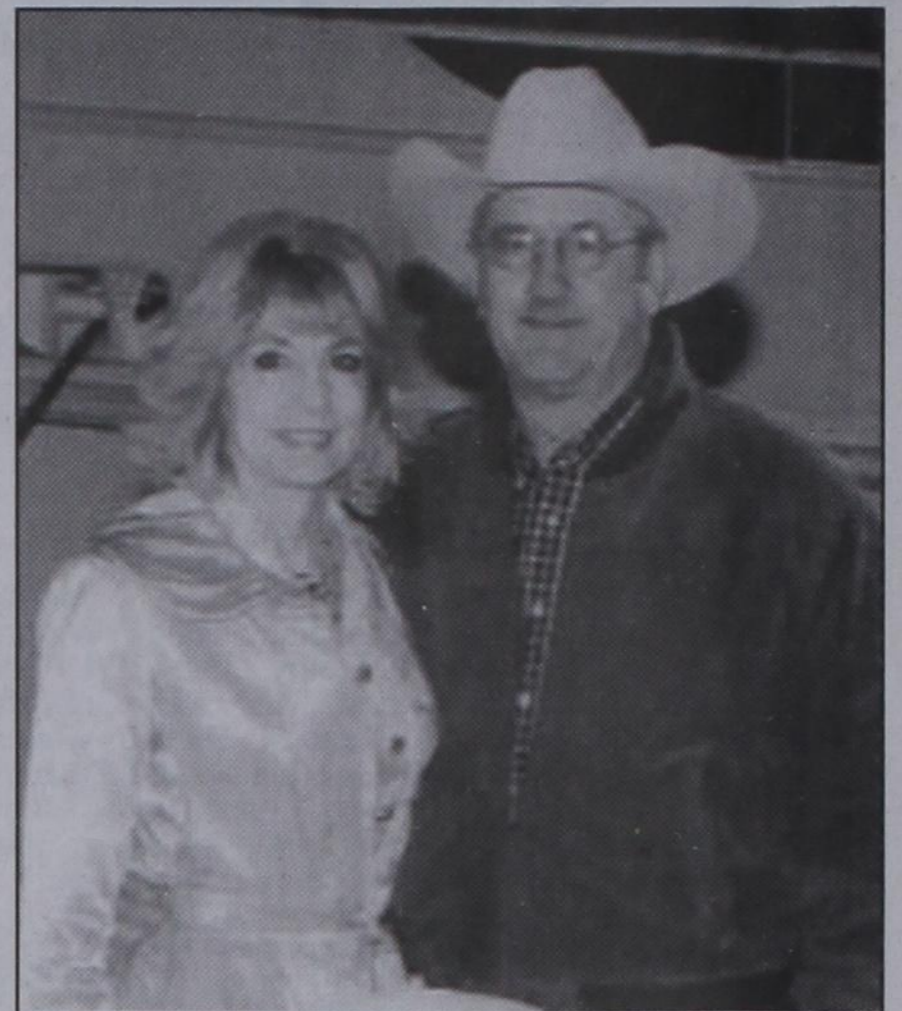
Help Available for Breast Cancer Survivors
Any woman who has had breast cancer surgery and cannot afford undergarments and prosthetics can get help from the American Cancer Society through a grant from Susan G. Komen for the Cure®. The Amarillo Area Breast Prosthesis and Lymphedema Accessory Program will provide financial help to women in need of breast forms or prostheses, mastectomy bras and accessories to help with lymphedema, which is swelling of the arm caused by a build-up of lymph fluid. For more information, call the American Cancer Society office in Amarillo at (806) 353-4307 or 1-877-227-2345.

Friendship Quilter Quilt Guild
The Friendship Quilter Quilt Guild of Perryton, Texas would like to invite you to their meetings. The Day Guild meets the 2nd Wednesdays of each month at 9 a.m. in the Community Worship Center, 2210 SW 15th, Perryton. The Night Guild meets the 2nd Tuesday of each month at 6 p.m. in the Community Worship Center, 2210 SW 15th, Perryton. Annual dues are \$15. (To receive only the newsletter \$7.50/yr.) Visitors are welcome. For more information, contact Cynthia Shattles at 806-435-2765 or Marilyn Robins at 806-624-2691.



Mr. and Mrs. Carthel Celebrate 40th Anniversary

Dan and Harletta Carthel of Gruver celebrated their 40th wedding anniversary March 31, 2012. Mr. Carthel married the former Harletta Capps on March 31, 1972, at the Church of Christ in Vernon. The couple have resided in "Carthel Corners" outside of Gruver since they married. Mr. Carthel is a farmer and rancher. Mrs. Carthel is an English as a second language and current events teacher at Stratford Independent School District. The couple have three children, Justin Carthel and wife Lisa of Littlefield, KiKi Brabham and husband Dr. David of Amarillo and Dr. Kade Carthel of Temple. They have four grandchildren, Harlie Brabham, Skyla Brabham, Levi Brabham and Eli Carthel.



You are invited to a **Bridal Shower** honoring **Melissa Lesly** bride-elect of Kyle Harshbarger on Saturday, April 14, 2012 from 2 p.m. - 3:30 p.m. in the home of Church of Christ Parlor 121 Haney St. Spearman, Texas Selections at Gordon's Drug, Target, Walmart and Kohls

You are invited to a **Bridal Shower** honoring **Mattie Davis** bride-elect of Cody Mac Bean on Saturday, April 21, 2012 from 10 a.m. - 11:30 a.m. in the home of Ginger Pittman 508 Roland St Spearman, Texas Selections at Gordons Drug and Bed, Bath & Beyond

You are invited to a **Bridal Shower** honoring **Mr. and Mrs. Brady Tidwell** (nee Tawnya Riney) on Saturday, April 21, 2012 from 2 p.m. - 3:30 p.m. in the home of Gary & Sandra Gumfory County Road B Gruver, Texas Selections at The Amazing Vase, Shear Style, Gordon's Drug, Evalene's Imports, Walmart and Bed, Bath & Beyond

WHEN DOES YOUR SUBSCRIPTION EXPIRE?

SCR1
03/12 EXPIRES
JOHN Q. PUBLIC
PO BOX 123
SPEARMAN TX 79081

Expiration dates are printed on the top of all mailing labels. Our readers can help keep the cost of subscriptions down by mailing in renewals in the appropriate month.

Thank you, Catherine Smith

THE HANSFORD COUNTY REPORTER-STATESMAN
213 Main Street • Spearman, TX 79081

Annual Subscription Rates
In Hansford County - \$30
Out of County - \$40
E-Subscription - \$35 (sent through e-mail)

- MITCHELL THEATRES.COM**
GUYMON, OK • LIBERAL, KS • NEWTON, KS
- NORTHRIDGE 8**
Guymon, Oklahoma
www.northridge8.com
580-338-3281
- SOUTHGATE 6**
Liberal, Kansas
www.southgate6.com
620-624-5573
- SEQUOYAH 8**
Garden City, Kansas
www.sequoyah8.com
620-275-2760
- CHISHOLM TRAIL 8**
Newton, Kansas
www.chisholmtrail8.com
316-283-0555
- FRESH POPCORN EVERYDAY!
-PARTY ROOM & ARCADE-

Hoochy Poochy Parlor

Where Spearman Customers Get Priority!

Hoochy Poochy Parlor is happy to have Kim Reynolds as part of our grooming family. Kim has 15 years experience as a vet tech and groomer. She knows just what to do to pamper your pooch!

Carmon is still be pampering pets on a request only basis.

Hoochy Poochy Parlor
421 E. 10th St.
Borger, TX 79007
806-273-2724
hoochypoochy@att.net
www.hoochypoochy.net
Hours:
Mon.-Fri., 8 a.m.-5 p.m.

We put the Hoochy in your Poochy

Troop 551 Visits Washita Battlefield

On March 16th, 17th, and 18th, Scouts, Corbin Hughes and Dylan Kemp with leaders Lance Kemp and Britt Jarvis, visited the Washita Battlefield. The Scouts and Leaders camped at Skipout Lake in the Black Kettle Wildlife Management Area. The Scouts prepared their own meals. Saturday evening's meal was the highlight. The Scouts cooked in Dutch Ovens and prepared pork chops and rice with peach cobbler as dessert. The Scouts visited the Washita Battlefield just East of Cheyenne, Oklahoma. The battlefield was located in a level wooded area on the Washita River. In the battle, Lt. Col. George A. Custer attacked the Southern Cheyenne at their winter camp. In the battle, Black Kettle, the Cheyenne chief, was killed along with his wife, Medicine Woman, and over a hundred others. Nineteen soldiers were



killed in the battle. The Cheyenne survivors were captured and taken to Ft. Supply. Dylan and Corbin walked down to the battle site and compared it to the map and brochure provided

by the National Park Service. The Washita Battlefield is an National Historic Site. The museum has relics from the battle, and displays that show how the battle progressed. From the

exhibit displaying the Cheyenne' side of the battle, the Scouts learned that there are two sides of the battle. The Scouts and Leaders enjoyed their camp out.

North Plains GCD Has Best Production Reporting Response Ever

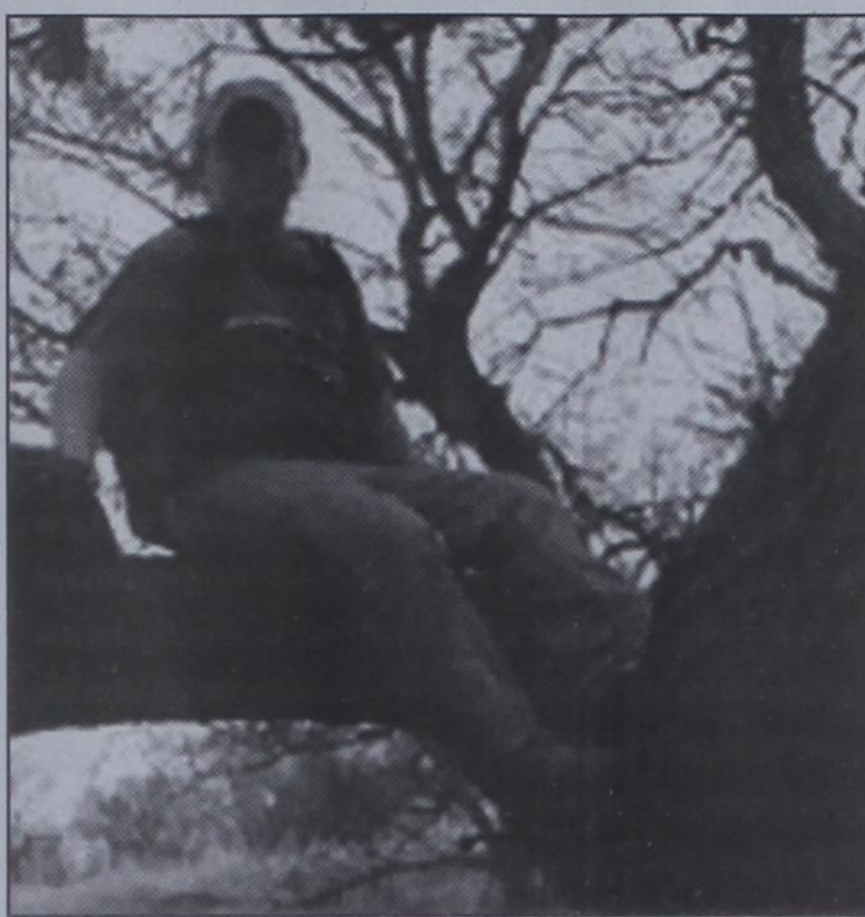
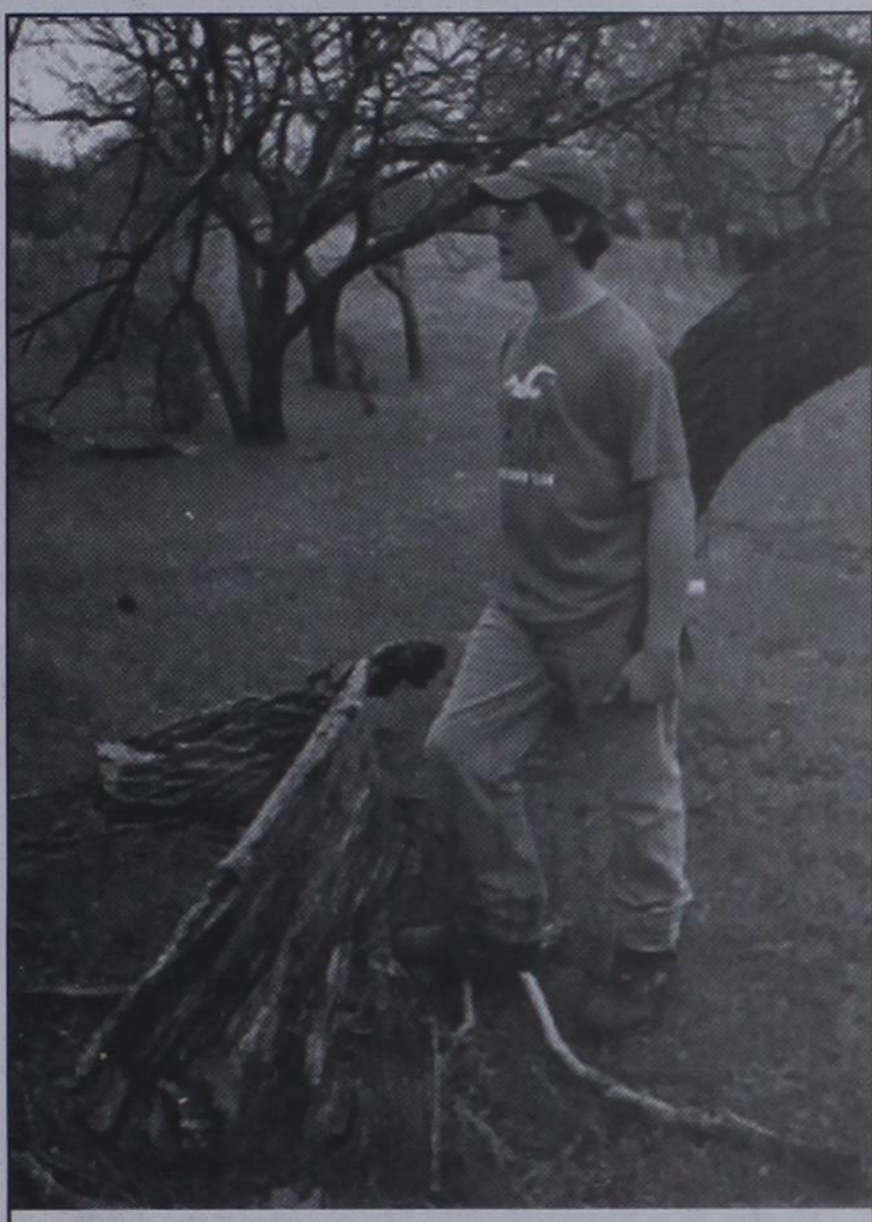
submitted by Kirk Welch

At their March board meeting, directors of the North Plains Groundwater Conservation District received a report from Steve Walthour, District General Manager, on the 2011 groundwater production reporting process. Walthour reported that for 2011 groundwater producers filed 98.5% of all reports on time. The percentage of timely reports is the highest since reporting started in 2006. Walthour commended stakeholders for their cooperation in the conservation efforts of the District. The board approved a policy for late filed reports for 2011 and for future years.

In other business, the board approved extension of two well permits for the City of Spearman. City representatives requested that the District issue two extended time well permits for one year because the Texas Commission on Environmental Quality application process for a public water supply well increases well completion time beyond the 150 days normally provided by the District's permitting process. The board approved the permits based on District Rule 9.4 for Extended Time Permits. The new permits will expire on February 13, 2013.

The board approved 11 well permits as active and complete. The board also ratified the notice for general election for the election of board members on May 12, 2012. The Director positions for Precinct 5 Hansford and Hutchinson Counties, Precinct 6 Ochiltree County, and Precinct 7 Lipscomb County are up for election in 2012. Only the incumbent Director in Precinct 7 Lipscomb County, will have an opponent. Since there is no opposition for the Precinct 5 and Precinct 6 races, the board cancelled those elections and the incumbent Directors, Precinct 5 Hansford and Hutchinson Counties, Bob Zimmer, and Precinct 6 Ochiltree County, Daniel Krienke were re-elected.

The board also received a status update on the District's "200-12 Reduced Irrigation on Corn" project, approved a water conservation intern program, approved the lease of space in the First State Bank building, and received a report from District Counsel, Keith Good, on the recent Texas Supreme Court ruling in the Day and McDaniel v. Edwards Aquifer Authority case. For more information on the ruling log on to www.northplains-gcd.org and find the story in the "Latest News" section.



PROJECT GRADUATION 2012

The parents of the Spearman High School Senior Class of 2012 will sponsor and host a "Project Graduation Party" following commencement exercises Friday May 25th. To encourage the graduates to stay the entire night, door prizes are awarded throughout the evening. In addition, graduates can earn paper money through their participation in various games so that prizes can be purchased. The graduation party will culminate with the distribution of grand prizes.

Prizes, gift certificates, and cash are needed for the evening's gifts. If you, the community, who supported and encouraged these seniors these past 13 years of school, would be willing to share in this final "class of 2012" memory, making this project "special," please call: Tihl Farrar at (806) 270-0213, Jean Snyder at 659-3009, or Gwendia Hanna at 659-9949. Contributions can be mailed to: Project graduation Gwendia Hanna, 403 S. Endicott St., Spearman, TX 79081

MACULAR DEGENERATION

Imagine A Pair Of Glasses That Can Help You See Better!

Ever look through a pair of field glasses or binoculars? Things look bigger and closer, and easier to see. Dr. Larry Chism is using miniaturized binoculars or telescopes to help people who have decreased vision, to see better.

In many cases, special telescopic glasses can be prescribed to enhance visual performance. He often can help people read, watch TV, and sometimes drive.

Although telescopic glasses cost between \$1900-\$2500, it is a small price to pay for the hours of enjoyment with better vision and more independence.

For information and a **FREE** telephone interview call:

1-888-243-2020

Dr. Larry Chism, Optometrist
Abilene • Austin • Fort Worth • Georgetown • Houston
Plano • San Antonio • Tyler
www.chismlowvision.com www.IALVS.com

FIREWOOD FOR SALE

Cedar firewood for sale. Call (806) 658-2573.
Delivered & stacked, or self pickup.

The Jays of Summer

Available all year!

SNOW CONE STAND

Monday-Friday
1:30-8 p.m.

MURMUR'S CAFE

100 S. Roland • Spearman
659-3580

NOTICE OF ELECTION

In accordance with the provisions of the Texas Agriculture Code, Chapter 74, Subchapter D, and 4 Tex. Admin. Code, Chapter 3, Subchapter A, the Texas Department of Agriculture (the Department) will conduct a board election in the Panhandle Boll Weevil Eradication Zone, in order to select a representative of the above-referenced zone to serve on the Texas Boll Weevil Eradication Foundation Board of Directors. The board is charged with administering the boll weevil eradication program in Texas.

The Panhandle Boll Weevil Eradication Zone consists of all of Carson, Dallam, Hansford, Hartley, Hemphill, Hutchinson, Lipscomb, Moore, Ochiltree, Oldham, Potter, Roberts and Sherman counties.

Any cotton grower having planted cotton in the year 2011 within the zone defined above is eligible to vote, and, if he or she resides in the Panhandle Zone and has at least seven years experience as a cotton grower, can have his or her name placed on the ballot as a candidate in the board member election. A cotton grower is defined as a person who grows cotton intended to be commercial cotton. The term includes an individual who, as owner, landlord, tenant or sharecropper, is entitled to share in the cotton grown and available for marketing from the farm, or share in the proceeds from the sale of the cotton from the farm or from an indemnity or other payment received from or related to the planting, growing, or failure of the cotton. Any person eligible to vote in the board member election that resides in the Panhandle Zone and meets the seven-year experience requirement may place their name in nomination for election to the Texas Boll Weevil Eradication Foundation Board by written application to the Department at the address provided below. Nomination forms are provided by the Department and must be signed by the nominee and at least ten other eligible voters. The nomination form must be received by the Department at its office located in Austin by April 23, 2012, and must provide the legal residence of the applicant. A nomination form may be obtained by contacting the Department office or any county agent located in the voting area.

The board election will be held by mail balloting. Ballots will be mailed to cotton growers by May 8, 2012. All ballots cast by mail must be postmarked no later than May 23, 2012, in order to be valid.

For more information regarding the referendum and election, or if you are a cotton grower in the above-referenced area and do not receive a ballot, please contact the Texas Department of Agriculture, P.O. Box 12847, Austin, Texas, 78711, telephone 512-463-3285.

Spearman Tennis Tournament A Success

submitted by Starla Whiteley

Spearman hosted their annual tennis tournament on March 28 & 29. Fifteen schools brought almost 200 players to enjoy beautiful weather and participate in the tournament. On Wednesday, the boys' singles, boys' doubles and mixed doubles took the court. Shelby Hanna and Luis Vela from Spearman won the mixed doubles championship in three sets over Wilson\Myneer from White Deer (4-6, 6-4, 6-2). Also in mixed doubles, Cassidy Odegaard and Derrick Zimmerman from Spearman finished as the third place medalists. Twenty-two mixed doubles teams participated in the tournament.

Also on Wednesday, sixteen boys' singles were entered in the tournament. Boys' singles top three medalists were Weissel from Perryton (1st), Smith from Panhandle (2nd) and Galvan from Booker (3rd). In boys' doubles, twenty-four teams came to play with Stephens\Navaratte from Perryton winning the championship over Montgomery\Collins of White Deer. Third place medalists were King\Blankenship of Gruver.

Thursday was set aside for the two girls' divisions of singles and doubles. Twenty-eight girls' singles were entered in the tournament

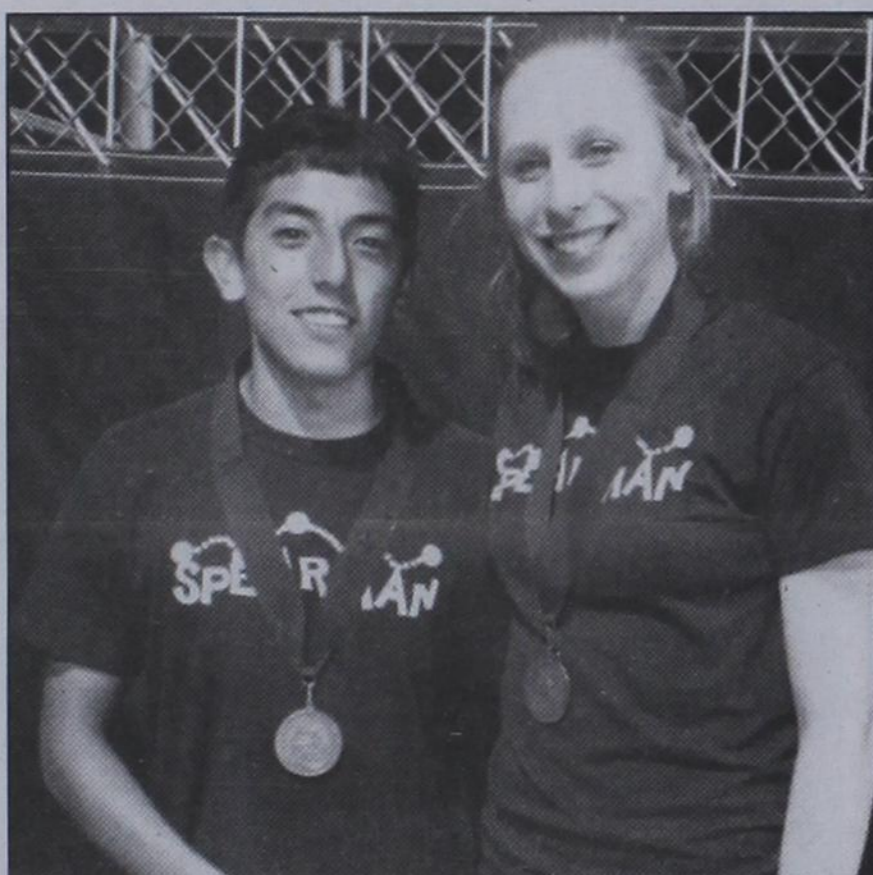
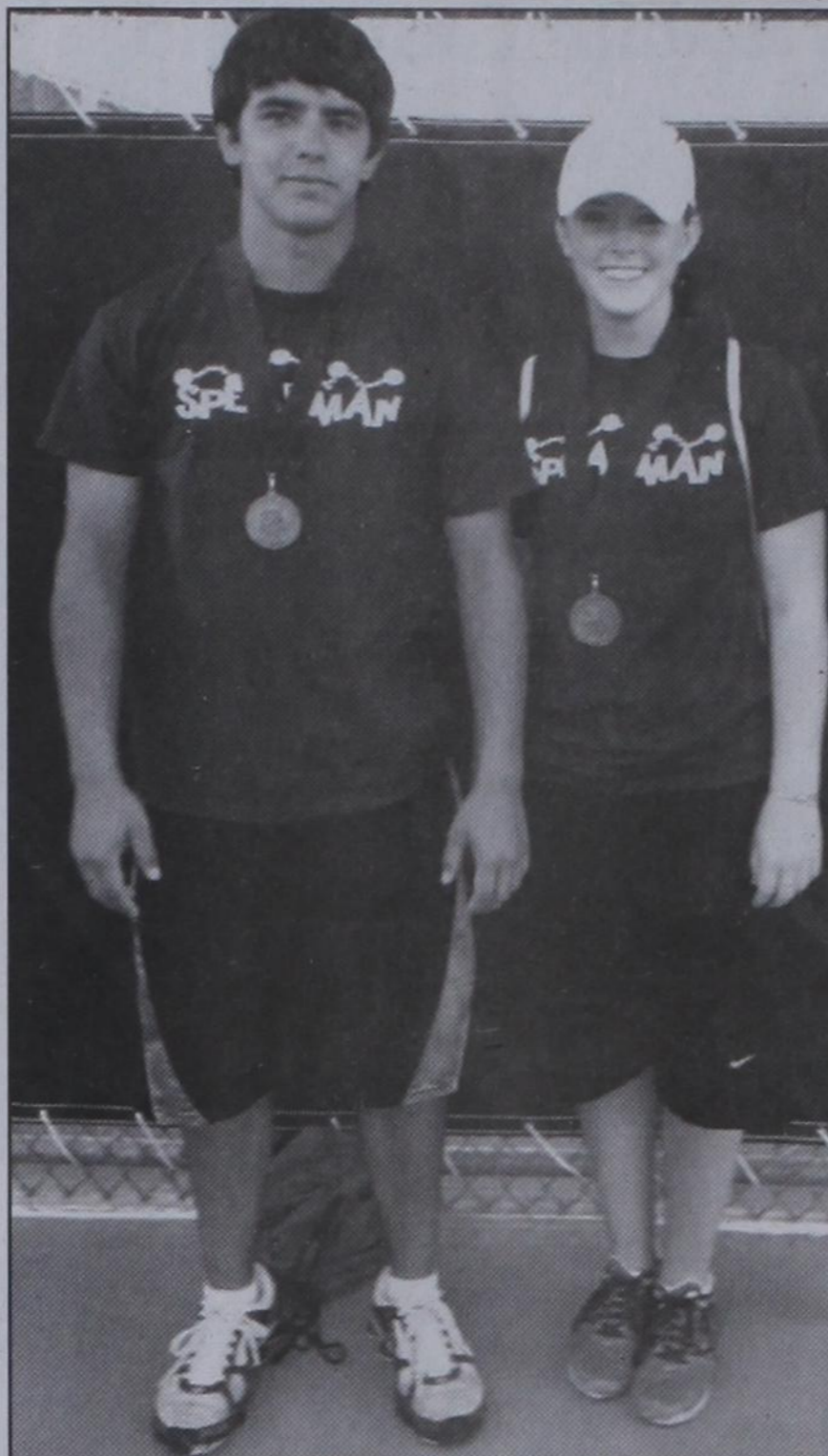
with Dalhart's Steyl defeating Kyla Walker of Spearman for the championship (6-3, 6-3). Third Medalist will be determined at a later date between two Perryton players, Terhune and Hulsey. Spearman's Slade Garnett fought her way through the consolation bracket to win the girls' singles consolation championship over Hinejos from Wheeler (8-1).

Spearman's Paige Pierson and Katy Miser won the large, thirty team bracket of girls' doubles by defeating Watts\Pelham of Canadian in two sets (6-2, 7-5). Panhandle's team of Ewing\Urbanczyk defeated Armstrong\Willareal of White Deer for the third place medal. The consolation championship was won by Ochoa\Long of Canadian over Craig\Brown of White Deer (8-6).

Other Spearman players that participated this week were Tyler Robinett, Gil Molina, John Holloway, Peyton Garnett, Clay Jackson, Brody Hargrove, Tanner Baird, Brent Hansen, Conner Wolf, Vanessa Vela, Anne Marie Comp, Jayme Pack and Cynthia Mendoza.

Special thanks to Mrs. Baird and her student council volunteers for selling drinks at the tournament, Damon Sibley and crew for preparing the courts and Coach Walker for facilitating the tournament on Wednesday.

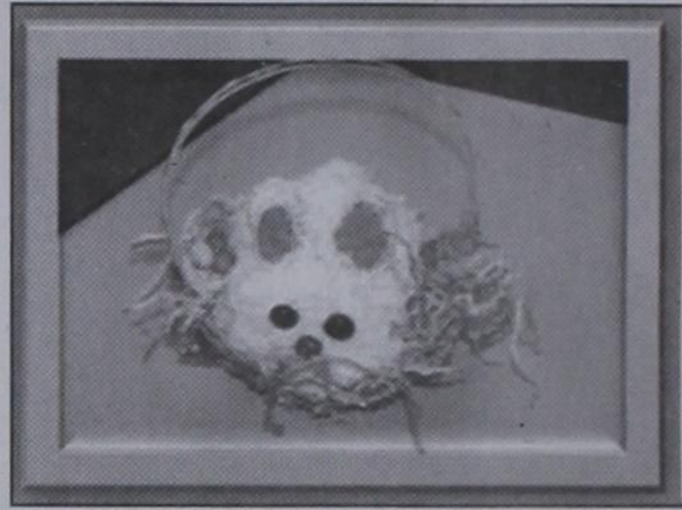
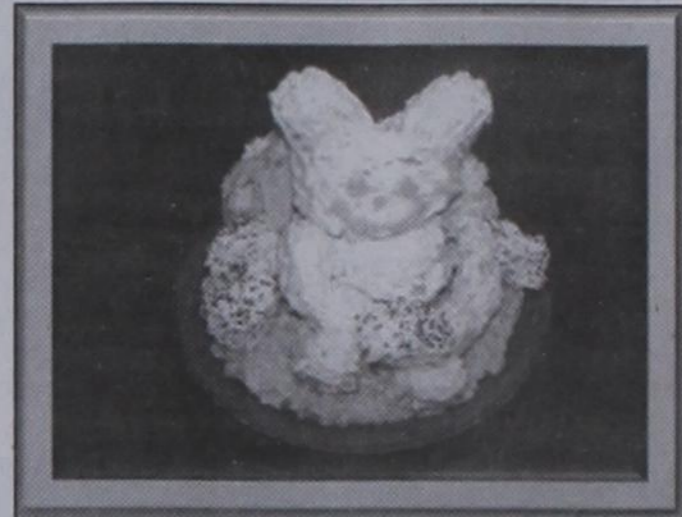
The District Tennis Tournament will be held on Thursday, April 5th, beginning at 9 a.m., in Spearman.



GHS FCS Easter Rice Krispie Cooking Competition Winners

Gruver High School Family and Consumer Science students competed Wednesday, April 4th, to determine what kitchen group could prepare the best looking Easter-themed Rice Krispie treat. There were 13 kitchen groups that participated. The creative projects were judged by Mrs. Kelly Hart, Mrs. Kathy Gillispie and Mr. Troy Seagler.

The top four winning groups were as follows:
1st place winners: Alex Logsdon & Forest Lopez
2nd Place winners: Fatima Barrera, Meghan Teal & Rocio Terrazas
3rd Place winners: Mariana Mendoza & Ashlynn Miner
4th Place winner were: Sabrina Buttman, Ana Lora & Merryly Ramos



Who Ya Gonna Call?

We Fix Computers

We Install Entertainment Equipment

Call Bob Squad Today!

ptci.net
721 W 7th - Spearman
800-562-2556

BOB Squad
HOME NETWORK SPECIALISTS
COMPUTER SERVICE EXPERTS
TECH Support

f Like
Follow

HELP WANTED

HELP WANTED: Oilfield work, must have drivers license. Good pay and benefits. Call 806-659-3911 or come by at 1103 West 7th, Spearman. Trencor Enterprises, Inc. TFN(11/10/11)B

HELP WANTED: Drivers & O/O's, CDL-A: Industry Leading Pay, Benefits, Home Most Weekends! Growing Tank Division. Need 2yrs OTR Exp., Tank End. Call Miller Truck Lines: 1-800-364-5874, x203 1(4/12/12)P

HELP WANTED: The Hansford County Soil & Water Conservation District in Spearman is now hiring for a clerical position. Responsibilities will include payroll, answering phones, and other secretarial duties. Computer skills preferred. Stop by the USDA building at 909 West 9th Avenue in Spearman to pick up an application. 3(3/29/12)B

HELP WANTED: Morse Implementation and Auto Supply is looking for summer help for a mature high school or college student. Job requires doing tire repairs and assisting mechanics. Must have a driver's license. Excellent wages for summer job. Please call 806-733-2668 to apply. TFN(4/12/12)B

SERVICES

HOOCHY POOCHY PARLOR Call us for all your pet's grooming and boarding needs. Call now for reservations! 806-273-2724. TFN(11/2/07)B

TIRE OF GARAGE SALE PRICES? Let me buy your good used furniture! 2nd Chance Antiques & Furniture, Don 806-648-1480; 806-202-1391 cell. TFN(1/20/11)B

BUSINESS

BUSINESS OPPORTUNITY: We buy Frac Sand trucking companies and complete sand rigs; tractors, blowers & pneumatic trailers. Call now! 800-397-2338 1(4/12/12)P

PUBLIC NOTICE

LEGAL NOTICE

Hansford County Commissioners' Court will receive bids until 4:00 on Friday, April 20, 2012 on up to 1000 tons of A-3 and B-4 gravel, F.O.B. the plant and F.O.B. the site (Gruver and Spearman Precinct Barns). Bids should be submitted to the Hansford County Judge's office, 16 Northwest Court, Spearman, Texas 79081-2052.

Bids will be opened on Monday, April 23, 2012 during the Commissioners' Court meeting in the Law Library of the Hansford County Courthouse, Spearman, Texas. Meeting will begin at 10:00 a.m.

Hansford County reserves the right to accept or reject any or all bids.

Benny Wilson
Hansford County Judge
3(4/4/12)B

2	5	4	9	3	7	6	1	8
9	7	8	2	1	6	3	4	5
3	6	1	4	8	5	2	7	9
7	3	9	8	4	2	5	6	1
4	8	5	3	6	1	9	2	7
6	1	2	5	7	9	8	3	4
5	4	6	7	9	3	1	8	2
1	2	7	6	5	8	4	9	3
8	9	3	1	2	4	7	5	6

POSER	TOM	SAKI
ULTRA	BAA	TILES
LEANT	ARC	EASEL
LOBSTER	ANEMONE	
TAT	QUIT	
IMF	THOU	BEVELS
MAAM	ERIC	REGIA
AGUE	REELS	LYNN
GISMO	OTIC	APED
OCTOPI	UPON	TRY
	TOGS	PUS
OCARINA	MERMAID	
RELIC	NEE	SANTO
CLUBS	EEN	ESTES
ALMS	FLU	SHIMS

IMMEDIATE OPENINGS

Administrative/Cashier

Needed Immediately. •Excel •Quickbooks

Thomas Metals - Perryton, TX

Call Stacy: 405-651-9331

Fax resume: 866-871-1188

Email resume:

stacy.young@thomasmetalsgroup.com

Are You A Victim of Domestic Violence, Sexual Abuse or Physical, Emotional or Sexual Assault?

Call Toll Free Hotline 1-800-753-5308

Battering Intervention & Anger Management Available

Panhandle Crisis Center

Serving Hansford, Lipscomb & Ochiltree Counties

& Ochiltree Counties

301 S. Ash - Perryton, TX

WTG FUELS INC. 518 SE LOOP 143 PERRYTON TX 79070 Phone: 806-435-5426 Fax: 806-435-4437 E-MAIL:

crawllins@windstream.net Full-time drivers available, competitive pay based on experience, insurance, benefits, 401K, must have CDL w/hazmat, and tanker endorsements, bonus pay/overtime, guaranteed hours, come by our office or call, send us an e-mail, or fax your resume. TFN(3/22/12)B

Check our websites for other properties.

DUMAS FARMS II - 1280 acres deeded, 320 ac. for lease with purchase of property, nice 2 bdrm. mobile home w/concrete foundation, mud room and patio, 2 all-steel barns w/concrete floors, 7 irrigation wells, UG pipe, on pvm. and all weather road.

VALLEY VIEW RANCH - Lipscomb Co., TX - 177 ac. w/extraordinary 5404 sq. ft. +/- home overlooking the property w/ beautiful views of live creek, trees, wildlife (deer, quail, & turkey), covered horse training facilities, stables, excellent cattle working facilities & pens, commercial dog kennels, employee housing. We can divide (10 ac. w/main residence or 167 ac. +/- w/other improvements)!

SHERMAN CO., TX - 627 acres, choice land, four 1/4 mile sprinklers, fully developed, one 1/4 mile off Hwy. 287 on paved CR - CC, 3 phase electricity, new irrigation well drilled in 2010.

WEST OF DUMAS on pvm. 606 ac. +/-, 17 tower sprinkler, four irr. wells, excellent location for residential or commercial development.

BUDDY CLINE ROAD - Moore Co., TX - 1/2 section choice land, two wells (one new) and sprinklers.

1200 SOW FARROW TO FINNISH OPERATION - Moore Co., TX - New 5 yr. lease with major hog company. Two separate units, can be divided - Please contact broker for info package and price. www.scottlandcompany.com www.texascrp.com Shawn Gillespie 806/922-5532 Ben G. Scott, Broker 1-800-933-9698 day/eve TFN(2-2-12)

ALL STATE REALTY 806 435-SOLD (7653)

All State Realty Sherrie E. Rima 806-435-SOLD (7653)

322 S. DRESSEN Corner Lot, 3 or 4 bedrooms, 2 Living spaces, 3 baths. Newly Remodeled & Priced To SELL!!

We have Buyers but We Need Listings! Call Us Today & Let us put the Two of you together!

See us for: AUTO • HOME • CROP HAIL • FARM & RANCH • MULTIPERIL • LIVESTOCK

INSURANCE

BORT AGENCY, INC. 510 Main St. • Gruver, TX (806) 733-2456

Blankenship Real Estate

659-3052 - 670-3774

LET US HELP YOU SELL YOUR HOME.

NEW LISTINGS WANTED!

Eulalia Blankenship - Sales Eschol Blankenship - Broker



We NEED listings! Call us now to help YOU sell your home for top dollar!

1026 Townsend - Spearman: 2,883 sq ft, 4 bed, 1 1/2 bath, LARGE Family Room!

1016 S Barkley - Spearman: 4,081 sq ft, 4 bed, 4 bath 3 lvg areas, 2 Att gar, Fireplace, Corner Lot! REDUCED AGAIN!

710 Front - Gruver: \$145,000 - @ 2,177 sqft, 3 bed, 2 3/4 bath, NEW Metal roof, NEW CACH,NEW Outside Stucco, and NEW Kitchen!

Shirley Howard, Broker/Owner 806-886-6536, Cell

806-648-4444, Work

Melinda McCullough, Realtor (806) 733-5678

We would LOVE to sell your HOUSE! CALL US!



Serving Hansford County Since 1990

209 & 213 N. Bernice: 2 houses, garage and storage bldg. Call for details.

34 N. Snider: 3 bed, 1 3/4 bath, CH/A wood-flooring improvements. Must see!

301 Hazelwood: 3 bed, 1 bath, fireplace, large yard

Julie Martin: Broker - 659-2425

We'd Like Your Listing!

FOR QUALITY & SERVICE CALL US TODAY!

Equal Housing Opportunity



Hansford County Hospital District OPENINGS AT HANSFORD HOSPITAL

RN 7p-7a: Providing nursing care, assessment, planning, implementation, and evaluation of each assigned patient of HCHD. Work to promote a safe environment by coordinating plans of care and supervising subordinate personnel. Key orders to EMR. Shift differential included. Licensed by the State of Texas. BCLS, ACLS, and TNCC preferred. CPR required

LVN 7p-7a: Providing prescriptive medical treatment and personal care services to patient. Assist RN in patient care plans. Licensed by the State of Texas. Must be a great communicator and team player.

LAUNDRY SUPERVISOR: Supervising laundry functions, ensures department compliance with established standards, orients new employees, over see laundry personnel, assign duties and schedule hours and maintains department records.

OPENINGS AT HANSFORD MANOR

CNA: Daily nursing care in accordance with the resident's assessment and care plan, and as may be directed by the supervisor. Must be certified by the State of Texas.

Great working environment and staff, quality facility providing opportunities for professional growth. Great Benefit package. Apply at 707 S Roland, Spearman, Tx or contact Jackie Nelson, HR 806-659-5841. Download application at hchd.net

EEDE (4/4/12)

Owned & Operated by Linda & Charles Stephens

Double XXL Steakhouse

(formerly Flying X Steakhouse)

We have expanded our seating capacity to 60! We welcome large and small groups and parties. Reservations suggested.

Open: Friday & Saturday Night

Reserve your holiday party now!

Open anytime for parties of 8 or more

From Stinnett: Go West on Hwy. 152 17 miles - Turn Left at Big White Sign (2 miles on Gravel Road)

From Dumas: Go East on Hwy. 152 16 miles - Turn Right at Big White Sign (2 miles on Gravel Road)

(806) 93JESUS (935-3787) www.doublexxl ranch.bravehost.com

TEXAS STATEWIDE CLASSIFIED ADVERTISING NETWORK

TexSCAN

TexSCAN Week of April 8, 2012

DRIVERS
CLASS-A TEAM drivers. Dedicated runs to Morton, IL. \$1000/week. \$500 Sign-On bonus. Home weekly. Consistent miles/freight. Day one medical. 1-866-331-3335. www.drivertst.com

DRIVERS - KNIGHT has steady Dry Van and Refrigerated freight. Annual Salary \$45K to \$60K. Flexible home time, modern trucks! CDL-A, 3 months current OTR experience. 1-800-414-9569 www.drivetrucknight.com

DRIVER TANGO TRANSPORT now hiring Regional, OTR, team. Top pay, plenty of miles. Great home time. Family Medical/dental. 401K, paid vacations. Call 1-877-826-4605 or www.drivertango.com

DRIVERS - \$2000 SIGN ON bonus. Get miles/home weekends, SW regional. Top pay/benefits. Paid orientation and training. 3 month OTR and CDL required. 1-800-535-1351. www.cypressruck.com, CHamblen@cypressruck.com

DRIVERS - HIRING experienced/inexperienced tanker drivers! Great benefits and pay! New fleet Volvo tractors. 1 year OTR experience required. Tanker training available. Call today! 1-877-882-6537, www.OakleyTransport.com

DRIVERS-REGIONAL FLATBED home every weekend, 40-45¢ cpm. Class CDL-A required. Flatbed load training available. 1-800-992-7863 ext. 185. www.MeElroyTruckLines.com

DRIVERS- STUDENTS 18 days from start to finish, earn your CDL-A. No out-of-pocket tuition cost. Step up to a New Career with FFE. www.drivethe.com 1-855-356-7122

EXPERIENCED FLATBED DRIVERS: Regional opportunities now open with plenty of freight and great pay. 1-800-277-0212 of primejnc.com

NEW TO TRUCKING? Your new career starts now! \$0 tuition cost, no credit check, great pay & benefits. Short employment commitment required. Call: 1-866-297-6598 www.joinCRST.com

OWNER OPERATORS \$2500 Sign-on/dedicated runs, Class CDL-A, ask about our Greatcare plan option for health care, retirement, wellness and business services. Call 1-866-904-9230; drivetogreatwide.com

PAID CDL TRAINING! No experience needed. Stevens Transport will sponsor the cost of your CDL training. Earn up to \$40K first year and \$70K third year. Excellent benefits! EOE, 1-800-333-8595, www.becomeadrivert.com

REWARDING CDL-A career with Averitt! 37¢ cpm with 1+years experience! 4-12 months experience! Then we have a paid refresher course available. 1-888-362-8608 or AVERITTCareers.com, EOE.

YOU GOT THE DRIVE. We have the direction. OTR drivers. APU Equipped. Pre-Pass, EZ-Pass, Pets/passenger policy. Newer equipment. 100% NO touch. 1-800-528-7825

EDUCATION
HIGH SCHOOL DIPLOMA from home 6-8 Weeks. Accredited and get a diploma. Get a job! Free brochure, 1-800-264-8330 Benjamin Franklin High School www.diplomafromhome.com

AIRLINES CAREERS begin here. Become an aviation maintenance tech. FAA approved training. Financial aid if qualified. Housing available, job placement assistance. Call Aviation Institute of Maintenance, 1-888-886-7315

ATTEND COLLEGE ONLINE from Home, Medical, Business, Criminal Justice, Hospitality. Job placement assistance. Computer available. Financial aid if qualified. SCHEV certified. Call 1-888-205-8920, www.CenturaOnline.com

CAN YOU DIG IT? We will train, certify and provide lifetime assistance landing work. Start digging as a heavy equipment operator. 1-866-362-6497

HIGH SCHOOL DIPLOMA graduate in 4 weeks! Free brochure! Call now! 1-866-562-3650, ext. 55, www.southeasternHS.com

HEALTH
TAKE VIAGRA/CIALIS? Save \$500.00! Get 40 100mg/20mg pills for only \$99.44 bonus pills free! #1 male enhancement, discreet shipping. Blue pill now! Call 1-888-395-8456

HELP WANTED
NURSES NEEDED: Lynn County Hospital in Tabaska is looking to hire full-time RNs for 12-hour nights. No OB care. Visit: lchdhealthcare.org for information and applications.

WANTED: LIFE AGENTS Earn \$500 a day, great agent benefits, commissions paid daily, liberal underwriting. Leads, leads, leads. Life insurance license required. Call 1-888-713-6020

MISCELLANEOUS
SAWMILLS FROM ONLY \$3997.00. Make and save money with your own handmill. Cut lumber any dimension. In stock ready to ship. Free information/DVD: www.NorwoodSawmills.com 1-800-578-1363 Ext. 300N

REAL ESTATE
2.4 ACRES in Crystal River, FL. Next to world famous Plantation Inn and Golf Resort and faces Kings Bay. Zoned for commercial or multi-family. Call Jack 1-214-755-6224.

3 TRACKS TOTALING 693 acres in Reeves County, 15 miles North Pecos, river frontage. Call Jack 1-214-755-6224

12 ACRES, Duval County, South TX brush, county road frontage. Deer, hogs, turkey. \$3,550/acre, 20 year owner financing or TX Vet financing. 1-866-286-0199. www.westmetatxland.com

ABSOLUTELY THE BEST VIEW Lake Medina/Bandera, 1/4 acre tract, central W/S/E. RV/motor home/house, OK only \$830 down, \$235 month (12.91%/10yr). Guaranteed financing, more information call 1-870-460-9354

AFFORDABLE RESORT LIVING on Lake Fork, RV and manufactured housing OK! Guaranteed financing with 10% down. Lots starting as low as \$6900. Call Josh, 1-903-878-7265

HUNTER'S DREAM: 211 acres \$64,900. 1 day land liquidation. Sat. April 21st. Repossessed property in Terrell County. Trophy whitetail habitat and more. Great views, secluded. Price to sell, excellent financing available. 1-888-764-8805.

NEW YORK STATE land sale discounted to 1990's prices! 3 acre starter camp -\$17,995. 5 acres with farmhouse -\$49,995. 52 acres, stream, 2 ponds. Beautiful woods and views. Access to road, utilities and state land. Limited offer, call Christmas & Associates 1-800-229-7843 or visit landandcamps.com

\$106 MONTH RVs land for RV, MH or cabin. Gated entry, \$690 down. (\$6900/10.91%/7yr) 90 days same as cash. Guaranteed financing, 1-936-377-3235

STEEL BUILDINGS
STEEL BUILDINGS Remaining: 2011 Blow-Out! Lowest prices around, low monthly payments. 5 left, make offer. 16x20, 20x26, 25x32, 30x40, 40x60. Call now! 1-800-991-9251. Ask for Tara

VACATION PROPERTY
WEEKEND GETAWAY available on Lake Fork. Lake Livingston or Lake Medina. Rooms fully furnished! Gated community with clubhouse, swimming pool and boat ramps. Call for more information: 1-903-878-7265, 1-936-377-3235 or 1-800-460-8354

Run Your Ad In TexSCAN!
Statewide Ad \$500
301 Newspapers, 942,418 Circulation
North Region Only \$230
98 Newspapers, 263,811 Circulation
South Region Only \$230
101 Newspapers, 366,726 Circulation
West Region Only \$230
102 Newspapers, 311,881 Circulation
To Order: Call this Newspaper direct, or call Texas Press Service at 1-800-749-4793 Today!

NOTICE: While most advertisers are reputable, we cannot guarantee products or services advertised. We urge readers to use caution and when in doubt, contact the Texas Attorney General at 1-800-621-0508 or the Federal Trade Commission at 1-877-FTC-HELP. The FTC web site is www.ftc.gov/bizop

Extend your advertising reach with TexSCAN, your Statewide Classified Ad Network.

Hotline for Priority Seating - 435-3945

MONEY'S

BBQ & STEAK HOUSE

We Are THPLC-2-B

14 SE 3rd Ave. Perryton, TX

Stan and Donna Zepp

New, Updated Menu Same Great Service

YOUR PROPERTY TAXES JUST WENT UP OR HADN'T YOU HEARD?

KEEP THE LIGHT ON PUBLIC NOTICES

When local governments want to increase tax revenues, they are required to publish notices in the newspaper so that you will know. But that right to know could disappear.

Local governmental entities across the state want to hide their public notices on little seen, rarely visited government websites.

What you don't know will affect you personally!

If it is not in the newspaper, you won't know about it.

The Hansford County Reporter-Statesman

GHS FCCLA Students to Attend State Conference

Several GHS students are set to attend the 3 day State FCCLA Leadership Meeting in Dallas, Texas, April 12-14, 2012. The conference will feature three days full of leadership opportunities for the members and advisors and exciting speakers of sessions that will motivate members to travel down the highway to success.

Featured speakers and entertainment will include Bryan Fiese, presenting a Hypnotic Comedy; the Granger Smith Band; Marcus Engel, a motivational speaker hit by a drunk driver and almost killed; the

Black Dutch Sioux Band; and Meg Brown, who will share "survival secrets" for students heading down the road of life. The group will also be touring the Dallas Market Center. Breakout sessions will include the following themes: Career Connections; Winning the Money Game; Teen Violence and Bullying; Childhood Obesity; and Drug and Alcohol Abuse. The group is also planning to tour the Sixth Floor Book Depository Museum in Dealey Plaza where President Kennedy was assassinated.

Students attending will

be Rocio Terrazas, Senior; Karen Tarrango, Junior; Irasema Soto, Junior; Noemy Guereca, Freshman; Gricelda Lopez, Freshman; and Thaily Martinez, Freshman. Students will be accompanied by Cherri Sherrill, FCCLA advisor and FCS Teacher; and Debby Odom, sponsor.

Students were selected to attend by earning points for their involvement in projects and activities throughout the current school year. The Gruber FCCLA is proud to have had 23 involved members this year participating this year.

by Dorothy Hudson
Out at the Lake

Lake Level--April 9, 2012--29.23 feet (-0.18)

Jim reported a very active Easter weekend at the Lake with 12 campers behind the dam and 6 on the office side. There were also dry campers--2 in the trees behind the dam and 2 near the Lake. The campers included a larger than usual number of children. Sunday afternoon was extra busy with family get-togethers.

Randy Coombs with his son Kiley, fishing from a boat, caught a nice string of large crappie. Being dedicated fishermen, they had gone to Lake Meredith for minnows for bait. It has been quite awhile since Jim had seen this size and quantity of crappie.

Jim is still seeing a bald eagle flying south from the Lake. Surely if we have a nesting pair, someone will notice the nest.

Snakes have yet to be seen at the Lake, but it is time to be alert for them.

Sand Pit in Hansford County

The process of fracking a horizontal oil well can take hundreds of tons of sand. This made me wonder about sand pits in Hansford County. Of course, we all know our county has had its share of caliche pits. And a rock quarry in southern Hansford County furnished stone for the Tyler, McKay, and Les Cator houses. But until Marshall Cator told me a story of a sand pit, I had not heard of one in the county.

He and I had been visiting about the stagecoach stop that operated around the 1890s on the Bert Cator ranch on the north branch of the Palo Duro Creek. According to Marshall, the creek was dry then, as it is now. So they dug a well in the bottom of the creek to supply water for the stage as well as the Cator dugout and the stock.

This led Marshall to tell about when his father, Bert Cator, used a steam engine to move his two-story house from Old Hansford to the Cator ranch. Because they had to make a new foundation for the house, Bert, Sr. told his two oldest sons, Bert, Jr. and Marshall, to take a wagon to the Canadian River for sand. But Marshall figured that he could find sand a lot closer than that. He started riding down the creek, and at the old stage stop, which was on a knoll, he found where a badger had dug into the knoll and brought up sand. He said they got the needed sand from that spot.

Years later when the railroad was built from Amarillo to Liberal, Bert, Jr., who was living on the ranch in the old sod house that Bert Sr. had built for his bride, let the railroad men dig the rest of the sand from the knoll.

**4th Annual Crimestoppers Auto Show
Ochiltree County Expo**



**April 21, 10am - 9pm
April 22, 12pm - 5pm**

Proceeds to Ochiltree County/Community Projects
Adults \$5, Children under 12 free
Concessions available

NAYLOR AUCTION and REALTY, INC.
Rt. 1, Box 65 (580) 646-3548, Balko, OK 73931

AUCTION SATURDAY
April 21, 2012 • 10 a.m.

Ollie Scott Ranch near Lipscomb TX

SELLER: GIMLET ENTERPRISES
LOCATIONS: 5 miles south of Lipscomb, Texas on Highway 305, west into ranch. Watch for signs. Ollie Scott Ranch

- TRACTOR, ROLLING STOCK, TRAILERS**
1993 JD 3055 tractor w/740 JD Loader, 5,700 hrs, 3 pt, pto, dual hyd. cab, dsl, w/reserve
2008 Dodge Ram 3500 SLT Quad Cab, 4x4, auto, dsl, 58,700 mi., spray-on bed liner, exc. condition, w/reserve
2006 Polaris Sportsman 700 4 wheeler, 4x4
1992 S10 Blazer, V-6, 207,555 mi.
1948 Chev grain truck, hyd bed, 4 sp
1987 Ford F350XL, duals, flatbed, dsl, 137K mi.
1979 Shelby GSN Livestock, 7 1/2-30, tandem, full top; Century GSN Livestock, 20-6, full top; Hanover GSN Livestock, 20-5 1/2, half-top
1994 Big Tex 16' flatbed utility
Pickup bed trailer
Motorcycle trailer
- TRACTOR ATTACHMENTS**
7' JD 307 3 pt Gyramor mower
7' JD 3 pt blade
Danuser Hyd Digger w/3 augers
Hay fork
Hay spike
- LIVESTOCK EQUIPMENT**
Priefert Cattle squeeze chute
30' Priefert alley w/tub
Calf cradle
WW loading chute
15 WW 10' panels
33 12' panels
3 walk thru gates
Lot wire mesh panels
Several lots gates and panels
John Bean cattle sprayer
Lot water tanks
2 mineral tubs
4 20' pre-fabricated portable feed bunks
4 round bale feeders
Round bale trailer w/unroller
My-D-Handy 800# cake feeder
1000# cake feeder
Wood 60 bushel self feeder on skids
Lot elect. wire and post
Big 12 grain cart
Log windmill pulling tools
Lot elect. fence chargers
Lot big cattle dehorners
Lot cattle processing equipment
Calf puller, EZE bander
Palmer cap-char dart rifle w/kit
- POWER EQUIPMENT**
7500 Pacific dsl generator, elect stand, 120-240
- volt, 1 hr
650 Pacific dsl generator, elect. start, 120-240 volt, 91 hrs
Pacific portable air compressor, twin cyl., dual tanks whose, LC 208 eng., like new
Pacific portable 3" centrifuge pump, LC 208 eng., new
Speed clean gas pressure washer, 2200 PSI
Campbell 110 volt compressor, 20 gal, 5 hp
Campbell 110 volt compressor, 10 gal
Forney 180 amp welder
Troybilt roto-tiller, 3 hp
Murray push mower
- SHOP TOOLS & EQUIPMENT**
Snap-on tool box
2 shop vacs
Elect fan
2 wheel grinders
1" socket set
Right angle grinder
Elect. Impact 1/2 drive
Dolly-creepers-hand tools, shop tools, gear pullers, jacks, chains, tie down straps
- HOUSEHOLD**
2 drop leaf tables
1 elect clothes dryer
Twin bed
Older sleigh bed
Dining table w/chairs
End table
Secretary desk
Lamps, Christmas trees
- NON-CLASSIFIED**
1,200 gal fuel tank on skids
500 gal overhead tank
GSN plate
2 7-50-20 tires
Lot used tires
Lot lumber
2 compartment portable fuel tank w/12 v pump
Lot PVC pipe
Lot 3" poly pipe
Lot crap iron
Red 2009 Chevy long bed
Bumpers 2005 Chevy
3000 Gal sprayer
Air compressor - needs repair
Lot T post
Many more items too numerous to mention!
- www.naylorauction.com
Not responsible for accidents.

For more info, call:
Dale Naylor
Owner/Broker

NAYLOR AUCTION & REALTY, INC.
Rt. 1 Box 65 BALKO, OK 73934
www.naylorauction.com

OK 107486 - TX 7285
580-646-3548
806-435-1994 (cell)

Tong's Chinese Restaurant
(806) 644-2838
22 Archer Street • Spearman

Daily Buffet
Lunch - 11 a.m.-2:30 p.m. • Dinner - 5:30-9 p.m.
Open Wednesday-Monday - Closed Tuesday

NEW
Sushi on Sunday Buffet

\$0 Down, 0% A.P.R. Financing for up to 60 Months* on Select New Kubotas!

ZD331



- 31 HP, 3-Cylinder Kubota Diesel Engine
- 60" or 72" Mower Deck • Hydrostatic Transmission

RTV900XT



- 21.6 HP, 3-Cylinder Kubota Diesel Engine
- General Purpose, Worksite & Utility Models Available

MX5100



- 50 HP, 4-Cylinder Kubota Diesel Engine
- 2WD with 4WD Available • Power Steering

L3800



- 37.4 HP, 3-Cylinder Kubota Diesel Engine
- Performance-Matched Implements Available

PANHANDLE IMPLEMENT CO., INC.
710 North Main Street • Perryton, TX
806-435-6508

* 50 down, 0% A.P.R. financing for terms up to 60 months on purchases of select new Kubota equipment from available inventory at participating dealers through 6/30/2012. Example: 48-month monthly installment payment term at 0% A.P.R. requires 60 payments of \$16.67 per \$1,000 borrowed. 0% A.P.R. interest is available to customers if no dealer documentation preparation fee is charged. Dealer charge for document preparation fee shall be in accordance with state law. Only Kubota and select Kubota performance-matched Land Pride and equipment is eligible. Inclusion of ineligible equipment may result in a higher blended A.P.R. Not available for Rental, National Accounts or Governmental customers. 0% A.P.R. and low rate financing may not be available with customer instant rebate (C.I.R.) offers. Financing is available through Kubota Credit Corporation, U.S.A., 3401 Del Amo Blvd., Torrance, CA 90503, subject to credit approval. Some exceptions apply. Offer expires 6/30/2012. See us for details on these and other low-rate options or go to www.kubota.com for more information.

Kubota
EVERYTHING YOU VALUE

SAFETY
K710-04-101588-2