



HANSFORD COUNTY ★ THE REPORTER-STATESMAN ★

HANSFORD COUNTY LIBRARY
0122 MAIN ST
SPEARMAN TX 79081-2064
COMP
SCR2

THURSDAY,
NOVEMBER 3, 2011

75¢

WWW.SPEARMANREPORTER.COM

VOLUME 104 • ISSUE 44

REPORTER@SPEARMANREPORTER.COM

COME TO THE GAME

SPEARMAN LYNX
vs Tulia
on 11/4
at 7:30 p.m.
in Spearman

Gruver Greyhounds vs Booker on 11/4 at 7:30 p.m. in Gruver

Spearman Lynx
The 7th & 8th Grade Lynx will play Tulia in Spearman on Nov. 3rd. The 7th grade will play at 5 and the 8th grade will play at 6:15. The JV will play Tulia on Nov. 3rd at 6 p.m.

Gruver Greyhounds
The Gruver Jr. High will play Booker in Booker on Thursday, November 20th at 5 p.m.. The Gruver JV does not have a game scheduled at this time.

CROSS COUNTRY

Gruver Greyhounds/Lady Hounds
The Gruver Cross Country Varsity teams will compete in the Regional Meet at Mae Simmons Park in Lubbock on Saturday, November 5, 2011.

Spearman Lynx/Lynxettes
The Spearman Cross Country Varsity teams will compete in the Regional Meet at Mae Simmons Park in Lubbock on Saturday, November 5, 2011.

Weather Forecast

THURSDAY - Mostly sunny. Highs in the lower 50s. South winds 10 to 15 mph.
THURSDAY NIGHT - Mostly clear. Lows around 30. South winds around 15 mph.
FRIDAY - Partly cloudy. Breezy - warmer. Highs in the upper 60s.
FRIDAY NIGHT - Partly cloudy. Breezy. Lows in the lower 40s.
SATURDAY - Mostly sunny. Windy. Highs in the upper 60s.
SATURDAY NIGHT - Mostly clear. Lows around 30.
SUNDAY - Mostly sunny. Highs in the upper 50s.
SUNDAY NIGHT - Partly cloudy in the evening then becoming mostly cloudy. Lows in the lower 30s.
MONDAY - Mostly cloudy with a 20 percent chance of rain showers. Highs in the upper 50s.
MONDAY NIGHT - Mostly cloudy with a 20 percent chance of rain showers. Lows in the upper 30s.
TUESDAY - Mostly cloudy with a 20 percent chance of rain showers. Highs in the mid 50s.
Read more: <http://www.city-data.com/forecast/w-Spearman-Texas.html#ixzz1XwhiVZt8>

Weekly Update

Texas, October 31- Average retail gasoline prices in Texas have fallen 3.5 cents per gallon in the past week, averaging \$3.25/g yesterday. This compares with the national average that has fallen 0.6 cents per gallon in the last week to \$3.46/g, according to gasoline price website TexasGasPrices.com.

Including the change in gas prices in Texas during the past week, prices yesterday were 66.1 cents per gallon higher than the same day one year ago and are 1.2 cents per gallon higher than a month ago. The national average has decreased 1.2 cents per gallon during the last month and stands 65.5 cents per gallon higher than this day one year ago.

"With some European resolve in regards to the Greece debt situation, oil prices took off late last week," said Patrick DeHaan, GasBuddy.com Senior Petroleum Analyst. "While the national average has remained relatively subdued in the last couple weeks, we may see a slow climb in the national average this week. The national average for gasoline has barely climbed, even as crude has gained some \$20/bbl from the lows we saw nearly six weeks ago. As we approach heating oil season, we'll also see support for diesel prices, which is sure to frustrate diesel consumers, who are paying as much as eighty cents more per gallon than gasoline consumers," DeHaan added.

GasBuddy operates, TexasGasPrices.com, and over 225 other local gasoline pricetracking websites that follow prices at over 125,000 gasoline stations in the United States and Canada. GasBuddy also uses Facebook (facebook.com/gasbuddy) Twitter (twitter.com/gasbuddy), and phone apps to keep motorists ahead of changing gasoline prices.

AVAILABLE NOW!
E-SUBSCRIPTION NEWS
In the Hansford County Reporter-Statesman
Delivered to your email each Thursday for only \$39/year.
Purchase online at www.spearmanreporter.com
Call 806-659-3434 or e-mail reporter@reporter-statesman.com for details.

General Election Set for Constitutional Amendments, Local Liquor Option

A general election will be held on Tuesday, November 8, 2011, for Texans to vote on 10 constitutional propositions submitted by the 82nd Legislature.

October 24, 2011 will be the first day for early voting in person. November 1, 2011 will be the last day to submit applications for ballot by mail to the early voting clerk. Friday, November 4, 2011 is the last day to vote early by personal appearance.

Early voting will be conducted in the County Clerks office at the Hansford County Courthouse, #1 NW Court in Spearman from 8 a.m.-5 p.m., Monday-Friday. Early voting will also be conducted at Gruver City Hall, 201 E Broadway, from 8 a.m.-5 p.m., Monday-Friday.

Late night voting will be held at the Hansford County Courthouse on Thursday, October 27th and Thursday, November 3rd from 8 a.m.-8 p.m.

Voting on November 8th will be held from 7 a.m. to 7 p.m. at the following polling places: **Precinct 1 & 5** - Spearman City Hall (30 SW Court, Spearman); **Precinct 2, 3 & 7** - Cristo Redentor Catholic Church (202 Hwy. 15, Gruver); **Precinct 4 & 9** - Gruver City Hall (201 E. Broadway, Gruver); **Precinct 6** - Spearman High School (403 11th Street, Spearman).

In addition to the constitutional propositions, a local option election will be held on November 8th at Spearman City Hall

for Precincts 1, 5 & 6 (inside city limits only). A local option election is an election to vote on the status of the sale of alcohol within a specific area, in this case, the Municipality of Spearman, Texas.

The ballot issue that this petition will be for is: "The legal sale of all alcoholic beverages including mixed beverages." Beer, malt liquor and wine in a grocery or convenience store AND beer, malt liquor, wine and distilled spirits in a liquor store AND beer, malt liquor, wine and distilled spirits in a bar or restaurant.

The propositions that will be on the ballot are as follows:

PROPOSITION 1: The constitutional amendment authorizing the legislature to provide for an exemption from ad valorem taxation of all or part of the market value of the residence homestead of the surviving spouse of a 100 percent or totally disabled veteran.

PROPOSITION 2: The constitutional amendment providing for the issuance of additional general obligation bonds by the Texas Water Development Board in an amount not to exceed \$6 billion at any time outstanding.

PROPOSITION 3: The constitutional amendment providing for the issuance of general obligation bonds of the State of Texas to finance educational loans to students.

PROPOSITION 4: The constitutional

amendment authorizing the legislature to permit a county to issue bonds or notes to finance the development or redevelopment of an unproductive, underdeveloped, or blighted area and to pledge for repayment of the bonds or notes increases in ad valorem taxes imposed by the county on property in the area. The amendment does not provide authority for increasing ad valorem tax rates.

PROPOSITION 5: The constitutional amendment authorizing the legislature to allow cities or counties to enter into inter-local contracts with other cities or counties without the imposition of a tax or the provision of a sinking fund.

PROPOSITION 6: The constitutional amendment clarifying references to the permanent school fund, allowing the General Land Office to distribute revenue from permanent school fund land or other properties to the available school fund to provide additional funding for public education, and providing for an increase in the market value of the permanent school fund for the purpose of allowing increased distributions from the available school fund.

PROPOSITION 7: The constitutional amendment authorizing the legislature to permit conservation and reclamation districts in El Paso County to issue bonds supported by ad valorem taxes to fund the development and maintenance of parks and recreational facilities.

PROPOSITION 8: The constitutional amendment providing for the appraisal for ad valorem tax purposes of open-space land devoted to water stewardship purposes on the basis of its productive capacity.

PROPOSITION 9: The constitutional amendment authorizing the governor to grant a pardon to a person who successfully completes a term of deferred adjudication community supervision.

PROPOSITION 10: The constitutional amendment to change the length of the unexpired term that causes the automatic resignation of certain elected county or district officeholders if they become candidates for another office.



Gruver Band Competes at Area

The Gruver High School Band competed in the Area Marching Contest, which was held in Amarillo on Saturday, October 29, 2011.

The Greyhound Band advanced to the finals at the Area Contest. They came in 6th out of 22 bands. The top four bands were Canadian, Sundown, Sudan and Tahoka, all of which are large 1A bands.

The Greyhound Band is directed by Sandy Cross.

Texas Crop & Weather

The following specific livestock, crop and weather conditions were reported by Panhandle Extension directors: The region received its first snow - as much as 4 inches - and cold front of the season. Actual moisture received ranged from a trace to about 2 inches. Soil-moisture levels were still very short to adequate with most counties reporting very short to short. The corn harvest was ongoing, and the cotton harvest began. Wheat growers continued planting. Rangeland and pastures were in from very poor to good condition, with most counties reporting very poor to poor. Livestock producers continued supplemental feeding of cattle.

Are You Ready For Some FOOTBALL?



LEFT: #25 Rene Pena finds an opening.
BOTTOM LEFT: #28 Alfredo Rosendo kicks an extra point while #13 Jace Lang-Swan holds.
BELOW: #87 Junior Garcia and #71 Jorge Caro tackle the Eagle ball carrier.
BOTTOM RIGHT: #82 Stefan Cook returns a kick-off for the Lynx.
Spearman photos by Tami Hargrove. Pictures available at <http://spearmansports.smugmug.com>
See related article on Page 6

Wolf Creek Heritage Museum Notes

by Virginia Scott
MUSEUM HAPPENINGS

First, the good news - Amy is extending her show through November. So, enjoy the fall foliage colors from Booker to Lipscomb or from Canadian to Lipscomb and come to the museum to see Amy's great paintings.

We have also starting adding to the Ranch Room exhibit with the installation of the Altmiller Family Heritage Display with their 100 year state certification. We have at least five ranches who have been certified and have historical markers on their ranches. We invite those of you who have historical markers to

bring us your certificates and photos, etc. for your ranch display. (We also have basic information on this program that will get you started, if you think your farm or ranch qualifies, come see us.)

Wednesday, was a good work day and our work room is looking pretty good. We still have areas that we need to clean, sort through, etc. At the last board meeting, it was decided that we would de-accession the old copy machine and start cleaning the school store room for more storage area until the new building is built. If you would like to assist with the clean-up, call us or show up

on Wednesdays.

I journeyed to Snyder last Thursday and Friday for the second Quannah Parker Trail meeting. This is a project of the Texas Plains Trail to identify areas where Quannah Parker and his tribe had significant events, or where they had camps, battles, etc. Once documented, these areas will be marked with a giant arrow. I got the application packet to submit two sites for Lipscomb County that I have information on that I think can qualify.

Last week I quoted in the tidbit section, Kathy Cook's writeup on her ride on the "Doodlebug." Lovella found the group picture of that trip and we are adding them to our Doodlebug exhibit on the outer office wall. If this keeps up we are going to have to move the Doodlebug exhibit to a full floor all its own.

MUSEUM MUSINGS

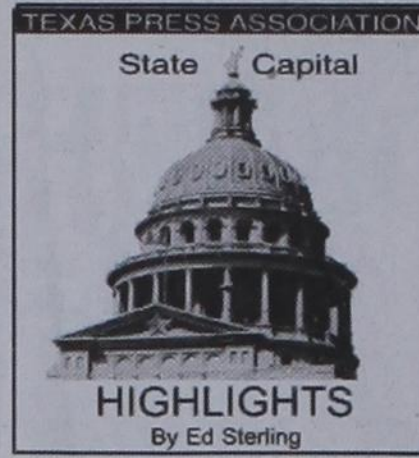
Did you know or do you remember who and how the first Follett history book got its name? Well, they had a Name contest for the Follett Anniversary Book which ended on Friday, June 23, 1967. The winner was Opal Breon, Follett with the title of "Pioneers of the Prairie."

I have often commented in this column how our obituaries of today were lacking in information on the deceased individual. In comparison is the obituary of Thomas Haines in the June 15, 1944 issue of the *Lipscomb Lime Light* and *The Follett Times*. It is two full columns long and gives all the details of his ninety years. A great read and I will try to highlight its contents for you in the next few columns.

Thomas Haines, born April 16, 1854 at Davenport, Iowa and died June 11, 1944 at the age of 90 years, one month and 26 days. On October 14, 1873, he was married to Miss Samantha Walton of Muscatine, Iowa who preceded him in death 18 years ago last April 30th. He is also survived by a second wife, formerly Mrs. Mary Rounkies, whom he married on July 20, 1929. He was survived by six children: oldest son, William Terrel Haines died Feb. 20, 1920. Mrs. W.C. Walker, Mrs. Myrtle Frazier, Oscar Haines and Albert Haines all of Follett and Mrs. Benjamin Farmer of Lincoln, Ark. (I guess in 1940's, the Skaggs did not give the ladies first names only husband's names.)

The article also stated that "In youth Mr. Haines was not a very strong child and often sick. His mother remarked to him many times, 'Thomas, you will never live to be a man.'"

Next week, more on family history. Hope you enjoyed Halloween.



STATE CAPITAL HIGHLIGHTS



by Ed Sterling

RRC adds to blast against proposed air rule

AUSTIN — All three members of the Texas Railroad Commission last week followed suit with the governor, lieutenant governor, House speaker and state attorney general in protesting a federal air pollution rule proposed in August.

The Cross-State Air Pollution Rule is meant "to reduce interstate transport of ozone and fine particle pollution from the air." If it takes effect in its present form, the rule would tighten operating methods and oversight of industries in Texas and other states generating emissions that blow into other states.

In their Oct. 25 letter to the U.S. Environmental Protection Agency, the commissioners wrote that the oil and gas industry in Texas would be significantly impacted and result in an expansion of EPA's authority to regulate and control oil and natural gas activities in Texas and other states.

"Here we go again with EPA trying to stifle one of this nation's top job creators—the oil and gas industry in Texas, which supports 2 million Texas jobs, Railroad Commission Chair Elizabeth Ames Jones said in an agency press release. "The Commission has been effectively regulating our oil and gas producers since 1919 and we do not need EPA hampering our efforts to boost this nation's domestic energy production."

Meanwhile, in energy-related news, the average rig count in Texas as of Oct. 21 was 905, representing about 46 percent of all active land rigs in the United States. In the last 12 months, Texas total reported production was 374 million barrels of oil and 7.1 trillion cubic feet of natural gas, the Railroad Commission reported.

Drought measures on ballot

Seventy-three percent of Texas is still in exceptional drought and though September was not nearly as hot and dry as the past few months, the period from April to September is the hottest and driest period since 1895.

Also, 229 counties have burn bans and 1 in 5 (941) of the state's public water supply systems have been impacted by the drought and statewide reservoir storage is declining and is at a record low of 60 percent. So said Mark Wentzel

of the Texas Water Development Board at the agency's Oct. 20 meeting. And the outlook is for the drought to persist into next year.

Two of the 10 propositions on the Nov. 8 election ballot would amend the Texas Constitution to address the state's chronic water deficit. Democratic State Sens. Kirk Watson of Austin, Juan "Chuy" Hinojosa of McAllen and Eddie Lucio Jr. of Brownsville said the two measures, if approved by voters, will "help protect water supplies for Texans, our children, and future generations."

The three lawmakers jointly stated on Oct. 20, "If there's any lesson from this terrible drought, it's that nothing is more important to Texas than a clean, reliable water supply. And on November 8, you'll have the chance to protect it."

Prop. 2 would allow the state to issue bonds that will provide money to partner with cities, counties and other local entities to create water, sewer and flood control projects. The total amount of bonds could not exceed \$6 billion outstanding at any time.

Prop. 8 would enact a law passed in the legislative session that ended in May, encouraging landowners to manage their property to conserve water and improve water quality.

Arson cases to be reviewed

The Texas Forensic Science Commission on Oct. 28 approved the creation of a program to review past arson cases.

Under the program, reviews are to be conducted by the State Fire Marshal's Office (part of the Texas Department of Insurance since 1997) and Innocence Project of Texas, a non-profit organization dedicated to securing the release of those wrongfully convicted of crimes in Texas.

A primary subject of review will be the controversial case of Cameron Todd Willingham, a Corsicana man convicted of the 1991 deaths of his three daughters in a fire ruled arson. Willingham was executed in 2004.

The commission's recommendations include the creation of a questionnaire for inmates convicted of arson to see if their cases are worth reviewing. The panel also recommended a review of death certificates in cases where the murder charge is listed as arson, new certification criteria for expert witnesses, adding rules and regulations to prevent the use of outdated science and improving the quality of testimony and analysis.

Words from Faith & Grace



by Cecil R. Biggers, Lutheran Lay Minister

In the twenty-first week of Pentecost, we learn something of death and life in Christ as we study Amos 6: 18-24, Psalm 70, 1 Thessalonians 4: 13-18, and Matthew 25: 1-13.

Amos is speaking with a tone of irony to his hard-headed people. The prophet warns believers not to be desirous of the Day of the Lord (the people were looking for a military victory over Israel's enemies), because the Day of the Lord will be darkness, not light, a day of judgment. Amos tells them that the Lord hates their festivals, solemn assemblies, and burnt offerings. Ritual worship does not please God if all the believer does is to go through the motions. That which pleases God is to worship him by living a life filled with justice to others. We cannot separate 'right' beliefs from 'right' actions. We show our love for God in our acts towards others.

The Psalmist sings a song of deliverance. "But I am poor and needy; hasten to me, O God! You are my help and my deliverer; O Lord, do not delay!" God is a God of mercy. God hears his children's pleas.

Paul reassures the Church at Thessalonica that those who die before Christ's return have not lost out on the Kingdom. The first century church looked for Christ's immediate return, and with the passage of time, started losing faith. Some use this scripture as a basis for the "parousia" or "rapture". What is important here is the fact that when we live in Christ and die in Christ, we are still "in" Christ.

Jesus tells about the Kingdom of Heaven in the parable of the ten bridesmaids. The scene is a common one in Palestine. Entire villages participated in a wedding. The bride was accompanied by ten of her friends who would watch with her until the bridegroom came; then the entire party would go to the bride's house where the new couple would be wed and the party would begin. Once the door was closed, no further guests were admitted. The wise bridesmaids were prepared to experience delays and even though they napped, they were prepared. The foolish bridesmaids had lamps and also napped, but were unprepared for the bridegroom's late arrival. When the foolish bridesmaids went to buy oil, the door to the house was locked and they missed out! Learn that we must be prepared, we must watch! Start your relationship with Christ now! Do not wait until he returns, for then the 'door' is shut.

May the Holy Spirit enable you to worship Jesus the Christ in your daily life so that you will be prepared for His return. Maranatha! (Come Lord Jesus!)

SUDOKU
PRESENTED BY

VolunteerMatch.org
Where volunteering begins.

6			2	4				
8	9				5	3		
5	4	7			9	6		
					9	1	2	
9	8	2						
3	6			2	8	1		
4	1			3		7		
			1	6			9	

© StatePoint Media answer on classified page
Fill in the blank squares in the grid, making sure that every row, column and 3-by-3 box includes all digits 1 through 9.

The Hansford County Reporter-Statesman
Mailing Address - 213 Main Street • Spearman TX 79081
Physical Address - 310 Barkley Street • Spearman TX 79081
Phone - (806) 659-3434 • Fax - (806) 398-9080
www.spearmanreporter.com • reporter@spearmanreporter.com
Mon.-Thurs. 9 a.m.-12 p.m., Mon.-Wed. & 1-5 p.m.
Closed Thurs. afternoon and all day Fri., Sat. & Sun.

Gary Smith - Publisher Catherine Smith - Editor
Contributing Writers: Dorothy Hudson, Jim Detrition, Merry Sparks, Cecil Biggers, Virginia Scott, Ed Sterling, Rod Sumner
Contributing Photographers: Lisa Johnson, Tami Hargrove, Tammy Batton, Bonnie Bergan, Rod Sumner

Subscription Rates
In Hansford County - \$30.00 • Out of County - \$40.00
E-Mail Subscription - \$35.00

The Hansford County Reporter-Statesman (USPS 529660) is published weekly in Spearman, TX. Periodical postage paid in Spearman, TX. **POSTMASTER:** Send address changes to: The Hansford County Reporter-Statesman, 213 Main Street, Spearman, TX 79081.

Publication Policy
The deadline to submit news and advertising to The Hansford County Reporter-Statesman is Monday at 5 p.m. Items submitted after the deadline will be published at a later date, as time and space permit. Publication of all items is at the discretion of the editor.

Advertising
Open Display rates are \$4.00 per column inch. Classified Ads are \$7 for the first 20 words and 15¢ per word for each additional word. (Additional charge for boxed classifieds.) There is a \$1 charge per week if billed.

Member of
Gruver Chamber of Commerce
Spearman Chamber of Commerce
Texas Press Association and Panhandle Press Association



SCARY MOVIES

These games are brought to you by the
Hansford County Reporter-Statesman

ACROSS

1. His/her right arm is raised in boxing
6. Departing agency
9. Alight, past tense
13. Western neck ornaments
14. Cul de ____
15. Co-exists with fauna
16. One who's overly sentimental
17. Recent or new, prefix
18. Worry or cause anxiety
19. Bigwig
21. *Viewers of this die in 7 days
23. Unit of electrical resistance
24. *Michael Myers' move, e.g.
25. Acid drug
28. Kick out
30. Easy on/off clothing
35. Throat-clearing sound
37. * ____ Paxton, of 2009's "The Last House on The Left"
39. Piano practice piece, e.g.
40. a.k.a. French Sudan
41. Beyond suburb
43. Algonquian people living in central Canada
44. Russian crepes
46. Arabian chieftain
47. Kept in certain state

DOWN

1. "Two and a Half Men" network
2. Ungulate's foot
3. ____ Romeo
4. "Semper Fidelis" to U.S. Marines, e.g.
5. *Featured Bates Motel
6. Is not
7. National Academy of Engineering
8. "He directed "Alien"
9. Having wings
10. Lesotho money
11. De-wrinkler
12. Tart spiciness
15. Faint
20. What some parks do
22. Owns
24. Swellings of the thyroid gland
25. *Clarice wanted them silent
26. "Thou ____ not envy"
27. Short for Cordelia
29. Original home of the Saxons
31. It itches
32. Make drinkable
33. Scott ____ Newbery Medal-winning children's author
34. Attention-seeking
36. Austin Powers' ____ Me
38. Like Arizona in summer
42. ____ patch
45. Steep
49. Salt in Mexico
51. *Scientist-turned-insect flick
54. Cause and effect cycle?
56. Bird of prey nest
57. *"Cujo" and "Man's Best Friend" featured them
58. Ralph in Spanish
59. It covers 8.7% of Earth's surface
60. Occupied Britain in pre-Roman times
61. *"Rosemary's ____"
62. Soda pop recyclables
63. Immense
66. Opposite of pro
68. " ____ and don'ts"

PRESENTED BY

VolunteerMatch.org
Where volunteering begins.

© StatePoint Media answer on classified page

Happy Birthday!

November 3
Birthday - Elva Cooper, Lisa Kaufmann, Dean Green, Burton Schubert, Denny Brown, Joe Bob Wrinkle, Colton Robinson, Sylvia Lopez, Steve Morales

November 4
Birthday - Justin Armes, Clayton Henson, Todd Winders, Lee Wilhelm, Julie Jones, Matthew Stewart, Tony Herndon, George Rex, Carlos Mendoza Sr., Rhett Link, Leona Stavlo, Lily Stedje, Matt Dunnihoo, Leona Stavlo
Anniversary - M/M John Cass

November 5
Birthday - Fred Davidson, James Dorman, Vireta Knight, Fabian Salazar, Jerry Holton, Dixie Smith, Lisa Price, Christopher Salazar, Richard Mackie, Nicole Fox, Debbie Trejo, Karen Paschel, Lola Mendoza, Lydia DeSantiago, Roz Duncan, Beverley Mireles, Eric Cudd
Anniversary - David & Mary K. Harbour, M/M Butch Noble, M/M Bryant Layton

November 6
Birthday - Paige Speck, Zachary Johnson, Ross Renner, Jill Watson, Don Kjos, Santiago Tercero, Calvin Bodey, Virginia Martin, Joan Hawkins, Rosa Alvarez Flores, Kiersan Lopez, Beth Dortch, Jill (Lusby) Butler, Cindy Holton, Linda Wilkerson, Tonya Mahaney, Tony Edwards, Tom Kirk, Stuart Martin, Raquel Arjona, Stacey Williams French, Dakota Lopez, Blake Burgess, Tom KirkRosa Vasquez
Anniversary - M/M David Collins, Fred & Brenda Shieldknight

November 7
Birthday - Gerald McBride, Gary McCalman, Cleo Cotter, Kurt Bynum, Megan Woolley, Lee Roy Mitchell, Jerry Tope, Haley Lombard, Pam Largent Ortega, Matthew Jarvis
Anniversary - Victor & Debbie Schumann

November 8
Birthday - Donnie Davis, Tara Gardiner, Sharon Reed, Santiago DeLaCruz, Kaylee Wheeler, Nathan Hanson, Linda Burke, Megan Stedje, Kristi Medford, Manda Simmons, D.A. Cator, Corey Fletcher, Amanda Wells
Anniversary - Danny & Delinda McLaughlin

November 9
Birthday - Mark Deakin, Tracey Chisum, Gloria Alicia Alvarez, Charolette Ford, Jasmine Bravo, Samuel Hanson, Shanna Dillard, Jessica Nicole Vela, Eloise Renner, Joe Mayo, Alfredo Mendoza, Shonna Gammon, Irasemo Soto, Pat Cudd, Beth Daniel

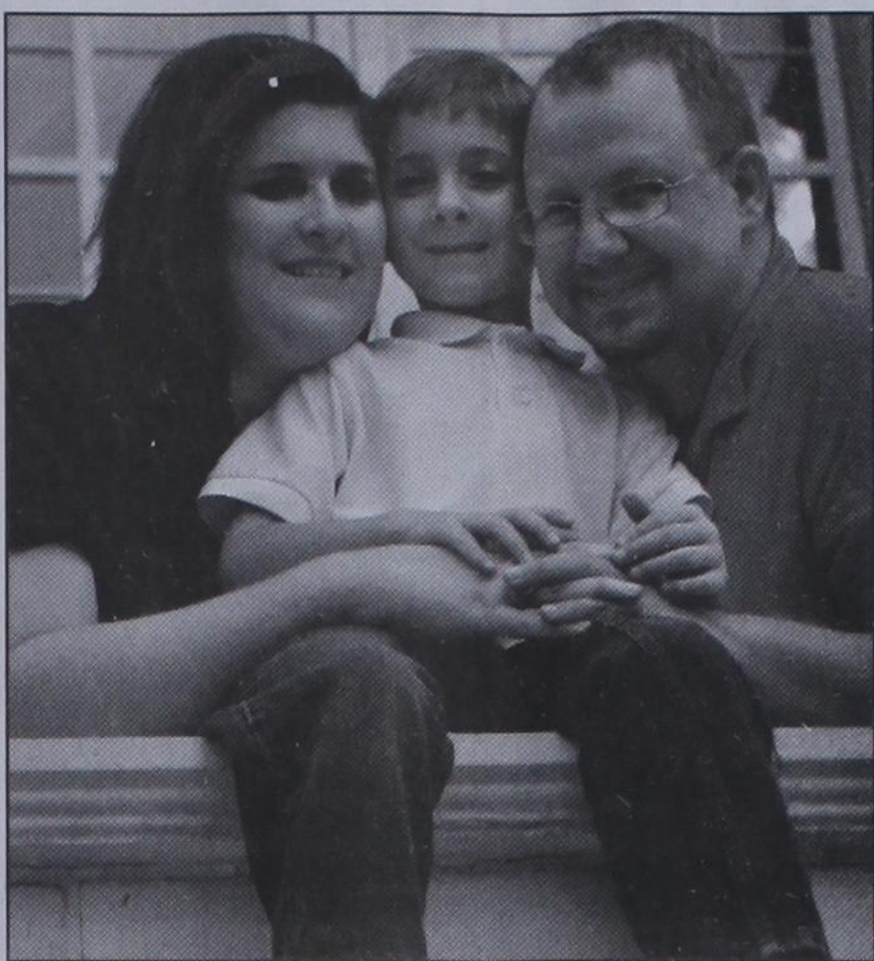
November 10
Birthday - Jess Rudolph, Rick Yanke, Buddy Hopper, Bernard Dossett, Caraly Garza, Cynthia Arnold, Marilyn Wilson, Candace Sharpe, Guadalupe Trejo, Catherine Smith, Sam Gruver, Sylvia Borunda, Bobbi Kay Christian, Jessica Gallegos, Kolby Sumner, Diane Close

November 11
Birthday - Luke Miller, Pat Overbey, Andres Rodriguez, Nichole Shearer, Matthew Stork, Tye Womble, Charles Ross III, Harriet Hutchison, Kurtis Hergert, Goldie Tucker, Heath Hergert, Callie Barkley Borger, Samantha Cazarez, Bill Watts, Liz Hickerson, Matthew Brown, Andres Rodriguez, Lupe Moreno, Alan Tarango
Anniversary - M/M Billy Snider, M/M Monty Black

November 12
Birthday - Jennie Blankenship, Monty Caszady, Benjamin Karlin, Bob Zimmer, Jo Nell Comegys, Cindy Avila, Sophia DeLuna, John Jackson, Helen Dry, Angie Thompson, Marolyn Scroggs, Brent Sanders, Dennis Crawford, Erica Alvarez, Buffy Adkins, Rose Isenhower, Jaime Briones, Ann Allen

November 13
Birthday - Lucy Alvarez, Angela Grotgut, Paulette Watkins, Rhonda Williams, Michelle Garnett, Andra Camille Brown, Kent Hargis, Amy Reed, Joseph Burch, Richard Nicholas, Carly Riethmayer, Hector DeSantiago, Masen Castillo

November 14
Birthday - Lisa Johnson, Luke Johnson, Missy Johnson, Ray Martin, Ricky Sharp, Carl Kunselman, Rhonda Tope, Norma Payne, Dolly McWhirter, Sandy Morris, Roy Pipkin, Mark Love, Jessica Crossland, Adela White, John Patterson, Judy Yarbrough, Luis C. Rodriguez, Sylvia Hodge, Shelby Ann Sasser, John Patterson



Engagement Announcement

Jesse Asiatico is proud to announce the engagement and upcoming wedding of his mother, Tawnya Riney, to Brady Tidwell. Tawnya is the daughter of Joe and LaGuan Riney of Plainview TX. Brady is the son of Buck and Linda Tidwell of Gruver, TX.

The Bride-elect is a graduate of Plainview High School and Wayland Baptist University. She is currently pursuing a Masters of Education Degree at Wayland Baptist University and is employed by United Supermarkets in Lubbock.

The future bridegroom is a graduate of Gruver High School and Texas Tech University. He is employed by United Supermarkets in Lubbock. The couple will marry March 17, 2012.

Our Sympathy

BETTY JEAN SPARKS THORESON

SPEARMAN — Betty Jean Sparks Thoreson, 82, of Spearman died Wednesday, Oct. 26, 2011.

Graveside services will be at 3 p.m. Saturday in Gruver Cemetery. Arrangements are by Boxwell Brothers Funeral Home, Spearman.

Mrs. Thoreson was born Oct. 26, 1929, in Springfield, Colo., to Burnie and Gertie Sparks. She was a homemaker. She never met a stranger. She will be missed by a special roommate and many friends at Hansford Manor.

She was a president of the resident council at Hansford Manor. She graduated from Morse High School and was Basketball Queen at West Texas State University in 1949. She was a member of Gruver United Methodist Church in Gruver.

She was preceded in death by her parents; a sister, Glenna Bell Sparks; and her husband, Billy Thoreson.

Survivors include three daughters, Glenna Jeanne Moore and Vicki Cox, both of Amarillo, and Kristi Gilstrap of Dallas; three sons, Brett Thoreson of Amarillo, Terry Mullins and Jerry Mullins, both of Ozark, Ark.; three brothers, Lavoe Sparks of Spearman, Jerry Sparks and Dean Sparks, both of Gruver; 10 grandchildren; 6 great-grandchildren; and many nieces and nephews.

The family suggests memorials be to Hansford Manor Empty Stocking Fund, Hansford Manor, 707 S. Roland, Spearman TX 79081; or a favorite charity.

ALMA JUANITA FILE

FOLLETT — Alma Juanita File, 79, of Follett died Monday, Oct. 24, 2011, in Perryton.

Services will be at 10 a.m. today in Follett Chapel in Follett. Burial will follow in Fairmont Cemetery in Follett. Arrangements are by Good Samaritan Funeral Service in Booker.

Mrs. File was born Jan. 11, 1932, in Beaver County, Okla., to John and Violet Halline Sisk. She grew up in Boise City, Okla. In 1946, she and her family made their home in Follett.

On Aug. 5, 1950, she married Lee Roy File in St. John's Congregational Church, just west of Follett. The couple made their home and raised their family in Follett. Juanita shared a true servant's heart; she was very active in her church, community and the lives of her children. Some of Juanita's community involvement included acting in melodramas in Darrouzett, teaching Sunday school and helping form the Follett Education Corporation.

She is preceded in death by her husband; a brother Maurice; and two sisters, Joyce and Betty Jo.

Survivors include three sons, Kenneth and wife Claudette of Laverne, David and wife Reann of Gruver and Tom and wife Bonita of Perryton; five grandsons, Joseph, DeWayne, Gregory, Brian and Timothy; and three great-grandchildren, Brooke, Sean and Brynley.

The family suggests memorials be to Follett Education Corporation, in care of Follett InterBank, P.O. Box 8, Follett TX 79034.

Sign the online guest book at www.goodsamaritan-booker.com.

TRUCK DRIVERS WANTED THROUGHOUT TEXAS

HOME DAILY OR WEEKLY

Hiring Solo and Team Drivers in Dedicated, Intermodal, Oil Field, Tanker and Van (OTR, Regional) Divisions

Sign-on Bonus May Apply - Ask Your Recruiter!

Experienced Drivers and Recent Driving School Grads Welcome

Inexperienced? Take advantage of Schneider's Tuition Reimbursement program and get your CDL at a local driving school.

Apply at schneiderjobs.com/newjobs Call 1-800-44-PRIDE for more information

MONUMENTS

Boxwell Brothers Funeral Home

519 Evans • Spearman
659-3802

Dear friends,
When you buy a monument from us we make sure it is exactly what you want at a price you can afford. If it is not right, we will make it right. And you will not have to search the countryside to find us. We are here when you have a need.

Sincerely,
Bob Boxwell

MACULAR DEGENERATION

Imagine A Pair Of Glasses That Can Help You See Better!

Ever look through a pair of field glasses or binoculars? Things look bigger and closer, and easier to see. Dr. Larry Chism is using miniaturized binoculars or telescopes to help people who have decreased vision, to see better.

In many cases, special telescopic glasses can be prescribed to enhance visual performance. He often can help people read, watch TV, and sometimes drive.

Although telescopic glasses cost between \$1900-\$2500, it is a small price to pay for the hours of enjoyment with better vision and more independence.

For information and a **FREE** telephone interview call:

1-888-243-2020

Dr. Larry Chism, Optometrist
Arlene • Austin • Fort Worth • Georgetown • Houston
Plano • San Antonio • Tyler
www.chismvision.com • www.IALVS.com

dish NETWORK AUTHORIZED RETAILER

BLOCKBUSTER MOVIE PASS

Up to 12 months with qualifying packages. Offer based on the discounted \$1 price for Blockbuster Movie Pass. One disc at a time. (\$20.00 value)

\$19.99 (small) (9.99) (reg. price \$24.99/mo)

FREE HBO CINEMAX **starz** 20 Movie Channels for 3 mo.

FREE 2 Room HD DVR Upgrade (1 HD DVR - 1 SD DVR) (\$600 DVR service fee applies)

1-800-465-9348 WWW.INFINITYDISH.COM

285+ ALL DIGITAL CHANNELS!

\$0 Start Costs

Packages Start At **\$29.99 Mo.**

DIRECTV

PLUS **HBO** **SHOWTIME** **starz** **cinemax**

FREE FOR 3 Months with CHOICE XTRA™ or Above

FREE HD/DVR Upgrade! • Free Installation

Order **DIRECTV Today!** **1-800-230-7774**

Authorized DIRECTV Dealer - Local Installers

Maximum strength analgesic for temporary relief from:

- Back pain
- Muscle pain
- Arthritis pain
- Joint pain

Go Painlessly™ with **THERA-GESIC**.

APRIL 28th - 7PM

Hilton Austin • Austin, TX

Psychic Medium & Author
John Edward

Tickets: (800) 233-3123

JohnEdward.net or Telecharge.com

A reading is not guaranteed.

TOLEDO BEND LAKE RESORT & LUXURY HOME AUCTION

(2) PROPERTIES SELLING ONSITE Thurs., Nov. 17

245 Fin & Feather Drive • Hemphill, TX @ 10:00 A.M.
265 Pinecrest Street • Many, LA @ 12:00 P.M.

ABSOLUTE RESORT & EQUIP AUCTION Fri., Nov. 18 @ 10:00 A.M.

Tranquility Bay Resort Plus Heavy Equipment, RV's, Boats, Mobile Homes & Tools

Wilson Auctioneers **501-624-1825 | 877-BID-2-BUY**
www.WilsonAuctioneers.com

Replenish the seed of faith through . . .

DAILY BIBLE READING, PRAYER & REGULAR CHURCH ATTENDANCE

Spearman

Apostolic Faith Church
822 S. Drensen • 659-2870
Sunday School: 10 a.m.
Worship Service: 11 a.m.
Sun. Eve.: 6 p.m.
Wed. Prayer Mtg: 7 p.m.
Pastor - Jack Cornell

First Assembly of God
401 N. Bernice • 659-2295
Sunday School: 9:30 a.m.
Worship: 10:40 a.m.
Evening Worship: 6 p.m.
Wed. Worship: 7 p.m.
Wed. Youth: 7 p.m.
Pastor - Brad Smith

First Christian Church
(Disciples of Christ)
29 S. Bernice • 659-2036
Sunday School: 9:45 a.m.
Worship: 10:50 a.m.
Minister -

First Baptist Church
123 N. Bernice • 659-5557
Sunday School: 9:45 a.m.
Worship: 11 a.m.
Evening Worship: 7 p.m.
Men's Bible Study - Wed., 7 a.m.
Children's Choir - Wed, 6 p.m.
Adult Choir - Wed, 7 p.m.
Wed. Bible Study: 7 p.m.
Pastor - Jim Medley

Church of Christ
121 S. Haney • 659-3244
Sunday Bible Class: 9:45 a.m.
Worship: 10:30 a.m.
Evening Worship: 6 p.m.
Bible Study Wed.: 7:30 p.m.

Sacred Heart Catholic Church
901 Roland • 659-2166
Sat. Night Mass: 5:30 p.m.
Sun. Mass: 9 a.m. - English
Sun. Mass: 11:30 a.m. - Spanish
Rev. Gregory Bunyan

First United Methodist
407 S. Haney • 659-5503
Sunday School: 9:45 a.m.
Worship: 8:30 & 11 a.m.
Jr. High Youth: 5 p.m. Sunday
High School: 6 p.m. Sunday
Kids Club: 3 p.m. Wed.
Pastor - Toni Bailey

Grace Presbyterian Church
(Worships with Faith Lutheran Church)
1101 Bernice • 659-2033

Faith Lutheran Church (ELCA)
1101 Bernice • 659-2252
Sunday School: 9:45 a.m.
Worship: 11 a.m.
(Worships with Grace Presbyterian Church)
Pastor - Cecil Biggers, PLM

Union Church
31 S. Endicot • 659-2644
Sunday School: 10:00 a.m.
Worship: 11 a.m.
Sun. Evening Worship: 6 p.m.
Sun. Evening Spanish Worship: 7 p.m.
Youth/Adult Service: 7:30 Wed.
Pastor - Philip Hudson

Fellowship Baptist
1102 S. Archer • 659-2783
Sunday School: 10 a.m.
Worship: 11 a.m.
Sun. Evening Worship: 6 p.m.
Sun. Evening Spanish Worship: 7 p.m.
Pastor - Steve Hinshaw
www.unionchurchonline.org

Primera Mision Bautista
502 E. 7th • 659-3991
Sunday School: 9:45 a.m.
Worship: 11 a.m.
Evening: 6 p.m.
Wed. Prayer Meeting: 7 p.m.
Thurs. Visitation: 7 p.m.
Pastor Joe Garcia Jr.

El Aposento Alto U.P.C.I.
1105 S. Roland
Domingos: Escuela-Domical - 10 a.m.
Culto Evangelistico - 7 p.m.
Jueves: Oracion - 8 p.m.
Mier: Estudio Biblico - 7 p.m.
Pastor - A.G. Martell
(806) 659-2153

Gruver United Methodist
Broadway & Garrett
733-2651
Sunday School: 9:45 a.m.
Worship: 8:30 & 10:50 a.m.
Eve. Worship & UMY: 6 p.m.
Pastor - George Price

Spanish Cristo Redentor Church
Hwy 15 806-659-2166
Gruver, TX
Sun. Mass: 1:30 p.m. - Spanish
Rev. Gregory Bunyan

Oslo

Oslo Lutheran Church (ELCA)
6 Miles West & 12 Miles North of Gruver
339-7646
Sunday School: 9:45 a.m.
Worship: 11 a.m.
Pastor - Arlen Lloyd

Morse

Morse Baptist Church
733-2757
Pastor - Gary Stevens

Waka

Church of Christ
300 Rogers Ave.
202-7126
Sunday School: 9:30 a.m.
Sunday Worship: 10:30 a.m. & 6 p.m.
Wednesday Bible Study: 7 p.m.
Preacher - Ed Jenkins

He has showed you, O man, what is good. And what does the LORD require of you? To act justly and to love mercy and to walk humbly with your God.

Micah 6:8

This feature is made possible through the sponsorship of these civic minded businesses:

<p>Deakin ELECTRIC</p> <p>OILFIELD • RESIDENTIAL • COMMERCIAL 321 S. MAIN • SPEARMAN</p> <p>1-800-999-1506 Chris Deakin 806) 659-5016 President</p>	<p>Bartlett's Lumber & Hardware</p> <p>105 W. Broadway • Gruver, TX (806) 733-2404</p>	<p>BERRY CLEANERS</p> <p>Ann & Vernon Pipkin - Owners Phone 659-3122 • P.O. Box 1017 207 Main St. • Spearman, TX</p>	<p>Morse Implement & Auto Supply</p> <p>"Join us in church" Tom Dortch 733-2668 Box 89 • Morse, TX 79062</p>
<p>PRAIRIE MOTORS INC.</p> <p>Hwy. 207 South • P.O. Box 430 Spearman, TX 79081 • (806) 659-2541 www.prairiemotors.com</p>	<p>MurMur's Cafe</p> <p>100 Roland St Spearman, TX. 659-3580</p>	<p>Hansford County Reporter-Statesman "Proudly Serving Hansford County Since 1907"</p> <p>(806) 659-3434 310 Barkley • Spearman, TX</p>	<p>INTERSTATE BANK, ssb</p> <p>www.interstatebank.net 322 Main • P.O. Box 146 Spearman, TX • 659-2559</p>

HYI

FOR YOUR INFORMATION

Medical Fund Established At FNB for Dynell Moore
Shawn and Dynell Moore, children of Johnny and Brenda Vera and Terry Moore of Spearman, have recently relocated their family to the Dallas-Fort Worth area. In March, Dynell was diagnosed with stomach cancer. She will be receiving treatments at MD Anderson in Houston and Baylor Medical Center in Fort Worth. After the birth of their second child, three tumors were discovered, two of which contained malignant cells. The tumors were safely removed at Mary Washington Hospital in Fredericksburg, VA. At which time, Dynell began oral oncology treatment to keep the cancer from spreading. The Moore's made the decision after consulting with their physician to continue an aggressive treatment program at MD Anderson Cancer Center in Houston as well as their sister facility in Fort Worth. There has been a Medical Fund established for the Moore family at First National Bank in Spearman to aid in treatment expenses. The Moore's feel extremely blessed with the early diagnoses of Dynell's condition and the support they have received from family and friends.

Bouquet Designs

Hansford County Library is selling raffle tickets for hand-painted tables, painted by Linda Combs. First place is a full-sized dining room table with a leaf. Second place is a side table or occasional table. Tickets are \$5 per ticket or 5 tickets for \$20. These tables are truly beautiful. All proceeds will benefit the library to help make up for lost Thrift Shop income. Tickets will be sold through Monday, November 14, 2011.

Spearman Food Bank 1st Thursday

If you would like to help the Spearman Food Bank, they need help unloading the truck at 11:30 each 1st Thursday of each month. Contact Cecil Biggers for more information.

Hansford Co. Library Thrift Shop Accepting Donations

The Hansford County Library Thrift Shop, now known as Alley Katz, is accepting donations of quality items. You may ask for the key to the Thrift Shop at the library desk during regular operating hours (9:30 a.m.-5 p.m., Monday-Friday). Alley Katz is open from 10 a.m.-4 p.m. each Wednesday.

Spearman Boys Basketball Fundraiser

The Spearman Boys Basketball team is selling Coffee Mugs and Coasters as a fund raiser. Forms are available at the high school and junior high offices, and may be returned there as well. This sale will end Nov. 30th! Purchase your Lynx and Lynxette Coffee Mug and Coasters Today! Great Christmas Gifts! Contact Coach White at the High School if you have any questions. Coffee Mug \$9, Travel Mug \$10, Coasters (4 per set) \$12, Trivet \$8.

Winter Landfill Hours

Due to a shortage of employees, the City of Spearman has decided to implement the winter hours at the landfill 2 weeks early. Normally it would not change until daylight savings time changes, but they implemented the winter hours beginning Tuesday, October 25, 2011. Winter Hours are: Tues-Sat, 8 a.m. - 5 p.m. Closed on Monday and Sun day. They will also begin the one garbage pickup. If you have any questions, please contact Spearman City Hall at 806-659-2524.

Enchiladas

Come and join us on Friday, November 4, 2011 for some good Mexican food. The Plate Contains three enchiladas, rice, beans, salad, dessert, and a drink for \$8.00. Take outs and deliveries will be made. Also you can pre-order your dozen of enchiladas at \$10.00 each dozen. To place your order of enchiladas either by the dozen or by the plate you may contact the following people: Armida Tarango 806-270-0607, Rita Vasquez 806-270-0508, Cecilia Chacon 806-644-1229 or 270-0512 or Lisa Munoz 806-270-0607. We will be at the parish hall from 11 a.m.-2 p.m. on November 4, 2011. Come joins us at 901 S Roland. (These are the same enchiladas made at Project Graduation.)

Veteran's Day Program

Local veterans will be honored Friday, November 11th from 9:30-10:30 a.m. in the Spearman Varsity Gym. The program will begin with a flag ceremony and the "National Anthem". Mr. James Cunningham will welcome all guests and give special recognition to veterans. Patriotic selections will be performed by the Spearman School Choirs and Band. Speaker for the program will be Mr. Rick Riggins. Rick is a native of Ochiltree county. Following his graduation from high school in 1971, he was drafted into the United States Army for service in Viet Nam. For two years, Rick was stationed in Camrhan Bay as a Machine Gunner Army Specialist 4. The Texas Extension Education Clubs of Hansford County help host the program and encourage all veterans to attend.

Gruver Blood Drive

Coffee Memorial Blood Center is hosting a blood drive in Gruver on Tuesday, November 8, 2011 from 2-7 p.m. in the La Casita Room at Gruver State Bank. Every eligible donor who presents to donate will receive a t-shirt! Photo ID or Donor Card required to donate. Donors must be 17 years old to donate blood. For appointments, please call 806-331-8800 or 1-877-574-8800. Walk-in's welcome. All blood types are needed! The need is real. There is no substitute for blood. It can only come from volunteer blood donors. Please support the patients to the High Plains Region... Give the Gift of Life!

Thanksgiving and Praise

The Rushing Wind Emmaus Community will meet at 6 p.m. on Saturday, November 12, 2011 at the Waka Christian Center for their annual Thanksgiving Dinner. Smoked turkey and ham will be furnished. This event is sponsored by the Board of Directors of the Waka Christian Center. Please bring the trimmings of vegetables, desserts, etc. to share with the community. Families, friends and new members with their families are welcome. A nursery will be provided for all of the children. Sponsor's training will be offered for anyone wishing to sponsor a pilgrim.

OPSU Baseball Clinic

Oklahoma Panhandle State University is hosting a six week baseball camp starting on December 4. Oklahoma Panhandle State head coach Steve Appel will direct the program in conjunction with U.S. Baseball Academy. Classes are available for players in grades 1-12 and are limited to six players per coach. Sessions are offered in advanced hitting, pitching, catching, fielding and baserunning at a cost as low as \$99 for six weeks. Space is limited. Registration is now under way. For more information, visit www.USBBaseballAcademy.com, or call toll-free 866-622-4487.

Annual Pumpkin Patch Benefit

The 29th Annual Pumpkin Patch Benefit will be held Saturday and Sunday, November 5th & 6th. The event will be held at the Texas County Activity Center in Guymon, OK. The public is invited to attend Saturday 9 a.m.-6 p.m., and Sunday 11 a.m.-4 p.m. Admission is free. Around 100 exhibitor booths will feature a variety of arts and crafts which include floral, clothing, ceramics, candles, wood, stained glass, jewelry and more. Several artists will also exhibit their paintings, sculpture, drawings, and pottery. There will also be several pre-packaged food and commercial exhibitors this year. Lambda Psi, a chapter of Beta Sigma Phi sorority, is sponsoring the event. Proceeds from the Pumpkin Patch Benefit are donated to community services in the Oklahoma panhandle. A concession stand will be provided by the Guymon High School Band Boosters.

Gruver Elementary Register Tapes for Education
Gruver Elementary is participating in the Lowe's Supermarket Register for Tapes for Education. Please help us earn free education material and equipment by collecting register tapes from Lowe's. You can deposit your register tapes in the boxes at the Elementary School Lobby, or the south entrance, Gruver City Library, City Hall, Gruver Library, Night & Day Beauty Salon and Shear Style Salon. Call Jo at 733-2247 for pickup of tapes or for more information.

Texas SNAP Benefits Assistance

Need help applying for SNAP benefits? We can help! High Plains Food Bank is providing application assistance for Texas SNAP benefits (Food Stamps) in your area. Telephone application assistance is available. If you need to apply for benefits, please call us today at 806374-8562 or 1-800-774-8564.

It's A Girl!

Aaron and Katy Abel of Waco, Texas, are proud to announce the arrival of their daughter, Lauren Marie, on September 21, 2011 at 5:39 PM. She weighed 7 pounds 14 ounces and was 20 1/4 inches long.



Lauren has an older sister, Caroline Grace. Lauren's grandparents are Richard Tracy of Waco and Jim and Susan Cummings of Crawford. Her great-grandparents are Everett Tracy and the late Dixie Caroline Tracy and the late Charles and Evelyn Marie Brillhart, all of Spearman.

Lauren has an aunt and uncle, Jennifer and Jay Tracy of Gatesville, Texas. Her great-aunt and uncles are Amy and Doug Booth of Talala, Oklahoma, Kirby Brillhart and the late Larry Brillhart of Spearman. Lauren has a special great-great aunt, Merriline Crawford of Denver, Colorado.

It's A Boy!

Jay and Jennifer Tracy of Gatesville, Texas, are proud to announce the arrival of their son, Jackson Everett, on October 12, 2011 at 7:09 PM. He weighed 6 pounds 14 ounces and was 20 inches long.



Jackson's grandparents are Richard Tracy of Waco and Jim and Susan Cummings of Crawford. His great-grandparents are Everett Tracy and the late Dixie Caroline Tracy

and the late Charles and Evelyn Marie Brillhart, all of Spearman.

Jackson has an aunt and uncle, Katy and Aaron Abel, and cousins Caroline and Lauren, all of Waco. His great-aunt and uncles are Amy and Doug Booth of Talala, Oklahoma, Kirby Brillhart and the late Larry Brillhart of Spearman. Jackson has a special great-great aunt, Merriline Crawford of Denver, Colorado.

It's A Boy!

Kassandra Getz and Charles Oltman wish to announce the birth of their son, Kaedin Lee Jacob Oltman. Kaedin was born on October 21, 2011 at 2:52 a.m. at Great Plains Community Hospital in Borger, TX. He weighed 7 pounds, 13 ounces and was 19 1/2 inches long.

Kaedin was welcomed by his four-year-old big sister, Abagayle Oltman and his 14-month big brother, Nathaniel Ramirez.

Proud grandparents are Bonnie and Rodger Getz of Spearman and Tammy Hendricks of Grove, OK. Great-grandparents are Sandra Bishop of Grove, OK and Al-tamae and Buddy Getz of Beaver, OK.

Thank You!

We are eternally grateful for every act of kindness and support shown to us during our time of great sadness. Your love called armies of Angels and Saints (living and deceased) to walk with us through the pain and joy.

The family of J.L. Pierce, The Windmill Man

Thank you!

We would like to thank all the people around Spearman who were praying for Ray and us when he had his heart attack. Prayers were answered. Ray is feeling fine. There was no damage to his heart. He is back to traveling to Grandkids sports. Thanks for your visits, too.

In Christ,


Ray & Anna Mae Johnson, Gwenda & P.J. Hanna & Kids

Thank you!


The family of Babe Pendergraft would like to take this opportunity to thank everyone who touched her life. We so appreciate those who sent cards, flowers, food and gave us hugs and expressed kind words that meant so much. Thank you to the staff at the Manor that took such loving care of her and made her days brighter. A special thanks to Dr. Garnett and the medical staff of the Manor and Hospital who looked after her medical needs. To Gary Smith, Jean Gwin, Lynanne Maize, and Janie Kunselman for making her service so special and personal. She was a special little lady who will leave a large hole in so many lives. We will miss her.

God bless and keep all of you,
Betty & Richard Gaines; Glenda Close; Peggy & Allen Varnon; her great-grandsons; and all of her great-great-grandchildren

Please Join us for a 90th Birthday Celebration



honoring...
eloise
renner



Saturday, November 12, 2011
3:00p to 4:30p
Phillip & Lynn's home-900 S Barkley

Your presence is your present!

You are invited to a
Wedding Shower
honoring
Brittney Bradley
(bride-elect of Rhett Renner)
Saturday, November 12, 2011
from 10:00-11:30 a.m. at the
home of Stephanie Brock
901 Barkley St Spearman TX
Selections: Gordons Drug,
Bed, Bath & Beyond and Target

Thank You!

WOW! We had the most INCREDIBLE response to the Fundraiser for Luis Morales. Remember, Luis is the Vega HS junior who was severely injured in a JV Football game September 29th. This Thursday, we will be presenting Vega ISD with a check for \$6,150.00 for the special fund they have created for this young man. Currently, Luis is in Sacramento, California, receiving special care and treatment. Students, parents, community, businesses and extended Greyhound family, thank you for supporting this cause. Gruver truly is a caring, compassionate community and the greatest place on earth!

Kimberly Irwin

Thank you!

Dear Mr. Teal,
I would like to personally thank Gruver High School student body for their generous donation to the Luis Morales Fund. Luis is overwhelmed by all of the support being given to him by the schools in the Texas panhandle. Luis is currently at Shriners Hospital in Sacramento, California. He is receiving the best medical care possible for spinal cord injuries. Luis has a long road ahead of him. As of today, walking is unlikely. Vega ISD would like to thank you for the fundraising activities that you did to raise the money. The family is very appreciative and in need. Thank you again for your kindness.

Sincerely,
Margo Knox
Vega ISD Superintendent

www.spearmanreporter.com

Gordon's

YOUR PLACE FOR
Bridal Registry

Couples Currently Registered

Brittney Bradley & Rhett Renner - 11/12
Angelica Valverde & Haden Hart - T&B
Sha & Dib Kirk
Margie (Vaquera) & Michael Warner
Tana (Saul) & Mark Navarrete
Lauren Mesneak & Andrew Dixon
Katie Winn & Tyler Lane

Baby Registry

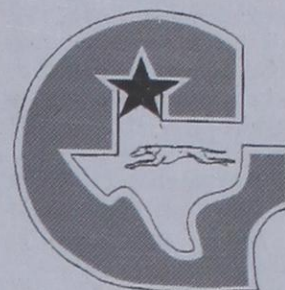
Jana (McCloy) & Jake Mitchell (Girl)
Irma Hernandez & Manuel Mendoza (Boy)
Brandi & Toby Thompson (Boy)
Jackie (Sparks) & John Martin (Boy)

Gordon's 659-2141
314 Main Spearman



**SPEARMAN
LYNX &
LYNXETTES**

**GRUVER
GREYHOUNDS
& LADY HOUNDS**



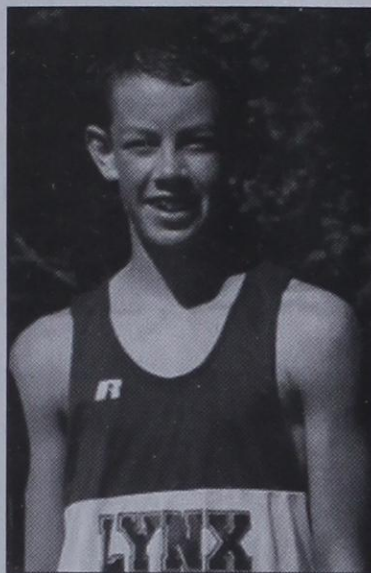
CROSS COUNTRY TEAMS



**Spearman Lynxettes
2A District Champions
4th Year In-A-Row**



**Gruver Lady Hounds
1A District Champions
3rd Year In-A-Row**



**Peyton Garnett
Individual
Qualifier**



**Gruver Greyhounds
1A District Runner-Up**

**GOOD LUCK AT REGIONALS!
WE'RE PROUD OF YOU!**

- | | | | | |
|--|---|---|---|---|
| Adobe Walls Gin, LP
Spearman • 659-2574 | Linda Cummings
Good Luck! | Golden Spread Sales Co.
Spearman • 659-3776 | Hi-Plains Auto Supply, Inc.
Spearman • 659-2506 | North Plains Electric Coop
806-435-5482 • 800-272-5482 |
| Aeroflight Publications
Gruver • 733-2483 | Delinda McLaughlin
Photo Solutions
Spearman • 659-2800 | Gordon's Drug
Spearman • 659-2141 | Hoochy Poochy Parlor
Borger • 273-2724 | Perryton Office Supply
Perryton • (806) 435-4812 |
| AeroTan
Gruver • 733-2483 | Jim & Mandy Detrition
Congratulations & Good Luck | Gruver Ford
Gruver • 733-2431 | Hungry Cowboy
Spearman • 659-5151 | Pizza Hut
Spearman • 659-2547 |
| All Occasion Flowers
Spearman • 659-5180 | Dreamers
Spearman • 659-9907 | Gruver State Bank
Member FDIC
Gruver • 733-5061 | Interstate Bank, ssb
Spearman • 659-2559 | Prairie Motors
Spearman • 659-2541 |
| AMA TechTel
Gruver • 806-322-5500 | El Vaquero Restaurant
Gruver • 733-2407 | H&H Credit Union
Stinnett • 878-2452 | Kirk Insurance Agency
Spearman • 659-2794 | Rocking F Boot
& Saddle Shop
Spearman • 659-3342 |
| B&B Sales
Spearman • 659-2662 | Equity Exchange
Spearman • 659-2420 | H&H Water Well
Spearman • 659-5577 | J&S Signs & Engraving
Spearman • 736-7020 | Sergio's Body Shop
Spearman • 659-5217 |
| Bartlett's Ace Hardware
Gruver • 733-2404 | First National Bank
Spearman • 659-5544
member FDIC | Hansford Abstract Co.
Spearman • 659-2516 | Jarvis Law Office, P.C.
Spearman • 659-2554 | Spearman Chamber
of Commerce
Spearman • 659-5555 |
| Berry Cleaners
Spearman • 659-3122 | First State Bank
Spearman • 659-5565
member FDIC | Hansford County Feeders
Gruver • 733-5025 | Jim's Diamond Shop
Borger • (806) 274-2370 | Speartex Grain Co.
Spearman • 659-3711 |
| Bob & Cathy Davis
Gruver • Spearman | Five Star Equipment
Spearman • 659-3743 | Hansford County Floral Co.
Spearman • 644-4000 | Lowe's Marketplace
Spearman • 659-2522 | Sunray Co-Op
Gruver Branch
Gruver • 733-2481 |
| Bob & Jackie Pearson
Gruver • Spearman | Frank Phillips College
Allen Campus
Perryton • 648-1450 | Hansford County Hospital District
Spearman • 659-2534 | M&D Aerial, LLC
Spearman • 806-202-2360 | Tong's Chinese Food
Spearman • 644-2838 |
| Bort Agency
Gruver • 733-2404 | Frontier Feedyard
Spearman • 882-4251 | Hansford County Reporter-Statesman
Spearman • 659-3434 | Matt, Kayla & Katy McClennan
We're Proud of You! | Willis Boyd Dirt Services
Spearman • 659-9848 |
| Boxwell Brothers Funeral Home
Spearman • 659-3802 | Gigot Agri Products
Spearman • 659-3121 | Hansford County Vet Clinic
Spearman • 659-2100 | Money's
Perryton • 435-3945 | Xcel Energy
Responsible By Nature
Perryton • 806-435-4052 |
| The Bunkhouse Restaurant
Spearman • 659-2089 | Golden Spread Carpet
Spearman • 659-3068 | Hansford Pharmacy
Spearman • 659-2226 | Morse Implement
Morse • 733-2668 | |
| Cates Men & Boys
Spearman • 659-3426 | | | MurMur's Cafe
Spearman • 659-3580 | |

Gruver 37, White Deer 0
 Jerrod Collier ran for 192 yards on 22 carries and two touchdowns as Gruver blanked White Deer in a District 1-1A Division II game.

Gruver scored 25 points in the third quarter and held the Bucks to 192 total yards.

Gruver improved to 4-5 overall and 2-0 in district, while White Deer is 1-8, 0-2.

Scores by Quarters
 Gruver 7 19 25 0 - 37
 White Deer 0 0 0 0 - 0

Scorers
 G — Jerrod Collier 5 run (kick good)
 G — Korbin Irwin 1 run (kick failed)

G — Collier 95 run (kick failed)
 G — Irwin 1 run (kick failed)

G — Cole Wills 4 run (kick failed)
 G — Victor Serrano 24 run (kick good)

Statistics

GG	WD
First Downs	NA NA
Rushing Yards	302 93
Passing Yards	NA 99
Total Yards	302 192
C-A-I	0-3-0 6-13-1
Punts-Avg.	NA NA

Fumbles-Lost NA NA
 Penalties-Yds NA NA

Sanford-Fritch 42, Spearman 14

Colton Valle of Sanford-Fritch ran for 251 yards on 26 carries and four touchdowns as the Eagles cruised past Spearman in a District 1-2A Division II game.

Sanford-Fritch outscored Spearman, 28-7, in the second half and held the Lynx to 143 total yards.

The Eagles are 5-5 overall and 5-1 in district. Spearman is 7-2, 3-2.

Scores by Quarters
 Spearman 0 7 0 7 - 14
 Sanford-Fritch 7 7 14 14 - 42

Scorers
 Sa — Colton Valle 14 run (Tate Murray kick good)

Sp — Jace Swan 1 run (Alfredo Roscendo kick good)

Sa — Valle 8 run (kick good)
 Sa — Valle 3 run (kick good)

Sa — Valle 62 run (kick good)
 Sa — Terry Bryan 20 pass (kick good)

Sp — Junior Garcia 5 pass (kick good)
 Sa — Murray 1 run (kick good)

good)

Statistics

SL	SF
First Downs	10 21
Rushing Yards	110 319
Passing Yards	33 97
Total Yards	143 416
C-A-I	4-11-1 11-20-0
Punts-Avg.	2-27 0-0

Fumbles-Lost 3-1 2-1
 Penalties-Yds 3-30 6-52

Spearman Jr. High Football Scores 10-27-11

Spearman 8th Grade 8, Fritch 14
 Spearman 7th Grade 8, Fritch 20

Individual Statistics Class 1A Team Offense

Team	Rush	Pass	Total	Avg.
Wellington	2,105	2,091	4,196	466.2
Sunray	2,110	1,278	3,388	423.5
Canadian	1,702	2,058	3,760	417.8
Booker	1,031	2,294	3,325	415.6
West Texas	2,877	596	3,473	385.8
Texhoma	2,298	667	2,964	370.5
Stratford	1,586	733	2,319	331.3
Clarendon	1,766	852	2,618	327.3
Memphis	2,313	205	2,518	314.8
Gruver	1,571	603	2,174	271.7
Boys Ranch	1,605	428	2,033	254.1
Farwell	1,604	297	1,901	215.3

Individual Rushing

Player, Team	No.	Yds.	TD
Ramirez, West Texas	123	1,368	16
Collier, Gruver	168	1,327	15
Williams, Clarendon	173	1,077	12
Cruz, Wellington	113	981	12
Gilbreath, Memphis	NA	970	NA
Chavoya, Stratford	145	900	10
Beattie, Texhoma	116	805	5
Killian, Boys Ranch	105	750	8
Dooley, Sunray	91	681	9
Schafer, Canadian	89	642	13

Individual Passing

Player, Team	C-A-I	Yds.	TD
Lile, Booker	161-270-7	2,294	32
Ashmore, Wellington	118-174-2	2,031	26
Br.Hudson, Canadian	134-213-9	1,788	22
Dooley, Sunray	64-111-5	1,144	13
McAnear, Clarendon	53-115-7	852	7
Wright, Stratford	42-84-7	673	4
Powers, Texhoma	44-88-5	667	5
Irwin, Gruver	45-113-8	602	3
Ramirez, West Texas	35-85-2	596	4
Robinson, Boys Ranch	42-80-5	342	1

Individual Scoring

Player, Team	TD	PAT	FG	Pts.
Ramirez, W. Texas	16	28	0	124
Schafer, Canadian	19	4	0	116
Morris, Farwell	18	4	0	112
Collier, Gruver	15	8	0	94
Williams, Clarendon	14	6	0	90
Christian, Farwell	14	0	0	84
Wauer, Booker	12	11	0	83
Dooley, Sunray	9	22	1	79
Lewis, Canadian	13	0	0	78
Castillo, Wellington	11	6	0	74

Individual Statistics Class 3A-2A Team Offense

Team	Rush	Pass	Total	Avg.
Muleshoe	1,925	2,151	4,076	509.5
Sanford-Fritch	1,965	1,380	3,345	371.7
Spearman	1,979	832	2,811	351.5
Dalhart	2,033	656	2,689	336.2
Friona	2,360	296	2,581	322.6
Borger	1,850	694	2,524	315.5
Perryton	1,146	1,343	2,489	311.1
Bushland	700	1,760	2,460	307.5
Childress	1,766	574	2,340	292.5
Pampa	1,049	1,184	2,226	278.2

Team Defense

Team	Rush	Pass	Total	Avg.
Spearman	1,143	395	1,538	192.3
Dalhart	844	712	1,556	194.5
Borger	936	1,159	1,637	204.6
Childress	989	1,114	2,103	262.9
Muleshoe	1,331	1,022	2,353	294.1
Perryton	1,074	1,408	2,482	310.3
Pampa	1,760	762	2,533	316.6
Bushland	1,631	903	2,534	316.8
Friona	1,396	1,253	2,667	333.4
Sanford-Fritch	1,769	1,331	3,100	344.4

Individual Rushing

Player, Team	No.	Yds.	TD
Valle, Sanford-Fritch	195	1,558	10
Monroe, Friona	120	1,144	12
Burks, Dalhart	110	1,051	14
I.Baca, Muleshoe	88	892	12
Hughes, Childress	81	720	9
Brown, Borger	85	708	8
Lang-Swan, Spearman	116	693	14
Bumpus, Borger	82	633	5
Avila, Muleshoe	125	577	3
Reyna, Bushland	99	575	6

Individual Passing

Player, Team	C-A-I	Yds.	TD
Avila, Muleshoe	140-204-8	1,985	22
Cornelius, Bushland	128-247-9	1,612	16
Turner, Perryton	149-275-11	1,343	8
C.Bryan, S-Fritch	103-188-9	1,221	14
Miller, Pampa	91-180-11	1,184	8
Lang-Swan, Spearman	33-85-3	771	8
Rendon, Borger	50-91-2	694	10
Schniederjan, Dalhart	23-59-1	580	7
Harris, Childress	44-92-8	440	4

Individual Scoring

Player, Team	TD	PAT	FG	Pts.
Burks, Dalhart	15	0	0	90
Elizalde, Muleshoe	9	NA	NA	88
Lang-Swan, Spearman	14	2	0	86
I.Baca, Muleshoe	14	0	0	84
Monroe, Friona	13	0	0	78
Hughes, Childress	9	0	0	54
Romero, Perryton	0	23	9	50
Brown, Borger	8	0	0	48
Baca, Dalhart	7	2	0	44
Keeth, Perryton	7	0	0	42
Rindlisbacher, Spearman	7	0	0	42

High School Football Standings District 1-2A Division II

Team	Dist	Pts	Opp	All	Pts.	Opp.
y-Abernathy	5-0	177	64	8-1	273	128
x-Sanford-Fritch	5-1	219	95	5-5	208	209
x-Spearman	3-2	122	90	7-2	274	110
Dimmitt	2-3	90	146	5-4	199	250
Floydada	2-3	211	120	4-5	253	264
Highland Park	1-4	33	205	3-6	155	266
Tulia	0-5	69	119	1-8	112	190

Last week: Dimmitt 38, Floydada 22; Sanford-Fritch 42, Spearman 14; Abernathy 17, Tulia 7.
 This week: Highland Park at Dimmitt; Tulia at Spearman; Floydada at Abernathy.

District 1-1A Division II

Team	Dist	Pts	Opp	All	Pts.	Opp.
x-Gruver	2-0	54	13	4-5	190	216
Booker	1-1	20	47	8-1	295	156
Vega	1-1	41	16	2-7	214	263
White Deer	0-2	19	58	1-8	194	354

Last week: Gruver 38, White Deer 0; Vega 28, Booker 0.
 This week: White Deer at Vega; Booker at Gruver.

Prices Good Thru 11/26/11



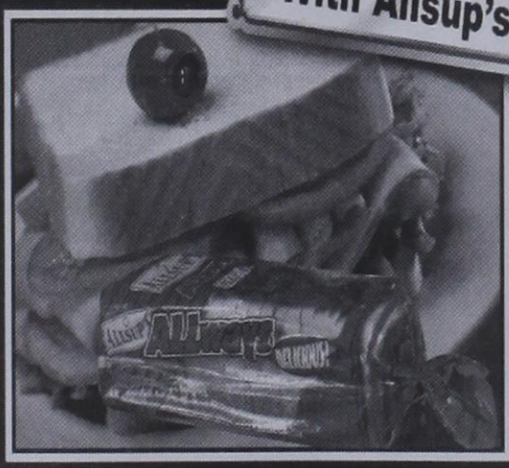
305 W. Kenneth
 Spearman • 659-3135

101 Main Ave.
 Gruver • 733-2953



Save Even More
 With Allsup's

ALLSUP'S
Sandwich Bread
 24 OZ.
2\$1
 FOR or 89¢ each



Allsup's Wheat Bread 24 oz. \$1.09 each or	2 \$1 FOR	Powerade 32 oz.	2 \$2.50 FOR
Jack Link's Chews 3 oz.	99¢	Monster Energy Drink 24 oz.	2 \$5 FOR
Jack Link's Jerky 3.25 oz.	\$4.99	Brisk Tea 1 ltr.	99¢
Kellogg's Cereal Cups each	99¢	Mentos Gum	FREE BUY ONE GET ONE
Tom's Bugles each	79¢	Tic Tacs	99¢
Spitz Sunflower Seeds 6 oz.	\$1.29	Trident Gum All Flavors	2 \$2 FOR
Kellogg's Nutri-Grain Bars	FREE BUY ONE GET ONE	Corn Nuts 4 oz.	\$1.29
Tom's Large Potato Chips 8.5-9 oz.	\$2.00	Allsup's Ice Cream 1/2 gallon	2 \$6 FOR



BUY 12 GALLONS OF FRESH ALLSUP'S MILK GET ONE **FREE!**



WESTERN FAMILY BATH TISSUE 4 ROLLS **99¢**



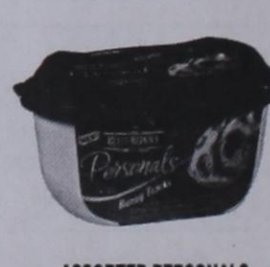
WESTERN FAMILY PAPER TOWELS EACH **79¢**



ASSORTED FLAVORS PEPSI 6 PACK **\$1.79**



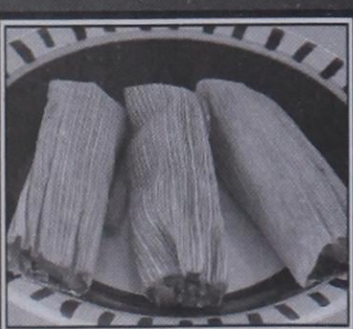
ASSORTED FLAVORS MTN DEW 20 OZ. **99¢**



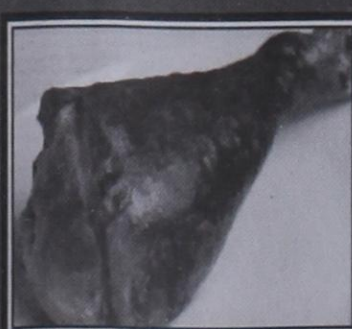
ASSORTED PERSONALS BLUE BUNNY EACH **99¢**

HOT OR MILD Tamales

BUY ONE ORDER OF 3 GET ONE ORDER OF 3 **FREE**



Turkey Legs EACH **\$2.99**



SELECT HORMEL FULLY COOKED Meat Entrées 17 OZ. **\$4.99**



Find This Low Price Everyday

by Dorothy Hudson

Out at the Lake

Jim Derington
Palo Duro River Authority
P.O. Box 99
Spearman, TX 79081
806-882-4401
pdra@dishmail.net



Lake Level--October 31, 2011--32.71 feet (-0.26)



Alice Stavlo Satrum, who grew up at Oslo, sent the pictures made in their backyard at Parker, Colorado. Notice the doe in the neighbor's yard. She seems to be waiting for the victor.

Alice and Randy Satrum live in Parker, Colorado, not far southeast of Denver. Alice, a daughter of Joel and Leona Stavlo, and I exchange e-mails, so she sent me these pictures Randy took of two bucks fighting in their backyard, while a resting doe, waited for the victor. Thanks to both Randy and Alice.

Jim didn't have much news this morning. He only had 2 campers. The sandhill cranes are still at the lake, and a group of 40 to 50 white pelicans visited one evening and the next morning. He has not seen the pair of eagles again.

His bird of the week is the Mountain Bluebird. He has been seeing them on the county road to the Park and near the office. They show up best when you catch them in the sunlight. Most years some are found at times in the Park after fall migration.

Hansford Land and Cattle Company
The Hansford Land and Cattle Company was

founded in Dundee, Scotland, late in 1882 by James M. Coburn, a banker in Kansas City. Coburn, a native of Scotland, put together three ranches in Hutchinson County. He had bought in January of 1883 from Word and Snider the Turkey Track Ranch that Richard McAnulty started in 1878 when he came down from Colorado and then sold to Word and Snider in 1881. His big purchase was Tom and Molly Bugbee's Quarter Circle T Ranch on the Canadian in March of 1883. The third ranch was the Scissors Ranch of Anderson and Moore on the Canadian that A. H. Johnson had bought in 1882.

The Syndicate made James Coburn the general secretary and A. H. Johnson the general manager with

Bill Hudson the first range boss. I think the Scissors ranch must have come into the company through Johnson. August (Gus) Johnson was struck and killed by lightning while trailing cattle on the Cimarron in July of 1883.

His death started the saying, "In 1883, the third of July was the last of August."

The Turkey Track brand was kept as the brand for the new company. Their headquarters were at the Bugbee stone house.

I have not found why the southern part of Hansford County is considered part of the big ranch. I did discover that James Coburn sold young Stanley C. Tyler Sec. 7, Block 5T, T&NO RR of Hansford County on Sept. 4, 1886.

Gladiola Flower Club Home Tour

The Gladiola Flower Club Home Tour will be held on November 13, 2011 from 2-5 p.m. Homes on the tour include Mr. & Mrs. Clancy Vanderburg, 806 Wilbanks; Mr. & Mrs. Dennis Nelson, Hwy. 15 W, 130 Nelson Rd.; Mr. & Mrs. Jonathan Bailey, 906 Wilmeth; and the Hansford County Library, 123 Main Street.

Tickets are \$5 each for adults and children 10 and older, and may be purchased from any Club member, or at the door.

Home of Chelsea & Clancy Vanderburg

Chelsea and Clancy Vanderburg bought their home in 2010. It was built in 2009 by Charles Elliott.

The home has 3 bedrooms, 2 baths, a family room, kitchen-dining room, patio and a 2-car garage, and lots of storage! The Vanderburg's have converted one of the bedrooms into a fantastic exercise room.

The home is decorated in warm, brown tones with accents of bright colors throughout. Chelsea said their favorite room is the living room. Chelsea loves to do holiday decorations. This is a happy home the minute you walk in!

The Hansford County Library

The Hansford County Library is located at 122 Main Street in Spearman. Margaret Ruttman is the current Library Director.

The Hansford County Library provides and promotes diverse and easily accessible materials, services and programs in an atmosphere that encourages the free flow of ideas to educate, entertain, enrich and inform local residents. Special emphasis is placed on providing current, high-demand, high-interest materials in a variety of formats for individuals of all ages; providing accurate, useful and timely information for job-related and personal interests; and encouraging young children to develop an interest in reading and learning. Hansford County Library also provides open access to information for people of all ages from earliest childhood through maturity.

If you haven't been to the library lately, please stop by soon! We are available to serve your informational needs!

Signal Energy Installs Wind Turbines, Towers at Frisco Site

20 MW Project in Texas Panhandle on Track

Signal Energy, LLC, a major design/build general contractor providing engineering, procurement and construction services to the North American renewable energy industry, has begun installing wind turbines and towers for the 10 machines which will generate 20 MW of power in the Texas panhandle (Frisco Wind Project). The project is currently owned by wind turbine manufacturer DeWind Co.

"Installing wind turbines and towers marks an exciting point at the Frisco Wind Project site for DeWind and for the region," said Ben Fischer, president of Signal Energy. "Soon the Texas panhandle will add 20 MW of clean, renewable energy to the grid. Signal Energy is proud to play a role in building our country's clean energy future." The company has completed over 35 renewable energy projects in the United States and Canada since its formation in 2005.

Located in Hansford County, Texas, the 20 MW Frisco project is in the Texas panhandle and is scheduled to be in commercial operation by the end of 2011. It will offset an annual average of 39,726.5 tons of CO2 emissions and provide enough electricity to power almost 6,000 average American households.

The Frisco project utilizes 10 DeWind 2.0 MW D8.2 turbines built at DeWind's contract assembly plant located in Round Rock, Texas, owned and operated by TECO-Westinghouse. The grid-friendly design of the 2.0 MW DeWind D8.2 uniquely provides grid-support capability to all grid situations.

"The DeWind turbine deliveries to the Frisco site mark the next milestone toward the completion of the wind farm later this year," noted Robert Rugh, President and CEO of DeWind.

Signal Energy's scope of work on the Frisco project includes full design and engineering of all project civil infrastructure, underground and overhead collection systems, wind turbine foundations, project substations and the project interconnection facilities. In addition, Signal Energy will self-perform the wind turbine erection.

Signal Energy currently has renewable energy projects under construction in ten locations in six states.

Wind power is one of the fastest growing forms of new electricity generation in the U.S.

The U.S. wind energy industry saw 35 percent average annual growth over the past five years, accounting for 35 percent of new U.S. power capacity in that period, according to the 2010 U.S. Wind Industry Annual Market Report.

Producing electricity from renewable sources, like wind energy, saves consumers money by avoiding rising fuel costs and price volatility of fossil fuels.

About Signal Energy: Signal Energy is a leading full service design/build contractor providing Engineering, Procurement and Construction (EPC) services for renewable energy projects across North America. Signal Energy is the renewable energy subsidiary of EMJ Corporation, one of the largest general contractors in North America. For more information, please visit www.signalenergy.com.

About DeWind Co: DeWind Co designs, produces and sells DeWind series wind energy turbines, including the 2.0 MW D8.2 and D9.2 models available in 50 and 60 Hz configuration, and the 2.0 MW D9.1 model available in 50 Hz configuration. DeWind 2.0 MW D8 series wind turbines featuring an 80 meter rotor have been operating since 2002. DeWind's latest release, the D9 series, features an enhanced 93 meter rotor while maintaining full IEC Class 2A operational capability. The D9.2 utilizes advance WinDrive(R) hydrodynamic torque converter jointly developed with Voith AG in combination with a fixed speed, high voltage output synchronous AC generator which can be connected directly to the grid without the use of power conversion electronics. DeWind D9.2 wind turbines are currently assembled at TECO-Westinghouse Motor Company (TWMC) in Round Rock, Texas. For more information, visit www.dewindco.com

Tong's Chinese Restaurant

(806) 644-2838

22 Archer Street • Spearman

Daily Buffet

Lunch Buffet 11 a.m.-2:30 p.m.

Dinner Buffet 5:30-9 p.m.

Open Wednesday-Monday - Closed Tuesday

MITCHELL THEATRES.COM

NORTHRIDGE 8
Guymon, Oklahoma
www.northridge8.com
580-338-3281

SOUTHGATE 6
Liberal, Kansas
www.southgate6.com
620-624-5573

SEQUOYAH 8
Garden City, Kansas
www.sequoyah8.com
620-275-2760

CHISHOLM TRAIL 8
Newton, Kansas
www.chisholmtrail8.com
316-283-0555

FRESH POPCORN EVERYDAY!
-PARTY ROOM & ARCADE-

Hurry! Before SANTA takes it ALL!

Amarillo Networks in HD
Over 150 channels
High Definition Programming
Combined billing of Telephone, Internet, and TV services

Incredible TV

\$29⁹⁹ mo.*

For 6 months!

FREE HD

For 6 months!

FREE Install

up to 4 set-top boxes

ptci.net
721 W 7th in Spearman
800-562-2556

*Requires two-year commitment