



The Hansford County Reporter Statesman

PROUDLY SERVING HANSFORD COUNTY SINCE 1907

reporter@spearmanreporter.com

VOLUME 101 • ISSUE 45

WWW.SPEARMANREPORTER.COM

THURSDAY, NOVEMBER 6, 2008

Rabies Confirmed in Hansford County

Within the past week a skunk was found and killed on Main Street in Spearman. The head was detached and sent to test for rabies and the test was positive. Once again Hansford County has a confirmed case of rabies, what precautions should you take with your animals?

"There is a very safe and effective way to prevent this disease from effecting your pets and livestock- Vaccination!" quoted Doctor Kristina Levis, DVM at Hansford County Veterinary Hospital. Dr. Levis says, "The vaccine schedule in Texas for cats and dogs is very simple and effective. Your pet should have the first rabies vaccination when it is 3 months old, followed by a booster in 1 year. After the first two vaccinations, a booster every three years is sufficient for protection. For example, if your dog had a rabies shot in 2007 and 2008, it is now protected until 2011. If you believe your pet was exposed to the virus from a wild animal then we should booster with another vaccination. There is also a vaccine available for humans that are in a high risk situation such as veterinarians, animal handlers, and rabies laboratory workers."

"Rabies is a serious, most often fatal, disease caused by a virus. The rabies virus is usually carried by wild animals, but on occasion a human can become infected and carry the virus. Bats, skunks, raccoons, cats and dogs are the most common carriers although all mammals may become infected. The virus can live in the host for weeks to years before symptoms are evident. Symptoms vary from patient to patient, but the most prevalent are behavioral changes such as nervousness, irritability, fatigue and inappetence, which may progress to seizures, hallucinations and paralysis. These symptoms may differ from one species to the next. A good rule of thumb to remember is: if the animal is acting abnormal, such as seen in the daytime when it is a nocturnal animal, or acting aggressive when it is normally very docile, it could be suspect. Excessive salivation is not a common symptom, but can be exhibited in rare cases." (Hansford County Veterinary Hospital Quarterly Veterinary Newsletter, Spring 2008 issue, Kristina Levis, DVM)

Continued on Page 4

Weather Forecast

THURSDAY NIGHT - Mostly clear. Lows in the mid 20s. West winds around 10 mph in the evening becoming light and variable.

FRIDAY - Mostly sunny. Highs in the mid 60s. West winds around 10 mph.

FRIDAY NIGHT - Mostly clear. Lows in the upper 20s. West winds around 10 mph in the evening becoming light and variable.

SATURDAY - Mostly sunny. Highs in the mid 60s.

SATURDAY NIGHT - Mostly clear. Lows in the upper 30s.

SUNDAY - Partly cloudy. Highs in the lower 60s.

SUNDAY NIGHT - Increasing clouds. A 20 percent chance of rain showers. Lows in the mid 30s.

MONDAY - Mostly cloudy with a 20 percent chance of rain showers and snow. Highs in the lower 50s.

MONDAY NIGHT - Partly cloudy. Lows in the upper 20s.

VETERANS DAY - Mostly sunny. Highs in the lower 50s.

TUESDAY NIGHT - Mostly clear. Lows in the mid 30s.

WEDNESDAY - Partly cloudy with a less than 20 percent chance of rain showers. Highs in the mid 50s.

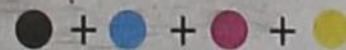
Texas Crop & Weather

The following specific livestock, crop and weather conditions were reported by Panhandle Extension directors: Temperatures were near normal at the beginning of the reporting period but above average at the end. Soil moisture was reported mostly adequate. The corn and soybean harvests were ongoing. Cotton was mostly fair to good, and most sorghum was mature, but only a few fields were harvested. Wheat varied from poor to excellent with most areas ranging from fair to good. Range conditions were mostly poor to fair. Cattle were in good condition.



SPEARMAN
vs Panhandle
11/7 - 7:30 p.m.
in Panhandle

ruver
reyhounds
vs. Canadian
11/7 - 7:30 p.m. at Gruver



Obama Elected 44th President of the United States



President-Elect Barack Obama

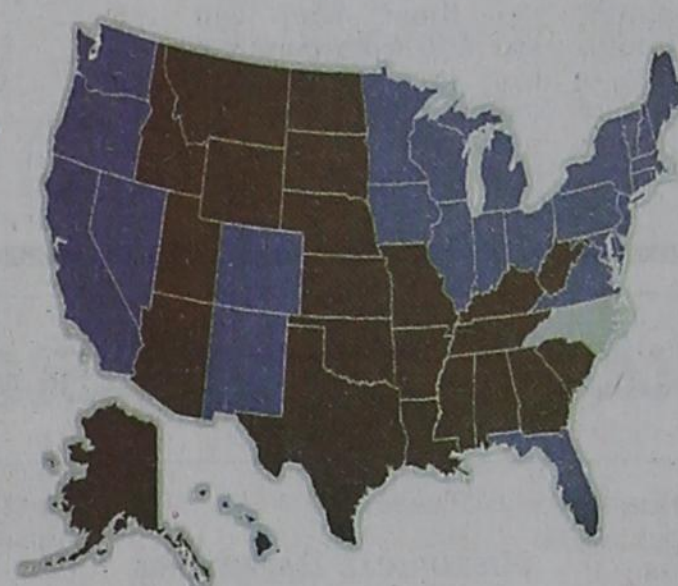
The 2008 presidential election recorded an unusually large number of voters to choose between President Bush and Democratic Senator John Kerry after a dead-locked campaign for the White House. The 2008 presidential election proved to be no different.

Barack Obama was elected the 44th president of the United States on Tuesday, November 4, 2008, following an improbably two-year trek.

Obama won 53% of the nation's popular vote, and had a 349-173 advantage in electoral votes. The nation's first African-American to win the White House, Obama claimed several swing and traditionally republican states in the victory.

"I was never the likeliest candidate for this office," Obama said in an acceptance speech in Chicago Tuesday night. "We didn't start with much money or many endorsements. Our campaign ... was built by working men and women who dug into what little savings they had to give five dollars and ten dollars and twenty dollars to this cause."

Both Obama and Republican rival John McCain relied on the net to bolster their campaigns. But Obama's online success dwarfed his opponent's, and proved key to his winning the presidency. Volunteers used Obama's website to organize a thousand phone-banking events in the last week of the race -- and 150,000 other campaign-related events over the course of the campaign. Supporters created more than 35,000 groups clumped by affinities like geographical proximity and shared pop-cultural interests. By the end of the campaign, myBarackObama.com chalked up some 1.5 million accounts. And Obama raised a record-break-



Presidential results

Obama	349	52%
McCain	173	46%

63,853,037 votes
56,404,917 votes
98% of precinct reporting

ing \$600 million in contributions from more than three million people, many of whom donated through the web.

"If there is anyone out there who still doubts that America is a place where all things are possible, who still wonders if the dream of our founders is alive in our time, who still questions the power of our democracy, tonight is your answer," Obama told more than 240,000 celebrants gathered along Chicago's waterfront. Many had tears streaking their faces.

"It's been a long time coming," said Obama, who strode on stage with his wife, Michelle, and their two daughters, Sasha and Malia. "But tonight, because of what we did on this day, in this election, at this defining moment, change has come to America."

Obama spoke to an enormous crowd of supporters and said that the night was only the beginning of change.

"The road ahead will be long," said Obama. "Our climb will be steep. We may not get there in one year, or even one term. But America, I have never been more hopeful than I am tonight that we will get there. I promise you, we as a people will get there."

Shortly after, Arizona Sen. McCain called the president-elect to concede. President Bush telephoned to congratulate the president-elect.

In Phoenix, McCain, 72, delivered a gracious concession speech.

"We have come to the end of a long journey," a somber McCain said. "The American people have spoken, and they have spoken clearly. This is an historic election, and I recognize the special significance it has for African Americans and the special pride that must be theirs tonight."

McCain urged his supporters to join him in working with the incoming president for the greater good of the country. "Whatever our differences," McCain said, "we are fellow Americans."

Texas recorded a 59.32% turnout with 8,053,036 of 13,575,062 registered voters casting ballots.

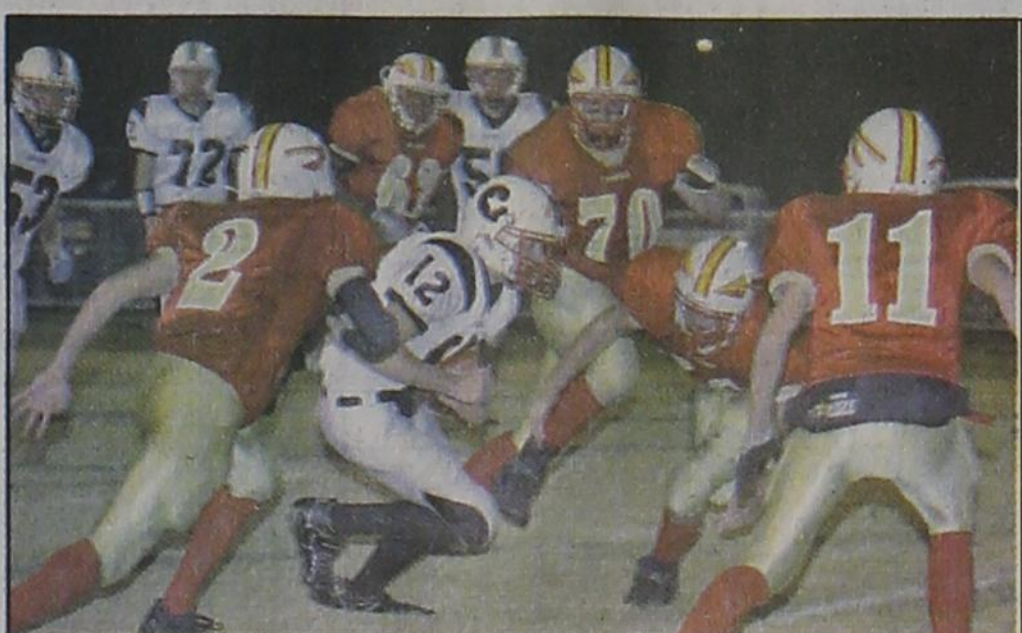
In 2004, a record 68% (2,168) of the 3,180 registered voters cast ballots in Hansford County. Also setting a record were the 910 early votes cast in 2004.

In the 2008 election, 66.6% (2120) of the 3,183 registered voters cast ballots in Hansford County. Early voting broke another record with 959 votes.

Election results are listed on page 5.



Kegan Garnett gets to the corner of the endzone for a Lynx touchdown. (Photo by Tami Hargrove, http://spearmansports.smugmug.com)



Blake Fitzgerald (12) tries to run through the West Texas defense. (Photo by Charlie Johnson)

Gladiola Flower Club Home Tour



MR. & MRS. JOEY WOOLLEY
1021 COTTER DR.

Joey and Lynn invite you to their home on December 7, 2008 from 2-5 p.m.

The Presbyterian Church was erected in 1963. Joey and Lynn purchased the building in August of 2004. After two years of hard work and thought, this was converted to a home of two bedrooms, three bathrooms, an office downstairs with a workroom and office upstairs. The Pastor's study is now a warm, inviting entryway. The sanctuary is now a family room and office.

Much of the church wall paneling remain. A special picture is being made from some of the stained-glass windows.

This past year the Woolley's invited the Faith and Grace Church members into their home to open a "Time Capsule."

Lyn stated there were many memories of the building as a church, and many more to come as a home.

The Woolley home is one of the homes featured in the Gladiola Flower Club Home Tour, which will be held on December 7th from 2-5 p.m. Other homes on the tour include: Mr. & Mrs. Tim Cooper, 801 Wilmet; Mr. & Mrs. Chad Knowlton, 501 S. Barkley; and Mr. & Mrs. Robert Howell, 620 S. Endicott.

Tickets are \$5 each and may be purchased from any Club member, or at the door.

Lullabies, Legends & Lies

by Parson Smith, the Prime Minister of Laughter

A Benedictine nun offered this prayer. This was my prayer this week.

At this moment in our nation's history, I offer it to you.

GIVE US, O GOD, LEADERS...

Let us join in prayer for our country and for the world.

Give us, O God, leaders whose hearts are large enough to match the breadth of our own souls and give us souls strong enough to follow leaders of vision and wisdom.

In seeking a leader, let us seek more than development for ourselves — though development we hope for — more than security for our own land — though security we need — more than satis-

faction for our wants — though many things we desire.

Give us the hearts to choose the leader who will work with other leaders to bring safety to the whole world.

Give us leaders who lead this nation to virtue without seeking to impose our kind of virtue on the virtue of others.

Give us a government that provides for the advancement of this country without taking resources from others to achieve it.

Give us insight enough ourselves to choose as leaders those who can tell strength from power, growth from greed, leadership from dominance, and real greatness from the trappings of grandiosity.

We trust you, Great God, to open our hearts to learn from those to whom you speak in different tongues and to respect the life and words of those to whom you entrusted the good of other parts of this globe.

We beg you, Great God, give us the vision as a people to know where global leadership truly lies, to pursue it diligently, to require it to protect human rights for everyone everywhere.

We ask these things, Great God, with minds open to your word and hearts that trust in your eternal care.

Amen
— Joan Chittister, OSB

Until the next time,
May God Bless.

State Capital HIGHLIGHTS

AUSTIN - The Monday morning deadline for this column forces coverage of the Nov. 4 general election into the next week.

But here is something that is reportable: Texas Secretary of State Hope Andrade on Oct. 28 announced the final tally of registered voters in Texas for the Nov. 4 general election was 13.5 million, up from 12.7 million registered voters in this year's March primaries.

Andrade, the state's chief elections officer, said more than 2 million registered voters cast a ballot during the first eight days of the early voting period, which began Oct. 20 and ended Oct. 31.

State Rep predicts House change

State Rep. Jim Keffer, R-Eastland, on Oct. 29 predicted the end of Speaker Tom Craddick's tenure as leader of the Texas House of Representatives.

Craddick, R-Midland, was first elected speaker on Jan. 11, 2003, after serving 34 years as a member of the House. His colleagues reelected him to the powerful post in 2005 and again in 2007.

In a news release posted six days before election day, Keffer said, "Within 24 hours of the polls closing after Tuesday's historic election, I predict there will be a new consensus choice for Texas House Speaker."

Keffer said he plans to consolidate bipartisan support of his candidacy for the speakership on election night.

Keffer, 55, has served as state representative for Eastland, Hood, Brown, Shackelford, Stephens and Palo Pinto counties since 1996.

House members will decide who is to be speaker soon after the 81st Texas Legislature convenes on Jan. 13, 2009.

RRC catching up with demand

On Oct. 30, Texas Railroad Commissioner Victor Carrillo said record energy sector activity has resulted in drilling permit application numbers that haven't been seen since the last energy boom in the 1980s.

In early October, processing times for expedited drilling permits had reached 13 days, and up to 40 days for non-expedited drilling permits, the RRC reported.

Now, four weeks after a new effort to reduce a backlog of drilling permit applica-

SECRETARY OF STATE REPORTS VOTER ROLLS INCREASED BY 800,000



by Ed Sterling

tions, the RRC says it has reduced the processing time for expedited drilling permits to three days, and for non-expedited permits, to seven days.

RRC Chairman Michael L. Williams said that to reduce the backlog, some employees are working overtime on Saturdays, some employees have been moved to the drilling permit section and some outside contractors have been hired.

Law lets agency read licenses

Texas Attorney General Greg Abbott on Oct. 31 released an opinion that state law allows the Texas Lottery Commission to use electronically readable information encoded on the magnetic stripe of a driver's license to verify the age of persons using self-service terminals and vending machines to purchase lottery tickets.

Abbott's opinion, GA-0675, says the Lottery Commission's reading of the cards serves a legitimate law enforcement or governmental purpose.

Texas Lottery director dies

Texas Lottery Commission Executive Director Anthony J. Sadberry, 59, died Oct. 28.

First appointed as a lottery commissioner by Gov. Ann Richards in late 1993.

He served as commission chair from October 1994 to

August 1995, was named acting executive director in January 2006, and was named executive director in June 2006.

Hurricane shelter aid continues

FEMA extended its program for Texans and Louisianans displaced by Hurricanes Gustav and Ike to Jan. 15, 2009.

The program makes available lodging to evacuees who remain unable to live in their homes because of damage or power outages directly resulting from Gustav or Ike.

The Federal Emergency Management Agency pays costs of room and taxes directly to the hotel. Meals, telephone calls and other incidental charges are not covered.

Security threat detailed in hearing

Steve McCraw, director of the Texas Office of Homeland Security, on Oct. 28 told a state Senate interim committee that Mexican drug cartels continue to threaten public safety and pose a homeland security problem.

McCraw said Ciudad Juarez, across the Rio Grande River from El Paso, has had 1,140 murders this year, so the state has intensified border security and increased teamwork with local and federal agencies to inhibit cross-border gang activity.

Wolf Creek Heritage Museum Notes

MUSEUM HAPPENINGS

Not much is happening which is good because it allows us to clean, organize, and complete projects and assignments. It also allows us time to relax and breathe for a change. Denny Mingus's mother, Paula, came to retrieve his photographs. Denny had a great exhibit and everyone enjoyed his view of the world through his camera. We wish him continued success and thank him very much for sharing his talent with us.

November/December exhibit will be Quilts. Anyone who has a holiday quilt in design or memory please bring it for inclusion in our exhibit. We want to celebrate the holidays through the artistic beauty of quilts. We are receiving the quilts now. You will be able to retrieve your quilt before Christmas Day so please share with us.

On Sunday, November 9, at 3 p.m., we will be hosting a reception for all veterans at the museum after the Darrouzett Legion Luncheon. An invitation has been sent to Veterans of the Korean War. These veterans will be recognized by the Lipscomb County Historical Commission and the museum for their service. This reception is always a wonderful time of sharing and one of thanks to our veter-

ans. Please join us.

HISTORICAL HAPPENINGS

As you read this, we know the results of the 2008 presidential race. Presidential races are always interesting.

On Wednesday, Georgia brought us a campaign poster postcard for President McKinley from 1896 and we reviewed our files and discovered that we have very little on presidential races but have a good sample of campaign items from county races that include pens, notepads, pencils, fans, and of course, buttons. We have put out some of these items on the table in the pioneer rooms for visitors to examine.

I am always interested in the history of women in all major areas of history, politics being one. I discovered that in 1944 national races included three women ran for congressional offices. They were Mrs. Emily Taft Douglas, wife of Marine Maj. Paul Douglas; Mrs. Claire Boothe Luce, playwright, wife of Henry Luce, publisher; and Mrs. Helen Gahagan Douglas, actress and wife of Marine Capt. Melvyn Douglas, movie star. The caption in the Follett times was that the women were adding glamour to the races and were "Standing" for Congress.

Franklin Roosevelt was overwhelming reelected for a

fourth term in 1944. Lipscomb county had six towns that reported the results at the bottom of this column.

Locally, two women, Ms. C.W. Dixon and Mrs. Rose B. Turner were running for Treasurer. Ms. Dixon won the race.

Interesting as always, but as usual when looking at history there is always something new. Where was Liberty and was it an official town or just a voting precinct. A topic for the Wednesday Core Team. See you on Sunday, please join us in celebrating our veterans.

Wolf Creek Heritage Museum

Museum Hours: Monday thru Friday 10 a.m. to 4 p.m., Sunday 2 to 4 p.m. Special hours upon request.

Museum Information: 13310 Hwy 305, PO Box 5, Lipscomb TX 79056; telephone: 806-852-2123; email: wolferk@amaonline.com; website: www.wolfcreekheritagemuseum.org

	Follett	Lipscomb	Booker	Higgins	Liberty	Darrouzett	TOTAL
FDR	161	92	76	136	25	61	551
Dewey	55	49	107	114	17	54	396

SUDOKU
PRESENTED BY

VolunteerMatch.org
Where volunteering begins.

			8	2	1	9		
	6		3	4		5		
					6			
	3	1			2			
5	2				9	6		
	8			5	3			
	9							
3		2	5		4			
7	4	8	1					

© 2008, StatePoint Media, Inc. answer on page 6

Fill in the blank squares in the grid, making sure that every row, column and 3-by-3 box includes all digits 1 through 9.

TEEN LIFE

ACROSS

- Last one?
- *IM buddy
- Count Monte Cristo's mentor
- Garlic mayonnaise
- Belonging to us
- *A high one is desirable on an SAT test
- Author of "Oil"
- Double helix
- Show in progress
- *New to a 16-year-old
- *Transitional time
- "Game, _____ match"
- _____ of Man in Irish Sea
- Marxism or Taoism, e.g.
- Wholly engrossed
- It could result in trip to ER
- _____back attitude
- Six above buried
- Femme fatale
- In neutral
- Longest human bone
- Sound at door
- In advance
- Ready to eat
- Concludes
- *Unwelcome time?
- Zn
- Three ahead of PST
- Tempo
- One of a range in Europe
- *For many, high school is this to college

- Rubber quality
- Rosie the Riveter's material
- *'80s teen flick actress of "Back To The Future" and others
- Hunter's fowl
- Relating to sheep
- Hawaiian welcome
- Far beyond norm
- Mix together
- *Teens sure aren't this
- Consumed

DOWN

- First king of Israelites
- Cone-shaped quarters
- Training program for officers
- Infection fighting plant, pl.
- One wearing blue ribbon
- Foretell
- *Every teen's summer goal?
- Tightens or fastens
- *Common byproduct of #21 Across
- Wild swine
- Trafalgar Square frequenter
- Halloween night, e.g.
- One _____ up after drinking
- Walking stick
- Preceding month
- Place on a list
- Relating to the illium

These games are brought to you by the
Hansford County Reporter-Statesman

CROSSWORD

1	2	3	4	5	6	7	8	9	10	11	12		
13					14			15					
16					17			18					
19				20			21	22					
		23					24						
25	26	27		28		29		30		31	32	33	34
35			36			37		38		39			
40						41		42		43			
44				45		46				47			
48				49		50				51		52	
				53		54		55		56			
57	58	59	60					61			62	63	64
65						66	67			68			
69						70				71			
72						73				74			

PRESENTED BY

VolunteerMatch.org
Where volunteering begins.

© 2008, StatePoint Media, Inc.

answer on page 6

The Hansford County Reporter-Statesman

213 Main Street • Spearman, TX 79081
Phone - (806) 659-3434 • Fax - (806) 398-9080
www.spearmanreporter.com
reporter@spearmanreporter.com
cathysmith@valornet.com

Mon-Thurs. 9 a.m.-12 p.m., Mon.-Wed. & 1-5 p.m.
Closed Thurs. afternoon and all day Fri., Sat. & Sun.

Gary Smith - Publisher Catherine Smith - Editor
Contributing Writers: Dorothy Hudson, Jim Derington,
Merry Sparks, Cecil Biggers
Contributing Photographer: Charlie Johnson

Subscription Rates
In Hansford County - \$30.00 • Out of County - \$40.00

The Hansford County Reporter-Statesman (USPS 529660) is published weekly in Spearman, TX. Periodical postage paid in Spearman, TX. POSTMASTER: Send address changes to: The Hansford County Reporter-Statesman, 213 Main Street, Spearman, TX 79081.

Publication Policy

The deadline to submit news and advertising to The Hansford County Reporter-Statesman is Monday at 5 p.m. Items submitted after the deadline will be published at a later date, as time and space permit. Publication of all items is at the discretion of the editor.

Advertising

Open Display rates are \$4.00 per column inch. Classified Ads are \$6 for the first 25 words and 10c per word for each additional word. (Additional charge for boxed classifieds.) There is a \$1 charge per week if billed.

Member of
Gruver Chamber of Commerce
Spearman Chamber of Commerce
Texas Press Association and Panhandle Press Association

Happy Birthday!

November 6
Birthdays - Paige Speck, Zachary Johnson, Ross Renner, Jill Watson, Don Kjos, Santiago Terceiro, Calvin Bodey, Virginia Martin, Joan Hawkins, Rosa Alvarez Flores, Kiersan Lopez, Beth Dortch, Jill (Lusby) Butler, Cindy Holton, Linda Wilkerson, Tonya Mahaney, Tony Edwards, Tom Kirk, Stuart Martin, Raquel Arjona, Stacey Williams French, Dakota Lopez, Blake Burgess, Tom Kirk/Rosa Vasquez
Anniversary - M/M David Collins, Fred & Brenda Shieldknight
November 7
Birthdays - Gerald McBride, Gary McCalman, Cleo Cotter, Kurt Bynum, Megan Woolley, Lee Roy Mitchell, Jerry Tope, Haley Lombard, Pam Largent Ortega, Matthew Jarvis
Anniversary - Victor & Debbie Schumann
November 8
Birthdays - Donnie Davis, Tara Gardiner, Sharon Reed, Santiago DeLaCruz, Kaylee Wheeler, Nathan Hanson, Linda Burke, Megan Stedje, Kristi Medford, Manda Simmons, D.A. Cator, Corey Fletcher, Amanda Wells
Anniversary - Danny & Delinda McLaughlin
November 9
Birthdays - Mark Deakin, Tracey Chisum, Gloria Alicia Alvarez, Charolette Ford, Jasmine Bravo, Samuel Hanson, Shanna Dillard, Jessica Nicole Vela, Eloise Renner, Joe Mayo, Alfredo Mendoza, Shonna Gammon, Irasemo Soto, Pat Cudd, Beth Daniel
November 10
Birthdays - Jess Rudolph, Rick Yanke, Buddy Hopper, Bernard Dossett, Caraly Garza, Cynthia Arnold, Marilyn Wilson, Candace Sharpe, Guadalupe Trejo, Catherine Smith, Sam Gruver, Sylvia Borunda, Bobbi Kay Christian, Jessica Gallegos, Kolby Sumner, Diane Close
November 11
Birthdays - Luke Miller, Pat Overbey, Andres Rodriguez, Nichole Shearer, Matthew Stork, Tye Womble, Charles Ross III, Harriet Hutchison, Kurtis Hergert, Goldie Tucker, Heath Hergert, Callie Barkley Borger, Samantha Cazarez, Bill Watts, Liz Hickerson, Matthew Brown, Andres Rodriguez, Lupe Moreno, Alan Tarango
Anniversary - M/M Billy Snider, M/M Monty Black
November 12
Birthdays - Jennie Blankenship, Monty Cassady, Benjamin Karlin, Bob Zimmer, Jo Nell Comegys, Cindy Avila, Sophia DeLuna, John Jackson, Helen Dry, Angie Thompson, Marolyn Scroggs, Brent Sanders, Dennis Crawford, Erica Alvarez, Buffy Adkins, Rose Isenhower, Jaime Briones, Ann Allen
November 13
Birthdays - Lucy Alvarez, Angela Grotgut, Paulette Watkins, Rhonda Williams, Michelle Garnett, Andra Camille Brown, Kent Hargis, Amy Reed, Joseph Burch, Richard Nicholas, Carly Riethmayer, Hector DeSantiago, Masen Castillo
November 14
Birthdays - Lisa Johnson, Luke Johnson, Missy Johnson, Ray Martin, Ricky Sharp, Carl Kunselman, Rhonda Tope, Norma Payne, Dolly McWhirter, Sandy Morris, Roy Pipkin, Mark Love, Jessica Crossland, Adela White, John Patterson, Judy Yarbrough, Luis C. Rodriguez, Sylvia Hodge, Shelby Ann Sasser, John Patterson
Anniversary - M/M Benny Bradvick, M/M Nathan Hanson, M/M Dave Barkley
November 15
Birthdays - Pam Shearer, Debbie Clawson, Virginio Ortega, Rudy Zamora, Kiki Kelp Connelly, Carolyn Sadler, Jeremy Hunter, Rue Sanders, Brenda Vassar, Francis Balderama, Maria Tarango, Reese Castillo, Edna Bassel
Anniversary - M/M Richard Pipkin
November 16
Birthdays - Felipe Alvarez, Charles Bell, Don Heddings, Chandler Miner, Angela Overbey, Clint Patterson, Charlotte Pearson, Karen (Kenney) Bonath, Keith Goodman, David McGuire, Ryan Quillin, Alexa Thoreson, Lindsey (Smith) Savage, Callie Smith
Anniversary - Bertha & Francisco Martinez
November 17
Birthdays - Pam Cassady, Janyth Hart, Francis Pipkin, Curtis Gross, Abby Winegarner, Bill Sparks
Anniversary - M/M Corky Kizzar, M/M Marvin Jones, Bernie & Kelly Kjos
November 18
Birthdays - Bryn Lowe, Gwen Parker, Kevin Rodriguez, Arnold Stork, Amanda Taylor, Jennifer Johnson, Steven Tindell, Rose Mary Tartar, Chris Taylor, Kashey Brown, Rita Underwood, Clayton Fox, Jennifer Nelson, Freida Burgess, Mona Lisa Garcia, Steven Cummings, Gabbi Boyd, Pepe Marquez, Eva Jo Pittman, Jill Clement, Marie Beck, Casie Butt
November 19
Birthdays - Cherri Sherill, David Hall, James Davis, Brian Beck, Tim Gikas, Sharon Barkley, Aaron Shawn Moore, Jeff Jackson, Kasey Harris, Jeffrey Davis
Anniversary - M/M Brice Lewis
November 20
Birthdays - Scott Davis, Jr. Rodriguez, Mrs. Ray McCammond, Jerry Wayne Dunaway, Danny Close, Ron Riley, Garland Dahl, Brenda Ferguson, Freda Sheets, Tammy Batton, Carie Tidwell, Casey Villines, Jason Payne, Josh Purvines, Ole Bergan, Christina Bowers
Anniversary - M/M Phillip Turner, M/M Ramon Garcia Jr., M/M Jesse Renteria, M/M Roberto Tarango

Words from Faith & Grace



by Cecil R. Biggers, Lutheran Lay Minister

We learn something of the Day of the Lord as we study Amos 5: 18-24, Psalm 70, 1 Thessalonians 4: 13-18, and Matthew 25: 1-13. Amos has condemned in early verses the "Cows of Bashan", the rich women of Samaria (the capital of Israel) who care more for their rich life than social justice. Here he warns by a funeral lament those who place reliance in the "Day of the Lord" as being a day of triumph for Israel. Amos tells Israel that it will be a day of judgment and those who offer hollow sacrifices, those who offer hymns and music will be ignored because they have not loved God and have not loved their neighbors. We cannot love God and ignore social justice in our communities.

The Psalmist sings a song "God remember me". He sings of his faith and need of deliverance. God is praised as the deliverer. This is almost a direct repeat of Psalm 11. Yet, when our life of faith is sorely tested, we may also sing, "God remember me".

Paul is advising the Thessalonian faith community about their concern, "What happens if I die before Christ returns?" Paul reassures these believers, and us, that the dead in Christ will rise again as did Christ. We are Christians both in life and in death. There is no power or thing or event that can separate us from the love of Jesus Christ. This message is in stark contrast to the general belief in Greek society that "dead is dead" and once our brief life ends, it ends. The orthodox Jew, the Sadducees, held a similar view of death. For us this reassurance means more than that the dead are resurrected, it indicates that our entire life is spent in awaiting the return of Jesus Christ, and that we need to continue working for the Kingdom of God until that day. The Christian is not offered "early retirement" from the labors of the Kingdom.

In the parable of the 10 virgins, Jesus shows us that those who await the bridegroom's return (Jesus' return) must wait in readiness. Early in my work with the church, a young minister asked me what I was planning for the return of Christ. My reply then and my reply now is, "I hope He finds me still working for the Kingdom in whatever way I can". This scripture reminds us that not all will enter into God's Kingdom; but, all who continue in faith, working for the Kingdom will not be caught "unaware" but will receive the reward of their faith and toil.

May the Holy Spirit keep you in Jesus Christ now and forever.

Our Sympathy

ISRAEL LONGORIA

LUBBOCK - Israel Longoria, 50, died Friday, October 31, 2008. Graveside services were held at 2 p.m. on Monday, November 2, 2008 in West Park Cemetery with the Rev. Armando Pinales officiating. Arrangements were by Rix Funeral Directors. Mr. Longoria was born July 3, 1958, to Juan and Hermelinda Cruz Longoria. Survivors include his father of Hereford; three brothers, Johnny Longoria and Hector Longoria, both of Cleburne, and Lucas Longoria of Spearman; and four sisters, Maria Lopez of Hereford, Eva Lopez of La Pryor, Esmeralda Ortega of Enid, Okla., and America Regalado of Dalhart.

MONUMENTS Boxwell Brothers Funeral Home

519 Evans • Spearman
659-3802

Dear friends, When you buy a monument from us we make sure it is exactly what you want at a price you can afford. If it is not right, we will make it right. And you will not have to search the countryside to find us. We are here when you have a need.

Sincerely,
Bob Boxwell

Alva Monument Co.

Formerly Liberal Monument & Memorial Company

New Location:
111 Tucker Road
Liberal, Kansas

North of the New Wal-mart

Serving Kansas, Oklahoma & Texas for 93 years
(316) 624-4211 toll free # 888-654-9318

New Winter Hours

MurMur's is going back to their winter hours. We will be open Monday-Friday, from 11:00 a.m.-7:00 p.m.

MURMUR'S CAFE
100 S. Roland • 659-3580 • Spearman

Thank You!

The Gladiola Flower Club would like to thank everyone who helped make the Nut Sale a success again this year!

Holiday Home Tour

The Gladiola Flower Club will host their Holiday Home Tour on Sunday, December 7, 2008 from 2-5 p.m. All proceeds from the Home Tour go to scholarships for local graduates.

We will be closed on Tuesday, November 11th in observance of

VETERANS' DAY

INTERSTATE BANK, ssb
A Full Service Bank
 Branch Office
 322 Main Street
 Spearman, TX 79081
 Phone - (806) 659-2559
 Fax - (806) 659-3276
 FDIC Insured

Replenish the seed of faith through . . . DAILY BIBLE READING, PRAYER & REGULAR CHURCH ATTENDANCE

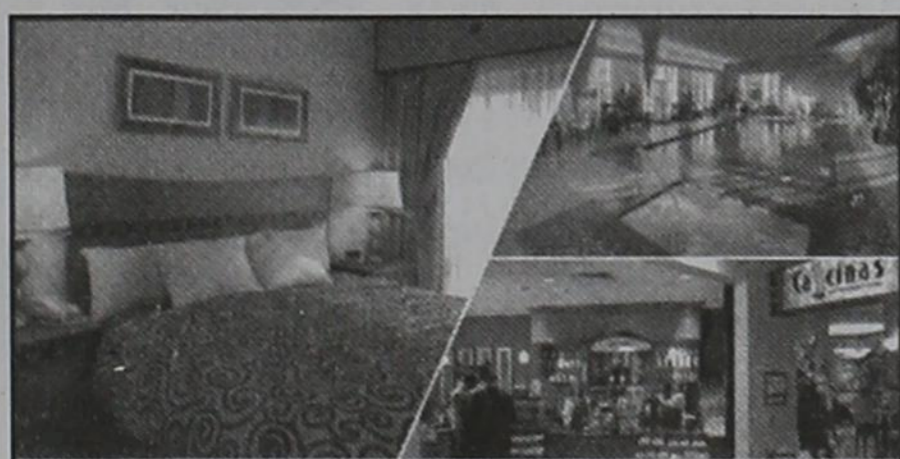
- Spearman**
- Apostolic Faith Church**
822 S. Dressen • 659-2870
Sunday School: 10 a.m.
Worship Service: 11 a.m.
Sun. Eve.: 6 p.m.
Wed. Prayer Mtg.: 7 p.m.
Pastor - Roland Hanev
 - First Assembly of God**
401 N. Bernice • 659-2295
Sunday School: 9:30 a.m.
Worship: 10:40 a.m.
Evening Worship: 6 p.m.
Wed. Worship: 7 p.m.
Wed. Youth: 7 p.m.
Pastor - Jerry Pollard
 - First Christian Church**
(Disciples of Christ)
29 S. Bernice • 659-2036
Sunday School: 9:45 a.m.
Worship: 10:50 a.m.
Minister -
 - First Baptist Church**
123 N. Bernice • 659-5557
Sunday School: 9:45 a.m.
Worship: 11 a.m.
Evening Worship: 7 p.m.
Men's Bible Study - Wed., 7 a.m.
Children's Choir - Wed., 6 p.m.
Adult Choir - Wed., 7 p.m.
Wed. Bible Study: 7 p.m.
Pastor - Jim Medley
 - Church of Christ**
121 S. Haney • 659-3244
Sunday Bible Class: 9:45 a.m.
Worship: 10:30 a.m.
Evening Worship: 6 p.m.
Bible Study Wed.: 7:30 p.m.
 - Sacred Heart Catholic Church**
901 Roland • 659-2792
Sat. Night Mass: 5:30 p.m.
Sun. Mass: 9 a.m. - English
Sun. Mass: 11:30 - Spanish
1:30 p.m. - Gruver - Christo
Rendontor Mass - Spanish
Rev. Guillermo Morales
 - First United Methodist**
407 S. Haney • 659-5503
Sunday School: 9:45 a.m.
Worship: 8:30 & 11 a.m.
Jr. High Youth: 5 p.m. Sunday
High School: 6 p.m. Sunday
Kids Club: 3 p.m. Wed.
Pastor - Neely Landrum
 - Grace Presbyterian Church**
(Worships with Faith Lutheran Church)
1101 Bernice • 659-2033
Pastor - Beverly Cook
 - Faith Lutheran Church (ELCA)**
1101 Bernice • 659-2252
Sunday School: 9:45 a.m.
Worship: 11 a.m.
(Worships with Grace Presbyterian Church)
Pastor - Beverly Cook
 - Union Church**
31 S. Endicott • 659-2644
Sunday School: 10:00 a.m.
Worship: 11:00 a.m.
Bible Study: 7 p.m. Wed.
Youth Service: 6 p.m. Wed.
Pastor - Don Baltazor
 - Fellowship Baptist**
1102 S. Archer • 659-2783
Sunday School: 10 a.m.
Worship: 11 a.m.
Sun. Evening Worship: 6 p.m.
Youth/Adult Service: 7:30 Wed.
Pastor - James Washburn
 - Primera Mision Bautista**
502 E. 7th • 659-3991
Sunday School: 9:45 a.m.
Worship: 11 a.m.
Evening: 6 p.m.
Wed. Prayer Meeting: 7 p.m.
Thurs. Visitation: 7 p.m.
Pastor Joe Garcia Jr.
 - El Aposento Alto U.P.C.I.**
1105 S. Roland
Domingos: Escuela-Domical - 10 a.m.
Culto Evangelistico - 7 p.m.
Jueves: Oracion - 8 p.m.
Mier: Estudio Biblico - 7 p.m.
Pastor - A.G. Martell
(806) 659-2153
 - Gruver United Methodist**
Broadway & Garrett
733-2651
Sunday School: 9:45 a.m.
Worship: 8:30 & 10:50 a.m.
Eve. Worship & UMY: 6 p.m.
Pastor - George Price
 - Spanish Cristo Redentor Church**
Sunday Mass: 1:30 p.m.
Friday Evening Mass
Summer - 8:00 p.m.
Fall/Winter - 7:30 p.m.
- Oslo**
- Oslo Lutheran Church (ELCA)**
6 Miles West & 12 Miles North of Gruver
339-7646
Sunday School: 9:45 a.m.
Worship: 11 a.m.
Pastor - Arlen Lloyd
- Gruver**
- First Baptist Church**
402 E. Broadway • 733-2411
Sunday School: 9:45 a.m.
Worship: 10:50 a.m.
Disciple Training: 6 p.m. Sunday
Prayer Meeting: 7:30 p.m. Wednesday
Pastor - Scott Curry
 - Church of Christ**
209 King • 733-2760
Sunday School: 9:30 a.m.
Worship: 10:20 a.m.
Evening Worship: 6 p.m.
Wed. Worship: 7:00 p.m.
Minister - Gaylord Cook
 - First Christian Church**
510 King • 733-2960
Sunday School: 10:00 a.m.
Sunday Worship: 11 a.m.
Youth: 7:30 Sunday
Adult Bible Study: 7:30 Sun.
Wed. Bible Study: 8:00 p.m.
Pastor - Gary Gumfory
- Morse**
- Morse Baptist Church**
733-2757
Pastor - Mike Martin
- Waka**
- Church of Christ**
300 Rogers Ave.
202-7126
Sunday Worship: 6 p.m.
Wednesday Bible Study: 6 p.m.
Pastor - Mike Martin

He has showed you, O man, what is good. And what does the LORD require of you? To act justly and to love mercy and to walk humbly with your God.

Micah 6:8

This feature is made possible through the sponsorship of these civic minded businesses:

<p>Deakin ELECTRIC OILFIELD • RESIDENTIAL • COMMERCIAL 321 S. MAIN • SPEARMAN 1-800-999-1506 Chris Deakin (806) 659-5016 President</p>	<p>Bartlett's Lumber & Hardware 105 W. Broadway • Gruver, Texas (806) 733-2404</p>	<p>BERRY CLEANERS Ann & Vernon Pipkin - Owners Phone 659-3122 • P.O. Box 1017 207 Main St. • Spearman, TX</p>	<p>Morse Implement & Auto Supply "Join us in church" Tom Dortch 733-2668 Box 89 • Morse, TX 79062</p>
<p>PRAIRIE MOTORS INC. Hwy. 207 South • P.O. Box 430 Spearman, TX 79081 • (806) 659-2541 www.prairiemotors.com</p>	<p>MurMur's Cafe 100 Roland St Spearman, TX. 659-3580</p>	<p>Hansford County Reporter-Statesman "Proudly Serving Hansford County Since 1907" (806) 659-3434 310 Barkley • Spearman, TX</p>	<p>INTERSTATE BANK, ssb www.interstatebank.net 322 Main • P.O. Box 146 Spearman, TX • 659-2559</p>



KICK BACK. RELAX. AND EXPERIENCE NORMAN'S NEWEST HOTEL.

With spacious two-room suites, exceptional dining and unrivaled amenities, the new Embassy Suites Norman is the area's premier place to spend the night. Plus, we're located right where you want to stay - minutes from downtown Oklahoma City and only five miles from the University of Oklahoma. Book our Drive & Stay Package and you'll save 10%.

Call 1-800-EMBASSY and ask for the Drive & Stay Package.

- Spacious two-room suites
- Complimentary cooked-to-order breakfast
- Evening Manager's Reception!

Drive & Stay Package
Save 10%*

*Must present this ad to receive promotional rate. Based on availability. Not available on special event dates. Offer good through 12/31/09.



EMBASSY SUITES®
 Norman - Hotel & Conference Center
 2501 Conference Drive, Norman, OK 73069
 Tel: 405-364-8040
 Fax: 405-364-3377
 norman.embassysuites.com



The Hilton Family Another exceptional hotel. By John Q. Hammonds Hilton Honors For more information, call 1-800-EMBASSY and ask for the Drive & Stay Package or visit hilton.com/embassysuites. Subject to applicable local laws. *Must present this ad to receive promotional rate. Based on availability. Not available on special event dates. Offer good through 12/31/09. ©2009 Hilton Hotels Corporation.

HYI

FOR YOUR INFORMATION

Medical Fund for Krystal Puentes

An emergency medical fund has been established for Krystal (Burkhammer) Puentes at First National Bank, Spearman. If you would like to make a contribution you may make a deposit with any teller or mail a donation to First National Bank, Krystal Puentes Medical Fund, PO Box 337, Spearman TX 79081.

Medical Fund for Rene Griffin

A medical fund has been established for Rene Griffin at First State Bank, Spearman. If you would like to make a contribution you may make a deposit with any teller or mail a donation to First State Bank, Rene Griffin Medical Fund, PO Box 247, Spearman TX 79081.

Medical Fund for Bruce Duncan

An emergency medical fund has been established for Bruce Duncan at First National Bank, Spearman. If you would like to make a donation you may make a deposit with any teller or mail a donation to First National Bank, Bruce Duncan Medical Fund, PO Box 337, Spearman TX 79081.

HC Library Harvest Craft Raffle

The Hansford County Library is announcing a Harvest Craft Raffle as the result of an idea spun from its mid-winter arts and crafts showcase. A number of participants in the showcase have generously donated items to be raffled to benefit the library's DVD collection. The drawing for the items will be on Monday, November 24, just in time to assist with your Christmas gift giving. Items are on view now with tickets selling for \$2 each or 3 for \$5. Come by the library to see the items & purchase tickets.

Region 16 ESC offers Free GED Preparation Software

Region 16 ESC is offering free GED preparation software for students interested in obtaining a GED. You will also have access to a free online GED prep program through the public library. If you are interested in finding out more information about these services, please contact: Cindy Blackman at 659-3233, Maria Carbajal or Margaret Rutman at 659-2231 or stop by the Hansford County Library.

Spearman Lynx Basketball Fundraiser

The Spearman Lynx Varsity basketball players are painting paws on driveways (\$15 each or 2 for \$25) to raise money for tournament expenses this year. If you are interested in purchasing paws, please contact Coach Jr. Ashmore or any member of the Lynx basketball team.

SHS Band Selling Discount Cards

Spearman HS Band is selling the discount band cards for \$10 ea. Good for 1 yr. The Band has a trip in the spring and needs your support. Contact Jerry at 659-2563 ext. 3005 or Sherrie at 659-2584 ext. 2202.

SHS Presents The Odd Couple

Spearman High School will present *The Odd Couple* for their fall production on Thursday, November 13, 2008 at 7 p.m. at the Spearman High School Auditorium. Donations will be accepted at the door.

Rushing Wind Emmaus Community Meets

Rushing Wind Emmaus Community will meet Saturday, November 8 at 6 p.m. in the Waka Christian Center. There will be a potluck supper, training for sponsors, and a praise and worship service. Friends and families are welcome and sponsors are encouraged to bring their new members from the recent walks. A nursery will be provided.

GISD Offering Reward for Information

Gruver Independent School District is offering a \$1,000 reward for information that leads to the arrest and conviction of the person or persons who burglarized two Gruver teachers homes between October 17-19 2008. If you have any information, contact: Troy Seagler at 806-733-2477, Micah Davis at 806-733-2081, David Teal at 806-733-2001 or the Hansford County Sheriff's Office at 806-733-2901.

Lunch & Learn

"Home for the Holidays" Lunch & Learn, Thursday, November 6, 12:00-1:00 p.m. in the Fellowship Hall of Spearman Church of Christ. Local merchants and guests will present decorating hints for home and table along with gift ideas for the holiday season. Sponsored by Texas AgriLife Extension Service & Hansford Extension Education Clubs. Donations for lunch will be accepted. Call Peggy Winegarner, Hansford County Extension Agent, for more information (659-4130 or 733-2901). Extension programs are open to all ages regardless of socioeconomic level, race, color, sex, religion, disability, or national origin.

Web Page Development - Level 1 Class

There have been some inquiries expressing an interest in a "Web Page Development" class. If you are interested in taking this class, contact Cindy Blackman, Community 659-3233 or cindy.blackman@region16.net.

FSB Aired Sunday Morning Worship on PTCI

Sunday morning worship services from Spearman's First Baptist Church are being telecast on PTCI's Channel 2 Wednesdays at 7 AM, 4 PM and 11 PM and on Sundays at 6 AM, 11 AM, 4 PM and 9 PM.

FFA Fruit Sale

The FFA has started their fruit fundraiser. Orders must be submitted by November 14th. The fruit will be delivered between December 1st and 19th, depending on the truck delivery. The FFA fundraising money goes to support the students in scholarship form, along with helping allow the students to participate in each FFA event. Thank you for your support.

FUMC Chancel Choir Annual Thanksgiving Dinner

The FUMC Chancel Choir will host the annual community Thanksgiving Dinner on Thursday, November 20, 2008 in the Fellowship Hall of the First United Methodist Church serving from 11:30 AM to 1:00 PM. Tickets are \$8 for adults with children 6 and under free. Advanced tickets are available from any choir member or can be purchased at the door on the day of the dinner. Take-outs will be available by calling 659-5504 by 10:30 AM. Come join us for the best eating in town featuring turkey, dressing, salads, with all the trimmings and the most luscious pies and desserts!!! Please enter through the double doors on the west side of the church where you can purchase tickets or pick up the takeouts meals. Thank you for supporting our choir and we know you will enjoy the wonderful meal.

Cowboy Poetry Breakfast

The Cowboy Poetry Breakfast will be Saturday morning, November 8, at the Big Texan Steak Ranch. Genny Peters stars as headliner with her humorous and heartwarming poetry. She is Secretary of the Southwest Cowboy Poets Association. Bob Muncy will emcee the program. Members of SWCPA follow the headliner with their cowboy/girl poetry, songs, music, tall tales and sometimes western skits. A special invitation is extended to all who attended. Mark your calendar for Saturday morning, and be there at 8:00 for outstanding family entertainment.

Annual Festival of Arts & Crafts

Wesley United Methodist Church will be holding its 28th Annual Festival of Arts & Crafts on December 6, 2008, from 9 a.m.-5 p.m. at the community center in Hereford. Only a limited number of booths are available, with applications being screened. The booth fee is \$10. Applications may be obtained by writing or calling any of the following names or numbers: Ellen Collins, 801 Miles St, Hereford TX 79045, 806-364-0774; Jane Eggen, 126 Aspen, Hereford TX 79045, 806-364-5789; or Wesley United Methodist Church, PO Box 1743, Hereford TX 79045, 806-364-4419.

Marines invited to celebrate 233rd Birthday of the US Marine Corps
The United States Marines of Lubbock extend an invitation to ALL Marines, past and present, to join them in celebrating the 233rd birthday of the United States Marine Corps. The Ball will be held at the Holiday Inn and Towers at 801 Avenue Q in downtown Lubbock, TX on November 15, 2008. The celebration will commence with a cocktail hour at 5:00 p.m., followed by a traditional birthday ceremony, dinner and dancing. To purchase tickets or get additional information please contact, the Inspector-Instructor Staff at (806) 763-2853.

Child Find

Your school district is looking for children ages 3-21 years who may be slow in developing communication skills, social interactions, walking skills and/or have major physical disabilities. We want to give your child the chance to receive the extra help he/she needs, if the disability interferes with his/her education. Please call your elementary campus to get more information or call Perryton SSA, 435-4412. Our staff will answer your questions about early intervention.

Gruver Elementary Collects Register Tapes for Education

Gruver Elementary is participating in the Lowe's Marketplace Register Tapes for Education. Gruver Elementary is also collecting the pink Box Tops for Education and the yellow UPC bar code Labels for Education from Campbell and Swanson products. You can deposit your register tapes, pink Box Tops and UPC Bar Codes in the Elementary School Lobby, City Library, City Hall, Night & Day Beauty Salon or Hitchin' Nails Salon. Jo Clawson will also collect them at 711 Womble. Please help us earn free education equipment by collecting these items.

Rabies Confirmed in Hansford County

Continued from Page 1

Currently there is only one test available for rabies and must be performed on brain tissue. This means the animal must be captured and deceased. If you or one of your animals are bitten by another animal and is not captured then there may be a rabies exposure. Unvaccinated pets exposed or suspected of rabies may be quarantined but this requires days or months of observation before symptoms may become evident. This is dangerous for the pets as well as delaying potential treatments for humans that may be at risk.

Avoid contact with unknown animals particularly those exhibit strange behaviors. Keep your pets confined, and make sure enclosures also prevent intrusion by wild animals. Your pet's water dish can become infected with rabies by a wild animal drinking from the bowl. Rabies virus can not live without moisture. Should you suspect your pet's dish might have become contaminated, wash it thoroughly with hot water and disinfectant.

Report any animals not confined to the animal control officer, do not attempt to capture or secure the animal. To make such a report call 806 659 4140, central dispatch and report the animal description, last known location and any other information requested.

Remember rabies exposure can be a medical urgency but not necessarily a medical emergency. If you are bitten by an animal seek

medical assistance, attempt to remember all descriptive elements about the animal as possible and report it to central dispatch. If possible have someone watch the animal while you seek medical attention.

ABOVE all have your pets vaccinated! Keep your pets protected and confined.

Some additional facts about rabies:

Fact: In the United States, an average of one person per year dies from rabies. Worldwide however, approximately 45,000 to 60,000 people die each year from rabies. The reason for the relatively low number of deaths in the US is because of an aggressive vaccination program for dogs, cats and ferrets. This statistic shows how important it is to vaccinate all pets, not just dogs, cats and ferrets, but all mammalian pets.

Fact: Rabies is found worldwide except for a few islands, Australia, and Antarctica.

Fact: Of wildlife species in the US, wild raccoons account for the largest number of rabies cases. Wild skunks account for the second largest number of rabies cases in wildlife in the US.

Fact: All mammals are believed to be susceptible to the rabies virus, but reservoirs are confined to Carnivores (dogs, foxes, coyotes, cats, raccoons, skunks, mongooses, etc) and Chiroptera (bats).

Fact: More people die each year from dog attacks than die from rabies. In 1999 alone, 11 people died from dog attacks, and only 1 from

rabies.

Fact: The post-exposure treatment for humans is called the Post Exposure Prophylaxis (PEP). It consists of human rabies immune globulin and five doses of vaccine. Correct and timely administration of the PEP provides nearly complete protection from the development of clinical symptoms of rabies (and death) in humans.

Fact: Currently, the only effective rabies tests must be performed on the brain after death with the direct fluorescent antibody (dFA) test. There are a battery of tests that can be used for ante mortem (prior to death) diagnosis of rabies in humans. However, to date, these tests have proven to be unreliable. The Humane Society in the US is currently looking for an effective ante mortem test.

Fact: Rabies virus may occur in saliva before clinical signs begin. Generally in experimental rabies in skunks, virus occurs in saliva at or slightly before onset of clinical signs and persists for several days (maximum observed is 6 days). The

skunk may harbor the virus for a long period of time, but until it reaches the salivary glands, skunks can not transmit the virus by biting. Clinical signs of rabies in skunks can last from 1-18 days before the animal dies. Skunks can not excrete the virus in saliva and remain clinically free of symptoms for long periods of time, nor have skunks recovered from clinical signs and continued to excrete the virus.

Fact: There are actually more polio cases each year than there are rabies in humans.

Signs of rabies in animals include:

- changes in an animal's behavior
- general sickness
- problems swallowing
- an increase in drool or saliva
- wild animals that appear abnormally tame or sick
- animals that may bite at everything if excited
- difficulty moving or paralysis
- death

You are invited to a
Bridal Shower
honoring
Lauren Payne
bride-elect of Steven Haney
on Saturday, November 15, 2008
from 3:00-4:30 p.m.
at the Spearman Union Church
31 S. Endicott Spearman, TX

You are invited to a
Wedding Shower
honoring
Eric & Tashi (Schumann) Haley
on Saturday, November 8, 2008
from 10:00-11:30 a.m.
in the home of Kiki Connelly
805 Wilmeth Dr. Spearman, TX

STOP LEG CRAMPS
BEFORE THEY STOP YOU.

Calcet's triple calcium formula is designed to help stop low calcium leg cramps. Just ask your pharmacist.

Mission PHARMACAL
CAL-05027 Rev. 08/08/08 Copyright © 2008 Mission Pharmacal Company. All rights reserved.

FREE DIRECTV 4 ROOM SYSTEM!

265+ ALL DIGITAL CHANNELS!
130 HD CHANNELS!
FREE HBO, Showtime & Starz for 3 Months!
Channel Pkgs. Start \$29.99 / mo

Package Start only \$29.99
FREE DVR/HD
No Start Up Costs!
We're Local Installers!

Toll Free 800-214-7110

REAL ESTATE AUCTION

113 +/- Acres • Offered In Multiple Tracts Or As A Whole
Commercial & Residential Development Property On Cedar Creek Lake
SATURDAY, NOVEMBER 15, 2008 • 10:00 A.M. • KEMP, TEXAS
Open Previews on Nov. 1 and Nov. 8 from 12 P.M. to 4 P.M. CST.

United Country
Meier Auctions & Realty, Inc.
Approximately 113 acres of prime commercial and residential development land are available with 1,800 ft fronting beautiful Cedar Creek Lake and another 1,200 ft offering lovely views of the water.

(972) 938-2121 • CedarCreekLakeAuction.com

Celebrate
Gifts for all your celebrations!
Bridal Registry

Tashi (Schumann) & Eric Haley - 11/8
Lauren Payne & Steven Haney - 11/15
Macy Harbour & Kevin Beedy - 11/29
Katie Adcock & Tarin Rice
Annie Mayhew & Brandon Gilbert

Baby Registry

Christen (Ferguson) & Bradley Brown - 11/15
Lisa (Harper) & Justin Carthel - 11/15
Kelci & Jordan Brock - 12/28
Courtney & John Brock - 12/28
Tara & Chad Gardiner
Janae (Watley) & Kyle Igo

Celebrate
203 Main St. Spearman, TX
(806) 659-3350 1-800-663-8026

Thank You

Thank you for electing me to another term as Hansford County Commissioner. I am honored to have the opportunity to represent you again.

Sincerely,
Tim Stedje
Hansford County Commissioner
Precinct 3

Thank You

Thank you for electing me to another term as Hansford County Tax Assessor/Collector. I am honored to have the opportunity to represent you again.

Sincerely,
Linda Cummings

Meet & Greet The O'Loughlin Center's New Employees—Jada Dickerson & Kristina Howell



A "Meet & Greet Coffee" will be held on Monday, November 10, 2008, from 10:00-11:00 a.m. in the Golden Spread Center honoring Jada Dickerson (right) and Kristina Howell (left).

The O'Loughlin Center Board of Directors invites everyone to a "Meet & Greet Coffee" on Monday, November 10, 2008, from 10:00 - 11:00 a.m. in the Golden Spread Center. They are delighted to announce that Jada Dickerson, formerly of Guymon, OK, now of Spearman, and Kristina Howell, a home-grown product of Spearman and Hansford County, will be sharing the "director's responsibilities". Jada will be handling most of the day-to-day operations, scheduling and programming as a full-time employee at the center while Kristina will be handling the accounts payable, payroll, and accounts receivable and assisting Jada on a part-time basis.

Jada has a degree in Psychology from PSU. In accepting the job of operations and programming manager, she brings a strong desire to work with the people of our community to improve the center, using

her previous experience in organizing and operating programs, management and grant-writing. Kristina, a born "multi-tasker", will continue her responsibilities at Gordon's Drug, but use her skills and experience in business to help the center manage its memberships and financial responsibilities.

The Board of Directors is excited about putting together the final pieces of a great staff, including Rebecca Anima, "housekeeping" and part-time receptionist, and her husband, Alfredo Anima and his brother, Jose Anima, who are in charge of set-up and maintenance. Sophia Anima also works part-time to help with cleaning. Brandi Thompson, Margie Vaquera, Natalie Saldivar and Susan Poole help fill the work schedule, and they will help sponsor the various events at the center.

Please mark your calendars and come to The O'Loughlin Center on Monday, November 10, between 10:00 and 11:00 a.m.

Hull Family Opens Door to Exchange Student Max Kopp

The Wes Hull family in Spearman has opened their heart and home to Maximilian Kopp of Trier, Germany, a high school foreign exchange student. "Trier is the oldest town in Germany," tells Kopp. The German city sits on the banks of the Moselle River. It is the oldest city in Germany, founded in or before 16 BC. Trier is not the only city claiming to be Germany's oldest, but it is the only one that bases this assertion on having the longest history as a city, as opposed to a mere settlement or army camp. It is also one of the few cities in Europe that have been capitals of the Roman Empire.

On his application for the program, the 16-year-old wrote, "I want to get to know the history of your country, your culture, and your way of life. For me the USA is such a big and exciting country with all your famous emblems, cities, and particularly your beautiful nature."

Arriving in the United States, Max first spent time at an orientation in New York City with other CIEE exchange students from around the world. He then flew to Texas and promptly went on vacation to New Mexico with his host family. They then came home and Max got to help the family move from one home to another. Getting in to the Spearman High School within days of arriving in Spearman, Max says he has enjoyed every day there.

This German boy has played the clarinet for seven years and has joined the Spearman High School band. With six years of English, Max's language skills are exceptional. He also knows Latin and French and loves to play tennis.

Local coordinator who made the match and is supervising Max's stay here in the United States is Stacie Reid, from Guymon. Reid, a coordinator for the Council on International Educational Exchange works on finding homes for students in the Oklahoma and Texas Panhandle area. She has students placed this year from Germany, Spain, Thailand, Brazil, Slovakia, and Macedonia. They are attending Goodwell, Guymon, Texhoma and Yarbrough, Oklahoma, and Spearman and Perryton, Texas schools.

Council, founded in 1947, is one of the world's leading operators of international exchange programs and related services. They are found on the web at HYPERLINK <http://www.ciee.org> www.ciee.org. If you are interested in learning more about the program, contact Reid at 580-651-2157 or nanareid@ptsi.net.

We will be closed on Tuesday,
November 11th in observance of
VETERANS' DAY

Spearman, Texas 79081 Dumas, Texas 79029
806-659-5544 806-934-8455
800-583-4166 800-583-4196
Member FDIC

Election Results

HANSFORD COUNTY

President/Vice-President	PARTY	EARLY	TOTAL
President/Vice-President			
John McCain/ Sarah Palin	REP	838	1,847
Barack Obama/ Joe Biden	DEM	103	239
Bob Barr/ Wayne A. Root	LIB	5	12
Chuck Baldwin/ Darrell L. Castle	W-I	1	1
Thaddeus Hill/ Gordon F. Bailey	W-I	0	0
Jonathan Allen/ Jeffrey D. Stath	W-I	0	0
Alan Keyes/ Marvin Sprouse, Jr.	W-I	0	0
Ralph Nader/ Matt Gonzalez	W-I	1	1
Cynthia McKinney/ Rosa Clemente	W-I	1	1
Brian Moore/ Stewart A. Alexander	W-I	0	0
Total Votes Cast		949	2,101

U. S. Senator	PARTY	EARLY	TOTAL
John Cornyn - Incumbent	REP	821	1,805
Richard J. (Rick) Noriega	DEM	83	207
Yvonne Adams Schick	LIB	17	30

U. S. Representative District 13	PARTY	EARLY	TOTAL
Mac Thornberry - Incumbent	REP	839	1,853
Roger James Waun	DEM	90	295

Railroad Commissioner	PARTY	EARLY	TOTAL
Michael L. Williams - Incumbent	REP	726	1,614
Mark Thompson	DEM	116	278
David Floyd	LIB	18	36

Chief Justice, Supreme Court	PARTY	EARLY	TOTAL
Wallace B. Jefferson - Incumbent	REP	729	1,614
Jim Jordan	DEM	106	246
Tom Oxford	LIB	20	45

Justice, Supreme Court, Place 7	PARTY	EARLY	TOTAL
Dale Wainwright - Incumbent	REP	710	1,580
Sam Houston	DEM	117	268
David G. Smith	LIB	18	39

Justice, Supreme Court, Place 8	PARTY	EARLY	TOTAL
Phil Johnson - Incumbent	REP	726	1,605
Linda Reyna Yanez	DEM	188	321
Drew Shirley	LIB	25	52

Judge, Court of Crim. Appeals Place 3	PARTY	EARLY	TOTAL
Tom Price - Incumbent	REP	709	1,588
Susan Strawn	DEM	122	274
Matthew E. Eilers	LIB	18	33

Judge, Court of Criminal Appeals Place 4	PARTY	EARLY	TOTAL
Paul Womack - Incumbent	REP	723	1,604
J.R. Molina	DEM	89	225
Dave Howard	LIB	24	48

Judge, Court of Criminal Appeals Place 9	PARTY	EARLY	TOTAL
Cathy Cochran - Incumbent	REP	775	1,714
William Bryan Strange, III	LIB	47	106

State Senator, District 31	PARTY	EARLY	TOTAL
Kel Seliger - Incumbent	REP	841	1,857
Lauren Poindexter	LIB	55	114

TEXAS

President/Vice-President	PARTY	EARLY	TOTAL
John McCain/ Sarah Palin	REP	2,902,151	4,467,748
Barack Obama/ Joe Biden	DEM	2,414,752	3,521,164
Bob Barr/ Wayne A. Root	LIB	31,148	56,398
Chuck Baldwin/ Darrell L. Castle	W-I	1,642	3,418
Thaddeus Hill/ Gordon F. Bailey	W-I	55	148
Jonathan Allen/ Jeffrey D. Stath	W-I	29	57
Alan Keyes/ Marvin Sprouse, Jr.	W-I	300	586
Ralph Nader/ Matt Gonzalez	W-I	1,337	3,053
Cynthia McKinney/ Rosa Clemente	W-I	219	415
Brian Moore/ Stewart A. Alexander	W-I	27	49
Race Total		5,351,660	8,053,036

U. S. Senator	PARTY	EARLY	TOTAL
John Cornyn - Incumbent	REP	2,828,588	4,326,639
Richard J. (Rick) Noriega	DEM	2,317,919	3,383,890
Yvonne Adams Schick	LIB	110,037	184,729

U. S. Representative District 13	PARTY	EARLY	TOTAL
Mac Thornberry - Incumbent	REP	105,506	179,653
Roger James Waun	DEM	31,546	51,914

Railroad Commissioner	PARTY	EARLY	TOTAL
Michael L. Williams - Incum.	REP	2,633,654	3,989,705
Mark Thompson	DEM	2,314,309	3,401,028
David Floyd	LIB	158,213	269,309

Chief Justice, Supreme Court	PARTY	EARLY	TOTAL
Wallace B. Jefferson - Incum.	REP	2,688,878	4,080,012
Jim Jordan	DEM	2,291,524	3,369,232
Tom Oxford	LIB	140,516	238,391

Justice, Supreme Court, Place 7	PARTY	EARLY	TOTAL
Dale Wainwright - Incumbent	REP	2,586,059	3,917,286
Sam Houston	DEM	2,376,546	3,519,540
David G. Smith	LIB	138,210	231,594

Justice, Supreme Court, Place 8	PARTY	EARLY	TOTAL
Phil Johnson - Incumbent	REP	2,647,283	4,009,063
Linda Reyna Yanez	DEM	2,319,050	3,424,159
Drew Shirley	LIB	139,501	233,460

Judge, Court of Criminal Appeals Place 3	PARTY	EARLY	TOTAL
Tom Price - Incumbent	REP	2,599,944	3,940,954
Susan Strawn	DEM	2,361,629	3,477,426
Matthew E. Eilers	LIB	126,062	215,427

Judge, Court of Criminal Appeals Place 4	PARTY	EARLY	TOTAL
Paul Womack - Incumbent	REP	2,665,080	4,035,683
J.R. Molina	DEM	2,265,690	3,336,944
Dave Howard	LIB	147,637	249,921

Judge, Court of Criminal Appeals Place 9	PARTY	EARLY	TOTAL
Cathy Cochran - Incumbent	REP	3,079,379	4,709,086
William Bryan Strange, III	LIB	679,069	1,041,499

State Senator, District 31	PARTY	EARLY	TOTAL
Kel Seliger - Incumbent	REP	113,993	179,774
Lauren Poindexter	LIB	11,247	19,510

UNITED STATES

President/Vice-President	TOTAL VOTES	ELEC. VOTES	PERC.
Barack Obama (Dem)	63,893,037	349	52%
John McCain (Rep)	56,404,917	173	46%

270 electoral votes needed to win | 98% of precincts reporting

First State Bank

will be closed on Tuesday, November 11th in observance of **VETERANS DAY**

The Bank that has the Tradition of Strength and Service

One NE Court
Spearman, TX
(806) 659-5565
member FDIC

Tong's Chinese Restaurant

(806) 644-2838
22 Archer Street • Spearman

Buffet Specials

Monday: Chicken w/Spiced Salt, Mongolian Beef, Sweet & Sour Chicken, Fried Rice, Etc. - \$6.75

Tuesday: Grilled Pork Chop, Black Pepper Chicken, Rice Noodles, Egg Roll, Etc. - \$6.99

Wednesday: Fried Shrimp, BBQ Chicken, Pork Sub Gum, Chop Suey, Lo Mein, Etc. - \$6.99

Thursday: BBQ Pork Ribs, Pepper Chicken, Won Ton Soup, Seafood Bun, Etc. - \$6.99

Friday: Shrimp w/Spiced Salt, Sesame Chicken, Broccoli Chicken, Rangoon, Etc. - \$7.25

Saturday: Catfish, Pepper Steak, Egg Drop Soup, Stir-Fry Mixed Vegetables, Etc. - \$7.25

Sunday: Roast Beef, Grilled Shrimp, Biscuits, French Fries, Mushrooms, Etc. - \$7.25

Lunch Buffet 11 a.m.-2:30 (7 Days A Week)

Dinner Buffet 5:30-9 P.M. (Monday-Saturday)

Hoochy Poochy Parlor

Professional Award Winning Stylist
Carmon Baker

Are you going out of town? Call Carmon today to make reservations for your pets at Hoochy Poochy Parlor. (It's more like camp)

Hoochy Poochy Parlor
421 E. 10th St.
Borger, TX 79007
806-273-2724
hoochypoochy@att.net
www.hoochypoochy.net
Hours:
Mon.-Fri., 8 a.m. until done
Saturday by appointment only
Please visit us for a free estimate on your pet care needs.

and Missy
"The Hoochy Poochy"

Nov. 7
National Bittersweet Chocolate & Almonds Day

Nov. 10
U.S. Marine Corps Day
Sadie Hawkins Day

Nov. 11
veteran's Day

Nov. 13
World Kindness Day

Nov. 15
Teddy Bear Day

Nov. 17
World Peace Day

All Occasion Flowers

202 N. Bernice (across from the Post Office)
659-5180 • Spearman

visit www.spearmanreporter.com

Eagles Upset Lynx, 27-19

Sanford-Fritch quarterback Tanner Strickland ran for all four of his team's touchdowns as the Eagles (4-5 overall, 2-2 in district) defeated host Spearman (2-7, 1-3) in District 1-2A action.

Strickland's scoring included 23, 6, 22 and 72 yards, and the Eagles ran for 285 yards.

Spearman quarterback Blayne Schroeder threw for two touchdowns and 148 yards. He also scored on a 1-yard run for his team's final tally.

The Lynx received the opening kick-off and worked the ball down-field towards a touchdown. The Eagles forced a turnover and drove the ball back into Lynx territory. The Eagle offense lined up in the shotgun formation, but the quarterback ran for a 23-yard touchdown. The PAT was good, making the score 7-0. The rest of the quarter remained scoreless.

The Eagle offense used up most of the second quarter running the ball. After a Lynx punt, they moved the ball into scoring position. The Eagle quarterback again found his way into the endzone for another touchdown. The PAT was good, making the score 14-0.

Chase Farrar made a good run with the kick return. The Lynx moved the ball towards a scoring position. Blayne Schroeder threw an 8-yard touchdown pass to Kegan Garnett for their first score of the night. The PAT by Skyler Sumner was good, making the score 14-7 at the end of the half.

The Lynx kicked to the Eagles to begin the second half. The Eagle quarterback scored again on a 22-yard run. The PAT was good, making the score 21-7.

The Lynx offense used passing and running to move the ball downfield. Schroeder threw to all three receivers - Josue Hernandez, Dakota Cator and Chase Farrar, to move the ball into scoring position. On third and goal, Schroeder threw a 6-yard touchdown pass to Hernandez. The snap for the PAT was bad and the Lynx failed to score, ending the third quarter 21-13.

The Lynx fought hard in the fourth quarter to get a win and keep their play-off hopes alive. Schroeder threw a pass to Sumner, putting the Lynx on the 15-yardline. The Lynx were able to move into a first-and-goal from the one-yardline. Schroeder scored with a quarterback sneak, putting the Lynx just two points behind the Eagles, 21-19. The Lynx went for the two-point conversion in an attempt to tie the Eagles, but the pass from Schroeder to Farrar fell incomplete.

The Lynx defense fought hard to keep the Eagles from scoring again, but were unable to contain the quarterback. Strickland ran through the Lynx defense for a 72-yard touchdown, bring the score to 27-19.

With only a short time remaining, and no time-outs left, the Lynx tried hard to move the ball quickly downfield. With just seconds left in the game, the Eagles sacked the Lynx quarterback to end the game.

The Lynx travel to Panhandle this Friday to play the Panthers in the season closer. Everyone is invited to the game to cheer the Lynx on to a victory.

Scoring

SF-Tanner Strickland 23 run (Casey Wood kick)
 SF-Strickland 6 run (Wood kick)
 SP-Blayne Schroeder 8 pass to Keegan Garnett (Tyler Sumner kick)
 SF-Strickland 22 run (Wood kick)
 SP-Schroeder 6 pass to Josue Hernandez
 SP-Schroeder 1 run (PAT failed)
 SF-Strickland 72 run (kick failed)

Game Statistics

	Sanford-Fritch	Spearman
First Downs	X	X
Rushing Yards	285	135
Passing Yards	34	148
Total Yards	319	283
Comp-Att-INT	2-11-0	13-23-0
Punts-Avg.	2-28	3-32
Fumbles-Lost	1-1	2-2
Penalties-Yards	0-0	3-30

OFFENSE

Rushing - 135 yards on 45 carries; Kegan Garnett 31 - 125; Chase Farrar 9 - 21; Cameron Meddock 1 - 3; Blayne Schroeder 3 - (-10); **Passing** - 164 yards on 14 completions, Blayne Schroeder 14 - 24 - 164 - 2 TD - 0 INT; **Receiving** - Skyler Sumner 5 - 71; Josue Hernandez 4 - 33; Kegan Garnett 3 - 25 (1 TD); Chase Farrar 2 - 35; **Total** - 303 yards 70 plays

DEFENSE

Rushing - 285 yards on 40 carries; **Passing** - 34 yards on 2 completions; **Total** - 319 yards on 51 plays

District 1-2A

Team	Dist.	Pts.	Opp.	All	Pts.	Opp.
y-Bushland (2)	4-0	147	45	9-0	325	122
y-Panhandle (4)	3-1	138	107	8-1	325	169
River Road (1)	2-2	82	77	4-5	185	174
Sanford-Fritch (3)	2-2	77	80	4-5	166	170
Spearman (5)	1-3	56	92	2-7	135	228
Highland Park (6)	0-4	26	125	3-6	134	217

Last Week: Bushland 42, River Road 3; Sanford-Fritch 27, Spearman 19; Panhandle 56, Highland Park 14.

This Week: River Road at Sanford-Fritch, Highland Park at Bushland, Spearman at Panhandle.

Greyhounds Fall to Stratford

reprinted from the Amarillo Globe-News

The Greyhounds scored 20 points in the second quarter and blanked West Texas High in the second half.

Gruver quarterback Drew Mireles threw for three touchdowns.

Logan Hoff ran for two touchdowns for WT High, which dropped to 4-5 overall and 1-3 in District 1-1A.

Gruver improved to 3-5, 2-2.

Highlights for the Hounds are as follows:
Offensively: Taylor Williams threw 2 passes for 112 yards and a TD; Payton Thoreson was 8 of 13 passing for 197 yards and 2 TDs; Justin Vasquez caught 3 passes for 112 yards and a 60 yard TD; Wide Receiver Rily Urban had a big night catching 5 passes for 170 yards and 2 TDs; The Offense gained 366 yards on just 34 plays including 319 yards passing.

Defensively: Taylor Williams, Tyler Wills and Parker Grotegut all had 8 tackles each; Alonzo Martinez added 11 tackles; Miles Messer led the team with 14 tackles; Cory Graves had a big night defensively with 10 tackles; Saul Hernandez and Rily Urban both had 7 tackles each.

Game Statistics

	Gruver	West Texas
First Downs	13	18
Rushing Yards	132	189
Passing Yards	197	79
Total Yards	329	268
Comp-Att-INT	16-28-0	8-21-1
Punts-Avg.	4-34	7-28
Fumbles-Lost	4-3	0-0
Penalties-Yards	8-70	7-76

Scoring

SF-Tanner Strickland 23 run (Casey Wood kick)
 SF-Strickland 6 run (Wood kick)
 SP-Blayne Schroeder 8 pass to Keegan Garnett (Tyler Sumner kick)
 SF-Strickland 22 run (Wood kick)
 SP-Schroeder 6 pass to Josue Hernandez
 SP-Schroeder 1 run (PAT failed)
 SF-Strickland 72 run (kick failed)
 S- Lopez 40 run (kick failed)
 S- Manuel Chavoya 45 pass interception (kick failed)

Team	District 1-1A				
	Dist.	Pts.	Opp.	All	Pts. Opp.
y-Stratford (4)	4-0	157	34	8-1	310 129
y-Canadian (1)	3-1	171	49	8-1	418 103
Sunray (3)	2-2	89	125	5-4	249 243
Gruver (5)	2-2	90	101	3-5	127 207
West Texas (2)	1-3	93	105	4-5	156 192
Booker (6)	0-4	14	200	2-7	91 355

Last Week: Canadian 42, Sunray 10; Stratford 54, Booker 6; Gruver 26, West Texas 21.

This Week: Booker at Sunray, West Texas at Stratford, Canadian at Gruver.

Mireles Named Player of the Week

Drew Mireles, quarterback/linebacker for the Gruver Greyhounds, was named the 1A Globe-News High School Football Player of the Week.

Mireles, making only his second start of the season at quarterback, completed 17-of-27 passes for 239 yards and three touchdowns in the Greyhounds' 26-21 win over West Texas High. He carried 13 times for 55 yards, punted for a 37-yard average and had 12 tackles.

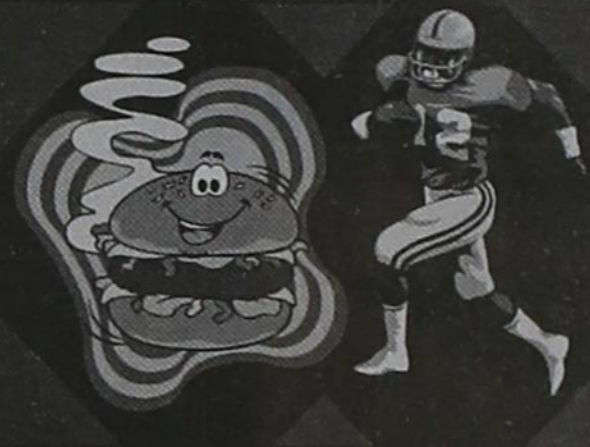
Comment: "Drew is the kind of player that can help a team at any number of different positions," said head coach Fred Tucker. "He played wide receiver on offense much of the season before an injury to our starting quarterback a few weeks ago. As a quarterback he understands our offense and what we're trying to do. He tries to get the ball to the receivers and let them make plays. He is only a junior and we know that he will be a key part of our team next season no matter where he winds up playing."

Riley Urban and Blayne Schroeder were both named to the Globe-News High School Football Players of the Week Honorable Mention for Wednesday, November 5, 2008.

Rily Urban caught nine passes for 134 yards and two touchdowns in Gruver's win over West Texas.

Blayne Schroeder passed for 148 yards and two TDs and ran for a touchdown in Spearman's loss to Sanford-Fritch.

Attention Football Fans!



Panhandle 55+ Club Hamburger Supper

The Panhandle 55+ Club is having a Hamburger Supper on Fri., Nov. 7th at the VFW Hall (corner of 12th & Park St. - 2 blocks west of football field) from 4-7:30 p.m. The price is \$7 a person (includes Hamburger, Cole Slaw, Beans and Drinks). Take-outs are also available.

Proceeds to toward purchase of chairs and tables for the New War Memorial Building.

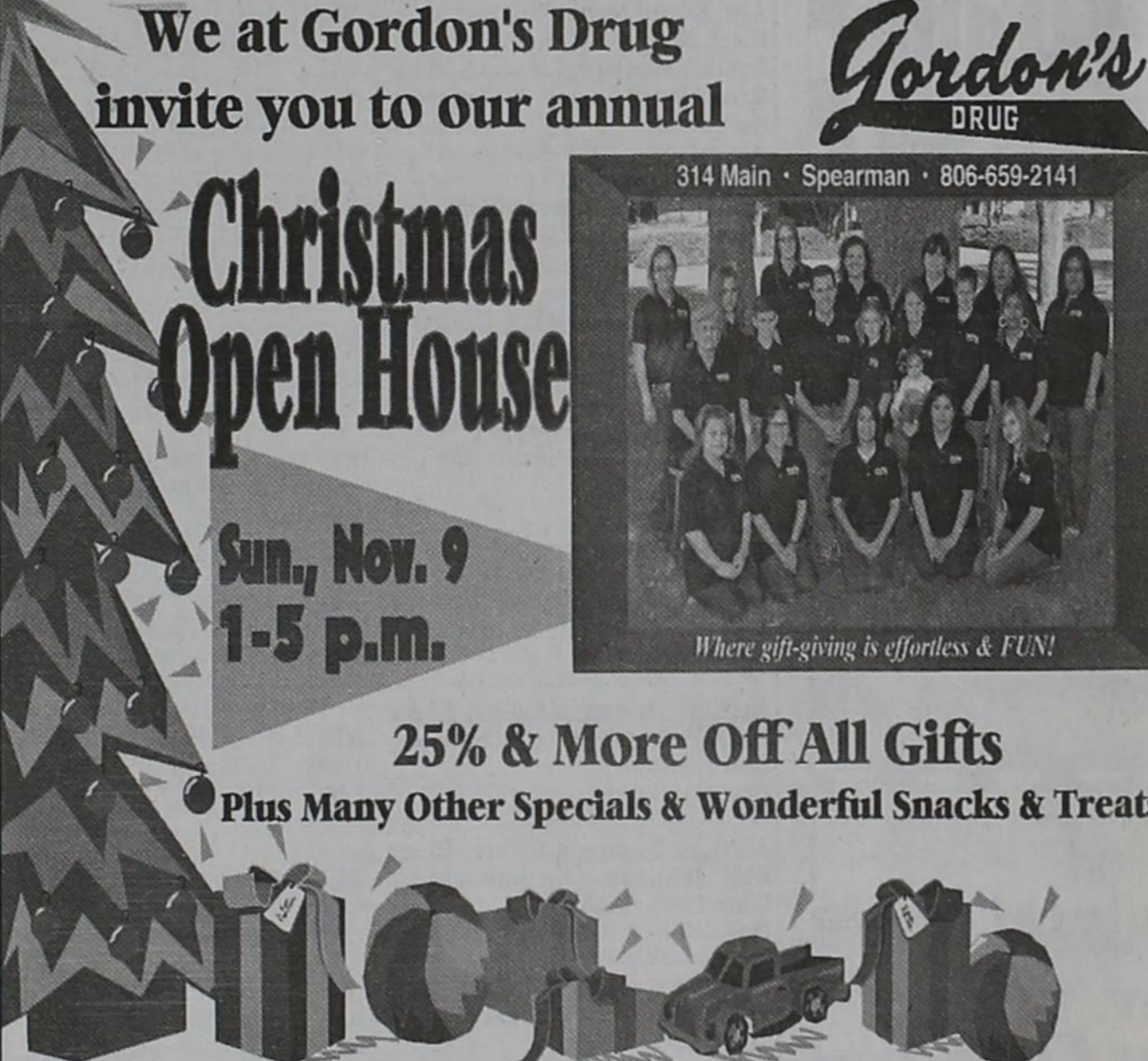
We at Gordon's Drug invite you to our annual

Christmas Open House

Sun., Nov. 9 1-5 p.m.

25% & More Off All Gifts

Plus Many Other Specials & Wonderful Snacks & Treats!



Gordon's DRUG
 314 Main • Spearman • 806-659-2141
 Where gift-giving is effortless & FUN!

Hotline for Priority Seating - 435-3945

MONEY'S BBQ & STEAK HOUSE



Stan and Donna Zepp

Under New Ownership Same Great Service & Menu!

14 SE 3rd Ave. Perryton, TX

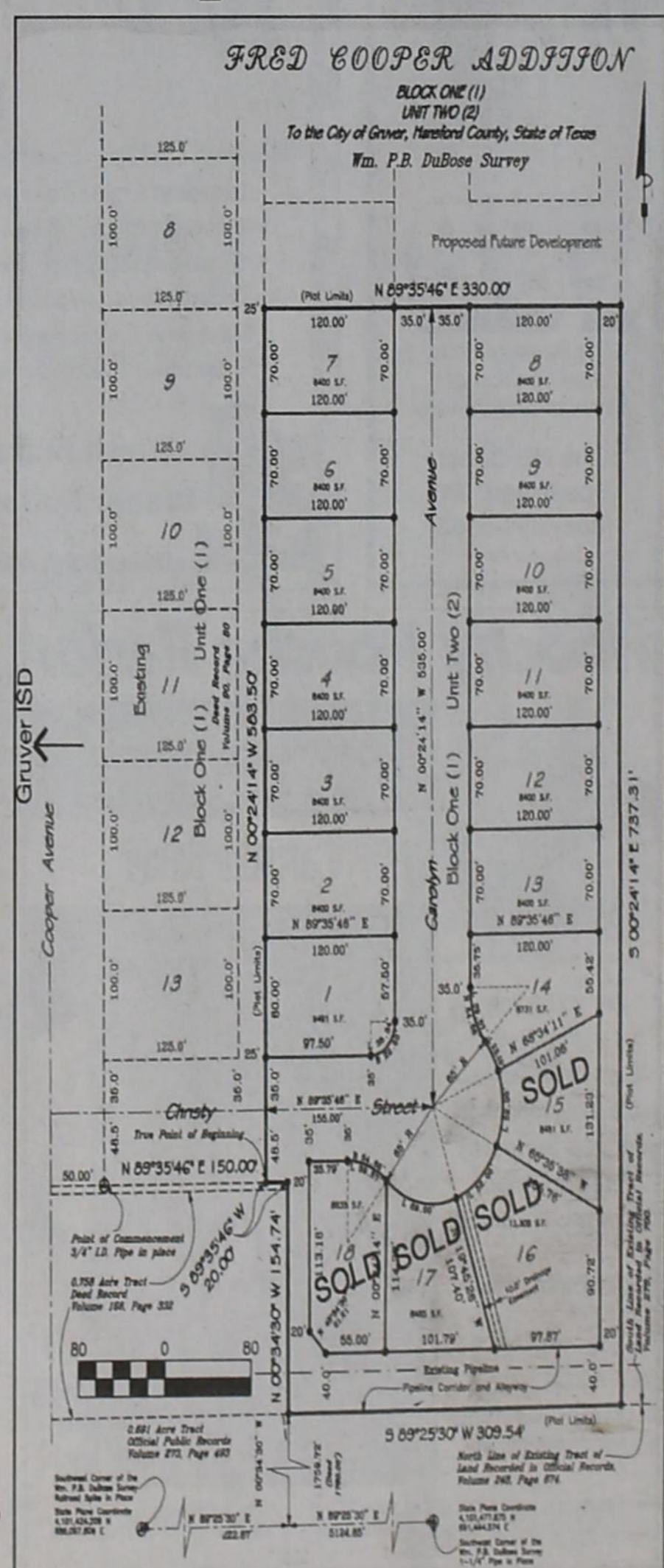
We Are THPLC-2-B

The Fred Cooper Addition

- All city utilities provided
- Across the street from exceptional school district
- Single Family Dwellings
- Various lot sizes
- Only new construction houses permitted
- Take advantage of extremely low interest rates to build your dream home now
- 14 lots still available

Call today!

Craig Cooper
806-736-8235



FRED COOPER ADDITION
 BLOCK ONE (1)
 UNIT TWO (2)
 To the City of Gruver, Hansford County, State of Texas
 Wm. P.B. DuBois Survey
 Proposed Future Development

REAL ESTATE

FOR SALE BY OWNER: 622 Barkley, Spearman - 3BR, 2B, detached 2 car garage, fenced backyard. Newly remodeled LR, DR, bathrooms & upstairs; updated plumbing. Great location - across alley from elementary/jr. high. Asking \$65,000. Call (806) 659-9860 after 5 p.m. or 270-0057. 4(10-20-08)B

HELP WANTED

HELP WANTED: Gigot Agra Products, Valley Center Pivot Dealer, is seeking additional service technicians at our Spearman location. Experience desired, but not required. Benefit package is available. Send resume to PO Box 1413, Guymon OK 73942, or call 580-338-2536 or 806-659-3121. TFN(9-18-08)B

HELP WANTED: General mechanic for automotive, irrigation work and tire repair. Tools provided. Apply at Morse Implement and Auto Supply in Morse. Call 06-733-2668. Ask for Tom or Gary. Good pay and working conditions. TFN(10-02-08)B

SERVICES

HOOCY POOCY PARLOR Call us for all your pet's grooming and boarding needs. Call now for reservations! 806-273-2724. TFN(11-2-07)

FOR SALE OR TRADE

FOR SALE: Dodge Ram 1997 Pickup w/cab-over camper. Has AC, heat & bathroom. Call 435-2274. 4(11-06-08)

FOR SALE: Sacrifice - \$250 - Brand Name King Pillow top Mattress Set. New in plastic, warranty 806-341-6233 TFN(1-31-08)

FOR SALE: \$109 QUEEN PILLOWTOP mattress & box. Manufacturer wrapped, with warranty 806-356-9215 TFN(1-31-08)

FOR SALE: Queen Orthopedic mattress set \$99 brand new in plastic, w/warranty. 806-356-9215 TFN(1-31-08)

FOR SALE: Full mattress set new in plastic must sell \$129. Twin \$99 806-341-6233 TFN(1-31-08)

FOR SALE: SLEEP ON A CLOUD - brand new complete memory foam mattress set. Never opened. \$350 806-341-6233 TFN(1-31-08)



Degreed Field Geologist to work in the OK-TX panhandle as geo-steering representative for rapidly growing, Independent Exploration and Production Company, drilling horizontal wells. Previous field experience is advantageous. Excellent opportunity for advancement and experience with current technologies. Competitive salary and generous comprehensive benefit package, commensurate with experience & qualifications. Send cover letter and resume to:

Human Resources
P. O. Box 3105
Tulsa, OK 74101
hr@pantherenergy.us
Fax 866-585-2752

S	T	R	A	W	B	F	F	A	B	B	E		
A	I	O	L	I	O	U	R	S	C	O	R	E	
U	P	T	O	N	D	N	A	O	N	A	I	R	
L	I	C	E	N	S	E	P	U	B	E	R	T	Y
	S	E	T	I	S	L	E						
J	S	M	R	A	P	T	T	R	A	U	M	A	
L	A	I	D	F	E	E	T	S	I	R	E	N	
I	D	L	E	F	E	M	U	R	D	I	N	G	
A	H	E	A	D	R	I	P	E	E	N	D	S	
C	U	R	F	E	W	Z	I	N	C	E	S	T	
	P	A	C	E	A	L	P						
P	R	E	L	U	D	E	P	L	I	A	B	L	E
R	I	V	E	T	L	E	A	Q	U	A	I	L	L
O	V	I	N	E	L	E	I	U	L	T	R	A	
M	E	L	D	O	L	D	E	A	T	E	N		

3	4	5	6	8	2	1	9	7
9	1	6	7	3	4	8	5	2
8	2	7	5	9	1	6	4	3
4	9	3	1	6	8	2	7	5
1	5	2	4	7	3	9	6	8
7	6	8	9	2	5	3	1	4
5	8	9	3	4	6	7	2	1
6	3	1	2	5	7	4	8	9
2	7	4	8	1	9	5	3	6

MITCHELL THEATRES
NORTHBRIDGE CINEMA 8

Guymon, Oklahoma

FRESH POPCORN EVERYDAY!
-PARTY ROOM & ARCADE-

Call for Showtimes
580-338-3281
www.northridge8.com

MARTIN & ASSOCIATES REALTY

Serving Hansford County for 14 years
Julie Martin, Broker - 659-2425

IN SPEARMAN

1111 S. Townsend - Split level, 3/2/1 Are you looking for a home with that brand new feeling? This home has been redone throughout: all new flooring, paint, fixtures, baths, remodeled kitchen w/new appliances, granite countertops; split level deck. **REDUCED!** **SOLD** 703 Collier - 3/1/7/1 **SOLD** 1005 S. Bernice - 3 bed bath, 2100 sq ft w/fireplace **SOLD**

We'd Like Your Listing
FOR QUALITY & SERVICE CALL US TODAY!
Equal Housing Opportunity

Cattleman's Livestock Comm. Co.

Proverbs 16:3
Hwy 54 W Box 58 Dalhart, Tx 79022
Fax: (806) 249 - 4800 (806) 249 - 5505
www.cattlemanslivestock.net
Sale Held Every Thursday at 11:00 a.m.

10/30/08	Head	Weight	Amount
Heifers-			
Ft. Sumner NM	By hd	12	241# \$340.00
Adrian TX	Blk	5	282# \$119.00
Dalhart TX	Blk	7	301# \$119.00
Ft. Sumner NM	Blk	19	311# \$114.00
Amarillo TX	Blk	25	431# \$94.00
Clayton NM	Blk	17	484# \$91.00
Sanford TX (weaned)	Blk	11	494# \$97.50
Tucumcari NM	Blk	10	514# \$88.00
Tucumcari NM	Blk	15	550# \$90.00
Clayton NM	Blk	84	589# \$99.25
Tucumcari NM	Blk	20	628# \$94.00
Adrian TX	Red	10	631# \$94.50
Adrian TX (clvs)	Blk	25	689# \$86.00
Tucumcari NM	Blk	5	753# \$91.50
Dalhart TX	Blk	14	814# \$87.50
Dalhart TX	Wf	16	831# \$84.00

Heifers-	Head	Weight	Amount
Steers-			
Ft. Sumner NM	Blk	24	317# \$142.00
Adrian TX	Blk	6	325# \$142.00
Tucumcari NM	Blk	2	378# \$132.00
Ft. Sumner NM	Blk	12	389# \$131.00
White Deer TX	Blk	9	391# \$136.00
Canyon TX	Blk	44	403# \$132.00
Adrian TX	Blk	6	418# \$127.00
Amarillo TX	Blk	34	423# \$123.75
Canyon TX	Blk	55	456# \$121.00
Des Moines NM	Mix	7	460# \$123.00
White Deer TX	Blk	13	523# \$115.00
Amarillo TX	Blk	8	589# \$103.00
Sanford TX	Blk	7	602# \$103.00
Adrian TX	Mix	15	606# \$103.50
Adrian TX (clvs)	Blk	29	723# \$85.25
Roy NM	Mix	35	767# \$98.00
Boise City OK	Blk	99	804# \$98.25
Adrian TX	Blk	19	860# \$88.50

743 Cows
Cows-\$45.00 - \$49.00
Holsteins-\$46.00-\$53.00
Young pairs- up to \$1350.00
Young blk 2nd stage cows- up to \$1160.00

Matt & Jeana Wing Jo Wing
Matt's Cell- 806-333-2522

Field Representatives

Clayton Ward (806)333-2199	Craig Lawrence (806)384-2153	Lanny Cook (806)267-2251
Don Prather (580)426-2416	Ted Allen (806)333-4361	Hannah Grice (806)339-2920

Blankenship Real Estate
659-3052 - 670-3774

Beauty Salon (Spearman) - 1-3 Bays, fixtures & inventory included.

3BR/1B Home (Spearman) - 2 living areas, nice fenced backyard, storage, close to school and hospital!

NEW LISTINGS WANTED!

Eulalia Blankenship - Sales
Eschol Blankenship - Broker



Openings at Hansford Hospital

Maintenance Person: Performing duties for maintenance of the building, grounds, including carpentry, painting, plumbing, electrical work, air conditioning, gardening, furniture repair, welding, etc.

Home Health RN: Must be licensed in the State of Texas

Openings at Hansford Manor

Dietary: Cooks, cooks helper and dishwasher

LVN: Must be licensed in the State of Texas

Housekeeper Full Time: Keeping our manor clean and sanitary for our residents, patients and family members

Housekeeper: Nights 4:00 - ? Keeping our manor clean and sanitary for our residents, patients and family members

Great working environment and staff, quality facility providing opportunities for professional growth. Great benefit package. Apply at 707 S. Roland, Spearman, TX or contact Jackie Nelson at 806-659-5841. Download application at www.hchd.net EOE 2(10-16-08)B

See us for:
AUTO • HOME • CROP HAIL • FARM & RANCH • MULTIPERIL • LIVESTOCK

INSURANCE

BORT AGENCY, INC.
510 Main St. • Gruver, TX
(806) 733-2456

Shirley Howard Properties

We're out of houses!
We NEED listings!
Call us now to help YOU sell your home for top dollar!

Shirley Howard, Broker / Owner
806-886-6536, Cell
Melinda McCullough, Realtor
(806) 733-5678

We would LOVE to sell your HOUSE!
CALL US!

WHEN YOU SEE THIS SIGN...

WARNING

NATURAL GAS CAN - BE TRANSPORTED IN UNDERGROUND PIPELINES ... CONTAIN HIGH PRESSURE

NATURAL GAS IS - COLORLESS, ODORLESS, LIGHTER THAN AIR

IF A NATURAL GAS LEAK IS SUSPECTED
... WALK AWAY FROM IT
... NEVER IGNITE A FLAME
... DO NOT TURN ON A LIGHT SWITCH, MOTOR, OR ANY EQUIPMENT
(AN EXPLOSION COULD RESULT)

BP AMERICA PRODUCTION COMPANY ANADARKO ASSET

6 USUADO VE ESTE ANUNCIO... (TUBERIA DE GAS NATURAL)

WARNING

PARA SEGURIDAD DE SUS FAMILIA, DE SUS NEGOCIOS Y DE SU COMUNIDAD, POR FAVOR LLAME A LA COMPANIA BP AMERICA PRODUCTION COMPANY. A LOS NUMEROS INDICADOS ABAJO, EN ESTE ANUNCIO, ANTES DE ESCARBAR, DE DESMONTAR, DE ARRASAR, O DE HACER CUALQUIER TIPO DE TRABAJO CERCA DE LAS TUBERIAS DE BP AMERICA PRODUCTION COMPANY (INCLUSO AGRICULTURA) 1-800-DIG-TESS

EL GAS NATURAL PUEDE - SER TRANSPORTADO EN TUBERIAS BAJO TIERRA ... CONTENER ALTA PRESION

EL GAS NATURAL - ... NO TIENE COLOR ... NO TIENE OLO ... PESA MENOS QUE EL AIRE

SI SOSPECHA QUE HAYA FUGA DE GAS
... ALEJESE DE ALLI CAMINANDO
... NUNCA ENCIENDA UNA FLAMA
... NO PRENDA LUCES, NI MOTORES, NI MAQUINARIA ALGUNA (PUEDEN CAUSAR UNA EXPLOSION)

BP AMERICA PRODUCTION COMPANY ANADARKO ASSET

TEXAS STATEWIDE CLASSIFIED ADVERTISING NETWORK

TexSCAN

TexSCAN Week of November 2, 2008

BUSINESS OPPORTUNITIES

ALL CASH CANDY Route. Do you earn \$800 in a day? Your own local candy route. 30 machines and candy. All for \$9,995. 1-888-625-5481. Multi Vend, LLC.

COMPUTERS FOR SALE

GET A NEW COMPUTER Brand Name laptops & desktops. Bad or NO Credit - No Problem. Smallest weekly payments available. Yours NOW-1-800-322-3749

DRIVERS

CDL-A DRIVERS: EXPANDING Fleet offering Regional/OTR runs. Outstanding pay package. Excellent benefits. Generous hometime. \$300 lease special on Volvos. National Carriers, 1-888-707-7729, www.nationalcarriers.com

DRIVER: PTL NEEDS Company Drivers- CDL-A Earn up to 46¢ cpm. 1/2 cpm increase every 60K miles. Average 2,800 miles/week. www.ptl-inc.com 1-877-740-6262.

DRIVERS: CALL TODAY! Sign-On bonus 35¢-41¢ cpm. Earn over \$1000 weekly. Excellent benefits. Need CDL - A & 3 months recent OTR. 1-877-258-8782. www.meltontruck.com

DRIVERS- GET THE respect you earned & support you deserve! \$5000 Sign-on with 1 year OTR experience. Students welcome, www.ffedrivers.com. Call FFE, Inc. (60 yrs. in business) 1-800-569-9232

NO TRUCK DRIVER Experience- No problem. Wil-Trans Trucking will teach you how to drive. Company sponsored CDL Training. Be OTR in three weeks. 1-877-230-8153.

EQUIPMENT FOR SALE

SAWMILLS FROM ONLY \$2,990.00- Convert your logs to valuable lumber with your own Norwood portable band sawmill. Log skidders also available. www.norwoodsaawmills.com/300N -FREE information: 1-800-578-1363-Ext:300-N.

EVENTS

WORLD'S LARGEST GUN show- November 8th and 9th. Tulsa, OK Fairgrounds. Saturday 8-6, Sunday 8-4. Wannenmacher Productions. Free appraisals. Bring your guns! www.tulsaarmsshow.com.

HOMES FOR SALE

7BR 4BA HUD \$19,900! 3BR 2BA only \$10,900! 5BR, 3BA only \$16,275! Foreclosures & bank repos! These homes must sell! For local BNI listings call 1-800-544-6258 ext. 9847

HELP WANTED

ABLE TO TRAVEL: Hiring eight people, no experience necessary, transportation and lodging furnished, expenses paid training. Work/travel entire US start immediately. www.proteckchemical.com, Call 1-877-936-7468

CALIFORNIA BOUND! AWESOME travel job! Guys/Gals 18 and over to travel USA with coed business group representing major Hip-Hop, Rock & Roll, fashion and sport publications. Transportation furnished. Must start ASAP. 1-888-802-8747.

MISCELLANEOUS

AIRLINES ARE HIRING, Train for high paying aviation maintenance career. FAA approved program. Financial aid if qualified. Job placement assistance. Call Aviation Institute of Maintenance, 1-888-349-5387.

ATTEND COLLEGE ONLINE from home. Medical, Business, Paralegal, Computers, Criminal Justice. Job placement assistance. Computer available. Financial aid if qualified. Call 1-866-858-2121, www.CerturaOnline.com

MOBILE HOMES

BUYWHOLESALE DIRECT! Wholesale brokers of quality manufactured homes. Save thousands guaranteed. Learn the secrets dealers don't want you to know. 1-866-467-8811. "mhhd-36142"

REAL ESTATE

20 ACRES NORTH of Brady. Seasonal creek, water, electricity. Large oaks, elm, and mesquites. Deer, turkey, hogs, \$3475/acre. Owner or TX Vet financing. 1-800-876-9720. www.hillcountryranches.com

PRICED TO SELL! Newly released Colorado Mountain Ranch. 35 Acres-\$39,900. Majestic lake & mountain views adjacent to national forest for camping or hiking. Close to conveniences. EZ Terms. 1-866-353-4810.

COLORADO FORECLOSURE 40 acres \$29,900 Outstanding views access to 6,000 acres BLM recreational land. 300 days of sunshine. Call 1-866-696-5263

MUST SELL! 3/2 on 1.4 Acres. Beautiful home and land with lots of trees. This is a must see! 1-210-675-4422

SOUTH PADRE ISLAND Triplex. 3 spacious beautiful condos. 2 Bedroom, 2 bath with garage. Stainless steel appliances, Washer & Dryer included. Close to beach \$560,000 1-956-245-1419

Run Your Ad In TexSCAN!

Statewide Ad \$450
303 Newspapers, 1,017,814 Circulation
North Region Only \$185
98 Newspapers, 278,933 Circulation
South Region Only \$195
103 Newspapers, 488,523 Circulation
West Region Only \$195
102 Newspapers, 252,398 Circulation

To Order, Call This Newspaper direct, or call Texas Press Service at 1-800-749-4793 Today!

Spearman Lynx & Lynxettes

<http://spearmansports.smugmug.com/>

Photos available of Spearman Lynx and Lynxette athletic events.

NOTICE: While most advertisers are reputable, we cannot guarantee products or services advertised. We urge readers to use caution and when in doubt contact the Texas Attorney General at 1-800-621-0508 or the Federal Trade Commission at 1-877-FTC-HELP. The FTC web site is www.ftc.gov/bizop

Extend your advertising reach with TexSCAN, your Statewide Classified Ads Network.

by Jim Derington
Out at the Lake



Jim Derington
Palo Duro River Authority
P.O. Box 99
Spearman, TX 79081
806-882-4401
pdra@dishmail.net

Lake level - November 3, 2008 - 24.10

The picture this week, was taken recently, near the entrance to the office. I have seen these spiders before, but did not know what they were. I asked Mandy to enlist the help of Diann Crawford, Spearman High School Biology teacher. Diann identified the spider as a Banded Argiope, or Argiope trifasciata. My research shows that these "banded garden spiders", are common in the U.S. They are orb weavers, and remain face down, until an unsuspecting insect is caught in their web. The prey is quickly wrapped in silk, for a later meal. The males are smaller than the females.



Banded Argiope

The District Cross Country meet was a blast! Congratulations to the Spearman runners. I don't think we have had a crowd that big, for a single event, here at Lake Palo Duro. I received many compliments from out of town people, and local people. Ramon Cantu and Darin Huckins deserve a pat on the back, for keeping our parks in great condition, and for preparing for the meet.

Mountain Bluebirds are still being seen around the park. They are in flocks or groups, and are really pretty when the sun catches them. I have not seen the Bald Eagle again, since last Monday. I watched a beaver quietly swim and then disappear underwater, on Friday morning, early.

November and December are the best time to see the bucks around Lake Palo Duro. I've seen three nice Whitetails over the weekend. I will get pictures, soon. Remember, no hunting is allowed on the lake property.

COUNTRY MARKET
SATURDAY ONLY

SPEARMAN COUNTRY MARKET
SECOND SATURDAY OF EVERY MONTH
SATURDAY, NOVEMBER 8
HOURS: 10 A.M. - 5 P.M.
BETWEEN LOWE'S AND ALCO ON HWY. 207

50 VENDOR SPACES
INDOOR & COVERED OUTDOOR

GREAT FOOD - FUNNEL CAKES, KETTLE
POPCORN, TAMALES, HAMBURGERS, BIEROX,
HOME-BAKED PUMPKIN ROLLS & APPLE PIES

SALE FEATURING HAROLD "COOKE" KOPKE ESTATE
CALL TEX AT 806-270-0640 FOR SPACE!

HCHD to Participate in Safe Riders Child Safety Seat Distribution and Education Program

Program Will Provide Educational Classes and Child Safety Seat Assistance to Low-Income Families

Hansford County Hospital District has been selected to participate in the 2008 Safe Riders Child Safety Seat Distribution and Education Program. Safe Riders coordinates a statewide child safety seat distribution and education program.

The goal of the program is to address non-use of child safety seats and to reduce the number child injuries and fatalities due to motor vehicle crashes. This is accomplished by working with a variety of local community groups, who in turn offer community education classes in which a family can receive a new child safety seat and instruction on how to use the seat properly. Parents interested in participating in the program

should call Safe Riders toll-free at 800-252-8255, 8 a.m. to 5 p.m. Monday through Friday.

Qualifying parents will be referred to a program in their area of Texas to contact in order to get scheduled for the next available child safety seat class. Seats are not always available in every area of the state and programs do not always have a supply of seats. Classes are offered on an ongoing basis and available at convenient times for the families. Classes are available in Spanish and English. If you are unable to attend on November 12, 2008 from 7 a.m.-1 p.m. at the O'Loughlin Center in Spearman, please call and pre-register for another

class date.

In Texas, motor vehicle crashes remain the leading cause of death for children ages 14 and under in Texas. Each year, more than 1,700 children die and another 264,000 are injured as occupants of motor vehicles. Half of the children that died were unrestrained (no safety belt or child restraint).

Safe Riders is a child passenger safety education and training program sponsored by the Texas Department of State Health Services in cooperation with the Texas Department of Transportation. HYPERLINK: <http://www.dshs.state.tx.us/saferriders> www.dshs.state.tx.us/saferriders

Annual Community Health Fair

Wednesday November 12, 2008 7:00 a.m. -- 1:00 p.m.
The O'Loughlin Center 502 S. Brandt, Spearman TX

Flu Shot \$15.00
Bring your Medicare Card. We will bill Medicare for the flu shot.

Screening Lab Tests (at Greatly Reduced Prices!)

Fasting for 10 hours prior to test is recommended.
We can accept cash or check for payment of blood work. Results will be mailed to the patient.

Thyroid Panel	Thyroid Function
Lipid Profile	Cholesterol Level, Cardiac Risk Profile The identification and treatment of individuals who may be at risk for heart disease at an earlier age offers the possibility to prevent or delay the progression of the disease.
Prostate Specific Antigen (PSA)	Prostate Health
Comprehensive Metabolic Profile	Screens for Several Diseases, Including Diabetes
Complete Blood Count (CBC)	Screens for Many Conditions, Including Anemia and Infection

Health Fair Price

Men \$45.00 Women \$35.00

In addition to flu shots and laboratory tests, there will be opportunities to talk with Hansford County Hospital District Healthcare Providers, As well as many providers of health-related services in the area.

Special promotional items and physician presentations regarding respiratory diseases will be available in observance of National Respiratory Care Week, Lung Health Day, and National COPD Awareness Month.
Co-sponsored by



GOLDEN SPREAD SENIOR CITIZENS CENTER

PRE-REGISTRATION - 806-659-5829

CELEBRATE

November 9th
2-4 p.m.
203 Main St.
Spearman

Wide Selection of Christmas Items

OPEN HOUSE

20% Off Storewide

Register for a \$50 gift certificate

Palace Theatre

MOVIE SHOW TIMES
Friday-Thursday - 7 p.m.
Sunday - 2 p.m.
Closed Sunday Night

FRESH POPCORN & DRINKS!
PARTY ROOM & ARCADE
MOVIE RENTALS

Palace Theatre
210 Main Street
Canadian TX 79014
806-323-5133
www.palacetheatre.com

The Palace Theatre meets Lucasfilm THX specifications for site and sound quality.

PTCI DIGITAL TV

Get Local

Channel 2 Real Local Programming

Weather Central
OKC News
Amarillo Networks

New Customers!

- FREE installation - up to 2 set-top boxes
- One month FREE expanded basic pkg

Your name will go into drawing for a **~FREE 40" LCD HDTV!~**

Drawing will be held Dec. 31

PTCI
Communication & Broadband Solutions

Services not available in all areas. Some restrictions apply.