

HANSFORD COUNTY LIBRARY  
0122 MAIN ST  
SPEARMAN TX 79081-2064  
COMP  
SCR2



# ★ HANSFORD COUNTY ★ THE REPORTER-STATESMAN

THURSDAY,  
NOVEMBER 24, 2011

CELEBRATING 104 YEARS OF SERVICE TO HANSFORD COUNTY  
HANSFORD COUNTY'S ONLY NEWSPAPER

75¢

WWW.SPEARMANREPORTER.COM

VOLUME 104 • ISSUE 48

REPORTER@SPEARMANREPORTER.COM



## Spearman Varsity Lynx - 2A Bi-District Champions

(Back row, left to right) Conner Wolf, Gil Molina, Jorge Caro, Justin Roberts, Marc Ortiz, Jace Lang Swan, Blaine Pack, Jake Willimon, Brody Hargrove; (Middle row, left to right) Jesus Lucero, Josh Martinez, Justin Rindlisbacher, Arik Mires, Jeffrey Thomas, Alfredo Rosendo, Stefan Cook, Derrick Zimmerman, Tony Ochoa; (Front row, left to right) Brent Hansen, Alex Mendoza, Christian Fisher, Rene Pena, Kyler Cator, Joe Martinez, Ruben Ponce, Junior Garcia.

Photo by Tami Hargrove. Pictures available at <http://spearmansports.smugmug.com>. See related article on Page 5

## SISD Names New Superintendent

Mr. Clay Montgomery was recently named SISD Superintendent.

Mr. Montgomery grew up in Cooke County, Texas and graduated in 1982 from Valley View High School where he excelled in athletics as First Team All-State Lineman and FFA as Chapter President and State Finalist.

His first year in college was on a football scholarship to attend Tabor College in Hillsboro, Kansas and then he transferred to Tarleton State University where he majored in Agriculture Education and minored in Accounting and Agricultural Engineering.

He was active in the Baptist Student Union, Alpha Zeta Honor Fraternity, and the Intramural Officials Program.

He graduated in December of 1986 with his Bachelor's of Science Degree and worked for Los Colinas Landscape Company in North Irving before accepting his first teaching job as the Agriculture Science Teacher in Gustine, Texas.

In 1991 Clay moved to the Panhandle to take over Gruver's ISD Ag Science Program. During his tenure at Gruver he established his program as one of the top teacher programs in the state with many national, state and area winning teams and individuals.

In 2001, Mr. Montgomery was selected to be the HS Principal at White Deer and served there four years. White Deer HS was an exemplary campus during those years and recognized for dual credit and college readiness programs established with Amarillo College.

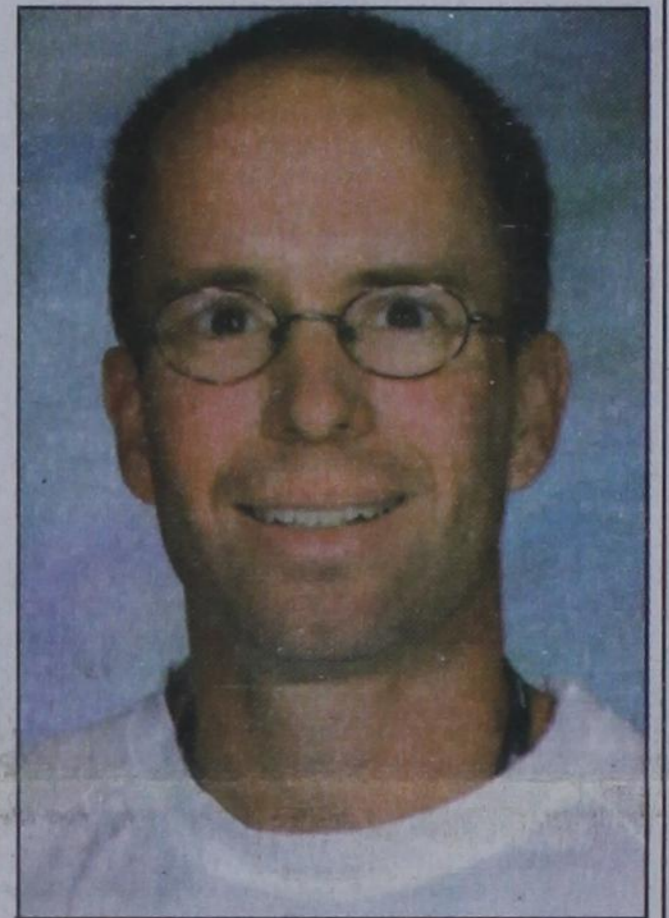
Mr. Montgomery's home town of Valley View called him back in 2005 as HS Principal. There he embarked on changing the school culture and climate to serve all students and develop and implement dual credit college course program with North Central Texas College.

In 2007, Mr. Montgomery was hired as the superintendent for Lefors ISD and has served the community for the past five years. During this time the school has undergone intensive renovation of all facilities, financial, and instructional systems. The District has grown by more than 30% and moved from financial instability to one of the stronger financially sound districts in the area.

He is married to Dr. Kimberley Montgomery, a pharmacist for CVS and they have four children.



## Gruver Basketball Coaches Recognized



Wade Callaway received the Kenneth Cleveland Best Sportsmanship Award for Boys Basketball.

Rod Been received the Mike Newland Best Sportsmanship Award for Girls Basketball.

Each year the Amarillo Chapter of Basketball Officials presents a Sportsmanship Award to one area high school Girls Coach and Boys Coach. Coaches representing all classifications are nominated by an official, and the nominees are voted on by the entire chapter.

Gruver was represented extremely well as both Coaches Wade Callaway and Rod Been received the award.

Way to go coaches! we are very proud of you!

## Morgan Lackey Named Miss North Texas Outstanding Teen



Morgan Lackey was named Miss North Texas Outstanding Teen in a pageant held Saturday, November 12th, in Fort Worth, Texas.

Morgan competed in four phases of competition - interview with a panel of judges, fitness in aerobic wear, formal wear and on-stage interview and talent. She performed a monologue and musical theatre vocal from "Legally Blonde The Musical".

Miss Texas' Outstanding Teen is the state pageant for Miss America's Outstanding Teen.

Along with her title, Morgan received over \$3,000 in cash and prizes, and is eligible to compete

for Miss Texas' Outstanding Teen in Arlington at the end of June.

Morgan is the daughter of Chris and Linda Ray of Amarillo and the late Jeff Lackey of Spearman. She is the granddaughter of Joel and Joyce Lackey of Gruver and Jim and Laquita Evans of Amarillo.



## Texas Girls Coaches Association 2011-12 Cross Country All-State Teams

TGCA selects an All-State team for each conference in cross country. These athletes are selected by the TGCA Cross Country Committee, which is composed of cross country member coaches of the Association, at their annual meeting. Selections are made from nominations submitted by member coaches. Athletes need not be seniors to be selected.

Hansford County had five students selected. Gruver High School - Taylor Felderhoff, Shelley Gibson and Madison McLain; and Spearman High School - Tylo Farrar and Gately Garnett.

## COME TO THE GAME

### Spearman Lynx/Lynxettes

11/28 7G (5), 8G (6), 9G (7) vs Fritch  
11/28 7B (5), 8B (6), 9B (7) @ Fritch  
11/29 JVG (5), JVB (5), VG (6:30), VB (8) at Texhoma

### Gruver Greyhounds/Lady Hounds

11/22 JVG (4), VG (6:30) vs Pampa  
11/28 7B (5), 7G (6), 8G (5), 8B (6) at Sun-ray  
11/29 JVB (5:15), VB (8) vs. Boys Ranch

## Weather Forecast

TUESDAY - Mostly sunny. Warmer. Highs in the lower 60s. North winds 10 to 20 mph.

TUESDAY NIGHT - Mostly clear. Lows in the lower 30s. Northwest winds around 5 mph shifting to the southwest after midnight.

WEDNESDAY - Mostly sunny. Highs in the upper 60s. Southwest winds 10 to 15 mph.

WEDNESDAY NIGHT - Mostly clear. Lows in the mid 30s.

THANKSGIVING DAY - Partly cloudy. Breezy. Highs in the upper 60s.

THURSDAY NIGHT - Mostly cloudy. Lows around 40.

FRIDAY - Mostly cloudy. Highs in the mid 60s.

FRIDAY NIGHT - Partly cloudy. Lows in the lower 30s.

SATURDAY - Mostly sunny. Highs in the upper 50s.

SATURDAY NIGHT - Mostly clear. Lows in the upper 20s.

SUNDAY - Mostly sunny. Highs around 60.

Read more: <http://www.city-data.com/forecast/w-Spearman-Texas.html#ixzz1eNlrWEbx>

## Closed Notice!

The Hansford County Reporter-Statesman will be closed Tues., Nov. 23-Sun., Nov. 27 for Thanksgiving

## Deadline Notice!

The deadline to submit news and advertising to the Hansford County Reporter-Statesman is Monday at 5 p.m. Items submitted after the deadline will be published at a later date, as time and space permit.

The deadline for the December 22nd and December 29th issues will be Friday, December 16th at 12 noon.

Items may be submitted by phone (806-659-3434), fax (806-398-9080), mail (Reporter-Statesman, 213 Main Street, Spearman TX 79081), or e-mail ([reporter@spearmanreporter.com](mailto:reporter@spearmanreporter.com)).

For more information, please contact Catherine Smith at 659-3434, 806-584-4879, or [reporter@spearmanreporter.com](mailto:reporter@spearmanreporter.com)



# Wolf Creek Heritage Museum Notes

by Virginia Scott  
Museum Happenings

I am writing the column early because most of the newspapers will go to print early due to Thanksgiving.

The museum volunteers were invited to the courthouse open house on Wednesday, so we went and enjoyed the delicious food and delightful company of the courthouse staff. It is always nice to visit with people outside their official roles. This year J.R. was the host and we promised to mention him because of his behavior. He was entertaining. Thanks to the courthouse staff for inviting us to your open house and the

members of the extension service who helped with the food.

We are almost caught up with our accessioning, so we will be able to go on vacation with a clear conscience. The workroom and archive is looking good. We will be open through the 30th, except for Thursday and Friday, November 24th & 25th, for Thanksgiving.

### Historical Musings

Here is some more railroad and Doodlebug history. The Santa Fe Railroad company and the Rock Island Railroad were in competition with each other in the 1920's and 30's over

the route from Shattuck to Spearman.

Information from the The Atchison, Topeka and Santa Fe Railway System states that Follett, Darrouzett, and Booker began Santa Fe service on July 1, 1920. A line from Shattuck, OK to the Oklahoma-Texas state line, a distance of 9.22 miles, was constructed by the North Texas & Santa Fe and the same company continued the construction of the line to Spearman, TX, a distance of 75.42 miles, with the opening date being July 1, 1920.

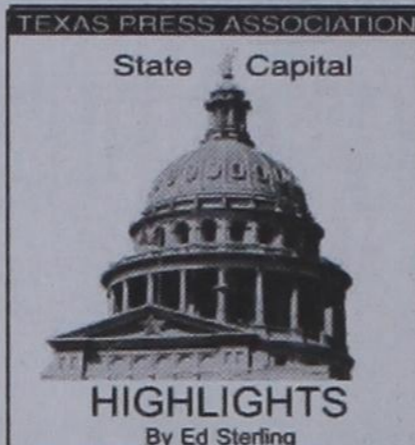
On April 28, 1930, the ICC approved of the plan to share the Rock Island track between Morse and Etter on the Santa Fe's North-South line. Construction of the Santa Fe's Spearman-Morse line began in January of 1931 and operations began on May 15.

Times had turned bad, and a change became necessary in scheduled service.

The line had been receiving mixed train service daily except Sunday. At various times, one train had put in a long day making a round trip in one day. Most of the time however, two trains had run in opposite directions on alternate days, each train making three round trips weekly. In 1933, the service was alternate days, a motor train or "doodlebug" was provided. With no freight switching to perform, the doodlebug was scheduled much faster than the mixed train.

Changing transportation needs, recession, and attempted hostile takeovers endangered the Santa Fe during the 1980s. In need of cash, the Santa Fe decided to follow the example of other Class 1 railroads and sell many of its branch lines to small companies. The theory is that a little company unburdened by union rules can make profits and provide better service. The Shattuck branch was duly sold to the southwestern Railway April 14, 1990.

Hope your Holidays are filled with good food, good friends, and good fellowship.



# STATE CAPITAL HIGHLIGHTS



by Ed Sterling

## Voters amend state constitution in Nov. 8 election

AUSTIN — Voters approved seven propositions and rejected three in the Nov. 8 state constitutional amendment election.

Unofficial figures posted Nov. 9 by the Office of the Secretary of State show that a little over 5 percent of Texas' more than 12 million registered voters cast ballots in the election.

Approved were:  
- Prop. 1, authorizing the Legislature to provide the surviving spouse of a 100 percent disabled veteran with an exemption from ad valorem taxation.

- Prop. 2, authorizing the Texas Water Development Board to issue up to \$6 billion in general obligation bonds.

- Prop. 3, authorizing the Texas Higher Education Coordinating Board to issue and sell general obligation bonds to finance education loans for students.

- Prop. 5, authorizing the Legislature to allow cities or counties to enter into interlocal contracts with other cities or counties without the imposition of a tax or the provision of a sinking fund.

- Prop. 6, allowing the General Land Office to distribute revenue from permanent school fund land or other properties to the available school fund to provide additional funding for public education.

- Prop. 9, authorizing the governor to grant a pardon to a person who successfully completes a term of deferred adjudication community supervision.

- Prop. 10, changing the length of the unexpired term that causes the automatic resignation of certain elected county or district officeholders if they become candidates for another office.

Rejected were:  
- Prop. 4, authorizing the Legislature to permit a county to issue bonds or notes to finance the development or redevelopment of an unproductive, underdeveloped, or blighted area within the county.

- Prop. 7, adding El Paso County to the list of counties authorized to create conservation and reclamation districts to develop parks and recreation facilities financed by taxes.

- Prop. 8, requiring the Legislature to provide for taxation of open space land devoted to water stewardship purposes on the basis of its productive capacity.

## Redistricting lines rejected

A panel of three Washington, D.C., federal district judges on Nov. 8 threw out U.S. congressional and state House and Senate district lines redrawn by the Texas Legislature earlier this year.

The court order denying the State of Texas' motion for summary judgment to have its new redistricting maps declared legal is worded as follows:

"Having carefully considered the entire record and the parties' arguments, the Court finds and concludes that the State of Texas used an improper standard or methodology to determine which districts afford minority voters the ability to elect their preferred candidates of choice and that there are material issues of fact in dispute that prevent this Court from entering declaratory judgment that the three redistricting plans meet the requirements of Section 5 of the Voting Rights Act."

New maps must be produced by the Federal District Court, Western District of Texas, San Antonio.

## Veterans story exhibit debuts

"Every Veteran has a Story to Tell," an exhibit at the Texas Capitol Visitors Center, opened on Veterans Day, Nov. 11, and will run through September 2012.

Twelve Texas veterans of four wars — World War II, Vietnam and both Iraq wars

— are featured in videos recounting their first-hand war experiences. The exhibit is the work of the Texas General Land Office.

Gov. Perry's statement in honor of Veterans Day included this excerpt: "With common bonds of selflessness and bravery, our veterans are a credit to our nation and our state. Their legacy of courage and conviction endures in the form of our most precious gift: freedom."

## Jessop sentenced to 10 Years

With the sentencing of Frederick Merrill Jessop last week, 10 YFZ Ranch-related defendants have been convicted on felony charges and sentenced to prison.

All were indicted on sexual assault of a child, bigamy or other charges, and two more defendants are awaiting trial, Attorney General Greg Abbott said Nov. 9.

A Coke County jury sentenced Jessop to 10 years in prison and a \$10,000 fine for performing a ceremony prohibited by Texas law, Abbott said.

YFZ Ranch, owned by the breakaway Fundamental Church of Jesus Christ of Latter Day Saints, is near Eldorado in Schleicher County.

Prosecution of certain adult male ranch residents began after the ranch was raided by federal, state and local agencies in the spring of 2008.

by GasBuddy.com  
**TexasGasPrices.com**

## Crude Oil Rises Above \$100

Minneapolis, MN (Nov. 17) - Yesterday WTI crude oil closed at \$102.59 per barrel. It's the first time ever that oil has closed above \$100 per barrel in November. And gas prices are going down?

Yes, they are. Today's national average price of gasoline (\$3.41 per gallon) is notably less than the average price at the pump the last time crude oil traded in the \$100-range. It wasn't long ago. From February through March WTI crude on the New York Mercantile Exchange (NYMEX) traded at the \$100+ per barrel level and the retail price of gasoline climbed steadily from \$3.50 to \$3.90 per gallon during the same period.

What gives?  
"Nobody wants to jinx the downward trend by actually asking the question, but everybody is wondering the same thing: Why are gas prices going down instead of up?" Laskoski said. "The answer, we believe, lies in the current disconnect between crude and pump prices. The two usually move in tandem, but this is one of those instances where the exception to the rule occurs, and when that happens, consumers notice immediately," said Laskoski. "WTI is now yielding to the pressure exerted by the increasing importance of Brent crude and the fact that Brent is a more accurate reflection of global value. As a result, WTI's price is rising to close that gap," he added.

At the same time, both refinery utilization and total gasoline production have increased according to the most recent data from the Dept. of Energy. Additionally, gasoline futures are at their lowest level since February 2011 and that facilitates the seasonal decline for wholesale and retail prices.

## Weekly Update

Texas, November 21- Average retail gasoline prices in Texas have fallen 7.3 cents per gallon in the past week, averaging \$3.14/g yesterday. This compares with the national average that has fallen 5.7 cents per gallon in the last week to \$3.36/g, according to gasoline price website TexasGasPrices.com.

Including the change in gas prices in Texas during the past week, prices yesterday were 48.7 cents per gallon higher than the same day one year ago and are 15.3 cents per gallon lower than a month ago. The national average has decreased 11.1 cents per gallon during the last month and stands 49.3 cents per gallon higher than this day one year ago.

"Gasoline prices have continued their slow decline in the last week across a solid majority of the United States, with the national average sagging to its lowest level since this past February," according to GasBuddy.com Senior Petroleum Analyst Patrick DeHaan. "Many motorists may be giving thanks for the lower gasoline prices- until they realize that average prices will still easily exceed prior Thanksgiving Day records," he adds. DeHaan also shared recent results from a poll conducted of its members, showing the smallest growth in holiday driving distance since it began surveying users in 2009. The poll also showed a 2% rise in the number of North Americans that would not drive at all for the holiday gathering. "This certainly isn't a shock given the higher gasoline costs, but goes to show that few motorists reduce their holiday driving because of higher prices," DeHaan states.

GasBuddy operates, TexasGasPrices.com, and over 225 other local gasoline price tracking websites that follow prices at over 125,000 gasoline stations in the United States and Canada. GasBuddy also uses Facebook (facebook.com/gasbuddy) Twitter (twitter.com/gasbuddy), and phone apps to keep motorists ahead of changing gasoline prices.

## Wolf Creek Heritage Museum

Museum Hours: Monday thru Friday 10 a.m. to 4 p.m., Special hours upon request.

Museum Information:  
13310 Hwy 305, PO Box 5, Lipscomb TX 79056; telephone: 806-852-2123; e m a i l : wolfcrk@amaonline.com; website: www.wolfcreekheritagemuseum.org

## ON THE GO

- ACROSS**
- Joanne Woodward's character Eve had three
  - Bag in French
  - SAT, e.g.
  - Positive electrode
  - Taxing job
  - \*-cross bicycling
  - \*Take one up or down
  - Mentally quick
  - Tapestry
  - \*Usually illegal while driving
  - \*Drive-
  - One of Sinbad's seven
  - Bluish green
  - London's Big
  - Musicalian's time to shine
  - Large, colorful parrot
  - Bear's hang-out
  - Pluribus
  - Policeman's club in India
  - Sky bear
  - Receive, as in debt
  - Daytime drama
  - Helen in Russian
  - To mark for omission
  - Charlie "Bird" Parker's sax
  - Parent's demand
  - Cribbage pieces
  - Acid
  - Italian car maker

- DOWN**
- \*Type of food
  - "Up the"
  - Sweet talk
  - Changes, as in written word
  - 7-game in baseball playoffs
  - Slang for heroin
  - \*Often free on smart-phone
  - Like malicious remark
  - Novice
  - Very light brown
  - Ore smelting by-product
  - Comedy Central's "O"
  - Relating to the body
  - Campbell or Watts
  - One looking for attention

## These games are brought to you by the Hansford County Reporter-Statesman

- Sometimes difficult to grasp
- Between Marquess and Viscount, pl.
- One born to Japanese immigrants
- "hol"
- Home in Spanish
- Coral reef island
- "up?"
- Goes with rave
- Christmastime
- \*Comes in nano and shuffle versions
- Roman king's abode
- Up to date, French
- Slob
- Flow, as in video
- Eagle's nest
- \*Star Trek's final frontier
- For fear that
- To, archaic
- African migrants
- "The \_\_\_ of Navarone"
- \*Most are now smart
- Scraps of meal
- Dish of stewed meat
- Country singer-song-writer Loretta
- Type of brew

**CROSSWORD**

1	2	3	4	5	6	7	8	9	10	11	12	
13					14			15				
16					17			18				
19				20			21	22				
			23				24					
25	26	27		28		29		30	31	32	33	
34			35			36		37		38	39	
40						41		42		43		
44			45			46				47		
	48			49		50		51		52		
			53			54		55		56		
57	58	59	60					61		62	63	64
65						66	67			68		
69						70				71		
72						73				74		

PRESENTED BY  
**VolunteerMatch.org**  
Where volunteering begins.

**The Hansford County Reporter-Statesman**  
Mailing Address - 213 Main Street • Spearman TX 79081  
Physical Address - 310 Barkley Street • Spearman TX 79081  
Phone - (806) 659-3434 • Fax - (806) 398-9080  
www.spearmanreporter.com • reporter@spearmanreporter.com  
Mon.-Thurs. 9 a.m.-12 p.m., Mon.-Wed. & 1-5 p.m.  
Closed Thurs. afternoon and all day Fri., Sat. & Sun.

**Gary Smith - Publisher** Catherine Smith - Editor  
Contributing Writers: Dorothy Hudson, Jim Detrition, Merry Sparks, Cecil Biggers, Virginia Scott, Ed Sterling, Rod Sumner  
Contributing Photographers: Lisa Johnson, Tami Hargrove, Tammy Batton, Bonnie Bergan, Rod Sumner

**Subscription Rates**  
In Hansford County - \$30.00 • Out of County - \$40.00  
E-Mail Subscription - \$35.00

The Hansford County Reporter-Statesman (USPS 529660) is published weekly in Spearman, TX. Periodical postage paid in Spearman, TX. **POSTMASTER:** Send address changes to: The Hansford County Reporter-Statesman, 213 Main Street, Spearman, TX 79081.

**Publication Policy**  
The deadline to submit news and advertising to The Hansford County Reporter-Statesman is Monday at 5 p.m. Items submitted after the deadline will be published at a later date, as time and space permit. Publication of all items is at the discretion of the editor.

**Advertising**  
Open Display rates are \$4.00 per column inch. Classified Ads are \$7 for the first 20 words and 15¢ per word for each additional word. (Additional charge for boxed classifieds.) There is a \$1 charge per week if billed.

Member of  
Gruver Chamber of Commerce  
Spearman Chamber of Commerce  
Texas Press Association and Panhandle Press Association



# Happy Birthday!

**November 23 Birthday** - Steven Francis, Randy Karlin, Kim Venneman, Klint Venneman, Sara George, Mary Hart

**Anniversary** - Lesly & Maurene Stinson, M/M Val Winger, M/M Greg Stork, M/M Steve Mitchell, Andy & April DeLaRosa, Ryan & LaSera McElhaney

**November 24 Birthday** - Brady Hart, Pablo Perez Jr., Danna Sue Floyd, Helen Gibson, Patty Younger, Duane Hart, James Jackson, Dana Garza, Lashera McElhaney, Jamie Dawn Hanson, Stephanie Villalobos, Raymond Fairbank, Brianne (Burkhammer) Eslick, Georgia Holt, Teresa Page, Linda Weller, Elvin Wright, Sharon Arrington, Whitney Maestas

**Anniversary** - M/M Rex Casdorff, M/M David Imke

**November 25 Birthday** - Kasey Cazares, Tracy Logsdon, Krista Davis, Opal Wallin, Trudie Goodheart, Terrie Orr, Mike Hager, Melissa Moyer, Dustin Red, Kristi Holt, Carmen Roy, Sara Vela, Katy Mitchell, Jerry Moore, Donnie Pool

**Anniversary** - Sherry & Willis Boyd

**November 26 Birthday** - Lori Perez, Chad Stork, Mollie Holton, Tracy Vernon, Chris Stewart, Scott Barkley, Dale Red, Eldon Sparks, Aaron Brown, James Smith, Jorge Soto, Jr.

**Anniversary** - M/M Harlan Gerardy

**November 27 Birthday** - Jim Potts, Dorothy Evans, Marilyn Davis, Jackie Nelson, Monty Ross, Tony Pacheco, Susan Poole, Jesse Moreno, Jackie Nelson

**Anniversary** - M/M Dale Wofford, M/M James Winger, M/M James Dorman, M/M Ty Williams

**November 28 Birthday** - Casey Smith, Clint Williams, Jeanie McClellan, Frank Shields, Patty Spoonmore, Thelma Ford, Caroline Schick, Jennye Womble, Pat Hamilton, Harley Murrell, Marie Belle Vargas, Rick Howard, Toni Pittman, Tammy Red, Darlene Curry, Neely Landrum

**Anniversary** - M/M Julian Rodriguez, Mary Lou & Steve Matthews, Brenda & Verlan Winegarner

**November 29 Birthday** - Brian Presley, Steven Salazar, Wanda

Wagner, Genna Floyd, Robert Browning, Ciria Vela, Ted Vela, Troy Lane Brown, Brenda Salgado, Amanda Burress

**Anniversary** - M/M Kermit Ford, M/M David Schick, M/M Jose Garcia, M/M Phil Tripp, M/M Brad Hart

**November 30 Birthday** - Cass Cooper, Roxane Holt, Rosie McClenagan, Judy Stedje, Miranda Thoreson, Dan Desimone, Don Maize, Jed Meisner, Mark Nelson, John Speck, Steve Harnish, Ernest Bowen, Eulalia Reyes, Mary Reyes, Marion Mitchell, Lisa Payne, David Reid, Cinda Haruch, Bonnie Bergan

**Anniversary** - M/M Lee Roy Mitchell, M/M Ross Walker, M/M Rick Harvey, M/M Luis Salazar

**December 1 Birthday** - Georgia Davidson, Robert Stayton, Peggy Archer, Debra Dennis, Peggy Ellsworth, Bill Martin, Brian Paul, Shane Vela, Eleen Wright, Sha Lynn Harris, Lynn Vela, Jennifer Neff, Graham Hartgraves

**December 2 Birthday** - Audrey Beasley, Don Dillow, Paul Stavlo, Mike Close, Sharon Freeman, Kristin Dunnihoo, Ginger McClellan, Jana Price, James Terry, Amanda Gaines, Blare Title, Christi Cooper, Cecilia Favela, Frances & Jeffrey Davis, Kane Pittman

**December 3 Birthday** - Shell Haynes, Bethany Harris, Lila (Mike) Hergert, Kevin Harris, Francisco Lozano, Jewell King, Alvin Auld, Mark Taylor, Jenny Neff, Phyllis Cummings

**Anniversary** - Dink & Carma Dorton, M/M John Haynes

**December 4 Birthday** - Chris Spivey, Lynn Stedje, Denise Ferguson, Heather Gikas, Kristy Easley, Imogene Baker, Joyce Duncan, Tim Fletcher, Amber Newman, Kristina Christian, Aleta Jackson, Lesley Stinson, Helen Sandoval, Rene Griffin

**Anniversary** - Kent & Tammy Benton, Crockett & Melinda Tidwell

**December 5 Birthday** - Martha Haden, Billy Dearmond, Mike Skinner, Arbeta Nobels, Gwen Smith, Norman Scroggs, Susie Oakley, Beatrice Comp, Cory Marrs, Brayden Bynum, Cason Lane Mathews

**Anniversary** - Alfonso & Carrie Cenicerros

# Words from Faith & Grace



by Cecil R. Biggers, Lutheran Lay Minister

Advent (lat. coming) begins our new church year. During the season of Advent we look back to the first advent of Christ as we prepare to celebrate his birth and we look forward to Christ's return in glory, his Second Advent (Greek parousia). We study Isaiah 64: 1-9, Psalm 80: 1-7, 17-19, 1 Corinthians 1; 3-9, and Mark 13: 24-37.

Isaiah describes God as a mighty warrior leaving his tent. He describes the people's rejection of God and he asks God to be present again with his people. Isaiah reaffirms the relationship of God with his people. He ends his plea describing God as Artisan/Creator, "Yet, O Lord, you are our Father; we are the clay, and you are our potter; we are all the work of your hand." Even though we may be naughty children and imperfect vessels; yet, God is our Father, God is our creator; we pray for his steadfast love and redeeming grace.

The Psalmist sings a prayer for deliverance. The refrain is found in verses 3, 7, and 19. The theme of the refrain is Restore, Shine, and Save. In the first refrain, "Restore" is a plea to God to renew a right relationship with him; "Shine" is a plea for God's presence with his people; and "Save" is a plea to redeem Israel from her enemies. God is addressed as "O God"; in the second refrain, God is addressed as "O God of Hosts"; and in the third refrain, God is addressed as "O Lord God of Hosts". Each refrain becomes a little more 'personal' with God.

Paul emphasizes God's grace through Christ to the Corinthians and reminds the Corinthians that the spiritual gifts which they prize so highly come from God and are not a result of the Corinthians' own merit. The focus for Christians should be on God not on ourselves. Even though a believer may possess gifts of the Spirit, even so that believer is still waiting for Christ's return. Spiritual gifts are given to enable us to wait for Christ's return in a positive manner by helping others.

Toward the middle of Mark's passion narrative, Jesus addresses Peter, James, John and Andrew about the signs of the return of Christ and a prophecy about the temple at Jerusalem. The portion of the narrative describing when the destruction of the temple was to occur, "Truly I tell you, this generation will not pass away until all these things have taken place." Historically, this did occur during the generation of the disciples. Despite the attempts by various evangelists to predict Christ's coming, Jesus states that only the Father knows the day and the hour of his Second Advent. There will be wars and various tribulations; it will seem that the powers of the very heavens will be shaken. Yet, Jesus assures us that though all else pass away, His words remain. The point, dear Christian, is not for us to know 'when' Christ is coming, but to be prepared for that coming! Keep awake!

May the Holy Spirit keep you faithful and working until our Lord returns. Maranatha!

# Our Sympathy

**KEITH LAMB**  
 BROOKEN, Okla. — Keith Lamb, 88, of Brooken died Thursday, Nov. 3, 2011.

Services were at 1:30 p.m. Monday in Pioneer Freewill Baptist Church with the Rev. Brian Snow officiating. Burial followed in Brooken Cemetery with full military honors recited by VFW Post No. 4446. Arrangements were by King & Shearwood Funeral Home of Stigler.

Mr. Lamb was born Oct. 15, 1923, to Dewey and Josephine Edwards Lamb in Ogden, Utah. He lived in Gruver for many years, and was married to Mary Rhea Cluck Hart. He was a skilled inventor and proud owner of five patents.

Survivors include his two sons, Jim Lamb of Briartown and Perry Lamb of Brooken; seven grandchildren; 12 great-grandchildren; a great-great-grandson; and a sister, Nedra Burke of Evanston, Wyo.

**RUTH LORRAINE BLACKBURN PRICE**  
 Ruth Lorraine Blackburn Price, 91, of Amarillo died Monday, Nov. 14, 2011.

Services were at 10 a.m. on Wednesday, November 16, 2011 in Schooler Funeral Home Brentwood Chapel with the Rev. Dale Moreland of Church at Quail Creek officiating. Burial was in Memory Gardens Cemetery. Arrangements are by Schooler Funeral Home, 4100 S. Georgia St.

Mrs. Price was born July 19, 1920, to Robert and Rosetta Blackburn in Lawton, Okla. She was an excellent cook and loved cooking for her family, especially Thanksgiving. Ruth was a charter member of Church at Quail Creek. When relaxing, she loved sewing. She was a lady who was easy to get to know and love. Ruth retired from Sears after a long career at multiple jobs. She was a loving mother, sister, grandmother and great-grandmother who will be missed by all who knew her.

She was preceded in death by her husband, Horace David Price; a son, David Ronald Price; parents; three brothers; and a sister.

Survivors include her daughter, Dania North of Amarillo; a daughter-in-law, Georgeanne Price of Oklahoma City; a son, Bud Howard of Amarillo; three sisters, Jean Thomas of Amarillo, Coleen Shaefer of Spearman and Sydenia Alexander of Claude; four grandchildren, David Kral, Michael Kral, Misti Knadle and Dayla Ross; 10 great-grandchildren, Adam Kral, Daniel Kral, Michael Jones, Holden Ross, Cameron Kral, Nathanael Knadle, Haley Romaine, Kendal Kral, Alyce Ross and Mason Ross.

Memorials may be made to City Church Children's Ministry, 205 S. Polk St., Amarillo, TX 79101.

Sign the online guestbook at [www.schoolerfuneralhome.com](http://www.schoolerfuneralhome.com).

# Letters to Santa

The Hansford County Reporter-Statesman will print Letters to Santa from children in Hansford County in our annual Christmas edition, which will be published on December 22nd.

Letters may be mailed to: Santa Letter, % Reporter-Statesman, 213 Main Street, Spearman, TX 79081, or dropped by the Reporter-Statesman office. Office hours are Mon.-Thurs., 9 a.m.-12 noon and Mon.-Wed., 1-5 p.m. (There is a drop-slot located in the window to the right of the door.) Letters may also be dropped off at the new home of the Reporter-Statesman, 310 Barkley Street, Spearman.

In order for your letter to appear in the Christmas issue, it must be at the Reporter-Statesman office by 5 p.m. on Thursday, December 16th. All letters will be forwarded to Santa. (Letters received after the deadline may not have time to reach the North Pole by Christmas.)

**MONUMENTS**  
**Boxwell Brothers**  
 Funeral Home  
 519 Evans • Spearman  
 659-3802

Dear friends,  
 When you buy a monument from us we make sure it is exactly what you want at a price you can afford. If it is not right, we will make it right. And you will not have to search the countryside to find us. We are here when you have a need.  
 Sincerely,  
 Bob Boxwell

**dish NETWORK**  
 AUTHORIZED RETAILER

**BLOCKBUSTER MOVIE PASS**  
 \$19.99 (1 mo.)

**FREE** 20 Movie Channels by 3pm

**FREE** 2000 HD DVR Upgrade (1 HD DVR - 1 SD DVR) (Some DVR service fee applies)

**1-800-465-9348** [WWW.INFINITYDISH.COM](http://WWW.INFINITYDISH.COM)

**CAREER OPPORTUNITY**  
 Petroleum Engineering Service Company has immediate openings for **FIELD PRODUCTION TESTER & WIRELINE OPERATOR** in **OZONA, TEXAS.**

**REQUIREMENTS:** Minimum of high school education required. Must be neat in appearance, responsible, dependable and have strong desire to excel. Good work history with excellent references. Must meet DOT Requirements.

**BENEFITS:** Group medical insurance, life insurance, liberal vacation policy, 401 K.

**SALARY:** Open (commensurate w/ experience)

Send resume to: **FESCO LTD.**  
 P.O. Box 1568  
 Ozona, TX 76943

**FESCO**  
 An Equal Opportunity Employer [www.fescolnc.com](http://www.fescolnc.com)

**TRUCK DRIVERS WANTED THROUGHOUT TEXAS**  
**HOME DAILY OR WEEKLY**

Hiring Solo and Team Drivers in Dedicated, Intermodal, Oil Field, Tanker and Van (QTR, Regional) Divisions

Sign-on Bonus May Apply - Ask Your Recruiter!  
 Experienced Drivers and Recent Driving School Grads Welcome

Inexperienced? Take advantage of Schneider's Tuition Reimbursement program and get your CDL at a local driving school.

Apply at [schneiderjobs.com/newjobs](http://schneiderjobs.com/newjobs)  
 Call 1-800-44-PRIDE for more information

**SCHNEIDER**

# HIP IMPLANT RECALL

Johnson & Johnson has recalled the **DePuy ASR XL Acetabular** hip socket implant system due to an unacceptably high failure rate. One in eight patients experience symptoms like infection, bone fracture, dislocation and pain. Other complications include **increased metal ion levels in the blood, bone staining, necrosis, swelling, nerve damage, tissue damage and/or muscle damage.** If you had hip replacement surgery during or after 2005 and you know you have a **DePuy ASR XL Acetabular** hip implant, or are unsure, please talk to your doctor right away, then contact us toll-free for professional insight into your legal rights.

**APPOLINO | DODD | KREBS**  
**1-800-460-0606**  
[www.DefectiveDrugsLaw.com](http://www.DefectiveDrugsLaw.com)  
 NO FEE FOR FIRST VISIT | Cameron, TX

**Replenish the seed of faith through . . .**  
**DAILY BIBLE READING, PRAYER & REGULAR CHURCH ATTENDANCE**

**Spearman**

**Apostolic Faith Church**  
 822 S. Drexler • 659-2870  
 Sunday School: 10 a.m.  
 Worship Service: 11 a.m.  
 Sun. Eve.: 6 p.m.  
 Wed. Prayer Mtg: 7 p.m.  
 Pastor - Jack Cornell

**First Assembly of God**  
 401 N. Bernice • 659-2295  
 Sunday School: 9:30 a.m.  
 Worship: 10:40 a.m.  
 Evening Worship: 6 p.m.  
 Wed. Worship: 7 p.m.  
 Wed. Youth: 7  
 Pastor - Brad Smith

**First Christian Church**  
 (Disciples of Christ)  
 29 S. Bernice • 659-2036  
 Sunday School: 9:45 a.m.  
 Worship: 10:50 a.m.  
 Minister -

**First Baptist Church**  
 123 N. Bernice • 659-5557  
 Sunday School: 9:45 a.m.  
 Worship: 11 a.m.  
 Evening Worship: 7 p.m.  
 Men's Bible Study - Wed., 7 a.m.  
 Children's Choir - Wed, 6 p.m.  
 Adult Choir - Wed, 7 p.m.  
 Wed. Bible Study: 7 p.m.  
 Pastor - Jim Medley

**Church of Christ**  
 121 S. Haney • 659-3244  
 Sunday Bible Class: 9:45 a.m.  
 Worship: 10:30 a.m.  
 Evening Worship: 6 p.m.  
 Bible Study Wed.: 7:30 p.m.

**Sacred Heart Catholic Church**  
 901 Roland • 659-2166  
 Sat. Night Mass: 5:30 p.m.  
 Sun. Mass: 9 a.m. - English  
 Sun. Mass: 11:30 a.m. - Spanish  
 Rev. Gregory Bunyan

**First United Methodist**  
 407 S. Haney • 659-5503  
 Sunday School: 9:45 a.m.  
 Worship: 8:30 & 11 a.m.  
 Jr. High Youth: 5 p.m. Sunday  
 High School: 6 p.m. Sunday  
 Kids Club: 3 p.m. Wed.  
 Pastor - Toni Bailey

**Grace Presbyterian Church**  
 (Worships with Faith Lutheran Church)  
 1101 Bernice • 659-2033

**Faith Lutheran Church (ELCA)**  
 1101 Bernice • 659-2252  
 Sunday School: 9:45 a.m.  
 Worship: 11 a.m.  
 (Worships with Grace Presbyterian Church)  
 Pastor - Cecil Biggers, PLM

**Union Church**  
 31 S. Endicott • 659-2644  
 Sunday School: 10:00 a.m.  
 Worship & Kid's Church: 11:00 a.m.  
 Wednesday Evening Worship and Bible Study Service: 7 p.m. Wed.  
 Pastor - Steve Hinshaw  
[www.unionchurchonline.org](http://www.unionchurchonline.org)

**Fellowship Baptist**  
 1102 S. Archer • 659-2783  
 Sunday School: 10 a.m.  
 Worship: 11 a.m.  
 Sun. Evening Worship: 6 p.m.  
 Sun. Evening Spanish Worship: 7 p.m.  
 Youth/Adult Service: 7:30 Wed.  
 Pastor - Philip Hudson

**Primera Mision Bautista**  
 502 E. 7th • 659-3991  
 Sunday School: 9:45 a.m.  
 Worship: 11 a.m.  
 Evening: 6 p.m.  
 Wed. Prayer Meeting: 7 p.m.  
 Thurs. Visitation: 7 p.m.  
 Pastor Joe Garcia Jr.

**El Aposento Alto U.P.C.I.**  
 1105 S. Roland  
 Domingos: Escuela-Domical - 10 a.m.  
 Culto Evangelistico - 7 p.m.  
 Jueves: Oracion - 8 p.m.  
 Mier: Estudio Biblico - 7 p.m.  
 Pastor - A.G. Martell  
 (806) 659-2153

**Gruver United Methodist**  
 Broadway & Garrett  
 733-2851  
 Sunday School: 9:45 a.m.  
 Worship: 8:30 & 10:50 a.m.  
 Eve. Worship & UMY: 6 p.m.  
 Pastor - George Price

**Spanish Cristo Redentor Church**  
 Hwy 15 806-659-2166  
 Gruver, TX  
 Sun. Mass: 1:30 p.m. - Spanish  
 Rev. Gregory Bunyan

**Oslo**

**Oslo Lutheran Church (ELCA)**  
 6 Miles West & 12 Miles North of Gruver  
 339-7646  
 Sunday School: 9:45 a.m.  
 Worship: 11 a.m.  
 Pastor - Arlen Lloyd

**Gruver**

**First Baptist Church**  
 402 E. Broadway • 733-2411  
 Sunday School: 9:45 a.m.  
 Worship: 10:50 a.m.  
 Disciple Training: 6 p.m. Sunday  
 Prayer Meeting: 7:30 p.m. Wednesday  
 Pastor - Scott Curry

**Church of Christ**  
 209 King • 733-2760  
 Sunday School: 9:30 a.m.  
 Worship: 10:20 a.m.  
 Evening Worship: 6 p.m.  
 Wed. Worship: 7:00 p.m.  
 Minister - Gaylord Cook

**First Christian Church**  
 510 King • 733-2960  
 Sunday School: 10:00 a.m.  
 Sunday Worship: 11 a.m.  
 Youth: 7:30, Sunday  
 Adult Bible Study: 7:30, Sun.  
 Wed. Bible Study: 8:00 p.m.  
 Pastor - Gary Gumlory

**Morse**

**Morse Baptist Church**  
 733-2757  
 Pastor - Gary Stevens

**Waka**

**Church of Christ**  
 300 Rogers Ave.  
 202-7126  
 Sunday School: 9:30 a.m.  
 Sunday Worship: 10:30 a.m. & 6 p.m.  
 Wednesday Bible Study: 7 p.m.  
 Preacher - Ed Jenkins

He has showed you, O man, what is good. And what does the LORD require of you? To act justly and to love mercy and to walk humbly with your God.  
 Micah 6:8

This feature is made possible through the sponsorship of these civic minded businesses:

**Deakin ELECTRIC**  
 OILFIELD • RESIDENTIAL • COMMERCIAL  
 321 S. MAIN • SPEARMAN  
 1-800-999-1506 Chris Deakin  
 (806) 659-5016 President

**Bartlett's Lumber & Hardware**  
 105 W. Broadway • Gruver, TX  
 (806) 733-2404

**BERRY CLEANERS**  
 Ann & Vernon Pipkin - Owners  
 Phone 659-3122 • P.O. Box 1017  
 207 Main St. • Spearman, TX

**Morse Implement & Auto Supply**  
 "Join us in church"  
 Tom Dortch 733-2668  
 Box 89 • Morse, TX 79062

**PRAIRIE MOTORS INC.**  
 Hwy. 207 South • P.O. Box 430  
 Spearman, TX 79081 • (806) 659-2541  
[www.prairiemotors.com](http://www.prairiemotors.com)

**MurMur's Cafe**  
 100 Roland St  
 Spearman, TX.  
 659-3580

**Hansford County Reporter-Statesman**  
 "Proudly Serving Hansford County Since 1907"  
 (806) 659-3434  
 310 Barkley • Spearman, TX

**INTERSTATE BANK, sss**  
[www.interstatebank.net](http://www.interstatebank.net)  
 322 Main • P.O. Box 146  
 Spearman, TX • 659-2559



# HYI

FOR YOUR INFORMATION

### Bouquet Designs

Hansford County Library is selling raffle tickets for hand-painted tables, painted by Linda Combs. First place is a full-sized dining room table with a leaf. Second place is a side table or occasional table. Tickets are \$5 per ticket or 5 tickets for \$20. These tables are truly beautiful. All proceeds will benefit the library to help make up for lost Thrift Shop income. Tickets will be sold through Monday, November 14, 2011.

### Spearman Food Bank 1st Thursday

If you would like to help the Spearman Food Bank, they need help unloading the truck at 11:30 each 1st Thursday of each month. Contact Cecil Biggers for more information.

### Hansford Co. Library Thrift Shop Accepting Donations

The Hansford County Library Thrift Shop, now known as Alley Katz, is accepting donations of quality items. You may ask for the key to the Thrift Shop at the library desk during regular operating hours (9:30 a.m.-5 p.m., Monday-Friday). Alley Katz is open from 10 a.m.-4 p.m. each Wednesday.

### Spearman Boys Basketball Fundraiser

The Spearman Boys Basketball team is selling Coffee Mugs and Coasters as a fund raiser. Forms are available at the high school and junior high offices, and may be returned there as well. This sale will end Nov. 30th! Purchase your Lynx and Lynxette Coffee Mug and Coasters Today! Great Christmas Gifts! Contact Coach White at the High School if you have any questions. Coffee Mug \$9, Travel Mug \$10, Coasters (4 per set) \$12, Trivet \$8.

### Winter Landfill Hours

Due to a shortage of employees, the City of Spearman has decided to implement the winter hours at the landfill 2 weeks early. Normally it would not change until daylight savings time changes, but they implemented the winter hours beginning Tuesday, October 25, 2011. Winter Hours are: Tues-Sat, 8 a.m. - 5 p.m. Closed on Monday and Sunday. They will also begin the one garbage pickup. If you have any questions, please contact Spearman City Hall at 806-659-2524.

### Overton Pesticide Applicator Trainings set 11/29 & 12/6

Pesticide applicators can earn 5.5 continuing education units toward the renewal of their licenses at trainings held on Nov. 29 and Dec. 6 at the Texas AgriLife Research and Extension Center at Overton. Both training sessions will begin with registration from 7:30-8:30 a.m. at the Overton center's classroom. The presentations will begin at 8:30 a.m. and end at about 2:15 p.m., with an hour break for lunch at noon. By state rules, participants may attend both the Nov. 29 and Dec. 6 sessions and earn 11 continuing education units, Higginbotham said. Three of the units will be in the general category, one in laws and regulations, and 1.5 in integrated pest management. Registration for either training will be \$30 per person and includes lunch and refreshments. Registration will be at the door only. To reduce costs to participants, no credit-card payments or telephone registrations will be taken, Higginbotham said. Payments may be made either by check, money order or cash. To receive continuing education units, participants will need to present either their driver's license or a copy of their applicator's license at registration. The Overton center is located 1 mile north of downtown Overton on Hwy. 3053.

### Michael Martin Murphey

Michael Martin Murphey will perform in the indoor Plaza of the Kwahadi Museum, 9151 I-40 E, Amarillo, TX on Saturday, November 26, at 7:00 PM. Tickets are \$40 and \$35 and are available via the museum gift shop at 806-335-3175. The concert is a benefit performance for the museum and its youth programs.

### Santa To Visit Gruver December 3 & 4

You are invited to come visit Santa on Saturday December 3 in Gruver as he makes his way to the North Pole. The Chamber of Commerce will host the 3rd Annual Cookie Contest at 6 PM and Santa will be at the Golden Age Center to take orders! On Sunday December 4 at 4:30, there will be a community wide church service at the park.

### Gruver Elementary Register Tapes for Education

Gruver Elementary is participating in the Lowe's Supermarket Register for Tapes for Education. Please help us earn free education material and equipment by collecting register tapes from Lowe's. You can deposit your register tapes in the boxes at the Elementary School Lobby, or the south entrance, Gruver City Library, City Hall, Gruver Library, Night & Day Beauty Salon and Shear Style Salon. Call Jo at 733-2247 for pickup of tapes or for more information.

### Texas SNAP Benefits Assistance

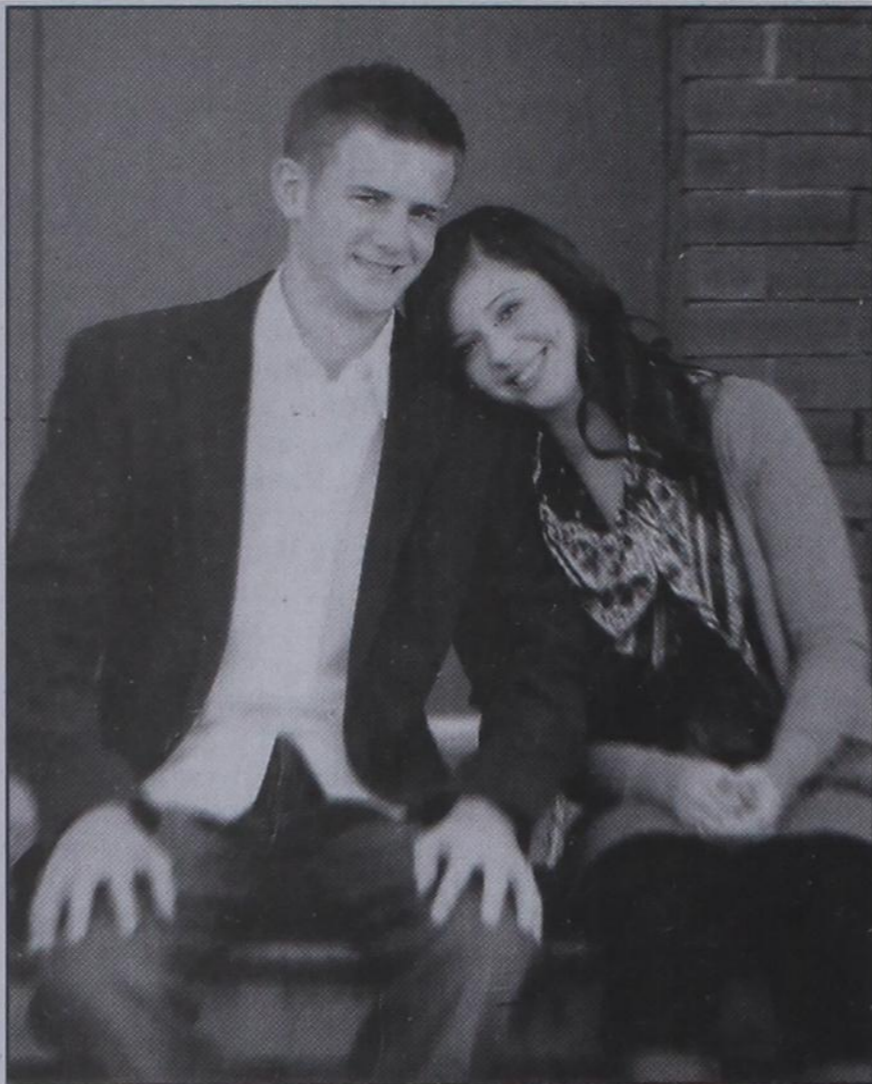
Need help applying for SNAP benefits? We can help! High Plains Food Bank is providing application assistance for Texas SNAP benefits (Food Stamps) in your area. Telephone application assistance is available. If you need to apply for benefits, please call us today at 806374-8562 or 1-800-774-8564.

### OPSU Baseball Clinic

Oklahoma Panhandle State University is hosting a six week baseball camp starting on December 4. Oklahoma Panhandle State head coach Steve Appel will direct the program in conjunction with U.S. Baseball Academy. Classes are available for players in grades 1-12 and are limited to six players per coach. Sessions are offered in advanced hitting, pitching, catching, fielding and baserunning at a cost as low as \$99 for six weeks. Space is limited. Registration is now under way. For more information, visit www.USBBaseballAcademy.com, or call toll-free 866-622-4487.

### Don't Text and Drive Decals

If you would like to purchase a lime green 'AMT 1994-2009 Don't Text and Drive' window decal in memory of Ali Tyler, please contact Stephanie Tyler at 806-736-0019. All proceeds go to the Ali Tyler Memorial Scholarship Fund. Decals are also available at Hansford County Floral Company on Main Street in Spearman.



### Engagement Announcement

Danny and Laura Boyd of Oklahoma City, OK wish to announce the engagement of their daughter, Noel Boyd, to John McCloy of Oklahoma City, OK. John is the son of Rick and Susan McCloy of Morse.

John is a Missions Associate at Reaching Souls International fo Oklahoma City.

The couple plan to wed on January 7, 2012 at the Wester Hills Church in Oklahoma City, OK.

### Thank You!

Thank you so very much to Mrs. Sandy Cross, Mrs. Anna Marie Holland, Katie Wiggins and the Gruver High School girls Ensemble for the uplifting program at the widows and widowers meal Monday. Several people mentioned how blessed they were by the music. What a blessing music is with its universal appeal. We appreciate Zoe Cantrell, Macy McLennan, Madi Teal, Madison Williams and Rachele Hamilton for sharing their talents with us. The only regret is that youth have no opportunity to be in the choir from 4th grade thru 9th grade. Some have such a wonderful talent to share.

We look forward to hearing more at the Christmas concert.

Nelle Evans, chairman of Gruver United Methodist Church Nurture Committee

Thanksgiving week special!  
**25% off** all crosses, memo boards,  
and oil paintings through  
Saturday, Nov. 26th.

**Acquisitions...  
open Monday - Saturday  
from 10 a.m. - 6 p.m.  
the corner of Hwys 54 & 287  
in Stratford, Texas  
806-396-5691**

# Sergio's Auto Sales

We appreciate your support!

Sergio Vargas  
120 W Kenneth Ave • Spearman TX 79081  
(806) 659-9971 - day • (806) 330-0173 - night  
Canyon Location Phone Number: (806) 231-8388

**SERGIO'S AUTO SALES**  
**SERGIO VARGAS**  
120 W. KENNETH AVE. SPEARMAN, TX 79081  
806 659 9971 CEL. 806 330 0173

**Happy Thanksgiving Day!**  
Mid pleasures and palaces though we may roam,  
be it ever so humble, there's no place like home.  
-- John Howard Payne

**GOLDEN SPREAD SALES CO.**  
414 S Hwy 207  
Spearman TX 79081  
Phone (806) 659-3776 • Fax (806) 659-3141

See us for:  
AUTO • HOME • CROP HAIL •  
FARM & RANCH • MULTIPERIL •  
LIVESTOCK

**INSURANCE**

**BORT AGENCY, INC.**  
510 Main St. • Gruver, TX  
(806) 733-2456

# Happy Thanksgiving from our family to yours

As we approach the end of this year, we want to thank our customers for their continuing business. We know there are many choices and we are grateful that you have chosen us to serve your farming and ranching needs. We will always treat you like family and give you the best service in town.

We will be closed Thursday, November 25, 2010 in observance of Thanksgiving.

**CASE III Zimmatic**

**FIVE STAR EQUIPMENT, INC.**

HIGHWAY 15 WEST • BOX 658  
SPEARMAN, TEXAS 79081  
PHONE # (806) 659-3743  
HOME # (806) 659-3846  
CELL # (806) 330-0051  
800-978-2759

**RICHEY THOMPSON  
MANAGER**

# Special Thanksgiving Wishes For All

Hoping your Thanksgiving is rich with meaning, blessed with warmth.

**MurMur's Cafe**  
26 Archer St • Spearman TX • 806-659-3500

We will be closed Thursday-Sunday, November 24th-27th for Thanksgiving. We will reopen on Monday, November 28th.



## Thanksgiving Day: Remembering Our Blessings & Giving Thanks - An American Tradition

By U.S. Senator Kay Bailey Hutchison, U.S. Senator from Texas

Thanksgiving is a unique American holiday. It doesn't commemorate a battle won, or honor an individual, or recognize a religious observance. Rather, it's a day to remember our blessings as individuals, and the collective blessing of being Americans.

Our nation's formative days underscore this. In 1621, the Pilgrims of Plymouth Colony in Massachusetts set aside a day to celebrate their first successful harvest. They also rejoiced in the promise of living outside of oppression in Europe, and under the liberties that God intended for all mankind.

In 1787, President George Washington built on this initial Plymouth feast by issuing the first national Thanksgiving proclamation, and marking one day each year for Americans to give thanks for our nation's prosperity. Nearly

eight decades later, President Abraham Lincoln, in the midst of a catastrophic conflict that threatened to tear our nation apart, called his fellow citizens to reflect on their blessings as Americans. In his Thanksgiving remarks of 1863, he noted "We have been the recipients of the choicest bounties of Heaven; we have been preserved, these many years in peace and prosperity; we have grown in numbers, wealth, and power as no nation has ever known."

Today our nation faces a host of challenges. At home, 14 million Americans remain jobless; economic growth is stuck in slow motion. Hundreds of thousands of our men and women are deployed overseas to defend our country against a new breed of sinister enemies. But if America, under Lincoln's leadership, could pause and offer thanks for life's blessings during one of the darkest times in our history, our thankfulness in 2011 for

family, friends, and community should be no less.

On this Thanksgiving, as so many of our military servicemen and women are separated from their loved ones, we should recognize how fortunate we are to be protected by our nation's armed forces. It is because of those who have defended this nation - from the earliest days of the Revolutionary War to today's Global War on Terror - we enjoy the liberties that have allowed us to grow and prosper. I encourage all Texans today to reach out to friends who have loved ones serving overseas, and especially thank them during this holiday.

The writer - and former Austinite and Houstonian - O' Henry once said, "Thanksgiving is the one day that is purely American." Indeed it is - a simple national gesture of gratitude for being individuals with freedom and opportunity - and for being citizens of this great nation.

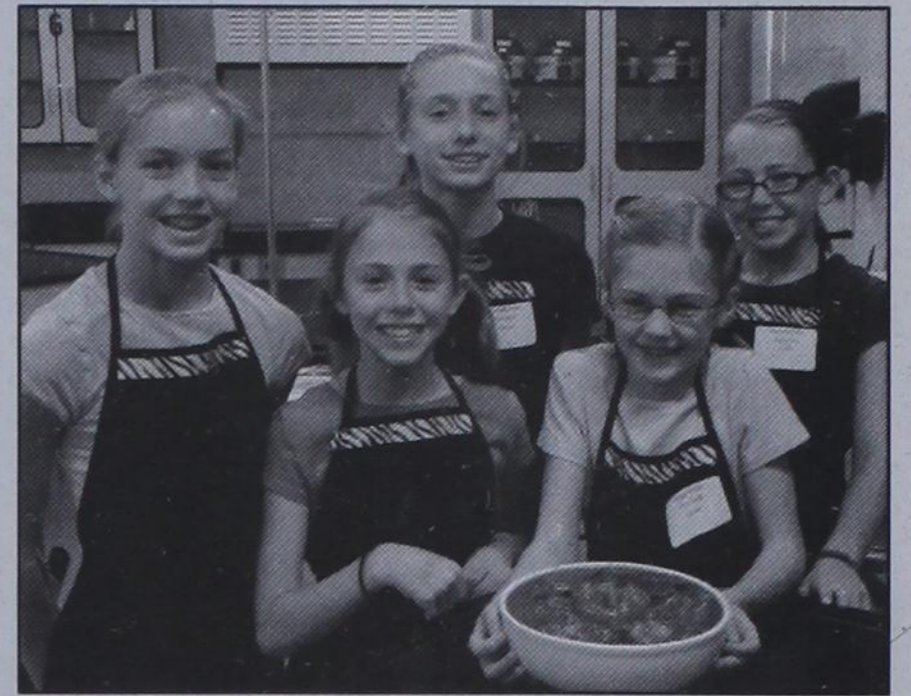


On Tuesday, November 15, 2011, the Spearman Lions Club had the Spearman Varsity Cross Country team as guests during their weekly meeting. We want to thank the team for sharing their excitement as four-time State Champions. Congratulations! Pictured are Team Members: (Standing, L-R) Sarah Snider, Brooke Walker, Cynthia Mendoza, Shelby Hannah, Mallory Martin, Itzel Meza (Leaning, L-R) Gena Hargrove, Tylo Farrar, Gately Garnett; Lions Club Members: (L-R) Britt Jarvis, Grace Calvert, Clay Schnell, Ricky Thompson, Ed Hansen, Robert Baker, Larry McCollum, James Cunningham, Cecil Biggers, Rick Harrell, Harry Stumpf

## Local Youth Win District 4-H Food Challenge and 4-H Food Show

281 youth gathered in Bushland Saturday, November 19 to compete in the District 1 4-H Food Challenge and Food Show held at Bushland High School. The Hansford team of Maren Garnett, KD McCloy, Finley Garnett, Maggie Davis and Maddie McCloy took first place in the Main Dish category of the Food Challenge. Teams were given ingredients and 40 minutes to create and prepare a dish using them, plan a presentation for judges, and clean up their preparation area. The team then participated in a presentation for judges telling nutrition facts about their dish, food safety practices needed, number of servings per recipe and where the dish belongs on MyPlate.

The District 1 4-H Food Show was held at Bushland High School in the afternoon with three 4-H members from Hansford county competing including Maggie Davis, Saxie Ralston and Maren Garnett. Maggie Davis won 1st place in the Junior Salsa category with her Pico de Gallo. Maren Garnett placed 3rd in the Intermediate Cake category with Pumpkin Poppy Seed Cake. County Extension



The Hansford team of Maren Garnett, KD McCloy, Finley Garnett, Maggie Davis and Maddie McCloy

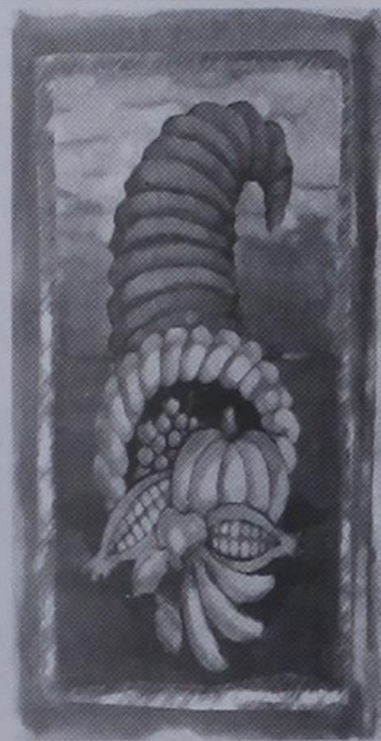
Agent Peggy Winegarner said "Not only did these three youth prepare outstanding dishes, they exhibited their knowledge of nutrition, leadership, community service and communications skills as well in the interview judging process."

## Happy Thanksgiving!

We will be closed Thursday, November 24th in observance of Thanksgiving.

Let us help you decorate this holiday season!

- Thanksgiving Centerpieces with or without Candles
  - Fall ceramic containers for plants or fresh flowers
  - Gourmet baskets for Thanksgiving or Christmas (or anytime)
  - Cornucopias • Gift Baskets • Christmas Home Decor
- Order your Poinsettias now!



### All Occasion Flowers

202 N. Bernice (across from the Post Office)  
659-5180 • Spearman



Thanksgiving - 11/24  
Christmas - 12/25



**Kirk Weatherford** (806) 336-2820  
8125 FM 3395 Toll Free: 1-800-585-6047  
Sanford, TX 79078 Email: kirk@weatherford-construction.com

# "72nd ANNUAL MEETING NOTICE" SUNRAY CO-OP

SUNRAY • CAPPS SWITCH • GRUVER • CONLEN • COLDWATER • ETTER

\* Monday December 5, 2011 11:00AM Meeting\*

\*Sunray Baptist Church Family Life Center\*

\*Lunch Will Be Served Immediately Following the Meeting\*

### FISCAL YEAR RESULTS

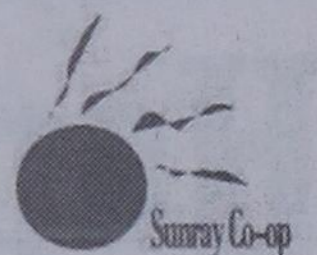
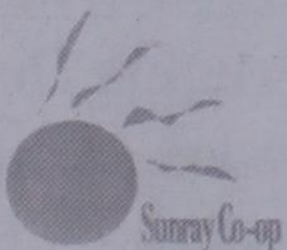
Total Sales	\$ 2 44,000,000.00
Total Savings Before Income Taxes	\$ 5,068,000.00
Total Current Dividend	\$ 3,035,526.00
Old Equity Retirement	\$ 1,617,802.18
<b>(15% of members total)</b>	

Last 8 fiscal years Sunray Co-op has paid **BACK 88%** of member book credits.

Last 8 fiscal years Sunray Co-op has invested over \$10,000,000.00 in property, plant and equipment,

making **YOUR** co-op second to none!

# Hope To See You There!





## Higher Fuel Costs to Impact Texas Electricity Bills in 2012

**2011 Lynxette State Cross Country Roster**  
 Tylo Farrar is the daughter of Tiki and Shawn Farrar. A Senior this year for the Lynxettes, Tylo medaled in 8 meets this year including three 2nd place finishes. She has won the individual District Championship for the last three years, and she the individual 1st place medalist in Regionals. (She was 2nd in the Regional Meet last year after being the Regional Champion in 2009.) As a freshman, sophomore and Junior, Tylo was named an All State runner by TGCA and the Cross Country Coaches Association. Tylo was also named the Amarillo Globe News Cross Country Athlete of the Year Class 1A-5A for her accomplishments in 2009.

Gately Garnett is the daughter of Jon & Kelly Garnett. A Senior this year for the Lynxettes, Gately has had an amazing year, medaling in 7 meets including winning this year's Lubbock Invitational. Gately was the 2nd place medalist at District and has been a top runner every year for the three-time Regional and State Championship teams. At the Regional Meet, Gately was our 2nd runner finishing 12th and earning another All-Region individual honor. As a freshman, she was named an All State Runner by TGCA and the Cross Country Coaches Association. Last year, she was named an All-State Runner by TGCA.

Shelby Hanna is the daughter of PJ & Gwenda Hanna. Another Senior runner for the Lynxettes, Shelby has medaled in two meets this year including a top 10 finish at the District meet in Spearman. She has been a key runner on each of the last three Regional and State Championship teams. Shelby was the 5th scoring runner for the Lynxettes at the McNeil meet where they finished 3rd.

Malory Martin is the daughter of Scot and Julie Martin. Also a Senior for the Lynxettes, Malory has

had an outstanding year, improving her times and places in all meets. She has earned a medal in four meets this year including 14th at the Lubbock Invitational and a top 5 spot at District. Malory finished 16th last week at Regionals, coming in as the Lynxettes' third scoring runner. Malory has been a member of the Regional and State Championship teams the last three years, and was an alternate as a freshman.

Sarah Snider is the daughter of Jean & Jimmy Snider. Another Lynxette Senior this year. Sarah has medaled in 6 meets this year. She was an impressive 8th place medalist at the Lubbock Invitational and 3rd at the District Meet. She also medaled at the prestigious McNeil Invitational which is the site of the State Meet. Sarah finished strong at Regionals, placing 18th, making her a scoring runner for Spearman. Sarah has been a top runner for the Lynxettes the last three years on the Championship teams.

Itzel Meza is the daughter of Rosalina and Fernando Meza. Itzel is a Junior runner for Spearman and has been a member of the 2009 and 2010 Regional and State Championship teams. She has medaled in two meets this year including an 11th place finish at the Canyon Invitational. Itzel ran well last week and placed 20th for the Lynxettes rounding out our top 5 runners. Itzel was a key scoring member on last year's 2010 team.

Gena Hargrove is the daughter of Rick and Tami Hargrove. Gena is a Sophomore runner for the Lynxettes and a newcomer this year to our Varsity team. She has climbed her way on to the team by earning medals in four JV races including a 3rd place finish at the Perryton Invitational. On Varsity, Gena finished in the top 10 at District claiming the 8th place medal. She was our 7th runner last week at Regionals running her best time on that tough course.

There were two alternates for the Varsity Lynxettes State Cross Country Team - Cynthia Mendoza and Brooke Walker. Cynthia, a junior and a member of the 2010 State Championship Team (daughter of Javier and Guadalupe Mendoza) and Brooke, a freshman (daughter of Steve and Leana Walker). Cynthia was the District Champion and Brooke was the 2nd place medalist in the JV District Race. Both girls have traveled some with the varsity this year, running both in Lubbock and Round Rock.

**Lynxette State History**  
 This year marked the Lynxettes 11th trip to the State Cross-Country Meet. The first trip was in 1987 under Coach Richard North. In only the second year of the CC program, the girls team finished 3rd at state. In the fall of 1988, the following season, the Lynxettes won their first State Championship.

Coach North and the Lynxettes would return to the State Meet in 1989 and 1990 to cap off 4 years in a row of state meet appearances. In 1989 the team finished 5th and in 1990 they won 2nd place.

13 years later the Lynxettes returned to the State Meet under head coach Kyle Short. In the fall of 2003, the Lynxettes placed 8th at the state meet. They returned in 2004 to place 5th as a team.

In the 2007 CC season, the Lynxettes were State Runners-Up under head coach Nan Cook. The following year in 2008 they won the 2nd CC State Championship in school history and also started the current streak which stands at 3 in a row.

Coach Starla Whiteley has been the head-coach since the 2009 season. The Lynxettes repeated as state champions in 2009, won it again in 2010, and are here this year to try to make it 4 in a row.

The Spearman Lynxettes have competed at the State CC Meet in 7 of the last 9 seasons.

## Spearman falls in OT; Panhandle tumbles

Spearman battled Holliday down to the wire Friday night in a Region I-2A Division II area matchup, but Holliday pulled out a 23-20 win in overtime in Plainview.

First, the Lynx quickly found the end zone against the Eagles, ending their 21-quarter scoreless streak.

Then using a pounding, punishing ground attack, Spearman held a fourth-quarter lead against the District 3-2A champions.

But the resiliency of the Eagles showed in overtime at Bulldog Stadium.

Hunter McCain's 51-yard field goal put Holliday in front 23-20 after it had committed three penalties on its OT drive.

Then Cameron Englishbee stripped Lynx quarterback Jace Swan after his 10-yard gain on Spearman's first play in overtime, ending the game.

The Eagles (9-2) advanced to face Abernathy (10-1) at 3 p.m. Friday in Sweetwater. Spearman finished its season at 9-3.

Spearman, which scored in the game's first minute thanks to Christian Fisher's 77-yard run, took a 20-13 lead with 9:53 remaining on Swan's 5-yard touchdown.

But with the wind at its back, Holliday quickly tied the score as Sam Shirley broke several tackles, scoring on a 33-yard touchdown with 7:43 to go.

The two teams traded punts before Holliday had a chance to win in regulation, taking over on its 49-yard line with 1:07 remaining.

But Stefan Cook intercepted Jacob Cole's deep pass on second down, forcing overtime.

**Scores by Quarters**  
 Holliday 0 7 6 7 3 - 23  
 Spearman 6 0 6 8 0 - 20

**Scorers**  
 S-Jace Swan 2 run (kick failed)  
 H-Austin Twilligear 3 run (Hunter McCain kick)  
 S-Christian Fisher 1 run (run failed)  
 H-Cameron Englishbee 65 pass from Jacob Cole (pass failed)  
 S-Swan 5 run (Swan

run)  
 H-Sam Shirley 33 run (McCain kick)  
 H-McCain 51 field goal

**Statistics**

	HE	SL
First Downs	11	15
Rushing Yards	159	286
Passing Yards	128	2
Total Yards	287	288
C-A-I	8-15-12-8-0	
Punts-Avg.	4-27	4-26.5
Fumbles-Lost	3-0	1-1
Penalties-Yds	11-74	5-50

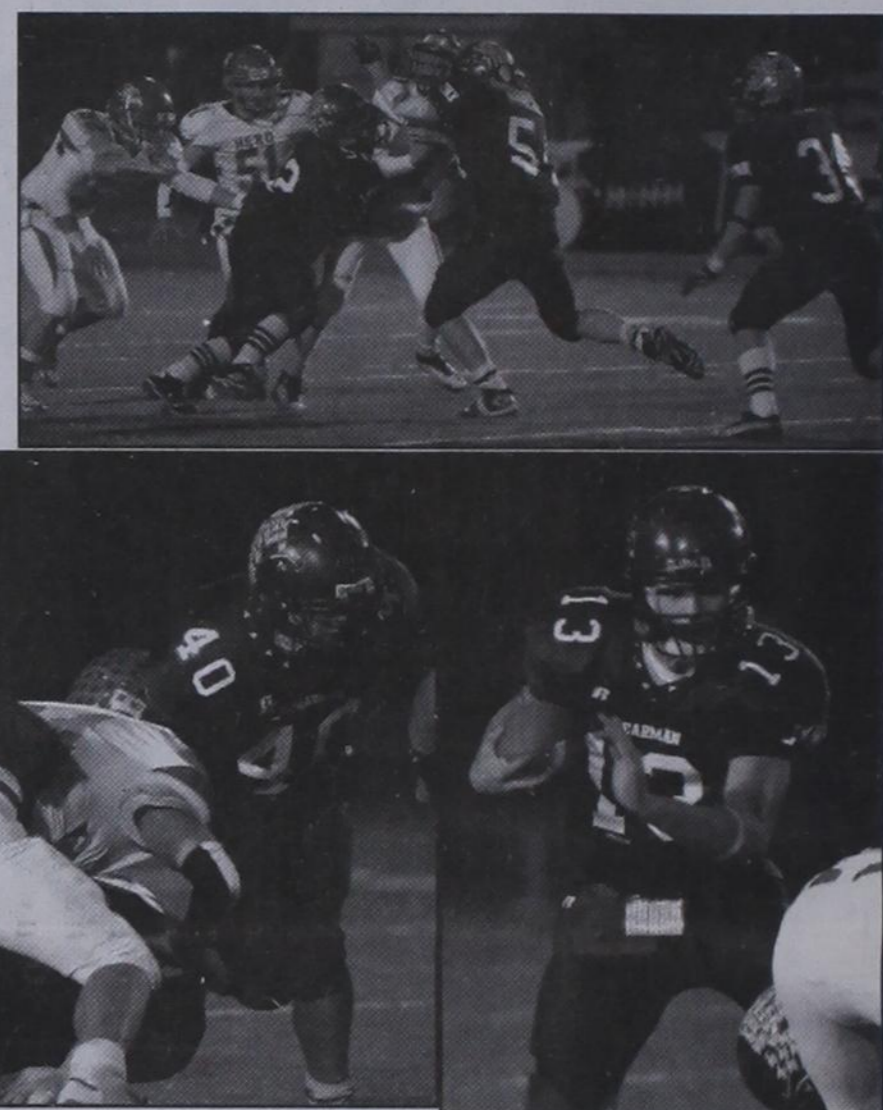
**Individual Statistics**

**Rushing:** Holliday, Jacob Cole 17-95; Austin Twilligear 10-21; Sam Shirley 6-40; Brennan Whitaker 1-3; Spearman, Christian Fisher 16-139; Jace Swan 22-108; Rene Pena 5-21; Alfredo Rosendo 3-15; Tyler Cator 2-2; Beau Brown 1-1.

**Passing:** Holliday, Cole 8-14-1-128 yards, Whitaker 0-1-0-0; Spearman, Swan 2-8-0-2.

**Receiving:** Holliday, Cameron Englishbee 4-97; Colby Baumer 2-13; Shirley 1-11; Twilligear 1-7. Spearman, Junior Garcia 1-2; Fisher 1-0.

**RIGHT: #52 Josh Martinez and #54 Blaine Pack tackle the Holliday running back.**  
**BELOW: #13 Jace Swan runs behind the blocking of #10 Tyler Cator and #40 Christian Fisher.**  
**BOTTOM RIGHT: #11 Derrick Zimmerman hangs on to bring down a Holliday Eagle.**



# Christmas Specials

at **Gordon's DRUG**

314 Main • Spearman • 806-659-2141  
 Where gift-giving is effortless & FUN!

## Thursday Night Savings

Different Special Each Thursday Night

Open until 8 p.m. each Thursday through December 23rd

**Photo Machine**  
 Fast Printing Time  
 Personalized Christmas Cards  
 Poster-Size Photos

We would like to wish you a

# Happy Thanksgiving

from **Gordon's DRUG**

314 Main • Spearman • 806-659-2141

*In appreciation of your business our christmas sales will begin early!*  
 Thanks for shopping locally.

Where gift-giving is effortless & FUN!

## Sale on Gift Items

Starts Monday, November 21st



## Gruver Basketball

### Dalhart Game

The 2011-12 Houndball Basketball season got off to a rather inauspicious start; however, the prospects for a very successful season continues to run high. As good a Dalhart team as has been seen in recent memory came to Gruver and although the Hounds took an early 4-0 lead, it was short-lived. Eventually the Greyhounds fell 59-40 to the 3-A school, but Gruver showed fight throughout. The outcome was disappointing, but considering only three players have varsity experience and that only 7 suited up (in fact, only 4 were healthy enough to even work out on Wednesday), there is no doubt that the Greyhounds best ball is in front of them.

All-district returner, Korbin Irwin, led the way with 16 points while senior letterman, Kramer King, had 6 points. Reese Clark, the third returner from last season, was hampered with early foul trouble, but ended up with a team-high 4 rebounds. Suiing up for the varsity and logging heavy minutes were senior Forrest Lopez, juniors Diego Ortiz, Colten Jackson, and sophomore Beau Blankenship. Joining the varsity squad soon will be juniors Lupe Pena and Cole Wills.

Houndball's next game is another tough one: at Perryton, followed by another home game against a highly touted Panhandle team on Tuesday. Hope to see you there.

### Sanford-Fritch Game

Gruver 11 22 41 53  
Sanford-Fritch 8 18 29 42  
G—McLain 23, Gibson 15. SF—Kelsey Ham 10, Mariah Cumings 8. Records: Sanford-Fritch 0-3, Gruver 3-0.

Gruver JV 14, Fritch 34

## 2011 State Champions



submitted by Coach Rod Been

I tell the girls, "If you train like a champion, you can expect championships!" These girls know there are no guarantees or promises. Things can happen....injuries etc.; but this group believed in one another, put in the work, and in the end lived up to their own expectations!

Each season begins with hopes of running in the "last" race of the year, but that hope fades away for all but twelve teams. Most of the remaining teams toe the line still wondering if running their best race will put them on the Award's Stand, but not the girls pictured above. They enter the race with a confidence based on their preparation and expect great results. These girls leave nothing to chance, and above all run with a belief that their training will deliver the results they have come to expect..... Champions!

## Luis Mendoza

by Coach Rod Been

It has been six years since this photo of Luis Mendoza was taken at Guymon, OK. It was his first cross country race, and he hasn't stopped running since.

In those six years Luis has recorded many wins and logged hundreds perhaps even thousands of miles. He has either been on regional qualifying teams or qualified individually all four years.

He qualified individually for the State Meet in Round Rock both his Junior and Senior seasons. In both attempts he finished in the top 15, garnering All State recognition. He was also named a Coaches Association of Texas 2011 All-State Runner.

Luis has represented himself, GHSXC, and Gruver very well! Congratulations on an outstanding senior season, and cross country career!



The first graders studied the history of Thanksgiving and completed many activities relating to Thanksgiving, Pilgrims, and Indians. At the conclusion of the Thanksgiving Unit the students produced an incredible Thanksgiving program. The program included Thanksgiving poetry, songs, and theatrical rendition of A Turkey for Thanksgiving by Eve Bunting.



## 2011 All-District Football

Several Gruver High School Varsity Greyhound football players were named to the 1-A All District Football Team for Division 2. They also had seven players named to the Academic All-District.

Those selected are: MV: - Jerrod Collier, Sr  
1st Team Offense: Quarterback - Korbin Irwin\*, Jr; Wide Receiver - Beau Blankenship, Soph.; Guard - Forrest Lopez\*, Sr  
2nd Team Offense: Running Back - Cole Wills, Jr; Wide Receiver - Kramer King, Sr; Tight End - Diego Ortiz, Jr; Guard - Simon Cuellar, Fresh.; Tackle - Israel Mendoza, Soph; Kicker - Lupe Pena, Jr  
Honorable Mention Offense: Tackle - Saul Suchil, Jr; Center - Johny Terrazas, Soph.

1st Team Defense: Defensive Lineman - Forrest Lopez\*, Sr; Defensive End - Korbin Irwin\*, Jr; Linebacker - Colten Jackson\*, Jr; Defensive Back - Beau Blankenship, Soph. and Cole Wills, Jr

2nd Team Defense: Defensive Lineman - Ben Book, Fresh.; Defensive Ends - Simon Cuellar, Fresh.; Defensive Back - Kramer King, Sr

Honorable Mention Defense: Defensive Back - Lupe Pena, Jr and Victor Serrano, Soph.

\*Denotes unanimous vote.

## Gruver Academic All-District

Seniors - Jerrod Collier and Kramer King; Juniors - Korbin Irwin, Lupe Pena and Saul Suchil; Sophomores - Victor Guereca and Victor Serrano

Wishing you a  
Happy  
Thanksgiving!



We will close at 1 p.m. on Wednesday, November 23rd and will be closed on Thursday, November 24th.



**First National Bank**

Member FDIC

We will be closed on Thursday, November 24th in observance of Thanksgiving.



Happy Thanksgiving!



**INTERSTATE BANK, ssb**

www.interstatebank.com  
322 Main Street \* Spearman, TX  
(806) 659-2559

Member FDIC

Happy Thanksgiving!

We count you as one of our blessings!

**Gruver State Bank**

3 Main Plaza • Gruver TX • (806) 733-5061

www.gruverstatebank.com • ATM Machine

Member FDIC

We will be closed on Thursday, November 24th in observance of Thanksgiving.

Happy Thanksgiving!

We will be closed on Thursday, November 24th for Thanksgiving.

**FSB**

**First State Bank**

One NE Court • P.O. Box 247  
Spearman, Texas 79081  
(806) 659-5565 • Fax 659-5292

Strength is our Tradition  
Service our Goal

A Full Service Bank That Wants Your Business.

**FDIC**





**SPEARMAN  
LYNX &  
LYNXETTES**

**GRUVER  
GREYHOUNDS  
& LADY HOUNDS**



**CONGRATULATIONS!!!**



**Spearman Lynxettes  
2A State Champions  
4th Year In-A-Row**



**Gruver Lady Hounds  
1A State Champions  
3rd Year In-A-Row**



**Luis Mendoza  
Individual  
State Qualifier**



**Spearman Lynx - 2A Bi-District Champions**

**WE'RE PROUD OF YOU!**

Adobe Walls Gin, LP Spearman • 659-2574	Doug & Linda Cummings Good Luck!	Gordon's Drug Spearman • 659-2141	Hoochy Poochy Parlor Borger • 273-2724	North Plains Electric Coop 806-435-5482 • 800-272-5482
Aeroflight Publications Gruver • 733-2483	Jim & Mandy Detritiñ Congratulations & Good Luck	Gruver Ford Gruver • 733-2431	Hungry Cowboy Spearman • 659-5151	Perryton Office Supply Perryton • (806) 435-4812
AeroTan Gruver • 733-2483	Dreamers Spearman • 659-9907	Gruver State Bank Member FDIC Gruver • 733-5061	Interstate Bank, ssb Spearman • 659-2559	Pizza Hut Spearman • 659-2547
All Occasion Flowers Spearman • 659-5180	El Vaquero Restaurant Gruver • 733-2407	H&H Credit Union Stinnett • 878-2452	Kirk Insurance Agency Spearman • 659-2794	Prairie Motors Spearman • 659-5241
AMA TechTel Gruver • 806-322-5500	Equity Exchange Spearman • 659-2420	H&H Water Well Spearman • 659-5577	J&S Signs & Engraving Spearman • 736-7020	Rocking F Boot & Saddle Shop Spearman • 659-3342
B&B Sales Spearman • 659-2662	First National Bank Spearman • 659-5544 member FDIC	Hansford Abstract Co. Spearman • 659-2516	Jarvis Law Office, P.C. Spearman • 659-2554	Sergio's Body Shop Spearman • 659-5217
Bartlett's Ace Hardware Gruver • 733-2404	First State Bank Spearman • 659-5565 member FDIC	Hansford County Feeders Gruver • 733-5025	Jim's Diamond Shop Borger • (806) 274-2370	Spearman Chamber of Commerce Spearman • 659-5555
Berry Cleaners Spearman • 659-3122	Five Star Equipment Spearman • 659-3743	Hansford County Floral Co. Spearman • 644-4000	Lowe's Marketplace Spearman • 659-2522	Speartex Grain Co. Spearman • 659-3711
Bob & Cathy Davis Gruver • Spearman	Frank Phillips College Allen Campus Perryton • 648-1450	Hansford County Hospital District Spearman • 659-2534	M&D Aerial, LLC Spearman • 806-202-2360	Sunray Co-Op Gruver Branch Gruver • 733-2481
Bob & Jackie Pearson Gruver • Spearman	Frontier Feedyard Spearman • 882-4251	Hansford County Reporter-Statesman Spearman • 659-3434	Delinda McLaughlin Photo Solutions Spearman • 659-2800	Tong's Chinese Food Spearman • 644-2838
Bort Agency Gruver • 733-2404	Gigot Agri Products Spearman • 659-3121	Hansford County Vet Clinic Spearman • 659-2100	Matt, Kayla & Katy McClennan We're Proud of You!	Willis Boyd Dirt Services Spearman • 659-9848
Boxwell Brothers Funeral Home Spearman • 659-3802	Golden Spread Carpet Spearman • 659-3068	Hansford Pharmacy Spearman • 659-2226	Money's Perryton • 435-3945	Xcel Energy Responsible By Nature Perryton • 806-435-4052
The Bunkhouse Restaurant Spearman • 659-2089	Golden Spread Sales Co. Spearman • 659-3776	Hi-Plains Auto Supply, Inc. Spearman • 659-2506	Morse Implement Morse • 733-2668	
Cates Men & Boys Spearman • 659-3426			MurMur's Cafe Spearman • 659-3580	<b>Congratulations!</b>



REAL ESTATE

FOR RENT: 1 & 2 BR furnished apartments. All bills paid. Call 659-2247.

HELP WANTED

HELP WANTED: Oilfield work, must have drivers license. Good pay and benefits.

NEW---NEW---NEW Come see our MooreMaker knives at Country Market.

Blankenship Real Estate 659-3052 - 670-3774 LET US HELP YOU SELL YOUR HOME.

Check our websites for other properties. VALLEY VIEW RANCH - Lipscomb Co., TX.

AMARILLO, TX. - 4 MI. N. OF LOOP 335 - development potential (wind energy, comm., res.)

CASTRO CO., TX. - on pvtm., 1845.6 ac +/-, sprinklers, irr. wells, employee housing, barns, cattle pens w/covered working area.

AMARILLO, TX. - 4 MI. N. OF LOOP 335 - development potential (wind energy, comm., res.)

HELP WANTED: First State Bank, Spearman, has a full time position open for a Teller and a position in the Bookkeeping Dept.

AUTOMOBILE FOR SALE FOR SALE: '95 Green Chevy Pickup, 180K miles. Call Les at 659-3602 and leave message.

SERVICES HOOCHY POOCHY PARLOR Call us for all your pet's grooming and boarding needs.

TIRED OF GARAGE SALE PRICES? Let me buy your good used furniture!

MARTIN & ASSOCIATES REALTY Serving Hansford County Since 1990

Shirley Howard, Broker/Owner 806-886-6536, Cell 806-648-4444

1016 S Barkley - Spearman: 4,081 sq ft, 4 bed, 4 bath 3 livg areas, 2 Att gar, Fireplace, Corner Lot! REDUCED AGAIN!

710 Front - Gruver: \$145,000 - @ 2,177 sqft, 3 bed, 2 3/4 bath, NEW Metal roof, NEW CACH,NEW Outside Stucco, and NEW Kitchen!

PUBLIC NOTICE

LEGAL NOTICE Hansford County Commissioner's Court will receive bids until 4:00 p.m. on Friday, December 9, 2011

First National Bank First National Bank has an immediate opening for a credit analyst.

ALL STATE REALTY 806 435-SOLD (7653)

All State Realty Sherrie E. Rima 806-435-SOLD (7653) 322 S. DRESSEN Corner Lot, 3 or 4 bedrooms, 2 Living spaces, 3 baths.

hchd Hansford County Hospital District Pharmacy Assistant: Reconciling insurance reports, check in order daily and stock shelves.

Information Technology Assistant: Maintain daily system data backups, perform routine desktop backups, add users to domain, monitor AV log reports and/or any assigned duties by the IT Director.

the County Auditor's office in the Hansford County Courthouse in Spearman. The Court reserves the right to accept or reject any or all bids.

LEGAL NOTICE Taylor Petroleum Companies, Inc. has made application with the Texas Alcoholic Beverage Commission for a Wine & Beer Retailer's Off-Premise License to be located at 107 Collard St., City of Spearman, County of Hansford and operated under the trade name of Taylor Petroleum Companies, Inc. #11. Corporate officers being: Robert K. Dorris, Pres./Sec./Treas. and Amy R. Dorris, Vice-Pres.

GRUVER ISD INVITATION TO BID Notice is hereby given that GRUVER ISD will receive sealed bid proposals for irrigation electric work including, running all electric lines to three wells, hook up electricity to all motors, and any finishing work that is needed to get entire electric system running.

INVITATION FOR BIDS Sealed proposals addressed to Benny Wilson, County Judge, Hansford County, for the construction of a multiple box culvert bridge and all associated work entitled: BRIDGE REPLACEMENT COUNTY ROAD R HANSFORD COUNTY, TEXAS

will be received by Hansford County, at Hansford County Courthouse, 16 Northwest Court St. - Spearman, TX 79081-2052 until: 2:00 P.M. DECEMBER 12, 2011

3 4 7 6 5 1 9 2 8
1 9 2 3 8 4 7 5 6
5 6 8 7 2 9 4 3 1

GOV AMA LAP HIKE BLEW SPALE ALAR RATE AIMER PLYMOUTH BLACK IVIES PEG SCENES EARRING WHA REALLY IDOL EIGHT NOS AMOVE ELLA MITERS LAN TIERCES OPUSES VOW SOBER DIRER THURSDAY OBESE PEAS URGE FIATS HART LOUT FDR IKE APE

tee that, if awarded the contract, the Bidder will, within fifteen days after receipt of Contact Documents, enter into a contract with the Hansford County and will execute bonds on the forms provided in the Contract Documents.

Attention is called to the fact that not less than the federally determined prevailing (Davis-Bacon and Related Acts) wage rate, as issued by the Texas Department of Housing and Community Affairs and contained in the contract documents, must be paid on this project.

Contract Documents are on file and may be examined in the office of the County Judge of Hansford County, County Courthouse, Spearman, Texas 79081-2052, phone (806) 659-4100.

Performance and Payment bonds shall be set forth in the Contract documents. The Owner reserves the right to reject any or all bids and to waive any informalities in the bidding.

JOB REQUISITION NUMBER: 016733 GENERAL TRANSPORTATION TECH II (K507)

The Texas Department of Transportation (TxDOT) will be accepting applications for one full-time position at the Ochiltree County Maintenance Office located at 1103 SH 15, Perryton, Texas.

Must have or obtain a Class A Commercial Drivers License within 90 days from date of employment. A completed State of Texas application is required and applications will be accepted until 5:00 p.m., Monday, December 12, 2011.

If more information is needed or if an applicant needs an accommodation in order to apply for this job, contact Human Resources at (806) 356-3231. TxDOT IS AN EQUAL OPPORTUNITY/AFFIRMATIVE ACTION EMPLOYER.

NOTICE TO CONTRACTORS OF PROPOSED TEXAS DEPARTMENT OF TRANSPORTATION (TxDOT) CONTRACTS Sealed proposals for contracts listed below will be received by TxDOT until the date(s) shown below, and then publicly read.

Dist/Div: Amarillo Contract 6235-49-001 for CLEANING AND SWEEPING HIGHWAYS in HANSFORD COUNTY, etc will be opened on December 21, 2011 at 2:00 pm at the District Office for an estimate of \$289,737.40.

LEGAL NOTICE Application has been made with the Texas Alcoholic Beverage Commission for a Mixed Beverage Permit by Bunkhouse Enterprises, Inc. dba Bunkhouse Restaurant, to be located at 212 Main Street, City of Spearman, County of Hansford, Texas.

CITY OF SPEARMAN ORDINANCE NO. 840 AN ORDINANCE OF THE CITY OF SPEARMAN, TEXAS, AMENDING THE CODE OF ORDINANCES BY AMENDING CHAPTER 4 "BUSINESS REGULATIONS" BY ADDING ARTICLE 4.05 "SALE OF ALCOHOLIC BEVERAGES"; TO ESTABLISH REGULATIONS GOVERNING THE SALE AND SERVICE OF ALCOHOLIC BEVERAGES WITHIN THE CITY OF SPEARMAN; ADOPTING DISTANCE REGULATIONS FROM CHURCHES, PUBLIC HOSPITALS, AND PUBLIC AND PRIVATE SCHOOLS; PROVIDING LICENSE AND PERMIT FEES; PROVIDE FOR REVIEW AND RECOMMENDATION; PROVIDING A REPEALING CLAUSE; PROVIDING A SEVERABILITY CLAUSE; PROVIDING FOR A PENALTY OR FINE NOT TO EXCEED THE SUM OF FIVE HUNDRED DOLLARS (\$500.00) FOR EACH O

TEXAS STATEWIDE CLASSIFIED ADVERTISING NETWORK TexSCAN SEMI-DRIVERS wanted to deliver from either Garland or Laredo. Call to get pre-qualified 1-866-764-1601 or www.qualitydriveaway.com

YOUR PROPERTY TAXES JUST WENT UP OR HADN'T YOU HEARD? KEEP THE LIGHT ON PUBLIC NOTICES When local governments want to increase tax revenues, they are required to publish notices in the newspaper so that you will know. But that right to know could disappear.



**2011 Spearman Lynxette Cross Country Awards**

Texas Girls' Coaches Association of Texas Cross Country Athlete of the Year 1A, 2A, 3A - Tylo Farrar  
 Cross Country Coaches Association of Texas All-Region Team - Tylo Farrar and Gately Garnett  
 Cross Country Coaches Association of Texas All-State - Gately Garnett  
 Texas Girls' Coaches Association of Texas All-State - Tylo Farrar and Gately Garnett  
 Texas High School Coaches Association/Texas Girls' Coaches Association/Cross Country Coaches Association of Texas Academic All-State - Tylo Farrar, Gately Garnett, Shelby Hanna, Malory Martin and Sarah Snider  
 Academic All-District - Tylo Farrar, Gately Garnett, Shelby Hanna, Malory Martin, Sarah Snider, Janneth Terrazas, Itzel Meza, Gena Hargrove, Cynthia Mendoza and Brooke Walker

**Happy Thanksgiving**

*We are thankful  
for our community!*



Hansford County Hospital District  
 Dr. Mark Garnett, DO Michelle Davis, PA-C  
 Dr. Hasham, MD Dr. Heath Cotter, MD  
 707 S. Roland • Spearman, TX  
 (806) 659-2535

*The clinics will be closed on Thursday, November 25th in observance of Thanksgiving.*

**Mark Garnett, D.O.**  
 Palo Duro Medical Clinic  
 712 South Roland  
 Spearman, Texas 79081  
 (806) 659-1778  
 Mon-Fri (8 a.m. to 5 p.m.)

**Dr. Hasham**  
 Family Medical Clinic II  
 712 South Roland  
 Spearman, Texas 79081  
 (806) 659-5234  
 Mon-Fri (8 a.m. to 5 p.m.)

**Dr. Heath Cotter**  
 Family Medical Clinic I  
 712 South Roland  
 Spearman, Texas 79081  
 (806) 659-2846  
 Mon-Fri (8 a.m. to 5 p.m.)

**Michele Davis, PAC**  
 Family Medical Clinic I  
 702 South Roland  
 Spearman, Texas 79081  
 (806) 659-2846  
 Mon-Wed (8 a.m. to 6 p.m.)

**Tong's Chinese Restaurant**  
 (806) 644-2838  
 22 Archer Street • Spearman

**Daily Buffet**  
 Lunch - 11 a.m.-2:30 p.m. • Dinner - 5:30-9 p.m.  
 Open Wednesday-Monday - Closed Tuesday

**Closed for Thanksgiving**  
 We will be closed Thurs., Nov. 24.

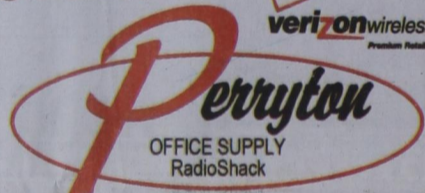
**Unbelievable Savings!**

**We will be open at 5:30 a.m.  
on Shack Friday, Nov. 25th.**  
 Unbelievable Discounts on Laptops, Cameras,  
 TV's, Nook, Nook Color and Toys!  
 Come Check Out The Apple IPAD 2 & Xoom Tablets.

**A Sale That Is Too Good To Be True!**



RadioShack



We're helping local families like only local families can.

123 S Main St • Perryton TX  
 (806) 435-4812

www.perrytonofficesupply.com

**Holiday Hours:**  
 Now through Dec. 24th  
 Mon.-Sat., 8:30 a.m.-7 p.m.; Sun., 1-4 p.m.



Buy One  
Get One  
**FREE**  
(BOGO)  
on Verizon  
Droid 3  
phones

This requires a new two-year agreement. Free Activation November 21-27.

**MITCHELL THEATRES.COM**

**NORTHRIDGE 8**  
 Guymon, Oklahoma  
 www.northridge8.com  
 580-338-3281

**SOUTHGATE 6**  
 Liberal, Kansas  
 www.southgate6.com  
 620-624-5573

**SEQUOYAH 8**  
 Garden City, Kansas  
 www.sequoyah8.com  
 620-275-2760

**CHISHOLM TRAIL 8**  
 Newton, Kansas  
 www.chisholmtrail8.com  
 316-283-0555

FRESH POPCORN EVERYDAY!  
 -PARTY ROOM & ARCADE-

**Hurry! Before SANTA takes it ALL!**

**Amarillo Networks in HD**  
 Over 150 channels  
 High Definition Programming  
 Combined billing of Telephone, Internet, and TV services



**\$29.99**



Some restrictions apply. See store for details. Offer good thru Dec 30, 2011

**Incredible TV**

**\$29.99** mo.\*  
 For 6 months!

**FREE HD**  
 For 6 months!

**FREE Install**  
 up to 4 set-top boxes

ptci.net  
 721 W 7th in Spearman  
 800-562-2556  
\*Requires two-year commitment