

THE HANSFORD COUNTY
Reporter-Statesman

Serving Hansford County Since 1907

THURSDAY, FEBRUARY 29, 1996

213 MAIN • SPEARMAN, TEXAS, 79081

VOLUME 89, ISSUE 9



**Gruver Varsity Hounds
1995-96 District 1-2A Bi-District Champions**

Story on Page 9

SHS To Perform Little Women

by Carolyn Cummings

Each year Spearman High School's Theater Arts Department presents a one-act play for local enjoyment and for UIL competition. Theater arts teacher, Frances Pipkin, is pleased to announce that this year's production is *Little Women* by John D. Ravold (based on the novel of the same name by Louisa May Alcott). The performance is scheduled for Tuesday, March 19th at 8:00 p.m. at the High School Auditorium. Admission is \$1.00.

As usual, a fine cast of performers and crew has been assembled for the production. *Little Women* is set in Civil War times and features the March family as told by eldest daughter and writer, Jo March (played by Regan Boxwell). For

the most part the play is centered around the activities of the four daughters and their friends. Most of the girls are in their teenage years except for the youngest, Amy March, who is 10 to 12 years old.

The March family is struggling financially and depends on help from an elderly, but somewhat grumpy and self-centered Aunt (Aunt March is played by Lacie Baker). Mr. March (played by Shane Hill) is a soldier and is not with the family for one year. Even though they have fallen on difficult times, the mother, Marmee (played by Maggie Carter), still shares whatever resources the family has, whether it be material goods or just time and caring. This sharing is instilled in the

children, also.

The family ventures out to make friends of neighbors,
Continued on Page 6

HC Hospital District Debt-Free



(L-R) Mark Thomas, Chief Financial Officer for Hansford County Hospital District, Anne Snow, Hospital Administrator, and Jerry Hunt, President of the Board of Directors are pictured above with the final check for the general obligation bonds used to build and expand Hansford Manor.

Hansford County Hospital District will be debt-free as of Friday, March 1, 1996. The last principal and interest payment on the general obligation bonds used to build and expand Hansford Manor are due on that day.

General obligation bonds in the amount of \$2.5 million were issued in 1986, following a bond election in Hansford County. These funds were used to expand Hansford Manor from 39 beds to 84 beds. Since then, the Manor has enjoyed over 90% occupancy.

Initially built with \$1.4 million in general obligation bonds, issued in 1980, the total cost of building the facility came to \$3.9 million. In addition, \$1.78 million in interest was paid over the sixteen-year period.

General obligation bonds are issued by government entities

by Angela Wright

Throughout the State of Texas ashes lay where grass and buildings once stood as dry conditions continue. Hansford County is no exception. On Thursday, Feb. 22, an estimated 7000 acres of grass land and two structures burned nine miles south of Gruver on Highway 136.

"It was one of those days when all the conditions were right (for a fire)," Gruver Fire Chief Sam Gruver said.

At approximately 3 p.m. Daniel Harris, 9-years-old, was doing his homework when he looked out the window and saw the fire. He asked his father, Ken Harris, "Daddy is that a fire?" Ken then reported the fire.

According to the Gruver Volunteer Fire Department, the fire call came in at 3:08 p.m. "The firemen reached the scene in less than 10 minutes," Gruver said, "but the conditions were so that we couldn't do anything but play catchup the rest of the day."

The fire, which was reported to have started at the

**Fire Scorches Hansford
7000 Acres Burned**



Spearman Firefighter Chet Pittman takes a short break after a full day of fighting fires.

Jack Hart place, was burning toward the northeast fueled by gusting winds estimated up to 30 miles per hour. Gruver had hoped that the running Palo Duro Creek would stop the fire, but it crossed regardless. Gruver's next hope was that Highway 136 would put it out. Less than an hour later the fire was still burning toward the northeast.

There were two structures on fire (the old Hawkins place and the old Bob Cator place) and the fire had jumped the highway. At that point Gruver said, "We were really expecting it to go all the way to Highway 15."

Gruver had requested mutual aid to fight this fire, but help from other departments was slowed. "Everyone was out fighting on their own calls," Gruver explained. So Gruver VFD, Morse VFD and surrounding neighbors tried to contain the fire and save nearby homes. Gruver said that the firefighters were way behind before they even got started because of the wind and the dry conditions. Gruver added, "The wind was blowing so strong we couldn't keep up. It was out running us. We'd fight to slow it down and then have to come back to help protect the homes."

Communications on a fire this size was also a problem, according to Gruver. "I could communicate with my own people, but not with the farmers plowing and other volunteers."

With this problem hampering the firefighters progress, Ken Harris went up in his airplane to help with communications. "Ken would call when it got close to a

home," Gruver explained, "It worked pretty good." Harris was in the air for approximately three hours. "At first there was an awful lot of smoke," he described, "then I could see it burning to the sides." It was reported that Scott Davis flew his plane as a spotter also.

The smoke at ground level was also bad. Gruver said that there was zero visibility on Highway 136 and that it was closed for approximately two hours due to the fire.

According to Spearman Fire Chief Keith Goodman, the terrain was also a fact in fighting this fire. "There were problems moving the equipment where it needed to be," he explained. It was reported that 11 road graders, 10 fire trucks, seven tanker trucks, two water wagons and numerous tractors were involved in controlling this fire. Aiding the Gruver VFD were Spearman VFD, Stinnett VFD, Hutchison County Fire Department, county and state road departments, Palo Duro Feeders, Caprock Feeders, Scurlock Permian, Joel Lackey, Jack Hart, Jerry Hart, Wes Whitaker, Ricky Thompson, David Boyd, Coy Winders, Cliff Barkley, Loyall Turner and several others.

"If it hadn't been for all of the area pitching in to help," Gruver stated, "it would have been a bigger problem. We couldn't have done it without their help."

Though the cause of the fire south of Gruver has not been determined, the black remains of the burnt Texas grasslands span approximately three miles wide and six miles long.

Hansford Happenings

Spearman/Gruver Chamber of Commerce Goat Shares

The Spearman/Gruver Chamber of Commerce is still accepting money for the Hansford County Stockshow goat shares. For donations or more information, please call Cindy at the Chamber 659-5555 or A.J. Ratliff at 733-5144.

Reunion

The USS Saint Paul CA 73 Association will hold its Eighth reunion September 1996 in Seattle Washington. For more information contact George M. Takis Jr. at 125 Spaulding Drive N.E., Atlanta, GA 30328

Windbreak Trees

The Hansford Soil and Water Conservation District will have "Earth Mat" available for the 1996 plantings. Orders for these seedling trees will be taken from now through March 8, 1996. Contact HSWCD at 659-2330 for more information.

FAFSA Express

If you are interested in using a PC and modem to complete and transmit the Free Application for Federal Student Aid, the software is available free of charge at Spearman High School. This software will significantly shorten the application process. If you are interested and would like more information, call Glenda Guthrie at 659-2584 or come by the counselor's office.

Day of Prayer

The 109th World Day of Prayer service will be held at the Lutheran Church, located at 1101 S. Bernice on Friday, March 1, 1996. Coffee will be served at 9:30 a.m. and the service will begin at 10:00 a.m. Please make an effort to attend this service, "God Calls Us To Respond," written by Christian women of Haiti.

Mexican Dinner

Sunday, March 3 from 11:00 - 4:00, there will be a Mexican Dinner for the Mision Cristo Redentor to be served at The Golden Age Center at Broadway and King St. in Gruver. Tickets for adults are \$6.00 and Children for \$3.00. Takeouts available.

109th World Day Of Prayer Celebrated

The 109th World Day of Prayer service will be held at the Lutheran Church, located at 1101 S. Bernice on Friday, March 1, 1996. Coffee will be served at 9:30 a.m. and the service will begin at 10:00 a.m. Please make an effort to attend this service, "God Calls Us To Respond," written by Christian women of Haiti.

Continued on Page 6

Laugh and Live

by Gary Smith



This week, several people have asked my opinion about some very important topics. I didn't know the answers, but I gave them each a sure fire method to solve any problem. The method is called **Gary's Guide to Life Love and Everything**.

Here's how it works. Ask any question, close your eyes and point to the Guide. Your finger will magically land on the right answer. Feel free to cut this Guide out of the paper or copy it or do anything else that you want to do with it. By the way, although this guide is 100%, absolutely, positively reliable, I cannot be held responsible for any major foul-ups in your life that it may result from use of the **GUIDE**.

Gary's Guide to Life Love and Everything

A bird in the hand is worth two in the bush. A fool and his money are soon parted. A good beginning makes a good ending. A jack of all trades is master of none. A miss is as good as a mile. A person is known by the company he keeps. A stitch in time saves nine. Actions speak louder than words. All that glitters is not gold. All's well that ends well. Ask and you shall receive. Ask no questions and hear no lies. Birds of a feather flock together. Don't change horses in midstream. Don't cross the bridge till you come to it. Doubt is the beginning, not the end, of wisdom. Every man has a price. Faith will move mountains. Familiarity breeds contempt. Forewarned is forearmed. Good fences make good neighbors. Half a loaf is better than none. He who lives by the sword shall die by the sword. History repeats itself. If the shoe fits, wear it. If you cannot stand the heat, get out of the kitchen. It's an ill wind that blows no good. It's not over till it's over. It's the early bird that gets the worm. It's the empty can that makes the most noise. It's the squeaky wheel that gets the grease. Absence makes the heart grow fonder. Make hay while the sun shines. Many hands make light work. Nature abhors a vacuum. Never judge a book by its cover. Never put off until tomorrow what you can do today. Opposites attract. Out of sight, out of mind. People who live in glass houses shouldn't throw stones. Power corrupts; absolute power corrupts absolutely. A rolling stone gathers no moss. Still waters run deep. The more things change, the more they stay the same. The pen is mightier than sword. Too many cooks spoil the broth. Truth is stranger than fiction. Two heads are better than one. Variety is the spice of life. Waste not, want not. What will be, will be. You can lead a horse to water, but you can't make it drink. You can't tell a book by its cover. You cannot teach an old dog new tricks. Don't burn your bridges behind you.

Till the Next Time,
May God Bless

"If I Were President, I Would Say..."

The Kindergarten classes of Gruver Elementary were asked "If I were president, I would give a speech. I would say..." Listed below are their responses.

MRS. HENSON'S CLASS

"Are ya'll glad to be here? I would like to make a good announcement. I hope we are all thankful for a President. I hope

we'll all say 'please' and 'thank you.' And that's all!

Abbi Yanke

"Hi, People! You are my friends. We can play. We can make a circle. We can ride in a car. We can write a heart. We can find dinosaurs. We can watch cartoons."

Samuel Acosta

More later...

Engagement Announcement



Mr. and Mrs. Mark Randall Seitz of McAllen announce the forthcoming marriage of their daughter, Kara Alexis, to Justin Lee Armes, son of Mr. John Armes and Doris Bewley Armes of Gruver, Texas.

The announcement was made Thursday at a formal tea given by Mrs. Seitz and the bride-elect's grandmothers, Mrs. Daniel Godfrey Seitz, Sr. of McAllen, and Mrs. Allen Edward Adams of Granbury, at the Mark Seitz home in McAllen.

The couple will wed May 18th at 7:30 p.m. in a formal wedding at Fredericksburg United Methodist Church in Fredericksburg, Texas.

The bride-elect attends Schreiner College in Kerrville. Her fiancé is a graduate of Tarleton State University in Stephenville.

Thank You

We would like to thank everyone for their wonderful welcome since we have moved to Spearman. We would also like to thank the Women's Division of the Chamber of Commerce for hosting the luncheon in our honor. We appreciate everyone who dropped by or called.

Thank You, Again, and God Bless You All.
Gary, Cathy and Clayton Smith

SHEAR ACTION HAS SOMETHING NEW!!!
Karen and Sue are now GIFT WRAPPING for ALL occasions... PLUS... We will get your packages ready to mail. All wrapping will include the box, tissue paper or packing materials such as foam, peanuts, etc... Wrapping both plain or fancy and the name tag... AND... in the case of packages to be mailed we could even take them to the post office for you!
Call Sue at 733-2789 or Karen at 733-2830 or SHEAR ACTION 733-5426
Come by and check out the SALE PRICES on hair care products and Arbonne skin care

MARY KAY
FACE TO FACE BEAUTY ADVISOR™
Leann Gillaspie
Beauty Consultant
659-3889

Grace Porta
STEEL GARAGES & BUILDINGS

Sanders & Custer Construction
P.O. Box 610 • Booker, Texas 79005
GRACE & PORTA DISTRIBUTORS
1-800-287-6782

Extension News

by Peggy Winegarner, County Extension Agent

Do the pesticide residues found on fruits and vegetables cause cancer?

Because animal studies show that high concentrations of pesticides can cause cancer, federal regulations limits the amount of pesticide residues permitted on food.

Government agencies monitor the food industry to be sure pesticides do not exceed legal limits.

Eating less produce because of concern about pesticides would be unwise, according to Dr. John Rinehart of Scott &

White Center for Cancer Prevention, because the levels that may be present are unlikely to cause cancer.

Furthermore, washing usually eliminates surface pesticides, although small amounts of some chemicals can be incorporated into the food itself. Studies also show those who eat more fresh fruits and vegetables have lower cancer rates than those who consume less.

Dr. Rinehart says the three most effective ways to reduce cancer risk are avoiding direct sunlight, not smoking, and consuming a low-fat diet.

At The Movies

Showing at the Lyric Theater Friday, March 1 through Tuesday, March 5 on Screen I beginning at 7:45 p.m. is "Grumpier Old Men" and on Screen II beginning at 7:30 p.m. is "12 Monkeys."

In "Grumpier Old Men", the addition of Sophia Loren make Jack Lemmon and Walter Matthau even grumpier. Ann-Margret, Kevin Pollak and Daryl Hannah also return from the surprise 1993 hit.

"Grumpier Old Men" is rated (PG).

In "12 Monkeys", Beautiful people Brad Pitt, Bruce Willis and Madeline Stowe descend on Terry Gilliam's mystery. You're never quite sure if it's a futuristic thriller of a paranoid schizophrenic fantasy. Whatever your decision, you'll be queuing yourself for days.

"12 Monkeys" is rated (R).

At the Lyric Theater...
Friday, March 1 - Tuesday February 5
Bargain Nights Mon. & Tues. Adults - \$4
Fri., Sat., Sun., \$5 - Child \$3 every night
Closed Wednesday & Thursday

7:45 SCREEN I	7:30 SCREEN II
GRUMPIER OLD MEN (PG)	12 MONKEYS (R)

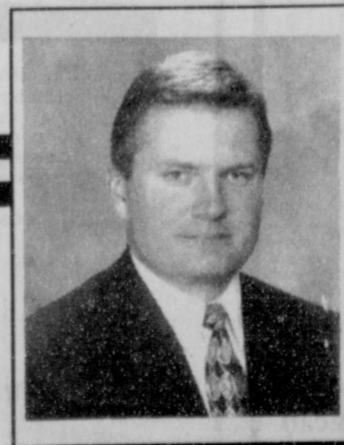
213 MAIN * SPEARMAN

**Hansford County Needs
a District Attorney with a
NEW Commitment
to Protect Our Children:**

**"There will be no probation
for child molesters if I am
elected your District Attorney."**

- Clay L. Ballman

Clay L. BALLMAN
for District Attorney
**March 12
Republican Primary**



Pol. Ad. Pd. For Clay L. Ballman, 210 Inverness, Borger, TX 79007

SUNQUEST TANNING
by Wolf
Located at The Bunkhouse
212 Main Street • Spearman, TX
Sign-Up March 1st through March 15th
And get 1 month unlimited tanning for just \$25.00
Other Specials:
10 Sessions for \$20.00 - get 1 Free
30 Sessions for \$50.00
Hours:
9:30-11:00, Mon.-Sat.
Sunday by Appt. Only
Call: 659-2617
659-3897 or 659-3773

Our Sympathy

Barbara Jean McClellan
Barbara Jean McClellan passed away on Monday, February 26, 1996 at the age of 67.

Services were held on Wednesday, February 28, 1996 at 11:00 a.m. at the First United Methodist Church of Spearman. Rev. Todd Dyess, pastor of the First United Methodist Church in Perryton, officiated. Interment followed in Hansford Cemetery. Arrangements were by Boxwell Brothers Funeral Home in Spearman.

Barbara Jean Daily was born in Guymon, Oklahoma on April 20, 1928, and was a lifetime resident of Spearman. She married Roy L. McClellan on December 28, 1947 in Spearman.

She was a homemaker, attended Cottey College in Nevada, Missouri and West Texas State College in Canyon. She was member of the First United Methodist Church, where she sang in the choir. She was also a member of Beta Sigma Phi and the Hansford Hospital Auxiliary.

She was preceded in death by her parents, Dr. Fred Daily and Mildred Nash Daily, and her sister, Elaine Floyd.

Survivors include her husband, Roy L. McClellan of Spearman; two sons, David Arthur McClellan, MD of Temple, TX and William (Bill) Richard McClellan, MD of Port Lavaca, TX; two daughters, Rebecca Sue (Becky) Madison of Amarillo and Jean Ann (Jeane) Holston of Sunray; and fourteen grandchildren.

She will be remembered by all who knew her as a devoted

wife, loving mother and grandmother and friend whose positive attitude, faith in God and love for people encouraged all.

The family requests memorials be made to Hansford Manor, Hansford Hospice, First United Methodist Church, or one's favorite charity.

Rex E. Sanders Jr.

Rex E. Sanders Jr. passed away on Friday, February 23, 1996 in Spearman.

Services were held on Monday, February 26, 1996 at 11:00 a.m. at the First Baptist Church of Spearman. Rev. Jeff Lust, pastor of the First United Methodist Church in Spearman officiated. Interment followed in Hansford Cemetery. Arrangements were by Boxwell Brothers Funeral Home in Spearman.

Rex was born in Ochiltree County in 1920. He has lived in the area all of his life. He married Velma Dillow in 1948 in Amarillo. He was a farmer and rancher. Rex was a member of the First Baptist Church and a World War II army veteran.

He is survived by his wife, Velma Sanders of Spearman; a son, Phil Sanders of Spearman; a daughter, Penny Ralston of Gruver; a brother, Rue Sanders of Spearman; seven grandchildren and one great-grandchild.

Thank You

Thank you to all who were so kind to us after my surgery. Rhonda and Myrt, we can't begin to repay you for your help and love!
Eddie and Hannah

The Hansford County Community Calendar

Feb. 29- March 9

Thursday, February 29

11:30 a.m.-1:00 p.m. - Hospice Chili, Soup & Homemade Pie Lunch - Sacred Heart Catholic Church Parish Hall
6:00-10:00 p.m. - Compliance Management Seminar at the Chamber Office

Monday, March 4th through Friday, March 8th

Public School Week

Sunday, March 3

11:00 a.m.-4:00 p.m. - Mexican Dinner served at the Golden Age Center in Gruver, sponsored by Mision Cristo Redentor

Monday, March 4

12:00 p.m. - Lions Club and Rotary Club meet together at Ivy's for Introduction of District Attorney Candidate

Tuesday, March 5

2:00 p.m. - 4th & 5th Grade Science Weather Program, presented by Dave Oliver, Channel 10 Weatherman

Wednesday, March 6

12:00 noon - Retail Merchants Association Meeting, Palo Duro Cafe

Thursday, March 7

4th & 5th Grade Science Electric Safety Program, presented by Southwestern Public Service Co.

Spearman ISD Open House - 6:00-7:00 p.m. - Elementary Open House; 6:30-7:30 p.m. - Junior High Open House; 7:00-8:00 p.m. - High School Open House

Friday, March 8

11:30 a.m. - Ribbon Cutting, Amanda's Shoppe, Main Street

To place an event in the Community Calendar, please call the Reporter-Statesman at (806) 659-3434

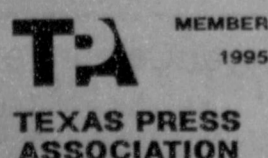
The Hansford County Reporter-Statesman

213 Main
Spearman, TX 79081
Serving Spearman, Gruver and Morse
Published weekly in Spearman, TX
Owned and operated by Gary and Catherine Smith

Gary Smith - Publisher
Catherine Smith - Editor

Chad Davis - Associate Publisher

Second Class postage permit USPS 509660
Postage paid in Spearman, TX



MEMBER 1995
Annual Subscription Rates
In Hansford County, \$20.00
Out of County, \$25

Advertising and Story Deadlines
Tuesday 12:00 noon

Let us replenish the seed of faith through...

REGULAR CHURCH ATTENDANCE, DAILY BIBLE READING & PRAYER

submitted by Rev. Beverly Cook, Pastor Faith Lutheran Church, Spearman and First Presbyterian Church, Spearman

Continued From February 22, 1996

"Demonic, epileptics, paralytics," Matthew tells us. Notice that these are "rock-and-hard-place" types of infirmities -- demon-possession, epilepsy, paralysis -- types of illness which may literally be seen to "take control" of a person's life. Matthew might have mentioned the illnesses of old age. What "choices" do these have? Matthew witnesses so beautifully as he observes so simply, "and He (Jesus) healed them."

And how did He heal them? ... but by His Presence with them as they were brought there by His disciples, His followers. "And great multitudes followed Him," Matthew tells us. ... "followed Him from Galilee and Decapolis and Jerusalem and Judea and from beyond the Jordan!" They followed Him out from every "rock and hard place," "across the river" and into life, life in which they now have power and authority and control. They chose to come to Jesus and follow Him, and He healed them, and they now have power-for-life. Theirs was a choice for life!

But what about this choice for perfection, this choice for being perfect (even) as God is perfect? "Follow Me," says Jesus again, or rather "Follow my commandments, My instructions, My teachings," as Matthew refers to Jesus' words about murder, adultery, divorce, and vengeance.

And what are murder, adultery, divorce, and vengeance but poor choices, poor choices about relationships, about relationships in the blessed life God has given. These healed multitudes -- you, we -- already have all the blessings we need, we already have what it takes to live a blessed life -- spirituality, meekness, a hunger and thirst for righteousness, mercifulness, purity of heart, capacities for comforting, peacemaking, and enduring persecution for the sake of righteousness -- we are the blessed congregation and together we already have everything it takes to lead a blessed life as we follow Jesus.

And, living together in accordance with these rules for relationship which Jesus then gives, we are not only the "blessed congregation" but the "perfect" or "blameless congregation." But who can do it; who is able to live by such rules as Jesus presents to His disciples? Not only is one not to kill another but not even to get angry or name-call or even to harbor ill in secret! Not only is a person responsible for their own faithfulness in marriage but for that of the marriage partner! Not only is one not to take responsibility for retribution toward one's enemies but not even for the vows one makes! ... for the assurance and certainty and certification of all of these lies with God and God alone.

So who can do it? Who is able to live by these rules? Only Jesus and those who are so empowered, those who are so "ordained" with the power and authority of God for life, by "following Jesus." In Jesus Christ we are forgiven, and therefore "blameless," and therefore powerful for life and able to live our lives, not as wimps, but with authority!

Let's look at how this works for us. We might take as our example any situation of "river-crossing," but I'll just take the example of a certain young woman whose name I don't even remember. She was in a certain Bible study group I used to attend, but she was seldom there. And when we'd check on her and ask how she was doing, she'd begin by saying "I'm blessed," whatever would-be "disaster" had befallen her during the week, she'd start off with "I'm blessed!"

"Follow Me," says Jesus, and when we confess our sins and feast upon His forgiveness and are baptized into His sacrifice, we do just that, it seems to me. As followers of Jesus, and with Him present in our midst, fellowshiping with us, teaching us, forgiving us, ... we are "blessed" and we are "blameless" and therefore powerful with the power of God for living our lives! How dare we say "poor me" when we are "blessed!" How dare we say "I can't" when we have the power of God for life!

Now, as I contemplate the prospect of whatever "river crossing" lies before me, I can't think of a more powerful, more exciting, more "promising," more "perfect" place to be, ... with Jesus there beside me saying, "Follow Me!"

In Spearman

Apostolic Faith Church

822 S. Dressen • 659-2870
Sunday School: 10 a.m.
Worship: 11 a.m.
Evening Worship: 6 p.m., Sun.
Wed. Prayer Meeting: 7:30 p.m.
Pastor - James Brown

Trinity Community Church

717 W. 7th Ave. • 659-2671
Worship Service & Children's Church: 10:30 a.m.
Sunday Night School: 5:30 p.m.
Wed. Night Youth: 7 p.m.
Interim Pastor - Richard Humphries

First Assembly of God

401 N. Bernice • 659-2295
Sunday School: 9:45 a.m.
Worship: 10:50 a.m.
Evening Worship: 7 p.m.
Wed. Worship: 7:30 p.m.
Youth: 7:30 Wednesday
Pastor - Walter Greaser, Jr.

First Presbyterian Church

(Worships with Faith Lutheran Church)
1021 Cotter • 659-2033
Sunday School: 9:45 a.m. at Lutheran Church
Worship: 11 a.m. (alternates monthly between Lutheran and Presbyterian Church Buildings)
Pastor - Beverly Cook

First Christian Church (Disciples of Christ)

29 S. Bernice • 659-2036
Sunday School: 9:45 a.m.
Worship: 10:50 a.m.
Evening Bible Study
Worship: 6:30 p.m., Sun.
Pastor - LaVern Draper

Faith Lutheran Church (ELCA)

1101 Bernice • 659-2252
(Worships with First Presbyterian Church)

First United Methodist

407 S. Haney • 659-5503
Sunday School: 9:45 a.m.
Worship: 11 a.m.
Jr. High Youth: 5 p.m. Sunday
High School: 6 p.m., Sunday
Rainbow Kids Club: 3:00 Wednesday
Pastor - Jeff Lust

First Baptist Church

123 N. Bernice • 659-5557
Sunday School: 9:45 a.m.
Worship: 11 a.m.
Evening Worship: 7 p.m.
Jr. High Youth: 6 p.m., Wed.
High School Youth: 7 p.m., Wed.
Youth Choir: 6 p.m., Sun.
Pastor - Kyle Henderson

Union Church

31 S. Endicott • 659-2644
Sunday School: 9:45 a.m.
Worship: 10:45 a.m.
Evening Worship: 6 p.m.
Bible Study & Prayer Mtg.: 7 p.m., Wed.
Pastor - Billy Stanford

Fellowship Baptist

1102 S. Archer • 659-2783
Sunday School: 10 a.m.
Worship: 11 a.m.
Evening Worship: 6 p.m. Sunday
Youth & Adult Serv.: 7:30 Wed.
Pastor - Tim Luttrall

Primeria Mision Bautista

502 E. 7th • 659-3991
Sunday School: 9:45 a.m.
Worship: 11 a.m.; Evening: 6 p.m.
Wed. Prayer Meeting: 7 p.m.
Thurs. Visitation: 7 p.m.
Pastor - Isaias Martinez

Church of Christ

121 S. Haney • 659-3244
Sunday Bible Class: 9:45 a.m.
Worship: 10:30 a.m.
Evening Worship: p.m.
Bible Study Wed.: 7:30 p.m.
KRDF Radio Program
Living With Christ: 7:50 a.m., M-F
Minister - Arnis Pape

Sacred Heart Catholic Church

901 Roland • 659-2792
Sat. Night Mass: 7 p.m.
Sunday Mass: 8:45 a.m. - English (8:45 a.m. Service on KRDF 98.3 FM)
Sunday Mass: 11:15 - Spanish 1:30 p.m. - Gruver - Christo
Renditor Mass - Spanish
Rev. Fernand Couture

"WE SUPPORT OUR LOCAL CHURCHES"

CAPROCK #1 & #2

Bill Park, Gen. Mgr.
(806) 733-5043 or 733-5025



"Custom Cattle Feeding"

This feature is made possible through the sponsorship of these civic minded businesses.

C.O.'S SUPPLY CO.

Plumbing & Tire Sales & Service

421 W. Kenneth • Spearman, TX
659-3781 or 659-3555

Bartlett's Ace Hardware

105 W. Broadway * Gruver, TX
733-2404

GILLASPIE

AUTO & TRUCK CENTER, INC.
CHEVROLET • OLDS • PONTIAC • BUICK
CHRYSLER • PLYMOUTH • DODGE

Hwy. 207 South • P.O. Box 430
Spearman, Texas 79081
(806) 659-2541

The Hansford County Reporter-Statesman

Serving The Communities Of Spearman, Gruver & Morse
213 Main • Spearman, TX
(806) 659-3434

Porter Satellite

Trey Porter
(806) 659-3657
420 Davis
Spearman, Texas 79081

Gruver Cablevision

Quality Family Entertainment with "The Disney Channel" 308 Main • 733-5295

Morse Implement Company

"Join us in church this week"

Boxwell Bros. Funeral Home

CORONADO HOSPITAL

Pampa, Texas
(806) 665-3721

Compliments of G&G FOODLINER

516 Main • Gruver, TX
733-2471

"Your Home Away From Home" Nursanickel Motel

815 Hwy. 207 S.
Phone: P.O. Box 115
(806) 659-3737 Spearman, TX 79081

BERRY CLEANERS

DAN DESIMONE • OWNER
Phone 659-3122 * P.O. Box 1017
207 Main St. • Spearman, TX

In Gruver

First Baptist Church

402 E. Broadway • 733-2411
Sunday School: 9:45 a.m.
Worship: 10:50 a.m.
Disciple Training: 6 p.m., Sunday
Prayer Meeting: 7:30 p.m., Wednesday
Pastor - Larry Miller

Church of Christ

209 King • 733-2760
Sunday School: 9:30 a.m.
Worship: 10:20 a.m.
Evening Worship: 6 p.m.
Wed. Evening Worship: 7:30 p.m.
Minister - Bob Setliff

First Christian Church

510 King • 733-2960
Sunday School: 9:45 a.m.
Worship: 11 a.m.
Wed. Bible Study: 7:30 p.m.
Youth: 6:30, Wednesday
Pastor - Gary Gumfroy

Oslo Lutheran Church (ECLA)

West of Gruver on Hwy. 15 & N. FM 1162
339-7646
Sunday School: 9:45 a.m.
Worship: 11 a.m.
Morning Prayer: 9 a.m., Wednesday
Pioneer Clubs (Grades 1-6): 4-5:30 p.m., Wed.
Pastor - John R. Chandler

Community Bible Church

(Interdenominational)
Hwy. 15 • 733-2443
Sunday School: 10 a.m.
Worship: 11 a.m.
Wed. Prayer Meeting: 7 p.m.

First United Methodist

Broadway & Garrett • 733-2651
Sunday School: 9:45 a.m.
Worship: 8:30 a.m. & 10:50 a.m.
Evening Worship: 6 p.m.
Pastor - Lewis Holland

In Morse

Morse Baptist Church

733-2757
Pastor - Mike Martin

Curtis' Hot Oilers

806-659-3432
"Taking Service to Perfection"
806-659-2912 P.O. Box 714
800-821-6714 Spearman, TX 79081

Palo Duro Supper Club

22 S. Archer
659-2232

GRUVER FORD

Ford FORD
531 Main • Gruver • 733-2431

Interstate Savings & Loan

322 Main • Spearman • 659-2559

Deakin ELECTRIC

OILFIELD • RESIDENTIAL • COMMERCIAL
321 S. MAIN • SPEARMAN
1-800-999-1506
(806) 659-5016
Chris Deakin
President

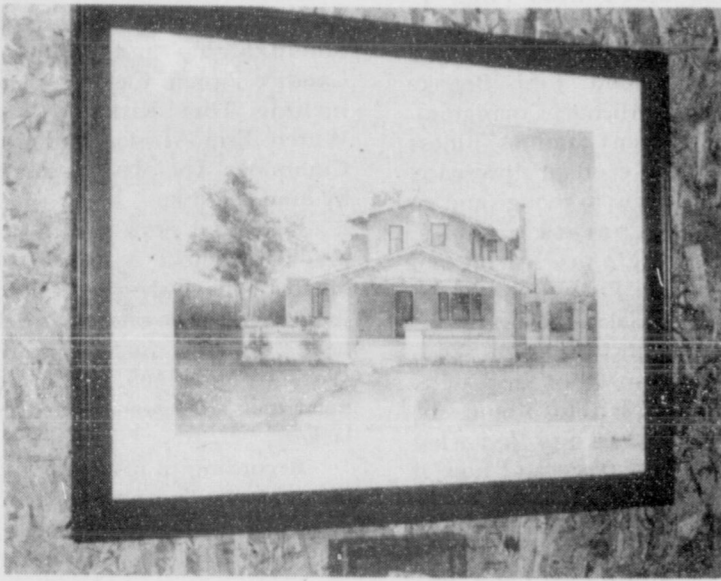
Gordon Drugs

Dependable Prescription Service
314 Main • Spearman
659-2141
Jim Evans

Compliments of...

AGCO of Spearman, Inc.
"See you in Church"
659-3751

Museum usings



by Joanne Eaton

Spearman has produced many very talented people. One such person is JoLinda Lee Marshall, daughter of Johnnie and JoAnn Lee.

Three of JoLinda's paintings are on display at Fort Zulu. These were presents for her dad when he was with the Palo Duro River Authority. They are the houses that were demolished when the Palo Duro Dam was built.

The houses, done in watercolor, are the Steele house, the Lasater house, and the Gibner house, which was adobe.

JoLinda, her husband Charles, and three children live in Austin. She was from the Spearman Class of 1971. JoLinda took only one class of art in college. She has taught herself most of her talent by reading and practicing. She studies a lot about the art of houses, but keeps it as a hobby. Her college degrees were in secondary education and science with a Master's in planning.

JoLinda's special love is the structure of Victorian homes. Once in a while people in the Austin area are able to commission her to preserve their old homes on canvas.

JoLinda's paintings are on loan to the Museum by Johnnie Lee. Be sure to come see them while they are on display.

I was told the old Cator house burned in the recent fire that swept down the Palo Duro Creek close to the Palo Duro Feeders. After looking for it one weekend, I had made plans to get permission to go on the land to take pictures. I was really disappointed! It is so sad for such a part of Hansford County history to be gone after so many years.

I received a letter from Jeanne Williams, author of *Lady of No Man's Land*, and

many other books. I sent her the clippings of the Zulu articles. Her letters are as interesting as her books. She is originally from Elkhart, Kansas, so is very interested in this part of the country.

The Stationmaster's House will be getting a face lift this spring or summer. A new coat of paint is in the works. For awhile it may look a lot worse than better, due to scraping off the old paint.

Our financial support system is very slim at the Museum. We happily take donations or memorials. This would be a way to remember loved ones or friends. A lot of families come to visit the Museum when they're having reunions or when they are passing through Spearman. It would be wonderful to be able to update it to meet their expectations. Everyone who goes through the Museum is always amazed at what there is, even young people.

Remember, the Museum is open from 1:00 to 5:00 p.m. Tuesday through Saturday. Barbara Rojas is there to show you around or answer questions. Special tours can be arranged by calling Rubyjo or J.D. Wilbanks at 659-3084 or Clementine Renner at 659-2335.

A special thanks to Gary and Cathy Smith, the new owners of the newspaper, for letting us run these articles.

I really thought one of you smart Gruver, Morse, or Spearman Elementary students would have answered my quiz by now. Get a copy of the Reporter-Statesman from February 15, 1996 to see if you can answer the quiz for \$5.00. Rules are printed in that paper also.

Hansford Hospice Met

Hansford Hospice held their monthly meeting on February 19th in Gruver at the El Vaquero Restaurant. Special guests from Hansford Hospital and Gary Smith from Hansford Reporter were invited for the presentation of a \$20,000 check from hospice to Hansford Endowment Fund. Jerry Hunt expressed appreciation for the donation.

Anne Snow introduced the board members who were present. Sandy Russell conducted the meeting and reminded all members to pay their annual dues.

It was voted that Hansford Hospice sponsor the "Bingo" two weeks in April for Hansford Manor. Final plans were also discussed for the Chili, Stew & Homemade Pie lunch on February 29th.

June Jackson read the minutes and Muriel Boyd gave the treasury report. The door prize was won by Pete Fisher.

Members in attendance were: I.W. Ayres, Maylyn Ayres, Jack and Dolly McWhirter, Doyle and June Jackson, Muriel Boyd, LoRee Booth, Wanda Stewart, Garland Hopper, Connie Gammill, Edith Womble, Carolyn Hicks, JoLinda Hutchison, Erin Bergin, Mary K.Harbour, Carolyn Cummings, Beverly Cook, Betty Jean Davis, Ruth Bryan, Beth Phelps, Cherri Sherrel, J.C. Harris, Sandy Russell, Eloise Renner, Anne Snow, and Ann Beth Wood. Guests present were: Bobby Hicks, Jerry Hunt, John Hutchison, Helen Etter, Pete and Alta Fisher, and Gary Smith.



(Standing, L-R) Jeff Swan, Ryan Quillan, and Kandace Boyd and (Sitting) Dustin Mackie

5th Grade Science Inventions

The Fifth Grade Science Invention Fair was held February 20th through the 22nd. The fair was attended by all elementary classes and some parents.

In preparation of the event, students drew patents with at least 3 simple machines and then, with help from moms, dads, uncles, aunts, grandparents, etc., constructed inventions. At the close of the project, the students wrote a summary of their experiences - materials used, problems they had and how they solved them. They then expressed how their invention would be a positive asset to our world.

Sandee Smith is the 4th and 5th grade Science teacher for Spearman Elementary.

Students participating are listed below: Leticia Anguiano, Travis Brown, Adam Cherry, Krystal Delagarza, Ryan Dewberry, Megan Dorton, Ana Fraire, Wesley Hathaway,

Tiffany Hendricks, Jesus Hernandez, Rodney Howell, Rose Lopez, Colton Miller, David Pipkin, Nicole Ramon, Colby Sawyer, John Thomas, Eric Vasquez, Kayla Rodriguez, Tyler Rae, Lance Baker, Kandace Boyd, Paul Bynum, Matthew Francis, Mindee Gillaspie, Tiffany Hand, Amber Langley, Dustin Mackie, Daniel Pape, Ashley Powers, Ryan Quillan, Danny Robledo, Albert Rodriguez, Scott Sauer, Kallie Smith, Jeffrey Swan, Elsa Vargas, Kimberly Vasquez, Lucy Villa, Kevin Beedy, Brianne Burkhammer, Jessica Crossland, Loree Espinosa, Leslie Goodson, Garrett Griffin, Christopher Hearon, Gerardo Hernandez, Daniel Longoria, Danielle McDaniel, Amber Morgan, Lisa Powers, Zachary Renteria, Nathan Rook, Lance Smith, Matthew Stewart, Jeremy Vera, Stephanie Villalobos and Rudy Zamora.

Golden Spread Senior Citizens News

by Garland Hopper

The Golden Spread Senior Citizens members wish to congratulate the Gruver Basketball girls and boys for their fine performances this year. Their successes shows a lot of work on the part of the players and their coaches.

The past few weeks a group of friends have returned to participate in games on Tuesday evening. They appear to be having fun playing progressive forty-two. Among them we welcome a new member, Anna Lea Pittman. It is nice to have all of you.

Last week three young ladies from North Plains Home Health Services attended the Tuesday evening activities. Besides taking blood pressures of our members, they also gave a

short program on medications and the care of them. Thank you Joanne Heck, Jean Lang and Pam Stumpf. Sorry, Pam, for the last name.

The quilt mentioned in previous articles being made by crafters and quilters had a change of design. The one under construction is the "Blossom of Love." The background is white, the applique is mauve and green. An early fall raffle is planned.

The exercisers, meeting at 9:30 each Monday, Wednesday and Friday, are still having fun and will welcome newcomers. The Blodgett Room (Golden Spread Senior Citizens) at 502 Brandt Street is the place for this activity.

HAPPY BIRTHDAY TO MARCH BABIES OF ALL AGES! MAY GOD BLESS OUR COUNTRY

Please Help



We have lost our dog. He is like a family member. He is 12 years old, and needs medicine in his ears.

If you see him, please call 659-5289, or come by 703 Lee Drive.

Thank You, Paul and Julie Moore

National Quilters Day Celebration

Saturday, March 16th, 9:30 a.m.-5:00 p.m.

30% Off All Merchandise unless otherwise marked

...QUILT SHOW...

Drawing - Q-Snap Quilting Frame & Tilt over \$100 value
\$25.00 purchase to enter - Must be present to win. Drawing at 4:00 p.m.

New Items:

Cross Stitch Books & Fabrics • DMC Thread

Jo's This N' That
216 Main Street
Spearman, TX 79081
(806) 659-3999

Refreshments will be served.



Prairie Garden Flowers

209 Main Street
Spearman
659-2212
659-3329

Bridal Gift Registry

Come by and let us help you set up your special gift table

Couples Currently Registered

Kara Faries & Robert Womble • March 3rd
Kara Seitz & Justin Armes • March 16th
Clint Sasser & Heather Vinson
Shawn Cook & Traci Peden

Mandi (Porter) Vargas and Gus Vargas - March 10th

Date of Bridal Shower

Gordon's
DRUG

314 Main
659-2141

Spearman,
Texas

THERE IS A DIFFERENCE

	Carper	Ballman
Years experience as a Felony prosecutor	15	0
Years experience as a part-time misdemeanor prosecutor	0	3
Felony convictions obtained	over 1600	0
Felony actions Won in Appellate Court	over 50	0

THE DIFFERENCE COUNTS

VOTE

Proven Ability



VOTE

Proven Experience

ROY CARPER

for
DISTRICT ATTORNEY

March 12 - Republican Primary
Pol. Ad. Bd. R. Carper, 139 Fairview, Borger, TX

Among The Neighbors

by Helen Fisher

The wind driven grass fires last Thursday were frightening in their potential. The Spearman Fire Department was called just after 1 p.m. to assist Ochiltree County in a fire a few miles east and south of Spearman. The department was needed to help contain a fire where a structure was threatened. They were also able to prevent the fire from reaching large acreages of CRP grass.

While the men were protecting a tank battery, the wind suddenly shifted and blew fire, smoke and debris into the fireman.

An ambulance was called for three firemen who were injured, and they were brought to Hansford Hospital for treatment of eye damage, minor burns, smoke and dust inhalation.

Fire Chief Keith Goodman had 22 Spearman firefighters on duty which included those staying at headquarters for local emergency.

The Spearman crew was called away from Ochiltree county to assist in a Hansford county burn. The number of acres burned in Ochiltree county was not available, but it was extensive.

The worst fire in Hansford county was first reported by George Jackson who was returning from Texhoma and saw the smoke southwest of Gruver. As he drove he noticed it's rapid progress and saw it heading into the direction of his home, just South of Hansford. The smoke and strong winds indicated he had little time, so he rushed and hooked up the tractor and started plowing a fire guard. Charlotte was standing by to evacuate if the fire couldn't be stopped. Fortunately, it was contained three miles west of his place.

The fire started on the Hawkins ranch, now owned by Jack Hart. Fire Chief Sam Gruver reports that the cause was undetermined. One structure was burned there.

It traveled northeast on the Cator land. The present owner, Mrs. LaMoyn Cator of Gruver, was greatly saddened as the historic stone house of the J.H. Cator family was completely burned. The first section of this house was built by Jim Cator in 1871. His bride came from England in 1877 and lived in the house until her death in 1950. It was not occupied at the time of

the fire.

The fire crossed to the Nobles ranch, then jumped highway 136 and reached the Whittenburg land. The near-by Palo Duro Feeders provided invaluable assistance in immediately furnishing a 25,000 gallon water wagon and two graders. They are credited with saving the Nobles house and the Turkey Track house, both very old stone houses.

The fire burned the south acreage and fences of all the ranches and continued to the Lackey, Rafferty and Pinkie Sheets land. It made rapid progress on the Holt ranch, and came within 100 feet of the structure, but the house and barns were saved by desperate efforts of all the fighters.

Some CRP grass was burned, but the wind direction prevented it's spread.

Since the fire didn't jump the Palo Duro, it didn't reach the Hunter place. Although the grass is short, the underbrush along the creek made it difficult to extinguish.

The fire departments of Gruver, Morse, Spearman and Stinnett all participated. Graders were brought in by Palo Duro Feeders, Caprock Feeders, Texas Highway Department, Wes Whitaker, Joel Lackey and five from Hansford County precincts. Numerous farmers brought their tractors and many volunteers worked long and hard.

Late in the evening the wind slowed and the combined efforts were successful in stopping the fire about sundown. The firemen of Gruver, however, were called back about 11:00 p.m. to extinguish some embers. At 2:30 a.m. Joyce Lackey saw renewed flames, so back came the firemen. Finally, about 4:00 a.m. they were able to retire. Twice Friday morning they were called back as a wind shift would ignite smoldering fence posts or dead trees.

It is a fairly accurate

estimate that 7,000 acres burned and many, many miles of fence. Sam Gruver and his assistant chief directed the extensive operation by radio and surveillance.

During the conflagration a fire was reported to the north in Hansford County on the ranch of Rose Roberts. Since there were no men or equipment available in Spearman, the Hardesty, Oklahoma fire department was called.

According to Dennis Nelson, who farms the Roberts land and was on the premises, the fire ignited by an electrical short in the REA transformer. It was confined to the short grass under some near-by trees and was extinguished before reaching a structure that was near-by.

Dennis expresses appreciation to the Hardesty department for their efforts.

Both fire chiefs, Keith Goodman and Sam Gruver, are to be commended for their leadership in directing and controlling what might have been a catastrophe. All of the firemen, who left their work or homes to fight all through the hot, windy, dusty afternoon until late at night, as well as all the volunteers, certainly are due a vote of appreciation by the entire county.

Rose Roberts enjoyed having her cousin and husband, Arlene and Don Camp, from Monday through Friday. They had spent a month at Padre Island and were en route back to their home in Davenport, Iowa.

Wasn't it a wise and appropriate choice of the Hansford Historical Society in selecting Ollie Jarvis as the Heritage Queen for the annual pioneer day observance?

The Generation Y issue this week carried a thoughtful

article by Kiki Carthel and an answer to the weekly question by Jason Ward. Both are students at Gruver.

June and Earl Spencer were pleased to learn that their son, Jeff, had been promoted to sergeant. He is in the army with the Bravo section of communications. He is stationed at Ft. Lewis, Washington, and his wife Kris and son Kyle are with him.

The family of R.E. Sanders have the heartfelt sympathy of the entire county on his death. His obituary appears elsewhere. R.E. had a lifetime filled with his friends. Though his health had been poor of recent years, he was always courteous and a pleasure to visit with. His amiability was part of the morning scene at the post office and coffee shop. He will be greatly missed.

John and Edith Pipkin had an extremely pleasant week-end with their daughter Pauline and Tom Mayes, who spent last week with them. They live in Andover, New Jersey and arrived last Tuesday. On Saturday, Yvonne Stokes with her daughter, Krystal Hare, and grandchildren Morgan Hare and Larae Stokes, all of Amarillo, spent the week-end with them.

They returned to Amarillo on Monday where the Mayes will visit a day or so before flying back to New Jersey.

John Pipkin went to Amarillo with them as he is to undergo cataract surgery.

Rarely has the passing of an individual had the impact on so many as that of Barbara McClellan. From the time she was a friendly, cheerful little girl, she had a quality that endeared her to every age group.

She had been active in and helpful in many phases of community life - church, school, civic, hospital and social.

She was preceded in death by her parents, Dr. F.J. and Mildred Daily, and a sister, Elaine Floyd.

Her brave acceptance of her terminal illness was an example of faith, and the courage that comes with faith. This, alone, would be a legacy to her children, grandchildren and friends.

Condolences are extend to R.L. and all her family. In the long, lonely days ahead, may they find solace in their memories of her and thankfulness that she was part of their life. They were blessed to share her strength, understanding and devotion.

Speech and English students can get an excellent lesson in the importance of the selection of a word by noting the words by the media in the political reporting.

An example - the word "admit" can make an innocent action leave a suspicious impression. i.e.: "Dole admits he had breakfast this morning." Or using the word "said" and changing it to whined, gurgled, sputtered, mouthed -- all these have been used by political reporters lately.

Traci Knox, student at WTA&M in Canyon, pleased her grandparents, Gloria and Don Knox by spending the weekend here with them. She is the daughter of Reata and David Knox.

Building For Rent

3400 square ft. (1 large room, 3 smaller rooms, 2 storage rooms and 1 small kitchen). 13 adjacent lots for sale (each lot is 25 ft. x 125 ft.). Located in Gruver at 600 Main Street, adjacent to hardware store. Price is negotiable. Call 733-2332.

Bridal Shower
for
Kara Faries
&
Robert Womble

Sunday, March 3rd
2:00-3:30 p.m.
Home of Karen Thompson
1104 Linn Drive

LR ELECTRONICS
Sales & Service
Leelyn Rock • 806-435-1112

DRIVER EDUCATION CLASSES
Independent Driving School
814 S. Main • Perryton
(806) 435-2579
Lanny Hargrove

AUCTIONS
April 5th - Bill Pletcher Complete Farm Disposal
April 9th - 320 Acre Farm Lipscomb County
April 19th - 110 Acre Native Grass Lipscomb County
April 27th - Balko Lions Club Consignment
March 30th - Gary Conley Farms, Perryton, TX, Farm Machinery

REAL ESTATE FOR SALE
160 Acres West Bryans Corner, Home, Barn, 50 Acre grass, 110 farm
150 Acres CRP 2 North, Bryans Corner
160 Acres CRP 2 North 1 West 1/2 North Bryans

Naylor Auction Realty
"Leading the Way - The Auction Way"
405-646-3548 TX 7285

All Occasion Flowers

"Our Customers Deserve The Best"
Friendly Hometown Service

659-5180

SAVE 6%
By February 15
SAVE 4%
By March 15

Buy seed from
CARGILL GRAIN DIVISION
and get a cash discount on every bag, plus volume discounts. Paying less per bag can save you a pile of cash.

CARGILL GRAIN DIVISION
659-3554
Spearman, TX
Brent Emch -- Manager

Clay L. BALLMAN
for District Attorney

An Excellent District Attorney has MANY Responsibilities:

Prosecution, Administration, and Community Involvement

Ballman Has Broad Experience in All Three Areas:

Prosecutor:
Prosecutor in the Hutchinson County Attorney's Office
Appointed Special Prosecutor in Hutchinson and Ochiltree Counties

Administrator:
Past Elected Hutchinson County Commissioner
Supervised both Public and Private Employees

Involved In the Community:
Practicing Attorney - Nine Years
Member and Past President -- Trinity Lutheran Church, Borger
Board Director -- Buttercup House, Borger
Past Board Director -- Fritch State Bank
Instructor -- Frank Phillips College

Vote for Clay L. Ballman
March 12, 1996
Republican Primary

Early Voting:
February 21 through March 8 - County Courthouse.

Pol. Ad. Pl. For Clay L. Ballman, 210 Inverness, Borger, TX 79007

Gruver EMTA Formed

The Gruver Emergency Medical Technicians Association was formed at the EMS meeting held on January 29, 1996. All but one of the eighteen EMT volunteers were present. It is the desire of the EMT Association members to provide greater safety awareness in the community, to let the community know who we are and the quality of care available and to provide increased interaction between the community and the EMT Association.

The Gruver EMS is a completely volunteer group of trained citizens. Monetary needs of the group will be provided by fundraising activities sponsored by the EMT Association and by donations (tax deductible) from the community. Some of those needs include simple uniforms that help identify the EMTs at the scene of an emergency and improved equipment for the ambulance.

At the present time, Gyene Spivey and Melyn Johnson are working on a grant so that we might receive federal funds for a new ambulance for the service.

The EMTs are citizens from a variety of occupations who

volunteer their time. Each has had extensive training, practice and testing in order to achieve and maintain their various certifications. Continuing education is a constant requirement and takes time and money. At the present time, the EMT Association consists of two EMT-Paramedics, two EMT-Intermediates (three more are waiting for test results), and fourteen EMT-Basics. Each of us in the EMT Association has a desire to serve this community and to make it an even greater place for everyone.

The current EMS Director for Gruver is Nick Jordan.

Officers for the EMT Association are as follows: President - Rita Ann Holland; Vice President - Sam Gruver; Secretary - Terri Montgomery; Treasurer - Trisha Fitzgerald; Training Officers - Jerry Virden and Curt Fitzgerald; Fund-Raising Committee - Pat Irwin, Sam Gruver, Debbie Chisum, Diane Boyd and Penny Kruse. Other members include the following: Nick Jordan, Chris Johnson, Merry Gale Sparks, Beth Swink, Mike Booth, Matt Johnson, Wayne Kruse and Gyene Spivey.

6th Graders Complete History Unit

Sixth grade students completed a unit on medieval history by having tours of their projects for parents, students and community members. Students created hand-dipped candles, punched tin lanterns, banners or individual coat of arms. During the presentations, the scaled castle even came under attack by catapults, both of which were designed and built by students. At the end of the tour, a skit of "Robin Hood in

the Sherwood Forest" was performed. After the presentations, the students feasted on a meal that was made by them with the help of the school cafeteria personnel. The day ended with the viewing of Errol Flynn's movie "The Adventures of Robin Hood."

Teachers that were facilitators of the groups were Pat Overbey, Roy Mayhew, Linda Haenisch, Ron Blassingame and Jamie Jordan.



Students of Carla's Dance Studio who competed at the DanceAmerica National prelim this past weekend in Dallas.

Dance Students Win Awards

Students of Carla's Dance Studio competed at the DanceAmerica National prelim this past weekend in Dallas. The students who placed 1st and 2nd are qualified for the National Finals, which will be held this summer in Orlando, Florida at Disney World.

1st Place - "Boogie and Beethoven" - Junior Production Clogging-Amanda Adams, Brooke Adams, Kelcee Barkley, Andraya Duke, Glen Hicks, Haley Farber, Cassidy Keifer, Jennifer McCarty, Wonder Shay, Tamra Walton, Misty Thomas, Ashley Barton, Ashley Brian, Joyce Keys, Haylee Mills, Crisy Nicholas, Kristian Luginbuhl, Brittany Muller, Amanda Hunt, Lauren Rusten, Shannon Simdorn, Amber Weir, and Katie Lee; 1st Place - "Contrast" - Intermediate Line Clogging-Amanda Adams, Brooke Adams, Kelcee Barkley, Andraya Duke, Glen Hicks, Haley Farber, Cassidy Keifer, Jennifer McCarty, Wonder Shay, Misty Thomas, and Tamra Walton; 1st Place - "Sold" - Intermediate Small Group Clogging-Kelcee Barkley, Haley Farber, Glen Hicks, Amanda Adams, Andraya Duke, and Cassidy Keifer; 1st Place - Junior Solo Tap-Glen Hicks; 2nd Place -

Primary Line Clogging - "God Bless Texas"-Ashley Brian, Ashley Barton, Joyce Keys, Haylee Mills, Crisy Nicholas, Kristian Luginbuhl, Shannon Simdorn, Brittany Muller, Amanda Hunt, Amber Weir, Katie Lee, and Lauren Rusten; 2nd Place - "I've Got a Crush on You" - Junior Small Group Tap-Glen Hicks, Amanda Adams, Kelcee Barkley, and Andraya Duke; 2nd Place - Junior Duo-Trio Clogging - "Old Enough to Know Better"-Kelcee Barkley, Amanda Adams, and Glen Hicks; 2nd Place - Intermediate Small Group Jazz - "Jump"-Amanda Adams, Haley Farber, Cassidy Keifer, Misty Thomas, and Kelcee Barkley; 2nd Place - Junior Solo Clogging - "Baby, Baby"-Amanda Adams; 2nd Place - Senior Solo Clogging - "I Want You Bad"-Haley Farber; 2nd Place - Senior Solo Open - "This Is Halloween"-Cassidy Keifer; 2nd Place - Junior Duo-Trio Tap - "Bandstand Boogie"-Katie Lee and Ashley Barton; 3rd Place - Intermediate Solo Open - "Shout"-Andraya Duke; 3rd Place - Primary Solo Open - "Itsy, Bitsy Spider"-Katie Lee. Carla Barkley, instructor of Carla's Dance Studio, was also presented with two special judges awards in Dallas, for Best Costuming in the competition, and the most spirit award.

SHS To Perform Little Women

Continued from Page 1 including Laurie Lawrence (played by Dillon Miller) and Laurie's friend, John Brooke (played by Michael Covington).

As in most families, illness and tragedy exerts its presence. The girls begin to change and go their separate ways, encountering a new friend and supporter, Professor Bhaer (played by Gabriel Rodriguez).

But, I must stop here. You, however, must not stop here. You must plan to attend the local performance to find what changes take place and how it ends.

I will, however, tell you a bit more about the characters: Jo March is a writer of plays, etc. and keeps the family entertained. She is a little on the tomboy side and is very direct. Meg March (played by Haley Farber) is the lady - quiet and dignified. Beth March (played by Kelly Goodman) is shy, frail and afraid of the world, and cherishes her family more than life itself. Amy March (played by Krystal Buchanan) is a little self-centered, but eventually comes around and joins the family spirit of caring and sharing with others.

The crew includes: Stage Manager - Karen Paschel,

Assistant Manager - Brandi Willis, Lighting - Quentin Shieldknight, and Sound - Candice Pipkin. Cast alternates include Tom Kirk, Michael Witten, Erin Atwood and Kelli Cummings. The play is directed by Frances Pipkin.

One final note: the theater arts department is needing to borrow a small writing desk for Jo. It needs to be one that might have been used during the Civil War, around 1865. They also need men's longer-styled dress jackets.

According to history books, these have either straight hems or the tuxedo-type with tails. If you have anything that might work, please contact Mrs. Pipkin at the High School at 659-2584.

Remember, the performance is Tuesday, March 19th at 8:00 p.m. at the High School Auditorium. Admission is just \$1.00. See you there!

Hansford Hospital

Continued from Page 1 largest employer, the economic impact is significant.

"The board and staff of the Hospital District want to thank the taxpayers of Hansford County for their support through the years," stated Jerry Hunt, president of the board.

We listen to

KRDF

98.3 FM

The Voice of Hansford County

Hill Receives Degree

Neta Yvonne Hill received her Bachelor of Science degree in Interdisciplinary Studies from Tarleton State University on December 16, 1995. She graduated with honors.

Congratulations, Neta!

CPSU Offers Computer Classes

Oklahoma Panhandle State University's Office of Continuing Education is offering two computer courses beginning in March.

Beginning Windows 95 runs March 12, 13, 19 and 20 from 6-9 p.m. Introducing the Internet runs March 26, 27 and April 2, 3 from

6-9 p.m.

For more information or to register, contact the Office of Continuing Education at (405) 349-2611, ext. 311.

Are You A Victim of Domestic Abuse . . .

Physical, Emotional or Sexual? Call Toll Free 1-800-753-5308

We are in Spearman on the 1st, 3rd, & 5th Wednesdays of each month at the First Presbyterian Church, 1021 Cotter. On the 2nd & 4th Wednesdays we are at the First Christian Church at 510 King in Gruver. We can come to Spearman & Gruver anytime upon request. We operate a safe place for victims & their children to stay in times of crisis.

Panhandle Crisis Center

Serving Hansford, Lipscomb & Ochiltree Counties
317 S. Main
Perryton, TX
Memorials Accepted

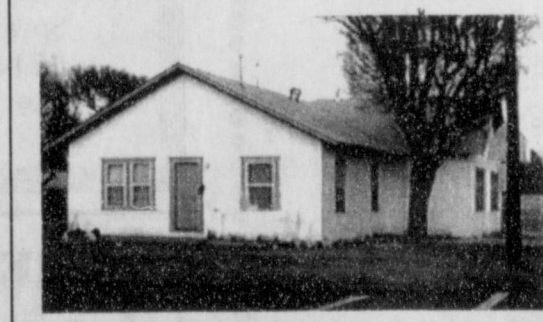
YOU work hard for your money. So, WHY rent?

YOU can own your OWN HOME!!!

Let your money work for you.

Feature Home:
421 Dressen

- 3 bedroom
- 2 bath
- 1770 sq. ft.
- Close to the Jr. High & Grade School



Come SEE us!

Interstate Savings & Loan

322 Main • Spearman • (806) 659-2559

Dee Allen

for

County Commissioner, Precinct 1

I ask for your vote in the Republican Primary
March 12, 1996

Political Ad Paid by David Allen, Box 792, Spearman, TX 79081

THE WEATHER CHANNEL CNBC abc A&E COME CNN CSPAN

BAD TV RECEPTION? NOT ENOUGH CHANNELS?

WHY PUT UP WITH HAVING ONLY A FEW, POOR-RECEPTION CHANNELS TO CHOOSE FROM?

Starting at about \$1 a day and a one-time installation fee you can get PRIMESTAR and your favorite channel choices: all the best basic cable channels, premium service like HBO and The Disney Channel, and pay-per-view channels. Plus you'll get a razor sharp picture, CD-quality digital sound and more!

Nothing to buy! Forget about spending a small fortune on an expensive mini-dish. With PRIMESTAR, you can rent everything and look what you get:

- Packages start at about \$1 a day for equipment and programming
- No-hassle, professional installation is just \$199
- 100 page monthly guide
- Worry-Free Warranty
- One call. One bill!

PRIMESTAR
PRIMESTAR BY TCI

CALL 1-800-716-0004 OR CALL THIS RETAILER IN YOUR AREA:

Audio Video Electronics 800-279-4904

ABC, CBS, NBC, PBS and FOX channels are available only for homes (1) which cannot receive an acceptable picture from local ABC, CBS, NBC, PBS and FOX affiliates via a conventional, outdoor, rooftop receiving antenna; and (2) which have not subscribed to cable television in the last 90 days. Additional charges for complex installations may occur. ©1995 PRIMESTAR By TCI F810

by Hel
Th
last Th
in t
Spearr
called
Ochilt
miles
Spearr
neede
where
threat
to prev
large a
W
protec
wind s
fire, sr
firema
Ar
three f
and t
Hansfo
of eye
smoke
Fir
had 22
duty
staying
emerge
Th
called
county
county
burned
not a
extensi
Th
county
Georg
return
the sm
As he
progre
the dir
South
and st
had litt
hooked
started
Charlo
evacua
stoppe
contair
his pla
Th
Hawki
Jack
Gruver
was un
was bu
It t
Cator
Mrs. L
was g
histori
Cator
burned
house
1871
Englan
house
was nc
LR
ELE
Sales
Leelyn
DRI
Indep
8
April
Comple
April
Lipscon
April
Grass L
April
Consign
Marc
Farms,
Machin
REAL
160 A
Home,
farm
150 A
Corner
160 A
1/2 Nort
Nayl
"Leadin
405-

Hounds - Bi-District Champs

by Bob Bort

The Gruver Greyhounds and the Clarendon Broncos met in a bi-district basketball playoff game this past Thursday night, February 22, at Pampa Harvester

Fieldhouse, and the Hounds escaped with a thrilling 80-74 victory in overtime. Time and again, in the first half and in the second half, the Hounds jumped to a double-digit lead over the broncos, only to see this fighting team come back and take the lead.

In the end, with 52 seconds left on the clock, it appeared the Hounds were doomed to defeat, trailing 68-65. But Brant Armes, who was unreal with 29 points on the night, nailed a trey with 40 seconds left in regulation to tie the game 68-68. Then both teams had the opportunity to win it in regulation, with the Hounds getting the last shot. But the game went into overtime tied 68-68.

With the score tied 70-70 and 2:47 left in overtime, Sammy Renteria nailed one of two free throws for a 71-70 Hounds lead, a lead that they would not relinquish. Renteria nailed a couple more free throws with 2:06 left for a 73-70 lead. With 1:47 left though, the Broncos cut it to one point again with a bucket. With 1:22 left, Wylee Maupin hit, and Gruver had the three point lead again, 75-72. Brant Armes and Maupin nailed field goals toward the end, with Travis Ferguson nailing a free throw, and the Hounds maintained their lead in overtime.

A lot of people might be interested to know that in 1966, the last time the Hounds won the state championship, they began their exciting 5-game run with a thrilling 47-46 victory over none other than the Clarendon Broncos in bi-district. The Hounds beat Stanton that year 70-69 in their second playoff game - this year they will face a tough bunch from New Deal.

The Hounds broke on top early in this game, and threatened to run away with the bi-district championship. Daniel

Bort had a steal and a layup for a 13-point 21-8 lead, the Hounds largest lead of the night. But the Broncos fought back and took a 31-30 lead at halftime.

Then in the second half the Hounds again jumped on the Broncos for a 10-point 52-42 lead, only to see Clarendon fight back in the fourth quarter to again take the lead. Armes hit a pair of free throws with 1:24 left in regulation to give the Hounds the lead, 65-64, but the Broncos scored four straight points to set up Armes heroics with 40 seconds left.

The Hounds have an extremely tough road to travel in order to make it to the regional tournament in Abilene. New Deal is ranked in the top ten, and frightfully good.

For The Sport Of It

I have been writing sports for the Gruver Statesman and the Hansford County Reporter-Statesman since 1988, and it has been fun. But now, with Yuki and Daniel graduating this spring, and now that basketball season is over, it is time for me to move on.

Where I will wind up, I don't rightly know. It could be Andorra la Vella, or it could be just Amarillo. It could be Santa Fe, Paso Robles, Great Falls, Vancouver, or Honolulu, a dozen other places. The only thing I would like to be certain of, is that

PUBLISHER'S NOTE: Bob Bort's writing has been a valuable part of the Reporter-Statesman. I am sure that our readers will miss his sports writing. We wish Bob the very best in all of his future undertakings. Thank you, Bob, for a job well done. **GCS**

LYNX AND LYNXETTE WEEKEND SCHEDULE

For March 1-2

Track Meets Elk Relays at Stratford for all divisions.
Tennis Tournaments Wichita Falls - TTCA
GOOD LUCK LYNX AND LYNXETTES!
From The Hansford County Reporter-Statesman

Hounds (26-6) vs. Clarendon Bi-district Championship
Thursday 2-22-96 at Pampa
Gruver 21 30 52 68 80
Clarendon 13 31 47 68 74

3-Pointers - Brant Armes - 5, Josh Mayhew - 2, Phil De La Cruz, Wylee Maupin.

Gru - Brant Armes - 29, Wylee Maupin - 15, Sammy Renteria - 10, Phil De La Cruz - 8, Josh Mayhew - 8, Bailey Barkely - 4, Travis Ferguson - 4, Daniel Bort - 2.

It would have been a gigantic upset, if Gruver had beaten the highly touted New Deal Lions. And it almost happened.

Gruver led only briefly in this game, at the outset, 6-3. But

after the Lions took a 22-11 lead, their largest lead of New Deal had a double digit lead, but in the end, they had to hang on for all they were worth.

Gruver's shooting went cold in the second half, especially from three-point distance. Gruver trailed only 33-32 towards the end of the first half, but New Deal picked it up at the end of the half, and led 41-34.

Then Gruver rallied in the third quarter to trail only 43-42, but New Deal exploded, especially on their fast break attack, and led 55-45. Gruver cut the lead to six points several times, and cut it to three points right near the end, 69-66. But the Lions were a hurdle the Hounds simply couldn't leap, and the final score was 72-66.

The referees did not call a good game, and the Hounds got the short end of the stick.

Sammy Renteria had an awesome ball game. He scored 28, his high for the season, and he

was 6-8 from the free throw line, mostly in critical situations. At one point Renteria shot 13 consecutive points for the Hounds, including all 11 points that the Hounds scored in the third quarter, and the first two we scored in the fourth. It was a fine effort for Sammy, one of 11 seniors on this team playing their last ball game.

Brant Armes and Wylee Maupin also scored in double digits, but at the end, the Hounds were cold. Brant Armes, Josh Mayhew, and Buster McLain will be back next year. That will be some year for the Hounds, in class A, with a maybe state championship to look forward to.

Gruver 17 34 45 66
New Deal 22 41 51 72
3-Pointers - Brant Armes - 3, Josh Mayhew - 2, Travis Ferguson.
Gru - Sammy Renteria - 26, Brant Armes - 13, Wylee Maupin - 11, Josh Mayhew - 8, Travis Ferguson - 3, Juan Arreola - 2, Phil De La Cruz - 2, Scott Jarvis - 1.

Lunch Menu

GRUVER ISD LUNCH MENU

Monday, March 4
Chicken patties, potatoes w/gravy, green beans, roll, pudding, and milk.

Tuesday, March 5
Soft tacos, cheese, lettuce, pineapples, crustos, and milk.

Wednesday, March 6
Chicken Fried steak, potatoes w/gravy, peas, pudding, biscuit, and milk.

Thursday, March 7
Lasagna, salad, fruit, garlic bread, and milk.

Friday, March 8
Chili dog, cheese, potato wedges, fruit juice bar, and milk.

BREAKFAST

Monday - Breakfast pizza, juice, and milk.

Tuesday - Two pancakes, syrup, juice, and milk.

Wednesday - Cereal, muffin, juice, and milk.

Thursday - Biscuit, sausage, juice, and milk.

Friday - 2 Cinn. Rolls, juice, and milk.

PRINGLE-MORSE CISD LUNCH MENU

Monday, March 4
Ham, mac and cheese, green beans, salad, rolls, and milk.

Tuesday, March 5
Steakfingers, potatoes, gravy, black eyed pea, rolls, fruit, and milk.

Wednesday, March 6
Bar-B-Que beef, pasta salad, beans, salad, dessert, and milk.

Thursday, March 7
Spaghetti, salad, rolls, dessert, and milk.

Friday, March 8
Grill cheese, noodle soup, salad, fruit, ice cream, and milk.

BREAKFAST

Monday - Cheese toast, toast, juice, and milk.

Tuesday - Oatmeal, toast juice, and milk.

Wednesday - Sausage, pancakes, juice, and milk.

Thursday - Blueberry muffins, toast, juice, and milk.

Friday - Biscuits, gravy, juice, and milk.

First National Bank

announces our new 24 hour ATM machine.



Lynanne Maize and Bill Pittman are pictured above with First National Bank's new 24 hour ATM machine.



Come by and get a **FREE** ATM card!

"The bank that always puts you first."

Don't forget our 24 hour First Call service!

659-1011



First National Bank

729 West 7th Street
Spearman, Texas 79081

806-659-5544 • 800-583-4196

member FDIC



Hansford Manor Celebrates February Birthday's

Hansford Manor residents celebrated February birthdays with a party on February 16th, hosted by the Hospital Auxiliary.

Residents celebrating birthdays were: Altha Kirk, Friendlar Monk, Myrle Holt, Grace O'Brennan, Mary Virden, Roy Blackman, Leon Burch, Luda Duncan, and Nina Evans.

Gruver Library News

New books recently received at the Gruver Library include: Richard Patterson's The Final Judgment; Erma Bombeck's All I Know About Animal Behavior...; That Camden Summer by Lavyrle Spencer; Shock Wave by Clive Cussler; and Bill Gates' Road Ahead among others. We hope you will

come in and see what your library has to offer.

Please consider the library for your memorials and contributions. We hope to be able to purchase new carpet for the library in the near future. Your assistance in making this a possibility is greatly appreciated!

Grand Jury Indictments

Listed below are the indictments handed down from the Grand Jury.

Jorge Cervantes Agüero - DWI, \$5,000 bond; Benny Ramon Bautista - Unauthorized Use of Motor Vehicle, \$5,000 bond; Randy Gene Brazeal - 3 Counts of Unauthorized Use of Motor Vehicle and 2 Counts Theft by Appropriation, \$100,000 bond for each; Brad Louis Jackson - Unauthorized Use of Motor Vehicle, \$5,000 bond; Joann Baca - Tampering with Gov. Records, \$3,000 bond; Jose Arnaldo Olivarez - Agg Assault/Peace Officer, \$10,000 bond; Joe Robert

Grayson - DWI, \$5,000 bond.

Arraignment was on March 19, 1996 at 10:00 a.m. Pretrial will be held on April 23, 1996 at 10:00 a.m.

Don't you think a congressman who believes in term limits and has already had six ineffective terms in Congress should make room for somebody else?

John W. SAWYER
FOR
CONGRESS

19th Congressional District 1-800-233-0267

Pol. Adv. paid for by Sawyer for Congress Campaign, P.O. Box 93668, Lubbock, TX 79493-0668, Sandra Newton-Treasurer.
Political contribution not tax deductible

Ask Dr. Dobson

QUESTION: I am 14 and have crummy-looking pimples all over my face. What causes them, and what can I do to clear up my skin?

DR. DOBSON: Practically every part of your body is affected in one way or another by the period of change you are experiencing. Even your skin undergoes major changes, whether you are a boy or a girl.

A study of 2,000 teenagers asked the question, "What do you most dislike about yourself?" Skin problems outranked every other reply by a wide margin.

Skin eruptions occur primarily as a result of an oily substance that is secreted during adolescence. The pores of the skin tend to fill up with this oil and become blocked. Since the oil can't escape, it hardens and causes pimples or blackheads.

When you get numerous pimples or blackheads

regularly, the condition is called acne. If this happens, it will be important for you to keep your skin clean, minimizing the oil and dirt on your face.

If the problem is severe, as you obviously feel it is, you should ask your parents to take you to a dermatologist, who is a doctor specializing in skin problems. Acne can now be treated effectively in most cases.

These questions and answers are excerpted from the book Dr. Dobson Answers Your Questions. Dr. James Dobson is a psychologist, author and president of Focus on the Family, a nonprofit organization dedicated to the preservation of the home. Correspondence to Dr. Dobson should be addressed to: Focus on the Family, P.O. Box 444, Colorado Springs, CO 80903.(c), 1982, Tyndale-House Publishers, Inc.

Dr. Dobson is brought to you each week by these fine businesses and people: Gillaspie Auto and Truck, Cunningham Insurance Agency, Ivey's Hungry Cowboy, B&B Sales Co., and Tom and Linda Latta.



(L-R) Brenda Busch, Sandi Pearson, Helen Pracher and Dr. Raul C. Tamayo

Coffee Held In Honor Of Doctors

A Coffee was held at the clinics of Dr. Iqbal and Dr. Tomayo on Tuesday, February 27th. Refreshments of coffee and cake were served to all who attended.



(L-R) Dr. Ahmed Iqbal, Darlene Pierce, Elizabeth Duncan and Betty Pugh

No-Till Drilling

Oats, Spring Wheat, Grass

30 ft. J.D. Drill

Brian Watley

806-659-3838 or 659-3618

PRICES EFFECTIVE
FEB. 25-MAR. 2, 1996
305 W. Kenneth
659-3135

ALLSUP'S

PEPSI
SAVE ON
Pepsi-Cola

1996 FORD PICK-UP XL

- 5 SPEED WITH OD
- 4-CYLINDER - POWER STEERING
- POWER BRAKES - AIR CONDITIONING
- AM-FM CASSETTE

VALUE \$13,500

ALLSUP'S & FRITO LAY'S FABULOUS PICK-UP DAYS
Register at any ALLSUP'S STORE while you
are shopping for FRITO-LAY Products.
Register from FEBRUARY 25-APRIL 13, 1996.
Drawing to be held APRIL 26, 1996

HURRY IN & Save

CANADIAN BACON
EGG & BISCUIT
EACH
99¢

FRESH
SAUSAGE ON A STICK
EACH
99¢

ALLSUP'S SANDWICH
BREAD 69¢ EA. OR
1 1/2 LB. LOAF **2\$1** FOR

GRAB BAG
FRITOS & DORITOS
REG. 75¢ SIZE
2\$1 FOR

LANCE
ALL VARIETIES
CRACKERS
EACH PKG. **4\$1** FOR

ALL FLAVORS DRINKS
SNAPPLE
16 OZ. **79¢**

ALL VARIETIES
M&M / MARS BAG
CANDIES
REG. \$1.69 SIZE **\$1.29**

SHURFINE GRADE A
LARGE EGGS
DOZEN **99¢**

U.S. NO. 1
RUSSET POTATOES
10 LB. BAG **\$1.89**

HORMEL LITE & LEAN
SLICED
TURKEY OR HAM
EACH 8 OZ. PKG. **\$1.99**

FILLED WITH YOUR
FAVORITE FOUNTAIN DRINK
HONCHO DRINKS
44 OZ. PAPER CUP **79¢**

Here are Six reasons...no, Seven to call CELLULARONE® of the Panhandle.

Free AT&T Bag Phone
(price \$24.75 rebate \$24.75)

AT&T Bag Phone w/ battery
\$9.95

Motorola 3 yr. Warranty Tote
\$19.95
(price \$29.97 rebate \$9.80)

Free Mitsubishi Handheld
(price \$33.75 rebate \$33.75)

Free "Toll Free America"
(for 2 months)

No Activation Fee

Whether you need a cell phone and a service plan, or you already own a phone, we have a great deal for you! And if six reasons aren't enough, CELLULARONE® of the Panhandle is now offering *The Area Wide Plan* which features local airtime throughout the Texas Panhandle*...including Potter and Randall Counties! At last you can justify owning that cellular phone you really, truly do need.

* With the sole exception of Lubbock County. 60 minutes of airtime costs \$35.00. No additional airtime for a 2 year contract. Additional minutes will be billed at \$.39 during peak time and \$.24 during off-peak time. The Area Wide Plan is not available with any other rate plan. All cellular phone sales require at least a one year contract with CellularOne of the Panhandle.

Authorized Agent:

COUNTRY CELLULAR

Box 430, Spearman, TX 79081 • (806) 659-2541

CELLULARONE® of the Panhandle

ALLSUP'S MONEY ORDERS UP TO \$299.00 FOR ONLY 29¢

