



HANSFORD COUNTY

THE REPORTER-STATESMAN

CELEBRATING 103 YEARS OF SERVICE TO HANSFORD COUNTY
HANSFORD COUNTY'S ONLY NEWSPAPER

THURSDAY,
MAY 6, 2010

75¢

WWW.SPEARMANREPORTER.COM

VOLUME 103 • ISSUE 18

reporter@spearmanreporter.com

GHS Students Excel at Regional Academic Meet

Gruver High School students competed in the Region 1 Academic Spring Meet in Levelland on Friday, April 24th. Competition was very fierce for the region that encompasses 92 school districts.

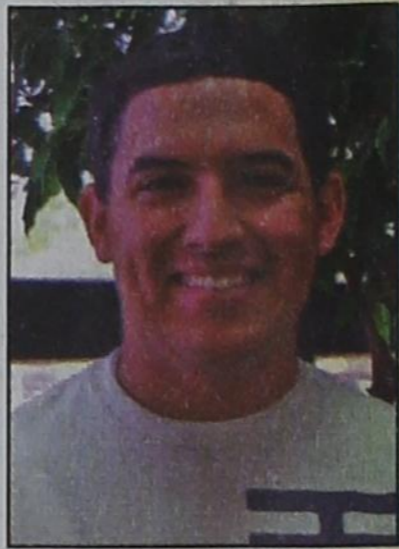
These are the students that competed in the meet and the results: **Luis Lora** - 20th in Accounting; **Alex Logsdon** - 15th place in Computer Applications; **Brianne Mitchell** - 6th place in Headline Writing; **Drew Mireles** - 2nd place in Informative Speaking; **Leigh Ann Winger** - 6th place in Lincoln Douglas Debate; **Nikki Beasley** - 7th place in Spelling & Vo-

cabulary; and **Dallas Reynolds** was the alternate for Persuasive Speaking but did not compete at the meet.

Drew Mireles will compete in the State Academic UIL Meet on Friday, May 6th - 8th in Austin, at the Thompson Conference Center.

We congratulate all of these students and their families for the amazing way they have represented Gruver High School and the community this year.

Coaches for these students were Sarah Clark, Kelly Hart, Kimberly Irwin, Cheri Sherrill and Annelle Teal.



Drew Mireles has qualified for State in Informative Speaking and will be competing Friday, May 7, 2010. Drew is coached by Cheri Sherrill.

4 GHS Students Receive Student Achievement Award

Four Gruver High School students received the "Texas Student Achievement Award" from the Texas ACT Council for their performance on the PLAN (the Pre-ACT) Assessment. These students are on target to meet or exceed ACT's College Readiness Benchmarks by graduation. ACT's College Readiness Benchmarks are empirically-based and identify the level of achievement necessary in English, mathematics, reading and science to have a successful college freshman experience.

The students receiving this recognition from the Texas ACT Council are:

Fatima Barrera, Brandi Brown, Shelley Gibson and Madison McLain.

The Texas ACT Council is made up of secondary and postsecondary educators who advise ACT, Inc. on the utilization of ACT programs and services in Texas schools and colleges. ACT, Inc. is the not-

for-profit organization that provides assessment, research, information and program management services in the broad areas of education and workforce development and the publisher of the ACT Assessment. The ACT Assessment is the college admissions test that is accepted by all colleges nationwide.

According to Karen Pennell, ACT Assistant Vice President and Southwest Regional Manager, "The Texas ACT Council recognizes those students who are making significant strides to prepare themselves for college by taking rigorous courses and meeting the PLAN (Pre-ACT) College Readiness Benchmarks. We also want to recognize that student PLAN (Pre-ACT) achievement is the result of a strong commitment by Gruver High School teachers, staff, administrators and parents to increase college readiness for all students."



The GHS Golf Team consists of Cory Graves, Parker Grotegut, Zach Logsdon, Blake Fitzgerald and Reagan Karlin. They compete in Austin May 10th & 11th. The golf team is coached by Rod Been.

New Seat Belt Laws Support This Year's Click It or Ticket Campaign

New seat belt laws and a contest for teens are among the features offered to reinforce this year's Click It or Ticket campaign, according to Bev Kellner, Texas AgriLife Extension Service passenger safety specialist.

"The good news is that more people are buckling up in Texas. The bad news is there are still far too many killed in crashes due to lack of seat belt use," Kellner said. "Despite gains in seat belt use for Texas, there are still some groups that do not wear their seat belts."

Kellner explained that the new laws in Texas require adult vehicle occupants in all seating positions to be buckled up - both front and back. Previously, the law required only those in the front seat and those less than 17 years of age in the back seat to be buckled.

The new laws, which became effective last September, extend to 12- and 15-passenger vans as well, she said. For children, the new law requires children under age 8, unless taller than 4 foot 9 inches, to be in a child safety seat system.

According to Kellner, among the groups that have lower usage rates are 16-20 year olds, pickup truck drivers and passengers, and male drivers and passengers. Statistics from 2008 show that 56 percent of persons killed in crashes were unrestrained.

Because teens are among the groups prone to not use seat belts, the campaign offers them an opportunity to create a personalized video to share with friends. The video will follow a teen beginning a road trip. Teens who participate will be entered into a contest for prizes. More information is available at <http://seatbeltsrock.com>.

"Even with the new laws, more education is needed to convince some groups that seat belts save lives," she said.

The key to surviving a crash is staying inside the vehicle, she said. Statistics from 2008 showed that 77 percent of occupants who were thrown from their vehicle were killed.

"Motorists can increase the odds of survival in a rollover crash in a light truck by nearly 80 percent by wearing their seat belts," Kellner said. "Seat belts are credited with saving 255,115 lives from 1975 through 2008."

The enforcement time for this year's campaign by the Texas Department of Transportation is May 24 through June 6. During that time, extra law enforcement will be on the roads to enforce the new laws with the goal of saving lives.

"The goal is to get every Texan to always buckle up, on every trip, every time," Kellner said. "A seat belt is your best defense against motor vehicle injuries and deaths."

Wheat Producer Update Informational Meeting Scheduled

A Wheat Producer Update informational meeting will be conducted by the Texas AgriLife Extension Service in Randall County on May 11 in Canyon.

The meeting is scheduled from 7-8:30 a.m., starting with a Dutch-treat breakfast, at the Ranch House Cafe at 810 23rd Street, according to J.D. Ragland, AgriLife Extension agent for Randall County. Two general continuing education units will be offered to private applicator license holders.

Producers are encouraged to bring samples of wheat that might be of concern, Ragland said. And, if need be and time and weather permit, the group could travel to fields where potential problems may be present.

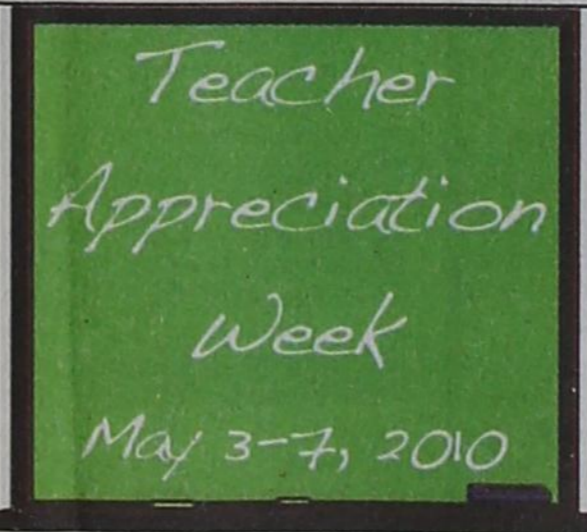
The program topics are:
-- Current Randall County Wheat Situation and Update, Ragland.
-- Panhandle Wheat Update: Producer Management Strategies - Now Until Harvest, Dr. Jackie Rudd, Texas AgriLife Research wheat breeder in Amarillo.

-- Occurring and Future Fungus or Diseases to be on the Lookout For, Dr. Ron French, AgriLife Extension plant pathologist in Amarillo.

For more information, contact Ragland at 806-468-5543 or jdragland@ag.tamu.edu.



Southwestern Oklahoma State University's Department of Chemistry recently honored its outstanding students at a banquet held on the Weatherford campus. Receiving honors for the 2009-10 academic year included Natalie Simpson, Spearman TX, Cronin Scholarship.



NRCS Celebrates 75 Years

USDA's Natural Resources Conservation Service (NRCS) turned 75 on April 27, 2010.

"For the past 75 years, the NRCS has led the nation in protecting our natural resources," said Don Gohmert, NRCS state conservationist for Texas. "We have followed the lead of the first chief of our

agency, Hugh Hammond Bennett, who envisioned the agency's soil conservationists working one-on-one with producers on private lands and walking the land to develop a conservation plan with private landowners," he said.

In Texas, approximately 90 percent of the land is privately owned. Gohmert said that means that the quality of our Texas land, water, air and habitats are dependent on the stewardship decisions that thousands of private landowners make every day.

Although programs and technology have provided many changes in the way NRCS delivers its services, Gohmert said working with the private landowner and getting conservation on the ground remains NRCS's number one priority.

"That priority is reflected in our agency's mission - Helping People Help the Land," he said.

Conservation practices carried out by farmers, ranchers, and other landowners in Texas have improved the quality of life and built stronger rural communities in the state. The state's natural resources have improved because of conservation practices such as crop rotations, terraces, waterways, windbreaks, wetland restoration, no-till farming, buffers, watershed dams, rangeland management, ponds, nutrient and pest management, to name a few.

"The 75 years of success of NRCS can be attributed to dedicated producers, agency employees, local soil and water conservation district supervisors and staff, and partners, all of whom worked together to accomplish the goal of protecting our natural resources," Gohmert said.

"This agency's rich conservation legacy has resulted in many benefits to the state's citizens - abundant food and fiber, clean water, clean air, productive soils, and open spaces to use and enjoy," he said.

NRCS was created as the Soil Conservation Service within USDA on April 27, 1935, in response to the devastation of the Dust Bowl on the nation's agricultural land. The agency's primary mission then was to conserve soil on agricultural land. It became the Natural Resources Conservation Service in 1994 to better reflect its expanded role of servicing other natural resources such as water, air, plants, and animals on private lands.

For more information about NRCS in Texas, visit <http://www.tx.nrcs.usda.gov> or stop by your local county USDA Service Center.

Weather Forecast

THURSDAY NIGHT - Partly cloudy. Windy. Lows around 40. West winds 15 to 25 mph shifting to the north 20 to 30 mph after midnight.

FRIDAY - Partly cloudy. Cooler. Highs in the upper 60s. Northeast winds 10 to 20 mph.

FRIDAY NIGHT - Partly cloudy. Lows in the upper 30s. Northeast winds 10 to 15 mph.

SATURDAY - Partly cloudy. Highs in the upper 50s.

SATURDAY NIGHT - Mostly cloudy with a 20 percent chance of rain showers. Lows in the lower 40s.

SUNDAY - Mostly cloudy with a 20 percent chance of showers and thunderstorms. Warmer. Highs in the upper 70s.

SUNDAY NIGHT - Mostly cloudy with a 20 percent chance of showers and thunderstorms. Lows in the lower 50s.

MONDAY - Partly cloudy with a 20 percent chance of showers and thunderstorms. Breezy. Highs in the mid 80s.

MONDAY NIGHT - Partly cloudy. Breezy. Lows in the lower 50s.

TUESDAY - Mostly sunny. Breezy. Highs around 80.

Texas Crop & Weather

The following specific livestock, crop and weather conditions were reported by Panhandle Extension directors: Strong winds began to dry out topsoils. On the good side, this allowed producers to get in the fields to catch up on planting corn and prepare to plant sorghum, cotton and peanuts. Wheat continued to develop and was in fair to good condition. About 2 percent of corn already planted was emerged. Rangeland grass growth started to take off and was expected to provide good spring grazing for livestock.

Nurses
CARING TODAY FOR A
HEALTHIER TOMORROW
National Nurses Week
May 6-12

May 8, 2010 • Canadian, Texas • Featuring Stoney LaRue
www.canadianrivermusicfestival.com

Wolf Creek Heritage Museum Notes

MUSEUM HAPPENINGS

The stories keep coming in and people keep calling to ask if it is too late. No, if you hurry. We will have to quit collecting after May 21st so we can finalize everything and start the second phase of planning. We will be setting up a new art exhibit this week. Denise Carter will be exhibiting her work through June. The summer season is upon us and we will be planning programs for the third Saturdays, so start planning your calendar. The newsletter for the membership will be mailed in the next two weeks. If you have not renewed your membership, get it in now. Next Sunday is Mother's Day. Celebrate your

mother by treating her with a day out.

HISTORICAL MUSINGS

Two holidays this week to celebrate. The first is Cinco De Mayo. The 5th of May commemorates the victory of the Mexican militia over the French army at the Battle of Puebla in 1862. It is not, as many people think, Mexico's Independence Day, which is September 16. Celebrating Cinco de Mayo has become increasingly popular along the U.S.-Mexico border and in parts of the U.S. that have a high population of people with a Mexican heritage. In these areas the holiday is a celebration of

Mexican culture, of food, music, beverage and customs unique to Mexico. In Mexico, the holiday is more of a regional holiday celebrated most vigorously in the state of Puebla.

The second holiday is May 9th, Mother's Day. Celebrated each year on the Second Sunday in May, Mother's Day became an official holiday in 1915 due largely to the perseverance and love of one daughter, Anna Jarvis. Anna's mother had provided strength and support as the family made their home in West Virginia and Philadelphia, Pennsylvania where her father served as a minister. When Mrs. Jarvis died on May 5, 1905, Anna was determined to honor her. She asked the minister at her church in West Virginia to give a sermon in her mother's memory.

On the same Sunday in Philadelphia, their minister honored Mrs. Jarvis and all mothers with a special mother's Day service. Anna Jarvis began writing to congressmen, asking them to set aside a day to honor mothers. In 1910, the governor of West Virginia proclaimed the Second Sunday in May as Mother's Day and a year later every state celebrated it. President Wilson proclaimed the first National Mother's Day in 1914.

Enjoy the week and honor your mother!

Wolf Creek Heritage Museum

Museum Hours: Monday thru Friday 10 a.m. to 4 p.m., Sunday 2 to 4 p.m. Special hours upon request.
Museum Information: 13310 Hwy 305, PO Box 5, Lipscomb TX 79056; telephone: 806-852-2123; e m a i l : wolfcreek@amaonline.com; website: www.wolfcreekheritagemuseum.org

Gruver Police Department Monthly Activity

April 2010
Number of Traffic Stops: 62
Number of Violations for which citations were issued: 47
Number of Violations for which warnings were issued: 32
Number of Calls for Service: 24
For the month of April the Police Department received two Criminal Mischief reports and one gas drive off report.
For the month of April the Police Department filed one Animal at Large case, and one Disorderly Conduct case with the Gruver Municipal Court.



STATE CAPITAL HIGHLIGHTS



by Ed Sterling

Governor: Texas cannot commit to funding high-risk health care pool

AUSTIN — The Patient Protection & Affordable Care Act, signed into law by President Obama on March 23, requires states to establish within 90 days "high risk pools" for people with a preexisting medical condition who have been uninsured for at least 6 months when they apply.

The pools would allow enrollees to pay standard market premium rates with their coverage not subject to any preexisting condition exclusion. But on April 30, Gov. Rick Perry sent a letter to U.S. Health and Human Services Secretary Kathleen Sebelius notifying her that the state of Texas cannot commit to operating "a new temporary high-risk pool program due to the lack of program rules or reliable federal funding."

"I do not believe the aggressive implementation and the lack of assurances on financial solvency of the program are in the best interest of Texas taxpayers, families, patients or health care providers," Perry wrote.

The governor expressed concern over the absence of key contract terms and passage of federal rules and covenants to ensure financial solvency so that taxpayers and state revenue systems are held harmless.

Texans working on big oil spill

Crews from the Texas General Land Office Oil Spill Prevention and Response Program deployed with 1,000 feet of fire boom to help corral and burn the oil slick spreading from the damaged Deepwater Horizon oil rig off the coast of Louisiana.

A damaged wellhead on the ocean floor more than a mile beneath the surface is discharging an estimated 5,000 barrels of oil each day. The spill threatens human health, wildlife and commerce along the Gulf coast. BP Plc, manager of the leaking oil facility, said it would pay clean-up costs.

State defends 'under God' in pledge

Texas Solicitor General James Ho on April 27 defended the constitutionality of the Texas Pledge of Allegiance before the U.S. Fifth Circuit Court of Appeals.

The pledge, as amended in 2007, reads: "Honor the Texas flag; I pledge allegiance to thee, Texas, one state under God, one and indivisible."

After the Texas Legislature added the words "under God" to the Texas Pledge in 2007, a Dallas couple filed a lawsuit arguing that the amended pledge violated the First Amendment's Establishment Clause. At trial, the Office of the Attorney General successfully argued that patriotic acknowledgments of the Almighty are consistent with the U.S. Constitution. The federal district court agreed, ruling that the revised state pledge is constitutional.

After the federal district judge issued its decision rejecting the plaintiffs' challenge in 2009, the plaintiffs appealed the adverse ruling to the Fifth Circuit.

"As the U.S. Supreme Court has repeatedly acknowledged, reciting the U.S. Pledge of Allegiance is an appropriate and constitutional way to begin each school day on the right note," Solicitor General Ho said. "The Texas Pledge of Allegiance serves precisely the same function — to give students an opportunity to engage in a patriotic acknowledgement of the religious heritage of our state and our nation."

Behind-wheel training increases

The Texas Department of Public Safety on April 28 said beginning May 1 anyone enrolling in a

driver education course will be required to complete an additional 20 hours of behind the wheel instruction, including 10 hours of night-time instruction.

The training is in addition to the 32 hours of classroom training, seven hours of behind-the-wheel training and seven hours of in-car observation/practice that already are required.

'CHL' application goes online

Concealed handgun permit applicants can now complete the application form and schedule their digital fingerprint appointments online at the DPS Web site, www.txdps.state.tx.us.

The online application process debuted May 1. Supplemental materials such as citizenship documents and criminal history are still required to be mailed in.

Parks to launch new software

The state park system of Texas soon will launch its new business software system.

A benefit for park customers is that people making online camping reservations will no longer pay the extra \$3 fee that has been charged for booking via the Web, Texas Parks and Wildlife said April 23.

The new system, Tx-Parks, will go live on May 12 at all 93 state park locations and the agency's Customer Service Center for centralized reservations, located in Austin.

Words from Faith & Grace



by Cecil R. Biggers, Lutheran Lay Minister

As we celebrate Mother's Day and the sixth week of Easter, we ponder Acts 16: 9-15, Psalm 67, Revelation 21:10-22:5, and John 14: 23-29.

Paul and crew are seeking to convert more people to The Way. They are barred by the Spirit from going into Asia (toward Ephesus) and from going to Bithynia. Paul has a vision of a man from Macedonia saying, "Come over to Macedonia and help us". Now Paul usually started his evangelizing by attending the local synagogue, but when they arrive in Philippi, a Roman colony, there is no synagogue and they seek to find a place of prayer near the river. When Paul finds a group of God-fearers he presents the gospel to them. A wealthy merchant, Lydia, hears and believes. After she is baptized, Lydia invites Paul and crew to stay at her home. The first church in Europe is established in the home of a foreign woman (Thyatira is in Asia Minor). The loving Spirit of God reaches all nations.

The Psalmist sings of all nations, all peoples praising God. The power of God is known to all nations.

John of Patmos is shown the "Bride of Christ" by one of the seven angels who had the seven bowls of plagues. John describes the New Jerusalem as a four-square cube with each side being 1500 miles long. (Attention math freaks, this yields an area of 2.25 million miles!) The cube of New Jerusalem has as its center God's throne; this is analogous to the Holy of Holies in the Jerusalem temple which was also a cube. The cube is a symbol of perfection. John describes the jewel like foundation of the City and describes this New Jerusalem as having twelve gates which serve to indicate the universal nature of the City and the continuous nature of the City. Each of the gates is formed from a single pearl. This image should be reassuring to the persecuted believer. God's City is open to all who believe and those who dwell there with God enjoy the privilege of seeing God and having a close relationship to Him. God is the center of the City; God is the light of the City; and entry to the City is attained through God's grace.

Between the preparation for Jesus to return to the Father and the arrival of the New Jerusalem, we have the gift of the Holy Spirit. Judas (not Iscariot) asks Jesus, "How is it that you will reveal yourself to us and not to the world?" Jesus answers, "Those who love me will keep my word, and my Father will love them, and we will come to them and make our home with them". He then promises the disciples that they will receive the Holy Spirit who will explain everything to them. He then tells them, "Peace I leave with you; my peace I give to you". This peace is "Shalom" which includes all things necessary for us to live and have a right relationship with God. Thus when we act in obedient trusting love for God, we have the ultimate safety and we gain a fuller and fuller revelation of God.

For those who have known the unconditional love of their earthly mother, this is only a reflection of the steadfast love of God. For those whose earthly family has been one of abuse and dysfunctional relationships, you as a believer are a Child of God and in His heavenly family you are loved without bounds.

May the Holy Spirit assure you of the unconditional love of Jesus The Christ and welcome you into the family of God.

SUDOKU
PRESENTED BY
VolunteerMatch.org
Where volunteering begins.

			3					9	
2			4						8
6	5		1		8	2			
8				2					
4	1							7	6
				4					2
			3	7		4		2	5
1						6			3
	8					3			

© 2010, StatePoint Media, Inc. answer on classified page
Fill in the blank squares in the grid, making sure that every row, column and 3-by-3 box includes all digits 1 through 9.

The Hansford County Reporter-Statesman
Mailing Address - 213 Main Street • Spearman TX 79081
Physical Address - 310 Barkley Street • Spearman TX 79081
Phone - (806) 659-3434 • Fax - (806) 398-9080
www.spearmanreporter.com • reporter@spearmanreporter.com
Mon.-Thurs. 9 a.m.-12 p.m., Mon.-Wed. & 1-5 p.m.
Closed Thurs. afternoon and all day Fri., Sat. & Sun.

Gary Smith - Publisher Catherine Smith - Editor
Contributing Writers: Dorothy Hudson, Jim Derington, Merry Sparks, Cecil Biggers
Contributing Photographers: Charlie Johnson, Lisa Johnson Tammy Batton, Bonnie Bergan

Subscription Rates
In Hansford County - \$30.00 • Out of County - \$40.00
E-Mail Subscription - \$35.00

The Hansford County Reporter-Statesman (USPS 529660) is published weekly in Spearman, TX. Periodical postage paid in Spearman, TX. **POSTMASTER:** Send address changes to: The Hansford County Reporter-Statesman, 213 Main Street, Spearman, TX 79081.

Publication Policy
The deadline to submit news and advertising to The Hansford County Reporter-Statesman is Monday at 5 p.m. Items submitted after the deadline will be published at a later date, as time and space permit. Publication of all items is at the discretion of the editor.

Advertising
Open Display rates are \$4.00 per column inch. Classified Ads are \$6 for the first 25 words and 10¢ per word for each additional word. (Additional charge for boxed classifieds.) There is a \$1 charge per week if billed.

Member of
Gruver Chamber of Commerce
Spearman Chamber of Commerce
Texas Press Association and Panhandle Press Association

PROM NIGHT

ACROSS

1. Relating to the Ilium
6. Short for England
9. Fill to satisfaction
13. Medvedev's retreat
14. "Neither here ___ there"
15. ___ circle, as in friends
16. *Prom revelers are instructed to remain in this state
17. Double helix
18. Echo sounder
19. Brains or intelligence
21. *Boutonniere, e.g.
23. Movie "___ Hard"
24. One on a list
25. "___ and don'ts"
28. *Not given by teacher the morning after prom
30. Ennui
35. Sections of a play
37. *Prom bands plug instruments into these
39. ___-Japanese War (1904-05)
40. Whiskey without water, e.g.
41. A renewable energy
43. Twelfth month of civil year
44. One of four Cs of a diamond
46. Caffeine-producing tree
47. Bluish green
48. Snare

DOWN

1. Proof of identification, pl.
2. Thailand's eastern neighbor
3. Intercontinental ballistic missile, acr.
4. In advance
5. *She took her revenge on Prom night
6. *make ___ meet"
7. Prefix for "not"
8. Often done to damaged skin
9. Found on Mt. Everest
10. Actress Hathaway
11. Eye drop
12. Make a mistake
15. Compounds of same molecular but different structural formulas
20. Where everything is big?
22. "___ the wild rumpus begin!"
24. Burst inward
25. *Done 'til dawn on prom night?
26. Clooney in "Ocean's Eleven"
27. The beginning
29. Berserk
31. Simon and Garfunkel, e.g.
32. British ___
33. "Round up the ___ suspects!"
34. *She looked pretty in pink
36. It grants wishes?
38. *Girls look for it when shopping for prom dresses
42. Synagogue teacher
45. Tibetan doctrine
49. Hawaiian dish
51. *His garb on the big night
54. The Romanovs, e.g.
56. 1/100 of a rial
57. Point formed by two intersecting arcs
58. Archaic "to"
59. *It ruins an outdoor prom
60. Anything that is necessary but lacking
61. "Show Boat" novelist Ferber
62. Dissenting clique
63. ___ Gehrig
65. Likewise
67. "Gidget" actress
67. Just a "___ bit" ___

These games are brought to you by the
Hansford County Reporter-Statesman

CROSSWORD

PRESENTED BY
VolunteerMatch.org
Where volunteering begins.

© 2010, StatePoint Media, Inc. answer on classified page

Happy Birthday!

May 6
Birthdays - Mike O'Connell, Robin Hargis, Cecil Fryer Jr., Andrea Archer, Raymond Jenkins, Audrey Regen, Joan Dahl, Sybil Vera, Dr. Darrell Duke, Angie McCarney, Tim Smith, Tyler Schnell
Anniversary - M/M Bob Davis

May 13
Birthdays - Kerry Foster, Billy Horton, Cora Meyer, Terry Butt, Roy Stinson, Tom Fanning, Sarah Moore

May 14
Birthdays - Nancy Barkley, Debbie Deeds, Gerald TeBeest, Vickie (Hand) Nickel, Patsy Barrera, Fran Quinby, Janice Gerrard, Luis Garcia, Sharon Seagler, Eric Titus, Jim Bartimus, Chris Johnson, Buck Tidwell, David Terry, Brandy Shelton, Sue Gerardy, Kevin Harris
Anniversary - M/M Felipe Lomeli

May 15
Birthdays - Monte Gluck, Brooke Holt Ruhlin, Jamie Maize, Tommy Russell, Charles Eaton, Wayne Cook, Francisco Borunda Jr., Tommie Mitchell, Luis Moreno, Trent Seagler, Ortha Fay Watkins, Trena Horton, Sadie Goodall, Janelle Baumgardner, Jean Armes, Bryan Dudley, Jennifer Traylor, Lance Smith
Anniversary - M/M Don Kjos

May 16
Birthdays - Charles Evans, Mary King, Justin Miller, Ashleigh Sherrill, Gayle Smith, Kurt Spoonmore, Linda Latta, Cinda Wolf, Shelly Whitefield, Mary Trent, John Sprig, Michael Gruver, Linda Lujan, Rhonda Christian, Landry Fletcher, April Payne

May 17
Birthdays - Bart Thoreson, Karen Burke, Billy Close, Lorene McGuire, Earla Spencer, Matt Lair, Scott Boyd, Angela Pipkin, Lloyd Laxton, Marcy Villalobos, Cleavevine Elliott, Edith Volden
Anniversary - M/M Randy Reid, M/M Justin Gifford, M/M Darrell Wright

May 18
Birthdays - Dan Carthel, Phylis Haefner, Amy Lewis, Darrell Messer, Clint Swink, Jerry Swink, Sally Desimone, Paula Fryrear, Alma Ricketts, Byron Kenney, Joy Gafford, Ernestine Gray, Luis Moreno Jr., Kimberly Rhea, Ann Atchison, Amy Sparks, Thea Beck, Danny Henson, Kenny Virden, Travis Hodge, Justine Rosales
Anniversary - Roy & Denise Harbour, Raymond & Judy Jenkins, M/M Mark McCloy, M/M Robert Elliott

May 9
Birthdays - Teresa Barkley, James Burk, A.J. Lopez, Bobby Thompson, Jerry Virden, Tommy Gambin, Chuck Sparkman, L.T. Wright, Dusty Ellis, Alicia Francis, Ruby McLain, Toni Davis, Liz Cazares, Julie May, Nikkie Stork
Anniversary - M/M Dale Hodge

May 10
Birthdays - Sandi Foster, Hayley Garland, Paula Williams, Butch Lasater, Teresa Kirk, Alva Garner, Brenda Shieldknight, Kevin Bellows, Deborah Randall, Paul Garza Jr., Robert Howell, Adrian Garza, Tashiana Schumann, Troy Seagler, Tammy Mitchell, Abigail DeLeon, Bonnie Novak
Anniversary - M/M Harley Murrell, M/M Gary Evans, M/M Ray Gibson

May 11
Birthdays - Pake Eckhardt, Jeff Hand, Diane McLain, Maria Arjona, Scotty Evans, Francis Ortega, Mary Ellen Vitele, Jeremy Austin, Larue Whitefield, Jared George, Wylee Maupin, Darla Myatt

May 12
Birthdays - Kristin Evans, John Holland, Trevor Ferguson, Deanna Johnson, Dave Karlin, Jimmy Greene, Hazel Scott, Gary Gumfory, Ernesto Puentes, Karen Hamilton, Toni Atwood, Bonnie Benson, Anita Spivey, Lauren Carter, Karen Hodge, Kenneth Redwine

Gruver Elementary Pre K and Kindergarten Round-up

The Gruver Elementary Pre-Kindergarten and Kindergarten Round-up will be held on Tuesday, May 11th at the Gruver United Methodist Church, Fellowship Hall.

To be eligible for the Pre Kindergarten program, your child must be 4 years old as of September 1, 2010, unable to speak or comprehend the English language, or be educationally disadvantaged or homeless.

For a student to be eligible for Kindergarten he/she must be 5 years old as of September 1, 2010.

We will administer the Dial 3 (Developmental Indicators for the Assessment of Learning: 3rd Edition) readiness assessment on all incoming Kindergartners. This assessment will help us know your child's abilities in Motor Skills, Concepts, and Language Development. Your child will also be screened for vision, hearing, and speech. The assessment will take approximately one hour. At the end of the process Mrs. Mayhew will go over your child's information with you. Feel free to ask any questions.

We will work with four children each hour. We will begin at 8:30 a.m. and conclude at 3:00 p.m. We will break for lunch from 11:00 - 12:00. To schedule an appointment, please call the elementary office at 733-2031 by May 10th.

Bring your child's birth certificate, social security card and immunization records with you. We will register your child for the 2010-2011 school year at this time.

Remember to contact the elementary office 733-2031, to schedule an appointment.

Our Sympathy

CHARLINE DORIS LAXSON

SPEARMAN - Charline Doris Laxson, 78, died Saturday, May 1, 2010.

Services were at 11 a.m. Tuesday in First Baptist Church in Spearman with the Rev. Jim Medley officiating. Burial was in Gruver Cemetery by Boxwell Brothers funeral Home in Spearman.

Mrs. Laxson was born Oct. 14, 1931, in Gatesville. She married Bo Laxson on Nov. 16, 1946, in Meridian. She was a homemaker.

She was preceded in death by her husband, Bo, in 1989; a son, Ronnie Laxson in 1996; a brother; and three sisters.

Survivors include two sons, Richard Laxson and wife Susan of Amarillo and Jim Laxson and wife Betty of Arlington; a daughter, Paulette Laxson of Spearman; a brother, Willis Warren of Trent; two sisters, Annie Belcher of Hamilton and Bernice Light of Andrews; and nine grandchildren, Courtney Laxson of Lubbock, Terry Laxson of Kingsville, Jeannie Gavigan of Merrick, N.Y., Blake Laxson of Miami, Fla., Jennifer Smith of Amarillo, Chris Laxson of Ashburn, Va., Randy Laxson of Kerrville, Lisa Bilbrey of Clarendon, and Kelly Laxson of Amarillo; and 11 great-grandchildren.

The family suggest memorials be to Hansford Manor, 707 S. Roland St., Spearman, TX 79081; or to a favorite charity.



visit... **FAMILYPOOLFUN.COM**

- Our pools create Generations of Memories everyday, vacations never end!
- Aboveground & Inground pools at WHOLESALE PRICING
- SIMPLE DIY Pool Kit Assembly
- SAVE MONEY on All Pool Supplies & Accessories. Ships Fast

Call Today! **800-250-5502**

NEED A CAREER CHANGE

Start your new career as a professional truck driver at Stevens Transport! We will sponsor the cost of your CDL training! No experience needed! In only 17 days you will earn your CDL and begin your paid on-the-job training! Potential to earn up to \$40K first year! Excellent benefits and 401K! EOE **800-333-8595**

www.becomeadrivers.com

MONUMENTS

Boxwell Brothers Funeral Home

519 Evans • Spearman
659-3802

Dear friends,
 When you buy a monument from us we make sure it is exactly what you want at a price you can afford. If it is not right, we will make it right. And you will not have to search the countryside to find us. We are here when you have a need.

Sincerely,
 Bob Boxwell

MARVIN EARL REAGAN

PANHANDLE - Marvin Earl Reagan, 57, died Friday, April 30, 2010.

Services were at 2 p.m. Wednesday in First United Methodist Church of Panhandle with the Rev. Lewis Holland officiating. Burial followed in Panhandle Cemetery by Minton-Chatwell Funeral Directors of Panhandle.

Marvin was born March 1, 1953, in Amarillo to Earl and Kyble Reagan. He attended Borger public schools and graduated from Borger High School in 1971. Marvin attended Texas State Technical Institute and graduated with a degree in diesel mechanics in August 1972.

He married his high school sweetheart, Cynthia Jean Harris, on Aug. 19, 1972, in Borger. Over the next few years, Marvin worked for the International Harvester Dealerships in Spearman, Fairview, Okla., Muleshoe and Brownfield.

In 1982 the opportunity to own an I.H. dealership presented itself in Panhandle, and Marvin and his brother, Jonny, went into business and hired their brother, Alan. They eventually moved their business to Pampa where it remained until Marvin closed it in 1998. Marvin then worked as a long-distance truck driver until his health no longer allowed him to drive professionally.

Marvin was a member of the First United Methodist Church of Panhandle where he enjoyed singing in the choir and cooking meals for the youth and choir parties.

Marvin was preceded in death by his parents; and his younger brother, Alan.

Survivors include his wife, Cynthia; two daughters, Jennifer Lavake and husband Jeremy of Amarillo, and Kimberly Reagan of Longview; a son, Robert Reagan of Canyon; a brother, Jonny Reagan and wife Mona of Pampa; two sisters, Sharon O'Connor and husband Michael of Burleson, and Kathy Lancaster and husband John of Baton Rouge, La.

The family suggests memorials be to First United Methodist Church Memorial Fund; Choir Memorial Fund; or Youth Fund at P.O. Box 549, Panhandle, TX 79068.

May 8, 2010 • Canadian, Texas • Featuring Stoney LaRue

www.canadianrivermusicfestival.com

FREE SCOOTER MONTHLY!

Toll Free **1-877-POWER17**
(1-877-769-3717)

"Sign up for Monthly Scooter Give-Away"

Med Care Se Habla Espanol
MEDICAL SUPPLY 8am-6pm M-F

February Winner: Linda Love, Springtown, Tx.

TOUGH Affordable Fun!

FamilyGoKarts.com

- Fantastic ATVs starting at \$569.95. Ships Free!
- Quality ATVs for all ages with fast shipping
- Plus Gokarts, Trailers, RC Cars & more...
- Long lasting fun!

Visit us at www.FamilyGoKarts.com

Call Now... **800-950-2210**

STOP LEG CRAMPS BEFORE THEY STOP YOU.

Calcet® is designed to help stop low calcium leg cramps. Just ask your pharmacist.

Calcet with More Calcium & Vitamin D3

Helps fight leg cramps. For those with milk allergies. Fights osteoporosis.

Mission

PUBLIC NOTICE

NEW HOME \$29,995! OVERBUILT **25 MUST GO!**

1.800.555.5035 *Hurry!*

DIRECTV SAVE \$29/MO FOR A YEAR!

PLUS: **FREE** 1-4 Room System

FREE Standard Installation (1-4 rooms)

FREE HD DVR Receiver Upgrade

FREE 3 MONTHS SHOWTIME & Starz with DIRECTV 3 YEAR Package and Above

No start costs! Local installs! ASK HOW! CALL DIRECTVARTV

Toll Free **800-214-7110**

NOW FREE MOVIES!

Replenish the seed of faith through . . .

DAILY BIBLE READING, PRAYER & REGULAR CHURCH ATTENDANCE

- Spearman**
- Apostolic Faith Church**
822 S. Dressen • 659-2870
Sunday School: 10 a.m.
Worship Service: 11 a.m.
Sun. Eve.: 6 p.m.
Wed. Prayer Mtg: 7 p.m.
Pastor - Roland Haney
 - First Assembly of God**
401 N. Bernice • 659-2295
Sunday School: 9:30 a.m.
Worship: 10:40 a.m.
Evening Worship: 6 p.m.
Wed. Worship: 7 p.m.
Wed. Youth: 7 p.m.
Pastor - Jerry Pollard
 - First Christian Church (Disciples of Christ)**
29 S. Bernice • 659-2036
Sunday School: 9:45 a.m.
Worship: 10:50 a.m.
Minister -
 - First Baptist Church**
123 N. Bernice • 659-5557
Sunday School: 9:45 a.m.
Worship: 11 a.m.
Evening Worship: 7 p.m.
Men's Bible Study - Wed., 7 a.m.
Children's Choir - Wed., 6 p.m.
Adult Choir - Wed., 7 p.m.
Wed. Bible Study: 7 p.m.
Pastor - Jim Medley
 - Church of Christ**
121 S. Haney • 659-3244
Sunday Bible Class: 9:45 a.m.
Worship: 10:30 a.m.
Evening Worship: 6 p.m.
Bible Study Wed.: 7:30 p.m.
 - Sacred Heart Catholic Church**
901 Roland • 659-2792
Sat. Night Mass: 5:30 p.m.
Sun. Mass: 9 a.m. - English
Sun. Mass: 11:30 - Spanish
1:30 p.m. - Gruver - Christo Renditor Mass - Spanish
Rev. Guillermo Morales
 - First United Methodist**
407 S. Haney • 659-5503
Sunday School: 9:45 a.m.
Worship: 8:30 & 11 a.m.
Jr. High Youth: 5 p.m. Sunday
High School: 6 p.m. Sunday
Kids Club: 3 p.m. Wed.
Pastor - Neely Landrum
 - Grace Presbyterian Church (Worships with Faith Lutheran Church)**
1101 Bernice • 659-2033
 - Faith Lutheran Church (ELCA)**
1101 Bernice • 659-2252
Sunday School: 9:45 a.m.
Worship: 11 a.m.
(Worships with Grace Presbyterian Church)
Pastor - Cecil Biggers, PLM
 - Union Church**
31 S. Endicott • 659-2644
Sunday School: 10:00 a.m.
Worship: 11:00 a.m.
Bible Study: 7 p.m. Wed.
Youth Service: 6 p.m. Wed.
Pastor - Don Baltazor
 - Fellowship Baptist**
1102 S. Archer • 659-2783
Sunday School: 10 a.m.
Worship: 11 a.m.
Sun. Evening Worship: 6 p.m.
Sun. Evening Spanish Worship: 7 p.m.
Youth/Adult Service: 7:30 Wed.
Pastor - Philip Hudson
 - Primera Mision Bautista**
502 E. 7th • 659-3991
Sunday School: 9:45 a.m.
Worship: 11 a.m.
Wed. Prayer Meeting: 7 p.m.
Thurs. Visitation: 7 p.m.
Pastor Joe Garcia Jr.
 - El Aposento Alto U.P.C.I.**
1105 S. Roland
Domingos: Escuela-Domical - 10 a.m.
Culto Evangelistico - 7 p.m.
Jueves: Oracion - 8 p.m.
Mier: Estudio Biblico - 7 p.m.
Pastor - A.G. Martell
(806) 659-2153
 - Gruver United Methodist**
Broadway & Garrett
733-2651
Sunday School: 9:45 a.m.
Worship: 8:30 & 10:50 a.m.
Eve. Worship & UMY: 6 p.m.
Pastor - George Price
 - Spanish Cristo Redentor Church**
Sunday Mass: 1:30 p.m.
Friday Evening Mass
Summer - 8:00 p.m.
Fall/Winter - 7:30 p.m.
- Gruver**
- First Baptist Church**
402 E. Broadway • 733-2411
Sunday School: 9:45 a.m.
Worship: 10:50 a.m.
Disciple Training: 6 p.m. Sunday
Prayer Meeting: 7:30 p.m. Wednesday
Pastor - Scott Curry
 - Church of Christ**
209 King • 733-2760
Sunday School: 9:30 a.m.
Worship: 10:20 a.m.
Evening Worship: 6 p.m.
Wed. Worship: 7:00 p.m.
Minister - Gaylord Cook
 - First Christian Church**
510 King • 733-2960
Sunday School: 10:00 a.m.
Sunday Worship: 11 a.m.
Youth: 7:30, Sunday
Adult Bible Study: 7:30, Sun.
Wed. Bible Study: 8:00 p.m.
Pastor - Gary Gumfory
- Morse**
- Morse Baptist Church**
733-2757
Pastor - Mike Martin
- Oslo**
- Oslo Lutheran Church (ELCA)**
6 Miles West & 12 Miles North of Gruver
339-7646
Sunday School: 9:45 a.m.
Worship: 11 a.m.
Pastor - Arlen Lloyd
- Waka**
- Church of Christ**
300 Rogers Ave.
202-7126
Sunday Worship: 6 p.m.
Wednesday Bible Study: 6 p.m.
Preacher - James Gordon

He has showed you, O man, what is good. And what does the LORD require of you? To act justly and to love mercy and to walk humbly with your God. Micah 6:8

This feature is made possible through the sponsorship of these civic minded businesses:

<p>Deakin ELECTRIC</p> <p>OILFIELD • RESIDENTIAL • COMMERCIAL 321 S. MAIN • SPEARMAN 1-800-999-1506 Chris Deakin (806) 659-5016 President</p>	<p>Bartlett's Lumber & Hardware</p> <p>105 W. Broadway • Gruver, TX (806) 733-2404</p>	<p>BERRY CLEANERS</p> <p>Ann & Vernon Pipkin - Owners Phone 659-3122 • P.O. Box 1017 207 Main St. • Spearman, TX</p>	<p>Morse Implement & Auto Supply</p> <p>"Join us in church!" Tom Dortch 733-2668 Box 89 • Morse, TX 79062</p>
<p>PRAIRIE MOTORS INC.</p> <p>Hwy. 207 South • P.O. Box 430 Spearman, TX 79081 • (806) 659-2541 www.prairiemotors.com</p>	<p>MurMur's Cafe</p> <p>100 Roland St Spearman, TX. 659-3580</p>	<p>Hansford County Reporter-Statesman "Proudly Serving Hansford County Since 1907" (806) 659-3434 310 Barkley • Spearman, TX</p>	<p>INTERSTATE BANK, sssb</p> <p>www.interstatebank.net 322 Main • P.O. Box 146 Spearman, TX • 659-2559</p>

TVI

FOR YOUR INFORMATION

Medical Fund for Bruce Duncan
A medical fund has been established for Bruce Duncan at First National Bank, Spearman. If you would like to make a donation you may make a deposit with any teller or mail a donation to First National Bank, Bruce Duncan Medical Fund, PO Box 337, Spearman TX 79081.

O'Loughlin Center Hours
The O'Loughlin Center is open for the following hours: Monday-Thursday, 6:00 a.m.-8:00 p.m.; Friday, 6:00 a.m.-6:00 p.m.; and Saturday, 9:00 a.m.-12:00 p.m. (noon). For more information, contact Jada Breeden, Manager, The O'Loughlin Center, 502 S. Brandt, PO Box 733, Spearman TX 79081, 806-659-3030.

Spearman ISD Community Resource Program
Spearman ISD Community Resource Program is considering starting beginner and intermediate computer classes. I am trying to get an indication of interest around the area for these classes. Please send an email or call the office to let me know if you would be interested in one of these classes. (Cindy Blackman - 659-3233 or cindy.blackman@region16.net)

Kids Kamp - Lynx Basketball Camp
Kids Kamp will host a Lynx Basketball Camp June 1-4 from 1-5 p.m. in the Lynx Varsity Gym. The cost of the camp is \$60 and includes a T-shirt. Students will learn the fundamentals of the game, learn the Lynx philosophy, and learn and develop a sense of family and pride. A competition will be held every day. The instructor is Coach Josh White. To register, call Cindy Blackman at the Community Resource Office, 806-659-3233, email to cindy.blackman@region16.net, or pick up an application from any school office or the Hansford County Library.

Kids Kamp - Lynxette Basketball Camp
Kids Kamp will host a Lynxette Basketball Camp June 1-4 from 9 a.m.-12 noon in the Lynx Varsity Gym. The cost of the camp is \$50 and includes a T-shirt. This camp is open to kids up to 9th grade and will be coached by Coach Jr. Ashmore. To register, call Cindy Blackman at the Community Resource Office, 806-659-3233, email to cindy.blackman@region16.net, or pick up an application from any school office or the Hansford County Library.

Spearman Blood Drive May 10
Coffee Memorial Blood center is hosting a Blood Drive in Spearman on Monday, May 10, 2010, from 1-7 p.m. at The O'Loughlin Center (502 Brandt). Every eligible donor who presents to donate during the months of May, June, July, and August will be entered into a drawing for a \$2500 cruise voucher to the destination of your choice. The more you donate, the more often you can enter! For more information, or to schedule an appointment, call Jada Breeden at 659-3030.

Rushing Wind Emmaus Community
Rushing Wind Emmaus Community will meet Sat., May 8, at 6 p.m. at the Waka Christian Center. There will be a potluck meal, sponsors training, and a praise and worship service. Families and friends are invited, a nursery will be provided.

SHS Athletic Banquet
The Spearman High School Athletic Banquet is May 17th at 6:30 p.m. in the O'Loughlin Center. Please come attend the end of year sports recognition. Hungry Cowboy will provide the meal at a cost of \$12 a person.

Gruver Junior Parent's Meeting
There will be a brief Junior parent meeting Thursday, May 13 at 6:00 p.m. in the FCS room of the high school. Some helpful reminders about the upcoming senior year make up the agenda. Topics of interest: Application for admission, scholarships, testing, and financial aid. Hope to see you there!!

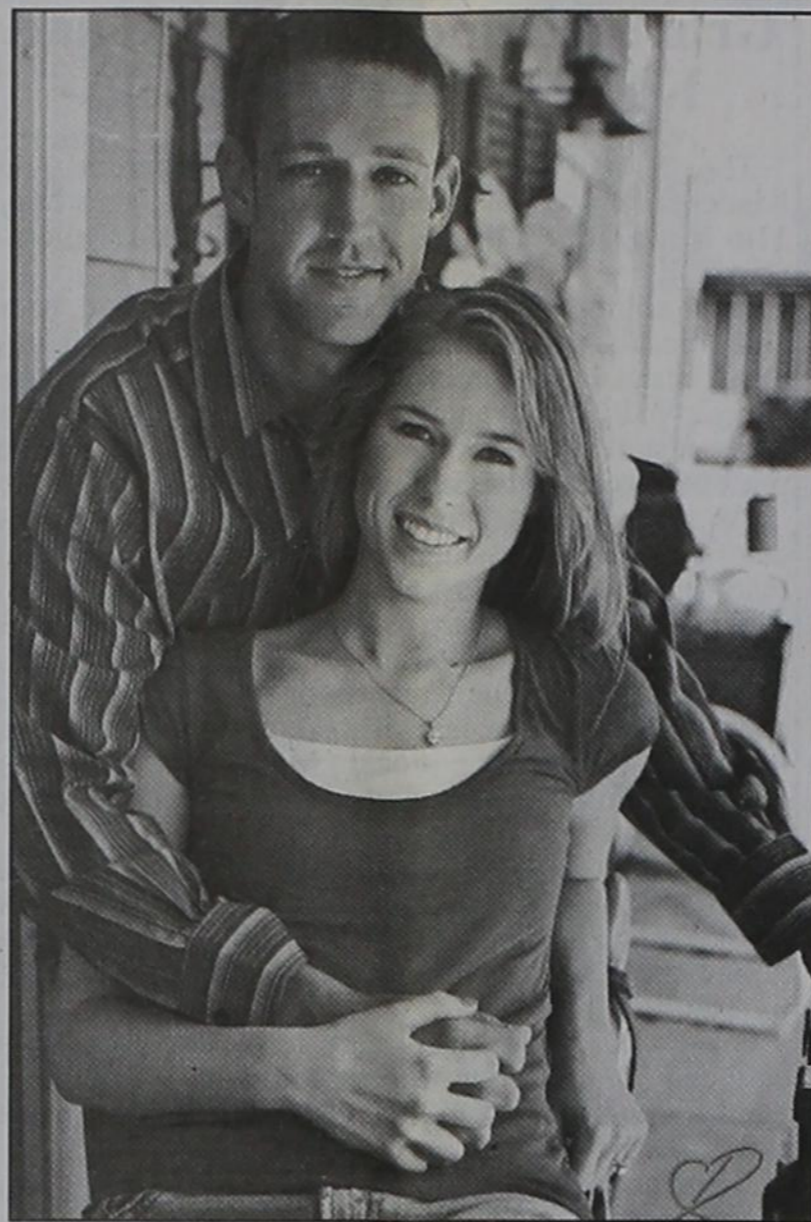
Hansford Golf Club Hosts Tuesday Night Scrambles
The Hansford County Golf Club has begun their Tuesday Night Scrambles. Tee-time is at 6 p.m. sharp. The cost is \$10 per person. Teams are drawn. For more information, or to sign up, call 659-2233.

Panhandle Crisis Center 14th Annual Golf Tournament
The Panhandle Crisis Center will host their 14th Annual Golf Tournament, a 2-Player Scramble, on Saturday, May 1st at 9 a.m. at the Perryton Golf Course. The cost is \$40 per player. The entry fee includes green fees, mulligans, and beverages during play, as well as lunch, which will be served at 11:30 a.m. For more information and tournament sign-up, contact the Perryton Club Pro Shop at (806) 435-5381.

Amarillo Botanical Gardens - Garden Fest
Amarillo Botanical Gardens will hold their annual outdoor GardenFest event on Saturday, May 1st from 10 a.m.-2 p.m. Local garden clubs and businesses will sell plants and other garden and yard related products. Also available will be gardening demonstrations, art show, book sale and gift shop. Light snacks and beverages will be available for purchase. Musical artist Mike Fuller will perform. Admission is free. For more information, visit www.AmarilloBotanicalGardens.org, or call 806-352-6513.

Get Your Green Thumb Here!
Gardening in the Texas Panhandle can be easy and fun! Master Gardener Angie Hanna will explain the "7 Basic Principles of Gardening" at the Take 5 program April 30 from 12:05 to 12:55 pm in the Education Classroom. Implementation of these principles provides three results: beautiful, thriving plants, low water usage and low maintenance gardens. Anyone can turn around a drab, boring, lifeless landscape when they adhere to established gardening principles and adjust them for climate and soil conditions. The fee for the program is \$3. Participants should enter at the door on the museum's north loading dock. Bring a brown bag lunch; coffee and tea will be provided. PPHM's Take 5 program series is held on the final Friday of months with five Fridays. The next program in the series is slated for July 30.

SHS All School Reunion July 2 & 3, 2010
The Spearman High School All-School Reunion will be held July 2nd & 3rd, 2010. If you have information regarding a specific class reunion, please contact the Hansford County Reporter-Statesman. We will list the specific information for each class reunion, as well as the information for the All-School Reunion in the newspaper as we receive it. Information may be mailed to: Reporter-Statesman, 213 Main Street, Spearman TX 79081; e-mailed to: reporter@spearmanreporter.com; faxed: 806-398-9080; or phoned in: 806-659-3434.



Engagement Announcement

David and Alexa Parnell of Carrollton, Texas announce the engagement and approaching marriage of their daughter, Kaela Elise Parnell, to Adam McKinley Cherry of Spearman, Texas.

Kaela is the granddaughter of Eli and Veda Parnell of Wichita, Kansas and Elzay and Almera Caywood also of Wichita, Kansas.

Adam is the son of Bruce and Jennifer Stinson of Spearman, Texas and Joe Mack and Tina Cherry of Greenbrier, Tennessee. He is the grandson of Lesley and Maurine Stinson of Waka, Texas, Robert and Martha Graves of Medina, Tennessee and Charley and Perrilyn Cherry of Ripley, Tennessee.

The bride-elect graduated in 2006 from Hebron High School in Carrollton, Texas. She will graduate in May from Hardin-Simmons University in Abilene, Texas with a Bachelor of Science. Her plan after graduation is to apply for medical school in hopes of practicing as emergency room physician in the future.

Adam is a 2003 graduate of Spearman High School. He earned a Bachelor of Science in Business Administration at McMurry University in 2007 and earned his Masters in Accounting at Abilene Christian University in 2009. He is now pursuing his teaching certification while working as the head tennis coach at Sweetwater High School in Sweetwater, Texas.

The couple is planning a destination wedding in the Bahamas on July 17, 2010.

Herban Renewal Bath and Body Care Products

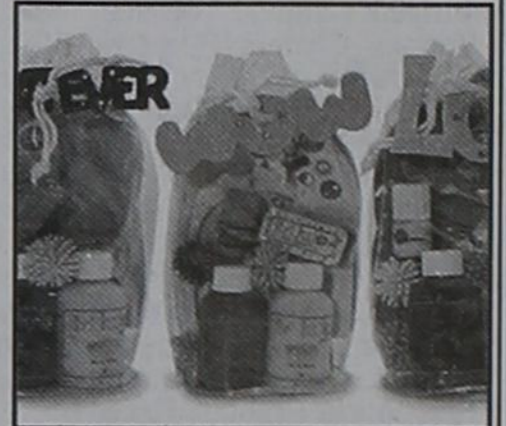
Herban Renewal Bath and Body Care offers top-quality bath and body care products. The company's products, made in West Texas by mentally and physically challenged adults, are steeped in love, opportunity and possibility. The special friends at Disabilities Resources, Inc. in Abilene, TX where Herban Renewal is based have been happily employed by the company for over a decade.


Herban Renewal boasts four unique lines: Herban Renewal, the flagship line, offers a range of luxurious and sophisticated bath items for women, including sumptuous soaps, lotions, salts and dusts. Arcelia is the company's other ladies line that's Earth-friendly and has a younger, chic and trendy sensibility. Herban Renewal also has two youth lines: Livi.Lu.Lu - cost competitive skin nourishing products for adolescent "tween" girlie girls - and Sweet Cheeks pampering products for babies. Herban Renewal also offers other kids items like its incredibly popular "Twinkle Toes" body glitter and Shoo! Monster (anti-boogeyman) dusts. Other adult items include whimsical soaps for men like its "Fish'n" and Hunt'n" Lather.

The Livi.Lu.Lu Girly Graphic Gift Sets contain: 2oz shower gel, 2oz lotion, lip balm, flippies, peace and love stickies, fun nail polish, and colorful star bursts. They sell for only \$14.95.

Products may be purchased online at <http://www.herbanrenewal.com/>. You may also call Toll-free: 877-691-5409 or send us an email to herbanrenewal@att.net.

(Advertisement)





You Are Invited
To An 80th
Birthday Celebration
Honoring

Billy P. Close

May 22, 2010
2:00 to 4:00
706 Ave. O

No Gifts Please
Cards may be mailed to
Box 652
Sunray, Texas 79086

DISH NETWORK
\$19.99/Mo. Why Pay More for TV?

- FREE 6-Room DISH Network Satellite System.
- 120+ Digital Channels. (for 1 year)
- FREE HD-DVR.
- Plus \$400 Sign-Up BONUS.

Call Now!
1-866-799-8039

Mesothelioma EXPERIENCE COUNTS
Lawyers with over 95 years combined expertise.

may occur 30 to 50 years after exposure to asbestos. Many workers were exposed from the 1940s through the 1970s. Industrial maintenance and operators are among those at risk for mesothelioma, throat cancer or lung cancer. Call us for professional insight.

Ryan A. Krebs, M.D., J.D.
Doctor-Lawyer in Full-time Law Practice
Richard A. Dodd, L.C.
Timothy R. Cappolino, P.C.
Board Certified Personal Injury Trial Law and Civil Trial Law by the Texas Board of Legal Specialization
NO FEE FOR FIRST VISIT
CAMERON, TEXAS

1-888-MESO-FIRM
(1-888-637-6347)
www.AsbestosLaw.com

HOME PHONE SERVICE
1st Month FREE
Starting at \$3.99/mo
\$14/mo including appropriate taxes and fees
\$0 Deposit • NO Credit Check
NO Contracts • Everyone Approved!
Restrictions May Apply.
NEWTALK 866.934.3448

PAXIL BIRTH DEFECTS
Congenital Heart Defects, Heart Valve & Lung Injuries

Paxil, a drug given to millions for depression, has been linked to serious birth defects including Atrial & Ventricular septal heart defects (hole in heart wall), PPHN, serious lung injuries, club foot, congenital heart defects & cranial skull defects.

In December 2005, the FDA issued a Black Box Warning concerning serious birth defects to infants of mothers taking Paxil while pregnant.

If you took Paxil during pregnancy and your child was born with a birth defect, you and your child may be entitled to compensation.
* Cases accepted for children born (1992-2006)

WILLIS LAW FIRM
HOUSTON, TEXAS
BOARD CERTIFIED
PERSONAL INJURY TRIAL LAWYER
TEXAS BOARD OF LEGAL SPECIALIZATION
DAVID P. WILLIS - ATTORNEY AT LAW

1-800-883-9858
CALL FOR A FREE CASE REVIEW

Gordon's

Your place for

Bridal Registry

- Couples Currently Registered**
- Kathy Slough & Scott Kilpatrick - 5/18
 - Beth & Daniel Kern - 5/22
 - Katie Reed & Cloyd Branson - 5/23
 - Kaylee Miesner & Broc Carter - 6/12
 - Michelle Waide & Jarick Howard - 6/19
 - Callie Hargis & Brian Hensley - 6/19
 - Jessica Cornell & Hunter Beville - 6/19
 - Kaela Parnell & Adam Cherry - 6/26
 - Bertha Ortiz & Osiel Flores - T&A
 - Esmerelda Bernal & Heriberto Navarret - T&A
 - Sara (George) & Nicholas Wright
 - Ashlee Flowers & David Fox
 - Kaylee Holt & Trel Etbauer
 - Crystal Boyd & Douglas Walls
 - Julie Bravo & Evan Cudd
 - Melissa (Bush) & Mark TeBeest
 - Chelsea Martin & Clancy Vanderburg
 - Roxane Holt & Oren Grossman
 - Nikki Hill & Matt Davis

Baby Registry

- Kassandra & Joshua Ramirez (Boy) - 5/17
- Brianne & John Thomas (Girl) - 5/22
- Randi (Atwood) & DJ Warrick (Boy) - 5/22
- Misti (Hand) & Jimmy Gaytan (Boy)
- Holly (Hart) & Marcus McLean

Gordon's 659-2141
314 Main Spearman

Alva Monument Co.
Formerly Liberal Monument
& Memorial Company

New Location:
111 Tucker Road
Liberal, Kansas

North of the New Wal-mart

Serving Kansas, Oklahoma & Texas for 93 years
(316) 624-4211 toll free # 888-654-9318

SPRING GARDEN IRON HAS ARRIVED AT

Acquisitions!

Just in time for Mother's Day... great selection of planters, pots, metal cactus and flowers, garden arches, wood-framed iron scrolls, metal trucks and tractors, and every size and shape of animal that you can imagine!

Stop by and see what's new at

Acquisitions...

at the corner of Hwys 54 & 287 in Stratford
Open Monday - Saturday from 10 a.m. to 6 p.m.

SHS 2010 All-School Reunion

SHS Ex-Students

The Spearman High School 2010 All-School Reunion will be held Saturday, July 3rd beginning at 8:30 a.m. at Spearman High School. The All-School Program will begin at 10 a.m. A barbecue lunch, catered by Hungry Cowboy, will be held after the program in the High School Cafeteria.

The O'Loughlin Center has also been rented for Saturday evening. All Ex-Students are invited to meet there for more fellowship.

The Ex-Students' Association needs your help. In order for us to make plans for the reunion. We need anyone who is planning to attend to RSVP as soon as possible with your updated info (name, mailing address, phone number, e-mail, etc.)

Your \$10 dues are also very important to the Association. The money from dues pays for a multitude of expenses: postage and supplies for mailings; janitorial services, flowers, refreshments, entertainment and supplies for the school assembly; rental of the O'Loughlin Center and various other expenses. The Ex-Students' Association also gives a scholarship each year to a \$500 senior graduate, which also comes from the dues.

Please send in your dues (even if you will be unable

to attend the reunion) to: SHS Ex-Students Association, PO Box 132, Spearman TX 79081. Please include your name and class year in any correspondence. For more information, you may call Claude or Jo Nell Sheets at (806) 659-2085.

If you have information regarding a specific class reunion, please contact the Hansford County Reporter-Statesman. We will list the specific information for each class reunion, as well as the information for the All-School Reunion in the newspaper as we receive it. Information may be mailed to: Reporter-Statesman, 213 Main Street, Spearman TX 79081; e-mailed to: reporter@spearmanreporter.com; faxed: 806-398-9080; or phoned in: 806-659-3434.

All Spearman High School Ex Students

A Dance/Social will be held on Saturday, July 3rd at The O'Loughlin Center (502 S. Brandt, Spearman) from 8 p.m.-12 midnight. A live band will perform and a concession stand will be available. The cost is \$10 per person. (BYOB)

Classes of 1943-1953

The SHS Classes of 1943-1953 will meet on Friday, July 2nd at the Palo Duro Dam Shelter. A catered meal will be

served at 6:30 p.m. The cost will be \$10.00 each. Bring your lawn chairs and come visit with your fellow classmates! For more information, or to RSVP, call Margarette Evans at 659-2165.

Class of 1960

The SHS Class of 1960 will hold our class reunion on July 1, 2010 at the Country Barn in Amarillo starting at 5 p.m. The next day we will travel to Spearman for the all school reunion. Contact Mickey Davis Gribble at mickeydg@comcast.net, Zack Fisher at zbfmem@windstream.net or, or Penny Dollar Cupp at cupstr4@aol.com for additional information.

Classes of 1960-1966

The SHS Classes of 1960-1966 will be meeting at The Hungry Cowboy on Friday night, July 2, 2010. The cost of the meal and other things will be \$12.00 per person. (The meal will start at 6:30 p.m.) We will need your RSVP by June 15, 2010 to Sharion Cook or Mary Dixon at 659-3711 or Diane Maxwell at 659-2987. Thank you and we look forward to seeing everyone at the Reunion.

SHS Classes of 1999

The Class of 1999 will have two class only events during the all-school reunion. All students from

the Class of 1999 are invited to attend both events. (If you can't make both, please come to one of the events!) Please RSVP to Kristin (Beedy) Whitehead, at kristinjan@hotmail.com.

On Friday, July 2nd, the Class of 1999 will meet at 7 p.m. at The Headquarters (217 Main Street, Spearman). The cost is \$20 per person (adults only). Price includes dinner and tip - salad, steak, baked potato, dinner roll, dessert and water/iced tea. (If you would like something other than water or iced tea, feel free to bring it along.) Please pay in advance to: Jess Anne Lusby (Mrs. Michael Lusby), 12950 FM 760, Spearman TX 79081.

On Saturday, July 3rd, the Class of 1999 will meet at the home of Michael and Jess Anne Lusby, 12950 FM 760, Spearman, at 6:30 p.m. Dinner will be potluck, so please bring something to share. Soft drinks will be provided. (If you would like anything other than soft drinks, feel free to

bring that along.) Children are welcome. If you have any questions, please e-mail Kristin (Beedy) Whitehead, at kristinjan@hotmail.com.

SHS Classes of 2000

The Class of 2000 will have our get together on Saturday, July 3, 2010 from 5-8 p.m. in the backyard of Marsha & Larry Murphy's home (1114 Bernice). Hamburgers & hotdogs will be on the grill, and drinks will be BYOB. Please feel free to bring significant others. Please RSVP to either Kathryn Murphy (kathryn.t.murphy@gmail.com) or Amber (Ramon) King (amber_ramon@hotmail.com).

Also, we are still in need of contact information for some of our classmates. So, if you have not already provided your current information to either Kathryn or Amber, please contact us so we may include you on our contact list. Also, if you have any information about other classmates, please pass that along as well.



Palace Theatre

MOVIE SHOW TIMES
Friday-Thursday - 7 p.m.
Sunday - 2 p.m.
Closed Sunday Night

FRESH POPCORN & DRINKS!
PARTY ROOM & ARCADE
MOVIE RENTALS

Palace Theatre
210 Main Street
Canadian TX 79014
806-323-5133
www.palacetheatre.com

The Palace Theatre meets Lucasfilm THX specifications for site and sound quality.

4th ANNUAL KURK ADAMS MEMORIAL POKER RUN

PROCEEDS BENEFIT JIM REEVES



50/50 POT
\$10 PER HAND
3 FOR \$25 (PER RIDER)
BYOB!

BAND & BBQ @ LAST STOP

SATURDAY, JUNE 12TH
SPEARMAN, TX
FIRST BIKE OUT @ 11 AM
LAST BIKE OUT @ 12:00 - LAST BIKE IN @ 4:00
10:30 REGISTRATION @ CITY HALL

FOR SHIRTS AND INFORMATION CALL AMANDA @ 806-662-3655 OR BRIANNE @ 806-231-7449

DOOR PRIZES
HIGH HAND/LOW HAND WINNERS ANNOUNCED @ 4:00
FOR CAMP SITE RESERVATIONS CALL 806-662-4401

CANADIAN RIVER MUSIC FESTIVAL

Band Lineup
Stoney LaRue-Headliner
Jody Nix and the Texas Cowboys
Spring Creek
Nite Life
Dave Stamey
Pete Watercott and Neil Gelvin

This event is being sponsored by Canadian Feedyards, Abraham Trading Company, King Well Service, Lowe's Pay N' Save, Bartlett's Ace Hardware, Happy State Bank, Canadian Banking Center, Railhead Bar and Grill, The Canadian Record, Alexander's Deli, Canadian Arts Alliance, and Canadian Economic Development Corp.



Canadian River Music Festival

806-323-6234

The Canadian River Music Festival will be held May 8th at Jones Pavilion in Canadian. Gates will open at 12 noon.

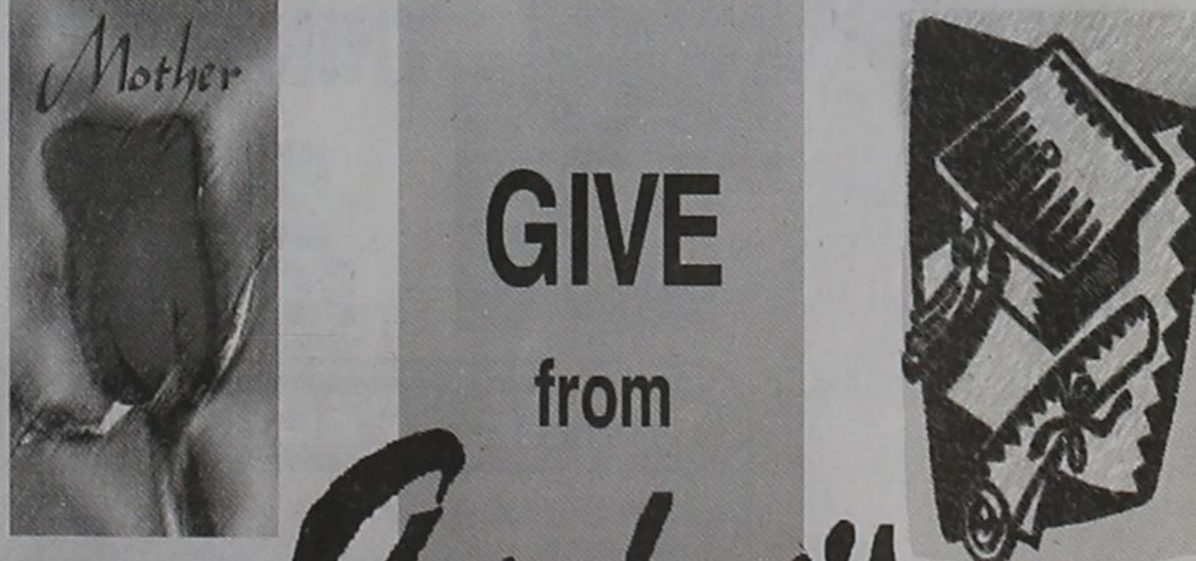
Tickets may be purchased at the Canadian Chamber of Commerce office located inside the visitor center in Canadian, Texas at 119 N. 2nd Street or may call 806-323-6234. Tickets are \$15 in advance and \$20 at the gate. Kids under 12 are free.

This event will be fun for the whole family with games and activities for the kids and local food vendors for everyone to enjoy.

WE LOVE OUR CUSTOMERS!

It's That Time of Year Again!

Mother's Day • Graduation
Father's Day • Weddings • Babies



GIVE from Gordon's DRUG

314 Main Spearman 806-659-2141

Spend \$100 - get 15% Off

Your Total Purchase (gift dept. only)

Property Tax Protest and Appeal Procedures

The law gives property owners the right to protest actions concerning their property tax appraisals. You may follow these appeal procedures if you have a concern about:

- the market or appraised value of your property
- the unequal appraisal of your property
- the inclusion of your property on the appraisal roll
- any exemptions that may apply to you
- the qualification for an agricultural or timber appraisal
- the taxable status of your property
- the local governments which should be taxing your property
- the ownership of property
- the change of use of land receiving special appraisal
- any action taken by the chief appraiser, appraisal district or appraisal review board that applies to and adversely affects you.

The appraisal district has the burden of establishing the property's value by a preponderance of the evidence presented. You can get a copy of a protest form from the Appraisal District office at 709 W 7th Ave Spearman, Texas 79081.

Note: You shouldn't try to contact ARB members outside of the hearing. The law requires ARB members to sign an affidavit saying that they haven't talked about your case before the ARB hears it.

Review by the District Court or an Arbitrator or SOAH
After it decides your case, the ARB must send you a copy of its order by certified mail. If you're not satisfied with the decision, you have the right to appeal. If you choose to go to court, you must start the process by filing a petition within 60 days of the date you receive the ARB's order. In certain cases, as an alternative to filing an appeal in district court, you may file, not later than the 45th day after you receive notice of the ARB order, a request for binding arbitration with the county appraisal district. In certain cases originating in certain counties, as an alternative to filing an appeal in district court, you may appeal to the State Office of Administrative Hearings (SOAH). An appeal to SOAH is initiated by, not later than the 30th day after you receive notice of the ARB's order, filing with the chief appraiser of the county appraisal district a notice of appeal with the applicable filing fee.

Tax Payment
You must pay either the amount of taxes due on the portion of the taxable value not in dispute or the amount of taxes due on the property under the order from which the appeal is taken.

More Information
You can get more information by contacting the Hansford County Appraisal District at (806) 659-5575 or 709 W 7th Ave, Spearman, TX 79081-3407.

You can also get a pamphlet describing how to prepare a protest from the appraisal district or from the State Comptroller's Property Tax Assistance Division at P.O. Box 13528, Austin, Texas 78711-3528.

Deadline for Filing Protests with the ARB*

Usual Deadline
On or before May 31 (or 30 days after a notice of appraised value was mailed to you, whichever is later).

Late protests are allowed if you miss the usual deadline for good cause. Good cause is some reason beyond your control, like a medical emergency. The ARB decides whether you have good cause.

Late protests are due the day before the ARB approves records for the year. Contact your appraisal district for more information.

Special Deadlines
For change of use (the appraisal district informed you that you are losing agricultural appraisal because you changed the use of your land), the deadline is not later than the 30th day after the notice of the determination was mailed to you.

For ARB changes (the ARB has informed you of a change that increases your tax liability and the change didn't result from a protest you filed), the deadline is not later than the 30th day after the notice of the determination was mailed to you.

If you believe the appraisal district or ARB should have sent you a notice and did not, you may file a protest until the day before taxes become delinquent (usually February 1) or no later than the 125th day after the date you claim you received a tax bill from one or more of the taxing units that tax your property. The ARB decides whether it will hear your case based on evidence about whether a required notice was mailed to you.

* The deadline is postponed to the next business day if it falls on a weekend or holiday.

Regional Track Meet Results

Region I-2A Track

The Region I-2A Track Meet was held on Monday and Tuesday, May 3rd and 4th at Ratliff Stadium in Odessa.

Following are the results for Spearman High School (Top 2 qualify for state meet):

Boys

Boys Team Standings:

1. Childress 78; 2. Sonora 70; 3. Wall 38; 4. Lubbock Roosevelt 32; 5. (tie) Littlefield and Bangs 27; 7. (tie) Coahoma and Highland Park 26; 9. (tie) Dimmitt, Bowie and Bushland 24; 15. (tie) Eastland, Panhandle and Idalou 16; 18. (tie) River Road and Kermit 14; 20. **Spearman 12**; 21. Slaton 10; 22. (tie) Muleshoe and Olney 9; 24. (tie) Merkel, Tuscola Jim Ned and Friona 8.

Pole Vault:

1. Jordan Yankovich, River Road, 15-0; 2. Bradley Toler, Cisco, 14-6; 3. **Dakota Cator, Spearman, 14-6**; 4. Manual Paredes, Sonora, 14-0; 5. Brady Murry, Cisco 14-0; 6. Nathan Castro, Brady, 13-6.

200: 1. Michael Vaughn, Wichita Falls City View, 22.31; 2. Lupe Abrego, Coahoma, 22.32; 3. **Fernando Flores, Spearman, 22.33**; 4. Michael Sternberg, Panhandle, 22.65; 5. Dusty Durham, Denver City, 22.68; 6. Tyler Cole, Holliday, 22.91.

Spearman boys competing were Sawyer Sutterfield - High Jump, Dakota Cator - Pole Vault, Fernando Flores - 200 M Spring, the 400 M Relay Team, and the 1600 M Relay Team.

Girls Team Standings:

1. Bangs 51; 2. Childress 50; 3. Shallowater 48; 4. Eastland, 42; 5. Idalou, 38; 6. **Spearman, 36**; 7. Grape Creek, 34; 8. Cisco, 32; 9. Kermit, 27; 10. Crane, 25.

13. (tie) Highland Park, 20; Sanford-Fritch, 20; Sonora, 20; 18. (tie) Bushland, 10; Wichita Falls City, 10; Olney, 10. 22. (tie) Panhandle, 8; Colorado City, 8.

400: 1. Kaitlin Roberts, Wichita Falls City View, 57.96; 2. Melanie Barrera, Eastland, 58.64; 3. Nancy Munos, Abernathy, 1:00.61; 4. **Sarah Snider, Spearman, 1:00.77**; 5. Chavelli Moreno, Comanche, 1:01.06; 6. Amber Eaton, Crane, 1:02.08.

1600: 1. Taylor Neal, Brady, 5:20.51; 2. Kenzi Gallaway, Shallowater, 5:35.35; 3. **Sutton Garnett, Spearman, 5:36.29**; 4. Debi Wallis, Grape Creek, 5:45.20; 5. Savanna Day, Tuscola Jim Ned, 5:50.88; 6. Danessa Vasquez, San Saba, 5:56.39.

1600 Relay: 1. Bangs, 4:06.23; 2. Eastland, 4:09.59; 3. **Spearman, 4:11.48**; 4. Crane, 4:12.78; 5. Holliday, 4:13.01; 6. Comanche, 4:16.68.

Spearman girls competing were Gately Garnett - Long Jump, Pole Vault, 100 M Hurdles; Joselyn Terrazas - Pole Vault; Sutton Garnett - 3200 M Run, 1600 M Run; Tylor Farrar - 800 M Run, 1600 M Run; Sarah Snider - 800 M Run; and the 1600 M Relay Team.

Region 1-1A Track

The Region 1-1A Track Meet was held at Level-land on Monday and Tuesday, May 3rd and 4th.

Following are the final results from Monday (Top 2 qualify for state meet):

Girls Team Standings:

1. Memphis 20; 2. Wheeler 18; 3. (tie) **Gruver, Anton and Buena Vista 10**; 6. Canadian 9; 7. (tie) Tahoka and Wellington 8; 9. Sunray 7; 10. New Deal 6.

Continued on Page 8

May 2010 Events

3-7 - Teacher Appreciation Week

6-12 - National Nurses Week

6 - Pringle-Morse CISD Elementary Rodeo Day w/OPSU; Spearman 1st Grade Field Trip to Palo Duro Lake; Spearman 2nd Grade Field Trip to Liberal, KS; Tate Batton signing Letter of Intent w/Clarendon College, 10 a.m.; Spearman Kindergarten "Mother's Day Tea", 1:30 p.m.; SHS Library; Pep-Rally for Drew Mireles (leaving Thursday morning to compete in Informative Speaking at State Academic UIL Meet), 2:45 p.m.; GHS Gym; GHS Academic Awards Program, 7 p.m.; Gruver Methodist Church; State Academic UIL Contest, Austin

7 - GHS State Pep-Rally for Golf, Track & Ag, 8:30 a.m.; GHS Gym; SISD School Holiday; Pringle-Morse CISD Pee Wee Track Meet; PMCIDSD Early Dismissal, 12 noon; State Academic UIL Contest, Austin

8 - State Academic UIL Contest, Austin

10 - GHS/SHS AP Biology Test; State Golf & Tennis Tournaments, Austin; Spearman NHS Senior Supper, 4 p.m.; Borger; SISD Board Meeting, 7 p.m.; SHS Library

11 - SISD CEIC Meeting, 4:30 p.m.; PMCIDSD 7th Grade Boys Reading Field Trip, Wells Fargo, Amarillo; Gruver Pre K and Kindergarten Round-up, Gruver United Methodist Church Fellowship Hall

12 - SHS English Language AP Exam, 8 a.m.; Spearman Diabetes Walk, 1 p.m.; SISD DEIC Meeting, 4 p.m.; Diabetes Walk

13 - GHS Band Trip; Spearman 4th Grade Field Trip, Guymon; Spearman Pre-K Program, 9:30 a.m.

& 1:30 p.m., Gus Birdwell Elementary; 4-H Photography Workshop, 4:30 p.m., Spearman Church of Christ; PMCIDSD Parent Meeting, 6:30 p.m.; PMCIDSD Band Spring Concert, 7 p.m.

14 - State Track Meet, Austin; PMCIDSD Early Dismissal, 12 noon; Spearman Elementary Talent Show, 1:30 p.m.; Cafeteria

15 - State Track Meet, Austin

17 - TAKS Testing; SHS Athletic Banquet, 6:30 p.m., O'Loughlin Center; GHS Band Spring Concert, 7 p.m., Auditorium

18 - TAKS Testing & Re-Testing; SHS Awards Assembly, 1:30 p.m., SHS Auditorium; GHS FFA Banquet, 6:30 p.m.; SHS Senior Supper, 6:30 p.m., First Baptist Church

19 - TAKS Re-Testing; SHS History AP Exam; SHAC Council Meeting, 4 p.m., HS Library

20 - Spearman 5th Grade Field Trip to Palo Duro Canyon; GHS Baccalaureate Practice, 1 p.m., Auditorium; SHS BIGS End-of-School Party, Lynx Den; PMCIDSD Awards Assembly, 2:45 p.m., Auditorium; SJH BIGS Party, 3:30 p.m.

21 - TAKS Testing Make-Up Sessions; GHS Senior Trip; GHS Teacher In-Service/No Students; Spearman 6th Grade Field Trip to Lake Fryer; Spearman 8th Grade Trip to OKC; PMCIDSD Elemen-

tary Sings at Hansford Manor

22 - GHS Senior Trip; Big Brothers Big Sisters Fun Run at Purple Park, 9 a.m., Spearman; Heritage Days, Spearman

23 - SHS Baccalaureate Practice, 4 p.m., SHS Auditorium; SHS Sr. Group Pictures, 5 p.m., SHS Cafeteria; SHS Baccalaureate, 7 p.m., SHS Auditorium; GHS Baccalaureate, 7 p.m., Gruver Methodist Church

24-26 - Spearman Elementary Early Release for Parent Conferences, 12:30 p.m.

24 - PMCIDSD Elementary AR Trip, Stinnett

25 - GHS Finals (2nd, 4th & 6th); SISD Finals; Pringle-Morse 8th Grade Graduation, 7 p.m.

26 - GHS Finals (3rd, 5th & 7th); SISD Finals (SHS 1A, 2A, 3A); Spearman 8th Grade Graduation Practice, 1 p.m.; PMCIDSD Last Day of School; PM 8th Grade Field Trip to Six Flags

27 - GHS Finals (1st & 8th); SISD Finals (SHS 1B, 2B, 3B); Spearman Kindergarten Graduation, 8:30 a.m., Gus Birdwell Elementary; Spearman 1st Grade Assembly, 9:45 a.m., Gus Birdwell Elementary; Spearman 8th Grade Graduation Practice, 11:15 a.m., SHS Auditorium; GHS Graduation Practice, 1 p.m., Auditorium; Spearman 8th Grade Graduation, 6:30 p.m., SHS Auditorium; Gruver 8th Grade Graduation, 8

p.m., Auditorium

28 - Spearman 1st, 2nd & 3rd Grade Awards Assembly, 8:30 a.m., Gus Birdwell Elementary; Spearman 4th & 5th Grade Awards Assembly, 9:45 a.m., Gus Birdwell Elementary; SISD Finals (SHS 4th & 5th Periods); GHS Graduation Practice, 9 a.m., Auditorium; SHS Graduation Practice, 10:30 a.m., SHS Auditorium; GHS Graduation, 10:30 p.m.; SISD School Out & Busses Run, 12:30 p.m.; SISD School Out & Busses Run, 1 p.m.; SHS Graduation, 7 p.m., SHS Auditorium; GHS Graduation, 8 p.m., Auditorium; SHS Project Graduation, 10 p.m.-6 a.m.

31 - Memorial Day Holiday

31 - Memorial Day Holiday

MITCHELL THEATRES.COM

GUYMON, OK • LIBERAL, KS • NEWTON, KS

NORTHRIDGE 8

Guymon, Oklahoma
www.northridge8.com
580-338-3281

SOUTHGATE 6

Liberal, Kansas
www.southgate6.com
620-624-5573

CHISHOLM TRAIL 8

Newton, Kansas
www.chisholmtrail8.com
316-283-0555

SEQUOYAH 8

Garden City, Kansas
www.sequoyah8.com
620-275-7707

FRESH POPCORN EVERYDAY!
-PARTY ROOM & ARCADE-

ALLSUP'S

Prices Good Thru 5/15/10

ASSORTED 12 PACKS COKE OR DR PEPPER
2 \$8.98 FOR 8

ASSORTED 6 PACKS COKE OR DR PEPPER
2 \$5.00 FOR 5

ASSORTED 16 OZ. MONSTER ENERGY
2 \$3.00 FOR 3

BUY 12 GALLONS OF FRESH ALLSUP'S MILK... GET ONE FREE!

**305 W. Kenneth
Spearman • 659-3135**

**101 Main Ave.
Gruver • 733-2953**

LARGE BAG ASSORTED TOM'S CHIPS
REGULAR \$2.49
2 \$4.00 FOR 4

MILD OR HOT TAMALES
2 ORDERS OF 3
\$3.00

2 PIECE CATFISH BASKET WEDGES & TALLSUP
\$2.99

2 PIECE CHICKEN TENDERS WEDGES & TALLSUP
\$2.99

ASSORTED 1/2 GAL. ALLSUP'S ICE CREAM
2 \$6 FOR 6

BUY ONE ASST. FLAVORS MENTOS GET ONE FREE

HONEY, TURKEY OR HONEY HAM BAR-S THIN CUTS
9 OZ.
2 \$5 FOR 5

MORE SPECIALS

ALLSUP'S SANDWICH BREAD 24 OZ / 79¢ OR	2 FOR \$1.29
ALLSUP'S WHEAT BREAD 24 OZ / 99¢ OR	2 FOR \$1.49
CHEEZ-ITS DUOS & SNACK MIX REGULAR \$2.09	BUY ONE GET ONE FREE
BRISK TEAS ASSORTED FLAVORS 1 LITER	99¢
BLUE BUNNY	69¢
JOLLY RANCHER POP OR TWIRLX BAR	69¢
ALLSUP'S MILK (ONLY MAY 9-15) HOMOGENIZED, 1% OR 2% GALLON	2 FOR \$5.00
JACK LINK'S 1.5 OZ. BEEF STICK OR 1.2 OZ. ALL AMERICAN COMBO	\$1.19
DENTYNE, STRIDE OR TRIDENT GUM ASSORTED FLAVORS	2 FOR \$2.00
COLORTEX BATHROOM TISSUE 4 ROLL PKG.	99¢
COLORTEX MOPPER TOWELS SINGLE ROLL PKG.	99¢

REAL ESTATE
FOR RENT: 1BR furnished apartment and 2BR furnished apartment. Bills paid, free laundry services. Call 659-2247.
 TFN(1/14/10)
WINDMILL COURTYARD APARTMENTS: 2BR, 1B unfurnished apartments. Central heat and air, new appliances. Pets allowed with additional deposit. Utilities not included. \$400/month rent with \$400 deposit. Inquire about applications at Deakin Electric, 321 Main St., Spearman.
 TFN(7/16/09)
REDUCED TO \$57,000! 3 BR home, central H/A, hardwood floors, new paint & lighting, large bath w/2 sinks + tub/shower, lots of built-in storage, laundry rm, attached garage, huge fenced yard. 1017 Townsend St. Call 659-5293 or 330-0384.
 TFN(3/4/10)
FOR SALE: 1025 Townsend - 3BR, 2 3/4B, fenced yard, 2-car unattached garage w/storage area, fireplace, app., 1440 sq. ft. \$52,000. Call 806-659-5037, leave message.
 7(4/15/10)B

FOR RENT: 2 HOMES OF 4 CITY LOTS - \$40K - Cute 2/1 with newer vinyl siding, windows, carpet, and 1999 3/2 16x80 mobile on 4 city lots. Mobile has fr & rear porches, central hvac, fenced rear yard, and both properties have dual access. Can be split very easily. Lots should accommodate add housing if so desired. On city water, sewer, trash. Now rented for \$700 monthly-lots of room for upward pricing movement. 40K firm. 806-733-2264. 1(5/6/10)P

HELP WANTED
HELP WANTED: First United Methodist Church, Spearman is currently taking applications for a nursery worker. Need to be available for Sunday church services and various times throughout the week and for funerals. If interested, please come by the church to pick up an application. (407 S. Haney, Spearman, 806-659-5504)
 4(2/4/10)B
HELP WANTED: Now seeking a temporary full/part time dependable salesperson to operate Spearman store. Duties: assisting customers, maintaining plants, and operating cash register. Starting pay: \$8.00/hour - 40 hour work week. No experience necessary. Hiring begins April 1st. Send resume to D&C Greenhouse, 36 Nelson Drive, Spearman TX 79081. 8(3/18/10)B

HELP WANTED: Immediate opening for LVN/RN, PT/FT positions, all shifts available. Come join our progressive team. Come by Senior Village, 3101 S. Main, Perryton TX 79081.
 4(4/15/10)B
HELP WANTED: Spearman ISD has substitute/part time bus driver positions open for extra curricular student trips. Length of trips vary from one day field trips to trips of three to five days. Pay: one hour to five hours \$7.50 per hour, with the sixth hour and all additional hours at \$10.00 per hour including rooms & meals. Drivers must have their bus driving credentials (CDL with S or P endorsements, bus driver certificate, and current physical), and will be subject to DOT drug testing. Applications may be picked up and accepted at the Spearman ISD, Superintendent's Office, 403 E. 11th Avenue, Spearman, TX 79081. 2(5/6/10)

SERVICES
CLICK PAINTING & HOME REPAIR: Painting, Texturing, Drywall Repair, Fencing & General Carpentry. Serving Perryton, Spearman & Gruver. Don Click, 648-1480, or 202-1391 (cell).
 TFN(10/15/09)
HOOCY POOCY PARLOR: Call us for all your pet's grooming and boarding needs. Call now for reservations! 806-273-2724.
 TFN(11/2/07)

PETS/ANIMALS
HOOCY POOCY PARLOR: Call us for all your pet's grooming and boarding needs. Call now for reservations! 806-273-2724.
 TFN(11/2/07)

AGRICULTURE
GALLAGHER'S PRECISION HARVESTING is booking acres for the 2010 wheat harvest, John Deere equipment, 35 foot draper headers and all support equipment. Professional Service. Call Shawn at 701-425-8400. 9(4/29/10)

AUTOMOBILE
FOR SALE: 1997 Ford F100 Pickup. Refurbished with new motor. Good work truck. Call 806-659-2442 or 806-330-0691.
 TFN(3/25/10)
FOR SALE: 2005 Dodge Ramp Van. Easy wheelchair accessibility. Low mileage. Call 659-3440, leave message. 3(4/29/10)P

PUBLIC NOTICE
JOB REQUISITION NUMBER: 014581
TRANSPORTATION MAINTENANCE TECHNICIAN I (K511)
 The Texas Department of Transportation will be accepting applications for one full-time position at the Hansford County Maintenance Office located at 114 W SH 15, Gruver, Texas.
 JRO14581 (K511): Entry level position. Performs entry-level transportation maintenance work. Work requires use of maintenance tools and

equipment. The starting salary will be \$10.85-\$15.74 per hour.
 A completed State of Texas application is required and applications will be accepted until 5:00 p.m., Tuesday, May 18, 2010. For further application information, including a complete job vacancy notice, contact the nearest Texas Department of Transportation. Information may also be accessed via the Internet at www.txdot.gov/careers/.
 Mailed applications should be postmarked no later than Tuesday, May 18, 2010 and sent to: TxDOT, Attn: Human Resources, 5715 Canyon Drive, Amarillo TX 79110. If more information is needed or if an applicant needs an accommodation in order to apply for this job, contact Human Resources at (806) 356-3231.
 TxDOT IS AN EQUAL OPPORTUNITY/AFFIRMATIVE ACTION EMPLOYER. 2(5/6/10)B

Blankenship Real Estate
 659-3052 - 670-3774
4BR/2B/2CG Home - Basement, pool, central H/A, fireplace
3BR/2B Home - 1500 sq. ft., brick, 2CG, patio, walk-in closets
3BR/2B Home - 1460 sq. ft., brick, 2CG, patio, walk-in closets.

NEW LISTINGS WANTED!
 Eulalia Blankenship - Sales
 Eschol Blankenship - Broker


Properties
 Shirley Howard
We NEED listings!
 Call us now to help YOU sell your home for top dollar!

113 N. Brandt - Spearman: Spacious 3BR, 2 1/2B, 848 sq. ft. home in need of a FAMILY!
902 9th - Gruver: Horse Stables FOR SALE! 18 pens, circular training pen, arena, & 4500 sq. ft. barn on 10.42 acres! PRICE REDUCED!!
712 Womble - Gruver: 1070sq. ft., 3 BR, 1 B, Central Heat, Lrg Corner Lot! REDUCED!
 Shirley Howard, Broker/Owner
 806-886-6536, Cell
 Melinda McCullough, Realtor
 (806) 733-5678
 We would LOVE to sell your HOUSE!
 CALL US!

MARTIN & ASSOCIATES REALTY
 Serving Hansford County for 15 years
 Julie Martin: Broker - 659-2425
PRICE REDUCED ON BOTH 804 & 806 Wilbanks
 New Construction. Call for your private showing!

We'd Like Your Listing!
FOR QUALITY & SERVICE CALL US TODAY!
 Equal Housing Opportunity

This ad is just a small sample of the properties that we currently have for sale.
 Please check our Web site and give us a call! We need your listings both large and small, all types of ag properties (ESPECIALLY CRP).
SWINE PRODUCTION FACILITY - Moore Co., TX. - 1200 sow capacity, capable of running 28,000 pigs annually, computerized feed mill, flex-flo feeding system, management in place. PRICED TO SELL!
RITA BLANCA RANCH - Dallam Co., TX - 4,055 acres, 4 circles, 375 acres CPR, good fencing, pens and water. Priced to sell.
HARTLEY CO, TX - 640 ac. 10 miles to Hilmar Cheese plant, on pvmt., dairy permit, 3 pivots, home, barn, grain storage.
OCEANS OF WATER II - Hansford Co., Texas - 4 sections, strong water, dev. with sprinklers, wells, feedyard, home, barns, pvmt., 2 mi. hwy. frontage.
 SEE OUR WEBSITE OR CALL US!
www.scottlandcompany.com
 Shawn Gillispie 806/922-5532
 Ben G. Scott, Broker
 1-800-933-9698 day/eve
 TFN(4-22 -10)

FOR SALE

2001 Pontiac Trans-Am WS6 - Pewter with blue pin stripe, black leather interior (good condition), 462 Horsepower to the rear wheels with Nitros (Dyno sheet proof), 6.0 Liter Engine, with aftermarket aluminum heads, upgraded cam, aftermarket intake, 92mm throttle body, 175 HP NX system (aka Nitros or NAS), Stage 2 Clutch, Freshly rebuilt 6 speed manual transmission, Eaton EZ rear locker, Flowmaster exhaust, T-top windows, 60,300 miles on car. For more information please call (806) 330-1939 or e-mail baileywaddles@yahoo.com
 TFN(4/8/10)

hchd
 Hansford County Hospital District
Openings at Hansford Hospital
RN: 7pm-7am. Graduate of an accredited School of Professional Nursing. Currently licensed in the State of Texas. BCLS, ACLS and TNCC preferred. CPR required.
Openings at Hansford Manor
LVN: Graduate of an approved LPN/LVN program. Must be able to make independent decisions when circumstances warrant. Must possess the ability to deal tactfully with residents, family and public.
 Great working environment and staff, quality facility providing opportunities for professional growth. Great benefit package. Apply at 707 S. Roland, Spearman, TX or contact Jackie Nelson at 806-659-5841. Download application at www.hchd.net
 EEQE (5/6/10)

Pamper Her for Mother's Day
Mother's Day Specials & Special Desserts Available
 We will be open Saturday May 8th
Reservations recommended • Prime Rib available by reservation
Mothers Day Buffet on Sunday
 Reservations are strongly recommended
at The Bunkhouse Restaurant
 212 Main Street • Spearman • (806) 659-2089
 Sunday - Friday Lunch Buffet 11:00 am to 2:00 pm.
 Tues thru Friday 5:00 pm to 8:00 pm. (Closed Saturdays)

We will have irregular hours over the next couple of months for family reasons. We apologize for this inconvenience. We look forward to serving you in the future!
All Occasion Flowers
 202 N. Bernice (across from the Post Office) 659-5180 • Spearman
 Faithfully serving Hansford County since 1992. We appreciate your support through the years.
 Angels and Crosses
 Green and Blooming Plants
 New Silk Arrangements
 Fresh Spring Arrangements

Any Large Specialty Pizza w/Breadsticks \$15.00 + Tax
Happy Hour Special
3 LARGE PIZZAS (with topping pizzas)
 Mon.-Fri. - 11:30 a.m.-10 p.m.
 Sat. - 12 noon - 10:00 p.m.
 Sun. - 3-10 p.m.
 Deliveries 5-9 p.m.
5-8 p.m. Only \$19.99
SIMPLE SIMON'S PIZZA
 312 Main Street Spearman, TX (806) 659-9991
 Due to gas prices, a minimum order of \$10 is required for delivery.
 Please remember to tip our drivers.
NEW ITEMS
 Manicotti w/Bread - \$5.99
 Rib Tips w/Baked Potato, Bread, Lettuce & Tomato - \$8.99

TEXAS STATEWIDE CLASSIFIED ADVERTISING NETWORK
TexSCAN
TexSCAN Week of May 2, 2010 AUCTION
FORECLOSED HOME AUCTION 1904 homes. Auction 5/24 Open House: May 15, 22 & 23 REDUCED. View full listings, www.auction.com. RE Broker #0580708
BUSINESS OPPORTUNITIES
ALL CASH VENDING! Do you earn \$800 in a day? Your own local candy route. 23 machines and candy. All for \$9,995. 1-888-625-5481. Multi Vend. LLC.
DRIVERS
ACT NOW! Top 5% pay 32¢-38¢ cpm. Excellent benefits, need CDL-A and 3 months recent OTR. 1-877-258-8782. www.meltontruck.com
CDL-A COMPANY DRIVERS! 6 months OTR experience, good MVR required, miles & benefits = money! Call 1-800-326-8885. www.gstransportation.com
DRIVERS - STUDENTS your new career starts here with tuition sponsored training! Possible \$40K 1st year. Call FPE, 1-423-436-0209 or e-mail: slong@fpe.net
FOOD TANKER DRIVERS needed. OTR positions available now! CDL-A with Tanker required. Outstanding pay & Benefits! Call a recruiter today! 1-877-810-1041. www.oakleytransport.com
NATIONAL CARRIERS needs O/O's Lease purchase. Company drivers for it's expanding fleet. Offering Regional/OTR runs. Outstanding pay package, excellent benefits, generous hometime. 1-888-707-7229. www.nationalcarriers.com
NO MONEY DOWN! No credit checks! Top lease purchase plan, low monthly payments. High % pay package, owner operators welcome! 1-800-767-6918. www.JoinCRST.com
PICKUP TRUCKS needed in Hope, AR. Make money now! Seeking qualified pickup truck owners to deliver 1,000 RV trailers from Hope, AR. www.horizontransport.com
REGIONAL DRIVERS NEEDED! Home hometime, top pay. Up to .41¢/mile company drivers. 12 months OTR required. Heartland Express, 1-800-441-4953. www.heartlandexpress.com
EQUIPMENT FOR SALE
NEW NORWOOD SAWMILLS- Lumber Mate-Pro handles logs 34" diameter, mills boards 28" wide. Automated quick-cycle sawing increases efficiency up to 40%! www.NorwoodSawmills.com/300N, 1-800-661-7746 Ext 300N
FINANCIAL
CASH NOW! GET cash for your structured settlement or annuity payments. High payouts. Call J.G. Wentworth. 1-866-SETTLEMENT (1-866-738-8536). Rated A+ by the Better Business Bureau.
HEALTH
IF YOU USED type 2 diabetes drug avandia and suffered a stroke or heart attack you may be entitled to compensation. Attorney Charles Johnson, 1-800-535-5727
HELP WANTED
BETWEEN HIGH SCHOOL and college? Drop that entry level position. Earn what you're worth! Travel with successful youth business group. Paid training. Transportation, lodging provided. 1-877-646-5050.
SALES REPRESENTATIVE needed. Must earn \$50K-\$100K or more. Call our regional office at 1-800-804-9968, ask for Pat Bessette or e-mail: patricia.bessette@inspherics.com. Visit www.inspherics.com
MATTRESSES FOR SALE
NEW QUEEN PILLLOW Top Mattress Set \$200.00 1-817-862-0782
REAL ESTATE
ABSOLUTELY THE BEST VIEW! Lake Medina/Bandera 1/4 acre tract, central W/S/E. RV/motor home/house, OK only \$830 down \$235 month (12.91%/10yr). Guaranteed financing. More information call 1-820-460-8354
HUNT WEST TEXAS, Torrell County/Sanderson. Panther Canyon Ranch #6, 118.42 acres, mule deer, \$34,933. Paint Mare Ranch #17, 164.02 acres, whitetail, \$48,385. 1-866-286-0199. www.westmexsasland.com
106 MONTH BUY'S land for RV/motor home/house, pier, boat ramp, pool, clubhouse, gated entry, on Lake Fork, \$690 down (\$6900/10.91%/7yr) Guaranteed financing. 1-214-696-2315
10.1 ACRES, DUVAL County. Heavy brush, deer, hogs, quail, locked gate. \$29,500, \$1475/down, \$290/month, (5% down, 11%, 20 years) or Vet financing. Toll-free: 1-866-286-0199. www.westmexsasland.com
20 ACRE RANCHES near growing El Paso, Texas. Only \$12,900. \$0 Down, \$99/month. owner financing, no credit checks, money back guarantee. Free map, pictures. 1-800-755-8953. www.SunsetRanches.com
676 ACRES-REEVES County, 15 Miles North Pecos. River frontage. Call Jack 1-214-755-6224.
1106 MONTH BUY'S land for RV, MH or cabin. Gated entry. \$690 down. (\$6900/10.91%/7yr) 90 days same as cash. Guaranteed financing. 1-936-377-3235
TOLEDO BEND LAKE LOUISIANA, Waterfront properties, homes, second homes, retirement homes, camps, lots. www.Litrookscrealstate.com, 1-318-590-1000. Featured: 4br/4ba, 4160 sq. ft., 1.57 acre waterfront, home with boathouse
SCHOOLS/TRAINING
AIRLINES ARE HIRING! Train for high paying aviation career. FAA approved program. Financial aid if qualified, job placement assistance. Call Aviation Institute of Maintenance. 1-877-523-4531
ATTEND COLLEGE ONLINE from home. Medical, Business, Paralegal, Accounting, Criminal Justice. Job placement assistance. Computer available. Financial aid if qualified. Call 1-888-205-8920. www.CenturaOnline.com
CANYON DIG IT? Heavy Equipment School. 3 week training program. Backhoes, Bulldozers, Trackhoes. Local job placement assistance. Start digging dirt now. 1-866-862-6407
HIGH SCHOOL DIPLOMA graduate in 4 weeks! Free brochure! Call now! 1-866-562-3650. ext. 55. www.southeasternHS.com
Run Your Ad in TexSCAN!
 Statewide Ad\$500
 107 Newspapers, 1,018,288 Circulation
 North Region Only\$230
 99 Newspapers, 970,648 Circulation
 South Region Only\$230
 107 Newspapers, 501,688 Circulation
 West Region Only\$230
 101 Newspapers, 848,581 Circulation
To Order Call This Newspaper
 Direct or call Texas Press Service
 at 1-800-749-4793 Today!

NOTE: While most advertisers are reputable, we cannot guarantee products or services advertised. We urge readers to use caution and when in doubt, contact the Texas Attorney General at 1-800-621-0508 or the Federal Trade Commission at 1-877-FTC-HELP. The FTC web site is www.ftc.gov/bizsp

Extend your advertising reach with TexSCAN, your Statewide Classified Ad Network.

by Jim Derington

Out at the Lake



Jim Derington
Palo Duro River Authority
P.O. Box 99
Spearman, TX 79081
806-882-4401
pdra@dishmail.net



An American Avocet, feeding in the shallow water, on Horse Creek.

May 3, 2010 - Lake level - 15.53

Lake Palo Duro has come to life, again. The lake is up a little, thanks to recent rains and Horse Creek. We are still waiting for Palo Duro Creek to run into the lake. The parks are as pretty as you will ever see them. Green grass, with a few weeds and wildflowers, cover the entire area. The leaves on the trees are not completely out yet, but it won't be long.

Last Tuesday night, or actually early Wednesday morning, a grass fire started on the south side of the lake. It started under an electric line and pole, and spread north. The green grass and not much wind, left it manageable, for the Spearman and Gruver fire Departments, with some help from Ramon Cantu and me on the PDRA truck. The fire was quickly brought under control. Many thanks to our volunteer firemen, as usual, they did a great job. The fire

area was surrounded by a fire grade, by Ramon, on the PDRA grader, the next morning. This area had to be watched for flare ups on Wednesday, as the wind really was strong.

Saturday was really slow at the lake. We ended up with three R.V. campers, Sunday night. Some fishermen were out on Sunday, but no "big fish" stories were told. An elementary school group, from Perryton, used the shelter on Friday, April 30.

The picture is an American Avocet, feeding in the shallow water, on Horse Creek. They sweep their upturned bill from side to side, in search of crustaceans, insects, and floating seeds. Groups of turkeys can be seen all around the park now. The swallows are back at the intake structure, on Horse Creek. I noticed the three to four inch tall antlers, on a mule deer buck, this morning. The bald eagle was here Saturday evening. I wonder if they are nesting in the area.

Hansford County Sports

Continued from Page 6
3200: 1. Shelley Gibson, Gruver, 12:08.20; 2. Macy Davis, Wellington, 12:13.85; 3. Taylor Sparks, Wheeler, 12:17.29; 4. Haley Sparks, Wheeler, 12:20.41; 5. Amanda McCoy, Comstock, 12:21.09; 6. Marissa Garcia, Smyer, 12:47.32; 7. Taylor Felderhoff, Gruver, 12:49.

Madison McLain came in 1st in the 400 with a time of 61.3.

Gruver girls competing were Madison McLain - 400 M Run; Makenzie Crane - Pole Vault, 200 M

Sprint; Shelly Gibson - 3200 M Run; Taylor Felderhoff - 3200 M Run; the 800 M Relay Team and the 1600 M Relay Team.

Luis Mendoza placed 10th in the 3200 M Run with a time of 10:52. Gruver boys competing were Jerrod Collier - 100 M Sprint, 200 M Sprint, Long Jump; Riley Urban - High Jump; Gonzalo Vega - 1600 M Run; and Luis Mendoza - 3200 M Run.

H.S. Boys Track Honor Roll

Thursday, April 29, 2010
200 Meters - Jerrod Col-

lier, Gruver 22.31
High Jump - Sawyer Sutterfield, Spearman 6-6; Rily Urban, Gruver 6-2
Long Jump - Jerrod Collier, Gruver 21-7½
Pole Vault - Dakota Cator, Spearman 13-6

Athlete of the Week Honor Roll

Tuesday, May 4, 2010
Makenzie Crane, Gruver track: Crane advanced to the Region I-1A track meet in four events - pole vault, 200, 800 relay and 1600 relay.

HERITAGE DAYS NEW DATE

Saturday, May 22nd

8:30 am Big Brothers Big Sisters 5k run and 1 mile family fun walk

Call Starla 330-1319 for info

Stationmasters House Museum reunion

Parade will begin at Alco parking lot at 11:00am

Main Street and Courthouse Square activities all day

Main Street Dance 8:00-11:00pm

Many other activities will be added as we get closer to date

**Spearman Boy Scouts will serve
Hamburgers, Hotdogs & Cobbler**

11:00am-1:00pm

Hamburger plates \$7.00 & Hotdog Plates \$4.00

Dutch oven cobbler, \$2.00

Advance tickets are available call Britt @ 659-2554 or any scout

If your organization would like to have a booth at the square, please register at the Chamber office

Call the Chamber for information 659-5555

Come enjoy the day

Tong's Chinese Restaurant

(806) 644-2838
22 Archer Street • Spearman

Daily Buffet

Lunch - 11 a.m.-2:30 p.m. • Dinner - 5:30-9 p.m.
Open Wednesday-Monday - Closed Tuesday

NEW
Sushi on Sunday Buffet

Spring Cleaning

On site shredding by Secure Shredding

First National Bank
Parking lot
Tuesday May 11th
10:00 a.m.—3:00 p.m.

Up to 40 lbs free for FNB customers. Minimal charge thereafter.

Spearman
806-659-5544

Member FDIC

Dumas
806-934-8455

SPRING INTO ACTION WITH A NEW KUBOTA!

ZD326

- 26 HP, 3-Cylinder Kubota Diesel Engine
- Durable HST Transmission • Hydraulic Deck Lift
- PTO Wet Disc Clutch • OSHA Approved ROPS

ZG327

- 27 HP 2-Cylinder Kubota Gasoline Engine
- Shaft Drive Mower Deck and Transmission
- Hydraulic Deck Lift

L4400

- 45.3 HP, 4-Cylinder Kubota Diesel Engine
- Category 1, 3-pt Hitch
- Gear or Hydrostatic Transmission

M5040

- 50.5 HP, 4-Cylinder Kubota Diesel Engine
- Fully Synchronized Transmission
- Ultra Grand Cab Available

ZERO DOWN, 0% A.P.R. FINANCING FOR UP TO 60* MONTHS ON SELECT NEW KUBOTAS!

PANHANDLE IMPLEMENT CO., INC.
710 NORTH MAIN STREET • PERRYTON, TX
806-435-6508

* \$0 down, 0% A.P.R. financing for terms up to 60 months on purchase of select new Kubota equipment from available inventory of participating dealers through 5/31/2010. Example: A 60-month monthly installment payment plan at 0% A.P.R. requires 60 payments of \$16.67 per \$1,000 borrowed. 0% A.P.R. interest is available to customers if no dealer documentation preparation fee is charged. Dealer charge for document preparation fee shall be in accordance with state laws. Only Kubota and selected Kubota performance-matched Land Pride equipment is eligible. Inclusion of ineligible equipment may result in a higher blended A.P.R. Not available for Rental, National Accounts or Governmental customers. 0% A.P.R. and low rate financing may not be available with customer instant rebate (C.I.R.) offers. Financing is available through Kubota Credit Corporation, U.S.A., 3401 Del Amo Blvd., Torrance, CA 90503, subject to credit approval. Some exceptions apply. Offer expires 5/31/2010. See us for details on these and other low-rate options or go to www.kubota.com for more information.