



★ HANSFORD COUNTY ★ THE REPORTER-STATESMAN

CELEBRATING 104 YEARS OF SERVICE TO HANSFORD COUNTY
HANSFORD COUNTY'S ONLY NEWSPAPER

WWW.SPEARMANREPORTER.COM
REPORTER@SPEARMANREPORTER.COM

75¢



VOLUME 105 • ISSUE 9

THURSDAY, MARCH 8, 2012

Federal Court Issues New Texas Congressional and State House Maps

Although Super Tuesday came and went without an election, Texas does finally have an official primary date. May 29th has been set for the election with the runoff scheduled for July 31.

Texas's lawyers asked the Supreme Court in November to delay the implementation of a new redistricting plan for the two chambers of the state's legislature — a plan drawn up by a three-judge federal District Court for use temporarily as election season begins. State Attorney General Greg Abbott's office sought the emergency order to postpone the plan that state officials contended went far beyond a federal court's authority to redistrict on an interim basis.

Rewriting Texas' state legislative districts, as well as its delegation in the U.S. House of Representatives, has been a major issue because of a sharp growth in the state's population — with most of the growth among the Hispanic population. That implicated two parts of the federal Voting Rights Act — Section 2, protect-

ing minorities against a reduction in their voting strength, and Section 5, requiring Texas to get federal preclearance for any change in its voting laws.

A federal court in San Antonio issued new Texas congressional and state House maps on Tuesday, February 28, 2012, just in time for the state to finally hold its twice-delayed primary on May 29th.

Under the court's plan, Hale County is one of 17 counties in Texas House District 88. Other counties are Armstrong, Bailey, Briscoe, Castro, Cochran, Donley, Hansford, Hockley, Gray, Hemphill, Lamb, Lipscomb, Ochiltree, Roberts, Swisher and Yoakum.

Current State Rep. Jim Landtroop of Plainview retained the three Republican challengers to his seat: Ken King of Canadian, Gary Walker of Plains and Mac Smith of Pampa.

Minority groups have accused the Republican-controlled Legislature of drawing maps that discriminated against them. The state's leaders say the maps merely give Republicans an advantage in the next election, something that is perfectly legal in drawing political districts.

Of national consequence is who will win the four new congressional seats moved to Texas following the 2010 census. Republicans want to retain control of Congress, where they currently have a 50-seat majority.

Minorities made up 89 percent of the population growth in the state, but the Legislature's map would have led to only one new minority elected to Congress from Texas.

In the Dallas-Fort Worth area, the court fundamentally redrew the Legislature's congressional map to create a majority Hispanic Congressional District 33, which runs through the center of the Metroplex. Republican Rep. Joe Barton's District 6 creates a right-handed hook through the mid-cities that separate Dallas and Fort Worth.

The court did make significant changes to Republican Rep. Quico Canseco's Congressional District 23, which stretches from El Paso to the western suburbs of San Antonio. The changes reflected those requested by Hispanic groups, but it was unclear if they were enough to hurt Canseco's chances.

In the Austin area, the court kept the Legislature's map of dividing heavily-Democratic Travis County into five districts from the existing three, virtually guaranteeing that an Austin Democrat could not win re-election. The only potentially Democratic district, Congressional District 35, has the majority of residents living in the San Antonio area.

The court-drawn map made no change to the congressional districts in the Corpus Christi area, where Hispanic groups complained their votes were being diluted.

Under the Legislature's map, Hispanics were expected to be able to elect a candidate of their choice in one out of the four new districts. In the court-drawn map, they appeared to pick up at least two.

Early reaction to the maps was mixed. Luis Vera, attorney for the League of United Latin American Citizens, said his first impressions included "some disappointment" but declined further comment until he reviewed the maps more closely.

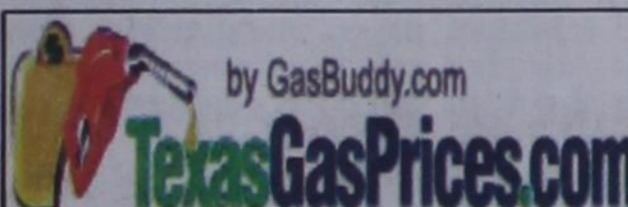
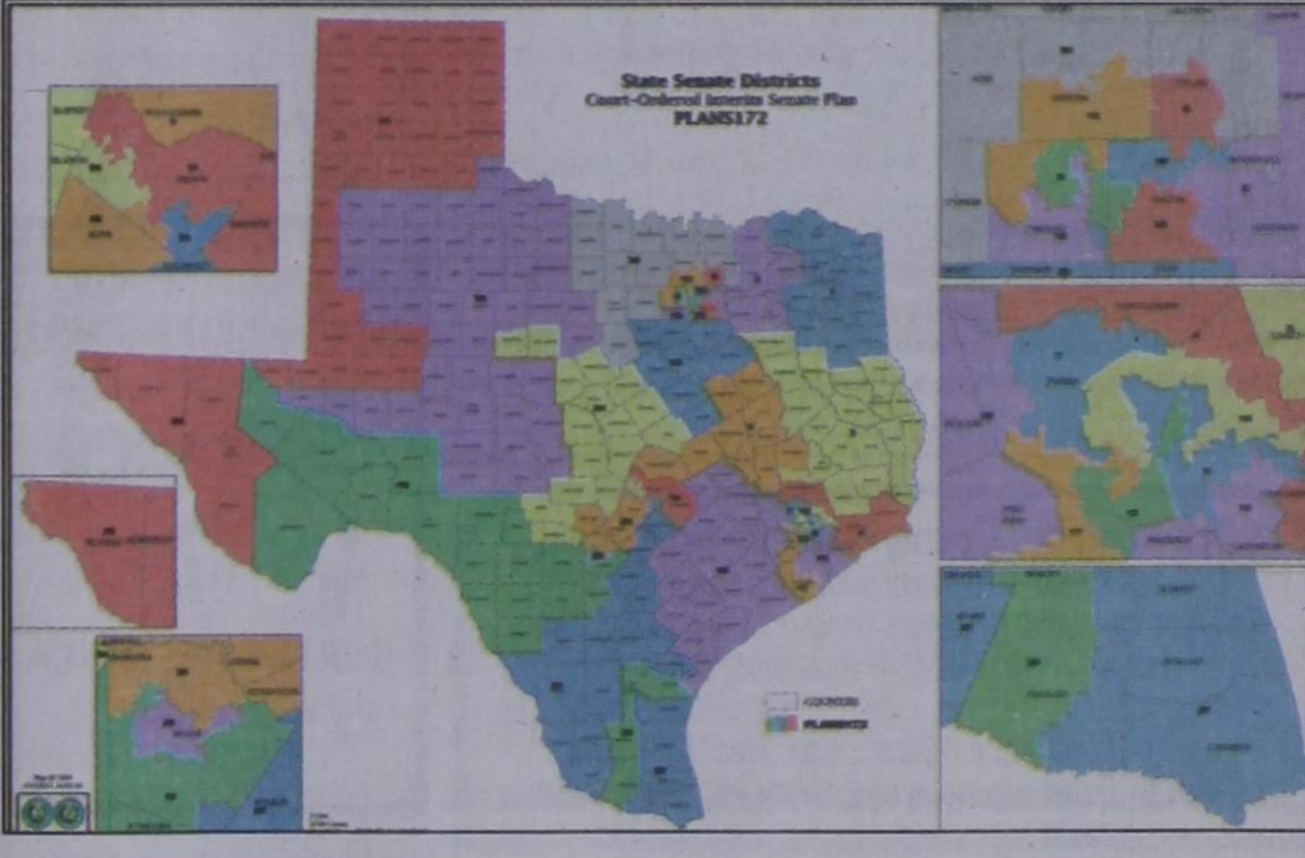
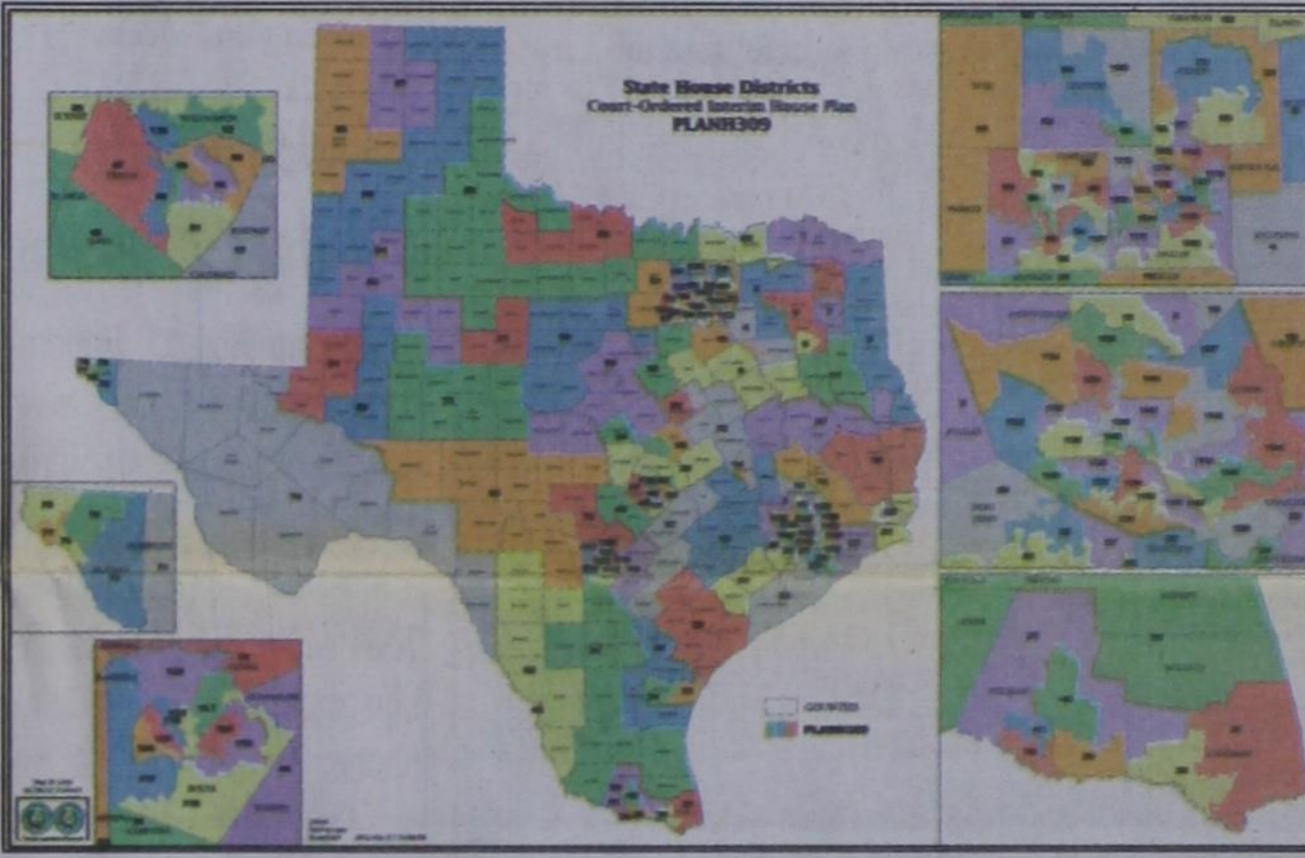
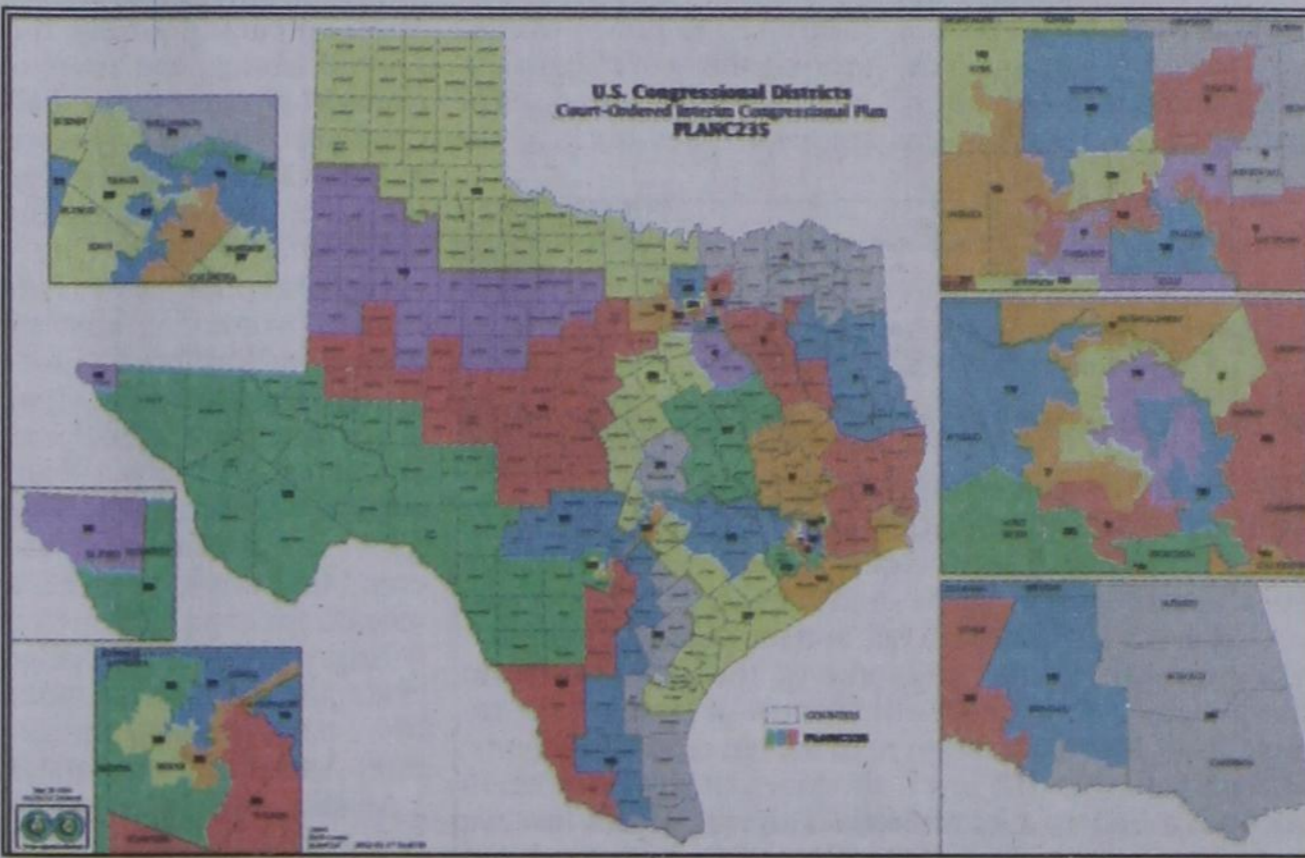
The Republican Party of Texas, meanwhile, simply celebrated the fact that there were maps and that a May 29 primary remained possible. The Texas primaries originally loomed as the biggest prize of next week's Super Tuesday before the redistricting fallout forced the state to push the back the primary date. Texas has the most delegates of any state beside California, and the state wants the chance to play kingmaker in the Republican presidential primary before the race is settled.

"This is what we've been waiting on for about three months now," party spokesman Chris Elam said Tuesday. "We've been anxiously awaiting maps,

and this is a great step forward in finally moving ahead with the primary."

Time is running out for Texas to hold primaries, and the maps are intended to get Texas through the 2012 election cycle. The fight over redistricting has already

San Antonio court must still make a decision on whether the original maps drawn by Republicans last year discriminates against minorities and needs to be changed.



Weekly Update

Texas, March 5- Average retail gasoline prices in Texas have risen 2.7 cents per gallon in the past week, averaging \$3.58/g yesterday. This compares with the national average that has increased 5.2 cents per gallon in the last week to \$3.71/g, according to gasoline price website TexasGasPrices.com.

Including the change in gas prices in Texas during the past week, prices yesterday were 19.9 cents per gallon higher than the same day one year ago and are 21.3 cents per gallon higher than a month ago. The national average has increased 27.8 cents per gallon during the last month and stands 24.1 cents per gallon higher than this day one year ago.

"Gasoline prices have spiked considerably higher in virtually every area over the last two weeks, and while I don't expect the pace of the recent rise in prices to continue for the entire month, a similar jump may again occur closer to April Fools Day, and it won't be a funny joke, it'll be disgusting reality," said GasBuddy.com Senior Petroleum Analyst Patrick DeHaan. "The rise in price is so unbelievable that we may have to revise upward our previous gasoline forecast that had called for a national average of between \$3.75 to \$4.15 by mid-May, as the national average already stands at nearly \$3.72/gallon," DeHaan said.

GasBuddy operates, TexasGasPrices.com, and over 225 other local gasoline pricetracking websites that follow prices at over 125,000 gasoline stations in the United States and Canada. GasBuddy also uses Facebook (facebook.com/gasbuddy) Twitter (twitter.com/gasbuddy), and phone apps to keep motorists ahead of changing gasoline prices.

Texas Crop & Weather

The following specific livestock, crop and weather conditions were reported by Panhandle Extension directors for March 6, 2012: Very little moisture and high winds increased wildfire danger. Soil moisture continued to be mostly short to very short. Producers were trying to reduce windblown soil erosion any way possible. Farmers were preparing fields for spring planting and actively irrigating wheat. Wheat was in mostly fair to poor condition. Insect activity on wheat was reported as light, with a few mites on the stressed crop and aphids on the better-looking wheat. Rangeland and pastures continued to be rated as mostly poor to very poor. Reports of cattle lice were still coming in. Livestock producers continued supplemental feeding of cattle.

Weather Forecast

THURSDAY - Mostly cloudy. Chance of light snow - light rain and light freezing rain in the morning - then a chance of light snow in the afternoon. Breezy. Much colder. Highs in the mid 30s. North winds 15 to 25 mph. Chance of precipitation 40 percent.

THURSDAY NIGHT - Mostly cloudy with a 20 percent chance of light snow. Breezy. Lows in the mid 20s. North winds 15 to 25 mph.

FRIDAY - Mostly cloudy. Slight chance of light rain and light snow in the morning - then a slight chance of light rain in the afternoon. Highs in the mid 40s. Chance of precipitation 20 percent.

FRIDAY NIGHT - Mostly cloudy with a 20 percent chance of light rain and light snow. Lows in the upper 20s.

SATURDAY - Mostly cloudy. Slight chance of light rain and light snow in the morning - then a slight chance of light rain in the afternoon. Highs in the lower 50s. Chance of precipitation 20 percent.

SATURDAY NIGHT - Partly cloudy. Lows around 30.

Read more: <http://www.city-data.com/forecast/w-Spearman-Texas.html#ixzz1njUmxyhe>

Hansford County Library 2nd Annual Art Exhibit Featuring Area Artists

Hansford County Library proudly presents its second annual art exhibit featuring area artists.

In March, the library will host the work of Spearman High School art students under the direction of Elizabeth White.

Monica Schmidt's Pringle-Morse students will show in April.

The art exhibit will conclude in May with the showing of work from Donna Wright's art students

of Gruver High School.

"I would like to invite everyone to view the talents of these county residents," stated Margaret Ruttman, library director. "The art show of 2011 was very successful and very well received, and we expect this one to do as well—we look forward to having you visit the library," added Ruttman.

The library is open 9 to 5, Monday through Friday.

Important Election Dates

May 29th Primary Election

The first day to file for a place on the ballot was Friday, March 2nd. The last day to file for a place on the ballot is Friday, March 9th.

The first day to apply for a ballot by mail is March 30th and the last day to apply for a ballot by mail is May 22nd. The last day to register to vote is April 30th.

The first day of early voting is May 14th and the last day of early voting is May 25th.

May 12th Limited Election

The May 12th limited uniform election date will be held as usual. (This election is for cities and schools only). The last day to file for a place on the ballot was Monday, March 5th.

The City of Spearman has two Alderman positions up for reelection - Jon Garnett and Charles Elliott, as well as the Mayor. As of Monday, March 5, 2012, the following have filed: Mayor Brian Gillispie has filed for reelection. Alderman Jon Garnett has filed for reelection. Also filing for Alderman are Armando Martinez and Bryce Williams. Alderman Charles Elliott did not file.

Spearman ISD has two terms up this year for School Board. At this time no one has filed. The two terms expiring are Maria Sibley and Glen Ray Mackie.

Gruver ISD has two positions on the ballot this year for School Board. The two candidates up for reelection are Dwayne Thompson and Brent Steeds. The first day to apply for a ballot by mail is March 13th, and the last day to apply for a ballot by mail is May 4th. The last day to register to vote is April 12th.

The first day of early voting will be April 30th and the last day of early voting will be May 8th.

Wolf Creek Heritage Museum Notes

by Virginia Scott

MUSEUM HAPPENINGS
March promises to be a busy month. We have a new exhibit up. Rebecca Ashley, Higgins is exhibiting her pastel paintings. Rebecca is a student of Amy Winton. She meets weekly with Jean Weis. She credits these two women with assisting her achieve a childhood dream of becoming an artist. She is married to John Ashley and is a stay-at-home mother to their son, Alec James Ashley. Her reception will be March 25 at 2 p.m. It is a beautiful show, so mark your calendars.

Sport uniforms and information are coming in for our exhibit. We have received a uniform from Ed Wiley. He is not sure what years it was used. It is a grey wool Booker uniform. I will include more information next week. If in the

area and are familiar with our uniforms drop in and examine it for us. Keep the material coming!

March is Women's History Month, and I will discuss this in my historical musings, but I will also be featuring Lipscomb County Women this month. If there is one you would like featured, give me a call or email. Lipscomb County Women celebrate US this month and take care of yourself. We have the 1848 Women Declaration of Independence by Elizabeth Cody Stanton on display and the Higgins Magazine Club featured in the Lobby.

HISTORICAL MUSINGS

In 1975, the United Nations began sponsoring International Women's Day (March 8) to honor women around the world, particularly working women. The tradition goes back to the

early years of the 20th century. In March 1909, women devoted to both the cause of labor and the cause of women led an uprising of thousands of garment industry workers in New York City. This alliance of militant working women and women's rights advocates inspired a German Socialist named Clara Zetkin and a Russian feminist representing textile workers named Alexandra Kollontai to declare an International Women's Day in 1911. After another uprising, March 8th became a holiday to honor women's labor and their role in the Russian Revolution.

In the late 1950s, the date was used as date for female-led protests against nuclear weapons. In the late 1960s, with women's liberation spreading across the United States, the revolutionary women who had originated the holiday were rediscovered and there was a revival of celebrating International Women's Day.

In 1981, the new National Women's History Project in Northern California led the lobbying of Congress to declare a National Women's History Week around March 8th. By 1987, by presidential decree, the week became a month.

Enjoy the month, celebrate the women in your life - past, present, and future. And promise yourself LADIES to Rest, Recoup, Relax, and Regroup Regularly.

Have a good week.

Wolf Creek Heritage Museum

Museum Hours: Monday thru Friday 10 a.m. to 4 p.m., Special hours upon request.

Museum Information: 13310 Hwy 305, PO Box 5, Lipscomb TX 79056; telephone: 806-852-2123; e m a i l : wolferk@amaonline.com; website: www.wolfcreekheritagemuseum.org

See us for: AUTO • HOME • CROP HAIL • FARM & RANCH • MULTIPERIL • LIVESTOCK
INSURANCE
BORT AGENCY, INC.
510 Main St. • Gruver, TX (806) 733-2456

Words from Faith & Grace

by Cecil R. Biggers, Lutheran Lay Minister



In the third week of the Season of Lent we learn of God's law, God's wisdom and God's forgiveness as we study Exodus 20: 1-7, Psalm 19, 1 Corinthians 1: 18-31, and John 2: 13-25.

God gives his law to Moses and the people. God identifies himself as the deliverer of the Hebrews from Egypt. God also identifies the people of Israel as the recipients of his steadfast love. In the ten commandments, God explains that the law is the tool that shapes Israel to become a Sacred Community. Through God's law we learn how to maintain our relationship with God and with our fellow man.

The Psalmist sings a song to celebrate the Law. He sings to celebrate the three great gifts of God to man--God's creation, God's law, and God's forgiveness. The Psalmist asks God to forgive his inadvertent sin, the sin committed without intent. His final plea to God, "Let the words of my mouth and the meditation of my heart be acceptable to you, O Lord, my rock and my redeemer."

Paul writes to the diverse membership of the Church at Corinth. Paul proclaims Christ crucified. A stumbling block to Jew and to the Gentile. The Jews see anyone who dies upon a tree as being accursed; therefore, Jesus could not have been the Messiah. The Gentiles believed that God has no feeling, no emotion, so we can only learn of God through wisdom. Paul shows the Corinthians, and us, that we are not called to Christ by wisdom nor by knowledge. By the grace of God, we are called by the Holy Spirit to faith in Jesus Christ so that we may have life. Foolish?!? Even so, it works! To meet the crucified, but living, Christ is transforming, redeeming!

John shows us Jesus entering the temple to find the hurly burly of a market place. "Unclean" Roman coins are exchanged (at great profit to the dealer) for Jewish coins which are the only coins accepted as gifts to God. Others are selling animals for sacrifice (many from the herds of the High Priest). Jesus makes a whip of cords and drives the sellers from the temple. Consider that the temple was the symbol of God's presence with Israel. The temple was "God's house". Yet, the Romans appointed the Chief Priest; and, thus a link was forged between civil life and religious life; a link without true service to God. Jesus then declares "Destroy this temple (His body) and in three days I will raise it up."

May the Holy Spirit enable you to understand your relationship with God's creation, God's law, and God's forgiveness through faith in Jesus The Christ.

The Hansford County Reporter-Statesman
Mailing Address - 213 Main Street • Spearman TX 79081
Physical Address - 310 Barkley Street • Spearman TX 79081
Phone - (806) 659-3434 • Fax - (806) 398-9080
www.spearmanreporter.com • reporter@spearmanreporter.com
Mon.-Thurs. 9 a.m.-12 p.m., Mon.-Wed. & 1-5 p.m.
Closed Thurs. afternoon and all day Fri., Sat. & Sun.

Gary Smith - Publisher Catherine Smith - Editor
Contributing Writers: Dorothy Hudson, Jim Detriton, Merry Sparks, Cecil Biggers, Virginia Scott, Ed Sterling, Rod Sumner
Contributing Photographers: Lisa Johnson, Sami Hargrove, Tammy Batton, Bonnie Bergan, Rod Sumner

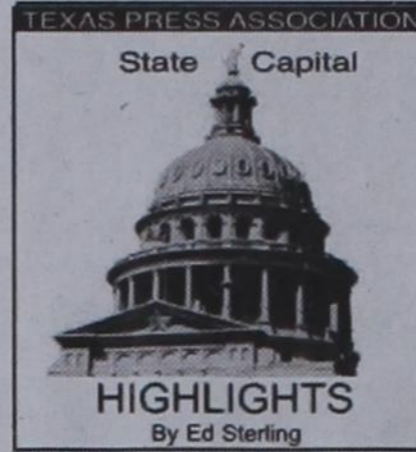
Subscription Rates
In Hansford County - \$30.00 • Out of County - \$40.00
E-Mail Subscription - \$35.00

The Hansford County Reporter-Statesman (USPS 529660) is published weekly in Spearman, TX. Periodical postage paid in Spearman, TX. POSTMASTER: Send address changes to: The Hansford County Reporter-Statesman, 213 Main Street, Spearman, TX 79081.

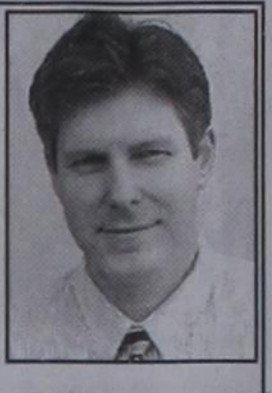
Publication Policy
The deadline to submit news and advertising to The Hansford County Reporter-Statesman is Monday at 5 p.m. Items submitted after the deadline will be published at a later date, as time and space permit. Publication of all items is at the discretion of the editor.

Advertising
Open Display rates are \$4.00 per column inch. Classified Ads are \$7 for the first 20 words and 15c per word for each additional word. (Additional charge for boxed classifieds.) There is a \$1 charge per week if billed.

Member of
Gruver Chamber of Commerce
Spearman Chamber of Commerce
Texas Press Association and Panhandle Press Association



STATE CAPITAL HIGHLIGHTS



by Ed Sterling

Court order sets date for primary election

AUSTIN — Dates put on the calendar make the prospect of party primaries seem more concrete now. An order by a three-judge panel of the U.S. District Court, Western District of Texas in San Antonio, set May 29 as the date of the 2012 general primary election and July 31 for the primary runoff election.

Despite continuing questions and objections over redrawn state House and U.S. congressional districts, the order written by Judge Orlando Garcia and dated March 1 includes a list of primary-related deadline dates for federal, state, county and local offices. In a long list of requirements in Garcia's court order is the reopening of the filing period for candidates. Filing was set to begin March 2 and end at 6 p.m. on March 9.

Furthermore, the order waived the state law requiring that a runoff election be held no earlier than the 20th nor later than the 45th day after the final canvass of the main election for any municipal, school, or other political subdivision election held on May 12. It also suspended the requirements of any home-rule city charter relating to runoff election dates to allow for compliance with the order.

Coach puts face on Alzheimer's

Darrell K. Royal, head coach of the University of Texas Longhorns football team from 1957-76, appeared in the state Senate Chamber on Feb. 28 to promote efforts to understand and deal with Alzheimer's disease. Royal, 87, suffers from Alzheimer's.

Royal's wife Edith spoke to the Joint Interim Committee on Alzheimer's Disease, an assembly of lawmakers tasked with studying the economic impact of the disease over the next five years and working toward mobilizing assets to combat it. Standing with the Royals were celebrated Texans Lance Armstrong and Matthew McConaughey.

State Health Commissioner Dr. David Lakey estimated 340,000 Texans suffer from the disease and the state's minimally funded Alzheimer's disease program was cut by 50 percent by the Legislature. While most of the estimated \$65 million cost of Alzheimer's treatment in Texas is covered by

Medicare, Lakey said, many Alzheimer's sufferers don't receive needed services.

Texas Department of Aging and Disability Services Deputy Commissioner Jon Weizenbaum estimated there are 2.7 million Texans providing informal caregiver tasks for Alzheimer's sufferers.

RRC elects new chairman

The Texas Railroad Commission on Feb. 28 elected current Commissioner Barry Smitherman chairman.

Smitherman, who joined the agency in July 2011, succeeds former Commissioner Elizabeth Ames Jones as chair. Ames Jones resigned from office last month to run for a state Senate seat.

"As Texas energy production is increasing at an unprecedented rate, the Railroad Commission must continue to maintain a fair and predictable regulatory climate in this state," Smitherman said, and expressed eagerness to work with the state Legislature and the Sunset Advisory Commission in the 83rd regular session, scheduled to convene in January. The Railroad Commission will undergo Sunset review, a process that scrutinizes each state agency and recommends whether an agency should continue or be dissolved.

Most schools are accredited

State law gives the Texas education commissioner authority to impose sanctions against any school district or charter school

that receives a lowered accreditation status.

This year, 97 percent of school districts and charter schools earned state accreditation based primarily on academic and financial performance.

In a March 1 Texas Education Agency new release, Education Commissioner Robert Scott said 1,185 out of 1,220 districts and charter schools met the requirements.

Accreditation status for each district and charter can be found at http://www.tea.state.tx.us/accredstatus/.

Phony email targets citizens

Texas Attorney General Greg Abbott on March 1 warned citizens not to open attachments, click on links or respond to fraudulent email that looks like it came from the U.S. Internal Revenue Service.

"Tax season is a particularly active time for identity thieves, because it provides an opportunity for criminals to create fraudulent emails and websites to trick taxpayers into divulging their sensitive financial information," Abbott said.

"Taxpayers should remember that the IRS does not use email or text messages to contact taxpayers about issues related to their income tax returns," Abbott added.

This year, the deadline for filing federal income tax returns is Tuesday, April 17. According to the IRS, the filing deadline was moved back because April 15 is a Sunday and April 16 is a holiday in Washington, D.C.

SUDOKU PRESENTED BY VolunteerMatch.org Where volunteering begins.
Grid with numbers 3, 6, 4, 6, 9, 7, 1, 8, 6, 2, 6, 7, 3, 9, 7, 3, 5, 2, 1, 5, 7, 5, 2, 1, 5, 7

U.S. PRESIDENTS

- ACROSS
1. Three square ones a day
6. Feline sound
9. Slope or hillside
13. Muslim God
14. Spermatozoa counterpart
15. "Little Deuce ___" song
16. ___ Boothe Luce
17. "Lake" in Provence
18. Taken by server
19. "Where most Presidents went to college
21. "He was famously Catholic
23. "He ___ and drank the precious words..."
24. Fool
25. Toy maker
28. "The American Tribal Love-Rock Musical"
30. Interstellar cloud
35. Like sinister side in "Star Wars"
37. Mountain goat terrain
39. Ranked or graded
40. Used in fencing
41. Luciano Pavarotti, e.g.
43. Actress ___ Sofer
44. "Your Body Is a Wonderland" performer
46. ___ Lee
47. Hat part
48. Popular flowering shrub
50. Do over
52. Feared by illegal immigrants
53. "Far and ___" the best
55. It fought British rule
57. Like a snake
61. *Tallest President
65. Hoppity-like board game
66. *35 is the minimum ___
68. Embryo sacs
69. Type of flu
70. Chewbacca's sidekick
71. Like yellow polka dot bikini
72. Not nice
73. R&R spot
74. Plural of suffix denoting female
DOWN
1. One of these is approximately equal to speed of sound
2. Famous female scat singer
3. Having or resembling wings
4. Caterpillar precursor
5. Holder for #40 Across
6. Result of dampness
7. Actress Longoria
8. Mad or crazy
9. *Pres. Coolidge was ___ on the Fourth of July"
10. Ill-mannered
11. Imitated
12. Suggestive of supernatural
15. Talk it over
20. Respond
22. Longest division of geological time
24. Grain storage
25. Organ swelling
26. Largest city in Bolivia
27. Goddess of love, Norse mythology
29. Wraths
31. Aggressive remark
32. Wombs
33. Most famous Bolshevik?
34. *First White House inhabitant
36. ___ over
38. "He won popular but lost electoral vote
42. Exact halves of diameters
45. *Oldest elected President
49. Hole punching tool
51. Like baroque
54. Indian nursemaids
56. Highest points
57. It featured George Michael
58. Enthusiastic review
59. Hipbones
60. FBI agent
61. River in Siberia
62. Singles
63. Drawn in the ___ years
64. They oppose the ___ Generation

These games are brought to you by the Hansford County Reporter-Statesman

CROSSWORD
Grid with numbers 14, 17, 18, 20, 21, 22, 23, 24, 25, 26, 27, 28, 29, 30, 31, 32, 33, 34, 35, 36, 37, 38, 39, 40, 41, 42, 43, 44, 45, 46, 47, 48, 49, 50, 51, 52, 53, 54, 55, 56, 57, 58, 59, 60, 61, 62, 63, 64, 65, 66, 67, 68, 69, 70, 71, 72, 73
PRESENTED BY VolunteerMatch.org Where volunteering begins.

Happy Birthday!

March 8
Birthday - Patty Cator, Drew Grotegut, Mike McLain, Bill Harnish, Melvin Swene, Kirby McAdams, Deana Shields, Dee Allen, Steve Cruse, Candi Delozier, Ben Cook, Colby Red, Eric Olsen, Rae Lynn Cook, Cindee Thomas, Christi Clift, Michelle Schick
Anniversary - M/M Richard Wagner

March 9
Birthday - Roy Byrd, Craig Cooper, Tommy Henson, Elizabeth Holt, John Brown, Mary Lou Vela, Amy Tucker, Jerry Younger, Cole Ivey, Aletha Lesley, Deann Turner, Karla Acton, Brandon Hathaway, Vickie Urban, Nita Byrd, Vernon Pipkin
Anniversary - M/M John Knowles, M/M Shawn Thompson, M/M Kermit Boone, M/M Dwayne Thompson, M/M Dan Wheelock

March 10
Birthday - Shanna Jarvis, Sandy Kirby, Debby Odom, Perry Lamb, Tucker Williams, Roy Uptergrove, Ricky Reger, Reba Ooley, Pam Hart, Shane Pearce, Eugene Barnes, Jr. Barnes, Felipe Lozano, Michael Lozano, Melinda Taylor, Sandy Spivey, Curtis Pearson, Jennifer Keim, Summer Fernandez, Kellyn King
Anniversary - M/M Bobby Mosier

March 11
Birthday - Daniel Rojas, Nina Hendricks, Dorothy Buzzard, Monty Dixon, Bob Breedson, Sandi Holt, David Ortega, Willie Jones, Felipe Dominguez
Anniversary - Buddy & Amber Newman, M/M Orville Brummett

March 12
Birthday - Loree Hart, Jason TeBeest, Lindy Tolleson, Judy Martin, Loraine Davidson, Sherry Bullard, J.L. Griffin, Sammi Johnson, Makenzie Crane, Katie Hintergardt
Anniversary - M/M Andy Hoel, M/M Tommy Henson, Kristal & Ernesto Puentes

March 13
Birthday - Fran Duncan, Bonnie Frick, Gene Leatherman, Brady Tidwell, Vernon Pipkin, Gary Pracher, Roy Flowers, Shannon (Holton) Steinberger, Chuck Fletcher, Lynell Williams, Kevin Bynum, Gretchen Collinsworth, Jerry Garcia, Dolores Moreno, Larry Butts, Hadley Fletcher, LeAnn Sheets, Thomas Cain, Pam Mayfield
Anniversary - M/M Forrest Acker, M/M Jim Dick Goodall

March 14
Birthday - Sue Gerardy, Chris Johnson, Brandy Shelton, Buck Tidwell, Steve Cook, Barbara Brown, Reagan Renner, James Ray Barimus, David Terry, Kelly Mills, Curtis Dudley, Mike Wilhelm, Madison Williams, Caylin Brown, Mason Turner
Anniversary - M/M Bill Robertson, Charles & Betty West, M/M Jimmy Bishard

March 15
Birthday - Trina Horton, Jerry Bowling, Randy Stafford, Darlene Schick, Parrish Larson, Gary Osborne, Mona Rivera, Richard Varnon, Trent Seagler, Ora Fay Watkins, Krista Dement, Araceli Briones, Trenton Finley
Anniversary - M/M Bill Roberston, M/M Joe Bynum, M/M Joe T. Venne-man

March 16
Birthday - Ted Harbour, Tonya Woodington, Janice Mayfield, Gary Davis, Missie Bates, Dan McCloy, Michael Gruver, Payton Thoreson, Suzanne Schad, Hadley Spivey, Jessica Brown, Christina Bently
Anniversary - Carey & Denice Bridges, M/M Robert Womble

March 17
Birthday - Dala Cathey, J.P. TeBeest, Elvana Davis, Kathy Slater, Carrol Van-Buskirk, Tony Barrera Jr., Tony Miller III, Jamie Thomas, Terry Latham, Jason Genn, Anna Soto, Kathy Brown, Makayla Wheelock, Rachel Cook, Curtney Chambers
Anniversary - M/M Richard Ooley, M/M Chris Christy

March 18
Birthday - Danny Henson, Tony Harper, Charles Friday, Cody McLeod, Kenny Virden, Laura Garcia, Tobe Shields, Connie Hobbs, Kelsey Henton, Matthew Bain
Anniversary - M/M Edwin Percy, M/M Ken Bullard

March 19
Birthday - Barry Haenisch, Melinda McCullough, Kerri Minter, Ron Gibson, Altha Groves, Pete Garcia Jr., Jesse Ruth Gerrard, Rose Marie Bruning, Cathy Davis, April Knight
Anniversary - M/M Michael Wilson

March 20
Birthday - Mack Bevell, Travis Ferguson, Chad TeBeest, Martha Stinson, Florencio Martinez, Angela Sinta, Jane Henton, Kim King, Marion Upchurch, Kay Christian, Garry Hathaway, Lisa Tice, Rocio Garcia
Anniversary - M/M R. M. Crawford, M/M Benny McCullough, M/M Rod Barkley

Our Sympathy

PHYLLIS JEAN DANIELS ATWOOD GRUVER

Phyllis Jean Daniels Atwood, 76, of Gruver died Wednesday, February 29, 2012. Graveside services were at 10 a.m. Saturday, March 3, 2012 in Gruver Cemetery with the Rev. Kyle Brock officiating. Arrangements were by Boxwell Brothers Funeral Home of Spearman. Phyllis was born April 9, 1935, in Marbelton, Wyo. She married Harvey Eugene Atwood on Sept. 23, 1953. Harvey and Phyllis moved to Texas in 1965 and bought Nancy's Cafe in Gruver three years later. They bought the Gruver Hotel and Coffee Shop two years later and turned it into El Vaquero, a historical restaurant that has attracted diners from all around to taste Phyllis' famous Mexican food and hot sauce and to enjoy her unique hospitality and service. These traits weren't just a business strategy for Phyllis; it was a way of life. She tirelessly served those around her, rising early and going to bed late after everyone had been tended to. Her children, grandchildren and everyone blessed enough to know her attest to her ability to make even strangers feel welcome and at home. "She never met a stranger," boasts her husband, Harvey, "and they all loved her for it."



This love of family and friends was rooted in her love for Christ, in whose name she was baptized in 1966 at Victory Baptist Church. She loved music, dancing and meeting new people, all of which she is enjoying perfectly right now in the presence of her Savior. Jesus said in Mark 10:43-44, "Whoever would be great among you must be your servant, and whoever would be first among you must be slave of all."

Phyllis served and honored others selflessly and tirelessly, laboring so that each was fed, each was comforted, each was provided for and each was welcomed home. Phyllis was truly great and first among many. She will be sorely missed, greatly celebrated and tightly embraced when we join her on high. She was preceded in death by her parents, Andrew Raymond Daniels and Nettie Francis Lewis Daniels; 11 of her 12 brothers and sisters; a grandson, Sheldon Ross Atwood; and a grandson-in-law, James E. Smith. Survivors include her husband, Harvey Atwood; a sister, Louise Marie Marx of Green River, Wyo.; three children, Phil Atwood and wife Toni of Gruver, Sandy Kuriyama and husband Kevin of Plainview and Scott Atwood and wife Tasha of Vega; eight grandchildren; and 11 great-grandchildren. The family suggests memorials be made to Don and Sybil Harrington Cancer Center, P.O. Box 51628, Amarillo, TX 79159-1628.

MONUMENTS
Boxwell Brothers
Funeral Home
519 Evans • Spearman
659-3802

Dear friends,
When you buy a monument from us we make sure it is exactly what you want at a price you can afford. If it is not right, we will make it right. And you will not have to search the countryside to find us. We are here when you have a need.
Sincerely,
Bob Boxwell

PEGGY JO TURNER

PAMPA — Peggy Jo Turner, 80, of Pampa died Tuesday, February 28, 2012. Services were at 2 p.m. Saturday, March 3, 2012 in Central Baptist Church of Pampa with the Rev. Norman Rushing, pastor, and the Rev. Rick Parnell, associate pastor, officiating. Burial was in Fairview Cemetery. Arrangements were by Carmichael-Whately Funeral Directors of Pampa. Peggy was an employee of Cabot Corp in Pampa. She later served as church secretary at Central Baptist Church for 27 years. Survivors include five children; Randy Turner of Aurora, Rhonda Hicks of Gruver, Ronnie Turner of Groom, Regina Orr of Floydada and Amy Turner of Guymon, Okla., 13 grandchildren; and 12 great-grandchildren. The family suggests memorials be to Solaris Hospice, 2250 S. Farm-to-Market Road 51, Suite 400, Decatur, TX 76234, or the Sunday school literature fund at a Christian church of your choice.

VIRDA JEAN HAWKINS

DUMAS — Virda Jean Hawkins, 72, of Dumas died Tuesday, February 28, 2012. Services were at 2 p.m. Friday, March 2, 2012 in First Baptist Church with the Rev. Jerry Howe, pastor, officiating. Burial will be in Dumas Cemetery. Arrangements are by Boxwell Brothers Funeral Directors of Dumas, 500 N. Maddox Ave. Virda was born Jan. 24, 1940, in Swisher County to Clin and Roberta Carter. She worked at Green Acres School as a secretary for 21 years until her retirement in 1997. She loved to quilt and was a member of First Baptist Church. She married David Hawkins on Dec. 20, 1959, in Swisher County. Survivors include her husband, David Hawkins of Dumas; a son, Terry David Hawkins and wife Rita of Claude; two daughters, Tresa Dawn Hawkins of Shallowater and Brenda Jean Ferguson and husband Tony of Spearman; a brother, Dwight Carter and wife Donna of Denton; eight grandchildren, Colby Akins, Brandy Brinkley, Josh Hawkins, Ben Akins, Christen Brown, Jeremy Hawkins, Addam Ferguson and Lauren Ferguson; eight great-grandchildren; and several nieces and nephews. The family suggests memorials be to Memorial Hospice, 224 E. Second St., Dumas, TX 79029.

Go Painlessly with THERA-GESIC

Maximum strength analgesic for temporary relief from:

- Back pain
- Muscle pain
- Arthritis pain
- Joint pain

FIREWOOD FOR SALE

Cedar firewood for sale. Call (806) 658-2573. Delivered & stacked, or self pickup.

Calcet® helps stop low calcium leg cramps. Just ask your pharmacist.

Calcet **PHYS**

Helps fight leg cramps For those with **alkalosis** Fights **osteoporosis**

1-800-298-4509

dish AUTHORIZED RETAILER

30 premium movie channels for 3 mos. FREE

PLUS **LOCKBUSTER @HOME** for 3 mos. FREE

2 Room HD DVR Upgrade for 3 mos. FREE

1-800-298-4509

71st Metroplex Looking Glass Show/Sale

Sat., Mar. 10 • 10-5
Sun., Mar. 11 • 11-4

25 nationally-known dealers from across the country!

Glassware from the Victorian Era thru Mid-Century

1-800-298-4509

FamilyPoolFun.com

Our pools create generations of memories everyday, vacations never end!

• Aboveground & Inground pools at WHOLESALE PRICING

• SIMPLE DIY Pool Kit Assembly

• SAVE MONEY on All Pool Supplies & Accessories. Ships Fast

Call Today! 800-950-2210

Replenish the seed of faith through . . . DAILY BIBLE READING, PRAYER & REGULAR CHURCH ATTENDANCE

Spearman

Apostolic Faith Church
822 S. Dressen • 659-2870
Sunday School: 10 a.m.
Worship Service: 11 a.m.
Sun. Eve. 6 p.m.
Wed. Prayer Mtg. 7 p.m.
Pastor - Jack Cornell

First United Methodist
407 S. Haney • 659-5503
Sunday School: 9:45 a.m.
Worship: 8:30 & 11 a.m.
Jr. High Youth: 5 p.m. Sunday
High School: 6 p.m. Sunday
Kids Club: 3 p.m. Wed.
Pastor - Toni Bailey

Grace Presbyterian Church
(Worships with Faith Lutheran Church)
1101 Bernice • 659-2033
Sunday School: 9:45 a.m.
Worship: 11 a.m.
(Worships with Grace Presbyterian Church)
Pastor - Cecil Biggers, PLM

Union Church
31 S. Endicot • 659-2644
Sunday School: 10:00 a.m.
Worship & Kid's Church: 11:00 a.m.
Wednesday Evening Worship and Bible Study Service: 7 p.m. Wed.
Pastor - Steve Hinshaw
www.unionchurchonline.org

Fellowship Baptist
1102 S. Archer • 659-2783
Sunday School: 10 a.m.
Worship: 11 a.m.
Sun. Evening Worship: 6 p.m.
Sun. Evening Spanish Worship: 7 p.m.
Youth/Adult Service: 7:30 Wed.
Pastor - Philip Hudson

Church of Christ
121 S. Haney • 659-3244
Sunday Bible Class: 9:45 a.m.
Worship: 10:30 a.m.
Evening Worship: 6 p.m.
Bible Study Wed.: 7:30 p.m.

First Baptist Church
123 N. Bernice • 659-5557
Sunday School: 9:45 a.m.
Worship: 11 a.m.
Evening Worship: 7 p.m.
Men's Bible Study - Wed., 7 a.m.
Children's Choir - Wed., 6 p.m.
Adult Choir - Wed., 7 p.m.
Wed. Bible Study: 7 p.m.
Pastor - Jim Medley

Church of Christ
401 N. Bernice • 659-2295
Sunday School: 9:30 a.m.
Worship: 10:40 a.m.
Evening Worship: 6 p.m.
Wed. Worship: 7 p.m.
Wed. Youth: 7 p.m.
Pastor - Brad Smith

First Christian Church
(Disciples of Christ)
29 S. Bernice • 659-2036
Sunday School: 9:45 a.m.
Worship: 10:50 a.m.
Minister -

Sacred Heart Catholic Church
901 Roland • 659-2166
Sat. Night Mass: 5:30 p.m.
Sun. Mass: 9 a.m. - English
Sun. Mass: 11:30 a.m. - Spanish
Rev. Gregory Bunyan

Primeria Mision Bautista
502 E. 7th • 659-3991
Sunday School: 9:45 a.m.
Worship: 11 a.m.
Evening: 6 p.m.
Wed. Prayer Meeting: 7 p.m.
Thurs. Visitation: 7 p.m.
Pastor Joe Garcia Jr.

El Aposento Alto U.P.C.I.
1105 S. Roland
Domingos, Escuela-Dominical - 10 a.m.
Culto Evangelistico - 7 p.m.
Jueves, Oracion - 8 p.m.
Mier. Estudio Biblico - 7 p.m.
Pastor - A.G. Martell
(806) 659-2153

Gruver United Methodist
Broadway & Garrett
733-2651
Sunday School: 9:45 a.m.
Worship: 8:30 & 10:50 a.m.
Eve. Worship & UMY: 6 p.m.
Pastor - George Price

Spanish Cristo Redentor Church
Hwy 15 806-659-2166
Gruver, TX
Sun. Mass: 1:30 p.m. - Spanish
Rev. Gregory Bunyan

Oslo

Oslo Lutheran Church (ELCA)
6 Miles West & 12 Miles North of Gruver
339-7646
Sunday School: 9:45 a.m.
Worship: 11 a.m.
Pastor - Arlen Lloyd

Gruver

First Baptist Church
402 E. Broadway • 733-2411
Sunday School: 9:45 a.m.
Worship: 10:50 a.m.
Disciple Training: 6 p.m. Sunday
Prayer Meeting: 7:30 p.m. Wednesday
Pastor - Scott Curry

Church of Christ
209 King • 733-2760
Sunday School: 9:30 a.m.
Worship: 10:20 a.m.
Evening Worship: 6 p.m.
Wed. Worship: 7:00 p.m.
Minister - Gaylord Cook

Morse

Morse Baptist Church
733-2757
Pastor - Gary Stevens

Waka

Church of Christ
300 Rogers Ave.
202-7126
Sunday School: 9:30 a.m.
Sunday Worship: 10:30 a.m. & 6 p.m.
Wednesday Bible Study: 7 p.m.
Preacher - Ed Jenkins

He has showed you, O man, what is good. And what does the LORD require of you? To act justly and to love mercy and to walk humbly with your God.

Micah 6:8

This feature is made possible through the sponsorship of these civic minded businesses:

Deakin ELECTRIC

OILFIELD • RESIDENTIAL • COMMERCIAL
321 S. MAIN • SPEARMAN

1-800-999-1506 Chris Deakin
806) 659-5016 President

Bartlett's Lumber & Hardware

105 W. Broadway • Gruver, TX
(806) 733-2404

Money's

Stan & Donna Zepp - Owners
Phone 435-3945
14 SW 3rd Ave, Perryton TX

Morse Implement & Auto Supply

"Join us in church"
Tom Dorch 733-2668
Box 89 • Morse, TX 79062

PRAIRIE MOTORS INC.

Hwy. 207 South • P.O. Box 430
Spearman, TX 79081 • (806) 659-2541
www.prairiemotors.com

MurMur's Cafe

100 Roland St
Spearman, TX.
659-3580

Hansford County Reporter-Statesman

"Proudly Serving Hansford County Since 1907"

(806) 659-3434
310 Barkley • Spearman, TX

INTERSTATE BANK, sbb

322 Main Street • Spearman, TX
(806) 659-2559

FBI

FOR YOUR INFORMATION

Medical Fund for Francis Scroggs Pond

A Medical Fund that has been set up at FNB for Francis (Scroggs) Pond, she has been Diagnosed with cancer and will begin chemotherapy in Amarillo (and possibly surgery in Dallas in the near future).

Spearman Food Bank 1st Thursday

If you would like to help the Spearman Food Bank, they need help unloading the truck at 11:30 each 1st Thursday of each month. Contact Cecil Biggers for more information.

Hansford Co. Library Thrift Shop Accepting Donations
Alley Katz (Library Thrift Shop) is accepting donations of quality items. You may ask for the key to the Thrift Shop at the library desk during regular hours (9:30 a.m.-5 p.m., Monday-Friday). Alley Katz is open from 10 a.m.-4 p.m. each Wednesday.

Gruver Track Meet - March 8 & 9

Gruver High School will be hosting their track meet on March 8th & 9th, and they will be needing many volunteers to help run the meet. Gruver has done a great job of running off a first class meet in the past, and has received many compliments from coaches at other schools. This would be possible without the help of volunteers from the school and community. The Junior High Track Meet will be on Thursday, March 8th, with field events beginning at 3:30 and the running events beginning at 5:30. The High School Meet will be on Friday, March 9th, with field events beginning at 12:30 and the running events beginning at 4:30. If you can help out in any way, please contact Coach Felderhoff at 806-736-0203 or by email at terry.felderhoff@gruverisd.net.

Caring for Those You Care About

Caring for Those You Care About, "Road Maps for the Journey," a 5 part Lunch & Learn Series, will be held at The O'Loughlin Center, 502 Brandt, Spearman from 12-1 p.m. Sessions will include: Hard Choices for Loving Caregivers - March 21st, Long Term Care - March 28th, and Protecting Against Scams & Frauds - April 18th. This event is sponsored by Texas AgriLife Extension. Registration Fee for the series is \$10. Participants may attend one or all of the five programs in the series for the one time fee of \$10. Lunch will be provided, followed by speaker and question/answer session. Call Peggy Winegarner, Hansford County Extension Agent, for more information, 806-659-4131.

Perryton Area Parkinson's Disease Support Group

The Perryton Area Parkinson's Disease Support Group will meet Friday, March 9, 2012 at the Mennonite Church, 2821 S. Ash, at 12 noon. A lunch will be provided for the noon meeting. Kim Moore, Physical Therapist, with Accolade Home Health will give the program. Any one who has Parkinson's or has a family member/friend with it is welcome to attend. For more information, call Bev Burger at 435-3437 or 435-0579.

Firefighters Wanted

The Spearman Volunteer Fire Department is actively recruiting new members. Both men and women age 18 and over are welcome. The number of volunteers has dropped to dangerously low levels and the roster needs to be increased. If you have an interest in helping to keep your community safe, the SVFD would like to talk to you. All new candidates will have access to the best training available. All interested parties should either come to the fire station located at 513 S Hazelwood or call Kimmi Rivera at 806-202-6374. The SVFD meets every Thursday night at 7 PM. Bring a friend and come join the team.

Gruver Blood Drive

Coffee Memorial Blood Center is hosting a blood drive in Gruver in the La Casita Room of Gruver State Bank (3 Main Plaza). The blood drive will be held on Tuesday, March 20, 2012 from 2-7 p.m. Every eligible donor who presents to donate will receive a Hoops Madness t-shirt and a chance to win a new flat screen TV from Sears AND a fajita party for 20 people from Jorge's Mexican Bar & Grill! Photo ID or Donor Card Required to Donate. MUST BE 17 YEARS OLD TO DONATE BLOOD. For an appointment, please call 331-8800 or 1-877-574-8800. Find us on facebook * Follow us on Twitter * www.thegiftoflife.org ALL BLOOD TYPES ARE CURRENTLY NEEDED! The need is real. There is no substitute for blood. It can only come from volunteer blood donors. Please support the patients of the High Plains Region... Give the Gift of Life!

Voter Registration Cards

Due to the redistricting issues, every voter in Texas is currently holding an expired voter registration card. Once the maps are drawn and approved and the primary date set, voter registration cards will be mailed out. However you may vote, this year, with the expired card. For further information please call 806-659-4120.

Ready, Set, Sew!

4-H Fashion & Fun begins in March with creative make and take projects. Participants must be 3rd grade and older. Please call County Extension Agent Peggy Winegarner at 659-4131 for more information.

Winter Landfill Hours

Due to a shortage of employees, the City of Spearman has implemented the winter hours at the landfill 2 weeks early. Winter Hours are: Tues-Sat, 8 a.m. - 5 p.m. Closed on Monday and Sunday. They will also begin the one garbage pickup. If you have any questions, please contact Spearman City Hall at 806-659-2524.

Gruver Elementary Register Tapes for Education

Gruver Elementary is participating in the Lowe's Supermarket Register for Tapes for Education. Please help us earn free education material and equipment by collecting register tapes from Lowe's. You can deposit your register tapes in the boxes at the Elementary School Lobby, or the south entrance, Gruver City Library, City Hall, Gruver Library, Night & Day Beauty Salon and Shear Style Salon. Call Jo at 733-2247 for pickup of tapes or for more information.

Hansford Hospice

Volunteering for Hospice is very flexible and easy to work into your schedule. Our volunteers provide important services to the people we serve, whether it is: providing companionship to patients and their families; helping with clerical duties in the office; helping with special projects such as cooking food, baking, running or helping with community outreach. If you are interested in being a Hansford Hospice Volunteer, please contact us at 806-659-5811.

Cross Country Rings

It is 2012 and time for me to begin asking for donations to the Lynxettes Cross Country ring fund. Already, many of you have given. We would appreciate any donations from members and businesses in our community. The Lynxettes are 4 time state champs and deserve recognition for this. All donations can be made to Stephanie Brock, Special at First National Bank.

Texas SNAP Benefits Assistance

Need help applying for SNAP benefits? We can help! High Plains Food Bank is providing application assistance for Texas SNAP benefits (Food Stamps) in your area. Telephone application assistance is available. If you need to apply for benefits, please call us today at 806374-8562 or 1-800-774-8564.

Don't Text and Drive Decals

If you would like to purchase a lime green 'AMT 1994-2009 Don't Text and Drive' window decal in memory of Ali Tyler, please contact Stephanie Tyler at 806-736-0019. All proceeds go to the Ali Tyler Memorial Scholarship Fund. Decals are also available at Hansford County Floral Company on Main Street in Spearman.

Help Available for Breast Cancer Survivors

Any woman who has had breast cancer surgery and cannot afford undergarments and prosthetics can get help from the American Cancer Society through a grant from Susan G. Komen for the Cure®. The Amarillo Area Breast Prosthesis and Lymphedema Accessory Program will provide financial help to women in need of breast forms or prostheses, mastectomy bras and accessories to help with lymphedema, which is swelling of the arm caused by a build-up of lymph fluid. For more information, call the American Cancer Society office in Amarillo at (806) 353-4307 or 1-877-227-2345.

Our Sympathy

HETTY JO TUCKER BYNUM

Hetty Jo Tucker Bynum, beloved wife and mother, went to be with the Lord on Sunday, March 4, 2012.

Services will be at 2:00 p.m., Wednesday, March 7, 2012, in First Baptist Church Chapel with Dr. Howard K. Batson and the Rev. Chester O'Brien officiating. Burial will be at Llano Cemetery. A memorial service will be at 10:00 a.m., Thursday, March 8, 2012, in Ware Living Center in the upstairs dining room with Alan Williamson officiating. Arrangements are by Boxwell Brothers Funeral Directors, 2800 Paramount Blvd.



Hetty Jo was born on May 30, 1924, in Burkburnett, Texas, to Alva Josephine Huey Tucker and James Howard (Bud) Tucker. Her grandfathers J.T. Huey and C.S. Tucker were two of 13 founding families of Wichita Falls, Texas. The Huey family came to Texas by wagon train from Tennessee and donated land for a school and park, Huey Elementary School, in Wichita Falls.

Hetty Jo moved with her parents from Earlsboro, Oklahoma, at age 10 to Pampa, Texas. At age 14, she began working in her father's bakery, Puritan Bakery, one of the first commercial bakeries in Pampa. She was walking home from the bakery when the huge dust storm hit Pampa in April 1935.

She graduated from Pampa High School in 1944. Moved to Oklahoma City, Okla., and worked at Armour's Meat Packing in the Bacon Dept. as a boxer.

She married I.R. (Dick) Bynum on September 23, 1951, at Pampa First Baptist Church. They moved from Oklahoma City to Amarillo in the spring of 1952.

She worked at Blackburn Bro's Dept. Store as head cashier from 1968 until retirement in 1986. Then she assisted her husband with his Trailways Tour Office.

Hetty Jo supported her husband in various church and community services. She worked as Sunday school director at Pierce Street Baptist Church and Trinity Baptist Church. She was also active in W.M.U., served as teacher for G.A.'s, Children's Primary Choir, and Vacation Bible School. She was a member of F.B.C. and Hephzibah Sunday School class. She had strong faith in God, was a faithful prayer warrior and a helpmate to her husband.

She enjoyed extensive travels with her family and friends in U.S. and abroad. She loved sewing, crafts, floral arranging, reading, holidays and family gatherings.

Hetty Jo was preceded in death by her parents; father-in-law and mother-in-law, I.R. and Hattie Lee Bynum; husband, I.R. (Dick) Bynum; sisters, Bonnie Grissom of Colorado and Marilyn Marie Haluska of New York; brother, Jimmie Tucker of Pampa; niece, Jamie Kathleen Tucker; brothers-in-law, John Miller, LeRoy Thomas, Carlos Grissom, Phillip Bynum, Elmer Bynum, Ralph Bynum; sister-in-law, Amy Bynum; and nephews, Joe Howard Grissom, Rocky Bynum and Ricky Bynum.

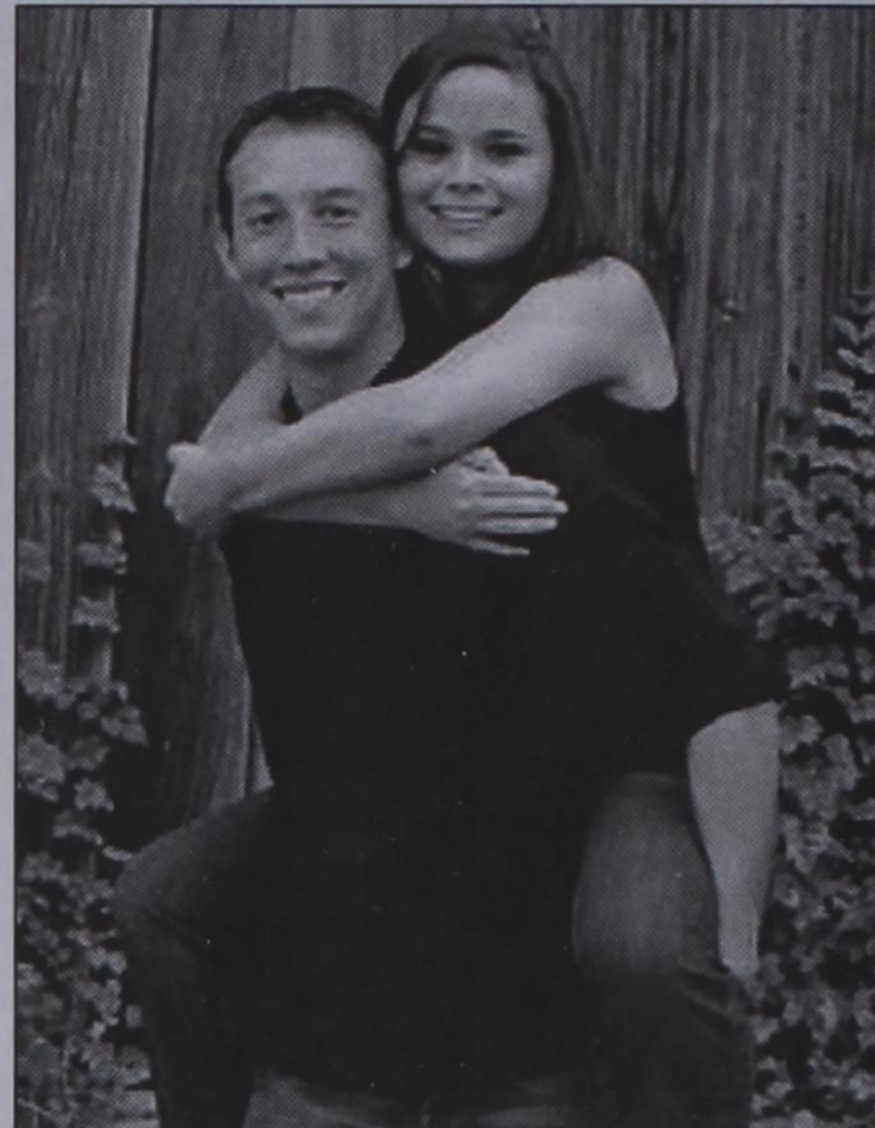
The family wishes to thank nurse Vanessa and staff at Ware Nursing Home and BSA Hospice nurse Wendy for their care of our mom.

She is survived by son and daughter-in-law, Gregg and Liz Bynum of Amarillo; daughter, Bonita Blackstock of Amarillo; granddaughter and husband, Heather and Brian Bailey of Amarillo; great-grandchildren, Graham Richardson Bailey and Anna Elise Bailey of Amarillo; sisters, Patsy Ruth Thomas of Joliet, IL and Dolores June Miller of Littleton, Colo.; brothers-in-law and sisters-in-law, Joseph and Nita Bynum of Spearman; CloAnn Bynum of Dumas; Paul and Julie Bynum of Silsbee, Texas; Beth and Gary Westberry of Adel, Georgia; and Frankie Herman of Miami, Texas; Bob Haluska of New York; Janice Tucker of Pampa; and 21 nieces and nephews.

The family suggests memorials be to Texas Lions Children's Camp, 4100 Memorial Blvd., Kerrville, TX 78028; High Plains Food Bank, P.O. Box 31803, Amarillo, TX 79120; or to Amarillo Salvation Army, 400 S. Harrison St., Amarillo, TX 79101-1442.

The family will receive friends from 6:00 p.m. - 7:00 p.m., Tuesday, March 6, 2012 at the funeral home.

Sign the online guest book at www.boxwellbrothers.com.



Engagement Announcement

Gilbert and Sharon Offer of Seguin, TX wish to announce the engagement to their daughter, Erika, to Ryan Ramon, son of Tindle and Kristi Ramon of Spearman, TX. Erika is the granddaughter of Arlene Kunde of Marion, TX. Ryan is the grandson of Victoria Orth of Asher, OK and Fin and VaLois Ramon of Goodwell, OK.

Erika attended Seguin High School, graduating in 2007. She attended Texas A&M University-Corpus Christi and graduated in May 2010 with a Bachelor's Degree in Communication. She is currently working on her Masters in Communication at Texas A&M-Corpus Christi. She is program coordinator for McNair Scholars Program at Texas A&M University-Corpus Christi.

Ryan attended Spearman High School, graduating in 2007. He attended Texas A&M University-Corpus Christi, graduating in May of 2011 with a Bachelor's Degree in Theatre. He is a sales associate for L&F Distributors in Corpus Christi and also does freelance voiceover work.

The couple plan to wed on May 26, 2012 at South Texas Botanical Gardens in Corpus Christi, TX. A reception will follow the ceremony.

The couple plan to go on a honeymoon to Key Largo of Key West in Florida for a week, immediately following their wedding.

Gordon's

Bridal Registry

Couples Currently Registered

- Shelby Begneaud & Chase Farrar - 3/10
- Jena (Cherry) & Charles Davis - 3/24
- Mandie Hunter & Josh Duggan - 3/24
- Jennifer Baldrige & Dustin Beck - 3/24
- Lindsey Mireles & Daniel Gale - 3/31
- Mattie Davis & Cody Been - 4/21 (Sp) & 5/15 (Gr)
- Amy Brown & Jon D'Zamko - 4/29
- Erika Offer & Ryan Ramon - 5/12
- Charity Burton & James Diaz - TBA
- Shelbi Roberts & TJ Vasquez - TBA
- Melissa Lesly & Kyle Harshbarger - TBA
- Heather Ford & Garrett Martin
- Dana McLaughlin & Justin Hendrick
- Kylie Knight & Tatum Rice

Baby Registry

- Baby Girl of Dana & Cass Cooper - 3/24
- Baby Girl of Kendra & Jim Potts
- Baby Boy of Adrienne & Kevin Baker
- Baby Boy of Brooke (Bevil) & Andrew McMurry

659-2141
314 Main Spearman

You are invited to a
Bridal Shower
honoring
Shelby Begneaud
bride-elect of Chase Farrar
on Saturday, March 10, 2012
from 10:30- 11:30 a.m.
in the home of Paula Cooper
801 Wilmeth Dr. Spearman, Texas
Selections at Gordon's Drug, Target
and Bed, Bath & Beyond

The
Joy's
of Summer
Available all year!

SNOW CONE STAND
Monday-Friday
1:30-8 p.m.
MURMUR'S CAFE
100 S. Roland • Spearman
659-3580

Walk for Kids' Sake 2012 Scheduled for March 24th

Walk for Kids' Sake 2012, the annual fundraiser benefiting Big Brothers Big Sisters, will be held Saturday, March 24th, at the Ochiltree County Expo Center. That evening there will be a dance benefiting Big Brothers Big Sisters at the Perryton Club featuring SUPERFREAK—a band out of Oklahoma City playing 70's and 80's music from 9 p.m.-1 a.m.

The Wheatheart Satellite of Big Brothers Big Sisters of the Texas Panhandle serves the local area—Perryton, Spearman and Gruver. "This fundraiser makes it possible for us to keep mentoring the children of our communities," said Lynda Underwood, local program director. "This one event represents about 60% of our annual budget."

"Walk for Kids' Sake is not a walk-a-thon. It does not matter how far or how fast you walk—or technically if you even walk at all! Participants can walk but they also get to eat, visit with friends, and maybe even win a door prize! It's really like a giant thank-you party for the people who raised money to help our kids," Underwood said. "That's what it comes down to—every dollar raised helps us match a child with a caring mentor. What we raise here, stays here."

There are many ways individuals, groups and businesses can be involved in this special event.

Teams of walkers made up of friends, neighbors, family and coworkers walk together during one of three forty-five minute shifts on the day of the event. Teams can also choose to participate in the Sleep In shift—which requires participants to turn in their forms and do nothing—just relax and sleep in that morning! Shifts are a 9:00 Family Walk, a 10:00 Family Walk II, and the 11:00 Party Walk.

Team members raise at least \$50 each by soliciting donations from their circle of contacts. "Last year we had 45 teams totaling 322 walkers," Underwood hopes this year to beat that record by having 60 or more teams with 400 participants this year. She goes on to say, "I hope 2012 is

the biggest and best one yet! There is still time to sign up."

Every team member raising \$50 or more receives a T-shirt printed by Lane's Locker Room and donated by Nabors Well Service. Walkers who raise more money receive prizes. This year walkers raising \$100 will receive a \$25 gift certificate to one of the following: Charlotte's, Expressions, or Taylor's Old Time Shoppe. Those raising \$200 will get the gift certificate and also a gorgeous black and cream frame with inscription that reads "May Our Home be Warm and Our Friends be Many."

Grand prizes will be given to the top four individual overall money raisers. This year's 4 grand prizes are all donated by Panhandle Anchors in Spearman. The grand prizes are: a 32 inch flat screen TV, a Fuji Digital Camera with accessory bundle, a Nook Simple Touch e-Reader, and a \$100 gift card to Wal-Mart.

Walkers at the event are eligible for many fantastic door prizes given away during their shift. Food and drinks, donated by our local stores and restaurants, will be provided throughout the day. The music will be provided by Darin Clark/KEYE Radio.

Corporate sponsorships ranging from \$50 to \$2,000 are available. Businesses may also donate door prizes for walkers.

"A raffle is being held in conjunction with the event. Office Supply/Radio Shack donated an Apple i-Pad 2 for the raffle. Tickets cost \$2 each. They can be purchased from any board member or at the Big Brothers Big Sisters office at 10 SW 3rd behind Hickerson Jewelers. Tickets will be available the day of the Walk.

Anyone who would like to serve as a team captain or who needs more information about this event or becoming a volunteer should call Underwood at 434-0016 or speak to one of the agency's Advisory Committee members who are recruiting team captains and sponsorships. These members are Kelly Barrett, Bev Burger, Dena Cator, Cindy Duvall, Lee Bob Harper, Carol Hayden, Zach Heflin, Traci Lane, Lindy Loftus, Donna Mann, Mark McLarty, Paula McGarrough, Mendy Riggins, Aaron Schilling, Nancy Seybert, Shawn Thompson, Sarah Tregellas, and Patsy Unruh.

Walkers at the event are eligible for many fantastic door prizes given away during their shift. Food and drinks, donated by our local stores and restaurants, will be provided throughout the day. The music will be provided by Darin Clark/KEYE Radio.

Corporate sponsorships ranging from \$50 to \$2,000 are available. Businesses may also donate door prizes for walkers.

"A raffle is being held in conjunction with the event. Office Supply/Radio Shack donated an Apple i-Pad 2 for the raffle. Tickets cost \$2 each. They can be purchased from any board member or at the Big Brothers Big Sisters office at 10 SW 3rd behind Hickerson Jewelers. Tickets will be available the day of the Walk.

event. The drawing will be held live on March 27th on KEYE Radio.

New for 2012 we will have a silent auction item, a Home Theater Projector donated by Roger Wright and Wright Trucking/Foster Testing, to be given to the highest bidder that evening at our Dance for Kids Sake.

The satellite office receives no funding from the hub agency in Amarillo or the national program. There is no cost to program participants. All of the money raised benefits the local program. "The money is used to create and support these intentional friendships that have such a huge impact on the children," Underwood explained. "Donating will help to recruit new Big Brother and Big Sister volunteers, cover the costs of background checks, insurance, and related business expenses like office space, phone and mileage, provide one-on-one, ongoing supervision and support for every match, and supply match activities and materials. At this time, we have 150 matches between our three communities and we are growing everyday!"

Anyone who would like to serve as a team captain or who needs more information about this event or becoming a volunteer should call Underwood at 434-0016 or speak to one of the agency's Advisory Committee members who are recruiting team captains and sponsorships. These members are Kelly Barrett, Bev Burger, Dena Cator, Cindy Duvall, Lee Bob Harper, Carol Hayden, Zach Heflin, Traci Lane, Lindy Loftus, Donna Mann, Mark McLarty, Paula McGarrough, Mendy Riggins, Aaron Schilling, Nancy Seybert, Shawn Thompson, Sarah Tregellas, and Patsy Unruh.

North Plains GCD Perspective on Texas Supreme Ruling

by Kirk Welch, kwelch@northplainsgcd.org

Last week the Texas Supreme Court issued its long-awaited decision in the Edwards Aquifer Authority v. Day case when the Court ruled that groundwater is owned by the landowner. The decision affirmed Senate Bill 332 that amended Chapter 36 of the Texas Water Code in 2011 to more clearly define groundwater ownership. The Court's ruling makes clear that the state can regulate groundwater production, which it has chosen to do through groundwater conservation districts, and provides that such regulation is essential to groundwater conservation and use across the state. "The Court's decision confirms North Plains Groundwater Conservation District's long held view that groundwater is private property. Because the district has used this view to develop and enforce its rules, we believe the decision will have little impact on landowners within the district," said Steve Walthour, North Plains GCD General Manager.

The Court focused heavily on the Edwards Aquifer Authority's ("EAA's") permitting system set out in its enabling act by the Texas Legislature. Under EAA's system, if a landowner who does not already hold a permit based on his or her historic use between 1972 and 1993, wanted to drill a well and pump the Edwards aquifer, the owner would need to purchase or lease all or part of another landowner's historic use permit before they could withdraw groundwater. Day originally claimed that 700

acre-feet of groundwater was used during the historical period, but could only prove that seven acres was irrigated directly from the well. The EAA's enabling statute required that Day should receive at least two acre-feet per irrigated acre or 14 acre-feet. Day wanted more water than the 14 acre-foot permit.

The Court's decision does provide that the landowners in the EAA v. Day case own the groundwater and may qualify for compensation based on a takings claim. According to case law a takings claim may occur when the regulation goes too far, so as to deprive the property owner of all reasonable use or value of the property. The Court does not address the merits of the takings claim because the lower court had not developed a sufficient record to do so. This means that Day will now go through another round of litigation to determine whether a taking by the EAA that requires compen-

sation occurred and the amount of compensation, if any, is due Day. The claim will be subjected to the complex takings analysis test created by the Texas Supreme Court and the U.S. Supreme Court. The Court discussed the test that will be used to determine whether an actual taking that requires compensation occurred and added that this review is based on the facts of each case and that all of the circumstances surrounding the EAA's groundwater regulation must be considered to determine whether the regulation is reasonable.

Created in 1955 by local residents and confirmed by the Texas Legislature, the North Plains Groundwater Conservation District is charged with the responsibility of conserving, preserving, protecting, and preventing waste of groundwater within its eight-county service area in the northern Texas Panhandle.

TECHNOLOGY TUNE-UP ON TUESDAY!!

MARCH 20, 2012

HANSFORD COUNTY LIBRARY

10-30 - 12:00 using e-readers and downloading library books
1:00-2:30 using smart phones and tablets

Bring your electronic devices and questions to the workshop.

122 Main Spearman, TX 79081



Do you take **VIAGRA** or **CIALIS**?
SAVE \$500!
 Get 40 100mg/20mg pills for only \$99.00
 BUY THE BLUE PILL NOW!
 call 1-888-395-8456
 CALL NOW AND GET 4 BONUS PILLS FREE!
SATISFACTION GUARANTEED

See us for:
 AUTO • HOME • CROP HAIL • FARM & RANCH • MULTIPERIL • LIVESTOCK
INSURANCE

BORT AGENCY, INC.
 510 Main St. • Gruver, TX
 (806) 733-2456

Hotline for Priority Seating - 435-3945
MONEY'S
BBQ & STEAK HOUSE

 Stan and Donna Zepp
 We Are THPLC-2-B
 14 SE 3rd Ave. Perryton, TX
New, Updated Menu Same Great Service

Tong's Chinese Restaurant
 (806) 644-2838
 22 Archer Street • Spearman
Daily Buffet
 Lunch - 11 a.m.-2:30 p.m. • Dinner - 5:30-9 p.m.
 Open Wednesday-Monday - Closed Tuesday
NEW
 Sushi on Sunday Buffet

Are You A Victim of Domestic Violence, Sexual Abuse or Physical, Emotional or Sexual Assault?
 Call Toll Free Hotline 1-800-753-5308
 We can see individuals from Hansford County anytime upon request. Call 435-5008 or 1-800-753-5308 to set up an appointment in Hansford County. We operate a safe place for victims and their children to stay in times of crisis.
 Battering Intervention & Anger Management Available
Panhandle Crisis Center
 Serving Hansford, Lipscomb & Ochiltree Counties
 301 S. Ash • Perryton, TX
 Memorials Accepted

SMART THING...
 I think I LOVE you
 Let PTCI connect your SMART THINGS
 Get FREE myWiFi*
 Get any speed Internet for only \$29.99*
 *Free myWiFi offer available to new & existing PTCI Internet customers, and includes free installation of up to 4 devices, plus up to 3 months free myWiFi service. Internet restrictions apply. See store for details. Limited time offer.

by Dorothy Hudson

Out at the Lake



March 3, 2012 - Lake Palo Duro level - 29.96 feet

The air and water temperatures are rising, causing a little more activity at Lake Palo Duro. The wind and cool weather on some days, are enough to keep most of us inside, though.

Fishing enthusiasts are at least thinking about it now. We are seeing a few boats and bank fishermen, and some are calling about fishing reports and boat ramps. I am not hearing about many fish being caught, yet. I hope the crappie catch will improve this year, along with the bass, and walleye. Catfish are still caught here the most, but more people fish for them.

Lake Palo Duro is a popular place to walk dogs. We have numerous local dog owners that come out regularly and exercise the dogs, let them swim, and get away from town for awhile. They use the remote areas, not the campgrounds, and they see some wildlife along the way.

Judging by the feeding frenzy at our bird feeder lately, the birds are nesting and soon will have little ones. I am feeding and wa-

tering four or five times more than in the last few months. Robins are plentiful, along with at least three pairs of cardinals, juncos, house finches, and sparrows. Red shafted flickers are here, but don't come to the feeder much. Few bald eagles have been seen the last two weeks. Many ducks are still here though.

The ban on campfires and charcoal grills is still in effect here at Lake Palo Duro. Enclosed propane or electric grills can be used.

This week will have two important meetings for me and some of the Directors. A Canadian River Compact meeting will be held at the capitol in Santa Fe. Representatives from New Mexico, Texas, and Oklahoma, will gather to report and discuss issues within the Canadian River basin. The second meeting will be the Texas Water Conservation Association annual meeting. Representatives from all over Texas will attend, to hear and discuss the varied water issues across the state. Drought and a recent Texas Supreme Court opinion on groundwater, will be among the hot topics.

Bobcat Relays At Sunray Boys

Team standings: 1. Stratford 124; 2. Perryton 116; 3. Sunray 99; 4. Spearman 83; 5. Canadian 60; 6. Panhandle 55; 7. Gruver 47; 8. Booker 14; 9. Channing 9.

400 Relay: 1. Stratford 46.00; 2. Gruver 46.64; 3. Panhandle 47.23; 4. Spearman 47.51; 5. Sunray 47.82; 6. Booker 47.85.

400: 1. Jerrod Collier, Gruver, 54.15; 2. Alex Carrasco, Perryton, 56.31; 3. Grayson Carter, Perryton, 56.42; 4. Fabian Mercado, Perryton, 56.88; 5. Drew Hendren, Booker, 58.46; 6. Jorge Arroyo, Sunray, 58.48.

800 Relay: 1. Sunray, 1:38.39; 2. Stratford 1:38.58; 3. Spearman 1:43.58; 4. Gruver 1:43.96.

300 hurdles: 1. Cameron Wolf, Spearman, 42.14; 2. Alex Graham, Panhandle, 42.35; 3. Julian Celestial, Sunray, 43.31; 4. Christian Fisher, Spearman, 43.38; 5. Taylor Thompson, Canadian, 44.45; 6. Rett Schoonover, Stratford, 45.49.

3200: 1. Fabian Mercado, Perryton, 10:23.25; 2. Elliott Webb, Canadian, 10:45.89; 3. Alex Bond, Perryton, 11:00.62; 4. Eddie Fierro, Sunray, 11:14.34; 5. Luis Mendoza, Gruver, 11:31.39; 6. Willie Morris, Channing, 11:41.88.

High jump: 1. Shay Wilkins, Sunray, 5-10; 2. Christian Fisher, Spearman, 5-8; 3. Sterling Audrian, Stratford, 5-6; 4. Stefan Cook, Spearman, 5-6; 5. Justin Mungia, Stratford, 5-6; 6. Colten Jackson, Gruver, 5-6.

Pole vault: 1. Cameron Wolf, Spearman, 11-6; 2. Preston Burr, Stratford, 11-0; 3. Rene Pena, Spearman, 11-0.

Long jump: 1. Jerrod Collier, Gruver, 21-3.25; 2. Seth Wood, Panhandle, 20-0.50; 3. Colten Rendon, Stratford, 19-5.75; 4. Talon Dooley, Sunray, 19-1.75; 5. Evan Purl, Sunray, 18-2; 6. Jordan Ramsey, Canadian, 18-5.

Triple jump: 1. Colten Rendon, Stratford, 40-9.0; 2. Cameron Wolf, Spearman, 39-5; 3. Talon Dooley, Sunray, 38-8.5; 4. Stefan Cook, Spearman, 38-4.5; 5. Chris Everett, Sunray, 38-4; 6. Evan Purl, Sunray, 38-1.

1600 relay: 1. Stratford, 3:42.71; 2. Perryton, 3:44.80; 3. Sunray, 3:46.00; 4. Spearman, 3:46.32; 5. Canadian, 3:49.31; 6. Panhandle 3:53.52.

Girls Team standings: 1. Spearman 140; 2. Sunray 133.333; 3. Perryton 91; 4. Stratford 87; 5. Panhandle 49; 6. Booker 44.6666; 7. Gruver 35; 8. Canadian 14.

400 Relay: 1. Sunray 56.39; 2. Perryton 56.44; 3. Stratford 56.84; 4. Spearman 58.75; 5. Gruver 58.99; 6. Perryton JV 59.42.

500 hurdles: 1. Gately Garnett, Spearman, 15.97; 2. Shaniah Fronk, Booker, 17.14; 3. Jackie Gonzalez, Stratford, 17.48; 4. Tori Hamby, Canadian, 17.58; 5. Kelsey Taylor, Sunray, 18.02; 6. Karsen Anderson, Sunray, 18.05.

800: 1. Sarah Snider, Spearman, 2:24.83; 2. Alina Spescia, Perryton, 2:27.20; 3. Jordan Molnar, Panhandle, 2:34.07; 4. Lupita Martinez, Perryton, 2:35.91; 5. Kaley Green, Sunray, 2:39.25; 6. Noemy Franco, Stratford, 2:45.91.

400: 1. Sarah Snider, Spearman, 1:02.22; 2. Lacey Herbert, Perryton, 1:06.55; 3. Mckenna Hatfield, Sunray, 1:09.02; 4. Karen Lozoya, Stratford, 1:10.24; 5. Aileen Oli-

varez, Perryton JV, 1:12.22; 6. Kaylee Patton, Perryton JV, 1:15.88.

800 Relay: 1. Sunray 1:59.87; 2. Gruver 2:02.21; 3. Panhandle 2:02.89; 4. Stratford 2:03.02; 5. Spearman 2:03.49.

300 hurdles: 1. Tori Hamby, Canadian, 48.27; 2. Gately Garnett, Spearman, 50.75; 3. Katsen Anderson, Sunray, 53.28; 4. Sonia Saenz, Sunray, 55.96; 5. Leslie Perez, Sunray, 56.28; 6. Katlynn Freeman, Panhandle, 57.02.

1600: 1. Tylo Farrar, Spearman, 5:54.17; 2. Lupita Martinez, Perryton, 5:55.80; 3. Alina Spescia, Perryton, 5:59.11; 4. Itzel Meza, Spearman, 6:02.49; 5. Macy Hubbard, Perryton, 6:06.42; 6. Melissa Corbin, Sunray, 6:28.82.

3200: 1. Tylo Farrar, Spearman, 12:45.82; 2. Itzel Meza, Spearman, 12:46.51; 3. Mayra Trejo, Sunray, 13:18.14; 4. Macy Hubbard, Perryton, 13:20.58; 5. Nohemi Ruedas, Stratford, 13:32.68; 6. Anahy Castro, Perryton, 13:47.91.

High jump: 1. Sydney Walton, Perryton, 4-10; 2. Alex Asher, Stratford, 4-8; 3. Hannah Patterson, Spearman, 4-6; 4. (tie) Mckenna Hatfield, Sunray; Natalia Hernandez, 4-4.9.12.

Booker and Shaniah Fronk, Booker, 4-6.

Pole vault: 1. Gately Garnett, Spearman, 8-0; 2. Tiffany Taylor, Sunray, 8-0; 3. M. Reining, Panhandle, 7-6; 4. Slade Garnett, Spearman, 7-6; 5. Alisa Bonner, Panhandle, 7-0; 6. Karsen Anderson, Sunray, 6-6.

Long jump: 1. Gately Garnett, Spearman, 15-1; 2. Kelsey Taylor, Sunray, 14-11; 3. Jackie Gonzalez, Stratford, 14-10½; 4. Addison Skaggs, Perryton, 14-7; 5. Slade Garnett, Spearman, 14-4; 6. Kaylee Patton, Perryton JV, 14-3¼.

Discus: 1. Sarah Pipkin, Sunray, 107-5; 2. Bethany Everett, Stratford, 95-9; 3. Alexa Peregrino, Stratford, 94-4; 4. Keylee Mayfield, Panhandle, 90-9; 5. Kayla Ramirez, Perryton, 87-11; 6. Niki Beasley, Gruver, 86-3.

Shot put: 1. Sarah Pipkin, Sunray, 32-4½; 2. Alexa Peregrino, Stratford, 32-2; 3. Kelsea Miller, Spearman, 30-5½; 4. K. Duckett, Panhandle, 30-1; 5. Niki Beasley, Gruver, 28-6; 6. Maria Fierro, Sunray JV, 28-5½.

1600 Relay: 1. Spearman 4:27.29; 2. Sunray 4:30.70; 3. Gruver 4:32.75; 4. Panhandle 4:43.44; 5. Perryton JV 4:46.29; 6. Stratford 4:49.12.

M&D Aerial, LLC
David & Megan George
P.O. Box 520 Spearman, Texas 79081
David: (806) 202-2360
Megan: (806) 202-2366
mdaerial@yahoo.com

WHEN DOES YOUR SUBSCRIPTION EXPIRE?

SCR1
03/12 EXPIRES
JOHN Q. PUBLIC
PO BOX 123
SPEARMAN TX 79081

Expiration dates are printed on the top of all mailing labels. Our readers can help keep the cost of subscriptions down by mailing in renewals in the appropriate month.

Thank you, Catherine Smith

THE HANSFORD COUNTY REPORTER-STATSMAN
213 Main Street • Spearman, TX 79081

Annual Subscription Rates
In Hansford County - \$30
Out of County - \$40
E-Subscription - \$35 (sent through e-mail)

Prices Good Thru 03/24/12

305 W. Kenneth Spearman • 659-3135
101 Main Ave. Gruver • 733-2953

TOP DEALS!

Save Money on Refills

ALLSUP'S Refillable Mugs
All Sizes
First Fill Up
FREE

MONSTER ENERGY DRINKS
16 OZ.
2 \$3.33 FOR

BUGLES
SAVE ON
EACH
99¢

HERSHEY'S SKITTLES
ALL REGULAR SIZES
CANDY BARS
EACH
99¢

BUY 12 GALLONS OF FRESH ALLSUP'S MILK
GET ONE
FREE!

BLUE BUNNY CHAMP CONES
VANILLA OR CARAMEL
99¢

BLUE BUNNY PREMIUM ICE CREAM
56 OZ. OVAL
\$5.79

SELECT VARIETIES PEPSI PRODUCTS
12 pk.
\$3.99

Allsup's Sandwich Bread
24 oz. 89¢ each or FOR **2 \$1.59**

Allsup's Wheat Bread
24 oz. \$1.09 each or FOR **2 \$1.89**

Kellogg's Cereal Cups
each **99¢**

Corn Dog Combo
2 Corn Dogs & a 32 oz. Tallup **\$3.09**

Gatorade
32 oz. FOR **2 \$3**

Sobe Life Water
20 oz. FOR **2 \$3**

HOT ITEM! Allsup's Taquitas
2 CT.
\$1.99

Hot Link Combo
2 HOT LINKS AND A 32 OZ. TALLSUP
\$2.99
(BREAD EXTRA)

Single Hot Link 99¢

NOW SERVING! Market Fresh Sandwiches

OVEN ROASTED TURKEY & CHEESE
ALBACORE TUNA SALAD, RANCH
CHICKEN SALAD OR SMOKED HAM AND CHEESE. FOR HEARTY APPETITES, CHOOSE A MEGA SANDWICH - EITHER SMOKED HAM & CHEESE OR SMOKED TURKEY & CHEESE

MARKET FRESH SANDWICH MS

HELP WANTED

HELP WANTED: Oilfield work, must have drivers license. Good pay and benefits. Call 806-659-3911 or come by at 1103 West 7th, Spearman. Trencor Enterprises, Inc. TFN(11/10/11)B

HELP WANTED: \$5000 Sign-On Bonus! Tons of Runs. Frac Sand Hauling. Owner Operators need tractor, pneumatic trailer, blower. 800-397-2338 1(3/1/12)P

HELP WANTED: Spearman Cattle Feeders is now hiring pen riders. Having your own horses and tack preferred. Please call 806-659-2577. 2(3/11/12)B

SERVICES

HOOCY POOCY PARLOR Call us for all your pet's grooming and boarding needs. Call now for reservations! 806-273-2724. TFN(11/2/07)B

TIRED OF GARAGE SALE PRICES? Let me buy your good used furniture! 2nd Chance Antiques & Furniture, Don 806-648-1480; 806-202-1391 cell. TFN(1/20/11)B

BUSINESS

BUSINESS OPPORTUNITY: We buy Frac Sand trucking companies and complete sand rigs: tractors, blowers & pneumatic trailers. Call now! 800-397-2338 1(3/8/12)P

PUBLIC NOTICE

NOTICE FINAL PUBLIC HEARING TEXAS COMMUNITY DEVELOPMENT PROGRAM

The City of Spearman will hold a final public hearing on Tuesday, March 13, 2012 at 5:05 PM. The hearing will be held at the City Hall in Spearman, Texas, in regard to the Water and Sewer System Improvement Project that was recently completed with a Texas Community Development Block Grant (TxCDBG). Topics to be discussed will include the specific program improvements completed and the costs associated with the Tx-CDBG and the City of Spearman. Handicapped citizens needing assistance to attend this hearing should contact Ed Hansen, City Manager, at (806) 659-2524. 1(3/8/12)B



Hospital Medical Records Clerk: Review and filing of medical records, review, report and maintain patient records, record retention plan, oversee flow of dictation.

Great working environment and staff, quality facility providing opportunities for professional growth. Great Benefit package. Apply at 707 S Roland, Spearman, Tx or contact Jackie Nelson, HR 806-659-5841. Download application at hchd.net EEEOE (3/8/12)



Serving Hansford County Since 1990

209 & 213 N. Bernice: 2 houses, garage and storage bldg. Call for details.

34 N. Snider: 3 bed, 1 3/4 bath, CH/A wood CONTRACT UNDER CONTRACT improvements. Must see!

301 Hazelwood: 3 bed bath, fire, wood CONTRACT UNDER CONTRACT large yard

Julie Martin: Broker - 659-2425

We'd Like Your Listing!

FOR QUALITY & SERVICE CALL US TODAY!

Equal Housing Opportunity

MITCHELL THEATRES.COM

GUYMON, OK • LIBERAL, KS • NEWTON, KS

NORTH RIDGE 8

Guymon, Oklahoma

www.northridge8.com

580-338-3281

SOUTHGATE 6

Liberal, Kansas

www.scottgate6.com

620-624-5573

SEQUOYAH 8

Garden City, Kansas

www.sequoyah8.com

620-275-2760

CHISHOLM TRAIL 8

Newton, Kansas

www.chisholmtrail8.com

316-283-0555

FRESH POPCORN EVERYDAY!

-PARTY ROOM & ARCADE-



Palace Theatre

MOVIE SHOW TIMES Friday-Thursday - 7 p.m. Sunday - 2 p.m. Closed Sunday Night

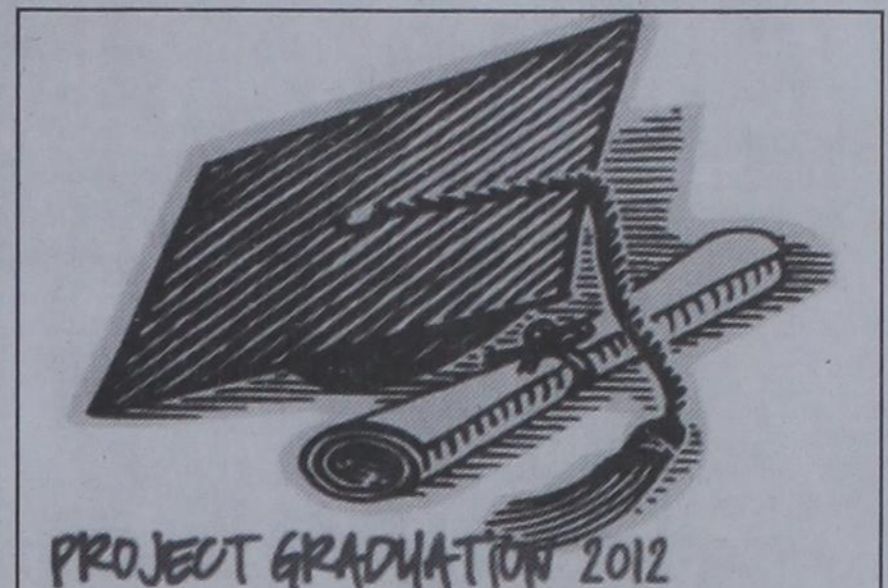
FRESH POPCORN & DRINKS! PARTY ROOM & ARCADE MOVIE RENTALS

Palace Theatre 210 Main Street Canadian TX 79014 806-323-5133 www.palacetheatre.com

The Palace Theatre meets Lucasfilm THX specifications for site and sound quality.

Word search grid with words like LUNAR, WAS, TOPE, UTILE, HUT, OHARE, SALTS, AGO, LASER, THEHELP, ODDITY, ONO, ALUM, PAL, TOLU, DAPPLE, ALOE, PITT, NASAL, ROOK, SCOWS, TENT, INFER, EPIC, HUGO, SEADOG, STOP, DEN, OILY, WEB, LOUNGE, CLOONEY, MOIRE, MAR, PROVO, BULGY, ODE, LEVER, APSE, NOW, ERAISE

Number grid: 2 1 7 4 3 6 8 9 5, 6 3 5 1 8 9 4 7 2, 8 4 9 7 5 2 3 1 6, 9 7 4 3 1 5 2 6 8, 3 2 1 6 9 8 7 5 4, 5 6 8 2 7 4 1 3 9, 7 5 2 9 4 3 6 8 1, 4 9 3 8 6 1 5 2 7, 1 8 6 5 2 7 9 4 3



PROJECT GRADUATION 2012 The parents of the Spearman High School Senior Class of 2012 will sponsor and host a "Project Graduation Party" following commencement exercises Friday May 25th. To encourage the graduates to stay the entire night, door prizes are awarded throughout the evening. In addition, graduates can earn paper monies through their participation in various games so that prizes can be purchased. The graduation party will culminate with the distribution of grand prizes.

Prizes, gift certificates, and cash are needed for the evening's gifts. If you, the community, who supported and encouraged these seniors these past 13 years of school, would be willing to share in this final "class of 2012" memory, making this project "special," please call: Tili Farrar at (806) 270-0213, Jean Snider at 659-3009, or Gwendia Hanna at 659-9949. Contributions can be mailed to: Project Graduation Gwendia Hanna, 403 E. Endicott St., Spearman, TX 79081

Check our websites for other properties.

DUMAS FARMS II - 1280 acres deeded, 320 ac. for lease with purchase of property, nice 2 bdrm. mobile home w/concrete foundation, mud room and patio, 2 all-steel barns w/concrete floors, 7 irrigation wells, UG pipe, on pvmnt. and all weather road.

VALLEY VIEW RANCH - Lipscomb Co., TX. - 177 ac. w/extraordinary 5404 sq. ft. +/- home overlooking the property w/ beautiful views of live creek, trees, wildlife (deer, quail, & turkey), covered horse training facilities, stables, excellent cattle working facilities & pens, commercial dog kennels, employee housing. We can divide (10 ac. w/main residence or 167 ac. +/- w/other improvements).

SHERMAN CO., TX - 627 acres, choice land, four 1/4 mile sprinklers, fully developed, one 1/4 mile off Hwy. 287 on paved CR - CC, 3 phase electricity, new irrigation well drilled in 2010.

WEST OF DUMAS on pvmnt. 606 ac. +/-, 17 tower sprinkler, four irr. wells, excellent location for residential or commercial development.

BUDDY CLINE ROAD - Moore Co., TX. - 1/2 section choice land, two wells (one new) and sprinklers. 1200 SOW FALLOW TO FINISH OPERATION - Moore Co., TX - New 5 yr. lease with major hog company. Two separate units, can be divided - Please contact broker for info package and price.

www.scottlandcompany.com www.texascrp.com Shawn Gillispie 806/922-5532 Ben G. Scott, Broker 1-800-933-9698 day/eve TFN(2-2-12)



All State Realty Sherrie E. Rima 806-435-SOLD (7653)

322 S. DRESSEN Corner Lot, 3 or 4 bedrooms, 2 Living spaces, 3 baths, Newly Remodeled & Priced To SELL!!

We have Buyers but We Need Listings! Call Us Today & Let us put the Two of you together!

Blankenship Real Estate

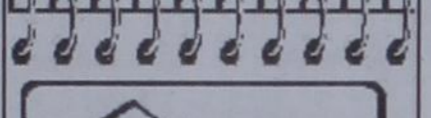
659-3052 - 670-3774

LET US HELP YOU SELL YOUR HOME.

NEW LISTINGS WANTED!

Eulalia Blankenship - Sales

Eschol Blankenship - Broker



Shirley Howard

We NEED Listings! Call us now to help YOU sell your home for top dollar!

1026 Townsend - Spearman: 2,883 sq ft, 4 bed, 1 1/2 bath, LARGE Family Room!

1016 S Barkley - Spearman: 4,081 sq ft, 4 bed, 4 bath 3 lvg areas, 2 Att gar, Fireplace, Corner Lot! REDUCED AGAIN!

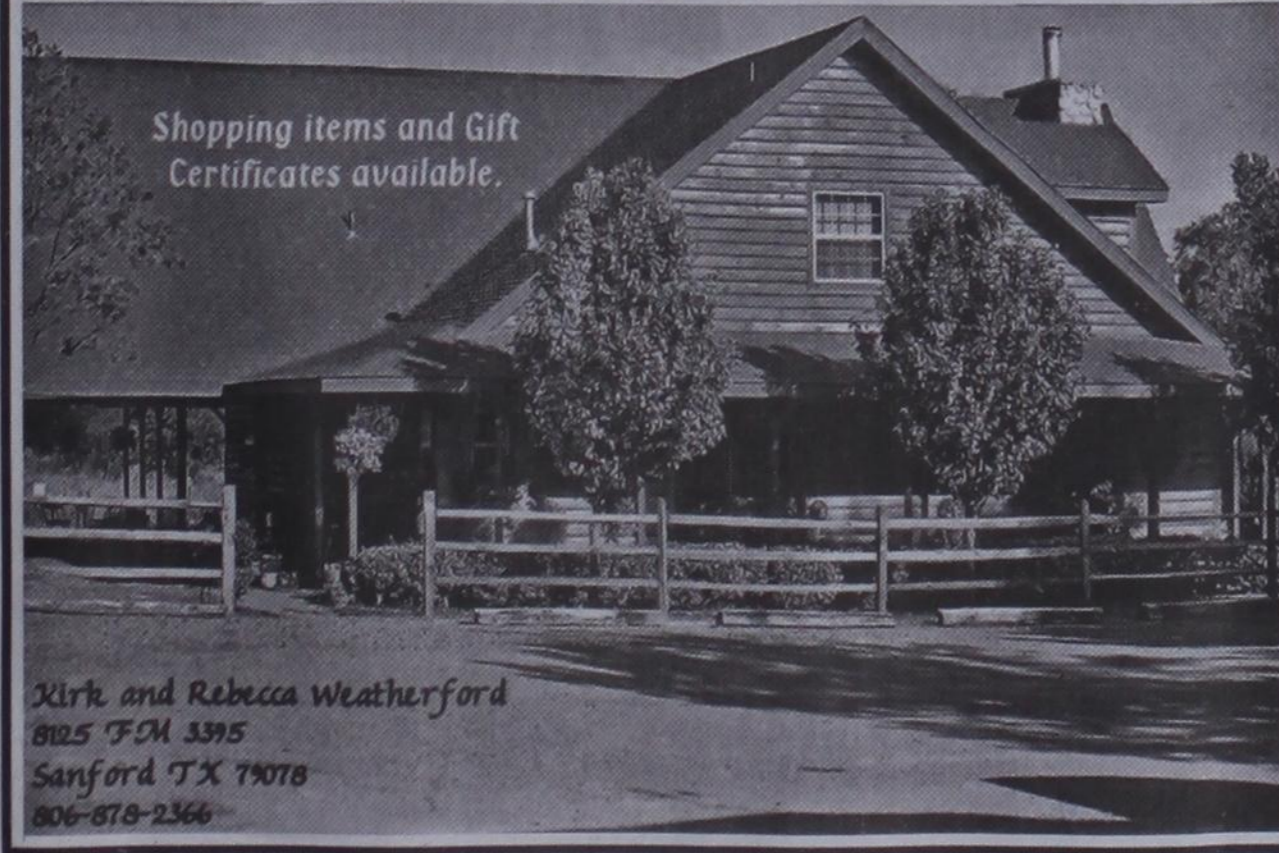
710 Front - Gruver: \$145,000 - @ 2,177 sqft, 3 bed, 2 3/4 bath, NEW Metal roof, NEW CACH, NEW Outside Stucco, and NEW Kitchen!

Shirley Howard, Broker/Owner 806-886-6536, Cell 806-648-4444, Work Melinda McCullough, Realtor (806) 733-5678

We would LOVE to sell your HOUSE! CALL US!

Three Falls COVE

From Sanford, take Hwy. 139 across the Lake Meredith Dam. About 1/2 mile after crossing the dam, turn left on Hwy. 3395. Go 2 miles until you see a pond surrounded by beautiful cottonwood trees. For map, go to www.threefallscove.com



Shopping items and Gift Certificates available. Kirk and Rebecca Weatherford 8125 FM 3395 Sanford TX 79078 806-878-2366

TEXAS STATEWIDE CLASSIFIED ADVERTISING NETWORK TexSCAN

TextSCAN Week of March 4, 2012 AUTOS EDUCATION BREWSTER COUNTY, Indian Wells Ranch #28, mule deer, 381 acres, \$265/acre. Terrell County, Paint Mare Ranch #24, whitetail, 133 acres, \$265/acre. Owner financed with 5% down. 1-210-734-4009. www.westernexasland.com FORECLOSED HILL COUNTRY HOME on 13.93 acres. 3BR/2BA furnished home with incredible hill top views. Canopied and 100 year old live oaks! Includes 1800's settlers home, 2 water wells, shed, storage barn, fenced animal stalls & pond. Originally \$499,900, liquidation price: \$349,900. Call now! 1-866-999-6697, ext 24 STEEL BUILDINGS STEEL BUILDINGS Remaining 2011 Must Buy! Make offer and low monthly payments. 20x20, 25x28, 30x40, 40x56. Save thousands and call now! 1-800-991-9251 Tara VACATION PROPERTY WEEKEND GETAWAY available on Lake Fork. Lake Livingston or Lake Medina. Rooms fully furnished! Gated community with clubhouse, swimming pool and boat ramps. Call for more information: 1-903-878-7265. 1-936-377-2235 or 1-830-460-8354 WANTED TO BUY ATTENTION WE BUY Frac Sand trucking companies and complete sand rigs. Must have tractors, blowers & pneumatic trailers. Call now, 1-800-397-2639 WE BUY MINERAL RIGHTS! Producing & non-producing, statewide! Top dollar paid. Fast, easy, discreet offer. Call Chuck anytime at 1-806-778-4368 for a fast cash offer! Run Your Ad In TexSCAN! Statewide Ad\$500 301 Newspapers, 942,418 Circulation North Region Only\$230 98 Newspapers, 263,811 Circulation South Region Only\$230 101 Newspapers, 366,726 Circulation West Region Only\$230 102 Newspapers, 311,881 Circulation To Order: Call this Newspaper direct, or call Texas Press Service at 1-800-749-4793 Today!

NOTICE: While most advertisers are reputable, we cannot guarantee products or services advertised. We urge readers to use caution and when in doubt, contact the Texas Attorney General at 1-800-621-0508 or the Federal Trade Commission at 1-877-FTC-HELP. The FTC web site is www.ftc.gov/bizop. Extend your advertising reach with TexSCAN, your Statewide Classified Ad Network.



YOUR PROPERTY TAXES JUST WENT UP OR HADN'T YOU HEARD?

KEEP THE LIGHT ON PUBLIC NOTICES When local governments want to increase tax revenues, they are required to publish notices in the newspaper so that you will know. But that right to know could disappear. Local governmental entities across the state want to hide their public notices on little seen, rarely visited government websites. What you don't know will affect you personally! If it is not in the newspaper, you won't know about it. The Hansford County Reporter-Statesman

Tylo Farrar signs with Midwestern State University

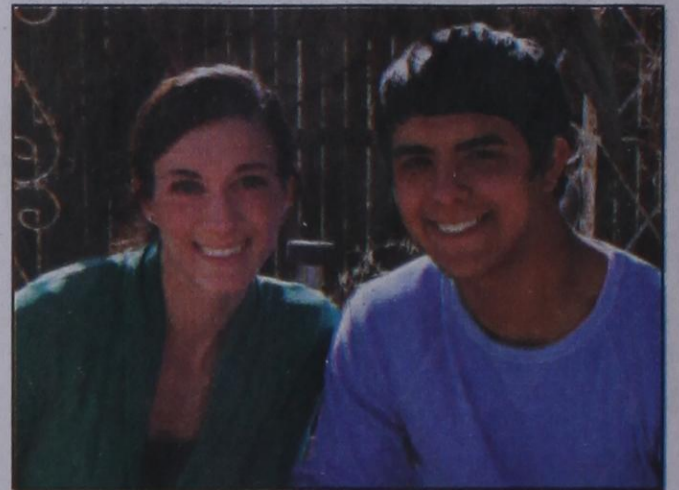


On February 22, 2012, Tylo Farrar signed a letter of intent to run cross country and track for Midwestern State University in Wichita Falls. "It will be very hard to replace the team members I have run with for the last six years, but I am very excited about this new chapter in my life," commented Tylo. "It has been a blessing living in a community that is so supportive and encouraging. I would like to thank all those who prayed for healing in my legs and knees. "I appreciate all the pats on the back, the hugs, and the younger Lynx, Lynxettes, and parents lined up cheering while we raced," continued Tylo. "Special thanks for all the precious notes I received over the years from teachers, students, friends, the community and most of all, my parents. Thanks, Spearman for supporting me and all my teammates in all our sports. Thanks, also, to my coaches for all your time and effort!"

SHS January Students of the Month

The January Students of the Month at Spearman High School are seniors, Gately Garnett and Derrick Zimmerman.

Gately is the daughter of Jon and Kelly Garnett. She has three brothers, Brynr, Kegan, and Aiden Garnett, and three sisters, Suttin, Slade, and Finley Garnett. Gately has been active in National Honor Society, Varsity Cross Country, Basketball, Track, Cheerleading, Student Council, UIL Ready Writing, Big Brothers Big Sisters of the Texas Panhandle, and Art. She is serving as the senior class Vice-President, National Honor Society Historian, and Student Council reporter. She is also very active in her church youth group where she is currently serving as the youth group president. While in high school, Gately has been received the Daughters of the American Revolution Outstanding History Student Award, All-District, All-Region and All-State Cross Country, Academic All-District Cross Country and Basketball, Academic All-State Cross Country, 2010-2011 Iron Woman Athlete, Texas Girls Coaches Association All-Star Cross Country Team Alternate, Top Student of the Year in World History and Anatomy and Physiology. In her spare time, Gately is interested in traveling and working in or with orphanages in other countries. She also loves to run, hang out with her family, and read. Gately recently signed a National Letter of Intent to run track at Utah Valley University in Orem, Utah, where she plans on majoring in communications and working in broadcasting. Gately states



about Spearman is, "Every- one is nice." Derrick says the best thing about Spear- man High School is, "Everyone knows each other." Derrick's most in- fluential teacher during his school years is Mrs. Sherry Johnson. Congratulations to Gately and Derrick on being named the Spearman High School January Stu- dents of the Month.

Derrick is the son of Marvin and Anne Wilker- son. He has one older sister, Aleisha Sweat, and one older brother, Jordan Sweat. Derrick has been ac- tive in Spearman Lynx Football for 4 years, Bas- ketball for 3 years Tennis for 1 year, Track for 1 year. Derrick is also a member of the National Honor Society and participates in UIL number sense, science, and mathematics. While in high school he has been named Academic All-District in football, Academic All- State Honorable Mention in football and was a regional qualifier in UIL number sense. In his spare time, Derrick enjoys playing ping pong and being with friends. Derrick plans on earning a degree in me- chanical engineering from Texas Tech University. Der- rick states the best thing

Are You A Victim of Domestic Violence, Sexual Abuse or Physical, Emotional or Sexual Assault?

Call Toll Free Hotline 1-800-753-5308

Battering Intervention & Anger Management Available

Panhandle Crisis Center
Serving Hansford, Lipscomb & Ochiltree Counties
301 S. Ash • Perryton, TX

Owned & Operated by Linda & Charles Stephens

Double XXL Steakhouse

(formerly Flying X Steakhouse)

We have expanded our seating capacity to 60! We welcome large and small groups and parties. Reservations suggested.

Reserve your holiday party now!

Open: Friday & Saturday Night

Open anytime for parties of 8 or more

From Stinnett: Go West on Hwy. 152 17 miles - Turn Left at Big White Sign (2 miles on Gravel Road)

From Dumas: Go East on Hwy. 152 16 miles - Turn Right at Big White Sign (2 miles on Gravel Road)

(806) 93JESUS (935-3787) www.doublexxlbranch.bravehost.com

FILM IS BIGGER IN TEXAS

2012 DALLAS INTERNATIONAL FILM FESTIVAL

PRESENTED BY BOARDWALK AUTO GROUP
Walkswagen Dealers

APRIL 12-22 DALLAS, TEXAS

DALLAS-FILM SOCIETY

Don't get hit with a penalty! "Render" your taxable property by April 15th

A "rendition" is a report to the appraisal district that lists all the taxable property you owned or controlled on January 1 of this year. The rendition form is available at the Hansford County Appraisal District.

WHO MUST FILE A RENDITION? You must file a rendition if you own tangible personal property that is used to produce income - such as the inventory and equipment used by a business.

ARE THERE ANY ADVANTAGES TO YOU? Yes, the advantages of filing a rendition are:

- You give your opinion of your property's value. If the appraisal district believes the value is higher, it must notify you in writing of the higher value and explain how you can protest that value to the appraisal review board.
- You record your correct mailing address so your tax bills will go to the right address. If your bill is mailed to the wrong address, the law still holds you responsible for paying your taxes on time or paying extra charges for late payments.
- You can also file a "report of decreased value" to notify the appraisal district of significant depreciation of the value of your property in 2011. The district will look at your property before assigning a value in 2012.

WHAT'S THE DEADLINE? The last day for filing 2012 renditions is April 15th. You can get an extra 30 days if you ask for it in writing by the April 15 deadline.

WHERE DO YOU FILE? File renditions at the:

HANSFORD COUNTY APPRAISAL DISTRICT
709 W 7th Ave. Spearman, Texas 79081
806-659-5575