



★ HANSFORD COUNTY ★
THE REPORTER-STATESMAN

THURSDAY,
SEPTEMBER 30, 2010

CELEBRATING 103 YEARS OF SERVICE TO HANSFORD COUNTY
HANSFORD COUNTY'S ONLY NEWSPAPER

75¢

WWW.SPEARMANREPORTER.COM

VOLUME 103 • ISSUE 39

reporter@spearmanreporter.com

Closed Notice

The Hansford County Reporter-Statesman office will also be closed October 7th-11th. The office will reopen at 9 a.m. on Tuesday, October 12th.
The deadline for the October 14th edition will be Tuesday, October 12th at 12 noon. Items submitted after the deadline will be published at a later date, as time and space permit.
Items may be submitted by phone (806-659-3434), fax (807-398-9080), mail (Reporter-Statesman, 213 Main Street, Spearman TX 79081), in person (310 Barkley Street, Spearman) or e-mail (reporter@spearmanreporter.com).

Hansford County Library Hosts Book Signing for Local Author

by Catherine Smith
Hansford County Library is hosting a book signing on Monday, October 11, 2010, from 2-4 p.m. Local author, Sandy Haney, will be signing copies of her new book, *Sand Crab Sentiments (A Tide Pool of Poetry)*. Everyone is invited to attend.
Sandy Haney's book of poetry was printed by Tate Publishing & Enterprises, LLC, and will be released on November 23, 2010.
Sand Crab Sentiments (A Tide Pool of

Poetry) consists of poems that Sandy has written for family and friends through the years for every occasion such as birth, graduation, empty nest, anniversaries and death. The purpose of the book is to persuade the reader to stay focused on God through every circumstance, and endure life's crashing waves to the end.
"This collection of inspirational poetry will encourage even the weariest Christian to keep looking forward and endure to the end," said Ashley Luckett, Tate Publishing Editor.
"Sandy's passion for the Lord and His Word is evident in her poems about life, death, love, happiness, and everything in between. She has been used as God's pen to bring hope to the hopeless and strength to the weak. *Sand Crab Sentiments* includes uplifting poems for any situation you may find yourself in, whether delightful or dismal, droll or deep. Immerse yourself in these *Sand Crab Sentiments*, and you will soon realize that this crustacean's perspective is one to emulate."
Sandy has been writing poetry since she was in first grade. "I remember the first time I gave someone a poem I had written," recalled Sandy. "I wrote it for my babysitter and Sunday school teacher - 'my earthly angel.' I remember that she cried and I thought, 'Wow! Something I wrote did that.' I

have been trying ever since then to get my poetry out there to bring people to God."
Sandy has submitted her poetry to publishers several times over the years, but was never successful until now.



"I don't know how other recent empty nesters coped, but I struggled," said Sandy. "After the graduation of our youngest, I furthered my own education and took on more responsibilities. Though all ventures were rewarding and meaningful, the gut-wrenching echo of an empty house still saddened me to my very core. As God cradled me through the emptiness of empty nest, he lovingly reminded me that writing has always been my greatest honor and best catharsis. He carried me through struggles, failures, healing and hope, and the poetry came."
"I was humbled as I watched tears bathe the precious faces of weary souls who read God's message in my poems," continued Sandy. "I started writing again, and the Lord filled my void in ways I never imagined, not just for me but for others as well."
That's what prompted her most recent attempt to have a book of poetry published. "Now that it is," said Sandy, "I pray it will accomplish God's purpose in each person who reads it."
Continued on Page 2

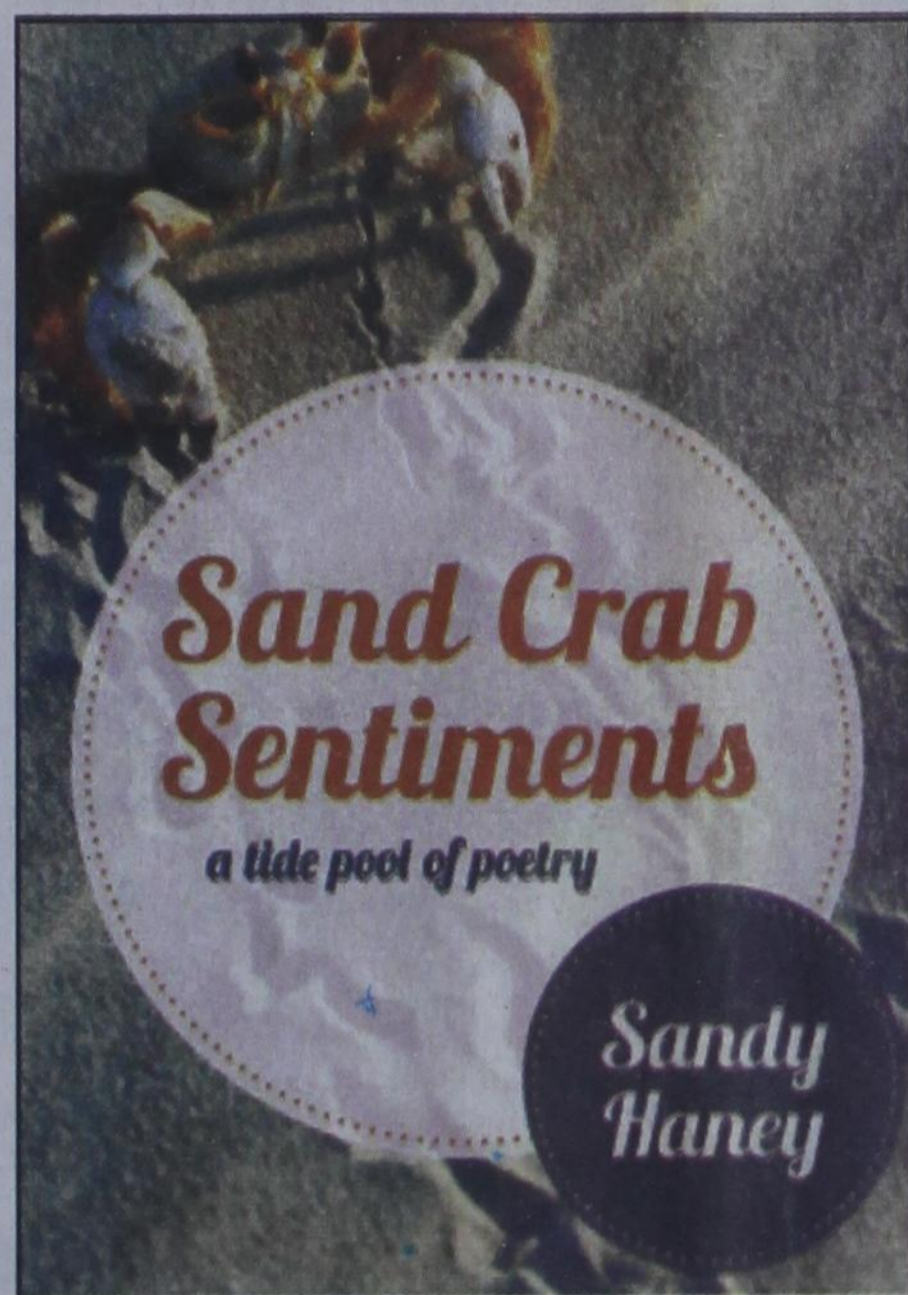
COME TO THE GAME

SPEARMAN LYNX at Highland Park on 10/1, 7:30 p.m.

Gruver Greyhounds vs Shamrock on 10/1 7:30 p.m.

Spearman Lynx
The Jr. High football teams (7th - 5 p.m., 8th - 6:15 p.m.) will play Highland Park in Highland Park on 9/30. The JV football team will play Highland Park in Spearman on 9/30 at 6 p.m. The Jr. High football teams (7th - 5 p.m., 8th - 6:15 p.m.) will play Dimmit in Spearman on 10/7. The JV football team will play Dimmit in Dimmit on 10/7 at 6 p.m.

Gruver Greyhounds
The 7th Grade (5 p.m.), 8th Grade (6:15 p.m.) and JV (7:30 p.m.) football teams will play Boys Ranch on 9/30 at Boys Ranch. The 7th Grade (5 p.m.), 8th Grade (6:15 p.m.) and JV (7:30 p.m.) football teams will play White Deer in Gruver on 10/7



CROSS COUNTRY

Gruver Greyhounds/Lady Hounds
The Gruver Cross Country teams will not compete on October 2nd.

Spearman Lynx/Lynxettes
The Spearman Varsity Lynxettes will compete in the McNeil Invitational in Round Rock on Saturday, October 2nd. The other Spearman ISD Cross Country teams will not compete this week.

Weather Forecast

THURSDAY NIGHT - Mostly clear. Lows in the upper 40s. Southeast winds 5 to 10 mph.
FRIDAY - Partly cloudy. Highs in the lower 80s. South winds 10 to 15 mph.
FRIDAY NIGHT - Partly cloudy in the evening then becoming mostly cloudy. Lows around 50. Southeast winds 10 to 15 mph.
SATURDAY - Mostly cloudy. Highs in the mid 70s.
SATURDAY NIGHT - Mostly cloudy with a 20 percent chance of showers and thunderstorms. Lows in the upper 40s.
SUNDAY - Mostly cloudy with a 20 percent chance of showers and thunderstorms. Highs in the mid 70s.
SUNDAY NIGHT - Mostly cloudy. Lows in the lower 50s.
MONDAY - Mostly cloudy. Highs in the upper 70s.
MONDAY NIGHT - Partly cloudy. Lows in the lower 50s.
TUESDAY - Partly cloudy. Highs around 80.
TUESDAY NIGHT - Mostly clear. Lows in the lower 50s.
WEDNESDAY - Mostly sunny. Highs in the upper 70s.
Read more: <http://www.city-data.com/forecast/w-Spearman-Texas.html#ixzz0xgJSWQkT>

Texas Crop & Weather

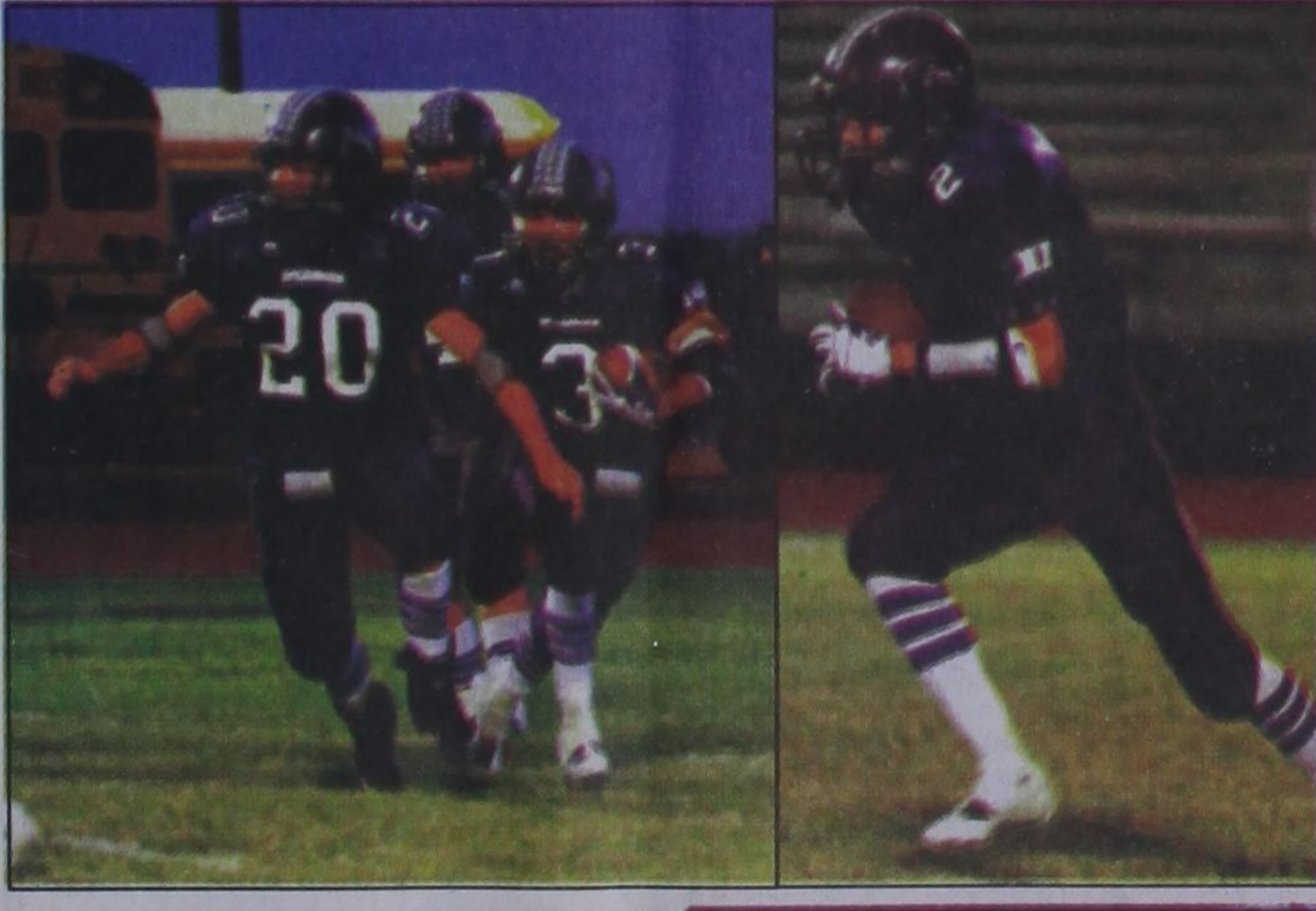
The following specific livestock, crop and weather conditions were reported by Panhandle Extension directors: Temperatures were above average most of the week. Most areas received some rain, and soil-moisture levels varied from very short to surplus, with most areas reporting short to adequate. The corn harvest was ongoing. Cotton was in fair to good condition. Sorghum varied very poor to excellent, with most reporting fair to good. Producers continued planting wheat. Rangeland and pastures were mostly in poor to fair condition. Cattle were in good condition.

Spearman Police Department Offering Reward for Information Related to Criminal Mischief Crimes

The Spearman Police Department and Hansford County Sheriff's Office are seeking information leading to the arrest and conviction of the person or persons involved in several acts of criminal mischief.
On the night of Saturday, September 25, 2010, the windows of several vehicles, farm equipment and businesses in and around Spearman were shot out, causing several thousand dollars worth of damage.
The Spearman Police Department is offering a reward for information leading to the arrest and conviction of the person or persons responsible for these crimes.
Please call the Spearman Police Department at 806-659-3707, send an e-mail to rbaker601@spearmanpd.com, or call the Hansford County Sheriff's Office at 806-659-4140 if you have any information regarding these crimes.

Sex Offender Arrested for Allegedly Grabbing Toddler

by Joe Gamm, Amarillo Globe-News
A 67-year-old registered sex offender from Perryton is in jail today after allegedly attempting to abduct a toddler.
Ochiltree County Sheriff Terry Bouchard said he received a complaint Monday that the man attempted to pull a child into his residence. Bouchard said two small children were playing in the back yard of the apartment building where the man lives. The man allegedly contacted the children and one ran to get their mother, who was nearby, Bouchard said. The mother told police that when she went to investigate, the suspect had the child by one arm. The mother grabbed the child and called the sheriff's office, Bouchard said.
The suspect was arrested on a charge of aggravated kidnapping and remains in jail today, Bouchard said.
He said the suspect, who has not yet been arraigned, was released from prison about three years ago after having served about 20 years for a sex offense.



Whirlwinds Sweep Past Lynx

The Spearman Lynx lost to the Floydada Whirlwinds, 7-14, on Friday, September 25th in Spearman.
See related story on page 7

FAR LEFT - #3 Jose Mendoza carries the ball for the Lynx behind the block of #20 Cameron Meddock.

LEFT - #2 Everardo Flores returns a Floydada kick-off.

(Photos by Tami Hargrove. Pictures available at <http://spearmansports.smugmug.com>)

Greyhounds Lose To Texico

The Gruver Greyhounds were defeated by Texico, 33-7, on Friday, September 25, 2010.
See related story on page 7

The Gruver Greyhound offensive line is pictured as they face Texhoma on September 3, 2010.
(Photo by Charlie Johnson)



Wolf Creek Heritage Museum Notes

by Virginia Scott

MUSEUM HAPPENINGS
Another busy week! While Georgia and I were out of town, the remaining work core converted the museum from summer to fall. The weather changed too, so we came home to fall weather and fall decorations in the exhibit area. NICE!

The conference in Oklahoma City was refreshing and educational for us. The American Association for State and Local History is a membership of museum and historical institution professionals and volunteers. The programs were varied and well planned. We visited with our HELP mentors, Edana and Brian. It was wonderful seeing them and bringing them up to date on our museum's progress.

They are now in six states with over 110 museums. To think that we were in the first group that

launched the program is a tribute to Mildred's and Dorothy's wisdom that has allowed us to continue our growth.

We heard many speakers with new ideas on how to digitalize our maps (I got new software on maps archiving), care for our documents (Georgia learned how to build a box) and many other topics on Historical Recording to the Politics of History Institutions.

By Saturday, Georgia and I were exhausted from the 6 a.m. to 9 p.m. schedule and brain weary from all the new and updated information. Meeting with people from other states also reaffirmed that Texas has a great program in the Texas Historical Commission. A great meeting.

Instead of Historical Musings this week, I am including the following written by Lovella Theissen on the exhibit "DORD ...re-

membered" and the reception.

"We felt the "DORD...remembered" show was a success. Our only advertisement about it came from our weekly news column, or by word of mouth.

Paintings were brought in by a number of Dord's former students from Guymon, Hardesty, Shattuck and places in between. Dord's sister, Elma Lue Case, loaned several portraits that Dord painted of their family members. Dord's nephew, Norvie Fitz of Shattuck, loaned 4 more, so we were very pleased at the response.


Graziella Marchicelli, Director of Amarillo Museum of Art, graced us with her presence and brought the 90-minute documentary produced by the museum entitled DORD.

Elma Lue Case had her hands full that day with the farm sale (she and Clarence also moved to Woodward later that evening). She was able to see the documentary, and it was special watching her view it. It brought back special memories of a brother who was very dear to her.

We were limited in space and know many more would have loved to see it, and some visitors were not able to view the printing and we apologize for that. The paintings will continue to be exhibited through the month of October. Please come see them.

Wolf Creek Heritage Museum
Museum Hours: Monday thru Friday 10 a.m. to 4 p.m., Sunday 2 to 4 p.m. Special hours upon request.
Museum Information: 13310 Hwy 305, PO Box 5, Lipscomb TX 79056; telephone: 806-852-2123; e m a i l : wolferk@amaonline.com; website: www.wolfcreekheritagemuseum.org

Are You A Victim of Domestic Violence, Sexual Abuse or Physical, Emotional or Sexual Assault?
Call Toll Free Hotline 1-800-753-5308
We can see individuals from Hansford County anytime upon request. Call 435-5008 or 1-800-753-5308 to set up an appointment in Hansford County. We operate a safe place for victims and their children to stay in times of crisis.
Battering Intervention & Anger Management Available
Panhandle Crisis Center Serving Hansford, Lipscomb & Ochiltree Counties 301 S. Ash - Peryton, TX Memorials Accepted

TEXAS PRESS ASSOCIATION
State Capital

HIGHLIGHTS
By Ed Sterling

STATE CAPITAL HIGHLIGHTS



by Ed Sterling

State files lawsuit to obtain \$830 million in teacher jobs funds

AUSTIN — State Attorney General Greg Abbott on Sept. 23 filed a legal challenge against the U.S. Department of Education to secure \$830 million in federal education funds for Texas schools, teachers and students.

The state's legal move comes in response to the Department of Education's Sept. 9 decision to deny Texas' application for the education jobs funds through H.R. 1586, U.S. House legislation signed into law in August.

According to a Dallas Morning News story carrying a Sept. 23 Washington, D.C., dateline, U.S. Education Secretary Arne Duncan said Texas will eventually get the money.

Abbott said the state's Petition for Review, filed in the Fifth U.S. District Court of Appeals in New Orleans, claims the Department of Education misapplied federal law when it construed an amendment by U.S. Rep. Lloyd Doggett, D-Austin, in a manner that unconstitutionally discriminates against the State of Texas.

Doggett's amendment, Abbott said, singles out Texas by subjecting the State to onerous standards that were different from the standards Congress placed on the other 49 states. Every state application for funding under the normal standards has been granted, while Texas' application under the heightened Texas-only standard was denied.

Doggett called the state's lawsuit "political theater" and said that all Gov. Rick Perry had to do to get the money was sign the funding application as written. Texas' application required the governor to assure that the federal money could only be spent to employ and pay teachers.

In addition to Abbott, Texas' legal challenge also names Gov. Perry, Lt. Gov. David Dewhurst, House Speaker Joe Straus, Education Commissioner Robert Scott and the State of Texas as petitioners.

Meanwhile, Perry is supporting legislation filed by U.S. Sen. Kay Bailey Hutchison and U.S. Rep. Michael Burgess, R-Lewisville, that would repeal Doggett's amendment. If Congress passes the legislation, it may be unnecessary for the state to proceed with the legal challenge.

Record lease sale helps education

Texas Land Commissioner Jerry Patterson, chairman of the Permanent University Fund's Board for Lease of University Lands, on Sept. 22 announced the results of a record oil and gas lease sale in Midland.

The sale brought in \$207 million, nearly four times more than the previous record of \$52 million, set in 1980, Patterson said. Some 260,000 acres were sold and went for more than \$1,000 per acre.

The Permanent University Fund is a constitutionally created endowment that benefits institutions in the University of Texas and Texas A&M university systems.

SBOE passes religion resolution

The State Board of Education on Sept. 24 approved a resolution that encourages future state boards to reject social studies books that don't provide fair coverage to the world's major religious groups.

The non-binding resolution says the board "will look to reject future prejudicial social studies submissions that continue to offend Texas law with respect to treatment of the world's major religious groups by significant inequalities of coverage spacewise and/or by demonizing or lionizing one or more of them over others."

Infectious disease center opens

The Texas Department of

State Health Services on Sept. 22 unveiled the new Texas Center for Infectious Disease facility in San Antonio.

The \$36 million, 65,000 square foot, 75 bed free-standing hospital replaces existing 57 year old facilities in San Antonio and will provide treatment for patients diagnosed with tuberculosis.

Patients will be transferred from the old building to the new one in mid-October. The new facility's air system is designed to prevent contaminants and pathogens in patient rooms from reaching surrounding areas.

First drug take-back day was held

The Texas Department of Public Safety on Sept. 22 reminded Texans of a nationwide prescription drug "take-back" initiative to prevent pill abuse and theft.

On Sept. 25, the U.S. Drug Enforcement Administration and local partners collected expired, unused and unwanted prescription drugs for destruction at drop-off sites in Texas nationwide.

The service was free and anonymous, no questions asked.

State Fair of Texas in full swing

The State Fair of Texas opened Sept. 24 and will continue through Oct. 17 at Fair Park in Dallas.

General admission tickets are \$15; tickets for seniors and children under 48 inches tall cost \$11.

Book Signing

Continued from Page 1

I am reminded that no matter how many certifications I hold, how many responsibilities I have or how many books I have published, nothing is more satisfying than being healed and bringing the wounded to the Healer."

Sandy was raised in beautiful San Diego, California. Both Community Full Gospel Church and Dr. Tim La Haye's Christian schools were very instrumental in grounding her in God from a young age. Her only public school experience was in her last two years of high school, but San Diego's mountain town of Julian helped her through the experience by encouraging her walk with the Lord.

After graduation, she went to the Apostolic Faith Bible College in Baxter Springs, Kansas. There she met Marty Haney. The couple has been married for 29 years. They have lived in and around Fayetteville, Arkansas, and in areas of Texas including Killeen, Rockdale and currently in Spearman.

After earning her degree in Elementary Education at the University of Mary Hardin-Baylor, a Christian college in Belton, Texas,

Sandy became certified to teach the visually impaired, Special Education, Early Childhood Education, English as a Second Language, and students with reading disabilities.

Sandy teaches first grade at Gus Birdwell Elementary in Spearman, TX. She is also a certified teacher of the visually impaired.

She and Marty Haney have two children, Steven and Sharon. Since graduating from college with a double major in Finance and Accounting, Steven and his wife, Lauren, make their home in Amarillo. Sharon is a student in her final year at a nearby Christian college, majoring in Business Education, and planning to marry fiancé Aaron in the summer of 2011.

Sandy is the daughter of Bob and the late Omie Danley of San Diego, California, and the daughter-in-law of Roland and Loretta Haney, former pastors of the Apostolic Faith Church in Spearman.

Sand Crab Sentiments will be available through Barnes & Nobles, Amazon, and area Christian book stores for \$12.99. Books may also be ordered online from the publisher. (Go to www.sandyhaney.com for details.)

ARE YOU BURIED IN DEBT?
WE CAN HELP YOU:
Reduce Your Balances Up To 60%!
Save THOUSANDS In Interest Payments!
Arrange One AFFORDABLE Monthly Payment!
Stop Harassing Creditor Calls!
Have An Advocate Deal With Your Creditors!
Settle ALL Your Debt In 12-36 Months!
Alternative to Bankruptcy!
RATED "A" WITH THE BETTER BUSINESS BUREAU
Must Have A Minimum Of \$10,000 In Credit Card, Store Card, Medical Bills Or Unsecured Debt...
Free Info 1-800-631-9149
We Know What The Credit Card Companies Don't Want YOU To Know! Call TODAY For Your FREE Consultation!

Central Texas Beefmaster Breeders
24th Annual
BEEF ON FORAGE BEEFMASTER PERFORMANCE BULL SALE
Saturday, October 16, 2010 • 1 p.m.
Selling 100 Bulls
WASHINGTON COUNTY FAIRGROUNDS, BRENHAM
For information call Gary Frenzel 254-721-2214

The Hansford County Reporter-Statesman
Mailing Address - 213 Main Street - Spearman TX 79081
Physical Address - 310 Barkley Street - Spearman TX 79081
Phone - (806) 659-3434 • Fax - (806) 398-9080
www.spearmanreporter.com • reporter@spearmanreporter.com
Mon.-Thurs. 9 a.m.-12 p.m., Mon.-Wed. & 1-5 p.m.
Closed Thurs. afternoon and all day Fri., Sat. & Sun.
Gary Smith - Publisher Catherine Smith - Editor
Contributing Writers: Dorothy Hudson, Jim Derington, Merry Sparks, Cecil Biggers
Contributing Photographers: Charlie Johnson, Lisa Johnson Tammy Batton, Bonnie Bergan
Subscription Rates
In Hansford County - \$30.00 • Out of County - \$40.00
E-Mail Subscription - \$35.00
The Hansford County Reporter-Statesman (USPS 529660) is published weekly in Spearman, TX. Periodical postage paid in Spearman, TX. POSTMASTER: Send address changes to: The Hansford County Reporter-Statesman, 213 Main Street, Spearman, TX 79031.
Publication Policy
The deadline to submit news and advertising to The Hansford County Reporter-Statesman is Monday at 5 p.m. Items submitted after the deadline will be published at a later date, as time and space permit. Publication of all items is at the discretion of the editor.
Advertising
Open Display rates are \$4.00 per column inch. Classified Ads are \$6 for the first 25 words and 10¢ per word for each additional word. (Additional charge for boxed classifieds.) There is a \$1 charge per week if billed.
Member of
Gruver Chamber of Commerce
Spearman Chamber of Commerce
Texas Press Association and Panhandle Press Association

INSECTS
ACROSS
1. Criss-crossed to form latticework
6. *Jerry Seinfeld's 2007 role
9. Octagonal traffic sign
13. Moral principle
14. Under the weather
15. Modern-day aqualung
16. Back of the body, pl.
17. Swedish shag rug
18. It gets wider in the dark
19. Offensively malodorous
21. *Wood-eating house hazard
23. *When dropped, causes infestation
24. Eagle's nest
25. Bow shape
28. Tie up
30. Close, but not quite
35. Cowboy's necktie
37. Cataclysmic nuclear explosion
39. Wasted on the young?
40. Black cat, e.g.
41. Famous Spanish Renaissance painter
43. Nicholas I or Nicholas II, e.g.
44. Veal and pork, e.g.
46. Coat of _____
47. Town on SE coast of England, west of Brighton
48. Tiny tree
50. Navy specialist
52. Make out of cloth
53. Wry face
55. *"Milk?"
57. *Insect with manners, so to speak
61. Fraudulence
64. Throat lobe
65. Charlotte of "Facts of Life" fame
67. Not yet payable
69. "The _____, they are a-changin'," sang Dylan
70. Rapsallion
71. *"Do-reh-mi-fa-so-lati"
72. Dutch cheese
73. *Host to fleas and ticks
74. *Chocolate-covered grasshoppers to some
DOWN
1. Light-emitting diode
2. On the top of a surface
3. Via
4. Short for History, pl.
5. *Sacred Egyptian beetle
6. *Insect's flying menace
7. Minnesota Boundary Waters entry point
8. Fill with spirits
9. *Mosquito food found on pond
10. South American Indian people
11. Posthumous notice
12. *Entomophobic reaction
15. Adverb derived from spry
20. Cake cover
22. Geological period
24. Contrary to one's interests
25. Goal of Manhattan Project
26. Young Montague
27. * _____ as a whistle"
29. Novelist Roberts
31. *"Like a _____ to a flame"
32. Anise-flavored Greek liquor, pl.
33. On which musical notes are written
34. Tossed or passed
36. *Known to march one-by-one
38. Pinnacle
42. Tributary of Missouri River
45. Brazilian ballroom dance, pl.
49. Debt acknowledgment
51. *Nathaniel West's novel "The Day of the _____"
54. Finnno-____ family of languages
56. Luciano Pavarotti, e.g.
57. Plucked string instrument
58. Fan quality
59. Russian governmental agency
60. Big bang theory's original matter
61. A division, especially in government, abbr.
62. Opposite of busy
63. Variety of limestone
66. American Medical Association
68. Elizabeth Gilbert's novel "____, Pray, Love"

SUDOKU
PRESENTED BY
VolunteerMatch.org
Where volunteering begins.

					6	8	9
				7			6
2	6						
	2			8	3	9	
		9		1		5	
		7		4			8
			4	5			
7						5	
1						2	

© 2010, StatePoint Media, Inc. answer on classified page
Fill in the blank squares in the grid, making sure that every row, column and 3-by-3 box includes all digits 1 through 9.

These games are brought to you by the Hansford County Reporter-Statesman

CROSSWORD

1	2	3	4	5	6	7	8	9	10	11	12

PRESENTED BY
VolunteerMatch.org
Where volunteering begins.
© 2010, StatePoint Media, Inc. answer on classified page

Happy Birthday!

September 30
Birthday - Aaron Boyd, Chile Favala, Kyle Williams, Tanya Adkins, Cindi Nash, Stan Seagler, Naomi Fryrear, Jana Tindell, June Spencer, Roger Jones, F.W. Thomas, Sandy Cummings, Jean West, Dixie Williams, James Whitaker, Patrick Jerman, Sharon Bailey, Jade Shaver, Chris Cudd, Jenn Schnell, Justin Parker, Glenn Robinson, Sable Ortiz
Anniversary - M/M Aaron Brown, M/M A.D. Reed Jr., M/M Leon Wilson, M/M Charlie Salgado

October 1
Birthday - Royce Mathews, Galen Slough, Merri Gale Sparks, Hector Nava, Beatrice Renteria, Brenda Pierson, Willie Clement, Sheila Watley, Colene Schaefer, Randall Schell, Angela Rodriguez, Laci Ortega, David Nash, Betty Perry, Robbie Dewberry, Jeff Shields, Maria Sibley, Lacey Decker
Anniversary - M/M Elwyn Young

October 2
Birthday - Kyler Barkley, Wayne Garrett, Jeremy Tunnell, Richard Wagner, Della Reed, Kathi Gilley, Kelly Trout, Angelita Cruz, Pamela Ring, Robbi Dewberry, Jerry Jasper
Anniversary - Glen Ray & Laura Mackie

October 3
Birthday - Ruth Ann Jones, Lloyd Carroll, Doris Bateman, Eulalia Blankenship, Brian Watley, Teresa England, Timber Barkley, Chad Brown, Arlene Kennedy, Lynda Tunnell, Griffin George, Marsha Murphy
Anniversary - M/M Scott Davis, Jim & Linda Beeson, M/M Jeff Hawkins, Mr. & Mrs Dan Desimone

October 4
Birthday - Debbie Garrett, Jan Stedje, Pam Stork, Abbi Yanke, Theresa Johnson, Jeff Gresset, Monty Hawkins, Karl Smith, Kandy Martin, Adam Red Bennie Brogdan, Francisco Borunda, Taryn Snider, Jess Anne Lusby, Earlene Russell, Macy Harbour, Lane Lee Harper
Anniversary - M/M Craig Vinson, M/M Andres Rodriguez

October 5
Birthday - Ernestina Sal-

Words from Faith & Grace



by Cecil R. Biggers, Lutheran Lay Minister

How can we find God in suffering as well as on the mountain top of faith? We study Habakkuk 1: 1-2; 4, Psalm 37: 1-9, 2 Timothy 1: 1-14, and Luke 17: 5-10.

The prophet Habakkuk struggles with the idea that God has shown him that the 'chosen people' have done evil and are about to be defeated by an even more evil people. The answer is found in loving God, not just in loving the blessings that God gives. The theme is, "the righteous shall live by faith". So when the law becomes slack and justice never prevails, the wicked surround the righteous and justice becomes perverted. The Hebrew word "mishpat" means both 'justice' and 'judgment'. God's people have become so corrupt that their 'judgment' is no longer 'justice'. Habakkuk is told to write the words of the vision on a tablet. This means that the promise God is giving is preserved that the people my read it and be convicted of their evil deeds yet the faithful will be sustained by this same writing as they await the fulfillment of God's promise. In good times and in bad times, the righteous, those who live by faith, are sustained by God's word.

The Psalmist sings a wisdom song. It is a song of an older man who has become wiser with age. The Psalmist does not sing as in a 1980's song, "Don't worry, be happy" rather the Psalmist sings, "Don't worry, Trust in God". The righteous live by faith.

Paul leaves his "testament" to Timothy as he prepares to die for the sake of the gospel. Paul reminds Timothy that he is the product of a family of faith which is dedicated to God. Paul reminds Timothy that Paul has laid his hands on Timothy just as Moses laid his hands on Joshua to indicate his succession to leadership. Timothy is to carry on the gospel even to the point that the adversary embraces Jesus Christ. Finally, Paul reminds Timothy that there is eternal glory for the believer who is faithful. The righteous live by faith.

Jesus has previously told his disciples to beware of becoming a stumbling block for the young. Jesus has told them that the disciple life is hard. The disciples ask Jesus to increase their faith. Instead, Jesus tells them that if they had faith the size of a mustard seed they could say to a mulberry tree, be uprooted and planted in the sea, and it would obey. He then tells them that a slave is not 'thankful' for doing what is commanded. This seems harsh, but it teaches us that we cannot put God in our debt. We are not 'earning' our salvation. By God's grace, Jesus died for our sins upon a cross, so that by faith in Him we are 'righteous' [in a right relationship with God]. Dear Christian, we live by faith whether in good times or in bad, whether in adulation or persecution. It is the love of God which sustains us as we live our disciple life in faith.

May the Holy Spirit keep your hearts and minds in Christ Jesus that you may be made "righteous" by your faith.

Open Letter

I feel very blessed to have the Johnson family as part of our community. The children are a part of our school family. The Johnson's are also members of our church and Sandi's father, Gary Stevens, is the pastor of our church.

Through my family's many medical needs from cancer to numerous surgeries and broken bones the past few years, David Johnson was there for our family. When I was very sick from cancer treatments, David met my husband at the pharmacy on a late weekend night to refill my prescription for nausea. He also delivered my husband's pain medication prescription to our house 25 miles away from Gordon's Drug on a late snowy, winter night because he knew my husband needed it for pain from his recent ankle surgery. We will truly miss his friendship and his dedication to his customers and our community!

I apologize in advance for bringing this tragic incident up again, but feel it is important some things are said. I know we are all ready to put this tragedy behind us and move on. Not everything people read and hear on the news is accurate. I, as well as other people in the Spearman, Gruver, and Morse communities, have close ties with people living in the Rocky Ford and La Junta, Colorado, area. I was born and raised there. I am sure others, like myself, have heard from very reliable sources an account of what happened at Rocky Ford that is different from what was reported. People who were close to the incident tell a much different version than the original news release. Yes, David Johnson did talk to the Rocky Ford woman, but he did not threaten the woman or the children and he did not take the woman hostage. These details may seem of little importance to some and do not change the final outcome of this very tragic incident, but to me make a difference!

I pray God will help us to be slow to judge, yet quick to help share the burden of another's heavy load. Please continue to pray that God will comfort and give strength to this family as they try to go on with their life!

Sincerely,
 VeAnn Clark, Morse, TX

Urgent news for people who had HIP REPLACEMENT

Several hip replacement systems used since 2003, including ones made by DePuy and Zimmer, have been recalled or had sales suspended due to an increased need for a second hip replacement. If you had or need a second hip replacement or are having unexpected hip problems, call us now for a free consultation at 1-800-THE-EAGLE (toll-free). No fees or costs until your case settles. We practice law only in Arizona, but associate with lawyers throughout the U.S.

GOLDBERG & OSBORNE
 1-800-THE-EAGLE
 (1-800-843-3245)
 www.1800theeagle.com

Open 7 days a week

MONUMENTS

Boxwell Brothers Funeral Home

519 Evans • Spearman
 659-3802

Dear friends,
 When you buy a monument from us we make sure it is exactly what you want at a price you can afford. If it is not right, we will make it right. And you will not have to search the countryside to find us. We are here when you have a need.

Sincerely,
 Bob Boxwell

\$2, \$4, \$5 PRESCRIPTIONS

DELIVERED TO YOUR FRONT DOOR!

- No more waiting in lines or running out of your meds!
- Licensed Texas Pharmacy.
- Valid Texas Prescriptions Only!
- Medicare, Medicaid, Most Private Insurances Accepted!

Call Us Today! We Will Do The Rest!
 877-779-1529 * 713-784-8100

DIRECTV's Best Package FREE for 5 months!

PLUS: FREE Standard Installation

FREE HD for LIFE!

No start costs! Local installs!

ASK HOW! CALL DIRECTSTARTV An Authorized DIRECTV Dealer
 Toll Free **800-214-7110**

FREE HD FOR LIFE!

Only on DISH Network

- Lowest Price in America!
- \$ 24.99/mo for over 120 channels!
- \$500 Bonus!

Call Now!
1-866-799-8039

**285+ Channels
 160 HD Channels**

DIRECTV 5 MONTHS FREE

Includes **HBO** **SHOWTIME** **stargz** **cinemax**

2 FREE Upgrades - HD DVR & HD Receiver - Ask How!

Direct Sat TV
1-800-577-1322
 Local Installers!

Offers end 10/06/10, on approved credit. New customers only. Other restrictions apply. Call for details.

UP TO **30x FASTER THAN DIAL-UP!**

AT THE BIGGEST STATE FAIR, GET THE BIGGEST **HIGH-SPEED INTERNET DEAL:**

\$0.00 TO GET STARTED

THIS IS BIG.

WILDBLUE
 (888) 264-4524

LIMITED TIME OFFER
\$0.00 TO GET STARTED
 Offer available only at the Texas State Fair.
 For offers in your area, visit www.wildblue.com

30 days after offer ends 10/30/2010. Additional one-time shipping & handling fee applies, plus monthly equipment lease fee and taxes. Minimum commitment term is 12 months. Subject to WildBlue terms and conditions. Visit www.wildblue.com/legal for details and the Fair Access Policy. *Speed comparison based on file download using WildBlue's Pro package vs. 42 Kbps dial-up. Actual speeds may vary. © 2010 WildBlue Communications Inc.

Replenish the seed of faith through . . .

DAILY BIBLE READING, PRAYER & REGULAR CHURCH ATTENDANCE

<p>Spearman</p> <p>Apostolic Faith Church 822 S. Dressen • 659-2870 Sunday School: 10 a.m. Worship Service: 11 a.m. Sun. Eve.: 6 p.m. Wed. Prayer Mtg.: 7 p.m. Pastor - Roland Haney</p> <p>First Assembly of God 401 N. Bernice • 659-2295 Sunday School: 9:30 a.m. Worship: 10:40 a.m. Evening Worship: 6 p.m. Wed. Worship: 7 p.m. Wed. Youth: 7 p.m. Pastor - Jerry Pollard</p> <p>First Christian Church (Disciples of Christ) 29 S. Bernice • 659-2036 Sunday School: 9:45 a.m. Worship: 10:50 a.m. Minister -</p> <p>First Baptist Church 123 N. Bernice • 659-5557 Sunday School: 9:45 a.m. Worship: 11 a.m. Evening Worship: 7 p.m. Men's Bible Study - Wed., 7 a.m. Children's Choir - Wed, 6 p.m. Adult Choir - Wed, 7 p.m. Wed. Bible Study, 7 p.m. Pastor - Jim Medley</p> <p>Church of Christ 121 S. Bernice • 659-3244 Sunday Bible Class: 9:45 a.m. Worship: 10:30 a.m. Evening Worship: 6 p.m. Bible Study Wed.: 7:30 p.m.</p>	<p>Sacred Heart Catholic Church 901 Roland • 659-2166 Sat. Night Mass: 5:30 p.m. Sun. Mass: 9 a.m. - English Sun. Mass: 11:30 a.m. - Spanish Rev. Gregory Bunyan</p> <p>First United Methodist 407 S. Haney • 659-5503 Sunday School: 9:45 a.m. Worship: 8:30 & 11 a.m. Jr. High Youth: 5 p.m. Sunday High School: 6 p.m. Sunday Kids Club: 3 p.m. Wed. Pastor - Neely Landrum</p> <p>Grace Presbyterian Church (Worships with Faith Lutheran Church) 1101 Bernice • 659-2033</p> <p>Faith Lutheran Church (ELCA) 1101 Bernice • 659-2252 Sunday School: 9:45 a.m. Worship: 11 a.m. (Worships with Grace Presbyterian Church) Pastor - Cecil Biggers, PLM</p> <p>Union Church 31 S. Endicott • 659-2644 Sunday School: 10:00 a.m. Worship: 11:00 a.m. Bible Study: 7 p.m. Wed. Youth Service: 6 p.m. Wed. Pastor - Don Baltazor</p> <p>Fellowship Baptist 1102 S. Archer • 659-2783 Sunday School: 10 a.m. Worship: 11 a.m. Sun. Evening Worship: 6 p.m. Sun. Evening Spanish Worship: 7 p.m. Youth/Adult Service: 7:30 Wed. Pastor - Philip Hudson</p>	<p>Primera Mision Bautista 502 E. 7th • 659-3991 Sunday School: 9:45 a.m. Worship: 11 a.m. Evening: 6 p.m. Wed. Prayer Meeting: 7 p.m. Thurs. Visitation: 7 p.m. Pastor Joe Garcia Jr.</p> <p>El Aposento Alto U.P.C.I. 1105 S. Roland Domingos: Escuela-Domical - 10 a.m. Culo Evangelistico - 7 p.m. Jueves: Oracion - 8 p.m. Mier: Estudio Biblico - 7 p.m. Pastor - A.G. Martell (806) 659-2153</p>	<p>Gruver United Methodist Broadway & Garrett 733-2651 Sunday School: 9:45 a.m. Worship: 8:30 & 10:50 a.m. Eve. Worship & UMY: 6 p.m. Pastor - George Price</p> <p>Spanish Cristo Redentor Church Hwy 15 806-659-2166 Gruver, TX Sun. Mass: 1:30 p.m. - Spanish Rev. Gregory Bunyan</p> <p>Oslo</p> <p>Oslo Lutheran Church (ELCA) 6 Miles West & 12 Miles North of Gruver 339-7646 Sunday School: 9:45 a.m. Worship: 11 a.m. Pastor - Arlen Lloyd</p> <p>Morse</p> <p>Morse Baptist Church 733-2757 Pastor -</p> <p>Waka</p> <p>Church of Christ 300 Rogers Ave. 202-7126 Sunday Worship: 10:30 a.m. & 6 p.m. Wednesday Bible Study: 7 p.m. Preacher -</p>
---	---	---	---

He has showed you, O man, what is good. And what does the LORD require of you? To act justly and to love mercy and to walk humbly with your God. Micah 6:8

This feature is made possible through the sponsorship of these civic minded businesses:

<p>Deakin ELECTRIC</p> <p>OILFIELD • RESIDENTIAL • COMMERCIAL 321 S. MAIN • SPEARMAN</p> <p>1-800-999-1506 Chris Deakin (806) 659-5016 President</p>	<p>Bartlett's Lumber & Hardware</p> <p>105 W. Broadway • Gruver, TX (806) 733-2404</p>	<p>BERRY CLEANERS</p> <p>Ann & Vernon Pipkin - Owners Phone 659-3122 • P.O. Box 1017 207 Main St. • Spearman, TX</p>	<p>Morse Implement & Auto Supply</p> <p>"Join us in church" Tom Dortch 733-2668 Box 89 • Morse, TX 79062</p>
<p>PRAIRIE MOTORS INC.</p> <p>Hwy. 207 South • P.O. Box 430 Spearman, TX 79081 • (806) 659-2541 www.prairiemotors.com</p>	<p>MurMur's Cafe</p> <p>100 Roland St Spearman, TX. 659-3580</p>	<p>Hansford County Reporter-Statesman</p> <p>"Proudly Serving Hansford County Since 1907"</p> <p>(806) 659-3434 310 Barkley • Spearman, TX</p>	<p>INTERSTATE BANK, sSB</p> <p>www.interstatebank.net 322 Main • P.O. Box 146 Spearman, TX • 659-2559</p>

HYI

FOR YOUR INFORMATION

Medical Fund for Bruce Duncan

A medical fund has been established for Bruce Duncan at First National Bank, Spearman. If you would like to make a donation you may make a deposit with any teller or mail a donation to First National Bank, Bruce Duncan Medical Fund, PO Box 337, Spearman TX 79081.

Hansford Gun Club Rifle Shoot

The Hansford Gun Club holds a .22 rifle shoot on the second Sunday of each month, starting at 1:30 p.m. at the gun range (located on Hwy. 15 between Spearman and Gruver). Everyone is invited to join the fun.

Fire Department Donations

Persons wishing to make donations to the Fire Departments in Hansford County may do so at the following addresses: Spearman Fire Dept., Box 37, Spearman TX 79081; Gruver Fire Dept., Box 947, Gruver TX 79040 or Morse Fire Dept., Box 28, Morse TX 79062.

Celebrating 90 Years of Life

Mrs. Wilma Clark is Celebrating 90 Years of Life at the Fellowship Hall of the First United Methodist Church in Spearman on Saturday, September 25, 2010 from 1:30 to 3:00 p.m.

Rainbow Kids Klub is Back!!

Our new building is finished and we are inviting all children Kindergarten -Fifth grade to join Rainbow Kids Klub. This is a weekly after school program with snacks, recreation, character building Bible lessons, memorization, music, games and its all free. Rainbow Kids Klub begins Wednesday, September 8, after school until 5 p.m. at the First United Methodist Church, 407 S. Haney in Spearman. Invitations and enrollment forms will be given out at school. Please bring the enrollment form when you bring your child to Rainbow Kids Klub. For more information call 659-5503.

Hospice Volunteer Class

Hansford Hospice Volunteer Classes will begin on Tuesday, October 5th. They will be held from 6:30-8:30 p.m. at the First United Methodist Church Fellowship Hall in Spearman. If you are interested in becoming a volunteer, or wanting to learn more about how to deal with death and dying, please call 806-659-5811 or 806-659-3846. Please leave your name and phone number. (You are not required to be a Hospice Volunteer to take the Hospice Volunteer Class. Classes are open to anyone interested in learning more about Hospice Care.)

Care Packages

If you would like to help with Care Package Drop Offs, please contact Less Sullivan at lesssullivan@hotmail.com. Less is collecting items for care packages in conjunction with AmericaSupportsYouTexas.com. Journals are also located at the O'Loughlin Center, Spearman High School, and Gus Birdwell Elementary for anyone wishing to sign them. For more information, contact Less at 330-0973.

4-H Smoked Meat Sale

4-H members across Hansford County (Spearman, Gruver & Morse) are selling smoked meats for their annual fund raising efforts. Products available include smoked & spiral hams (\$28), Turkey (\$23), peppered Turkey breasts (\$21), smoked or peppered bacon (\$14), beef (\$15) or chicken (\$13) fajitas, chicken tenders (\$16), tamales (\$16), pork patties (\$14) pork chub (\$10), sausage links (\$15), pecan cobbler (\$13), pulled pork BBQ (\$13), little porkies Wraps (\$14), sausage gravy (\$), Hunters Package (pancake mix, Canadian bacon, peppered pork loin & jalapeno cheese summer sausage (\$23) and pumpkin roll (\$13). Funds benefit the awards program, contest and recognition banquet for all 4-H members. Orders must be received by October 18th, with a delivery date before Thanksgiving. Please contact a 4-H member or call the County Extension Office 659-4130 or 733-2901, fax 659-4133 to place your order. If email would be easier hansford@ag.tamu.edu.

Spearman FFA Meat & Cookie Fundraiser Sale

Spearman FFA will be having their Meat & Cookie Fundraising Sale from October 4th thru October 15th. Spearman FFA and Jr. FFA members will be taking orders on these dates. The delivery of these items will be during the week of November 1st-5th. Proceeds will contribute support to the Spearman FFA's Chapter Activities. For any further information or questions, please contact Josh Brockman at 659-2584. Thank you for your support of the Spearman FFA Chapter.

Quilt Home Tour

Take a Quilt/ Home Tour with us!! In conjunction with Ozfest in Liberal, Kansas on October 9th and 10th, this special event will feature over 200 quilts, 5 beautiful homes, the Coronado Museum and the Pancake Day Museum - ALL for the cost of \$5.00 per ticket! This will also include quilting demonstrations at each home, an "Everything OZ" quilt challenge display and souvenir items. Tickets are available at Prairie Trails Quilting and Quilted Treasures and guild members before the tour, and the museums and homes during the tour. Hours are Saturday from 10 am to 5 pm and Sunday from 1 pm to 5 pm. For more information call Ginny Anderson 620-624-8283. The proceeds go toward guild programs and the Susan G. Komen for the Cure. Sponsoring this event: Needles and Friends Quilt Guild -www.wequilt.net

USS Solace Reunion

Veterans, spouses and children of veterans who served on the USS Solace will travel to Lubbock from all over the country to attend their annual reunion September 29th-October 1st. Solace, a hospital ship, was at Pearl Harbor during the attack December 7th, 1941, and received seven battle stars for World War II service. William H. "Bill" Logan of Lubbock, who recently passed away, planned this year's reunion. Mr. Logan's wife, Editha, will now welcome the reunion in honor of her husband. The reunion group will tour the Silent Wings Museum, 6202 North Interstate 27, Thursday, September 30th at 2:00pm. The media and general public are encouraged to join the group at the Silent Wings Museum to ask questions and hear personal stories from the USS Solace. For additional information, contact Editha Logan at 806.799.2748.

Spearman Booster Club

The Spearman Booster Club will meet on Monday, September 27, 2010 at 7 p.m. in Coach Rodman's room at Spearman High School. Anyone interested is encouraged to attend!

Adult ESL Class

Improve your English skills and enroll in an adult ESL Class. Learn to speak the English Language and receive the educational skills necessary to help your children in school. Registration will be the first night of class. Classes begin Thursday, September 16, 2010, and will be held from 6:30-8 p.m. at Spearman High School. Mrs. Lopez will be the instructor. Classes will be held on Tuesday and Thursday nights. There is no charge for the class. For more information call Cindy Blackman at the Community Resource office, 659-3233.

Low-Income Tax Clinic

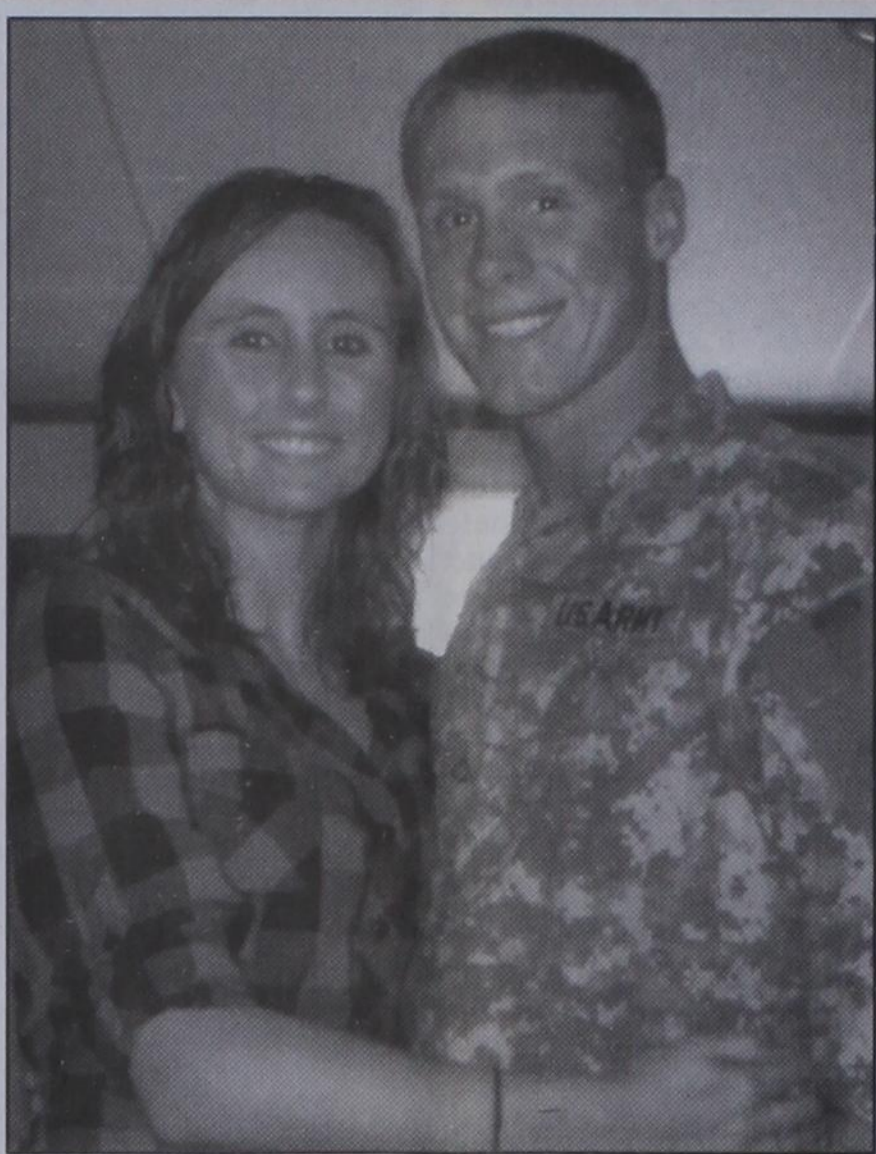
The Texas Tech School of Law operates a Low-Income Tax Clinic to provide assistance relating to issues involving controversies with the Internal Revenue Service to low-income taxpayers and to individuals for whom English is a second language. Law students, under the supervision of a law professor, handle a wide range of issues and such as innocent spouse, offers in compromise, federal tax levies, payment agreements and representation before the United States Tax Court. Persons interested in seeking representation should contact the Texas Tech Law School Low Income Tax Clinic at (806) 742-4312 or (800) 420-8037 for further information or to schedule an appointment.

SPWA Seeks Volunteers

The Southwest Pioneer Windmill Association is seeking the next generation of volunteers to continue the work of restoring and maintaining the windmills of the SPWA. If you have an interest in windmills and their upkeep, and/or maintenance of the park, you are needed. For information, call Dwayne Mitchell, 270-0291 or Don Reed 330-0745.

O'Loughlin Center Hours

The O'Loughlin Center is open for the following hours: Monday-Thursday, 6:00 a.m.-8:00 p.m.; Friday, 6:00 a.m.-6:00 p.m.; and Saturday, 9:00 a.m.-12:00 p.m. (noon). For more information, contact The O'Loughlin Center, 502 S. Brandt, PO Box 733, Spearman TX 79081. (806-659-3030)



Engagement Announcement

Rick and Jan Howard of Spearman, TX wish to announce the engagement of their daughter, Kylee Howard to Jeremy Frost. Jeremy is the son of Glen and Stacie Ruga of Spearman, TX and Matt and Ramona Frost of Amarillo, TX.

The couple plan to wed on November 13, 2010 on the beach at Kelyll Island, GA.

Kylee graduated from Spearman High School in 2008 and attended West Texas A&M for two years.

Jeremy graduated from Spearman High School in 2008 and is currently serving in the United States Army.



Lowe, Lair Wed

Shea Lyn Lowe and Brian Gregory Lair were united in holy matrimony on September 4, 2010 at 7 p.m. in the Gruver United Methodist Church in Gruver with Reverend Jonathan Mast of Hillside Christian of Amarillo officiating.

Shea is the daughter of Buddy and Marsha Lowe of Gruver and the granddaughter of Mrs. Oliver Wallin and Mrs. George C. Lowe, both of Gruver. Brian is the son of Greg and Marshi Lair of Canyon and the grandson of Mrs. Winnie Fred Lair of Canyon and Mrs. Bettye Clark of Amarillo.

The Matrons of Honor were Bryn Weller and Cori Cox, sisters of the bride. Bridal attendants were Kallie Hauschild, Brooke McMurtry, Tricia LaRocca, Brooke Condry, Mary Brennehan and Mackenzie Millican. Flower girls were Chloe Cox and Campbell Cox, nieces of the bride.

The best man was Greg Lair, father of the groom. Groom's attendants were Chip Cox, Elijah Amlund, Matthew Lewis, Jeff Hauschild, Aaron Weller, Jose Medellin and Luke Milloican. Ringbearer was Cooper Weller, nephew of the bride.

Joe Wallin, uncle of the bride, played the violin as people were seated before the wedding, and as the party walked in. He was accompanied by Kathy Gillispie of Gruver. Soloists were Lisa Salmans and Brenda Hopkins of Gruver.

Ushers were Jonathan Lair, Matthew Lair, Michael Lair and Seth Solomon. Scripture was read by Lindsay Solomon.

The bride wore a Pronovias gown of Dupioni silk. It featured a one-shoulder ruched bodice with an asymmetrical drop waist and an A-line skirt with chapel train.

The bridal attendants wore purple gowns and carried green floral bouquets. The bride chose purple and lavender calla lilies and purple calla with garden roses and orange Ranunculus caged with lily grass for her bridal bouquet.

Special guests were Dr. Bruce Mickey and wife, Barbara, of Dallas.

A reception followed the ceremony at The O'Loughlin Center in Spearman.

Shea is a graduate of Gruver High School and Texas Tech University. She teaches 3rd grade at Woodlands in Amarillo.

Brian is a graduate of Canyon High School and Northwood University in Midland, Michigan. He is a manager at Greg Lair Pontiac.

Following a honeymoon in Hawaii, the couple will reside in Amarillo.

You are invited to a
Bridal Shower
honoring
Clayton & Amanda Wilkerson
Saturday, October 9, 2010
from 10:00-11:30 a.m.
at The O'Loughlin Center
502 S. Brandt Spearman TX

The
Joys
of Summer
Available all year!
SNOW CONE STAND
Monday-Friday
1:30-8 p.m.
MURMUR'S
CAFE
100 S. Roland • Spearman
659-3580

HOME PHONE SERVICE
NO Pre-Payment • NO Deposit Required!
Rates from \$6.99 per month*
(\$17/month including approximate taxes & fees)
FREE 1st Month of Service
Caller ID & Call Waiting included in Packages**
New-Talk 866.934.3448
*36.99/month with auto pay **Requires silver or gold package.

Truck Wrecks
are not accidents
Trucker negligence is the major contributing factor in many fatalities nationwide. Maybe the driver was distracted or didn't adjust for road conditions. Maybe he was late, sleepy or did not maintain the rig. If you have been in a truck collision or other automobile collision, call us for professional insight.
CAPPOLINO | DODD | KREBS
1-800-460-0606
www.YourCarWreck.com
NO FEE FOR FIRST VISIT | Cameron, TX

UNITED STATES POSTAL SERVICE® (All Periodicals Publications Except Requester Publications)
Statement of Ownership, Management, and Circulation
1. Publication Title: The Hansford County Reporter-Statesman
2. Issue Frequency: Weekly
3. Filing Date: 9/20/10
4. Issue Date: 9/20/10
5. Number of Issues Published Annually: 52
6. Annual Subscription Price: \$20 - In Country; \$47 - Out of Country; \$55 for Subscriptions
7. Complete Mailing Address of Known Office of Publication (Not printer) (Street, city, county, state, and ZIP+4®)
The Hansford County Reporter-Statesman
213 Main Street
Spearman, TX 79081
Contact Person: Catherine Smith
Telephone (include area code): (806) 659-3434
8. Complete Mailing Address of Headquarters or General Business Office of Publisher (Not printer)
The Hansford County Reporter-Statesman
213 Main Street
Spearman, TX 79081
9. Full Names and Complete Mailing Addresses of Publisher, Editor, and Managing Editor (Do not leave blank)
Publisher (Name and complete mailing address)
Gary Smith
213 Main Street
Spearman, TX 79081
Editor (Name and complete mailing address)
Catherine Smith
213 Main Street
Spearman, TX 79081
Managing Editor (Name and complete mailing address)
10. Owner (Do not leave blank. If the publication is owned by a corporation, give the name and address of the corporation immediately followed by the names and addresses of all stockholders owning or holding 1 percent or more of the total amount of stock. If not owned by a corporation, give the names and addresses of the individual owners. If owned by a partnership or other unincorporated firm, give its name and address as well as those of each individual owner. If the publication is published by a nonprofit organization, give its name and address.)
Full Name: Gary Smith, Complete Mailing Address: 213 Main Street - Spearman, TX 79081
Full Name: Catherine Smith, Complete Mailing Address: 213 Main Street - Spearman, TX 79081
11. Known Bondholders, Mortgagees, and Other Security Holders Owning or Holding 1 Percent or More of Total Amount of Bonds, Mortgages, or Other Securities. If none, check this box.
Full Name: _____ Complete Mailing Address: _____
12. The Status (For completion by nonprofit organizations authorized to mail at nonprofit rates) (Check one)
The purpose, function, and nonprofit status of this organization and the exempt status for federal income tax purposes:
 Has Not Changed During Preceding 12 Months
 Has Changed During Preceding 12 Months (Publisher must submit explanation of change with this statement)
13. Publication Title: The Hansford County Reporter-Statesman
14. Issue Date for Circulation Data Below: 9/20/10
15. Extent and Nature of Circulation
Average No. Copies Each Issue During Preceding 12 Months
No. Copies of Single Issue Published Nearest to Filing Date
a. Total Number of Copies (Net press run) 1600 1600
b. Paid Circulation (By Mail and Outside the Mail)
(1) Mailed Outside-County Paid Subscriptions Listed on PS Form 3541 (Includes paid distribution above nominal rate, advertiser's proof copies, and exchange copies) 300 285
(2) Mailed In-County Paid Subscriptions Listed on PS Form 3541 (Includes paid distribution above nominal rate, advertiser's proof copies, and exchange copies) 410 399
(3) Paid Distribution Outside the Mails Including Sales Through Dealers and Carriers, Street Vendors, Counter Sales, and Other Paid Distribution Outside USPS® 400 400
(4) Paid Distribution by Other Classes of Mail Through the USPS (e.g., First-Class Mail®) 0 0
c. Total Paid Circulation (Sum of 15b (1), (2), (3), and (4)) 1110 1082
d. Free or Nominal Rate Distribution (Sum of 15d (1), (2), (3) and (4))
(1) Free or Nominal Rate Outside-County Copies Included on PS Form 3541 18 18
(2) Free or Nominal Rate In-County Copies Included on PS Form 3541 7 7
(3) Free or Nominal Rate Copies Mailed at Other Classes Through the USPS (e.g., First-Class Mail®) 0 0
(4) Free or Nominal Rate Distribution Outside the Mail (Carriers or other means) 80 80
e. Total Free or Nominal Rate Distribution (Sum of 15d (1), (2), (3) and (4)) 105 105
f. Total Distribution (Sum of 15e and 15c) 1215 1188
g. Copies Not Distributed (See Instructions to Publishers #4 (page 82)) 385 413
h. Total (Sum of 15f and g) 1600 1600
i. Percent Paid (15c divided by 15f times 100) 92% 91%
16. Publication of Statement of Ownership
 If the publication is a general publication, publication of this statement is required. Will be printed in the 9/20/10 issue of the publication. Publication not required.
17. Signature and Title of Editor, Publisher, Business Manager, or Owner
Catherine Smith 9/20/10
I certify that all information furnished on this form is true and complete. I understand that anyone who furnishes false or misleading information on this form or who omits material or information requested on the form may be subject to criminal sanctions (including fines and imprisonment) and/or civil sanctions (including civil penalties).

Winegarner Named Multimedia Editor for The Daily Toreador



Brett Winegarner pictured at his desk at The Daily Toreador.

by Catherine Smith

Brett Winegarner, a 2009 Spearman High School graduate, is the new Multimedia Editor for The Daily Toreador, the student newspaper of Texas Tech University in Lubbock.

During Red Raider Freshman Orientation, Brett visited the student media booth and took an application, filled it out and submitted it along with his resume. A few weeks before school began, he received an e-mail that asked him if he would like to go in and see if he could produce good stories. He did well, so he was hired.

His first semester at Tech, he didn't cover very many stories, and most of them were news stories. He covered the Red Raider and Lady Raider Basketball games later in the semester, and became more involved in The Daily Toreador.

During the spring semester he covered all sports, and even served as a fill-in editor one week when his boss was in London for an internship.

As Multimedia Editor, he is in charge of sending people out to cover events and sporting events, as well as the Daily Toreador website, and also covers the football games. (Brett's video coverage clips are available at www.spearmanreporter.com/collegenews)

Brett plans to work at the Daily Toreador until he graduates. After graduation he plans to get a job with a TV station in a major sports market, and hopes to work his way up to a large sports television company like Fox Sports or ESPN. His ultimate goal is to be the everyday play-by-play announcer for a Major League Baseball team.

Brett is the son of Brenda and Verlan Winegarner of Spearman.

The Texas Tech newspaper started in 1925 after the founding of Texas Technological College in 1923. It was originally called The Toreador to reflect the Spanish Renaissance architecture of the campus's buildings. In 1965, the name changed to The University Daily and then changed again to its current name The Daily Toreador in 2005.

The publication is available in print, e-mail, and web formats (www.dailytoreador.com).

Although two faculty advisers watch over the operations of the newspaper, the day-to-day decisions for the newspaper rest on the student staff. The advisers choose not to restrict the content that is placed in the paper, but instead make suggestions and give advice to the editorial board.

The newspaper prints Monday-Friday, and has around 2,000 to 5,000 unique visitors per day to its Web site, continually making it one of the top-25 read college newspapers in the nation.

Letter to the Editor

Dear Editor,
A note of thanks from me and my family to all the wonderful people of the town of Spearman.

I thank each and every person who came to the airport on Friday, September 17, 2010 to honor my brother, Sam Cornelius. The turnout was so amazing and it was so nice to see our friends. Our mother and daddy would have been so proud to see Sam remembered in such a special way.

Thank you to everyone who donated money for the project. Town folks told me they tried to donate, but

were told there was already enough money - thanks to those, too.

Thank you to every single soul who helped get this project done. It was such a great memory for me to have. Special thanks to Jake Willimon and his family for the hard work. Also to Mike Schnell for having the vision and sharing it with Jake. Thank you to the Boy Scouts and to the young woman who played "Taps." The whole morning was

perfect; the ceremony, the weather and the company!

Before I left town, I went to see the wonderful remodel of our old house on Haney Street. The City is lucky indeed to have the Woolley family who uses their time and talent to improve neighborhoods.

Again, thank you to all who honored our true blue American hero.

Adele (Dell)
Cornelius Rumley
Abilene, TX

Spearman Sparkler Fundraiser

A Spearman Sparkler Cheer Fundraiser will be held on Saturday, October 2nd from 10 a.m. - 1 p.m. at the 1st Saturday Country Market (in the Lowes Shopping Center in Spearman).

For only a \$1 per game, you can choose from Balloon Darts, Plinko, Duck Pond, Moving Ring Toss, Bean Bag Toss, Pistol Pete Quick Draw, and Blaster Ball. Play games to earn great prizes, such as Lava Lamps, Light-up Glasses, Ice Cream Cone Shooters, Light-up necklaces and mouth pieces, Inflatables, Laser Pointers, and so much more.

Come out and play a few carnival games to help the Spearman Sparkler Competition Cheer Team raise money for their competition suits. (All proceeds will benefit Spearman Sparklers Gymnastics.)

Please come out and support the Spearman Sparklers!

Thank you!

We would like to extend a heart-felt thank you to all of our family, friends and neighbors for the thoughts, prayers, food, calls, flowers and many acts of kindness extended to us during Pat's sickness. He is now cancer free!

Sincerely,
Pat and Rita Underwood

Spirit of Sedona, L.L.P.: Massage Therapy
by Michael L. Cook, C.M.T.; L.M.T.
**Now Offering Detoxifying
30-Minute Ionic Footbaths**
\$45.00
Allow 45 minutes to 1 hour for procedure
Call for appointment - 806-886-1125
30 S. Haney St. • Spearman TX
(NW corner of 1st Street & Haney, across from Palo Duro Skatepark)

Tong's Chinese Restaurant
(806) 644-2838
22 Archer Street • Spearman
Daily Buffet
Lunch - 11 a.m.-2:30 p.m. • Dinner - 5:30-9 p.m.
Open Wednesday-Monday - Closed Tuesday
NEW
Sushi on Sunday Buffet

Any Large Specialty Pizza w/Breadsticks
\$15.00 + Tax
Mon.-Fri. - 11:30 a.m.-10 p.m.
Sat. - 12 noon - 10:00 p.m.
Sun. - 3-10 p.m.
Deliveries 5-9 p.m.
Happy Hour Special
3 LARGE PIZZAS
Whole Topping Pizzas
5-8 p.m. Only
\$19.99
Simple Simon's PIZZA
312 Main Street
Spearman, TX
(806) 659-9991
Due to gas prices, a minimum order of \$10 is required for delivery.
Please remember to tip our drivers.
NEW ITEMS
Manicotti w/Bread - \$5.99
Rib Tips w/Baked Potato, Bread, Lettuce & Tomato - \$8.99

NOTICE OF PUBLIC MEETING TO DISCUSS

GRUVER INDEPENDENT SCHOOL DISTRICT'S STATE FINANCIAL ACCOUNTABILITY RATING

The Gruver Independent School District will hold a public meeting on October 12, 2010 at 6:45 p.m. in the Gruver High School Library, 601 Garrett Street, Gruver, Texas 79040. The purpose of this meeting is to discuss the school district's performance under each of the 21 indicators of the Financial Integrity Rating System of Texas (FIRST). Public participation in the discussion is invited.

The FIRST ratings are based upon analysis of staff and student data reported for the 2008-2009 school year, and budgetary and actual financial data for the 2009 fiscal year (ending August 31, 2009). The FIRST rating system was developed by the Texas Education Agency in response to Senate Bill 875 of the 76th Texas Legislature in 1999. The primary goal of the FIRST is to achieve quality performance in the management of the school district's financial resources.

PUBLIC HEARING

Date: October 12, 2010
Time: 6:45 p.m.
Location: Gruver High School Library
601 Garrett Street., Gruver TX
Subject: Financial Accountability Rating

Local Sports

Greyhound News

Lynx Fall to Whirlwinds

The Spearman Lynx hosted the Floydada Whirlwinds on Friday, September 24, 2010 for their first district game of the season. The Whirlwinds were able to blow through the Lynx defense, winning 14-7.

The Whirlwinds scored in the first quarter and the game was scoreless in the second quarter. The Lynx went into the half down 0-7.

Cameron Meddock scored on the opening kickoff of the second half with a 65-yard touchdown. The PAT was good, tying the game at 7-7.

The two teams went back and forth in the final quarter, with Rex Mathis scoring the winning touchdown for the Whirlwinds in the fourth quarter. Mathis rushed for 80 yards and Jordan Wooding added 80 more for the Whirlwinds.

Meddock led the Lynx with 103 yards rushing, including his 65-yard touchdown.

The Lynx will travel to Highland Park on Friday, October 1, 2010. Kick-off will be at 7:30 p.m.

Records: Spearman is 4-1. Floydada is 3-2.

Score by Quarters

Floydada	7	0	0	7	14
Spearman	0	0	7	0	7

Scoring

F-Rex Mathis 16 run (Hector Rodriguez kick)

S-Cameron Meddock 65 run (Francisco Camacho kick)

F-Mathis 7 run (Rodriguez kick)

	FW	SL
First Downs	17	6
Rushing	56-249	23-132
Passing	49	19
Total yards	298	151
C-A-I	3-8-0	2-13-2
Punts	3-37	5-27
Fumbles-Lost	6-2	3-2
Penalties	7-45	5-39

What's it like ...

... to have a team score two safeties in a single game?

By Lee Passmore, Amarillo Globe-News

Spearman pulled off that feat in their 24-14 win against West Texas High (Sept. 17th). The first safety came with 11 seconds left in the first half. WT High's Jeremy O'Gorman was tackled in the end zone by Derek Zimmerman and Alfredo Rosendo for two points after bobbling the kickoff.

In the third quarter, the Lynx scored two more points when they buried WT's Terrence Bonds behind the goal line on a running play.

Coach Steve Rodman can remember his team scoring only one safety in the previous four seasons.

"You really don't expect to get two safeties in one game," Rodman said. "You hope if you get someone pinned deep you can get enough pressure on them to

get two points out of it. "Safeties just don't happen that much. To get points in that kind of situation is big, plus you get the ball back."

Spearman 7th Grade

The Spearman 7th Grade lost to Floydada 0-28 on Thursday, September 23rd.

They will play Highland Park on Thursday, September 30th at 5 p.m. in Highland Park

Spearman 8th Grade

The Spearman 8th Grade defeated Floydada 30-0 on Thursday, September 23rd.

They will play Highland Park on Thursday, September 30th at 6:15 p.m. in Highland Park

Spearman JV

The Spearman JV football team lost to Floydada 16-38 on Thursday, September 23rd.

They will play Highland Park on Thursday, September 30th at 6 p.m. in Spearman.

Greyhounds Fall to Texico

The Gruver Greyhounds lost to Texico, NM on Friday, September 24, 2010, 7-33.

The Hounds had 141 yards rushing and 76 yards receiving. They were led by Jerrod Collier with 124 yards rushing, followed by Colton Moffett with 32 yards rushing and 44 yards receiving.

Collier scored the only touchdown for the Greyhounds, followed by the PAT by Lupe Pena.

Collier has a total of 555 rushing yards for the first five games of the season, followed by Payton Thoreson with 121. Zachary Saylor has 164 yards receiving, followed by Moffett with 96. Thoreson has 18 completions out of 49 passing attempts for a total of 300.

The Hounds will play Shamrock in Gruver at 7:30 p.m. on Friday, October 1, 2010.

HS Cross Country

The Spearman Lynxettes competed in the Lubbock Invitational Cross Country Meet on Saturday, September 25th. The Lynxettes came in 2nd with 69 points, behind Wall with 64, and ahead of 3. Tuscola Jim Ned, 91; 4. Ballinger, 124; 5. Idalou, 140; 6. Muleshoe, 156; 7. Bushland, 159; 8. Roosevelt, 249; 9. Crane, 255; 10. Slaton, 277; 11. Floydada, 301; 12. Alpine, 313; 13. Tornillo, 324; 14. Abernathy, 327; 15. Littlefield, 347.

The Lynxettes were led by Tylo Farrar in 2nd (12:12.9) and Gately Garnett in 5th (12:55.5).

The Gruver Lady

Hounds and Hounds also competed in the Lubbock Invitational Cross Country Meet.

The Lady Hounds came in first with 63 points, followed by 2. Wellington, 110; 3. Sunray, 122; 4. Sundown, 122; 5. Panhandle, 137; 6. Farwell, 205; 7. Sudan, 237; 8. Smyer, 292; 9. Wheeler, 303; 10. Crosbyton, 306; 11. Canadian, 309; 12. Rankin, 313; 13. Bovina, 341; 14. Wellman-Union, 368; 15. Plains, 407; 16. Quanah, 439; 17. Hale Center, 468; 18. New Deal, 471; 19. Lockney, 475; 20. Petersburg, 549; 21. Tahoka, 552; 22. Grady, 553; 23. Jayton, 572; 24. Lorenzo, 635; 25. Motley County, 664.

They were led by Shelley Gibson in 4th (12:22.7), Madison McLain in 7th (12:26.2) and Taylor Felderhoff in 8th (12:49.2)

Luis Mendoza was the only medalist for the Hounds. He placed 3rd with a time of 17:13.4.

Jr. Hi Cross Country

The Spearman Lynx and Lynxettes Jr. High Cross Country Teams competed in the Beaver Invitational Cross Country Meet on Saturday, September 25th.

The Jr. High Lynxettes came in 2nd with 70 points behind Boise City (51) and ahead of Canadian (73).

There were approximately 55 girls in the 1 1/2 mile race. The top 15 runners medaled.

Medaling for the Lynxettes was Cristma Campos in 14th.

There were approximately 20 boys competing. The top 15 runners medaled.

Lynx medal winners were: Jose Carbajal, 6th; Peyton Garnett, 7th; Javier Caro, 8th; Clay Jackson, 11th; Jon Holloway, 13th.



NORTHRIDGE 8

Guymon, Oklahoma
www.northridge8.com
580-338-3281

SOUTHGATE 6

Liberal, Kansas
www.southgate6.com
620-624-5573

SEQUOYAH 8

Garden City, Kansas
www.sequoyah8.com
620-275-2760

CHISHOLM TRAIL 8

Newton, Kansas
www.chisholmtrail8.com
316-283-0555

FRESH POPCORN EVERYDAY!
-PARTY ROOM & ARCADE-

Band Parents Meeting

There will be a meeting for all high school band parents on October 5, from 6:00-6:30pm in the band room. All parents need to plan on attending. If you have not paid your \$20 band booster fees, please do so at this time! Items to be discussed include the Halloween carnival, fundraising and electing a president/vice president for the year. Thanks for your help in making this a successful program!!

Gruver FFA Fundraiser

It is that time of year again as each organization is gearing up to have their annual fundraisers.

First off, let me thank you for your support over the past ten years. The FFA program each year participates in two fundraisers that help with each FFA activity. The most important of these is the Dennis Stedje Memorial FFA Scholarship that has generated over \$7000 dollars for FFA members the past 10 years. Without your support this would not be possible.

Monday, September 27th will be the start of this year's FFA fundraising program. The FFA will begin selling Seitz Golden Valley meat products and will also have a Seitz Gift Fruit fundraiser later this fall.

Products for the meat fundraiser include: Smoked Spiral Ham, Peppercorn Turkey Breast, Hunter Pack, Smoked Turkey, Smoked Pit Ham, "Lil" Porkies, Smoked Sausage Links, Pork Breakfast Sausage (Patties, Roll), Smoked Bacon, Peppercorn Bacon, Chicken Tenders, Pulled Pork BBQ, Pork Tamales, Chicken Fajitas, Beef Fajitas, Sausage Gravy, Pumpkin Roll and Pecan Cobbler.

Please see an FFA member for your order or just call the numbers below and

I will assist you in your order.

Thank you for your continued support,

Weston Born, AST; Gruver ISD; PO Box 747; Gruver, TX 79040; 806-733-2091

High School Aerospace Scholars

The High School Aerospace Scholars program is now available for high school juniors that have a high aptitude in math and science. The program is an interactive, online learning experience in which selected students complete web-based lessons, interact with students across Texas, and travel to NASA Johnson space Center for a six-day residential summer experience.

Students must submit a letter of interest to the high school counselor by October 29, 2010. If selected to represent our school, the student must then complete the student application by November 15, 2010. There is no cost for participation and all expenses are included for the student that is selected.

Please see <http://aerospacescholars.jsc.nasa.gov> for more details.

Darlene Curry,
Gruver Elem./
HS Counselor/DTC

Thank You From GHS Cheerleaders and Sponsors

The GHS Cheerleaders and Sponsors would like to thank everyone for making Homecoming 2010 a HUGE success. We specifically-want to thank Coach Felderhoff, Coach Brockman and Coach Borunda for their assistance with the Powder Puff game. We want to thank Ms. Cross and the GHS Marching Band for their awesome sound at the Burning of the GHS and Coronation. We say thank you to Mr. Born and his AG classes for set-

ting up and cleaning up the Burning of the GHS and the Gruver Fire Department for delivering our football team, cheerleaders and seniors to the burning and ensuring everyone's safety that evening.

We also want to thank Gloria Perez for donating her chairs for our homecoming attendants and Ms. Odom for picking up our roses and sashes for the homecoming court. We certainly appreciate Mr. Mayhew for the wonderful job he does as our Homecoming Coronation emcee. Thank you to Stan TeBeest and Hansford County Floral for donating the roses and sashes for our homecoming court.

A special thank you goes out to our "Secret Judges" for the week for special competitions: Mrs. Thompson, Mrs. Salazar, Mrs. Mitchell, Ms. Cross, Ms. Wiggins, Coach Brockman, Mrs. Stedje, Mrs. Weller and Mrs. Holland. We very much appreciate Mrs. Miner and GJHS Cheerleaders for their participation in the pep rally and Friday night's game. Thank you also to our faculty and class sponsors for their encouragement and participation with the week's activities and our students for all their school spirit throughout the week.


Gruver Pee Wee Football Schedule

Oct 2, 2010 - Gruver vs Perryton (Terry Townsend's team), 10:30 a.m., Ranger Field

Oct 9, 2010 - Gruver vs Perryton (Ben Butler's team), 10:30 a.m., Football Field #1 (north field)

Oct 16, 2010 - Gruver vs Perryton (Shawn Davis's team), 12:00 noon, Football Field #1 (north field)

Football Playoffs - TBA per standings



VOTER REGISTRATION IS ONLY NINE QUESTIONS.

(AND ONE OF THEM'S YOUR NAME.)


VOTEXAS.ORG
(800)252-VOTE

1 Are you a U.S. Citizen?

2 Last Name (Include Jr, Sr, III)

3 Residence Address (Describe where you live)

4 Mailing Address (If different from residence address)



Owned & Operated by Linda & Charles Stephens

Double XXL Steakhouse

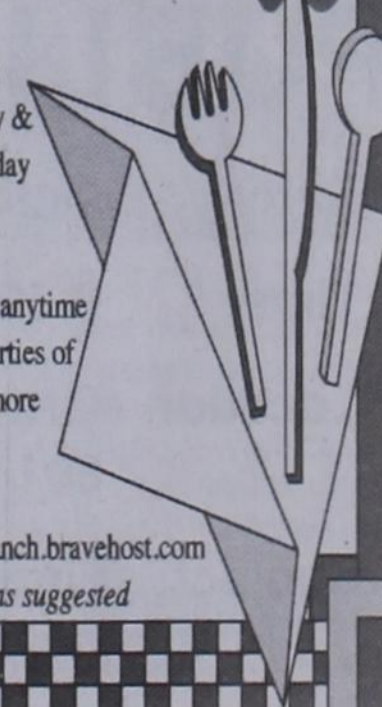
(formerly Flying X Steakhouse)

From Stinnett: Go West on Hwy. 152
17 miles - Turn Left at Big White Sign
(About 2 miles on Gravel Road)

From Dumas: Go East on Hwy. 152
16 miles - Turn Right at Big White Sign
(About 2 miles on Gravel Road)

Open:
Friday &
Saturday
Night

Open anytime
for parties of
8 or more



(806) 93JESUS
(806) 935-3787

www.doublexxlranch.bravehost.com
reservations suggested

HELP WANTED

HELP WANTED: Dean Cluck Feedyard is now accepting applications for the following job openings: Feed Mill Operator, Feed Truck Driver, and Pen Rider. Experience preferred. Apply at Feedyard, located SW of Gruver, or fax resume to (806) 733-2244. 2(9/23/10)B

FOR SALE

FOR SALE: 2004 Lincoln Town Car. 30,000 miles, new set of tires. Must sell due to illness. Asking \$18,000. Call 644-2623. TFN(9/23/10)B

SERVICES

CLICK PAINTING & HOME REPAIR Painting, Texturing, Drywall Repair, Fencing & General Carpentry. Serving Perryton, Spearman & Gruver. Don Click, 648-1480, or 202-1391 (cell). TFN(10/15/09)B

HOCHY POCHY PARLOR Call us for all your pet's grooming and boarding needs. Call now for reservations! 806-273-2724. TFN(11/2/07)B

FIREWOOD FOR SALE

Cedar firewood for sale. Delivered & stacked, or self pickup. Call (806) 658-2573. 15(8/12/10)P

French & Co., Realtors 273-7355

Beautiful 3 BR, 28 home in Morse, Texas. 1.06 acres. Updates Galore, Gorgeous tile & wood floors, stunning trim, custom paint, 28x33 garage & separate shop. Call Michele for details. 806-273-7355

This ad is just a small sample of the properties that we currently have for sale.

Please check our Web site and give us a call! We need your listings both large and small, all types of ag properties (ESPECIALLY CRP).

HARTLEY/MOORE COUNTY LINE - corn, wheat, cotton, cattle with all the perks, 992 acres, sprinkler irrigated with some improved pasture, large brick home, large set of state of the art steel working pens with concrete feed bunks and covered working area, on pavement.

DALLAM COUNTY - Three adj. sections of dryland, some native grass, irrigation in area (new wells across the road).

SWINE PRODUCTION FACILITY - Moore Co., TX. - 1200 sow capacity, capable of running 28,000 pigs annually, computerized feed mill, flex-flo feeding system, management in place. PRICED TO SELL! INVESTORS WELCOME!

SEE OUR WEBSITE OR CALL US! www.scottlandcompany.com Shawn Gillispie 806/922-5532 Ben G. Scott, Broker 1-800-933-9698 day/eve TFN(9-23-10)



We NEED listings! Call us now to help YOU sell your home for top dollar!

902 9th - Gruver: Horse Stables FOR SALE! 18 pens, circular training pen, arena, & 4500 sf barn on 10.42 acres! PRICE REDUCED!! 13125 Co Rd 18A - 1,463 PLUS 504 Basement, 3BR, 1B, CACH, 2C Det Gar, 6.2 Ac, 1,800 sqft Barn!
Shirley Howard, Broker/Owner 806-886-6536, Cell
Melinda McCullough, Realtor (806) 733-5678

We would LOVE to sell your HOUSE! CALL US!

PUBLIC NOTICE

PUBLIC NOTICE
The City of Gruver is accepting sealed bid proposals until 1:30 p.m. October 15, 2010 for fiscal year 2009-2010 Audit Services. Any proposals received after that time and date will not be read and returned unopened and not considered. Please mail or deliver bid proposals to City of Gruver, PO Box 947 or 201 East Broadway, Gruver TX 79040. For questions, contact City Manager Steve McKay at 806-733-2424. The City reserves the right to reject any and/or all bids.
2(9/23/10)B

NOTICE OF PUBLIC HEARING

The Planning and Zoning Committee of the City of Gruver will hold a PUBLIC HEARING to discuss a zoning change, which has been applied for by Victor Rios. The changes will apply to property located in Block 2, Lots 24-28, Original Town Addition of Gruver known as 406 Front Street. Requesting a change from I-H Industrial Heavy to M-H Manufactured Housing. The applicant wishes to place a Mobile Home in the back of his property. The public hearing will be held on Monday, October 11, 2010 at 6:00 p.m. at the Gruver City Hall, 201 East Broadway Street, Gruver. 2(9/23/10)B

NOTICE OF RECEIPT OF APPLICATION AND INTENT TO OBTAIN WATER QUALITY PERMIT RENEWAL PERMIT NO. WQ0010751001

APPLICATION. City of Gruver, P.O. Box 947, Gruver, Texas 79040-0947, has applied to the Texas Commission on Environmental Quality (TCEQ) to renew Texas Pollutant Discharge Elimination System (TPDES) Permit No. WQ0010751001 (EPA I.D. No. TX0023604) to authorize the discharge of treated wastewater at a volume not to exceed a daily average flow of 200,000 gallons per day. The domestic wastewater treatment facility is located approx-

imately 0.6 mile west of State Highway 15 and approximately 0.8 mile east of State Highway 136, southeast of the City of Gruver in Hansford County, Texas 79040. The discharge route is from the plant site to Farwell Draw, in the drainage area of Palo Duro Creek, a nondesignated segment of a river basin flowing out of the state and into Oklahoma. TCEQ received this application on March 4, 2010. The permit application is available for viewing and copying at Gruver City Hall, 108 East Broadway Street, Gruver, Texas.

ADDITIONAL NOTICE. TCEQ's Executive Director has determined the application is administratively complete and will conduct a technical review of the application. After technical review of the application is complete, the Executive Director may prepare a draft permit and will issue a preliminary decision on the application. **Notice of the Application and Preliminary Decision** will be published and mailed to those who are on the county-wide mailing list and to those who are on the mailing list for this application. That notice will contain the deadline for submitting public comments.

PUBLIC COMMENT / PUBLIC MEETING. You may submit public comments or request a public meeting on this application. The purpose of a public meeting is to provide the opportunity to submit comments or to ask questions about the application. TCEQ will hold a public meeting if the Executive Director determines that there is a significant degree of public interest in the application or if requested by a local legislator. A public meeting is not a contested case hearing.

OPPORTUNITY FOR A CONTESTED CASE HEARING. After the deadline for submitting public comments, the Executive Director will consider all timely comments and prepare a response to all relevant and material, or significant public comments. **Unless the application is directly referred for a contested case hearing, the response to comments, and the Executive Director's decision on the application, will be mailed to everyone who submitted public comments and to those persons who are on the mailing list for**

this application. If comments are received, the mailing will also provide instructions for requesting reconsideration of the Executive Director's decision and for requesting a contested case hearing. A contested case hearing is a legal proceeding similar to a civil trial in state district court.

TO REQUEST A CONTESTED CASE HEARING, YOU MUST INCLUDE THE FOLLOWING ITEMS IN YOUR REQUEST: your name, address, phone number; applicant's name and proposed permit number; the location and distance of your property/activities relative to the proposed facility; a specific description of how you would be adversely affected by the facility in a way not common to the general public; and, the statement "[I/we] request a contested case hearing." If the request for contested case hearing is filed on behalf of a group or association, the request must designate the group's representative for receiving future correspondence; identify an individual member of the group who would be adversely affected by the proposed facility or activity; provide the information discussed above regarding the affected member's location and distance from the facility or activity; explain how and why the member would be affected; and explain how the interests the group seeks to protect are relevant to the group's purpose.

Following the close of all applicable comment and request periods, the Executive Director will forward the application and any requests for reconsideration or for a contested case hearing to the TCEQ Commissioners for their consideration at a scheduled Commission meeting. The Commission will only grant a contested case hearing on disputed issues of fact that are relevant and material to the Commission's decision on the application. Further, the Commission will only grant a hearing on issues that were raised in timely filed comments that were not subsequently withdrawn. TCEQ may act on an application to renew a permit for discharge of wastewater without providing an opportunity for a contested case hearing if

certain criteria are met.

MAILING LIST. If you submit public comments, a request for a contested case hearing or a reconsideration of the Executive Director's decision, you will be added to the mailing list for this specific application to receive future public notices mailed by the Office of the Chief Clerk. In addition, you may request to be placed on: (1) the permanent mailing list for a specific applicant name and permit number; and/or (2) the mailing list for a specific county. If you wish to be placed on the permanent and/or the county mailing list, clearly specify which list(s) and send your request to TCEQ, Office of the Chief Clerk at the address below.

AGENCY CONTACTS AND INFORMATION. All written public comments and requests must be submitted to the Office of the Chief Clerk, MC 105, TCEQ, P.O. Box 13087, Austin, TX 78711-3087 or electronically at www.tceq.state.tx.us/about/comments.html. If you need more information about this permit application or the permitting process, please call TCEQ Office of Public Assistance, Toll Free, at 1-800-687-4040. Si desea informacion en Español, puede llamar al 1-800-687-4040. General information about TCEQ can be found at our web site at www.tceq.state.tx.us.

Further information may also be obtained from the City of Gruver at the address stated above or by calling Steve McKay, City Manager at (806) 733-2424. Issuance Date: March 10, 2010. 1(9/30/10)B

NOTICE TO CONTRACTORS OF PROPOSED TEXAS DEPARTMENT OF TRANSPORTATION (TxDOT) CONTRACTS
Sealed proposals for con-

tracts listed below will be received by TxDOT until the date(s) shown below, and then publicly read.

CONSTRUCTION/ MAINTENANCE/ BUILDING FACILITIES CONTRACT(S)

Dist/Div: Amarillo
Contract 0090-03-055 for SEAL COAT in OLDHAM County, etc will be opened on October 22, 2010 at 1:00 pm at the State Office.

Plans and specifications are available for inspection, along with bidding proposals, and applications for the TxDOT Prequalified Contractor's list, at the applicable State and/or Dist/Div Offices listed below. If applicable, bidders must submit prequalification information to TxDOT at least 10 days prior to the bid date to be eligible to bid on a project. Pre-qualification materials may be requested from the State Office listed below. Plans for the above contract(s) are available from TxDOT's website at www.txdot.gov and from reproduction companies at the expense of the contractor. NPO: 34090

State Office
Constr./Maint. Division
200 E. Riverside Dr.
Austin, Texas 78704
Phone: 512-416-2540

Dist/Div Office(s)
Amarillo District
District Engineer
5715 Canyon Dr
Amarillo, Texas 79105-2708
Phone: 806-356-3283

Minimum wage rates are set out in bidding documents and the rates will be part of the contract. TxDOT ensures that bidders will not be discriminated against on the grounds of race, color, sex, or national origin. 2(9/30/10)B

Blankenship Real Estate 659-3052 - 670-3774
LET US HELP YOU SELL YOUR HOME. NEW LISTINGS WANTED!
Eulalia Blankenship - Sales
Eschol Blankenship - Broker

MARTIN & ASSOCIATES REALTY
Serving Hansford County Since 1990
Julie Martin: Broker - 659-2425
We'd Like Your Listing!
FOR QUALITY & SERVICE CALL US TODAY!
Equal Housing Opportunity

hchd
Hansford County Hospital District
Openings at Hansford Manor
LVN: Graduate of an approved LPN/LVN program. Must be able to make independent decisions when circumstances warrant. Must possess the ability to deal tactfully with residents, family and public. Great working environment and staff, quality facility providing opportunities for professional growth. Great benefit package. Apply at 707 S. Roland, Spearman, TX or contact Jackie Nelson at 806-659-5841. Download application at www.hchd.net
EEOE (8/26/10)

4	7	3	2	5	6	1	8	9
9	1	5	3	7	8	4	2	6
2	6	8	1	4	9	7	3	5
6	2	1	5	8	3	9	7	4
8	4	9	7	6	1	3	5	2
5	3	7	9	2	4	6	1	8
3	9	2	4	1	5	8	6	7
7	8	4	6	3	2	5	9	1
1	5	6	8	9	7	2	4	3

LATHS BEE STOP
ETHIC ILL SCUBA
DORSA RYA PUPIL
PUTRID TERWITE
SAC AERY
ARC BIND ALMOST
BOLA NOVA YOUTH
OMEN GRECO TZAR
MEATS ARMS HOVE
BONSAI SEAL SEW
MOUE GOT
LADYBUG DECEIT
UVULA RAE UNDOE
TIMES IMP SOLFA
EDAM CAT TREAT



Dahl PEST CONTROL
Residential and Commercial
General Pest Control - Lawn & Tree spraying and fertilization
580-338-5665 or dsdahl@ptsi.net
Scot and Nancy Dahl - owners

JINES REAL ESTATE
Farnsworth 208 Locust - \$132,000
Open Sunday, June 20 • 1-4
Residence - Apartment - 3 Car Garage
14601 NW Loop 143 - \$124,900
10+ fenced Acres w/Manufactured Home
New Listings Coming Soon!
I Look Forward to Working For You!
Remember, I can show you homes in the Spearman and Surrounding areas even if listed with another Broker.
Linda Jines • Broker-Owner
806-202-4752
View Photos at www.jinesrealestate.com

TEXAS STATEWIDE CLASSIFIED ADVERTISING NETWORK
TexSCAN

TexSCAN Week of September 26, 2010 AUCTIONS
AUCTION BANK-OWNED homes in this area. Now is the time. The market, interest rates and opportunities couldn't be better. New properties added daily! 2% to buyers agents! Bid now online: www.OnlineBidNow.com. Hudson & Marshall, 1-866-539-4174.

NATIONAL CARRIERS needs O/O's. LAKEFRONT LOT - NEW RELEASE Lease purchase. Company drivers for 31's Athens premiere lakefront community. Over expanding fleet. Offering Regional/OTR one acre with the best view on the lake. runs. Outstanding pay package, excellent 267' of lake frontage. This is an absolute steal for only \$89,900. Excellent financing available. 1-877-730-0755.

150+ TRAVEL TRAILERS & camp houses. Online bidding available. no minimum price. Saturday, October 9th at 10 am. Philadelphia, MS. www.hendersonauctions.com. 1-225-686-2252; MS Lic# 266, Firm Lic# 462F

SAVE \$1000+ ON Auto Repairs! Get a vehicle service contract! Covered repairs paid, towing/ rental roadside assistance 130,000 miles or less. FREE quote: 1-888-364-1655

DRIVERS
DRIVER: CDL A Advantages keep coming. High miles, \$500 sign-on for 18 mos, new performance bonus program. 2011 Freightliner Cascadia have arrived. CDL-A. TWIC card and good driving record. Western Express: 1-866-863-4117

DRIVER CDL-A: TEXAS regional company drivers: Home most weekends, make good money. Run I-35 corridor. CDL-A. 8 month OTR experience. Limited positions! deBor Transportation. 1-888-730-9312

DRIVERS-ASAP! New pay increase: 37¢-43¢ cpm, fuel bonus up to 4¢ cpm, need CDL-A and 3 months recent OTR. 1-877-258-8782. www.meltontruck.com

DRIVERS-CO & O/O's looking for an outbound freight opportunity in your area! TFE seeks O/O's. Class A-CDL and 1 year experience. Call 1-214-819-5680 or recruit@fex.net

DRIVERS-DEDICATED drivers average \$1000-\$1200 per week. Great benefits, consistent home time. 1 year tractor-trailer experience required. Call 1-888-251-2123 or apply online at www.averiticareers.com. EOE

DRIVERS - O/O's FED EX ground; all hub-to-hub miles paid. Mileage plus and fuel programs. monthly safety incentives, weekly settlement. Fleet owners welcome! 1-866-832-6339. www.buildgroundbiz.com

DRIVERS-100% Tuition paid CDL training! Start your own career. No credit check, no experience required! Call 1-888-417-7564. CRST EXPEDITED. www.JoinCRST.com

FED EX GROUND contractor seeking Class A drivers - teams preferred! Great pay packages, excellent home time, no touch freight, all drop and hook. Toll-free, 1-866-565-1700 or apply online www.AmericanBusTransportation.com/Careers

18.9 ACRES, nice draw, heavy cover. Native exotic game, hogs, North of Brackettville. \$1-700/acre, owner or Vet financing. 1-800-876-9720. www.texasranchland.com

ABSOLUTELY THE BEST VIEW Lake Medina/Banders 1/4 acre tract, central W/E. RV/motor home/house, OK only \$830 down \$235 month (12.91%/10yr). Guaranteed financing. More information call 1-830-460-8354

AMAZING LAKEVIEW! Gorgeous 1 acre homestead with huge views of Texas's 3rd largest lake. Access to lakeside park and pool area. Paved roads, utilities available. Build when you want, was \$49,900, now \$29,900. Call now 1-214-613-1284. 1-866-832-6339. www.buildgroundbiz.com

BANK SAYS MUST SELL 5 AC beautiful Athens, great views, huge oak trees, access to professional horse training barn and fishing lake. Priced to sell at \$34,900. Call 1-888-243-4047.

LAKEFRONT / BOAT DOCK COMBO! 1 acre dockable lakefront on 3rd largest lake in Texas, with brand new boat dock & touch freight, all drop and hook. Toll-free, 1-866-565-1700 or apply online www.AmericanBusTransportation.com/Careers

ONE TIME MONTANA land bargain, Billings area 166 acres. Was \$229,900 Now \$99,900! Only a few tracts! Below market prices! Trees, ridges & views. Close to Round-Up, MT & Musselshell River. The best land deal ever in Montana! Call 1-888-361-3006, www.WesternSkiesLand.com

WATER, WATER, WATER, 3 acre with central water, hard surfaced streets, near Ruidoso. Only \$17,900. Call NMLR, 1-877-926-8201.

676 ACRES-REEVES County, 15 Miles North Pecos. River frontage. Call Jack 1-214-755-6224.

\$106 MONTH BUYS land for RV, MH or cabin. Gated entry, \$690 down, (\$6900/10.91%/7yr) 90 days same as cash. Guaranteed financing. 1-866-362-6497

AIRLINES ARE HIRING Train for high paying aviation career. FAA approved program. Financial aid if qualified, job placement assistance. Call Aviation Institute of Maintenance. 1-877-523-4531

CAN YOU DIG IT! Heavy equipment school, 3 week training program, Backhoes, Bulldozers, Tractors. Local job placement assistance. Start digging dirt now. 1-866-362-6497

HIGH SCHOOL DIPLOMA graduate in 4 weeks! Free brochure! Call now! 1-866-562-3650, ext. 55. www.southeasternHS.com

Run Your Ad In TexSCAN!
Statewide Ad.....\$500
307 Newspapers, 1,018,288 Circulation
North Region Only.....\$230
99 Newspapers, 270,048 Circulation
South Region Only.....\$230
107 Newspapers, 501,889 Circulation
West Region Only.....\$230
101 Newspapers, 248,581 Circulation
To Order: Call this Newspaper direct, or call Texas Press Service at 1-800-749-4793 Today!

Taylor Petroleum Companies
Equal Opportunity Employer
At Taylor, it's all about a positive thinking attitude!
Right now, we're looking for hard-working, high-energy, dedicated individuals who want to work with others in a dynamic environment.
Be a part of the Taylor Team and enjoy flexible hours, competitive wages, free uniform shirts, wage reviews, career advancement opportunities & benefits. Taylor has some of the best full-time and part-time positions available in the industry.
APPLY NOW AT: www.taylorfoodmart.com

NOTICE: While most advertisers are reputable, we cannot guarantee products or services advertised. We urge readers to use caution and when in doubt, contact the Texas Attorney General at 1-800-621-0508 or the Federal Trade Commission at 1-877-FTC-HELP. The FTC web site is www.ftc.gov/bizop. Extend your advertising reach with TexSCAN, your Statewide Classified Ad Network.

by Dorothy Hudson

Out at the Lake



Jim Derington
Palo Duro River Authority
P.O. Box 99
Spearman, TX 79081
806-882-4401
pdra@dishmail.net

Lake Level--September 27, 2010--52.73 feet (-6 inches)

A light rain of .31 inch fell last Thursday.

Jim and Mandy had a mini vacation last weekend as they made a trip to see Erin and family. They helped celebrate two birthdays--one for granddaughter Halle Bickle and one for Mandy.

Bob Adams had the Gruver Boys Club out to spend the night on Saturday.

Jim mentioned seeing burrowing owls on the road to the Lake. He said their eyes really shine in the car light at night.

Black Panther Memory

Wanda Reed of Spearman has shared a memory of seeing a black panther. She grew up on a ranch that fronted on the Colorado River out from San Angelo. Born in 1933, she was 8 when World War II began. They were unable to get ammunition for their guns during the War. This caused coyotes and cougars to proliferate, and seemed to be the introduction of the black panthers. Her father raised some crops and both

cattle and sheep. A black panther was a wanton killer that could kill several sheep at a time. As a child, she and her 7 brothers were especially fearful of this animal.

There was always talk in the house when a cougar or panther was seen. The cougar was more of a shy animal that disappeared when seen, but the panther was more aggressive and would sometimes growl back at the observer and saunter from sight. She remembered one old-timer who called them "painters". However, Wanda had never seen one of black cats until the year the War ended.

She remembers in 1945, that horseback, she went out to bring in the horses. She was going down the sandy bed of a creek that muffled the sound of her horse's hooves, when ahead of her on a sandy bank, she noticed a black panther. The animal was very sleek, the long tail was there, but the head did not look like the head of a mountain lion. She felt its size was about half that of a cougar. It gave Wanda and her horse a good look, did not growl, but just walked into some

brush.

Wanda began to hear these particular cats called jaguarundi.

This week I googled an article by a man that thinks all black panther sightings in Texas are actually people seeing jaguarundi. It would be strange if this rare animal in south Texas had ranged this far north. One thing in its favor is that there are known to be black jaguarundi in their mix of colors.

ADOBE WALLS TOUR

October is Texas Archeology Month. An event in easy driving distance to our area is being held by Panhandle-Plains Historical Museum. They are conducting a walking tour of the Second Battle of Adobe Walls site on Saturday, October 16, from 12 noon to 2 p.m. Dr. Jeff Indeck, the curator who cares for the artifacts from Adobe Walls, will lead the tour. Tour participants must pre-register by calling Jeff Indeck at (806) 651-5231 or emailing jindeck@pphm.wtamu.edu.

I hope they will agree for participants from here to meet them at the site.



Picture of the lovely fall flower -- Gay Feather. There are many gayfeathers scattered around the park, this year.



This is an antelope, spotted east of lake property, on Monday, September 20, 2010.

Annual Community Health Fair

Thursday October 14, 2010 7:00 a.m. -- 1:00 p.m.
The O-Loughlin Center 502 S. Brandt, Spearman TX

Flu Shot	25.00
Pneumonia	50.00

Screening Lab Tests (at Greatly Reduced Prices!)

Fasting for 10 hours prior to test is recommended.
We can accept cash or check for payment of blood work.
Results will be mailed to the patient.

Thyroid Panel	Thyroid Function
Lipid Profile	Cholesterol Level, Cardiac Risk Profile The identification and treatment of individuals who may be at risk for heart disease at an earlier age offers the possibility to prevent or delay the progression of the disease.
Prostate Specific Antigen (PSA)	Prostate Health
Comprehensive Metabolic Profile	Screens for Several Diseases, Including Diabetes
Complete Blood Count (CBC)	Screens for Many Conditions, Including Anemia and Infection

Health Fair Price

Men \$45.00

Women \$35.00

In addition to flu shots and laboratory tests, there will be opportunities to talk with Hansford County Hospital District Healthcare Providers, as well as many providers of health-related services in the area.

Co-sponsored by



GOLDEN SPREAD SENIOR CITIZENS CENTER
O'LOUGHLIN CENTER
PTCI

PRE-REGISTRATION - 806-659-5833
SEE 5 OR MORE VENDORS, GET A FREE T-SHIRT

Flashover Fiesta

hosted by
Spearman Volunteer
Fire Department

Saturday, October 23 • 6 p.m.
O' Loughlin Center • Spearman

\$

3rd Prize: \$500
2nd Prize: \$1000
1st Prize: \$2500

Contact any Spearman firefighter or
Kimmi at (806) 202-6374 for tickets!
\$50 for 2 meals and 1 drawing entry!

Fall Festival

October 2nd
5:00pm-8:00pm
Hansford County Barn
GAMES FOOD and FUN
Raffle: \$1 tickets
FREE ADMISSION

CASA GLADYS

owned by Roberto & Suzanna Flores
519 S. Hwy. 207 (Next to Alco) • Spearman
Phone - (806) 330-0570 • Fax (806) 659-2621

A Little Bit of Everything!

- Snacks & Drinks
- Pinatas, Toys
- Baby Clothing & Furniture
- Christening & Quinceañera
- Clothes, Shoes, Jewelry
- Western Hats & Boots
- Kitchen & Household Items
- Furniture (Bedroom, Living Room, Dining Room, Game Tables, etc.)
- Inflatable Bouncer For Rent •

Come Check Us Out!