

INSIDE			
Lunch Menus	2	At the Movies	2
Among the Neighbors	4	Out at the Lake	6
Chamber Chatter	2	Museum Musings	5
A "Center" Piece	2	Spiritually Speaking	5
Recycling Words	6	Club News	9
For the Short of It	8	Obituaries	10

Pageant Deadline Extended

Page 9

WEATHER FOR WEEK OF 5-04 THRU 5-10

Day	Hi	Lo	Precip	Day	Hi	Lo	Precip
Thu	71	41	.00	Mon	72	42	.27
Fri	54	44	.00	Tue	75	47	.00
Sat	76	49	.58	Wed	--	45	.00
Sun	79	52	2.05	Total Precipitation 5.37			

HANSFORD COUNTY LIBRARY
0120 MAIN ST.
SPEARMAN, TX 79081-2064
EXPIRES 04/15/1996 THANK YOU

The Hansford County Reporter-Statesman

Serving Hansford County Since 1907

Volume 87 • Issue 19

213 Main • Spearman, Texas 79081

Thursday • May 11, 1995

Hansford County elections place several into city council and school board positions

Elections were held in Hansford County this past Saturday for both school and city positions.

In the elections for Spearman City Council three positions needed to be filled from amongst the four candidates running. Steve Benton with 227 votes, Ed Garner with 203, and Brian Gillispie with 187, all received positions on the City Council. Steve Krug obtained 83 votes.

There was a total of 280 voters who turned out for the City elections on Saturday.

Spearman ISD also held election this year for the SISD School Board. The Board had three positions opening this time around and voters had

four candidates to choose from. Craig Schumann got 244 votes, Carol Dunnihoo received 242, and Bob Boxwell obtained 228 votes to fill the three vacant positions. Archie Smith the other candidate running received 190 total votes.

There were a total of 304 voters who turned out for the School Board elections.

The elections for the City of Gruver were held to vote on a Mayor, Commissioner, and two propositions.

Archie Nelson was the only candidate running for Mayor. He received 156 total votes. Roy Mayhew was the only person signed up to run for Commissioner, and he got

nod from the voters to join the School Board. Dan Carthel received 137 votes, and Ralph Mireles got 85 votes.

A total of 256 citizens of Gruver turned out for the SISD elections.

Elections were also held in Morse for the Pringle-Morse CISD School Board elections. Voters chose from amongst four candidates to fill two vacating positions. Betty Womble received 82 votes and Pete Schumann received 42 to become the newest members of the Board. Mike Martin received a close 41 votes, and write in candidate Kerri Phillips received 31 total votes.

101 voters turned out for the Pringle-Morse elections.

160 votes.

Both propositions up for the citizens of the City of Gruver to vote on also passed. Proposition 1, sales tax for Economic Development, passed with 86 votes going For, and 76 Against. Proposition 2, Property Tax Relief, passed the voters approval with 104 votes For, and 49 Against.

There were a total of 177 voters who turned out for the City Elections.

Elections were held by Gruver ISD to choose three candidates for three open positions on the School Board. Buddy Lowe with 193 votes, Marquerite Nelson with 162, and Kevin Holt with 147 all received a

Alford/Archer retire from Spearman I.S.D.

The Board of Trustees of the Spearman Independent School District met in Regular Session on May 8, 1995 at 7:00 P.M. in the high school.

Mr. James Schnell, President of the Board of Trustees, announced that a quorum was present and called the meeting to order.

No information or comments

were made by patrons or school staff.

Special Reports came from Mr. Atwood, Mr. Morris, and Mr. Hargis. They each reported on their respective campuses. They stated that they have had a positive year and are developing plans for next school year.

School Board Spring Training will be conducted May 10th at West Texas A&M University. James Schnell, Craig Schumann, Carol Duniho, and Willard Murrey will attend.

A letter from James Umphress was shared as an appreciation for all the assistance provided to his son Clayton. Mr. Umphress expressed his concern about Clayton's transition from the Texas School for the Blind to private jobs sector jobs.

Additionally, Charles Elliott discussed his plans for summer maintenance projects for the schools.

All the options for the 1995-1996 school calendar were discussed. The decision on next year's calendar will not be made until later this month.

The Board also discussed the need for word session on Board Policy Update 48. Mr. Murrey reported that this needed to be done in May.

Mr. Murrey also called the Board's attention to the need for numerous workshops in May and during the summer for budgeting and policy updates. The Board determined to meet on May 15, 1995 at 7:00 P.M. to reorganize the Board

and conduct a workshop on Policy Update 48.

Mr. Murrey had several other areas to report on. He informed the Board of the election of E.R. Bell of Stratford and Kay Sherrod of Amarillo as Directors of E.S.C. Region XVI.

Also, he reported that Summer School will be conducted at the Elementary school for several groups of students including: English as a Second Language for next years kindergarten and first grade students, special reading and math classes, and extended year services for Special Education students.

Mr. Murrey mentioned that task of networking the high school's computers still has slight corrections that need to be made.

This Board Meeting approved the use of the school gyms for boys and girls basketball camps this summer. The Board also accepted the gas/diesel bid made by Equity. They decided to pay school bills standing at \$57,761.42. Additionally, they approved a Budget Amendment of \$11,500.00 to go for the TEA for a T-star satellite.

The Board canvassed and certified the Board of Trustee election. After doing so, the Preliminary Oath was administered to Craig Schumann, Carol Duniho, and Bob Boxwell.

Also, the resignation of Margie Alford and Wanda Archer were accepted. Afterward, the meeting was adjourned.

"Pet Vaccination Week" proclaimed by mayor

Spearman Mayor Burl Buchanan signed a proclamation announcing "Pet Vaccination Week".

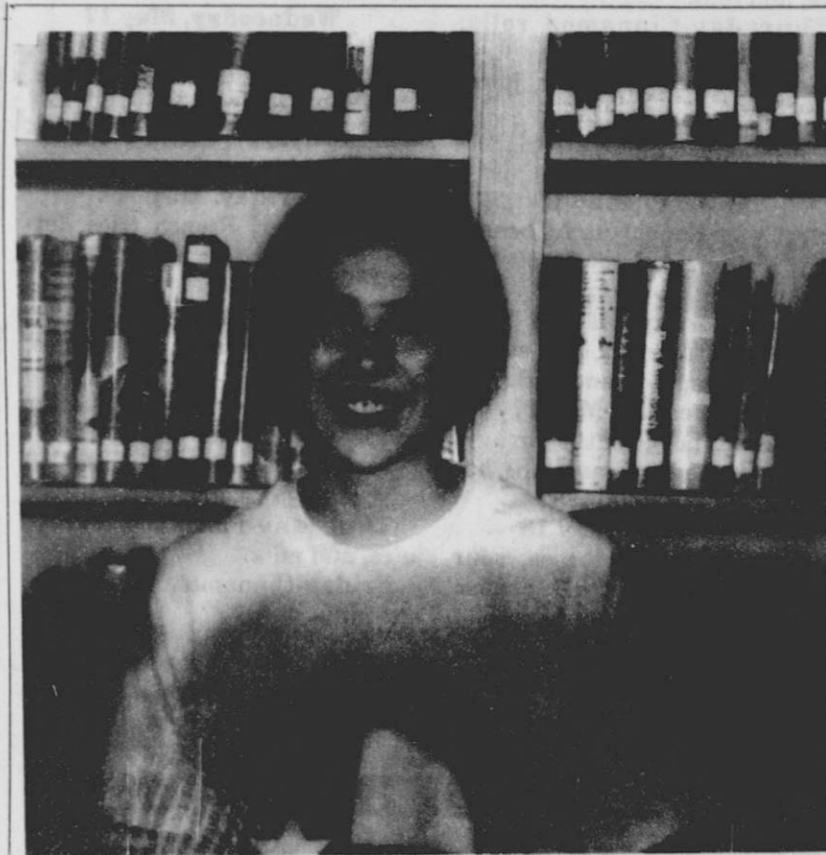
The Hansford County Veterinary Hospital in conjunction with the City of Spearman Animal Control Department will conduct a week long rabies/vaccinations clinic. This clinic will be held at the Hansford County Veterinary Hospital located at 405 S. County Road #1, Monday through Friday, May 15 through May 19 from 9:00 a.m. to 12:00 P.M. and 1:00 P.M. to 5:00 P.M. and on Saturday, May 20 from 9:00 a.m. to 12:00 P.M.

Discounted fees for the vaccinations and tests for dogs and cats

that will be offered is Rabies Vaccination \$7.00, DHLPC (Distemper-Parvo) \$17.00, Heartworm Check \$18.00, Feline Leukemia \$14.00, FVRCP Rabies (Feline Rabies & Distemper) \$17, and Feline Leukemia Test \$20.00.

City tags for male and female cats and dogs will be \$10.00, while neutered male cats and dogs and spayed female cats and dogs will carry a \$5.00 tag fee.

"I encourage all owners of pets to help control any outbreak of disease by having their pets vaccinated during this week long clinic," said Mayor Buchanan.



TOP OF THE STATE - Junior Regan Boxwell, Spearman High School Student, placed an outstanding fourth at the State Meet at the University of Texas in Austin. Boxwell took her place in Poetry Interpretation, in which she traveled with three other girls, who also competed in different events, but she was the only one to make it the top six places.

Boxwell takes fourth at state UIL contest

Regan Boxwell, a Junior from Spearman High School, placed an impressive fourth in Poetry Interpretation at the State UIL Academic Contest in Austin this past weekend at the University of Texas.

Regan said, "I'm crossing my fingers that I'll make it to state again next year and this time take first place."

Regan qualified for the State Meet after placing second in Poetry Interpretation in Abilene at the Regional UIL Meet on April 22 held at Abilene Christian University.

Regan was part of a four person UIL team from SHS to participate in the State Meet. It was the first time for any of them to attend the UIL State Meet.

Kristina Poole, senior, competed in Accounting after placing third at Regional.

Haley Farber went to Austin to compete in two events. She participated in Feature Writing and Spelling/Vocabulary after placing third in both events in Abilene. In the state Feature Writing competition, the participants got to interview a woman who was a Jewish child during World War II. After questions, Haley had 45 minutes to write a story about this woman.

Haley said that her trip to Austin, "was a very educational trip, but we still managed to have fun."

Teresa Gomez traveled to Austin to compete in News Writing after placing third at Regional. Teresa is taking her first trip to the State Meet as a freshman at Spearman High School.

Mrs. Derrington and Mrs. Davis went to Austin as well as sponsors. Mrs. Derrington is in charge of UIL accounting at Spearman. Mrs. Davis is the sponsor of the UIL journalism events. She was proud to have two of her participants earn the right to compete in the State Meet.

The group flew out of Amarillo

on Thursday and returned Saturday. The days in between were eventful.

Regan was the first to compete. The preliminaries for her event were held on Friday. She placed second in her room, and she earned the right to compete in the finals on Saturday. The rest of the group competed on Saturday as well, but no one else placed above sixth.

Hansford County to continue WIC Program

Texas health officials have urged news-watching Texans not to give up on the WIC program in this state. The Special Supplemental Nutrition Program for Women, Infants and Children (WIC) has funds through October 1, 1995, including resources for expansion. As many as 100,000 more participates may be served with current funding.

"We want people to know that the Texas WIC program is in full force today," Dr. David R. Smith, Texas Commissioner of Health, said. "Regardless of any changes for WIC on a national level after October 1, the Texas Department of Health (TDH) plans to carry on some kind of similar services for the women, infants and children of Texas. We encourage qualified people to enroll for WIC benefits."

"This is not merely a food assistance program," said Dr. Smith, "It's some families' front-line contact with health care. WIC clinics provide counseling, immunizations, screenings for such problems as

See WIC, page 10

Hansford Happenings

Memorial Wreaths

Memorial wreaths are available from the Senior Citizens at the O'Loughlin Community Center in the Blodgett Room.

"Blue and Gold Banquet"

Spearman Cub Scouts will host its annual "Blue and Gold Banquet" Saturday, May 13, 1995 at 7 p.m. at the Church of Christ. This year's banquet theme is "Cubs Scouts Caring about Our Earth." In celebration of Earth Day's 25th anniversary. Recognition of all cubs' achievements and a "graduation" of Webelos to Boy Scouts will highlight the event. All cubs and their families are invited to attend the banquet, which will feature hamburgers and all the trimmings, prepared by the Spearman Boy Scouts. RSVP: 659-3889 (Andy and Janet Scarborough).

Immunization Clinic

An immunization clinic offering vaccines that give protection against several childhood diseases is scheduled for May 17 from 9 to 11:30 a.m. and 1 to 3 p.m. at the Texas Department of Health Office located at 721 S. Evans in Spearman. The Texas Department of Health is charging money to help with the cost of keeping the clinic open. The amount of money charged will be based on family income and size, and the ability to pay.

Arts and Craft Show

Spearman Study Club will be having an Arts and Craft Show in conjunction with Celebration of Spearman's Heritage Days on June 10, 1995. The show will be an outside show on the Courthouse Square from 10 a.m. to 4 p.m. Along with the Craft Show, there will be a parade, car show, barbeque, country opera, and other activities on Main Street. Profit made will go back into the community or local project. Persons interested in obtaining a booth for the Show in June or if more information is needed, call or write Claudine Hardy, 803 Wilmett Dr., Spearman, 806/659-3440 after 4 p.m.

Certified Nurse Aide Classes

Hansford Manor will begin classes for certified nurse aides June 5 at 8:30 a.m. Classes will be daily 8:30 to 5:30, Monday thru Friday, June 5-20. Deadline to register for the classes is May 29. For more information or to apply, contact Linda Sanders, Personnel Director, Hansford County Hospital District, 707 S. Roland, Spearman, TX 79081, 806/659-2235. EOE.

55 Alive Driving Course

If you are interested in taking 55 Alive Driving Course contact Kathy Bryant at the O'Loughlin Center, 502 S. Brandt, Spearman, 659-3030. The class will be given May 15th and May 18th. Classes will be from 2 to 6 p.m. both days. Cost is \$8 per person.

4-H Horse Show

Ochiltree County 4-H will be sponsoring an Open Horse Show on Sunday, May 21 at the Ochiltree County Fairgrounds Arena. Books open at 1 p.m. with books closing 2 classes before the actual class begins. For more information call 806/435-4501.

Spearman Swim Team

The Spearman Swim Team will begin practices Monday, May 15 at 6 p.m. at the city pool. All swimmers and parents need to attend the first practice. Anyone interested in becoming a member of the Swim Team needs to contact Michele Goodheart at home 659-5611 or work 659-3424, or Kitty Edwards at 659-3773 for more information.

Hansford Hospice Meeting

Hansford Hospice will meet May 15 at 6:30 p.m. in the El Vaquero Restaurant in Gruver. This will be a dinner and business meeting.

School Lunch Menus

PRINGLE-MORSE LUNCH MENU
Monday, May 15
 Nachos, beans, salad, cornbread, fruit, and milk.

Tuesday, May 16
 Cook's Choice, potatoes, gravy, vegetables, rolls, fruit, and milk.

Wednesday, May 17
 Corn dogs, pork-n-beans, salad, dessert, and milk.

Thursday, May 18
 Grilled cheese, salad, fruit, cookie, and milk.

Friday, May 19
 Pizza, salad, fruit, ice cream, and milk.

BREAKFAST
Monday-Cheese toast, toast, juice, and milk.

Tuesday-Toast, juice, and milk.
Wednesday-Sausage, waffles, juice, and milk.

Thursday-Cinnamon rolls, toast, juice, and milk.
Friday-Sausage, biscuit, juice, and milk.

SPEARMAN ISD LUNCH MENU
Monday, May 15

Beef enchiladas, pinto beans, Spanish rice, salad, pineapple tidbits, and milk.

Tuesday, May 16
 Chili Dog, Tator tots, corn, strawberry glazed apples, and milk.

Wednesday, May 17
 Breaded pork patty, gravy, whipped potatoes, green beans, hot rolls, pears, and milk.

Thursday, May 18
 Stuffed baked potatoes, sour cream, butter, broccoli, cheese sauce, bread, peaches, and milk.

Friday, May 19
 Hamburgers, French fries, salad, fruit, and milk.

BREAKFAST
Monday-French toast sticks, fruit, and milk.

Tuesday-Pancakes, fruit, and milk.
Wednesday-Toast, scrambled eggs, fruit, and milk.

Thursday-Cereal, toast, juice, and milk.
Friday-Breakfast pizza, fruit, and milk.

GRUVER ISD LUNCH MENU
Monday, May 15

Chicken patty, mashed potatoes, gravy, green beans, biscuit, peach cobbler, and milk.

Tuesday, May 16
 Western burger, corn, fruit, jello, and milk.

Wednesday, May 17
 Submarine sandwich, ham, cheese, chips, pickle, fruit, and milk.

Thursday, May 18
 Taco salad, lettuce, cheese, fruit, and milk.

Friday, May 19
 Hamburger, French fries, lettuce, pickles, cheese, ice cream, and milk.

BREAKFAST
Monday-Cereal, muffin, juice, and milk.

Tuesday-Toast, peanut butter and jelly, juice, and milk.

Wednesday-Biscuit, scrambled eggs, jelly, juice, and milk.

Thursday-Pancakes, syrup, juice, and milk.
Friday-Cinnamon rolls, juice, and milk.



HONORED FOR SERVICE-Members of the Hansford County Hospital Auxillary were presented with pins designating the number of hours of service they have given. Members receiving the pins are (left to right) Virginia Head, and Mary Fern, who received 150 hour pins, and Beth Phelps, Betty Davis, Rosa Lee Butt, Margaret Evans, Alva Garner (150 hours), and Verna Brown, who received 100 hour pins.



NEWLY ELECTED-The Hansford County Hospital Auxillary elected officers for 1995. These new officers are (from left to right) Virginia Head, President; Verna Brown, Vice President; Beth Phelps, Second Vice President; Alva Garner, Secretary; and Barbara McClellan, Treasurer.

Exchange students available for area hosts

Foreign high school students are scheduled to arrive into the Spearman area for academic program homestays, and the sponsoring organization needs a few more local host families.

According to Pacific Intercultural Exchange (P.I.E.) Executive Director, John Doty, the students are all between the ages of 15 and 18 years, are English-speaking, have their own spending money, carry accident and health insurance, and are anxious to share their cultural experiences with their new American families. P.I.E. currently has programs to match almost every family's needs, ranging in length from a semester to a full academic year, where the students attend local high schools.

P.I.E. area representatives match students with host families by finding common interest and lifestyles through an informal in-home meeting. Prospective host families are able to review student applications and select the perfect match. As there are no "typical" host families, P.I.E. can fit a student into just about any situation, whether it be a single parent, a childless couple, a retired couple or a large family.

Families who host for P.I.E. are also eligible to claim a \$50.00 per month charitable contribution deduction on their itemized tax returns for each month they host a sponsored student.

For the upcoming programs, P.I.E. has students from Spain,

Germany, Poland, Russia, Finland, Argentina, Brazil, Columbia, Paraguay, Australia, New Zealand, Croatia and many other countries. P.I.E. has also been invited to participate in a special government-funded program to bring scholarship students from the Newly Independent States of the former Soviet Union to the United States. P.I.E. is a non-profit educational organization that has sponsored more than 18,000 students from 40 countries since its founding in 1975. The organization is designated by the United States Information Agency and is listed by the Council on Standards for International Educational Travel (CSIET), certifying that the organization complies with the standards set forth in CSIET's Standards for International Educational Travel Programs.

Doty encourages families to contact the program immediately, as it will allow the proper time for the students and host to get to know one another before they actually meet for the first time.

Spearman area families interested in learning more about student exchange or arranging for a meeting with a community representative may call P.I.E. toll-free at 1-800-631-1818. The agency also has travel/study opportunities available for American high school students as well as possibilities for community volunteers to assist and work with area host families, students and schools.

Chamber Chatter

by Cindy Blackman
 Chamber Manager

Printed in the April edition of the Texas Business Report, which is a publication of Texas Association of Business and Chambers of Commerce: consistently over the last decade, public education reforms have been a priority with the Texas Legislature and the citizens of Texas. Business has a direct interest in a quality public education system, because it is the schools that prepare those individuals who will become the world business and civic leaders of tomorrow. The Texas Business and Education Coalition, an affiliate of Texas Association of Business and Chambers of Commerce, is an advocate for performance based system of public education with appropriate incentives. Some of the Coalition's objectives are to: build awareness of the importance of education and the need for school improvement; establish community based education reform activities; attract, develop and retain effective educators; establish high standards; strengthen curriculum; improve instruction; and demand academic and fiscal accountability.

Spearman is lucky to have such an excellent academic school system that we can be proud of. Work-

ing with the school on such projects as our career fair gives the Chamber a chance to work closely with our school administration.

Reminders: Heritage Days meeting for all chairpersons and people having booths or activities scheduled for June 10th will be Thursday, May 18, 5:00 P.M. at the Chamber office.

Ribbon-Cutting, Friday, May 19th, 10:00 a.m. for new Chamber members, Golden Spread Carpet, Plains Shopping Center.

A "Center" Piece

By Garland Hopper
 The ladies are still working on Memorial wreaths. Plenty are yet to be chosen, but no more special orders are available.

Special programs have been arranged this month. Stop by the Blodgett Room of the O'Loughlin Center for a calendar. Besides the special programs you may find other things of interest.

There have been reports of ill members. They are wished a speedy recovery.

May God Bless Out Country

At the movies...

Showing at The Lyric Theatre Friday, May 12 through Tuesday, May 16 on Screen 1 beginning at 8:15 p.m. is "The Pebble and the Penguin," and on Screen 2 beginning at 8:00 p.m. is "Rob Roy"

In "The Pebble and the Penguin," Hubie (Martin Short) is a short, shy, romantic penguin, who competes with Drake (Tim Curry), whom is a villainous penguin who is need of the love of Marina, the

penguin-girl of Hubie's dreams in this animated tale of adventure.

"The Pebble and the Penguin" is rated G.

In "Rob Roy", Liam Neeson stars as the 18th-century Scot, Robert Roy MacGregor. Jessica Lange plays his wife, Tim Roth his nemesis and a convocation of Irish, English, and American actors assemble to bring the legend to life.

"Rob Roy" is rated R.

At The Lyric Theatre...

Friday, May 12 - Tuesday, May 16

Bargain Nights Mon. & Tue. Adults - \$4
Fri., Sat., Sun., Adult \$5 - Child \$3 every night
Closed Wednesday & Thursday

SCREEN 1 • 8:15 PM SCREEN 2 • 8:00 PM

The Pebble and the Penguin
 (G)

Rob Roy
 (R)

113 Main • Spearman

GET THE **ALC10** Advantage



FREE

SECOND SET OF PRINTS EVERY TUESDAY!

Receive a second set of 3" prints FREE with any exposure roll of 35mm, disc, 110 or 126 color print film left for developing and printing at our everyday prices! C-41 process only. Excludes larger 4" size prints, photo galaxy or kodalux finishes.



DAILY:
 9 a.m. to 8 p.m.

SUNDAY:
 12 p.m. to 5 p.m.

521 Hwy 207 S. • Spearman, TX

Perhaps you sent a lovely card, or sat quietly in a chair.

Perhaps you sent a funeral spray, if so, we saw it there.

Perhaps you spoke the kindest words, as any friend could say.

Perhaps you were not there at all, just thought of us that day.

Whatever you did to console our hearts, we thank you so much, whatever the part.

A special thanks to Pastor Orville Rogers, members of the First Baptist Church, Hospice, Lynn Garrett, Marla Batenhorst and Dr. Ed Quiros.

By the Family
 of
 James Batson

Put a Sparkle in Mom's Eye.

Give the Crystal Lace Bouquet for Mother's Day, Sunday, May 14.

Give her fresh flowers in a stunning crystal pedestal bowl accented by a lace design. Afterwards, the unique keepsake is a reminder of your thoughtfulness. To send this exclusive gift anywhere, call or visit our shop.



FLOWERS ALL OCCASION FLOWERS
 MARY MOORE, OWNER
 a/s FLOWERS-BY-WIRE
 517 Plains Shopping Center • Spearman, TX • (806) 659-5180



The Hansford County Reporter-Statesman

Serving all of Hansford County
 Spearman • Gruver • Morse

USPS 509660 • 213 Main, Box 458 • Spearman, Tx. 79081
 (806) 659-3434 • 1-800-395-9482 • FAX (806) 659-3368

Published weekly at 213 Main, Spearman, Texas

Owned & Operated by

Texas Independent Newspapers, Inc.
 16607 Blanco Road #100 • San Antonio, Tx. 78232
 (210) 492-8707

Second class postage paid at Spearman, Texas 79081

Any erroneous reflection upon the character of any person or firm will be gladly and promptly corrected upon being brought to the attention of the management.

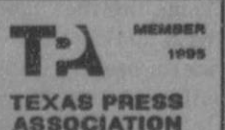
Publisher - Dezire Torres

Sports Editor/Photographer - Chad Davis

News Editor/Photographer - Wade Ahwood

Student Assistant - Erin Ahwood

The publisher reserves the right to revise or reject at its option any advertisement which it deems objectionable, either in subject or phraseology, or which it may deem detrimental to its business.



Subscription Rate: Hansford County, \$19.95; out of county, \$24.95 annually.
 Postmaster: Send address changes to Hansford County Reporter-Statesman, Box 458, Spearman, Tx. 79081.

Advertising & Story Deadlines
 Monday, 5:00 p.m.



DUKE'S CHIROPRACTIC CENTER

EVENING HOURS AVAILABLE

- Headaches / TMJ
- Neck Pain / Stiffness
- Low Back Pain
- Shoulder / Arm Pain
- Hip / Leg Pain
- Family Health Care
- Pediatrics
- Athletic Injuries
- Numbness
- Gentle Treatment

AUTO ACCIDENTS • WORK INJURIES
 (Most Insurance Accepted)

New Hours:
 2-6 p.m. Mon. thru Fri.

659-5505



Darrell D. Duke DC

11 W. Kenneth • Spearman, Tx.

Lifestyles



SHERRIE THOMPSON and EDDY LEE BULLINGTON

Thompson and Bullington plan to exchange vows

Sherrie Lee Thompson and Edward Lee Bullington would like to announce that they will be joined in matrimony on June 4 in Red River, New Mexico.

Sherrie is the niece of Perry and Loni Lamb of Gruver. Lee is the son of Robert and Jolene Bullington of Red River.

The bride-elect is the granddaughter of Keith Lamb of Gruver.

A graduate of Texas Tech University, Sherrie is currently employed by the Sunset Grill in Nashville, TN.

The future bridegroom is pursuing his music career in Nashville.

The couple will reside in Nashville after a wedding trip to Orlando, Florida.

All friends and family are invited to attend the wedding.

Milacek and Pool make wedding plans

Diane Kay Milacek and Trevor Lee Pool will exchange wedding vows at 7 P.M. July 15, in the Salem United Methodist Church of Drummond, OK. The Rev. Richard Leonard will officiate.

Parents of the couple are Alan and Pat Milacek of Waukomis, OK, and Donnie and Dixie Pool, of Spearman. Grandparents are Mrs. Ida A. Hane, Waukomis, Mrs. Margie Curry, Longmont, CO, Mr. and Mrs. Ed Pool, Higgins, TX, and the late

Mr. and Mrs. Jeff Melton, Spearman.

Diane graduated from Altus High School and from Oklahoma State University, Stillwater, with a bachelor's degree in Secondary Math Education and a minor in computer science. She is a teacher at Hennessey High School.

Trevor graduated from Spearman High School. He is employed by Enron Corporation of Houston, TX and is a Sr. O&M Technician.



DIANE MILACEK and TREVOR POOL

Williams to represent Gruver at district rodeo

Johnnie Williams, Assistant Maintenance Supervisor for the Texas Department of Transportation (TxDOT) Maintenance Office in Gruver, drove away with the highest points at the local Truck Rodeo held in April. Williams will go on to represent Gruver at the District Rodeo to be held May 11 in Amarillo.

TxDOT sponsors the Truck Rodeo annually to recognize the skills of TxDOT truck drivers and to showcase the pride they have in the safe operation and maintenance of TxDOT equipment. Drivers are scored on two different tests. First, they are tested on how well they can spot safety defects on equipment. Then, they drive through an obstacle course designed to simulate truck maneuvers encountered during a normal workday. Williams scored the most combined points in Gruver's competition.

Williams will be recognized during the Amarillo District Safety Awards Banquet May 18 in Canyon. He has worked with TxDOT for 13 years. He graduated from

Holland receives recognition from UT

At a ceremony Friday, April 21, Jay Holland received recognition from the University of Texas in Austin for completing the Option II Executive Master of Business Administration Program.

The Option II Program is a specialized Masters Program for those who are already in the work force that are continuing their careers while attending class every other week-end.

Although regular classes are completed, a final seminar will be held in London, Paris, and Lyon in early May, dealing with International Business Topics.

Following completion of the seminar, Jay and his wife Amy, both former Spearman residents, will be traveling to several other European destinations, ending with several days in Germany visiting Patricia Schnell Nash and family.

Those attending the ceremony were Jay, Amy, and three daughters; Audra, Erin, and Lauren, plus Jay's mother Norma and Art Daniell.

Gruver High School. Williams and his wife, Kristi, live in Darrouzett. They have a child, Shelby. They attend Gruver United Methodist Church.

Fanizzo to perform at local recital

The Oslo Lutheran Church will present the works of Johann Sebastian Bach in recital this Thursday, May 11, 1995 at 8:00 P.M.

Haesi H. Fanizzo, Recitalist, will perform a number of works by Bach in his concert at Oslo Lutheran Church.

After the concert refreshments will be provided in the Parish Hall. Please call 806-339-7709 for more information.

Brummett wins first place honors at contest

Alexa Brummett, from Duncan, Oklahoma won first place honors from over 100 entries at the Regional Reading Rainbow's Young Writers and Illustrators Contest.

Alexa, 7, a first grade student at Plato Elementary School, travelled to Amarillo recently with her grandparents, Orvil and Colene Brummett of Spearman to receive her award. While there, she appeared on the sponsoring Public Broadcasting Service stations KACV-TV, reading her winning story.

Her entry will now be sent to the national competitors in New York City.

Miss Brummett is the daughter of Terril and Liz Brummett of Duncan.



ALEXA BRUMMETT

Congratulations



Hapy 59th Anniversary
1936 May 14 1995

Verna (Lawrence) & Woodville Jarvis

From your family with love: Cheri & Wesley Jarvis, Ross, Holly & Lee, Carol & Neil Pack, Mike & Teresa, Jay & Mai, Chance & Blaine

REMEMBER Debbie's Ready or Not

For your mother on Mother's Day
Sunday, May 14, 1995

659-3328 • 315 1/4 Main • Spearman, TX

You are invited to a
Wedding Shower
honoring

Julie Jan Bolin

Bride-Elect of

Slaid Jones

Saturday, May 13, 1995

2:30 to 4:00 p.m.

in the home of Betty Womble

Selections at Dilliards, Gordon's & Celebrate

Gruver High School Rodeo Club would like to thank the following sponsors for their donations:

- | | |
|------------------------------|-----------------------------|
| Dean Cluck Cattle Co. | Hansford Supply Inc. |
| First State Bank of Spearman | Gruver Ford Inc. |
| Bob & Olene Cluck | Hansford County Vet. Hosp. |
| Gruver Farm Supply | Micro Chemical Inc. |
| Joe & Nancy Morris | Caprock Industries Inc. |
| Cluck Flying | Gruver Agri-Industries Inc. |
| Bart Thoreson | Lowe Cattle Co. |
| Lone Star Service Center | |

Gordon's DRUG Bridal Gift Registry

COME BY & LET US
HELP YOU SET UP YOUR
SPECIAL GIFT TABLE

Couples Currently Registered

- Slaid Jones & Julie Bolin *May 13
- Neal Earle & Toni Davis
- Angula Sintas & Jesse Anzaldua
- Billie Jo Moore & Wayne Pierson
- Chris & Brette McClellan
- T.I. & Kaisi (Foster) Harbour
- Dean Greene & Brooke Homesly

314 MAIN
PHONE
659-2141

Gordon's DRUG SPEARMAN TEXAS

Among The Neighbors

by Helen Fisher

For two days and three nights last week, the 11th annual "Cousin's Slumber Party" took place in the home of Mary Rae Lamb in Gruver.

The out of town guests arrived Tuesday morning and spent the afternoon bringing each other up to date on the last year.

Tuesday evening they were joined by Del, Barbara, and Fay Cluck for dinner at the El Vacuero. At the First Methodist Church after dinner, Del and Barbara entertained them with a mini-concert of their music on the piano and oregon. Later they all enjoyed singing many of their favorite old hymns.

Wednesday noon, they were guests at the rural "bunkhouse" at the headquarter of the Dean Cluck Cattle Company. In the afternoon to the old home place where the ten children of Mr. and Mrs. Homer Cluck were reared.

The buildings are being demolished-the two story house-the barns-the bunkhouse. Watching brought a touch of nostalgia, even sadness. Memories came back of carefree childhood, of teen ages, marriages, deaths. Many were the recollections of Christmas, storms, accidents, fun, family, and fellowship.

Then one by one all the family were gone, leaving only Mary Rae and her memories. Razing the building was sad, but sadder still is seeing them fall into decay, forlorn and desolate.

Later Wednesday afternoon, on the grounds of the Gruver Elementary School they attended a tree planting ceremony with Principal Burgoon and the student body. The red maple tree was donated and presented by Monte, Dean, and Rita Cluck honoring the memories of the victims of the Oklahoma City disaster.

The cousins left Thursday morning after presenting to the hostess, in gratitude, an elaborate and unusual Indian Wind Chime and a sequined, fringed denim shirt.

The cousins were Belle Graves

Bradley, Tulsa; Nelda Tatum Bowie, Edmund; Dixie High, Edmund; Alice Tatum Holland, Washington, OK; Bobbie Tatum Dudeck, Norman; Lavita Stevens Ward, Hobart; and Mary Catherine Tatum Robinson, Miami.

Glenda Cluck Cox of Sun Valley, Idaho visited with relatives and old friends in Gruver during the week. She was accompanied by her niece, Tesha Cluck Beaty who lives in Aubery, Texas.

Sympathy is extended to the family of Mona Beth Hester Windom in her untimely passing. The esteem and respect in which she was held was demonstrated in the large crowd at her services on Thursday.

Her obituary is elsewhere in this issue.

Donna Sheets and Alice Lackey's guests last week from Wednesday thru Saturday were Alice's niece, husband, and daughter. Grace Louise and Vivian Cannon are from Derby, Kansas and their daughter, Mrs. John Finch, is from Wellington, Kansas. Mrs. Cannon spent two summers with the Lackeys when she was a child and enjoyed re-visiting the places she remembered.

Martha and Orville Latham, after enjoying two weeks of good weather down state, returned home just in time for the turbulent weather Saturday night.

They had driven to El Indo, Texas and had a pleasant visit with Felma Evans, formerly of Spearman.

Then they went to Fredricksburg for a week. Orville attended a wood-carving seminar there. Anyone who has seen some of the wood-carving done by Orville would think that he would be the instructor at the seminar, rather than a student.

Following Fredricksburg, they drove to Waco for a week's visit with Martha's brother and sister.

Tip (Cloyd) Windom of Lubbock visited old friends and relatives in Spearman Thursday. His daughter brought him to Spearman to attend the services for Mona Beth Windom, his daughter-in-law.

Myra Berner spent last week at their ranch near Roy, New Mexico. Wally and his brother John, were already there as they had been moving cattle from here to the summer grass. Myra leaves the cowboying to them, but did indulge them with her cooking.

John, from Dunnellon, Florida, had been visiting them here. Myra reports that the storm early Sunday morning had winds up to 52 miles an hour at their home south of Spearman. Huge limbs were torn from the trees and one tall pine tree was completely up-rooted. Fortunately the hail and wind didn't last long and the rain was welcome.

In the same area the wind twisted the steel of the metal Star windmill at the collection at J.B. Buchanan's. The other mills were not damages.

Elsewhere in this issue are the results of the contests at Austin for the UIL district winners in high school competition. The sponsors of the Spearman students were Mandy Derrington and Lynda Davis. Others going, more in pride, than as chaperones were Susan and Steven Poole, Candy and Bob Boxwell with Erin.

Tiny Gressett and Gordon Cummings spent the week-end with other members of the Morse Bass Club at Lake Foss near Elk City. The plans were to do some bass fishing, but since the rain was constant, the actual fishing was quite limited. However a few were caught between showers.

Travis Reiswig and Pete Schumann of Morse were among the other members who were fishing from Stinnet, Dumas and Amarillo. It was an enjoyable outing

though the fishing results were not as hoped.

Now this fisherman's club is one, perhaps the only one, that George Washington would feel comfortable in, since he too couldn't tell a lie!

HENSON CHIROPRACTIC

300 S. Ash • Perryton, TX

Call for Appointment • 435-7525

OFFICE HOURS:

Monday, Wednesday & Friday 9:00 to 5:00
Tuesday & Thursday 9:00 to 11:30



TURNING 40 REALLY ISN'T A
CURSE,
JUST LOOK AT YOU,
YOU'RE OUR FAVORITE NURSE

HAPPY BIRTHDAY
May 13th!!!

???

HANSFORD

COUNTY HOSPITAL DISTRICT

Striving for Excellence

We strive to keep Hansford Manor "on top." We are always looking for ways to stay there, and last month we started a new program with that purpose in mind. We perform a daily check with our residents by RN/LVN/CNA.

We would like to thank our CNA's for their excellent work in this area because things are looking exceptionally great on a daily basis. Last month we noticed a lot of teamwork goes into their job in order to keep things going so well. Hall II was an excellent example of this effort last month; they all worked together to stay on top of things.

A special "honorable mention" goes out to some CNA's who do an outstanding job: Norma Hermosillo, Angie Salgado, Doris Hendricks, Roberta Bridwell, and Jolynda

Rodriguez. These women are definitely "A TEAM." When our CNA's work together it really shows, and the LVN charge nurses notice and appreciate

their efforts. They make everyone's jobs go a whole lot smoother, so special thanks go out to the "A TEAM" on Hall II for the outstanding job they do!!!!



DORIS HENDRICKS, JOLYNDA RODRIQUEZ, ROBERTA BRIDWELL and ANGIE SALGADO

A Note from Activities

Whew! April has been a busy and exciting month! We've done everything from hunting Easter eggs with the Spearman Kindergartners to attending the All-Star Opry at the O'Loughlin Center! We have traveled down the old "Route 66" in our Activity Room, and even "visited" Nashville, Tennessee one morning in our "Journey's End" activity. Special thanks to all who helped, putting smiles on the faces of our residents.

We ended the month on a high note with an Appreciation Tea to honor all of our volunteers. Our theme for Volunteer Week was "Vol-

unteers touch many hearts." This is very evident throughout the halls of Hansford Manor. These local "heroes" can be seen at any given time sharing in the lives of our residents. The impact they have on the quality of life here is immeasurable!

We are moving into May full speed ahead! We begin on May 1 with Men's Day Out (postponed from last month), a trip out to dinner for the guys. The Gruver Music club will be performing for us on the 2nd. Journey's End will "travel" to Indianapolis, Indiana this month,

on May 12. Our Christian Buffet will be sponsored by the First United Methodist Church of Spearman and will be held on May 22. Our Resident Birthday Party will be the 26th. Tuesday night bingo will be sponsored by the Twentieth Century Club and the Employees of the Hansford County Hospital District.

We have had a lot of fun with our monthly themes in the Activity Room. Each month we decorate in a different theme and have a party centering on that theme. Here is a hint for those of you wondering what the theme for May is - "Follow the yellow Brick Road!"

Welcome New Residents

Ollie Leota Giblin - Morse
Roy A. Beasley - Gruver



Resident Birthdays!

Nanalee Brown • 2nd
Jewell Renner • 3rd
Allen Beasley • 7th
Sada Hoskins • 17th
R.P. Stout • 25th
Daisy Rhea • 25th
Pete Jesch • 29th

Solid Gold Selection

Our featured resident for the month of May is Gladys Riddle. Gladys was born in Meridian, Texas, on October 4, 1914, to John and Ida Adams. She had two brothers and one sister. Gladys and her husband, Ernest, had two daughters, Maralene and LaRue, and two sons, Kenneth and Wayne. They lived in Sunray for 22 years before moving to Spearman to care for a granddaughter when LaRue became ill.

Gladys attended First Baptist Church where Verna Jarvis was her Sunday School teacher; Verna and Gladys visit frequently.

When asked how she feels, Gladys told us, "This is the greatest place! I love the Manor and the people here. I plan to make this my home because I am really happy." Gladys, we love you!!



GLADYS RIDDLE



Hansford Manor residents celebrated April birthdays at a party sponsored by the Hospital Auxiliary on April 28th. Residents celebrating birthdays were: (standing) Esther Weeks, Charles Reagh, (seated) Ernie Newcomb, Pauline Pshigoda. Residents with April birthdays not pictured were Paula Avila, Maxie Stayton, and Mary Shirley.

CNA Spotlight

Shirley Burton has been working at Hansford Manor for five months. Shirley came to work at the Manor because she loves to be around people, her kids are growing up and moving away, and Shirley found herself with too much spare time. She had worked as a CNA before in Stevenville. Her impression of working here: "It's not just a job, it's an adventure!"

Shirley and her husband (involved in Soil Conservation) have been married for 24 and a half years and have three daughters: Beverly, a student at West Texas State, Carrie, a Junior, and Carla who lives at Pampa.

Cooking, sewing, and crafts are Shirley's other interests. We are proud to have Shirley on our staff; she is "excellent!"



SHIRLEY BURTON

Congratulations Jorge

CONGRATULATION, JORGE ARENIVAR, for setting goals and achieving them! Jorge recently received good news that he has passed another test. EMT class - December, 1993; EMT-I class - May 1994; EMT-P class - February, 1995; ACLS certified.

Jorge has been a Certified Nurse's Aide at Hansford County Hospital District since February, 1991, and will start Licensed Voca-

tional Nurse school in May. He wants to become a Registered Nurse

Arenivar, who has been a volunteer with the ambulance service since February, 1994, says, "I really enjoy being on the service. Everybody there has been so supportive. It is a privilege to be involved with such a great group of people that take so much pride in what they do."



A HELPING HEART--These students participated in the "Jump Rope for Hearts" fundraiser for the American Heart Association. Sponsors donated money for the students to jump rope. In the back are Brittni Samply, Allison Behney, and Amy Watley from Gruver. Jared Lozano and Nicholas Benton of Spearman are in the front. Also participating, but not pictured is Colt Cluck.

Pierce named as Heart Association president

The American Heart Association Hansford Division's Annual Meeting was held May 1, 1995 at Lozano's Restaurant.

The presentation of awards was given by Hansford Division Representative Debbie Wright of Amarillo.

Darlene Pierce presented incoming officers. The 1995-96 President is Darlene Pierce, Vice-President is Byrl and Debbie Sears, Secretary/Treasurer is Rosemary Brown, Program Chair Person is Darlita Ellis, Development is Cheryl Sanders, and Communication is Colleen Schaefer.

"Jump Rope For Hearts" win-

ners were also recognized.

From Morse, the winners were Brittni Samply and Allison Behney. The children were sponsored by Sandra Blankenship.

The winners from Gruver were Amy Watley and Colt Cluck. They were sponsored by Sheila Watley.

From Spearman, the winners were Jared Lozano and Nicholas Benton. They were sponsored by Carla Flowers.

Members present were Cheryl Sander, June Barkley, Darlene Pierce, Rosemary Brown, and Colleen Schaefer. Guests present were Jump Rope winners and their sponsors and Debbie Wright.

Spiritually Speaking

Spiritually Speaking
By Pastor Lewis Holland

Four years ago I did a study about what enables ministers to maintain their joy in the ministry. As I look back over that list of things today, it seems that many of the things on the list also apply to the ministry of lay people. I would like to share one of those items with you today.

We are able to maintain our joy in the ministry or in our Christian service when we understand the long range plan of God. Most of the things God wants to accomplish through us do not happen over night. As a result, the battle goes to the determined and not to the outraged. It goes to the committed and not the dramatic. If you do not feel like you see results from the things you do for the Lord quickly enough think about the following example which comes from an article that appeared in the *Atlantic Monthly*.

In the hey day of the great western cattle ranches, a little burro was employed to gentle the stron-

gest steers. The steer would be haltered to a little burro and turned loose on the range. They would disappear over the horizon with the burro being dragged like a streamer in the wind. They would be gone for days, but they would eventually return with the little burro in the lead and with the submissive steer in tow. When the steer would finally become exhausted trying to drag the burro everywhere, then the burro would take mastery and become the leader.

God calls us to a slow winning of the kingdom. Its like the patience and confidence we need as we wait for our corn to grow. Part of our joy comes when we realize that God's plan will unfold before us in His timing. So the next time you get discouraged, remember God has a long range plan, and with faith, you can be like the little burro who accomplished far more than he ever thought possible, because he was determined and committed over the long haul.

Jesus Is Lord

Museum Musings

by Joanne Eaton

Many thanks go to Joan Farr, Spearman's own quilt expert, for going to the Museum with me to go through the quilts that are on display there. She told me many things about each one that I did not know. We definitely have our own quilt show about each one that can be seen on a daily basis.

Idella Randall's grandmother, Mrs. Minnie Close, hand-pieced a quilt that is called Circle Saw, or sometimes Rising Sun. She used a lot of red fabric set with pink. This pattern appeared in the *Kansas City Star*, a newspaper from Kansas City, Missouri. The fabrics in the quilt are from the 1930's era. The quilt has an ice cream cone border.

A quilt made by the sixth grade class of 1988 is made in brown tones on white. The students drew pictures to celebrate the 200th birthday of the Constitution and Charlene Bulls put the designs on fabric and quilted it for the students. Students involved were Josh Winegarner, Molly Blackman, Tony Holguin, Stuart Riggins, Kathy Hansen, Mandi Lair, Sandi Rich, Traci Martin, Josh Howard, Shirley West, Brandee Groves, Ashley Baker, Ronnie Ring, Lyndee Cook, Ben Auelner, Radar Garcia, Jeff Gillrest, Jill Clement, Joe Breardon, Kortney Henton, and Amy McCubbin.

An applique quilt with matching shams decorates the bed in the Museum: It was used for a bedspread. It belonged to Virginia Barkley Renfro. It is designed with the old way to applique, by putting a buttonhole stitch around each piece.

The Elmo McClellan estate has a wool quilt called Around the World on display. Each square is about 3 inches across. This quilt uses very dark pieces and has been tied together instead of quilted.

Hanging on the wall in the front room at the Museum is a flower-basket quilt of tans and gold on white. It is finished with diamond shaped quilting.

A friendship quilt, donated by Delbert Allen, belonged to Lcis Maupin. People would make a quilt and have friends or relatives sign each block.

A quilt on display from Clementine Renner was made for her hope chest. It is in a pattern similar to Clay's Choice.

A Sesquicentennial quilt made by members of Golden Spread Center, 1836-1986, was designed by Lois Gibner. Marilyn Cline donated fabrics for the quilt. Ladies contributing to the making of this quilt were Anita Anthony, Susan Delk, Mabel Jameson, Jewel Turner, Eddie Largent, Lorene McGuire, and Adalyn Barnes. It is done in applique and embroidered with matching pillows.

A pink floral on tan quilt belonged to Beth Phelps and Ruth Bryan's mother, Mrs. Hix Wilbanks. She really treasured the quilt. Mrs. Wilbanks, her mother, Georgia

Winn, and her sister, Anna Lisa, made this applique quilt for her brother Hugh. It was made around the late twenties.

A quilt belonging to Kiff White's great grandmother is on loan by Mrs. Garland Head. It is tan flowers with green stems on a white background. The quilting is very close together. This is a quilt that shows some of the excellent needlework of some of the pioneer women. The stitches are about 16 per inch.

Juanita Pierce has a Double Wedding Ring quilt on loan. It was from the Jess French estate. The quilting on it is also very nice, flowers and a spider-web design. The quilt has many different pieces of calico fabric in it.

A patchwork quilt is on the dug-out bed in Fort Zulu also.

To get into the spirit of the early quilt-maker's life, I recently took a quilt class from Joan Farr. I have a new admiration for these quilt-making ladies. My sister reminded me I had once given her my view on quilt-making when she was getting ready to take a class, "Why do you want to cut all that material up into little pieces then sew it all back together?" I should have listened to myself! This is hard work!

Our 1995 Heritage Days Queen is going to be Fannie Venneman. She will ride in the celebration parade on June 10. We are really excited that Fannie is going to be Queen. Come on out and support her and visit with her.

There have been no responses to the Mystery Lady. I hope someone can soon tell us who she is.

Come to the Museum to see our Constant Quilt Show. Museum hours are Tuesday through Saturday from 1 until 5 P.M. Special tours can be arranged by calling J.D. or Rubyjo Wilbanks at 659-3084, Clementine Renner at 659-2335, or Juanita Pierce at 659-5100.



QUILT DISPLAY--Joan Farr, of Jo's This and That, holds a quilt that is on display at the Stationmaster's House Museum. This quilt is on loan by Idella Randall.

INTRODUCING
PRIMESTAR:
THE ONLY MINI-DISH
SATELLITE TV SERVICE
WITH FANTASTIC
PROGRAMMING AND
NO EQUIPMENT TO BUY.

PRIMESTAR
WE BRING SATELLITE TELEVISION DOWN TO EARTH
BY TCI



CALL NOW:
1-800-318-8829

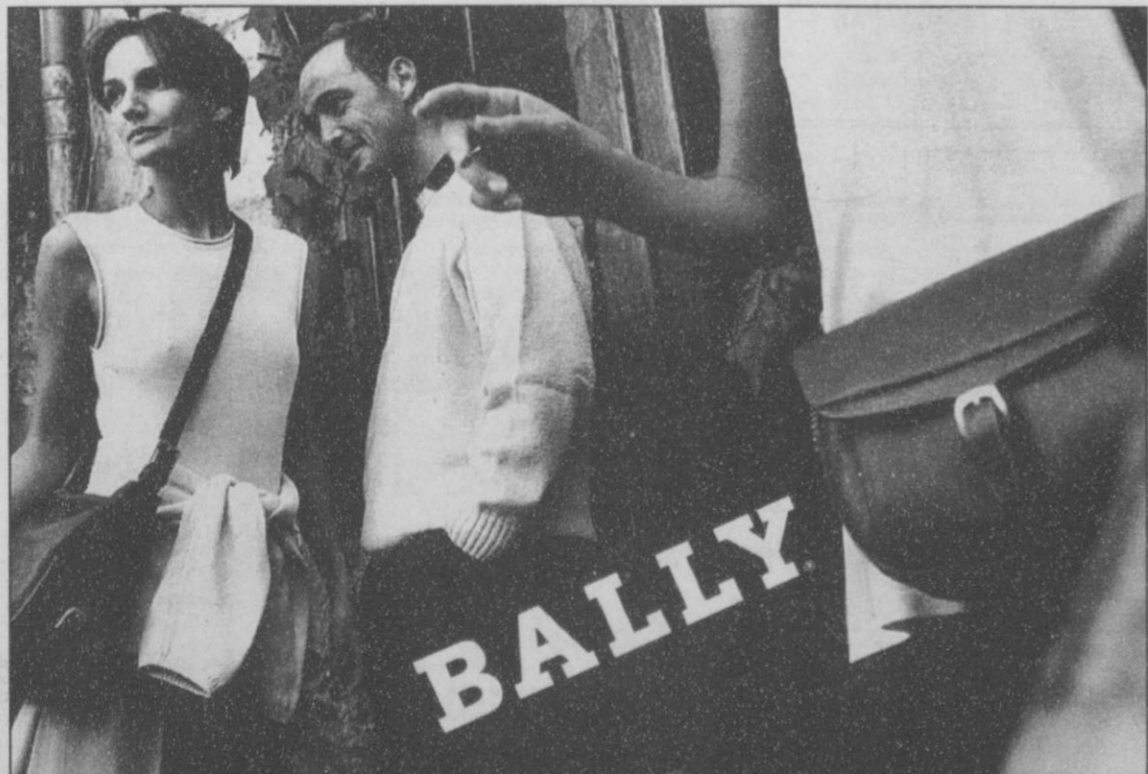
Just in time for Mother's Day

FREE Cellular Bag Phone*

Country Cellular Communications

Jeff Beedy & Dick Gillaspie
(806)659-2541

* Conditions apply for 24 month contract



COULD THE HANDBAG BE THE MOST IMPORTANT ACCESSORY OF ALL? IF SO... THEN YOU'LL LOVE THE DISTINCTIVE DESIGNS... RICH LEATHERS OF BALLY. SEE OUR SPRING AND SUMMER COLLECTION NOW AT J-WINSTON.

j. Winston
of amarillo

WOMEN'S FASHION 2701 PARAMOUNT 358-2457



ALL-AROUND COWGIRL - Jana McCloy, seen here in the goat tying event, became the all-around cowgirl at the Gruver Rodeo Arena last weekend. McCloy was one of 37 girls competing nine event round-up.

All around cowgirl

McCloy wins events at Gruver Rodeo

This past weekend the Gruver Rodeo Arena was full of action. Jana McCloy emerged all around cowgirl winning the breakaway roping and goat tying events. There were 36 girls competing and 134 boys.

Other winners in events were: Bareback Riding 1. J.J. Blacksher, 2. Casey Drake, and 3. Jeremy Sullivan.

Calf Roping: 1. Rusty Slavin, 2. Kip Clayton, 3. Drue Knight, 4. Josh Purcell, 5. Matt Carlson, 6. Dustin Bell, 7. Shawn Hill, and 8. Kyle Zyback.

Ribbon Roping: 1. Matt Carlson, 2. Matt Reeves, 3. Reid Green, 4. Rusty Slavin, 5. John Gregory, 6. Kyle Zyback, 7. Matt Rhine, and 8. Justin Winders.

Steer Wrestling: 1. Yandy Yarbrough, 2. Matt Reeves, 3. Rusty Slavin, and 4. Tanner Winkler.

Bull Riding: 1. Tim Holcomb, 2. Tony Williams, 3. Jason Griswold, 4. Layne McCasland, David Sonnicksen, Cory Watts, and Anthony Jackson, and 8. Charlie Tims and Efen Jiminez.

Team Roping: 1. Michael Snelson and C.M. Kuhlman, 2. Ty Clevenger and Matt Davis, 3. Tye Sims and Ashley Noland, 4. Lee Bagel and Brandon Nix, 5. Rance Jameson and John Gregory, 6. Matt Davis and Curt Cornett, 7. Yancey Short and Jamey Maxwell, 8. Ollie

Lanham and Ty Boggerman. Breakaway Roping: 1. Jana McCloy, 2. Sahala McCloy, 3. Susan Beauchamp, 4. Sequin Downey, 5. Misty Meyer, 6. Julie White, and 7. Leann Keathley.

Barrel Racing: 1. Jody Rae Sartin, 2. Sanja Hext, 3. Leann Keathley, 4. Jodi Boykin, 5. Julie White, 6. Shvonne Farrow, 7. Sequin Downey, and 8. Summer Leffew.

Pole Bending: 1. Nickie Leggett, 2. Jodi Boykin, 3. Lara Futrell, 4. Julie White, 5. Manchie Light, 6. Amber Hayes, 7. Leann Keathley, and 8. Catherine Foster.

Goat Tying: 1. Jana McCloy, 2. Manchie Light, 3. Nickie Leggett, 4. Jera Harris, 5. Kari Cobb, 6. Remick Haley, 7. Lana Keathley, and 8. Sequin Downey.

The students will compete this next weekend at Memphis.

Out at the Lake

By Helen Fisher
Lake Depth-22.7 feet.

Dorothy Hudson is out of town this week but her interesting and informative column will be in next week's issue.

The wonderful rain has brought the lake depth to 22.7 feet by noon Monday and was still rising. Jim Derrington noted that the depth had risen seven inches in 2 1/2 hours. According to his charts the five feet rise would double the volume of water in the lake and increase the surface area by one-third. The lake temperature was 49 degrees Monday morning.

There have been several fishermen at the lake this week with different results. All have enjoyed watching the wild turkeys which are numerous and all around the lake.

The sighting of a type of wild cat of recent months has brought requests for the following personal reminiscence.

The following is the truth, the whole truth, and nothing but the truth, and no doubt I will regret relating it.

It was many and many years ago, and hardly a person is now alive who can verify it.

In the middle 1950's, on a pleasant afternoon, I had taken my son, Zack B. and his friend, Bob Hartman, son of the school superintendent, rabbit hunting. Zack B. had just graduated from a B B gun to a single shot 22.

We were a little north of Hansford on the Palo Duro, up the creek from where the ostrich farm is now. We stopped on a dirt road near a little bridge that has since washed out. The boys went thru the east fence into some tall sun flowers.

I was standing still, debating whether to climb over, under, or thru the barbed wire fence, when from the sun flowers and bounded a twany, cat-like creature. I suppose the boys flushed it and it stopped to lick its paws, evidently not noticing me. I was quite close to it and thinking it a bob cat, I edged back toward my car to get a hand gun, thinking I would demonstrate to the boys how a fearless hunter bags game.

My movement may have startled it as it turned and sailed over the barbed wire fence to the west. As it stretched out, clearing the fence, I thought it looked the length of a German Shepherd dog. Now, that is when I got goose pimples-its tail, its long tail, stretched out behind-it sure did. No bob cat, perhaps a mountain lion, panther, or cougar, but no bob cat.

It stopped on the other side and just sat, watching me. I honked for the boys to see it. Zack B. took a shot and it trotted away-and again emphasized the length of the tail to the boys.

I was employed at the office of Sheriff-Tax Collector and mentioned it to Sheriff J.B. Cooke. He had a tolerant, quizzical smile as he questioned me. I doubt if anyone really believed it, even with the boy's statement.

Bill Miller Sr. had a article in the

Spearman Reporter about it-good natured but skeptical. A mountain lion in the country-hardly.

The Amarillo News-Globe called me and had an article on the front page. Well I had to put up with the comments, ranging from questioning my sobriety to my impaired vision, until some time later. I think it may have been when two men, who had ranches north of the now Palo Duro Lake, reported seeing the creature-not at the same time nor the same place. They were Emil Knutson and Buck Edge-the ranches are still owned by the families.

Months later, the creature, of a facsimile of, showed up south of Gruver on the Palo Duro reported by Doc Jones. He was not as thick-skinned as I and resented the com-

ments. I recall getting a letter from him expressing some bitterness and also sympathy.

Shortly thereafter some ladies, whose names I don't recall, were fishing in the same area and the cat came very close to them. Seems there were others who had glimpses, so some of the Gruver folk organized a lion hunt one Sunday afternoon. Since they claimed I was responsible for the origin of the rumors, they called me to come and be in on the capture. They called Hix Wilbanks who made sure I went, taking me and a friend.

I remember a sizable crowd that took part, some horse-back and armed, but no self-respecting lion would have showed its face to that noisy crowd.

That is the last cat story heard in these parts until the recent reports.

Recycling Words

By MARGIE FAGAN
Spearman-Gruver Recycling Co-ordinator

Recycling Motor Oil

It is illegal to dispose of oil or oil filters in household trash. By April 1, 1994, a statewide ban was imposed forbidding the disposal of used oil filters in municipal landfills. Over 50 million filters are disposed of in Texas every year.

Enforcement of the law will become more critical to Spearman and Gruver as Spearman will be closing its landfill. When waste is hauled to other communities for landfilling it is inspected for contaminants. If filters and motor oil are found, the load could be refused. The only recourse left would be to have the waste hauled to a hazardous waste

facility at a considerably higher cost.

Changing your oil can be very expensive to individuals as well. At a recycling program recently, a man related a story to me of a friend whose last oil change cost \$5,000! He had tried to return the oil to it's native habitat via his alley and was fined. Don't think it won't happen to you. Take your oil to the recycling center and save!

In order to provide a place where individuals could dispose of their oil and filters, grants were made available to communities across the state to open Public Used Oil Collection Centers. Grant funds were

See RECYCLING, page 10

Hansford County Hospital District

SUMMER YOUTH EMPLOYMENT PROGRAM

Part-time Positions available: Maintenance, Central Supply, Ward Clerk, Activity Department, Nursing Home, Hospital

Must be between 16 and 18 years old and currently enrolled in high school, with a GPA of 3. or above

Must be Hansford County resident

Personal appearance and hygiene are important

Students with an interest in career in Health Care are preferred

TAKING APPLICATIONS MAY 1 - MAY 15, 1995

MUST BE AVAILABLE TO WORK JUNE 1 - AUGUST 15, 1995

Watch Energy Savings Grow With Every Tree You Plant.



You can expect Texas-New Mexico Power Company to furnish reliable power, plus programs to help you use energy wisely. For example, we'll show you how to plant trees in energy-strategic locations so your landscaping helps reduce energy waste. For more information about saving energy, call or visit your local TNP office for our free Energy Management Guide.



SATURDAY MAY 20, '95 AUCTION 10:00 A.M.

ESTATE AUCTION - J.C. HICKERSON
730 COTTER DRIVE, SPEARMAN, TEXAS

Real Estate in Spearman and White Deer. Vehicles, Household, Antique Clocks, Watches, Pocket Watches and Estate Jewelry
Real Estate Sells At 1:00 p.m. Followed By Vehicles And Estate Jewelry
(J.C. Hickerson Was A Well Known Jeweler in the Clarendon, Spearman Area For Many, Many Years)

REAL ESTATE SELLS AT 1:00 P.M.
730 Cotter Spearman, Texas

The J.C. Hickerson Estate Will Offer The Following Real Estate At Auction
Real Estate Being Described As:

SPEARMAN - Lots 17, 18 and the South 15' of Lot 19, Block 4, Blodgett Addition, Hansford County, Texas Commonly Known as 730 Cotter, Spearman, Texas. Spearman Property Consists of an Exceptional 4 Bedroom, 2 3/4 Baths, Fireplace, 1803 Square Foot Brick Home With Partial Basement, 1170 Square Foot 3 Car Garage and 1217 Square Foot Covered Patio. Fenced Yard. Exceptional Yard w/Sprinkler System and Large Fenced Garden Area. This House is Located In The South-East Part of Spearman Close To The High School, Swimming Pool and City Park.

WHITE DEER - Lot 12, Block 18, Original Town Survey, White Deer, Carson County, Texas Commonly Known As 211 Paul, White Deer, Texas. No Minimums and Reservations On This Tract.

TERMS - Owner financing available. 10% of purchase price will be deposited in escrow the day of sale. Seller will finance qualified buyer for 10% down, 20 years at 9% fixed interest. Seller will furnish the insurance. Purchaser will have 10 days to examine title at purchaser's expense. Balance upon closing if seller's finance is not used. Stagnant Texas Real Estate Contract will apply. Closing costs will be split between buyer and seller. 1994 and prior taxes paid by the seller. 1995 taxes prorated to day of closing. Cash Bidders, Closing Agent.

Every effort will be made to assure the accuracy of the information with no guarantee of authenticity. Any announcements made by the seller shall make all other notices null and void.

For Showing Or More Information Call Bozeman Auction Company, (806) 435-4472. Sale Subject To Continuation And Acceptance Of High Bid By Buyer.

- 1993 GMC Caballero, 350 Auto Elec. DiV. 78,000 One Owner Miles. Nice
- ANTIQUE CLOCKS
- French Mobier Wall Clock w/Repairer
- 2 - Regulator Type Wall Clocks (1 Replaced by from Clovis Train Station)
- 3 - Wood Cased Wall Clocks
- 3 - Mantel Clocks, Seth Thomas Kitchen Clock, Art Deco Mantel Clock
- 2 - Black Marble Mantel Clocks
- 1 - Modern Grandfather Clock
- 1 - New Kieninger Wall Clock Jeweled Movement In Custom Made Wood Case
- WATCHES & ANTIQUE POCKET WATCHES
- Dozens Of Old Pocket Watches Key WINDS, Enamel Faces, Double and Triple Dials - Hammond, Harvard, James W. Peters Liverpool
- Duebermanpieter, Waltham, Elgin, Logie, Cubano, Rosew Co. Etc.) These Watches Are In Various Degrees Of Repair
- Dozens of Wrist Watches From The 40's Up
- New Wrist Watches (Older Model Seiko, Bulova Etc.)
- 1 - Lot Estate Jewelry, Pocket Watches Cameo Pins, Etc.
- 1 - Model 20 JC Higgins 16 Gauge Pump
- 1 - Excel 410 Single Shot Shotgun
- ANTIQUES
- 1 - Lot Carnival Glass
- 1 - Lot Depression Glass
- 1 - Lot Figurines
- Spode Cup
- 5m Antique End Table
- Cedar Chest
- 1g Lot Dolls (60's & 70's)
- Oak Wood Desk & Chair
- Metal Picnic Basket
- Butter Mold
- Snuff Glasses
- 1 - Arcade Crystal #4 Coffee Grinder
- Horse Collars
- Milk Can
- 1 - Lot Old Jars
- Old Cast Iron Hog Waterer
- Underwood Typewriter
- HOME MEDICAL
- Electric Hospital Bed
- 3 - Walkers
- 2 - Potty Chairs
- Portable Oxygen Unit
- Hosp. Bed Serving Tray
- 2 - Exercise Bikes
- 1 - Exercise Machine
- HOUSEHOLD
- 1 - White French Provincial Headboard & 4 Drawer Chest
- 1 - Early American Double Bed w/6 Drawer Chest & Nightstand
- 1 - Kind Waterbed
- 1 - GE No Frost Refrigerator
- Key Ig Better Living Freezer
- 1 - Nice Round Maple Pedestal Table w/2 leaves & 8 Chairs On Rollers
- 2 - Loveseat Hdb-d-Bed
- 3 Pc. Coffee Table & End Tables Gold Leaf
- 3 Pc. Bedroom Suit w/Triples Dresser
- Nightstand
- Wooden Rocker
- Wood Hall Tree
- Footstools
- 1 - Lot Elec. Heaters
- 1 - Lot Kitchen Appliances: Utensils, Dishes
- 1 - Lg. Lot Linens
- 1 - Lot Handwork
- 1 - Lot Pictures, Prints, Oils & Wall Decorations
- 1 - Lot Telephones, CB's, Turntable, Tape Decks
- Zumth Vlog Sarament System
- 1 - Lot Yard & Garden Tools
- 2 - Lawnmowers, Bicycles, Red Wilson Axis Motor Storage Bin
- Wood Stangle Hog House

Bozeman Auction Co. & Appraisal Service
Texas License - 9275
Kenneth Bozeman - Auctioneer
P.O. Box 736
Perryton, Texas 79070
(806) 435-4472
Cecil Biggers Attorney for Real Estate Auction

Sports

Spearman tennis players meet tough competition at regionals



OK, HERE'S THE PLAN - Although Spearman will not be advancing anyone to the State Tennis Tournament in Austin, several competitors did quite well at the Regional Meet in Abilene. In the photo above, the gifted Kara Townsen discuss how she is going to take on the next match with Coach Ryan Rhoades. Townsen made it all the way to the gold medal match against Hart's Shea Bennett. Unfortunately, Townsen barely missed out, 6-1, 6-3. She did go on, however, to take home the bronze medal. (Photo by Shirley Atwood)

Who would have thought that, with the tough competition that the Spearman Lynx and Lynxettes' tennis teams had to face at the Regional Tournament in Abilene, so many tennis players would have come out of the tournament like they did?

For instance, Kara Townsen. Townsen, of course, was expected to come out on top, which was natural as she was top seed in the tournament. She did more than a fabulous job at this level of competition, by placing 3rd overall in the tournament. She started off her winning by taking a couple of easy matches from Hart's Brandi Key, 6-2, 6-2. The next match, in which she was paired with Amanda Tatum, of Idalou, was just as easy for this junior hard-swinging tennis player, as she took her in the same manner as Key, 6-2, 6-2. She then went on to grab another victory, this time from Eldorado's Whitney McGinnes, 6-2, 6-2. From there she went on to the most important of all matches, the championship. Hart soon got revenge on a surprised Townsen, as the town sent Shea Bennett to do battle with her in the big match. Bennett handed Townsen her first defeat, 6-1, 6-3. This was an upset for Townsen, as she was 1st seed but was beaten by a 3rd seed player. As this were not enough, Marnie Spillman, of Wellington, then challenged Townsen for a match to see who will get the 2nd of best places. Spillman narrowly edged-out this tough never give up Townsen, 6-4, 7-6.

As for the boys, only four Spearman tennis players competed in the tournament, and those four were in doubles' competition. Senior and Junior competitors Chad Wilkerson and Bill Pittman were on display at the tournament. This duo of upperclassmen showed Sergio

Martinez and Brandon Irons, of Hart, what Spearman tennis was like, as they destroyed them, 6-1, 6-2. The next match later, the two were taken out of the tournament by Ozona's Mickey White and John Vasquez, 6-2, 6-3.

The other of the two doubles' competitors were Mike and Mac Butts. This set of fine up and coming freshman tennis stars were beat in their first match by Tim Sherry and Chris Yardley of Jim Ned, 6-3, 6-1, but considering that the Butts' are only freshman, and their competitors were seniors, they did quite well against the two experienced players.

The girls' doubles also saw their share of heartache, as they too were beaten out in their first rounds of play. The junior connection, Erin Atwood and Crystal Boyd, saw their way into a tough match between Canadian's Tisha Carr and Hilary Brown, the top seed in girls' doubles play, as the combo was beaten out, 6-0, 6-2. As for the freshman team, Misha Davis and Kasey Dunnihoo, were beat also by a narrow margin, 6-3, 6-3, by a team of juniors, Jessie Ann Perez and Candra Beeson, of Forsan.

Although no one will be attending the State Meet in Austin, every competitor, including Coach Ryan Rhoades, deserves a much needed pat on the back for a job well done this year.

G & G ELECTRONICS

- 2-way radio • Repeater • Satellite
 - Mobile Telephone • Pagers
 - Motorola Radius • Kenwood • Maxon • Vertex & Reim
- BRUCE DUNCAN**
(806) 659-3125

ATTENTION GOLFERS

Hansford County Golf Club Membership Drive!!!!!!!

A once in a lifetime special from May 15 thru June 15 for these special thirty days and thirty days only, Hansford Golf club will wave the \$100 up-front stock fee if you buy a one year membership during this time period.

Everyone take advantage of this special offer and **JOIN NOW!**

Contact Mark Thomas - 659-3782 after 5:00 p.m. or Hansford Golf Club at 659-2233.

Golfsters place 11th

Both the boys' and girls' Spearman golf teams were good enough to be called the best in the district, however, when the two teams got through with their rough competition at the Regional Golf Meet in Abilene, they got to see first hand a big group of golfers who are awesome. Both of the teams finished in 11th place, which, given the fact that Spearman's golf teams are really impressive, proved how tough the competition really was, as they

played 18 holes both days, May 27th and 28th, at the beautiful Maxwell Municipal Golf Course.

For the boys, Clint Faries finished in the number one spot with a 36 hole-ending score of 156, which was brought on by a 73 the first day and a 83 the second day. Chris Jenkins finished his first day of competition with an 82 and the second day with an 85, which brought his total to a 167. Schane

See GOLF, page 9

Former Lynxette to play in NCAA

Several Spearman graduates go on in their college years to play athletics. Many of them do quite well, but besides a few little awards here and there, quite a few them are not in as big as spotlight as former Spearman High School tennis sensation, Kimbre Townsen.

Townsen is probably remembered by Spearman fans as a great tennis player in high school. After all, she did capture 3rd at State in singles play her sophomore 1991 year, not to mention a gold medal the following year in a combo set with her older sister Tamri. Plus, the next year, her senior year, she went back to State in singles' to win a silver medal.

Now, Townsen, who is currently a sophomore at Cameron University, will be representing her school in this year's NCAA Division II Tennis Tournament in the singles' division, and in the doubles' division with partner senior Lisa Coomer. Townsen helped her team

win the Midwest Regional Tennis Tournament in Topeka, Kansas. It's hard to believe that only a sophomore would be able to attend this gigantic of importance tournament, but with a record of 24-4 and a doubles' record of 17-2, this is really no surprise, just talent.

These records are really remarkable, considering the fact that she had to switch grips on her racket. Also, what is really astounding is that the quick Townsen is doing so well in school. She was a great student in high school, but at a larger University and the demanding time of practice, it is hard to imagine keeping up good grades. However, Townsen is showing excellent academic abilities as well, as she is majoring in finance.

Kimbre will be in action at Sacramento, California, as her team will be doing battle with 16 other teams throughout the nation in the National Tournament. In addition,

she will be coming back home this summer to be the City of Spearman's new Recreational Director.



KIMBRE TOWNSEN

BARRY R. MARON, M.D.

Board Certified in Orthopaedic Surgery with hospital fully equipped for orthopaedic surgery!

Specializes in:
Problems of the Spine
Arthroscopic Surgery
Sports Injury
Joint Replacements

Office Hours by Appointment
Call: (806)273-3002 • 202 S. McGee, Borger

SAVE BIG ALLSUP'S

EFFECTIVE MAY 7, - MAY 13, 1995
Gruver & Spearman Only

Enjoy Coca-Cola CLASSIC

SAVE ON COCA-COLA

6 pk. • 12 oz. cans
\$2³⁹

Enjoy Coca-Cola CLASSIC

GROCERY SPECIALS

- DIXIE 20 CT. PLASTIC CUPS 16 OZ. **99¢**
- CHEETOS & DORITOS REG. 69" GRAB BAGS **2 FOR \$1⁰⁰**
- SHURFINE CRISPY CRUNCH CEREAL 16 OZ. **\$1⁹⁹**
- CANADIAN BACON, EGG & BISCUIT EA. **99¢**
- ALLSUP'S 1.5 LB. LOAF SANDWICH BREAD 69¢ EACH OR **2 FOR \$1⁰⁰**

ALLSUP'S BEEF, CHEESE & GREEN CHILI CHIMICHANGA

99¢ EA.

BLACK LABEL LB. PKG. SLICED BACON

\$1⁴⁹

ALLSUP'S GALLON HOMOGENIZED MILK

\$1⁹⁹

THRIFTY HOUND 20 LB. BAG DOG FOOD

\$3⁴⁹

WILSON'S 12 OZ. PKG. MEAT BOLOGNA

79¢

LOOK FOR IT... IT'S NEW! IT'S EXCITING!!
Listen for the RATTLE!

LANCE REG 59" BIG VALUE CHIPS
2 89¢ FOR

For the Sport of it

by Bob Bort

Mindy Davis really was an angel at Abilene, helping me by taking a myriad of excellent pictures. There were the two pictures that appeared in last week's Reporter-Statesman, including the outstanding picture of Wylee Maupin in the triple jump competition. But there were also pictures of Molly McLain and Amber Murrell in the high jump, Joe Bravo and Julie Meyer in the 800 meter run, Aaron Frick in the discus throw and shot put, Amy Gillispie in the 300 meter hurdles, Bailey Barkley and Myriam Alvarez in the long distance events, a couple of relay pictures, of handoffs, a group picture of all the Lady Hounds who competed, and even a picture of Kara Townsen on the awards stand receiving her gold medal for the discus competition. What outstanding pictures she took - any one of which could have graced the pages of this newspaper and been wholly appreciated. But there just wasn't room. In all fairness, my article should have been cut more, as it was so long, and the pictures by Mindy should have been run with captions, and that would have been a story in itself! Some people seem to have a magic touch with a camera in their hands, and that is Mindy Davis! All in all, there were 17 pictures that caught the eye of Coach Davis and myself, and those 17 pictures were turned in to the newspaper. There was only room for two of them. What a shame!

Aaron Frick will be competing at the state meet in Austin, throwing the discus, at 3 P.M. on Friday, May 12. Aaron is still listed by the Amarillo Globe News as the number one discus thrower and shot putter in the entire area, small school or large school. This past week, on Thursday, May 4, Aaron competed in a warm-up meet for the state meet at Sunray. Four local area boys competed with

Aaron, and naturally, Aaron took first place in the discus with a heave of 170' 10". It was a good warm-up for state, and the only warm-up for state that Aaron will have.

The Gruver High School Athletic Banquet, put on by the Greyhound Mothers each year, will be Saturday evening May 20 this year. What an event that is each year. It should be interesting to see who gets the big awards this year. There are so many talented seniors graduating in May 1995, and going on to higher endeavors. It is always interesting to listen to the coaches rave about their athletes, and poke fun with quips about themselves. And the food is usually very very good.

Major League Baseball is really suffering this year, and deservedly so, with pitiful attendance. It is as though the fans have stopped caring and stopped coming to the ball games. Attendance is way, way down. Nothing could make me happier than to see this happening. It is time the players and the owners realize what they have done to the game with their pig-headed greediness. One Atlanta Braves pitcher just signed for four million dollars, and yet we just went eight months without baseball as the players were striking for a larger share of the money, and the owners were striking for a larger share of the money. It was just stupidity, and now I hope they both pay dearly for what they have done to the game. It would be nice if the players found out what unemployment or a regular job was like, as the players and the owners in their bitterness towards each other may have killed the goose that laid the golden egg...

I can't wait till the 1995 Hounds football season! Just think, only three more months till two-a-days

begin on August 9. It will be a great season. Mark my words!


Next week, I will have as much as possible on the 1995 Gruver Little League, set to begin their month-long play in about 3 or 4 weeks. Look for it.

Chad Davis, in his column "At the Buzzer", recently has been ending his columns with some professional sports trivia questions, and college sports trivia questions, which he would come up with, and then the readers would have to guess the answers prior to the next week's column. Well, here is what I am going to do in my column. And don't expect them to be easy!

I am going to quiz you on the Hounds and Lady Hounds history, with trivia questions, and I will provide the answers a week after the questions appear in the newspaper. Any fan who comes up with the correct answer, will be designated a super fan (as the questions really will be tough!), and will be mentioned for posterity in this column. Any fan who actually corrects one of my questions with correct information I don't have will get write this column in my place forevermore. Here goes...

Who holds the Lady Hounds record for the most points scored in a basketball game? The record is 51 points in a game. Three times 44 points has been scored by a Lady Hounds in a game, twice in the same year by the same girl. Name the player who scored 51, and name the two girls who each reached 44 points in a single game.

Here is more history, a little preview, highlighting one of these three girls, to make it more intriguing. During one of these three girls' sophomore year, in the bi-district



Spearman Heritage Days

June 2 - 11, 1995

EVENTS SCHEDULED AT THIS TIME

- Friday, June 2
Hansford County Team Roping
- Tuesday, June 6
Miss Hansford Scholarship Pageant
7:00 p.m.
- Friday, June 9
Duck Soup Softball Tournament
Teen Dance at the O'Loughlin Center
9:00 p.m.
- Saturday, June 10
Main Street Craft Fair - 10:00 a.m. to 4:00 p.m.
Antique Car Show and Rally - 10:00 a.m. to 4:00 p.m.
Rally at 9:00 a.m.
Old Timers Reunion - 2:00 p.m.
Parade - 3:00 p.m.
Country Opry - 3:00 p.m.
Bar-B-Q - 5:00 p.m.
Rodeo - 6:30 p.m.
Street Dance - 9:00 p.m.
- Sunday, June 11
Rodeo - 2:00 p.m.

For More Information Call:
Spearman Chamber of Commerce
659-5555

TEXAS
It's Like A Whole Other Country.

Make A Difference For Mom With Dobson!

The One Gift For Mothers Who Wear So Many 'Hats'.



She's a woman, a wife and...a cook, nurse, housekeeper, chauffeur, coach, referee and more. After all, she is a mother — your mother! And that's why she deserves a Difference-Making cellular phone and service from Dobson Cellular Systems.

As busy as mom is, with a cellular phone she'll get things done much faster. She'll be much safer. And you'll feel much better, knowing you've given her all the advantages of cellular with the Mother's Day Special —

FREE AUTOHELP
the 24-hour roadside assistance and protection service,

PLUS 100 FREE MINUTES
of cellular airtime*

* New activation required. Certain terms and conditions apply. AutoHelp free for one year from date of activation. Offer expires 5/13/95.

The Difference Maker

DOBSON CELLULAR SYSTEMS

MOTOROLA
Authorized Dealer

© 1995, Dobson Cellular Systems

Authorized Agents: **1-800-882-4154**

Cellular Communications 659-2848
W.T. Services 273-2092
Gruver Cellular 733-2180

FIELDERS CHOICE

OFFER ENDS MAY 31, 1995

FREE R.A.M.S. Computerized Control Panel
WITH THE PURCHASE OF A 7+ TOWER REINKE SYSTEM.

OR FINANCE IT!

- 8% 3yr. FIXED APR**
- 8.75% 5yr. FIXED APR**
- 9.25% 7yr. FIXED APR**

LOW DOWN PAYMENT
TEN PERCENT DOWN ON THREE AND FIVE YEAR LOAN, FIFTEEN PERCENT DOWN ON SEVEN YEAR PROGRAM. NO PREPAYMENT PENALTIES. FIRST PAYMENT DUE JANUARY 1, 1996

OFFER ENDS MAY 31, 1995

LIMITED TIME / QUANTITY OFFER: SUBJECT TO CHANGE WITHOUT NOTICE. FINANCING (AVAILABLE ONLY IN USA) SUBJECT TO CREDIT APPROVAL, CERTAIN RESTRICTIONS APPLY.

Paschel Irrigation Inc.
Hwy 15 W. • P.O. Box 69 Spearman, TX 79081

a generation ahead!

REINKE
IRRIGATION SYSTEMS

P.O. Box 566 • Deshler, Nebraska 68340 • (402) 365 7251



PROMISING ATHLETES - The Spearman 6th Grade All-Stars competed in tournaments in Peryton, Panhandle, Guymon, and Spearman, during the months of March and April. They competed against teams from all over the area, including towns such as, Amarillo and Dumas. This team of promising young athletes finished their season with a winning record, backed by dedicated coaches, Joey Wooley (at back right) and J. L. Griffin (at back left). These kids are: (Back row l to r) Clinton Wrinkle, Dib Kirk, Jimmy Gayton, and Brady Wooley. (First row l to r) Richard Varnon, Ty West, Timmy Bynum, Brandon Clyburn, and Coley Griffin. (Not pictured is Jared Freeman)

Golf CONTINUED FROM PAGE 7

Schneider came strolling in behind Jenkins, with a 90 and a 94, for a two day total of 184. Jamie Townsen was only 4 strokes above Schneider, with a 91 and 97, for a two day total of 188. To finish things up, Colby Bedell brought in a 211, which came with a 103 in the first day and 108 in the second day.

As to be expected, Molly Blackman did lead the Spearman girls. Her first day landed her with a 95, which was followed the second day by a 105, which gave her a 200. Darla Black snuck right in behind Blackman, as she brought in a 103

and a 99, to give her a 202. Amy Schoenhals was 3rd best for the Lynettes, as she came down with a 120 in the first day of competition and a 117 in the second day, for a 237. Macy Shieldknight added 120 both days and came up with a 240 ending score. In the end, Amanda Burress brought up the rest with a 130 and a 123, for a totaling ending 253.

Neither of the Spearman Golf Teams will be going on to the State level, but their efforts this year were way beyond what was expected of them.

PERRYTON CLEANERS & LAUNDRY

Furs & Woolens
Cleaned and then stored in our temperature and humidity controlled locked vault.

CALL FOR DETAILS
1-800-232-5370

Angus cow earns recognition

Troy Morris of Gruver, has been recognized nationally by the American Angus Association for having one registered Angus cow included in the American Angus Association's 1995 Pathfinder Report.

Only 1,487 of the more than 27,000 members of the American Angus Association are represented in this year's report, according to Richard Spader, executive vice-president of the American Angus Association with headquarters in St. Joseph, Mo.

The Pathfinder Program identifies superior Angus cows based upon record performance traits that are economically important to efficient beef production. These traits include regular calving and heavy weaning weights, reports John Crouch, director of performance programs for the American Angus Association. All registered Angus cows that meet the strict Pathfinder standards are listed, along with their owners, in the Pathfinder Report which is published annually by the American Angus Association.

The 1995 Pathfinders Report lists, 5,855 individual cows. It is published in the May issue of the Angus Journal and extra copies are available from the American Angus Association. The largest number of Pathfinder cows from a single herd this year is 71, and several hundred breeders have a single cow that qualifies for the exclusive listing.

Support The
Christmas Seal Campaign
AMERICAN LUNG ASSOCIATION
1-800-LUNG-USA

Club News

The Gladiola Flower Club met at 9:30 in the home of Ann Flowers on May 4.

Margaret Evans called the meeting to order with the reading of the Club Collect by the members. Roll call was answered by those present with "Favorite Vegetables from the Garden". The minutes were read and approved. The Treasurers report was given by Estella Jackson.

New business: Gladiola Flower Club medical scholarship was voted on.

Flower winners: Home grown arrangements-Margaret Evans;

Borrowed Arrangement-Margaret Evans; Specimen-Gwen Smith; Pot Plant-Ann Flowers.

The program was given by June Jackson on the making of lamp shades from wall paper borders and fabric.

Members present: Charlsie Baker, Wanda Brown, Rose Cummings, Margaret Evans, Mike Hergert, Fay Holt, Estella Jackson, June Jackson, Lorene Kunselman, Gwen Smith, Kathleen Sutton, Virginia Trindle, and hostess Ann Flowers.

The next meeting will be with Virginia Trindle.

Hansford pageant deadline extended

The final deadline for the Miss Hansford Pageant has been moved back. The deadline for contestants to turn in their completed entry form is now Friday, May 12 at 5:00 P.M. This year's pageant, headed by Cindy Avila, Jodie Hight, and Davonna Daharsh, will be held Tuesday, June 6.

There will be five age groups again this year with a Little Miss Hansford, open to girls between the ages of four and six. The Junior Miss Hansford, for those seven to nine years old. Pre-Teen Miss Hansford is open to girls age ten to twelve. The Miss Teen Hansford category

is open to girls between the ages of thirteen to sixteen, and Miss Hansford open to ages seventeen to twenty-one.

Teen and Miss Hansford is \$50. For the winner of the 1995 Miss Hansford Pageant, a \$500 residence hall scholarship will be offered to West Texas A&M University. There will also be the offer of an \$800 scholarship to Frank Phillips College.

The theme for this year's pageant is "Hats Off To Hansford County". For further information, contact any Women's Division Chamber Member or call the Chamber Office in Spearman at 659-5555.

J&M SERVICE CENTER

415 Collard • Spearman

Invites you to their

CUSTOMER APPRECIATION DAY

MAY 19, 1995

COFFEE & DONUTS • 7-10 a.m.

HOT DOGS & TRIMMINGS • 11-2 p.m.

REGISTER TO WIN DOOR PRIZES

DRAWING AT 3 p.m.

PRIZES INCLUDE:

SET OF PASSENGER TIRES, OIL & LUBE, CAR WASH, 2 - \$25 GAS CERTIFICATE, BATTERY, ROTATE & BALANCE, & A CASE OF OIL.

10% OFF ALL CASH PURCHASES OF PASSENGER & LIGHT TRUCK TIRES.

PANHANDLE HEALTH SERVICES CELEBRATES 20 YEARS OF HOME NURSING CARE

There are many milestones in a lifetime and Panhandle Health Services has reached a milestone that very few home care agencies can claim. June 1, will be 20 years of continuous service to the community.

National Nurses' Week is May 7 - 13. Panhandle Health Services would like to invite the public to join us in recognition of Nurses' Week.

Darlene Hataway, R.N., Branch Manager, would like to thank and show appreciation to the nursing staff of the Spearman area for hard work and selfless dedication to their profession and community.

Juanell Brooks, Vice-President of Administration, of Panhandle Health Services recognizes that it requires a corporate effort of nursing care and medical coordination to continue their commitment to quality nursing care.

For further information about Panhandle Health Services, Home Nursing Care, call (806) 273-5644.

REPORT OF CONDITION	
Consolidating domestic subsidiaries of the First National Bank of Spearman in the state of Texas, at the close of business on March 31, 1995, published in response to call made by Comptroller of the Currency, under Title 12, United States Code, Section 161. Charter Number 18609, Comptroller of the Currency, Southwest District.	
Statement of Resources and Liabilities	Dollar Amounts in Thousands
ASSETS	
Cash and balances due from depository institutions:	
Noninterest-bearing balances and currency and coin	1,275
Interest-bearing balances	3,868
Securities:	
Held-to-maturity securities	7,464
Available-for-sale securities	4,208
Federal funds sold	0
Securities purchased under agreements to resell	0
Loans and lease financing receivables:	
Loans and leases, net of unearned income	27,812
LESS: Allowance for loan and lease losses	301
LESS: Allocated transfer risk reserve	0
Loans and leases, net of unearned income, allowance, and reserve	27,511
Assets held in trading accounts	0
Premises and fixed assets (including capitalized leases)	673
Other real estate owned	4
Investments in unconsolidated subsidiaries and associated companies	0
Customers' liability to this bank on acceptances outstanding	0
Intangible assets	0
Other assets	1,487
Total assets	46,490
Losses deferred pursuant to 12 U.S.C. 1823(j)	0
Total assets and losses deferred pursuant to 12 U.S.C. 1823(j)	46,490
LIABILITIES	
Deposits:	
In domestic offices:	
Noninterest-bearing	41,286
Interest-bearing	3,584
Interest-bearing	37,702
Federal funds purchased	1,225
Securities sold under agreements to repurchase	0
Demand notes issued to the U.S. Treasury	0
Trading liabilities	0
Other borrowed moneys:	
With original maturity of one year or less	0
With original maturity of more than one year	0
Mortgage indebtedness and obligations under capitalized leases	0
Bank's liability on acceptances executed and outstanding	0
Subordinated notes and debentures	0
Other liabilities	306
Total liabilities	42,817
Limited-life preferred stock and related surplus	0
EQUITY CAPITAL	
Perpetual preferred stock and related surplus	0
Common stock	1,000
Surplus	1,000
Undivided profits and capital reserves	1,689
Net unrealized holding gains (losses) on available-for-sale securities	(16)
Total equity capital	3,673
Losses deferred pursuant to 12 U.S.C. 1823(j)	0
Total equity capital and losses deferred pursuant to 12 U.S.C. 1823(j)	3,673
Total liabilities, limited-life preferred stock, equity capital, and losses deferred pursuant to 12 U.S.C. 1823(j)	46,490
We, the undersigned directors, attest to the correctness of this statement of resources and liabilities. We declare that it has been examined by us, and to the best of our knowledge and belief has been prepared in conformance with the instructions and is true and correct.	
<i>Bill Pittman</i> Bill Pittman	I, Lynnae Haize
<i>Don Johnson</i> Don Johnson	Vice President & Cashier
<i>Gene Cudd</i> Gene Cudd	of the above-named bank do hereby declare that this Report of Condition is true and correct to the best of my knowledge and belief.
	<i>Lynnae Haize</i> Signature
	4-27-95 Date
FDIC 8040/54C (Page 2)	

Obituaries

Mona Beth Windom
SPEARMAN-Mona Beth Windom, 62, died Tuesday, May 2, 1995.

Services were at 2:00 P.M. Thursday at the First United Methodist Church with the Rev. Jeff Lust, pastor, officiating. Burial was in Hansford Cemetery by Boxwell Brothers Funeral Home.

Mrs. Windom was born in Spearman and had been a lifetime resident. She married Cloyd "Sonny" Windom in 1951 at Spearman. She owned and operated the Lady Fair Shop for 10 years. She was a member of the First United Methodist Church and Laureate Gamma Gamma Chapter of Beta Sigma Phi Sorority, and was past president of Hansford County YMCA.

Survivors include her husband; a daughter, Jody Rex of Guymon; two sons, Walter Windom of Coppell and Phillip Windom of Las Vegas; four sisters, Joyce Crum, Dorothy Buzzard, Betty Scribner, and Doris Beck, all of Spearman; a brother, J.D. Hester of Texline; and four grandchildren, Brandon and Tiffani Rex of Spearman and Jeremy and Chad Windom of Coppell, Tx.

The family suggests memorials be to a favorite charity.

Archie E. Correll

PERRYTON-Archie E. Correll, 70, died Sunday, April 30, 1995.

Services were at 3:00 P.M. Wednesday at First Christian Church with the Rev. David Scott officiating. Burial will be in Ochiltree Cemetery by Boxwell Brothers Funeral Directors.

Mr. Correll was born in Perryton and had been a lifetime resident. He married Louise A. "Diddy" Records in 1946 at Austin. She died in 1994. He was a farmer and owned A.C. Bookkeeping from 1966 to 1971.

He was a member of First Christian Church and served in the Army during World War II. He received a number of awards, including the Purple Heart, American Theater Medal, and the European-African-Middle Eastern Theater Medal with two Bronze Service Stars.

Survivors include two daughters, Jean Cooper of Perryton and Susie Cochran of Hugo, Colorado; a son, Spencer Correll of Spearman; a sister, Virginia Eisenburg of Clinton, Oklahoma; eight grandchildren; and three great-grandchildren.

The family suggests memorials be to thee Ochiltree General Hospice; or the Neonatal Intensive Care Unit at Northwest Texas Hospital in Amarillo.

Alice Turnbull

SPEARMAN-Alice Turnbull, 81, died Saturday, May 7, 1995, in Amarillo.

Services were at 1:30 P.M. Wednesday in First Presbyterian Church with the Rev. Beverly Cook, pastor, officiating. Burial was in the Hansford Cemetery by Boxwell Brothers Funeral Home Inc.

Mrs. Turnbull was born in Medicine Lodge, Kansas, and had lived in the Spearman area for 32 years. She married Truman Hittle in 1931 at Medicine Lodge. He died in 1950. She married Nelson Turnbull in 1951 at Medicine Lodge. She was a homemaker and member of First Presbyterian Church.

Survivors include her husband; a son, Bill Hittle of Santa Barbara, Calif.; two sisters, Mildred Webster of Jerome, Idaho, and Vida Lou Baisch of Eden, Idaho; a brother, Troy Strickland of Elko, Nev.; three grandchildren; and nine great-grandchildren.

The family suggests memorials be to First Presbyterian Church.

RECYCLING

CONTINUED FROM PAGE 6

obtained through a two cent tax that is added to the cost of each oil filter sold. Spearman's center is open at the city warehouse located at 707 E.D. Avenue. Gruver's center is located next to city hall in the recycling center. Both centers are open regular business hours, Monday through Friday. Gruver's center is also open Saturday.

Businesses are required to recycle their filters separately and may not use the public centers. If you are a business that requires information on oil and filter recycling you may call CEG. CEG recycles from the city center and will pick up commercial accounts as well. Their toll free number of 1-800-646-6406. This number is provided as a service and not as an endorsement of CEG. Businesses are free to choose their own oil recycler.

Used oil is reprocessed into industrial grade fuel oil. It can be refined over and over again without losing its lubricating quality. Only one gallon of used oil is needed to make 2.5 quarts of lubricating oil as opposed to 42 gallons of crude.

WIC

CONTINUED FROM PAGE 1

anemia and ultimately help to prevent developmental problems that affect learning."

Smith noted that WIC is one of several programs which may undergo proposed nationwide changes. In Texas, WIC serves 600,000 participants, most of whom are children who are younger than five. WIC is funded by the US Department of Agriculture (USDA).

"Some directors of local WIC agencies have reported that participation has ebbed because of news reports that Congress is discussing major changes in the program," Dennis H. Bach, chief of TDH's Bureau of Nutrition Services, said. "We want to be sure people understand that any changes in the program will not take effect until October of this year."

The 20 year old WIC program provides clients with nutritious food, nutrition education, immunizations and referrals to other health care services, said Delynn Gordzelik of Outreach Health Services WIC. "We're always glad to see a new face," she added.

WIC services are available to pregnant women, women who are breast-feeding, women who have

There are some very strict rules that govern the collection of oil and filters but they are simple and easy to follow.

*Drain the filter by puncturing the top and allow the filter to drain into a collection container for 24 hours.

*Take the filter and oil to the collection centers.

*Oil should be transported to the recycling center in a clean container. The oil is drained into the middle door of the recycling "igloo".

*Save the empty container for your next oil change. Do not attempt to recycle this container or any that have held oil. If you cannot reuse the container put it in the trash. Be certain it is completely drained.

*Pour the oil into the collection igloo slowly and carefully so that it does not spill down the front of the center.

*Do NOT recycle antifreeze, brake fluid, gasoline, paint thinners, or any liquid with the oil.

*Close the lid when you are through so water does not get into the oil.

had a baby in the past 6 months, and children younger than 5 years. Eligibility is based on income and nutritional risk.

Studies have shown that WIC saves taxpayers money by reducing costs associated with childhood anemia, infant mortality, premature births, and other nutrition related problems, Bach explained.

"The discussions going on in Congress about the WIC program do not effect funding for this fiscal year," Bach said. "Texas WIC has been expanding and will continue to grow. Since 1990, WIC has grown from about 340,000 participants per month to more than 633,000 today at more than 600 clinics in Texas," he added.

Area residents who have question about WIC should call Delynn Gordzelik at 806-659-1182. Outreach Health Services WIC is located at the Spearman Office, 720 South Archer.

CLASSIFIED RATE

\$4.00 first insertion
\$3.00 each additional insertion (30 words or less)
13¢ each word over 30
Legal Notices: 15¢ per word

Let us replenish the seed of faith through...

REGULAR CHURCH ATTENDANCE, DAILY BIBLE READING & PRAYER



In the first years, you were life itself. Warmth, sustenance, and the softness of loving arms were only a heartbeat away.

As we became young children, you were perfection personified... the queen of our world. A kiss erased the pain of a skinned knee or hurt feelings. Shelter was your arms.

During the teen years, your queenly crown tilted precariously. You became our "critic." "Your room is a pigsty!" ... "That phone must be glued to your ear!" What's happened to Mom?

However, college gave us a new perspective as you again became our rescuer. Goodies and loving letters (with enclosed check) proved your crown was on straight. Thank goodness!

Finally, we launched lives of our own. You became our confidant and advisor as we began jobs and raised families. Again we were babes in a new world, and you were there.

Mom, life has come full circle. You played many roles with little rehearsal, but you were always right on cue. Today, you take center stage. Congratulations... and Happy Mother's Day!

"This Is Your Life"



Sunday Luke 8:1-3
Monday Luke 8:4-15
Tuesday Luke 4:38-44
Wednesday Luke 5:1-11
Thursday Luke 5:12-16
Friday Luke 5:17-26
Saturday Luke 27:32

Scriptures Selected by The American Bible Society
Copyright 1995, Keister-Williams Newspaper Services, P. O. Box 8005, Charlottesville, VA 22906

In Spearman...

Apostolic Faith Church
822. S. Dressen • 659-2870
Sunday School: 10 a.m.
Worship: 11 a.m.
Evening Worship: 6 p.m. Sun.
Wed. Prayer Meeting: 7:30 p.m.
Pastor James Brown

First Assembly of God
401 N. Bernice • 659-2295
Sunday School: 9:45 a.m.
Worship: 10:50 a.m.
Evening Worship: 7 p.m.
Wednesday Worship: 7:30 p.m.
Youth: 7:30 Wednesday
Pastor Todd Lillard

First Christian Church (Disciples of Christ)
29 S. Bernice • 659-2036
Sunday School: 9:45 a.m.
Worship: 10:50 a.m.
Women's Bible Study: 2 p.m. Wed.
Youth: Wed. 6 p.m. & Sun. 5 p.m.
Pastor LaVern Draper

First Baptist Church
123 N. Bernice • 659-5557
Sunday School: 9:45 a.m.
Worship: 11 a.m.
Evening Worship: 7 p.m.
Jr. High Youth: 6 p.m. Wed.
High School Youth: 7 p.m. Wed.
Youth Choir: 6 p.m. Sun.
Pastor Kyle Henderson

Church of Christ
121 S. Haney • 659-3244
Sunday Bible Class: 9:45 a.m.
Worship: 10:30 a.m.
Evening Worship: 6 p.m.
Bible Study Wed. 7:30 p.m.
KRDF Radio Program
Living With Christ 7:50 a.m. M-F
Minister Arnis Pape

Fellowship Baptist
1102 S. Archer • 659-2783
Sunday School: 10 a.m.
Worship: 11 a.m.
Evening Worship: 6 p.m. Sunday
Youth & Adult Serv.: 7:30 Wed.
Pastor Tim Luttrall

Primera Mision Bautista
502 E. 7th • 659-3991
Sunday School: 9:45 a.m.
Worship: 11 a.m.; Evening: 6 p.m.
Wed. Prayer Meeting: 7 p.m.
Thurs. Visitation: 7 p.m.
Pastor Isaias Martinez.

Trinity Community Church
717 W. 7th Ave. • 659-2671
Celebration of Praise 10:15
Worship Service and Children's Church 10:30
Sunday Evening 6:30 p.m.
Wednesday evening: 7 p.m.
Pastor Dan Carter

Faith Lutheran Church (ELCA)
1101 Bernice • 659-2252
(Worships with First Presbyterian Church)

First Presbyterian Church
(Worships with Faith Lutheran Church)
1021 Cotten • 659-2033
Sunday School: 9:45 a.m. at Lutheran Church
Worship: 11 a.m. (alternates monthly between addresses above)
Pastor Beverly Cook

First United Methodist
407 S. Haney • 659-5503
Sunday School: 9:45 a.m.
Worship: 11 a.m.
Jr. High Youth: 5 p.m. Sun.
High School: 6 p.m. Sun.
Pastor Jeff Lust

Union Church
31 S. Endicott • 659-2644
Sunday School: 9:45 a.m.
Worship: 10:45 a.m.
Evening Worship: 6:00 p.m.
Bible Study & Prayer Meeting: 7:00 p.m. Wed.
Pastor Billy Stanford

Sacred Heart Catholic Church
901 Roland • 659-2792
Sat. Night Mass: 7 p.m.
Sunday Mass: 8:45 a.m. - English (8:45a.m. Service on KRDF 98.3 FM)
11:15 a.m. - Spanish
1:30 p.m. - Gruver - Christo
Renditor Mass - Spanish
Rev. Fernand Couture

This feature is made possible through the Sponsorship of these Civic Minded Businesses

"WE SUPPORT OUR LOCAL CHURCHES"

CAPROCK #1 & #2
Bill Park, Gen. Mgr.
(806)733-5043 or 733-5025



"Custom Cattle Feeding"

Curtis' Hot Oilers
806-659-3432
"Taking Service to Perfection"

806-659-2912 P.O. Box 714
800-821-6714 Spearman, TX 79081

Palo Duro Supper Club

22 S. Archer
659-2232

C.O.'S SUPPLY CO.

Plumbing & Tire Sales & Service
421 W. Kenneth • Spearman
659-3781 or 659-3555

Bartlett's Ace Hardware

105 W. Broadway
733-2404

GILLASPIE
AUTO & TRUCK CENTER, INC.
SHEVROLET * OLDS * PONTIAC * BUICK
CHRYSLER * PLYMOUTH * DODGE
Hwy 207 South • P.O. Box 430 (806)659-2541
SPEARMAN, TEXAS 79081

DEKIN ELECTRIC
OILFIELD • RESIDENTIAL • COMMERCIAL
519 Plains Shopping Center
Spearman, TX 79081
1-800-999-1506 (806)659-5016

PORTER SATELLITE
TREY PORTER
806-659-3657
420 Davis
Spearman, Texas 79081

Gruver Cablevision
Quality Family Entertainment with
"the Disney Channel"
308 Main • 733-5295

Morse Implement Company
"Join us in church this week"

Boxwell Bros. Funeral Home

THE HANSFORD COUNTY REPORTER-STATESMAN
Serving The Communities Of Spearman, Gruver & Morse
213 Main • 659-3434
1-800-395-9482

CORONADO HOSPITAL
Pampa, Texas
(806)665-3721

Compliments of
G&G FOODLINER
516 Main • Gruver
733-2471

In Gruver...

First Baptist Church
402 E. Broadway • 733-2411
Sunday School: 9:45 a.m.
Worship: 10:50 a.m.
Disciple Training: 6 p.m. Sunday
Prayer Meeting: 7:30 p.m. Wednesday
Pastor Larry Miller

Church of Christ
209 King • 733-2760
Sunday School: 9:30 a.m.
Worship: 10:20 a.m.
Evening Worship: 6 p.m.
Wed. Evening Worship: 7:30 p.m.
Minister Bob Setliff

First Christian Church
510 King • 733-2960
Sunday School: 9:45 a.m.
Worship: 11 a.m.
Wed. Bible Study: 7:30 p.m.
Youth: 6:30 Wednesday
Pastor Gary Gumfory

Oslo Lutheran Church (ECLA)
West of Gruver on Hwy 15 & N. FM 1162
339-7646
Sunday School: 9:45 a.m.
Worship: 11 a.m.
Morning Prayer: 9 a.m. Wed.
Pioneer Clubs (Grades 1-6):
4-5:30 p.m. Wednesday
Pastor John R. Chandler

Community Bible Church (Interdenominational)
Hwy. 15 • 733-2443
Sunday School: 10 a.m.
Worship: 11 a.m.
Wed. Prayer Meeting: 7 p.m.

First United Methodist
Broadway & Garrett • 733-2651
Sunday School: 9:45 a.m.
Worship: 8:30 a.m. & 10:50 a.m.
Evening Worship: 6 p.m.
Pastor Lewis Holland

In Morse...

Morse Baptist Church
Pastor Mike Martin
733-2757

"Your Home Away From Home"
Nursanickel Motel
815 Hwy. 207 S.
Phone: (806)659-3737 P.O. Box 115
Spearman, Texas 79081

BERRY CLEANERS
DAN DESIMONE • OWNER
Phone 659-3122 • P.O. Box 1017
207 Main St. • Spearman, Tx. 79081

GRUVER FORD
Ford FORD
531 Main • Gruver • 733-2431

Interstate Savings & Loan
322 Main • Spearman • 659-2559

Hagerman Services
Backhoe • Dozer • Welding
North Hwy. 15 • Spearman
659-5131

Gordon Drugs
Dependable Prescription Service
314 Main • Spearman
659-2141
Jim Evans

Compliments of...
AGCO of Spearman, Inc.
"See you in Church"
659-3751

"IT'S FOR YOU"...
The Classifieds Have Something For Everyone!

The Home Seiler...
The Car Buyer...
The Do-It-Yourselfer...
The Mother's Helper...
The Job Seeker...
The Bargain Reaper...

When you want results, turn to The Classifieds.

The Hansford County Reporter-Statesman

Serving Hansford County Since 1907

Telephone: 1-800-395-9482 or (806)659-3434

REAL ESTATE

AA Realty

Allen Alford - Broker - 659-3034
Julie Martin - Sales - 659-2425
Larry Trosper - Sales - 659-3491

1017 Townsend - 3/2/1 - New lower price!
1103 S. Townsend - 3/1 1/4, 1, good loc.
613 Kenneth - 5 BR, 2 story, rock house
1107 S. Barkley - 3, 1 1/4, 2
Good Hanger & Storage - Old Airport

NEW LISTINGS
2 LOTS at 7th & Barkley - Bldrs. Dream
204 S. Drensen - 3/1 1/2

FOR QUALITY & SERVICE CALL US TODAY
We Need Your Listing.

REAL ESTATE

Century 21

GOLDEN SPREAD REALTY
Janye Helton Pointer, Broker Owner
435-5444

1117 Drensen - 4/2/1, Large home w/basement. Corner fireplace, covered patio...
712 Collier - 2/1/2, Owners anxious to sell!
Crawford Addition: Under Contract
2 - 1st - Will look at all offers!
2 - 1 - Small and affordable!
205 Hazelwood - Great buy, excellent condition
211 Hazelwood - 3/1, Make an offer.
315 1/2 N. Bernice - Lot for sale.
East 7th Street - Mobile homes, lots to lease!!
412 Roland - 3/1/1, comfort you can afford!

® and ™ trademarks of Century 21 Real Estate Corporation. Equal Housing Opportunity INDEPENDENTLY OWNED AND OPERATED

Three Bedroom Brick, two baths, double garage, lots of trees, 1.8 acres, horse barn, 26 by 36 shop. 205 E. 10th, Gruver, Texas. Call J.W. Whitaker at 733-2433. Also 1983 Coachman Motor-home. \$30, 1tp/RTN.

FOR SALE OR RENT: Old City Hall building. 221 Sanders. Call 659-2518. S3, RTN

HOUSE FOR SALE: 2,167 sq. ft. brick, 4 bedroom, 1 3/4 bath, double garage with two openers, central air/heat, 18'x27' workshop in backyard. Call 659-3027 work or after 4 p.m. at 659-3071. Close to pool, parks, O'Loughlin Center and High School. Well taken care of. Affordable, 707 Lee Dr. S17, 4tp

1117 TOWNSEN: Reduced Price! New paint! New carpet! Seller will pay closing costs. Affordable 3 bedroom, 1 3/4 bath, with game room and basement. Call Real Estate and Rental TODAY! 435-4623. S15, RTN

HOUSE FOR SALE: 3 bedroom, 1 bath, attached garage, nearly new heating & cooling unit with major appliances & furniture. 408 S. Barkley. Call 659-3464. S16, 8tp

FOR SALE: Attractive 3 bedroom, 1 3/4 bath, brick home, single garage, storage building, RV port, C.H. & C.A., ceiling fans, storm windows, fenced yard and extra lot 64 by 100 ft. Call 806-659-3353. S18, 2tp

HOUSE FOR SALE: 1,906 sq. ft. living area and double car garage, 3 bedroom, 2 bath, recreation room, sprinkler system, nice neighborhood. 719 Wilbanks. Call 659-3761. S18, RTN

FOR SALE: 2 houses, barn, 37.5 acres within 2 miles of Gruver. \$99,100. Call 733-2666 after 7 p.m. S18, 2tp

FOR SALE: Affordable priced 3-bedroom, 1 3/4 bath. Secluded master bedroom, oak hardwood floor, fireplace, beautiful landscaping and much more. Can all be yours at 417 Drensen. Call today for appointment. Real Estate & Rental 435-4623. S8, RTN

THREE ADJACENT HOUSES FOR SALE: A. 620 S. Bernice, 2400 sq. ft., \$30,000 - currently occupied by seller. B. 620 1/2 S. Bernice, 1200 sq. ft., \$15,000. C. 618 S. Bernice, 1500 sq. ft., \$27,500 - currently rented at \$300/mo. Properties A & B together, \$39,500; all three properties as a unit, \$65,000. Assumable loans. For more information contact Ed Pearson at 806/659-3851. S10, RTN

MAKE US AN OFFER: Great brick home in great location. 2,200 sq. ft., 4 bedrooms, 3 baths, big den with fireplace, basement, double car garage. 702 Gibner. Call and let's make a deal! 659-3838 or 733-5555. S19, RTN

FOR SALE: 3 bedroom, 2 bath house, large living area. 2,100 sq. ft., 9 Golden Circle. Call 659-2096. S18, 3tp

FOR SALE: 200 ACRES FARMLAND: 6 miles southwest of Spearman, irrigation well, no mineral rights. Seller reserves right to approve buyer. Bob Hardy Realty, 659-3440, Robert Hardy, Broker. S59, RTN

FOR SALE: Registered American Eskimo pups ready for sale 6115195. Papers and 1st shots. Call 659-3949 for appointment to view pups. 2 males and 2 females. UKC registered with "PR" title. S19, 3tc

FOR RENT

FOR RENT: One bedroom newly decorated, furnished apartments, utilities paid. Call 659-3260. S47, RTN

FOR RENT: Trailer park spaces for rent. Located on S.E. 7th and Loop road, Spearman. \$30 per month. Call 435-5080. S23, 1tc/RTN.

FOR RENT: 2 bedroom house. 659-3260. S60, RTN

FOR RENT: 3 bedroom, 1 bath, washer/dryer hook-ups, carpet, fenced back yard, \$275 per month. Call 659-3844 anytime. S16, RTN

SERVICES

PITS CLEANED: Dragline or Loader. Call LeeRoy Mitchell, 733-2384 or 733-2175. S47, RTN.

Free Bible Correspondence Course. Write P.O. Box 604, Perryton, TX 79070. S46, RTN

CALL YOUR LOCAL Used Cow Dealer for days a week stock removal. 659-3544 or 1-800-692-4043. Serving Cattlemen for the past 20 years. G51/RTN.

WEIGHT WATCHERS is now meeting every Monday in Gruver. For more information, please call 1-800-359-3131. S11, RTN

J & M Service Center 24-Hour Service-415 Collard, Spearman 79081. 659-5519 or 659-3352. Tires, flats, oil & lube, wash, brakes, batteries and minor repairs. Now selling gas. S27, 1tc/RTN.

CLIFCO WINDSHIELD REPAIR SERVICE: Don't replace your damaged windshields. Local area toll free call at 930-1704. Home phone: 435-9149. Ask for Clifford Cox. S43, RTN

PUBLIC NOTICE

LEGAL NOTICE

First State Bank, Spearman, Texas, is accepting sealed bids for a 1983 Buick Regal Limited, as is All bids must be received on or before Friday, May 26, 1995. Bids will be accepted at 1 N.E. Court, First State Bank reserves the right to accept or reject any or all bids. The property hereinabove described may be inspected during normal business hours at the address mentioned above. For any further information, please contact Worth Whitworth at (806)659-5565. S19, 3tc

JAN'S ETC. NEW & USED & ANTIQUES TOO

Everything for home and family. Plains Shopping Center in Spearman

Open Monday - Saturday
10 a.m. til 6 p.m.

AUTOMOBILES

FOR SALE: 1984 Ford Truck with 20' van and lift. V-8 diesel engine. Excellent condition. For more information call 659-3432 or 659-2912. S52, RTN

FOR SALE: 85 Chevy Suburban, runs good and very clean, \$4,995 or best offer. 659-2700. S19, RTN

FOR SALE

FOR SALE: Completely rebuilt 605 International and HD 800 Moline Irrigation engines. Call 733-5263 or 659-5036 7:30 a.m. to 5:30 p.m., Monday thru Friday, 7:30 a.m. to 12 p.m. Saturdays. S4, RTN

FOR SALE: Nostalgic chair groups of four, \$40 per group. Suitable for patios and game rooms. Oak and leather cushions. Call FUMC at 659-5503. S19, 1tc

PUBLIC NOTICE

NOTICE TO ALL PERSONS HAVING CLAIMS AGAINST THE ESTATE OF DALE MENDENHALL

Notice is hereby given that original Letters of Administration for the Estate of Dale Mendenhall were issued on May 2, 1995, in Cause No. 2126 pending in the County Court of Hansford County, Texas, to Gaylon Mendenhall. The post office address of the Executor is 6048 Sunset Drive, Gruver, Oklahoma 73942. All persons having claims against this estate, which is currently being administered, are required to present them within the time and in the manner prescribed by law. Dated the 2nd day of May, 1995
John L. Hutchison
Attorney for the Estate

★★★★★★★★★★★★★★

TERMITE TERMINATOR

House Leveling
15 Years Experience
Honest & Dependable
References Available
10% Senior Discounts

★ Call Dennis 1-800-613-9317 ★

★★★★★★★★★★★★★★

GARAGE SALE

GARAGE SALE: Moving, 617 S. Haney, Friday, May 12th from 1 to 6 p.m. and Saturday, May 13th from 9 a.m. to 5 p.m. Lots of clothes and miscellaneous. S19, 1tp

YARD SALE: Saturday, May 13th at 106 Wanda Dr. from 9 a.m. to noon. Exercise equipment, toys, games, clothes, furniture, TV's. No early sales. S19, 1tp

LOST & FOUND

LOST DOG: Collie lost around first of April, brown and white. Money reward offered if found. Call 659-2827. S17, RTN

PUBLIC NOTICE

NOTICE OF APPLICATION FOR WASTE DISCHARGE PERMIT RENEWAL

City of Gruver, P.O. Box 947, Gruver, Texas 79040 has applied to the Texas Natural Resource Conservation Commission (Commission) for renewal of Permit No. 10751-01 which authorizes a discharge of treated domestic wastewater effluent at a volume not to exceed an average flow of 200,000 gallons per day from the Gruver Wastewater Treatment Facilities. The wastewater treatment facilities are approximately 0.8 mile east of State Highway 136 and approximately 0.6 mile west of State Highway 15, southeast of the City of Gruver in Hansford County, Texas. The effluent is discharged into Farwell Creek; thence to Palo Duro Creek; thence to the State of Oklahoma in Segment No. 0100 of the Canadian River Basin. In accordance with the Texas Surface Water Quality Standards, the Commission staff must determine the existing uses for the receiving water in the area of the proposed discharge and whether the proposed discharge will cause significant degradation to any high quality waters in the area. The unclassified receiving waters of Farwell Creek have no significant aquatic life uses. The designated uses for Segment No. 0100 are contact recreation and high quality aquatic life uses. The effluent limitations in the draft permit will maintain and protect the existing instream uses. All determinations are preliminary and subject to additional review and/or revision. The Executive Director of the Commission has prepared a draft permit which, if approved, will enforce existing applicable rules and regulations. The renewed permit would add a surface constructed wetland system to the existing wastewater treatment facility. The wetland system is being added to improve the effluent quality of the existing wastewater treatment facility. It is proposed that the expiration date of the renewed permit be specified as midnight, August 13, 1997. Legal Authority: Section 26.028 of the Texas Water Code and 30 TAC Chapter 305 of the Rules of the Texas Natural Resource Conservation Commission. This application is subject to a commission resolution adopted August 18, 1993, which directs the Commission's Executive Director to act on behalf of the Commission and issue final approval of certain permit matters. The Executive Director will issue this permit unless one or more persons file written protests and/or a request for a hearing within 30 days after publication of this notice. If you wish to request a public hearing, you must submit your request in writing. You must state (1) your name, mailing address and daytime phone number; (2) the permit number or other recognizable reference to this application; (3) the statement "I request a public hearing;" (4) a brief description of how you, or the persons you represent, would be adversely affected by the granting of the application; (5) a description of the location of your property relative to the applicant's operations; and (6) your proposed adjustment to the application/permit which would satisfy your concerns and cause you to withdraw your request for hearing. If one or more protests and/or requests for hearing are filed, the Executive Director will not issue this permit and will forward the application to the office of Hearings Examiners where a hearing may be

NEW TRAMPOLINES

Mats & springs
Resew trampoline mats.
Make new boat covers.
Call (806)659-2109
Harry Stumpf
301 W. 12th
Spearman, Texas

FARM PRODUCTS

200 ACRES FARMLAND: 6 miles southwest of Spearman, irrigation well, no mineral rights. Seller reserves right to approve buyer. Bob Hardy Realty, 659-3440, Robert Hardy, Broker. S59, RTN

MISCELLANEOUS

Discouraged with diet aids of the past? Look forward to a more satisfying future with FORMULA THREE...all-natural and amazing. See Jim Evans - 659-2141 or 659-3379. S60, RTN?

HELP WANTED

HELP WANTED: Semi truck drivers, CDL required. Must be 25 yrs. old. Conventional's new hopper bottom trailers. McCarty Trucking, 806/362-4807. S10, RTN

JOB OPENING: The position of Hansford County Auditor will be open May 31, 1995. Inquires and resumes may be sent to William D. Smith, 84th District Judge, P.O. Box 489, Spearman, TX 79081-0489. Applicants should have auditing and accounting experience and reside in Hansford County. S18, 4tc

HELP WANTED: Operate a fireworks stand 6/24 through 7/4 outside Spearman. Make up to \$1,500. Make up to \$1,500. Call 659-3949 for appointment to view pups. 2 males and 2 females. UKC registered with "PR" title. S19, 3tc

HELP WANTED: The Hansford County CFSA office, (formerly ASCS) is now taking applications for permanent employment. If you are interested, application forms are available at the County Office located at 711 West 7th, Spearman, TX. Applications will be accepted through May 22, 1995. Candidates will be considered without discrimination because of race, color, religion, national origin, sex, political affiliation, physical or mental disability, age, marital status, or other nonmerit factors. S19, 2tc

2052 after 6 p.m. S18, 2tp

HELP WANTED: Hi Plains Auto Supply needs a parts person. Experience preferred. No phone calls. Apply in person at 118 N. Main, Spearman. S18, RTN

PUBLIC NOTICE

NOTICE OF APPLICATION FOR WASTE DISCHARGE PERMIT RENEWAL

City of Gruver, P.O. Box 947, Gruver, Texas 79040 has applied to the Texas Natural Resource Conservation Commission (Commission) for renewal of Permit No. 10751-01 which authorizes a discharge of treated domestic wastewater effluent at a volume not to exceed an average flow of 200,000 gallons per day from the Gruver Wastewater Treatment Facilities. The wastewater treatment facilities are approximately 0.8 mile east of State Highway 136 and approximately 0.6 mile west of State Highway 15, southeast of the City of Gruver in Hansford County, Texas. The effluent is discharged into Farwell Creek; thence to Palo Duro Creek; thence to the State of Oklahoma in Segment No. 0100 of the Canadian River Basin. In accordance with the Texas Surface Water Quality Standards, the Commission staff must determine the existing uses for the receiving water in the area of the proposed discharge and whether the proposed discharge will cause significant degradation to any high quality waters in the area. The unclassified receiving waters of Farwell Creek have no significant aquatic life uses. The designated uses for Segment No. 0100 are contact recreation and high quality aquatic life uses. The effluent limitations in the draft permit will maintain and protect the existing instream uses. All determinations are preliminary and subject to additional review and/or revision. The Executive Director of the Commission has prepared a draft permit which, if approved, will enforce existing applicable rules and regulations. The renewed permit would add a surface constructed wetland system to the existing wastewater treatment facility. The wetland system is being added to improve the effluent quality of the existing wastewater treatment facility. It is proposed that the expiration date of the renewed permit be specified as midnight, August 13, 1997. Legal Authority: Section 26.028 of the Texas Water Code and 30 TAC Chapter 305 of the Rules of the Texas Natural Resource Conservation Commission. This application is subject to a commission resolution adopted August 18, 1993, which directs the Commission's Executive Director to act on behalf of the Commission and issue final approval of certain permit matters. The Executive Director will issue this permit unless one or more persons file written protests and/or a request for a hearing within 30 days after publication of this notice. If you wish to request a public hearing, you must submit your request in writing. You must state (1) your name, mailing address and daytime phone number; (2) the permit number or other recognizable reference to this application; (3) the statement "I request a public hearing;" (4) a brief description of how you, or the persons you represent, would be adversely affected by the granting of the application; (5) a description of the location of your property relative to the applicant's operations; and (6) your proposed adjustment to the application/permit which would satisfy your concerns and cause you to withdraw your request for hearing. If one or more protests and/or requests for hearing are filed, the Executive Director will not issue this permit and will forward the application to the office of Hearings Examiners where a hearing may be

OSGOOD MONUMENT CO.
Amarillo, Texas

Dealers of Rock of Ages Granite, as well as all colored granites, marble and bronze memorials.

Represented by
Boxwell Bros. Funeral Home
519 S. Evans
659-3802

Must sell house NOW!

Beautifully decorated 2,000 sq. ft. brick home on double corner lot, centrally located, fenced yard, with 3 br., 2 baths, 2 liv. areas, 2-car garage. Cent. air and allergy-filtered furnace. Recently remodeled garage apt. with bed./bath. All kit. appliances, window treatments, ceiling lights/fans, play-yard equip. to stay. Yard features cov. patio, fountain, large trees, playground. Available: JULY 15TH!

OWNER WILL SELL FOR \$60,000 OR LEASE-TO-OWN
(\$5,000. down payment plus under \$450/mo.)
CALL FOR APPOINTMENT:
659-3272 OR 659-2846

Are You A Victim of Domestic Abuse . . .

Physical, Emotional or Sexual?
Call Toll Free
1-800-753-5308

We are in Spearman on the 1st, 3rd, & 5th Wednesdays of each month at the First Presbyterian Church, 1021 Cotter. On the 2nd & 4th Wednesdays we are at the First Christian Church at 510 King in Gruver. We can come to Spearman & Gruver any time upon request. We operate a safe place for victims & their children to stay in times of crisis.

Panhandle Crisis Center
Serving Hansford, Lipscomb & Ochiltree Counties
317 S. Main
Perryton, Tx.
Memorials Accepted

JOB OPPORTUNITIES

OWN YOUR OWN APPAREL OR SHOE STORE, CHOOSE: Jean/sportswear, bridal, lingerie, westernwear, ladies, men's, large sizes, infant/preteen, petite, dancewear/aerobic, maternity, or accessories store. Over 2000 name brands. \$25,900 to \$37,900: inventory, training, fixtures, grand opening, etc. Can open 15 days. Mr. Loughlin (612) 888-6555. S1, 3tp

PUBLIC NOTICE

BIDS ON HIGHWAY CONTRACT ROUTE

The Postal Service is accepting bids for a Highway Contract Route from May 1, 1995 thru May 31, 1995. Information is available at your local post office. S18, 4tc

HELP WANTED

HELP WANTED: Hi Plains Auto Supply needs a parts person. Experience preferred. No phone calls. Apply in person at 118 N. Main, Spearman. S18, RTN

Are you a **Smoke Detector Neglector?**

Test your smoke detector regularly and change the battery once a year.

A fire prevention message from your local fire department.

held. Commission public hearings are evidentiary legal proceedings similar to civil court non-jury trials. Although general comments from the public may be a recommendation to the commission for final decision. If no protest or requests for hearing are filed, the Executive Director will sign the permit 30 days after publication of this notice or thereafter. If you wish to appeal a permit issued by the Executive Director, you may do so by filing a written Motion for Reconsideration with the Chief Clerk of the Commission no later than 20 days after the date the Executive Director signs the permit. Requests for a public hearing on this application should be submitted in writing to Chief Clerk's Office - Mail Code 105, Texas Natural Resource Conservation Commission, P.O. Box 13087, Austin, Texas 78711, Telephone (512)239-3312. Information regarding hearing procedures may be obtained by contacting Kerry D. Sullivan, Assistant Chief Hearings Examiner - Mail code 102 at the same address or by telephone at (512)239-4100. Information concerning any technical aspect of this application can be obtained by writing John O. Onyeniobi, Wastewater Permits Section - Mail Code 146, at the same address or by telephone at (512)239-4608. Issued this 1st day of May, 1995. Gloria A. Vasquez, Chief Clerk



A.C.E.S. AT EXERCISING - Some time ago, former Spearman coach, Carla Flowers, started a program in Spearman that had already begun world-wide. A.C.E.S. (All Children Exercise Simultaneously) is a program dedicated to get children interested in exercising, and each year the number of participants seems to continue to grow. For the program, every student must drop what they are doing at that moment at exercise at least 15 minutes. Seen here are some of the students of Spearman Elementary participating in the program. (Photo by Wade Atwood)

Bartlett's
ACE Hardware
105 W. Broadway, Gruver, TX (806)733-2404

Baling Wire
Cargill # 6500
\$33.95/ctn

No Rain Checks - No Dealers Please

Look for the Bartlett Lumber location nearest you!

Gruver · Memphis · Miami · Perryton · Dalhart
Dumas · Shamrock · Wellington · Pampa · Canadian



JUDGING TEAM-The Spring 1995 Oklahoma Panhandle State University Senior Livestock Judging Team was presented with belt buckles at the recent agriculture banquet held at OPSU. Team members are (l to r): Jason Brown, junior, Texhoma, Ok.; Chad Newman, senior, Guymon; Scott Van Allen, senior, Sharon Springs, Kan.; Brent Stedje, senior, Gruver; and Rھےff Heflin, senior, Guymon. The buckles were in recognition of their outstanding performance at the Kansas City meat judging contest.

Canadian to hold "Bottoms Up"

"Bottoms Up", a hilarious comedy set in a quaint hotel on the tropical island of Santa Pequena, will be the spring dinner theatre production of the Canadian Community Players, May 11, 12, 13, and 14th at the Canadian City Auditorium. The group has brought live theatrical productions with a gourmet dinner to area theatre enthusiasts for the past eight seasons.

The story centers around the ill-fated suitcase full of money. The Hotel Grande, a somewhat rundown and gaudy island resort, offers a perfect setting for the romp of the eight actors.

The evening of entertainment will begin with dinner music, played by Natalie Sanders, and a festive and delicious meal. Evening dinner service will begin at 6:30 P.M. and Sunday matinee lunch will begin at 12:30 P.M.

The Canadian Community Players have benefited local non-profit entities and Canadian High School students through a scholarship program. Tickets are all pre-sold and can be purchased by calling (806)-323-8431, (806)-323-6213, and (806)-323-6234 at a price of \$22 each.

MONEY RATES

Interstate Savings & Loan Association
301 S. Main • P.O. Box 947 Perryton, TX
322 S. Main • P.O. Box 146 Spearman, TX

ALWAYS Offers You Competitive C D Rates!

Annual Percentage Yields (APY) are effective as of 5-10-95

6 MONTHS	5.25%	5.25%	5.40%	5.75%
	APY	APY	APY	APY
	\$2,500	\$20,000	\$40,000	\$100,000
12 MONTHS	5.65%	5.65%	5.90%	6.25%
	APY	APY	APY	APY
	\$500	\$20,000	\$40,000	\$100,000
18 MONTHS	5.93%	6.15%	6.25%	6.45%
	APY	APY	APY	APY
	\$500	\$20,000	\$40,000	\$100,000

INDIVIDUAL RETIREMENT ACCOUNTS
Fixed and Variable Rates

18 MONTHS	5.93%	6.15%	6.25%	6.45%
	APY	APY	APY	APY
	\$50	\$20,000	\$40,000	\$100,000

Stated minimum balance must be maintained to earn the corresponding APY. A penalty may be imposed for early withdrawal. Your deposit is Federally insured to \$100,000.

Other rates & terms available, call us at (806)435-4071 • Perryton or (806)659-2559 • Spearman 1-800-757-4071

375,000 funding sources available to pay costs of college students

Each year individuals preparing to go to college or graduate school face the dilemma of how to pay for tuition, room and board, text books, lab fees, and other expenses. That's because college costs have skyrocketed and continue to

increase yearly, putting extra strain on family budgets and assets.

Yet there are over 375,000 funding sources available to assist these students. Contrary to popular belief, over 80% of the funds available to students do not depend on family

need or high grades. Many are based on factors such as the student's interests, hobbies, academic focus, age, ethnic background, or parent's work or military service.

Remarkable over \$6.6 Billion of this funding goes uncollected each year simply because people do not ask for it according to a report by the National Commission on Student Financial Aid. Now a new academic funding publication, updated for 1995, is available to help students through the process and to outline their options and identify sources for assistance.

For information on how to receive academic funding and scholarships, send a No. 10 self addressed, double stamped envelope plus \$2.00 to cover handling to the National Academic Funding Administration, 815 Middle Street, Suit, 1300, Portsmouth, NH 03801.

Spearman Elementary holds "Alien Day"

For the fourth and fifth graders at Gus Birdwell Elementary School, Thursday, April 27, was "Alien Day."

Alien Day is a science project for Mrs. Smith's students. The students were able to work in groups to complete the project.

The assignment includes creating a new planet. Students also had to make a poster and a brochure to promote their new planet.

These posters and brochures now line the fourth and fifth grade hall of the elementary.

Also, the group must write and perform a play about how life is on their planet. Along with the play, the students dress-up as aliens from their planet.

Although it is an assignment that requires a lot of work and time, the students seem to enjoy this project.



ALIEN DAY--The fourth and fifth graders recently participated in their "Alien Day." Back row are LeAnn Earle, J.D. Shufeldt, Hector Diaz, Annabelle Velaquez, Mrs. Smith, Clara Shieldknight, Audrey Winegamer, and Nicole Sullivan. Middle row are Jessica Volden, Eduardo Vasquez, Coy Herrington, Miguel Calbous, Joe Wilson, Tashi Schumann, and Lester Mendias. Front row are Annie Johnson, Alexis Woodward, Bethany Furlow, Jenifer Gonzales, Charlie Earhart, and Tony Wrinkle. Not pictured are Tomy Jerman and Amanda Bowman.

SATURDAY MAY 20, '95 AUCTION 10:00 A.M.

- REAL ESTATE SELLS AT 1:00 P.M. -
730 Cotter
Spearman, Texas

The J.C. Hickerson Estate Will Offer The Following Real Estate At Auction Real Estate Being Described As:

SPEARMAN - Lots 17, 18 and the South 1/2 of Lot 19, Block 4, Blodgett Addition, Hanstford Community, Texas Commonly Known as 730 Cotter, Spearman, Texas. Spearman Property Consists of an Exceptional 4 Bedroom, 2 3/4 Baths, Fireplace, 1803 Square Foot Brick Home With Partial Basement, 1170 Square Foot 3 Car Garage and 1217 Square Foot Covered Patio. Fenced Yard, Exceptional Yard w/Sprinkler System and Large Fenced Garden Area. This House is Located in The Southeast Part of Spearman Close To The High School, Swimming Pool and City Park.

WHITE DEER - Lot 12, Block 13, Original Town Survey, White Deer, Carson County, Texas Commonly Known As 211 Paul, White Deer, Texas. No Minimums and Reservations On This Tract.

TERMS: Owner financing available. 10% of purchase price will be deposited in escrow the day of sale. Seller will finance qualified buyer for 10% down, 20 years at 9% fixed interest. Seller will furnish title insurance. Purchaser will have 10 days to examine title at purchasers expense. Balance upon closing if seller finance is not used. Standard Texas Real Estate Contract will apply. Closing costs will be split between buyer and seller. 1994 and prior taxes paid by the seller. 1995 taxes prorated to day of closing. Cecil Biggers, Closing Agent.

Every effort has been made to assure the accuracy of the information with no guarantee of authenticity. Any announcements made day of sale supersede all other announcements or advertising.

For Showing Or More Information Call Bozeman Auction Company, (806) 435-4472. Sale Subject To Confirmation And Acceptance Of High Bid By Seller.

