



★ HANSFORD COUNTY ★  
**THE REPORTER-STATESMAN**

THURSDAY,  
FEBRUARY 11, 2010

CELEBRATING 103 YEARS OF SERVICE TO HANSFORD COUNTY  
HANSFORD COUNTY'S ONLY NEWSPAPER

75¢

WWW.SPEARMANREPORTER.COM

VOLUME 103 • ISSUE 5

reporter@spearmanreporter.com

**COME TO THE GAME**

**Spearman Lynx/Lynxettes**  
2/12 JVB (6), VB (7:30) at Highland Park

**Gruver Greyhounds/Lady Hounds**  
2/12 JVB (5), VB (6:30) at Stratford  
2/12 VG vs Lubbock Cooper at WTAMU Box  
in Canyon - Practice Game

**Hansford County**  
JUNIOR LIVESTOCK SHOW  
AND  
PREMIUM SALE

Donated by Gruver Independent School District



**Grand Champion Swine**  
Malory Martin  
Purchased by First National Bank (Brett Burgin)

**Medicare**  
**Learn Your ABC'S**

Keeping up with annual Medicare changes can be challenging for seniors. A seminar on 2010 Medicare Updates will give an overview of the changes and also help those who may just be turning 65 to learn what they need to know. Those already on Medicare may be eligible for benefits they may not even realize.

The program will take place Thursday, February 18 at 2:00 p.m. in the O'Loughlin Center in Spearman. Lisa Hancock, public education specialist with the Area Agency on Aging of the Panhandle, will present the free program. Refreshments will be provided and door prize will be donated by Hansford County Floral.

The 2010 Medicare Updates seminar is sponsored by the Texas AgriLife Extension Service and the Senior Citizen Center. Please call Peggy Winegarner, Hansford County Extension Agent, for more information 806-659-4130.

The Hansford County Junior Livestock Show and Premium Sale were held on Saturday, January 30, 2010 at the Hansford County Barn in Gruver.

A total of 171 animals were shown with the sale bringing in \$243,766.80. The following clubs and organizations were represented: Gruver 4-H, Gruver FFA, Gruver Jr. FFA, Morse 4-H, Spearman 4-H, and Spearman FFA. Due to weather conditions, the judging contests were not held, and the livestock show was held in one day instead of two.

The Showmanship Awards are as follows: Market Lamb Senior Showmanship - Brenna Reid; Market Lamb Junior Showmanship - Jennifer Crowl; Market Steer Senior Showmanship - Callie Stedje; Market Steer Junior Showmanship - Jace Lane; Market Swine Senior Showmanship - Dakota Cator; Market Swine Junior Showmanship - Bailey Rae Poer

The Livestock Show Results are as follows: Grand Champion Lamb - Brenna Reid; Reserve Grand Champion Lamb - Jonathan Crowl; Grand Champion Steer - Callie Stedje; Reserve Grand Champion Steer - Bailey Stedje; Grand Champion Swine - Malory Martin; Reserve Grand Champion Swine - Michaela Davis;

OPB Breed Champion - Megan Stedje; OPB Reserve Breed Champion - Kyler Cator; Duroc Breed Champion - Ashlynn Miner; Duroc Reserve Breed Champion - Wyatt Poer; Hampshire Breed Champion - Bailey Rae Poer; Hampshire Reserve Breed Champion - Cory Graves; Yorkshire Breed Champion - Matthew Jarvis; Yorkshire Reserve Breed Champion - Shakota Field; Cross Breed Champion - Jacob Lieb; Cross Reserve Breed Champion - Macy Haight

See complete results, pictures, and congratulations on pages 6, 7 and 8. (Photos by Lisa Johnson)

**Game Statistics**

Panhandle Pantherettes 50, Spearman Lynxettes 45

**Records:** Panhandle is 18-11, 10-0 in District 1-2A. Spearman is 22-6, 8-2.

**Spearman:** (22-6, 8-2): Mallory Martin 0 0-1 0, Morgan Ashmore 8 4-6 25, Kyla Walker 4 0-0 8, LeAnna Espinosa 2 0-0 4, Shelby Hanna 2 2-5 6, Tylo Farrar 0 2-2 2. Totals: 16 8-14 45.

**Panhandle:** (18-11, 10-0): Rachel Urbanczyk 1 1-2 4, Cayla Neusch 2 3-4 8, Jaycee Crawford 4 3-4 15, Kelsi Peacock 1 0-0 2, Maidie Reining 1 0-0 3, Emily Duckett 2 1-1 6, Kori Smith 1 2-2 4, Kenzie Crabtree 1 6-6 8. Totals: 13 16-19 50.

**3-point goals:** Spearman 5 (Ashmore 5), Panhandle 8 (Crawford 4, Reining 1, Urbanczyk 1, Neusch 1, Duckett 1).

**Total fouls:** Spearman 19, Panhandle 20. **Fouled out:** Espinosa (Spearman).

**Noteworthy:** The Pantherettes hit seven 3-pointers in the second half.



**Lynxettes Take 2nd in District After Loss to Panhandle Pantherettes**

By Les Giles, Amarillo Globe-News

The Panhandle Pantherettes overcame an eight-point deficit in the second half thanks to seven 3-pointers, including four in the final period, as they captured the outright District 1-2A championship Tuesday by defeating Spearman, 50-45, before a crowd of about 800 at the Panther Gym.

Spearman pulled in front by six points at 39-33 with 6:40 to go thanks to a trey by sophomore guard Morgan Ashmore and a 12-footer by Kyla Walker.

But again Panhandle did not go away.

Rachel Urbanczyk's trey with 6:23 to play, two free throws by Jaycee Crawford and another 3-pointer by Cayla Neusch tied the game at 41-41 with 4:51 remaining.

The Pantherettes took the lead with 4:08 to go on two free throws by Kenzie Crabtree before Spearman's Shelby Hanna tied it by sinking two free throws with 3:50 to play.

When Emily Duckett hit the front end of a one-and-one foul situation with 3:34 to play, the Pantherettes had the lead for keeps. They extended it to 45-43 on a Crawford free throw with 2:38 to go and to five points with 1:20 remaining on Crawford's fourth trey of the night.

"This game was very much like our overtime loss to them at our place a few weeks ago," Spearman head coach Junior Ashmore said. "We had the lead for much of the game before they caught us late. We made a big basket near the end to send it into overtime."

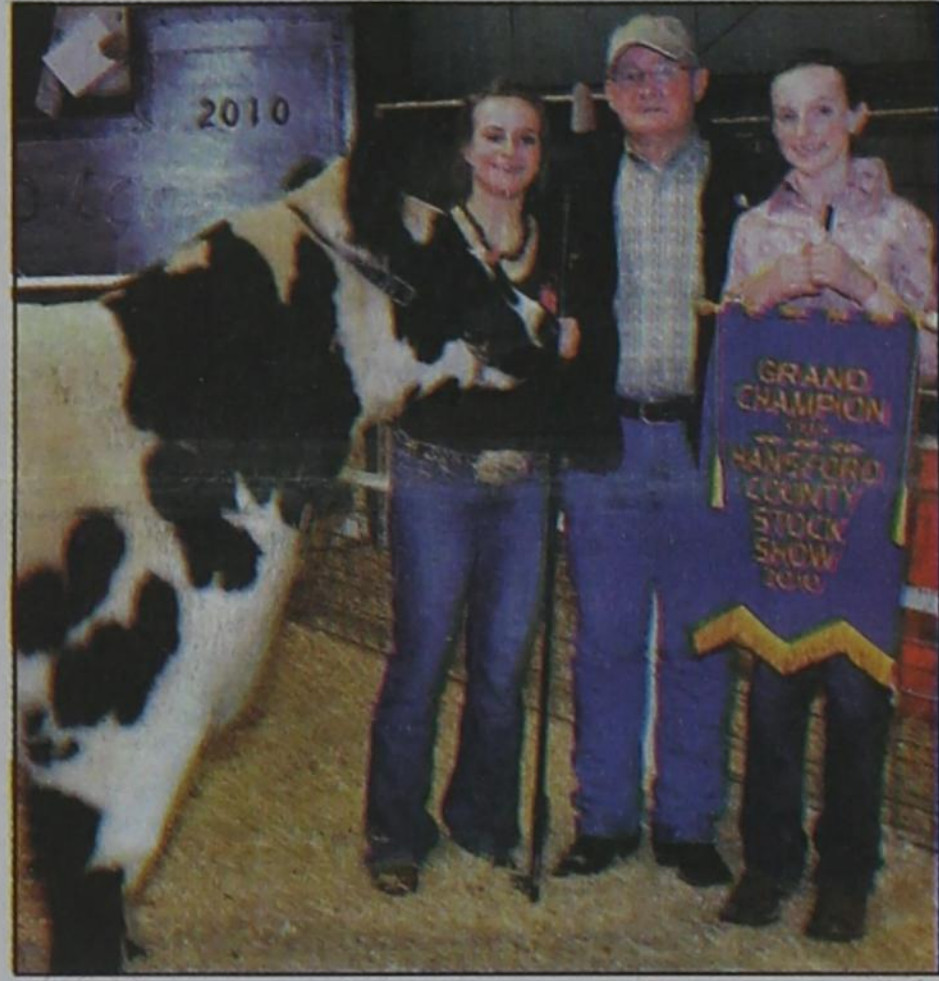
"This time, we had the lead until midway through the fourth quarter. They came back again, but we were not able to answer down the stretch."

Crawford led a balanced Panhandle scoring attack with 15 points, and Neusch and Crabtree added eight points each. Duckett had six, and Urbanczyk and Kori Smith chipped in with four.

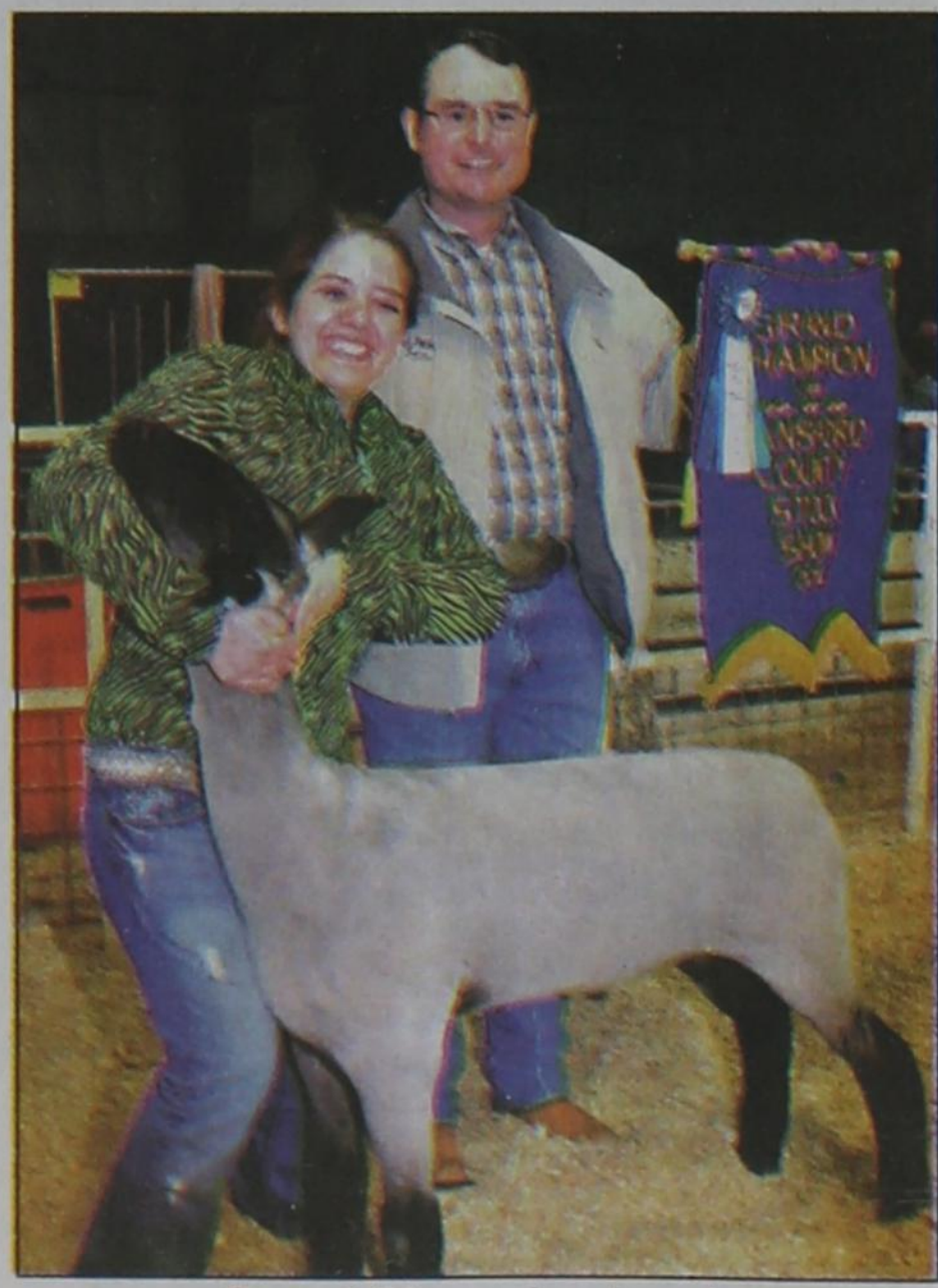
Morgan Ashmore scored a game-high 25 points, including five 3s, to lead the Lynxettes. Walker added eight and Shelby Hanna six.

"Twice we came from behind to beat them," Panhandle head coach Kurt Richardson said. "It shows the kind of determination our team had in the two games."

"Getting hot from 3-point range in the second half was certainly the key for us. We showed a lot of poise in those final few minutes even though we turned the ball over some. We hit some big shots in the fourth quarter that proved to be the difference for us."



**Grand Champion Steer**  
Callie Stedje  
Purchased by Bort Agency



**Grand Champion Lamb**  
Brenna Reid  
Purchased by First National Bank (Brett Burgin)

**Weather Forecast**

THURSDAY - Mostly cloudy. Patchy freezing fog in the morning. Highs in the upper 30s. South winds around 5 mph.

THURSDAY NIGHT - Partly cloudy. Lows in the mid 20s. South winds around 5 mph shifting to the west after midnight.

FRIDAY - Mostly sunny. Highs in the upper 40s. Southwest winds 5 to 10 mph.

FRIDAY NIGHT - Mostly clear. Lows in the mid 20s. South winds around 10 mph.

SATURDAY - Partly cloudy. Highs in the lower 50s.

SATURDAY NIGHT - Partly cloudy in the evening then becoming mostly cloudy. Lows in the mid 20s.

SUNDAY - Mostly cloudy. Breezy. Highs in the upper 30s.

SUNDAY NIGHT - Partly cloudy. Lows around 18.

PRESIDENTS DAY - Mostly sunny. Highs in the mid 40s.

MONDAY NIGHT - Mostly clear. Lows in the lower 20s.

TUESDAY - Partly cloudy. Highs around 50.

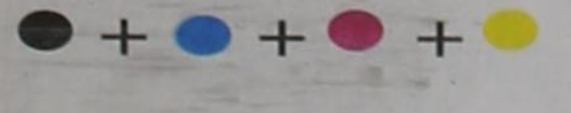
TUESDAY NIGHT - Partly cloudy. Lows in the mid 20s.

WEDNESDAY - Partly cloudy. Highs around 50.

Read more: <http://www.city-data.com/forecast/w-Spearman-Texas.html#ixzz0fCciaB18>

**Texas Crop & Weather**

The following specific livestock, crop and weather conditions were reported by Panhandle Extension directors: Rain and snow brought much-needed moisture. Soil conditions improved and should continue to do so as the snow melts. Spring planting preparations halted because of the wet conditions. The moisture will be good for spring planting and wheat when it comes out of dormancy. Because most fields were snow covered and not grazable, producers had to supplement cattle with hay. Cattle death losses from the winter storm were low.



**Gruver Elementary Seeking Pre-School Students**

Gruver Elementary is seeking to compile a list of children in our district who will be 4 on or before September 1, 2010. Please contact the elementary office with your child's name and age by February 12, 2010. If you know someone with a child starting Pre-Kindergarten in the fall, please have them contact the office at 733-2031 with their child's information. This will help us begin to make plans for our Pre Kindergarten program in the coming year.



## Wolf Creek Heritage Museum Notes

### MUSEUM HAPPENINGS

A very quiet and beautiful week with very few visitors and a lot of snow. I got some great photos and will continue to try to send them to Stan so he can post them on our web site.

With more snow arriving last night (Sunday), our view of the museum is again very white and gorgeous. The snow, heavy with moisture, however tried to melt some yesterday and slid into our gutter above the front door. It refroze last night, tearing the gutter, and now poses a snow hazard above our heads when entering the museum. I hope like last week, all of you are enjoying the snow from the warmth of your homes.

We are working on our book projects, and stories are starting to arrive. I hope all of you are busy writing. The projects are proceeding on schedule. Remember you get a price discount if

you order your book before we publish.

I am working on our annual report for the county commission and for the state. I will summarize in the column when complete.

The student art exhibit has three more weeks, so be sure to come see it soon. Higgins and Darrouzett schools will visit this week, weather permitting.

### HISTORICAL MUSINGS

Today, February 8th is the 100th birthday for the The Boy Scouts of America (BSA), founded in Chicago by William Boyce, publisher. At that time in the U.S., there were several other loosely structured outdoor-oriented youth organizations, some using the name "Boy Scout" and some using other names. There were already a number of troops in existence using some variation of the British Scout program founded in 1907-08 by

General Robert Baden-Powell.

Boyce's key contribution was to organize the BSA as a business. He incorporated the organization (in Washington), recruited key youth professionals (mainly the YMCA) to design and operate the program, and he provided key funding for the organization.

Three additional men assisted Boyce in developing the BSA. Ernest Thompson Seton, James West, and Daniel Beard. Mr. Seton became the first Chief Scout (1910 -1915). He considered himself to be the real founder of the World Scouting movement. In the introduction of the first boy scout handbook he wrote, "In 1904, I went to England to carry on the work of fostering a woodcraft and scouting movement there, and, knowing General R.S.S. Baden-Powell as the chief advocate of scouting in the British Army, invited him to cooperate with me, in making the movement popular. Accordingly, in 1908 he organized his boy scout movement, incorporating the principle of the Indians (Seton's group) with other ethical features.

West was recruited in 1911 as the Executive Secretary. He soon changed his title to Chief Scout Executive. He created a well-organized national structure that was a key to the BSA's growth and reputation. He remained with the BSA from 1911 to 1943.

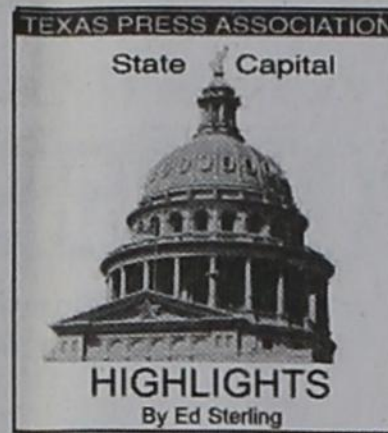
West and Seton had conflicting ideas on how the BSA should be developed and Seton was forced out of the organization in 1915.

Today, Scouting is in 185 countries and is considered the most successful youth movement.

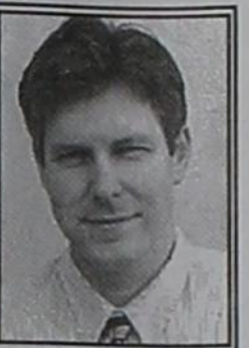
Lipscomb County has had troops in all of our towns with only Booker remaining active.

In an issue of the Higgins News in 1959, we found that the Higgins Boy Scouts participated in the Kiowa District Buckskin Camporee south of Follett on April 17-18, 1959, and entered the Scoutcraft field events. They won the Buckskin Trophy from the Adobe Walls Council for the best troop average. They also won the National Proficient ribbon for meeting national patrol standards in Scoutcraft skills. The troop included Willis Smith, Senior Patrol Leader, J.D. Barton, Patrol Leader, Dean Bay, Patrol Leader, Mark Goettshe, Jerry Bernaud, Bill Trosper, Haskell McLane, Ronnie Johnson, Rhamy Morrison, Robert Miller, Billy Hunt, Jim Slavin, Bobby Ely, Rod Immel, and Gary Laubhan. Alva Bernaud, Scoutmaster, and Kenneth McAdoo, assistant Scout Master. Carl Goetsche and Elzie Immel spent the night with the boys returning to Higgins on Saturday morning.

Happy Birthday all of you present and past Boy Scouts.



## STATE CAPITAL HIGHLIGHTS



By Ed Sterling

### Homeland security chief briefs lawmakers on various threats

AUSTIN — Transnational gangs fueled by Mexican drug cartels are the biggest threat to security in Texas, said the state's homeland security chief at a Feb. 1 hearing at the Capitol.

Steve McCraw, director of the Governor's Office of Homeland Security, told members of the House Transportation Committee and the Senate Transportation and Homeland Security Committee that his office and partner agencies are battling the gangs' multi-billion dollar criminal enterprise through multi-jurisdictional "fusion centers."

These fusion centers are tasked with "connecting the dots" to prevent acts of terrorism, drug and human trafficking, and serial crimes by pooling the intelligence efforts of local, state and federal law enforcement agencies. Texas is home to several of the 70 fusion centers that report to the U.S. Department of Homeland Security.

McCraw said roving wiretaps would help law enforcement track gangs that use throwaway cell phones.

McCraw also addressed security in the Capitol complex. He said the Department of Public Safety has a plan that includes X-ray machines and metal detectors to increase protections and does not turn the Capitol into an armed fortress.

And, McCraw addressed the estimated 3,000 Texas highway traffic deaths in 2009. About 15 percent of those deaths involved commercial trucks and tractor trailers.

Regarding the new federal law banning commercial truck operators from typing and sending text messages while driving, Sen. Florence Shapiro, R-Dallas, pointed out the difficulty in enforcing the ban. She brought up the line-of-sight issue: drivers in truck cabs are hard for troopers in sedans to catch in the act of texting. Sen. Rodney Ellis, D-Houston, said enforcement would be after the fact, by comparing the time of the accident with cell phone records.

The House and Senate committees also had questions about "Real ID" — the authentication system that ties together a Texas

driver's license, voter registration and citizenship. McCraw said the state is getting better at detecting fake licenses and other forms of false identification.

### Ag chief calls for Haiti help

State Agriculture Commissioner Todd Staples on Feb. 1 asked farmers and ranchers to help Haiti, with more than 2 million people in need of food and water after the Jan. 12 earthquake.

"Texas is a state large in geography and even larger in heart and compassion," Staples said. "Texans have always responded to those in crisis, and right now, the Haitian people desperately need our assistance."

"Whether it's a surplus food commodity, a volunteer service or a monetary donation, I know the Texas agriculture community and citizens of Texas can find ways to mobilize resources and offer assistance."

The Texas Peanut Producers Board already has responded and is working to deliver peanut butter.

Shelly Nutt, executive director of the Texas Peanut Producers Board, said Texas peanut farmers have combined efforts with the entire U.S. peanut industry to raise more than \$75,000 to purchase peanut butter for Haiti.

### Work program features incentives

"Texas Back to Work," a two-year, \$15 million employment program promoted by Lt. Gov. Dewhurst and funded by the state Legislature last

session, will offer employers incentives such as subsidized-wage reimbursements or retention bonuses for hiring qualified out-of-work Texans.

Grants under the program are available to employers through the 28 Texas local workforce development boards, which also provide employers with workforce recruitment assistance, pre-screening of qualified applicants and training programs.

More than 1.8 million customers were served in more than 240 workforce centers across Texas last year, according to the Texas Workforce Commission.

### Computer recycling figures in

The Texas Commission on Environmental Quality in late January announced first-year results in its computer recycling program.

The agency reported manufacturers collected for reuse or recycling 12.4 million pounds of computer equipment in Texas from Jan. 1 through Dec. 31, 2009.

The program, which helps conserve reusable materials including copper, lead and steel, requires computer manufacturers that sell in Texas to offer consumers convenient, free recycling for their brands of computer equipment.

Currently, 81 manufacturers representing 116 brands are participating in the program.

## Words from Faith & Grace



by Cecil R. Biggers, Lutheran Lay Minister

In this last week of Epiphany, the season of manifestation, showing forth, making clear, discovery, we study Exodus 34: 24-35, Psalm 99, 2 Corinthians 3: 12-4:2, and Luke 9: 28-43.

Moses, the great "law-giver", comes down from the mountain with the two tablets of the covenant in his hand. The skin of his face is shining because he has been in the presence of God. The Israelites react with fear. Moses reassures the people, and tells them God's commandments. Moses then veils his face. The idea here is that when we come face-to-face with God we are transformed and our being reflects God's glory. (FYI the vulgar translation of the bible translates the verb "shone" as "horns"; this is why the famous statue of Moses by Michelangelo shows Moses with "horns" on his head. Perhaps it is easier to do "horns" in marble than "shining".)

The Psalmist sings of God as a Mighty King who has helped prophets such as Moses, Aaron and Samuel. This is an 'enthronement' psalm which celebrates God as King and tells of his might and mercy.

Paul suggests that Moses wore a veil to keep the people from seeing that the glory of his face was fading. He uses this 'veil' theme to suggest that the time of the old covenant is fading, and the new covenant in Christ will 'shine'. He then says that when the people of Israel hear the words of the law, a veil keeps them from understanding that the law points to Christ. He then tells the Corinthians that only through Christ can that veil be set aside. Read this passage carefully; we should come away with the idea that when we turn to the Lord the veil separating us from God's glory is removed. When we then gaze upon Christ, we are transformed and reflect his glory.

Eight days after Peter responds to Jesus questioning, "You are the Christ", Jesus together with Peter, James and John climb a mountain. Jesus approaches God in prayer, seeking God's guidance as he prepares to enter Jerusalem for the last time. As Christ prays, he is transfigured. Jesus' face shines. Jesus' clothes become dazzlingly white. The three disciples who were weary, craving sleep behold Moses the giver of the law, and Elijah, the greatest of the prophets, talking to Jesus. [Remember, the 'law' and the 'prophets' point to Jesus]. They hear a discussion of Jesus' "exodus" from Jerusalem. An "exodus" which begins with the cross. This all happens at the time of the Feast of Booths which celebrates God's caring for the people during the "exodus" from Egypt. Peter, caught up in the moment, suggests that they build booths for Moses, Elijah and Jesus. Perhaps Peter recalled that the Feast of Booths was to be part of the final Kingdom. After this a shining cloud covers them, the same 'cloud' that led the people through the first "exodus". They hear a voice declare Jesus to be God's chosen, commanding the disciples to listen to him.

May the Holy Spirit remove the veil from your eyes that you may behold the glory of Jesus Christ and be transformed.

SUDOKU  
PRESENTED BY

Where volunteering begins.

6	7					4		
	2		4	8				
								8
	6	2	5					9
4	1		8		2		5	6
	9				7	4	1	
2								
			9	5				7
	7						1	9

© 2010, StatePoint Media, Inc. answer on classified page  
Fill in the blank squares in the grid, making sure that every row, column and 3-by-3 box includes all digits 1 through 9.

## FAMOUS COUPLES

- ACROSS**
- \*Either Houlihan or Burns from M\*A\*S\*H
  - Cat sound
  - Lover's strike
  - Remove from existence
  - "Four score and seven years"
  - Like N1H1 flu
  - One-story home
  - Read-only storage
  - Canned tomato product
  - "The Beast's Valentine"
  - \*John Adams' Valentine
  - DNA transmitter
  - Like a bug in a rug
  - AV manufacturer
  - Make a fool of
  - Fall asleep
  - Egg-layers
  - Whiskey without water
  - Luciano Pavarotti or Jose Carreras, e.g.
  - U2 guitarist
  - Eagle's claw
  - Island east of Java
  - a.k.a. thaler
  - Spanish courtesy title for woman
  - Young herrings
  - Canned as sardines
  - Seismic vibration
  - Different version of #6 Across
  - Swedish shag rug
  - "I call first \_\_\_"
  - Communist Zedong
  - \*FDR's Valentine
  - \*Fred's dance partner
  - \_\_\_fire
  - \*George and Martha were its first famous couple
  - Triumph maliciously
  - Rough, as in voice
  - Wrath
  - Slow in music
  - Short for ukuleles
  - Nada
  - Literary composition
- DOWN**
- "Sea" in French
  - Inhabitant of Middle East
  - \*Tarzan's Valentine
  - \*Felix's roommate
  - Like a picture moved to another wall
  - \*Jane, Spider-Man's Valentine
  - Id's partner
  - \*Adam's Eve was the first of these
  - Goods obtained illegally
  - \*\_\_\_ Marie, Michael Jackson's former Valentine
  - Those not in favor
  - Banana skin
  - Water faucet
  - Tease or harass
  - Dog holder
  - Ski racer's sport, pl.
  - \*Scarlett's Valentine
  - Mothball substitute
  - Space between two intersecting lines
  - Old paint hazard
  - Short for debutantes
  - Broadcast in progress
  - Foolishness
  - \*Diego's artistic Valentine
  - Appear
  - \_\_\_deaf
  - \*This Watts is Liev Schreiber's better half
  - Late comedian who got no respect
  - Site of 2016 Summer Olympics
  - Manipulate
  - Boston's bear
  - Flirtatious stares
  - Beige
  - Pipe problem
  - "At \_\_\_ soldier"

These games are brought to you by the Hansford County Reporter-Statesman

**The Hansford County Reporter-Statesman**  
213 Main Street • Spearman, TX 79081  
Phone - (806) 659-3434 • Fax - (806) 398-9080  
www.spearmanreporter.com  
reporter@spearmanreporter.com  
cathysmith@valornet.com

**Mon.-Thurs. 9 a.m.-12 p.m., Mon.-Wed. & 1-5 p.m.**  
**Closed Thurs. afternoon and all day Fri., Sat. & Sun.**

**Gary Smith - Publisher** Catherine Smith - Editor  
Contributing Writers: Dorothy Hudson, Jim Derington, Merry Sparks, Cecil Biggers  
Contributing Photographer: Charlie Johnson

**Subscription Rates**  
In Hansford County - \$30.00 • Out of County - \$40.00

The Hansford County Reporter-Statesman (USPS 529660) is published weekly in Spearman, TX. Periodical postage paid in Spearman, TX. **POSTMASTER:** Send address changes to: The Hansford County Reporter-Statesman, 213 Main Street, Spearman, TX 79081.

**Publication Policy**  
The deadline to submit news and advertising to The Hansford County Reporter-Statesman is Monday at 5 p.m. Items submitted after the deadline will be published at a later date, as time and space permit. Publication of all items is at the discretion of the editor.

**Advertising**  
Open Display rates are \$4.00 per column inch. Classified Ads are \$6 for the first 25 words and 10¢ per word for each additional word. (Additional charge for boxed classifieds.) There is a \$1 charge per week if billed.

Member of  
Gruber Chamber of Commerce  
Spearman Chamber of Commerce  
Texas Press Association and Panhandle Press Association

CROSSWORD

1	2	3	4	5	6	7	8	9	10	11	12
13					14			15			
16					17			18			
19					20			21	22		
23					24						
25	26	27	28	29	30	31	32	33	34		
35	36	37	38	39	40	41	42	43	44		
45	46	47	48	49	50	51	52	53	54		
55	56	57	58	59	60	61	62	63	64		
65	66	67	68	69	70	71	72	73	74		

PRESENTED BY

Where volunteering begins.

© 2010, StatePoint Media, Inc. answer on classified page



# Happy Birthday!

**February 11**  
**Birthdays** - Angie Clawson, Craig Schuman, Kari Lou Russell, Joan McClellan, Denise Harbour, Lillian Cooksey, Roy Harbour, Leigh Anne Winger, Addie Williams, Sloan Dominguez, Leo Cummings

**February 12**  
**Birthdays** - Rod Been, Lynn Burk, Louise Evans, Brian McClenagan, Brandon Reagon, Kaci Renteria, Sister Criselda Vela, Mae Hargis, Kelly Goodman, Anselmo Vela, Mary Dixon, Glynn & Lynn Pattison, Jennie Lou Connelly, Jana Hawkins, Roy Sutton, Mary Virden, Derrick Burnett, Clayton Vanderberg, Walter Postoak, Eleanor Bently, Kellye Buchanan, Mary Dixon  
**Anniversary** - M/M Buck Tidwell, M/M Gary Evans, M/M Roy Lee Uptergrove, Mr. and Mrs. Larry Ross

**February 13**  
**Birthdays** - Rick Barkley, Rosi Chisum, Kristi Williams, Sherry Lee, Richard Ooley, Bill Watson, Catalina Espinosa, Esther Vargas, Mari Ann Bartimos, Maura Gaspar, Lexi Farmer, Kelly Pecha  
**Anniversary** - M/M Eddy Rojas

**February 14**  
**Birthdays** - Alice Goodman, Nick Nelson, Janice Holt, C.W. Kirk, Tommy Thomas, Bubba Smith, Donna Ball, Lena Kathryn Harbour, Betsy Sutterfield, Kenneth Baker, Josiah Lee Vasquez, Courtney Wood, Wes Daniel  
**Anniversary** - M/M Kip Francis, M/M Roney Clark, Ricky & Cindy Dowdy, Hal & Jeanie Bennett, Terry & Tammy Burch, M/M Omar Sutton, M/M Salomon Tarango, M/M Tony Swink, M/M Rod Holland, M/M Delfino Parra, Rev. & Rev. Joseph Weeks, Garrett & Mika Gumfory, Buck & Cleo Hughes

**February 15**  
**Birthdays** - Lee Bradford, Heath Gammon, Donnie Thorsen, Claude Sheets Jr., Lynn Sheets, Brenda White, Marlane Nollner, Laura Dahl, Toby White, J. P. Prouty, Juanna Rosales, Colby Bedell, Rick Finley, Colleen Burkhammer, Steve Hartgraves, Emily Bently  
**Anniversary** - M/M Hoyt Biles, M/M Jim Norton

**February 16**  
**Birthdays** - Johnny Pat O'Connell, David Parker, Mike Larson, Lynda Owens, Ismael Vela, Timothy Peck, Maylynn Ayers, Cliff Lang, Brittany Claxton, Diana Pepper, Rex Reid, J.D. Wilbanks  
**Anniversary** - M/M

Jesus Espinosa, M/M Charles Chritton, M/M Augustine Mejia, M/M Bob Hohertz, M/M Gene Fletcher, Eschol & Eulalia Blankenship

**February 17**  
**Birthdays** - Katie Jones, Manuel Ruiz Jr., Mark Guthrie, Lee Ann Schrader, T.H. Rodriguez, Ernest Wayne Jr., Ric Smith, Isela Huerta  
**Anniversary** - M/M Ed Castillo

**February 18**  
**Birthdays** - Vickie Bullard, Carla Jo Riggins, Luke Stroud, Beau Roberts, Buck Sell, Edith Breland, Brian Rutherford, J.D. Poer  
**Anniversary** - M/M Richie Fletcher

**February 19**  
**Birthdays** - Melissa Quillin, Delphine Etling, Bob Womble, Stephanie Hays, Bennie Brogdon, David Kellum, Sylvia Rosales, Niki Taylor, Robert Dean Meire, Chuck Ball, Sylvia Taranto  
**Anniversary** - M/M Dorsey Perez, M/M Lupe Moreno, M/M Larry Trosper

**February 20**  
**Birthdays** - Brant Armes, Ed Mayfield, Greg Stork, Tessa Yanke, Kathy Brown, John Antalek, Terry Morris, Melissa Holt, Brenda Moyer, Steve Shields, Clayton Hergert, Bill Volden, Cody Brandvick, Rosemary McKee, Jeannie Folwen, Pauline McGee, Richey Thompson  
**Anniversary** - M/M Wilson Bruning, M/M Charles Evans, M/M Jon Hart

**February 21**  
**Birthdays** - Sandra Profitt, Walter McDade, Lisa Meisner, Raul Ortega, Ann Thomas, Chandler Adkins, Tom Speck, C.J. Renteria  
**Anniversary** - Ken & JoAnn Schneider

**February 22**  
**Birthdays** - Russell Dahl, Rhonda Hicks, Betty Mathews, Ryan Mathews, Sherri Hall, Tim Cook, Bobby Jo Grayson, Paul Reimer, Sonny Kell, DeAnn Sparkman, Derryla Stedje, Connie Davis, Linda Coombs, Jack Sparks, Brenda Winegarner, Kreisun Dominguez  
**Anniversary** - M/M Jason Bass, M/M Freddy Walton

**February 23**  
**Birthdays** - Hailey Lamb, Randy Reid, Dave Clement, Janyth Smith, Cynthia Miller, Phil Larson, Aaron Hager, Kacee Smith, Elizabeth Pipkin, Jim McMahan, Maxine Cline, Jason Bartimos, Edoliina Garcia, Tommy Reger, Daryl Noble, Mollie Burnam, Alan Jones

# Our Sympathy

## AUGUST LEROY "GUS" SCHOTT

GUYMON, OK - August Leroy "Gus" Schott, 86, died Saturday, February 6, 2010, in Spearman, Texas.

Services with military rites were at 1:30 p.m. Tuesday, February 9, 2010 in Victory Memorial United Methodist Church with Dr. Michael Burkett and the Rev. Barry Bennett officiating. Burial was in Elmhurst Cemetery by Henson-Novak Funeral Directors.

Mr. Schott was born Feb. 25, 1923, in Manchester to Ada Margaret Krus and August A. Schott. He married Ima Gene Hardenbrook on Aug. 18, 1946.

Survivors include his wife; a daughter, Diana Tharp of Hardesty; two sons, Bill Schott of Colorado Springs, Colo., and Alan Schott of Liberal, Kan.; a brother, Marvin Schott of Derby, Kan.; five grandchildren; nine great-grandchildren; and 12 step-grandchildren.

The family suggests memorials be to Hardesty Senior Citizens or Victory Memorial United Methodist Church, in care of the funeral home, P.O. Box 1306, Guymon, OK 73942.

## SULLIVAN ROSS WALKER

GRUVER, TX - Sullivan Ross Walker, 90, died on Monday, February 8, 2010, in Spearman, Texas.

Funeral services will be held on Friday, February 12, 2010 at 2 p.m. at the Church of Christ in Gruver with Gaylor Cook officiating. Interment will be at Gruver Cemetery under the direction of Boxwell Brothers Funeral Home of Spearman, TX.

Ross was born on June 13, 1919 in Hansford County, and had lived in the area his entire life. He was a veteran of World War II, where he served in the Army Air Force. He was a member of the Church of Christ in Gruver.

He married Cleo Allsup in 1941 in Odessa, TX. She preceded him in death in 1985. He married Edna Marie Williams in 1985 in Gruver, TX. She preceded him in death in 2008.

Mr. Walker was a farmer and rancher. He and his wife enjoyed many winters at Buchanan Dam in their RV. He was also preceded in death by his parents, Orville and Alice Walker; and two brothers, O.V. Walker, Jr. and Roy Walker.

He is survived by three daughters, Sandra Kay Preston of Owasso, OK, Martha and husband David Annsbach of Gruver, and Judy Clemans of Guymon, OK; two step-daughters, Geanette Jones of Amarillo, TX and Alicia Dee Shaeffer of Hurst, TX; a special nephew, Allen Walker of Gruver; 24 grandchildren; and several nieces and nephews.

The family requests memorials be to Hansford Hospice, 707 S. Roland, Spearman TX 79081; Gruver EMS, 108 E. Broadway, Gruver TX 79040; or Gruver Cemetery Association, PO Box 947, Gruver TX 79040.

## MEGAN E. GRAHAM

LAKEWOOD, CO - Megan E. Graham, beloved daughter, wife, mother, sister and friend passed away Friday, February 5, 2010 at the tender age of 38 at her home in Lakewood, CO. She was born in Leadville to parents Merilee Maupin and the late Myles Nuttall.

She will be remembered as a kind, generous soul who touched many lives. Megan went to school in Leadville graduating from Lake County High School. Many of her former Panther classmates kept in touch with Megan and will remember her fondly at this summer's class reunion. After high school, Megan went on to the University of Northern Colorado in Greeley, eventually receiving her Master's Degree in Community Health.

She will be remembered as an animal lover and was involved with the Golden Retriever Rescue organization helping many dogs to be "re-homed". She also enjoyed scrapbooking and was very active with the Leadville Trail 100.

Megan is survived by her husband, Thompson Graham, of Lakewood; her son, Myles Martinez; her mother Merilee Maupin, of Leadville; aunts, Joyce Pearson, of Bellingham, WA, Sher Kerschen, of Highlands Ranch, CO and Micky Maupin, of Gruver, TX; and numerous cousins.

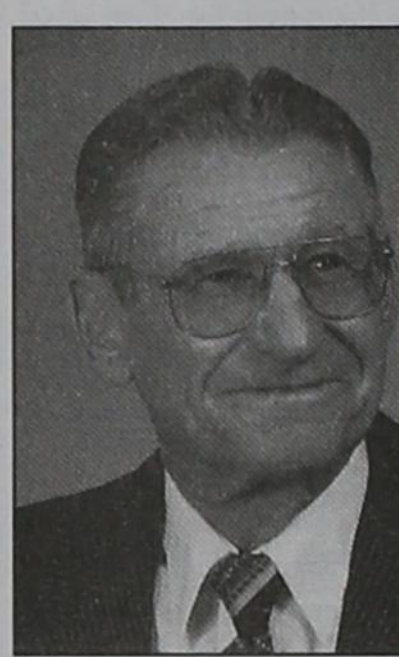
Megan was preceded in death by her father (1977) and an infant sister, Chelsea (1976).

Megan's generosity and kind heart were an inspiration to her family and all will feel the void she has left.

A Memorial Service was held on Monday, February 8, 2010 at the First United Presbyterian Church in Leadville. The Reverend Peggy Marshall officiated with a eulogy by Ken Chlouber. Arrangements were handled by Bailey Funeral Home.

Those wishing to honor Megan's memory may make contributions in her name, to the Leadville Trail 100 Legacy Scholarship Fund, P.O. Box #487, Leadville, CO 80461.

## LEE ROY MITCHELL



NOCONA, TX - Lee Roy Mitchell, 88, died at the Wise Regional Health System in Decatur, TX on Monday, February 8 2010.

Funeral services will be held at 2 p.m. on Friday, February 12, 2010 at the Nocona Church of Christ with Austin Wright officiating. Interment will be on Sunday, February 14, 2010 at 3 p.m. in Gruver Cemetery. Arrangements are under the direction of Scott-Morris Funeral Home

Lee Roy was born on November 7, 1921 in Sant

Jo, TX to Molly (Collier) and Frank Mitchell.

Lee Roy moved to Nocona 14 years ago from Gruver, Texas. He was active in his church, a member of DAV, the So-Journers-Baptist Men Builders, and was a Ham Operator.

He was preceded in death by his wife, Ruby Eades Mitchell; a son, Melvin Leroy Mitchell; and three brothers.

Survivors include his wife, Arlean Mitchell of Nocona, TX; a son, Larry Don and wife Genevieve Mitchell; grandchildren Marlin Mitchell, Cheryl Mitchell, Steven Lee Mitchell and Cheryl Welch, Shon Ranton, Natalie Carter. The family suggests memorials in lieu of flowers.

## MONUMENTS

### Boxwell Brothers

### Funeral Home

519 Evans • Spearman  
659-3802

Dear friends,  
When you buy a monument from us we make sure it is exactly what you want at a price you can afford. If it is not right, we will make it right. And you will not have to search the countryside to find us. We are here when you have a need.

Sincerely,  
Bob Boxwell

**FamilyPoolFun.com**

- Our pools create Generations of Memories everyday, vacations never end!
- Aboveground & Inground pools at WHOLESALE PRICING
- SIMPLE DIY Pool Kit Assembly
- SAVE MONEY on All Pool Supplies & Accessories. Ships Fast

Call Today! 800-250-5502

DIRECTV SAVE \$29/MO FOR A YEAR!

PLUS: **FREE** 1-4 Room System

**FREE** Standard Installation 1-4 rooms

**FREE** HD DVR Receiver Upgrade

**FREE** 3 MONTHS SHOWTIME & Starz

No start costs! Local installs!  
ASK HOW! CALL DIRECTSTARTV

Toll Free 800-214-7110

A Building for Every Budget

BIGGEST

Join us for our three-day Building Value Days  
Open House February 11-13, from 8 a.m.-6 p.m.

800-447-7436

MORTON BUILDINGS

HOME PHONE SERVICE

1st Month FREE

Starting at \$3.99/mo

\$14/mo including appropriate taxes and fees

\$0 Deposit • NO Credit Check

NO Contracts • Everyone Approved!

Restrictions May Apply.

NEWTALK 866.934.3448

Need Electricity?

Limited Time Offer:

\$0 DEPOSIT\*

1st Month as low as \$89\*\*

- Includes 1st 30 days electricity
- NO Credit / NO ID
- Hablamos Espanol

1-866-934-3446

\*Terms & conditions apply. Plus tax & fees. \*\*Based on 1BR apt. For home only. 1st mo. price subject to change. REP #10110

Replenish the seed of faith through . . .

DAILY BIBLE READING, PRAYER & REGULAR CHURCH ATTENDANCE

<p><b>Spearman</b></p> <p><b>Apostolic Faith Church</b> 822 S. Dressen • 659-2870 Sunday School: 10 a.m. Worship Service: 11 a.m. Sun. Eve.: 6 p.m. Wed. Prayer Mtg: 7 p.m. Pastor - Roland Haney</p> <p><b>First Assembly of God</b> 401 N. Bernice • 659-2295 Sunday School: 9:30 a.m. Worship: 10:40 a.m. Evening Worship: 6 p.m. Wed. Worship: 7 p.m. Wed. Youth: 7 p.m. Pastor - Jerry Pollard</p> <p><b>First Christian Church</b> (Disciples of Christ) 29 S. Bernice • 659-2036 Sunday School: 9:45 a.m. Worship: 10:50 a.m. Minister -</p> <p><b>First Baptist Church</b> 123 N. Bernice • 659-5557 Sunday School: 9:45 a.m. Worship: 11 a.m. Evening Worship: 7 p.m. Men's Bible Study - Wed. 7 a.m. Children's Choir - Wed. 6 p.m. Adult Choir - Wed. 7 p.m. Wed. Bible Study: 7 p.m. Pastor - Jim Medley</p> <p><b>Church of Christ</b> 121 S. Haney • 659-3244 Sunday Bible Class: 9:45 a.m. Worship: 10:30 a.m. Evening Worship: 6 p.m. Bible Study Wed.: 7:30 p.m.</p>	<p><b>Sacred Heart Catholic Church</b> 901 Roland • 659-2792 Sat. Night Mass: 5:30 p.m. Sun. Mass: 9 a.m. • English Sun. Mass: 11:30 • Spanish 1:30 p.m. • Gruver - Christo Rector/Msgr. - Spanish Rev. Guillermo Morales</p> <p><b>First United Methodist</b> 407 S. Haney • 659-5503 Sunday School: 9:45 a.m. Worship: 8:30 &amp; 11 a.m. Jr. High Youth: 5 p.m. Sunday High School: 6 p.m. Sunday Kids Club: 3 p.m. Wed. Pastor - Neely Landrum</p> <p><b>Grace Presbyterian Church</b> (Worships with Faith Lutheran Church) 1101 Bernice • 659-2033</p> <p><b>Faith Lutheran Church (ELCA)</b> 1101 Bernice • 659-2252 Sunday School: 9:45 a.m. Worship: 11 a.m. (Worships with Grace Presbyterian Church) Pastor - Cecil Biggers, PLM</p> <p><b>Union Church</b> 31 S. Endicott • 659-2644 Sunday School: 10:00 a.m. Worship: 11:00 a.m. Bible Study: 7 p.m. Wed. Youth Service: 6 p.m. Wed. Pastor - Don Baltazor</p> <p><b>Fellowship Baptist</b> 1102 S. Archer • 659-2783 Sunday School: 10 a.m. Worship: 11 a.m. Sun. Evening Worship: 6 p.m. Sun. Evening Spanish Worship: 7 p.m. Youth/Adult Service: 7:30 Wed. Pastor - Philip Hudson</p>	<p><b>Primera Mision Bautista</b> 502 E. 7th • 659-3991 Sunday School: 9:45 a.m. Worship: 11 a.m.; Evening: 6 p.m. Wed. Prayer Meeting: 7 p.m. Thurs. Visitation: 7 p.m. Pastor Joe Garcia Jr.</p> <p><b>El Aposento Alto U.P.C.I.</b> 1105 S. Roland Domingos: Escuela-Dominical - 10 a.m. Culto Evangelistico - 7 p.m. Jueves: Oracion - 8 p.m. Mier. Estudio Biblico - 7 p.m. Pastor - A.G. Martell (806) 659-2153</p> <p style="text-align: center; font-weight: bold;">Gruver</p> <p><b>First Baptist Church</b> 402 E. Broadway • 733-2411 Sunday School: 9:45 a.m. Worship: 10:50 a.m. Disciple Training: 6 p.m. • Sunday Prayer Meeting: 7:30 p.m. Wednesday Pastor - Scott Curry</p> <p><b>Church of Christ</b> 209 King • 733-2760 Sunday School: 9:30 a.m. Worship: 10:20 a.m. Evening Worship: 6 p.m. Wed. Worship: 7:00 p.m. Minister - Gayford Cook</p> <p><b>First Christian Church</b> 510 King • 733-2960 Sunday School: 10:00 a.m. Sunday Worship: 11 a.m. Youth: 7:30, Sunday Adult Bible Study: 7:30, Sun. Wed. Bible Study: 8:00 p.m. Pastor - Gary Gumfory</p>
<p><b>Gruver United Methodist</b> Broadway &amp; Garrett 733-2651 Sunday School: 9:45 a.m. Worship: 8:30 &amp; 10:50 a.m. Eve. Worship &amp; UMY: 6 p.m. Pastor - George Price</p> <p><b>Spanish Cristo Redentor Church</b> Sunday Mass: 1:30 p.m. Friday Evening Mass Summer - 8:00 p.m. Fall/Winter - 7:30 p.m.</p>	<p style="text-align: center; font-weight: bold;">Oslo</p> <p><b>Oslo Lutheran Church (ELCA)</b> 6 Miles West &amp; 12 Miles North of Gruver 339-7646 Sunday School: 9:45 a.m. Worship: 11 a.m. Pastor - Arlen Lloyd</p>	<p style="text-align: center; font-weight: bold;">Morse</p> <p><b>Morse Baptist Church</b> 733-2757 Pastor - Mike Martin</p>
<p style="text-align: center; font-weight: bold;">Waka</p> <p><b>Church of Christ</b> 300 Rogers Ave. 202-7126 Sunday Worship: 6 p.m. Wednesday Bible Study: 6 p.m. Preacher - James Gordon</p>		

He has showed you, O man, what is good. And what does the LORD require of you? To act justly and to love mercy and to walk humbly with your God. Micah 6:8

This feature is made possible through the sponsorship of these civic minded businesses:

<p style="text-align: center; font-weight: bold;">Deakin ELECTRIC</p> <p style="text-align: center; font-size: 0.8em;">OILFIELD • RESIDENTIAL • COMMERCIAL 321 S. MAIN • SPEARMAN 1-800-999-1506 Chris Deakin 806) 659-5016 President</p>	<p style="text-align: center; font-weight: bold;">Bartlett's Lumber &amp; Hardware</p> <p style="text-align: center; font-size: 0.8em;">105 W. Broadway • Gruver, TX (806) 733-2404</p>	<p style="text-align: center; font-weight: bold;">BERRY CLEANERS</p> <p style="text-align: center; font-size: 0.8em;">Ann &amp; Vernon Pipkin - Owners Phone 659-3122 • P.O. Box 1017 207 Main St. • Spearman, TX</p>	<p style="text-align: center; font-weight: bold;">Morse Implement &amp; Auto Supply</p> <p style="text-align: center; font-size: 0.8em;">"Join us in church" Tom Dortch 733-2668 Box 89 • Morse, TX 79062</p>
<p style="text-align: center; font-weight: bold;">PRAIRIE MOTORS INC.</p> <p style="text-align: center; font-size: 0.8em;">Hwy. 207 South • P.O. Box 430 Spearman, TX 79081 • (806) 659-2541 www.prairiemotors.com</p>	<p style="text-align: center; font-weight: bold;">MurMur's Cafe</p> <p style="text-align: center; font-size: 0.8em;">100 Roland St Spearman, TX. 659-3580</p>	<p style="text-align: center; font-weight: bold;">Hansford County Reporter-Statesman</p> <p style="text-align: center; font-size: 0.8em;">"Proudly Serving Hansford County Since 1907" (806) 659-3434 310 Barkley • Spearman, TX</p>	<p style="text-align: center; font-weight: bold;">INTERSTATE BANK, ssb</p> <p style="text-align: center; font-size: 0.8em;">www.interstatebank.net 322 Main • P.O. Box 146 Spearman, TX • 659-2559</p>



# HWYI

FOR YOUR INFORMATION

**Medical Fund for Bruce Duncan**  
A medical fund has been established for Bruce Duncan at First National Bank, Spearman. If you would like to make a donation you may make a deposit with any teller or mail a donation to First National Bank, Bruce Duncan Medical Fund, PO Box 337, Spearman TX 79081.

**March 4th Primary Early Voting**  
Applications for ballots by mail for the March 2nd Republican Primary must be received on or before Tuesday, February 23rd. Early voting will be held at the Hansford County Courthouse in Spearman and the branch office in Gruver City Hall from February 16th through 26th, from 8 a.m.-5 p.m. The primary election day will be Tuesday, March 2, 2010 from 7 a.m. to 7 p.m.

**Late Night Voting Information**  
Late night voting for the March 2, 2010 Republican Primary Election will be available on Thursday, February 18th and February 25th until 8 p.m.

**Miss Irish Rose Pageant**  
Once again, Shamrock, TX will be hosting their annual St. Patrick's Celebration on March 19-21, 2010. One of the many highlights of this celebration is the crowning of Miss Irish Rose. This Scholarship Pageant is open to all young ladies who are between the ages of 14-19 and enrolled in high school. None of the contestants need to live in the Shamrock area, nor do they need to be currently holding a title or reign. The 2010 Miss Irish Rose, along with her three runner-ups and Miss Congeniality, will be receiving a scholarship to the college of her choice. For further information, please send a S.A.S.E. to Gaylynn Otts at PO Box 107, Shamrock TX 79079 or call Gaylynn at 806-256-5188. You can also call the Chamber of Commerce Office at 806-256-2501. The deadline for entry forms to be received is March 3, 2010.

**February Emmaus Community Gathering**  
The Rushing Wind Emmaus members from the Southwest Kansas area have graciously invited our community to the Trinity Faith Church in Liberal, KS for the Feb. 13 community meeting. A Rushing Wind Emmaus board meeting will be held at 4 p.m. with the potluck meal at 6 p.m. Sponsor training will be available to all who have not attended, as well as for those who need a refresher. Praise and Worship will begin at 7 p.m.

**Concealed Handgun Course Offered**  
A concealed handgun course will be offered on Saturday, March 6th (9 a.m.-5 p.m.) and Sunday, March 7th (2-6 p.m.) at Mur Mur's Cafe in Spearman. The cost is \$125 for the instructional course with a certificate and targets provided. (The State fee is dependent on age and/or occupation and ranges from \$25-\$140 for a 5-year license.) If interested in attending this class, please contact Dee Mayfield at (806) 330-0269.

**Gruver Memorial Tournaments**  
The 3rd and 4th grade Art Salazar memorial tournament is Feb. 11th and 13th. The 5th and 6th grade Debby Chisum memorial tournament is Feb. 18th-20th. Everyone is invited to come and support the future Hounds and Lady Hounds!!

**Perryton Area Parkinson's Disease Support Group**  
The Perryton Area Parkinson's Disease Support Group will be meeting Friday, February 12 at the Perryton Mennonite Church at 2821 S. Ash. Lunch will be provided for the noon meeting. Guest speaker will be speech therapist Renita Logan MSCCC-SLP who will give a presentation on LSVT voice exercises that are beneficial to those who have Parkinson's. Anyone who has Parkinson's or has a family member with it is welcome to attend. For more information, call Bev Burger at 435-3437.

**SHS All School Reunion July 2 & 3, 2010**  
The Spearman High School All-School Reunion will be held July 2nd & 3rd, 2010. If you have information regarding a specific class reunion, please contact the Hansford County Reporter-Statesman. We will list the specific information for each class reunion, as well as the information for the All-School Reunion in the newspaper as we receive it. Information may be mailed to: Reporter-Statesman, 213 Main Street, Spearman TX 79081; e-mailed to: reporter@spearmanreporter.com; faxed: 806-398-9080; or phoned in: 806-659-3434.

**Spearman Chamber of Commerce Banquet**  
The Spearman Chamber of Commerce Banquet will be held on Thursday, March 11, 2010 at the O'Loughlin Center, 502 S. Brandt, in Spearman. Further information will be available as the date grows nearer.

**Youth Writing Contest**  
Panhandle Professional Writers has announced its 2010 Youth Writing Contest. The competition is open to any student in grades three through twelve. There are three age groups: grades three through five, six through eight, and nine through twelve. Students may enter as many times as they like in these three different categories: short story, poetry, and memoir. All entries will be judged by published authors. Entries must be postmarked no later than April 1, 2010. Complete rules and entry forms may be found online at [www.panhandleprowriters.org](http://www.panhandleprowriters.org). First, second, and third place winners in each category will be announced in July. Anyone wanting additional information can e-mail Vicki Schoen at [PPWYouthcontest@gmail.com](mailto:PPWYouthcontest@gmail.com). Panhandle Professional Writers is open to writers at all levels and of all genres.

**SPWA Seeks Volunteers**  
The Southwest Pioneer Windmill Association is seeking the next generation of volunteers to continue the work of restoring and maintaining the windmills of the SPWA. If you have an interest in windmills and their upkeep, and/or maintenance of the park, you are needed. For information, call Dwayne Mitchell, 270-0291 or Don Reed 330-0745.

**Fire Department Donations**  
Persons wishing to make donations to the Fire Departments in Hansford County may do so at the following addresses: Spearman Fire Dept., Box 37, Spearman TX 79081; Gruver Fire Dept., Box 947, Gruver TX 79040 or Morse Fire Dept., Box 28, Morse TX 79062

## Out at the Lake

by Jim Hudson



Drawing of the Hotel at Lucern by Ann Cluck Fry.

Lake Level--February 8, 2010--16.08 feet (-0.04)

Jim said he measured 3 inches of snow this morning. When all the snow melts, he is hoping we will get a rise in the lake level.

The Lake is frozen over again, and there are no geese. He is still seeing the

western bluebirds around the house and office. Some were drinking out of small puddle on his driveway. We are back to the original four eagles.

**Hotel Lucern**  
Actually, the name of the hotel at Lucern was Hotel American, but since it has always been designated with Lucern, I will

continue to use that title. In this segment of the hotel's life, it became the home Gus and Ada Ward. Thomas Cook had moved to Oklahoma City and had sold his Hansford County land in 1914. After the Wards became the new owners of the land with the hotel, the Lucern post office was moved to Zulu. It seems the hotel may have become a private dwelling. The history here is murky. Later Ada Ward's sister Nellie and her family join them at Lucern. The Wards were childless, but Nellie and Boston Eubanks had four children, Jessie, Mona, Edna, and son B.B. I had assumed that they all lived in the former hotel, but there is a possibility that the Eubanks were in Lucern but in a separate dwelling.

In her later years, Jessie Eubanks Spivey wrote for Vol. I, Hansford County history that while they lived at Lucern she met Johnnie Spivey when the community Sunday School was started with meetings in the home of her aunt, Mrs. Gus Ward. Jessie and Johnnie were married May

27, 1920 at Old Hansford after Johnnie returned from service in World War I. Both the Ward family and the Eubanks later moved away, and it was time for the hotel to be a hotel again. In 1927 or 1928 it was moved into a spot on the west side of main street in the newly platted town of Gruver. A railroad had come back into its future.

Nonagenarian Fred Miller of Gruver remembers playing in the hotel after it was moved. He lived in the country, and after school while he waited to be picked up to go home, he and other small boys would play in the vacated building. He said the older boys, such as Pete Maupin and Fred Cooper, told the young ones the building was haunted. Then when the youngsters were busy playing the older kids would see to it that there were loud noises and strange sounds, and Fred Miller and his buddies would be scared and run outside. (To be Continued)

We will be closed on Monday, February 15th, in observance of

**PRESIDENTS DAY**

**INTERSTATE BANK, ssb**  
[www.interstatebank.net](http://www.interstatebank.net)

322 Main Street \* Spearman, TX  
(806) 659-2559

**MITCHELL THEATRES**

**NORTHRIDGE 8**  
Guymon, Oklahoma  
[www.northridge8.com](http://www.northridge8.com)  
580-338-3281

**SOUTHGATE 6**  
Liberal, Kansas  
[www.southgate6.com](http://www.southgate6.com)  
620-624-5573

**CHISHOLM TRAIL 8**  
Newton, Kansas  
[www.chisholmtrail8.com](http://www.chisholmtrail8.com)  
316-283-0555

**SEQUOYAH 8**  
Garden City, Kansas  
[www.sequoyah8.com](http://www.sequoyah8.com)  
620-275-7707

FRESH POPCORN EVERYDAY!  
-PARTY ROOM & ARCADE-

**TO ROTH OR NOT TO ROTH**

**5.00% APY**  
INSURED/CD

**4.01% APY**  
LIQUID ACCOUNT INSURED

**3.75% APY**  
INSURED IRA/CD

**FIRST FIDELITY**  
Financial Group, LLC  
Your Safe Money Solution®  
1800 Washington, Suite 110 • Amarillo, TX  
**806-373-9480**  
1-800-371-9201  
By appointment only

First Fidelity is a financial services firm that licenses FDIC insured banks offering the highest CD yields nationwide. Minimum deposits may apply, and deposits subject to withdrawal; subject to change without notice; primary rate only; withdrawal of CD up to \$2000 per month; \$25,000 per withdrawal; annual bank rate may be lower than advertised rate. Any difference in rate will be provided by the bank. First Fidelity serves as a Prudential licensee. First Fidelity Financial Group is not a state or federally chartered financial institution, and is not affiliated with First Fidelity Bank, First Fidelity Trust, or First Fidelity Savings & Loan. Insurance products, including those services, are not guaranteed by our bank. Member Agency of the FDIC. © 2010 First Fidelity Financial Group, LLC. Reg. 049-14, 0107.

**Extra Protection for Your Corn**

**A BPM (Base Price Modifier) Policy** for irrigated corn gives you added protection and peace of mind in protecting your yields. Supplement the price election selected on your underlying MPCI, CRC, RA or RA/HPO Policy with a BPM policy. Contact your Windmark agent for availability in your area.

**Windmark Agro**  
CROP DIVISION NATIONAL

This agency is an equal opportunity agency

Contact Your Windmark/Agro National agent  
800 687 2265 ext. 2402 [www.windmarkcrop.com](http://www.windmarkcrop.com)

**OK PANHANDLE CONSIGNMENT AUCTION**

Wednesday, March 10th at 10am

NE Hwy 54, Next to NAPA store of Guymon

**CONSIGN TODAY!!**  
Commission as low as 4.75%!

Farm Equipment  
Vehicles / Trailers  
ATV's & More

**ALLIANCE AUCTION GROUP**

For More Information Contact:  
Zurick Labrier 806.681.9099 or  
Amarillo Office 800.299.5263

5% Commission Discount for Equipment Consigned by Feb. 15 AND delivered by March 1.

[www.AllianceAuctioneers.com](http://www.AllianceAuctioneers.com)

**25th Anniversary**

Valentine for our customers!

**2.50% APY\***

**25 month CD\*\***

**First National Bank**  
Celebrating 25 years of Service in 2010

\*Annual Percentage Yield  
\$1,000 minimum to obtain APY  
\*\*Early withdrawal penalty applies  
Offer for a limited time only

[www.fnbspearman.com](http://www.fnbspearman.com)  
[www.fnbdumas.com](http://www.fnbdumas.com)

Member FDIC



# Hansford County School News

## GRUVER

**February 5, 2010**  
Boys Ranch 47, Gruver Greyhounds 52  
**Scorers:** BR-Padilla 10, McGowan 10; G-Riley Urban 14, Tyler Wills 11, Blake Fitzgerald 10.  
**Records:** Gruver 21-4, 6-0; Boys Ranch 8-15, 1-6.

**What Happened:** The Gruver Greyhounds took the lead 18-10 at the end of the first quarter and never looked back. They finished the half up 34-28, and ended the third quarter up 42-36. They came back in the fourth quarter to seal the victory, 52-47

JV: Gruver 56, Boys Ranch 21.

Boys Ranch 12, Gruver 75  
**Scorers:** BR-Smith 8, Golden 4, G-Katie Gibson 23, Mattie Yanke 23, Leigh Anne Winger 10.  
**Records:** Boys Ranch 5-23, 0-8. Gruver 26-4, 7-0.

**What Happened:** The #4 state-ranked Lady Hounds were no match for Boys Ranch. The Lady Hounds outscored Boys Ranch by 18 points in the first quarter, 20-2. They ended the half at 40-4, and the third quarter at 55-8. Boys Ranch was able to hit double digits in the fourth quarter, but were dominated by the Lady Hounds, who ended the game at 75-12.

**February 9, 2010**  
Gruver Lady Hounds 62, West Texas 22

Gruver Greyhounds 55, West Texas 35

JV Lady Hounds 26, West Texas 16

JV Greyhounds, 43 West Texas 27

Gruver 19 30 37 55, West Texas 6 22 25 35  
G-Riley Urban 21, Tyler Wills 13; WT-Alex Ramirez 18, Logan Hoff 7.  
**Records:** West Texas 16-

14, 3-4, Gruver 22-4, 7-0.  
Gruver 14 25 43 62, West Texas 7 13 15 22  
G-Mattie Yanke 26, Madison McLain 17. WT-Chaslyn Tull 7, Cheyenne Tull 4, Maci Forrest 4.  
**Records:** Gruver 27-4, 8-0; West Texas 7-25, 2-6.  
JV: Gruver 26, West Texas 16.

**District Standing**  
**Girls:** Gruver is the champion, while Sunray and Stratford have secured playoff berths.  
**Boys:** Gruver and Stratford have clinched playoff berths. West Texas High gets the final berth with a win against Boys Ranch on Friday.

## SPEARMAN

**February 5, 2010**  
Sanford-Fritch 31, Spearman Lynxettes 57  
**Scorers:** SF-Courtney Cunningham 13, Jacy Judd 8, S-Morgan Ashmore 27, Leanna Espinosa 13.  
**Records:** Spearman 22-5, 8-1; Sanford-Fritch 12-16, 2-7.

**What Happened:** The Spearman Lynxettes hosted the Sanford-Fritch Lady Eagles on Friday, February 5, 2010 for the last home game of the season. The Lynxettes lead the Lady Eagles 16-6 at the end of the first quarter. The Lady Eagles pulled together and brought the lead to only 8 points at the end of the half, trailing the Lynxettes 17-25. The Lynxettes came back from half-time fired up to win, holding the Lady Eagles to only 2 points in the third quarter. The Lynxettes went into the fourth quarter leading 45-19, and finished the night with a definitive victory of 57-31.

JV Lynxettes 60, Sanford-Fritch 15.

Sanford-Fritch 53, Spearman Lynx 63  
**Leading Scorer:** Tate Batton 27  
**Records:** Spearman 13-9, 6-1; Sanford-Fritch 12-12, 1-6.

**What Happened:** The Sanford-Fritch Eagles came onto the court ready to play ball. The Lynx wanted their last home game of the season to be a win, though, and turned up the heat. The Lynx defeated the Eagles 63-53. The Lynx were led by senior Tate Batton with 27 points.

**February 9, 2010**  
Spearman Lynx 57, Panhandle 49  
**Scorers:** S-Batton 25, Cator 9, Schroeder 9. P-Jacob Cameron 16, Johnny Diaz 13, Trey Hall 12.  
**Records:** Spearman 14-9, 7-1. Panhandle 12-14, 4-4.

**What Happened:** Spearman Lynx claimed the court in Panhandle on Tuesday night with a run of 4 straight 3-pointers, to lead at the end of the first quarter, 17-6. They furthered their lead in the second quarter, going into the half with a lead of 30-16. During the third quarter, both teams scored about 15 points, with the score

going into the fourth quarter at 45-31. The Lynx came away with the victory, finishing the game at 57-49.

Spearman Lynxettes 45, Panhandle 50  
**Scorers:** S-Ashmore 25, S-Walker 8, S-Hanna 6, P-Crawford 15, Neusch 8, Crabtree 8  
**Records:** Panhandle 18-11, 10-0; Spearman 22-6, 8-2

**What Happened:** The Panhandle Pantherettes overcame an eight-point deficit in the second half thanks to seven 3-pointers, including four in the final period, as they captured the outright District 1-2A championship Tuesday by defeating Spearman, 50-45, before a crowd of about 800 at the Panther Gym. The Lynxettes led the Pantherettes 9-4 at the end of the first quarter, and led 21-15 going into the half. The Pantherettes came back from half-time wanting a victory, though, and finished the third quarter trailing the Lynxettes 34-30. The Pantherettes continued their drive in the fourth quarter and pulled off the upset by defeating the Lynxettes 50-45.

JV Lynx 39, Panhandle 65

**District Standing**  
**Playoffs**  
**Girls:** Panhandle and Spearman have clinched playoff berths. The final playoff berth is up for grabs. Highland Park defeated Bushland on Tuesday night, forcing a tiebreaker game to determine the third-place team.  
**Boys:** Bushland at 8-0 and Spearman at 7-1 have clinched playoff berths. Panhandle is third at 4-4.

**Gruver JH Tourney**  
The Spearman 7th and 8th Grade Lynxettes and 7th and 8th Grade Lynx competed in the Gruver Jr. High Basketball Tournament on Thursday, February 4th and Saturday, February 6th.

Below are the scores from the tournament.

**Thursday, February 4th**  
7th Grade Lynxettes 32, Gruver 24  
8th Grade Lynxettes 26, Gruver 18  
7th Grade Lynx 32, Gruver 23  
8th Grade Lynx 20, Gruver 25

**Saturday, February 6th**  
7th Grade Lynxettes 30, Sunray 13  
7th Grade Lynxettes 38, Guymon 37 (overtime)  
8th Grade Lynxettes 25, Sunray 29  
8th Grade Lynxettes 26, Guymon 30

**Amarillo Globe-News Athlete of the Week Honor Roll**  
*Tuesday, Feb. 9, 2010*  
**Tristan Wilborn, Spearman basketball:** Wilborn totaled 44 points in two District 1-2A games, including 26 in a 66-49 win over River Road.  
**Morgan Ashmore, Spearman basketball:** Ashmore totaled 78 points

in District 1-2A wins over Bushland, Sanford-Fritch and River Road, against whom she scored 30.

**District Standings**  
*Wednesday, Feb. 10, 2009*

**District 1-2A Girls**  

Team	Dist	All
y-Panhandle	10-0	18-11
x-Spearman	8-2	22-6
Highland Park	4-6	5-13
Bushland	4-6	8-17
Sanford-Fritch	3-7	13-16
River Road	1-9	5-24

  
*End of regular season*

**District 1-2A Boys**  

Team	Dist	All
x-Bushland	8-0	11-1
x-Spearman	7-1	14-9
Panhandle	4-4	12-14
River Road	2-6	7-15
Sanford-Fritch	2-6	13-12
Highland Park	1-7	5-20

  
*y-Clinched No. 1 playoff seed*  
*x-Clinched playoff berth*

**Friday:** Bushland at Sanford-Fritch, River Road at Panhandle, Spearman at Highland Park.

**District 1-1A (Div. I) Girls**  

Team	Dist	All
yx-Gruver	8-0	27-4
x-Sunray	6-2	18-10
x-Stratford	4-4	9-16
West Texas	2-6	7-25
Boys Ranch	0-8	5-23

**District 1-1A (Div. I) Boys**  

Team	Dist	All
x-Gruver	7-0	22-4
x-Stratford	5-2	9-3
West Texas	3-4	16-14
Sunray	2-6	12-12
Boys Ranch	1-6	8-15

**Friday:** Boys Ranch at West Texas, Gruver at Stratford.

**State Standings**  
*Monday, Feb. 8, 2009*

**1A Boys, Div. 1**  
1 Cayuga (11-2) (7-0); 2 Mumford (26-2) (7-0); 3 Merit Bland (24-2) (9-0); 4 Anton (26-1) (7-0); 5 Poolville (25-2) (7-0); 6 Sabinal (26-0) (7-0); 7 Italy (22-3) (7-0); 8 Tenaha (19-4) (10-0); 9 Martin's Mill (22-7) (10-0); 10 Gruver (21-3) (6-0); 11 Clyde Eula (25-5) (9-0); 12 Wellington (19-3) (7-0); 13 Clarendon (18-5) (6-1); 14 Bronte (18-4) (8-1); 15 Wheeler (19-3) (7-0); 16 La Poynor (23-4) (5-2); 17 Medina (21-5) (7-0); 18 Milano (20-5) (6-0); 19 Seagraves (13-6) (6-1); 20 Plains (17-6) (5-3); 21 White Deer (20-6) (4-2); 22 West Sabine (16-1) (6-1); 23 Grapeland (17-3) (6-0); 24 Mt. Enterprise (18-9) (8-2); 25 Avery (17-6) (4-2)

**1A Girls, Div. 1**  
1 Wellington 26-1 7-0; 2 Sudan 26-5 9-0; 3 Anton 27-2 9-0; 4 Gruver 26-4 7-0; 5 Canadian 20-4 5-0; 6 Nueces Canyon 23-1 8-0; 7 Martin's Mill 24-4 9-0; 8 Muenster 23-6 9-0; 9 Port Aransas 25-4 7-1; 10 Smyer 27-3 8-1; 11 Tahoka 25-4 8-1; 12 Lovelady 20-8 5-0; 13 Thornedale 23-4 9-0; 14 Evadale 20-6 9-0; 15 Hubbard 25-8 8-1; 16 Meridian 22-7 6-1; 17 Falls City 21-4 7-1; 18 Claude 14-5 3-1; 19 Goldthwaite 20-9 4-2; 20 Snook 21-6 7-0; 21 Louise 21-5 7-0; 22 Mart 22-5 9-0; 23 Farwell 22-5 6-2; 24 Cayuga 18-10 8-1; 25

Tolar 19-7 9-0

## Amarillo Globe-News Ranking

*Friday, Feb. 5, 2009*  
**Boys 3A-2A-1A**  

Team	Record
1. Bushland	9-1
2. Wellington	18-3
3. Gruver	20-4
4. Perryton	18-8
5. Wheeler	18-2

**Girls 3A-2A-1A**  

Team	Record
1. Wellington	25-1
2. Panhandle	16-11
3. Gruver	25-4
4. Canadian	23-3
5. Spearman	21-5

## High School Basketball Stats

*Friday, Feb. 5, 2009*  
**Class 3A-2A-1A Boys**

**Team Offense**  
**Team Avg.:** Childress 69.6, Gruver 62.3, Wheeler 61.1, Bushland 59.5, Friona 59.4, Vega 56.1, Stratford 53.7, Groom 49.7

**Team Defense**  
**Team Avg.:** Gruver 39.9, Wheeler 41.0, Bushland 44.6, Stratford 44.8, Vega 45.0, Groom 45.5, Friona 46.3, Childress 59.3

**Individual Scoring**  
**Player, Team Avg.:** Dontae Flemons, Childress 24.1, Michael Matthews, Bushland 20.5, Derek Amador, Kress 20.1, Terry Menefield, Wheeler 19.4, Johnny Gaines, Clarendon 19.3, Ian Smith, Valley 19.1, Rily Urban, Gruver 18.6, Tate Batton, Spearman 18.5, Tyson Turnbow, Muleshoe 17.7, LaQuan McGowan, Boys Ranch 16.9, Tyler Case, Groom 16.5, Thomas Allen, Dalhart 16.0, Tyler Wright, Stratford 15.6, Bryce Cummings, Stratford 15.5, Matthew Stanberry, Friona 15.5, Boone Tyson, Follett 15.0, Johnny Venzor, Wheeler 13.7, Chip Morris, Vega 13.7, Jacob Torres, Groom 13.7, Brock Moudy, Happy 12.3, Cameron Gruhlkey, Vega 12.2, Justin Gannaway, Childress 12.2, Travis Price, River Road 11.9, Eric Rohrbach, Vega 11.3, Robert Lewis, Wheeler 11.1

**Individual Rebounding**  
**Player, Team Avg.:** LaQuan McGowan, Boys Ranch 13.9, Tyler Case, Groom 10.5, Matthew Stanberry, Friona 10.0, Tyler Wills, Gruver 9.6

Brady Harwell, Vega 9.6, Sheldon Franks, Follett 9.5, Chip Morris, Vega 9.3, Michael Matthews, Bushland 9.2, Cooper Washington, Muleshoe 9.2, Brock Moudy, Happy 9.0, Rily Urban, Gruver 8.3, Harper Scofield, Dalhart 8.3, Tre Brown, Clarendon 8.0, Tucker Sherman, Valley 7.8, Tyler Wright, Stratford 7.3, Kyle Horsford, Stratford 7.0, Terry Menefield, Wheeler 7.0, Travis Price, River Road 6.8, Taylor Fields, Groom 5.7, Dontae Flemons, Childress 5.6, Tyler Babcock, Groom 5.2

## Class 3A-2A-1A Girls

**Team Offense**  
**Team Avg.:** Valley 58.1, Happy 56.7, Wellington 56.4, Spearman 55.3, McLean 54.6, Memphis 50.0, Gruver 49.2, Muleshoe 47.5

**Team Defense**  
**Team Avg.:** Wellington 30.7, Gruver 31.0, Valley 39.1, Happy 39.9, McLean 39.8, Spearman 40.9, Memphis 48.5

**Individual Scoring**  
**Player, Team Avg.:** Morgan Ashmore, Spearman 20.4, Ashlynn Knoll, Happy 18.9, Sheri Haynes, McLean 18.7, Skyler Warwick, Wellington 17.1, Cassandra Ross, Memphis 15.9, Mattie Yanke, Gruver 15.8, Sarah Johnson, Muleshoe 15.3, Alexis Menefield, McLean 14.8, Madison McLain, Gruver 14.4, Macy Davis, Memphis 13.7, Lacie Pointer, Valley 13.1, Yvonne Gardea, Muleshoe 12.5, LaChrista Nash, Wellington 12.4, Lisa Rinker, Perryton 12.3, Leanna Espinosa, Spearman 10.2, Meagan Bell, Happy 10.2, Payton Price, Valley 10.0

**Individual Rebounding**  
**Player, Team Avg.:** Cassandra Ross, Memphis 13.8, Macy Davis, Memphis 10.9, Mattie Yanke, Gruver 9.8, Skyler Warwick, Wellington 9.1, Shelby Hanna, Spearman 8.8, Yvonne Gardea, Muleshoe 8.3, Lisa Rinker, Perryton 8.0, Val Olivas, Muleshoe 7.7, Ashlynn Knoll, Happy 7.6, Ykevia Henderson, Memphis 6.6, Kelsey Kelley, Valley 6.5, Payton Price, Valley 5.9, Lacie Pointer, Valley 5.9

**Palace Theatre**  
210 Main Street  
Canadian TX 79014  
806-323-5133  
www.palacetheatre.com

**First State Bank**  
will be closed  
on Monday, February 15th, in observance of

**PRESIDENT'S DAY**  
**FSB**  
The Bank that has the Tradition of Strength and Service  
One NE Court  
Spearman, Texas  
(806) 659-5565  
member FDIC

We salute the 4-H and FFA youth for demonstrating personal responsibility, exhibiting high standards in animal care and promoting production agriculture.

**SIMPLE SIMON'S PIZZA**  
312 Main St. (806) 659-9991 Spearman

**The Hansford County Reporter-Statesman**  
Salutes  
the 4-H and FFA youth for demonstrating personal responsibility, exhibiting high standards in animal care and promoting the production agriculture.

**Spearman Housing Authority Projects for 2010**

The Spearman Housing Authority is currently considering the following projects for 2010 pertaining to its 5 duplex apartment buildings and grounds:

- Repairing/Cleaning/Re-painting metal roofs
- Repairing/Caulking/Re-painting of soffits & trim & installation of covered guttering system
- Re-modeling front porches and sidewalks of 9 apartment entrances to improve accessibility
- Replacement of windows with Simonton Generations series welded vinyl replacement windows, or close equivalent (quote for each building)
- Replacement of cook stoves (gas, with electric ignition), overhead vent hoods with light, water heaters (tall, 30-gal., electric), refrigerators (17 c.f.) (All quotes for appliances should include delivery/installation charges and 48-hour service guarantee.)
- Installation of 4 separate sewer lines
- Installation of Housing Authority-wide watering system
- Installation of storm shelter (for up to 30 persons)

*In addition, Spearman Housing Authority from time to time has need of electricians, plumbers, a/c & heating specialists, carpenters, general handymen and lawn care individuals/contractors. Interested parties may specify availability and apply to be added to our call list. Contact Beverly Cook at (806) 659-9990; leave message on answering machine, if necessary.*

**Spearman Housing Authority - (806) 659-9990**



**MARKET STEER RESULTS**

**01 Lightweight**  
1 Kaitlyn Stedje, Gruver 4-H; 2 Tate Batton, Spearman 4-H; 3 Ry Clark, Morse 4-H; 4 Lexi Batton, Spearman 4-H; 5 Braxton Aguilar, Gruver 4-H; 6 Hudson Williams, Gruver 4-H

**02 Medium weight**  
1 Callie Stedje, Gruver FFA; 2 Bailey Stedje, Gruver Jr. FFA; 3 Travis Stedje, Gruver 4-H; 4 Jace Lane, Morse 4-H; 5 Taos Anderson, Gruver 4-H; 6 Audrey Lieb, Morse 4-H

**03 Heavy weight**  
1 Jacob Lieb, Morse 4-H; 2 Brenna Reid, Morse 4-H; 3 Trace Patterson Spearman 4-H; 4 Reese Clark, Morse 4-H; 5 Sierra Butman, Gruver 4-H; 6 Rayel Anderson, Gruver 4-H

**04 Heavy weight**  
1 Tyler Stedje, Gruver Jr. FFA; 2 Zane Patterson, Spearman 4-H; 3 Sabrina Butman, Gruver 4-H; 4 Lauren Patterson, Spearman 4-H; 5 Macy McLennan, Gruver 4-H

**MARKET LAMB RESULTS**

**01 Fine Wool**  
1 Gena Gillispie; 2 Lane Farrar; 3 Braxton Crane, Gruver 4-H; 4 Shakota Field, Morse 4-H; 5 Kyler Cator, Spearman 4-H; 6 Rayel Anderson, Gruver 4-H; 7 Colton Cator, Spearman 4-H; 8 Halston Kenney, Spearman 4-H

**02 Medium Wool**  
1 Brenna Reid, Morse 4-H; 2 Jonathan Crowl, Morse 4-H; 3 Kaitlyn Stedje, Gruver 4-H; 4 Karissa Martinez, Spearman 4-H; 5 Kaycee Anderson, Gruver 4-H; 6 Haylee Miesner, Morse 4-H

**03 Medium Wool**  
1 Tylo Farrar; 2 Lane McNett, Gruver 4-H; 3 Travis Stedje, Gruver 4-H; 4 Beau Brown, Spearman 4-H; 5 Emilyn Robinson, Morse 4-H; 6 Dakota Cator, Gruver 4-H

**04 Medium Wool**  
1 Jennifer Crowl, Morse 4-

H; 2 Hadlee Spivey, Gruver Jr. FFA; 3 Trenton Finley, Gruver 4-H; 4 Katie Miesner, Morse 4-H; 5 Sheldon Field, Morse 4-H; 6 Dustyn Kelley, Spearman 4-H

**05 Medium Wool**  
1 Jace Lane, Morse 4-H; 2 Reese Clark, Morse 4-H; 3 Kevin Ruiz, Spearman 4-H; 4 Katy McLennan, Gruver 4-H; 5 Allison Brown, Spearman 4-H; 6 Daniel Jarvis, Spearman 4-H; 7 Brantly Shields, Spearman 4-H; 8 Megan Stedje, Gruver 4-H

**06 Medium Wool**  
1 Lauren Ferguson, Spearman 4-H; 2 KD McCloy, Gruver 4-H; 3 Cooper DeArmond, Spearman 4-H; 4 Richard Jarvis, Spearman 4-H; 5 Makenzie Crane, Gruver 4-H

**07 Medium Wool**  
1 Matthew Jarvis, Spearman 4-H; 2 KD McCloy, Gruver 4-H; 3 Cooper DeArmond, Spearman 4-H; 4 Richard Jarvis, Spearman 4-H; 5 William Robinson, Morse 4-H

**MARKET SWINE RESULTS**

**OPB**

**01 OPB**  
1 Kyler Cator, Spearman FFA; 2 Brenna Reid, Morse 4-H; 3 Reed Anderson 4 Kaycee Anderson, Gruver 4-H

**02 OPB**  
1 Megan Stedje, Gruver 4-H; 2 Joslyn Aguilar, Gruver 4-H; 3 Joe Martinez, Spearman FFA; 4 Karissa Martinez, Spearman 4-H

**Duroc**

**03 Duroc**  
1 Wyatt Poer, Gruver Jr. FFA; 2 Mabry Sutterfield, Spearman 4-H; 3 Caylin Brown, Spearman 4-H; 4 Molly Lieb, Morse 4-H; 5 Lexi Batton, Spearman 4-H; 6 Hunter Kenney, Spearman 4-H

**04 Duroc**  
1 Ashlyn Miner, Gruver FFA; 2 Reece Shields, Spearman 4-H; 3 Trace Patterson, Spearman 4-H; 4 Joshua Martinez, Spearman FFA; 5 Ryan Schnell, Spearman 4-H;

6 Allison Brown, Spearman 4-H

**Hampshire**

**11 Hampshire**  
1 Thaxton Boyd, Spearman 4-H; 2 Nikki Boyd, Spearman FFA; 3 Cooper Lieb, Morse 4-H; 4 Trenton Finley, Gruver 4-H; 5 Halston Kenney, Spearman 4-H; 6 Colton Cator, Spearman 4-H

**12 Hampshire**

1 William Robinson, Morse 4-H; 2 Kevin Ruiz, Spearman 4-H; 3 Carlee Johnson, Morse 4-H; 4 Rily Urban, Gruver FFA; 5 Sheldon Field, Morse 4-H

**13 Hampshire**

1 Jace Lane, Morse 4-H; 2 Greyson Karlin, Gruver FFA; 3 Blaine Pack, Spearman FFA; 4 Kambree Desmond, Gruver 4-H; 5 Beau Brown, Spearman 4-H; 6 Makenzie Caddick, Gruver 4-H

**14 Hampshire**

1 Bailey Rae Poer, Gruver Jr. FFA; 2 Shelby Williams, Gruver FFA; 3 Carson Williams, Gruver Jr. FFA; 4 Dax Haight, Gruver Jr. FFA

**15 Hampshire**

1 Cory Graves, Gruver FFA; 2 Sabrina Butman, Gruver 4-H; 3 Carter Burgin, Spearman 4-H; 4 Kennedy Venneman, Gruver Jr. FFA; 5 Parker Grotgut, Gruver FFA

**Yorkshire**

**31 Yorkshire**  
1 Shakota Field, Morse 4-H; 2 Isvy Acosta, Spearman FFA; 3 Zane Patterson, Spearman 4-H; 4 Brantly Shields, Spearman 4-H; 5 Hannah Patterson, Spearman 4-H

**32 Yorkshire**

1 Bailey Stedje, Gruver Jr. FFA; 2 Madison Williams, Gruver Jr. FFA; 3 Jennifer Crowl, Morse 4-H; 4 Sawyer Sutterfield, Spearman 4-H

**33 Yorkshire**

1 Matthew Jarvis, Spearman FFA; 2 Hadlee Spivey, Gruver Jr. FFA; 3 Tyler

Stedje, Gruver Jr. FFA; 4 Blake Fitzgearld, Gruver FFA

**Cross**

**41 Light Cross**  
1 Audrey Lieb, Morse 4-H; 2 Bryce Jarvis, Spearman 4-H; 3 Tate Batton, Spearman 4-H; 4 Skyler Sumner, Spearman FFA; 5 Steven Johnson, Morse 4-H; 6 Daniel Jarvis, Spearman 4-H

**42 Light Cross**  
1 Braedon Ralston, Gruver 4-H; 2 Sierra Butman, Gruver 4-H; 3 Emilynn Robinson, Morse 4-H; 4 Kennedy King, Gruver Jr. FFA; 5 Reese Clark Morse 4-H

**43 Light Cross**  
1 Callie Stedje, Gruver FFA; 2 Jesus Mendoza, Spearman FFA; 3 Lonnie Born, Gruver FFA; 4 Keegan Kelp, Spearman 4-H; 5 Ry Clark, Morse 4-H

**44 Light Cross**  
1 Karsten Irwin, Gruver Jr. FFA; 2 Dakota Cator, Spearman FFA; 3 Jack Karlin, Gruver FFA; 4 John Bergin, Gruver FFA; 5 Caleb Miller, Gruver FFA; 6 Tate Tyler, Gruver Jr. FFA

**45 Light Cross**  
1 Michaela Davis, Gruver Jr. FFA; 2 Tyann Hight, Spearman 4-H; 3 Lilly Patterson, Spearman 4-H; 4 Trenton Baird, Spearman 4-H; 5 Tanner Baird, Spearman 4-H

**46 Light Cross**  
1 Malory Martin, Spearman 4-H; 2 Creed Spivey, Gruver Jr. FFA; 3 Jonathan Crowl, Morse 4-H; 4 Kylie Thomas, Gruver 4-H; 5 Trent Goodheart, Spearman FFA

**51 Dark Cross**  
1 Macy Haight, Gruver Jr. FFA; 2 Klaire Irwin, Gruver Jr. FFA; 3 Richard Jarvis, Spearman 4-H; 4 Jaci Burgin, Spearman 4-H; 5 Blaise Davis, Gruver Jr. FFA; 6 Hudson Williams, Gruver 4-H

**52 Dark Cross**

**Thank You!**  
Hansford County Jr. Livestock Show photos courtesy of Lisa Johnson of Gruver.

**CONGRATULATIONS**

to all the boys and girls in FFA and 4-H on a great job in the 2010 Hansford County Jr. Livestock Show!

**Gruver Ford**

531 Main Ave. • 733-2431 • Gruver TX

**HATS OFF**



to all the boys and girls in 4-H & FFA who

participated in the Hansford County Livestock Show & Sale!

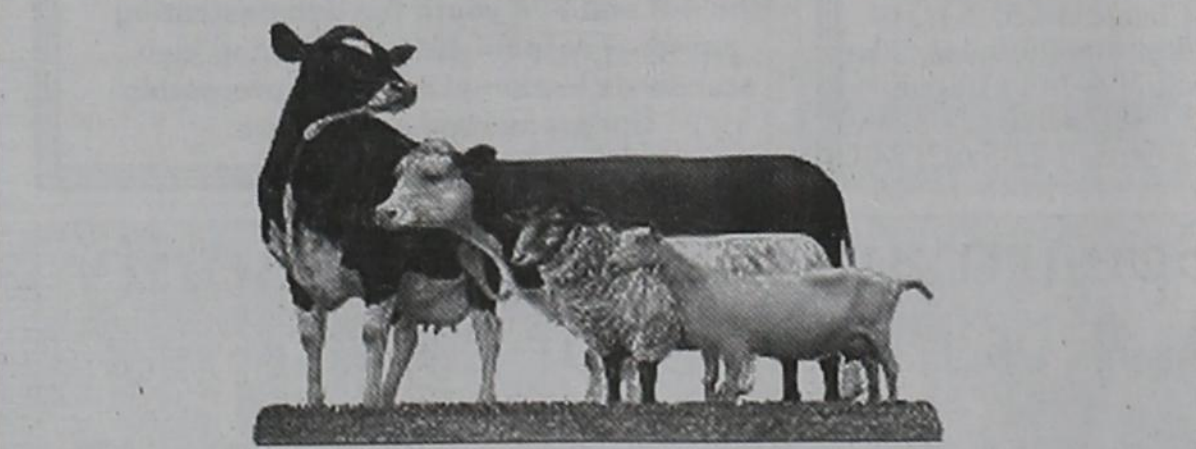


AMARILLO CREDIT OFFICE 5700 West 45th Street Amarillo, Texas 79109 806-353-6688 806-353-7389 Fax

PERRYTON CREDIT OFFICE 506 South Main Perryton, Texas 79070 806-435-4319 806-435-4280 Fax

Proud to support events like the Hansford County Livestock Show that promote strong family ties.

**GORDON'S DRUG & PHOTO**  
314 Main Spearman, TX 79081  
Tel: 806-659-2141 Fax: 806-659-5135 www.gordonsdrug.com



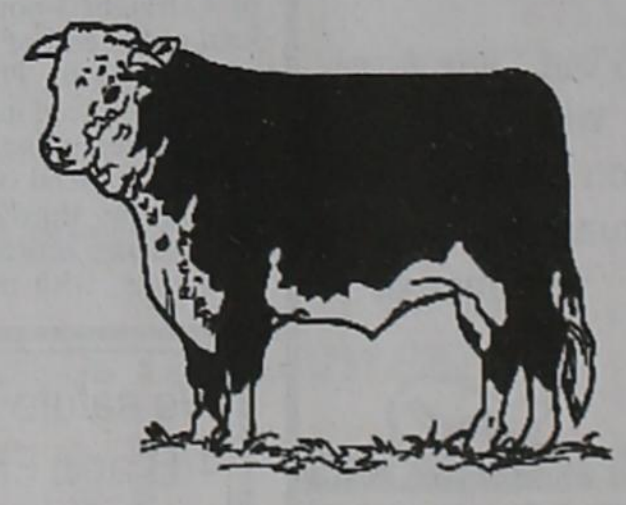
**CONGRATULATIONS!**

WE ARE PROUD TO SUPPORT OUR AREA YOUNGSTERS!

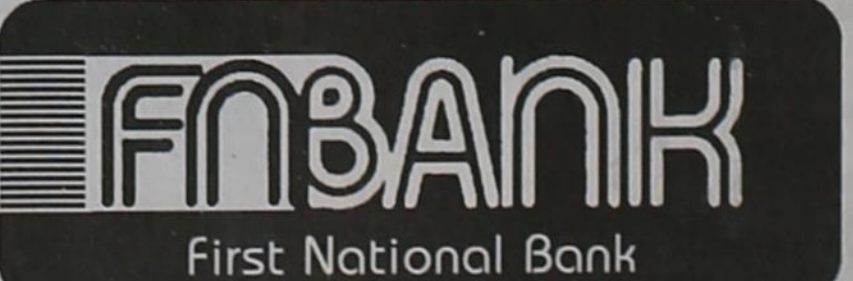
**ADOBE WALLS GIN**

**JERRELL KEY**  
MANAGER  
10175 SH 51  
SPEARMAN, TX 79081  
(806) 659-2574  
(806) 659-1032 FAX  
(806) 653-7631 MOBILE  
adobe\_walls@pcna.com  
A • W • G

We're proud to support Hansford County youth involved in the



Livestock Show and Sale

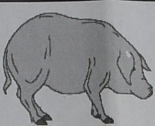


Spearman, Texas 79081 Dumas, Texas 79029  
806-659-5544 806-934-8455  
800-583-4196 866-583-4196  
Member FDIC



We're proud to support  Hansford County youth involved in the Livestock Show and Sale

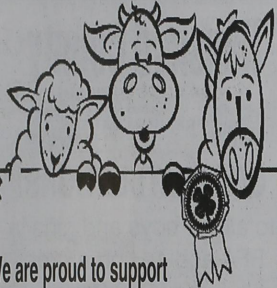
**MurMur's Cafe**  
100 Roland St. Spearman (806) 659-3580

 Proud to support events like the Hansford County Livestock Show that promote strong family ties.

**Hansford County Vet Clinic**  
Spearman, TX • 659-2100

**The Bunkhouse Restaurant Salutes**  
the 4-H and FFA youth for demonstrating personal responsibility, exhibiting high standards in animal care and promoting production agriculture.

**The Bunkhouse Restaurant**  
212 Main Street • Spearman  
(806) 659-2089


 We are proud to support Hansford County youth involved in the Livestock Show and Sale.

**Golden Spread Sales Co.**  
414 S. Hwy. 207 • Spearman TX  
(806) 659-3776

We salute all the participants of the 2010 Hansford County Livestock Show

**B&B Sales Co.**  
205 Dillon • 659-2662 • Spearman

**Congratulations to all participants in the Hansford County Junior Livestock Show and Sale.**

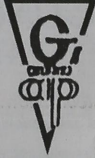
*We salute our ag teacher, Jackie Burkhalter, and the good things our kids do!* 

**Spearman Independent School District and Board of Trustees**

**Congratulations**


 4-H & FFA on a job well done!

**H&H Water Well Service Inc.**  
Gruver Highway • Spearman TX  
659-5577

 **Gigot Agra Products, Inc.**  
"Committed to making things better in and out of the field."

**Congratulations to all the exhibitors in the Hansford County Livestock Show & Sale.**

Gigot Agra Products, Inc.  
506 Hwy. 207 South  
Spearman, Texas  
(806) 659-3121

 **VALLEY**  
Precision Irrigation Made Easy

**CONGRATULATIONS FFA & 4-H Members!**


*We salute you on all your hard work!*


**North Plains Electric Co-op**  
14585 N. Hwy. 83 • Perryton, Texas  
(806) 435-5482 • 1-800-272-5482

**Congratulations!**

to all the youth who participated in the Hansford County Junior Livestock Show & Sale.

*We believe in the future of farming and ranching!* 

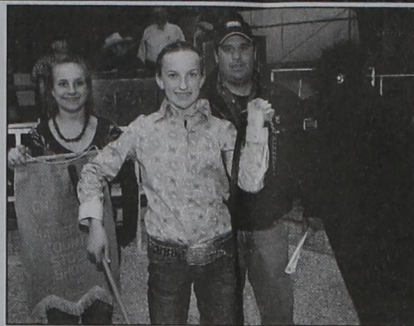
from the employees, officers and directors of

 **Gruver State Bank**  
3 Main Plaza • (806) 733-5061 • Gruver, TX  
member FDIC





Reserve Grand Champion Lamb  
Jonathan Crowl  
Purchased by Hansford Implement (Mike Cudd)



Reserve Grand Champion Steer  
Bailey Stedje  
Purchased by Dr. Dietmar & Kay Kennel



Reserve Grand Champion Swine  
Michaela Davis  
Purchased by Lynn Stedje

Supporting all the participants in the Hansford County Livestock Show




-----

**Lowe's Marketplace**

Plains Shopping Center • Spearman  
(806) 659-2522

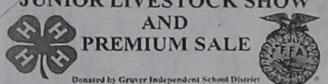
**CONGRATULATIONS!**

We're proud to support Hansford County youth involved in the Livestock Show!



1-800-562-2556      www.ptci.net

**Hansford County**  
JUNIOR LIVESTOCK SHOW AND PREMIUM SALE



Donated by Gruver Independent School District

**CONGRATULATIONS!**

to all the boys and girls in FFA and 4-H on a great job in the 2010 Hansford County Livestock Show.

-----

**Hungry Cowboy**  
Hwy. 207 S. • Spearman • 659-5151

**We're Proud Of You!**

We are proud of the young people -- FFA and 4-H youth -- adults and sponsors who participated in and helped with the 2009 Hansford County Livestock Show.

-----

**Five Star Equipment, Inc.**  
Spearman, Texas ★★★★★ (806) 659-3743

**CONGRATULATIONS!**  
4-H & FFA Members!

First State Bank is proud to be involved in various community activities, such as the Hansford County 4-H & FFA Livestock Show. We would like to congratulate all of the participants.

**FSB**

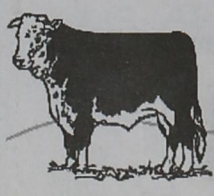
**FIRST STATE BANK**  
"The Good Ag Bank"

1 NE Court • 806-659-5565 • Spearman TX 79081  
member FDIC

**Working For The FUTURE**  
Supporting the Youth of Hansford County

We want to take this opportunity to recognize the farming and ranching youths of our area.

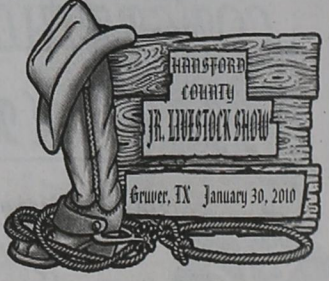
Your hard work was very evident when you displayed your animal projects at the Hansford County Livestock Show.



**INTERSTATE BANK, ssb**  
www.interstatebank.net

322 Main Street • Spearman, TX  
(806) 659-2559

We're proud to support Hansford County youth involved in the Livestock Show and Sale



-----

**hchd**  
Hansford County Hospital District

Dr. Mark Garnett, DO      Michelle Davis, PA-C  
Dr. Hasham, MD

707 S. Roland • Spearman, TX  
(806) 659-2535



**REAL ESTATE**

**FOR RENT:** 1BR furnished apartment and 2BR furnished apartment. Bills paid, free laundry services. Call 659-2247.  
**TFN(1/14/10)**  
**FOR LEASE:** 2 Bedroom apartment, \$375.00 month, \$375.00 deposit, water paid, NO PETS. Call Larry O'Neal at 405-285-8782. Available immediately.  
**TFN(12/10/09)**  
**FOR SALE:** 21 Hazelwood - 3BR, LgB, 2 1/2 lots, 2 car port, 4 storage buildings, storm shelter, central heat. Call 659-3935.  
**TFN(12/10/09)**  
**WINDMILL COURTYARD APARTMENTS:** 2BR, 1B unfurnished apartments. Central heat and air, new appliances. Pets allowed with additional deposit. Utilities not included. \$500/month rent with \$500 deposit. Inquire about applications at Deakin Electric, 321 Main St., Spearman. **TFN(7/16/09B)**  
**FOR RENT:** Spearman - 2BR, 2 1/2B, Lg. open area, central H/A. \$495/month, \$495 deposit. Call 940-631-0894. **TFN(1/7/10)**  
**READY FOR MOVE-IN!** 3 BR home, central H/A, hardwood floors, new paint & lighting, large bath w/2 sinks + tub/shower, lots of built-in storage, laundry rm, attached garage, huge fenced yard. 1017 Townsend St. **REDUCED TO \$59,500!** Call 659-5293 or 330-0384. **TFN(1/21/10)B**

**HELP WANTED**

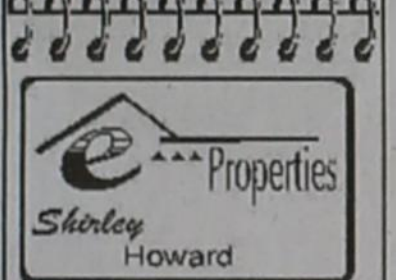
**MYSTERY SHOPPERS WANTED:** National Market Research Company seeks individuals to evaluate local establishments service. Apply at [www.bestmark.com](http://www.bestmark.com) 3(1/28/10)P

**Blankenship Real Estate**  
 659-3052 - 670-3774

- 4BR/2B/2CG Home - Basement, pool, central H/A, fireplace
- 3BR/2B Home - 1500 sq. ft, brick, 2CG, patio, walk-in closets
- 3BR/2B Home - 1460 sq. ft, brick, 2CG, patio, walk-in closets.

**NEW LISTINGS WANTED!**

Eulalia Blankenship - Sales  
 Eschol Blankenship - Broker



**We NEED listings!**  
 Call us now to help YOU sell your home for top dollar!

1020 Evans - Spearman: 1,869 sq. ft. 4 bed, 1 3/4 bath, 2 car garage. UNDER CONTRACT. \$129,900. Call 866-886-6536.  
 501 Barkley - Spearman: 2,490sf, 3-4BR, 1 1/2B, CACH, 2 att gar, includes 700 sf basement, plus wood shop! VERY modern and updated!  
 902 9th - Gruver: Horse Stables FOR SALE! 18 pens, circular training pen, arena, & 4500 sf barn on 10.42 acres! **PRICE REDUCED!!**  
 712 Womble - Gruver: 1070sf, 3 BR, 1 B, Central Heat, Lrg Corner Lot! **REDUCED!**  
 Shirley Howard, Broker/Owner  
 806-886-6536, Cell  
 Melinda McCullough, Realtor  
 (806) 733-5678  
 We would LOVE to sell your HOUSE!  
**CALL US!**

**HELP WANTED:** Outreach Health Services is hiring an attendant for Spearman. 4 hours a week, must be 18+. For more information, please call Mary at 806-373-0986 or 1-800-800-0697. EOE. 3(1/28/10)  
**HELP WANTED:** First United Methodist Church, Spearman is currently taking applications for a nursery worker. Need to be available for Sunday church services and various times throughout the week and for funerals. If interested, please come by the church to pick up an application. (407 S. Haney, Spearman, 806-659-5504) 4(2/4/10)B  
**HELP WANTED:** Spanish-speaking LVN needed for pediatric patient. Call 806-355-1899. Fax resume to 806-355-4312. Position available immediately. 3(2/11/10)

**SERVICES**

**CLICK PAINTING & HOME REPAIR** Painting, Texturing, Drywall Repair, Fencing & General Carpentry. Serving Perryton, Spearman & Gruver. Don Click, 648-1480, or 202-1391 (cell). **TFN(10/15/09)**  
**HOOCY POOCY PARLOR** Call us for all your pet's grooming and boarding needs. Call now for reservations! 806-273-2724. **TFN(11/2/07)**

**AUTOMOBILES**

**2006 HUMMER H3** yellow, 24" wheels, excellent condition; leather. \$16,995. For more information, call Devin or Mandy at 806-878-3944. **TFN(12/10/09)**  
**2005 NISSAN ARMATA** excellent condition inside and out; entertainment, navigation and leather. \$15,995. For more information, call Devin or Mandy at 806-878-3944. **TFN(12/10/09)**

**PUBLIC NOTICE**

**INVITATION FOR BIDS**  
 Sealed proposals addressed to the **Honorable Mayor and City Commission of the City of Gruver, Texas**, for the seal-coating of approximately

27,670 square yards of streets and alleys entitled: **SEALCOATING - 2010** will be received at the office of the **City Manager of the City of Gruver at City Hall, 201 E. Broadway, P.O. Box 947, Gruver, Texas, 79040** until:

**11:00 A.M. February 24, 2010**  
 A cashier's check, certified check or acceptable bidder's bond, payable to the Owner an amount equal to not less than five percent of the bid submitted, must accompany each bid as guarantee that, if awarded the contract, the Bidder will, within fifteen days after receipt of Contract Documents, enter into a contract with the Owner and will execute bonds on the forms provided in the Contract Documents. Any bid received after the time and date listed above will be returned unopened and will not be considered.

Bidders are expected to inspect the site of the work and inform themselves regarding all local conditions. Contract Documents are on file and may be examined in the office of the City Manager, City of Gruver, 201 E. Broadway, P.O. Box 947, Gruver, Texas 79040, phone (806) 733-2424, and the office of Brand Engineers, Consulting Engineers, 4537 Canyon Drive, Amarillo, Texas 79110, telephone (806) 353-7233. Plans and Specifications may be obtained from the Engineers, Brand Engineers, 4537 Canyon Drive, Amarillo, Texas 79110, phone (806) 353-7233 in the following manner:

Cost: Fifty Dollars (\$50.00), non-refundable, for each set of plans and specifications. Performance and Payment bonds shall be set forth in the Contract documents. The Owner reserves the right to reject any or all bids and to waive any informalities in the bidding. In case of ambiguity or lack of clearness, the Owner reserves the right to adopt such interpretations as may be most advantageous or to reject the bid as informal. No bid may be withdrawn until the expiration of 30 days from the bid opening date.

**CITY OF GRUVER**  
**BUSTER DAVIS, MAYOR**  
 2(2/4/10)B

**CUSTOMERS OF PANHANDLE TELEPHONE COOPERATIVE, INC.:**  
 Effective January 1, 2010, the amount of the Federal Universal Service Charge (FUSC) appearing on your bill each month will increase as a result of an increase in the Federal Communications Commission's (FCC) universal service fund contribution factor from 12.3 percent to 14.1 percent. The new FUSC amount is calculated by multiplying the FCC's universal service contribution factor against your interstate access service charges. The federal universal service fund program is designed to help keep local telephone service rates affordable for all customers, in all areas of the United States.  
**Panhandle Telephone Cooperative, Inc.**  
 Ron Strecker, CEO  
 PO Box 1188  
 2222 NW Hwy 64  
 Guyton, OK 73942  
 580-338-2556  
 1-800-562-2556  
 1(2/11/10)B

**NOTICE FOR PROPOSALS**  
 Competitive sealed proposals for multiple category construction contracts for the 2010 High School Renovations and Ag Science Restroom Addition, an addition to the Spearman Independent School District, will be received by the Board of Trustees until 2:00 PM, Local Time, Thursday, February 25, 2009, then publicly opened and read aloud. Proposals shall be addressed to the Owner, Rodney Sumner, Superintendent, Spearman Independent School District, 403 E. 11th Avenue, Spearman, Texas 79081. Plans and Specifications may be obtained or examined at the following locations on that charge:

Stephen L. Butler, Architect; A+E Design Group, Inc.; 300 T-Anchor View; Canyon TX 79015; Phone - (806) 655-9361; Email - slb.architect@mac.com  
 Huseman Builders, Inc.; Construction Manager; 1001 23rd Street; Canyon TX 79015; Phone - (806) 557-4088; Email - husemang@arn.net  
 or  
 ABC Blueprint; 906 S. Tyler Street; Amarillo, Texas 79101; Phone - (806) 376-5671; Web site - [www.blueprinter.com](http://www.blueprinter.com).  
 By submitting a proposal, the proposer agrees to waive any claim against Spearman Independent School District, Greg Huseman, or Stephen L. Butler, Architect made in connection with the administration, evaluation or recommendation of any proposal.  
 2(2/11/10)B

**NOTICE TO CREDITORS**  
 Notice is hereby given that original Letters Testamentary for the Estate of Elizabeth L. Phelps, Deceased, were issued on January 4, 2010, in Cause No. PO-2589, pending in the County Court of Hansford County, Texas, to: Estate of Elizabeth L. Phelps.  
 All persons having claims against this Estate which is currently being administered are required to present them to the undersigned within the time and in the manner prescribed by law.  
**c/o Estate of Elizabeth L. Phelps**  
**Howell Phelps**

County Court of Hansford County, Texas, to: Joe S. Jenkins, II.  
 All persons having claims against this Estate which is currently being administered are required to present them to the undersigned within the time and in the manner prescribed by law.  
**Joe S. Jenkins, II**  
**Independent Administrator of the Estate of Joe Stanley Jenkins, Deceased**  
 c/o John B. Atkins  
 PO Box 9158  
 Amarillo TX 79105-9158  
**DATED the 4th day of February, 2010.**  
 Respectfully submitted,  
**UNDERWOOD, WILSON, BERRY, STEIN & JOHNSON, P.C.**  
 PO Box 9158  
 Amarillo TX 79105-9158  
 Phone: (806) 376-5613  
 Fax: (806) 349-9471  
 By: John B. Atkins,  
 State Bar No: 24050237  
 Attorneys for Joe S. Jenkins, II  
 1(2/11/10)B

**NOTICE TO CREDITORS**  
 Notice is hereby given that original Letters Testamentary for the Estate of Elizabeth L. Phelps, Deceased, were issued on January 4, 2010, in Cause No. PO-2589, pending in the County Court of Hansford County, Texas, to: Estate of Elizabeth L. Phelps.  
 All persons having claims against this Estate which is currently being administered are required to present them to the undersigned within the time and in the manner prescribed by law.  
**c/o Estate of Elizabeth L. Phelps**  
**Howell Phelps**

**Local Man Gallops 1.2 Miles Without Pain**  
**BEXAR COUNTY** - After using Thera-Gesic® pain crème on his sore legs, Tom W. was comfortably romping through town while laughing, according to witnesses. When asked about the laughing, he replied, "The price on this product is silly!"  
  
 Go painlessly with Thera-Gesic®

8610 Robbie Dr. Austin TX 78759  
**DATED the 4th day of February, 2010.**  
 Respectfully submitted,  
**BILLY BRITT JARVIS,**  
**ATTORNEY FOR ESTATE OF ELIZABETH L. PHELPS**  
 State Bar No.: 10585000  
 Billy Brit Jarvis,  
 Attorney at Law  
 PO Box 515  
 Spearman TX 79081  
 Phone: (806) 659-2554  
 Fax: (806) 659-3517  
 1(2/11/10)B

6	8	7	2	3	5	9	4	1
9	2	1	6	4	8	5	3	7
3	5	4	1	7	9	6	2	8
7	6	2	5	1	4	8	9	3
4	1	3	8	9	2	7	5	6
8	9	5	3	6	7	4	1	2
2	4	9	7	8	1	3	6	5
1	3	8	9	5	6	2	7	4
5	7	6	4	2	3	1	8	9

MAJOR	MEW	SLAP
ERASE	AGO	SWINE
RANCH	ROM	PASTE
BEAUTY	ABIGAIL	
	RNA	SNUG
RCA	GULL	NODOFF
HENS	NEAT	TENOR
EDGE	TALON	BALI
TALER	DONA	SILD
TREMOR	MEOW	RYA
	DIBS	MAO
ELEANOR	GINGER	
CEASE	USA	GLOAT
RASPY	IRE	LENTO
UKES	NIL	ESSAY

**MARTIN & ASSOCIATES REALTY**  
 Serving Hansford County for 15 years  
 Julie Martin: Broker - 659-2425  
**PRICE REDUCED ON BOTH 804 & 806 Wilbanks**  
 New Construction. Call for your private showing!  
**We'd Like Your Listing!**  
**FOR QUALITY & SERVICE CALL US TODAY!**  
 Equal Housing Opportunity

**hchd**  
 Hansford County Hospital District  
**Openings at Hansford Hospital**  
**RN:** 7pm-7am. Graduate of an accredited School of Professional Nursing. Currently licensed in the State of Texas. BCLS, ACLS and TNCC preferred. CPR required.  
**Openings at Hansford Manor**  
**LVN:** Graduate of an approved LPN/LVN program. Must be able to make independent decisions when circumstances warrant. Must possess the ability to deal tactfully with residents, family and public.  
**CNA:** CNA certification required. Must be able to provide assigned residents with routine daily nursing and services in accordance with the resident's assessment and care plan, and as may be directed by your supervisor.  
 Great working environment and staff, quality facility providing opportunities for professional growth. Great benefit package. Apply at 707 S. Roland, Spearman, TX or contact Jackie Nelson at 806-659-5841. Download application at [www.hchd.net](http://www.hchd.net)  
 EEOE (1-21-10)B

**REGLAN** Parkinson's Like Symptoms  
 Tongue Protrusions  
 Frowning, Facial Twitching  
 Reglan® (metoclopramide) has been linked to a serious condition called Tardive Dyskinesia (TD), which causes involuntary movements of the tongue, face or mouth, lip smacking, shakes, NMS, Dystonia, Akathisia and other Parkinson's-like symptoms.  
 In Feb. 2009, the FDA required the manufacturers of Reglan® to include Black Box Warnings regarding the drug's usage for more than 12 weeks.  
 If you or a loved one has suffered severe side effects after taking Reglan® you may be entitled to compensation. Cases taken on a Contingency Fee Basis. Call for a Free Case Consultation  
**WILLIS LAW FIRM**  
 HOUSTON, TEXAS  
**BOARD CERTIFIED**  
**PERSONAL INJURY TRIAL LAWYER**  
 Texas Board of Legal Specialization  
 DAVID P. WILLIS - ATTORNEY AT LAW  
**1-800-883-9858**

**BUY HERE! PAY HERE!**  
**We Finance!**  
**CLASSIC CLOSED CARS, INC.**  
 Devin Cook  
 Manager  
 (806) 878-3944  
 724 S. Main Street  
 Stinnett TX 79083

**SHOW YOUR APPRECIATION**  
 with a Thank You ad in the Reporter-Statesman  
**Thank You!**  
 Many thanks to (Buyer's Name) for purchasing my (type of animal) at the Hansford County Jr. Livestock Show.  
**Your Name**  
**Only \$15<sup>00</sup>**  
 Ads may be placed by calling the  
**Hansford County Reporter-Statesman at 806-659-3434.**  
 Must be exactly as shown. One animal per ad. To take advantage of this low price, ads must be paid at time of purchase.

**TEXAS STATEWIDE CLASSIFIED ADVERTISING NETWORK**  
**TexSCAN**

**TexScan Week of February 7, 2010**  
**BUSINESS OPPORTUNITIES**  
**ALL CASH VENDING!** Do you earn \$800 in a day? Your own local candy route. 25 machines and candy. All for \$9,995. 1-888-825-5481. Make Your Own, LLC.  
**DRIVERS**  
**DRIVERS-HIRING DEDICATED** drivers. Average \$850-\$1250 per week. Great benefits. Home every 1-2 weeks. 1 year tractor-trailer experience and HS diploma or GED required. Call 1-888-905-5238 or apply online at [www.americancarriers.com](http://www.americancarriers.com). Equal opportunity employer.  
**CDL-A TEAMS WANTED** Celdan company drivers and owners! Paid vacation. Great pay, benefit and home time. 1 year verifiable T/T experience. 1-800-729-9770. [www.DriveCeldan.com](http://www.DriveCeldan.com)  
**EQUIPMENT FOR SALE**  
**NEW NORWOOD SAWMILLS**- Lumber Mate-Pro handles logs 34" diameter, mills boards 27" wide. Automated quick-cycle-sawing increases efficiency up to 40%! [www.NorwoodSawmills.com](http://www.NorwoodSawmills.com) 1-800-661-1776. Ext. 302N  
**HOMES FOR SALE**  
**FORECLOSED HOME AUCTION** 150+ Homes, February 15th, OH: 2/6, 2/13 & 2/14. View full listings at [www.Auction.com](http://www.Auction.com). REDC - BE 0580708

**REAL ESTATE**  
**ABSOLUTELY THE BEST VIEW** Lake Medina/Bandera 1/4 acre tract, central W/S/E. RV/motor home/house, OK only \$830 down \$235 month (12.91%/10yr). Guaranteed financing. More information call 1-830-460-8354  
**\$106 MONTH BUYS** land for RV/motor home/house, pier, boat ramp, pool, clubhouse, gated entry, on Lake Fork. \$699 down (\$699/10.91%/7yr). Guaranteed financing. 1-214-696-2315.  
**22.18 ACRES NORTH** of Brackerville. Rugged, electricity. Native and exotic game, hogs, \$1350/acre, owner or Viet financing. 1-800-876-9720. [www.texasranchland.com](http://www.texasranchland.com)  
**676 ACRES-REEVES** County, 15 Miles North Pecos. River frontage. Call Jack 1-214-755-6224.  
**\$106 MONTH BUYS** land for RV, MH or cabin. Gated entry. \$690 down, (\$690/10.91%/7yr) 90 days same as cash. Guaranteed financing. 1-936-377-3235  
**WEST TEXAS,** Terrell County near Sanderson, Meyers Canyon Rd, 206.25 acres, \$72,187.50. Owner financed or TX Vet. 1-866-286-0199. [www.westtexasland.com](http://www.westtexasland.com)  
**SATELLITE**  
**DISH NETWORK** \$19.99/month. Why pay more for TV? 130+ Channels. FREE 4-Room Install. FREE HD-DVR. Plus \$60! Sign-up BONUS. Call Now! 1-888-433-9266

**SCHOOLS/TRAINING**  
**AIRLINES ARE HIRING.** Train for high paying aviation maintenance career. FAA approved program. Financial aid if qualified. Housing available. Call Aviation Institute of Maintenance. 1-888-349-5387.  
**ATTEND COLLEGE ONLINE** from home. Medical, Business, Paralegal, Accounting, Criminal Justice. Job placement assistance. Computer available. Financial aid if qualified. Call 1-888-205-8920. [www.CenturaOnline.com](http://www.CenturaOnline.com)  
**HIGH SCHOOL DIPLOMA** graduate in 4 weeks! Free brochure! Call now! 1-866-562-3650, ext. 55. [www.southtexasHS.com](http://www.southtexasHS.com)  
**SPRING TRAINING** for a new career in heavy equipment. 3 week Program. Backhoes, bulldozers, tractors. Local job placement assistance. Use Tax Refund towards career! 1-866-362-6497



# Happy Valentine's Day!

**Valentine's Day**  
Tell Someone You Love Them with ROSES!

Long-Stemmed Roses • Fresh-Cut Arrangements  
Green & Blooming Plants  
New Silk Arrangements

Push Animals  
Balloon Bouquets  
Angel Figurines

Order Early!

**All Occasion Flowers**  
202 W. Bernice (across from the Post Office)  
659-5180 • Spearman

**double XXL steakhouse**

**Valentine's Weekend**  
Linda and Charles Stephens, owners and operators of The Double XXL Ranch, Steakhouse and Bed & Breakfast (formerly known as the Flying A Steakhouse), would like to invite you to join them on Valentine's Weekend. They will be serving their special Ribeye Steaks with all the trimmings! Make your reservation now for this special occasion!

For Valentine's Weekend, couples receive a discount for the number of years they have been married.

We serve a 16 oz. Ribeye Steak with all the down-home trimmings for \$25 (+ tip). (We also do ribs, tender loin and brisket that match or exceeds most of the best.) Tea, coffee, water and of course piels! Although steak is our specialty, we can prepare anything you wish, and usually in a very timely manner.

**Best Direction Possible**  
We are approximately at the center between Dumas & Berger on Hwy. 192. Look for the white fence and big white sign with XXL Ranch. (We are 1.4 miles east of Natural Gas Road & 1.4 miles west of Ranch Rd 1913 to take Meredith Turn south at the sign and go approx. 1.2 miles till the drive dead ends into the house & barn. Our address is 7900 Hwy 192, Stanett, TX.

(806) 931-8585 (806-935-3787)

**Valentine's Day Buffet**

- Appetizers Include: Assorted Salads
- Entrees Include: Fried Shrimp, Fried Catfish, Shrimp Scampi, Ribeye, Kabobs, Etc.
- Desserts Include: Chocolate-Covered Strawberries, Dessert Tray

Served with bread, drink and a rose for your date!

**\$18.95 per person**  
Reservations suggested.  
Special love ballads performed by Marlon Sparks.  
Join us for lots of Valentine's Day fun.

5-9 p.m. on Sunday, February 14

**Lobo at Wolf Creek**  
13560 CR U • Perryton TX  
(806) 435-4559

**Bunkhouse Restaurant**  
CELEBRATE WITH US!  
CALL NOW TO MAKE YOUR RESERVATION!

Special Menu Available ON 2/12 & 2/13

**BE MINE**  
Friday & Saturday, Feb. 12 & 13

Prime Rib Special Special Menu  
Prime Rib Special must be reserved in advance.

EXTRA Special Buffet ON Feb. 14th

RESERVATIONS RECOMMENDED

**Bunkhouse Restaurant**  
Spearman's Place for Steak!

212 Main Street • Spearman • (806) 629-2089

**Hours**  
Tuesday-Saturday - 5:00-8:00 p.m.  
Sunday-Friday - 11:00 a.m.-2:00 p.m.

QUALITY AND DESIGN FOR THAT SPECIAL SOMEONE

Order Now for Valentine's Day!

**HANSFORD COUNTY FLORAL COMPANY**  
300 MAIN ST • SPEARMAN, TX • 806-644-4000  
WHERE EXPERIENCE COUNTS

**Valentine's Special**

You better take care of your valentine sweetheart!

Check Out These Great Gift Ideas!  
Perfume and Cologne, Chocolates, T-Shirts, Sunglasses and Jewelry

Sweet Deals for a "Sweet" Day!  
25% Off ALL Valentine Candy  
(Sale effective through Saturday, Feb. 13th)

**Happy Valentine's Day**

**Gordon's DRUG**  
314 Main • Spearman • 659-2141

Valentine's Day A reminder of what Love is... 1 Corinthians 13:4-7

A love held dearly

A remembrance A day to rekindle love

Gift Certificates Available

**Serenity Massage**  
Annette Bynum, LMT  
659-5679 or 341-8941

Open by appointment Mon.-Fri.

**Celebrate Valentine's Day With Us!**

**Tong's Chinese Restaurant**  
(806) 644-2838  
22 Archer Street • Spearman

**Daily Buffet**  
Lunch Buffet 11 a.m.-2:30 p.m.  
Dinner Buffet 5:30-9 p.m.  
Open Wednesday-Monday - Closed Tuesday

**Valentine's Special!**  
Medium 1-Topping Pizza with Calzone or Stromboli

**\$14.99 + Tax**  
SIMPLE GORDON'S PIZZA

**Happy Hour Special**  
3 LARGE PIZZAS \$19.99

312 Main St • Spearman, TX (806) 435-4559

Mon.-Thurs. - 11:00 a.m. - 9 p.m.  
Fri. - 11:00 a.m. - 10 p.m.  
Sat. - 12 noon - 10:00 p.m.  
Sun. - 3-9 p.m.  
Deliveries Available 5-9 p.m., Mon.-Thurs. and 5-9 Fri.-Sun.  
Due to gas prices, a minimum \$10 order is required for delivery. Please remember to tip our drivers.