

## PAGE ONE

A QUICK READ OF THE NEWS

### Texas safari celebrates National Ag Week

COLLEGE STATION — Spaceships, submarines, 4-wheelers, bug mobiles and horses will depart daily beginning Monday, March 15 for an online celebration of National Agriculture Week.

"Texas Safari" is a website being launched by the Texas A&M University agricultural communications unit to point to the wonders of plants and animals that contribute to the state's massive agriculture industry.

The safari, located at <http://agweek.tamu.edu>, is a fun way to hunt for unique places and things in Texas agriculture such as livestock, water, insects, youth issues and wildlife.

"Kids will learn about neat and cool animals in Texas," said Blanca Jackson, Texas Agricultural Experiment Station graphic artist who designed the site. "And it's interactive and creative with sound, video, postcards and games to play along the way."

### Council meeting Tuesday

The Muleshoe City Council will hold its monthly meeting at 8:30 a.m. on Tuesday, March 16, 1999 in the Council Chambers at Muleshoe City Hall.

The council will discuss several issues with Classic Cable, sole provider for the city. Among the issues to be addressed are the rate structure and recent quality of service.

The council will also discuss taking action to have the Texas Department of Transportation conduct a feasibility study on putting a turn signal for the north/south traffic at the intersection of Highway 214 and U.S. 84.

Other business will include taking the necessary action to accept the land donated by BNSF to the city, the appointment of election judges and alternates, and giving the results from a public hearing on water line improvements.

Citizens are encouraged to attend all meetings of the council.



Drawing date: Wednesday, March 10  
Winning numbers: 02-16-19-42-47-49  
Estimated jackpot: \$4 million  
Winners: none  
Next drawing: Saturday, March 13  
Estimated jackpot: \$7 million

### On this date in history

March 15 — The first blood bank was established in Chicago, Ill. at Cook County Hospital (1937).

March 16 — The establishment of the U.S. Military Academy at West Point is authorized by an Act of Congress (1802).

March 17 — Eleanor Roosevelt marries Franklin Roosevelt in New York (1905).

March 18 — First space-walk is made by Russian cosmonaut Alexi Leonov (1965).

### LOCAL WEATHER

	High	low	Pre.
Tuesday	37	30	—
Wednesday	63	26	—
Thursday	66	29	tr.
Prec to date	1.99 inches		

### EXTENDED FORECAST

Mostly cloudy Saturday with a 40% chance of light snow. High around 40 with north winds 15-25 and gusty. Low near 22. Enjoy sunshine and warmer temperatures through Tuesday. Highs in the mid 70s. Lows in the mid to upper 30s. Wednesday look for partly cloudy skies and a slight decrease in temps.

Managing Editor Rick White can be reached at 272-4536 or [ctyankee@fivearea.com](mailto:ctyankee@fivearea.com)



### Checking it twice

Bailey County clerk Sherri Harrison (left) and Deputy clerk Raygena Barrett check a record book in the office

## Keeping the books

By PATTI DRIVER  
Journal staff writer

Books upon books of records fill the office of Bailey County clerk Sherri Harrison.

Harrison and Deputy clerk Raygena Barrett are responsible for a myriad of duties within the office. "We are never bored because of all the different jobs we perform," Harrison said.

"Every record that comes into our office must be recorded, filmed, indexed and filed," Harrison said. "We hope to implement a positive change in the office by indexing the document ourselves."

According to Harrison, the government

charges \$3.98 to index each document. "We average about \$1000 per month on the indexing alone," she added. "The money we save will be used to buy a laser scanner that will give us a hard copy of each document, index the document, and record the information on a CD. We hope to have the system by June 1."

"One of our biggest jobs is the keeping of real estate records," Barrett said. These include warranty deeds, deeds of trust, releases of liens, abstracts of judgement, tax liens, mechanic liens and substitute trustee sales. They also have plat

see RECORDS on page 2



### Science winners

Pictured above are (left to right) — Hillary Tipps, Myles James, Cory Wallace, Brett Bamert and Monica Posadas.

## Regional science fair winners

Five students from DeShazo Elementary School in Muleshoe recently placed first or second in the South Plains Regional Science and Engineering Fair held at Texas Tech University on March 5-6. The students were judged on a point scale to earn their ribbons.

Cory Wallace and Myles James earned blue ribbons for their efforts. Cory also received the High Tech Award from FOX channel 34 for his project on hovercrafts. Hillary Tipps, Monica Posadas, and Brett Bamert earned second place ribbons for their projects.

## Filing closes Wednesday

Filing for candidacy for the May 1 local elections has picked up during the past week.

Sam Burke has filed to run for the District 3 position of the Muleshoe City Council, currently held by Larry Kirk. He will be running against Rich Magby and Jerry Hicks. The District 4 position, currently held by Eugene "Peanut" Hawkins, has Sharon Grant running uncontested.

Sergio Leal and Francis Saldana Recio have both filed for the District 3

position on the Muleshoe Independent School Board, currently held by Frank Saldana. Incumbents Cindy Purdy and Nick Bamert have filed for re-election in Districts 2 and 5 respectively.

Tim "Buck" Campbell has filed for re-election for Place 2 on the Muleshoe Area Hospital District Board. No candidates have filed for Place 4, currently held by Phil Kent.

The deadline to file for candidacy for any of the city boards is this Wednesday, March 17.

## Lubbock votes against weevil zone

AUSTIN — Cotton producers in the Southern High Plains/Caprock Boll Weevil Eradication Zone have voted against establishing a boll weevil eradication program and setting a maximum assessment in the 10-county zone.

Final results were 2,282 voting "for" and 1,359 voting "against" establishing an eradication program in the Southern High Plains/Caprock zone. Proposition 1 failed because it was not approved by more than two-thirds of the valid ballots received, and it was not supported by more than 50 percent of the total cotton acreage in the zone.

The Texas Department of Agriculture reported that 3,669 valid ballots representing more than 1.3 million cotton acres in the zone were tabulated. Some 6,925 ballots were mailed to cotton producers in the zone.

"This has been and always will be a producer-driven program," Agriculture Commissioner Susan Combs said. "If cotton producers in the zone want to revive the program, they can initiate another referendum in a year."

Propositions on the ballot included:

Proposition 1: Establishing a boll weevil eradication program in the Southern High Plains/Caprock Boll Weevil Eradication Zone.

For — 2,282 representing 62.68%

Against — 1,359 representing 37.32%

Percentage of all zone acreage voting for

see VOTE on page 3

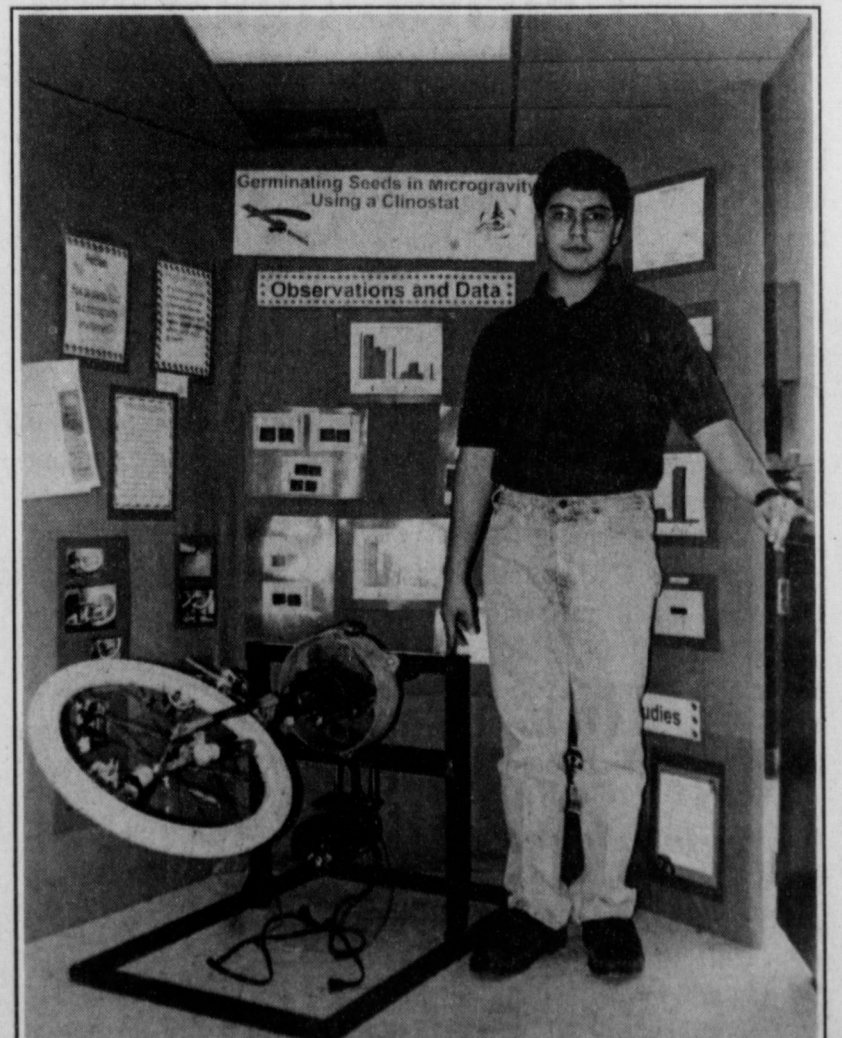
## Engineering project wins blue ribbon

Muleshoe High School freshman Ricardo Aburto participated in the South Plains Regional Science and Engineering Fair held on the Texas Tech campus March 5-6. His project, "Germinating Seeds in Microgravity Using a Clinostat," received a blue ribbon in the biological division of the 9th grade level.

Ricardo was also recognized by the U.S. Army for best engineering project, and he received the U.S. Metric service award for his display of the metric system of measurement.

Besides gathering data for his project, Ricardo wrote a research plan and term paper. He also presented his project to judges at the fair.

He is now eligible to participate at the Texas State Science Fair on April 14-16 in Austin.



### State bound

Ricardo Aburto is shown with his blue ribbon display



## AROUND MULESHOE

### Babe Ruth baseball registration

The Muleshoe Area Babe Ruth Baseball League will hold registration on Monday, March 22 from 6-8 p.m. at Bailey County Electric Cooperative located at 305 E. Ave B in Muleshoe. Registration is open to players (male or female) who will be 13-15 years of age as of Aug. 1, 1999 and live in the Muleshoe, Lazbuddie, Earth and Sudan areas.

The entry fee is \$35. A certified copy of a birth certificate is required at the time of registration. Registration at this time is critical in order to determine teams and schedules. Other area teams include Littlefield, Levelland, Morton and possibly Friona. There will be another registration on Monday, March 29 from 6-8 p.m. at the same location. For more information, call David Marricle at 272-4863 after 5 p.m.

### Financial aid seminar

The Jennyslippers will sponsor the Annual High School Students/Parents seminar on Monday, March 22, 1999 at 7 p.m. in the Muleshoe High School cafeteria. Area college and university representatives will present information on applying for financial aid to attend college.

The seminar is open to all high school students and adults interested.

### Douglas receives award from USAA

The United States Achievement Academy announced today that Amanda Douglas from Garland, Texas has been named a United States National Award Winner in cheerleading.

This award is a prestigious honor very few students can ever hope to attain. In fact, the Academy recognizes fewer than 10% of all American high school students. Amanda, who attends Berkner High School, was nominated for this national award by Holly Welch, a teacher and sponsor at the school.

Amanda will appear in the United States Achievement Academy Official Yearbook, which is published nationally.

She is the daughter of Ed and Marsha Douglas of Garland, and the granddaughter of Gloria Douglas of Crowley, Texas, and Barbara Blackman of Muleshoe.

### Certified Nurse aide course scheduled

Openings are available in an 80-hour course in Certified Nurse Aide scheduled for March 29 through May 10 at South Plains College in Levelland.

The course covers skills necessary to work in long-term care, home health or hospital environments.

Classroom instruction will be given from 5:30-9:30 p.m. on

Mondays, Wednesdays and Thursdays. Clinical instruction will be given 8 a.m.-5 p.m. on three Saturdays, to be arranged.

Tuition is \$250, and the state exam fee is \$64.75. Students must provide proof of immunization for MMR, tetanus and have a current TB test prior to enrolling in the course. Registration is limited to the first 16 students and will be taken up to March 29. Registration materials may be obtained by contacting the SPC Office of Continuing and Distance Education. Call (806) 894-9611, ext. 2341 for more information.

### Local church sponsors women's retreat



First United Methodist Church of Muleshoe will be sponsoring an overnight women's retreat from 5 p.m. Friday, March 26 to 3 p.m. Saturday, March 27 at the Amherst Retreat Center in Amherst.

The featured speaker for the event is Amy Black. She is a dedicated Christian, mother, accomplished speaker, musician, and wife of the pastor of the First

United Methodist Church in Lamesa.

The fee for the retreat is \$35 and the registration deadline is March 16. Call 272-5517 to register or to get more information.

### Muleshoe CTA offering scholarships

The Muleshoe Classroom Teachers Association is offering two scholarships to students pursuing a career in education. A \$300 scholarship will be awarded to a 1999 Muleshoe High School graduate planning on majoring in education. A second \$300 scholarship will be available to a former MHS graduate classified as a college junior or senior majoring in education. Contact Gayla Gear or Alice Liles at 272-7303 for an application or more information.

### Local group holds talent show

The Teen Leadership Organization Council of Muleshoe High School will be sponsoring a talent show at 7 p.m. on Thursday, April 8 at the high school auditorium.

Tickets will be available at the door.

For more information, contact Ms. McElroy at 272-7303 or Chris Garcia at 272-5765.

*The deadline for items to appear in Around Muleshoe is 5 p.m. Monday for Thursday's edition and 5 p.m. Thursday for Sunday's edition. Items can be mailed (PO Box 449), called in (272-4536) or faxed (272-3567).*

## J & L Enterprises Introduces Holy Spirit Inspirations

We're proud to introduce this unique Christian contemporary, inspirational CD praising God through music and song. Selections from this annotated collaboration are currently playing on KIJN-FM 92.3 in Farwell and on KNNK-FM 100.5 in Hereford.

Order your copy today by contacting:

J & L Enterprises  
P.O. Box 254 • Del Valle, TX 78617  
www.holyspiritinspirations.com or  
jandl@freeweb.com  
**CD - \$10.95 Cassette - \$7.95**  
includes tax and shipping

Hear "True Love" the international hit #1 song on Estonia radio today!

### Bailey County Journal USPS 040-200

Established March 31, 1963 Published by Triple S Publishing, Inc.  
Every Sunday at 304 W. Second, Box 449, Muleshoe, TX 79347.

Second Class Postage paid at Muleshoe, TX.

POSTMASTER: Send address changes to the Bailey County Journal, P.O. Box 449, Muleshoe, TX 79347.

We are qualified members of:

Panhandle Press Association, National Newspaper Association,  
West Texas Press Association and Texas Press Association

WEST TEXAS PRESS  
ASSOCIATION

TA

MEMBER 1999

TEXAS PRESS ASSOCIATION

PPA

Panhandle Press Association

Scot Stinnett, Publisher  
Lisa Stinnett, Vice-President/Comptroller  
Rick White, Editor  
Mari Guadaluca, Classifieds  
Leah Bell, Advertising

© 1999

SUBSCRIPTIONS: Muleshoe Journal and Bailey County Journal  
By Carrier Yearly - \$22.00  
Bailey County - by mail - \$24.00  
Elsewhere - \$26.00  
Advertising Rate Cards on Application

\*Advertisers should check their ad the first day of insertion. The Journals will not be liable for failure to publish an ad or for a typographical error or errors in publications except to the extent of the cost of the ad for the first day of insertion. Adjustment for errors will be limited to the cost of that portion of the ad where the error occurred.\*

## RECORDS

from page 1

maps of the county. "Some of these records date back to the 1800's," the deputy clerk said.

"We just became the official registrar of birth and death records," clerk Harrison said. "The county commissioners eliminated an unneeded step in the record keeping process by changing the registrar from the Justice of the Peace to the County clerk," she added. The office also issues marriage licenses and keeps records of Informal (common law) marriages.

The county clerk's office is responsible for keeping county court records. Civil, probate, juvenile criminal, and criminal

misdeemeanor cases, and mental commitment records and guardianship proceedings are included in these records. The office also collects all fees and fines associated with these cases.

Harrison said she is responsible for co-signing all county checks along with county treasurer Donna Kirk. She also signs all burial transit permits. "These permits are needed to transport someone who passed away in Bailey County to be transported out of the county to the town they will be buried in," the clerk said.

The office issues hunting and fishing licenses, issues and records cattle brands, and is-

sues and records assumed name certificates (to register business names). "We also will store military discharge papers and wills for safekeeping," Barrett said.

Harrison was elected in November of 1998 and started her four year term in January of 1999. Barrett was hired in January of 1998 and will work with Harrison until the end of her term.

The clerk's office can provide certified copies of these documents for varying fees. They are open from 8 a.m. to noon and 1 p.m. to 5 p.m. Monday through Friday. For more information call the office at 272-3044.

## Texas farmers suffered particularly tough 1998

New figures from the Texas Agricultural Extension Service indicate 1998 was a particularly tough one for Texas farmers.

Farm and ranch production values dropped by more than \$2.4 billion from 1997 because of drought and low prices.

Poor exports of agricultural commodities added to the decline in the farm sector.

Extension agricultural economist Dr. Carl Anderson says the loss to agribusiness income is an \$8 billion blow to the state's overall economy. Most of this damage will be felt in small, rural communities.

In Texas, the estimated cash value of farm and ranch production dropped 16 percent from 1997, to \$13.16 billion in 1998.

Crop values fell 23 percent and livestock values were down 12 percent, Anderson said.

Some losses were offset by crop insurance proceeds and added government payments, he added.

A report in 1998, by the South Texas Cotton and Grain Association and a Coastal Bend agricultural lender, found that one in five full-time farmers within the lender's portfolio will survive after 2002 without government payments.

Producers will have a hard time financing their operations to survive the crisis. "If you have an operation that is not profitable, it's difficult to refinance," says STCGA Executive Director Jeff Nunley of Victoria.

Dan Glickman, U.S. Secretary of Agriculture, spoke to economists and farmers at the USDA's annual outlook conference in Washington. He reported that rural America could face a social catastrophe this year.

## SCHOOL LUNCH MENUS

MARCH 15-19

MULESHOE

NO SCHOOL — SPRING BREAK

THREE WAY

NO SCHOOL — SPRING BREAK

LAZBUDDIE

Monday

Lunch — Subs, pizza, PK-1 pork patty, mashed potatoes, English peas, corn, fruit, salad, jello, and milk.

Tuesday

Lunch — Tamales, Spanish rice, beans, hominy casserole, fruit, salad, jello, and milk.

Wednesday

Lunch — Pizza, burritos, PK-1 chicken & rice, green beans, sweet potatoes, squash, fruit, salad, jello, and milk.

Thursday

Lunch — Rib-B-Qs, corndogs, PK-1 steak patty, ranch beans, country potatoes, asparagus, fruit, salad, jello, and milk.

Friday

MANAGER'S SPECIAL

## Journal Classifieds . . . (806) 272-4536

ENTRY DEADLINE IS APRIL 6, 1999 AT 5 P.M.

ENTER TODAY!  
The Muleshoe Journal's  
5th Annual

## Cutest Baby Contest

Enter any child born in 1998 who is special to you— children, grandchildren, nieces, nephews, friends, etc.

Winner Will Receive a  
\$50 Savings Bond For  
Being Selected 1998's  
Cutest Baby!

Kaitlin Hope Foster  
1997 Cutest Baby Contest Winner

This year's contestants will appear in the April 11th issue of the Bailey County Journal. A panel of unbiased judges will pick the most attractive picture to be the 1998 Cutest Baby. All baby pictures will be printed. Babies need not be born in this area.

Bring your favorite child's photo along with \$10 to the Muleshoe Journal office at 304 W. 2nd St., Monday-Friday between 8:30 a.m. and 5 p.m. or mail the coupon below with your child's photo and \$10 to Cutest Baby 1998, c/o Muleshoe Journal, P.O. Box 449, Muleshoe, Texas 79347. You may pick up your baby's picture during office hours after Monday, April 12, 1999. Arrangements must be made to return photos by mail!

Please provide phone number or address (it will not be published) so that we may contact you if we need additional information.

Baby's Name: \_\_\_\_\_

Date of Birth: \_\_\_\_\_

Weight at Birth: \_\_\_\_\_

Length at Birth: \_\_\_\_\_

Place of Birth: \_\_\_\_\_

Mom & Dad's Name: \_\_\_\_\_

Grandparent's Name: \_\_\_\_\_

ENTRY DEADLINE IS APRIL 6, 1999 AT 5 P.M.



# DeShazo chooses champion students

A select group of more than 100 students from a Muleshoe elementary school enjoyed a day of fun and festivities on Friday.

These students were chosen by a committee to be part of the Circle of Champions at DeShazo Elementary. The committee meets once every nine weeks and selects students who exhibit good behavior, good grades and good attendance.

The children were awarded a certificate by Superintendent of MISD Bill Moore in an assembly ceremony at the school. They were then treated to a movie and lunch, and were brought to the Bailey County Coliseum for an afternoon of fun and games.

Afterwards they returned to the school where they drew for prizes. Some of the prizes included a Game Boy, a stereo, a camera, a walkman, boardgames, frisbees, and various other toys. The PTA donated the money to purchase the prizes for the students.

Members of the Circle of Champions for the third nine weeks are:

**3rd Grade** — Priscilla Quezada, Chriselda Trevino, Dezrae Contreras, Ashley Grumbles, Courtney Mardis, Jordan Marlow, Belen Nunez, Caitlyn Wills, Heather Barker, Cynthia Barrera, Jennifer Carrion, Diego Del Toro, Colt Ellis, Samantha Miller, Garrett Riley, Joaquin Ruvalcaba, Juan Salcido, Ashley Scolley, Creston Standard, Eli Symm, Austin Allison, Holly Hunt,



## Waiting their turn

DeShazo third grade students Belen Nunez (left) and Lyndsey Suhr (right) wait to be called by principal Barbara Finney to receive their certificate from superintendent Bill Moore.

Cesar Lopez, Monica Sanchez, Kelsey Tipps, Tanner Bales, Angel Daniel, Reina Granados, Timothy Mendoza, Tiffany Reyes, David Rodriguez, Perla Sanchez, Lyndsey Suhr, JR Young, Corie Ann Black, Ruben Campos, Colby Carpenter, Stephen Dominguez, Daniel Mendoza, Ismael Mendoza, J.J. Mendoza, Adrian Perez, Adriana Segura, Samantha Toscano, Olivia Delgado, Ivonne Marquez, Gilberto Mojica, Yanett Vidana;

**4th Grade** — Nicklas Brewster, Katie Brown, Bianca Gonzales, Chelsi Hawkins, D.J. Robertson, Martin Rodriguez, Jordan Saylor, Elizabeth Symm,

Irma Torres, Raul Campos, Mike Cantano, Claudia Morales, Jose Muniz, Juan Avila, Aaron Arcos, Karina Agundis, T.J. Brantly, Laura Cogliandro, Kelly Dale, Jamie Hall, Shayla Hall, Alyssa Lopez, Cade Smith, Robert Williams, Tori Vise, Dustin Barker, Daisy Estrada, Tosha Gomez, Calli Hancock, Diana Hernandez, Jackie Ledesma, Kate Leopard, Ashley Star Martinez, Ashley Mumau, Autumn Rainey, Matthew Richards, Lily Ruiz, Eric Washington, Brittini Carter, Marissa Cebalos, James Coffman, Timothy Conner, Kaitlyn Geissler, Gerardo Gomez, Kendall Johnson, Jr.

Martinez, Madison Myers, Kindra Pruitt, Victoria Castillo, Angel Garcia, Ray Martinez, Travis Thompson;

**5th Grade** — Wendy Godinez, Monica Posadas, Lidia Villezas, Monse Elias, Daniel Olivas, Joe Ambriz, Zannia Avila, Brett Bamert, Ashley Dickson, Jarad Flores, Lindsey Hall, Janice Pacheco, Erica Villa, Brandi Wood, Emily Zackoski, Phelicia Alarcon, Brook Bottleman, Myles James, Rodrigo Mendoza, Brady Black, Felicia Glover, Vanessa Lopez, Lucy Ortega, Jenna Rasco, Autumn Remington, Hillary Tipps, Freddy Tovar, Corey Wallace, Wesley Welch.

## Booth #130

LOCATED INSIDE ANTIQUES & FINE THINGS

**A TRUCKLOAD OF ANTIQUES!**

Ironrite Ironer • Rocking Horse • Clark Thread Holder • Trunk • Old Maple Furniture • Table & Chairs • End Tables • Lamps and much more!



HANDMADE EASTER BASKETS make a perfect gift for **SOMEBUNNY** you love!

2104 W. American Blvd. • 272-4217

## NATIVE GRASSES, INC.

*Experts in the sowing and harvesting of native grasses of the Great Plains and of the Southwest*

- Specializing in native American grasses of the Great Plains and the Southwest
- Most native grass seeds available at wholesale prices with turnkey jobs.
- All work done in compliance with Government specifications

Please Call:

**Darwin Simmacher**  
505-762-7817  
FAX 505-763-9115  
Email [simmacher@3leifties.com](mailto:simmacher@3leifties.com)

Or

**Vince Simmacher**  
806-946-3461  
FAX 806-946-3604

References provided upon request

## GOOD DEALS

**BATTERIES**

▶ StrongBox™—U1, 165 CCA Sale Ends April 3

▶ Hibernator—U1R, 235 CCA

**STRONGBOX™ BATTERY**

**\$19.95**

TY23017

**HIBERNATOR BATTERY**

**\$29.95**

TY21752

**CHAIN & CABLE LUBRICANT**

▶ Use as penetrating oil to loosen nuts, bolts, and rusted threads

▶ Recommended to protect and lubricate exposed chains

**GOOD BUY \$2.99**

Sale Ends April 3

TY22087

**LINCH PINS**

▶ Size — 7/16 in.

▶ Made of forged carbon steel

▶ Zinc-plated, spring steel snap rings



**GOOD BUY 10 \$1.00 for**

Sale Ends April 3

**Stop in today for the best deals ever!**  
Hurry, sale ends April 3.



## Dent & Co.

2800 W. American Blvd. • Muleshoe Location • 272-4296

# Dillman Elementary School Receives Award

Monetary awards in the amount of \$1688 were made to Dillman Elementary School in the Muleshoe Independent School District as a part of the Texas Successful Schools Awards System (TSSAS), Bill

Moore, Superintendent of the Muleshoe ISD, announced today.

The schools are being recognized for gains in student performance on indicators that are part of the Academic Ex-

cellence Indicator System (AEIS), more commonly known as the state's school report card. Dillman Elementary is among 823 cash-winning schools statewide receiving awards for exemplary, recognized, or acceptable performance and rankings in the top 25 percent of all campuses in the same unique comparison group statewide, with respect to growth on the Texas Learning Index (TLI) derived from the Texas Assessment of Academic Skills (TAAS) reading and mathematics tests given at Grades 3 through 8, and 10.

The awards are based on spring 1998 performance on the TAAS test which measures performance in reading, writing, and mathematics. Schools also had to meet performance

standards for drop out and attendance rates. Cash awards ranging from \$500 to \$5000 per school were given, depending on the number of students served at the school.

Campuses are TAAS award recipients only if they rank in the top 25% of all campuses that are in the same unique comparison group statewide, with respect to their growth in reading and math. Campus categories are based on several factors including the percent of students identified as African American, Hispanic, White, Economically Disadvantaged, Limited English Proficient, and Mobile.

A total of \$2.5 million is being awarded to schools this year under TAAS.

# Application made easy

Applying for admission to a Texas public university has never been easier for students, thanks to a common application now being used by all of the state's public universities.

It is hoped that the convenience of completing and submitting copies of the same application, instead of having to complete a separate application for each of the state's 35 public universities, will encourage many students to take the steps necessary to begin college or to continue work on a four-year degree.

Legislation sponsored by State Sen. Teel Bivins (R-Amarillo) in 1997 directed the creation of the common application. An advisory committee to the Texas Higher Education Coordinating Board developed two versions, one for first-time freshmen and one for transfer students.

## Divided land harms wildlife

As more and more people move to small acreages in the country, more and more wildlife have no place to go.

"The number 1 threat to wildlife in Texas is fragmentation," said Dr. Bob Brown, Texas A&M wildlife and fisheries sciences head.

Fragmented land occurs when

Approximately 600,000 copies of the common application have been mailed since August 1998 to high schools and community colleges throughout the state. Students may request a copy from their academic counselor at those institutions or print a copy from the Texas Higher Education Coordinating Board's web site at [www.thech.state.tx.us](http://www.thech.state.tx.us).

The common application may also be completed and submitted electronically to one or more public universities in the state. The internet address is [www.applytexas.org](http://www.applytexas.org). The availability of an electronic version of the State of Texas Common Application adds a whole new dimension to the process of applying for university admission in Texas. Thousands of electronic applications have already been received by the state's public universities.

larger parcels of land are developed in smaller amounts for different purposes - development into new subdivisions or office sites, for example. That interrupts the wildlife population's normal routines and decreases the availability of supplies for their basic needs - food, water, cover and space.

## VOTE

from page 1

Proposition 1 — 45.03%


Proposition 2: Setting the maximum assessment for boll weevil eradication in the Southern High Plains/Caprock Boll Weevil Eradication zone not to exceed \$12 per land acre for irrigated cotton and \$6 per land acre for dryland cotton.

For — 2,173 representing 60.43%

Against — 1,423 representing 39.57%

Percentage of all zone acreage voting for Proposition 2 — 41.70%

Counties in the Southern High Plains/Caprock Boll Weevil Eradication Zone are: Cochran, Crosby, Dickens, Garza, Hockley, Kent, Lubbock, Motley and portions of Lynn and Terry.



**National Home Health Care**


**You have a choice in home respiratory providers.**

**Make a change if yours isn't hitting the mark.**

1200 West 21st Street  
Clovis, New Mexico 88101

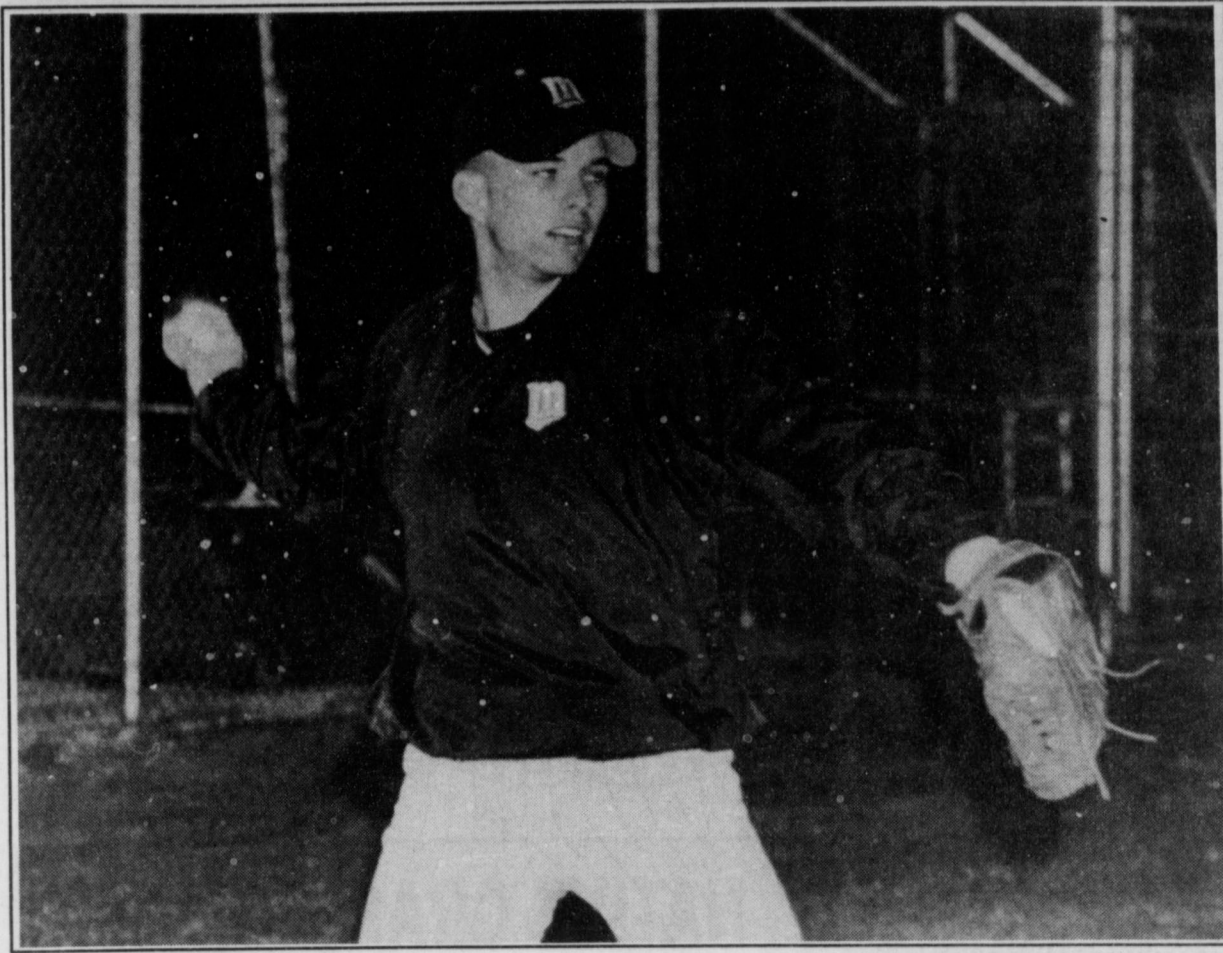
Call 1.800.842.8278 and learn how to receive the service you deserve with oxygen, breathing medications and other home medical needs.

ACCREDITED BY



**Joint Commission**  
On Accreditation of Healthcare Organizations





**Keeping warm**

Muleshoe's Rhett Kerby tries to generate a little heat during the warmup prior to the Mules' first-round game with Tulia Thursday in the Mule Classic. Cold, rainy weather forced cancellation of the event after the first round.

JOURNAL PHOTO BY PATTI DRIVER

**Mule Classic canceled after first round**

Cold, rainy weather forced the cancellation of the final two rounds of the 1999 Mule Classic baseball tournament

Muleshoe, an 18-3 first-round loser to Tulia, would have met Portales varsity in the consolation semifinals Friday at 11:30 a.m.

In other first-round games:

- Abernathy hammered Portales 18-6 in the tournament opener.

- Kermit got past Denver City 7-6 in the closest game of the day.

- Crane shut out Lubbock Christian 11-0.

- Dimmitt doubled Portales JV 14-7.

The Mules are scheduled to play in the West Texas Classic tournament March 18-20 in Midland.

**Kennedy, Black show reserve champs at San Antonio**

*Bailey County Youth make strong showing in Texas major livestock shows*

Several Muleshoe FFA and Bailey County 4-H students traveled to major stock shows in Ft. Worth, El Paso, San Antonio, and Houston to exhibit their livestock.

There were approximately 10,000 head of barrows and 5,000 head of steers exhibited at these shows, with only about 20% eligible for the premium sales.

Muleshoe's Ky Kennedy and Lysie Black each had a reserve champion steer at San Antonio. Kennedy had the Reserve Champion Chianina, while Black had the reserve champion AOB (All Other Breeds).

The following is a list of the local youth who made the premium sales at the respective shows:

**FORT WORTH**

**Steers** — Ky Kennedy, 5th Place Exotic Cross; Jill Gadden, 9th Place Hereford; Hadley Henderson, 10th Place Exotic Cross.

**Barrows** — J.R. Young, 3rd Place Duroc; Jill Gladden, 21st Place Cross.

**EL PASO**

**Barrows** — Coli Hunt, 4th

Place Hampshire.

**SAN ANTONIO**

**Steers** — Ky Kennedy, Reserve Champion Chianina; Lysie Black, Reserve Champion AOB; Jill Gladden, 1st Place Heavyweight Chianina; Rhett Richardson, 2nd Place Lightweight Limousin; Brady Black, 3rd Place Middleweight Santa Gertrudis.

**Barrows** — Ky Kennedy, 2nd Place Mediumweight Cross; Brady Black, 9th Place Mediumweight Cross;

Rhett Richardson - 11th Place Yorkshire

**HOUSTON**

**Steers** — Kylie Henderson, 2nd Place Middleweight AOB; Josh McElroy, 2nd Place Lightweight Limousin; Lysie Black, 3rd Place Heavyweight Chianina; Judd Glover, 5th Place Heavyweight Chianina; Ky Kennedy, 7th Place Middleweight Simmental; Ryan Richardson, 9th Place Lightweight Maine-Anjou; Lysie Altman, 15th Place Lightweight Chianina.

**Barrows** — Ky Kennedy, 1st Place Middleweight Cross; Lysie Altman, 6th Place Berkshire; Myndi Heathington, 8th

Place Lightweight Cross; Johnathan Kindle, 13th Place Duroc; Dal Whalin, 17th Place Lightweight Cross; Ryan Richardson, 22nd Place Heavyweight Cross; Scott Pollard,

20th Place Middleweight Hampshire; Jill Gladden, 28th Place Hampshire

**Meat Goats** — Cami Jo Vandiver, 20th Place Lightweight.

**DIMINUTIVE DESERTS**  
DISTINCTIVE DISH GARDENS  
Custom Designs On Request  
Corner of Joliet & Juniper  
**272-5200**  
Alice Liles, Designer

**CRP GRASSES**  
Specializing in Native Grass Seed since 1951!

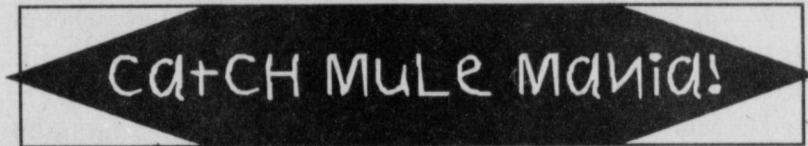
- Buffalograss
- Sideoats
- Bluestems
- Switchgrass

and many others!

*We produce our own seed and pay most freight.*

**Straight from our farm to you!**

**1-800-262-9892**  
806-272-5506  
**BAMERT SEED CO.**  
Muleshoe, Texas  
bamseed@fivearea.com



**Farmers in need of disaster relief now**

By CONG. LARRY COMBEST  
Chairman, House Agriculture Committee

Farmers in West Texas are hurting. Drought, low market prices and pest problems have plunged them into a financial crisis.

They need some form of disaster relief and they need it now.

The bureaucrats in Washington and within the USDA have been more talk than action. They have failed to deliver farm emergency disaster aid to producers that was authorized by Congress nearly four-and-a-half months ago. This latest delay by the USDA in distributing relief payments will push livestock payments back until April and crop disaster checks to farmers until May. This is a serious failure by USDA to meet the needs of the producers.



The House Agriculture Committee provided nearly \$6 billion to the U.S. Secretary of Agriculture months ago, with near-complete authority to provide farm disaster relief, but farmers will go through this planting season with very little help from USDA. Help is many months past producers' expectations and the Department's own promises. Overdue regulations and application backlogs will only be made worse by the President's planned employee cuts directly affecting those who help farmers. USDA's only attempt to help the farmers is by clearing a few paperwork hurdles. However, their management wants to keep eliminating employees who help farmers in the field. During this farm crisis, the USDA wants to cut 752 more Farm Service

see COMBEST on page 5

**BLUE BOOK™ OFFICIAL GUIDE SINCE 1926**

**BENDER'S ANNUAL NO DICKER STICKER SALE ENDS SATURDAY MARCH 13th** At The Close Of Business

**Hurry In Today For The Greatest Savings Of The Year!**

Check Out Our Lots For New Trade-Ins.  
All Used Cars Priced At Wholesale Or Below!

**IT ALL ENDS SATURDAY MARCH 13th**

- Get A No Hassle Deal!
- Over 350 New Cars, Trucks & Vans
- Over 300 Used Cars, Trucks & Vans
- All Trades Accepted!
- Purchase Just Like The Dealer!

**BENDER Family of Dealerships**  
*You're going to like our family!*

<b>CHEVROLET • OLDSMOBILE CADILLAC</b> 2500 MABRY DRIVE (505) 763-4465	<b>HONDA NISSAN</b> 3000 MABRY DRIVE (505) 762-3701	<b>CHRYSLER • PLYMOUTH DODGE</b> 3400 MABRY DRIVE (505) 762-4511
--	---	--



# Bush moves step closer to presidential run

AUSTIN — On March 2, Texas Independence Day, the idea of a George W. Bush presidential candidacy moved a step closer to reality.

In deference to Texas reporters, Gov. Bush barred the national media from a news conference at the Governor's Mansion.

During the conference, Bush announced his authorization to form an "exploratory committee" to start raising funds for a possible presidential candidacy.

"I do have a compelling reason to consider running for president. For my family and every family in America, I want the 21st century to be prosperous. And I don't want anybody being left behind," Bush said.

Meanwhile, last week, a contingency of North Carolina Republicans urged Bush to seek the presidency with North Carolina native Elizabeth Dole as his running mate.

David Wilkins, speaker of the South Carolina House, brought Bush a letter saying most Republicans in the House support his candidacy.

Bush reiterated his intention not to decide whether to run for president until after the Texas Legislature adjourns May 31.

### Tax Cut Bill Passes Senate

About 28,000 small businesses in Texas would not have to pay state franchise tax under legislation passed last week by the state Senate.

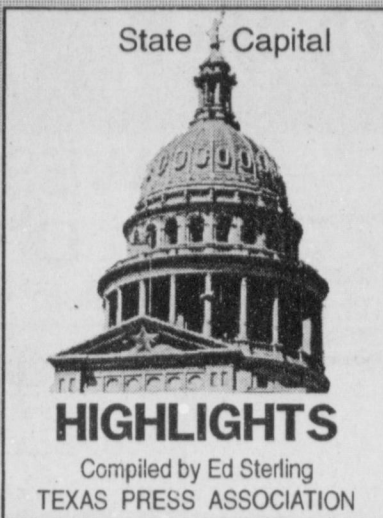
The \$57 million tax break would be meted out over the next biennium for an average cut of \$2,000 in taxes to qualified businesses whose gross annual receipts total less than \$100,000.

"This tax break might seem small to a multi-million dollar corporation, but for a neighborhood store or a small, home-owned business, even a tax break for a couple of thousand dollars goes a long way," Robert Howden of the National Federation of Independent Business of Texas was quoted by *The Dallas Morning News*.

The bill has moved to the House for consideration.

### Teachers Urge Pay Increase

A sign-carrying crowd numbering in the hundreds urged legislators to pass pay increases and better benefits for public school classroom teachers at a March 1 rally on the Capitol



steps.

Senate Education Committee Chairman Teel Bivins, R-Amarillo, told the crowd, "I think I can represent to you today that you will see more money in your pockets the next school year."

Bivins said he wants to see to it that those who won seats in the Legislature by campaigning with education as a priority will stick to their pledge.

Texas teachers last year were paid an average of \$32,426, compared with a national teacher salary average of \$38,436.

### State to Appeal Prison Decision

Conditions in Texas state prisons have improved over the years, but they're not good enough, US District Judge William Wayne Justice of Austin ruled last week.

Justice, who has overseen the prison system since 1979, decided to continue federal supervision of the system's 110 units and 150,000 inmates.

That decision will be challenged by Texas Attorney General John Cornyn, who said he is taking the matter to a higher court. "All along, we felt the final decision would be made by the Fifth Circuit Court of Appeals in New Orleans, and that's where we head next," Cornyn said.

Three weeks of hearings on conditions in the prison system were held in January and February.

### Algebra Scores Show Weakness

Preliminary results of fall testing are in, Texas Education Commission Mike Moses announced last week.

Seventy-seven percent of Texas students who took the state's end-of-course test in biology earned passing grades. A majority of those who took new tests given in English II and U.S. history passed.

Students performed poorly, however, on the Algebra I test, Moses said. Only 31 percent of the 18,375 students who took the test passed.

"Clearly, we continue to have our work cut out for us as far as improving our students' performance in algebra," Moses said.

One way to improve performance, he said, is to have teachers who are certified in math instruction. About 35 percent of teachers teaching Algebra I in middle school lack that certification.

### Other Capital Highlights

■ The deadline for state lawmakers to file non-emergency legislation is March 12. So far, about 2,200 bills have been filed in the House and 900 in the Senate.

TERMS: CASH, CHECK, MASTERCARD & VISA

## ESTATE Auction

Of Mr. and Mrs. Charles Little

107 Yucca Dr., Portales, NM • Saturday, March 20 @ 10:30 a.m.  
Real Estate Auction will be at 1 p.m.

10% down day of Auction; balance at closing  
We Have Been Commissioned By the Heir To Sell the Following At Auction.  
Haven't Seen What's In Garage and Storage Bldg.

• LIVING ROOM/DEN • APPLIANCES • BEDROOMS •  
HOUSEHOLD GOODS • COLLECTIBLES

James Priest & Associates W & J Auction

"OUR KNOWLEDGE IS YOUR SECURITY"  
AUCTIONEERS: James Priest, Butch Priest, Gid Priest  
4205 South Prince Clovis, New Mexico  
Las Vegas NM (505) 454-8026 TX LC # 11077 & 9474 Clovis NM (505) 763-7311  
1-800-822-1243

## The Day, the Car Wash, and a Time of Decision

Occasionally, I suppose every Christian has a day when the Scripture, "This is the day the Lord has made," brings to mind not images of thanksgiving but, instead, thoughts like, "I wonder if He really wants to claim this one."

I'm sure that sort of feeling says more about my mental state on some days than it does about the quality of the Creator's handiwork. Still, there are those days . . .

time, so I whipped in, shoved a \$5 bill into the machine, sat back, and watched as the automated arm began its first pass over the truck.

Somewhere toward the end of that first soapy pass, I remembered the cloth-covered suitcase and the file box (full of stuff more precious to me than clothes) in the back of the truck behind the cab.

Decision time. Big decision. Not much time.

I almost flung open the door and jumped out to try to beat the arm and the rinse cycle. But the only thing more embarrassing than explaining why you washed unwashable stuff in the back of your truck would be explaining why you got mangled by an automated arm while washing unwashable stuff in the back of your truck.

People with no brains and ready access to attorneys are why garden hoses now come with labels to let geniuses know that putting one end in your mouth and cranking the faucet wide open is a bad idea. Jumping out of cars in automated car washes is about that smart (but if my computer case had been back there, I'd have been out the door daring that arm to come back over.)

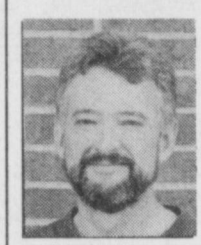
I finally flicked the back window open, shoved as much of me as I could through the hole, dragged my soap-covered stuff dripping into the cab.

My suitcase and file box are cleaner. (Never rinsed though.) And "wet because you were stupid" beats "mangled in the machinery because you were stupid."

Dumb and dumber.

But the day got better. God did fine with a day I almost botched.

*Curtis Shelburne is minister of the 16th & D Church of Christ in Muleshoe.*



**Focus On Faith**  
Curtis Shelburne

Recently, on what started out as a fine Thursday morning, I got up, got the kids off to school, loaded my truck with a suitcase, a computer, a plastic file box, and some other assorted items for a trip to Amarillo which would include an overnight stay and a couple of days spent planning a youth program to be held in Dallas this summer.

I dropped Josh at school and pointed the truck to Friona.

Two miles out of town the cell phone broke the silence.

"Did you mean to leave these tennis shoes at home?"

No. I turned around, picked up the shoes, and tried again. I was still okay on time, and I'd meant to run the truck through the car wash on the day before but hadn't done it. My truck is a blip about to drop right off the tax roll radar due to age. But a wash makes it look almost taxable again. I still had

## Ranking deadlines established for EQIP signup

The Natural Resources Conservation Service has set the ranking deadlines for the 1999 Environmental Quality Incentive Program.

The first ranking deadline for the 1999 program year is March 31 and a second ranking deadline is set for July 1.

Applications received before March 31 from individual landowners interested in participating in the EQIP during the 1999 program year will be ranked for program eligibility during April. Those applications received after March 31 will be ranked after the July 1 deadline.

Producers who did not qualify for the EQIP program during the March 31 ranking period may request a deferment from their local Farm Service Agency office and be eligible to be re-ranked during the July 1 ranking period.

It should be noted that applications received after the

July 1 deadline, as part of the EQIP continuous program sign-up provisions, will be held until the 2000 program year ranking period.

Private landowners should be aware that EQIP provides technical, educational, and financial assistance to eligible farmers and ranchers to address soil, water and related natural resource concerns on their lands in an environmentally beneficial and cost-effective manner.

EQIP is a voluntary program and is designed to assist farmers and ranchers with placing natural resource conservation practices on their property. Cost share is provided to program participants to achieve the goals of a conservation plan designed with the assistance of local NRCS staff.

Cost share practices include placement of appropriate structural or vegetative practices, such as animal waste manage-

ment facilities, irrigation management equipment, and vegetative buffers and wildlife habitat enhancement, to name a few. Eligible practices will depend on the location of the farm or ranch on which the practice is to be installed and the major resource concern to be addressed in that particular area.

Information on eligible cost share practices and major resource concerns of an area can be secured from your local NRCS field office. Contracts for eligible producers are made for a period of five to ten years and include incentive payments to assist with implementation of land management practices, such as nutrient management, pest management, and grazing land management. It should be noted that program funds target natural resource concerns of farmers as well as livestock producers.

For more information on EQIP or to submit an application, contact the NRCS office or the FSA office at 111 East Avenue D in the USDA Service Center in Muleshoe, or call 272-5124 or 272-4538.

**Golden Anniversary**

The children and grandchildren of **James and Betty Glaze** are hosting a reception honoring their 50th Wedding Anniversary.

The reception will be **Saturday, March 20** from 1:30 pm to 3:00 pm at the **Bailey County Coliseum**. We invite all family and friends to join us in this joyous occasion.

## COMBEST

from page 4

Agency jobs next year.

Immediate action is needed. This week, I sponsored and the House has since passed H.R. 882, which would make \$470 million available immediately to meet pressing farm credit needs, while supplemental loan authority is addressed by the President and Congress. Farmers cannot wait for Congress to pass and the President to sign a supplemental appropriations bill that he should have requested weeks ago. The demand for operating credit is now. Farmers and lenders have already made their planting decisions. The funds to carry out those decisions need to be in the farmers' hands now. This bill provides loan money for farmers to qualify for instantly, without having to wait on an additional supplemental bill later. With the continued drought and de-

pressed markets, farmers are still feeling the after-shock as they try to secure financing to start again this year. H.R. 882 is a way that we can get the ball rolling to provide some farm disaster relief immediately.

I will not sit idly by and allow producers' needs go unanswered because of bureaucratic failure from Washington. I am working with the Secretary of Agriculture to set up a meeting to give him a chance to explain these disaster relief delays to farmers. We all have a lot of work to do this year to help producers through these trying times, but we must demand and receive competent expedited delivery of Congressional funds. The USDA and Washington bureaucrats must be held accountable for failing to deliver farm disaster aid to producers.

## TO ALL INTERESTED PERSONS AND PARTIES:

Pleasant Valley Gin, Inc. has made application with the Texas Natural Resource Conservation Commission for Air Quality Permit No. 40641 to expand a Cotton Ginning Plant in Muleshoe, Lamb County, Texas. The location of the existing facility is 9.5 miles east of Muleshoe on Highway 70 and 4 miles north on FM 2910. Additional information concerning this application is contained in the public notice section of this newspaper. This notice is to be published on March 11 and 14.

**JOURNAL CLASSIFIEDS SELL! (505) 272-4536**



# BAILEY COUNTY DEVOTIONAL PAGE

**BRUCE, INC.** TACL-8003350C, LP08638  
 HEATING & AIR CONDITIONING  
 Hwy. 214 North Muleshoe 272-5114

**DAMRON DRUG, INC.**  
 308 Main St. 272-4210  
 Muleshoe, TX

**SAIN IRRIGATION & MACHINES**  
 Complete Pump Service  
 W. American Blvd. 272-4397  
 Walt Sain Muleshoe, TX 272-4148

**MULESHOE PEA & BEAN, INC.**  
 RR 2 Box 297 272-5589  
 Muleshoe, TX

**NEEDMORE Co-op GIN COMPANY**  
 946-3361 • Sudan, TX

**Henry Insurance Agency, Inc.**  
 "Serving You Since 1964"  
 111 West Avenue B 272-4581  
 Muleshoe, TX

**MULESHOE MOTOR CO.**  
 1225 W. American Blvd. 272-4251

**WES-TEX FEED YARDS, INC.**  
 Custom Cattle Feeding  
 272-7555 Muleshoe, TX

**TINO'S**  
 104 W. American Blvd.  
 272-7528 • Muleshoe, TX  
 Daily Specials Owners: Tino & Linda Campoya

**FARWELL CONVALESCENT CENTER**  
 "In Christ's Love, Everyone Is Someone Special"  
 305 5th St.  
 481-9027 • Farwell, TX

**"THE FIVE AREA TELEPHONE COOPERATIVE ORGANIZATION"**  
 West Plains Telecommunications Co.  
 Five Area Systems, Inc., Plateau Cellular Network  
 Five Area Long Distance - Five Area Internet  
 302 Uvalde Muleshoe, USA (806) 272-5533

**AMERICAN AVIATION INC.** West  
 Hwy 84  
 272-4266  
 Muleshoe

**FIRST TEXAS FLBA MULESHOE**  
 "Serving Farmer & Bailey Counties"  
 272-3010 • Fax 272-5388  
 316 Main • P.O. Box 424 • Muleshoe, TX

**McCormick Seeds, Inc.**  
 400 East Ash • Muleshoe, Texas  
 272-3156  
 A complete line of field seeds

**HIGGINBOTHAM-BARTLETT CO.**  
 215 Main Muleshoe  
 272-3351 FAX 272-6860  
 Bruce Hartline-Mgr.

**Lowe's MARKETPLACE**  
 401 W. American Blvd. 515 W. American Blvd.  
 Muleshoe 272-4585 Muleshoe 272-4406

**MULESHOE FEED BARN**  
 311 W. American Blvd.  
 Muleshoe, TX  
 272-5626

There hath no temptation taken you but such as is common to man: but God is faithful, who will not suffer you to be tempted above that ye are able; but will with the temptation also make a way to escape, that ye may be able to bear it.  
 —I Corinthians 10:13

**MULESHOE AREA HEALTH CARE Center**  
 "Committed to Caring"  
 106 W. Ave. H Muleshoe 272-7578

**IRRIGATION PUMPS & POWER**  
 ZIMMATIC CENTER-PIVOTS  
 W. Hwy. 84 272-4483

## Facts About The BIBLE BY JOHN LEHTI

**"OFF WITH HIS HEAD!"**

AMONG THE ANCIENT RULERS WE FIND SOME TYRANTS WHO TOOK THE LAW INTO THEIR OWN HANDS. WHEN DISPLEASED WITH ONE OF THEIR SUBJECTS IT WAS NOT UNUSUAL FOR THEM TO BELLOW, "OFF WITH HIS HEAD!" NO ONE QUESTIONED THEIR AUTHORITY OR COULD DEMAND A COURT TRIAL. IT WAS JUST AN OPEN AND SHUT CASE! ON THE OTHER HAND THE ISRAELITES WERE UNDER MOSAIC LAW WHICH PRESCRIBED CERTAIN PROCEDURES FOR ALL PEOPLE WHO MIGHT BE ACCUSED OF A CRIME. IT FELL TO THE ELDERS, MEN OF MATURE AGE, TO JUDGE THE OFFENDER, CONSIDERING ALL THE EVIDENCE AGAINST HIM AND FINALLY DECIDE HIS INNOCENCE OR GUILT. THE MORALITY OF THE MOSAIC LAW, STRICT AS IT WAS, GAVE EACH ACCUSED THE PERSONAL DIGNITY OF PRESENTING THE FACTS OF HIS CASE. THE PETTY RULERS DESTROYED HUMAN RIGHTS AND DIGNITY JUDGING ALL CASES ON THE BASIS OF THEIR OWN NARROW VIEWPOINT—USUALLY IN AN AROUSED STATE OF ANGER. THE LAWS WHICH THE ISRAELITES ADHERED TO ALTHOUGH THEY WERE SEVERE, WERE MORALLY EXACT.

SAVE THIS FOR YOUR SUNDAY SCHOOL SCRAPBOOK

This devotional & directory is made possible by these businesses who encourage all of us to attend worship services.

**ASSEMBLY OF GOD**  
**FIRST ASSEMBLY OF GOD**  
 521 South First Street • 272-3017  
 Jack Stone, Min. • 272-3984  
 S.S. 9:45 am, W.S. 11 am & 6:30 pm, Wed. 7:30 pm  
**EL BUEN PASTOR**  
 415 E. Ave. F • Pastor Felix Cadena  
 S.S. 9:45 am, W.S. 11 am & 6 pm; Wed. 7 pm

**BAPTIST**  
**CALVARY BAPTIST**  
 1733 W. Ave. C. Rev. Jeff Coffman  
**CIRCLE BACK BAPTIST**  
 Intersection FM 3397 & FM 298  
 Jessie Shaver, Min • 946-3676  
**FIRST BAPTIST**  
 220 West Ave. E., Stacey Conner, Min.  
**FIRST BAPTIST**  
 Lazbuddie • 965-2126

**PRIMERA IGLESIA BAUTISTA**  
 223 E. Ave. E, Rev. Greg Guzman  
**PRIMITIVE BAPTIST**  
 621 South First, Elder Cleveland Bass, Min.  
**PROGRESS BAPTIST**  
 Progress, TX  
**PROGRESS SECOND BAPTIST**  
 Arthur Hays, Min.  
 1st & 3rd Sundays

**RICHLAND HILLS BAPTIST**  
 17th & West Ave. D, George Malis, Pastor  
**ST. MATTHEWS BAPTIST**  
 Corner of W. Boston & W. Birch  
 Floyd R. Monroe, Min.  
**THREE WAY BAPTIST**  
 927-5467  
**TRINITY BAPTIST**  
 314 E. Ave. B, Robert Brown, Min.

**CATHOLIC**  
**IMMACULATE CONCEPTION CATHOLIC CHURCH**  
 805 E. Hickory, Father Joseph Augustine

**CHARISMATIC EPISCOPAL ST. CLEMENTS**  
 1536 W. American Blvd. • 272-5954  
 Father Sergio Leal  
 Sun. W.S. 10:30 am  
**CHRISTIAN THE CHRISTIAN CENTER**  
 Morton Hwy. • 272-5105  
 Reydon Stanford, Min.

**Muleshoe Area Medical Center "Your Hospital"**  
 708 S. First St. • 272-4524  
 Muleshoe, TX

**BAILEY COUNTY ELECTRIC COOPERATIVE ASSN.**  
 Muleshoe — 272-4504 Morton — 266-8600

**minsa southwest corporation**  
 P.O. Box 484 272-5545  
 Muleshoe, TX  
 FAX (806) 272-5135 (800) 852-8291

**CHURCH OF CHRIST**  
**LARIAT CHURCH OF CHRIST**  
 Sam Billingsley, Min.  
 S.S. 10 a.m.; W.S. 11 a.m. & 6 p.m., Wed. 7 p.m.  
**LAZBUDDIE CHURCH OF CHRIST**  
 Nathan Crawford, Min.  
 S.S. 9:30 am; W.S. 10:20 am & 5 pm; Wed. 7 pm  
**MULESHOE CHURCH OF CHRIST**  
 22nd & W. American Blvd.  
 Harry Riggs, Min.  
 Albert Garcia, Min. (Spanish service)  
 S.S. 9:30 am; W.S. 10:20 am & 6 pm; Wed. 7:30 pm  
**16th & AVE. D CHURCH OF CHRIST**  
 Curtis Shelburne, Min. • 272-4619  
 S.S. 10:30 am & 1:30 pm; Wed. 7:00 pm

**LUTHERAN**  
**ST. JOHN LUTHERAN**  
 Lariat, TX-David Symm, Min.  
 S.S. 10:30 am; W.S. 9:30 am

**METHODIST**  
**FIRST UNITED METHODIST HISPANIC MINISTRIES**  
 E. 5th and E. Ave. D  
 Pastor Benito Cavazos  
**FIRST UNITED METHODIST**  
 507 W. 2nd St.  
 Pastor Brad Reeves  
**LAZBUDDIE METHODIST**  
 965-2121  
**EL DEVINO SALVADOR**  
 814 W. Ave. C, Muleshoe, TX  
 Guadalupe Ballinas, Min.

**NAZARENE**  
**NEW VISION CHURCH OF THE NAZARENE**  
 814 W. Ave. C • 272-3622  
 Hugh Hayes, Interim-S.S. 10 & 11 am;  
 W.S. 7 pm

**PENTECOSTAL**  
**UNITED PENTECOSTAL LIGHTHOUSE**  
 207 East Ave. G • 1-800-454-6051  
 Pastor McKibben, S.S. 10 am  
 Thursday, Bible Study 7 pm

**INTER DENOMINATIONAL NEW COVENANT**  
 Plainview Hwy. Jimmy Low, Min.  
 Steve Claybrook, Assoc. Pastor  
 W.S. 10 am; Wed. 7 pm

**PACO FEED YARD, INC.**  
 Commercial Cattle Feeders  
 P.O. Box 956 265-3281  
 Friona, TX  
 Feller Hughes-Mgr.

**TEXAS FARM BUREAU INSURANCE CO.**  
 1612 W. American Blvd. • 272-4567 • Muleshoe

**Nieman Realty**  
 116 East Avenue C  
 Muleshoe • 272-5285  
 George & Dianne Nieman

**WESTERN DRUG**  
 114 Main 272-3106 Muleshoe

**Springlake Potatoes, Inc.**  
 P.O. Box 280 • Springlake, TX  
 262-5542

**1ST BANK** MEMBER FDIC  
 202 South First 272-4515

**WINKLES TRUCKS, INC.**  
 Box 757 (806) 247-2724  
 Friona, TX

**PINNACLE THERAPY SERVICES**  
 Speech/Language, Physical & Occupational Therapies  
 305 5th St. • Farwell, TX • (806) 481-CARE

1315 W. American Blvd.  
 272-3333  
 Muleshoe, TX

**MULESHOE LIVESTOCK AUCTION**  
 Muleshoe, TX • Sale Every Saturday  
 Clayton Myers • 272-4201

**BAILEY GIN COMPANY, INC.**  
 946-3397 • Sudan, TX  
 Peanut Hawkins, MGR

**SHERLEY-ANDERSON LAZBUDDIE ELEVATOR**  
 965-2922 Lazbuddie, TX

**Leal's Tortilla Factory, Inc.**  
 "Serving West Texas since 1957"  
 107 E. Ash 272-5772 Muleshoe, TX

**MAPLE COOP GIN**  
 927-5501  
 Maple, Texas

**JAMES CRANE TIRE CO., INC.**  
 107 Main 272-4594  
 Mike Hahn Muleshoe, TX

**TERRA DISTRIBUTION**  
 Hwy. 84 • 272-4203  
 Muleshoe, Texas  
 Bruce Bruns - Mgr.

**churches CHICKEN**  
 1411 American Blvd.  
 272-5581  
 Muleshoe, Tx.  
 10% Discount for Senior Citizens

**HEREFORD FEED INGREDIENTS, INC.**  
 232 Main St. • Muleshoe, Tx.  
 272-5871  
 DAVID R. TIPPS — Representative

**Dairy Queen**  
 1201 W. American Blvd.  
 272-3412 Muleshoe

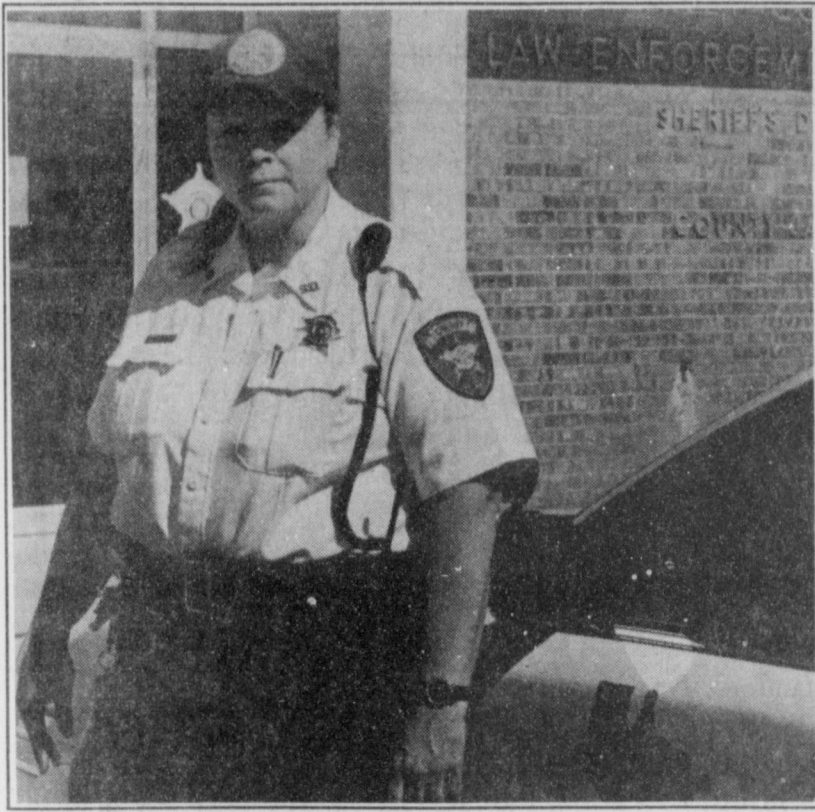
**WEST CAMP GIN, INC.**  
 Better Ginning & Courteous Service  
 Route 2 Box 1000 • 925-6681  
 Muleshoe, TX  
 James Shepard / Phyllis Shepard

**Shipman's Body Shop**  
 Auto Painting • Wrecker Service • Free Estimates  
 Tractor Glass & Windshields  
 410 N. 1st Muleshoe, TX  
 272-4408 FAX 272-3366

**Two locations to serve you**  
 1900 W. American Blvd. 107 E. American Blvd.  
 272-5337 272-3978  
 Muleshoe, TX

**Decorators Floral & Gifts**  
 616 South First 272-4340  
 Muleshoe, TX





**Defensive driving Deputy**

Bailey County Sheriff's Deputy Eileen Ciampoli attended the first ever National Academy for Professional Driving "Tactical Police Driving Class" held at Reese Center in Lubbock on Feb. 10-12.

# Keep your cool without the cost

Although it is technically still winter, it is never too early to get your house ready for the long hot summer ahead that is typical of this area.

SPS passes along these tips to help you keep your house cool and your electric bills down.

- Clean and service cooling unit before the start of the cooling season.
- Check and clean or replace filters at least once a month. They will run more efficiently increasing comfort and saving significant energy.
- Put window air conditioners on the shady side of the house. They are more efficient

if they don't have to fight the sun's direct heat.

- Shade your heat pump or air conditioner with an awning or trees.
  - For the long term, plant trees and shrubs to shade your home being careful not to get them near or under power lines.
  - Close drapery and blinds on the sunny side of the house to block the sun.
  - Keep vents and ducts clean and clear of furniture and other obstructions.
  - Keep rooms open to allow air to circulate.
  - Use ceiling fans to move cooler air up from the floor.
  - Weatherstrip or caulk doors and windows or wherever two different materials meet.
  - Keep storm doors and windows closed tightly.
  - Set the thermostat a few degrees higher.
  - Only set the thermostat to 78 or 80 degrees if you plan to be gone more than four hours. This keeps the system from having to work harder to cool down the house when you return.
  - Turn off lights and appliances when not in use.
- SPS offers averaged billing based on historic use to keep electric bills from skyrocketing during the summer months. Call SPS at 1-800-750-2520.

# Lazbuddie honors students

The students of the month for March have been named at Lazbuddie Elementary School. These students have displayed outstanding qualities of character, citizenship and leadership. They have proven to be an asset to their class and to their school. Each student was presented a ribbon and commended for their efforts. They are the following:

**Pre-Kindergarten:** Audrey Daniel, daughter of Mark and Michelle Daniel; **Kindergarten:** Joselina Garcia, daughter of Jose and Cruz Marquez; **First Grade:** Logan Mason, son of Shane and LaShea Mason; **Second Grade:** Cassie Steinbock, daughter of Terry and Judy Steinbock; **Third Grade:** Brianna Sanchez, daughter of Jr. and Chandra Sanchez; **Fourth Grade:** Erica Derma, daughter of Carmen Galaviz; **Fifth Grade:** Zack Ballanger, son of Steve and Lisa Ballanger.



Pictured back row (l-r) - Logan Mason, Erica Derma and Zack Ballanger; front (l-r) - Cassie Steinbock, Joselina Garcia, Audrey Daniel and Brianna Sanchez.

## Circle E Pets

Your full line pet store & more!

**WE CAN GET ALL PURINA FEEDS!**

605 W. American Blvd. • 272-4118



## Thank You

*With great appreciation and love, I thank the friends of my brother, Ronnie Luna, for caring for him. There will never be another like him, and I'm so thankful that he was buried in the town that he loved so much.*

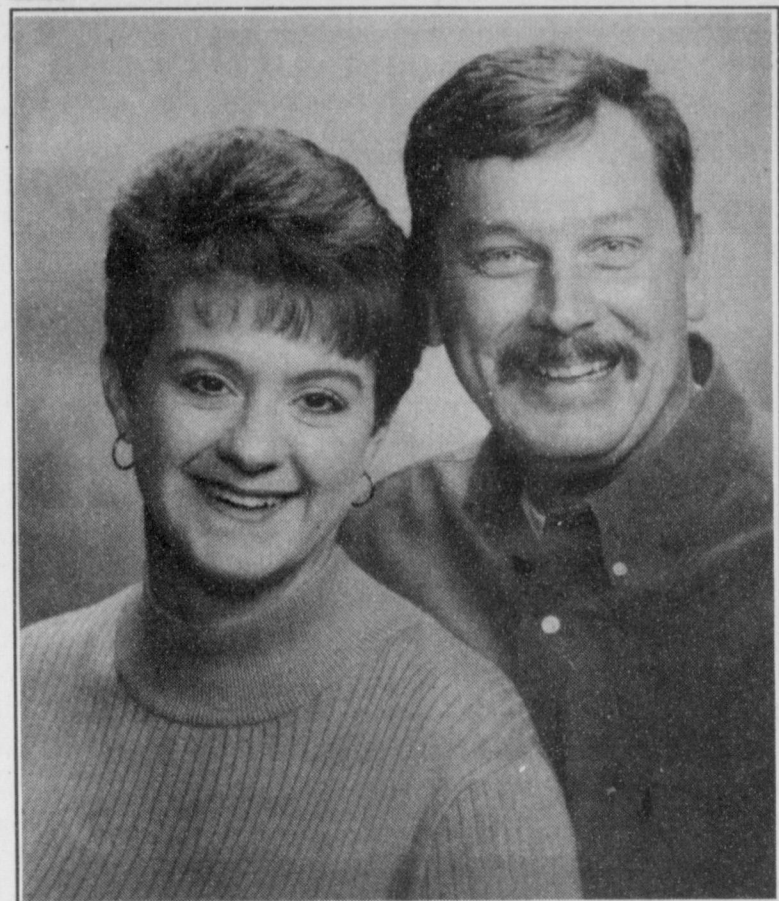
*Ronnie loved people and family with all that he had and in his own way, showed it by waving at the people he knew and the people he didn't know. Ronnie didn't know a stranger, as I'm sure you all realize.*

*Please pray for him, that God will show mercy and that he will finally find the peace that he searched for so long. Please pray for his family and his children so that they, too, may find their peace. May God bless you all, and may He help all those who need a friend find one in Muleshoe.*

<b>GM Goodwrench Service Plus</b>	PROVIDING FREE PICKUP AND DELIVERY AT HOME OR WORK IN THE LOCAL AREA
<b>ALL GM VEHICLES</b>	
REPLACE FUEL FILTER	\$34. <sup>00</sup>
ELECTRIC WHEEL BALANCE WITH TIRE ROTATION	\$28. <sup>00</sup>
A/C SYSTEM INSPECT AND PREFORMANCE TEST (FREON IF NEEDED IS EXTRA )	\$28. <sup>00</sup>
FUEL INJECTION SERVICE WITH FILTER	\$63. <sup>00</sup>
SPECIAL INCLUDES CLEAN THROTTLE PLATE FLUSH FUEL INJECTORS AND TANK ADDITIVES	\$92. <sup>00</sup>
TRANSMISSION FLUSH	\$99. <sup>00</sup>
SPECIAL INCLUIDES COMPLETE FLUSH OF TRANSMISSION AND NEW FLUID AND NEW FILTER	
COOLING SYSTEM FLUSH	\$77. <sup>00</sup>
COMPLETE FLUSH OF COOLING SYSTEM AND REPLACE WITH NEW COOLANT AND THERMOSTAT	
LUBE OIL FILTER	\$22. <sup>00</sup>
SPECIAL INCLUDES OIL FILTER 24 POINT MAINTANCE CHECK	INCLDES TAX
SOME VEHICLES SLIGHTLY HIGHER EXPIRES 3/31/99	
<b>The Plus means better.</b>	
<b>BENDER CHEVROLET OLDSMOBILE CADILLAC</b>	
2500 MABRY DRIVE • CLOVIS, NM • 763-4465	



**ENGAGEMENT**



**Wooten — Rasco**

Bob and Carolyn Wooten of Lubbock announce the engagement and approaching marriage of their daughter, Suzanne, to Ricky Rasco, son of Odell and Marcha Rasco of Abernathy. The couple will marry May 1 at Monterey Church of Christ in Lubbock. Suzanne is a Lubbock Christian University graduate and is employed by Incode. Ricky graduated from Muleshoe High School, and he attended South Plains College and Texas Tech University. He is employed by Gary Products Group.

**JENNYSLIPPERS NEWS**

The Jennyslippers met with a full agenda at noon on Tuesday, March 9 at the Carrousel. Financial Aid Seminar planning, and the putt-putt miniature golf course were the issues of most importance.

The Financial Aid Seminar will be March 2 with area college and financial aid consultants present. President

Ruby Green gave information in detail about the putt-putt miniature golf course. It will be run by the Jennyslippers for the next year.

Other business on the agenda were the Welcome Packet and Toast to Texas. There was a short discussion of the problems of the Welcome Packets. Thanks were given to those

who helped with the Toast to Texas.

When President Ruby Green called the meeting to order, twelve Jennyslippers and one guest were present. Billie Downing said the opening prayer. The minutes and treasurer's report were accepted. Those present were Peggy Bruton, Alene Bryant,

Joyline Costen, Billie Downing, Ruby Green, Gail Hargrove, Nancy Kidd, Ellen Ladd, Susie Pierce, Thursie Reid, Vivian White, Joy Williams, and guest Arleen Keithly, granddaughter of Peggy Bruton.

Jennyslippers meet the 2nd and 4th Tuesday of the month. We invite anyone interested in promoting Muleshoe to come and join us.

**OBITUARIES**

**JUANITA BLACKSTOCK**

Juanita Blackstock, 78, of Morton died Wednesday, March 10, 1999 at Cochran Memorial Hospital in Morton.

A church service was held Saturday at the First Missionary Baptist Church in Morton with Rev. Harold Harrison, pastor of the First Baptist Church of Whiteface, officiating. Burial was held in Morton Memorial Cemetery in Morton under the direction of Ellis Funeral Home of Morton.

Mrs. Blackstock was born May 18, 1920 in Nugent, Texas. She married Tolbert Harold Blackstock Nov. 20, 1937 in Lamesa, Texas. He passed away March 9, 1997.

Mrs. Blackstock moved from Lamesa to Morton in 1948. She was a homemaker and a member of the First Missionary Baptist Church of Morton.

Casket bearers were: grandsons Leslie and Len Blackstock, Stephen Tanner, Darin and Dusty Enos and Michael Cason.

She is survived by two sons, Harold Blackstock of Morton and Maurice Blackstock of Wolforth; two daughters, Brenda Enos and Linda Hatter both of Morton; four sisters, Lois Sanders of Gainesville, Texas, Margie Lee Wyatt of Colorado City, Texas, Almetta Buchanan of Denver, Colo., and Mary Beth Mayhue of

Stamford, Texas; one brother, J.T. Wyatt of Stamford; ten grandchildren; four step-grandchildren; 19 great grandchildren; and seven step-great grandchildren. She was preceded in death by one grandson Wayne Enos in 1983.

The family suggests memorials be made to your favorite charity.

**B&B Agritech**  
**GRASS SEED & DRILLING**  
*Custom Farming*  
**AerWay Plows**  
 Kem Bales (806) 272-5400  
 Cell # (806) 946-7255  
 Doug Bales (806) 272-4419  
 P.O. Box 104 • Muleshoe, TX

**Pride**  
 Mobility Products Corp.  
**AMERICAN**  
**EQUIPMENT & TRAILER, Inc.**  
 3707 M.L.K. Jr. Blvd.  
 Lubbock, Texas 79408  
**1.800.530.4775**

**Come Check Our Rates!**  
**WE HAVE MONTHLY AUTO INSURANCE**  
*Delton E. Wilhite & Associates*  
**INSURANCE AND FINANCIAL SERVICES**  
 1631 West American Blvd. • 272-3652 or 272-5988

**SCHOOL BOARD NOTES**

The Muleshoe ISD Board of Trustees began their meeting last night with the recognition of the Muleshoe High School girls basketball team and their coaches. Each team member and coach received a certificate of achievement in recognition of their success this season. The first item of business for the Trustees was to

present a certificate to Dillman Elementary recognizing them as a Texas Successful School (see lead story)

The second item of business for the Board was a review of the five year facility plan. Following that review, the Trustees authorized Bill Moore and Sam Whalin to seek pricing on what they consider the top three fa-

cility projects which include remodeling the Principal's office and the Special Ed./Federal Programs offices at the high school, constructing new restrooms on the visitors side of the football stadium, and putting asphalt on the parking lot between the band hall and the high school gym. Once prices are obtained on these

projects, the Board will consider them for completion this summer.

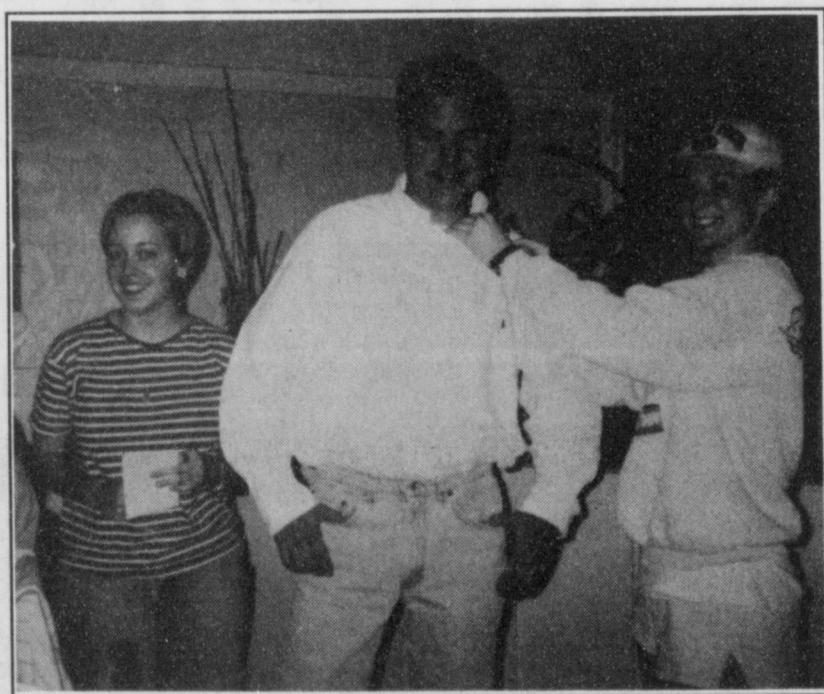
The Trustees ended their meeting by submitting ballots for the region 17 Education Service Center Board of Trustees.

The meeting adjourned at 8:41 p.m.

The next meeting for the Trustees will be held on March 29.

**Action Citizen**

The Student Community Action Club has selected Dale Hughes as the February Citizen of the Month. Krystal Heathington presented him a boutonniere. He was congratulated for his community service by SCAC president, Amber Bruns.



**BIRTHS**

**MARIO JESUS DEHOYOS**  
 Mario and Mary Jane DeHoyos of Muleshoe announce the birth of a son, Mario Jesus.

He was born Feb. 25 at 4:06 p.m. at Lamb Healthcare Center in Littlefield. He weighed 7 lbs. and 15 ounces.

Grandparents are Ramon and Cruz Sanchez of Friona, and Ramon and Janie Garcia of

Muleshoe. Mario Jesus has 3 sisters, Yolie DeHoyos of Lubbock; Erin DeHoyos of Muleshoe; and Veronica Nunez of Muleshoe, and one brother, Rocky DeHoyos of Muleshoe.

**DUSTIN JOHN SMITH**

Michael and Regina Smith of Lazbuddie announce the birth of a son, Dustin John.

He was born March 7 at Muleshoe Area Medical Cen-

ter at 9:30 a.m. He weighed 7 lbs. and 4 ounces.

Grandparents are Robert and Sylvia Smith of Muleshoe and Samuel and Arlene Zimmerman of Fleetwood, Pa. Great grandparents are David Smith and Harry and Mary Wedel of Montezuma, Kan.; Daniel Martin of Denver, Pa.; and Anna Zimmerman of Buffalo, Mo.

**TOPS NEWS**

Noemi Sanchez, former co-leader of TOPS #34 installed the new officers at the meeting on March 11 at the Church of Christ on American Boulevard. Members installed in their offices were Alene Bryant and Betty Jo Davis as weight recorders, Laverne James as leader, Polly Otwell as co-leader, Janie Hughes as secretary and Ruth Clements as treasurer.

The new TOPS card chairman is Lucille Harp. Laverne

James presented Joline Franklin with a TOPS charm for serving as the reporter.

Fourteen members weighed in at the meeting. The best loser was Ruth Clements and tying for first runner up were Jewel Peeler, Joline Franklin

and Lucille Harp. Those tying for second runner up were Janie Hughes and Cheryl de Graffenreid.

Our next meeting will be March 18 in the Fellowship room of the 16th and D Church of Christ.



The American Automobile Association originally sanctioned the Indianapolis 500 race. The United States Auto Club assumed those duties in 1956.

**CHRISTIAN WOMEN'S RETREAT**  
**"ABIDING IN FAITH"**  
**Friday, March 26<sup>th</sup> & Saturday, March 27<sup>th</sup>**  
**AMHERST RETREAT CENTER**  
*Experience a weekend of spiritual renewal, inspirational speakers, study in the word, fun, laughter and solitude.*  
**REGISTRATION DEADLINE IS MARCH 16**  
 Time: **Friday, March 26** — Registration 5:00 to 6:00 pm  
 Bring your own brown bag supper  
**Saturday, March 27** — Overnight until 3:00 pm  
 Breakfast and lunch provided  
**REGISTRATION COST: \$35**  
 For more information, please call 272-5517

**Featured Speaker will be AMY BLACK**  
 Amy is the wife of David Black, pastor of First United Methodist Church in Lamesa, Texas. She is a respected therapist at Lamesa Middle and High School and has recently spoken at several women's retreats.  
 Mrs. Black is the dedicated mother of a high school and college student. She is a native of Texas, hailing from Denver City. In her spare time, Amy enjoys music, quilting and camping.

*Amy Black, speaker*

**¡PRESTAMOS!**  
**LOANS!**  
**¡PRESTAMOS!**  
**\$100 to \$446**  
**ALL APPLICATIONS ACCEPTED**  
 Ask for Norma or Yolanda

Open:  
 Mon. thru Thurs.—9 am to 5 pm  
 Fri.—9 am to 6 pm

**272-3673**  
 Phone Applications Welcome

**Continental Credit**  
 206 South Main Street  
 Muleshoe, TX









# St. Patrick's Day Sale

You don't have to be lucky to find great savings at **LOWE'S!**



PRICES EFFECTIVE MARCH 10-16, 1999

## MEAT

- VALUE PACK  
LOWE'S PREMIUM SELECT BONE-IN
- PORK COUNTRY STYLE RIBS** .....LB **88¢**
- LOWE'S PREMIUM SELECT  
MARKET TRIMMED
- WHOLE BEEF BRISKET** .....LB **\$1<sup>69</sup>**
- VALUE PACK  
LOWE'S PREMIUM SELECT
- BONELESS SKINLESS BREAST** ....LB **\$1<sup>99</sup>**
- BONE-IN
- COOK'S SHANK**
- PORTION HAM** .....LB **99¢**
- ANY SIZE PACK  
BONELESS
- CHUCK ROAST** .....LB **\$1<sup>59</sup>**
- ANY SIZE PACK  
BONELESS
- CALIFORNIA ROAST** .....LB **\$1<sup>79</sup>**
- BONE-IN
- COOK'S BUTT PORTION HAM** .....LB **\$1<sup>19</sup>**
- LOWE'S PREMIUM SELECT
- CATFISH FILLETS** .....LB **\$2<sup>99</sup>**
- PILGRIM'S PRIDE BONE-IN
- SPLIT BREAST** .....LB **\$1<sup>39</sup>**
- VALUE PACK  
BONE-IN
- PORK STEAK** .....LB **\$1<sup>49</sup>**
- BAR S POINT CUT
- CORNED BEEF BRISKETS** .....LB **98¢**
- OLD MILL
- HOT LINKS** .....LB **\$1<sup>59</sup>**
- PEYTON'S
- SLICED BACON** .....12 OZ. PKG **99¢**
- SMOKED OR POLISH
- PEYTON'S SAUSAGE** .....14 OZ. PKG **\$1<sup>39</sup>**
- DECKER SMOKED/OVEN ROASTED  
WHITE TURKEY OR
- COOKED HAM**.....1 LB. PKG **\$2<sup>49</sup>**
- PEYTON'S
- MEAT BOLOGNA** .....12 OZ. PKG **99¢**
- PEYTON'S
- CHOPPED HAM** .....10 OZ. **\$1<sup>89</sup>**
- PEYTON'S
- COOKED HAM** .....10 OZ. **\$2<sup>69</sup>**
- DECKER
- BEEF BOLOGNA** .....12 OZ. PKGS **2/\$3**
- PEYTON'S
- MEAT FRANKS** .....12 OZ. PKG **79¢**
- PEYTON'S
- CHORIZO** .....8 OZ. PKG **\$1<sup>19</sup>**
- DECKER
- JUMBO MEAT FRANKS** .....1 LB. PKG **99¢**
- REGULAR OR LEMON
- PARSONS' AMMONIA** .....28 OZ. BTL **79¢**
- ORIGINAL, RED OR WHITE
- WELCH'S GRAPE JUICE** .....64 OZ. BTL **\$2<sup>59</sup>**

## PRODUCE

- GARDEN FRESH
- GREEN CABBAGE**.....LB **10¢**
- HOT AND SPICY
- JALAPENO PEPPERS** .....LBS **3/\$1**
- MIX OR MATCH
- COLLARD, MUSTARD**
- OR TURNIP GREENS** .....BUNCHES **2/\$1**
- FRESH AND TANGY
- LEMONS** ..... **7/\$1**
- NEW CROP
- ASPARAGUS** .....LB **\$1<sup>99</sup>**
- WASHINGTON EXTRA FANCY
- GRANNY SMITH APPLES** .....LB **89¢**
- NORTHWEST FRESH
- D'ANJOU PEARS** .....LB **69¢**
- GARDEN FRESH
- ZUCCHINI** .....LB **99¢**
- STRAIGHT NECK
- YELLOW SQUASH** .....LB **99¢**

## FROZEN & DAIRY

- ASSORTED
- TOMBSTONE**
- 12" PIZZA**.....19.4 TO 23.6 OZ. PKG **\$2<sup>88</sup>**
- LIMIT 4
- ORIGINAL OR LOW FAT
- PARKAY QUARTERS** .....16 OZ. **87¢**
- ORIGINAL OR BLUEBERRY
- AUNT JEMIMA WAFFLES** ....10 OZ. PKG **99¢**
- ASSORTED
- FRESCHETTA** **BAKES & RISES**
- PIZZA** .....25.6 TO 30.7 OZ. PKG **\$4<sup>49</sup>**
- VALUE PACK—BREADED DIP
- MRS. PAUL'S FISH**
- STICKS/FILLETS** ....20.7 TO 23.5 OZ. PKG **\$3<sup>99</sup>**
- 16 OZ. ORIGINAL OR 12 OZ. PUB STYLE
- FISHER BOY**
- FISH STICKS** .....YOUR CHOICE **\$1<sup>99</sup>**
- ASSORTED
- SWANSON DINNERS** ....9.5-11.5 OZ. PKG **\$1<sup>69</sup>**
- ASSORTED
- EGGO WAFFLES** .....8.6 TO 11 OZ. PKG **\$1<sup>19</sup>**
- BIRDS EYE
- BROCCOLI CUTS** .....16 OZ. PKG **99¢**
- ASSORTED
- MINUTE MAID
- ORANGE JUICE** .....64 OZ. CTN **2/\$4**

## HEALTH & BEAUTY

- ASSORTED  
REGULAR OR PEDIATRIC
- VICKS FORMULA 44**.....4 OZ. BTL **\$3<sup>19</sup>**
- ASSORTED
- ALKA-SELTZER**
- PLUS COLD** .....20 CT. PKG **\$3<sup>59</sup>**
- ASSORTED
- SCOPE MOUTHWASH** .....24 OZ. BTL **\$2<sup>99</sup>**
- ASSORTED
- PERT PLUS SHAMPOO** .....15 OZ. BTL **\$2<sup>99</sup>**

ALL TYPES

**COCA-COLA, SPRITE**  
**OR DR. PEPPER**

6 PACK-12 OZ. CANS **\$1<sup>58</sup>**

ALL TYPES

**COCA-COLA, SPRITE**  
**OR DR. PEPPER**

3 LITER BTL **\$1<sup>78</sup>**

**FRUITOPIA**.....4 PACK-20 OZ. **\$2<sup>99</sup>**

- ASSORTED
- PREMIUM CRACKERS** ....15-16.5 OZ. **2/\$3**
- CHICKEN OF THE SEA  
IN WATER OR OIL
- CHUNK LIGHT TUNA**.....6 OZ. CAN **48¢**
- ASSORTED
- SHURFINE SYRUP** .....24 OZ. **\$1<sup>35</sup>**
- ORIGINAL OR REDUCED FAT  
KEEBLER
- VANILLA WAFERS** ....11 TO 12 OZ. BOX **2/\$4**
- ASSORTED KEEBLER
- TOWN HOUSE**
- CRACKERS** .....13 TO 16 OZ. **2/\$4**
- ASSORTED KEEBLER
- CHIPS DELUXE** .....16 TO 18 OZ. PKG **2/\$4**
- ASSORTED
- LITTLE HUGS DRINKS** .....24 CT. DAILY **\$2<sup>99</sup>**
- KIDNEY OR ASSORTED  
BLACK EYE PEAS/PINTOS
- RANCH STYLE** .....15 OZ. CAN **2/\$1**
- LONG/THIN SPAGHETTI OR ELBOWS
- SKINNER PASTA** .....24 OZ. PKG **99¢**
- ASSORTED GARDEN STYLE  
OR OLD WORLD
- RAGU**
- SPAGHETTI SAUCE** .....28 OZ. JAR **2/\$3**
- ASSORTED
- RENUZIT ADJUSTABLE**.....7.5 OZ. **\$1<sup>09</sup>**
- ASSORTED OR DESIGNER
- BRAWNY PAPER TOWELS** .....ROLL **79¢**
- WHITE
- NORTHERN BATH TISSUE** ..4 ROLL PKG **99¢**
- WHITE
- LOWE'S**
- SANDWICH BREAD** .....24 OZ. LOAF **59¢**
- SUNNY
- VANILLA WAFERS** .....11 OZ. BOX **79¢**
- SUGAR, CHOCOLATE OR VARIETY
- MRS. FRESHLEYS**
- DOUGHNUTS** .....12 CT. BOX **2/\$3**
- ASSORTED DORITOS
- TORTILLA CHIPS** .....14.5 OZ. BAG **2/\$5**

Each Week you may purchase the 5 piece plate setting for only \$3.99 with each \$10.00 minimum purchase.

**Affiliated Foods, Inc. presents**

**Chrome Stainless Steel Flatware!**

**Granada**

**GOURMET COLLECTION**

At participating stores only.

**5-Piece Place Setting**

With Two Patterns To Choose From

**\$3<sup>99</sup>**

with each \$10.00 purchase  
**Reg. Price \$6.99**

We are giving you the opportunity to purchase a flatware set to suit your household at a fraction of the regular cost! Each week different completer pieces will be featured at a special feature price with coupon so you may round out your flatware collection. Lifetime Warranty, High Quality Shine, Made in Spain, Dishwasher Safe.

WESTERN MONEY  
UNION TRANSFER<sup>SM</sup>  
The fastest way to send money

**Lowe's**

**MARKETPLACE**

401 W. American Blvd.  
Muleshoe 272-4585



515 W.  
American Blvd.

Muleshoe  
272-4406

WE RESERVE THE RIGHT  
TO LIMIT QUANTITIES  
IN TEXAS

WEEK 6

**SOUP/ GRAVY**  
**LADLE**

**\$6.99**

WITH \$3.00 OFF  
COUPON.

**REG. PRICE \$9.99**

W/ \$10.00 PURCHASE  
ONLY AT PARTICIPATING AFFILIATED FOODS  
MEMBER STORES. ONE COUPON PER  
COMPLETER PIECE.