

## WEATHER

July 30 91 62  
July 31 91 61 .3  
Aug. 1 79 58

# BAILEY COUNTY JOURNAL

*'The Community Of Opportunity-Where Water Makes The Difference'*



© 1990

Vol. 31, No. 31

Published Every Sunday At Muleshoe, Bailey County, Texas 79347

Member  
**TA** TEXAS PRESS  
ASSOCIATION

20¢

Sunday, August 2, 1992

# Alternative Education School Opens

## PEP School To Open In Fall

### around Muleshoe

Gary W. Watkins of Muleshoe was named to College of Santa Fe's President's List for the Spring 1992 semester.

In order to qualify for the President's List, students must achieve a grade point average of 3.8 or higher on a four-point scale.

The College of Santa Fe is a four-year liberal arts institution offering associate's bachelor's and master's degrees in more than 40 program areas.

\*\*\*

The Senior class of Lazbuddie will have a garage sale on Saturday, August 8 from 8 a.m. to 5 p.m. at Jarmen Seed located at 801 W. American Blvd. Many different and unusual items will be available. Everyone is encouraged to go by and support the Lazbuddie Senior Class.

\*\*\*

In Thursday's edition of the Muleshoe Journal it incorrectly stated that the cafe in Damron Drug would be open for the Mule Days Celebration. Linda Nowell, owner, said that Linda's Place will not be open.

According to the chamber office, The Spudnut Shop will be open for the Mule Days.

\*\*\*

Coach Scisson reported that physicals will be given at 5 p.m. August 5 for both Junior High and High School male athletes at the Muleshoe High School gym. He also stated that they will begin two-a-day at 7 a.m. August 10.

\*\*\*

Physicals for male athletes will be on Wednesday, August 5 at 5 p.m. at the Muleshoe High School gym. This will include area schools as well (Bovina, and Lazbuddie). If you have any questions, you may call Randy Adair at 272-7571.

\*\*\*

The Bailey County Commissioners Court will meet in Special Session Monday, August 3 in the Bailey County Courthouse.

The meeting will begin at 10 a.m. and will continue until all business is concluded, with the following items on the agenda:

1. Approve the minutes of the previous meeting.
2. Authorize County Judge to advertise for bids for the purchase of a new motor grader for Precinct

Cont. Page 6, Col. 1

## Cicada Killers Arrive In County

A very large wasp, the "cicada killer", is making its annual summer appearance on the South Plains, said Curtis Preston, Bailey County extension agent. This wasp is the largest in our area, being about an inch and half in length.

These wasps are much more interested in stinging cicadas than people. They can often be seen dragging or flying and carrying paralyzed cicadas back to their nests.

At suitable nesting sites, the wasps excavate a tunnel into the soil at an angle for a distance of one to three feet. The main tunnel ends in a number of branches and cells. The burrow may be dug during the day or night. The excavation will often result in a large mound of dirt. The burrow entrances are left open during provisioning of the nest and may never be closed except when the wasp's entire job is completed.

Depending upon their size, from one to four cicadas are provisioned in each underground cell. The female lays an egg on the last cicada she places in a cell. As many as four females may provision a single nest simultaneously, although only one of them made the initial excavation.

The wasp larva which hatches from the egg has a cicada meal



**SCHOOL TAXES AT WORK**---Construction is continuing on the new Library at Dillman Elementary School. The library is just one of a number of improvements being made to the Muleshoe Schools. (Journal Photo)

## Pilgrimage To The United Nations

On June 21, a journey began for two young people from Muleshoe, Stacey Langfitt, daughter of Pat and Herb Langfitt, and David Ramirez, son of Mary Ann and Albert Ramirez, Jr. boarded a plane at Lubbock International Airport for Dallas Love Field. On landing they were taken to the Odd Fellow Lodge Hall, where they were to meet other young people from all over Texas.

This was the start of a two and half week tour heading to New York, New York and the United Nations Pilgrimage of 1992. This is a trip, for young people from all over the United States and they are sponsored by local Rebekah's and Odd Fellows and is the only organization accorded this privileged. It is also the only organization that is allowed to lay a wreath at the Tomb of The Unknown Soldier.

This journey was concluded when they arrived back at Lubbock International Airport July 8.

The Rebekah's received a letter from The Grand Secretary of The

Grand Lodge I.O.O.F. of Texas. This letter was read to all in attendance and it was full of praise of the moral character and conduct of these two young people during the tour.

"The Muleshoe Rebekah's and Odd Fellows feel justly proud of these two young people and compliment their parents for the values instilled into them during their young lives," said Leslie Lambert. "David's account of his views of the trip is recounted below.

By David Lee Ramirez

This exciting journey began on June 21st, for Stacey and myself. We flew to Dallas Love Field where we were picked to go to the lodge. At this point in time, I was getting butterflies in my stomach, because I did not know what to expect.

We arrived at the lodge hall at 3:45 p.m., this is also the place where we would be staying the night. As we walked in, the lodge was crowded with parents and other family members that went to drop off the other delegates.

By now, Stacey and I were feeling out of place, not knowing anyone there, except each other. As we were waiting for the short briefing, Stacey and I were separated to go meet some of the other delegates. I was put into a room of complete strangers who I had to get to know, since we were going to spend 2 weeks of our life together.

These other young men were just like you and I. I just had to talk to them to find out what they were really like and what their hobbies were. The night went on and everyone was getting to know each other. We played games with the other delegates.

That night, we had a D.J. playing music for us until 10:30 p.m. At 10:30, we were supposed to go to the room where we would spend the night. Well, it didn't work out quite that way; we didn't get to our rooms until 11:00 p.m. that night and that was not the end of it though. For the guys, the night continued until 4:00 a.m. the next morning. We were able to get very little sleep on the bus because the roads in Louisiana were the worst in my opinion. We got 4 hours sleep that day, but that was OK because we had nothing to do for the rest of the day but travel until we reached Meridian, Mississippi that night.

**MERIDIAN, MISSISSIPPI**  
When we got to the motel in Meridian, the guys went to the pool and were swimming from 6 p.m. to 9 p.m. That night, we were

to be in our rooms at 11:00 p.m. and we were. Event though we were in separate rooms, we were still

Cont. Page 6, Col. 2

## Cattle 'The Alternate Crop' Seminar Set

A Multi-County Stocker Cattle Management Seminar and Trade Show has been scheduled for Tuesday, August 4 in the Bailey County Coliseum in Muleshoe.

### Proposed Three Year Project Meetings Set

The Texas Department of Transportation will hold a series of meetings to get public input about the Transportation Improvement Program for 1993, 1994, and 1995.

Public comment is invited concerning the projects that have been identified as high priority projects and any additional needed improvements to the highway system.

These meetings are required by the National Intermodal Surface Transportation Efficiency Act of 1991.

The following meetings have been scheduled:

On August 6 at 7 p.m. in the Old City Hall council Chamber, 916 Texas Ave., Lubbock.

This meeting is to discuss projects in the Lubbock Metropolitan area and is being conducted by the Metropolitan Planning Organization of Lubbock.

A meeting will be held at 7 p.m. August 10 in the Terry County Courthouse, 500 W. Main, Brownfield.

This meeting is to receive comments concerning projects in Yoakum, Terry, Gains, Lynn, and Dawson Counties.

A meeting is planned for August 11, at 7 p.m. in the Bailey County Courthouse, 300 South 1st, Muleshoe. This meeting is to receive comments concerning projects in Parmer, Lamb, Bailey, Cochran and Hockley Counties.

On August 12 at 7 p.m., a meeting has been planned at the Plainview Chamber of Commerce, 710 West 5th, Plainview.

The purpose of this meeting is to receive comments concerning projects in Castro, Swisher, and Hale Counties.

A meeting has been planned for August 13 at 7 p.m. in the Caprock Community Action Association, Inc., 224 South

Cont. Page 6, Col. 1

"We hope to open in the fall," Bill Moore, Superintendent of the Muleshoe Independent School District, said in speaking of the PEP High School at Pep.

The PEP High School will have an Alternative Educational Environment dedicated to helping students complete high school and prepare for the future.

A few months ago the old Pep School was acquired and is in the process of being renovated at this time.

Students from Anton, Amherst, Morton, Muleshoe, Sudan, Three Way, Whiteface and Whitharrel are eligible to attend.

Although classes are scheduled to begin on August 17, each class will be designed on an open-entry/open-exit basis. Classes will be held from 8:25 a.m. until 3:04 p.m. each school day.

The PEP School is an alternative school that will work with students who are from 14 to 35 years of age and meet at least one of the following criteria: \* have dropped out of junior or senior high school, \* are considering dropping out of school, and \* are two or more years behind in school.

Students will have the opportunity to graduate with 21 credits or earn a GED certificate.

You might ask, how is PEP School different from a traditional

high school?

1. The number of credits needed to earn a high school diploma varies from district to district. Texas requires 21 credits to graduate and so will the PEP school.

2. If students meet state eligibility guidelines, they may participate in U.I.L. events at their home district, not at PEP school.

3. Students will be admitted to school upon the recommendation of their home district.

4. Instruction will focus on preparing students with marketable job skills.

5. Special programs will be designed for working students.

6. Working in cooperative groups will be stressed.

7. Students will be able to determine the pace at which they work.

8. PEP classes will have an inter-disciplinary focus: math/science, language/social studies.

Students will have access to Computer Assisted Instruction, day care facilities for their children from 0-3 years of age while their parent(s) attend classes, and services from the Texas Department of Human Resources for students who qualify.

They will also be offered vocational courses in Child Development, Parenting, Food Production, Auto Mechanics and Building Trades.

Transportation to and from the PEP school will be furnished by the home district.

The motto of the PEP school is "If you don't see yourself as a winner, then you cannot perform as a winner." At PEP School everyone is a winner.

If you or anyone you know wishes to learn more about the school and how to enroll, they may contact the high school counselor or principal at one of the eight participating schools. They may

also contact the PEP High School Principal at Box 394, Pep, Texas 79353 or call 806-933-4499.

July Rainfall  
3.19

1992  
Moisture To Date

18.36

## School Bus Driving Course Set Aug. 3-7

In accordance with Texas law, school bus drivers will undergo training in Muleshoe Monday, August 3 through Friday, August 7.

David Gray, instructor, said classes will get underway at 1 p.m. in Room 16 of Muleshoe High School. Classes will dismiss at 5:30 p.m. each day with the exception of Friday, when they will dismiss at 3 p.m. There is no charge for this school.

Gray reminded that any person employed to drive a school bus in the state of Texas is required to complete a 10 unit bus training course to be certified. Once certified, the driver must take refresher courses every three years.

"Several videos will be shown," said Gray. "These videos are made available by Region 17 Education Service of Lubbock."

Those taking the course will be given a text book. According to Gray, he will be utilizing both classroom and actual driving of the buses during the five day school.

All persons taking the course will be given a pre-test on the first day of class and a post-test the last day, according to Gray.

Drivers from Muleshoe, Lazbuddie, Spring Lake-Earth and Amherst are expected to attend the school.



## Potential Homebuyers Faced With Array Of Choices

Potential homebuyers faced with an array of mortgage loan choices have help with the Residential Mortgage Guide published by the Real Estate Center at Texas A&M University.

"Despite current low mortgage interest rates and affordable home prices, many borrowers still cannot qualify for the standard fixed-payment, 30-year mortgage loan," says Research Economist Jack C. Harris, author of the report. "But loan alternatives devised for specific borrower situations can help many people qualify for financing."

Insured and guaranteed loans from the Federal Housing Administration and the Veterans Administration, for example, are popular with first-time homebuyers with little cash for a down payment. Buyers with money for a substantial down payment can apply for a permanent buy-down mortgage that reduces the

interest rate for the entire loan term.

"The adjustable rate mortgage, or ARM, is the most widely available mortgage loan alternative today," says Harris. "An ARM's lower initial rate may allow a borrower to qualify for a loan that would be unaffordable under a fixed-rate regime."

Other alternatives include seller financing, equity sharing, lease-purchase, balloon mortgages and 15-year loans. The 12-page Residential Mortgage Guide describes the pros and cons of these and other loan types and includes a glossary of mortgage loan terms. The report can be ordered for \$1 in Texas (\$2 out of state) from the Real Estate Center, Texas A&M University, College Station, Texas 77843-2115. Add \$1 handling charge per order.

## Retail Building Bright Spot

Retail building permits are the bright spot in the state's nonresidential real estate market, according to the chief economist for the Real Estate Center at Texas A&M University.

"For the 12 months ending in May, retail building permits were up 9.9 percent in Texas," said Ted C. Jones. "This is in stark contrast to a 51.5 percent decline in office building permits and a 21 percent drop in industrial building permits."

Figures compiled by the Real Estate Center show almost \$581 million in retail building permits issued during the 12 months. Houston led the state with \$155.1 million in retail permits, a 36.8 percent increase. Dallas was second with nearly \$105 million in retail permits, down 2.8 percent.

"The improving Texas retail picture looks even better when compared to the nation," said Jones. "While Texas improved nearly 10 percent, retail building permits nationwide fell 12.5 percent."

Texas' residential market "softened slightly" during the past 12 months, said Jones, as evidenced by the less than 1 percent decline in total properties sold. "The good news, however, is that supply also

shrank. The number of new listings was down 4.72 percent through May, despite a 14.1 percent gain that month.

"The overall number of homes on the market in major Texas cities fell 5.8 percent in May," said Jones. "The number of months supply stood at 10.68 months, down almost 4.4 percent. As the supply of existing homes continues to shrink, prices will begin to move upward."

May's median price for a home sold by Multiple Listing Services in 26 major Texas markets was \$78,100. The national median was \$102,700. Both prices were up 2.3 percent from May 1990.

### Reactor Needed

A scientific panel said that development of an advanced-design, mid-size nuclear reactor, with passive safety features, represents the greatest promise for the struggling U.S. commercial nuclear industry.

Never tell all that you know, or do all that you can, or believe all that you hear. -Portuguese Proverb.

## LOUISA'S LETTER

Dear Louisa,

My wife is a pack-rat. The closets in our house are filled with clothes that she never wears--some of them date back to fifteen years. Every now and then she pulls a garment out and says it has come back in style but I notice that she doesn't wear it more than once or twice. What can I do about this? I am afraid to throw or give away clothes because I might do away with something that is not old.

Husband--Mich.

Answer:

It is true that if you keep things long enough they are likely to come back in style. The only trouble with this is that the fabric becomes old and very often discolored. A very nice garment should be packed away and kept in a cool place and protected from moths but the best thing to do with old clothes, if one is not good at remodeling, is to give them away to people who are in need.

-Louisa

### Congress & Aid

Congress in response to the Los Angeles riots, approved a scaled-down, \$1 billion emergency urban aid bill that would provide summer jobs for disadvantaged teen-agers.

\*\*\*

Man can believe the impossible, but many can never believe the improbable. -Oscar Wilde.

### INGENIOUS IDEAS DEPT.

Here's news about useful items you may soon see in local stores: Businesses can get preprinted Personalized Stamped Envelopes at the Post Office.

## Nursing Home News

by: Joy Stancell

\*\*\*

We wish to thank Five Area Telephone for bringing and picking up the tables that were used Friday for our picnic.

\*\*\*

Tuesday morning Jimmy Espinosa and Trino entertained in the Day Room. Their guitar music and singing ensured a delightful and enjoyable music festival.

\*\*\*

Tuesday afternoon Beverly Wagnon, Claudine Embry, Lynda Low and Bonnie Green came to shampoo and set the ladies' hair. Mandy Edwards gave manicures, assisted by Shelby Murphy.

\*\*\*

Wednesday afternoon Glenda Jennings entertained with her songs and wit.

\*\*\*

Guy Kendall's grandson Mike and his friend were here visiting.

\*\*\*

Linda and Pat were here visiting their mother Clara Weaver, over the weekend. They all celebrated Clara's grandson Chris' birthday.

\*\*\*

Congratulations, Lib King, on the birth of a new 8 lb., 4 oz. great grandson.

\*\*\*

Arvel Robertson received a visit from an old friend last week.

\*\*\*

Our thanks to the A.A.R.P. for their donation to the Activity Fund.

\*\*\*

Dixie Jesko brought Crispies that were served at Music Festival Tuesday morning.

\*\*\*

Jim Clements attended the Music Festival with his wife Wilmoth Clements Tuesday morning.

\*\*\*

Victor Foss is in the local hospital. Please keep him and his family in your prayers.

\*\*\*

Ella Faubus celebrated her 93rd birthday Wednesday, July 29. She received visits, cards, flowers from her family and friends.

\*\*\*

Janetta Hukill was visited by her grandson Keith and granddaughter, Britney Griffin.

## OVEN-CRISPED CHICKEN BREASTS

8 boneless, skinless chicken breasts (about 2 lbs.)  
2 egg whites  
1/2 C. skim milk  
1/2 C. all-purpose flour  
1 T. paprika  
1 t. dried basil leaves  
1/4 t. salt  
1/4 t. pepper  
1 C. fine dry bread crumbs  
1/4 C. Crisco Oil

1. Heat oven to 425 degrees
2. Rinse chicken breast halves. Pat dry with paper towels.
3. Beat egg whites until frothy. Beat in milk.
4. Combine flour, paprika, basil, salt and pepper in large plastic food storage bag. Place bread crumbs in another bag. Dip breast halves, one or two at a time, in flour mixture, then in egg white mixture, then in crumbs.
5. Place Crisco Oil in 15 1/4 x 10 1/4 x 3/4-inch jelly roll pan or other shallow pan. Place in 425 degree oven for 3 to 4 minutes or until oil is hot, but not smoking. Add chicken breasts in single layer.
6. Bake at 425 degrees for 10 minutes. Turn chicken over. Bake for 5 minutes.



Keep an eye on your children during open-window season.

childproof. They are designed to keep insects out—not to keep children in.

•Do not allow children to play near windows or patio doors.

•Do not paint, nail or weatherstrip windows shut. They must be operable to provide emergency exits.

•Develop an emergency plan to make sure family members know how to use any emergency exit window or accessory.

## Photography By Lonnie & Sue Gibson



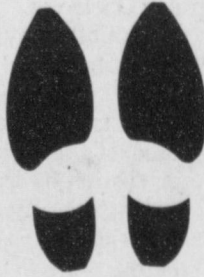
Call 806-246-3337

To Make An Appointment

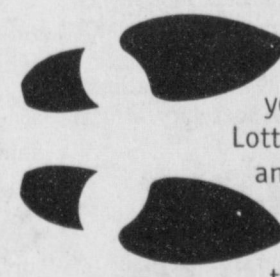
P.O. Box 364 Amherst, Tx.

# How To Do The Texas Two Step.

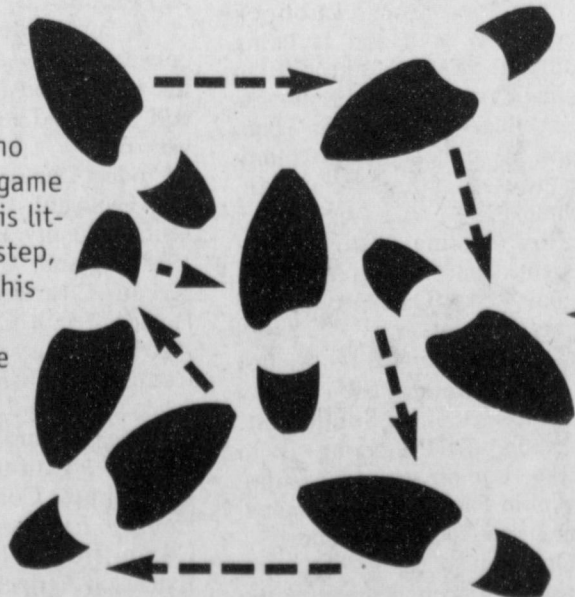
Step 1. Stand erect, feet together, back straight, breathe normally.



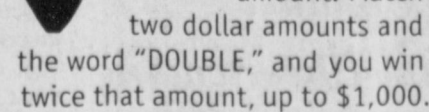
Step 2. Head to your nearest Lottery retailer and purchase the new instant ticket called Texas Two Step.



Step 4. A lot of people who play this game will do this little extra step, because this game will have more winners than ever before.



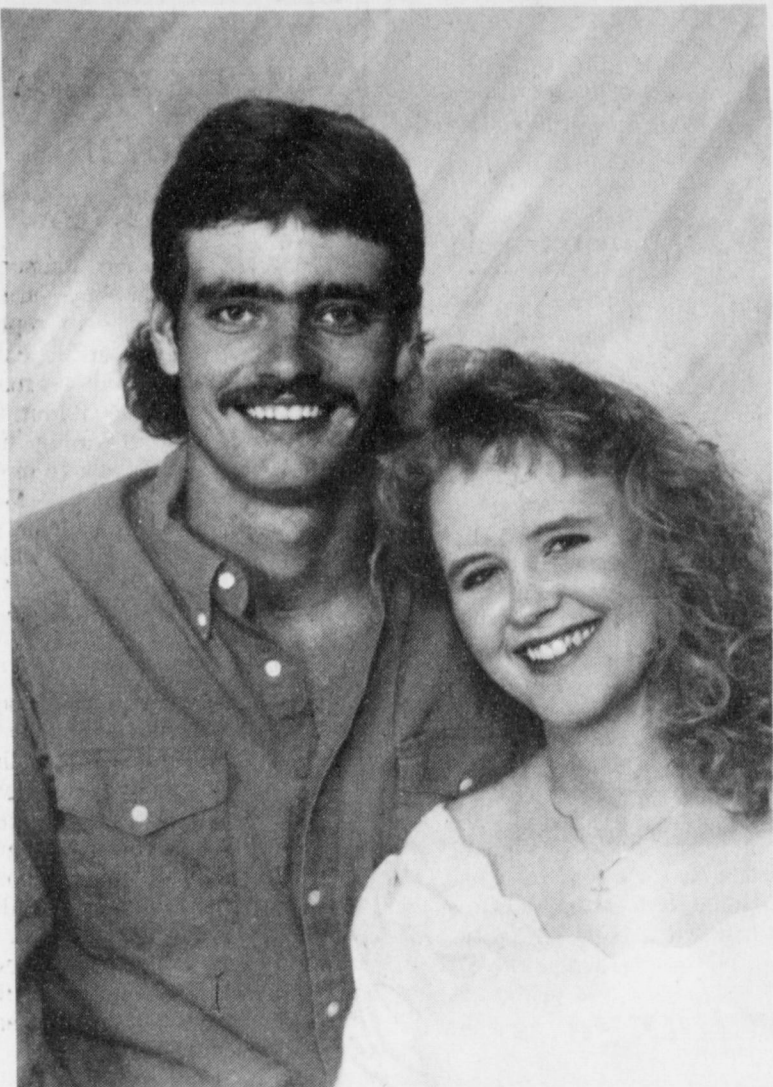
Step 3. Step to the side and scratch off the entire play area. Match three dollar amounts in any order and win that amount. Match two dollar amounts and the word "DOUBLE," and you win twice that amount, up to \$1,000.



No matter what kind of dancing you're used to doing, you can win doing the Texas Two Step. You just need to be 18 years of age or older to play.







**WEDDING PLANNED**--Eugene and Jan Cornelius of Lubbock announce the engagement and upcoming marriage of their daughter Virginia (Gin) Lynn Cornelius to Jimmy Wayne Johnson. Jimmy is the son of Kearney and Jackie Scoggin of Muleshoe and Jim Johnson of Houston. The bride-elect is a 1990 graduate of Frenship High School in Wolforth and a 1992 graduate of South Plains College in Levelland. She is currently enrolled at Texas Tech University in Lubbock and employed at the Hobby Lobby in Lubbock. The prospective groom is a 1990 graduate of Muleshoe High School and currently is a junior at Texas Tech University in Lubbock. He is now employed at Dekalb-Plant Genetics in the Lubbock Plant. The wedding is set for August 14 at 7 p.m. at the Calvary Baptist Church, 8202 Aberdeen in Lubbock.

(Guest Photo)



**GARDEN SPOT OF THE WEEK**--this week is the home of Mr. and Mrs. Kearney Scoggin located behind Leal's Restaurant. The award is made by the Jennyslippers organization. (Journal Photo)

**Make Bath Time "Getaway" Time**

Relaxing and rejuvenating, wet when it comes to water conservation. Americans are opting for baths over showers--bathing uses approximately half the water of showering.

**Enochs News**

by: Mrs. J.D. Bayless

Visiting in the home of Mr. and Mrs. Jack Stanley last Sunday was their daughter, Mr. and Mrs. Alton Jones of Shallowater.

Mr. and Mrs. Jarrol Jayton and children spent last weekend at Lake Brownwood.

Mr. and Mrs. Bill Key spent the weekend at Conchs Lake to attend the Walker Reunion. The Marion Walkers are good friends of the Keys. There were 30 present.

Mr. and Mrs. Dale Nichols helped their daughter Paula Grant and children move to Amarillo Friday. Then Paula and children spent the weekend with her parents.

The Bud Huffs and grandchildren from Three Way visited Mr. and Mrs. Jack Stanley Sunday afternoon.

**Creative Living**

by: Sheryl Borden

Information on cooking techniques to reduce fat, cleaning carpet, and making elegant almond desserts will be the featured topics on "Creative Living" on Tuesday, August 4 at 12 noon and Saturday, August 8 at 2 p.m. (All times are Mountain.) "Creative Living" airs on public broadcasting station, KENW-TV, from Eastern New Mexico University.

Marilyn Harris, representatives of Procter and Gamble, will explain that dietary guidelines recommend cutting fat and saturated fat in the diet by selecting leaner cuts of meat and marinating various cuts of meat. Ms. Harris is from Cincinnati, OH.

Joan McClain, spokesperson for Milliken Textiles and Iona Appliances, will show a new dual cyclone vacuum cleaning system as well as some new products for dry cleaning carpet. Ms. McClain is from Manhattan Beach, CA.

Audrey Stehle, representative from the Almond Board of California, will prepare some wonderful dessert recipes with almonds. Ms. Stehle is from Indianapolis, IN.

On Tuesday, August 4 at 9:30 p.m. and on Thursday, August 6 at 12 noon "Creative Living" will present information on sports nutrition, gifts kids can make, and setting up home filing systems.

Cynthia Valdez, registered clinical dietician with the University of New Mexico Medical Center, explains that there is no "magic

food" that will make you feel stronger, train harder or compete better. However, what and when you eat can affect your athletic performance. Ms. Valdez is from Albuquerque, N.M.

Deborah Durham, Creative Consultant to JC Penney Home, will demonstrate several inexpensive and easy gifts for kids to make and give. Ms. Durham is from New York City.

Joy Best, Extension Home Economist, will demonstrate how to organize household records with a home filing system. Ms. Best is from Portales, N.M.

"Creative Living" Requests, KENW-TV Station 52, Eastern New Mexico University, Portales, N.M. 88130.

**Nursing home News**

by: Joy Stancell

The Healthcare Center's Family Support Group meets each second Monday at 7 p.m. in the Conference Room. We encourage any interested party to attend.

Friday afternoon Grace Scarbrough and Irene Splawn came to visit and play table games with the residents. Our special friend made rice krispie treats that were served for refreshments.

**PLAY! PLAY! FREE GAS FOR A YEAR!**

**EASY MONEY**

PICK UP YOUR FREE GAME TICKET TODAY!

**ALLSUP'S**

**EASY MONEY**

**\$1,000.00 WINNER**

**\$100.00 WINNERS**

LA NITA WESLEY-VERNON, TX.  
VIRGINIA BRANE-BOOKER, TX.  
JUDY HOLLUMS-PETERSBURG, TX.  
BETH ALTMAN-HEREFORD, TX.  
SAMMY SOZA JR.-ROSWELL, N.M.  
EVLINDA ORTEGA-CARLSBAD, N.M.  
EVA MEDINA-PETERSBURG, TX.  
LICHA K. GREEN-BORGER, TX.

**SAUSAGE & BISCUIT 69¢ EACH**

**COMBO OF THE MONTH! FRESH BAR-B-Q SANDWICH & 16 OZ. COKE ONLY 99¢**

**LAST WEEK TO PLAY EASY MONEY!**

ALL PRIZES MUST BE CLAIMED BY AUGUST 15, 1992. DRAWING FOR THE NEW 1992 CAVALIER VL 4 DOOR SEDAN WILL BE HELD ON THURSDAY, AUGUST 20, 1992.

**ALL TYPES PEPSI-COLA 3 liter \$1.59**

**GOTTA HAVE IT**

**PLANTER'S BULLPEN CHEW SUNFLOWER SEEDS 2 OZ. BAGS 2 89¢**

**ALL FLAVORS LAY'S POTATO CHIPS REG. \$1.49 SIZE ONLY 99¢**

**VALLEY FARE PAPER TOWELS JUMBO ROLLS 2 \$1**

**ALLSUP'S "FAMOUS" BURRITOS BUY ONE GET ONE FREE**

**LIBBY'S VIENNA SAUSAGE 5 OZ. CANS 2 \$1**

**CHARMIN BATH TISSUE 4 ROLL PKG. 99¢**

**2 PACK C OR D, 1 PACK 9-VOLT ENERGIZER BATTERIES \$2 39**

**TROLLI SQUIGGLERS, BEAR, DINOSAUR GUMMI CANDY 5.29 OZ. BAG 89¢**

**ASSORTED FLAVORS BONKERS CANDY 3 \$1**

**SOLARAY SUNGLASSES \$1 OFF ANY PAIR**

Fitti Diapers 1g. or med.	\$5.99	Shurfine Sugar 4 lb. bag	\$1.69
Shurfine Dog Food 20 lb. bag	\$3.99	Shurfine Crackers 1 lb. box	79¢

Thanks To All Our Customers & Friends For Our 4 Great Years at Linda's Kitchen!

(Located in Damron Drug)

We appreciate each and everyone and hope to continue to serve you.

Linda, Mama, Paw & Alice





**ENGAGEMENT ANNOUNCED**--Mr. and Mrs. Royce Turner would like to announce the engagement and approaching marriage of their daughter Viki Jill Turner to Timothy Carter Winter. He is the son of Hank Winter of Plainview and Dona Harper of Bakersfield, CA. The couple will exchange vows August 15 in the St. Stephen's Episcopal Church in Lubbock. (Guest Photo)



Marilyn Young

### Marilyn Young Honored By Doncaster

Marilyn Young, a local Fashion Consultant for Doncaster, a women's clothing company headquartered in Rutherfordton, North Carolina, was honored recently for being in the top 500 consultants located throughout the United States.

Joan Ussery, Doncaster's President, praised Marilyn for her hard work and dedication to serving her customers. "Marilyn has proven that a good product, coupled with creative service, is what today's consumer wants," said Ms. Ussery.

Doncaster is a 60 year old fashion

company, selling direct to the customer through Fashion Consultants who hold private wardrobe consulting appointments with each client. The company's sales have increased dramatically over the last three years and its continued success is attributed to a dedicated and highly motivated force of Fashion Consultants.

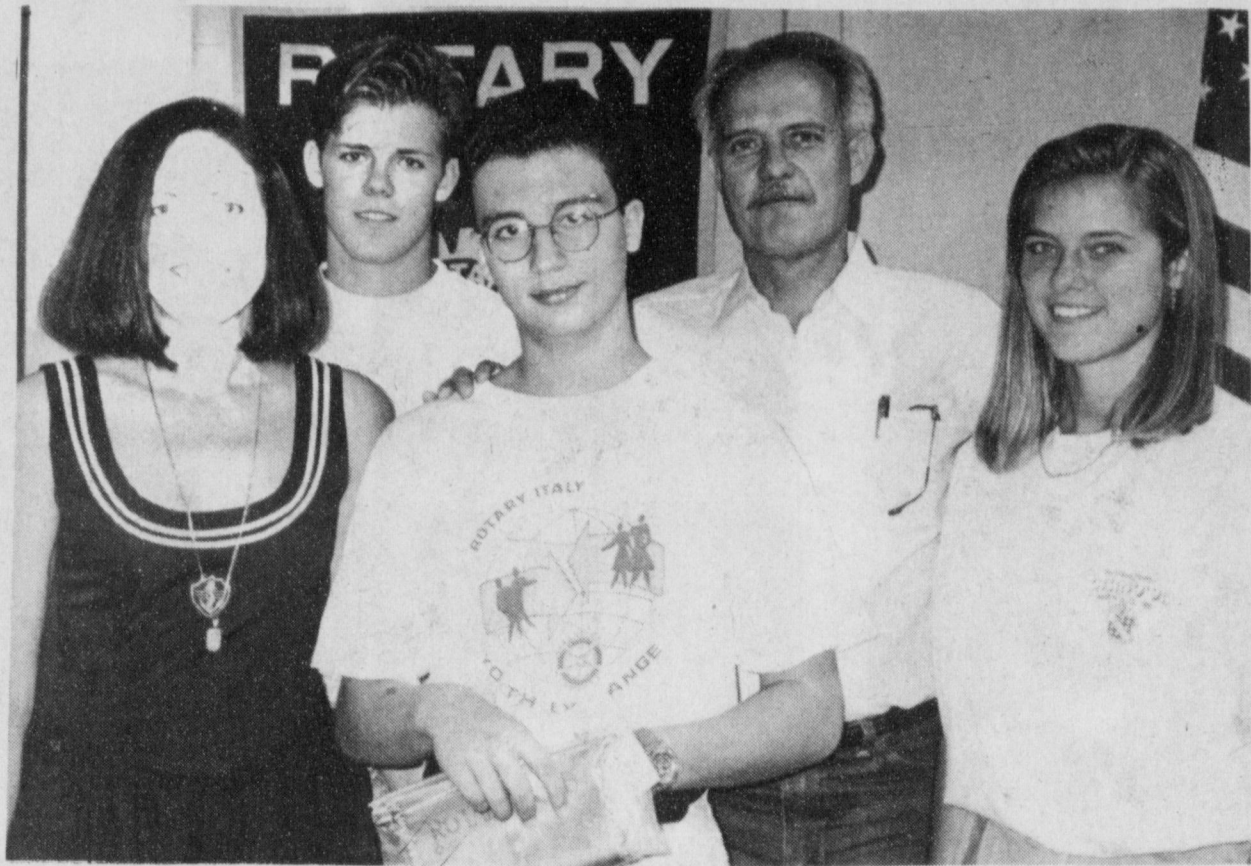
Charles Black, Bush campaign advisor: "Nobody's paying any attention to him at all right now," speaking of David Duke's challenge to President Bush.

**A Special Thank You To**  
Those who worked so hard to make this years summer production a success.

- Mr. Kerry Moore - Director
- Dale Hughes - Set
- Robert Orozco - Programs
- The Cast
- Darrell Turner - M.C.
- Merchants
- All others who helped and Those who attended.

You are all special, and we appreciate you.

**Mule-Plex Production Co., Inc.**



**HOST FAMILY**--Lisa and Don McElroy and their son Eric recently participated in the Rotary International Youth Exchange Program. Eric visited Udine, Italy and Luigi Murena from Udine lived in the McElroy home this summer. The McElroys, Eric and their daughter Stacy are shown here with Luigi. Don, Eric and Luigi spoke at the Rotary luncheon July 28. (Journal Photo)

### Rotary Hears Talks On Youth Exchange

The Muleshoe Chapter of Rotary met July 28 at 12 noon in the Bailey County Civic Center with about 55 attending. Bret McCasland presided. He introduced 12 guests.

McCasland also introduced Don McElroy who was in charge of the program. McElroy brought his son Eric and Luigi Murena from Udine, Italy. Both boys were involved this summer in the Rotary International Youth Exchange Program. Eric visited Udine and was hosted by the Rotary Club of Gemona, District 2060. Luigi was hosted by the local Rotary Club and stayed in the McElroy home.

Lee and Janet George from Big Spring co-ordinated the exchange. According to McElroy, the Georges face a big problem in finding enough host families for youth who want to come to the United States for such visits.

"It has been a pleasure to be involved in the Rotary International Youth Exchange Program," said McElroy. He noted that Lynn and Buck Campbell hosted a summer exchange student earlier in the year.

Eric McElroy showed books on Italy to the group and presented a banner from the Rotary Club in Udine, Italy that he visited. "I found out about the exchange program at Camp Ryla," Eric said. He was given a choice of three countries. He found that Italy had a number of interesting towns and that he could learn a lot about the medieval culture. "It was a nice experience," Eric said. He noted that the Rotary Club meetings in Italy are more formal than those in

this country and the food is good. Udine, Italy is a town near Venice located 20 miles from the Yugoslavian border. "You can't drive there until you're 18," Eric said. While in Italy, Eric visited Milan, Venice and other cities and two beach resorts.

Also present at the meeting was Luigi Murena, native of Udine. Luigi's dad is an orthopedic surgeon and past president of the Rotary Club in Udine. His mother is a school teacher. Luigi is an only child and will be in grade 12 next year in Italy.

Luigi spoke briefly about his town of Udine, noting its Romanesque and Gothic architecture that originated in the

15th and 16th centuries. "The city is alive. Its industries include fresh produce and beer. Summers in Udine are warm and humid.

Before completing his talk Luigi thanked the Rotary Club and Mr. and Mrs. Don McElroy for being such fine hosts. Luigi presented a book on Italy and a banner to Rotary president Bret McCasland. McCasland presented Luigi a gift certificate from Joe's Boot Shop.

\*\*\*

In an effort that may prove inspirational around the country, the Brooklyn Union Gas company is helping stabilize many neighborhoods and transform others.

The Discovery channel will be offering some educational shows this summer.

### Senior Citizens Meet At Depot

Senior Citizens met in the Old Depot for a covered dish lunch. Odessa called the house to order. Brother Bobby Burris asked the blessing. We all enjoyed the good food and visiting.

Odessa introduced Brother Bobby Burris and his wife Orydie. He read a short message from the Bible. Bobby and Orydie sang for us. "I'm Blessed," "Old Rugged Cross," "Because He Lives," "Until then." Everyone loved it.

Low Knowles read the minutes and they were approved. The treasurer's report was given.

Odessa encouraged everyone to make plans to go to the Jubilee in Lubbock August 19. It opens at 9:30 a.m. and closes at 2:30 p.m. Sounds like a fun day.

Get well cards sent to Mattie Grimsley, Mae Wilterding and Bettie Griswold. Sympathy card was sent to Clara Coffman.

Lou Knowles made motion that Senior Citizens pay for material used to make the banner for the Senior Citizens Jubilee. Second was by Opal Robinson. Voted on and no one objected.

We were dismissed by Dorothy Browning. Senior Citizens Bus will take anyone that wants to go to the Jubilee.

### Castro County Fair Set

The Castro County Fair will be held August 13-15 at the Expo Building, 403 S.E. 4th in Dimmitt. All entries are due at the Expo Building between 11 a.m. and 6 p.m. on August 13 and exhibits will be open for viewing August 14 from 9 a.m. to 7 p.m. and August 15 from 9 a.m. to 5 p.m. Anyone who would like to enter the fair may pick up a fair book, which contains copies of all rules and regulations and entry blanks, from the County Extension Office, Castro County Courthouse. For more information contact Carolyn Osborn at 806-647-4115.

Reservations are being accepted from exhibitors who wish to display arts, crafts, commercial items or educational exhibits at the Harvest Days Arts and Crafts Show on August 14 and 15. The booths are 10' width by 12' depth and cost \$30. Outdoor booths are available and size and price is negotiable. Those who wish to reserve a booth should contact the Dimmitt Chamber of Commerce office at 115 West Bedford, Dimmitt, TX 79027, 806-647-2524.

**Bailey County Journal** © USPS 040-200  
Established March 31, 1963. Published by Muleshoe Publishing Co., Inc. Every Sunday at 304 W. Second, Box 449, Muleshoe, TX 79347. Second Class Postage paid at Muleshoe, TX 79347.

**MEMBER 1992**  
**TEXAS PRESS ASSOCIATION**

L.B. Hall, Publisher  
Eveline Harris, News Editor  
Joyce Adams, Society Editor  
Holly Millsap, Advertising Editor  
Dianna Bierma, Classified Editor

**SUBSCRIPTIONS**  
Muleshoe Journal and Bailey County Journal  
Bailey and surrounding counties  
By Mail \$15.75  
Muleshoe Journal and Bailey County Journal  
Elsewhere  
\$17.50  
Muleshoe Journal and Bailey County Journal  
By Carrier Yearly  
\$14.00

Advertising Rate Card on Application  
\*Advertisers should check their ad the first day of insertion. The Journal will not be liable for failure to publish an ad or for a typographical error or error in publication except to the extent of the cost of the ad for the first day of insertion. Adjustment for errors will be limited to the cost of that portion of the ad where the error occurred.

*Thank You*  
It would be impossible to thank everyone personally for all the kindnesses shown us when we lost our loved one, Jay McDonald. Your concern for us helps see us through this sad time.  
*Anna McDonald & family*  
*The Don McDonald family*

### Rebekah Lodge

By Ina Wilemon

Tuesday evening July 28 at 7:30 N.G. Doris Lambert turned to David Ramirez, son of Albert and Mary Ann Ramirez to give his report on the United Nations Tour.

David gave a most impressive talk on each day what they did, where they went and what they saw.

He made up a large scrap book of pictures and many things he can be so proud of. David, we were so happy to send you on this tour and may you always remember your trip and this great organization. We will give more news on this later. Thank you, David.

After refreshments were served and the guests left the members were attentive as the N.G. Doris Lambert opened lodge. Our flags were brought in with great honor. Chaplain gave opening prayer. Records of last session were read and approved. Roll call of eighteen members present.

Stacy Langfitt will soon be giving her report on the United Nations Tour. I will finish this next week.

### Good News Department

Here's news that may be useful to you:

Deborah Heart and Lung Center offers free care to those with heart, lung and vascular diseases.

More vehicles are run on clean, efficient, propane gas.

People taking high blood pressure medicine can get timely reminders from Searle.

Austria's new president is a former ambassador to the U.S.

Enlightened business policies and an influx of scientists in Israel may mean more and better products from that country for this.

U.S. meat exports help our economy to the tune of \$2.6 billion.

**ROCKY MOUNTAIN**

**JEANS \$17.98**  
...as low as

**Pick a pair.**

Bushels and bushels of the best jeans of the season have just arrived and are ripe for your pickin'!

**JEANS SIZES 00-24**

Rocky Mountain And Panhandle Slim  
**JEANS** Little Girls Sizes 4-14..... **10% OFF**

Rocky Mountain  
**TOPS** Sizes S, M, L, XL..... **10% OFF**

Short Sleeve  
**TOPS**..... **50% OFF**

All Boys Shirts  
Sizes 0-18..... **10% OFF**

Little Girls Long Sleeve  
**TOPS**..... **50% OFF**

LAYAWAYS WELCOME  
FREE ALTERATIONS  
FREE GIFT WRAPPING

STORE HOURS  
8 a.m. - 6 p.m. CDT

WE ACCEPT  
VISA, M.C., AMEX, DISCOVER

**Rip's**  
1-800-748-2459  
482-3363  
314 Wheeler IN TEXICO  
Your Personal Service People For 47 Years





**WOODCARVING SHOW**--The West Texas Wood Carving Association will host its 14th annual show in Denver City at the Community Building on 15th St. and North Avenue E. Friday, August 7 and Saturday, August 8. (Guest Photo)

## West Texas Wood Carving Association Hosts Show

The West Texas Wood Carving Association is hosting their 14th annual "Biggest Little Carving Show in Texas." The show will be in Denver City at the Community Building on 15th St. and North Ave. E Friday August 7 and Saturday, August 8.

The nationally recognized professional wood carver, Dave Stetson from Phoenix, Arizona will judge the show. He has extensive experience in judging as well as being a dedicated effective carving instructor. His carvings will be displayed at the show for viewing. There will be eleven categories as listed below:

- 1) Relief
- 2) Caricature
- 3) Western
- 4) Realistic Human
- 5) Realistic Animal
- 6) Realistic Birds
- 7) Stylized
- 8) Miniature
- 9) Miscellaneous
- 10) Wood Burning
- 11) Novice (Never won ribbon in show)

A \$50 cash prize and a ribbon will be awarded for first place in each category except Novice which will be ribbon only with no cash award. Second and third place winners will receive ribbons. Honorable Mention ribbons will also be awarded in all eleven categories. Carvings which have won ribbons in previous West Texas Wood Carving Shows may not be entered. Exhibitors may enter one piece in each category. There must be at least two entries for a category to be judged. Judging will be Friday, August 7 starting at 10:30 a.m. and continue throughout the day. Guests are invited to come and see the winning carvings from each category.

There will also be a ribbon and \$50 cash award for "Best of Show." Also, a trophy will be awarded the "Best Table Display." A judge for this will be selected by the club. A ribbon is also awarded to the wood carver that is selected by the show judge on "Judge's Choice." This is awarded on enthusiasm, interest and versatility.

Displays will be open to the public from 10 a.m. until 6 p.m. on Friday, August 7 and from 9 a.m. until 4 p.m. Saturday, August 8. There is no admission charge to the public and everyone from surrounding areas are invited to come browse and enjoy the fine art work exhibited. Some of the wood carvings will be for sale to the public.

The West Texas Wood Carving Club was formed about sixteen years ago with five charter members: Benny Bridges, Frank Frankfather, Rex Knox, Larry Moreland, and Stanley Wright. It has grown to approximately thirty five wood carvers. This club is a "family" club with spouses and children invited to attend. They meet the first Monday night of each month at the Civic Center on West Fifth Street in Denver City, Texas at 7:30 p.m. There are members

from Hobbs and Lovington, New Mexico, Midland, Seminole, Odessa, Wolfforth, Lubbock and Denver City. If anyone is interested in learning wood carving, we would like them to come meet with this group on the first Monday night of each month. They will help and instruct; also programs are presented at various times that will help in learning or improving wood carving or painting of carvings. The ladies in the club do wood burning and have turned out some pretty work.

Please make a note of August 7 and 8 and come to the Fourteenth Annual West Texas Wood Carving Show. It will be time well spent viewing beautiful work from carvers all over the country. If you need further information or would like to enter the show, please contact the club president; Benny Bridges, 1712 Franks, Denver City, Texas 79323 or call 806-592-3435.

We give each and everyone a hearty welcome and invitation to attend this show and see the many displays. It will be an opportunity to see some fine art with no admission charge. You are welcome!

## Summer Music Workshop Set

The First United Methodist Church of Muleshoe will again be hosting a Summer Music Workshop for all children entering first through seventh grades. The workshop will be held Monday, August 10 through Friday, August 14 from 9 to 11:30 a.m. (at the Methodist Church).

The workshop will include special activities, games, snacks, and learning a musical which will be performed Sunday night, August 16, in the Fellowship Hall of the First United Methodist Church. The musical will include solo speaking and singing parts, of which tryouts will be held during the workshop. All children are invited and encouraged to attend.

The registration fee is \$5. Registration forms are available in the secretary's office of the Methodist Church, and in other local churches. Early registration is encouraged, though children may register on Monday morning (August 10) at the workshop.

## Dealing With Diaper Rash

Millions of babies develop diaper rash every day. In fact, it accounts for one-third of pediatricians' daily phone calls and 556 million annual office visits. As most experienced mothers or pediatricians know, it is the rare baby who does not develop some form of diaper rash during the first year. Although the problem is not completely unavoidable, in many cases it can be easily treated.

The rash is characterized by red, blotchy, inflamed, irritated skin that can burn and itch, causing discomfort to the infant.

Scholars believe the first wallpaper was made in Europe during the 1500's.



Cory Welch and Gilrobert Rennels

## Welch And Rennels Attend Writing Camp

Cory Welch and Gilrobert Rennels have returned from San Marcos where they attended a summer Writing Camp on the campus of Southwest Texas State University. They both will be seniors at Muleshoe High School next fall.

The boys were selected for the camp by submitting a short story and a poem which they had written. Both were creative writing students of Pat Watson at Muleshoe High

School last school year.

Cory is the son of Mr. and Mrs. Gary Welch and Gilrobert is the son of Mr. and Mrs. Jack Rennels, all of Muleshoe.

The campers gave a reading of work they had done during the week on July 17 at the Alkek Library on the SWT campus. Attending from Muleshoe besides the boys' parents were Cory's sister Ransley and Gilrobert's brothers Payton and Greyson.



Mari Claudia Andrade

Medardo and Ramona Andrade of Muleshoe announce the birth of a daughter, Mari Claudia Andrade. The child was born July 29 at 2:54 p.m. in the Muleshoe Area Medical Center. She weighed 6 lbs., 8 oz. The Andrades have two other children, Rosa Elena and Anna Laura. Grandparents are Reynaldo and Sulema Paz of Earth and J. Pueblito Andrade and Maria Guadalupe Chavez of Mexico.

## Alexandria Nichol Eagle

Chip and LeAnn Eagle announce the birth of a daughter, Alexandria Nichol Eagle. The child was born July 17 at 7:36 in the Clovis High Plains Hospital. She weighed 6 lbs., 13 oz. Grandparents are Hilbert and Sherry Wisian of Muleshoe and Melba Eagle of Clovis and Barbara Eagle of Garland. Great grandparents are Audrey Humphrey of Muleshoe, Otilie Wisian of Muleshoe, Claude and Maggie Eagle of Earth and Clarence and Marie Black of Amherst and Gerald Coffey of Littlefield.

## Homero Segovia

Horacio and Dolores Segovia of Friona announce the birth of a boy, Homero at 3:28 p.m. July 27 in the Muleshoe Area Medical Center. He weighed 9 lbs., 13 oz. and has one brother, Eddie. Grandparents are Eleno and Viviana Segovia of Mexico and Lorenzo and Petra Medellin of Mexico.

• What to do if your keys are locked in your car. Most professional locksmiths have 24-hour mobile emergency service for this type of problem. Only professional locksmiths have the proper tools and the knowledge about how to open your car without damage. Police and other public service employees do not have this knowledge and may try for a long time, only to be unable to open your car, or they may damage it.

## Ryan Taylor Watkins

Randy and Richelle Watkins of Lubbock announce the birth of a son, Ryan Taylor Watkins was born Wednesday, July 22 at 11:44 a.m. Ryan weighed 9 lbs., 1 oz. and was 22 inches tall. He has two brothers, Sam and Tye. Local grandparents are Jerry and Mary Hicks, and Glen and Marsha Watkins.

**BACK-TO-SCHOOL  
DESK  
SALE**

**10 DAYS ONLY...**

A wide assortment of desk styles—all crafted by Riverside, America's largest maker of fine desks!  
A solid investment in your child's future at once-a-year savings up to \$700

Riverside  
Desks Ready for  
Immediate Delivery



Curved Back Desk Chair, swivels, rocks, adjusts in height. Rugged casters. Medium brown oak finish.

\$159



ROLL TOP

\$299

FLAT TOP DESK

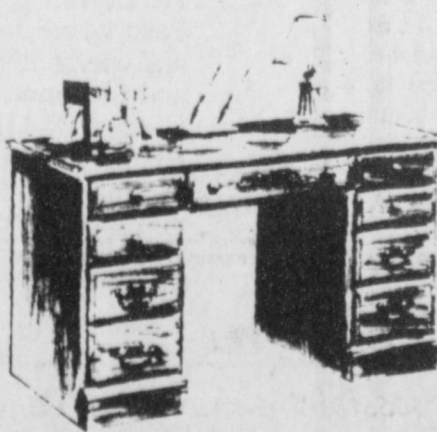


Roll Top Desk with locking top. Abundant storage, organizing and work space, including numerous pigeonholes, plus center drawer, pedestal drawers and 2 file drawers. Rich brown finish. 48x20x42" high.

Double Pedestal Desk, locking file. Writing surface is high pressure laminate to resist marks and scratches. Ample storage in 7 drawers, including 2 file drawers. Medium brown finish has NOVACRON protective topcoat to resist everyday spills. 60x30x30H

\$399

Use Your Master Or Visa Card Or Our Convenient Terms



Pedestal Desk, 5 drawers, including center drawer with pencil tray and 2 file drawers. deep brown finish. 48x20x30" H.

\$199

Other Roll Top Desks

\$1995

\$2751<sup>25</sup>

Your Quality Furniture Store

**CALTON FURNITURE**

507 E. 2nd 359-1442

## Back to School Special

Haircuts - \$7.00

Perms - \$25.00

Spiral Perms - \$35.00 (Shoulder Length)

Prices Good August 3 - Sept. 15, 1992 (Senior Citizen Discounts Available)

Come By & See Linda Flores at

**Ana's House of Beauty**

109 W. Ave. B

272-4152



# South Plains Fair Set For September

The 75th annual Panhandle-South Plains Fair is scheduled for September 26-October 3 and Fair Officials are inviting residents throughout the Area to participate in the "Diamond Jubilee" exposition by entering and competing for a share of the more than \$22,000 in prize money to be given away in eight departments in the Women's Building. These departments include Textile; Crafts & Hobbies; Relics & Antiques; Crochet, Knitting, Tatting and Weaving; Culinary; Youth; Fine Arts and China Painting.

The classes and divisions in these departments have been revised to include many of today's most popular crafts, including Pretty Punch embroidery and painted clothing. "We have divisions for just about any hobby or craft you can think of", said General Manager Steve Lewis. "We encourage everyone to enter".

There are no entry fees in any division in these departments, but each exhibitor is limited to one entry per class and articles which have received a premium at previous fairs are not eligible. No professional work will be accepted. Any person receiving a fee for making or teaching anything in any class cannot enter as an amateur.

Classes in the Textile Division include embroidery, counted cross stitch, needlepoint, crewel work, small rugs and Pretty Punch.

## Pilgrimage...

Cont. from Page 1  
able to communicate with each other through the telephone.

The rest of the trip to Washington D.C. basically worked out the same way. We would pick up the delegates in certain towns as we were going through the state. We picked up 8 from Louisiana, 1 from Alabama, and 4 from North Carolina.

## TRIP EXPERIENCE

Our bus was approached by police two times during the tour. The first time was in between Mississippi and Alabama. The bus was doing 79 mph in a 65 zone. The reason was because we were coming down a steep hill. THE BUS DRIVER DID NOT GET A TICKET THIS TIME.

In Washington D.C., the bus driver parked in a NO LOADING ZONE and got a ticket. The bus was empty, but it was still a NO LOADING ZONE. This was the first time he ever received a ticket. The group of delegates pitched in and played the ticket so the driver did not have to spend the money he brought for the trip, besides; the poor guy did have to spend 2 1/2 weeks with our noise making group of delegates.

This is the first in a series. More will be printed in Thursday's edition of the Muleshoe Journal.

quilting, children's clothing, women's clothing, men's clothing and other sewing.

Shirley Bednarz is superintendent of the Textile Division. She will be assisted by Edith Macha and Norma Jean Kitten.

Articles in the Crafts and Hobbies Division may be entered under Holiday Parade, woods toys, miscellaneous, textile-craft, craft painting, ceramics, ceramics-skilled, dolls, dolls-skilled, lapidary, school motif, golden age (for crafters 65 years of age or older) or nursing home residents.

Queenelle Huff is superintendent of the Crafts and Hobbies Division. She will be assisted by Linda Huff, Barbara Jones, Carolyn Brackett and Joyce Hinsley.

The Crochet-Knitting-Tatting-Weaving Division offers classes in crochet, knitting (no machine knitting permitted), tatting, hand weaving, and golden age (for crafters 65 years of age or older). Jo Anne Mead is superintendent for this division. She will be assisted by Beverly Ellis, Glenna Speer and Ella McInroe.

The Culinary Division will accept entries in bread (with a new class for tortillas), cakes, decorated cakes, cookies, candies, canned fruits and vegetables, pickles, and preserves and jellies. Glenna Myatt is serving as superintendent of this division, assisted by Esther Warren, Onedia Hagens, Joyce Lundgren and Shirley Schooler.

Classes in the Youth Department include household linens, clothing, crafts, breads, cookies, candy, cakes, canned fruits, canned vegetables, pickles, and preserves and jellies. Patti Jones and Norine Patschke are co-superintendents for the Youth Department. They will be assisted by Sandra Lemon, Sheila Forrest and Carla Bessent.

The Fine Arts Department offers division for adult amateur, golden age (for artisans 65 years of age or older).

## Cicada...

Cont. from Page 1  
on cicadas. However, they can be present in sufficient numbers to be a nuisance. For control you may use one of the outdoor aerosol sprays containing pyrethrum or dust the nest entrance with sevin, the extension agent said.

older), miniatures, College, high school, and photography. Nicky Standlee is superintendent and will be assisted by Lou Beth Robison, Paula Breashear, Marlene Hutton, Alice Temple and Bobby Wages.

The China Painting division has classes for those with less than 3 years experience in the craft, non-professionals, advanced and skilled painters. Dixie Martin is superintendent and will be assisted by Ruth Bogart, Glenda Dobbs, and Flo McKinzie.

Relics and Antiques may be entered under the following divisions; elegant glass of the depression era; china and porcelain; ironstone, semi-porcelain, stoneware and crockery; glass; depression glass; metals; paper, wood and miscellaneous; for men only; large items; jewelry and buttons.

The Relics and Antiques Department has co-superintendents Quata Murphree and Margie Stinson. They will be assisted by

Allene Pritchard, Connie Butler, Dorene Culaney, Jody McCauley and Leta Smith.

Mildred Tyree and Sara Hana will serve as general superintendents for the Flower Festival, operating this year under the theme of "Spaces and Directions."

This show is open to all amateurs wishing to exhibit in both horticulture and design. Entrants need not be garden club members and men and children are invited to enter. Entries from 4-H and FHA members are welcomed and points will be given through the Youth Department.

No money prizes are awarded in the Flower Festival.

Creative Art from junior high and elementary students may be entered in the Creative Art Division under these categories: water based paint; pastel, oil or charcoal; drawings in ink, crayon, pencil or colored markers; and weaving, stitchery or collage.

Zonalyn Stevens, art consultant

for the Lubbock Public Schools, is superintendent of the Creative Art Division.

More detailed information about classes, entry times, etc., can be obtained from the Panhandle-South Plains Fair catalog. All prospective entrants may obtain a copy at the South Plains Fair Office, 105 E. Broadway; Lubbock County Extension Office, 1418 Ave. G; Lubbock Public Information Office, 1625 13th St. South Plains residents may also pick up a copy from their local County Extension Office.

Mail orders for tickets are now being taken for shows by McBride & The Ride and Hal Ketchum at 5 and 9 p.m. (\$10, \$12) on Sept. 26; Sawyer Brown at 5 and 7 p.m. (\$12) on Sept. 27; J.D. Sumner & The Stamps and The Chuck Wagon Gang at 7 and 9 p.m. (\$5) on Sept. 29; and Tanya Tucker at 5 and 7 p.m. (\$10, \$12) on Oct. 3.

To order tickets write: SHOW TICKETS, Box 208, Lubbock, TX 794-8. Include a stamped, self-addressed envelope and \$1 for handling charges.

All seats are reserved and show tickets do not include gate admission.

## NEWS VIEWS

David Souter, Supreme Court Justice:

"To overturn Roe vs. Wade would not be seen as anything but a surrender to political pressure," commenting on high court decision upholding abortion.

Susan Parks, of Planned Parenthood:

"It (the recent ruling) clearly shows that the court does not have to overturn Roe outright to deny women access to abortion."

Gavin Quill, marketing analyst:

"People who are looking for a little bit more yield are going for a Ginne Mae fund or an international bond fund."

George Bush, U.S. President:

"It's sick," commenting on films and music which stress cop-killing and other criminal activity.

## Meetings...

Cont. from Page 1

Berkshire, Crosbyton.

The purpose of this meeting is to receive comments concerning projects in Floyd, Crosby, Garza, and rural Lubbock.

The public is urged to attend any or all of the public meetings but to reduce travel, meetings have been arranged in your area.

## Muleshoe...

Cont. from Page 1

No. 2.

3. Review, approve and order payment of County bills.

4. Consider Budget Amendment No. 9 to FY 1992 Budget.

5. Approve payroll.

6. Discuss Texas Department of Transportation Public Hearing on August 11, 1992.

7. JoAnne Head to give Department of Health report.

8. Discuss computer software for the Ambulance Service.

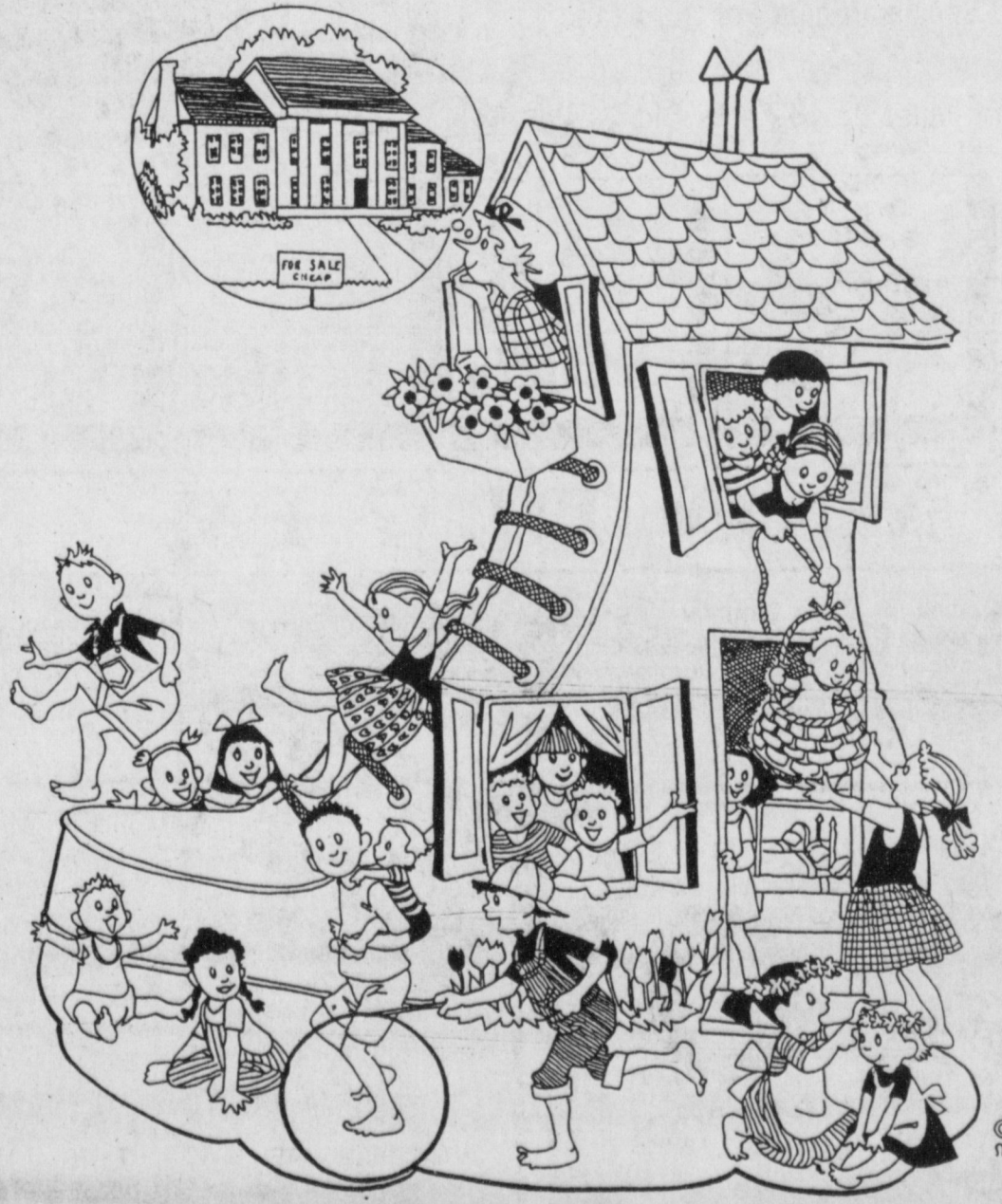
9. Conduct budget workshop.

\*\*\*

Anyone interested in high school girls basketball in Muleshoe is urged to attend a "Meet The Coaches" get-together Thursday, Aug. 6 at 7 p.m. at the high school.

\*\*\*

The Chamber of Commerce notified the Journal Friday morning that there is still time for anyone wishing to participate in the Pony Express Ride during the Mule Day's Celebration to register. If you would like to take part in this ride, which will begin at Needmore, you have until August 14 to call the chamber office at 272-4248.



**SPACED OUT?**  
Find More Square Footage In The Classifieds!  
Before you wear a hole in your soles, check our Real Estate listings daily for a shoe that fits your family and budget.  
272-4536  
Muleshoe & Bailey County Journal

## Welcome To Muleshoe



Welcome To Muleshoe---This week we welcome Jack and LaVonne Henderson BACK to Muleshoe. Jack and LaVonne return to us from El Paso where Jack was in the wholesale appliance business. They now own and operate the Carousel Of Good Food Restaurant here in Muleshoe. Jack and LaVonne have two children, Micheal, who lives and coaches in Las Cruces, N.M., and Mischel, who lives in Minneapolis, Minn. The Hendersons also have 4 grandchildren. As hobbies, LaVonne enjoys Tournament Bridge, and cooking. Jack enjoys music, music and more music. They are members of the Primitive Baptist Church. Go by and visit with them at the restaurant and give them a "Big" welcome back to Muleshoe!  
(Journal Photo)

**GOODYEAR**  
**James Crane Tire Co.**  
322 N. 1st 272-4594

**Damron Drug** 308 Main 272-4210  
**Henry Insurance Agency** 111 W. Ave. B 272-4581



## Water Commission Will Not Regulate Groundwater

The Texas Water Commission (TWC) has no desire to regulate groundwater in Texas and would support legislation that would reserve that prerogative solely for Texas legislature.

That was the reassurance delivered by Commission Chairman John Hall and Commissioner Peggy Garner to agricultural interests during a two-day swing through west Texas July 20-21.

On April 15, the TWC designated the Edwards an underground river, bringing those waters under state control and setting the stage for implementation of a state management plan. The TWC action is aimed at heading off possible pumping restrictions by the federal government to protect endangered species as well as water shortages during dry periods due to unrestricted pumping.

But agricultural interests and groundwater districts have expressed concern that the action will lead to TWC regulation of groundwater in Texas.

"We have no desire at all to regulate groundwater in Texas and would prefer a legislative solution for the Edwards which we are working hard to facilitate," said Hall. "And if the legislature wishes to establish itself as the sole authority to handle such problems, this commission would wholeheartedly applaud and support such a move."

The Edwards is the only source of water for San Antonio and a six-county area of 1.5 million people and 700,000. Yet it is completely unmanaged. The amount of water being withdrawn annually from the Edwards is moving dangerously close to the amount of annual recharge and even though the population is projected to double within the next 20 to 30 years--there is not yet a single plan on the drawing boards for securing additional water supplies.

The seriousness of the situation was dramatized this past year when a catfish farm began operations. The business is designed to pump 68,000 acre-feet of water per year out of the Edwards--enough water to meet the needs of the entire city of San Antonio for almost six months.

"Without a management plan for the Edwards, cities, agriculture, industries and other users can do nothing to stop a large user from virtually pumping the Edwards dry," Hall said. "This region is literally one catfish farm or one major water user away from total chaos."

Still there is opposition to the TWC action, especially from many farmers who say it would unlawfully take away "right of capture" property rights.

"Our action is not an attack on the 'right of capture' concept," said Peggy Garner, TWC Commissioner. "We are simply trying to solve a problem that threatens a major Texas community. The fact is, since state law gives domestic and industrial water use priority over agriculture, farmers needs management of the Edwards more than any other group to protect their inherent water rights in the future."

Before designating the Edwards an underground river last April, the TWC spent six months of intense negotiations trying to get the users of the Edwards to agree on a plan that the users themselves would implement. But the various interests simply could not agree.

Even after taking its action in April the TWC has consistently vowed to halt its proceedings if a fair, workable and enforceable plan is brought forward by anyone. None have been forthcoming. Finally, the TWC announced it would delay implementing a management plan for the Edwards to give the legislature the time it needs to provide a solution.

"I believe we have shown over and over than we are genuinely interested in solving a problem and

not in muscle-flexing or empire-building," said TWC Commissioner Pam Reed. "We are certainly not interested in regulating groundwater. Who in their right mind would be interested in that?"

Meanwhile, the Sierra Club lawsuit that seeks additional protection for endangered species has now been set for an October 26 trial date in Federal District Court. The lawsuit seeks to limit pumping from the Edwards to protect endangered species in Comal and San Marcos springs. The two springs rely on the Edwards for about a third of their water.

Should the Sierra Club win its

lawsuit, pumping from the Edwards could be reduced by as much as 70-80 percent during dry times, creating tremendous economic hardships.

The TWC has been holding talks with the U.S. Fish and Wildlife Service and Sierra Club officials in an effort to reach a compromise that would provide as much protection for endangered species as humanely possible. The compromise would include a special drought management plan to assure spring flow 100 percent of the time at San Marcos Springs and most of the time at Comal Springs.

### Thank You

The family of Jack Jones would like to express their appreciation for the flowers, food, phone calls, memorials, prayers, and visits, during their time of sorrow.

Your love and kindness has meant a lot to us.  
God Bless Each of You!

June Jones & Jack's Children  
Brad & Nickki Thompson & children  
Mike & Melinda Jones & children  
Bob, Dorothy Ray & Little One

# furniture + DISCOUNT FURNITURE

421 N. Main  
(Formerly Russell Home & Auto)  
Clovis, New Mexico



# Grand Opening CELEBRATION

Due To The Tremendous Growth Of Furniture Plus, We Have Opened Our New Store In Clovis, New Mexico. Famous Name Brand Furniture And Special Pricing For Our Grand Opening.



Register For Free Door Prizes. No Purchase Necessary. Must Be 18 Years Old To Win

<b>SOFA &amp; CHAIR</b> Herculon fabric, hard wood frame. Reg. \$399.95 <b>SALE \$188</b>	<b>RECLINERS</b> 2 position, Antron covers. Perfect for any home. Reg. \$249.95 <b>SALE \$128</b>	<b>5 PC. DINETTE</b> Octagon shape table with rosewood edge and smoked glass top with brass pedestal base & 4 brass chairs with velvet seats. Reg. \$299.95. <b>SALE \$98</b>	<b>TWIN FULL BUNK BEDS</b> Blue, white, red colors, Wood slates, ladder and innerspring mattress. Reg. \$699.95 <b>SALE \$348</b>	<b>Twin Size MATTRESS SETS</b> Innerspring construction. Lots of coils for comfort. Reg. \$149.95 <b>SALE \$78</b>	<b>All Wood DELUXE DAYBED</b> In rich pine wood finish. Includes sides, back, rails, and mattress - complete. Reg. \$299.95 <b>SALE \$148</b>	<b>Heavy Duty 2" x 6" All Wood BUNK BEDS</b> Makes into twin beds also. Comes complete with mattress. Reg. \$399.95 <b>SALE \$197</b>
---	---	---	---	--	---	---

## SUNDAY 12 NOON TIL 7 PM

<b>MODERN 5 PC. PIT GROUP</b> 2 Sofa-Loveseat- 20 Hamans throw pillows, Antron cover. Reg. \$899.95 <b>SALE \$498</b>	<b>BRASS ACCENT PIECES</b> For any home or office. Planter bakers rack, etergeres, Diamond <b>FROM \$5<sup>88</sup> UP</b>	<b>WATERBEDS</b> Complete mattress, liner, heater, and fill kit. 5 Board, super single, queen, king available. Reg. \$298. <b>SALE \$188<sup>UP</sup></b>	<b>QUEEN SLEEPER w/5" INNERSPRING</b> Mattress, headboard, frame, beautiful Herculon fabric, compare - Reg. \$798. <b>SALE \$488</b>	<b>5 PC. BEDROOM SUITES</b> Dresser, mirror, chest, night stand, headboard, mauve, black, oak, walnut, white. Reg. \$447.00 <b>SALE \$268<sup>UP</sup></b>	<b>WALL PIER BEDROOM SUITE</b> 9 Pc. with decorator mirror, oak finish, bedroom full of furniture at a tremendous price. Reg. \$2295 <b>SALE \$1288</b>
<b>Benchcraft SOFA &amp; LOVESEAT</b> Camel back w/pleats, Antron cover - compare. Reg. \$1695.95 <b>SALE \$988</b>	<b>HORN 3 PC TABLE SET</b> Coffee and 2 end tables, glass top, black and brass. Reg. \$299.95 <b>SALE \$148</b>	<b>ALL LAMPS Are on Sale</b> Lots of styles, shapes & colors. Choose one or a pair. <b>SALE FROM \$17</b>	<b>TRUCK LOAD SALE</b> Famous Ortho Mattress Set King Koil, Spring Air <b>\$198<sup>UP</sup></b>	<b>ROCKER</b> Velvet swivel, assorted styles and colors, barrel back with Antron fabric, hardwood frames. Reg. \$248. <b>SALE \$128</b>	<b>7 PC. GLASS &amp; BRASS DINETTE</b> 6 chairs in 4 different colors to choose from, Temper glass smoked accents your dining room. Reg. \$799 <b>SALE \$448</b>
<b>4 PC. LIVING ROOM SUITE</b> Sofa, loveseat, chair and ottoman. Perfect for apt. or small living room. Antron fabric. Reg. \$699.95 <b>SALE \$398</b>	<b>3 Pc. Washington LIVING ROOM SUITE</b> Early American - four different fabrics to choose from. Reg. \$1388. <b>SALE \$998</b>	<b>10 Year Warranty</b> Twin Size Set.....299.95 \$138 Full Size Set.....399.95 \$178 Queen Size Set.....449.95 \$148 King Size Set.....599.95 \$288	<b>15 Year Warranty</b> Twin Size Set.....349.95 \$158 Full Size Set.....499.95 \$198 Queen Size Set.....599.95 \$268 King Size Set.....699.95 \$348	<b>5 PC. WOOD DINETTE</b> Formica table, four wood chairs, oak or pine finish, quality plus. Reg. \$447.00 <b>SALE \$288</b>	<b>OAK FINISH 5 PC BEDROOM SUITE</b> Dresser, mirror, chest, night stand, headboard. Perfect for child's or guest room. Reg. \$288.00 <b>SALE \$178</b>
<b>3 PC. Early American LIVING ROOM SUITE</b> Sofa, Loveseat, & Chair. Antron fabric. Reg. \$799.95 <b>SALE \$398</b>	<b>SLIPPER SEATERS</b> 5 Pc. innerspring mattress. Benchcraft, Gentry, Washington choice fabric and styles, special order. Reg. \$2995 <b>SALE \$1688<sup>UP</sup></b>	<b>Large Group Of Decorator SOFA &amp; LOVESEATS</b> From Benchcraft, Washington, Custom. A very select group of values. Reg. \$1488 <b>SALE \$688</b>	<b>VAUGHN WOOD BEDROOM SUITES</b> Dresser, mirror, chest, headboard, night stand, made in Vienna. Beautiful buff glossy finish. Reg. \$1888 <b>SALE \$1088</b>	<b>SOFA WITH 2 RECLINERS</b> In a beautiful Antron black and gray fabric with loveseat. #1 in looks and quality. Reg. \$1488. <b>SALE \$988</b>	<b>TWIN HEADBOARD AND FOOTBOARD</b> Brass with porcelain balls, bed rails and 5 year innerspring mattress set. Available in full, queen, king. Reg. \$399 <b>SALE \$228<sup>Complete</sup></b>

# FURNITURE + DISCOUNT FURNITURE

A Name You Can Trust  
421 N. Main (Formerly Russell Home & Auto)  
Corner 5th & Main CLOVIS 762-5001

CASH OR PERSONAL CHECK  
VISA, MASTERCARD, DISCOVER  
UP TO 36 MONTHS  
ON APPROVED CREDIT  
ON THE SPOT FINANCING

SUNDAY 12 NOON TIL 7 PM  
DELIVERY AVAILABLE  
90 DAYS SAME AS CASH

### Patients in Muleshoe Area Medical Center

#### JULY 28

Cindi Smith, Rosa Castro, Mary Lockeby, Lynn Glasscock, Darrene, Collins, Jesus Arrendondo, Thelma Bartlett, Silvester Olvera, Victor Foss, Gilbert Gilliam, Concha Estrada, Merriman Vise, Dolores Segovia, baby boy Segovia, Lorene Martin

#### JULY 29

Cindi Smith, Mary Lockeby, Jesus Arrendondo, Thelma Bartlett, Silvester Olvera, Victor Foss, Concha Estrada, Dolores Segovia, baby boy Segovia, Ramona Andrade, baby girl Andrade, Lorene Martin

#### JULY 30

Cindi Smith, Mary Lockeby, Jesus Arrendondo, Thelma Bartlett, Silvester Olvera, Victor Foss, Concha Estrada, Dolores Segovia, baby boy Segovia, Ramona Andrade, baby girl Andrade, Lorene Martin



## Society Honors Roland Roberts

The American Society of Horticultural Sciences will present one of its highest honors for extension educational programs to a Lubbock-based specialist with the Texas Agricultural Extension Service. Dr. Roland Roberts will receive the ASHS Extension Division Award of Excellence at the organization's annual meeting August 3-6 in Honolulu.

The award is presented by the society's Extension Division, Commercial Horticulture Working Group and Consumer Horticulture Working Group for an outstanding, innovative extension activity that contributes to the horticulture industry.

Roberts was selected for his coordinated educational program to introduce pinto beans as a new vegetable crop for the Texas High Plains, and to improve production, harvesting and marketing practices.

Texans are major consumers of pinto beans. The state imports more than 100 million pounds of pintos each year. San Antonio alone consumes an estimated 40,000 pounds of pinto beans daily. Despite the popularity of the pinto and the presence of suitable growing conditions, less than 3,000 acres of pinto beans were produced annually in Texas prior to 1989. Most of those were grown as a "catch" crop by farmers who had lost cotton or grain crops to unfavorable weather. These beans had gotten a reputation of poor quality and being hard when cooked.

Using variety trials and grower-assisted demonstrations, Roberts identified superior varieties and studied effects of planting date, fertility, plant spacing and other cultural practices. He used field days, tours and mass media to provide information to producers. Analyzing data from these field demonstrations, Roberts developed guidelines for commercially growing pinto beans on the High Plains. These initial guidelines were provided to producers through newsletters, direct mail publications and handout materials.

Working with county extension agents, the extension vegetable specialist conducted short courses

and workshops covering pinto bean production. He was a featured speaker on the topic at meetings of producer groups and grower associations, and discussed production techniques and economic returns on radio and television programs. With fellow extension specialists and research scientists, he authored the "Texas Commercial Vegetable Growers Guide--Pinto Beans," used by growers in Texas and other states.

To alleviate a grower problem with high rate of damage to seeds during harvest, Roberts conducted a field demonstration with Hale County grower Gary Foster to show how simple modifications and reduction of cylinder speeding the combine reduced bean damage. He then wrote a script and with an extension communications specialist produced a videotape explaining the problem and identifying the solution. More than 600 producers have viewed the videotape and made necessary adjustments to their combines.

Roberts continues to conduct field trials and programs demonstrating new varieties, effective weed control and the effect of moisture content at harvest time on bean quality. He also is investigating the area's potential for other types of dry edible beans.

Planted acreage of pinto beans on the High Plains has increased dramatically each year since Robert began his educational campaign in 1988, and exceeded 20,000 acres in 1990. Yields have increased from a previous average of 750 to 1,000 pounds an acre to an average of 1,800 to 2,200 pounds an acre.

Roberts, a professor and extension horticulturist at the Texas A&M Agricultural Research and Extension Center at Lubbock, has served the 61-county area since 1970. He has a B.S. from the University of Connecticut and Ph.D. from the University of Missouri.

Other awards he has received include the Award in Excellence from the Texas A&M University System; Superior Service Award from the Texas Agricultural Extension Service; the ASHS Covington Award; Blue Ribbon

Extension Publication Award, Southern Region ASHS; Superior Programs Award, Texas Council of Garden Clubs; Award of Merit, High Plains Vegetable Growers and Shippers Council; Professional Educator Award, West Texas Agricultural Chemicals Institute, and Silver Chalice Award, Maine Vegetable Growers Association.

## Fever Does More Good Than Harm

Fever-for most parents it's a sure sign that their child isn't feeling well. What many parents don't realize, however is that most fevers do more good than harm.

"In a majority of cases fever is the body's way of fighting off infection," said Yoghesh Pandya, M.D., chief of staff at Methodist Children's Hospital.

Here's how a fever typically plays its protective role in guarding against infection. When a virus or other microorganism invades the body, white blood cells release a hormone called interleukin which instructs the brain to turn up the body's thermostat, producing fever. Often an individual will experience chills along with the fever. Such chills produce shivering and muscle activity which prompts the body to produce even more heat.

Although such symptoms are unpleasant and can be alarming to parents, they do provide protective advantages. "Extra body heat inhibits the growth of infectious microorganisms and also boosts the ability of white blood cells to fight disease," said Dr. Pandya. "A fever also robs bacteria of iron a key facilitator in the spread of infection." And, fever is rarely a serious threat to children--such rare occurrences as seizures and are only possible when body temperatures dramatically rise in susceptible children.

Parents can help their children feel more comfortable when they have a fever by:

- \*Administering a fever reduction medication such as children's acetaminophen;
- \*Giving tepid baths;
- \*Increasing fluid intake to prevent dehydration; and

- \*Dressing children in light-weight comfortable clothing.

According to Dr. Pandya a physician should be consulted if a fever:

- \*Is present in an infant 3 months or younger;
- \*Persists without symptoms for more than 48 hours;
- \*Is 103 degrees axillary (under the arm) or 102 degrees orally for children over six months of age;
- \*Is accompanied by either a stiff neck or seizures;
- \*Is not brought down by medication; or
- \*Is accompanied by any other symptoms such as painful urination, a sore throat or a productive cough.

small grains and other crops.

He has received the 4-H Spur Clip Award and the 4-H Alumni Award. In 1988, he was honored with the Texas Agricultural Extension Service Knapp-Porter Award--the highest state award given to an individual outside Extension. The Texas County Agricultural Agents Association named him "Man of the Year in Texas Agriculture" in 1979. Last year, he received the State Friend of Extension Award from the Alpha Zeta Chapter of Epsilon Sigma Phi.

True is also involved in state and local activities. He has served on the Governor's Task Force of Immigration and Agricultural Development, the Joint Committee on Farm Workers' Insurance and the Texas Family Farm and Ranch Advisory Committee.

Also recognized with the Honors Award during the meeting will be the Texas Senate Natural Resources Committee, chaired by Sen. Bill Sims of San Angelo. The group was cited for outstanding leadership in the preservation and conservation of the state's natural resources while supporting Extension programs.

## Report From U.S. Representative Larry Combest

Legislative gridlock in the Capital City causes our country much more frustration than the slow-motion nightmare of any traffic jam. In Congress, several economic proposals and budget measures demanded by the public have been diluted or stalled in committees. Opponents of these measures have controlled Congress and delayed progress in budgeting, tax breaks and reducing the deficit. It is past the point in time to move the country along.

In his January State of the Union Address, the President proposed an economic growth plan that included a \$5,000 tax credit for the first-time homebuyer. Congress ignored that part of the message, failing to include the homebuyer's tax break. The alternative from congressional leaders advanced a temporary 55-cent-a-day tax relief for middle income earners, paid for by increasing the taxes on small businesses and adding to the deficit.

While the taxpayers choke on the size of the budget deficit, Congress choked when it came time for action on a Balanced Budget Amendment. The Balanced Budget Amendment was the first piece of legislation that I cosponsored when you sent me to Washington as your representative. After many attempts by myself and other fiscal conservatives, a Balanced Budget Amendment was finally brought to a vote in Congress last month. However, 11 of the amendment's cosponsors abandoned their support, adding to the nine-vote losing margin.

Spending continues to be off-balance. In response to the changing nature of our military needs, the President called for \$50 billion in five-year Defense Department budget cuts. Instead, Congress insisted on weapons and programs that the Pentagon does not want. The spin Congress places on budgets makes balanced spending plans wobble out of control.

After the House Post Office problems, unpaid restaurant bills and check-writing scandals, Congress has explored some organizational reforms. However, as usual the public is way ahead of Congress in demanding change. That change more likely will happen with the return of a more conservative Congress favoring a balanced budget and line-item veto.

Too many in Washington are absorbed with the fascination of the

wreckage produced by all of the legislative gridlock. Like spectators at the scene of a terrible accident, they are stunned and fascinated. Likewise unable to move from their positions, many members of Congress stand in the way, hampering the country's progress. It is times like these when a firm voice tells the bystanders, "Move along."

**Shop Muleshoe First**

**Call Classifieds! 272-4536**

**3. Help Wanted**

**3. Help Wanted**

**TEXAS MIGRANT COUNCIL**  
Summer Employment  
Is Now Taking Applications For Infant-Toddler Teacher  
Trainees and Cook:  
**Qualifications Needed:**  
1. High School Diploma or G.E.D.  
2. Some Experience in Child Care  
3. Bilingual Helpful  
For Applications Come By 101 E. Ave. B., Muleshoe  
DEADLINE TO APPLY -August 5, 1992

**Thank You**  
The family of W.F. (Dub) Bartley would like to express our appreciation for all the prayers, visits, cards, phone calls, food, flowers, and memorials during our time of sorrow, words can't express how much your love and kindness has meant to us.  
May God Bless each of you.  
**Mildred, Barbara Hall, Bo, Linda Elliott, and Beverly Robberson.**

## Farm Bureau President To Receive Visionary Award

S.M. True Jr. of Plainview was presented the 1992 John E. Hutchison Extension Visionary Award at the annual Texas Agricultural Extension Service Specialists' Association meeting in Austin on July 25-27.

Each year, the specialists' association honors an individual who has made a significant contribution in promoting and advocating Extension education programs in Texas.

True, president of Texas Farm Bureau, was cited for "continued involvement and support of Extension education for farmers, ranchers and 4-H youth in the state of Texas."

For 34 years, True has been a 4-H leader helping young people build self-esteem and develop leadership skills. In agriculture, he has chaired the Hale County Extension Program Council and served as advisor to subcommittees in the production of cotton, feed grains,

and workshops covering pinto bean production. He was a featured speaker on the topic at meetings of producer groups and grower associations, and discussed production techniques and economic returns on radio and television programs. With fellow extension specialists and research scientists, he authored the "Texas Commercial Vegetable Growers Guide--Pinto Beans," used by growers in Texas and other states.

To alleviate a grower problem with high rate of damage to seeds during harvest, Roberts conducted a field demonstration with Hale County grower Gary Foster to show how simple modifications and reduction of cylinder speeding the combine reduced bean damage. He then wrote a script and with an extension communications specialist produced a videotape explaining the problem and identifying the solution. More than 600 producers have viewed the videotape and made necessary adjustments to their combines.

Roberts continues to conduct field trials and programs demonstrating new varieties, effective weed control and the effect of moisture content at harvest time on bean quality. He also is investigating the area's potential for other types of dry edible beans.

**CALL HEALTH INSURANCE**  
Mark Morton  
109 S. 1st Muleshoe  
272-7519  
State Farm Mutual Automobile Insurance Company  
Bloomington, Illinois

**Ask the Land Bank about...**  
money to buy land or improve your farm.

Farmers today are looking at ways to increase their productivity...buying or improving land...building or remodeling facilities.

Whatever way you choose to grow, the Federal Land Bank can provide long-term credit to help.

So when you're looking to buy or build, stop in and talk to the long-term farm credit specialist at your Federal Land Bank Association.

**Federal Land Bank Of Muleshoe**  
316 Main 272-3010

**THE LAND BANK**

**IMPORTANT: Please learn American Red Cross Infant-Child CPR**

Ad Council

**APPLE MATURING DATES: 1992**

12 July	Earliblaze
16 July	Akane
28 July	Gala
10 Aug.	Ozark Gold
12 Aug.	Jonathan
15 Aug.	Jonagold
18 Aug.	Lurared
	Melrose
22 Aug.	Holly
	Red Delicious
1 Sept.	Empire
5 Sept.	Gold Delicious
15 Sept.	Winesap
22 Sept.	Rome
27 Sept.	Granny Smith

Open Daily 9 a.m. to 7 p.m.  
(A variety can be expected to be available for about 3 weeks after first picking)

**Hi Plains Orchards**  
4 miles east of Idalou on US 62-82  
For Additional information:  
Phone 806-777-2074

**Courthouse News**

**WARRANTY DEEDS**  
S. D. Clements and wife Ruth Clements to Veta Miller-a rectangular tract of land, being 65' by 140', the Easterly 65' of Lot (1), Clements additions to the city of Muleshoe, Bailey County, Texas  
Elva Deene Kernell to Carlene Stroud-west 59.3 acres in Labor (21) League (197), Lubbock Co. School Land, Bailey County, Texas  
**CIVIL MINUTES**  
BCAD VS D-K Commodities-Agreed Judgment

**CLEAR CONNECTIONS**

**Telephone Service: A True Value**

**Terry Smith**  
Brownfield District Manager

Recent statistics from the Department of Labor show that telephone service is one of the best values.

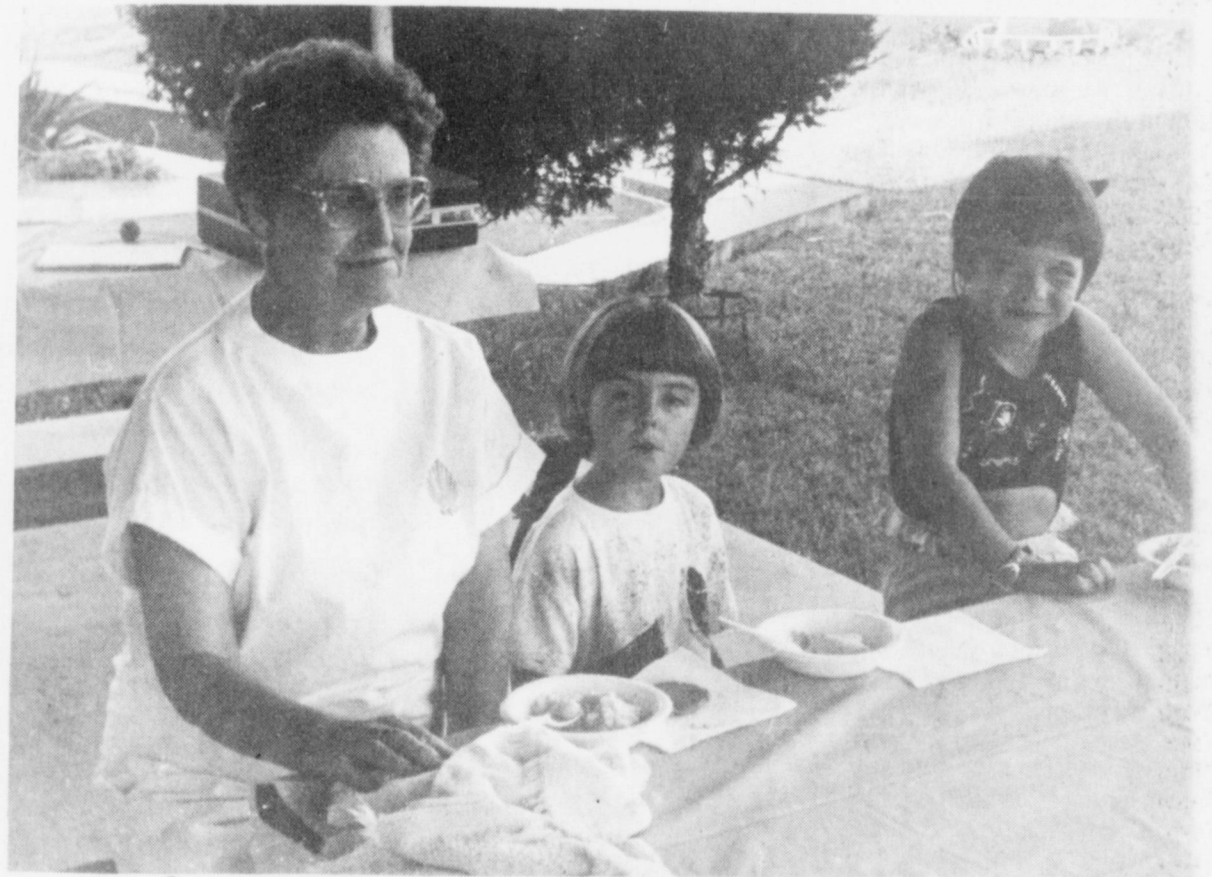
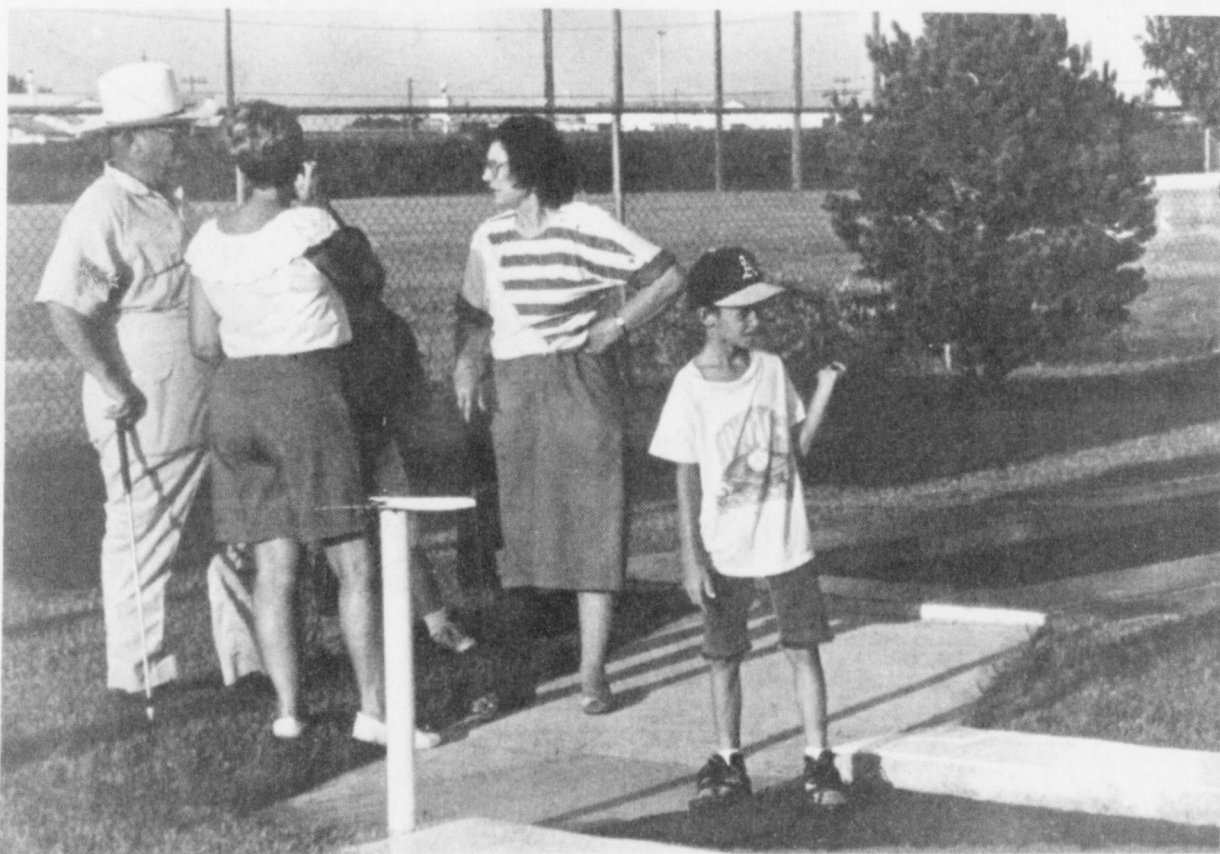
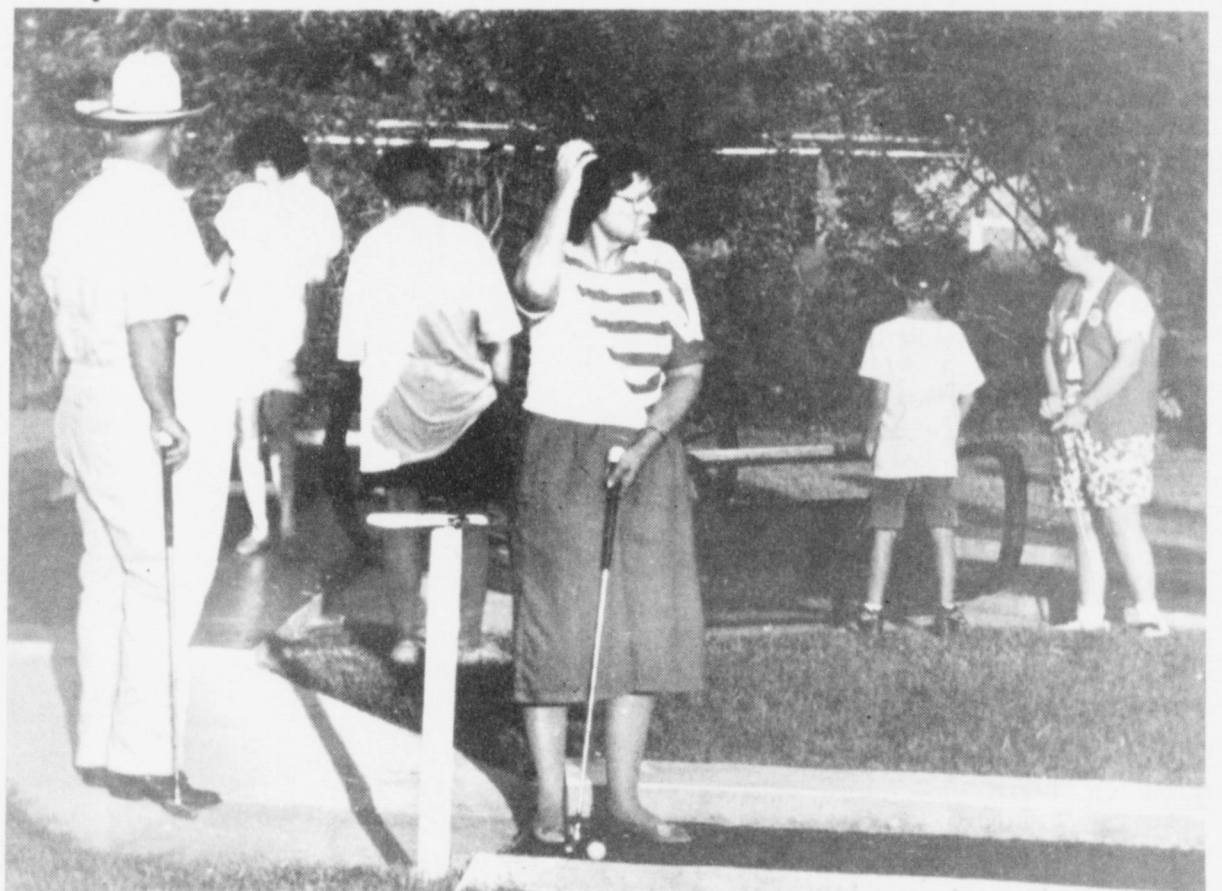
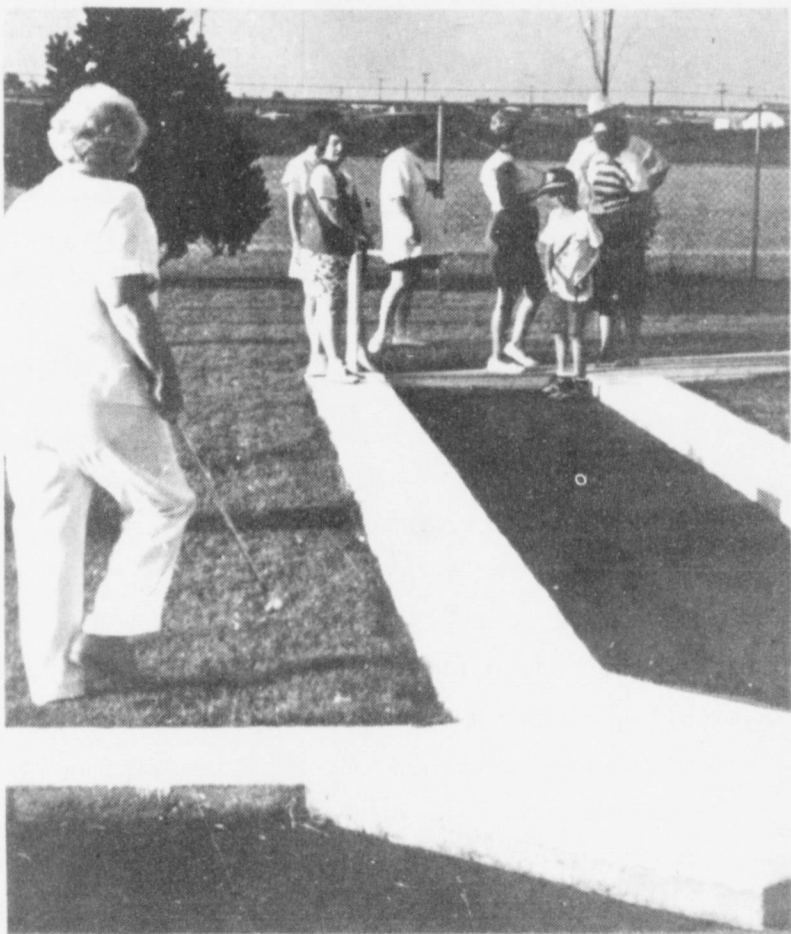
In the past five years, food and beverage costs have gone up over 23 percent, housing costs up over 21 percent, and medical care skyrocketed over 45 percent. During this same period, the cost of telephone service increased by little more than 3 percent nationwide.

**At GTE, we're doing our best to make your telephone service an EXCELLENT VALUE.**

**GTE**  
THE POWER IS ON



# Jennyslipper Fun Night





## After School Care National Concern

After-school care for children at risk is a matter of national concern. To help meet the needs of youths in the hours between the end of a school day and the time parents return home from work, the Randall County Extension Service has been awarded a \$95,950 grant by the U.S. Department of Agriculture-Extension Service.

Randall County's School Age Child Care (SACC) project, entitled "4-H After School Care," has several components. These include the development of curriculum and management guides with supporting materials, and extensive testing and implementation by school-age care providers in day care settings, and by parents and children.

"Our research and development efforts in this five-part project will be ongoing since each phase is pilot tested with providers, parents and children, said Leesa Wood Calvi, Randall County extension agent. She co-directs the project with Dr. Martha Couch, extension 4-H and youth specialist from Lubbock.

The project already has produced a step-by-step management guide for use by groups identifying the need for school age child care and who are working to develop the concept in their own communities.

"We are offering a new approach for after school care with specialized curricula and training," said Kaye Gilliland, SACC project director in Amarillo. The program is open to day care providers wanting to increase their expertise in meeting the needs of early- to mid-grade school age children in the 'after school' environment.

The project entered a third phase of implementation in June as three day care centers in Amarillo began using the total 4-H After School

Care curriculum. The centers completed their curriculum testing and are reporting their results to the project directors.

A 12-issue parenting newsletter includes information directed to the home and family. Couch, who is part of a statewide network of extension 4-H and youth specialists, says "parents need answers to solve complex problems such as developing and maintaining two-way communication with children." Parents and children may not be talking about essential behaviors within the family structure, how rules are set and interpreted by both parties, and how we respond to differences in the roles of parent and child, Couch said.

Newsletter topics range from situations causing stress in children

to ways parents and children can work together on projects or challenging a child's potential.

"The child who stays at home alone concerns this project, too," says Calvi. Calvi, Couch and Gilliland, with SACC project team members by Dr. Judy Flynn, extension director in Amarillo, and Janet Yeates, extension 4-H and youth specialist at College Station, are designing lessons and materials for responsible youth self care to be used by children. This final segment will be tested among youths in 6th to 8th grades who are considered most at risk when daily school regimes end.

The Randall County project is one of 30 the federal extension service has funded nationwide this year.

Additional information is available from local county Extension Service offices, or by telephoning Gilliland at 806-352-7340 or Calvi at 806-655-6325.

## Edd Crawford Parker Funeral Services Held Friday

Funeral services for Edd Crawford Parker, 66, of Princeton, who died Wednesday at VA Hospital in Dallas, were held at 2 p.m. Friday in the Princeton Chapel at Horn-Harris-Crouch-Belew Funeral Home. Burial was at Princeton Cemetery.

Parker was born November 26, 1925 in Jarrel, Texas, the son of John M. Parker and Ethel Favors Parker. He married Juanita Parker. He was a disabled American veteran of World War II, serving in the U. S. Army as a paratrooper and high speed radio operator in Company C, 509th Parachute Infantry. He was awarded the EAME Campaign Medal with 3 Bronze Stars, the Good Conduct Medal, Distinguished Unit Badge with 1

Oak Leaf Cluster, the Purple Heart and the Combat Infantryman Badge. He was a member of the Ham Operator's Club at Possum Kingdom Lake and he lived most of his life in Princeton and Collin County.

Parker is survived by: his ex-wife and good friend, Juanita Smith, Princeton; two sons, John M. and Larry W., both of Princeton; one

daughter, Judy Coursey of Princeton; one sister, Florence Miller of Portales, N.M.; seven grandchildren and three great grandchildren.

He was preceded in death by one son Terry L. Parker, December 14, 1969, and one brother, Joe Parker. Memorials in lieu of flowers may be made to the American Cancer Society.

### FREE HEARING TESTS FOR SENIOR CITIZENS

MEET AT WESTERN DRUG—MULESHOE

114 MAIN

Wednesday, August 5, 1992

COME BY OR CALL 272-3106 9:30 a.m.-10:30 a.m.

10 DAYS FREE TRIAL 12 BRANDS TO CHOOSE FROM

SATISFACTION GUARANTEED

LIVINGSTON HEARING AID CENTER

Sponsored by:

Roland K. Denison

1903 19th Lubbock, Tx. 79401  
606-B Quincy Plainview, Tx. 79072  
806/762-2951 806/293-8874  
TOLL FREE 1-800-628-0722

\*\*\*  
\* A shoe with a firm sole and soft upper is best for daily activities.

### Inmaculate Conception

Catholic Church  
Father Patrick Maher  
Northeast of City

First Baptist Church  
220 West Ave. E.  
Pastor Stacey Conner

Trinity Baptist Church  
314 E. Ave. B  
Rev. Dale Berry

Circle Back Baptist Church  
Intersection FM 3397 & Fm 298  
Rev. Jessie Shaver  
946-3676

Calvary Baptist Church  
1733 W. Ave. C.  
Rev. Rick Michael

Church of Compassion  
605 W. 8th  
Jimmy Williams  
272-5624

Progress Baptist Church  
Alan Petersen  
Progress, Texas

Richland Hills Baptist Church  
17th and West Ave. D  
Rev. Terry Taylor

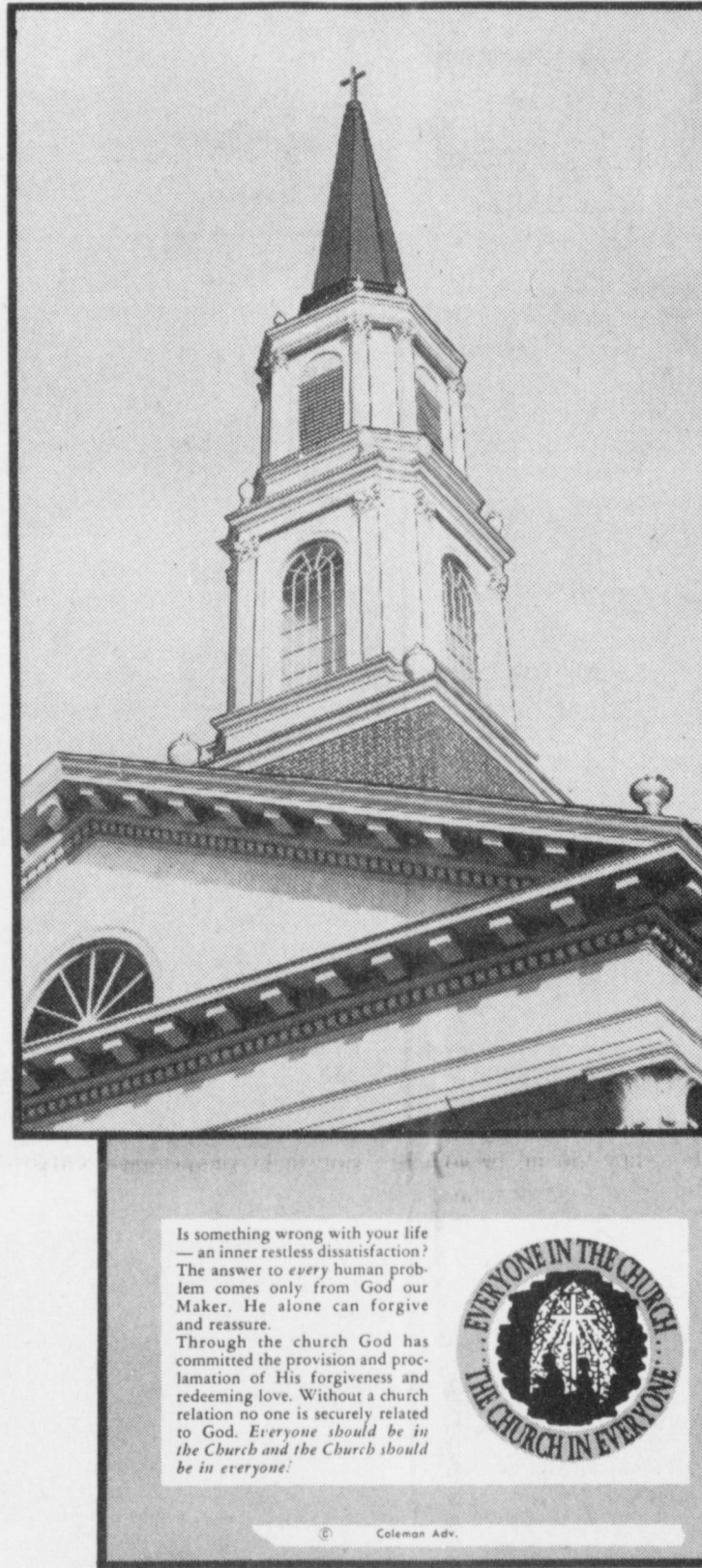
St. Matthews Baptist Church  
Corner of West Boston & West Birch  
Pastor M.S. Brown

Progress Second Baptist Church  
1st and 3rd Sundays  
Rev. Arthur Hayes

Primitive Baptist Church  
621 South First  
Elder Cleveland Bass, Pastor

1st Baptist Church  
Lazbuddie, Tx.  
Gary Wilcox, Pastor  
965-2126

New Covenant Church  
Plainview Hwy  
Sunday 10:00 a.m.  
Wednesday 7:00 p.m.  
Jimmy Lowe, Pastor



## Pointer To Heaven

Did you ever stop to wonder why so many churches have steeples? The answer is simple — a steeple has meaning — it is a finger pointing to Heaven. The steeple is the architect's way of showing what is important about life, and that is life's relation to God. The steeple also symbolizes the role of the Church as showing men the way to eternal life. Eternal life is not just an extra tacked on to the end of life, but those who know God, and thereby really know themselves aright, share now in the eternal, or heavenly, kind of life, for theirs is the Kingdom of God. If you would live, look for the nearest steeple, and go there to find the meaning of life.

Is something wrong with your life — an inner restless dissatisfaction? The answer to every human problem comes only from God our Maker. He alone can forgive and reassure. Through the church God has committed the provision and proclamation of His forgiveness and redeeming love. Without a church relation no one is securely related to God. *Everyone should be in the Church and the Church should be in everyone!*



### Three Way News

by: Mrs. H.W. Garvin

Mrs. Marvin McCaul was seriously injured in a car roll over Monday north of Bula. She is a patient in Methodist Hospital in Lubbock.

Andrew Wittner is a patient in Methodist in Lubbock. He is in CCU.

Mr. and Mrs. Bobby Kindle were in Lubbock Monday to visit Mrs. McCaul and Andrew Wittner.

Mr. and Mrs. H. C. Toombs spent part of the past week fishing at Lake Kemp.

### Cal Farley's Boys Ranch Rodeo Sept. 6th and 7th

Youths of all ages are ready for one of the Texas Panhandle's most exciting Labor Day weekend events- the annual Cal Farley's Boys Ranch Rodeo, September 6 and 7.

This 48th annual event will feature more than 100 boys riding calves, steers, bulls and bareback broncs. Area riding clubs and girls from Girlstown, U.S.A. will join the boys for the Grand Entries. The girls will compete in a flag race and barrel race. Also participating for the first time as rodeo contestants will be youths from the Cal Farley Family Program campus at Borger.

While the girls compete for trophies, the boys will vie for belt buckles and the titles of Junior and Senior All-Around Cowboys. Numerous specialty acts include clown skits, a calf scramble and stick horse rides featuring the Ranch's youngest boys and girls.

Along with rodeo excitement, many of the Ranch's former boys will enjoy numerous activities during the two-day event. Since 1939, more than 4,000 boys have called the Ranch "home," and many look forward to attending the annual Alumni Association Reunion.

Rodeo performances begin at 2:30 each day. Tickets are available at \$3.50 for reserved bleacher seats; \$2.50 for general admission; and \$1 for children ages six to 12. Barbecue beef plates will be sold at noon each day for \$3.50.

The Boys Ranch Rodeo is the only one of its kind in the nation that features only boys and girls of all ages as contestants. Much of their reward is seeing thousands of fans in attendance, and hearing their appreciative applause.

Reservations and further information are available by calling (806) 372-2341, or writing to P.O. Box 1890, Amarillo, Texas 79174.

St. John Luthern  
Sunday School and Bible  
Classes 9:30 a.m.  
Church Services 10:30 a.m.  
Rev. Richard Greenthancer

"Inglesia Pentecostal Unida"  
207 East Ave. G  
272-5944  
Pastor: Wenceslado Trevino

Lazbuddie Methodist Church  
965-2121  
Doug Chapman, Pastor

Jehovah Witness  
Friona Hwy  
Jack Tiffin, Minister  
Warren Meeks, Minister

New Vision Church of the Nazarene  
814 W. Ave. C  
272-3622  
Pastor David R. McIntire

Primera Iglesia Bautista  
223 E. Ave. B  
Roy Martinez, Pastor

Lariat Church of Christ  
Sunday School 10:00 a.m.  
Worship 11:00 & 6:00 p.m.  
Wednesday Services 7:00 p.m.  
Sam Billingsley, Minister

Muleshoe Church of Christ  
Clovis Hwy  
Bret McCasland, Minister

16th & Ave. D Church of Christ  
Sunday 10:30 a.m.  
Evening 6:00 p.m.  
Wednesday 7:30 p.m.  
Curtis Shelburne, Minister

Lazbuddie Church of Christ  
Minister, Keith Courmier  
Sunday School 9:30 a.m.  
Morning Services 10:20 a.m.  
Evening Services 5:00 p.m.  
Wednesday Night 7:00 p.m.

First Assembly of God  
Rev. G. Dean Reid, Pastor  
Sunday School 9:45 a.m.  
Morning Worship 11:00 a.m.  
Evening Services 6:30 p.m.  
Mid-Week Services 7:30 p.m.  
272-3984

Spanish Assembly of God  
East 6th and Ave. F.  
Mike Doyle, Pastor

First United Methodist Church  
507 W. 2nd Street  
Richard Edwards, Pastor

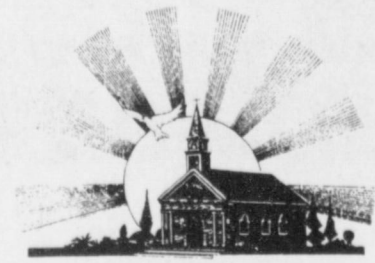
El Divino Salvador Methodist Church  
5th and E. Ave. D  
Leonard Gonzales, Pastor

United Pentacostal Lighthouse Church  
207 East Ave. G  
Rev. N.W. Thompson  
272-3258

The Christian Center  
Morton Hwy  
272-5992



## Attend The Church Of Your Choice!



Western Drug 114 Main 272-3106	Throckmorton Refinishing Shop 319 E. Amer. Blvd. 272-5345	Lowe's Marketplace 401 W. Amer. Blvd. 272-4585	American Valley Inc. W. Hwy 84 272-4266
Decorator's Floral & Gifts 616 S. 1st. 272-4340	Bratcher Motor Supply 107 E. Ave. B 272-4288	Richland Hills Texaco 1914 W. Amer. Blvd. 272-4875	Bob Stovall Printing 221 E. Ave. 272-3373
Dairy Queen 1204 W. Amer. Blvd. 272-3412	Bobo Insurance Agency 108 E. Ave. C 272-4264	Bailey County Farm Bureau 1612 W. Amer. Blvd. 272-4567	Combination Motors & Salvage 272-4458
Irrigation Pumps & Power W. Hwy 84 272-4483	Wes-Tex Feed Yards, Inc. 272-7555	Viola's Restaurant 2002 W. Amer. Blvd. 272-3838	5-Area Telephone Cooperative Inc. 302 Uvalde 272-5533



# CLASSIFIEDS 272-4536



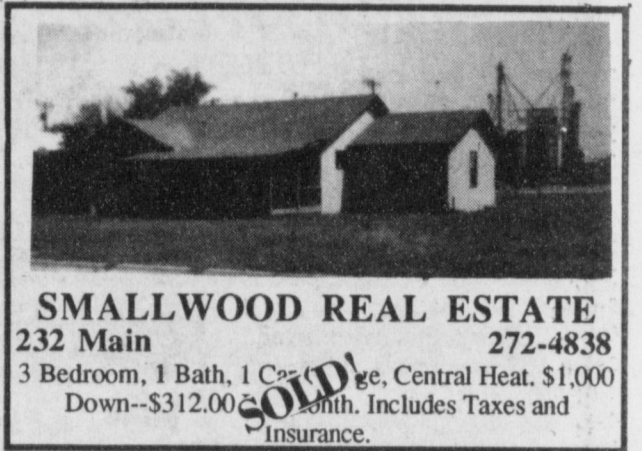
**Classify! It Pays**  
Call 272-4536

**8. Real Estate** **8. Real Estate**

**8. Real Estate**

**HOUSE FOR SALE**

4-2 1/2-2 Brick 201 Smith St. Sudan. LR-Den-FP-2 DR-1 ExTL-2 Story Workshop-Fenced, C Fans-Builtins All Elct-BB Htrs-EVAC-Lots Closets. Call for Appointment at 227-2229 or 272-3332. H8-30s-4tcS \*\*\*



**SMALLWOOD REAL ESTATE** 272-4838  
232 Main  
3 Bedroom, 1 Bath, 1 Carport, Central Heat. \$1,000 Down--\$312.00/mo. Includes Taxes and Insurance.

**8. Real Estate**

Large 3 bedroom older house on oversize lot, with mature trees, 620 West Avenue C, Muleshoe. Must sell to settle estate. All offers will be considered. Call Gordon H. Green, attorney for the estate. 272-3140.

**CLASSIFIED RATES**

15 Words & Under Minimum Charge \$2.30  
Thereafter \$2.00  
16 Words & Over 1st Insertion 15 cents per word  
2nd Insertion 13 cents per word

**CLASSIFIED DISPLAY RATES**  
\$1.75 Per Column Inch

**DEADLINES**  
12 noon Tues.  
For Thursday Paper 12 noon Friday  
For Sunday Paper

To receive the reduced rate after the first insertion, ad must run continuously.

We reserve the right to classify, revise, or reject any ad. We are not responsible for any error after ad has run once.

**3. Help Wanted**

**PHOTO TRIMMERS**  
EARN TO \$125 PER DAY!  
NO EXPERIENCE NEEDED.  
1-800-262-4389

\*\*\*  
**TRUCK & TRACTOR DRIVERS WANTED:** Monthly salary, lots of travel. Job runs March-December. Contact Scott or Charles at SCB Farms, Inc. in Bovina, TX--(806)238-1206 S3-23s-tfc

\*\*\*  
**A-NEW way to sell Avon!**

No more door to door selling required! For a limited time only, no initial starter fee. Call 272-5607 after 6 p.m. \*\*\*

\*\*\*  
**\$200-\$500 WEEKLY** Assemble products at home. Easy! No selling. You're paid direct. Fully guaranteed. FREE Information-24 Hour Hotline. 801-379-2900 Copyright # Tx 340DH A3-31t-16tp

\*\*\*  
**BEAUTICIAN NEEDED** Full or part time. Apply in person **MAIN STREET BEAUTY SHOP** M3-31t-8tc

\*\*\*  
**MEDICAL BILLING** AmeriClaim electronic insurance claims processing for medical practitioners. \$30,000 part-time to over \$80,000 full-time. Investment \$5950 plus PC. For information by mail call 913-599-7955 Y3-31s-4tc

**4. Houses For Rent**

\*\*\*  
**FOR RENT** 2 bedroom house, 1 bath, double garage located at 1901 W. Birch Ave. House is furnished with stove, refrigerator, & air conditioner. May inquire at 1918 W. Birch Ave. or call 272-3696. B4-31s-4tc

**9. Automobiles For Sale**

\*\*\*  
**CHEAP! FBI/U.S. SEIZED**  
89 MERCEDES.....\$200  
86 VW.....\$50  
87 MERCEDES.....\$100  
65 MUSTANG.....\$50  
Choose from thousands starting \$25.  
FREE Information-24 Hour Hotline. 801-379-2929 Copyright # Tx340JC A9-31t-16tp

\*\*\*  
**FOR SALE: 1987** Chevrolet Suburban Wrangler Conversion, Call 272-3615. H9-31s-3tc

\*\*\*  
**SEIZED VEHICLES BY DEA, FBI and U.S. Customs.** Low as \$100. Cadillacs, GM, BMWS, Mercedes, Porches, Fords. Call 1-315-733-8512 Ext. R104 T9-31s-6tc(ts)

**Classify**

**3. Help Wanted**

Earn \$500 - \$1000 weekly stuffing envelopes. For details - RUSH \$1.00 with SASE to:  
**GROUP FIVE**  
57 Greentree Drive, Suite 300  
Dover, DE 19901  
C3-29S-28tp(t)

**11. For Sale Or Trade**

\*\*\*  
**PIANO FOR SALE**  
WANTED: Responsible party to take on small monthly payments on piano. See locally. Call Manager at 800-635-7611 30s-6tp

\*\*\*  
**FOR SALE** Bumper Pool Table. Very good condition. Call 272-4311 after 6:00 p.m. R11-31s-tfc

**15. Misc.**

\*\*\*  
**FOR RENT:** Large Self Storage rooms with 24 hour a day access. Call J & J Self Storage at 272-4307. S15-13t-tfc

\*\*\*  
Need to have an **ESTATE SALE?** Let us do it for you! 227-2016 or 227-2060 B15-28t-8tc

\*\*\*  
**GOT WEEDS? CALL JACK LITTLE FOR FREE ESTIMATE ON COST OF CUTTING WEEDS! SATISFACTION GUARANTEED! CALL 806-272-4805 MULESHOE** L15-30t-tfc

**3. Help Wanted**

**11. For Sale Or Trade**

\*\*\*  
**FOR SALE** 23 1/2 foot travel trailer. Fully equipped- Self contained. Shown by appointment only. Call 800-272-5672. Muleshoe B11-30s-5tc

\*\*\*  
Brick home, 2 acres. 3 bedroom, 3 bath, fireplace, double car garage, cement cellar. 1 1/2 miles south of Bula. Call 946-3484. C8-28s-8tc

**15. Misc.**

\*\*\*  
**CONNIE'S CLASSY CANINES** Dog Grooming! For Appointment Call 272-3167 602 E. Chicago C15-31t-3tc

\*\*\*  
**ROUND-UP APPLICATION** Pipe-wick mounted on high-boy. 30 in. or 40 in. rows. Cotton, milo, soybeans and Vol. corn. Call: Roy O'Brian 265-3247

\*\*\*  
**STORAGE!** Rooms Available For Storage \$25.00-\$30.00 Per Month **Ted Barnhill 272-4903**

**1. Personals**

**CONCERNED About Someone's Drinking? HELP IS AVAILABLE** through Al-Anon Call 272-2350 or 965-2870 or come to visit Tuesday and Thursday nights, 8:00 p.m. & ... AA call 965-2870 or come visit Tuesday nights, 8:00 at 620 W. 2nd, Muleshoe.

For more information and assistance regarding the investigation of get-rich-quick, work-at-home and other financial/business opportunities, The Muleshoe and Bailey County Journals urges its readers to contact the Better Business Bureau, 1206 14th St., #901, Lubbock, TX 79401 or call (806)763-0459

I would like to buy some Bailey County History Books. Please call 272-7575 and ask for Evelyn. H1-30s-4tc

**3. Help Wanted**

**PERMANENT JOB OPPORTUNITY** Wanted: Assistant Partperson to fill position at local Case-IH Dealership. Will train but some experience is definitely a plus. Please come in for an application. C&H EQUIPMENT, WEST HIGHWAY 84, MULESHOE, TEXAS Phone 806-272-551 C3-30s-3tc

**R.N.'s needed** part time and full time. All shifts. Contact Personnel- Deaf Smith General Hospital. 806-364-2141 Ext. 317 D3-30s-3tc

**IMMEDIATE OPENINGS** for LPN's and RN's. Excellent salary. Shift differentials. Insurance available. Apply at High Plains Nursing Center, 1400 West 21st Street, Clovis, NM 88101. (505)762-4705 or Golden Age Nursing Center, 1201 Norris St., Clovis, NM 88101. (505)762-3753. G3-29s-8tc

## CLOVIS LIVESTOCK AUCTION

P.O. Box 187 • Clovis, New Mexico 88101 • (505) 762-4422.

**COMPLETE RANCH DISPERSAL OF 584 COWS AND 28 BULLS**  
Wednesday, August 5

This is a reputation herd of cows being dispersed because the owner has decided to run only yearlings. This is a rare opportunity to buy some of the very best commercial cows that will be offered anywhere, all carrying one brand.

- 48 Fancy blk. & bwf. heifers. 28 A. I.'d to Salers bulls, to calve September 15 to 30. Balance bred to black bulls.
- 96 3-year old blk. & bwf. cows & pairs.
- 180 4 & 5-year-old blk. & bwf. cows & pairs.
- 200 6 to 7-year-old blk. & bwf. cows & pairs.
- 38 8 & 9-year-old blk. & bwf. cows & pairs.
- 30 Older cows, blk. & bwf. cows & pairs.
- 28 Bulls - Brangus, Angus, Limousin, Hereford, & Beefmaster.

These cows are black and black whiteface, and all are caldhov vaccinated. A really super set of big, growthy cows with some exotic influences. Right off of excellent grass and a super set of calves. Approximately 300 calves on the ground with calves weighing up to 450 lbs.

**Also, Aug. 5th - Holstein Steer Special** (First Wednesday Of Every Month, Consignments Welcome)

- Early Consignments:**
- 65 Head of Holstein steers, 700 to 750 lbs.
  - 38 Head of 300 lb. Holstein steers.
  - 103 Head of 300 to 500 lb. Holstein steers, good condition.
  - 32 Head of Holstein steers. 450 lbs.

**ANNUAL FALL HORSE SALE**  
August 14, 15, & 16, 1992

Fri., Aug. 14 9:00 a.m.  
Non-Catalogued - Registered & Grade  
Sat., Aug. 15 7:30-9:30 a.m.  
Demonstration of Performance Horses  
10:00 a.m.

CLOVIS CLASSIC "CREAM OF THE CROP"  
Sun., Aug. 16 9:00 a.m.  
Traditional Catalog Sale  
2:00 p.m.

CLOVIS CLASSIC QUARTER HORSE YEARLING FUTURITY SALE  
**For More Information Call: (505) 762-4422**

**Horse Supplement Closes August 6**  
Your help in the May sale in which 1,307 horses sold for 522 consignors in 3 big days was certainly appreciated. We are looking forward to serving you in August.





# Back to School SALE

AMERICAS FAVORITE BRAND!

ALL FLAVORS  
**COCA-COLA**  
2 LTR. BTL.  
**\$1.19**



### Fresh Meats

HEAVY GRAIN FED BEEF  
**Round Steak**  
**\$1.59**  
1 B.

HEAVY GRAIN FED BEEF  
**Boneless Round Steak**  
**\$1.79**  
LB.

SHURFINE FULLY COOKED 95% LEAN-5 TO 8 LB. AVG.  
**Whole Boneless Hams**  
Half Hams \$2.99  
1 B. \$1.99

SHURFINE BOLONA-PAP-SALAMI Luncheon Meats  
SHURFINE Cooked Ham  
SHURFINE Ham Salad  
SHURFINE Chicken Salad  
SHURFINE JALAPENO OR PIMENTO Cheese Spread  
SHURFINE PIMENTO Cheese Spread

SHURFINE REG. OR HOT **Whole Hog Pork Sausage**  
1 LB. ROLL \$1.39

SHURFINE REG. OR HOT **Boneless Rump Roast**  
EXTRA LEAN \$2.09  
**Ground Round** \$1.99

HEAVY GRAIN FED BEEF **Sirloin Tip Steak or Roast**  
\$2.39

SHURFINE READY TO HEAT & SERVE  
**Hot & Spicy Wings** \$1.99  
**Meat Balls** \$1.79  
**Chicken Breast Patties** \$2.09  
**Chicken Breast Nuggets** \$2.19

U.S.D.A. GRADE "A" SELF-BASTING **Shurfine Turkeys**  
ALL SIZES \$1.79  
1 LB. WITH TENDER TIMER

SHURFINE **Meat Wieners**  
12 OZ. PKG. \$0.69

### It's easy to pack a healthy lunch

## START SMART

AFFILIATED FOODS MEMBER STORES MAKE SENSE FOR SCHOOLS

RIPE GOLDEN **Bananas**  
4 \$1  
LBS

Why go bananas thinking up a healthy way to jazz up your kids lunch box? Bananas are easy to pack in a lunch box and delicious to eat.

FRESH CRISP **Dole Carrots** 3 1-LB. CELLO BAGS \$1.39  
**Stalk Celery** 3 1-LB. CELLO BAGS \$0.89  
**Cauliflower** 1 LB. \$0.29

NEW CROP **Texas Potatoes**  
10-LB. BAG \$1.29

**SWEET JUICY Peaches**  
39¢  
LB.

WASHINGTON EXTRA FANCY RED DELICIOUS **Apples**  
LUNCH BOX SIZE \$5.1  
FOR

**Three Brad Pocket Folders** 5 \$1.59 FOR

**Elmers School Glue** 4-OZ. BTL. \$1.59

**OR Glue All** 4-OZ. BTL. \$1.59

**Crayola Crayons** 89¢  
BOX OF 16

70-CT. Theme Book EACH 39¢  
ASSTD. SCHOOL Lunch Kits EACH \$5.99

**Gold Seal OR Snappy Pencils** 8-CT. PKG. \$2.19

FOR LOCKERS AND BIKES **Master Combination Lock** EACH \$2.99

SHURFINE **Liquid Bleach** GAL. JUG 79¢

PUPPY - GRAVY - CHUNK **Shurfine Dog Food** 20 LB. BAG \$3.79

SHURFINE **Evaporated Milk** 12 OZ. CANS 2 \$0.89

SHURFINE ASSTD. **Potato Chips** 7 OZ. BAG 69¢

SHURFINE **Pork and Beans**  
15.5 OZ. CANS \$4.99

CHOPPED MUSTARD OR TURNIP GREENS, FRESH SHELLED BLACK EYE PEAS, NEW POTATOES, WHOLE CUCUMBER, SAUER KRAUT  
**Shurfine Canned Vegetables**  
15 TO 16 OZ. CANS \$1.99

SHURFINE **Tomato Sauce**  
8 OZ. CANS 6 99¢

CHEESE OR REG. **Shurfine Nacho Chips**  
3 LB. BAG \$1.99

SHURFINE **Tomato Ketchup**  
28-OZ. SQUEEZE BTL. 99¢

SHURFINE ASSTD. **Spaghetti Sauce**  
30 OZ. JAR \$1.29

SHURFINE **Margarine**  
16 OZ. QTRS. \$3.99

SHURFINE **Salad Dressing**  
32 OZ. JAR 99¢

REG. OR LITE FRUIT COCKTAIL, REG. OR LITE HALVES OR SLICED PEACHES  
**Shurfine Canned Fruits**  
16 OZ. CAN 69¢

12-CT. BOX **Colored Map Pencils** 79¢

16-CT. PKG. **Bic Round Stic** 99¢  
BLACK OR BLUE

10-CT. PKG. **Paper Mate Pens** 99¢  
BLACK OR BLUE

4 1/2 INCH **Blunt or Pointed Scissors** PAIR \$2.19

SHURFINE **Cranberry Juice Cocktail** 48-OZ. BTL. \$1.99

SHURFINE CRANAPPLE OR CRANRASPBERRY DRINK 48-OZ. BTL. \$1.99

DAMSON PLUM-GRAPE-OR APPLE **Shurfine Jelly** 18-OZ. JAR 99¢

SHURFINE REG. OR LITE **Waffle/Pancake Syrup** 24-OZ. BTL. \$1.29

SHURFINE **Complete Pancake Mix** 32-OZ. BOX \$1.29

SHURFINE **Black Pepper** 4-OZ. CAN \$1.29

SHURFINE **Paper Towels** ROLLS FOR \$2.99

SHURFINE **Bath Tissue** 9-ROLL PKG. \$1.89

SHURFINE ASSTD. BOYS OR GIRLS **Ultra Diapers** CONV. PACK \$5.99

SHURFINE ASSTD. **Soda Pop** 2 59¢  
LITER BTL.

SHURFINE **Saltine Crackers** 16 OZ. BOX 59¢

SHURFINE CREAMY/CHUNKY **Peanut Butter** 18 OZ. JAR \$1.29

SHURFINE FROZEN **Orange Juice** 12 OZ. CAN 69¢

SHURFINE FROZEN **Shurfine Sugar** 4 LB. BAG \$1.29

SHURFINE **Asstd. Coffee** 39 OZ. CAN \$3.69

SHURFINE **Paper Towels** ROLLS FOR \$2.99

SHURFINE **Bath Tissue** 9-ROLL PKG. \$1.89

SHURFINE ASSTD. BOYS OR GIRLS **Ultra Diapers** CONV. PACK \$5.99

SHURFINE ASSTD. **Soda Pop** 2 59¢  
LITER BTL.

SHURFINE **Saltine Crackers** 16 OZ. BOX 59¢

SHURFINE CREAMY/CHUNKY **Peanut Butter** 18 OZ. JAR \$1.29

SHURFINE FROZEN **Orange Juice** 12 OZ. CAN 69¢

SHURFINE FROZEN **Shurfine Sugar** 4 LB. BAG \$1.29

SHURFINE **Asstd. Coffee** 39 OZ. CAN \$3.69

SHURFINE **Paper Towels** ROLLS FOR \$2.99

SHURFINE FROZEN **Orange Juice** 12 OZ. CAN 69¢

SHURFINE FROZEN **Shurfine Sugar** 4 LB. BAG \$1.29

SHURFINE **Asstd. Coffee** 39 OZ. CAN \$3.69

SHURFINE ASSTD. **Soda Pop** 2 59¢  
LITER BTL.

SHURFINE **Saltine Crackers** 16 OZ. BOX 59¢

SHURFINE CREAMY/CHUNKY **Peanut Butter** 18 OZ. JAR \$1.29

SHURFINE FROZEN **Orange Juice** 12 OZ. CAN 69¢

SHURFINE FROZEN **Shurfine Sugar** 4 LB. BAG \$1.29

SHURFINE **Asstd. Coffee** 39 OZ. CAN \$3.69

SHURFINE **Paper Towels** ROLLS FOR \$2.99

### Health and Beauty

WESTERN FAMILY PASTE OR GEL **Tartar Control Toothpaste** 4.4 OZ. TUBE 99¢

WESTERN FAMILY REGULAR **Non-Aspirin Tablets** 12 OZ. BTL. \$1.69

WESTERN FAMILY EXTRA STRENGTH **Non-Aspirin Caplets** 12 OZ. BTL. \$1.99

WESTERN FAMILY **Sleep Tablets** 12 OZ. BTL. \$1.89

WESTERN FAMILY ASSORTED ANGLED, OR **Tuft Toothbrushes** SHURFINE 99-75-100 WATT \$0.99

STANDARD **Light Bulbs** 69¢

### Frozen

REG. OR PINK **Shurfine Lemonade** 12 OZ. CAN 59¢

SHURFINE **Whole Strawberries** 16 OZ. PKG. \$1.39

SHURFINE **Whipped Topping** 12 OZ. TUB 99¢

SHURFINE **Corn on the Cob** 4 EAR PKG. \$1.39

CRINKLE CUT OR HASH BROWN **Shurfine Potatoes** 2 LB. PKG. \$1.39

BRUSSEL SPROUTS-CAULIFLOWER-BROCCOLI CUTS **Shurfine Vegetables** 16-OZ. PKG. \$1.19

Shop Lowe's Marketplace & Pay-n-Save for Low Low Prices!!!



**MARKETPLACE** 401 W. Amer. Blvd. Muleshoe 272-4585

515 W. Amer. Blvd. Muleshoe 272-4406

Prices effective August 2 - 8, 1992

WE RESERVE THE RIGHT TO LIMIT QUANTITIES IN TEXAS

Our Best to You!