

Muenster ISD administration details Bond Election

By Janet Felderhoff

A crowd of concerned citizens gathered at Muenster ISD's cafetorium Wednesday, March 23 to hear what is being planned for proposed construction. The Bond calls for a 14 million dollar Bond Election on May 14.

MISD Superintendent Clay Richerson addressed the group using a Power Point visual to help with the points he made. He said all he could do is offer the facts. The new construction that is planned includes a 40,000 square foot elementary school with parking lot; 18,000 square foot junior high building with parking lot; 7,000 square foot VoAg shop/classroom building with site paving for staging and material/equipment storage; and maintenance/storage bay added to Ag Shop; PE gymnasium with field house additions and renovations and paving of parking lots. The bond money would also cover building demolition, asbestos abatement, furniture and fixtures, and playground equipment. See chart for list of specific items and projected costs.

In 2000 and 2001, surveys were done regarding the MISD facilities. Claycomb Associates, Architects rated PK-2 in 2000 as "Borderline," scored 51% and rated the junior high as "Borderline," scored 58%. In 2001, Genesis Partnership scored the Elementary at 49% and recommended a complete renovation or replacement and the Secondary at 71%, which in that company's terms served the programs. "The difference between these two is they specifically rated in 2000, the PreK-2 building, the Junior High building, and the High School building," Superintendent Richerson explained. "In 2001, they put the Junior High and High School together as Secondary facilities. The combinations together made it score 71%."

Some of the reason not-

ed for upgrading included room size and space. Richerson stressed that was 10 years ago. "During inclement weather, during recess, our elementary students are placed in the hallway to watch videos. There is no place for them to go in their building in bad weather," he said.

The First Grade classroom is just over 400 square feet. TEA and State law guidelines are that classrooms have to be 800 square feet. A Second Grade classroom was shown with computers, bookshelves, and students in chairs with little space remaining to move around. A Junior High classroom was also shown as crowded, and Richerson noted that there would be three more students in it next year.

Other issues in the Elementary include electrical and storage problems, and inefficient heating, cooling, and lighting. They are unable to update technology due to the electrical and space problems. There is asbestos in the Junior High hallways in the tile, and there are leaks on the north side during heavy rains. "Because of our situation with our campuses, we have mixing of the elementary, the high school students, and the junior high all in the same building," said Superintendent Richerson. "There are some concerns there... We have some high school kids mixed in with 7th and 8th grade students that pass in the hallways. In our eyes, that's not a good situation to have, and certainly we can't monitor everything at all times."

An independent company did a projection and survey of students. Three methods were given to project student numbers. All three indicated that K-6th through the year 2016 should increase in numbers.

Plans for the Elementary include 26 classrooms, one art room, a computer lab, a

multipurpose activity center, and administrative offices. The Junior High would have eight classrooms, computer lab, library, band hall, two Ag classrooms, Ag/maintenance shop, practice gymnasium, upgrade field house, and paved parking lot.

Richerson noted that part of the reason that classrooms for the Ag shop are needed is that if they build where they hope to, the Junior High and the 300 wing in that building will have to come down. This is where all the Ag storage and maintenance is now.

"The field house and practice gym were something that the Board had planned to do on the fund balance over the last year, but due to overpayments from the State the last couple of years, we've been paying that back. Our fund balance was not what the books said it was and we were not able to do those projects using our fund balance. The decision was made to put those in with this project," reported the Superintendent.

An information chart was distributed on what the cost would be to taxpayers. That chart is shown on page 2. The numbers in it are projections based on bond prices in March of 2011.

"We have in favor of us, as far as our school district is concerned, the wind farm," stated Superintendent Richerson. A chart developed with figures from TEA, Southwest Securities, and Moak & Casey, the law firm that wrote the agreement between MISD and the wind farm, showed the projected valuation of the wind farm in 2011 and through 2017. The value drops each year, thus its tax contribution drops. In 2011, the wind farm pays 32.4% of the District's taxes and by 2017 that drops to 22.3%.

Taxpayers 65 and over will not have their taxes go above the frozen levy amount that was established at the time their over 65 exemption was

granted.

A question from the audience on the classroom size wondered if the school would be closed down if MISD doesn't agree with the mandate. The answer was that the project would not be approved if those specifications were not met.

Another question was if this was an all or nothing situation. Richerson commented, "The bond election has only one proposition, which is \$14,000,000 for the purpose of a new elementary, new junior high, band hall, library, agriculture classrooms, ag/maintenance shop, practice gymnasium, upgrade field house, and pavement of the parking lot. Voters will either vote for or against the \$14,000,000 package."

They hope to start with the Elementary building. When it is completed, the students would then be moved out of

the Junior High and into the old Elementary so that the Junior High building could be demolished to construct the new Junior High. This is expected to be a two-year process. It is hoped to build the new Elementary facility on Eighth Street where the practice area is now. Studies must be done to see if this is a feasible location.

Another question was what the overpayment from the State was about. Richerson explained that student numbers were turned in higher than they actually were by two previous superintendents. He said that the State pays on student numbers. At the end of the year, they look at ADA (average daily attendance) and if they don't match up, the State asks for the overpaid amount to be returned.

Also, last year MISD collected taxes on the Wind Farm, but the State only saw

the value of the District from the prior year, which didn't include the Wind Farm's tax valuation. The overpayments amounted to about \$2 million. The high student count was not spotted by the School Board, auditors, or superintendent.

Board Trustee Ben Bindel commented, "We are trying to do this in phases so we are not purchasing temporary classrooms. We are going to build one, move the students, tear down, build the other one."

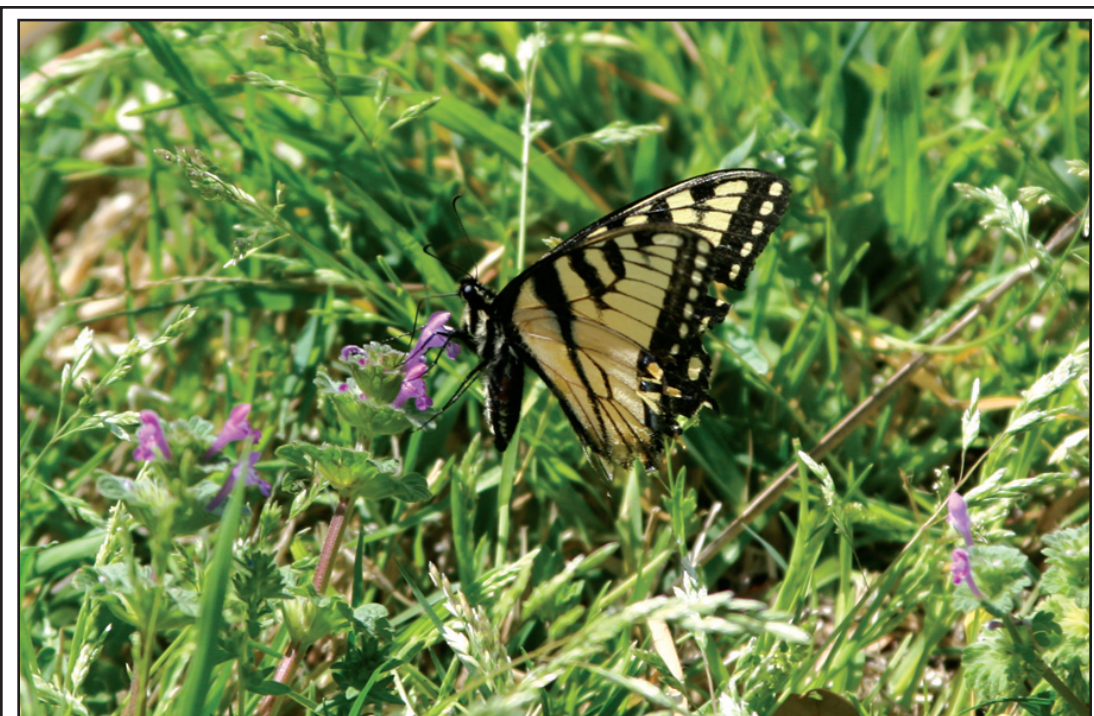
Architect Kelly Zwinggi remarked that with today's economy, bids have been coming lower than anticipated due to more competition. "I think that along with the Wind Farm, and also with the way the economy is, now is the time to build," said Zwinggi.

Asked after the meeting about if, with all the State's

See BOND, pg. 2

2011 Bond Construction Program

New 40,000 sq. ft. Elementary School with Parking Lot for approx. 40 cars and Drives for Drop Off/Pick Up Lanes	\$ 6,000,000
New 18,000 sq. ft. Junior High Building with Parking Lot to Accommodate approx. 25 cars	\$ 2,700,000
New 7,000 sq. ft. VoAg Shop/Classroom Building with approx. 2,500 sq. ft. Site Paving for Staging & Material/Equip. Storage ..	\$ 945,000
New Maintenance/Storage Bay Added to Ag Shop	\$ 85,000
PE Gymnasium with Field House Additions & Renovations including Paving Existing Parking Lots at Football Field & New Cafeteria Area (approximately 75,000 sq. ft.)	\$ 2,795,000
Building Demolition	\$ 150,000
Asbestos Abatement	\$ 75,000
Site Drainage & Upgrade and Extension of Utilities	\$ 300,000
Furniture & Fixtures	\$ 275,000
Playground Equipment	\$ 75,000
Misc. Costs (GeoTech Investigation, Construction Material Testing, Topographic Survey, Computer Cabling & Wiring, Security & Telephone System)	\$ 300,000
1/2 the Cost to Pave Walnut Street (1/2 to be paid by City of Muenster)	\$ 85,000
Contingency Allowance	\$ 200,000
Total	\$13,985,000



Spring is all around

Warm sunny days have early spring flowers budding out. Butterflies, like the Tiger Swallowtail above, celebrate the end of winter by feasting on wildflowers. At left, a wisteria vine blooms in the KMB Park as does the coral honeysuckle, below. Rain droplets shimmered on the flowers from a shower Tuesday that left things wet, but did little to quench the dry, thirsty ground in need of Spring's usual showers.

Photos by Janie Hartman and Janet Felderhoff



Cooke County remains under outdoor burn ban

By Janet Felderhoff

Cooke County Commissioners Court took no action regarding the County-wide Burn Ban that has been in place since the March 14 Commissioners Court meeting. County Fire Marshal Ray Fletcher recommended that the Ban be kept due to the dry conditions.

Fletcher reported that the County's current KBDI (Keetch-Byram Drought Index) has a high of 488, a low of 268, with an average of 364.

"Since we last met, there hasn't been any measurable precipitation," noted Fletcher. "The drought outlook for the period of April to June supposes that our drought will persist or intensify for a large area surrounding us, so it's not like we are on the line of it might or it might not." The area is currently in a moderate drought and very near the severe drought situation. Little rain is predicted this week.

Committee members Commissioners Gary Hollowell and Al Smith reported

on their findings in regard to the vehicle possibly to be given to the IT Department. This was discussed at the March 14 meeting and the two Commissioners were charged with looking into the situation.

Four vehicles are being considered between the IT and Maintenance Departments. Commissioners do not wish to increase the County's fleet of vehicles.

The final decision was to take the Trailblazer from the Sheriff's Office and make it road-ready with new tires, windshield, and wiper motor and be made available to the IT Department. The blue Explorer will remain with the Maintenance Department along with a white pick-up, and the red Chevrolet pick-up will be surplus.

County Judge John Roane made a request that people, including elected officials, not go visit the Courthouse unless they are with Commissioner Leon Klement or himself and taking the proper safety precautions.

Adoption of the County Road map will be considered at a meeting on April 4 at 10 a.m..

In other business, Commissioners Court:

- Appointed a committee of Kevin Grant, Ray Fletcher, Billie Jean Knight, Judge Roane, and other necessary representation needed to assist HR Director Diana Allen with the revision of the County's Personnel Policy. The County Attorney or District Attorney will be asked to serve with those named.
- Rejected bids for road aggregate. They will continue with current vendors until the current bid prices expire this fall, since those prices are much lower.
- Declared April as Child Abuse Awareness Month.
- Approved contract with Compano Energy for the installation of a natural gas pipeline across CR 343 in Precinct #3.
- Approved indigent burial of David B. Goodman.
- Approved bond for Brenda Johnston, Adult Probation Department.

Muenster Independent School District
(Cooke County, Texas)
\$14,000,000
Impact of the New Bonds

February 18, 2011

The following chart shows the projected impact of this transaction on the homestead of a resident of the District.

There is no increase in taxes for the homestead of those persons receiving the "senior citizen" exemption at the time that the bonds are sold.

BOND
.....continud from pg. 1

budget cuts impacting schools, if this is a good time to risk such a high Bond Election, Superintendent Richerson responded, "The state's budget cuts will affect Maintenance & Operation (M&O). Budget cuts will affect instruction (teacher salaries), supplies and materials, travel, and all other daily operating fees. Even though the state's budget cuts will affect operations, there are no risks toward the Bond Election as far as money coming from the State to the School District that would affect the bonds. At this time, the positive facts concerning the bond election are: 1. bond rates are at historic lows; 2. construction costs are relatively low; 3. the impact of the values of the Wind Farm toward I&S (debt services); 4. incurring debt will reduce the amount of recapitalization paid back to the State.

Election day is Saturday, May 14 from 7 a.m. to 7 p.m. in the Muenster Junior High foyer. Residents of the Muenster School District and who have a valid voter registration certificate dated 30 days prior to the date of the election are eligible to vote. Those who are not registered and who wish to vote still have time to register. Early voting begins on Monday, May 2 and ends Tuesday, May 10. To early vote, come to the MISD Administration office at 135 E. Seventh Street in Muenster on weekdays between 8 a.m. and 4 p.m.

Applications for early voting by mail must be submitted to Jeanette Reiter, Early Voting Clerk, P.O. Box 608, Muenster TX 76252-0608 no later than Friday, May 6.

Superintendent Richerson plans to attend meetings and luncheons of various organizations during the coming weeks to explain the Bond Election. He also encourages anyone with questions to contact him at his office.

If you count all your assets, you always show a profit. ~ Robert Quillen

Assessed Value of Homestead	less State Exemption	Taxable Value of Homestead	Current Tax Bill 2010-2011	Projected Tax Bill								
				2011-2012			2012-2013			2013-2014		
				Annual Taxes	Monthly Taxes	Change from Prior Year	Annual Taxes	Monthly Taxes	Change from Prior Year	Annual Taxes	Monthly Taxes	Change from Prior Year
\$50,000	\$15,000	\$35,000	\$394.82	\$446.05	\$37.17	\$51.23	\$472.58	\$39.38	\$26.53	\$472.03	\$39.34	-\$0.55
75,000	15,000	60,000	676.84	764.66	63.72	87.82	810.14	67.51	45.49	809.20	67.43	-0.94
100,000	15,000	85,000	958.85	1,083.26	90.27	124.41	1,147.70	95.64	64.44	1,146.37	95.53	-1.34
125,000	15,000	110,000	1,240.87	1,401.87	116.82	161.00	1,485.26	123.77	83.39	1,483.53	123.63	-1.73
150,000	15,000	135,000	1,522.88	1,720.47	143.37	197.59	1,822.82	151.90	102.35	1,820.70	151.72	-2.12
175,000	15,000	160,000	1,804.90	2,039.08	169.92	234.18	2,160.38	180.03	121.30	2,157.86	179.82	-2.52
200,000	15,000	185,000	2,086.91	2,357.69	196.47	270.78	2,497.94	208.16	140.25	2,495.03	207.92	-2.91
225,000	15,000	210,000	2,368.93	2,676.29	223.02	307.37	2,835.50	236.29	159.21	2,832.20	236.02	-3.30
250,000	15,000	235,000	2,650.94	2,994.90	249.57	343.96	3,173.06	264.42	178.16	3,169.36	264.11	-3.70
300,000	15,000	285,000	3,214.97	3,632.11	302.68	417.14	3,848.18	320.68	216.07	3,843.70	320.31	-4.48

The information in the above chart is based on the following assessed valuations and tax rates.

Fiscal Year	2010-2011	2011-2012	2012-2013	2013-2014
Assessed Valuation	444,248,795	\$444,248,795	\$444,248,795	\$444,248,795
M&O Tax Rate	\$1.0400	\$1.0400	\$1.0400	\$1.0400
I&S Tax Rate	0.0881	0.2344	0.3102	0.3087
Total Tax Rate	\$1.1281	\$1.2744	\$1.3502	\$1.3487

LEON JOHNSON & DONNA SCOTT



DALLAS, TEXAS
Your Information Resource

Windmill Projections

	2011	2012	2013	2014	2015	2016	2017
MISD Taxable Value (SoF)	\$464,128,877	\$464,128,877	\$464,128,877	\$464,128,877	\$464,128,877	\$464,128,877	\$464,128,877
MISD Taxable Value (SWS)	\$444,248,795	\$444,248,795	\$444,248,795	\$444,248,795	\$444,248,795	\$444,248,795	\$444,248,795
Project Value (Moak & Casey)	\$143,781,000	\$135,151,140	\$127,044,892	\$119,422,198	\$112,256,866	\$105,521,454	\$99,190,167
I & S Rate	0.0835/\$100	0.2143/\$100	0.2905/\$100	0.2901/\$100	0.2896/\$100	0.2896/\$100	0.2898/\$100
I & S Collections	\$120,057.14	\$289,629.00	\$369,065.00	\$346,444.00	\$324,759.00	\$305,590.00	\$287,453.00
Windmill % of Taxable Value	32.40%	30.40%	28.60%	26.90%	25.30%	23.80%	22.30%

SoF - Summary of Finance TEA
SWS - Southwest Securities, Leon Johnson

Collections and % taxable value based on SWS

For Good, Low Cost
FIRE and STORM INSURANCE
Contact
Muenster Farm Mutual
Fire Insurance Association
212 N. Walnut P.O. Box 612 Muenster, Texas 940-759-4770

To get rich, never risk your health. For it is the truth that health is the wealth of wealth. Richard Baker

MUENSTER ENTERPRISE

SUBSCRIPTION RATES:
In Cooke County - 1 year-\$37; 2 years-\$69
Outside of Cooke County - 1 year-\$42; 2 years-\$79
Phone (940) 759-4311
THE MUENSTER ENTERPRISE (USPS 367660) is published weekly by The Muenster Enterprise, Inc. Post Office Box 190, Muenster, Texas 76252-0190 Periodicals postage paid at Muenster, Texas 76252 and additional offices. POSTMASTER: Send address changes to: THE MUENSTER ENTERPRISE, P.O. Box 190, Muenster, Texas 76252 ISSN:0883-2544

**MUENSTER MEMORIAL HOSPITAL
MMH FAMILY HEALTH CLINIC
MMH HOME HEALTH**

Health Fair 2011
Friday Morning, April 15 7 - 9 A.M.
Saturday Morning, April 16 7 - 9 A.M.
Check in at the Front Entrance of the Hospital

Participants include:

Dr. J. Stephen Jones, Dr. Mario B. Roa, Jr.
Yvonne Ambrose & Melissa Trubenbach, Nurse Practitioners

Laboratory Discounts on tests done the day of the fair.

Complete Health Panel (Complete Blood Profile including Cholesterol, good & bad.)	\$35.00
PSA (Prostate)	\$15.00
Stool Occult Blood	\$5.00
TSH (Thyroid)	\$15.00
Hgb A1C	\$10.00

You May Purchase a Voucher for the following 3 procedures and schedule within 90 days.

EKG (Heart check)	\$10.00
Urinalysis	\$5.00
PAP Screening	\$50.00

Prices good if scheduled day of fair only. Insurance will not be billed. Labs can be scheduled for April 18 - April 22. If abnormal findings on Labs, you may be requested to see your PCP or have additional testing done which is not included in these prices.

Please drink water only after midnight for laboratory tests.
Come by for a tour of our brand new F.I.T. Center (Functional Innovative Therapy)

Spring Planting Day



Sat. April 9

Join Keep Muenster Beautiful in cleaning up and planting in the flower beds on Muenster's Main Street

2-WEEK EVENTS CALENDAR To list your event, call 759-4311 BEFORE NOON WEDNESDAY!

Sunday, April 3, 2011	Monday, April 4, 2011	Tuesday, April 5, 2011	Wednesday, April 6, 2011	Thursday, April 7, 2011	Friday, April 8, 2011	Saturday, April 9, 2011
Muenster Museum open- 1-4 pm Home Hospice Golf Tournament Turtle Hill 2 pm	City Council mtg. 7:30 pm	Library open 10am-6:30 pm MISD Kindergarten registration 3:45-5:30 pm	Library open 1:30 -5:30 pm Kiwanis mtg. noon, Center Religious Ed class, 7 pm Co-ed V.ball 7:30 MISD old gym	Library open 10 am - 6:30 pm Muenster Museum open 1-4pm	Muenster Museum open- 1-4pm AARP luncheon 11:30	Library open 10:30 am - 2:30 pm KMB Spring Planting Day JC Hold 'Em Tournament
Sunday, April 10, 2011	Monday, April 11, 2011	Tuesday, April 12, 2011	Wednesday, April 13, 2011	Thursday, April 14, 2011	Friday, April 15, 2011	Saturday, April 16, 2011
Muenster Museum open- 1-4 pm	VFW mtg. 8 pm MMH Aux. mtg. 5:30 pm 4-H mtg. 3:30 pm	Library open 10am-6:30 pm	Library open 1:30-5:30 Kiwanis mtg. noon Center Co-Ed V'ball M old gym 7:30 Religious Ed class, 7 pm SH Alumni & Supporters mtg 8 pm	Muenster Museum open 1-4 pm Library open 10 am - 6:30 pm Muenster Historical Comm. mtg. Chamber Luncheon Community Immunization Clinic, Muenster School, 10am-2pm	Muenster Museum Open 1-4 p.m United Way Day of Caring	Library open 10:30 am - 2:30 pm CDA Spring Luncheon KMB Spring Cleanup

Sponsored by



24 Hour Drive Up ATM Now Available!

519 E. Division St. Muenster, TX 76252 · (940) 759-2218 · www.F-S-B.com
Gainesville | Lake Kiowa | Valley View | Muenster | Saint Jo | Denton | Corinth

Member FDIC EQUAL HOUSING LENDER

John Fletcher 1923 - 2011

John William Fletcher, 87, died Saturday, March 26, 2011 in Denton. John was called home to Heaven after suffering a heart attack.

Funeral services are set for Friday, April 1 at 3 p.m. at St. Paul's Episcopal Church, 411-415 East California Street in Gainesville, followed by a Masonic Memorial and a friends and family reception in the Parish Hall.

John was a real estate broker for over 20 years. Most often referred to as a sweet and jovial man, John inspired and earned the respect and admiration of everyone who knew him. He loved to have fun and he sprinkled his cheer to anyone who would listen. A beloved member of the "old coots coffee club" in Gainesville, his laughter spread to everyone around him. He was happy-go-lucky and always had a positive attitude and was a great person. At the same time, John tirelessly served the civic needs of the North Texas area he loved so dearly. He was a past member of the Lions Club, The Rotary Club, and the Chamber of Commerce. John was also a Mason for over 50 years, and a Worshipful Master Mason at the Fish Creek Lodge #344. A member of St. Paul's Episcopal Church in Gainesville, John led his life as a man of high morals, ethics, and maintained a strong commitment to God.

He was preceded in death by his father John "Jack" W. Fletcher, Sr. and his mother Eppie Ophelia Shiflett Fletcher, and his sister Dorothy Nell Reed.

Survivors include wife and love of his life of 60 years Rhea Louise McLain Fletcher; daughters Sister Jennifer S. Fletcher - Little Sisters of Jesus and Mary in Salisbury, Maryland, and Sara Diane Fletcher Bell and her husband Randall E. Bell; grandchildren Richard William Bell and his wife Shelby Linn Anderson Bell, Craig Thomas Bell, and Karen S. Whitt; and his sister Emma Alyne Terrell of Lewisville.

The family requests that, in lieu of flowers, expressions of sympathy in John Fletcher's memory be sent to your charity of choice, or the Texas Heart Association at P.O. Box 841125, Dallas Texas 75284-1125, (817) 698-5400, or www.heart.org

found his true calling as a real estate broker for over 20 years. Most often referred to as a sweet and jovial man, John inspired and earned the respect and admiration of everyone who knew him. He loved to have fun and he sprinkled his cheer to anyone who would listen.

A beloved member of the "old coots coffee club" in Gainesville, his laughter spread to everyone around him. He was happy-go-lucky and always had a positive attitude and was a great person. At the same time, John tirelessly served the civic needs of the North Texas area he loved so dearly. He was a past member of the Lions Club, The Rotary Club, and the Chamber of Commerce. John was also a Mason for over 50 years, and a Worshipful Master Mason at the Fish Creek Lodge #344. A member of St. Paul's Episcopal Church in Gainesville, John led his life as a man of high morals, ethics, and maintained a strong commitment to God.

He was preceded in death by his father John "Jack" W. Fletcher, Sr. and his mother Eppie Ophelia Shiflett Fletcher, and his sister Dorothy Nell Reed.

Survivors include wife and love of his life of 60 years Rhea Louise McLain Fletcher; daughters Sister Jennifer S. Fletcher - Little Sisters of Jesus and Mary in Salisbury, Maryland, and Sara Diane Fletcher Bell and her husband Randall E. Bell; grandchildren Richard William Bell and his wife Shelby Linn Anderson Bell, Craig Thomas Bell, and Karen S. Whitt; and his sister Emma Alyne Terrell of Lewisville.

The family requests that, in lieu of flowers, expressions of sympathy in John Fletcher's memory be sent to your charity of choice, or the Texas Heart Association at P.O. Box 841125, Dallas Texas 75284-1125, (817) 698-5400, or www.heart.org

The sovereign invigorator of the body is exercise, and of all the exercises walking is the best.
Thomas Jefferson

LaVerta Burhans 1934 - 2011

LaVerta Ruth Rollins Lovell Burhans of Lake Kiowa died unexpectedly Saturday, March 26, 2011. A Celebration of Remembrance will be held at Lake Kiowa in the near future. In lieu of flowers, please donate in LaVerta's name to CASA and VISTO in Gainesville.

LaVerta was born Sept. 20, 1934 in Snyder, Texas, the daughter of Nina McCormick Rollins and Ivey Matt Rollins. She married Dell Lovell in 1951 and had two sons, Ulon "Bo" Lovell and Jeffrey Lovell. In April 1990, she married Bill Burhans and they enjoyed more than 20 years of married life together. Her parents and elder son Bo predeceased her.

Survivors are her husband Bill Burhans of Lake Kiowa; son Jeff Lovell and wife Georgia, Amy Lovell Britton (the widow of Bo) and husband Del; and three grandchildren and one great-grandson.

LaVerta was best known for her inherent gifts as an artist and sculptor, especially her painting. Art played a major role in her life. LaVerta had a stellar career in economic development and on-location film-making. She headed the Chamber of Commerce in Snyder, and was director of economic development in both Marshall and Jefferson.

LaVerta played a major role in supporting the Soviet Inspection Teams that came to Marshall and Karnack, Texas to observe the elimination of the US Pershing missiles as part of the Intermediate Force Treaty 1988-1991. In 1997, she and Bill moved to Moscow, Russian Federation, living there five years.

She and Bill returned from Moscow in 2001 and settled at Lake Kiowa. Being a very dynamic lady, LaVerta introduced several innovative programs into that community. The one of which she was most proud was the annual Leadership Lake Kiowa course which she organized and taught for seven years.

Mary Lamb 1919 - 2011

Graveside services for Mary Lamb of Kemp were held Wednesday, March 30 at Fairview Cemetery. Visitation was held at Geo. J. Carroll & Son Funeral Home the same day.

Mrs. Lamb died at the age of 91 on Sunday, March 27, 2011 in Grand Saline. She was born in Gainesville to Edgar V. and Myrtle Mae McCarty Clay on Nov. 13, 1919.

Survivors are her husband Herman B. Lamb of Kemp; children Burnice Hinkle, Shirley Lane, Jerry Lamb, and Linda Kay Norris; and 11 grandchildren and numerous great-grandchildren.

The objective of the increased patrols was to deter citizens from driving while intoxicated and to stop those who did get behind the wheel while under the influence. During this time period, troopers in these counties were able to work 242 hours in addition to the regularly scheduled shifts. During these extra hours, troopers arrested 17 additional intoxicated drivers.

Luttrull-McNatt Gainesville

1608 West Highway 82
Gainesville, TX 76240



Michael Murphy
General Sales Manager
Phone: 940-665-5591
1-800-865-5591



HOLD 'EM TOURNAMENT

SAT. APRIL 9 KC HALL

PLAY STARTS AT 7 P.M. BUY IN STARTS AT 6 P.M.

Food will be provided

PROCEEDS WILL BENEFIT CODY KLEMENT TO HELP COVER MEDICAL EXPENSES

FOR MORE INFORMATION CONTACT:
NOLAN HARTMAN 768-8814 OR CHRIS DANGELMAYR 736-6363

Sharia Law is topic for meeting of County Republican Women

Guest speaker Dorrie O'Brien of the Grand Prairie Chapter of ACT! for America will appear on Thursday, April 7, at a meeting of Cooke County Republican Women. O'Brien's presentation is titled "Sharia Law and the Muslim Brotherhood in the U.S."

According to their website, ACT! for America is "a nationwide network of chapters in order to more effectively inform, educate, and mobilize Americans regarding the multiple threats of radical Islam, and what they can and must do to protect themselves and their country against this determined enemy." The organization is dedicated to enacting legislation that would prevent the use of Sharia in the United States. Proposed bills are often described as "American Law for American Courts" legislation.

O'Brien has been speaking on behalf of ACT! for

America for several years, taking her message to ACT! chapters around Texas, as well as to churches and civic organizations, including Tea Party groups and Republican Women's clubs. She is a member of Irving Republican Women.

A women-lance book editor, O'Brien is also active in the Republican Party, serving as a delegate to the last three State Conventions. She is a precinct chairman and election judge in Tarrant County. O'Brien's family boasts a long line of military veterans. She is the daughter of an Air Force colonel, and has a son currently serving in the U. S. Army.

The program will be held at the First Christian Church Fellowship Hall, 401 Commerce, Gainesville, beginning at 7 p.m. Guests are welcome. For more information, contact President Pauline Lesch, 940-726-3954.

DAYS GONE BY.....

65 YEARS AGO March 29, 1946

Tenderfoot badges presented to 40 boys during Scout ceremony. Richard Hess, 8, recovering from pneumonia. The Anthony Klemm buys seven-room house in Lindsay and will move it to Muenster to be their home. Wedding: Lillie Mae Jigout and Lynton I. Coursey. Tim and Agnes Stormer to make their home in Amarillo. Alphonse Fleitman lost a cow that was struck by lightning. Robert Voth, little son of Joe and Alvina Voth, has recovered from minor eye operation.

50 YEARS AGO March 31, 1961

Sacred Heart 8th grade class supplies Papal Flags for every room in both grade and high schools with funds raised by selling seeds. Alan Miller, age five, sustains eye injury in fall at home. New Arrivals: Donna to Earl and Velma Fisher; Shelley to Pete and Catherine Stoffels.

Obituary: Mrs. Sam Epps, 79. Hofbauer's advertises frozen waffles 2 pkgs. 29¢, coffee 55¢; Fisher's advertises tomato juice 46 oz. 29¢, pork and beans 2 for 25¢; Park's advertises Kraft 2 lb. Velveeta cheese 79¢, assorted frozen fruit pies 35¢.

25 YEARS AGO March 28, 1986

New bridge being built across the Brushy Elm Creek in the city park. Obituaries: Shawn Hoenig, 17; Sandra Yarbrough, 47. Beta Kappa Sorority announces overall winners of 42 Domino Tournament - Peggy and Raymond Walterscheid. Edna Hogan honored on 97th. New Arrival: Frank to Pat and Ruth Klement. Benny Haverkamp advertises "Fishing Reels - Cleaned & Repaired." "The Old Pool Hall," Muenster landmark that has become an eyesore after being neglected in recent years, is torn down and removed from Main Street.




"For the Rest of Your Life"

Queen Set \$499



940-612-2337
427 N. Grand Avenue,
Gainesville, Texas 76240
www.sleep-master.com



SACRED HEART ALUMNI & SUPPORTERS ANNUAL BUCKAROO AND RANCH RODEO

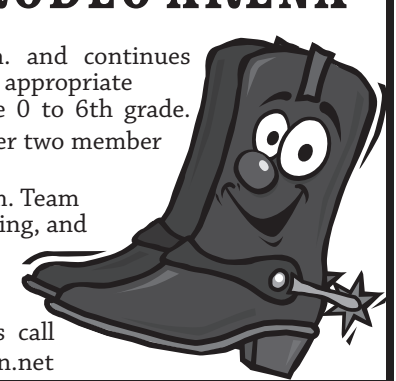
SUNDAY, APRIL 3

SAINT JO RODEO ARENA

Buckaroo begins at 8 a.m. and continues throughout the morning. Age appropriate obstacle courses for kids age 0 to 6th grade. Prizes awarded. Entry: \$20 per two member team.

Ranch Rodeo begins at 1 p.m. Team mugging, sorting, un-decorating, and roping. Entry: \$200 per four member team.

To sign up or ask questions call 940-736-1041 or cutnup@ntin.net



MMH FAMILY HEALTH CLINIC

PROVIDING QUALITY HEALTH CARE TO PATIENTS OF ALL AGES



JAMES STEPHEN JONES, MD
GENERAL PRACTICE



MARIO B. ROA, MD
FAMILY PRACTICE



MELISSA TRUBENBACH, FNP-C
BOARD CERTIFIED
FAMILY NURSE PRACTITIONER



YVONNE AMBROSE, FNP-C, ACNP-C
BOARD CERTIFIED
FAMILY NURSE PRACTITIONER

509 NORTH MAPLE • MUENSTER • (940) 759-2226

We Welcome New Patients

MEDICARE, MEDICAID, AND MOST INSURANCES ACCEPTED

Clinic Hours
MONDAY - FRIDAY,
8AM - 5PM



Gaylon Thompson Insurance Agency

940-759-4571

Auto • Home • Life • Commercial

CITY COUNCIL AGENDA

MEETING DATE - APRIL 4, 2011

The following is the Agenda for the regular meeting of the Muenster City Council to be held at 7:30 p.m. in the City Hall meeting room on Monday, April 4, 2011.

- Call meeting to order at 7:30 p.m.
- Opening prayer.
- Approve minutes of the regular meeting on March 7, 2011.
- Recognize visitors and invite them to attend the entire Council meeting and to discuss their business.
- Consider any other business to come before the Council.

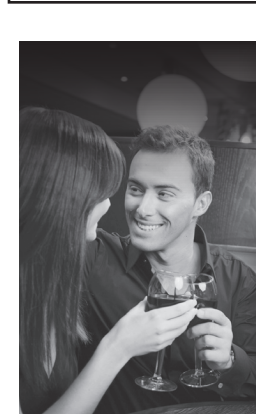
OLD BUSINESS

- Discuss and possibly approve Ordinance establishing guidelines for approved burning in the City.

NEW BUSINESS:

- Take Action on approving Reinvestment Zone and Tax Abatement for Superior Machining.
- Authorize the City Engineer to advertise for bids for Water and Sewer line extensions for Muenster Industrial Foundation Business Park.
- Discuss the City Park, including hiring pool manager, take action as needed.
- Police Chief Stovall will give quarterly police report.
- Approve the C of C's request to close Maple St. during Germanfest.
- Approve the C of C's request to sell Alcoholic Beverages in the City Park during Germanfest.
- Consider and act on appointment of election judge. Set compensation rate for election officials.
- Consider and act on dates for early voting.
- Receive status report on City projects and activities. Take any needed action.
- Review and act on monthly bills.
- Adjourn.

Brenda Simpson, City Secretary



Area Dining Guide

Miguelito's

Authentic Mexican Cuisine

Lunch Specials
Tues. - Beef & Chicken Fajitas - \$7.75
Wed. - Combination Dinners 1-14 - \$5.25

2 Locations to Serve You
1412 N. Stemmons - Sanger 940-458-0073
241 W. McCart St. - Krum 940-482-7007



Ronnie and Sharon Felderhoff of Muenster announce the engagement of their daughter Amanda Felderhoff of Dallas to Raymond Powers, son of Jackie and Ronda Powers of Dimmitt, Texas. Amanda graduated from Muenster High School in 2003. She attended Texas Tech University and completed a Bachelor of Science degree in Civil Engineering in 2007. She is currently employed as a design engineer for Freese and Nichols Inc. in Dallas. The bride-elect is the granddaughter of Mr. and Mrs. Arthur Felderhoff of Muenster and Mr. and Mrs. Raymond Metzler of Lindsay. Raymond graduated from Dimmitt High School in 1999. He is employed as a technical advisor for Schell Cooley law firm in Addison. The future-groom is also a professional triathlon coach, working with clients in the Dallas area. The couple both volunteer coach for Team in Training, benefiting the Leukemia and Lymphoma Society in Dallas. The couple plans to be married on June 4, 2011 at the Bent Tree Country Club in Dallas. They will reside in Dallas.

Women of Faith in Service to meet Friday, April 1

Women of Faith in Service will be holding their first event at 10 a.m. Friday, April 1 in the Fellowship Hall at First Presbyterian Church, 401 S. Denton Street in Gainesville. The Celebration Coffee is the first event of the year and will include "Contemplating the Many Forms of Prayer" given by speaker Kaye King. Refreshments will be served. There is no cost to attend.

Women of Faith in Service, formerly known as Church Women United of Cooke County, is an ecumenical body of women of all faiths in fellowship. The goal of the group is to serve God and those in need in Cooke County. The group stresses ecumenism, fellowship, and prayer. Events are planned around the seasons of Lent

and Advent, the latter being the largest celebration of the year highlighted by the Woman of Faith in Service award and officer elections.

For more information on Women of Faith in Service, contact Lucy Sutton at 940.665.9707.

United Way announces 2011 Board and Officers

The Cooke County United Way Board of Directors is made up of 27 local, experienced volunteers representing the County in an effort to support and serve the agencies of Cooke County by increasing the community's understanding of human needs and to mobilize resources to meet those needs.

Cooke County United Way has recently announced the 2011 officers: president - Rhonda Beam; 1st vice president/2011 Campaign Chair - Mark Austin; 2nd vice president/2012 campaign chair - Trey Hayes; treasurer - Laure Kuykendall; past president - Condoa Parrent.

The 2011 committee chairs and event coordinators are: allocation co-chairs - Danny Knight and Debbie Hess; bylaws chair - Debbie Hess; finance chair - Brent Reed; nominating committee chair - Shelley Carson; publicity chair - Kathy Boone; Kids Care coordinator - Galene Morris; Day of Caring coordinator - Steven Sims; Stuff the Bus coordinator - Trey Hayes; Youth Board mentors - Laura Otts and Mary Rondon; FEMA representative - Ben Willingham; VOAD representative - Robbie Baugh; and trustee - Tim Turbeville.

Cooke County United Way is proud to announce the members of the 2011 Officers and Board of Directors. Members of the 2011 Board of Directors are: Class of 2011 - Mark Austin/Weber Aircraft, Kathy Boone/Cooke Co. Electric Coop, Shelley Carson/WinStar World Casino, Tina Ewing/Emma Claire's Salon, Danny Knight/Knight Insurance & Ray of Sunshine Sitting Svc., Laure Kuykendall/First State Bank, Don Metzler/Callisburg ISD, Galene Morris/consultant, Ben Willingham/Lost Dog Productions/Callisburg Church of Christ; Class of 2012 - Brandon Bayer/Muenster State Bank, Leslie Nichols/Gainesville ISD, Laura Otts/Otts Furniture, Condoa Parrent/Kaplan University, Brent

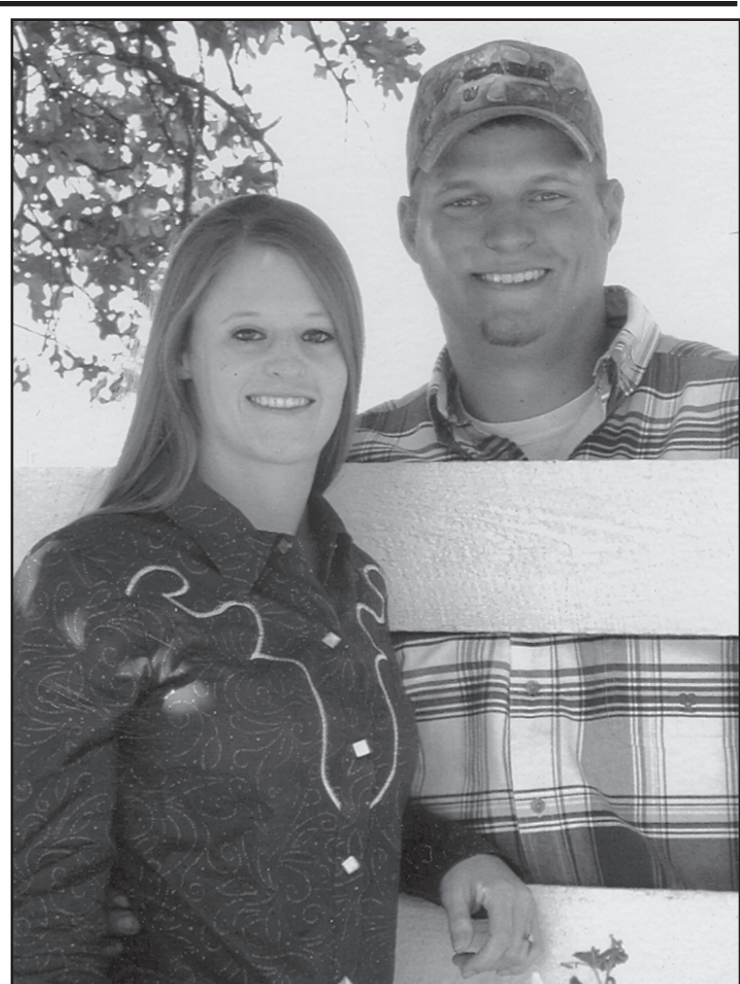
Reed/Brent Reed Investments, Danny Reeves/North Texas Medical Center, Mary Rondon/Motorola Mobility, Steven Sims/Landmark Bank, Lisa Uselton/Arbonne International; Class of 2013 - Robbie Baugh/North Central Texas College, Rhonda Beam/Gainesville Health & Rehab, Ruthie Chalmers/MRC Enterprises, Lois Essenburg/American Bank of Texas, Ray Fletcher/Cooke County, Trey Hayes/Walmart Supercenter, Debbie Hess/Turtle Hill Golf & Resort, Joey Luttrull/Luttrull-McNatt Chevrolet, and Jim Perry/Gainesville Daily Register.

Currently, the United Way Allocation Committee is preparing for the Citizens Review Panel. The members of the panel are local volunteers who represent various demographic areas of the County and diverse industries of Cooke County. They will recommend to the United Way Board proposed funding for each agency that qualified. Those approved will be part of the upcoming 2012 United Way campaign.

Plans are underway for the third annual Day of Caring event which is scheduled for Friday, April 15. The Day of Caring is a one-day event which organizes volunteers to conduct yard projects across the County for those in need whether elderly, special health concerns, and/or handicapped. Projects are identified by local agencies and churches who recommend clients/members.

Cooke County United Way is preparing to present its 6th annual Kids Care program. This year, the program will be presented to the third grade students of St. Mary's Elementary School.

For more information, contact Angie Hare, 940-665-1793.



The engagement and upcoming marriage of Amber Nicole Evins of Gainesville and Kirk Andrew Hartman of Muenster is announced by the couple's parents Dwayne and Shelly Evins of Gainesville and Tim and Janie Hartman of Muenster. The couple will be married at 6 p.m. on Saturday, May 28, 2011 in St. Mary's Catholic Church of Gainesville with Father Victor Cruz as celebrant. The bride-elect is a 2004 graduate of Gainesville High School and a 2008 graduate of NCTC. She is employed by Pumpeo Energy Services. The future groom graduated from Muenster Public School in 2004. He is employed by Texoma Drilling Services. Bride's attendants are Brandi Felderhoff, Shanda Miller, Jessica Bartel, and Jessika Hartman. Attendants of the groom are Jared Ledbetter, Mike Bowen, Michael Bowen, and Calvin Huchton. The couple will reside in Muenster after their marriage.

Learn about diabetes during April

Texas AgriLife Extension Service has a program that can help you prevent and/or manage Type 2 diabetes. Do Well, Be Well with Diabetes will be held on each Thursday in April, beginning April 7. It will be held at the Area Agency on Aging located at Pecan Creek Apartments, 1100 Lawrence Street in

Gainesville and will begin at 1 p.m.

Classes will be taught by local experts in diabetes education. The cost of the series is \$10 to cover program materials.

For more information and to register, contact Angel Neu at (940)668-5415 or email at adneu@tamu.edu.

Your locally owned and operated sitting and caregiving registry...

Ray of Sunshine

Sitting & Caregiving Service
Grayson, Cooke & Montague Counties
112 N. Dixon, Gainesville, TX
940-665-2999 • 888-665-2992
State Licensed • Long-Term-Care Policy Qualified
www.rayofsunshinesittingservice.com



Cooke County United Way recently announced its 2011 Board of Directors and Officers. Pictured are, from left, sitting - Laura Otts, Lois Essenburg, Mary Rondon, Debbie Hess, Ruthie Chalmers, Laure Kuykendall, Shelley Carson, and Rhonda Beam; standing - Brent Reed, Joey Luttrull, Brandon Bayer, Danny Reeves, Danny Knight, Tina Ewing, Jim Perry, Kathy Boone, Tim Turbeville, Robbie Baugh, and Steven Sims. Courtesy photo

KLEMENT FORD IS YOUR SOURCE FOR TRUCK ACCESSORIES



We Service All Makes & Models

We Offer a Full Line off Accessories for Your Truck Including: Ranch Hand Grill Guards & Bumpers, Frontier Grill Guards, and B&W Turnover Hitches.

We also specialize in Toolboxes, Fuel Tanks, Pumps, Headache Racks, Bedliners, and Much More.

Competitive Pricing on all Brands of Tires!

Klement Ford of Muenster

1005 E Division Muenster TX 76252 940-759-2244

SMILE! They are on candid camera with NORTEX SECURITY



- Burglar and Intrusion Detection
- Door and Window Sensors
- Pet "friendly" Protection
- Wireless Glass Break Detector
- Personal Emergency Pendants
- Key Fob Wireless Capability to Activate/Deactivate the System From Outside the House

*Video surveillance available

759-2251 info@nortex.com



Get outstanding low prices on quality products.

SAVE 25%
8.88
reg. 11.99

5-Pk., 13W Compact Fluorescent Bulbs
8,000-hour life. Energy Star® rated.
E 655 185 B5 While supplies last.

GreenThumb®
SAVE 26%
10.99
reg. 14.99

16-Lb. Premium Weed & Feed Lawn Fertilizer
Covers 5,000 sq. ft. and controls over 200 types of weeds. Controlled-release nitrogen for extended feeding. L 128 393 120 While supplies last.



GreenThumb®
SAVE OVER 50%
9.99
reg. 24.99

2-Gal. Back Reliever Sprayer
Pump handle extends to a comfortable height. 24" telescoping wand helps prevent back strain. L 131 388 1 While supplies last.



APRIL Bargains of the month®

COMMUNITY LUMBER COMPANY

HIGHWAY 82 • MUENSTER

759-2248

True Value®

START RIGHT. START HERE.™

Find the right products for your project and expert, local advice at True Value.

After 37 years, air traffic controller Isenhour leaving her post

Lenora Fleitman Isenhour of Kempner, an Army air traffic controller for 37 years, has recently retired from her post. Lenora is the daughter of Eddie and Maryanne Fleitman of Muenster. She grew up in Muenster and is a 1973 graduate of Muenster Public School.

The following is reprinted with permission from the Friday, Dec. 31, 2010 edition of the **Killeen Daily Herald**. The article was written by Holly Wise.

Under the glow of fluorescent lights in the control room at Robert Gray Army Airfield at Fort Hood, air

traffic controller Lenora Isenhour balances communication with multiple pilots at the same time effortlessly and ends her rhetoric with a cheery, "Good day."

After 37 years with the Army as an air traffic controller, Isenhour will work her final shift today.

"I tell everyone the planes are getting faster and I'm getting slower," she laughed, seated at her dining room table in her Kempner home. "You know when it's time to go."

Raised on a dairy farm in Muenster, Isenhour was intrigued by aircraft at an early age when she visited Love Field in Dallas. Later, it was an advertisement in a magazine that caught her attention - a lady in an air traffic control tower.

"I decided I really liked airports and I had to find a way to stop milking cows," she said.

In her senior year of high school, Isenhour spoke with a recruiter who tried to persuade her to become one of the first women military police. She was determined, though, to become an air traffic controller.

"Everyone in my hometown probably thought I was crazy," she said, sitting straight in her kitchen chair as she does in the control room. "It ended up being a really good choice."

She is still questioned about her decision by family members. One of her aunts recently asked Isenhour if she still thought it was a good idea to go into the Army.

"I said, 'I got the best job in the world; you have no idea,'" Isenhour said.

Her background as a "country girl" gave her a work ethic that earned promotions and accelerated her military career. She attained the rank of sergeant first class.



Lenora Isenhour, an Army air traffic controller, works her shift Dec. 9 at Fort Hood's Robert Gray Army Airfield. Photo by Catrina Rawson, Herald

After 13 years and six tours of duty in the Army that included Fort Sill, Oklahoma, Germany, Korea, and Fort Hood, Isenhour was hired as a civilian air traffic controller, which gave her the flexibility to raise her family.

She's been a mainstay at Robert Gray for nearly 25 years.

"She's a fine girl, a great lady," said her shift supervisor Mike Moodt. "I'm going to miss her. She's been with me a long time."

Isenhour describes her job as "do or die."

"You've got to have that confidence and authority in your voice," she said. "We're the voice of authority, but we don't see our customers."

"It's a multi-tasking job; you can't have tunnel vision. You've got to be able to change gears really fast."

Communication with pilots lasts about 10 to 15 minutes and at any given time, one controller could be talking to 15 to 20 pilots at a time. The constraints don't leave time for chatting, but there are conversations Isenhour recalls.

A pilot was flying into Temple with low fuel on a graveyard shift with weather Isenhour called "on the sidewalk" - no visibility.

"She told me to tell her daddy 'I love him,'" Isenhour remembered. "She later called me and thanked me; you could tell she was still in shock. We both were."

During her first assignment in Germany, Isenhour and another air traffic controller told an Army aviator he was not cleared to land

because of heavy fog.

The pilot said it was clear and blue from his perspective and decided to land his aircraft despite the controllers' warnings.

"He said, 'Help, I'm inadvertent IFR (instrument flight rules),' Isenhour said. "That (controller) and I heard his last words."

The pilot crashed into a sugar beet field and was killed.

While in Germany, Isenhour met her husband of 33 years, Gene Isenhour, who worked in the same tower as an air traffic controller. The couple have one son, Josh,

who lives in Bryan.

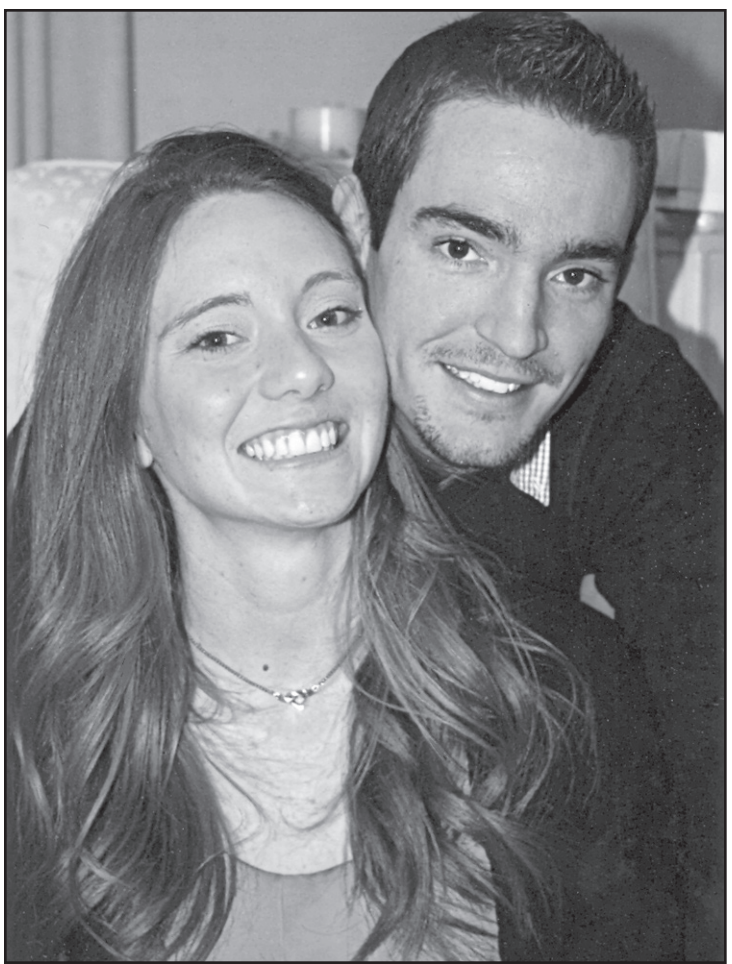
Though she's leaving her job, Isenhour will take traits of it that have become familiar.

"I've been termed (bossy)," she said. "I'm pretty organized; I keep moving."

To help keep her stress levels down, Isenhour said she walks her dogs, gardens, and does yardwork. She's hoping to gain a break from her busy schedule in her retirement but will pursue her hobbies and volunteering.

She said she will miss being at the pulse of the airport.

"I'm going to miss the people," she added.



Thomas and Mary Henscheid of Arlington announce the engagement and upcoming marriage of their daughter Katherine Henscheid of Arlington to Dwight Byrd of Dallas, son of David and Le Anne Byrd of San Angelo. Katherine is the granddaughter of Pat Henscheid of Muenster and the late Arnold Henscheid and the late Louise and Alfred Morisak. The couple will be married on May 28, 2011 in St. Maria Goretti Catholic Church in Arlington. The bride-elect graduated from Texas A&M University with a Bachelor of Science degree in Spatial Science. The future groom is a Magna Cum Laude graduate of Texas A&M University with a Bachelor of Science degree in Electrical Engineering. After their marriage, the couple will live in Dallas.

Invest in Catholic Education

Support the Sacred Heart School Trust Fund



A memorial gift will earn income for Catholic education in memory of the donor.

An annuity gift will earn interest for the donor or designate for the rest of their life after which the gift will be used for Catholic education.

A donation to the Sacred Heart School Trust Fund is an investment in Catholic education.

Sacred Heart Parish

714 North Main

Muenster, Texas 76252

MARCH TIRE MANIA

Buy A New Set of 4 Qualifying Cooper Tires from March 1 to March 31, 2011 and Get Up To A \$50 Visa® Prepaid Card by Mail!



Receive a Visa® prepaid card worth \$40 for four Lifeliner GLS and \$50 for four CS4 Touring Tires. Promotion dates: March 1 - 31, 2011. See Official Rebate Form for complete promotion Terms and Conditions.



Schilling Tire & Auto
New & Used Tires
Automotive Service & Repair

Jon & Joel Schilling
116 W. Second Muenster, Texas 759-4141

Muenster Memorial Hospital Rehabilitation Program



Total Access Weight Equipment

The MMH FIT Center is equipped with top of the line strength training equipment. One way that ours is different from others is the total access option which allows it to be used by handicapped or able bodied patients. For example, the seats can be removed on many of the machines to allow individuals in a wheelchair to use them. MMH is the second hospital in the state of Texas to have this line in their facility.

Our Swing Bed Program patients are already benefiting from the new Functional Innovative Therapy (FIT) Center.

Therapists provide Occupational Therapy, Physical Therapy, and Speech Therapy

Contact Adelia Wilson (940) 759-6162

Shots offered to the community by Health Department

Muenster Independent School District and the Texas Department of State Health Services are providing a COMMUNITY IMMUNIZATION CLINIC on Thursday, April 14 from 10 a.m. to 2 p.m. This is an excellent opportunity for families in the area to get their immunizations up-to-date.

All children entering the seventh grade will be required to have the Tdap (tetanus, diphtheria, and pertussis), meningitis, and the second chickenpox shots. There are also other optional vaccines available. All children need booster shots at the age of four years, before they enter school or day care. Those who are seniors, and attending college, may need vaccinations, as many colleges require the meningitis vaccine now. Adults need tetanus shots every 10 years and the Tdap is available for adults. Pneumonia shots are available for those 65 and older who have not had a pneumonia shot and for all adults with certain health problems. The flu vaccine is available also, combination (HINI) and regular seasonal.

All children under the age of 18 MUST have an adult with them. If it is someone other than a parent or guardian, older sibling, grandparent, or aunt or uncle, there must be a written consent giving that adult permission to sign and care for your child. The school nurse has a simple form that you may fill out if you need to have someone else bring your child. There is also a brief medical history for everyone getting vaccinated. If allergies are present, please list. If you have had a serious illness please list those as well.

REMEMBER TO BRING THE SHOT RECORD WITH YOU ... if you are a student at Muenster ISD, the nurse will have shot records available.

Services are provided on a sliding fee scale and no one is turned away due to inability to pay.

For more information, call the school nurse, Marlene R. Fisher, R.N. (940) 759-2282 ext 626, or the Texas Department of State Health Services (940) 665-6397.

Muenster One Act Play takes awards at Zone and District



Members of the MHS One Act Play included, from left, front - crew members Payton Sanders, Tori Dyess, Makayla Pumphrey, and Audrey Taylor Saavedra; middle - cast members Abby Pagel, Rachel Mouring, Alley Trubenbach, Kendi Bayer, Jori Magee, and Danielle West; back - cast members ShyAnn Bartel, David Hutson, Jamie Mandrell, Austin Creswell, Caitlin Beavers, Brooke Walterscheid, Juan Orocio, and Brianna Klement. Courtesy photo

Muenster High School's One Act Play, *I Remember Mama*, advanced from Zone competition on March 22 to compete in District competition on March 24. The cast and crew garnered several awards.

At Zone competition, the following students were recognized: Best Actor - Austin Creswell; All Star Cast - Alley Trubenbach, Brianna Klement; Honorable Mention All Star Cast - Caitlin Beavers. Tech Awards went to Payton Sanders and Audrey Taylor Saavedra. Muenster was one of two advancing

plays from Zone B to go on to District Competition.

At District competition, Muenster took the Alternate play award with several awards. Those students recognized at District included: All Star Cast - Caitlin Beavers, Austin Crewell, and Alley Trubenbach; Honorable Mention All Star Cast - Brianna Klement and Brooke Walterscheid. Payton Sanders and Audrey Taylor Saavedra once again took outstanding Tech awards for their work in lighting and sound for the play.

If our American way of life fails the child, it fails us all.

~ Pearl S. Buck

PRE-KINDERGARTEN REGISTRATION

Pre-Kindergarten registration for Muenster ISD will be April 4-8, 2011. Registration folders may be picked up at the elementary office. Children must be four years old by September 1, 2011. A copy of the child's immunization records, social security card and birth certificate must be filed with the school secretary, Deborah Sanders, prior to school starting.

Parents who wish to transfer their children into the Muenster Independent School District must complete a transfer request in addition to the registration card. The MISD School Board must approve all transfer requests. For more information about transfer requests call Lou Heers, Principal, at 759-2282, extension 620.

El Registro de Pre-Kindergarten para Muenster ISD sera abril 4-8, 2011. Las carpetas del registro se pueden recoger en la oficina elemental. Los ninos deben cumplir cuatro anos ante de septiembre 1, 2011. Una copia de los registros de la inmunizacion: tarjeta social de seguro y certificado de nacimiento oficial se deben presentar a la secretaria de la escuela, Deborah Sanders, antes de que los estudiantes empiesen la escuela.

Los padres que desean tranferir sus ninos en el Muenster Distrito Independiente de Escuela debe completar una petition de la transferencia ademas de la tarjeta de matricula. El Comité Ejecutivo de la Escuela de MISD debe aprobar todas transferencias solicitadas. Para mas informacion acerca de la transferencia solicitada llame Lou Heers, la Directora en 759-2282, la Extension 620.

MISD KINDERGARTEN REGISTRATION

Kindergarten registration for MISD will be held on Tuesday, April 5, from 3:45 p.m. to 5:30 p.m. in the PreK-2 building.

Parents registering children for the 2011-2012 school year must complete a registration card. A copy of the child's immunization records, social security card and birth certificate must be filed with the school secretary, Deborah Sanders, prior to school starting.

Parents who wish to transfer their children into the Muenster Independent School District must complete a transfer request in addition to the registration card. The MISD School Board must approve all transfer requests. For more information about transfer requests call Lou Heers, Principal, at 759-2282, extension 620.

Muenster Elementary's full day kindergarten, a child centered program, develops pre-academic skills. The kindergarten teachers use a combination of centers, discovery and direct instruction in a language-rich environment to maximize each child's potential. Students discover the fun of learning as they prepare for future academic and social success. The teachers will be on hand at registration to answer questions.

We look forward to seeing you. If you are unable to attend on April 5 please contact the school for a convenient time to register.

La MATRICULA del JARDIN DE LA INFANCIA MISD

La matricula del jardin de la infancia kinder para MISD sera martes, el 5 de abril a las 3:45 p.m. hasta las 5:30 p.m. en el PreK-2 edificio elemental.

Los padres que registran sus ninos para el 2011-2012 ano escolar deben completar una tarjeta de matricula. Una copia de los registros de la inmunizatrion: tarjeta social de seguro y certificado de nacimiento oficial se deben presentar a la secretaria de la escuela, Deborah Sanders, antes de que los estudiantes empiesen la escuela.

Los padres que desean tranferir sus ninos en el Muenster Distrito Independiente de Escuela debe completar una petition de la transferencia ademas de la tarjeta de matricula. El Comité Ejecutivo de la Escuela de MISD debe aprobar todas transferencias solicitadas. Para mas informacion acerca de la transferencia solicitada llame Lou Heers, la Directora en 759-2282, la Extension 620.

El Kinder de Muenster Elementaria es para el dia entero para desarrollar las destrezas necesarias para entrar en el primer grado. Las maestras de Kinder usan muchas diferentes estragedias para sacar el maximo desarrollo del nino. Los ninos desubren el gozo de aprendizaje mientras preparan para su futuro educacional. Las maestras de Kinder estaran dispuestos a contestar cualquiera pregunta.

Esperamos con ansia verlo. Si usted es incapaz de asistir en el 5 de abril avisa por favor llame la escuela para un tiempo conveniente para el registro.

SHCHS students participate in TAPPS Academic Meet at Dallas Cambridge

Sacred Heart High School students competed in the TAPPS Academic Meet on Friday, March 11 at Dallas Cambridge. To advance to State, students must score in the top four of their event. Of the 20 Sacred Heart students who competed, five placed in the top four and advance to the State academics meet.

Mark Bartush placed fourth in Ready Writing. Michael Davis placed third in Science, fourth in Math, and second in Current Events. Jessica Olvera placed third in Spanish, and Viviana Iglesias placed fourth. Quinn Sicking placed second in Poetry Interpretation. The State meet is scheduled for Friday, April 1.

Students competing in Dallas and their category and rank were:

Ready Writing - Mark Bartush 4th; John Hesse; Robert Bartush.

Science - Michael Davis 3rd; Austin Miller 6th; Christina Rohmer 7th.

Prose Interpretation - Quinn Sicking *The Return of the King* by J.R.R. Tolkien 7th; Effie Tjhia *Tell Tale*

Heart by Edgar Allen Poe 8th.

Persuasive Speaking - Isaac Barnhill.

Spelling - Isaac Barnhill 5th; Christopher Bartush 7th; Joshua Biffle.

Current Events & Issues - Michael Davis 2nd; Keith Metzler 8th.

Number Sense - John Hesse 5th; Michael Weinzapfel 6th; Andrew Ware.

Calculator - Austin Miller; Christina Rohmer; John Hesse.

Advanced Math - Austin Springer 6th; Robert Bar-

tush 7th; Benjamin Yosten 8th.

Solo Acting - Effie Tjhia.

Social Studies - Quinn Sicking 5th; Christina Rohmer 7th; Isaac Barnhill.

Spanish - Jessica Olvera 3rd; Viviana Iglesias 4th; Omar Colmenero 7th.

Poetry Interpretation - Quinn Sicking *The Ballad of the White Horse* by G.K. Chesterton 2nd; Effie Tjhia *Carry On* by Robert Service 6th.

Mathematics - Michael Davis 4th; Mark Bartush 6th; Isaac Barnhill.

Lunch Menus

WEEK OF APRIL 4 - 8

MUENSTER ISD

Mon. - Chicken fajita tacos, lettuce, tomatoes, macaroni and cheese, pinto beans, pears, cake.

Tues. - Roasted chicken patty, creamed potatoes w/gravy, corn, peaches, rolls.

Wed. - Ham, turkey, and cheese sub sandwiches, lettuce, tomatoes, chips and salsa, apples, cookies.

Thurs. - Lasagna, lettuce salad w/dressing, green beans, pineapple, hot rolls.

Fri. - Cheese pizza stix w/pizza sauce, lettuce salad w/dressing, pork and beans, carrots, applesauce, ice cream.

SACRED HEART

Mon. - Hot dogs, celery sticks, peanut butter, fruit.

Tues. - Chicken nuggets, potatoes, gravy, green peas, cherry crisp.

Wed. - Fiesta salad w/trimmings, pinto beans, corn chips, salsa, pears.

Thurs. - Pork chops, potatoes, gravy, carrots, hot apple slices, hot roll.

Fri. - Grilled cheese sandwich, tomato soup, peaches, cookies, crackers.

LINDSAY ISD

Mon. - Chicken fajitas w/ trimmings, pinto beans, Spanish rice, pineapple cake.

Tues. - Corn dog, corn on the cob, carrot sticks, peach.

Wed. - Beef tips over rice, carrots, applesauce, batter bread.

Thurs. - Chicken on a bun w/trimmings, tator tots, ice cream.

Fri. - Cheese pizza, corn, lettuce salad, pears.

ERA ISD

Mon. - Lasagna, green beans, breadstick, fruit.

Tues. - Chicken nuggets, macaroni and cheese, peas, fruit.

Wed. - Chicken fajitas, shredded cheese, bell pepper and onion, pinto beans, cornbread.

Thurs. - Hamburgers, sliced cheese, potato wedges, trimmings, fruit.

Fri. - Popcorn chicken or fish sticks, baked beans, carrots, fruit, ice cream.

SAVE MONEY



The economy is uncertain. You need a cushion to fall back on. With today's economy, it just make sense to save all the money you can. We can help. From statement savings, to CDs, to Money Market Accounts, we've got so many ways to save. It just makes sense to save with us. Substantial penalty for early withdrawal on CDs.

Muenster State Bank

201 N. Main, Muenster
940-759-2257

1601 W. Hwy. 82, Gainesville
940-665-7900



It just makes sense.

©MTI, Inc.

Fall in Love with Fiber to the Home Lightspeed Package from NORTEX COMMUNICATIONS

LightSpeed* Package:

- **High Speed Internet Service**
LightSpeed 5.0 broadband
Includes 5.0Mb download and 1.5Mb upload speed
- **Basic Cable TV**
68 channels
Plus optional services available: Digital, HD & DVR
- **Telephone**
One voice line/with choice or all of 7 calling features, plus 100 LD minutes

All for a low monthly cost of

\$114.85*

*Some restrictions apply. Fiber available in most of Muenster and Valley View telephone service area. Higher speeds available for an additional charge. Call for eligibility. Per month rate does not include applicable taxes and surcharges. Long Distance service is provided by Nortex Communications.



759-2251 www.nortex.com

SPORTS

Sacred Heart golf teams advance to Regional

Sacred Heart hosted the TAPPS District I Golf Championship Tuesday at Turtle Hill Golf Course. Drizzling, 42° north wind conditions caused the tournament to be called after nine holes. The nine hole scores were doubled.

Texoma Christian won the Boys division with a 386. Individual top medalist score was 88. The Sacred Heart

Tigers placed 4th with a score of 428.

Austin Miller led the team, shooting a 96. Michael Davis and Isaac Barnhill each scored 104, Cooper Eddleman 124, and Jordan Henscheid 132.

Amarillo Holy Cross took the Girls Championship with a 394. Top individual score was 94.

The Tigerettes of Sacred

Heart finished in 2nd place with a score of 464. Shelby Ratliff led the girls, shooting a 96. Devan Henry scored a 116, Lindsay Miller 120, Elizabeth Turner 122, and Madison Dugger 144. Sarah Miller competed as an individual with a 144 score.

The top four teams in each division advance to Regional Monday at the Ridgeview Ranch Golf Course in Plano.

Muenster takes on Gunter course

The win streak for the Lady Hornet golfers came to an abrupt end March 21 at The Bridges Golf Course at Gunter. After winning three in a row, the Hornet girls had to settle for third place behind the Gunter Lady Bulldogs (395) and the Sanger Lady Indians (405).

"Posting a 406 was disappointing to the girls, since we had beaten both those two teams two weeks ago. The competition was good though as we needed a tough challenge" explained Coach Hamric.

Freshman Erin Hess also had her five tournament winning streak broken as she settled for fourth place with an 87 over the long Bridges layout. Miranda Pagel made her presence felt by posting a top 20 score of 101, her best of the season. Chloe Schneider 107, Payton Sanders 111, and Andi Hess 112 rounded out the team scoring for the local girls. Top scores were 78 by the Anna medalist, and 84 for the leaders from Howe and Sherman.

The Muenster boys found it tough going also and posted a 386, well above their previous outing of 368. The Hornets finished in sixth place in a strong field of 12 teams. Blake Grewing led the team with a 91 followed by Sean Chism's 92. Cole McAden overcame a shaky front nine and carded a 99, along with Landon Presnall 105, and Darrell Hermes 117 to complete the team scores.

Both teams had this week open and are working on their games in preparation for the District Tournament on April 4 to be played on familiar turf at Turtle Hill Golf Course.



Tiger Chad Walterscheid catches a fly ball. Photo by Donna Endres

HESSE TO PLAY FOR UMHB



Sacred Heart Catholic Senior Matt Hesse has verbally committed to play football at The University of Mary Hardin-Baylor (UMHB) in Belton. Seated with Matt are his parents Anne and Neil Hesse. Standing are Kaitlin and Sam Hesse and Tiger Coach Dale Schilling (center). Coach Schilling stated, "Matt has been a tremendous leader during his career at Sacred Heart. He has led by example on and off the field, not only by his style of play, but also his incredible work ethic." Courtesy photo

TAPPS AA District II 2011 All-District Basketball Teams

GIRLS

1st Team: Lauren Kirby, Sr., and Delaney Ortega, Sr., TC, Co-MVPs; Karli Anderle, Jr., SH; Sydney Hoedebeck, Sr., SH; Rebekah Hesse, Sr., SH; Mesha Ellison, Sr., TC; Alex Payne, Jr., C; Tia Orred, Sr., HC; Brenna DeLong, Sr., TC; Kish Larson, Jr., C.

Newcomer Of The Year: Karleigh Reeves, Fr., SH.

2nd Team: (Sacred Heart) Kelsey Reeves, Jr.; Kaitlin Hesse, So.; Mikaela Bartush, So.

Honorable Mention: (Sacred Heart) Devan Henry, So.; Peyton Reiter, Fr.

BOYS

1st Team: Reece McConnell, Sr., TC, MVP; Ryan Felderhoff, Sr., SH; Josh Biffle, Jr., SH; Micah Reeves, Jr., F; Aaron Harris, So., F; Tyler Steele, Jr., TC; Michael Reichart, Jr., HC; Jacob Collins, Sr., F; Kyle Abrantes, Sr., TC; Caleb Poston, Jr., HC.

Newcomer Of The Year: Jon Paul Hesse, So., SH.

2nd Team: (Sacred Heart) Jordan Henscheid, Sr.; Matt Hesse, Sr.

Honorable Mention: (Sacred Heart) Greyson Evans, Sr.

School Key: SH - Sacred Heart; TC - Texoma Christian; C - Calvary; HC - Harvest Christian; F - Fellowship.

Tigers sweep double header

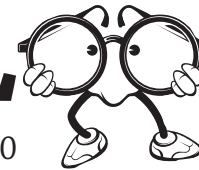
The Sacred Heart Tigers swept a chilly double header on Tuesday, March 29 against Arlington Fellowship (2-2) by the scores of 19-7 and 20-5 to remain undefeated (6-0) in District Baseball. Justin Brown got the win in relief in game one, and Chad Walterscheid got the complete game victory in game two. Greyson Evans, Matt Hesse, and Bob Bartush all hit safely in both games.



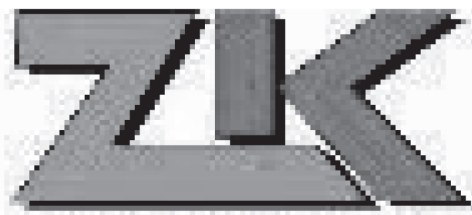
COME SEE OUR NEW LOOK!

(940) 668-7500 (888) 237-0756

311 E. California St., Gainesville, Texas 76240



PROFESSIONAL EYE EXAMINATION FORMULATION OF EYEWEAR PRESCRIPTIONS
DR. JOHN A. WEBB, JR.
THERAPEUTIC OPTOMETRIST



ZIMMERER KUBOTA & EQUIPMENT, INC.

GRAND OPENING

1 Day Echo Sale

April 5 • 9 to 5
Financing as low as 0% a.p.r. for up to 60 months.

Serving Hamburgers & Hot Dogs at Lunch Time

L4400F-1



Only \$11,995

45 HP, Two Wheel Drive

Kubota

ZG222



\$7,395

L3200DT



Tractor and LA524FL Loader

\$15,995

Factory Reps From Kubota, Land Pride, Echo, Shindaiwa And Vermeer Hay Equipment Will Be Present

CUSTOMER INSTANT REBATE (C.I.R.) DISCLAIMER: Standard and Grand L Series; L39/L45 TL/TLBs; MX4700, MX5000, MX5100; M40 Series ROPS models, including Specialty Utility; M59TL/TLBs; and M7040HDC-LTD & M9540HDC-LTD models: Customer instant rebates (C.I.R.) of \$1,000 are available on cash or standard rate finance purchases of eligible Kubota equipment through Kubota Tractor Corporation. C.I.R. not available with 0% A.P.R. or low rate financing offers. Financing is available through Kubota Credit Corporation, U.S.A., subject to credit approval. Dealer subtracts rebate from dealer's pre-rebate selling price on qualifying purchases. Subject to governmental agencies, independent rental centers, and dealer owned rental fleets do not qualify. Some exceptions apply. Customer instant rebates are not available after completed sale. C.I.R. availability ends 3/31/11. \$0 Down, 0% A.P.R. for 48 months on Kubota ZG, ZD, F, BX, B, L, M, RTV, KX, U, R, SVL & TLBs: \$0 down, 0% A.P.R. financing for terms up to 48 months on purchases of select new Kubota equipment from available inventory at participating dealers through 3/31/2011. \$0 down, 0% A.P.R. financing for terms up to 60 months on purchases of select new Kubota equipment from available inventory at participating dealers through 3/31/2011. A Example: A 48-month monthly installment repayment term at 0% A.P.R. requires 48 payments of \$20.83 per \$1,000 borrowed. 0% A.P.R. interest is available to customers if no dealer documentation preparation fee is charged. Dealer charge for document preparation fee shall be in accordance with state laws. Only Kubota and select Kubota performance-matched Land Pride and equipment is eligible. Inclusion of ineligible equipment may result in a higher blended A.P.R. Not available for Rental, National Accounts or Governmental customers. 0% A.P.R. and low rate financing may not be available with customer instant rebate (C.I.R.) offers. Financing is available through Kubota Credit Corporation, U.S.A., 3401 Del Amo Blvd., Torrance, CA 90503; subject to credit approval. Some exceptions apply. Offer expires 3/31/2011. See us for details on these and other low-rate options or go to www.kubota.com for more information. Limited quantities, taxes, fees and insurance not included, prices quoted are for cash, check or Kubota Credit, units pictured may display options **

1529 North Dixon, Gainesville, Texas
940-668-7861 • zimmererkubota.com

DRIVE ONE HOME



Start your new life together with a new car
GIVE BEN BINDEL A CALL



940-665-5591
Luttrull-McNatt
1608 W. Hwy. 82 Gainesville, TX



Muenster softball
Courtesy photos

Sacred Heart baseball
courtesy of
Donna Endres

Muenster Track by
Thomas Otto

Muenster Memorial Hospital
MMH
Family Health Clinic
MMH
Home Health



Go Teams!
Good Luck
Mike & Joni Sturm
MUENSTER AUTO PARTS



NEIL'S
SUBWAY
Pizza Inn
82 Liquor
Hwy. 82 Muenster
Neil & Peachie

MUENSTER ENTERPRISE
NEW SPORTS PHOTO
COVERAGE EVERY
WEEK!
759-4311

First State Bank
proudly supports
Muenster High athletics.
Good luck Hornets!
www.F-S-B.com
First State Bank
First in Texas. First in Support.

MDC
MUENSTER DRILLING
COMPANY, INC.

Walterscheid Oil Co.
Good Luck
teams
Go Garrett


F M W
INSURANCE AGENCY
Gary Fisher
Paula Kerr
Anna Braziel
940-759-4644

Nortex
Communications
Muenster
940-759-2251
www.nortex.com

ACE
Hardware
117 N. Main
759-2296

Gerald Graham, D.D.S.
Mindy Klement, D.D.S.


HAVE SOME FUN!
Chuck Bartush, Jr., P.C.



Jimmy Jack Biffle

Fischer's Meat Market
- Since 1927 -
All the way teams!
304 N. Main
P.O. Box 156 • (940) 759-4211
Muenster, TX 76252-0156

M & W
Oil Field Supply

759-2234

Hennigan Auto Parts, Inc.
759-2291
Muenster


KLEMENT

of Muenster
Have a GREAT year
Tigers & Hornets



Good Luck!
759-2822


PHIL'S
COLLISION REPAIR
CUSTOMS, INC.
940-612-4004
230 J M Lindsay Blvd
(Highway 82 in Lindsay)

Muenster

Chamber of Commerce


Muenster Meat Company
759-2744

TONY'S SEED & FEED


Universal Machining Industries, Inc

Steve Trubenbach

Schilling Tire & Auto
116 W. 2nd St.
759-4141


WAW
PRODUCTION COMPANY, INC.
204 N. Walnut Street, Muenster, TX 76252
Phone 759-4001
Glenn Walterscheid,
Tim Felderhoff, and
Mel Walterscheid
Go Amber & Cole!!

BODY WORKS
Collision Specialists
FULL SERVICE
COLLISION CENTER
940-668-6857

F.E.I.
Flusche Enterprises, Inc.
759-2248 Muenster

NASCOGA
FEDERAL CREDIT UNION
YOUR COMMUNITY CREDIT UNION!
GAINESVILLE 1312 Lawrence St. LAKE KIOWA 100 Kiowa Dr. West
www.nascoga.org
940.665.1797 800.303.8455
fax 940.665.7953

Sisters
Good Luck!
759-5090


Walterscheid Appliance


Auto Clinic
OIL CHANGES, CAR
WASH & MORE
940-668-6857

G & H Backhoe
Muenster, Texas
759-2577
736-4763
902-6815


True Value
COMMUNITY LUMBER COMPANY
759-2248 Muenster

First State Bank
proudly supports
Sacred Heart athletics.
Good luck Tigers!
www.F-S-B.com
First State Bank
First in Texas. First in Support.

Girlfriends Boutique
Jan Cain
Patty Fuhrmann
Terri Klement
216 N. Main
Muenster, TX


LUBE WORKS
1115 N. Grand, Gainesville
940-668-8417

Lora's Flowers
HAMRIC'S
TUXEDOS
GOOD LUCK RED


M S B
FDIC
Muenster State Bank
201 N. Main, Muenster, 940-759-2257

Schilling Oil Co.
HAVE A GREAT SEASON!


Kountry Korner
759-2846
Good Luck RED!!


Cooke County Electric Coop
759-2211

Robert Hermes Insurance
Germania
INSURANCE
Home, Auto, Life
759-2540

Copystar
Kyocera Technology
Dustin's Office
Machines
105 E. California,
Gainesville 665-5594

GO HORNETS & TIGERS
MUENSTER FARM MUTUAL FIRE INSURANCE
759-4770

Luttrull  McNatt
BUICK • CHEVROLET • GMC
SANGER • GAINESVILLE 736-3090
Come See Ben Bindel

Muenster track teams settle for 4th and 5th at Ponder

The Muenster Varsity Track and Field teams participated in the Ponder meet along with teams from Collinsville, Alvord, Krum, Gunter, Paradise, and Fort Worth Christian (FWC).

In the Varsity Boys division, FWC took the championship, with Collinsville finishing in 2nd. The Hornets placed 5th.

Andy Flusche and Dalton Koelzer brought home the Gold and Cole Walterscheid the Silver.

Emily Hellman won one race and finished 2nd in another, with Amber Walterscheid and Demi Koelzer also earning Silver medals.

Alvord won the Varsity Girls division, followed by Gunter, FWC, and Muenster.

Muenster placers, times, and distances were as follows:

VARSITY GIRLS
Long Jump: 3, Demi Koelzer, 15' 10".
High Jump: 2, Amber Walterscheid, 4' 8".
Shot: 4, Taylor Klement, 32' 7".
Discus: 5, Taylor Klement, 81' 5".
3200m: 2, Emily Hellman, 13:04; 5, Lana Heers, 14:42.

400m Relay: 3, Demi Koelzer, Hannah Bayer, Shelbi Sicking, Amber Walterscheid, 52.35.
100m Hurdles: 2, Demi Koelzer, 16.79; 5, Shelbi Sicking, 18.11.
100m: 4, Shelbi Sicking, 13.56.
300m Hurdles: 2, Amber Walterscheid, 52.14; 4, Michelle Sicking, 53.59.
200m: 4, Shelbi Sicking, 28.21.
1600m: 1, Emily Hellman, 5:41.
1600m Relay: 3, Demi Koelzer, Michelle Sicking, Amber Walterscheid, Emily Hellman, 4:29.

VARSITY BOYS
High Jump: 2, Cole Walterscheid, 5' 10".
Triple Jump: 3, Cole Walterscheid, 39' 0.75".
Shot: 5, Andy Flusche, 36' 11.5".
Discus: 1, Andy Flusche, 126' 4.75".
110m Hurdles: 1, Dalton Koelzer, 15.46; 3, Cole Walterscheid, 16.80.
300m Hurdles: 3, Dalton Koelzer, 42.96; 4, Cole Walterscheid, 43.68.
1600m Relay: 6th, Blake Voth, Dalton Koelzer, Cole Walterscheid, Steven Flusche, 3:46.
JV BOYS
High Jump: 4(t), Trevor Hess, 5' 0".
Shot: 6, Corey Richey, 32' 5".
1600m: 4, JJ Horsman, 5:36.



Cole Walterscheid clears the Ponder high jump bar. Thomas Otto photo



Hannah Bayer passes the stick to Demi Koelzer as members of the Lady Hornets relay team. Thomas Otto photo

Lindsay wins Era meet

The Knights and Lady Knights won the Era Invitational Track and Field Meet last Saturday. In the Girls division, Lindsay ran up 150 points. Era was on their heels with 145 and Muenster 3rd at 105. S&S, Bells, Valley View, and Chico followed.

The Knights scored 169, followed by Valley View 123 and Era 79. Chico, Bells, Muenster, and S&S followed. The Hornets of Muenster had only two participants, Dalton Koelzer and Cole Walterscheid.

Placers, times, and distances for the Muenster and Lindsay athletes were as follows:

VARSITY GIRLS
3200m: 1, Emily Hellman, M, 12:48.24; 2, Lauren Gibbs, L, 12:55.54; 4, Megan Holt, L, 13:38.08.
800m: 1, Megan Caillier, L, 2:27.40.
100m: 1, Ashton Reynolds, L, 12.49; 2, Demi Koelzer, M, 13.03; 4, Hannah Bayer, M, 13.13; 5, Shelbi Sicking, M, 13.19.
400m: 1, Megan Caillier, L, 1:02.67.
200m: 2, Bethani Eberhart, L, 26.64; 3, Shelbi Sicking, M, 27.76; 4, Alie Fogle, L, 28.58; 6, Hannah Bayer, M, 28.97.
400m Relay: 1, Lindsay, 52.38; 2, Muenster, 52.99.
100m Hurdles: 3, Demi Koelzer, M, 16.43; 5, Michelle Sicking, M, 17.51.
800m Relay: 1, Lindsay, 1:49.96.
300m Hurdles: 2, Amber Walterscheid, M, 51.99; 3, Michelle Sicking, M, 52.64; 4, Jordan Fleitman, L, 53.28.
1600m: 1, Emily Hellman, M, 5:36.46; 2, Lauren Gibbs, L, 5:43.21; 3, Megan Holt, L, 5:56.58.
1600m Relay: 2, Lindsay, 4:11.1.
Triple Jump: 3, Jordan Fleitman, L, 33' 0.50".
Shot: 4, Taylor Klement, M, 30' 9"; 6, Lucinda Krahl, L, 28' 7.25".
Pole Vault: 4, Alie Fogle, L, 7' 6".
High Jump: 2, Amber Walterscheid, M, 4' 8".
Long Jump: 2, Bethani Eberhart, L, 15' 2.5"; 4, Demi Koelzer, M, 14' 11"; 5, Katie Arndt, L, 14' 11".
Discus: 1, Brooke Walterscheid, M, 102.5"; 6, Lucinda Krahl, L, 77.9".

BOYS VARSITY
800m: 3, Garrett Yancey, L, 2:12.99.
100m: 1, Robert Arend, L, 10.59; 2, Walker, L, 10.64; 5, Tyler Schofield, L, 11.46.
400m: 1, Travis Skinner, L, 53.85.
200m: 4, Jordan Lane, L, 23.55; 6, Tyler Schofield, L, 23.92.
400m Relay: 1, Lindsay, 43.46.
110m Hurdles: 1, Dalton Koelzer, M, 14.55; 3, Kyle Johnson, L, 15.00; 4, Cole Walterscheid, M, 15.91.
800m Relay: 1, Lindsay, 1:33.08.
300m Hurdles: 1, Kyle Johnson, L, 42.23; 3, Dalton Koelzer, M, 42.66; 4, Drew Cooney, L, 43.07; 5, Cole Walterscheid, M, 43.81.
1600m: 2, Garrett Yancey, L, 5:10.10.
1600m Relay: 1, Lindsay, 3:39.14.
Triple Jump: 3, Cole Walterscheid, M, 39' 2.5".
Shot: 4, Connor Fuhrmann, L, 37' 4".
High Jump: 2, Kyle Johnson, L, 6'; 3, Dawson Holt, L, 6'; 4, Cole Walterscheid, M, 5' 10".
Long Jump: 1, Dalton Koelzer, M, 19'; 2, Travis Skinner, L, 19'.
Discus: 4, Connor Fuhrmann, L, 112' 5"; 5, Dean Fleitman, L, 111' 7.5".
 In the JV Boys division, Lindsay took 1st place with 180 points. S&S, Valley View, Chico, Era, and Bells followed.
 Placers for the JV Knights were:
3200m: 1, Price, 11:42.33; 2, Block, 11:59.03; 3, O'Shel, 12:24.22.
800m: 1, Ellender, 2:16.43; 6, Polk, 2:31.75.
100m: 1, Dennington, 11.53; 2, Walker, 11.78.
400m: 1, Block, 57.36; 3, Reiter, 58.21; 4, Metzler, 1:01.32.
200m: 2, Marion, 24.68.
400m Relay: 1, Lindsay, 47.32.
800m Relay: 4, Lindsay, 1:42.95.
1600m: 1, Price, 5:21.13; 2, Block, 5:22.69; 5, O'Shel, 5:44.06.
1600m Relay: 1, Lindsay, 3:48.77.
Triple Jump: 6, Reiter, 34' 3".
Shot: 1, Krahl, 37' 8"; 6, Bell, 33' 8".
Long Jump: 4, Dennington, 16' 6"; 6, Haverkamp, 16' 2".
Discus: 2, Bell, 95' 3"; 3, Krahl, 94' 4".

Lindsay Knight baseball

The Knights improved to 11-5 on the season and 4-0 in District after an 11-1 victory over the Valley View Eagles Friday night. "We started flat, but finished strong," noted Coach Cody Bounds.

At the plate, Travis Skinner was 3 for 5; Dylan Hughes 2 for 3, triple, and 2 RBIs; and Dean Fleitman 2 for 3, and 3 runs.

Todd Bezner started on the mound and got the victory, with Tanner Kuhn getting the final 6 outs of the game.

The Knights were to travel to Collinsville Tuesday, but the game was rescheduled due to weather conditions.

Lady Knight softball

The Lady Knights defeated the Lady Hornets of Muenster 15-0 last Friday. Lindsay had 7 hits in 4 innings in an errorless game.

Kayla Davis scored 3 points. Scoring 2 runs each were Erin Copeland, Rane Morrison, Taylor Atkins, and Megan Caillier. Adding a run were Alyx Ethington, Elizabeth Zwinggi, Bethani Eberhart, Cassidy Gum, and Rachel Fuhrmann.

Atkins pitched a no-hitter, facing 14 batters, striking out 8 and walking 1.

On Monday, the Lady Knights traveled to Collinsville and remained on top of the District by defeating the Lady Pirates 21-0. Lindsay pounded out 22 hits and stole 20 bases for the win.

Copeland scored 4 runs; Elizabeth Wallace, Morrison, and Atkins, 3 each; Caillier and Lucinda Krahl, 2 apiece; and Zwinggi, Davis, Fuhrmann, and Gum 1 run each.

Atkins faced 15 batters, struck out 9, and allowed no one on base.

Drillers baseball

The North Texas Drillers competed in the Sherman Slam baseball tournament held at Old Settlers Park in Sherman last weekend. The Drillers defeated the Plano Stallions 6 to 5 in opening round play, then bested the Denison Angels 9 to 3. After advancing past the Richardson Tornados 11 to 1 in semi-final play, the Drillers lost to a fine team from Frisco by a score of 10 to 8 in the finals.

The Drillers were led at the plate by Garrett Martin with 6 hits, Doug Case and John Michael Fuhrmann with 5 hits each, and Kyle Hermes with 3 hits. Yancey Otto added a home run over the left field fence to contribute to the Drillers' success. Garret Martin, Kyle Hermes, Bryce Herr, Yancey Otto and John Michael Fuhrmann all turned in excellent pitching performances from the mound.

Muenster and Lindsay District Golf Monday, April 4 Turtle Hill Golf Course

COOKE COUNTY ELECTRIC COOPERATIVE
 Muenster, TX • 940-759-2211
 Your Touchstone Energy® Cooperative
 The power of human connections®

Keep Muenster Beautiful Spring Clean-up Sat. April 16

MUEINSTER FAMILY MEDICAL CLINIC

Services include Family Care - Women's Health - Weight Management - Minor Emergencies - Juvederm - Botox - Cryotherapy - Bio-Identical Hormone Replacement Therapy

Amy Dangelmayr, RN, FNP-C
Brent Meredith, PA-C

134 S. Mesquite, Muenster 759-2502

Muenster Business Review

HOT, FRESH READY TO GO

Pizza Inn EXPRESS

MENU STARTERS

Breadsticks (4)	\$1.99	(Lg) \$6.99
Garlic Cheesebread (Sm)	\$3.99	(Lg) \$6.99
Spicy Wings (10)	\$5.99	(20) \$11.99
Boneless Wings (10)	\$5.99	(20) \$11.99

COMBO MEALS

8" I-Topping Pizza & 20oz. Fountain Drink	\$4.99
8" Specialty Pizza & 20oz. Fountain Drink	\$5.99
10 Wings, 2 Breadsticks & 20 oz. Fountain Drink	\$6.99
2 Large 2-Topping Pizzas, 8 Breadsticks & 2-Liter Soft Drink	\$22.99

BREAKFAST BISCUITS

Sausage, Egg & Cheese	\$1.99
-----------------------	--------

PIZZA

Individual (8")	Large (14")
I-Topping Pizza \$4.49	\$11.99
Additional Toppings \$.50	\$1.50
Specialty Pizzas \$5.49	\$13.79

(Descriptions of the Specialty Pizzas at right)

CHOOSE FROM THE FOLLOWING TOPPINGS:

• Pepperoni	• Ham	• Onions
• Beef	• Bacon	• Mushrooms
• Sausage	• Black Olives	• Cheddar Cheese
• Canadian Bacon	• Green Peppers	• Jalapeño Peppers

* No Extra Charge for Veggies

203 Division St. (Hwy. 82) Muenster, TX (Inside the Valero Gas Station) (940) 759-2923

Open 7 Days a Week 5am - 10 pm

SPECIALTY PIZZAS

EVERYTHING MONSTER™ - A hearty combination of lean beef, smoked ham, pepperoni, seasoned pork topping, savory onions, black olives, mushrooms, fresh green bell peppers and two layers of mozzarella cheese.

BACON CHEDDAR HAM - Lots of lean bacon, smoked ham and layers of cheddar and mozzarella cheese on our New York crust.

VEGGIE MAX™ - A special selection of garden-fresh toppings including savory onions, black olives, fresh green bell peppers, mushrooms, topped with cheddar cheese.

MEATY MAX™ - A ton of pepperoni, seasoned pork topping, lean bacon, beef, and loads of cheddar and mozzarella cheese.

PIZZA INN SPECIAL - One bite and you'll know why we call it special. It's a blend of fresh toppings including pepperoni, beef, sausage, onions, mushrooms, black olives and green peppers with mozzarella cheese and a rich tangy tomato sauce.

The Edelweiss Teahaus
 Gemutlichkeit
 "Good Health, Good Food, Good Friends"
 Monday through Saturday - 11 am to 3pm
 105 South Commerce • Gainesville, Texas
 940-665-6540
 Owners - Georgie and Barrett Brown

Enderby GAS, Inc

Hwy. 82 • Gainesville • 940-665-3457
 N. 377 • Whitesboro • 903-564-3649
 E. Hwy. 82 • Sherman • 903-892-8933

Find comfort. Know peace. Experience joy.

Call us... We'll be right there

Serving Cooke County

940.665.9891 • www.homehospice.org

Subway Pizza Inn EXPRESS

Open 7 Days a Week 5am - 10 pm

203 Division St. (Hwy. 82) • Muenster, TX (Inside the Valero Gas Station) (940) 759-2923

Your ad should be here, give us a call and let's make it happen!

(940) 759-4311

MUEINSTER PHARMACY

For ALL your pharmacy needs.

"Our goal is to provide the best, most personable service of any pharmacy in the area. We work hard to earn your business."

Locally owned and operated with **FREE** delivery to local areas and all major insurances accepted.

Conveniently located at 511 North Maple, between Muenster Family Health Clinic and Muenster Memorial Hospital

940-759-2833

Business Hours are 8:30am to 5:30pm - Mon thru Fri Lunch 12:30pm to 1:30pm

Party Pizza Specials!

Large I-Topping Pizzas

3 Pizzas - \$27.99 • 5 Pizzas - \$39.99
 10 Pizzas - \$69.99 • Each additional pizza \$6.99

WHEN YOU NEED TO BUY, SELL, HIRE ...

759-4311
FAX 759-4110
 EMAIL:
ADVERTISING@NTIN.NET
DEADLINE
TUESDAY 5PM

Muenster ENTERPRISE CLASSIFIEDS

CLASSIFIED RATES
First 20 words \$7.00
25¢ per word after that

SERVICES

HESSE-SCHNIEDERJAN
 HEATING AND AIR CONDITIONING
 - We service all makes and models
 - 100% customer satisfaction
 It's Hard To Stop A Trane.
759-2787 TACLA-010802C www.hstrane.com

THI WATER WELL P.O. Box 1300, Bowie, TX 76230
Brad Biffle Matt Muller
 Mobile: (940)736-4336 Mobile: (940)727-9942
 bradbiffle@msn.com Lic.# 54275CMW
 Lic.# 56089IKLPT
Wes Spruiell
 Mobile: (817) 219-3561
 Office: (940) 872-6633
 WELL DRILLING AND SERVICE
 INDUSTRIAL-CITY-DOMESTIC WELLS

B.P.R.S. ELECTRICAL
 Residential - Commercial - Remodel
 New Construction - Industrial
 24 Hour Emergency Service
 Licensed & Insured
940-759-2486 - Cell: 940-393-5473

Nortex Communications
 Local Telephone
 Cable TV
 Long Distance
 Internet
 Wireless Service
 205 N. Walnut Street, Muenster
 759-2251

H & H
 VACUUM SERVICE • SEPTIC TANK CLEANING
PRESTIGE PORTABLES
 PORTABLE TOILET RENTALS
940-668-7268 • 940-736-3448

Family owned
 business since
 1974

Lake Kiowa Landscaping & Septics
 Install Delta Whitewater Aerobics
 We service all types of systems.
 All employees are licensed installers and inspectors.
 We have a soil evaluator.
 References available
 Call (940) 665-5001

FOR SALE

ONE HAS TO GO!!
 My fishing boat or my wife!
 Make me an offer.
 Call, if no answer, leave message.

06 CHEVY 4x4
 BRIGHT RED \$14,500
 @ Auto Topic 940-665-2966
 3.11

07 DODGE RAM
 SLT, SHARP \$13,500
 @ Auto Topic 940-665-2966
 3.11

05 FORD FOCUS
 \$\$ GAS SAVER \$\$
 \$8500
 @ Auto Topic 940-665-2966
 3.11

YOUR CHOICE
 \$7500 CASH
 03 FORD EXPEDITION
 05 DODGE MAGNUM
 06 DODGE RAM SLT
 1500 PICK-UP
 @ Auto Topic 940-665-2966
 3.11

YOUR CHOICE
 \$11,000 CASH
 05 LINCOLN TOWN
 CAR LOW MILES
 06 DODGE DURANGO
 SLT LOADED
 06 CHEVY TRAILBLAZER
 LOW MILES
 @ Auto Topic
 940-665-2966
 3.11

Think advertising doesn't work? It Just did!

HELLER'S HAULING
 Junk, Construction Debris,
 & General Cleanup. Call
 940-736-7859. Off duty
 fireman. 12.10x

Painting
 Inside & Outside
 Light Carpentry Work
 Dependable. Danny Silmon
759-2759 or 634-2771

OTTO DOZER SERVICE
Mike Otto 665-2258
Mobile 736-5333

FEDERALLY INSPECTED
Meat processing plant.
 Bring in your animal
 Tues. or Thurs.
Fischer's Meat Market,
759-4211.

For Septic Systems
ROEBIC K-37 Septic Tank Liquefier
 A single treatment of this product prevents clogging of a septic tank and is guaranteed effective for one whole year.
Community Lumber Co.
 200 E. Division - Muenster-759-2248

Have a Great Week

REAL ESTATE

North Texas Properties
940-995-2987
940-841-1821

NEW LISTING - 707 E. 2nd St in Muenster. Built in 1993. 1 1/2 story brick. 3 bedroom, 2 1/2 baths, fireplace, separate utility, open floor plan all on large lot. Great opportunity in Muenster. Call Jack at 940-841-1821.

NEW LISTING - 2.8+ wooded acres with 2 BR (plus small office), 2 BA, Cement board type siding home built in 2000. Secluded location about 4 miles north of Saint Jo just at the foot of the "bluff" on gravel road. Asking only \$125,000 for entire package.

Owner says BRING OFFERS - Great building lot in Muenster. Approx. 90+ wide. Close to church, schools, and hospital on wide street in established neighborhood. Located at 1013 N. Maple Street. Asking only \$18,000.

More Available at: northtexasproperties.com

STORAGE

Mini Storage

Schilling Fina
759-2522 or 759-2836

Storage Units For Rent
308 North Mesquite, Vickie or Douglas Fleitman
736-1041 or 736-5434

AUCTIONS

Marietta, OK
Farm AUCTION
 Saturday April 2nd
10:00 am

LOCATION: 3 miles West of Marietta, OK on Hwy 32 Turn North go 3 miles to Dixon Rd. turn West go 3 miles to Auction Site.
WATCH FOR SIGNS

SELLER: Ed Strate
 Mr. Strate is changing up his cattle operation and is selling his hay equipment and other farm equipment. This is well kept Equipment and will sell to the highest bidder.

Tractor
 2007 CASE IH JX95 - 640 Hours - 93 hp - MFWD Drive Case IH Utility Tractor - 80 PTO Hp - Cab w/Heat/AC/Radio - Front weights/rear wheel weights - (Barn Kept)

John Deere 730 (Wide Front) Good Rubber, Great Tractor

Hay Equipment
 2007 Vermeer Rebel 5410 round baler (Barn Kept)
 2007 Krone am 323S Cutter (Barn Kept)
 2007 Enewold rake caddy (Barn Kept)
 Hay rake caddy
 6 Bale GN Dump Trailer.

Trucks/Trailers
 19000 Ford Truck - Cummings Motor
 Lufkin Trailer - 40ft Float (Highway Ready)
 CM GN Trailer - 20ft Float (Great Shape)
 Box Van Trailer - 28ft bobtail, great for storage
 16 ft Utility Trailer

Cattle Feeders
 Oklahoma Pride Feeder - 4000# (Like New)
 Numerous Round Bale Feeders
 Numerous Feed Bunks
 2 Creep Feeders (Like New)

Brush Hog
 Rhino Batwing Brush Hog (15ft)

Round Pen
 Portable 40ft Round Pen (Like New)

Misc. Farm Equipment & Tools
 Box Blade / Smoker on Trailer / Four Wheelers / Overhead Fuel Tanks / Hydraulic Hay Spike for truck (Works Great) / Small Lawn Mower Tri / Fimco Pull behind Sprayer(25gal) / Misc Gates / T-post / Misc Pipe and Scrap Metal/ Plus More / Many Items Too Numerous to Mention!



Go To www.auctionzip.com to view listing.
 Auctioneer ID# 21948

You Don't Want To Miss This Auction!

Terms: Bidders must register on sale day with a government-issued ID. Payment must be made in full at or before conclusion of the sale with cash, or a check. Once the auctioneer says "sold" merchandise becomes the responsibility of the successful bidder. We have put forth every effort to provide accurate descriptions of all items and we are not responsible for errors or omissions in this listing. Items are sold "as-is, where-is" and there are no warranties or guarantees on any of the personal property items we sell. MZW Auctions is not liable for accidents. Any announcements made day of auction shall supersede any previous advertisement or statement and prevail as the final terms and conditions.

MZW Auctions
580-279-5053
 Ada, Ok

Muenster State Bank
 Competitive Rate & Low Closing Cost
 Construction Loans, Home Loans & Home Equity Loans
 WE ALSO MAKE Long-term Fixed-Rate Mortgages
940-759-2257

FOR RENT
 Gainesville office space for lease. 1,056 sq.ft. Reception area plus 2 private offices, full bath/kitchenette. - \$695/month 940-736-1966

HELP WANTED

Mission Petroleum Carriers, Immediate Openings for Crude Drivers! 2011 Enhanced Pay Package including: Upgraded Pay Scale 03/01/2011, Night Shift Differential, Safety & Performance, Quarterly Bonus, Paid Vacations/Holidays, Company Benefits pkg: Medical/Dental/Vision/Life, 401K w/company match, Pd orientation/training. Referral bonus. A Driving Job with MPC Leads to a Career Path! Class A CDL-X req. 2yrs T/T exp. in last 5 yrs. or 1 yr. exp w/accredited semi-truck driving school diploma. Contact: Jon Townley at 940-549-4578 or Dean Munson at 979-535-8131. Mon-Fri 8a-5p. EOE 3.25-2

Gehrig's
 Bridal Registry
 Amber Evins & Kirk Hartman
 Tiffany Miller & Duncan Campbell
 Lisa Felderhoff & David Phillips
210 N. Main Muenster 759-4112

LEGAL NOTICES

NOTICE TO CREDITORS
 Notice is hereby given that original Letters Testamentary for the Estate of Betty V. Pautler, Deceased, were issued on March 28, 2011, in Cause No. PR16738, pending in the County Court at Law of Cooke County, Texas, to: Ruth Owen.

All persons having claims against this Estate which is currently being administered are required to present them to the undersigned within the time and in the manner prescribed by law.
 c/o: **Chuck Bartush Jr. Attorney at Law**
408 North Main Street P.O. Box 68 Muenster, Texas 76252
DATED the 28th day of March, 2011.

/s/ Chuck Bartush
 Chuck Bartush Jr.
 Attorney for Ruth Owen
 State Bar No.: 01865000
 408 North Main Street
 P. O. Box 68
 Muenster, Texas 76252
 Telephone: (940) 759-2913
 Facsimile: (940) 759-2980 4.1-1

NOTICE TO CREDITORS
 Notice is hereby given that original Letters Testamentary for the Estate of Troy Ardell Hammer, Deceased, were issued on March 28, 2011, in Cause No. PR16742, pending in the County Court at Law of Cooke County, Texas, to: **LISA HAMMER.**

All persons having claims against this Estate which is currently being administered are required to present them to the undersigned within the time and in the manner prescribed by law.
 c/o: **Jim J. Hatcher Attorney at Law**
109 W. California Street P.O. Box 279 Gainesville, Texas 76241
DATED the 28th day of March, 2011

/s/ Jim J. Hatcher
 JIM J. HATCHER
 Attorney for Lisa Hammer
 State Bar No.: 09220000
 109 W. California Street
 P.O. Box 279
 Gainesville, Texas 76241
 Telephone: (940) 665-3441
 Facsimile: (940) 665-2000 4.1-1

NOTICE TO CREDITORS
 Notice is hereby given that original Letters Testamentary for the Estate of Vivienne King, Deceased, were issued on March 28, 2011, in Cause No. PR16730, pending in the County Court at Law of Cooke County, Texas, to: Nancy Jean Dugger.

All persons having claims against this Estate which is currently being administered are required to present them to the undersigned within the time and in the manner prescribed by law.
 c/o: **LEE TATUM Attorney at Law**
113 N. Commerce Street P.O. Box 1211 Gainesville, Texas 76240
DATED the 28th day of March, 2011

/s/ Lee Tatum
 LEE TATUM
 Attorney for Nancy Jean Dugger
 State Bar No.: 24043952
 113 N. Commerce Street
 P.O. Box 1211
 Gainesville, Texas 76240
 Telephone: (940) 580-3501
 Facsimile: (940) 580-3505 4.1-1

STATE OF TEXAS
 COUNTY OF COOKE
 235TH JUDICIAL DISTRICT
CITATION BY PUBLICATION
 CV11-00005

To: SAM TULLOS PAYNE, JALIE ANN PAYNE, LUCINDA ELIZABETH CALHOUN, ROBERT G. PAYNE, RANDOLPH L. PAYNE, JOHN B. PAYNE, H. H. PAYNE, SAM TULLOS PAYNE, JR., SARAH EDNA PAYNE AND THEIR UNKNOWN HEIRS
NOTICE TO DEFENDANT: YOU HAVE BEEN SUED. YOU MAY EMPLOY AN ATTORNEY. IF YOU OR YOUR ATTORNEY DO NOT FILE A WRITTEN ANSWER WITH THE CLERK WHO ISSUED THIS CITATION BY 10:00 A.M. ON THE MONDAY NEXT FOLLOWING THE EXPIRATION OF TWENTY DAYS AFTER YOU WERE SERVED THIS CITATION AND PETITION, A DEFAULT JUDGMENT MAY BE TAKEN AGAINST YOU.

You are hereby commanded to appear by filing a written answer to the Amended petition of plaintiff at or before 10 o'clock a.m. of the Monday next after the expiration of forty-two days after the date of service of this citation before the Honorable 235TH JUDICIAL DISTRICT, Cooke County, Texas, at the courthouse in the city of Gainesville, Texas.

Said Amended petition was filed in said court, on the 9th day of March, 2011 in cause number CV11-00005 on the docket of said court and styled: V&H OIL, L.P. vs. SAM TULLOS PAYNE, JALIE ANN PAYNE, LUCINDA ELIZABETH CALHOUN, ROBERT G. PAYNE, RANDOLPH L. PAYNE, JOHN B. PAYNE, H. H. PAYNE, SAM TULLOS PAYNE, JR., SARAH EDNA PAYNE AND THEIR UNKNOWN HEIRS
 The nature of this cause is to appoint a receiver to execute an oil and gas lease.
 The officer executing this citation shall promptly served the same according to requirements of law, and mandates thereof, and make due return as the law directs.

Issued and given under my hand and seal of said court at Gainesville, Cooke County, Texas this the 09th day of March, 2011.
ATTORNEY FOR PLAINTIFF:
 DERRELL L. COMER
 109 EAST CALIFORNIA ST. P.O. BOX 973
 GAINESVILLE, TX 76241

Susan Hughes, District Clerk
 Courthouse Annex
 112 S Dixon, Suite 102 Gainesville, Texas 76240
 BY: /s/ Melissa Gann, Deputy 3.11-4

Spring Cleaning? Promote your next Garage Sale in the Muenster Enterprise

Classified Deadline is 5pm Tuesday

ADVERTISE HERE GET RESULTS!
Muenster Enterprise
 advertising@ntin.net

TUNE IN
It's Hometown Radio at its Best!
KNTX AM1410
Trade Fair 9-10 am Mon-Fri
Listen at work, in your car, at home, or online at www.kntxradio.com 940-872-2288

Your Community Your News Your Newspaper
Muenster Enterprise
 To report your news or sale your stuff call
759-4311

Don't Mess with Texas
 Keep Muenster Beautiful
Trash Pick-up Sat. April 16
 Meet at the **KAB Haus City Park 9 a.m.**
Everyone is invited to Pitch In!



FARM & RANCH

New red imported fire ant enemies in place for combat

U.S. Department of Agriculture (USDA) scientists released the fifth species of phorid fly to control fire ant populations. Red imported fire ants first arrived in the United States in the early 1930s and have been expanding along the southern portion of the country ever since, resulting in medical, agricultural, and environmental impacts that cost the U.S. public billions of dollars each year.

Agricultural Research Service (ARS) entomologist Sanford Porter and his colleagues at the ARS Center for Medical, Agricultural and Veterinary Entomology (CMAVE) Imported Fire Ant

and Household Insects Research Unit in Gainesville, Florida, have collected, bred, and released phorid flies that help to control fire ant populations in the southern part of the United States. ARS is USDA's principal intramural scientific research agency.

Scientists at CMAVE and cooperators in several states conducted the fire ant biocontrol program to suppress the stinging insects in large areas. Since the program began in 1995, five species of phorid flies have been released to parasitize various sizes of fire ants, from large to very small. According to Porter, the relationship between phorid fly and fire ant is very specific:

The introduced phorid fly species only attack imported fire ant species.

The fifth phorid fly species, *Pseudacteon cultellatus*, is currently being released at several sites in Florida to control tiny fire ant workers that belong to multiple-queen colonies. These colonies are particularly problematic because they usually house two to three times the number of worker ants.

Of the four phorid fly species previously released, only one has failed to establish itself and widely spread out. *P. litoralis*, released in 2004 and 2005, was only able to establish itself in Alabama. The others—*P. tricuspidis*, *P. curvatus*, and *P. obtusus*—have expanded well beyond their release sites and are attacking fire ants across large areas. *P. tricuspidis* and *P. curvatus* each cover over half of the U.S. fire ant range, and that is expected to increase to well over two-thirds of the range by the end of 2011, according to Porter.

Vilsack warns Congress livestock and dairy sectors at risk

Agriculture Secretary Tom Vilsack told lawmakers last week "the livestock and dairy industries could face financial pressures in 2011 and bear watching."

Vilsack cited soaring price of feed and other input costs, according to the *Des Moines Register*. He did not offer those industries any relief, although he said the department expects corn acreage to increase by 3% to 5% this year.

Groups representing livestock producers are pressing Congress to roll back incentives for using corn to make fuel ethanol, but Vilsack, a former Iowa governor, is a staunch advocate for the biofuel industry. Both at the Senate hearing and during an earlier appearance in the House, Vilsack warned against cutting off subsidies for ethanol. Economists say the ethanol producers are far less dependent on federal subsidies than biodiesel makers are.



AG TALK

By Gene Hall
Public relations director

Sales tax exemption rules could change for Texas farmers/ranchers

For many years, Texas farmers and ranchers have received an exemption of the state sales tax on those items used to produce agricultural products. This is a very reasonable and appropriate state policy. In lean years, it can be the difference between staying in business or not. Despite the law's popularity, there have been problems and those who believe they've been victimized by its administration are becoming increasingly vocal.

Currently, anyone who buys products for use in agricultural production only has to state that he or she is sales tax exempt and fill out a form. When, however, that form arrives in the Texas Comptroller's office and there is a problem, the seller of that product may be liable for the tax. Quite understandably, those who sell these kinds of products are objecting to that.

I have been told of situations where abuse has occurred. For example, a 4-wheeler, ostensibly for use in farm chores, was sold and the sales tax exempted. Later, when the justification was found lacking, the dealer had to pony up the sales tax. This is a substantial hit for any business, small or large.

There are all kinds of good reasons to continue this exemption for the benefit of those who farm and ranch and none for those who do not. HB 268 has been filed in the Texas Legislature to address this problem. The bill requires farmers and ranchers to secure a number that will prove their exempt status. It also would put some teeth into enforcement, with penalties for falsely claiming exempt status. The trick is to make the process seamless and easy for those who deserve it.

Texas Comptroller Susan Combs has provided a list of reasonable documentation her office will accept as proof of farm or ranch production. These include receipts for sales of livestock or crops, expense receipts for feed or other production items, a Farm Services Agency farm number or a Natural Resources, Conservation Service cooperator number.

Of course, an IRS Schedule F, reporting farm income, would do the trick, but there is understandable reluctance to provide personal income tax information to a state agency.

The voices complaining against fraudulent use of sales tax exemptions are growing louder. At some point, these voices could threaten the continuation of the agricultural sales tax exemption that is very important to Texas agriculture.

HB 268 seems very reasonable. It could be an idea whose time has come.



TDA market recap

For the week ending March 26, feeder cattle price trends at Texas auctions were very uneven, with some locations as much as \$5 lower per hundredweight than the previous week, and some as much as \$5 higher.

Fluctuating grain prices, lower fed cattle, and tight supplies of feeders contributed to the unevenness. Grain prices were also higher on strong exports and concerns about dry weather on the U.S. Central Plains and wet weather in the Midwest.

As for futures markets, feeder cattle, fed cattle, cotton, wheat, and corn were higher while lumber was unchanged.

Little or no rainfall was recorded anywhere in the state during the week. Topsoil moisture supplies were mostly short to very short statewide, and crops and pastures in most of the state need rain.

The winter wheat crop was 2% headed and rated in mostly fair to very poor condition. Fifty-percent of the corn acreage was planted and 16% has emerged. Planting progress is ahead of the normal pace for most crops, but additional moisture is needed for germination and growth. Pastures were rated in mostly fair to very poor condition.

County Agent's Report

Foliar fungicide decisions for wheat

The following information was adapted from a publication developed by James Swart, entomologist (IPM) with Texas AgriLife Extension Service and Dr. Curtis Jones, Extension agronomist and professor at Texas A&M University-Commerce.

A number of factors are usually considered in making a fungicide spray decision, including yield potential, wheat price, fungicide cost, and disease pressure. This year, two of those factors make the decision much easier: \$8.00 wheat and \$4.00 per acre tebuconazole. A producer only needs one more bushel of wheat to cover the cost of the fungicide and application.

Tebuconazole (sold as TebuStar, Monsoon, Onset, and others) was synthesized by Bayer Chemical Company around 30 years ago and tested under the trade name Folicur®, but it did not receive a federal label for wheat until 2009. It has properties that often cure and/or protect wheat from either leaf or stripe rust.

They have evaluated this product in almost all of their fungicide tests from 1984 to now, and it is as effective now as it was when we first tested it.

The past two years, fungicide trials have indicated the following: We obtained a positive return on investment on all of the varieties evaluated in the trial. Using projected 2011 prices, we returned \$1.51 to \$10.93 for every dollar invested.

The greatest return was achieved by spraying Jackpot HRWW, a variety that was heavily infected with leaf rust in 2010 at the Royse City location.

The yield increases observed with Pioneer 25R47 and Terral LA 841 in 2009 are attributed to a late infection of glume blotch.

Based on two years of research, a foliar fungicide treatment with tebuconazole will be a wise investment this year, even under light to moderate disease pressure. For optimum results in controlling leaf rust and glume blotch, Mr. Swartz and Dr. Jones suggest that tebuconazole be applied anytime between Feekes 9 and Feekes 10.5.1 (flowering). Based on multiple years of research, a single application of tebuconazole will provide 35 to 40 days of control, which should protect the leaves throughout the grain filling period.

THE NEW GAINESVILLE LIVESTOCK AUCTION, LLC.

www.gainesvillelivestock.info

Stock cows high demand; High demand on weaned calves with vaccinated. Sold at Friday's sale MARCH 25 were 1409, compared to 1642 the previous week. Sold at Tuesday's sale MARCH 29 were 179 Goats, 58 Sheep, and 147 Hogs. The numbers from last week were 252 Goats, 49 Sheep, and 139 Hogs. Results follow:

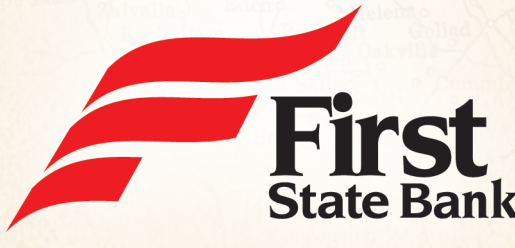
<p>Feeder Steers (per lb.) 200-300 lbs.: No. 1, 1.50-1.90; Nos. 2 & 3, 1.25-1.45; 300-400 lbs.: No. 1, 1.50-1.87; Nos. 2 & 3, 1.20-1.40; 400-500 lbs.: No. 1, 1.45-1.70; Nos. 2 & 3, 1.20-1.35; 500-600 lbs.: No. 1, 1.40-1.70; Nos. 2 & 3, 1.15-1.25; 600-700 lbs.: No. 1, 1.35-1.60; Nos. 2 & 3, 1.10-1.25; 700-800 lbs.: No. 1, 1.20-1.37; Nos. 2 & 3, 1.00-1.15.</p> <p>Feeder Heifers (per lb.) 200-300 lbs.: No. 1, 1.50-1.80; Nos. 2 & 3, 1.20-1.50; 300-400 lbs.: No. 1, 1.45-1.70; Nos. 2 & 3, 1.20-1.35; 400-500 lbs.: No. 1, 1.40-1.65; Nos. 2 & 3, 1.20-1.30; 500-600 lbs.: No. 1, 1.35-1.55; Nos. 2 & 3, 1.10-1.30; 600-700 lbs.: No. 1, 1.20-1.45; Nos. 2 & 3, 1.10-1.15.</p> <p>Slaughter Cattle (per lb.) Slaughter Bulls: Yield Grade #1-2, 1,200-2,050 lbs., .80-.97; Slaughter Cows: #1&3, .65-.81; Cutter: .55-.65.</p>	<p>Stocker Cows (per head) Pregnancy-tested, 3 to 9-year-olds - Large Frame: \$900-\$1400; Medium Frame: \$750-\$900.</p> <p>Cow/Calf Pairs w/calves under 250 lbs. - Large Frame: \$1300-\$1550; Medium Frame: \$850-\$1200.</p> <p>Baby Calves: Holstein: N/T; Cross Breeds: \$150-\$350.</p> <p>Barrows & Gilts (per lb.) US #1, 230-270: .60-.68; US #2, 220-280: .55-.60.</p> <p>Feeders (per head): 100-175 lbs.: .60-1.20; 25-90 lbs.: .25-.70.</p> <p>Sows (per lb.) Feeder, 400 or less: .27-.50; Light wt., 400-500: .42-.50; Med. wt., 500-600: .45-.47; Heavy wt., 600+: NT.</p> <p>Boars (per lb.) 300 lb. up: -4-; 200-300 lbs.: .20-.35; Light wt.: .30-.36.</p> <p>Sheep (per lb.) Feeder lambs: 1.30-1.75; Light lambs: 1.50-1.75; Fat lambs: 1.50-1.55.</p> <p>Ewes (per lb.) Stocker: .70-.80; Thin: N/T; Fat: NT.</p>	<p>Bucks (per lb) Thin: NT; Fat: .75-.90</p> <p>Barbardo (per head) Lambs: 45-70; Ewes: 60-1.10; Bucks: 1.00-1.90.</p> <p>Goats (per head) Kids: 25-55 lbs., \$20-\$60; 35-55 lbs., \$30-\$90; 55-75 lbs., \$65-\$1.10.</p> <p>Yearlings (per head) 75-120 lbs., \$.85-\$1.65.</p> <p>Nannies (per head) Stocker: \$75-\$1.50; Milk Type: N/T; Slaughter: 1.10-\$140; Thin: \$.50-\$75.</p> <p>Billies (per head) 120 lbs. up Breeders: \$145-\$170. Slaughter: \$100-\$140.</p> <p>Boer Goats (per head) 1/2 Nanny: NT; 3/4 Nanny: NT; Full Nanny: NT, 1/2 Billy: NT; 3/4 Billy: NT; Full Billy: NT.</p> <p>Special Female Replacement Sale Wed. April 13 noon</p>
--------------------------------------------------------------------------------------------------------------------------------------------------------------------------------------------------------------------------------------------------------------------------------------------------------------------------------------------------------------------------------------------------------------------------------------------------------------------------------------------------------------------------------------------------------------------------------------------------------------------------------------------------------------------------------------------------------------------------------------------------------------------------------------------------------------------------------------------------------------------------------------------------------------------------------------------------	------------------------------------------------------------------------------------------------------------------------------------------------------------------------------------------------------------------------------------------------------------------------------------------------------------------------------------------------------------------------------------------------------------------------------------------------------------------------------------------------------------------------------------------------------------------------------------------------------------------------------------------------------------------------------------------------------------------------------------------------------------------------------------------------------------------------------------------------------------------------------------------------------------------------------------------	-----------------------------------------------------------------------------------------------------------------------------------------------------------------------------------------------------------------------------------------------------------------------------------------------------------------------------------------------------------------------------------------------------------------------------------------------------------------------------------------------------------------------------------------------------------------------------------------------------------------------------------------------------------------------------------------------------------------------------------------------------------------

Let First State Bank help spruce up your home for Spring!

Landscaping & Construction Loans

Home Improvement Loans

Mortgage Loans



Visit our Mortgage Center at www.F-S-B.com and you can...

Apply for a home loan online in just minutes. It's fast, easy & secure!

Sign up for Rate Watch.

We'll email the most current rates right to you!

519 E. Division St. Muenster, TX 76252
(940) 759-2218 · www.F-S-B.com

Gainesville | Lake Kiowa | Valley View | Muenster | Saint Jo | Denton

First in Texas. First in Lending.

Member FDIC EQUAL HOUSING LENDER

Just a thought

There comes a time when you must stop grieving over the death of a loved one and get on with your life.

People don't always want advice, but understanding.

The New GAINESVILLE LIVESTOCK AUCTION L.L.C.

North Texas Leading Auctions • www.gainesvillelivestock.info

P.O. Box 1055 • 1920 Refinery Road
Gainesville, Texas 76240

James "Redbone" Peyrot, Jr.
Owner/Operator

Call 940-665-4367

For More Information

SPECIAL SPRING SALE

SEVERAL MORE CONSIGNMENTS BY SALE TIME!

12:00 p.m. Wednesday, April 13 Gainesville, Texas

<p>Bred Cows</p> <p>50-55 Brangus/Angus Cows, 3.5 years old. Cows will be medium bred to black bulls.</p> <p>30 Angus cows, a few BWF cows, 3.5 years old, 10 calves now, several more will be pairs by sale time. Cows are gentle and cake broke.</p> <p>20 3.5 year old Angus/Brangus, some Brangus Baldies, 8 pairs now, the rest are heavy bred to Angus bulls. Cows are one brand and nice set.</p> <p>30 3.5 year old Angus Cows with a few calves on the ground, the balance are heavy bred.</p> <p>20 Red Angus, 4.5 year old cows bred to Registered Black Angus bulls. Cows are fall calving.</p> <p>6 Brangus Bred Heifers bred to LBW Brangus Bulls. Fancy set of cow makers.</p> <p>22 Angus & Brangus cross cows, 4 years old, bred to Angus bulls. All coming with 2nd calf, cake broke and gentle.</p> <p>10 Brangus Baldie heifers, big & fancy bred to Brangus Bulls. Great set of heavy-bred heifers.</p> <p>145 Angus & Brangus cows, 4-5 years old, these cows are all second-calf cows and are cake broke. Cows will be heavy bred to Real Coud Angus & Semi-Angus bulls, some are calving now. Good set of ranch cows.</p> <p>30-50 1/2 Braunvieh, 1/2 Angus cows, 2005-06 models bred to LimFlex Bulls.</p> <p>Open Heifers</p> <p>9 Fancy Hereford heifers, big and nice, ready for bulls now.</p> <p>30-35 Brangus & Brangus Baldie heifers. Cake broke, horse broke, four-wheeler broke, you can handle them with anything.</p> <p>25 Angus heifers, all weaned and cake broke, ready for bulls.</p> <p>10 Tiger-Stripe heifers, big and ready for bulls, they will make a great set of cows.</p> <p>3 Angus heifers, big and nice, ready to breed.</p>	<p>Pairs</p> <p>80-100 Black Angus/Brangus cross cows, 3.5 years old. Cows will have big calves and have been running back with black bulls.</p> <p>5 Red Angus pairs, 5 years old, very gentle with big calves.</p> <p>6 Char-Cross pairs, 4 years old, good disposition with good calves weighing 300 lbs.</p> <p>85 Big & nice Brangus cows, 3.6 years old. Cows will have calves from babies to 400 lbs., all sired out of good Angus bulls. Very nice set of cows, some will be bred.</p> <p>16 Angus pairs, 2.5 years old. Calves will weigh 250 lbs. and are all vaccinated and worked. Nice set of cows, gentle and cake broke.</p> <p>95 1/2 Braunvieh, 1/2 Angus pairs and breeds. Cows are all 2005-06 models, about 40 calves on the ground now, more calving daily. Calves are sired by LimFlex bulls. This is an outstanding set of calf raisers, easy to handle, cake broke and with good babies.</p> <p>30 Angus/Brangus 2nd calf pairs, cows are all cake broke, calves are all sired by Angus or Semi-Angus bulls. Good set.</p> <p>40 Brangus/Brangus Baldies, 3.4 years old. These cows are all 2nd calf pairs and have a good set of black and black baldie babies.</p> <p>10 7 year old Hereford pairs with Tiger-Stripe babies sired out of good Brahman bulls.</p> <p>30 Red Angus, 6 year old pairs, cows are from same ranch that had the high-selling breeds last year. Cows will be very gentle and easy handling, calves will be outstanding.</p> <p>Bulls</p> <p>18 month old Maine Angus virgin, - 3 year old Angus bull. 19 month old Chi Angus. - Two 15-month old Chi Angus. 19 month old good Angus. - Three 3 yr. old good Angus bulls. Two 22-month old Maine Angus virgin bulls. Two 22-month old Angus virgin bulls. 20-month old purebred black Simmental.</p>
----------------------------------------------------------------------------------------------------------------------------------------------------------------------------------------------------------------------------------------------------------------------------------------------------------------------------------------------------------------------------------------------------------------------------------------------------------------------------------------------------------------------------------------------------------------------------------------------------------------------------------------------------------------------------------------------------------------------------------------------------------------------------------------------------------------------------------------------------------------------------------------------------------------------------------------------------------------------------------------------------------------------------------------------------------------------------------------------------------------------------------------------------------------------------------------------------------------------------------------------------------------------------------------------------------------------------------------------------------------------------------------------------------------------------------------------------------------------------------------------------------------------------------------------------------------------------------------------------------------------------------------------------------------------------------------------------------------------	----------------------------------------------------------------------------------------------------------------------------------------------------------------------------------------------------------------------------------------------------------------------------------------------------------------------------------------------------------------------------------------------------------------------------------------------------------------------------------------------------------------------------------------------------------------------------------------------------------------------------------------------------------------------------------------------------------------------------------------------------------------------------------------------------------------------------------------------------------------------------------------------------------------------------------------------------------------------------------------------------------------------------------------------------------------------------------------------------------------------------------------------------------------------------------------------------------------------------------------------------------------------------------------------------------------------------------------------------------------------------------------------------------------------------------------------------------------------------------------------------------------------------------------------------------------------------------------------------------------------------------------------------------------------------------------------------------------------------------------------------------------------------------------------------------------------------------------------

DIXIE CHOPPER™

The World's Fastest Lawn Mower

IRON EAGLE That's Right...

UP TO **0% For 60 Months***

25 HORSEPOWER
50 INCH CUT WIDTH
2.4 ACRES PER HOUR

PRICES STARTING AT \$4900

RED RIVER RENTAL
2818 E. Hwy 82
Gainesville, TX 76240
(940) 665-4896

*SEE YOUR LOCAL DEALER FOR COMPLETE DETAILS

Fischer's Meat Market

Since 1927
We Wouldn't be 84
Without You!



304 North Main, Muenster, TX • 1 (800) 259-7248 or 759-4211

www.fischersmeatmarket.com

NOT RESPONSIBLE FOR PICTORIAL OR TYPOGRAPHICAL ERRORS

**DOUBLE
COUPONS
EVERY DAY**

**AT AFFILIATED
FOODS INC.** ALL ITEMS NOT
AVAILABLE AT ALL
AFFILIATED STORES
THRIFTWAY

Senior Citizens:
No amount of Purchase Necessary
on Limited Sale Items!
QUANTITY RIGHTS RESERVED
**PRICES EFFECTIVE
APRIL 4 - 10, 2011**

Weekly Grocery Specials



Blue Bell Ice Cream ASSORTED FLAVORS
HALF GALLON **2\$9** for

MRS. BAIRD'S 100% Wheat Bread
20 OZ. LOAF **\$1.99**

SHUR SAVING Tomato Sauce
8 OZ. **5\$1** for

SHUR SAVING Vegetables
14.5-15.25 OZ. CAN **38¢**

- SHUR SAVING Macaroni & Cheese... 7.25 OZ. **4\$1** for
- SHUR SAVING Liquid Bleach... 128 OZ. **88¢**
- SHUR SAVING Paper Towels... SINGLE ROLL **2\$1** for
- SHURFINE ORIGINAL OR MESQUITE Charcoal Briquets... 8.3 LB. **2\$5** for
- SHUR SAVING Granulated Sugar... 4 LB. **\$1.99**
- PLAIN OR IODIZED Shur Saving Salt... 26 OZ. **3\$1** for
- SHUR SAVING REGULAR OR MINI Marshmallows... 16 OZ. **99¢**
- SHUR SAVING DISTILLED White Vinegar... GAL. **2\$4** for
- SHUR SAVING ASSORTED FLAVORS Salad Dressing... 16 OZ. **99¢**
- SHUR SAVING Prepared Mustard... 16 OZ. **79¢**
- SHUR SAVING HAMBURGER DILL Pickle Slices... 32 OZ. **2\$3** for
- SHUR SAVING CREAMY OR CRUNCHY Peanut Butter... 16 OZ. **2\$3** for
- SHUR SAVING Strawberry Preserves... 32 OZ. **\$1.99**
- SHUR SAVING Honey Bear... 12 OZ. **\$2.49**
- SHUR SAVING Tea Bags... 100 CT. **99¢**
- SHUR SAVING CHOCOLATE FLAVORED Chocolate Syrup... 24 OZ. **2\$3** for
- SHUR SAVING Tomato Ketchup... 35 OZ. **98¢**
- SHUR SAVING SELECT VARIETIES Condensed Soup... 10.5-10.75 OZ. **2\$1** for
- SHUR SAVING ASSORTED VARIETIES Sandwich Cookies... 32 OZ. **\$1.99**
- SHUR SAVING Saltines... 16 OZ. **99¢**
- FRUIT MIX OR YELLOW CLING SLICED Shur Saving Peaches... 15 OZ. **89¢**
- SHUR SAVING WHOLE OR DICED Tomatoes... 28 OZ. **99¢**
- SHUR SAVING DRIED Pinto Beans... 4 LB. **\$1.99**
- ELBOW MACARONI OR LONG SPAGHETTI Shur Saving Pasta... 32 OZ. **\$1.69**
- WESTERN FAMILY SELECT VARIETY Super Alkaline Batteries... 1-4 CT. **2\$3** for
- SHUR SAVING Paper Napkins... 160 CT. **99¢**
- SHUR SAVING Aluminum Foil... 12"X25' ROLL **79¢**
- SHUR SAVING Paper Plates... 100 CT. **\$1.99**
- SHUR SAVING TALL KITCHEN Trash Bags... 30 CT. **\$1.99**
- SHUR SAVING Sandwich Bags... 150 CT. **89¢**
- SHUR SAVING Facial Tissue... 150 CT. **99¢**
- SHUR SAVING SELECT VARIETIES Canned Dog Food... 13.2 OZ. **2\$1** for

Health & Beauty Care

- WESTERN FAMILY NON-DROWSY Nasal Decongestant PE 18 CT. **\$1.29**
- WESTERN FAMILY MINT OR PEPPERMINT Mouthwash & Gargle... 33.8 OZ. **2\$4** for
- WESTERN FAMILY SELECT VARIETIES Toothpaste... 6.4-8.2 OZ. **2\$3** for

Fischer's Quality Meats

PREFERRED TRIM BONELESS BEEF
Top Sirloin Steak **\$3.99** LB.



PILGRIM'S
Drumsticks or Thighs **78¢** LB.



FARM RAISED, RAW
Catfish Nuggets **\$1.99** LB.



BUTTERBALL, MARKET SLICED
Lemon Pepper Turkey Breast **\$3.89** LB.



- SHURFINE BEEF Bologna... 12 OZ. **\$1.69**
- SHURFINE THIN SLICED CHICKEN, Turkey or Ham... 2 OZ. **49¢**
- SHURFINE REGULAR OR HOT Whole Hog Sausage... 1 LB. **\$2.29**
- BOLOGNA, CHOPPED HAM & SMOKED TURKEY Oscar Mayer Variety Pack... 1 LB. **\$2.59**
- OSCAR MAYER REGULAR OR Cajun Chicken Breast... 8-9 OZ. **\$2.99**
- FISCHER'S CURED Smoked Bacon... LB. **\$3.49**
- SHURFINE Beef Franks... 12 OZ. **\$1.99**
- SHURFINE Meat Franks... 12 OZ. **89¢**
- SHURFINE Bologna or Salami... 12 OZ. **\$1.09**

Fresh Produce

- FARM FRESH Cantaloupe Melons... 2 FOR **\$3**
- SEEDLESS OR GLOBE Red Grapes... LB. **98¢**
- CELLO PACK Baking Potatoes... 4 CT. PKG. **98¢**
- BRAEBURN, FUJI, GALA, GRANNY SMITH OR RED DELICIOUS Bagged Apples... 3 LB. BAG **2\$3** for
- BAGGED Navel Oranges... 4 LB. BAG **2\$5** for
- FRESH BAGGED Mandarin Oranges... 3 LB. BAG **\$3.99**
- FRESH Green Broccoli... LB. **99¢**
- SLEEVED Crisp Celery... EA. **99¢**
- FRESH GOLDEN Pineapple... EA. **\$2.99**
- JUICY Fresh Blackberries... 6 OZ. **2\$5** for
- HEARTS OF ROMAINE, TRIPLE HEARTS, OR 5-LETTUCE MIX Fresh Express Salads... 2 FOR **\$5**
- JUMBO SWEET ITALIAN Red Onions... LB. **99¢**
- FRESH Sweet Potatoes... LB. **99¢**

Dairy & Frozen Foods

- ASSORTED FLAVORS Shurfine Ice Cream 56 OZ. SQUARE **\$1.48**
- CRUNCHY OR BATTERED FILLETS, OR CRUNCHY STICKS Shurfine Fish 19.2-24 OZ. PKG. **2\$7** for
- BLUE BELL Fruit Bars... **\$1.89**
- SHURFINE REDUCED FAT BUTTERMILK OR Chocolate Milk... HALF GAL. **2\$4** for
- SHURFINE SELECT FLAVORS Jumbos Biscuits... 8 CT. **98¢**
- SHUR SAVING CREAMY Whipped Topping... 8 OZ. **99¢**
- SHURFINE 16 OZ. BLACKBERRIES OR 24 OZ. Sliced Strawberries... **\$2.99**
- SHURFINE DEEP DISH 9 INCH Pie Crusts... 12 OZ. **2\$5** for
- SHURFINE MINI COBS Corn on the Cob... 8 CT. **2\$4** for
- SHURFINE SELECT VARIETIES Frozen Vegetables... 32 OZ. **\$1.89**
- SHURFINE SMALL CURD Cottage Cheese... 24 CT. **2\$5** for
- SHURFINE ORIG. OR 1/3 LESS FAT Cream Cheese... 8 OZ. **4\$5** for
- SHUR SAVING AMERICAN Sandwich Slices... 10.6 OZ. **\$1.29**
- ASST. VARIETIES CHUNK, HALFMOON, OR SHREDDED Shurfine Cheese... 8 OZ. **2\$3** for
- SHURFINE SUGAR OR CHOCOLATE CHIP Cookie Dough... 16.5 OZ. **\$1.99**
- SHURFINE Cinnamon Rolls... 8 CT. **2\$3** for

750 ML BOTTLES
ASST. VARIETIES, CALIFORNIA WINE
Beringer Wine **\$5.69**

ASSORTED VARIETIES
Dr. Pepper Products **4\$5** for
2 LITER BOTTLES

6 PACK BOTTLES
ASST. VARIETIES, GERMAN IMPORTED
Paulaner Beer **\$8.00**



24 PACK CANS
Miller Lite, Coors or Coors Light **\$21.00**

