

WEATHER

August 24	90	66	.00
August 25	90	63	.00
August 26	95	62	.00
August 27	93	68	.00

BAILEY COUNTY JOURNAL

'The Community Of Opportunity-Where Water Makes The Difference'



Vol. 26, No. 34

10 PAGES TODAY

Published Every Sunday At Muleshoe, Bailey County, Texas 79347

20¢

Sunday, August 28, 1988

Vice President Hopeful On Campaign Trail



Three more back-to-back meetings are scheduled for the Board of Trustees of the Muleshoe Independent School District to start off this week.

On Monday, the board will be meeting at 6:30 p.m.; they will meet at 12 noon on Tuesday, August 30 and will meet at 1 p.m. on Wednesday, August 31.

On Monday, August 29, at 7:30 p.m., the Muleshoe Fine Arts Boosters will hold their first fall meeting in the fellowship hall of the 16th and Avenue D Church of Christ.

Parents of junior high and high school fine arts students, including all band, speech and art students are urged to attend.

All proceeds from the Fine Arts Boosters go to the students of band, speech and art.

From the Three Way School, inservice for all new employees will be on Tuesday, August 30, beginning at 8:30 a.m.

All employees will have an inservice day at 8:30 a.m. on Wednesday, August 31 in the cafeteria.

Lunch will not be served on those days.

Workdays will be held September 1-2. Coffee and donuts will be served at 8 a.m. with the workday getting underway at 8:30 a.m.

Teacher aides at Three Way this year are Frances Duarte, Oleta Richardson, Armida Martinez, Chris Hodnett, Cathy Martha, Beverly Turney, Connie Carsten, and Fredia Lowe.

Dusty Prairie and Progress Extension Homemaker Clubs will jointly sponsor a Truck Load Fabric Sale on Friday, September 2, 9 a.m.-6 p.m.

It will be in the old Western Auto Store building at 318 Main.

Sgt. Charlie Simmons of Plainview, of the Texas Department of Public Safety, said, in the month of July, our troopers investigated no fatal accidents and no personal injury accidents, with six property damage accidents.

Watson Junior High School Coach Roy Donaldson said eighth Cont. Page 6, Col. 1



WHAT A WAY TO END A FOOTBALL PRACTICE--They came off the field soaked in their own sweat, but, ended the practice just right. As they came off the field behind the bleachers, members of the Muleshoe Athletic Booster Club were waiting with cool watermelon. Here, a group of the players are exhibiting their enjoyment over their watermelon feast. Those enjoying the watermelon also included injured players, who are unable to workout and the Muleshoe Varsity and junior Varsity cheerleaders. They all 'got in one the act' Thursday evening. (Journal Photo)

Lan Bentsen Visits Here; Speaks For Dukakis-Bentsen

Lan Bentsen, the second son of Senator Lloyd and Mrs. Bentsen was a visitor in Muleshoe Thursday afternoon.

Lan Bentsen is from Houston, a graduate of the University of Texas and Harvard Business School. He is chairman of Sovereign Management Corporation, and is spending much of his time 'stumping' for his father's dual candidacy. Sen. Bentsen is seeking re-election as Senator, and is also the Democratic candidate for vice president with Massachusetts Governor Mike Dukakis' candidacy for President of the United States.

Personable and well-versed in

all the issues, Lan Bentsen also has a distinguished career of service to Texas.

He chairs the Texas Foundation for Human Services and co-chairs the Texas Coalition for Maternal and Child Health, and served on the select committee for Medicare and Family Services.

"Lloyd Bentsen has been an excellent Senator for Texas and an excellent Senator for Muleshoe for the past 18 years," he said.

The younger Bentsen spoke of his father's work to obtain a Trade Bill for the U.S., the first in more than 40 years.

In speaking of the Trade Bill, he commented, "The Trade Bill practice can affect national defense. For instance, take a government that pays the farmer 20 cents for sugar, then dumps it on the market for eight cents. That wipes out the sugar crops from Central America, by using unfair trade practices."

"The French thus damage Central America by their trade practices."

He spoke of the Windfall Profit Tax and OPEC, citing and updating what has happened with the world's oil supplies Cont. Page 6, Col. 1

Tuesday Set For Annual Meet The Mules

"Each year, the athletes of the Muleshoe School District put out their best for you, just for the pleasure of playing the game," said a spokesman for the Muleshoe Athletic Boosters Club. "Now, on August 30 at 7:30 p.m. at the Benny Douglass Stadium, we have a chance to meet some of these athletes and let them know what a good job they have been doing. Come out and get to know these young people and eat ice cream with them."

He added, Remember! The time has been changed from 8 p.m. to 7:30 p.m. Come out and buy a Muleshoe Mule cap to wear to the games and show these young men that we support them.

Hubert Kidd and George Washington have been named the marketing co-chairmen for the cap sale.

Kidd said the caps are a winter type black corduroy with white lettering, and are selling for only \$5 each.

Following the "Meet The Mules" will be a meeting of the Athletic Boosters. They will meet every Tuesday at 7:30 p.m., beginning on September 6.

As a reminder, be sure to buy a signature ad for the football program, and have it to a member of the Athletic Booster Club by "Meet the Mules" night.

[See you at the games]

Hunt Dates For Fall '88

Are Released

Area hunters are gearing up for the dove season, which begins Thursday, September 1, and closes on November 9.

Shooting hours will be one-half hour before sunrise to sunset, and the daily bag limit is 12 mourning, white-winged and white-tipped doves in the aggregate to include no more than two whitewings and two whitetips; possession limit is twice the daily bag limit.

Antelope permits are for an October 1-9 season, with one antelope allowed with the permit.

Pheasant season in Bailey County is December 10-25; with two cocks per day the limit; and four in possession.

Fifteen quail per day is the daily bag limit for the October 29-February 26 season. No more than 45 quail can be in possession.

Producers Facing Trouble For Weed-Filled CRP Land

Information from the Bailey County ASC office includes the following:

MEASURING SERVICE
Remember!! As soon as the ASC gets your farm measured, you will be notified of the measured acreage and have only five workdays in which to adjust (if any) and certify your acres in this office.

You are asked to notify the ASC office if you have to adjust prior to plowing anything up.

If you requested measurement service on corn, please be sure that the ASC has completed the measurement service before cutting it for silage. If you are ready to cut silage before you are notified of the measured acres, give the ASC a call and they will try to complete the service so you

can certify.

MAINTENANCE OF ACR AND CRP

The ASC is still making ACR and CRP maintenance spot checks. They have found that many of you are pushing your luck and walking on a thin line by not taking proper care of this land, (especially CRP). Proper weed control measures must be carried out.

INTEREST RATE

The loan interest rate for August is 7.625 percent.

LOAN RATES

The 1988 loan rates for Bailey County have been established for the following commodities: Grain Sorghum - \$3.35 per cwt., Corn - \$2.09 bu., Soybeans will be announced at a later date.

DISASTER

AFFECTED CROPS

Congress is considering legislation that, if enacted, would authorize disaster payments for participating and non-participating farms. The legislation under consideration also includes provisions for disaster payments for all commercially grown crops.

Any producer who plans to harvest disaster affected participating or non-participating grain crops or soybean acreage for other than grain or beans, should request an appraisal before making any other use of the crop.

This would include any corn cut for silage or grain sorghum grazed or baled for livestock feed. Disaster affected cotton that will not be harvested will also need to be appraised.

Cont. Page 6, Col. 4

In Profile

When It's A Matter Of--Life Or Death!

(Editor's Note: The following story was obtained by Leigh Rudy, in an exclusive interview for *The Bailey County Journal*. The journalism student from Texas Tech University's School of Mass Communication has been working in the Muleshoe area on a grant from Reader's Digest. This is the fourth of five articles written for *The Journals*. Her approach to various activities around Muleshoe has been fresh and new.)

Maybe you have looked overhead after hearing the buzz of the St. Mary's Flight for Life helicopter and wondered about its purpose and where it was going.

"Flight for Life is a secondary response unit," said Bill Holland, chief flight nurse and program director. "We receive requests from doctors, nurses, highway patrolmen and people like that."

"We strictly deal in emergency flights. When we get a

call, it is a life or death matter," he said. "The helicopter is staffed by a paramedic, a registered nurse and a pilot."

"The nurse is the primary team leader, because the majority of our flights are ICU hospital-to-hospital transfers. If we have a patient in an ICU who is on ventilators, we have tubes and medications going that a paramedic is not been trained to do," Holland said. "Paramedics do assessments, administer medication and interpret the heart monitors."

"We have an efficient team situation because we have flown so many flights now, that the nurses have trained the paramedics and the paramedics have trained the nurses," Holland said.

"Flight for Life flies to rural areas within 200 miles of Lubbock," he added. "We work with areas like Muleshoe and Wolforth."

"Muleshoe is bigger than a lot of other towns. They have nice

facilities and full-time people," he added, "plus, during the day, there is always someone there with the ambulance."

"In some towns, such as Wolforth, there is no one with the ambulance, and when a call comes in, they have to get in cars and go to the emergency vehicle," Holland said.

"Because of Randy Watkins, a paramedic who splits time between Muleshoe and the Flight for Life program, we may work closer with Muleshoe than other areas. When they have a critical patient, we meet them on the highway or fly to the hospital," Holland continued. "We work that way with every rural ambulance service."

"The helicopter is just like a care unit in a hospital. It has ventilators, IV pumps and 80 different medicines on board," he added. "We supply Activase (TPA) to the hospitals. When administered, this drug finds the blood clot in the body and dissolves it. TPA is a new drug,

and has been used several times at the Muleshoe hospital before the patient is transferred to Lubbock."

Since acquiring the drug very recently in Muleshoe, it has been administered to four patients, and has been credited with saving the life of each patient, who was subsequently transferred by helicopter to Lubbock for more intensive treatment.

"It is important to remember that the helicopter is not effective unless there is a strong tertiary care center such as St. Mary's," Holland continued. "You must have a hospital that can care for the type of patients the helicopter brings in."

"Lubbock has turned into a medical center, and St. Mary's is a primary leader," he said. "We have pediatric, adult, neonatal and cardiac units, as well as trauma teams."

"Flight for Life began January 1, 1987," he said, "and, we have since flown close to 700 flights, averaging about 45 each month."



STN... or LIFE

Nursing Home News

By: Joy Stancell

Thursday morning Clara L. Jones, Zora M. Bellar, Jackie Johnson, and Nicolas came to have gospel music with the residents. This is a time to sing and share thoughts and feelings.

Thursday afternoon we had a burrito feast. Vickie demonstrated and made flour tortillas. The residents created their own burrito from an array of blurrito fillings. Special guest were Lena Hawkins, Winnie Berry and Lucy F. Smith.

Friday morning Lena Ruthardt showed an interesting and entertaining film from the

library. We also enjoyed the sandhill plums she brought us to sample. We enjoyed sharing jelly recipes.

Sunday afternoon the New Covenant Church came to visit and sing and play gospel music.

Bernice Holderman came Monday and gave Edith Goucher a new perm.

Marlene Harper's daughters, Dana and Andrea and family have been here visiting.

Birdie Warren was visited by her pastor Tuesday afternoon. Rev. Mac Bearss of St. John Lutheran Church in Lariat.

Ruth Clements, Laverne James, Olive Cox, and Irene Steinbock came Tuesday to shampoo and set the ladies hair.

Johnny Miller came Tuesday

afternoon and played Skip-Bo with Lois Ethridge, Effie Smith and Mamie Askew.

Wilma Clements went out Monday with her husband to the beauty shop. Her grandson visited her Tuesday afternoon.

Julia Hawkins was visited by her daughter, Alma Crim, last week.

Clara Weaver's daughter-in-law, Cheryl Weaver, visited her Tuesday. She was also visited by Effie Smith and her husband, Quinn Weaver.

Johnny Chappell was visited by his wife and grandson several times last week.

The ladies shelled black eyed peas Tuesday afternoon. They will be cooked in the kitchen for the residents. Our thanks to Jackie Johnson for bringing the fresh produce.

Lois Ethridge celebrated her birthday Monday, Aug. 22nd. She attended the J.O.V. Choir meeting at the First Baptist Church with Clara L. Jones Monday night.

Steve Claybrook and his daughter, Kayla, came Friday afternoon to visit, sing and play gospel music and to share scriptures from the Bible with the residents.

Who were those ladies



GARDEN SPOT OF THE WEEK--This flower bed with its petunias in full bloom surrounding a bird bath in the front yard of Mr. and Mrs. W.L. Bartley, 1705 West Avenue H proudly sports the "Garden Spot of the Week" sign after being chosen as the Garden Spot of the Week by the Jennyslippers.

(Journal Photo)

helping the residents shell peas Tuesday? Ask Lucy Faye Smith, Joylene Costen and Lois Baldwin.

We are so happy to have Cari Kidd back with us after her vacation.

Awilda Hayes, our D.O.N. celebrated her birthday Tuesday.

Ruth Williams had a birthday Tuesday. She received several birthday greetings from friends and family.

Inez Algood was visited by Dr. and Mrs. Homer Algood and

Elaine Damron last week. She was busy shelling peas Tuesday.

Our thanks to Joylene Costen for the cups of ice cream for the residents.

Shop
Muleshoe
First

Filter Queen
Eureka • Kirby • Hoover • Hoky
Repairs On All Makes And Models

CLOVIS VACUUM CENTER
TOMMY BURKETT, Owner
New, Used & Rebuilt
Sales

703 East Grand
Clovis, NM 88101

Telephone
(505) 762-6580



Happy
2nd
Birthday
Corey Allen
DePalma
Love, Mom

TO THE PEOPLE OF MULESHOE;

This is a great town for a person to live in. In our recent loss of our husband and father, Bill Franklin, Muleshoe showed the Franklin family all the support that a small town could give. We wish to take this time to tell all of Muleshoe, Plainview and Lubbock thank you for your prayers, support, food and your love in our recent loss of our father and husband.

The Franklin Family

END OF SUMMER SALE

CORDOVAN 12 Volt
24 or 24F GP
5000 Series
Battery
Just: **\$34⁹⁹**
3 yr - Pro Rated Warranty
GB1183
GB1193
(Exchange Required)

Universal Running Boards
#39951
Only: **\$44⁹⁹** Reg. \$61.99
Installation Available
Clovis & Portales Only

BIG BUGGER
60" Of Protection
Just in Time!
Now: **\$24⁹⁹**
Choose from:
Clear or Smoke
Red or Blue

15 Watt
GALAXIE
BUG MACHINE
Bug Fighter
#PM-1500
Only: **\$21⁹⁹**

300 Watts
QUARTZ-HALOGEN
Floodlights
Sale Price **\$14.99**
Mfg Refund **-\$4.00**
Your Final Cost **\$10⁹⁹**
#DR300Q/6
Reg. \$20.99

PEERLESS FAUCET
3 Hole Chrome
w/o Spray "Faucet Sale"
For: **\$39⁹⁹**
Reg. \$44.99
MODEL 8200

2 Handle Faucet w/spray
Washerless Faucet
#203
At: **\$19⁹⁹**
CRYSTAL CLEAR HANDLES™

10 AMP Battery Charger
#SE-40M
Only: **\$34⁹⁹**
With overcharge protection.
Recharges batteries in 3-7 hrs.

End of Summer
CLEARANCE
Prices on All Our
Lawn Mowers & Air Coolers
SAVE UP TO
20%

White-Eight Spoke Wheels
15x7 Just: **\$27⁹⁹**
15x8 Just: **\$28⁹⁹**
Chrome Eight-Spoke Wheels
15x7 Only: **\$40⁹⁹**
15x8 Only: **\$41⁹⁹**

Cat Food
10# Bag
Just: **\$3⁹⁹**
30% Protein

Chunk Style
Dog Food
For: **\$8⁹⁹**
Reg. \$9.49
50# Bag

A&M FARM & RANCH SUPPLY

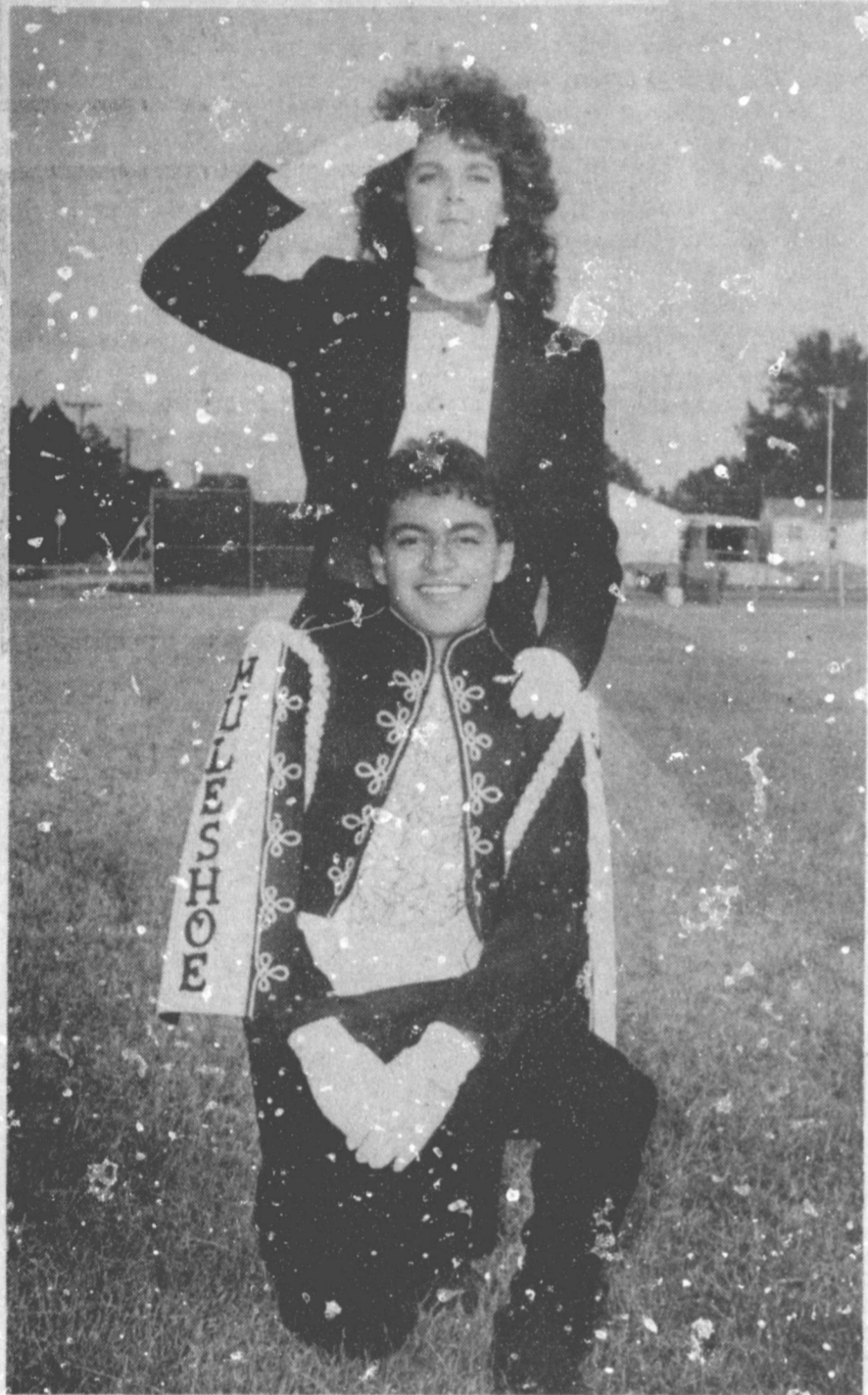
2600 Mabry Dr. Clovis, N.M.
1-505-762-7717
1601 S. Ave. D. Portales, N.M.
1-505-356-8543
1302 W. American Blvd., Muleshoe, Texas
1-806-272-5571

All Stores Open
Monday-Saturday
7:30 A.M. - 6:00 P.M.
Sundays
12:30 - 5:00 P.M.
Sale Good Through
September 3rd, 1988
Major Credit Cards Accepted
Term Financing is Available

Biggest 'Fair' Ever Expected

September 8-9-10

The ninth annual Bailey County West Plains Fair is scheduled for September 8-10 at the Bailey County Coliseum in Muleshoe. In conjunction with this year's fair will be the 75th Birthday celebration for Muleshoe.



THE LEADERS OF THE BAND--Ronnie Gail Barrett, standing, is the drum major for the 1988-89 Mighty 'M' Marching Band for Muleshoe High School; and Danny Rodriguez, kneeling, is the assistant drum major. The band is very busy before school starts practicing on an almost daily basis.

(Journal Photo)

"You are invited to attend, and join in on all the activities," said Spencer Tanksley, Bailey County CEA-Ag; and Kandy McWhorter, CEA-HE. "Everything is free and open to the general public."

The following schedule of events has been planned for this year's Bailey County West Plains Fair:

September 8 - All fair entries must be brought to the Coliseum between 9 a.m.-9 p.m. Commercial booths may be set up during these hours also; September 9 - Judging of exhibits and booths from 9 a.m.-noon; September 9 - Fair is open to general public 1 p.m.-7 p.m.; September 10 - Fair is open to general public 10 a.m.-6 p.m.; September 10 - 75th Birthday Cake cutting at 2:30 p.m.; September 10 - All exhibits can be picked up at 6 p.m. Items not removed will be turned over to the Fair Board.

Exhibits to the fair will be accepted from adults and youth (18 years old or under) who live in Bailey. Parmer, Lamb or

Cochran Counties.

Entries will be accepted in the following areas: agriculture, textiles, arts and crafts, culinary, canning, food preservation and fine arts.

A special cash prize of \$50 will be given this year by the Muleshoe Jennyslippers to one lucky exhibitor who enters exhibits in the Fair.

Tanksley and McWhorter said, "Each year the fair has gotten a little larger, so we want to encourage everyone to come out and help make this our best year ever. Fair catalogs are available at the Bailey County Extension office with more details on the types of items which can be entered."

The Muleshoe Rotary Club will be handling the commercial and food booth reservations. Anyone interested in setting up a booth should contact R. D. (Dick) Chitwood at 272-5097. The county agents said educational booths add greatly to the Fair such booths are greatly encouraged.

Immunizations Needed For School Age Children

Are your children immunized? You should ask yourself this question for two important reasons, says the Texas Medical Association.

First, children must receive vaccinations for six diseases -- diphtheria, tetanus, polio, measles, mumps, and rubella--before they can enter Texas elementary and secondary schools. Also, pertussis (whooping cough) vaccination is required for children less than five years of age, and certain vaccinations must be given to children who are entering day or child care centers.

Secondly, and most importantly, TMA urges parents to immunize their children because the vaccines protect them from diseases that can cause permanent disabilities or even death.

The immunization series should begin when a child is two

months old. The process continues until they are about five years of age, and booster shots for tetanus and diphtheria continue throughout life.

For more information about immunizations, contact your physician or the local health department. For a free brochure, "Immunizations, Investing in a Healthy Future," write Texas Medical Association, Public Relations Department, 1801 North Lamar Blvd., Austin, Texas 78701.

The Texas Medical Association is a professional organization with more than 78,000 physician and medical student members. It is located in Austin and has 116 component county medical societies around the state.

Video On Swans Shown Kiwanis

By: R. A. Bradley

Twelve members were present for the Friday morning meeting of the Muleshoe Kiwanis Club at the Old Corral.

President Keith Turner called the meeting to order with Lyndon Huckaby leading the club in the pledge to the flag and Don Martin giving the invocation.

Dale Berry had the friendship coin, but was absent, so someone will have to wait to receive the coin.

"Swan Blues" was the name of the video presented by President Keith Turner.

According to the tape obtained from the Muleshoe National Wildlife Refuge, swans were in big numbers, but have fallen to a very low number.

The film showed the ones nesting in Yellowstone National Park. The swans are decreasing because of some disease that is unknown to the refuge researchers.

There are now about 600 swans, but the number continues going down hill.

This was a very good video and was enjoyed by all present.

BACK-TO-SCHOOL

Coca-Cola Sweaters
reg. 45.00

\$19.95

B. Jay's

309 Main - Clovis

A special prize will be awarded to the best commercial and best food booth by the Muleshoe Rotary Club. The cash prizes will be \$50 for the commercial booth and \$25 for the food booth.

At the present time, more activities relating to the 75th Birthday Celebration are being planned and a more detailed time schedule of these events will be forthcoming as they develop.

Special gift certificate prize drawings, sponsored by the Muleshoe Rotary Club, will be held each day of the fair. Drawings for \$50 gift certificates will be held on Friday at 2, 4, and 6 p.m. and on Saturday at 10

a.m., 12 noon, 2, 3, and 4 p.m. The final drawing at 5 p.m. on Saturday will be for a \$100 gift certificate. These gift certificates will be redeemable at participating commercial businesses.

The Muleshoe Rotary Club will also be selling chances for a 41-inch color television set between now and the fair. It will be given away at 5 p.m. on Saturday, September 10. Other special drawings by businesses will be held at this time.

The fair is sponsored by the Bailey County Extension Program Council, the Muleshoe Rotary Club and the Bailey County Commissioner's Court.

CLIP & SAVE

ATTENTION

TO ALL CARRIER ROUTE SUBSCRIBERS!

Murray Lemons now has all the carrier routes for the Muleshoe Journal & Bailey Co. Journal

272-4608

CLIP & SAVE

it's
School Time

Beat The Back To School Heat

With Our Delicious Hand-Rolled Waffle Cone

From The Spudnut Shop.

We Make Your Choice Of Over 200 Different Flavors

While You Watch.



Spudnut Shop

328 Main



Made From Old Fashioned Hard Pack Ice Cream.

Spudnut Shop

Muleshoe

272-3542

Bailey County Journal USPS 040-200

Established March 31, 1963. Published by Muleshoe Publishing Co., Inc. Every Sunday at 304 W. Second, Box 449, Muleshoe, Texas. 79347. SECOND CLASS POSTAGE paid in Muleshoe, Texas. 79347. U.S. Post Office approved.

TA
MEMBER 1988
TEXAS PRESS ASSOCIATION

Member
NATIONAL NEWSPAPER ASSOCIATION
WEST TEXAS PRESS ASSOCIATION

L. B. Hall, President & Publisher
Symmye Hall, Vice President & Controller
Cleta Williams-News Evelene Harris-Society
Lillie Nino-Bookkeeping

SUBSCRIPTIONS
Muleshoe Journal and Bailey County Journal
Muleshoe By Carrier \$12.50
Muleshoe Journal and Bailey County Journal
Bailey County & Surrounding Counties By Mail \$14.75
Muleshoe Journal and Bailey County Journal
Elsewhere in Texas \$18.50

Advertising rate card on application

MEMO:

You Are Invited To
Bailey County Farm Bureau's

Annual Meeting
Saturday, Sept. 10, 1988

At The
Muleshoe High School Cafeteria
400 W. Ave. G.

Free Meal Of Bar-B-Q
And Home Grown Vegetables
Serving Begins At 6:30 p.m.

Drawings For Door Prizes!
High School Citizenship Students
Will Speak!

Election Of Four Directors!
Come To The Convention & Let
Your Ideas Be Heard!



Ben Franklin
PRESENTS A

1/2 PRICE

BUTTERICK PATTERNS

SALE



Sale
Good Aug. 27th thru Sept. 7th

6450

Ben Franklin
Better quality for less

2104 N. Amer. Blvd. 272-3855

Mon.-Sat. 8 a.m.-8 p.m. Sun. 12-5 p.m.



SAVAGES COME TO TOWN---Have you met any of these Savages? The Savages were one of the teams at the Jennyslipper family social Tuesday night. Following games of miniature golf, home made ice cream and cake was served to the Jennyslippers and their families. (L-R) Back Row: Linda Tosh, Kimberley Chance, Patsy Chance, Thursie Reid, Norma Bruce, Margie Goforth and W.E. Goforth; Front Row, Ellen Ladd, left, and Billie Downing.

Jennyslippers Enjoy Annual Family Social

It was a fun filled evening Tuesday night when the Muleshoe Jennyslippers and their families gathered at the Putt Golf Course for their annual family social. Dividing into six teams the group enjoyed a hard fought game of miniature golf, followed with cake and home made ice cream. The teams were The Die-Hards, Try-Hards, Turkeys, Missfitts, Pooped Putters, Savages, and The Whiz Kids.

Donna Kirk, president, conducted a short business meeting before the motion was made to adjourn and hold a special called meeting at noon on Thursday.

Mrs. Kirk also called the business meeting to order at noon Thursday and Ellen Ladd read the minutes of the previous meeting.

The first item of business on the agenda was a discussion on the Bailey County Fair. The Jennyslippers will have two booths, with one selling inflatable and another one selling food. The history book committee will also have a booth where they will be serving coffee and giving the public one last opportunity to purchase their history book. Books are on sale for \$55.00 through the fair and will sell for \$75.00 after the fair. The committee would like to encourage everyone to go by the booth and make their purchase if they haven't already done so. This book will be a large hard backed book with gold lettering and if you would like you may have your copy personalized with your name in gold lettering for an extra five dollars. If you would like one of these family heirlooms go by and have a cup of coffee and visit with one of the representatives.

Also on the agenda was the selection of three more judges for the "Garden Spot of the Week". Each week garden spots which have been nominated (within a two mile radius of Muleshoe) are judged with the judges favorite garden spot sporting a sign for a week designating it as the "Garden Spot of the Week. If you haven't nominated your favorite garden spot you are encouraged

to call the Chamber of Commerce office and do so. The Jennyslippers will be sponsoring this contest through September.

Three members of the local organization are planning to attend the Regional meeting on Saturday, Sept. 10 at Memphis, TX.

Plans for Muleshoe's 75th Birthday Celebration were also discussed. Being held in conjunction with the county fair on Sept. 8, 9, and 10. Birthday activities already planned include: Period Costume Contest, Judging at 1 p.m. on Saturday; Pet Show, 2 p.m. Saturday; Birthday Cake Cutting, 2:30 p.m. Saturday; Bar-B-Q at the American Legion Hall, 3 to 6 p.m. Saturday; Window Decorating Contest; and hourly drawing for prizes, which will include a \$50.00 prize from the Jenny-

slippers. Possible activities include: Bandage Contest, Washer Pitching Contest, Old Time Fidler's Contest, Petting Zoo, Water Polo, Remote Control Planes, Mule Wagon Rides, and entertainment (Square Dancers/Gymnastics.)

During the last noon meeting of Jennyslippers, Lonnie Adrian from Adrian Photography took a group picture of the Jennyslippers for the history book and Billie Downing reported that any member wishing one may purchase it for \$7.50.

Evelyn Peat reported that a tour bus will be coming through Muleshoe on June 2, 1989, with approximately 40 tourist. They will be staying at the Heritage House Inn. The Jennyslippers voted to cater their evening meal on Friday. She also stated that if this tour was successful, there will possibly be two tours conducted each year. Everyone is encouraged to work hard at making this tour successful, thus giving the entire Muleshoe area a boost.



AUGUST BIRTHDAYS AT NURSING HOME---Connor Burford (Left) and Ruth Williams (Right) were honored with a birthday party Thursday afternoon in the day room of the Muleshoe Nursing Home hosted by the Needmore Community Club. Music was provided by the Needmore Community Club and Mr. and Mrs. J.D. Shanks with a special song by Janie Moraw. Decorators Floral and Gift provided the flowers. Burford was born on August 24, 1895, and Mrs. Williams was born on August 23, 1910. Two other residents who were unable to attend the birthday party also celebrated their birthdays, Edith Bruns, born August 1, 1889, and Lois Ethridge, born Aug. 22, 1917.

Library News

by Anne Camp

Registration for children age three to five will begin on Wednesday morning, September 7th at 10 a.m. Children must be accompanied by a parent this first day. Thereafter, storyhours will be held every first and third Wednesday of each month during the school term. The second Wednesday is reserved for the children from the Methodist Day-care center.

Storyhours are filled with activities geared for this age-stories-old and new, songs,

learning games, movies, usually a small treat. This fall the library will also have a "Read to Me" version of the Texas Reading Club held during the summer for older kids. This will help children to enjoy having books read to them at home, and they will receive a certificate when 12 books are read and reported. If they continue, stars will be added to their certificate, and at the close of the program in November, awards and prizes will be given.

The Muleshoe Young Homemakers will sponsor and help with the third week storyhours again this year. This has been a project of their club for several years and we really appreciate their help-our hats are off to this fine group of civic-minded young women!

The library will be closed on Sept. 5th for Labor Day.

Rebekah Lodge News

Muleshoe Rebekah Lodge No. 114 met Tuesday night, Aug. 23 in their lodge hall with nine members present.

Due to the absence of the Noble Grand, Audrey Langfitt, Vice Grand, presided over the meeting. Fern Davis, acting Chaplain, gave the opening prayer and June Green, secretary, called the roll and read the minutes of the previous meeting.

A memorial was sent to one of the Lodge supported homes in memory of Bill Franklin.

Novella Price and Ina Wilemon gave a report on the "Degree Under the Stars" Aug. 20 in Clovis, N.M.

Seventy-nine Oddfellows and Rebekahs registered from the eastern New Mexico and West Texas area, and included seven Rebekah's and three Oddfellows, from Muleshoe.

Refreshments were served by Opal Talley and Novella Price.

Read the Classifieds

Entire Remaining Stock Of Summer Merchandise

1 / 2

PRICE

Lookin' Good

206 Main

Phone 272-5052



WESTERN WEAR IN TEXICO
314 Wheeler Ave. 482-3363
Open 8 am - 6:30 pm CDT

Fall is in the Air!

- * Sweaters
- * Slacks
- * Skirts
- * Mix-n-Match Coordinates
- * Jackets

INTRODUCING OUR NEW LADIES APPAREL

Rocky Mountains \$26.98

10% OFF All New Fall Ladies Wear

WE WILL BE CLOSED SATURDAY, SEPTEMBER 3, IN HONOR OF OUR DAUGHTER'S WEDDING. Thank You.

WE ACCEPT:

LAYAWAYS WELCOME

Special Purchase

Reebok® Hi-Top Basketball Shoes

Sale 29⁹⁹



Regular 57.00. Walk this way and save on first quality leather high-tops great for fashion or fitness! Choose white with green or grey accents. Sizes available in 6 1/2 to 10 1/2 only. Hurry, quantities are limited!

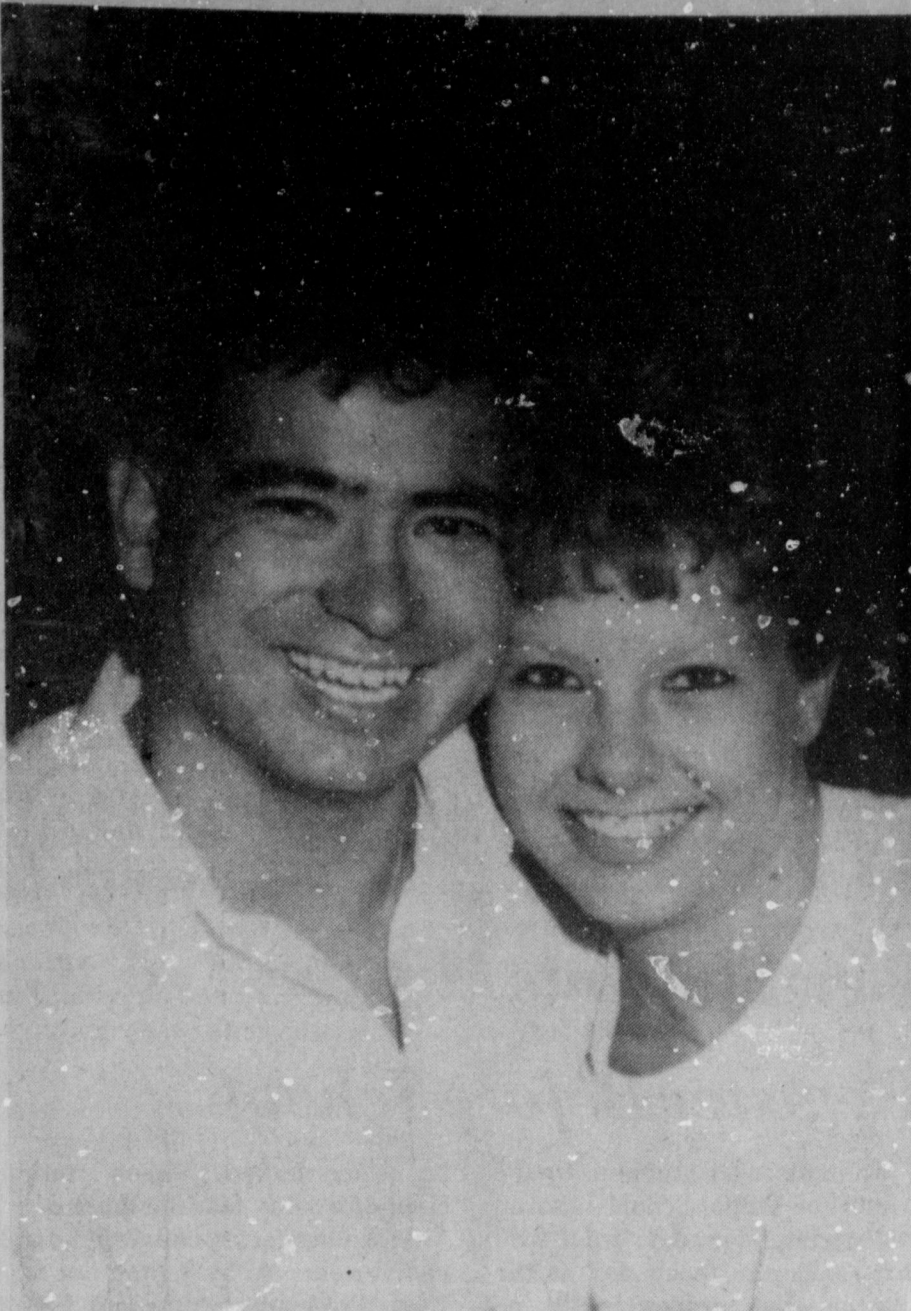
Open 9 a.m. to 6 p.m. Mon. thru Sat. Closed Sunday

Bentley's
Smart Fashion

Muleshoe

272-4119





MARRIAGE ANNOUNCED—Shirley Bean of Muleshoe and Mike Bean of Lubbock wish to announce the marriage of their daughter, Amy to Lonnie Scott, son of Sam Scott of Logan, N.M. The couple were married in Las Vegas, Nev. on Aug. 14. They were accompanied to Las Vegas by Shirley Bean, Tona Simnache, Gary Cates, Kim Nelson and Charlotte Scott. They will make their home in Eunice, N.M. where the bride is a student at New Mexico Junior College and Scott is coaching.

TOPS CLUB
Muleshoe TOPS Club chapter No. 34 met at 6:30 p.m.

Thursday, August 25 in the Heritage Thrift Shop. Laverne James, leader, called the meeting to order. The TOPS pledge was recited and the fellowship song sung. Mrs. James also led the group in prayer.

Minutes of the previous meeting were read by Aurora Mata, secretary, and they were approved as read.

Evelene Harris called the roll with nine members answering with the amount they had lost or gained.

Mrs. James was named best loser for the week. Best loser for the month will be crowned at the next meeting.

The meeting was closed with the singing of the goodnight song.

It is difficult to keep quiet if you have nothing to do.
—Arthur Schopenhauer.



420 Main

Lady You-Nique



MRS. DENNA PEREZ

Creative Living

by Sheryl Borden

Information on using a food processor to make desserts and tips on making homemade garments look like designer originals will be featured on "Creative Living" on Tuesday, August 30 and repeated on Saturday, September 3 at 2 p.m. on KENW-TV. (All times are mountain.)

Anne Greet is a consultant to Cuisinart, Inc., and she will show how versatile a food processor can be by preparing several dessert recipes. Even though food processors are in over 25 million American homes, many people still do not use them for all the tasks they could be used for. Anne lives in Dallas, TX.

Another guest will be Audrey Childress, and she conducts fashion sewing seminars across the country. She lives in Metairie, LA. Audrey will share some sewing techniques that will make garments made at home have the same look as the more expensive designer fashions.

On Tuesday, August 30 at 9:30 p.m. and on Thursday, September 1 at 12 noon, topics will include yo-yo quilting and microwave cooking.

Yo-Yo quilting is a fun project for any age and Mary Ellen Payne, Extension Home Economist in Clayton, NM will demonstrate how to create some exciting finished projects.

Nancy Boyle, home economist with Sharp Electronics, Paramus, NJ will demonstrate using a convection/microwave oven. She will explain the advantages as well as the disadvantages of cooking with the combination features.

"Creative Living" is produced and hosted by Sheryl Borden. The show airs on more than 100 PBS stations in the United States, Canada, Guam and Puerto Rico and is distributed by Pacific Mountain Network, Denver, CO.

AMERICA'S FAVORITE BROWNIES

2 oz. unsweetened chocolate, 1 C. sugar, ½ C. hot melted unsalted butter, 2 large eggs, 1 tsp. pure vanilla extract, ¼ cup all-purpose flour, ¼ tsp. salt, 1 tsp. baking powder, ½ C. walnut pieces.

Preheat oven to 350 degrees F. and butter the 8X8-inch pan. Break the chocolate squares in half. Chop the chocolate and half the sugar until as fine as sugar with the metal blade, pulsing 6 times and then processing 30 seconds.

With the motor running, add butter by the tablespoon through the small feed tube. After 4 tablespoons, pour the remaining

butter in a thin steady stream and process 1 minute. Scrape down work bowl. Add remaining sugar, eggs and vanilla and process 10 seconds. Scrape down work bowl and add the remaining ingredients. Pulse 6 times just to combine. Spread batter in prepared pan and bake 25 to 30 minutes. A toothpick inserted in the center should NOT come out clean.

Let brownies cool completely before cutting.

Baby Shower Honors

Mrs Danna Perez

The home economics room of the Lazbuddie School was the scene of a surprise baby shower on Thursday, Aug. 4 honoring Mrs. Danna Perez.

Special guests were the prospective grandmothers, Mrs. Mary Martinez and Mrs. Palastina Perez.

The room was decorated with an assortment of stuffed teddy bears.

Refreshments of strawberry-nut bread and strawberry-pine-apple punch were served from a blue and white lace-covered table. The centerpiece was a white teddy bear holding a heart, filled with blue and pink silk flowers.

The hostesses gift was a baby crib. Hostesses for the occasion included: Lisa Rodriguez, Mary Martinez, Darla Valdez, Diana Cozby, Barbara Lust, Evelyn Moore, Janice Bradshaw, Tammie Galaviz, Phoebe Davison, Coralynn Jarman, Vickie Burch and Belinda Steinbock.

It was reported that Mrs. Perez had another surprise when on Tuesday, August 9, her twin sons, Gregory and Andrew, were born.



MICROWAVE TIPS

Here are tips on what not to try in a microwave oven:

Don't try to cook large foods such as a 25-pound turkey. Most conventional ovens do it better.

Don't cook eggs in shells or even shelled boiled eggs.

Avoid cooking pancakes. They do not form a crust, although they will reheat well in a microwave.

Food in bottles with a narrow neck may shatter the bottle.



Sheila Black is back!
at
Chubbys Beauty Shop.
Just in time for the that
new fall hairstyle or
that back to school cut
and perm.

Sheila would like to
invite all of her friends
& customers to come
by or drop-in.

Tues. & Wed. Aug. 30 & 31 & then every
Wed. & Thurs.

Chubby's Beauty Shop

Chubby, Charlotte, Shelia, Liz & Vandi
214 W. 2nd 272-3976

Ben Franklin

Better quality for less

2104 W. American Blvd. 272-3855
Mon.-Sat. 8 a.m. - 8 p.m. Sun. 12-5 p.m.

Back-To-School Bargains

 Dr. Pepper 12 Oz. Cans 6 pk. \$1.49	 Scripto Pens & Pencils 99¢
--	--

Canvas Notebooks \$1.88	Cartoon School With Vacuum Bottle Lunch Kits \$4.79
---	---

We Are Your Headquarters For All Your School Supplies!

Construction Paper

Beginners Pencils	Composition Notebooks
Notebook Paper	Erasers
Scissors	Greenex
Map Colors	Rulers
Notebooks	Glue
School Boxes	Pens
Red Pens	Folders
	Crayons
	Red Pencils
	Protractors
	Compasses
	Felt Tip Pens
	Watercolors



It's Nice To Do Business With Friends...

You'll find a lot of your friends and neighbors are banking with First Bank.

And many of them have been banking with us for a long time. That's because we are a friendly bank dedicated to giving each of our customers the service that helps them most. If you're not already banking with First Bank, please come by and see for yourself how convenient and friendly a bank can be.

Friendly, Full-service... we're the one.



202 S. 1st

Member FDIC

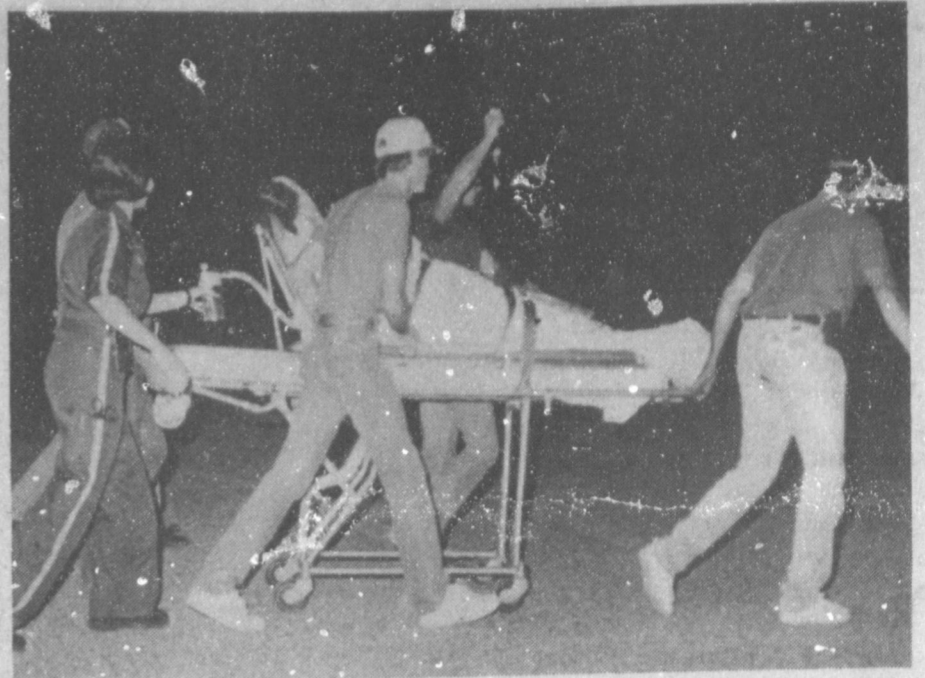
272-4515



RIBBON CUTTING HELD AT ANTHONY'S--A large crowd gathered at Muleshoe's C.R. Anthony Store Thursday morning for a ribbon-cutting ceremony for a re-opening of the newly remodeled store. Mayor Darrell Turner said the City of Muleshoe appreciates the investment Anthony's has made in Muleshoe, and cited their 35 years in Muleshoe. A tour of the store was conducted immediately following the ribbon cutting. (Journal Photo)



VICE PRESIDENT HOPEFUL'S SON VISITS--Thursday afternoon, several people were on hand at First Bank when Lan Bentsen, second son of Democratic vice presidential hopeful Sen. Lloyd Bentsen, visited in Muleshoe. From left, Dick Pylant, Bailey County Sheriff Jerry Hicks, and Bentsen. Bentsen gave the people present an example of what his father believes in, and would 'endorse' if elected. (Journal Photo)



HEADED FOR THE HELICOPTER--Randy Watkins, foreground, center, helps guide a gurney to the Flight For Life helicopter as it waits on the back parking lot at West Plains Medical Center. The patient is a cardiac patient being transferred to a Lubbock hospital. Watkins is employed by Flight for Life and by Bailey County Ambulance Service. (Journal Photo)

Campaign Trail

Cont. from Page 1

since around 1972.

Some 42 percent of the U.S. oil comes from OPEC now, he said, and the U. S. has less than 1,000 wells working and no incentive to keep producing oil, to the detriment of energy and national security.

Touching on health care for the elderly, Lan Bentsen spoke of his father's work on a catastrophic health bill for the elderly. Such a bill was approved through self-insurance, with no new taxes to help the elderly if and when catastrophic illness strikes.

He spoke of Mike Dukakis as a very strong individual. He said since Dukakis became governor

of Massachusetts, crime has dropped 13 percent, and Massachusetts murder rate is one half the national average.

According to Lan Bentsen, Mike Dukakis is very strong on law enforcement.

He said the state of Massachusetts also has the second lowest unemployment rate of any in the U.S., with Gov. Dukakis being a strong supporter of creating an environment to attract industry and put welfare people to work.

"People with jobs don't commit as many crimes, and are more drug free," he commented. "Mike Dukakis doesn't want to put out a tax dollar unless he can see a return on it."

Gov. Dukakis approach on welfare programs, is if they are able to work, train them and put them to work. He believes in training individuals, then putting them to work, and removing them from welfare roles, thus cutting welfare programs.

Bentsen said Mike Dukakis believes in a strong defense, and that research on the 'Star Wars' needs to be continued, but not forget about building up our conventional defense.

"Mike Dukakis is an advocate of gun control as it pertains to three things," added Bentsen, "and they are cop-killer bullets, plastic guns that can get through airport security and Saturday night specials. But, he is not against individuals owning rifles, shotguns and other guns."

He also touched on education, and said Mike Dukakis wanted to upgrade education on a national basis, citing that in the U.S., students attend school for 180 days; Japanese students attend school 240 days and Koreans, 250 days a year.

As he was making five stops on Thursday, Bentsen left shortly after meeting with some 15-16 people at First Bank. However, he did not appear to be 'rushed' or 'pushed' and left a positive image with those who met and talked with him.

Summit Savings Has Name Change To Sunbelt Savings

Last weekend, a large number of Savings and Loan institutions in Texas were taken over by a Savings and Loan in Dallas.

Monday morning, persons calling Summit Savings in Muleshoe were surprised when the phone was answered "Sunbelt Savings."

Darrell Turner, local manager, said all information was being released from the Dallas office, so in a telephone conversation with Sunbelt Savings FSB of Dallas on Thursday afternoon, Tom Wageman, president, made the following statement:

"We are delighted to be able to participate with the Federal Home Loan Bank Board and FHI Bank in Dallas in this important work.

"My colleagues and I are committed to realizing the goals and objectives for the new Sunbelt Savings FSB.

"Most importantly, I welcome

Profile...

Cont. from Page 1

Bailey County Ambulance Service in the past, and will probably be working in Muleshoe at various times in the future.

Another Flight for Life employee, Tim Wetzel, also works part time for the Bailey County Ambulance Service.

Since Flight for Life first came to Lubbock, it has made numerous flights to Muleshoe. Patients are generally picked up on the parking lot behind West Plains Medical Center. But, they have also transferred patients from the parking lot at the softball field south of KMUI Radio; from the highway between Muleshoe and Sudan; from the parking lot at the South Plains Hospital at Amherst; and from the highway between Sudan and Amherst.

And, when the high-pitched whine of the approaching jet helicopter is heard, it still draws crowds around the hospital. They are assisted by the local law enforcement officers from city, county and state officers, and by the Muleshoe Fire Department.

The emergency helicopters have been a welcome addition to the emergency medical field on the South Plains.

the opportunity to bring Sunbelt Savings philosophy of "NO Excuses. Answers." to our new customers in 89 cities from our 143 Texas offices."

The Dallas offices also said all local operations would remain the same as they were before being taken over by Sunbelt Savings FSB last weekend.

CPR Land...

Cont. from Page 1

Any producer who harvests disaster affected participating or non-participating grain crops or soybean acreage for grain or beans should request bin measurements if the crop is stored on the farm prior to making other use of the crop.

DROUGHT RELIEF HAY
USDA has announced the release of ACR and CU for payment acreage and CRP acreage in counties not now approved for emergency haying and grazing, if the vegetative cover removed is donated for drought relief. (Bailey is not approved). This is for donation only. The producer may not charge for the vegetative material or for services in making the vegetative material available, nor receive any benefit in exchange for material or services.

This is not for grazing, haying only.

Remember!! If you are interested in donating your hay, you MUST contact this office for further details and also call 1-800-DIAL HAY prior to haying any ACR, CU and CRP. Failure to contact the ASC office prior to haying ACR, CU and CRP will be treated as a violation of the provision for maintaining the cover crop.

FARM CHANGES
Any changes in operators, acreage, or mailing addresses should be reported to the ASC office so they may keep their records current.

Kindness has never yet done anyone serious harm.

If you're satisfied with yourself, take another look.

The best speaker is even better when he's brief.

New Students Must Register Before School

Students who are new to the Muleshoe Public Schools started registering Thursday, from 8:30 a.m.-3:30 p.m. each day at the campus the student will be attending.

Students in pre-kindergarten through second grade will attend Neal B. Dillman Elementary, third through fifth grade students attend Mary DeShazo Elementary, sixth through eighth grade students attend Watson Junior High School, and ninth through twelfth grade students attend Muleshoe High School.

Copies of birth certificates, health records, and social security numbers (if available) must be provided on registration.

To be eligible for kindergarten, children must be four years old by September 1, 1988 and must

be either limited English proficient or qualify for free lunches.

All kindergarten children must be five years old by September 1, 1988. Pre-kindergarten and kindergarten students who registered in May do not need to register again.

Homeroom class assignments at Dillman Elementary and DeShazo Elementary will be posted for all students by tomorrow, Monday, August 29.

All junior high students may pick up their class schedules on Wednesday, August 31, at 2:30 p.m. High school students will pick up their class schedules the first day of school, Tuesday, September 1.

For additional information, call Dillman Elementary at 272-7541, DeShazo Elementary at 272-7546, Junior High at 272-4841, and High School at 272-3060.

Three Way School

Annual Community Get-Together Set

On Monday, August 29, at 7:30 p.m., the Three Way School will hold their annual 'Welcome Back to School' community get-together at the school cafeteria.

Activities will include the Annual signing party; welcome to the faculty; introduction of new employees; greetings to the athletic teams, as well as other activities important to a new school year.

Hamburger meat and buns will be furnished. Other condiments for the hamburgers will be needed. Each family planning to attend is asked to bring enough condiments, and add-ons for their family or group.

VARIABLE RATE LOANS

9.95% RURAL REAL ESTATE

10.20% RURAL RESIDENCE

Rates effective August 1, 1988
 ■ LONG-TERM FINANCING UP TO 35 YEARS
 ■ PRE-PAYMENT WITHOUT PENALTY
 ■ ONE POINT CLOSING FEE
 ■ FUNDS HELD ACCOUNTS AVAILABLE
 ■ FIXED RATE LOAN PLANS ALSO AVAILABLE
 We are strongly committed to real estate lending in Texas.

FEDERAL LAND BANK ASSOCIATIONS OF TEXAS
 316 Main
 Muleshoe, Texas
 272-3010

Muleshoe...

Cont. from Page 1

grade football boys will be fitted on August 30, 2:30-5 p.m. and seventh grade boy athletes will be fitted 2:30-5 p.m. on August 31.

He also said the first after school football practice will be the first day of school, September 1.

All boys who plan to be in athletics will need to have their physicals before the first day of school. They may pick up the proper form at the school from Coach Donaldson.

 If you will bake a square or rectangular yellow cake for a part of the 75th Birthday cake for Muleshoe, please contact the Muleshoe Chamber of Commerce and Agriculture at the Muleshoe City Hall, or call 272-4248.

All cakes will need to be taken to the Bailey County Coliseum on Friday, September 9, between 1-6 p.m.

 If you or your group is interested in participating in a domino-'42' tournament on Friday or Saturday, September 9-10, call Myrtle Creamer at 272-3265.

The tournament will be for any age, male or female.

Now open again to serve you with your livestock feed needs

John's Custom Mill

523 N. Amer. Blvd. 272-4116

JOHN DEERE OIL

JOHN DEERE FILTERS

Engineered to work together, to give your equipment maximum protection.

SAVE on the PROTECTION PARTNERS

Dent & Co.

W. Hwy. 84 Muleshoe 272-4296

Longhorn Ag. Inc.

• BOLLWORMS
 • APHIDS
 • Ground Sprayer For Skip Row Cotton
 • Airplane For Solid Planted Cotton
 • FREE Field Scouting

LONGHORN AG INC.

ROUTE 3 BOX 1065
 MULESHOE, TEXAS
 79347

AMHERST (806)246-7736
 MULESHOE (806)965-2365

Quality Work At Discount Prices

**Patients At
West Plains
Medical Center**

AUG. 22
Christopher Ballard, Doyce Turner, Eva Griggs, Debra Jones, and Debbie Proudfoot
AUG. 23
Christopher Ballard, Debra Jones, Eva Griggs, Joyce Turnbow, and Debbie Proudfoot
AUG. 24
Debra Jones, Joyce Turnbow, and Kent Kirkwood

**'88 Football
Reserve Seat
Tickets Ready**

Persons who held reserve seat tickets for the 1988 football season may pick up their options on these tickets at the MISD business office, 514 West Ave. G, starting Monday, August 22, through Wednesday, September 7.

Those persons whose names appear on the chart may pick up their tickets in the following manner: (a) in person; (2) by mail with ticket holder's personal check; or (3) by third party if tickets are purchased with ticket-holder's personal check.

Beginning September 8, all remaining tickets will go on sale on a first come, first serve basis. Reserve tickets may be purchased at the school business office during regular office hours, 8:30 a.m.-5 p.m.

Cost of a reserve season ticket for four home games will be \$14. Any reserve seats remaining after the season starts will be \$4 for each home game.

Student season tickets are \$6; adult general admission is \$3; and student general admission is \$2 per game.

Large schedule placards with a place to record scores may be picked up at the school business office or the athletic office at Muleshoe High School.

**Local Woman's
Grandson Dies
At Clovis**

Graveside services for Jerrod Lewis, 7 month old son of Almedia Lewis of Clovis, N.M. and Alvin Green, also of Clovis, were conducted at 1:30 p.m. Friday, August 26 in Mission Garden of Memories Cemetery with the Rev. A. B. Everage officiating.

Burial was under the direction of Muffley Funeral Home. Jerrod died Monday, Aug. 22 in Clovis High Plains Hospital.

He was born on Jan. 9 in Clovis, N.M.

Survivors include his parents, Almedia Lewis of Clovis; his father, Alvin Green of Clovis; his grandparents, Margaret and Emmitt Lewis Jr., Clovis; and his great-grandparents, Celestine Lewis of Muleshoe, and Emmitt Lewis of Coolidge.

**ONE MINUTE
SPORTS QUIZ**

1. For whom does Ray Knight play baseball?
2. Which team won the Atlanta-Boston NBA play-off series?
3. What horse won the recent Preakness?
4. How do Pete Rose and Ty Cobb compare in strikeouts?

The Answers:

1. The Detroit Tigers.
2. The Boston Celtics, 4-
3. Risen Star.
4. Cobb struck out 357 times, Rose 1077.

GRAIN PRICES
YELLOW CORN... 4.95 cwt
YELLOW FOOD CORN... Call
WHITE FOOD CORN... Call
MILO..... 4.12 cwt
SOYBEANS... 7.55 cwt
NEW WHEAT... 3.25 cwt
COMMODITY CERTIFICATES
100%
Prices August 26, 1988
MARKETS COURTESY OF
FARMERS CO-OP
ELEVATORS
272-4335 Muleshoe, Texas



1988 Three Way Eagles



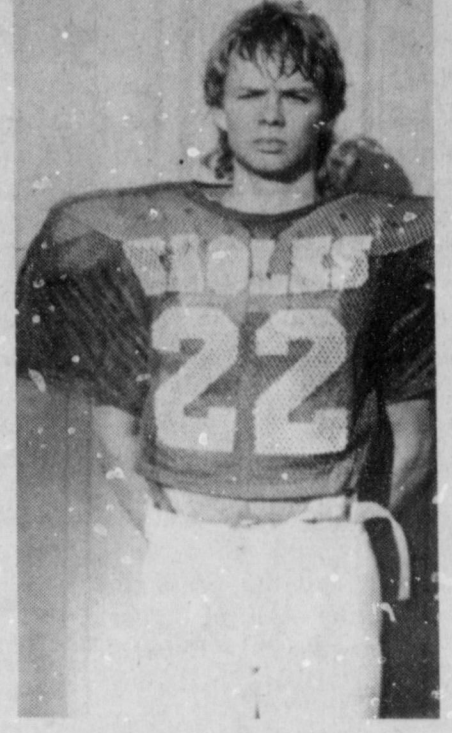
11 Jesus Flores



12 Mario Guillen



21 Billy Perez



22 Jarrod Sowder



25 Efrain Guillen



30 Jesse Haros



42 Chris Locke



65 Pete Haros



Mgr. Ray Perez



Mgr. Barney Haros



Coach Jerry Schaeffer



84 Chad Welch



Coach Greg Jeffcoat

Proudly Sponsored By The Following Civic-Minded Merchants:

Great Western Meat Co.
Of Morton

Caswell Cattie Compay
of Nездmore

Farmer's Co-op Elevators

5-Area Telephone Cooperative

St. Clair's Dept. Store of Morton



Bailey Co. Farm Bureau

First State Bank
of Morton

Courthouse News

MARRIAGE LICENSE
Arthur Flores Recio and Josephine Bara, Muleshoe
Christopher Clay Hernandez and Carolyn Sue Hodges, Muleshoe

WARRANTY DEEDS
Carroll D. May to Tierra Partnership, a partnership consisting of Guadalupe Alderete, Antonio Gonzalez, Bernardino Gonzalez and wife, Christina Gonzalez; Fernando Ramos and wife, Frances Ramos, Antonio Renteria and wife, Maria Del Refugio Renteria; Antonio Ramero and wife, Servilia Ramerio; Lorenao Sedeno and wife, Lydia Sedeno; Juan Perez and wife, Esperanza Perez; Jesse Ybarra and wife, Ester Ybarra; Amadio Perez and wife, Mercedes Perez; and the Christian Renewal Center---All of Labor No. 2 in League 201, Roberts County School Lands, in Bailey County, Texas.

Rudy Campos and wife, Beatrice Campos, and Johnny Campos to Richard Toscano---All of the (N. 20') of all of Lot Number (3), Block Number (1), Kelley and Slemmons Addition to the Town of Muleshoe, Bailey County Texas.

Herb Marchman to Muleshoe Broadcasting Company, Inc.---A 2.07 acres tract of land out of Section (39), Block Y, WD&FW Johnson Subdivision No. 2, Bailey County, Texas.

Richard E. Ronek and wife, Lou Ann Ronek to Donald W. Harrison and wife, Bobbie Frances Harrison---All of Lots 58, 59, 60, and 61, Lathy's Acres, a subdivision of Section Nos. 91 and 92, Block "Y", WD&FW Johnson Subdivision No. 2, Bailey County, Texas.

Jonell Clark, Gerald Ray Bass, Mary Charlene Farley to Earl Leonard Madrid and wife, Paula D. Madrid---A 5.54 acre tract of Land out of the North 1/2 of the Southwest 1/4 of Section 51, Block Y, WD&FW Johnson Subdivision in Bailey County, Texas.

Vanda Jane Turnbow to J. D. Spurgeon and wife, Audrey Lee Spurgeon---A rectangular tract of land, 64 feet by 140 feet, and more particularly described as all of Lot (6), and the Easterly Fourteen feet of Lot (7), Block (7), Highland Addition to the Town of Muleshoe, Bailey County, Texas.

Zeb's Investment Co. to Fernando Fernandez and wife, Gloria Fernandez---A 1.451 acre tract out of Tract 8 of Warren's Acreage Subdivision of Sections 33 and 40, Block "Y" of the WD&FW Johnson Subdivision, Bailey County, Texas.

Leon Dent and wife, Neleen Dent to Duane Darling and wife, Jewel Darling---1.03 acre tract of land out of the Northeast 1/4 of Section 53, Block Y, WD&FW Johnson Subdivision, Bailey County, Texas.

Betty Jean Ovalle to Leonardo Ovalle, Jr.---All of Lot (6), Block (23), Country Club Addition to the City of Muleshoe, Bailey County, Texas.

J. Ken Smith and wife, Wilma Colleen Smith to Joy H. Betenbough---A 5.51 Acre Tract of Land out of the N/2 of Section 33, Block Y, WD&FW Johnson Subdivision, Bailey County, Texas.

Alex H. Williams to Donald A. Williams and Merlyn Neel---All

of Lots (1) and (2), in Block (10), Original Town of Muleshoe, Bailey County, Texas.

Timbr Management, Inc. to Alex H. Williams---All of Lots (1) and (2), in Block (10), Original Town of Muleshoe, Bailey County, Texas.

Marcella A. Warren and Kathy E. Potter to Timbr Management Inc.---All of Lots Numbers (1) and (2), in Block (10), Original Town of Muleshoe, Bailey County, Texas.

COUNTY COURT
Baltazar Moreno Alcala, Jr., DWI \$250 Fine, 1 Year Probation
Marvin Arredondo, DWI, \$250 Fine, 3 Days Jail
Jese J. Marquez, DWI, \$300 Fine, 3 Days Jail

Larry Darnell Richardson, DWI, 2 Days Jail
Arturo Padilla, DWI, \$250 Fine, 1 Year Probation
Ramon Solis, DWI, \$250 Fine, 20 Days Jail

DISTRICT COURT
Bailey County Appraisal District VS Alanis, Robert, Order

of Dismissal
Bailey County Appraisal District VS Storie, Joe D., Order of Dismissal

Bailey County Appraisal District VS Rex Boyd Black and Citizens State Bank of Earth, Order of Dismissal

NEW VEHICLES
Dennis Flowers, 1988 Ford PU, Muleshoe Mtr Co Inc
W.O. Johnson, 1988 Ford PU, Muleshoe Mtr Co Inc

School Again

The freedom of summer for millions of youngsters is coming to an end. The "necessary tragedy" of school is arriving.

This, of course, is not the view of all. Many look forward to school, a healthy reaction.

But the Huck Finns among us love freedom under summer skies. The end of vacation is heavy stuff. Fall, nevertheless, has its attractions---cooler weather, beautiful landscapes, football, hunting, etc. Enjoy it, and the great outdoors!

CROWDS AND CROWDS OF READY BUYERS

15. Misc.

15. Misc.

Storm Cellars
Concrete & Iron Reinforced Ref. In Muleshoe.
Lynn Miller
Littlefield, Tx 385-6801

15. Misc.

Money-saving news for State Farm drivers 50 and over.

State Farm's new reduced car insurance rate is saving money for many State Farm Mutual policyholders 50 and over. Call and see if you qualify.
F.L. Newton Agent
128 East 10th
Phone 385-3055
Littlefield, Texas

Like a good neighbor, State Farm is there.
State Farm Mutual Automobile Insurance Company
Home Office: Bloomington, Illinois

Immaculate Conception Catholic Church

Father Patrick Maher
Northeast of City

First Baptist Church

220 West Ave. E.
Barry Bradley, Pastor

Emmanuel Baptist Church

Iglesia Bautista Emmanuel
107 East Third
Isaías Cardenas, Pastor

Trinity Baptist Church

314 F. Ave. B.
Rev. Dale Berry

Circle Back Baptist Church

Joel E. Stafford
Intersection FM 3397 & FM 29E
946-3676

Calvary Baptist Church

1733 W Ave. C.
Rev. Danny Mann

Muleshoe Baptist Church

8th and Ave. G.
Bob Dodd, Pastor

Progress Baptist Church

Paul Brigham, Pastor
Progress, Texas

Richland Hills Baptist Church

Allen Petersen, Pastor

St. Matthews Baptist Church

Corner of West Boston & West Birch
M.S. Brown, Pastor

Progress Second Baptist Church

1st and 3rd Sunday
Clifford Slay, Pastor

The Community Church

Morton Hwy.
Jim Cope, Pastor, 272-5992

STOP-CAUTION-GO

Protection

The signal light is man's guide to safer travel. However, they protect only as they are obeyed.
The Bible is God's Signal Light and guide for man's path through life.
"Thy word is a lamp unto my feet, and a light unto my path."
Through study of God's word, we learn His will for our life, and He will lead in paths of righteousness.
ATTEND CHURCH

EVERYONE IN THE CHURCH
THE CHURCH IN EVERYONE

The Church is God's appointed agency in this world for spreading the knowledge of His love for man and of His demand for man to respond to that love by loving his neighbor. Without this grounding in the love of God, no government or society or way of life will long persevere and the freedoms which we hold so dear will inevitably perish. Therefore, even from a selfish point of view, one should support the Church for the sake of the welfare of himself and his family. Beyond that, however, every person should uphold and participate in the Church because it tells the truth about man's life, death and destiny; the truth which alone will set him free to live as a child of God.

Coleman Adv. Serv.

Longview Baptist Church

965-3413
B.C. Stonechipper, Pastor

Primera Iglesia Bautista

223 E. Ave. E.
Roy Martinez, Pastor

Lariat Church Of Christ

Sunday School 10:00 a.m.
Worship 11:00 & 6:00 p.m.
Wednesday Services 7:00 p.m.
Sam Billingsley, Minister

Muleshoe Church Of Christ

Clovis Hwy.
Bret McCasland, Minister

16th & Ave. D. Church Of Christ

Sunday 10:30 a.m.
Evening 6:00 p.m.
Wednesday 8:00 p.m.

First Assembly Of God

Rev. David C. McCune
9:45 Sunday School
11:00 Morning Worship
6:30 Evening Services
7:30 Mid Week Services
272-3984

Primitive Baptist Church

621 South First
Elder Cleveland Bass, Pastor

Spanish Assembly Of God

East 6th and Ave. F.
Luis Campos, Pastor

First United Methodist Church

507 W. 2nd Street
Richard Edwards, Pastor

El Divino Salvador Methodist Church

5th and Ave. D
Jose M. Fernandez, Pastor

1st Baptist Church

Lazbuddie, Tx. 965-2126
Gary Wilcox, Pastor

Lazbuddie Church Of Christ

United Pentacostal Lighthouse Church
207 East Ave G.
Rev. J.A. Torres

St. John Lutheran

Sunday School and Bible
Classes 9:30 a.m.
Church Services 10:30 a.m.
Rev. Mac Bearss, Pastor

Lazbuddie Methodist Church

965-2121
Larry Raid Farris, Pastor

Templo Calvario

507 South Main
Sunday 10:00 a.m.
Sunday Evening 7:00 p.m.
Evangelistic Services
J.L. Soto, Pastor

Jehovah Witness

Friona Hwy.
Boyd Lowery, Pastor

New Covenant Church

Plainview Hwy.
Sunday 10:00 a.m.
Wednesday, 7:00 p.m.
Jimmy Lowe, Pastor

Church Of The Nazarene

9th and Ave. C.
Dennis Hayes, Pastor

Western Drug 114 Main 272-3106			Dairy Queen 1204 W. Amer. Blvd. 272-3412
Little Gulf 202 W. Amer. Blvd. 272-4918	Baker Farm Supply 1532 W. Amer. Blvd. 272-4613	American Valley, Inc. Hwy. 84 W. 272-4266	Robert D. Green, Inc. 2400 W. Amer. Blvd. 272-4588
Fry & Cox, Inc. 401 S. First 272-4511	Bob Stovall Printing 221 E. Ave. B. 272-3373	James Roy Meat Market 506 W. Amer. Blvd. 272-4361	Lookin Good 206 Main 272-5052
Main Street Beauty Salon 115 Main 272-3448	1st Bank 202 South First 272-4515	Bratcher Motor Supply 107 E. Ave. D. 272-4288	Five Area Telephone Cooperative, Inc. 302 Uvalde 272-5533
Irrigation Pumps & Power West Hwy. 84 272-4483	Farmers Co-Op Elevators 113 N 1st 272-4490	Foster Fertilizer Lazbuddie 965-2921	Richland Hills Texaco 1914 W. Amer. Blvd. 272-4875

Special Of The Week

NEISON

32.95

Rain Date Electronic Water Timer.
Turns water on and off automatically.

Fry & Cox
401 S. 1st 272-4511

COOK UP A COOKOUT!



HEAVY GRAIN
FED BEEF-PACKER TRIM
WHOLE IN THE BAG
7 TO 12 LB. AVG.

BRISKET

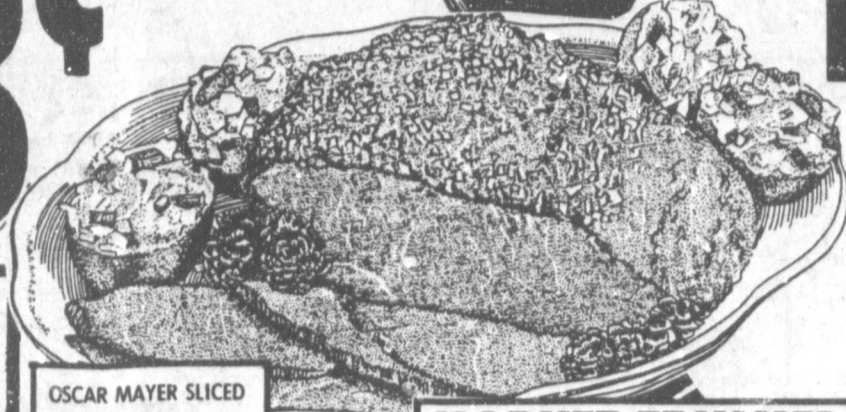
99¢



U.S.D.A. GRADE A
PILGRIM'S PRIDE

WHOLE FRYERS

68¢



OSCAR MAYER SLICED
MEAT BOLOSNA
8 OZ. PKG. **88¢**

MEAT SPECIALS	
WILSON'S 96% LEAN REG./HONEY BONELESS FULLY COOKED 2-4 LB. AVG.	
HALF HAMS LB. \$2.49	LEAN AND MEATY PORK MEDIUM-3 1/2-5 1/2 LB. AVERAGE \$1.39
LEG QUARTERS LB. 49¢	WILSON'S REGUI AR 12 OZ. PKG. 69¢
DRUMSTICKS LB. 69¢	GOOCH'S GERMAN BRAND 12 OZ. PKG. \$1.19

KINGSFORD CHARCOAL BRIQUETS
10 LB. BAG
\$1.99

GULF CHARCOAL LIGHTER FLUID
32 OZ. SIZE
\$1.49

ABSORBENT PAPER
BRAWNY TOWELS
JUMBO ROLL
68¢

CITRUS HILL FROZEN
ORANGE JUICE
12 OZ. CAN
99¢

SHURFINE ASSORTED
SODA POP
12 OZ. CANS
69¢

ALL TYPES LAY'S
POTATO CHIPS
REG. \$2.49
\$1.49

U.S. NO 1
POTATOES
\$1.59
10 LB. BAG

GOLDEN RIPE BANANAS
LB. **29¢**

VAN CAMP'S PORK & BEANS HAMBURGER OR CONEY	4 16 OZ. CANS	\$1.00
TENDERCRUST BUNS	3 PKGS.	\$1.00
VIVA NAPKINS	140 CT. PKG.	69¢

CRISCO OIL FRENCH'S SQUEEZE	64 OZ. JUG	\$2.89
MUSTARD	16 OZ. BTL.	79¢

THE SAVINGS ARE HOT

SHELF FAVORITES		
SCOTTISSUE 1000 SHEETS PER ROLL	4 ROLL PKG.	\$1.79
BATH TISSUE FLUSHABLE CLEANSING	40 CT. PKG.	\$1.49
SOFKINS WIPES 40" OFF LABEL-DETERGENT	42 OZ. BOX	\$1.69
TIDE CONDENSED	14 OZ. CAN	\$1.39
EAGLE BRAND CEREAL	18 OZ. BOX	99¢
POST TOASTIES SCOTTIES	280 CT. BOX	99¢
FACIAL TISSUE LUZIANNE	24 CT. PKG.	\$1.69
TEA BAGS IBC 12 OZ. N.R. BOTTLES	6 PACK	\$1.99
ROOT BEER LIQUID DISH 40" OFF LABEL	22 OZ. BTL.	99¢
SUNLIGHT BEST MAID HAMBURGER	32 OZ. BTL.	89¢
DILL SLICES SHURFINE TOMATO	32 OZ. BTL.	99¢
KETCHUP LONG GRAIN	42 OZ. BOX	\$1.79
COMET RICE AUNT JEMIMA YELLOW	2 LB. PKG.	59¢
CORN MEAL AUNT JEMIMA WHITE/SELF RISING	2 LB. PKG.	59¢
CORN MEAL	4 LB. BAG	89¢
MASA TRIGO	20 LB. BAG	\$8.49
MASA HARINA HERSHEY ASSORTED	5 LB. BAG	\$2.39
CANDY BARS REGULAR	6 PACK	\$1.89
KOOL AID	7 2 QT. SIZE	\$1.00
SUGAR SWEET KOOL AID	2 QT. SIZE	69¢
SUGAR SWEET KOOL AID SUGAR SWEET LEMONADE	8 QT. SIZE	\$2.29
COUNTRY TIME DRINK MIX	8 QT. SIZE	\$2.19
CRYSTAL LIGHT MORTON	8 QT. SIZE	\$2.79
ICE CREAM SALT SWEETHEART 16 OZ. SIZE	4 LB. PKG.	69¢
BIG CUPS MARCHING GEESE 9 INCH	18 CT. PKG.	89¢
PAPER PLATES BETTY CROCKER CHERRY/STRAWBERRY	36 CT. PKG.	\$1.29
FRUIT WRINKLES BETTY CROCKER ASSORTED	5.4 OZ. PKG.	\$1.89
FRUIT ROLL UPS DETERGENT-75" OFF LABEL	4 OZ. PKG.	\$1.89
LIQUID TIDE 60" OFF LABEL-FAB. SOFTENER	64 OZ. JUG	\$3.49
SNUGGLE LIQUID 45" OFF LABEL-FAB. SOFTENER	96 OZ. JUG	\$2.99
SNUGGLE SHEETS BATH SOAP	60 CT. PKG.	\$2.79
SAFEGUARD PERSONAL SIZE	3 BAR PACK	\$1.99
IVORY BATH SOAP	4 BAR PACK	99¢
ZEST BATH SOAP	3 BAR PACK	\$1.99
FROZEN		
BIRDSEYE CORN ON THE COB	4 EAR PKG.	\$1.19
GORTON'S STICKS/FILLETS	7-8 OZ. PKG.	\$2.19
MICRO FISH BUTTERMILK OR HOMESTYLE	11 OZ. PKG.	99¢
EGGO WAFFLES	11 OZ. PKG.	99¢

DAIRY DELIGHTS	
SOFT FROZEN ASSORTED YOPLAIT	6 PACK \$2.29
ICE CREAM ASSORTED GOLD RUSH BARS	6 PACK \$2.29
GOLD RUSH NUGGETS	18 CT. PKG. \$2.29
SLICES REG./EXTRA THICK VELVEETA	12 OZ. PKG. \$1.89
TOUCH OF BUTTER SPREAD	3 LB. TUB \$1.69
BORDEN HI PRO MILK	1 GAL. \$2.29
BORDEN SHERBET ICE CREAM	1/2 GAL. \$1.59

HEALTH & BEAUTY	
REG./GEL TARTAR CONTROL COLGATE	4.3 OZ. PUMP \$1.59
EXTRA STRENGTH GELCAPS TYLENOL	50 CT. PKG. \$3.49
ANTI-PERSPIRANT ASSTD. SURE	4 OZ. SIZE \$2.39
ASSORTED SURE ROLL-ON	1 1/4 OZ. SIZE \$1.89
LISTERINE MOUTHWASH	32 OZ. BTL. \$2.59
WESTERN FAMILY VITAMIN C	100 CT. BTL. \$1.59

ALL TYPES
COCA-COLA
12 OZ. CANS **\$1.39**
6 PAK

THRIFTWAY

WE ACCEPT FOOD STAMPS...WE RESERVE THE RIGHT TO LIMIT

AFFILIATED FOODS INC. MEMBER STORE

PRICES EFFECTIVE
AUG. 28-SEPT. 3, 1988



COUPON EXPIRES SEPT. 7, 1988
KRAFT
BARBECUE SAUCE
28 OZ. BTL.
38¢
WITH COUPON THEREAFTER REGULAR PRICE