

# New Year's Greetings From The Entire Journal Staff

## WEATHER

December 27	62	15	.00
December 28	62	25	.00
December 29	63	25	.00
December 30	45	21	.00

## BAILEY COUNTY JOURNAL

*'The Community Of Opportunity-Where Water Makes The Difference'*



Vol. 27, No. 53

12 PAGES TODAY

Published Every Sunday At Muleshoe, Bailey County, Texas 79347

Member 1989  
TEXAS PRESS  
ASSOCIATION

20¢

Sunday, December 31, 1989

# Ambulance Controversy Highlighted

(Editor's note: As the Muleshoe Area Hospital District started negotiating with the West Plains Hospital Board, controversy started 'creeping' then 'rumbling' around concerning the Bailey County Ambulance Service. Much of the last half of 1989 concerned controversy centered at the Bailey County courthouse, and in commissioner's court.)

## JULY

'Family Fun Night' held June 29-30 was presented by the Mule Plex Production Co., and exceeded all expectations. It was staged before more than 600 people each of the two nights it was held in the Muleshoe High School auditorium. Local entertainers, a melodrama, an old-fashioned candy sale, special effects and other memorable acts. All combined to contribute to a very-well received production.

Sylvia Buchenau, local postal worker for the U. S. Post Office, was named postmistress for the Happy Post Office.

Good crowds were on hand for the annual Fourth of July activities. The Jennyslippers won first in the parade with their float.

Elray Rasco, 50, of Sudan, was killed, apparently instantly, and his wife, Georgann, injured in an intersection crash at their farm-to-market roads in southwestern Bailey County. The other driver, from Farwell, was slightly injured in the accident.

The Muleshoe Area Hospital District announced plans to affiliate with Methodist Hospital, Lubbock. The Lubbock hospital will provide support services and expertise in re-organizing the hospital and nursing home. The local MAHD board will retain control of both facilities.

Muleshoe High School Principal Wayland Ethridge resigned after 25 years with the Muleshoe Independent School System to accept a position of high school principal at Idalou. He spent two years as principal at Watson Junior High and the past 18 years as principal of MHS.

GTE announced the lowering of rates for both residential and business customers.

Five year old Jennifer Thiele was being on arrival at West Plains Medical Center in Muleshoe after being involved in an accident northwest of Lazbuddie. Her guardian, Evelyn Moore, driver of the station wagon in the one-vehicle accident, was injured and also brought to the hospital in Muleshoe.

Bailey County Judge Jim Watson met with the Muleshoe Area Hospital District Board to request MAHD to take over operations of the Bailey County Ambulance Service. The judge was informed that the hospital district had no funds to operate anything.

Bovina Police Chief Gary Coleman received serious gunshot wounds to his face by a former Missouri resident he had stopped for a traffic violation. The fugitive was found on top of a building near the city hall as officers poured into Bovina to assist in the search.

The Muleshoe Fire Department held they would sponsor Mule Days in August, with activities to be held at the old city airport and the Muleshoe Roping Arena.

Record crowds were on hand for the annual Jamaica at the Immaculate Conception Catholic Church.

Muleshoe Area Hospital District signed a lease agreement with West Plains Medical Center board for the hospital, clinic and nursing home.

The first 'rumbles' in the distance, of an approaching ambulance controversy were heard when Bailey County Commissioners court did not hire a director to replace Ambulance Service Director Richelle Watkins, whose resignation was effective on August 1.

From Progress, northeastward beyond Lazbuddie, large hail wiped out crops in a 2-3 mile wide band.

Bailey County Milewide Alliance scheduled a week-long Encounter Crusade, scheduled to take place at Benny Douglass Football stadium.

Special music was to be presented during the week by 'Big' John Hall, an internationally-known bass-baritone gospel singer.

The ambulance controversy 'heated up' when Bailey County Judge Jim Watson issued a statement concerning finances of other ambulance services in the area. The Bailey County EMS said the report only covered a 'portion' of the true facts.

Muleshoe Area Hospital District changed the name of West Plains Medical Center to Muleshoe Area Medical Center and the name of the Muleshoe Nursing Home to the Muleshoe Area Health Care Center.

## AUGUST

Michelle Winders, 14-year old daughter of Mike and Roxanne Winders was named Earth Rodeo Queen. Little Miss Cowgirl was Sarah Templeton, nine, and daughter of Donald and Susan Templeton.

Richelle Watkins was honored with a surprise 'come and go' reception on her final day as director of the Bailey County Ambulance Service. She was due to go back into the nursing field, as a nurse at the Muleshoe Area Medical Center.

The Bailey County district courtroom was more than three-fourths full of local and area people who were on hand to ask questions, and hear speakers as Bailey County considered whether or not to keep control of the Bailey County Ambulance Service, or lease it to an outside agency to operate. The county officials heard speakers until early afternoon, then voted to keep control of the service, and hire a paramedic director.

Muleshoe Area Medical Center was notified that they had passed preliminary Medicare inspections and were 'conditionally' approved for certifications, with certain criteria to be met within a certain number of days for final certification.

Pat Watson, Muleshoe High School English teacher, wrote and published her first book. It was a 'teaching' book on creative writing.

Five young Austrians visited Muleshoe. They enjoyed a backyard cookout at the home of J. D. and Julie Cage and their family. Several local residents were invited to meet the group.

U. S. Congressman Larry Combest visited the Muleshoe Rotary Club and talked about issues currently facing the nation.

Making his first visit back to Muleshoe since he was elected, State Senator Teel Bivins reported on various items facing the state.

A large delegation of farmers and ranchers attended a Bailey County Commissioners meeting to request the county to hire a deputy sheriff to reside in southwestern Bailey County. The county commission turned down the request.

Spotty rainfall helped make crop prospects brighter, according to Bailey County Agent Spencer Tanksley.

The annual Mule Skinner Show as much larger this year, with 137 people entering 175 animals.

Bailey County Commissioners made several changes in the Employee Manual.

Bailey County Crime Line erected several large billboard-type signs around the county about rewards being offered for crime information.

Chad Garlington received a check from Robert Montgomery on behalf of the Muleshoe Chamber of Commerce and Agriculture. Chad designed and did most of the painting on a mural painted on the north wall of the Harvey Bass Appliance.

Nancy Kidd was named manager of the Muleshoe Chamber of Commerce and Agriculture. Her husband, Hubert, is manager of Five Area Telephone Cooperative, Inc.

Bailey County Commissioners court reduced the funds allocated for the ambulance service in the 1990 budget. They also did not include salary for a third deputy for Bailey County in the new budget.

## SEPTEMBER

Muleshoe Area Hospital District approved a budget of \$2.7 million for their first year to operate the hospital and nursing home.

Bailey County Agent Spencer Tanksley was the first weekly winner in the annual Merchants Football Contest. He received a check for \$10 and a bonus of \$3,000 in MAC Buck tickets.

Fourteen entries in the annual Bailey County West Plains Fair won a prize awarded for the first time during this year. They won the 'Best of Show' award.

Brownfield defeated the Muleshoe Mules, 28-0, in the season opener in football.

A full agenda faced the Bailey County Commissioners court. Commissioners increased the ambulance budget from \$116,000 to \$118,000 for 1990. They also voted to leave the tax rate the same for 1990. They also approved the hiring of Joy Harp of Big Spring as director of the ambulance service, and her husband, Jerry, as a full-time EMT. Commissioners were told during the meeting that they 'could not' lease an ambulance to the Muleshoe Area Hospital District for Lazbuddie to use.

Twenty-two Australians arrived in Muleshoe, sponsored by the First Baptist Church. They stayed in church members' homes while here.

Muleshoe Area Hospital District set the tax rate at \$.25 per \$100 valuation for the first year. Projected losses for the first year was \$438,000.

The Muleshoe Independent School District announced a tax increase of 16 cents to help pay for state-mandated pay raises for professional personnel.

The Mules fell to the Shallowater Mustangs, 28-6.

The City of Muleshoe city council approved no change in the tax rate for 1990. The city budget was slightly under the amount of the Cont. Page 6, Col. 1

## EMS Delivers Food, Toys To 467 Kids

It took a lot of very hard work -- but, through the efforts of the Bailey County EMS Organization -- along with a lot of volunteers, Christmas was a lot brighter for a lot of kids this year.

Jackey Burris, assistant director of the Bailey County Ambulance Service, and vice president of the Bailey County EMS, toys and food were delivered to 114 families, which included 467 kids.

For weeks before Christmas, the EMS organization worked at the old John Deere House sorting and organizing the toys as they were received. Then during the last week the 'big push' was on to sack and box the toys and food for delivery.

Saturday morning, December 23, at 9 a.m., six vehicles started loading and all the toys and food were delivered around 3:30 p.m.

Some of the trips with Christmas presents were made into Parmer and Lamb Counties.

Burris said the Spartan van from Bailey County Community Action helped make the deliveries.

Tired, but happy EMS personnel and other volunteers had the satisfaction of seeing that 467 youngsters had Christmas.

At this point, the project has doubled each year since it started.

## Lazbuddie EMS Plans Emergency Care Classes

The Lazbuddie EMS will conduct an Emergency Care Attendant (ECA) class, starting Wednesday, January 10 at 6:30 p.m. in the school cafeteria.

The ECA class incorporates basic life-sustaining measures that members of the general public should learn in order to recognize the many hazards encountered during their daily activities, said Connie Barnes, president of the Lazbuddie EMS.

This training includes CPR and "hands-on" skills sessions.

If you have questions concerning this class, contact Connie Barnes at 965-2623 or 965-2118 after 5; Cheryl Weaver at 965-2784 after 3 p.m. or Robert Smith at 965-2813 or 965-2330.

Cost for the 40-hour class will be \$75, which includes the instruction book.



INDUSTRIAL FOUNDATION PRESENTS AWARD--Thursday morning, the Muleshoe Area Industrial Foundation presented a plaque "In Appreciation" to Troy Stegemoller, for his services as a member of the MAIF. Stegemoller is moving to Ralls this week. Shown from left are MAIF members Bob Stovall, Howard Watson, Stegemoller, Duane Castleberry, and Duane Lloyd and Cliff Black. (Journal Photo)

## Lazbuddie Man; Son And Friend Burned In Flash Fire Accident

Shortly before 6:30 p.m. Wednesday, Guy Farris, 49, of the Dodd community northeast of Muleshoe, was filling his pickup tank with butane when a 'flash fire' broke out.

At the time, his son, Clint, 15 and a friend, Craig Smyer, 13, were in the back of the pickup.

The trio was burned in the ensuing fire that erupted.

Mrs. Farris, who was inside the family home, quickly called for ambulances and emergency personnel.

Ambulances responded from Earth, Lazbuddie and Muleshoe, along with law enforcement officers from Earth, Bailey County and Castro County.

Each of the three ambulances transported a burn victim to Muleshoe Area Medical Center for emergency treatment.

Muleshoe City officers blocked traffic at the crossroads as the ambulances came screaming into town, and the back parking lot and hallways at the hospital filled with concerned family members and friends.

Extra hospital personnel were called in to help take care of the burned trio.

It was determined that the burns to the face, hands and arms of the two teenagers were serious enough to move them to the burn unit at Lubbock General Hospital as soon as possible, so the Flight For Life helicopter was called to Muleshoe.

In the meantime, Guy Farris was placed in the intensive care unit of the local hospital.

On Thursday morning, Farris was transferred to Lubbock General Hospital to the burn unit.

At presstime, all the victims

were reported to be improving. Both in the teenagers, but stable

Cont. Page 6, Col. 3

## Hospital District Passes Proposed Tax Reduction

It was a very light agenda for the board of directors of the Muleshoe Area Hospital District Wednesday evening.

No one showed up for the tax hearing, and after waiting for a period of time to see if any citizen had any questions, the board approved continuing the option to tax vehicles and other personal property of persons residing within the boundaries of the Muleshoe Area Hospital District.

Financial reports on the operations of the hospital and nursing home were given by the respective administrators, Phil Langston and Rachel Snider.

Board members discussed a survey team who will be in Muleshoe next week to check the hospital and nursing home.

The survey team will make recommendations on room rate adjustments for the hospital after they conclude the survey.

To conclude the meeting, the MAHD went into executive session to discuss matters with the hospital administrator.

around  
muleshoe

Funeral services were pending with Ellis Funeral Home at presstime for Veda Marie Terrell, 79, of Sudan.

She died Friday afternoon at Methodist Hospital in Lubbock following an illness.

In their first action on Thursday, the Lady Mules fell to Wall. They came back on Friday afternoon to defeat Anton, 54-26.

They were scheduled to play Saturday against Friona for consolation.

The Muleshoe Mules won their first game in the Sudan Tournament on Thursday, then lost to Farwell, 85-55 on Friday afternoon.

They were to play Friona Saturday afternoon for third place in the tournament.

## Employee HealthCare Program To Be Solved

Battles between employers and workers continue over who should assume responsibility for escalating health-care costs. The prolonged regional telephone company strikes throughout the U.S. illustrated how volatile the issue can be.

According to Hay/Huggins, a benefits consulting firm, the average medical premium charged U.S. businesses rose 20 percent in 1989, compared with 17 percent for 1988.

At a recent seminar sponsored by Weight Watchers At Work Program, corporate health-care professionals discussed one of the new initiatives being developed to alleviate this costly problem -- employee wellness programs. According to Wyatt's 1988 Group Benefits Survey, over 50 percent of U.S. companies now offer some type of wellness program.

### PREVENTION AS CURE

"When we found our company health-care dollars were not going as far as they once did, we began thinking about prevention as a means of controlling costs," says Gwen Mojer R.N., manager of Corporate Health Services and Employee Assistance Programs at Nabisco Brands, Inc. "One of the ways we can defer health-care costs is by positively influencing the lifestyle of our employees through weight management, exercise and smoking cessation."

According to a Control Data study, a typical 40-year-old man who doesn't exercise, doesn't wear a seat belt, smokes two packs a day, and is 30 percent overweight costs his employer \$1,282 a year in medical bills, double the \$631 spent on someone the same age with healthier habits.

Insurance companies, who bear a great deal of the costs, are working closely with clients to help them lower health expenditures says Daniel Bernstein, coordinator of Worksite Health Promotions Programs at Empire Blue Cross and Blue Shield. Bernstein hopes that identifying and preventing employees' potential health problems will, in the long run, reduce health-care costs.

Common employee wellness programs include health screenings, weight control programs, smoking cessation seminars, stress management programs, exercise plans and health education classes. "Many organizations work closely with outside vendors, like the American Cancer Society, American Heart Association or Weight Watchers, because they don't have the staff or expertise to run the program on their own," adds Bernstein.

An advantage to using community resources is that turnkey programs can be replicated in other company facilities across the country.

### WEIGHT LOSS PROGRAMS POPULAR

Weight loss programs are often used by companies as building blocks to more extensive employee wellness programs, reports Susan Consorte, service system manager at Weight Watchers International. "We've experienced a tremendous de-

mand from employees for The At Work Program<sup>®</sup> because of their increasingly busy lifestyles," she says. "While employees are sometimes asked to pay the full cost of the program, many companies subsidize their participation, often on a basis of attendance. For example, as an incentive, if the person attends 80 percent of the weekly meetings, he or she will be reimbursed for half the cost."

According to Mojer, "In addition to better employee

health and lower insurance costs, another by-product of wellness programs is the goodwill engendered for the corporation. We find that our programs do a great deal for employee morale at a time when many large corporations are undergoing organizational changes.

"Universities can even benefit," says Jeanie Booros, director of wellness programs for both Manhattanville College in New York and Nestle Foods. "They often share their health- and fitness-related facilities with a nearby corporation in return for, among other things, funding and internship opportunities for students."

"The ethics of such a situation have yet to be worked out though."

One creative solution, says Bernstein, might be discounting insurance premiums by as much as five percent with the stipulation that companies earmark the savings for in-house wellness programs.

The seminar experts agree that wellness programs teach consumers how to use the health-care system in a more cost-effective way: to understand symptoms; to treat themselves when appropriate; and to know where proper care is available. Health consumerism will be a growing trend for the 90s.

## LOUISA'S LETTER

Dear Louisa,

What do you do with a friend that uses people? Every one he associates with ends up being useful to him or he gets angry with them and accuses them of being cheap or stingy or unfair.

This fellow can be very nice when he wishes but he never keeps his friends very long. He has a good personality that makes new friends but his old friends feel sorry for him and hate to see him make such a mess of his life because of this trait. Do you think it would be any good to talk to him or would he get mad?

Answer:

I doubt if you would get anywhere talking to a person of this kind. He is selfish and probably thinks it is smart to get the best of anyone even though they be friends.

There are some people in the world who will take everything that anyone will give them and never try to pay off their obligations. They rationalize that what they are doing is right but they know in their hearts that they are wrong. They usually end up to be very unhappy people and wonder why they have so few friends.

# 13 MONTHS SALE!

Open 9 AM-5 PM  
Friday-Saturday

BARGAIN WORLD FURNITURE Gives  
The Clovis Area The Final  
Incredible Discounts For 1989

Open New Year's Day

SAVE 20-30-40-50  
Up To 55%

**SOFA SLEEPER**  
Opens with Twin Size  
Mattress-Nice Cover.  
REG. \$279.95  
SALE \$167

**4 DRAWER CHEST**  
Lots of Storage. Decorator  
brass handles.  
SALE \$37

**5 PC. BRASS AND GLASS DINETTE**  
Stop Sign Style-With 4  
Padded Chairs. Priced  
in the Box.  
REG. \$199.95  
SALE \$97  
2 Left

**WHITE AND BRASS METAL DAY BED**  
All welded ends-Includes sides,  
back-rails and mattress.  
SALE \$147

**BROYHILL CHINA CABINET**  
As Is. Slight Damage.  
1 Only  
\$367

**BASSETT MIRRORS**  
Framed mirrors by this leading  
manufacturer. Ready for  
hanging.  
SALE \$17

NO DOWN PAYMENT

90 DAYS - SAME AS CASH - NO PAYMENT TIL MARCH 1990

**6 DRAWER DRESSER & MIRROR**  
Nice oak finish solid construction, good  
storage area.  
1 Only \$77

12,000 Sq. Ft. Furniture

**HI BACK WOOD ROCKERS**  
with cane bottom & back. Built strong  
and made to last.  
1 Only \$87

Don't Miss It - 13th Month Sale

**5 PC. DINETTE SET**  
4 all wood padded chairs and table.  
"slight damage"  
1 Only \$97

Sorry - No Phone Orders

**KIDDIE ROCKERS**  
Large kiddie rockers with padded seats  
and back.  
3 Left \$37

Starts Friday

**ALL WOOD STURDY BUNK**  
Bed's in pine finish complete with  
mattress.  
3 sets left \$157

90 Days Same As Cash

**ALL WOOD 24" BAR STOOLS**  
Hi back swivel design. These won't last  
long.  
1 only \$57

**9 PC. BROYHILL COUNTRY STYLE DINING ROOM SET**  
Includes buffet, lighted china,  
large extension table, 4 side and  
2 arm chairs. Colonial Pine finish.  
Reg. \$1699.95

**OCCASIONAL CHAIRS**  
These are real values that can't be  
duplicated. Assorted colors and  
sizes. Values to \$287  
Sale \$97

**6 PC. FAMILY ROOM GROUP**  
in beautiful rust color. Includes sofa,  
chair, rocker, cocktail table-2 end  
tables.  
1 only \$397

**SOFA & MATCHING LOVE SEAT**  
in beautiful soft texture  
fabric. This one won't last  
long.  
Sale \$397

**3 PC. BRASS AND GLASS TABLE SET**  
Includes cocktail table with 2  
nice lamp tables priced in the  
box - Set of 3. Reg. \$249.95  
1 only \$97

**5 PC. HONEY PINE FINISH BEDROOM SUITE**  
Dresser with drawers and 2  
doors, shell mirror chest, nite  
stand and full or queen head-  
board. Reg. \$699.95

Sale \$447

**LARGE SELECTION BRASS ACCENT ITEMS**  
Many different items to  
choose from. All at up to  
1/2 OFF

**2 PC. SOFA & LOVE SEAT**  
In beautiful supreme azure,  
velvet cover.  
1 only at \$397

**3 PC. OCCASIONAL TABLE SET**  
Nice Parquet oak finish, all  
wood, large size coffee and 2  
end tables.  
Reg. \$369.95 Sale \$197

**MATTRESS SETS CLEARANCE**

Twin Size-5 Year	\$87
2 Only	
Full Size-5 Year	\$97
4 Only	
Queen Size-5 Year	\$97
King Size-5 Year	\$197
Full Size-10 Year	\$147
3 Only	
Queen Size-10 Years	\$187
Full Size Pillow Fluff-15 Year	\$267
Queen Size Pillow Fluff	\$327
15 Year	
King Size Pillow Fluff	\$427
15 Year	
Queen Size Spinal Guard	\$267
20 Year-1 Only	
Full Size Spinal Majestic	\$267
20 Year-1 Only	
Queen Size Spinal Majestic	\$297
20 Year-1 Only	

**BRASS FINISH DELUXE**  
Twin full or queen size  
headboards. Beautifully  
styled, sturdy construction.  
Reg. to \$99.95 \$27

**3 PC. OCCASIONAL TABLE SET**  
Nice Parquet oak finish, all  
wood, large size coffee and 2  
end tables.  
Reg. \$369.95 Sale \$197

**3 PC. EARLY AMERICAN LIVING ROOM SUITE**  
Includes sofa - loveseat - chair -  
nice Antron cover - all hardwood  
construction. Reg. \$699.95

**5 PC. BEDROOM SUITE**  
All wood Vaughn bedroom  
suite, Mossini triple dresser,  
hutch mirror, large chest-nite  
stand and full or queen head-  
board. Reg. \$1499.95

**3 PC. ALL WOOD HOME BAR SET**  
Nice pine finish-large bar and 2  
sturdy stools.  
1 only used \$77

**ALL WOOD DAY BED**  
in cherry finish-includes wood parts,  
mattress & link springs.  
1 only at \$167

**ALL WOOD CURIO CABINET**  
Lighted on top and bottom  
2 only \$177

**6 PC. PUP GROUP**  
Includes sofa, love seat, corner table,  
2 end tables and upholstered cocktail  
table.  
1 only \$887

**SOFA AND MATCHING CHAIR**  
in soft blue tones over stuffed. Look  
Compare at \$897.  
1 only \$497

**SOLID CEDAR WARDROBE**  
lots of storage for extra clothes.  
1 only \$197

**QUEEN ANNE CHAIRS**  
Soft mauve colors.  
2 only \$119

**6 PC. MAUVE AND GREY GIRLS BED ROOM SET**  
Dresser mirror, chest queen or full  
headboard. 2 nite stands. \$397

**4 PC INCLINER SECTIONAL**  
By 20th Century - Includes 2  
Loveseats with incliners,  
corner table and armless chair.  
Nice decorator cover.  
Reg. \$1099 Sale \$597

**4 SHELF OAK FINISH BOOKCASE**  
Lots of storage - solid construction  
Reg. \$59.95  
2 only SALE \$27



Remember The  
Old-Fashioned  
Values For! 90

A peaceful, pleasant and  
prosperous New Year to all!

Thanks to our many  
friends and customers.

Noble TV  
& Appliance

Cash or Personal Check  
Visa, Mastercard...  
Up To 36 Months  
On Approved Credit

90 Days Same As Cash  
No Down Payment

BARGAIN WORLD  
FURNITURE

318 Main - Clovis

UP TO  
55%  
OFF

# Making Tamales a Tradition During the Christmas Season

(AUSTIN)—When Cortés arrived in Mexico in 1519, he found native people who ate tamales to celebrate special occasions. Four hundred seventy years later the tradition lives on among families with roots in Mexico. During the Christmas holidays, many of these families gather in their kitchens to spread masa on corn husks, which are folded like carefully wrapped gifts.

"It's appropriate that tamales are served at Christmas. They're wrapped like a package and opened up," said Nell Veeder, a University of Texas graduate student specializing in culinary anthropology. Stuffing something inside of something else is a common way of cooking food all over the world," Veeder went on to say. "Human beings seem to delight in it."

Not only Hispanics, but Texans of many ethnic backgrounds identify tamales with Christmas festivities. Hungry guests snap them up at office parties and holiday buffets. Those who don't want to make them, often buy them. At Jimenez Food Products Inc., San Antonio, people come from 50 miles away to pick up tamales, sold fresh only during the holidays. The few days before Christmas are the busiest, said Lucy Balderas, company spokeswoman. On these days, 300 to 400 customers may line up daily for orders ranging from one to 100 dozen.

Eating store-bought tamales may taste good, but it's not the same as making them, Veeder says. Home preparation constitutes an important social ritual, calling people together to reestablish family ties.

"It's a cooperative effort. It can also be a time when mothers pass on a tradition to their daughters," Veeder said. "Making food together is part of the Christmas ritual in many cultures. In my family it was ravioli. One family I remember would do weiner schnitzel. One child would pound the veal, and another would do something else. It's

important in these rituals to use the food at hand (in that culture). Most festival foods are not exotic."

The traditional tamale filling is cabeza de puerco, ground meat from hogs' heads that have been boiled and deboned. Meatier cuts of pork, beef, poultry and game are also used, as are beans, cheese and chiles and, occasionally, a sweet filling of nuts, sugar and spices.

To make masa, solid shortening is necessary to bind the cornmeal, meat stock to make it soft and pliable. "Lard is the typical shortening used in tamales," said Carol Guthrie, Texas Department of Agriculture home economist. "It adds flavor to the dough, but it's saturated animal fat, which is the kind to avoid if you're concerned about clogged arteries and high cholesterol. You have to use fat in tamales, but it doesn't have to be animal fat."

The Aztecs whom Cortés met, in fact, probably added less fat to their tamales than is used today. Their meat was mostly wild game, which contains little fat in comparison to domestic meat. Guthrie recommends any good polyunsaturated margarine as a lard substitute. "Margarine doesn't have the smooth consistency of lard, which makes the masa more difficult to spread. But with a little extra effort it works fine."

Tamales ordinarily take 45 to 60 minutes to steam. Use a large, deep pot or Dutch oven or a roasting pan with a rack. The lid must be tight-fitting to prevent steam from escaping. When the masa turns firm and translucent, pulling away easily from the husk, the tamales are done. Tamales can be reheated in the steamer or in a covered dish in the oven or microwave.

## TAMALES

2-3 dozen dried corn husks

**Pork filling:**  
2 lb. Boston butt (pork)  
2 peeled garlic cloves  
1 T. salt, divided  
1 2-3/4 C. chili powder  
2-3 C. meat stock

**Masa:**  
1 C. lard or soft margarine  
1 3/4 C. hot meat stock  
3 C. masa harina  
1 tsp. salt

Cover corn husks with hot water. Soak 3 hours to overnight. When ready to use, rinse husks in cold water. Leave in fresh water while making tamales.

**Filling:** Put pork, garlic, 1 1/2 teaspoons salt and enough water to cover in large pot. Simmer over low heat 2 to 3 hours. When meat is tender enough to fall apart, remove from pot and set aside to cool slightly. Discard garlic and reserve stock. Chop meat

finely, discarding fat and bones. Combine chopped meat with remaining salt and chili powder to taste. Stir 2 to 3 cups stock into meat to moisten thoroughly. Heat mixture, simmering 30 minutes until thick enough to spread.



To begin tamales, spread bottom half of pre-soaked corn husk with masa, making 1/8- to 1/4-inch-thick rectangle.



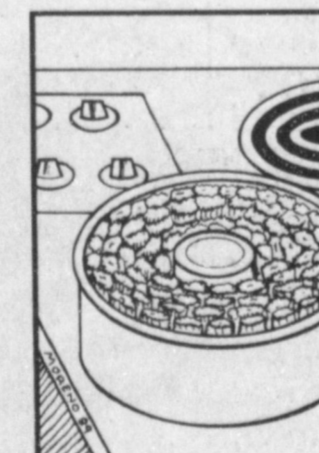
Masa should border one side of husk with an inch margin on the other. Place a strip of filling down center third of masa.



Fold husk lengthwise from masa-filled side so that it covers tamale filling. Lap one-inch margin over the tamale.



Fold top half of husk toward center of tamale. Folded this way, tamales do not have to be tied. Steam them folded end down.



Stand tamales against a cup in the center of 4-quart dutch oven. There must be enough room for steam to circulate easily.

## ATTENTION

Your only local media of general circulation that qualifies for & has a 2nd class newspaper subscribers mailing permit. U.S. Post Office Approved.

**Bailey County Journal** USPS 040-200  
Established March 31, 1963. Published by Muleshoe Publishing Co., Inc. Every Sunday at 304 W. Second, Box 469, Muleshoe, Tx 79347. Second Class Postage paid at Muleshoe, Tx. 79347.

Member 1989  
**TEXAS PRESS ASSOCIATION**

L.B. Hall, Publisher  
Semmye Hall, Vice President/Controller  
Clay Williams, News Editor  
Eudene Harris, Society Editor  
Holly Millage, Advertising Editor  
Dora Torcano, Classified Editor  
SUBSCRIPTIONS  
Muleshoe Journal and Bailey County Journal  
Bailey and Surrounding Counties  
By Mail \$14.75  
Muleshoe Journal and Bailey County Journal  
Elsewhere By Mail \$16.50  
Muleshoe Journal and Bailey County Journal  
Yearly by Carrier \$12.50

Advertising Rate Card on Application  
Advertisers should check their ad the first day of insertion. The Journal will not be liable for failure to publish and will not be held responsible for a typographical error or errors in publication except to the extent of the cost of the ad for the first day insertion. Adjustment for errors will be limited to the cost of that portion of the ad where the error occurred.

**Masa:** Cream lard or margarine until light and fluffy. Heat 1 3/4 cups meat stock. Blend masa, salt and stock into lard. Beat mixture until dough holds together well.

**Tamales:** Spread bottom half of each husk with about 2 tablespoons masa. Make a 4x3-inch rectangle placed completely to one side, leaving a 1-inch margin on the other side. Masa should be 1/8 to 1/4-inch thick. Place strip of pork filling down the center third of masa. Fold the side with masa over filling, lapping 1-inch margin over back of tamale. Fold top toward center. Line a 4-quart dutch oven with aluminum foil and scatter some corn husks on bottom of pot. A steamer or any large kettle or roasting pan with a rack and tight fitting lid can also be used.

Tamales must stand out of water. If using dutch oven or other large pot, stand tamales in with top fold down, using a cup in center of pot to keep tamales standing. Be sure there is plenty of space around tamales to let steam circulate. Add and keep adding water to maintain active steam. In 45 to 60 minutes, masa will be translucent and will loosen easily from husk. Serve tamales warm. To reheat, resteam tamales or place in covered dish in conventional or microwave oven until just heated through. Steamed tamales can be frozen. Cool them first.

## Who Knows?

1. Where do trees get 90 percent of their nutrients?
2. Name the most common street name in America.
3. Which of the five senses is less sharp after you eat too much?
4. Define "Cum Laude."
5. Where was the first prison constructed in America?

## Answers:

1. The air.
2. Main Street.
3. Hearing.
4. Latin phrase meaning "with praise."
5. Nantucket, Mass., in 1676.

Wide bottoms are usually a result of overloading.

**Don't Miss It!!**  
**Tiffin II's**  
**Annual January Clearance Sale**  
**20-50% off**  
**Most Fall and Winter Merchandise.**  
Sale starts Jan. 2 - 10 a.m.  
**Tiffin II**  
Earth 257-2223

**3 ANTHONYS Day Sale**  
**CLIP THE COUPON FOR EXTRA SAVINGS!**  
Save an additional 25% off any one item of your choice. Choose from regular or clearance price merchandise and take an extra 25% off when you clip the coupon!

**ANTHONY'S VALUABLE COUPON**  
**Save 25% OFF**  
**Any One Item in Our Store**  
That's right! You choose the merchandise and save an extra 25% off the price. Choose from regular or clearance priced fashions for the family and the home.  
Coupon does not include denim jeans. Anthony's already has the lowest jeans prices in town. This coupon may not be used in conjunction with layaways, existing layaways or with any other coupon or gift certificates. Expires 1/3/90



**TAMALE-MAKING** can be an important social ritual drawing families together to reestablish ties.



**PHEASANT SCULPTURE WINNER**--Joe Rhodes (right) is shown congratulating Cary Skaggs (left) who brought in the longest pheasant tail feather. Cary won a \$500 pheasant sculpture shown in the background. His winning feather was a 41-inch "Lady Amherst" tail feather. (Guest Photo)

**Have a Sweet New Year**  
May it hold lots of surprises and smiles in store for you. Thanks, friends.

**Wes-Tex Futures, Inc.**

**Super Buy**  
Long Sleeve Crewneck Sweatshirts for Men, Juniors and Boys  
**3<sup>97</sup> 2<sup>97</sup>**  
Men's and Juniors', Reg. 5.97 Boys', Reg. 4.97

**Save 40%**  
Save Now On Selected Men's Long Sleeve Flannel Shirts  
**4<sup>47</sup>**  
Reg. 7.99. This long sleeve flannel shirt is made from 100% cotton that feels soft next to the skin and keeps you warm on cold winter days. Styled with button-thru pockets. Choose from a variety of plaids in men's sizes S,M,L,XL.

**Save 45%**  
Special Purchase Women's Turtleneck Tops  
**6<sup>97</sup>**  
Reg. 12.99. Made from a polyester-cotton blend, these long sleeve knit tops feature a turtleneck and oversized styling. In solids or stripes. Sizes S,M,L.

**Save up to 35%**  
Women's Isotoner® Slippers and Gloves Your Choice  
**14<sup>97</sup>**  
Gloves, Reg. \$24. Unlined glove is made from nylon-spandex for a snug fit. Assorted colors. Slippers, Reg. \$24. Perfect for home or the office. Assorted fashion colors.

**Save 25%**  
Men's Famous Maker Long Sleeve Dress Shirts  
**9<sup>97</sup>**  
Reg. 13.99. Compare at 19.99. Choose from styles by Van Heusen®, Anthony's® and NoFads®. Made from easy care blends in assorted solids and stripes. Sizes 14 1/2-17 1/2.

**Great Buy**  
Queen or King Size Electric Blankets  
Your Choice  
**34<sup>97</sup>**  
Queen, if perfect ..... 49.97  
King, if perfect ..... 65.97  
The machine washable fabric has minor imperfections. The wiring is in perfect working order. Assorted colors. Queen and king sizes only.

**Super Buy**  
Men's Wrangler® 13MWZ® Cowboy Cut® Jeans  
**15<sup>97</sup>**  
Reg. 16.99. Wrangler® 13MWZ® Cowboy Cut® jeans are 100% cotton denim and feature live-pocket styling and a straight leg that fits over boots. In indigo blue. Men's sizes 28-42.

**Super Buy**  
Levi's® Shrink-to-Fit 501 Denim Jeans  
**15<sup>97</sup>**  
Reg. 16.99. Levi's® shrink-to-fit 501® jeans shrink to a comfortable fit after several washings. 100% cotton, button-fly and straight leg silhouette. Sizes 29-42. 38" length, Reg. 18.97. Sale **17<sup>97</sup>**

Anthony's Credit Card... the Smart Shopper's Choice!

**ANTHONY'S**  
We're Good At Making You Look Great!

Sale prices effective through 1/3/90.  
Hours:  
New Years Day - 12:00 to 5 p.m.  
Reg. Hours: Mon.-Sat. 9 a.m. to 6 p.m.

## Alexander Cage Will Travel To Campeche Mexico

The Spanish-speaking skills of Muleshoe resident Alexandra Cage, along with 31 other Austin College students, will be put to the test next month when she travels to Campeche, Mexico, for a four-week tour.

The daughter of Mr. and Mrs. James D. Cage, Cage is enrolled in the college's January Term course, "Summer in Campeche." January Term is a four-week session in which Austin College students explore one topic in depth. A variety of travel-abroad courses are available during the term.

While in Campeche, the students will become involved in an extensive Spanish immersion program at the Autonomous University of the Southeast in Mexico. Course organizer is Dr. Nelson DeVega, a professor of Spanish at Austin College.

Mornings will be devoted to classroom work while the remainder of the day will be spent in working situations, tours, and social and cultural activities. To further intensify their use of the language, students will stay with Spanish-speaking families.

With numerous tourist sites in and around Campeche, the students will also be given ample time to tour the Mexican city. Places of interest include ancient pyramids and a vast array of beaches. Although the students will be visiting in January, temperatures in Campeche usually reach 85 to 90 degrees.

The Campeche tour is only one of 17 off-campus courses offered

during Austin College's January Term. Others include course study in France, West Germany, the Soviet Union, England, New York and New Mexico.

January Term allows students to break from their traditional academic roles and pursue one course in depth. Because of the short, one-month commitment, many take a class they wouldn't normally take, such as scuba diving, movie labs, poetry writing or microcomputer instruction. Others opt for a full-time professional internship at the state capitol or in local school systems.

The term runs from Jan. 8 through the first week of February.

Located 60 miles north of Dallas, Austin College is a 140-year-old liberal arts college related by covenant to the Presbyterian Church (USA).

### Jennyslippers

#### To Select

#### Jennyslipper Of Year

Nominations for the Jennyslipper of the Year was the main topic for discussion at the Jennyslipper meeting at noon Thursday. The following names were submitted and voted on with the Jennyslipper of the Year being named at the annual banquet: Mary Ann Ramirez, Billie Downing, Ellen Ladd, Norma Bruce and Renae Rudd. The banquet will be held on January 9 and the meal will be catered by the Blue Goose.

Sandi Robinson called the meeting to order followed with a prayer by Pat Langfitt. Minutes of the previous meeting were read by Nancy Kidd and they were approved. Norma Bruce gave the treasurer's report, as well as a report on the money earned with the pick-up give away.

Mrs. Kidd reported that the Chamber of Commerce and Agriculture will be sponsoring a Customer Development Seminar on Jan. 8 and 15 in the Muleshoe State Bank conference room. A number of topics will be covered in these meetings which will begin at 7 p.m. Cost for the conference will be \$49 each for the first two people attending from a business and will decrease with additional participants.

The body of man is a machine which winds its own springs.

-JO De La Mettrie.



**CELEBRATING DECEMBER BIRTHDAYS**--Thursday afternoon, two residents of the Muleshoe Area Health Care Center, Ora Roberts and Effie Smith, were honored with a birthday party. The Needmore Community Club hosted the event and J. C. and Odessa Shanks and the Needmore Community Club provided the entertainment. Creations by Helen provided corsages for the honorees. Ora Roberts, standing, was born Dec. 9, 1900 and Effie Smith was born Dec. 2, 1902. (Journal Photo)

### Three Way News

Miss Robin Kindle, daughter of Mr. and Mrs. Bobby Kindle graduated from San Angelo State University the 15th of December. We are very proud of her.

Mr. and Mrs. Bill Dolle and Darla were in Lubbock Monday on business.

The Three Way senior high basketball teams played Cotton Center there Tuesday night with Three Way girls winning and boys losing.

Mr. and Mrs. Bobby Kindle and girls spent Thursday until Saturday in Albuquerque, N.M. visiting her sister, the R.E. Thompson family.

Mrs. Jack Lane, Mrs. Bud Huff, Milissa Bennett, and Rev. Rodger Foot took punch and cake to the rest home in Morton Thursday.

Mr. and Mrs. W.T. Simpson had Christmas dinner Saturday for their children and Mrs. Jim Simpson and Mrs. Inez Clark.

Mrs. George Tyson is a patient in Methodist Hospital in Lubbock.

Mr. and Mrs. Paul Huff and children from Lubbock spent Friday night and Saturday with their parents, the Bud Huffs'.

The Kindle families had Christmas dinner with their parents, the Robert Kindles' Saturday.

The Jack Lane family spent Saturday and Sunday in Clovis, with their daughter, the Rodger Hatcher family.

The Joe Sowders had their children home the past week. They were Mr. and Mrs. Mike Sowder and son from Arkansas, and the Jack McCarty family from Logan. The Joe Sowders' and the McCarty families took the Mike Sowders to the plane

Look into the mirror and you'll see what others see.

For Your Many Key Cosmetics  
 Josie Flowers  
 272-3865  
 8 a.m. - 12 p.m.  
 & after 6 p.m.  
 \*75 Christmas Drawing  
 was won by Nera Calvert

### SALMON-STUFFED MUSHROOMS

20 large fresh mushrooms  
 ¼ teaspoon salt  
 2 tablespoons finely chopped pecans  
 ½ teaspoon Worcestershire sauce  
 1 6½ ounce-can boneless skinless pink salmon, drained and flaked  
 1 3-ounce package cream cheese, softened  
 ½ teaspoon dried dillweed  
 ¼ cup finely chopped onion

Caviar (optional)  
 Several dashes bottled hot pepper sauce  
 Parsley leaves (optional)  
 Clean mushrooms; remove stems. Place half the mushroom caps, stem side up, around edge of a 10 or 12 inch round microwave-safe plate. Cover with waxed paper; micro-cook on 100% power (high) 2 to 4 minutes or till almost tender and just starting to water out, giving a plate a half-turn once. Invert on paper towels. Repeat with remaining caps.  
 Meanwhile, for filling, a mixing bowl stir together cream cheese,

onion, pecans, dillweed, Worcestershire sauce, salt, and hot pepper sauce. Stir in salmon. Spoon about 1 rounded teaspoon of filling into each cap. Place half of the filled caps around the edge of the same plate. Cook uncovered, on high about 1½ to 2½ minutes or till heated through, giving a half-turn once. Top with caviar and parsley. Serve immediately. Repeat with remaining mushrooms. Makes 20.

### GOLDEN GLEAMS

Come, all ye faithful, joyful and triumphant;  
 Come ye, come ye to Bethlehem.

--St. Bonaventure

It came upon the midnight clear, that glorious song of old.

--E.H. Sears

'Twas the night before Christmas when all through the house not a creature was stirring not even a mouse.

--C.C. Moore

Saturday. They went to Muleshoe for Christmas dinner with Joe's mother, Opal Rith Sowder and other family members.

Mrs. Jewell Lyons from Morton, Bonnie McDewra from Lamesa and Harold Wemyouth visited Mrs. H.W. Garvin Sunday evening.

Mr. and Mrs. Bill Dolle and Darla had supper Saturday night in Littlefield with Bill's brother, the J.T. Dolle family.

Mr. and Mrs. Truman Kelley and family from Beaumont spent Saturday and Sunday with her sister, the R.L. Vavis'.

**JANUARY Clearance**  
 Up To **50% Off**  
 We Will Be Closed Monday, Jan. 1st.  
 Monday-Saturday  
 10 a.m. - 6 p.m.  
**Lattrell's FASHIONS**  
 PHONE 806 272-3459  
 1519 WEST AMERICAN BLVD.  
 MULESHOE, TEXAS 79347

**HAPPY NEW YEAR**

May the New Year bring to you all your fondest wishes and hopes and may luck follow you throughout 1990.

**Wes Tex Feed Yards, Inc.**

1- 10x13 (Wall Photo)  
 1- 8x10  
 2- 5x7  
 2- 3x5  
 16- King Size Wallets  
 8- Regular Size Wallets

30 Color Photos  
 99¢ Deposit  
 \$10.00 Due at Pick up (plus tax)  
**\$10.99**  
 WE USE KODAK PAPER

AT **Anthony's**  
 321 Main  
 Fri. & Sat.  
 Jan. 5th & 6th  
 Photo Hours: 9 - 6 p.m.

**Shugart's inc.**  
 Group charge 99¢ per person  
 We use **Kodak PAPER** for a Good Look  
 FOR CREATIVE COLOR PORTRAITS

## Muleshoe 4-H Club Make Plans For Stock Show

A committee will meet at 5 p.m. January 3 at the Old Corral Restaurant to plan the concession stand for the Bailey County Junior Livestock Show. Cindy Magby has agreed to chair the committee for the 4-H. Everyone is ask to volunteer for a time to work in the concession stand when they are contacted. The 4-H Clubs get one-half of the profit from the stock show concession stand.

The Muleshoe 4-H Club will meet on Monday night, Jan. 8 at 7 p.m. in the meeting room of the Bailey County Civic Center.

The Three Way 4-H Club will not meet during the month of January due to the county livestock show and the Three Way stock show.

On Monday night, February 5 at 7 p.m., the Muleshoe 4-H will meet in the meeting room of Bailey County Civic Center. The program will be on 4-H presentations and will be given by Kandy McWhorter, CEA-HE.

Ms. McWhorter will also present the program for the Three Way 4-H Club on Wednesday, Feb. 14 at 3:45 p.m. in the Home Economics Department of the Three Way Schools. The program will be on 4-H presentations.

The Extension Office has received information about the Texas 4-H Foundation Scholarship program. Application forms are available at the Extension Office if you would like one. To be eligible for one of these scholarships, you must meet the following requirements.

- Actively participating in 4-H during part or all of the 1989-90 4-H year.

- Will graduate from high school during the 1989-90 school year.

- Have a minimum SAT score of 800 or minimum ACT score of 18. No other test (including PSAT) will be accepted.

- Have made formal application to enroll at a Texas college or

university they plan to attend. "If any of you would like to receive information on the scholarships, contact us at the Extension office" said Kandy McWhorter. "Most of the

scholarship applications are due by March 1, 1990. Texas 4-H Foundation Scholarship applications are due to the county office on February 28, 1990.

## Farewell Reception Honors Carters

Mr. and Mrs. Jessie Ray Carter were honored with a farwell reception Saturday, Dec. 9 at the Old Depot. Approximately 50 were in attendance.

Carter was born and raised in this area and married the former Maxine Slayden on May 17, 1947, in Portales. She had moved to this area in 1945, from Afton.

The Carter's moved to Calwell, Kansas Dec. 27 and will continue farming.

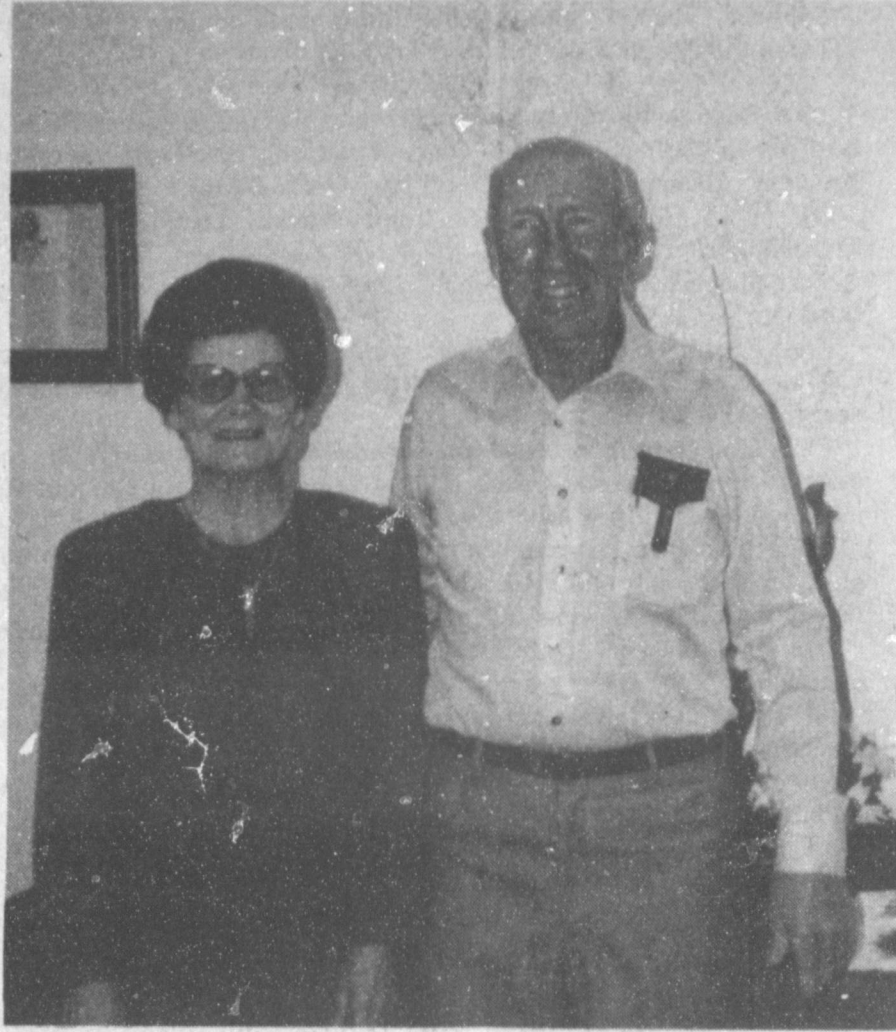
They have three children, Peggy Berhman, David and Paula, and four grandchildren.

The body of a man is not a home but an inn--and that only briefly.

## ONE MINUTE SPORTS QUIZ

By Christian Thodund  
 1. What was the score of the recent Seattle-Buffalo NFL game?  
 2. What was the only college football team defeated four times and ranked in the top 25?  
 3. What male tennis player ranked no. 1 at year-end (by the ATP)?  
 4. When is the Citrus Bowl played?  
 5. Who is coach of the Dallas Mavericks (NBA)?

Answers:  
 1. 17-16, Seattle.  
 2. Michigan State.  
 3. Ivan Lendl.  
 4. Jan. 1--Orlando (Illinois vs. Virginia).  
 5. Richie Adubato.



MR. AND MRS. JESSIE RAY CARTER

## Carrot Snack Cake

Ideal for snacks, dessert and also breakfast, Carrot Snack Cake is rich in apple juice, grated fresh carrots, and raisins and dates already in Oat Bran Options. Try this refreshingly new way to incorporate oat bran into the diet beyond breakfast and stretch your menu options.

With all of this information, now is a good time to answer that quiz.

### Carrot Snack Cake

So low in fat and calories you'll feel good about enjoying it for breakfast, too!

- |  |                            |
|--|----------------------------|
| 3/4 cup packed brown sugar                               | 1 cup all-purpose flour    |
| 3 tablespoons vegetable oil                              | 2 teaspoons baking powder  |
| 4 egg whites OR 2/3 cup cholesterol-free egg product*    | 1 teaspoon ground cinnamon |
| 1/3 cup apple juice                                      | 1/4 teaspoon ground nutmeg |
| 2 cups Oat Bran Options™ brand cereal, crushed to 1 cup. | 1 cup finely grated carrot |
|  | Powdered sugar (optional)  |

Preheat oven to 350°. Coat 9-inch square baking pan with no-stick cooking spray. In large bowl beat sugar and oil. Add egg whites and juice; mix well. Stir in cereal, flour, baking powder, cinnamon and nutmeg until well combined. Stir in carrot. Pour into prepared pan. Bake 25 to 30 minutes or until tester inserted in center comes out clean. Cool. Sprinkle with powdered sugar if desired.

\*2 whole eggs may be substituted.

Makes 1 cake.

Nutrition information per 2 1/4-inch square: 116 calories, 21.5g carbohydrate, 2g protein, 3g fat, 0mg cholesterol, 79.5mg sodium, 1g dietary fiber.



Here's wishing you and yours 366 days of health, happiness and prosperity. You've been great, friends.

## Bailey County Gin Company

## Pineapple Cheese Coffee Cake



Crumbly Crunch Bursting with Juicy Tang

The Home Baking Association says this recipe works well with all-purpose flour if you add 1-1/2 teaspoons leavening and 1/2 teaspoon salt for every cup of flour.

If you use self-rising flour, you save measuring and mixing steps because the leavening and salt are included.

Whichever you use, the word "enriched" on the bag of flour means that the B-vitamins, thiamin, niacin and riboflavin, and the minerals, iron and calcium have been added as a nutritional bonus.

The recipe looks a little long because of the many scrumptious ingredients. The procedure is simple. Just follow the five steps according to instructions.

### Pineapple Cheese Coffee Cake (1 Coffee Cake)

#### Pineapple Filling\*:

- 2 cups fresh pineapple, chopped, peeled
  - 1 cup sugar
  - 1 tablespoon fresh lemon juice
  - 2 teaspoons vanilla extract
- \*may substitute 1 jar (10 oz.) apricot pineapple preserves

#### Cinnamon Crumb Topping:

- 1 cup enriched self-rising flour
- 1/2 cup sugar
- 1 teaspoon ground cinnamon
- 1/2 cup butter or margarine

#### Dough:

- 3 cups enriched self-rising flour
- 1/3 cup sugar
- 1 teaspoon rapid rise dry yeast
- 1 cup milk
- 1/4 cup water
- 1/3 cup unsalted butter
- 2 eggs

**Prepare Pineapple Filling:** In small saucepan combine all ingredients. Cook until syrupy and liquid is reduced to about 1/3 cup, stirring occasionally. Cool. Set aside.

**Prepare Creamy Cheese Filling:** Beat cream cheese with sugar until smooth. Beat in eggs one at a time. Beat in vanilla and lemon juice. Set aside.

**Prepare Cinnamon Crumb Topping:** Stir together flour, sugar and cinnamon. Cut in butter with pastry blender or food processor until crumbly.

**Prepare Dough:** In large mixing bowl of electric mixer stir together flour, sugar and undissolved yeast. In saucepan heat milk, water and margarine until warm, (no more than 120 degrees F.). Add liquid to dry ingredients. Beat 3 minutes. Add eggs, one at a time. Add remaining flour to make a stiff batter.

**To assemble coffeecake:** Spoon batter into greased 13 x 9-inch pan, reserving about 1/3 of the batter for the top. Spread Creamy Cheese Filling on top. Dollop Pineapple Filling over all. Top with dollops of remaining batter. Top all with crumb topping. Let rise in warm place 20 minutes. Bake in preheated 375 degree F. oven 35 to 40 minutes. Cool.

## MICROWAVE TIPS

Walnuts are now being recommended as a superior nut because they contain little cholesterol. For a special treat, here is how one makes rosemary-flavored walnuts:

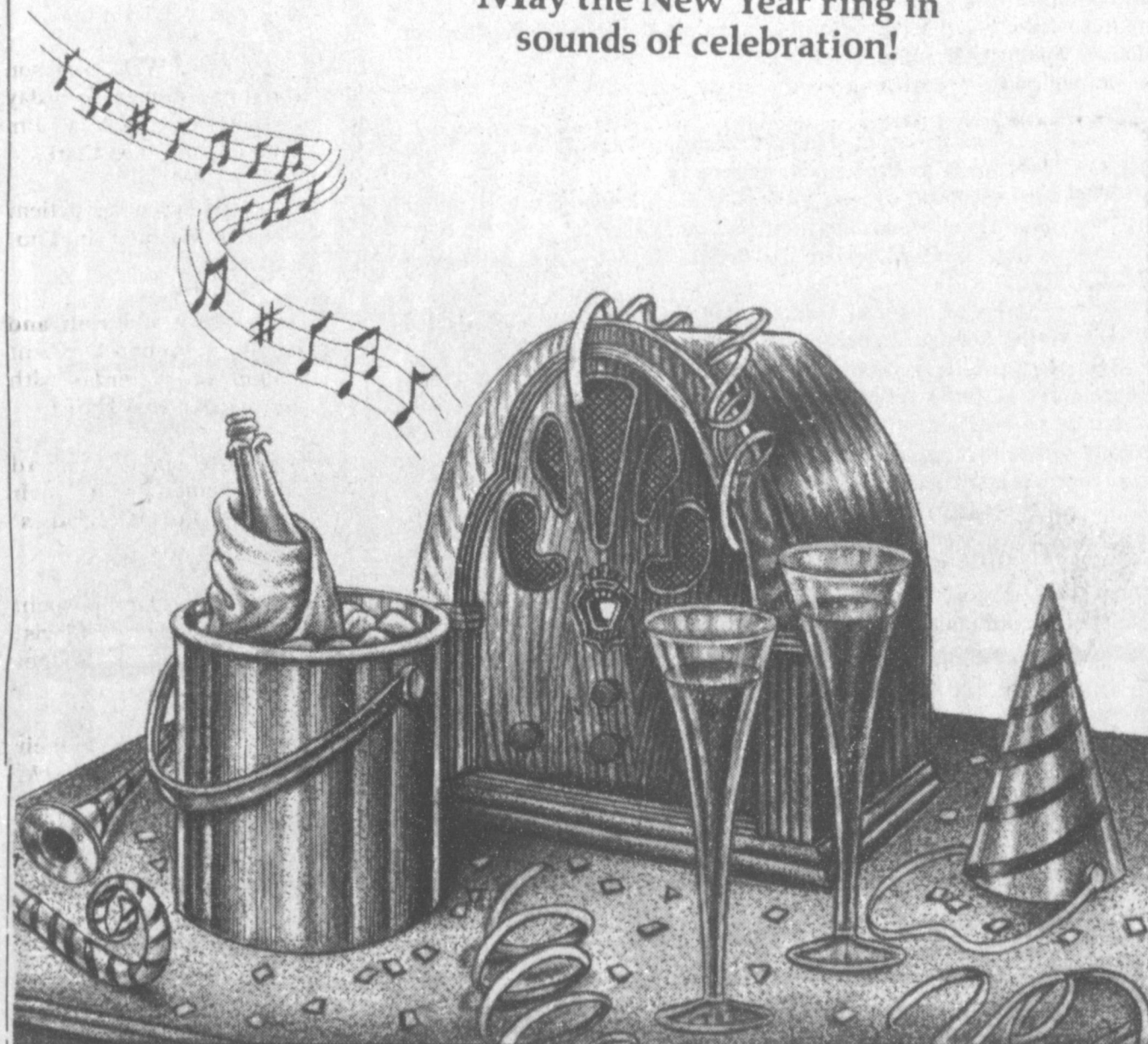
Melt a tablespoon of butter in a pie plate. Add two teaspoons of Worcestershire sauce, three-fourths of a teaspoon of dried rosemary leaves, crushed, and half a teaspoon of lemon pepper seasoning. Mix well.

Then add 8 ounces of walnut halves and stir to coat. Microwave on high from four to six minutes, stirring several times. Spread on a baking sheet or pan lined with paper towels. Cover and store in a cool dry place.

They will be tasty for about two weeks.

## Sing Songs Of Cheer!

May the New Year ring in sounds of celebration!



## 1ST BANK MULESHOE

Member F.D.I.C.

## Rip's

### AFTER CHRISTMAS SALE!

Continues  
 Largest Clearance Sale  
 Of Rip's 46 Years In Business!

#### BOOTS

All First Quality NO SECONDS!

- Justin Ropers (Select Group) ..... \$79.98
- Justin Elephant Ropers ..... \$179.98
- Justin Lizard Ropers ..... \$179.98
- Texas Ladies Ropers ..... \$39.98
- Python..... \$159.98
- Select Styles Redwing Work Boots . \$44.98
- Large Group Tony Lamas ..... \$59.98
- All Childrens' Tony Lamas ..... \$29.98
- Insulated Lace Up Boot ..... \$34.98
- Tony Lama Bullhide One Group Starting at \$99.98

All Mercedes Boots  
**\$100 Off Regular Price**  
 Per Pair

- One Group Men's Sportcoats .....50% Off
- All Men's Dress Pants .....50% Off
- Large Group Men's Shirts ..... \$9.98
- All Other Men's Dress Western Shirts 50% Off
- All Goose Down Coats .....50% Off

- Walls Coveralls & Jackets ..... 50% Off
- All Felt Hats ..... 20% Off
- Men's Colored Wranglers ..... \$19.98
- 13 MWZ Wranglers ..... \$14.98
- All Belts, Buckles & Billfolds .....20% Off

Large Groups of Ladies Wear  
**50% & 75% Off**

- All Ladies Coats & Sweaters ..... 40% Off
- One Group Ladies Blouses ..... 30% Off
- Sterling Jewelry ..... 20% Off
- All Other Jewelry ..... 50% Off

Watch For Other Unadvertised Specials

Throughout Our Store!

Hours: 8:00 to 6:30 CDT

Monday thru Saturday

NO REFUNDS ON SALE MERCHANDISE

1-800-748-2459

482-3363

314 Wheeler St.

We Accept  
 VISA DISCOVER  
 MASTER CARD  
 AMERICAN EXPRESS

IN TEXICO

We're Your Family Store!

## Ambulance Controversy Highlighted

Cont. From Page 1

1989 budget.

Mule Plex Production Co. elected officers for the next year, who included: Pat Prater, chairman; Darla Rhodes, vice chairman; Arlene Phelps, secretary and Norma Bruce, treasurer.

It was a final score of 49-6 when the Mules lost to Denver City. Glen Morris was presented a plaque as 'Man of the Year' for the Muleshoe Kiwanis Club during their annual awards banquet.

Linda Turner, 12½ year employee of FmHA, received an award for "Meritorious performance in rural housing inventorying property and farmer programming servicing responsibility."

Women from several area towns and cities joined the Muleshoe Jennyslippers at the Bailey County Civic Center for the 8th Annual Regional Conference of Chamber of Commerce Women.

OCTOBER

Dr. Bruce Purdy, ambulance service medical director, asked Bailey County commissioners to pay the increase in his liability insurance, \$5,000 per year, to act as medical director. He also asked for county compensation of \$1,000 per month as long as he is director; plus the right to help choose and approve any paramedic considered as an employee with the Bailey County Ambulance Service.

The Greenwood Rangers defeated the Muleshoe Mules, 29-0. Charla Holt and Tiffany Angeley received the 4-H Gold Star Award and the Joe Wheeler family was named 4-H Family of the Year.

After 23 years of publication, the Muleshoe Independent School District informed *The Journal* they were discontinuing *The Mule's Tale*, the Muleshoe High School newspaper.

Citing "a lack of support by the county judge and county commissioners," the entire Bailey County EMS volunteers resigned. The ambulance service had at that time operated without a director for three weeks following the resignation of ambulance service director, Richelle Watkins.

Taking advantage of homecoming, the Mules downed River Road, 19-7. In pre-game activities, Wendy Green was named 1989 Homecoming Queen. She was escorted by Andy Langfitt.

Brittini Engelking was crowned Homecoming Queen and Gerardo Mata, Homecoming King, for 1989 at Lazbuddie.

Faced with the resignation of Bailey County Ambulance Director Joy Harp and her husband, Jerry, county commissioners named Jim Fitzgerald, owner/operator of Pioneer Ambulance Service of Morton, as interim director. He formerly worked part time as a paramedic with the Bailey County Ambulance Service. Following Fitzgerald's employment, the EMS volunteers agreed to return to the ambulance service.

Chief Deputy Steve Bearden announced he was leaving the Bailey County Sheriff's office to accept a position with the Levelland Police Department.

Vegetable harvesting and packaging was going strong, with all area vegetable packing sheds operating to near capacity.

The Muleshoe Mules and Dimmitt Bobcats battled to a 0-0 tie in district action.

Brother and sister, Debbie and Chris Locke, were crowned Homecoming Queen and King at Three Way.

Don Carter resigned from the Muleshoe City Police Department to be administered the oath of office as a deputy sheriff to replace Steve Bearden.

Muleshoe Area Hospital District voted to purchase a surplus ambulance from Bailey County to provide to EMS personnel in the Lazbuddie community.

Floydada 'blew by' Muleshoe, when the Mules lost to the Whirlwinds, 27-7.

Watson Junior High School Student Council joined a national 'Drug Free' week, distributing pledge cards, buttons and ribbons.

Tulia rambled over the Mules, 49-0, in a district game.

Bailey County commissioners sold surplus items at an auction, then in a meeting conducted in the commissioners meeting room, named Jim Fitzgerald ambulance director, effective December 1, 1989.

The Lazbuddie EMS scheduled a chili supper for funds to help equip their newly acquired ambulance.

NOVEMBER

Muleshoe Lions Club hosted the Lions International District 2-T-2 Cabinet Meeting in Muleshoe. It was attended by Lions Club members from across the South Plains.

MAC scheduled a Thanksgiving turkey drawing. More than 20 turkeys, one turkey with all the trimmings, and one ham with all the trimmings, were given away.

Lena Garcia and Filemon Garcia were named Spirit Princess and Prince for Watson Junior High School.

Friena broke a year-long losing streak, and took a 34-13 victory from the Mules.

Both the annual Nursing Home Christmas Card Project and the Annual Toys for Kids Project got underway.

Methodist Hospital agreed to help the Muleshoe Area Hospital District obtain a new administrator for the MAHD.

To end their football season, Littlefield defeated the Muleshoe Mules, 20-0.

Bailey County Ministerial Alliance planned the annual Community Thanksgiving Service, to be held at Trinity Baptist Church.

Spencer Tanksley received the Texas Superior Service Award in ceremonies at Texas A&M.

It was an overflow crowd at the Muleshoe Area Hospital District monthly meeting, as citizens asked questions about proposed room rate increases at the nursing home.

After a successful season, the Lazbuddie Longhorns took a 47-36 Bi-District title from the Silverton Owls.

Though a joint effort of Bailey County EMS, paramedic Raymond Davis of Lubbock, and the Muleshoe Area Medical Center, the Lazbuddie ambulance was supplied and equipped to meet state

requirements, and lacked only a radio to meet state certification standards.

The New Home Leopards fell victim to the Lazbuddie Longhorns, as the 'Horns took the 6-Man Regional Title, 49-6.

Spencer Tanksley, who won the first football contest of the year, became the Grand Prize winner for 1989.

DECEMBER

U. S. Senator Phil Gramm visited Muleshoe again, and spoke to a large crowd in the district courtroom about the national drug problem. Also speaking on a local basis were Bailey County Sheriff Jerry Hicks, Muleshoe Police Chief Wayne Holmes, and DPS Trooper Lacie Kirk.

Fort Hancock ended Lazbuddie's bid for a state title by defeating the team, 66-37.

The Firemen's Auxiliary float won first place in the annual Christmas parade. The parade was the largest held in Muleshoe in several years.

Phil Langston from Oklahoma was named administrator for MAHD. He was chosen from a field of 74 applicants for the job. He assumed his duties in Muleshoe early in December.

Muleshoe Broadcasting Co., Inc. president, Leola Randolph, announced the sale of KMUL AM-FM to Southwestern Broadcasting, Inc. Tom Crane of Florida, moved to Muleshoe to operate the station.

Incumbent District Judge Jack Young announced he is a candidate for re-election.

An arctic blast levelled at the area, and dropped temperatures to the -0 bracket.

Muleshoe Area Hospital District adjusted room rates for the nursing home.

A nine year old Lazbuddie youth was killed, apparently instantly, when he turned an all-terrain vehicle over on him near Lazbuddie.

Marilyn Cox, a former Muleshoe businesswoman, announced she was seeking the office of Bailey County Judge.

Toys for Kids received over 460 names this year. The Bailey County EMS asked for additional gifts and funds to help fill in for all the applications.

Sub-freezing temperatures meant over 100 telephone calls to city water workers concerning frozen water mains, frozen meters, and burst water pipes.

Ricky Mata received his paramedic certification. His 95.5 grade was said to be one of the highest in the state.

Jodie Barrett, longtime southern Bailey County resident, announced he is seeking election as Commissioner, Precinct Four.

Jim Watson, incumbent Bailey County judge, also announced he is seeking re-election in the Democratic Primary.

\$2,500 in MAC Bucks, turkeys, giant Christmas stockings were given away in the MAC Christmas drawing. Keith Morris was the winner of the new Jenny/Mac pickup.

(As 1989 faded into history -- many events occurred during the

## Flash Fire

Cont. From Page 1

condition and Farris was in fair, but stable condition.

At the conclusion of the emergency runs, the ambulances were re-stocked to get ready for the next calls.

"MAN WITH GUN"

Somewhere around 11 p.m. on Wednesday night, the Muleshoe City Police dispatcher sent an officer to an apartment complex where a man was reported to be "wandering around outside with a gun."

On arrival, the officer was informed that the man was looking for a woman who

neighbors said "beat up his wife."

Backups were called out, and within minutes, at least five city units, two county units, and a state unit were at the complex to help find the man.

After a search, the man was found and was taken into custody. He was booked into the Bailey County jail by the MPD.

year. It was a year of tragedy and triumph; and a year of controversy and compromise; as well as a year of growth and death for the county and the area. -- The editor)



A SCENE REPEATED ALL OVER MULESHOE--For about a week, workers from the City Water Department have been busy day and night replacing burst water mains, such as the one shown here just east of the post office. They also had frozen and burst water meters, and many instances of burst pipes, with people calling in needing their water turned off "real fast." Another cold front was approaching the area late Friday afternoon, with freezing rain and snow predicted for the weekend. (Journal Photo)

# HAPPY 1990

As we herald in a new decade, we offer our wish for a bright, prosperous future for all.

We will close Sun. afternoon at 3 p. m. and reopen Tues. Jan 2 at regular time.

Thanks for your business in the past and we look forward to serving you in the new decade!

*Leal's*

DRINKING AND DRIVING CAN ADD UP.

PLEASE AVOID DWI DURING THE NEW YEAR

TEXAS DEPARTMENT OF PUBLIC SAFETY



## Happy New Year

We'd like to take this moment to thank the kind and loyal people who have been our customers.

**W. T. Services  
Radio Shop**

319 E. Amer. Blvd

272 - 4888

## Thank You

Bailey County EMS wishes to thank all the businesses, organizations and individuals who donated merchandise, food, money or time to the Toys For Kids project.

Because you cared, more than 460 kids got to enjoy a better Christmas in 1989.

Special thanks to Jeri Weidibush for providing a building to store and sort the toys and food.

May you all have a very happy and prosperous New Year.

**Bailey County EMS**



**WINNER OF EXOTIC JACKET**--Caprice Nutt, of Lubbock, was the lucky winner of the Ladies' Exotic Jacket Saturday, December 23, at Joe's Boot Shop. Lane McFarland, son of Lonnie and Yolanda McFarland, drew the lucky name. (Guest Photo)

### Letter To The Editor

As 1989 draws to an end, another year of Muleshoe history and heritage is recorded. We, ordinary people on an ordinary day in an ordinary little town, have

made history.

Dedicated people planned and implemented the development of the Heritage Complex several years ago. Buildings were moved; renovating the Santa Fe Depot completed and work begun on the Janes Ranch House. Many more hours of work have been given this year and the Janes House is beginning to take on its new old look!

**Cash Rewards  
Up To \$1,000  
For Information!**

**Call  
Bailey County  
Crime Line  
272-HELP**

There are ninety-two current memberships in the Heritage Foundation. Thirty-eight memorials have been given this year. Monetary gifts to the Foundation are derived from membership dues, memorial gifts, donations, fees from use of Depot and profit from the Thrift Shop. These funds are used only on Heritage Foundation work.

Hopefully, a temporary office will soon be set up in the Janes House to maintain records which must be kept in establishing the museum. If you have office furniture you would loan for this purpose please call Cara Juan

Schuster at 946-3626.

History in 1990?

The gift of your time, work and money is needed to fulfill the dream of completing the Janes House during the next year. Will you be a part of Muleshoe

submitted by  
Maurine Hooten  
Secretary of the  
Muleshoe Heritage Board

### Thank You

Sammie Ethridge, and The Muleshoe Area Healthcare Center wish to take this way of thanking each, and every one that contributed to the Christmas Card Project.

We cannot thank you personally. The total received was \$2,862.70 we can now purchase the chairs, and tables that are needed.

When we get them in, we would like for you to come by and see them. Thanks again.

May God bless, and keep you in His loving care.

### Resolutions

Americans often make resolutions just before or on New Year's Day. Most of them, of course, aren't kept, but some are.

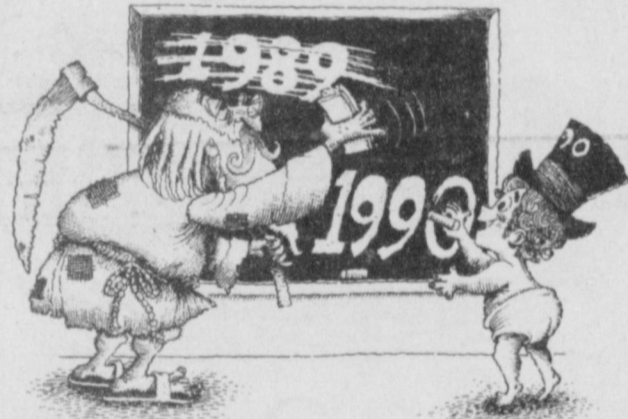
Resolutions are a good habit, not because we can keep all of them, but because they show we are striving to better ourselves. They denote positive thought and good intentions--worthwhile traits.

resolutions will likely be broken, some only hours or days after they're made, are right. But they are wrong that resolutions are useless. After all, what is life all about, if not about hope and betterment?

So, what will you resolve to do better in 1990 than in 1989, or resolve not to do in 1990 that you did in 1989?

Cynics who note that most

### IN WITH THE NEW



We will close at 6 p.m. Sunday December 31 and reopen Wednesday, Jan. 3 at our regular time

We owe our past success to you!  
A very special thanks to all our customers and friends.

### Viola's Restaurant

### THE RANCHER THE FARMER

A Health Insurance Plan Designed For You

The **UNIVERSAL P.L.A.N.**

- Builds Cash Value •
- Designed By Farmers and Ranchers, Sponsored By: Texas Wheat Producers Association

**"OWN YOUR HEALTH INSURANCE, DON'T JUST RENT IT!"**

Gain Control of Runaway Health Premium Costs!

Kenny Kittrell

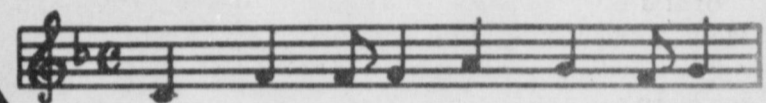
272-5646

\*Subject to surrender charge

Insured By  
The Universe Life  
Insurance Company  
Reno, Nevada  
Administered By  
A.I.A., Inc.



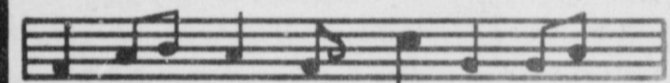
### SHOULD AULD ACQUAINT



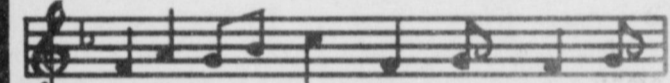
BE FORGOT AND I



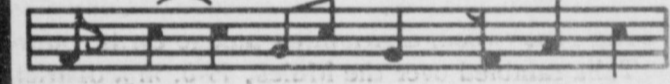
BROUGHT TO MIND



SHOULD AULD ACQUAINT



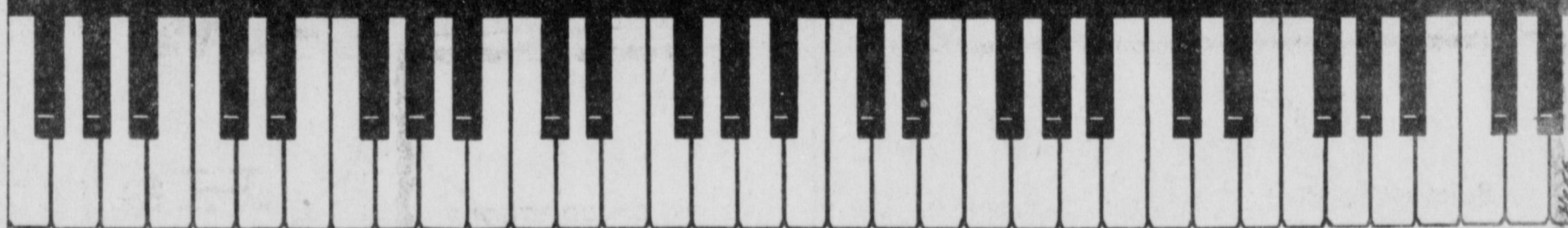
BE FORGOT AND



OF AULD LANG SYNE



Happy  
New Year!



As the New Year commences, may we take this opportunity to extend to our many friends the very best

Thanks for making our year a success

### Farmers Co-Op Elevator

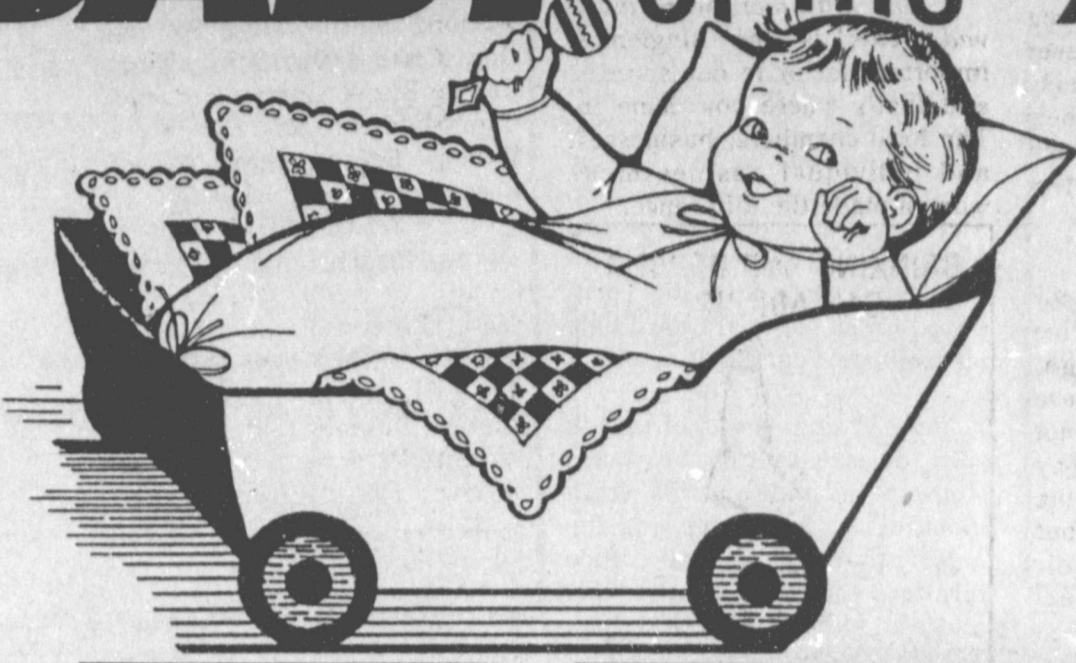
Five Locations To Serve You

Muleshoe

Enochs

Clays Corner

# FIRST BABY of the '90s



# CONTEST

## Contest Rules

1. Winning baby must be born in Bailey County.
2. Exact time of birth must be specified by the attending physician.
3. In the event there is no winner on January 1, 1990, the contest will be extended until a winner is declared.

### BE THE GUEST OF HONOR

Two  
Leal's Specials  
*Including Drink & Tostadas*

Leal's  
Restaurant

FILLING  
ALL YOUR  
PRESCRIPTION  
NEEDS!

Baby Wipes

Western Drug

GIVING YOU  
THE BEST  
PRICES IN  
TOWN!

Box of  
Huggies

Small Convenience Pack

**thriftway**

TAKE TIME  
TO SMELL  
THE FLOWERS!

Ivy in  
Baby Container

Decorator's  
Floral & Gifts

GIVING YOU  
LOCAL NEWS  
AT YOUR  
FINGERTIPS!

One Year's  
Free Subscription

Muleshoe Journal

JUST A  
SWEET TOOTH  
OR TWO!

2 lb. Box  
Russell Stover  
Candy

Damron Drug

PROVIDING  
YOU THE BEST  
POSSIBLE CARE!

New Mother's Packet  
Diapers Milk  
Powders & Lotion  
Emergency - OB - Medical -  
Respiratory - Physical Therapy  
Lab

Muleshoe Area  
Medical Center

BANK ON SUCCESS!

\$50  
Savings Bond

**THE BANK**  
MULESHOE  
Member F.D.I.C.

PICTURE YOURSELF  
BOOTY-FUL!

Haircut  
& Style  
for the Mother

Ana's  
House of Beauty



# Texas CofC Gives Legislative Update On Workers Comp

Reform to the Workers' Compensation System became a reality at 5:15 p.m. Tuesday, Dec. 12, 1989...and what a Christmas present for the Texas business community.

The Friday before final approval, it appeared that "all was lost," with the same 17-14 vote opposing reform in the Senate being cost one more time. However, Texas Chamber staff members observed some unusual activity on the floor of the senate. They noticed House Conference Committee member Bruce Gibson and several of the Lt. Governor's staff members in serious conversation with several senators who had previously opposed the effort. They also noticed some smiles being exchanged. A few minutes later, "the hunt was on" again.

Throughout the weekend it became obvious that Senators Edwards, Zaffirini and Brooks were serious in their comments that if a few compromises could be worked out, they would change their votes.

After extensive talks and a trip to the border, a signed agreement was presented to House Speaker Lewis indicating that the three senators would vote for a bill that contained seven amendments.

On Sunday, the Texas Chamber participated with other members of the Jobs for Texas coalition in discussions with the lawyers and workers' comp experts who have represented us throughout the many months of negotiations. The two-hour conference call produced one conclusion...the amendments contained nothing that was unaccep-

table to the business coalition and agreed to support the proposed compromise.

The trial lawyers and labor held a press conference to strongly denounce the compromise effort, and debate on the Senate floor began at 9 a.m. Tuesday, Dec. 12, amid threats of a possible filibuster.

In the House, Speaker Lewis called members back to vote on the compromise version. Rep. Richard Smith, the original workers' compensation reform author described the measure as "a good bill," and the House passed the compromise on a voice vote.

Debate in the Senate lasted more than eight hours, with several acrimonious exchanges between members on opposing sides of the issue.

Senate members supporting the bill from the start were: Armbrister, Bivins, Brown, Glasgow, Haley, Harris, Henderson, Krier, Leedom, McFarland, Montford, Ratliff, Sims, and Tejada. Senators joining the business position through the compromise were Brooks, Edwards, and Zaffirini. The only surprises in the voting occurred when Senator Carriker, previously a strong and vocal opponent of reform, cast a last-minute vote on the side of business.

### WHAT'S NEXT

If your senator or representative voted for reform, let them know how much you appreciate their decision. In some instances, it was a difficult vote to cast and they need to know that you appreciate their effort. Wherever possible, you should publicly honor that support and let their constituents know how much business appreciates their decision.

### AND THEN

If you were able to use our FAX network or the Legislative Hotline to your advantage, please let us know. Both of these were new projects and not inexpensive ones. We think they were more than worth the investment of time and staff, but we need to analyze their effectiveness in terms of expense. We can only do that with your feedback about the service. If it helped you, we need to know. No response is necessary if you didn't benefit from the effort.

### WHAT MADE THE DIFFERENCE?

You did! The phone calls, letters, resolutions, dogged determination in staying in touch with legislators...that was the difference. Every legislator we talked to noted they had never seen such a united effort on behalf of business. There were three reasons for that:

1. *Our cause was just.* It helps

to be on the right side of an argument, and this time there was little doubt that we held those cards. The need for reform was easily seen.

2. *Business was united.* Every major statewide business organization was on-board for the entire effort. No fighting, no separate effort. This united front resulted in a well-coordinated effort, the likes of which business has never before managed.

3. *The grassroots were involved.* This is the single most important factor in our success, and that's where you come in. The local chambers, businesses, and individual businessmen/women made the difference.

**DRINKING AND DRIVING CAN ADD UP.**

**PLEASE AVOID DWI DURING THE NEW YEAR**

TEXAS DEPARTMENT OF PUBLIC SAFETY

## Patients in Muleshoe Area Medical Center

DEC. 26-28 TUESDAY

Miguel Acevedo, Josie Salazar, Generosa Castillo, David Knapp, Tosha Garza, T.J. Tucker, Wenona Gibson, Ollie Sebring, Ona Coffey, Abraham Flores, Connie Bruns, Ramon Berlanga, Clio Middlebrooks, Erin Pena, Winona Spears, Rosie Martin, Ross Goodwin, Sylvia Bennett and Matt Phelps

WEDNESDAY

Mylissa Thompson, Tosha Garza, Genaro Heredia, Miguel Acevedo, Josie Salazar, Generosa Castillo, David Knapp, Matthew Richards, Janie Moraw, T.J. Tucker, Joseph Embry, Willie Wright, Wenona Gibson, Ollie Sebring, Ona Coffey, Abraham

Flores, Connie Bruns, Ramon Berlanga, Clio Middlebrooks, Erin Pena, Winona Spears, Rosie Martin, Ross Goodwin, Sylvia Bennett and Matt Phelps

THURSDAY

Mylissa Thompson, Genaro Heredia, Miguel Acevedo, Matthew Richards, Generosa Castillo, David Knapp, Janie Moraw, Joseph Embry, Wenona Gibson, Ona Coffey, Abraham Flores, Oleta Hamblin, Clio Middlebrooks, Guy Farris, Rosie Martin, Ross Goodwin, Sylvia Bennett, and Matt Phelps

### The Reason

"Pilot to control tower! Pilot to control tower: I'm coming in, please give landing instructions."  
"Control tower to pilot! Control tower to pilot! Why are you yelling so loud?"  
"Pilot to control tower! I don't have a radio!"

1989 Crop

	Pool Cash Advance	Sale Flat	Sale Basis	Month
Feed Corn.....	4.37.....	4.36.....	0.05.....	March
White Cobb Yellow.....	4.10.....	5.10.....	0.40.....	March
Red Cobb Yellow.....	4.00.....	4.50.....	0.12.....	March
White Food Corn.....	5.00.....	6.00.....	0.96.....	March
Milo.....	3.78.....	3.73.....	-0.32.....	March
Soybeans.....	No Pool.....	5.19.....	-0.50.....	Jan.
Wheat.....	No Pool.....	3.67.....	-0.41.....	KW Mar.

95%  
Prices effective Dec. 29, 1989

**Farmer's Co-Op Elevators**  
272-4335

## Three Way Menu

**JAN. 3-5 MONDAY NO SCHOOL**  
**TUESDAY NO SCHOOL**  
**WEDNESDAY BREAKFAST**  
Eggs, Biscuits, Milk and Juice  
**LUNCH**  
Chili, Grilled Cheese, Crackers, Milk and Brownies  
**THURSDAY BREAKFAST**  
Waffles, Milk and Juice  
**LUNCH**  
Hot Dogs, Peas, Tator Tots, Hot Dog Bun, Milk, and Pears  
**FRIDAY BREAKFAST**  
Hash Browns, Eggs, Milk and Juice  
**LUNCH**  
Hamburger w/Cheese, Tossed Salad, French Fries, Hot Bun, Milk, and Fruit Salad



**LUCKY WINNER SATURDAY**--Paige Lewis of Clovis is pictured here in the Rodeo Jacket she won at Joe's Boot Shop, Saturday, December 23. Lane McFarland, son of Lonnie and Yolanda McFarland, drew the winning name. (Guest Photo)

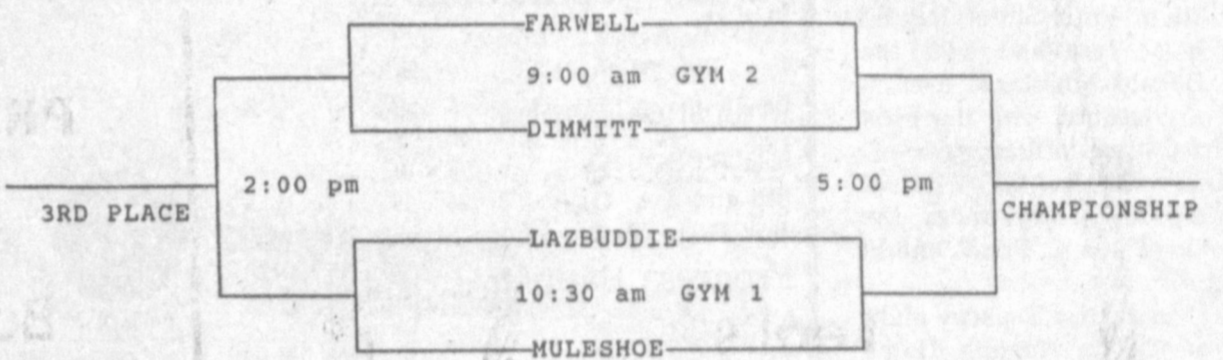
The less you work the less you want to work.

It is easier to utter words than to live a brave life.

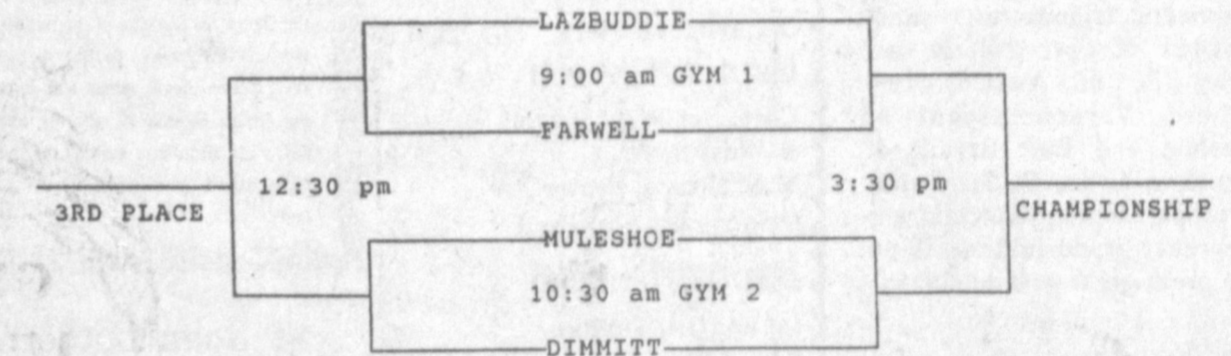
### LAZBUDDIE JR. HIGH TOURNAMENT 1990

January 6, 1990

#### BOYS:



#### GIRLS:



ALL TEAMS ON TOP WILL WEAR WHITE JERSEYS!

ALL AFTERNOON GAMES WILL BE PLAYED IN THE NEW GYM (#1)

## THE PERFECT PAIR... You and the Classifieds!

She thinks the Classified ads are for selling things they don't need. He thinks the Classifieds are for buying things they do! They're both right! Reading the Classifieds has become a tradition in some very fine families, so join the leaders who declare the Classifieds "unbeatable" allies in matching you to what you want or need!

**Muleshoe & Bailey Co. Journals**

272-4536



## Nursing Home News

by: Joy Stancell

We have had an enjoyable Christmas holiday most of the residents went out Christmas or had family and friends visiting them here. Among those going out to be with their families and loved ones were Emma Schuster, Ruby McCamish, Otilie Wisian, Pearl Cox, Ora Roberts, Mary Sisemore, Ruby Malone, Patsy Franklin, Mamie Askew, Wilmoth Clements, Lois Ethridge and Eric Smith.

Fluff Baldwin, Guy Kendall, Clara Weaver, Effie Smith, Arnold Morris, Ella Faubus, Ernest Kerr, Birdie Warren, John Seid, Inez Allgood, Edith Bruns, Allice Barbour, Cora Duncan, Thelma Stearns, Conor Burford, Beryl Hollis, Mildred Nieman, Robert Kimbrough were among those who had family and friends visiting during Christmas.

Wednesday afternoon Glenda Jennings came for a fun afternoon of singing and story telling.

Friday morning after exercise class the residents watched two good films from the library.

### Ida Mears

### Local Man's

### Sister Dies

Funeral services for Ida Mears, 93, of Fort Collins, Colo. were held at 2 p.m. Saturday, Dec. 30 in Fifth Street Baptist Church of Levelland with the Rev. Donald Moreland, a minister of education with the First Baptist Church, officiating.

Burial was in the City of Levelland Cemetery under the direction of Geo. C. Price Funeral Directors.

Ms. Mears died Tuesday night in Fort Collins Nursing Home following a lengthy illness.

She moved to Fort Collins from Levelland in 1983. She married Joe Mears on March 30, 1920, in Lamesa. He died Feb. 20, 1974. She was a homemaker and a Baptist.

Survivors include two sons, Joe Glen of Fort Collins and Dewey G. of Austin; two brothers, Vernon Bryant of Muleshoe and Bert Bryant of Lubbock; a sister, Bessie Curtis of Pampa; four grandchildren; six great grandchildren; and three great-great grandchildren.

### Bobby Tucker

### Services Held

### At Midland

Funeral services for Bobby Tucker, 54, were held at 4 p.m. Friday, Dec. 29 in Ellis Funeral Home of Midland with the Rev. Bob Porterfield, pastor of West Kentucky Baptist Church, officiating.

Burial was in Red Top Cemetery in Shiro under the direction of Ellis Funeral Home. She died Wednesday morning in Courtyard Care Center following a brief illness.

Born in Shiro, she married E.W. Tucker on Nov. 16, 1969, in Muleshoe. He died in January 1987. She was a teacher's aid in Megargel for five years and worked in restaurants until retiring.

Survivors include a son, John Colburn of Lubbock; her mother, Odessa Gable of Midland; a brother, Doyle Linville of Midland; and a sister, Delores Vaughn of El Paso.

**Political Calendar**  
Bailey Co. Judge  
Marilyn Cox  
Jim Watson  
District Judge  
Jack Young  
Commissioner Prec. 4  
Jodie Barrett  
**VOTE!**

\*\*\*  
Sunday afternoon the pastor and members from the Progress Baptist Church came for an up lifting time of singing gospel songs, devotional and visiting. We thank them for coming and being with us on Christmas Eve.  
\*\*\*

We just can't thank the people of the Muleshoe area enough for all the nice and thoughtful things you did for us this holiday season. For every card, favor, the carolling, the visits, parties, gifts of food and gifts of clothing, lotion, powder, money, those who donated to the Christmas Card Project, and many other gifts of love, like, your visits. We deeply appreciate you and the kind things you did.  
\*\*\*

Guy Kendall was visited by Lewis Scoggins, Christmas Day his daughter-in-law and two

grandchildren, his wife, Elsie, ate dinner with him and spent the day.  
\*\*\*

Clara Weaver's daughter, Pat, came during Christmas and cooked Christmas dinner for Clara and her family.  
\*\*\*

Ruby Malone was visited by Billy Wednesday afternoon.  
\*\*\*

Ona Coffey and Mary Gibson remain in the local hospital. Please pray with us for them.  
\*\*\*

Julia Hawkins was visited by several of her family members last week.  
\*\*\*

Happy New Year to you and yours from the residents and staff of the Health Care Center.  
---

Study links cancer to human exposure of electricity.

## Enochs News

by: Mrs. J.D. Bayless

Mr. and Mrs. Morris Peterson and children, Scott, Stephanie and Steven of Hillsboro, came Friday to spend the Christmas holidays with his parents, Mr. and Mrs. Buford Peterson, Rev. and Mrs. Harold Abney and children also had Christmas dinner with them.  
\*\*\*

Clifford Snitker came home from the Methodist Hospital Monday, Dec. 18. He is doing very well. His son, Stanley spent till Thursday with them. A grandson, John, visited them Wednesday.  
\*\*\*

The extra cold front lasted most of the week. The coldest

was Thursday night four degrees below zero. We were proud to have a pretty Christmas day.  
\*\*\*

Christmas eve Mr. and Mrs. Harrie Pollard had their Christmas supper. All of their children

were home, Mr. and Mrs. Joel Sinclair and children of Muleshoe, Mr. and Mrs. Tommy Lewis and children of Littlefield, and Mrs. Steve Pollard and baby of Morton.

*Thank you from the bottom of my heart residents and their families, friends and care center staff for the wonderful Christmas gift.*  
*You are very dear to me*  
**Joy Stancell**

### Immaculate Conception

Catholic Church  
Father Patrick Maher  
Northeast of City

First Baptist Church  
220 West Ave. E.  
Barry Bradley, Pastor

Emmanuel Baptist Church  
Iglesia Bautista Emmanuel  
107 East Third  
Isaias Cardenas, Pastor

Trinity Baptist Church  
314 E. Ave. B.  
Rev. Dale Berry

Circle Back Baptist Church  
Intersection FM 3397 & FM 298  
Pastor, Glen Price  
946-3676

Calvary Baptist Church  
1733 W. Ave. C.  
Rev. Rick Michael

Muleshoe Baptist Church  
8th and Ave. G.  
Bob Dodd, Pastor

Progress Baptist Church  
Charles Fisk, Pastor  
Progress, Texas

Richland Hills Baptist Church  
17th and West. Ave. D.  
Allen Petersen, Pastor

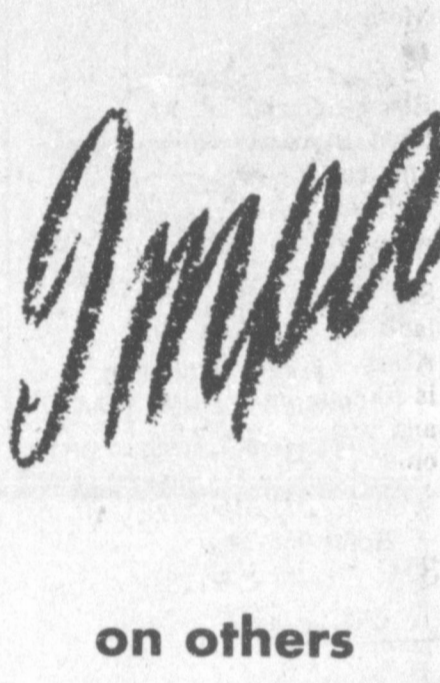
St. Matthews Baptist Church  
Corner of West Boston & West Birch  
M.S. Brown, Pastor

Progress Second Baptist Church  
1st and 3rd Sunday  
Rev. Arthur Hayes

Primitive Baptist Church  
621 South First  
Elder Cleveland Bass, Pastor

1st Baptist Church  
Lazbuddie, Tx.  
965-2126  
Gary Wilcox, Pastor

**Make your life have the right ...**



**Impact on others**

THE CHURCH IN EVERYONE

The Church is God's appointed agency in this world for spreading the knowledge of His love for man and of His demand for man to respond to that love by loving his neighbor. Without this grounding in the love of God, no government or society or way of life will long persevere and the freedoms which we hold so dear will inevitably perish. Therefore, even from a selfish point of view, one should support the Church for the sake of the welfare of himself and his family. Beyond that, however, every person should uphold and participate in the Church because it tells the truth about man's life, death and destiny; the truth which alone will set him free to live as a child of God.

The carpenter knows that there is a proper way to hold the hammer, and that the nail must be hit from the right direction or the nail will bend.

As children of God we need to make the right impact on others. When we attend church we learn how to treat others, and at the same time are setting an example for others. If we remain straight as a well hit nail, then others are less likely to bend.

*"For I have given you an example, that ye should do as I have done to you."*



### Longview Baptist Church

965-3413  
B.C. Stonechiper, Pastor

Primera Iglesia Bautista  
223 E. Ave. B.  
Roy Martinez, Pastor

Lariat Church Of Christ  
Sunday School 10:00 a.m.  
Worship 11:00 & 6:00 p.m.  
Wednesday Services 7:00 p.m.  
Sam Billingsley, Minister

Muleshoe Church Of Christ  
Clovis Hwy  
Bret McCasland, Minister

16th & Ave. D. Church Of Christ  
Sunday 10:30 a.m.  
Evening 6:00 p.m.  
Wednesday 8:00 p.m.  
Curtis Shelburne, Minister

Lazbuddie Church Of Christ  
Minister, Keith Courmier  
Sunday School 9:30 a.m.  
Morning Services 10:00 a.m.  
Evening Services 6:00 p.m.  
Wednesday Night 7:00 p.m.

First Assembly Of God  
521 South First St.  
272-3017  
9:45 Sunday School  
11:00 Morning Worship  
6:30 Evening Services  
7:30 Mid-week Services  
Rev. G. Dean Reid, Pastor

Spanish Assembly Of God  
East 6th and Ave. F.  
Mike Doyle, Pastor

First United Methodist Church  
507 W. 2nd Street  
Richard Edwards, Pastor

El Divino Salvador Methodist Church  
5th and Ave. D.  
Jose M. Fernandez, Pastor

United Pentecostal Lighthouse Church  
207 East Ave. G.  
Rev. N.W. Thompson  
272-3258

Truth Tabernacle Pentecostal Church  
200 E. Ithaca & Fir  
272-3391  
Les James, Pastor

Templo Calvario  
507 South Main  
Sunday 10:00 a.m.  
Sunday Evening 7:00 p.m.  
Evangelistic Services  
J.L. Soto, Pastor

Jehovah Witness  
Friona Hwy  
Boyd Lowery, Pastor

The Community Church  
Morton Hwy  
Mort Cross, Pastor  
272-5992

Church Of The Nazarene  
9th and Ave. C.  
Dennis Hayes, Pastor

New Covenant Church  
Plainview Hwy  
Sunday 10:00 a.m.  
Wednesday 7:00 p.m.  
Rev. Mac Bearss, Pastor

St. John Luthern  
Sunday School and Bible Class 9:30 a.m.  
Church Services 10:30 a.m.  
Rev. Mac Bearss, Pastor

Lazbuddie Methodist Church  
965-2121  
Larry Reid Farris, Pastor

<b>Western Drug</b> 114 Main 272-3106	<b>Wes-Tex Futures, Inc.</b> 1910 W. Amer. Blvd. 272-5585	<b>Serv-All Thriftway</b> 401 W. Amer. Blvd. 272-4585	<b>American Valley, Inc.</b> W. Hwy 84 272-4266	<b>Dairy Queen</b> 1204 W. Amer. Blvd. 272-3412
<b>Bob Stovall Printing</b> 221 E. Ave. B. 272-3373	<b>Combination Motor &amp; Salvage</b> 272-4458	<b>Farmer's Co-Op Elevators</b> Muleshoe 272-4335	<b>Bobo Insurance</b> 108 E. Ave. C. 272-4264	
<b>Main Street Beauty Salon</b> 115 Main 272-3448	<b>Lenau Lumber</b> 202 E. Ash 272-4222	<b>Bratcher Motor Supply</b> 107 E. Ave. D. 272-4288	<b>5-Area Telephone Cooperative, Inc.</b> 302 Uvalde 272-5533	
<b>Irrigation Pumps &amp; Power</b> West Hwy 84 272-4483	<b>Wes-Tex Feed Yards, Inc.</b> 272-7555	<b>Muleshoe Lawn &amp; Leisure</b> 522 W. Amer. Blvd. 272-3162	<b>Richland Hills Texaco</b> 1914 W. Amer. Blvd. 272-4875	

# CLASSIFIEDS 272-4536

## CLASSIFIED RATES

15 Words & Under  
Minimum Charge  
\$2.30  
Thereafter  
\$2.00

16 Words & Over  
1st Insertion  
15 cents per word  
2nd Insertion  
13 cents per word

CLASSIFIED  
DISPLAY RATES  
\$1.75  
Per Column Inch

DEADLINES  
12 noon Tues.  
For Thursday Paper  
12 noon Friday  
For Sunday Paper

To receive the re-  
duce rate after the  
first insertion ad  
must run continous-  
ly.

We reserve the right  
to classify, revise, or  
reject any ad. We are  
not responsible for  
any error after ad  
has run once.

## 1. Personals

CONCERNED  
About Someone's  
Drinking?  
HELP IS  
AVAILABLE

through Al-Anon  
CALL 272-2350 or  
965-2870 or come to  
visit Tuesday nights,  
8:00 p.m. or Saturday  
mornings at 10:30 a.m.  
and through AA call  
965-2870 or come visit  
Tuesday nights, 8:00  
at 620 W. Second,  
Muleshoe.

DKK Custom Farm-  
ing. Contact Keihm  
Smith at 965-2629 or  
965-2189.  
1-49t-8tp

## 3. Help Wanted

THE BAILEY COUNTY  
ASCS office is now  
taking applications for  
employment thru Jan-  
uary 5, 1990. Appli-  
cants must be a citizen  
of the United States,  
be of good character,  
and personality suited  
to work with farmers,  
people who work in  
business and others.  
Two positions will be  
filled, one permanent  
and one temporary.  
Candidates shall be  
considered without  
discrimination because  
of race, color, religion,  
national origin, sex,  
political affiliation,  
personal sponsorship,  
physical or mental  
handicap, age, marital  
status, or other non-  
merit factors. ASCS is  
an Equal Employment  
Opportunity employer.  
83-53s-2tp

ATTENTION - HIR-  
ING! Government jobs  
in your area. Many  
immediate openings  
without waiting list or  
cost. \$17,840 - \$69,485.  
Call 1-602-838-8885.  
Ext. R10191.  
3-52s-4tpts

ACT IN TV  
COMMERCIALS  
HIGH PAY  
No Experience.....All  
Ages Kids, Teens,  
Young Adults, Fam-  
ilies, Mature People,  
Animals, Etc. Call  
Now! Charm Studios  
1-800-837-1700  
EXT 8385  
83-49s-20tp

## 4. Houses For Rent

FOR RENT: 1 small  
unfurnished house.  
Call 272-3107.  
M4-49t-tfc

## 9. Automobiles For Sale

ATTENTION - GOV-  
ERNMENT SEIZED  
VEHICLES from \$100.  
Fords, Mercedes, Cor-  
vettes, Chevys. Sur-  
plus Buyers Guide.  
1-602-838-8885. Ext. A  
10191.  
9-52s-4tpts

## 11. For Sale Or Trade

PUPPIES for sale.  
\$10.00. Half shepard,  
1/4 collie, 1/4 timber  
wolf. Come by and see  
at 716 W. Ave. E or  
call 272-3798.  
L11-53s-4tc

PIANO FOR SALE  
Wanted: Responsible  
party to assume small  
monthly payments on  
piano. See locally. Call  
Credit Manager at  
1-800-233-8663.  
N11-50t-7tp

FOR SALE 1-GE 40 hp  
irrigation motor, real  
good. 3-Woodline 8  
inch pumps. Call 965-  
2658.  
T11-50t-6tc

## 15. Misc.

### Ernie's Roofing

Specializing in flat  
roofs, shingles and  
Build-up roofs.  
Residential-  
Commercial  
Free estimates,  
References, work  
guaranteed.  
L1s-33s-tfc  
Bus.  
505-762-6510

## 8. Real Estate

LOT FOR SALE: Rich-  
land Hills. Great view.  
710 W. 20th. 140x140'.  
Call 272-4344 or 272-  
3510.  
J11-52t-tfc

ATTENTION - GOV-  
ERNMENT HOMES  
from \$1 (U-repair).  
Delinquent tax prop-  
erty. Repossessions. Call  
1-602-838-8885. Ext.  
GH10191.  
8-52s-4tpts

3-BEDROOM, 2-bath,  
double-wide mobile  
home for sale.  
272-3438.  
C8-47s-tfc

FOR SALE: Property  
of Longview Baptist  
Church, approximately  
3 acres with buildings.  
Land is next to FM  
pavement located a-  
bout 15 miles south-  
west of Muleshoe. Sale  
of property will be with  
sealed bids directed by  
the Llanos Altos Bap-  
tist Association. Direct  
inquiries to Rev. Joe  
Vernon, First Baptist  
Church, Earth: 257-  
2036 or Rev. Dale  
Berry, Trinity Baptist  
Church, Muleshoe:  
272-4015. Association  
reserves the right to  
refuse any unaccept-  
able bids.  
L8-51t-4tc

## 8. Real Estate

### Smallwood Real Estate

232 Main Muleshoe 272-4838  
FOR RENT: Office, large reception room, 4  
private offices furnished, central heat &  
refrigerated air.

LENAU ADDITION-3 Bedroom, 1 Bath,  
Living room, Den with wood stove, 1 car  
Garage. Nice. Priced less than tax appraisal.

3 Bedroom, 1 Bath, Living room, Dining  
area, Cooktop, Oven, Dishwasher, Central  
heat, Evaporative cooling, 1 car garage.  
Large garage and Storage building.

8th STREET-3 Bedroom, 1 Bath, Living  
room, Microwave, Gin air Cook top, oven,  
New carpet. Small apartment and workroom  
in detached garage. 150' x 140' lot, Water  
well, Geo-Thermal heat and cooling.

LONGVIEW AREA-1 Labor of red, sandy  
dry land. Deep soil. This is productive land.

### Jo Ann Chester Realty

REDUCED ADVANTAGES of Country  
Living-Options-19 1/2 ac. w/house, or 1/2 ac.  
w/house. Stucco-3 Bd, 1 1/2 B, L.R., Den  
w/F.P., Kit. & Ut., grg., Ct. Lt-air, c. fans,  
strm. wind., well w/sub. pump. Strg.-shop  
w/corral-1 1/2 mi. NW MULESHOE.

320 ACRES CRP FARM WITH 2/6 inch  
wells underground tile & pivot pad. Bailey  
County.  
806-272-2368

FOR SALE in Richland  
Hills by owner. 3  
Bedroom, 2 bath red  
brick home. 1815 W.  
Ave. C. Call 272-3767.  
B8-48t-tfc

FOR SALE OR RENT:  
2 bedroom, 2 full bath  
mobile home, on 45'x-  
150' fenced lot. Call  
272-5435, after 5 p.m.  
G8-49t-tfc

## Bingham & Nieman Realty

116 E. Ave. C

272-5285 or 272-5286

RICHLAND HILLS  
JUST LISTED-IMMACULATE, ENERGY  
EFFICIENT 3-2-2 Brick, Cent. A&H,  
built-ins, FP, sunken lv. area w/ cathedral  
ceiling, ceiling fans, earthtones, storage  
bldg., much more!!! \$50's!!!!!!

4 NICE RESIDENTIAL LOTS PRICED  
FROM \$5,000.00!!!!!!

JUST LISTED-NICE 3-2-2 Brick on large  
corner lot, Cent A&H, built-ins, storm  
windows & doors, large basement, much  
more!!!!!!

PRICE REDUCED, VERY NICE 3-2-3  
Home, Cent. A&H, built-ins, FP, fans,  
spktr. sys., fenced. 60's!!!!!!

HIGHLAND AREA  
NICE 3-2-2-Brick home (2 story), on corner  
lot, Cent. A&H, built-ins, and much more.  
LET'S LOOK TODAY!!!!!! 60's

NICE 3-2-1 Brick Home, Cent A&H,  
built-ins, large den w/fireplace. Fenced  
yard, storage bldg. 540's!!!!!!

PRICE REDUCED 2-2-2 Brick, corner lot,  
Cent. A&H, spacious rooms, utility, cov.  
patio, fenced yard, & much more. 40's!!!!!!

HIGH SCHOOL  
JUST LISTED-COZY 2-1 Home, nicely  
remodeled, fenced yard, & More \$17,000!!!!

2-1 1/2-1 Brick, fl. furnace, CA, fenced yard  
& more. 520's!!!!!!

NICE 2-1 1/2-1 Home, corner lot, built-ins,  
nice carpet, heat pump, fenced yard,  
storage bldg. & more!!!!

PRICE REDUCED- 3-1-1 Home earthtone  
carpets, fenced yard, storm cellar &  
workshop!!!!

3-1 1/2-1 Brick, Cent. A&H built-ins, fenced  
yard, much more **SOLD**

## 8. Real Estate

### James F. Hayes & Co.

Agricultural  
Real Estate  
Sales &  
Appraisals  
Vic Coker  
Agent

320 ACRES on Parmer  
County, Castro County  
Line. 2 electric sprink-  
lers. Good water. Good  
bases and yields. 60  
Acres of grass. Seller  
Motivated.

159 ACRES-Valley  
Electric Sprinkler, Al-  
lotted in corn, wheat,  
and cotton, lays per-  
fect, on pavement, 2  
wells. Priced Right.

810 ACRES-Of Dry-  
land in 3 tracts. 80  
Acres of grass, balance  
is allotted. Some Water  
and underground pipe  
on one tract.

Office 272-3100  
Home 965-2468  
310 Main Street  
Suite 103

NICE 3-2 on 2 acres of  
land, with own well.  
Storm cellar, antenna.  
4 miles from Mules-  
shoe. HCR Real Es-  
tate. Call Thursie Reid  
272-5318.  
R8-53s-tfc

## Enochs News

by: Mrs. J.D. Bayless

Mr. and Mrs. Burley Roberts  
and Tory went to Littlefield  
and picked up their daughter,  
Mr. and Mrs. Greg Bruton  
and children and spent Christ-  
mas with her mother and husband,  
Mr. and Mrs. Billy McDaniel  
at Lubbock. Her brothers, Mr. and  
Mrs. Donnie McCall of White-  
face, Rondo McCall of Spur,  
Texas and sisters, Mr. and Mrs.  
Dennis Medlin of Belton, Texas.

Mr. and Mrs. Dennis Turney  
had all of his sisters and brother  
home for Christmas, Mr. and  
Mrs. Tom Newton and Children,  
Mr. and Mrs. Kenneth Turney  
and children, and Mr. and Mrs.  
Terry Druenan and children.

Mr. and Mrs. Bob Newton had  
all of their children home for  
Christmas, Mr. and Mrs. Dennis  
Newton and children of Here-  
ford, Mr. and Mrs. Tom Newton  
and children of Morton, and Mr.  
and Mrs. Steve Newton and  
children of Smyer.

Leon Jones of Lubbock spent  
Christmas with his mother and  
brother, Mrs. Lorella Jones and  
Wendell.

Mr. and Mrs. Pete Rank and  
children of Socoro, N.M. spent  
Christmas with Mr. and Mrs.  
Quinton Nichols, also Tammy  
and children.

Mr. and Mrs. Bill Key were  
guests in the home of her sister  
during the holidays, Mr. and  
Mrs. Bud Huff, Jr.

Seems everyone had a wonder-  
ful Christmas and I wish  
everyone a happy New Year.

Mr. and Mrs. Mitch Autry and  
children spent Christmas with his  
parents, Mr. and Mrs. Elwood  
Autrey.

Mr. and Mrs. Bobby Adams'  
Christmas guests were Mrs.  
Mamie Adams and grandchild-  
ren, Tannan, Kayla Logsdon and  
their daughter, Mr. and Mrs.  
Glynn Green and Matthew of  
Lubbock.

Mrs. Gertrude Fred had all of  
her children home for Christmas  
dinner, Mr. and Mrs. Richard  
Greer and Dwa of Morton,  
Durwood Fred of Morton, Mr.  
and Mrs. John Fred and family of  
Bula, Mr. and Mrs. Mark Bker  
and family and Ricky Fred, also  
Richard's parents, Mr. and Mrs.  
Greer.

Mrs. Darlene Alexander and  
sons, Kelly and Britt from  
Phoenix, Ariz., who is stationed  
at Luke Air Force there visited in  
the community.

Mr. and Mrs. Donnie Nichols  
and family of Canyon came  
Friday and spent through Christ-  
mas Eve with his parents, Mr.  
and Mrs. Dale Nichols.

Mrs. Ellen Bayless drove to  
Lubbock Christmas Eve after-  
noon and spent till Christmas  
evening with her sister, Olene  
and Ray Cunningham. Other  
guests were a niece, Rev. and  
Mrs. C.T. Cunningham of  
Kansas. Also their son, Mr. and  
Mrs. Bill Cunningham and  
daughters of Odessa.

Mr. and Mrs. Burley Roberts  
and Tory were in Muleshoe  
Tuesday to visit an uncle, Mr.  
and Mrs. Arnold Archer and her  
daughter, Mrs. Joett Stewart,  
husband and children from  
Denver, Colorado.

Jacque Price brought the  
special music at the Baptist  
Church Sunday morning.

Visitors at the Baptist Church  
Sunday morning were Morris  
Peterson and sons, Scott and  
Steven, Mr. and Mrs. Donnie  
Nichols and children, David and  
Bethany, Paul Grant and chil-  
ren, Jacque Price.

Mr. and Mrs. Clifford Snitker  
had their Christmas dinner  
Sunday, Christmas Eve. Their  
sons were all present, Mr. and  
Mrs. J.C. Snitker, Mr. and Mrs.  
Curtis Snitker and Stanley  
Snitker. There were 21 present  
including grandchildren and  
great grandchildren.

Mr. and Mrs. Goldman Stroud  
had their family Christmas  
dinner at the Bula-Enochs  
Community Center. All of the  
Strouds' children and grand-  
children were present, Mr. and  
Mrs. Orvin Stroud of Brown-  
wood, Mr. and Mrs. Harrie  
Pollard, also Doris, Bonnie,  
Sandra, Gene and Glynn and  
Carolyn and their families. There  
were 60 in attendance.



Think Classifieds Call  
272-4536

## 8. Real Estate 8. Real Estate

### HCR REALESTATE

Is proud to announce that Thursie  
Reid is now associated with our firm



I would like to ask all my friends,  
neighbors and customers to  
continue to send me business,  
and, I will make every effort to  
help them with their Real Estate  
wants and needs.

WE GIVE QUALITY SERVICE

Call Thursie Reid  
272-5318

"Season's Greetings From Our Home To Yours!"

GEORGE NIEMAN, BROKER

DIANNE NIEMAN, BROKER