



# MUENSTER

Serving Muenster  
and Cooke County since 1936

# ENTERPRISE

VOL. LVII NO. 1

12 PAGES

50 CENTS

NOVEMBER 27, 1992

## Muenster city officials committed to county landfill

by Elaine Schad

Muenster city officials have reaffirmed their commitment to the construction of a countywide landfill, saying over the long term that access to a local landfill will result in a more economical way of disposing of garbage for their residents.

A host of officials representing Cooke County and several cities in the county, along with engineers and officials from nearby counties, held a press conference this past week outlining plans for the proposed countywide landfill. Gainesville Mayor Pro Tem Rosie Rosenberg, who headed up the press conference, said the decision to develop a landfill locally was made to protect the health and welfare of the citizens in Cooke County. He said the press conference was being held to "dispel rumors" that had been circulating in regards to the landfill.

Opponents of the landfill have called a press conference for this week at Virgil Taylor Drilling Company in Gainesville. Opponents are attempting to circulate a petition to stop the financing for acquiring the land. Stanley Smith, a Gainesville resident who owns land near the landfill, has a pending lawsuit filed in Austin which states the City of Gainesville doesn't have the authority to operate a landfill.

Gainesville City Attorney Mack Barnhart said the City of Gainesville was set to make final closure on acquiring land for the landfill on Nov. 30, but that date has been extended by four months due to the litigation.

The Cooke County Regional Landfill Task Force was formed in 1989 to look for alternatives for long-term waste disposal for Cooke County. Remaining member cities include the cities of Muenster, Valley View and Gainesville as well as Cooke County. The City of Gainesville is acting as the agent for the task force, so all legal actions such as acquiring the land and permit applications will go through the Gainesville city government.

The City of Muenster, as part of an interlocal agreement with the task force, has agreed to pay 4.6 percent of the costs for the landfill. Cooke County will pay 47 percent, Gainesville will pay 46 percent and Valley View will pay 2.4 percent of the costs.

Cooke County Commissioner Kenneth Alexander, who represents the county on the task force, told the group the commissioners court is "100 percent" behind the construction of the landfill. Muenster City Council members Mary Ann Grant and Aubrey Tuggle, who represented Muenster at the press conference, said they

were glad the City of Gainesville is taking the landfill project on in behalf of the task force and that Muenster city officials are still strongly behind the effort to develop a local landfill.

Gainesville City Manager Lyle Drescher said it was hard to estimate what type of increased costs citizens may face in the future as the landfill is constructed. Engineers estimate that an average household generates about two tons of garbage a year. It is estimated it will cost about \$23 per ton to dispose of the waste in the landfill.

County residents who live outside the member task force cities will have their refuse weighed and will be charged accordingly, he said. Drescher said there are also plans to set up collection stations around the county for county residents, but none of those plans have been worked out yet.

Monthly garbage rates in the City of Gainesville could increase from \$8.50 to more than \$12 per month over the next three to five years, Drescher said. Again, Drescher said those estimates could change as the landfill project develops.

City of Muenster residential customers presently pay an \$8 per month minimum garbage charge based on water usage, said City Secretary Celine Dittfurth. The average residential customer in Muenster has a garbage bill of

between \$12 and \$15 per month, she said.

The proposed landfill site is located on 1,257 acres of land along County Road 134 in northeastern Cooke County, east of Interstate 35 and near the Red River. Of that acreage, the actual landfill site itself will consist of 220 acres located so that there will be a buffer between the landfill and any property owner on all sides, said Kerry Maroney of Biggs and Mathews, Inc., consulting engineers in Wichita Falls.

Maroney said the permit will be for a landfill where refuse can be buried up to 40 feet deep. He said no refuse will be on top of the ground. It would be unfeasible to expand the landfill to the north toward the Red River due to the rocky ground, but the task force could apply for an additional permit in later years to expand the landfill south if needed, he said.

As for potential water contamination of the Red River, Maroney said that was "the least of my worries." He said the elevation differences between the landfill site and the Red River would make it very improbable for flooding into the Red River. He said, due to the new federal regulations, the landfill must provide for drainage of any liquid exceeding one foot from the landfill, so seepage is also a very remote possibility.



DEANN DANGELMAYR, left, Casey Bayer, center, and Evan Koesler, right, apply paint to a sleigh that will be part of the Tender Loving Care Day Care's float in Muenster's Christmas Parade this Saturday. The children at TLC Day Care enjoyed the opportunity help create decorations for their float.  
Janie Hartman Photo

## Christkindlmarkt to usher in Muenster's Christmas season

Muenster's Christmas season will officially begin this Friday evening at 6:30 p.m. when the Muenster Jaycees light up the large Christmas tree that they place annually in Mid Park. The sparkling lights from the Jaycees' tree will signal the local businesses to light up one after another, until the first several blocks of downtown Muenster are aglow with Christmas lights.

Businesses will stay open until 8 p.m. for the convenience of shoppers. Local Boy Scouts have hot dogs and hot chocolate available for a quarter each. They will be set up in front of Gehrig's Hardware.

Also the Sacred Heart Alumni is sponsoring a live Nativity at Mid Park. Sacred Heart 7th and 8th grade girls will sing Christmas carols during this time. Strolling accordionist Eddie Godwin will delight the crowds with Christmas and German music.

Local stores will play on the senses as they will be filled with the sights, sounds and smells of the Christmas holidays on Friday and Saturday. In the fashion of Texas hospitality, many will offer shoppers treats of wassail, coffee, dips, cookies, etc.

Saturday's agenda is filled with many unique experiences. Mrs. Claus, a professional storyteller, will attempt to enthrall young listeners ages 3 and up with her Christmas tales. She will be at the Olde Theatre Mall from 12:15 to 12:45 (before the parade) and again from 2:15 to 2:45 p.m.

Robert Shaw's "The Many Moods of Christmas" will be performed by the Cooke County Chorale in Sacred Heart Church from 3 to 3:30 p.m. It is open to the public at no charge.

The town's annual Christmas Parade is set to begin at 1 p.m. Participants will line up along North Mesquite Street near Chuck's Trucks no later than 12:30 p.m. Parade route is west on Hwy. 82 and north up Main Street as far as City Hall. "Have Yourself a Merry Little Christmas" is the parade theme. According to Parade Chairman Peggy Grewing, there will be 20-plus entries.

Santa's entrance into downtown Muenster will be made on one of the local fire engines. Children can visit with Santa in Mid Park after the parade. Roach Photography will make pictures with the children and Santa.

Later, Santa will give free rides in his horsedrawn sleigh. These will be offered from 2:30 to 4:30. The sleigh rides are being made available by Endres Motor Co. and Muenster State Bank.

Other special features offered on Saturday are Sacred Heart Youth Choir singing in front of the Olde Theatre Mall from 11 to 11:30 a.m.; entertainment by the strolling accordionist; an all-day bake sale at Fischer's Market by juniors from Muenster High and Sacred Heart High; and craft demonstrations at The Crafty Olde German.

## Carroll elected to TAPS Board

Herman Carroll of Muenster was recently elected to serve a term as a director on the Board of the Texoma Area Paratransit System (TAPS). Carroll will act as representative for the Muenster transit service on the TAPS' Board. He is active on the TAPS local advisory committee and was nominated from that group to serve on the Board.

Elected members of the Executive Board are John E. Smithen of Denison, chairman; Mary Ethyl Praetz of Sherman, vice-chairman; Lester Loftice of

Ladonia, secretary/treasurer; David Bayless Jr. of Denison, Grayson County member-at-large; Wayne Perritt of Bonham, Fannin County member-at-large; Michael Ann Riggler of Gainesville, Cooke County member-at-large; Stan Hopson of Sherman, disabled representative; and Juanita Kelly of Sherman, minority representative.

Directors representing local transit services on the TAPS Board are Fairy Ramsey of Bells, Bunny Luttrell of Howe, Ted Hoeller of Van Alstyne, Jody Broyles of Leonard, Sue Martin of Pottsboro, Bruce Roberts of Whitewright, Jim

Holt of Whitesboro, Maquestia Johnston of Honey Grove and Jim Pulte of Gainesville.

Herman Carroll has been a member of the local advisory committee for about three years. He replaces Joe Fenton as the Muenster representative on the TAPS Board. Carroll was nominated Aug. 25 and elected on Oct. 1.

Other members of the local TAPS committee are Mary Alice Bayer, Al Wiesman, Traci Stoffels, Claude Klement and Pat Walterscheid.

TAPS is a regional public

transportation system serving residents of all ages in Grayson, Cooke and Fannin counties. TAPS provided 184,466 trips during fiscal year 1991-92 to elderly, disabled and the general public in the Texoma region. Funding for the program comes from Federal Transit Administration, Texas Department of Transportation, Texoma Council of Governments, Department of Human Services and local entities. TAPS is a Grayson County United Way agency.

For information about the service or to schedule a ride, call 817-759-2236.

## Local schools begin fiber optic sharing next fall

by Elaine Schad

Schools in Muenster, Era and Forestburg are expected to begin sharing their resources through fiber optic technology by offering teacher in-service classes by the beginning of next year.

The Muenster ISD, Era ISD and Forestburg ISD as well as Sacred Heart School in Muenster are expected to have the equipment in place by the middle of December so that the pilot in-service project can be initiated, said Era Superintendent Randel Beaver. The Era district has applied for a \$100,000 grant that would be used to provide additional equipment to expand the project to the Valley View School District with the

intent to offer summer school classes to at-risk students by the summer of 1993 if the district receives the grant, Beaver said.

Muenster Superintendent Steve Cooper said the pilot project will give the districts a chance to work out any problems before the schools actually schedule time blocks to offer full classes to students of the rural districts, possibly by Fall 1993. The schools are members of the North Texas Educational Network, Inc. (NTEN), which will allow rural schools to share teachers and resources through a telecommunication system in partnership with Muenster Telephone Company.

Muenster Telephone is supplying all the hardware for the initial linkup of the schools at no cost to the school districts, Cooper said. "We appreciate their commitment in this area," he said. The project is the first of its kind in the state that will link rural schools.

Other NTEN member schools are Cooke County College, Gainesville ISD, Nocona ISD, and Sanger ISD. They are expected to link into the system later since they are located in areas involving other telephone company lines which require additional fiber links.

## Good News!

*The heart of a man changes his countenance, either for good or for evil. The sign of a good heart is a cheerful countenance; withdrawn and perplexed is the laborious schemer. Happy the man whose mouth brings him no grief, who is not stung by remorse for sin. Happy the man whose conscience does not reproach him, who has not lost hope.*

SIRACH 13:24-25; 14:1-2

## UIL sports events are educational activities

by Jerry Metzler

Texas public schools conduct numerous educational activities under the auspices of the University Interscholastic League. The UIL consists of representatives of public schools who set the rules and guidelines for all league activities. As a member of the UIL, Muenster High School makes every attempt to follow all recommended procedures.

The UIL stresses that all activities are an "extension of classroom." Every activity of a UIL member should be educational in nature and should only be conducted to help students further their education. UIL activities include more than just athletic contests; the league also sponsors academic, journalism and music contests. Muenster High School sponsors students in all of these events; however, the general public usually plays an active role only in athletic contests.

Muenster High School makes every effort to provide a secure

educational environment for all athletic contests. Fans of both teams are expected to enter the contests and remain in the stadium or gym to watch the games. Parents are asked to attend events with their children and not to use the school as a "babysitter." Students, especially young children, need their parents to supervise them and to provide an adult example of how to watch the game. Elementary students should never be "dropped off" at any school activity. If all students are properly supervised, all fans can enjoy the game and enthusiastically support the participants.

In the past few years, the UIL has increasingly emphasized strict crowd control. Incidents around the state with unruly crowds have increased and all member schools are expected to take every precaution to prevent such problems. For these reasons, you often see reserve deputies at MHS functions. The officers are there to

Please See UIL, Page 3

The staff of The Muenster Enterprise offers greetings for the Thanksgiving Holiday in a spirit of gratitude for many favors we have all received during the year, and with prayers to Almighty God asking him to bless all of you with peace, health, understanding, brotherhood and the warm glow of friendship.



## SH Picnic attendance surpasses years past

Crisp seasonal weather and a spirit of festivity and gratitude for a much-needed rain brought larger crowds than usual to a Thanksgiving benefit picnic at the Community Center on Sunday, Nov. 22, 1992.

Sponsors of the bountiful dinner reported with smiles that 1,306 meals were served.

Tom Vogel was the winner of the rifle in a special raffle. Lucky winners in the general raffle include: Bob Hess, Magnavox VHS camcorder; Tom Vogel, 500-lb. calf; Marcia Dennison, Howard

Miller wall clock; Rebecca Grewing, Magnavox stereo and CD player; Irene Sicking, 1 set of 4 passenger tires; John Fleitman, W.C. Bradley charcoal gas grill; Wilfred Walterscheid, \$200.00 in Muenster Marks; Marie Reiter, 1/2 hog; Albert Stoffels, 10-speed Huffy bicycle; Bernice Mollenkopf, \$105.00 gift certificate; Tom Flusche, wooden porch swing; Arnie Knabe, dual cassette recorder/AM-FM radio; Ed Cler, \$50.00 gift certificate; Chas Bayer, \$50.00 in Muenster Marks; Theresa Hesse, \$50.00 gift certificate.

## MMH Auxiliary plans for Christmas, elects officers

The Nov. 19 meeting of the Muenster Memorial Hospital Auxiliary was called to order at 7:45 p.m. by President Peggy Grewing. Invocation was offered by Betty Rose Walterscheid. Secretary Brenda Rigsby read the minutes of the previous month's meeting, making the correction that

8.08% from the Money Market account at First Gibraltar should have been \$8.08.

Glenda Russell gave the treasurer's report, listing bills paid and deposits received in October. She noted that the Auxiliary made more money on this year's

Please See AUXILIARY, Page 3



**Letters to the Editor**

**To the Editor and the Folks of Muenster,**

So many times people are quick to see faults and the bad of the world and dismiss the good as something which is supposed to be. I would like to focus on a great good which has come out of this community for me in the past months.

As most of you know, I was selected to serve on the National Evangelization Team (NET) of Australia for the calendar year of 1993. In order to make my selection a reality, I was given the responsibility of raising \$5,000 in charitable contributions to, in essence, pay for myself in the coming year. The response I have received from people in this regard was fantastic. In approximately 3 1/2 months, 63 separate donations (some from out of Muenster) from individuals and groups have totaled up to \$6,088.55 to date.

To all those people who have been praying for me in this endeavor and who have contributed monetarily to this fund, I thank you all. May God bless each and every one of you for what you have done for me. As I will be leaving Muenster in a little over a month from now, let me assure you that I will properly represent my country, state and community as I minister to the youth of Australia with N.E.T. I do ask for your continued prayers, and I promise you mine for you.

Once again, thanks goes to all

who made my N.E.T. ministry possible! Especially (of course) thanks be to God!

Address will be:  
Eric B. Gray,  
c/o National Evangelization Teams,  
P.O. Box 516,  
Fortitude Valley, Queensland  
4006 - Australia -

Eric B. Gray

Dear Editor,

At Thanksgiving we are especially thankful and grateful to our God, to our church, to our parish and our community. It's that time of year when we try to express our thanks and appreciation to all the beautiful people of our community. For all the help we receive, in performing the tasks that are set before us, we say thank you.

To all the generous people who provide food that is ready to serve; to all who help in a monetary way, we say thank you. To the Knights of Columbus for use of their hall, without it we would be "up a creek." To Rohmer's who always provide the ice, to Neil when we are caught between a "rock and a hard place." To Bayer's, Hofbauer's, H&W and Fischer's Market, we say "thank you." To all the organizations in our community, again we say thank you.

To my sister CDA officers and members and especially the ones who so faithfully attend the meetings I say "thank you."

Due to a raise in our national

dues we again had to raise our's. The national office just about doubled the per capita tax. I think they are too close to Washington D.C. Our next meeting is Dec. 8. Notice the change in date, this month only. At this meeting we will pack goodie bags for the elderly and shut-ins and those in need. Please be generous, as our list seems to get longer and longer.

And now if you have borrowed our large stainless steel plan, won't you please return it? We surely do need it.

Happy Thanksgiving to one and all.

Sincerely,  
Dorothy Fisher  
Rt. 2, Box 330  
Muenster

P.S. What we really need is some new blood, mine is very tired.



**MUENSTER ENTERPRISE**  
ISSN: 0883-2544  
Phone (817) 759-4311  
MUEENSTER ENTERPRISE (USPS 367660) is published every Friday except the last week of December by The Muenster Enterprise, Inc., 117 E. First St., Muenster, TX 76252. Second-class postage paid at Muenster, Texas. POSTMASTER: Send address change to THE MUENSTER ENTERPRISE, P.O. Box 190, Muenster, Texas 76252.

Ray B. Russell, County Judge, Cooke County Texas hereby proclaims, in cooperation with Mothers Against Drunk Driving, November 21, 1992 thru January 1, 1993 as

**Project Red Ribbon Campaign**

WHEREAS, drunk driving crashes cause numerous injuries and deaths of persons in Cooke County annually; and  
WHEREAS, many of these injuries and deaths occur during the Thanksgiving through New Year holiday season each year; and  
WHEREAS, through the dedication and persistence of citizens groups such as Mothers Against Drunk Driving, public awareness of the drunk driving problem has been heightened; and  
WHEREAS, through the MADD Project Red Ribbon Campaign, all citizens of Cooke County are urged to tie a red ribbon to their vehicle to serve as a reminder not to drink and drive and to serve as a sign that they have joined the campaign for a less violent holiday season;  
NOW, THEREFORE, I, Ray Russell, County Judge of Cooke County, Texas, do hereby proclaim the period of November 21, 1992 through January 1, 1993 as PROJECT RED RIBBON CAMPAIGN and urge all citizens to join me in the efforts of the campaign in working toward a safer holiday season in Cooke County, Texas and throughout the United States.

In witness whereof I have hereunto set my hand and caused this seal to be affixed.

*Ray B. Russell*  
RAY B. RUSSELL, COUNTY JUDGE

ATTEST: *Frank Deaggu*

**Think tanks rank Finnell second most conservative**

State Rep. Charles Finnell of Holliday is the second most conservative of the state representatives in the Texas legislature, according to a study done by the Dallas-based Free Market PAC.

Finnell, a Democrat, vice chairman of the house agriculture committee and a leader in rural and public safety law legislation, received a 91 percent rating from the Conservative think tank, second only to State Rep. Talmadge L. Heflin, a Houston Republican, whose rating was 95.

The ratings were based on votes in the 1991 legislature. "Due to the comprehensive number of votes used to determine the rating, a 100 percent rating is rarely achieved," said Conservative Reports, a Free Market PAC publication in which the ratings were published.

"As a result, a rating in the 90s or upper 80s is roughly equivalent to 100 percent on other conservative ratings."

**"Repentance and Forgiveness"**

by Emily Klement

(EDITOR'S NOTE: This is the third in a continuing series of articles on "The Christian Family - the Domestic Church" to be submitted by Emily Klement from The Word Among Us.)

Christian parenting is difficult and to "go against the world" is challenging to say the least. Yet, if eternal life is truly our goal for our families, we must persevere. In the next installment from The Word Among Us, we can find a key to new life - repentance and forgiveness.

None of us, much less our children, quickly acquires a mind wholly formed by the word of God. The pull of the fallen nature is quite strong. The "spots and wrinkles" (Ephesians 5:27) of sin can sometimes make our children look like spiritual ragamuffins. Even so, we should not panic or give in to frustration. The Christian parent will tell the children when their behavior is wrong, but also that Jesus died to cleanse us from sin. In His love and mercy, God has given us the powerful tool of repentance. Thus, if we desire our families to be domestic churches, when we see our children being selfish, deceitful, disobedient or rebellious, we should teach them (from their earliest years) to repent for their sins and to forgive those who ask to be forgiven.

As we work to form a disposition of truth and honesty within our children, we open the door for them to know the freedom that comes from repentance. As they learn to distinguish truth from lies, they will begin to recognize those times when they deny the truth of God and hurt others by their actions. By seeking forgiveness, they can learn about and experience the mercy and love of God in a very tangible way. They learn to be accountable, both to God and to other people, for what they think, what they say, and what they do.

By learning to admit sin and ask forgiveness when they offend others, our children learn that they are not isolated individuals, living only to please themselves. They realize that God sees into their hearts and wants to liberate them from sin and the guilt it brings. Further, they will learn more clearly that they are members of the body of Christ, that they are called to become responsible brothers and sisters in the body of Christ. By teaching reverence for truth and the habit of honest repentance, we help to dispose our children to God. We help to form in them a disposition of mind and heart that is open to God's word and receptive to the work of His Spirit.

Reprinted with permission of The Word Among Us, Box 6003, Gaithersburg, MD 20884-0963, September 1992.



**THE BEST HOLIDAY GIFT YOU'LL GIVE THIS YEAR...**

*because there's no place like home!*

If you have loved ones who are elderly, or handicapped, you're probably concerned about their well being. Although they can live happily on their own, one day they might have an emergency... and you may not be there to help.

That's why this holiday season you should give your loved ones Lifeline® - the push button emergency response system that puts help at their fingertips.

With Lifeline, when someone has an emergency, they simply push the Help Button worn on a necklace, belt loop or wrist. It immediately signals our staff of highly trained professionals who will identify the emergency and send help to them fast.

**LIFELINE SYSTEMS**  
"People Helping People"

Lifeline is the perfect holiday gift. It will give your loved ones greater security, freedom, and the flexibility to lead a more fulfilling life.

What's more, it gives you the peace of mind that comes from knowing that they can always get help... 24 hours a day.

Call the number below for more information about Lifeline. And give your loved ones the gift that lasts a lifetime!

**Gainesville Memorial Hospital  
Lifeline Program**  
1016 Ritchey Street  
Gainesville, Texas  
[817] 665-1751

Save taxes tomorrow by requesting your free copy of A.G. Edwards' Tax Saver magazine today.



If you want to discover how to pay less taxes next April, one phone call to A.G. Edwards can make a difference right now.

**AG Edwards**  
INVESTMENTS SINCE 1887  
Betty Preveto - V.P. Investments  
113 East California, Gainesville, TX 76240  
1-800-588-8889  
or 817-668-8762  
Member SIPC  
1992 A.G. Edwards & Sons, Inc. TX 120-1768-4c

**Watts Prescription Shop**

**BELTONE**  
Hearing Aid Batteries  
Always Fresh

Shop the Drive-In Window for all your prescriptions and drug needs.

**WATTS' PRESCRIPTION SHOP**  
302 N. Grand Gainesville  
665-3438 6-6-XE

**Independent Insurance Agent**

**F M W**  
INSURANCE AGENCY

For all your insurance needs  
Drawer O, 204 N. Main, Muenster, TX  
817-759-4644

**2 WEEK EVENTS CALENDAR To list your event, call 759-4311 BEFORE NOON WEDNESDAY!**

|  |  |  |   |   |   |  |
|--|--|--|---|---|---|--|
| <b>Sunday, November 29</b><br>JELLY Advent Mass, 6 p.m.            | <b>Monday, November 30</b><br>Cubs vs. Montague, H, 6 p.m.<br>MJH vs. Valley View, H, 5 p.m.                                 | <b>Tuesday, December 1</b><br>Cooke County Chorale meeting, 7 p.m.<br>Tigerettes vs. Gainesville, H, 4 p.m.<br>MHS vs. Bellevue, T, 4:30 | <b>Wednesday, December 2</b><br>SH Alumni meeting, 7:30<br>Religious Ed. Class & Reconciliation Services, 7p.m. | <b>Thursday, December 3</b><br>MHS/SHHS Basketball toumey<br>C of C Board meeting, 5 p.m. | <b>Friday, December 4</b><br>MHS/SHHS Basketball toumey<br>SH Home/School Society Bake Sale<br>JELLY Dance at St. Mary's, 6:35 p.m. to 10:35 p.m. | <b>Saturday, December 5</b><br>MHS/SHHS Basketball toumey  |
| <b>Sunday, December 6</b><br>SH Home/School Society Shopping Spree | <b>Monday, December 7</b><br>MJH vs. Lindsay, T, 5 p.m.<br>Cubs vs. Forestburg, H, 6 p.m.<br>City Council meeting, 7:30 p.m. | <b>Tuesday, December 8</b><br>Cooke County Chorale Meeting, 7 p.m.<br>MHS vs. Petrolia, T, 5 p.m.<br>C of C Noon Luncheon at The Center  | <b>Wednesday, December 9</b><br>Religious Ed. Closing Mass & Christmas Program, 7 p.m.                          | <b>Thursday, December 10</b><br>MHS basketball - Chico toumey                             | <b>Friday, December 11</b><br>MHS basketball - Chico toumey<br>SH vs. Meadowbrook Christian, H, 6 p.m.  | <b>Saturday, December 12</b><br>MHS basketball - Chico toumey<br>Tigerettes vs. Trinity Christian, T, 4:30 |

Sponsored by



**Flusche Enterprises, Inc.**

109 S. Main Muenster, Texas

"CELEBRATING OUR 50th ANNIVERSARY"

(817) 759-2203



DISTRIBUTOR FOR **RITE-WELD** SUPPLY, INC.

Hydraulic Hoses - Steel Bolts - Pipe and Steel Round Bale Rings and Feed Trough



# Jerry Hoenig, 57, dies of injuries in fall

Jerome John "Jerry" Hoenig, 57, a Muenster native died on Thursday, Nov. 19, 1992 in Kenestone Hospital of Marietta, Georgia, of injuries suffered in a fall near his home in Castle Lake Mobile Home Park in Kenesaw, Georgia. He was the manager of the park.

He had successfully undergone surgery for the injuries when he succumbed to a heart attack.

A Memorial Mass will be offered in Sacred Heart Church in Muenster on Saturday, Nov. 28 at 11 a.m., by Father Victor Gillespie OSB. Private burial services attended only by the family were held previously in Sacred Heart Cemetery.

Survivors of Jerry Hoenig are his wife, Cece Quarley Hoenig of the home, to whom he was married on March 18, 1977 in Chatanooga, Tennessee; and three sons Billy Hoenig of Whitesboro; Curtis Hoenig of Gainesville; Douglas Hoenig of Gainesville; and three daughters Wilma Boaz of Gainesville; Pam Baldwin of Gainesville; and Donna Argo of Atlanta, Georgia, and ten grandchildren.

Also his father Joe Hoenig of Muenster; and three sisters Eleanora Pelzel of Ennis, Rita Cottle of Carrollton and Edna Hermes of Lindsay; and two brothers Rupert Hoenig of Lake Kiowa and Raymond Hoenig of



JERRY HOENIG

Lindsay. He was preceded in death by his mother Susie Hoenig on July 11, 1980.

Jerry Hoenig was born in Muenster on July 10, 1935 to Joe Hoenig and Susie Fleitman Hoenig. He attended local schools and joined the Marines on March 8, 1954, serving in Korea and Okinawa. After discharge in 1957, he returned to Muenster and became a dairy farmer south of town. In February 1958 he was married to Lucy Stoffels of Lindsay. They were divorced in 1975.

# VV School Board seeks new superintendent

by Elaine Schad

The Valley View School Board, during its regular November meeting, heard a proposal from Jim Covert, a consultant with the Texas Association of School Boards. Covert outlined a plan and timetable trustees could select. A consultant, if hired, would assist with planning community and staff input, developing a profile on the needs of the district in hiring a superintendent, and would screen candidates and present finalists for trustees to interview. Estimated

cost for Covert's services would be \$5,500.

The district is seeking a replacement for long-time Superintendent Bert Glascock, who has announced his retirement effective the end of the school year.

In other matters, trustees reviewed plans for a library and a resource center presented by Denton architect Alan Nelson. Construction could begin by the spring on the two projects, which will include a 6,000 square-foot library that will be built on the

south end and behind the high school building, connected to the present home economics classroom. The estimated \$300,000 project will include three times the space for library volumes now in the existing library and can accommodate two classes of students.

The smaller resource center will mainly be used by elementary students. The \$100,000 project will be 3,600 square feet and will include a reading and story telling area, enough capacity to seat one class and counseling and testing areas. The district is partially funding the project with a state grant.

# Auditor's office to include all Texas school districts

Due to the overwhelming response from private citizens and elected officials, the State Auditor's Office's Management Audit of Public Schools (MAPS) will now be expanded to include ALL school districts in Texas.

The continuation of the public school audits was requested by Governor Ann Richards, Lt. Governor Bob Bullock, and Speaker Gib Lewis.

State Auditor Larry Alwin said, "The leadership of Texas wants the citizens to know they are searching for savings at every level, and our Office intends to continue to assist them." He said auditors will be looking for the school districts which have implemented cost-saving ideas that can be passed on to other districts as well as pointing out school districts who are not doing the best job possible.

"The order in which school districts will be audited has not

been determined as yet; however, each school district selected for an audit will be notified when the schedule has been completed," said Alwin. A proposal for MAPS II, outlining the continuation of the project, will be presented to the Legislative Audit Committee in the next few weeks.

Last week, the State Auditor's Office issued their report, *Making the Most of our Education Dollars*, which covered audits of 55 school districts. The report recommended changes to the public education system in Texas and projected savings to the State of \$640 million annually by 1997. Results of individual audits of school districts were included.

Citizens of Texas are encouraged to call the State Auditor's Office's 24-hour, toll-free hotline, 1-800-TX-AUDIT (1-800-892-8348) to report information about or ideas for school districts.

# City of Valley View to build wastewater treatment plant

by Elaine Schad

The Town of Valley View will build a new wastewater treatment plant to comply with more stringent treatment requirements recommended by the Texas Water Commission.

Town aldermen, during their regular November meeting, voted to build the estimated \$400,000 plant, but set no timetable for completion. In June, the town received a temporary two-year extension to its wastewater treatment permit, but TWC officials told the town it must upgrade its wastewater treatment system to provide for a more stringent 10-15 permit. The town presently has a 30-90 treatment permit.

The city has received a \$178,000 state community development

block grant contingent upon the city obtaining \$100,000 in matching funds. Town alderman voted to raise sewer rates from \$9 to \$15 per month effective Jan. 1, 1993, to assist in raising the matching funds for the project.

Valley View, a community of 600 residents in southern Cooke County, is located within two miles of the 33,000-acre Ray Roberts Lake. Effluent from Valley View's treatment plant empties into Spring Creek, a tributary of the Elm Fork which empties into Ray Roberts. The cities of Dallas and Denton, which own the water rights to Ray Roberts, protested renewal of Valley View's current permit, requesting that the town upgrade its permit to meet more stringent treatment standards.

# Era School to upgrade technology

by Elaine Schad

The Era School District will purchase 18 computers and other hardware items to upgrade its technology in its classrooms and in a new library now under renovation.

Era school trustees during their regular November meeting awarded the low bid for the purchase to Gainesville Office Supply for a total of \$20,903 worth of computer equipment. The new equipment will include 18 new computers, two printers, a modem and six computer memory extensions. About \$13,000 of the equipment, which will include six of the computers, will be used in the new library which should be completed by mid December, said Era Superintendent Randel Beaver. Some of the computers will be for a lab and others will be for catalog and circulation use, he said. The other equipment will be used to upgrade the district's computer laboratory, with some existing computers to be placed in individual classrooms, he said.

In other business, the board approved the district's application for an innovative teaching grant from the state. If Era receives the \$100,000 grant, it would be used to offer Valley View and Era at-risk students summer school classes by utilizing fiber optic technology now in place through the NTEN system. It could be May before the district knows whether it has received the grant.

In other business, the board: -Reported the state highway department will place school zone lights near the campus since the Era district is eligible.

-Set the board's next meeting for Dec. 14.

-Approved early dismissal dates of Dec. 11 and Dec. 17 for teacher in-service.

-Awarded a bid to Hoover Brothers for the purchase of library furniture at a cost of \$10,740.

# Father Geurtz to celebrate Healing Mass November 30

On Monday, Nov. 30, Sacred Heart Catholic Church has scheduled a Healing Mass at 7 p.m. with Fr. Gary Geurtz as the principal celebrant. Fr. Victor Gillespie, OSB, and the Sacred Heart Prayer Group are sponsoring the special event.

Everyone is encouraged to attend this liturgy to pray for community, loved ones and self. There will be a box in which to place special petitions.

For more information, call David or Pam Fette, 759-2894.

Reg. Price \$75.00

## Motorola

Portable Cellular  
Telephones

**Special**  
**\$49.95**

Talk to Ben at  
**DI One Stop**

Great Christmas Gift

---

**COPIES COPIES COPIES**

get your copies made at

## DI One Stop

Highway 82      Muenster      759-4512

11-27-1-E

### Tax Talk

by: Duane Knabe, CPA

Duane Knabe will discuss a different topic each week. Any questions should be directed to him at 759-4010.

This week's topic is for non-profit organizations. Although, organizations may be granted tax-exempt status they may be subject to a tax on income from a business enterprise not related to their exempt status.

Unrelated business taxable income is derived from an activity that constitutes a trade or business that is regularly carried on and is not substantially related to the organization's tax-exempt purposes. The only organizations exempt from this tax are government instrumentalities and certain federally licensed businesses carried on before May 27, 1959.

The proceeds from bingo games conducted by most exempt organizations are not unrelated business income if the games are conducted in accordance with local law and do not compete with profit-making businesses. Tax-exempt organizations that derive income from other games of chance are subject to tax on unrelated business income. The first \$1,000 of unrelated business income is not subject to tax.

11-27-1-E

- FREE Hearing Test
- FREE Service on any make or model

Testing inside of:  
**Muenster Pharmacy**  
from 1 to 2 p.m.  
Tuesday, Dec. 1  
817-759-2883  
Gainesville 817-865-8172

**Bellone**  
Better Hearing Through Professional Care

8-30-XE

# AUXILIARY

fundraiser dance than last year's. Items on the agenda included the success of the social held for Administrator Jack Endres, Christmas decorating for the hospital, the Christmas Parade and Christmas caroling.

In new business, Glenda Russell will begin a new membership drive during January, with dues remaining at \$6.00. Also discussed were plans to man the Germanfest gates as the Auxiliary's other fundraiser again.

The final item on the agenda was election of officers for the 1993 fiscal year. Serving the Auxiliary will be Kathy Bauer, president; Betty Rose Walterscheid, first vice-president; Deb Klement, second vice-president; Carol Klement, secretary; and Laura Pagel, treasurer.

The next meeting will be held Jan. 21, 1993. Motion to adjourn at 9:30 p.m. was made by Lisa Walterscheid, seconded by Terry Hess. Door prizes were won by Deb Klement and Carol Klement. Refreshments were served to 13 members following adjournment.

# UIL

ensure that immature, unruly "fans" do not disrupt the game or bother officials. Referees and officials are part of the educational activity; their job is to regulate the action and enforce rules. They should not be the objects of fan discontent under any circumstances. People who attempt to disrupt the game or to harass officials are not "fans" - they are troublemakers and they need to be treated as such.

Muenster community members are probably aware of these procedures and, for the most part, support them and understand their importance. However, visiting fans are not always so understanding and we often rely on the other school's administration to assist in crowd control. Fortunately, our area administrators also support such preventive procedures and are quick to offer assistance, even at games in Muenster.

As we continue to participate in the UIL "educational" activities, let's make every effort to keep the game an enjoyable event. We are lucky in Muenster to have people who see the importance of student activities and the value of being a good fan. Muenster High School appreciates your support and your cooperation.

## Great Rates From AmWest

|   |   |
|---|---|
| <h1 style="font-size: 3em;">30<br/>Month<br/>Certificate<br/>of Deposit</h1> <p style="text-align: center;">RATE</p> <h1 style="font-size: 4em;">4.50%</h1> <p style="text-align: center;">YIELD</p> <h1 style="font-size: 4em;">4.58%</h1> | <h1 style="font-size: 3em;">48<br/>Month<br/>Certificate<br/>of Deposit</h1> <p style="text-align: center;">RATE</p> <h1 style="font-size: 4em;">5.00%</h1> <p style="text-align: center;">YIELD</p> <h1 style="font-size: 4em;">5.10%</h1> |
|---|---|

- Monthly Checks Available
- Interest Compounded Quarterly
- \$1,000 Minimum Opening Balance

Put Your Money on Texas.<sup>SM</sup>

**AmWest Savings<sup>SM</sup>**

Substantial penalty for early withdrawal. Rate subject to change without notice.

GAINESVILLE: 1000 North Grand, 817-668-7292

Insured by FDIC.  
©1992 AmWest Savings Association

11-27-1-E

# Whirlpool

HOME APPLIANCES

**Pair Price \$688<sup>00</sup> C/C**

**Washer Model LA8860 Dryer Model LE8860**

■ Large Capacity ■ 3 Automatic Cycles ■ 3 Water Temperature Selections ■ Large Capacity ■ 3 Drying Cycles ■ Extra Large Top-Mounted Lint Screen ■ Side-Swing Door

## COOKE COUNTY APPLIANCE

414 East California Gainesville 665-0811

East Highway 82 Muenster 759-4411

11-27-1-E



## Soroptomists honor Felderhoff, Truebenbach



JULIE FELDERHOFF and APRIL TRUEBENBACH

April Rose Truebenbach and Julie Marie Felderhoff were honored as "Girl of the Month" by the Gainesville Soroptomist Club of Gainesville at its noon luncheon on Monday, Nov. 23. The meeting was held at the Soroptomist Friendship House in Gainesville.

Both girls are seniors at Sacred Heart High School. They were accompanied to the luncheon by a teacher, Mrs. Linda Ellender, and by Loretta Felderhoff.

Julia is the daughter of August and Loretta Felderhoff. She has been a member of the Student Council for all four years of high school and is now serving as president of the group. Julia has been a National Honor Society member since her sophomore year and is now president. She is also president of her senior class, and has held an office for them for all four years.

Participation on the Sacred Heart Drill/Dance Team has been a part of Julia's high school curriculum. Other memberships include the Chemistry Club, Letterman's Club and German Club.

Julia has earned numerous academic awards during her high school years, including the Master Trophy for four years of continuous quarters on the Principal's Honor Roll.

School sports played by Julia include cross country, basketball, tennis and track. She also played soccer with the Cooke County Soccer Association and the Denton U-19 Girls Soccer Team.

A member of Sacred Heart Church, Julia has taught Vacation Bible School. She belongs to JAM and reads in church. She has been active in community service, including teaching Red Cross swim lessons.

During the summer, Julia worked as a lifeguard at the Cross Timbers Girl Scout Camp and the Muenster Swimming Pool. She plans to attend college, but is as yet undecided about her major.

April Truebenbach is the daughter of Allen and Carla

Truebenbach. She has served on the Student Council all during high school. She is a member and the secretary of the National Honor Society. She has been a member since her sophomore year.

She is the high school editor of the Annual Staff and belongs to the Spanish Club, Speech and Drama Club and Letterman's Club, of which she serves as president.

April plays varsity basketball, plays tennis, runs track and is a member of the Sacred Heart Drill/Dance Team. She was Homecoming Princess for her freshman, sophomore and junior year and was chosen Homecoming Queen this year. She was also selected Class Favorite as a freshman and a junior.

Part of April's activities include regular visits to the local rest home and helping at parish picnics. She is a member of Sacred Heart Catholic Church where she sometimes serves as a liturgy reader. April has taught summer Bible School and is a member of JAM.

In addition to attending school, April is a hostess at The Center Restaurant and also models at The International Apparel Mart in Dallas.

## J.A.M. works at Loaves and Fishes

by Emily Klement

A group of apprehensive, yet willing, J.A.M. members left for Fort Worth on Saturday, Nov. 14. Most never worked in a soup kitchen, nor had been that close to a homeless person, but that was the experience they had that day.

Loaves & Fishes was the destination and the young people who worked in the soup kitchen will have a new insight and knowledge - not only about the poverty and hunger they saw, but also about how the system of food banking works. Ron Riel, the director of Loaves & Fishes, was the tour director of the day, as well. The young people were taken to the food bank several blocks away from the soup kitchen and were shown the operations. Mr. Riel is in charge of coordinating volunteers and donations for this worthwhile project.

Based in what used to be a middle-class neighborhood and now is a run-down and poverty-stricken home for Fort Worth's poor and overshadowed by the glitz of the downtown area, many of the residents only know generations of living in the projects or the remnants of once proud homes.

The young people were

impressed with the volunteers, donations and how the system works. Loaves & Fishes was started by Third Order Franciscans over ten years ago and continues to thrive with members of all denominations helping the cause. "Rescuing God's food for the hungry" is the motto of Loaves & Fishes. The JAM group was amazed at the respect they received from the hungry and poor that day. Many were down-and-out, some homeless, some drug-addicted...but all needing help. Judging the people was cast aside and the work began. The group helped prepare, serve and then clean afterwards. The system was very coordinated and by 4 p.m. everyone was back in Muenster.

The lives of the young people will never be the same. They all want to go back, for part of their hearts stayed in that neighborhood in Fort Worth. For more information on how to help Loaves & Fishes or to donate food or money, call Ron Riel, 817-334-0907, or the Sacred Heart Youth Ministry Office, 759-2511, ext. 44 and leave a message.

Matthew 5:7 - "Happy are those who are merciful to others; God will be merciful to them!"

## Joan Walterscheid, C.D.E., attends diabetes seminar

Joan Walterscheid, Certified Diabetes Educator, recently attended a seminar at Presbyterian Hospital of Dallas. The one-day seminar, "Empowerment, Facilitating a Path to Personal Self Care," was sponsored by Miles Inc., Diagnostic Division and The North Texas Diabetes Educators Association.

The empowerment philosophy is based on a set of interrelated assumptions which give rise to a holistic patient-centered approach to diabetes care and patient education. Therefore in the empowerment view, the primary purpose of patient education is to prepare patients to make informal decisions about their self-care.

In order to take responsibility for their self-care, patients with

diabetes must have insight into their own values, needs and goals as well as specific knowledge about diabetes and its treatment. Diabetes education designed to empower patients requires appropriate attitudes, knowledge and skills on the part of the diabetes educator. Empowerment, good setting, problem solving, coping with diabetes and daily stress, support and motivation were discussed in depth at the seminar.

Joan Walterscheid is the Diabetes Educator for Muenster Memorial Hospital and the president of the Cooke County Diabetes Support Group. Contact her at (817) 759-2271 for any needed information related to diabetes and the support group.

## Dec. 5 dance to benefit Henry Fleitman family

A fund-raising benefit to help pay for the medical expenses of the Henry Fleitman family is scheduled for Saturday, Dec. 5 at the new Centennial Center in Lindsay. Mr. Fleitman, a life-long resident of Lindsay, is afflicted with cancer and is currently confined to Gainesville Memorial Hospital.

The event, which will feature a dance and silent auction, is being sponsored by the Lindsay branch of Catholic Life Insurance.

Bids for items on the silent auction will be taken from 7 p.m. until 10 p.m. Any person or business interested in contributing items for the auction can contact Danny Nortman (665-8297), Kevin

Block (665-2969), or Steve Fuhrmann (665-9369).

The dance will begin at 8 p.m. and last until midnight. Music will be provided by Marty Bartlett disco. Tickets can be purchased at the door for \$15 per couple or \$8 per person.

## Extension Homemakers elect officers at November meeting

The November meeting for the Extension Homemakers was held on November 18 at the home of Louise Bayer at 2 p.m. New officers were elected for the

coming year as follows: Dorothy Hesse, president; Florence Williams, vice president; Liz Koesler, secretary-treasurer; Dorothy Fisher, council delegate; Jackie Bilderback, alternate delegate.

Plans were finalized for the county clubs Christmas party to be held on December 7 at 6:30 p.m. at The Center Restaurant. The Muenster club will have their Christmas dinner on December 9 at 12:00 in the Cooperative building. Each member will bring a covered dish.

It was voted to give a \$35 donation to the Head Start program in Gainesville. A check for \$15 was given to Dorothy Yosten to help with the Bingo games at St. Richard's Villa.

President Lucille Lutkenhaus opened the meeting and led the Creed prayer, followed by the Pledge of Allegiance.

Jackie Bilderback gave the inspirational reading.

The hostess served pumpkin mousse pie, nuts and coffee to 20 members. A lovely fall arrangement brought by Ann Herr was used as the table centerpiece. Two "welcome back" members, Bea Young and Mabel Sicking, attended. Mrs. Bayer showed guests a beautiful embroidered quilt and pillow shams she completed recently.

The January meeting will have a white elephant sale as a fund-raiser for the club.

## News of the Sick

Marie Reiter is a patient in the Extended Care section of Gainesville Memorial Hospital for therapy. She fell at her home on Sunday, Nov. 15, breaking a leg, and undergoing surgery the following Tuesday. Get-well cards will reach her addressed to Marie Reiter, Room 118, Convalescent Center, Gainesville Memorial Hospital, 1016 Ritchey St., Gainesville, TX 76240.

### Germania Insurance



Covering Texas since 1896.

Property and Life Insurance

Bob Hermes  
759-4496  
Muenster, Texas

4-20-2-NAE

## WORKAHOLICS!



Cushion crepe sole. Soft water repellent leather. Perfect heel-huggin' fit. These are made for all-day comfort...even if you work around the clock.



Wayne's Lost Luggage  
209 N. Commerce, Gainesville

## WE HAVE SO MUCH TO BE THANKFUL FOR

It's our pleasure and privilege to be of service to you. Enjoy your Thanksgiving!

Community Lumber Company

200 E. Division 759-2248  
Muenster



**AFTER Thanksgiving SPECIAL**

**TWO DAY SALE**  
Friday & Saturday Only - November 27 & 28  
**25-50% OFF**

On Everything In Store, Including All  
Shoes • Boots • Handbags • Hose  
Socks • Billfolds • Umbrellas • Bows • Polish • Etc.  
Shop Now For Christmas and SAVE!

Closed Thanksgiving

**TEL SHOES**

"The Store With The Personal Touch"

102 West Main Street South Side of Courthouse 665-6081

You're Invited to

## Christmas Open House

Fri., Nov. 27 10 a.m. - 8 p.m.  
Sat., Nov. 28 10 a.m. - 6 p.m.

Experience the Sights, Sounds & Smells of Christmas at

The

### Crafty Olde German

a unique crafters showplace & anytime gift shoppe

- Yankee Candles
- Unique Gift Items
- Christmas Furnishings
- Teacher Gifts
- Gourmet Coffees
- Christmas Ornaments
- FREE Gift Wrap

Join Us for Refreshments, Door Prizes & Discounts

In conjunction with:

Muenster Christkindlmarkt

216 N. Main Muenster, Texas (817) 759-2505

## Kickoff Christmas Shopping Season

Diamond and Kt. Gold Jewelry ALWAYS Sale Priced

THE ORIGINAL **Jim Seeds Jewelers** Lay-away for Christmas NOW

Seeds Jewelers Over 48 Years See Jim Seeds for Your Jewelry Needs 309 N. Grand, Gainesville 665-4812

Most Major Credit Cards Accepted

# 1/2 off\*

Reg. Price on Both Ladies' & Gent's Diamond Rings and 10 & 14 kt Chains

"Everything Else in Store SALE PRICED"

with exceptions of Class Rings, Lorus Watches and Custom Made Jewelry

Even items ordered will be Sale Priced!

\* Cash or Lay-a-way Only 5% Add-on on Credit Card Purchase on Sale Priced Items

Friday, November 27 and Saturday, November 28 Only!



## VFW Auxiliary announces 'In Lieu of Christmas Cards'

Plans for their traditional "In Lieu of Christmas Cards" project were completed by the V.F.W. Ladies Auxiliary during the Nov. 16 regular meeting in the VFW Post Home. Through this project the auxiliary invites community participation in a holiday fund raiser that allows persons to send greetings to friends, neighbors and relatives by an ad which is published in the **Muenster Enterprise**. The monetary donations made by participants are placed in a special relief fund to be used locally in the community to assist those who are in need through illness or misfortune. Juanita Knabe and Frances Bayer are co-chairmen.

In other business, President Frances Bayer announced that the "Voice of Democracy" tapes are ready to be judged and sent to District competition. She also announced the Mid-Winter Roundup meeting in Austin on Jan. 21-24. The Auxiliary Rules and Regulations were read; and the "Pot of Gold" project was held with proceeds going to cancer aid and research. Members voted to contribute \$2 per person to cancer aid and research.

A letter from the Muenster Chamber of Commerce with an invitation to participate in the Christmas Parade, was read. A "Get Well" card and a "Sympathy" card were sent to two members. Members voted to send Christmas gifts to five local special children.

Dorothy Hesse reported on a visit she made to the Bonham VA Hospital, and the District meeting in Sherman with Frances Bayer. The Buddy Poppy Raggedy Ann doll won third prize. Both ladies also each made a Buddy Poppy quilt square to enter in the contest. Gainesville won first place.

The local auxiliary is collecting gift items for the Bonham VA Hospital. Suggested are personal items, magazines, sweat suits, sweaters, socks, hobby or craft items, etc. These can be left at the

VFW Hall any evening after 5 p.m. and before Dec. 10.

The Children's Christmas Party will be held Dec. 10 at 9:30 a.m. Santa Claus will be present to greet the children and grandchildren of Veterans. Linda Knabe and Frances Bayer are co-chairmen.

The business meeting was conducted by Frances Bayer. Dorothy Hesse was patriotic instructor pro-tem. Chaplain Ethel Hesse led the opening prayer and the pledge of allegiance. Secretary Ida Bindel read roll call and minutes and communications. Treasurer Lucille Hesse gave her report. Members were urged to pay 1993 dues.

After adjournment Hilda Sicking served refreshments to thirteen members. For the December meeting, members will bring covered dishes.

## JELLY events

A special Mass for the first Sunday of Advent will be held Sunday, Nov. 29 at 6 p.m. with Father Victor Gillespie OSB officiating in Sacred Heart Church. A reception will follow in the SH Community Center Cafeteria until 7:30 p.m.

\*\*\*

A Christmas party/dance will be held at St. Mary's in Gainesville on Friday, Dec. 4 in conjunction with the parishes in Lindsay and Valley View. A bus will leave the Community Center parking lot at 6:35 p.m. and return at 10:25 p.m. for anyone that wants to participate. Sub sandwiches and punch will be served.

## Home-School Society plans bake sale Dec. 4

The Sacred Heart Home School Society will sponsor its traditional annual Christmas Bake Sale on Friday, Dec. 4, 1992 from 7:30 a.m. to 4:00 p.m. in the front lobby of the Community Center.

This announcement is made in advance of the date, to help everyone plan for purchase of Christmas baked goods, either for immediate use, or to store in freezers for holiday use. It is also suggested as a reminder to parents of school children, to bring in their baked goods on December 4, well wrapped or packaged, and labeled.

One more thought, say the sponsors, is to give the children enough coins to permit them to buy their snacks at the bake sale.

For more information, call Barbara Bayer at 759-2574.



**ROBBY PEYROT**, Hood Community Club president, holds the Traveling Trophy for Cooke County. Others in the photo, l to r, are Evelyn Yeatts, Cooke County Extension Agent, C. William Hermes, Mary Hermes and Leann Peyrot.



**ILLINOIS BEND** Community Club Vice President W.D. (Dub) Dowd holds the Traveling Trophy for Montague County. The club has completed an outstanding year of service and education in its community. Others associated with the club are, l to r, Bernice Dowd, Cecilia Ashley, Norene Dowd and County Extension Agent Barbara Holeman.

## Improvement clubs receive service awards

The Hood and Illinois Bend Community Improvement Clubs were honored with presentation of Traveling Trophies for excellence in service to their communities November 17.

The honor was awarded at the Community Club Banquet held in the Cooke County Electric Cooperative auditorium. The event is sponsored each year by the cooperative and the Home Extension offices in Cooke and Montague counties.

The gathered officers of the various community clubs were treated to a feast of Mexican food and earthquake cake prepared by Evelyn Yeatts, Cooke County Home Extension Agent, and Barbara Holeman, Montague County Home Extension Agent.

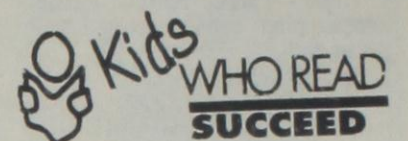
The entertainment was provided by Karen House, a singer/songwriter who performs contemporary Christian music. Miss House, who grew up in Era, is a Dallas C.P.A. who loves to perform Christian music. She has recorded one album. Her strong, clear singing accompanied by guitar drew rousing applause.

Officers of community

improvement clubs in Ross Point, Illinois Bend, Spanish Fort, Callisburg, Downard Fairplains, Woodbine, Era and Hood were on hand to pick up participation certificates from Yeatts and Holeman. Ray Powell, Vice President of the Cooperative's Board of Directors, presented checks to each club with facilities served by the cooperative.

Powell praised the community club leaders for their efforts.

All of the community improvement clubs offer both service and a social outlet in their communities. They sponsor dinners, make special calls on the ill, the grieving and shut ins. They maintain meeting facilities and often clean up along highways and other common areas in their communities. Several clubs sponsor pet vaccination clinics and non-partisan political rallies.



You'll always be our champ!  
Happy 35th Birthday!  
Love,  
Margie & Toby

## Muenster Honor Rolls

### SECOND SIX WEEKS A HONOR ROLL

**Grade 1** - Deann Dangelmayr, Joseph Dangelmayr, Kyle Endres, Chelsea Felderhoff, Diana Felderhoff, Kirk Hartman, Robyn Hermes, Bridgett Klement, Kristian Koelsler, Kristi McAden, Daniel Russell, Justin Thweatt.

**Grade 2** - Amanda Felderhoff, Mitchell Felderhoff, Karl Fisher, Megan Grewing, Crystal Hacker, Shanna Jones, Wesley Koelsler, Mark Mosler, Cindy Tempel, Ricky Endres, Kami Klement, Megan Lippe, Tyler Walterscheid.

**Grade 3** - Andrea Bauer, Krystal Hale, Grant Hartman, Nathan Hess, Kimberly Klement, Crystal Lutkenhaus, Daniel Rohmer, Shanell Spakes, Jason Vogel, Chisam Cain, Laura Drachenburg, Mitch Endres, Ashley Klement, Pamela Lutkenhaus.

**Grade 4** - Diane Britain, Lauren Dangelmayr, Malony Gieb, Megan Hennigan, Heidi Jones, Kristie Lutkenhaus, Michelle Montgomery, Terri Wimmer.

**Grade 5** - Allison Endres, Justin Fleitman, Jackie Henscheid, Jessica Schoppa, Casey Walterscheid, Kristen Creed, Polly Fette, Randy Grewing, Darren Hennigan, Jeffrey Klement, Douglas Knabe, Raegan Koelsler.

**Grade 6** - Stephanie Bierschenk, David Jones, Dolly Patel, Brent Sicking, Matthew York, Cristy Drachenburg.

**ACADEMIC HONOR ROLL**  
**Grade 7** - Valerie Erwin, Joyce Hacker, Lucas Hartman, Stephanie Huchton, Leigh Reiter, Kim Sturm.

**Grade 8** - Greg Flusche, Eric Miller, Holly Mullins, Jonathan Otto.

**Grade 9** - Jeff Flusche, Hollie Fuhrmann, Melissa Biffle, DaLana Endres.

**Grade 10** - Kerri Barnhill, Cory Cain, Jamie Hellman, Tommy Dankesreiter, Denise Russell.

**Grade 11** - Brandi Grewing, Shelley Klement, Theresa Kubis, Danell Reiter, Tracey Vogel, Amy Otto, Amy Sturm.

**Grade 12** - Daren Bindel, Justin Hartman, Chelby Schoppa, Joy Tisdale, Melissa Fisher, Lori Graham, Marlene Hess, Allison Klement, Dianne Pagel, Lisa Russell, Eric VanSwearingen, DaLana Walterscheid.

**B HONOR ROLL**  
**Grade 1** - Andrew Cherry, Martha Knabe, Nathan Sicking, John Sturm, Alisha Walterscheid, Cameron Walterscheid, Matthew Yosten.

**Grade 2** - Shane Barnhill, Ashley Sicking, Jonathan Sicking, Jennifer Ashley, Ranev Bauer, Jami Gerstberger, DeWayne Montgomery, Christopher Rains, Dustin Walterscheid.

**Grade 3** - Lacy Endres, Brittany Haverkamp, Kevin Hermes, Travis Sicking, Toby Walterscheid, Adam Bayer, Brad Felderhoff, P.J. Fleitman, Shawn Hess, Chris Lutner, Jennifer Reid, Christopher York.

**Grade 4** - Misty Barnhill, Brandy Gilbreath, Bronya Vogel.

**Grade 5** - Danny Felderhoff, Kristen Grewing, Courtney Haverkamp, Jason Lutkenhaus, Bryan Miller, Jonna Schneider, Craig Hartman, Heather Hess, Rhianna Samek, Nicholas Silmon, Jim Stoffels.

**Grade 6** - Chad Felderhoff, Justin Klement, Amber Riddle,

John Roller, Mickie Thweatt, Melinda Fanning, Eric Fisher, Mendy Gieb, Dee Dee Walterscheid.

### REGULAR HONOR ROLL

**Grade 7** - Michael Grewing, Scott Hermes, Bryan Hudspeth, Kristine Hartman, Michael Boydston, Bradley Escobedo, Kristen Dickerson, Cody Perryman, Aaron Sicking, Jerry Stoffels.

**Grade 8** - Greg Fisher, Tony Hartman, Brandi Lutkenhaus, Christina Metzler, Jacob Luke, Steven Reiter, Amanda Russell, Jennifer Sicking.

**Grade 9** - Carrie Hess, Andrea Klement, Mary Knabe, Julia Fleitman, Misty Klement, Audrey Knabe, Leasha Perryman, Crystal Knabe.

**Grade 10** - Maurus Hacker, Ashley Hartman, Rebecca Fleitman, Jason Huchton, Cody Klement, Brad Knabe, Lisa Lippe, Cindy Reiter, Laura Vogel.

**Grade 11** - Candise Abney, Misty Gieb, Kay Grewing, Cory Knabe, Brandon Walterscheid, Amy Fette, Jay Hennigan.

**Grade 12** - Cindy Culp, Michael Hacker, Amber Vogel, Julie Miller, Charlie Hermes.

**Pharmacy Topics**

from **Wal-Mart Pharmacy**  
Gainesville Shopping Center  
(817) 665-2839

International study, judging the effectiveness of aspirins and clotbuster drugs after a heart attack, found all three drugs equally effective in reducing deaths. Streptokinase, the oldest and least expensive, was least likely to cause strokes.

Laser beams may be used to numb teeth before treatment. New unit being tested pulses on and off so heat doesn't build up.

New use for time-release capsules: filled with antiviral drugs, they are implanted inside the eye to treat cytomegalovirus retinitis. Harvard ophthalmologist hopes to try them for other conditions, too.

It's not just the vitamins and the beta-carotene -- now researchers at Johns Hopkins University School of Medicine have isolated a chemical in broccoli, sulforaphane, with cancer-fighting muscle.

Insulin-dependent diabetics who travel need to take special care with medication when they cross time zones. Free how-to card is available from The Diabetic Traveler, Box 8223 RW, Stamford, CT 06905.

Diabetics know they'll find the test strips, syringes, insulin and everything else they need at Wal-Mart Pharmacy in Gainesville Shopping Center. 11-27-1-E

**Miller's Cleaners**

- Drapery Cleaning
- Refrigerated Fur Storage
- Bridal Gown Preservation
- Repairs
- Alterations

~Since 1922~

329 N. Commerce  
Gainesville  
665-3301

9-11-XAE

**ENCORE VIDEO**  
1000 E. Hillcrest Muenster, Texas

**Thanksgiving Holiday SPECIAL**

beginning WEDNESDAY, Nov. 25 at 6:00 p.m. and THURSDAY, Nov. 26 - Turkey Day! All Day! return Friday

RENT "5" MOVIES \$6.99\* for only

and rent any CHILDREN'S \$1.25 movie for only

OPEN Thanksgiving Day 2:00 p.m. to 8:00 p.m. 759-4040

Happy Thanksgiving from All of Us Here at ENCORE VIDEO

\*Limit one blue dot movie for special!

Not for honor. Not for country. For his wife and child.

**HARRISON FORD PATRIOT GAMES**

PARAMOUNT PICTURES PRESENTS  
A MAC NEUFELD PRODUCTION  
HARRISON FORD PATRIOT GAMES ANNE ARCHER PATRICK BERGIN SEAN BEAN THORA BIRCH JAMES FOX AND JAMES EARL RAYNE  
WITH RICHARD HARRIS MUSIC BY JAMES HORNOR COSTUME DESIGNER NEIL TRAVIS, A.C.C.  
EDITED BY JOSEPH NEMEC III DIRECTOR OF PHOTOGRAPHY DONALD M. McALPINE, A.C.C.  
EXECUTIVE PRODUCERS CHARLES H. MARQUIE BASED ON THE NOVEL BY TOM CLANCY  
SCREENPLAY BY W. PETER UFF AND DONALD STEWART  
PRODUCED BY MAC NEUFELD AND ROBERT REINE  
DIRECTED BY PHILIP NOYCE

ON VIDEOCASSETTE

**ENCORE VIDEO**  
1000 E. Hillcrest 759-4040 Muenster



# Lunch Menus

**SACRED HEART SCHOOL S.N.A.P. MENUS**  
Nov. 30 - Dec. 4

Mon. - Macaroni and Cheese, salad, green beans, garlic toast, fruit, milk.

Tues. - Sausage, sauerkraut, potatoes, peaches, cinnamon rolls, butter, milk.

Wed. - Oven Fried Chicken, potato salad, green peas w/pimientos, orange slices, milk.

Thur. - Lasagna Casserole, green beans, lettuce, garlic toast, cake, milk.

Fri. - Cheeseburgers w/Trimmings, French fries, ice cream, milk.

**LINDSAY LUNCH MENU**  
Nov. 30 - Dec. 4

Mon. - Chili w/Beans, creamed potatoes, fruited gelatin, pickles, iced cake, crackers, milk.

Tues. - Fiesta Salad, applesauce, assorted fruit, milk.

Wed. - Chicken Nuggets, mashed potatoes, gravy, green beans, pineapple, bread, milk.

Thur. - Turkey Fajitas, tortilla, cheese, pinto beans, assorted fruit, bread, milk.

Fri. - Teacher In-Service

**ERA ISD LUNCH MENU**  
Nov. 30 - Dec. 4

Mon. - Steak Fingers, gravy, green beans, macaroni and cheese, pear half, banana pudding, milk.

Tues. - Submarine Sandwich, trimmings, potato chips, mixed fruit, chocolate chip cookie, milk.

Wed. - Chicken Nuggets, creamed new potatoes, English peas, hot rolls, butter, jello w/whipped topping, milk.

Thur. - Vegetable Beef Soup, grilled cheese sandwich, salad, Reese's cake, milk.

Fri. - Hamburger, cheese slice, trimmings, tator tots, ice cream, milk.

**FORESTBURG MENU**  
Nov. 30 - Dec. 4

Mon. - LUNCH: Pizza, corn, applesauce, cake, milk. BREAKFAST: Cereal, juice, milk.

Tues. - LUNCH: Meat Loaf, creamed potatoes, blackeye peas, spinach, pears, bread, milk. BREAKFAST: Donuts, juice, milk.

Wed. - LUNCH: Smothered Turkey, creamed potatoes, English peas, vegetable salad, chocolate pudding, bread, milk. BREAKFAST: Hash browns, toast, juice, milk.

Thur. - LUNCH: Taco Salad w/Cheese, tomatoes, lettuce, ranch style beans, peaches, bread, milk. BREAKFAST: French toast, juice, milk.

Fri. - LUNCH: Corny Dogs, chips, lettuce, pork and beans, baked apples, milk. BREAKFAST: Biscuit and gravy w/sausage, juice, milk.

**MUESTER LUNCH MENU**  
Nov. 30 - Dec. 4

Mon. - Taco (Meat and Cheese), baked beans, lettuce, fruit, milk.

Tues. - Fried Chicken, potatoes and gravy, corn, rolls, milk.

Wed. - Vegetable Beef Soup, ham and cheese sandwiches, fruit, cornbread, milk.

Thur. - Hamburgers, fruit, brownies, milk.

Fri. - Chicken Fried Steak, potatoes and gravy, green beans, rolls, milk.

## MMH Auxiliary plans caroling excursion Dec. 13

The Muenster Memorial Hospital Auxiliary is planning a Christmas Caroling Party to be held on Sunday, Dec. 13, beginning at 6:30 p.m.

All Auxiliary members and families are asked to meet in the south parking lot of the hospital with all your caroling gear - warm clothes, blankets, scarves and flashlights. Music sheets will be provided so everyone will know the

words and join in the spirit of Christmas. The route will include the hospital and rest home and, if anyone would like the group to carol in front of their home, simply call Kathy Bauer at 759-2573.

Doughnuts and hot chocolate will be furnished when the carolers return to the hospital. Come and help the Auxiliary bring Christmas cheer to Muenster residents!

## Baptisms

**Felderhoff**

Ryan Scott Felderhoff received the Sacrament of Baptism in Sacred Heart Church on Sunday, Nov. 8, 1992 following the 10:30 a.m. Mass, officiated by Father Victor Gillespie OSB.

Serving as baptismal sponsors were an aunt and an uncle Janet Felderhoff of Muenster and Tim Voth of Arlington. The infant wore a baptismal gown that was a gift from the maternal grandparents, "Grandma and Grandpa Voth."

A buffet dinner followed the ceremony, hosted by the baby's parents, Scott and Sandy Felderhoff, in their home. A christening cake made by Betty Rose Walterscheid was served as dessert.

Guests included the parents and Ryan's sister Kaitlyn; the grandparents Theo and Milly Voth and Al and Sis Felderhoff; and aunts, uncles and cousins, Kim, Kenny, Kayla, Keith, Kara and Kirk Felderhoff; Janet, Jody and Deann Felderhoff; Gene Voth of Denton and Tim Voth and Debbie Metzler of Arlington.

Mrs. Regina Flusche and Mrs. Elizabeth Krahl were unable to attend. Also in attendance were aunts, uncles and cousins, Janet and Christine Jordan; Janet, Henry and Amy Deckard; Joyce, Dea and Karen Cler; and Victor Schmidtkofer. Friends in attendance were Martin Knabe, Elvira and Bill Flusche and Imogene Zimmerman.

A celebration dinner was held after the ceremony at the home of the parents. A baptismal cake made by Jessica's mother was served and presents were opened.

**Walterscheid**

Garrett Alois Walterscheid, infant son of Kim and Lisa Walterscheid, received the Sacrament of Baptism in Sacred Heart Church on Sunday, Nov. 22 at 9 a.m. It was the birthday of Garrett's grandfather, the late Alois Trubenbach. Father Victor Gillespie OSB conferred the Sacrament.

Godparents were an aunt, Toni Trubenbach, and a cousin, Bob Endres. The christening robe was a gift from maternal grandmother, Gwen Trubenbach, and the covering blanket was given by the paternal grandmother, Queenie Walterscheid. The godfather presented a St. Christopher medal. Garrett also wore a crocheted coat his mother wore on her own baptismal day.

Brunch followed in the home of the maternal grandparents Loyd and Gwen Trubenbach. Guests were Garrett's brothers Dustin and Bret and their parents; the great-grandparents Louise Trubenbach, Laverne Hornsley and Arnold and Dolores Friske; the grandparents Loyd and Gwen Trubenbach and Willie and Queenie Walterscheid. Also Toni Trubenbach; Barbara Traweek; the Bob Endres family; the Glenn Walterscheid family; Beverly and Bill Sterling; and Terry, Dianne and Tyler Walterscheid.



## Jonathan Krahl celebrates

Jonathan Krahl, son of David and Judy Krahl of Rt. 2, Gainesville celebrated his eighth birthday with a special fun time at the Pizza Inn in Gainesville on Oct. 24. In attendance were his mother and his brothers Adam and Aaron and his sisters Lauren and Jessica, and his grandmother Mrs. Viola Schmidtkofer. Jonathan's cousins Dea and Karen Cler also attended.

About 20 of his second grade classmates were also present to celebrated with Jonathan, with pizza and dinosaur birthday cake. Gifts were opened and displayed, games were played and everyone enjoyed a wonderful party.



## - NOTICE -

GTE Directories, the Official Directory Service for Muenster Telephone Corporation, is currently canvassing our area for the 1993 Muenster Directory Yellow Pages Business Advertisements.

Muenster Telephone Corporation  
P.O. Drawer 587  
Muenster, Texas  
759-2251

## Cooke County Heritage Society holds bake sale

The Cooke County Heritage Society will hold its annual Christmas Bake Sale on Friday, Dec. 4 in the lobbies of the First State Bank and Gainesville National Bank between 9 a.m. and 12 noon. People wanting to donate baked goods should bring them to the Morton Museum of Cooke County on Thursday, Dec. 3 before 4 p.m. Proceeds from the sale will be used to help support the Morton Museum and its programs.

For further information, please contact the museum at 668-8900.

## Notice!

Cooke County Catholic Singles will meet at Mary Ann's in Myra on Friday, Nov. 27 at 7:30 p.m. to play board games. Call 736-2361 for directions.

## Krahl

Jessica Marie Krahl, infant daughter of David and Judy Krahl of Rt. 2, Gainesville, was baptized at St. Peter's Catholic Church on Sunday, Nov. 15. Father Stephen Eckart officiated. Baptismal sponsors were Mr. and Mrs. Edward Krahl, paternal grandparents.

Jessica wore a christening gown made and smocked by a friend and wore a cap crocheted by the mother of the paternal grandmother, the late Mrs. Ed Eberhart.

Attending were Jessica's brothers, Jonathan, Adam and Aaron, and sister Lauren, her parents and grandparents, Mr. and Mrs. Joe Schmidtkofer and Mr. and Mrs. Edward Krahl and great-grandmother Catherine Schmidtkofer. Great-grandmothers

## Carolyn Powell is shower honoree on November 14

Carolyn Powell of Grand Prairie was honored at a pink and blue shower on Saturday, Nov. 14 in the home of her parents, Bill and Eileen Luke.

Hostesses for the afternoon party were Carolyn's sisters Kathy Hartman of Muenster and Nancy Webster of Keller; also Monica LeBrasseur of Muenster and Laurie Jones of Georgetown.

## Catch 'The Glow of Christmas' at Morton Museum

The Cooke County Heritage Society is happy to announce the opening of a new exhibit - "The Glow of Christmas" - at the Morton Museum of Cooke County. The exhibit allows visitors to share in the holiday customs of a variety of cultures and countries. It culminates with a look at the holiday traditions once practiced on the American frontier - in many cases, the result of immigrants bringing their customs to this country and adding to and modifying them to develop unique American customs. The exhibit will remain on display throughout December. The museum's hours are 10 to 5 p.m. Tuesday through Friday and 12 noon until 5 p.m. on Saturday. For more information please call the Morton Museum of Cooke County at 668-8900.

After the honoree opened and displayed her gifts, guests were served from a table with a pink cloth and white lace overlay. The table featured a large Teddy bear seated in a circle of pastel paper flowers, holding a bunch of pastel pink, blue, yellow, mint and purple balloons in its paw.

The table centerpiece of tall blue tapers flanked a silver bowl containing candy mint chocolate teddy bear suckers with ribbon ties, for the guests to enjoy.

A bountiful array of pick-up foods and beverages completed the setting.

The afternoon was spent visiting and reminiscing with many long-time friends, family and work associates.

**WALLACE INGLISH**  
New York Life Insurance Company

"Your estate is planned, if not by you, by the federal and state government."

Bus. (817) 665-5863  
(800) 794-6476

**NEW YORK LIFE**  
The Company You Keep.

**Have A Gobblin' Good THANKSGIVING**

Bring Your Film to King's

**COUPON**

**25% OFF**  
Film Processing & Printing

- 10 Roll Limit
- No Other Specials Apply
- Coupon Must be Present when Ordering
- Coupon Expires Dec. 20, '92

**COUPON**

**BING'S**  
PHOTOS

110 E. Main, Gainesville  
Mon.-Fri. 9a.m.-5p.m.  
665-4380  
Night Film Drop Available

**WE PLAY THE HITS**

**24 Hours A Day**

**K X G M**  
HIT 106.5

**Give the Gift of Sight!**  
Give a Gift Certificate for Christmas

If you come up short this Christmas, bring a buddy and get —

Two Complete Eye Exams for the Price of One!

Includes Testing for Glaucoma. Not valid on contact lens exam.

**\$35.00**

|  |   |
|--|---|
| Daily Wear Soft Contacts \$109.00<br>(B & L, Hydrocurve II, American Hydron, & DuraSoft) | Tinted Soft Contacts \$149.00<br>(Choice of 5 colors, Daily Wear) |
| Extended Wear Soft Contacts \$149.00<br>(B & L, Hydrocurve II, Permalens)                | Gas Perineable Disposable Contacts \$169<br>\$149                 |

\* Cost of Contact Lens • Contact Lens Exam • Care kit & Follow-Up

**2 PAIR COMPLETE EYEGLASSES \$58.00** Frames & Lens

OR

**1 PAIR COMPLETE EYEGLASSES \$29.00** Frames & Lens

- Does not include eye exam
- Bifocals extra, options extra
- Special Collection Only

**HURRY! LIMITED OFFER!**  
Not Valid with any Insurance Claims  
Offer Expires December 31, 1992  
Offer Good at this Location Only

**Texas State Optical**

Medicaid / Medicare • One Day Service in Most Cases • MasterCard / VISA / Discover  
Complete Care for All Your Needs Including Cataract and Glaucoma

Dr. Clyde S. McCain Optometrist (817) 668-7254  
311 E. California, Gainesville

John A. Webb, Jr., O.D. Optometrist

**Happy Thanksgiving to All**

Open Friday & Saturday

**In Store Christmas EARLY SPECIALS**  
to start your Christmas shopping

- Interior Design Services
- Custom Window Treatments and Bed Coverings
- Verticals, Mini-Blinds, Pleated Shades
- Bridal Registry
- Awnings
- European Ring Lace
- Fieldcrest
- Accessories
- Gifts

**The Shady Spot Studio**  
Bob and Virginia Archer  
665-5735  
Gainesville, TX

Gift Wrap & Delivery 109 South Commerce  
West Side of Square

11-27-1-E



# Tigers' playoff hopes dashed by Cardinals

The Sacred Heart Tigers had high hopes of advancing to the TAPPS State Football Final after finishing District 1A runner-up earlier this month. Their chances were crumbled Friday night when they fell 43-14 to a frisky little team from Saint Paul's of Shiner.

"I was a little disappointed in our defensive performance, lack of concentration really hurt us," commented Coach John Nasche. "The offense was very productive. A completely different style of offense and new quarterback didn't lose the game." The Tigers did sputter, getting close 5 times, but couldn't score.

The Cardinals took the opening kick, starting the game's first drive on their 35-yard line. It took 10 plays for Saint Paul's to move down field 65 yards and score. The extra point kick failed and, with 8:35 on the clock, the Tigers were behind 6-0.

Shiner's kick was returned 20 yards by Neil Berres to the 33-yard line. The Tigers' first attempt of offense was fumbled and the Cardinals were sitting on the Tigers' 29-yard line. Tackles by Barry Hess, Larry Switzer and Chris Pagel held Saint Paul's on 4 plays. Two runs by Trent Trubenbach and an offside flag moved the Tigers 16 yards. Pagel then picked up another 6 on a keeper before the Cardinals' defense forced Sacred Heart to punt.

From the 32, a motion penalty put Shiner back. But their next play was a 37-yard touchdown run. The PAT run failed and, with 3:41 on clock, Saint Paul's took a 12-0 lead.

Sacred Heart's next drive started deep on their 8. Pagel ran for 5 and Scott Frost gained 9 to the 21-yard line. The Tigers were caught holding and, on 3rd down, the Cardinals covered a fumbled ball only 8 yards from paydirt. Two runs later, Saint Paul's added another 6 points. The extra point pass failed for an 18-point lead with 41 seconds left on the first quarter

clock. The Tigers carried the ball into the second period, punting it away after failing to pick up the needed 10 yards.

Four plays were all it took and the Cardinals were again in the end zone. The extra run was good and the scoreboard read 26-0 with 9:52 remaining on the clock.

It was 3 plays and punt again for the Tigers. Jeremy Bayer and Switzer, assisted by a holding call, forced a punt after 8 plays.

The Tigers started play on their 24-yard line. Runs by Trubenbach, Frost, Pagel and Switzer moved Sacred Heart into Cardinal territory. Switzer and Trubenbach took turns running 6 plays to the 16-yard line. Pagel moved the ball 3 yards then Switzer pushed through to the 2. Switzer was given the ball again and cleared the goal line to put the Tigers on the board. The extra run failed for a 26-6 score with 46 seconds on the clock. But the Cardinals came right back on their next offensive play, with a 59-yard scoring run. The PAT kick cleared the uprights and Saint Paul's took a 33-6 lead with 27 seconds left before the halftime break.

Saint Paul's kept Switzer triple covered, so the Tigers used him as a decoy giving Berres, Frost and Trubenbach their best running game.

After the first half, Sacred Heart regrouped, played better and more consistent.

Jordan Bayer returned the 2nd half kick 13 yards to the Tigers' 42-yard line. The drive never got started when a fumbled ball was recovered by Saint Paul's on the Tigers' 39. The Cardinals moved to the 12, but defensive stops by Kelly Bayer and Mike Schilling gave Shiner the choice for a field goal. The 37-yard kick was good and the Cardinals covered a fumbled ball only 8 yards from paydirt. Two runs later, Saint Paul's added another 6 points. The extra point pass failed for an 18-point lead with 41 seconds left on the first quarter

Again, Sacred Heart punted after 3 unsuccessful plays. Saint Paul's started a good drive, but their threat



KELLY BAYER (81) and Larry Switzer stop a Saint Paul's ball carrier as Barry Hess (72) and Jordan Bayer (65) move in to assist.

Janie Hartman Photo

was halted when Jordan Bayer covered a loose ball for the Tigers on their 43-yard line.

Two 15-yard penalties back to back delayed the Tigers' drive, but 10- and 21-yard runs by Berres with short runs by Switzer and Trubenbach gave Sacred Heart a first down on the Cardinals' 29. Switzer, Berres and a 5-yard face mask penalty moved the ball to the 10. Two runs by Berres picked up 9, but a motion penalty set the Tigers back 5 yards. Frost gained another 2 as the final quarter began. On 4th and 4 on the 4-yard line, Pagel could only gain 2 and Shiner took over on their 2-yard line.

The Cardinals moved 98 yards down field in 12 plays for another touchdown. The PAT kick counted for a 43-6 score with 6:42 remaining in the game.

Sacred Heart came back in their next possession. Starting on their 45, runs by Pagel, Switzer and Berres were assisted by face mask and unsportsman flags to Shiner's 24-yard line.

After a quarterback sack for an 8-yard loss, Berres picked up 13 yards and Trubenbach carried the ball to the 7.

Berres went wide right into the end zone for a Sacred Heart touchdown. Trubenbach ran in the extra point for a 43-14 score with 3:16 remaining in the game.

The Tigers tried an onside kick, but it was covered by Shiner near midfield. The Cardinals got in 7 plays before the Tigers' offense took to the field one last time. Switzer got in a good 14-yard run and Berres broke away for a 33-yard run to the 11. A personal dead ball foul and a chop block by Sacred Heart ended the game with the Tigers having a first and 40 near midfield.

Nasche commented that the lack of concentration from the defense, penalties, turnovers and the worst punting game of the season all hurt the Tigers' game.

His bright spot was the offense, with the line doing their best blocking. And the freshman and sophomore running backs filling in for Switzer. "Anytime a team takes

away our running back and we still run for over 200 yards, we're doing something right."

Nasche is looking for a very promising season next year, losing 5 seniors. "Their leadership helped, especially on the offensive line," commented Nasche. "If they learn from their mistakes this year, they will improve next year."

Statistics submitted by Alvin Hartman

Tigers 0 6 0 8 14  
Cardinals 18 15 3 7 43

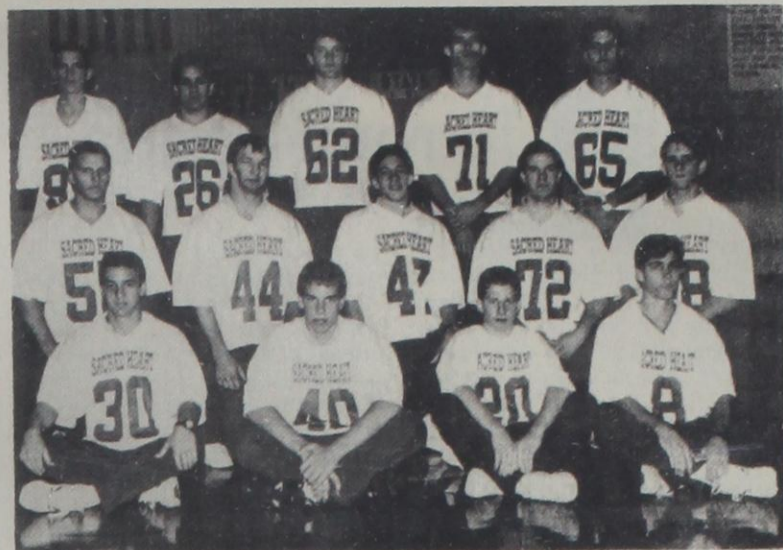
TEAM LEADERS  
Rushing - Neil Berres, 12/114 yards; Jamie Pohler, 21/173 yards.

| Tigers | Cardinals |                 |
|--------|-----------|-----------------|
| 17     | 20        | First Downs     |
| 60/253 | 55/363    | Rushes/Yds.     |
| 0      | 61        | Passing Yds.    |
| 0/4/0  | 27/0      | Comp./Att./Int. |
| 4/26   | 1/33      | Punts/Avg.      |
| 2/4    | 1/2       | Fumbles/Lost    |
| 10/104 | 12/85     | Penalties/Yds.  |

## Prairie restoration planned for Ray Roberts

A 400-acre site on the Lake Ray Roberts Wildlife Management Area has been designated for native prairie restoration and management through an agreement between the Texas Parks and Wildlife Department and the U.S. Army Corps of Engineers.

Management of the wildlife and habitat resources at Lake Ray Roberts WMA, north of Denton, currently provides public hunting, fishing and other non-consumptive outdoor recreational opportunities for the public.



SACRED HEART TIGERS chosen for the 1A TAPPS All District were, 1 to r, back row - Jody Fleitman, Martin McCoy, Mike Schilling, Werner Becker, Jordan Bayer; middle - Jeremy Bayer, Larry Switzer, Aaron Berres, Barry Hess, Kelly Bayer; front - Neil Berres, Scott Frost, Brandon Bayer and Jason Hess. Watch next week for complete All District listing. Janie Hartman Photo

**NEW CHEVY FEVER?**

Call **Ray Wilde**

759-2535  
OR  
(405) 276-3326

Higginbotham & Associates  
Agent: Don Aiken  
- All Lines of Insurance -  
• Commercial • Oil Field • Personal  
1-800-728-2374 or  
Res. 903-523-5221

**METAL BUILDING MATERIALS**  
**Build Your Own & Save!**

12" Rib Galvanized \$35.00 sq. 10 ft.  
#1, 20 yr. warranty, 12" Rib Galvalume \$44.00 sq. 8 thru 26 ft.  
#1, 5 yr. warranty, 12" Rib White, Tan, Stone Beige \$49.00 sq. 8 thru 26 ft.  
#1, 20 yr. warranty, 9" Rib Galvalume \$39.00 sq. 10 thru 16'  
#1, 5 yr. warranty, 9" Rib White, Tan, Stone Beige \$45.00 sq. 10 thru 16'  
#1, 20 yr. warranty, 12" or 9" or 6" Rib Colors Custom order only \$62.00 sq. cut to length

**"Especially for Residential Roofing"**  
All Panels Cover 3 ft. All Panels 2 ft. increments  
American Made Purlins

|                              |                                 |
|------------------------------|---------------------------------|
| 4" Primed Cee Purlin 59¢ ft. | 6" Primed Cee Purlin \$1.29 ft. |
| 4" Black Cee Purlin 69¢ ft.  | 8" Black Cee Purlin 99¢ ft.     |
| 6" Black Cee Purlin 79¢ ft.  | 8" Primed Cee Purlin \$1.49 ft. |

**Metal Mart**  
Hwy. 82 (817) 665-8158 Gainesville  
1 (800) 677-2514



JORDON BAYER returns a short Cardinal kick in the Tigers' semi-final game last Friday. Also pictured are Jeremy Bayer and Larry Switzer.

Janie Hartman Photo

"Being thus arrived in a good harbor, and brought safe to land, they fell upon their knees and blessed the God of Heaven who had brought them over the vast and furious ocean, and delivered them from all the perils and miseries thereof, again to set their feet on the firm and stable earth, their proper element."

—William Bradford (1590-1657), Governor of Plymouth Colony at the time of the first Thanksgiving

We join our voices with yours in appreciation of the bounty we enjoy, and add our heartfelt thanks to all of you for the kindness and support you've given us through the year. May your Thanksgiving be a joyous one!

**Muenster State Bank**

201 N. Main, Muenster, 759-2257

FDIC

**WAL-MART PHARMACY**  
Gainesville Shopping Center  
817-665-2839

*We are here to serve you!*

Dean Flanagan, R.Ph.      Russell Pelzel, R.Ph.

|   |   |
|---|---|
| <p>LIMIT 2</p> <p>Maximum Strength <b>Dexatrim</b></p> <p>Capsule 40's <b>\$7.27</b></p> <p>Prices Effective November 28 thru December 2</p>            | <p>LIMIT 2</p> <p><b>Imodium A-D</b></p> <p>2 oz. <b>\$3.47</b></p> <p>Prices Effective November 28 thru December 2</p>   |
| <p>LIMIT 2</p> <p><b>Gyne-Lotrimin Cream</b></p> <p>Disposable Applicator 7's <b>\$12.97</b></p> <p>Prices Effective November 28 thru December 2</p>    | <p>LIMIT 2</p> <p><b>Aspercreme Analgesic Rub</b></p> <p>3 oz. <b>\$3.14</b></p> <p>Prices Effective November 28 thru December 2</p>                                    |
| <p>LIMIT 2</p> <p><b>Nature's Source Vitamin C</b></p> <p>500 Mg. 100's <b>\$1.38</b></p> <p>Prices Effective November 28 thru December 2</p>           | <p>LIMIT 2</p> <p><b>Nature's Source Vitamin E</b></p> <p>400 IU 100's <b>\$2.36</b></p> <p>Prices Effective November 28 thru December 2</p>                            |
| <p>LIMIT 2</p> <p><b>Nature's Source Oyster Shell Calcium</b></p> <p>500 mg 100's <b>\$1.97</b></p> <p>Prices Effective November 28 thru December 2</p> | <p>LIMIT 2</p> <p><b>Centrum Vitamin Tablets</b></p> <p>(Our Everyday Low Price)</p> <p>130 count <b>\$7.97</b></p> <p>Prices Effective November 28 thru December 2</p> |



## Sacred Heart competes in Saint Jo round robin

Sacred Heart hosted a round robin basketball tournament last weekend, which included the varsity Sacred Heart teams. A makeshift Tiger team played Thursday and Saturday as did the girls, but got S&S to sub during Friday's state semi-final football game.

Thursday, the Tigerettes improved their season record to 3-0, defeating the Bowie JV 51-36. Three girls shot double numbers, led by Mandy Barnhill's 12 points. Erica Shilling hit in 11 and April Truelsenbach 10. Stephanie Grewing added 9, Julie Felderhoff 4, Christy Yosten 3 and Deann Bayer 2.

Grewing was leading rebounder with 7 and is credited for 3 blocked shots. Truelsenbach pulled down 6 rebounds and took away 6 steals for the Tigerettes. "The girls played a great 3rd period. We picked up the defensive pressure which allowed us some excellent scoring opportunities," Coach Jon LeBrasseur commented. "Mandy had an outstanding 2nd half with Erica and Stephanie having a fine game."

|       |    |    |    |    |    |
|-------|----|----|----|----|----|
| SH    | 13 | 10 | 17 | 11 | 51 |
| Bowie | 11 | 12 | 3  | 10 | 36 |

The Tigers struggled on the basketball court, due to being short-handed because of the football team participating in the playoffs. After one practice, the team consisted of 4 freshmen, 3 juniors and 2 seniors. "It was a pretty good effort considering all the negatives," Coach John Nasche stated.

Jason Hofbauer was the leading scorer for Sacred Heart against the Bowie JV Rabbits with 12 points. Joe Bedowitz added 9. Others scoring were John Klement 4, Chad Summerville 4, Scott Poole 3, Weldon Bayer 2 and Brian Rohmer 1. The Tigers shot only 25% from the free throw line.

|          |    |   |    |    |    |
|----------|----|---|----|----|----|
| SH       | 10 | 7 | 10 | 8  | 35 |
| Bowie JV | 18 | 9 | 14 | 16 | 57 |

The Tigerettes, in Saturday's action, played last year's playoff team, Bellevue, who returned all starters this season. "We were a half step slow," said Coach Jon. "We made a run in the 3rd and cut the lead to 11, but they headed back

to the line and put us away." Deann Bayer's hot shooting game led Sacred Heart with 20 points. Stephanie Grewing and April Truelsenbach each added 8 with Truelsenbach the leading rebounder with 17. Others scoring were Deanna Hess 4, Julie Felderhoff 3 and Erica Schilling. Mandy Barnhill, Donetta Hess and Christy Yosten each adding 2.

Sacred Heart made more field goals than their opponents, but Bellevue connected on 38 of 56 free shots while the Tigerettes hit only 5 of 20.

|          |    |    |    |    |    |
|----------|----|----|----|----|----|
| SH       | 13 | 10 | 20 | 8  | 51 |
| Bellevue | 26 | 21 | 12 | 19 | 78 |

The Tigers picked up 2 football players for their second game - Kelly Bayer and Neil Berres, who played the night before in the football game. Chad Summerville led the team with 14 points. "Chad wasn't feeling well and saw limited playing time," Nasche said. "I can't wait to see him play healthy." Joe Bedowitz dropped in 10 points, Jason Hofbauer 9 and John Klement 8. Neil Berres added 6, Brian Rohmer 5 and Kelly Bayer 2.

"We just ran out of gas. Our fatigue was simply due to lack of practice and conditioning," concluded Nasche.

|          |    |    |    |    |    |
|----------|----|----|----|----|----|
| SH       | 16 | 15 | 11 | 10 | 54 |
| Bellevue | 25 | 26 | 17 | 25 | 93 |



## Girls allowed to play football and softball

The addition of girls' fast-pitch softball as a championship sport became reality and girls can now play high school football in action taken at the 52nd annual University Interscholastic League's (UIL) Legislative Council meeting in Austin last month.

Approved by a unanimous vote by the Legislative Council, the amendment to the girls' softball plan adds a state playoff system to be implemented this spring. The plan calls for eight regions, with each regional champion advancing to the state tournament in Austin in May.

Advocates of girls' fast-pitch softball have pushed for three years for the change. Some 160 schools responded to a UIL survey and expressed an interest in playing softball this spring if approved.

While a girl has been permitted to play football at the middle and junior high level at UIL member schools for the last six years, the opportunity did not exist at the high school level. That is no longer the case. The approved amendment, by a 16-4 vote, now allows a girl an opportunity to try out for her high school football team beginning next season.

Texas is now one of 42 states in the nation that do allow girls to play high school football.

With a resounding vote of 16-4, the Legislative Council rejected a proposal to place on a referendum ballot to member schools an amendment that would establish a central site for state championship football games in Conference 5A Division II, 4A, 3A, 2A and 1A.

Council members cited the fact that schools would lose yet another ability to make "local" decisions concerning a school activity and that schools have been surveyed for several years already on the issue as reasons for voting against the idea.

The girls softball and girls football amendments need State Board of Education approval before going into effect.

In other athletic-related action, the Legislative Council passed:

-Approved amendment that will allow football practice to begin five days earlier. Practice usually begins on the second Monday in August for all schools except 5A that have spring practice.

-Approved an amendment to allow schools an additional weekend of scrimmages and to charge admission for scrimmages.

-Approved an amendment to allow students to participate in eight cross country and tennis/team tennis meets.

## RED RIVER SHOOT-OUT SCHEDULE

hosted by Muenster High School and Sacred Heart School  
December 3, 4, 5, 1992

| THURSDAY    |                                |       |  |
|-------------|--------------------------------|-------|--|
| 7:00 at MHS | Liberty Christian vs. Muenster | Girls |  |
| 8:30 at MHS | Liberty Christian vs. Muenster | Boys  |  |
| 7:00 at SHS | Saint Jo vs. Sacred Heart      | Girls |  |
| 8:30 at SHS | Saint Jo vs. Sacred Heart      | Boys  |  |
| FRIDAY      |                                |       |  |
| 7:00 at MHS | Saint Jo vs. Muenster          | Girls |  |
| 8:30 at MHS | Saint Jo vs. Muenster          | Boys  |  |
| 7:00 at SHS | Liberty Chr. vs. Sacred Heart  | Girls |  |
| 8:30 at SHS | Liberty Chr. vs. Sacred Heart  | Boys  |  |
| SATURDAY    |                                |       |  |
| 3:00 at SHS | Saint Jo vs. Liberty Christian | Girls |  |
| 4:30 at SHS | Saint Jo vs. Liberty Christian | Boys  |  |
| 6:00 at SHS | Muenster vs. Sacred Heart      | Girls |  |
| 7:30 at SHS | Muenster vs. Sacred Heart      | Boys  |  |

## Fishing Report

**MOSS LAKE:** Water clear, 62 degrees, 1 foot low; black bass are fair but most are minimum-sized and are caught on worms and spinners; crappie are fair to 8 fish per string on minnows; white bass are slow; catfish are fair to 2 pounds on stinkbait and shrimp.

**RAY ROBERTS:** Water clear, 60 degrees, normal level; black bass are slow to 5 pounds on spinners; crappie are good around brush piles suspended at 12 feet on minnows; white bass are slow; catfish are good to 10 pounds on

trotlines baited with shad gizzards.

**TEXOMA:** Water clear, 61 degrees, 1 foot low; largemouth bass are fair to 4 pounds on cranks and pigs and jigs; smallmouth bass are good to 4-1/2 pounds on pigs and jigs; striper are excellent to 10-1/2 pounds with many limits on live bait, Sassy Shad and trolling; crappie are fair on minnows; white bass are good to 3 pounds on Sassy Shad, spoons and live bait; catfish are excellent to 52 pounds on Sassy Shad.

## Muenster trades wins with Slidell

Muenster hosted Slidell Friday night on the basketball court with the teams splitting the winnings.

The Lady Hornets got in a big early season victory, defeating the 6th-ranked Lady Greyhounds 57-43. Muenster jumped out to an early lead but Rhonda Wilson brought Slidell closer, hitting 11 of 15 free throws for a 28-19 halftime Hornet lead.

In the second half, the Lady Dogs closed within 4 points twice, but Muenster answered back with DaLana Walterscheid and Danell Reiter hitting 3 pointers.

"The girls played good ball control and good defense to slow Slidell down and not give them a chance to get back in the game," stated Coach Brian Strother. Amy Otto is credited for good defense on Wilson in the second half. This was a good game for us to be able to stop a great player, a very good discipline team can beat the good player," concluded the coach.

DaLana Walterscheid, Theresa Kubis and Amy Otto led Muenster in rebounds. Leading scorer was Kubis with 15 points. Walterscheid put in 12, Otto 11 and Danell Reiter 10. Also scoring were Dianne Pagel 4, Candise Abney 3 and Kay Grewing 2.

|          |    |    |    |    |    |
|----------|----|----|----|----|----|
| Muenster | 14 | 14 | 14 | 15 | 57 |
| Slidell  | 10 | 9  | 12 | 12 | 43 |

The Hornets fell 58-71 to Slidell

Friday night. "We still don't have our shooting touch," said Strother. Muenster started going good the second quarter, with the 3rd period slow, before picking up speed in the final quarter. "Our defense still needs a lot of work. The Hornets played hard and are doing better. I see a lot of promise from these guys," concluded Coach Strother. Muenster's free throw shooting could have put the game a lot closer, hitting only 14 of 32 attempts.

Jay Hennigan was the leading scorer with 18 points. Mike Hacker hit in 16, while nabbing 16 rebounds. Kody Truelsenbach added 6, with the Knabes - A.J., Cory and Brian - each scoring 4. Eric VanSwearingen put in 2.

|          |    |    |    |    |    |
|----------|----|----|----|----|----|
| Muenster | 11 | 19 | 8  | 20 | 58 |
| Slidell  | 21 | 17 | 14 | 19 | 71 |

Muenster hosted Petrolia Tuesday, Nov. 24, and Byers Saturday, Nov. 28, at 1 p.m. before traveling to Bellevue next Tuesday, Dec. 1.

**★ STATE TWIN ★**

200 E. California Gainsville 885-2741

**"PURE COUNTRY"**

LATE SHOW FRI & SAT 9-25 PG

★NIGHTLY 7-30 SUN ADD 5:30★

**"THE MIGHTY DUCKS"**

LATE SHOW FRI & SAT 9-15 PG

Adults \$4.00 Children \$2.50

**ALL SEATS \$2.00** Sunday 5:30 Thursday 7:30

# TOUCHDOWNS and TURNOVERS



Chris Pagel and Aaron Berres stop a Shiner ball carrier, others moving in are Neil Berres, Jordan Bayer and Kelly Bayer.



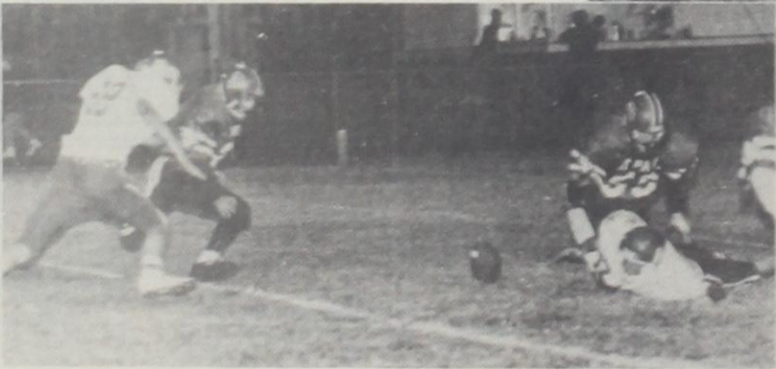
Neil Berres over the goal line for 6 points.



Trent Truelsenbach pushed through on a good gain. Jordan Bayer and Werner Becker assisted in the blocking.



Jordan Bayer stops a Cardinal one inch short on 4th down.



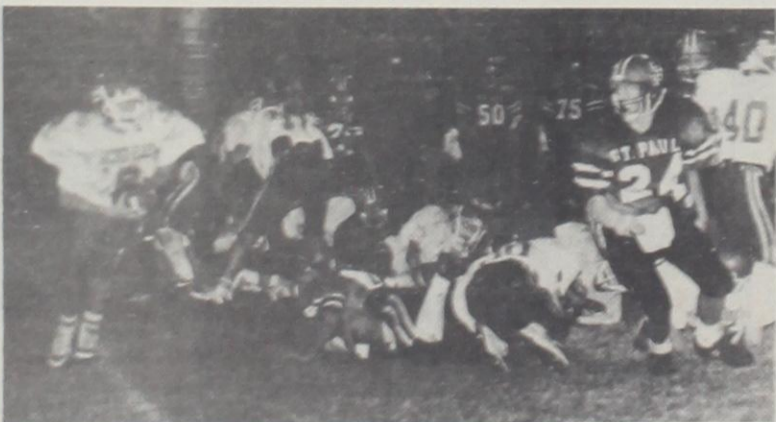
The ball gets popped loose and covered on the 7-yard line, setting up a Saint Paul's TD.



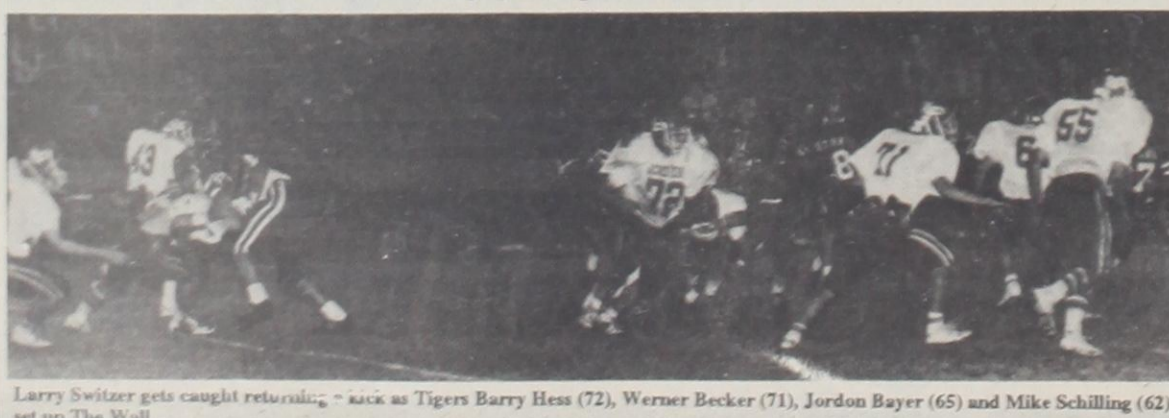
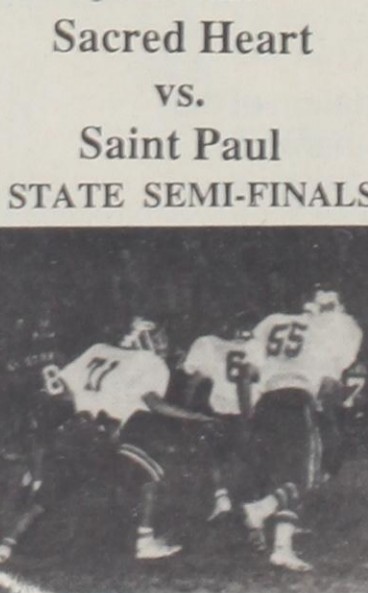
Neil Berres takes the ball to the 1-foot line, but the Tigers failed to score.



Larry Switzer pushes through for a 10-yard gain.



Quarterback Chris Pagel sees trouble coming and prepares to pitch the ball back



Larry Switzer gets caught returning - sack as Tigers Barry Hess (72), Werner Becker (71), Jordan Bayer (65) and Mike Schilling (62) set up The Wall.

## Sacred Heart Tigers

| Tigers | Opponents                                      |    |
|--------|--|----|
| 2      | Sept. 4, Era, T, 8:00                          | 26 |
| 14     | Sept. 11, Windthorst, H, 8:00                  | 27 |
| 6      | Sept. 18, Collinsville, T, 8:00                | 50 |
| 21     | Sept. 25, Saint Jo, T, 8:00                    | 19 |
| 12     | Oct. 3, Lindsay, H, 6:00                       | 39 |
| 20     | Oct. 10, Lakehill, T, 7:30                     | 7  |
| 23     | Oct. 16, Masonic Home, H, 7:30                 | 8  |
| 0      | Oct. 23, Tyler Street, T, 7:30                 | 26 |
| 38     | Oct. 30, Southeast Dallas, T, 7:30             | 0  |
| 22     | Nov. 6, Pantego Christian, H, 7:30             | 8  |
| 14     | Nov. 20, St. Pauls, 7:00, Semi Finals, at Waco | 43 |

## Sacred Heart vs. Saint Paul STATE SEMI-FINALS



Scott Frost prepares for collision after a 5-yard gain.



# Jr. High-Jr. Varsity Basketball

## Muenster vs. Slidell

The Hornets' junior varsity passed Slidell on the court last Friday night 72-52.

"The boys shot well and played a fast-paced game," said Coach Brian Strother. "They pressed and fast broke all night to jump to a big lead that we kept."

James Klement was the leading scorer with 21 points, including five 3-pointers. Jason Huchton put in 20, and Cory Cain 12. Other scorers were Cody Klement with 9, Jeff Flusche with 4, Darrell Charles 3, and Jamie Hellman 2.

|          |    |    |    |    |    |
|----------|----|----|----|----|----|
| Muenster | 21 | 10 | 20 | 15 | 72 |
| Slidell  | 8  | 7  | 16 | 21 | 52 |

## Muenster vs. Era

Muenster's Junior High "B" Hornets took on Era Monday night, bringing home a 44-36 victory. Cory Anderle lit up the boards with 19 points. Scott Hermes added 9 while Ryan Klement, Brian Hudspeth and Shane Sparkman each had 4 points. Bill Hellman and Aaron Sicking added 2 apiece. Sparkman and Hellman led the way for the defense, each stealing the ball when Era threatened to tie. Jerry Stoffels is credited also for a good defensive game.

Lakker and Muller led Era with 12 and 10 points.

|          |    |    |   |   |    |
|----------|----|----|---|---|----|
| Muenster | 15 | 21 | 2 | 6 | 44 |
| Era      | 10 | 10 | 8 | 8 | 36 |

The Lady Hornets Junior High

squad earned their second season win, defeating Era 24-17. Four girls scored, led by LeAnn Klement's 10 points. Brandi Lukenhaus added 8, Christina Metzler 4 and Becky Fette 2. "The girls dominated the game till the end, playing good defense and really hard ball," commented Coach Strother. Klement is also credited with 12 steals.

|          |   |   |   |   |    |
|----------|---|---|---|---|----|
| Muenster | 8 | 4 | 4 | 8 | 24 |
| Era      | 5 | 2 | 2 | 8 | 17 |

The "A" team Junior High Stingers squeaked by Era 56-52 in a cliffhanger game. Steven Reiter was Muenster's leading scorer with 21 points. Eric Miller added 15 and Tony Hartman 11. Others scoring were Chad Roller 4, Greg Fisher 3 and Jonathan Otto 2. Wilson was Era's high scorer with 26 points.

"The boys played excellent defense and came through on offense when needed," said Coach Kyle Baker. The Muenster boys came back from being down 14 points to a win with 4 seconds on the clock.

|          |    |    |    |    |    |
|----------|----|----|----|----|----|
| Muenster | 8  | 14 | 10 | 24 | 56 |
| Era      | 12 | 19 | 14 | 7  | 52 |

## Sacred Heart vs. Terral

Sacred Heart's Junior High roundballers were on the road again Monday night. The Lady Cubs brought home a 33-12 win, with Leslie Grewing hitting 10 points to lead her team. Dobe Fleitman and

Jennifer Campbell each added 6 and Jill Hess put in 4. Two points each were added by Crystal Klement, Anna Fette and Corey Hess with Yvonne Martin getting a free throw point.

"The girls did a great job passing the ball," commented Coach Jon LeBrasseur. "They found the open man and the open man sank the shot."

|        |    |    |   |   |    |
|--------|----|----|---|---|----|
| SH     | 12 | 12 | 8 | 1 | 33 |
| Terral | 4  | 2  | 0 | 6 | 12 |

The Cubs fell to Terral 45-35

after 3 slow quarters. "The boys really played hard. We were down by 14 and fought back to 5 down with 23 seconds left," Coach John Nasche said. "If we could have connected on a few more free shots, we may have pulled the game out."

Douglas Novak led the Cubs, scoring with 12 points. Matt Fuhrmann and Paul Swirczynski each added 7, with John Bartush hitting 3 and Glen Dangelmayr and Waylon Hess 2 apiece.

|        |    |   |    |    |    |
|--------|----|---|----|----|----|
| SH     | 6  | 7 | 6  | 16 | 35 |
| Terral | 14 | 6 | 13 | 12 | 45 |

## HUNTERS

**Remember, You Are The Landowner's Guest**



Don't trample crops.  
Don't endanger his family,  
home or stock.

(Reprinted from Texas Game & Fish Magazine, October 1955.)

## Mark Our Calendar



Want to know what's happening? We do, too!

We wouldn't mind having the results either!

If your team or organization is having a game, tournament or fundraiser, **The Muenster Enterprise** would like to know when, where and who's in charge. Don't forget

Deadlines are Tuesday at 5 p.m., so give us a call at 759-4311 or mail it to us at P.O. Box 190, Muenster, Texas 76252.

## Monden's SHUTTLE SERVICE



**Dallas Airport Shuttle  
Door to Door Pick-Up**

Call 817-665-1300  
for Appointment

**Owners Ancil & Ruth Monden**

Happy Birthday, Damian Walterscheid

## Playoffs run Football Contest to 12 weeks

The Muenster Enterprise Football contest continued through twelve weeks, with both local teams making it into the playoffs. For the last week of the contest, only 31 entries were taken in, which was a season low. Winning first place in Week 12 was Mike Stoffels with 22 correct picks. Tying for second place were Gary Barnhill and Peachie Huchton. Gary's tie-breaker score was 31 points off, giving him second place. Peachie's score was 37 points off. Guessing 20 correct games were Mickey Haverkamp, Neil Huchton,

Nick Stoffels, Wayne Klement and Willie Walterscheid.

In Sacred Heart's play-off game 15 fans picked SH to win. Twenty-one contestants unfortunately thought Valley View would get beat by Gunter. In college football, only one correctly picked SMU over Arkansas and everyone got the Texas A&M over TCU game correct. Only one person thought Phoenix would upset the Cowboys.

Weekly winners picked up their prizes at The D.I. One Stop, Week 12's tie-breaker sponsor.



MIKE STOFFELS and Peachie Huchton share this year's Enterprise Football Contest grand prizes, finishing in the tie.

Janie Hartman Photo

## Contest ends in tie

Following an extended 12 weeks, The Muenster Enterprise Football Contest comes to an end. After much figuring and refiguring contestants' percentages of correct games chosen, the contest ended in a tie. Peachie Huchton and Mike Stoffels both finished the contest, picking 224 out of 275 winners of chosen high school, college and pro game winners.

The tie breaker was used once more, but both only missed guessing the winner of one game each. The tiebreaker point spread system was then used, tallying the scores from all 12 weeks.

Again, Peachie and Mike were tied, each missing the scores by 243 total points. So, the decision was left to them, and they split the cash prizes at \$75.00 each.

Third place honors, but no cash, goes to Neil Huchton, with 223 correct games, one game short of a

3-way 1st place tie. Mike Felderhoff fell to 4th with 221 right picks.

Others with over 200 correct winner selections were Edna and Richard Hermes, Benny Haverkamp, Ben Bindel, Wayne Klement, Mickey Haverkamp, Nick Stoffels, Gary Barnhill, Tim Bindel, Mark Grewing, Shirley Noonan, Mark Fuhrmann, Terry Walterscheid, Henry Kessler, Willie Walterscheid, Bonnie Stoffels, Barbie Barnhill and Edgar Dyer.

A total of 70 different people entered the contest during the season, with most weeks setting new highs over last year.

The Muenster Enterprise wishes to thank all who took part, especially the sponsors on the Contest Page, for making the contest a success.



PICTURED are the first place champions of the Cooke County Youth Center Football League, 3rd and 4th grade division. The team finished with a 5-0-1 conference record. They are, l to r, front row - Adam Bayer, Chris Hoover, Jason Cook, Shane Barclay, William Weatherread, Daniel Cook; second row - Keith Felderhoff, Billy Underwood, Greg Reeves, Timmy Sampson, Michael Morris; third row - Heath Harris, Brandon Moore, Travis Bayer, Kameron McMahan, Joe Tuggle, Josh Raymond; back row - Coaches Billy Morris, Ricky Cook and Joe Reeves. The team was sponsored by Red River Cycle Trails of Saint Jo.

video *Roach* Trust your memories with us

759-4001  
Muenster, TX

photography

### The DI One Stop

Your One Stop Convenience Store

### Muenster Pharmacy

Medical Center Building 817-759-2833



### Muenster Auto Parts & Muffler Shop

Larry Gobble 759-4487 Mike Sturm

### Muenster Building Center

759-2232




### Tony's Seed and Feed

759-4347 Muenster





## NEIL'S

759-2923  
Hwy. 82  
Muenster

## H & W

Meat Co. Kountry Korner



## Tops & Teams

Muenster ATHLETIC GOODS and ACTIVE WEAR 759-2540

## Schilling Oil Co.

759-2522  
Muenster



Open Tuesday thru Sunday


### The Center

Restaurant & Tavern

759-2910  
759-2984  
Muenster



## ENDRES MOTOR CO.

Muenster 759-2244



### KARL KLEMENT Automotive Center

Decatur, Texas 817-627-1101

## amapi

Muenster

### ASSOCIATED MILK PRODUCERS, INC.


759-2822 Muenster



Lottery Tickets  
Beverages  
Gas  
Fresh Donuts Daily  
Homemade Baked Goods & Pastries

## RED RIVER CUT RATE LIQUOR

Muenster 759-4131



## Enderby GAS, Inc

759-4628  
Since 1945"  
Gasoline, Propane and Diesel

Ray and Kaye Wimmer "Your Friendly Package Store" Overton vs. Chester 759-4343


## 82 Liquor

Mark Klement

## Fischer's

759-4211 MEAT MARKET





## COMMUNITY LUMBER CO.

759-2248 Muenster

Chevrolet GEO Pontiac Buick GMC Trucks

## Brown Motor Co., Inc.

1608 W. Hwy. 82 Gainesville 665-5591

The **Crafty Olde German**

a unique crafters showplace  
anytime gift shoppe

Muenster, Texas 759-2505

## Walterscheid Oil Company

759-2737 Muenster



## Kohmer's

A Family Restaurant

759-2973



## HENNIGAN Auto Parts, Inc.

Muenster 759-2291





# "Bountiful" Savings to be found in The Enterprise Classifieds!

Classified  
Deadline  
Wednesday at  
noon



## FOR RENT

**FOR RENT**  
406 North Main  
Phone 759-2726

**MOBILE HOME FOR RENT:** 2 bedroom, fully furnished, a block from school on N. Walnut. Phone 759-2938, Jerome Pagel. 4.18-XE

**FOR RENT:** High pressure sprayer, 2500 lbs. For removing paint, etc. Muenster Building Center, 421 N. Main, 759-2232. 7.24-XE

**HOUSE FOR RENT:** 2 bedroom, central heat and air. 759-4504 11.13-XE

**U-Store & Lock**  
Mini-Warehouses  
759-4621

**Red River Rental**  
665-4896  
Contractors & Homeowners Equipment Rental  
East Hwy 82 Gainesville

## HELP WANTED

**WANTED!** Weekend cook Will consider a student. Apply in person at St. Richard's Villa. 8.21-XE

**HELP WANTED:** Kitchen help and part-time waitress. Apply in person at The Center Restaurant. 7.31-XE

**WE'LL PAY YOU** to type names and addresses from home. \$500.00 per 1000. Call 1-900-896-1666 (\$1.49 min/18 yrs.+) or Write: PASSE-K1173, 161 S. Lincolnway, N. Aurora, IL 60542. 11.20-4-EP

## CARD OF THANKS

**CARD OF THANKS**  
We want to thank everyone who offered comfort and encouragement to Al during his illness and to all who have showered our family with acts of kindness since his death. Special thanks to Dr. and Angela Antonetti; Home Hospice; Fr. Victor and Fr. Camillus; and CDA ladies for preparing the meal. Thanks for the cards, food, flowers, Masses and other memorial donations.  
Margaret Schmitt and family

**The Cowboy Depot**  
Hwy. 82 Saint Jo on the City Square  
Open: 9-12, 1-5  
Tuesday thru Saturday  
(817) 995-2445  
Complete Western Wear for the Entire Family  
Boots, Saddles & Tack

**ATTENTION!**  
I AM NO LONGER RESPONSIBLE for any other debts other than my own.  
Linda Elaine Carpenter 11.6-4-EP

**North Texas Communications Co.**  
205 N. Walnut Muenster 759-2251  
Telephone and Accessories  
Competent, Professional Service  
"The People Who Know Telephones"  
2.3-NS

**NEW! NEW! NEW!**  
Introducing **NUNN BUSH** Shoes for Men  
**20% off SALE**  
on all men's shoes  
• NUNN BUSH • JARMAN • HUSH PUPPIES  
Now thru Dec. 5, 1992  
**HAMRIC'S** men's & boys' wear  
Muenster  
VISA MC FREE Gift Wrap

**Oak Jewelry Armoire**  
The ultimate personal accessory and jewelry organizer. Free-standing floor model. Comfortably stores all of your jewelry and personal accessories. Perfect with any decor.  
Falshevik oak reproduction. Beautiful quality that will pass from generation to generation.  
Sides swing out to store necklaces, bracelets, earrings, watches, pins, scarves, sunglasses, handkerchiefs, and much more.  
Eight glass-lined drawers for all of your rings, earrings, bracelets, necklaces, watches, pins, scarves, sunglasses, handkerchiefs, and much more.  
Lay-a-way for Christmas  
\$179.95 to \$219.95  
759-4455 Muenster Convenient Credit

**BROWN MOTOR CO., INC.**  
Chevrolet • Geo • Pontiac • Buick • GMC Trucks  
Overstocked All Vehicles Must Go! 5.9% Available!  
**1993 Chevrolet EXT CAB** In Stock. Ready For Delivery. \$14,995.00  
**1993 Chevrolet Ext. Astro Van** Loaded!!! \$19,899.00  
**1992 GMC Sierra SLE** Loaded! Auto, 5.7 V8, A/C, Pwr. Windows, Pwr. Locks, Tilt, Cruise, Plus More. \$14,995.00  
**1992 CHEVY S-10 MAXI-CAB** Loaded! V6 Overdrive Transmission, Tinted Glass, Plus More. \$10,495.00  
**1992 Chevy Lumina Euro Coupe** Loaded! \$14,229.00  
**1993 GMC Sonoma Club Coupe** Auto, 4.3 V6, Pwr. Windows, Pwr Locks, Tilt, Cruise, Plus More. \$13,699.00  
**SALE! SALE! SALE! SALE!**

**SPECIAL NOTICE**  
NO. 13627  
**NOTICE TO ALL PERSONS HAVING CLAIMS AGAINST THE ESTATE OF W.R. PATTERSON, DECEASED**  
Notice is hereby given that original Letters Testamentary for the Estate of W.R. Patterson were issued on November 16, 1992, in Cause No. 13627, pending in the County Court of Cooke County, Texas - Probate Division, to the following named executor whose mailing address is: The First State Bank, Linda Rutherford, Trust Officer, P.O. Box 10, Gainesville, Texas 76241-0010.  
All persons having claims against this estate which is currently being administered are required to present them within the time and in the manner prescribed by law.  
Dated this 16th day of November, 1992.  
Respectfully submitted,  
/s/ Russell Duncan, P.C.  
P.O. Drawer 1219, Gainesville, TX 76241-1219  
(817) 665-1671, Bar Card No. 06219000  
Attorney for the Estate 11.27-1-EL

**STATEMENT OF NONDISCRIMINATION**  
Muenster Telephone Corporation of Texas is the recipient of Federal financial assistance from the Rural Electrification Administration, an agency of the U.S. Department of Agriculture, and is subject to the provisions of Title VI of the Civil Rights Act of 1964, as amended, Section 504 of the Rehabilitation Act of 1973, as amended, the Age Discrimination Act of 1975, as amended, and the rules and regulations of the U.S. Department of Agriculture which provide that no person in the United States on the basis of race, color, national origin, age, or handicap shall be excluded from participation in, admission or access to, denied the benefits of, or otherwise be subjected to discrimination under any of this organization's programs or activities.  
The person responsible for coordinating this organization's nondiscrimination compliance efforts is Alvin M. Fuhrman, Manager. Any individual, or specific class of individuals, who feels that this organization has subjected them to discrimination may obtain further information about the status and regulations listed above, from and/or file a written complaint with this organization; or the Secretary, U.S. Department of Agriculture, Washington, D.C. 20250; or the Administrator, Rural Electrification Administration, Washington, D.C. 20250. Complaints must be filed within 180 days after the alleged discrimination. Confidentiality will be maintained to the extent possible.  
11/27-1-EL

**REAL ESTATE**  
EFFICIENT 2 bedroom, 1 bath frame home, rebuilt in 1986. Interior designed with wood ceilings, stained and etched glass, large carpet. Nice. Must see! Mid-\$30s. 924 N. Elm, Gary J. Walterscheid, 759-4031. 11.27-XE  
RESIDENTIAL building locations are available in Community Estates, Lindsay, Texas, including 25 platted locations, paved streets and underground utilities. For more information, contact Community Lumber Company, Muenster, 759-2248. 3.29-XE  
HOUSE FOR SALE: 618 N. Sycamore St., 3 blocks from school. 3 bedroom, 2 bath brick, 3,008 sq. ft., with pool. Like new condition. Price reduced for quick sale. Call 759-4312 for appointment to see. 9.11-16-E  
Will accept sealed bids on approximately 178.5 acres farm located 5.5 south of Gainesville on Spring Creek Road until Dec. 15, 1992. Estate of Regina Krebs reserves the right to reject any or all bids. Call 817-668-8065 for appointment. 11.27-3-E  
Residential lots for sale, 400 Block on Elm Street, Lots #13-24, each lot 25x150'.  
Commercial & Residential lots for sale on East Hwy 82 at Mesquite St. Rent or lease all or part of Old Center Building on Hwy 82.  
10 Acres of land for sale east of Muenster on Myra road.  
50 Acres of land for sale south of Myra.  
119 Acres of land for sale north of Bonita.  
Don Flusche Real Estate (817) 759-2832 8.28-1-E

**BROWN MOTOR COMPANY, INC.**  
1608 W. Highway 82, Gainesville  
Mon.-Fri 8-6 Sat. 8-5  
(817) 665-5591 11.27-1-E

**USED CAR - TRUCK SALE**  
1991 Chev Ext. Cab 30,000 Miles - Loaded \$13,995.00  
1989 Chev Ext. Cab 45,000 Miles - Loaded \$9,995.00  
1990 Chev Conv Van Low Mileage - Loaded \$12,995.00  
1989 Mercury Cougar Sunroof - Leather \$9,495.00  
1986 Pontiac Firebird V8 - Auto - Loaded \$4,995.00  
1987 Buick LeSabre Low Mileage - Extra Clean \$5,995.00  
1990 Pontiac Sunbird 20,000 Miles - Loaded \$7,499.00  
1989 Buick Park Ave. Extra Clean - Loaded \$9,995.00  
1986 Ford F-150 Extra Clean - Loaded \$4,995.00  
1990 Dodge Ram D-50 Low Miles - Extra Clean \$6,995.00  
1986 Chevy Silverado Extra Nice - Low Miles \$4,995.00  
1988 Chev Suburban Loaded - Low Miles \$9,995.00

**INSTOCK**  
Electrical - Plumbing  
Paneling - Roofing  
Hardware - Water Pumps  
Heating - Air Conditioning  
We can recommend an installer  
**Muenster Building Center, Inc.**  
Muenster, 759-2232 3.8-1-E

## MISCELLANEOUS SERVICES

**CARPENTER WORK WANTED**  
Also odd jobs  
Reasonable rates  
Ernie Martin, 759-4650

**You Bend 'Em... We Mend 'Em**  
**BRYAN'S PAINT & BODY**  
• Frame Straightening  
• Color Matching  
• Insurance Claims Processed  
BRYAN BICKING 759-2223 11.6-NS

**TENDER LOVING CARE**  
Day Care Center, 759-4964. 4.4-XE

**KNABE'S CABINETS**, steel siding, vinyl siding, construction work and estimates. Call 759-4559. 9.15-XE

Call **Dave's DJ Service** for weddings, parties, etc. 759-2865 3.20-2-E

**Bob's Auto Service**  
• Automatic Transmission Service & Overhaul  
• General Automotive Repair  
R.D. Walterscheid 323 N. Main, Muenster 759-4474 or 759-2713

**Septic Tank and Grease Traps Cleaning H & H Vacuum Service**  
Mobile  
888-7268 or 736-3448  
3.23-EL  
FOR HOME DELIVERY OF Fort Worth Star-Telegram, call Dale White, 817-668-6130

**WRANGLER**  
Western Wear  
**J.R. HOCKER**  
Men's & Boys' Store  
207 N. Commerce Gainesville 3.1-NS

**METAL SIDING and Soffits**  
• Installer Available  
• Free Estimates  
**Muenster Building Center, Inc.**  
759-2232 10.5-NS

**Trailer Parts and Supplies**  
Structural Steel and Pipe  
Complete Line of Bolts and Miscellaneous Hardware  
**METAL SALES, INC.**  
On Highway 82 West of Gainesville

## FOR SALE

**FOR SALE**  
Farm fresh eggs  
759-4590

**FOR SALE:** Glass shower doors, tub enclosures, mirrors in all sizes. Installation available. Contact Ted Henschel, 759-4280, Muenster. 9.14-XE

**SUDAN and RED TOP HAY**  
Round bales, \$20 to \$30 per roll. If no answer, leave message, Melvin Yosten, 817-759-4400. 11.13-XE

**PAUL J. HESS NO. 1 Kansas**  
Alfalfa hay for sale. Any amount. 665-7601 or 665-9228. 2.2-XE

**USED FURNITURE** in excellent condition. Recliner, swivel rocker, sofa. 759-4455, Hess Furniture. 11.20-2-E

For Septic Systems  
**ROEBIC K-37**  
Septic Tank Liquefier  
A single treatment of this product prevents clogging of a septic tank and is guaranteed effective for one whole year.  
Community Lumber Co. Hwy 82 Muenster 759-2248

**No. 1 Railroad Ties**  
Used Power Poles  
Community Lumber Co.  
200 E. Division, 759-2248, Muenster 12.1-NS

**FOR SALE:** Large octagonal trampoline in very good condition. \$185. 759-2904. 11.27-3-E

## AUTOS

**FOR SALE:** 1987 Ford F-150, low mileage, dual tanks, camper shell, V-6, excellent on gas, good condition. 825-6170. 11.27-3-EP

**FOR SALE:** 1982 Chevy El Camino. Perfect condition, 36,000 miles, V-8, cruise. Asking \$4950. 759-4455 or 795-2904. 11.20-2-E

**OVER 60 USED CARS and TRUCKS** available all the time at Holiday Chevrolet, Whitesboro, 668-8152 or (903) 564-3551. 1.10-XE

**!! FREE !!**  
**FREE** Australian Shepherd Females  
1-Black 1-Red  
Call  
759-4485

## WANTED

**WANTED:** Copy of old German newspaper, **Gainesville ANZEIGER**, or make a copy of your original. Call Jack at 665-5511. 11.27-3-ec

## Country Tidings

**Bula Mae Maughan**, 88, passed away Monday, Nov. 23 in Gainesville Memorial Hospital. Funeral arrangements at Vernie-Keel Funeral Home are pending at this writing.  
**Mr. and Mrs. C.H. Christian** were in Fort Worth Thursday. Tip and Ruth's granddaughter, Mrs. Debbie Giles of Cincinnati, Ohio, her parents Bill and Dorothy Christian of Stephenville and Jimmy Christian of Springtown all had lunch together in Fort Worth.  
**Pete and Vera Holley** of Whitesboro visited Miss Lois Bewley Sunday afternoon.  
**Faye and Lee McKown** and their grandson Brian of Dallas and Mrs. Marilyn McKown and Casey of Valley View spent Tuesday with Odessa and Jack Berry.  
**Blake Freeman** had as his guests during the weekend Mr. and Mrs. Jimmy Don Freeman of Saint Jo and Mr. and Mrs. Harold Freeman of Austin.  
**Mr. and Mrs. Jeff Lanier** and Whitney of Krum visited Mrs. Olita Lanier Sunday.  
**Mr. and Mrs. Johnny Lanier** and family of Decatur visited Mr. and Mrs. Eli Harvill during the weekend.  
**Mrs. Olita Salinas** of Haltom City visited her mother Mrs. Dorothy Hubbard.  
**Wynona Riddles**, Jo Ann Greenwood and Mrs. Betty Greenwood, Christy and Bonnie were in Bowie Saturday.  
**Mr. and Mrs. Elvin Echols** of Watauga visited Mr. and Mrs. Clifton Bewley and D.D. Echols Sunday.  
**Mrs. Charlotte Sanford** of Little Elm visited her parents Mr. and Mrs. Willard Freeman.  
**The annual Community Supper** Thursday evening was well attended.  
**Gladys and Charley Barclay** of Saint Jo visited the Greenwood sisters Thursday. Charley also visited his mother Mrs. Claud Barclay who is a resident of the Nursing Home in Bridgeport.  
**Mr. and Mrs. Cecil McCandless** had as their guests Mr. and Mrs. Clyde Croxton of Bowie.  
**Angela and Charles Barber** of Wichita Falls spent Friday night until Sunday with their grandparents Mr. and Mrs. Clifford Hudspeth. \*\*\*  
I hope all of you have had a nice and joyful Thanksgiving - my thanks to all of you everywhere for the nice compliments, for reading my column and your news and support. May God richly bless you.



# County Agent's Report

by Craig Rosenbaum

## Stored Grain Pests- The Lesser Grain Borer

Some wheat growers have noticed that their wheat stored during the summer for seed suffered more insect damage than usual. While other species have been present, much of the damage has been due to the lesser grain borer. This pest has become more difficult to control in some parts of Texas and Oklahoma during the past several years. The insecticides Reldan, Actellic and malathion applied as grain protectants do not provide adequate control of lesser grain borer. (The Actellic label states, "aids in suppression of lesser grain borer at high label rate.") This borer apparently has developed tolerant strains that survive these insecticides. The problem is more common in grain stored during the summer as higher temperatures increase the breakdown of the insecticide.

The lesser grain borer, in addition to being tolerant to insecticides, is a primary pest. Primary pests are more damaging because they attack sound kernels, unlike secondary pests which can only feed on broken kernels. Both the larval stage and adult lesser grain borer have strong jaws used to chew into undamaged kernels.

Lesser grain borer adults are tiny, cylindrical beetles, shiny brown to black in color, and about 1/10th-inch long. The head is not visible when the beetle is viewed from above because the head is directed down and covered by the front of the thorax. From above, the insect appears to have only two body regions and this characteristic

distinguishes it from other stored grain pests.

Each female lays 300-500 eggs and the white larvae or grubs feed inside the grain kernels. At 80 degrees F., development from egg to adult requires about 30 days. Infestations develop very rapidly under warm conditions. According to one source, a single female lesser grain borer has the potential to increase to over a million individuals in 90 days under optimum moisture and temperature conditions. Little wonder then that wheat stored over the summer can suffer significant damage.

Lesser grain borers are found in many areas outdoors. The adults readily fly and enter storage facilities with the grain or later through cracks, doorways and other openings.

Stored grain should be monitored monthly so infestations can be detected and treated early before significant damage can occur. Finding one lesser grain borer per quart of properly sampled grain indicates the need for fumigation to prevent further insect damage. Developing infestations of lesser grain borer can be controlled if fumigation is done correctly.

### Junior Livestock Show Entries Due Dec. 4

Junior Livestock entries are due in the **County Extension Office, Courthouse Basement, by 4 p.m. Friday, Dec. 4, 1992.** The following should be turned in: 1 eligibility and drug awareness card per exhibitor; \$5 entry fee per animal; 1 entry card per animal for the following animals: **Market Animals** - market lambs, meat goats, broilers, meat rabbits, market swine and **All Breeding Animals.** **Absolutely no entries will be accepted after the above date.**

## EPA sets worker rules on pesticides

New regulations issued by the EPA are geared toward protecting farm workers from pesticide contamination.

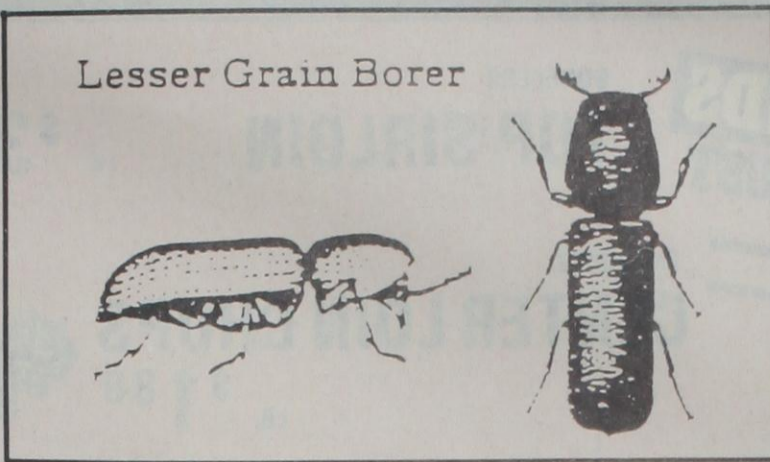
Included in the new regulations: -By April 1994, employers will be required to train workers in pesticide safety, post safety information and place warnings signs to keep workers out of freshly sprayed fields.

-Quarantines ranging from twelve hours to three days will be placed on fields sprayed with pesticides that are not covered by existing laws.

-Product labels must carry the new regulations on quarantines and protective equipment.

-Employers must provide adequate soap and water for decontamination purposes. The EPA estimates that first year costs for manufacturers and farmers will reach \$95 million.

## Lesser Grain Borer



## Greenhouse effects are still "affective"

by Edith Chenault

The greenhouse effect could make the Texas climate drier and less hospitable to cattle production during the next 50 years, according to the director of the Climate System Research Program at Texas A&M University.

"Ranchers shouldn't be hurt too badly overall, but water will be the major issue," said Dr. Gerald North.

The laws of physics require that the earth maintain a balanced heat budget, North said. In simple terms, components of the earth and atmosphere work to balance the amount of heat that the planet retains and loses.

It's when these components get out of balance that the earth retains more heat than is desirable. With the greenhouse effect, Texas could see warmer temperatures of 3 to 7 degrees, and therefore drier conditions, over the next century.

Water rights, access and cost will be the major concerns ranchers will face. "Even if the rainfall stays the same, evaporation rates go up," he said. In Texas, the soil will dry at a much higher rate.

For example, Brazos County averages about three inches of rain each month, creating a fairly inviting habitat for grasses and trees. In areas west of Austin, the evaporation rate exceeds rainfall, creating a "tree line" that marks the beginning of the smaller and fewer trees of West Texas. With the drying effect of higher temperatures, that tree line could possibly move as much as 100 miles eastward to College Station, he said.

Arid range conditions, similar to those in South and Southwest Texas, could move farther east, while West Texas producers could face even more desert-like conditions. Fewer animals could be stocked per acre, he said.

"We don't know what the exact effect (on rangelands) will be. Actually, studies have shown that some grasses will do better because of increased carbon dioxide," which is elevated by the greenhouse effect.

Cities will need water, and those residents would be willing to pay for it. "Water is going to be expensive," he said. Landowners will see increased competition for water, and probably a continuing battle for water rights as well.

The amount of solar energy radiating on the earth is about 340 watts per square meter (on an average through a 24-hour day), or the equivalent of having a few reading lamps every few yards. Satellite measurements of infrared rays indicate that 30% of this energy is reflected directly back to space by clouds and other bright features of the earth-atmosphere system. Without a mechanism to release this heat, the surface temperature would rise and liquid water would evaporate.

Conversely, greenhouse gases, such as water vapor, carbon dioxide, and methane help hold heat on earth so life can survive. These gases are invisible, but absorb infrared rays. "If there were no greenhouse effect, the temperature would be about 70 degrees colder," North said.

Carbon dioxide, one of the main greenhouse gases, is removed from the air by the photosynthetic process of plants, and is absorbed by cool ocean surface waters and carried deep into the ocean by downwelling currents. These input and removal mechanisms were in balance until the Industrial Revolution of the 1800s, when fossil fuels began to be used. Scientific evidence suggests that the concentration of carbon dioxide is doubling every 140 years, he said.

Methane also occurs naturally, and has increased through man's activities in the last century. "You (cattle producers) may be under more fire from environmental groups," he said. Some groups charge that cattle contribute significantly to the problem by releasing methane from their digestive tracts.

On the other hand, scientific evidence of the last few years indicates that the amount of methane gas released into the atmosphere may be leveling off, possibly due to repairs and improvements in natural gas lines, he said.

Scientists have found that the earth's temperature has increased about 1 degree over the last century, North said, but controversy remains over whether the greenhouse effect will occur. Part of the problem is that computer climate models used in predictions are inexact because of the uncertain nature of weather.

## Texas Farmers Union chief finds income report misleading

Joe Rankin, president of Texas Farmers Union, said the headlines from a recent newspaper article, "Perry says Bush raised farm income 32%," is misleading, inaccurate and totally distorts the true agriculture financial crisis in rural America today.

Texas Agriculture Commissioner Rick Perry, at the National GOP Convention, said, "Under the leadership of President Bush, farm income has risen 32% nationally; a record high, and farm debt has fallen \$55 billion."

The USDA publication *Agricultural Outlook*, estimates the 1991 forecast of net farm income at \$37-\$45 billion, or an average of \$42 billion; a decrease from \$60.8 billion in 1990; a 30.9 percent decrease; and only a slight increase from 1988 of \$40.6 billion.

"These numbers vary widely with IRS figures, which reflect reported farm income for tax purposes," said Keith Collins, director of the Department's Economic Analysis Staff. "USDA calculates its farm income estimates on the basis of agriculture's contribution to the gross domestic product, while IRS figures reflect reported farm income for tax

purposes," Collins continued.

"USDA is always saying farm income is at a record level, but, at the same time, most farmers are just getting by and many are going out of business, which might account from some drop in farm debt. If farmers going out of business reduces farm debt, it does not represent the economic recovery in agriculture being portrayed," Rankin said.

"Thirty-six thousand farmers went out of business in the past year. Twelve percent (of the nation's farmers) didn't leave agriculture in the past 10 years because they were making too much money," Rankin said.

With the U.S. Department of Agriculture, and the Texas Commissioner of Agriculture, using statistics with this extremely large margin of error, it's not surprising that more and more family farmers go out of business every day. There is a real world out here and if farmers are to be expected to provide food and fiber for that world, then USDA and our Texas Agriculture Commissioner need to acquaint themselves with accurate data - which is available to them.

**Levi's® Saddleman Boot Jeans: How to Fool Mother Nature**

Levi's took the comfort and durability of man-made 100% polyester knit and sewed it up to look for all the world like the original denim boot jeans. These jeans have Levi's famous over-the-boot fit, slim in the legs, slightly flared below. They've got Levi's familiar contrast stitching. Even a watch pocket. But, maybe best of all, they've got what it takes to keep looking good for a good long time.

**Levi's**  
Commerce Street Store  
Pete Briscoe Gainesville 11-13-2AE

## EPA sets worker rules on pesticides

New regulations issued by the EPA are geared toward protecting farm workers from pesticide contamination.

Included in the new regulations: -By April 1994, employers will be required to train workers in pesticide safety, post safety information and place warnings signs to keep workers out of freshly sprayed fields.

-Quarantines ranging from twelve hours to three days will be placed on fields sprayed with pesticides that are not covered by existing laws.

-Product labels must carry the new regulations on quarantines and protective equipment.

-Employers must provide adequate soap and water for decontamination purposes. The EPA estimates that first year costs for manufacturers and farmers will reach \$95 million.

**Auto-Homeowners-Life**

**FARM BUREAU INSURANCE** Helping You Is What We Do Best.

John Bartush, Agent  
759-4052 Hillcrest Center  
1100 E. Division Muenster, Texas

**PYBAS RANCH SIMMENTAL SALE**  
Saturday, December 12, 1992  
Gainesville Livestock Market, Inc.  
Gainesville, Texas  
LUNCH 11:00 a.m. 1920 Refinery Road  
SALE: 12:30 p.m.  
Sale Day Phone: (817) 665-4367 or 4999

- \* 50 Service-Age Bulls
  - All Bulls Forage Tested
  - Average Birth Weight: 86 lbs.
- \* 40 Bred Simmental Females
  - A Very Fertile, Highly Maternal Set of Females
  - Offering Simmentals for our 21st Year!
  - Over 80 percent of the offering is polled, many are double polled.
  - Performance data and EPD's available.
  - All Bulls fertility tested.
  - All females from the "Heart of the Herd." Majority are 4 years or less.
  - Females palpated to calve in January and February.
- \* Sires include: DS Pollfleck (34 sons selling)  
Highwayman (10 sons selling)  
Polled Abundance  
JPR Polled Stretch 7037  
JPR Dance

For Catalogs and Information Contact:  
**J.E. and Barbara Pybas**  
Star Route, Box 1406, Gainesville, Texas 76240  
(817) 665-9646  
Phillip Marsh (Herdsman): (817) 665-4655  
Certified Brucellosis Free Herd #5846

**Fertilize for Spring wheat now.**

Give your new wheat crop a fast start, and make sure it has all the nutrients it needs to produce the yield you're after.

Base your fertilizer plans on soil test information and your realistic yield goals, then apply all your fertilizer ahead of the drill. Do it early... as soon as the weather breaks. You'll be ready to plant when the soil temperature is right.

Let our Fertilizer Specialist help you from the start. We have all the materials that have been proven effective in this area. We can also arrange custom application if you wish. Come see us soon. We're ready when you are.

**Red River Farm Co-op**  
1300 N. Dixon, 665-4338, Gainesville

**COOP**  
Standing together. Standing strong.

FARMLAND INDUSTRIES, INC.

### Market Report

by Mike Hamer  
Prices for November 19

| STEERS  |                   |
|---|-------------------|
| 300-400 lbs.....  | \$90.00-105.00    |
| 400-500 lbs.....  | \$85.00-93.00     |
| 500-600 lbs.....  | \$80.00-92.00     |
| 600-700 lbs.....  | \$80.00-86.00     |
| 700-800 lbs.....  | \$75.00-81.00     |
| HEIFERS   |                   |
| 300-400 lbs.....  | \$88.00-94.00     |
| 400-500 lbs.....  | \$82.00-90.00     |
| 500-600 lbs.....  | \$80.00-87.00     |
| 600-700 lbs.....  | \$75.00-81.00     |
| 700-800 lbs.....  | \$70.00-78.00     |
| PACKER COWS   |                   |
| Utility Boning.....                                       | \$40.00-49.00     |
| Canner/Cutter.....  | \$34.00-41.00     |
| BULLS.....  | \$51.00-61.00     |
| BRED COWS   |                   |
| Choice.....   | \$650.00-795.00   |
| Medium-Good.....  | \$525.00-625.00   |
| Medium-Poor.....  | \$400.00-500.00   |
| COW-CALF PAIRS  |                   |
| Choice.....   | \$950.00-1,025.00 |
| Medium-Good.....  | \$750.00-875.00   |
| Medium-Poor.....  | \$500.00-675.00   |
| Heiferettes, 750-1,000 lbs., sold for \$55.00 to \$71.00. |                   |

Muenster Livestock Hog Pool  
Prices for November 24  
TOP HOGS  
#1s and #2s (230-270 lbs.)...\$36.50-37.50  
#3s and #4s (230-290 lbs.)...\$35.00-36.50  
ALL BOARS.....\$25.00-26.00  
ALL SOWS.....\$26.00-30.00

### Household pesticide use still an issue

A recent EPA study revealed some interesting statistics about pesticide usage by homeowners:

- 85% of households own a pesticide.
- in 76% of households, someone personally applies the pesticides.
- 15% of households hire a professional applicator.
- 76% of households dispose of empty or partially filled pesticide containers in the trash.
- 17% gave partially filled pesticide containers away to neighbors or friends.
- 35% poured excess pesticides into a sink, drain, toilet, street or onto soil.

### Fall Special

**Fill Up on CATTLE-LAC-35**

**\$10.00 OFF per ton**

Cattle come running for CATTLE-LAC Liquid Supplement

Offer good through December 12, 1992

**MUENSTER MILLING CO. THE FEED PEOPLE**

322 N. Main Muenster (817) 759-2287



# SAVE ON THE BRANDS YOU KNOW AND TRUST

- FISCHER'S LARGE PORK RIBS ..... LB. **79¢**
- FISCHER'S SMALL PORK RIBS ..... LB. **\$1.19**
- FISCHER'S SLICED BACON ..... LB. **99¢**
- FISCHER'S GRAIN FED BEEF BONELESS SIRLOIN TIP ROAST ..... LB. **\$2.49**
- LEAN & TENDER ASSORTED PORK CHOPS ..... LB. **\$1.29**

BONELESS TOP SIRLOIN ..... LB. **\$3.98**

FISCHER'S CENTER LOIN CHOPS ..... LB. **\$1.89**

CENTER RIB CHOPS ..... LB. **\$1.59**

FIRST CUT CHOPS ..... LB. **\$1.19**

COUNTRY STYLE RIBS ..... LB. **\$1.49**

FISCHER'S 80% LEAN MARKET MADE FRESH

GROUND BEEF ..... LB. **99¢**

ADDITIONAL PURCHASE **\$1.49** LB. (LIMIT 2 PACKAGES)

- FISCHER'S GRAIN FED BEEF T-BONE STEAK ..... LB. **\$4.59**
- PORTERHOUSE ..... LB. **\$4.89**
- ROUND STEAK ..... LB. **\$2.59**
- BONELESS RIB-EYE STEAK ..... LB. **\$5.29**



SHURFINE AUTO. DRIP/REG./ELEC. PERK

## COFFEE

13 OZ CAN **99¢**

LIMIT 1 w/\$10.00 OR MORE ADDITIONAL FOOD PURCHASE, PLEASE!

- SHURFRESH MEAT HOT DOGS 12 OZ PKG. **57¢**
- SHURFRESH ALL VARIETIES SLICED LUNCH MEATS (EXCLUDING BEEF BOLOGNA & HAM ITEMS) 12 OZ PKG. **89¢**
- PILGRIM'S PRIDE SKINLESS BREAD NUGGETS ..... LB. **\$3.29**
- LAND O LAKES SLICED AMERICAN CHEESE ..... LB. **\$2.19**
- WILSON EXTRA LEAN HALF HAM ..... LB. **\$2.99**

- PILGRIM'S PRIDE GRADE "A" DRUMSTICKS, THIGHS OR WINGS ..... LB. **69¢**
- SHURFRESH SLICED BACON 16 OZ PKG. **\$1.19**
- DELTA PRIDE FRESH WHOLE CATFISH ..... LB. **\$1.99**
- WHOLE BONE-IN SMOKED PICNICS ..... LB. **79¢**
- WILSON JUMBO MEAT FRANKS ..... 16 OZ PKG. **89¢**

DEL MONTE ASSORTED

## VEGETABLES

5 FOR **\$1.99**

12-17 OZ.

- ENERGIZER C.D.S.V BATTERIES 2 PACK **\$2.49**
- SHURFINE FAMILY SIZE TEA BAGS 74 CT **\$1.59**
- RAILSTON TRADITIONAL CHEX MIX 8.5 OZ **\$1.89**
- POP SECRET ASSORTED MICROWAVE POPCORN 18.21 OZ **\$2.99**
- COMET LONG GRAIN RICE 7 LBS **\$1.09**
- SHURFINE BLACK PEPPER 4 OZ CAN **\$1.19**
- CHEF BOYARDEE ASSORTED PASTA 14.8 15 OZ **\$1.09**
- SHURFINE SUGAR FROSTED FLAKES/CRISP CRUNCH CEREALS 16.20 OZ **\$1.79**
- ASSORTED MICROWAVE MEALS LUNCH BUCKET 7.5 8.5 OZ **89¢**
- DORITOS PRE-PRICED \$2.99 ASSORTED TORTILLA CHIPS 14.15 OZ **\$1.99**
- DUNCAN HINES ASSORTED/MICROWAVE DUNCANS CUPS 1.6 13.7 OZ **\$1.59**
- BETTY CROCKER BLUEBERRY MUFFIN MIX 13.5 OZ **\$1.69**
- DEL MONTE PITTED PRUNES 12 OZ BAGS **\$1.29**
- HORMEL TAMALES 15 OZ **89¢**
- OCEAN SPRAY FRUIT JUICE BLENDS 48 OZ **\$2.49**
- WOOLITE PET STAIN ELIMINATOR/RUG CLEANER 22 OZ **\$3.59**
- SCOT TISSUE BLUE/PEACH/WHITE BATH TISSUE 4 ROLL PKG. **\$2.29**
- ENERGIZER AA/AAA BATTERIES 2 PACK **\$1.69**
- SHURFINE SINUS TABLETS 24 CT **\$1.09**
- BUFFERIN 30 CT TABLETS **\$3.49**
- ASSORTED COLGATE 4.6 OZ TUBE **\$1.89**
- OZARKA ASSORTED SPARKLING SPRING WATER 1.5 LITER **99¢**

May Your Home Be Blessed With Thanksgiving's Bounty

It's our privilege and pleasure to be graced with such kind friends and neighbors. Many thanks to all.

- HORMEL REG./HOT NO BEANS CHILI 19 OZ CAN **99¢**
- DEL MONTE SQUEEZE KETCHUP 32 OZ PLASTIC BOTTLE **99¢**
- FIELD TRIAL RATION DOG FOOD 20-LB. BAG **\$2.99**
- RO-TEL DICED/WHOLE TOMATOES W/GREEN CHILIES 10 OZ **69¢**
- DEL MONTE ASSORTED TOMATOES 14.5 15.5 OZ **69¢**
- SHURFINE MACARONI & CHEESE DINNERS 7.25 OZ BOX 4 FOR **\$1.00**
- GENERAL MILLS CLUSTERS/BASIC 4/OATMEAL RAISIN CRISP CEREALS WITH COUPON 14.5-15.5 OZ **\$1.49**
- DEL MONTE ASSORTED CANNED FRUITS 16-17 OZ **79¢**
- SHURFINE TOMATO SAUCE 8 OZ CAN 5 FOR **\$1.00**
- VIVA DESIGNER/WHITE PAPER TOWELS 1 ROLL PKG. **79¢**

SAVE \$1.50 when you buy one box of Basic 4

SAVE \$1.55 when you buy one box of 15.5 oz. Clusters

SAVE \$1.30 when you buy one box of 15 oz. Oatmeal Crisp with Raisins

- ULTRA PUREX PRE-PRICED \$1.69 10 USE DETERGENT 16 OZ BOX **89¢**
- COTTONELLE ASSORTED/WHITE BATH TISSUE 4 ROLL PKG. **99¢**
- HUGGIES ULTRA ASSORTED DIAPERS 26-54 CT. **\$8.99**
- 9 LIVES ASSORTED CAT FOOD 5.5 OZ 3 FOR **89¢**

DR PEPPER 2-12 PACKS **\$4.99**

- SWANSON BEEF/CHICKEN/TURKEY POT PIES 8 OZ BOX **59¢**
- SWANSON ASST. ENTREES 5.5 10 OZ. **\$1.29**
- EGGO ASSORTED WAFFLES 11 OZ. **\$1.59**
- SWANSON ASSORTED BUDGET DINNERS 9 12 OZ. **99¢**
- SHURFRESH ASSORTED ICE CREAM 1 GAL. PAILS **\$3.49**
- SHURFINE CRINKLE CUT POTATOES 32 OZ. **\$1.29**
- SHURFINE ORANGE JUICE 12 OZ. **89¢**
- SUNKIST JUMBO TANGERINES 2 LBS. **\$1.00**
- FRESH CARROTS 3 PKGS. **\$1.00**
- PERSIAN LIMES 10 FOR **\$1.00**
- CALIFORNIA AVOCADOS 4 FOR **\$1.00**
- GRT GUACAMOLE AVOCADO MIX 2 PKGS. **\$1.00**
- IDAHO BAKER POTATOES 3 LBS. **\$1.00**
- LOCAL PECANS ..... LB. **\$2.25**
- HONEY LITE PEANUTS ..... LB. **\$2.50**
- SPANISH PEANUTS ..... LB. **\$1.97**
- RAW PEANUTS ..... LB. **\$1.64**

KIWI FRUIT 5 FOR **\$1.00**

MIX OR MATCH! SUPER SELECT CUCUMBERS OR LARGE FANCY BELL PEPPER 4 FOR **\$1.00**

DEL MONTE GOLDEN RIPE BANANAS 4 LBS. **\$1.00**

QUANTITY RIGHTS RESERVED

**AFFILIATED**

ALL ITEMS NOT AVAILABLE AT ALL AFFILIATED STORES  
Prices Effective Nov. 30 thru Dec. 5

SENIOR CITIZENS: No Amount of Purchase Limited Sale Items!

# Fischer's Meat Market

304 N Main, Muenster

Since 1927

1-800-535-7248 OR 759-4211

**DOUBLE COUPONS EVERY DAY!**

