

Banks see increases in loans

According to figures released recently by local banks, Muleshoe State Bank and First Bank of Muleshoe, both banks showed increases in loans for the second quarter of the 1994 year. The second quarter includes the months of April, May

and June.

Muleshoe State Bank and First Bank of Muleshoe both saw slight drops in deposits though during the second quarter.

Combined, both banks had total loans in the amount of

\$56,642,000, an increase of \$9,044,000 over last quarter.

In deposits, the two banks had a combined total for the second quarter of \$87,802,000 a drop by \$2,929,000 over last quarter.

Figures for Muleshoe State

Bank also include the bank's Farwell branch. Total loans made for the second quarter by Muleshoe State Bank were \$27,341,000, compared to \$24,666,000 last quarter. This

Continued on page 2

Inside today!

Back to School

Inside today's *Bailey County Journal* is a special Back to School supplement with helpful information to help our readers prepare for the 1994-95 school year.



— See special insert

Support from community helps church expand

By Helena Rodriguez

With the help of local parishioners, community volunteers and a pastor and his congregation from Lubbock, the New Vision Church of the Nazarene, located at 9th Street and West Ave. C in Muleshoe, is in the process of expansion.

The Church of the Nazarene is expanding its facilities by more than double its present size. Planning and a groundbreaking ceremony for the project began three years ago, according to Debra McIntire. However, major construction did not get underway until recently.

Debra is the wife of the Nazarene Church pastor David McIntire. David has been pastor of the Muleshoe church for 3-1/2 years.

Debra said the the New Vision Church was built in Muleshoe in 1948.

"Our church is multicultural," Debra said. "We have a very diverse congregation."

This past week, Bob Mahaffey, pastor of the Arlington Church of Nazarene in Lubbock, along with some of his parishioners, were helping the New Vision Church in constructing the new addition.

Debra said that the church has also received a great deal



EXPANDING FACILITIES — The New Vision Church of the Nazarene, located at 9th Street and West Ave. C. in Muleshoe is in the process of expanding its present facilities by more than double its current size.

of support and help, mainly from funds and labor donated from area residents. She said a large number of people who have been helping the church with the construction are not

parishioners. They are people who have just been willing to help.

"We have received contributions from the community, including from people who

have helped feed our work teams," Debra said.

Debra said they hope to have the 3,200 square foot addition completed by December.

The new stucco and brick

addition will include a sanctuary, study for the pastor and restroom facilities. The existing part of the church will be

Continued on page 2

Around Muleshoe

Community is invited to come and meet the Mules

The Muleshoe Athletic Booster Club announces "Meet the Mules" will be held on Saturday, Aug. 13 at 6 p.m. in Benny Douglas Stadium.

They urge the whole community to come encourage the Muleshoe athletes and coaches. Ice cream will be served at the conclusion.

Girls physicals to be given Aug. 14

Girls physicals will be given on Sunday, Aug. 14 in the Muleshoe High School gym. All incoming 7th and 9th graders must have a physical, as well as new students and anyone who has been ill for more than a week, hospitalized or injured in the last year.

This will be the only time the school will provide a free physical. All girl athletes are urged to receive this yearly checkup.

Meeting for cross country runner set

A Cross Country meeting for all 9-12th graders interested in running competitively, will be held on Thursday, Aug. 11 at 7 p.m. at Muleshoe High School gym.

Continued on page 4



HIGH-MONEY WINNER — David Christian of Floydada won \$1,554.50 over the weekend to win high-money honors at the annual Muleshoe Rotary Club Roping at Dusty Rhodes Arena. He received a 16-foot D&D 3-horse slant trailer.

County clerk requests salary grievance hearing with committee

The Bailey County Salary Grievance Committee will meet in special session Monday, Aug. 8 at 5 p.m. in the District Courtroom to consider a grievance submitted by County Clerk Barbara McCamish.

McCamish requested the meeting to consider the salary proposed for her office in the soon to be filed fiscal year 1995

county budget. The proposed budget, yet to be approved, includes a \$50 a month raise for employees in all county department's, except the County Clerk's Office.

Current employees in that office are the county clerk and a part-time relief deputy county clerk.

Bailey County Judge Marilyn Cox said that the

commissioners made the decision not to include the County Clerk's Office in raises because new people with no experience will be coming into that office.

Billie Downing won the March election primary for county clerk and is, so far, running unopposed in the November election. If elected, she will take over as county clerk on Jan 1, 1995.

During previous meeting, the county commissioners discussed salary schedules and raises, at which time most felt that new employees should not be given the same raises as employees who have worked there longer.

McCamish said that she is not concerned about money, particularly since she is not eligible to run for re-election.

She said, "My question here is that Downing presented to voters that she had three years of experience (in the County Clerk's Office) and they (the commissioner's court) are saying that she has no experience. Which is correct?"

"In all of the history of the county, this has never hap-

Continued on page 2

Christian wins high-money trailer in Muleshoe Rotary Club Roping

MULESHOE, TX — David Christian of Floydada, Texas, took the lead on the first night and won just enough on the second day to claim the high-money trailer at the annual Muleshoe Rotary Club Team Roping July 30-31 at Dusty Rhodes Arena.

Christian placed first and second in the average in the No. 10 on the first night, winning \$1,362.50 to take a sizeable lead for the trailer.

Christian's only placing on the final day came in the No. 9, where he was second in the first-go round. He won \$192 for that effort, bringing his total to \$1,554.50 for the weekend.

Christian's partner in winning the No. 10, Hollis Harris of Friona, Texas, won \$743 on the first day. He made a final push for the trailer by winning the final and largest roping of the weekend, the No. 7. But his \$1,541 total came up just

\$13.50 short of Christian. Harris still went home with a trophy saddle as the reserve high-money winner of the weekend.

Expanded from one day to two after a marathon in 1993, the Rotary Roping drew a record 921 teams with ropers competing for \$31,276 in cash. In addition to the D&D 3-horse slant trailer and the Clifton B. Allen saddle awarded to the top two money winners, buckles from Joe's Boot Shop were awarded to the average winners in each roping and ropes were awarded to the go-round winners. Organizers ran 1,763 teams over 18 hours, averaging 98 teams per hour.

Third on the high-money list was Jed Figg of Portales, NM, with \$1,436, while Cody Guess of Colorado City, Texas, was fourth with \$1,236.50. Chad Helmer of Clovis, NM, was fifth with \$1,005.50.

The event opened Saturday (July 30) with 143 teams in the

No. 6. Helmer and Bill Teague had a 54.77 time to win the average. Ernie Lucero and Clinton Franz were second, followed by Neal Stanfield and Dee Fish; Lucero and Carter Callen, and Darnell Lewis and Ralph Stevenson.

With 177 teams running at the money in the No. 10, Christian and Harris snared four head in 39.87 for first place. Wallace Townsend and Christian were second with 43.13 on four, followed by Kirk Sparkman and Jesse Valdez with 43.62 on four. Chris Mardis and Kyle Stamps were fourth with 44.05 on four, while George Harlan and Gary Jacobs were fifth with 44.24 on four.

Action resumed Sunday (July 31) at 9 a.m. with 86 teams in the No. 11. Beau Lamb and Figg collected first place with 30.71 on four head. Jason Sloan and Randy Coleman

Continued on page 5



HARD AT WORK — David McIntire, pastor of New Vision Church of the Nazarene, works on a 3,200 square foot addition being added to the church. The church has received a great deal of support from community volunteers.

Church

Continued from page 1

converted into Sunday school classrooms and fellowship rooms, Debra said.

The new expansion will also include facilities for the handicapped as well as unique window architecture. The design of the new addition was drawn by David.

Some of the people who

have helped with the church construction are: Hilbert Wisian, Leon Logsdon, Sonny Bennett, Larry Combs, Larry McIntire, Brian Tolbert, Brian Sharp, Shane Glover, Gary Nolton and many others.

The McIntires have two children, Amy, who lives in Levelland, and Jeff, who lives in Muleshoe.

Banks

Continued from page 1

was an increase of \$2,675,000 over last quarter.

In deposits for the second quarter, Muleshoe State Bank had \$36,479,000. Total deposits last quarter were \$37,772,000. This was a decrease of \$1,293,000 over last quarter.

Figures for First Bank of Muleshoe include the First Bank's branches in Bovina and Dimmitt.

For the second quarter, First Bank had total loans of \$29,301,000 an increase of \$5,147,000 over last quarter.

In deposits, First Bank had a total of \$51,323,000 compared to \$52,959,000 over last quarter. This was a decrease of \$1,636,000 over last quarter.

Comparing figures to last year at the same time, Muleshoe State Bank had loans totalling 20,855,000 during the second quarter of 1993, compared to \$27,341,000 for the second quarter of 1994. This is an increase in loans of \$6,486,000 over last year.

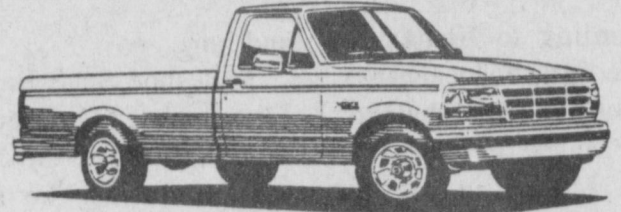
In deposits last year, Muleshoe State Bank had \$33,849,000, during the second quarter of 1993. In 1994, Muleshoe State Bank has total deposits of \$36,479,000, an increase of \$2,630,000 over last year.

Comparing figures for First Bank of Muleshoe to last year's figures, First Bank had total loans of \$22,806,000 at the

end of the second quarter of 1993, compared to \$29,301,000, this is an increase of \$6,495,000 over last year.

FACTORY AUTHORIZED CLEARANCE ALL 94'S MUST GO!!

94 F-150 PICKUP



\$229 /MO

#245750... Price... \$12995 8.9% APR... \$1500 down-plus \$500 Business rebate assigned to dealer... 60 mos-0ac-plus TTL

USED CAR SAVINGS

| '91 Escort | '93 Festiva | '93 Ranger |
|---|---|--|
| | | |
| \$179 OR \$5995 | \$148 OR \$6995 | \$239 OR \$10995 |
| <small>Auto-PB-PS-Air-Air/Fm Stereo-Custom Stripes-\$800 DN..36 MOS..12.9% APR..OAC #R235-38903 miles</small> | <small>Auto-PB-Air-Air/Fm Stereo-\$800 DOWN..54 MOS..10.9% APR..OAC #R247-31004 miles</small> | <small>Auto-PB-PS-Air-Air-Air/Fm Cass. Chrome Wheels-\$800 DOWN..54 MOS..10.75% APR..OAC #R199-24882 miles</small> |



BIG COUNTRY FORD

2400 MABRY DR. CLOVIS, NM
1-800-748-3306

CALL CHARLES MAYHUGH HOME: 806-272-3610

Clerk

Continued from page 1

pened," McCamish said.

"Downing won the primary but she still could have an opponent in the election who is experienced. My feelings are that whoever comes in will have to do this job and deserve raises like the other offices."

Under the proposed 1995 budget, the County Clerk's Office will include the county clerk, a fulltime deputy county clerk and part-time help, McCamish said.

If raises are approved for county employees, they will take effect Oct. 1.

The Salary Grievance Committee is composed of the sheriff, county tax assessor-collector, county treasurer, county clerk, district clerk, county attorney and a number of public members necessary to provide nine voting members.

The grievance process states that an employee must request a hearing in writing within

five days after notice of the salary expenses. The committee is then required to set a hearing in 10 days.

If, after the hearing, six or more of the members recommend an increase in this office, the committee will submit a recommendation to the commissioner's court in writing to consider. If six to eight members vote to increase, the commissioner's court shall consider the recommendation at its next meeting. If nine recommend the increase, the court shall include the increase in the budget before the budget is filed.

ROOSEVELT COUNTY FAIR

August 10 thru 13
Fun For The Whole Family!!

Midway

Square Dance
Thursday Night
7:00 p.m.

Entertainment Nightly!

Old Fiddlers Contest
Friday Night
7:00 p.m.

Roosevelt County Pioneer Day
Thursday

Livestock Shows

DANCE
Friday & Saturday
Nights to Delk Band
9:00 p.m.



For More Information,
Call Roosevelt County Chamber of Commerce
(505) 356-8541
Roosevelt County Extension Office (505) 356-4417

1st FAIR DAYS

Specials

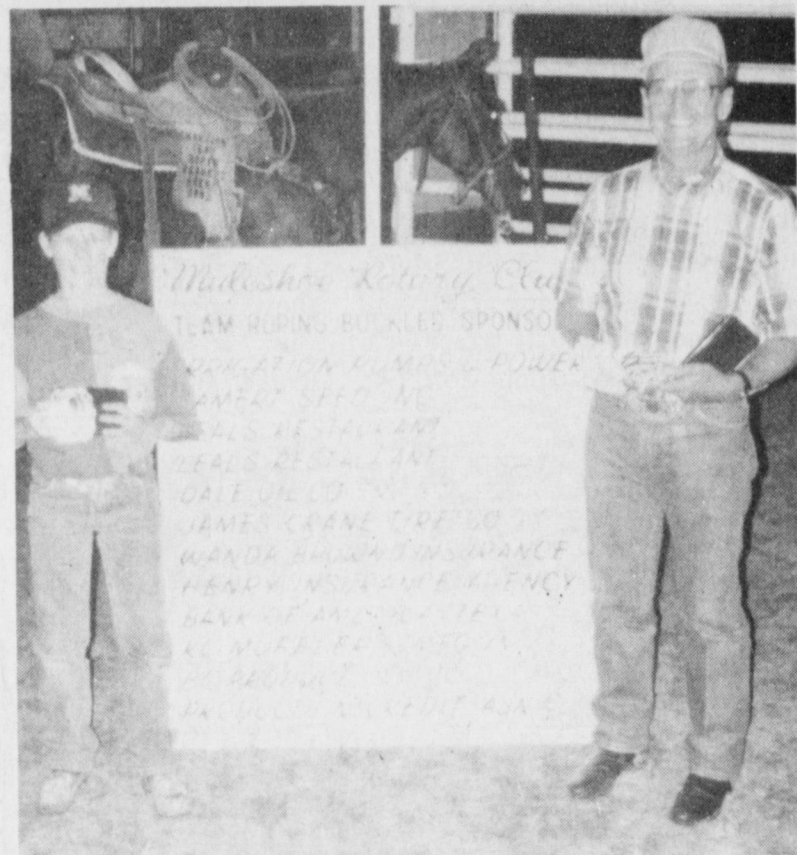
| | |
|---|--|
| <p>Justin Ropers Select Group \$79.98</p> <p>Lacers Select Group \$89.98</p> <p>Justin Juniors \$39.98</p> <p>Other Children's Boots \$29.98</p> <p>Straw Hats 50% Off</p> <p>Felt Hats Resistol/Stetson 20% Off</p> | <p>Rocky Mountain Jeans 20% - 50% Off</p> <p>Girls' Jeans 4-14 - entire stock \$5 - \$10 - \$15</p> <p>Men's & Boys' Shirts 20% - 50% Off</p> <p>Wrangler Jeans 13 MWZ Indigo - \$17.98 Colors - \$19.98 22 MWZ - \$29.98</p> <p>Rip's 4x Black Felt Hats \$69.98</p> |
|---|--|

Rip's
IN TEXICO
314 Wheeler

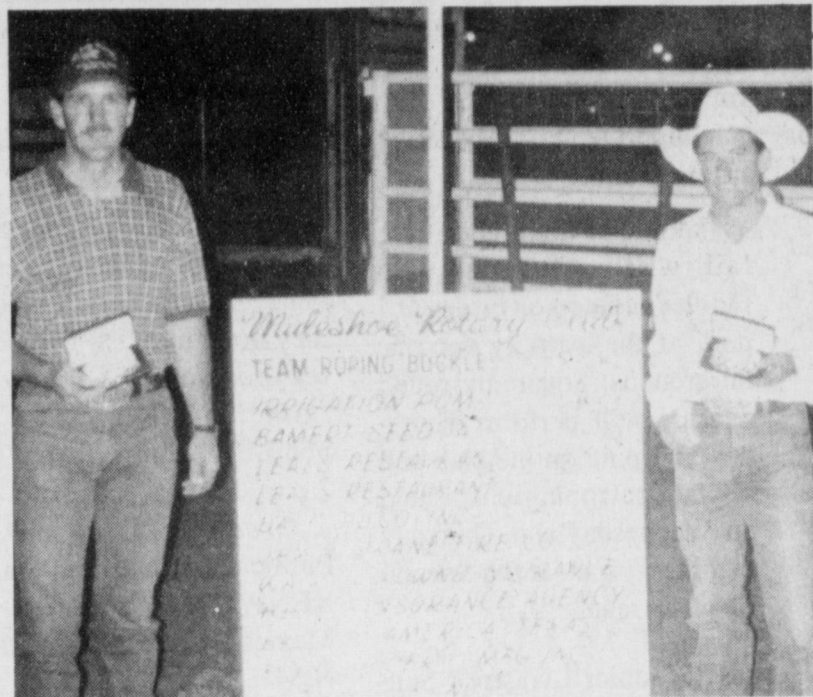
Open: 9:00 a.m. - 6:30 p.m. cdt
482-3363 Toll Free 800/748-2459

We Accept: * Layaways Welcome *
* Free Gift Wrapping *

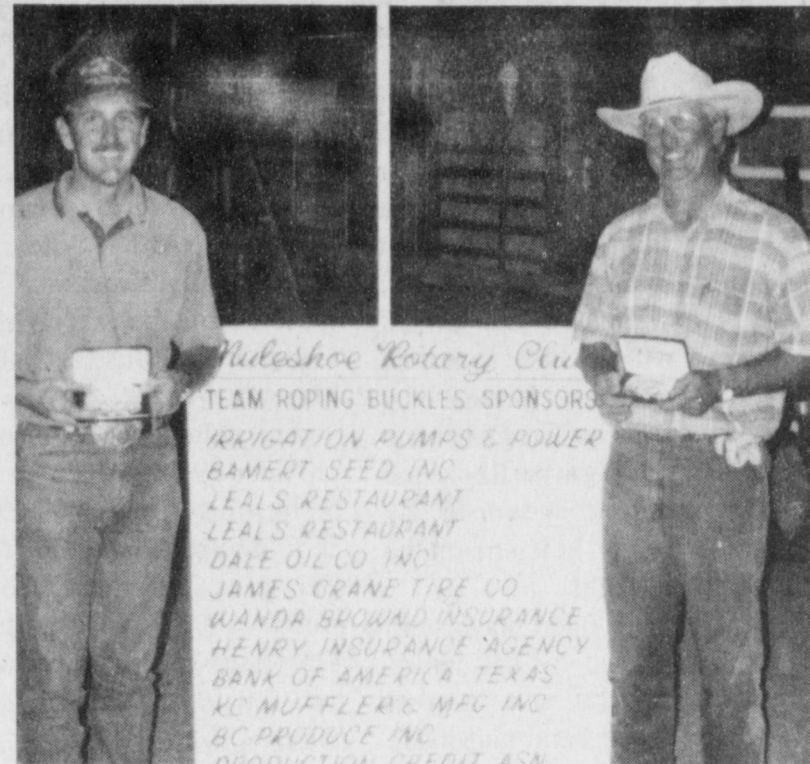
Muleshoe Rotary Club roping winners



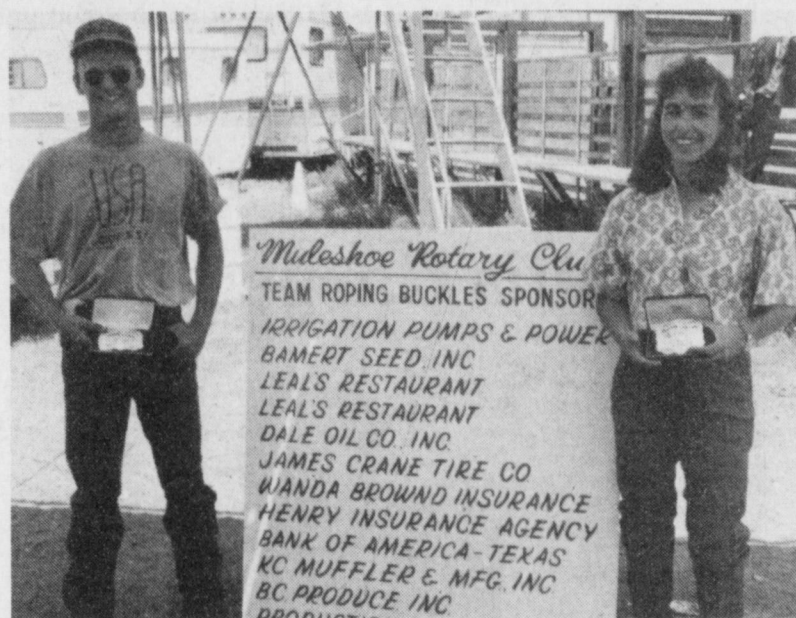
NO. 6 WINNERS — Chad Helmer of Clovis (left) and Bill Teague were the No. 6 winners in the Muleshoe Rotary Club Roping.



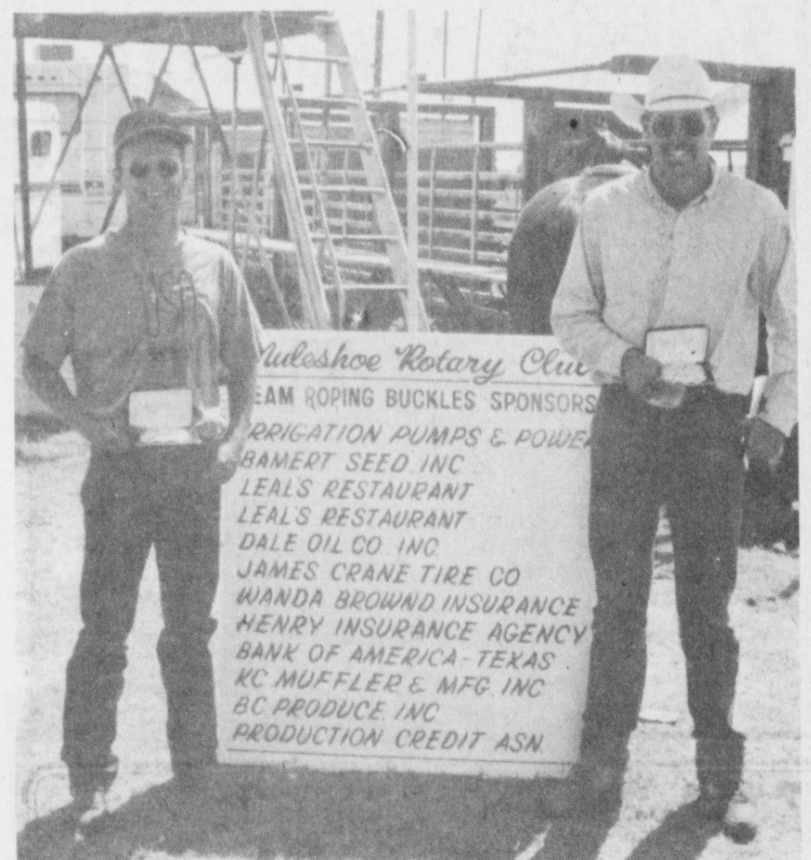
NO. 10 WINNERS — Hollis Harris of Friona (left) and David Christian of Floydada teamed up to win the No. 10 at the Muleshoe Rotary Club Roping.



NO. 7 WINNERS — Hollis Harris of Friona (left) and Guy Walker claimed the No. 7 buckles at the Muleshoe Rotary Club Roping.



NO. 9 WINNERS — Jed Figg of Portales (left) and Lisa Stinnett of Muleshoe captured the No. 9 at the Muleshoe Rotary Club Roping.



NO. 11 WINNERS — Jed Figg of Portales (left) and Beau Lamb of Santa Rosa, NM, won the No. 11 at the annual Muleshoe Rotary Club Roping.

Bailey County Journal USPS 040-200
 Established March 31, 1963. Published by Triple S Publishing, Inc. Every Sunday at 304 W. Second. Box 449, Muleshoe, Tx. 79347. Second Class Postage paid at Muleshoe, Tx. POSTMASTER: Send address changes to the Bailey County Journal, P.O. Box 449, Muleshoe, Tx. 79347.
 We are qualified members of:
 Panhandle Press Association, National Newspaper Association, West Texas Press Association and Texas Press Association

© 1990
 WEST TEXAS PRESS ASSOCIATION

Scott Stinnett, Publisher
 Lisa Stinnett, Vice-President/Comptroller
 Helena Rodriguez, News
 Laura Sanchez-Mora, Classifieds
 Holly Millsap, Advertising

Muleshoe Journal and Bailey County Journal
 By Carrier Yearly - \$15.00
 Bailey and surrounding counties
 By Mail - \$16.75
 Elsewhere - \$18.50

National Newspaper Association
 Advertising Rate Cards on Application
 Advertisers should check their ad the first day of insertion. The Journals will not be liable for failure to publish an ad or for a typographical error or errors in publications except to the extent of the cost of the ad for the first day of insertion. Adjustment for errors will be limited to the cost of that portion of the ad where the error occurred.

Classifieds
Work
 Call 272-4536
Muleshoe Journal

Complete Line
 Monuments - Markers
 Memorials
 Granites - Bronze
Muleshoe Memorial Park Cemetery, Inc.
 232 Main P.O. Box 373
 Muleshoe, TX
 272-5727 or 272-4670

Want to buy or sell?
Read the classifieds!

Mule Days Celebration

August 12 - 13, 1994

FRIDAY, AUGUST 12
 4:00 p.m. Mule Rodeo, Dusty Rhodes Arena. Judged class events. Contact Chamber 272-4248
 7:30 p.m. Stick Mule Decorated Contest, Dusty Rhodes Arena. For children under 6. Prizes to be awarded for 1st & 2nd in each age group.
 8:00 p.m. Registration for Stick Mule Flag Races to be held Saturday night 7:30 p.m. For children under 6, Ages 3-under, 4-6.

SATURDAY, AUGUST 13
 6:30 a.m. - 9:00 a.m. "Burro-ito" Breakfast at the Heritage Complex
Live Music and Gun Fight
 10:00 a.m. - Mule Days Parade
 11:00 a.m. - Mule Patty Bingo, Mulelot. 2 Bingos. 2 winners \$250 cash each, \$5 per card.
 2:00 p.m. - Mule Match Races, Dusty Rhodes Arena
 4:00 p.m. - Mule Rodeo, Dusty Rhodes Arena. All Timed Events
 7:00 p.m. - Registration for Stick Mule Races, Dusty Rhodes Arena
 7:30 p.m. Stick Mule Races, Dusty Rhodes Arena
 10:00 p.m. - 1:00 a.m. - KKYC Radio Street Dance, north end of Main.

THRU OUT THE DAY SATURDAY AT JOE'S BOOT SHOP
 9:30 a.m. - 6:00 p.m.
World Championship "Goat Team Roping on Foot", Practice on Friday 5:00 p.m.
World Championship "Mechanical Mule Roping"
\$1000 Gift Certificate prize, \$10 per entry

No Gate Charge On Any Event At Arena

(see more on page 5)

Jeans Headquarters

Levi's **Wrangler** **Lee** **H.I.S.** **Chic**

The brand that fits:
 Stuffed Shirt

| MEN'S | |
|--|-------|
| LEVI'S 501* PREWASHED JEANS IN BLUE Sizes 29-42, limit 6 pair per customer | 23.99 |
| LEVI'S 501* PREWASHED JEANS IN BLACK Sizes 29-42, limit 6 pair per customer | 25.99 |
| LEVI'S 501* STONWASHED JEANS Sizes 29-38, limit 6 pair per customer | 29.99 |
| LEVI'S 505* REGULAR FIT JEANS Sizes 29-42, limit 6 pair per customer | 23.99 |
| LEVI'S 550* RELAXED FIT JEANS Sizes 29-38, limit 6 pair per customer | 29.99 |
| LEVI'S 517* PREWASHED BOOT CUT JEANS Sizes 30-42, limit 6 pair per customer | 21.99 |
| LEVI'S TEX TWILL* DRESS JEANS Sizes 29-42, limit 6 pair per customer | 23.99 |
| LEVI'S ESP* STRETCH DENIM JEANS Sizes 32-42, limit 6 pair per customer | 23.99 |
| LEVI'S CLASSIC DENIM JACKET Sizes 36-48, limit 6 per customer | 37.99 |
| WRANGLER* 13MWZ* OR 936* JEANS IN BLUE 13MWZ in 29-42, 936 in 29-38 | 17.99 |
| WRANGLER* 13MWZ* OR 936* JEANS IN COLORS Sizes 29-38 | 21.99 |
| WRANGLER* 22MWZ* RELAXED FIT JEANS Sizes 29-38 | 25.99 |
| LEE* PREWASHED DENIM JEANS Sizes 30-42 | 18.99 |
| LEE* RELAXED FIT DENIM JEANS Sizes 30-42 | 22.99 |
| H.I.S.* STONWASHED OR RELAXED FIT JEANS Sizes 29-38 | 17.99 |
| MISSES • JRS • PLUS SIZES | |
| JRS* LEVI'S 501* JEANS REG. \$45. Sizes 3-13 | 34.99 |
| JRS* LEVI'S 550* RELAXED FIT JEANS REG. \$45. Sizes 3-13 | 34.99 |
| MISSES* & JRS* LEE* JEANS REG. 29.99. Sizes 8-18, 3-13 | 23.99 |
| MISSES* & JRS* LEE* JEANS REG. \$32 TO \$38. Sizes 8-18, 3-13 | 26.99 |
| PLUS SIZES LEE* JEANS REG. 31.99. Sizes 18-26 | 24.99 |
| MISSES*, JRS* & PLUS SIZES CHIC* JEANS REG. \$25. Sizes 8-18, 3-13, 18-26 | 16.99 |
| JRS* STUFFED SHIRT* JEANS REG. 22.99. Sizes 3-13 | 16.99 |
| MISSES* GLORIA VANDERBILT* JEANS REG. 22.99. Sizes 6-16 | 16.99 |
| BOYS' | |
| SIZES 4-7 LEVI'S 550* JEANS REG. \$22. Blue or black | 15.99 |
| SIZES 8-14 & 26-30 LEVI'S 550* JEANS REG. \$25 & \$27. Blue or black | 19.99 |
| SIZES 4-7 WRANGLER* COWBOY CUT* JEANS REG. \$16. Blue or black | 12.99 |
| SIZES 8-14 WRANGLER* COWBOY CUT* JEANS REG. \$18. Blue or black | 14.99 |
| SIZES 25-30 WRANGLER* COWBOY CUT* JEANS REG. \$20. Blue denim BLACK DENIM, REG. \$22 | 17.99 |
| SIZES 2-4T H.I.S.* JEANS REG. 14.99 | 10.99 |
| SIZES 4-7 H.I.S.* JEANS REG. 16.99 | 12.99 |
| SIZES 8-16 H.I.S.* JEANS REG. 19.99 | 14.99 |
| GIRLS' | |
| SIZES 2-4T LEE* JEANS REG. 17.99. Girls' and boys' | 13.99 |
| SIZES 4-6X LEE* JEANS REG. 21.99. Assorted colors | 17.99 |
| SIZES 7-14 LEE* JEANS REG. 25.99. Assorted colors | 19.99 |
| SIZES 2-4T CHIC* JEANS REG. 14.99. Girls' | 10.99 |
| SIZES 4-6X CHIC* JEANS REG. 17.99. Assorted colors | 13.99 |
| SIZES 7-14 CHIC* JEANS REG. 19.99. Assorted colors | 14.99 |

ANTHONY'S
 321 Main Muleshoe 272-3478
 Hours: Mon.-Sat. 9:30 a.m. - 6:00 p.m.
 Sale Prices Effective through August 14, 1994

Roosevelt County Fair set for Aug. 10-13

PORTALES - The 1994 Roosevelt County Fair in Portales, N.M., will feature a full weekend of fun for the whole family. It will be held Aug. 10-13.

Highlights of the annual event will include livestock judging and a performance by the Delk Band. The Delk band will be playing at the Roosevelt County Fairgrounds on Friday and Saturday at 9 p.m. on the slab each night.

The Delk Band plays solid country music that has earned them a reputation as a great young dance band and made them a popular entertainment group.

They have toured the Southwest, playing clubs, fairs

and special events. They have opened and closed concerts for nationally-known artists, including Neal McCoy, Diamond Rio, Asleep At The Wheel and The Bellamy Brothers. They most recently backed up Mark Collie at the Museum Club in Flagstaff, Ariz.

Entertainment will also be provided by Triology, who will perform on Wednesday, Friday and Saturday; and by Tina George as Cousin Sis. George works at Dollywood park in Tennessee every summer with her Cousin Sis act. Michelle Dunn, a twirler, will also provide entertainment.

Roosevelt County Pioneers will hold their annual meeting, with registration at 8:30 a.m.

on Thursday at the fair pavillion. Dinner will be served at 11:30 a.m.

Additional highlights of the fair will include an Old Fiddler's contest on Friday at 7 p.m. at the Armory (on the fairgrounds). Square and round dancers will perform Thursday at 7 p.m. on the slab and invitational roping will be held on Wednesday and Thursday nights at 7 p.m. at the Special Events Arena.

The Junior Livestock Sale will be held on Saturday at 5:30 p.m. in the Show Arena.

Also included at the fair will be carnival rides and numerous exhibits.

Creative Living

With Sheryl Borden

Information on spoon dessert, tips for buying and caring for mens shoes and recipes for fish cuisine for people who say they don't like fish will be the featured topics on *Creative Living* on Tuesday, Aug. 9 at noon and Saturday, Aug. 13 at 2 p.m. Mountain Time.

Creative Living airs on Public Broadcasting Station KENW-TV from Eastern New Mexico University in Portales, N.M.

Lynn Nusum, cookbook author from Las Cruces, N.M., will demonstrate preparing spoon desserts - the kind we remember mother and grandmother making years ago.

Another guest, Diane Creston, representing Botony 500 Footwear, will discuss consumer tips for buying and caring for men's shoes. Creston is from New York City.

Anne Fletcher, spokesperson for Long John Silvers Restaurant in New York, will demonstrate fish recipes for people who say they don't like

to eat fish.

On Tuesday, Aug. 9 at 9:30 p.m. and on Thursday, Aug. 11 at 2 p.m., *Creative Living* will demonstrate beading the easy way and painting on fur pelts.

Peggy Caldwell from Delta Technical Coating, Inc., will show how to bead the easy way - with a special glue. She lives in Huffman.

Muleshoe

Continued from page 1

People who are interested and cannot attend this meeting are asked to contact Coach Gruhlkey at 272-5358.

UBS council to meet in Muleshoe

The United Blood Services Muleshoe Advisory Council will meet on Monday, Aug. 8 at 7 a.m. at Connie's Place Restaurant.

To be discussed will be the situation at UBS Lubbock and they will go over the Aug. 4 Church of Christ blood drive in Muleshoe. Since the UBS Albuquerque will be temporarily conducting the Muleshoe drives, their representatives will also attend the meeting, which is why it is being held early.

Mini Mule Camp set for Friday

The 1994 Mini Mule Camp will be held on Friday, Aug. 12 at Watson Junior High School Gymnasium from 9 a.m. to 3 p.m. Girls need to bring a sack lunch. Snacks will be provided.

Registration will begin at 8:45 a.m. There will be a small fee. Classes will be held for groups aging three years old up to and including fifth graders for the coming year.

All proceeds will go to the Muleshoe High School cheerleaders.

Wanting to buy or sell! Read the Classifieds!

C. Otis Carpenter



For All Your New or Used Truck & Car Needs

Muleshoe Motor Co.

1225 W. American Blvd. Muleshoe 272-4251

Back to School SAVINGS

- Denims
- Broomstick Skirts
- Slacks • Tops
- Coordinates

Selected Rack of Summer Merchandise "Teens"

Check Our Back Room

LADIES 6-18
JUNIORS 1-15

500 Main
Downtown

(505) 763-7153
Clovis

Notice Of Effective Tax Rate and Estimated Unencumbered Fund Balances

This notice concerns 1994 property tax rates for the six taxing units listed below. It presents information about three tax rates for each unit. Last year's tax rate is the actual rate the taxing unit used to determine 1993 property taxes. This year's effective tax rate would impose the same total taxes as last year if you compare properties taxed in both years. This year's rollback tax rate is the highest tax rate the taxing unit can set before taxpayers can start rollback procedures. In each case these rates are found by dividing the total amount of taxes by the total taxable value of taxable property with adjustments as required by law. The rates are given per \$100 of property value. Full calculations can be inspected at the Bailey County Appraisal District, 104 E. Ave. C, Muleshoe, Texas. Notice prepared by Kaye Elliott, Chief Appraiser, August 3, 1994.

| | MULESHOE ISD | THREWAY ISD | CITY OF MULESHOE | MULESHOE AREA HOSP. DIST. | BAILEY CO. GEN. FUND | BAILEY CO. FARM ROAD |
|--|-----------------|----------------|---------------------|------------------------------|-------------------------|-------------------------|
| LAST YEAR'S TAX RATE | | | | | | |
| Last Year's Operating Taxes | 2,148,986 | 544,551 | 579,594 | 535,371 | 754,756 | 159,858 |
| +Last Year's Debt Taxes | -0- | -0- | -0- | -0- | -0- | -0- |
| =Last Year's Total Taxes | 2,148,986 | 544,551 | 579,594 | 535,371 | 754,756 | 159,858 |
| /Last Year's Tax Base | 175,512,453 | 40,890,756 | 87,327,903 | 214,148,704 | 222,563,841 | 218,074,981 |
| =Last Year's Total Tax Rate | 1.26 | 1.34 | .6637 | .2500 | .3391 | .0733 |
| THIS YEAR'S EFFECTIVE TAX RATE | | | | | | |
| Last Year's Adjusted Taxes | 2,082,882 | 540,881 | 578,393 | 535,104 | 754,190 | 159,588 |
| /This Year's Adjusted Tax Base | 170,692,191 | 40,839,289 | 87,530,495 | 219,864,069 | 223,835,237 | 219,345,457 |
| =This Year's Effective Tax Rate | 1.2202 | 1.3244 | .6607 | .2433 | .3369 | .0727 |
| X1.03=Maximum Rate unless the entity Publishes Notices & Holds Hearings | 1.2568 | 1.3641 | .6805 | .2505 | .3470 | .0748 |
| THIS YEAR'S ROLLBACK TAX RATE | | | | | | |
| Last Year's Adjusted Operating Taxes or School Maintenance & Operation Component | 2,155,815 | 544,035 | 578,393 | 535,104 | 895,339 | 159,588 |
| /This Year's Adjusted Tax Base (school tax base) | 171,949,649 | 40,904,239 | 87,530,495 | 219,864,069 | 223,835,237 | 219,345,457 |
| =This Year's Local Maintenance & Operation Rate | 1.2537 | 1.3300 | .6607 | .2433 | .3999 | .0727 |
| X1.08(or + .06 for School) = Maximum Operating Rate | 1.3137 | 1.3900 | .7135 | .2627 | .4318 | .0785 |
| +This Year's Debt Rate | -0- | -0- | -0- | -0- | -0- | -0- |
| =This Year's Rollback Rate Before Adjustment | 1.3137 | 1.3900 | .7135 | .2627 | .4318 | .0785 |
| -Sales Tax Adjustment Rate | N/A | N/A | N/A | N/A | .0627 | N/A |
| =Rollback Tax Rate | 1.3137 | 1.3900 | .7135 | .2627 | .3691 | .0785 |

SCHEDULE A: UNENCUMBERED FUND BALANCES

The following estimated balances will be left in the taxing unit's property tax accounts at the end of the current fiscal year. These balances are not encumbered by a corresponding debt obligation.

| | | | | | | |
|---|-----|-----|-----|-----|---------|-----|
| Maintenance & Operation of General Fund | -0- | -0- | -0- | -0- | 195,691 | -0- |
|---|-----|-----|-----|-----|---------|-----|

SCHEDULE C: EXPECTED REVENUE FROM ADDITIONAL SALES TAX

| | | | | | |
|-----|-----|-----|-----|---------|-----|
| N/A | N/A | N/A | N/A | 141,149 | N/A |
|-----|-----|-----|-----|---------|-----|

SCHEDULE D: STATE CRIMINAL JUSTICE MANDATE

The Bailey County Auditor justifies that Bailey County has spent \$-0- in the previous 12 months beginning July 1, 1993 for the maintenance and operations cost of keeping inmates sentenced to the Texas Department of Criminal Justice. Bailey County Sheriff has provided information on these costs, minus the state revenues received for reimbursement of such costs.

Roping

Continued from page 1

were second with 32.92 on four, followed by Carlos Ortiz and Freddie Lucero with 34.33. Clay Good and Jimmy Don Dobbins were fourth with 35.22 on four.

The No. 9 followed with Lisa Stinnett and Figg besting 182 other teams with a 35.42 on four. Boone Daniels and Ben Pierce were second at 36.03, while Durward Dixon and Terry Leatherwood were

third with 38.18. Sam Stevens and Guess were fourth at 38.46, while Michael Davis and Bill Teague were fifth with 40.22.

Dave Sample and Burl Mardis claimed the average in the No. 5, where 137 teams competed in a three for \$40 format. Sample and Mardis had a 36.83 time in the three-header. Helmer and Fred Lucero were second with 38.26, while Jimmy Sogs and

Jim Cook were third with 43.67. Gary Stevenson and Chad Davis were fourth with 43.79, while Clay Ainsworth and Clay Myers placed fifth at 49.78.

Harris and Guy Walker topped a 190-team field to become the No. 7 champions, followed by Gamron Walker and Jeff Campbell. Third went to Spence Ainsworth and Guess, while Sam Jackson and Thurman Myers were fourth. Fifth went to Buttons Howard and Gamron Walker.

Here are the final results:

- No. 6** (148 teams, 4 for \$50)
1st go-round — 1. 9.26, Ryan Perschbacher and Bill Weston, \$259/man; 2. 9.39, Lisa Stinnett and Gene Creighton, \$155/man; 3. Jim Bohler and Thurman Myers, \$104/man.
Average — 1. 54.77/4, Chad Helmer and Bill Teague, \$622/man; 2. Ernie Lucero and Clinton Franz, \$518/man; 3. Neal Stanfield and Dee Fish, \$414/man; 4. Ernie Lucero and Carter Callen, \$310/man; 5. Darnell Lewis and Ralph Stevenson, \$208/man.
- No. 10** (177 teams, 4 for \$50)
1st go-round — 1. 6.95, Michael

- Davis and Jimmy Cooper, \$310/man; 2. 7.0, Lynn Davenport and Jed Figg, \$185.50/man; 3. 8.17, Carlos Ortiz and Jimmy Don Dobbins, \$124/man.
Average — 1. 39.87/4, David Christian and Hollis Harris, \$743/man; 2. 43.13/4, Wallace Townsend and David Christian, \$619.50/man; 3. 43.62/4, Kirk Sparkman and Jesse Valdez, \$495.50/man; 4. 44.05/4, Chris Mardis and Kyle Stamps, \$372/man; 5. 44.24/4, George Harlan and Gary Jacobs, \$248/man.

- No. 11** (86 teams, 4 for \$50)
1st go-round — 1. 7.02, Buttons Howard and Ben Pierce, \$150.50/man; 2. 7.13, Beau Lamb and Ryan Rankin, \$90.50/man; 3. 7.27, Rob Denny and Ryan Rankin, \$60/man.
Average — 1. 30.71/4, Beau Lamb and Jed Figg, \$482/man; 2. 32.92/4, Jason Sloan and Randy Coleman, \$361/man; 3. 34.33/4, Carlos Ortiz and Freddie Lucero, \$241/man; 4. 35.22/4, Clay Good and Jimmy Don Dobbins, \$120/man.

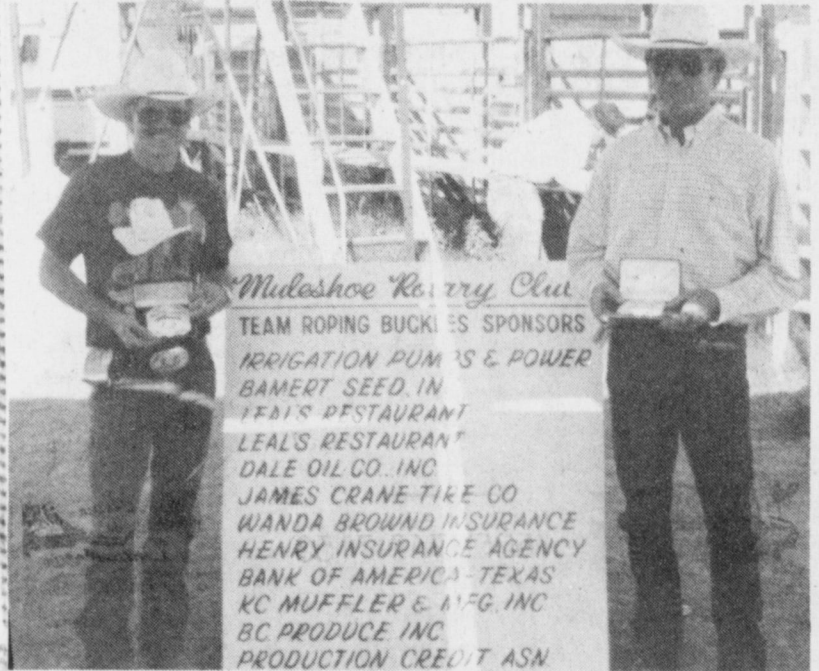
- No. 9** (183 teams, 4 for \$50)
1st go-round — 1. 6.99, Sam Stevens and Cody Guess, \$320/man; 2. 7.05, Wallace Townsend and David Christian, \$192/man; 3. 7.44, Boone Daniel and Jimmy Don Dobbins, \$128/man.
Average — 1. 35.42/4, Lisa Stinnett and Jed Figg, \$768/man; 2. 36.03, Boone Daniels and Ben Pierce, \$640/man; 3. 38.18/4, Durward Dixon and Terry Leatherwood, \$512/man; 4. 38.46/4, Sam Stevens and Cody Guess, \$384/man; 5.

- 40.22/4, Michael Davis and Bill Teague, \$256/man.
- No. 5** (137 teams, 3 for \$40)
1st go-round — 1. 9.45, Clay Ainsworth and Pecos Alford, \$192/man; 2. 10.60, Ab Hendley and Eric Rush, \$115/man; 3. 11.10, Matt Bohler and Jim Bohler, \$77/man.
Average — 1. 36.83/3, Dave Sample and Burl Mardis, \$460/man; 2. 38.26/3, Chad Helmer and Fred Lucero, \$383.50/man; 3. 43.67/3, Jimmy Sogs and Jim Cook, \$307/man; 4. 43.79/4, Gary Stevens and Chad Davis, \$230/man; 5.

- 49.78/3, Clay Ainsworth and Clay Myers, \$153/man.
- No. 7** (190 teams, 4 for \$50)
1st go-round — 1. 6.68, Sam Jackson and Thurman Myers, \$332.50/man; 2. 8.21, Ramiro Agundis and Jim Cook, \$199.50/man; 3. 8.77, Sam Jackson and H.B. Mardis, \$133/man.
Average — 1. Guy Walker and Hollis Harris, \$798/man; 2. Gamron Walker and Jeff Campbell, \$665/man; 3. Spence Ainsworth and Cody Guess, \$532/man; 4. Sam Jackson and Thurman Myers, \$399/man; 5. Buttons Howard and Gamron Walker, \$266/man.



RESERVE HIGH-MONEY WINNER— Hollis Harris of Friona won a Clifton B. Allen handmade saddle as the reserve high-money winner of the weekend at the Mulshoe Rotary Club Roping. He finished with \$1,541 — just \$13.50 behind David Christian.



NO. 5 WINNERS— Dave Sample of Portales (left) and Burl Mardis of Mulshoe won the buckles in the No. 5 at the Mulshoe Rotary Club Roping.

We Can Learn Something From the Eider Duck

In the conclusion of her book, *Cities on a Hill*, Pulitzer Prize-winning author Frances Fitzgerald writes about the molting habits of a type of duck known as the eider duck.

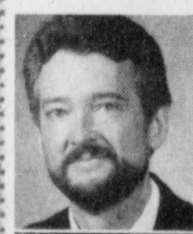
These sea ducks, she says, all lose their feathers at the same time—which would make

"the company of the committed," the Church, as a body. As far as Paul is concerned, a Christian alone is a contradiction in terms!

A Christian is part of a living body composed of mutually interdependent members. He or she can no more be effective (or even alive for long) on his own than a foot can walk or a nose can smell or an eye can see cut off from the rest of the body.

We who are the members of Christ's Body need each other! If we cut ourselves off from the Body, we become, at best, weak and ineffective and, at worst, a danger to ourselves and to others, like the cell dividing madly on its own which becomes a cancer, like the flute in the orchestra choosing to play "Yankee Doodle" while the rest of the orchestra plays "Beethoven's Fifth."

The Body, though, whose members work together in harmony is a thing of beauty. Maybe we can learn something from the eider duck.



Focus On Faith
 Curtis Sheldorne

them easy prey for predators from above and below, from the sea and the air, were it not for one fact. "When they are molting, they join together in huge naked bands, or 'rafts,' to paddle and skim the surface of the ocean pretending (for the benefit of larger predatory fish and fowl) that they are one large thing."

The truth is that by ourselves believers, too, are naked and alone, easy prey for the enemies we face from without and within. But joined together with other Christians we become "one large thing," the living Body of Christ.

It is no accident that Paul refers to what Christian philosopher Elton Trueblood calls

the Body, though, whose members work together in harmony is a thing of beauty.

Maybe we can learn something from the eider duck.

Curtis Sheldorne is minister of the 16th & Avenue D Church of Christ in Mulshoe.

Report of Condition

Mulshoe State Bank

| LEGAL TITLE OF BANK | | STATE BANK NO | |
|--|--|---|--------|
| MULSHOE STATE BANK | | 1631-21 | |
| CITY: MULSHOE | | FEDERAL RESERVE DISTRICT NO: 1113-16793 | |
| COUNTY: BAILEY | | ZIP CODE: 79347 | |
| STATE: TEXAS | | CLOSE OF BUSINESS DATE: JUNE 30, 1994 | |
| Dollar Amounts in Thousands | | | |
| ASSETS | | Liabilities | |
| 1 | Cash and balances due from depository institutions | a. Noninterest-bearing balances and currency and coin | |
| | | | 674 |
| | | b. Interest-bearing balances | |
| | | | 0 |
| 2 | Securities | | |
| a. Held-to-maturity securities | | | 0 |
| b. Available-for-sale securities | | | 11,576 |
| 3 | Federal funds sold & securities purchased under agreements to resell in domestic offices of the bank & of its Edge & Agreement subsidiaries, & in IBFs | a. Federal funds sold | |
| | | | 0 |
| | | b. Securities purchased under agreements to resell | |
| | | | 0 |
| 4 | Loans and lease financing receivables | | |
| a. Loans and leases, net of unearned income | | 27,729 | |
| b. LESS: Allowance for loan and lease losses | | 388 | |
| c. LESS: Allocated transfer risk reserve | | 0 | |
| d. Loans and leases, net of unearned income, allowance, and reserve (item 4 a minus 4 b and 4 c) | | 27,341 | |
| 5 | Assets held in trading accounts | | 0 |
| 6 | Premises and fixed assets (including capitalized leases) | | 509 |
| 7 | Other real estate owned | | 325 |
| 8 | Investments in unconsolidated subsidiaries and associated companies | | 0 |
| 9 | Customers' liability to this bank on acceptances outstanding | | 0 |
| 10 | Intangible assets | | 0 |
| 11 | Other assets | | 1,402 |
| 12 | a. Total assets (sum of items 1 through 11) | | 41,827 |
| | | b. Loans deferred pursuant to 12 U.S.C. 1823(j) | |
| | | | 0 |
| c. Total assets and losses deferred pursuant to 12 U.S.C. 1823(j) (sum of items 12 a and 12 b) | | | 41,827 |
| LIABILITIES | | | |
| 13 | Deposits | | 36,479 |
| a. In domestic offices | | | |
| (1) Noninterest-bearing | | 6,279 | |
| (2) Interest-bearing | | 30,200 | |
| b. In foreign offices, Edge and Agreement subsidiaries, and IBFs | | | 0 |
| (1) Noninterest-bearing | | | 0 |
| (2) Interest-bearing | | | 0 |
| 14 | Federal funds purchased and securities sold under agreements to repurchase in domestic offices of the bank & of its Edge & Agreement subsidiaries, & in IBFs | a. Federal funds purchased | |
| | | | 1,700 |
| | | b. Securities sold under agreements to repurchase | |
| | | | 154 |
| 15 | a. Demand notes issued to the U.S. Treasury | | 0 |
| b. Trading liabilities | | | 0 |
| 16 | Other borrowed money: | | |
| a. With original maturity of one year or less | | | 0 |
| b. With original maturity of more than one year | | | 0 |
| 17 | Mortgage indebtedness and obligations under capitalized leases | | 0 |
| 18 | Bank's liability on acceptances executed and outstanding | | 0 |
| 19 | Subordinated notes and debentures | | 207 |
| 20 | Other liabilities | | 0 |
| 21 | Total liabilities (sum of items 13 through 20) | | 38,540 |
| 22 | Limited-life preferred stock and related surplus | | 0 |
| EQUITY CAPITAL | | | |
| 23 | Perpetual preferred stock and related surplus (No. of shares outstanding) | | 0 |
| 24 | Common stock (No. of shares a. Authorized b. Outstanding) | 50,000 | 1,000 |
| 25 | Surplus | | 1,000 |
| 26 | a. Undivided profits and capital reserves | | 1,423 |
| b. Net unrealized holding gains (losses) on available-for-sale securities | | | (136) |
| 27 | Cumulative foreign currency translation adjustments | | 0 |
| 28 | a. Total equity capital (sum of items 23 through 27) | | 3,287 |
| b. Losses deferred pursuant to 12 U.S.C. 1823(j) | | | 0 |
| c. Total equity capital and losses deferred pursuant to 12 U.S.C. 1823(j) (sum of items 28 a & 28 b) | | | 3,287 |
| 29 | Total liabilities, limited-life preferred stock, equity capital, and losses deferred pursuant to 12 U.S.C. 1823(j) (sum of items 21, 22, and 28 c) | | 41,827 |
| MEMORANDA: Amounts outstanding as of Report of Condition date: | | | |
| 1 a. Standby letters of credit Total | | | |
| | 1 b. Amount of Standby letters of credit in memo 1 a. conveyed to others through participations | | 0 |
| NOTE: This report must be signed by an authorized officer(s) and attested by not less than three directors other than the officer(s) signing the report. I, the undersigned officer(s), do hereby declare that this Report of Condition has been prepared in conformance with official instructions and is true and correct to the best of my (our) knowledge and belief. | | | |
| SIGNATURE OF OFFICER(S) AUTHORIZED TO SIGN REPORT | | DATE SIGNED | |
| Burl Mardis | | 7-26-94 | |
| NAME(S) AND TITLE(S) OF OFFICER(S) AUTHORIZED TO SIGN REPORT | | AREA CODE/PHONE NO | |
| KAY MARDIS, CASHIER | | 806-272-4561 | |
| We, the undersigned directors, attest to the correctness of this Report of Condition and declare that it has been examined by us and to the best of our knowledge and belief has been prepared in conformance with official instructions and is true and correct. | | | |
| SIGNATURE OF DIRECTOR | SIGNATURE OF DIRECTOR | SIGNATURE OF DIRECTOR | |
| Margaret Hamilton | Kay Mardis | | |
| (MAKE MARK FOR NOTARY'S SEAL) | State of TEXAS | County of BAILEY | 55 |
| | Sworn to and subscribed before me this 26TH day of JULY 19 94 | Signature of Notary Public | |
| | 5-12-19-97 | | |
| MARGARET HAMILTON Notary Public, State of Texas My Commission Expires 5-12-97 | | | |

Back To School SALE



ALL TYPES COCA-COLA
2 LITER BTL.

99¢

PREFERRED TRIM Round Steak \$1.39 LB.

Turkey Ham \$1.39 LB.

Sliced Bacon \$1.39 1 LB. PKG.

THOMPSON OR FLAME Seedless Grapes 69¢ LB.

HEAT & SERVE MEATS

| | | | |
|----------------------------------|--|---|---|
| Shurfine Meat Balls POUND \$2.29 | SHURFINE HOT 'N SPICY WINGS POUND \$2.49 | SHURFINE-BREADED CHICKEN PATTIES POUND \$2.49 | SHURFINE-BREADED CHICKEN NUGGETS POUND \$2.49 |
|----------------------------------|--|---|---|

| | | | | | | |
|--|---|--|---|--|--|--|
| SHURFINE CHICKEN SALAD 7.5 OZ. CTN. 99¢ | SHURFINE HAM SALAD 7.5 OZ. CTN. \$1.19 | PREFERRED TRIM ROUND STEAK POUND \$1.59 | PREFERRED TRIM RUMP ROAST POUND \$1.99 | PREFERRED TRIM SIRLOIN TIP STEAK POUND \$2.39 | PREFERRED TRIM SIRLOIN TIP STEAK POUND \$2.29 | FRESH GROUND ROUND POUND \$1.79 |
|--|---|--|---|--|--|--|

SHURFINE REG. OR POLISH Smoked Sausage \$1.29 LB.

U.S.D.A. GRADE A PILGRIM'S PRIDE THIGHS. Wings or Drumsticks 69¢ LB.

| | | | | |
|--|-------------------------------------|---|--|--|
| SHURFINE FULLY COOKED BONELESS WHOLE HAM POUND \$1.89 | HALF HAM 3-4 LB. AVG. \$1.99 | SHURFINE PIMENTO OR JALAPENO CHEESE SPREAD 5 OZ. CTN. \$1.29 | SHURFINE PIMENTO CHEESE SPREAD 14 OZ. CTN. \$2.19 | SHURFINE POTATO SALAD 14 OZ. CTN. 79¢ |
|--|-------------------------------------|---|--|--|

ASSORTED FLAVORS Shurfine Soda Pop 3 LITER BOTTLE 69¢

SWEET JUICY California Nectarines POUND 69¢

White Onions FRESH 3 \$1

LARGE Baking Potatoes POUND 39¢

Tangy Limes EACH 10¢

RED DELICIOUS WASHINGTON APPLES POUND 49¢

| | | | | | |
|--|--|--|--|--|--|
| SHURFINE MEAT WIENERS 12 OZ. PKG. 59¢ | SHURFINE BEEF WIENERS 12 OZ. PKG. 99¢ | SHURFINE P&P LOAF, OR SALAMI 8 OZ. PKG. 59¢ | SHURFINE HAM STEAK 12 OZ. PKG. \$1.79 | SHURFINE 97% FAT FREE HAM OR SLICED TURKEY BREAST 4 OZ. PKG. \$2.29 | 97% FAT FREE HAM 4 OZ. PKG. 99¢ |
|--|--|--|--|--|--|

ASSORTED Shurfine Vegetables 15-17 OZ. CANS 3.99¢ FOR

2 PLY-SHURFINE Paper Towels ROLLS 2.99¢ FOR

ASSTD. M'IAL SOFT Shurfine Bath Tissue 4 ROLL PKG. 69¢

ALL PURPOSE Shurfine Flour 5 LB. BAG 69¢

SHURFINE FACIAL Tissue 175 CT. BOX 69¢

WESTERN FAMILY 42 CT. BABY WIPES 99¢

ULTRAS 26 BOYS / GIRLS ASSORTED STAGES Shurfine Diapers 26-40 CT. CONV. PKG. \$5.69

FAMILY SIZE Shurfine Spread 3 LB. TUB 99¢

GRANULATED Shurfine Sugar 4 LB. BAG \$1.19

SHURFINE Mac & Cheese Dinners 7.25 OZ. BOXES 6.99¢ FOR

| | | | |
|---|-------------------------------------|--|--|
| SHURFINE WHITE NAPKINS 120 CT. BOX 69¢ | SANDWICH BAGS 80 CT. BOX 89¢ | SHURFINE LAWN & LEAF BAGS 10 CT. BOX \$1.59 | ALUMINUM FOIL 12 X 25 BOXES \$2 |
|---|-------------------------------------|--|--|

SHURFINE KETCHUP 28 OZ. BTL. 79¢

SHURFINE SPAGHETTI SAUCE 30 OZ. JAR 99¢

SHURFINE ELBOW MACARONI OR LONG SPAGHETTI 24 OZ. PKG. 79¢

HERSHEY'S CANDY 13-16 OZ. PKGS. 2 \$5 FOR

GROCERY SPECIALS!

| | | | |
|--|--|--|---|
| SHURFINE FABRIC SOFTENER SHEETS 40 CT. BOXES 2.33 | PLAIN OR IODIZED SHURFINE SALT 26 OZ. CTNS. 99¢ | SHURFINE VEGETABLE OIL 48 OZ. BTL. \$1.99 | SHURFINE SALAD DRESSING 8 OZ. BTL. 89¢ |
| SHURFINE DISH DETERGENT 22 OZ. BTL. 99¢ | ASSTD. VARIETIES SHURFINE CAT FOOD 4.5 OZ. CANS 99¢ | SHURFINE COFFEE CREAMER 11 OZ. JAR 79¢ | |

SHURFINE LIQUID BLEACH 1 GAL. JUG 69¢

ALL PURPOSE ENRICHED SHURFINE FLOUR 25 LB. BAG \$2.99

OLD FASHIONED PREMIUM ASSORTED SHURFINE ICE CREAM 1/2 GAL. RND. CTN. 2 \$3

CHUNK OR GRAVY SHURFINE DOG FOOD 40 LB. BAG \$5.99

GRANULATED SHURFINE SUGAR 4 LB. BAG \$1.19

SHURFINE-FROZEN ORANGE JUICE 12 OZ. CAN 69¢

HEALTH & BEAUTY

| | | | | |
|--|---|---|---|--|
| WESTERN BAKING SODA 5 OZ. BOX 99¢ | WESTERN FAMILY Ibuprofen 100 75¢ | WESTERN FAMILY CHLOR TABS 32 99¢ | WESTERN FAMILY Reg. / Super Tampons 30 CT. PKG. 2.99 | SHURFINE LIGHT BULBS 2 PKG. 69¢ |
|--|---|---|---|--|

APPLE OR CHERRY Shurfine Pie Filling 20-21 OZ. CAN 99¢

SHURFINE CLOVER HONEY 16 OZ. JAR \$1.69

SHURFINE-REG. OR PINK GRAPEFRUIT COCKTAIL OR GRAPEFRUIT JUICE 48 OZ. JAR \$1.69

SHURFINE GRAPE JELLY 18 OZ. JAR 99¢

SHURFINE-SWEET PICKLE RELISH 16 OZ. JAR \$1.19

SHURFINE-ASSTD. SALAD DRESSING 8 OZ. BTL. 89¢

FROZEN-SPECIALS

SHURFINE REG. / PINK Lemonade or Fruit Punch 12 1/2 LITER 2.89¢ FOR

SHURFINE FRENCH FRIES 12 OZ. BAG 99¢

ASSORTED SHURFINE VEGETABLES 12 OZ. BAG 99¢

SHURFINE WHOLE STRAWBERRIES 12 OZ. CAN \$1.39

SHURFINE REG. CREAMY WHIPPED TOPPING 8 OZ. TUB 69¢

WOOD RULER 12 INCH 25¢

EVER-HARD YELLOW PENCILS 24 CT. PKG. 39¢

WITH POCKETS MEAD 3 BRAD Report Cover 4 \$1.79

GLUE-ALL OR Elmer's School Glue 4 OZ. BTL. 79¢

CRAYOLA Crayons 16 CT. PKG. 99¢

ACCO NEON BINDER EACH 69¢

MEAD 3 SUBJECT NOTE BOOK 120 PAGE 79¢

SAFETY OR POINTED SCISSORS EACH 59¢

ASSORTED BIC STIC PENS 30 PENS 99¢

BIC-ASSTD. Wavelength Pens 12 PENS \$1.29

DAIRY SPECIALS

CHILLED Shurfine Orange Juice 64 OZ. JUG \$1.39

| | | | | | |
|---|--|--|--|--|---|
| SHURFINE DELUXE CHEESE SLICES 12 OZ. PKG. \$1.89 | SHURFINE MILD CHEDDAR CHEESE 12 OZ. PKG. \$2.59 | ASSORTED TEXAS STYLE SHURFINE BISCUITS 12 OZ. CAN 59¢ | SHURFINE ENGLISH MUFFINS 12 OZ. CAN 59¢ | SHURFINE DANISH ROLLS 11 OZ. CAN \$1.39 | SHURFINE CINNAMON ROLLS 9.5 OZ. CAN \$1.39 |
|---|--|--|--|--|---|

Lowe's Pay-n-Save

MARKETPLACE

401 W. Amer. Blvd. Muleshoe 272-4585

515 W. Amer. Blvd. Muleshoe 272-4406

PRICES EFFECTIVE AUGUST 4-10, 1994

WE RESERVE THE RIGHT TO LIMIT QUANTITIES IN TEXAS

Our Best to you!

Record

Continued from page 7

Obituaries

Jack Earl Isaacs

SNYDER - A memorial service for Jack Earl Isaacs, 82, of Snyder was held on Thursday, Aug. 4 at Bell-Cypert-Seale Funeral Home. Chaplain Stan Wilson officiated. Burial was held at Snyder Cemetery.

Isaacs died Tuesday, Aug. 2, 1994 at Snyder Care Center.

He was born on Nov. 7, 1911 in Snyder. He married Rayolene Smith on Sept. 3, 1942 in Snyder. She died in Oct. of 1992.

Isaacs was a Methodist and member of Mason Lodge #706. He had lived his life in Scurry County, where he was a farmer and rancher.

He is survived by two sisters, Gertrude Fish of Snyder and Farene Harris of Muleshoe; a brother-in-law Jack Martin of Snyder; a nephew, Jeff Martin of Fluvanna; three nieces, Judy Church, Janet Merritt, Jacqueline Wills and numerous other nieces and nephews.

He was preceded in death by his wife Rayolene in 1992 and by six sisters and a daughter, Jane Isaacs.

Services were under the direction of Bell-Cypert-Seale Funeral Home.

MISD to conduct budget hearing

The Muleshoe Independent School District Board of Trustees will conduct a public hearing on the proposed 1994-95 school budget during a

meeting on Monday, Aug. 8 at 7 p.m. at the Administration Building.

The board is expected to adopt the budget and vote on

the proposed tax rate of \$1.2567. They will also discuss the Group Health Trust and take appropriate action related to the third party ad-

ministrator, a preferred provider organization and Section 125.

They will approve the certified appraisers and appraisal

calendar for 1994-95 and receive Update 46 from the Texas Association of School Board Policy Service.

The board will also conduct an executive session to receive resignations and consider hiring new personnel, followed by appropriate action.

In the Service

Mobbs

FORT KNOX - Army Pvt. Shon C. Mobbs has completed the calvary scout course here. Students received basic combat and reconnaissance training, camouflage and concealment, communications, demolitions and first aid.

Mobbs is the son of Debbie and Quintin Merrill of Lorenzo. He is a 1993 graduate of Lorenzo High School.

Showers

Foster is honored with bridal shower

A bridal shower honoring Jill Ann Foster of Muleshoe was held on July 30, 1994 at Muleshoe Heritage Center Depot. She is the bride-elect of Kip McCall of Muleshoe. The couple were married on Saturday, Aug. 6, 1994 at University Baptist Church in Portales, N.M.

Foster is the daughter of Jane C. Foster and Larry L. Foster. McCall is the son of Betty McCall of Muleshoe and Don McCall of Amarillo.

The hostess gift was a vacuum cleaner.

Hostesses were Kay Mardis, Paula Benton, Frances Bruns, Margaret Copley, Charlotte Field, Carlene Stroud, Jo Harmon, Jane Reeder, Debbie Jo Kemp, Tawna Ward, Ronda Scott, Ricki Kelley, Judy Moore and Judy Wilbanks.

Special guests were: Clytie Calton, grandmother of the bride; Juanita Holt, grandmother of the groom;



Jill Ann Foster

Charlene Foster, grandmother of the bride; Elrie Capps, great-grandmother of the bride; Sharon Davis, aunt of the bride; Micah Davis, cousin of the bride; Lynda Spencer, aunt of the groom; Tanya Griswold, sister of the groom; Jane Foster, mother of the groom; and Jodie and Jana Foster, sisters of the bride.

Subscribe To The Muleshoe Journal
And Read Your Hometown News

MULESHOE AREA
M E D I C A L

Center

ANNOUNCING AN
ORGANIZATIONAL
MEETING OF A
"BETTER BREATHERS
CLUB"

Wednesday, August 17th
1:00 P.M. - 2:00 P.M.
Muleshoe Area Medical Center
Dining Room

Education, information,
and refreshments!

Especially provided for all
those who experience
respiratory problems or have
loved ones who do.

Sponsored by
Muleshoe Area Medical Center
Respiratory Therapy Department
and
The American Lung Association

TWO OF THE HOTTEST NUMBERS ON THE LOT.

2.9%

APR Financing
or \$750 Cash Back⁽¹⁾

#1-Selling Truck⁽²⁾



Ford F-150 Texas SE

- Driver's-Side Air Bag⁽³⁾
- Chrome Wheels
- AM/FM Cassette
- Two-Tone Paint
- Air Conditioning
- And More!

Now get low 2.9% APR Financing or \$750 cash back on select F-150 Regular Cabs. 2.9% can reduce your monthly payment by over \$55 a month! But you'd better hurry, this hot number ends August 8th!

(1) 2.9% APR Financing or \$750 cash back on new 1993/1994 F-150 Reg. Cab, 6-cyl. manual transmission. Varies by credit worthiness of consumers as determined by Ford Credit. 2.9% APR for 48 months at \$22.09 per month per \$1000 financed with 10% downpayment. Dealer participation may affect savings. Take new retail delivery from dealers' stock between 7/8/94 - 8/8/94. Residency restrictions apply. See dealer for details. (2) Based on 1994 CY R.L. Polk Registrations. (3) Always wear your safety belt. (4) Example: \$55.37 monthly payment difference based on financing MSRP \$17,158 with \$1,000 down for 48 months at 2.9% APR (\$356.93 per month) compared to average APR of 10.32% (\$412.30 per month) for contracts purchased by Ford Motor Credit in Texas during May, 1994.

New grand presides at lodge

Tuesday Aug. 2 sixteen members were served a delicious supper by Ina Wilemon, Mary Ann Ramirez, Becci Benson, Dire Snell and enjoyed a lot of Fellowship.

The meeting was opened by new Noble Grand, Betty Vanzandt, and a job well done.

Those who are still on our prayer list include Olan Burrows in Methodist hospital, not improving. Ernest Bass in St. Mary's improving slowly. Velma Howell had minor sur-

gery but is home improving also her sister Vista in Idaho is having problems tolerating treatments for cancer.

Ona Bury is improving at home. Maud Young is not feeling so well, Doris Lambert will undergo test at Temple next week. Good Luck Doris. And Clay Vansandt is in hospital at Seattle, Wash. Hope he will be well in a day or so.

Invitation to the degree under the stars on August 20 at Clovis was read. To those who

have never attended they are missing a experience of fellowship with other members from all over New Mexico and West Texas.

Plan to attend this year. To be at Edd Knuff Park at 3 p.m. M.S.T. Evening Meal around 6:30p.m.

The Rebekah's will sponser skating for all who want to

skate young or old at the Civic Center this fall. Bring Refreshments will be served.

Lions to conduct broom sale

The Muleshoe Lions club will conduct an all-out drive on Aug. 24 from 8 a.m until 5 p.m. to sell quality Blind Made Merchandise to residents and local businesses.

All of these items are manufactured by blind and visually impaired workers in the Lighthouses for the Blind. In addition, the Lions Club's earnings will be used to continue scholarships for local seniors, the local eyeglasses program, and other projects to serve the community.

The entire membership of the Lions Club has been organized to supply friends and neighbors with these quality items.

The Mop and Broom Sale will be located at the Muleshoe State Bank parking lot where citizens may purchase directly from the Caravan truck, or contact Bill Moore at 272-3389 to have orders delivered. Pre-orders can be made through any member of the Lions Club.

Sales of Blind Made Merchandise in previous years have been very successful and Lion President Mark Morton expressed his confidence in reaching a new all-time goal this year.

"Every home and business can use some of these cleaning aids, and every item purchased helps provide dignity and the security of regular employment for our blind citizens."

Have a nice day

Muleshoe Area Calendar

MONDAY, AUGUST 8

Cub Scouts, boy scout grounds
Girl Scouts, girl scout hut, 3:30 pm
Muleshoe Heritage Foundation, Old Depot
Border Rounders dance, 7:30 p.m., Civic Center

TUESDAY, AUGUST 9

Alcoholics Anonymous, Muleshoe Counseling Center, 8:00 pm
Rebekahs, Lodge Hall, 7:30 pm
Rotary Club, Civic Center, noon
Muleshoe Senior Citizens dance, Legion Hall, 8:00 pm
Jennyslippers, noon, Depot
Masonic Lodge, 7:30 p.m., Masonic Lodge
Young Homemakers, Muleshoe Church Of Christ

WEDNESDAY, AUGUST 10

Lion's Club, noon, Civic Center
Muleshoe Volunteer Fire Dept., City Fire Station

THURSDAY, AUGUST 11

Oddfellows, Lodge Hall, 7:30 p.m.
Tops Club, Am. Blvd. Church of Christ, 6:00 pm
Muleshoe Squares, Legion Hall
Border Rounders Square Dance, Muleshoe Square, 7:30 p.m., American Legion

FRIDAY, AUGUST 12

Muleshoe Road Riders
Daisy Girl Scouts, girl scout hut, 3:30 pm
Kiwanis Club, 6:30 am

With A Little Help from Your Friends At Muleshoe Area Healthcare Center

You'll Find Life Is Still Terrific!



We want you to maintain, as much as possible, the independent lifestyle you're used to. So our facility is now offering adult day care and respite care. If you just need a day or a week or two away from your caregiver or family, come join us. There's something for everyone here. Art, music, games, exercise classes, meals and a whole lot more.

If you're not ready to give up doing things and enjoying life, but staying home sometimes presents a problem, you ought to consider staying with us part time!

Call Rita Walker at 272-7578 for more information.

MULESHOE AREA MEDICAL CENTER

is pleased to announce a new service for our area residents.

SANFORD T. WARD, D.O.

will be holding an Ear, Nose and Throat Clinic at the hospital
The 1st and 3rd Wednesday each month

1:00 p.m. - 5:00 p.m.

For appointments call Dr. Ward's office in Lubbock
800/693-6208

Summer Merchandise Close-Out

All Remaining Summer Merchandise

35 to 75% OFF

The fashion girl
MERLE NORMAN COSMETICS

103 W. 2nd Portales 359-0815

10% OFF
First Merle Norman Cosmetic Purchase With FREE Merle Norman Makeover

Open 9:00-5:30
Monday thru Saturday

READ THE CLASSIFIEDS!



\$ MONEY

INSTANT WIN GAME

WIN FREE FOOD!

Come in and Start Winning Today!

WIN UP TO \$1000 INSTANTLY!

Pick up your free game ticket today!

FINAL WEEKS OF OUR PROMOTION!!!

PRICES EFFECTIVE
AUGUST 7-13, 1994
-318 W. American Blvd.-
272-4862 MULESHOE

FREE GAS FOR A YEAR
VICTOR E. PEREZ
ALBUQUERQUE, NEW MEXICO
PEGGY R. RUBIO
BARSTOW, TEXAS
MARIE WARREN
CANYON, TEXAS
SHEILA LEWIS
BORGER, TEXAS
LISA RAMIREZ
RUIDOSO, NEW MEXICO
MARINA UNDERWOOD
WINK, TEXAS
JIM LINDSEY
WELLINGTON, TEXAS
MICKY WILLIAMSON
GUADALUPITA, NEW MEXICO

\$50.00 WORTH OF GASOLINE FREE!!!

TAKE THIS COUPON TO BIG COUNTRY FORD 2400 MABRY DR. CLOVIS, NEW MEXICO 88101. IF YOU PURCHASE A NEW VEHICLE BEFORE AUGUST 13, 1994 YOU WILL RECEIVE \$50.00 WORTH OF FREE GASOLINE COURTESY OF ALLSUP'S.

ALLSUP'S
SAUSAGE, EGG, & BISCUIT
FOR ONLY
99¢

\$1,000 WINNERS!
VICTORIA A. MATTHEWS
LAS VEGAS, NEW MEXICO
PAM FREEMAN
BALKO, OKLAHOMA
ARCHIE A. CRAWFORD
ALAMO, NEW MEXICO
DAVID JONES
CARLSBAD, NEW MEXICO
MARLO BOOGUA
GALLUP, NEW MEXICO

ATTENTION CUSTOMERS!
All second chance Sweepstakes Tickets must be deposited in the stores by August 13th. The drawing for the Ford Escort LX will be held on Friday August 19th. You must have all your Free Products redeemed by August 31st.

| | | | |
|--|--|---|---|
| ALLSUP'S HOT LINKS 2 FOR 99¢ | SAVE ON SHOCK TARTS 2 FOR 99¢ | ALLSUP'S HOMOGENIZED MILK GALLON \$1.99 | SHURFINE MAGIC STARS 14 OZ. BOX \$1.99 |
| WILSON MEAT FRANKS 12 OZ. PKG. 69¢ | ASSORTED SARA LEE DANISH 2 FOR \$1.00 | SAVE ON TROLLI GUMMI 5.29 OZ. BAG 99¢ | DECKER CHOPPED HAM 10 OZ. PKG. \$1.59 |
| PEARSON'S "BONUS" NUT ROLL 15 OZ. 2 FOR 89¢ | ALL TYPES PEPSI-COLA 6 pk. 12 oz. cans \$1.79 | SHURFINE SQUEEZE TOMATO KETCHUP 28 OZ. 99¢ | SHURFINE PEANUT BUTTER 18 OZ. JAR \$1.99 |



\$ MONEY

Free Food & Food Products!

Nursing Home News

By Joy Stancell

Corrections for Nursing Home News on August 4th.

Friday morning Rev. and Mrs. Darrell Sanderlin and girls.

Our thanks to Howard Awbrey (not Embry).

Entertainment for Birthday party Rev. Darrell Sanderlin and Wayland Ethridge of the First Assembly of God.

Jeanetta Hukill (not Huskill) and Mr. Hukill brought the Lubbock paper.

Happy August Birthday to - Arnold Beckett Aug. 20, Nell Parkison Aug. 19, Elodia Reyna Aug. 14, Rosa Sneed Aug. 31 st, Rena Tharp Aug. 29, Bootie Tiller Aug. 28.

Friday afternoon the J. O. Y. Choir from the First Baptist Church came to lead and play gospel hymns and music. Refreshments of finger sandwiches, cookies and punch were served to all attending and residents in their rooms.

Sunday afternoon Billie Downing played gospel songs and "old favorites" on the piano for the residents.

Tuesday afternoon Lanell Stancell, Martha McCormick and granddaughter Lisa, Claudine Embry and Lindsay came to shampoo and set the ladies hair.

Wednesday morning Melvin Griffin (Welcome back Melvin from your vacation) Buster and Wanda Kitrell hosted coffee, spudnut and Table Talk Time. Following this event, Thursie Reid gave a program on birds - she shared many interesting facts and bird figurines, bird houses and relics. Stacy Peterson brought a pet parakeet in a cage for the

MISD to discuss Group Health Trust at meeting

The Muleshoe Independent School District Board of Trustees will meet on Monday, Aug. 8 from 11 a.m. to 1 p.m. at the Bailey County Coliseum to discuss the Group Health Trust.

No action is expected to be taken at this meeting.

Commissioner's court to meet

The Bailey County Commissioner's Court will meet on Monday, Aug. 8 at 10 a.m. at the Bailey County Courthouse.

During the meeting Monday, the commissioners will discuss the proposed fiscal year 1995 budget and set a date for a public hearing on their budget.

They will also consider a budget amendment and review and approve a report from the county treasurer for the month of July. They will also authorize the use of county road machinery and equipment for soil conservation and the prevention of soil waste through erosion, as authorized in 201.151 of the Agriculture Code.

residents to listen to and observe.

Wednesday afternoon Mr. and Mrs. J. C. Shanks came to play and sing gospel songs with the residents.

Ryan Lusk brought his chinchilla "Al" to visit Friday. Al made friends with just about everyone he came in contact with. Ryan also brought a pretty bird Wednesday afternoon to visit.

Arvilla Sliger was visited by Nan Gatlin Tuesday afternoon.

Jewell Griffith left Wednesday afternoon for her home to live. We are proud that she is able to go by we really will miss her. She was a delight to us all.

Thursday morning Rev. David McIntire, assisted by Clara Lou Jones and Rue

Kimbrough directed a memorial service for Minnie Pettyjohn. Retha Tigie sang a special song.

Vera Downing's daughter Maxine is here visiting.

Have a nice day!

Got something to buy or sell? Read the classifieds!

Rebecca's Sewing Box Still Open

Different Location!
410 E. Austin Muleshoe
272-4132
Your Business Is Appreciated
Hope To See You Soon!!

Immaculate Conception Catholic Church
805 E. Hickory
Father Joseph Augustine

First Baptist Church
220 West Ave. E.
Pastor, Stacey Conner

Emmanuel Baptist Church
Iglesia Bautista Emmanuel
107 East Third
Isaias Cardenas, Pastor

Trinity Baptist Church
314 E. Ave. B
Rev. Dale Berry, Pastor

Circle Back Baptist Church
Intersection FM 3397 & FM 298
Rev. Jessie Shaver
946-3676

Calvary Baptist Church
1733 W. Ave. C
Pastor Ben Davis

Progress Baptist Church
Progress, Texas

Richland Hills Baptist Church
17th & West Ave. D

St. Matthews Baptist Church
Corner of West Boston & West Birch
Pastor, Floyd R. Monroe

Progress Second Baptist Church
1st and 3rd Sundays
Rev. Arthur Hayes

Primitive Baptist Church
621 South First
Elder Cleveland Bass. Pastor

1st Baptist Church
Lazbuddie, Tx.
Bobby Alexander, Pastor
965-2126

Lazbuddie Church of Christ
Minister, Nathan Crawford
Sunday School 9:30 a.m.
Morning Services 10:20 a.m.
Evening Services 5:00 p.m.
Wednesday Night 7:00 p.m.

16th & Ave. D Church of Christ
Sunday 10:30 a.m.
Evening 6:00 p.m.
Wednesday 7:30 p.m.
Curtis Shelburne, Minister
272-4619

First Assembly of God
272-3017 or 272-3984
Rev. Darrell R. Sanderlin, Pastor
521 South First Street
Sunday Services: 9:45 & 11:00 a.m.
6:30 p.m.
Wednesday Services 7:30 p.m.

St. John Luthern
Lariat, Texas
Sunday School and Bible Classes 9:30 a.m.
Church Services 10:30 a.m.
Rev. Richard Greenhaner

The Christian Center
Morton Hwy.
Reydon Stanford
272-5263 or 272-5105

New Covenant Church
Plainview Hwy
Sunday 10:00 a.m.
Wednesday 7:00 p.m.
Phil Ensminger, Pastor

Lazbuddie Methodist Church
965-2121
G. Scott Richards, Pastor

New Vision Church Of The Nazarene
814 W. Ave. C
272-3622
Pastor David R. McIntire

Primera Iglesia Bautista
223 E. Ave. B
Roy Martinez, Pastor

'Iglesia Pentecostal Unida'
207 East Ave. G
272-3636
Pastor: Wenceslodo Trevino

Lariat Church of Christ
Sunday School 10:00 a.m.
Worship 11:00 & 6:00
Wednesday Services 7:00 p.m.
Sam Billingsley, Minister
Muleshoe Church of Christ
Clovis Hwy

First United Methodist Church
507 W. 2nd Street
Dr. James Bell, Pastor

El Divino Salvador Methodist Church
E. 5th and E. Ave. D
Rev. Libney Penada, Pastor



Around almost any home you will find flowers that someone planted, watered, and with tender care, helped bring forth into a thing of beauty. People are very much like flowers, and it is wonderful to see a child walking in the path of the Lord, being trained and taught the ways of the Lord. Then one day you realize the fruits of your labor as they blossom forth and show their appreciation and love for God. Bring your children to church where others can help you in this labor of love.



The Church is God's appointed agency in this world for spreading the knowledge of His love for man and of His demand for man to respond to that love by loving his neighbor. Without this grounding in the love of God, no government or society or way of life will long persevere and the freedoms which we hold so dear will inevitably perish. Therefore, even from a selfish point of view, one should support the Church for the sake of the welfare of himself and his family. Beyond that, however, every person should uphold and participate in the Church because it tells the truth about man's life, death and destiny; the truth which alone will set him free to live as a child of God.

© Coleman Adv.

Attend The Church Of Your Choice!

| | | | |
|--|---|--|--|
| <i>Attend The Church Of Your Choice</i> | <i>Bobo Insurance Agency</i> 108 E. Ave. C 272-4264 | <i>Bailey Gin Co.</i> 946-3397 | <i>American Valley, Inc.</i> W. Hwy 84 272-4266 |
| <i>Bailey County Farm Bureau</i> 1612 W. Amer. Blvd. 272-4567 | <i>Viola's Restaurant</i> 2002 W. Amer. Blvd. 272-3838 | <i>Western Drug</i> 114 Main 272-3106 | <i>James Crane Tire Co.</i> 322 N. 1st 272-4594 |
| <i>Decorator's Floral & Gifts</i> 616 S. 1st 272-4340 | <i>Wes-Tex Feed Yards, Inc.</i> 272-7555 | <i>Attend The Church Of Your Choice</i> | <i>5-Area Telephone Cooperative, Inc.</i> 302 Uvalde 272-5533 |
| <i>Irrigation Pumps & Power</i> W. Hwy 84 272-4483 | <i>Attend The Church Of Your Choice</i> | <i>Bob Stovall Printing</i> 221 E. Ave. B. 272-3373 | <i>First Bank</i> Member F.D.I.C. 202 South First 272-4515 |

Foley family reunites

The Foley reunion was held on July 23 in Littlefield. The family met at the Cattlelacs Steak & Grill for lunch. Afterwards, everyone went to Parkview Baptist Church for visiting, ice cream and homebaked goodies. The children of all ages went swimming.

Those attending from Maple were Clif, Kelly, Kara, Canaan, Caleb, and Colton Heinrich. Attending from Springlake was Annie Lois McCurry.

Also attending were: Art Foley Sr., Feris and Toni Foley, M.J. and Nell Cotter of Littlefield; Elbert and Ida Mae Callis of Roswell, N.M.; Janet Arnold of Artesia, N.M.; Charles and Billie Owens, David, Sarena, Jill and Cory Owens, Bill and Kim Owens of Detroit, Texas; and Annette and Cody Davidson of Paris.

Also attending were: Garry, Marsha, Jamie, Julie and Brian Romines of Mt. Vernon; Carl, Jo Nell and Bruce Leavelle and LaJuana Dixon of Stafford, Kan.; Tommy, Cynthia, Richard, Robert and Stephen Leavelle of Clinton, Miss.; Bobby and Paula Foley and Ron Foley of Goodland and Robbie De'Aun, D'Lea, Chase and Garrett Autry of Tahoka.

Also attending were: Jimmy and Virginia Foley of Ft. Morgan, Colo.; Howard Cotter or Levelland; Janie Cotter Crawford and Quade of Harlingen; Linda Ellis of Southland; Chole Klutts and Barbara Junker of Lubbock; Audley and Della Jo Hamrick of Knoxville, Tenn., and Buford and Fay Martin of Slaton.

Reserve tickets ready

Persons who held reserve seat tickets for the 1994 football season may pick up their options on these tickets at the School Business Office, 514 West Avenue G, starting Monday, Aug. 8, through Friday, Aug. 26. Those persons whose names appear on the chart may pick up their tickets:

(1) in person. (2) by mail with ticket. (3) by third party if tickets are purchased with ticket holder's personal check.

Beginning Aug. 29, all remaining tickets will go on sale on a first come, first serve basis. Reserve tickets may be purchased at the School Business Office during regular office hours from 8:30 a.m. to 5:00 p.m.

Reserve tickets for five home games, student season tickets, adult general admission and student general admission are available.

Birthdays policy

The Muleshoe and Bailey County Journals publish birthday announcements free of charge for babies one year old or for people ages 90 and over. A photo may also be included with the announcement. Complete guidelines and forms are available at the Muleshoe Journal office.

Hutto receives award at basketball camp

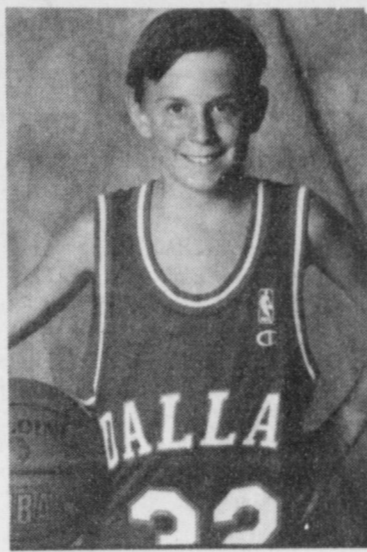
T.J. Hutto II of Muleshoe received a top award for hustle, self-improvement, coach ability and sportsmanship at a recent Dallas Mavericks Organization basketball camp held July 20-24 in Plano.

Awards were given at the closing ceremony at the camp. One camper from each of the three divisions received a top award.

Maverick coaches lead campers in instruction on ball handling, shooting skills, nutrition, correct body building procedures and team play. Special appearances were made by various Dallas Mavericks stars during the camp.

Hutto received the award in the 10-13 year-old division. As an award T.J. received a special Mavericks cap.

He was nicknamed "Iron Man" by his coaches because he was not afraid to get on the



T.J. Hutto

floor and dive after the ball. Head coach at the camp Jim Guy said, "This is a tremendous honor. We take this award seriously at this camp and the recipient of this particular award is chosen carefully."

T.J. is the son of Terry and Debbi Hutto of Muleshoe.

Three Way News

By Mrs. H.W. Garvin

George Tyson spent the past weekend at Brownwood attending the annual Tyson family reunion.

Mr. and Mrs. James Gillentine from Lubbock spent Friday night and Saturday with her mother Mrs. H.W. Garvin.

Several families from the community are vacationing in the mountains.

Mrs. Bobby Sinclair from Midland spent the weekend with her parents, the Bill Duplers and sister Eugena.

Robin Kindle from Lamesa is visiting her parents, the Boby Kindle's.

Nancy Castillo visited Mrs. H.W. Garvin on Thursday.

CALL TODAY TO PLACE YOUR AD IN THE CLASSIFIEDS

Thank You

Joe Yruegas and family would like to express their appreciation to the Immaculate Conception Catholic Church for a beautiful service, to the women of the church for a wonderful dinner, Ellis Funeral Home & Pallbearers and to Noe Elias Anzaldua for his words of kindness, and friends during the loss of their beloved father, Nestor Yruegas

BLOWOUT SALE

- HELD OVER -

Everything Must Go!!
No Payment Til February
* Up To \$2500 OAC

INSTANT CREDIT

A \$650,000 Inventory Offered Direct To The Public!
We Will Beat All Competitors Prices!!

- ✓ 6 Months Same As Cash
- ✓ 0 Interest
- ✓ 0 Down
- ✓ 0 A Month for 6 Months

No Reasonable Offer Will Be Refused.

UP TO 60% OFF MSRP

Bedding Buys - Over 200 sets of top quality bedding from King Koil and Famous Springwall

| | |
|--|----------|
| Better Quality - 10 Year Warranty | |
| Twin Size Set, Reg. \$309.00 | \$159.99 |
| Full Size Set, Reg. \$427.99 | \$217.99 |
| Queen Size Set, Reg. \$457.99 | \$247.99 |
| King Size Set, Reg. \$699.99 | \$399.99 |
| Best Quality - 15 Year Warranty | |
| Twin Size Set, Reg. \$349.99 | \$187.99 |
| Full Size Set, Reg. \$449.99 | \$257.99 |
| Queen Size Set, Reg. \$599.99 | \$299.99 |
| King Size Set, Reg. \$799.99 | \$499.99 |

Terms Of Sale:

- * Visa * Mastercard * Discover * American Express
- * On The Spot Financing * Cash or Personal Check
- * Layaway Available!

Open 9 a.m. - 6 p.m. Daily

SAME DAY DELIVERY

Sale Will Be Conducted On Premises Of

Furniture Plus

421 N. Main, Clovis, NM 505-762-5001

- Solid Wood Corner Curio**
Reg. \$399.99
SALE \$199.99
- End Tables**
Starting at \$67.99
- Daybeds**
Complete with mattress
Starting at \$199.99
- Bunkbeds**
Reg. \$449.99
Starting at \$219.99
- Sofa/Loveseat/Chair**
One Only, Reg. \$899.99
SALE \$399.99

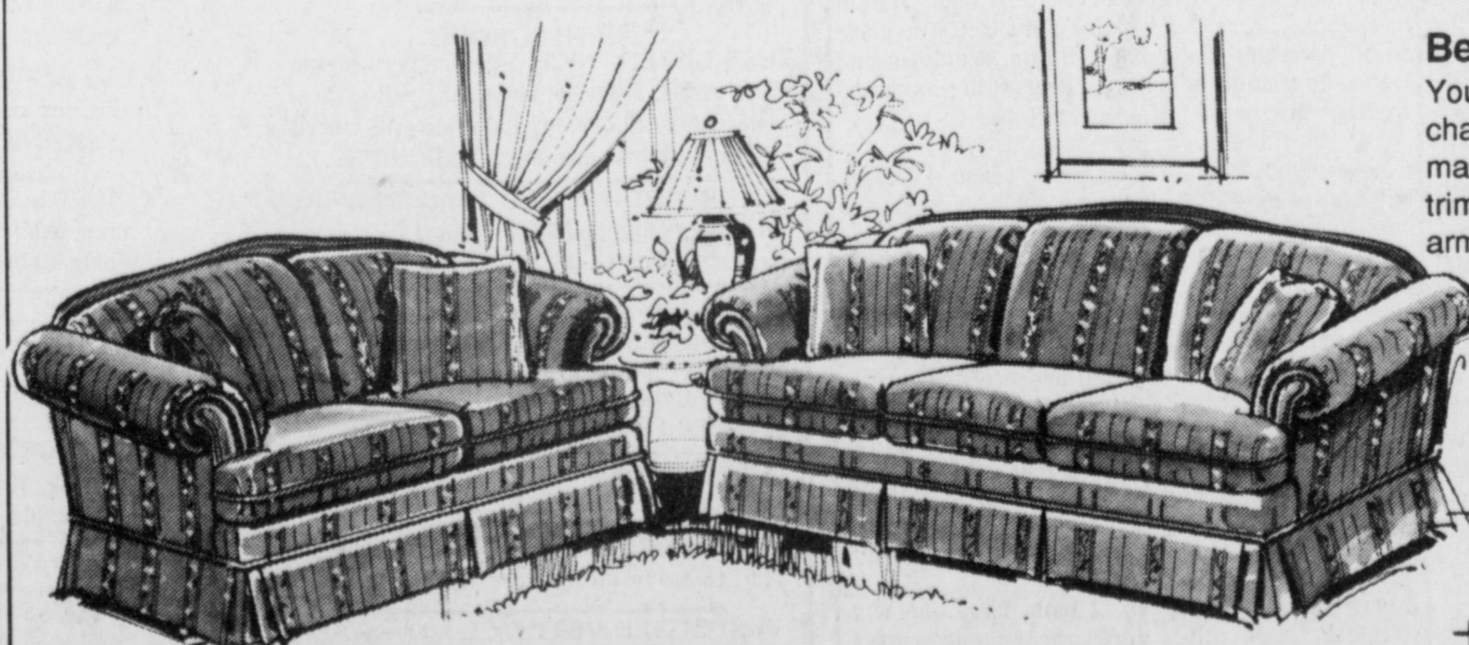
Treat yourself to the superior styling and quality

by *Mayo*

THE MAYO BROTHERS

Beauty that's timeless.

You'll love the classic look of this charming style! Gently contoured, masterfully tailored featuring a wood-trimmed serpentine back, sloping roll arms and pretty pleated skirt.



- 90" sofa \$699
- 67" loveseat \$649
- Optional sleep sofa \$899

Calton Furniture

"Where Hwy 70 Divides"

507 E. 2nd Portales 359-1442

