



BAILEY COUNTY JOURNAL

'The Community Of Opportunity-Where Water Makes The Difference'



Vol. 28, No. 18

16 PAGES TODAY

Published Every Sunday At Muleshoe, Bailey County, Texas 79347

20¢ SUNDAY, APRIL 30, 1989

State Approves Hospital District

Local Voters To Decide If Hospital Stays Open

By: Dave Marr

On April 26, 1989, Governor Clements signed into law an Act relating to the creation, administration, powers, duties, operation, and financing of the *Muleshoe Area Hospital District*.

The law allows for an election at which the residents of the district will be asked to vote *FOR* or *AGAINST* the proposition: "The creation of the Muleshoe Area Hospital District and the levy of annual taxes for hospital purposes at a rate not to exceed 25 cents on each \$100 valuation of all taxable property in the district."

As you will recall, the hospital was closed in November of 1986 by Westworld. Over the next few months, the Board of Directors of West Plains Medical Center, Inc. sought financing to provide working capital to reopen the facility.

In the summer of 1987, during a special session of the Texas Legislature, a bill was introduced in the Senate to authorize the creation of the Muleshoe Area Hospital District. This was a thirty day special session and although the bill passed the Senate, it did not succeed in the House.

After the failure of this legislation, the City of Muleshoe made application to the State of Texas, Texas Department of Commerce for a Texas Capital Fund Grant and Loan. Many of you wrote letters in support of this application. The City was unsuccessful in obtaining these funds.

In November of 1987, the Board of Directors of West Plains

Medical Center, Inc. succeeded in reopening the West Plains Medical Center Hospital by obtaining substantial donations of volunteer labor and funds. Since that time, the hospital has remained open, but the fiscal crisis faced by the facility has not disappeared.

Although the facility is open, it is operating on a hand-to-mouth basis and cannot continue to operate indefinitely in this mode. In addition, many persons are unable to utilize the facility because it has not been able to regain its medicare and medicaid certifications.

The crisis facing our hospital is one shared by most of the hospitals located in rural America and many urban facilities. The causes of this crisis are too varied and complex to be discussed in this brief summary. The continued operation of the nursing home is also threatened by the hospital's problems due to the integral nature of the relationship of the hospital and nursing home.

The proposed solutions to these problems are also many and varied. Almost all of these solutions have at least one item in common. *Third party financial support.*

In an attempt to obtain a realistic and reliable vehicle for providing third party financial support, an effort was mobilized to have legislation passed which will allow for the creation of the Muleshoe Area Hospital District.

Public notices were published in December relating to this effort and draft legislation was given to our State Representative, Pete Laney, and State Senator, Teel Bivins, to accomplish this purpose.

Bills have been introduced (Senate Bill 696 and House Bill 1467) authorizing the creation of the Muleshoe Area Hospital District. Both the representative and the senator agreed to support the legislation. Lieutenant Governor Hobby also assisted in the passage of the legislation.

Briefly, the Act does the following:

1. It defines the boundaries of

Cont. Page 6, Col. 1



Muleshoe Study Club will be holding a garage sale at 619 West 7th St. Friday, May 5, 8 a.m.-6 p.m. to raise funds for their civic projects.

Named Educator of the Week for Watson Junior High School is Sandi Chitwood, eighth grade science teacher. Artist of the Month at WJHS is Jolene Benavidez.

Receiving principal awards as Students of the Week at WJHS were Todd Shipman, sixth grade; Tina Garcia, seventh grade and Jody Thomas, eighth grade.

Workers are not needed in Valdez, Alaska, to assist with oil spill cleanup. In a letter to the Texas Employment Commission, Joe Sitton, Director of the Alaska Employment Security Division, states, "Hundreds of job seekers are outside our office door each morning. Not only do we not need help, but there is not a bed to be had anywhere (even the churches are full), and it is still winter here, so camping or otherwise roughing it is out of the question."

The letter was sent by Sitton to TEC Administrator Bill Grosenbacher to seek the assistance of TEC in discouraging Texas workers from going to Alaska.

Hoax Phone Call Ties Up Emergency Personnel

It was a cruel hoax late Friday afternoon when a bogus telephone call tied up emergency personnel from three counties for

Five Area Gives Four Scholarships To Area Seniors

Four scholarships were awarded to area graduating seniors by Five Area Telephone Cooperative Inc. These scholarships were made available through the Cooperative by the First Bank of Muleshoe, according to Hubert Kidd, manager of Five Area Telephone Cooperative, Inc.

Recipients of this year's \$400 scholarships were:

Misty L'Gay Bartley, from Sudan High School. She is the daughter of Mr. and Mrs. Gene Bartley, RR Two, Sudan.

Krystal Angeley, Muleshoe High School, the daughter of Mr. and Mrs. R. D. Angeley, RR 4, Muleshoe.

Chad Waddell, of Lazbuddie High School, the son of Mr. and Mrs. Doyce Waddell, RR 1, Muleshoe.

Jarrod Sowder, Three Way High School, son of Mr. and Mrs. Mickey Sowder, HCR 3, Sudan.

Kidd explained that these scholarships may be used in any college, university, trade school or technical training institute of the student's choosing.

They are paid in four checks -- \$100 each semester for the first four semesters the students are in college.

Kidd said the scholarships can be used only if the student is enrolled in college, university, trade school or technical training institute.

He commented, "The employees, directors, and members of Five Area Telephone Cooperative, Inc. wish to congratulate these students for their outstanding achievements."



SORORITY GIVES CHECK TO CRIME LINE--Crime Line operates on donations by organizations, businesses and individuals. Thursday morning, Alpha Zeta Pi presented Crime Line representatives with a check for \$80. Pictured from left are Stephanie Barrett, Alpha Zeta Pi; Starla Ellis, Crime Line; Bailey County Deputy Sheriff Steve Bearden, Crime Line; and Rhonda Myers, Alpha Zeta Pi. Rewards are paid by Crime Line to individuals who give correct information leading to the arrest and indictment of individuals who have committed various crimes in this county. (Journal Photo)

Banks Show Deposit Increase; Loans Decrease Same Period

In the first quarter of 1989, the seven area banks checked show an increase of just over a million dollars in deposits and a \$7 million decrease in loans.

Overall, deposits were shown to be \$254,049,696, and this figures shows a \$1,011,376

increase over the \$253,038,320 on deposit at the same time in 1988. This figure reflects the combined total of First Bank of Muleshoe and First Bank of Bovina.

Loans at the same banks decreased \$7,614,181 during the same period of time. Loans shown closing out the first quarter of 1988 were \$101,194,882 and were \$93,580,701 to close the first quarter of this year.

In Muleshoe, Muleshoe State Bank has deposits of \$35,298,000 at the end of March this year, down \$3,734,000 from the \$39,032,000 on deposit closing out March of 1988.

Combined totals for First Bank of Muleshoe and their branch bank, First Bank of Bovina, show total deposits at the end of March this year to be \$48,902,000, an increase of \$3,453,000 over the \$45,449,000 at the same time last year.

Loans for the two banks also increased during the year. Total loans at the close of the first quarter of 1989 are shown to be \$20,830,000, an increase of \$2,114,000 over the \$18,716,000 at the same time a year ago.

Friona State Bank increased deposits by three-quarters of a million during the past year. Their deposits at the end of March last year were \$57,957,560 and this figure had increased by \$754,274 to \$58,711,834 at the end of March in 1989.

At the same time, loans for the bank increased by \$2,585,828. Friona State Bank's loans were \$28,520,318 at the end of March, 1989, an increase of \$2,585,828 over the \$25,934,490 shown a year ago.

At Sudan, First National Bank shows a slight increase in both deposits and loans for the year.

Deposits shown at the close of the first quarter, 1989, were \$11,618,720, up \$223,673 over the \$11,395,047 a year ago at the same time.

Some \$243,603 in loans reflect an increase there. Loans were \$3,846,987 closing out March, 1988 and at the same time this year were \$4,090,590.

First State Bank of Morton showed deposits totalling \$42,397,344 at the end of March this year, an increase of \$4,079,630 over the \$38,317,714 on deposit closing out March, 1988.

Loans at First State Bank in Morton increased by \$861,001 during the year. Loans were

\$10,168,296 at the end of March last year and for the first quarter of this year were \$11,029,297.

From Security State Bank in Farwell, a decrease was noted in both deposits and loans during the past year. Deposits were \$42,603,087 at the end of March, 1989, down \$2,498,297 from the \$45,101,384 shown on deposit March 31, 1988.

Loans for the bank decreased by \$4,543,234 during the year. Loans were \$9,889,146 at the end Cont. Page 6, Col. 4

Five Civil Cases Shown For Trials This Week

A panel of prospective jurors has been notified to report to 287th District Court for possible service to hear five civil cases scheduled beginning Monday, tomorrow.

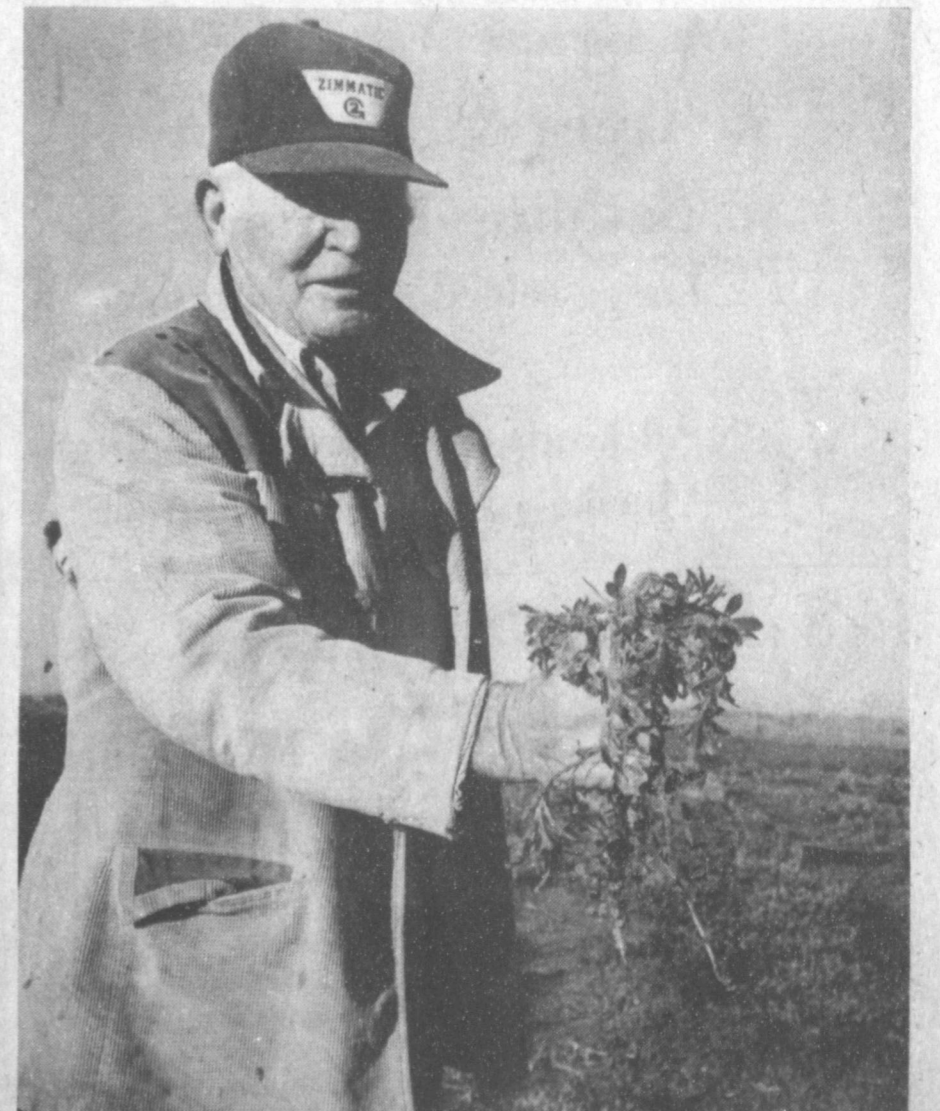
First case on the list is T. L. Timmons vs. Watson Alfalfa, followed by Federal Land Bank of Texas vs. Walter B. Little; Frank Stegall, et al vs. Caprock Farms, Inc., et al; Margarito Hernandez, et ux, et al vs. Emilio Valencia; and Pete Franco & Houston General Insurance Co. vs. J. K. Angeley Trucking & Scott Branscum.

Prospective jurors who will be reporting Monday morning include:

Mrs. Vere Kerr Fox, J. H. Lackey, William Theodore Milten, Beverly Nance Jinks, Jo Wagnon Mayhugh, Sydna A. Flowers, Juan Lopez Soto, Tommy Charles Taylor, Frances Dunbar Hamilton, Gerry Grant Pierce, Bobby Brent Nelson, Charlie Timothy Walker and Charles Larry Gist.

Also, Verner Ashton Dodson, Delton Eugene Wilhite, Frank Moreno Saldana, Jr., Euleess Barry Wilson, Jerry Max Harrison, Mildred Laverne Throckmorton, Frank Louis Stegall II, Bobby G. Free, Peggy Stephens Jones, Maudie Coffman Speck, Dana Smith Rasco, Felipa Trevino Garcia, and Terry Ray Yell.

Also, Tisha Dean Clements, Mary Roxbal Pedroza, Larry D. Ross, Nelda LeBleu Merriott, Wesley Thomas Cook, Jo Ann Autry, Mrs. Ellen Jo Glover, Don Seales, Jodie Sayers Barrett, Danny Lynn Kelley, Charleen Hurtado DeLeon, Helen Padilla Lovato, Samuel Gordon Harlan and Paul Edwin Wilbanks.



AND-THIS IS THE END OF APRIL?--Friday morning, J. K. Adams went to his alfalfa field just south of the Harmon Elliott Senior Citizen Complex to change his sprinkler, and found icicles dangling, as well as a very 'white' patch of alfalfa, where ice had formed in the early morning temperature. He is holding one ice covered handful of alfalfa plants. The temperature was reported to be as low as 34 degrees for Friday morning. (Journal Photo)

Cont. Page 6, Col. 3



APRIL BIRTHDAYS CELEBRATED—Thursday afternoon, the Needmore Community Club hosted a birthday party honoring residents of the Muleshoe Nursing Home who celebrated their birthdays in April. Mr. and Mrs. J. C. Shanks and the Needmore Community Club provided the music and Creations by Helen provided the flowers. Those celebrating birthdays included: Julia Hawkins, standing, who was born April 20, 1903; Guy Kendall, left, was born April 14, 1919; and Juanita Snow, who was born April 15, 1904. Not pictured: Robert Kimbrough, born April 7, 1907. (Journal Photo)

Girl Scouts Hold Annual Meeting And Recognition

On Saturday, April 22, the 1989 Annual Meeting and Recognition Event of the Caprock Girl Scout Council, Inc. was held in Plainview. Those attending from Muleshoe were Nelda Merriott, Service Unit Chairman; Mary Ann Ramirez, Linda Tosh and Lela Villarreal.

The group was welcomed by Shirley Igo, president of Caprock Council. Mrs. Merriott reported that a delicious buffet lunch was enjoyed by the large crowd which filled the Ollie Liner Center.

Girl Scouts presented the flag ceremony, which was followed by entertainment by the Girl Scouts of Earth and Plainview. Numerous Community Awards were presented by Shirley Igo, president.

It was noted that Kendra Foster, a Brownie Girl Scout of Idalou was the best salesperson of Girl Scout Cookies. She sold 1,647 boxes. "Surely everyone in Idalou is eating Girl Scout Cookies" said Mrs. Merriott. Kendra was awarded a computer for her outstanding effort.

Cheryl Puckett, a troop leader from Muleshoe earned a Leadership Development Pin.

Mrs. Merriott reported that the Girl Scout program is growing in the 18 county area of Caprock Council, showing a 9.6

percent increase during this past year. Having troops for the first time in several years were Kress, Hart, Plains, Abernathy, Spur, O'Donnell and Crosbyton.

The volunteer service unit chairmen were commended for supporting their leaders and working together with the staff of Caprock Council to help retain membership and touch more girls' lives.

All Girl Scout leaders and assistants were recognized and warmly thanked for their contribution to the Scouting program. Saturday, April 22 was officially Leader Appreciation Day and many leaders were honored by their troops in many special ways on that day.

"Our hats are off to the great leaders we have in Muleshoe" Mrs. Merriott continued.

A poem entitled "Portrait of Girl Scout Volunteers" was read and enjoyed by all.

The meeting was closed with a "Farewell Laser Light Show" for outgoing president, Shirley Igo. Everyone had taken a flashlight, which they shined through colored cellophane, in various sequences, during the Girl Scout song, which concluded, "I'm proud to say that I'm a Girl Scout!"

Creative Living

by Sheryl Borden

Information on how to plan your own hawaiian luau and a demonstration on furniture refinishing will be featured on "Creative Living" on Tuesday, May 2 at 12 noon and on Saturday, May 6 at 2 p.m. (All times are Mountain.)

Sheri Mader will demonstrate how to put on a successful hawaiian luau—complete with food, music, costumes and even decorations. Sheri represents Time Brokers, Inc., a catering business located in Albuquerque, N.M. Ms. Mader will go through the entire process of putting on a special event and will talk about planning the guest list and the place for the function as well as offer suggestions for selecting authentic music to create the right atmosphere, choosing decorations, invitations and even costumes.

The flashback segment will feature Lynn Gerhart who is an expert at furniture refinishing from Boynton Beach, Florida. Lynn travels around the country demonstrating a unique product developed by her father, using QRB, which stands for Quickly

Restores Beauty. Ms. Gerhart will present a mini-course in furniture refinishing.

On Tuesday, May 2 at 9:30 p.m., and repeated on Thursday, May 4 at 12 noon, "Creative Living" will present information on high fiber, gestational diabetes and how to do a landscape applique.

Donna Haverstock with Norwegian Dairies will talk about the importance on high fiber in our diets, and show how to substitute high fiber crispbread crackers in place of bread. Donna lives in Key West, Florida.

Dr. Lois Jovanovic-Peterson, a research scientist from Santa Barbara, California, will discuss gestational diabetes, which is a temporary but very serious condition that affects up to 10 percent of all pregnancies and is the most common cause of complications during pregnancy.

The flashback segment features Landscape Applique, which is a free-form type of applique, Kathy Albright from The Quilt Works in Albuquerque will demonstrate how to do landscape applique using ribbon, lace,

doilies and fabric.

"Creative Living" is produced and hosted by Sheryl Borden. The show is carried on more than 100 PBS stations in the United States, Canada, Guam and Puerto Rico and is distributed by Pacific Mountain Network, Denver, CO. Viewers can request copies of printed materials offered on the show by calling on KENW-TV's toll-free telephone lines between 8 a.m. and 5 p.m. In New Mexico, the number is 1-800-432-2361, out-of-state: 1-800-545-2359 and Portales and

Roosevelt County: 562-2112.

GARLIC KAVLI CHIPS
 1/2 cup butter or margarine, softened
 24 thin-style Kavli Norwegian crispbreads
 1/4 cup minced green onion
 1 medium clove garlic, minced
 In bowl, blend butter, garlic and onion. Spread on crispbreads. Arrange in single layer on ungreased baking sheets. Bake at 375F for 3-5 minutes until butter is melted and Kavli is lightly browned. Makes 24 wafers.

NEW HOURS

SUNDAYS
11:00 AM till 3:00 PM

MONDAY THRU SATURDAY
5:00 PM till 10:00 PM

- We will gladly cater luncheons for groups of 15 or more.
- Let us cater your dinner meeting or banquet.

Driftwood
Seasons
 Restaurant

3800 Mabry Drive
 • 763-6443

Statement of Condition

First Bank

March 31, 1989

Consolidated Report of Condition of Muleshoe And Foreign and Domestic Subsidiaries, a member of the Federal Reserve System, at the close of business March 31, 1989, published in accordance with a call made by the Federal Reserve Bank of this District pursuant to the provisions of the Federal Reserve Act.

LEGAL TITLE OF BANK		STATE BANK NO.	
First Bank of Muleshoe		2720-02	
Box 565		FEDERAL RESERVE DISTRICT NO.	
Muleshoe, Texas 79347		11 13 22965	
CITY	COUNTY	STATE	ZIP CODE
Muleshoe	Bailey	Texas	79347
CLOSE OF BUSINESS DATE			
March 31, 1989			
Dollar Amounts in Thousands			
ASSETS			
1 Cash and balances due from depository institutions:			
a Noninterest-bearing balances and currency and coin			
		2	357
b Interest-bearing balances			
		160	
		22	654
2 Securities			
3 Federal funds sold and securities purchased under agreements to resell in domestic offices of the bank and of its Edge and Agreement subsidiaries, and in IBFs:			
a Federal funds sold			
		5	250
b Securities purchased under agreements to resell			
		None	
4 Loans and lease financing receivables:			
a Loans and leases, net of unearned income			
	21	080	
b LESS: Allowance for loan and lease losses			
		250	
c LESS: Allocated transfer risk reserve			
		None	
d Loans and leases, net of unearned income, allowance, and reserve (item 4 a minus 4 b and 4 c)			
		20	830
5 Assets held in trading accounts			
		None	
6 Premises and fixed assets (including capitalized leases)			
		974	
7 Other real estate owned			
		84	
8 Investments in unconsolidated subsidiaries and associated companies			
		None	
9 Customers' liability to this bank on acceptances outstanding			
		None	
10 Intangible assets			
		143	
11 Other assets			
		1	095
		53	547
12 a Total assets (sum of items 1 through 11)			
		None	
b Loans deferred pursuant to 12 U.S.C. 1823(j)			
		None	
c Total assets and losses deferred pursuant to 12 U.S.C. 1823(j) (sum of items 12.a and 12.b)			
		53	547
LIABILITIES			
13 Deposits			
a In domestic offices			
(1) Noninterest-bearing			
	8	666	
(2) Interest-bearing			
	40	236	
b In foreign offices, Edge and Agreement subsidiaries, and IBFs			
(1) Noninterest-bearing			
		None	
(2) Interest-bearing			
		None	
14 Federal funds purchased and securities sold under agreement to repurchase in domestic offices of the bank and of its Edge and Agreement subsidiaries, and in IBFs:			
a Federal funds purchased			
		None	
b Securities sold under agreements to repurchase			
		None	
15 Demand notes issued to the U.S. Treasury			
		None	
16 Other borrowed money			
		None	
17 Mortgage indebtedness and obligations under capitalized leases			
		None	
18 Bank's liability on acceptances executed and outstanding			
		None	
19 Notes and debentures subordinated to deposits			
		None	
20 Other liabilities			
		510	
21 Total liabilities (sum of items 13 through 20)			
		49	412
22 Limited-life preferred stock			
		None	
EQUITY CAPITAL			
23 Perpetual preferred stock (No. of shares outstanding)			
		None	
24 Common stock (No. of shares a. Authorized			
		50,000	
b. Outstanding			
		50,000	
25 Surplus			
		500	
26 Undivided profits and capital reserves			
		2,000	
27 Cumulative foreign currency translation adjustments			
		1	535
28 a Total equity capital (sum of items 23 through 27)			
		4	135
b Losses deferred pursuant to 12 U.S.C. 1823(j)			
		None	
c Total equity capital and losses deferred pursuant to 12 U.S.C. 1823(j) (sum of items 28.a and 28.b)			
		4	135
29 Total liabilities, limited-life preferred stock, equity capital, and losses deferred pursuant to 12 U.S.C. 1823(j) (sum of items 21, 22, and 28.c)			
		53	547
MEMORANDA Amounts outstanding as of Report Date			
1 a Standby letters of credit, Total			
		162	
1 b Amount of Standby letters of credit in memo 1 a conveyed to others through participations			
		None	

MEMO 1 a MEMO 1 b

MEMO 1 a MEMO 1 b

MEMO 1 a MEMO 1 b

MEMO 1 a MEMO 1 b

MEMO 1 a MEMO 1 b

MEMO 1 a MEMO 1 b

MEMO 1 a MEMO 1 b

Perennials Are Here!!

Violets, Daisies, Liriope, Ground Cover and More!

- ★ Roses ★
- ★ Grape Vines ★
- ★ Trees & Shrubs ★
- ★ Bedding Plants ★

Large selection of tomatoes & peppers.

All kinds of flowers, hanging baskets and potted plants.



Check Our Large Assortment of Clay Pots

- Potting Soil ● Fertilizer
- Weed killer ● Whiskey Barrels
- Humming Bird Feeders

★ Bulk Garden Seed ★

Kristy's Plants

1516 W. Amer. Blvd.

272-5536

We, the undersigned directors, attest to the correctness of this Report of Condition and declare that it has been examined by us and to the best of our knowledge and belief has been prepared in conformance with the instructions issued by the Board of Governors of the Federal Reserve System and is true to the best of my knowledge and belief.

State of Texas County of Bailey

Sworn to and subscribed before me this 18th date of April, 1989, and I hereby certify that I am not an officer or director of this bank.

Susan Puckett
 Commission Expires: 6-1-93

Selena Gonzalez Named AAUW Girl Of Month

Selected as the Student of the Month by the members of the Muleshoe Branch of the American Association of University Women is Miss Selena Gonzales. Selena is the daughter of Ana Gonzales, and is a senior at Muleshoe High School. She is a Chamber of Commerce Ambassador and a member of the Immaculate Conception Catholic Church.

Selena is very active in school activities. She is a two-year member of the Student Community Action Committee. She was Student Council Historian as a freshman and sophomore and Student Council Secretary as a junior and senior. She was a JV cheerleader in her freshman and sophomore years and a Varsity Cheerleader as a junior. She was in band and jazz band when she was a freshman and sophomore. She was junior class president and was a member of FTA two years and FCA three years. She played basketball as a freshman and sophomore and was Science Club secretary when she was a sophomore.

Selena has played tennis all four years of high school and was District Champion as a junior and won second in District as a senior. This qualified her for regional competition both years in tennis.

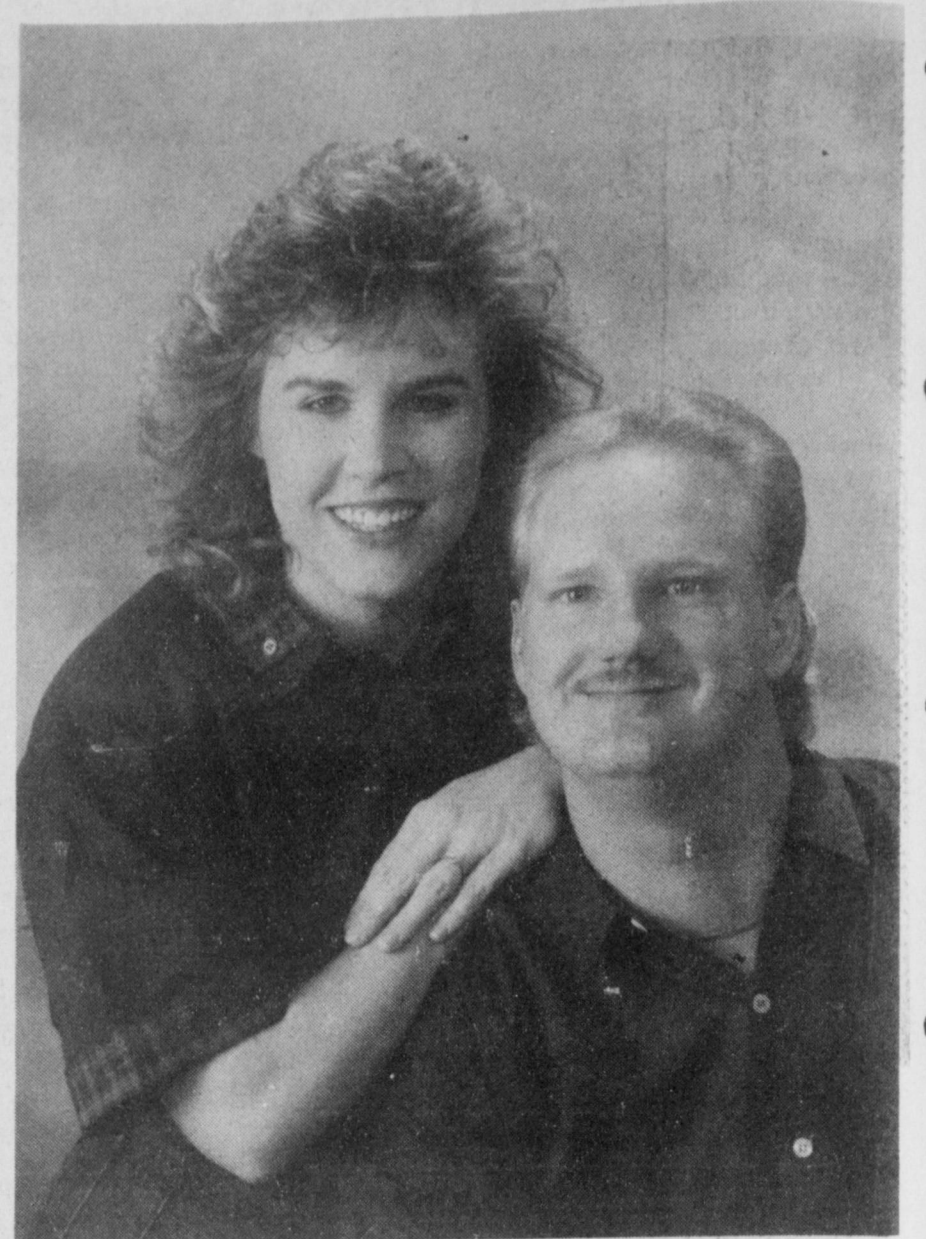
As a member of the Mock Trial Team, Selena participated in the competition in Lubbock.

Hobbies of this very active young woman include piano, tennis, twirling, and dancing. She plans to attend pharmacy school after completing her bachelor's degree.

"AAUW members congratulate Selina as Student of the Month of May" said Lucy Fay Smith.



SELENA GONZALES



JUNE PLANS REVEALED--Mr. and Mrs. Charles Bratcher wish to announce the engagement and approaching marriage of their daughter, Tami Dawn to Billy Lynn Brown, son of Mr. and Mrs. Leon Trotter of Lubbock and the late Billy G. Brown. Vows will be exchanged on June 24 at Trinity Baptist Church in Muleshoe. Miss Bratcher is a 1982 graduate of Muleshoe High School and attended Wayland Baptist University and South Plains College. She is presently employed by Acme Marketing Co. of Lubbock. Brown is a 1982 graduate of Coronado High School in Lubbock and is now employed by Brannon and Clark of Lubbock. (Guest Photo)



ENGAGEMENT ANNOUNCED--Mr. and Mrs. Ricky Byers and Mr. and Mrs. Dudley Winders would like to announce the engagement and approaching marriage of Jill Hamilton, daughter of the late Kenny and Sharon Hamilton, and Kerry Winders. Marriage vows will be exchanged on June 10 at 4 p.m. in the First Baptist Church at Lazbuddie. (Journal Photo)

Study Club

Muleshoe Study Club met Thursday, April 13 in the meeting room at the library with Anne Camp as hostess.

In commemoration of National Library Week, Anne served cake, shaped like an open book, with coffee and tea to the following: Betty Jo Carpenter, Joylene Costen, Fern Gregory, Wanda Kelly, Jesse Sanders, Izetta Shain, Alma Turner, Vivian White and one guest, Aurelia Sanders.

Wanda Kelley called the roll and read the minutes. Joylene led the Club Collect.

Due to the absence of the president, Joylene led the brief business meeting. It was reported that no one from Muleshoe Study Club was able to attend the March 25 convention in Lubbock. Although the club did send a donation to help with a project in Austin.

Plans were completed for the used book sale, which was held at the library on April 14-15.

Now microwave the rest of the time. If not tender extend time slightly.

After this, let the chops stand for five minutes before cooking, or until they're easily pierced or obviously pliable.

Roasts are much harder to thaw, and sometimes outside areas may have to be covered with foil early to prevent too much heat. They require four microwave operations and must stand ten minutes after two, be turned, and stand half an hour after the fourth microwaving. Thaw conventionally, if one has the time.

Depreciation
"I need a holiday," said the pretty restaurant cashier. "I'm not looking my best." The manager looked annoyed. "Nonsense!" he retorted.

"It isn't nonsense," she said. "The men are beginning to count their change."

MICROWAVE TIPS

Do you know the best way to defrost chops in the microwave?

First, after unwrapping, place on a roasting rack. Operate the microwave for one half the time listed for total defrosting.

Then separate the chops with a knife. Put the least defrosted portions toward the outside.

Bailey County Journal USPS 040-200
Established March 31, 1963. Published by Muleshoe Publishing Co. Inc. Every Sunday at 304 W. Second, Box 449, Muleshoe, TX 79347. Second Class Postage paid at Muleshoe, TX 79347.
L. B. Hall, President & Publisher
Sammye Hall, Vice President & Controller
Chris Williams, News
Evelene Harris, Society
SUBSCRIPTIONS
Muleshoe Journal and Bailey County Journal
Bailey County & Surrounding Areas \$14.75
Muleshoe Journal and Bailey County Journal Elsewhere \$16.50
Muleshoe Journal and Bailey County Journal Yearly By Carrier \$12.50
Yearly By Local Mail \$14.25
Advertising rate card on application

TIRED OF LIFTING IRRIGATION PIPE AND GETTING MUDDY?

With A Raintrain (Pat 4,726,529) you can row water and change pipe settings from your turn row without walking into your field. It is now old-fashioned to get in the mud to pick up pipe and surge units. To see a demonstration, call us.

Miller Manufactured Systems



B. T. Lusk
Sales

(806) 293-1304
P. O. Box 1685
Plainview, Texas 79073-1685



\$5,995



Rip's

482-3363
314 Wheeler Avenue
Open 8:00 a.m.-6:30 p.m. C.D.T.
In Texico

ORIGINAL Justin \$79.98

ALSO AVAILABLE AT SLIGHTLY HIGHER PRICES
Justin High Ties In Several Colors
Justin Ropers In Exotic Leathers Including Lizard Elephant and Wildebeest

Straw Hats 20% OFF

Layaways Welcome We Accept

SIDEWALK SALE
Thurs., Fri., Sat.
May 4, 5, & 6

Little Giant
Cooler King
EVAPORATIVE COOLER PUMP

Beat The Heat

Little Giant Pump	Model 537200 .6 Amp	6.99
Little Giant Pump	Model CP6500 .85 Amp.	15.99
Vebco Cooler Cleaner		1.89
Cooler Switch	2 sp.	6.99
A/C Pads	24x36, 28x34, 30x36	1.79
Float Valves		2.99
A/C Motor	1/2 Hp 2 speed Model W502	57.00
A/C Tubing	50ft. 1.59 100ft. 2.59	
Cooler Drain		99¢

Sale Ends May 13th 1989

Fry & Cox, Inc.
401 S 1st 272-4511



SORORITY PRESENTS AWARDS--Tuesday night during the Founders Day Banquet, the local sororities presented special awards to some of their members. Among those were (L-R) Leslie Denney, Alpha Zeta Pi Pledge of the Year; Cindy Barrett, Alpha Zeta Pi Woman of the Year; Dawn Williams, Xi Omicron Xi Woman of the Year; and Janelle Turner, Zeta Rho Woman of the Year. Not pictured: Nancy Barrier, Xi Omicron Xi Pledge of the Year. (Journal Photo)

Founders Day Banquet Held Tuesday Night

On Tuesday, April 25 at 7 p.m. in the Bailey County Coliseum the three chapters of Beta Sigma Phi held their Founder's Day Banquet. Founder's Day is a celebration held each year to commemorate the beginning of the International Sorority by Walter W. Ross on April 30, 1931, in Abilene, Kansas.

Founder's Day is held not only to remember the founding of Beta Sigma Phi but also to recognize outstanding women both in and outside the organization.

The "First Lady of the Year" Award went to Bobbie Nell

Dunham for her countless hours of work in the community. She was presented a plaque by her daughter, Rhonda Myers, who not only recognized her mother's many community activities but also her deep commitment to her family. Awards were also given to members of Beta Sigma Phi. "Pledge of the Year" went to Alpha Zeta Pi's Leslie Denney and Xi Omicron Xi's Nancy Barrier. "Women of the Year" Awards were presented to Cindy Barrett, Alpha Zeta Pi, Dawn Williams, Xi Omicron Xi, and Janelle Turner, Preceptor Zeta Rho.

The Order of the Rose ritual was held for Pamela Miller, a special honor for those holding membership in Beta Sigma Phi for fifteen years.

Dinner was catered by The Blue Goose and special guests were former "First Lady of the Year" recipients, Joy Stancell, Magann Rennels, Kathryn Sanders, Mary B. Obenhaus and Ruby Kerr.



PAM MILLER

Rebekah Lodge News

Ten Rebekahs' and three Oddfellows attended the Panhandle Association in Friona Saturday and Sunday, April 22 and 23 and gave their report of the meeting at the regular meeting of the Muleshoe Rebekah Lodge Tuesday night, April 25. "We have officially been elected into membership of this association" said Fern Davis. "Everyone reported a great fellowship.

Audrey Langfitt, Noble Grand, presided during the business meeting with Ruby Green, chaplain, giving the opening prayer.

Della Puckett, flag bearer, presented the flag and Ruby Garner presented the Rebekah banner.

"Pat Langfitt, Lodge Deputy, held a very interesting school of instruction" Mrs. Davis continued. Lena Hawkins led the candle light service and gave the closing prayer.

Refreshments were served to 20 members by Joyline Costen.

Slaton Art Show Date Set May 20

The nineteenth annual Slaton Art Show, sponsored by the Women's Division of the Slaton Chamber of Commerce will be held Saturday, May 20 in Slaton's Lubbock County Club House, 750 W. Garza, Slaton, TX. The show will be open to the public from 1:30 to 5 p.m.

Juror will be Lonnie Mason of Lubbock.

Cash awards will be given for the best works. Awards will be given in eight categories. There will be forty purchase prizes.

Entry fee is \$3.00 per entry, no limit. Paintings will be received at the Club House May 19 from 4-7 p.m. and May 20 from 8-10 a.m.

For more information, you may contact Slaton Chamber of Commerce at 828-6238.



"FIRST LADY OF THE YEAR"--Bobbie Nell Dunham was named Beta Sigma Phi "First Lady of the Year" during the annual Founders Day banquet held Tuesday night. Making the presentation was her daughter, Rhonda Myers, right, who recognized Mrs. Dunham for the countless hours of community work she has done. (Journal Photo)

Guild Circle

Meets In

Drake Home

The Guild Circle of the Sudan United Methodist Women met Monday, April 17 in the home of Dorothy Drake.

Mary Smith led the opening prayer and Grace Lopes presented the continuation of the study on the book of Ruth. Scripture was read by several members. The lesson concluded with a prayer by Grace Lopes.

Minutes of the previous meeting were read and approved. Mary Tollett presided over the short business session. Eloese Curry scheduled the members for participation in the Cancer Drive.

Pastries with ice cream, drinks and nuts were served by the hostess, Dorothy Drake, to the following members: Frances Potter, Mary Tollett, Jennifer Horn, Grace Lopes, Jackie McAlpin, Mary Smith, Jackie Markham, Mae White, Eloese Curry, Nellie Williams and Anita Wallace.

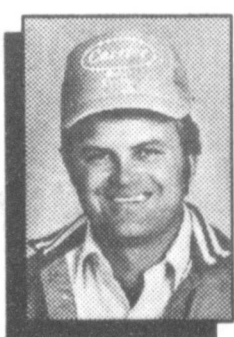
Lucky

"Father, what is a convalescent?"
"A patient who is still alive, son."

In Sight

"You know, I've just got to watch my waistline."
"How lucky you are to have it out there where you can."

Rarely does anyone take the trouble to thank anyone for anything.



Bob Bomer
Bomer Electric
Muleshoe, TX



Dee Puckett
Southwestern Geo-Thermal
Muleshoe, TX

Why these heating and cooling specialists recommend the **Dual Fuel Heat Pump**

- "It saves money."
- "It's dependable."
- "It's cleaner."
- "It both heats and cools."
- "It's energy efficient."
- "It works with your present gas furnace."
- "It's comfortable."
- "It's modern."

MULE TEAM LAUNDROMAT

Has Been Purchased By
Jose & Dora Triana

They Will Do Custom Washing & Ironing

\$1 Service Charge For Pickup & Delivery

Custom -
8 a.m. - 5 p.m.

Reg. Laundry -
8 a.m. - 10 p.m.

322 W. B.

272-3575

Let Joe & Larry Help With Your Meat Bill!



1/2 Beef
\$1.45 lb.
Cut & wrapped to your specifications

Whole Loin Pork Chops **99c** lb.

1/2 Hog **69c** lb. live wt.

Now Available All The Time
Family Pack

Beef Pack

\$39.95 lb.

17 lbs. Choice Cuts

Now Available All The Time!
1/2 Pork 1/2 Beef

Family Pack

\$35.95 lb.

20 lbs. Assorted Choice Cuts

Stock up

Whole Loin
K C's Strip

\$3.99 lb.

While They Last

Pork Ribs

\$1.39 lb.

German Sausage

\$1.69 lb.

All Beef Raised & Fed By Joe Rhodes!

Winkler Meat Co.

401 Main

272-4703

Hospital District

Cont. From Page 1

the proposed district.

The hospital district boundaries as proposed includes the southern half of the Lazbuddie Independent School District (the boundary runs approximately one mile north of FM 145 from the Farmer/Castro County line to the Farwell ISD/Hospital District Line). In Bailey County, the proposed hospital district includes all of the northern portion of the county with the southern boundary of the Muleshoe ISD being the southern boundary of the proposed hospital district in Bailey County.

2. It appoints a temporary board of directors.

The temporary directors proposed in the legislation are representative of the geographical areas of the district in addition to being highly qualified to organize a new district.

They include Tim 'Buck' Campbell, Darrell L. Jennings,

Neal Caswell, Vance Wagnon, Robert E. Finney.

3. The legislation allows for a creation election either called by the temporary directors on their own initiative or on petition of the general public.

The residents of the district will be asked to vote "FOR" or "AGAINST" "The creation of the Muleshoe Area Hospital District and the levy of annual taxes for hospital purposes at a rate not to exceed 25 cents on each \$100 valuation of all taxable property in the district."

4. The remaining portions of the proposed legislation detail how the district would be operated, its authority, responsibilities, relationship to the State of Texas, borrowing authority, etc. Most, if not all, of this portion of the proposed legislation is canned, that is, it is common to all legislation creating hospital districts and is a

requirement of the legislature.

The passage of the legislation referenced above is just the beginning if we wish to have a quality medical care facility in Muleshoe, Texas. There will be and should be public discussion of what the level of medical services should be provided in a rural hospital. That discussion should not be allowed to divert our attention from the primary issue of establishing a stable fiscal base for a hospital in our community.

We cannot hope to attract and retain quality health care professionals to our community if we do not have a hospital. The Muleshoe Area Hospital District Board of Directors, if a district is approved by the voters, and the citizens by their support of a tax, will decide the issue of level of service at a later date. We first need to create the vehicle so that we may have a hospital and retain our nursing home.

A hospital is one of the primary elements of our communities infrastructure. A hospital is every bit as important to the longterm well-being of our community as our schools, churches, or municipal facilities. It is a key element if we hope to attract new business and residents or retain the ones we currently have.

All of us have an investment in this community. A hospital helps insure the value of our investment and the good marketability of that investment just as much as a good geographical location does. In fact, none of our investments, either homes or businesses, will be as valuable if we do not have medical care

Hoax...

Cont. From Page 1 hour, the emergency personnel determined that it was a hoax call and returned to their home stations and regular patrol.

This supposed emergency tied up numerous officers, fire department personnel and ambulance personnel, as they made a wide-spread search for a plane crash that apparently never happened.

Officers remind that a 'very stiff' penalty accompanies such bogus reports, and indicate they will be making a diligent attempt to identify the person who made the call.

facilities available in our area.

The hospital district is not a "partisan" issue i.e., democrat versus republican. It is not a racial or ethnic issue. It is not a "have" versus "have not" issue. It is a community issue. The issue is "Do we wish to continue to have a healthy, progressive, vital community and area."

The continuing crisis in the provision of medical services will probably insure that everyone is included in a hospital district sometime in the near future. These districts will be local or regional in nature. There is great pressure from urban areas to absorb rural areas, not already included in local hospital districts, into regional districts. The Lubbock County Hospital District has tried to create a regional district in the past and will probably try again.

Almost 20 years ago, when the Bailey County Hospital District was being debated, it became a divisive issue for this community. We would hope that the Muleshoe Area Hospital District can be a unifying cause for our area and community.

Banks...

Cont. From Page 1 of March last year, and on March 31 of this year were \$5,345,912.

First State Bank of Dimmit, Earth Branch showed a decrease in both deposits and loans during the past year.

Deposits dipped \$1,266,904 during the past year. A total of \$14,518,711 was on deposit closing out March this year, and a year ago, showed to be \$15,785,615.

Loans at the Earth bank were \$4,553,584 on March 31, 1989, down by \$5,702,379 from the loans at \$10,255,963 at the end of March last year.

Texas A&M researchers say travel agents favor boycott of terrorist areas

COLLEGE STATION — If travel agents...

Cont. From Page 1

Felisita C. Lopez.

And, Lucy Yoachum Smith, Archie Calvin Wiseman, Jr., Mary Swinford Scoggin, Pauletta Fannon Crawford, Olga Melendez Chavez, Robert L. Lunsford, R. G. Bennett, IV, Mary Jo Carpenter, Allen E. Scott, Howard Wallace Pennington, Jacque Turner Boutell, Gordon Vernon Waldrop II, Jean Ann Faver, Kim Duncan Gardner, Donald Ray Clapp, Juanita Jasso Ibarra, David Wayne Killough, Stanford Morrill Barrett, Joe Robert King and Rebecca Diane Otwell.

agents had any say in what to do about terrorism they would boycott countries that are sympathetic to it and tighten security in airports.

What they often do, however, is depend on public relations and other promotional strategies such as personal selling to help alleviate concerns of danger and to present options for travelers.

Marketing researchers at Texas A&M University and the University of Notre Dame surveyed 359 of the nation's largest travel agencies and found the strategy they most favored for dealing with terrorism would be to boycott cities or countries known to be sympathetic to terrorists.

They also strongly favored more security for travelers, such as requiring airports to hand-search all luggage being carried onto planes rather than just using metal detectors and x-ray machines, reports Dr. Jeffery Conant of Texas A&M's College of Business Administration.

Edwin R. Cox

For Muleshoe School Board

EXPERIENCE

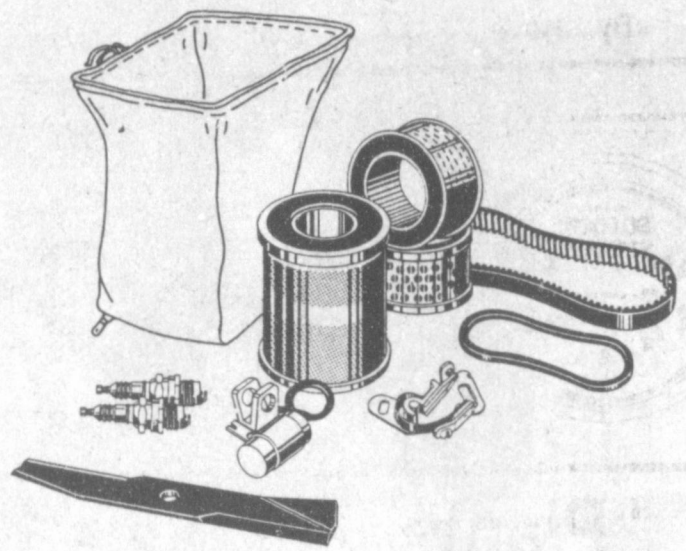


- Graduate of Muleshoe High School
- Graduate of Texas Tech University (B. A. Degree in Management)
- Chamber of Commerce and Agriculture Board
- Airport Board
- Equalization Board
- Board Member, Insurance Trustee, and President of Southwest Hardware and Implement Association
- Ownership and Management of Local Business
- Two Children in School System

Let's continue to build pride in your school system and our community. Your vote for MISD School Board will be greatly appreciated.

Pd. Pol. Adv.

Summertime...And The Lawn Care Is Easy



John Deere makes it easy, by supplying all the mowing parts you need — blades, belts, grass bags, filters and electrical parts. All John Deere quality... at competitive prices. Visit us today, and let us take the worry out of summer lawn care.

PK8

Dent & Co.

W. Hwy. 84

272-4296

REGULAR ELECTION (ELECCION REGULAR)

MULESHOE INDEPENDENT SCHOOL DISTRICT

Muleshoe, Texas

(Distrito Escolar Independiente de Muleshoe, Texas)

May 6, 1989
(6 de mayo de 1989)

OFFICIAL BALLOT BOLETA OFICIAL

INSTRUCTION NOTE: Vote for the candidate of your choice in each race by placing an "X" in the square beside the candidate's name.

(NOTA DE INSTRUCCION: Vota por el candidato de su preferencia para cada candidatura marcando con una "X" el cuadro al lado del candidato.)

For Trustee
(Para Regentes)

Vote for 2 (Vota por 2)

- GARY HUGG
- MAX KING
- DANNY NOBLE
- JULIE CAGE
- TERRY JAMES HUTTO
- EDWIN R. COX
-
-

CITY OF MULESHOE (Ciudad de Muleshoe, Texas)

CITY OFFICERS ELECTION (Eleccion de Funcionarios de la Ciudad)

May 6, 1989
(6 de mayo de 1989)

OFFICIAL BALLOT (Boleta Oficial)

Vote for the candidate of your choice in each race by placing an "X" in the square beside the candidate's name.

Vota por el candidato de su preferencia en cada competencia marcando con "X" en el cuadro junto al nombre del candidato.

For Councilman, Place 1
(Para Miembro del Concilio, Sito 1)

- TROY STEGEMOELLER
-

For Councilman, Place, 2
(Para Miembro del Concilio, Sito 2)

- A. V. WOOD
-

Presented in the Public Interest by:

Farmer's Co-Op Elevators

Clays Corner

Enochs

Muleshoe

Pleasant Valley

Old Griffith

May Sale

SPRUCE UP AROUND The House.

NEILSON
non-puddling
Oscillating Sprinkler
RAINSHOWER™ 40
"Perfect For Anywhere"
Now: **\$5.99** Reg. \$8.09
#1015

**Time To Do
The Lawn
and Keep
COOL.**

UAP 25% Malathion
For Only: **\$6.99** Reg. \$9.39
1 Quart Size #9448

**HAVE A
ROSE**
Choose from: Angel Face, Blaze, Chicago Peace, Crimson Glory, Fred Edmunds, J.F.K., King's Ransom, Mirandy, Mr. Lincoln, Montezuma, Peace, Queen Elizabeth, Summer Sunshine, and Tropicana!
California Premium Quality
Only: **\$5.99**
By: Jenco a Bush

**We Have
NEW
Roundup LG**
The Tough Weed
Weedkiller
Introductory
Price
1-Quart Size
Now: **\$17.99**
#RP03
(concentrate)

**Ladies Garden
Gloves**
Lots of Colors and
styles to choose from
Only: **\$1.29**
A Pair
By: Magid. Reg. \$1.99

5/8" x 80' Garden Hose
Only: **\$13.99** Reg. \$17.99
Five Point

"Plants For Sale"
Choose from:
Dianthus, Marigolds,
Petunias, Snapdragons,
Pansy, Cabbage, Broccoli,
Pepper (Hot), Pepper (Sweet) and
Lots More in Stock
Now Just:
4 Plants
For: **\$1.00**
Stock
Up

Compare and Save!

<p>UAP Special Products \$3.99 REBATE!</p> <p>SALE PRICE: \$2.99 LESS MFG. REBATE: -3.00 YOUR COST AFTER REBATE: +\$.01</p> <p>#9458 1 Quart</p>	<p>UAP Special Products \$3.00 REBATE!</p> <p>SALE PRICE: \$2.99 LESS MFG. REBATE: -3.00 YOUR COST AFTER REBATE: +\$.01</p> <p>#8051 1 Quart</p>
<p>UAP Special Products \$3.99 REBATE!</p> <p>SALE PRICE: \$3.99 LESS MFG. REBATE: -3.99 YOUR COST AFTER REBATE: \$.0</p> <p>#9456 1 Quart Size</p>	<p>UAP Special Products \$3.00 REBATE!</p> <p>SALE PRICE: \$8.99 LESS MFG. REBATE: -3.00 YOUR COST AFTER REBATE: \$5.99</p> <p>#9438 Special Spout</p>
<p>UAP Special Products \$3.00 REBATE!</p> <p>SALE PRICE: \$3.49 LESS MFG. REBATE: -3.00 YOUR COST AFTER REBATE: \$.49</p> <p>#9123 1 Pint Concentrate</p>	

SUPER SAVINGS!
*Offer limited. Obtain details on coupon in store.

**Woo! Woo! All Aboard
For The Rain Train
Special Savings**

NEILSON
RAIN TRAIN® 200
metal treating sprayer
• Maximum coverage 6' x 30 ft. x 1"
• Adjustable spray gun coverage width from 15 to 35 ft.
• Ejects garden 800 psi to 1000 psi
• Extra powerful - cuts thru 1/2" to 1" grades around corners
• 2 forward speeds and 1 reverse for maneuvering

It does the
work for you!
#1860
Just: **\$44.99** Reg. \$61.99

Ortho
**Lawn Hose
Sprayer**
For: **\$4.99** Reg. \$5.99
The Easy Way.
Fits any Garden Hose. No. 70614
Accurately syphons, mixes & sprays chemicals. 15 gallon.

**Evaporative Cooler
Pump**
Now: **\$5.49**
For Air Coolers
up to
5000 CFM
Economy Reg. \$7.99

**Rotary or
Oscillating Sprinkler**
Your Choice:
Now: **\$4.99** Reg. \$6.99
Oscillating Sprinkler
Covers an area up to 2,400 sq. ft.
Adjustable spray pattern. Includes ac-
cessory adapter and connector with
automatic water stop. No. 2534
Rotary Sprinkler
Covers a diameter up to 50'. Includes accessory
adapter and connector with automatic water stop.
No. 2532
Reg. \$9.99

Air Cooler Tubing
Fix Those Leaks
Breaks, Cracks, and
Splits Now!
1/4" x 50'
Just: **\$1.99** Reg. \$2.95
Black Plastic

**Don't let the Swamp
Monster get your
cooler. Service it now!**

**Don't Forget These For Your
"Cooler Fix Up Time."**

**Super D
Weedone** 32 oz. can
No. 14-204
For: **\$6.99** reg. \$8.60

Air Cooler Pads
These Pads can
be cut down
easily to fit
your needs.
No. 1, 2, Are
3, 5 \$1.49
No. 8 is Just \$1.79
No. 30 is Just \$1.99

Pad No.	Pad Size
1	28x34
2	22x34
3	24x30
5	24x36
8	30x36
30**	32x40

**Evaporative Cooler
Cover**

A&M FARM & RANCH SUPPLY
Come By Any Of
Our 3 Locations To
Serve You.
2600 Mabry Dr. Clovis, N.M.
1-505-762-7717
1601 S. Ave. D. Portales, N.M.
1-505-356-8543
1302 W. American Blvd., Muleshoe, Texas
1-806-272-5571
All Stores Open
Monday-Saturday
7:30 A.M. - 6:00 P.M.
Sundays
12:30 - 5:00 P.M.
Visa, Mastercard
or Discover
Are All Welcomed.

Nick Black Gives Show For Kiwanis

By R.A. Bradley

Sixteen Kiwanians, three honorary members and five guest were present Friday morning at the Old Corral. The membership drive is going strong and there is lots of competition between the three teams.

Sweetheart, Justine Hanes was absent and we sure miss her. Justine hurry back and tell us about your trip to Houston and how you came out in the contest.

President, Keith Turner called the meeting to order. Scott Churchman led the club to the flag and James Roy Jones gave the invocation.

Since Lyndon Huckaby gave the friendship coin last week to Dale Berry with instructions to keep the coin in team No. 2. Since Team No. 2 cannot find a friend outside of their team, Dale gave the coin to J.O. Parker, the rest of the club has decided to call the coin the "Friendless" coin.

Present Friday morning beside Kiwanians were honorary members, Lacy Morris, Jon Keith

Turner and Chad Johnson. Our guest was Max King, who is a candidate for the School Board, and Max urged everyone to come out May 6th and vote. Also present were Mickey Merriott, Eddie Morris, Nick Black, Charles Martin, and Ryan Clapp.

Nick was our program Friday morning, "Black Magic". Nick borrowed a \$10.00 bill from Jerry Hutton and changed it over to a \$100.00 bill. Since O's are nothing the bill really looked like a \$1.00 bill. Nick told Jerry thanks for his help. Nick then gave a lesson on how to pull curtains. Most of us have had problems with this and the schooling on this showed that there was nothing to it. Ryan Clapp then assisted Nick with another trick with money. Ryan thought for awhile that he had been short changed and lost his bill but Nick finally found it in an insurance policy envelope he had.

Keith Turner tried to help Nick with a bottle and tube trick. Keith was supposed to follow

Nick's everymove but for some reason, Keith's bottle would get turned upside down in the tube. It was decided that Keith could not follow instructions.

Nick then had a demonstration with three cards, two Black Jacks and one red Queen of Hearts. Like most women, the Red Queen of Hearts was never where she was supposed to be. Maybe Nick will get this trick down so he can keep up with the Red Queen of Hearts.

It is good to have a local Magician. Nick it was a very good program. Thank You.

I promised last week to furnish the score for each team today as the contest is half way, Team No. 1 led by Jim Lutz has 68 points, Team No. 2 led by Hugh Young has 49 points and Team No. 3 led by Glen Morris has 65 points. Team No. 1 would like to warn teams No. 2 and No. 3 that Jim Lutz who heads team No. 1 and Jim keeps the score, has been taking lessons from Nick Black and his "Black Magic". So teams No. 2 and No. 3 work real hard but you don't have a chance. Jim is learning how to make scores disappear real good. See you next Friday.

Texas A&M study finds paperwork, not students, causes teacher burnout

COLLEGE STATION — Teachers are under such stress that more than half surveyed in Texas would not choose the teaching profession again, according to a Texas A&M University study.

Teachers also say half of their colleagues are already burned out due to stress — nearly 90 percent of which is blamed on paperwork — said Dr. Rutha Leffel, who surveyed nearly 400 elementary, middle school and high school teachers in 15 small, medium and large districts for her Ed.D.

The stress and burnout is unexpectedly not connected to the number of years on the job, said Leffel, coordinator of psychological services in special education with the Round Rock school district near Austin.

"Beginning teachers are reporting the same stress level as experienced teachers," Leffel said. "The burnout is not from the years of experience; it's the workplace that's causing stress and burnout."

"Ironically, schools could gear up very easily for this sort of intervention strategy," Stenning said. "They have the facilities and the staff. Administrative leadership could make the difference."

Alcoholic's Daughters Face More Difficulties

Daughters of alcoholics are more prone to long-term difficulties in establishing and maintaining intimate relationships, according to a recent study.

The findings, released last month by researchers at Indiana University, were based on surveys of 1,200 women, half of whom had at least one alcoholic parent.

Compared to women whose parents did not abuse alcohol, daughters of alcoholics reportedly were on average 20 percent more likely to have relationship problems, to criticize themselves and to crave approval.

Daughters of alcoholics also were far more likely to have been victims of abuse. As children, one in three had been physically mistreated while one in five had been sexually abused. Nearly 40 percent had been abused by their husbands.

Eighty percent of women from alcoholic families also reported that a parent's drinking had a dramatic affect on their lives. However, only one in 10 had ever shared their feelings and experiences.

Ben Bynum, program manager of the CareUnit at Palo Duro Hospital, says other studies carry the Indiana University findings one step further with estimates that one in four daughters from an alcoholic family grows up to be an alcoholic herself. "The study reinforces a lot of what we see on the Unit among our female patients," Bynum says.

"So often these women have grown up neglected and abused and consequently believe they're unloveable," he says.

Their low self-esteem results in a constant struggle for approval from those around them, Bynum adds.

"They feel, 'I'm not good

enough. So I'll have to act better, look better and perform better so I am good enough.' However, when, as you'd expect, they fail to achieve those goals, they feel more unloveable than ever," he says.

Because they've grown up with few positive role models, daughters of alcoholics also frequently have difficulties in their relationships, he says.

They mimic the behaviors of the alcoholic parent by dealing with others through manipulation. They often are unquestionably loyal and, because they expect to be treated badly, many of them marry alcoholics.

However, Bynum adds that increasing numbers of women are helping themselves to overcome the effects of growing up in an alcoholic family through therapy and support groups such as Adult Children of Alcoholics.

**West Plains
Medical Center
272-4524**

VOTE FOR ENERGETIC LEADERSHIP

Terry J. Hutto

For
MISD Trustee

With at least one child in Muleshoe Schools for the next 13 yrs., these aspects of our school system are important to me.

Are they important to you?

- ★ Strong academic foundations
- ★ Support for ALL extracurricular activities
- ★ Positive student attitudes
- ★ Quality physical facilities
- ★ Wise use of tax dollars

Your Vote On May 6
Will Be Appreciated

Pd. Pol. Adv.

Chamber Corner

By John W. Smith

Our Attorney General's office has given us the following advice. There are many new high technology means to promote old scams. The people of Texas have some very good consumer protection laws, but through new twists in the computer fields we have the old con games being used again. By following some basic rules, consumers can avoid the pitfalls of consumer fraud.

Here are some examples:

1. Don't sign anything you haven't read.
2. Shop around and compare prices.
3. Resist high pressure tactics, if it's a good deal today it will still be a good deal tomorrow.
4. Get all promises in writing.
5. Always get a receipt. Never give your credit card number over the phone.
7. When possible, deal with businesses you know or that have a reliable reputation.
8. Also remember, if it sounds too good to be true, it probably is not true.



They're not Seniors...

...Yet Eighth Grade Graduation is a milestone not to be forgotten!

We save Memories...

...it's our business

Lonnie D. Adrian

**Adrian
Photography**

Call For Details

218 W. 2nd Muleshoe 272-3487

SHE'S THE MOTHER OF THE YEAR

Have a message to your mother printed in the May 14th edition of

The Bailey Co. Journal

Mother's Day is Sunday, May 14th!

Just fill out this form and mail it to

P.O. Box 449 or bring it into the office at 304 W. 2nd before noon, Wednesday, May 10 with \$5.00.

Mother's Name _____
 Message (15 words or less) _____

 Your Name(s) _____

 Phone Number _____

"Mother's Day Specials"

New Supply Of Giftware & Appliances

Eureka Vacuums Priced For Mother's Day!



FR-16
FR-16V

Reg. \$ 37⁹⁹
Sale

\$29⁹⁹



SWING SEAT

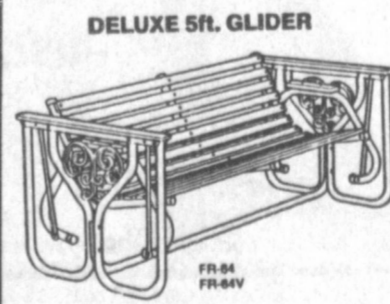
FR-60 (Frame)
FR-60V (Frame)

Combination Reg. \$146⁹⁹

Sale **\$92²⁸**

Seat Only Reg. \$83⁹⁹

Sale **\$52²⁹**



DELUXE 5R GLIDER

FR-54
FR-54V

Reg. \$151⁹⁹
Sale

\$89⁹⁹



DELUXE 4R GLIDER

FR-40V

Reg. \$148⁹⁹
Sale

\$87⁹⁹



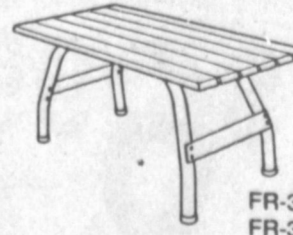
GLIDER CHAIR

FR-31
FR-31V

Reg. \$92⁹⁹
Sale

\$57²⁹

COFFEE TABLE



FR-33
FR-33V

Reg. \$46⁹⁹
Sale

\$39⁹⁹

Higginbotham-Bartlett Co.

"Quality & Service At The Right Price"

215 Main



272-3351

Heritage Foundation Appreciates Memorials

Shortly after the Muleshoe Heritage Foundation was organized in 1986, they started the Memorial Fund. They say they are very pleased that people are still interested in the Heritage Foundation and the Memorial Fund.

Jenne McVicker, Memorial Chairman, said, "So many people have used the Heritage Foundation as a way to remember friends and loved ones who are deceased, with a memorial made to the Muleshoe Heritage Foundation.

"In this way, that memory lives on in the historical buildings and the use of them, at the Muleshoe Heritage Center."

She added, "Many people have been honored, too, with gifts made to the Muleshoe Heritage Foundation, and as living memorials. These honorariums are always very special and very much appreciated by the recipient."

Although the list of such memoriums is much too long to

publish in its entirety...below are some of the people who have recently been honored with contributions made in their name:

Since April, 1988:

Sarah Russell, D. O. Burel-smith, Bera Irene White, Sadie Howard, Mrs. Paul Simpson, Bertha Hardage, Kenneth Briscoe, Charletta Treider, Raymond Precure, Mae Loyd, Wilma Waddle, Theresa Feagley, Dimple Sims, Ralph Randolph, Ruth Bass, Morris Douglas, Mrs. Mary M. Price, Lester Baker and Bill Franklin.

Also, Mrs. Sammie Moore, Don Moore, Mrs. Lovetta McKinstry Cumpsten, Joe Meyers, Mrs. Sherman Inman, Marie Gwyn Brown, Lee Palmer, Lisa Triana, Phyllis Beavers Smith, Mildred Davis, I. L. Kitchens, Sue Holt's mother, Fred Hutchinson, Barney Scheller, Dr. John Henry Hamblen, Corda Taylor, E. W. Locker, Wayne Snyder, John Gunter, and the mother of Lisa McElroy.

Get Well Wishes to J. E. McVicker and to Paul Poynor.

To honor on their 50th Wedding Anniversary, Mr. and Mrs. Horace Hutton.

If you would like to make a memorial in memory of someone deceased, or honor someone still living, please send your check and information to Jenne McVicker, Memorial Chairman, Box 766, Muleshoe, TX 79347.

Dillman School

Pre-Registration

Next Friday

Friday, May 5, Dillman Elementary will pre-register students who are eligible for kindergarten or pre-kindergarten for the 1989-90 school year. Registration will take place in the Dillman Gym from 8 a.m. to 4 p.m.

To be eligible for kindergarten, children must be five years old by September 1, 1989. To be eligible for pre-kindergarten, children must be four years old by September 1, 1989 and must also meet one of the following requirements: (1) have limited knowledge of and comprehension of the English language, or (2) are from a family who is eligible to receive free or reduced price lunches. Pre-kindergarten students who are already attending school do not need to register for kindergarten.

The pre-kindergarten classes will operate on a half-day basis only, with classes being from 8:00 to 11:00 or from 12:30 to 3:30. Kindergarten will operate on a full-day basis.

Parents are asked to take the child's birth certificate, immunization records, and the child's social security number when enrolling. All children who enroll for kindergarten or pre-kindergarten on May 5 will be screened for speech and language that day, and will also be given a school readiness screening test. Parents are therefore urged to take their children with them.

Current Kindergarten classes continue as usual Friday, May 5.

If you have any questions, you are asked to contact Mrs. Barbara Finney, principal at Dillman Elementary School. The phone number is 272-7541.

Letter To The Editor

April 28, 1989

Dear Clea:

I would like to express my appreciation to Coach Duncan and Coach Stewart for the enthusiastic news reports related to sports which appear from time to time in the papers.

I feel that these two young men are giving our young athletes a desire and head start on becoming not only excellent athletes, but also people with a better outlook toward life. They are doing so by acknowledging the success of the youth and more especially by recognizing their hard work and effort toward reaching their goals.

Coaches, like parents, need to admonish young people from time to time, but doing so should always be with the intention to teach them a better way. The recognition that they realize how much work the young athletes are putting forth will encourage them to work harder and I believe we are going to see a very successful program in Muleshoe with a little time and the continued leadership of such fine young coaches as these. The positive attitudes exhibited by them will bring great results.

Hats off to Coach Duncan and Coach Stewart!!

P. A. Moore

Senator Teel Bivins Reports



AUSTIN - I watched some of the NCAA basketball tournament and noticed how many of the teams were made of students from all over the country and in some cases different nations. All of these student athletes are working together to accomplish the same goal. Win!!!

In the Texas Senate, I may be on a new team every day, with different players in order to work for the best interest of the 31st district. Building coalitions is perhaps the most important job of an effective legislator. It may be hard to believe that a Senator from a very rural, conservative district whose constituents are spread out among 29 counties can find shared concern with a Senator who represents a liberal 3 mile area of Houston, but it happens.

I also have learned that it is equally as important to have a good team to block bad legislation as it is to pass good legislation. Often due to the Rules of the Senate it is easier to kill a bill than it is to pass one.

The Senate operates under a number of rules, both formal and informal. The formal rules represent many constitutional requirements, as well as a number of rules which deal with decorum. The informal rules have evolved over time and are equally important to ensure that the Senate is able to accomplish its duties under the constitution. It is also important to know that formal rules can be and often are suspended. However the informal rules are largely based on an honor system and are rarely ignored.

The truth regarding the formal rules is that many of the rules governing the day to day business of the Senate are never observed. One example of a rule which is never observed is the "Regular Order of Business." This rule states that the Senate shall hear legislation in the order in which it is reported from the committee. In reality the first action on the Senate floor when legislation is about to be heard will be a motion to suspend the "Regular Order of Business" and bills are taken up in an order controlled by the Lt. Governor.

As I mentioned before often a team works to kill a bill rather than to pass a bill. The rules both formal and informal are in many cases tilted in the direction of a group wishing to kill a bill. In the example I gave, suspending "The Regular Order of Business," requires a two-thirds vote. Since all business in the Senate is conducted under suspension of this rule, this means that if a Senator opposes a bill but cannot get a majority, which is 16 Senators, to vote to kill the bill, he can work to get the support of 11 other Senators, and can kill the bill by never allowing the rules to be suspended.

With all of the formal rules being suspended it becomes apparent the informal rules must exist. The first and most important rule is the same

rule we were all taught as youngsters; "never tell a lie." A Senator who goes back on his word is a very ineffective Senator and will have a hard time putting together a team when he needs support.

Another rule which is very important is proper communication. If a Senator has a concern or problem with another member's bill the informal rule requires that the Senator with the problem contact the sponsoring Senator and discuss the concern. While this does not assure that the problem can be resolved, it does allow the opportunity for discussion. Often the problem can be worked out before the bill is voted on. However if it cannot, at least the sponsoring Senator will know who has objections to the bill.

Janes Ranch Week Report

By Brad Bradley

Sixteen hard working people reported to the Jane Ranch House Tuesday night and lots of good work was done. Eleven Jennyslippers showed, ready to work, washing of lots of woodwork, sanding and cleaning floors was done. A special big thank you to the Muleshoe Jennyslippers. This group of ladies are real workers for Muleshoe. All could not be there this Tuesday so maybe some of the others could come another time.

We do not have any group picked out for next week. We have heard that the Rebecca's would like to come out. If this is true, please come out next Tuesday night.

A big thank you to Roger Clarkson of "Muleshoe Sod Farm" for coming Monday evening and digging the trench to install the permanent electricity to the Depot and also a big thank you to Bailey County Electric for furnishing the wire and PVC pipe for this job.

Those present Tuesday evening were: Hector Posadas, Mike Bomer, Kathi Franks, Lorene Lynch, Evelyn Peat, Bobbie Harrison, Ellen Ladd, Billie Downing, Anne Camp, T.R. and Vivian White, Nelda Merriott, A.T. Henderson, Norma Head and Marie and R.A. Bradley.

If there is anyone who would like to help with the Jane's Ranch House please come out on Tuesday evening's. Your help is needed and will be greatly appreciated.

respected by all members of the Senate deals with legislation which effects only one member's district. On legislation which has no statewide effect or effect outside the district of one member, it is understood that only the Senator from that district can give final approval to any piece of legislation.

As you can see, these rules, both formal and informal, are designed to make the system run more smoothly. However, problems do still occur and often the team system is the most effective way to reach a compromise on legislation. In the event, the team system

breaks down and when the whole cart is in the ditch, we have the "Gorilla Rule." This rule says Lt. Governor Hobby makes the rules. At the beginning of the Session when the rules are adopted, Senators give the Lt. Governor the authority to "take charge." Because of the respect that is given to Lt. Governor Hobby, existing problems are able to be worked out through discussion and compromise.

My goal is to be a team player and to learn the rules so that I can be the most effective Senator I can be for the 31st District.

West Plains Medical Center

A Sub-Regional Health Care Facility

Now Interviewing for the Following:

<p>NURSING</p> <ul style="list-style-type: none"> RN's & LVN's Ward Clerks <p>Laundry</p> <ul style="list-style-type: none"> Housekeeping <p>NURSING HOME</p> <ul style="list-style-type: none"> Aides & LVN's 	<p>DIETARY DEPT.</p> <ul style="list-style-type: none"> Cooks Dishwashers Food Service <p>Experienced Insurance Clerk</p> <p>Registered Medical Librarian (M.R.A. or A.R.T.)</p> <p>Licensed Physical Therapist</p> <p>Physical Therapist II</p>
---	--

West Plains Medical Center is an Equal Opportunity Employer.
 Call (806) 272-4524 or Send Resume to:
 West Plains Medical Center
 P.O. Box 630 708 S. 1st
 Muleshoe, Tx. 79347

Retirement Sale

20% - 75%!

Mens Suits & Ladies Shoes

1/3 OFF 1/3 OFF

Men's, Childrens & Ladies Clothing & Shoes

with Brand names such as: Hush Puppies, Daniel Green & Freeman.

We have a Linen and Lingerie Dept.

We deeply appreciate your patronage for the past 20 yrs.

The Building is also for sale come in for Details.

Woody's

520 Main No Refunds or Exchanges Hours 9-5
 Visa - Mastercard - Discover

Make A Difference!!

Vote In The MISD School Board Election



Julie Cage

EXPERIENCE

4 yrs School Board President

2 yrs President South Plains

School Board Association
 Serving on the Select Committee
 for School Finance in Austin

Your Vote Will Be Appreciated

Pd. Pol. Ad. By Julie Cage

Tuesday, May 2, 1989 — Sale Time: 10:00 a.m.

LOCATED: From Sudan, Texas, 2 miles North on Highway 303 then 2 miles East on County Blacktop then 1 1/2 miles North then 1/2 mile East.

CHESTER FARMS & OTHERS — Owners

Telephone: Glenn Chester — (806) 227-2368 (Nights) or (806) 227-2011 (Day) or James G. Cruce — (806) 296-7252

The following will be sold at Public Auction — Any announcement Sale Day takes precedence.

"Limited Consignments Welcome"

TRACTORS, COMBINE —

- 1-1981 Case 2290 Diesel Tractor, Cab, A/C, Htr., Radio, W.F., Wts., D.H., 18.4X38 Rubber, (2400 Hours)
- 1-1980 Case 2590 Diesel Tractor, Cab, A/C, Htr., Radio, P/S Trans., W.F., 3-pt., D.H., Weights, 20.8X42 Rubber With Axle Duals, (4575 Hours), 20 Hours On New O/H
- 1-1979 John Deere 4640 Diesel Tractor, Cab, A/C, Htr., Radio, P/S Trans., W.F., 3-pt., D.H., Weights, 18.4X38 Rubber With Axle Duals, (5000 Hours)
- 1-1978 John Deere 4640 Diesel Tractor, Cab, A/C, Htr., Radio, Quad Range Trans., W.F., 3-pt., Dual Hyd., New 20.8X38 Radial Rubber, (4800 Hours)
- 1-1973 John Deere 4430 Diesel Tractor, Cab, A/C, Htr., Radio, Quad Range Trans., W.F., 3-pt., D.H., Weights, 18.4X38 Rubber, (New Engine), Shredded
- 1-1969 John Deere 4020 Diesel Tractor, P/S Trans., W.F., 3-pt., S.H., Weights, Fenders, 16.9X38 Rubber
- 1-1958 John Deere 720 LPG Tractor, W.F., P/S, 3-pt., L.P.T.O., 15.5X38 Rubber
- 1-1958 John Deere 720 LPG Tractor, Tricycle Front, P/S, L.P.T.O., 15.5X38 Rubber
- 1-1957 Ford 901 Select-0-Speed Diesel Tractor, Hi Profile, W.F., 3-pt., P.T.O., Fenders, 13.6X28 Rubber
- 1-1972 John Deere Diesel Combine, Cab, A/C, Htr., Radio, Belt Drive, 24" Platform M.B.R., 23.1X26 Rubber, 1 Owner

LOADERS, TUB GRINDER, POWER UNIT TRUCK —

- 1-Haybuster H-1100 Tub Grinder, 671 Detroit Diesel Power Unit Mounted On 1974 GMC 2 Ton, S.A. Truck, 427 Engine, 5 Sp., 2 Sp.
- 1-1976 Case W-18 Articulating Diesel Self Propelled Loader, A401B 6 Cylinder Diesel Engine, 2 Yard Bucket, 17.5X25 Rubber
- 1-1969 John Deere 644 Articulating Diesel Self Propelled Loader, 4 Yard Bucket With Extra 4' Arm Extensions, 20.5X25 Rubber

TRUCKS —

- 1-1979 International 4300 Conventional Truck Tractor, Twin Screw, 350 Cummins, 15 Speed Transmission
- 1-1977 Ford F-600 S.A. Feed Truck, V-8 Engine, 4 Sp., 2 Sp., W/Oswalt Ensilimixer Box, Electronic Scales, Overhead Unloading Auger, Side Bunk Delivery, 10.00X20 Rubber Engine, 4 Speed, A/C, Htr., Radio, P/S, Gooseneck Trailer Hookup
- 1-1974 Chevrolet C65 T.A. Grain Truck, 427 Engine, 4 Sp., 2 Sp., 22" Bed, T/C Hoist, Aux. Fuel Tank, 10.00X20 Rubber
- 1-1972 Ford 9000 Conventional Twin Screw Truck Tractor, 300 Cummins Engine, 13 Speed Trans., 10.00X22 Rubber
- 1-1959 Chevrolet Viking 60 S.A. Grain Truck, 6 Cylinder, 4 Sp., 2 Sp., 14" Midwest Bed, Hoist, 8.25X20 Rubber

TRAILERS, REEFER —

- 1-Lufkin 48', Live Bottom Hyd. Driven Imco Open Top Van Trailer
- 1-Hobbs 45', Mohrlang Live Bottom, T.A. Van Trailer
- 1-Strick 40', Mohrlang Live Bottom, T.A. Van Trailer, With Roll Over Tarp
- 1-Brown 40', Live Bottom, T.A. Van Trailer, With Roll Over Tarp, New Unloading Motor
- 1-1976 Trainmobile 40', Hopper Bottom, T.A. Grain Trailer, With Tarp
- 1-1979 Dorsey 43' Reefer Trailer, Thermo King Ref. Unit, 11R24.5 Rubber, New Brakes
- 1-Wilson 45', Drop Deck, T.A. Cattle Trailer
- 1-Gooseneck 26', T.A., Dual Wheel Implement Trailer, With Dove Tail, Ramps

PEANUT EQUIPMENT —

- 10-Peerless All Crop 14" Metal, Drier Peanut Trailers, Ball Bearing 6th Wheel, (Bought New in 1988, Little Used)
- 4-Peerless Dual Peanut Drier Units, Single Phase, 220 Volt, (2 Units Never Used, 2 Units Used Very Little)

EQUIPMENT —

- 6-White 3400 Air Planter Units, Disc Bed Levelers, With Knife Openers
- 1-1988 Wylie 500 Gallon T.A. Sprayer, Flotation Axles, 12 Row Booms, Ace Hyd. Pump, Elec. Controls (Used Little)
- 1-Rayne Plane S-600 F Dirt Scraper
- 1-John Deere Killer 10' Dirt Mover
- 1-Hamby 9 Shank, 3-pt. Ripper Plow
- 1-Big Ox Ind. 300 Blade, C.C.
- 1-Waldon 8' Dozer Blade
- 1-Bush Hog 6', 3-pt. Shredder, (Needs Gear Box Repair)
- 1-Phares Wilkins 3-pt. Disc Ditch Filler
- 1-Hamby 21' Lift Mulch Harrow
- 3-Noble 10' Mulch Harrow Units
- 1-Ford 2 Row Ground Driven Planter
- 1-Phares Wilkins 18 Row, D.T. Sandlighter
- 1-John Deere 3 Shank, D.T.B., 3-pt. Orchard Shank Plow
- 1-2 Row Crustbuster Knife Steel
- 1-John Deere 3 Section Drag Harrow

HAY & LIVESTOCK EQUIP., AUGER —

- 1-John Deere 530 Round Hay Baler
- 1-Vermeer 605F Round Hay Baler, Shredded
- 1-1982 John Deere 347 P.T.O. Square Hay Baler, Twine Tie, Hydraulic Press
- 1-Hesston 60A Stak Mover Trailer
- 1-Vicon 3-pt., 10 Wheel, Double Side Delivery Hay Rake
- 1-Farmhand 6 Wheel, D.T. Side Delivery Hay Rake
- 1-Kneib Pop-Up Hay Bale Loader

IRRIGATION —

- 1-International 446 Long Block Motor, Not Run Since D/H
- 1-Ford 460 Irrigation Motor, Not Run Since D/H
- 3-Chrysler 413 Irrigation Motors
- 2-Ford Irrigation Motors: 1-460, 1-300
- 1-Chevrolet 292 Irrigation Motor
- 30-Joints 5" X 30" Sprinkler Pipe
- 6-Joints 6" X 20" Gated Pipe, 40" Rows
- 25-Joints 7" X 20" Gated Pipe, 40" Rows
- 2-Injecto Meter Pumps, 1-12" X 9", Hr. Hydrant
- 1-Lot 1's, L's, Slip Joints, End Plugs, Aluminum Fittings
- 2-Gate Valves
- 2-Irr. Motor Covers
- 1-Lot Drive Shafts
- 1-Lot Scrap Aluminum Pipe
- 1-Lot Murphy Gages, Panels, Switches, Etc.

MANURE BOX, TRUCK BED, TRAILERS, TANKS —

- 1-Oswalt 14' Live Bottom Manure Spreader Box
- 1-Hobbs 16' Truck Bed With Boards & T/C Hoist
- 1-T.A. Flotation Axle Swather Trailer
- 1-Dual Wheel Truck Axle
- 1-T.A. Dry Fertilizer Chassis & Tank
- 1-250 Gallon Propane Tank, 200 PSI
- 1-113 Gallon Pickup Propane Tank
- 1-Butane Carburetor System
- 1-Lot 12 Volt Fuel Transfer Pumps

SHOP EQUIPMENT —

- 1-4 1/2 Yard Cement Mixer With 3-pt., P.T.O. Drive
- 1-Jenny Multi Job 500 Portable Pressure Sprayer
- 1-John Deere Hi-Pressure Portable Washer
- 1-Int. HBI2 Band Saw
- 1-Smudge Pot Heater
- 1-Dayton Small Band Saw
- 1-Selidon 1 Ton Chain Hoist

3 WHEELER, NON-CLASSIFIED —

- 1-1989 Lnc 3 Wheeler Spray Rig W/Hand Gun, (New)
- 1-Lot Electric Wiring
- 1-Lot J.C. Penney Shelving & Counters
- 25.2 X 16' Fiberglass Greenhouse Traps
- 1-Lot Switch Boxes
- 2-Air Pre-Cleaners
- 1-Lot Garden Hose
- 1-Lot Electric Motors
- 1-Lot 5 Gallon Cans
- 1-Large Lot Tires & Wheels
- 1-Tote Gull Roll-Off Cart
- 1-Lot Items Too Numerous To Mention

Sudan News

by Evelyn Ritchie

Mr. and Mrs. Willie McAlpin hosted a birthday celebration Sunday in their home in honor of the birthday of her mother, Bill Timberlake of Levelland. Others attending were her dad, Jack, also of Levelland, Roy and Alora McGuire of New London, Nita Jelfcoat of Dallas, Kevin McAlpin and Kendall Cross of Canyon, Tracy and Celeste Spinhirne of Dumas, and Michael Timberlake of Levelland.

Visiting for several days with Ouida Parrish has been her sister, Wilda Freeman, of Alto Loma, Calif.

Wayne Swart was to undergo surgery on his injured foot on Tuesday at the Methodist Hospital in Lubbock. It was reported that he is doing well.

Iwen West was at St. Mary's hospital Tuesday for tests.

Morris Jefferson was released Saturday from St. Mary's Hospital where he has been a patient for some time.

Bill Poe was released Saturday from St. Mary's.

Ruby Ingle remains a patient in the Methodist Hospital in Lubbock.

Mr. and Mrs. Buster Kittrell visited recently in San Angelo and while there they visited with Rev. and Mrs. Truman Johnson, former Sudan residents.

Mr. and Mrs. Halbert Harvey have returned home from Ft. Worth where they were last week to attend funeral services for his sister, Marie Rhoades.

Mr. and Mrs. Byron Ford have returned from a vacation at Pagosa Springs, Colo. during the weekend.

Mary Powell was honored Monday night with dinner at Poor Boys in Clovis. While gone, someone entered their home and decorated it with happy birthday posters.

Tammi Gore of Angelo State University was home during the weekend with her parents, Mr. and Mrs. James Gore and here to attend a bridal shower in her honor.

Mr. and Mrs. Edgar Chance of Lubbock were among those from out of town that were here Friday to attend funeral services for Weldon Wiseman.

Mr. and Mrs. Bent Wiseman of Oklahoma visited recently with his parents, Mr. and Mrs. Kenneth Wiseman and were here to attend funeral services for Bent's uncle, Weldon Wiseman.

Rex Baccus of Dallas visited during the weekend with his parents, Mr. and Mrs. Roy Baccus.

Mechelle Burns and Kammi of Littlefield were visitors for the worship services Sunday morning at the FBC with her parents, Mr. and Mrs. Gaylon Burns.

Visiting during the weekend with Mr. and Mrs. Rick Walker and boys was her dad of Borger.

Mr. and Mrs. Billy Hanna and Matt were in Monahans during the weekend to visit their son, Mr. and Mrs. Larry Hanna and children and attended their District Track meet in which their grandson, Chad participated.

Visiting Sunday with Mr. and Mrs. Buster Kittrell were their grandchildren and they attended worship services with them Sunday morning at the FBC.

J.C. Wells remains a patient in the Methodist Hospital where he has undergone surgery two times recently.

Mrs. Annie Chester was taken by ambulance to the Amherst hospital Tuesday.

Several ladies of the FBC met Monday evening to begin the organization of a WMU. Visitors included Jane Ritter of Petersburg, Edna Evans of Kress, Barbara Hutson of Dimmitt, Sammy Gross of Kress, Jolene Sanders of Plains and Mona Samples of Plainview. Local ladies attending were Ruth Baker, Dottie Haynie, Jean Harvey, Wanda Kittrell, Frances Gardner, Gwen West and Evelyn

Ritchie. Following the meeting, refreshments of finger foods were served by Frances and Ruth.

The members of the senior class are researching the athletic history of Sudan High School for a class project. They need information on the teams that were district, bi-district, area, regional or state champions. This includes all sports-football, basketball, track, tennis and golf. The recent teams will not be a problem but in order to get an accurate account of teams of the past they need some community assistance. If you have information concerning team championships from the 50's on back, please contact a member of the senior class or a class sponsor. Information can be left at the office of the high school any time during the day or given to a senior during home room (10-10:45 a.m.)

Mr. and Mrs. Butch Blind of Arizona visited this week with her brother, Mr. and Mrs. B.A. Beauchamp and family. They were enroute to Ohio for a few months visit with family and friends.

Weekend visitors with Mr. and Mrs. James Conn and boys were her parents, Mr. and Mrs. Wayne Arthur of Abernathy. They were here for the District Track Meet Saturday when their grandson, Jason, participated in Pole Vaulting and other heats.



MAYOR SIGNS PROCLAMATION ON 'LOYALTY' DAY--Muleshoe Mayor signed a proclamation Thursday afternoon, designating Monday, May 1, as 'Loyalty' Day in the City of Muleshoe. Loyalty Day is sponsored by the VFW, and is observed nationwide. Congress passed a law on July 18, 1958, designating Loyalty Day. Pictured from left are D. T. Garth, Commander of Walter A. Moeller VFW Post #8570 in Muleshoe; Mayor Turner; and Hugh Young, Quartermaster of the Walter A. Moeller VFW Post #8570. The proclamation calls on all Americans to show their loyalty to their country, not only on Monday, May 1, but every day. (Journal Photo)

Plan Now To Get Better Nitrogen Efficiency For Your Corn.

Let Us Show You Why Nitrogen Solutions From Western "66" Are Your Best Buy---

- ★ Less Application Loss Than Ammonia!
- ★ Recent Research Shows A Combination Of Ammonia And Nitrate Nitrogen Gave Higher Corn Yields Than Either One Alone. (You Get Both In Solution)
- ★ Flexible Application Alternatives - Sidedress While You Cultivate, Or Apply Through Irrigation Water.
- ★ Add Other Nutrients At The Same Time If Needed. - See How Economical Sulfur Can Be Added.

Let Us Help You Plan A Maximum Economic Yield Program To Produce Top Profits For You. Call Or Come By Soon.

Western "66" Co.

Earth Hwy

Muleshoe

272-4556

EXENCIONES DE RESIDENCIA



PUEDEN REDUCIR LOS IMPUESTOS QUE PAGA POR SU CASA

Una exencion de residencia le ayuda a reducir los impuestos sobre la propiedad que tiene que pagar por su residencia reduciendo el valor que se utiliza como base para calcular sus impuestos. Por ejemplo, si su casa esta valorada en \$50,000 y usted recibe una exencion de residencia de \$5,000, usted va a pagar impuestos de residencia como si su valor fuese de \$45,000.

Usted puede recibir

una exencion de residencia si usted era el dueño de su casa el primero de enero y la usaba como su residencia principal en la misma fecha. No importa si su residencia es una casa, un condominio o una casa remolque.

Hay exenciones

que cualquier persona que es dueño(a) de su residencia puede usar para rebajar sus impuestos escolares. Exenciones adicionales se ofrecen a dueños de residencia que estan incapacitados o tienen 65 años o mas. Otras exenciones pueden ofrecerse a propietarios por distritos escolares, condados, ciudades y distritos escolares.

Bailey County Appraisal District
104 E. Ave. C 272-5501

Solicite todas las exenciones que usted puede recibir en la oficina local del distrito de valoracion en la direccion que se cita abajo.

Si usted recibio una exencion para su residencia actual en 1988, usted no necesita solicitarla para 1989 a menos que el jefe de valoracion pida que haga una nueva solicitud.

Sin embargo, si usted cumplio 65 años o quedo incapacitado antes del primero de enero haga una nueva solicitud para recibir exenciones adicionales.

Si usted no ha recibido una exencion para su residencia actual o si se cambio de casa haga una nueva solicitud para 1988.

Usted tiene que hacer

su solicitud antes del 1 de mayo de 1989. Comuniquese con su distrito de valoracion antes de esa fecha si necesita mas tiempo para hacerla.

Para tener mas informacion usted puede recibir una copia gratis del folleto *Los Derechos, Remedios y Responsabilidades del Contribuyente de Impuestos* en la oficina del distrito de valoracion o puede pedirla del Consejo Estatal de Impuestos sobre la Propiedad (State Property Tax Board) en Austin.

Muleshoe Menu

MAY 1-5 MONDAY BREAKFAST
Cereal, Toast, Fruit and Milk
LUNCH
Steak & Gravy, Creamed Potatoes, Green Beans, Hot Rolls, Fruit and Milk
COMBO
Steak & Gravy, Creamed Potatoes, Green Beans, Hot Rolls, Fruit and Milk
TUESDAY BREAKFAST
Cheese Toast, Fruit and Milk
LUNCH
Hamburgers, Lettuce & Tomato, Pickles & Onions, Tater Tots, Cobbler and Milk
COMBO
Juicy Burgers, Lettuce & Tomato, Pickles & Onions, Tater Tots, Cobbler and Milk
WEDNESDAY BREAKFAST
Pancakes, Syrup, Sausage, Fruit and Milk
LUNCH
Burritos, Corn, Cheese Stick, Crackers, Fruit and Milk
COMBO
Cheese Nach'o, Corn, Fried Okra, Crackers, Fruit and Milk
THURSDAY BREAKFAST
Blueberry Muffin, Juice and Milk
LUNCH
Hot Dogs, Potatoes Salad, Pork & Beans, Pudding and Milk
COMBO
Frito Pie, Beans, Cheese, Corn, Fruit and Milk
FRIDAY BREAKFAST
Cooked Cereal, Toast, Fruit and Milk
LUNCH
Fried Chicken, Gravy, Creamed Potatoes, Eng. Peas, Hot Rolls, Fruit and Milk
COMBO
Fried Chicken, Gravy, Creamed Potatoes, Green Beans, Hot Rolls, Fruit and Milk

Golden Gleams

Small cares speak; great ones are dumb.
—Seneca.

Care sits behind the horseman.
—Horace.

Care's an enemy to life.
—Shakespeare.

It is a mistake to suppose that all care is wakeful.
—Leigh Hunt.

Definition of Legal Publication

Art. 28A. Legal Publication, Definitions.

"The following terms shall, unless the context indicates otherwise, have the following respective meanings:

"(1) The term 'publication' shall mean any proclamation, notice, citation, advertisement, or other matter required or authorized by law to be printed in a newspaper or newspapers by any institution, board, commission, department, officer, agent, representative, or employee of the state or of any subdivision or department of the state, or of any county, political subdivision, or district of whatever nature within the state, whether to be paid for out of public funds or charged as costs or fees.

"(2) The term 'newspaper' shall mean any newspaper devoting not less than twenty-five per cent (25%) of its total column lineage to the carrying of items of general interest, published not less frequently than once each week, entered as second-class postal matter in the county where published, and having been published regularly and continuously for not less than twelve (12) months prior to the making of any application mentioned in this Act, except that any weekly newspaper shall be allowed to omit two (2) publication issues in twelve (12) months and still retain its status as a newspaper eligible to make any publication mentioned in this Act.

"(3) The term 'political subdivision' shall include cities, towns, and villages, but this definition shall not be exclusive.

"(4) The term 'district' shall include school districts of every kind, road districts, drainage districts, irrigation districts, levee improvement districts, conservation and reclamation districts, and improvement districts of every kind, but this definition shall not be exclusive.

"(5) The term 'shall' whenever used in this Act shall be construed as indicating mandatory provisions in this Act.

"(6) The officer, employee, agency, or persons charged with the duty of inserting any publication in a newspaper or newspapers shall select the newspaper or newspapers in which such publication is to be inserted."

Effective August 23, 1963
(VATS Art. 28A.)

[The Muleshoe Journal and Bailey County Journal are the only newspapers in Bailey County that meet the above requirements.]

Lazbuddie Menu

MAY 1-5 MONDAY BREAKFAST
French Toast, Juice and Milk
LUNCH
Pizza, Corn, Green Salad, Pudding, and Milk
TUESDAY BREAKFAST
Donuts, Fruit and Milk
LUNCH
Chicken Strips, Potatoes & Gravy, Green Peas, Biscuits, Fruit and Milk
WEDNESDAY BREAKFAST
Toast, Bacon, Juice and Milk
LUNCH
Burritos, Corn, Green Salad, Cake, and Milk
THURSDAY BREAKFAST
Cereal, Juice and Milk
LUNCH
Baked Potatoes/Chili Meat, Broccoli & Cheese, Hot Rolls, Fruit and Milk
FRIDAY BREAKFAST
Cinnamon Rolls, Fruit and Milk
LUNCH
Bar-B-Q On Bun, French Fries, Pickles/Cheese Sticks, Brownies and Milk
SALAD BAR SERVED MONDAY-THURSDAY

Methodist Churches Will Hold Golden Cross Sunday May 7

May 7 is designated as Golden Cross Sunday for the 248 churches of the Northwest Texas Conference of the United Methodist Church.

Contributions from the churches will be earmarked for the Golden Cross Fund, which assists persons who have no means of paying for necessary hospital care. The fund is supported solely by church contributions, individual donations and the annual Golden Cross Bike-A-Thon.

In 1988, \$20,971 was granted to 24 people who requested assistance. Money from the fund is available to all persons, regardless of their religious preference, when they are admitted to Methodist Hospital by members of its medical staff. The fund is administered by the hospital's Department of

Three Way Menu

MAY 1-5 MONDAY BREAKFAST
Steamed Rice, Juice and Milk
LUNCH
Carne Guesada, Gucamole, Salad, Refried Beans, Fruit and Milk
TUESDAY BREAKFAST
Biscuit/Gravy/Sausage, Juice and Milk
LUNCH
Chicken Salad Sandwich, Cheese Stix, Tator Tots, Salad, Ice Cream and Milk
WEDNESDAY BREAKFAST
Waffles/Syrup, Juice and Milk
LUNCH
Baked Ham, Corn on Cob, Salad, Hot Rolls, Jello and Milk
THURSDAY BREAKFAST
Pop Tarts, Juice and Milk
LUNCH
Bar-B-Que Wieners, M Potatoes, Green Beans, Hot Rolls, Honey & Butter and Milk
FRIDAY BREAKFAST
Breakfast Burrito, Juice and Milk
LUNCH
Red Beans, Spanish Cabbage, Tator Tots, Corn Bread, Apple Crisp and Milk
It Is
The only international language that has endured is double talk.

Best of Press

Quite So!
If you've made up your mind you can't do something—you're absolutely right!
—Beamrider, Indianapolis, Ind.

Defined
Fishing—An uninhabited body of water surrounded by liars in old clothes.
—Leader, St. Louis.

Three Way News

Rev. and Mrs. Alford Richards and Mrs. Richards from Portales, visited in the community Tuesday with Mrs. M.C. Toombs, Mrs. H.W. Garvin, Mrs. Minnie Dupler and Mr. and Mrs. George Tyson. The Richards family were pioneers in our community.

Mr. and Mrs. Joe Sowder spent the past week visiting their son, the Mike Sowser's in Arkansas.

Mrs. Adolph Wittner was in Lubbock Wednesday. She brought her grandson, Camron Vaughan, home with her for a few days.

Charlie Parker from Lubbock spent Thursday with her sister, the Bill Dolles.

Mr. and Mrs. Bobby Adams from Morton and Mr. and Mrs. Bill Key from Enchoh were supper guests in the Bud Huff home Friday evening celebrating Mrs. Bill Key's birthday.

Mr. and Mrs. Bill Dupler and Eugena spent the weekend fishing.

Mrs. Baxter Vaughan from Plainview spent the weekend with her parents, the Adolph Wittners.

Mr. and Mrs. R.L. Davis visited the George Tysons Thursday evening.

Mr. and Mrs. M.S. Leon Dupler from Andrews spent the weekend with his mother, Mrs. Minnie Dupler.

Mr. and Mrs. Mike White from Lubbock was dinner guests Sunday in the Bill Dolle home.

Robin Kindle, a senior at Angelo State University spent the weekend visiting her parents, the Bobby Kindles.

Mr. and Mrs. Kenneth Fox from Clovis, N.M. spent Sunday with her mother, Mrs. H.W. Garvin.

Mrs. Darrel Robertson from Haskell spent the weekend with her sister, the R.L. Davon's.

True!
If you are wrong, you can't afford to argue and if you are right, what's the use?

Enochs News

by: Mrs. J.D. Bayless

Mr. and Mrs. Bill Key and son, Sid Key, and Vonna Hamilton attended the 50th anniversary of Bill's sister and husband, Hubert Gammons, at Weatherford last weekend.

Rev. and Mrs. David Graves and children, Sidney, Tonya and David Jr. were supper guests in the home of her mother, Mrs. Nova Louise Thomas Friday night. The boys remained and spent till Saturday afternoon. Mrs. Thomas met the Graves' in Morton Saturday afternoon and they picked the boys up and Tonya went home with her grandmother to spend till Monday afternoon. The children are enjoying not having school Monday.

Gene Stroud and Justin of Dimmitt were guests in the home of his parents, Mr. and Mrs. Goldman Stroud Saturday.

Mr. and Mrs. Bob Newton spent the weekend with their son and family, Mr. and Mrs. Dennis Newton at Hereford and they went to the baseball game to see their grandson, Patric, play ball Saturday evening.

Mrs. Doris Huff cooked a birthday supper for her sister, Mrs. Bill Key, Sid Key, Vonna Hamilton, and Mr. and Mrs. Bobby Adams.

Mr. and Mrs. Goldman Stroud visited Mr. and Mrs. Travis Lambert in Muleshoe Sunday afternoon.

Mrs. Louise McCall celebrated her birthday Saturday with a supper. The supper was for the daughters, Brenda George, and Dolores Mosser, who also had a birthday this month. Those present were Mr. and Mrs. Robert George of Lubbock, Mr. and Mrs. Steve Mosser, Kerry, Kim, Kelly and friends, Eric Fisher and Tracy Starkey of Slaton. They all spent the night. They had a wonderful time and a good supper.

Mrs. Martha Leake of Pogosa Springs, Colo. spent Thursday till Saturday with her sister and husband, Mr. and Mrs. Buford Peterson, Rev. and Mrs. Harold Abney and Koby spent Friday night with them.

Kris Rowden and his girl friend, Shelly of Slaton, visited his grandparents, Mr. and Mrs. E.N. McCall Sunday afternoon. They also visited his grandparents, Mr. and Mrs. Tom Rowden in Morton.

DOGGONE TIRED OF A HOUSE TOO SMALL FOR THE BROOD?



RAISING THE ROOF ABOUT YOUR HOUSING NEEDS? IF YOU NEED AN ADDITION, OR A NEW HOUSE, CHECK THE LISTINGS IN THE CLASSIFIEDS, FOR THE SPACE YOU NEED!

A&M's Do It Yourself

Semi-Gloss Weather-Shedder Latex House & Trim Paint

Now: **\$12.99** White or Base
Reg. \$14.79-\$14.99 Clovis & Muleshoe Stores Only

Acrylic Latex House Paint

- ★ One Coat Coverage
- ★ 10 Year Durability
- ★ Fume Resistant
- ★ No Chalk Washdown
- ★ Non-Yellowing
- ★ Washable
- ★ Stain Resistant

And For The Inside Of Your House.

Latex Flat Wall Paint

White or Base Only: **\$9.99** Reg. \$11.95
Clovis & Muleshoe Stores Only

All Painting Accessories 20% Off

- ★ One Coat Coverage
- ★ 8 Year Durability
- ★ Washable
- ★ Stain Resistant
- ★ Spot Resistant
- ★ Non-Yellowing
- ★ Colorfast

KELLER 6 Foot

ALUMINUM STEP LADDERS GREENLINE SERIES COMMERCIAL TYPE II MEDIUM DUTY

Steady and True For Years & Years

Now Just: **\$34.99**

#926

- Auto-fold paint tray, shelf-tested to 100 lbs.
- Riveted "L" shaped back brace with anti-racking design
- Diagonal "L" knee braces
- Full 3" side rail and step with slip resistant surface, each step double riveted
- Safety feet with slip resistant vinyl—crimped in to last
- Pinch-proof spreader bars

A&M FARM & RANCH SUPPLY

Sale Prices Good Through **May 6th, '89**

Come In And See All The Colors You Can Make

2600 Mabry Dr. Clovis, N.M. 1-505-762-7717
1601 S. Ave. D. Portales, N.M. 1-505-356-8543
1302 W. American Blvd., Muleshoe, Texas 1-806-272-5571

All Stores Open Monday-Saturday 7:30 A.M. - 6:00 P.M.
Sundays 12:30 - 5:00 P.M.

Come By Any Of Our 3 Locations To Serve You.

Visa, Mastercard and Discover Welcome

Patients In West Plains Medical Center

APRIL 20-27 THURSDAY

Stacy Knowlton, Kayla Magby, Leslie Moraw, Leigh Moraw, Francis Bland, Maria Toscano, Shane Scoggin, Ricardo Alarcon

Jackie Scoggin, Jo Beth Edward and Jesse Leal.

FRIDAY

Stacy Knowlton, Leslie Moraw, Leigh Moraw, Gil Lamb, Maria Toscano, Ricardo Alarcon, Jackie Scoggin, Margaret Parker and Jesse Leal

SATURDAY

Stacy Knowlton, Geneva Rubio, Margaret Parker and Jesse Leal

SUNDAY

Stacy Knowlton, Geneva Rubio and Davie Bellar

MONDAY

Stacy Knowlton and Geneva Rubio

TUESDAY

Stacy Knowlton, Mylissa Thompson, Geneva Rubio, Betty Vansandt and Herron Washington

WEDNESDAY

Stacy Knowlton, Mylissa Thompson and Betty Vansandt

THURSDAY

Stacy Knowlton, Mylissa Thompson, Cheryl Wills, Betty Vansandt and James Barrett

What the world needs today is millions of honest, average citizens.

Over the Doors

"So you're a painter?"
"Yep."
"Paint houses, I presume."
"Nope, paint men and women."
"Oh—I see, an artist."
"Nope, just paint 'Men' over one door and 'Women' over the other door."

So What

He had taken his wife to her first ball game.
"What's so exciting, why are they jumping up and down?"
"Look," he exclaimed, "the Dodgers have a man on every base!"
"So what," she scoffed. "So have the Giants."

ATTENTION!

CLOSED TILL 10 A.M. SATURDAY

BARGAIN BARN FURNITURE

RETIREMENT SALE!!

CONTINUES

SATURDAY

10:00 A.M. to 7:00 P.M.

OPEN SUNDAY 12:00 to 5:00 p.m.

MUST SELL ALL OUR FAMOUS BRANDS. TOTAL LIQUIDATION PRICES WILL PREVAIL. Styleline - King Koil - Broyhill - Vaughn - Action - Sidex - Astro - Lehigh - Custom - 3 Star - Standard 20th Century - Ashley - etc.



SHELBY AND RUBY BISHOP TO RETIRE
Since 1976 it has been our privilege and pleasure to have served as owners of Bargain Barn Furniture in Downtown Clovis. But now it is time for us to go fishing and visiting or otherwise do whatever you do when you don't open the store everyday. But before we can do this we must get our things in order and liquidate all of all name brand furniture stock to the bare walls. Thanks for all the good years.

Shelby & Ruby Bishop

DELUXE QUEEN SIZE EARLY AMERICAN SLEEPER
Opens with Queen Mattress-Antron Nylon Cover
REG. \$499.95
SALE \$297

SOFA SLEEPER
Opens with Twin Size Mattress-Nice Cover.
REG. \$279.95
SALE \$167

WHITE AND BRASS METAL DAY BED
Includes Sides-Back-Rails and Mattress.
REG. \$247.00
SALE \$167

5 PC. BRASS AND GLASS DINETTE
Stop Sign Style-With 4 Padded Chairs. Priced in the Box.
REG. \$199.95
SALE \$127

4 DRAWER CHEST OF DRAWERS
Nice Wood Grain Finish-Nice Storage Space.
REG. \$49.95
SALE \$24⁷⁷

ALL WOOD DAYBED
Sturdy Construction. Nice Pine Finish. Includes Mattress.
REG. \$269.95
SALE \$147

MATTRESS SETS
Famous Name-Smooth Top Construction. Sold in Sets Only.
REG. \$129.95
SALE \$97 set

PUBLIC NOTICE
The Bargain Barn is not quitting business. At the end of this sale, new management will take over with a face lift, new stock, and great new bargains.

NO DOWN NO INTEREST TILL AUGUST NO PAYMENT TILL AUGUST

3 PC. LIVING ROOM SET
Includes Envelope Back Sofa, Loveseat & Chair - Nice Velvet Cover.
Reg. \$599.95 **Sale \$397**

3 SHELF-GOOD SIZE OAK FINISH BOOKCASE
Nice Finish and Shelf Room.
Reg. \$49.95 **Sale \$27**

5 PC. TRIPLE DRESSER BEDROOM SUITE
Includes Triple Dresser, Mirror, Large Chest, Headboard and Night Stand. Pine Finish.
Reg. \$399.95 **Sale \$247**

WALL TO WALL
3 PC. BEAUTIFUL CONTEMPORARY LIVING ROOM SUITE IN RICH MULTITONE VELVET COVER. Includes Sofa-Love Seat and Chair
Reg. \$749.95 **Sale \$487**

3 ONLY ODD CHINA. CHOICE OF STYLES AND FINISHES - These Are Real Values-That Can't Be Duplicated.
Values to \$499.95 **Sale \$247**

5 PC. ALL WOOD DINETTE - Includes Table With Pine Finish, Formica Tabletop & 4 Sturdy All Wood Chairs.
Reg. \$279.95 **Sale \$147**

BEAUTIFUL 3 PC. LIVING ROOM SUITE WITH OAK ACCENT TRIM-Includes Large Cushiony Sofa-Love Seat & Chair-Choice of Colors.
Reg. \$1399.95 **Sale \$877**

RETIREMENT

FAMOUS KING KOIL MATTRESS SETS AT TRUCKLOAD PRICES
5 YEAR WARRANTY SETS

	REG.	SALE
Twin Size Set	\$179.95	\$97
Full Size Set	\$249.95	\$137
Queen Size Set	\$299.95	\$167

DELUXE 10 YR WARRANTY SET

Twin Size Set	\$229.95	\$127
Full Size Set	\$299.95	\$167
Queen Size Set	\$399.95	\$237
King Size Set	\$499.95	\$297

TOP OF LINE 15 YEAR WARRANTY SETS

Full Size Sets	\$399.95	\$247
Queen Size Set	\$499.95	\$297
King Size Sets	\$599.95	\$397

LIQUIDATION
3 PC. INCLINER SECTIONAL - Includes 2 Love Seats With Incliners, & Matching Corner Table. Nice Velvet Cover.
Reg. \$797.00 **Sale \$597**

6 PC. WOOD ARM DELUXE FAMILY ROOM GROUPS - Nice Antron Cover Includes Sofa, Chair, Rocker, Party Ottoman, and 2 Lamp Tables.
Reg. \$697.00 **Sale \$497**

BROYHILL 9 PC. FORMAL DINING ROOM SUITE. Includes Buffet-Lighted Hutch-Large Extension Table-2 Arm and 4 Side Chairs-Rich Pine Finish.
Reg. \$1499.95 **Sale \$977**

DELUXE 7 PC. DINETTE SETS. Large Extension Table with Leaf and 6 Deluxe Chairs-Several to Choose From.
Values to \$329.95 **Sale \$197**

BEAUTIFUL VELVET SWIVEL ROCKERS
All Hardwood Construction-Choice of Velvet Covers.
Reg. \$149.95 **Sale \$97**

EXTRA CREDIT HELP
HEAVY DUTY 2x6 ALL WOOD BUNK BED
Makes into Twin Beds. Includes Mattress, Nice Pine Finish.
Reg. \$289.95 **Sale \$187**

EXTRA DELIVERY HELP
EXCELLENT SELECTION OF BRASS PLANTERS-HALL TREES-BAKER RACKS-TABLES-STANDS AND MANY MORE ITEMS TO NUMEROUS TO MENTION.
UP TO 1/2 OFF

BARGAIN BARN

201 W. Grand, Clovis 762-2304



TERMS OF SALE

- Time Payment Plan
- No Down Payment Till July
- Visa or Mastercard
- Cash or Check
- 90 Days Same as Cash
- On The Spot Financing

All items priced U-haul-But delivery is available. All items must be removed from bldg.

Open Letter To The Public

Muleshoe Publishing Co. Inc.
304 West 2nd
Muleshoe, TX 79347

Dear Taxpayer:

We recently sent out a letter alerting you that there are some so-called consultants making wild promises that they had secret, surefire methods of getting refunds from the Comptroller's Office.

But apparently our zeal to put down these few unscrupulous operators (some of whom previously worked for the Comptroller's Office) has caused concern in some areas that we were inadvertently casting a shadow on the vast majority of honest CPAs, consultants and practitioners.

Let me assure you, this was never my intent. Good, honest CPAs and tax advisors are an excellent source of guidance and information.

In fact, they are a vital link between our office and you, the taxpaying public. We have enjoyed a pleasant, constructive working relationship for years, and I am committed to that.

I have sent examples used by these few unscrupulous operators to the Chief of Consumer Affairs, Texas Attorney General's Office; the Executive Director, Texas Society of CPAs; and the Executive Director, State Board of Public Accountancy, seeking their assistance in separating the great number of legitimate tax practitioners from the few get-rich-quick artists.

I do not want to see these operators line their pockets with a refund rightfully owed a Texas taxpayer. My office has audited refund claims which have ended up not covering the 30-50 percent fee charged by the consultant. On the other hand, I do not want to discourage you from hiring CPAs or tax practitioners with whom you have worked in the past or when you feel it's in your best interest to do so.

If I can be of help to you in any way, please let me know.

I am grateful for your time and consideration in understanding what happened on this refund solicitation question.

Sincerely,
Bob Bullock
Comptroller of Public Accounts

Courthouse News

MARRIAGE LICENSE
Luis Davila Daniel and Mary Ann Gutierrez Gonzalez, Muleshoe

William Ezra Funk and Tina Marie Greene, Clovis, N.M.

WARRANTY DEEDS
Juan Fco. Garza and wife, Noemi D. Garza to Gilberto Febela and wife, Felipa Febela---All of Lot No. 5, in Block No. 9, Warren Original Addition to the Town of Muleshoe, Bailey County, Texas.

Ben Roming and wife, Julia Ann Roming (AKA Judy A. Roming) to Clayton Myers and wife, Gladys Myers---All of the (N/2) of Section Number (15), Block "X", WD&FW Johnson's Subdivision, Bailey and Parmer Counties, Texas.

COUNTY COURT
Omar Morales Mendoza, DWI \$350 Fine, 1 Year Probation
Bobby Dean Fried, DWI \$350 Fine, 2 Years Probation

DISTRICT COURT
Simmacher Ag. Inc., a Texas Corporation VS Tom Flowers, Order of Dismissal
Thomas Edward Page VS American Motorist Insurance Company, Judgment
Toni Cheryl Eagle and Weldon Leon Eagle, DV

David Alton Parker and wife, Elaine Parker, individually and next of friends to Damon Lee Parker, a minor, V J.C. Pearson, Jr., Angel Dawn Pearson and Norene Pearson, Judgment

Glena Yell, individually and as next of friend of Robert Shannon Gregory, a minor VS J.C. Pearson, Jr., Angel Dawn Pearson and Norene Pearson, Judgment

L.F. Bruns V County of Bailey and Lubbock Humane Society, Judgment.

Nursing Home News By: Joy Stancell

Sunday afternoon the Progress Baptist Church came to hold a special Sunday service for the residents.

Tuesday morning Louise Legg of Me Ma's Ceramic Shop in Sudan came to assist the residents in painting ceramics. Residents participating were Effie Smith, Emma Schuster, Julia Hawkins, Thelma Stearns, Pearl Cox, Lois Ethridge, Guy Kendall, Clara Weaver, Stella Morgan and Ora Roberts.

Winnie Berry and Mike Doyle visited the nursing home Tuesday.

Tuesday afternoon Laverne James, Betty Jo Davis, Luia Maye Shanks, Beth Watson, Holly Milsap, and Claudine Embry came to shampoo and set the ladies hair. Dustie Moynihan helped with manicures.

Congratulations Cari Kidd for the special awards at the Special Olympics Saturday. We are so proud for you.

Holly Milsap, Irene Splawn, Elsie Kendall and Dustie Moynihan played Skip-Bo with the residents Tuesday afternoon.

Barbara Blackman ran the juice cart Wednesday afternoon and visited with the residents. Clifton Finley went shopping for us Wednesday morning.

Recent visitors of Effie Smith were Gene and Grace Kim-

brough, Sherry Embry and children from Farwell.

Riehl and Ruth Williams visited Ruth's sister in Lubbock last Thursday and Hazel Wagner in Dimmitt Saturday.

Ora Roberts has had several visitors this week. She is confined to her bed but we are happy to report that she is feeling better.

Enda Willoughby remains in the Methodist Hospital in Lubbock. Please join us in remembering her and Ora in your prayers.

Clara Weaver was visited by her daughter-in-law Tuesday afternoon.

Fluff Baldwin was visited by his little grandson, Corey, Tuesday. He has had several

other visitors.

Eric Smith was visited by Lucy Faye Smith and his daughter, Patricia Thatcher, of Portales.

Birdie Warren is visited daily by her daughter-in-law Fern Warren. Her son, James, visits several times a week.

Julia Hawkins celebrated her birthday last Thursday. She received birthday greetings, gifts, and the best gifts of all, visits from her family. She also received a new perm.

Most people can stand tragedy but few can master the small irritations of life.

Next Sunday, or in fact any Sunday, is a good day to begin going to church regularly.

BIBLE VERSE

Give us help from trouble; for vain is the help of man.

1. Who uttered the above prayer?
2. Upon what occasion?
3. By what term is he known?
4. Where may this prayer be found in the Bible?

- Answers to Bible Verse**
1. King David.
 2. During a battle with enemies from the land of the Euphrates.
 3. "The man after God's own heart."
 4. Psalms 60:11.

Follow peace with all men, and holiness, without which no man shall see the Lord.

Immaculate Conception Catholic Church

Father Patrick Maher
Northeast of City

First Baptist Church
220 West Ave. E.
Barry Bradley, Pastor

Emmanuel Baptist Church
Iglesia Bautista Emmanuel
107 East Third
Isaias Cardenas, Pastor

Trinity Baptist Church
314 E. Ave. B.
Rev. Dale Berry

Circle Back Baptist Church
INTERSECTION FM 3397 &
FM 298 Pastor Glen Price
946-3676

Calvary Baptist Church
1733 W. Ave. C.
Rev. Rick Michael

Muleshoe Baptist Church
8th and Ave. G.
Bob Dodd, Pastor

Progress Baptist Church
Charles Fisk, Pastor
Progress, Texas

Richland Hills Baptist Church
17th and West Ave. D
Allen Petersen, Pastor

St. Matthews Baptist Church
Corner of West Boston
& West Birch
M.S. Brown, Pastor

Progress Second Baptist Church
1st and 3rd Sunday
Rev. Arthur Hayes

The Community Church
Morton Hwy.
Mort Cross, Interim Pastor
272-5992

1st Baptist Church
Lazbuddie, Tx. 965-2126
Gary Wilcox, Pastor



REST

A day of play has tired this little one, but now sleep will bring about the needed rest. This is the time for restoring energies, and breaks the day's pace. The Lord set aside a day for rest and worship. This day allows us to be in the Lord's house and renews our energies for the week to come.

The Church is God's appointed agency in this world for spreading the knowledge of His love for man and of His demand for man to respond to that love by loving his neighbor. Without this grounding in the love of God, no government or society or way of life will long persevere and the freedoms which we hold so dear will inevitably perish. Therefore, even from a selfish point of view, one should support the Church for the sake of the welfare of himself and his family. Beyond that, however, every person should uphold and participate in the Church because it tells the truth about man's life, death and destiny; the truth which alone will set him free to live as a child of God.

Coleman Adv. Serv.



Longview Baptist Church

965-3413
B.C. Stonecipher, Pastor

Primera Iglesia Bautista
223 E. Ave. B.
Roy Martinez, Pastor

Lariat Church Of Christ
Sunday School 10:00 a.m.
Worship 11:00 & 6:00 p.m.
Wednesday Services 7:00 p.m.
Sam Billingsley, Minister

Muleshoe Church Of Christ
Clovis Hwy.
Bret McCasland, Minister

16th & Ave. D. Church Of Christ
Sunday 10:30 a.m.
Evening 6:00 p.m.
Wednesday 8:00 p.m.

First Assembly Of God
Rev. David C. McCune
9:45 Sunday School
11:00 Morning Worship
6:30 Evening Services
7:30 Mid-week Services
272-3984

Primitive Baptist Church
621 South First
Elder Cleveland Bass, Pastor

Spanish Assembly Of God
East 6th and Ave. F.
Mike Doyle, Pastor

First United Methodist Church
507 W. 2nd Street
Richard Edwards, Pastor

El Divino Salvador Methodist Church
5th and Ave. D.
Jose M. Fernandez, Pastor

Lazbuddie Church of Christ

United Pentacostal Lighthouse Church
207 East Ave. G.
Rev. Norman Thompson
272-3258

St. John Lutheran
Sunday School and Bible Classes 9:30 a.m.
Church Services 10:30 a.m.
Rev. Mac Bearss, Pastor

Lazbuddie Methodist Church
965-2121
Larry Reid Farris, Pastor
Truth Tabernacle Pentecostal Church

Templo Calvario
507 South Main
Sunday 10:00 a.m.
Sunday Evening 7:00 p.m.
Evangelistic Services
J.L. Soto, Pastor
Jehovah Witness
Frona Hwy.
Boyd Lowery, Pastor

New Covenant Church
Plainview Hwy.
Sunday 10:00 a.m.
Wednesday 7:00 p.m.
Jimmy Lowe, Pastor
Church Of The Nazarene
9th and Ave. C.
Dennis Hayes, Pastor

965-2932

Western Drug 114 Main 272-3106	St. John Lutheran Sunday School and Bible Classes 9:30 a.m. Church Services 10:30 a.m. Rev. Mac Bearss, Pastor		Dairy Queen 1204 W. Amer. Blvd. 272-3412
Little Gulf 202 W. Amer. Blvd. 272-4918	Serv-All Thriftway 401 W. Amer. Blvd. 272-4739	American Valley, Inc. W. Hwy. 84 272-4266	Superior Med-Equip 623 W. 2nd 272-3757 or 965-2622
Bob Stovall Printing 221 E. Ave. B. 272-3373	KC Mufflers Inc. 201 North First 272-3620	Farmers Co-Op Elevators Muleshoe 272-3988	Bobo Insurance 108 E. Ave. C. 272-4264
Main Street Beauty Salon 115 Main 272-3448	Lenau Lumber 202 E. Ash 272-4222	Bratcher Motor Supply 107 E. Ave. D. 272-4288	Five Area Telephone Cooperative, Inc. 302 Uvalde 272-5533
Irrigation Pumps & Power West Hwy. 84 272-4483	Wes-Tex Feed Yards 272-7555	Frank's Southside Gulf 502 South 1st 272-5659	Richland Hills Texaco 1914 W. Amer. Blvd. 272-4875

Shop The Classifieds 272-4536

CLASSIFIED RATES
Minimum Charge \$2.30

Consecutive Insertions Minimum Charge \$2.00

CLASSIFIED DISPLAY RATES
\$1.75 Per Column Inch

DEADLINES
12 noon Tuesday For Thursday Paper
12 noon Friday For Sunday Paper
We reserve the right to classify, revise, or reject any ad. Not responsible for any error after ad has run once.

1. Personals
Call your local used cow dealer for 7 day a week dead stock removal. 965-2903 or 1-800-697-4043. c1-37t-tfc

ELDERLY: Need help in your home? Day-time care. Medicare or Private pay. Ms. Smith 986-4325. 51-17t-2tct

HIGH PLAINS ANTIQUE DEALERS ASSOCIATION ANTIQUES & HANDICRAFTS Show and Sale: Depression Glass and Carnival Glass Primitives, Furniture and Glassware. **Biggest Show Ever.** May 6 10 a.m. - 6 p.m. May 7 12:00 - 5 p.m. **ROY'S WALKER COMMUNITY CENTER**
316 W. Grand (Where First Street & Hwy 60 merge into West Grand Ave.), Clovis, N.M.
Admission: \$1 Donation
1-18s-2tp

Mary Kay Cosmetics
Josie Flowers
272-3865
Call 8-12 a.m. and after 6 p.m.

CONCERNED About Someone's Drinking? HELP IS AVAILABLE
through Al-Anon
Call 272-2350 or 965-2870 or come to visit Tuesday nights, 8:00 p.m. or Saturday mornings at 10:30 a.m. and through AA call 965-2870 or come visit Tuesday nights, 8:00 at 620 W. Second, Muleshoe.
TFC

3. Help Wanted
WANTED: A general Office Worker. Must Have Neat Appearance And Be Able To Meet Public. Apply In Person, Only. No Information Will Be Given Over The Telephone. *The Journal*, 304 W. 2nd Street.
TFC

5. Apts. For Rent
FOR RENT: Nice 2-bedroom apartment. Water paid. Deposit required. 272-7575. P11-11t-TFC

3. Help Wanted
SALESMAN
WANTED: Must have experience in retail business, 40 hr. week, Send resume to P. O. Box 344, Muleshoe, Tx. or come by 1302 W. American Blvd., NO PHONE CALLS PLEASE. A3-17s-tfc

8. Real Estate
FOR SALE: In town 3 bed.-1 bath fully carpeted, with extra large room-fenced in yard with shed. 965-2838. G8-16t-4tc

FOR SALE: Lot 8, Parkridge Addition. \$2,000. (806) 794-6329. 8-14s-9tp

GREAT BUY: 2-bedroom, 1 bath home on 1/2 acre, 1-1/4 miles west of Lazbuddie on Hwy. 145. Large mature orchard, trees, landscaped. Yellow aluminum siding, carpet, carport and storage. Ideal for retired couple, starter home or hired hand. Asking \$12,000. Call C.C. Matthews, Jr. 965-2133. 58-17s-tfc

FOR SALE by Owner: 3-2-2 Brick home, Lots of storage, sprinkler system, fireplace, good location. Richland Hills Addition: owner/agent, (806) 272-5629. 8-17s-3tp

NEWLYWEDS!
Teachers! Immaculate 14'x80' mobile home. 2 bedroom 2 bath, all furniture and appliances included Coleman refrigerated AC. Located at 922 Gum Ave. in Muleshoe on 60'x130' fenced lot with trees, workshop and concrete drive. Take up payments on the mobile and \$3500 for the real estate. Call Mike or Michelle Albers at 272-4683 anytime. Available immediately. A8-17s-4tc

9. Automobiles For Sale
FOR SALE: 1985 Chrysler Laser. Loaded. Turbo-charged. Call after 6 p.m. 272-5008. 917t-9tp

11. For Sale or Trade
REGISTERED Beef Master Bulls For Sale. Call M.D. Gunstream, (806) 272-5035 or 272-4515. G11-13t-tfc

Think Classifieds Call 272-4536



8. Real Estate 8. Real Estate

LOOK AT THESE!
FOR SALE OR CASH LEASE: 800 acres in Parmer Co. One quarter-section under center pivot sprinkler, balance is flat and "Row-Waters." Nice grain handling and storage installation.

LOTS O' COTTON
FOR SALE IN CASTRO CO.: 320 acres with one center-pivot sprinkler and 2 pivot points. Base acres in cotton, corn and milo with large cotton allotment. Immediate possession.

REAL SLEEPER
24-UNIT APARTMENT COMPLEX IN HEREFORD: Good cash flow; high occupancy rate and priced thousands under current appraisal.

Don Tardy Co. Realtors
Hereford, Texas
1-800-344-4561

Smallwood Real Estate
232 Main 272-4838

3 Bedroom Stucco. 2 Bath, Living Room & den. Large kitchen, Fenced back yard, Storage building. Priced to sell, good interest rate. This one is nice.

Muleshoe
Buy Sell or Trade
Check Classifieds

Bingham & Nieman Realty

116 E. Ave. C. RICHLAND HILLS
IMMACULATE 3-2-2 Brick, corner lot, Cent. A&H, built-ins, FP, loads of storage & closet space, much more!
PRICE REDUCED 3-1-1 Brick, Cent. Heat, Evap. air, built-ins, fenced yard....
VERY NICE 3-2-3 Home, Cent. A&H, built-ins, FP, fans, splkr. sys., fenced. PRICED TO SELL!!!!
156.58' x 140' corner residential lot or lots - \$7,500.00!!!!
JUST LISTED 3-2-1 carport Brick, Cent. A&H, built-ins, FP, den or 4th bdrm., storage bldg., Fenced yd.

HIGHLAND AREA
PRICE REDUCED 2-2-2 Brick, corner lot, Cent. A&H, spacious rooms, utility, cov. patio, fenced yard, & much more. 40's!!!!!!!

VERY NICE 3-2-2 Brick, Cent. A&H newly remodeled kitchen with built-ins, storm windows, fenced yard, storage bldg. and much more!!!!!!
NICE 3-2-2 Brick home (2 story), on corner lot, Cent. A&H, built-ins, and much more. LET'S LOOK TODAY!!!!!!160's
NICE 3-1/4-1 Brick Home Cent. A&H, built-ins, large den w/Fireplace, fenced yard, storage bldg. \$50's!!!!

HIGH SCHOOL
NICE 2-1/2-1 Home, corner lot, built-ins, nice carpet, heat pump, fenced yard, storage bldg. & more!!!!!!
PRICE REDUCED FOR QUICK SALE! Nice 2-1-1 Home, Cent. Heat, carpets, work-storage area, and much more. \$19,950.00!!!!

PRICE REDUCED - IMMACULATE 3-2-3 Brick Home, Heat Pump Sys., built-ins, nice finished basement w/FP, splkr. sys., & much more. \$50's!!!!!!

COUNTRY COUNTRY well-kept 2-1-1 Home on CONTRACT, nice earthenware carpets, work-storage area, & more. \$20's!!!!!!
DIANNE NIEMAN, BROKER

8. Real Estate

James F. Hayes & Co. Agricultural Real Estate
Vic Coker Agent
310 Main Street, Suite 103

220 Acres...Downtown Baileyboro. Irrigation wells & underground pipe. Fully allotted.

159 Acres North of Muleshoe...on Highway 214. Lays perfect. 2 wells, Valley electric sprinkler with drops. Allotted. Nice!

413 Acres...North of Baileyboro Gin. Some grass with windmill. Balance is good cultivated land.

1-210 Acre Farm...Lamb County; steel barn and other improvements, 2 wells, lots of underground pipe, good soil and lays good. Immediate Possession.

177 Acres Southwest of Muleshoe...all cultivated and allotted.

160 Acres...with 4 Bedroom House East of Earth. 2.8 inch irrigation wells. Located on Pavement. A good value.
Phone 272-3100 Home 965-2468 Muleshoe, Texas

CANCORP AUCTIONEERS INC.
2336 LAKEVIEW DRIVE AMARILLO, TEXAS
76109-1510 • 806/358-4523

8. Real Estate

272-5285 or 5286
COUNTRY CLUB-VERY NICE 3-2-2 brick, Cent. A&H, built-ins, FP, Earthenware carpet, large fenced yd., storage-workshop, corner lot. \$50's!!!!!!
LENAU ADD.
very nice 3-1-1 Home, WB stove, enclosed patio, storm windows & doors, well insulated, beautifully landscaped. LET'S LOOK TODAY!!!!

COZY 3-1/2-1 home. Cent. heat, nice earthenware carpets, fenced yard, storage bldg., & more!!!!
3-1-1 home, Cent. A&H, utility, storage bldg., cellar, gas grill & more. \$20's!!!!

COUNTRY HOMES
JUST LISTED 3-2-2 Brick on 1 acre on pavement close to town, Cent. A&H, built-ins, FP, etc. \$40's!!!!!!

NICE 4-2/4-1 Brick on 1.2667 ac. on pavement at edge of town, built-ins, loads of storage, & much more. PRICED FOR QUICK SALE!!!!

VERY NICE 3-2-1 Home on 1 acre, close to town, Cent. Heat, Evap. air, nice carpets, nicely remodeled. \$30's!!!!!!
2-1 home, 20 acres, sub. pump, sprinkler, barns & corrals. \$40's!!!!!!

JUST LISTED - NICE COMMERCIAL BLDG. ON MAIN HIGHWAY. Approx. 2800 feet of area, suitable for various types of business. Possible Owner Financing to qualified Buyer. \$20's!!!!

APPROX. 3,000 sq. ft. bldg. Railroad frontage. CASH PRICE \$15,000.00.

JUST LISTED-DRIVE-IN THEATER, fully equipped, nice snack bar. JUST IN TIME FOR SUMMER SEASON!! PRICED TO SELL!!!!!!
GEORGE NIEMAN, BROKER

AUCTION

Presented by Dale...
FOR SALE...
TUESDAY 4:45 P.M.
#1 - 1/2 A.C.
#2 - 1/2 A.C.
#3 - 1/2 A.C.
#4 - 1/2 A.C.
#5 - 1/2 A.C.
#6 - 1/2 A.C.
#7 - 1/2 A.C.
#8 - 1/2 A.C.
#9 - 1/2 A.C.
#10 - 1/2 A.C.
#11 - 1/2 A.C.
#12 - 1/2 A.C.
#13 - 1/2 A.C.
#14 - 1/2 A.C.
#15 - 1/2 A.C.
#16 - 1/2 A.C.
#17 - 1/2 A.C.
#18 - 1/2 A.C.
#19 - 1/2 A.C.
#20 - 1/2 A.C.
#21 - 1/2 A.C.
#22 - 1/2 A.C.
#23 - 1/2 A.C.
#24 - 1/2 A.C.
#25 - 1/2 A.C.
#26 - 1/2 A.C.
#27 - 1/2 A.C.
#28 - 1/2 A.C.
#29 - 1/2 A.C.
#30 - 1/2 A.C.

18. Legals 18. Legals

ADVERTISEMENT FOR BIDS
Separate sealed BIDS for the construction of Six two-bedroom quadrplexes, of a building, The Maintenance Bldg. building must be and the remodel and addition to the existing Administration / Laundry Facility. All construction is concrete block, wood trusses, with minor wood stud interior partitions. Bids will be received by Mr. Jim Hartline, Executive Director at the office of The Housing Authority, 301 E. 6th, Muleshoe, TX until 2:00 PM, Tuesday, May 2, 1989, and then at Harmon Elliott Complex Community Room, 901 W. Ave. K, Muleshoe, TX publicly opened and read aloud.

NOTICE FOR BIDS
The Bailey County Commissioners Court will receive bids until 10:00 A.M., May 8, 1989, for the purchase of a building, The Maintenance Bldg. building must be at least 2500 square feet, preferably within close proximity of the courthouse. Bids will be submitted in a lump sum not to exceed \$25,000.00.
Payment in full will be made upon acceptance of bid and proper title documents.
The Commissioners Court reserves the right to reject any or all bids and to waive formalities.
(S) Jim Watson County Judge
C18-17s-3tcs

CONTRACT DOCUMENTS may be obtained at the Owner's Office, 301 East 6th Street, Muleshoe, TX; Architech's Office, 1340 98th Street, Lubbock, TX; Dodge Plan Room, Lubbock, TX; AGC Plan Room, Lubbock, TX.

Copies of the CONTRACT DOCUMENTS may be obtained at the office of The Architect located at 1340 98th Street, Lubbock, TX (P. O. Box 3513) 77452, 806/745-6004 upon payment of \$50.00 for each set.
Any BIDDER, upon returning the CONTRACT DOCUMENTS promptly and in good condition, will be refunded the payment, and any non-bidder upon so returning the CONTRACT DOCUMENTS will be refunded \$50.00.
April 3, 1989
/s/ Yancey L. Jones
Yancey L. Jones AIA
F-18-15s-4tfc

18. Legals
NOTICE OF IMPOUNDMENT OF ESTRAY
Case No. 89-957
Date 04-25-89
On the 24th day of April, 1989, I impounded the following estray:
Kind of Animal-3 head of cattle.
Breed - Mixed
Color - Red
Sex - males-steers
Age - about 1 yr.
Size - about 600 pounds.
Brand - none
and, on the 26th day of April, 1989, I filed a Notice of Estray in the Estray Book of Bailey County, Texas.
I have made a diligent search of the register of recorded brands in Bailey County, Texas, for the owner of said estray, but the search did not reveal the owner.
Notice is hereby given that, if the ownership of said estray is not determined by the 13th day of May, 1989, said estray will be sold at public auction/sheriff's sale at Muleshoe Livestock Auction.
WITNESS my hand this 26th day of April, 1989.
Jerry N. Hicks
Sheriff of Bailey County, Texas
H-18-18s-2cs

8. Real Estate

Whitt Reid Real Estate
201 Main Street Muleshoe, Tx.
272-3611

NICE 2-1-1 a good buy for a young couple or a retired couple, with affordable price O-H18

2-1-1 carpet and tile floors, floor furnace, well constructed, siding. Let's look at this one for \$17,500 O-H14

HANDYMAN SPECIALS! Needs some fixing up.

COMMERCIAL Bldg. Down town Muleshoe. 12 1/2 % income on investment. 3 yrs. on present lease with option for renewal. Lessee pays tax and maintenance except roof. C-5

Check with us for other properties.

SOME BIG MONEY CAN BE MADE WITHIN THE NEXT TEN YEARS..... PRICED FOR QUICK SALE..... CALL: GEORGE POTEET (806) 272-4047 (Home)