

## WEATHER

March 15	81	36	.00
March 16	65	32	.00
March 17	80	36	.00
March 18	85	36	.00

# BAILEY COUNTY JOURNAL

*"The Community Of Opportunity-Where Water Makes The Difference"*



Vol. 27, No. 12

12 PAGES TODAY

Published Every Sunday At Muleshoe, Bailey County, Texas 79347

20¢

Sunday, March 19, 1989

## Ag Week Highlights Farmers, Ranchers

### Agriculture Producers Recognized Nationwide

National Agriculture Day, set to honor the nation's food and fiber providers, will be observed Monday, March 20.

According to Spencer Tanksley, Bailey County agent with the Texas Agricultural Extension Service, business and consumer groups will join in honoring farmers and ranchers on that special day.

County, state and national observances of Agriculture Day will be keyed to the continuing theme of "Honoring America's Providers," said Tanksley.

Coordinated nationally by the Agriculture Council of America in Washington, D. C., the Agriculture Day observance is a part of National Agriculture Week, March 19-25.

"National Agriculture Day and Week observances can reflect the ideas and wishes of every community and county," said Tanksley.

The two observances provide special recognition of the food and fiber industry's contributions to America, the agent said.

Tanksley said the celebrations can increase awareness of agriculture's accomplishments and the challenges it faces in meeting the world's food and fiber needs.

In fact, says Tanksley, one might say that urban dwellers, farmers and ranchers are "partners."

Their partnership involves their dependency on each other for the products and services

essential to their busy lifestyles and businesses.

Tanksley adds that's a major reason why business and consumer groups will have an opportunity to join in a special observance. National Agriculture Day will be held in conjunction with National Agriculture Week, March 19-25.

Each year, National Agriculture Day is timed to coincide with the arrival of spring, the season of growth and development, and is tied to the March equinox, Tanksley added.

He said the two observances are intended to give state and national recognition to the people, organizations and businesses responsible for producing the "most abundant, highest quality and most reasonably

Cont. Page 6, Col. 2

### Anchor Brothers Performance Set For Lubbock

Medical Reform Association is sponsoring a free seminar on health care on Tuesday, March 21, at the Civic Center in Lubbock.

There will be two sessions. The 3:00 p.m. session will consist of two forty-five minute sessions with a fifteen minute break between the sessions.

Focus will be the Catastrophic Medicare Act. Medicare Park A (hospital benefits) will be discussed by Dr. William P. Dukes, Texas Tech professor and Van Dryden.

The second half of the 3 p.m. session will cover Part B (Doctor, or medical) care. Dryden will discuss how the changes in medical care will affect senior citizens.

Judah band will perform during the break, then Jerry Clower will speak.

The 6 p.m. session will cover how Medicare changes are affecting people of all ages. Group insurance and Section 89 will be discussed.

Entertaining from 8:15-9 p.m. during the second session will be *The Anchor Brothers* from Sudan. They will also lead for Jerry Clower to top off the evening at 9 p.m.

The evening will be free, but donations will be accepted and appreciated.



\*\*\*  
Again this year, the Bailey County Ministerial Alliance will conduct a Sunrise Service on Easter morning. It will be at the tennis courts in the West Avenue D. City Park at 6:30 a.m.

Dale Berry, minister of Trinity Baptist Church will bring the message, and there will be special music.

Bring your lawn chairs and blankets. Then, after the service, go across the street to 16th & D Church of Christ for coffee and donuts.

\*\*\*  
It was sent in from Lazbuddie in "The Lazbuddie Notes" that Amy McGehee received All-District Basketball Honors for the Lady Longhorns.

In fact, it was Mia Jennings who received that honor.

\*\*\*  
Bailey County Judge Jim Watson said County Commissioners will meet in Special Session at 3 p.m. and will continue until all business is concluded.

Items to be considered will be to hold a public hearing to discuss a proposed value added tax abatement policy; and miscellaneous items.

\*\*\*  
Three more local residents signed up as candidates for one of the two slots open on the board of trustees of the Muleshoe Independent School District.

The latest candidates are Danny Noble, Max King and Gary Hugg.

With the terms of Julie Cage and Rex Harris expiring, Mrs. Cage has filed for re-election. Also filing as candidates are Terry Hutto and Edwin Cox.

\*\*\*  
Being presented the principal's awards for the past week at Watson Junior High School were Edward Rodriguez, sixth grade; Brenna Wheeler, seventh grade and Shane Glover, eighth grade. Educator of the Week is Donna Green, eighth grade English teacher.

\*\*\*  
The Non-Commissioned Of-

### Lawn, Leisure Shop Now Open In Muleshoe

A Houston native, who has lived in Sudan for more than five years, has opened a new shop in Muleshoe.

Charlie Lyle's new business is named Muleshoe Lawn And Leisure and is located at 522 West American Blvd. His phone number there is 272-3162.

Lyle says he will do sales and service of lawn mowers, bicycles and small engines and cites more than 10 years experience with repair and service of mowers, bicycles and engines.

He said that as a youth, growing up in Houston, he just naturally followed his father and grandfather before him, who were both in the same type business.

Lyle said as a boy, he went with his father on service calls, and when he entered junior high school, started working with his father.

Lyle already has local ties. His wife is a third grade teacher at DeShazo Elementary School.

They are the parents of Kristen five and Brandon, 11 months old.

He said he will be open for business Monday through Saturday, 8 a.m.-6 p.m. and can be called at 272-3162.



**FARMERS IN THE FIELDS, A SURE SIGN OF SPRING**--Field preparations are being conducted all around Muleshoe and throughout the area, as spring rapidly approaches. Here, a tractor approximately two miles north of Muleshoe is preparing a field for planting. Planting corn, onions, potatoes and other early crops will be underway soon. A lack of moisture is threatening to hamper planting operations in the entire area. (Journal Photo)

## Sales Tax Rebate Check Shows Continuing Economic Recovery

State Comptroller Bob Bullock said Friday that March's city sales tax rebates, which reflect sales made in January, were up by an average of 27 percent statewide.

"Although consumers usually slow down their spending in January, this is a good sign that the state's economic engine is running strong and steady," Bullock said.

Checks totaling \$61.7 million were sent Friday to 888 cities that collect local sales tax at either one or one and one-half percent. Bullock said that's an impressive gain over last year's March

payments to cities, which was just \$48.6 million statewide.

Bullock added that 26 cities that began collecting an optional half-percent local sales tax in January received their first payments with this month's allocation.

In Bailey County, Muleshoe received a payment of \$14,854.23 which is up 24.89 percent over the \$11,893.57 received for the same pay period a year ago. The 1989 payments to date are \$59,666.10, an increase of 8.27 percent from the \$55,110.80 received to date in 1988.

To the south of Bailey County, Morton is still showing a deficit for the year. To date in 1989, total payments are \$16,356.05, down some 2.21 percent from the \$16,726.07 received at this time last year. Their current payment was \$5,031.95, up by 0.15 percent from the \$5,024.31 received in March last year.

From Lamb County, it was reported that Littlefield received \$16,704.69 for their current

payment, up some 20.63 percent over the \$13,847.52 received for the same period last year. They show an increase for the year of 9.47 percent. Their 1989 payments to date are \$69,618.52, up from the \$63,594.74 recorded at the same time in 1988.

Friona showed a 'dramatic' increase in sales tax rebates for both the current payment and for the year. Their current payments are up by 80.12 percent, with \$7,107.71 received for their latest payment. In 1988, for the same pay period, the figure showed to be \$3,945.99. For total payments to date, Friona is showing \$28,762.19, an increase of 38.08 percent over the \$20,829.56 received through the same time a year ago.

The state's six metropolitan transit authorities and one city transit department are also showing promising growth, with payments of \$29.7 million this month.

Bullock said the transit authorities show a 32 percent increase over last year's payments, while year-to-date payments to the MTAs are up by 18.8 percent.

According to Bullock, a total of \$5.9 million was allocated to 91

Cont. Page 6, Col. 3

## Health Office Has Emergency Measles Clinic

An Emergency Measles Immunization Clinic was underway Saturday at the Muleshoe office of the Texas Health Department, 306 West 2nd Street, in an attempt to ward off a measles epidemic in Muleshoe.

JoAnn Head, R.N., and head of the Muleshoe office said the outbreak was released by the Lubbock office of the Texas Health Department around 5 p.m. on Friday, March 17.

Mrs. Head said a young woman, not from Muleshoe, was assisting with the FCA-fund raiser photo session in Muleshoe at the Junior High Gym on Friday, March 10, and Saturday, March 11.

According to the Health Department officials, this person is hospitalized in Lubbock after developing measles.

All persons who were at the photo session have been asked to check for immunization. Key groups are those persons under 33 years of age, or above 12 months of age.

Symptoms of measles are high fever, cough, runny nose, red-sensitive eyes, followed by a rash.

An outbreak of measles is anticipated during the week, beginning Monday, March 20 through Wednesday, March 22.

For any questions, Mrs. Head asks that you contact your family physician.

She also noted that persons are contagious for up to five days before the outbreak of the red rash that always accompanies measles.

## Financial Aid Workshop Set At Lazbuddie

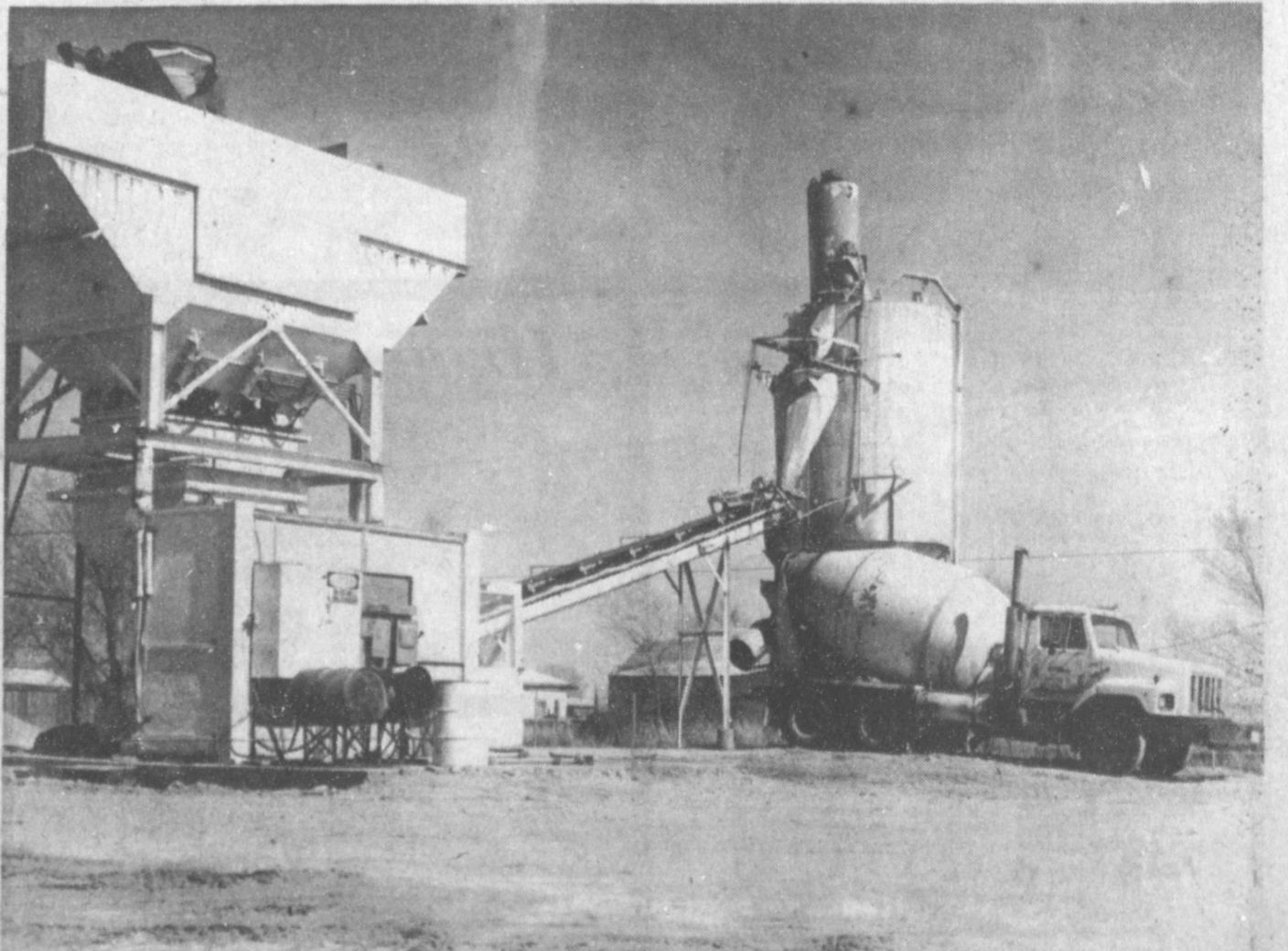
A Financial Aid Workshop for area senior students and their parents will be held Monday, March 20 at 7 p.m. in the Lazbuddie High School library.

The Workshop will be conducted by Ms. Jeanette Head, assistant director of Financial Aid from West Texas State University, Canyon.

According to Mrs. Anne Farris, high school counselor, "The purpose of the workshop is to acquaint families with the types of financial aid available to them as their senior students plan to attend college, vocational school, or career training programs after high school graduation."

The types of financial aid that will be discussed include scholarships, loans, grants, work-study and others. Applications for these sources will be available, and assistance will be given in completing the forms for mailing and processing.

Interested persons are cordially invited to attend this most important workshop. Mrs. Farris concluded, "Seniors may be eligible to receive more than one type of financial aid, but they must APPLY in order to be considered."



**LARGE PAVING PROJECT CONTINUES IN AREA**--With paving going on between Muleshoe and Sudan on Highway 84; and a large paving project ongoing in the City itself, trucks hauling gravel, concrete and tar are a common sight. At the south edge of Muleshoe, a large concrete operation has been set up to service the trucks on the project. (Journal Photo)

# Honoring America's Providers

## An upbeat outlook

\*And now the 1989 forecasts  
As in 1988, they're generally upbeat, at least that's true for the forecasts coming from the U.S. Department of Agriculture's Annual Outlook Conference in Washington during late November and early December.

Here's a summary of the outlook for U.S. agriculture, according to reports released during the conference.

**Production**-U.S. production of wheat, corn and soybeans is expected to rebound in 1989 in response to higher prices from drought reduced harvests. For some crops, the government also has eased its land idling requirements for subsidy programs. In general, global grain and soybean stocks were down about one third in 1988, with reserves good for about two months of use for grains and 1 1/2 months for soybeans.

**Exports**-U.S. export values should rise by about \$1 billion to \$36.5 billion in fiscal year 1989, while volumes are forecast to decline by 8 percent to 136 million metric tonnes. The U.S. share of world grain trade is expected to slip to 46 percent from 50 percent in 1988.

**Prices**-World prices for wheat, corn and soybeans are expected to be at their highest point since 1985. Food prices are forecast to climb 3 percent to 5 percent, which compares with a 4 percent rise this year

that included the effects of the drought.

Income-Net farm income, which includes rising values of inventories of commodities, will increase by about 20 percent to between 44 billion and \$48 billion in 1989. Cash farm income is expected to fall about 10 percent to \$48 billion to \$52 billion. Higher production costs and lower direct government payments will draw down cash gains from rising farm prices.

**Weather**-Forecasters are assuming there will be a rebound from the drought in 1988. If not, all bets are off. Statistics do favor a return to more normal production, but climatologists are concerned about possible global warming trends.

Now for some details:  
The global agricultural outlook for 1989 will be highlighted by smaller crops and higher prices but near-record meat supplies, a senior U.S. Department of Agriculture official said at the opening of the USDA annual Agricultural Outlook Conference. James Donald, chairman of the World Agricultural Outlook Board, said demand for both crop and animal products will be firm next year and crop prices will be strong. Expanded crop production is likely by the second half of the year.

Supplies of animal products will continue to be large, dampening livestock price increases, he said.

## People Get More For Their Money

Table 1. The amount of food a factory worker's hourly pay would buy

Food item	1950	1986
White bread	10.1 lbs.	15.6 lbs.
Frying chickens	2.5 lbs.	10.4 lbs.
Milk	8.0 qts.	7.9 half gals.
Fresh potatoes	32.7 lbs.	36.5 lbs.
Eggs	2.4 doz.	10.1 doz.
Pork	2.7 lbs.	4.9 lbs.



**NATIONAL AGRICULTURE DAY,**  
March 20, 1989 - in honoring America's providers: the 21 million men and women who make up the food and fiber industry.

\* 1986 Fact Book of Agriculture  
Agriculture Council of America Education Foundation



Honoring America's Providers

## National Agriculture Day - Honoring America's Providers

National Agriculture Day is an annual observance which focuses national attention on the important contribution the food and fiber industry makes to the American economy. The official observance for 1989 Ag Day is March 20th.

All across the country people celebrate agriculture on this day, and during the week of March 19-25, to help increase the awareness of agriculture's accomplishments and the challenges it faces in continuing to meet the world's food and fiber needs.

How many people know American agriculture a production miracle? Well, it is! Consider these facts.

\*Fewer than 2.5% of the nation's population, using only 60% of production capacity, can provide 250 million Americans food of the highest quality and purity at less cost as a percentage of income than any other country in the world.

\*The food and fiber industry alone generates approximately 20% of the nation's Gross National Product and 20% of the national employment.

### Farmers are consumers as well as producers

Like everyone else, the U.S. farmer is a consumer and a taxpayer, as well as a producer.

Farmers pay about \$3.7 billion in farm real estate taxes annually, and \$474 million in personal property taxes.

In 1986, farm operators spent about \$122 billion for goods and services to produce crops and livestock. They had available \$37.5 billion in personal income from production activities and government payment and \$44.7 billion from nonfarm sources to spend for personal taxes, debt reduction, investments, and some of the same things that city people buy.

Farmers' 1986 purchases included the following:

- \$6.4 billion for farm tractors and other motor vehicles, machinery, and equipment;
- \$9.5 billion for fuel, lubricants, and maintenance for machinery and motor vehicles used in the farm business;
- \$19 billion for feed and seed;
- \$5.8 billion for fertilizer and lime.

## Small-scale agriculture

Small-scale agriculture implies people utilizing alternative systems to attain gainful employment. Small-scale agriculture, sometimes referred to as "small farms," constitutes a significant number of the Nation's 2.2 million farms, as noted in the 1988 Fact Book of Agriculture introduction.

When farms grossing less than \$40,000 annually are defined as "small," then more than 7 out of 10 U.S. farms are classified as small.

Awareness is growing that small-scale farmers make a significant contribution to economic development of both agribusiness and consumer industries of rural communities throughout the United States. Some say such people are the "mortar" providing rural communities with social and economic strengths.

USDA's Office for Small-Scale Agriculture was created as part of the Cooperative State Research Service to increase and improve the flow of information about small-scale farming to agricultural producers and consumers. It is a focal point for distribution of USDA resources on this subject.

The office functions as a liaison to other USDA agencies such as the Extension Service and the Agricultural Research Service in identifying and directing research and educational programs to improve usefulness of information received by all small-scale farmers and others wishing to join their ranks.

Ongoing and planned activities of the office include:

- A bimonthly newsletter on small-scale agriculture;
- Factsheets on small-scale agriculture;
- A national directory of small-scale agriculture contacts;

\*An assessment of all ongoing USDA research and educational efforts that target on small-scale agriculture;

\*Continual monitoring and/or implementing of conferences on small-scale agriculture.

Table 30.—Number of farms and land in farms, by States, June 1, 1985-87<sup>1</sup>

State	Farms			Land in Farms		
	1985	1986	1987 <sup>2</sup>	1985	1986	1987 <sup>2</sup>
	Number			1,000 Acres		
Alabama	54,000	51,000	49,000	11,500	11,000	11,000
Arkansas	53,000	50,000	49,000	16,100	15,700	15,400
California	79,000	79,000	77,000	32,900	32,800	32,600
Georgia	50,000	49,000	48,000	13,500	13,500	13,000
Illinois	90,000	86,000	84,000	28,700	28,700	28,600
Indiana	80,000	77,000	72,000	16,400	16,400	16,200
Iowa	111,000	119,000	107,000	33,600	33,600	33,500
Kansas	72,000	70,000	70,000	48,000	47,900	47,900
Kentucky	100,000	99,000	99,000	14,500	14,500	14,500
Louisiana	36,000	36,000	36,000	10,100	10,000	9,700
Michigan	62,000	60,000	58,000	11,400	11,300	11,300
Minnesota	96,000	93,000	92,000	30,400	30,000	30,000
Mississippi	48,000	46,000	45,000	14,100	14,000	13,800
Missouri	115,000	115,000	114,000	30,800	30,700	30,600
Montana	23,800	23,600	23,300	61,000	61,900	60,800
Nebraska	59,000	57,000	56,000	47,200	47,200	47,200
North Carolina	76,000	73,000	72,000	10,800	10,800	10,800
North Dakota	34,000	33,000	32,500	40,900	40,700	40,500
Ohio	89,000	88,000	84,000	15,800	15,800	15,600
Oklahoma	71,000	71,000	70,000	33,000	33,000	33,000
South Carolina	27,500	27,000	26,000	5,500	5,400	5,200
South Dakota	36,500	36,000	35,000	44,500	44,500	44,500
Tennessee	98,000	96,000	96,000	13,400	13,000	12,600
Texas	177,000	162,000	160,000	135,500	134,000	133,200
Virginia	54,000	50,000	50,000	9,600	9,600	9,600
West Virginia	21,000	21,000	21,000	3,600	3,700	3,700
Wisconsin	83,000	82,000	80,000	17,700	17,600	17,500
Wyoming	9,000	8,800	8,700	34,800	34,800	34,800
United States	2,274,730	2,211,920	2,173,410	1,014,383	1,007,643	1,002,463

<sup>1</sup>A farm is a place as of June 1 that sells or could sell \$1,000 of agriculture products during the year.  
<sup>2</sup>Preliminary.

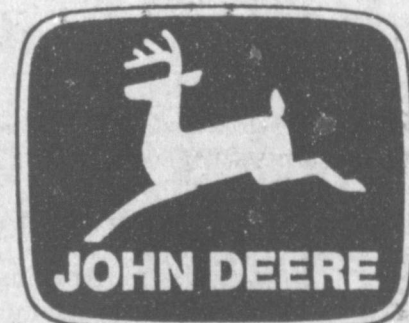
Table 15.—Agricultural productivity

Year	U.S. Population (July 1) (millions)	Index of total farm output (1977 = 100)	Index of output per work hour (1977 = 100)	Crops harvested (million acres)
1930	1123.1	43	NA	369
1940	1132.1	50	NA	341
1950	151.7	61	22	345
1955	165.3	69	30	340
1960	180.8	76	42	324
1965	194.4	82	56	298
1970	205.1	84	74	293
1975	216.0	95	90	336
1976	218.0	97	97	337
1977	220.2	100	100	345
1978	222.6	104	104	338
1979	225.1	111	113	348
1980	227.8	104	109	352
1981	230.1	118	123	366
1982	232.5	116	125	362
1983	234.8	96	99	306
1984	237.0	112	121	348
1985	239.3	119	140	342
1986	241.5	*113	*135	*325

<sup>1</sup>Includes 50 States.  
<sup>2</sup>Estimated.  
<sup>3</sup>Revisions made last year in the labor input series produced extensive changes to the indexes for labor and total output per work hour.

\*January Harvest States Journal

This Special Ag Day Message Sponsored By These Companies ...



...And These Supporters Of Area Agri-Business...

<p><b>SOUTHWESTERN GEO - THERMAL</b> TX LIC. TAEL 8002676 NM LIC. #28225 806/272-5557 P.O. BOX 405 - HWY 84 WEST MULESHOE, TEXAS 79347</p> <p>STANLEY WILSON DEE PUCKETT</p>	<p><b>WILSON DRILLING CO.</b> TX LIC. 02628W NM LIC. WD1152 806/272-5521</p> <p>Hwy 84 272-5545</p>	<p><b>Valley Grain</b> Food &amp; Processors &amp; Buyers</p> <p>Hesston True Value <b>Fry &amp; Cox, Inc.</b> Krause Bush Hog Massey-Ferguson 401 S. 1st 272-4511</p>	<p><b>FARM BUREAU INSURANCE</b></p> <p><b>Bailey Co. Farm Bureau</b> 1612 W. Amer. Blvd. 272-4567</p>
<p><b>Foster Fertilizer</b> Lazbuddie, Tx. 965-2921</p>	<p><b>Higginbotham -Bartlett</b> OWENS CORNING FIBERGLAS HWI JB 215 Main 272-3357</p>	<p><b>Wes-Tex Feed Yard</b> 272-75555</p>	<p><b>Scoggin Ag Center, Inc.</b> 1532 West Amer Blvd. 272-4613</p>
<p><b>THE BANK MULESHOE</b> Member Of F.D.I.C. 202 S. 1st 272-1515</p>	<p><b>SAIN IRRIGATION &amp; MACHINE</b> Complete Pump Service P.O. Box 117 Muleshoe, Texas 79347 806/272-4397 806/272-4148</p>	<p><b>Sherley -Anderson Lazbuddie Elevator</b> Lazbuddie 965-2922</p>	<p>PUMP SALES &amp; SERVICE FLOW METERS ELECTRIC MOTORS PIVOT PARTS &amp; SERVICE PUMP EFFICIENCY TESTING</p> <p><b>IRRIGATION PUMPS &amp; POWER, INC.</b> WEST HIGHWAY 84 - P.O. BOX 813 MULESHOE, TEXAS 79347 272-4483 - 272-5507</p> <p>DON MCELROY MOBILE 806/665-3328 HOME 806/272-3606</p>

### Brownie Scout News

Brownie Girl Scout Troop 228 began Girl Scout Week Saturday, March 11 with Cynthia Villarreal, Tori Tosh, DeeDee Morris, Angela Castorena, Jennifer Castorena, and leaders, Lela Villarreal and Linda Tosh all going to Mass at the Catholic Church. Father Pat Maher welcomed seven Daisies and five Brownies to the church. The girls recited the Girl Scout Law. After Mass the Brownies from Troop 228 were treated to supper at the Dairy Queen.

On Sunday, March 12, Cynthia Villarreal, Tori Tosh, Angela Castorena, Jennifer Castorena and leaders, Lela Villarreal and Linda Tosh all went to services at the First Baptist Church.

On Monday, the girls went to visit Alta Gore at her home. They

took a cake and punch and had refreshments with her. After refreshments, Mrs. Gore showed the girls some slides from Disney World. It was reported that the girls had a wonderful time with Mrs. Gore.

Girls going were: Cynthia Villarreal, Tori Tosh, Lisa Pharis, DeeDee Morris, Jennifer Castorena and Angela Castorena along with leaders, Lela Villarreal and Linda Tosh.

Mrs. Gore invited all the girls to go to church with her and go back and visit with her again.

### Tops Club

TOPS Club chapter No. 34 met at 6 p.m. Thursday, March 16 in the Heritage Thrift Shop, with Laverne James, leader, calling the meeting to order with the pledge, fellowship song and a prayer.

Evelene Harris called the roll with 15 members answering with the amount they had lost or gained. Minutes of the previous meeting were read by Aurora Mata, secretary, and they were approved as read.

Mrs. James received a gift for her birthday and the birthday song was sung. Rama Smalling drew a gift from the White Elephant Box for being best loser last week and losing again this week. Mrs. Mata received a gift from her secret pall.

The point contest ended with side two winning. The same contest will begin again next week and it will run for eight weeks.

Best loser for the week was Nan Gatlin. First runner-up was Jewel White, and second runner-up was a tie between Betty Jo Davis and Rama Smalling.

After singing some TOPS songs the meeting was adjourned with the goodnight song.

After the meeting was closed an auction was held.

The happiest people go to church; there must be something to it.

Rarely does anyone take the trouble to thank anyone for anything.

Some of the music one hears these days does not suggest music.

## Creative Living

by Sheryl Borden

Information on the latest trends in built-in appliances and delicious chocolate and other dessert recipes will be featured on "Creative Living" on Tuesday, March 21 at 12 noon and repeated on Saturday, March 25 at 2 p.m. on KENW-TV. (All times are Mountain.)

Jill Absher with Creative Kitchen Designs in Birmingham, AL, will discuss the latest trends in built-in appliances and also tell about some of the new products on the market. Jill will also discuss the trend toward the European look and tell how some American manufacturers are producing European look-alikes.

Jane Hunton, owner of Mamma Bear's Kitchen in Portales, will share three delicious dessert recipes that are easy to make, look very impressive and taste great.

The flashback will feature Jo Ann Cooper, representative of Hershey Foods, who will show three tempting chocolate desserts--all made with unsweetened cocoa. Cocoa is convenient to use; is less expensive than baking chocolate and results in a rich chocolate flavor. Jo Ann will make a chocolate cheesecake, a black forest cherry cake and a chocolate orange roll.

On Tuesday, March 21 at 9:30 p.m., and Thursday, March 23 at 12 noon, "Creative Living" will feature segments on Festive Food recipes and Ukrainian Easter Eggs.

Connie Moyers, Marketing Home Economist with Southwestern Public Service Co. in Clovis, N.M., will share the 25th anniversary celebration of Festive Foods. Each year the company's ten home economists collect outstanding recipes, but only the best ones become a part of the current year's collection of Festive Foods Recipes. Connie will share some of the current year's favorites that are quick, easy to prepare, and ones which make use of energy-efficient electrical appliances.

Ukrainian Easter Egg decorating has been handed down through generations of the Ukrainian people. They are famous the world over for their colorful Easter Eggs. The flashback segment will feature Mary Johnson who will demonstrate making and decorating eggs as well as tell about the interesting history behind the Ukrainian Easter Eggs. Mary is a homemaker from Portales, N.M.

"Creative Living" is produced and hosted by Sheryl Borden. The show is carried on more than 100 PBS stations in the United States, Canada, Guam and Puerto Rico and is distributed by Pacific Mountain Network, Denver, CO. Viewers can request copies of printed materials offered on the show by calling on KENW-TV's toll-free telephone lines between 8 a.m. and 5 p.m. In New Mexico, the number is 1-800-432-2361, out-of-state: 1-800-545-2359 and Portales and Roosevelt County: 562-2112.

### CRANBERRY PUMPKIN BREAD

- 2 eggs, slightly beaten
- 1 tablespoon pumpkin pie spice
- 1 cup cranberries, chopped
- 1 cup solid packed pumpkin
- 1 teaspoon soda
- 1/2 cup oil
- 2 cups sugar
- 2 1/4 cups flour
- 1/2 teaspoon salt

Combine eggs, sugar, oil, and pulpkin; mix well. Combine flour, pie spice, soda, and salt in large bowl; make well in center. Pour pumpkin mixture into well; stir just until dry ingredients are moistened. Stir in cranberries. Spoon batter into two greased

and floured 8X3 3/4X2 1/2-inch loaf pans. Bake at 350F for 1 hour or until toothpick inserted in center comes out clean. Makes 2 loaves.

### QUICK CORNBREAD WITH CHILIES 'N CHEESE

- 1 pkg. (12-16 oz.) cornbread or corn muffin mix
- 1 cup shredded Monterey Jack cheese, divided
- 1 envelope Lipton Vegetable Recipe Soup mix
- 1 can (4 oz.) chopped green chilies, drained

Prepare cornbread mix according to package directions; stir in 1/2 cup cheese, chilies, and soup mix. In lightly greased 13X9X2-inch baking pan, bake according to cornbread package directions. While warm, top with remaining cheese; cool completely on wire rack. Cut into squares to serve. Makes about 16 squares.

### BLACK FOREST PIE

- 1 carton (12 oz.) non-dairy whipped topping, thawed and divided
- 1 pkg. (3 1/2 oz.) instant chocolate pudding and pie filling mix
- 1-2 squares semi-sweet chocolate, melted
- 1 cup cold milk
- 1 cup cherry pie filling
- 1 (8-in.) graham cracker crust

Spread 1 cup of whipped topping on bottom of pie crust. Combine milk and pudding mix in medium bowl. Blend with wire whisk or electric mixer (low speed) for 1 minute. Fold in 1/2 cups whipped topping. Spread over whipped topping in crust. Spread remaining whipped topping over top, leaving a 1-inch border and forming a depression in center of topping. Spoon cherry pie filling in the center. Chill at least 2 hours. Garnish edges of topping with melted chocolate if desired.



GIRL SCOUT WEEK--Brownie Troop No. 228 began Girl Scout Week Saturday, March 11 going to Mass at the Immaculate Conception Catholic Church. Girls pictured are: Tori Tosh, Dee Dee Morris, Cynthia Villarreal, Jennifer Castorena and Angela Castorena. Their leaders are Lela Villarreal and Linda Tosh. Seven Daisies also attended. (Guest Photo)

### Best of Press

**Tolerance**  
To permit others to be happy in their own way is tolerance at its highest level.  
—Grit.

**For Everyone**  
Notice in a loan office window: "For the person who has everything and hasn't paid for it."  
—Enterprise, Lisbon, Me.

### Thank You

We would like to express our appreciation to each one for their prayers, cards, flowers and visits during Margaret's stay in the hospital and since she has returned home.

May God Bless and Keep You.  
Margaret & J.K. Adams

HERE NOW! ANOTHER GREAT CHRYSLER-PLYMOUTH COMBINATION -

# OUR BIG SPRING SAVINGS SPREE!

A WINNING COMBINATION OF SUPER DEALS AND UP TO \$750 CASH BACK!

<p>1989 CHRYSLER NEW YORKER</p> <p><b>\$1000</b> CASH BACK <b>+ \$850</b> EQUIPMENT PACKAGE SAVINGS <b>\$1850</b> TOTAL SAVINGS</p>	<p>1989 CHRYSLER NEW YORKER LANDAU</p> <p><b>\$1000</b> FACTORY CASH BACK*</p>
<p>1989 CHRYSLER LE BARON COUPE</p> <p><b>\$11,495</b><sup>†</sup> <b>- \$1000</b> CASH BACK <b>\$10,495</b></p>	<p>1989 PLYMOUTH SUNDANCE</p> <p><b>\$8395</b><sup>†</sup> <b>- \$500</b> CASH BACK <b>\$7895</b></p>
<p>1989 PLYMOUTH HORIZON AMERICA</p> <p><b>\$6595</b><sup>†</sup> <b>- \$500</b> CASH BACK <b>\$6095</b></p>	<p>1989 COLT HATCHBACK, IMPORTED FOR PLYMOUTH</p> <p><b>\$500</b> FACTORY CASH BACK*</p>

OR GET 4.9 A.P.R. FINANCING ON SUNDANCE!<sup>††</sup>  
OR GET 4.9 A.P.R. FINANCING ON HORIZON!<sup>††</sup>

\*Choose your new car from stock at your local Chrysler-Plymouth dealer and get big cash back savings. \*\*Savings based on sticker price of options if purchased separately. †Base sticker price excluding title, taxes and destination charges. ††Annual Percentage Rate financing for qualified buyers through Chrysler Credit Corporation on new dealer stock. Other rates offered as length of contract varies.

**Hurry into our 10-day Spring Savings Spree today!**

**CHRYSLER Plymouth**

**Muleshoe Motor Co.**

1225 W. Amer. Blvd. 272-1251

### The Singing Cricket

Ladies & Teens Fashions

We have the original modular clothing.

10% discount with this ad now thru March 31.

Store Hours: 10 - 5:30 p.m. Mon. - Sat.

1004 Mitchell Clovis, N.M. 505-763-3871

**Muleshoe Lawn & Leisure**

Now Open For Business

Let us repair your power mowers & bicycles. We have a complete line of parts for Lawnboy & Toro mowers & Briggs & Stratton & Tecumseh engines.

Pick up & deliveries are also available.

We will soon have a line of new Lawnboy and Toro mowers.

Toro mowers are powered by Toro GTS engines. They are guaranteed to start on the first or second pull for five years or Toro will fix them for free.

**Muleshoe Lawn & Leisure**

522 W. Amer. Blvd.

Bailey County Journal USPS 690-200

Member NATIONAL NEWSPAPER ASSOCIATION WEST TEXAS PRESS ASSOCIATION FARMLAND PRESS ASSOCIATION

J. J. Hall, President & Publisher  
Sammy Hall, Vice President & Controller  
Ceta Williams, News  
Evelene Harris, Society

SUBSCRIPTIONS  
Muleshoe Journal and Bailey County Journal  
Bailey and Surrounding Area  
Muleshoe Journal and Bailey County Journal  
Muleshoe in Texas \$14.75  
Muleshoe Journal and Bailey County Journal  
Outside of Texas \$16.50  
Yearly by Carrier \$12.50  
Advertising rate card on application

## 'Essence Of Europe' Travelers Group Meet

Kelly Conklin was hostess for the "Essence of Europe" travelers Sunday, March 12.

Mrs. Johanna Wrinkle reported that Brad Helton would be going with the group to Europe. Also, Cynthia Smith, daughter of Mrs. Wrinkle, will be going. She will join the group in Dallas.

Packing for the trip and a check list of clothes and other personal items needed for the

15-day trip was the emphasis for the meeting. The travelers will need a diversity of clothes because of the different climates they will face and the different types of activities in which they will be involved, plus the fact that everything must be packed in one suitcase.

It was reported that the group enjoyed looking over dozens of booklets, etc., from Switzerland and admired the countless items that can be purchased while in Lucerne.

Highlights of the sites of interest were discussed and some travelers spent extra time to give the group some needed information.

While in Lucerne the group will walk across some centuries old bridges, Kapelbrucke and Spreurbrucke, which cross the River Reuss.

Shea Wilbanks gave the history of the two bridges.

Kelly Conklin then told about the statue of David by Michelangelo which is in Florence, Italy, the next stop for the group.

"Shea and Kelly have done a good job in learning of the places the group will travel" said Mrs. Wrinkle. "This will make the visit to these places much more beneficial."

Kelly Conklin was the winner of a makeup bag in a "Word Search" including information about the trip thus far. Michelle Finney won an umbrella and scarf set as a door prize, then Kelly won the second door prize.

Becky Conklin treated the group to cheese fondue with bread sticks, Toberone chocolate from Switzerland, and chocolate fondue with banana chunks, marshmallows, and cake squares.



### Brandon Scott Bass

Mr. and Mrs. Scott Bass of Amherst are the proud parents of a son, Brandon Scott, who was born at 12:11 p.m. Tuesday, March 14 in St. Mary's of the Plains Hospital in Lubbock.

Brandon Scott weighed eight pounds and three ounces and was 21 inches long. He has an older sister, Krystal Marie, who will be three years on March 26.

Grandparents are Mr. and Mrs. Elton Bass of Amherst and Mr. and Mrs. Wayland Harris of Muleshoe.

Great grandmother is Athenia Brown of Lubbock.

### Oswaldo Castanon

Mr. and Mrs. Abraham Castanon of Friona are the proud parents of a son, Oswaldo, who was born at 11:28 p.m. Monday, March 13 in West Plains Medical Center.

The young man weighed nine pounds and one ounce.

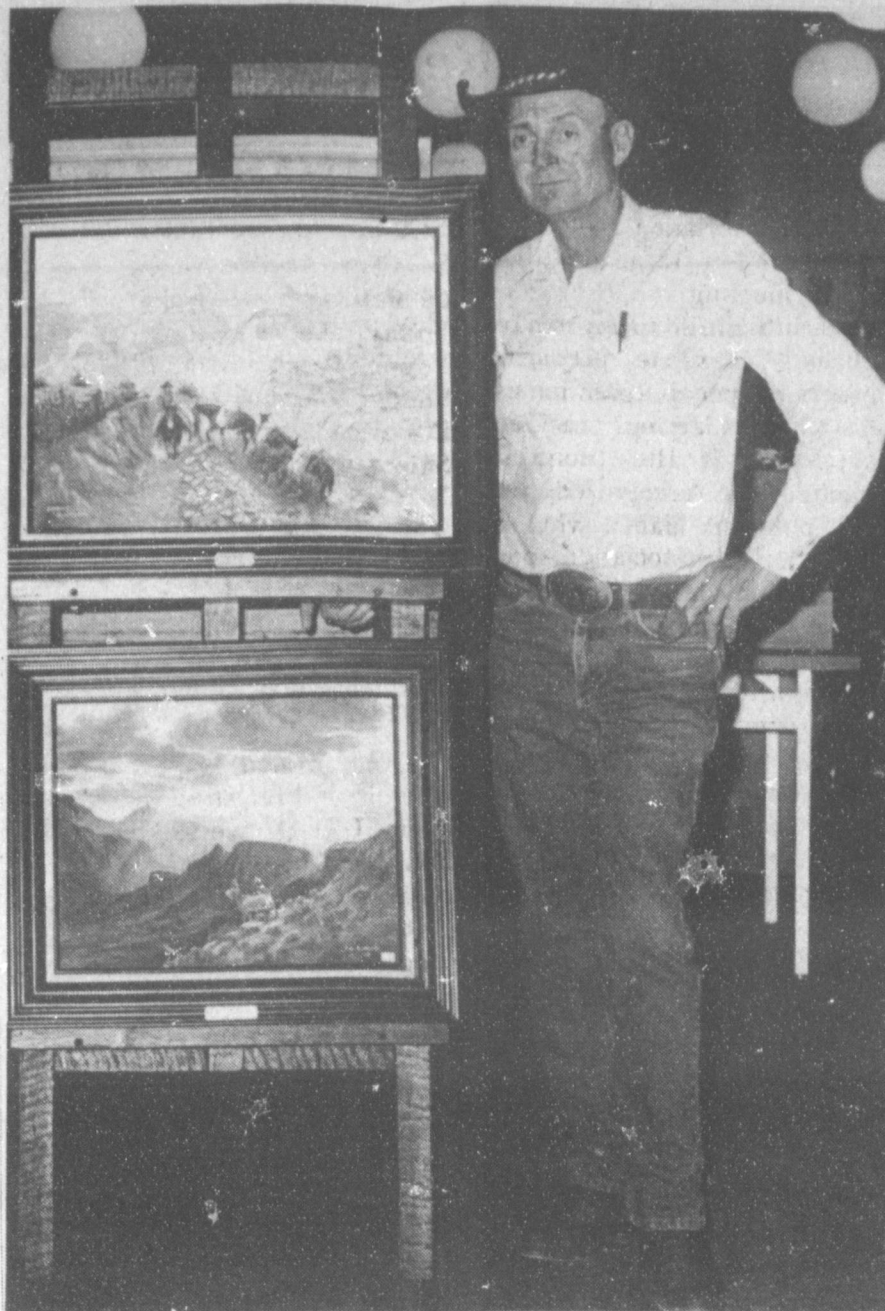
Grandparents are Elisco and Aurelia Delgadillo and Vicente and Erlinda Castanon, all of Mexico.

### Zulema Garcia

Francisco and Pabla Garcia of Bovina are the proud parents of a daughter born at 12:53 p.m. Monday, March 13 in West Plains Medical Center.

The young lady weighed six pounds and two ounces and has been named Zulema. The couple have two other children, Elva and Atileno.

Grandparents are Atileno Garcia, Maria Garcia, Bacilio Rueda and Filomena Rueda, all of Mexico.



**ARTIST OF THE MONTH**--Frank Blumlein of Clovis, N.M. has been chosen as Artist of the Month at the Muleshoe Public Library and some of his work will be on display at the library all month. He has been painting for 40 years, and has paintings hanging at Clovis Livestock Auction, in the Cattle Country Cafe. He also does pencil drawing, pastels, pen and ink and watercolors. Blumlein has worked on ranches in Arizona, Colorado, Texas, Montana and Wyoming. He packed mules in Grand Canyon and Yellowstone Park as well as rodeoing professionally in the P.R.C.A. (Journal Photo)

### Daisy Scouts

Daisy Girl Scouts met Wednesday, March 15 at the Fire Station. This week the girls made a thumbprint picture and also

visited the Sheriff's office. They were shown the holding cell and the womens jail.

Diana Gable got fingerprinted since it was her birthday. The Daisies sang Happy Birthday to her.

Melissa Flores took refreshments and it was reported that everyone enjoyed them.

Those present were: Diana Gable, Casey Tosh, Karen Jo Wimberley, Misty Garcia, Stephanie Kirk, Melissa Flores, Kinsee Estep, Elizabeth Torres, Chyla Torres, Kayla Claybrook, Shari Alanis, Adrienne Ashford, Jamie Prather and Lisa Marie Ramirez and troop leaders, Cherry Estep, Linda Flores, Linda Tosh and Mary Ann Ramirez.

The Daisies were reminded that they need to help clean up after the Easter Egg hunt Saturday. This will help them to earn a button for Girl Scout Week.

### Wheels For Life Bike-A-Thon Set

St. Jude Children's Research Hospital has announced that Billye Doty will coordinate the St. Jude Children's Research Hospital "Wheels For Life" Bike-A-Thon in Sudan on April 15.

Founded by Danny Thomas in 1962, St. Jude Children's Research Hospital is the largest childhood cancer research-treatment-education center in America. St. Jude Hospital is non-sectarian, interracial and provides medical care for over 3,200 active patients. Currently,

over \$183,000 is needed each day to keep the doors open. These funds come primarily from public contributions.

The Bike-A-Thon program this year is dedicated to Brian

McCollister. McCollister, a native of Louisiana, was diagnosed with leukemia in October, 1984. For the next two and half years he underwent chemotherapy. Today, he is in remission and visits St. Jude Hospital for routine check-ups. Brian is a living example of the progress and success of the research, patient care, and educational programs of this internationally recognized hospital.

"We are grateful for the concern that Mrs. Doty has for our work and we hope the citizens of Sudan will support the Bike-A-Thon to help provide the funds that are needed to preserve the world's greatest asset..." Our Children", said a spokesman from the research hospital.



**DAISY TROOP NO. 300**--Kicking off Girl Scout Week, Daisy Girl Scouts met in front of the Immaculate Conception Church to meet one of the requirements needed to earn a button during Girl Scout Week. Those attending were Casey Tosh, Jamie Prather, Kinsee Estep, Elizabeth Torres, Lisa Marie Ramirez, Chyla Torres and Stephanie Kirk. The girls introduced themselves to Rev. Maher and recited the Girl Scout Promise. (Guest Photo)

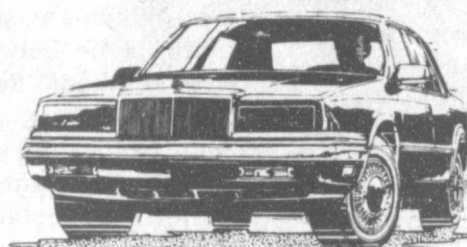
### NOTES COMMENT

The best years can always be ahead.

People who never make mistakes are poor companions.

Writers will do well to avoid the intoxication of adjectives.

## Test Drive A LA-Z-BOY® Recliner



and you could drive away in a  
1989 Chrysler New Yorker

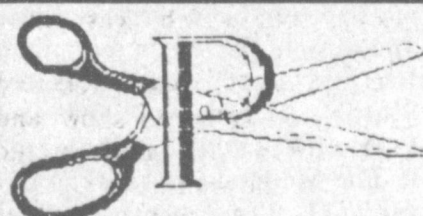
### Sweepstakes Rules

No purchase necessary. For rules and entry forms visit your participating La-Z-Boy® retailer. Sweepstakes open to residents of the U.S., 18 or older. Void in Puerto Rico and where prohibited. Sweepstakes ends 5/1/89.

**HARVEY BASS**  
APPLIANCE

122 S. First

272-3030



## Louie's Shear Shack

208 Main Muleshoe, Texas 79347 (805) 272-3991

We Have Something New.... Now We're Open Late For You!!!

Mon. thru Fri. - 9:00 am until 9:00 pm

Saturday - 9:00 am until 6:00 pm

Open During Lunch!

Appointments taken, but not necessary...

"Walk-Ins" always welcome!

272-3991

Five hair specialists on staff to create a look a all your own.

(Louie-Ruth-Jannette-Juanita-Martha)

Discounts for children under 8

Monday's....  
Regular Perm, Cut  
& Style  
\$ 25.00

Designer Perm, Cut  
& Style  
\$ 35.00

Friday's...  
Senior Citizen's  
DISCOUNT

Present this Coupon  
for  
\$2.00 off  
any haircut!!!  
Coupon Expires April 31, 1989

Quality Sukesha Hair Products Available  
quality hair care for the entire family

# Rip's

## Easter Eggcitement...

SAVINGS THROUGHOUT THE STORE!

<p style="text-align: center;">Men's Spring &amp; Summer <b>SPORT COATS</b> and <b>STRAW HATS</b> <b>20% off</b></p>	<p style="text-align: center;">Entire Stock of New Spring <b>MEN &amp; BOYS SHIRTS</b> <b>10% off</b></p>
<p style="text-align: center;">Panhandle Slim &amp; Rocky Mountain Ladies <b>JEANS \$26.98</b> Children Sizes \$19.98</p>	<p style="text-align: center;"><b>FINAL CLEARANCE</b> Our Large Rack Of <b>LADIES WEAR</b> <b>\$5. and \$10.</b></p>

**Treasure Basket Of Egg Savings**

Pick-An Egg Savings. From \$5 to \$25.  
On Specially Marked Merchandise  
No Obligation - Every Egg Gives You Savings

## Country Club Report

By Claudine Elliott

The Muleshoe Women's Country Club Association met Wednesday, March 15th, for their monthly meeting.

The ladies are so happy to have Barbara Marlow back preparing her delicious meals again for us.

Dorothy St. Clair, our president presided over the business meeting. She recognized our guest, Dawn Williams, who we hope joins our Association soon. Also, our birthday ladies for March were Lynn Campbell and Claudine Elliott.

Our Ways and Means Chairman, Jeanetta Precure had the drawing for our raffle this month and Rayniel Bamert was the lucky winner.

Ruby Hart, our Hi Plains Director, reported that our first playday for Hi Plains this year will be April 12th in Hereford.

Helen Templeton, our Playday Chairman, gave awards to: February 22nd- Ruby Hart and Analita Haley; March 8th to Analita Haley, Mary Holt and Argilee Millen.

After the meeting, the ladies divided into three teams to play a scramble. The team winning was Helen Templeton, Argilee Millen, Yolanda Bell, Claudine Elliott and Melzine Elliott. Congratulations to this team for their good play.

Helen Templeton started off her year as out Playday Chairman in a big way. She also had us to keep our putts during our low ball scramble. She had made some lovely gifts herself as prizes for the winners. It really made a fun day for us all. Our thanks to Helen for all her time and work.

Those attending our luncheon were: Analita Haley, Jeanetta Precure, Helen Templeton, Ruby Hart, Dorothy St. Clair, Claudine Elliott, Ruby Lee Kerr, Jerry Mayo, Mary Holt, Rayniel Bamert, Jo Rempe. Cookie

Bamert, Darlene Henry, Marlene St. Clair, Argilee Millen, Yolanda Bell, Laverne Winn, Ma'ha Young, Linda Elder, Marilyn Young, Carclean Hamilton, Kay Fields, Melzine Elliott, Neats Foster, Lynn Campbell, Sherry Shipman and Dawn Williams.

### Greg Moton

#### Receives Degree

#### From UTI

Greg Moton, son of Opal Moton of Muleshoe, graduated from UTI (Universal Technical Institute) of Houston, Friday, February 24. He received his associate of occupational studies degree in Automotive Diesel Technology.

Moton grew up in Muleshoe and was a 1987, graduate of Muleshoe High School. While in high school he played on the varsity football team three years and also on the varsity basketball team.

Attending his graduation was his mother, Opal; his brother, Larry Richardson, and Geraidean Lewis, all of Muleshoe; and his aunt, Charlie Bell Pratt from Lubbock.



GREG MOTON

#### Deceiving

"They look such a happily married couple, John." "You can't go by looks, dear. They probably say the same about us."

## Across The Fence

By:

Kandy McWhorter

Family money will get attention when Bailey County residents meet every Monday for five weeks at 2:30 p.m., beginning March 20 and ending April 17, according to Kandy K. McWhorter, County Extension Agent.

Meetings will be held in the community room of the Muleshoe State Bank in Muleshoe.

"Five lessons, one each week, in this series will teach residents how to make a spending plan and follow the plan to get things they want," the agent said.

The series, "The Family Money Puzzle--Putting the Pieces Together," is sponsored by the Texas Agricultural Extension Service, Texas A&M University and conducted by the county Extension agent.

Topics include: Getting What You Want, Where Money Comes From and Where It Goes, Making a Plan and Computer Dollar Watch, and Changes You Can Make.

Interested persons may obtain more information from the County Extension Office in the

Bailey County Courthouse or by calling 806/272-4583.

Educational programs conducted by the Texas Agricultural Extension Services serve people of all ages regardless of socioeconomic level, race, color, sex, religion, handicap or national origin.

Remember to mark your calendars for the next five Mondays and make plans now to attend the meeting series on family money.

### Study Club

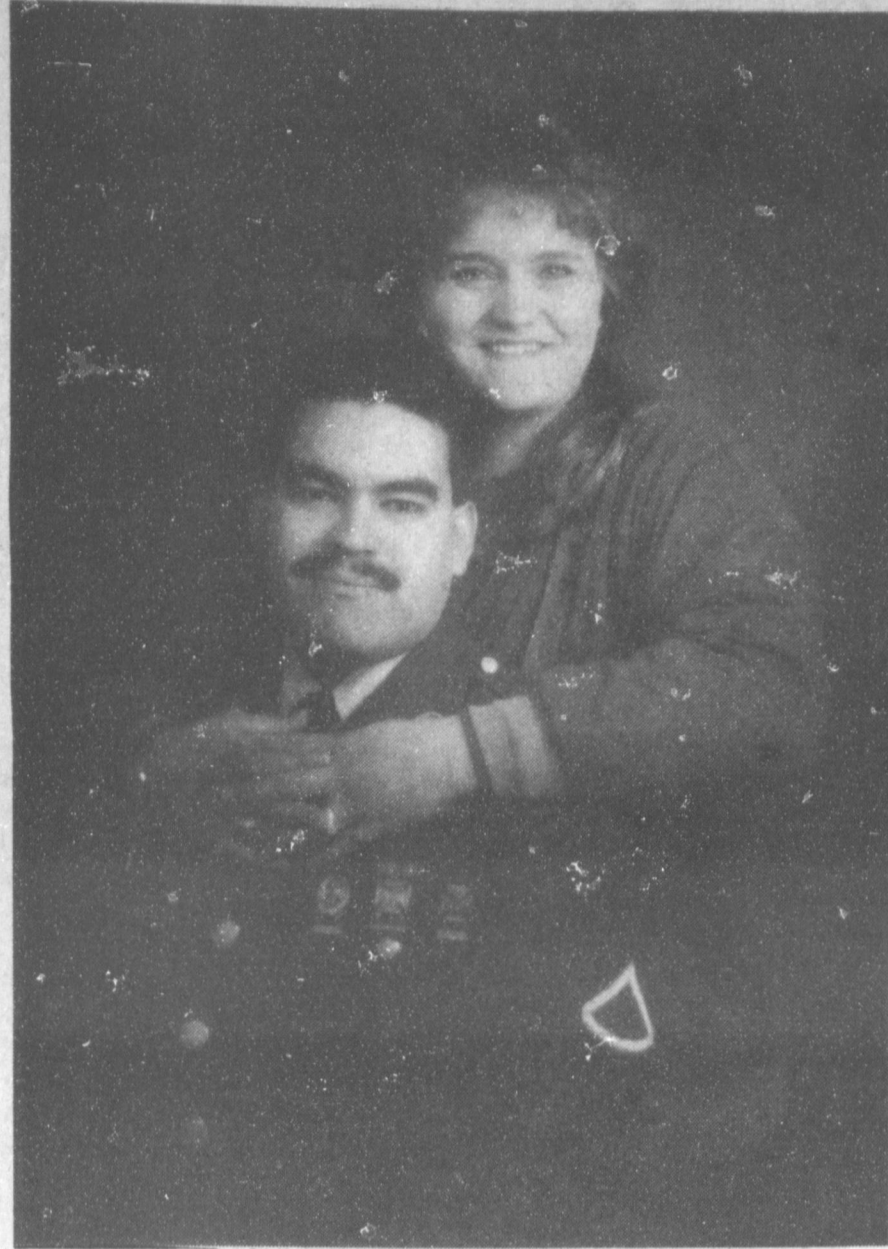
Muleshoe Study Club met Thursday, March 9 in the home of Fern Gilbreath.

Carrie Juan Schuster presented the program on Arts and Crafts. She chose Stained Glass, displaying the different types of glass that may be used, the treating, cutting and preparing each piece to be placed in your own individual design, ultimately becoming a thing of beauty. It was reported to be a very interesting program and enjoyed by all of those present.

Louis Agee conducted the business meeting and reminded the club members to take items to the next meeting to be placed in the Country Store, at the March 25 Convention in Lubbock.

Members present were: Louise Agee, Verde Nelle Arnn, Anne Camp, Betty Jo Carpenter, Joyelene Costen, Izetta Shain, Alma Turner, Vivian White and the hostess, Fern Gilbreath.

The next meeting will be at the 100F Hall, with Joyelene Costen as the hostess, on March 23 at 4 p.m.



**APRIL PLANS REVEALED**--Mr. and Mrs. Leamon Stances of Muleshoe announce the engagement and approaching marriage of their daughter, Jennifer Glorie to Enrique Garza, son of Eva Garza of Corpus Christi. Vows will be exchanged at 3 p.m. Saturday, April 22, in the 16th and Ave. D Church of Christ in Muleshoe. The bride-elect is a 1983 graduate of Farwell High School and a 1985 graduate of South Plains College. Garza is currently serving in the United States Army. (Guest Photo)

### Jennyslippers

### Meet, Plan

### Coming Events

Muleshoe Jennyslippers, Women's Associates of the Chamber of Commerce, met at noon Tuesday, March 14 at the Old Depot, for their regular meeting, with 22 present.

The meeting was called to order by Pat Langfitt. Minutes of the previous meeting were read and a treasurer's report given.

Thank you notes were read from the Chamber of Commerce, for decorating for the banquet; Ms. Elizabeth Watson and Marjorie Merritt.

Renee' Rudd reported that Ben Franklin's donated the eggs for

the Easter Egg hunt which was held Saturday. Two hundred twenty five prizes were given in the four age groups.

It was also reported that the Walk-A-Thon will be held on Saturday, May 13 with starting time being at 9 a.m.

It was reported that diddy bags have been purchased by the Chamber of Commerce, from the Hotel/Motel Tax, and will be given to tourist. These bags will have a Mule on them with "Home of Mule Memorial".

Special olympics will be held on April 21 and 22 according to an announcement made at the meeting.

The next meeting will be on March 28 at the Muleshoe Public Library. This will be a Brown Bag meeting. The membership meeting is scheduled for April 11.

The family of E.W. Locker deeply appreciates the offerings of love and concern shown during our time of sorrow. We shall always remember the caring and sharing expressed by our friends within the community.

The E.W. Locker Family

### Hobby Club

Muleshoe Hobby Club met Thursday, March 16 at the Senior Citizens Complex with 11 members present.

The meeting was called to order with the roll call and minutes of the previous meeting was read and approved.

Those present included: Laura Mae Stansell, Ruby Lambert, Frances Bruns, Kathy Hancock, Myrtle Chambless, Edith Fox, Jane Williams, Ladema Wright, Mabel Caldwell, Mattie Benton and the hostess, Glenda Morris.

Jane Williams drew the hostess gift which was three butterflies.

Ms. Caldwell took a red and white plaid collar to show and Ms. Morris took a decorated broom for the wall.

Chips and dips, cookies, coffee, Cokes and 7-Up was served.

The next meeting will be a luncheon on Thursday, March 30 and everyone is asked to take a friend.

## TAXPAYERS' Rights, Remedies, Responsibilities

Want to learn more about the property tax system? That's possible by reading a pamphlet the State Property Tax Board has written and made available at the local appraisal district office.

It's called "Taxpayers' Rights, Remedies, Responsibilities" and it may help you save money. Learn about tax relief available through

- homestead exemptions
- disabled veteran exemptions
- special productivity value for farm, ranch, and timber land
- tax deferral for over-65 homeowners

You'll learn how your property is appraised. That way, you can decide if the appraisal district's value is reasonable.

If you think it isn't, the pamphlet tells you how to prepare an appeal to the appraisal review board. You'll learn the types of protests the appraisal review board can hear and useful evidence to bring to your hearing.

Important dates in the tax year are listed. You'll know what your responsibilities are and when you are obligated to satisfy them.

"Remedies" is free to taxpayers. Ask for yours today at

**Bailey County Tax Appraisal District**

104 E. Ave. C. Muleshoe 272-5501

State Property Tax Board

Box 15900 Austin, TX 78761-5900

We want to roll up our sleeves and give you a helping hand.

If your business is planning to grow, modernize and become more productive; you probably need to make a few changes.

That means rolling up your sleeves and a little hard work.

We want to help. We're offering all types of business loans to all types of businesses. We understand progress, and we're looking to put in a little hard work to help you grow.

So come by today and visit with our loan officer.

We're ready to go to work.



202 S. 1st

Member F.D.I.C.

272-4515

**Muleshoe...**

Cont. From Page 1

Officers Ass'n., termed a non-profit fraternal veterans organization), will hold a meeting at the Bailey County Coliseum on Wednesday, March 29.

Discussion will be on veterans benefits, catastrophic health bill, social security and other benefits, including how these will have an effect on veterans retirement years.

\*\*\*

Rick Copp, senior sponsor at Lazbuddie High School, said the annual Lazbuddie Senior Class Volleyball Tournament will be played April 6-8 at the school.

Divisions will include men, women and mixed, and it will be a double elimination tourney.

T-Shirts will be given first, second and third place winners.

Deadline for entry will be March 31, and entry fee is \$35 per team.

For further information, contact Copp or Richard Luscombe at (806) 965-2806 or (806) 965-2719.

\*\*\*

A Reminder!! Saturday night, March 18, is the night for the annual Fireman's Ball.

It will be held 9 p.m.-1 a.m. at the Earl Ladd Station on East American Blvd.

Unlike many things, the price to attend the Fireman's Ball is still only \$5 per couple, and it is for couples only. Entertainment will be by a country/western band.

\*\*\*

An election will be held on Saturday, May 6, to elect two councilmen for the City of Muleshoe. The terms of Councilman, Place One and Councilman, Place Two, will be on the ballot.

As of Monday, March 13, incumbent A. V. Wood has filed for re-election for Councilman Place Two.

City Secretary Mary Hicks said the last date to file for a position on the ballot is March 22 at 5 p.m. at the Muleshoe City Hall.

\*\*\*

Due to spring break, the March 20 PTA meeting and Science Fair have been cancelled.

They will be rescheduled in April.

**NEWS VIEWS**

**George Bush, President:**  
"I hope the final pullout of Soviet armed forces from Afghanistan ensures 'no more bloodbaths' in the war-torn nation."

---

**James R. Tallon Jr., chairman of the coalitions committee on Medicaid:**

"We call for a system that truly cares for the needs of the poor."

---

**Noboru Takeshita, Japanese Prime Minister:**

"I will dedicate myself to the realization of political reform the people strongly desire..."

---



**FLOYD LIONS CLUB JAMBOREE PRACTICE**--It's not long until the Floyd Lions Club's 39th Country Jamboree, and the Floyd, N. M. residents and performers are gearing up and practicing. On the fiddle is Chet Rippie of Floyd; Scott Buchanan is to the left and Danny Cresat is on the drums. The popular country jamboree will be held March 23, 24 and 25 (Guest Photo)

**Ag Week**

Cont. From Page 1

priced food and fiber supply in history."

Tanksley reminded that all groups work together in processing and marketing food and fiber products. In addition, they are all consumers of these products.

He said movement of food and fiber from its place of origin to supermarkets and family tables provides jobs and income for about one-fifth of the work force.

**Three Way News**

Mr. and Mrs. James Kindel was in Lubbock Friday on business. \*\*\*

Mr. and Mrs. Jack Hodnett were in Lubbock over the week end to be with Jack's mother, Mrs. Maggie Hodnett, who is a patient in Methodist Hospital. \*\*\*

Farmers in the community are putting fertilizer on the fields. Some have started watering. \*\*\*

Mrs. Adolph Wittner was in Lubbock Saturday to attend a wedding shower honoring a nephew. \*\*\*

Marcus Huff, Mabelle Calverhouse, Chad and Seberna Huff, all of Lubbock spent Sunday with their parents and grandparents, the Budd Huffs. \*\*\*

Mrs. Minnie Dupler was a dinner guest in the home of her son, the Bill Duplers, Sunday. \*\*\*

Mr. and Mrs. Joe Sowder spent the week end in Logan, N.M. visiting their daughter, the Jack McCarty's. \*\*\*

J.W. Tyson visited his uncle and aunt, the George Tysons, Sunday.

"One of every 40 Texans is a farmer or rancher. In addition, about 20 percent of the state's retail trade business is closely associated with agricultural production and marketing of food and fiber products," Tanksley continued.

He said that nationally, one of every five jobs in private enterprises is tied to agriculture.

With roughly \$11.5 billion in cash receipts from farm and ranch products in 1988, Texas continues to rank second behind California nationally, added the Bailey County agent.

"These farm and ranch receipts have a total economic impact of more than \$35 billion," Tanksley said.

He said that Texas traditionally is number one in the sales of

cattle and calves, cotton, sheep and wool, goats and mohair, cabbage and spinach.

Also, according to Tanksley, with production of an abundance of high quality food and fiber an inherent mark of American agriculture, consumers spend far less of their take-home pay on food than people elsewhere in the world, he said.

"Today, that averages about 15 cents of every dollar of disposable income, with five cents of that spent on food eaten outside the home," Tanksley concluded. "Farm and urban residents together make the best food and fiber combination team anywhere in the world."

**Tax...**

Cont. From Page 1

counties that collect the one-half percent county sales tax. Ten counties that began imposing the local sales tax this year received their first allocation in March.

March's checks represent taxes collected by monthly filers in January and reported to the Comptroller's office by February 21.

How True? Any time you feel you would like to be young again, just think of algebra.

—Tribune, Des Moines

**MISD Has New Pilot Program**

Muleshoe ISD is, once again, a pioneer. A federally-funded pilot program has brought a whole new type of education -- **DISTANCE EDUCATION** -- to Muleshoe.

**DISTANCE EDUCATION** simply means that the teacher and the learner are not in the same place at the same time for the teaching and learning activities. There are many different types of **DISTANCE EDUCATION**. **AUDIOGRAPHICS** is one of the newest and most exciting of these, according to Georgia Pena, director of Special Programs.

The Migrant Programs at Muleshoe High School and Watson Junior High are now linked together for two periods each day with an audiographic program.

Sue Espinoza, from her classroom at Watson Junior High, tutors high school students, who remain at Muleshoe High School. Alice Arguello, a TA at WJHS, spends these two periods at MHS, supervising computer use and tutoring students.

The goal of this program is to help students learn to succeed (understand and pass) in their regular classes, while allowing them to take part in, and help develop, a **DISTANCE LEARNING** project using the wonders of **AUDIOGRAPHICS**, added Mrs. Pena.

Only four MHS students are involved as students and staff to learn to use this innovative program, but the potential is there to help many more students next year.

This audiographics program is used elsewhere in the country by colleges and universities, where the professor remains in his office while teaching students in several different towns at the same time. Because of the multiple sites, it is possible to offer classes that would not "make" it if the entire enrollment had to come from one town.

A few states, such as Utah and Pennsylvania, offer high school courses via audiographics. Although this is sometimes to enable small schools to provide state-required courses, it is also used to offer enrichment courses,

**Floyd Lions Ready For County Jamboree**

Unless you are a newcomer to Eastern New Mexico and West Texas, you know what the last full weekend of March holds in the tiny farming community of Floyd, between Portales and Melrose.

The Floyd Lions Club is busy making the final arrangements for their 39th Annual Country Jamboree. This community will literally burst at the seams when 1000 to 1500 people show up nightly for the annual three and one half hour Country Jamboree program.

This year will be no exception. The Lions promise a full evening of good family entertainment. There will be a lot of familiar talent from the past mixed in with new area celebrities.

The Jamboree started in 1950 and became a yearly affair. The show now runs for three consecutive nights and has been moved to the high school gymnasium to accommodate the fans who come every year.

The 31st Legislature of the State of New Mexico passed House Memorial No. 15 in the 1974 second session honoring the Floyd Lions Club Country Jamboree "For its outstanding performances and the many charitable ventures that it benefits." The memorial lauded the Jamboree for its activities and popularity, and cites the fact that it is an all-volunteer performance of "some of the best country talent in the world."

Entertainers have been holding practice sessions every weekend since mid-January. Thirty-four solo, duet or group vocalists will perform with the Floyd Jamboree Band as back-up. Featured performers, selected by audition, come from Hereford, Sudan, Anton, Leveland, Texas, along with Portales, Tucumcari, Roswell, Floyd and other surrounding towns. Larry Buchanan will be the master of ceremonies and will be delighting the audience with his wit and talent.

This event is the only money-raising project for the Lions Club. The money is used to support programs in the International Lions Club, New Mexico Lions Eye Bank and within the community for various projects.

The Jamboree will kick off on Thursday, March 23, at 7 p.m. and continue Friday and Saturday. The doors will open at 6 p.m. and there will be no advance or reserve seat tickets sold this year. A concession stand will be provided by the Floyd 4-H Club.

Never worry about what other people do; that's not your responsibility.

It is not "un-American" to disagree with others regardless of what positions they occupy.

**WHY WAIT FOR YOUR TAX REFUND WHEN YOU CAN GET YOUR MONEY FAST!**

Use H&R Block's Rapid Refund Program

It's a loan against your expected federal income tax refund. Available whether H&R Block prepares your tax return or not.

**IT'S FAST! H&R BLOCK**

272-3332 224 W. 2nd St. Muleshoe, Tex.

**Summertime...And The Lawn Care Is Easy**

John Deere makes it easy, by supplying all the mowing parts you need — blades, belts, grass bags, filters and electrical parts. All John Deere quality... at competitive prices. Visit us today, and let us take the worry out of summer lawn care.

**Dent & Co.**  
W. Hwy. 84  
272-4296

**BLACK'S MAGIC & ILLUSION**

Thursday, April 13, 1989  
7:00 P.M.

**Muleshoe High School Auditorium**

Tickets Available From  
The Journal, 304 W. 2nd.

Advance Tickets: \$4 Adults, \$3 Students

## Nursing Home News

By: Joy Stancell

Stella Morgan's children from, far and near, came to visit last weekend. She went out to her daughter's, Elsie Williams, to be with them all last Saturday.

Effie Smith was visited by her niece, Dortha Joiner, of Lubbock this weekend. Debbie and her son also visited her.

Eric Smith was visited by his daughter, Patricia Thatcher, during the weekend.

Ella Faubus was visited by Jeana Taylor and children, D.D., Paul and Sandy from Decatur Friday. Mr. and Mrs. Mack Hodges visited Thursday. They are from Brownfield. She was also visited by John of Lubbock and Wayne.

Ernest Kerr was visited by Ruby Lee Kerr, Goldie Baker and his sister-in-law of Illinois last week.

Sunday afternoon the Muleshoe Singers came to visit and sing and play gospel music for the residents.

Wednesday afternoon Mission Friends from the First Baptist Church came to visit and distribute baskets of goodies and fruit to the residents that they had made.

J.E. Embry and Winnie Berry came Thursday to play Skip-Bo with the residents.

Friday afternoon Clara L. Jones brought her little dog, Candy, to visit. She was a delightful and welcomed guest.

Tommy Sesimore visited his mother, Mary Sisemore, last week.

We are pleased to have

## Courthouse News

### WARRANTY DEEDS

Donald G. Long and wife, Rhonda Long to Dorothy M. Long--All of Lot (15), in Block (8), Lenau Addition to the City of Muleshoe, Bailey County, Texas.

Velma L. Fried to Gordon Wilson and wife, Marilyn Wilson ---All of Lots (4), and (5), in Block (16), Original Town of Muleshoe, Bailey County, Texas.

First Bank of Muleshoe to Keith Vourazeris and wife, Sylvia Vourazeris---All of the (NE/4) of Section (22), Block X, WD&W Johnson Subdivision, Bailey County, Texas.

### COUNTY COURT

Felipe Martin Ramos, DWI, \$250 Fine 30 Days Jail  
Roy Robert Harris, DWI, \$250 Fine 1 Year Probation

### MARRIAGE LICENSE

William Randolph Marks and Beatrice Ann Nelson, Clovis, N.M.

Jim Arnold Rookard and Elizabeth Marie Mercer, Albuquerque, N.M.

Waymon Charles Palmer and Buhie Mae Lewis, Muleshoe  
Andres Martinez, Bovina and Margarita Ruiz, Muleshoe

Mildred Nieman back with us after being in Methodist Hospital for a lengthy time. Also Cora Duncan.

Guy Kendall was visited by D.E. Bellar, his wife, Elsie, and Nealie Moore this week.

Monday Lorinda Bodiford and Erin came to visit and read to the residents.

Tuesday afternoon Laverne James, Olive Cox, Holly Milsap, Claudine Embry, Irene Steinbock and Betty Jo Davis came to shampoo and set the ladies hair.

Our sympathy goes to Ruth Williams on the death of her sister.

Lynn Bratcher was visited Sunday by Mr. and Mrs. C.W. Wilhite.

Barbara Blackman comes each Wednesday afternoon serving chilled fruit juice and a "note of cheer."

## Pantalion Salazar Graveside Services Held Friday

Graveside services for Pantalion Salazar, 72, of Earth were conducted at 2 p.m. Friday, March 17 in Springlake Cemetery with the Rev. Manuel Samaron officiating.

Burial was under the direction of Parsons-Ellis Funeral Home of Earth. Salazar died at 4:27 a.m. Wednesday in the Methodist Hospital at Lubbock.

Born June 27, 1916, in East Donna, Salazar had been a resident of Earth 16 years, moving from Anton. He was a farmer and a member of St. Magadalen Church of Earth.

He was a farmer. He married Lucy Gonzales on March 18, 1943, in Edinburg.

Survivors include his wife, Lucy; five sons, Roy Salazar, Simon Salazar of Earth, Rocky Salazar of Lubbock, Phillip Salazar of Earth, and Casimiro Salazar of Sudan; three daughters, Gloria-Villalon of Littlefield, Eneidine Morales of Wilcox, Ariz. and Janie Soto of Amherst; a sister, Francisco Gonzales of Mercedes; three brothers, Joe Salazar of Temple, Okla., and Fred Salazar and Juan Salazar, both of Mercedes; and 20 grandchildren.

## Golden Gleams

Come, gentle Spring, ethereal mildness, come!  
—James Thomson.

Spring makes everything young again, save man.  
—Jeane Paul Richter.

Spring is sooner recognized by plants than by men.  
—Chinese proverb.

In the Spring a young man's fancy lightly turns to thoughts of love.  
—Alfred Tennyson.

## WPMC To Host Breast Cancer Detection Unit

According to the American Cancer Society, one out of every ten women in the United States will develop breast cancer sometime during her lifetime. Every year over 37,000 women die as a result of breast cancer.

According to a spokesman from the Regional Breast Care Center at Women's and Children's Hospital in Odessa, Texas "The death rate from breast cancer could be drastically reduced if women would have mammograms done before a problem exists." By using modern state of the art x-ray equipment, breast cancers can be found when they are about the size of a grain of rice and well before the cancer can be felt.

A woman who is diagnosed with breast cancer at this early stage has a 90-97 percent survival rate. However, a woman who is not diagnosed until a lump can be felt has approximately a 50 percent survival rate in five years.

In an effort to find cancers at the earliest possible stage and prevent unnecessary deaths, a mobile breast cancer detection unit will be made available to local women on Monday, March 27.

## Patients In West Plains Medical Center

### MARCH 14-16 TUESDAY

Johnny Longoria, Pabla Garcia, Baby Girl Garcia, Eloisa Castanon, Baby Boy Castanon, Joey Bruton, Rosalinda Rincon, Clammie Ladd and Deana Shipman

### WEDNESDAY

Johnny Longoria, John Maddox, Sherman Inman, Melicio Cantu, Elizabeth King, Clemmie Ladd and Deana Shipman

### THURSDAY

Johnny Longoria, Lorena Marquez, Melicio Cantu, Clemmie Ladd and Deana Shipman

The mobile unit will be parked at West Plains Medical Center in Muleshoe. Appointments may be made by calling 272-4524.

For more information, you may

call the Regional Breast Care Center at Women's and Children's Hospital at (915) 334-8888/561-9999.

## Plainview Will Host Cancer Fund Raiser

The Plainview square dance clubs, the Promenaders and the Belles & Beaux, are having their annual Cancer Fund benefit dance on March 24 in Plainview at the Ollie Linder Center. The caller will be Sid Perkins and there will be a cake and pie auction. Donations will be accepted at the door.

"We're also selling tickets for a 19-inch color TV, which was donated by Walmart in Plainview," said Jack Burton, dance organizer and American Cancer Society volunteer. "This is a new addition to our regular dance and should be fun."

"This will be the sixth year straight that we've had the dance," said Burton. "We've had several dance club members who have had cancer, and this is our way to fight back."

Join the fight!! All square dancers, pie and cake eaters and anyone interested in attending is welcome. Tickets will be on sale at the Plainview Walmart Saturday, March 18.

For further information regarding the dance, call Jack Burton at 296-2710.

## Who Knows?

1. What is a diocese?
2. When does spring begin?
3. Name the U.S. Attorney General.
4. What is the duty of the Attorney General?
5. What is a homonym?

### Answers to Who Knows:

1. The territory over which a Bishop has authority.
2. March 20, 10:28 a.m., EST.
3. Richard Thornburgh.
4. The Attorney General enforces the U.S. government laws.
5. A word with the same pronunciation as another but with a different meaning.

## Lazbuddie Menu

### MARCH 20-23 MONDAY BREAKFAST

Toast, Bacon, Juice and Milk  
LUNCH  
Fish/Tarter Sauce, Cole Slaw, French Fries, Biscuits, Fruit and Milk

TUESDAY BREAKFAST  
Cereal, Juice and Milk  
LUNCH  
Beef Stew, Cheese Toast, Crackers, Cake and Milk

WEDNESDAY BREAKFAST  
French Toast, Juice and Milk  
LUNCH  
Tacos, Corn, Green Salad, Fruit and Milk

THURSDAY BREAKFAST  
Cinnamon Rolls, Applesauce and Milk

LUNCH  
Hamburgers, Chips, Pickles, Salad, Pudding and Milk

FRIDAY NO SCHOOL  
SALAD BAR MONDAY THRU WEDNESDAY

Dear Friends,

May God bless each of you for the love and care you have shown for us while we were in M.D. Anderson hospital.

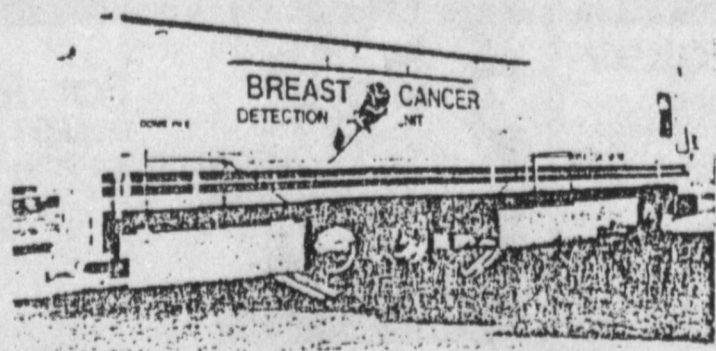
The many prayers, phone calls, and cards made our hearts lighter and our days pass faster.

We Love You.

Cleo and Beth Webb

## BREAST CANCER DETECTION UNIT

Located at Your  
WEST PLAINS MEDICAL CENTER  
Muleshoe, Texas  
Monday, March 27, 1989



A woman who is diagnosed as having breast cancer by mammography, before a lump can be felt, has a 97% five year survival rate and a 90% 10 year survival rate.

**COST IS ONLY \$50.00**

A Community Service of Your  
WEST PLAINS MEDICAL CENTER  
708 South First Street  
Muleshoe, Texas

and  
TRANSAMERICAN DIAGNOSTIC SERVICES, INC.  
Odessa, Texas

CALL 272-4524 FOR APPOINTMENT



## Hat's Off! Our Teachers Are What Our Kids Will Be!!



When one of her broad smiles breaks across her face, her entire face lights up, and Kay Lepard has made another 'instant' friend. The second grade teacher at Dillman Elementary takes her job seriously, but at the same time, manages to find fun in it.

With a small class of 11 students, Mrs. Lepard can give one-on-one special attention, and that suits her just right.

She commented, "Teaching is a personal challenge, as you set out to build the concept of self-esteem in the student. "You want the student to learn good self-concept and confidence, and each level you reach is another milestone," she added.

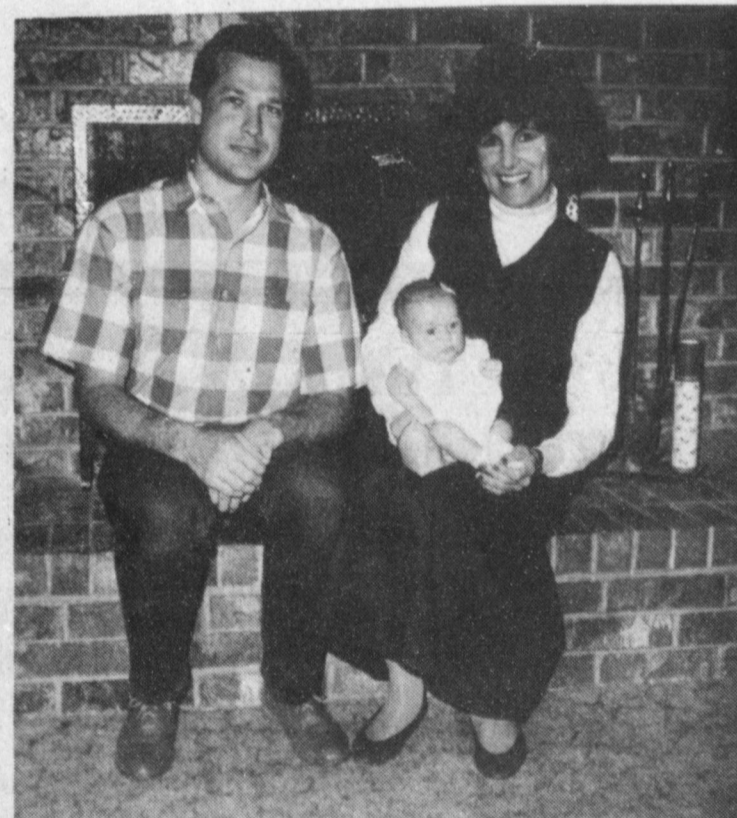
The Brownfield native graduated from Brownfield High School, then entered Texas Tech University, where she graduated cum laude with a better than 3.5 average. Her majors are in elementary education and Earth Science. However, she is qualified to teach through junior high school.

But that's not where her heart and her interests lie -- they are embedded in the youths she tucks around her like a 'mother hen' at Dillman Elementary.

Kay and her husband, Dr. Robert Lepard, made it through school 'the hard way.' She earned her "PHT" certificate after he became a dentist, attending school in Dallas for four years. During that four years, Kay taught fourth graders from a housing project in South Dallas. Her experiences there nearly ruined teaching for her, and for the first two years after the Lepard's moved to Muleshoe in September '85, she 'chair-sided' with her husband.

Then the lure of teaching came out again, so she accepted her present position.

While helping her husband through school, he acted as a waiter and parked cars. And brought home 'parking' adventures to Kay at night. He parked for Nieman-Marcus, the 'Dallas' crew at



South Fork, for debutante's coming out balls, major law firms and others. Neither was a stranger to washing dishes either.

Kay enjoys jogging or running. As a senior in Brownfield High School, she was one of the first three women (at the same time) to finish a marathon in Palo Duro Canyon (26.7 miles) with a decent time. Her time was 3:48. She credits a good coach with her success in her first year of running.

Nine weeks ago, she and Dr. Robert Lepard, who is a very civic-minded individual in his own right, became the parents of their first child, a daughter Katherine Amber (Kate) who currently 'rules the roost' at the Lepard home.

Muleshoe is very fortunate to have the caliber of dedicated teachers such as Kay Lepard in its system.



# Muleshoe Kiwanis Club Hears DECA 'State Winner's' Program

By: R. A. Bradley

Eleven Kiwanians and seven guests wished everybody a good St. Patrick's Day as they met Friday morning, March 17, at the Old Corral.

Guest Lacy Morris, daughter of Glen Morris, made sure that everybody has something green for this St. Patrick's Day. Other guests were Carol Copley, daughter of Jimmy and Myra Copley; Sue Haire, past club sweetheart, who is home on spring break. Sue, it is real good to have you home and very good to have you back at Kiwanis. You know you will always be our sweetheart. Other guests were Jon Keith Turner, son of Keith Turner; Chad Johnson, son of Reggie Johnson; Robby Clapp, son of Don Clapp, and of course, our Sweetheart, Justine Hanes. It is always good to have the beautiful Justine present with her 'Bubbling Personality.' Justine, just in case you haven't figured it out, "We Love You."

President Keith Turner finally found the gavel and called the meeting to order. Lyndon Huckaby led the club in the pledge and Don Martin gave the invocation. Don Clapp is still looking for a friend, as he left the Friendship Coin home on his dresser. If anyone would like to be a friend to Don, please let him know. Don is having a HARD time trying to find a friend.

Several members of the Kiwanis Club plan on helping with the Mule Kicker Track

Meet, Saturday, March 18. They also voted to donate \$100 to help with the meal for workers at the track meet. Be sure and come out and watch this wonderful sport and cheer the Mule teams on.

Sweetheart Justine Hanes, introduced the program. She introduced Carol Copley, daughter of Jimmy and Myra Copley and a senior at Muleshoe High, a member of the Marketing Education Program and a member of the DECA Club.

Carol is employed at Adrian Photography and has entered the DECA competitions for the last two years.

Carol won first in state competition this year. She and six other winners will be the delegation to go to National Competition in Orlando, Fla. April 26-30.

Carol, congratulations on your state win and good luck to you and the rest of the Texas delegation in Orlando. Work hard, do good and have lots of fun in Orlando.

Carol explained that the DECA Club is 43 years old and is in high school and colleges.

There are 200,000 members, nationwide, and 15,000 in Texas. There are 17 members locally.

Carol explained how she won state by preparing a 40-page summary about a new business. She had to present her summary before a panel of bankers in applying for a loan of \$143,000 to start a new business.

Her new business was "One Hour Photo Finishing Service," and Carol had it down to all details as to renting a building, buying materials, hiring personnel and projected profit so, this loan could be paid back in five years.

Carol presented a good summary and was able to answer questions afterwards.

You can very quickly see why she won state. Congratulations Carol, and we wish you the best at National.

We are very proud of our youth. It seems the future will be left in some good hands.

## Wayland Baptist

### Will Sponsor

#### April Job Fair

Wayland Baptist University will host its first Education Job Fair in mid-April, it was announced today.

Sponsored by the Office of Placement and Career Planning, the job fair is scheduled for 10 a.m.-5:30 p.m. Tuesday, April 18, according to Bobby Hall, coordinator.

All activities will be held in the Multi-Purpose Room of the Mabee Library Complex. The event is open to all state-certified public school teachers, as well as students who are scheduled to receive education degrees in May from any area college or university.

Sixteen independent school districts from Region I will be represented at the fair, according to Hall.

Persons needing additional information may contact Hall at (806) 296-5521.

#### Texas A&M psychologist says children with cancer have optimistic outlook

COLLEGE STATION — Children with cancer have a much brighter outlook on their medical condition than their physicians or even their parents, and the reason for their optimistic outlook may be linked to denial — a very healthy coping mechanism — says a Texas A&M University educational psychologist.

Dr. Frances Worchel recently completed research that examined the ways children with cancer cope with illness. She found that 96 percent of the patients rated themselves as getting better. Physicians gave a rating of only 43 percent of the patients evaluated as getting better.

Worchel further examined the possibility of denial by looking at the patient's self-reports of depression. She discovered that depression was significantly lower than would be expected when compared to norms for both school children and other pediatric patients.

"What's surprising is the patients' self-ratings of depression were significantly lower than ratings of depression given by their parents," she said.

## Enochs News

by: Mrs. J.D. Bayless

Rev. Wendell Horn remains a patient in the Methodist Hospital in Lubbock where he may possibly undergo surgery in the near future.

Anita Wallace has been in Lubbock this week to be with her sister-in-law, Alberta Bedo, who underwent eye surgery there Monday.

Dewayne Serratt, 51, of Arkansas, and nephew of Louzell Serratt died last week. Funeral services were held Sunday in Lovington, N.M. Her sons, Kenneth and Colby and Delbert of Amarillo visited with her enroute to Lovington to attend services. Kenneth and Colby came back through and spent the night with her. Mr. and Mrs. Melvin Serratt of Hico also attended the services buy Louzell was unable to attend.

Mr. and Mrs. Goldman Stroud visited the Boyd Maxeys at Amherst Sunday afternoon.

Mrs. E.N. McCall and Mrs. Inez Sanders attended the funeral service of Ernest Locker

at Progress Baptist Church 2 p.m. Wednesday.

Mrs. Winnie Byars and Mrs. Ellen Bayless ate dinner at the Senior Citizens at Morton Thursday. They had a real good dinner.

## Heritage Center Update

By: The Heritage Board.

Sixteen people came out to help work on the Janes Ranch House Tuesday, March 14. This was the Rotary night. This was a pretty good showing and lots of work was done.

Sanding and cleaning is very slow and, of course, it does not look pretty when you are done, but all of these things have to be done before painting and making it pretty can start.

Sanding on windows, doors, base boards, removing paint from some of the ceilings and cleaning on one of the bathrooms was done. All of this work is greatly appreciated.

There were seven Rotarians

and three Rotaryans.

Those present were George Nieman, Robert and Maureen Hooten, Ed and Carol Cox, Vivian White, Julie Cage, Frank and Janie Saldana, Max King, Dick Chitwood, Norman Head, Tim Campbell, Jerry Hicks and Marie and R. A. Bradley.

Next Tuesday, March 21, will be the Lions Club and March 28 will be the City Council, Mayor and all of City Hall.

If you are interested in helping, you do not have to be a member of some organization. Just come out and be a friend to the Heritage Foundation.

Thanks to everyone for your concern and help. It is really appreciated.

**It's Time To Look At Crop Insurance**

**Call Today**

**Ronnie Holt**

Office 272-3614      Night 965-2842

**Multiple Peril Crop Insurance Has Sale Closing Date Soon! Talk To Us About Your Coverage Today!**

**Call Ronnie Holt For Information About Your Own Protection.**

**Call Or Come By Western 66!!**

**Earth Hwy. & Talk To Ronnie Holt**

**Thanks For Your Support!**

*The Lazbuddie Volunteer Fire Dept. held a Benefit Supper Thursday, Feb. 23rd at the Lazbuddie School. The fund raising event was very successful and the Lazbuddie Fire Dept. wishes to thank all the individuals who contributed.*

*The Lazbuddie Fire Dept. and Lazbuddie community also appreciate the support of Mr. Jerry White of Rhone-Poulenc Ag. Co. for donating the meal catered by Cattle Call of Amarillo.*

*Thanks also to the "South Plains Playboys" for providing the Entertainment.*

*A special thanks also to the following businesses who contributed:*

Production Credit Association	Paco Feed Yard	Poynor's Home & Auto
American Valley Inc.	Muleshoe Motor Co.	Mohawk Auto Parts Co., Inc.
Farmers Co-op Elevator	Bovina Feeders Inc.	Joe's Boot Shop
Farwell Gin	Gallman Payloader Service	Clays Corner Gin
Tri-County Tire	Friona Fire Dept.	Aldridge, Harding, Aycock &
Lariat Gin	Allison Bookkeeping -Tax Service	Atkinson
Five Area Telephone Cooperative	Farmers Aerial Spraying	Hub Grain Co.
C&H Equipment	Lazbuddie Garage & Supply	Friona Transport
Sherley-Anderson Elevator	Muleshoe Coop Gin	Energas Co.
Morrison Oil Co.	Dent & Co.	Muleshoe Journal
Dale Oil Co.	Wilson Appliance	
James Crane Tire Co.	Muleshoe Animal Clinic	
Federal Land Bank	Irrigation Pumps & Power	

**COOPER TIRES • COOPER TIRES • COOPER TIRES**

# We like riding with you.



**COMPARE THIS SUPER VALUE!**

**POYNORS' FREE Road Hazard Warranty**



**You'll like riding on VALUE PACKED BUDGET PRICED TRENDSETTER RADIALS**

PRICED TO SELL **\$32.99** P155/80R13

**SPECIAL PRICE**

Size	PRICE
P165/80R13	34.99
P185/80R13	39.99
P185/75R14	41.99
P195/75R14	42.99
P205/75R14	44.99
P205/75R15	44.99
P215/75R15	46.99
P225/75R15	49.99
P235/75R15	57.99

**Setting new trends in quality, low priced radials for the motoring majority.**

CREDIT TERMS AVAILABLE  

Let our professional sales people show you real quality.






**COOPER TIRES • COOPER TIRES • COOPER TIRES**

## Oil & Filter Change Special

**Includes:**  
5 Qts. Oil (Havoline, Pennzoil, Quaker State, Phillips, Valvoline, Castrol)  
Mastercraft Oil Filter — Includes Labor .....

**\$12.88**

### BRAKE SPECIAL

**For Front Brakes**  
Includes new disc pads.  
Includes labor to install pads.  
Includes labor to pack wheel bearings.

**\$34.50**



**For Rear Brakes**  
Includes brake shoes.  
Includes labor to install.

**\$26.50**



**Battery \$29.88**

Coast to Coast.

# POYNORS' Home & Auto

103 Main      Muleshoe      272-4552



# From The Senate

By: Teel Bivins

I have suffered an on the job injury. On January 10, the day I was sworn in as a Texas Senator, I probably shook more hands than I ever have in my life. Toward the end of the day, I began to notice a slight pain in my elbow each time I shook hands. The next day the condition grew worse. After my first week in office it had gotten to the point that any attempt to shake hands resulted in severe pain in my elbow.

You guessed it. I had developed that dreaded syndrome "politician's elbow." The doctors gave me some anti-inflammatory medication, but that did not seem to work. While continuing to take the medication, I began to act like Bob Dole and carry a pen in my right hand so that whenever I came across someone I would always shake hands left-handed. After a month of this, I finally succumbed to allow the doctors to give me an injection of cortisone in my elbow. It worked!

Since this was an on the job injury and because I am on the State's payroll (your payroll), I figure I am entitled to worker's compensation benefits. I was able to confirm this easily because this session the Capitol is absolutely overrun with worker's compensation insurance experts. It is my hope that worker's compensation insurance reform will be one of the major pieces of legislation that comes out of the 71st session of the Legislature.

Worker's compensation is a no-fault insurance system de-

signed to pay medical expenses and lost earnings of employees injured on the job. All fifty states have some type of worker's compensation insurance system. However, our system in Texas, as Lt. Governor Hobby says, "does not work and does not compensate."

Worker's compensation insurance premiums have increased over 125 percent in the last four years. Rates in Texas are among the highest in the nation. At the same time, in many instances, benefits to injured workers are among the lowest in the nation. The system as it is today seriously impedes our ability to attract new businesses to Texas as well as a qualified work force.

The Texas House of Representatives has taken the first important step in reforming the Texas worker's compensation laws by passing H.B. 1. This 188 page piece of legislation deals with a very complex system and attempts to inject reforms in to that system that will hopefully reduce the cost of worker's compensation insurance, increase benefits to workers, and improve safety in the work place.

The very fact that the worker's compensation bill was given the number "1" for House Bill 1 by Speaker of the House Gib Lewis indicates the importance he attaches to this reform legislation. Governor Clements has also indicated in no uncertain terms that if the Legislature does not vote out a significant worker's compensation reform bill during the regular session, he will call

the Legislature back into a special session. Finally, Lt. Governor Hobby has also expressed his strong commitment to getting a good reform bill voted out of the Texas Senate.

There are basically five "players" in the worker's compensation reform game: employers, employees, doctors, insurers, and attorneys. To arrive at a meaningful reform there must be compromise from each of the players. The process is made more difficult by the fact that each of these players have strong lobbyists who know their way to the Capitol.

I believe House Bill 1 has made a good start on the reform process. To give you a sense of the players and lobbyist at work, consider that while the bill was before the House Business and Commerce Committee, there were some 300 amendments offered to the bill. Approximately 1/3 of those amendments offered on the floor of the House during debate.

However, when the final vote came the bill emerged pretty much intact. The bill's author, Richard Smith, Republican from Bryan, says that he believes the bill, if passed by the Senate and signed by the Governor, could decrease worker's compensation rates from 8 to 15 percent.

The bellwether issue in House Bill 1 was trial de novo. In a disputed worker's compensation claim, an injured worker can appeal the settlement offered by the insurance carrier to the Industrial Accident Board. The Board rules on that dispute.

However, if either party to the IAB proceeding is not happy with the outcome that party can appeal to a district court and start the process all over again. Hence, the name trial de novo. House Bill 1 modifies this duplicitous process by limiting appeals from an IAB hearing to those based on the "substantial evidence rule."

This basically means that appeals to district court can only deal with legal issues. The facts as determined at the IAB level not be relitigated. This change in law is controversial because it eliminates the right to a jury trial.

Self insurance is another major issue that House Bill 1 deals with. Currently only state or local governments may have their own insurance funds. Therefore, the State of Texas is going to be faced with a claim for my "politician's elbow," as opposed to an insurance company.

Though worker's compensation insurance is not mandatory in Texas if a business chooses not to carry worker's compensation insurance they are limited in the defenses that they can use in a suit for damages brought by an injured worker. These limitations create a strong incentive for businesses to purchase worker's compensation insurance.

Texas is one of only two states that does not allow self insurance. This is an obvious barrier in our attempts to draw new business to Texas. House Bill 1 removes this barrier.

As I pointed out, some of the benefits to workers under the current worker's compensation system are among the lowest in the country. Under House Bill 1 workers will be eligible for higher weekly benefits than they are currently, because benefits would be pegged to the statewide average weekly wage which is now \$416.00 rather than the current cap of \$238.00.

It is argued by many that one of the major problems of the current system is the excessive use of lump sum settlements or "compromise settlement agreements." Insurance companies like to use CSA's because it allows them to "close the books" on a file. Attorneys representing injured workers like CSA's because it enables them to collect their contingent fee up front as opposed to spread out over time.

Problems often arise when an injured worker receives his lump sum settlement, succumbs to the temptation to spend the money on items other than what the money was intended for and thus becomes unable to pay for continuing medical treatment will not be relitigated. This change in law is controversial because it eliminates the right to a jury trial.

State of Texas is going to be necessary to fully recover. House Bill 1 restricts the use of lump sum settlements in the area of medical

issues show that Texas as one of the worst work place safety records of any state in the union. Some argue that if we would create a Texas OSHA and enforce strict new safety requirements that worker's compensation insurance rates would immediately fall. I disagree. First, because worker's compensation insurance rates have skyrocketed over the last three years for many different reasons including safety in the work place.

Second, I strongly oppose the imposition of new mandates on free enterprise system. Rather I support what was done in House Bill 1. In the bill, incentives were built into the new rate structure so as to reward businesses who have strong safety records. As a conservative, I will always prefer to work with incentives as opposed to mandates.

House Bill 1, as enacted by the House of Representatives has only partially completed the legislative process. Under normal circumstances the bill as passed by the House would come to the Senate where it would be referred to committee, voted out of committee, voted on by the entire Senate and ultimately sent to the Governor for his signature. However, the circumstances that

surround the issue of worker's compensation are anything but normal. The issue has received intense scrutiny by interest groups, the media, and individual legislators.

Senator Robert Glasgow was co-chairman of the Joint House/Senate Interim Committee on Worker's Compensation. I anticipate that rather than allowing the Senate to simply take up consideration of House Bill 1, Senator Glasgow will introduce his own version of a worker's compensation reform bill. It should be added here that at least one other bill by another senator regarding worker's compensation reform has already been filed and it is anticipated that others will be.

If the Glasgow bill is enacted, it and House Bill 1 will go to a Senate/House conference committee to work out the differences. Only after all this occurs will there be a piece of legislation to put before Governor Clements for his signature.

Thus, there is a great deal of work yet to be done in the area of worker's compensation reform. It is an issue that I am very interested in. I plan to work hard to see to it that the positive reforms enacted in House Bill 1 stay intact in any legislation that may be voted out of the Senate.

The issue is complex with strong interest groups on many sides. Be that as it may, in my view we have a system that simply is not working. It is my duty as your Senator to attempt to fix it.

## Texas A&M specialist says unhappy customers should tell the company

COLLEGE STATION — It pays to write manufacturers of grocery store products that fall short of expectations, says a marketing specialist at Texas A&M University who conducted a study on how firms respond to consumer letters.

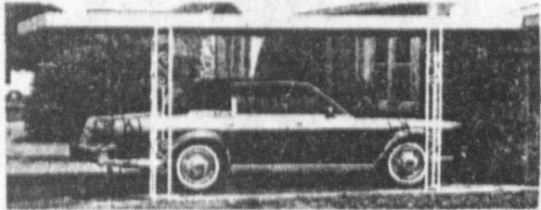
"Companies are listening," says Dr. Denise Smart of Texas A&M's College of Business Administration. "They are anxious to hear from consumers because it helps them correct problems and deliver better products."

Smart and Dr. Charles Martin of Wichita State University conducted a study in which they wrote letters of complaint and praise to 51 companies.

"We found that people in the companies are relaying the letters to others who can make a difference," Smart said. "So it appears that letters from consumers really do have an impact on the decisions of the company."

She pointed out that it is to a firm's advantage to respond to consumer complaints and praise because the market for consumer products is highly competitive and in many cases it is less costly to retain customers than to obtain new ones.

## CARPORTS AND PATIO COVERS



Protect Your Auto, Van, or RV From Weather Damage.  
Financing Available!

**EB-TX** 7105 Olton Rd., Drawer 369, Plainview, Tx  
Call Now: 1-800-293-9526

## HOMESTEAD EXEMPTIONS



### CAN LOWER THE PROPERTY TAXES ON YOUR HOME

A homestead Exemption

lowers the property taxes on your home by lowering its taxable value. For example, if your home is valued at \$50,000 and you receive a \$5,000 homestead exemption, your home will be taxed as if it were worth only \$45,000.

#### You qualify

for a homestead exemption if you owned your home on January 1 and used it as your primary residence on January 1. It doesn't matter whether your home is a house, a condominium or a mobile home.

#### Exemptions are available

to all homeowners on their school taxes. Additional exemptions are available to homeowners who are disabled or age 65 or over. Other exemptions may be offered to homeowners by school districts, counties, cities, and special districts. All taxing units offer exemptions to disabled veterans.

#### Apply to

your local appraisal district office at the address shown

## Bailey County Appraisal District

104 E. Ave C

272-5501

below for all exemptions you may qualify for. Application forms are available at this

If you received a homestead exemption on your present home in 1988, you won't need to apply again for 1989 unless the chief appraiser requires you to reapply.

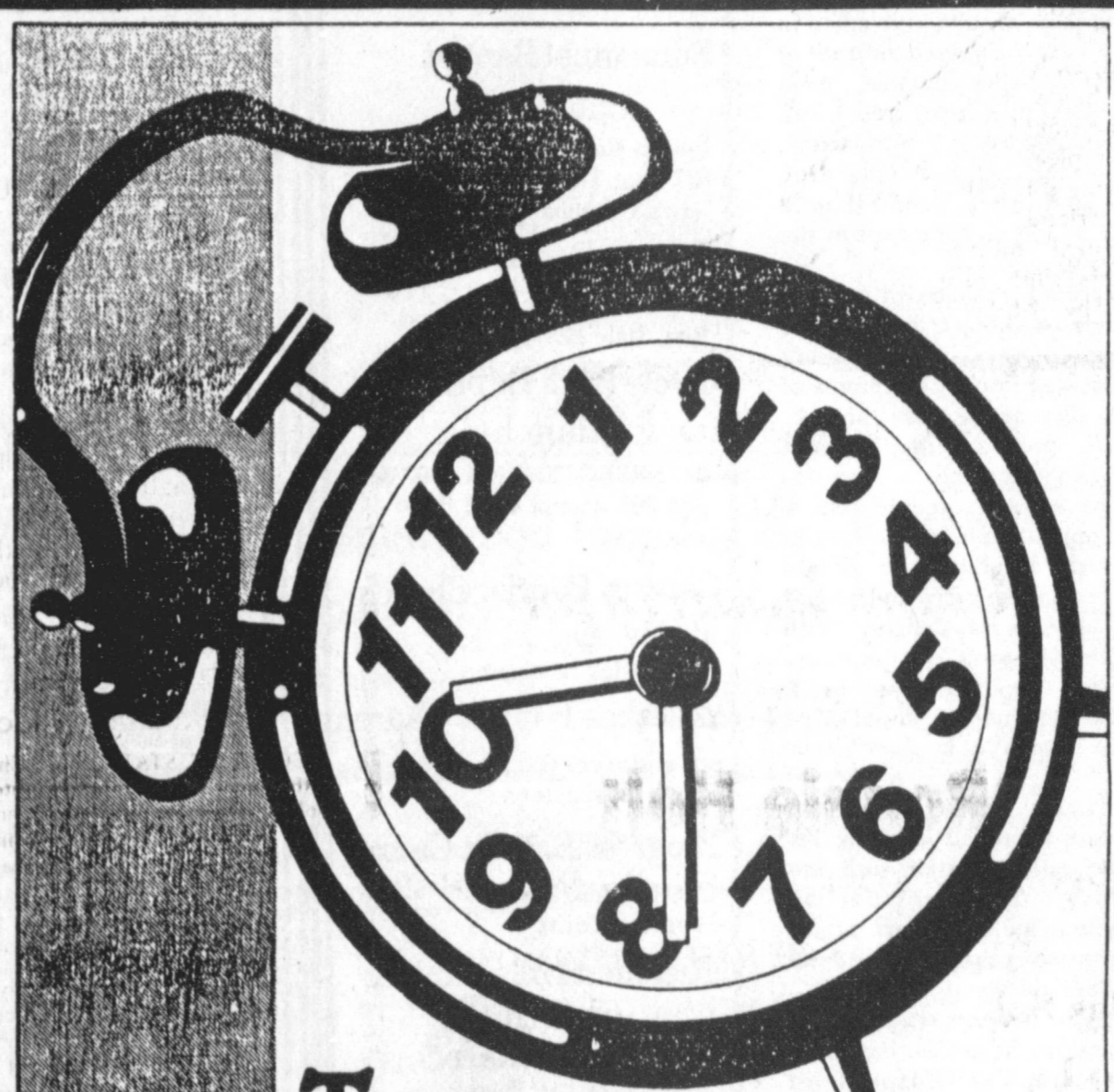
However, if you passed your 65th birthday or became disabled before January 1, file a new application to receive the additional exemptions.

If you haven't received an exemption on your present home, or if you've moved to a new home, make a new application for 1989.

#### The deadline

for applications is April 30, 1989. Contact your appraisal district before then if you need more time.

For more information, get a free copy of the pamphlet, *Taxpayers' Rights, Remedies, Responsibilities*, at your appraisal district office or from the State Property Tax Board in Austin.



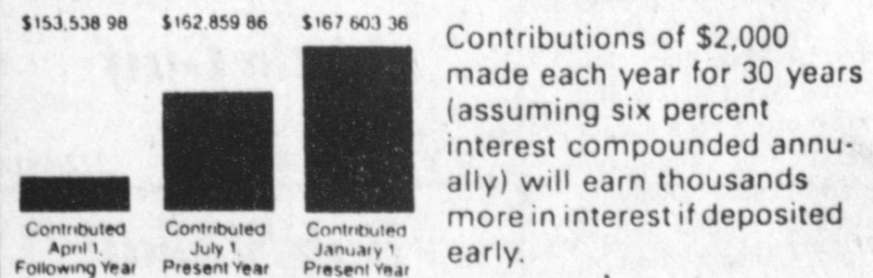
## TIME IS ON YOUR SIDE...

## WITH EARLY CONTRIBUTIONS TO AN IRA.

When you invest in an IRA — especially when you contribute early in the year — time goes to work for you.

That's because tax-deferred interest begins compounding sooner — a remarkably valuable asset to your IRA savings fund.

Contribute early; you'll gain thousands of extra interest dollars over the years.



Put time on your side.  
Contact our IRA representative today.

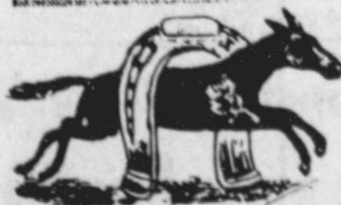
## MULESHOE STATE BANK

MEMBER FDIC

101 West American Blvd.

Phone 806/272-4561

MULESHOE, TEXAS 79347



# Heart-Attack Victims Benefit From 'Watch-Wait Approach'

Patients could be spared unnecessary medical procedures and millions of health-care dollars could be saved by using a "watchful waiting" approach in treating heart-attack victims who have received a clot-dissolving drug.

That is the conclusion of a study conducted at Baylor College of Medicine and 23 other medical centers nationwide.

The conservative approach suggested by the study eliminates the standard procedure of examining a blocked artery through cardiac catheterization and subsequently clearing the artery through balloon angioplasty 18 to 48 hours after a heart attack.

Dr. Robert Roberts, a cardiologist at Baylor's DeBakey Heart Center, and chief of cardiology at the Methodist Hospital, said there was no significant difference in the rate of subsequent heart attacks and deaths between those who received the more extensive treatment automatically and those who did not.

The study results, published in today's *New England Journal of Medicine*, showed that most patients with a heart attack can be managed by early administration of the clot-dissolving drug TPA and the blood thinner heparin, and starting aspirin the following day.

"Cardiac catheterization for possible angioplasty needs to be performed only if the patient develops additional symptoms of heart disease or has an abnormal, pre-discharge exercise test," Roberts said.

"These results should start a small revolution in cardiac care in terms of deciding who should receive angioplasty and could save millions of dollars. With 'watchful waiting' as the newly preferred treatment approach, we estimate saving about \$704 million annually in health-care costs."

That figure is based on Medicare-approved charges for cardiac catheterization and angioplasty procedures for an estimated 300,000 heart attack patients each year who would not need the additional treatments.

All 3,262 patients studied at 50 participating hospitals, including The Methodist Hospital in Houston, received TPA and heparin within four hours of the onset of chest pain. All were also treated with aspirin during their hospital stay and upon discharge.

"Invasive strategy" treatment was selected for 1,636 patients. They underwent diagnostic cardiac catheterization within 18 to 48 hours of their heart attacks to determine if they were candidates for balloon angioplasty, a procedure which inflates a balloon inside the artery to compress the plaque blockage and restore blood flow to the heart muscle. Those qualifying received angioplasty treatment.

The remaining 1,626 patients received the "watchful waiting" or "conservative strategy" treatment, receiving cardiac catheterization for angioplasty only if they developed chest pain or exhibited abnormal results on an exercise test. At the end of six weeks, 16 percent of the "watchful waiting" group had undergone angioplasty.

The combined rate of sub-a community hospital without facilities for angioplasty treatment should receive the clot-dissolving drug immediately and then be transported to a larger medical center for additional diagnosis and care. Delaying transfer is recommended only if routine, rapid transportation to such a center is available on a 24-hour basis and can be utilized if symptoms of cardiac distress

develop."

Working at Baylor with Roberts on the study were Dr. Albert E. Raizner and Dr. Neal S. Kleiman.

Besides Baylor, other medical sequent heart attacks and deaths in each of the groups, however, was similar: 9.7 percent in the "watchful waiting" group and 10.9 percent in the "invasive strategy" group, Roberts said.

The study, sponsored by the National Heart, Lung and Blood Institute, also "demonstrated once again the importance of prompt treatment of heart attack patients with TPA," Roberts said.

"Like other clot-dissolving

drugs, TPA is most effective when given early after the onset of symptoms," he said. "Results of this study suggests that candidates for TPA who arrive at the University of Massachusetts, the University of Texas at Dallas, Washington University, Yale University, Baystate Medical Center, Bridgeport Hospital, Maine Medical Center, New York Medical College, New York University, North Shore University, Northwestern University, St. Louis University, the University of Alabama, the University of Minnesota and William Beaumont Hospital.

## Sudan News

by Evelyn Ritchie

Joe Burt Markham has been a patient in the Amherst Hospital for several days recently.

Veda Terrell has been released from the Amherst hospital, as has Jay Dorsey.

Martha Taylor was released Friday from the Amherst hospital following surgery last week.

Weekend visitors with Mr. and Mrs. Elray Rasco were their daughter, Mr. and Mrs. Kevin Frierson of Dallas, and also their son, Brad Byerley of Tech. Brad left Tuesday for Pensacola, Florida where he will be stationed for the next four

months with the U.S. Navy.

Mrs. Juanda Fields and Gary were in Clyde last week to visit friends and relatives and her aunt, Lois, returned home with them for a visit.

Winona Dudgeon visited during the school holiday weekend in Crane with her son, Mr. and Mrs. Roy Don Dudgeon and son.

Barbara Harper was released Friday from Methodist Hospital in Lubbock following her surgery there last week.

Dale Rice, son of Mrs. W.L. Rice, has been seriously ill for several days and it was reported that he was going to the Veterans Hospital in Albuquerque.

It was reported that Sadie Wills is a patient in the Levelland Hospital.

## 18.Legals

### NOTICE FOR BIDS

The Bailey County Commissioners Court will receive bids until 10:00 A.M., March 31, 1989, for the purchase of a radial caliche stacker, with pivot pedestal and wheels, 24" width belt, 40" minimum, for Precinct 1.

The bids must be submitted to the County Judge prior to the above time.

The Commissioners Court reserves the right to reject any or all bids and to waive formalities.

Jim Watson  
County Judge  
18-12s-1tc

### Immaculate Conception Catholic Church

Father Patrick Maher  
Northeast of City

First Baptist Church  
220 West Ave. E.  
Barry Bradley, Pastor

### Emmanuel Baptist Church

Iglesia Bautista Emmanuel  
107 East Third  
Isaias Cardenas, Pastor

### Trinity Baptist Church

314 E. Ave. B.  
Rev. Dale Berry

### Circle Back Baptist Church

INTERSECTION FM 3397 & FM 298  
Pastor Glen Price  
946-3676

### Calvary Baptist Church

1733 W. Ave. C.  
Rev. Rick Michael

### Muleshoe Baptist Church

8th and Ave. G.  
Bob Dodd, Pastor

### Progress Baptist Church

Charles Fisk, Pastor  
Progress, Texas

### Richland Hills Baptist Church

17th and West Ave. D  
Allen Petersen, Pastor

### St. Matthews Baptist Church

Corner of West Boston & West Birch  
M.S. Brown, Pastor

### Progress Second Baptist Church

1st and 3rd Sunday  
Rev. Arthur Hayes

### The Community Church

Morton Hwy.  
272-5992

### 1st Baptist Church

Lazbuddie, Tx. 965-2126  
Gary Wilcox, Pastor

*The Church Building*

This is only a building, but it is a special building for it is the worship place for God's people. It is a place where one may go to study and hear God's word preached.

"... faith cometh by hearing, and hearing by the word of God."

If there are unanswered questions in your mind... go... seek... and find God in his house

★ ★ ★

The Church is God's appointed agency in this world for spreading the knowledge of His love for man and of His demand for man to respond to that love by loving his neighbor. Without this grounding in the love of God, no government or society or way of life will long persevere and the freedoms which we hold so dear will inevitably perish. Therefore, even from a selfish point of view, one should support the Church for the sake of the welfare of himself and his family. Beyond that, however, every person should uphold and participate in the Church because it tells the truth about man's life, death and destiny; the truth which alone will set him free to live as a child of God.

EVERYONE IN THE CHURCH  
THE CHURCH IN EVERYONE

Coleman Adv

### Longview Baptist Church

965-3413  
B.C. Stonechipper, Pastor

### Primera Iglesia Bautista

223 E. Ave. B.  
Roy Martinez, Pastor

### Lariat Church Of Christ

Sunday School 10:00 a.m.  
Worship 11:00 & 6:00 p.m.  
Wednesday Services 7:00 p.m.  
Sam Billingsley, Minister

### Muleshoe Church Of Christ

Clovis Hwy.  
Bret McCasland, Minister

### 16th & Ave. D. Church Of Christ

Sunday 10:30 a.m.  
Evening 6:00 p.m.  
Wednesday 8:00 p.m.

### First Assembly Of God

Rev. David C. McCune  
9:45 Sunday School  
11:00 Morning Worship  
6:30 Evening Services  
7:30 Mid-week Services  
272-3984

### Primitive Baptist Church

621 South First  
Elder Cleveland Bass, Pastor  
Spanish Assembly Of God

### East 6th and Ave. F. Mike Doyle, Pastor

### First United Methodist Church

507 W. 2nd Street  
Richard Edwards, Pastor

### El Divino Salvador Methodist Church

5th and Ave. D.  
Jose M. Fernandez, Pastor

### Lazbuddie Church of Christ

965-2932  
United Pentacostal Lighthouse Church

207 East Ave. G.  
Rev. J.A. Torres

### St. John Lutheran

Sunday School and Bible Classes 9:30 a.m.  
Church Services 10:30 a.m.  
Rev. Mac Bearss, Pastor

### Lazbuddie Methodist Church

965-2121  
Larry Reid Farris, Pastor  
Truth Tabernacle Pentecostal Church

### Templo Calvario

507 South Main  
Sunday 10:00 a.m.  
Sunday Evening 7:00 p.m.  
Evangelistic Services  
J.L. Soto, Pastor

### Jehovah Witness

Friona Hwy.  
Boyd Lowery, Pastor

### New Covenant Church

Plainview Hwy.  
Sunday 10:00 a.m.  
Wednesday 7:00 p.m.  
Jimmy Lowe, Pastor

### Church Of The Nazarene

9th and Ave. C.  
Dennis Hayes, Pastor

**Western Drug**  
114 Main 272-3106

200 E. Ithaca & Fir  
272-3391

**Dairy Queen**  
1204 W. Amer. Blvd. 272-3412

**Little Gulf**  
202 W. Amer. Blvd. 272-4918

**Serv-All Thriftway**  
401 W. Amer. Blvd. 272-4739

**American Valley, Inc.**  
W. Hwy. 84 272-4266

**Superior Med-Equip**  
623 W. 2nd 272-3757 or 965-2622

**Bob Stovall Printing**  
221 E. Ave. B. 272-3373

**KC Mufflers Inc.**  
201 North First 272-3620

**Farmers Co-Op Elevators**  
Muleshoe 272-3988

**Bobo Insurance**  
108 E. Ave. C. 272-4264

**Main Street Beauty Salon**  
115 Main 272-3448

**Lenau Lumber**  
202 E. Ash 272-4222

**Bratcher Motor Supply**  
107 E. Ave. D. 272-4288

**Five Area Telephone Cooperative, Inc.**  
302 Uvalde 272-5533

**Irrigation Pumps & Power**  
West Hwy. 84 272-4483

**Wes-Tex Feed Yards**  
272-7555

**Frank's Southside Gulf**  
502 South 1st 272-5659

**Richland Hills Texaco**  
1914 W. Amer. Blvd 272-4875

**GRAIN PRICES**  
FEED CORN.... 4.85 cwt  
WCY..... 5.70 cwt  
RCY..... 5.00 cwt  
WHITE FOOD CORN... 6.85 cwt  
MILO.... 4.28 cwt  
SOYBEANS..... 7.20 cwt  
NEW WHEAT..... 3.83 cwt  
98%  
Prices Effective March 17, 1989  
MARKETS COURTESY OF  
FARMERS CO-OP  
ELEVATORS  
Muleshoe, Texas  
272-4335

272-4536



# Shop The Classifieds

**CLASSIFIED RATES**  
Minimum Charge \$2.30

Consecutive Insertions  
Minimum Charge \$2.00

**CLASSIFIED DISPLAY RATES**  
\$1.75 Per Column Inch

**DEADLINES**  
12 noon Tuesday  
For Thursday Paper  
12 noon Friday  
For Sunday Paper  
We reserve the right to classify, revise, or reject any ad. Not responsible for any error after ad has run once.

## 1. Personals

**ALFALFA BALES**, in barn. Green leafy Alfalfa, no rain. J.A. Parmer. Phone (505) 461-2666. Tucumcari. pl-10s-4tp

Call your local used cow dealer for 7 day a week dead stock removal. 965-2903 or 1-800-592-4043. cl-37t-tfc

**WANTED** - Painting ext.-int. Cabinet New-Formica. We do wall-papering, any carpentry work. Call 272-4874 Tommy & Barbara Hall hl-9s-8tc

## SALES OPPORTUNITY

For local person in the Muleshoe area to represent our National Lubrication Company. A Full-Time sales position High Commissions. Opportunity for advancement. Knowledge of farm and/or industrial equipment helpful. Product training when hired. For interview call 1-800-443-1506 or send resume to HYDROTEX - DEPT 2406-G. P.O. Box 560843 Dallas TX 75356 pl-2tp-5t

**WILL** Clean Houses or Offices. Call 965-2391. Have References. 1-12s-4tp

**CONCERNED** About Someone's Drinking? **HELPS AVAILABLE** through Al-Anon Call 272-2350 or 965-2870 or come to visit Tuesday nights, 8:00 p.m. or Saturday mornings at 10:30 a.m. and through AA call 965-2870 or come visit Tuesday nights, 8:00 at 620 W. Second, Muleshoe.

**Mary Kay** Cosmetics  
**Josie** Flowers  
272-3865  
Call 8-12a.m. and after 6p.m.

## 5. Apts. For Rent

**FOR RENT:** Nice 2-bedroom apartment. Water paid. Deposit required. 272-7575. P11-11t-TFC

## 3. Help Wanted

**INCOME AND CAREER OPPORTUNITIES PART-TIME AND FULL-TIME**

America's fastest-growing rural organization has openings for a limited number of full-time and part-time career opportunities in this area marketing membership benefits.

No experience is required, however a farm or rural background will improve your success potential.

The income potential for a membership director is excellent. Many of our representatives—some 2,000 across America—have doubled their income within two years.

To learn more about the opportunity, and meet with our area representative, place a toll-free call to **CA Support Services** at 1-800-445-1525.

**WANTED**

The National Motor Club needs 2 mature individuals to live and work in the surrounding area. Must be Bondable and have references. For more information or interview, call Rusty Hollar at (806) 873-3551, After 8 p.m. 3-12s-2tp

## 3. Help Wanted

**REGISTERED NURSES**

Methodist Hospital Levelland, a non-profit 78-bed general acute care hospital located in Levelland, Texas, has openings for Registered Nurses to join our medical team.

RN-ICU-11-7  
RN-Labor & Delivery 3-11  
RN-Med/Surg-11-7

Please apply in person at 1900 College Avenue, Levelland, Texas or call **PERSONNEL** collect (806) 894-4963. 6tc

## SALES, INCOME AND CAREER OPPORTUNITIES

Part-Time and Full-Time sales openings available with national rural association. Excellent income and growth potential. No experience is required, however, a farm or rural background will improve your success potential. CALL 1-800-445-1525 for an opportunity to meet with area representatives. 3-11s-1tp

## OPERATING ROOM SUPERVISOR

Methodist Hospital Levelland, a non-profit 78-bed general acute care hospital located in Levelland, Texas, has an opening for a O.R. Supervisor. We are looking for a Registered Nurse with 2-3 years previous O.R. experience. We will pay relocation expenses and offer an excellent starting salary and benefits. Interested applicants should call Personnel collect at (806) 894-4963 or apply in person at 1900 College Avenue, Levelland, Texas.

## NEED TO HIRE:

Person With Farming Knowledge. Must Also Be Knowledgeable In The Care of Pasture Cattle. Call (806) 965-2712 After 6:00 P.M. M3-11s-4tc

**WANTED:** A general Office Worker. Must Have Neat Appearance And Be Able To Meet Public. Apply In Person, Only. No Information Will Be Given Over the Telephone. The Journal, 304 W. 2nd Street. TFC

**WANTED:** Mature Woman To Keep 3 Children In My Home Occasionally. Call 965-2986 For Appointment. K3-11s-3tc

## 8. Real Estate

3-2-1 **STUCCO**. Close to town on Hwy. 2 bedrooms downstairs, 1 bedroom and bath upstairs. Fire place. A must see on 100x400 lot. Call Whitt Reid Real Estate 272-3611 or Thursie Reid, 272-5318.

w18-3s-tfc  
**FOR SALE:** 2 bedroom 1 bath mobile home on 60 x 100 lot with 2 car carport in Country Club Addition. Call: 925-6480 after dark. 08-45s-tfc

**NICE 3 bedroom, 2 bath house, 2 miles west of Muleshoe.** With large barn. Nice location. Call 946-3340. d8-25s-tfc

**FOR SALE BY OWNER:** Brick Home: 3-2-2 Central Heat & Air Conditioning. Excellent Location, Corner Lot 1 Block From School, Lots of Storage, Sprinkler System. By Appointment Owner/Agent. (806) 272-5629. 8-12s-1tp

## 11. For Sale or Trade

**GOOD BUSINESS FOR SALE:** Excellent 2nd Income. Call 272-4823 until 5:30. After 6 Call 272-3659. 11-11t-4tc

**FOR SALE:** 3-bedroom house. 2100 square feet. In Sudan. Call 227-2085 or 659-3725. 11-11t-TFC

## 11. For Sale or Trade

**CASH BUSINESS**

Buy this high profit candy vending route. Nationally proven program since 1959. Nice family business - includes training. Requires cash investment of \$4237 to \$14,070. Call 1-800-328-0723. **EAGLE INDUSTRIES** Since 1959 11-11t-2tp

**FOR SALE** 16ft. Deck Boat, 85 Johnson Motor or real clean, has been covered. 927-5423. r11-7t-tfc

**FOR SALE** 1500 ft. Pivot Sprinkler Galvanized, All new Drive Train and Dropps 806-374-3743 Call after 6:00 p.m.

**FOR SALE:** 2 Antique Love Seats. Completely Refurbished. Call 272-3714 Anytime.

**CRP GRASS** For Sale: Ermelo, Weeping Love Grass, Plains Blue Stems and Many Others. Call 505-762-4759 m11-10t-7tc

Is It True You Can Buy Jeeps for \$44 through the U.S. government? Get the facts today! Call 1-312-742-1142 Ext. 6976-A. p9-3t-4tp

**REGISTERED** Beef Master Bulls For Sale. Call M. D. Gunstream, (806) 272-5035 or 272-4515. 11-12s-1tc

## 8. Real Estate 8. Real Estate

### Whitt Reid Real Estate

201 Main Street Muleshoe, Tx. 272-3611

**Would you like 20% return? Rent property for sale.**

**5 Rent Houses - trailer park**

**Come by, lets's talk**

Thursie Reid-272-5318  
Sandra Chancey-925-6727  
Geo. Poteet-272-4047  
Roy Whitt-272-3058

### Jo Ann Chester Realty

806-227-2363  
**REDUCED**

Bailey County Farms  
504 Acres irrigated with Pivots  
177 acres Dry Land  
\*\*\*  
700 acres Dry Land-CIRCLEBACK  
\*\*\*  
240 acres 2-8 in Wells on highway  
70 EAST OF EARTH

### Smallwood Real Estate

232 Main 272-4838

3 Bedroom Stucco. 2 Bath. Living Room & den. Large kitchen, Fenced back yard, Storage building. Priced to sell, good interest rate. This one is nice.

Muleshoe

## Buy Sell or Trade

## Check Classifieds

## 18. Legals

### NOTICE OF SHERIFFS SALE

THE STATE OF TEXAS  
COUNTY OF BAILEY

By virtue of an Order of Sale issued out of the Honorable 287th Judicial District Court of Bailey County, on the 20th day of January, 1989 by the Clerk thereof in the case of **BAILEY COUNTY APPRAISAL DISTRICT VS. MIDSTATE HOMES, INC.** Cause #5556 and to me, as Sheriff, directed and delivered, I will proceed to sell, at 2:00 O'CLOCK P.M. on the 4TH DAY OF APRIL, 1989 which is the first Tuesday of said month, at the EAST door of the Courthouse of said Bailey County, in the City of MULESHOE, Texas, the following described property, to wit:

TRACT 1: LOTS 1, 2, BLOCK 2, NORTHWEST ADDITION TO THE CITY OF MULESHOE, BAILEY COUNTY, TEXAS. VOLUME 109, PAGE 138 OF THE DEED RECORDS, BAILEY COUNTY, TEXAS.

TRACT 2: LOTS, 50, 52, BLOCK 5 PLUM STREET, PROGRESS, BAILEY COUNTY, TEXAS. VOLUME 99, PAGE 112 OF THE DEED RECORDS, BAILEY COUNTY, TEXAS.

TRACT 3: LOT 49, BLOCK 5, PEACH, PROGRESS, 0.11 ACRES, BAILEY COUNTY, TEXAS.

Levied on the 19th day of December, 1988 as the property of MIDSTATE, HOME, INC. to satisfy a judgment amounting to \$3,408.05 with interest from the 19th DAY OF DECEMBER, 1988 at 10 per cent, per annum, and all costs of suit in favor of BAILEY COUNTY APPRAISAL DISTRICT. GIVEN UNDER MY HAND THIS 6th day of February

Jerry N. Hicks  
SHERIFF Bailey County, Texas  
h18-11s-3tsc

**Think Classifieds**

## Bingham & Nieman Realty

116 E. Ave. C. 272-5285 or 5286  
**PRICES REDUCED UP TO \$7,000 on 2 & 3-1-1 Brick Homes, Cent. heat, Energy Efficient. PRICED FROM \$23,500 !!! Approx. \$600.00 total move-in, payments based on income for Qualified Buyers.**

### RICHLAND HILLS

**IMMACULATE** 3-2-2 Brick, corner lot, Cent. A&H, built-ins, FP, loads of storage & closet space, much more!

**PRICE REDUCED** 3-1-1 Brick, Cent. Heat, Evap. air, built-ins, fenced yard....

**VERY NICE** 3-2-3 Home, Cent. A&H, built-ins, FP, fans, splkr. sys., fenced. **PRICED TO SELL!!!!**

**VERY NICE** 3-2-2 Brick Home, Cent. A&H, built-ins (inc. kitchen compactor, & microwave) Jan. loads of storage, basement, IN CONTRACT splkr. sys. & Much More!!!!

**JUST LISTED**-3-2-1 carport Brick, Cent. A&H, built-ins, FP, den or 4th bdrm., storage bldg., Fenced yd.

**JUST LISTED**-Nice Large 2-2-2 Brick, Cednt. A&H, utility, cov. patio, fenced yard & more!!!!!!

**VERY NICE** 3-2-2 Brick, Cent. A&H newly remodeled kitchen with built-ins, storm windows, fenced yard, storage bldg. and much more!!!!

**NICE** 3-2-2 Brick home (2 story), on corner lot, Cent. A&H, built-ins, and much more. **LET'S LOOK TODAY!!!!!!**60's

**NICE** 3-2-1 carport home 2 living areas, priced under \$20 per sq. ft., fenced yard, workshop-storage, & more!!!!!!

**NICE** 3-1 1/4-1 Brick Home Cent. A&H, built-ins, large den w/Fireplace, fenced yard, storage bldg. \$50's!!!!

### HIGH-SCHOOL

**NICE** 2-1 1/2-2 Home, corner lot, built-ins, nice carpet, heat pump, fenced yard, storage bldg. & more!!!!!!

**PRICE REDUCED FOR QUICK SALE!** Nice 2-1-1 Home, Cent. Heat, carpets, work-storage area, and much more. \$19,950.00!!!!

DIANNE NIEMAN, BROKER

GEORGE NIEMAN, BROKER