

USPS 947040

Thursday, Feb. 7, 1980

Number 6

Wanda Smith announces for office

Wanda Smith, head deputy clerk in the Donley County Tax Assessor-Collectors office for the past four years has announced her intention to run for that office.

She lists as her qualifications the four years experience in the Donley County office, where she worked with taxes, motor vehicle and voter registration—all the duties of the tax office. She is qualified and capable of doing all the duties of the office. For the remaining months of office for Kay McCowen, she will work with Kay and attend workshops to further her knowledge. She has profited by the sharing and exchange of knowledge and experience with Mrs. McCowen the present tax assessor-collector, in her awareness of upcoming changes for taxes as set forth in H.B. 621.

Mrs. Smith was promoted to head tax clerk after the first six months in the tax office and is now classified as 2, having completed course 310 in the tax schools. She is a member of TAAO, Texas Association of Assessing Officers. As an elected Tax Assessor-Collector she will continue to keep herself informed through recommended sources of the tax changes, the better to serve county property owners.

Wanda is a native of Hall County. She graduated from Esteline High School in 1967, and came to Donley County and Clarendon as a bride about seven years ago when she married Steve Smith, who is employed by the State Highway Department. Steve and Wanda have two children, Gina, 10 years old and Wesley, four years old.

Weekend phone numbers

Residents in and around Donley County and Clarendon are now able to receive medical attention on weekends from one of four doctors who rotate their services here at Medical Center complex in Clarendon.

These highly qualified doctors are part of the Panhandle Rural Health Corporation, a developing and expanding medical service to residents to rural areas.

If you need the services of a doctor on the weekend, when your doctor is not in his office call 874-3531 or if there is no answer 874-3760.

Remember you do have a doctor as near as your telephone.

Weekend medical service numbers are 874-3531 or if no answer 874-3760. Clip and enter in your telephone directory emergency numbers.

Dance and Exercise class

Dance and Exercise class being offered at the High School old gym from 3:30 to 5:00, Monday afternoon starting February 18. All ages, shapes, and sizes are welcome. We guarantee results! Instructors for the class are Helen Parker and Leslie Garnett. Exercises, ballet technique, modern dance, aerobic dancing and a general "Good Time" are offered. Six weeks class, \$15.00. Hope to see everyone there.

Compiled by Tommie Saxe, Cooperative Observer for National Weather Service, Clarendon.

DATE	HIGH	LOW	
Tuesday	29	21	14 .02
Wednesday	30	27	15 .01
Thursday	31	27	12
Friday	1	32	12
Saturday	2	43	15
Sunday	3	62	18
Monday	4	63	28
Tuesday	5	57	29
Total for month			.00
Total for year			.61

A statement from the incumbent Tax Assessor-Collector, Kay McCowen recommends Wanda Smith. "I have decided not to run for re-election for the office of Donley County Tax Assessor-Collector for personal and family reasons. Wanda Smith is qualified for the position of Tax Assessor-Collector and she has my full endorsement," said Mrs. McCowen.

Wanda Smith, wishes to tell the voters that she will contact as many of them as possible. But because of the demands of the tax office, which are heavy with the required training schedule for the new upcoming tax system, her time will have to go to the office first. Her understanding and state instruction is to benefit you, the taxpayer, for whom she works.

C of C has new member

Newest of the Clarendon Chamber of Commerce members are Randy and Rhonda Looney, owner-operators of the Nook, ready-to-wear clothing store for men and ladies fine clothing.

B. J. Mooring announces for commissioner prec. 1

To the people of precinct 1 and Donley County, I am announcing my candidacy for Donley County Commissioner of precinct 1 and am asking for your vote and support.

I was born and raised in Donley County on a farm and spent three years seven months in the Coast Guard in World War II.

I have worked with heavy equipment in road construction, spent 15 years in building construction and the last 11 years in private business.

I believe I am experienced enough to do you a good job and will do my very best to do just that.

B.J. Mooring

CC Collegiate 4-H 1979-1980

The Clarendon College Collegiate 4-H was founded October 10, 1979. Clarendon College became the second college in the state of Texas to have a charter. The first was Texas Tech University.

On this day officers were elected. They are as follows: Susan Payne, President; Tommy Perkins, Vice President; Charlotte Redwine, Secretary-Treasurer; Thersa Cummins, and Billy Darby, Reporters.

Nursing Care

Panhandle Home Health Agency offers nursing services in the home under the direction of the patients doctor. Skilled nursing visits can be made daily, weekly or as often as needed.

Payments are available
Con't on p 7



WANDA SMITH

CC has record enrollment

Final statistics released by the registrar's office of Clarendon College shows the college has 772 students enrolled for the spring semester, the largest spring enrollment ever for the panhandle college. The enrollment is a 9% increase over the 705 students enrolled at the institution last spring. The final enrollment figures are a total head count of academic, vocational, adult-vocational and community services classes. The Clarendon College - Pampa Center enrolled 424 students. The center is offering 30 academic courses and a number of community service programs. The center has scheduled both daytime and evening classes this semester. Enrollment for other area towns in which Clarendon College is offering courses this spring are: Shamrock - 19; Childress - 11; Turkey-Quitque - 21.

The college has steadily grown over the past years as new program offerings have been added to the curriculum and out of town schedules have increased. Officials at Clarendon College are elated with the progress the institution is making. Dr. Bob E. Riley, Dean of Instruction, stated that, "The increased enrollment at Clarendon College is certainly satisfying. We feel that this is a direct result of our attempts to meet the educational needs in our service area. We are certain that individual attention and concern for the welfare of our students is paying off when many of our students transfer to Clarendon College from larger institutions."

Medical Center Valentine Day party planned

Valentine Day has been chosen as a day for honoring all the volunteers who were so thoughtful and generous to Medical Center Nursing Home this past year.

Everyone who has had a part in any way to help the residents at Medical Center Nursing Home are asked to please come. This is your party and you must be present to make it a success.

This is the way residents and staff at Medical Center have of saying Thank You, to all the wonderful persons in the community.

Featured this year will be the thin mints, peanut butter Dodos, chocolate and peanut butter Tagalongs, vanilla and chocolate creme Vanchos, old-fashioned shortbread Trefoils, the granola cookie, and the caramel and coconut Samoa.

WTSU requesting nominations

For the fifth consecutive year, West Texas State University will honor the nominees and recipients of the Texas Panhandle Award for Distinguished Service at a luncheon Saturday, April 19.

"A New Decade: Enter Women of the '80s" is the theme of the luncheon from 11 a.m. to 1 p.m., Saturday, April 19, in the WTSU East Dining Hall.

The WTSU Office of Programs for Women has sent letters to individuals and groups in the top 32 counties of the Texas Panhandle requesting nominations. Deadline for submitting nominations is Friday, March 28.

'Premillennialism and Prophecy' re-scheduled Monday

Our world is in an intense frame of mind, with challenges daily for people to become more excited. Pressures come from friends, enemies, acquaintances, radio, television, pictures, advertising, books, magazines, and the well doesn't seem to run dry.

One source that is continual also is religion, as it, too promises excitement. This brand of excitement can be offered in experiences or flights of imagination dealing with supernatural phenomena. Some purpose visions of great events



ED. C. WHARTON

J.R. Graham is candidate for commissioner

James R. Graham, has filed with the County Democratic Chairman and has announced his candidacy for Donley County Commissioner for precinct 1, for the next term of office.

J.R. was born and raised in Donley County, attended Clarendon schools and is a third generation farmer in the Ashtola community where he has lived 40 years.

He is the son of Lena Mae, and the late Harold Graham, and the grandson of Mr. and Mrs. J.M. Graham, who were oldtimers in the Ashtola Community.

J.R. owns his own farm and is aware of the needs and demands on county government. "My interest is seeing the county run in a businesslike manner. I feel as a county commissioner I can contribute to this end". Graham said.

He further stated that in the support and vote of residents of Donley County precinct number 1 will be most greatly appreciated.

Calendar of Events

Monday, Feb. 11, Artist Studio Club of Clarendon will meet at 7 p.m. at Clarendon Press office.

Mon. Feb. 11 at 7:30 p.m. 4-H Adult Leaders Association meeting in room 102 at college.

Thurs., Feb. 14 starting at 9:30 a.m. Annual Crop Production Symposium at Texas A&M Research and Extension Center

Thurs., Feb. 14 8:00 p.m. "Energy for America Forum" at Texas A&M Center

Fri., Feb. 15, 2:30 p.m. LVN organize at Medical Center

Tues., Feb. 18 3:30-5:00 p.m. High School old gym dance and exercise class

Girl Scout cookies on sale

Bakery fresh Girl Scout cookies in a variety of shapes and flavors will be on sale February 1 at 4 p.m. for \$1.50 a box. This annual cookie sale has raised needed revenue for the Girl Scout organization since the 1930's.

LVN Association to organize

All LVN's who are interested in getting an association started in this area, are encouraged to come to the Clarendon Medical Center February 15 at 2:30 p.m. We will meet in the Dining Room. Mrs. Barbara Kindell State president and Mrs. Eva Rutluz Amarillo president will be the guest speakers. It will take 15 LVN's to get a Chapter started in this area. We will need a name for the Chapter. If you think of one, bring it along all names will be appreciated. The best one will be selected. We could really benefit from this. So please LVN's, we don't want to let this chance go by-Come all.

Emergency loans from FmHA

Emergency loans for farmers, ranchers, or aquaculture operators are available through county offices of the Farmers Home Administration (FmHA), Robert A. Keown, FmHA county supervisor, said today.

The interest rate for farm operating purposes is 10 1/2 percent.

Deadline for filing on county offices has expired

Deadline for filing for Donley County offices has passed and the time for making application for three expiring positions on the City of Clarendon Board of Aldermen, three positions also expiring on the Clarendon Independent School District Board of Trustees and Clarendon College Board of Regents began on Monday, Feb. 4. Applications will continue for the city, school and college board positions, through March 5. Absentee voting for these posts will not begin until March 17.

Applications for the city Board of Aldermen may be made at the Clarendon City Hall, located at 119 South Sully during business hours Monday through Friday, 9 a.m.-12 noon and 1-5 p.m. For the school Board of Trustees, applications may be made at the Clarendon School superintendent's office, at 416 S. Allen from 8:30-12 noon and 1-5 p.m. For the Clarendon College Board of Regents applications may be requested of Mrs. Phelan, in the office of the president of the college from 8:30 a.m.-12 noon and 1-5 p.m. Monday through Friday.



JAMES R. GRAHAM

Fire truck vital piece of equipment

Donations are beginning to come in toward the cost of the new truck for the Fire Department of the City of Clarendon.

This small truck is a vital piece of equipment. It can be manned by one person and is small enough to get out of the station and to the site of a fire in a record amount of time. It may mean the difference between a fire which has been reached soon enough to contain and losing a home or business. The ability to reach the scene quickly until the larger equipment arrives means fewer severe fires. A reduction in fire damage is a two-fold blessing; it saves property and keeps the insurance rate from rising.

Good equipment is little enough to provide for our Volunteer Fire Department members.

Be sure you are counted

Persons in Clarendon, Hedley and Donley County need to make every effort to see that they are counted in the upcoming census for 1980. It can mean money in the bank for you as an individual and can add more revenue sharing dollars to county and city governments.

The amount of Revenue Sharing funds which come to the city and county are based on the per capita (a nose count) population of the county and the city. This money is used for badly needed improvements to

Tonya Owens Woman of the Year

Extension Homemaker Woman of the Year in Donley County. Tonya was one of four candidates chosen for her outstanding service and leadership ability this past year. Not only does she work in the community, home extension and 4-H clubs, she serves as Secretary of the Donley County Council and is the District TEHA Representative. The winner was announced Thursday, January 24 during the annual EH Salad supper held in the First United Methodist Church.

The Council chose a family theme for the occasion. A large doll house decorated the head table and the women brought favorite old dolls to decorate the center of the tables. Donley County has many women with leadership ability—we're proud of Tonya and the use of her talents for the community.

Whether they are of God: because many false prophets have gone out into the world. - 1 John 4:1 K.J.V.

4-H Adult Leaders to meet

The Donley County 4-H Adult Leader's Association will meet at 7:30 p.m. Monday February 11 in Room 102 of the college. We encourage you to attend this meeting where the upcoming years activities will be planned. See you then!

Mr. and Mrs. R.L. Scott, of Muleshoe, spent the weekend in the C.C. Ayers home. They are long time friends of Mrs. Ayers.

Emergency loans from FmHA

Emergency loans for farmers, ranchers, or aquaculture operators are available through county offices of the Farmers Home Administration (FmHA), Robert A. Keown, FmHA county supervisor, said today.

The interest rate for farm operating purposes is 10 1/2 percent.

To be eligible for an emergency loan, an applicant must have suffered losses from the disaster and be unable to get credit from other sources.

Deadline for filing on county offices has expired

Deadline for filing for Donley County offices has passed and the time for making application for three expiring positions on the City of Clarendon Board of Aldermen, three positions also expiring on the Clarendon Independent School District Board of Trustees and Clarendon College Board of Regents began on Monday, Feb. 4. Applications will continue for the city, school and college board positions, through March 5. Absentee voting for these posts will not begin until March 17.

Applications for the city Board of Aldermen may be made at the Clarendon City Hall, located at 119 South Sully during business hours Monday through Friday, 9 a.m.-12 noon and 1-5 p.m. For the school Board of Trustees, applications may be made at the Clarendon School superintendent's office, at 416 S. Allen from 8:30-12 noon and 1-5 p.m. For the Clarendon College Board of Regents applications may be requested of Mrs. Phelan, in the office of the president of the college from 8:30 a.m.-12 noon and 1-5 p.m. Monday through Friday.

Persons in Clarendon, Hedley and Donley County need to make every effort to see that they are counted in the upcoming census for 1980. It can mean money in the bank for you as an individual and can add more revenue sharing dollars to county and city governments.

The amount of Revenue Sharing funds which come to the city and county are based on the per capita (a nose count) population of the county and the city. This money is used for badly needed improvements to

Tonya Owens Woman of the Year

Extension Homemaker Woman of the Year in Donley County. Tonya was one of four candidates chosen for her outstanding service and leadership ability this past year. Not only does she work in the community, home extension and 4-H clubs, she serves as Secretary of the Donley County Council and is the District TEHA Representative. The winner was announced Thursday, January 24 during the annual EH Salad supper held in the First United Methodist Church.

The Council chose a family theme for the occasion. A large doll house decorated the head table and the women brought favorite old dolls to decorate the center of the tables. Donley County has many women with leadership ability—we're proud of Tonya and the use of her talents for the community.

Whether they are of God: because many false prophets have gone out into the world. - 1 John 4:1 K.J.V.

4-H Adult Leaders to meet

The Donley County 4-H Adult Leader's Association will meet at 7:30 p.m. Monday February 11 in Room 102 of the college. We encourage you to attend this meeting where the upcoming years activities will be planned. See you then!

Mr. and Mrs. R.L. Scott, of Muleshoe, spent the weekend in the C.C. Ayers home. They are long time friends of Mrs. Ayers.

Emergency loans from FmHA

Emergency loans for farmers, ranchers, or aquaculture operators are available through county offices of the Farmers Home Administration (FmHA), Robert A. Keown, FmHA county supervisor, said today.

The interest rate for farm operating purposes is 10 1/2 percent.

To be eligible for an emergency loan, an applicant must have suffered losses from the disaster and be unable to get credit from other sources.

Deadline for filing on county offices has expired

Deadline for filing for Donley County offices has passed and the time for making application for three expiring positions on the City of Clarendon Board of Aldermen, three positions also expiring on the Clarendon Independent School District Board of Trustees and Clarendon College Board of Regents began on Monday, Feb. 4. Applications will continue for the city, school and college board positions, through March 5. Absentee voting for these posts will not begin until March 17.

Applications for the city Board of Aldermen may be made at the Clarendon City Hall, located at 119 South Sully during business hours Monday through Friday, 9 a.m.-12 noon and 1-5 p.m. For the school Board of Trustees, applications may be made at the Clarendon School superintendent's office, at 416 S. Allen from 8:30-12 noon and 1-5 p.m. For the Clarendon College Board of Regents applications may be requested of Mrs. Phelan, in the office of the president of the college from 8:30 a.m.-12 noon and 1-5 p.m. Monday through Friday.

Persons in Clarendon, Hedley and Donley County need to make every effort to see that they are counted in the upcoming census for 1980. It can mean money in the bank for you as an individual and can add more revenue sharing dollars to county and city governments.

The amount of Revenue Sharing funds which come to the city and county are based on the per capita (a nose count) population of the county and the city. This money is used for badly needed improvements to

Tonya Owens Woman of the Year

Extension Homemaker Woman of the Year in Donley County. Tonya was one of four candidates chosen for her outstanding service and leadership ability this past year. Not only does she work in the community, home extension and 4-H clubs, she serves as Secretary of the Donley County Council and is the District TEHA Representative. The winner was announced Thursday, January 24 during the annual EH Salad supper held in the First United Methodist Church.

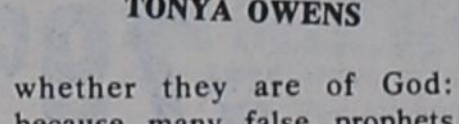
The Council chose a family theme for the occasion. A large doll house decorated the head table and the women brought favorite old dolls to decorate the center of the tables. Donley County has many women with leadership ability—we're proud of Tonya and the use of her talents for the community.

Whether they are of God: because many false prophets have gone out into the world. - 1 John 4:1 K.J.V.

4-H Adult Leaders to meet

The Donley County 4-H Adult Leader's Association will meet at 7:30 p.m. Monday February 11 in Room 102 of the college. We encourage you to attend this meeting where the upcoming years activities will be planned. See you then!

Mr. and Mrs. R.L. Scott, of Muleshoe, spent the weekend in the C.C. Ayers home. They are long time friends of Mrs. Ayers.



TONYA OWENS

whether they are of God: because many false prophets have gone out into the world. - 1 John 4:1 K.J.V.

Ed C. Wharton will return to Clarendon for "Premillennialism and Prophecy," a session of the in-depth study series at the meeting house of the church of Christ, 3rd at S. Carhart. The discussion will begin at 7:30 Monday night, February 11, 1980. Questions on the announced subject will be dealt with openly and honestly.

Mr. and Mrs. R.L. Scott, of Muleshoe, spent the weekend in the C.C. Ayers home. They are long time friends of Mrs. Ayers.

Chamber of Commerce had annual banquet

January 29, 1980, the Clarendon Chamber of Commerce held their annual banquet in the Clarendon College Cafeteria and very successful it was too. Presiding as Master of Ceremonies was Jack Daniel. Rev. Paul Hancock gave the invocation and led the singing of the National Anthem.

President Walt Knorpp gave the welcome address and invited the guests of the buffet dinner catered by Dryer's Bar of Pampa.

Out of town guests, Mr. and Mrs. Don Hileman, executive vice-president of the Amarillo Chamber of Commerce and Mr. Hardwick from Pantex were welcomed by Chamber president Walt Knorpp.

Allen Estlack, gave a review of the Chamber projects for the year 1979.

Three award plaques were presented by Jerry Courtney to Allen Estlack, Patrick Robertson, and Phillip Vargas for

distinguished and useful service to the community.

Other honors were Recognition Certificates given to five industries, Clarendon Mfg., Texas Saddlery, Wallace Monument, Owens Boot Co. and Pantex.

L.E. Williams rites held February 1

L. E. Williams, 75, of Littlefield died Wednesday, January 30. Services were held Saturday, February 1, in the First Baptist Church of Friona with Rev. Murle Rogers, pastor of Calvary Baptist Church officiating.

Interment was in Parmer County Memorial Park Cemetery by Parsons-Ellis Funeral Home.

Survivors include three sons; Tommy Williams of Friona; Earl Williams of Clarendon and Pat Williams of Clovis, N.M.; two sisters, Lois Gunter and Bea-

Following the awards Jack Daniel introduced the guest speaker for the evening, Jean Burchett, who entertained the audience with humorous accounts and stories.

Everyone is looking forward to next year's banquet.

Services held for H. C. Heatherly Sr.

Hubert Charles Heatherly Sr. of Lubbock, Texas died Monday. He was 68.

Services were at N.S. Griggs Funeral Home in Amarillo, Texas at 2:00 p.m. Saturday, February 2nd.

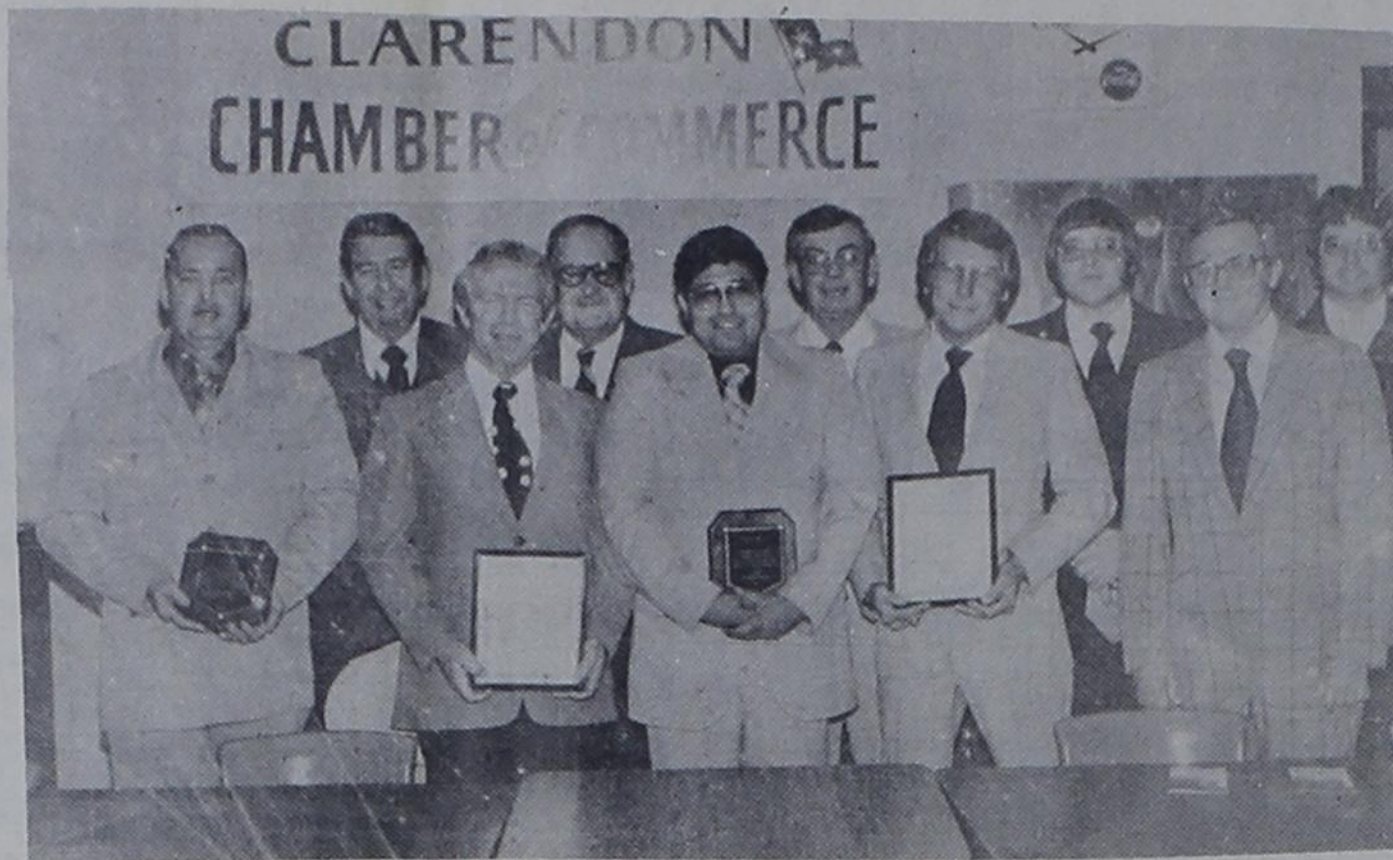
Mr. Heatherly had resided in Lubbock, the previous 12 years. He was a businessman in Clarendon, Clovis, New Mexico and Amarillo for many years.

He was a member of First Baptist Church in Amarillo and the Odd Fellows Lodge.

He is survived by a son, Hubert Charles Heatherly Jr. of Tulsa, Okla.; eight grandchildren; one brother, John Heatherly of Atoka, Okla.; four sisters, Mrs. Lois Carroll and Mrs. Thelma Jones of Amarillo; Mrs. Bessie Wallace, of Plain Dealing, Louisiana, and Mrs. Annie Ford of Dallas.

CLARENDON PRESS and the Donley County Leader. Published every Thursday at Clarendon, Texas, 79226, Box 1110, at Hiway 287 and Jefferson Street and entered as Second Class Mail at the post office at Clarendon, Texas. Helen Woody, Publisher and Jeanice Weatherly, Editor.

Subscription rates: \$8.50 a year outside Donley County, \$6.50 a year in Donley County. Any erroneous reflection upon the character of any person or firm appearing in these columns will be gladly and promptly corrected upon being brought to the attention of the management.



PICTURED WITH AWARDS ARE from [l to r] Allen Estlack, Troy Skinner, Darrell Lefew for Clarendon Mfg Co.; Hardwick for Pantex; Phillip Vargas; Gene White and Glenn

Wallace, for Wallace Monument Co.; Patrick Robertson; Owen Johnson for Wallace Monument and David Owens, representing Owens Leather Goods

Medical Center news

Church services this past Sunday evening were conducted by Rev. Wayne Naylor, of the Hedley Baptist Church. Mr. and Mrs. Claude Liles of Hedley were present also.

Each first Sunday members of

the Calvary Baptist Church with the assistant minister, Rev. James D. Jones and his wife Sue, go to Medical Center Nursing Home to sing. Others present besides Rev., and Mrs. Jones on Sunday were: LaDonna Murdock, Renee Murdock, Judy Garrison, Mary Jaramillo, Crystal Tatum, Linda Murdock, Kraig White, Carol Hall, and Sharyn Morrow.

Helen Rogers, of the Assembly of God Church brings the Sunday School to Medical Center Nursing Home residents each Sunday, regularly.

Freezing of cured meats is recommended for only short periods -- though not really worthwhile since the salt added to cured meats can hasten the onset of rancidity, says Mary K. Sweeten, a foods and nutrition specialist with the Texas Agricultural Extension Service, The Texas A&M University System.

"Opera" is a shortened form of the Italian opera in musica, meaning "musical work."

Services held for Dewey Myers

Dewey Myers, 67 died Monday, January 28, in Pampa.

Services were held Wednesday, January 30, in Carmichael-Whately Colonial Chapel with Rev. J.B. Fowler, minister of the First United Methodist Church of Pampa, officiating. Interment was in Memory Gardens Cemetery in Pampa. Rev. Paul Hancock gave the eulogy and sang a musical selection.

Mr. Myers was born Dec. 9, 1912, in Conesville, Schlaris County, N.Y. He grew up in an orphan home with a brother and sister. At just over 10 years of age he came to Texas on a train with other youngsters from orphanages. Mrs. Ella Grady, of Clarendon and the Brice Community asked for Dewey Myers and took him into her home Feb. 20, 1923 as one of her own children. He later asked for his brother to be able to join him and Mrs. Gady sent for him also.

Mr. Myers spent much of his life in the area of Brice and Hall County, but resided for the past number of years in Pampa, where he was a building contractor before his retirement.

Dewey Myers is survived by his wife Pat, of the home; a daughter, Barbara Cavanaugh, of Irving; a son Bob Myers of Clarendon; three grandchildren, and Joni Myers Chaison, of Uvalde.

Cindy Myers and Dewey Bob Myers both of Clarendon and one great grandchild Doshia Chaison.

Bearers were J.Q. Russell, Herman Ledbetter, Barry Long, O.C. Cox, Paul Hancock and Spud Dalton.

Pearl Boswell rites held Tuesday

Mrs. Pearls Boswell, 83, died Sunday, February 3, 1980 in Burnet.

Services were at 2 p.m. Tuesday, February 5, in Travis Baptist Church in Memphis with the Rev. V.L. Huggins, pastor, officiating. Burial was in Fairview Cemetery by Spicer Funeral Home.

Mrs. Boswell, born in Mena, Ark., came to Hall County in 1937. She had lived in Clarendon since 1955, before moving to Burnet. She was a Baptist. She married John William Boswell in 1920. He died in 1964.

Survivors include two daughters, Mrs. Jim Elliott of Kinsland and Mrs. J.W. Helms of Clarendon; two sons, Bill Boswell of Plainview and Johnny Boswell of Sweetwater; a sister, Mrs. Gilliam Tallant of Plano; a brother, Luther Laird of Wilcox, Ariz., 14 grandchildren; 16 great-grandchildren; and a great-great-grandchild.

Lesley Janice

Mr. and Mrs. H.W. Harlan of Clarendon are proud to announce the arrival of a daughter, Lesley Janice. The young miss weighed 6 pounds and 11 ozs, 19 inches long.

The grandparents are Mr. and Mrs. Ross Hill of Clarendon, Mr. and Mrs. Gene Phillips of Baytown and Mr. and Mrs. Harry Harlan of McLean.

The great grandparents are Mr. and Mrs. O.T. Hill of Clarendon and Mrs. Helen Harlan of Amarillo.

Sue Leeper named secretary of PDNA

Sue Leeper, Director of Nurses at Medical Center Nursing Home in Clarendon, was elected to the office of secretary, at a January 18, 1980 meeting, of the Panhandle Directors of Nurses Association for Long Term Care.

This is another position of recognition of the high quality personnel on staff at Medical Center Nursing Home.

EMMETT O. SIMMONS
Insurance

The Insurance Store

874-3506

ALLSUP'S
CONVENIENCE STORES

WE RESERVE THE RIGHT TO LIMIT PRICES EFFECTIVE FEBRUARY 7-9, 1980
SPECIALS GOOD WHILE SUPPLY LASTS - LIMITED SUPPLY

PEOPLE PLEASERS

COOKED FOOD SPECIAL OF THE WEEK
Allsup Cooked Fresh Every Hour

BEEF AND BEAN BURRITO'S **2/\$1.00**

SHOP NOW!
DON'T FORGET YOUR VALENTINE!
CANDY

VALENTINE HEARTS

VALUES FROM **\$1.49** TO **\$25.00**

BIGGEST SELECTION IN TOWN!

ALL GRINDS
FOLGER'S COFFEE

\$3.39

1 LB. CAN

ALLSUP'S ICE CREAM

\$1.39

1/2 GAL. RD. CTN.

BORDEN'S COTTAGE CHEESE

12 OZ. CTN. **79¢**

Giant Size **TIDE**

Reg. \$1.94
49 oz **\$1.49**

ALLSUP'S
FROM \$00.00 TO \$200.00
MONEY ORDERS

19¢ EA.

REFRESHING
COCA-COLA

16 OZ. CUP **25¢**

NOW AVAILABLE!
NEW! FRESH BREWED
FOLGER'S COFFEE

12 OZ. CUP **39¢**

GOLDEN SPREAD

IRRIGATION

SUPPLY INC.

Memphis, Texas announces

LOCKWOOD CENTER

PIVOTS LEASE PROGRAMS

AVAILABLE CALL

806 - 259 - 2963 OFFICE

NIGHT

WAYNE SWEATT 806-259-2021

OR B. PHILLIPS 806-259-3280.

ROSE M. Lemley
Brann
engag
Mr. and Mrs. M. Brannan, 4 N. Koo...
lips, announce th...
of their daughter...
to Joe William...
Hedley, son of M...
Troy Lemley, 113...
Phillips. The e...
exchange vows at...
Hedley
report
Hedley-Claude g...
game last week...
was 31, Claude 30...
players were Chery...
Kim Woodard wi...
each.
Varsity girls H...
game Jan. 22. He...
36. High point fo...
Sherrie Hill wi...
Varsity girls F...
game Friday, Jan...
35 and Claude 61...
player for Hedley...
Taylor with 12 po...
Boys Varsity...
Jan. 22. Hedley...
31. High point p...
Hill with 18 point...

Why will the...
how many bedr...
home? Because...
combined with...
indicate overco...
quality, and he...
tentia school en...

JAN...
J...
has file...
candida...
Donley...
next t...

PANG...
For...
FR...
Reg. \$8.00
Honey...
Reg. \$9.00
Hand &...
Interlu...
Love S...
Brute...
C...
Reg. \$5.75
Firming...
260 Count...
Cosmeti...
BAIL



ROSE MARIE BRANNAN and Joe William Lemley

Brannan-Lemley engagement

Mr. and Mrs. Marion Glenn Brannan, 4 N. Koopman, Phillips, announce the engagement of their daughter, Rose Marie, to Joe William Lemley, of Hedley, son of Mr. and Mrs. Troy Lemley, 113 Phillips Ave., Phillips. The couple will exchange vows at 7 p.m. March

1 in the Phillips United Methodist Church. Miss Brannan is a graduate of Phillips High School. She is employed at Pizza Hut No. 2. Mr. Lemley, also a graduate of Phillips High School, is employed at Farley Well Drilling Service in Hedley.

Hedley Basketball report

Hedley-Claude girls J.V. only game last week. Hedley score was 31, Claude 30. High point players were Cheryl Phelps, and Kim Woodard with 10 points each.

Varsity girls Hedley-Lefors game Jan. 22. Hedley 55-Lefors 36. High point for Hedley was Sherrie Hill with 18 points.

Varsity girls Hedley-Claude game Friday, Jan. 25. Hedley 35 and Claude 61. High point player for Hedley was Kim Taylor with 12 points.

Boys Varsity game Tues., Jan. 22. Hedley-60 and Lefors 31. High point player was Jeff Hill with 18 points. Boys Varsity

for Friday, Jan. 25. Hedley 63-Claude 54. High point player for Hedley was Ronald Alston.

Conference standings are: Boys varsity 26-4; 6-0 in district play with the first half won. Girls varsity 15-14; 2-4 in district play.

Clarendon School menu

February 11-15
Monday Burritos, buttered corn, spinach, brownies and milk.

Tuesday Chip-o-pie with cheese, macaroni salad, English peas, pineapple cake and milk.

Wednesday Beef stew with vegetables, cheese wedge, sliced pickles, cornbread, ½ orange and milk.

Thursday Chicken pot pie, combined with the number of occupants and the home's value, indicate overcrowding, housing quality, and help forecast potential school enrollment.

Research news report on energy

Energy is on everybody's mind. The price keeps going up and the supply gets shorter. At the same time the cost-price squeeze gets tighter. Growers interested in how energy in agriculture is produced and used are invited to the Annual Crop Production Symposium at the Texas A&M Research and Extension Center in Amarillo. The invitation was issued by Dr. G.B. Thompson, Research Director at the Center. The activity will start February 14 at 9:30 a.m. and the program will continue until 3:50 p.m. A Dutch treat barbeque lunch will be available for \$4.00.

The keynote address will be given by T.B. Pickens, President of Mesa Petroleum. He will discuss future prospects for energy supplies.

The program starts with Ron Allen, USDA Agricultural Engineer, discussing energy use for food production. He says that only 3 percent of the energy used in the United States goes into agricultural production. He will explain how limited tillage can cut energy use and increase returns.

Later Dr. B.A. Stewart, Research Director from the USDA Center at Bushland, will analyze irrigated grain sorghum as a user and producer of energy. According to his calculations sorghum produces 5 times as much energy as used to grow it. He points out that as energy becomes more scarce and expensive, growers will have to use it more wisely. The remainder of the program will be research reports on showing growers how to become more efficient.

Dr. Nolan Clark, USDA Agricultural Engineer, will follow by showing the role of wind in reducing the energy requirement of agriculture.

After lunch Drs. Bill Lyle and Arland Schneider, Agricultural Engineers, will discuss irrigation systems and pumping efficiency. In some instances fuel costs can be reduced 50 percent with proper repairs or changes.

The energy used for weeding crops will be shown by Dr. Allen Wiese, Texas Agricultural Experiment Station Weed Researcher. His studies show that without herbicides crop production would be reduced 25 to 35 percent.

Chemical fertilizers require energy to produce, but grain sorghum yields are increased from 3,000 to 7,000 pounds per acre in the High Plains because of fertilizer. In West Texas, fertilization requires about 22 percent of energy used for producing crops. Dr. Harold Eck, USDA Soil Chemist, will tell people at the symposium about this and other aspects of fertilizer use and manufacture.

After a break Dr. Wyatt Harman, Agricultural Economist will analyze changes in cropping patterns.

Drs. Dan Undersander and Jack Musick will tell growers

about research aimed at producing the most wheat and sorghum from an ever decreasing supply of water. Later Dr. Paul Unger will discuss methods of reducing the energy required for irrigating sunflowers and soybeans.

Dr. G.B. Thompson, Paul Gross, District I, Texas Agricultural Extension Agent and Dr. Frank Petr, Extension Agronomist, will moderate the three sessions of the symposium.

The event is sponsored by USDA Southwestern Great Plains Research Center, Texas Agricultural Experiment Station, Texas Agricultural Extension Service and Panhandle Economic Program.

"Farmers and agribusiness people attending the symposium will learn what USDA and Texas A&M researchers and specialists are doing to help reduce the energy problems for agriculture," Dr. Thompson said.

In the evening on February 14, at 8:00 p.m., the Junior League of Amarillo will sponsor an "Energy for America Forum" at the Texas A&M Center. It will continue through the next day, and the public is invited.

Claude 4-H auction to be held March 15

Starting time is 10:00 a.m. Saturday, 15 March, for the annual Armstrong County 4-H Farm Machinery Sale. This will take place at the American Legion Grounds, Claude. Items offered will be many varied, and not restricted to farm machinery. Auctioneers Chester Butler, Wildon Hundley, James Bible and Bedford Forrest will be donating their services. The 4-H Clubs receive a small commission on all items handled. This money finances 4-H activities conducted during the year. The 4-H girls will be operating a concession stand. Many bargains will be available. Everyone is invited.

Dr. Nolan Clark, USDA Agricultural Engineer, will follow by showing the role of wind in reducing the energy requirement of agriculture.

After lunch Drs. Bill Lyle and Arland Schneider, Agricultural Engineers, will discuss irrigation systems and pumping efficiency. In some instances fuel costs can be reduced 50 percent with proper repairs or changes.

The energy used for weeding crops will be shown by Dr. Allen Wiese, Texas Agricultural Experiment Station Weed Researcher. His studies show that without herbicides crop production would be reduced 25 to 35 percent.

Amarillo Republicans to host party February 9

Abraham Lincoln's Birthday has historically been a time of celebration by Republicans across the Nation. Potter County Chairman John McBride has announced that Amarillo Republicans will be hosting their annual Lincoln Day Rally on Saturday, February 9. It will be held at the Santa Fe Depot, 3rd and Grant Streets.

The informal get-together will begin at 6:00 p.m. A barbeque dinner catered by Sutphen's will be served from 7:00 until 8:00 o'clock, when dancing to the music of Trew Harmony will begin. The public is invited to join area Republicans, candidates and special guests for this event.

Tickets are \$10.00 per person and may be purchased by contacting Republican headquarters, 1408 West 8th St., Amarillo, 806 376-4832.

Colts Corral

Hi! Welcome to the Colts Corral! The 7th girls, and both 8th teams played at Shamrock last week. The 7th girls and the 8th boys lost. The 8th girls won. There are two more district games including Wellington that we will play this Thursday. The 7th boys, and both 8th teams will play at Wellington. Now here's some gossip:
Toni M. What did the baby do??
Dore B. Bodart!!
Connie G. An eye that can wink across the gym??
Creed W. A worm in your arm!!
Richard G. The corn dog man!!
Tammy W. Miss Green Jeans!
Judy H. She's been glowing at us!!
Gayla C. The Evil Eye!
Dyron H. When You're only lonely!!
Tambra P. Sad eyes!!
Liz B. What were you doing in the van??
Kristen W. Hanging by a string??
Rodney S. Fifteen thousand million??
Cutest Couple: Annette W. and Jack D.



BIVENS PHARMACY

Elmonette and Paul Bivens Registered Pharmacists



7 Oz
\$ 1 19

48 Toddler Day & Night



\$ 6 99

SUNGLASSES

Sunsensor Turns dark with sunlight Reg. \$12 00



\$ 5 95

8 Inch Franciscan Salad or Desert



CHINA
59c

Selection of Hallmark

CANDLES



50% off

SUDDEN BEAUTY



8 Oz Pump

99c

WHITE CLOUD



4 Rolls

95c



PANTY HOSE

99c

TYLENOL



100's

\$ 1 49

NO ASPIRIN

Rexall

NO ASPIRIN PAIN RELIEVER

(325 mg. ACETAMINOPHEN)



100 Tablets

99c

Identical Products

both Great Buys

Rexall Money Back Guarantee

JAMES E. (Slick) JOHNSTON
has filed and announced his candidacy for the office of Donley County Sheriff for the next term.

Ad for by James E. Johnston

Valentine's Day Sale

PANGBURN'S HEARTS

For Your Valentine

ALL COLORS AND SIZES



FRANCES DENNEY SPECIALS

Reg. \$8.00

Honey Butter Hand Cream \$4 75

Reg. \$9.00

Hand & Body Moisturizing Lotion \$5 00

Interlude Speical Reg. \$17.50 \$8 00

Love Special Cologne Reg. \$2.50 \$1 50

Brute Cologne For Men Reg. \$7.00 \$5 00

Reg. \$17.50

Hope

Cologne

\$7 00

DU BARRY SPECIALS

Reg. \$5.75

Firming Lotion \$4 00

Freshner Cream Reg. \$5.75 \$4 00

260 Count Cosmetic Puffs \$1 00

Young Promise Reg. \$6.00 \$3 50

BAIN'S FOUNTAIN & GIFT

Facts from the Farm Bureau

USDA has announced the following determinations with regard to the 1980 crop of corn, grain sorghum, barley, oats, rye and soybeans:

- (1) National program acreage for the 1980 crop of corn is established at 82.1 million acres; grain sorghum 39.9 million acres and barley 7.9 million acres.
- (2) There is to be no set-aside for the 1980 crop of feed grains.
- (3) There is to be no land diversions implemented for the 1980 crop of feed grains.
- (4) So long as producers plant no more corn, sorghum, barley for the 1980 harvest than was planted, and considered planted, for harvest in 1979 they will be guaranteed target price protection on the normal production from the entire acreage.
- (5) Preliminary target prices are established as follows: corn, \$2.08 a bushel; grain sorghum, \$2.46 per bushel or \$4.39 a cwt.; barley, \$2.35 pr bushel.
- (6) Target levels per bushel are estimated in the range of \$2.00 to \$2.20 per bushel for corn; \$2.35 to \$2.60 per

bushel or \$4.20 to \$4.64 per cwt. for sorghum and \$2.20 to \$2.45 per bushel for barley.

(7) Loans and purchase levels for feed grain and soybean 1980 crop are as follows: corn, \$2.00 per bushel; grain sorghum, \$1.90 a bushel or \$3.39 per cwt.; barley, \$1.63 per bushel; oats, \$1.03 per bushel; rye, \$1.70 a bushel and soybeans, \$4.50 per bushel.

(8) Barley and oats are to be considered a part of the feed-grain program for 1980.

The Secretary of Agriculture has been announcing periodically by way of news releases a number of changes in the farm program. The provisions referred to above have been approved and placed in the FEDERAL REGISTER, but the ones announced by news release have not been announced in the FEDERAL REGISTER. However, the Department has announced that it is putting into effect immediately, as of January 8, 1980, the following:

- *increase the wheat loan price from \$2.35 to \$2.50 a bushel;
- *increase the corn loan price from \$2.00 to \$2.20 per bushel;
- *increase the corn loan price

from \$2.00 to \$2.10 a bushel, with comparable increases in loan prices for the other feed grains;

*increase the reserve release price from \$3.29 to \$3.75 a bushel for wheat—representing 150 percent of new loan price;

*increase the reserve call price from \$4.11 to \$4.63 a bushel for wheat—representing 185 percent of the new loan price;

*increase the reserve release price from \$2.50 to \$2.63 a bushel for corn—representing 125 percent of the new loan price;

*increase the reserve call price from \$2.80 to \$3.05 a bushel for corn—representing 145 percent of the new loan;

*increase the reserve release and call prices for the other feed grains comparable to corn;

*waive first year interest costs for the next 13 million tons (512 million bushels) of corn entering the reserve;

*increase reserve storage payments from 25 to 26 1/2 percent a bushel for all reserve commodities except oats, which is

increased from 19 to 20 cents a bushel;

*purchase 4 million tons (150 million bushels) of wheat, including the assumption of the contractual obligation on up to 3.7 million tons (135 million bushels) that will not be shipped to the Soviet Union;

*offer to assume the contractual obligation on up to 10.0 million tons (395 million bushels) of corn;

A decision on a paid diversion program for 1980 crop grains will be made at a later date.

"We are convinced these actions will protect producers, but if legislation to complement them is necessary, we will propose it," Williams (Acting Secretary of Agriculture Jim Williams) said.

Crop Insurance

A new revised all-risk Federal Crop Insurance program is now being considered by Congress. The Senate has passed a plan and the House Agriculture Committee has approved a version to be considered by the House in 1980. The new program is designed to expand and eventually extend the program nationwide.

The plan being considered in Congress also includes an extension of the disaster payment for grain, cotton and rice producers through 1981 crops.

The article on page 10 of FACTS FOR YOU, dated January 11, 1980, reports decisions made under the authority of current laws now in effect. In other words, changes announced last week were issued under the authority of current law.

Labor Regulations

The U.S. Department of Labor has proposed extensive rule and regulation changes designed to clarify present

regulations with regard to migrant seasonal farmworkers. Comments regarding this program must be received in Washington before March 11, 1980. Comments should be addressed to Assistant Secretary for Employment and Training, U.S. Department of Labor, 601 D Street, N.W., Washington, D.C. 20213, Attention: David O. Williams, Administrator, United States Employment Service.

Copies of the proposed changes are available from this office. If additional information is needed from the Labor Department, the request should be directed to: Joseph Paslawski, Regulations Coordinator, Office of policies and Program Design, 601 D Street, N.W., Room 8018, Washington, D.C. 20213, telephone number (202) 376-7601.

A great deal has been said in the public press regarding these changes and they are extremely difficult to explain. The proposed rules do change the definition of migrant and seasonal farmworkers. The purpose of these changes is to clarify the definitions which are causing trouble. The proposed definition of migrant farmworkers is as follows:

"Migrant farmworker" shall mean a person who during the preceding 12 months worked at least one month in farmwork, earned at least half of his/her earned income from farmwork and who had to travel to do the farmwork so that he/she was unable to return to his/her permanent place of residence within the same day. Full time students who not traveling as members of a family group are excluded. (FEDERAL REGISTER, p. 2501, Jan. 11, 1980)

Farm Income

USDA has estimated the January-September 1979 cash receipts from farm marketing at \$85,596.7 million compared to \$74,846.4 million in 1978.

Cash receipts from farm marketings in the January-September 1979 period from crops is reported at \$36,557.2 million, compared to \$32,409.4 million in 1978.

Cash receipts from farm marketings January-September 1979 livestock and livestock products were reported at \$49,039.1 million compared to \$42,437.0 million during a similar period of 1978.

These figures reveal that cash receipts from farm marketings during the January-September 1979 period were 57.29% of the total, compared to 56.69% of the total a year ago.

Parity

Parity ratio of index of prices received by farmers to index of prices paid, interest, taxes, and farm wage rates for December 1979, based on 1967 index, was 92. Parity ratio for December 15, 1979, based on 1910-14 index, was 68 compared to 72 a year ago. Adjusted parity ratio which includes government payments for December 1979 on the same basis was 69, compared to 74 a year ago.

Fertilizer Consumption

The July-October 1979 total fertilizer consumption for the 17 reporting states having comparable data indicates less than a 1% increase in consumption, compared with the same period a year ago. Nitrogen materials for direct application were up 14%. Phosphate materials were down 16%. Potash materials decreased 3%. Mixed fertilizer tonnage was down 2% from a year ago.

Agricultural Appropriations

Congress appropriated \$18,528,940,000 for agriculture, rural development and related agencies for the fiscal year ending on September 30, 1980. The President had requested \$20,034,617,000 and the appropriations for the previous fiscal year ending on September 30, 1979 totaled \$20,824,711,000. Major allocations of the budget for the fiscal year ending on September 30, 1980 are as follows:

Production, Processing, and Marketing \$1,604,701,000; Farm Income Stabilization \$3,258,065,000; Farmers Home Administration \$1,367,990,000; Conservation \$789,947,000; Child Nutrition Programs \$1,279,215,000; Food Stamp Program \$6,188,600,000; International Programs \$777,767,000; and Food and Drug Administration \$317,168,000.

These figures reveal that the Food Stamp Program and the Child Nutrition programs were allotted \$7,467,815,000 or 40.3% of the total budget.

Singapore Trade Office

USDA opened an agricultural trade office in Singapore on January 12, 1980. The office is located so as to assist export sales promotion in Singapore,

Indonesia, Malaysia and Thailand. The Department reported that these countries are a market for approximately \$600 million in U.S. agriculture products annually. In 1978 Congress authorized the creation of between 6 and 25 agriculture trade offices in key trade regions of the world. Three trade offices are already open -- one in Miami to serve the Northern Caribbean and Central American regions; one in Manama Bahrain for the Arabian Gulf area; one in Hamburg covering West Germany. Soon offices will be opened in Seoul, Korea and Warsaw, Poland. An additional four offices are planned for later this year bringing the total to 10 by the end of 1980. In addition, there is a similar office in London, opened in 1978 under other authority.

The Singapore office will assist trade associations currently working in Southeast Asia under continuing agreements with USDA's Foreign Agriculture Service as market development cooperators. Among the cooperators that now have offices in the new Singapore trade office are the American Soybean Association, the Poultry and Egg Institute of America, U.S. Wheat Associates, Inc. and U.S. Feed Grain Council.

Fun After 50 Club meets

Fun After Fifty met at the Lion's Club Hall Saturday February 2. After games of 42 and visiting a short business meeting was held, which was followed by the program presented by some of the members reading various poems and clippings. Those participating were: Mrs. D. T. Smallwood-I'm not growing old; Tennie Smith-Old Folk Prayer; Abbie Warner-Take Time; Iva Dee Hinkle-I am The Nation and Wonderful World; Mary Cooke-Stopping by Woods on a Snowy evening; and Helen Carr-When Earth's Last Picture is painted. It was a very interesting program and everyone agreed to have the same type next month. So select one of your favorite and come join us March 1.



Through the knot-hole

By PECK SMITH

Knot-holes are a fascination to some folks. They appear in the most tempting places in ball-parks, construction projects, back-yard fences and various other locations.

They are especially attractive to little boys who are not as high off the ground, and to men who are taller than the knot-hole is situated. Another problem is seen in the size of the knot-holes. They are never big enough for comfortable viewing and, too, the grain around them is always tougher than the average Barlow.

Notwithstanding the difficulties and adjustments one has to make, the view through the knot-hole has its moments of delight when one's favorite home-run king zered in on that same board that contained the knot-hole of knot-holes and I happened to be there. Almost before one could tell about it, that tailor-made baseball sailed over my knot-hole. Visions of owning a new ball flashed ***

After prayer by Mrs. W.S. Carlile a covered dish luncheon was served.

through my one-track mind. No longer would I have to con mother into saving those old Bachelor's Friend Sox of dad's rolling them hard, sewing them into an unreasonable fascimile of a baseball! No more would I have to bribe a friend to play catch with me - the price being the latest Captain Marvel funny book (if he didn't already have it). No more would that old sock-ball betray me in a moment of critical importance in a win-or-lose double. -Ah! What ecstasy and prestige! Why - with a new ball, I could even be pitcher!

...But then, I forgot that there were fourteen other knot-holes in that ball-park fence that had about the same point of view. And d'you know who got that new genuine horse-hide covered trophy? That new sissy-kid from across the block - why he didn't even know what it was for, hardly!

Sr. High 4-H Club news

By VIRGINIA CLIFFORD

The Sr. High 4-H club met on the night of January 21, 1980. Threasa Cummings from Clarendon College came and met with the 4-H and discussed method demonstrations, which will be coming up sometime in April. For those who are interested Please be thinking about doing a demonstration, they are fun and educational. In order to make the best of our 4-H club we need more people to be coming to the meetings. The next 4-H meeting will be February 18 at 7:15 p.m. please try to come. See ya there!

I am announcing my candidacy for Donley County Commissioner for Precinct 1.

James R. Graham

Pd for by J. R. Graham

SALE on MAYTAG

Great Value!
ENERGY-EFFICIENT
MAYTAG WASHERS
BUILT TO LAST LONGER AND NEED FEWER REPAIRS!
CYCLES AVAILABLE FOR ANY WASHABLE FABRIC!

Great Value!
BIG LOAD CAPACITY
MAYTAG DRYERS
LOW TEMPERATURE, STREAM-OF-HEAT DRYING. FAST, ENERGY-EFFICIENT OPERATION!

Great Values!
MAYTAG JETCLEAN DISHWASHERS
Outcleans them all on the regular cycle!
Energy Saving Cycle Dries Without Heat, Exclusive Maytag Micro Mesh™ Filter, Tested Exclusive Maytag Jetwash Action

Goodman FURNITURE APPLIANCES & CARPET

"SEEK YE FIRST THE KINGDOM OF GOD"

<p>CALVARY BAPTIST CHURCH Hwy. 287 & Jackson 874-3479 R. W. Sullivan, Pastor Sunday School 10:00 a.m. Sunday Worship 11:00 a.m. Training Union 6:30p.m. Evening Worship 7:30p.m. Wednesday Night Service 7:30 p.m.</p>	<p>ASSEMBLY OF GOD 5th & McClelland Roger Gray, Pastor Sunday School 9:45 a.m. Sunday Worship 11:00 a.m. Sunday Eve. Worship 6:30p.m. Tuesday Women's Missionary 1:00 p.m. Wednesday Night Service 7:30 p.m.</p>	<p>FIRST CHRISTIAN CHURCH Wilbert Bernabe, Pastor 3rd & Gorst Sunday School 9:30 a.m. Morning Worship 10:30 a.m. Evening Worship 6:00 p.m. Wednesday Night Service 6:00 p.m. Night Service 7:30 p.m.</p>
<p>FIRST BAPTIST CHURCH Bugbee & Third Streets 874-3833 Paul Heil, Pastor Sunday School 9:45 a.m. Morning Worship 11:00 a.m. Training Union 6:00 p.m. Evening Worship 7:00 p.m. Wednesday Night Service 7:00 p.m.</p>	<p>CHURCH OF THE NAZARENE 3rd & Hawley 874-2321 Bill Hodges, Pastor Sunday School 9:45 a.m. Morning Worship 11:00 a.m. Evening Worship 6:00 p.m. Wednesday Night Service 7:30 p.m.</p>	<p>CHURCH OF CHRIST 4th & Carhart 874-2495 Gene Basden Sunday School 9:30 a.m. Morning Worship 10:30 a.m. Evening Worship 6:00 p.m. Wednesday Night Service 7:30 p.m. Ladies' Bible Class Tuesday 10:00 a.m. Church of Christ</p>
<p>ST. MARK BAPTIST CHURCH Jefferson & Martindale Albert Yarbrough, Pastor Sunday School 9:45 a.m. Preaching 11:00 a.m. Night Service 8:30 p.m. Prayer Service 7:30 p.m. Woman's Mission 8:00 p.m.</p>	<p>PRESBYTERIAN CHURCH 4th & Parks 874-3428 Dr. E.L. Manning, Pastor Sunday School 10:00 a.m. Morning Worship 9:00 a.m. Youth Program 6:00 p.m. Evening Worship 7:00 p.m. Tuesday Bible Study 2:30 p.m.</p>	<p>UNITED PENTECOSTAL CHURCH Rev. N.W. Thompson Montgomery & Faker St. 874-3756 Sunday School 10:00 a.m. Morning Worship 11:00 a.m. Evening Worship 6:00 p.m. Wednesday Night Service 6:30 p.m.</p>
<p>MARTIN BAPTIST CHURCH Robert Shugart, Pastor Sunday School 10:00 a.m. Church Service 11:00 a.m. Evening Service 6:00 p.m. Wednesday Night Service 7:00 p.m.</p>	<p>ST. JOHN BAPTIST EPISCOPAL 3rd & Parks Sunday School 10:00 a.m. Services 11:00 a.m. Holy Communion 1st, 3rd, & 5th Sundays</p>	<p>FIRST UNITED METHODIST CHURCH 5th & Jefferson 874-3667 Wm. H. (Bill) Watson Sunday School 9:45 a.m. Morning Worship 11:00 a.m. Evening Worship 6:00 p.m. Youth Program 7:00 p.m. Wednesday Bible Study 6:00 p.m.</p>
<p>FIRST BAPTIST CHURCH Howardwick SBC Jack Daniel, Pastor Sunday School 10:00 a.m. Worship Service 11:00 a.m. Evening Service 6:00 p.m. Wednesday Prayer Meeting 6:00 p.m.</p>	<p>ST. MARY'S CATHOLIC CHURCH McClelland & Montgomery Father Carlson Sunday Morn. Mass 12:15 p.m. Holy Days 5:00 p.m. Father Carlson of Groom</p>	<p>UNITED METHODIST CHURCH Hedley, Texas Wm. H. (Bill) Watson 874-3879 Sunday School 10:30 a.m. Morning Worship 9:30 a.m. Wednesday Bible Study 6:00 p.m.</p>
<p>FIRST BAPTIST CHURCH Hedley 856-2711 Wayne Naylor, Pastor Sunday School 10:00 a.m. Worship 11:00 a.m. Evening 6:00 p.m. Wednesday Night Service 6:30 p.m.</p>		

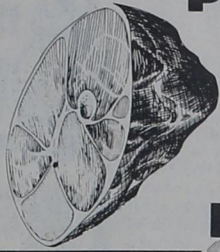
HENSON'S TUMBLEWEED BYLOW GROCERY EDDIE FLOYD SHOP OSBURN FURNITURE DREAM DONUT SHOP ALDERSON CHEVROLET

SUPER FOOD BUYS

NOTICE: Beginning February 15th, we will have lunch meat and cheese by the loaf. Buy your lunchmeat the ole fashion way. We will slice it while you wait. No minimum purchase required. Garlic bologna, bologna, pepper loaf, honey loaf, old fashion loaf, chopped ham, pressed ham, liver cheese and American cheese.



Armour Star Boneless
HAMS
\$1.89 lb



Corn King Center Cut Smoked
PORK CHOPS \$1.79 lb

BEEF CUTLETS \$2.39 lb

Ranch Brand
BOLOGNA 12 oz 89¢

Ranch Brand
FRANKS 12 oz 89¢



Wrights Sliced
SLAB BACON 89¢ lb

Family Pak
GROUND BEEF
\$1.39 lb



Golden Delicious
APPLES 3 lb bag 89¢



Russet
POTATOES 20 lb bag \$1.59



SPAM 12 oz \$1.29

Dinty Moore
BEEF STEW 24 oz \$1.29

Nabisco
VANILLA WAFERS 69¢

Sunbeam
COOKIES 8 oz 3/89¢

Our Darling Whole Kernel
CORN 17 oz 3/89¢

Plains
BUTTERMILK 1/2 gallon 95¢

Bordens 1/2 gallon square
ICE CREAM \$1.29

Van Camp
PORK & BEANS 16 oz 3/\$1.00

Atkins Fresh Kosher
SUMMER DILLS 48 oz \$1.19

Friskies
CAT FOOD 6 1/2 oz assorted flavors 3/89¢

Log Cabin
SYRUP 24 oz \$1.29

Betty Crocker
CAKE MIX 18 1/2 oz 79¢

Folgers
COFFEE \$2.99 1 lb



Giant Size
TIDE 49 oz \$1.69



Soap 4 personal bars
IVORY 65¢

White Swan Soft
OLEO 1 lb tub 59¢



Pascal
CELERY stalk 23¢

CARROTS cello pkg 1 lb 19¢

Purple Top
TURNIPS 25¢ lb



SAVE HERE FOR A SNOWY DAY !!!!
STOCK YOUR FREEZER VALUES

Morton
HONEY BUNS 9 oz 59¢

Stillwell
CUT CORN 16 oz 59¢

Green Giant
BROCCOLI AND CHEESE SAUCE 10 oz 79¢

Wholesum
ORANGE JUICE 12 oz 79¢

Patio
MEXICAN DINNERS 12 oz 79¢

giant roll
BOUNTY 79¢

Imperial
SUGAR 5 lb bag \$1.59

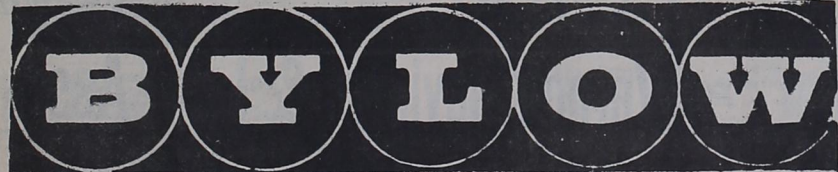
COMET 21 oz 2/88¢

DOWNY 33 oz 89¢

Fleischman Light
CORN OIL SPREAD 2 lbs \$1.49



COKE SPRITE 10 oz 6 bottle crt 79¢



OPEN 7 til 7 FOOD STORE 6 DAYS A WEEK

AD GOOD FEBRUARY 7, 8 and 9th

TIC-TAC TREASURE

INSTANT CASH PRIZES



PLUS WEEKLY SWEEPSTAKES

What's burning in Maurine's Kitchen

By MAURINE BUTTS

It is such a pleasure to have trees in your own back yard. In the other homes that I have lived in, the tallest shade bearing plants were the weeds! And along with the trees, I have birds and squirrels, something that I haven't had the joy of watching. Birds just do not perch on the blades on the old milk weed plant. I must relate this tale. Being a member in good standing of the PAC, Procrastinators of American Club, I failed to place the summer macrame hanger in its proper place when we moved. I found a wire and I loosely tied the hanger on to that wire which was attached to the patio cover. One night a wind blew the hanger down. Now, being a member of PAC, I, again, did not pick up the hanger. In a few days, I noticed that the hanger was missing. I didn't get real upset, because I knew it would turn up sooner or later. I went out into the back yard to check the ever-empty bird feeder and I noticed that the macrame hanger was hanging rather poorly from a top branch. My beloved squirrels had carried it up into the branches. I truly love my southern exposure to the back yard; I never know what the natural inhabitants will be doing next.

Getting back to cooking, some people, myself included, often feel intimidated by so-called gourmet cooks. A gourmet is simply a person who has mastered the fine art of cooking for a particular cuisine. You are a gourmet. You have mastered the fine art of fine Southern Cooking. You prepare the food just the way your family and friends expect it to be prepared. Here are some recipes that have the southern back ground, but with some added touches.

I am actively seeking the knowledge of all the gardeners of the Donley county area. I would like to start printing some gardening tips for the up coming spring. I would like to have your feed back on what you plant, how and when you plant it, what grows well in this area, and what doesn't grow well here. With your help, I think that all the semi-gardeners will enjoy gardening more when their plants survive. Please respond to Box 1036, Clarendon.

Southern Potato Salad with

Sour Cream
4 medium boiled potatoes, diced
1/2 cup diced green onion
1/2 cup diced dill pickle
1/4 cup diced green pepper
4 strips crisp bacon, crumbled
1/2 to 3/4 cup sour cream
2 to 3 tbs dill pickle juice
1/2 tsp salt
1/2 tsp celery seed
pepper
Combine all the vegetables and bacon. In another bowl prepare the sauce, adding the pickle juice until the sour cream has a consistency that is easy to pour. Add the sauce to the vegetables and chill before serving.

For the cucumber lovers, peel and dice a cucumber and add to the above.

Remember, that you can microwave your potatoes in a fraction of the time. Just remember to stir the potatoes once during cooking.

To continue with our Southern menu, try baked ham with hot mustard sauce.

Score the top of the ham. Cook the ham for 8 to 10 minutes per pound in the microwave, or 10 to 12 minutes on Roast-8. Using the temperature probe for the last few minutes (note: this probe is for microwave machines which have the built in probe), cook the ham until the internal temperature is 90 degrees. Let the ham stand on the counter for 10 to 15 minutes, when the internal temperature will reach 120 degrees. While the ham is standing, prepare the Hot Mustard Sauce.

Hot Mustard Sauce
1 tbs butter or margarine
1 tbs all purpose flour
1/2 tsp salt
1/8 tsp black pepper
1 cup milk or light cream
3 tbs prepared mustard
1 tbs horseradish

Place butter in a 2-cup glass measuring cup. Microwave 30 seconds to 1 minute. Stir in flour salt and pepper until smooth. Gradually stir in milk, mustard and horseradish. Microwave 3 to 4 minutes, stirring every minute.

Pour over ham and serve. And what would potato salad and ham be without baked beans.

Glorified Baked Beans
2 cans (1 lb each) baked beans
1/2 cup chopped onion
1/2 cup brown sugar, firmly



MAURINE BUTTS

packed
1/2 cup catsup or barbecue sauce
2 tbs prepared mustard
1 tbs Worcestershire sauce
1 tbs molasses
1 can (8 oz) crushed pineapple, if desired.

Combine all ingredients in a 3 quart glass casserole dish. Cover with a paper towel. Microwave 9 to 12 minutes, or on Simmer-4, for 30 minutes or until beans are piping hot. Stir twice during cooking. Let stand 5 minutes before serving.

I have one more microwave candy recipe to pass on. This recipe is also from the November issue of Southern Living.

Millionaires
1 1/4 oz pkg caramels
1 1/2 tbs milk
2 cup coarsely chopped pecans
1 1/2 oz pkg semisweet chocolate morsels
1 tbs vegetable shortening

Remove any chocolate caramels in package and reserve for another use. Unwrap remaining caramels, and place in a 2 quart casserole. Microwave at high for 1 to 1 1/4 minutes, stir well.

Add milk to caramels, and microwave at high for 1 1/2 to 2 minutes, stirring every 30 seconds. Stir until mixture is smooth, add pecans, mixing well. Drop by teaspoonfuls onto buttered cookie sheet. Cool, cover and chill.

Combine chocolate morsels and shortening in a 4 cup glass measure. Microwave at medium for 3 to 4 minutes or until morsels are softened; stir well. Dip caramel centers into chocolate, and return to waxed cookie sheet. Chill. Store candy in refrigerator. Yield about 2 1/2 dozen.

Child care credit

Over the past years, there has been an increase in the number of working mothers and single-parent families. Consequently, the cost of child care has had a significant bearing on the family budget.

A tax credit is now available to parents who pay someone to watch their children while they work. The child care tax credit enables parents to cut their taxes by \$400 for one child and \$800 for two or more children.

Computing the credit is not difficult. Figure 20 percent of the first \$2,000 spent during the year on child care for one child. For two or more, figure 20 percent of the first \$4,000 spent.

The "Child Care Credit," officially titled the Credit for Child and Dependent Care expenses, has two major uses. Although most claimants are parents of small children, the credit is also available to working persons who must pay for care of a disabled spouse or other dependent.

To qualify for the credit, you must: have maintained a household with one child under 15 years of age or a disabled dependent; have paid the expenses to enable you to be gainfully employed; file a joint return if married; and have made the child care payments to persons other than your spouse or person you can claim as your dependent. You may use payments you made to relatives who are not your dependents, even if they lived in your home.

Report from the Fort Worth Livestock Show

Donley County 4-H'ers exhibited several top placing animals at the Fort Worth Livestock Show last week according to County Extension Agent Ronald Gooch. In the junior heifer show Phil Moreman placed 1st with a Hereford junior heifer calf and Melody Moreman placed 2nd with her winter Hereford heifer.

In the junior shorthorn heifer show Jamie McAnear placed 1st with her junior yearling heifer and 2nd with a summer yearling Lisa McAnear placed 2nd with her winter heifer calf and 3rd with a spring yearling heifer. Rodney McAnear placed 6th with his spring yearling.

The junior heifers that place 1st or 2nd in their classes are eligible to show in the open breeding cattle show. In the open shorthorn show Jamie McAnear placed 1st and 3rd and Lisa placed 3rd. In the open Hereford show Melody placed 6th and Phil placed 8th. In the open show they were competing against breeders from all over the United States.

In the steer show Jack Craft placed 1st with a light weight Hereford and 8th with his middle weight Hereford steer. Jamie McAnear placed 7th with her middle weight Hereford and Starla Mann placed 9th with a light weight Shorthorn steer. In the light weight European Cross class Dean Hawkins placed 18th.

A Moment for Meditation

By INEZ LAWRENCE
"Judge not that ye be not judged." Mt. 7:1

This is a saying we have heard all our lives. But the words fell from the lips of Jesus when He preached His most famous sermon. He gave the statement to practicing believers in God when He was outlining the rules for righteous living.

He stated a basic law of nature in the saying, namely, cause and effect. There is no getting around this law in any area of life. The farmer is well aware of it in his annual planting and reaping. He knows he reaps exactly what he planted. There is no element of surprise involved. Cotton seeds produce cotton; corn produces corn; wheat makes wheat.

This law is true in the social area also. To have friends, one must be friendly. People who like people usually have people around them. One who thinks only of himself is usually alone with himself-permanently.

The basic law is true in a spiritual sense as well. The critical judgmental person is feared and shunned. His unchristian statements about others are judged also. His very words give him away and reveal weaknesses he thinks are hidden. Psychologists say we are most intolerant of those who have the same failings we have. If this be true surely tolerance and forgiveness are in order as Jesus always taught. But tolerance is a difficult one to practice and forgiveness is even harder to come by. It takes more Christianity than many of us have to throw down the burden of unforgiveness and walk away free. Only those who will to do so can forgive and only those who will to do so can refrain from judging others. It takes determination to seal our lips when critical thought surge through the mind.

It would be well if we could follow the example of the woman who always said something good about everyone. A wag asked her if there was anything good she could say about the devil. She replied, "Well, he's always busy."

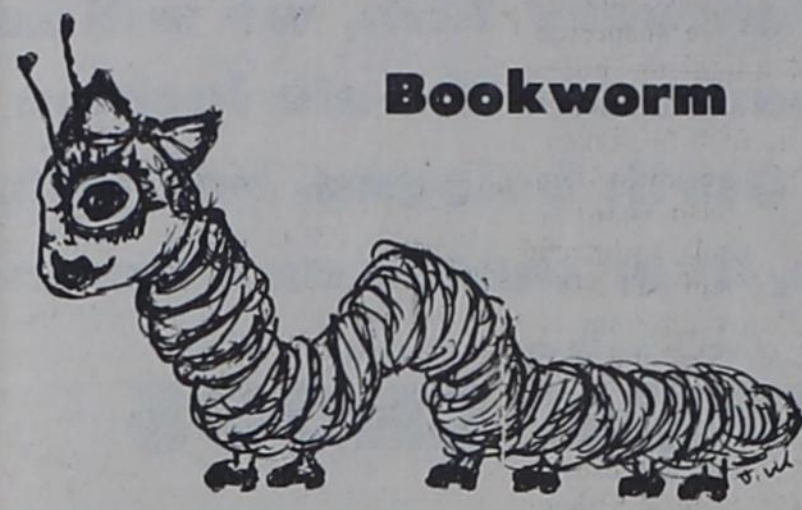
DeeAnn Cook makes 3.31 average at Texas Tech

Dee Ann Cook, daughter of the late D.F. and Mary Cook, received a certificate from Texas Tech University, where she attended the fall session, giving her grade average as 3.31. Dee Ann is making her home with Mr. and Mrs. Orin Lee Hill and is attending Clarendon College.

Three of the steers were sold in the premium sale, Jack Craft sold his 8th place steer and Jamie and Dean sold their 7th and 18th place steers. Dairy Queen of Clarendon bought Jamie's steer for \$1.25 per

pound and Dean's steer for \$1.05 per pound. Jack's steer was bought by a Chevrolet dealer for \$1.05 per pound.

In the barrow show Jennifer Cox placed 13th with her heavy weight spot barrow.



Bookworm

Our local City County Library has been in existence over 60 years. We have been around so long, some of our books are considered rare volumes. Mr. George Chamberlain came by our library recently for a visit. He is a rare book and antique dealer from Scottsdale, Arizona.

Texas Panhandle Awards
Con't from p 1

have distinguished themselves in a variety of areas. Emphasis for 1980 will be on women in the fields of education, medicine, business, civic service and professional areas. Women from each field will be honored.

Ruth Cross will serve as chairperson of the luncheon. She retired in 1969 after 42 years with WTSU. At the time of her retirement at the age of 69, she was associate professor of physical education and dean of women.

Five or six residents of the Panhandle area will serve as judges to review each nomination application and select recipients of the Distinguished Service Awards.

Tickets for the luncheon will be \$5.

Countries eligible to nominate are Armstrong, Bailey, Briscoe, Carson, Castro, Childress, Collingsworth, Cottle, Dallam, Deaf Smith, Donley, Floyd, Gray, Hale, Hall, Hansford, Hartley, Hemphill, Hutchinson, Lamb, Lipscomb, Moore, Motley, Ochiltree, Oldham, Parmer, Potter, Randall, Roberts, Sherman, Swisher and Wheeler.

Honorary co-chairpersons for the luncheon committee are Gene Alice Sherman, whose husband, Max is WTSU president, and Helen Shannon, whose husband, Gail is executive president.

Other committee members are Lila Vars, director of the Office of Programs for Women; Jane Kerr, assistant director; Sandra Meek, dean of student affairs at WTSU; Stephanie Kordas, associate director of the WTSU Counseling and Testing Center; Sandy Sparling, representative of Wives, Etc.; Mona Williams, university editor; and Pat Thompson and Carolyn Sherrod, both of Canyon.

Minutes of City Board of Aldermen

Members of the Board of Aldermen for the City of Clarendon met in a regularly scheduled meeting on Tuesday, January 22, 1980 in the board room at City Hall at 7 p.m.

Members present were Bob Kidd, acting mayor; Alderman Shirley Clifford, Cecil McAfee, James Kuhn and Lloyd McCord. Absent was Leonard Selvidge, mayor.

Others present were; Bill Weatherly, City Secretary, Bill Hodges, Chief of Police and Jerry Gage, Clarendon Fire Chief.

Business was transacted as follows: minutes of the previous meeting January 8, 1980 were read and approved; bills incurred for the month of January were presented and allowed.

Motion was made by Alderman Kuhn and seconded by Alderman McCord to appoint Sam Lowrey election judge for the city election to be held on April 5, 1980.

Fire Chief Jerry Gage informed the mayor and aldermen that the 1961 International Fire Truck needed to be replaced.

Business taken care of the meeting was adjourned.

The 1980 census will probably be the first census since the Civil War to record that blacks moving to the South outnumber those leaving.

Broncho schedule High School Schedule

Date	Opponent	Place	Time	Girls	Boys
Feb. 7-9	White Deer	J.V.	Tournament		
Feb. 8	Wellington	T	4:00	A-B	A-B
Feb. 12	Panhandle	T	4:00	A-B	A-B

Junior High Schedule

Date	Opponent	Place	Time	Girls 8-7	Boys 8-7
Feb. 7	Wellington	There	5:00	x	x-x
Feb. 14	Memphis	Here	5:00	x-x	x

 the wise old owl says **WISDOM IS...**



protection for your family

Life insurance is an investment in the future for you and your family. A life insurance policy can also guarantee that you will have enough money to send your children to college. Ask about one of our life insurance policies now!

BRIGHT NEWHOUSE
874-2001

Vernon Savings & Loan Association

Offering Variety In Savings Accounts

Would like you to know about our New 2 1/2 year certificate of deposit. A Minimum deposit of \$1,000.00 is required. Interest paid on this certificate is based on U. S. Treasury Security Yields. Please inquire for the current rate.

Also Available:	Minimum Deposit	Interest Rate	Annual Yield
90-day Certificate	(\$1,000.00)	6.00%	6.18%
1 Year Certificate	(\$1,000.00)	6.50%	6.72%
4 Year Certificate	(\$1,000.00)	7.50%	7.79%
6 Year Certificate	(\$1,000.00)	7.75%	8.06%
8 Year Certificate	(\$1,000.00)	8.00%	8.33%
Passbook		5.50%	5.65%

Six month money market certificates require a minimum deposit of \$10,000.00.

These certificates bear an interest based on six month treasury bills and yield the highest rate allowable by law.

Federal regulations prohibit compounding of interest on these certificates.

Federal regulations require a substantial interest penalty for early withdrawal of time certificates.

All accounts are insured by the Federal Savings and Loan Insurance Corporation up to \$40,000.00.

Five Offices Serving Your Area:

Home Office 1725 Wilbarger St. Vernon, Tx. 76384	Paducah Branch 10th & Easy Paducah, Tx. 79248	Memphis Branch 119 S. 6th St. Memphis, Tx. 79245
Childress Branch 423 North Main Childress, Tx. 79201	Frederick Branch 113 North Main Frederick, Okla. 73542	

Vernon Savings & Loan Assn.



(Memphis Office)

ESLIC

119 S. 6th St.

Phone: 259-3384

The ALCOHOLIC ANONYMOUS

hall will be open, Wednesday, Friday and Saturday from 7 p.m. to 9 p.m. for individual counseling on problems related to alcoholism.

Cattlemen counter Beferendum claims

"Some cattlemen are being misled about the Beferendum," declares J.D. Sartwelle, a Sealy, Texas rancher who is co-chairman of the Texas Beferendum campaign.

Beferendum is the name used by cattlemen supporting a national Beef Research and Information Program, on which cattlemen will vote February 19-22. Registration for the referendum began January 28 at county ASCS offices and will continue through February 6.

"Due to the misrepresentations, innuendoes and in some cases outright untruths being circulated, we have decided to call a spade a spade and try to set the record straight," says Sartwelle. "We are disappointed that some Texas organizations are opposing a self-help program designed to help cattlemen. It appears that they either don't understand the program or they are misleading cattlemen for ulterior motives."

Following are Sartwelle's points refuting what he labels "misinformation" being disseminated:

1. The Beferendum is NOT a government program. It is a cattlemen's self-help program--initiated by cattlemen, to be financed by cattlemen and run by cattlemen...for the benefit of cattlemen.

2. It will NOT be run by the Secretary of Agriculture. His role is limited to (1) the formality of confirming cattlemen nominated to the Beef Board and (2) monitoring of programs to assure that producers' funds are invested in accordance with the law. Producers should welcome this added protection.

3. Consumers will NOT serve as voting members on the Beef Board. There may be up to five consumer advisors to the Board, but these will be nominated by cattlemen. And if cattlemen nominate the right kind of

consumers--dieticians, home economists, nutrition researchers, etc.--they will be an asset.

4. Cattlemen will NOT be fined or taken to court for failure to comply. Slaughterers are the only segment of the industry that actually collect and remit funds. If they are suspected of fraud--of collecting but not remitting funds to the Beef Board--they will be taken to court. I believe most honest producers would want and deserve this kind of protection.

5. Foreign beef will NOT be promoted. This program is to promote U.S. beef and to help U.S. producers. If foreign producers were paying assessments, we could not use their money to promote U.S. beef.

6. Current beef promotion programs are NOT adequate. The National Live Stock and Meat Board has a beef budget of only \$2.4 million (about 1 cent per capita) to protect and expand beef markets. Authorities say 15 cents to 20 cents per

capita is needed. 7. It will NOT take a producer five or six months to get a refund. The law states that a refund must be made within 60 days after a producer requests it.

8. This program IS needed. It's needed to fight anti-beef propoganda, combat beef substitutes, promote the nutritional value of beef and expand foreign markets...all aimed at helping cattlemen.

"For these reasons," concludes Sartwelle, "we urge cattlemen who are concerned about economic stability in our industry to register, before February 6, and to vote 'YES', between February 19 and 22.

Nursing Care Con't frm p 1

through medicare, medicaid, Chanpus, VA and private insurance. Examples of nursing care given are: monitoring blood pressure and vital signs for cardiac patients; health teaching for diabetics; physical therapy for CVA patients, injections as ordered by the Dr.; care of levin tubes and Foley



Adequate spacing between rows is essential if a vigorous, fast-growing windbreak is to be produced. Note the clean cultivation practiced here.

Windbreak spacing

Spacing between rows depends on the amount of moisture available, the species planted in each row, and the width of implements used in windbreak cultivation.

Many people make the mistake of planting rows too close together. After a few years, the trees become severely competitive. The overtopping species out compete the smaller trees and end up with all the available moisture and nutrients. Others grow so close together that it is hard or impossible to get machinery between the rows for cultivation. These windbreaks commonly fall into disrepair and seldom become effective.

Spacing of 16 to 20 feet between rows is recommended. Allow for 4 feet more than the width of the cultivation equip-

ment to be used. Be sure that spacing between deciduous and evergreen rows is adequate. The faster growing deciduous trees will overtop and suppress the evergreens, if planted too close. For this reason, do not mix evergreens and deciduous trees in the same row.

Within the row spacing depends on the species being planted and whether it is an outside or interior row. Distance between hardwood plants in a shrub row is usually 3 to 5 feet.

Spacing of evergreens is usually 8 to 12 feet and broadleaf trees, 10 to 14 feet. There is only half the distance between trees for crown and root growth. And, hardwoods have a greater crown and root spread than do evergreens.

REMEMBER: The SWCD is still taking orders for trees. The deadline for ordering is February 29th. Come by the SCS office and let us place an order for you.



AD GOOD WED. to SAT.

WINTER STORE HOURS

8 a.m. - 7 p.m.

Sunday

9 a.m. - 7 p.m.

WINTER-RIGHT Fresh FRUITS & VEGETABLES
No. 1 Russett

POTATOES

75¢

ONIONS

10¢ lb

CHILI

79¢

HOT COCOA MIX

\$1.09

SYRUP

\$1.19 each

ORANGES 89¢

CUCUMBERS 25¢ lb

SQUASH 33¢ lb

APPLES 99¢

LETTUCE 33¢ Head

TOMATOES 29¢ lb

Enjoy Coca-Cola

King Size 6 Pack

69¢

AJAX Dish Liquid 22 oz 69¢

COOKIES pkgs 4/\$1.00

APPLE JUICE 64 oz \$1.47

SYRUP 24 oz \$1.19 Btl.

WAFFLE MIX 32 oz 69¢ box

WORCESTERSHIRE SAUCE 10 oz 67¢ btl

SPAGHETTI SAUCE 15% 69¢ jar

PRUNES 12 oz 89¢ pkg

DIPS 2/99¢

COTTAGE CHEESE 12 oz 65¢

ITEM AFTER ITEM... low priced for bigger savings

Swiss Miss Hot COCOA MIX 12 oz box 89¢

Hefty TRASH BAGS 30 gal. 20 ct box \$1.97

14 oz Dog Food FRISKIES DINNERS 5/\$1.00

White Swan 14 oz PORK AND BEANS 4/89¢

White Swan 3 lb can SHORTENING \$1.27

White Swan Golden Whole or Cream CORN \$3/79¢

Gladiola POUCH MIXES \$1.00

Denorex 4 Oz Lotion \$1.39

SPECIALS
Extra Large EGGS 59¢ dozen

Dry & Clear CLEANSER 4 oz \$1.37 8 oz \$1.87

Double Strength 1 Oz Tube \$2.27 1 Oz \$1.47 Lotion 2 Oz \$2.27

FROZEN FOODS SALE

Parkerhouse ROLLS 24 oz 69¢ pkg

Carnation CRINKLE FRIES 32 oz 69¢

Jeno's Mini PIZZAS 87¢ each

Mrs. Pauls SEA FOOD PLATTER 87¢

Patio MEXICAN DINNER 67¢

COOL WHIP 4 oz 47¢

Fleischman EGG BEATERS 97¢

Hershey Chocolate SYRUP 24 oz \$1.19 Btl.

Log Cabin Regular WAFFLE MIX 32 oz 69¢ box

Heinz WORCESTERSHIRE SAUCE 10 oz 67¢ btl

Ragu SPAGHETTI SAUCE 15% 69¢ jar

Sunsweet Pitted PRUNES 12 oz 89¢ pkg

DIPS 2/99¢

Borden's COTTAGE CHEESE 12 oz 65¢

JIMMY DEAN PORK SAUSAGE 1 lb pkg 1.19 \$2.38 2 lb pkg

BUDGET WISE... GIBSON'S FRESH MEATS

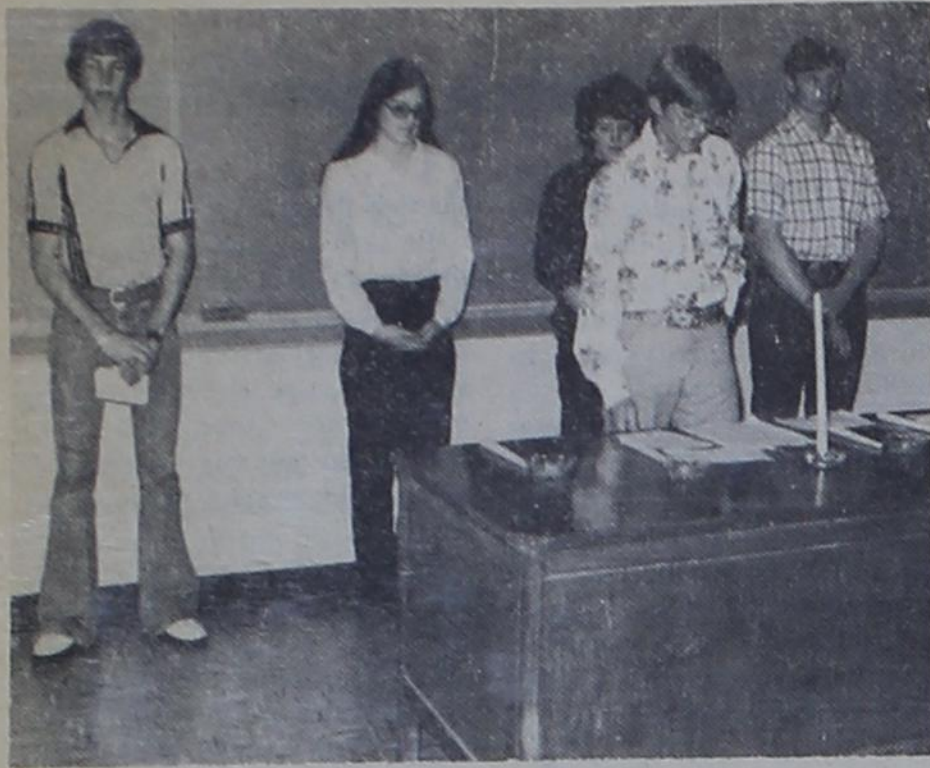
Country Style SPARE RIBS \$1.28 lb

For the Weight Watchers TURBOT FISH FILLETS \$1.69 lb

2 Breasts 2 Drumsticks 2 Thighs PICK OF THE CHICK 99¢ lb

USDA Choice Beef RIB STEAK \$1.98 lb

PORK CHOPS 2 rib chops 2 loin chops 6 center cuts \$1.18 lb



INSTALLING OFFICERS [l to r] Bill Cornell, Pat Coker, Sherilyn Walker, Jay Lindley and Buddy Hall

National Honor Society awards

Awards in various categories have been selected by the National Honor Society and are listed with the persons chosen by category as follows:

Best Dressed: Lynn Thompson, Jenny Deyhle; Tim Brown and Kathy Wilson.

Most Studious: Buddy Hall, Sherilyn Walker; Jay Lindley and Brenda Daniel.

Most Humorous: Dean Hawkins, Kathy Wilson; Jeff Topper and Colleen Cockerham.

Most Talented: Jeff Topper, Sherilyn Walker; Lynn Thompson and Pat Coker.

Most Friendly: Micky McGuire, Kathy Wilson; Phillip Moreman and Lisa McAnear.

Most Athletic: Tim Brown, Jenny Deyhle; Lynn Thompson and Sherilyn Walker.

Mr. and Miss Personality: Mark Jack, Kathy Wilson; Micky McGuire and Medina McAnear.

Most Likely to Succeed: Bill Cornell, Sherilyn Walker and Jenny Deyhle; Buddy Hall and Lisa McAnear.

Most Courteous: Buddy Hall.

Medina McAnear; Bill Cornell and Lisa McAnear.

Most Dependable: Jay Lindley, Sherilyn Walker; Bill Cornell and Jenny Deyhle.

Mr. and Miss C.H.S.: Tim Brown, Kathy Wilson; Mark Jack and Jenny Deyhle.

Most Spirited: Stuart McAnear.

"Scouting" The better life

The Boy Scouts of America has been an important influence for young people for 70 years, and the Scouting Anniversary Week, February 3-9, has as its theme, Scouting...the Better Life.

Over the years, we've watched boys who have been Cub Scouts and Boy Scouts and young men and women who have been Explorers. The training they have received has given them the skills that have helped them in later years.

Now, there are 3,400 youth members in 146 Units in the Adobe Walls Council in our area, and they are receiving the benefits of Scouting's educational program that lead them to a better life.

With a strong emphasis on the outdoors, an advancement program, opportunities to serve as leaders, learning about democracy in their Scouts units, there are 800 volunteer leaders who make it possible for youth to become better citizens...to have a better life.

The Boy Scouts of America also is celebrating another important milestone. Cub Scouting, the program for younger boys, is observing its 50th anniversary this year.

We can be proud of what Scouting has done for youngsters, and we believe that the national movement offers a better life for young people now - and for the years ahead.

Congratulations to all the young people who are in Scouting, to their volunteer leaders who make it possible, and to the organizations in our area that use the Scouting program for youth.

During the month of February, units will be celebrating Scout Sunday in the Church of their choice.

February 4-18, their will be a Scout Display at the Lovett Memorial Library.

Cub Scout Packs will be celebrating the Golden Anniversary with Blue and Gold Banquets.

Kiowa District Scout Skills Show will take place at Pampa Mall, 1-7 p.m., Saturday, March 1, 1980.

The Council Silver Beaver-Eagle Banquet held March 21, 1980 at M.K. Brown Auditorium, will have a guest speaker, "Greenbar Bill" Bill Hillcourt, author of the new Scout Handbook.

All Scouters, families and public invited to attend.



NEW MEMBERS ARE [l to r] Lori Skelton, Brenda Daniel, Karen Alderson, Kelli Hardin, Spencer Hayes and David Lane



LISA MCANEAR, left, Basketball queen and Jenny Deyhle, runner-up

News from the Cotton Board

The Cotton Board has completed action on a number of steps taken to strengthen its supervision of Cotton Incorporated's operation of the industry's research and promotion programs.

Chairman Murray Williams says the Cotton Board has been notified by the U.S. Department of Agriculture that the organization has "addressed all of the issues raised in the audit of the Cotton Board and Cotton Incorporated by the Office of the Inspector General."

The Altus, Oklahoma cotton producer said the most recent step taken was a decision to acquire advisory assistance to aid the Cotton Board in the evaluation of programs and projects proposed by Cotton Incorporated. This will include monitoring teams to review on-going cotton research and promotion activities.

Williams, speaking at a Cotton Board meeting here, note previous steps taken included:

1. Improved reporting on Cotton Incorporated expenditures.

2. Controls to ensure that Cotton Incorporated, in overseas promotional activities for U.S. cotton, will not engage in actual selling of cotton such as channeling inquiries or suggesting possible suppliers.

3. Adoption of procedures to develop more detailed reporting on Cotton Incorporated operations.

"The Cotton Board is confident," Williams said, "that the actions taken to date will result in an improved effort to help cotton increase its share of the fiber market."

The Cotton Board collects per bale assessments from cotton producers to finance research and promotion programs and contracts with Cotton Incorporated to implement these programs.

Members of the Cotton Board are appointed by the Secretary of Agriculture from persons nominated by certified cotton producer organizations across the Cotton Belt.

High-speed rail routes possible

Texas possess the space and available unused fuels to give America its first truly new high-speed rail passenger service.

Railroad Commission Chairman John Poerner has been pressing this point to underpin his suggestion that Texas become the proving ground for high speed rail service to ease U.S. transportation and urban congestion problems.

"The nation wants and needs new options for travel and the nation can do no better than to again look to Texas," he maintains the energy and transportation official.

In appearances before civic clubs recently, Poerner observed there has been too much talk about high speed rail corridors in the U.S. and too few results. "Studies and planning for rapid rail transit in Texas need to begin now," he stressed.

Poerner pointed to the so-called Texas Triangle formed by

Questions and Answers SSA

Q: When my brother retired last year, he told me that Social Security was using a new method to calculate benefits. I plan to retire later this year. How does the new method work? Will I get a smaller benefit under the new method?

A: The new method of calculating benefits applies to workers who reach 62, become disabled, or die after 1978. Under this method, actual earnings for past years will be adjusted to take account of increases in average wages since 1951. These adjusted earnings will be averaged and a formula will be applied to the average to determine the benefit amount. Under the old method, benefits were based on average earnings over a period of years, using the actual dollar value of past earnings. To protect people now nearing

retirement, benefits for workers who reach 62 after 1978 and before 1984 will be figured under both the old method and the new method. They will be paid whichever benefit amount is higher.

Q: My father gets Social Security Disability Benefits. I think he may be eligible for SSI payments, too. If he applies for SSI, will he have to wait for another medical review of his condition before payments can start?

A: No. The Social Security Office can determine whether a claimant is currently receiving Social Security Disability Benefits. If so, and if the claimant is otherwise eligible for SSI, the Social Security Office can immediately authorize SSI payments without a further medical review.

San Antonio, Houston and the Dallas-Fort Worth metroplex as a region favorable for a rapid rail corridor system to move commuters and other travelers, using speeds up to 150 miles per hour.

The RRC Chairman explains: 1) In contrast to most rail corridors in the eastern U.S., a rapid rail system around the Texas Triangle would essentially traverse open country with few obstacles to swift and safe passage. It should be based upon new, protected tracks used only for passenger service.

2) The "triangle" lies in or near bountiful sources of fuels -- lignite and coal -- to supply electric generating plants to power a high speed, environmentally clean rail system.

3) Texas boasts legions of determined and productive workers who have an intense sense of pride in their state and its history and capabilities.

4) Texas has a deep reservoir of engineering and other scientific talent to design and operate intricate, split-second systems as was proven by the leading role the state held in the successful man-on-the-moon program of the Sixties.

The triangular sector is the home of almost half of Texas' 12 million people and is expected to register a 120 percent increase in travel demand within 10 years, Poerner told civic and service leaders in his recent visits with them.

conserve energy and wise use of "our resources" dictates that America search for transportation alternatives such as a rapid rail transit. Gov. William P. Clements recently requested the Railroad Commission to conduct a study of rail passenger service for Texas, he has pointed out.

In mid-January, Poerner and members of the Commission's Rail Planning Section met with officials of the Japanese National Railways regarding JNR's "bullet train" system that moves passengers at speeds of 130 miles per hour.

"After watching their presentation," reported Poerner, "I must tell you that I am excited by the possibilities and I am ready to push hard for a similar high-speed commuter train system to link this state's largest cities.

"Texas can quickly move to the front of rail transport in the United States. So far, we have not even begun to taste the full benefits of such a system, as have the people of nearly every other developed nation of the world."

Poerner emphasized that rail service is about two and one-half times as fuel efficient as the automobile in intercity travel. The principal users of high speed rail service would be those who now drive at increasingly great expense.

Also, Poerner reported, in the last 13 to 15 years of operation, the Japanese "bullet train" system has produced a profit at the rate of 50 percent per year, and has carried nearly 1.5 billion passengers without serious injury and without a single fatality.

"I am prepared to lobby for such a system with the federal government and the Texas congressional delegation," he told members of the civic organizations.

"The Texas high speed system should have terminal facilities linked to air and bus service," he adds, "so that the advantages of speedy mass transit can be placed before the widest possible range of Texas residents."

The 1980 census asks when a person moved into his or her current residence, but why? Because it helps identify transitional communities and aids planning for schools and law enforcement.

The 1980 census is expected to show a nine percent increase in the U.S. population for the past decade, the smallest increase in the Nation's history except for the 1930s, the time of the Great Depression. Why will the 1980 census ask if people have complete plumbing facilities? The lack of indoor plumbing is a good indicator of substandard housing and helps identify areas that need governmental assistance.



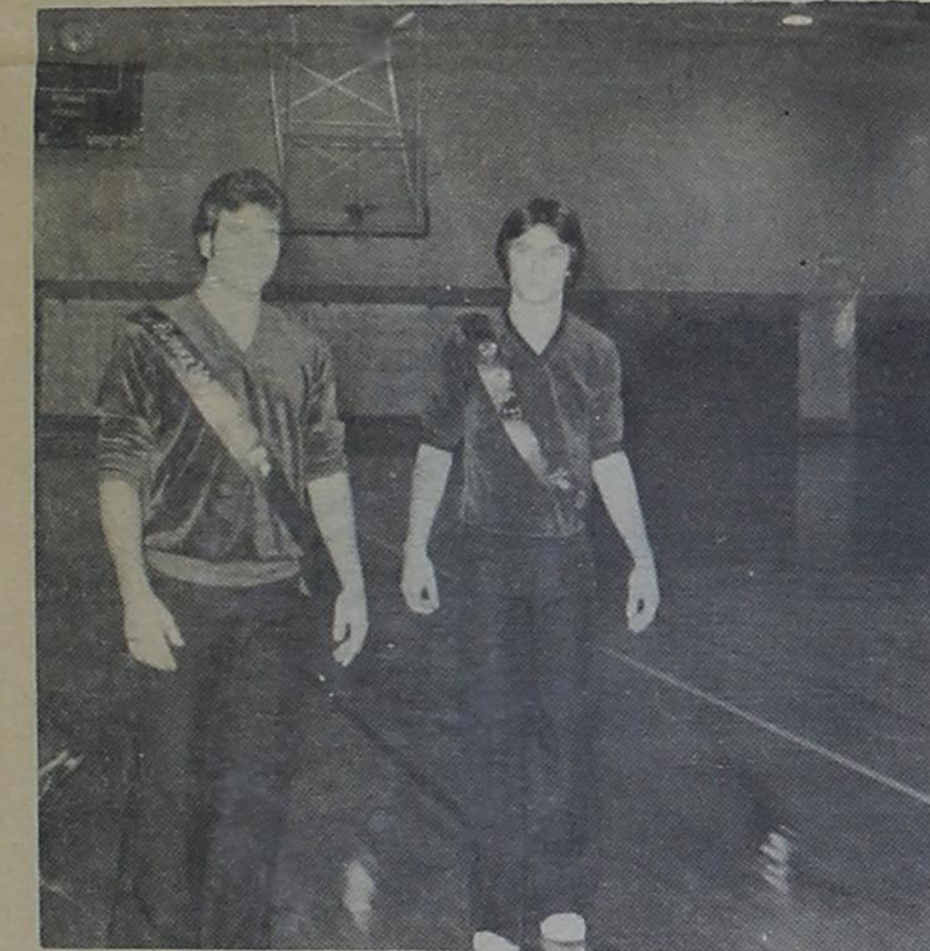
WINNERS NHS Backrow, Dean Hawkins, Mark Jack, Buddy Hall, Bill Cornell, Jay Lindley, Micky McGuire and Stuart McAnear;

front row [l to r] Tim Brown, Kathy Wilson, Jenny Deyhle, Sherilyn Walker, Medina McAnear, Jeff Topper and Lynn Thompson



RUNNER UPS FOR NHS top row Mark Jack, Jenny Deyhle, Lisa McAnear, Phil Moreman, Buddy Hall, Bill Cornell, Jay Lindley, Micky

McGuire, Lynn Thompson, Jeff Topper; sitting Tim Brown, Kathy Wilson, Pat Coker, Colleen Cockerham, Brenda Daniels, Sherilyn Walker and Medina McAnear



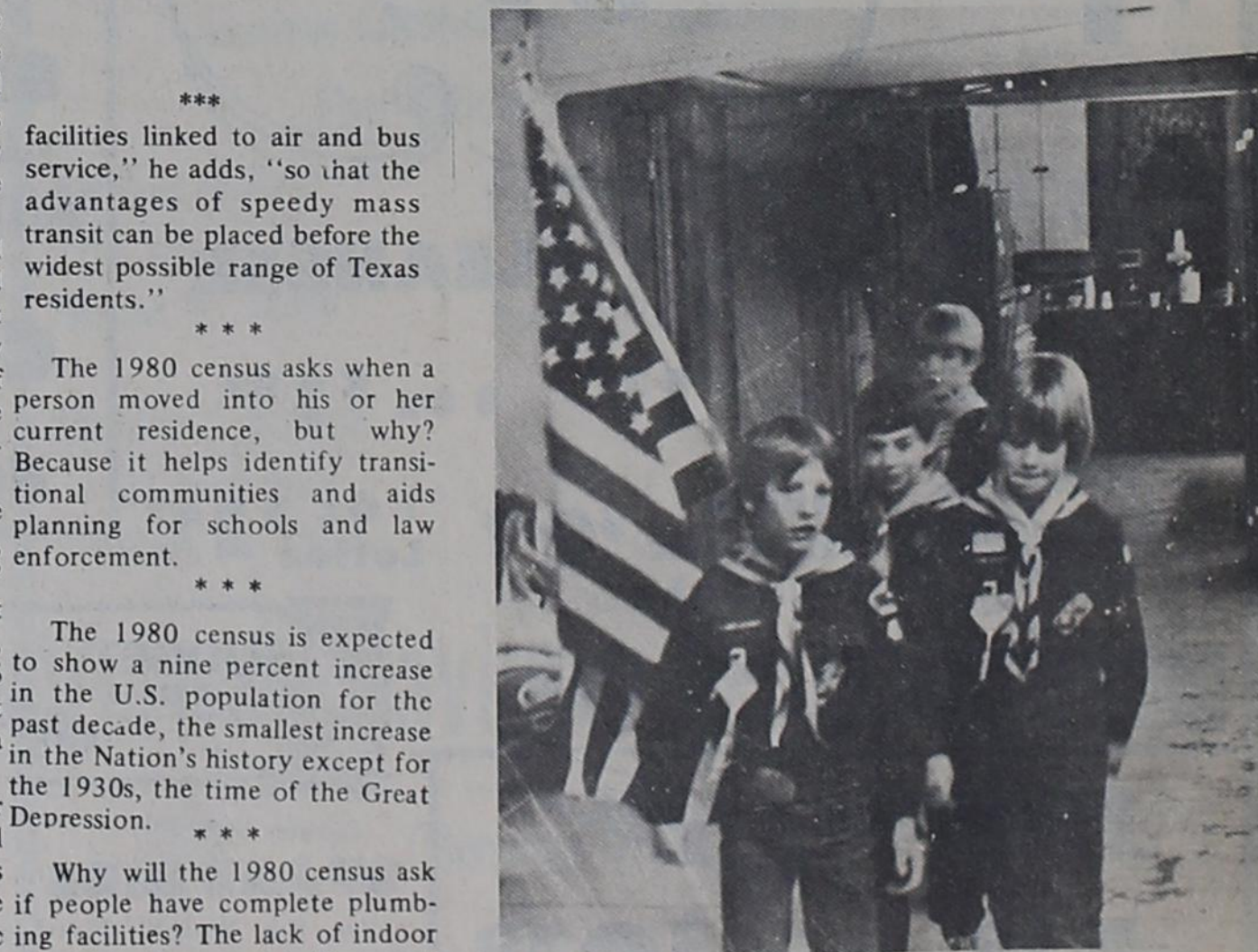
TIM BROWN, runner-up and [right] Lynn Thompson, Basketball king



Cub Scout awards were presented by Joe Chambers of Pampa



VIPs EVERYWHERE at the Cub Scout Banquet



CUB SCOUTS [l to r] are Todd McAnear, Bradley Braddock, Matt Mann and Todd Phillips



JR. HIGH 7TH BOYS Top row Carl Cox, Todd Robertson, Rodney Smith, Stan Garland, Brett White; 2nd row Lynn Alderson, Shawn Studer, Dean Kearly, Tim Cole, Robert Asher; 3rd row Stanley Gardner, Rodney Keown, Ben Clifford,

Earnie Jaramillo, Chris Downer; 4th row Rodney Webb, Dewey Mincey, Shane Klinnert, Chris Phillips, Richard Richardson and Craig Kennedy Bottom row Kevin Thompson, Mitch Johnson, Blade Barker, Earnie Copland, Jerry Morris

Bronchos down Shamrock 74-54

The Clarendon Bronchos downed the Shamrock Irish 74-54 to start play in the second half of District 2A play. On the following Friday, however, the Bronchos fell 28-39 to Memphis in a contest that was closer than the score indicates. The victory over Shamrock was largely the result of an outstanding offensive performance by the Bronchos, who shot 57% from the field for the game. After a slow start in which they trailed 2-7 halfway through the first quarter, the Bronchos' press began to work and they pulled ahead 16-13 at the close of the first frame. Clarendon continued to open the gap, leading 37-26 at halftime. After a slower-paced third quarter which ended 52-40, the Bronchos overcame a fourth quarter Shamrock press, racing away to the 74-54 final. Alvin Reese led the attack with a red-hot 10 for 20 shooting performance to net 20 points. Lynn Thompson also had 20 points while leading the Bronchos fastbreak attack. Brad Thompson also was in double figures with 12 points in the contest. Tim Brown and Ken Jones added 6 points apiece, while Lance Thornberry and Randy White contributed 4 points each. Brian Hill completed scoring with 2 points. Brian Murray and Drew Thornberry also saw action for Clarendon. A change of tactics was in order for the game with the

Memphis Cyclones. In order to combat the greater size of Memphis, the Bronchos utilized a deliberate style of play throughout the first three periods. Early in the game the Bronchos were successful, but a few crucial turnovers and key calls allowed the Cyclones to slip ahead 10-6 right at the end of the quarter. They pulled to a 10 point lead at half. The Bronchos battled on even terms throughout the third quarter and trailed 18-28 at start of fourth quarter action. During the last period the Bronchos began a comeback, cutting the margin to 7 points with five minutes left. That was to be as close as the Bronchos were to get, however, as they were forced to press, which in turn led to fouls. Memphis hit 3 of 4 last quarter free tosses to hold the visiting Bronchos off. Again, the final score was Memphis 39, Clarendon 28. Lynn Thompson scored 14 points and Ken Jones had 9 points to lead the Bronchos offensive effort. Brad Thompson and Alvin Reese each added 2 points, while Lance Thornberry completed scoring with 1 point. Tim Brown, Hosea Hearn, and Drew Thornberry also played in the contest. The Bronchos stand at 16-8 for the year and 1-1 in District 2A second half play with a home contest left with White Deer, and road games at Wellington and Panhandle.



JR. HIGH GIRLS /In top standing Susan Mosley, Amy Hancock, Gayla Clifford, Annette Watson, Vicky Holman, Debra Blaggs; front Tish Robertson, Terry Lefew, Muzzie Hayes, Kay Bell, Wendy McCombs, Judy Hightower, kneeling Paula Noble, Kim Formway, Isabel Luna, Toni Micheals, Christine Jaramillo, Shelly Hicks

Chamberlain news

By MRS. HAWLEY HARRISON

Chamberlain Community Center held their regular meeting last Friday night and there was a nice crowd in attendance. Mr. and Mrs. Lucy Noble and Mr. and Mrs. Lloyd Risley were our hosts and hostesses. Everyone enjoyed the fun and games. Next meeting will be February 15th. Mr. and Mrs. Frank Corder Sr. went to Amarillo last Thursday and visited Mr. and Mrs. Orville Swanson, Willie and Jamie, and brought Jamie home with them for a visit. Mr. and Mrs. Charlie Hearn visited Mrs. Richard Cannon last Monday. We were glad to learn Mr. Charlie Bates was able to be home for a few days but he had returned to his daughters home for awhile. Mr. and Mrs. Tom Bogard of Bula, Texas visited Mr. and Mrs. Roy Blackman Thursday and Friday. Mrs. Pauline Koontz visited her mother, Mrs. Fannie Stone and Mrs. Blanche Smith at the Clarendon Rest Home Friday afternoon. Ewayne and Janice Barbee and little Beth visited her parents Mr. and Mrs. Norman Fry of Booker, Texas Thursday. Rev. Robert Shugart, Mr. Delmar Koontz, Mr. Dennis Harrison, Mrs. Betty White, and Mrs. Betty Lane were in Sayre, Okla. on business church Saturday. Mr. and Mrs. Dennis Lindley and Mr. and Mrs. Tommy Lindley attended a fish and chicken fry at Lakeview Saturday night sponsored by Elanco Corporation, and Tommy was real lucky. He won a 5 gallon

can of Treflan. Jerry and Kathy May and children visited Dennis, Loretta and Anna Harrison Saturday night. Red and Louise Carter of Dumas visited Mr. and Mrs. Henry Mann and because of a gas leak they all spent Saturday and Sunday nights with Mrs. Clara Mae Carter. Mr. and Mrs. Richard Dingler visited Jiggs and Evelyn Mann Sunday afternoon. Anna Harrison visited Mrs. Hawley Harrison Sunday afternoon. Mr. and Mrs. Ernest Barbee were Sunday dinner guests of Mr. and Mrs. Ewayne Barbee. Mr. and Mrs. Frank Corder Sr. spent Saturday night and Sunday with Mr. and Mrs. Orville Swanson, Willie and Jamie. Mr. and Mrs. Henry Mann and Mrs. Clara Mae Carter visited Jiggs and Evelyn Mann Sunday night. Dennis Knowles visited Mrs. Richard Cannon Friday night. Mr. Lee Christie of Idalou and Mr. Richard Christie of Big Spring visited Mrs. Florence Harp Saturday afternoon. Mrs. Freda Holland and baby of McLean and Mrs. Betty White and Mrs. Genoa Lowe visited Mrs. Richard Cannon Monday afternoon. Mr. and Mrs. Wayne Chaney and Mr. and Mrs. Dean Chaney of Amarillo spent the weekend with Mr. and Mrs. W.R. Chaney. We were sorry to learn of the death of Mrs. Carmen Wrights aunt, Mrs. Chloe Rogers. Our sympathy goes to the loved ones and friends in their loss. She was 81. Mr. Wayne Lowe of Amarillo

visited his mother Mrs. Genoa Lowe Saturday night and Sunday. Mr. Charles Blackburn finished his cotton harvest Monday and most of all of our area is finished and plowing has begun. We need rain.

New car registration

1980 Olds purchased by Johnnie Burrell, Twitty, TX from Chamberlain Motor Co. 1980 Cadillac purchased by Larry Carl Barbour, Wheeler, TX from Chamberlain Motor Co. 1980 Buick purchased by J.B. Sudbury, Amarillo, TX from Chamberlain Motor Co. 1980 Cadillac purchased by Wayne Wilson, Center, Colorado from Chamberlain Motor Co. 1980 GMC Pickup purchased by Johnny K. Miller, Pampa, TX from Chamberlain Motor Co. 1980 GMC Pickup purchased by Grant Trucking, Amarillo, TX from Chamberlain Motor Co. 1980 Pontiac purchased by Gary Masters, Greensboro, North Carolina from Chamberlain Motor Co. 1980 Cadillac purchased by Amy L. Birdwell, Ft. Worth, TX from Chamberlain Motor Co. 1980 Buick purchased by Vernoy Willis, Amarillo, TX from Chamberlain Motor Co. 1980 Olds purchased by Richard L. Swisher, Beaver, Oklahoma from Chamberlain Motor Co. 1980 Olds purchased by James R. Ross, Quail, TX from Chamberlain Motor Co. 1980 Chevrolet Pickup, purchased by Gene E. Steed, Groom, TX from Alderson Chevrolet. 1979 Chevrolet purchased by Elizabeth Agnes Schulze, Clarendon, from Alderson Chevrolet 1980 Chevrolet Pickup purchased by John Session, Turkey, from Alderson Chevrolet. 1980 Chevrolet LUV Pickup purchased by Teddy W. Ashcraft, Clarendon, from Alderson Chevrolet.

Hell is no joke

By REV. WAYNE NAYLOR

In hearing or talking about hell men seem to think that the devil and his angels and the place of their abode is just a joke. The devil is described as having a long pointed tail, horns, a pitchfork, and red flannel underwear and when pictured thus, those who hear go into spasms of laughter as if hell and its inhabitants were but a joke. In Luke 16:19-31 we have anything but a funny story. It begins with "There was a certain rich man" vs. 19 and "a certain beggar" vs. 20 which does not begin a message in the Holy Bible as if when it were finished we could laugh about it. "It came to pass that the beggar died, and was buried; and was carried by the angels into the bosom of Abraham: the rich man also died, and was buried; and in HELL he lifted up his eyes, being in torments, and seeth Abraham afar off, and Lazarus in his bosom. And he cried and said, Father Abraham, have mercy upon me, and send Lazarus, that he may dip the tip of his finger in water, and cool my tongue; for I am tormented in this flame." Vses. 22-24. The Scripture indicates that Hell's experiences are not to be scoffed or laughed about, for they are real, not a joke. In the passage which we have called to your attention and quoted a part above there are several things that we want you to know. First, people are going there, the rich man did, Second, people who go there cannot get out, the rich man couldn't, Third, people who go there have a sense of feel or touch, the rich man was in torment, Fourth, people who go there are conscious of where believers went, the rich man did, (he saw

Lazarus in Abraham's bosom vs. 23). Fifth, people who go there become concerned too late to do anything about it, the rich man did, (Then he said, I pray thee therefore father, that thou wouldest send him to my father's house: for I have five brethren; that he may testify to them, lest they also come into this place of torment.) Vs. 27-28 It is my conclusion from the study of this passage that the cries from hell by those who have gone there are just as real as the rich man's cries and it may be that someone I love and care about has not become a believer yet. Luke 16 tells anything but a funny story and if you can speak of the devil and his place of abode (hell) as if it were a joke the May God have mercy on your soul. Pastor First Baptist Church, Hedley, Texas

RCA Public review

Last week started a 60-day public review period during which time interested people are being asked to comment on the direction they think future U.S. Department of Agriculture conservation programs should take. The public review period started January 28 and ends March 28. Four draft documents describing the Nation's nonfederal soil and water resources, their condition, projected demands, and seven proposed alternative strategies can be reviewed at the local SCS office on S. Kearney. Jim Donaho, District Conservationist said the proposals for a national soil and water conservation program were developed by a coordinating committee made up of members from nine U.S.D.A. agencies plus the Office of Management and Budget and the Council on Environmental Quality. The process, mandated by the Soil and Water Resources Conservation Act of 1977 (RCA), included consideration of public input from 9,000 public meetings held in the United States during 1978. The Act directs the USDA to appraise the condition of the Nation's renewable natural resources and to propose alternative programs to guide the Nation's conservation activities. The appraisal revealed that one-third of the Nation's cropland-136 million acres-is eroding at an excessive rate. Basic information about the

RCA process and proposals may be seen in four documents: The first document, "Draft Appraisal Part I", describes the status and condition of our natural resources and provides information on their quantity and quality and major uses of nonfederal land. The completed draft identifies national conservation objectives for:--Reducing erosion and preserving prime farmlands--Improving water quality--Conserving water--Improving fish and wildlife habitat, including the preservation of wetlands--Reducing up-stream flood damages--Conserving energy--Solving related resource problems. The second document, "Draft Appraisal Part II", projects demands on soil and water resources to the year 2030 and suggests levels of management that could be used to preserve these resources. It also summarizes trends in rural land ownership and describes the contribution of state and local programs to soil and water conservation. The third document, "Program Report and Environmental Impact Statement", outlines seven possible approaches-called alternative strategies-for changing USDA conservation programs and outlines the probable environmental impact. The fourth document, "Summary of Appraisal, Parts I and II, and Program Report" is a brief summary of the other three documents. During the public review period, three public meetings

will be held in Texas to discuss content of the documents and provide an opportunity for comments. The meetings will be held in Arlington on February 26; Lubbock, March 4; and San Antonio, March 6. Interested citizens are invited to send written comments about the documents or suggestions about future conservation programs to the RCA Response Analysis Center, P.O. Box 888, Athens, Georgia 30603. Anyone interested in review the documents or finding out more information about upcoming RCA meetings should contract the Soil Conservation Service Office. 874-2339.

Microwave ovens are 40 percent energy efficient, compared to 14 percent for electric ovens and seven percent for gas ovens, according to the National Bureau of Standards, reports Nancy Granovsky, a family resource management specialist with the Texas Agricultural Extension Service, The Texas A & M University System. A home is still the best investment you can make, says a housing and home furnishings specialist with the Texas Agricultural Extension Service, The Texas A & M University System. Housing prices are expected to stay even with inflation -- one reason homeowners are now making so many improvements and additions, Dr. Jane Berry reports.

Clip and Save



FEB. 1980 MULKEY Theatre CLARENDON, TEXAS GARY BARNHILL - PHONE 874-2241

Clip and Save

SHOW STARTS AT 7:00

Thursday-Friday Saturday-Sunday 7-8-9-10

Thursday-Friday Saturday-Sunday 14-15-16-17

Thursday-Friday Saturday-Sunday 21-22-23-24

Thursday-Friday Saturday-Sunday 28-29-March-1-2

ROGER MOORE JAMES BOND 007 MOONRAKER Starring LOIS CHILES MICHAEL LONSDALE as DRAX RICHARD KIEL as JAWS and CORINNE CLERY

The Fish That Saved Pittsburgh JULIUS ERVING JONATHAN WINTERS MEADOWLARK LEMON KAREEM ABDUL-JABBAR MARGARET AVERY

AUDIENCES WILL SIMPLY CHERISH BREAKING AWAY PG COLOR DENNIS CHRISTOPHER/DENNIS QUaid JACKIE EARLE HALEY/BARBARA BARRIE PAUL DOOLEY/ROBYN DOUGLASS

ROLLER BOOGIE PG United Artists It's love on wheels! LINDA BLAIR JIM BRAY starring BEVERLY GARLAND ROGER PERRY JIMMY VAN PATTEN - KIMBERLY BECK

CONSOLIDATED REPORT OF CONDITION The Farmers State Bank & Trust Company Clarendon, Texas. Includes financial statements and bank information.

The Lions Tale

By GENE ALDERSON

The Clarendon Lions Club held its regular meeting at noon on Tuesday at the Lions Hall with 24 members and the Lion Sweetheart present. Following the regular opening ceremonies, Boss Lion Courtney called on Lion Nixon to fill us in on Clarendon College Basketball for the past several weeks. Lion McCombs then brought us a program on the importance of proper packaging of items to be mailed.

When topstitching two or more rows in the same area, stitch in the same direction to avoid fabric bubbles or pulls, suggests Becky Saunders, a clothing specialist with the Texas Agricultural Extension Service, The Texas A & M University System.

Realistic expectations, privacy, open and honest communication, flexibility in roles, companionship, equality, identity and trust are constant challenges of happily married couples, says Dorothy Taylor, a family life education specialist with the Texas Agricultural Extension Service, The Texas A & M University System.

Howardwick partyline

By NORMA CORGILL

Louise Garvin of Turkey, Sue Strange of Claude took their mother, Norma Corgill to Amarillo Saturday, to visit her sister Mrs. O.T. Hill who is in the St. Anthony Hospital. They found her condition improved, though she will be in the hospital a few more days. The past two days have been so lovely, makes you want to get out side, work in flower beds and plant garden. But that ole ground hog was bound to have seen his shadow Saturday. So guess I'll wait awhile. Bro. Robert and Faye Griffin, Dale, Darlene and Ray of Durant, Oklahoma, visited in the home of Henry and Cora Bland Saturday. The sales people are back out at the office. It seems good to see all the activity going on again.

RICKY RATTAN Owner
 TEX NAYLOR
ZENITH
SALES & SERVICE
RATTEN T. V. SERVICE
AFTER THE SALE, IT'S SERVICE THAT COUNTS
 Fm - 2 Way Communications Cable TV
 OFFICE-HOME BOX 912
 CLARENDON TEXAS 79226

1973-Buick Regal-56,000 mi.-Everything incl. sunroof
 1978-Grand Prix-29,000 mi.-all the extras
 1975-Buick LaSabre 4 door-26,000 mi. Excellent car at economy price
 1978-Olds Cutlass-29,000 mi.-Beautiful little car with lots of extras and good rubber
 1979-Olds 98 Regency Coupe-29,000 mi.-like new with all the things that make a car be called loaded.
 1977-Jeep Cherokee Waggoner-4 wheel drive all power-air-AM-FM stereo-8 track only 36,000 mi.
 1979-Buick Riviera-10,000 mi.-6 cyl.-turbo power all power-tilt-cruise-AM-FM stereo tape. Lots of car and at a large discount off a comparable new car.
 1978 & 1979 Cadillacs (4 of them) all low mileage, all loaded-2 coupes-2 sedans.-If you want a big car at a fair price-What an opportunity.
 Many-many other nice used cars with low mileage.
 Free Coffee-Cokes & Popcorn every day.

FRED CLIFFORD AT CHAMBERLAIN MOTOR CO 874-3527

CLASSIFIED ADS

TO BUY, SWAP, TRADE OR SELL 874-3541
ALL CLASSIFIED ADS MUST BE PAID FOR IN ADVANCE

Mrs. Bond's Baking
 Located at Mobile home South on Koogle at the First turn west. 874-3355 49-tfc

HELP WANTED: \$370/thousand for envelopes you mail. Postage paid. Free application. K.M. Wilson Electra, Texas, 76360 3-4tp

FOR SALE: Battery feed fryers 874-2829 or 874-2822 5-2tc

HOUSE FOR SALE: 10% down, 10% interest, 10 years to pay. E.W. Anglin 874-3969 6-tfc

WANTED: 2 or 3 bedroom home, central heat, lots of storage, built in appliances, good condition. Call (806) 355-1685 6-2tp

WE WILL NOT be responsible for any debts other than our own. Jerry & Patty Lemons. 6-3tp

ALTERNATIVE
 Alternative to an Abortion for an untimely pregnancy Call THE EDNA GLADNEY HOME Texas Toll-Free 1-800-792-1104 51-tfc

FOR SALE: Feeder pigs 874-3946 4-4tp

FOR SALE: Cane hay Bob Cole 874-2030 5-4tp

WANTED: Light hauling-minimum \$8 per hour. Call after 4:30 p.m. 874-2283 4-3tp

FOR RENT: One bedroom apt. furnished. Phone after 6 p.m. 874-2814 6-1tc

NOTICE OF SALE
 The City of Hedley is taking sealed bids on the following vehicles. Bids will be opened at 6 p.m. February 7th. at the Hedley City Hall. The City reserves the right to reject any or all bids. Proceeds from the sale of these vehicles will be used to help pay for the New Hedley Community Fire Truck. 1952 Reo 1/2 Ton Army Surplus Truck with 500 Gallon Tank, Pump. 1945 GMC Tank Truck, 750 Gallon, with Pump. 1951 Willys Jeep, Army Surplus For further information contact the Hedley City Hall. 5-2tc

OFFICE SUPPLIES
 Bookkeeping Supplies Storage Boxes Office Machine Ribbons Office Furniture Clarendon Office Supply and Printing G.W. Estlack Clarendon, TX 79226

FREE: Part poodle puppies, make lovable pets. Call 874-2029 6-2tp

FOR SALE: Gas dryer \$25 and Kenmore washer \$25. Call 874-2381 after 6:30 p.m. 6-2tc

FOR SALE: 986 International tractor, fully loaded with less than 300 hours. Also 1968 model 656 International tractor-clean. Call after 5 806 259-3247 5-tfc

WE ARE NOW BUYING silver dollars, halves, quarters and dimes. Call weekdays after 6 p.m. and all day Saturdays and Sundays. 874-3451 4-tfc

GARAGE SALE: arts and crafts, tiems. Proceeds to finance Cosmotology students trip to Dallas at 7th and Taylor inside. Thurs. Feb. 7 9-5 Fri. Feb. 8, 9-noon. 6-1tp

FOR RENT: Two bedroom home, near school, college and churches. 510 S. Bugbee. Call 867-2241 Lakeview or 874-2594 4-7tp

FOR SALE: 3 bedroom, with 2 room basement, 874-2485 2-tfc

REAL ESTATE SALES

IF YOU'RE LOOKING FOR A HOME, SEE ME BEFORE YOU BUY

I have some selection 2, 3 and 4 bedroom homes. From \$9,500.00 to \$45,000.00

Contact me between 8 a.m.-5 p.m. at my office or after 7 p.m. at home. Call 874-3896 Day or Night.

See or Call Clyde I. Price Real Estate Broker

NEEDED: Two paid nursery workers for Clarendon First Baptist Church. Call 874-3833 or 874-2575 5-2tc

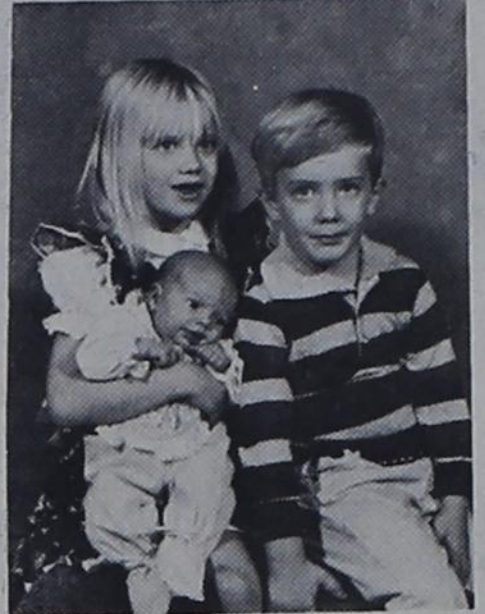
FOR SALE: 1979 Prowler Travel Trailer, 31 ft. ref.-air-awning \$8,700.00 874-3795 5-3tp

FOR SALE OR RENT: Nice 2 bedroom house 1800 sq. ft. 7th and Ellerbee Clarendon, Texas 856-4401 5-4tp

FOR SALE: 5.3 acres, 10 miles North of Amarillo in Tierra Grande call 874-2882 6-16f

SPRING & SUMMER Fabrics are now in stock at Ashtola Fabrics 874-2017 6-2tp

PRETTY AS A PICTURE



AUDRA AND BILLY BOB HOGGARD with baby Candl are the children of Mr. and Mrs. Bobby Hoggard and grand children of Mr. and Mrs. Gene Swearingen of Childress and Mr. and Mrs. Clyde Hoggard of Hedley

FOR SALE: Levelled corner lot #60 on Pueblo St. at Howardwick. \$2,500 ph. 806 374-3906 6-4tc

Common Sense Tips

Hints For Homeowners

DISHWASHERS
 An automatic dishwasher takes care of one of the most disliked jobs in the kitchen. This popular appliance is fast becoming a necessity for many busy families.



Here are a few tips from Whirlpool home economists to help you get the most from your dishwasher.
Preparation—Pre-rinsing of normal food soils is usually not necessary. However, before placing items in the dishwasher, remove bones, large pieces of food, and empty cups and glasses.
 It may be necessary to loosen and scrape cooked-on foods in pots and pans. For best cleaning action, place pots and pans in the bottom rack with the soiled surfaces face down. Use only a detergent made especially for automatic dishwashing.
 Before you arrange to finance your new or late model car, compare my new low cost finance rates. I can save you money.
 Emmett O. Simmons At the Farmers State Bank

TUNEUPS-MUFFLER OR MAJOR OVERHAULS
 On The Farm Service STEVE'S AUTOMOTIVE AND INDUSTRIAL 323 S. Kearney 874-3446 Clarendon, Tex. Memphis Singer Sewing Machine Sales Service For contacts call Goodman Furniture I am in Clarendon every two weeks on Thursday 43-tfc

Many of today's newspapers derive part of their name from the word *gazetta*, a small coin in the 16th century Venetian government charged to read posted news bulletins.

FELICITY GREENHOUSE AND NURSERY

David D. Lowrie Naylor Mt. Clarendon, Texas 79226
 Several varieties of each of the following available in Feb when orders placed in January.
 Few varieties of each of the following available for immediate delivery
 Fruit Trees Shade Trees
 Grapes Ornamental Trees
 Berries Flowering Shrubs
 Stock guaranteed fresh, disease free and true to name.
 874-3488 After 6 p.m. Weekdays and all day Saturday

TERMITE PROBLEMS

Call for the best termite control Over 20 years experience Call Colelet 383-7075 7608 N.E. 23rd Amarillo, Texas 79107 State Lic. No. 1178 Owner Operator
LEO RUSSELL

FREE ESTIMATES
NEED PAINTING OR REMODELING DONE
 CALL US after 5:00 p.m.
 PAINTING SUE SCHAEF 944-5211 REMODELING JOHNNY SCHAEF

RAY'S APPLIANCE SERVICE

Franchise For Kitchen Aid Dishwashers Sales and Service 874-3801
 D. P. Ray, Owner
 General Electric Franchise Dealer Heating and Air Conditionion We service all makes of Air Conditioners Freezer & Refrigeration Service & Repairs

PUMPING SERVICE

septic tanks, mud pits, grease traps, etc FRFF estimates
SELMAN'S CUSTOM CONTRACTING
 Call Fed Selman 874-2481

MARBIL CUSTOM BUILDERS

General Contracting Phone 874 3717
 Patios, Sun Decks, Roofing, Remodeling, Painting, Contract Framing, Custom Cabinets, General Repair, References, Free Estimates,
Bill, Andy, Fed Selman
 Locally Owned & Operated

BAILEY ESTES AND SON

WELDING FABRICATING
 Enamored Steel Buildings Custom BARNs Portable Buildings

CANTRELL LP GAS

S. J. "Shorty" Tolbert 874-2079
 Junior Hill 856-2801
 Sales & "Complete Service" new propane tanks

SELMAN'S CUSTOM CONTRACTING

★ General Repair
 ★ Painting ★ Dashing
CALL FED SELMAN 874-2481

Brown-McMurtry Implement

SALES AND SERVICE
 PHONE 806-823-2441
 BOX 777 SILVERTON, TEXAS 79257
 DON BROWN HOME PH. 823-2292 CLARENCE WARD HOME PH. 823-2083

THE CABINET MAN

Custom Cabinets for any room
 Specializing in 24 Door Designs
 Kitchens Bathrooms Formica Counter Tops
 Custom made Gun Cabinets Hatches Desks Bookcases
 North of Nodoe Grds.
NORMAN STEWART

KIRBY SALES & SERVICE
 illeye Street Howardwick, Texas (Sherwood Shores IX) Phone 874-3403 for repair on any make vacuum cleaner 33-tfc

COMMERCIAL PRINTING
 Business and Personal Stationery & Cards Business Forms & Statements Window Cards Whatever your printing needs, check with us. CLARENDON OFFICE SUPPLY & PRINTING Mr. & Mrs. G.W. Estlack Phone 874-2043 Clarendon, TX 79226

SANDERS REAL ESTATE
 720 South McClellan FOR SALE: Land, one and two story houses. See us first. Listings Wanted Oneta 874-2533 Jaqueta 874-2021 Junlor Spier 874-3336 After 5 p.m. call Mike Spier 874-3498 Billy Neal Spier 874-2383 After 6 p.m. call Thelma 874-2649 Jimmie 874-2602

LAMPS, LAMP PARTS, all light bulbs
HOUSE OF SHADES and
LAMP REPAIR
 Wolflin Avenue Wolflin Village Amarillo, Tex 79019
 Service comes Naturally

CORNELL & BRADDOCK SHELL

FLOWERS ALL OCCASIONS
I Will Serve Hedley
JOANE'S 874-3621

James F. Hayes & Co.
 RESIDENTIAL - COMMERCIAL PROPERTIES
 CLARENDON, TEXAS 79226
 CAROL BRYANT Off: (806) 874-2361 Res: (806) 874-3649

WEST TEXAS GAS, INC.
 Code pumps now in operation 24 hour self-service Regular-no-lead, and Diesel Wholesale Price Billed Monthly Requirements: \$25.00 Refundable deposit and \$25.00 annual rental fee Call 874-2155

Applications are now being taken for persons interested in admission to Clarendon Care Center, an 18 bed Personal Care Home in Clarendon, Tx. The facility is designed to aid persons who need assistance in such areas as medication administration, personal hygiene, ambulation, and nutritional needs. The services are provided in a safe, comfortable, and home-like atmosphere with an emphasis on helping the resident retain as much independence as possible. Persons interested in this type of care or those having questions may contact Larry White at 874-3711, or write Clarendon Care Center, Box 868, Clarendon, Tx. 79226.

Money Market 11.985%
 Rate effective through Wed., Feb. 13, 1980
 No financial institution pays a higher rate on \$10,000 six-month certificates. Federal regulations prohibit compounding of interest on Money Market Certificates, and there is a substantial interest penalty for early withdrawal.
First Federal Savings & Loan Association
 BRANCH OFFICE Wellington P.O. Box 109 Chilcross, Texas 817-937-2514 BRANCH OFFICE Memphis

POLITICAL CALENDAR

COUNTY JUDGE

W.R. (Billie) Christal

SHERIFF

Jimmy Thompson
James E. Johnston

STATE SENATE 31ST DISTRICT

Bill Sarpallus
Gerald McCathern

DISTRICT ATTORNEY

David McCoy

COMMISSIONER PRCET 1

James R. Graham

TAX ASSESSOR-COLLECTOR

Wanda Smith



JACK HIGHTOWER
13th District, Texas

News from Washington

A six-member House delegation left Saturday, February 2 on a factfinding mission to Pakistan, India and Saudi Arabia to examine conditions in the area since the Soviet invasion of Afghanistan and to evaluate the President's request for \$400 million in additional military and economic assistance to Pakistan. Congressman Dave Obey, D-Wis., ranking Democrat on the House Appropriations Subcommittee on Foreign Operations, will head the delegation, which includes House members

representing the Appropriations, Budget, Armed Services and Intelligence Committees. The group will be accompanied by officials of the Defense and State Departments. Other members of the delegation are: Rep. Matt McHugh, D-N.Y.; Rep. Joel Pritchard, R-Wash.; Rep. Jack Hightower, D-Tex.; Rep. David Emery, R-Maine; and Rep. Pete McCloskey, R-Calif.

"The Soviet invasion of Afghanistan has the potential for affecting the daily lives of Americans for years to come," Obey said. "In reacting to that action and in evaluating the President's aid request, Congress should know as much as possible about the intention, attitudes and capabilities of the governments and other forces in the Persian Gulf and Southwest Asia."

"We need to be asking questions before the fact, not afterwards," he continued. "We will be talking with government officials, military leaders, local political leaders and foreign as well as American diplomats in an attempt to determine what mix of assis-

tance to Pakistan and other nations of the area will be most effective in reducing Soviet opportunities to exploit the instability in the area."

"It is extremely important to have close cooperation between Congress and the Administration in developing a policy toward this area and better cooperation would begin with a broader-based understanding in the Congress of the political and military realities of the area," Obey concluded.

The group is scheduled to return to the U.S. Saturday, February 9.

Response State of Union Speech

President Carter, in a time of tense adversity, has demonstrated a determined strength that I believe will be welcomed by the American people, as it was welcomed by the Congress.

His statement that verbal condemnation of the Soviet Union's aggression is not enough reflects what I believe to be the will of the overwhelming majority of the American People. Our list of options short of military action to protect what are undoubtedly our vital interests in the Persian Gulf have dwindled to a precious few. In effect, he has drawn a line in the sand down the Middle East and announced the United States' intention to respond with military action if the Soviet Union steps over it.

Revitalization of the Selective Service System is imperative. I will support it. As very recent events have proven, the United States must be prepared to counter aggression quickly and effectively. Under the present system it would require a period of months to strengthen our armed forces, and that time lag is a luxury the nation can no longer afford.

I will also support a strengthened intelligence capability.

MIKE'S



PHARMACY

374-3554

Limit Rights Reserved

Senior Citizens Receive

15%

Discount on Prescriptions

Mail Orders Receive Prompt Service

THE FITTIN'EST PULL-ON WORK BOOTS

FIT FOR YOUR FEET AND FIT FOR YOUR JOB!

AAA	AA	A	B	C	D	E	EE	EEE
10-14	9-15	8-15	7-16	7-14	4-16	5 1/2-15	6-14	7-14

RED WING

JAMES OWENS LEATHER GOODS

SAVE 22¢ ON AMERICA'S FAVORITE GO TOGETHERS

Get together with the light, buttery taste of PARKAY, America's favorite margarine, and the oven-hot freshness of Pillsbury, America's favorite brand of biscuits. And get in on the savings... 10¢ off on one lb. of Soft PARKAY Margarine from Kraft, and 12¢ off on four 10-biscuit size cans of Pillsbury Buttermilk* or Country Style Biscuits. Save 22¢ in all. Great taste and great savings from America's favorites. Now that's a great deal!

STORE COUPON

12¢ SAVE 12¢

on four 10-biscuit size cans of Pillsbury Buttermilk or Country Style Biscuits. They're America's favorite brand of biscuits, made with Poppin' Fresh® Dough.

10¢ SAVE 10¢

on a one-lb. tub or two 8-oz. cups of Soft PARKAY Margarine from Kraft. It's America's favorite margarine because the flavor says butter.

TO THE DEALER: We will reimburse you the face value of this coupon plus 5¢ handling provided you and the consumer comply with terms of this coupon offer. The consumer must pay any sales tax imposed. This coupon is not assignable, non-cash, and good only for the purchase of the specified product to which it applies. Proof of purchase of sufficient stock of this specified product to cover coupons presented must be shown upon request or we may void all coupons submitted. Reimbursement will be made only to a retail distributor of our merchandise or to a holder of our certificate of authority acting for him. For redemption of coupons, mail to The Pillsbury Company, Box 602, Minneapolis, Minn. 55460. Cash redemption value: 1/20th of 1¢. Void where taxed, prohibited or restricted by law. LIMIT: ONE COUPON PER PURCHASE. NO EXPIRATION DATE.

© The Pillsbury Company, 1980

21000 105094

Honest To Goodness Savings!

600 With Zinc 60's STRESSTABS

\$5.47

External Arthritis Pain Medication

METAMUCIL 14 Oz \$3.19

ASPERCREME 3 oz \$1.49

75's ROLAIDS \$1.29

Tablets 50's COMTrex Multisymptom Cold Reliever \$2.29

2 Oz. CAMPHO PHENIQUE \$1.29

TYLENOL Tablets 100's \$1.77


HOURS MONDAY - SATURDAY 8:30 a.m. TILL 6:30 p.m.

WE WANT TO BE YOUR PHARMACIST!

Mike Butts Jerry Hodge



PAPER TOWELS
Hi-Dri 2 JBO. \$1
 ROLLS
 KLEENEX TODDLER DISPOSABLE
Diapers 12 CT. \$1.79
 BOX
 KOTEX
Maxi Pads 30 CT. \$2.29
 BOX
 KOTEX
Mini Pads 30 CT. \$1.69
 BOX

FACIAL

Kleenex Tissue 200 CT. \$5.99
 BOX

BATHROOM

Delsey Tissue 4 ROL. \$8.99
 PKG.

DOUBLE S&H GREEN STAMPS TUESDAY WITH \$2.50 PURCHASE OR MORE
Grocery Budget Stretcher
 RANCH STYLE
Beans 3 15 OZ. \$1
 CANS
 CONTADINA
Tomato Sauce 5 8 OZ. \$1
 CANS
 Lipton Instant Pure
Tea 3 oz. \$2.39

KING SIZE
 20" OFF LABEL

Joy Liquid
 \$1.29
 32 OZ. BTL.

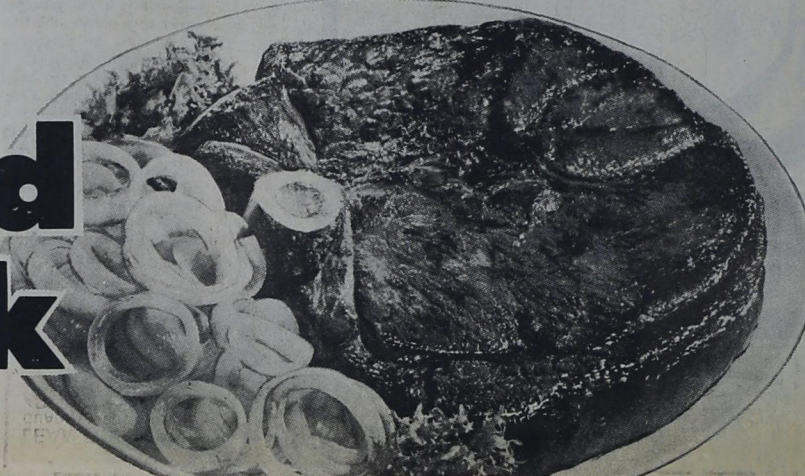
LEM/LIME-ORANGE
Gatorade 2 32 OZ. \$1
 JARS
 PURINA BUTCHER BLEND
Dog Food 5 LB. \$1.99
 BAG
 DISINFECTANT
Pine-Sol 15 OZ. 89¢
 BTL.

Fun-10-Eat-At-Home SWEEPSTAKES
 Entry blanks available at special displays of...

CARNATION
Milk EVAPORATED 2 13 OZ. 89¢
 CANS
 COFFEE CREAMER
Coffee Mate 16 OZ. \$1.39
 JAR
 CARNATION MIX
Hot Cocoa 12 CT. \$1.19
 BOX
 CARNATION INSTANT CHOC.
Breakfast 10 CT. \$1.99
 BOX

Meat Specials
 HEAVY GRAIN FED BEEF TENDERIZED
Cutlets LB. \$2.69
 HEAVY GRAIN FED BEEF LEAN
Stew Cubes LB. \$1.99
 HEAVY GRAIN FED BEEF BONELESS TIP
Sirloin Roast LB. \$2.39
 HEAVY GRAIN FED BEEF BONELESS
Chuck Roast LB. \$1.99
 HEAVY GRAIN FED BEEF BONELESS
Chuck Steak LB. \$1.99
 HEAVY GRAIN FED BEEF BONELESS ARM
Swiss Steak LB. \$1.99
 SHURFRESH REGULAR
Franks 12 OZ. 89¢
 PKG.
 SHURFRESH REGULAR SLICED
Bologna 12 OZ. 99¢
 PKG.

HEAVY GRAIN
 FED BEEF
Round Steak
 \$2.09
 BONELESS CENTER CUT
 Round Steak \$2.39
 LB.



D.A.K. COOKED SLICED
Ham 4 OZ. 99¢
 PKG.

LEAN FRESH GUARANTEED 73% LEAN
Ground Beef \$1.39
 LB.
Wrights Slab Sliced Bacon 89¢
 LB.

10" OFF LABEL

Giant Oxydol
 \$1.69
 49 OZ. BOX

Dairy And Frozen Food
 SHURFRESH
Buttermilk 1/2 GAL. 89¢
 CTN.
 MAZOLA CORN OIL QTRS.
Margarine LB. 73¢
 PKG.
 SHURFRESH AMERICAN
Slices IND. WRAPPED 16 OZ. \$1.69
 PKG.
 MRS. PAUL'S LIGHT BATTER SUPREME
Fish Fillets 7 1/2 OZ. 99¢
 PKG.
 MINUTE MAID 100% PURE
Orange Juice 32 OZ. 69¢
 CTN.

COFFEE ALL GRINDS

Maryland Club \$2.79
 LB. CAN

Extra Large
EGGS
 69¢ DOZEN

PEPSI COLA
 2 Liter 89¢

Health And Beauty Aids
 VASELINE INTENSIVE CARE
Lotion 10 OZ. \$1.19
 BTL.
 VASELINE INTENSIVE CARE
Bath Beads 15 OZ. \$1.19
 BOX
 COTTON SWABS
Q-Tips 300 CT. 99¢
 PKG.
 CUTEX REG/LEM 4 OZ. BTL.
Polish Remover 59¢
 PETROLEUM JELLY
Vaseline 7 1/2 OZ. 99¢
 JAR

CALIFORNIA ICEBERG
Lettuce
 Large Head 29¢

AFFILIATED
 WE RESERVE THE RIGHT TO LIMIT PRICES EFFECTIVE FEBRUARY 6th thru 9th
CHARLIE'S GROCERY & MARKET
 CLARENDON, TEXAS PHONE 874-2425
 DOUBLE S&H GREEN STAMPS TUESDAY WITH \$2.50 PURCHASE OR MORE

CALIFORNIA PURPLE TOP
Turnips LB. 25¢
 US NO. 1 RUSSET
Potatoes 10 LB. 89¢
 BAG
 LONG GREEN SLICERS
Cucumbers LB. 25¢

RED DELICIOUS
Apples 3 LB. 99¢
 BAG
 CALIFORNIA GREEN PASCAL
Celery LARGE STALK 29¢

Venture FOODS