

If a red check appears by your name your paper has expired. Subscription rates for Donley County \$6.50 outside of County \$8.50. Mail Box 1110 Clarendon, Texas 79226.

# THE CLARENDON PRESS

Volume IX

Dedicated To Fair And Impartial Representation

20¢

USPS 947040

Thursday, Jan. 10, 1980

Number 2

## Donley County Jail - Part III

Two incidents have happened concerning panhandle jails within the past several weeks which underscore the practical wisdom of Texas Jail Standards. The first involves the Hutchinson County jail and the murder of a jail attendant when a pair of inmates attempted an escape. Later the same pair filed a suit against the county sheriff for their confinement in a substandard jail. The suit has been entered for the amount of \$100,000.

Second of the events was the shooting of Carson County sheriff with his own gun, the attack on other officers present, the physical force necessary to control the inmate responsible for the shooting and the still serious condition of the sheriff.

These incidents would not have happened in all probability, certainly not the way they occurred, if recommended Texas jail standards were in force.

One of the incidents in Hutchinson County and the one in Carson County come under security. It is recommended that there be a place securely away from the inmates for law enforcement personnel to lock their guns away safely and to proceed to the cells within an area which is itself secure from the outside and from inmates as well. This security has saved the lives of law officers and the lack of it has cost their lives.

Second of the incident involves sanitation which is an area in which the old Hutchinson County jail may well be substandard, and perhaps other items which an older building cannot be up to date on without modification and the expenditure of funds.

There are several options open to the counties as concerns the jail. 1. Prospects of "Boarding inmates as neighboring facilities has been considered. Here the problem is that every sheriff interviewed has jail space and condition problems of their own. Hall County takes some of its prisoners to Swisher County and does not recommend it from a viewpoint either of safety of economy. Some other neighboring sheriffs stated that on a prearrangement basis they could take Donley County prisoners if they had room beyond their own needs. This would be done only if Donley County was working to solve its own problem and with the understanding that it was on a temporary basis. Per diem costs varied on the survey from \$27.00 at Collingsworth to \$5.50 at Swisher County.

Drawbacks to transporting prisoners are many; danger, lack of security, cost of vehicle expense and time, and the reduction of peacekeeping coverage in Donley County during the absence of transporters. Also there is the ever present threat of lawsuit which could be raised with the added hardship of distance between the inmates and their families.

2. As mentioned in a prior article it was recommended that Donley County not try to use the old jail structure, because of limitations of money, restrictions to the old structures architecture and the ultimate result of a still inadequate facility.

3. A new facility was estimated to cost less than the cost of makeshift-remodeling, and in addition would have the advantage of being able to be added on to in the future if it became necessary. To determine this it was necessary to have a plan drawn up for comparison. The plan pictured meets with the minimum requirements set by the Texas Jail Standards.

The needs for the county are a Criminal Justice Complex with a jail and offices for the sheriff. It is recommended that the sheriff's office, Clarendon Police Department and a joint jailer/dispatcher for the providing of 24 hour/day jail supervision and radio alert contact capability be incorporated into a new facility.

4. A new facility should be erected with space for an addition in time if necessary. The survey recommended nearby space. Law enforcement personnel agree that the less distance they have to travel with a prisoner the safer it is for them their prisoner and for any citizens who might be in the vicinity.

Although it has been recommended that a new site be purchased for the newly recommended jail construction, the Commissioners Court would like to use the space on the west side of the old courthouse. The most desirable location according to the survey committee, would be on a corner lot. Unless the old jail building could be demolished this would be out of the question with presently county owned land. It is in the best interest of the county tax payers not to have to purchase lots for the jail, if a new one is constructed - and instead use what money is available toward that end, believe the commissioners.

Compiled by Tommie Saye-Cooperative Observer for National Weather Service, Clarendon.

DATE	HIGH	LOW	
Tuesday	1	55	31
Wednesday	2	67	32
Thursday	3	53	29
Friday	4	53	27
Saturday	5	45	22
Sunday	6	50	25
Monday	7	68	16
Tuesday	8	37	13

Total for month Total moisture for 1979 .00  
Total for year 24.35 .00

With the limitations, which have been explained earlier, to be encountered concerning the old jail building, and the costs which are, as well as is possible to determine, as great as new construction, the Donley County Commissioners decided to ask for bids from architects on proposed jail plans. These plans are the first step in the process of making application for grant funds, since the grant request must be accompanied by an approved plan with other items as well.

The recommended construction is shown to house the jail, sheriff, Clarendon Police Department, with a joint Jailer/dispatcher providing a 24 hour/day jail supervision and radio alert contact capability.

Lack of 24 hour alert contact capability, which would need a dispatcher to reach officers in the field, would be an asset of incomparable value to law enforcement officials, both in the execution of their duties and to their security.

After receiving bids from architects in answer to the advertisement run by the Donley County Commissioners, the court opened the bids at a called meeting held on January 7, 1980.

Con't p. 11

County pig and lamb show

Donley County will have their Pig and Lamb show on Saturday, January 12 at 1 p.m. at the county show barn.

Judging the show will be Bob Skaggs, of Pampa, the Vocational Agriculture instructor in Pampa.

Entires include 30 pigs and 14 sheep.

Sim Goodall announces for district attorney

I welcome the opportunity to return home to Texas after several years of military service. I believe that my twenty two years as an attorney, serving both the federal government and the State of Texas, including nearly four years of civil practice in Texas give me unique and excellent qualifications to serve as your District Attorney.

I have personally participated in law enforcement actions, from the arrest through trial. My years as an air police officer and special agent for the Air Force Office of Special Investigations have provided me with a good understanding of the problems faced by our law enforcement officials as well as criminal investigative techniques. My experience as a military trial counsel and the year I served as County Attorney for Hall County have provided me with court room experience. Service as a military judge has given me a greater understanding of the necessity for trial briefs, proper preparation for trial and experienced counsel.

I believe the laws of the State of Texas and the United States must be enforced to protect its citizens, and their freedom, to punish those who violate those laws, and finally to deter those who may be attracted to a life of crime.

I solicit your vote and support. I will try to personally contact each of you before election day.

Biography

Sim Goodall was born in Memphis, Texas 47 years ago. He is the son of Dr. and Mrs. (deceased) O.R. Goodall of Memphis. He attended Price Memorial College in Amarillo, Texas, and the Allen Military

con't p. 2

### Summary



DONLEY COUNTY FOOD Show participants are; Back row [l to r] Karen Alderson, Melody Moreman, Angela Klinnert and Virginia Clifford. Front row [l to r] Shana Cole, Kim Formway, Mary Kay Hayes and Tish Robinson.

## Bronchos start 1980 season with two wins

The Clarendon Broncos won two of three games played at the North Plains Tourney in Claude on January 3, 4, and 5, coming away with a Third Place finish.

For the second time this season the Broncos met Valley in tournament play. The Broncos fared better in this opening game, as they defeated the Patriots by 58-51 count. The game was close throughout, with Clarendon holding a slight lead during the first half action. The score was 29-28 at the midway point. With both teams playing cautiously in the third quarter, the Broncos upped their lead to 39-35 at the end of that period. To do so, they had to overcome two quick Valley field goals which put them behind 29-32 a minute and a half into the quarter. The fourth quarter was fast-paced throughout, with the Broncos pulling steadily away to the final seven point victory. Scoring punch was provided by Ken Jones with 18 points, Brad Thompson with 14 points, Alvin Reese with 12 points, and Lynn Thompson with 10 points. Rebounding was led by Reese, Jones and Brian Murray.

In second round play the opponents were the Stinnett Rattlers. Playing against a team with greater size for the second day in a row proved too much for the Broncos, as they fell by a 45-56 margin. The Rattlers were

subdued for a half, as the Broncos took a 25-23 lead at the break. Stinnett tied the score at 35-35 by the end of the third period before racing to victory in the fourth quarter. Ken Jones and Lynn Thompson led Broncho scoring with 18 points and 13 points, respectively. Alvin Reese added 6, Brad Thompson had 4, while Brian Murray and Hosea Hearn added 2 points apiece. Ken Jones also had 18 rebounds.

The Broncos faced the host Claude Mustangs in the third place game. Utilizing a full court press and substituting liberally, the Broncos gradually wore their opponents down. The game was tied at 37 each going into the

last quarter, but the final period surge of the Broncos took them to a 60-52 win. Ken Jones, Tim Brown, and Lynn Thompson were all in doubles figures with 16, 11, and 10 points. Randy White and Brian Murray contributed 7 and 5 points, respectively. Brad Thompson had 4 and Alvin Reese had 3, while Doug Foster and Drew Thornberry rounded out scoring with 2 points each. A big factor in the win were twenty steals made by Clarendon in the game.

The Broncos are now 11-5 for the season and open District 2A play at Shamrock on January 11, with the girls game starting at 6:30.

Funeral services for Mayburn B. Trout, age 69, were held at 2:00 p.m. on Thursday, January 3, 1980 in the First Baptist Church with Rev. Paul Heil, Pastor, officiating. Interment was in Citizens Cemetery with the arrangements under the direction of Robertson Funeral Directors.

Agency on Aging to hold meeting

The Panhandle Area Agency on Aging would like to invite the residents of Donley, Gray, Wheeler, Collingsworth, Briscoe, and Hall Counties to participate in the public review of the 1980 Area Plan for Progress Toward a Comprehensive Coordinated Service System for Older Persons. Review copies of the Plan and forms on which to make comment will be available at the Donley County Senior Citizens Center, 103 East 4th, Clarendon, Texas, on January 10, 11, 14, 15, 16, and 17, 1980, from 9:00 a.m. to 5:00 p.m.

Staff from the Panhandle Area Agency on Aging in Amarillo will be at the Clarendon Center from 1:00 p.m. to 3:00 p.m., Friday, January 18, 1980, to answer inquiries about the Plan and to receive the written comments and suggestions of interested parties.

Public reviews of the Plan are also being held in other areas of the Panhandle. Area Agency staff will be at the following senior citizens centers on the dates indicated: Hereford- January 16; Borger- January 17; Dalhart- January 21; and Amarillo- January 22.

Calendar of Events

Sat. Jan. 12, 1 p.m. Donley County Pig and Lamb Show at Show Barn

Sat. Jan. 12, 6:30 p.m. Ashtola Community Center 42 party and covered dish supper

Mon. Jan. 14, 7 p.m. Artist Studio meets at Clarendon Press office.

## 4-H food show winners named

Knowledge of nutrition and skills in planning and food preparation won four youths from the Texas Panhandle silver trophies at the District 1 4-H Food Show in Amarillo Saturday, Dec. 8. The four advance to state competition next June at College Station.

The top winners are Becky Hughes and Glenda West, both of Deaf Smith County; Annette Clements of Moore County, and Revis Ann Massey of Hemphill County.

Four other winners took second place honors and the right to serve as alternates should the first place winners not be able to compete at the state contest. The alternates are Karen Alderson of Donley County, Penny Miller of Gray County, Kayla McEntire of Hemphill County and RaLynda (cq) Wharton of Dallam County.

Junior division contestants received ribbons but will not compete beyond the district level. Juniors named best in class in each of the four food categories were: Snack and beverage-Polly West of Deaf Smith, Tanya Wharton of Dallam, Amy Diederichsen of Moore and Darla File of Lipscomb. Side dish-Robin Conkwright of Deaf Smith, Stacey Reynolds of Hartley, Jalene McAdams of Hemphill and Mary Ann Terry of Moore.

Bread and dessert-Debbie

Said of Dallam, Jessica Bookout of Hartley, Donna Peters of Moore, Lisa Wiley of Sherman and Hope Coffman of Wheeler. Main dish-Kim Formway of Donley, Lee Ann Tate of Gray, Melaine Morehead of Hemphill and Traci Carnahan of Moore.

Four-H'ers from Donley County and their awards were: Junior Division-Snack and Beverage Shana Cole, Blue Ribbon; Side dish-Tish Robinson Blue Ribbon; Main Dish-Kim Formway Blue Ribbon; and High Individual of the division; Breads and Desserts-Mary Kay Hayes-Blue Ribbon.

Senior Division-Snacks and Beverages Virginia Clifford, Red Ribbon; Side Dish- Melody Moreman, Blue Ribbon; Main Dish-Angela Klinnert, Red Ribbon; Breads and desserts-Karen Alderson, Blue Ribbon and first alternate to the state Food Show.

We're proud of these girls who represented Donley County against 19 other panhandle counties. A total of 131 4-H'ers competed at the food show held in Bonham Jr. High. The judges expressed their appreciation for the advanced skills and nutritional knowledge exhibited by Donley County contestants congratulations!

4-H Amarillo stock show

Jan. 18th

Several Donley County 4-H'ers will exhibit livestock at the Amarillo Stock Show in Amarillo next week according to County Extension Agent Ronald Gooch. 4-H'ers showing steers are Doug and Dean Hawkins, Jay Lindsey, Jack Craft, Melody Moreman, Drew and Lance Thornberry and Jamie and Rodney McNear. The steers will be judged on Friday, January 18 at 9:00 a.m.

The heifer show will be judged at 9:00 a.m. on Saturday, January 19 and Melody and Phil Moreman, Lisa, Jamie and Rodney McNear will exhibit heifers.

Exhibiting barrows will be Lori Robinson, Jennifer and Colleen Cox. The barrows will be judged at 5:00 p.m. on Thursday, January 17 at 8:00 a.m.

The 4-H and FFA Auction Sale for prize winning animals will be held on Saturday, January 19 at 1:00 Gooch said.

Uva Agnes

Dever services held

Mrs. Uva Agnes Dever, 74, died Thursday in Memphis. Services were at 2 p.m. on January 4 in Memphis at the Church of Christ, with Derrel McGlathery minister, officiating. Burial was in Citizens Cemetery in Clarendon by Spicer Funeral Home.

Mrs. Dever born in Paris, Texas, moved to Donley County in 1910. She married Alva B. Dever in 1940 in Clarendon. She was a member of Church of Christ.

Survivors include a daughter, Mrs. Elizabeth Jane Yarbrough of Memphis; two sisters, Mrs. Sadie Hudson of Amarillo and Mrs. Bertie Helton of Groom; two brothers, Howard Steward of Amarillo and Roy Stewart of Houston; and two grandchildren.

Before going to law school McCoy attended Amarillo College. Con't p. 2

## Mayburn B. Trout rites held

Funeral services for Mayburn B. Trout, age 69, were held at 2:00 p.m. on Thursday, January 3, 1980 in the First Baptist Church with Rev. Paul Heil, Pastor, officiating. Interment was in Citizens Cemetery with the arrangements under the direction of Robertson Funeral Directors.

Agency on Aging to hold meeting

The Panhandle Area Agency on Aging would like to invite the residents of Donley, Gray, Wheeler, Collingsworth, Briscoe, and Hall Counties to participate in the public review of the 1980 Area Plan for Progress Toward a Comprehensive Coordinated Service System for Older Persons. Review copies of the Plan and forms on which to make comment will be available at the Donley County Senior Citizens Center, 103 East 4th, Clarendon, Texas, on January 10, 11, 14, 15, 16, and 17, 1980, from 9:00 a.m. to 5:00 p.m.

Staff from the Panhandle Area Agency on Aging in Amarillo will be at the Clarendon Center from 1:00 p.m. to 3:00 p.m., Friday, January 18, 1980, to answer inquiries about the Plan and to receive the written comments and suggestions of interested parties.

Public reviews of the Plan are also being held in other areas of the Panhandle. Area Agency staff will be at the following senior citizens centers on the dates indicated: Hereford- January 16; Borger- January 17; Dalhart- January 21; and Amarillo- January 22.

Calendar of Events

Sat. Jan. 12, 1 p.m. Donley County Pig and Lamb Show at Show Barn

Sat. Jan. 12, 6:30 p.m. Ashtola Community Center 42 party and covered dish supper

Mon. Jan. 14, 7 p.m. Artist Studio meets at Clarendon Press office.

## Notice Howardwick Senior Citizens

Senior Citizens of Howardwick who payed money in to the Howardwick organization will meet Friday, January 18, with the Howardwick Friendship Club at 7 p.m.

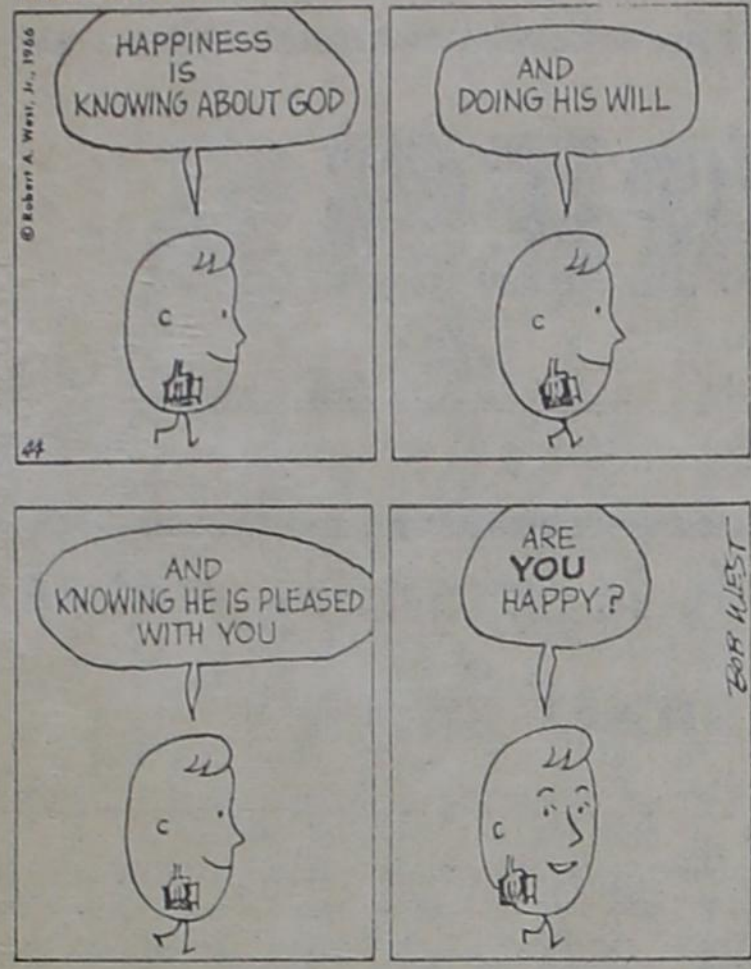
At this meeting called by secretary Jim Dunn members will determine the course of action to take concerning the money in their treasury. Everyone is asked to be present.

## Is there a need?

In an effort to find out whether there is a need and demand for pre-kindergarten classes interested persons are asked to call 874-3833 or 3541. After 5 p.m. call 874-3962.

# SHOP CLARENDON

## THEOPHILUS



Goodall from p. 1

Academy in Bryan, Texas. He received his bachelor of Business Administration degree from Baylor University and his Bachelor of Laws degree from Baylor Law School. He was admitted to the practice of law in April 1958.

Mr. Goodall is currently serving on active duty with the United States Air Force in the grade of Colonel, and is assigned to Headquarters, Air Force Communications Command, Scott Air Force Base, Illinois, where he is the command staff judge advocate. He retires from military service with twenty four years total service on 1 March 1980.

He practiced civil law in Tulsa, Texas from 1958 until he returned to Memphis in November 1959. He practiced in Memphis until his recall to active duty (during the Berlin Wall crisis) in 1961. At the time he was recalled to military service, he was serving as County Attorney for Hall County.

Sim Goodall has been admitted to practice law before the Supreme Court of Texas, the United States Supreme Court, the United States Fifth Circuit of Appeals, the United States District Court for the Northern District of Texas, and the United States Court of Military Appeals. He has also practiced before the Civil Aeronautics Board, Washington, D.C., representing the Department of Defense before that agency.

His present duties are to provide advice, opinions, and recommendations to the AFCC commander and staff on legal

**CLARENDON PRESS**  
and the Donley County Leader. Published every Thursday at Clarendon, Texas, 79226, Box 1110, at Hwy 287 and Jefferson Street and entered as Second Class Mail at the post office at Clarendon, Texas. Helen Woody, Publisher and Jeanice Weatherly, Editor.

Subscription rates: \$8.50 a year outside Donley County, \$6.50 a year in Donley County. Any erroneous reflection upon the character of any person or firm appearing in these columns will be gladly and promptly corrected upon being brought to the attention of the management.

aspects of all matters within the AFCC worldwide mission, including contract law, administrative law, regulatory law, military justice and discipline Problems, general civil law, U.S. statutes, applicable state laws, and Department of Defense and U.S. Air Force regulations. He also advises on the preparation of cases to be heard by the Federal Regulatory Boards and Commissions.

Other military experience includes two years as an Air Police Officer (1953-1955), Special Agent for the USAF Office of Special Investigations (1961-1963). Sim has served as a member of the Judge Advocate General's department (the legal arm of the USAF), since January 1964.

His assignments have included tours in Australia where he was assigned to the United States Embassy, Thailand, Germany, Tennessee, South Dakota, Virginia, Arizona and Illinois. His Military duties have taken him to most countries in the free world.

His other educational achievements include completion of the OSI basic investigator's course, prosecuting attorney's course conducted by Northwestern University School of Law, Air Force Procurement Law Course, The Hague Academy of International Law (a course in public international law), The Hague, Netherlands (1968), the Air College, and the University of Oklahoma Graduate School (political science).

Upon retirement from the USAF on 1 March 1980 he will be living at 219 South 10th St., Memphis. He has four children, Sharon, a junior at Abilene Christian University, Laura, a freshman at ACU, Brenda, a senior in high school and Robert, a freshman.

## Calendar of events

Wed.-Fri. 9-11, and each Monday-Friday Exercise Classes 9 a.m. Senior Citizens Center.

Thurs. Jan. 10, Arts at 1 p.m. Senior Citizens Center

Fri. Jan. 11, 6:30 Birthday-Salad supper at Senior Citizens Center.

Tues. Jan. 15, 8 p.m. dance Senior Citizens Center.

McCoy from p. 1  
lege and West Texas State University where he majored in criminal justice. This work was done at night following his daytime employment at the Pantex Plant and required as much as 98 miles of driving per night, spread over a nine-year period. He especially credits his wife, Sherion, and their five children for their sacrifices when the entire family moved to Waco and dedicated itself to the task of obtaining his law degree from the Baylor University School of Law. While in law school he served as a student assistant to the District Attorney of McLennan County.

McCoy is a partner of C.A. Williams, C.C. Broughton, and John T. Forbis in a Childress Law firm. He is a member of the Church of Christ of Childress and the Childress Rotary Club. He urges inquiry among those who know him.



**DISTRICT RUNNER-UP-Karen Alderson earned runner-up honors in the breads and desserts category of the District**

# VA payments are raised

Checks reflecting a 9.9 percent increase in Veterans Administration compensation payments will be mailed at the end of December to more than two-and-a-quarter million veterans, 235,000 surviving spouses and more than 85,000 children of deceased veterans, Jack Coker, Waco VA Regional Office Director, said today.

The increased payments were authorized by Congress earlier this month and were signed into law by President Carter November 28. They are retroactive to October 1. A separate adjustment check covering the increased amount due in November and December will be mailed during the latter part of December.

The new rates means that a veteran with a service-connected disability rated at 10 percent will receive \$48 a month, up from \$44. The rate for a 50 percent disability goes from \$232 monthly to \$255, and a veteran with 100 percent disability will receive \$889 monthly, an increase of \$80.

Additional amounts providing up to a maximum payment of \$2,536 a month (up from \$2,308) are paid for specific severe disabilities.

The new legislation also increases by 9.9 percent the added amounts paid for dependents to veterans rated 30 percent or more disabled.

The clothing allowance paid disabled veterans whose use of the prosthetic or orthopedic device wears out or damages clothing was increased from \$218 to \$240 yearly.

Also increased were the rates of Dependency and Indemnity Compensation paid survivors of veterans whose deaths were due to service-connected causes or veterans totally disabled from service-connected causes whose deaths were not the result of such disabilities.

Christmas dinner was celebrated Sunday, Dec. 22, at the home of Mamie Mills with 36 attending.

Those attending were: Mr. and Mrs. James King and Romana, Mr. and Mrs. Harry Burrier and Crers and Gary, Mr. and Mrs. Buddy Winn and Stephanie and Shad all of Amarillo; Mr. and Mrs. Wiley Mills, Cecil Ray and Richard of Holdenville, Okla.; Mr. and Mrs. Mike King of Corpus Christi; Mr. and Mrs. Wesley Mills, Kent and Adenia, Mr. and Mrs. Dale Mills, Gerold,

Certain children of those deceased veterans also receive increased compensation under the new legislation. They include unmarried children under 18 as well as certain older helpless children and those between 18 and 23 who are attending VA-approved schools.

# VA document information

Don't let lost documents prevent you from seeking veterans benefits, Jack Coker, Waco VA Regional Office Director, today reminded veterans and their dependents.

Coker said, "We have found that some veterans who cannot locate birth or marriage certificates don't apply for benefits because they believe these documents are essential."

VA will accept a certified statement instead of an original birth or marriage certificate when needed to establish eligibility, provided -- in the case of a marriage -- that it is the first for each partner and VA has no contradictory information on file.

In years past, VA required formal documentation to support claims for compensation and education benefits for veterans, widows, and orphaned children.

Now, however, VA will accept a certified statement regarding the birth of a veteran's child or as proof of age and relationship in disability cases, Coker said.

Coker urged veterans and their dependents with eligibility questions to contact the nearest VA regional office or a representative of one of the national veterans service organizations, or a veterans county services.

\*\*\*

Jeff. Mr. and Mrs. Carson Bowling, Rachel, Lindy, and Mrs. Ola Bradshaw all of Clarendon; Mr. and Mrs. Dougless Bradshaw, Penny, Kem and Doug Jr. all of Henderson.

Everyone reported a very enjoyable day.

Thomas Jefferson sold his 10,000 books to the U.S. government to replace the collection burned by the British. The books became the nucleus of today's of Congress.

# Pioneer poll grain transfer

The questionnaire seeks two kinds of information from farmers:

1. How are they being affected by the grain transportation situation?

2. What policies should be established or actions taken to alleviate specific problems?

Regarding the effects of grain transportation, farmers are asked to indicate which, if any, of six different "inconvenience" problems they have experienced. They are also asked, if on the average, they received less for their grain and soybeans in either of the past two years as a result of transportation problems.

Following is a brief summary of the various sections relating to grain transportation: Roads and bridges: Are conditions of county roads and bridges hindering movement of machinery and grain? If so, how do farmers feel the problem should be attacked?

Railroad branch lines: How important are they? What's their condition? If upgrading is needed, how should it be financed?

Railroad main lines: Importance; what should be done, if anything, to improve main lines that haul a lot of grain?

Barge lines: How much, if any of the cost of maintaining the

navigable waterways should barge lines pay--recognizing that higher operating costs for barge lines would increase grain shipping costs?

Local elevators: How important are rail service or unit train loading facilities to the survival of local elevators?

Deregulation: Regulation of rates for shipping grain is not applied equally to all forms of competing transportation. Should the presently unregulated forms (trucks and barges) be regulated as railroads are, or should railroads get the same freedom to set rates that barges and trucks have?

Respondents are being asked for considerable information about their farm operations as well as demographic information. This will allow breakdowns of the results, for example, of grain farmers vs. livestock farmers, or by geographic area.

The survey questionnaire was designed by Pioneer personnel with the assistance of Dr. Phillip Baumel, transportation specialists in the Iowa State University Department of Agricultural Economics. Supervision of the questionnaire design and methodology is by Jefferson Davis Associates, Cedar Rapids, Iowa and by Yankelovich, Skelly and White, Inc., New York.

# Increasing rural land prices

Increasing rural land prices which appear to be unrelated to farm productivity continue to alarm farmers, notes Dr. Richard Floyd. In many cases, they have outpaced general price rises experienced throughout the economy.

"The main reason for this is that non-farmer land buyers have discovered many advantages to rural land investments," says the real estate economist with the Texas Agricultural Extension Service, Texas A&M University System.

"The phenomena can be easily explained by understanding the motives of a typical real estate investor," says the economist. "Real estate is an attractive investment medium because it offers the investor an overall high return. This return includes the advantages of using borrowed funds to obtain leverage, a tax shelter, an inflation hedge, and perhaps the benefits of forced saving."

Through borrowed funds, a real estate investor can capture the entire benefits of any return which exceeds that repaid in interest.

At the same time, he can benefit from depreciation of improvements on his property which shelters income from other sources, the economist explains.

\*\*\*

Visiting with Roeda and Sibyl Rattan during the Christmas holidays were Roeda's twin daughters, Annese and Carlei Bennett, of Tulsa and Bernese and Tack Moreland from Rogers, Arkansas, Rick and Pat Rattan, of Clarendon and Roeda Rattan's granddaughter, Charlotte and Bob Paul with children Peter and Laura from Edinboro, Pa.

Charlotte is an associate professor at the university at Edinboro. Charlotte and her family spent a week with her mother, Sybil and brother, Rick Rattan.

Other visitors included Glen Robertson, his two daughters and his father Andy Robertson all of Amarillo.

**PRE KINDERGARTEN INTEREST? CALL**

**874-3833**

OR

**874-3541**

**AFTER 5**

**874-3962**

**1¢ SALE**

**Over 6,000 Pairs Of Shoes**

**Women's - Men's - Children's**

**ALL FAMOUS BRANDS**

**SALE STARTS**

**Open 8 a.m. to 7 p.m.**

**THURSDAY, JAN. 10th**

**BATES SHOE STORE**

**Tulia, Texas**

**YOUR Independent Insurance AGENT SERVES YOU FIRST**

**EMMETT O. SIMMONS Insurance**

**874-3506**

**SPECIALS GOOD WHILE SUPPLY LASTS! LIMITED SUPPLY!!**

**SHOP AND SAVE AT ALLSUP'S!**

**ALLSUP'S CONVENIENCE STORES**

**PRICES EFFECTIVE JANUARY 10-12, 1980**

**WE RESERVE THE RIGHT TO LIMIT!**

**ALLSUP'S SAVINGS TIME!**

Pet Ritz Frozen **PUMPKIN PIES** 59¢ each

Hi and Dry Bathroom **TISSUE** 4 roll pack 59¢

Allsup **MILK** 1 Gallon Plastic Jug \$1.95

Harvest Moon **CHEESE** Longhorn Style Cheddar Reg. \$1.46

Shurfine Frozen **DONUTS** boxes 2/\$1.00

SHURFRESH CINNAMON **ROLLS** 12 OZ. REG. 79¢ PKGS. 4 \$1.00

Fresh Cooked - **COOKED FOOD SPECIAL OF THE WEEK - BURRITO'S** 2/\$1.00

BORDEN'S **EGG NOG** QT. 89¢

BORDEN'S **BUTTER MILK** 1/2 GAL. CTN. 89¢

**COLEMAN FUEL** Reg. 3.79 Now \$2.99

RATH'S PURE **PORK SAUSAGE** 1 LB. ROLL 69¢

**COOL WHIP** 8 oz carton 2/\$1.00

BORDEN'S COTTAGE **CHEESE** 12 OZ. CTN. 69¢

BORDEN'S ASSORTED **ICE CREAM** 1/2 GAL. RD. CTN. \$1.39

**Land-McKinney announce engagement**

Mr. and Mrs. Jiggs Land, of Delia Lake, announce the engagement and approaching marriage of their daughter, Gina Kay Land to Lyn McKinney, son of Mr. and Mrs. James McKinney of Clarendon.

The wedding will be February 9, 1980 in the Chapel of the First Baptist Church of Clarendon.



GINA KAY LAND and Lyn McKinney have wedding plans

Thomas Jefferson steadfastly supported freedom of the press, even as he himself was being slandered and libeled by many newspapers.

**Fun After Fifty Club meets**

Fun After Fifty Club met at the Lion's Club Hall Saturday January 5, with the first meeting of the new year.

Mrs. O.C. Watson wished everyone a Happy New Year by bringing a doll dressed as the New Year baby, with a sign "Happy 1980 Everyone". It was very clever and admired and appreciated by everyone.

Officers were elected for another year. The officers of the past year were unanimously re-elected for another year. Mr. Raymond Hinkle was elected as vice president.

No games were played as most of the first hour was spent visiting. Mr. Raymond Hinkle brought an article "Depression of the 30's" and Mr. Fred Russell brought two "Life Begins at 80" and "How are You Today" that were read. They were very comical and everyone had a good laugh. Mrs. D. T. Smallwood said "Whistling in Heaven" from memory. A poem she learned when she was a young girl. Everyone enjoyed it very much.

It was decided that we will have the same type program next month. Everyone is urged to bring a poem, quotation, song, or "whatever" and as many as time will permit will be presented.

After prayer by Lois Hutchins a delicious covered dish luncheon was served.

**Income tax packages mailed out**

Approximately 156,785 Federal tax packages are on their way to Panhandle taxpayers this week. The IRS sends taxpayers either a 1040 or 1040A package, depending on the form the taxpayer filed last year. Taxpayers who need to file a different form this year because of a change in tax status, can pick up the proper form and schedules from their local IRS office, or from one of many post offices which stock them. Extra forms are also available by using the order blank in the back of the tax package.

Whether taxpayers use the form the IRS sends them, or order a different one, the IRS encourages use of both the peel-off label and pre-addressed, coded, return envelope provided in the originally mailed tax package. If used, both the label and envelope speed up processing the return, lessen the chance of making mistakes, and produce a faster refund for the taxpayer.

The peel-off label, which should be placed at the top of the return, contains the name, address and Social Security number of the taxpayer and, like the return envelope, is specially-coded to speed up the sorting process.

If there is a mistake on the label, or if the envelope is marked with the incorrect form number, the IRS said the taxpayer should simply make necessary changes in ink.

The step-by-step and more spacious format of the tax forms, retained from last year, should make it possible for most taxpayers to complete their returns with the aid of their instructions, according to the IRS. The instructions take the taxpayer through each step of return completion and are number-coded to correspond to the lines on the return.

Taxpayers who need additional information before deciding what credits, dependents, or deductions they should claim can order any of some 70 specialized IRS publications by using the same order blank used to order forms. These publications are also available from most IRS offices.



The winningest race horse of all times is the Hungarian mare named Kinsem—a wonder mare who won 54 straight races and never lost a race before she died in 1888.

During a period of 12 days in 1906, marksman Adolph Topperwein fired at 72,500 targets and missed only nine.

**MIKE'S**



**PHARMACY**

874-3554

Limit Rights Reserved

Senior Citizens Receive

**15%**

Discount On Prescriptions

Mail Orders Receive Prompt Service



**ALKA SELTZER**

25's

**77¢**

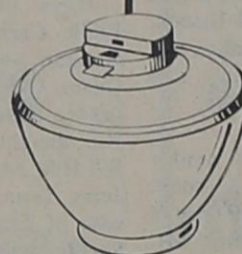
Sunmark Cool Spray

**HUMIDIFIER**

Reg. \$17<sup>99</sup>

2 1/4 Gal No. 1060

**\$13<sup>99</sup>**



Northern Moist Reg.

**HEATING PAD**



\$10<sup>99</sup> Sale

**\$6<sup>99</sup>**

Sunmark Warm Steam

**HUMIDIFIER**

1 Gal Reg. \$7<sup>95</sup>

**\$4<sup>99</sup>**

**GIBSON VITAMINS**

**2 FOR PRICE OF ONE SALE**

**VITAMIN C 250 Mg 100's 2/\$1<sup>19</sup>**

**ONE DAILY MULTIPLE VITAMIN 100's 2/\$1<sup>19</sup>**

**ONE DAILY MULTIPLE VITAMIN WITH IRON 100's 2/\$1<sup>23</sup>**

**VITAMIN E 100 IU 1000's 2/\$1<sup>39</sup>**

**VITAMIN C 500 mg 100's 2/\$1<sup>79</sup>**

**VITAMIN C 500 mg CHEWABLE 100's 2/\$2<sup>17</sup>**

**VITAMIN C 250 Mg CHEWABLE 100's 2/\$1<sup>47</sup>**

**VITAMIN C 1000 Mg 100's 2/\$3<sup>17</sup>**

**ONE DAILY VITAMIN & MINERALS 100's 2/\$2<sup>49</sup>**

**HI POTENCY VITAMIN WITH MINERALS 100's 2/\$2<sup>99</sup>**

**B COMPLEX WITH VITAMIN C AND IRON 100's 2/\$1<sup>43</sup>**

**VITAMIN B-12 100' 100 MCG 100's 2/\$1<sup>19</sup>**

**HOURS**

**MONDAY - SATURDAY**

**8:30 a.m. TILL 6:30 p.m.**

**WE WANT TO BE YOUR**



Mike Butte



Jerry Hodge

**PHARMACIST!**

As of this date 1-9-80

GIBSONS is voluntarily taking magazines from the shelves, after it became known to us that certain publications were considered offensive.

What is not understood is that objection has just now been voiced after four years of the publications place on the shelves in our store.

Not one customer or public official has voiced an opinion to us, but as we have stated above these magazines, considered offensive, can no longer be purchased at GIBSONS in Clarendon or Childress.

Thank you James Stubblefield



**AUCTION**

GARRY BIBLE FARM EQUIPMENT

SATURDAY, JANUARY 12, 1980, 1:00 P. M.

(If a bad storm sets in on this date, it will be postponed to January 19, 1980)

From Ashtola, go 2 miles West, 1 mile North, and then 1/2 mile East. The auction will be held at the farm.

**FARM EQUIPMENT:**

3010 John Deere Tractor- Butane, no cab, Serial #IT-27983, P.T.O., and a 3 point hitch.

Model B John Deere Tractor-3 point hitch.

3 bottom 16" Mold-board Plow, with a 3 point hitch.

4-row Lister Planter with markers, John Deere.

4-row Cultivator, John Deere, front mounted.

500 Gallon Butane Tank, on trailer.

AC Drag-type Combine, 6', P.T.O.

2-row John Deere Shredder.

4-row Knife-sled.

Cotton Stripper, Model 77, John Deere.

10' Drill, single disk, 6" spacing.

Graham-Hoeme Chisel Plow, 9 shanks.

3 Section Drag-harrow, with draw-bar.

12' Tandem Disk, Burch Plow Company.

4-row Stalk Cutter, roll-type.

8' John Deere One-way.

30X CAR:

One (1) Box Car, 40', steel exterior, refrigerator type, converted for grain storage, excellent condition.

Due to the sale of our farm, we are selling this farm equipment and personal property at auction.

Due to the sale of our farm, we are selling this farm equipment and personal property at auction.

Three (3) Cotton Trailers, 2, 3, and 4 bale sizes.

One (1) Extra Cotton Trailer Running Gear.

6' Portable Mayrath Grain Auger, 21', with gasoline engine and hoist.

One (1) Portable Hammer Mill Feed Grinder, John Deere, with Wisconsin gasoline engine.

**TOOLS AND MISCELLANEOUS:**

Two (2) Livestock Water Tanks.

250 Gallon Water Tank, on trailer

Miscellaneous Hog Feeders and Waterers.

Electric Fence Posts and Wire.

500 Gallon Butane Tank.

Miscellaneous tires, wheels, tools, bolts, chains, hog wire, barb wire, paint, lumber, etc.

Chain Hoist, 1 ton size.

Scrap Iron-several tons.

Milo Seed and Cotton Seed, several sacks.

Approximately 4 Gallons of Treflon.

Electric Drill.

Portable Hog Scale, 500 pound capacity, New

**ANTIQUES:**

Two (2) Old row-binders, McCormick Deering

Two (2) Kerosene lanterns

Approximately 4 Gallons of Treflon.

Electric Drill.

Portable Hog Scale, 500 pound capacity, New

**ANTIQUES:**

Two (2) Old row-binders, McCormick Deering

Two (2) Kerosene lanterns

Approximately 4 Gallons of Treflon.

Electric Drill.

Portable Hog Scale, 500 pound capacity, New

**TERMS:**

Cash. Sales tax charged on all taxable items unless exemptions are furnished. All purchases must be settled for the day of the sale. No property to be removed before making settlement. Any announcements at the time of auction supersede all printed advertising.

CONSIGNMENTS ARE WELCOME!

**national auctioneers, inc**

SUITE 704, BANK OF THE SOUTHWEST BUILDING  
PHONE (806) 355-9415 • Day or Night  
AMARILLO, TEXAS 79109 • TxE 010-0139

Tom Moran | Cahin Hornsby | Jerry Shannon | Donald Tevis | Ricky Babin | Ray Stafford

# The Lions Tale

By GENE ALDERSON

The Clarendon Lions Club held its regular meeting at noon on Tuesday at the Lions Hall with twenty-five members present. Following the regular opening ceremonies, Boss Lion Courtney read a card of thanks for Christmas Bonuses from Mrs. Norma Corgill and Mrs. Trula Moore, the ladies who do such a fine job for us in the kitchen.

The Boss Lion then read two letters of thanks from girls from Girls Town for our club's contribution to their Christmas Coat and Shoe Fund.

He also read a letter from Glen Crawford of the Texas Lions Crippled Children's Camp at Kerrville, asking that we get our applications in early for this year's camp because they filled up last year. Preference is to be

given this year to those who have not attended before and also those whose applications are in early. There are two camp sessions, one for diabetic children and one for crippled children. If you know of someone who might qualify for either session. Please contact any member of the local Lions Club.

The Boss Lion had also received our standing as of September 15th in the Lions District 2T-1 efficiency contest. We were first in Zone, first in Region IV, 3rd out of 33 in Division II, and tied for 8th out of 68 in district.

Next Tuesday, we will have a special treat. The Program will be presented by Lion Lawrence who will be showing films on his recent trip to Norway.

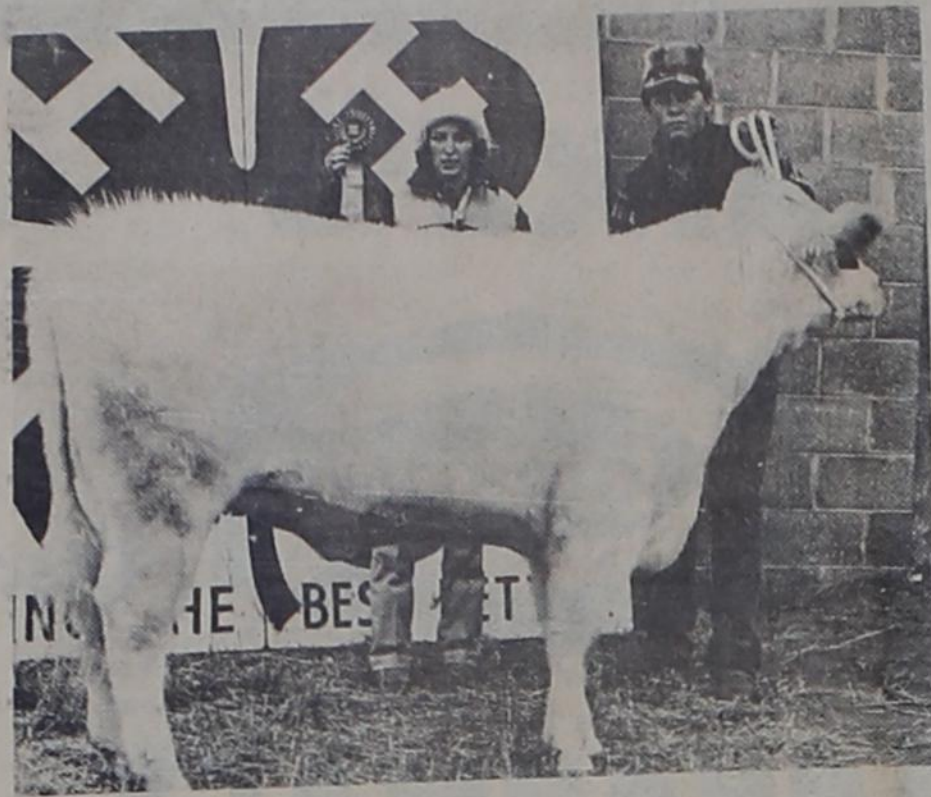
Relatives visiting in the Bill Mooring and Doyce Graham homes during holidays were: Mary Lou Hopkins, Judy and Chris Macklin of Snyder; Mr. and Mrs. C. B. Noble of Lubbock; Don Barker of Amarillo; and Mr. and Mrs. D.W. Tomlinson of Bartlesville, Okla.

John Nicholas Gerner, son of Mr. and Mrs. Johnny Gerner of Panhandle celebrated his first birthday at a party at the home of Ruby Roden in Memphis on January 5, 1980.

Those attending in addition to Nicholas and his parents were grandparents, Mr. and Mrs. Harold Gerner, Nancy and Billy D. Roden; great grandparents, Mr. and Mrs. C. F. Moss, Mrs.

Ruby Roden, Mrs. Mildred Brewer and his great-great grandmother, Mrs. Lucy Phillips. Also attending were Rick Gerner, Mr. and Mrs. B.B. Osborn and Dorcas, Debbie and Michael Roden, Darrel Blades, Mr. and Mrs. Alvin Phillips and Kathy Sprull and family and Mr. and Mrs. Eddy Eads.

Mac Thornberry a senior student at Texas Tech spent four days of the Christmas holidays with his parents Mr. and Mrs. Don Thornberry and brothers Lance and Drew. On December the twenty seventh (27) he left Lubbock with Techs debate team for USC and Fullerton, California to be gone until January sixth.



RODNEY McNEAR, 1st place in class 4 steers

## CC Dean's honor roll

Dr. Bob E. Riley, Dean of Instruction at Clarendon College has announced the names of students who have been named to the Dean's Honor Roll for the Fall 1979 semester.

Treva Carmichael, wife of Eddie Carmichael, Donald C. Garman, son of Mr. and Mrs. Duane Garman, received a 4.0 grade point average. Teresa Hill, daughter of Mr. and Mrs. Bill Hill. Justin Lemons, son of Jerry Lemons. Trista Moore, wife of Chester Moore. Susie Shadle, wife of James Shadle. Cheryl Thomas, daughter of Mr. and Mrs. C.R. Molder, received an A in Licensed Vocational Nursing. Sandra Wallace, wife of Glenn Wallace. Daphne Littlefield, wife of Ricky Ray Littlefield, received an A in

Cosmetology. To receive this honor, a student must achieve a grade point average of 3.6 or above on 12 or more semester hours of credit or receive a grade of A in a vocational program.

Others on the honor roll are Preston Byrd of Lelia Lake with 3.86 in Auto Mechanic and Colleen Smith of Paducah, Texas with 3.62.

Ashtola 42 party planned Ashtola Community Center will have their 42 party and covered dish supper Saturday evening January 12, at 6:30.

Hosts and hostesses for the party will be Mr. and Mrs. Bill Bennett and Mr. and Mrs. Pete Darnell. Make your plans to come.

# Congressman Jack Hightower's Washington Report

A special news message for people of the 13th Congressional District



JACK HIGHTOWER 13th District, Texas

Letters have been pouring in supporting efforts to resolve the problems in Iran. Few issues in recent times have caused such an outpouring of support.

The Shah must not be bartered for either hostages or oil and the immunity of diplomats and their embassies must not be bargained away. Under the circumstances, I believe that the President is being both wise and firm in this contest against with Ayatollah Khomeini whose total disregard of international law is in violation of all principles of human decency.

In any case, we simply can not tolerate hostile activity by foreign students on our soil. The legislation I have authored in the form of H.R. 5813 authorizes the deportation of students who have abused our hospitality by participating in activities intended to further tyranny in their home countries.

Sixty-seven members of Congress have co-sponsored this piece of legislation. We have asked that immediate hearings in the House of Judiciary Committee be held so that the process of ridding our nation of this disruptive influence can begin.

Both houses of Congress have held banking committee hearings on the Carter Administration's plan to provide \$1.5 billion in federal loan guarantees to Chrysler Corporation.

Chrysler's bankruptcy would have serious effects on both the public and private sectors of the economy. The collapse would cause short term job disruption for 500,000 workers. This is a dangerously high figure at the advent of an economic recession.

It is estimated that in the event of bankruptcy, the loss of payroll tax revenues, unemployment claims, welfare costs, and court expenses will cost the public over \$2.5 billion in the next two years. If reorganization should occur under bankruptcy proceedings, no one is sure Americans would have sufficient trust in the new firm to buy its product. Treasury Secretary William G. Miller cites that "while we have no guarantee this approach will work, it is our best option available."

Underwriting bad business judgment is never a good idea. Approximately 7000 companies fail every year. Many argue that we must save Chrysler because of its size. It is highly questionable that the Congress should have to be placed in the position to decide which companies are large enough not to fail.

Before the full House acts, this plan will be extensively revised. We can only hope that final action will aid the economy as well as place minimum stress on our public resources. We also must be careful that we do not set a precedent which will be impossible to live with in the future.

We are hearing a great deal of discussion of a new tax system called the value-added-tax (VAT). The chairman of the taxation committees in both Houses of Congress have proposed massive tax revision plans utilizing this system. The system is quite a departure from the one we use at present, but offers a "mixed bag" of features which we must carefully study before considering its use.

The VAT is a federal sales tax placed on all goods and services at each stage of manufacturing and processing. Western European countries place a 10 percent tax on each participant in the production chain—from initial manufacturer to final sale to the consumer. In these countries, each producer charges his next customer a tax which would be sent on to the government. The tax becomes a part of the final sales price of the product. It's a system of rebates on taxes paid along the line, the cumulative tax at the retail level cannot be more than 10 percent of the product's final retail value.

Those who support VAT believe that if enacted, personal income taxes would be cut by a total of \$50 billion a year. The maximum IRS rate for an individual would be lowered from 70 percent to 50 percent and corporate taxes would be

cut \$28 billion-- with maximum rates being reduced from 46 percent to 35 percent. Social security taxes would be rolled back, and every citizen would receive a maximum \$1000 exemption on all interest income.

VAT would in effect be a national sales tax on virtually everything. This would be in addition to local sales taxes already in effect. This would cause a terrific, one-time surge in the inflation rate which is already at double digit levels. It makes no distinction between low-income and high-income individuals. Food, housing and medical care would be taxed at a 5 percent rate, certain educational and charitable institutions would be exempt, but the tax would still fall most heavily on those who have small discretionary incomes and spend most of their funds on necessities.

We will hear a great amount of debate on this issue in the next session of Congress.

## Farmers lower income in 1980

Texas farmers and ranchers face prospects of lower net incomes in 1980 than during the current year, an agricultural economist with the Texas Agricultural Extension Service says.

Dr. Carl G. Anderson, marketing economist, says it simply boils down to costs increasing faster than farm prices. He notes that cow-calf operators generally will fare a little better in 1980 than most other agricultural producers. Fewer calves and strong demand are expected to help hold prices near the level averaged in 1979. An exception would be those ranchers of South and Southwest Texas who are hard-hit by the current summer and fall drought and are dispersing their entire herds.

Higher feed costs and the likelihood of a sluggish fed cattle market may mean that cattle feeders may find profit margins slim over the next 12 months, Anderson points out. "Large supplies of competing meats, particularly pork and poultry, will likely dampen any big rise in price of fed beef. The expected economic recession will increase unemployment and add to the cooling off of demand of beef," he predicts.

As a result of abundant supplies, hog, broiler and turkey prices are expected to remain low until late in 1980, when a possible reduction of output could bolster markets.

Lamb prices may run slightly less than in 1979 as total meat supplies are expected to be sizable, particularly in the first half of 1980. A small increase in U.S. lamb and mutton production is likely in 1980, with the inventory of sheep and lambs expected to be up from a year earlier.

Crop farmers of the state can expect 1980 price levels to remain near those of 1979. Little price change is foreseen in average prices for cotton and grains, but soybean prices may weaken slightly as increasing world consumption failed to match this year's increase in production, says Anderson.

The economist says vegetable supplies are up, causing market prices to weaken. And the plentiful supply of fruit and tree nuts points to moderately lower prices for producers until the 1980 crop size can be determined.

Anderson says production expenses for U.S. farmers moved up about 16 percent in 1979 and will probably increase another 11 percent or more in 1980.

"For irrigated farming in Texas, the increase will be much higher because of rising fuel and energy costs," he points out.

No let-up is foreseen in the rising price of energy and climbing inflation rates.

"Early this fall, prices paid by farmers for fuels and energy were 44 percent higher than a year earlier. Prices for tractors and other machinery were 11 percent higher, and for building and fencing, prices were up 10 percent. Interest rates on farm mortgages had jumped 25 percent during this period," Anderson notes.

On November 15th, the House overwhelmingly rejected President Carter's plan for standby mandatory controls on hospital cost increases. By a vote of 234-166, the House adopted a substitute measure that removed cost controls from the bill entirely. The Administration has indicated it will carry the fight to a new arena.

I do not favor mandatory cost controls on hospitals. Last year Texas and Georgia led the Nation in implementing the voluntary effort to reduce the rate of increase in hospital costs. In Texas, the rate of increase in cost per admission in its hospitals dropped from 15 percent in 1977 to 12.5 percent in 1978.

The substitute amendment by Congressman Richard Gephardt, D-Missouri which I supported, would continue the voluntary effort and keep the pressure on hospitals to hold down cost increases by creating a National Commission on

Hospitals Costs to monitor and report to Congress on the success of the voluntary effort. It would also authorize HEW to provide assistance to the States to develop cost control programs tailored to local needs and problems.

Visiting in home of the V.T. McPherson's of Hedley over the Christmas holidays were the following: Mr. and Mrs. Don Smith, Sherri, Shannon and Shawn, and Becky McPherson, all of Rogersville, Mo.; Mike and Chris Ray of Niangua, Mo.; Mr. and Mrs. James Kirkland and Debbie of Amarillo; and Mr. and Mrs. Jimmy Kirkland of Clarendon, Texas.

All had a very enjoyable time with the exception of missing Beverly Cork as she underwent major surgery and was in hospital in Springfield, Mo. and unable to come "Home" for Christmas.

"A hen is only an egg's way of making another egg." Samuel Butler

Of the 444,000,000 radios in use today, 106 million are auto radios.



**the wise old owl says**

## WISDOM IS...



**protection for your family**

Life insurance is an investment in the future for you and your family. A life insurance policy can also guarantee that you will have enough money to send your children to college. Ask about one of our life insurance policies now!

**BRIGHT NEWHOUSE**

**874-2001**

## FELICITY GREENHOUSE AND NURSERY

Naylor Rt.  
Clarendon, Texas 79226

Finest quality nursery stock available for delivery in February on orders placed during January.

- APPLES-6 VARIETIES
- PEACHES-10 VARIETIES
- NECTARINE-1 VARIETIES
- APRICOTS-3 VARIETIES
- PEARS-6 VARIETIES
- CHERRIES-4 VARIETIES
- PLUMS-5 VARIETIES
- GRAPES- 5 VARIETIES
- PECANS-14 VARIETIES
- BERRIES-7 VARIETIES

Shade and ornamental trees, flowering shrubs, and roses also. Commercial orders welcome. All stock guaranteed fresh, disease free, and true to name.

Call or write and compare our prices.  
874-3488 after 6:00 p.m.

# FIRST FEDERAL

Savings & Loan Association

P.O. Box 109 Childress, Texas 79201 (817)937-2514

## RATES EFFECTIVE JANUARY 2, 1980:

**5.50%** REGULAR PASSBOOK—INTEREST PAID FROM DAY OF DEPOSIT TO DAY OF WITHDRAWAL —ADD TO OR WITHDRAW FROM ACCOUNT IN ANY AMOUNT AT ANY TIME.

**5.65%** APPROXIMATE EFFECTIVE ANNUAL YIELD WHEN INTEREST IS LEFT TO ACCUMULATE.

### CERTIFICATE ACCOUNTS

RATE	APPROXIMATE ANNUAL YIELD WITH DAILY COMPOUNDING IF INTEREST IS LEFT TO ACCUMULATE	MINIMUM TERM	MINIMUM AMOUNT
6.50%	6.72%	1 YEAR	\$100.00
7.50%	7.79%	4 YEARS	\$100.00
7.75%	8.06%	6 YEARS	\$100.00
8.00%	8.33%	8 YEARS	\$100.00
	(NEW)	2 1/2 YEARS	\$100.00

\*INTEREST PAID ON THE NEW 2 1/2 YEAR CERTIFICATE IS BASED ON U.S. TREASURY SECURITY YIELDS. PLEASE INQUIRE FOR THE CURRENT RATE.

THE ABOVE CERTIFICATE ACCOUNTS MATURE AT THE END OF THE CALENDAR QUARTER FOLLOWING THE STATED TERM AND INTEREST IS COMPOUNDED DAILY AND PAID QUARTERLY.

**6-MONTH "MONEY MARKET CERTIFICATES":** FIRST FEDERAL OFFERS THE "MONEY MARKET CERTIFICATE". \$10,000.00 MINIMUM, 182 DAYS AT THE HIGHEST ALLOWABLE RATE.

FEDERAL REGULATIONS PROHIBIT COMPOUNDING OF INTEREST ON THESE CERTIFICATES. PLEASE INQUIRE FOR CURRENT EFFECTIVE RATE.

FEDERAL REGULATIONS REQUIRE A SUBSTANTIAL INTEREST PENALTY FOR EARLY WITHDRAWAL OF TIME CERTIFICATES.

**FIRST FEDERAL SAVINGS ACCOUNTS ARE INSURED BY THE FEDERAL SAVINGS AND LOAN INSURANCE CORPORATION, AN AGENCY OF THE UNITED STATES GOVERNMENT UP TO \$40,000.00.**

**HOME OFFICE**

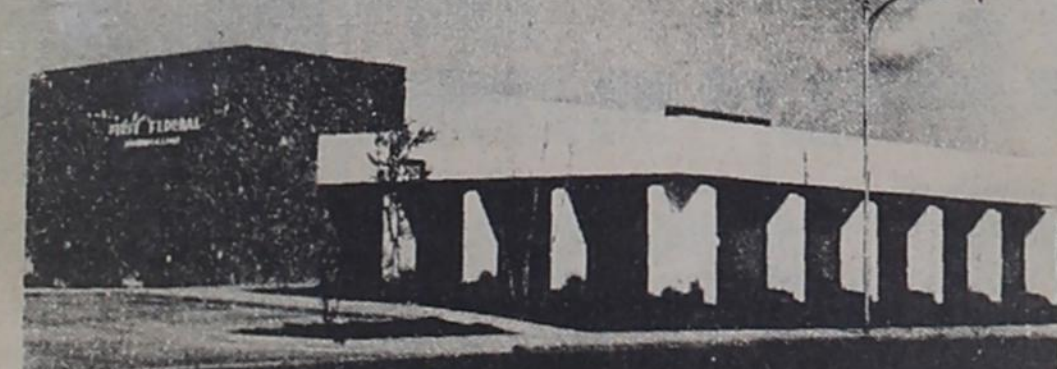
501 COMMERCE  
CHILDRESS, TEXAS  
TEL. 817-937-2514

**MEMPHIS BRANCH**


101 SOUTH 9TH  
MEMPHIS, TEXAS  
TEL. 806-259-2152

**WELLINGTON BRANCH**

815 WEST AVENUE  
WELLINGTON, TEXAS  
TEL. 806-447-2730



SERVING THIS AREA SINCE 1934





JACK CRAFT 1st place winner in class 1 steers

### 4-H Sand Hills Hereford Show

Donley County 4-H'ers exhibited several top placing steers and heifers at the Sand Hills Hereford Show in Odessa last week according to County Extension Agent, Ronald Gooch. Jack Craft placed 1st with his middle weight steer. Lance Thornberry placed 2nd with his light weight steer. Also in the middle weight class, Drew Thornberry placed 4th and Dean Hawkins placed 14th.

Jamie McNear placed 13th with her medium heavy weight and Ray Lindley's heavy weight steer placed 17th.

Five of the steers were sold in the auction sale for .95 to 1.05 cents per pound.

In the Hereford heifer show Phil Moreman placed 2nd with his junior heifer calf. Melody Moreman placed 2nd with her winter heifer calf.

### New bill may make landlords do repairs

This past legislative session the Texas Legislature passed the Bill imposing a statutory duty on landlords to repair any condition of an apartment or house which materially affects the physical health or safety of a tenant.

In order to get repairs, a tenant must give notice of the

repair to the landlord. That notice need not be in writing unless it is required by the rental agreement. In order to be effective, the tenant must not be delinquent in rent at the time notice of the needed repair is given to the landlord. After notice has been given to the landlord, the landlord has a

reasonable time in which to repair the condition.

The legislation provides that if the tenant gives notice and the landlord does not repair, the tenant may invoke one of several remedies. First, the tenant may terminate the lease agreement and move out. Secondly, the tenant may go to court and obtain a court order directing the landlord to repair the premises and directing that the landlord reduce the rent. Moreover, the tenant may obtain damages from the landlord in the amount of one month's rent, plus \$100.00, plus actual damages and attorney's fees.

The Bill also provides for protection from retaliation by a landlord. A landlord may not, within six months from the date of a tenant's repair notice, evict

or decrease services to the tenant. Of course, the landlord may evict if there is a breach of the lease by the tenant. However, the landlord is prohibited from evicting because the tenant sought to obtain repairs. The landlord is allowed to raise the rent after making repairs provided that it is done on a project wide basis and no one tenant is singled out for special treatment because of complaints about needed repairs.

Should a landlord retaliate and a tenant move, the tenant may sue and recover one month's rent, plus \$100.00, plus moving costs and his or her attorney's fees. The Bill provides further that a tenant is not relieved from the obligation to pay rent because of the land-

Con't to p. 7

WATER USAGE REPORT FOR DECEMBER  
1970 ----- 1979

	DECEMBER 1970	DECEMBER 1971	DECEMBER 1972	DECEMBER 1973	DECEMBER 1974
Childress	11,425,000	15,863,000	25,780,000	18,533,000	14,923,000
Quanah	9,040,000	7,566,000	10,500,000	10,718,000	8,808,000
Clarendon	6,315,000	5,030,000	7,969,000	8,010,000	9,366,000
Crowell	2,018,000	2,727,000	7,144,000	4,154,000	5,811,000
Hedley	860,000	982,000	1,238,000	1,044,000	1,331,000
Bestwall	4,056,000	4,278,000	3,182,000	5,134,000	3,909,000
Red River	1,450,000	1,190,000	1,591,000	7,058,000	10,454,000
Copper Breaks	-0-	-0-	-0-	-0-	12,000
TOTALS	35,164,000	37,636,000	57,404,000	54,651,000	54,615,000

	DECEMBER 1975	DECEMBER 1976	DECEMBER 1977	DECEMBER 1978	DECEMBER 1979
Childress	14,780,378	22,681,000	24,498.	18,179.	16,418.
Quanah	9,316,000	9,122,000	12,541.	12,738.	15,512.
Clarendon	9,756,000	12,524,000	13,385.	11,421.	14,452.
Crowell	5,267,800	6,776,000	8,191.	8,967.	11,491.
Hedley	1,529,500	1,619,000	1,598.	1,535.	1,439.
Bestwall	5,235,500	9,008,000	10,464.	14,246.	15,630.
Red River	10,897,837	12,588,000	11,846.	13,573.	12,111.
Copper Breaks	13,980	18,100	14.	8.	23.
TOTALS	56,796,995	74,336,000	82,537.	80,667	87,076.

**OUR**  
*January Clearance*  
**SALE**

**IS CONTINUING**

**ALL**  
**FALL AND WINTER**  
**MERCHANDISE**

**20% to 75% OFF**

**QUALITY MERCHANDISE**

**THE NOOK** **Clarendon**



# BIVENS PHARMACY

Elmonette and Paul Bivens  
Registered Pharmacists

---

## VACCUM



1 One Pint  
Great For Coffee  
**\$1.49**

Tall Kitchen 12

## TRASH BAGS

44 quart  
**69¢**

---

## TODDLERS



One Box 12's  
**\$1.69**



Lysol  
"Love My Carpet"  
RUG & ROOM DEODORIZER  
12 OUNCE  
**99¢**

---

## HAND TOWELS

Terri



**99¢**

16 Oz

## REDI SHAVE

Guaranteed Satisfaction  
**77¢**

---

## KLEENEX

200 Count



**79¢**

## FANTASTIK

32 Oz



**99¢**

---

200 Sheets

## NOTEBOOK PAPER

Wide or College Rule



**59¢**

## STEPHEN B. PERFUME



**50% OFF**

---

Crystal

## ASH TRAYS



**39¢ each**

60 Sheet

## TABLET LINED

or

32 ENVELOPES

Floral Design  
**59¢**

### It's important to keep your will up to date

If Aunt Sarah dies "without a word" about her will, she risks sparking a family conflict. Even death can't free us from misunderstandings, unless we take early steps to avoid them, research says.

Do two things: keep an updated will and explain it to your family, says Dr. Betty Jo Smith, a family life education specialist.

Dr. Smith is with the Texas Agricultural Extension Service, The Texas A&M University System.

Of course, the two steps don't guarantee total success, but they'll help, the specialist insists.

We all know that a "no will" situation can almost assure conflict, but research reports that one of every seven cases with a will produces it, too, Dr. Smith says.

Here's a brief look at the "why's," based on what surveyed families said were the key factors:

Most conflict arises through

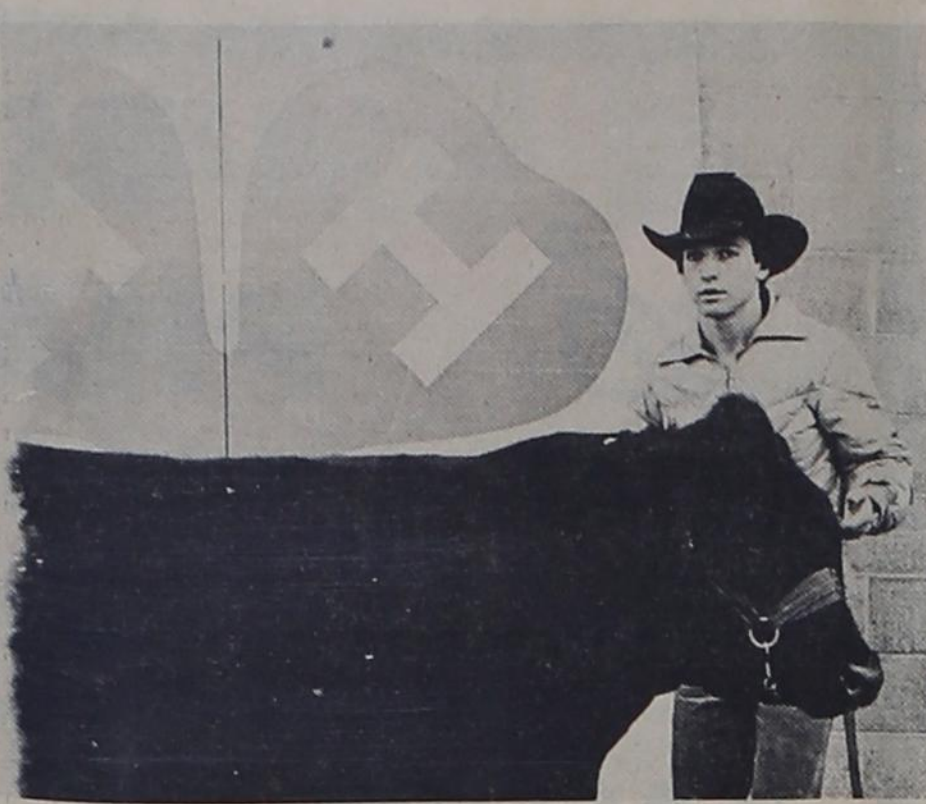
different views among family members on what is equal and what is fair.

Also, remember that some of the very principles used to decide inheritance are the ones that come under the fire of differing views.

These principles include the idea that some right to inherit stems from long residence in a house -- and the idea that "last-name identity" gives a person some rights to the deceased's property.

Other principles include the idea that blood relationship and frequent contact with the deceased give a person some right to inherit.

Still other principles are the idea that material support of the deceased -- and co-residence with the deceased -- carried some rights and that kinship closeness and congenial relationships increase rights, while hostile relationships decrease rights.



DEAN HAWKINS, 1st place winner in class 3 steers

### Texas Tenants' Union

Landlords in Texas are now legally bound to repair conditions which affect the physical health or safety of a tenant. Passed by the most recent session of Texas legislature, the Warrant of Habitability became effective September 1, 1979. Serious problems with plumbing, wiring, rodents, leaking roofs, lack of heat or hot water may be covered.

In order to have repairs made, a tenant must give a notice to the landlord (preferably written) that such repairs need to be made. The tenant must not be delinquent in rent at the time the notice is given and the tenant's family or guests must not have been responsible for the repair problem. If after a reasonable period of time the landlord has not remedied the condition, the tenant should give a second notice to the landlord stating that they have the option of suing in County Court or terminating the lease if the repairs are not made in seven days.

The Warrant of Habitability also provides for protection from retaliation by the landlord. In the past tenants have often been reluctant to complain about repairs, fearing eviction or rent

increases. If tenants are not certain if their specific repair problems are covered by this law, they should contact a local branch of the Texas Tenants' Union: Austin (512) 441-8660, Dallas (214) 823-2733, Fort Worth (817) 923-5071, Houston (713) 438-0278.

### Hedley School menu

**January 14-18**  
**Monday** Spaghetti with meat sauce, blackeye peas, fried okra, hot rolls with butter and milk.

**Tuesday** Tuna casserole, buttered peas, hominy, whole wheat rolls, peaches and milk.

**Wednesday** Mexican casserole, buttered corn, green salad, apple sauce and milk.

**Thursday** Burritos with cheese, green beans, plum cobbler and milk.

**Friday** Corn dogs with mustard, french fries, ketchup, chocolate pudding with topping and milk.

Hickory Jim, the oldest race horse in history, won his last race in 1891 at the age of 25.

It takes one second for the wings of small hummingbird to beat 70 times.

### New car registrations

1980 Olds purchased by Mrs. Frank D. Babcock, Groom, TX from Chamberlain Motor Co.

1980 Cadillac purchased by Joe Holmes, Electra, TX from Chamberlain Motor Co.

1979 GMC Jimmy purchased by Georgia Beaver, Amarillo, TX from Chamberlain Motor Co.

1980 GMC Puckup purchased by Rex Johnson, Flomot, TX from Chamberlain Motor Co.

1980 Buick purchased by H.C. Brannon, Shamrock, TX from Chamberlain Motor Co.

1980 Pontiac purchased by Terry Cole, Clarendon, TX from Chamberlain Motor Co.

1980 Buick purchased by M & M Dirt Construction, Beaver, Okla. from Chamberlain Motor Co.

1980 GMC Puckup purchased by Porter Cattle Company, Clarendon, TX from Chamberlain Motor Co.

1980 Buick purchased by Leo Cutler, Borger, TX from Chamberlain Motor Co.

1980 Pontiac purchased by James Evans, Denison, TX from Chamberlain Motor Co.

1980 Cadillac purchased by N.C. Thompson, Duke, Okla. from Chamberlain Motor Co.

1980 Buick purchased by Charles W. Miller, Pampa, TX

from Chamberlain Motor Co. 1980 Chevrolet Pickup purchased by Allen Bartel, Clarendon, from Alderson Chevrolet 1979 Chevrolet purchased by Leo Smith, Lelia Lake, TX from Alderson Chevrolet

1980 Chevrolet Pickup purchased by Nolen Hill, Clarendon, from Alderson Chevrolet 1980 Chevrolet Pickup purchased by Mac J. Stavenhagen, Clarendon, from Alderson Chevrolet

## JOSEPHINE BURGESS

Cotton Buyer

874-3452

12 Noon - 1 p.m. 4:30 p.m. - 10:30 p.m.

Nature accepted them...but the government wouldn't!



Starring ROBERT F. LOGAN - SUSAN DAMANTE SHAW WILLIAM BRYANT - HEATHER RATTAY - HAM LARSEN and GEORGE 'BUCK' FLOWER

Written and Produced by ARTHUR H. TUBBS. Directed by JOHN COOPER. Director of Photography: JAMES ROBERTSON. Music by HERBERT U. BRAGLAND. Songs Performed by GARY ROBERTSON. Lyrics by CAROL CONNORS. A TRISTAR INTERNATIONAL ENTERPRISES INC. RELEASE. Copy by C.F.T.

## MULKEY THEATRE

Clarendon

ONE DAY ONLY

Tuesday, Jan. 15th

SHOW TIME 7 and 9 p.m.

### Second series tax tip articles

The Internal Revenue Service has established certain requirements for taxpayers filing income tax returns this year.

The following is a list of the minimum amount of gross income which would require a taxpayer to file a return.

Single persons can earn up to \$3,300 before they are required to file. Single persons aged 65 or over have a gross income limit of \$4,300.

Married persons filing a joint return have a gross income limit of \$5,400. Married persons with one spouse 65 or over filing a joint return have a gross income limit of \$6,400. Married persons who are both 65 or over filing a joint return have a gross income limit of \$7,400.

Married persons filing separate returns have a gross income limit of \$1,000 while a surviving spouse (qualifying widow/widower with a dependent child) has a gross income limit of \$4,400. A surviving spouse who is 65 years of age or older has a gross income limit of 15,400.

In addition, taxpayers are required to file a return if: They have received tips from which social security tax was not withheld, even if gross income was less than \$3,300; they were in business for themselves and had net earnings of \$400 or more (called self-employment income); they had unearned income of \$1,000 or more, such as dividends or interest from savings accounts, and can be claimed as a dependent by their parents. This is particularly important to students; or they received any advance earned income credit payments from their employer.

These and other questions concerning your 1979 tax return will be answered in the Taxpayer Education program. This public service course will be offered Jan. 29 and 31, 7:00-9:30 p.m. This program is co-sponsored by the Panhandle

### Eddie Carmichael makes Presidents honor roll

Eddie L. Carmichael, of W.T.U. made a 4.0 average grade and was named on the presidents honor roll.

Carmichael is an Elementary Education Major and is the son of Joe Bob Carmichael of Clarendon. He has a wife and 3 children.

### Clarendon School menu

January 14-18

**Monday** Macaroni and cheese, green beans, cabbage slaw, hot rolls-butter, jelly and milk.

**Tuesday** Beef tacos with cheese, buttered corn, lettuce and tomatoes, cherry jello and milk.

**Wednesday** Beef stew with vegetables, sliced pickles, celery stick, cornbread, banana pudding and milk.

**Thursday** Turkey pot pie, mashed potatoes, peas with carrots, peanut butter cookie and milk.

**Friday** Hamburger on bun, lettuce and tomatoes, tater tots, sliced onions, fruit cup and milk.

## Statement of Condition of THE FARMERS STATE BANK AND TRUST COMPANY

Clarendon, Texas

at the close of business December 31, 1979

ASSETS	LIABILITIES
Cash & Due From Banks . . . . . \$2,441,226.64	CAPITAL STOCK . . . . . \$ 250,000.00
U. S. Treasury Securities . . . . . 1,383,168.91	SURPLUS . . . . . 750,000.00
U. S. Government Agencies & . . . . . 1,550,531.72	UNDIVIDED PROFITS
Corporations	& RESERVES . . . . . 698,679.60
Obligations of States & . . . . . 4,132,007.38	LIABILITY RESERVES . . . . . 539,457.73
Political Subdivisions	DEPOSITS . . . . . 19,832,147.57
Federal Funds Sold . . . . . 1,000,000.00	
Loans & Discounts . . . . . 10,954,297.32	
Bank Premises, Furniture & . . . . . 133,673.88	
Fixtures	
Stock in Federal Reserve Bank . . . . . 30,000.00	
Other Assets . . . . . 445,379.05	
<b>\$22,070,284.90</b>	<b>\$22,070,284.90</b>

MEMBER FEDERAL RESERVE SYSTEM

MEMBER FEDERAL DEPOSIT INSURANCE CORPORATION

## STATEMENT OF CONDITION

Each depositor insured to \$40,000



### OFFICERS

EMMETT O. SIMMONS, President & Trust Officer

JOE T. LOVELL, Vice-President & Ass't Trust Officer

BRONNIE F. McNABB Jr. Vice-President & Cashier

VAN KENNEDY, Vice-President (Inactive)

DOUG BURGESS, Vice-President

CLARA LOHOFER, Ass't Cashier

GLENDORIS McAFEE, Ass't Cashier

PHYLLIS FORD, Ass't Cashier

BILLIE GUILL, Ass't Cashier

JACI McANEAR, Ass't Cashier

TOOKIE THORNBERRY, Ass't Cashier

RUTH J. HANCOCK, Ass't Cashier

H. M. BREEDLOVE

Agricultural Representative

### DIRECTORS

H. L. BENSON

VAN KENNEDY

D. E. LEATHERS

BRONNIE F. McNABB Jr.

ANNA MOORES SIMMONS

EMMETT O. SIMMONS

FRANK WHITE Jr.



## Howardwick Partyline

By NORMA CORGILL

Johnny and Darlene Lacy and children from Amarillo, were down this weekend. We are always glad to have our weekenders. They make up a big part of Howardwick.

The Friendship Club have their regular meeting the 3rd Friday night, all the ones that took part in trying to get a senior citizen group started out here are asked to be present. They have some decisions that need to be made. If they are going to disband, what is to be done with the money they have in the bank and such.

Mrs. Mabel May is still on our sick list, also Mrs. John Raines. hope both of you are feeling better soon.

The Castners singers, from Lubbock are supposed to be

here Jan. 20th. They will have charge of the Sunday morning preaching hour and bring us Gods message in song.

Mrs. Bea Rodgers has also got the flu bug or virus, and is not feeling so good. There is so very much of that scattered around our community.

Jim and Thelma Corgill from Zapata were in Amarillo for Christmas, came by and spent the night with Norma Corgill Thursday night and visited with friends the next day enroute back, where it is warm and the fish bite all the time. What a good life.

Ruth Chaney of Cheyene, Wyo. spent last week with her sister Waldon and Aileen Moore. Her mother and sister from Amarillo joined them new years eve, and attended the Senior Citizens New Years Eve

dance at the Lion's hall. Everyone reported having such a nice time.

Visiting the Huell Bingham's through the Christmas and New Year holidays were their children, Buchand Mildren Bingham, Brandon and Christal of Lubbock, Rusty Bingham of Amarillo, Larry and Kim Brackett and Nicholus of Amarillo, Grandchildren Jr. and Bradley Bradey of Amarillo.

Jr. is living with his grandparents now and will attend college this semester here.

John and Polly Sarich are back home from their trip to San Jose, Calif. where they visited a daughter, Murleen Ryder and children. A son Ingo Swann, met them there and they had a very nice visit together, while there they attended the San Francisco Ballet and saw the Nut Cracker Suite. They took hot baths at the hot mineral spa in Calistoga, Calif. On the return trip home they came by Lake Habasu City, Arizona and saw the London Bridge and last but not least. They have a new grandson.

Mr. and Mrs. Russell Sarich are the happy parents. Joseph Anthony was born Dec. 14, 1979 in Breadenton, Florida. Glad you had a nice trip but we are happy to have you home again.

Norma Corgill spent some time with her daughter in Claude last week, the Bud Strange family.

Albert and Trula Moore met their son, Larry down town Clarendon and visited with him on his way to Dallas, New Years night.

**Some elderly and handicapped may be eligible for ECAP aid**

The Donley County Community Action is administering the Energy Crisis Assistance Program to assist the poor and near poor to pay for the high costs of energy. Priority of services under the program will be for the elderly and handicapped. Persons who believe they may be eligible should contact Robbie Hill or Eureda Mays, Donley County Community Action 874 2573 -- 874-3613.

## Hedley news

By WILLIE JOHNSON

Mr. and Mrs. Bert Stone spent the weekend in Amarillo with their daughter Mr. and Mrs. Alvin Winters and children.

Ike Rains had minor surgery for an ulcer on his ankle Friday at the Groom hospital and is reported doing fine.

Hedley's Boys basketball team won at the Phillips tournament the past weekend. They beat Phillips 40-Hedley 56.

Mrs. Marjorie Bailey spent the week with Mr. and Mrs. Gary Graham in Bushland.

Mrs. Cottie Bogue is visiting

her brothers and sisters in North Carolina. She left Saturday and expects to be gone about 3 weeks.

Miss Elen Faye Land, Pete, Jack and Jigg Land of Clarendon attended memorial services of a cousin in Childress on Saturday Jan. 6. Mrs. Ben Walker passed away at Lubbock. Mr. Walker was raised in Memphis and formally lived in Childress.

Mrs. Bessie Yandell is still at the Memphis nursing home recovering from recent surgery and is reporting to be doing fine.

Mr. and Mrs. Sam Owen's weekend company was Mr. and Mrs. Sam Owens of Ft. Worth, and Mr. land Mrs. Burl Owens and family, Jimmy Owen all of Amarillo. Sam will be going to Australia soon.

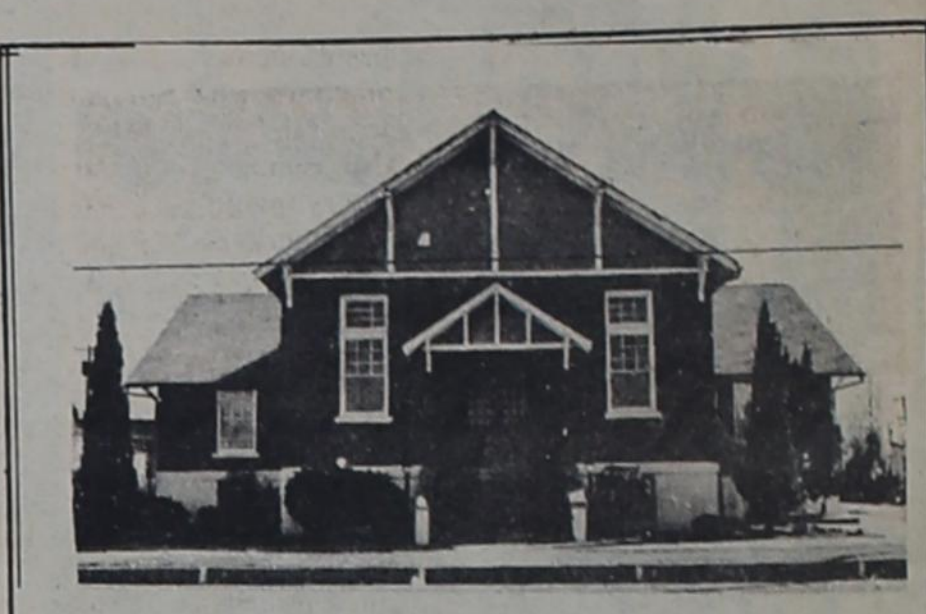
"Can" Do all the good you can By all the means you can In all the places you can At all the paces you can At all the times you can To all the people you can As long as ever you can

Young elephants stay with their mothers for about 12 years before going out on their own.



During a period of 12 days in 1906, marksman Adolph Topperwein fired at 72,500 targets and missed only nine.

## SHOP CLARENDON



Jude 1:24-25 To the only God our Saviour To him who is able to keep the glory, majesty, power, and you from falling and to present authority through Jesus Christ you before his glorious presence our Lord, before all ages, now without fault and with great joy- and for ever more. Amen.

A New Testament Church following the precepts of God and the teachings of the Apostles.

**FIRST CHRISTIAN CHURCH**  
Wilbert Bernabe, Pastor  
Third & Gorst Streets  
Clarendon, Texas

**AVAILABLE MONDAY 1-14-80**

**CLARENDON WONDER BREAD**  
1 lb loaf  
**45¢**

Landlords from p. 5

lord's failure to make repairs. The tenant must first obtain a court order directing the landlord to make repairs. Thus, a tenant will not be able to claim that he or she cannot be evicted for non payment of rent because the non payment is due to the landlord's failure to repair. If the tenant continues to pay rent, the tenant has strong remedies that he or she may invoke.

Should a landlord attempt to evict within 6 months of the date of the repair notice, the tenant may prevent the eviction by demonstrating to the court that the landlord is retaliating. If the landlord cannot show some valid breach of the lease, the court cannot evict.

The legislation further provides that a landlord and tenant may agree that the landlord is not to be responsible for making repairs. However, this must be pointed out in the lease agreement in bold print or it must be underlined. Any such clause which attempts to relieve the landlord of his responsibility to repair must be agreed to by the tenant knowingly, voluntarily and for consideration.

The new legislation becomes effective on September 1, 1979. It will provide an effective tool for tenants to use in their battle to get landlords to repair.

A recent study showed that people who ate within two hours of food shopping bought an average of \$7.48 less than they did shopping when hungry.

DEC. 26, 1979 thru JAN. 31, 1980

**PLACE SETTING SALE**

ONEIDA STAINLESS the American made stainless.

5-Piece Place Setting \$699 to \$1299  
Contains: Salad Fork, Place Fork, Place Knife, Place Spoon, Teaspoon.

**ONEIDA**  
The silver cube. Our silverware's mark of excellence.

<b>COMMUNITY STAINLESS</b> 5-Pc. Place Setting... \$12.99 (Reg. \$20.50)	<b>ONEIDA DELUXE STAINLESS</b> 5-Pc. Place Setting... \$9.99 (Reg. \$16.00)	<b>ONEIDA PROFILE STAINLESS</b> 5-Pc. Place Setting... \$6.99 (Reg. \$10.50)
---	--	---

**Henson's** Gift Dept. Clarendon

No. 2 Russet 10 lb bag

**GIBSON'S DISCOUNT CENTER POTATOES 85¢**

**LETTUCE 24¢ head**

**TOMATOES 37¢ lb**

**BANANAS 23¢ lb**

**JELLY or JAM 89¢ 2 lb**

**Van Camp PORK & BEANS 59¢ 31 oz**

**Extra Large EGGS 73¢ Dozen**

**Meat's Split Top Honey Wheat BREAD 59¢ 1 1/2 lb loaf**

**Sunshine GINGER SNAPS 65¢ 14 oz**

**Sunshine Cinnamon GRAHAM CRACKERS 65¢ 16 oz**

**Sunshine Vienna FINGER COOKIES 65¢ 12 oz**

**CRISCO 1.99 3 lbs**

**Parkay Soft Corn Oil OLEO 85¢ 16 oz**

**Parkay Light Spread OLEO 1.19 2 lb**

**Log Cabin PANCAKE & WAFFLE MIX 89¢ 32 oz**

**Ranch Style BLACKEYE PEAS 4/99¢**

**Frozen Banquet FRIED CHICKEN 2.47 32 oz**

**USA Choice Beef CHUCK STEAK 1.28 lb**

**Wright's Smoked HAM 1.78 lb**

**American Beauty RONI-MAC 85¢ 24 oz**

**American Beauty ELBO-RONI 85¢ 24 oz**

**American Beauty SPAGHETTI 85¢ 24 oz**

**American Beauty SAUCE MIX 23¢ 1 oz pkg**

**TIDE 1.47 Giant Box**

**White Swan Single Sliced CHEESE 1.49 12 oz pkg each**

**White Swan Half Moon Longhorn CHEESE 1.09 8 oz each**

**Wilson's Certified 4 to 6 # Boneless HAM 1.98 lb**

**Gillette Atra Blades With Free Razor 1.29**

**Gillette Regular Cricket Lighters 3/\$1.00**

**Gillette Super Cricket Lighters 69¢ Each**

# CLASSIFIED ADS

**TO BUY, SWAP, TRADE OR SELL 874-3541**  
**ALL CLASSIFIED ADS MUST BE PAID FOR IN ADVANCE**

**RICKY RATTAN** **TEX NAYLOR**  
 Owner

**ZENITH**  
**SALES & SERVICE**

**RATTAN T. V. SERVICE**  
**AFTER THE SALE,**  
**IT'S SERVICE THAT COUNTS**

Fm - 2 Way Communications Cable TV

OFFICE-HOME **BOX 912**  
**CLARENDON TEXAS 79226**

**I AM NOT REJECTING ANY BUSINESS CONCERNING THE PURCHASE OF ANY AUTOMOBILE. BUT I AM PARTICULARLY INTERESTED IN DONLEY COUNTY TRADE AND WILL DO MY BEST TO SEE THAT IT IS TO YOUR BENEFIT TO TRADE WITH**

**FRED CLIFFORD**  
**AT**  
**CHAMBERLAIN MOTOR CO**  
**874-3527**

**FOR SALE:** Registered Brangus Bull Glen Whatley 874-2892 2-1tp

**FOR LEASE** 114 acres of fine pasture land, good grass \$5 per acre for year. Three miles west of Goldston. Charley L. York, Rt. 2, Whitney, Texas 76692 817 694-3704 2-3tc

**THANK YOU**  
 We wish to express our gratitude to the friends and neighbors whose kindnesses during the loss of our loved one were so appreciated.

Your flowers, cards, food, calls and all other thoughtful acts did help so much. The family of Letha Youngblood 7-1tp

If you don't like to cook, let someone do it for you. Let me bake for you every day needs and special occasions. Now taking orders for all kinds of home baked goods. Will make special occasion cookies and cakes. Call Brenda Ward at 874-3904. 16tc

**R & S FUR CO.** Will buy furs skinned or on carcass Call 874-2417 Wednesdays and weekends 45-11tp

**OFFICE SUPPLIES**  
 Bookkeeping Supplies  
 Storage Boxes  
 Office Machine Ribbons  
 Office Furniture  
 Clarendon Office Supply and Printing  
 G.W. Estlack  
 Clarendon, TX 79226

**REAL ESTATE SALES**

IF YOU'RE LOOKING FOR A HOME, SEE ME BEFORE YOU BUY

I have some selection 2, 3 and 4 bedroom homes. From \$9,500.00 to \$45,000.00

See or Call  
 Clyde I. Price  
 Real Estate  
 874-3896  
 874-2002

**Mrs. Bond's Baking**  
 Located at Mobile home South on Koogle at the First turn west. 874-3355 49-tfc

**PRE-INVENTORY Clearance Sale.** Nothing priced over \$3 per yard. Spring & Summer Merchandise due to arrive any day, so I need to move my fall and winter fabrics. Open 9 to 6 Wednesday thru Saturday. Ashtola Fabrics, Carlene Hollar, 874-2017 50-4Tp

**FOR SALE:** 1,800 sq. ft. house on corner 1 1/2 lots. Storage building, new carpet, nice, will consider renting. Larry Helms 856-4401 51-4tp

**FOR SALE OR LEASE:** 2 bedroom house 520 W. 7th, large storage and 1 car garage. \$150.00 a month Call 915-362-7255 Odessa Texas 48-6tc

**ALTERNATIVE**  
 Alternative to an Abortion for an untimely pregnancy Call THE EDNA GLADNEY HOME Texas Toll-Free 1-800-792-1104 51-tfc

**FOR SALE:** 1979 World Books, Childcraft Dictionaries, cyclo-teacher. Carpet, red and black \$75.00 13x15, 9x12 multi-green hooked rug \$15.00, 12x15 in-door-outdoor blue with green \$25.00 Early American desk. 856-2481 1-2tp

**FOR SALE:** Cane and Higiera mixed hay. Contact Ralph Hill 874-2473 2-1tp

**PERMANANT ANTI FREEZE**

\$3.75 Gal Case  
 \$3.95 single gal

**We Do Car Washing**  
**HOMMEL MOBIL STATION**

**Help Wanted**  
 Apply in person  
**WESTERN SKIES MOTEL**

**TRAILER SPACE FOR RENT**  
**CORONADO MOTEL**  
 874-2087 2-4tc

**FOR SALE:** Two year old Angus bull. Call after 6 p.m. 874-2057 2-2tc

**FOR RENT:** 4 room apartment call 874-2857 or 874-3488 after 6 p.m. 1-2tp

**LOST** Black and white Huskey dog, with blue eyes. \$100.00 reward James Kirland 1-3tp

**FOR SALE:** Laying hens, 2 year old female black Labrador 944-5475 Goodnight 2-1tc

**WANT TO BUY** second hand guitar call 874-3307 or 874-2645 2-1tp

**NOTICE**  
 City of Fritch is accepting applications for Patrolman. Must be certified. Salary - \$900.00 to \$950.00/mo. Plus \$100.00/mo. clothing allowance. Send resume to City Mgr., Box 758, Fritch, Texas. 79036. 1-2tc

**THANK YOU**  
 Words cannot express our appreciation for the prayers, visits, food and other acts of kindness shown during the illness and loss of our loved one. May God bless each of you. The family of Mayburn Trout 2-1tp

**GODFREY PEST CONTROL**  
 Memphis, Tex. 259-2766  
 Contact: Pat Godfrey  
 Good Work Reasonable Price

**KIRBY SALES & SERVICE**  
 Alley Street  
 Howardwick, Texas (Sherwood Shores IX)  
 Phone 874-3403  
 for repair on any make vacuum cleaner 33-tfc

**FOR SALE:** Good haygrazer baled hay at Goodnight, Tx. approx. 3,000 bales, \$1.65 bale. All or large amounts at \$55.00 ton. call at night, Bob Brown 806 944-5475 52-2tp

**FOR RENT**  
**TV SETS FOR RENT**  
 Inquire at Hensons

**WEST TEXAS GAS, INC.**

Code pumps now in operation  
 24 hour self-service  
 Regular-no-lead, and Diesel  
 Wholesale Price  
 Billed Monthly  
 Requirements: \$25.00 Refundable deposit and \$25.00 annual rental fee  
 Call 874-2155

**James F. Hayes & Co.**  
 RESIDENTIAL - COMMERCIAL PROPERTIES  
 CLARENDON, TEXAS 79226

CAROL BRYANT  
 Off: (806) 874-2361  
 Res: (806) 874-3649

**PRETTY AS A PICTURE**



**CATRINA DAWN BURROW, 3** month old daughter of Mr. and Mrs. Calvin Burrow. Grandparents of Mr. and Mrs. Ben Burrow.

People in the U.S. consume eleven billion bananas annually, according to *The World Book Encyclopedia*. Most of them are eaten as snacks or in cereal, fruit cocktails, and salads.

**HOUSE FOR SALE:** Small down payment will carry balance. E.W. Anglin 874-3969 45-tfc

**OPEN YOUR** own retail apparel shop. Offer the latest in jeans, denim and sportswear. \$14,850.00 includes inventory, fixtures, etc. Complete Store! Open in as little as 2 weeks anywhere in U.S.A. (Also infants and childrens shop). Call Sue, Toll Free 1-800-874-4780. 2-1tp

**LOST** small tan female Bassett Hound with white markings, red collar, Texas A&M rabies tag. Last seen on Thursday at Sid Blues. Any information appreciated. Call 874-2868 1-2tc

**FOR SALE:** 3 week old New Hampshire Red chickens, coats, 20-20 tire machine and cash register. Also puppies to be given away. 874-2829 if no answer 874-2822 2-1tp

**FOR SALE:** 3 bedroom, with 2 room basement, 874-2485 2-tfc

**FOR SALE:** Self contained 27' travel trailer call 874-3492 2-2tp

**TV CABLE SERVICE:**  
 Six Clear Channels  
 Plus FM Music and  
 Two Continuous Weather Scans on Channels 9 and 13  
 For information and service Call 874-3570  
 CLARENDON CABLE TV

**IT'S THE MOST**

The most effective sunglasses protect against bright sun and reflected glare without distorting what you see.



Sunglass lenses should be large enough to shield the normal angles of vision—above, below and either side—against glaring rays. A curved lens gives the least distortion as the eye rotates. Lens tints permitting the most accurate color perception possible are neutral gray or smoke-colored.



For more tips about selecting sunglasses, write your state Prevent Blindness Society, or the National Society to Prevent Blindness, 79 Madison Avenue, New York, N.Y. 10016.

**FOR SALE:** Small acreage with 2 bedroom house \$3,000 down owner carry balance. See Ray Combs after 3:30 Goodnight, Texas 2-3tp

**NOTICE OF INTENT TO CHANGE RATES**

Notice is hereby given that on December 28, 1979, Lighthouse Electric Cooperative, Inc. filed an application for rate change with Public Utility Commission of Texas. The application requests a 7.84% rate increase in gross revenue which shall become effective February 1, 1980, for all classes of service subject to approval by the Public Utility Commission. The Statement of Intent and a copy of the complete rate filing package is available for public inspection at the offices of Lighthouse Electric Cooperative, 201 California, Floydada, Texas or 502 South Second Street, Memphis, Texas.

Lighthouse Electric Cooperative, Inc. Floydada, Texas

**FOR SALE:** Two working saddles and tack. 874-3956 or 874-3729 2-1tc

**FOR RENT:** Two bedroom furnished house and two bedroom furnished apartment. Call 874-2392 2-tfc

**PIANO IN STORAGE**  
 Beautiful spinet-console stored locally. Reported like new. Responsible party can take at big savings on low payment balance. Write Joplin Piano, P.O. Box 1015, Waco, Tx. 76703. 2-1tp

**CLARENDON OFFICE SUPPLY & PRINTING**  
 Mr. & Mrs. G.W. Estlack  
 Phone 874-2043  
 Clarendon, TX 79226

**FOR RENT:** 2 bedroom brick house, plumbed for washer and dryer 874-3906 2-tfc

**TRAILER SPACE FOR RENT**  
 on pavement, good neighborhood, call Bob Bell 874-2576 2-tfc

**BEFORE YOU** Arrange to finance your new or late model car, compare my new low cost finance rates. I can save you money.  
 Emmett O. Simmons  
 At the Farmers State Bank

Memphis  
 Singer Sewing Machine  
 Sales Service  
 For contacts call  
 Goodman Furniture  
 I am in Clarendon every two weeks on Thursday 43-tfc

**TUNE-UPS-MUFFLER OR MAJOR OVERHAULS**  
 On The Farm Service  
**STEVE'S AUTOMOTIVE AND INDUSTRIAL**  
 323 S. Kearney 874-3446  
 Clarendon, Tex.

**FLOWERS ALL OCCASIONS**  
 I Will Serve Hodley

**JOANE'S**  
 874-3621  
 219 Kearney

**TERMITE PROBLEMS**

Call for the best termite control  
 Over 20 years experience  
 Call Colelet 383-7075  
 3608 N.E. 23rd  
 Amarillo, Texas 79107  
 State Lic. No. 1178  
 Owner Operator

**LEO RUSSELL**

**RAY'S APPLIANCE SERVICE**

Franchise For  
 Kitchen Aid Dishwashers  
 Sales and Service  
 General Electric Franchise Dealer  
 Heating and Air Conditionion  
 We service all makes of Air Conditioners  
 Freezer & Refrigeration Service & Repairs

D. P. Ray, Owner 874-3801

**MARBIL CUSTOM BUILDERS**  
 General Contracting  
 Phone 874 3717

Patios, Sun Decks, Roofing, Remodeling,  
 Painting, Contract Framing, Custom Cabinets,  
 General Repair, References, Free Estimates,

**Bill, Andy, Fed Selman**  
 Locally Owned & Operated

**CANTRELL LP GAS**

**S. J. "Shorty" Tolbert 874-2079**

**Junior Hill 856-2801**

Sales & "Complete Service"  
 new propane tanks

**Brown-McMurtry Implement**

SALES AND SERVICE  
 PHONE 806-823-2441  
 BOX 777  
 SILVERTON, TEXAS 79257

**DON BROWN** **CLARENCE WARD**  
 Home Ph. 823-2292 Home Ph. 823-2083

**FREE ESTIMATES**  
 NEED PAINTING OR REMODELING DONE

CALL US  
 after 5:00 p.m.  
 944-5211

**PAINTING** **REMODELING**  
 SUE SCHAEF **JOHNNY SCHAEF**

**PUMPING SERVICE**  
 septic tanks, mud pits, grease traps, etc. FRFF estimates

**SELMAN'S CUSTOM CONTRACTING**  
 Call Fed Selman 874-2481

**BAILEY ESTES AND SON**  
**WELDING FABRICATING**  
 Enamored Steel Buildings Custom  
**BARNs** **Portable Buildings**

**SELMAN'S CUSTOM CONTRACTING**  
 ★ General Repair  
 ★ Painting ★ Dashing  
**CALL FED SELMAN 874-2481**

**THE CABINET MAN**  
 Custom Cabinets for any room

Specializing In Custom made  
 Kitchens Gun Cabinets  
 Bathrooms Hutches  
 Formica Deaks  
 Counter Tops Bookcases  
 24 Door Designs  
 North of Rodeo Grds. 874-2802

**INSULATION**

Start your new year out right. Save money and energy. Insulate your home today.

Call  
**HOWELL INSULATION**  
 for blown fiberglass and fiberglass batts

new or existing homes free estimates call  
**Clarendon 874-2481** If no answer call after 5 p.m.  
**HOWELL INSULATION CO.**



HUNT'S STEWED  
**Tomatoes**  
14 1/2 OZ. CAN **39¢**

**GIANT SIZE**  
**JANUARY FOOD SAVINGS**

HUNT'S WHOLE PEELED  
**Tomatoes**  
14 1/2 OZ. CAN **39¢**

BUSH SHOW BOAT  
**Pork & Beans**  
14 1/2 OZ. CANS **489¢**

SWIFT  
**Vienna Sausage**  
2 5 OZ. CANS **79¢**

PURE VEGETABLE  
**Crisco Oil**  
48 OZ. BTL. **\$2.49**

**Grocery Specials**

- FRANCO AMERICAN **Raviolios** 14-3/4 OZ. CAN **59¢**
- SHURFINE UNPEELED HALVES **Apricot** 16 OZ. CAN **59¢**
- JIF SMOOTH/CRUNCHY **Peanut Butter** 18 OZ. JAR **\$1.10**
- KRAFT 2 LB. JAR **Strawberry Jam** **\$1.59**
- Best Maid Asst. Variety **Pickles** 16 oz **79¢**
- Bodens Rich and Ready Gal **Orange Drink** **98¢**
- Shurfresh TRASH **Can Liners** 10 Ct Box **\$1.19**

GIANT  
**Ivory Liquid**  
22 OZ. BTL. **99¢**

**Meat Specials**

- WRIGHT'S HICKORY SMOKED SLAB **Sliced Bacon** LB. **99¢**
- HEAVY GRAIN FED BEEF BONELESS **Round Steak** LB. **\$2.19**
- HEAVY GRAIN FED BEEF TENDERIZED **Cutlets** LB. **\$2.69**
- HEAVY GRAIN FED BEEF LEAN **Stew Cubes** LB. **\$1.89**
- HEAVY GRAIN FED BEEF BONELESS TIP **Sirloin Steak** LB. **\$2.49**

- HEAVY GRAIN FED BEEF CENTER CUT **Sirloin Steak** LB. **\$2.39**
- 3 Lbs **Salad Shrimp** **\$6.95**
- SHURFRESH SLICED MEAT **Bologna** 12 OZ. PKG. **99¢**
- SHURFRESH REGULAR MEAT **Franks** 12 OZ. PKG. **89¢**
- SHURFRESH PORK **Sausage** 1 LB. ROLL **99¢**

HEAVY GRAIN FED BEEF

**Round Steak**  
**\$1.99** LB.



**Health And Beauty Aids**

FAMILY SIZE REG/MINT  
**Crest**  
7 OZ. TUBE **\$1.29**

FAMILY SIZE CONCENTRATE  
**Prell**  
5 OZ. TUBE **\$1.89**

LIQUID  
**Prell**  
11 OZ. BTL. **\$1.89**

SKIN CARE LOTION  
**Wondra**  
REG UNSC 10 OZ. BTL. **\$1.49**

KING SIZE  
**Era Liquid**  
64 OZ. BTL. **\$2.69**

FACIAL TISSUE  
**Kleenex**  
3 100 CT. BOXES **\$1.19**

Shurfine 1 Lb Can  
**COFFEE** **\$2.29**

KITCHEN TESTED FLOUR  
**Gold Medal** 5 LB. BAG **95¢**

ZEE BATHROOM TISSUE  
**Nice'n Soft** 4 ROLL PKG. **89¢**

**Dairy And Frozen Food**  
PILLSBURY COUNTRY STYLE/BUTTERMILK **Biscuits** 2 7 1/2 OZ. CANS **39¢**- QUARTERS **Parkay** 1 LB. PKG. **59¢**
- KRAFT AMERICAN STACK PACK **Singles** 1 LB. PKG. **\$1.69**
- SHURFINE STEW **Vegetables** 20 OZ. PKG. **59¢**

Shurfine 5 Lbs Bag **Sugar** **\$1.39**- COKE** 32 Oz 6 Bottle Carton **\$1.69**

CALIFORNIA ICEBERG  
**Lettuce**  
**29¢** Large Head



Yellow **Onions** 2 lb **29¢**


CALIFORNIA GREEN SKIN **Avocados** EACH **39¢**

CALIFORNIA **Carrots** Pkg **29¢**

No 1 RUSSET **Potatoes** 10 Lb Bag **\$1.09**

WE HAVE THE RIGHT TO LIMIT PRICES EFFECTIVE JANUARY 8-12, 1980

**CHARLIE'S GROCERY & MARKET**  
CLARENDON, TEXAS PHONE 874-2425  
DOUBLE SAN GREEN STAMPS TUESDAY WITH \$2.50 PURCHASE OR MORE



**Venture FOODS**

# A Moment for Meditation

By INEZ LAWRENCE

"Be of good cheer; I have overcome the world." Jn 16:33  
Resolutions for the new year would do well to contain this prayer: "Oh God, animate us to cheerfulness. May we have a joyful sense of our blessings and learn to look on the bright side of our lives, whatever the circumstances." Now this does not mean we are to ignore the problems which face us or to insist that everything is well when it is not. It does mean that we need to get our priorities straight about day to day living if our christianity means what we say it does. I think pessimism is most unbecoming to a christian at any time. But we are all so human that we sometimes let it control us. Inflation, uneasy world conditions, illness, or death often deal knock-out blows to us and we sink into depression. In times like these, we need the reminder of Jesus that He has overcome the world. Notice the tense is past. He has already overcome the world. So we christians are already on the

winning side. We may lose a battle or two, but not the final victory. Our spirits rise at the thought and enthusiasm mounts as we look toward the new year. "We are not bound to make the world go right, but only to discover and do with cheerful heart, the work that God appoints," wrote Jean Ingelow. We wish the world would go right but we are only responsible to do with cheerful heart the work that God appoints. The cheerful heart and face reflect our faith in Jesus the One who has already overcome the world. Take heart and cheer up. Begin the new year by memorizing what Jesus said and thinking about an unknown poet's words:

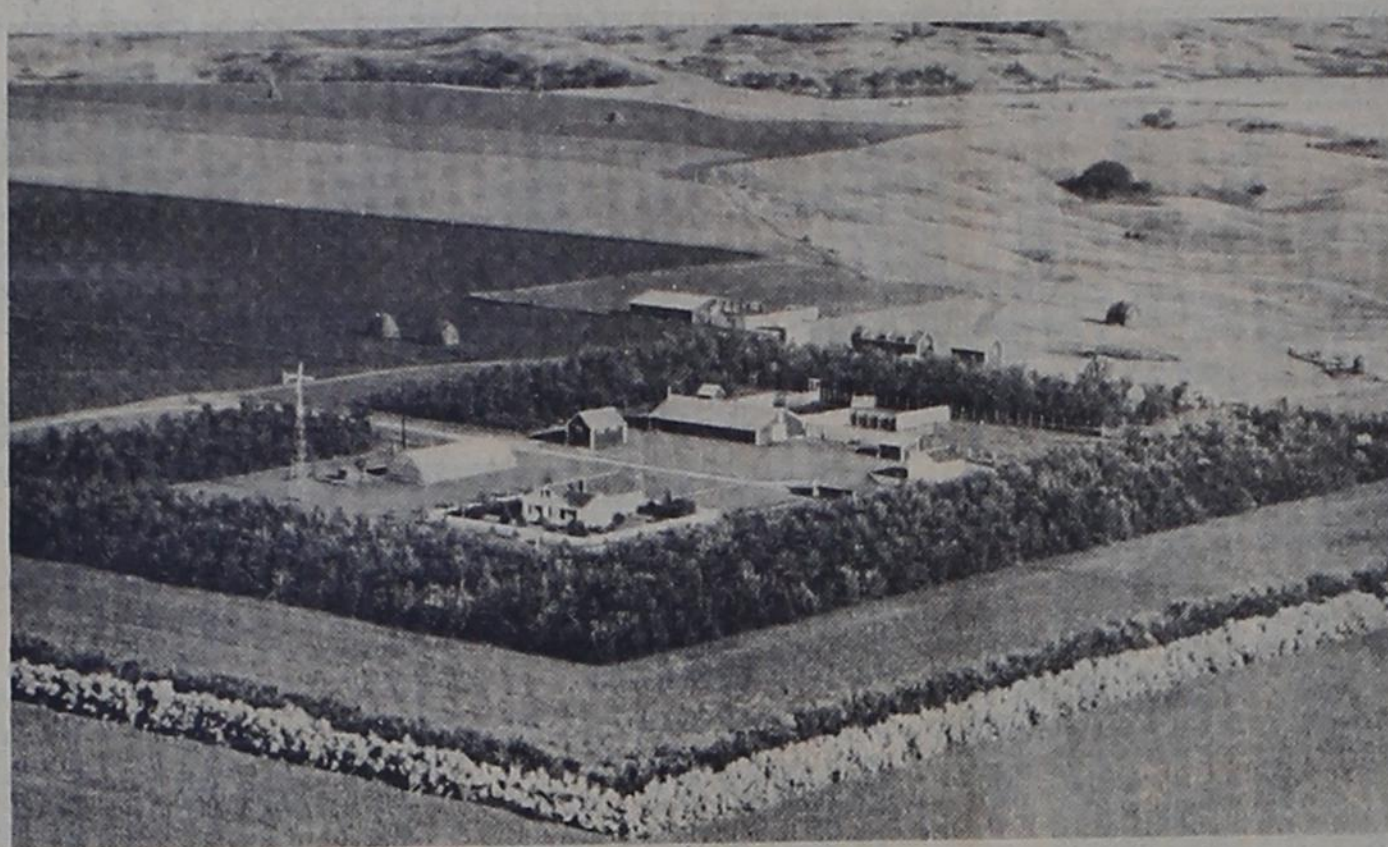
"Nobody ever added up the value of a smile. We know how much a dollar's worth And how much is a mile; We know the distance to the sun The size and weight of earth But no one's ever told us yet How much a smile is worth.

## Lelia Lake News

By MARY CASTNER

Mr. and Mrs. F.A. Floyd celebrated their 45th wedding anniversary New Years day in the home of their daughter, Mr. and Mrs. Harold Moffitt and children of Memphis. Others attending the celebration were their son, and families, Mr. and Mrs. Eddie Floyd and Keith and grandson, Mr. and Mrs. Johnny Floyd and girls.  
Mr. and Mrs. J.B. McDaniel visited in Vernon over the holidays with relatives and friends. They met her sister and husband, Mr. and Mrs. Homer Hoffman of Gainsville and all visited in the home of J.B.'s aunt, Mrs. M.B. Rhoads, and

friends, Mrs. Bertha Carpenter, Mr. and Mrs. Pat Knight, Mr. and Mrs. Woodrow Tacker, Mr. and Mrs. Earl Madden.  
Mr. and Mrs. Ronnie Hasteley of Elkhart, Kansas visited over the holidays with his parents, Mr. and Mrs. Henry Hasteley, Jr. Larry Hoffman and children of Morse visited Saturday with Mr. and Mrs. David Wilson, Jr. Mr. and Mrs. Alvin Mace of Farwell visited Thursday with Mr. and Mrs. F.A. Floyd. The Maces were here for the funeral services of M.B. Trout.  
Bill Poole is home from Hall County Hospital and feeling much better.  
Mitch Self of Kearney, Ari-



A PATTERN of tree wind breaks protects this North Dakota farmstead.

zona is visiting with his grandparents, Mr. and Mrs. Leo Smith, during his mid-term break.  
Mrs. L.B. Leathers accompanied her parents, Mr. and Mrs. Lige Griffin of Littlefield and her brothers and sisters to San Angelo Friday to attend funeral services for an aunt.  
Robert Youngblood of Clarendon visited Sunday evening with Brett Harbert.  
Mr. and Mrs. Hester Shields visited in Lakeview Sunday evening.  
Mr. and Mrs. Gerald Hasteley of Plainview visited Saturday with Mr. and Mrs. Henry Hasteley, Jr.  
Mr. and Mrs. R.O. Nelson, Jr. visited in Northwest Texas Hospital Sunday evening, with R.O.'s nephew, Stanley Nelson, a patient.  
Ava Hasteley of Amarillo spent Sunday night with her parents, Mr. and Mrs. Henry Hasteley, Jr. Mr. and Mrs. Leo Smith visited Saturday in Goodnight with Mr. and Mrs. O.C. Edwards.  
Glenn and Chet Harbert visited Sunday evening in Clarendon with the Robert

Edman children.  
Mr. and Mrs. Ronnie Deen and girls were in Amarillo Saturday on business.  
Rev. and Mrs. W.R. Lawrence visited Sunday night with Mr. and Mrs. Leo Smith.  
Mr. and Mrs. Gerald Thomas and boys of Dimmitt visited Sunday afternoon with his mother, Mrs. Opal Thomas.  
Mr. and Mrs. Wiley Reynolds returned home Sunday night from San Marcos. While there, Wiley attended a 3 day school session.  
Mrs. F.A. Floyd visited Thursday with her sister, Mrs. Bessie Reynolds, in the Wiley Reynolds home.  
We had a good crowd at Community Center Saturday night. We invite everyone to come out and enjoy visiting, the forty-two games, and singing.  
We were so sorry to learn of the death Mr. Maburn Trout. Our sympathy goes to the loved ones and friends in their loss.  
Mrs. Charity Humphrey visited Mrs. Richard Cannon Monday afternoon.  
Mrs. Roxie Barbee, Janice and little Beth Barbee and Mrs. Lois Daugherty were in Amarillo Monday on business.  
Dood and Wanda Cornell and Cara visited Mr. and Mrs. Otto Elliott Sunday afternoon.  
Mrs. Richard Cannon visited Mrs. Irene Winchester Monday evening.

## Chamberlain Community news

By MRS. HAWLEY HARRISON

Chamberlain Community Center had their regular meeting Friday night January 4th "1980". Mr. and Mrs. Henry Mann and Mr. and Mrs. Garden Mann hosted the meeting. There was a nice crowd in attendance, and Mrs. Clara Mae Boggett and Mrs. Mollie Dickson of Hedley attended.  
The latest report on Mr. Charles Bates is that is improving daily. We hope he can come home before too long.  
Mr. and Mrs. Frank Corder Sr. visited in Amarillo with Mr. and Mrs. Orville Swanson, Willie and Jamie News Years night and Wednesday.  
Mr. and Mrs. Dennis Harrison and Anna had lunch with Mr. and Mrs. Olace Hicks New Years Day and Mr. and Mrs. Tom Davis Sr., Mark and Marvin, and Mr. and Mrs. Tom

## Soil Conservation now selling trees

The Donley County Soil and Water Conservation District is in the process of selling trees another year. Last year's sales were successful and hopes are high for this year.  
Why plant trees?

For the energy conservation minded, trees form invaluable windbreaks which cut down on home heating and cooling costs; both in and out of town. They also save the ladies' cleaning energy during the blowing season, by cutting down the amount of dust reaching the home.

For the wildlife conscious, shelterbelts are an excellent form of food and cover.

Planting trees adds to aesthetic values as well as to land values, and at a relatively low cost.

The species adapted to this area and available to you this year include: Mondale Pines, caragana, honeysuckle, Hansen rose, lilac, plum, sumac, sand cherry, Nanking cherry, ash, Chinese elm, cottonwood, hackberry, honeylocust, Russian olive, Austrian pine, ponderosa pine, scotch pine, E. red cedar and Colorado blue spruce.  
Many orders have already been taken, so don't be left out. Call or come by the Soil Conservation Service on S. Kearney, 874-2339.

## The O. C. Edwards honored by DQ

Mr. and Mrs. O.C. Edwards of Route One in Clarendon will be honored this month by the Clarendon Dairy Queen and will be given a special dinner and jewelry in celebration of their Golden Wedding anniversary on Jan. 16.

Of all the couples with wedding anniversaries in January who have signed up for the anniversary dinner program at the Clarendon Dairy Queen, the Edwards have been married the longest.

Every couple registering at the Clarendon Dairy Queen receives a free wedding anni-

versary dinner at the restaurant as a gift of Dairy Queen, whether they are celebrating their first, 50th or longer anniversary during the next 12 months.

Those married 50 or more years are presented with specially designed jewelry-gold-filled pins for the women and tie tacks for the men.

The wedding anniversary dinner program encompasses almost 50 DQs in Central and West Texas that are part of the Chapman Fast Foods organization.

## NOW ALLSTATE CAN SAVE YOU 10% OFF TEXAS STATE RATES FOR AUTOMOBILE INSURANCE

Come in and compare.

Your Allstate agent will show you just how much you may save on automobile insurance with Allstate's new low rates.

We're helping you keep your insurance costs down -- as we protect your car against loss. Come in soon and find out how much you might save. Or just phone us



Allstate  
You're in good hands.

1625 "good hands" people in Texas invite you to come in and compare.

KNORPP  
Insurance  
PH. 874-3521

## "SEEK YE FIRST THE KINGDOM OF GOD"

**CALVARY BAPTIST CHURCH**  
Hwy. 287 & Jackson  
874-3479  
R. W. Sullivan, Pastor  
Sunday School 10:00 a.m.  
Sunday Worship 11:00 a.m.  
Training Union 6:30 p.m.  
Evening Worship 7:30 p.m.  
Wednesday  
Night Service 7:30 p.m.

**ASSEMBLY OF GOD**  
5th & McClelland  
Roger Gray, Pastor  
Sunday School 9:45 a.m.  
Sunday Worship 11:00 a.m.  
Sunday Eve. Worship 6:30 p.m.  
Tuesday  
Women's Missionary 1:00 p.m.  
Wednesday  
Night Service 7:30 p.m.

**FIRST CHRISTIAN CHURCH**  
Wilbert Bernabe, Pastor  
3rd & Gorst  
Sunday School 9:30 a.m.  
Morning Worship 10:30 a.m.  
Evening Worship 6:00 p.m.  
Wednesday  
Night Service 6:00 p.m.  
Night Service 7:30 p.m.

**FIRST BAPTIST CHURCH**  
Bugbee & Third Streets  
871-3833  
Paul Heil, Pastor  
Sunday School 9:45 a.m.  
Morning Worship 11:00 a.m.  
Training Union 6:00 p.m.  
Evening Worship 7:00 p.m.  
Wednesday  
Night Service 7:00 p.m.

**CHURCH OF THE NAZARENE**  
3rd & Hawley  
874-2321  
Bill Hodges, Pastor  
Sunday School 9:45 a.m.  
Morning Worship 11:00 a.m.  
Evening Worship 6:00 p.m.  
Wednesday  
Night Service 7:30 p.m.

**CHURCH OF CHRIST**  
4th & Carhart  
874-2495  
Gene Basden  
Sunday School 9:30 a.m.  
Morning Worship 10:30 a.m.  
Evening Worship 6:00 p.m.  
Wednesday  
Night Service 7:30 p.m.  
Ladies' Bible Class Tuesday  
10:00 a.m. Church of Christ

**ST. MARK BAPTIST CHURCH**  
Jefferson & Martindale  
Albert Yarborough, Pastor  
Sunday School 9:45 a.m.  
Preaching 11:00 a.m.  
Night Service 8:30 p.m.  
Prayer Service 7:30 p.m.  
Woman's Mission 8:00 p.m.

**PRESBYTERIAN CHURCH**  
4th & Parks  
874-3428  
Dr. E.L. Manning, Pastor  
Sunday School 10:00 a.m.  
Morning Worship 9:00 a.m.  
Youth Program 6:00 p.m.  
Evening Worship 7:00 p.m.  
Tuesday  
Bible Study 2:30 p.m.

**UNITED PENTECOSTAL CHURCH**  
Rev. N.W. Thompson  
Montgomery & Faker St.  
874-3756  
Sunday School 10:00 a.m.  
Morning Worship 11:00 a.m.  
Evening Worship 6:00 p.m.  
Wednesday  
Night Service 6:30 p.m.

**MARTIN BAPTIST CHURCH**  
Robert Shugart, Pastor  
Sunday School 10:00 a.m.  
Church Service 11:00 a.m.  
Evening Service 6:00 p.m.  
Wednesday  
Night Service 7:00 p.m.

**ST. JOHN BAPTIST EPISCOPAL**  
3rd & Parks  
Sunday School 10:00 a.m.  
Services 11:00 a.m.  
Holy Communion 1st, 3rd, & 5th  
Sundays

**FIRST UNITED METHODIST CHURCH**  
5th & Jefferson  
874-3667  
Wm. H. (Bill) Watson  
Sunday School 9:45 a.m.  
Morning Worship 11:00 a.m.  
Evening Worship 6:00 p.m.  
Youth Program 7:00 p.m.

**FIRST BAPTIST CHURCH**  
Howardwick  
SBC  
Jack Daniel, Pastor  
Sunday School 10:00 a.m.  
Worship Service 11:00 a.m.  
Evening Service 6:00 p.m.  
Wednesday  
Prayer Meeting 6:00 p.m.

**ST. MARY'S CATHOLIC CHURCH**  
McClelland & Montgomery  
Father Carlson  
Sunday Morn. Mass 12:15 p.m.  
Holy Days 5:00 p.m.  
Father Carlson of Groom

**UNITED METHODIST CHURCH**  
Hedley, Texas  
Wm. H. (Bill) Watson  
874-3879  
Sunday School 10:30 a.m.  
Morning Worship 9:30 a.m.  
Wednesday  
Bible Study 6:00 p.m.

**FIRST BAPTIST CHURCH**  
Hedley  
856-2711  
Wayne Naylor, Pastor  
Sunday School 10:00 a.m.  
Worship 11:00 a.m.  
Evening 6:00 p.m.  
Wednesday  
Night Service 6:30 p.m.



**HENSON'S  
TUMBLEWEED  
BYLOW GROCERY  
EDDIE FLOYD SHOP  
OSBURN FURNITURE  
DREAM DONUT SHOP  
ALDERSON CHEVROLET**

## Youth for Understanding

A ticket to ride through year long or summer adventures into new horizons awaits area youths with Youth for Understanding. Texas teenagers, picture the scene of your dreams...then put yourself in it, with a new family, new friends, and a whole new world to wake up to. Whether you select the summer program, or a special place in Asia, Latin America, Europe or Australia, you travel with friends. Some 2,200 American teenagers aged 14 through 18 will leave this summer for any one of 23 overseas countries.

And you're not alone when you get there. A family, chosen for you by the program staff and volunteers in the country you select, awaits your arrival. This means you enter a new country not as a tourist but as a full-fledged member of your host family's culture. The exchange you make is with your new host family, when you share each other's ideas, traditions, and styles of living. Host families, your fellow adventurers, make their days your days. Their heritage, maybe one that's thousands of years old, becomes yours. What you give of yourself and your American way of life becomes a part of the cross-cultural experience.

Experience the joys of discovery, of yourself, other people and new places. For further information, please contact Lois Perna, Field Co-ordinator, 3563 Colgate, Irving, Texas 75062, telephone 214-256-1105 (Metro).

Youth for Understanding is a non-profit education organization which cooperates with and receives an annual grant from the U.S. Department of State. It is dedicated to fostering greater international understanding by making it possible for young people to have an overseas family living experience.

## 72 and receive Social Security you may need to file income tax return

Jim Talbot, District Manager of the Amarillo Social Security Office, said this is the time of year that many people begin to think about filing their 1979 income tax returns. People who receive social security benefits have an additional report that needs to be filed with the Social Security Administration, if they were under age 72 for any month of 1979, and had earnings from self-employment or wages of more than \$4,500. The \$4,500 amount applies only to people age 65 to age 72. All workers who were under age 65 all months of 1979 and earned more than \$3,480 must file a report with Social Security if they were eligible to receive any social security benefits in 1979.

Some people think that filing their income tax return is all that is necessary. Both the income tax return and the annual social security report are due by April 15th each year; however, the income tax return doesn't contain information necessary to determine if a social security beneficiary had received the correct amount of benefits for the year.

Anyone who earns more than 14,500 for the year may still be due some social security benefits. Entitlement to social security benefits is based on the amount of monthly earnings as well as yearly earnings for the first year of eligibility. The monthly exempt amount in 1979 or wages is \$290 if you are under 65, or \$375 if you are 65 or older.

Workers who earn more than the exempt amount for each month of the year and over their annual exempt amount may still be due some payments. If your earnings go over the annual exempt amount, \$1.00 in benefits is withheld for each \$2.00 over the earnings limit (\$3,480 for people under age 65 and \$4,500 for those over 65).

The earnings limit for 1980 had been increased to \$3,720 for beneficiaries under age 65 or \$310 monthly. For beneficiaries age 65 to 72, it is \$5,000 for the annual amount and \$417 for the monthly amount.

Talbot said anyone with questions regarding whether or not they should file a report with Social Security on their earnings can visit, write, or telephone the nearest Social Security Office for additional information.

**JANUARY**

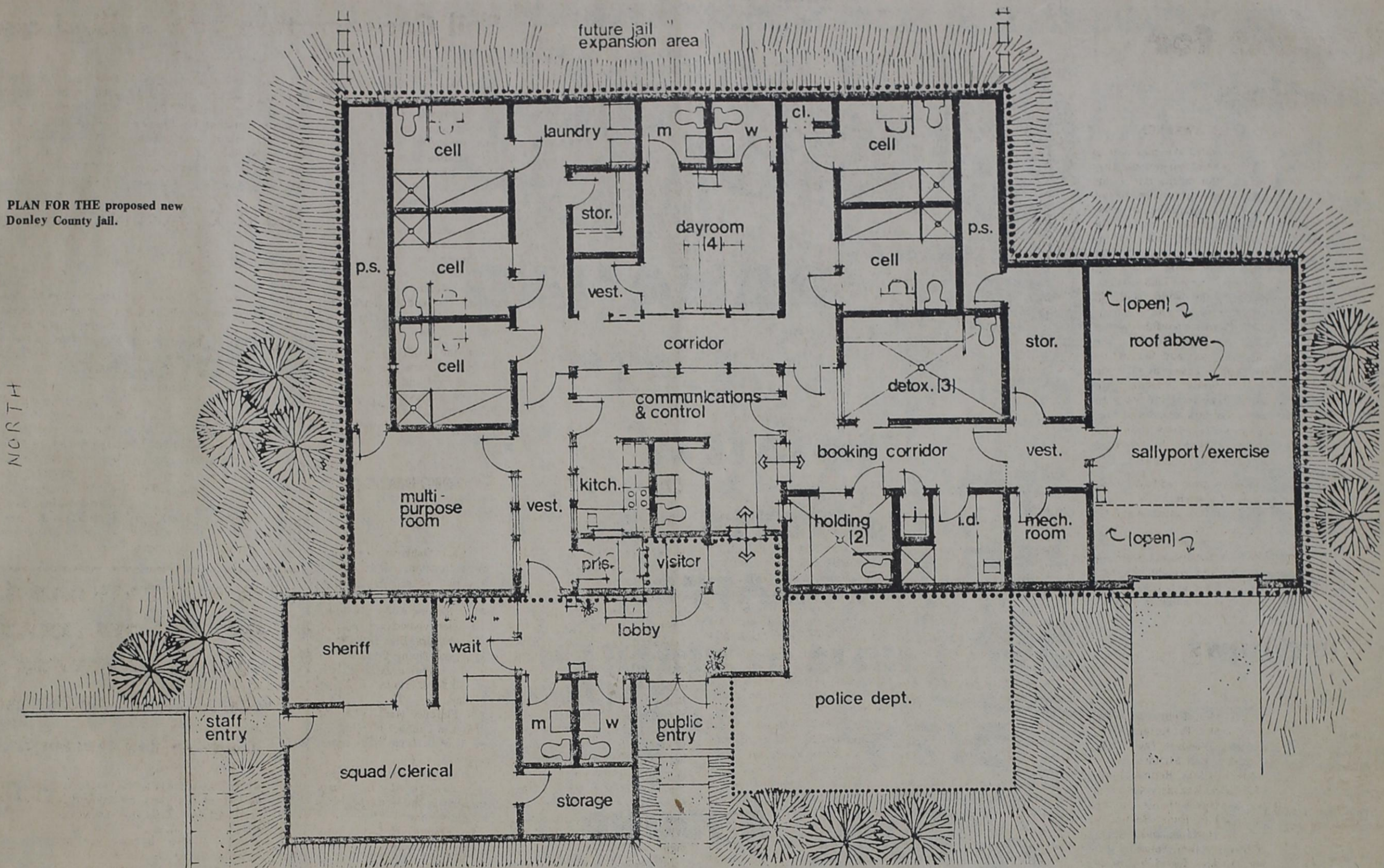
# CLEARANCE SALE

**WILL CONTINUE THRU JANUARY**

## ALL CLOTHING WILL BE FROM

# 25% to 50% OFF THE TUMBLEWEED

PLAN FOR THE proposed new Donley County jail.



Jail firm p. 1

On a motion by Gene White, Inc. for \$19,950. Although their seconded by Buford Holland, bid was not the lowest bid it did include the additional service of supervision of the personnel who will run the jail upon completion. This firm has much experience of this type and

**I AM ANNOUNCING MY CANDIDACY FOR RE-ELECTION FOR COUNTY COMMISSIONER FOR PRECT 3 BUFORD HOLLAND**  
pd for by Buford Holland



**Brandon Charles**

Karen and Tommy Shields announce the arrival of a son born January 6, 1980 weighing 8 lbs., 13 ozs. The young man was named Brandon Charles. Paternal grandparents are Mr. and Mrs. Roland Shields of Clarendon and maternal grandparents are Mr. and Mrs. Billy Clay of Abilene.

**Emily Mae**

Mr. and Mrs. Van Kelley of Brookings, S. Dak. are the parents of a daughter, Emily Mae, born Dec. 21, 1979.

Grandparents are Dr. and Mrs. Duane Kelley of Lake Jackson, and Mr. and Mrs. Jim Cockerham of Clarendon. Great grandmother is Mrs. Marie McCracken, Great-great grandmother is Mrs. Henrietta Reynolds both of Clarendon. Emily joins sister Rachel at home.

**Rachel Diane**

Rev. and Mrs. Roger Gray announce the arrival of their daughter Rachel Diane, Jan. 1, 1980, who was 21 inches long, weighing 7 lbs. 15 ozs.

Rachel Diane was born at Highland General Hospital, Pampa, Texas. She was welcomed by her two sisters, Rodora and Rogina and one brother Rodney.

**Social Security**

**Q & A**

Q: My husband had used up the 90 hospital days that medicare pays for in a benefit period, but he has to stay in the hospital for several more weeks. Doesn't Medicare provide a certain number of extra days for cases like this?

A: Yes, Medicare Hospital Insurance includes an extra 60 hospital days that a person can use if he or she ever needs to be in a hospital for more than 90 days in a benefit period. These extra days are called reserve days. But, reserve days are not renewable like the 90 hospital days in each benefit period. Once you use a reserve day, you never get it back.

Q: I recently had a bad fall and injured my back. Will Medicare pay for the services of a Chiropractor?

A: The only treatment that can be covered is manual manipulation of the spine to correct a subluxation that can be demonstrated by x-ray. Medical Insurance does not pay for any other Diagnostic or Therapeutic services, including x-rays, furnished by a Chiropractor.

**Passbook Savings Account** Annual Yield **5.65%**  
Annual Rate-Based on **5.50%** Compounded daily

**Vernon Savings & Loan Assn.** (Memphis Office) ES LIC

119 S. 6th St.

Phone: 259-3384

26-Week, \$10,000 minimum  
**Money Market Certificate**

Federal regulations prohibit compoundings of interest and require a substantial penalty for each withdrawal. Rate is subject to change at renewal.

ANNUAL RATE	8.00%	7.75%	7.50%	6.75%	6.50%	5.75%
	8-Year Certificate	6-Year Certificate	4-Year Certificate	2-Year Certificate	1-Year Certificate	90 Day Notice
YIELD	8.33%	8.06%	7.79%	6.98%	6.72%	5.92%
	1,000 min.	1,000 min.	1,000 min.	1,000 min.	1,000 min.	1,000 min.

**5.50%** Passbook Savings  
**5.65%** Money Market Certificate  
\$5 min.

Federal regulations require a substantial penalty for early withdrawal of certificates.

**YEAR-END Fashion CLEARANCE**

**January Shoe Sale!**

- one group of ladies and girls fall and winter shoes and boots **1/3 OFF**
- One section men's dress shoes **OFF**
- One group of childrens boots **OFF**
- One counter of mens dress shoes values to \$18<sup>00</sup> your choice **\$4<sup>98</sup>**
- ONE GROUP OF MENS SUITS 1/3 OFF**
- ONE GROUP OF MEN AND BOYS SPORT COATS 1/2 PRICE**
- Mens & boys knit and woven long sleeve sport shirts 25% OFF**
- ONE RACK MEN AND BOYS WINTER COATS AND JACKETS 25% OFF**
- MEN AND BOYS SWEATERS 25% OFF**
- ONE TABLE OF BOYS SWEAT SHIRTS 1/2 PRICE**
- ALL LADIES AND GIRLS FALL AND WINTER MERCHANDISE 1/3 off**
- ALL FALL AND WINTER PIECE GOODS \$1<sup>00</sup> per yard off**

**GREENE DRY GOODS Co.**  
THE FAMILY STORE

# STACK UP SAVINGS

DOUBLE STAMPS TUESDAY & WEDNESDAY

Morton 8 ea  
**POT PIES 3/\$1.00**

Weight Watchers  
**BEEF STEAK 10 oz \$1.39**

Morton pecan  
**PIES 16 oz \$1.09**

Sillwell cut  
**CORN 16 oz 59¢**

## BANANAS

4 lbs \$1.00

**POTATOES 10 lbs 79¢**

Ireberg  
**LETTUCE 3 heads \$1.00**

**TOMATOES 49¢ lb**

Tender Chalk  
**HAM or CHICKEN 8 oz 98¢**

Red Delicious  
**APPLES 39¢ lb**

Sunkist  
**ORANGES 3 lbs \$1.00**



Sillwell Chopped  
**BROCCOLI 10 oz 2/79¢**

Wholesome  
**ORANGE JUICE 12 oz 79¢**

Betty Crocker  
**CAKE MIX 18 1/2 oz 79¢**

White Swan  
**SHORTENING 3 lbs \$1.69**

18 oz  
**POST TOASTIES 89¢**

Starkist  
**TUNA 6 1/2 oz 89¢**

Maxwell House  
**COFFEE 1 lb \$2.79**

White Swan Veg  
**OLEO 1 lb 49¢**

White Swan Tub Soft  
**OLEO 1 lb 59¢**

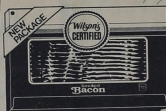
Kountry Kist Cut  
**GREEN BEANS 16 oz 3/\$1.00**



**GROUND BEEF Family 1 lb \$1.39**

Wilson Certified

**BACON 1 lb \$1.19**



White Swan  
**SALTINES 1 lb 49¢**

Kountry Kist Sweet  
**PEAS 16 oz 3/\$1.00**

Our Darling  
**CORN 17 oz 2/69¢**

Scott Big Roll  
**TOWELS 59¢**

Dol Monte  
**PINEAPPLES 1 1/2 oz 49¢**

Big Tex  
**ORANGE JUICE 46 oz 79¢**

Peter Pan  
**PEANUT BUTTER 18 oz \$1.19**

White Cloud Toilet  
**TISSUE 4 roll 98¢**

White Swan Laundry  
**DETERGENT 42 oz \$1.09**

Kleens Boutique Facial  
**TISSUE 125 ct 69¢**

Owens  
**SAUSAGE 1 lb \$1.39 2 lbs \$2.69**

Edrich Smoked  
**SAUSAGE 1 lb \$1.79**

Ranch Brand  
**FRANKS 12 oz 89¢**

Ranch Brand  
**BOLOGNA 12 oz 89¢**

Center Slice Cured  
**HAMS 1 lb \$1.89**

White Swan American Singles  
**CHEESE 12 oz \$1.19**

Center Slice  
**ROUND STEAK \$1.99**

Bonless  
**CAT FISH 1 lb \$1.69**

White Swan Instant  
**TEA 3 oz \$1.59**

Gold Medal  
**FLOUR 5 lbs 98¢**

**Peter Pan SMOOTH**

# BY LOW

6 DAYS A WEEK FOOD STORE OPEN 7 till 7

AD GOOD JAN. 10, 11 & 12th



**BY LOW FOOD STORES**

Double Gunn Bros. STAMPS WEDNESDAY with 25¢ in Savings Purchase at BY LOW!