



CLARENDON PRESS

Volume VII Number 7 Thursday, February 16, 1978

Calendar of Events

THURSDAY, FEB. 16 - 7:30 p.m. Clarendon Chapter #6 Order of the Eastern Star.

THURSDAY, FEB. 16 - Quik Sew Classes postponed until Thursday, March 2.

FRIDAY, FEB. 17 - Chamberlain Community Center covered dish supper 7 p.m.

MONDAY, FEB. 20 - Al Morrah Shrine Club meets 7:30 p.m. at Clarendon Country Club.

MONDAY, FEB. 20 - 4-H Council meeting, 6:45 p.m. Room 106, Clarendon College.

MONDAY, FEB. 20 - Lucky Leaf and Greenbelt 4-H Club Meetings, 7:30 p.m. Clarendon

TUESDAY, FEB. 21 & 28 - Defensive Driving Course 6-10 p.m. Clarendon College Classroom Building, Room 102.

WEDNESDAY, FEB. 22 - 'Super Consumer' 4-H project, 4:00 p.m. 4-H room, old College Building.

SATURDAY, FEB. 25 - Dinner Theatre at Clarendon Country Club "Waiting for the Bus", 7:00 p.m.

Lawrence Neece seeks office of County Judge

I am announcing my candidacy for the office of County Judge subject to the May 6 action of the Democratic Primary.

I have lived in Donley County since 1939 with the exception of one year with the Extension Service in Gray County and four years as an officer in the U.S. Navy

during World War II.

I have taught Government, Economics and History at Clarendon College and technical subjects in Navy schools.

If elected, I will serve the people of Donley County to the best of my ability.

Lawrence C. Neece

Maxey announces for Justice of Peace

I am announcing as a Democratic candidate for Justice of the Peace. I feel my experience as a business woman and my years as a citizen of Clarendon and Donley County are in my favor.

Your vote and influence in the coming election will be greatly appreciated.

Allie Mae Maxey

MAJOR WINTER STORM HOLDS AREA IN ITS GRIP

The longest, wettest cold spell of the winter arrived Monday, February 6 and has continued through this week. A snow cover of two inches was received on Monday the 6th followed by additional accumulations of four and one-half inches on Wednesday and early Thursday bringing the total amount of snowfall received in the area to six and one-half inches. The snow was followed by freezing mist-drizzle, fog and ice Thursday thru Saturday noon.

Maintenance crews from the Texas Department of Highways and Public Transportation worked Monday night Feb. 6 thru Thursday scraping ice off the highways, and sanding hills and bridges. All roads remained open for travel throughout the storm, but ice and snow

on roads caused hazardous driving conditions thru Sunday noon Feb. 12 until warming temperatures induced melting. By Monday evening, Feb. 13 most city streets were clear and unpaved roads very muddy.

Several minor accidents were blamed on bad weather conditions, but fortunately no injuries were reported from any of the mishaps. Sheriff Truett Behrens said his men were very busy from 7:00 a.m. on Saturday until 7:00 p.m. Sunday investigating traffic accidents caused by icy slick roads.

An accident Saturday about noon involving a car and pick-up with trailer loaded with Arabian horses occurred on I-40 at the traffic light. The car involved received major damage. Near Goodnight a truck

jackknifed on Saturday, and another truck near Jericho on the same day.

Still another accident Saturday about mid-night occurred four miles west of Hedley. There a cattle truck over-turned, and resulted in the loss of several head of cattle. Before the wrecked truck could be cleared from the highway poor visibility from heavy fog cover and icy highways caused a car and truck to skid into the wreckage. Both city and county law enforcement officers worked this wreck into the early morning hours.

A number of activity cancellations were forced by the winter storm. Clarendon Public Schools dismissed early Monday, Tuesday and Wednesday and closed Thursday Feb. 9. The regular school schedule was followed

Friday as weather conditions improved. Sunday worship services were cancelled at several churches and the First United Methodist postponed the religious emphasis services scheduled to begin Sunday.

Heavy ice and snow accumulations downed power lines in Clarendon and throughout much of the county early Saturday causing power failure to numerous homes and businesses. West Texas Utilities crew men aided with crews from Memphis, Wellington, and Childress worked Saturday and Sunday and into the week trying to repair power lines and restore service to customers as soon as possible.

David Pruitt, manager of Greenbelt Electric reported, "This is the worst storm in

the history of our company." All east-west lines in the Shamrock, Wheeler and Mobeetie area and the Clarendon-Claude area were hard hit, Pruitt said. These lines caught the full force of the north winds. Service is being restored as fast as possible to customers, and Greenbelt Electric Cooperative believes power will be restored to all persons by Saturday. "Because of the spread of this storm we have other co-ops in the same situation," explained Pruitt, "and where they might ordinarily help out if the storm was confined to a small area, each finds he must take care of his own area as best he can in this instance."

As a service to customers Greenbelt Electric will have dry ice at the Butler Meat Company in Clarendon. To

get dry ice patrons must present a Greenbelt Electric bill stub as proof of being a Greenbelt customer.

Sunday, as a direct result of no power some Clarendon residents were without water. James L. Khun, spokesman for Greenbelt Water Authority said, "The problem was a power shortage, and without power there was no way to pump water." Most residents who were without water had it restored after two or three hours.

Several businesses were forced to close Sunday because of power failure. Gibsons and all gas stations were among those that closed.

Television service was curtailed, also, because of broken or downed power lines. Ricky Rattan said, his office was doing its best to restore service to everyone as quickly as possible.

Telephone lines and poles were downed in most rural areas of the county. As of Tuesday Larry Dauster reported 128 phones out of order, all steel lines running out of Clarendon on the ground with an unestimated number of poles down. Dauster continued by saying "Clarendon was the hardest hit area." General Telephone Co. has crews from south Texas and Carlsbad, New Mexico here helping local workers repair lines and restore customer service.

Heavy ice accumulations on trees caused limbs to break and damaged many trees. Broken limbs were strewn in yards across town and at the courthouse.

The storm was part of a major weather pattern which covered most of the southwest and in Texas extended as far south as Lubbock, Mineral Wells, Fort Worth and Dallas.

Although trees have been damaged and inconveniences caused by limited utility services area residents may be thankful that west Texas winds were not part of the storm and that zero or sub-zero temperatures were not the case.

Temperatures for the week in the daytime ranged from the mid twenties to the upper thirties. Nighttime temperatures averaged in the teens.

Wheat and cattle raisers may be grateful for the much needed moisture received. A total of more than an inch was recorded for the week.

Forecast for the next several days call for more snow and low temperatures.



BEAUTIFUL AND BROKEN trees in county gave way to the frozen moisture of the winter storm.

County Club presents dinner theatre "Waiting for the bus"

The Drama Dept. of Clarendon College will present a one-act comedy "Waiting for the Bus," by Ramon Delgado.

"Waiting for the Bus" is an allegorical, theatrical poem, which depicts the progress of Western man and his prospects for the future.

Edith, an old, old woman,

the man's wife, is played by Kim Cochran of Hereford; Andrew, an old, old man, the woman's husband, is played by Mike Leeper of Clarendon; Cynthia, an old woman of ill repute, is played by Kathy Butler of Panhandle; Benny, a black shoeshine boy, is played by

Larry Pitts of Matador. The director is Miss Leslie Schnauffer.

The club is serving a varied menu and serving will begin at 7:00 p.m. Cost is \$6.00 per person. Everyone is cordially invited.

Reservations must be made before Saturday noon. Call 874-2166.

Attention, Greenbelt Electric customers

As a service to customers, Greenbelt Electric will have dry ice at the Butler Meat

Company in Clarendon. To get dry ice patrons must

present a Greenbelt Electric Bill stub as proof of being a Greenbelt customer.

MAYOR'S PROCLAMATION

WHEREAS, The Congress of the United States and the State of Texas have recognized the growing and imperative need for vocational education and have provided broader concepts of vocational, career, and manpower education to prepare individuals for the world of work; and

WHEREAS, Through the increased emphasis in reaching out to prepare individuals to enter employment, many new programs are now available to assist individuals in reaching their occupational goals;

WHEREAS, The American Vocational Association, by representative assembly, has established the second week of February as "Vocational Education Week" and is supported by Texas vocational groups in this endeavor; and

WHEREAS, That week in February has been set aside by proclamation of the Governor of Texas as Vocational Education Week; and

WHEREAS, The ultimate success of this endeavor rests with each and every individual who is concerned with providing training opportunities through a comprehensive educational curriculum for all students; and

WHEREAS, Vocational education serves secondary, post-secondary school youth, as well as adults, in preparing them for occupations in agriculture, business and office, marketing and distribution, vocational home economics, trades and industries, health occupations, industrial arts, manpower, technical education, and through the efforts of vocational guidance and counseling by assisting individuals to reach their occupational goals;

NOW, THEREFORE, I, Leonard D. Selvidge, Mayor of the City of Clarendon, Texas, do hereby proclaim February 12-18, 1978 as

VOCATIONAL EDUCATION WEEK

in the City of Clarendon, Texas and urge all citizens of this great community to visit their local schools and vocational education programs, thereby making themselves better acquainted with the services offered by these institutions to each citizen.

IN WITNESS WHEREOF, I have hereunto set my hand and caused the Seal of the City of Clarendon to be affixed this the 10th day of February, 1978.

Leonard Selvidge, Mayor



WEST TEXAS UTILITIES service men repair broken power line leading to James F. Hayes' home.



ICY SLICK STREETS were blamed for accident.

Week's Weather

Compiled by Tommie Saye - Cooperative observer for National Weather Service, Clarendon.

DAY	DATE	HIGH	LOW	PRECIP.
Tuesday	7	30	23	.32
Wednesday	8	25	18	.01
Thursday	9	22	16	.38
Friday	10	26	3	
Saturday	11	25	16	
Sunday	12	32	24	.31
Monday	13	35	20	.01
Tuesday	14	31	14	
Total for month				1.25
Total for year				1.66

Manufacturers of Mini Vehicles seeks distributor for Clarendon

Perhaps in recent weeks trailers or trucks, loaded with a variety of mini car and truck models being transported across country, have been seen. Maybe you have even wondered how one of these mini model vehicles could be purchased.

These mini model vehicles are the "fad of the day" according to Ray Stinson, manager of franchise in Texas for F.W. and Associates, Inc., manufacturers of the mini vehicles. Stinson accompanied by David Snow, company district manager serving the Amarillo area, stopped in Clarendon this week in search of a local distributor for these vehicles.

Last year (just before Christmas) in retail outlets in seven states 10,000 mini vehicles were sold. The

companies goal in 1978 is to sell 10,000 in Texas and to set up retail outlets in every state and virtually in every town.

Until January of 1978, these cars were manufactured in Ohio by a slower process and at more expense than at present. As of the first of the year a new plant completely automated opened in Tempe, Arizona. This plant produces 600 cars each day and an average of 100 of these cars are shipped across Texas every week. These vehicles are manufactured by the fifth largest auto maker in the world and by the only mini auto maker of this type in the world.

Mini vehicles have been sold in every country in the world except Russia, Red China, and Greenland.

Celebrities such as Elvis Presley, Sonny and Cher, Tommy Wynn and Royalty of Arabia were among some of the first customers purchasing the mini vehicles. 97% of the cars presently sold are to families with children.

Mini vehicles are designed for anyone from three to ninety-three years of age. Powered by 3-horse power engine they will travel 15 mph top speed.

The vehicles feature quality engineering and construction, and render big car performance. Twenty-two models are available and standard features for all models include:

• 1. 3 hp, 4 cycle Briggs and

Stratton engine with an integral carburetor, recoil starter and centrifugal clutch. Direct mechanical linkage for throttle, brakes, and steering. Limited 1 yr. warranty on engine.

• 2. Rubber bushings are mounted between the body and the one-inch tubular steel, jig-welded frame.

• 3. Seat is body contoured for comfort. Molded of high-impact fiberglass.

• 4. Heavy-duty Firestone pneumatic tires (4.10 x 3.50 x 6) with inertubes.

Bodies are single-piece, high-density fiberglass construction with good safety features. Standard size for all

models is: height 33 1/2"; width 35 1/2"; length 84 1/2"; weight 150 lbs. Tank capacity is 1 quart and regular fuel is required. Ground clearance is 4".

Retail price of the vehicles is \$595.00 Before the

vehicles were produced by mass production they retailed for \$1,000.00

For more information concerning the mini vehicles or distributorship for the cars refer to the Classified ad in this news paper.





EXHIBITOR MARK MANN with James L. Utey of Midland.

Ribbon - winning Clarendon steers purchased by Dairy Queen

Dairy Queen of Clarendon purchased several ribbon-winning steers from Clarendon youth at the 1978 Southwestern Exposition and Fat Stock Show in Fort Worth. Purchases made by the Clarendon Dairy Queen included a 925 lb European Cross steer owned by Phillip Moreman, a 905 lb. Polled Hereford owned by Starla

Mann, a 965 lb. Polled Hereford owned by Mark Mann, a 930 lb. Hereford steer owned by Mary Hermesmeyer, a 910 lb. Polled Hereford owned by Lisa McAnear, a 1,090 lb. Hereford steer owned by Lance Thornberry, and a 935 lb. Hereford steer owned by Drew Thornberry. Dairy Queen of West

Texas, Inc. is one of the four fast-food organizations headed by I.B. (Barney) Chapman II, of Fort Worth, who is a director of the Southwestern Exposition and Fat Stock Show. In all, Texas Dairy Queen companies, led by Chapman, purchased 64 champion and ribbon-winning steers at the stock show auction, making

Dairy Queen the largest single supporter of the sale. Chapman companies bought 80% of the Dairy Queen total. In the past, grocery chains had been the dominant buyer of sale steers. The steers purchased by Dairy Queen of Clarendon brought 57 to 69 cents per pound.



EXHIBITOR PHILLIP MOREMAN with Mrs. I.B. (Barney) Chapman of Fort Worth, left, and Mr. and Mrs. James L. Utey of Midland. Mrs. Chapman is the wife of the president and chief executive of Dairy Queen of West Texas, Inc. and Utey is executive vice-president and chief operating officer for the corporation that owns the Clarendon Dairy Queen.



EXHIBITOR DREW THORNBERRY with Utey of Midland.

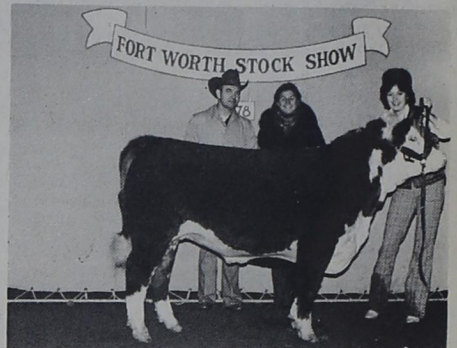
Houston Livestock show & rodeo - Feb. 22

Nineteen 4-H members from Donley, Jack Craft, Lisa McAnear, Rodney McAnear, Lori Robinson, Gary McClellan, Drew and Lance Thornberry, Mark, Susan and Starla Mann, Richard Richardson, Phillip Moreman, Melody Moreman, Jamie McAnear, Jay Lindley, Ray Lindley, Dean and Doug Hawkins, Mary Hermesmeyer, and 25 FFA members from Clarendon, Chas. Blackburn, Starla and Susan Mann, Terry Cole, Kelly Tunnell, Kennan Shields, David Lane, Dan Hansen, Jo Kellner, John Hall, Lynn Thompson, Mark Dauster, Micky McGuire, Tim Brown, Terry Putman, Kyle Hill, Chris Ford, Dean Hawkins, Barry Hastey, Wayne Reynolds, Steve Nance, Dan Hall, Ken Shelton, Preston Byrd and Doug Walker will be participating in the 1978 Houston Livestock Show and Rodeo, February 22--March

5. With more than 22,500 expected livestock entries, the Houston Show will once again be the largest in the world. Throughout the state, the Houston Show is the culmination of a year's hard work of preparing their animals for the toughest of show ring competition. It is hard work that often pays off: open show and junior exhibitors will vie for \$470,210 in prize monies and premium auction prices above market value. From a spectator's point of view, the young exhibitors are center-stage in a two-week extravaganza that begins when Houston, the fastest growing city in the nation, takes a step backwards in time and brings a bit of western heritage to its busy streets. Horse, buckboards and stagecoaches take to the concrete and businessmen don western hats and boots to welcome the largest civic event in the history of this bustling oil and space flight capital.

More than 6,000 trailriders journeying as far as 200 miles will join city officials and bands as the annual rodeo parade winds through the canyons of downtown streets at 9:15 A.M. on Friday, February 24. Following the parade, the action moves farther out Main Street to the Astrodome and the adjoining Livestock Exposition facilities where the rodeo will open with a matinee performance in the Astrodome at 2 P.M. The livestock show begins a week earlier with open show competition on Feb. 22. Professional breeders and ranch owners from some 35 states will bring in the best in breeding stock to compete in breeding beef, dairy, swine, poultry, sheep, Angora goat and rabbit shows. The Houston Show is a showcase of the livestock industry and cattlemen from Europe, Mexico, Central and South America plan to attend the open show to get a look at the best in stock. In 1977, 500 international visitors from 32 countries registered with show officials and the number expected for 1978 International Days, February 22-26, is expected to be even larger. Horse show activities will fill the 4.3 acre Abercrombie Arena, adjacent to the livestock exposition building (Astrohall). With 2,600 horses entered in the nine

shows, the horse show must run 16 days, beginning on February 18, in order to accommodate all classes. In addition, the second annual horse judging contest has almost doubled its number of entrants, with 792 contestants competing this year on February 23. Junior show exhibitors take over the 22.3 acre livestock exposition facility for the second week of the livestock show, with judging beginning on March 2. Each exhibitor knows he is up against the best in livestock, with much riding on the decision of the most experienced livestock judges in the nation. Junior shows include breeding beef heifers, dairy, breeding sheep, Angora goats, beef and dairy scramble heifers, commercial steers, breeding rabbits, market lambs, market poultry, market swine and market steers, including a carcass contest. In addition to the premium awards and trophies, exhibitors of market animals know that a grand championship in their market division at Houston can translate into the stake for a future cattle herd or college diploma. The Houston Livestock Show and Rodeo holds the world's record for prices paid for all five junior market animals--Grand Champion Steer, \$50,000; Grand Champion Barrow, \$23,000; Grand Champion Lamb, \$14,500; Grand Champion Turkey, \$10,500; and Grand Champion Pen of Broilers, \$10,800. More importantly, community involvement and civic support from thousands of individuals and businesses alike combine to assure junior exhibitors that their animals selling in the market auctions will bring premium prices. Show officials estimated that 35 per cent of animals entered in market competition make the auction sales. Thousands of junior exhibitors are also competing in livestock and dairy judging contests where their knowledge of animals can win calf purchase certificates worth \$275 toward the purchase of a purebred, registered beef or dairy heifer. For the 1978 rodeo, 388 boys will be participating in beef and dairy calf scrambles as part of rodeo action in the Astrodome.



EXHIBITOR LISA McANEAR with Utey and Mrs. Chapman.

Monday, Feb. 20 is a legal holiday; offices & some businesses to close

Monday, February 20, state and federal offices will be closed in observance of George Washington's birth-

day. In addition, the banks and the post office will also be closed.

OPEN 24 HOURS

ALLSUP'S

CONVENIENCE STORES

OPEN 24 HOURS

SPECIALS GOOD FEBRUARY 16, 17, 18, 19, 1978

ALL SIZES

ICEES

BUY ONE GET ONE FREE!

BORDEN'S

ICE CREAM

1/2 GAL. RD. CTN. \$1.19

BORDEN'S

BUTTER-MILK

HALF GAL. 89¢

FRESH COOKED BURRITOS 3 FOR \$1

WILSON COOKED HOT LINKS 3 FOR \$1

32 OZ. BTL. COCA-COLA \$1.39

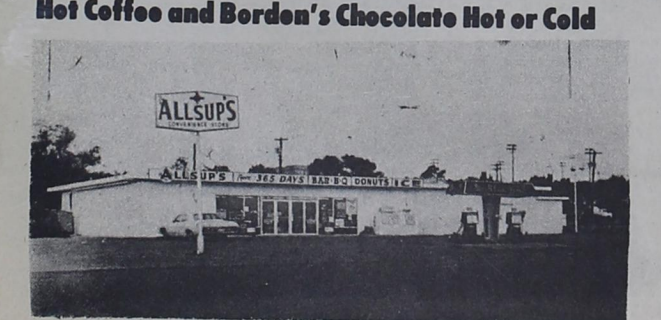
PLUS DEPOSIT

HOT COOKED FOODS TO GO

- ★ BROASTED CHICKEN Half or Whole
- ★ BURRITOS ★ GERMAN SAUSAGE
- ★ MILD LINKS ★ CORN DOGS ★ BBQ RIBS
- ★ BBQ BEEF SANDWICHES ★ HOT LINKS

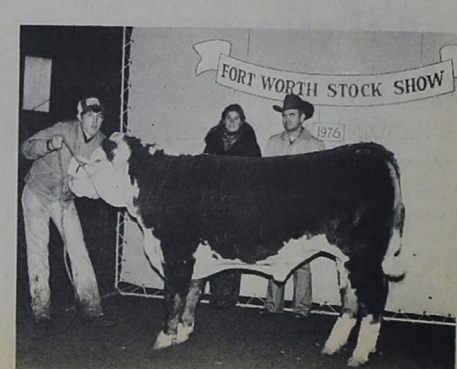
We always have

Hot Coffee and Borden's Chocolate Hot or Cold

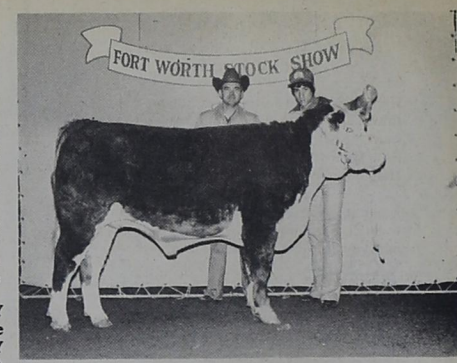


Tax savings possible for farm, ranch drought losses

Income tax savings may be available to Texas farmers and ranchers who suffered losses due to summer heat and drought. That information comes from Dr. Richard Trimble, economist in management with the Texas Agricultural Extension Service. "Normally, the sale or trade of livestock, if held primarily for sale, produces ordinary farm income that should be reported in the year it is received. However, a rancher may be able to elect to defer reporting income from the sale of certain livestock because of drought conditions which occurred during 1977," points out Trimble. To qualify for this election, the rancher must use the cash method of accounting and the livestock must be held primarily for sale. Another condition is that the area or county must be designated as eligible for assistance by the federal government due to the drought conditions. "This special treatment is limited to income from livestock which is sold or exchanged in excess of the usual sales each year. The income can be deferred for only one year," explains the economist. Trimble cites an example. Rancher Smith normally sells 50 head of feeder cattle each year. In 1977, because of the drought, he sold 70 head of feeders which averaged \$200 each. Smith may elect to defer reporting the income on 20 head of the feeder cattle sold (\$4,000) and report it on his 1978 income tax return. Smith must use the cash method of accounting, live in an eligible area, and depend on farming or ranching as his principal occupation. Special provisions also apply to drought-forced sales of breeding livestock, notes the economist. When livestock held for draft, breeding or dairy purposes are sold or exchanged solely because of drought, their disposition is considered an involuntary conversion. Only livestock sold in excess of the number normally sold under usual business practices in the absence of drought will be considered involuntarily converted. The gain on livestock involuntarily converted into money will not be taxed in the year of the sale if the converted property is replaced within two years. How are farmers affected? "Farmers may be able to elect to defer for one year the reporting of crop insurance payments from the tax year the crops were destroyed or damaged by drought," says Trimble. "A farmer can defer reporting such income if he can establish that under normal practice, the crop destroyed would have been sold in the following tax year. This provision should help provide a normal income flow for the individual farmer who qualifies." There may be some drought related losses that are not deductible, points out Trimble. The loss of growing crops for a farmer using the cash method of accounting is not a deductible income tax loss. This is because the



PHILLIP MOREMAN SHOWS Mary Hermesmeyer's steer. Pictured also is Mrs. Barney Chapman II of Fort Worth and James Utey of Midland.



DREW THORNBERRY SHOWS Lance Thornberry's ribbon winning steer. Also pictured is James L. Utey.



JAMIE McANEAR SHOWS Starla Mann's steer at the stock show sale. Pictured with Jamie is James L. Utey of Midland.

costs of the productive inputs such as seed, fertilizer and insecticide are deducted as farm expenses. The same rule applies to the loss of raised livestock where the cost of raising has been deducted as farm expense. Publication No. 225, "Farmer's Tax Guide," 1978 Edition, is a good source of information and may be obtained from any county Extension agent or the Internal Revenue Service, adds the economist.

Ag loans, services up

--According to a recent survey, money lenders in Texas are serving more farmers and ranchers and the average loan amount has increased. Interest rates also appeared to be leveling off. The demand for short term loans was up, including an increase in operating loans. Lenders expected farm and ranch earnings to be lower through 1978, and they also expected an increase in the demand for refinancing farm loans.

County Commissioners meet in regular session

Commissioners Court for Donley County met in regular session Monday, February 13, with all members present.

- Business transacted included:
 - On a motion by Gene White second by Buford Holland to approve minutes read in open court this date.
 - Motion by Jess Finley second by Buford Holland to increase the hours of the librarian two hours per week.
 - Motion by Gene White

second by Buford Holland to approve and adopt resolution presented by the Farmers Home Adm.

- Motion by Olace Hicks second by Gene White to allow Al Morrah Shrine Club the same space used on July 4, 1977.
- Motion by Olace Hicks second by Gene White for the county to make a charge of \$27.50 for public use of motor grader and dozer, \$20.50 to \$25.00 for front end loader, \$15.00 for back hoe and \$10 for welding machine

per hour. Motion by W.R. Christal and second by Gene White to amend the 1978 budget, to adjust salaries for clerks and part time secretaries.

- Motion by W.R. Christal and second by Gene White to amend the 1978 budget, to adjust salaries for clerks, part time secretaries, county service officer, court reporter, district attorney secretary and Judge Montgomery juvenile service.
- Motion by Jess Finley second by Gene White to

accept bid presented by G.W. Estlack for two new electric typewriters in the amount of \$1,500.

- Motion by Jess Finley and no second received to pay juror \$7.50 per day for Jurist who qualify but do not serve and \$10.00 a day for jurist who serve.
- Motion by Jess Finley and no second received to increase the county attorney's salary equal to the salary of the County Judge.

Clarendon College homecoming

activities rescheduled

Homecoming activities have been re-scheduled for both men and women's games for Tuesday, February 21.

The women's game is set for 2:30 p.m. against Howard College, Big Springs. At 8:00 p.m. the men are scheduled to play, also against Howard College.

Homecoming activities are scheduled for Half Time during the men's game.

THANK YOU

To the West Texas Utilities crew who worked so long and hard in terrible weather to restore power to customers on the Brice highway after being without electricity for two days and nights, we think you are great! Also thanks to the telephone company and the highway department for their efforts in spite of snow and ice. A very special thanks to Steve Smith who really takes care of us.

Carmen Wright

Danny Dwight of Hedley promoted

Navy Aviation Maintenance Administration Third Class Danny D. Dwight, son of Betty J. Dwight of Hedley has been promoted to his present rank while serving

with Fighter Squadron 24, Naval Air Station Miramar, San Diego.

A 1975 graduate of Hedley High School, he joined the Navy in November 1975.

Chamberlain Community Center to meet

Chamberlain Community Center will meet Friday night February 17 with Mr. and

Mrs. Clarence Ayers and Opal and Pete Darnell as hosts. It will be a covered dish supper at 7 p.m.

Local Mrs. Dovee Graham and Mrs. Bill Mooring spent last weekend with their sister and family, Mr. and Mrs. Rex Hopkins, in Snyder.

Local Mrs. Oran Burton and Christie of Gruver were in Clarendon several days this week visiting Mrs. Burton's parents Mr. and Mrs. Bill Weatherly.

CLARENDON PRESS

Established May 1, 1972

Published Every Thursday, at Clarendon, Donley County, Texas

Highway 287 and Jefferson St. Phone 874-3541
Edwin M. Easkin and Publishers and
Carroll Koch Owners
Ruth Hancock Editor
Helen Woody Managing Editor

Enter at the Post Office at Clarendon, Texas for transmission through the mail as second class matter, according to an act of Congress, March 3, 1879.

Any erroneous reflection upon the character of any person or firm appearing in these columns will be gladly and promptly corrected upon being brought to the attention of the management.

Subscription Rates

Donley County, One Year \$5.50
Outside Donley County, One Year \$7.50

Advertising Rates

Display: Given on application.
Classified: \$1.50 per issue minimum of 15 words. All over 15 words 8c per word per insertion.

ALL CLASSIFIED MUST BE PAID IN ADVANCE



WE HAVE IN ANOTHER SHIPMENT OF CLOTHES

WE ALSO HAVE TOYS AND SOME FURNITURE

WE WILL TAKE ANY KIND OF STAMPS
OPEN 9 a.m. - 6 p.m.
Saturday 8 a.m. - Noon.

THE RAG SHOP

(IN THE OLD GOODMAN FURNITURE BUILDING)



MIKE LEEPER, of Clarendon, and Kim Cochran of Hereford as they appear in a scene from "Waiting for the Bus".



SEATED L. to R. Kathy Butler of Panhandle and Kim Cochran of Hereford. Standing is Mike Leeper of Clarendon in a scene from "Waiting for the Bus" which the Drama Department of Clarendon College will present at Clarendon Country Club Dinner Theatre Feb. 25, 1978.

Mark White is candidate for Attorney General

Mark White Friday paid his \$1,500.00 filing fee to State Democratic Party officials as a Democratic candidate for Attorney General.

White resigned as Secretary of State in October, 1977, to make the race. He was appointed to that position in January, 1973.

Before being the state's highest appointed official, White practiced as a private attorney and an Assistant Attorney General.

White said that he has received a tremendous reception as he campaigns across the state. "During the last week, I have been in Waco, Dallas, Bryan, Amarillo, Lubbock, Elgin and Bastrop, and the response to my candidacy is gratifying at each stop.

"I have informed the people of my record. They know that I returned more than \$4 million to the state treasury during my tenure in office without cutting the services. Texans want more efficient, economical government. I am committed to continue this frugality in the Office of Attorney General."

White, 38, has both an undergraduate degree and a law degree from Baylor University. Born in Henderson (Rusk County), he grew up in Houston. He and his wife, the former Linda Gale Thompson of Irving, have three children.



BIVENS PHARMACY

PAUL & ELMONETTE BIVENS

TWO REGISTERED PHARMACISTS TO SERVE YOU

WATCH SALE



ALL TIMEX AND CARAVELLE

ON SALE FROM

10 - 20 % OFF

4 Womens Cavatina

\$15⁹⁵ to \$17⁹⁵

Your Choice

\$9⁹⁵

2 Mens Electric

Digtric Reg. \$30⁰⁰

\$19⁹⁵

2 - 17 Jewel Digital

Reg. \$45⁰⁰

\$35⁹⁵

2 Men Electric Reg. \$35⁰⁰

\$24⁹⁵



MAALOX

26 Oz.

\$2⁶⁹

180 SOFTEES

75^c

CLOSEOUT RUSSELL STOVER HEARTS

1/3 OFF

ALL VALENTINE CARDS 50% OFF

POSH PUFFS



49^c



CHARMIN

79^c

SHOE POLISH

Johnson's 29^c

2 Qt Porcelain STEW POTS

\$2⁹⁹

PICK UP A FREE CALENDAR

HANKSCRAFT VAPORIZER

1 Gal

MODEL 5592—1-gal capacity, provides up to 10 hours of operation.



\$4⁹⁵

24 Hour-West Clock Turns Off and On Electric

TIMER

Sug. Ret. \$9⁹⁵ \$6⁶⁶

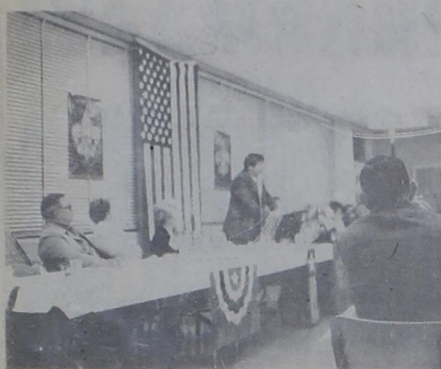
HANKSCRAFT HUMIDIFIER

1 Gal



\$7⁷⁹

Boy Scouts honored at awards banquet



MAYOR TEX SELVIDGE delivers address to Scouts at Eagle awards program.

Saturday evening, February 11, the annual awards banquet for Boy Scout Troop 33 was held in the Clarendon High School Cafeteria. A large crowd gathered for the presentations and for the delicious barbecue dinner catered out of Pampa.

Raymond and Tony Jarmillo presented the colors and Lynn Alderson led the Pledge to the flag. The scout oath was led by Chris Sanchez and delivering the invocation was Wilbert Bernabe.

Thomas and Pat Robertson, advisor to Explorer Post 33. Guest speaker for the evening was Mayor Tex Selvidge, who spoke on the topic of "What It Means to be an Eagle Scout." Selvidge, although not an Eagle himself, pointed out that it takes patience, endurance, and work to earn the Eagle award. He said, the award itself is not what is gained by the Eagle, rather what the Eagle gains is what he learns as he goes through the process to earn the award. Requirements to become an Eagle stress the importance of man's personal relationship to God, church, community and country. In closing Selvidge admonished scout master Saye and all Scouts to keep up the good work.

Awards were next presented by Scout master Saye. Receiving the Eagle award were Richard and Leroy Sanchez. The Eagle Scout receiving the Silver Palm was Eddie Bright. 1st aid merit badge was presented to Lynn Alderson, and achieving the Tenderfoot Rank were Robert Asher and Chris Phillips. Named 1978 Senior

patrol leader was Richard Sanchez. Receiving the trophy for 1977 senior patrol leader was Eddie Bright. Also, receiving trophies for serving as assistant patrol leaders were Leroy, Richard Sanchez, and Spencer Hayes. James Thomas received the trophy for assistant Scout master and Gary Thomas was recognized for extra service rendered in camping and canoeing trips. Donny Garman also received special recognition for service he had given to Troop 33 in 1977.

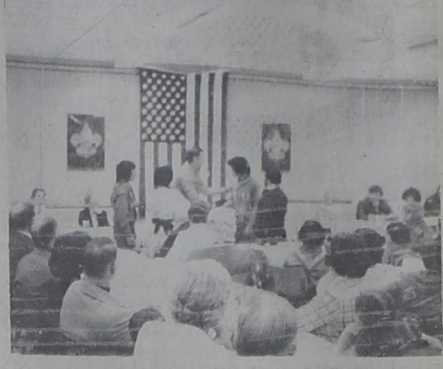
The Good Turn Award was presented to Allen Estlack for serving Troop 33 seven years as assistant Scout master and for serving as chairman of the Eagle Review Board in a very dependable manner. Wilbert Bernabe, also was presented the Good Turn Award for serving Troop 33 as institution representative, for taking scouts to Amarillo on Saturdays four weeks and for taking scouts on the Atomic Energy Field Trip to New Mexico.

Service awards went to E.O. Simmons, Claude Thomas and Charles Blackburn. E.O. Simmons has

served faithfully on the Troop Committee and as assistant Scout master twelve years. He has served on every Eagle board of review and as master of ceremonies for every Eagle Scout award presentation. Claude Thomas was awarded the service award for his service to Troop 33 as assistant Scout master for nine years and for sponsoring over night camp outs and for providing transportation for scouts to troop activities.

For six years, Charles Blackburn served the troop as assistant Scout master. He, also, has accompanied boys on camping trips, and has provided transportation for the troop on many occasions.

Concluding the ceremonies names of the 41 Eagle Scouts in Clarendon were read by E.O. Simmons. Presently Troop 33 has 32 Eagle Scouts, 15 eagles who hold the bronze palm, 7 with the gold palm, and 5 the silver palm, 22 1-mile swimmers, 6 lifeguard, 47 order of the arrow scouts and 49 with the God and Country Award.



EAGLE SCOUT AWARDS presented to Richard and Leroy Sanchez by Scout master Tommie Saye.



L. to R. SENIOR PATROL leader, Eddie Bright and assistants Leroy Sanchez, Spencer Hayes, and Richard Sanchez.

Proclamation FBLA - PBL week

Members of the Future Business Leaders of America-Phi Beta Lambda are playing an outstanding role in assuring the future progress and prosperity of their community.

It is vital that in our complex society we train and continue to train young

people in the area of business and business education to fill the increasing demand in this area.

These young people, members of Future Business Leaders of America-Phi Beta Lambda, Inc., are secondary and postsecondary students who are preparing for careers in business and

business education. This intense interest in our business world will continue to grow and improve.

FBLA-PBL has provided the valuable service of developing leadership, encouraging cooperation, promoting good citizenship, teaching up-to-date business

information, and inspiring patriotism among its members.

Therefore, I as mayor of Clarendon, Texas, do hereby designate the week of February 12-18 as FBLA-PBL Week.

Leonard Selvidge

PBL "Mothers March" successful

The "Mother's March" for March of Dimes held on January 23 was very successful in raising much needed funds for that foundation.

Sponsored by the Phi Beta Lambda Chapter of Clarendon College, the march raised \$325.00 for March of Dimes.

Officers and members of PBL would like to take this opportunity to say "Thanks"

to the citizens of Clarendon for responding to this worthwhile project. Funds raised will go toward research in preventing birth defects.

Call your news to CLARENDON PRESS 874-3541

Phi Beta Lambda entertains Lion's

Members of the Clarendon Lion's Club were treated to a noon hour of fun recently when members of Phi Beta Lambda of Clarendon College presented the Product is Right game show. A rip-off

of the T.V. show, the "Price is Right", provided fun and prizes (although not as extravagant as those on T.V.). Prizes consisted of stencils, books, a ruler, a haircut compliments of

Clarendon College School of Cosmetology, liquid paper, a free Broncho Booster hamburger compliments of Broncho Drive Inn, a free dry cleaning of one pair of slacks by Johnston's Dry Cleaning.

Lucky game winners were P.C. Messer, W.R. Christal, and Billy Ray Johnston.

Local Joel Greene is now at home in Clarendon following an extensive stay in the hospital and physical therapy.



SERVICE AWARDS GIVEN to E.O. Simmons, Claude Thomas and Charles Blackburn for continued support of Troop 33.



GOOD TURN AWARDS presented to Wilbert Bernabe and Allen Estlack.



heaven and earth will pass away, but my words shall not pass away. **THE LATE GREAT PLANET EARTH** featuring ORSON WELLES and HAL LINDSEY. COMING SOON. 1 DAY ONLY MONDAY FEB. 27th MULKEY THEATRE SHOW TIMES 7:00 & 9:00 p.m.

DONLEY COUNTY LAND O' PROMISE
BY VIRGINIA BROWDER
THE CLARENDON PRESS
\$15.00 Plus Tax

P.B.L. members to attend March of Dimes conference

Twenty members of Phi Beta Lambda of Clarendon College will attend a March of Dimes Conference in Dallas, February 17 and 18. While attending the conference, members will have an opportunity to participate in an Industrial Tour which will include visits to General Motors, Sanger-Harris, and the Data Processing Department of North Texas

State University. Main speaker for the conference will be Ruth Anderson, noted publisher of books dealing in secretarial subject matter.

Phi Beta Lambda entertain at Day Care Center

As part of National Phi Beta Lambda Week, February 13-17, the PBL Chapter of Clarendon College will participate in a Valentine Day Party at the local Donley

County Day Care Center. Members of PBL will visit the center and assist in the Day Care Head Start Program.

Baptist youth ski in New Mexico

Friday February 10, the First Baptist Church youth group left for a three day retreat at the Glorieta Baptist Conference Center in Glorieta, New Mexico.

The group left Clarendon at 9:30 p.m. Friday and arrived at 4 a.m. Saturday Texas time, at the camp.

On Saturday they enjoyed the recreation center and toured Santa Fe.

Bible study for the group was led by Roy Lee Helms, Stan Leflew and Preston Byrd.

On Sunday everyone enjoyed the Santa Fe Ski basin before the return trip

on Sunday. Twenty five persons enjoyed the trip and included: Sala Leflew, Angela Klinnert, Lacreia Petty, Donna Johnston, Rosebud Albert, Colleen Cockerham, Paula Helms, Karen Alderson and Sheryl Walker. Also Terry Cole, Preston Byrd, Jeff Helms, Stan Leflew, Katherine Perdue and Tamra Day.

Sponsors on the trip were: Mr. and Mrs. Roy Lee Helms, Mr. and Mrs. Bob Cole, Mr. and Mrs. Darrell Leflew, Mr. and Mrs. Roddy Klinnert, Mrs. Gene Alderson and Miss Cynthia Manning.

Incorrect Social Security number can delay income tax refund

An incorrect Social Security number will hinder the processing of a tax return and can delay any refund due, the Internal Revenue Service said.

To help avoid this problem, taxpayers should use the peel-off label included in the tax package received in the mail. This label contains the name, address, and social security number of the taxpayer. If

the social security number or other information listed is incorrect, the correct information should be written in right on the label.

If a taxpayer has had a change in name since last year, a local office of the Social Security Administration should be contacted so that the taxpayer's new name will correspond to his or her social security number.

JOHN'S CLARENDON

SALE 3 days Feb. 16-17-18

THE BARGAIN RACK SAVINGS OF UP TO 60% Includes Top Brand Names Donovan Galvani Center Stage Prophecy

Men's SLACKS Over 400 to choose from 20-40% OFF	Men's SUITS Johnny Carson, Curlee, Don Richards, Berkley Hall 25-60% OFF	Men's Long Sleeve Sport SHIRTS 33 1/3% OFF	Entire Stock Men's SPORT COATS \$39.95
Ladies Fall ROBES 50% OFF	One Group Ladies JUMP SUITS 50% OFF	Jr. Dresses 33 1/3% OFF Jr. Jump Suits 40% OFF	Men's Entire Stock Down-Dacron Filled, Leathers, Simulated Leathers, Wool-All Weather COATS 40-50% OFF
Ladies WINTER COATS 1/2 Price	Ladies BLOUSES 25 to 50% OFF	Ladies & Mens SWEATERS 40% OFF	Men's LEISURE SUITS 40-50% OFF
Ladies DRESSES & PANT SUITS 33 1/3% OFF	Ladies One Group COORDINATES 50% OFF	Ladies Fall HANDBAGS 40% OFF	Men's SHOES 25% OFF One Group While They Last 50% OFF
			Western HATS Entire Stock of Felt 30% OFF
			BOOTS 33 1/3% OFF



HOURS 8 a.m. - 7 p.m.
SUNDAY 9 a.m. - 7 p.m.
Ad Good Feb. 15 THRU 19th

Nestle's Egyptian
HENNA
 Nestle's Blowdry Men's & Women's
CONDITIONER
 Nestle's
BABY OIL
 Nestle's
BABY POWDER

\$1²⁷
73^c
97^c
87^c

New! from
ClairMist Super hold, non-aerosol hair mist.
 Clairol Clairmist
87^c 8 oz
57^c 4 oz

Lee Nails **NAIL KITS**
 Brush-on Artificial Fingernail Kit
\$4⁹⁹

clairresse All Shades
\$1⁸⁹
 the clairo color and conditioning discovery
 Shampoo in hair color lotion
 ONE APPLICATION

Borden's
HALF & HALF
37^c
 Borden's
WHIPPING CREAM
37^c



FRESH MEAT MARKET

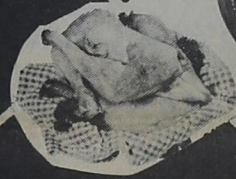
GRADE CHOICE CUTS BEEF AND PORK AT

Country Style Spare
RIBS
\$1³⁹ Lb



Porterhouse
STEAK
\$1⁷⁹ Lb

T-BONE STEAK
\$1⁷⁹ Lb.



Chuck
ROAST
79^c Lb



CHICKEN
 LEGS & THIGHS **89^c** Lb
 BREAST **\$1⁰⁹** LB.

Short & Sassy
CONDITIONER
 7 oz **99^c**
 Short & Sassy
SHAMPOO
 7 oz **99^c**



RADISHES
 Cello
2 Bag 25^c

Vine Ripe
TOMATOES
23^c lb



Cello
CARROTS
2 Bag 49^c

BELL PEPPERS **39^c** lb.

Russet
POTATOES
 10 lb Bag **61^c**



EGG PLANT **25^c** lb

SLENDER BARS
\$1¹⁹ A Box

MUFFIN MIX
 Martha White Corn **2/29^c**
 7 1/2 oz

Adolph's 3 1/2 oz
TENDERIZER **57^c**

JELLO Instant Pudding & Pie Filling **27^c** Small Box

Borden's
ORCHARD DRINK 64 oz **61^c**



Shortening
CRISCO
 3 lb Can **\$1⁶⁷**



Gladiola
FLOUR
 5 lb **67^c**



Pillsbury
QUIK BREAD MIX A Box **79^c**
 Friskies 15 oz can
DOG FOOD **5/\$1⁰⁰**
 Alpo Beef Flavored Dry **DOG FOOD** 5 lb Bag **\$1¹⁹**
 White Swan Slice **CARROTS** 16 oz **4/\$1⁰⁰**

CHEF BOY-AR-DEE
 Mini Ravioli, Meatball A-Roni, Lasagna, & Roller Coasters

LYSOL 40 oz
 Fanning Bread & Butter
PICKLES 14 oz

Wagner 32 oz
ORANGE DRINK
 Brawny
PAPER TOWELS A Roll

Ragu 15 oz
SPAGHETTI SAUCE
 Para-Gard 3 oz
TOILET DEODORANT

47^c 15 oz Can
\$1⁵⁷
49^c
33^c
57^c



Liquid 22 oz
JOY
87^c
SOAP
 Ivory Bar **49^c**
 4 Bar Pkg

30 oz Box
59^c **ARM & HAMMER** **51^c**
27^c

White Swan
PEACHES 16 oz **2/69^c**
 Hershey's
BAKING CHIPS 6 oz **33^c**
 Carnation Hot
COCOA MIX 1 oz Pkgs **6/69^c**
 Wick Fowlers 2-Alarm
CHILI MIX A Pkg. **79^c**



Keebler Club
CRACKERS
CINNAMON CRISP **67^c** Each Box
HONEY GRAHAMS

NOTICE

We, the Board of Directors of Donley County Farm Bureau; urge the Farm Bureau members of Donley County, to act as individuals, at their own discretion, in support of the following five-point plan to alleviate the problem of low net-income for Donley County Farmers.

- [1] 100% parity for all domestically produced or consumed agricultural products.
- [2] 100% parity for all agricultural products exported to foreign countries.
- [3] 100% parity for all agricultural products contracted for national or international food reserves.
- [4] The creation of a structure with inputs from farmers to handle the marketing of American agricultural products.
- [5] Stopping all meat & livestock imports until 100% parity prices are reached.

DONLEY COUNTY FARM BUREAU

ASC schedule meetings on farm bill

Jerry Gage of the ASC office has announced meetings in several towns open to any one interested in the new farm bill. Check below for time and place.

TUESDAY, FEBRUARY 21 - Farm meeting to discuss the new farm bill, Clarendon College cafeteria, 7 p.m.

WEDNESDAY, FEBRUARY 22 - Farm meeting in Groom in the Legion Hall at 7 p.m.

THURSDAY, FEBRUARY 23 - Farm meeting in Hedley at the Lions Hall at 7 p.m.

Planning helps cope with poison perils

Memories of a poisoning accident can last a lifetime, a very short lifetime for some poisoning victims. Fast action is the key to saving poisoning victims from death or serious injury. A minimum of advance preparation can insure fast, proper action if such an emergency does occur, the Texas Medical Association (TMA) says.

Getting medical help is of prime importance. A list of emergency numbers plainly posted can save phone fumbling when time should be spent giving the victim first aid.

Many places may be able to provide small charts or pamphlets you can post inside a medicine cabinet or other convenient place. Check with the local Red Cross, poison control center in large cities, or TMA Communication Dept., 1801 North Lamar Blvd., Austin, Texas 78701. The materials

contain simple instructions for handling many types of poisoning situations.

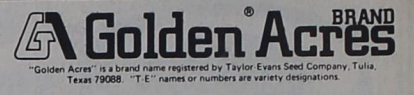
For instance, if someone swallows any type of poison, getting medical help quickly is the key factor. Bring along the container and any poison left so the doctor can examine it. If the poison is unknown and the patient vomits, bring along any vomitus for examination.

Sometimes vomiting will harm a victim. Do not induce vomiting if the victim: 1) is in convulsions; 2) has severe pain, burning sensation in mouth or throat; 3) is already vomiting; or 4) has swallowed a corrosive substance such as acid (toilet bowl cleaners, rust removers, iodine, etc.), alkali (washing soda, household bleach, lye, etc.), or a petroleum product such as gasoline or lighter fluid. Instead give milk and room temperature water if the patient can swallow. Give

up to 2 cups for a victim 1-5 years old; up to 1 quart over age 5. Alkali poisoning victims also may have fruit juice or vinegar.

If the poison is non-corrosive, induce vomiting by placing the blunt end of a spoon or your finger at the back of the victim's throat. Giving 2 teaspoons of salt in a glass of warm water or giving syrup of ipecac according to directions on the bottle also will cause vomiting. After first aid treatment, seek medical help to make sure the victim will recover satisfactorily.

Knowing what to do for swallowed poisons is only a small part of necessary knowledge. Inhaled poisons, insect bites and poison prevention measures help complete the list of areas where advance planning can be very important. TMA says.



HYBRID GRAIN SORGHUM

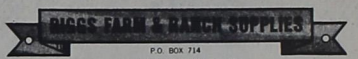
UNIVERSALLY POPULAR YELLOW ENDOSPERM GREENBUG RESISTANT



TE Y-101-R

- Easily Threshed
- Drouth Resistant
- Heavy Yield Potential
- Semi-Open Uniform Well Exserted Heads
- Thick, Short, Heavy Stalk, Excellent Standability
- Extensive Root System, Adapts to Varying Soils
- Excellent Greenbug Resistance

WE RECOMMEND TE-Y-101-R



COME IN NOW FOR YOUR SEED NEEDS

A record \$445.6 million in dividends will be paid during 1978 to 4.1 million veterans with GI life insurance policies in force, according to the VA.

The Following Was Adopted As A Volunteer Set-Aside Program Sponsored By American Agriculture. It Is Not A Government Program, But One for And by Farmers.

We Urge All Farmers And Landlords To Consider How They Can Support The Movement.

EQUATE to PARITY

If the farmer receives 100% Parity for his Fiber and Commodities and no other cost are tacked on by the Middle Man, the increase in prices to the retail market will only Increase 2.3%

How does this effect You?

Cost Now	Item	Cost After 100 Percent Parity
\$1.75	Cotton T-Shirt	\$1.79
45¢ Lb.	Fryers	46¢
\$1.39 Lb.	Pork Hams	\$1.42 Lb
\$1.58 Lb.	Sirloin Steak	\$1.61 Lb
\$1.09 Lb.	Boneless Chuck Roast	\$1.11 Lb.
\$145.00	Men's Suits	\$148.34
\$13.00	Men's Jeans	\$13.30
\$8.00	Boy's Shirts	\$8.19
\$15.00	Bedsread Reg. Size	\$15.35
\$2.00	Socks	\$2.05
98¢	Butter Lb.	\$1.01
\$1.59	Crisco	\$1.63
79¢	5 Lbs. Potatoes	81¢

IN RURAL AMERICA, 1978, A DECLARATION OF THE FARMERS OF THE UNITED STATES OF AMERICA:

When in the course of human events, it has become necessary for we, the farmers, of this nation to take it upon ourselves to correct the economic injustices wrought upon us by governmental powers.....

Whereas: President Carter has broken his campaign promises to work for farmers.

Whereas: The USDA Secretary Bergland claims only a few farmers are in trouble, and would go broke anyway.

Whereas: A cheap food and fiber policy allows imported agricultural products to wreck the economy of agriculture and the nation.

Whereas: The USDA Secretary Bergland allows only a possible 10% set-aside for feed grain, 20% wheat, none cotton, in view of the SO CALLED "SURPLUS" which depresses agriculture to "GREAT DEPRESSION" levels.

Whereas: It is in the best interest of all the citizens of our Great Nation to conserve our resources (fuel, soil, water) and not waste them growing unwanted crops.

Whereas: The farmers of this nation are losing their equities in farms and are being forced into BANKRUPTCY allowing even foreigners to purchase our farms and ranches.

Whereas: Soil conservation is a prime concern of farmers. Cover crops may be needed to control erosion from wind and water. Production from these cover crops will not be used. The cultural practices that were followed in 1977 is to be followed in the 50% planted acres. This is to include herbicides, fertilizer, chemical use and planting pattern.

Whereas: The loss of income for the nation caused by 64% parity farm prices is causing our country to become insolvent.

Whereas: All citizens of the nation, INCLUDING FARMERS, are endowed by their creator with certain inalienable rights, and that among these are life, liberty and the pursuit of happiness.

NOW THEREFORE, BE IT RESOLVED, That we the farmers of this nation adopt the following plan to help achieve 100% PARITY for agriculture.

This family recognizes that we are only one farm family, but we believe that we must do our part to support this effort. Therefore, with God's help, we agree to plant only 50% of our land until AAM's goals are achieved. Further, we agree that we will not lease or rent any land which a landlord has taken back from another farm family who has also agreed to plant only 50% of their land.

We, the undersigned, hereby agree to set aside, by not planting crop or by plowing up growing crops, ONE HALF (1/2) of our normal cultivated and planted acres for the year 1978 to bring about a decrease in the SO CALLED "SURPLUS" for an increase in price.

I understand that this will be a national effort.

✓ This movement is not just for farmers and ranchers, but for the economic well-being of every citizen in our county, state and country.

.....this message sponsored by People in Agriculture and Friends of Agriculture

USDA REPORT MID-NOVEMBER CROP PRICES RECEIVED AND PAID BY FARMERS

CROP	FARMERS PRICES	PARITY PRICE
Wheat	\$2.48	\$5.04
Corn	\$1.91	\$3.46
Soybeans	\$5.68	\$7.63
Sorghum Cwt.	\$3.15	\$5.78
Oats	\$1.14	\$1.74
Peanuts	\$20.04	\$28.06
Cotton UPL	52.3¢ Lb.	83.81¢ Lb.
Oranges Box	\$4.27	\$3.32
Hogs CWT	\$37.50	\$55.5
Cattle CWT	\$34.60	\$58.4
Calves CWT	\$37.00	\$68.2
Eggs Doz.	\$51.3	\$81.1

News from Ashtola - Martin community

By Mrs. Hubert Rhoades
So glad to report Clovis Bible was released from Groom Memorial Hospital on Monday to recuperate at home.
Mr. and Mrs. Craig Pillard are the proud parents of a baby boy born Monday at Groom Hospital. Michael Lee Pillard weighed 7 lbs. 8 ozs. The grandparents are Mr. Ray Brogden of Amarillo and Mrs. Cindy Brogden of Clarendon. Great grandparents are Mr. and Mrs. Jake Moffett of Clarendon.
Doyle Brazelle of Amarillo, R.R. Partain's uncle, had open heart surgery Wednesday at Saint Anthony Hospital in Amarillo.
Mr. and Mrs. Gerry Bible took Clovis Bible to Groom on Wednesday for a checkup. Skeet Brown made a business trip to Amarillo Friday.
Mrs. Willard Wieck of Groom and Mrs. Skeet

Brown went to the airport in Amarillo Friday to pick up Willard Wieck who returned from a visit with his sister in Arizona.
Mr. and Mrs. J.R. Graham visited Saturday with her sister, Mr. and Mrs. Charlie Slavin in Clarendon, and they all visited their parents, Mr. and Mrs. W.A. Ward in Memphis Saturday afternoon.
Mr. and Mrs. Gary Davis of Amarillo spent Saturday night and Sunday with their family, Mr. and Mrs. Skeet Brown and Eddy.
Sorry I did not get you when I called this week.
MARTIN
By Mrs. Hubert Rhoades
Mrs. Margaret Waldrop and her mother visited Monday with Mrs. Ruth Lyles in Childress.
Patty and Tracey Floyd are visiting their grandparents, Mr. and Mrs. Bill Rushing, in Lela.

Mr. and Mrs. Darrell Leffew and Stan went with the group from the First Baptist Church to the Baptist encampment at Glorieta, New Mexico. Terri Leffew stayed with her grandparents, Mr. and Mrs. Othel Elliott.
Dana Perdue of WTSU at Canyon spent the weekend with her parents, Mr. and Mrs. Dane Perdue.
Mr. and Mrs. Bob Cole and Terry went with the church group to Glorieta, N.M.
Mr. and Mrs. Othel Elliott and Terri visited Sunday afternoon with Jack Foster.
Kathryn Perdue was with the young people who went to camp at Glorieta, New Mexico.
Mrs. Charlie Floyd and Mr. and Mrs. Steve Reynolds visited Sunday afternoon with Mr. and Mrs. Olace Hicks.
Mr. and Mrs. Charlie

Hearn had dinner with her dad, Frank Lyle, on Sunday. Sorry I did not get you when I called this week.

BOOK ON TEXAS WATERWAYS REPRINTED— "An Analysis of Texas Waterways," a book first published in 1975 which details the physical characteristics of rivers, streams and bayous throughout the state, has been reprinted through a joint agreement with the Texas Agricultural Extension Service and the Texas Parks and Wildlife Department. A close look at the more than 80,000 miles of major as well as seasonal or restrictive streams and rivers in Texas is provided in the 240-page book. It is available at \$4 a copy from the Department of Agricultural Communications at Texas A&M University.



PICTURED ARE SOME of the Panhandle State University physical education ski classes held at Red River, New Mexico. Standing front row, Tammy Cleveland, Dumas; Mark Lasof, Houston; Oscar Montano, Houston; Debbie Jones, Clarendon; Kim O'Dell, Perryton; and Brent Westbrook, Amarillo.

EVERY DAY DOUBLE ON TUESDAY

CLIFFORD GROCERY

Best Food Buys AFFILIATED

Feb. 15th to 18th

USDA Grade "A" **FRYERS** Extra Nice **49¢**

Wrights Finest **CURED HAMS**

Shank Half or Whole **\$1.19** lb.

Butt Half **\$1.39** lb.

Cut to your Specifications USDA Choice **T BONE STEAKS** Lean & Tender **\$1.98** lb.

BACON Wilson Certified Thick or Thin 2 lb **\$2.89**

Spiced (Pressed Ham) **LUNCHEON MEAT** or All Meat (Wrights) Bulk Sliced **\$1.09** lb

BOLOGNA Whole Approx. **\$1.39** lb

CATFISH 1 lb Each **59¢**

Soft Tub Oleo Meadowlake **OLEO** 1 Lb Tub **59¢**

Brawny Paper **TOWELS** Jumbo Roll **59¢**

Remarkable #2 1/2 Can **PEARS** **2/99¢**

Shurfine Chunk Style **TUNA** 6 1/2 oz can **69¢**

Gebhardt's Jumbo **TAMALES** #2 1/2 Can **69¢**

Shurfine **FRUIT COCKTAIL** #303 Cans **2/79¢**

Wagner **ORANGE DRINK** Quart Decanter **2/69¢**

Purina **DOG CHOW** 10 lb Bag **\$2.29**

Fresh & New Ray O Vac Lantern **BATTERY** 6 volt 1/2 Price **98¢**

TIDE Giant Size **\$1.39**

GLAD Gladrola All Purpose 5 lb. Bag **69¢**

GLAD 10 Cnt Pkg **99¢**

FABRIC SOFTENER Always Soft 6oz Bottles **8/\$1.00**

AJAX 14 oz Cans **4/\$1.00**

Shurfine Paper **NAPKINS** 160 cnt. Pkg **49¢**

100 Sq Ft. Roll **HANDI WRAP** **49¢**

Irish Spring **BATH SOAP** Bath Size Bars **3/89¢**

PALMOLIVE Quart Bottle **\$1.09**

Shurfine **BLACK PEPPER** 4 oz can **79¢**

Morton **CHILI BLEND** 8 oz Bag **\$1.19**

GRAPEFRUIT Texas Ruby Red Large, Sweet Juicy **3 for 49¢**

Colorado White Russett **POTATOES** 10 lb bag **69¢**

Mexico Green Bell **PEPPERS** **49¢** lb.

Spanish Sweet Yellow **ONIONS** **10¢** lb.

Texas **ORANGES** 5 lb Bag **\$1.00**

BAKE-RITE 3 lb. Can **\$1.29**

Shurfine **COFFEE** 1 lb Can **\$2.79**

Maxwell House **INSTANT COFFEE** 10 oz Jar **\$4.49**

Betty Crocker **BROWNIE MIX** Supreme 23 oz Pkg **98¢**

Betty Crocker **CAKE MIXES** **59¢**

Washington Roman Beauty **APPLES** 3 lbs **89¢**

CLASSIFIED ADS TO BUY, SELL, SWAP RENT OR HIRE

Please check ad carefully the first time it appears. In event of error, The Clarendon Press will not assume responsibility for more than one incorrect insertion. This newspaper reserves the right to reject any ad it feels objectionable and also to correctly classify any ad for best results.

Classified ads must be paid for in advance.

MISC

Dr. Ken McCarty, optometrist, has closed his office in Clarendon. All patient files and records will be kept at his office in Amarillo where he will remain in full time practice. Please contact him there - 2801 Paramount, 355-9536 - for further visual care.

"CONFIDENTIAL Care for pregnant unwed mothers." EDNA GLADNEY HOME 2308 Hemphill, Ft. Worth, Tex. Toll free number 1-800-792-1104.

OFFICE SUPPLIES Bookkeeping Supplies Storage Boxes Office Machine Ribbons Office Furniture Clarendon Office Supply & Printing G.W. Estlack Clarendon, TX.

CAKE DECORATING All occasions, weddings, etc. Also home baking. Mary Bond-Cheryl Adams. 874-3355.

FOR SALE: Storm doors, windows. Complete window units. Clarendon Glass Co. 874-3826.

SANDERS REAL ESTATE 720 South McClelland FOR SALE: Land, one & two-story houses. See us first. Listings wanted. Oneta 874-2533 Jaquetta 874-2021 After 6 p.m. - Thelma 874-2649 Jimmie 874-2606

COMMERCIAL PRINTING Business and Personal Stationery & Cards Business Forms & Statements Envelopes, Circulars, Window Cards Whatever your printing need, check with us. CLARENDON OFFICE SUPPLY & PRINTING Mr. & Mrs. G.W. Estlack Phone 874-2043 Clarendon, TX 79226

FLEA MARKET Memphis, Texas Every Sunday 10 - 4 Free Booths in February 415 Main St. We'll even sell your junk for a small fee.

WANTED PAINTING, residential, commercial and appliances. Call after 5 p.m. 874-2522.

LOST: 9.50 - 16.5 Goodyear Hi-Miler on 8 hole Chev. rim. Reward. 874-2575.

FOR RENT: 2 bed-room furnished house. Close in. 874-2392.

FOR RENT TV SETS FOR RENT Inquire at Hensons.

APARTMENT FOR RENT. bills paid. Apply in person. Pud Bain

WANTED

NEW BUSINESS OPPORTUNITY! The hottest new product of the year are the Mini Cars, Trucks and Vans. One exclusive dealership is available for the Clarendon area. This high profit dealership can be yours for a total investment of about \$5,000 which buys your cars. For complete details call David or Bea Snow 806-373-4662, Amarillo.

NOTICE

Drinking water at the Circle C Mobile Park for the months of October, November and December did not meet the drinking water standards of Texas Department of Health. This condition is now corrected and the drinking water met the standards for the months of January and February.

FOR SALE

FOR SALE: 1970 Buick Wildcat. Perfect condition. 874-2407.

FOR SALE: Gun cabinets, doll houses. 248-3761. R.A. Snyder, Groom, Tx.

FOR SALE: 320 acres south of Lelia Lake. 130 acres cropland - balance grass. Financing available. 150 acres 4 1/2 miles south of Clarendon on pavement. Joe Lovell 226-3801

FOR SALE: Nice 3-bedroom house. B.B. Joiner, Box 921, Clarendon, TX 79226.

FOR SALE: New shipment of shade, pecan and fruit trees. Open Sunday. MOORE NURSERY Memphis, Texas

FOR SALE: I have the following one-owner items for sale: 6 row Hoby Rod Weeder; 6 row Hamby Cultivator; 6 row John Deere Planter; 6 row International Breakover Rotary Hoe; 16-10 John Deere Drill; 17 Shank (H-C) Graham Plow; 7 Row Lister with Marker; 20 ft. John Deere One Way; 3 Row John Deere Subsoiler; 80 in. Rotavator. See Carver Monroe, 4 miles south and 3 1/2 miles east of Silvertown.

FOR SALE: Pivot sprinkler system seven tower located east of Clarendon. Call Truett Hall. 874-3648.

FOR SALE: Ten used side roll sprinklers, 5 & 4 inch pipe, 60 & 76 inch wheelers, all are Aircro Sprinklers. Call 983-5231 Days; 983-5367 Nights.

FOR SALE: Nice Shetland pony with bridle. \$50. 874-3756.

Tom's Terrace and Blade 1402 W. Noel Memphis, TX 79245

NOTE OF THANKS We want to thank everyone for their calls, cards, flowers and prayers while Truett was in the hospital. A special thanks for the one who helped deliver the mail. Truett & Thelma Behrens

LEGAL NOTICE The Commissioners Court of Donley County will accept bids on two new electric typewriters for the Tax Office with the following features: 15.5" carriage, dual pitch, correctable film ribbon with lift-off tape. Bids will be opened and considered on February 13, 1978. The Commissioners Court reserves the right to reject any and all bids.

POLITICAL CALENDAR
COUNTY JUDGE Billie Christal, Democrat.
J.S. Hinds, Democrat.
COUNTY COMMISSIONER Precinct 2, Donley County Claude Moore, Democrat.
Olace Hicks, Democratic.
COUNTY COMMISSIONER Precinct 4, Donley County William Chamberlain, Democrat.
Jess Finley, Democrat.
Glen Adkins, Democrat.
COUNTY CLERK

P.C. Messer, Democrat.
COUNTY TREASURER Mrs. Nina Dale, Democrat.
Mahdene [Dee] Williams, Democrat.
Nadine Bobbitt, Democrat.
JUSTICE OF THE PEACE Precinct 2, Donley County Ernest Kent, Democrat.
Carroll Lewis, Democrat.
Alle Mae Maxey, Democrat.
WANT TO BUY the lease on water-front lot on south side of Greenbelt Lake. Will buy improvements. Call 806-259-2057.

COLLECTOR Chauncey Hommel, Democrat.
Kay McCowan, Democrat.
Lyndel W. Moffet, Democrat.
STATE REPRESENTATIVE 66th Legislative District Glenn Conrad, Democrat.
Bill Hale, Republican.
Foster Whaley, Democrat.
CONGRESSMAN 13th District Congressman Jack Hightower, Democrat.

PUBLIC NOTICE

Pursuant to TEX. REV. CIV. STAT. ANN. art. 1446c, 43[1975], Lone Star Gas Company hereby gives Notice of the Company's intent to implement a new schedule of rates, effective March 3, 1978 to be charged for natural gas service to residential and commercial customers in the environs areas [outside incorporated limits] of the cities and towns listed below with the effect on gross revenue to the Company as listed:

Environs Area of	Current Annual Revenue (Test Year ended 9-30-77)	Estimated Annual Revenue Under Proposed Rates	Revenue Increase
Clarendon	\$18,854	\$19,706	852

A Statement of Intent, filed with the Railroad Commission of Texas, contains base rates to be adjusted monthly [1] for new or increased taxes subsequent to July 1, 1976, and [2] in accordance with a purchase gas adjustment clause with a base city gate rate set forth in the Statement of Intent. A discount for summer air conditioning gas use is contained in the proposed rates set forth in the Statement of Intent. The Statement of Intent is available for inspection at the Company office located in the city or town associated with the affected environs area.

Any affected persons desiring to contest such change [changes] in rates can file a complaint with the Director of the Gas Utilities Division, Railroad Commission of Texas, P.O. Drawer 12967, Capitol Station, Austin, Texas 78711.

LONE STAR GAS COMPANY

BUSINESS REVIEW

TUNEUPS-MUFFLER Or MAJOR OVERHAUL On-The-Farm Service STEVE'S AUTOMOTIVE & INDUSTRIAL 323 S. Kearney 874-3446 Clarendon, Texas

EFFECTIVE IMMEDIATELY We have purchased Casteel Plumbing. All jobs will be cash upon completion. Billy Joe Hall, Box 247, Phone 874-2085 before 8 a.m. and after 2 p.m.

LAMPS, LAMP PARTS, all light bulbs. HOUSE OF SHADES and LAMP REPAIR. 2613 Wolfilin Avenue Wolfilin Village Amarillo, Tex 79019

SADDLE REPAIR CUSTOM SADDLES TACK* LEATHER GOODS Triangle - D Custom Saddle Shop 806-779-2562 P.O. Box 563 McLean, TX 79057 Closed Saturday

Service comes naturally
CORNELL & BRADDOCK SHELL

Painting & Dashing Drywall Textures Acoustical Ceilings Paneling Wall Papering Call Lawrence Thompson Phone 874-3756 Clarendon, Texas

COMPLETE FLORAL SERVICE ALL OCCASIONS **JOANE'S** 8th & Bond **CORSAGES**

Begonias Hanging Ivy Geraniums Green-Yellow Jew

DO IT YOURSELF "STEAM" CLEAN YOUR CARPETS... THE PROFESSIONAL WAY Rent the fantastic new Up & Out Hydro-Mist Machine for superior carpet cleaning. Locates and removes dirt, previous shampoo residue, and up to 90% of the moisture in just one step. Save money... get results just like a professional!
HENSON'S

ANTI-FREEZE \$2.95 Gallon While it lasts Have about 20 gallons left Also several used Electric Motors for Sale Several used 9:50 x 14 trailer tires 6 ft Steel T Posts \$1.95 each Also new & used steel Channel, angle etc. Cotton trailer kits ready for you to assemble all steel - any size Call **RODDY KLINNERT**

Casio Calculators **RALPH ALEXANDER'S** Office Machine SERVICE 835-2997 Lefors, Texas

SHOP CLARENDON

MESSER ELECTRIC INSULATION Memphis, Texas Ph. 259-3329 Cut heating and cooling cost. Tax deductible. For free

PROCTOR WINDMILL SERVICE Ray Proctor

HOWELL'S INTERNATIONAL 401 West First Panhandle, Texas 79068 (806) 537-3942

CHARLES HOWELL DENNIS HOWELL

INSURANCE FOR YOUR HOME RANCH FARM AUTO CROPS LIFE When I hire an employee for farm and ranch work do I need Worker's Compensation insurance? For help with insurance questions and needs call... TEXAS FARM BUREAU INSURANCE COMPANIES 874-2471 or 874-2818

BAILEY ESTES AND SON Welding Fabricating Enameled Steel Buildings Custom Built Portable Buildings Barns

We Sell The Best And Service The Rest **RATTAN'S TV SERVICE & SALES** Your Zenith Dealer **WICK RATTAN, Owner** 874-3570

NEW HOMES - and - REMODELING **C & C BUILDERS** * * C. R. COLE * * HOWARDWICK, TEXAS PH. 874-2152

Brown-McMurtry Implement SALES AND SERVICE Phone 806 823-2441 P.O. Box 777 Silvertown, Texas 79257 **DON BROWN** Home Ph. 823-2292 **CLARENCE WARD** Home Ph. 823-2083

Lovelady & Associates Construction Commercial & Residential Construction **W. W. "Bud" Lovelady** Builders of Fine Homes Remodeling & Cabinet Work 622 W. 4th Street Phone 874-3703 P. O. Box 828 Office At Residence Clarendon, Texas 79226

RAY'S APPLIANCE SERVICE Franchise for KitchenAid Dishwashers Sales and Service General Electric Franchise Dealer Heating and Air Conditioning. We service all makes of Air Conditioning Freezer & Refrigeration Service & Repairs **D.P. Ray, Owner** Clarendon 874-3801

PHONE (806) 944-3852 TXGS 77-0273 **Butler Auction Service** Agricultural Equipment / Livestock Industrial Property **CHESTER BUTLER** Complete Sales Management Box 60 / Claude, Tx. All Personal Property

Alaska, Clarendon and the North Pole-places where ice, snow and winter winds blow



FRANK HOMMEL'S southern antebellum home shown in a Texas panhandle winter setting.



FRANK WHITE home shows winter scenery at its best.



PICTURED IN FRONT of Sadie Wilson's home is a magnolia tree covered with snow and ice. A rare scene for this area.



REDELL HENSON HOME, a beautiful winter landscape.



MISTIC BEAUTY IN a winter wonderland - the Harriot Kunz home.



SNOW FORT PROVIDES these boys protection from enemy snowballs. Left to right: Blake Bryant, Spencer Hayes, and Scott Newland.



ABOMINABLE SNOWMAN? This winter monster was seen strolling down the center of Gorst Street late Monday night. Male or female?



STOPPING BY ON a cold snowy day Brett Bryant and Kelly Hill challenge Tommy Nichols to a snowball fight.

NOTICE

**THE FARMERS STATE BANK
AND TRUST CO.**

WILL BE CLOSED

MONDAY, FEB. 20th.

COMPLETE FLORAL SERVICE

ALL OCCASIONS

JOANE'S

8th & Bond

CORSAGES

Begonias
Hanging Ivy
Geraniums
Green-
Yellow
Jew

DOLLARS

YOU SPEND

AT HOME

STAYS AT

HOME

NEW SHIPMENT

WALLS BLIZZARD PRUF

INSULATED

COVERALLS

FINEST IN

STYLING,

FABRICS,

INSULATION

AND

WORKMANSHIP

GREENE

DRY GOODS CO.

Clarendon

WHATEVER YOU'RE LOOKING FOR

YOU CAN FIND IT IN THE PAGES OF

THE CLARENDON PRESS

SUBSCRIBE TODAY

RCA's

DOUBLE

SAVINGS

SALE

SAVE DOLLARS

SAVE ENERGY

on selected RCA color TV models with XtendedLife chassis

Money back direct from RCA

One of our greatest sales ever—designed to introduce you to RCA's most energy-efficient color TV's ever. Just buy one of the qualifying models, fill out the money-back coupon and send it to RCA with your sales receipt. You'll get a check direct from RCA.

LIMITED TIME ONLY!

SAVE \$50

Money back direct from RCA

On these XL-100 Consoles with electronic tuning

Reg. price	\$729 ⁰⁰
Money back from RCA	\$50 ⁰⁰
YOUR COST	\$679⁰⁰

GB744

GB748

Save energy with RCA's 100% solid state XtendedLife chassis

Uses only about the same amount of energy as a 100-watt light bulb. And it's designed to outperform and outlast any previous RCA color TV chassis.

SAVE \$40

Money back direct from RCA

FB530R

RCA ColorTrak with electronic remote control

Reg. price	\$769 ⁰⁰
Money back from RCA	\$40 ⁰⁰
YOUR COST	\$729⁰⁰

RCA XL-100 table model with electronic tuning

Reg. price	\$449 ⁰⁰
Money back from RCA	\$20 ⁰⁰
YOUR COST	\$429⁰⁰

SAVE \$20

Money back direct from RCA

Model FB450

OSBURN

FURNITURE & APPLIANCES

Clarendon

YOUR VOTE AND INFLUENCE WILL BE APPRECIATED

W. R. "BILLIE" CRISTAL
 CANDIDATE FOR RE-ELECTION
 COUNTY JUDGE
 DONLEY COUNTY

SUBJECT TO THE ACTION OF THE DEMOCRATIC PRIMARY
 PAID FOR BY W. R. CRISTAL

**Ruby Bromley is proud
 great-grandmother**

A baby daughter was born to Janice and Ed Rangle of Amarillo Friday, February 10, 1978 at Northwest Texas Hospital. The baby weighed 7 lbs. 14 oz. and has been named Tana Jade.

Ruby Bromley is the proud great-grandmother. ***
 Cyndy Williams of Amarillo visited and attended Sunday morning church services with her mother, Dee Williams.



The Clarendon Press, Thursday, February 16, 1978



MARY COOK holds the watermelon she received for Valentine Day from Ray Pittman of Amarillo. He delivered it to Mutt's Restaurant where Mary is employed.

Letter to the editor

My name is Terry Moore, my wife's name is Sherry; she is deaf and depends upon her animals to hear for her. On Feb. 9, 1978 at 5:00 p.m. my wife's ears died. She was murdered. Her name was Babe. She was not much to look at really, just a medium-sized mutt. To us she was a part of our life and family. She was a lot more to my wife, she was her ears, her guardian, her babysitter, and her friend. Our dog was poisoned. This has not been the first time her and our other, a Collie, have been poisoned; it was tried 7 times before. I have been trying to figure out what kind of person, if they deserve the name, would poison a dog that is kept in the house most of the time, or in a chain link fenced yard 24 hours a day, 7 days a week. At night she slept at the foot of my wife's bed. The "thing" that killed our beloved Babe is the lowest form of life imaginable.

My husband wrote the above article. Since then we have talked to the Humane Society in Amarillo. They are going to investigate this, also I wish it to be known that whoever is doing this can be imprisoned for as much as 2 years or fined \$20,000 if they are caught. Also, I would like to state that we are not the only ones with this problem. We live on Koogale Street at the very end of it. Everyone, or just about everyone in our part of town, has lost their dogs due to this poisoner. It has been going on for over 2 years now. It must be stopped before someone loses a child. Most of these dogs are like ours - penned up in a nice yard and never bother a soul or are allowed to roam.

Sherry Moore

**Both Washington and Lincoln
 learned to save when they were young.**

If you didn't ... you probably wish you had.



Too many people are now learning about savings the hard way. When economic stress hits your family, a savings account that you've regularly built up over the years can help. If you're not saving now, don't wait until you wish you had. See us today about a savings plan tailored to meet your needs and goals. We can help.



THE FARMERS STATE BANK AND TRUST CO.



Since 1912

Tips from Cynthia

As colors change with the seasons, choose those that create a desirable effect for present body size, shape and personal coloring. Sometimes favorite fashion colors are not the most attractive color choices for an individual. Also, skin and hair color change with whim or age and figures change in size and shape. Flattering color choices may also change. Some basic guidelines about affect of color on the body may help in clothing selection.

Warm colors make the body appear larger; cool colors make the body appear smaller. Warm colors are those with dominant red, yellow, or orange hues. Colors with dominant blue, green, or purple hues are cool colors. Colors create different effects depending on their value or strength. For example, bright, hot pink reacts as a warm color while pastel pink responds as a cool color.

Bright, or strong colors and light tints make the body look larger. Conversely, dull or subdued colors and darker shades generally make the body appear smaller. Use color to make "top heavy" or "bottom heavy" figures appear proportion-

ate. For example, a dark, cool colored skirt will help subdue heavy hips. For a taller appearance, choose cool, dark, solid colors or muted prints. Direct attention upward with a color contrast near the head. To appear shorter, select cool, dull colors with contrasting colors on top and bottom. Belts or contrasting colors at the hemline direct eye attention downward. Colors also have a dramatic effect on skin tone. Hold colors next to the face to determine the effect reflected on the skin.

Generally, cool colors and lighter warm colors compliment cool skin (those with bluish or violet cast). Warm colors and bright, cool colors flatter warm skin (those with deep peach, yellow, or red cast).

Intermediate skins (opaque white with greenish tints and those with both warm and cool traits) are complimented by both cool and warm colors. Avoid purples and yellows with yellow skin, and avoid greens and reds with dominant red skin. Blemished skins should avoid rose and purple tones. If favorite colors or the colors which create the best illusions for the figure are not complimentary to the face, wear a small portion of a flattering color as a scarf, collar, or jewelry item near the face.

General Telephone hopes to restore service soon

"Telephone service to 851 customers in the northern part of the Memphis Division was interrupted last Sunday, Feb. 12, when a cold front crossed the area dropping snow and freezing rain," J.H. Davis division manager for General Telephone Company said. The following towns were hardest hit by the ice storm: Clarendon, Hedley, Wellington, Dodson, Wheeler, Miami, Mobeetie, Panhandle, Claude, White Deer and Groom. The major portion of the outages were caused by ice accumulating on the lines which caused them to break due to the extra weight. Ice accumulation on some of the lines was noted at up to four inches in diameter.

"We also have several telephone lines down throughout the area due to power lines falling across our lines causing the telephone lines to burn in two," Davis added. Employees have been brought in from as far south as Del Rio to assist in restoring service to our customers. We have approximately 60 people and 40 vehicles working in these

towns to repair damaged facilities. It could possibly take as long as Sunday, Feb. 19, 1978 to restore service to some remote rural locations.

"Telephone installation has been hampered due to this storm and there will be some delays in establishing new service during this time period. Priority will be given to establishing and re-establishing normal service to all emergency-type phone installations," Davis explained.

Emergency generators were brought in to furnish auxiliary power to our offices in Claude, Groom, Panhandle, Miami and Mobeetie because of commercial power failure. Our emergency generator was also used in Mobeetie to assist in getting the water supply to people in Mobeetie.

ACCIDENT CONTROL

The elderly account for about 73 percent of all fatal falls, so the Texas Agricultural Extension Service recommends extra caution and fall prevention equipment.

Daughter born to the R. E. Bond's

Mr. and Mrs. Ronald E. Bond are the proud parents of a daughter born Wednesday, February 1, 1978 in Hall County Hospital. The young lady has been named Destiny Rain and she was born in Hall County Hospital in Memphis, weighed 5 lbs. 6 1/2 ozs and measured 19 inches.



QUITTING BUSINESS SALE

DUE TO BAD WEATHER

We are forced to drastically CUT PRICES in order to quickly move out the remaining inventory by March 1st.

NOW YOU CAN SAVE **50-60%** OFF OF EVERY SINGLE ITEM IN STOCK UNTIL IT'S ALL GONE

DOUBLE KNIT

\$6.00 Sale **\$2.49** Save 60%

\$5.00 Sale **\$1.99** Save 60%

GINGHAM SOLIDS 88¢ Yd Values to \$1.89

88¢ Yd



PANTY HOSE 69¢ Save \$1.10

1 Table Reg. \$2.39 **PRINT FABRIC 95¢** Save 60%

DON'T WAIT YOUR SELECTION MAY BE GONE

BARBARA'S FABRIC MART

Clarendon

"BUT SEEK YE FIRST THE KINGDOM OF GOD"

<p>CHURCH OF CHOICE W.W. Wilson Weekly Sunday Services</p> <p>CALVARY BAPTIST CHURCH Hwy. 287 & Jackson 874-2479 R. W. Sullivan, Pastor Sunday Sunday School.....10:00 a.m. Sunday Worship.....11:00 a.m. Training Union.....6:30 p.m. Evening Worship.....7:30 p.m. Wednesday Night Service.....8:00 p.m.</p> <p>FIRST BAPTIST CHURCH Hwy. 287 & Third Streets 874-3833 James Brandon, Pastor Sunday Sunday School.....9:45 a.m. Morning Worship.....11:00 a.m. Training Union.....6:30 p.m. Evening Worship.....7:30 p.m. Wednesday Night Service.....7:30 p.m.</p> <p>ASSEMBLY OF GOD 5th & McLelland 874-2195 Sunday Sunday School.....9:45 a.m. Sunday Worship.....11:00 a.m. Sunday Evening Worship.....7:00 p.m. Tuesday Women's Missionary Council.....1 p.m. Night Service.....7:30 p.m.</p> <p>FIRST BAPTIST CHURCH Howardwick, Texas 874-3762 Bryan Knowles, Pastor Sunday Sunday School.....10:00 a.m. Morning Worship.....11:00 a.m. Evening Worship.....6:30 p.m. Wednesday Worship.....6:30 p.m.</p> <p>FIRST BAPTIST CHURCH HEDLEY Lewis Ellis, Pastor Sunday School 10 a.m. Morning Worship 10 a.m. Evening Worship 6 p.m. Wednesday Worship 7 p.m.</p>	<p>METHODIST CHURCH Jefferson & Rosenfeld Rev. E.G. Gilbert</p> <p>CHURCH OF THE NAZARENE 3rd & Hawley 874-2321 Sunday Sunday School.....9:45 a.m. Morning Worship.....11:00 a.m. Evening Worship.....6:00 p.m. Wednesday Night Service.....7:30 p.m.</p> <p>PRESBYTERIAN CHURCH 4th & Parks 874-3428 Owen McGarity, Pastor Sunday Sunday School.....10:00 a.m. Morning Worship.....9:00 a.m. Youth Program.....6:00 p.m. Evening Worship.....7:00 p.m. Tuesday Bible Study.....2:30 p.m.</p> <p>ST. JOHN BAPTIST EPISCOPAL 3rd & Parks Pettigrew V. Hamilton Sunday Sunday School.....10:00 a.m. Services.....11:00 a.m. Holy Communion 1st, 3rd, & 5th Sundays.</p> <p>UNITED METHODIST CHURCH Hedley, Texas Bob Brown, Pastor 874-3565 Sunday Sunday School.....10:30 a.m. Morning Worship.....9:30 a.m. Wednesday Bible Study.....7:00 p.m. 4th Sunday Evening Service 6 p.m.</p> <p>MARTIN BAPTIST CHURCH Clarendon, Texas Charlie Floyd, Pastor Sunday Sunday School.....10:00 a.m. Church Service.....11:00 a.m. Evening Service.....6:00 p.m. Wednesday Night Service.....7:00 p.m.</p>	<p>ST. STEVENS BAPTIST CHURCH Jefferson & Martindale Rev. Wilson, Pastor Weekly Sunday Services The pastor is from out of town.</p> <p>FIRST CHRISTIAN CHURCH 3rd & Gorst Wilbert Bernabe, Pastor Sunday Sunday School.....9:30 a.m. Morning Worship.....10:55 a.m. Evening Worship.....6:00 p.m.</p> <p>CHURCH OF CHRIST 4th & Carhart 874-2495 Don Stone, Minister Sunday Sunday School.....9:30 a.m. Morning Worship.....10:30 a.m. Evening Worship.....6:00 p.m. Wednesday Night Service.....7:30 p.m.</p> <p>ST. MARY'S CATHOLIC CHURCH McClelland & Montgomery Father Carlson Sunday Morning Mass.....12:15 p.m. Holy Days.....5:00 p.m. Father Carlson of Groom</p> <p>United Pentecostal Church Montgomery & Faber St. 874-3756 Lawrence Thompson, Pastor Sunday Sunday School.....10 a.m. Morning Worship.....11 a.m. Evening Worship.....7:00 p.m. Wednesday Night Service.....7:30 p.m.</p> <p>FIRST UNITED METHODIST CHURCH 5th & Jefferson 874-3467 Bob Brown, Pastor Sunday Sunday School.....9:45 a.m. Morning Worship.....11:00 a.m. Youth Program.....7:00 p.m. Evening Worship.....6:00 p.m.</p> <p>DONLEY COUNTY MINISTERIAL ALLIANCE Meets First Wednesday of Every Month at 10:00 a.m. in Farmer's State Bank Hospitality Room</p>
---	--	--

Allsup's Bylow Food Store Dream Donut Shop

Bronc Buster

Hello, folks, from the Land of the mighty Bronchos! Last week was a little "wishy-washy" for the students and faculty at CHS due to the weather and the tests that had to be taken! There were a lot of snowball fights, people being rolled in the snow and a lot of slipping and sliding! Anyway, I think the over-all attitude of the Broncho people was pretty good concerning the happenings of last week! Right?

The Spanish club finished with their carnation sale from what I hear. They distributed them this Tuesday, or so that was their plans! This is in memory of YOUR SPECIAL VALENTINE!!! How was Valentine's Day for you? Was your Valentine extra nice to you? I hope so! It's a good occasion to show someone you really care and love them!!! I hope you took that opportunity! We must thank the Spanish club for carrying out the spirit of Valentine's Day each year!!!

The Maranatha club met last week and made further plans for the future banquet for the public! Tickets will be going on sale very soon and I hope everyone will truly support this organization by coming to this special event this year! The menu will be very different and one I think everyone enjoys--BARBEQUE!!! The entertainment comes highly recommended from the WTSU campus! March 9, the members will be covering the town and area, selling tickets for this occasion and then we will be involved in a club get-together. We will be going to a church service held at the Saint Steven's Baptist Church one Sunday in March selling these tickets. So watch for us and support us!!!

The FTA club left today for Dallas for the annual state FTA convention. They took 25 students with them. We are expecting to have a State officer when they return for 1978-79 FTA year. Good luck FTAs!!! They have been working on money making projects and many other things such as plays and campaigns for these candidates! Thank you for supporting this club at this time!!!

The Library has received new help from the college! Welcome to Broncho Land, Robbie!!! If you haven't come into the library and met Robbie, CHS students, do so!!! She is ready and willing to help you if she can!!!

The CHS Speech team will be loading up and going to Groom this Saturday, February 18, 1978, for a speech tournament. We are really looking forward to this event. It is the first tournament in which the whole team has been able to attend. We expect to bring home some definite winners!!!

The FHA club is busily preparing for the annual Sweetheart Banquet which will be held in the High School cafeteria, February 25, 1978. Members be sure and get your tickets!!!

The Annual Staff has been very busy once more in getting the last of the annuals finished!!! The last deadline has passed and things are really clicking!!! The annual will be a great

one this year!!! You can sure be proud of it!!! Even though we have been out of school some this week and tests and examinations have been going on there still are a lot of "good" things that have gone on that you may be interested in!!! So here goes.....

Irven T- Been picking on everyone lately for some unknown reason??? Do you feel better??? Or did you feel bad to start with? HA!

Brent K-Making love in the halls with Mrs. K.H.??? Mrs. Stave- Fine view of the Grand Canyon!!! Your mouth and that picture!!! Karlen C- Deliberately missed twelve meetings??? Gary M- What was that on your pretty little face??? Pete H- "One day Mrs Hayes' book rack will fly away!!!!" Billy P- Everybody loves some body sometime!!! But,

By Elesha Brandon

not you!!! Ha! Kristi W- Been to the dog races??? Did you win??? Stan L- Why don't you like to visit with Mr. Nance??? Mr. Risley-Slip, slidin', and smilin'??? Gary T- Two in one day??? Who's Wayne??? Mrs. Johnston- The "L-I-B-A-R-I-A-N"---OOPS--- Librarian! Connie M- Any "B boys" pictures around??? Ellen G- A white tooth??? Debbie J- Preparation for greatness??? Well, folks, that's it and I hope that you will have a very nice week until I'm able to visit with you again!!!

A Valentine thought for you from the Bronc Buster... "The love in your heart wasn't put there to stay - Love isn't love 'til you give it away"!!!!

Make today count and don't forget to say "Hi" to a Broncho from Broncho Land!

School board meets

Members of the Clarendon Independent School District board of trustees met Thursday evening Feb. 9 in regular session.

Other than routine business the board recommended EPCO to Shamrock, the physical agent for the area. This recommendation was for the 1978-1979 school year.

An election was called for April 1, to elect two trustees for the positions on the board expiring this year.

Appointments were made for election judge and absentee and deputy clerks for the election.

A sale was made of some

Shamrock to host world championship domino tournament

Shamrock will be host city for the World Championship Domino Tournament it was announced last week. The tournament, scheduled for March 30, 31 and April 1, will be held on the showroom floor of Grand Slam Chevrolet, Olds & Buick dealership in Shamrock.

The tournament, according to Leroy G. Jarvis, president of Grand Slam, will be the first annual playoff. Invitations have gone out to players, both men and women, in other cities, and a roster of approximately 200

school owned property and other school owned properties will be up for bids soon.

Present were President, L.A. Watson, Vice-President James McAneer, Sr., Secretary Gene Alderson, Warren Hardin, L.P. Moore, Darrell Leffew, Earl Shields board members and Jeff Walker, superintendent.

Filing deadline for prospective board members is March 1.

Filing deadline for prospective board members is March 1.

State Democratic Party officials as a Democratic candidate for Attorney General.

Social Security Q. & A.

Q -- My monthly insurance premiums are \$32.20. I'm on Social Security disability and am finding it difficult to make the monthly payments. I don't want to lose my coverage. What can I do to reduce or waive premium payments but still retain coverage?

A -- If your disability is

total and it happened before your 65th birthday and has continued for six or more consecutive months, you may be eligible for a waiver of premiums for as long as you remain totally disabled.

School Menus

CLARENDON School Menu

Monday - Burritos with cheese, chili beans, relish, brownies and milk.

Tuesday - Hamburger on bun, lettuce and tomatoes, french fries, sliced onions, peach pie and milk.

Wednesday - Pig in a blanket, blackeyed peas, buttered potatoes, fruit salad and milk.

Thursday - Turkey pot pie, mixed vegetables, creamed potatoes, orange juice and milk.

Friday - Chip-O-pie, tossed salad, buttered corn, pineapple pie and milk.

HEDLEY SCHOOL MENU Feb. 20 to Feb. 24

Monday - Burritos with cheese, salad, corn, milk and gingerbread.

Tuesday - Spaghetti with meat sauce, green beans, rice, hot rolls, butter, milk and peaches.

Wednesday - Chili dogs with mustard, buttered potatoes, fried okra, salad, milk and apple sauce.

Thursday - Fish, salad, onion rings, blackeye peas, slice bread, milk, cookies.

Friday - Hamburgers, ketchup, french fries, lettuce, slice onions, milk, fruit and jello.

YOUR VOTE AND INFLUENCE WILL BE APPRECIATED

ERNEST (TUNNIE) KENT

CANDIDATE FOR
JUSTICE OF THE PEACE
PRECINCT NO. 2
DONLEY COUNTY

PAID FOR BY ERNEST KENT

SUBJECT TO ACTION OF THE DEMOCRATIC PRIMARY

FRENCHY MC GORMICK

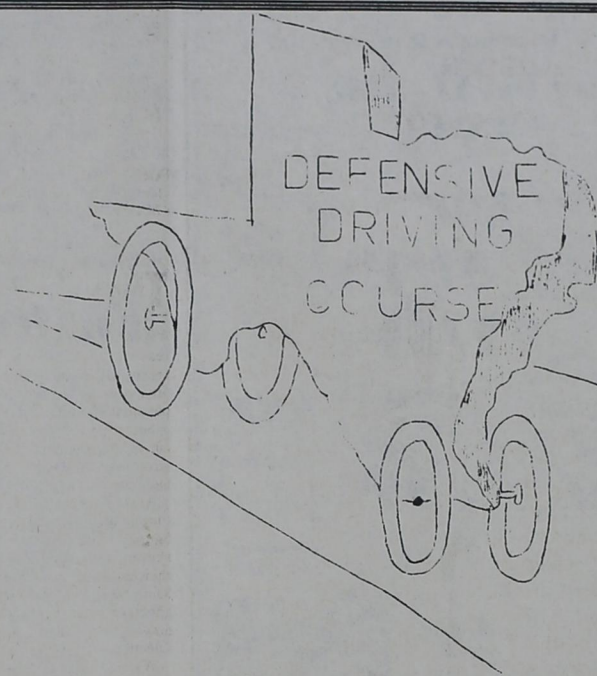
ONE OF DINNER THEATRE ON STAGE
NEIL SIMON'S presents: Feb. 7 to March 11
GREATEST HITS Barefoot in the Park
Buffet - 6:30
Performance - 8:15
Tues. thru Sat. Nights

CALL 376-4038 FOR RESERVATIONS

HILTON INN 1-40 AT LAKESIDE AMARILLO

CORRECTION

In last week's paper the headline in an article on farmers tax deadline was in error. The headline should have read **FARMERS TAX DEADLINE IS MARCH 1**. The rest of the article is correct.



WHEN: Tuesdays, February 21 - February 28, 6p.m. to 10:00 p.m.

WHERE: Clarendon College Classroom Building, Room 102

COST: \$5.00

DEFENSIVE DRIVING COURSE

Now, what is a defensive driving course, you may ask. It is an eight hour curriculum that is designed to teach people to be better drivers. To drive defensively. The course explains where the possibilities of an accident lie and tells the student what to do to avoid them. Through lectures, discussions, films, and other visual aids, ALL drivers, even the seasoned motorist, is shown how to improve his driving habits.

Jerry Burgtorf, Safety Education Officer with the Texas Dept. of Public Safety, from Pampa, will be the instructor for the course.

Certified Defensive Drivers are eligible for a 10% discount on automotive insurance premiums, depending upon your individual case.

For more information contact Tiny Alderson or Cynthia Manning.

REGISTRATION FORM

NAME _____ AGE _____

ADDRESS _____ CITY _____

PHONE NUMBER _____

Make your check out to the Late Edition Home Demonstration Club and bring it with your registration form to Alderson's Chevrolet, Judy's Hair Design, or the County Extension Office or mail to Tiny Alderson, Box 127, Clarendon, Tx. 79226.

CARPET CLEANING RENTAL CENTER

RINSENVAC does it... and does it better than any other carpet cleaning system

RENT RINSENVAC Monday thru Thursday
3.99 ONLY HALF DAY
GOODMAN FURNITURE 874-2452 CLARENDON

SHOP NOW!

goodman FURNITURE
APPLIANCES & CARPETS

SAVE NOW!

FURNITURE ★ FLOOR COVERINGS ★ BEDDING ★ APPLIANCES
★ We accept trade-ins

SEE OUR **INSTORE ADS** FOR SUPER **SAVINGS**

NEW LIFE FOR YOUR HOME AT DOWN-TO-EARTH PRICES
We're not expensive, we only look that way!

BY LOW

OPEN 7 'TILL 7 **FOOD STORE** 6 DAYS A WEEK

We reserve the right to limit quantity

Double Gunn Bros. Stamps every Wed. \$2.50 Purchase or Over. Excl. Cig.

Specials Good February 16 - 17 - 18th

Sunshine Krispy CRACKERS	16 oz box	59¢	
Sunshine Hi-Ho CRACKERS	12 oz box	69¢	
Ranch Style BEANS	15 oz can	3/\$1.00	
Ranch Style PINTO BEANS	15 oz can	2/59¢	
Folgers COFFEE	1 lb can	\$2.99	
Qt. Jar MIRACLE WHIP		99¢	
CRISCO	3 lb can	\$1.59	
Chicken of Sea Chunk TUNA	6 1/2 oz	69¢	
Merico Texas Style BISCUITS	12 oz	2/49¢	
DETERGENT		\$1.89	
MARGARINE		2/89¢	
Delsey TISSUE	4 roll pkg	79¢	
Ranch Style CHILI	19 oz can	79¢	
White Swan MACARONI & CHEESE	Dinner 7 1/4 oz pkg	4/98¢	
Honey Boy Chum SALMON	Tall Can	\$1.49	
Bordens ICE CREAM	1/2 gal rnd crt	\$1.29	
Plains BUTTERMILK	1/2 Gal.	79¢	
Kellogg 24 oz box CORN FLAKES		89¢	
Banquet POT PIES	8 oz crt	4/\$1.00	
Swanson Chicken 3-Course CHICKEN DINNERS	15 oz pkg	89¢	
Morton 9 oz pkg HONEY BUNS	Cut 2 lbs.	49¢	
Wrights Sliced SLAB BACON	lb	\$1.19	
CHUCK ROAST	79¢ lb		
GROUND BEEF	79¢ lb		
CHEESE	16 oz pkg \$1.69		
SAUSAGE	\$1.39		
GRAPEFRUIT	4/59¢		
LEMONS	39¢ lb		
APPLES	39¢ lb		
POTATOES	98¢		
AVOCADOES	39¢ each		
FRYERS	49¢ lb		
FRANKS	12 oz pkg 69¢		
FRITTERS	16 oz pkg \$1.09		
LITTLE SIZZLERS	12 oz pkg 98¢		

Lelia Lake news

By Mary Castner
Jack Pentecost of Canton, Mississippi spent Thursday night with Mr. and Mrs. J.C. Shields.
Mr. and Mrs. Mark Robinson and Katrina of Amarillo visited several days last week with her parents, Mr. and Mrs. R.D. Castner and her sister, Mr. and Mrs. Phil Lauderdale and Shauna.
Mr. and Mrs. Harold Moffitt and family of Memphis visited Sunday with her parents, Mr. and Mrs. F.A. Floyd.
Preston Bryd was among the group of young people from the First Baptist Church in Clarendon to spend a skiing week-end in Glorieta, New Mexico.
Mr. and Mrs. J.L. Butler visited Sunday night with

Mr. and Mrs. Heckle Stark.
Mrs. W.H. Browning, accompanied by her daughter, Mrs. Marvin Thompson, carried her mother, Mrs. Fred Farnsworth, to Memphis Saturday to spend several days with her son, Mr. and Mrs. Johnny Farnsworth.
We will have our regular meeting at the Community Center Saturday, Feb. 18. Hosts and hostesses will be Mr. and Mrs. Roy Lee Helms and Mr. and Mrs. L.B. Leathers. We will eat at 6:30. Everyone is invited.
Mr. and Mrs. H.M. Banister are the proud grandparents of a new granddaughter, Tracy Done, born Friday at Big Springs. Parents are Mr. and Mrs. Kelsey Banister.



ANNIE AND DON WOOTEN in front of their Exxon station. Annie encourages Don to sweep faster as she watches new front move in from the west.



News from Hedley

By Willie Johnson

The early Sunday morning service at the Hedley United Methodist Church was canceled.
The Thursday evening meeting of the Hedley Lions Club was cancelled. Don Tarver is president and O'Neil Weatherly is secretary.
The Thursday meeting of the Greenbelt Water Authority scheduled to be held in Childress last Thursday evening was postponed. The meeting will be held in Childress this Thursday evening at 5 p.m. Virgil McPherson, the Hedley director, plans to attend.
Grant Johnson of Matador and Clarendon College visited his grandparents, Mr. and Mrs. Clifford Johnson Saturday afternoon.
Mr. and Mrs. Cletus Allen spent Tuesday night of last week with the Virgil Johnson family. They live in Canyon and were on the way home from Dallas. Mr. and Mrs. Allen have attended and Cletus has played at all of the Cotton Festivals in recent years.

The Class B high school district tournament will be held in Clarendon this Thursday, Friday and Saturday. The Hedley boys basketball team are favored to win the district. The Hedley High School girls are still in the running.
Mrs. S.A. Younger is driving a new 1978 Pontiac.
Everett Cornell is in the Hall County Hospital suffering a heart attack. We wish him a speedy recovery.
Mrs. Ned Grimsley has been in the hospital at Amarillo for eye surgery again. She is doing fine.
David and Daniel Bolin are back in Hedley at the place known as the Biffle home and laundry. They are making improvements there.
Jess Beach was taken to the Veterans' Hospital in Amarillo. Mrs. Beach is with him.
A former Hedley resident, Omel Hill, passed away in Fort Worth Saturday. Mr. and Mrs. Johnny Hill of Amarillo and Mrs. S.A. Younger and son, S.A., went to Fort Worth. Sympathy is extended to the family.
Word comes to us that the former Donna Gibson passed away at her home in Pampa Sunday. She is the daughter of Mr. and Mrs. Arthell Gibson of Pampa and the granddaughter of Mr. and Mrs. Walter Johnson of Hedley. Sympathy is ex-

tended to the family.
Mrs. Modina Hill has been in Fort Worth because of the illness of a granddaughter.

Mrs. Selma Kennedy was released from the Hall County Hospital in Memphis recently. She is the mother of Mrs. Betty Hoggatt.

IRS will compute tax for many taxpayers

The Internal Revenue Service will compute the income tax for single taxpayers having an adjusted gross income of \$20,000 or less and married taxpayers filing jointly with an adjusted gross income of \$40,000 or less when deductions are not itemized. Taxpayers can use either the Form 1040A or Form 1040 to request the tax computation by the IRS.
The taxpayers income must be solely from wages, salary, tips, dividends, interest, pensions and annuities for the IRS to compute the tax.
To take advantage of this IRS service, the taxpayer

need only complete certain portions of his or her tax return, attach all W-2 forms, sign the return, and mail it by April 15 to the address listed in the tax instruction booklet.
The tax will be determined from the proper tax table and the taxpayer will either receive a refund for any overpayment or be notified of the amount of any tax due.

Exact details of which portion of the return must be completed in order to have IRS compute the tax appear in the tax package instructions mailed earlier to each taxpayer.

Pvt. Charles Brown completes basic training

Private Charles Y. Brown, son of Mrs. Edna Brown, Claude, Tex., recently completed basic training at Fort Sill, Okla.
During the training, students received instruction in drill and ceremonies, weapons, map reading, tactics, military courtesy, military

justice, first aid, and Army history and traditions.
Pvt. Brown entered the Army in November of last year.
The private is a 1977 graduate of Claude High School.
His father, Cecil Brown, lives at 1606 Monroe, Amarillo.

Using peel-off label speeds up tax refund

Taxpayers can help speed up the processing of a tax return and receive a refund faster by using the pre-addressed peel-off label on their returns, the Internal Revenue Service said.

The label, which appears on the cover of the tax package mailed to taxpayers, lists name, address, and social security number. The IRS emphasized that if any information on the label is incorrect, the taxpayer should make corrections right on the label.
Married taxpayers filing a joint return should check to see that two social security numbers appear on the label. If only one social security number is shown, the other spouse's number should be entered on the appropriate line.

According to the IRS, taxpayers can also ensure a faster refund by mailing their return in the coded envelope also included with the tax package and making sure they have attached all W-2 forms and required schedules and forms.

NEW CARS

1978 Chevrolet pickup purchased by Jimmy L. Butler, Lelia Lake from Alderson Chevrolet.
1978 Mercury purchased by Joe Wilson, Claude from Greenbelt Ford, Inc.
1978 Ford truck purchased by Terry Kenmore, Olustee, Oklahoma from Greenbelt Ford, Inc.
1978 Ford purchased by Edward Stillman, Amarillo from Greenbelt Ford, Inc.
1978 Buick purchased by Dennie R. Marcum, Quail from Chamberlain Motor Co.
1978 GMC purchased by Hubert Rhoades, Clarendon from Chamberlain Motor Co.



The Great Tire Drive Of '78



WINTER TIRE CLEARANCE

There's Still Time To Save On Hard-Pulling Deep Lug Polyglas!

<p>'Suburbanite XG Polyglas' Discontinued Design</p> <p>2 Wide Fiberglass Belts All Polyester Cord Body</p>	<p>WHITEWALLS</p> <p>\$32 \$37</p> <p>Size A78-13 whitewall plus \$1.80 F.E.T. No trade needed</p> <p>Size A78-14 whitewall plus \$2.39 F.E.T. No trade needed</p>
<p>\$40 \$42</p> <p>Size F78-14 whitewall plus \$2.55 F.E.T. No trade needed</p>	<p>\$43 \$46</p> <p>Size G78-15 whitewall plus \$2.74 F.E.T. No trade needed</p> <p>Size H78-15 whitewall plus \$3.01 F.E.T. No trade needed</p>



HENSONS TIRE DEPT CLARENDON