

Foreman Company  
P.O. Box 68  
Munmouth, Illinois  
614



20¢

**WEATHER**

Feb. 25	76	25
Feb. 26	80	34
Feb. 27	75	43
Feb. 28	50	43

Moisture .28

# BAILEY COUNTY JOURNAL

'The Community of Opportunity-Where Water Makes the Difference'

Volume 19, No. 9

12 Pages Today

Published Every Sunday at Muleshoe, Bailey County, Texas 79347

Sunday, March 1, 1981

## Around Muleshoe

A formal ceremony will be held Sunday, March 8 at 2 p.m. for the renaming of the Neal B. Dillman Elementary School (formerly Richland Hills Elementary), in honor of Dillman being Superintendent of Schools in Muleshoe from 1960-1980.

Gene McGuire, Ben Roming and Jim Shafer have filed for the School Board Trustee election to be held April 4. Terms available are three, three year terms and one, one year unexpired term.

St. John's Lutheran Church of Lariat will be conducting Lenten services beginning Wednesday, March 4 and continuing for six consecutive Wednesdays.

Johnathan Flores was reported in critical condition Thursday and his grandmother, Laverne Adrian was listed in serious condition in Lubbock's Methodist Hospital, as a result of injuries suffered in an auto accident Friday.

Cont. Page 3, Col. 3

## Horne Calls Emergency Board Meeting

An emergency meeting of the Muleshoe School Board has been called for Monday, March 2, at 7:30 p.m. in the School Administration office.

Harold Horne, superintendent, has called the meeting to review applications for the position of head football coach for Muleshoe High School.

Horne hopes to have the selection by this week.



SHANNON KENNEDY

## Kennedy Wounded In Lubbock Shooting

Shannon Kennedy, formerly of Muleshoe, is in satisfactory condition in Lubbock Methodist Hospital following a single gunshot wound to the neck suffered Thursday evening in Lubbock.

Ms. Kennedy, 19, and a fellow worker, Bryce Cockerham, of the Lubbock Avalanche Journal were wounded Thursday when a passing motorist apparently fired a shot into the



**EMPLOYEES OF THE MONTHS....**John Gulley, manager of the Chamber of Commerce, named the Employees of the Month Thursday. Pictured from left, Eddie Morris, was named August Employee of the Month. He is employed at Higginbotham-Bartlett Co.; Loyce Davis an employee at Lindsey Jewelers was named December employee; Paul Cisneros was named October employee. He is employed at Smith's LP Gas. Making the presentation is Carson Clayton, of the Business Service Committee.



**PLAQUE PRESENTATION....**Carson Clayton, on the right presented plaques Thursday to employees who were selected Employee of the Month. Pictured from left, Jean Whalin, Muleshoe High School Cafeteria for September; Susan Wilson, Wilson Appliance for November; Ethel Murray, Lindsey Jewelers for July.

## Disaster Payments Total \$8 Million

Rusty Williamson, county executive director for the Agriculture Stabilization and Conservation Service, has announced that over \$8 million has been distributed in disaster payments in Bailey County as of Feb. 27 for the 1980 crop year.

The figure total for 1980 which includes cotton, grain sorghum, wheat and corn, is \$8,176,904.58. "This is a sizeable amount considering that in the period of 1974-1979 our total in payments was \$12,820,588," said Williamson.

He has attributed the losses to the high temperatures and low moisture experienced in the area this past year. The major areas hit by the drought this summer are south of the sandhills, he said, adding, "We have made payments to corn farmers that we don't usually have to make."

The farmer must suffer a

25 percent loss before filing for a disaster payment.

Williamson gave an example of how disaster payments are calculated:

"Let's say a farmer has a 100 acre cotton farm with an average estimate yield of 300 pounds per acre. Suppose his crop is destroyed and he has zero

Cont. Page 3, Col. 1

## Chamber Banquet Tickets On Sale

Tickets for the 31st Annual Banquet of the Muleshoe Chamber of Commerce and Agriculture will go on sale Monday, March 2. The tickets will be available at the Chamber office in City Hall at 215 South First. Tickets are \$9.00 each.

Chamber members will receive a special discount, and may buy their tickets for \$8.00 until Wednesday, March 18. After that date, all tickets will be \$10.00. According to Chamber Manager John Gulley, "the Chamber is encouraging everyone to buy their tickets early so that we will know how many

at 7:30 p.m., will feature Flatland Bluegrass. The popular area band, which also appeared at last year's Chamber banquet, has performed with the Lubbock and Midland-Odessa Symphony Orchestras. They have also appeared at bluegrass festivals in Glen Rose and Kerrville, Texas, and Hugo, Cement, and Duncan, Oklahoma. In addition, the group has been featured in many newspapers and magazines and has been appearing in numerous television and radio programs and commercials.

The speaker at this year's banquet will be the Honorable Raymond Joseph Cuff

## Area Schools Observe Texas School Week

### Criminal Trials Set For March 9

Nine criminal cases are set to be heard in District Court beginning Monday, March 9, in Bailey County Courthouse in Muleshoe. Presiding will be Judge M.C. Ledbetter.

Scheduled to appear for alleged criminal acts include Juan Rodriguez, burglary; Roy Quiroz, burglary; Pablo Lira, burglary; Isidro Aviles Balle, assault; and Gilbert Lamb, sexual abuse of a child.

### SBA Loans Available Until April 13

The deadline for farmers and ranchers to file physical drop crop loss disaster loan applications under the Small Business Administration (SBA) declaration #1900 is April 13, 1981. Businesses have until July 13, 1981 to apply for Economic Injury Disaster Loans. This declaration covers the drought and extreme heat conditions during the 1980 crop production season.

If a Farmers Home Administration (FmHA) borrower suffers a disaster loss, it is suggested the borrower apply first with FmHA. An applicant cannot receive the total amount of his eligibility from both FmHA and SBA for the same disaster loss to his crops. Under SBA guidelines, should an applicant not receive his full eligibility from FmHA, he could apply with SBA for the difference provided his application is received by the April 13, 1981 deadline.

For applications to be accepted, they must be received by the close of business or postmarked before midnight of the deadline date.

### Grand Jury Indicts 5

The Grand Jury handed down five indictments in the Bailey County Courthouse Wednesday which are set for arraignment on March 9.

Individuals indicted include: Robert D. Kelton, who is charged with the alleged shooting of Omar Kelton. Omar Kelton was found February 8 in the parking lot of the sheriff's department in Muleshoe. He was shot three times. Kelton is out on \$5,000 bail.

Lynn Thompson was indicted for the alleged theft of cattle from the Muleshoe Livestock Auction. Thompson is presently in the Muleshoe jail.

### Muleshoe, Lazbuddie Plan Open Houses

Muleshoe and Lazbuddie schools will be observing Texas Public School Week (March 3-6) by holding Open House for the communities.

Harold Horne, superintendent of Muleshoe Independent School District extends a personal invitation. "It is our hope that you will consider this a very personal invitation from your school board, faculty, and administration to visit us any day during this special week. The occasion will afford you an excellent opportunity to become better acquainted with the teachers of your children, and to see something of the programs designed for excellence in education that have been undertaken in this district."

Muleshoe Jr. and Sr. High Schools will hold Open House with several programs and displays on Thursday, March 5, from 7-9 p.m. The Lazbuddie Independent School District will have a dinner and Open House Friday, March 6 beginning at 5 p.m.

According to Wayland Ethridge, principal at MHS, government classes will present and display special projects they have completed in their study of the Free Enterprise System. Students in these classes chose several areas of interest. Students formed a sole proprietorship, a partnership a corporation, an advertising agency, or tried out for a manager's position. On display will be their advertising agencies' layouts, manager's resumes, and ownership papers with students of Mrs. Jean Alison there to explain the special activities.

Two new programs will

catch the eye of all parents--the new computer programs. Nick Landers will have the new Computer Math Lab open for observation with samples of work done by students in this new class. Students will be available to demonstrate the use of the new computer program and equipment. The Computer Assisted Instruction Program, headed by Mrs. Renee Taylor, will be available for parents to sit down and try the new learning machines that are hooked up to a master computer in Lubbock.

Students in the business department will be displaying samples of accountin I and II practice sets in Room 13. This will include the displays plus explanations of the work done. Mrs. Lucy Smith also said that the new IBM electric typewriters will be available in the typing room for parents to try out.

Students in the business department will be displaying samples of accountin I and II practice sets in Room 13. This will include the displays plus explanations of the work done. Mrs. Lucy Smith also said that the new IBM electric typewriters will be available in the typing room for parents to try out.

Cont. Page 6, Col. 1

### Commissioner's Court Sets Special Session

The Bailey County Commissioner's Court will meet in special session at the Courthouse, Monday, March 2, according to Glen Williams, County Judge.

The meeting will begin at 10:00 a.m. and will continue until 5:00 p.m.

The meeting agenda includes the opening of bids for the purchase of a new motor grader and passing an order nominating a member to fill the vacancy on the Bailey County Appraisal Board.

The public is cordially invited to attend.

### Water Research Council Topic

The Muleshoe City Council will have a regular meeting Tuesday, March 3, beginning at 8:30 a.m. in City Hall.

Topics on the agenda include council consideration of a request by the High Plains Underground Water Conservation District #1 for funds to conduct urban water conservation research.

A presentation will also be made concerning the Phase III report of the Airbort Master Plan Feasibility Study by Earl Cook of Gordon Herkenhoff and Associates.

The Council will also consider the authorization for Dave Marr, City Manager, to apply for assistance from the Texas Forestry Service to acquire a rural fire truck/rapid attach vehicle. This truck





**WE'VE GOT YOUR DOLLARS WORTH AT**  
**Pay-n-Save**  
 QUALITY AND SERVICE

**AF**  
 AFFILIATED  
 FOODS, INC.



**We're proud to give you more**

**AT PAY-N-SAVE!**

WE RESERVE THE RIGHT TO LIMIT PRICES EFFECTIVE MARCH 2-7, 1981

**ROGER STAUBACH**



**CHECK IN STORE SPECIALS**

HEAVY GRAIN FED BEEF BONELESS

HEAVY GRAIN FED BEEF BONELESS  
**CHUCK STEAK**  
**\$1.98**  
 LB.



**CHUCK ROAST**  
**\$1.88**  
 LB.

THE FINEST QUALITY MEATS AVAILABLE AT SPECIAL SAVINGS TO YOU



**KIMBERLY-CLARK TRUCKLOAD SALE**

2 PLY FACIAL TISSUE  
**KLEENEX**  
**2 \$1**  
 200 CT. BOXES

KLEENEX DISPOSABLE DIAPERS NEWBORN/DAYTIME/TODDLER/OVERNIGHT  
**HUGGIES**  
**2 \$5**  
 BOXES

PAPER TOWELS  
**HI-DRI**  
**2 98¢**  
 JUMBO ROLL

NEW FREEDOM  
**MAXIPADS**  
**\$1.09**  
 12 CT. BOX

BATHROOM TISSUE  
**DELSEY**  
**98¢**  
 4 ROLL PKG.

NEW FREEDOM  
**MINIPADS**  
**79¢**  
 12 CT. BOX

**MEAT SPECIALS**

<b>BACON</b>	THE SUNDAY BACON HORMEL BLACK LABEL SLICED...	1 LB. PKG.	<b>\$1.68</b>
<b>BEEF</b>	CHUCK QUALITY GUARANTEED 81% LEAN GROUND	LB.	<b>\$1.88</b>
<b>HOT LINKS</b>	GOOCH'S HOT & SPICY	LB.	<b>\$1.38</b>
<b>SAUSAGE</b>	HORMEL LITTLE SIZZLERS PORK LINK	12 OZ. PKG.	<b>\$1.28</b>
<b>CATFISH</b>	FRESH WATER WHOLE	LB.	<b>\$1.18</b>
<b>CATFISH</b>	FILLET OF OCEAN BULK PACK	LB.	<b>\$1.28</b>

ENRICHED **GLADIOLA FLOUR** 5 LB. BAG **98¢**

**DAIRY AND FROZEN FOODS**

<b>MILK</b>	BORDENS SKIMMED	1/2 GAL. CTN.	<b>99¢</b>
<b>DIPS</b>	BORDENS ASSORTED	8 OZ. CT.	<b>55¢</b>
<b>ICE CREAM</b>	BORDENS ASSTD. FLAVORS	1/2 GAL. RD. CTN.	<b>\$1.69</b>
<b>ICE CREAM</b>	LADY BORDEN ASSTD. FLAVORS	2 PT. CTNS.	<b>99¢</b>
<b>MARGARINE</b>	PARKAY QUARTERS	1 LB. BOX	<b>59¢</b>
<b>VAN DE KAMP</b>	FISH STICKS	10 OZ. BOX	<b>\$1.29</b>
<b>CHEESE</b>	KRAFT DELUXE SLICES AMERICAN/PIMENTO	12 OZ. PKG.	<b>\$1.59</b>

**SPECIALS FROM THE GROCERY DEPARTMENT**

<b>CHICKEN</b>	SWANSON CHUNK MIXIN'	2 5 OZ. CANS	<b>99¢</b>
<b>MUFFIN</b>	DUNCAN HINES BLUEBERRY MIX	13 OZ. BOX	<b>99¢</b>
<b>BROWNIE</b>	DUNCAN HINES FAMILY SIZE MIX	23 OZ. BOX	<b>\$1.19</b>
<b>PANSHAKES</b>	PILLSBURY NEW	2 7 OZ. BOXES	<b>\$1.00</b>
<b>SYRUP</b>	GOLDEN GRIDDLE PANCAKE	24 OZ. BTL.	<b>\$1.29</b>
<b>MAZOLA</b>	NO-STICK SPRAY	9 OZ. CAN	<b>\$1.09</b>
<b>DOG FOOD</b>	FRISKIES ASSORTED	3 15 OZ. CANS	<b>89¢</b>
<b>CAT FOOD</b>	FRISKIES ASSORTED	3 15 OZ. CANS	<b>89¢</b>
<b>TIDE</b>	GIANT SIZE	3 lb. 10 oz.	<b>\$1.89</b>

**HEALTH AND BEAUTY AIDS**

<b>ONE-A-DAY</b>	VITAMINS	60 CT. BOX	<b>\$2.19</b>
<b>ONE-A-DAY</b>	VITAMINS WITH IRON	60 CT. BOX	<b>\$2.49</b>
<b>TREATMENT</b>	AGREE HAIR	4 OZ. JAR OR TUBE	<b>\$2.49</b>

NESTEA **INSTANT TEA** 3 OZ. JAR **\$1.89**

REFRESHING **COCA-COLA** **\$1.79**  
 6 PK. CTN. 32 OZ. BTLs.  
 PLUS DEPOSIT

**PRODUCE SPECIALS**  
 WASHINGTON RED DELICIOUS **APPLES** **79¢**  
 3 LB. BAG

**LEMONS** CALIFORNIA SUNKIST 3 LBS. **\$1.00**  
**CARROTS** CALIFORNIA GOLDEN 1 LB. PKG. **29¢**

DEL MONTE CUT **GREEN BEANS** 2 16 OZ. **79¢**

MORTON'S PLAIN/RIDGIES **POTATO CHIPS** **79¢**



**Disaster...**

Cont. From Page 1  
 production. Payments through the ASCS would be made on a maximum of 75 percent of the estimate yield or 225 pounds per acre. The farmer must suffer a 25 percent loss before filing for the disaster payment," added Williamson. "The calculations would be 225 pounds multiplied by 100 acres or 22,500 pounds. We would then pay the farmer 19.5 cents per pound or a total of \$4,387.50. This is a small amount when compared to what the farmer could have made on his crop had it not been lost," he said. If the farmer had made

his yield of 30,000 pounds and he sold it at the current price of 70 cents a pound he could have made \$21,000. And that is a big difference, said Williamson. "We aren't giving him but a small portion of what he could have made."

Of the 1,187 farms in the county, 1,100 have received payments from ASCS this year according to Williamson. "Some of our farms in this area lost all three crops of wheat, corn and grain sorghum. The maximum payment a farmer can draw is \$100,000, regardless of his calculated loss is more." "Due to lack of interest, the 1981 crop year will be

your last year for the disaster program," said Williamson. "FCIC will be made available for both dryland and irrigated crops starting in 1982." Williamson qualifies the lack of interest as "we haven't talked to our congressmen enough to let them know how we feel." Williamson also said there are no major changes in the 1981 farm program except there is no NCA restriction involved. However, "any NCA crop acreage planted in 1981 that is greater than your 1981 NCA or 1980 planted and considered acreages, will not be used in determining a farms NCA in future years."

Williamson also commented on other areas of interest: "The final sign up date for aerial measurement is April 10, 1981 for

fall seeded crops and June 12, 1981 for spring seeded crops."

Also, aerial measurement service is available at \$7 for the first plot, plus \$5 for each additional plot. Those interested in this service should contact the office as soon as possible.

Lane Kirkland, AFL-CIO president:

"Organized labor should celebrate its 1981 centennial not only by bragging about past victories but also by preparing to deal forcefully with future challenges."

**BIBLE VERSE**

"I know whom I have believed, and am persuaded that he is able to keep that which I have committed unto him against that day."

1. Who is the author of the above statement of faith?
2. To whom was he writing?
3. What was Timothy's occupation?
4. Where may this statement be found?

Answers to Bible Verse

1. Paul, the Apostle.

2. Timothy.
3. Timothy was a young preacher and companion of Paul on some of his missionary tours.
4. A part of II Timothy 1:12.

**Ellis Funeral Home**  
 24 Hour Ambulance Service  
 Ph. 272-4574 Muleshoe



**1/2 Beef**  
**\$1.21** LB.

**Hind Qtr.**  
**\$1.44** LB.

**Now Homemade German Sausage**  
 For Custom Hogs or Retail

**"We Do Custom Processing and We Appreciate Your Business."**

**Winkler Meat Co.**  
 401 Main 272-4703



**Bloomin' Buys for SPRING**  
**New Arrivals for Spring**

**Blouses, Jewelry & Accessories**

**Shakley products**  
**Pennyrich Bras**  
**Redkin Products & Cosmetics**  
**Natural Woman Cosmetics**

Call Helen, Sherri, Rhonda, Annette, Linda or Bernice for an appointment today.

**Main Street Beauty Salon**  
 115 Main 272-3448

**Muleshoe...**  
 Cont. from Page 1

The Youth Activities Committee will hold their regular meeting on Monday, March 2, at 7 p.m. at the Bailey County Civic Center.

All interested persons are urged to attend.

Area residents are reminded to return the City questionnaire on the GTE survey as soon as possible to the City Council.

They Are Some of the best boy scouts are girls. -The Bluejacket.

**BIG EARS!** **NC+**

**59**

**NC+ delivers... and always will!**  
 \*Excellent Supply  
 \*Germination 95 percent  
 \*Cold Vigor Rating?... Outstanding

Medium flats (F.5) and medium rounds (R.16)  
 Plant easy and accurate. If you want things to go a little smoother this year with your planting seed.

Call us your NC+ Dealer  
**Rickey Barrett 272-4687**  
 mobile 965-2279  
**Derrel Embry 272-3808**



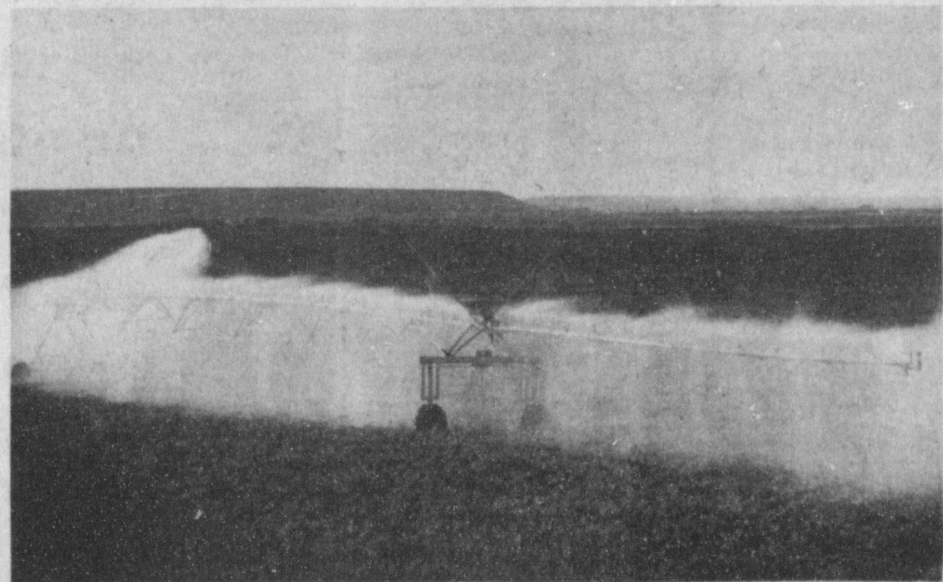
**Bailey County Journal** USPS 040-200  
 Established March 31, 1961. Published by Muleshoe Publishing Co., Inc. Every Sunday at 204 W. Second, Box 489, Muleshoe, Texas, 79347. Second class postage paid at Muleshoe, Texas, 79347.

**TA MEMBER 1981**  
**TEXAS PRESS ASSOCIATION**

L.B. Hall - President  
 James Woods - Vice President  
 Eugene Harris - Society  
 Billy McKay - Advertising  
 Donnie Crowder - Bookkeeper

**SUBSCRIPTIONS:**  
 Muleshoe Journal and Bailey County Journal (1 year) - \$12.50  
 Muleshoe Journal and Bailey County Journal (6 months) - \$7.50  
 Muleshoe Journal and Bailey County Journal (3 months) - \$4.50  
 Muleshoe Journal and Bailey County Journal (1 month) - \$1.50  
 Monthly by Carrier - \$1.50  
 Advertising rate card on application

**How much did it cost you not to own a Valley Corner System?**  
 In 1980. Plenty!



Depending on what you raised, at 1980 prices, there were big dollars that could have been

added to your gross income by bringing corners and odd shapes into full production.

Yield/Acre	Producer Price	EXTRA INCOME		
		Center Pivot 131 Acres	with Valley Corner System +20 Acres	+30 Acres +40 Acres
Grain Sorghum 7,000 lbs	\$ 5.35 cwt	\$ 49,059	\$ 7,490	\$ 11,235 \$ 14,980
Potatoes 30 tons	6.83 cwt	536,838	81,960	122,940 163,920
Corn 150 bu	3.01 bu	59,539	9,090	13,635 18,180
Alfalfa 7 tons/yr	72.534	11,074	16,611	22,148
Peanuts 4,500 lbs	21.46 lb	126,153	19,260	28,290 38,520
Cotton 750 lbs	75.46 lb	75,063	11,460	17,190 22,920

No wonder there are more and more corner systems than ever. And with prices rising, adding a corner arm to your existing system becomes more attractive all the time, because it's likely to be the least costly way to increase your gross and net. If you're con-

sidering a whole new system, opting for a corner system over a standard pivot is the least costly investment per acre when all the numbers are checked.

Stop by and see us for the complete corner system story.

Valley dominates the field.



**American Valley Inc.**

**Anthony's**  
 C. R. ANTHONY CO.

**Levi's WOMENSWEAR**  
**Juniors**



**no outseam**

special purchase!  
**Levi's®**  
**L'Glove™**  
 junior pant  
**10.88**

jr. sizes 3-15 reg. \$24

For juniors only... Levi's® L'Glove™ pant has the fit, feel, and looks you want! They're 100% stretch gabardine to let you move freely, and the hidden elastic waistband lets you breathe deeply. And check out these colors: Navy, Scallop, Taupe, Red, Green, and Grey

With our special purchase price, you save \$13.12! Junior sizes 3-15 — not available in misses' sizes.

**"Super Fit"**  
**"Super Look"**



## YAC Keeps Youngsters Off Street

"In what has been described as a 'most successful effort', the Muleshoe Area Youth Activities Committee kept the streets of Muleshoe virtually deserted on Valentine night," Mrs. Hopper said. YAC presented a youth Valentine disco, and registered 277 area youth for the evening.

"The streets of Muleshoe were deserted that night," said Wayne Holmes, YAC vice president, and Muleshoe City

Police Patrol Sergeant. "We were really happy to have the large crowd we had at the dance, and we were more than pleased to have at least that many young people in a controlled atmosphere where they had a nice evening."

During the evening, door prizes were awarded to several of the youths at the dance. Included were Mary Norman, who was presented a Leal's Special; Dony Barry, a pizza from Pizza Hut; Ray Vinson, won a Dairy Queen gift certificate and Eddie Perez received a Corral gift certificate. Also, Delores Costilla, Alicia Daniel, Juanita Garcia and Luis Daniel all were recipients of a box of candy

from the YAC.

"YAC is still asking for assistance during the discos," Mrs. Hopper added. They are urging parents who are interested in their children and the youth of the community to visit a disco, see how the young people have a good time, and see how the dances are handled. Currently, very few adults assist with the dances, and more adult participation is urged, according to YAC President Bob Sanders.

Mickey Bear Enterprises will be providing the music for the next youth disco, which is scheduled Saturday, March 14, 9-midnight at the Bailey County Exhibition Center and Coli-

seum.

Parents and interested persons are also encouraged to attend the next YAC meeting, scheduled for Monday, March 2, 7 p.m. at the Civic Center.

### TOPS Weekly Meeting

Muleshoe TOPS Club Chapter TX34 met Thursday, February 26 at 6:30 p.m. in the meeting room of Bailey County Electric. Carlene Stroud, president, called the meeting to order. The TOPS pledge was recited and the fellowship song sung.

Linda Vinson, weight recorder, called the roll with 28 members present. Two new members, Mary Ann Romirez and Shonda Mitchell, were welcomed to the Club. Vickie Garner, secretary, read the minutes of the previous meeting.

Best loser for the week was Theresa Davis, Carlene Stroud was first runner up and Clara Lou Jones was second runner up.

Theresa Davis, Libby Black, Jerri Serna and Jo Ann Cline received charms for losing 10 pounds. Jenny Mitchell received a charm for losing 40 pounds. Jackie Whatley received a charm for eight weeks of consecutive attendance.

Hazel Nowell, Aurora Mata and Ella No-man received material for three consecutive weeks weight loss. Aurora and Ella also received a hair set for losing six consecutive weeks.

The members were reminded that the best loser for the month and KOPS monthly queen will be crowned next week.

Election of officers for the coming year will be held March 12.

The meeting was dismissed with the goodnight song.



**Come To Lee's For Your Dollar Day Buys**



**Lee's WESTERN WEAR Inc.**

1910 W. Amer. Blvd. Muleshoe 272-4663

**True Value HARDWARE STORE**

**TOOL VALUE OF THE MONTH**

**Master MECHANIC**

While Supplies Last

**FIX-IT KIT**

now **77¢**

Ideal "extra" tool kit for home, car. Incl. 8-in. adjustable wrench, 6-in. slip-joint pliers, plus 2 screwdrivers—1 regular and 1 Phillips, in pouch. MMTS4

**QUANTITIES LIMITED**

**401 S. 1st.**

**Muleshoe**

**272-4511**

**City COX**

## Girl Scout Week Begins March 8

March 8-14 is Girl Scout Week, marking the founding of Girl Scouting on March 12, 1912.

"Each of the 341 Girl Scout Councils in the United States will observe the week in accordance with the national theme, Girl Scouting - 1980's Style," said Mrs. Nolen Swain, President of the Board of Directors, Caprock Girl Scout Council.

She further noted that Caprock Council would utilize the theme at the annual Reunion Luncheon, scheduled March 6 at the service center in Lubbock; the Girl Scout Fair to be held at Fair Park Coliseum on March 7; and in all troop activities the following week. Adults and girls from the eighteen county area will take part in the events.

Mrs. Swain also announced, in connection with the birthday, the selection this past week of two Girl Scouts for national opportunities.

Mandy Stavlo, daughter of Mr. and Mrs. Danny Stavlo, and member of Senior Troop 132, was selected to attend "Upstage, Onstage," to be held in New York City. Fifty participants were chosen from a field of 250 applicants for the drama event.

Valerie Seymour, daughter of Glenys Hailey, Cadette Troop 2, will attend "Ho West We Go," a wider opportunity sponsored by GSUSA and scheduled at the National Center West, Ten Sleep, Wyoming. Archaeology, horseback riding, geology and photography will be emphasized.

The Reunion Luncheon, will feature a program on

Girl Scouting presented by Mrs. Craig McDonald, Ralls; and Mrs. Keith Strain, Mrs. John Mallory, and Mrs. James Burkeholder all of Lubbock. Mrs. W.C. Warren, also of Lubbock, will serve as hostess for the event. Reservations may be made through the service center, 2567 74th Street.

Scheduled 1-4:30 p.m. March 7, at the Fair Park Coliseum in Lubbock, the Girl Scout "Fair" will bring Girl Scout troops in the council together to share songs, folk games, folk arts, and contemporary program for the public. There is no charge for admission.

\*\*\*\* Experience is rarely valued by those who need it most.

The strip tease seems to be on the beaches as well as in burlesque.

He who lives at high tension usually blows a fuse.

## Tole Painting workshop

By Kathy Balko

of Portales

March 9-11 1-4p.m.

Fee \$19<sup>50</sup>

Supply list available

Register now

Sherry's Art Shack

Tradewinds Plaza

**To God Be The Glory**

Grand Opening In Muleshoe

**The Good News Bookstore**

Books Bibles Music Church Supplies

Come in and register for Free Gifts.

Drawing will be on March 14, 1981.

106 E. Ave. B Muleshoe Tx. 272-5463

**Jesus Is Lord**

## El Paso's Norma Frye OLE ROCKIN' CHAIRS GOT ME-- AND I'm GLAD!!!

You see, before my Pat Walker's program my "lumps" poked thru the spokes of my rocker. Now, after losing 28 1/2 pounds and 43 1/2 inches I can sit in my rocker, or an airplane seat, and feel slim and trim. There is space on each side!!

Before Pat Walker's I wore only full skirts — to cover up. Now when I wear full skirts it is only because I want to.

Before Pat Walker's I felt heavy, my choice of clothes was limited. Now my body feels strong, I feel healthy — and I shop in size 7, with nothing to hide.

The above testimony is important. But equally important — I've been able to maintain my present weight this past year even though I had surgery and 2 three week vacations. There was no problem, I followed the Pat Walker's method of eating. Sound good??? IT IS!!

Not only have I purchased a "new body", I now know the lovely ladies at the Pat Walker's Figure Salon as my friends. THEY CARE!! I'd love for you to meet them. Tell them I sent you.

Norma Frye

### FREE FIGURE ANALYSIS

Make an appointment now for a free, no-obligation consultation at Pat Walker's. We'll explain how our program works, from the no-muss, no-fuss passive exercise treatments to our belief in your right to privacy. Based on four dollars per thirty minute treatment.



MRS. FRYE



MRS. FRYE AFTER PAT WALKER'S

**Pat Walker's**  
Figure Perfection Salons International  
119 E. Ave. C.

**GIBSON'S DISCOUNT CENTERS**

WHERE YOU ALWAYS BUY THE BEST FOR LESS

Store Hours: Mon-Sat. 9-7 Sun. 1-6

Prices effective March 1-4, 1981.

<p><b>Men's Dress Western Shirts</b> by Wrangler Reg. \$18<sup>97</sup> &amp; \$19<sup>97</sup></p> <p><b>\$14<sup>88</sup></b></p>	<p><b>Fuzzie Footies</b></p> <p>Keep cold feet warm with soft footies in brushed orlon. Choose from an assortment of popular colors. Sizes 8 1/2-11.</p> <p><b>77¢</b></p>	<p><b>Car Wax</b></p> <p>Rain Dance Liquid 16 fl. oz. or Paste 14 oz.</p> <p><b>\$3<sup>88</sup></b></p>	<p><b>Rosemilk</b></p> <p>Skin Care Lotion 8 fl. oz.</p> <p><b>\$1<sup>19</sup></b></p>
<p><b>Joy</b> 22 fl. oz. Dishwashing Liquid</p> <p><b>99¢</b></p>	<p><b>Rake</b></p> <p>Lawn &amp; Leaf</p> <p><b>\$1<sup>88</sup></b></p> <p>Reg. \$2<sup>99</sup></p>	<p><b>Marks-A-Lot Markers</b></p> <p>Black, Blue or Red</p> <p><b>2/\$1</b></p>	<p><b>Bold 3</b></p> <p>King size</p> <p><b>\$3<sup>19</sup></b></p>
<p><b>Toothpaste</b></p> <p>Pepsodent 6.5 oz.</p> <p><b>\$1<sup>09</sup></b></p>	<p><b>Kleenex</b></p> <p>Facial Tissue 200 ct.</p> <p><b>79¢</b></p>	<p><b>Children's Sandals</b></p> <p><b>\$7<sup>00</sup></b></p> <p>Reg. \$9<sup>99</sup></p>	<p><b>Ladies long sleeve Blouses</b></p> <p>Reg. \$11<sup>99</sup> \$12<sup>99</sup></p> <p><b>\$8<sup>88</sup></b></p>
<p><b>Soap</b> Bath size Camay Bar</p> <p><b>2/95¢</b></p>	<p><b>Stuart Hall Notebook Filler Paper</b></p> <p>200 ct.</p> <p><b>90¢</b></p>	<p><b>Summers Eve</b></p> <p>2 pk.</p>	



## Muleshoe Twisters Attend Amarillo Meet



GYMNASTS PARTICIPATE IN MEET....The Muleshoe Twisters Gymnastic Team participated in a meet in Amarillo Feb. 21. Pictured back row, Tonda Gunstream, Cindy Lane, K-K Flowers; middle row, Sherri Bessire, Lance King, Kevin King, Coach Drew Oberbeck; front row, Winston Stice, Brett King, Jay Hawkins, Caroline Liles doing the splits; not pictured is Michael Angelev, Michelle Finney.

Twelve boys and girls gymnasts from the Muleshoe Twisters Gymnastic Team of Hawkins and Purdy's School of Dance and Gymnastics attended a meet at Nard's Gymnastic School in Amarillo Saturday, February 21, 1981.

In the boys division, Michael Angelev, son of Mr. and Mrs. Ken Angelev placed 2nd on vault, 2nd on pommel horse, 2nd on floor exercise, 2nd in tumbling, and 2nd in All-Around with a score of 27.85.

Lance King, son of Mr. and Mrs. Max King, placed 1st on pommel horse, 3rd on vault, 3rd in tumbling, and 4th in floor exercise. Lance won 3rd in All-Around with a score of 26.15.

Winston Stice, son of Mr. and Mrs. Kenneth Stice, won 4th on vault, 4th on pommel horse, 4th in tumbling, 5th in floor exercise and 5th in All-Around with a score of 23.45.

Jay Hawkins, son of Mr. and Mrs. Richard Hawkins won 5th place on vault, 4th place on pommel horse, 4th place in tumbling, 4th place in floor exercise, and 5th place in All-Around with a score of 22.90.

Kevin King, son of Mr. and Mrs. Max King,

placed 5th on vault, 3rd on pommel horse, 5th place in tumbling, 3rd place in floor exercise and 4th place in All-Around with a score of 24.6.

Brett King, son of Mr. and Mrs. Max King, won 4th place on vault, 3rd place on pommel horse, 5th place in tumbling, 5th place in floor exercise and 4th place in All-Around with a score of 23.10.

In the girls division, Caroline Liles placed 2nd on balance beam, 2nd on uneven bars, 2nd on vault, 3rd in floor exercise and 5th in All-Around with a score of 33.3. Caroline is the daughter of Mr. and Mrs. Bill Liles.

Sherri Bessire, daughter of Mr. and Mrs. Travis Bessire, placed 2nd on balance beam, 3rd on bars, 2nd place on vault, 3rd in floor exercise, and 3rd in All-Around with a score of 33.90.

Tonda Gunstream, daughter of Mr. and Mrs. Tommy Gunstream, won 3rd place on balance beam, 2nd place on bars, 4th on vault, 2nd place on floor exercise and 2nd in All-Around with a score of 34.10.

Michelle Finney, daughter of Mr. and Mrs. Bob Finney, placed 2nd on balance beam, 2nd on uneven bars, 2nd on vault, 2nd on floor exercise and 1st in All-Around with a score of 31.50.

K-K Flowers, daughter of Mr. and Mrs. Charles Flowers, won 4th place on balance beam, 4th place on bars, 3rd on vault, 4th place in floor exercise and 4th place in All-Around with a score of 33.35.

### Muleshoe Singing Group Meets

The Muleshoe Singing Group met February 21 at 6:30 p.m. in the fellowship hall of the Trinity Baptist Church.

Jess Pruitt gave the invocation. J.C. Shanks was in charge of the meeting. There were 24 present, including four from Clovis and one from Farwell.

"Everyone enjoyed the special arrangements and the congregational singing," said Clara Coffman.

Fred Wilbanks gave the benediction.

Cynthia Lane, daughter of Mr. and Mrs. Lionel Lane, won 4th place on bars, 3rd place on vault,

and 5th place in floor exercise. Cynthia's all-around score was 32.00.

Coaches Drew Oberbeck, Cindy Purdy, and Sheri Hawkins also attended the meet.

**WHEN IT'S TIME TO START PLANTING AGAIN, REMEMBER THIS...**



**NO MATTER WHAT HAPPENS BETWEEN NOW AND HARVEST, WE'LL GUARANTEE YOUR YIELD AND PROTECT YOUR INCOME.**

That's the promise behind All-Risk Federal Crop Insurance.

What does it mean for you and your family? Plenty. Because by locking in a guaranteed yield and income, you cover the risk of losses from natural disasters such as drought, flood, insects and disease.

With All-Risk Federal Crop Insurance, you and your family can all sleep a little easier knowing that even if you hit a bad year, your cash flow will keep flowing. Because no matter what natural disaster comes along, All-Risk Federal Crop Insurance protects the money you and your family invest in your crop.

For more information, call the FCIC representative in your area. All-Risk Federal Crop Insurance. In good years and bad, it pays off.

**All-Risk Federal Crop Insurance**

**Smallwood-Harmon Ins.**  
232 Main 272-4531

Call Joe or Rick Smallwood

\*\*\*\*  
Never speak of the beautiful snow to a man who has just shovelled clear the drive.

\*\*\*\*  
If you haven't adopted a safe driving resolution, we suggest that you do so immediately.

\*\*\*\*  
Some writers hold back what they know in order to have something to write about.



### Stephen Kent Foster

Mr. and Mrs. Steve Foster are the proud parents of a new son born February 24 at 3:45 p.m. The young man weighed 8 pounds and has been named Stephen Kent Foster. The couple have three other children, Amy, seven; Bew, four; and Christen two years of age.

Grandparents are Mr. and Mrs. Jim D. Mortin of Midland and Mr. and Mrs. B.J. Foster of Lubbock.

Great grandparents are Mr. and Mrs. T.L. Kent of Muleshoe and Mr. and Mrs. W.M. Foster of Farwell.

### Jimmy Gale Watson

Mr. and Mrs. Jimmy Watson are the proud parents of a new son born at 1:22 p.m. February 25. He weighed 8 pounds and 12 ounces and has been named Jimmy Gale. He is the second child for the couple. He has a sister, Sarah, two years of age.

Grandparents are Mr. and Mrs. Delbert Watson of Muleshoe, Mrs. Dorothy Winn of Tyler and Earl Delvalle of Florida.

Great grandparents are Tom Watson of Muleshoe, Marie Christy of Tyler and Christine Delvalle of Florida.

## Welcome To Muleshoe



This week we welcome the Rev. and Mrs. James Golaz. James and Anita came to Muleshoe from Monument, Colorado. Golaz is now pastor of the First Assembly of God in Muleshoe. They have two daughters, Stacey, age 12 and Tracey, 9. As hobbies, Anita enjoys reading and Golaz enjoys Gospel music and tape ministries. The girls enjoy athletics. The Golaz's now reside at 1721 W. Ave. E.

REV. AND MRS. JAMES GOLAZ,  
STACEY AND TRACEY

**James Crane Tire Co.**  
**GOODYEAR**

322 N. 1st.

272-4594

**Henry Insurance Agency**

Box 563

Muleshoe

**Damron Rexall Drug**

308 Main

272-4210

## If Not N.O.W. When?

If you haven't yet combined your savings and checking accounts into a Muleshoe State Bank N.O.W. Account, you're losing interest—fast!! The N.O.W. Account acts like a regular checking account—there when you need it. Open a N.O.W. Account—now and watch your interest grow!!

**MULESHOE STATE BANK**

HOW TO WIN AT THE LOSING GAME

**DIET CENTER**

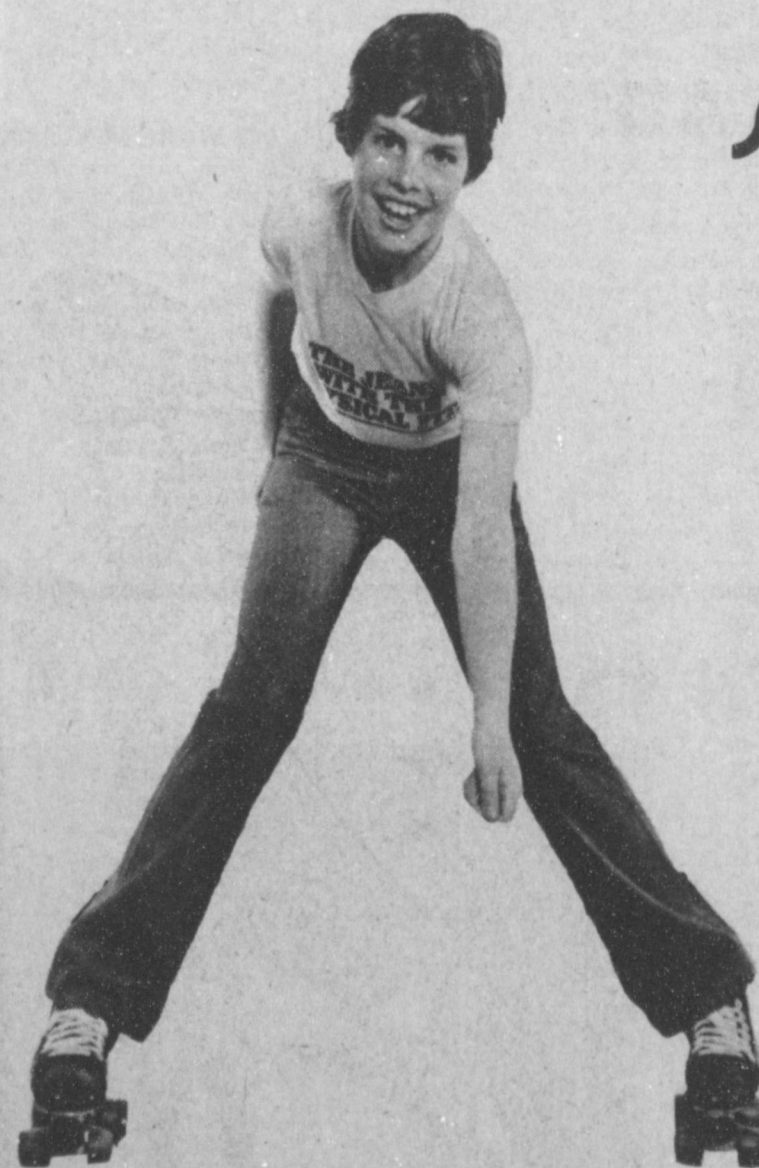
Learn more about the Nation's Fastest Growing Weight Loss Program!  
Read the March Edition of . . .

**Reader's Digest**

Jama Brown 272-5487  
Beginning on page 39

## DOLLAR DAY SALE

**Sedgefield**



When the going gets rough, he keeps going in Sedgefield Do-Nothing® Denims of 100% cotton. They never wrinkle, pucker or shrink out of size. They make him look terrific no matter what he's doing.

**30% Off**

Men's Reg. \$24.00 **\$16.65**

Student's Reg. \$22.00 **\$15.65**

Boy's Reg. \$17.00 **\$11.65**

**3 Days Only**

**Ladies Jewelry Entire Stock**

**1/2 price**



Earrings

Bracelets

Necklaces



**St. Clair's**



**School...**

Cont. From Page 1  
As of 1978, the typing room equipment of Muleshoe High has been all electric, and as of 1979, all typewriters have been the IBM Selectric models. For parents who learned to type on the manual type machines, typing on the new Selectrics should really be a rewarding experience.

The speech department, under the direction of Kerry Moore, will be presenting duet acting scenes and humorous interpretations. David Pruitt and Scott Ellard will team with Freddie

**Chamber...**

Cont. From Page 1  
sioner of Agriculture. Mr. Brown is widely known for his wit and humor as well as his knowledge of the agriculture scene. He has served as Commissioner of Agriculture since March of 1977. Mr. Brown has an extensive record as a speaker, having spoken in every county in Texas, and in thirty one states.

The Chamber Banquet is not reserved for Chamber members. Everyone is encouraged to attend. For ticket information, you may call the Chamber at 272-4248, or come by the office in City Hall at 215 South First.

Vela and Jeff Combs in 10 minute duet acting scenes during the evening. Giving humorous interpretations will be Julius Briscoe, Freddie Vela, Jeff Combs, and Scott Ellard. These events will be given continually in Room 14. Those wishing to watch them will enter the room at appropriate times to watch these events.

The Muleshoe High School Mighty M Band will be in a clinic in the auditorium under the direction of Dr. Garner from West Texas State University, from 6:30 until 9:00. Parents are invited to enter the auditorium any time during the two hours, take a seat, and watch how a band clinic is performed. It is astonishing how students are pushed to perform at their best in such a short time.

In the auto mechanics department, students will be displaying projects they plan to enter the next day at the Area 6 VICA competition in Amarillo. Mr. Shain encourages everyone to come by the auto mechanics department and see these projects. Students will be available to explain the auto mechanics program. Along with the auto mechanics, Mr. Keith Taylor says that several exceptionally good projects both finished and un-

finished, will be on display in the woodworking department.

Mrs. Wrinkle noted that she will have some of the senior research papers in Room 11 available for parents to see. Parents can see the steps that are taken for this research, the various methods used, the teaching techniques used, methods of grading, and the final papers. Other segments of the college prep English IV program will be explained also. Other English teachers will have samples of students' work in their rooms and would welcome you to come by and visit.

The vocational ag department will be closed for the evening since both ag teachers will be in Houston for the stock show.

"Other teachers in the building will have samples of work available for observation and welcome all to come by and see this work. Muleshoe High is blessed with excellent teachers, excellent programs, and various methods of instruction to meet individual needs of students," said Ethridge.

Fred Mardis, principal at MJHS, encourages parents and patrons to visit the history and science fairs to

be held in the Junior High Building. Displays, projects, research papers and demonstrations may be viewed by the public from 7-9 p.m.

Principals of the elementary schools, Milton Oyler and Bill Taylor, invite parents to visit their schools anytime during the week but no special program is planned.

"We urge you to visit school during this special week," said Horne. "because we must have the informed support and involvement of our patrons to insure quality education in Muleshoe."

Toby Booth, principal for Lazbuddie schools, says their Open House and Science Fair will begin with a meal at 5 p.m. The price for the meal will be \$3.00 for adults and \$2.00 for children under sixth grade.

"We will have room visitation beginning at 5:30 p.m. and the school band will perform a concert in the auditorium at 7:45 p.m."

"Each class from the seventh grade up will be exhibiting a science project along with other classes such as the industrial arts class. The elementary classes will have room visitation."

**Trials...**

Cont. From Page 1

Also, Charlie Agbert Watson, Ruth Brians Hammock, Robert L. Lunsford, Ronald E. Shafer, Billy Jack Bruns, Claude Don Holmes, Alene Belle Horn, Tom Bogard, Nancy Mae Wittner, Dorothy M. Lee, Zed Robinson, Derrell Martin Oliver, Jackie Merritt Bailey, Josephine Chavez Gonzales, Cherylee Bryant and Christine Isaac.

Other prospective jurors include Jose Luis Mata, Wesley Thomas Cook, Nora Roby Burris, Antonio Garcia Vega, George Emery Green, Bill Jim St. Clair, Randall Gene Gore, Alvis Wayne Holmes, Donald V. Puckett, Jan Garrison King, Guy Austin, Mark Allen Fried, W. E. Blair, Conner W. Burford and Rosa Linda Hernandez.

Others include Eula Hubbard Archer, Lorna Pryor Moravec, Sheryl Watts Morris, Darwin Loran Robertson, Vicki Bollen Black, Gerald K. Reid, Dean Edward Northcutt, Juan Alarez Duran, James W. Witherspoon, Terree Fletcher Donaldson, Aaron Ray Kelton, Lyndal Thomas Stovall, Todd Wayne Ellis, Johnnie Kemper Althoff and Gladys

Maddox.

Also Evette La Parche Freeman, Allen Dale Middlebrooks, Beverly Casey Heathington, R.A. Grosse, James Alexander Harvey, Elsie Moore Damron, Carolyn Cole Sowder, Violet Denton Dean, Pearl Mills Lowe, Leon Howard Lewis, Olga Melendez Chavez and Joellen Spain Cowart.

Scheduled to report as prospective jurors for service Thursday, March 12 at 9:30 a.m. include August G. Taylor, Bernice Ray Bullard, Billy Don Crenshaw, Doris Fort Huff, Johnny Loyd Boyce, William H. Eubanks, Birdie B. Warren, Cleo Coleman Bellar, Alda Scott Odom,

**Jury...**

Cont. From Page 1  
alleged possession of a controlled substance and is out on a \$4,000 bond. Cuff was stopped for speeding by the State Highway Patrol and charged with possession.

Sue Canfield of West Virginia was indicted for alleged forgery. She has not been apprehended by local authorities.

Richard Puckett has been indicted for the alleged possession of a short barrel firearm. He is out on a \$3,000 bond.

Savannah Truelock Kilough, Arthur Roy Oxford, Nancy Coffman Cochran, J.E. Layton and Robert Delton Gilliland.

Others include Ruel S. Kirby, Richard Barrios Rodriguez, June Chandler Bartley, Donald Joe Cook, Lorene Martin, Ruth Sullivan Terrell, W.C. Wooley, Jr., Jo Wagnon Mayhugh, Margaret Taylor Quarles, Ted Simmons Barnhill,

Lester Wayne Gore, Nellie Wood and Lorene Delloro Obenhaus.

**REAGAN & EMBARGO**  
President Reagan told American farm leaders recently that foreign policy considerations—including Russian troops on the Polish border—will help him decide whether to sell grain to the Soviet Union. Reagan told the farmers he hasn't decided to keep his campaign promise to life the embargo.

**LABOR SAVINGS!**

Get a **GENIE** Now Specially Priced

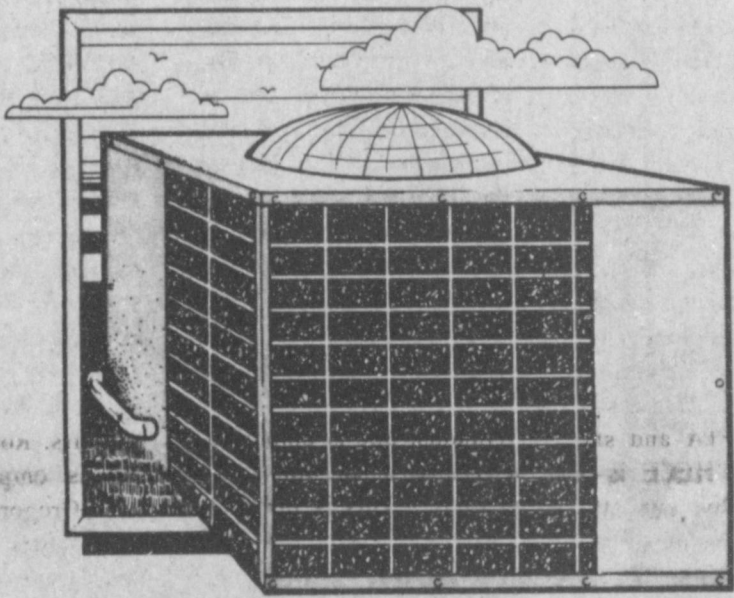
Take the labor out of garage door opening with Genie—America's #1 automatic garage door opener system. Get special savings, too! Made only by Alliance.

**ALLIANCE**  
Manufacturing Co., Inc. Alliance, Ohio 44601  
A NORTH AMERICAN PHILIPS COMPANY

Don Terrell, Manager

**Plainview Overhead Door**

3014 Dimmitt Hwy Plainview, Texas



**ENERGY SQUEEZER**

**The Electric Heat Pump**

The heat pump... all heating and cooling to keep you comfortable year 'round from one system. And, it's energy efficient. Because even on cold days, the heat pump delivers more heat than energy used to produce it.



**Shooting...**

Cont. From Page 1

After shattering the window, a single .38 or 357 caliber bullet apparently broke apart, with two fragments striking Cockerham in the back and a third portion hitting Miss Kennedy in the neck.

Still another fragment lodged in a corner of the living room, and police found additional pieces of the bullet as far as 50 feet from the window.

A neighbor of Cannon's said two shots apparently were fired. One was fired at a vehicle in the neighborhood.

A vehicle was seen halted at a stop sign near the Cannon residence and sped away after the shot at the house was fired. Police said late Thursday they had no motive in the shooting.

Ms. Kennedy is the daughter of Mr. and Mrs. Clinton Kennedy.

**ONE MINUTE SPORTS QUIZ**

- Who won the Wickes-Andy Williams San Diego Open Golf Tournament?
  - Who won the LPGA Elizabeth Arden Classic?
  - Who won the Tennis Challenge championship?
  - Benny Parsons is known in what sport?
- Answers To Sport Quiz**
- Bruce Lietzke.
  - Sally Little.
  - Vitas Gerulaitis over John McEnroe.
  - Stock car racing.

**CORDOVAN QUALITY**

**Cordovan Sovereign**

**Aramid Belled Radial**

**BEST**

ARAMID BELTED — The strongest tire cord ever developed, the strength of steel with less weight. ARAMID is much more flexible — for a much more comfortable ride. ARAMID produces a lighter, easier rolling tire which improves gas economy. ARAMID absorbs more road shock — eliminates joint slap and provides greater impact resistance.

Number	Tubeless Whitewall Size	Regular Price Each	Sale Price 2nd Tire	Plus F.E.T. Each
No. 23C45	P215/75R15	77.30	69.57	2.58
No. 23C49	P225/75R13	81.76	73.58	2.74
No. 23C64	P235/75R13	84.94	76.45	2.85

For years Steel belled radials have been the established standard of the industry... now Aramid — the space-age tire cord material has been developed by Dupont laboratories to replace steel as a belt material in radial tires. Aramid is the ideal material for tires because it combines the toughness and durability of steel at one fifth of the weight with the comfort and smooth ride of a fabric belted radial.

**Cordovan Premier IV Polyester**

**Steel Whitewall**

**BETTER**

Constructed with 2 belts of steel cord and 2 tough body plies of Polyester Cord. Good traction on both wet and dry pavement. Hi-traction tread compound remains flexible at temperatures below freezing to maintain good traction. In many cases it eliminates winter tire changeover.

Number	Regular Price Each	Sale Price 2nd Tire	Plus F.E.T. Each
P185-80R13, Whitewall	40.96	36.86	1.89
P185-75R13, Whitewall	44.65	40.19	2.02
P185-75R14, Whitewall	50.41	45.37	2.19
P195-75R14, Whitewall	51.25	46.13	2.33
P205-75R13, Whitewall	54.67	49.20	2.48
P215-75R14, Whitewall	57.62	51.86	2.58
P225-75R14, Whitewall	59.34	53.41	2.81
P205-75R15, Whitewall	56.08	50.47	2.57
P215-75R15, Whitewall	59.70	53.73	2.75
P225-75R15, Whitewall	61.57	55.41	2.93
P235-75R15, Whitewall	65.89	59.30	3.11

**FREE MOUNTING & COMPUTER BALANCE**

**Cordovan Radial CR-10**

**GOOD**

Tubeless Whitewall Size

Number	Regular Price Each	Sale Price 2nd Tire	Plus F.E.T. Each	
No. 61C60	GR78-14	51.17	46.05	2.43
No. 61C66	HR78-14	53.51	48.16	2.59
No. 61C45	GR78-15	52.89	47.00	2.41
No. 61C49	HR78-15	54.30	48.87	2.75
No. 61C64	LR78-15	57.83	52.05	2.92

**JET STAR 120 Polyester Cord .85" Whitewall**

The 4 ply polyester cord body resists impact, blow outs, deterioration. You get a softer, quieter ride with no road whine or joint slap and no morning thump.

Number	Regular Price Each	Sale Price 2nd Tire	Plus F.E.T. Each
A78-13, Whitewall	33.20	28.56	1.50
B78-13, Whitewall	34.29	27.43	1.61
C78-13, Whitewall	36.00	28.90	1.79
C78-14, Whitewall	36.17	28.94	1.68
D78-14, Whitewall	36.61	29.29	1.79
E78-14, Whitewall	38.96	31.17	2.04
F78-14, Whitewall	40.96	32.77	2.14
G78-14, Whitewall	42.06	33.65	2.28
H78-14, Whitewall	45.33	36.26	2.52
G78-15, Whitewall	43.79	35.03	2.36
H78-15, Whitewall	46.12	36.90	2.57
J78-15, Whitewall	48.40	38.70	2.79
L78-15, Whitewall	49.75	39.90	2.84

**A & M FARM & RANCH SUPPLY**

**Farmers .....**

**Track Fillers For Circle Systems**  
With Bearings

**165**

Installed



Come In & Talk To Joe At  
**Muleshoe Machine & Welding**



Nellie Bellore  
told  
policy  
Polish  
decide  
to the  
told  
de-  
paign  
argo.



# MULE'S TALE

Editor: Michelle Agee

Official Publication of Muleshoe High School Written and Edited by Students of the Muleshoe Schools



Sunday, March 1, 1981

Volume 16, No. 21

## Speech Members for State Bound

Muleshoe High's Speech Squad competed at the Texas Tech Invitational Speech Tournament this past weekend. Six hundred students representing forty two schools competed in the UIL-TFA events meet.

Four students from Muleshoe High qualified for the Texas Forensics Association State Tournament in Arlington, March 19-21. Marlin Bynum won third in men's extemp and qualified for State TFA; Kevin Robinson placed third in oratory and qualified for TFA; and Jeff Combs and Freddie Vela won third in duet acting and qualified for TFA State.

Muleshoe had twenty two students competing in the two day events meet.



HECE MEMBERS.....Pictured from left to right arer: Back row Orpha Pecina, Diana Saldana, Michelle Bryant, Donna Hawkins, Maria Alfaro, Cara Bass, Mary Burton, Terry McCamish, Lori Butler, Shelley Davis. Front row-Advisor Mrs. Mary Furgeson, Jacinda Gleason, Jennifer Tillema, Lori Hartline, Sally Lunsford, Awyna Cox, Nancy Garcia, Shelli Hawkins, Denna Harris, Marilyn Harris, and Leslie Wagnon.

## HECE Club Highlighted

Home Economics Co-operative Education courses feature training conducted through the co-operation of local schools and local business establishments of approved home economics related occupations. Students receive practical on the job training with related classroom instruction. Students may enroll for 1 or 2 years. Students must have an 85 or above average and less than 10 days of absences to be eligible for the program.

Art Club Secretary, and is in FTA. She commented, "I have really enjoyed being in HECE. I think it is a very good program, and I have learned a lot from it."

Donna Hawkins, the 17 year old daughter of Margie Hawkins, works at West Plains Medical Center. She is a member of FTA. She commented, "I have really enjoyed and gained by being in HECE. There's always activities to get involved in. Mrs. Furgeson isn't just the ordinary teacher; she makes things fun and exciting."

HERO is really super - it has taught me a lot about my responsibilities toward school, work, and life as a whole."

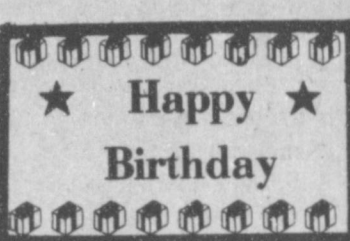
Marilyn Harris is the 18 year old daughter of Mr. and Mrs. Wayland Harris. She is employed at the West Plains Medical Center and commented, "HECE is a very good program for young people to be in so they can get ready to work with people outside of school. It teaches many things."

## Nora Rojas Receives \$100 Scholarship

Nora Rojas, a senior at Muleshoe High School, has been awarded a \$100 book scholarship from the West Texas State University Bookstore.

Rojas was one of seven high school seniors who received scholarships during Buff Boat, a senior weekend hosted by the WTSU Student Foundation.

Buff Boat attracted more than 250 students from Texas, New Mexico, Oklahoma, Kansas, and Colorado.



The Mule's Tale Staff would like to wish the following people a very Happy Birthday!

- Sunday, March 1 -- Joe Trevino
- Tuesday, March 3 -- Elvira Nunez, Curtis Hunt
- Wednesday, March 4 -- Brenda Flowers
- Thursday, March 5 - Perry Whalin, Misti Prater, Lee Free, Wendy Stice
- Saturday, March 7 -- Linda Luna

## Ski Break For Schools

Muleshoe High School students are enjoying a ski break this weekend. School was dismissed at 3:15, Thursday, February 26. Students will return to classes Tuesday, March 3.

Groups going skiing include the Methodist Youth and the Baptist Youth. They are skiing at Wolf Creek, near Pagosa Spring, Colorado. Many other students are skiing in various resorts in New Mexico and Colorado.

Teachers completed an Inservice Day Friday and will enjoy a holiday Monday. Special areas of Inservice included a Special

Education, Departmental Meeting, Title I Migrant Personnel Meeting, and a Gifted/Talented Management Team Meeting. Also there were departmental meetings, a general faculty meeting, and time set aside for updating notebooks and permanent records as well as reviewing guides for Career Education, Crime and Drugs, and Gifted and Talented.

Report cards for the 4th six weeks will go out to parents this week. The 5th six weeks begins Tuesday, and teachers have made plans for completing the 1980-81 school year.

## Calendar Of Events

- Monday, March 2-Holiday; Houston Stock Show March 2-8
- Thursday, March 5-Open House 7:00 - 9:00 p.m.; DECA Students leave for Wichita Falls Area CDC; Band Clinic
- Friday, March 5--French Horn Clinic; DECA Area CDC-Wichita Falls
- Saturday, March 7-Girls' Track to Plainview; Boys' Track Open Date; DECA Area CDC-Wichita Falls

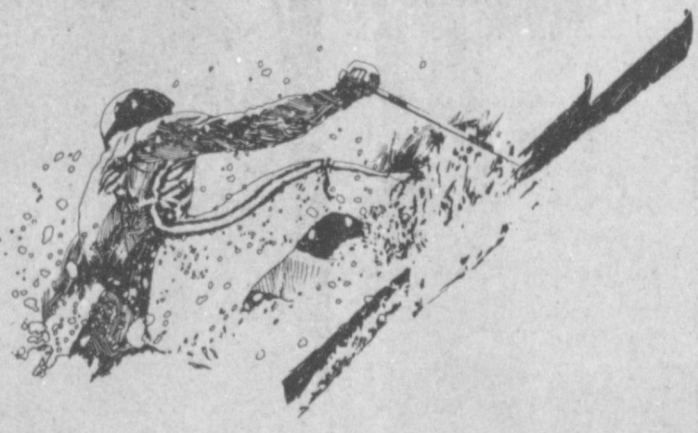
## Muleshoe School Lunch

- March 2-6 1981
- MONDAY  
NO SCHOOL
- TUESDAY  
BREAKFAST  
Milk, Cereal, Fruit  
LUNCH  
Milk  
Frito Pie  
Buttered Corn  
Cole Slaw  
Corn Bread  
Fruit
- WEDNESDAY  
BREAKFAST  
Milk, Toast, Jelly  
LUNCH  
Milk  
Spaghetti with Meat Sauce  
Lettuce & Tomato Salad  
Beans  
Corn Bread  
Cake
- THURSDAY  
BREAKFAST  
Milk, Honey Buns, Juice  
LUNCH  
Milk  
Corn Dogs  
Vegetable Beef Soup  
Crackers  
Cinnamon Rolls  
Fruit
- FRIDAY  
BREAKFAST  
Milk, Toast, Oatmeal,  
Fruit  
LUNCH  
Milk  
Fish  
Macaroni & Cheese  
English Peas  
Hot Rolls  
Fruit

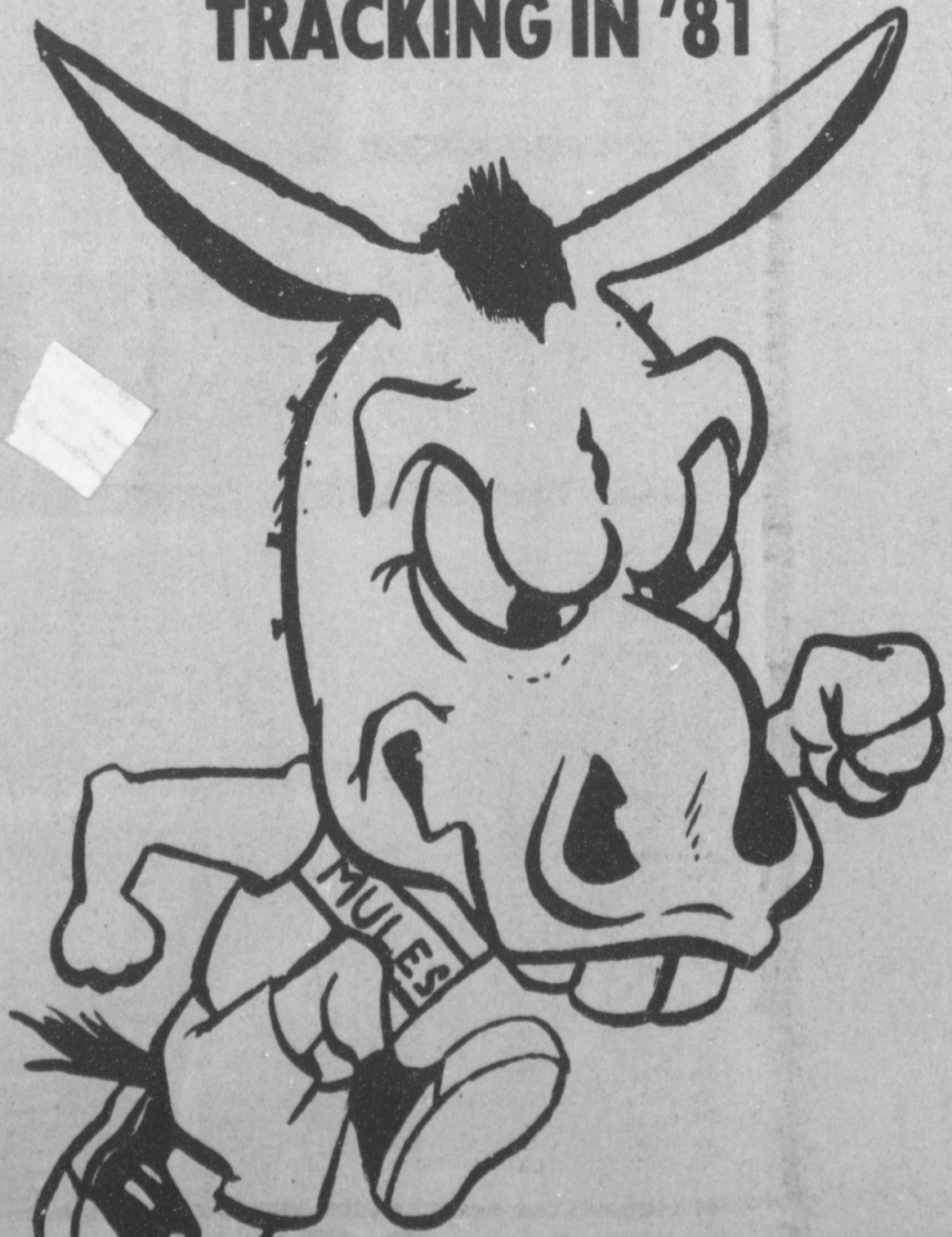
## National Honor Society Meeting

Thursday, February 19, the National Honor Society held a meeting in room 14. The members discussed various scholarships that are available and also congratulated Clifford Watson and Lynnette Shafer on being chosen to apply for the National Honor Society

Scholarship Program. The members discussed other important projects and set the next meeting for March 11. Members present were Lynnette Shafer, Carla Shafer, Keva Roming, Brenda Stevens, Carroll Precure, Clifford Watson, and Bryce Holmes.



## TRACKING IN '81



Leslie Wagnon, the 18 year old daughter of Mr. and Mrs. Joe Mack Wagnon, works at the First National Bank. She is District XVII FTA Corresponding Secretary and is Head Cheerleader.

Diana Saldana, the 18 year old daughter of Mrs. Marcelina Saldana, works at Shop Rite Foods. She is Band Vice President, Senior Class Parliamentarian, National Honor Society and participated in Solo and Ensemble and All-Region Band.

Nora Rojas is the 18 year old daughter of Mr. and Mrs. Tino Rojas. She is employed at Albertson's Shop for Men. She is a twirler for the Mighty M Band is a member of the Catholic Youth Organization. Her comments were, "HERO-HECE is really great; it helps you to really get to know the different careers around here. It's a lot of help for choosing your future."

Debra Pecina is the 18 year old daughter of Mr. and Mrs. Hipolito Pecina. She is employed at Poyner Whites Auto and she commented, "HERO-HECE- I like being in these organizations because I've been able to train for a job. I have learned to get along in a group."

Michelle Bryant, the 17 year old daughter of Mr. and Mrs. Jess Bryant, works at West Plains Medical Center. She is in Student Council. She commented, "I have really enjoyed being in HECE. I have learned a lot from my work and I think HECE is a good organization."

Cara Bass, the 16 year

Jacinda Gleason is the 16 year old daughter of Dr. and Mrs. Jerry Gleason. She is employed at Dr. Hamblen's office. She is active in FTA and 4-H. She commented, "I believe HERO-HECE is a terrific organization. It has benefited me more than I can say. I think HERO-HECE is for everyone."

Paula Williams is the 17 year old daughter of Mary Williams. She is employed at Expressions. She commented, "This is my first year in HECE. I think it has taught me more about myself and is a helpful class."

Jennifer Tillema, the 17 year old daughter of Mr. and Mrs. Dick Tillema, works at KL's Steakhouse. She is in FTA and plays tennis and golf. She commented, "I enjoy getting out of school early and doing something for myself."

Maria Alfaro is the 20 year old daughter of Mr. and Mrs. Pedro Pacheco. She is employed at St. Clair's Department Store. She commented, "In HECE I've learned a great deal on how to better myself as a wife and mother, and how to succeed in job success."

Shelley Davis is the 16 year old daughter of Mr. and Mrs. Harlan Davis. She works at Harvey Bass Appliance and commented, "This program is really great. It helps us to learn the responsibility of work and how to get along with others, and Mrs. Furgeson is a super teacher!"

Denna Harris, the 17 year old daughter of Mr. and Mrs. Wayland Harris, is employed at Bob Stovall Printing.

Shelli Hawkins is the 17 year old daughter of Mr. and Mrs. Eugene Hawkins. She is HECE President, FTA Parliamentarian, National Honor Society Reporter, Area I Vice President of HECE and a member of Student Council. She is employed at Joyce Shafer's CPA and commented, "This year has been a fun year. We have learned very much and have done many projects."

Nancy Garcia is the 17 year old daughter of Mr. and Mrs. Albert Garcia. She is active in FTA, Na-

Awyna Cox, the 17 year old daughter of Mr. and Mrs. David Cox, works at West Plains Medical Center as a receptionist. She is the HERO Parliamentarian and is in FTA. She commented, "I feel that through HECE I have learned how to save money for college and other activities. I have learned to appreciate myself and others around me."

Sally Lunsford is the 18 year old daughter of Mr. and Mrs. Robert Lunsford. She is employed at Dr. Jerry Gregory's office as a receptionist. She is HERO first vice president and is in FTA. She commented, "I feel that through class study and on the job work experience, HECE helps students to become more mature and responsible individuals."

Mary Burton is the 17 year old daughter of Mr. and Mrs. Earl Burton. She is employed at Damron Drug. She commented, "HERO is a real fun class and I am glad to be a part of it."

Lori Hartlin, the 16 year old daughter of Mr. and Mrs. Jim Hartline, works at Muleshoe Publishing Company. She is HERO Historian and a member of FTA. She commented, "I really like being in HECE because it has helped me work well with other people and also to get to know them better. It has also helped me to know myself a little better."

Lori Butler is the 17 year old daughter of Mr. and Mrs. Charles Glover. She is Speech Captain, Drama-Contest One-Act Play Contestant, and works at Photography by Lonnie. She commented, "I think that HECE is a very good program. It helps you to prepare for your future in the working world as well as in the home. I also think Mrs. Furgeson is a terrific teacher."

Terry McCamish is the 17 year old daughter of Clark and Barbara McCamish. She commented, "It has been a very interesting experience to be in HECE." She is employed at White's Cashway Grocery.

Mrs. Mary Furgeson, a graduate of Texas Tech University, did her student teaching in Muleshoe, and then came to Mule-



**Brent Gunter  
Member Of  
Corps Of Cadets**

Brent Gunter of Muleshoe and Kelly Castleberry of Lake Jackson have been named to lead the 2,300 member Texas A&M University Corps of Cadets next year.

Castleberry will serve as Corps commander, with rank of cadet colonel of the Corps. As deputy commander, Gunter will be a cadet colonel.

They will assume the

posts along with other senior-to-be cadet commanders May 9 at Final Review, the Corps' last formal military activity of the school year.

Appointment of Castleberry and Gunter was announced by U.S. Army Col. James P. Woodall, commander of the Texas A & M Corps.

A member of the U.S. Marine Corps commissioning program and acrony major, Castleberry succeeds Ken Cross of Richardson. Gunter, an animal science major and Army contract cadet succeeds Dave Rencurrell of Arlington.

The two were chosen during the spring semester to allow selection of other Corps officers. A "leadership lab" for the Navy, Air Force, Army and Marine Corps commissioning programs at Texas A&M, the Cadet Corps operates separately with cadets given decision-making responsibility.

Both Castleberry and Gunter are Distinguished Students and active in numerous student organizations and activities. Castleberry is the 1980-81 Corps sergeant major; Gunter is Corps operations sergeant.



BRENT GUNTER

**Chicken Tater Platter**  
 4 tablespoons oil or melted shortening  
 1 packet Oven Fry coating mix for chicken - crispy crumb recipe  
 1 teaspoon onion powder  
 1 egg  
 1 tablespoon water  
 2 whole chicken breasts, split (about 1-3/4 lb.)  
 2 cups 1/4-inch strips unpeeled potatoes  
 Spread oil in 15x10x1-inch jelly roll pan. Empty coating mix into shallow bowl; add onion powder and mix well. Beat egg in large bowl with a fork; add water and blend. Moisten and coat chicken pieces as directed on package and arrange in the pan. Moisten and coat potatoes with remaining egg and coating mixtures. Arrange in pan. Fry in oven at 400° for 25 minutes.

**The Pro Shop**  
 at the Muleshoe Golf Club has  
 professional Ken Garrison  
 to show you a complete line of Golf  
 equipment and give group and individual  
 golf lessons.

**FARM**  
 SERVICE YOU CAN TRUST

For prompt service, Call: 272-3420

**SHOOK**  
 TIRE & SERVICE

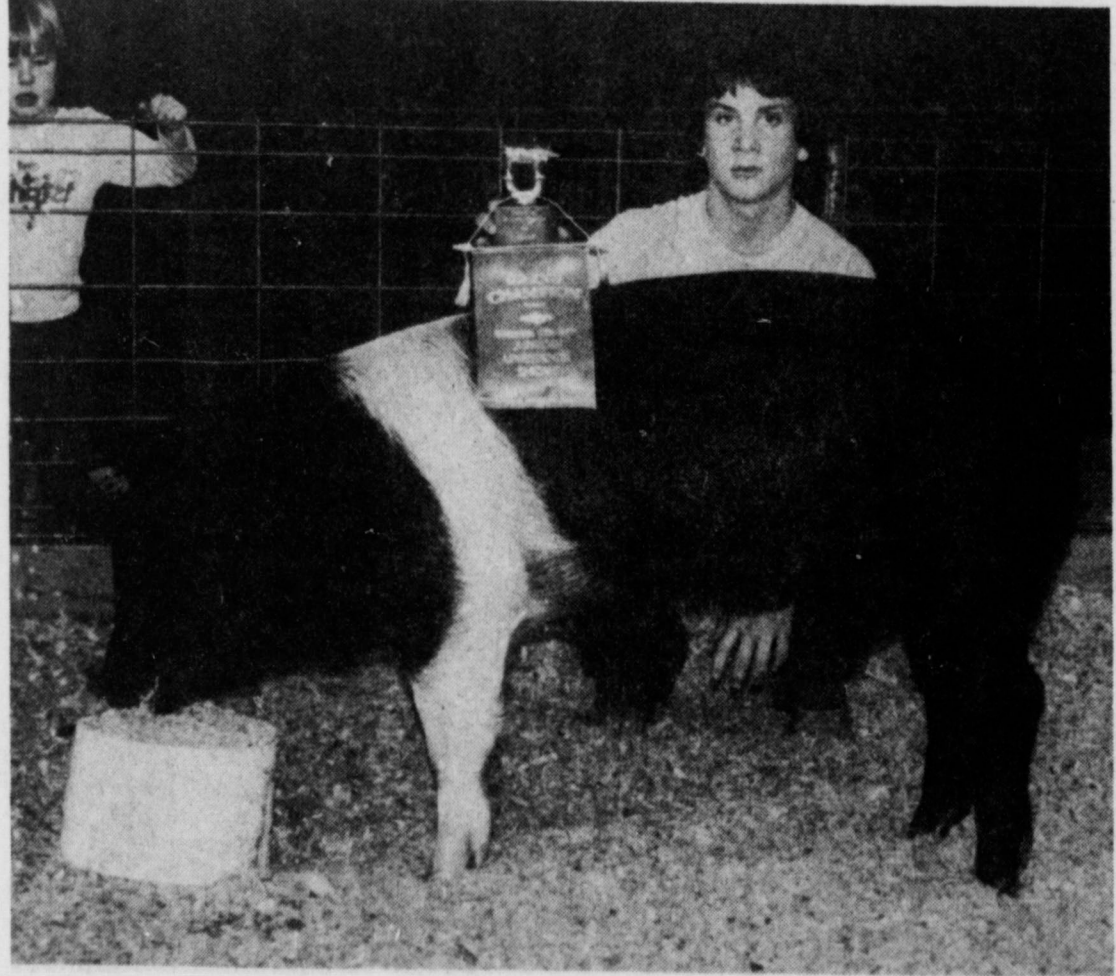
301 N. First • 272-3420  
 Manager: John Robinson

**agri-facts**  
 By Bill Wooley

Crystalballing agriculture five years down the road is risky, but agri-economist John Marten has done just that, and predicts some interesting developments. Export is the key word for 1985, given a hefty boost by a 250 percent overall increase during the last decade. Marten looks for total grain tonnage of at least 150 million metric tons at a total dollar volume of \$75 billion - at least. That may sound high, but the world is hungry, inflation will stay with us and the U. S. farmer has the ability to produce the crops. Marten predicts an eight to nine billion bushel corn yield in 1985, meaning average U. S. yields of 110+ per acre and, despite higher input costs, prices will remain strong enough to encourage production. Russia, Japan, China and Europe will continue to be major U. S. grain markets. Feed grain yields will increase by 2 percent per year, soybean acreage may increase only slightly and wheat acreage will continue to depend on price and set-aside decisions.

Wooley International, Inc.  
 Hwy. 84 Muleshoe

**Congratulations  
 Joe Dan Tarter**



GRAND CHAMPION BARROW.....Joe Dan Tarter, Lazbuddie FFA Member, won Grand Champion at the Parmer County Jr. Livestock Show, February 20, 1981, with his Crossbreed Barrow. North Lazbuddie Gin bought the animal at auction for \$2.00 a lb. Joe Dan is the son of Mr. and Mrs. Joe Tarter of Lazbuddie.

Sponsored by the following Civic Minded Merchants:  
 Western "66" Co.  
 1st National Bank  
 Muleshoe State Bank  
 Muleshoe Publishing Co.



**PLAY**  
 Game Tickets & Collector Cards available at the checkout counter. No purchase necessary.

**SHOP  
 RITE**

**WINNING  
 DEAL**

**IT COULD BE  
 A BIG DEAL  
 FOR YOU!**

Each of these advertised items is required to be readily available for sale at or below the advertised price in each store, except as specifically noted in this ad. We reserve the right to limit quantities. None sold to dealers.

**Round Steak**  
 Boneless Full Cut \$1.98/lb

**Round Steak**  
 Beef Full Cut Bone In \$1.88/lb

**Rump Roast**  
 Western Select Boneless \$2.59/lb

**Sliced Bacon**  
 Glover's Mkt. Style (Bulk) \$1.29/lb

**Chorizo**  
 Glover's 88¢

**Turkeys**  
 Butterball 95¢  
 12 lbs. or over

**Fruit Cocktail**  
 White Swan 16 oz. Can 2/99¢

**Cling Peaches**  
 White Swan Yellow Sliced or Halves 16 oz. Can 2/88¢

**Corn**  
 White Swan Whole Kernel or Cream Style 3/\$1

**Green Beans**  
 White Swan Cut 16 oz. Can 3/88¢

**Oranges**  
 10/\$1



### Increase In Mail Over Last Year

Tom Lobaugh, Muleshoe Postmaster, recently announced a 5.7 percent increase in mail compared to figures at this time last year.

"I had noticed it was taking longer for our carriers to get the mail out, so I began to study the situation," said Lobaugh. "Our city delivery has increased 10.3 percent making our total city/rural delivery approximately 33,000 letters every week."

The reason for this in-

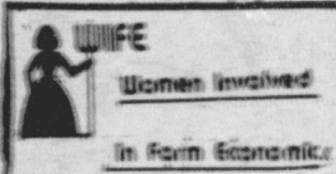
crease in mail according to Lobaugh, is a four percent increase in possible deliveries over last year. "Last year we had 1979 possible deliveries and this year we have 1992," he added.

Lobaugh had noticed a gradual increase over the five years he had been in Muleshoe, "but nothing this significant. The real increase has been over the last seven or eight months."

Asked if any changes would be made to accommodate this increase Lobaugh replied: "If the amount does not increase drastically there will be no changes, but if the amount continues to grow, there would be a possibility of adding another city route and a rural route."

#### Small Computation

Asking a woman her age is like buying a second hand car; the speedometer's been set back, but you can't tell just how far.



WIFE (Wives Involved In Farm Economics) met Friday night, February 20 at the 10th and Ave. D Church of Christ.

Jane Saylor, president, presided over the business meeting. Seven members and guests were present. Charlotte McLaughlin, State President, was a guest.

Plans were finalized to host an appreciation dinner for the Muleshoe merchants. The dinner is to be held Friday, March 6 at the Civic Center.

Some of the members took the book "Power of Parity" to area schools and suggested it be taught by the Ag teachers during Ag Week, March 15-21.

The next meeting will be held March 19 at 7 p.m. in the meeting room of Bailey County Electric.

### Enochs News By Mrs. J.D. Bayless

Supper guests in the home of Mr. and Mrs. Dennis Turney Sunday were her parents, Mr. and Mrs. Truman Nix of Littlefield.

Mr. and Mrs. Jerry Nichols and Kristen of Dell City came Sunday night and visited his parents, Mr. and Mrs. Dale Nichols.

One thing about West Texas, if you don't like the weather, just wait, it's very changeable. One day we had beautiful weather then a sandstorm and then the next day was cloudy with misted rain and snow flurries.

The Enochs Baptist Church revival begins Sunday, March 1 and goes through the 6th. Everyone is invited.

Andy Dunlap is very ill and a patient in the hospital in Lubbock.

Tom Bogard had eye surgery at St. Mary's Hospital in Lubbock Friday and came home that day.

Scenery may be interesting but it's the people that count.

### Reid Real Estate

## Do You Want To Buy A New Home?

If You Qualify, We Now Have 100% Financing With Closing Cost Not Included

### Call Today!

Thurcie Reid 272-3142  
George Nieman 272-3142 or 965-2488  
Dianne Nieman 272-3142 or 965-2488  
Lucille Harp 272-3142 or 272-4693

### EXTRA SPECIAL, SPECIAL

Five Point

## DOG FOOD

50 LB BAG 25 LB BAG

**9<sup>16</sup>** **5<sup>15</sup>**

Alert Cat Food **3<sup>45</sup>**

10 LB. Bag

### True Value Hardware

## MONTH

White Supplies Last

**now 9.44**

100-FT. OUTDOOR CORD

Three-wire weatherproof cord is UL listed and polarized for safety. Withstands hot sun and extreme cold.

401 S. 1st. Muleshoe 272-4511

## Springtime Savings

### 5/8" x 50 ft. All Weather HOSE \$7.45

Similar To Illustration

### Nelson Dial-A-Rain SPRINKLER

N-055A DIAL-A-RAIN®

- Uniform water coverage
- Unique heart-shaped cam eliminates puddling for uniform coverage in all 20 watering positions
- Click-Set 4 1/2" Dial
- High torque water motor designed to operate on even the lowest water pressure
- Gold anodized spray tube and base add years of long-lasting beauty
- 16 brass water jets wear longer than punched water openings
- Maximum coverage: 3,500 sq. ft. (53 x 66 feet) Effective coverage: 2,700 sq. ft.

### Garden Seed

10 Pkg \$1 For

### \$24.95 Regular 26.59

### Paramount No. SK160 Trimmer

Model SK-160

Our largest - 16-inch cut with Automatic Line Feed. Torque Booster Switch for extra power. Our toughest with a .750 HP Permanent Magnet Motor. Includes Adjustable helper handle. Power to spare for the toughest cutting, heavy weeds and grasses.

Special Sale Price **59.95** Regular 65.45

### Onion Sets

Red Or White Regular 99¢ Package

**69¢** Package

### MTD CHAIN DRIVE TILLERS

### 5 HP Chain Drive Tiller With Reverse \$350

Model No. 1001B

Carton Size 8" wide, 14" high and 28" long. Weight 57 lbs.

### MURRAY

The only real choice.

### Gas Lawn Mower

No. 2001

Regular **\$104.95**

118.00

### PRECISION GARDEN SEEDER

PLANTS 28 DIFFERENT VEGETABLE SEEDS WITH PRECISION.

Simple one step operation:

- Opens Soil
- Plants and spaces seeds
- Covers seeds
- Packs soil
- Marks next row

**\$39.95** Reg. 44.79

SIX SEED PLATES INCLUDED WITH EACH PRECISION GARDEN SEEDER:

- CORN 1/2" Spacing (Plate No. 1002-2)
- BEANS 1/2" Spacing Small Peas (Plate No. 1002-1)
- PEAS 1/2" Spacing and will plant Lima and Early June Peas (Plate No. 1002-1B)
- SPINACH 1/2" Spacing and will plant Leaf Spinach (Plate No. 1002-3)
- CARROT Uniform Spacing also will plant Parsnips (Plate No. 1002-2)
- BEETS 1/2" Spacing and will plant Chard (Plate No. 1002-2)

FOUR OPTIONAL SEED PLATES AVAILABLE

### Earn 5 1/4% Interest On All Your Money

## Write Checks, Earn Interest!

### NO SERVICE CHARGE

IF

You Maintain a \$500 Checking Account Balance.

OR

If You Are 65 Years Old Or Older.

OR

If You Maintain A Savings Account Of At Least \$10,000, Other Than Your Checking Account.

Tri-County SAVINGS AND LOAN ASSOCIATION  
Of Muleshoe, Texas



### Luella Taylor Services Held in Amherst

Funeral services for Luella Taylor, 83, of Amherst, were held at 2 p.m. Thursday in the Amherst First Baptist Church with Rev. Larry Sanders, pastor and Rev. Leonard Tittle, pastor of Amherst Church of Christ.

Interment was in Fairlawn Cemetery in Amherst under the direction of Hammons Funeral Home. Mrs. Taylor died at 5:10 p.m. Tuesday at Amherst Manor.

She was born in Greentop, Missouri and married

William F. Taylor, Sr. December 3, 1921 in Roosevelt, Oklahoma. She moved to Amherst in 1935 and was a member of the Amherst Baptist Church.

Survivors include her husband; one son, Bill of Muleshoe; one daughter, Mrs. J.C. Goodin of Tucson, Arizona; four grandchildren and three great grandchildren.

Pallbearers were George Washington, Jimmy Crawford, Raymond Duval, Gene Campbell, Charles Jones and J.C. Moreland.

### West Plains Medical Center Report

#### ADMITTED

February 23, Tammy Wall, Theresa Gonzales, J. J. McDonald, Patricia Jaime, Emmie Love, Elizabeth Jaime

February 24, Sandie Foster, Milfred Ratliff, Laura Andringa, Jason Brandon, Bamberett Sikes, Mandy Collins, Lynn Moore, Cynthia Contreras, James Duncan

February 25, Lorena Scott, Sandra Watson, Lula Embry, Sanford Stormes, Nael Reyes, Geraldine Meeks, Ronda McIntosh, Shien Hone

#### DISMISSED

February 23, Tina Galvan, Mary Ann Contreras, Priscilla Galevan, Sandra Gray

February 24, Evelyn Ziegenfuss, Espifania Sierra, Cesilia Merino and baby boy, Juan Gutierrez

February 25, Theresa Gonzales and baby boy, Jo Harmon, Tammy Wall

February 26, Noe Torres, Emmie Love, Dollie De Loach

#### True No Doubt

A brat is a child who acts like your own children do but lives up the street.

-Record, Columbia, S. C.

### Marlin Mills Claudine Elliot Win Tournament

February 22 the men and women of the Muleshoe Golf and Country Club completed a tournament. "The men's tournament was won by Marlin Mills with a birdie on the difficult number nine hole." Ken Garrison, golf pro said. "Jerry Harrison finished a close second and a fast finish and hard playing of Demp Foster gave him third place."

"The ladies may have had the most exciting race of the event with Claudine Elliott the champion. Accurate tee shots are attributed to the champions success. Overall good playing by Dixie Hodge brought her the runner up spot. Shirley Walker fought the wind with good iron shots and putting to take third place."

Jess Winn was referee for the men and Earl Richards for the ladies. Their professionalism was

an example to be followed by all who love the game of golf, Garrison added.

**Pass the Gaff**  
Father--"Daughter, isn't that young man rather fast?"  
Daughter--"Yes, but I don't think he'll get away."

#### ALGERIA & US

The government of Algeria, its reputation enhanced by its key role in freeing the U.S. hostages from Iran, has asked the Reagan administration to permit it to buy C-130 Hercules military transport planes.

#### CALLS OFF STRIKE

A union representing airline pilots called off a threatened strike next month after President Reagan agreed to name a task force to study how many pilots are needed to safely fly the newest airliners.

## ROLL ON AMERICA!

**BIG \$500 CASH REBATES**  
ON  
1981 CITATIONS and CHEVETTES

**BIG \$700 CASH REBATES**  
ON  
1981 MONTE CARLOS and CAMAROS

CASH REBATE OFFER GOOD THRU MARCH 19, 1981  
ALL OTHER MODELS ALSO DISCOUNTED

ROY WHITT CHEVROLET

201 MAIN ST. MULESHOE, TX. 272-4521

## Believe It or Not Brown Seed

will open

Monday

March 2, 1981

Potato Seed Red & White

Onion Sets & Plants

all vegetable seeds. (bulk)

Paymaster & Trojan

corn, milo etc.

**Brown Seed**

2015 w. W. American Blvd. 272-3335

**True Value**  
HARDWARE STORE

**BARGAIN OF THE MONTH**

QUANTITIES LIMITED

**COSCO**

White Supplies Last

now **10.99**

**LIFT-UP SEAT STEP STOOL**

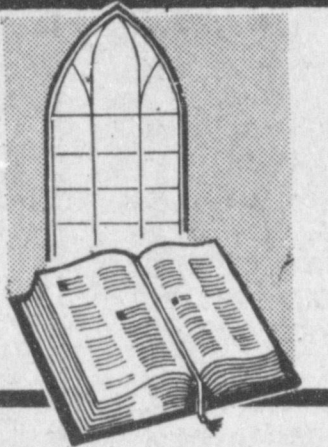
Flip up hinged seat to use 2 safety-tread steps. 24-in. high, brown vinyl-upholstered seat, enamel trim; chrome frame. 11-229

401 S. 1st.  
Muleshoe  
272-4511

**COX**



## ATTEND THE CHURCH OF YOUR CHOICE



**MULESHOE ASSEMBLY OF GOD**  
517 S. First  
Rev. James Golaz

**EMMANUEL BAPTIST CHURCH**  
Iglesia Bautista Emmanuel  
107 E. Third  
Isaias Cardenas, Pastor

**RICHLAND HILLS BAPTIST CHURCH**  
17th and West Ave. D  
Brock Sanders Pastor

**SPANISH BAPTIST MISSION**  
East Third and Ave. E  
Rev. Aradio Gonzalez

**TRINITY BAPTIST CHURCH**  
314 Ave. B  
Don Knight, Pastor

**LONGVIEW BAPTIST CHURCH**  
Phone 946-3413  
B.C. Stonecipher, Pastor

**SIXTEENTH AND AVE. D CHURCH OF CHRIST**  
James Johnson, Pastor

Sunday - 10:30 a.m.  
Evening - 6 p.m.  
Wednesday - 8 p.m.

**PROGRESS BAPTIST CHURCH**  
Danny Jackson  
Progress, Texas

**NORTHSIDE CHURCH OF CHRIST**  
117 E. Birch Street

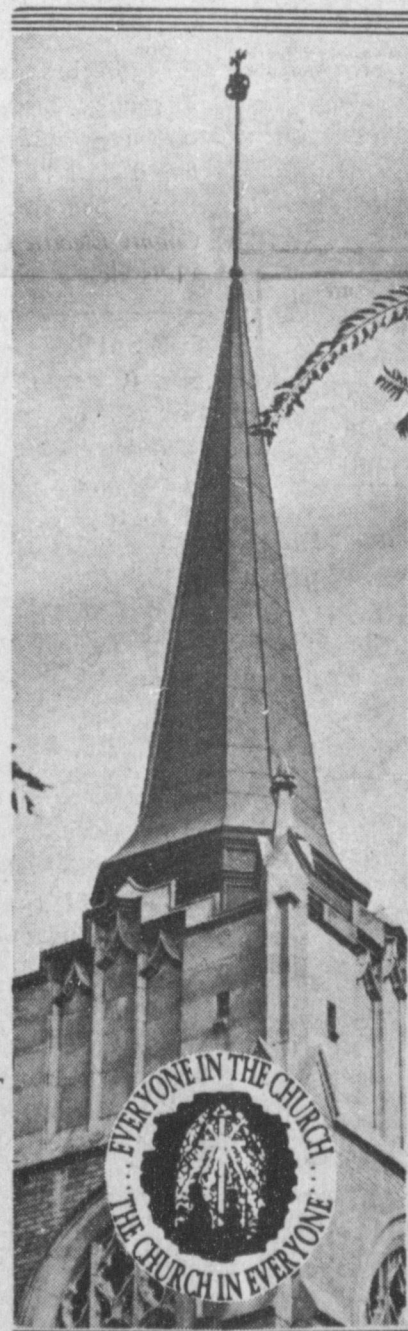
**SPANISH ASSEMBLY OF GOD**  
East 6th and Ave. F  
Rev. Hipolito Pecina

**UNITED PENTECOSTAL GOSPEL**

**LIGHTHOUSE CHURCH**  
207 E. Ave. G  
George Green, Pastor

**MULESHOE BAPTIST CHURCH**  
8th Street and Ave. G  
Bob Dodd, Pastor

**FIRST BAPTIST CHURCH**  
220 West Ave. E  
Rev. J.E. Meeks

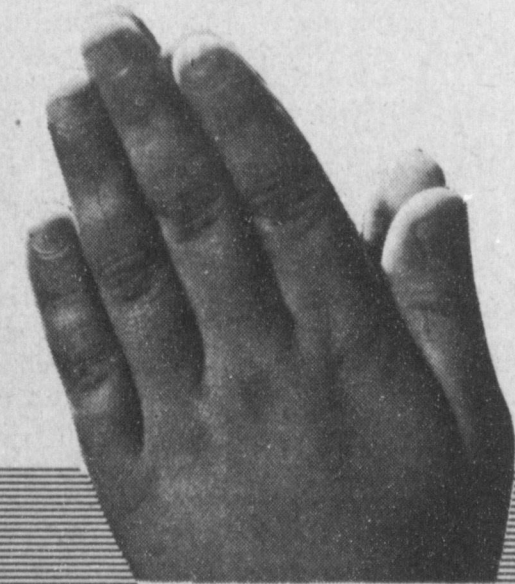


### A PLACE TO PRAY

Man can, and should, pray anywhere. God has placed no limitations on his communing with him.

Our Lord has said, "... Ask and ye shall receive." God listens when we seek him, no matter where, however he desires that we gather together in prayer too. "... mine house shall be called an house of prayer for all people."

The Church is God's appointed agency in this world for spreading the knowledge of His love for man and of His demand for man to respond to that love by loving his neighbor. Without this grounding in the love of God, no government or society or way of life will long persevere and the freedoms which we hold so dear will inevitably perish. Therefore, even from a selfish point of view, one should support the Church for the sake of the welfare of himself and his family. Beyond that, however, every person should uphold and participate in the Church because it tells the truth about man's life, death and destiny; the truth which alone will set him free to live as a child of God.



**CHURCH OF THE NAZARENE**  
Ninth and Ave. C  
David Gray, Pastor

**FIRST CHRISTIAN CHURCH**  
130 W. Ave. G  
Rev. Walter Bartholf  
Sunday School 10:00 a.m.  
Worship 11:00 a.m.

**LATIN AMERICAN METHODIST MISSION**  
Ave. D and Fifth Street  
R.Q. Chavez, Pastor

**THE COMMUNITY CHURCH**  
Morton Highway  
H.D. Hunter, Pastor

**CALVARY BAPTIST CHURCH**  
James Williams, Pastor  
1733 W. Ave. C

**PROGRESS SECOND BAPTIST CHURCH**  
Clifford Slay, Pastor  
1st and 3rd Sundays

**FIRST UNITED METHODIST CHURCH**  
Rev. Bill Kent  
507 West 2nd, Muleshoe

**ST. JOHN LUTHERAN**  
Lariat, Texas  
Herman J. Schelter, Pastor  
Sunday School - 10 a.m.  
Worship Service - 11 a.m.

**PRIMITIVE BAPTIST CHURCH**  
621 South First  
Elder Bernard Gowens  
**MULESHOE CHURCH OF CHRIST**  
David Cox, Minister  
Clovis Highway

**JEHOVAH WITNESS**  
Friona Highway  
Boyd Lowery, Minister

**IMMACULATE CONCEPTION CATHOLIC CHURCH**  
Father Patrick Mahar  
Northeast of City in Morrison Edition

**ST. MATTHEW BAPTIST CHURCH**  
Corner of West Boston and West Birch  
Rev. M.S. Brown, Pastor

### Remember Now So You Can Remember Then.

A Professional  
8 x 10 Color Portrait  
For 88 Cents

In addition to our Regular Offer, Now You Can Get An Exciting 10x13 Dual-Image Portrait! Ask photographer for details.



Portraits Back in Time For Easter

March 5-6-7 Thursday,

Friday & Saturday

10a.m.-6p.m.

Sat. 10a.m.-5p.m.

### PERRYS

88¢ per sitting. No charge for additional group subjects. One special per person. Backgrounds may occasionally change. Remember, children must be accompanied by parent. Satisfaction always or your money cheerfully refunded.



<b>Bratcher Motor Supply</b> 107 E. Ave. B 272-4288	<b>Muleshoe Publishing Co.</b> Muleshoe 272-4536	<b>White's Cashway Grocery</b> Where Friends Meet & Prices Talk	<b>Bailey County Memorial Park</b> "Every Service A Sacred Trust" 272-4383
<b>Dairy Queen</b> Margie Hawkins, Manager 272-3412	<b>Good News Book Store</b> 106 E. Ave. B. Bibles, Music, Books	<b>Dent-Rempe Implement Co.</b> John Deere Dealer 272-4297	<b>Dari-Delite Drive In</b> Take Out Orders 210 N. First 272-4482
<b>Western Drug</b> 114 Main 272-3106	<b>James Roy Meat Market Co.</b> 506 W. Amer. Blvd. 272-4361	<b>Muleshoe Co-op Gins</b>	<b>First National Bank</b> "Home Owned" 202 S. 1st 272-4515
<b>Baker Farm</b>	<b>Roy Whitt</b>	<b>Western Sprinklers</b>	<b>Lambert Cleaners</b>



**BUY  
SELL  
AND  
TRADE  
WITH...**

# Classified Ads

**Deadline For Classified Ads Is 11:00  
Tuesdays And Fridays**

**CLASSIFIED RATES**  
1st Insertion,  
Per Word--\$.15  
Minimum Charge--  
\$2.00  
2nd Insertion,  
Per word--\$.13  
3rd Insertion,  
Per Word--\$.10  
Minimum Charge  
\$.80  
1/3 Cheaper to run  
Classifieds 3 times or more  
**CARD OF THANKS**  
25 words--\$3  
Over 25 words  
charged at regular  
classified rates  
Classified Display--  
\$.155 per column inch  
Double Rate for  
Blind Ads  
**DEADLINE FOR  
INSERTION**  
11 a.m. Tues. for Thurs.  
11 a.m. Fri. for Sun.  
**WE RESERVE THE  
RIGHT TO CLASSIFY  
REVISE OR REJECT  
ANY AD.  
NOT RESPONSIBLE  
FOR ANY ERROR  
AFTER AD HAS RUN  
ONCE.**

**1. PERSONALS**

**WE BUY  
USED FURNITURE AND  
APPLIANCES  
CALL 272-3030  
HARVEY BASS  
APPLIANCE**  
1-18s-tfc

**PHOTOGRAPHY BY  
OECIA**

For a lifetime of memories,  
let us put your wedding in  
beautiful pictures. Call  
Oecia for your date.  
385-5169, 512 Phelps, Lit-  
tlefield, Tx. 79339.  
1-6s-tfc

Piano Lessons  
272-3229  
Experienced  
1-7t-tfc

Reduce safe & fast with Go  
Bese Tablets & E-Vap  
"water pills" at Damron  
Drug.  
1-8s-2sp

If anyone knows the  
whereabouts of Wilton Ed  
Blackshaw, call 272-3668.  
1-9s-2tc

**Card of Thanks**

Words cannot express  
our deep appreciation for  
the kindness and sympathy  
in the loss of our daddy.  
We want to extend a spe-  
cial thanks to Rev. James  
Williams, Dr. Gary Albert-  
son, and the nursing home  
and it's staff for their  
concern for our loved one.  
We also want to thank  
our many friends for the  
food, flowers, and cards,  
the kindness shown us in  
our time of sorrow.  
God bless each and ev-  
eryone of you.  
The Parker Family  
1-9s-1tp

**Littlefield Medical Center is offering for part-time and  
full-time RN's and LVN's:**

- Mileage allowance paid monthly
  - Generous shift differential
  - New salary scale
  - Small hospital setting with informal working environment
  - Tuition reimbursement for continuing education
- Call or Write:  
Littlefield Medical Center  
1500 S. Sunset  
Littlefield, Texas 79339

**3. HELP WANTED**

Muleshoe Country Club is  
taking applications for per-  
manent employment as  
lounge waitress. Contact  
business office, 272-4250.  
3-9t-tfc

Open territories available  
for Avon representatives.  
Person must be neat and  
energetic, willing to work,  
15 to 20 hours per week.  
For details call Oneida at  
272-3346.  
3-7s-tfc

Visiting Nurse Service, Inc.  
in Lubbock accepting ap-  
plications for Licensed Vocational Nurse in Muleshoe  
area -- Mon.-Fri. from 8-5  
Contact Lee Battey R.N.  
793-9067.  
3-7s-8tc

Good Pay working from  
home, processing mail for  
us. No experience re-  
quired. Part or full time.  
Start immediately. For in-  
formation and application,  
send stamped, self-  
addressed envelope to:  
Colfax Publications, Box  
1135, Newberry, Florida  
32669.  
3-9s-12tc

**HELP WANTED:** Beauty  
operators in new facility  
with good working con-  
ditions. Apply in person at  
1002 North Main, Friona,  
Texas 79035 or call  
247-2210 from 9-6.  
3-7t-tfc

**4. HOUSE FOR RENT**  
House for Rent in Mule-  
shoe. 2000 square feet, 3  
bedroom, 2 bath, dining  
room, den and fireplace,  
refrigerated air conditioned  
1733 W. Ave. B. Call  
272-4811 or 272-4661.  
4-7t-tfc  
Two - 3 bedroom houses on  
farm for rent. 272-4642.  
4-7t-tfc

**Office Space  
For Rent  
Call 272-5512**

**For Rent  
Offices for Rent  
302 W. 2nd  
272-3107**

**Storage Rooms  
FOR RENT  
\$15-\$25  
TED BARNHILL 272-4903  
6-9s-2tsp**

**5. APTS. FOR RENT**

Furnished apartment for  
rent in Muleshoe. 3 large  
rooms and bath. Remo-  
deled with all new carpets  
and paneling. \$225.00  
month - plus \$100.00 de-  
posit. All bills and TV  
cable paid. Call Mrs. L.W.  
Routon at Farwell  
1-825-3555.  
5-9t-2tp

**J.B. SUDDERTH  
REALTY INC.  
Box 627  
109 Fifth St.  
Farwell, Texas 79325  
Phone (806) 481-3288  
or 481-9149**

148 Acres irrigated on  
highway. Lays good  
with super nice, extra  
large 4 bedroom, 3  
bath brick home. 2  
miles south of Bovina.

60 Acres west of Mule-  
shoe on highway. One 6  
inch well, side - roll  
sprinkler. Steel build-  
ing. 2 sets of nice im-  
provements.

160 acres northwest of  
Muleshoe, 2 wells, lays  
good on FM highway.  
8-49s-tfc

**TOWN and  
COUNTRY  
REAL ESTATE**  
FARMS RANCHES HOMES  
JOHN W. SMITH, Broker  
806 272-4678 or 272-3725

Brick home has 3 bed-  
rooms, 2 baths, 2 car  
garage. Good location.  
\$55,000.

Large home has 3 bed-  
rooms, 2 baths, living-  
room, dining room and  
den. Franklin fireplace,  
refrigerated air. Good  
buy \$39,990.

Stucco house has 3  
bedrooms, 2 baths, new  
paint inside and out and  
new carpet. \$27,500.  
8-9s-tfc

**KREBB'S  
REAL ESTATE  
201 W. Avenue C  
272-3191**

Lots and acreages 10  
percent down.

2 Section wheat and  
grass - priced right.

Beautiful 2 bdr. home -  
good location.

30,000 A. ranch - good.

300 A. Alfalfa - 2  
sprinklers

160 A. Wheat - Sprin-  
kler - on pavement.  
We appreciate your  
listings.  
Have Buyers Waiting.  
8-8s-tfc

**FOR SALE BY OWNER:**  
Nice 2 bedroom, house  
close to schools. Call after  
6 p.m. 272-4325.  
8-9t-8tp

**FOR SALE:** 2 houses on  
1-55A. Small down pay-  
ment. Owner will carry the  
papers. Call after 7 p.m.  
927-5356.  
8-9t-2tp

**HOUSE FOR SALE BY  
OWNER**

Approximately 2000 feet  
under roof, 3 bedroom, 2  
full baths. By appointment  
only. 272-3344.  
8-8t-5tc

3 bedroom home, newly  
remodeled, 807 W. Ave. J  
Call 272-3549 after 4 p.m.  
8-7t-tfc

**FOR SALE:** 3 bedroom, 2  
bath, home

**SMALLWOOD  
REAL ESTATE  
232 Main 272-4838  
Joe and Ricky  
Smallwood**

96 acres, 3 miles north-  
west of Muleshoe, elec-  
tric circular sprinkler.  
Will take house in trade

160 acre farm, 5 miles  
from Muleshoe on 1760.  
2 wells, water drive  
Valley Sprinkler.

170 acres of irrigated  
land for cash lease.

323 W. Ave. E, 3 bed-  
room, 2 bath, living  
room, kitchen and  
dining area.

Large duplex, 913 and  
915 East Fir. Each unit  
has 2 bedrooms, 2 bath,  
living room and den.  
Small down payment

*We need listings.*  
See or call Joe or Ricky.  
8-4t-tfc

110 acres east of Muleshoe  
on Hwy. 70. 5000 sq. ft.  
buildings, including excel-  
lent office space, large  
paved parking area, 2 mo-  
bile home hook ups, small  
corrals with sprinkler ir-  
rigated pasture, 90 acres  
irrigated farm land. Great  
potential and priced to sell  
at \$150,000. Call 965-2627.  
8-6s-12tc

**For all your real estate  
needs call:  
GLAZE & GOFORTH  
112 Ave. C  
272-4208**  
8-11-tfc

**We Want Your  
Business  
"Remember"  
REID REAL ESTATE  
1614 W. American Blvd.  
Henry C. Reid, Broker  
Just listed--Spacious 3-  
2 1/2 home, over 2700  
sq. ft. of living area,  
Central A & H, and a  
fireplace too. Priced to  
sell.**

Sorry, but I missed this  
one. 3844 1/2 in quiet  
neighborhood.

Charming 2-1 with a  
carport and fenced  
yard. See to believe.

Reduced to \$17,000.  
would make excellent  
rental.

In Parkridge Addition,  
3-2-2 with a fireplace  
and fenced yard. Under  
\$70,000.

**FARMS**  
Parmer Co. - 320 acres-  
1-10" & 1-8" well, 2  
circles, good productive  
land. 29 percent down,  
8 percent financing.

Bailey Co. - 160 acres-  
2-6" wells, 1/2 mile  
undgrd. tile, lays per-  
fect.

Parmer Co. - 280 acres-  
1-8" & 1-6" well, 1  
circle, 2 siderolls, Mod-  
erate down & assume  
low interest loans.

Parmer Co. - 1275 acres  
4-8" wells, 2 circles,  
with excellent improve-  
ments.

*George Nieman  
Manager-272-3142 or  
965-2488  
Thursie Reid-272-3142;  
Dianne Nieman-272-3142  
or 965-2488;  
Lucille Harp-272-4693.*  
8-8s-tfc

*Just Reward  
Real wealth comes to  
the guy who learns he is*

**10. FARM EQUIP.  
FOR SALE**

6 rows Gandy insecticide  
spreaders, for Temik.  
Electric driven, extra  
motor.  
Wyle Spray Rig: 200 gallon  
tank, Hyd. pump. Call  
925-6766 nights.  
10-9t-tfc

**11. FOR SALE  
OR TRADE**

New 1981 18 ft. and 19 ft.  
Sea Arrows. See at Friona  
Boat Company at Reeves  
Chevrolet, Olds in Friona.  
806-247-2774.  
11-3s-tfc

**Treflan, Proul,  
Atrazine, etc.  
Save At  
Watson Chemical  
272-4737**  
11-15-TFC

**FOR SALE:** 11 year old  
registered Quarter Horse  
Mare, good brood mare or  
kid horse. Excellent blood  
lines.  
6 year old registered Paint  
Gelding. Great kid horse,  
very gentle. Trained in  
Western Pleasure. Call  
806-933-4387 after 7 p.m.  
11-9s-1tsp

**HOUSEHOLD GOODS**  
FOR SALE: 2 mechanical  
Victor calculator, 1 Fricden  
calculator - \$25 each. Also  
6'X10' dark brown wooden  
table - \$75. See at Bailey  
County Electric Co-op.  
11-9s-3tc

**FOR SALE:** Hammond Or-  
gan (Codette). Two key  
board, auto, rythm. Good  
condition. Call 946-3368  
after 4 p.m.  
11-9t-2tp

Pink and green couch and  
green love seat -- Like  
new. Rockwood fold out  
camper. Sleeps 7. Call  
272-3881.  
12-8t-tfc

**BURROWS  
UPHOLSTERY AND  
FURNITURE REPAIR  
118 W. Ave. C  
In the rear  
Phone 272-4255**  
12-39s-tfc

**TRADEWINDS PLAZA**  
A few custom designed  
retail or office space  
left. Now's the time to  
put in that shop you  
always dreamed of (re-  
gardless of size). Come  
down to 800 W. Ameri-  
can Blvd. and let us  
show you around and  
acquaint you with our  
growing family of  
friendly shop owners.  
We believe you will like  
what you see and agree  
that this is the place to  
start a business. Call  
272-5180 or 965-2471.  
13-3s-tfc

**14. FARM PROPERTY  
TO RENT**

**FOR RENT:** 350 A irri-  
gated sandy land farm,  
3-8" wells, natural gas, 9  
miles south of Muleshoe.  
Will pay 1/3 fertilizer.  
320 A dry land farm. 3  
miles west of Bird Sanctu-  
ary at Muleshoe. 806/  
655-2104 or after 6 p.m.  
655-3124.  
14-9t-2tc

**15. MISCELLANEOUS**  
Want a propane system?

Lose weight safely, ef-  
fectively with *Dex-A-Diet*.  
Enter now in \$25,000  
Sweepstakes at Western  
Drug.  
15-9t-4tp

Surplus Jeep value \$3196--  
sold for \$44. Call 312/  
742-1142 ext. 794 for in-  
formation on how to pur-  
chase bargains like this!!  
15-3t-tfc

**WATERLESS  
COOKWARE**  
Home demonstration kind.  
Lifetime guarantee. Still in  
box. \$250. 1-303-574-4345.  
15-9t-4tp

**Gage Construction  
Bob Gage**

Specialize in Custom  
Fireplaces  
Phone 272-5240  
Or  
272-5105  
at Muleshoe  
Home Center  
213 S. 1st  
Muleshoe, Texas  
15-4s-tfc

**STATE FARM  
Auto  
Life Fire  
INSURANCE**  
FOR INSURANCE CALL

F.L. NEWTON, Agent  
128 East 10th - Box 749  
Littlefield, Texas 79339  
Phone: Bus. 806 385-3055

**Like a good neighbor,  
State Farm is there.**  
State Farm Insurance Companies  
Home Offices, Bloomington, Illinois  
SIFC

**of interest to  
VETERANS**

Ex-service people separated  
from service during 1975  
after 18 months or more of  
active duty had better hurry  
to benefit from their full  
GI Bill education entitle-  
ments. They're eligible for  
45 months of educational  
assistance, but it must be  
completed within 10 years of  
honorable discharge.

Veterans who received less-  
than-honorable discharges  
prior to 1966 have until this  
April 1 to apply for review  
and possible correction of  
their records. After that,  
the 15-year deadline on apply-  
ing for review takes effect.

Veterans can get more in-  
formation and assistance from  
any American Legion Post or  
Veterans Administration  
Office. --Michael J. Kogut-k,  
National Commander.


Lady Bee at Earth is  
now carrying  
**SCULPTRESS BRAS.**  
Call 252-3748.  
15-26s-stfc

**FRANK'S  
REFRIGERATION  
APPLIANCE & SERVICE  
PARTS & REPAIR**  
315 W. 3rd Ph. 272-3822  
15-7t-tfc

**Rent-to-Own  
Color TV**  
Washers Dryers Refrigerators  
No Service Expense No Interest To Pay  
**Wilson**  
Appliance  
117 MAIN MULESHOE 272-6631

**Oil & Filter Change  
with  
Lubrication  
\$9.99**  
Here's what we do:  
\*Drain old oil \*Install up to 5 qts  
of Whites 10W40 oil \*Install  
Whites oil filter \*Complete  
chassis lubrication (Fittings extra  
if needed) \*Whites safety check  
**Poynor's White Store Inc.**  
SIFC

**True Value  
HARDWARE STORE**



**AUTO BATTERY**  
Designed to be maintenance free under all normal driving conditions. Exclusive Triloy® grids deliver maximum starting power, greater reserve capacity. 24-24  
\$29.8

**AUTO BATTERY**  
Designed to be maintenance free under all normal driving conditions. Exclusive Triloy® grids deliver maximum starting power, greater reserve capacity. 24-36  
\$39.8

**TRACTOR BATTERY**  
**AUTO BATTERY**  
Designed to be maintenance free under all normal driving conditions. Exclusive Triloy® grids deliver maximum starting power, greater reserve capacity. 24-60  
\$79.8

**TRACTOR BATTERY**  
**AUTO BATTERY**  
Designed to be maintenance free under all normal driving conditions. Exclusive Triloy® grids deliver maximum starting power, greater reserve capacity. 24-60  
\$49.8

**All Batteries With Exchange**  
All Other Batteries 10% off

**H&R BLOCK  
TAX TEST  
Question No. 1**

It is too late to claim a deduction or credit overlooked on a 1977 tax return.  
 True  False  
If you know about amending a tax return, you probably know the answer. If you don't, maybe you need H&R Block. Because H&R Block knows tax laws that you might not know. You can amend a tax return for overlooked deductions and credits up to three years after the filing deadline. So the the answer to the question is FALSE.

**WE'LL MAKE THE TAX LAWS  
WORK FOR YOU**  
**H&R BLOCK**  
THE INCOME TAX PEOPLE  
224 W. 2nd St.  
272-3332  
Weekdays 9-6  
Saturday 9-5





**FEBRUARY BIRTHDAY'S**.... Six residents of the Muleshoe Nursing Home celebrated their birthdays Thursday at the nursing home. The Needmore Community Club hosted a birthday party in their honor. Flowerland provided corsages for each of those having birthdays. Pictured standing from left Russ Duncan, born Feb. 20, 1904; Rosemary Pool, born Feb. 15, 1936; seated, Chellie Bradley, born Feb. 26, 1899; Marie Engram, born Feb. 12, 1916 Ruby McCamish, born Feb. 17, 1905.

### World Day Of Prayer

Friday, March 6th is World Day of Prayer. Women of 150 countries and islands throughout the world will gather in prayer to worship God as the Creator and Sustainer of the Earth and to pray for

the healing and fruitfulness of the Earth. Local services will be held at 7:00 p.m. on Friday, March 6th in the chapel of the First United Methodist Church, Muleshoe.

This year's international service was written by Christian American Indians from six tribes -- Cherokee, Choctaw, Hopi, Seneca, Sioux and Winnebago.

They drew upon scripture and the rich religious heritage of the American Indians for this meditation on the theme, "The Earth Is The Lord's."

Church Women United, official sponsor of World Day of Prayer in the United States, is a national ecumenical movement of Christian women who witness to their faith and unity in Jesus Christ through worship, study, action and celebration. Offerings on World Day of Prayer will be used to support programs and projects which are concerned with hunger, housing, health, education, environment, family stability, employment, justice, peace and human rights.



You may be able to tenderize a tough day at the office with tea. Many people keep immersion coils in their desk drawers to enable them to brew a soothing cup of hot tea when the going gets rough. When you lunch or dine at your desk a cup of tea can help draw off some of your fatigue and feelings of being under pressure.

### WOTS Weekly Meeting

The WOTS (Women Of Talk Station) met for a luncheon Thursday, February 26 at 11:30 a.m. at the XIT Restaurant. Members present were Kay Madry, Mildred Williams,

Doris Williams of Earth, Lois Martinec, Dee Merryman of Sudan, Nora Flanary, Jerry Chapman and Jackie, Millie Mitchell, Zellma Toler, Elsie Gregory, Betty Barker, Donnita Crowder, Theresa Todd and a new member, Mary Ann Ramirez.

Next week the luncheon will be held in the Community Room of Tri County

Savings and Loan. Helen Williams and Betty Barker will be the hostesses.

For more information on WOTS you may call Mildred Williams at 272-5260 or Lois Martinec at 272-3019.

**Always**  
"Ma, what's a second-story man?"  
"Ask your father. If I don't believe his first tale, he always has a second."

**Pre-Register Now!**  
For six week sessions on nutrition and behavior modification.

Classes will begin March 5

Contact Jama Brown  
272-5487



# This Suit Won't Take You To The Cleaners

**HAGGAR**

## Haggar® Washable Suit

# \$97

Coat \$70  
Slack \$27

An unbelievable suit from Haggar®...the washable "Magic Stretch"® suit! Made of 100% stretch polyester, it's got to be one of the most comfortable suits ever. You can machine wash and dry it - and it always looks great! In Tan, and Blue, Expandomatic® slacks in sizes 32-42; coat in sizes 36-46.

• Vests also Available  
• Layaway now for Easter



321 Main Street  
Muleshoe, Tx  
Open 9 to 6

# Anthony's

C. R. ANTHONY CO.

**Campbell Irrigation Systems**  
has a 7 year lease with a true interest of 10.95% which ends April 1, 1981.

Special price in conjunction with this lease.



604 N. 1st 272-5536

A money-saving <sup>making</sup> tip for cotton growers . . .

### Hedge your fertilizer investment at plow down.

Instead of applying all your fertilizer at plow down, consider the efficiency and potential of a side-dress application of NA-CHURS Liquid Fertilizer at first cultivation — after you know you have a stand. Unlike a plow down application, none of the fertilizer is wasted in the

skips, because NA-CHURS Liquid Fertilizer is strategically placed for quick uptake and utilization by the young plants. The result: vigorous, fast-growing plants with more resistance to adverse weather and disease.

#### SPECIAL 16-4-4-8 FORMULATION FOR SIDE-DRESS APPLICATION.

This complete NPK + Sulfur formulation has been used by many satisfied growers right here in the High Plains. And yield-boosting chelated micronutrients can be added, as indicated by your soil analysis.

#### IMPORTANT EXTRA SERVICES — AT NO EXTRA COST.

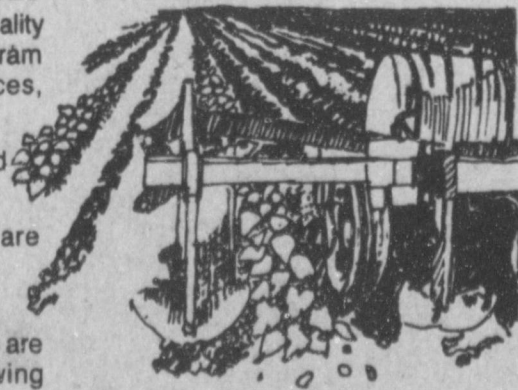
In addition to a premium quality product, the NA-CHURS program includes these special services, without extra charge:

- Soil samples are analyzed in NA-CHURS laboratories.
- Fertility recommendations are made by NA-CHURS staff agronomists.
- Leaf analysis and tissue tests are taken throughout the growing season, as required.
- Follow-up scouting service by your NA-CHURS representative helps your crop reach full-yield potential.

And remember, special discounts and credit terms are an

important part of the NA-CHURS program.

This year, you can skip fertilizer waste in solid and skip-row cotton. Call today for full details on this program that is aimed at providing optimum value for your fertilizer dollar.



Ron Kidd