

Deadline for submitting material to *The Clarendon News* is Monday at 5:00 p.m.

Don't forget to vote August 10th!

40¢

Clarendon: Oldest THRIVING Town in

The Clarendon News

Dedicated to Fair and Impartial Reporting

USPS 947040 ISSN 1048-8170

Volume 2, Number 32

Thursday, August 8, 1991

Crossing Funds Endangered by Budget Cuts

According to an article in *The Signal*, the publication of Texas' Operation Lifesaver Program, a proposal by the Bush Administration would reduce the funds available for making grade crossings safer. Excerpts of the article are given below:

William H. Dempsey, president of the Association of American Railroads, told the House Energy and Commerce Committee's Subcommittee on Transportation and Hazardous Materials that the number of injuries and fatalities attributable to crossing accidents also dropped, by 34 percent.

The number of rail-highway crossing accidents nationwide decreased by nearly half between 1980 and 1990, a congressional panel was told June 12.

But, government funding of grade crossing improvements is in jeopardy, warned Mr. Dempsey.

"The Administration has proposed to consolidate highway grant programs, including the rail-highway grade crossing program, in block grants. Should this block grant approach be adopted, there are genuine fears that actual funds spent on crossing projects will decrease substantially because grade crossing projects will lose out to other highway projects more politically appealing to the states," he said. "Any reduction in the \$160 million Congress had annually appropriated in the last few years for grade crossing improvements would be an unfortunate reversal for the cause of safety."

Railroads annually invest \$200 million on grade crossing improvements and maintenance projects. In addition, Congress has appropriated \$160 million annually since 1987 for improvements.

"However," noted Mr. Dempsey, "railroad payouts as a result of grade crossing claims and suits increased 97 percent and the number of injuries and per grade crossing accident increased 24 percent. These latter statistics show that railroads and the state and federal governments must continue efforts to improve the safety of highway-rail grade crossings."

The money for the Ayers Street crossing in Clarendon is already appropriated, so presumably the change would not have any impact on it. However, the administration proposal would probably make it more difficult to get signal on other dangerous crossings in Donley County in the future.

Fishing Report

The Texas Parks & Wildlife reports that fishing at Lake Greenbelt is good. The water is clear, 79 degrees, normal level; black bass are good to 5 1/2 pounds on spinners; crappie are fair to 1 pound each to 6 fish per string on minnows; white bass are fairly good to 15 fish per string to 1 1/2 pounds each on minnows; blue catfish are excellent to 17 1/2 pounds on liver; channel catfish are fair with a few

Attention: Kids of All Ages

Boys, girls, men and women, Saturday, Aug. 10th from 3:00p.m. - 8:00p.m. at the school playground, we are having a Back to School Bronco Bash.

There will be a dunking booth with coaches and teachers as the "victims." A back seat driver-obstacle driving course. For licensed operators only. For the younger drivers a Hot Wheels obstacle course.

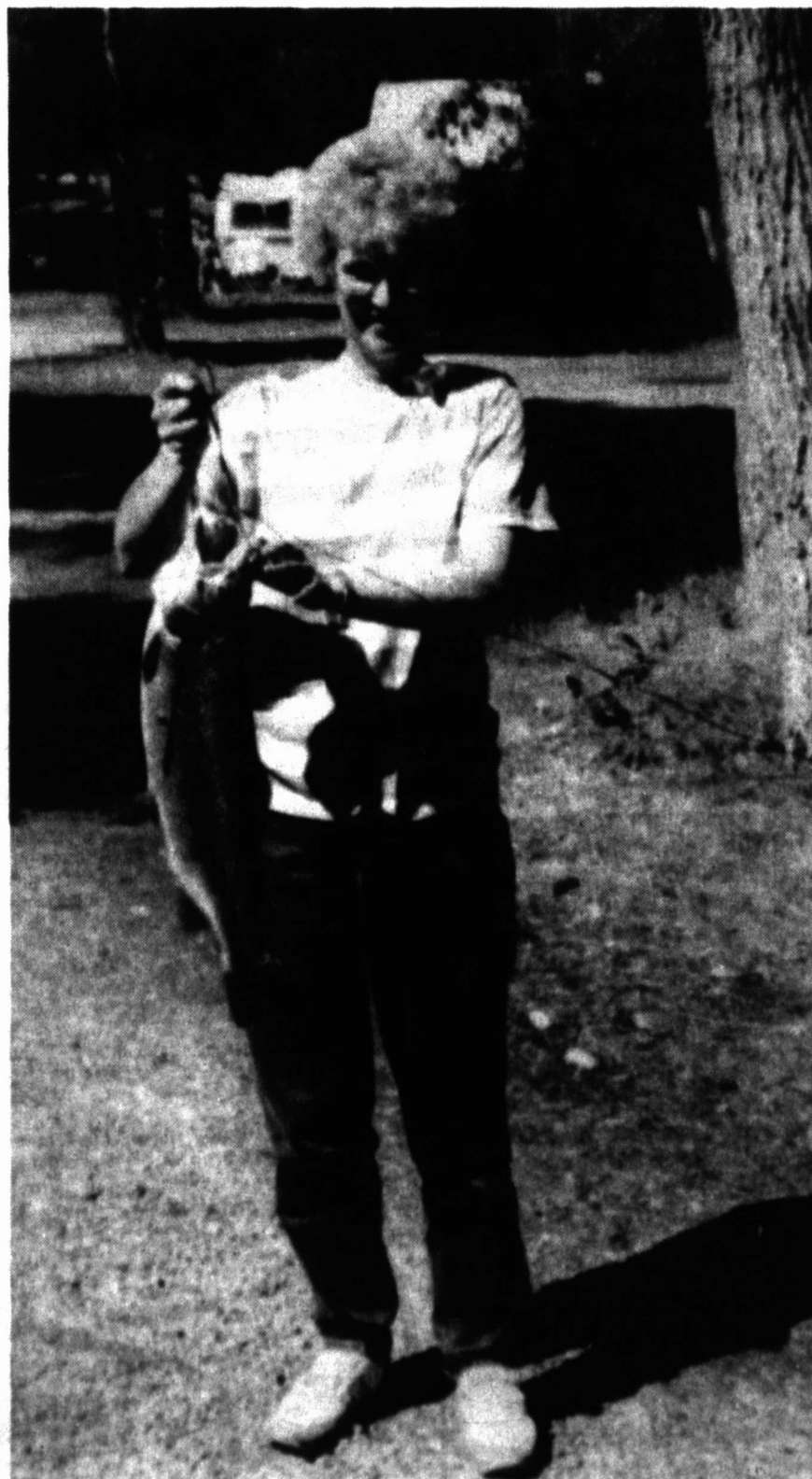
Has anyone gotten out of shape over the summer? Well why not try the Boot Camp obstacle Course or Shot Putt. A Bike Race will also be held for Grades 6-8 at 6:00pm show up at 5:30 and for grades 9-12 at 7:00pm show up at 6:30. Entry fee will be one dollar and prizes will be given away.

This is only a few of the games we will have. There will be many games and great prizes. Also, homemade Ice-Cream and Lemonade to help keep you cool.

We are looking forward to seeing everyone again.

The funds from the Back to School Bronco Bash will help fund Operation Bronco Pride.

caught on minnows; walleye are excellent in the 5-7 pound range on nightcrawlers behind jigs.



WILMA LEFFEW won the fishing contest at Fun Valley near South Fork, Colorado with this 5 1/4 lb., 22 inch trout.



FIREFIGHTERS at the 62nd Annual Texas Fireman's Training School are shown fighting a gasoline fire at a refinery process fire training aid. Participants in the school learned the latest technology for all types of fires.

Firemen Attend School

Four firemen from Clarendon V.F.D. attended the 62nd annual Texas Firemen's Training School at A & M July 21 to 26. These men use their own vacation time to further their firefighting techniques. The City provides the funds to pay their tuition.

This benefits the home owners in the Clarendon area by obtaining a lower key rate for fire insurance. Credit for attendance at the Annual Texas Firemen's Training School at Texas A & M University in College Station, sponsored by the State Firemen's and Fire Marshals' Association, will be 3%, 4%, or 5% for eligible cities and towns, depending on the attendance in creditable courses. This credit is not available to cities with key rate penalties for lack of fire chief drill reports, lack of proper equipment maintenance. No key rate of less than 20 cents or more than 80 cents can include Texas Firemen's Training School Credit. Towns without a fire marshal and those with key rate penalties for lack of fire marshal monthly information reports or fire marshal monthly information reports or fire loss reports will be denied credit for fire prevention courses, but may receive credit for fire suppression courses. When two or more firemen successfully complete firemen's training courses, and one fireman or fire marshal successfully completes a fire prevention course, the credit is 5%.

Duane Garman, City Fire Marshall, had training in Fire Prevention 5 (36 hours). This is his 5th year at A & M to attend Fire Prevention Class. Duane works for GTE.

Cont'd on p. 4.

Masons Level Cornerstone

On Saturday, July 27, 1991, officers from the Grand Lodge of Texas assembled at Clarendon College for the purpose of leveling the cornerstone on the Northeast corner of the Bairfield Activity Center. A capsule filled with memorabilia was also sealed into the wall directly behind the cornerstone. Those who were from out of town representing the Grand Lodge were as follows: R. Furman Vinson Grand Master, J. P. Vogel Deputy Grand Master, Bob Schnell-Grand Senior Warden,

What Is The Election About

During the last session of the Legislature, a school finance bill passed which radically alters the way school property taxes are collected and distributed. The bill created 188 county education districts (CED's) composed of the school districts in each county. Those county education districts will levy a property tax which will be distributed equally among school districts within the county education district. The election to be held August 10 will enable taxpayers in the county education districts to avail themselves of certain exemptions on their homesteads as

Cont'd on p. 9.

Peanut Tour

Donley County and area farmers are invited to the Donley and Collingsworth County Peanut Tour on August 14, 1991. The tour will start in Donley County at the old courthouse at 8:30 a.m. Fields will be toured throughout the county from Clarendon to Hedley. On the tour, stops will be made at Spanish, Virginia, and Flo-runner peanut fields with the highlight of the morning tour to be a demonstration plot of LEPA irrigation vs. conventional irrigation.

Assisting with the tour will be Dr. "Chip" Lee, Extension Plant Pathologist; Dr. Ed Colburn, Extension Agronomist; Dr. Carl Patrick, Extension Entomologist; and Leon New, Extension Irrigation Specialist.

The afternoon tour will be in Collingsworth County at Quail, starting at 1:00 p.m. Following the tour, there will be an evening meal served for participants.



ON SATURDAY, July 27, Nathan Lowrie and Wesley Smith traveled to Wichita Falls to play in a basketball tournament as part of the Red River Basketball League All-Star team. Twenty boys comprised two all-star teams from the Red River district. The first game was played at 10 a.m. and the Red River team beat the team from Wichita Falls by a score of 98-96. In the game that afternoon the Red River team lost by a score of 74-72. The Red River team was coached by Tommy Brown of Paducah. Others traveling from Clarendon to Wichita Falls for the games were Wanda Smith, Gina Archer, David and Paula Lowrie and Greg Collins.

Pre-Kindergarten Registration Set

The First Baptist Church Pre-Kindergarten registration will be held August 10, from 9 a.m. until 12 noon. Shot records and birth certificates need to be brought at the time of enrollment. Classes will begin Sept 3rd & 4th.

Public Meeting Scheduled

The Commissioners' Court of Donley County is in the process of reapportioning the Commissioners' precincts according to the 1991 Census. Proposed plans have been drawn. All interested citizens are encouraged to attend one or more of the following meetings, at which the proposed plan will be discussed. Citizen comments will be invited at the August 8, 1991, at 3:00 p.m. and 7:00 p.m. public hearings. These meetings will be held at the Lions Club Building at 3:00 p.m. and at the Donley County Courthouse at 7:00 p.m.

Dance Scheduled

The Senior Citizens Dance Club will have their 2nd Tuesday dance on August 13, 1991, at the Clarendon Community Center from 8 p.m. until 11 p.m. Live music will be by Paul and the Country Boys. Everyone is invited. Admission fee will be \$2.00 per person.



Ashtola Reunion Set

All former students, teachers, and former residents and residents of Ashtola will be gathering for the annual reunion at the Clarendon Community center Sunday, August 11th. You all Come!

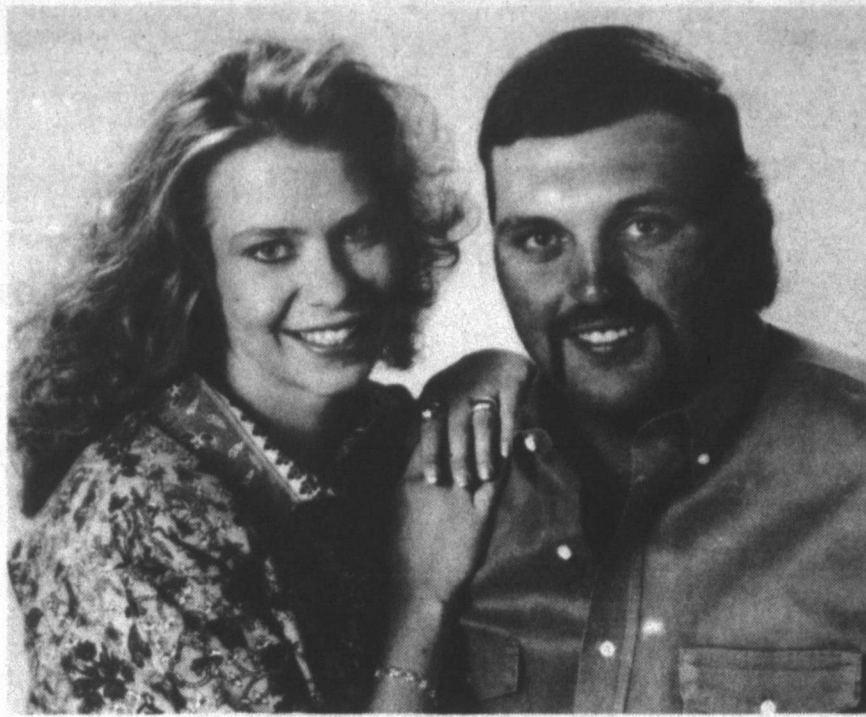
Clinic Scheduled

Future Brides
Selections at
Harlan's

Terri Haney
(Bride-elect of
Robert Youngblood)
Lesia Fuston
(Bride-elect of
Brad Schnitker)

Immunization clinics offering vaccines that give protection against several childhood diseases are scheduled for August 13, 1991, from 9-12 & 1-3 p.m., in the Texas Department of Health Office, on the second floor, 300 S. Sulley, in the old courthouse, Clarendon.

The Texas Department of health is charging money to help with the cost of keeping the clinic open. The amount of money charged will be based on family income and size, and the ability to pay.



CHRISTALYNN DIANNE BURTON AND DAVID BLAKE

Engagement Announced

Oran and Ann Burton of Stinnett announce the engagement of their daughter, Christalynn Dianne, to David Blake Trimmer.

Trimmer is the son of Heidi Trimmer of Hale Center and Buddy Trimmer of Lubbock. Christalynn Diane Burton is the granddaughter of Jeanice Weatherly of Clarendon.

The couple plans to be wed August 24 at the home of the bride's parents.

The bride-elect received an associate of arts degree from Clarendon College in Clarendon. She is a senior at West Texas State University majoring in Cemetery education.

The prospective groom received an associate of applied science degree from Clarendon College. He is a junior at WT majoring in agricultural business.

Senior Citizen
News

by Nova Neuhaus

Senior Citizens had a fun evening, Tuesday, July 30th with 69 folks present for the Birthday/Anniversary Supper. We were also delighted to have a "special guest" Jim Holston, the new R.S.V.P. director from Amarillo. Jim came down to meet the volunteers and just get acquainted. He pitched right in helping take pictures and setting up extra tables and chairs. Thanks Jim! Shirley Pitts opened our evening with prayer. We sang "Happy Birthday" to: Thelma Behrens, Lessie Salmon, Bill Meadors, Don & Annie Wooten, Dorothy Pitts, Carl Zybach, Alfred Reynolds, Joe Conti, Jane Stevens, Dick & Glenda Patterson and Trina Judd. Anniversary couples were: Lee and Bradis Shaller and Coy & Jane Stevens. Door prize went to Mary Lee Nobles. For the entertainment we played several games of Bingo for various nice prizes, some of which were donated by Tinnie Smith and Cennet Rhode. Elmo Fortenberry did a super job of calling the games. Special thanks to the people who attended to the kitchen detail.

Make plans to attend the 2nd Tuesday night dance on Tuesday, August 13th at the Community Bldg. from 8 til 11 p.m. with Paul and the Boys from Pampa furnishing the music.

Hats off to all July Volunteers: Thelma Behrens, Ann Bunyan, Lee Caskey, Joe Conti, Della & Elmo Fortenberry, Imogene Glass, Hazel Guy, Mary Howard, Trina Judd, Mary Lee Noble, Letha Mulder, Marie McCracken, Dorothy Pitts, Verdie Tipton, Eda Wallin, Ellie Wilkinson, Don Wooten, Karen Wortham, Carmen Wright and all others who do nice things for our Center.

July Memorials: To Bertham Emmons by Eda Wallin, Thelma Behrens, Hugh & Nova Neuhaus, Jean Baten, Abby Warner, C.E. & Helen Welch, Lacy & Mary Lee Nobles and Don & Annie Wooten; W. T. Stevens by Senior Citizens Dance Club; Ruby McKee by Margaret Woods, Callie Riley and Lee Caskey. Facility Use: Bill & Nita Meadors, Senior Citizens Dance Club, and Boy Scouts Troop #443. Love: Gladys Baten

Ashtola Reunion
To Be Held

Once again it is time for the Ashtola Reunion so Grab Ma, Pa, and all the kids. For all of us exes, it will be another fun time of "Remember When."

Door Prizes Galore! Some only for exes! Some only for guests! Something for everyone! Some door prize categories are: youngest father, youngest mother, youngest grandfather, youngest grandmother, oldest ex-student, youngest ex-student, oldest guest, youngest guest, prettiest Bald head, prettiest all-grey head of hair, ex-Ashtola resident travelling the furthest. And once again we will have the best bonnet (hat) and best cap award.

The fun start with registration at 10:00 a.m. Lunch will be served at 12:30 with the business meeting starting about 2:00. Paper goods for lunch will be furnished. The potluck lunch will be furnished by everyone. Remember! We are now meeting at Donley County Community Center.

The Coyote Den

Used Book Exchange

NEW BOOKS

Arts & Crafts

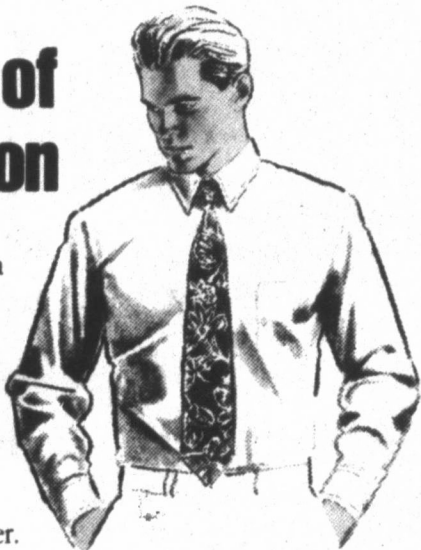
Advanced Book Ordering
Now Available
Watkin Products

Clarendon 402 E. 2nd (Hwy 287 E)

874-2357

Picture of
perfection

You'll sigh with joy when you slip into a professionally laundered shirt. The collar says, "comfort." The cuffs are a picture of perfection. Starched or very soft, whichever you prefer.

Greenbelt
Cleaners

874-5024



A member of the International Fabricare Institute,
the association of professional drycleaners and laundrers.

Board of Directors
Donley County Hospital District
and Staff at Medical Center Nursing Home
Cordially invite you to a reception in honor of
Larry D. White ADM

Tuesday, August 13, 1991
From 3:30 pm to 5:00 pm
Medical Center Nursing Home
Hwy 70 N
Clarendon, TX
RSVP: (806) 874-3760

WANTED

INITIAL SUBSCRIBERS
&
LOCAL INVESTORS

CAPROCK



MOBILE PHONE

Clarendon Communication System is on the air. Get a piece of the action! New technology GE equipment local telephone service. Also, two way radio service. Private. Long range. Service available throughout several states.

Need local investors and subscribers.

1-800-336-3607

REWARD

Kenny's
Barber Shop

(next to Owens Boots)

We appreciate your business
110 S. Kearney
Clarendon, TX. 79226

The
Clarendon
News

ISSN: 1048-8170

The Clarendon News (USPS 947040) is published weekly for \$15.50 per year in Donley County and \$18.50 per year out-of-county, by Bob Williams, dba The Clarendon Press, 103 S. Kearney, Clarendon, Texas 79226. Second-class postage paid at Clarendon, Texas 79226-1110.

POSTMASTER: send address changes to The Clarendon News, P.O. Box 1110, Clarendon, Texas 79226-1110.

Classified ads are \$4.25 for the first 15 words and 10 cents per word for each additional word. Boxes or special typography are extra. Standard display rates are \$3.00 per SAU column inch. Engagement, wedding, and anniversary pictures are \$5.00 each. Pictures submitted for publication should be picked up within 10 days of publication.

Deadlines for news and articles are normally Monday at 5:00 p.m. Pictures must be taken by Friday at 5:00 p.m. The deadline may be altered for holidays.

Any erroneous reflection upon the character of any person or firm appearing in these columns will be gladly and promptly corrected upon being brought to the paper's attention.

T.A.

MEMBER

1991

TEXAS PRESS
ASSOCIATIONCall for a quote on your auto
or homeowners insurance.

Compare Allstate for value.
Absolutely no obligation.
Call now for an
estimate.

JEM and KAREN SIMMONS
Emmett O. Simmons Insurance Agency
(806) 874-3506 or (800) 999-6145
310 S. Kearney
Clarendon, Texas

Leave
It to The
Good Hands
People.

Allstate®
Allstate Insurance Company

Mike's Pharmacy
874-3554

Medicines and Foods: Common Interactions

The ways medicines interact with each other are varied and complex. Little attention has been devoted by researchers to the interactions that occur between the foods we eat and the medicines we take. Some of these interactions should be avoided if possible, while other interactions between food and medicines are beneficial. One of the most common interactions occurs in the stomach. While food may make some medicines less irritating to the stomach, absorption of most medicines is delayed by the presence of the food. This is the reason for instructions to either "take with food or milk" or "take on an empty stomach, one hour before or two hours after meals." Medicines that interact with foods or the nutrients in food include:

Blood thinners: Spinach and onions are rich in vitamin K, a vitamin which promotes the coagulation of blood. These foods can interfere with blood thinner medicine activity.

Antibiotics: The calcium in milk and dairy products can interact with antibiotic medicines such as tetracycline to make the antibiotic less effective.

Cholesterol-lowering agents: These medicines may interfere with the absorption of the fat soluble vitamins A, D, K, and E.

Senior Citizens Receive 15% Discount On Prescriptions

Welcome PCS Member Pharmaceutical Card System Inc.

Mail Orders receive Prompt Service.

Across From B & R THRIFTWAY

MIKE WANTS TO BE
YOUR PHARMACIST



MR. AND MRS. GLENN HOGGATT

Anniversary Celebrated

Mr. and Mrs. Glenn Hoggatt of Perryton, formerly of Clarendon celebrated their 50th Wedding Anniversary on Saturday, August 3, 1991 with a reception at the Holiday Inn I-40 at Ross, Amarillo. The event was hosted by the daughter and granddaughters of the couple.

Glenn Hoggatt of Lakeview married Nellie Grady of Clarendon at the Baptist Church in Childress, August 1, 1941. Glenn served in World War II. He was wounded in Germany and returned to the States, receiving the purple heart, bronze star, and other medals. Later, he attended Horology School at Bradley University, finishing with an associate degree in watchmaking and jewelry. He had his own store in Clarendon, then worked in Tulia and Plainview before moving to Perryton where he worked and retired from Corner Drug and Jewelry in 1977.

Mrs. Hoggatt received her B.S. in Home Economics and Master of Education from WTSU. She taught in New Mexico, Lake View, Clarendon, Tulia, and retired from Perryton I.S.D. with 31 years of experience. Their two children, Glynell and Terry Ralph (deceased), graduated from Perryton High School.

They have membership in the Trinity Presbyterian Church, Ochiltree Senior Citizens Association, VFW and Disabled Veterans of America, Texas Teachers Association, and AARP.

Children of the couple are: Glynell McCoy, Perryton; grandchildren: Terri Allen, Midland; Sherri Buschman, Waka; Amy Schroeder, Perryton, and great-grandsons Ryan and Nathan Buschman.

Naomi's News

By Naomi Green

Clifford and Stella Jewett were in Amarillo Wednesday at the home of Linda Bagrich to celebrate Clifford and Krishna's birthdays. Krishna was twelve. Clifford is holding. Saturday the Jewetts went to Pampa to spend the afternoon with Bobby and his family.

Sunday Barbara Mason,

Brian and Brandon came with two friends Steve and Micheal to the Clifford Jewett home for a belated celebration of Clifford's birthday.

Frankie Green and Fern Belows of Canyon visited with the H.A. Greens Sunday afternoon enroute home from picking peaches at Hedley.

Charline Brown of Floydade spent Sunday night with the Vance Grays. Larry Gray of Earth was there Sunday afternoon.

Skeet and Eleene Brown had guests, Day and Harold Green from Stinett Thursday. They went to GROOM DAY Friday night and Saturday.

Mr. and Mrs. Bill Bennett attended the wedding of Steve Parr to Misty Contreras at South Georgia Baptist Church in Amarillo Saturday night at 7 p.m.

Public Meeting Scheduled

The Commissioners' Court of Donley County is in the

process of reapportioning the Commissioners' precincts according to the 1991 Census. Proposed plans have been drawn. All interested citizens are encouraged to attend one or more of the following meetings, at which the proposed plan will be discussed. Citizen comments will be invited at the August 8, 1991, at 3:00 p.m. and 7:00 p.m. public hearings. These meetings will be held at the Lions Club Building at 3:00 p.m. and at the Donley County Courthouse at 7:00 p.m.

Senior Citizens Menu

August 8 - August 14
Thursday: Steak Fingers w/Gravy, Blackeyed Peas, Mixed Greens, Tropical Fruit, Frozen Pie, Dinner Roll, Milk, Tea, Coffee

Friday: Pork Patties w/Sweet & Sour Sauce, Onion Rings, Mexican Corn, Coleslaw, Medley Fruit Salad, Bread, Coffee, Tea, Milk

Monday: Fish, Broccoli and Rice Casserole, cantaloupe Salad, Lemon Fluff, Corn Nuggets, Coffee, Tea, Milk

Tuesday: Beef Tostitos w/Cheese, Pinto Beans, Tossed Salad, Peaches and Cookies, Tortilla Chips, Coffee, Tea, Milk

Wednesday: BBQ Chicken, Parsley Potatoes, Green Beans, Jello Cubes, Apricots, Bread, Coffee, Tea, Milk

Calendar of Events
Thursday: Exercise 11 a.m., Lunch 11:30 a.m., Games 12:30 p.m.; Friday: Exercise 11 a.m., Lunch 11:30 a.m., Games 12:30 p.m.; Monday: Exercise 11 a.m., Lunch 11:30 a.m., Games 12:30 p.m., Dance Practice 7-9 p.m.; Tuesday: Exercise 11 a.m., Lunch 11:30 a.m., Games 12:30 p.m., 2nd Tues. Nite dance comm. Bldg. 8-11 p.m.; Wednesday: Exercise 11 a.m., Lunch 11:30 a.m., Games 12:30 p.m., Arts & Crafts

HOMEMADE ICE CREAM LEMONADE

BACK TO SCHOOL

To Help Fund

OPERATION BRONCO PRIDE

BRONCO BASH

WHEN: Saturday, August 10, 1991

WHERE: School Playground

TIME: 3:00-8:00pm

ALL AGES!
ALL SIZES!
ALL WELCOME!

PRIZES

Shot Putt
Dunk-A-Coach
Balloons
Sponge Booth

FUN!

Basketball
Obstacle Course
Face Painting

GAMES

Bike Race
Grades 6-8 and 9-12
Entry Fee \$1.00

GAMES!!!

DRINKS

PRIZES!

Stodghill Reunion Held

The children of Hugh and Dosia Stodghill had a reunion at Clifton Stodghill's in Silverton, August 2th to 4th.

All 5 children were there. Mozelle Purcel of Dalhart, Oneta Sanders of Clarendon, Bill and Clara Belle Stodghill of Amarillo, Clifton and Joy Stodghill of Perryton, and aunt Marguerete Mercer, two cousins Ellen Frances Johnson and Sara Pace all of San Antonio. Mr. and Mrs. Bryan Garner, Matthew and Nicolas of Amarillo.

Everyone enjoyed the good food, spinner dominos, visiting and the "Caprock Jamboree," Saturday night. The Mullin's children from Turkey sang, La-Queta, Mr. Martinez, Country Sounds Band, Tommy Nasa and the 3 Walkers Sisters were some of those who played and sang at the Jamboree. Clifton and Joy Stodghill are in the Country Sounds Band, others in it are John Frances, Benny Brown and Jimmy Burson.





First Baptist Pre-Kindergarten Registration

August 10th 9-12 a.m.

Tuition \$35
MF 4 Years old by Sept. 1 - \$50
TT 3 Years old by Sept. 1 - \$45

Bring Birth Certificate and Shot Record
Classes Begin Sept. 3 & 4

Public Notice

On April 9, 1991, Southwestern Bell Telephone Company filed an application with the Public Utility Commission of Texas to request that the optional feature "Call Transfer Disconnect" be available to all PLEXAR I customers by including the feature in Southwestern Bell's PLEXAR I tariff. Currently, this optional feature is available only on a customer requested basis.

Call Transfer Disconnect (CTD) is an optional feature that allows PLEXAR I customers the ability to transfer a call to another telephone number within or outside their PLEXAR I system, hang up, and permit the two remaining parties to continue with the call. The PLEXAR I user is then free to place or accept another call. CTD is not intended to be used to avoid toll charges. Therefore, CTD will not be available to PLEXAR I customers subscribing to optional Extended Metropolitan Service or Extended Area Calling Service.

If the company's application is approved, the monthly rate for CTD will be \$4.00 for each PLEXAR I station line. Prior to the June 19, 1991, interim rate approval, Southwestern Bell was billing customers who receive the service \$1.50 for each station line equipped with this feature. In addition, under Southwestern Bell's proposed tariff, every line within the PLEXAR I system must be equipped with this feature. The nonrecurring charge for the additional lines which must be equipped with CTD will be waived for existing CTD customers. The tariffed monthly rate will apply to all existing and future CTD customers.

Persons who wish to intervene or otherwise participate in these proceedings should notify the commission as soon as possible. A request to intervene, participate, or for further information should be mailed to the Public Utility Commission of Texas, 7800 Shoal Creek Boulevard, Suite 400N, Austin, Texas 78757. Further information may also be obtained by calling the Public Utility Commission Consumer Affairs Division at (512) 458-0256, or (512) 458-0221, teletypewriter for the deaf.



Southwestern Bell
Telephone

BETTER SERVICE FOR YOUR HEARING AID...



Gary Wormshaker
Hearing Specialist

...MEANS BETTER HEARING FOR YOU.

Ask For FREE Hearing Test

Be sure to visit our next Service Center.

August 15, 1991
10 a.m. - 12:00 Noon
Clarendon
Senior Citizens
104 E. 4th
(806)874-2665



Formerly Beltone
27-B Medical Dr
Amarillo 352-8961

Doing Business With People You Trust...

It is always good to do business with people

you know and trust... people who are

interested in you, and willing to give

you personal attention.

We think that is pretty much the story to our

bank. A story of local people who own and

operate our bank, right here at home with the

interest of our community at heart.

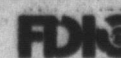
Our people live right here in Clarendon and

our bank serves the specific needs of our

community.



FIRST BANK & TRUST
OF CLARENDON



Agriculture News

By Tim Trimble - cea

Loan Program Set For Minor Oilseed Crops

Rules have been issued by the Commodity Credit Corporation (CCC) under which producers of minor oilseed crops, such as canola, flaxseed, rapeseed,

sunflower and mustard seed, may place those seeds in the CCC loan program. The CCC also has announced how loan repayment rates will be calculated.

Basic provisions are that loan rates first are reduced by the 2 percent origination fee required by the 1990 Farm Bill. Then they are adjusted for quality premiums and discounts.

In addition, the CCC also has specified the minimum quality

standards to be met for the seed to be eligible for the loan.

The number of quality standards varies from fifteen for canola to eight for flaxseed.

Because of the marketing loan benefits available for the minor oilseed crops, these loans may be repaid for the lesser of the loan amount and charges plus interest, or the announced repayment rate times the quantity being liquidated.

The Farm Bill also allows for the repayment of loan deficiency payments in lieu of entering the loan program.

"For both of these provisions, a loan repayment rate specific to each county and crop is determined by applying a county-specific regionally calculated price differential to specific terminal markets," said Dr. Lawrence A. Lippke, a management economist with the Texas Agricultural Extension Service.

He said terminal market prices are announced at 7 a.m. Eastern Standard Time each Friday, effective until the next Friday.

Beef Cattle Short Course Set For August 13-14

The 37th annual Texas A & M University Beef Cattle Short Course has revised the program format to provide even greater flexibility for in-depth beef cattle training for producers.

The Clarendon News

The August 13-14 agenda provides for new "break-out" sessions allowing producers to attend smaller, in-depth classes including nutrition, health management, pasture, hay and soils training, range and wildlife management. All sessions are taught by the Texas A & M teaching, research and Extension faculty and staff.

Demonstrations include evaluation of computer beef cattle software, live animal vaccination practice, carcass cutability differences and animal selection using visual appraisal coupled with computerized record systems.

Special sessions on beef cattle management programs will be conducted by ranch managers including Paul Genho, Deseret Ranches, Florida; Jim Pumphrey, Nobel Foundation, Oklahoma; and M. J. Florence, Price, Texas.

Florence will discuss the 40-40 beef management concept: how to work a 40 hour week at another job and still manage a 40-head cow herd for profit. Other management topics include integrated resource management cow-calf production analysis and Texas A & M Fed Beef and Carcass Program, and production and economic evaluation of artificial insemination programs.

Of special interest this year will be discussions by employees of Keystone Foods Corporation, a major supplier to McDonald's, on how the "McLean Burger" may affect the American cattle producer.

Dr. Ernie Davis will provide an update on the cattle market and Dr. Dennis Herd will evaluate the process of trace mineral and copper supplement demonstrations across the state.

Every producer in the state should be able to relate to this program agenda which provides both basic and in-depth programming, tours and demonstrations. More than forth trade show cooperative sponsors also should add to the

Thursday, August 8, 1991 success of the program.

Registration fees are \$40 for participants and \$20 for spouses. A Tuesday night social, breaks and two lunches are covered by the fees. To register contact Tim Trimble or call Larry Boleman or Anne Moody and (409) 845-2051 for registration forms. The registration deadline is August 9. A \$10 late fee will be assessed for those registering at the conference.



REFUGIO BENAVIDEZ, Donnie Chambliss, Dwayne Gamen and Jim Sharrar

FIREMEN-from p. 1.

Refugio Benavidez, Truck Engineer, took Rescue 1 course (36 hours). This was his 3rd year to attend A & M. He has had Firefighting 1 and 2. Refugio works for B & R Thriftway.

Donnie Chambliss, Firefighter, took Firefighting 1 (36

hours). This was Donnie's first year to attend A & M. Donnie works at TDC in Amarillo.

Jim Sharrar, 3rd Assistant Chief, took Methods of Teaching (40 hours). This was his 5th year to attend. He has had Firefighting 1, 2, 3, Ag Rescue II, & Fire Prevention 1. Jim works for GTF.

Time To Control White Grubs In Lawns

White grubs or grubworms are the larval form of insects commonly known as May or June beetles or June Bugs. Almost one hundred species exist in Texas, but the one that feeds on grass roots and causes the most problems in lawns is the *Phyllophaga Crinita*. The beetle can often be seen around lights at night and is one half to 5/8 inch long and light brown with a slight reddish tinge just behind the head.

The insect passes through three larval stages. Stages one and two require about three weeks; the third stage is in the soil the rest of the year, and during the summer and fall causes most of the lawn damage by its root feeding. Feeding of large numbers of grubs causes lawns to turn yellow, stop growing and the severely damaged grass can be lifted easily by hand from the ground or "rolled up" like carpet. I have already noticed some grub damage in lawns this year and now is the time to treat for grubworms.


White grubs are not evenly distributed across the lawn so damage may be localized or much more severe in some parts of the lawn. Lawns should be checked closely before treating for grubs. Several samples should be taken in at least three to four inches in diameter and four inches in depth. Take the sample from widely scattered parts of the lawn, being careful to include areas of suspected grub damage. Tear the plugs apart and thoroughly examine them for grubs. Treatment usually is justified when more than four grubs per square foot are found. Some grubs can be fairly small and careful inspection of samples is needed to get an accurate count.

Use insecticides containing diazinon, chlorpyrifos (Dursban), or isofenphos (Othenol). Refer to the label for proper use of insecticides.

If spray formulations are used, first water the lawn with about one-fourth inch of water. This will wet the grass and allow the spray formulation to better penetrate the soil. Apply at least fifteen to twenty-five gallons of spray solution per 1,000 square feet. Wash the insecticide into the soil immediately with a one-half to one inch of water. Keep children, pets and other animals off the lawn until the insecticide has been thoroughly watered into the soil and sprays have dried. Again, always read and follow carefully the instructions on the insecticide container label.

Public Meeting Scheduled

The Commissioners' Court of Donley County is in the process of reapportioning the Commissioners' precincts according to the 1991 Census. Proposed plans have been drawn. All interested citizens are encouraged to attend one or more of the following meetings, at which the proposed plan will be discussed. Citizen comments will be invited at the August 8, 1991, at 3:00 p.m. and 7:00 p.m. public hearings. These meetings will be held at the Lions Club Building at 3:00 p.m. and at the Donley County Courthouse at 7:00 p.m.



"Slip On Down"

OASIS SALOON
PRESENTS

7 Days A Week
Monday - Thursday
3 p.m. - 2 a.m.

Fri. - Sat. - Sun.
2 p.m. - 2 a.m.

7.7 MI North of 287 on Hwy 70
10 MI South of I-40 on Hwy 70

Every Thursday is Weekend Eve
Every Sunday Compact Disc Night
7 to 11

Music:
Various Country Western,
Rock n Roll, Soft Rock

CALL FOR DETAILS
Slip On Down
Phone 874-3162



At GTE, our residential repair service is so good, we're willing to guarantee it. From now on, if we don't have your phone line fixed by the time we promise, we'll give you credit for one full month's local service

charges.* Even if we're only one minute late. In order to make a guarantee this good, GTE has invested millions not only in state of the art telecommunications, but also in our people. And we think both are the best in the

business. So if for some reason, our repair service doesn't measure up, please tell us. Any of our GTE employees would be more than happy to honor this guarantee. It only takes about a minute.

GTE

THE POWER IS ON

*This credit covers local phone charges, monthly charges and any additional charges for SmartCall® Services, unlisted numbers and extra directory listings.

Pre-Registration Set

Students intending to attend Clarendon High School should participate in pre-registration in the High School Auditorium on August 12, 1991, according to the following schedules.

9:00 - 10:30 Seniors; 10:30 - 12:00 Juniors; 1:00 - 2:30 Sophomores; 2:30 - 4:00 Freshman.

The pre-registration will allow students to better select courses which are required, as we as, electives. This process should reduce schedule conflicts for the '91-'92 school year. At Clarendon High School, students are expected to plan for a successful futures. We are looking forward to a year of achievement academically, athletically and organizationally.

Elementary and Jr. High Enrollment Scheduled

Parents who need to enroll their sons/daughters in ECE-H thru 8th grade classes and have not already done so will need to enroll them on August 12, 1991 from 9 a.m. until 3 p.m. To enroll these students, parents must bring birth certificates, shot records, social security number, and last report card. Please have these materials with you when registering. They will not be able to register students who do not have these items with them. The building will be closed from 12:00 TO 1:00 p.m. for lunch. Registration will be held in the cafeteria and the school will have their copier available if copies are needed for the shot records, social security numbers, and/or report cards.

In case of
emergency call
874-3533

(After September
call 911)

Clarendon School Supply List

Kindergarten Supply List: Kleenex, School Box, Box of 8 Crayons (Basic Colors; size child prefers), Scissors (Child safe scissors; stainless steel cutting edge embedded in plastic), Elmer's School Glue, No. 2 Pencil, Box of 8 Large Markers (Primary Colors; Crayola Brand or similar), Plastic Rest Mat (please get folding mat because it lays flat for storage).

1st Grade Supply List: Kleenex (large box), 2 Grip Stick Pencils, Crayolas (8 only), Glue Stick, Water Colors, 1 Eraser.

2nd Grade Supply List: Nifty Writing Tablet (2nd Grade) (1/2 inch ruled), 2-#2 Pencils, Erasers, Elmers Glue, Crayons (16), Scissors, School Box, Big Chief Tablet, 1 Big Box Kleenex, 2 Folders with Brads (Mrs. Hankins), 4 Folders with Pockets & Brads (Mrs. Thompson), 1 Spiral Notebook (Mrs. Hankins), 2 Spiral Notebooks (Mrs. Thompson), 200 Count Wide Rule Notebook paper (Mrs. Thompson), 2 Red Grading Pencils (Mrs. Thompson).

3rd Grade Supply List: 2 Pencils, Extra Eraser, Notebook Paper (regular width lines), Notebook (small), Crayons, Scissors, Elmer's Glue, 1 Spiral, Colored Markers (Optional), Kleenex, 1 Folder (with inside pockets) (Mrs. Moreman).

4th Grade Supply List: Small Notebook or Clipboard, Notebook

Paper, 2 Pocket Folders, 1 Spiral Notebook, Pencils, Scissors, Glue, Ruler, Crayons.

5th Grade Supply List: Loose-leaf Notebook, Loose-leaf Notebook Paper, Ink Pen, #2 Pencil, Eraser, Map Colors, Crayons, Scissors, Glue, 12" Ruler, Protractor, Compass (second semester), Kleenex, Fee: \$2.65 for Scholastic Newspaper, 5 Spiral Notebooks (Mrs. Nelson), 3 Spiral Notebooks (Mrs. Campbell).

Missing Report Cards Reported

These students who attended Clarendon Junior High School as 6th, 7th, or 8th graders and have not received their report cards need to contact the Junior High office at 874-3855 to get them picked up.

There are a good number of report cards which have not been picked up from the last school year. These report cards must be picked up for students to be able to enroll in school for the coming school year. Also, they will be needed so students will be enrolling in the correct grade. The students are: Caryle Adkins, Robert Bertrand, Wil Boston, Phillip Hearn, Laura Hommel, Carrie Moore, Jason Morrow, Max Rippetoe, Clemmie Smith, Allen Turner & Alesia Womack. Also: P Tiffany Calloway, Mac Dunham, Lynn Hearn, April Hommel, Ronnie Lewis, Delinah McConnell, Rodney Smith, Carlos Vaquera, & Tamra Williams. In Addition: Justin Griffin, Jason Ham, Martha Harris, Shanita Harris, Wayne Hopper, Kelly Laxson, Lisa Laxson, Jancie Melton, Clifton Moore, Beverly Thomas, Garey Vinson, Suzy Williams, and Danny Wilson.

INVITATION FOR BIDS

The City of Clarendon, Texas will receive Bids for construction of Water System Improvements until 2:30 p.m. on the 22nd day of August, 1991, in City Hall, P.O. Box 1089, Clarendon, Texas 79226, at which time and place all bids will be publicly opened and read aloud.

Bids are invited upon the several items and quantities of work as follows:

- Item 1. 10,100 linear feet 6 inch PVC pipe
- Item 2. 8 each 6" tapping sleeves and valves
- Item 3. 2 each 6" tapping crosses and valves
- Item 4. 11 each 6" MJ tees
- Item 5. 13 each 6" gate valves
- Item 6. 2 each 6" 90° MJ bends
- Item 7. 2 each 6" plugs
- Item 8. 10 each 6" x 2" saddles
- Item 9. 10 each 2" gate valves
- Item 10. 1 each 2" 90° bend
- Item 11. 7 each fire hydrants
- Item 12. 76 service connections

Contract Documents, including Drawings and Technical Specifications, are on file at the office of OJD Engineering, Inc., Wellington, Texas.

Copies of the Contract Documents may be purchased at the office of OJD Engineering, Inc., P.O. Box 543, Wellington, Texas 79095, Phone Number 806-447-2503, at a cost of \$30.00 for each set so obtained. This fee is not refundable. Materials suppliers may obtain unbound copies of the specifications and bid sheets only by contacting the Engineer.

A certified check or bank draft, payable to the order of the City of Clarendon, Texas, negotiable U.S. Government bonds (at par value) or a satisfactory Bid Bond executed by the Bidder as an acceptable surety in an amount equal to five percent (5%) of the total Bid shall be submitted with each Bid.

Attention is called to the fact that not less than the federally determined prevailing (Davis-Bacon) wage rate, as issued by the Texas Department of Commerce and contained in the Contract Documents must be paid on the project. In addition the successful bidder must ensure that employees and applicants for employment are not discriminated against because of their race, color, religion, sex or national origin.

Attention is called to General Condition 142 "Restrictions on Public Buildings and Public Works Projects". The bidder certifies by the submission of its bid that it:

1. Is not a Contractor of a foreign country included on the USTR list.
2. Has not and will not enter into any subcontract with a subcontractor of a foreign country included on the USTR list.
3. Will not provide any product of a foreign country included on the USTR list.

The City of Clarendon, Texas reserves the right to reject any or all Bids or to waive any informalities in the bidding.

Bids may be held by the City of Clarendon, Texas for a period not to exceed thirty (30) days from the date of the opening of Bids for the purpose of reviewing the Bids and investigating the qualifications of Bidders, prior to awarding of the Contract.

City of Clarendon Jim Sharrar, Mayor Date: Aug. 1, 1991.



BACK TO SCHOOL SALE

PALMOLIVE DISH DETERGENT
32 OUNCE LIQUID. KING SIZE.

SALE PRICE **1.79**
LESS MAIL IN REBATE **-1.00**
FINAL COST AFTER REBATE **79¢**

DETAILS IN STORE.

LISTERINE OR LISTERINE MINT MOUTH WASH
32 OUNCE.

SALE PRICE **3.99**
LESS INSTANT COUPON **-1.75**
FINAL COST AFTER REBATE **3.24**

DETAILS ON PACKAGE.

MENS TUBE SOCKS
5-PAIR PACK. 4.99 VALUE.

1.99

#2 PENCILS 10 PACK
2 PACKS. 1.39 EACH VALUE.

SALE PRICE **2/1.00**
LESS MAIL IN REBATE **-1.00**
FINAL COST AFTER REBATE **FREE**

DETAILS IN STORE.

COUPON FILLER PAPER
200 COUNT. 1.79 VALUE.

SALE PRICE **2/\$1**
LESS MAIL IN REBATE **-1**
FINAL COST AFTER REBATE **FREE**

DETAILS IN STORE.
LIMIT 2 WITH COUPON
COUPON EXPIRES: 9/15/91

JERGENS BAR SOAP
3 OUNCE BARS.

SALE PRICE **1.00**
LESS MAIL IN REBATE **-1.00**
FINAL COST AFTER REBATE **FREE**

DETAILS IN STORE.

PEPSODENT TOOTHPASTE
4.4 OUNCE FAMILY SIZE.

SALE PRICE **1.00**
LESS MAIL IN REBATE **-1.00**
FINAL COST AFTER REBATE **FREE**

DETAILS IN STORE.

BIC BRITE-LINERS OR CLIC STIC PENS
1 PACK. \$1.50 VALUE.

SALE PRICE **1.50**
LESS MAIL IN REBATE **-1.50**
FINAL COST AFTER REBATE **FREE**

DETAILS IN STORE.

TRANSPARENT TAPE
1/2" x 800" ROLLS. 2.47 VALUE.

SALE PRICE **1.00**
LESS MAIL IN REBATE **-1.00**
FINAL COST AFTER REBATE **FREE**

DETAILS IN STORE.

FINAL TOUCH LIQUID FABRIC SOFTENER
64 OUNCE.

1.99

ALL LIQUID LAUNDRY DETERGENT
64 OUNCE.

2.69

KLEENEX FACIAL TISSUE
175 COUNT. WHITE OR ASST.

SALE PRICE **1.00**
LESS MAIL IN REBATE **-1.00**
FINAL COST AFTER REBATE **FREE**

DETAILS IN STORE.

BRAWNY

"BRAWNY" TRASH BAGS
18 GAL. 100% NEW. 100% RECYCLED.
SALE PRICE **1.00**
LESS MAIL IN REBATE **-1.00**
FINAL COST AFTER REBATE **FREE**

DETAILS IN STORE.

THEME BOOKS
70 COUNT. 1.00 EACH VALUE.

3/\$1

DUO TANG PORTFOLIOS
2-POCKET. 2-POCKET WITH CLIP.

7/\$1
5/\$1

HI-DRI PAPER TOWELS
JUMBO ROLLS.

2/\$1

CRACKER JACK
3-PACK. WITH FREE "TOPPS" BASEBALL CARD INSIDE.

99¢

PLANTERS Cheez Curlyz
SNACKS ASSORTED. TYPES. 5 TO 7.5 OZ. CANISTERS.

99¢

COTTONELLE BATH TISSUE
WHITE. 4-PACK. 1.59 VALUE.

\$1

BIVENS

HEALTH MART

PHARMACY

200 SOUTH KEARNEY
CLARENDON, TEXAS 79226
874-3740



We Accept:

PCS

HEALTH MART
HEALTH SMART

Are you aware of the possible side effects of your prescription? Talk to your Health Mart Pharmacist before you get your next prescription filled.

Open Weekdays
8 a.m. to 6 p.m.
Saturdays
9 a.m. to 5 p.m.
Pharmacy Open
Sat. 9 to 2 p.m.

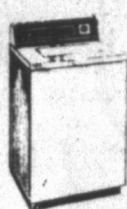
Osburn Appliance Rabbit's Appliance Service

We service all types of appliances.
42 Years Experience in sales and service.
We also have a good supply of rebuilt & repo appliance with a 1 year warranty.

Phone 874-3632

319 S. Kearney

B.B. "Rabbit" Osburn



Obituaries

Ruby Alice Henderson

Ruby Alice Robertson Henderson, of Snyder, age 78, an Amarillo resident for many years, died Wednesday, July 31, 1991.

Graveside services were held Thursday, August 1, 1991, in Memorial Park Cemetery in Amarillo with Lynn Garrett officiating. Arrangements were by Bell-Cypert-Seale Funeral Home in Snyder.

Mrs. Henderson was born in Donley County. She lived in Amarillo until three years ago when she moved to Snyder. She married Sam R. Robertson in 1929 at Estelline. He died in 1966. She later married H.L. Henderson. He died in 1989. She was a housewife and a Baptist. She was a lifetime member of the Order of Eastern

Star, Bonita Chapter No.184, in Amarillo. She also was preceded in death by a daughter, Jo Ellen Pfeiffer in 1973.

Survivors include a son, Sam Robertson of Snyder; a brother, Dick Shelton of Clarendon; five grandchildren; and nine great-grandchildren, and 1 great-grandchild.

Lavel Clayton Phillips

Lavel Phillips, age 72, of Henderson, Colorado, died July 24, 1991 at Rose Medical Center. He was buried in Clarendon's Citizens Cemetery.

Mr. Phillips was born September 21, 1918 in Chillicothe, Texas. On March 12, 1967, he married Aurora S. Garcia in San Jose, California. He had been a carpenter for most of his life.

Survivors include his mother Katie B. Phillips of Clarendon; wife Aurora S. Phillips of Henderson, Colorado; 2 daughters: Beverly Winkler of Henderson, CO, Katie Phillips of Aurora, CO, 2 step-daughters, Tomasa Martinez of Lakewood, CO, and Victoria Rivas of Thornton, CO; and 3 sons, Michael Phillips of Glendale, AZ, Larry Phillips and Jackie Phillips both of Texas, 2 step-sons: Salvador Rivas of Thornton, CO, and Patrick Rivas of San Diego; 3 brothers: Donnie Phillips of Clarendon, TX, Billy Van Phillips of Odessa, TX, and Jimmy Phillips of Jauarez, Mexico. 1 sister: Laverne Beger of Odessa, TX. 26 grandchildren and 4 great grandchildren.

Ambulance Report

7-26-91: Jill Elliott, Transported to Childress General(Medical); 8-01-91: Hassel Jones, Transported to Hall County Hospital(Medical); 8-02-91: Letah Adams, Transported to Hall County Hospital(Medical); 8-02-91: Lyndell Lindsey, No Transport(Trauma); 8-02-91: Edna Holsenbeck, Transported to AERC(Medical); 8-04-91: L.P. Moore, Transported to AERC(Medical).

Ruby Henderson, known to most as "Ninnie" was and is my great-grandmother. Although she now rests in Peace, she is still alive, her spirit and smile. She always kept you laughing. I am told of a time when she was 63 years of age, she jumped off a high diving board into a swimming pool, if that doesn't tell you she was an incredible woman, I don't know what would. I am very reassured that she is now with his savior, still listening and signing that gospel music, but now happy and content. Although we are sad and glad, sad she is gone, glad she is no longer in pain. I love you and miss you Ninnie.

Kimberly

Alzheimer's Disease Expected to Increase

A rapid increase of elderly persons means more Alzheimer's disease cases than ever before.

In the year 2000, about two million Texans will be age 65 and older. Of these, more than 200,000 are expected to suffer from Alzheimer's disease.

Though more than 180,000 Texans now have the illness, many people don't know much about Alzheimer's disease. "It is a dementing disease, a thief of minds, a destroyer of personalities, wrecker of family finances, filler of nursing homes," said Morris H. Craig, director of TDH's Alzheimer's Disease Program. "It also is a leading cause of death, after heart disease, cancer and stroke, causing 150,000 deaths each year nationwide. At this time, there is no known cure for this disease, and even the causes of it are not clear, though research continues."

Alzheimer's disease begins almost imperceptibly as perhaps an inability to find the right word—especially nouns, the need to write many reminder notes or wearing the same clothes day after day. Personalities change to reflect less spontaneity, ambition and interest. At some point, the sufferer may become unable to write or speak coherently, to understand most spoken or written language, or to recognize anyone, including himself in a mirror. The patient becomes unable to feed himself and in time, becomes bedridden and incontinent. Eventually, he or she loses consciousness and is unable to survive without total care.

An Alzheimer's patient is usually cared for at home in the beginning. As the patient's mental powers slip away, the caregiving family agonizes over and usually concludes that nursing home care is the best choice for a patient who must be cared for around the clock.

Choosing a nursing home can be bewildering since there are many different kind of nursing homes including religiously affiliated, usually not-for-profit homes and homes run for a profit. There are homes in which a wide range of disabilities are represented and homes with designated Alzheimer's units. Some homes are run on a pay-as-you-go basis and others are life care facilities which require an up-front payment (sometimes the patient's life savings) and may then provide care for life even after the patient's funds are exhausted.

In selecting a nursing home, families of Alzheimer's disease victims are advised to visit several to give some basis for comparison. "Visit when you can spend time to thoroughly check the facilities for

everything from licensing to availability of snack," advised Craig. "Visit at different times of the day and on different days before making a decision. Keep in mind that often there are waiting lists, so it's necessary to begin the selection process before placement becomes necessary."

Craig also warns family members to keep in mind that nursing home care is expensive, currently averaging more than \$2,000 a month. Medicare, Medicaid, private insurance, Veterans Administration System and Social Security Disability are areas of possible financial lacking and must pursue these benefits aggressively.

To provide support for Alzheimer's caregivers, TDH runs a toll-free hotline, 1-800-242-3399, as part of its Alzheimer's Disease Program. TDH staff provide specialized information, resources, research information and information regarding support groups.

"The good news is that Alzheimer's disease does not affect some 91 percent of those over age 65," said Craig. "And research is continuing so that in time, we may be able to prevent and even cure Alzheimer's."

The Lions Tale

by Gene Alderson

The Clarendon Lions Club held its regular meeting at noon on Tuesday, July 30, 1991 at the Lions Hall. There were eighteen members, Lion Sweetheart, Dee Williams and three guests present.

A chicken fried steak dinner was enjoyed by all present. Boss Lion Robertson called the meeting to order and led the Pledge of Allegiance after Jerry Chambliss led the singing. Lion Christal gave the prayer. Liontamer Henson introduced our guests including Rick Knapp, a C.P.A. from Dallas, who was the guest of Lion Smith and Cris Reynolds from Dimmitt who was a guest of his grandmother-sweetheart Dee Williams. The club voted to reimburse Lion Bernabe for his phone calls to Lions International on behalf of the club. There was no program. Meeting adjourned.

Tommy Saye
Cooperative Observer
For National Weather
Service, Clarendon

August				
Day	July	Hi	Low	Prec.
Mon. 29	94	63		
Tues. 30	92	61		
Wed. 31	94	61		
Thurs. 1	94	62		
Fri. 2	96	65		
Sat. 3	96	66		
Sun. 4	97	66.18		
Total for Mo.	.18			
Total for Yr.		14.91		
Moisture 1 year ago		21.07		
Jan-June total		2.47		

PUBLIC NOTICE

CITY OF Clarendon

TEXAS COMMUNITY DEVELOPMENT PROGRAM

The City of Clarendon is currently making plans to apply to the Texas Department of Commerce for Texas Community Development Program funds. Two public hearings to solicit the input of the community in the preparation of the Community Development Program will be conducted.

The first public hearing will be held at City Hall, 119 South Sully at 7:00 P.M., August 13, 1991 to discuss housing and community development needs, use of past TCDD awards, amount of funds available and eligible activities. The City encourages individual citizens and citizen's groups to make their views known at these public hearings and welcomes the full participation of its citizens in the development of this TCDD application. General information on the TCDD program will be available. Citizen comments may be delivered in advance to City Hall at any time. Groups representative of persons of low and moderate income may request technical assistance in developing TCDD proposals by contacting the person listed below.

The second public hearing will be held at City Hall, 119 South Sully at 5:15 P.M., August 20, 1991 to allow citizens an opportunity to comment on the proposed project, amount of funds requested and estimated amount proposed for activities that will benefit low/moderate income persons.

More detailed information on proposed activities, amount of funds and proposed location of activities will be available for inspection at City Hall after the second hearing. Handicapped individuals who may have difficulty in attending these meetings should contact City Hall to arrange for assistance. *Para residentes necesitados de interpretes, favor de comunicarse con la municipalidad antes de las audiencia publica.*

For further information, contact Sue Howard, City Secretary at the City Hall at # 874-3438.

PRICES EFFECTIVE AUGUST 4 thru 10, 1991

Hwy 287 West
Clarendon, Texas
874-3906

ALLSUP'S

ALL FLAVORS
**ALLSUP'S
ICE CREAM**
1/2 GALLON
99¢

DECKER ZIPLOC PACK
COOKED HAM
10 OZ. PKG.
\$1.99

SHURFINE
SUGAR
5 LB. BAG
\$1.59

NABISCO OREO
COOKIES
20 OZ. PKG.
\$2.29

SAUSAGE, EGG & BISCUIT EACH **79¢**
YOUR CHOICE VALVOLINE
MOTOR OIL QUART **\$1.29**

COOKED FRESH 24 HRS. A DAY HOT FOODS MENU AVAILABLE AT ALL ALLSUP'S LOCATIONS

BARBECUE BEEF SANDWICH	99¢	9 PIECE BOX CHICKEN	\$4.99
BARBECUE PORK RIBS (LB.)	\$3.99	BEEF & CHEESE CHIMICHANGA (MEAD)	\$1.19
BARBECUE WHOLE CHICKEN	\$3.99	CORN DOG	69¢
ALLSUP'S BURRITO	79¢	DELICIOUS HAMBURGER	59¢
BREAKFAST BURRITO	99¢	WILSON HOT LINKS	99¢
BURRITO	\$1.19	SAUSAGE ON A STICK	\$1.59
BEEF & SALSA	79¢	SAUSAGE & BISCUIT	79¢
DELICIOUS CHEESEBURGER	\$1.59	SAUSAGE, EGG & BISCUIT	\$1.09
FRIED STEAK	\$1.49	SAUTEYEA SAUSAGE	\$1.09
3 COUNT CHICKEN STRIPS	\$1.99	4 COUNT STEAK FINGERS	\$1.00
W/POTATO WEDGES/CHICKEN (2 PCS) BISCUIT			

CALL-IN ORDERS WELCOME CHECK OUR WEEKLY SPECIALS

**Allsup's
Ice Cream**
1/2 Gallon
\$.99

Ken-L-Ration
Dog Food 3/\$1.00
15 oz. Cans

Shurfine
**Cake
Ice Cream Cones** \$.39
1 Dozen Box

\$1000* WINNER
WILLIAM HATCHER, ROSWELL, N.M.
\$150* WINNERS
GABRIEL MENDOZA, FLOYDADA, TX.
LUPE ZAMBRANO, VERNON, TX.
MISTY ROSS, LOS LUNAS, N.M.
THOMAS FRANKLIN, ALBUQUERQUE, N.M.
GAS FOR A YEAR WINNERS
ROCKY SMITH, PADUCAH, TX.
JESUS MALDONADO, HEREFORD, TX.
JOY HILL, JAL, N.M.
SHANNON ROSS, SPRINGTOWN, TX.
DEL FRED WAINKA, GALLUP, N.M.
LISA CLARDY, OUTTAQUE, TX.

NO PURCHASE NECESSARY
See Store for Complete
Rules and Odds.

PLAY TODAY Convenient Cash

TM Pick Up Your FREE
Instant Win
Scratch-Off Game
Ticket

Over
325,000 Chances to win CASH,
FREE PRODUCTS & FREE FOOD
Enter Our Second Chance

Sweepstakes and
Cruise The Caribbean

OR Be one of 9 lucky people
who will win
FREE GAS
FOR A YEAR*!
(*8 Gallons a week for 52 weeks)

7 Day Cruise For Two Can
Be Yours(a \$5000 Value)With
\$300 Spending Money!
Mithchie Fuston of Clarendon
was the winner of \$100

Sewing Fair To Be Held

A "Needles and Things" Sew Fair will be held in Amarillo at Texas A & M Extension and Research Center, 6500 Amarillo Blvd. West, on Tuesday, August 20, 1991, from 9:00 a.m. until 4:00 p.m.

The event will be sponsored by the Potter and Randall County Extension Services and is open to the public in the Panhandle area. Registration at the door will be \$3.00.

Alma Fonseca of College Station, Texas Agricultural Extension Service clothing specialist; and Casandra Steele of Prairie View, Texas Agricultural Extension Service home economics specialist, will be among presenters.

Fonseca will present "Short Cuts in Sewing". Steele's topic will be the "Fashion Tips and Tricks" and will include written instruction on making fabric accessories.

The new Fashion/Fabric Forecast from McCall's Pattern Company will be presented by slides.

Linda Hawkins, owner-manager of Creative Needle in Amarillo, will present "News You Can Use in Sewing".

"Wardrobe Secrets" will be the program topic for Joyce Cyr, owner of Wardrobe Secrets in Amarillo.

The concluding session will be "Dressing on a Budget", presented by Phyllis Cook of Panhandle Community Action in Amarillo.

Exhibits by Amarillo and area merchants will be in place during the day. Exhibitors will include Creative Needle, Cloth World, Kathie's Creation, Brenda's Baskets, Levis & Lace, Wardrobe Secrets, Northwest Fabrics, Sewing World, and Fabric Galore, all of Amarillo; Sew Creative of Hereford; C and C Crafts of Wildorado; and Margie's Rags to Rugs of Sunray.

The event will be coordinated by Wynon Mays and Alby Peters, Randall and Potter Extension home economists, who will be emcees for the program.

For additional information interested parties may call 373-0713 or 655-7001, ext. 325.



PANHANDLE STATE UNIVERSITY in Goodwell, OK, recently held a fall pre-enrollment clinic. Attending the Clinic from Texas were: Front row (l-r) Steven Boone, Clarendon; Patricia Rascon, Perryton; Laura Loya, Perryton; Terri Rafe, Booker; Misti Cates, Booker; and John Johnson, Tulia. Back row (l-r) Paige Ford, Canadian; Chris Maloy, Amarillo; Shy Ward, Amarillo; Tim Nava, Amarillo; Kevin Johnson, Sunray; Ross Kelso, Mobeetie; and Tracey Kincannon, Canyon. (Photo courtesy of PSU)

Advertise in The Clarendon News!

Hall County Hospital Home Health Service



Hospital Base

Medicare Approved

Skilled Nursing Care

Personal Care

Local Nurses

NURSES ON CALL 24 HOURS A DAY
We Accept Medicare, Medicaid, Private Insurance
Private Pay and Workman's Compensation

For More Information
Contact Betty Christian, Supervisor
Call 1-800-274-6998

Emsley A. Davis, M.D., F.I.C.S.

Diplomate, American Board of Surgery
General Surgery, General Practice

1009 15th Street
Wellington, Texas 79095
806/447-5208

August 6, 1991

Dear Friends,

I have been serving the health care needs of the people of Wellington, Texas and Collingsworth County for one year. I want to express my sincere thanks and appreciation to Collingsworth County Hospital and the citizens of this area for their support.

My goal is to help build a healthier community for all of us to live and work in and raise our families. I hope that you and your family never need the services of a physician, but when you do, I am here to help.

As a physician I specialize in General Surgery (including gallbladder, colon, stomach, breast, thyroid) and surgical endoscopy. I am Certified by the American Board of Surgery, a Member of the American Society of Abdominal Surgeons, and a Fellow of the International College of Surgeons. I am also doing a General Practice to fill the needs of the community.

If I can ever be of any assistance to you or your loved ones, please feel free to call my office at (806)447-5208.

Thank you again for your kind support, and for making me feel so at home in the Panhandle!

Sincerely,

Emsley A. Davis M.D.
Emsley A. Davis, M.D.

INVITATION FOR BIDS

The City of Clarendon, Texas will receive Bids for construction of a Standpipe Water Tank until 2:00 p.m. on the 22nd day of August, 1991, in City Hall, P.O. Box 1089, Clarendon, Texas 79226, at which time and place all bids will be publicly opened and read aloud.

Bids are invited upon the several items and quantities of work as follows:

Item 1. 1 - 70,000 gallon standpipe water tank including pipe, valves and fittings and all associated appurtenances.

Contract Documents, including Drawings and Technical Specifications, are on file at the office of OJD Engineering, Inc., Wellington, Texas.

Copies of the Contract Documents may be purchased at the office of OJD Engineering, Inc., P.O. Box 543, Wellington, Texas 79095, Phone Number 806-447-2503, at a cost of \$30.00 for each set so obtained. This fee is not refundable. Materials suppliers may obtain unbound copies of the specifications and bid sheets only by contacting the Engineer.

A certified check or bank draft, payable to the order of the City of Clarendon, Texas, negotiable U.S. Government bonds (at par value) or a satisfactory Bid Bond executed by the Bidder as an acceptable surety in an amount equal to five percent (5%) of the total Bid shall be submitted with each Bid.

Attention is called to the fact that not less than the federally determined prevailing (Davis-Bacon) wage rate, as issued by the Texas Department of Commerce and contained in the Contract Documents must be paid on the project. In addition the successful bidder must ensure that employees and applicants for employment are not discriminated against because of their race, color, religion, sex or national origin.

Attention is called to General Condition 142 "Restrictions on Public Buildings and Public Works Projects". The bidder certifies by the submission of its bid that it:

1. Is not a Contractor of a foreign country included on the USTR list.
2. Has not and will not enter into any subcontract with a subcontractor of a foreign country included on the USTR list.
3. Will not provide any product of a foreign country included on the USTR list.

The City of Clarendon, Texas reserves the right to reject any or all Bids or to waive any informalities in the bidding.

Bids may be held by the City of Clarendon, Texas for a period not to exceed thirty (30) days from the date of the opening of Bids for the purpose of reviewing the Bids and investigating the qualifications of Bidders, prior to awarding of the Contract.

City of Clarendon Jim Sharrar, Mayor Date: Aug. 1, 1991.



Back to School Pre-Fall Sale

Shopping Just Got Better!
Just Arrived

- * George Strait Ropers
- * for Girls Miss Quality Dresses
- * OP Sweat Tops
- * Maty Dresses for Girls
- * Act 1 Dresses for Ladies

Children's Shoes 25% off	Men's Panhandle Slim Shirts 25% off	Straw Hats 50% off
Girls Fall Dresses 20% off	Boys Shirts 50% off	Much, Much More!



Greene Dry Goods Co.
CLARENDON, TEXAS

Letter to the Editor

NOTE: The Clarendon News welcomes letters to the editor, as space permits. This is a forum for local opinion, and the ideas expressed are those of the writer.

The newspaper does not check facts and figures cited in letters. The paper does not necessarily agree or disagree with letters, and may or may not feel that the topics are important. However, it is important that local people have an opportunity to express their feelings.

Letters may be left at the office or mailed to The Clarendon News P.O. Box 1110, Clarendon, TX 79226. Letters should be signed.

Dear Editor:

Voter approval of Proposition 2 on Saturday, Aug. 10, is vital for thousands of young Texans pursuing their college degrees.

Proposition 2 is a constitutional Board to issue general obligation bonds to fund the state's Hinson-Hazlewood College Student Loan Program.

Without the amendment, there will be no funds for the state's student loan program after March 1992. An unprecedented increase in demand for student loans has depleted this self-supporting program. In 1988, 6,259 students received these loans. Last year the number of student borrowers increased to 26,239.

The Hinson-Hazlewood loan program functioned as a revolving fund between 1977 and 1989. No new bond sales were needed because loan repayments covered the cost of making new loans. But today's unprecedented demand requires the sale of additional bonds to support our college students.

Our future depends on wise choices today. Vote "yes" for Proposition 2. It will permit deserving young people to help pay for an education they otherwise might not be able to obtain.

Sincerely,
Harry M. Reasoner
Chairman
Texas Higher Education
Coordinating Board

Dear Editor

The Motel Bed Tax Fund in Clarendon currently contains approximately \$17,000. This money has accumulated since October, 1989 from a tax paid by overnight visitors.

State law requires that these funds be spent in two basic categories, restoration and tourism.

Since January of 1990, the Clarendon Chamber of Commerce has received \$12,567 and the Saints

Roost Museum \$5,000 from the fund. Two of the most recent expenditures approved by the Board of Aldermen include \$1,000 for a "Thunder Junction/Shop Clarendon" billboard and \$582 for advertising costs associated with Chamber of Commerce sponsored events. These items were submitted to the Board of Aldermen for approval after the expenses were incurred by the Chamber.

In my opinion, proposals for expenditures from the Motel Bed Tax Fund should be considered and approved or disapproved before those expenses are incurred, not after. The "after-the-fact" approach puts undue pressure on our elected officials to rescue a potentially embarrassing situation.

Planning, on both sides, would create a much more desirable, effective means of solving the problem. Guidelines need to be established by the Board of Aldermen and then communicated to all sectors of our community. This would ensure that other projects receive proper consideration and funding based on merit.

Judy Welch

The Clarendon News

Dear Editor

The people of Clarendon who enjoy a good garage sale have learned that a good garage sale in Clarendon is a thing of the past. The ones who are considerate enough to wait until the posted times advertised in the paper arrive to find that an "early bird" was allowed to pick and choose over the articles and leave very little good bargains. The good articles are then taken to a flea market and sold for considerably more. For those of us who enjoy a good garage sale, we have discovered that we have to go out of town. So why say "no early birds" and then allow them?

Sincerely,
Geneva Mays

Dear Editor

Homestead tax exemptions may be eliminated!

The election on Saturday, August 10th is vitally important to all property owners. There are two ballots for each voter; one is a State ballot with two constitutional amendments to vote on. The other ballot is (C.E.D.) County(s) Education District ballot with three(3) propositions to vote "yes" or "no" on.

Amendment #1 and the three propositions were put on the ballot to straighten out the big mess caused by the State Legislature when they created these multi-county education districts with one member from each school district being appointed to make up the C.E.D. Board, without regard to the number of voters in each school district. This is considered a violation of the Federal Voting Act.

Amendment #1 and the three propositions are closely related to each other. If amendment #1 should fail, propositions 1, 2, and 3 become null and void regardless of how you voted on them. This will leave the C.E.D. with power to grant homestead and senior exemptions or not to grant these exemptions as they see fit. Also the C.E.D. can tax personal property if they wish. Personal property can include furniture, appliances, clothing, vehicles, motorhomes, trailers, boats, jewelry, etc.

Let's assume that amendment #1 passes. This means we will have given ourselves the power to grant:

Proposition #1 Homestead Exemptions

Proposition #2 Tax our personal property

Proposition #3 Disability and Senior exemptions

Rep. David Swinford serving the 88th District of Texas, explains these propositions far better than I. The following is taken from his column in the Amarillo Daily News, Friday, August 2, 1991.

Proposition #1 "The exemption of 20 percent of the market value of the residence homestead ad valorem taxation in the (county) County Education District" (a "yes" vote on this proposition means that 20 percent of the value of the home in which you live will be reduced from the total amount of county education district taxes you pay).

Proposition #2 "The taxation of all tangible personal property, other than manufactured homes in the (county) County Education District that is not held or used for the production of income" (a "yes" vote on this proposition means that you are giving permission to have your personal property taxed by your county education district).

Proposition #3 "The exemption of \$10,000 of the market value of the residence homestead of an individual who is disabled and of \$10,000 of the market value of the residence homestead of an individual who is 65 or older from ad valorem taxation in the (county) County Education District." (a "yes" vote on this proposition means that persons who are disabled or who are age 65 or older will get an additional \$10,000 exemption from the total amount of county education district taxes paid).

In a nutshell, if you want to continue the homestead exemption vote "yes" on proposition #1, if not vote "no."

If you want the C.E.D. to tax your personal property, vote "yes" on proposition #2, if not vote "no."

If you want to continue the disabled and the 65 or older exemptions vote "yes" on proposition #3, if not vote "no."

Amendment #2 on the State ballot provides additional funds for the State student loan program.

Please, all of you registered voters exercise your rights and responsibility by voting Saturday, August 10, 1991.

Floyd Ramsey

Americans Living Longer

Americans are living longer, giving rise to a new phenomenon -- elderly children caring for elderly parents.

"The golden years are some-

Thursday, August 8, 1991

times not so golden," said Dr. Robert J. Luchi, associate chief of staff for geriatrics and extended care at the Houston Veterans Affairs Medical Center and professor of medicine at Baylor College of Medicine. "Today's parents are older and more likely to be widowed and in poor health, requiring a high level of care from their children."

Members of this "sandwiched" generation are usually women who are trying to care for their parents, their families and their own needs. These combined stresses on the caregiver can take their toll, both emotionally and financially. And times are going to get tougher.

According to the U.S. Bureau of the Census, by the year 2000, 35 million Americans will be older than 65, and approximately 108,000 will live to be 100 and older.

Many adult children must make tough decisions regarding expensive health care as well as limited parental incomes, living arrangements and the high cost of nursing-home care.

As Americans get older, they are more likely to have one or more chronic illnesses. Many elderly have no insurance or are under-insured, relying on financial assistance from their children.

Living arrangements may bring adjustments. Family life can be disrupted when a parent moves into an adult child's home; however, the parent may require extensive physical and emotional support, forcing the family member to hire help.

Nursing-home care costs \$25,000 to \$35,000 per year. It is rarely covered by Medicare or private health insurance, and it can quickly deplete savings.

Only when a person is considered "needy" (low income and no assets) is he or she eligible for Medicaid, which pays for skilled nursing home care. However, many nursing homes have long waiting lists and a limited number of Medicaid beds.

"There is not much in the way of community resources and many people have trouble locating them," Luchi said. "It takes creativity and careful homework."

Luchi suggests the following: -Contact county, state and government agencies to learn about available benefits.

-Join an organization such as the American Association of Retired Persons.

-Find out what services volunteer agencies offer.

-Investigate adult day care centers.

-Take a break by asking relatives or friends to help out. Also, volunteer to help someone care for an elderly relative.

"I would advise young people to seriously plan for their golden years," said Luchi. "They may have to care for an elderly parent someday."

Remington Tire Sale

Petty's Texaco

Hwy. 287 East

Ph. 874-3964

Complete Line of Passenger car & Light Truck Tires

Price Starting at \$39.95 for 165-80-13

Remington Pioneer 235-75R-15 \$59.95

or Remington Maximum Plus 235-75R-15 \$53.25

Prices include mount & balance plus

Road Hazard Warranty



1991 Property Tax Rates in Donley Hospital

This notice concerns 1991 property tax rates for Donley Hospital. It presents information about three tax rates. Last year's tax rate is the actual rate the taxing unit used to determine property taxes last year. This year's effective tax rate would impose the same total taxes as last year if you compare properties taxed in both years. This year's rollback tax rate is the highest tax rate the taxing unit can set before taxpayers can start tax rollback procedures. In each case these rates are found by dividing the total amount of taxes by the tax base (the total value of taxable property) with adjustments as required by state law. The rates are given per \$100 of property value.

Last year's tax rate:	
Last year's operating taxes	\$ 135,746
Last year's debt taxes	\$ 45,232
Last year's total taxes	\$ 180,978
Last year's tax base	\$ 103,033,066
Last year's total tax rate	\$.17565 /\$100

This year's effective tax rate:	
Last year's adjusted taxes	\$ 180,325
(after subtracting taxes on lost property)	
+ This year's adjusted tax base	\$ 100,516,385
= This year's effective tax rate	\$.17939 /\$100
x 1.03 = maximum rate unless unit publishes notices and holds hearing	\$.18477 /\$100

This year's rollback tax rate:	
Last year's adjusted operating taxes	\$ 180,325
(after subtracting taxes on lost property)	
+ This year's adjusted tax base	\$ 100,516,385
= This year's effective operating rate	\$.13456 /\$100
- .72 for school district (or zero)	\$ 0
x 1.08 (or add \$.08 for schools) = this year's maximum operating rate	\$.14532 /\$100
+ This year's debt rate	\$.04794 /\$100
= This year's rollback rate	\$.19326 /\$100

SCHEDULE A: Unencumbered Fund Balances

The following balances will probably be left in the unit's property tax accounts at the end of the current fiscal year. These balances are not encumbered by a corresponding debt obligation.

Type of Property Tax Fund	Balance
HOSPITAL DISTRICT	\$23,682.00

SCHEDULE B: 1991 Debt Service

The unit plans to pay the following amounts for long-term debts that are secured by property taxes. These amounts will be paid from property tax revenues (or additional sales tax revenues, if applicable).

Description of Debt	Principal or Contract Payment to be Paid	Interest to be Paid	Other Amounts to be Paid	Total Payment
GENERAL OBLIGATION BONDS	\$30,000.00	\$19,145.00	\$350.00	\$49,495.00

This notice contains a summary of actual effective and rollback tax rate calculations. You can inspect a copy of the full calculations at the Donley Appraisal District office.

Name of person preparing this notice Paula Lowrie

Title Chief Deputy

Date prepared July 31, 1991



GREENE
DRY GOODS
(806) 874-3664



1-800-255-3267

EK Jeans Originals
1876

CLARENDON'S ORIGINAL GEANS
100 % TEXAS HIGH PLAINS COTTON

Preshrunk
Customized Fit

Made In
CLARENDON
U S A
79226

This Pocket Patch will become a familiar sight in and around Clarendon when EK Jeans gets in production.

Bright Newhouse and Lou Ann Gregory have teamed up to produce a full line of Jeans.

Greene's Dry Goods store will be the retail outlet as well as "order taker" and will do measuring for custom designs.

Let's be proud of Clarendon and take pride in wearing "Home Made" Jeans that are as good as any and better than most.

IT'S
**DOUBLE
VALUE**
TIME AT
DAIRY QUEEN!

\$2.99



FULL MEAL DEAL™

1/4 lb. +
Hungr-Buster®
french fries, drink
& a small sundae.

\$1.99



FUN BUNCH MUNCH™

KID'S MEAL

A meal just for
kids! Your choice
of hot dog,
Hungr-Buster® Jr.,
corny dog or two
steak fingers, plus
drink, french fries
and a DQ treat.
And a fun prize!

ON SALE JULY 29 -
AUG. 12, 1991

THIS WEEK'S

**DQ
VALUE**

© Reg. U.S. Pat. & Tm. Off. All D.Q. Dns.
1728 Reg. U.S. Pat. & Tm. Off. D.Q. Dns. Clm.
© Tr. D.Q. Dns. Clm. All participating Dairy
Queen stores. © 1991 Dairy Queen

Thursday, August 8, 1991
ELECTION-from p. 1.

well as open up the possibility of taxing certain tangible personal property.

• What is on the August 10 ballot?

There will be two elections held that day - a state constitutional amendment election and a school district election (in a few cities, there will be an additional local election regarding local issues.

The state election involves two constitutional amendments: 1) Proposition 1 to allow certain property tax homesteads exemptions and taxation of certain tangible personal property by the county education district; and 2) Proposition 2 which allows the Texas Higher Education Coordination Board to issue up to \$300 million in general obligation bonds to fund student loans.

The school districts will conduct a local option election on behalf of the county education district concerning issues addressed by Proposition 1. The school ballot will be in three parts: 1) whether to adopt a homestead exemption of 20% of market value; 2) whether to adopt an additional exemption of \$10,000 for the elderly and disabled; and 3) whether to tax non-income producing tangible personal property.

• What happens if Proposition 1 fails?

If this constitutional amendment fails statewide, the school district election whereby the VOTERS authorize the exemptions will be disregarded. However, the governing body of the CED might adopt these exemptions under existing provisions of the Constitution.

• Does each school district have to approve the three ballot propositions for them to pass?

The results for each question will be added together for the county education district as a whole. If the question fails in one district but passes the CED as a whole, it is still adopted by the CED.

• Is a vote against Proposition 1 a vote against taxing tangible personal property by the CED?

Yes, but it is also a vote against voter-authorization for the CED to use homestead exemptions and elderly and disabled exemptions. As stated previously, the CED governing body might adopt these provisions following procedures set up under current law.

• What items would be taxed as tangible personal property?

Perhaps tangible personal property can best be described by what it is NOT: it is not real property; it is not household goods, which are exempt from taxation by the Texas Constitution; it is not intangible property, such as stocks or bonds; and it is not income-producing property.

The most obvious targets are cars, boats, airplanes, and RVs.

• Where do I vote?
Ballots will most likely be cast on election day at your regular precinct polling station, but check your newspaper to be sure. If joint elections have not been worked out in your area by the schools and the county election officer, it is possible you may have to vote at two different polling stations.

Further questions about this election should be directed to the Secretary of State's Elections Division, 1-800-252-VOTE.

90 Day "Amnesty" for Tank Registration Announced

The Texas Water Commission has announced that, beginning immediately, owners of underground and aboveground storage tanks who have not registered their tanks with the state agency may do so without penalty for late registration until October 15, 1991.

Owners of underground storage tanks that contain petroleum and other hazardous substances have been required since 1987 to register those tanks with the Texas Water Commission. Tanks not currently in use, but not properly closed out according to TWC standards, also must be registered. In addition, aboveground storage tanks that contain motor fuel-type petroleum products have been required to register with the Commission since 1990.

Only owners of registered petroleum storage tanks are eligible for clean-up reimbursement from the state's petroleum storage tank remediation fund in the event their tanks leak and result in environmental contamination.

After the tank registration "amnesty" period ends on October 15, 1991, owners with unregistered tanks are subject to fines up to \$10,000 per day. The amnesty policy does not apply to persons who have unregistered tanks that are discovered independently by the Texas Water Commission.

Insects Increasing In Cotton

Donley County cotton farmers need to be checking fields very close the next couple of weeks. Bollworm activity is increasing with some early planted cotton showing signs of egg lay and worm damage. Bollworm Moth trap catches peaked the end of last week, which would indicate an expected bollworm lay and hatch this week and/or next week.

In fields that are blooming good, producers should wait until worms reach 6,000 to 8,000 per acre range before spraying. Fields that are in the late squaring to very early bloom will need to be treated when worm populations reach 4,000 to 6,000 per acre. Producers should check fields very closely before spraying. Treatment too early or too late can cause secondary problems and cost money.

Contact the Donley County Extension Office for more information.

Registration requirements do not apply to certain tanks exempted by law or excluded by TWC rules, including small farm and residential tanks of less than 1100 gallons, heating oil tanks, hydraulic lifts, hazardous waste tanks, wastewater treatment tanks, small aboveground storage tanks of less than 1100 gallons, and certain other exempted or excluded tanks.

For more information on registering underground or

aboveground storage tanks, please contact the Registration Section of the Petroleum Storage Tank Division of the Texas Water Commission at 512-371-6212.

Government Directory

U.S. Sen. Lloyd M. Bentsen
Room 703, Hart OB
Washington, DC 20510
(202) 224-5922

U.S. Sen. Phil Gramm
Room 370, Russell OB
Washington, DC 20510
(202) 224-2934

U.S. Rep. Bill Sarpalus
1223 Longworth OB
Washington, DC 20515
(202) 225-3707

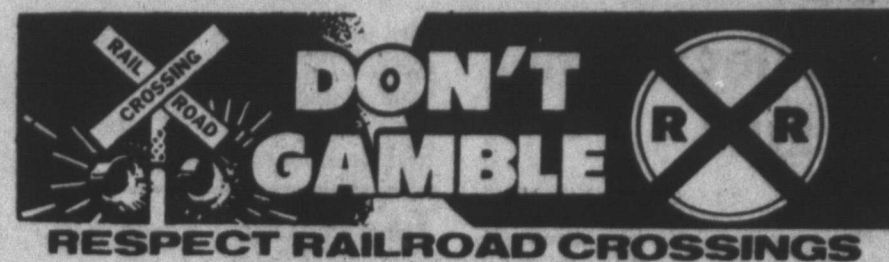
Tx. Sen. Teel Bivins
Box 12068 Capitol Sta.
Austin, TX 78711
(512) 463-0121

St. Rep. Warren Chisum
P.O. Box 2910
Austin, TX 78768-2910
(800) 692-1389
(512) 463-0736

Gov. Ann Richards
Room 200 State Capitol
Austin, TX 78711
(800) 252-9600
(512) 463-2000

MAGIC!

Classified ads can change your junk into cash.
Run an advertisement in The Clarendon News



Office Hours By Appointment

FAMILY MEDICAL CENTER
JOE WAYNE MORROW, D.O.
General/Family Medicine
Manipulative Medicine

6017 S.W. 45th Ave.
Amarillo, Texas 79109

(806) 354-0167
24 Hr. Answering Service

Special Election (Elección Especial)
#25 County Education District
(Distrito Educativo del Condado de #25)
August 10, 1991 (10 agosto de 1991)

COUNTY EDUCATION DISTRICT PROPOSITIONS (PROPOSICIONES DEL DISTRITO EDUCATIVO DEL CONDADO)

INSTRUCTION NOTE: (NOTA DE INSTRUCCION):

Place an "X" in the square beside the statement indicating the way you wish to vote. (Marque con una "X" el cuadro al lado de la frase que indica la manera en que quiere usted votar.)

NO. 1

☐ FOR (A FAVOR DE)

☐ AGAINST (EN CONTRA DE)

The exemption of 20 percent of the market value of the residence homestead from ad valorem taxation in #25 County Education District. (La exención del 20 por ciento del precio en plaza del hogar residencial de impuestos al valor, en Distrito Educativo del Condado de #25.)

NO. 2

☐ FOR (A FAVOR DE)

☐ AGAINST (EN CONTRA DE)

The exemption of \$10,000 of the market value of the residence homestead of an individual who is disabled and of \$10,000 of the market value of the residence homestead of an individual who is 65 or older from ad valorem taxation in #25 County Education District. (La exención de \$10,000 del precio en plaza del hogar residencial de personas incapacitadas, y de \$10,000 del precio en plaza del hogar residencial de personas de 65 o más años de edad, de impuestos al valor, en Distrito Educativo del Condado de #25.)

NO. 3

☐ FOR (A FAVOR DE)

☐ AGAINST (EN CONTRA DE)

The taxation of all tangible personal property, other than manufactured homes, in #25 County Education District that is not held or used for the production of income. (Recaudación de impuestos a todos los bienes personales tangibles, con excepción de viviendas fabricadas, en Distrito Educativo del Condado de #25, cuando dichos bienes no se posean ni se utilicen para producir ingresos.)

Notice of Effective Tax Rate

1991 Property Tax Rates

This notice concerns 1991 property tax rates about three tax rates. Last year's tax rate is the actual rate the taxing unit used to determine property taxes last year. This year's effective tax rate would impose the same total taxes as last year if you compare properties taxed in both years. This year's rollback tax rate is the highest tax rate the taxing unit can set before taxpayers can start tax rollback procedures. In each case these rates are found by dividing the total amount of taxes by the tax base (the total value of taxable property) with adjustments as required by state law. The rates are given per \$100 of property value.

It presents information about three tax rates. Last year's tax rate is the actual rate the taxing unit used to determine property taxes last year. This year's effective tax rate would impose the same total taxes as last year if you compare properties taxed in both years. This year's rollback tax rate is the highest tax rate the taxing unit can set before taxpayers can start tax rollback procedures. In each case these rates are found by dividing the total amount of taxes by the tax base (the total value of taxable property) with adjustments as required by state law. The rates are given per \$100 of property value.

Last year's tax rate:
Last year's operating taxes
Last year's debt taxes
Last year's total taxes
Last year's tax base
Last year's total tax rate

This year's effective tax rate:
Last year's adjusted taxes
(after subtracting taxes on lost property)
+ This year's adjusted tax base
(after subtracting value of new property)
= This year's effective tax rate
x 1.03 = maximum rate unless unit publishes
notices and holds hearing

This year's rollback tax rate:
Last year's adjusted operating taxes
(after subtracting taxes on lost property)
+ This year's adjusted tax base
= This year's effective operating rate
- .72 for school district (or zero)
x 1.08 (or add \$.08 for schools) = this year's
maximum operating rate
+ This year's debt rate
= This year's rollback rate

	Clarendon College	City of Hedley	City of Clarendon
Last year's tax rate:			
Last year's operating taxes	\$ 187,884	\$ 9,686	\$ 181,666
Last year's debt taxes	\$ 0	\$ 0	\$ 0
Last year's total taxes	\$ 187,884	\$ 9,686	\$ 181,666
Last year's tax base	\$ 103,029,425	\$ 4,435,370	\$ 32,791,040
Last year's total tax rate	\$.18236 /\$100	\$.21838 /\$100	\$.55401 /\$100
This year's effective tax rate:			
Last year's adjusted taxes (after subtracting taxes on lost property)	\$ 187,207	\$ 9,679	\$ 181,423
+ This year's adjusted tax base (after subtracting value of new property)	\$ 100,516,385	\$ 4,242,020	\$ 32,285,785
= This year's effective tax rate	\$.18624 /\$100	\$.22816 /\$100	\$.56192 /\$100
x 1.03 = maximum rate unless unit publishes notices and holds hearing	\$.19182 /\$100	\$.235 /\$100	\$.57877 /\$100
This year's rollback tax rate:			
Last year's adjusted operating taxes (after subtracting taxes on lost property)	\$ 187,207	\$ 9,679	\$ 181,423
+ This year's adjusted tax base	\$ 100,516,385	\$ 4,242,020	\$ 32,285,785
= This year's effective operating rate	\$.18624 /\$100	\$.22816 /\$100	\$.56192 /\$100
- .72 for school district (or zero)	\$ 0	\$ 0	\$ 0
x 1.08 (or add \$.08 for schools) = this year's maximum operating rate	\$.20113 /\$100	\$.24641 /\$100	\$.60687 /\$100
+ This year's debt rate	\$ 0 /\$100	\$ 0 /\$100	\$ 0 /\$100
= This year's rollback rate	\$.20113 /\$100	\$.24641 /\$100	\$.60687 /\$100

SCHEDULE A: Unencumbered Fund Balances

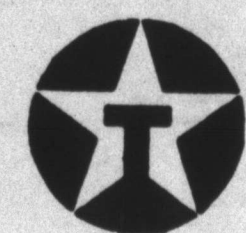
The following balances will probably be left in the unit's property tax accounts at the end of the current fiscal year. These balances are not encumbered by a corresponding debt obligation.

Type of Property Tax Fund	Balance	Balance	Balance
Maint & Opr	978.00	General Fund	\$2,239.67
		General Fund	-0-
		Current Tax Savings	-0-
		Delinquent Tax Savings	-0-

This notice contains a summary of actual effective and rollback tax rate calculations. You can inspect a copy of the full calculations at the Donley Appraisal District office.

Name of person preparing this notice Paula Lowrie
Title Chief Deputy

Date prepared July 31, 1991



SUPER,
UNLEADED,
DIESEL FUEL,
URSA & HAVOLINE OIL,
SYSTEM 3

DRIP OIL & DIESEL OIL
T.D.H. OIL

TROCO OIL
10 WT
20 WT
30 WT

FREE DELIVERY

BIVENS OIL
CLARENDON, TEXAS 79226

Laquita Cox, Office Mgr.
Pick Cox, Del. Driver

Work: 874-2692 - Home: 856-5432

Hedley School Begins

Another year at Hedley School is about to begin. This is a schedule of events to help the students and parents get ready for that first day. Pre-registration will be held on Monday, August 19th from 9:00 until 12:00 and 1:00 until 4:00.

Students entering Hedley School for the first time should bring their birth certificate, immunization records and a social security number or an address so these things may be obtained.

School starts Monday, August 26th at 8:00 a.m. The regular opening meeting with parents will be Friday night, August 23rd at 7:00 p.m. in the gymnasium. At 7:30 the parents will attend each class with their child for about ten minutes in the cafeteria. Then we will proceed

with the afternoon schedule. This will give the parents a chance to see what classes their child is taking and if any changes need to be made in their schedule.

Hedley Grade School Supply List

Kindergarten & First Grade: School box, Crayons - 24 count, Scissors, Glue-Elmers school glue in a bottle, 2 large boxes of Kleenex, pencils - 1 pkg., 1 large eraser, old shirt for painting, Kindergarten- pillow and blanket for nap time.

Second Grade: Folders-4, School Box, 1 large eraser, Crayons -24 count, Markers, Water color paints, Scissors, Glue, 1 large pkg. of pencils, Old shirt for painting.

Third Grade: 3 ring notebook, notebook paper, 1 package dividers, 1 plastic pencil holder to fit in notebook, 2 spiral notebooks, 5 folders with brads & pockets, ruler with inches and centimeters, scissors, pencils, eraser, glue, crayons, map colors, paint shirt.

Fourth Grade: 3 ring binder notebook, notebook paper, 1 pkg. dividers, 1 plastic pencil holder to fit in notebook, Ruler with inches and centimeters, Scissors, Pencils, Erasers, Glue, Crayons.

Fifth Grade: 3 ring binder notebook, notebook paper, 1 pkg. dividers, 1 plastic pencil holder to fit in notebook, Ruler with inches and centimeters, Scissors, Pencils, Eraser, Red pen, Map Colors, Compass, Protractor.

Hedley News

By Earl

The crime wave in Hedley continues. First, Josh Collins rabbits were killed while he was gone. Next, Frank Ramirez' sheep was killed. Then some chickens were slaughtered, and now some turkeys have been attacked and beheaded. Dog tracks have been found at the scene of the crimes, but the prime suspect was tied up during the latest attack. Things are getting curiously and curiously. The victims have not been eaten on, so apparently, the killer kills for fun and to satiate his blood thirst.

Besides reports of boll worms in the cotton, boll weevils are also now being reported in the Hedley area. Thanks to our governor, a bill to eradicate the boll weevil in our state was vetoed. It would have cost the State of Texas about 100,000 dollars. That's a lot of money, but it costs about 10 dollars an acre to spray for insects, and usually multiple sprayings will be required. These sprayings will be required every year until the boll weevil is control-

led on a state wide basis. Individual farmers cannot do this without the state's help. Some of the southeastern states have eradicated the boll weevil, and no longer have to spray to control it. The boll worm can be controlled somewhat by beneficial that feed on the boll worm eggs, but there are no natural predators of the boll weevil. If the boll weevil is controlled so fewer sprayings are required, the threat to the environment will be reduced. This also will reduce the threat to the environment if the boll weevil is eradicated.

School is not far off. New teachers for Hedley this year are: Shauna Monroe-Home Ec and business,

Lon Adams-Vo Ag,
Donna Costa-Special Ed,
Russel Schaub-Math,
Debbie Hill-Elementary Ed.

Hedley has traditionally had an exceptionally strong staff for a small school.

The City of Hedley has been informed by the State of Texas that Hedley's landfill will have to be closed. The Hedley City Council voted to buy some dumpsters and to send the garbage to the Memphis landfill. There will also be a small increase in fees, but they will now be, after the raise, the same as those in Clarendon and Memphis.

Obituary

John Edward Fisher

Funeral services for John Edward Fisher, age 74, were held at 10:00 am on Tuesday, August 6, 1991 in the First Baptist Church in Hedley with Rev. Bryan Knowles, Pastor of the Howardwick Baptist Church, officiating. Additional services and interment will be held in Peru, Indiana with arrangements under the direction of Robertson Funeral Directors.

Mr. Fisher died at 9:10 p.m. on Saturday, August 3, 1991 at his residence in Hedley from an apparent heart attack. He was born February 8, 1917 in Peru, Indiana and had lived in California for several years before moving to Hedley 6 years ago. He married Eddie Mae Land on December 25, 1943 in Dallas. He had worked most of his life as a heavy construction welder for Operating War II, having served in the Air Force. He was a member of Burbank Masonic Lodge 406 in Burbank, California, The Order of the Eastern Star Crown Chapter 162 in Corona, California, The Operating Engineers Union in Pasadena,

California, and the First Christian Church in Peru, Indiana.

Survivors include his wife, Eddie mae Fisher of Hedley; two daughters, Charlotte Grecian of Riverside, California, Madonna Geboe of Moreno Valley, California; a step-son, Jerry Tidrow of Idalou, Texas; 3 grandchildren; and a nephew, Hank Hilmer of Peru, Indiana.

Casket bearers were Don Blanks, Raymond Hopper, O'Neill Weatherly, Virgil McPherson, Fred Watt, and Kermit Hopper.

The family requests that memorials be to Cal Farley's Boys Ranch or the the Hedley Senior Citizens Association.

Hedley Senior Citizens Menu

August 8 - August 14

Thursday: Roast Beef, Baked Potato, Glazed Carrots, Hominy Salad, Purple Plums, Roll, Milk, Tea, Coffee

Friday: Cod Fillets, Tater Tots, Spinach, Cantaloupe Chunks, Oatmeal Cookies, Corn Muffin, Milk, Tea, Coffee

Monday: Oven Fried Chicken, Broccoli & Rice, Carrot/Raisin Salad, Peach Cobbler, Roll, Milk, Tea, Coffee

Tuesday: Meat Loaf W/Sweet, Sour Sauce, Steamed Cabbage, English Peas, Watermelon Chunks, Spice Cake, Roll, Milk, Tea, Coffee

Wednesday: Steak & Gravy, Mashed Potatoes, Colored Greens, Fresh Veg. Strips, Baked Apple, Corn Muffin, Milk, Tea, Coffee

Calendar of Events

Thursday: Games 1-3

p.m.; **Friday:** Games 1-3 p.m.,

Exercise 10 a.m., Games 7

p.m.; **Saturday:** Musical 7

p.m.; **Monday:** Games 1-3

p.m., Exercise 10 a.m., Musi-

cal 7 p.m.; **Tuesday:** Games 1-3

p.m., Board Meeting 1

p.m., Games 7 p.m.; **Wednes-**

day: Exercise 10 a.m., Games

1-3 p.m.

Public Notice

PUBLIC NOTICE CITY OF HEDLEY TEXAS COMMUNITY DEVELOPMENT PROGRAM

The City of Hedley will hold a second public hearing at 7:00 p.m. on August 15, 1991, at City Hall in regard to the submission of an application to the Texas Department of Commerce for a Texas Community Development Program (TCDF) grant. Topics to be discussed will include the application for sewer system improvements in the amount of \$197,400.00 (approximate) and the estimated amount of funds proposed for activities that will benefit low and moderate income persons. The application will be available for review at City Hall during regular business hours. Handicapped individuals that wish to attend this meeting should contact Danny Monroe at City Hall to arrange for assistance.

PUBLIC NOTICE

The City of Hedley will hold a Budget Hearing on the proposed 1991-1992 budget from 6:00 p.m. until 7:00 p.m. on Thursday, August 15, 1991, at the Hedley City Hall in Hedley, Texas.

PUBLIC NOTICE

At the Hedley City Council Regular meeting on Thursday, August 1, 1991, it was voted to raise the monthly sewer rate to \$7 per outlet, effective with the next billing (September 1). The increase will be used to make state-mandated improvements to the present sewage treatment plant.

In case of
emergency call
874-3533

(After September
call 911)

MAZE ENTERPRISE

Underground Homes, Basements,

Storm Shelters, & Walls.

Reinforce Concrete Structures

Financing Available
405-256-8881 - Woodward, Ok

When replacing your old worn out air conditioner, ask your Cooling & Heating Dealer about the DUAL-FUEL HEAT PUMP!

The DUAL-FUEL Heat Pump allows you to use your present gas furnace, duct system and electrical wiring. It replaces your old worn out air conditioning unit, but does much more -- it cools and heats. The heat pump provides the most efficient heating for your home during normal winter weather and uses your existing gas furnace to assist during extremely cold conditions if needed.

As a WTU customer
you can qualify for

\$500⁰⁰
cash

when you install an Electric
Heat Pump with a SEER rating of 10 or
more and your home meets WTU Energy
Saving Plan requirements

WEST TEXAS UTILITIES COMPANY

An Equal
Opportunity
Employer 

A Member of The Central and South West System

For more information call
your cooling & heating
dealer or WTU.

Ask about WTU's Finance Plan; you can pay for a new heat
pump and its installation on your monthly electric bill.

Notice of Effective Tax Rate

1991 Property Tax Rates in Donley County

This notice concerns 1991 property tax rates for Donley County. It presents information about three tax rates. Last year's tax rate is the actual rate the taxing unit used to determine property taxes last year. This year's effective tax rate would impose the same total taxes as last year if you compare properties taxed in both years. This year's rollback tax rate is the highest tax rate the taxing unit can set before taxpayers can start tax rollback procedures. In each case these rates are found by dividing the total amount of taxes by the tax base (the total value of taxable property) with adjustments as required by state law. The rates are given per \$100 of property value.

	General Fund	Farm to Market/ Flood Control Fund
Last year's tax rate:		
Last year's operating taxes	\$ 231,992	\$ 117,915
Last year's debt taxes	\$ 0	\$ 0
Last year's total taxes	\$ 231,992	\$ 117,915
Last year's tax base	\$104,623,555	\$101,817,313
Last year's total tax rate	\$.22174/\$100	\$.11581/\$100

This year's effective tax rate:		
Last year's adjusted taxes	\$ 231,169	\$ 117,377
(after subtracting taxes on lost property)		
+ This year's adjusted tax base	\$101,389,842	\$ 98,629,402
(after subtracting value of new property)		
= This year's effective tax rate for each fund	\$.22800/\$100	\$.119 /\$100
Total effective tax rate	\$.347 /\$100	
1.03 = maximum rate unless unit publishes notices and holds hearing	\$.35741	

This year's rollback tax rate:		
Last year's adjusted operating taxes	\$ 231,169	\$ 117,377
(after subtracting taxes on lost property)		
+ This year's adjusted tax base	\$101,389,842	\$ 98,629,402
= This year's effective operating rate	\$.228 /\$100	\$.119 /\$100
1.08 = this year's maximum operating rate	\$.24624/\$100	\$.12852/\$100
+ This year's debt rate	\$ 0 /\$100	\$ 0/\$100
= This year's rollback rate for each fund	\$.24624/\$100	\$.12852/\$100
This year's rollback rate	\$.37476/\$100	

SCHEDULE A: Unencumbered Fund Balances

The following balances will probably be left in the unit's property tax accounts at the end of the current fiscal year. These balances are not encumbered by a corresponding debt obligation.

Type of Property Tax Fund	Balance
GENERAL ACCOUNT	\$450.00 Appr.
ROAD & BRIDGE	\$1,000.00 Appr.

This notice contains a summary of actual effective and rollback tax rate calculations. You can inspect a copy of the full calculations at the Donley Appraisal District office.

Name of person preparing this notice Paula Lowrie
Title Chief Deputy
Date prepared July 31, 1991

Classified:

Classified ad rates are \$4.25 for 15 words or less, 10 cents per word for each additional word. Special type or boxes are extra. Thank You notes of average length are \$4.75.

There will be an additional \$1.00 billing charge if it is necessary to send out a statement. Subscription rate in Donley County is \$15.50 per year; out-of-county are \$18.50.

Meetings

CLARENDON LODGE #700AF/AM
 Stated Meeting: 2nd Monday each month 8:00 pm.
 Practice Sessions: 4th Monday
 Jem Simmons WM
 Willard Skelton Secretary
 Refreshments served at 6:30 p.m.

VFW POST 7782
 8 pm - First Tuesday
 Aux
 7:30 pm - First Thursday
 Joint Meeting
 3rd - Thursday

Real Estate

FOR SALE: Nice Location, House in Lelia Lake on 2 acres. 2 wells, 3 1/2 baths, 3 ceiling fans. Basement. Barn. Dishwasher. Fenced. Owner Will Carry. See to appreciate. Call 856-5436 32-4tp

For Sale: Dwelling in Hedley on Reeves Street, 3 bd. 1 bath, 2 car garage, with apt. \$10,000. Call Campbell Real Estate 1-800-999-9357 31-1tc.

FOR SALE: 3 Bedroom, 2 Bath, 2 Car Garage, Cellar, Fenced, Modern Kitchen. Assumable (806)352-3465, 23-1t

FOR SALE: 2 Bedroom House, Carport, Corner Lot, Fenced in Yard - \$15,000. Would make good rental property. Call 874-5103, 29-tfc

FOR SALE: 2 Bedroom, FIX-UP Special on two 3/4 lots in Hedley with garage and barn \$1500.00 cash. Buyer pays transfer and title fees. Call 874-2670, 29-tfc

FOR SALE: 4-bedroom brick, 1 1/2 bath. Many nice features O.W.C. with small down. Call 874-2005 26-4tc

FOR SALE: 2 Bedroom house, owner will finance. Call 874-2846, 217 S. Parks. 26-tfc

FOR SALE

1 Bedroom, 1 Bath House
 3 Bdrm, Brick, 1 1/2 Baths, Garage, Carport & Cellar.

320 Acres, 2 Bdrm. House, Good Well, 278.4 CRP, 6 more Years.

Trailer House, Storage Shed at Howardwick

2 Bedroom, 1 1/2 Baths, Den, 1 Car Garage, Storage Building

2 Older Houses on 3 acres, 3 Bedrooms, 1 Bath, 2 Bedrooms.

2 Bedroom-Fenced Yard with Fruit Trees.

Nice 2 Story House 116 E. 6th St. Garage-Large Lot.

3 Bdrm house-Shop Bldg-1 Car Garage, Large Lot
 3 Bdrm, on 1 acre, 2 Garages & Barn. Good Water Well, Fruit Trees, Cellar
 Detail Shop Bldg 75' Lot, Hwy 287

2 Bedroom House, with 1 Block of Land Included

Oneta Sanders
 Real Estate
 720 S. McClelland
 Clarendon 874-2533

Help Wanted

PART TIME RN NEEDED:
 The Medical Center Nursing Home is taking applications for part-time RN to work weekends on the 7 a.m. to 3 p.m. shift. Applications should be submitted to the business office of the Medical Center Nursing Home from 9 a.m. to 5 p.m. Monday through Friday, 37tfc
 Postal Jobs: Start \$11.41 pr. hr. Carriers, sorters, clerks. Excellent pay & benefits. For examination and application information call 1-206-736-7000 Ext. 8876T2 6am - 10pm/7 days. 31-1tp.

Kimberly Quality Care is accepting applications for RN's and LVN's to work in your area. Call 874-3524; ask for June Davis.

Kimberly Quality Care
 117 East 4th
 Clarendon, TX 79226

LAUNDRY

NOW OPEN
ANGLIN'S PLACE
HWY 287 EAST
874-3234

Real Estate

For Sale: 3 Bedroom House, needs repair, on 10 acres in Hedley. 856-5272. 31-tfc.

FOR SALE: All of Lot 462, Arrowhead Section of Sherwood Shores. Call 782-3976 or write E.L. Holt, Rt. 3, Box 18, Mangum, Okla.

Fred Day Painting Contractor

Free Estimates
874-3890

Donley Co.

Brick, 3 Bdrm, 1-3/4 Bath, Built Ins, 2 Car Garage, 1 Car Garage with work shop & Office, Central H/A, Sprinkler System, Brick & Wood Fence, Corner Lot, \$87,000.00

14X80 Town & Country Mobil Home converted to Steak House. All equipment included. \$15,000.00, to be moved.

Stucco, Three Bedroom, 1 & 3/4 Bath, 1 Car Garage. \$24,500.00. Clarendon City Limits. Reduced \$22,500.00

Brick, 3 1/2 & 1/2, 2 C/H & A, Basement, 10 acs. \$69,000.00
 Brick, 4,3,2 C/H & A, Cellar, Sacs, 70acs, or 230acs, excellent fences, wells, corrals.

Stucco, Three Bedroom, 1 Bath, Huge Carport, Nice Cellar, Beautiful Kitchen, Carpeted. Two Blks. from school. \$26,500.

Lake Houses

14X55 Trailer with Carport, \$10,000.00 Reduced \$8,000.00
 3 Bdrm, 2 Bath, Central H/A, Woodburner, Boat Storage, Garden, Orchard, Storage Building, Approx. 2200 Sq. Ft. \$69,500.00 With terms.

Jimmy Garland Real Estate
874-3757

Misc.

FOR SALE: Rear Bag Lawn Mower - 2 years old. Call 874-3108 or 874-2458 32-1tp

For Sale: Hotpoint Electric Stove, \$150.00. 874-2366 32-1tp.

FOR SALE: 60 Months, Heavy-Duty Continental Battery, \$35.95 Exchange, Henson's 221 S. Kearney, Clarendon, Texas. 20-1tc

For Sale: Zenith TV, 27 inch, color, remote, cabinet type, nearly new \$400.00. GE Electric cook stove, almond \$200.00. Westinghouse refrigerator/freezer, gold \$200.00. Kenmore heavy duty clothes dryer \$100.00. Antique bed, dresser & chest of drawers \$250.00. Adjust-O-Matic adjustable bed new '91-cost \$750.00 sale \$500.00. 806/455-1274 32-1tp.

For Sale: About 800 Patio Bricks. Make offer. Wanted: 2 or 3, 55 gal. drums. 874-5056 32-1tp

For Sale: Pop up camper for long, wide bed pickup, also a Tommy Lift for pickup. 874-2213 or 5081. 32-2tp.

Elberta Peaches: Will be ready Aug. 10th at The Behrens Orchard, 2 1/2 miles east of Clarendon on Hwy. 287. \$6.00 Bu. you pick. Bring on container. 32-1tp

For Sale: Weiner Pigs. 874-2214. 32-1tp.

For Rent

FOR RENT: 4 Bedroom House, Central H/A \$350.00 per month. Call 874-3905. 32-1tnc

Garage Sales

Yard Sale: 502 West 3rd, August 10th, From 9 to 6. Baby Clothes and accessories and misc. 32-1tp.

Estate Sale: 8 to 5, Friday and Saturday, Hedley, 2 blocks west of Main. 32-1tp.

Yard Sale: August 10-18th, 9:00 till dark, S.S. Waterbed-6 drawers, 2 stereos, C.D. Player, C.D's, Baseball Cards, Refrigerator, 19" Color TV, miscellaneous items. 118 Olita Howardwick 32-1tp

Garage Sale: Lawn mower, chain saw, grill, bar stools, organ, misc. Sat. 9:00am, corner Sherwood and Barracuda, Howardwick 32-1tp.

Estate Sale: 606 Hwy. 70 South, Friday and Saturday, 8am to ? Pump Jack, Electric fencing, triple dresser, dining room set and chair with buffet, bedroom suit, much, much, more! 32-1tp.

CHURCH WIDE GARAGE SALE: 1st Assembly of God Fellowship Hall, Thursday & Friday, Aug. 8 & 9th. 9 a.m. to 5 p.m., furniture, clothes, assorted junk. 32-

3 FAMILY GARAGE SALE: Friday & Saturday, #82 Grouper, Howardwick. Travel trailer, drapes, furniture, school clothes, twirling costumes, formals, and other goodies. 32-1tc

FINAL MOVING SALE: Small Appliances, Sofa Bed, Swivel Chair, Tens Machine w/supplies, Quality books, Lamps, Also Yard Sale Items. Saturday Only. J.S. Gholson, 410 Browning Street, 874-2489. 32-1tc

YARD SALE: Saturday, August 10th. 8 a.m. til 4 p.m. 702 E. 3rd. Lots of Miscellaneous Items. No Early Birds.

Peaches and vegetables available now. Dale's vegetable 1/2 mile, North, Hwy. 70. 874-5069 32-1tc.

Thank You

For all of you who expressed concern and demonstrated your love in so many ways during the time of my surgery and recuperation. Johnny and I say "Thank you" and God Bless you.

Melba and Johnny Leather

Thank You

Deep gratitude to our Major Jim Sharrar, GTE and Jerry West of Southwest GTE District Manager of Memphis for their saving of my life by their quick sensitive observation and quick action in calling the ambulance after helping me to consciousness a few days ago. I ended up in the hospital at Plainview where I was treated by our family Dr. Joe J. Horn, of many years. God Bless you and reward you for all you did for us and as I know you do, and have been doing for others.

W.C. and Eddie Strickland

• We Will Pick Up
 • Your Leftover
 • Garage Sale Items
 Chamber of Commerce
2421

Russell Vernon
Painting
Contractor
374-5028

Public Notice

Bid Notice

Now accepting bids for trash pick-up and haul-off for City of Howardwick. Please inquire or call City Hall, Howardwick 874-2222. Bids will be taken from 7-29-91 through 8-9-91. 31-2tc.

Jobs Wanted

OFFICE AND HOUSE CLEANING - Dependable, thorough. Will work around your schedule. Specialized in rush jobs and extra's. Call Sammi at 874-2255. References Available. 29-1tp
CARPENTER SERVICES
 Repairs, remodels, additions, complete home maintenance and repairs. Call 874-5051, Larry Christopher. 16-2pd-TFC

They need you and you need them! Free puppies to good homes. Retriever/Australian Shepherd crosses ready to go August 15th. 874-3214. 32-1tp.

Positive Feed Inc.
28% Protein
Ron Munson
 (After 7 p.m.) 874-3116

JOHN MORROW
DRILLING & SERVICE
 GRAVEL PACKED WELLS
 TURN KEY SYSTEMS
GRUNDFOS
 Authorized Sales & Service
 AERMOTOR WINDMILLS
806-874-2704
 Hwy 287 W. • CLARENDON

John Tom Morrow

Morrow Income Tax & Bookkeeping Service

316 S. Kearney Street
 Phone 806-874-2618 - P.O. Box 1130
 Clarendon Texas 79226

Receptionist - Cassie Row

ESTLACK ELECTRIC
ALLEN ESTLACK PH 874-3683
ELECTRICAL CONTRACTING
APPLIANCES, HEATING & COOLING
AMANA, PAYNE, CARRIER, TRANE
BONDED & LICENSED
BOX 598, CLARENDON, TEXAS

Loyd's Backhoe & Ditching Service
 Install Gas & Water Lines
 Government Approved Septic Tank Systems.
 State Certified

Loyd Ford
 Owner 874-2287

Glidden **Repair Storm Doors** **Glidden**
Glass & Screens
\$14.99 **\$15.99**
Everyday! **Everyday!**
J & W Lumber
874-2000

Betty's Electronic Repair
 Call 874-2178
Betty Watson
TV, Radios & VCR Repair
Antenna Work
 Clarendon, Texas
 (Across From Chamberlain Motors) Hwy 287

Chamberlain **MOTOR COMPANY**
HIGHWAY 287 CLARENDON, TEXAS
BUICK-OLDSMOBILE-PONTIAC-
CADILLAC-GMC TRUCKS
FRED CLIFFORD **Clarendon (806)874-3527**
Home Phone **Amarillo 376-9041**
(806)874-2415 **Texas WATS (800)692-4088**

OUR CHURCH CAN BE YOUR HOME

CHRISTIAN CHURCH

Third and Gorst
 P.O. Box 690
 Clarendon, Texas 79226
(806)874-3212

SOLAR WATER PUMPING SYSTEMS

Proven water pumping systems for livestock, home, or small irrigation use. These pumps, solar panels, and control equipment are now available and in many applications less expensive than wind or fuel powered equipment & systems. They are very reliable and require very little or no maintenance. They have only one or two moving parts.

I have several systems in place now in Donley County. If you are interested please give me a call.
 John Morrow
 John Morrow Drilling
 874-2704

SOLAR WATER PUMPING



SALE AUGUST 1991

Wrights Sliced Slab

Bacon **\$1²⁹** lb

Wilson's Meat

Bologna 12oz pkg **\$1⁰⁹**

Wilson's Meat

Franks 12oz pkg **89¢**

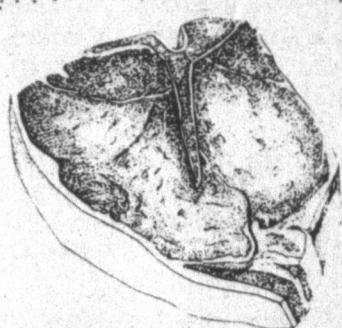
Wilson's Polish or Smoked Sausage

\$2¹⁹ lb

US Choice Boneless

Top Sirloin Steak **\$2⁸⁹** lb

US Choice Table Trimmed

T-Bone Steak **\$3⁹⁸** lb

Packer Trimmed Beef 7-9lb avg

Brisket **\$1²⁹** lb

Baby Beef

Liver **89¢** lb

All Kinds

Coca Cola

99¢

2liter bottle



Del Monte Tomato

Ketchup

\$1¹⁹

quart bottle



Peter Pan Extra Crunchy

Peanut Butter

30 cents off label

\$2¹⁹

18oz jar



Welch's

Grape Jelly

\$1¹⁹

18oz jar



Maryland Club

Coffee

\$1⁷⁹

13oz can



Betty Crocker Assorted Layer

Cake Mixes

99¢

Van Camps

Pork & Beans **3³⁰³ cans \$1⁰⁰**

Gladiola All Purpose

Flour 5lb bag **99¢**

Vlasic

Dill Spears 24 oz jar **\$1⁹⁹**

Thirst Quencher Ass't Flavors

Gatorade quart bottle **89¢**

Kraft

Barbecue Sauce 18 oz bottle **99¢**

Lipton

Tea Bags 100cnt pkg **\$2⁹⁹**

Sunshine

Lemon Coolers & Animal Cookies

9oz box

89¢

Mississippi Sorghum & Ribbon Cane

Syrup Quart jar **\$3⁶⁹**

Texsun

Grapefruit Juice 46oz can **89¢**

Hormel

Vienna Sausage **2⁹⁹¢**

Hormel No Beans

Chili 19oz can **\$1¹⁹**

Post Toasties

Corn Flakes 18oz box **\$1⁴⁹**

Nabisco Comet

Ice Cream Cones 48cone pkg **\$1⁷⁹**Six "Quicker Picklers" Each pk. makes 10-12 qts. **\$1⁴⁹**

Washington Red Delicious

Apples

59¢ lb

California Seedless Red or Green

Grapes

99¢ lb

Colorado White Russet

Potatoes 10lb bag **\$1¹⁹**

California

Carrots **2⁴⁹¢** pkg

California Vine Ripe

Tomatoes **39¢** lb

Home Grown

Cantaloupe **29¢** lb

Liquid Detergent

Sunlight

\$1¹⁹

22oz bottle

Bathroom Tissue

White Cloud

99¢ 4roll pkg

Fabric Softener

Downy

\$2⁷⁹

1/2 gallon



Patio Mexican Food Asst.

Frozen Dinners

11oz

\$1⁴⁹

Frozen Breaded

Chicken Strips

3lb box

\$9⁹⁹

Ad Good

August 7-10

THE GROCERY STORE

874-2425
Clarendon, Texas

OPEN MON. - SAT. 7 AM - 7 PM

HOME OWNED AND OPERATED BY
JACK & SHIRLEY CLIFFORD
BRIT & VIRGINIA PATTEN

DOUBLE COUPONS
ON WEDNESDAY & SATURDAYS ONLY!
EXCLUDING CIGARETTE & TOBACCO COUPONS
EXCLUDING FREE COUPONS
DOUBLE COUPONS NOT TO EXCEED ITEMS VALUE
DOUBLE COUPONS NOT TO EXCEED \$1.00
ONLY 1 DOUBLE COUPON HONORED ON MULTIPLE ITEMS