

GTE changes name...
see page 3

Food Show results...
see page 5

Asbestos rules affect
all schools...see page 8

If a check appears by your name your paper has expired. Subscription rates for Donley County are \$13.00 and outside the county and out of state residents subscription rates are \$16.00. Mail to Box 1110, Clarendon, Texas 79226.

The Clarendon Press

Dedicated to Fair And Impartial Representation

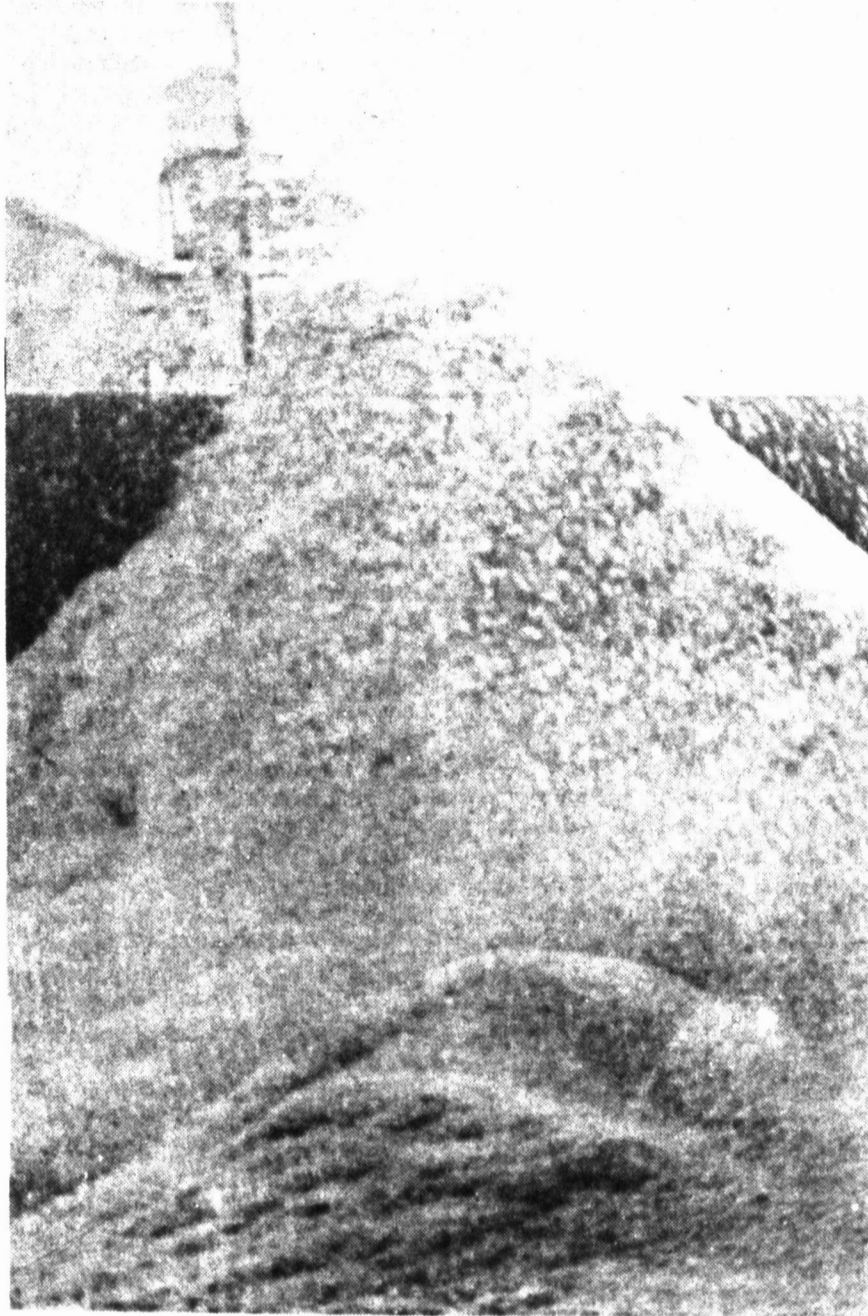
USPS 947040

Serving Hedley, Clarendon and Howardwick.

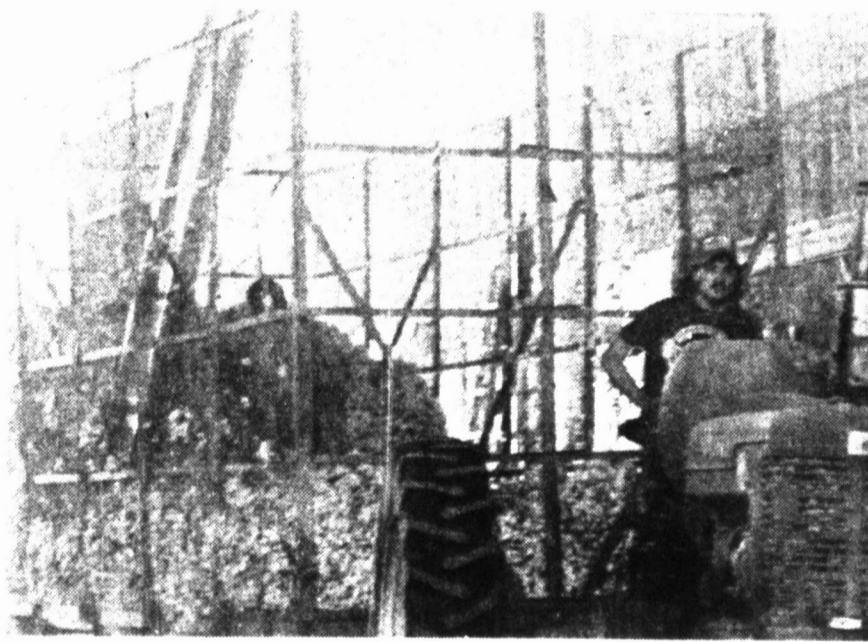
Thursday, December 17, 1987

Number 51

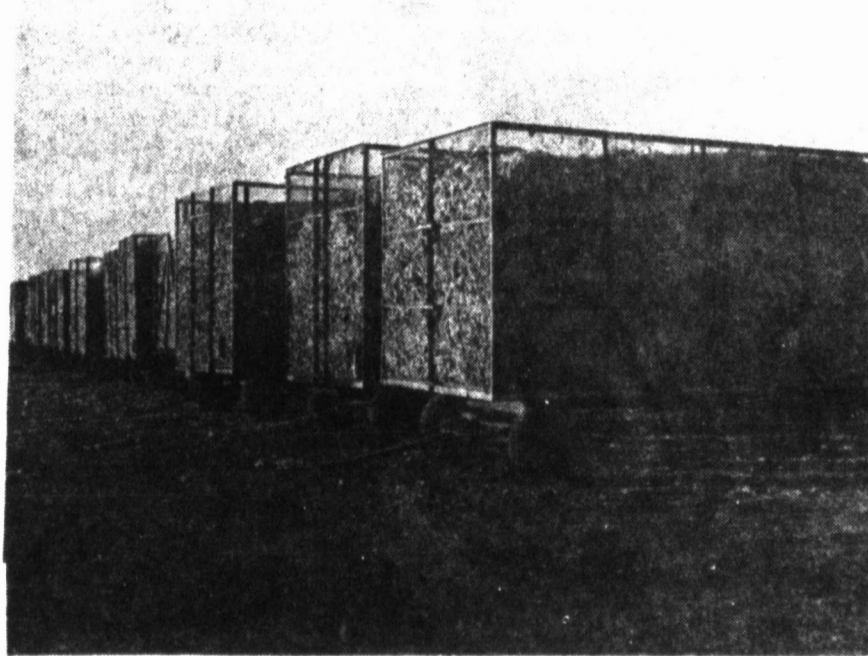
40c



MOUNTAIN OF COTTON SEEDS at Paymaster Gin



THESE TWO WORKERS are getting the cotton ginned at West Texas Gin in Hedley.



COTTON TRAILERS- row after row waiting to be ginned at Clarendon Gin.

Cotton crop may be best ever

Cotton, cotton, cotton everywhere. According to the managers of the three Donley County Gins, Wondell Luttrell, Earl Shields and W.B. Wiggins, this is the best cotton crop the county has had in a long long time.

Not only is the cotton crop good, but it looks like the farmer will get a fairly good price for their crop, the grade and mike are good, and the weather has been just beautiful. All of these combinations can really help the farmers and the economic development of the county.

Most of the cotton has a grade of 31 or 41 and staple of 33 and 34. The dry land cotton is averaging from a bale to bale and half, while the irrigated land as much as 2-2/4 bales per acre.

The price has been from 55 to 65 cents per pound, but buying has slowed somewhat lately. H.L. White of Hedley using 4 2-roll strippers pulled 100 bales of cotton, Saturday, Dec. 5. Because of the good weather, farmers are getting their cotton out faster. Clarendon Gin and Paymaster at Lelia Lake are running 24-hours and Hedley is ginning until about midnight.

According to the Dunivant Report they estimate some 14,300,000 bales of cotton through the United States this year.

According to Mr. Wiggins at the Hedley Gin, they have ginned 1800 bales of cotton and expect to bale about 2800 more. Last year they only ginned 1832 for the entire season. Paymaster Gin in Lelia Lake have ginned 4200 and expecting some 7 or 8 thousand more, and last season they ginned a total of 52000. While Clarendon Gin ginned 3168 last year, they have already ginned 2400 and expecting to gin at least 6000 bales this season. It takes about 2200 pounds of cotton to gin a 500 pound bale.

Santa Claus is coming to town

Alpha Upsilon Epsilon is glad to announce that they were able to get in touch with Santa Claus to come to Clarendon Texas and visit with all the kids. Santa will be at the Burton Memorial Library Thursday, December 17, 1987 from 7:00 to 9:00 p.m. All Donley County kids are welcome to see Santa. Parents are urged to bring their own cameras to take pictures of their children with Santa.

Santa Claus will have a little goodie for every child that comes to see him. So parents bring your children to Burton Memorial Library so that they can visit with Santa.

John Hill Jr. announces for Commissioner Precinct 3

John Hill Jr would like to announce that he will be a candidate for commissioner Precinct 3.

Junior is a lifelong resident of Donley County. He and his wife, Martha, have 5 children and 6 grandchildren. He is a World War II veteran, a member of the First Baptist Church of Hedley and previously served as commissioner of this same precinct from 1964-1976.

Mr. Hill stated, "I feel that I know the needs of the precinct and if elected, will strive to fulfill the duties of the position. Your vote and influence will be appreciated."

Commodity distribution

Panhandle Community Services will distribute commodities on December 17, 1987.

In Clarendon we will give commodities from 9 a.m. to 12 noon and 1 p.m. to 6 p.m.

Commodities will be distributed at Hedley Senior Citizens from 1p.m. to 4 p.m. on Thursday December 17, 1987.

These will be a Blood Pressure Clinic at Clarendon from 9 a.m. to 12 noon.

All the gins managers, stated that if the weather stays good, famers may be finished with stripping by mid December, allowing the gins to finish their ginning season by mid January.

4-H Christmas party Dec. 21st.

The Donley County 4-H Christmas Party is scheduled to be held on Monday, December 21. The evenings activities will begin at 5:30 p.m. when all county 4-H'ers will meet at the medical Center Nursing Home to present it's residents and staff with a holiday fruit basket and a selection of Christmas carols. Each 4-H'er is asked to arrive promptly at 5:30 p.m., and bring a piece of fruit (to be placed in the fruit basket) and your best singing voice.

Following our visit to the Medical Center Nursing Home, we will go to the Community Center for our party and Chinese Ornament Exchange.

The following clubs are responsible for the following items:

Beverages Rack, Tack, and Tails
Cookies Pins 'n Pans
Rice Crispy Treats K-9 Korp

Each 4-H'er is asked to bring a wrapped Christmas ornament (please do not spend over \$2.00) to the Community Center for the ornament exchange.

All currently enrolled 4-H'ers are invited to share in this fun evening.

Funeral services held Tuesday for Robert Lee Bell

Funeral services for Robert Lee Bell, age 79, were held at 10:00 a.m. on Tuesday, December 15, 1987 in the First Presbyterian Church with Rev. Larry Black, Pastor, officiating. Interment was in Citizens Cemetery with arrangements under the direction of Robertson Funeral Directors.

Mr. Bell died at 11:00 a.m. on Saturday, December 12, 1987 in Medical Center Nursing Home in Clarendon following a short illness. He was born October 25, 1908 in Bovina, Texas and was married to Marie Thigpen on February 18, 1934 in Memphis. He had lived in Memphis for 7 years before moving to Clarendon in 1936. He was the manager of the Mulkey Theater for 25 years and worked at the Farmer's State Bank and Trust for 14 years before retiring in 1977. Throughout his life he was involved in several community and civic groups and was an Elder in the First Presbyterian Church where he was a member.

Survivors include his wife, Marie Bell of Clarendon; one son, Robert Paul "Bob" Bell of Clarendon; two sisters, Mildred Smrekar of Dallas, Vera Garner of Harlingen; one brother, Sam Bell of Nevada; two granddaughters; and two nieces. He was preceded in death by one daughter, Lee Ellen Seago in 1974.

Casket bearers were Trey Chamberlain, Joe Lovell, Johnnie Myers, Sam Lowry, Clyde Price, and Joe Bownds.

Honorary bearers were First Presbyterian Church Elders.

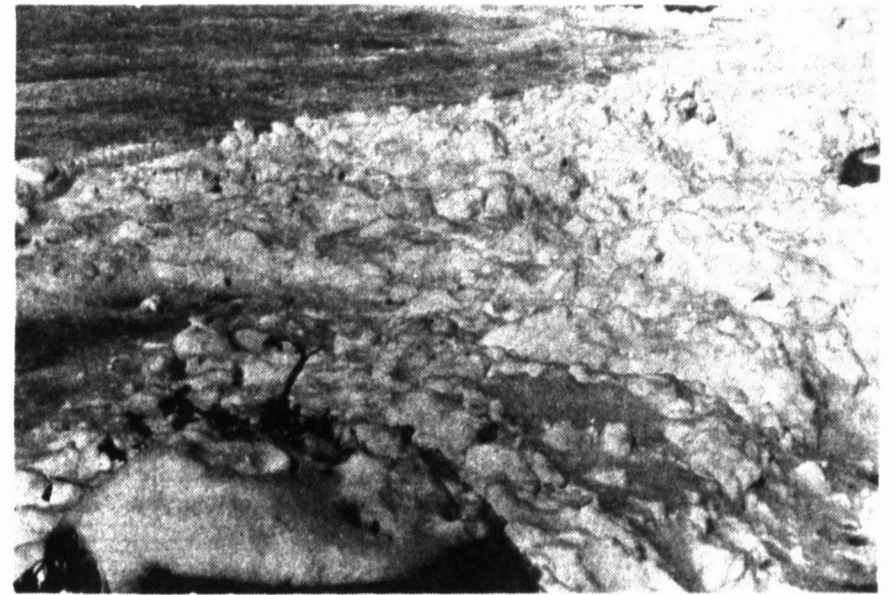
The family requests that memorials be to the First Presbyterian Church, Boys Ranch, or Citizens Cemetery Association.

4-H pecans reduced to \$4.00 per bag

All 4-H'ers selling pecans need to reduce the cost of your pecans to \$4.00 per bag.

An entire case will now sell for \$45.00 (a savings of \$3.00).

Plan to buy your pecans for all you holiday baking needs from a Donley County 4-H'er, and support your local 4-H Clubs.



First snow of season leaves county with 16 inches of snow

As much as a foot of snow was dumped on Donley County starting early Sunday morning and continued through Monday. Everything came to a stand still as schools were closed and some businesses, while others braved the weather to stay open, even though some employees could not get to work.

The Texas Highway Department had their trucks out all day and probably all night trying to keep the roads clear. High winds kept blowing the snow back on the highways almost as fast as the road crews got the snow off.

The road from Giles to Memphis was closed for a while, most of Highway 287 was kept open, but was extremely hazardous.

The wind blew the snow into drifts up to 12 feet high, keeping a lot of residents in their homes.

Monday morning the highway authorities reported all roads open in the 17 county district which includes Donley County. Roads west into New Mexico were closed at the request of officials, as stranded motorists had already overloaded emergency facilities in that state.

Extension office open house

The Donley County Extension offices will hold their annual Open House and Information Day on Tuesday, December 22, 1987, from 10 a.m. to 12 noon in the old courthouse. We invite you to come by the office, pick up any brochures or pamphlets that might be of interest to you, and help yourself to our holiday goodies.

Turkey dinner at Hedley Senior Citizens Center

The Hedley Senior Citizens will be holding a turkey and dressing dinner Saturday, Dec. 19th from 3 p.m. until 7 p.m. at the Senior Citizens Hall and all proceeds will be donated to the Hedley Volunteer EMTs. They will charge \$4.00 per plate.

Tuesday morning saw the sun out, and by noon the ice and snow was melting at a fast pace, but roads were still very dangerous.

According to Tommie Saye, Clarendon's official weather reporter, Clarendon got about 16 inches of snow.

In the spirit of Christmas

- please don't tear down others Christmas decorations

Christmas is a magical time of the year. The children look forward to Christmas with great anticipation, to the candy, fruit and all those wonderful toys, gifts and decorations.

The grown ups look forward to seeing relatives, friends and cooking the holiday foods.

It is a time of joy and thanks giving for all the good things that God has bestowed on us during the year.

But there is always a few who try to destroy these joys by stealing or tearing down decorations, that others have worked so hard to buy and put up for everyone to enjoy.

David and Gayla Davidson have spent a lot of money and many many hours on the decorations around their home - for them, their children and the community to enjoy.

They had a Christmas scene, with Santa and a little boy on their front porch, last Thursday night, someone stole the Santa. Whoever did this, probably thought this was a good joke.

Mr. Davidson stated, "If the Santa is returned, there will be no question asked, if it is not returned, and the Sheriff's office finds out who took the Santa, I will press charges."

If anyone knows who took the Santa, prevail upon them the Spirit of Christmas and have the Santa returned to the Davidson's front porch.

CHRISTMAS CHEER

LETTERS TO SANTA

It is once again time for boys and girls to write that jolly old man named Santa Claus. Santa resides at the North Pole and he receives millions of letters each year from children all over the world. You may bring your letters to the Clarendon Press and they will print your letter in their Christmas paper. There is a box in the lobby of the Clarendon Press office where you can drop your letters. All letters must be in by December 17th.

Tommie Saye
Cooperative Observer
for National Weather
Service, Clarendon

Day	Date	HI	Low	Precip.
Wednesday	9	60	23	
Thursday	10	63	24	
Friday	11	63	31	
Saturday	12	62	20	
Sunday	13	46	20	.01
Monday	14	30	26	1.60
Tuesday	15	28	-2	.05
Total Moisture for month		1.66		
Total for year		24.36		
		Snow 16 inches		

56-large print books added to library

Fifty-six large-print books have been temporarily added to the Burton Memorial Library collection, these books are on loan through the Texas Panhandle Library System, which the Burton Memorial Library is a member. Current titles will be held locally until March 16, 1988.

A few of the authors whose works are in this collection are Max Brand, Agatha Christie, Stephen King, Norman Vincent Peale, Margaret Truman, Corrie ten Boom.

D
E
C

1
7

8
7

GTE completes first major fiber optic cable placement in Texas Panhandle

Jerry West, Operations Manager for GTE Southwest Incorporated in Memphis, Texas announced today the completion of the first major fiber optic cable placement in the Panhandle of Texas. The project which began in April of 1987 completed in the first of December 1987, and involved the placement of over 90 miles of fiber optic cable.

The Panhandle areas of Memphis, Clarendon, Groom and Panhandle were selected for the advanced fiber optic cable placement due to local service needs. The cable was placed along Highway 256 from Memphis to Clarendon, along Highway 70 from Clarendon to Interstate 40, then over to Groom and Panhandle, making this one of the longest fiber optic

routes in Texas.

"Fiber optics his helping us answer some of the customers' request for expanded communication services while maintaining our position as a low cost provider of quality service," West stated. "The optical fiber can carry over two thousand telephone calls, data messages, graphic materials and television pictures, meeting a variety of new and emerging demands from both our business and residential customers. In fiber optics, normal speech signals are changed into light pulses and then sent through the fiber. "A single fiber optic cable measures about one-thousandth of an inch in diameter, which is about the thickness of the human hair." Four of

these hair-like cable wires will be running through our underground system. "These hair-like fibers, could if you wanted to, send a complete set of encyclopedia content, in seconds," he added.

"Another major improvement with fiber optic cable is that, unlike metal cable, it is less likely to be adversely affected by lightning or moisture on the line, and provides the customer with a higher level of privacy."

West concluded, "Not only are we proud about the improving of service but we are pleased with the level of both voice and data transmissions with use of fiber optics and hope this brings our customers a greater level of service satisfaction."

Library Film Festival

During the Christmas School Holiday, the Burton Memorial Library will entertain school age children with a film festival on Tuesday, December 22 and Tuesday, December 29. An Abbott and Costello collection will be shown on December 22, and a Walt Disney special, "Run, Appaloosa, Run" will be shown on December 29. Show time is at 1:00. Kindergarten students should be accompanied by an older sibling or baby-sitter. Students will be asked to display their library card as admission. (Parents, of course, are also welcome.)

Museum Party a huge success

Two hundred eighty eight museum supporters were served a delicious meal as the festivities began. Door prizes were awarded to Don Hillis, Mike Sanders, Pat Roberson, Ned Creswell, Jim Robinson, Jack Craft, Wes Henson, Kelly Hill, Joyce Combs, Patsy Lefew and Tookie Thornberry. The door prizes were donated by First Bank and Trust, Bivens Pharmacy, Donley County State Bank, Greenbelt Cleaners, Saven, This N That Arts and Crafts,

Green Light Auto Supply, The Plaza Restaurant in Amarillo, Suzannes of Amarillo and The Kitchen Galley of Ar arillo. Names remaining in the Grand Prize drawing were Lynn Floyd/Hal Hoover, Donald and Judy Bland and Xi Lambda Xi Chapter of Beta Sigma Phi. Those three split the prize and retired happily. As a result of this fine gathering the Museum will be able to progress and make ready more available exhibit space during the coming year.



The left foot is just a little bit larger than the right foot on most people.

The calendar was changed during George Washington's lifetime. His birthday was originally on February 11, 1732.



By Dorcas R. Hardy Commissioner of Social Security

Did you know that on Federal tax returns filed in 1988 and after, you have to list a Social Security number for any person age 5 or above who you wish to claim as a dependent?

The provision requiring Social Security numbers for dependents was contained in the Tax Reform Act of 1986. The purpose is to reduce tax evasion in cases where parents filing separate returns both claim a dependent for tax purposes or in cases where taxpayers claim non-existent dependents. This results in a substantial loss of revenue at the expense of millions of other taxpayers.

About two-thirds of America's young people already have Social Security cards with lifetime numbers. They may have gotten them for bank accounts, part-time jobs, driver's licenses, college entrance examinations, or other purposes.

Because almost all employment and

self-employment are now covered by Social Security, just about every American will eventually need a number. All reported earnings are recorded on an individual's earnings record under his or her name and using that number. Entitlement to and the amount of any future disability, survivors, and retirement benefits—as well as entitlement to Medicare—will depend on the completeness and accuracy of that record.

In a normal year, Social Security issues about 6 million original and 6 million replacement cards. Under the new law, we expect to issue an additional 9 million new cards and 3 million replacement cards between now and April 15, 1988—in effect, dou-

bling our normal workload.

In general, a person can apply for a Social Security number at any Social Security office by mail or in person. Evidence of date of birth, U.S. citizenship or lawful alien status, and identity must be provided. Of course, there is no charge for either a new or replacement Social Security card.

To permit parents to comply with the new law as easily as possible, we are seeking the cooperation of schools, local organizations, businesses, and other government agencies in informing parents about the law's requirements. In many localities, schools are assisting in getting the word out by relaying information and, in some cases, supplying Social Security number applications to parents. In many cases, school records can provide the information needed by parents to apply for the child's number. Local organizations, businesses, other agencies, tax preparers, and others are including brief messages in their newsletters, supplying information in payroll stuffers, or informing clients during interviews or through mailings.

If you want more information or need assistance in applying for a Social Security number, please contact your local Social Security office. The telephone number can be found in your phone directory under "Social Security Administration" or "U.S. Government." Remember, don't wait until the last minute; apply now. If you wait until March or April of next year, it may be too late!

Reducing cholesterol with diet

For years Americans have been advised to reduce their intake of cholesterol, but guidelines issued by a National Institute of Health federal advisory committee should give added impetus for as many as 25% of adults actually change how they eat.

Whenever new dietary guidelines are issued by major government or health agencies, more people become interested in learning about nutrition, according to Dr. Dymple Cooksey, a nutrition specialist with the Texas A&M University Agricultural Extension Service (TAEX).

Since TAEX conducts nutrition education programs through Extension programs in 250 counties, Cooksey says they are anticipating many questions from the public about low-cholesterol diets.

The federal panel has advised

American physicians to measure total serum cholesterol in all adults over age 20 because cholesterol levels are casually related to coronary heart disease.

Patients with a cholesterol level of 200-239 mg/dl will be classified as borderline high blood cholesterol, and those at 240 mg/dl and above as high blood cholesterol. One in four adults are estimated to fit in these categories.

Treatment for high blood cholesterol begins with diet modification to reduce total fat intake to less than 30% of calories, reduce saturated fats to less than 10% of calories and reduce cholesterol to less than 300 milligrams per day.

Since most people don't calculate their daily calories, let alone figure the percent of calories in total fat and

saturated fat, this advice alone could be difficult to follow.

People who are identified by their physicians as having high blood cholesterol may receive specific diet plans and daily menus to help them with diet modification.

But for the general public, simply eating a well-balanced diet can contribute to reducing cholesterol intake.

The specialist suggests following the U.S. Dietary Guidelines by eating a variety of foods from the basic food groups, reducing total fat, saturated fat and cholesterol and increasing fiber intake.

Using low-fat dairy products, trimming visible fat from meat, removing skin from poultry, and avoiding fried foods will also help reduce saturated fat and cholesterol in the diet.

In addition, moderating intake of certain high-cholesterol foods, such as eggs, shellfish or organ meats like liver is important.

However, following a balanced diet and watching your intake of high-fat foods is not enough, according to the nutritionist. You should still have your blood cholesterol level checked by a physician.

Diet alone will not reduce blood cholesterol levels for some people. Some people diagnosed by their physicians as having high cholesterol will respond to the initial diet modification, while others may require a more restrictive diet or drug treatment.

VAN'S PRIME SEAFOOD

Fresh Shrimp and Seafood---by Air!
**From Boston, Portland, Seattle,
 New Orleans, Texas Coast
 and Elsewhere.**

The difference in our "FRESH" and their "FRESH"...is air freight!

B&R Thriftway
Highway 287 West
Sunday Dec. 20, 12 noon - 2p.m.

Sorry - snowed out last week

Over 100 fresh and frozen items
 Amarillo Market: 1709 West 6th (806) 376-5777

Fresh
Cut
Virginia
Pines
5-7 Ft.

SALE
All Trees
\$10⁰⁰

418 S. Goodnight
Roy Bertrand

GIVE THE GIFT YOU'D LIKE TO GET

20" XL-100
diagonal

\$419⁰⁰

26" ColorTrak Table Model Color TV

\$559⁰⁰

26" STEREO ColorTrak

\$629⁰⁰

26" XL-100 Console Color TV

\$599⁰⁰

26" XL-100 Console Color TV

\$599⁰⁰

26" ColorTrak 2000

\$799⁰⁰

Stereo Monitor-Receiver

\$799⁰⁰

EADS FURNITURE & APPLIANCE
 You get 2 years parts & labor warranty on appliances
 Kearney Street Clarendon 874-3412

Remarried couples need financial plan

A budget and spending plan can benefit any family, but for remarrieds it may be critical, says a consumer economics specialist. "Finances, children and child-rearing have been identified by researchers as the major problems in many remarriages," says Bonnie Piernot, "with finances often ranking the highest." People entering a remarriage often have assets-and debts-to bring to the new marriage. When couples share this information prior to the wedding, it will make it easier to develop a financial plan, says the Texas A&M University Agricultural Extension Service home economist. "Fluctuating income from child support can be a major strain on the new family's budget," Piernot says. One recent study of remarried couples in Kentucky found that when child support was awarded 36% either never received it, received it irregularly or regularly received it but not in the full amount, she reports.

The Clarendon Press is published every Thursday at 106 S. Kearney and entered as Second Class Mail at the post office at Clarendon, Texas. J.C. and Helen Woody, publishers and editors.

Any erroneous reflection upon the character of any person or firm appearing in these columns will be gladly and promptly corrected upon being brought to the attention of the management.

All pictures used in The Clarendon Press which are not the property of The Clarendon Press must be picked up in 10 days after publishing date.



GTE
 General the South year by cl Southwest pany ann become
 The six phone of make simi
 The dec Telephone each com market t
 "GTE" is corporate
 "The s name was business. than you any." sai
 GTE Sov addition services e and its d
 ness Ph ness co equipmen
 Ruth Robi Clarendon
 Dear Ruth
 One hu myself th sional life work of o and that I give in th have rece
 What b the hoids of Albert of giving our work thanks fo receive d some th than our
 Each i pints of patients Coffee serves. A communi donors. you are keeper".
 Your produc lifesavin hopefull young b enjoying Thanks blessing selfless!

GTE changes name

General Telephone Company of the Southwest will ring in the new year by changing its name to GTE Southwest Incorporated, the company announced today. The change will become effective Jan. 1, 1988.

The six other GTE domestic telephone operating companies will make similar changes in their names.

The decision to drop the "General Telephone Company..." title from each company came after extensive market testing, which found the "GTE" is one of the most recognized corporate names in the country.

"The study showed that the old name was inadequate to describe our business. We are, after all, more than your basic telephone company," said E.L. "Buddy" Langley, GTE Southwest president. "In addition to regulated network services equipment, GTE Southwest and its deregulated division, Business Phone Systems, provide business communications systems, equipment and maintenance ser-

VICES; telephone network consulting; long-distance billing and collection for interexchange companies; private line services; mobile telephone service; radio paging and voice and data transmission."

James L. Broadhead, president of GTE Telephone Operations, said the name changes will allow "all of our telephone operating companies to maintain their important local presence, while gaining the strong market value of one of America's most familiar corporate names."

Along with the changes to GTE Southwest, the other name changes scheduled to take effect January 1 are:

CURRENT NAME	NEW NAME
General Telephone Co. of California	GTE Calif.
General Telephone Co. of the South	GTE South
General Telephone Co. of the Northwest	GTE Northwest
General Telephone Co.	GTE

of Florida
GTE MTO
Hawaiian Tel
GTE Florida
GTE North
GTE Hawaiian Tel
GTE is a worldwide corporation with combined revenues and sales totaling more than \$15 billion in 1986. Its three core business—telecommunications, lighting, and precision materials—employ approximately 160,000 people in 48 states and 33 countries.

The GTE Telephone Operations, FTE's largest business unit with revenues of nearly \$11.3 billion in 1986, includes telephone operating companies in the United States, Canada and the Dominican Republic. GTE Southwest provides network access to over 1.2 million customers in 398 exchanges in Arkansas, Oklahoma, New Mexico and Texas.

Harrison Reunion highlights

Members of the Hawley and Corrine Harrison family met at Clarendon Thanksgiving for a time of fun and fellowship, along with a lot of good food. Several family members arrived on the scene early in the week to purchase food and get things set up at the Clarendon Community Center. Others joined them as they could.

Highlights of the reunion were a family dinner at the Golden Acorn, Thanksgiving evening; home movies dating from the 50's to present days; a children's art exhibit; sing-a-longs accompanied by our talented guitarists; our annual talent show featuring such numbers as Erica Guyton and Annie Berg doing their dance routines, the Morris Brothers on-stage with stringed instruments, and a new drama by Lisa Cannon narrated by Lisa and enacted by various members of the family; and catching up on the latest news of each family member. Paula Berg read parts of husband Ed's letters from China where he was working, giving us an insight into another culture and making us more thankful for all we enjoy in these United States of America.

Once again an auction of family items raised a sizable sum toward our next reunion expenses and also provided a lot of entertainment as well. We appreciate all who brought items to auction, those who ran the bidding up and sometimes ended up with something they didn't want, and especially those who make successful bids and carried home the goods. We really enjoyed watching the younger set who bid hopefully for their chosen treasures.

Those attending this 1987 reunion were Hawley and Corrine Harrison, Dennis, Loretta and Anna Harrison, Clarendon; June Chase, Odessa; Bill, Martha, Rachel and Richard Dolman, Susie and Erica Guyton, Ron, Carol, Robbie, Corie and Peter Dolman, Aaron, Debbie, Joshua, Jacob and Jessica Morris, Austin; Paula, Beth and Annie Berg, Englewood, CO.; J.D. and Nelda Jones, Mike Jones and Jim Ecker, Dalhart;

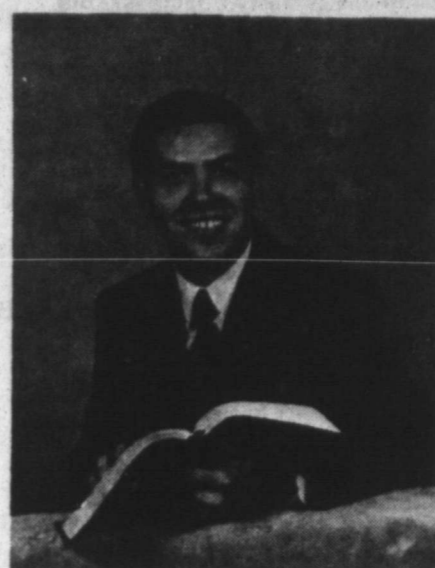
Charles and Karen Cozart, Norman, Oklahoma; Ramey and Nicholas Cozart, Stratford; Frank Cannon, Novasota; Kerry Cannon, Oklahoma City, Oklahoma; Lisa Cannon, College Station and Steven Taylor, Dallas.

Those who were unable to attend were missed and we hope to see all of you at the next reunion.

Read food handling instructions

"Reading handling directions can help you make sure food remains safe to eat," says Marilyn Haggard, a nutrition specialist with the Texas A&M University Agricultural Extension Service. All perishable products must give handling instruction, such as "keep frozen" or "keep refrigerated", she notes. Some meat and poultry products may be labeled "ready-to-eat" or "fully cooked", which means no further cooking is necessary. The specialist advises checking the labels of acceptably packaged products, since many will require refrigeration after opening. "Although some product labels carry directions on how long and at what temperature to cook a product, the directions are not required or verified by the U.S. Department of Agriculture," she remarks. "When cooking instructions are not included on the label or you have some doubts about them, the safest course is to cook the product thoroughly," Haggard adds.

From the Desk of Pastor Colburn



It Was Love

It was love that gave us Christmas!
God so loved us that He gave
His only Son, the joy of heaven,
Knowing He alone could save!

It was love that gave us Christmas!
Jesus came so willingly,
Leaving all His heavenly glory
So our poor souls could be free!

It was love that gave us Christmas!
God's sweet Spirit comes in love,
Knocking at each heart's door gently,
Calling us to things above!

It was love that gave us Christmas!
On this holy day of days
May we love our blessed Savior!
May each heart be filled with praise!
Hazel M. Workman
First Christian News

McCampbell to receive degree from WTU

Geraldine McCampbell will be among the 328 West Texas State University student to receive their degrees, Thursday December 17 at the Amarillo Civic Center Auditorium. McCampbell will receive a BA degree in Social Work.

Letter to the Editor

Ruth Robinson
Clarendon Jr. College

May each of your homes be filled with warmth, love and laughter.

Dear Ruth and Student Senate,

Sincerely,
Bobby Thomas
Community Relations Manager
Coffee Memorial Blood Center, Inc.

One hundred times a day I remind myself that my personal and professional life depends on the fruit of the work of other men, living and dead, and that I should make every effort to give in the same measure in which I have received and am receiving.

Albert Einstein
What better time of the year than the holiday ahead should these words of Albert Einstein echo the message of giving to others. As we perform our work each day and begin to give thanks for the many blessings we receive daily, please stop and give some thought to those less fortunate than ourselves.

Each morning, some 75 to 100 pints of blood will be used by patients in the 21 area hospitals Coffee Memorial Blood Center serves. All of the blood used in our community comes from volunteer donors. Your gifts of blood means you are indeed, "My brothers' keeper".

Your recent blood drive that produced 70 pints of this precious lifesaving, human medicine will hopefully ensure some man, woman, young boy, young girl, or infant of enjoying yet another holiday season. Thanks so much for sharing your blessings with others and giving so selflessly that others may live.

Rattans attend

Hollowell services

Roeda Rattan and Ricky Rattan have just returned from Cooper, Texas where they attended the funeral of her brother Ted Hollowell of the Delta Nursing Home in Cooper who died on Monday Dec. 7th at Hupkins Memorial Hospital in Sulphur Springs. Graveside services were at 2 p.m. on December 9th in Oaklawn Cemetery in Cooper under the direction of McClannahan and Sons. The Rev. Van George officiated.

Mr. Hollowell was born on October 29, 1903 in Delta County. He was the son of John and Susie Foster Hollowell. He was a life long resident of Delta County and a retired farmer. He was survived by two sisters - Roeda Rattan of Clarendon and Ida Dean of Whitney, a brother Byron Hollowell of Klondike.

Merry Christmas and Happy New Year

THE VIDEO STOP

1075 Kearney

874-3174

December Special Rent a VCR for \$1.99
(Monday-Thursday)

Rent 3 movies and get the 4th free!!!
(Good Everyday)

New movies for December

Star Crash	Mannequin
Dead of Winter	Angel Heart
Bed Time Stories	My Doman Lover
Wanted - Dead or Alive	Some Kind of Wonderful

Complete set of Five Mile Creek Series

THE WOMAN IS "50"!



49 yrs. ago



Child Prodigy



Reached Puberty



Persuasive



Motherhood



Grandmother

HAPPY BIRTHDAY BETHIE!!!

UNCLE SAM WANTS YOU TO TAKE ADVANTAGE OF HIM!



- ★ Reduce your federal income tax. This reduction could amount to several hundred dollars!
- ★ Continue reductions in future years if you so choose!
- ★ Save for your retirement and pay no taxes on your earned interest until you retire!

See our IRA Specialist for complete details.

OPEN AN IRA Account Today!

FIRST BANK & TRUST
OF CLARENDON



DONLEY COUNTY SENIOR CITIZENS

Caring People...A Lamp to the Community

Thanks to Avis Fain for some more Christmas cards, if you need some--pick them up. Thanks to Helen Welch for another box of Christmas decorations. The girls have got the center looking real pretty.

Dance Club had a good crowd at Monday night practice and the 2nd Tuesday Dance on December 7th and 8th.

Game night didn't bring to many out, had two and a half tables for Bridge and one table busy in the dining room.

Board of Directors met in regular session on Wednesday, December 9th. President, Robert C. Jones opened the meeting with a prayer. Thelma Rudder, new Board Member was introduced. Thank you's and good-bye's were extended to Murle Butts. Murle has served as Secretary of the Board for two terms and did not wish to run again. We appreciate the good job she did and the many contributions she has made to and for the Center. A motion was made and passed the Center will be closed two (2) days for Christmas. On Thursday and Friday, December 24th and 25th. We truly hope everyone has a very Merry Christmas.

We have a new part-time employee, Deborah Pounds will be helping Rose and Star in the kitchen. If you haven't met Deborah--make it a point to introduce yourself. She is a very energetic young person willing to help our Center.

Had a good Musical Jam Session on Friday, December 11th. Thirty-one enjoyed music by Hugh Neuhaus

Nova Neuhaus, Jerry Chambliss, Bill Meador, Creed Smith, Bailey Estes, Lucille Smith, Roy Don Stevens, Fred Fortenberry and Howard Sutton.

We want to thank everyone for concern for our Center during November 1987. LOVE DONATIONS: Gwenith Goldston, Shirley and Dorothy Pitts, Raymond Hinkle, Thelma Behrens, Mr. and Mrs. Lacy Noble and Margaret Wood. facility use: Senior Citizens Dance Club. Mr. and Mrs. Artis Mooring and Mr. and Mrs. Joe Bowns. MEMORIAL DONATIONS: Charley and Rose Farmer in memory of Scott Edward and Lela Swain. Mr. and Mrs. Truett Behrens, Mr. and Mrs. J.P. Rhode and Mr. and Mrs. Barney Baten in memory of P.C. Messer. The following are in memory of Lela Swain

- Mrs. Norman Fulps, Coronado Hospital Auxiliary, Mr. and Mrs. Rex McKay, Jr., Mr. and Mrs. Richard Balke, Lockie Pitts, Mr. and Mrs. Homer Bones, Starlene Pike, Della Allen, Wanda Clay, Mr. and Mrs. Truett Behrens, Tennie Smith, Lillian Eudy, Gwenith Goldston, Carmen Wright, Eda Wallin, Robert C. Jones, Mr. and Mrs. Rex McAnelly, Howardwick Lions Bingo, Mr. and Mrs. J.C. Beyer, Mr. and Mrs. J.P. Rhode and Mr. and Mrs. Barney Baten.

Thanks and God Bless our Volunteer. November volunteers are Alta Adkins, Barney Baten, Ann Bunyan, Wanda Clay, Lillian Eudy, Rose Farmer, Gwenith Goldston, Lenora Karnes, Rosa Mears, Marie McCracken, Starlene Pike, Romana

Slover, Lucille Smith, Tennie Smith, Verdie Tipton, Eda Wallin, Annie Wooten, Don Wooten, and Carmen Wright. Thank you all very much. Friday, December 18th is the day for our Christmas Dinner at the Center, hope you can enjoy it with us.

CALENDAR OF EVENTS December 17-23

Thursday Exercise 11 a.m., Game Night 6 p.m.

Friday Exercise 11 a.m., Musical Jam Session 7 p.m.

Monday Exercise 11 a.m., Dance Practice 7-9 p.m.

Tuesday Exercise 11 a.m.

Wednesday Exercise 11 a.m.

MENU December 17-23

Thursday Fried Fish, steam rice, spinach, coleslaw with carrots, hush-puppies, peach cobbler, milk, tea, coffee.

Friday Christmas Dinner Turkey and Dressing, giblet gravy, yam patties, green beans, cranberry salad, pecan pie, bread, milk, tea, coffee

Monday Spaghetti and meat sauce, broccoli, rice salad, peaches and cookies, dinner rolls, milk, tea, coffee

Tuesday Roast beef, macaroni and cheese, english peas, carrot, cabbage and raisin salad, apple cobbler, dinner rolls, milk, tea, coffee

Wednesday Fried pork chops, yellow hominy spinach, congealed beet salad, tapioca pudding with raisins, dinner rolls, milk, tea, coffee

Jai alai is often called the fastest game in the world. When in play, the ball can travel at 150 miles per hour.

Happening In Hedley

By NINA RIDDLESPURGER



THIS CHRISTMAS TREE and Santa at Hedley helps boost the holiday spirit.

Senior Citizens had a good musical Monday night, with 28 attending, good music, thanks to Creed Smith, Johnny Hancock, Margaret Hancock, Herman Word, Dick Stevens, Weldon Petty and Dee Williams.

We had four tables playing at our Tuesday 84 Club. There were four who went on our grocery shopping trip Wednesday.

There will 33 checked Thursday in our Blood Pressure Clinic. We had four tables playing at the Thursday night 84 Club.

We took two trips to Amarillo to cat and see the Christmas lights.

On the trip Friday night we had 13 and also had 13 on Saturday night.

Due to the weather we will have pictures and names in next weeks paper.

Due to the weather the Lions Trap Shoot that was to be held Sunday the 13th of December, will be held Sunday Dec. 20th.

Slats DeBord under went surgery for a broke hip last Tuesday at Northwest Texas Hospital in Amarillo. Connie said he was doing very well and would probably have come home Monday except for the bad weather.

The Hedley Lioness Club will hold their Christmas party Friday, Dec. 18.

Frank Murry celebrated his birthday on Tuesday, Dec. 8th, Pauline Haufman also had a birthday Dec. 8th.

Holbert Moffitt was taken to St. Anthony's Hospital last Saturday. Holbert fell at his home Saturday morning but there was no broken bones. At this time Holbert remains in the hospital.

Juanell Carson had a birthday the 14 of December.

The Senior Citizens will be holding a turkey and dressing dinner Saturday, Dec. 19th from 3 p.m. until 7 p.m. at the Senior Citizens Hall and all proceeds will be donated to the Hedley Volunteer EMTs. They will charge \$4.00 per plate.

Monday Exercise Class 10:30-11:00 a.m., Musical 7 p.m.

Tuesday 84 Club 7 p.m.

Wednesday Grocery Trip 2:30 p.m. Call Center by 2:00 p.m. if you need to go. You will be picked up at your home between 2:00 and 2:30 p.m. Exercise Class 10:30-11:00 a.m.

Thursday Bridge Club 2 p.m., 84 Club 7 p.m., Blood Pressure Clinic 12:30-1:30 p.m.

Friday Exercise Class 10:30-11:00 a.m., Friday night out to eat 5:30 p.m.

Calendar of Events Dec. 17-23

Menu Dec. 17-23

Thursday Pork roast, baked sweet potatoes and apples, buttered spinach, cottage cheese with chopped veg., roll-oleo, lemon ice box dessert, milk, tea, coffee, juice.

Friday Fish oven fried with tarter sauce, english peas, cauliflower, creamy slaw, corn muffin-oleo, fruit cup, milk, tea, coffee, juice.

Monday Chicken oven-fried, zucchini-tomatoes mixed veg., macaroni salad, roll-oleo, baked apple, milk, tea, coffee, juice.

Tuesday Roast with gravy, whipped potatoes, carrots, fresh veg. comb. salad, roll-oleo, strawberry shortcake, milk, tea, coffee, juice.

Wednesday Ham, sweet potatoes, green beans, tomato-onion-cucumber salad, roll-oleo, peach slice, milk, tea, coffee, juice.

Shopping with J. Winston
2701 Paramount
Amarillo, Texas 79109

WOMEN'S FASHIONS

Weekly in-house specials

Christmas is coming Christmas is coming Christmas is coming Christmas is coming

To all the friends of
JAKE HOLMAN

I wish you a Merry Christmas and a Happy New Year.

Those who wish to send a card my address is:

Jake Holman
c/o Raford Hoskinson
Route 1 Box 27
Klondike, Texas 75448

Bring back the "Good old days"

...with GTE CLASSIC SERVICE.

GTE CLASSIC SERVICE

GTE TURNS BACK THE CLOCK WITH CLASSIC SERVICE.

Remember "the good old days?" Whatever problems you had with your phone service, you'd just call GTE and we'd take care of it. No second thoughts. No repair bill. Your regular phone bill covered everything.

Now, under recent FCC rulings, you're responsible for the cost of repairs to the wiring and jacks inside your home or business. This makes things a little more complicated.

CLASSIC SERVICE HELPS KEEP THINGS MORE LIKE THEY USED TO BE.

We can't bring back "the good old days" entirely but, with new CLASSIC SERVICE, we can make things more like the way they were.

With CLASSIC SERVICE, you pay only \$1.25 per month to have GTE repair your telephone wiring and jacks during normal working hours, at no additional charge.

Just \$1.25, per telephone number, on your monthly phone bill (about 44 a day) covers you, no matter how many jacks you have. And if you sign up before JANUARY 1, 1988, you can avoid the one-time sign-up charge.

Here's how you'll save with CLASSIC SERVICE ...

NO SERVICE CALL CHARGES

Without CLASSIC SERVICE, if you have a problem with your phone service, and a GTE service call is needed to locate the trouble, you will be charged for the visit if the problem turns out to be in your wiring, jacks, or telephone instrument.

With CLASSIC SERVICE, there is no service call charge during normal working hours.

HERE'S WHAT CLASSIC SERVICE COVERS ...

- Service call charges
- Identification of the problem.
- Repair or replacement of inside wiring and jacks.

Like anything else, your telephone wiring can deteriorate with age and exposure to air and humidity. CLASSIC SERVICE covers this damage, as well as damage caused by natural disasters such as floods or lightning.

*Coverage does not include ...

- Willful damage
- Damage due to negligence
- Telephone instrument repair

AND NOW, NO SIGN-UP CHARGE UNTIL JANUARY 1, 1988.

Whatever problems you may encounter with your phone service, we urge you to call GTE first, even if you don't have CLASSIC SERVICE, because in many cases we can correct the problem from "our end." But if the problem does turn out to be inside your premises, won't it be nice to have CLASSIC SERVICE protection?

Sign up for CLASSIC SERVICE before JANUARY 1, 1988 and avoid a sign-up charge.

GTE General Telephone

When an engine's gone wrong, we've got the right parts.

When you're ready to work on an engine, come see us. We have a full line of high quality TRW engine parts for domestic and import cars--valves, pistons, rings, camshafts, even complete rebuild modules and performance parts. TRW, one more reason to come see us for all your automotive needs.

REYNOLDS MACHINE AND SUPPLY
874-3614

KOETTING AUTOMOTIVE
874-5186

TRW
A Company Called TRW

Christmas cards by Margaret Smith ...

12 cards and envelopes \$5.00

PEACE

THE PRINT SHOPPE

4-H Parent Assoc. meeting

The Donley Leader Assoc. 19, 1987 in the noon. The n order by Pres Secretary Suzy of the previous

Items discuss ing ideas, the bread supper and a report Leaders Assoc given by Lina McCully. Eac report on t activities. T program, the and the pecan sed.

A stew and gingerbread c served by age

Parent/Lea members pre: ham, Suzy H Pat McAnear Black, Cheryl and agents T Gooch.

The next Parent/Leade ned for Marcl the Extension provided. If y leader, we et these quart: port Donley C

Put the dat your calend: the office and to attend at l the meeting.

Lac Ass

Sharla Fel quilt recent Ladies Golf thanks to ev tions.

M C WH DOI

Mr. and Mr Peggy Rey memory of C

4-H Parent/Leader Assoc. hold quarterly meeting

The Donley County 4-H Parent/Leader Association met November 19, 1987 in the Extension office at 12 noon. The meeting was called to order by President Linda Dunham. Secretary Suzy Hall read the minutes of the previous meeting.

Items discussed were: Fund raising ideas, the 4-H bean and cornbread supper report and evaluation, and a report on the District parent/Leaders Association meeting was given by Linda Dunham and Judy McCully. Each club manager gave a report on the three 4-H clubs activities. The Adopt-A-Highway program, the 4-H Christmas Party, and the pecan sales were all discussed.

A stew and cornbread lunch, with gingerbread cake and topping, was served by agent Terry Floyd.

Parent/Leader Association members present were: Linda Dunham, Suzy Hall, Edwin Campbell, Pat McAnear, Judy McCully, Larry Black, Cheryl Burch, Carlene Hollar and agents Terry Floyd and Ronald Gooch.

The next meeting of the 4-H Parent/Leaders Association is planned for March 17, 1988 at 12 noon in the Extension office. A meal will be provided. If you are a 4-H parent or leader, we encourage you to attend these quarterly meetings and support Donley County 4-H.

Put the date of March 17, 1988 on your calendar now. Be sure to call the office and let us know your plans to attend at least one week prior to the meeting.

Ladies Golf Association

Sharla Feland of Claude won the quilt recently given away by the Ladies Golf Association. A special thanks to everyone for their donations.

MEDICAL CENTER WHIRLPOOL DONATIONS

Mr. and Mrs. A.J. Hicks and Mrs. Peggy Reynard and family in memory of Guy White.



FOOD SHOW WINNERS--Top honors in the fruits and vegetables category for Junior contestants in the Panhandle District 4-H Food Show are, from left, Kimberly Wootten, Donley County, Lori Escalon, Moore County; Susan Burger, Ochiltree County and Mylinda McCrary, Potter County.

District Food Show winners named

Knowledge of good nutrition and skills in cooking were blended into scores of delectable dishes in Borger on Saturday, December 5 as 200 youths from 20 counties competed in the Panhandle District 1-4-H Food Show at Borger Middle School. Four senior winners advanced to the state competition next year.

The four top winners were: Becky Reed, Gray County, main dish; Carla Heiskell, Dallam County, fruits and vegetables; Heather Kludt, Gray County, breads and cereals, and Boniene Scroggs, Moore County, nutritious snacks and desserts.

Senior alternates, who will compete in the state contest if the winners are not able are: Amanda Hendrix, Moore County, main dish; Shawna Wagoner, Hemphill County, fruits and vegetables; Patty File, Lipscomb, breads and cereals, and Jim Bret Campbell, Deaf Smith County, nutritious snacks and desserts.

Contestants from Donley County and their awards were Kimberly

***** Well, Does Advertising Really Work?

Our system of free enterprise is populated by a retailing community so highly competitive the statement is often made that "business is war". Take note that the winners are always those who best used the advantages of advertising. **WINNERS know that advertising works!**

Successful retailers won't carry products that aren't heavily advertised either individually by a manufacturer or together in a co-op ad plan. They know it takes advertising to make a product successful.

Wooten, first place in the Junior Fruits and Vegetables Category with her recipe for Cranberry-Apple Sweet Potatoes.

The 4-H'ers, between the ages of 9 and 19, participated in the district show after winning at the county level. Prior to the shows, they were active in foods and nutrition projects involving food science, safety, nutrition, fitness and career opportunities.

In the district show, contestants were interviewed on nutrition facts

and preparation principles. Judges then evaluated each dish on taste, appearance, texture and aroma.

Four-H is the youth development program of the Texas Agricultural Extension Service, an arm of the Texas A&M University System.

Educational program conducted by the Extension Service are open to all persons regardless of socioeconomic level, race, color, sex, religion, handicap or national origin.

Donley County Food Show results

The Donley County 4-H Food Show was held November 14, 1987, in the Clarendon School Cafeteria.

The thirty-three area 4-H'ers participating in the event were: Pee Wee-Debi Hall, Cindy Hern, and Christina Wooten; Juniors - Amanda Ward, *Jennifer Simpson, Heather Shields, Russell Estlack, *Kimberly Wooten, Beth Barbee, Corey Knorpp, Lewis Ellerbrook, Annie Jones, *Margaret McNabb, Lorenzo Moore, Kristy Hankins, Carrie Moore, Lana Moffett, Carla Moore, *Trey Tull, Lynn Hearn, Ashley Knorpp, Clint Green; Intermediates-*Steven Davis, *Sheri

While 31 percent of the men in a recent Gallup Poll were smokers; an additional 29 percent of those polled said they had given up smoking. The percentage of women smoking was 28 percent, but only 17 percent said they had kicked the habit.

Hall, *Carrie Shields, *Elizabeth McAnear, and Misty Criswell; and Seniors-Katrina Leathers, *Minda Hollar, Jennifer Davis, *Carrie Simpson, *Shannon Myers, and *Stacey James.

The 4-H'ers with an * indicate that they won their food category and advanced to District competition, which was held on December 5, 1987, in Borger at the Borger Middle School.

A big THANKS goes to Clarendon School for the use of the cafeteria, and to the parents and leaders for their support.

Congressman Beau Boulter Reports from Washington



PEACE WITH FREEDOM

Having recently returned from a series of meetings with the presidents of key Central American countries and a face-to-face encounter with refugees who have fled from the oppression of Communism, I am more convinced than ever that the so-called "Guatemalan Peace Plan" is a prescription for disaster.

The plan assumes that peace is a difficult thing to achieve. But that's not true. Peace—at least short-term peace—couldn't be easier. It's peace with freedom that's so elusive.

The problem with the Guatemalan Plan is that it abandons the cause of freedom in Central America in favor of a policy of appeasement. The Guatemalan Plan seeks to insure peace in the region by extinguishing the only hope for freedom in Nicaragua—the Contras. At the same time, the plan legitimizes the Soviet Union's incredible military presence in Nicaragua. (Already the Soviet Union has outspent the United States 5-to-1 in the area and currently pumps more than \$4 million a day into the Sandinistas' coffers.) While the Soviets are free to continue to aid their Communist surrogate, Daniel Ortega, the United States is prohibited from providing any assistance to the Contras.

In brief, the outrageous underlying presumption of the plan seems to be that the Soviets have a right to be there and that we, frankly, do not. The Sandinistas are not stupid. They have made some cosmetic changes to give the liberals in our own country "proof" of their democratic intentions, an attempt to stave off more U.S. aid to the freedom fighters. But as long as Daniel Ortega has the power to dispense freedoms, he also holds the power to deny freedom. Freedom should not be his to give and take back; it must be guaranteed to all Nicaraguans.

Recently, the Nicaraguan Communists reluctantly agreed to reopen the nation's Catholic radio station only to close it again after a little more than a month. *La Prensa*, the opposition newspaper, has been alternately closed and reopened several times. After the most recent closing, Nelda Blandon, the government's director of censorship, said, "They (the newspaper) accused us of suppressing freedom of expression. This was a lie, and we could not let them print it."

Clearly Communist governments do not freely abrogate their power, become lovers of democracy, or invest freedom in the hands of their people. Let us not forget, the ruling Communist government has repeatedly professed its Marxist-Leninist loyalties and its intention to export its revolution northward through Mexico.

So the question remains: is it possible that Nicaragua would become the first Communist government ever to willingly negotiate itself out of power? It's not likely—but that is exactly what some in Congress are foolishly counting on.

More than ever the freedom fighters need our support. They are the only real hope for peace with freedom in Nicaragua. We face a stark test of leadership in our hemisphere and must decide whether we will accept peace Moscow-style or whether we are willing to support the cause of freedom in Nicaragua.

To be sure, this peace plan will bring peace, for the moment, but it may be at the expense of freedom.

THE HAPPIEST FAMILY...



IS THE FAMILY UNITED IN GOD'S LOVE... IN THE TEACHINGS OF HIS HOLY WORD... IN THE SACRIFICE OF HIS ONLY BEGOTTEN SON, JESUS!!! FOR NOT ONLY WILL THEY WEATHER THE STORMS OF THIS LIFE, WITH ALL OF IT'S TRIALS AND TRIBULATIONS AND STILL STAND STRONG IN ONE ANOTHER'S LOVE AND COMMITMENT... BUT THEY KNOW THAT THEY WILL ALSO DWELL TOGETHER, FOREVER, IN ETERNITY AND STAND HAND-IN-HAND IN THE LIGHT OF GOD'S ETERNAL LOVE AND CARE!!!

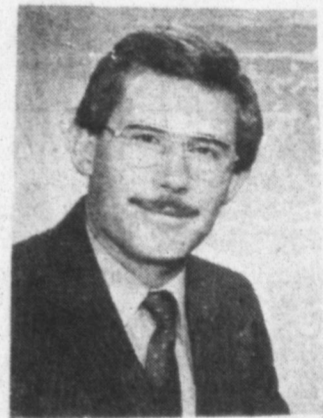
- SEEK GOD'S WILL -

for the life of your precious family, now & forever...

The church of Christ
(3rd and Carhart)
Box 861
Clarendon, Tx 79226
Ph: 874-2495

Sunday Bible Class ... 9:30am
Sunday AM Assembly ... 10:30am
Sunday PM Assembly ... 6:00pm
Wednesday Classes ... 7:30pm
(attended nursery available)

You're always Welcome!



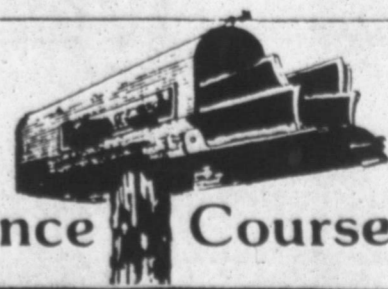
Philip R. Stroud
-evangelist-

THE MAILBOX TEACHER

This is your invitation to enjoy a Personal Bible Study in the privacy, comfort and convenience of your own home! Course consists of 16 simple, practical, exciting, "adult" Bible lessons sent directly to you through the mail... Simply fill out the information below and mail this coupon back in to us:

NAME: _____
ADDRESS: _____

(No cost or obligation!)

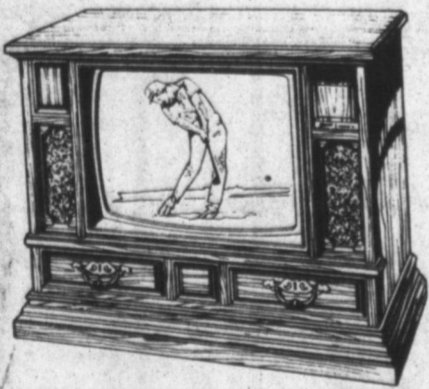


Bible Correspondence Course

HOLIDAY SPECIALS

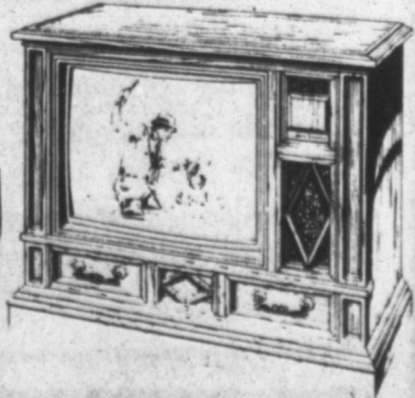
AT

RATTAN TV



STARTING AT ONLY

\$389⁰⁰



D E C 1 7 8 7

AD-GOOD DEC. 14, 1987

LET US SERVE ALL YOUR CHRISTMAS FOOD NEEDS

Boneless Packer Trimmed
BEEF BRISKETS 7-9 Lb Avg **\$1.19** Lb

Bottom
ROUND STEAK **\$1.69** Lb

Extra Lean
GROUND CHUCK **\$1.39** Lb



HOLIDAY FOODS

HAMS for the Holidays!

Corn King Boneless **\$1.89** Lb

Eagle Brand **MILK** 14 Oz Can **\$1.39**

Hunts Tomato **KETCHUP** **\$1.29** Quart Bottle

Shurline Cherry 20 Oz Can **PIE FILLING** **99c**



Shurline Whole Peeled **TOMATOES** 303 Cans **2/89c**

Bakers Angel Flake **COCONUT** **\$1.19** 14 Oz Pkg



Blackbuns Crystal White **SYRUP** **99c** Quart Jar

MIRACLE WHIP Salad Dressing **\$1.59** Quart Jar

Bakers **CHOCOLATE CHIPS** **\$1.19** 12 Oz Pkg



Gladiola White or Yellow **CORNBREAD MIX** **2 Pkgs 49c**

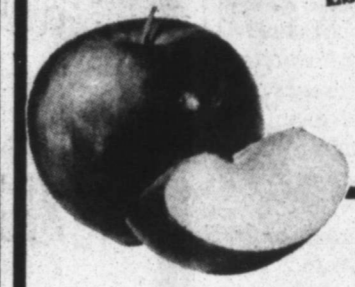
Fresh Produce happy holiday SAVINGS

POTATOES 10 Lb Bag **99c**

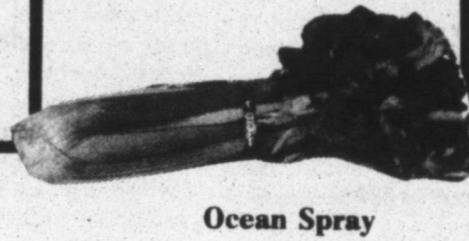
Colorado White Russett



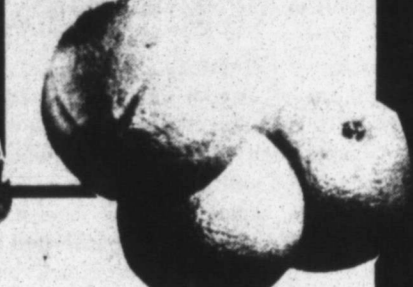
Washington Red Delicious **APPLES** **39c** Lb



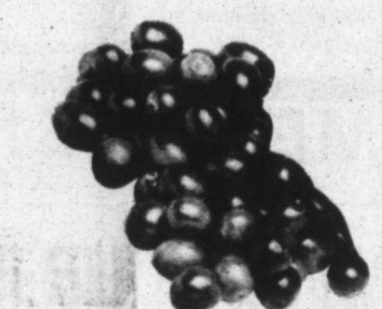
California Pascal **CELERY** Large Crisp Stalks **39c** Each



California Sunkist Navel **ORANGES** **39c** Lb



Ocean Spray **Cranberries** **59c** 12 Oz Pkg



Portales **SWEET POTATOES** **39c** Lb



Shurfresh X-Large **EGGS** **49c** Dozen

Parkay Pure Vegetable **OLEO** **3/\$1.00**

Shurfresh Pure Pork Whole Hog **SAUSAGE** 2 Lb Bag **\$3.19**

Wrights Hickory Smoked Sliced **SLAB BACON** **\$1.19** Lb

Aunt Jemima Yellow **CORN MEAL** **49c** 2 Lb Bag

Assorted **JELLO** 303 Pkgs **2/79c**

Planters Raw Spanish **PEANUTS** **\$1.29** 11 Oz Pkg

Sunco Grade "A" **TURKEYS** 16/20 Lb Avg **57c** Lb

4-6 Lb Avg. **BAKING HENS** **69c** Lb



Del Monte **PINEAPPLE** 14 1/2 Oz Can **59c**



Del Monte Early Garden **SWEET PEAS** 303 Cans **2/99c**

Del Monte Cut 303 Cans **GREEN BEANS** **2/89c**

Swansons 14 Oz Cans **CHICKEN BROTH** **2/89c**



Van Camps 303 Cans **PORK & BEANS** **3/\$1.00**



Libbys 303 Can **PUMPKIN** **69c**

Del Monte Golden **CORN** 303 Cans **2/89c** Whole Kernel or Cream Style

Breast O'Chicken **TUNA** Water or Oil Pack 6 Oz Can **69c**



Wolf Brand No Beans **CHILI** **\$1.29** 19 Oz Can



Shortening **CRISCO** **\$1.99** 3 Lb Can



Folgers **COFFEE** **\$6.19** 3 Lb Can

Citrus Hill Frozen **ORANGE JUICE** **\$1.19** 16 Oz Can



Welch's Grape **JELLY** 2 Lb Jar **\$1.29**



Gold Medal All Purpose **FLOUR** 5 Lb Bag **89c**

Shurline **SUGAR** 5 Lb Bag **\$1.49**

Paper Towels Jumbo Roll **BOUNTY** **79c**



Price Saver Paper **NAPKINS** 300 Cnt Pkg **\$1.39**

Kleen Kan **TRASH BAGS** 20 Cnt Pkg **\$1.49**

Scotties Family Size 280 Cnt Box **FACIAL TISSUES** **99c**

Delta 4 Roll Pkg **BATHROOM TISSUE** **89c**

Liquid **IVORY DETERGENT** **\$1.19** 22 Oz Bottle



DOUBLE COUPONS EVERYDAY

Excluding Cigarette and Tobacco Coupons
Excluding Free Coupons
Double Coupons not to exceed item value
Double Coupons not to exceed \$1.00
Only One Double Coupon honored on multiple purchase of an item

THE GROCERY STORE

Home Owned and Operated

Jack & Shirley Clifford

874-2423 Clarendon, Texas

Open Mon.-Sat. 7 a.m. - 7 p.m.
Closed Sunday

The Fabulous "WHEEL OF FORTUNE"

Cash and Groceries Give-A-Way

There will be three names drawn out of a pot each Saturday night at 6:00 p.m. Must register each week to be a winner. Notice to Winners
*First Come-First Spin
*Only 1 cash prize awarded per week
*Must be at least 18 years of age to participate
*If marker stops on post you must spin again.



Order now
Holiday Fruit Baskets

\$9.99 - \$24.99

FmHA Chief honored by FFA

Vance L. Clark, Administrator of the U.S. Department of Agriculture's Farmers Home Administration (FmHA), received one of the highest honors bestowed by the Future Farmers of America (FFA) at its national convention in Kansas City, Clark, whose agency is called the "lender of last resort," was awarded the Degree of Honorary American Farmer for his contributions in assisting young farmers entering the agricultural vocation.

"This award is especially meaningful since it came from the FFA," Clark said. "because these young people are the hope and the future of farming. It makes me feel good to know that they see a future in farming, and are facing the future with optimism and enthusiasm."

Texas FmHA State Director J. Lynn Futch echoed Clark's sentiments. "FFA members here in Texas are some of the most active, energetic and forward looking people I know. It is extremely gratifying to have their national organization recognize the work FmHA is doing to help family farmers."

The Farmers Home Administration makes loans to established farmers in financial difficulty as well as young farmers with no credit history. In the past year, FmHA dispensed \$4.3 billion in farm loans to over 21,500 borrowers for operating, real estate and emergency assistance.

Additionally, FmHA makes "youth loans" to high school students for worthwhile agricultural

projects. The loans are limited to \$10,000, and are subject to the same repayment provisions as other loans.

The Future Farmers of America, founded in 1928, is a national organization for students of vocational agriculture. The award was made at FFA's 60th national convention, held annually in Kansas City.

Buckling up keeps holidays happy

Texas motorists who gift-wrap their families with safety belts will get a head start on a happy holiday season, a leading traffic safety advocate announced.

"Most of us wouldn't send a fragile gift through the mail without protective packaging," said George R. Gustafson, president of Texas Safety Association and spokesperson for the Texas Coalition for Safety Belts. "It's equally important, when we get into moving vehicles, to minimize the risk to our bodies by using safety belts and children's car seats."

Safety restraints are important the year round, but they're even more critical during holiday seasons, Gustafson noted.

"As we celebrate Hanukkah, Christmas, and the beginning of a new year, many Texans will be on the road, going to visit families and old friends," he said. "The Christmas weekend and New Year's Eve are especially hazardous because of increased travel and the traditional use of alcoholic beverages. The weeks between Thanksgiving and Christmas pose a danger, too, as people attend parties and rush to get their shopping done."

"We urge all Texans not to drink and drive," said Gustafson, "and to remember that a safety belt is your best protection against drivers who fail to heed this advice."

Social Security news

Effective January 4, 1988, the Social Security representative will begin visiting Clarendon on Mondays instead of Thursdays, announced Jim Talbot, District Manager of the Amarillo Social Security office.

"We are currently in Clarendon on the second and fourth Thursdays of each month," Talbot said. "Starting in January, we will be at the Donley County Courthouse on the first, third and fourth Mondays, except for national holidays," he added.

Talbot explained that staff downsizing and a smaller number of people seeking help with Social Security matters in contact stations has made it necessary to consider rearranging visit schedules. The goal

is to operate more efficiently while maintaining a high level of service to residents in and around Clarendon. Several changes in visit schedules to outlying communities have already taken place.

Beginning January 4, 1988, the representative will be at the Donley County Courthouse from 2:00-3:00 p.m. "We will answer questions and take care of other Social Security matters," promised Talbot.

The Amarillo office is offering a service called "teleclaims" - a process where an application is taken by phone and the rest is handled by mail. "Teleclaims is a good way to do business because a person can file an application in the comfort of their

own home and save on gas and wear and tear on the car," Talbot said.

Anyone wanting to handle Social Security business by phone is invited to call the Amarillo Social Security office at (806) 376-2241.



Jack Frost, the imaginary sprite who makes frost on trees and windows originated Norse mythology.

Final Asbestos rules affect all Texas schools

The environmental Protection Agency (EPA) has published final regulations to identify and control asbestos hazards in public and private schools nationwide. The rules implement that Asbestos Hazard Emergency Response Act (AHERA) of 1986.

Under the new regulations, which closely match those proposed last spring, every school district in Texas must inspect for asbestos. If asbestos is found, districts must submit a plan to the Texas Department of Health for eliminating, containing or monitoring the material by October 12, 1988.

Orbry Holden, Executive Director of the Texas Association of School Boards (TASB) said, "These inspection requirements, paperwork burdens, and maintenance plans will be extremely costly to Texas schools already facing financial problems in hard economic times. The Texas Association of School Boards is working to get some relief on the unreasonable timelines, and is working on cost effective approaches for dealing with the new regulations. However, schools will be faced with having to move forward with plans to implement the Act."

Here are some highlights of the new regulations as they affect schools: The district must see that each building owned, rented, leased or occupied by the district be inspected

for friable (easily crumbled) and non-friable asbestos. The inspections must be performed by an accredited asbestos building inspector who has completed EPA-approved training.

The district must have an accredited management planner develop the district's response actions in the event that inspections reveal the presence of asbestos.

Following the initial inspection, the district must conduct a periodic surveillance every six months in all buildings that were found to contain asbestos. The district is also required to thoroughly re-inspect these buildings every three years.

The district must appoint an asbestos coordinator to ensure compliance with all training, notification, and certification requirements.

Once a management plan has been submitted, the district must keep detailed records of its asbestos related activities.

Two of the most disturbing aspects of these requirements are that no federal or state funds were provided to help defray the cost of these mandates, and the deadline of October 1988 for submitting the asbestos management plan is really not that far away," Holden said.

Schools that fail to conduct inspections or to submit an adequate plan to the state agent designated by the governor can be fined \$5,000 daily for each violation of the rules.

Special CHRISTMAS SERVICES

Calvary Baptist Church

Sunday December 20th

10:00 a.m.

- ★ Evangelist Bud Ammermon
- ★ Special Christmas Music
- ★ Candy for all the kids
- ★ Good Fellowship
- ★ Worshiping the "Christ of Christmas"
- ★ Nursery provided

"The church where folks take time to be friendly"



COME TO US FOR YOUR INSURANCE NEEDS

COMPARE OUR PRICES TO YOUR CURRENT INSURANCE



Homeowners Discount
25%



Auto Discount
10%

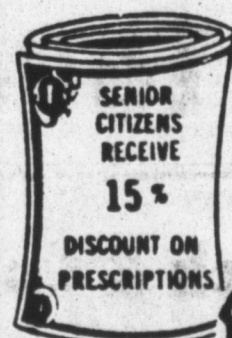
Call Us Anytime



NORPP Insurance Agency, Inc.

(806) 874-3521

Clarendon, Texas



Mike's Pharmacy



Medicines Produced By Bacteria

Many helpful medicines are extracted from plants (digoxin from foxglove, penicillin from certain molds) and animals (insulin and some immunization materials from domesticated animals). The human body has also served as a source of some medicines. Yet, some medicines can be extracted from the body only at death, and then in minute quantities. And few individuals are willing to allow their bodies to serve as medicine sources. These factors have limited the widespread availability of materials such as human growth hormone, a material required to correct growth problems in hormone-deficient children.

Protein materials that are exact replicas of those which are produced by the human body can now be produced through genetic engineering. In this complicated process, bacteria are modified (through alterations in DNA) so that they produce the desired materials in vast quantities. Since the early 1980's, human insulin has been produced via this process. Other materials that these "trained bacteria" can manufacture include the cancer-fighters interleukin-2 and interferon, growth hormone, and tissue plasminogen activator, an enzyme that holds promise in treating blood clots.

Mike Wants To Be Your Pharmacist

874-3554

Across From B & R Thriftway



Pic for

The termin when you'll l

"Wh camou confus blends says A tries, t turer o success think is going

"Wa going over the ing, the lightni guishal opt fo to mix colors

"Turk from t either h In this vertical tree wo

Obviu man de out and pattern

Not oils

More cerned intake lower t "Made oil" is labels, include the fol bean, c and coc tion for since t vegetab saturate cholest

The f coconut more : soybear corn oil: the sat Palm, f contain ated fa compar cottons 13%. S: the low butter s range.

It is dealing shorten glycerid ine mo fatty ac are mai and nut oils. On are 100 product thus in ation. I mostly : at room at roo contain acids ar and are They ar able so nut, pal are mo room t: genatec saturate hydroj results ing or n life re Hydrog oil in th saturate them. S suscept dative

Palm are fre foods. 7 your di

Pick your camo for your prey

The most important factor in determining the correct camouflage when hunting is determining what you'll be going after.

"What you're trying to do with camouflage clothing is create visual confusion so that your outline blends in with your surroundings," says Albert Archer of Walls Industries, the nation's largest manufacturer of hunting apparel. To do this successfully, he said, you have to think about the angle a bird or deer is going to see you from.

"Waterfowl, if they see you, are going to spot you as they're flying overhead. Even if you're not moving, they're going to dart faster than lightning if your outline is distinguishable," he added. "You might opt for a more traditional pattern to mix with the various shapes and colors the bird would see."

"Turkey and deer generally see you from the ground — you're usually either hiding behind a tree or in one. In this case, your best choice is a vertical patterned Trebark or Real-tree wood camouflage."

Obviously, the average outdoorsman doesn't have the dollars to go out and buy a different camouflage pattern for every hunting situation.

So Walls' Archer cites this general rule: If you're hunting ground animals, a vertical pattern will be your most versatile. Most bird hunting situations call for a more traditional classic camo pattern. In both cases, the color of the pattern will depend on the time of year and terrain in which you'll be hunting.

An exception to the rule is safety. "Many states require Blaze Orange for all hunting," said Archer. "So be sure to check your local laws before making a purchase."

One thing to keep in mind: Just as camo patterns vary, so does quality. After you've decided which camo is best for your needs, look for quality construction and materials from a reputable brand such as Walls. No camo pattern is going to be effective if it falls apart or fades after just a few washings. If in doubt, ask a reliable retailer for advice.

Choosing the right camouflage pattern is easy when you think about what it is you're trying to achieve with the apparel. Even if you wrongly purchased tropical green "Woodland" camouflage years ago, take heart. Any camouflage is generally better than no camouflage at all. Besides, you're probably due for new hunting apparel anyway.

Winter Time driving

"Driving on icy, snow-covered, or wet roads is just some of the hazards motorists will be encountering this winter. Drivers will need to be more cautious and learn to adjust their driving habits from day to day or sometimes from hour to hour," said Major V.J. Cawthon, Regional Commander of the Texas Department of Public Safety.

Major Cawthon continued, "Most of our winter time accidents are caused by driving too fast for conditions. Sometimes 20 or 30 miles per hour is too fast when driving on icy or snow-packed roadways."

Some of the first things a motorist should do is to have their cars "winterized", whether it be replacing a worn wiper blade or a worn tire. He also cautioned those people who operate a 4-wheel drive vehicle that we may have better traction when starting off, but the distance required to stop is the same as other cars, and by using more caution, slowing down, and leaving earlier to go to school or work, we can make winter driving safer.

Not all vegetable oils are the same

More and more people are concerned about their saturated fat intake because they are trying to lower their blood cholesterol level. "Made with 100% pure vegetable oil" is seen on many of our food labels. The ingredient statement may include "made from one or more of the following vegetable oils: soybean, cottonseed, palm, palm kernel and coconut oil". The general reaction for most consumers might be, since this product contains only vegetable oils, it must be low in saturated fatty acids and contains no cholesterol -- not necessarily.

The fact is palm, palm kernel and coconut oils contain significantly more saturated fatty acids than soybean, cottonseed, safflower and corn oils. They actually contain twice the saturated fat of animal fats. Palm, palm kernel and coconut oils contain 51%, 80%, and 87% saturated fatty acids respectively. This compares to soybean oil at 14%, cottonseed at 23%, and corn oil at 13%. Safflower and sunflower oil are the lowest at 10% - 11%. Lard and butter are usually in the 40% - 45% range.

It is easy to get confused when dealing with fats and oils. Oils and shortenings consist primarily of triglycerides, which consist of a glycerine molecule with three attached fatty acids. The fatty acid molecules are mainly responsible for functional and nutritional properties of fats and oils. One must remember that all oils are 100% fat. Shortening is a fat product that has been hydrogenated, thus increasing the level of saturation. In general, fats that contain mostly saturated fatty acids are solid at room temperature. In general, fats that contain mostly unsaturated fatty acids are liquid at room temperature and are commonly referred to as oils. They are generally made from vegetable sources. Exceptions are coconut, palm and palm kernel oils which are mostly saturated and liquid at room temperature. Partially hydrogenated vegetable oils contain more saturated fatty acids than those not hydrogenated. Hydrogenation results in a white, hardened shortening or margarine with a longer shelf-life requiring no refrigeration. Hydrogen gas is bubbled through the oil in the presence of a catalyst to saturate the fatty acids and harden them. Saturated fatty acids are less susceptible than unsaturated to oxidative rancidity.

Palm, palm kernel and coconut oils are frequently used in processed foods. To control the saturated fat in your diet, read labels carefully.

Mr. Burger

Holiday Special


Single Burger

89¢



Ad Good
Dec. 15 - 24

874-2811



First Christian Church

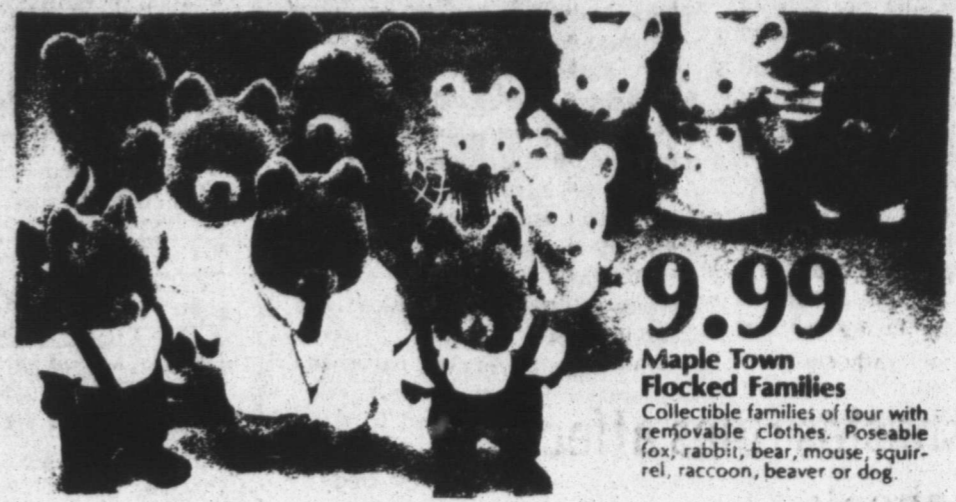
invites you to join in the spirit of
**Christmas by celebrating
and participating
in the Lord's Supper.**

Time: 7:30 p.m.
Date: Wed. Dec. 23, 1987
Place: First Christian Church
Third and Gorst Streets
Clarendon, Texas

Keep Christ in Christmas

Holiday Greeting from
FIRST CHRISTIAN CHURCH
Clarendon, Texas
Wilbert Bernabe, Pastor

SPECIAL GIFTS for Special People



9.99

Maple Town Flocked Families
Collectible families of four with removable clothes. Poseable fox, rabbit, bear, mouse, squirrel, raccoon, beaver or dog.



Satin Tree
Ornaments

\$1.57



Group of Hallmark
Stocking
Stuffers
Little gifts that deliver a lot of love


1/2

Price

Sathers

Christmas Candy

2/\$1.00



Colegas

Pierre Cardin

\$14.95 4oz

Pierre Cardin Set

\$16.95 - \$27.99

Subsidiary

Trivial Pursuit

Card Set
Baby Boomer - Silver Screen
\$9.95

GI Joe

2000
Tanks & Air Planes
\$8.99

Rock & Curl Jem

\$8.99

Hallmark Coupon

CHRISTMAS MERCHANDISE

25% off Limit One Item

Hallmark Coupon

CHRISTMAS MERCHANDISE

25% off Limit One Item

BIVENS PHARMACY

Two Registered Pharmacists To Serve You
Paul and Elmonette Bivens



FREE DELIVERY

they won't



mix.

What's new in meat case

If you haven't looked closely at the meat case lately - look again. You're likely to find leaner, lower-calorie and more convenient products.

At the 1987 Beef Industry Conference held August 10-12 at Texas A&M University, a number of products already on the market, in test-marketing or being developed were on display. Here are a few of those items.

If you want to cut calories or sodium in your diet, there are beef products that can help you accomplish this goal:

- Close-trimmed meat with no more than 1/4" fat on the outside.

- Cuts with USDA labels indicating they are "light", "lite", or "leaner", which means they can contain 25% less fat or calories than what is typically found for that product. Beef labeled "lean" or "low fat" can not contain more than 10% fat.

- Fully-cooked beef luncheon meats and sausages with less fat.

- Lower-fat and lower-sodium beef sausage.

Changes in packaging have also made beef products more convenient to use:

- Stores are packaging carefully

trimmed cuts of beef in portions for smaller families and light eaters.

Individual cuts or meat are being vacuum packaged for retail sale at the grocers. This form of packaging extends the refrigerator shelf life of meat by seven days. The packages can also go directly into the freezer, without requiring further wrapping to prevent freezer burn.

If you're interested in reducing preparation and cooking time, a variety of beef convenience products are now on the market:

- Grocery stores are preparing beef for stir fry, shish kabobs, breaded beef cutlets, spiced oven-ready cuts of meat and other dishes to save consumers both preparation and clean-up time.

- Pre-cooked beef ribs, roasts and microwavable "heat and eat" entrees are being offered in many chain supermarkets.

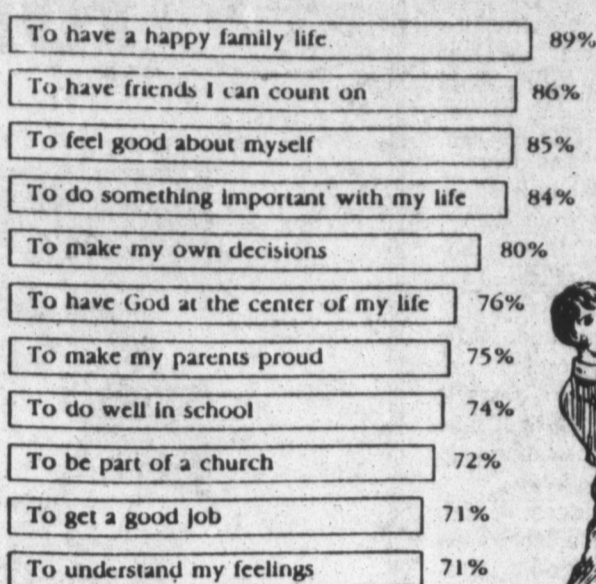
There are even some new kinds of products on the market made from "restructured" beef:

- Beef bacon, strips and nuggets.
- Intermediate priced roast beef, steaks and chicken fried steak.

If you think you don't have time to prepare beef, or that it won't fit into your diet, some of these new products may change your mind.

What Kids Want in Life

A happy family life is the #1 desire of teenagers surveyed by Group Publishing at the 1987 National Christian Youth Congress. The 360 teenagers responding said these goals are very important.



Highway Department saluted for safety efforts

Federal highway and safety officials have lauded the highway department for its part in reducing traffic deaths in Texas. The 1986 traffic fatality rate was the lowest ever recorded.

The rate in Texas in 1986 was 2.4 deaths per 100 million miles driven, an eight percent decrease from 1985. A total of 3,568 people died in traffic accidents in Texas last year, down 3.1 percent from 1985.

And through Friday, September 26, fatalities this year (2,193) were 318 fewer than by the same date in 1986.

In a letter to Engineer-Director R.E. Stotzer Jr., Georgia S. Jupinko, regional administrator of the National Highway Traffic Safety Administration, and John J. Conrado, division administrator of the Federal Highway Administration, said:

"You and your staff are to be commended for your efforts that have contributed to the enviable record Texas has established in highway safety."

Texas is one of the leading states in seat-belt usage. Jupinko and Conrado noted, and the number of fatalities in 1986 was the lowest in a decade.

"We are very pleased with what

Texas has done," said Jupinko, who administers federal traffic safety programs in six Southwestern states.

"When you think of the immensity of the state and limited resources available, rising to the challenge as Texas has done certainly is worthy of great praise."

"No single thing can be credited for all the improvements in our traffic safety record in Texas," Stotzer said, "and no single agency or group is totally responsible for these great achievements."

"However, I am proud of the contributions the highway department has made." He noted that the public has responded to education and information campaigns sponsored by the department on such subjects as seat belt use. "Keen public interest is a powerful ingredient in making driving in Texas safer," he said.

Stotzer added: "Everything we do to improve the highways in reality is an investment in safety. We are building the safest highways possible, given today's technology. But even one death on the highways would be too many. We pledge our best efforts in seeking out the means of making Texas' highway system the safest in the world."

Financial planning for long-term care

Many middle-aged couples, having planned for children's college educations or retirement activities, may now need to think about the cost of long-term care for their elderly parents and for their own later years.

Perhaps the reason so few people seem to plan for long-term costs is the mistaken belief that Medicare and Medicare supplement insurance policies will pay for it, says Mary Clayton Nance, an expert in family economics.

However, Medicaid is the only government program that provides any extended coverage for nursing home care, and only those who are impoverished can qualify.

With the cost of a nursing home stay averaging over \$20,000 a year, it's not surprising that two-thirds of all nursing home patients who start out paying their own bills become impoverished within a year of entering the nursing home, and many within the first four months.

A combination of Medicare and a good Medicare supplement policy can provide excellent coverage against acute illnesses such as heart attack or injuries such as a broken bone, from which there is a reasonable expectation of recovery.

However, once a person becomes so ill that there is little or no hope of making him or her self-sufficient, Medicare and supplemental plans typically cease coverage.

Nance, who is a specialist with the home economics program of the Texas A&M University Agricultural Extension Service, designs educational materials to help families better manage their resources.

She points out that in 1987, Medicare pays 100% of the bill for the first 20 days in a Medicare-approved skilled nursing facility, a varying percentage of the cost for the next 80 days, and nothing beyond that point. This 100 days of coverage must follow a hospital stay of at least three days.

According to the specialist, Medicare supplement policies are typically limited to providing coverage for

Medicare's deductibles and coinsurance only, and most do not offer coverage for services not covered by Medicare, including long-term custodial care.

Private long-term care insurance is a new product emerging from the life and health insurance industries to help finance long-term care. While not intended to replace Medicaid, long-term care insurance offers another option for protection against the potentially devastating costs of long-term chronic diseases and disabilities.

Long-term care insurance is not designed to pay all bills associated with long-term care. Whether long-term care insurance is appropriate for you or your family depends on age, health and the family's financial condition.

Because the long-term care insurance industry is in its infancy, policies may vary greatly from company to company.

It's especially important to determine if a long-term care policy offers custodial care, because many do not.

She advises consumers to carefully study and comparison shop among policies to find the one that meets their needs.

VA Q & A

Q-I am attending college full time under the GI Bill. If I reduce my status to part-time do I need to notify the VA?

A-Loan guaranty entitlement is not subject to an expiration date.

Q-Can I get a release of liability if a non-veteran assumes my VA-guaranteed home loan?

A-Anyone may assume your loan. If the buyer meets with Veterans

Administration approval, you may be released from liability.

Q-May I use my VA home loan benefit to purchase a house for my son?

A-No. The home must be the principal residence of the veteran.

Q-I used my VA home loan entitlement in 1969 to purchase a home. I now want to sell this home and buy a larger one, do I have any remaining entitlement?

A-The maximum home loan guaranty entitlement was raised to \$27,500 in 1980. The amount of any additional entitlement is the difference between \$27,500 and the amount of entitlement used on prior loans.

Q-Is there a time limit to file for reimbursement for the cost of a non-Government headstone placed in a private cemetery?

A-Yes. The claim must be filed within two years of either the date of burial or the date of purchase of a privately purchased headstone or marker.

Q-My husband was cremated and his ashes were scattered without interment of any portion of the ashes. May I still obtain a memorial marker for him?

A-Yes. The memorial may be erected in a private cemetery or memorial section of a national cemetery.



Christmas SALE

30% OFF WITH COUPON

ALL MERCHANDIZE

Except Antiques

The Treasure Chest
Gifts and Antiques

220 S. Kearney

Ladies

Dresses

25% off

Mens

Jackets

25% off

1 Group

Allison Collectibles

1/2 off

T.J.'s

1/2 off

The Nook

RABBIT'S APPLIANCE SERVICE

Service All Makes Of Appliances
Central Heating,
Wall & Floor Furnaces

513 Orpe 874-3632
On Call 6 Days A Week
B. B. (Rabbit) Osburn

ALL YOUR PRINTING AND OFFICE SUPPLIES

THE PRINT SHOPPE

874-2711

Let Us Design Whatever You May Need
To Your Specifications

- ★ Wedding Invitations
- ★ Letterheads
- ★ Envelopes
- ★ Business Cards
- ★ Receipt Books
- ★ Posters
- ★ Business Forms

Class words: 15 wor length Donley Subscr Count year. \$8.00 a are \$6. A \$1 statem If y blocke \$1.00 c

AL MO of Dire of each Trust 1 The clu 7:30 p Lodge. H.H. R J.C. W Bill Nid

CLARE Stated Practic Mike B Willard Refresh

RABB

H Howa (S/

M Epli

220

L

CLASSIFIED ADVERTISING FOR BEST RESULTS...

806-874-2259

All classified ads must be paid for in advance.



Classified ad rates are \$3.50 for 15 words or less, 10 cents per word over 15 words. Cards of thanks, average length is \$4.00. Subscription rate in Donley County is \$13.00 a year. Subscriptions for outside of Donley County and out of state are \$16.00 a year. Six month subscriptions are \$8.00 and three month subscriptions are \$6.00. Display ads on request. A \$1.00 charge will be added if statements are sent on classified ads. If you want your classified ad blocked, there will be an additional \$1.00 charge on the first ad.

FOR SALE: 5 year old white gelding horse and a 4 year old mare call 874-2302 evenings and 874-2259 days.

FOR SALE: New and used aero motor windmills and parts. Submersible pump, stock tanks, water well drilling and service, custom hay hauling. John Morrow 874-2704.

FOR SALE OR TRADE: 2 bedroom furnished house, Howardwick, 202 Angel, living room, dining room, den, large family room, garage 874-5150.

FOR SALE: 2 bedroom, 1 bath country home on 5 acres, 1 mile east of Hedley. Central air and heat, built in stove and microwave. 259-3554.

WANT TO BUY FARM: 80-160 acres, irrigationable, call Lynne 874-3595 or Bob 874-2414.

FOR RENT: 3 or 4 bedroom house, built-in dishwasher and compactor, ceiling fans, real nice \$325.00 per month, new central heat and air 874-2452 or 874-3905.

GET PAID for reading books! \$100.00 per title. Write: ACE-A1160, 161 S. Lincolnway, N. Aurora, IL 60542.

QUALIFY BY PHONE 806-381-1352 Call Collect

RABBIT'S APPLIANCE SERVICE 39 years experience 874-3632

FOR SALE: Cable tool drilling rig and equipment 874-3602.

PRE-ENGINEERED STEEL BUILDINGS
 24x27x12 \$3,590.00
 30x50x12 5,265.00
 30x90x12 8,759.00
 40x75x14 9,380.00
 50x100x14 13,266.00
 Price includes one 10x10 overhead one walk door

PIONEER BUILDING SYSTEMS 512-389-3664

NOT ONLY DOES McVICKERS' KIRBY SERVICE Repair and/or Recondition any make or model vacuum cleaner but We Also Clean Carpets JOHN D. AND LOIS McVICKER

MEMPHIS SINGER SEWING MACHINE SALES AND SERVICE For contacts call Stavenhagen Furniture I am in Clarendon every two weeks on Thursday

MAJOR CREDIT CARDS! Regardless of credit history. Also, new credit card. No one refused! For information call...1-315-733-6062 Ext. M1824.

HALF PRICE! Flashing arrow signs \$299! Lighted, non-arrow \$289! Unlighted \$249! Free letters! See locally. Call today! Factory: 1 (800) 423-0163, anytime.

TAKE A SHOPPING TRIP to "Dolls 'n' Things" HANDMADE GIFTS, crocheted items, stocking stuffers, perfumes, hats, wreaths, ceramic items, ducks 'n' lambs etc, and dolls, all in time for gift giving. 317 S. Kearney-874-5156

BABYSITTING in my home anytime call Sharon 874-3179.

FOR SALE: 1/4 mattress and box springs, like new, can be seen at Osburn Furniture or call Thelma Behrens 874-2444.

GREENBELT MOTEL in Clarendon, Tx. for sale. \$20,000.00. Owner financing available. Call Russell Kellner 505 392-5070.

LAMP, LAMP PARTS all light bulbs HOUSE OF SHADES and LAMP REPAIR Wolfin Village Wolfin Avenue Amarillo, Texas 79109

TRAIN IN TEXAS Local & Nat'l Job Placement Assistance. Eligible Institution Guaranteed Student Loan & Pell Grants. Accredited Member N.H.S.C. *Correspondent - Resident Training 379-5053 3323 Bell (Amarillo) SUPERIOR TRAINING SERVICES Headquarters, Phoenix, Az.

THANK YOU The family of Norma Corgill would like to express their sincere gratitude and gratefulness for the many flowers, cards, food, prayers and personal services. Words cannot express how much it means to our family.

W.L. Corgill & Family Mr. and Mrs. Ray Corgill & Family Mr. and Mrs. Eugene Corgill and Family Mr. and Mrs. Jerry Corgill & Family Mr. and Mrs. Jay Hood & Family Mr. and Mrs. Bud Strange & Family

THANK YOU I would like to thank Brian Leeper for his help in transporting employees to and from work at the Medical Center during the snow storm. I would also like to thank the Texas Highway Dept. for using their plow and front end loader to clear our parking lot. I am very thankful for your help.

Larry White, Administrator Medical Center Nursing Home

THANK YOU We greatly appreciate all the flowers, food, phone calls and visits from all the special people of this fine city. We also appreciate the newspaper, funeral home and florist for all the beautiful help through our time of need. A special thanks goes to Bro. Tony and the people of Calvary Baptist Church. Thanks for all the help and attention during this trying time. Lucille Watts, Mr. James Watts, Mr. and Mrs. Buster Kerlee and family, Mr. and Mrs. Billy Kerlee and family, Mr. and Mrs. Joe Wheeler and family, and Mr. and Mrs. James Watts Jr. say a special thanks to all. Thanks again from all of us.

THANK YOU On behalf of Mrs. Tucker's 1st grade class a thank you to Mr. Smith Manager of Perrys for donating the materials to make our elves costumes for the Christmas Program. Denise Bertrand

K&T GARAGE 323 S. Kearney Auto, Diesel, Tractor Repair 874-3446

FOR SALE: Guns new in box, Browning automatic's 243 Cal., 270 Cal. 3x9 scope; Remington 1100 12 ga. & 20 ga.; Remington 870 Pump 20 ga.; Colt Auto 38 & 25 Pistols; Jim Garland 874-3556

JANITORIAL CONTRACTOR for GTE-Memphis-Clarendon area has opening for working supervisor full time. Call Southwest Contractors 915-655-5911.

MAJOR CREDIT CARDS! Regardless of credit history. Also, new credit card. No one refused! For information call...1-315-733-6062 Ext. M1823

NOTICE Britco Enterprises, Inc. has made application with the Texas Alcoholic Beverage Commission for a Package Store Permit to be located 108 Circle Dr., City of Howardwick, County of Donley, and operated under the trade name of Britco Enterprises, Inc. Corporate Officers being: Danny P. Britten, President; Gary W. Britten, V. President; Stan J. Britten, Sec./Treas.

NEWS OF FOOD The Healthful Banana Here are a few of the reasons to have a bunch of healthful bananas on hand: Bananas are low in calories—about 90 calories per 3.5 ounce banana. The fruit is also low in sodium and fat and contains no cholesterol. A twelve-year study gave evidence that bananas are an important preventative measure in reducing the risk of death from stroke. The natural potassium provided by eating just one banana per

AL MORRAH SHRINE CLUB Board of Directors meet on the 1st Tuesday of each month at the First Bank and Trust Hospitality Room 7:30 p.m. The club meets every 3rd Monday, at 7:30 p.m. in the Clarendon Masonic Lodge. H.H. Rodgers President J.C. Woody Vice President Bill Nidiffer Secretary

CLARENDON LODGE #700AF/AM Stated Meeting: 2nd Monday each month 7:30 p.m. Practice Sessions: 1st & 4th Mondays Mike Butts WM Willard Skelton Secretary Refreshments served at 6:30 p.m.

ABANDONED HOMES take over payments on 2 and 3 bedroom homes QUALIFY BY PHONE 806-381-1352 Call Collect

RABBIT'S APPLIANCE SERVICE 39 years experience 874-3632

FOR SALE Houses in Clarendon, and Howardwick. Lots of new Listings. Call us, we need listings 874-2533 SANDERS REAL ESTATE 720 South McClelland 874-2533

OVEREATERS ANONYMOUS Meets 6:30 Thursday nights Episcopal Church Parish House 301 S. Parks No Dues No Fees

DR. JACK L. ROSE Optometrist 220 S. 10th Ph. 259-2216 Memphis

Greenbelt Dry Cleaners Professional Dry Cleaning Levis & Shirts 874-5024

Brown-McMurtry Implement PHONE 806-823-2441 BOX 777 SILVERTON, TEXAS 79257 SALES & SERVICE DON BROWN Home Ph. 823-2292 CLARENCE WARD Home Ph. 823-2083

FOR SALE

THIS 5 ROOM HOUSE AT 410 Barrens, Clarendon, in top condition, on four city lots, carport, storm cellar, storm windows, carpeted, air conditioned, 6" cased water well, also city water and sewer. Some fruit and shade trees, small tool house.

\$25,950 with reasonable down and approved credit - Owner Financed.

Cash Sale Price is Negotiable.

Agent 806-874-2533 Owner 505-587-2254

Chamberlain MOTOR COMPANY HIGHWAY 287 CLARENDON, TEXAS BUICK•OLDSMOBILE PONTIAC•CADILLAC•GMC TRUCKS FRED CLIFFORD Home Phone (806) 874-2415 Clarendon (806) 874-3527 Amarillo 376-9041 Texas WATS (800) 692-4088

Bailey Estes & Son Welding Fabricating & Steel Buildings -also self storage units for RENT \$25⁰⁰ month

Chamberlain MOTOR COMPANY HIGHWAY 287 CLARENDON, TEXAS BUICK•OLDSMOBILE PONTIAC•CADILLAC•GMC TRUCKS DARELL HARPER (806) 874-3687 Clarendon (806) 874-3527 Amarillo 376-9041 Texas WATS (800) 692-4088

CORNELL REAL ESTATE

Beautiful home-3 Bdrm-Newly Remodeled-All Built-ins-Fireplace Call Now.

3 Bdrm-2 Bath-Mobile with Shop & Storage-Pratio-Priced Right.

3 Bdrm-1 1/2 Baths-Central Heat-Large Fenced Yard-Brick West Clarendon-Priced to Sell NOW!

Call: Carol Hinton 874-3649 or 874-3148 'Dede' Cornell-Broker 874-3377 or 874-3320

... Many more good listings

We Have It Anything Golf Layaway now for Christmas GOLF USA Amarillo 417 S. Western 358-9932

BOB MAJOR REAL ESTATE RESIDENTIAL FARM RANCH 709 BOND ST. BOX 357 CLARENDON, TEXAS 79226 (806) 874-2230 (4WD VEHICLE & ANSWERING SERVICE)

ALLEN ESTLACK Electrical and Appliance Repair Call 874-3683 Box 596 Bonded & Licensed

806-874-3770 PHONE 806-874-2178 FAYLON WATSON and LARRY WATSON CUSTOM FARMING HAY BALING Terrace Mending And Light Dirt Work Cattle Hauling Route 1 Clarendon, Texas 79226

BUYERS AND SELLERS All Kinds of Grain 70 Ft. Scales Clarendon Grain Elevators, Inc. J. R. GILL P.O. Box 805 Clarendon, Tex. 79226 874-3172

Political Calendar

Constable Precinct 3 C.C. (Blackie) Johnson

Sheriff Jimmy Thompson

Tax Assessor/Collector Wilma Lindley

County Treasurer Pam Fletcher

Commissioner Precinct 1 Steve Reynolds

Commissioner Precinct 3 Otis Holland

District Attorney

Representative District 84

Vote!

Christmas Headquarters

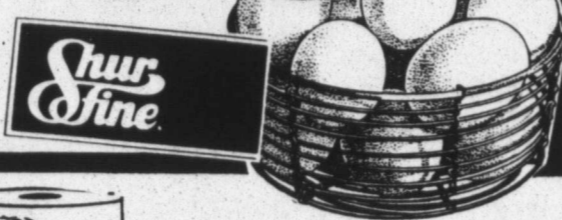
REGULAR/ BUTTER FLAVOR
CRISCO
SHORTENING
3 LB. CAN

\$1.99



SHURFINE GRADE A
EXTRA LARGE
EGGS
DOZEN

39¢



ALL GRINDS
HILLS BROS.
COFFEE
3 LB. CAN

\$4.99



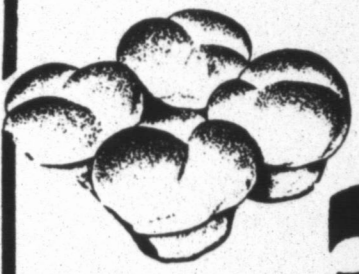
SHURFRESH
WHIPPING
CREAM
1/2 PINT CTN.

3 FOR \$1



TENDERCRUST
BROWN & SERVE
DINNER
ROLLS
PKGS.

3 FOR \$1



ASSORTED/ DESIGNER PAPER
BRAWNY
TOWELS
JUMBO ROLL

59¢



IMPERIAL POLY
POWDERED OR
BROWN
SUGAR
2 LB. BAG

99¢



KRAFT **PARKAY**
MARGARINE
1 LB. BOXES

3 FOR \$1



Corn King
BONELESS
FULLY COOKED WHOLE
CORN KING
HAMS
6 TO 8 LB. AVERAGE

\$1.69



Wilson **Extra LEAN Ham**
96% FAT FREE

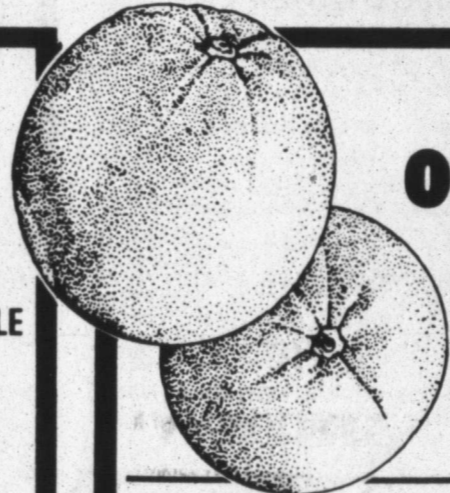
NEW 96% FAT FREE
BONELESS FULLY COOKED WHOLE
WILSON'S
HAMS
6 TO 8 LB. AVERAGE

\$2.59



SUNKIST NAVAL
LARGE SIZE
ORANGES

3 FOR \$1



WASHINGTON EXTRA FANCY
RED DELICIOUS
APPLES

3 FOR \$1



- HICKORY SMOKED SLICED TRAY PAK
WRIGHT'S BACON LB. **\$1.39**
- LEAN TRIM FRESH
PORK BUTT ROAST LB. **\$1.29**
- HEAVY GRAIN FED BEEF BONELESS
TOP SIRLOIN STEAK LB. **\$2.29**
- HEAVY GRAIN FED BEEF
T-BONE STEAK LB. **\$3.29**
- COUNTRY PRIDE FULLY COOKED
SMOKED TURKEYS 10-12 LB. AVG. LB. **\$1.29**
- U.S.D.A. GRADE A SHURFRESH
BAKING HENS 4-6 LB. AVG. LB. **69¢**
- LOUIS RICH BONELESS FULLY COOKED
TURKEY HALF HAMS 1 1/2-5 LB. AVG. LB. **\$1.89**
- YOUR CHOICE-MEAT OR BEEF
WILSON'S BOLOGNA 1 FULL LB. **\$1.49**

U.S.D.A. GRADE A HEN
TURKEYS
10-14 LB. AVG.
LB. **58¢**

Shop Your
Thriftway
Store for
Fresh
Oysters-
Dry Cured
Hams and
Many Other
Christmas
Needs.

- SUNKIST MAMMOTH
TANGERINES LB. **59¢**
- CALIFORNIA FRESH
BROCCOLI LB. **59¢**
- SNO-WHITE
CAULIFLOWER PER HEAD **79¢**
- U.S. NO. 1 YELLOW
ONIONS LB. **19¢**
- SHELLED RAW
PEANUTS 1 LB. PKG. **79¢**
- U.S. NO. ONE
SWEET POTATOES 3 LBS. **\$1**
- CALIFORNIA LARGE STALK
CRISP CELERY **3 FOR \$1**

- LIPTON
ONION SOUP MIX 2 CT. PKG. **89¢**
- SHURFINE HEAVY DUTY
ALUMINUM FOIL 18x37 1/2" ROLL **\$1.19**
- BLACKBURN CRYSTAL
WHITE SYRUP 32 OZ. BTL. **99¢**
- BEST MAID
SWEET PICKLES 16 OZ. JAR **\$1.49**
- HUNT'S
TOMATO JUICE 46 OZ. CAN **99¢**
- GEBHARDT EAGLE
CHILI POWDER 3 OZ. BTL. **\$1.29**
- ROSARITA "CHUNKY"
PICANTE SAUCE 16 OZ. JAR **\$1.29**
- OCEAN SPRAY GRAPEFRUIT REG./PINK
JUICE 48 OZ. BTL. **\$1.89**
- LIPTON ASSORTED VARIETIES
RICE & SAUCE 4.6 OZ. PKG. **89¢**
- SUNSHINE HI-HO
CRACKERS 16 OZ. BOX **\$1.79**
- BAMA STRAWBERRY
PRESERVES 16 OZ. JAR **\$1.49**
- "DELUXE" 66 SML./48 MED./32 LGE.
LUV'S DIAPERS CONV. PACK **\$9.99**
- FACIAL TISSUE
KLEENEX 250 CT. BOX **\$1.29**
- BATHROOM TISSUE
CHARMIN 4 ROLL PKG. **99¢**
- SOLO 16 OZ.
PARTY CUPS 20 CT. PKG. **99¢**
- SOLO 9 INCH PAPER
PARTY PLATES 15 CT. PKG. **\$1.19**
- SHURFINE PITTED LARGE
RIPE OLIVES 6 OZ. CAN **99¢**
- SHURFINE SPANISH
STUFFED OLIVES 5 1/2 OZ. JAR **99¢**
- SHURFINE CORNBREAD/CHICKEN
STUFFING MIX 6 OZ. BOX **69¢**

COOL DAIRY BUYS

- SHURFRESH
EGG NOG QT. **99¢**
- QUALITY ASSORTED VARIETIES
KRAFT DIPS 8 OZ. CTN. **59¢**
- HALFMOON COLBY OR CHEDDAR
KRAFT CHEESE 16 OZ. PKG. **\$2.49**
- MAXI-CUP MARGARINE
SOFT PARKAY 1 LB. CTN. **99¢**
- PILLSBURY CHOC. CHIP/PEANUT BUTTER OR
SUGAR COOKIES 20 OZ. ROLL **\$1.99**

FROZEN FOOD SPECIALS

- SHURFINE FROZEN
ORANGE JUICE 12 OZ. CAN **89¢**
- TOPPING REG./EXTRA CREAMY
COOL-WHIP 8 OZ. CTN. **79¢**
- "BAKE & SERVE" DINNER ROLL
RHODES DOUGH 36 CT. PKG. **\$1.89**
- BIRDSEYE MIXED-ASSORTED VARIETIES
VEGETABLES 16 OZ. PKG. **\$1.49**
- BROCCOLI-ZUCCHINI-OKRA VEGETABLE
ORE-IDA CRISP 12 OZ. PKG. **\$1.49**
- BANQUET MINCE OR
PUMPKIN PIE 20 OZ. BOX **99¢**
- ORE-IDA REGULAR OR ASSORTED
TATER TOTS 2 LB. BAG **\$1.59**

HEALTH & BEAUTY AIDS

- SOFT WHITE 60/75/100 WATT
SYLVANIA BULBS 2 CT. PKG. **\$1.19**
- TABLETS
ALLEREST 24 CT. BOX **\$2.49**
- STYLE
HAIR SPRAY 8 OZ. CAN **99¢**
- STYLE ASSORTED
SHAMPOO 15 OZ. BTL. **\$1.89**
- STYLE ASSORTED
CONDITIONER 15 OZ. BTL. **\$1.89**

- DUNCAN HINES ASSORTED
CAKE MIX 18 1/2 OZ. BOX **69¢**
- DUNCAN HINES R.T.S. ASSORTED
FROSTING 16 OZ. CAN **\$1.29**
- KRAFT PHILADELPHIA
CREAM CHEESE 8 OZ. CTN. **79¢**
- ENRICHED
GLADIOLA FLOUR 5 LB. BAG **69¢**
- 40" OFF LABEL REG./UNSCENTED
TIDE DETERGENT 42 OZ. BOX **\$1.79**
- BAKER'S "REAL"
CHOCOLATE CHIPS 12 OZ. PKG. **99¢**
- OCEAN SPRAY WHOLE/JELLIED
CRANBERRY SAUCE 16 OZ. CAN **69¢**
- CONDENSED MILK
EAGLE BRAND 14 OZ. CAN **\$1.29**
- CUT
SUGARY SAM YAMS 29 OZ. CAN **79¢**
- 50" OFF LABEL
WESSON OIL 64 OZ. BTL. **\$2.39**
- KLEENEX DINNER
NAPKINS 50 CT. BOX **89¢**
- BAKER'S ANGEL FLAKE
COCONUT 14 OZ. PKG. **99¢**
- KRAFT JET PUFFED/MINIATURE
MARSHMALLOWS 16 OZ. BAG **69¢**
- AUNT JEMIMA ASSORTED
POUCH MIXES 5 6 OZ. PKGS. **\$1.00**
- ASSORTED FLAVORS
JELL-O GELATIN 3 3 OZ. PKGS. **\$1.00**
- DEL MONTE ALL TYPES IN JUICE
PINEAPPLE 2 1 1/2 OZ. CANS **\$1.00**
- DEL MONTE
RAISINS 15 OZ. BOX **\$1.19**
- LEMON JUICE
REALEMON 32 OZ. BTL. **\$1.79**
- DROMEDARY
CHOPPED DATES 8 OZ. BOX **\$1.99**
- SKIPPY CREAMY/CRUNCHY
PEANUT BUTTER 18 OZ. JAR **\$1.99**
- PLANTERS HONEY OR DRY ROAST
PEANUTS 16 OZ. JAR **\$2.79**
- PLANTERS-WITH PEANUTS
MIXED NUTS 12 OZ. CAN **\$2.99**

DOUBLE COUPONS
WEDNESDAY & SATURDAY
Double Value Coupons Cannot Exceed \$1.00
Double Coupon Offer Excludes Free Coupons
Cigarettes & Tobacco Coupons
Double Value Of Coupon Cannot Exceed Value Of Item Purchased

B&R THRIFTWAY

AT AFFILIATED FOODS INC. MEMBER STORE

PRICES EFFECTIVE
December 16-24, 1987
We Accept Food Stamps

WINTER STORE HOURS
8 a.m. - 8 p.m.
SUNDAY
9 a.m. - 7 p.m.