

If a check appears by your address label, your subscription has expired. Subscriptions rates for Donley County are \$13.00. Out-of-county rates are \$16.00. Mail to: Box 1110, Clarendon, Texas 79226.

# The Clarendon Press

Serving Clarendon, Hedley, Howardwick and all of Donley County

Dedicated to Fair and Impartial Reporting

USPS 947040

The Clarendon Press, Thurs., Jan. 5, 1989

Number 1



Judge Billie Christal swears in Donley County Sheriff, Jimmy Thompson; Donley County Treasurer, Pat Roberson; Donley County Constable from Hedley, Blackie Johnson; Donley County Commissioner Precinct 3, T. Mullins; Donley County Vehicle Registration Office, Wilma Lindley; and Donley County Commissioner Precinct 1, Steve Reynolds.

## Defensive Driving To Be Offered

A defensive driving course will be held at Clarendon College on Saturday, January 14, 1989. It will meet from 8:00 a.m. to 5:00 p.m. in room 102. The fee is \$25.00. Please contact Clarendon College at 1-806-874-3571 for further information. Upon completion of this course, participants will be eligible for a 10% discount on their liability insurance and dismissal of a traffic violation. All dismissals of traffic violations must be approved by the appropriate Justice of the Peace.

## Clarendon Volunteer Fire Department Fund Raising Drive

The members of the Clarendon Volunteer Fire Department last week initiated a fund raising drive in the form of a mailout to all property owners in Donley County. Early indications are that the fund drive will be a success with over \$700.00 being raised in the first few days. Due to

the computer generated list of property owners and large volume of mail, it is possible that some property owners may have been missed. If you have been missed and would like to contribute, you may do so by mailing your donation to Clarendon Fire Department, Box 364, Clarendon, Texas 79226-0364 or leaving your donation at City Hall or giving it to David Pitts, Secretary Treasurer or Delbert Robertson, Fire Chief.

The Clarendon Volunteer Fire Department has accomplished much in the past 3 years in the form of a new building, replacing some worn out firefighting equipment, repairing some other firefighting equipment, and providing training and protective gear for the 41 volunteer members and officers. In addition, the remodeling of the main building built in 1918 is nearing completion giving the city a first class fire station and restoring a piece of Donley County history in the process. Almost all work has been done with volunteer labor by the members and others in the community. All that has been spent has been for materials, etc. Many communities have chosen to build new fire stations as needs arise and in most cases, have spent many times the amount Clarendon has spent and have ended up with a much smaller and less usable building.

Since the city and county pay the Fire Department for each fire, the fires the last three years have been less due to unusually wet years. This has created a strain on the budget of the Department. The firefighters sincerely appreciate all the support shown to them in the form of donations, labor assistance, loans of water tanks, etc. which have all helped a great deal. With a successful fund drive, the Department should be in a good position to continue to provide top quality firefighting and emergency services to the citizens of Donley County.

If you would like additional information or would like to see what your money is being spent for, the Firefighters extend you a sincere invitation to come by the Fire Station for a tour. You may contact any of the members at your convenience to arrange for this.

## Local Students Named to Honor Rolls

Judy McCully of Clarendon, Texas has been named to the President's Honor Roll for the Fall Semester at Clarendon College. Mrs. McCully maintained a 4.0 GPA while carrying 13 academic hours.

Grace Almaguer, Linda Murphy, and Jay Gage were listed on the Dean's Honor Roll which requires a minimum 3.5 GPA for at least 12 academic hours. Clarendon College congratulates these fine students for their achievement.

## Colts

The Clarendon Junior High teams will play Memphis in the local gym, Thursday, January 5. Game time will be at 5 p.m.

## Bronco JV

The Bronco JV boys & girls teams will be participating in the Shamrock JV Tournament, Jan. 5 thru Jan. 7. Good Luck!

## Broncos

The Clarendon Broncos teams will start their District Play against Canadian, at Canadian, January 10. Game time is 5 p.m. Good Luck in your District play.

## V.F.W. Auxiliary Post

We are happy to announce the charter for V.F.W. Auxiliary Post number 7982 has been received. We will have our institution of the Auxiliary, election of officers and officers ratified on Thursday January 5, 1989 at 7 p.m. The meeting will be held at the Rodeo Grounds Community Center, Clarendon, Texas. All members are asked to be present with the public invited to view this ceremony.

## Five Busted in Drug Raid

Local law enforcement officers arrested five people and seized a cache of drugs in a recent raid at Howardwick. They also confiscated seven shotguns, a .30-30 rifle, two cameras and a pair of binoculars, as well as \$1,300 cash.

Those arrested were Warren Wiley, Pete Pettit, William Mark Ginn, Teresa Kathy Ginn and Kathy Ledgerwood. All of those arrested were from Pampa except for Ledgerwood, who was listed as a Midland resident. Bond was set at \$30,000 each.

Officers participating in the arrest were Sheriff Jimmy Thompson, Deputy Mike Spier, Deputy Joe Shadle, Reserve Deputies Larry Taylor, Jim Mincey, Terry Ashcraft, Gary Thomas. District Attorney's Investigator Doug Wright and Warden Gary Hunt also participated in the arrest. Sheriff Thompson said, "I'm really proud of all of our officers. They behaved in a competent and professional manner. They worked well under pressure, did their jobs quietly and effectively."

According to the sheriff, the suspects were using the house at 112 Dying Drive in Howardwick as a stop-over between Dallas and Pampa. The officers reported that the house contained amphetamines, prescription drugs for which there was no prescription, marijuana, syringes, pipes, scales and other drug paraphernalia. The house had been under surveillance for some time. According to Thompson, "the arrests were made within fifteen minutes after the suspects arrived on the scene."

In unrelated cases, the Oasis was burglarized on Wednesday night, December 22. Three suspects were apprehended, two of whom were juveniles.

## The Year of the Young Reader - 1989

The Library of Congress has requested that libraries throughout the country promote 1989 as the Year of the Young Reader. Locally, the Burton Memorial Library with the aid of the Friends of the Library, is planning several special events to commemorate the year.

As an aid to parents, a brief bibliography of reading ideas will be made available on a monthly basis. Selections are based on availability at the local library and are appropriate for preschool through junior high.

Beginning Thursday, January 19, a weekly Story Hour for pre-school children ages 4 and 5 will occur at the library from 1 to 1:30. A child

must be accompanied by his/her parent. (Ask about bringing younger siblings.)

In the spring, an "I'd Rather Read" campaign will be sponsored through the assistance of the Friends organization. The purpose of the program is to encourage young people to set aside a daily reading time. Special incentives will be offered to participants and awards will be presented to those who achieve their reading goals.

The Summer Reading Club will once again keep children entertained and provide ample reading opportunity for the many weeks of summer vacation. More details will be provided as summer years.

As always, volunteers are needed. If anyone would enjoy helping with any of these programs, please contact the library.

Tommie Saxe  
Cooperative Observer  
for National Weather  
Service, Clarendon

Day	Date	Hi	Low	Precip.
Monday	26	55	31	
Tuesday	27	65	35	
Wednesday	28	41	9	
Thursday	29	42	11	
Friday	30	46	15	
Saturday	31	59	24	
Sunday	1	55	22	
Total Moisture for Month		.00		
Total for year		.00		

## Help Wanted

The Sheriff's Office has issued a request for anyone who was in the vicinity of Syd Blue's between 8:45 and 9:20 on Monday, January 2nd; please come by and visit with the sheriff. You may have seen something that might help solve a crime. Anyone seeing a discarded cash register should report it to the sheriff, but please do not touch it. Your cooperation would be deeply appreciated.

## Prepared Childbirth Series to Begin

Sharon Adams will begin a 4 week prepared childbirth series starting January 24 at 7:00 p.m. She will be teaching the Lamaze method of breathing. Other topics of interest will be process of labor, delivery, routine hospital procedure, medication for labor and delivery, episiotomy, forcep delivery, C-sections, post partum care, breast feeding and newborn care.

Sharon is a certified childbirth

instructor and she has 4 years teaching experience. She has formerly taught for Lubbock General Hospital and Childress General Hospital.

If you are financially unable to pay the full class fee and would be interested in taking classes, please contact Sharon and she will work out a lower rate, based on your financial situation.

If you are expecting a baby and your due date is in March or April, Sharon would like to encourage you to call and register for classes at 874-3227.

If you are expecting and have a later due date, you can call Sharon and find out more information about class schedules for spring.

## Local Store Robbed Woman Injured

According to local law enforcement officers, someone robbed a Howardwick convenience store about 9:15 p.m. The robber struck the attendant, June Hopper, in the head. She was severely injured, and required hospitalization. The thief stole an estimated \$600 to \$800, including the cash register.

Law enforcement officers are investigating the case. They have asked that anyone in the area visit

with the Sheriff's office.

This was the second robbery in recent weeks. On December 24th, someone robbed the Taylormart store in Clarendon on some \$1,500 in twenty-dollar bills, plus additional cash. Manager Richard Grisham was struck in the head in that robbery.

Anyone with information on either crime should contact law enforcement authorities.

## Commodity Recipients Can Re-Certify Early

Donley County residents who wish to see if they are eligible for commodities can come in any time before February 16th. They will need to provide a Social Security number and proof of income to the Panhandle Community Services in the Courthouse. All recipients must recertify to receive

benefits. Robbie Hill, coordinator of the program, said, "By coming in early applicants can avoid standing in line and a long wait." Hedley residents can recertify early in Clarendon, or they can recertify at Hedley on February 17th, although that may mean standing in line.



Jimmy Thompson, Pat Roberson, Blackie Johnson, and T. Mullins signing the necessary papers at their swearing in of offices at the Donley County Court House, January 2, 1989



Winners of the Beauty and Brawn Beauty Pageant: Crystal Hill - Most Beautiful, Jason Klinnert - Most Handsome



Mrs. & Miss Congeniality-Cody Fletcher and Stephanie Luttrell



Runners-up of the Beauty and Brawn Beauty Pageant: Most Beautiful - Suzette Henson Most Handsome - Jimmy Milhoan

### Reading For the Young Reader

In celebrating 1989 as the Year of the Young Reader, the following bibliography is a brief listing of suggested readings for the month of January. Selections have been compiled by the staff of the Burton Memorial Library using BOOK-LIST as a tool. Books are available at the library and are appropriate for preschool through junior high.

**Martin Luther King Jr., A Boy with a Dream**  
Dharathula H. Millender  
Gr. 3-6. King's January birthday provides an excellent opportunity to honor the late civil rights leader, and Millender's book provides a highly readable biography.

**The Big Snow** (Caldecott medal)  
Berta and Elmer Hader  
Ages 4-8. Woodland birds and

animals survive the hard winter due to the help of kindly people who put out food.

**The Value of Respect - The Story of Abraham Lincoln**  
Ann Donegan Johnson  
Ages 5-10. As the U.S. inaugurates its 41st president, this brief biography of Lincoln is an easy read that stresses the significance of respect in Lincoln's life.

**Owl Moon** (Caldecott Medal)  
Jane Yolen  
Ages 5-9. The companionship of child and father as they go owling by moonlight is depicted through this gentle story.

**Winnie the Pooh**  
A. A. Milne  
Ages 3-6. Celebrate Milne's 106th birthday this month by reading one of the treasured Pooh stories. Other authors' birthdays in January include J.R.R. Tolkien, Jacob Grimm, Charles Perrault, Mary Mapes Dodge, and Lewis Carroll.

**Moses the Kitten**  
James Herriot  
All ages. World famous veterinarian James Herriot rescues a bedraggled kitten, and as it is nursed back to health by a loving family, the kitten adopts a most unusual mother.

### Profits Come From The Right Business Location

Choosing the right site location for your business can be a major factor in its success or failure. A good location may allow a struggling business to survive, but a bad location will probably mean failure for even the best run business. It "pays" to choose your site carefully!

Different businesses will have different location needs and all of these needs should be carefully analyzed. For example, a manufacturer will most likely look for easy access to transportation routes and suppliers, while a retailer will be primarily concerned with local traffic patterns, parking availability, convenience and visibility.

#### What To Look For In A Location

The first step in selecting a business site is to decide upon a general location. It is important that you locate your business in an area where the economic base is strong enough to support your business. It would be a mistake to establish a business in an area of economic decline or where there is no market for your products or services. To help evaluate a particular location's economic and market potential, you should investigate the following factors:

### Trivia Treasures:

## You Name It and It's Been Collected

America is truly a nation of collectors. Everything imaginable has been collected at one time or another. How do people get started collecting?

Often times, what starts off as a simple gift, later becomes a cherished collection. (For this writer, it started as a single mechanical bank - a birthday gift!)

While many collections have purely sentimental value, others, even though they may start out that way, become really valuable. For example, the estimated worth of one collection of "Superman" mementos is more than one million dollars!

Collections comprised entirely of paper items, i.e., post cards, old-time sheet music, paper dolls, posters, show tickets, etc., are also popular. Such collectibles take little space and they, too, can gain substantially in value!

Experts say that the poster, more than other art forms, often tends to be undervalued. Although posters are in demand, anyone looking for a bargain can often find one in a poster.

According to the Poster Society in Upper Montclair, New Jersey, posters of the original 1933 version of *King Kong* have sold for up to \$10,000 at auction. A poster of the movie classic, *Casablanca*, has commanded as much as \$16,000.

Opportunities for collectors often pop up unexpectedly.

Twenty years ago more than a half million people flocked to a New York state farm for what was billed as a weekend rock concert: Woodstock instead became the symbol of a generation.

When thousands streamed onto

"posters" became available for collecting or special occasion gift-giving. The tickets with authenticity certificates are \$35 each and the original and rare posters are \$150 each. Each is available - plus \$4 for postage and handling - from Woodstock '69, P.O. Box 680, Stillwater, MN 55083 or by calling toll free to 1-800-624-9000. (A portion of each sale goes to charity.)

In addition to more traditional collectibles such as coins, stamps, bottle caps, baseball cards, and autographs, people also collect buckles, thimbles, and even plates, and even record cards.

The *Guinness Book of World Records* says the largest collection of different credit cards - 1,196 cards in all - belongs to a California man known as "Mr. Plastic Fantastic."

And, the same source reports that a Denmark man has the world's largest collection of bottle caps: a total of 44,217 from 149 countries.

Other popular items for collectors: Original Shirley Temple memorabilia and premiums from old-time radio shows such as Little Orphan Annie shaker mugs and Captain Midnight "Secret Squadron" decoders.

Add to this, the collectors of tie pins, hats, keys, dolls, rocks, model trains, vintage autos and old phonograph records. The list goes on and on...



People collect all kinds of things. Among collectables which have just recently become available are original rare "Woodstock" rock concert posters and tickets. Every item imaginable has been collected at one time or another. The Guinness Book of World Records says that one man has collected 36,122 different keys.

the farm grounds, promoters declared the event a free concert. Most of the Woodstock tickets went unsold and later became collectors' items. In 1980 an original ticket sold for \$9,000.

Recently, other unsold Woodstock tickets and original "Aquarian Ex-

#### Choosing A Site

Once you have decided upon a general location, then you can select an appropriate site. Again, this must be approached with care and sensitivity towards the type of business you plan to establish. Key factors that must be considered are zoning requirements, accessibility, cost and site history.

Before seriously considering any site or building, you will want to be sure it is zoned for your type of business. Also, you will want to be certain that you are aware of any restrictions or ordinances that govern what you can and cannot do at that site. For instance, a local ordinance may restrict the operating hours of your business which may be contrary to your needs. Check with local government authorities (City Hall or Town Clerk) about zoning requirements and other restrictions. Far too many businesses learn what they cannot do when it is too late.

Is the site accessible and convenient? Customers must be able to easily get to and from your business and they must be able to find a parking space. Depending on the nature of your business, accessibility can be a major factor in your ability to attract customers. How often do you patronize a business that is difficult to get to and just out of the way?

A business must be able to afford the costs associated with the selected site. The cost of your site will involve either renting, leasing, buying or building. Often leasing is best at first to preserve cash. The physical requirements for your location could determine the financing alternatives, and the following questions will need to be addressed:

- How much square footage will you need?
- How much storage space is

#### needed?

- Are renovations needed? What are the expected costs?

Leasing can be an attractive alternative to buying. However, lease vs. buy decisions can present complex issues. Therefore, you should consult with an attorney and an accountant in addressing the tax and financing implications. If you plan to lease, you should address the following questions:

- Is the rent high or low in relation to the area?
- What are the lease renewal options?
- Does the tenant have the right to sublet?
- Are there any restrictions on the property's use?

If you are contemplating buying an existing building, you should again consult with a professional and address the following questions:

- Can you fix the building the way you want it without spending too much money?
- What are the energy costs of the building?
- What are the purchase terms of the agreement?

Is the price comparable with that of similar-sized buildings in the same area?

The ultimate costs associated with the selected site are very important to the financial health of your business. Be sure the business can afford the site you select.

Also make certain that you research the history of each site you

Cont'd on Pg. 6

### Mary's Country Kitchen

**OPEN UNDER NEW MANAGEMENT**

Netta Draper is the new manager at Mary's Country Kitchen. Her new staff includes cooks Ruby Hearn, Ann Alexander and Sharon Cannon and waitresses are Pat Ritchie, Helen Graham, Vicki Percival, April McCary, Gwen Bohannon and

We specialize in Char-broiled steaks and Mexican food. Coffee drinkers welcome in our East Dining Room.

**Try our Salad Bar and Buffet!**

Family togetherness in a casual setting

### Free Hearing Tests

January 12  
10:00 a.m.-1:00 p.m.  
BIVENS PHARMACY

Service on all makes & models  
Batteries & Accessories  
In Home tests available

Larry DeSierra  
H.A.S.

High Plains  
Hearing Aid Center  
1-800-333-1501 5501 W. 9th Amarillo

## RABBIT'S APPLIANCE SERVICE

Service All Makes Of Appliances  
Central Heating,  
Wall & Floor Furnaces

Franchised  
White-Westinghouse  
Appliance Dealer

319 S. Kearney 874-3632  
On Call 6 Days A Week  
B. B. (Rabbit) Osburn

## COME TO US FOR YOUR INSURANCE NEEDS

COMPARE OUR PRICES TO YOUR CURRENT INSURANCE

Auto Discount 10%

Call Us Anytime

Homeowners Discount 25%

**NORPP**  
Insurance Agency, Inc.  
806-874-3521 Clarendon, Texas

HAPPY NEW YEAR

# SALE

All Fall and Winter Clothing

1/3 to 1/2 OFF

## THE NOOK

We a big Ha 1988 wa our exp better, a to make thank the bea still enj Hedley Christri people New Ye The evening day, Da good cr food at We invit Compu Tuesday form 8 t Srygle sion \$2. Carr the Bl Deceml Tuesda We Birtday Tuesda ning of a praye people quabar Davids were J Henry & Jaks door croche Fannie Smith, David; by Jea let frc suran Texas Suppl mation everyc Quilt. meyer sure y

Jan T Lun 3 p F Lun p.m sion M Lun

## Senior Citizens News

We sincerely hope you all had a very Merry Christmas and a big Happy New Year to everyone. 1988 was a good year at the Center, our expectations for 1989 are even better, although we need all of you to make it a better one.

thanks to the Clarendon FFA for the beautiful Poinsettes. We are still enjoying them. Thanks to the Hedley Senior Citizens for the Christmas dinner that a lot of people enjoyed with you. May the New Year be good to you, also.

The Dance Club enjoyed the evening of dance practice on Monday, December 26th. Also, enjoyed good crowd, good music and good food at the Community Building. We invite all of you to join us at the Community Building for the 1st Tuesday Dance on January 3, 1989 from 8 to 11 pm - music by Melvin Srygley and the Offbeats - Admission \$2.00 per person.

Carmen checked thirty seven at the Blood Pressure Clinic on Tuesday, January 3, 1989.

We enjoyed our December Birthday/Anniversary Supper on Tuesday, December 27th. Our evening of fellowship was started with a prayer by Jack Edwards. Birthday people present were Lota Farquhar, Goldie Barbee and Jack Davidson. Anniversaries present were Jack & Elfreda Edwards, Henry & Eunice Mann and Creed & Jake Smith. Eda Wallin won the door prize. Fun prizes were crocheted Pot Holders donated by Fannie Wilson and went to Jennie Smith, Henry Mann, and Jack Davidson. The Program was a talk by Jean Baten on a letter and booklet from the State Board of Insurance regarding A Guide for Texas Consumers on Medicare Supplement Insurance. This information is on file at the Center for everyone use. We closed the evening out with the drawing for the Quilt. Winner was Nell Hermesmyer. Congratulations Nell, I'm sure you will enjoy this beauty.

## Calendar of Events

Jan. 5 - Jan. 11

**Thursday:** Exercise 11 a.m., Lunch 11:30 a.m., Games 12:30 - 3 p.m.

**Friday:** Exercise 11 a.m., Lunch 11:30 a.m., Games 12:30 p.m. - 3 p.m., Musical Jam Session 6:30 p.m.

**Monday:** Exercise 11 a.m., Lunch 11:30 a.m., Games 12:30 - 3 p.m., Arts & Crafts 1 p.m.

3 p.m., Dance Practice 7-9 p.m.  
**Tuesday:** Exercise 11 a.m., Lunch 11:30 a.m., Games 12:30 p.m. - 3 p.m.  
**Wednesday:** Exercise 11 a.m., Lunch 11:30 a.m., Games 12:30 p.m. - 3 p.m., Arts & Crafts 1 p.m.

## Senior Citizens Menu

Jan. 5 - Jan. 11

**Thursday:** Beef Stew W/Celery, Peas, Carrots, Tomatoes, Onions & Potatoes, Macaroni Salad, Apple Cobbler, Cornbread/Crackers, Milk, Tea, Coffee

**Friday:** Oven Fried Chicken, Broccoli W/Cheese sauce, Whole Kernel Corn, Toss Salad, Butterscotch Pudding, Dinner Roll, Milk, Tea, Coffee

**Monday:** Chicken Fried Steak, Brussel Sprouts, Corn on Cob, Carrot & Raisin Salad, Peaches & Bananas, Dinner Roll, Milk, Tea, Coffee

**Tuesday:** Roast Beef W/Nat. Gravy, Baked Potatoes, Mix Vegetables, Ambrosia Salad, Chocolate Cream Pie, Dinner Roll, Milk, Tea, Coffee

**Wednesday:** Meat Loaf W/Tomato sauce, Spinach, Fried Squash, Pea Salad, Prune Cake, Dinner Roll, Milk, Tea, Coffee

## Mailing of Social Security Checks

If you are retired, disabled, or entitled to survivors benefits, you should know when to expect your Social Security benefits every month.

Your Social Security check usually will arrive in the mail on the third of the month. If the third of the month falls on a Saturday, Sunday or legal holiday, you will generally receive your check on the last banking day before then.

For example, in December this year, the third of the month falls on a Saturday. So, you should expect to get your check on Friday, December 2nd.

Sometimes, for one reason or another, there are delays in delivering Social Security checks. You should allow at least 3 full days from the third of each month for your check to arrive. If you do not receive your check by the sixth of the month, then you should contact your Social Security office.

Aged, blind or disabled people who receive supplemental security income (SSI) can expect to receive their checks in the mail usually on the first of the month. If the first falls on a weekend or legal holiday, the check will usually arrive on the Friday before.

For example, October 1, falls on

a Saturday, so SSI checks should arrive on Friday, Sept. 30. New Year's Day, January 1, 1989, falls on a Sunday, so SSI checks should be delivered on Friday, December 30. If your SSI check does not arrive in the mail on the usual day (around the beginning of the month), you should look for it to come in the next few days. If your check does not arrive by the fourth of the month, contact your local Social Security office.

If your Social Security or SSI payment is deposited directly into your checking or savings account in a bank, credit union or other financial institution, you do not have to worry about when your check will be delivered. The benefit will be deposited automatically into your account every month.

Today, almost half of all Social Security beneficiaries and 15% of SSI recipients use direct deposit. This eliminates any worry, particularly for the elderly and the disabled, about when their checks will arrive or if they will be lost or stolen.

Any time you have questions about your monthly checks, or if you want to sign up for direct deposit, call your Social Security office.

## People With Kidney Failure Can Get Medicare

Medicare health insurance, including both hospital and medical insurance, is available to people in the Amarillo area who have permanent kidney failure and who need kidney dialysis treatment or a kidney transplant, Jim Tollbooth, Social Security manager in Amarillo, Tx, said recently.

A person, regardless of his or her age, who needs dialysis or a transplant because of permanent kidney failure is eligible for Medicare if he or she:

Worked long enough to be insured under Social Security, or already gets Social Security benefits, or

Is the husband, wife, or dependent child of someone insured or getting benefits.

Medicare coverage for an eligible person generally begins on the first day of the third month after the month the person starts receiving maintenance dialysis treatment.

Medicare coverage can begin the first month of a course of dialysis treatments, if the person takes part in a self-dialysis training program in an approved facility during 3-month Medicare waiting period, and the person expects to complete training and self-dialyze afterward.

Coverage can also begin the month the person is admitted to an approved hospital for a kidney transplant, or preliminary procedures for a transplant if the transplant takes place that month or within 2 months, therefore.

Medicare coverage generally ends 12 months after the month a person no longer needs maintenance dialysis, or 36 months following a kidney transplant.

For more information about

Medicare coverage because of permanent kidney failure, call the Amarillo Social Security office, located at 3601 W. 15th. The telephone number is (806)376-2241.

## Report Shows Homeowner's Share of Property Taxes Growing

Homeowners paid a third of all school district property taxes in 1987, according to the 1987 annual report from the State Property Tax Board (SPTB). "The share of school taxes paid by homeowners has been growing since we began making these estimates in 1981," said Ron Patterson, the SPTB's executive director.

"On the other hand," Patterson added, "the share of school taxes paid by mineral producers has declined sharply, while the portions paid by business and by agriculture have remained relatively stable."

The SPTB uses information reported by school districts to estimate the share of school taxes attributed to each category of taxable property.

"Homeowners aren't the only property owners with a bigger share of school taxes," said Patterson. "The shares generated by multi-family dwellings, vacant lots, and commercial and industrial real estate have also grown considerably." As a group, these urban real properties generated two-thirds of the 1987 school tax levy, compared to only 54 percent of the 1981 levy.

"The reason the property tax burden shifts from one property category to another is that the taxable values of the categories change," explained Patterson. "While the tax rate determines the total amount of taxes, the taxable values determine the distribution of the taxes." He said the main reasons for changes in taxable values are economic changes, changes in tax appraisal practices, changes in tax exemptions, and the addition of new property to the tax rolls.

Patterson suggested several reasons for the growing tax burden on urban real estate. "Residential property and commercial real estate usually account for most of the

new property added to the tax rolls," he said. "In addition, real estate values in most parts of the state were going up until the mid-1980s as the population increased and the demand grew for new housing and commercial development."

Tax appraisals have also contributed to the shift of tax burden onto residential property, according to Patterson. "Before appraisal districts began operating in 1982, residential property was reappraised infrequently and often appeared on the tax rolls at much less than actual market value," he said. "Since then, however, reappraisals have been more frequent and tax appraisers have become better trained. The SPTB's 1987 Property Value Study showed residential property is much more likely to be on the rolls at close to its market value. As a result, this property is now shouldering a more equitable share of property taxes."

Taxing units may offer local-option homestead exemptions to ease the tax load on homeowners. However, the maximum amount of the local-option homestead exemption allowed by law dropped from 40 percent of a home's market value beginning in 1982 to 30 percent as of 1985. "In those school districts that offered a 40 percent exemption before 1985, this reduction created a heavier tax burden for homeowners," Patterson explained.

Another reason for the shift of the school tax burden onto urban real estate is that mineral reserves have been producing much less property tax revenue. "The share of school taxes from minerals in 1987 was less than half of what it was in 1981," said Patterson. The minerals category, which consists mainly of oil and gas reserves, accounted for 15 percent of the 1981 school tax levy. By 1987, the share generated by minerals had dwindled to only seven percent of the school levy.

"The drop in property tax revenues from mineral reserves has been particularly steep since 1985," Patterson said. "Our studies show that the taxable value of mineral reserves fell from \$84 billion in 1985 to only \$47 billion in 1987." He noted that 1986 was the year oil prices fell to record lows. "Low prices discouraged the search for new reserves, and the existing reserves dwindled in size," he

added. "According to the SPTB analysis, the portion of taxes from business personal property also decreased in the seven-year period. This property category, which includes the inventoried machinery and equipment of commercial and industrial businesses, produced almost 13 percent of the 1981 school tax levy. Since 1984, however, this property has generated around 11 percent of school taxes."

"On the whole," said Patterson, "the share of school taxes from business-related property categories has remained relatively stable." These categories include business personal property, multi-family dwellings, banks, utilities, and commercial and industrial real estate. Their share of school property taxes has stayed between 44 and 46 percent since 1981, according to the SPTB figures. Patterson noted that while personal property values have dropped, rising real estate values have made up the difference in tax revenues.

The portion of school taxes from rural acreage has also been fairly constant, at about six percent, in the period 1981-1987. "Most agricultural land is appraised for taxation under formulas that average the land's income over a five-year period," explained Patterson, "minimizing year-to-year value changes."

Patterson believes changes in property tax exemptions have also helped shift the school tax burden. "For instance," he said, "many taxing units have exercised their option to exempt personal vehicles because they generate so little revenue compared to the cost of listing and appraising them." In 1987, only 14 percent of the state's school districts taxed personal vehicles, compared to 64 percent in 1981. As a result, the share of school taxes generated by the vehicles category has dwindled to almost nothing.

In addition, farm and ranch personal property became exempt in 1982. Beginning in 1985, bank stock became exempt from property taxation and the personal property of banks became taxable for the first time.

READ AND USE  
 The Clarendon Press  
 Classified Ads

Christian Counselling  
 Biblical, Personal, Family  
 Philip R. Stroud  
 Ministering with the  
**CHURCH OF CHRIST**  
 (3rd at Carhart)  
 P.O. Box 861  
 Clarendon, TX 79226  
 Telephone  
 1-806-874-2495

"I'm Pregnant. What Should I Do?"  
 Free Pregnancy Test  
 Confidential Counseling  
 Education on Every Alternative  
 Free Housing Aid  
 Arrange Financial Aid  
 Post Abortion Counseling  
 Amarillo Area Crisis Pregnancy Center  
 24 Hour Hot Line 354-2244 Call Collect  
 For Local Help, Call 874-3242 or -2495 or -3667

The Clarendon Press is published every Thursday at P.O. S. Kearney and entered as Second Class Mail at the post office at Clarendon, Texas. Bob and Lynne Williams, publishers and editors.  
 Any erroneous reflection upon the character of any person or firm appearing in these columns will be gladly and promptly corrected upon being brought to their attention.  
 All pictures used in The Clarendon Press which are not the property of The Clarendon Press must be picked up in 10 days after publishing date.  
**TPA** MEMBER 1988  
**TEXAS PRESS ASSOCIATION**

**THE PRINT SHOPPE**  
 874-2711 Clarendon  
 Let us design whatever you may need to your specifications  
 Wedding Invitations \* Letterheads \* Envelopes \*  
 Business Cards \* Receipt Books \* Posters \*  
 Business Forms

**SEPTEMBER**  

						1
2	3	4	5	6	7	8
9	10	11	12	13	14	15
16	17	18	19	20	21	22
23	24	25	26	27	28	29
30						

**NOW YOU CAN SELECT THE MATURITY DATE FOR YOUR C.D.**  
 The choice is yours. Select two weeks from the date of deposit, or up to five years. New legislation pertaining to banks now allows you to select the exact date of maturity on Certificates of Deposit.  
 Minimum requirements are 14 days for deposits of \$100,000 or more and 32 days or longer on smaller deposits. (Penalty for early withdrawal.)  
 Obtain Money Market rates on CD's with a minimum deposit of \$1,000.  
 All deposits insured to \$100,000 by the FDIC and your money stays in Clarendon.  
**FIRST BANK & TRUST**  
 OF CLARENDON  
**FDIC**

### Friendship Quilting Club

The Friendship Quilting Club met in the home of Yvonne Belle McDaniel for their annual Christmas Party on Tues., Dec. 13. As guests arrived they were given a number for the drawing of the door prize.

A program was enjoyed by the group with Edna Dishman giving a beautiful poem "Heavens Grocery Store" The group sang several Christmas Carols, then a recording, "The Star of the East" was played by Rachael Butler. Mary Lee Noble led a prayer which was said in unison by the group.

The entertaining rooms were decorated in the Christmas motif & gifts were exchanged from a pretty lighted Christmas tree. Oddie Moss drew the number for the door prize.

The serving table of coffee & punch, was laid in red taffeta & over laid with red net accented with red bows. The center piece was of gold candelabra with four lighted candles, and as a tradition members brought all sorts of Christmas goodies which was served from a table laid in white lace with red velvet runners and red bows. The center piece was Christmas greenery with three red candles. Mary Lee

Noble served coffee, while Florene Bennett served punch.

Members present were: Florine Bennett, Murle Butts, Bradis-Balwell, Doris Denny, Edna Dishman, Irene Jones, Lucille Lattrell, Vada Morrison, Oddie Moss, Mary Lee Noble, Thelma Rudder, Jane Stevens, Sadie Shields and Guest Edith Carter, Rachael Butler and the hostess Yvonne Belle McDaniel.

The next meeting will be with Oddie Moss, Tues., Jan. 10 at Shirley Osburns home on the Brice Highway.

### Lion's Tale

The Clarendon Lions Club met January 3rd at noon, for their regular meeting in the Lions Hall. There being 23 present, the Lions Sweetheart, Mrs. Jessie Adams and 5 visitors. After a very delicious meal, the Boss Lion Larry Hicks called the meeting to order. Lion Tamer Redell-Henson, introduced the visitors as follows: Mr. David Smith, a guest of Lion Don Smith; Mr. Kyle Allen, a guest of Lion Larry Hicks; Mr. David Hicks, a guest of Lion Larry Hicks; Mr. Wayne Chambliss, and Mr. Roger Estlack, a guest of Lion Jerry Chambliss; and Mr. Roger Estlack, a guest of Lion Allen Estlack. Among other business, the Boss

Lion reported that 40 boxes of food, donated by the Lions Club, Churches, individuals and Salvation Army, were delivered by members of the Lions Club, to the needy of our community for Christmas. We were glad to have back with us an old member of the Club, Lion Jack Moreman. There being no further business Boss Lion Larry Hicks adjourned the meeting.

### Local Attorney Injured by Horse

Randall Walker, prominent local attorney, was injured Monday afternoon in a riding mishap. He was reportedly riding in the pasture when his mare threw her head back, causing the back of the bridle to strike Randy in the face.

When Randy arrived back at the house, his face was covered with blood, which scared his wife, Fredi.

Damage was lighter than it might have been. He suffered a broken nose and a broken tooth. Randy also had quite a black eye on the left side.

### Medical Center News

by Vera Johnson, Activity Director

Last Friday, Dec. 23, 1988 we had our yearly Christmas Party for our residents and their families. As usual we had two parties, one for the West Wing about 4:00 p.m., and one for the East Wing about 6:00 p.m.

We were very thankful for the beautiful weather, which permitted the families to be able to attend the party. We wish to thank them for their cooperation with us in caring for their loved ones, and all the beautiful gifts the residents received.

We have several people we wish to thank for making the residents Christmas so wonderful. We wish to thank all the little Children's group that had part in decorating our tree. First Baptist Children's Choir; The Methodist Children and the Brownie Troop; church of Christ Ladies for the neck aprons and Lap Robes and fruit; United Methodist Ladies for the gifts for our residents, The Salvation Army for their box of gifts; and Bivens Pharmacy for their gifts.



Decorations at the Medical Center for the Christmas Party

On the night of our party we wish to thank Mr. & Mrs. David Randall for being Santa Claus; and for our beautiful western music, for our program, we give special thanks to Mr. & Mrs. Creed Smith, Clarendon; Weldon Petty, Giles; and Mr. & Mrs. Billie Cox, Pampa.

We wish to thank the Nurses for dressing the residents and making them so pretty, also the Kitchen and all their members for the beautiful table and delicious food that they served to everyone present. We had 38 residents present-five were not able to attend. We had a large number of family and friends. Everyone had a beautiful Christmas spirit and enjoyed themselves very much. We can never get through saying thanks to everyone who had a part in our

Christmas celebration. May God bless all our efforts for our residents, also many thanks to all of our volunteers that has helped us through out the year.

### The Fun After 50 Club

The Fun After 50 Club will hold their first meeting of the new year on Saturday, Jan. 7. The program will begin at 10:00 a.m. followed by a covered dish luncheon at noon. They invite all Sr. Citizens to come and be a part of this group. Our newly elected officials will take over their new duties, at this meeting. There will also be door prizes. So come and start the new year with your friends.

# MIKE'S PHARMACY

**Sale**

MEDALIST

TRIPLE ANTIBIOTIC OINTMENT

\$1.17

1 oz.



Compare To Neosporin

**MEDALIST**

OUR BRAND OF QUALITY AND VALUE

HAPPY NEW YEAR

MEDALIST

TUSS'N DM

ANTIHISTAMINE CAPSULES

25 MG

\$1.47

Compare To Benadryl 24'S



CHILDREN'S GRAPE ALLERGY ELIXIR

Elixir - Great Grape Taste!

\$1.47

8 oz. Liquid Compare to Dimetapp Elixir



IBUPROFEN

200 MG TABLETS

\$1.99

Compare To Advil 50's



\$1.99

8 oz.

Compare to Robitussin DM



ANTACID

\$1.47

12 oz.

Compare To Mylanta



CHILDREN'S Non Aspirin Pain Relievers

\$1.27

4 oz.

Compare to Tylenol



MEDALIST

ANTIHISTAMINE ELIXIR

\$1.17

4 oz.

Compare to Benadryl Elixir

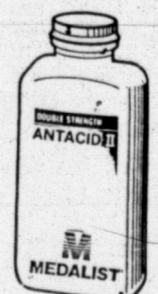


ANTACID II

\$1.88

12 oz.

Compare To Mylanta II



HYDROCORTISONE CREAM 1/2%

99¢

1 oz.

Compare To Cortaid

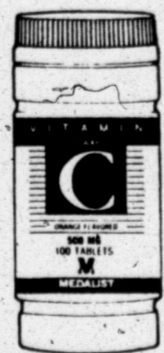


VITAMIN C

500 MG

\$1.27

100's



COMPARE OUR PRICE AND FORMULA WITH THE HIGHER PRICED NATIONAL BRANDS. YOU'LL FIND OUR MEDALIST BRAND IS THE SAME HIGH QUALITY AT A MUCH BETTER PRICE.



VITAMIN C

1000 mg

\$2.47

100's



ASPIRIN 5 grain

\$1.37

250 count



SENIOR CITIZENS  
**15% DISCOUNT**  
ON PRESCRIPTIONS



WELCOME  
PCS  
**BLUE CROSS BLUE SHIELD**  
PAID  
PRESCRIPTION CARDS

MAIL ORDERS  
RECEIVE  
PROMPT SERVICE

**MIKE WANTS TO BE YOUR PHARMACIST**

874-3554

# Naomi's News

by Naomi Green

Visitors with the Lacy Noble's during Christmas were Janie and Frank Amon from Wharton, Jan & Lacy Lee from Windy Valley, Carrie, Terry Lee and Tiffany. Paula & Mitchell, and Mark. On New Year's Day some of the Noble clan met at the Lacy Noble's for a pot luck dinner. Ronnie Noble from Colorado, Gary Noble and friend Mike from Amarillo, Zilda & Red Leeper from Valley High, Steve, Nita, Chad and Keena Ellis, Llooyd & Theola Leeper, Terry Lee and Mark Noble.

Relatives visiting in the home of Mr. and Mrs. D.E. Leathers over the holidays, were their daughter Mr. and Mrs. J.R. Williams and son Jaa from Durango, Colo., Mr. and Mrs. Johnny Leathers from Clarendon, Mrs. Louise Aten from Clarendon, Mrs. Allie Caviness, from Memphis, Mr. and Mrs. David Hudgins from Lakeview, Texas, Mr. and Mrs. Scott Roberts form Flagstaff, Arizona, Dr. Robert G. Meredith from Carvallas, Oregon & Washington D.C., Mr. David Leathers from Amarillo, Texas, June Summers, from Pampa, Texas, Rev. and Mrs. Richard Leathers and children from Fort Worth, Texas.

Holiday visitors in the home of Mr. and Mrs. Shirley Pitts were: Chad Pitts and Alisha Ems, Mr. and Mrs. Dale Pitts, Cody key, Mr. and Mrs. Todd Pitts and Josh all of Amarillo. Visitors from Pryor, Oklahoma were Mr. and Mrs. Gayle Perry and Matthew. Mr. and Mrs. Leland Pitts and Collin came from Dallas and Mr. Vance from Childress.

The Jack Moreman family came home for the holidays. Phillip came from Vega and Brent & Melody Sanderson from Lubbock.

Sharon Thomas and Mr. and Mrs. Mel Mills went to Childress the Saturday before Christmas to meet Ruth Mills's sister, Helen Jenne and her daughter Frances at a Memphis restaurant. They had lunch visited and exchanged Christmas gifts.

Mr. and Mrs. Haskell Talley of Memphis visited with the Jerry Green family Sunday.

Katherine Williams, David, Clint and Lindsay Green went to Dallas Wednesday to spend a few days with her parents the Charles Dunns and visit with her sister's family the Bob Gammons.

Don Williams left Sunday to take Phillip and Kent back to San Antonio.

The L.A. Watsons had all of their children home for Christmas Eve and went Christmas Day to visit with the Hap Watson family at Groom.

Betty White cooked a birthday dinner for L.A. Watson Saturday the 30th and invited L.A. and Rose Lee to celebrate his 39th birthday.

New Year's eve was celebrated at the Bob Cole home with a gathering of his Sunday School class taught by Leo Smith. L.A. and

Rose Lee Watson were invited to join the festivities.

Sunday night Rose Lee invited those at church to come home with her and help eat up the black-eyed-peas. Those to accept the invitation were: The Bud Whites, Steve Reynolds, Johnny Haggarts and Delmar Wiggs.

Cathy Vaughn honored Jamie with a 3 year old birthday party Sunday. Those in attendance were: Betty and Bud White, Henry and Ina Like, Mary Coe all local residents. From Amarillo Amy Hilliard and Doris Black were guests. Lucille Vaughn came from Groom and will be spending several weeks with the Dennis Vaughn family. A favorite feature for Jamie was the Micky Mouse Cake.

The Dennis Vaughn family were in Groom Christmas eve night and Santa managed to find Jamie there and slipped down to leave her Christmas under the tree for all to enjoy.

The Bill Bennetts had Christmas at their home at Ashtola for the Jimmy Bennett family of Amarillo Christmas Eve. Christmas day they went to Amarillo to have dinner with the Lonnie Parr family. Saturday, New Year's Eve found them Christmasing once again with the O.V. Bennett family in Clarendon.

Jeremy David Hawkins's first birthday was celebrated by the Terry Hawkins family on the date of his birth December 30th. The honoree managed to blow out his candles and is pulling up to walk now. Brandy or Josh reported the Memaw and Pa-pa were there. I dug deeper and discovered it was David and Jean Hawkins from Dumas.

Visitors in the Bud Hermesmeier home the Friday before Christmas were Mrs. Frank Hermesmeier of Jericho, Mrs. Nell Brittan of Groom and Angie Brittan who works in Amarillo.

Christmas Day, Mr. and Mrs. Bud Hermesmeier entertained Frank, Jeanne, Jacque and Greg Hermesmeier of Wall, Henery and Carol Hermesmeier of Amarillo, Paul Hermesmeier of Denton, John hermesmeier of Sunray, Bryan, Mary Jo and Colby Houseman Of Idalou; Floyd and Ann Derrick of Amarillo, Mary and Donald Harlan of Tulia and Frank Derrick of Clarendon.

Thursday night Bud and Pearl Hermesmeier went to Groom to spend the night with Nell Brittan.

Bud and Pearl Hermesmeier were among others to enjoy the trip to Amarillo to the Senior Citizens dance for New Year's Eve.

My New Year's resolution was to get myself better organized. I was so busy organizing that I did not get the black-eyed-peas cooked until the 2nd of January and they were 1987 peas as we did not raise any in 1988. The peas tasted great and I consider my good fortune the fact that I did not burn them or the ring to the pressure cooker to the extent that I did before Christmas when I tested Mary Ellen's last years Christmas investment of some smoke alarms. So goes my plot for self improvement for 1989.

Mr. and Mrs. J.B. McDaniel returned Christmas Eve from their

hospital stay. Mr. McDaniels fell and broke his hip while feeding cattle December the 14th. When he did not come in for dinner Vonnie Belle went to hunt him. He had to have surgery but is recovering from the ordeal.

Mrs. Oscar Anderson went to Leveland to have Christmas with her daughter's family the Harold Gooches. She returned home New Year's day.

Bud Hermesmeier tell me that he has a hour long VCR movie of the reunion in Amarillo of all of the classes of the 50's. We need to get those who are interested in seeing themselves as star material together for evaluation. If you are interested call me and we will try to set a time and place.

Holiday visitors in the J.R. Brandon home were Jimmy Lee and Don Matherson from Claude, Myrl and Frank Reger from Hedley and W.D. Brandon.

Myrl and Frank Reger went to Stinnett to have Christmas with his daughter Johnny and family.

Tuesday and Wednesday guests in the J.R. Brandon home were her cousins Rex and Masie Cole from Show Low, Arizona. They had ben to Boulder, Colo. to visit their son and came on to Clarendon while they were there much closer.

Sunday, Mr. and Mrs. Don Matherson of Claude entertained Mr. and Mrs. J.R. Brandon, Mr. and Mrs. Frank Reger of Hedley, Norma Brown, and Joe English of Amarillo.

Wayne Reynolds of Tulia and Jason Bunyon of Simmanoic visited Flossie Reynolds Wednesday.

Flossie Reynolds visited with Marie McCracken Sunday afternoon.

**HELP FOR SMOKERS WHO WANT TO QUIT**  
The Cancer Information Service of The University of Texas M. D. Anderson Cancer Center provides support, referrals, and literature for anyone who wants to quit smoking and quit for good! Call: **1-800-4-CANCER.**

## Services Held for Carl Lee Watson

Carl Lee Watson, 51, brother of the late Alta Shaller, died early Dec. 26 at his home south of McLean. Services were held 2:30 p.m. Wednesday in First Baptist Church with the Rev. Buell Wells, retired Baptist minister, and the Rev. Jeff Messer, pastor, officiating. Burial was in Hillcrest Cemetery by Lamb Funeral Home.

Mr. Watson was born in Wheeler County on Dec. 28, 1936. He lived in and around McLean all his life. He was a barber and owner of Carl's Barber Shop in McLean. He was a member of First Baptist Church.

Survivors include his parents, Mr. and Mrs. E.L. Watson of McLean; one sister, Norma Curry of McLean; and several nieces and nephews.

## Mrs. Lilla Moore Services Held

Funeral services for Mrs. Lilla Lorena Warren Moore, age 77, were held at 11:30 a.m. on Tuesday, December 27, 1988 in Citizens Cemetery in Clarendon with Rev. Truman Ledbetter, Pastor of the First Baptist Church in Clarendon, officiating. Interment was in Citizens Cemetery with arrangements under the direction of Robertson Funeral Directors.

Mrs. Warren died at 4:27 p.m. on Friday, December 23, 1988 in Centralia, Illinois following a lengthy illness. She was born November 18, 1911 in Clarendon and had lived here for a period of time. She was a resident of Centralia, Illinois at the time of her death. Her parents, James A. Warren, Sr. and Lilla Maude Moore Warren came to Clarendon in 1903 from Stephenville. She married William Harry Moore on May 8, 1931 at Amarillo. He died in 1977. She was a homemaker and a Baptist.

Survivors include one daughter, Barbara Jean Little of Centralia, Illinois; one son, James Moore of Phoenix, Arizona; four sisters, Mrs. Norman Welborn of Timberon, New Mexico, Mrs. Albert Mandril of Amarillo, Mrs. Wavne Tiller of

Amarillo, Mrs. James Stone of Arlington; one brother, Weldon Warren of Dallas; four grandchildren; and six great grandchildren.

## School Menu

Jan. 9 - Jan. 13

**Monday:** Steak fingers W/gravy, Cream Potatoes, Blackeyed Peas, Hot Rolls, Applesauce and Milk

**Tuesday:** Beef Stew W/Vegetables, Cheese Wedge, Cole Slaw, Cornbread, Pears and Milk

**Wednesday:** Oven Fried Chicken, Cream Potatoes, Hot Rolls, Green Beans, Banana Pudding and Milk

**Thursday:** Spagetti W/meat sauce, Hot Rolls, Mixed Vegetables, Pears and Milk

**Friday:** Chili Burgers on a Bun, French Fries, Tossed Salad, Cherry Cobbler and Milk

## Turners Host Family

Mr. and Mrs. Abe Turner recently hosted a family holiday gathering in honor of her parents, Mr. and Mrs. Henry Mann of Clarendon.

Mr. and Mrs. Mann celebrated their 60th wedding anniversary Dec. 22.

Family members attending included Garth and Louise Mann Carter and great-grandson, Dakota Carter, of Pampa; Gervis and Frances Mann Kennard of Amarillo and their daughter and son-in-law, Jenny and Allan Smith, of Brownwood.

Also attending were the children and grandchildren of the Turners, Mike, Teri, Jessica and Lori Turner of Lubbock; Sharon and Kevin Rinn of Mineral Wells; April Turner and her friend, Ty James, both students at Texas Tech in Lubbock.

Other well-wishers included longtime Haskell acquaintances of Mr. and Mrs. Mann.

## Prepared Childbirth Classes

Taught by Sharon Adams

Certified Childbirth Instructor

4 week series

Jan. 24 - Feb. 21 at 7:00 p.m.

\$45.00 Class fee-includes

Lamaze Manual

For more information or to register

for class Call Sharon at

874-3227

1-3tc



## Greenbelt Cleaners

...the only name you have to remember for fine drycleaning and shirt laundering in Clarendon, Texas

## Greenbelt Cleaners

874-5024

A member of the International Fabricare Institute, the association of professional drycleaners and laundries.

# COMMUNITY CALENDAR

# JANUARY 1989

Sunday	Monday	Tuesday	Wednesday	Thursday	Friday	Saturday
1 Attend Church	2 Booster Club - 7:30 p.m.	3 Resume Classes PTA Meeting 7:00 p.m. Heimlich Maneuver Lions Noon McLean - 5:00 T	4	5 Memphis-4:00 H-7th & 8th Shamrock JV Tourny	6 Shamrock JV Tourny	7 Howardwick 8:30 a.m. Shamrock JV Tourny
8 Attend Church	9 XLX - 7:30 p.m. FFA Meeting	10 Lions Noon City Aldermen 7 p.m. Hospital Board 7 p.m. Firebelles meeting 7:30 Canadian-5:00 T	11	12 CC Board Regents 11:45 a.m. Canadian-4:00 H 7th & 8th	13 Wellington-4:00 H	14 Howardwick Lions 6 p.m. Howardwick Bingo 8 p.m.
15 Attend Church	16 County Commissioners 9 a.m. Lakers Homemakers 1:30 p.m. EMS meeting 7:00 p.m. Booster Club - 7:30 p.m.	17 Lions Noon Quanah-4:00 H	18	19 CISD 7:30 p.m. End 3rd Six Weeks & Fall Semester Wellington 4:00 T 7th & 8th Valley JV Tourny	20 Friendship Club County Stock Show 6:30 p.m. Teach Work Day- Stud. Holiday Valley JV Tourny Shamrock-5:00 T	21 County Stock Show Valley JV Tourny
22 Attend Church	23 Begin 4th 6 weeks	24 Lions Noon City Aldermen 7 p.m. Memphis-4:00 H Bronco Mothers Mexican Pile-On (5-7)	25 Saint's Roost Museum 5 p.m.	26 Quanah-4:00 T 7th & 8th Chamber of Commerce 7 p.m.	27 Canadian-4:00 H	28 Howardwick Bingo 8 p.m. Howardwick Lions 6 p.m. Wellington Tourny - 7th
29 Attend Church	30	31 Lions Noon Wellington-4:00 H Fl. Worth Stock Show				

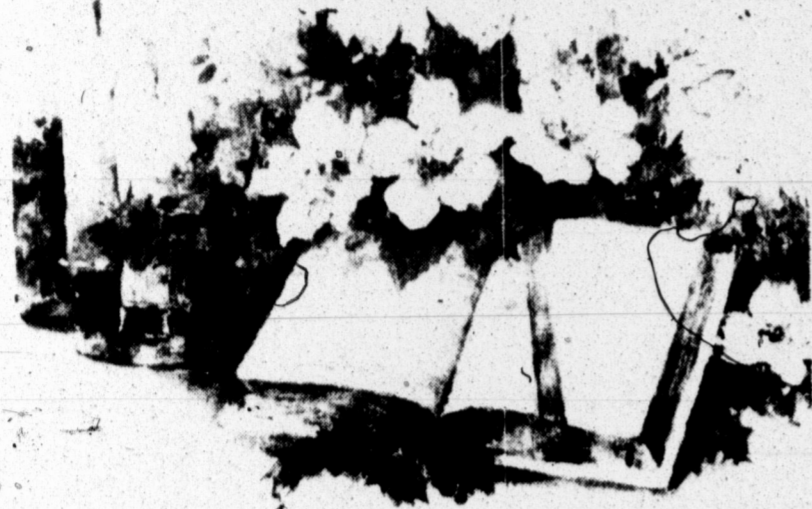
Sponsored By These Merchants:

Security Abstract  
Law Offices of Randy Walker  
Floyd's Automotive Supply & Muffler Shop

McKinney Motor Co.  
Keynolds Machine & Supply

Bivens Oil Co. 874-2692  
Clarendon Gin, Inc.,  
Greenbelt Marina, Inc. 3 Locations on Greenbelt Lake

# Attend Services



"I was glad when they said unto me, Let us go into the house of the Lord."  
Psalm 122:1

<b>ST. STEPHENS BAPTIST CHURCH</b> Jefferson & Martindale Rev. Melvin Brooks, Pastor Sunday School 9:45 a.m. Preaching 11:00 a.m. Night Service 8:30 p.m. Prayer Service 7:30 p.m. Woman's Mission 8:00 p.m.	<b>MARTIN BAPTIST CHURCH</b> Johnny Hoggatt, Pastor Sunday School 10:00 a.m. Church Service 11:00 a.m. Evening Service 6:00 p.m. Wednesday Night Service 7:00 p.m.	<b>PENTECOSTAL HOLINESS CHURCH</b> Rev. Claude Peach, Pastor 415 Friker Street Sunday Bible Study 9:45 a.m. Worship Service 11:00 a.m. Evening Worship 6:00 p.m. Wednesday Evening Worship 7:00 p.m.
<b>FIRST UNITED METHODIST CHURCH</b> 5th & Jefferson 874-3667 Rev. Terry Tamplen Sunday School 9:45 a.m. Morning Worship 11:00 a.m. Evening Worship 7:00 p.m. UMY Sunday 6:00 p.m.	<b>UNITED PENTECOSTAL CHURCH</b> Rev. Jerome A. Campbell Montgomery & Faker St. Worship Services 3:00 p.m. Wednesday Night Services 7:30 p.m.	<b>CALVARY BAPTIST CHURCH</b> Hwy. 287 & Jackson 874-3479 Tony Colburn, Pastor Sunday School 10:00 a.m. Sunday Worship 11:00 a.m. Bible Study 6:30 p.m. Evening Worship 7:00 p.m. Wednesday Night Service 7:30 p.m.
<b>CHURCH OF CHRIST</b> 4th & Carhart Phil Stroud, Minister Sunday School 9:30 a.m. Morning Worship 10:30 a.m. Evening Worship 6:00 p.m. Wednesday Night Service 7:30 p.m.	<b>PRESBYTERIAN CHURCH</b> 4th & Parks Rev. Larry Black, Pastor Sunday School 9:45 a.m. Morning Worship 11:00 a.m.	<b>CHURCH OF THE NAZARENE</b> 3rd & Hawley 874-2321 Bill Hodges, Pastor Sunday School 9:45 a.m. Morning Worship 11:00 a.m. Evening Worship 6:00 p.m. Wednesday Night Service 7:30 p.m.
<b>ST. MARY'S CATHOLIC CHURCH</b> McClelland & Montgomery Rev. J. Arnold Carlson Sunday Morning Mass 9:30 a.m.	<b>FIRST BAPTIST CHURCH</b> Bugbee & 3rd Streets 874-3833 Truman Ledbetter, Pastor Sunday School 9:45 a.m. Morning Worship 11:00 a.m. Training Union 6:00 p.m. Evening Worship 7:00 p.m.	<b>HEDLEY CHURCH OF CHRIST</b> Bright Newhouse Minister Sunday School 10:00 a.m. Worship Services 11:00 a.m. Evening Services 6:00 p.m. Wed. Bible Study 8:00 p.m.
<b>ASSEMBLY OF GOD</b> 5th and McClelland Rev. J.W. Brown, Pastor Sunday School 9:45 a.m. Sunday Worship 11:00 a.m. Evening Worship 7:00 p.m. Wednesday Prayer Meeting 6:00 p.m.	<b>FIRST BAPTIST CHURCH</b> Howardwick SBC Bro. James Martindale Sunday School 10:00 a.m. Worship Service 11:00 a.m. Evening Service 6:00 p.m.	<b>FIRST BAPTIST CHURCH HEDLEY</b> W. Bryan Knowles Pastor 856-5370 Sunday School 10:00 a.m. Worship Services 11:00 a.m. Evening Services 6:00 p.m. Wed. Bible Study 7:00 p.m.
<b>FIRST CHRISTIAN CHURCH</b> Minister: Wilbert Bernabe Sunday School 9:30 a.m. Worship 10:40 a.m. Children's Worship 10:40 a.m. Evening Study 6:00 p.m. Youth 6:00 p.m.	<b>ST. JOHN THE BAPTIST EPISCOPAL CHURCH</b> Sunday School 9:45 a.m. Holy Communion 11:00 a.m.	



Clarendon Auto Supply

- Eads Furniture & Appliances
- Aiderson Crevrolet
- Kidds Texaco
- Mary's Country Kitchen
- The Clarendon Press
- J & W Lumber
- Chamberlain Motor Company
- The Print Shoppe
- Robertson Funeral Home

## Farm Credit Bank of Texas Selected To Serve Region's Farmers, Ranchers

The Farm Credit Bank of Texas received word today that it had been awarded the bid on approximately \$1.4 billion in agricultural loans in the former Federal Land Bank of Jackson (Mississippi). The receiver handling the liquidation of the Jackson bank's assets made the announcement.

"We're pleased with the decision," said Donald R. Rogge, CEO of the Austin, Texas-based agricultural bank. "We're looking forward to providing long-term credit for the farmers and ranchers of Alabama, Louisiana and Mississippi on a permanent basis."

The decline of farmland values in the mid-1980s hit farmers and ranchers in the Jackson District particularly hard, bringing about a wave of loan defaults that led to the Jackson bank's being placed in receivership on May 20, 1988.

While the Texas bank and its shareholders were not exempt from the adverse agricultural economy, the bank remains one of the strongest in the nationwide Farm Credit System. Through September 30, the Farm Credit Bank of Texas and associations had assets of \$3.934 billion and total capital of \$503 million.

The Farm Credit Bank of Texas already has long-term credit experience in Louisiana. For the past six months, the FCB of Texas has been providing long-term loans on an interim basis in Louisiana.

"The Texas District Board and management recognized how essential the farmers and ranchers of the Jackson District were in maintaining our nation's food and fiber supply," Rogge said.

"Also, our board recognized how similar many of the farming and ranching operations were to those in Texas. Their decision to bid on the loan assets of the Jackson District made good business sense," said Rogge.

The Texas bank was chartered as

a single-state district in 1917. Expansion into the Jackson district represents the first time the Texas district has had responsibility for extending credit outside the state. The interim arrangement in Louisiana was the one exception.

Nationwide, the Farm Credit System consists of 12 Farm Credit Districts. As of September 30, the System had assets of \$61.61 billion and a net worth of \$1.59 billion.

## Texas Unemployment Rates Drop Again

"Unemployment rates are down again in Texas and both business and labor are beginning to breathe a little easier," said Commissioner Mary Scott Nabers of the Texas Employment Commission.

Statistics just released show that the statewide unemployment rate is 6.6% - down from 6.8% last month. "While statewide statistics show only a small decline," Nabers said, "at least we are headed in the right direction. This is the third consecutive month of a declining statewide rate and the figures even look better when we remember that the rate was 7.9% this time last year," Nabers concluded.

In mid-November 1988 there were 551,000 jobless Texans. That compares with the 650,000 plus that were out of work a year ago.

Almost all of the 27 Metropolitan Statistical Areas for which data are currently available mirrored the statewide trend in unemployment, with rates falling slightly in November. Rates in two MSA's were unchanged over the month, and one (Wichita Falls) rose slightly from October to November.

Bryan-College Station continued to record the lowest rate in November, with a 4.1% rate which was its lowest since April of this year. Lubbock had the second-lowest rate, at 4.5%. Three MSA's had a rate of 5.3% - Austin, Dallas and Midland.

Highest rates continued to be along the border, with McAllen-Edinburg-Mission leading, at 15.9% in mid-November. Laredo's rate was 11.6%; Brownsville-Harlingen had a rate of 11.1%; and El Paso's rate was 10.2%. These were the only MSA's with rates above 10% in November.

## Children Need Evidence For Number

Everyone who applies for a Social Security number must provide evidence of age, identity, and U.S. citizenship for lawful alien status, including young children, Amarillo Social Security Manager, said recently.

Parents sometimes have difficulty finding the required evidence of identity.

Proof of age is relatively easy, an official U.S. public birth certificate recorded before age 5 is preferred. This document will also establish citizenship.

Documents which will establish a young child's identity, and which are usually available to most families, include a report card, school identification card, newspaper birth announcement, court order for name change, church membership or confirmation record, doctor or hospital record, vaccination certificate, day care or nursery school records, or child's membership in youth organization, such as scouts.

This list is not an exclusive list, Tollbooth said. Any document providing enough identifying data can be used.

Foreign born applicants will also need the appropriate Immigration and Naturalization Service documents.

Only original documents or copies certified by the issuing agency can be used.

For more information, contact the Amarillo Social Security office, located at 3601 W. 15th. The telephone number is (806)376-2241.

Cont'd from Pg. 2

consider. Avoid sites that have been occupied by a succession of business failures, unless you can determine, for certain, the failures had nothing to do with the business location.

Selecting the right site location can be critical to the success of your business. Do not make the mistake that many do and select a site because it is close to home, convenient or cheap. Do your homework and find the site that is best for your business. It "pays" to choose your site carefully!

The U.S. Small Business Administration is pleased to sponsor this article. For additional information contact your local SBA office.

## Winter Sale

# GREENE'S DRY GOODS

## We're Here to Serve

- Men's L/S Sport and Dress shirt 50% off
- Men's S/S Sport and Dress Shirt 75% off
- All Mens Acme Boots 50% off
- Men's L.S. Knit Shirts 75% off
- Boys L.S. Sport & Dress shirts 50% off
- Boys S.S. Sport & Dress Shirts 75% off
- All Mens Sweaters 60% off
- Men's Straw Western Hats 75% off
- All Boys & Girls Jackets 1/3 off
- Boys L.S. Knit shirts 25% to 50% off
- Men's All Felt Western Hats 1/3 off
- All Boys Sweaters 1/3 off
- 1 Size XL Moon Boots \$12.95

**Look For In-Store Specials Please Excuse Our Mess!**  
Week ending Jan. 7, 1988

## Hedley News

by Nina Riddlespurger

Jr. and Martha Hill had visitors from Van Buren, Ark. who arrived in Hedley on Thursday night. They are Martha's mother, Nina King and her sister and brother-in-law, Pat and Bill Crowden. On Friday they all went to Amarillo to visit with three of Martha's aunts. They are Lelia Hutchinson, Florene Darnell and Van Adams. On Sunday they were joined by Loretta Crump and Jason and Justin Ham from Clarendon.

Faye Patton was admitted to Hall County Hospital in Memphis on Christmas night. Faye was released on Wednesday night, when her 18 year old son was injured in a car accident in Hedley. Vernon Patton was taken to Hall County Hospital in Memphis and then transferred to Northwest Texas Hospital in Amarillo. Vernon suffered severe head lacerations as well as other injuries in the accident that occurred around 9:00 pm near the Hedley School.

Vernon was in the Intensive Care Unit in Amarillo for two days but was able to return home on Saturday afternoon. We are very thankful that Vernon is able to be home and send our best wishes for a complete and speedy recovery.

Sam Sanders was also released from Hall County Hospital on

Saturday. Sam will be going to Amarillo later this week for further tests. Our prayers and best wishes to Sam and Granny.

Deloris Hodge celebrated a birthday on Saturday, December 31st. Hope she had a great birthday.

Pauline Kaufman had her son, James Knightstep and grandson, Jamie and granddaughter Shirle from La Porte, Texas for a visit over the New Year's weekend. Also joining them was another son, John Knightstep and his wife Kathy and their children, Holley and Spencer from Bedford, Texas. On Saturday they all went to Amarillo to spend New Year's with the rest of Pauline's children. They are Jeanine Celey and family, Ronnie Knightstep and family and Martha Crawford and family.

Margaret Holland traveled to Amarillo on Friday to pick up Jean Landrum. These two ladies then traveled to Leveland to visit with Margaret's two brothers. They are Loyd Webster and Marvin Webster and families. Margaret returned to Hedley on Saturday night.

Woodroe and O'Pearl Farris and John Farris traveled to Wichita Falls to visit with their daughter and family over the New Year's weekend. They are Don and Erma Young and Melissa.

Don Ricken, 58 died Friday, December 30, 1988 at his home in Memphis of a self-inflicted gun shot wound. Don was a former Hedley resident for many years. Funeral services were held Monday,

January 2nd at Spicers Funeral Home in Memphis. Burial was in Fairview Cemetery at Memphis.

To Paulette and the entire family we send our deepest sympathy and our prayers.

## Hedley Senior Citizens Activities

**Monday January 9:** Staff Meeting; 10:30 am Exercise; 9:00-3:00 pm Games; 9:00-3:00 pm Quilting; Noon Lunch 12:00; 6:30 pm Musical

**Tuesday January 10:** 10:30 am Exercise; 9:00-3:00 pm Games; 9:00-3:00 pm Quilting; 12:00 Noon Lunch; Monthly Board Meeting; 5:30 pm Games

**Wednesday January 11:** 10:30 am Exercise; 9:00-3:00 pm Games; 9:00-3:00 pm Quilting; 12:00 Noon Lunch; 2:30 pm Grocery Trip

**Thursday January 12:** 10:30 am Exercise; 9:00-3:00 pm Games; 9:00-3:00 pm Quilting; 12:00 Noon Lunch; Blood Pressure Clinic; 5:30 pm Games

**Friday January 13:** 10:30 am Exercise; 9:00-3:00 pm Games; 9:00-3:00 pm Quilting; 12:00 Noon Lunch; Movies 6:00 pm

## Doorposts

**Deuteronomy 6:7-9**  
**Resolution**  
**By Jon Leggett**

When you read this, four or five days of 1989 will have passed, and already, broken New Year's resolutions will have littered the scene like the fallen leaves of autumn. Whether you actually go through the motions of making New Year's resolutions or not, no doubt you really want 1989 to be a better year—you really want to be a better person. In fact, it's a truly rare person, at least in my experience, who doesn't want to do the right thing, to better himself, to better his little corner of the world. Why, then, is resolution-making so difficult, and resolution-keeping so much more difficult?

Paul said, in effect, "I do the things I know I shouldn't, and don't do the things I know I should." (See Romans 7:19-20.) He seemed to have trouble with his resolutions too. Again, why?

It would require far more space than we have here to adequately answer that question, but the Word does plainly say that our righteousness—the best we can do by ourselves—is as filthy rags (Isaiah 64:6). In the verse just preceding the Romans passage referred to above, Paul says, "For I know that in me (that is, in my flesh,) dwelleth no good thing: for to will is present with me: but how to perform that which is good I find not."

But if you need help with your New Year's resolutions—help in making them, or help in keeping them—listen to the words of a familiar old hymn by Palmer Hartsough: "I am resolved no longer to linger, Charmed by the world's delight."

The hymnwriter hit the nail on the head in his very first sentence. We find ourselves charmed by the world, don't we? That's why we—and Paul—do things we don't want to do, and refrain from doing what we know is good.

"Things that are higher, things that are nobler, These have allured my sight."  
When we find ourselves drawn by the things of heaven, we're on the right track.

"I am resolved to go to the Savior, Leaving my sin and strife." Did you ever see a world so strife-torn? Did you ever hear of so many families, businesses, churches, wrecked by grasping selfishness? Would you ever have imagined that so many Americans would become so rude, so totally self-centered? What is the solution to so sad a situation? The poet says it well. We don't have to dwell in the midst of such debilitating turmoil. I am resolved to go FROM my sin and strife TO the Savior, he says.

It isn't always easy. "I am resolved to enter the kingdom, Leaving the paths of sin; Friends may oppose me, foes may beset me, Still will I enter in."

The writer has hit upon yet another reason our resolutions are often broken: The opposition of the world, and, at times, even the opposition of well-meaning friends. But may God grant us a large measure of the hymnwriter's determination: "Still will I enter in."

Each of the five verses of this hymn begin with the words, "I am resolved." We hear so much about how salvation is completely God's work. How very blessedly true that is! But, like any gift, we must accept it, make use of it, with a definite act of our wills reach out and appropriate to ourselves God's wonderful provision for us.

Are you really resolved to make 1989 the best year yet? That can happen—it WILL happen—when we follow the hymnwriter in his flight to Jesus which is so beautifully expressed in the chorus: "I will hasten to Him, Hasten so glad and free, Jesus, greatest, highest, I will come to Thee."

Please, please, do it now, before another day of 1989 passes. May you be filled with an overwhelming consciousness of how desperately, how longingly Jesus wants you to hasten to Him, and may your year be filled with all the joy and peace and victory that only the Lord Jesus Christ can give.

## Hedley School Menu

**Monday January 9**  
Chicken Fried Steak w/gravy, Whipped Potatoes, Green Beans, Fruit, Hot Rolls w/butter, 1/2 pint milk

**Tuesday January 10**  
Meat Loaf, Baked potatoes, Salad, Honey & Butter, Hot Rolls, 1/2 pint milk

**Wednesday January 11**  
Spaghetti w/meat sauce, Carrot sticks, Cheese slices, Buttered Corn, Peach Cobbler, Butterbread, 1/2 pint milk

**Thursday January 12**  
Pinto Beans, Boiled Cabbage, Fried Okra, Brownies, Cornbread, 1/2 pint milk

**Friday January 13**  
Cheeseburgers, French Fries, Lettuce, Tomatoes, Pickle, Onion, Cookies, 1/2 pint milk

## Hedley Senior Citizens News

by Nina Riddlespurger

With so many people out of town and all the Holiday company, our number was down on Monday night for our musical. We do appreciate Creed Smith and Weldon Petty for providing our music.

On Tuesday afternoon we had eight playing dominos.

Our Tuesday night 84 club had a good turn out with 18 playing.

Wednesday afternoon there were 9 who played dominos.

We had 4 who went on our grocery shopping trip on Wednesday afternoon.

Dean Hill checked 21 in our Blood Pressure Clinic on Thursday afternoon.

Friday afternoon there were seven who played dominos.

Friday night we had 10 for our Movie.

On Saturday night there were 35 people who attended a New Year's Party and Musical. Thanks to Donnie Hall, Preston McDaniels, Monty and Lelia Chandler for their singing and playing.

There was around 15 who stayed until midnight.

## Hedley Senior Citizens Menu

**Thursday January 5:** Chili, Pinto Beans, Corn, Tomato-onion-cucumber salad, Corn Muffin, Whole Purple Plums, Coffee, Tea, Milk, Juice

**Friday January 6:** Roast Beef, Macaroni w/cheese, Green Beans, Coleslaw, Roll, Strawberry Shortcake, Coffee, Tea, Milk, Juice

**Monday January 9:** Steak w/gravy, Baked Potato, Topping as desired, Green Peas, Roll, Apple Cobbler, Coffee, Tea, Milk, Juice

**Tuesday January 10:** Oven Baked Fish, French Fries, Buttered Carrots, Coleslaw, Corn Muffin, Fresh Fruit Cup, Coffee, Tea, Milk, Juice

**Wednesday January 11:** Roast Beef, BBQ sauce, Potato Salad, Baked Beans, Green Vegetable Salad, Roll, Apricot Halves, Coffee, Tea, Milk, Juice

## Hedley Clothes Closet

The Clothes Closet at the First Baptist Church in Hedley will be open on Saturday, January 7th from 9:00 am to 5:00 pm.

The Clothes Closet is for the entire community and everyone is welcome to take advantage of this service.

If you need clothes or if you are tired of the clothes you have and would like to exchange them for some different ones, then come by on Saturday and look around. If you know anyone in our community who needs clothes, please contact Betty Hoggatt or one of the ladies at the Church and they will be glad to help.

## Services Held for Donald Eugene Ricken

Donald Eugene Ricken, 58, died Friday, December 30, 1988.

Services were held at 10:00 am Monday in Spicer Funeral Home chapel with the Rev. Bryan Knowles, retired Baptist minister, officiating. Burial was in Fairview Cemetery by Spicer Funeral Home.

Mr. Ricken was born in Algona, Iowa. He had been a Hedley resident until 1986 when he moved to Memphis. He married Doris Hill in 1952 at Clovis, N. M. She died in 1986. They had 5 children. He married Paulette Crump in 1987 at Memphis. He was a veteran of the Korean War. He was preceded in death by one son, Tim Ricken.

Survivors include his wife, Three sons, Bryan Kelly Ricken of Memphis, Michael Shane Ricken of Channing and Anthony Gene Ricken of Slaton; a daughter, Donna Hinklin of El Paso; nine grandchildren, and a sister, Judy Oswald of Des Moines, Iowa.

SHOP  
CLARENDON  
FIRST!

## CRP Grass Seeds

Plains Bluestem.....8.00 per pls  
W.W. Spar Bluestem.....8.00 per pls  
Blue Grama (native).....13.50 per pls  
-Stated Varieties Blue Grama-  
-Call For Quote-  
Love Grass (Ermelo).....1.30 per pls  
Love Grass (Morpha).....2.35 per pls  
All Other Native Grasses ..... 6.50 per pls



L & M Seed Co.

(806) 874-2071 or (817) 552-7162

# RCA

## GOLDEN SAVINGS TIME

CELEBRATING 50 YEARS OF TV TECHNOLOGY



RCA Model E09190GM 19" diagonal



RCA Model V1705



RCA Model C261307M 26" diagonal



RCA Model E13164GM 13" diagonal



RCA Model V1740



RCA Model C261307M 26" diagonal



RCA Model V1745



RCA Model E20517MN 20" diagonal

**RCA** Model E20517MN  
**20" diagonal**  
RCA 20" diagonal ColorTrak™ TV  
• All-remote control system with on-screen prompts  
• On-screen time and channel display  
• 4-hour sleep timer  
• All-remote cable-compatible tuning  
• Hi-Def™ square-corner picture tube  
• Auto start Auto programming

**RCA**  
THE BEST THERE IS  
TODAY'S SOLUTION TO TOMORROW'S PROBLEMS

**5 YEARS PARTS/LABOR WARRANTY**



RCA Model C261307M 26" diagonal

**RCA** Model C261307M  
**26" diagonal**  
RCA 26" diagonal ColorTrak™ Stereo Monitor-Receiver

- RCA TV/VCR remote
- All-remote control system with on-screen display
- MTS stereo sound system w/SAP
- Stereo audio/video jack panel
- 147 channel cable-compatible tuning
- Hi-Def™ square-corner picture tube
- Auto start Auto programming

Celebrating Television's 50th Anniversary with rebates up to \$100 on top-of-the-line RCA video products.

# Eads

FURNITURE & APPLIANCE

874-3413

For Quality & Service You Can Depend On.

## New Space-Age Hearing Device Available Soon

Knoxville - Clear Corporation of Knoxville, TN, has announced the development of a tiny, new hearing instrument, small enough to fit entirely inside the canal of the ear, yet powerful enough to change the way millions of Americans hear. This amazing device, called the Word Sorter Crystal Canal, utilizes a space-age microchip which functions like an electronic "brain" to sort words out of noisy environments, thus providing the wearer better clarity and understanding of speech.

The development came from an eleven-month project set up by Clear Corp., which combined with its engineering department a four-member team from the firm that earlier designed and built President Reagan's hearing instruments. Clear officials announced that the team will remain in Knoxville indefinitely for production supervision of the new Crystal Canal instru-

ment which is scheduled to be released later this month in Tennessee as well as sixteen other states.

Free electronics hearing tests are now being scheduled on a first-come, first-served basis for those interested in the remarkable Crystal device, through a special arrangement with local hearing instrument specialists. There is no cost or obligation, but appointments will be limited. All candidates for the new device receiving the test before the end of January, will be offered a trial-period using the Crystal instruments as well as special, introductory discounts. Those interested in better hearing are advised to call immediately for an appointment.

The number to call collect is 806-353-9718. Clarke Hearing Aid Service. There will be 2 day testing held on Dec. 13th and 27th. All appointments are being set without charge or obligation.

## Clark's Restaurant

Sunday, January 8th

Mexican Buffet

Mexican Chicken Casserole

Chili Rellenos

Chicken Fried Steak

Vegetables:

Cream Potatoes

Mexican Sweet Corn

Ranch Style Beans

Green Beans

Broccoli & Cauliflower w/ Mexican Cheese Sauce

Cherry Cobbler

Hot Rolls

Mexican Salad Bar

Last Sunday was Great!

Looking Forward to Seeing You Again

Wills and Jack Clark

### Clark's Restaurant

Hwy. 287 874-3213

## Governor Clements accept final report from Task Force on Agriculture

In Governor Clements remarks in accepting the final report from the Governor's task force on agricultural development in Austin the Governor stated, "Seven months ago, I called on this task force to develop suggestions to enhance and protect the vitality of Texas agribusiness in the coming decades.

It was a tall order. But with this group's diverse and successful experience in the industry, it was an order I knew they were fully capable of filling.

Agriculture is our number one renewable economic resource. It's the foundation upon which our state was built and it holds out countless opportunities.

Texas consistently ranks among the nation's top three states in total cash receipts from agribusiness, and we're in the top 10 nationally in the production of 42 different agricultural commodities.

Our food and agriculture sectors now account for some 20 percent of all jobs in Texas. That translates into a total economic output of more than 70 billion dollars per year. Together, food and agriculture represent the second largest industry in Texas.

But many of our farmers and ranchers are facing financial crises.

From 1979 to 1986, farm cash receipts in Texas dropped by 17 percent and farm debt rose by 18 percent to 10.4 dollars. Combined, this meant a 35 percent reduction in available assets for our farmers and ranchers.

In Texas today, agribusiness accounts for less than 10 percent of the "Total value added" to our economy through processing and manufacturing. That's in stark contrast to the national average of 20 percent.

Bringing Texas up to that average would create more than 250,000 new jobs for Texas and boost our annual gross state

product by 24 billion dollars, according to Texas A&M University. That's a long-range goal we can and should shot for.

Clearly, too much of Texas' agricultural processing takes place outside the state. And certainly, a great opportunity exists to expand our economy through this one sector alone.

## Fight Drought with Xeriscape

by Bill Chambers

(In this area, winter is a good time to transplant trees and shrubs, which makes the following article quite appropriate. The copyrighted article is reprinted with the kind permission of Co-op Power Magazine.)

With drought on everyone's mind these days, a landscaping approach that's designed to conserve water seems appropriate.

Xeriscaping has been adapted from an original idea developed in Denver. "Xeri" is the Greek for "dry".

Seven principles are involved in xeriscaping:

1. Start with a good design.
2. Improve the soil.
3. Use mulch.
4. Limit lawn areas.
5. Choose low-water-use plants or native plants.
6. Water efficiently.
7. Practice good maintenance.

Remember that this information was adapted especially for use in the Austin area, but the general ideas may apply in your area as well.

Design, in this approach, means pretty much the same as it does in any other landscaping, except that it emphasizes conservation of water and energy through careful planning.

A good design should include a site plan to scale showing existing buildings, hard surfaces and plants. It should take into account usage of the various areas (play, pets, etc.), as well as plant condi-

tions and slope of the land.

Soil improvement recommended in xeriscaping includes the addition of sandy loam, where shallow, rocky or clay soils exist, as well as organic materials, such as composted leaves, grass clippings, rotted material, rice hulls, or decomposed cotton burs. It will help the soil hold moisture and drain evenly.

Using mulch can mean using bark, wood chips, pine needles, composted leaves or grass clippings, and neutral shades of gravel (gray, light brown or terra cotta). In a layer about 3 to 4 inches deep around shrubs, flowerbeds, and trees, mulch will inhibit weeds, reduce evaporation, and keep the soil at more moderate temperatures. Using mulch can also reduce planted areas that need water.

Lawns should be limited to small areas near the house for recreation and entertainment and to areas requiring erosion control. Check with your local supplier for the best grass types for your area.

Native grasses, wild flowers, ground covers, beds of mulch material, patios, decks and so on may be used to reduce lawn area.

Xeriscaping recommends using native and/or low-water-use plants as an ideal way to conserve water.

Under normal weather conditions, native plants will thrive on normal rainfall alone. They will need to be watered regularly while they are getting established or in times of drought. Native plants are also suggested because they preserve and promote Texas beauty and help the state economy.

Low-water-use plants are those that grow in other parts of the world where similar climatic conditions exist. Like native plants, they will need regular, deep watering the first two years, while getting established.

Native and low-water-use plants can be substituted for any more-exotic plant.

In xeriscaping, plants are watered only when they need it, and not on a regular, rigid schedule. Plants signal when they should be watered—grass will lie

flat when you walk on it and will look dull; other plants will droop and wilt, and the soil will be dry.

When you do water, make sure you water deeply. Most plants will survive on one inch water per week. You can use a rain gauge to see how much you may have to add. Water in the early morning or late evening to reduce evaporation loss.

Drip irrigation is recommended in the xeriscape program. It delivers water slowly, which is absorbed more deeply. If you do use a sprinkler, the recommendation is for one that sprays large drops close to the ground.

The soil should be dry between watering, and you should taper off watering as autumn approaches, to encourage hardening of growth that will protect the plants. Soil basins and berms will help retain and direct water where you want it.

In the maintenance area, xeriscaping makes the following recommendations:

- Fertilize in moderation.
- Remove weeds as soon as

- possible—they use water.
- Build soil basins around large plants to hold water.
- Aerate lawns to promote water penetration.
- Prune or thin trees and shrubs to reduce leaf surface.
- Raise the lawn mower blades to the highest wheel setting.
- Cut only one-third of total grass height at a time and leave the clippings to act as mulch.
- Keep mower blades sharp.

The following sources should be able to supply more information on xeriscaping and how you might adapt it to your area:

Texas Department of Agriculture, Box 12847, Austin, TX 78711

National Wildflower Research Center, 2600 FM 973 North, Austin, TX 78725

Texas Association of Nurserymen, 512 E. Riverside Drive, Suite 207, Austin, TX 78704

## January Clearance

Hallmark Christmas Wrap, Ornaments, Cards, Etc.  
1/2 Price

Selection of L'Air du Temp Charlie Interlude  
Many more  
1/2 Price

Picture Albums  
\$3.99

Casio Scientific Calculator  
\$9.95

Am-Fm Radio Headphones  
\$10.95

Healthmart Extra Strength Pain Reliever Caplets  
\$2.99  
Same as Tylenol Extra Strength

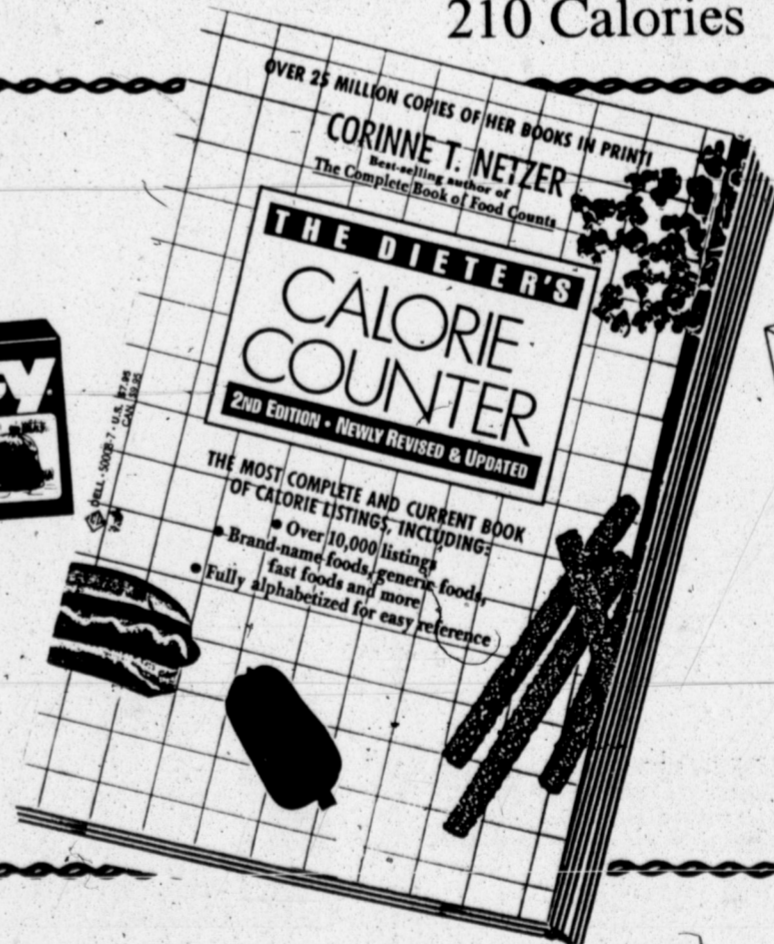
Depend Undergarments  
30 Extra Strength  
\$14.95

Palmolive Gold  
69¢  
3 Bars

Ex: Peanut Butter (2 Tbsp-Creamy)  
210 Calories

Palmolive Dishwashing Liquid  
12 gal.  
69¢

Hefty Trash Bags  
30 Cnt.  
13 Gallon  
\$1.99



The Dieters Calorie Counter - \$7.95

Kotex Pads  
\$2.49  
Your Choice:  
Profile  
Maxi  
Overnites  
Thin Super

### "SAM HILL"

THE ONLY BAR-B-Q

RESTAURANT IN THE PANHANDLE

SERVING B3R BEEF: (ALL NATURAL)

- NO ANTIBIOTICS
- NO ADDITIVES
- NO HORMONES
- NO STEROIDS
- NO PRESERVATIVES



OUR MEAT IS LIKE FINE WINE - NEVER SERVED BEFORE ITS TIME - COOKED 18 - 21 HOURS OVER

MESQUITE - ITS LARRUPIN' GOOD AND GOOD FOR YOU!

"SAM HILL" PIT BBQ

West Texas Cookin Co.  
Open 11 a.m. to 8 p.m.  
Closed Mon. & Tues.

# Bivens

HEALTH MART

# Pharmacy

PROFESSIONAL HEALTH CARE FROM HEALTH MART



We Accept:



PCS

HEALTH MART HEALTH SMART

Are you aware of the possible side effects of your prescription? Talk to your Health Mart pharmacist before you get your next prescription filled.



# CLASSIFIED

**VFW POST 7782** will meet at 7:00 p.m., 1st and 3rd Thursdays at the Community Center. 41 tlc

**CLARENDON LODGE #700AF/AM** Stated Meeting: 2nd Monday each month 7:30 p.m.  
Practice Sessions: 4th Monday  
**John Sarich WM**  
Willard Skelton Secretary  
Refreshments served at 6:30 p.m.

**AL MORRAH SHRINE CLUB** Board of Directors meet on the 1st Tuesday of each month at the First Bank and Trust Hospitality Room 7:30 p.m. The club meets every 3rd Monday, at 7:30 p.m. in the Clarendon Masonic Lodge.

**John Sarich** President  
**Roy Jeffrey** Vice President  
**Bill Nidiffer** Secretary

**FOR SALE:** new and used aero motor windfills and parts. Submersible pump, stock tanks, water well drilling and service, custom hay hauling. John Morrow 874-2704. 1-tlc

**Need money to go to NASA Space Camp. Want odd jobs: raking leaves, cleaning flowerbeds, cleaning alleys, etc. - By hour or by job. Call Josh Shields 874-2097 or Evan Williams 874-2414.**

**Will do house cleaning, painting, dog sitting and etc. Reasonable Rates.** Call 874-3404. 52-2tc

1-tlc

**For Sale: 1979 Champion Mobile Home** on lot in Clarendon, ready to move into - very good condition. 874-9987 ask for Homer. 1-2tp

**Want To Lease or Buy Large Home** in or Near Clarendon. Call 665-1954 1-1tp

**For Sale: John Deere 4020 Tractor** on butane, good condition. 7 ft. John Deere Shredder & Mower (806)248-7473 (Groom) 1-2tc

**Bobcats Wanted:** Top prices paid. Call before 7 a.m. or after 7 p.m. Lynn Kill 847-2226 1-2tp

**Trash Holes / Cesspools** from \$250.00. Big Hole Drilling 806-383-7424 1-13tp

3 bedroom, 2 bath, 2300 sq. ft., custom built, fireplace-cent. heat & air, cellar, fenced yard. 60 S. Cottage, Call for appointment 874-3619 Ronald Gooch 1-4tp

**ATTENTION - HIRING!** Government jobs - your area. \$17,840 - \$69,485. Call 1-602-838-8885 EXT. R 4444 1-4tp

**For Sale:** Gently worn boys clothing Sizes 5 - 7. Levis, Dress pants, etc. Also shoes Sizes 13 -3. Call 874-3471 for Shana 1-1tp

**For Sale:** Allis - Chamber WD-45 Mower, Post-hole digger & accessories, 16 Ft. Utility trailer, small Utility trailer. For more information call 779-2827 1-1tp

**Texas Refinery Corp. Needs Mature Person Now In Clarendon Area - Regardless of Experience** Write T. R. Hopkins, Box 711, Fort Worth, Texas 76101 52-2tp 1-1tp

**BUSINESS OPPORTUNITIES**

**OWN YOUR OWN APPAREL OR SHOE STORE, CHOOSE FROM: JEAN/SPORTSWEAR, L A D I E S , M E N ' S , CHILDREN/MATERNITY, LARGE SIZES, PETITE, DANCEWEAR/AEROBIC, BRIDAL, LINGERIE OR ACCESSORIES STORE. ADD COLOR ANALYSIS. BRAND NAMES: L I Z C L A I B O R N E , HEALTHTEX, CHAUS, LEE, ST MICHELE, FORENZA, BUGLE BOY, LEVI, CAMP BEVERLY:HILLS, ORGANICALLY GROWN, LUCIA, OVER 2000 OTHERS. OR \$13.99 ONE PRICE DESIGNER, MULTI TIER PRICING DISCOUNT OR FAMILY SHOE STORE. RETAIL PRICES UNBELIEVABLE FOR TOP QUALITY SHOES NORMALLY PRICED FROM \$19. TO \$60. OVER 250 BRANDS 2600 STYLES. \$17,900 to \$29,900: INVENTORY, TRAINING, FIXTURES, AIRFARE, GRAND OPENING, ETC. CAN OPEN 15 DAYS. MR. SCHNEIDER (612) 888 1009. 1-1tp**

A \$1.00 charge will be added if statements are sent on classified ads.  
If you want your classified ad blocked, there will be an additional \$1.00 charge on the first ad.  
Classified ad rates are \$3.50 for 15 words or less, 10 cents per word over 15 words. Cards of thanks, average length is \$4.00. Subscription rate in Donley County is \$13.00 a year. Subscriptions for outside of Donley County and out of state are \$16.00 a year. Six month subscriptions are \$8.00 and three month subscriptions are \$6.00. Display ads on request.

## Notice By Publication

### State of Texas

To DENNIS LAVERN JOHNSON, Respondent, GREETINGS; YOU ARE HEREBY COMMANDED to appear and answer before 10 o'clock a.m. of the Monday next after the expiration of 42 days from the date of service of this citation, then and there to answer the petition of DEVON MICHELLE JOHNSON, Petitioner, filed in said Court on the 3rd day of June, 1988, against DENNIS LAVERN JOHNSON, Respondent, and said suit being number 4779 on the docket of said Court, and entitled "In the Matter of the Marriage of Devon Michelle Johnson and Dennis Lavern Johnson And In the Interest of Nicole Ardell Johnson, Amanda Jo Johnson, Don Wayne Johnson-Tracy Michelle Johnson, and Cortney Brickell Johnson, Children," the nature of which suit is a request to grant divorce to Petitioner.

The Court has the authority in this suit to enter any judgment or decree dissolving the marriage and providing for the division of property which will be binding on you.

Issued and given under my hand and seal of said court on Dec. 20, 1988.

Fay Vargas  
Clerk of the District Court of Donley County, Texas' 1-3tc

### Notice by Publication

### State of Texas

To Claude McClain, Jr., and to all whom it may concern, Respondent, GREETINGS; YOU ARE HEREBY COMMANDED to appear and answer before the Honorable 100th Judicial District Court, Donley County, Texas, at the courthouse of said county in Clarendon, Texas, at or before 10 o'clock a.m. of the Monday next after the expiration of 20 days from the date of service of this citation, then and there to answer the petition of Kathy A. McClain, Petitioner, filed in said Court on the 29th day of December, 1988, against Claude McClain, Jr., Respondent, and said suit being number 4774 on the docket of said Court, and entitled "In the Interest of Amy McClain, Shawna McClain and Christopher McClain, Minor Children," the nature of which suit is a request to terminate the parent-child relationship. Said children, were born the 20th day of December, 1985, Christopher McClain, the 2nd day of January, 1987, Shawna McClain, the 25th day of March, Amy McClain.

The Court has authority in this suit to enter any judgment or decree in the children's interest which will be binding upon you, including, but not necessarily limited to, the termination of the parent-child relationship, the determination of paternity, and the appointment of a conservator with authority to consent to the children's adoption.

Issued and given under my hand and seal of said Court at Clarendon, Texas, this 29th day of December, 1988.

Fay Vargas  
Clerk of the District Court of Donley County, Texas  
by Cleta Hall, Deputy

### Public Hearing

The City of Clarendon will hold a Public Hearing on January 10, 1989, at 7:00 p.m. at City Hall to receive public input concerning a project for the City Park pursuant to a grant application to be submitted to the Texas Parks and Wildlife Department.

## Notice to the Public

Due to the death of Michael R. Sanders, Attorney at Law, of Clarendon, Texas, his estate is closing his office immediately. If you have abstracts, wills or files you would like to have, please make arrangements before January 30, 1989 to have the same pickled up at 111 S. Kearney, Clarendon Texas. Any files left in his office after January 30, 1989 will be destroyed. Any abstracts left in his office after January 30, 1989 will be stored at the Security Abstract Company in Clarendon Texas 1-1tc

## Questions About CANCER?

Call 1-800-4-CANCER  
Cancer Information Service  
UT M. D. Anderson Cancer Center.

## OVEREATERS ANONYMOUS

Meets 6:30 Thursday nights  
Episcopal Church  
Parish House  
301 S. Parks  
No Dues  
No Fees 35-9tp

## TV REPAIR

Most TV's repaired under \$25.00  
Come by 507 E. 4th  
For Details

LAMPS LAMPS LAMPS  
all light bulbs  
HOUSE OF SHADES  
and  
LAMP REPAIR  
Wolfin Village  
Wolfin Avenue  
Amarillo, Texas 79109

## ASK BY NAME FOR BILL M. DERR

24 Years of Selling to Sell Again  
Marcum Chrysler-Dodge Jeep  
833 W. Foster 665-6544

## BOB MAJOR REAL ESTATE

RESIDENTIAL FARM RANCH  
709 BOND ST. BOX 337  
CLARENDON, TEXAS 79226 (806) 874-2230

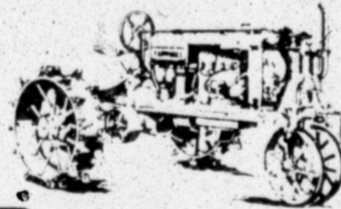
## DR. JACK L. ROSE

Optometrist  
220 S. 10th Ph. 259-2216 Memphis

Fordson, Farmall and Poppin' Johnny:  
A History of the Farm Tractor and Its Impact on America

Autographed copies

Available at the Clarendon Press



### Listing of the Week

Beautiful 3 Bedroom Brick Home - Quality Built - Good Location  
Too Many Features To List!  
Call Carol For Appointment  
874-3649 or Dude 3377

## CORNELL REAL ESTATE

...Offering Clarendon's Best!  
Dude Cornell-Broker Call: Carol Hinton 874-3377 or 874-3320 874-3649 or 874-3148

### Territory Sales Manager

Grow with the leading manufacturer in custom lubricant and fuel conditioner sales. Solid company since 1916 - outstanding product line and excellent earnings serving fuel jobbers, industry, agriculture, transportation and other businesses. In field training. Contact D. R. Thomas at the Holiday Inn, I-40, Amarillo, Texas, on Friday, January 6 at 7 p.m. or Saturday, January 7 at 9:00 a.m. for interview. 1-1tp

## BUYERS AND SELLERS

All Kinds of Grain  
70 Ft. Scales  
Clarendon Grain Elevators, Inc.

J. R. GILL

P.O. Box 805  
Clarendon, Tex. 79226  
874-3172

## How do you measure business success?

## By the column inch!

Successful businesses advertise. They know that no one else is going to tell about their products and services. They know that advertising builds an image. And that they cannot compete without advertising.

The Clarendon Press



## Bailey Estes & Son

Welding Fabricating & Steel Buildings  
-also self storage units for RENT \$25.00 month

MOVERS  
Mobil Homes, Boats, R.V.'s etc.  
Licensed, Insurance, Bonded  
48 States

WE'RE THE COMPETITION  
John W. Mays

806-874-2711 or 806-359-0788

## Chamberlain MOTOR COMPANY

HIGHWAY 287 CLARENDON, TEXAS  
BUICK • OLDSMOBILE  
PONTIAC • CADILLAC • GMC TRUCKS

FRED CLIFFORD  
Home Phone  
(806) 874-2415

Clarendon (806) 874-3527  
Amarillo 376-9041  
Texas WATS (800) 692-4088

## ALLEN ESTLACK

Electrical and Appliance Repair  
Call 874-3683 Box 596

Bonded & Licensed

## TERMITE PROBLEMS

Call for best termite control  
Over 20 years experience  
Call collect 383-7075

3608 N.E. 23rd  
Amarillo, Texas 79107  
State Lic. No. 1178

LEO RUSSELL



## Brown-McMurtry Implement

PHONE 806-823-2441  
BOX 777  
SILVERTON, TEXAS 79257

SALES & SERVICE

DON BROWN  
Home Ph. 823-2292

CLARENCE WARD  
Home Ph. 823-2083

The Branding Iron Restaurant  
Memphis, Texas

Friday Night  
Fish Buffet & Salad Bar  
\$5.95

Noon Buffet  
includes: Drink,  
Coffee & Tea  
& Dessert  
\$4.50

Homemade Pies



# WINTER FOOD BUYS

# Sale!

Fresh Fryer  
**Thighs** 59¢  
Lb.

Fresh Fryer  
**Drumsticks** 69¢  
Lb.

Wrights Sliced Slab  
**Bacon** \$1.09  
Lb.

Kraft Red Rind Longhorn  
**Cheese** \$1.99  
Lb.

Kraft Dinners  
**Macaroni & Cheese** 59¢  
7 1/4 Oz. Pkg.

Folgers  
**Coffee** \$6.98  
39 Oz. Can

Hawaiian  
**Bread** \$1.39  
Loaf

Hawaiian  
**Rolls** 99¢  
Pkg.

Lipton  
**Tea Bags** \$2.98  
100 Cnt Box

Duncan Hines Chewy  
**Brownie Mix** \$1.19  
19.8 Oz. Box

Gladiola White or Yellow  
**Cornbread Mix** 2/59¢  
2 Pkgs.

Ocean Spray  
**Cranberry Juice** \$2.59  
1/2 Gal

Prego  
**Spaghetti Sauce** \$1.79  
Quart Jar

Carnation  
**Evaporated Milk** 2/99¢  
Tall Cans

Kraft Jet Puffed or Miniature  
**Marshmallows** 89¢  
1 Lb. Bag

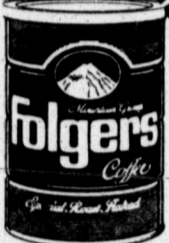


**Flour** 99¢  
5 Lb. Bag



**Owens Pure Pork Sausage**

1 Lb. \$1.79  
2 Lb. \$3.57



**Shurline Catsup** 99¢  
Quart



Stillwell Breaded  
**Okra** \$1.19  
24 Oz. Bag

Wesson  
**Corn Oil** \$2.39  
48 Oz. Bottle



Ocean Spray Pink  
**Grapefruit Juice** \$1.79  
48 Oz. Jug

Owens  
**Sausage & Biscuits** \$1.89  
12 Oz. Pkg

Decker All Meat  
**Bologna** Market Sliced \$1.69  
Lb.

Gooch German  
**Sausage** \$1.49  
12 Oz. Pkg.

Del Monte Seedless  
**Raisins** 99¢  
15 Oz. Pkg.

Nabisco Premium Saltine  
**Crackers** 89¢  
1 Lb. Box

Vlasic  
**Dill Spears** \$1.59  
24 Oz. Jar

Salad Dressing  
**Miracle Whip** \$1.79  
Quart



Aunt Jemima White or Yellow  
**Corn Meal** \$1.39  
5 Lb. Bag

Kal Kan Assorted  
**Dog Food** 2/79¢  
14 Oz. Cans

Coffee Mate  
**Creamer** \$1.98  
16 Oz. Jar

**Pepsi Cola** \$1.59  
6 Pk 12 Oz. Cans  
Regular or Diet



**Bounce** 2/1.49  
Fabric Softener With Staingard  
18 Cnt Boxes

All Purpose Cleaner With Ammonia  
**Top Job** \$1.89  
28 Oz. Bottle

Spill Mate  
**Towels** 69¢  
Roll

Angel Soft Bathroom  
**Tissue** 99¢  
4 Roll Pkg.

Bleach 5¢ off label  
**Clorox** 99¢  
Gal. Jug

Liquid Detergent  
**Ivory** \$1.98  
Quart Bottle



Ad Good Jan. 4 - Jan. 7, 1989  
**THE GROCERY STORE**

Open Mon.-Sat. 7 a.m. - 7 p.m. Closed Sunday

Home Owned and Operated by Jack and Shirley Clifford

874-2425 Clarendon

**DOUBLE COUPONS EVERYDAY**

Excluding Cigarette and Tobacco Coupons  
Excluding Free Coupons  
Double Coupons not to exceed item value  
Double Coupons not to exceed \$1.00  
Only One Double Coupon honored on multiple purchase of an item