

The Clarendon News

"Oldest thriving town in the Panhandle!"

50¢

USPS 847040

ISSN 1048-8170

Thursday, December 8, 1994

Vol 5, Number 49

Santa Letters Wanted

Deadline for submitting Santa letter is December 14, 1994 at 5:00 p.m.

Commodities To Be Given Away

Commodities will be distributed on Thursday, December 15, 1994 from 8:30 a.m. until 12 noon in the offices of Panhandle Community Services, 416 Kearney, Clarendon, and at the Senior Citizens Center in Hedley, from 8:30 until 10 a.m. Please note day/date change for this time only!

College Choir

Presents Christmas Program

Following an outstanding performance Sunday afternoon, the Clarendon College Show Choir will present their Christmas program again Friday evening December 9 at 7:00 p.m. in the Harned Sisters Fine Arts Auditorium. The one hour program is filled with wonderful Christmas music to treat all ages.

The Show Choir is an extension of the college's Fine Arts Department and Jim Stewart is the director. Everyone is invited to come and enjoy the Christmas spirit through the department's musical presentation.

Christmas Musical To Be Presented

On Sunday night, December 11 at 7:00 p.m., and on Monday night, December 12 at 7:00 p.m., The Assembly of God Church will be presenting Robert Stirling's Christmas Musical entitled "For Unto Ya'll."

The musical answers the question, what if the events of Luke Chapter 2 in the Bible, had taken place in 19th Century West Texas. It is an unforgettable retelling of the story of Christ's birth, complete with lots of pickin, grinnin, fiddlin, singing, cowboys and fun.

Several Clarendon residents play the key roles in the musical. Don Hall plays the part of Gabriel with his 10 gallon white hat and pearl hand revolvers. Jeremy Annis and Amanda Burns play the roles of Mary and Joseph. Bobby El-

Single's Group Organized

On Thursday, December 1st, the newly organized single's group met in the home of John Rattan. They all enjoyed a pot luck supper.

Single's if you are over 18 and Home Alone, join them at their next meeting in January. As their single's group grows, they want to meet the needs of the single's in Clarendon. Suggestions have been made for other activities such as bowling one night a month, a trip away from Clarendon to eat, a poet group may meet once a month, one night just to watch movies, a craft night, and a devotional study night. They realize that you may not fit in all these groups, but, they are interested in any suggestion you may have about your interest. Please join them in January for their next meeting. Watch the paper for the correct date. If you have any other questions write: John Rattan, Box 1145, Clarendon, Texas 79226.

Open House Planned

The Saints Roost Museum will open the doors for its 18th annual Christmas Open House, Sunday afternoon, December 11th from 2 to 5 p.m. Everyone is invited to attend. Go out and visit with friends and enjoy the exhibits. You will be entertained by Jo Shaller as she gives her Cowboy Poetry renditions. Jo has entertained in several local clubs and in Vernon, Texas. She has headlined at The Big Texan Cowboys Poets Breakfast and will again perform there in January. She is a member of the Southwest Cowboy Poets Association. Mr. Wes Thomas of Clarendon will be on hand with his guitar and might even sing you a song or two. Refreshments will be served and they guarantee that you will be glad you came.



KYLE ALLEN was sworn in November 23, 1994 as County Attorney by Judge Billie Christal.

lerbrook plays the role of Rev. Ira Pennington, and there are 20 other cast members from Clarendon who have worked very hard to make this program successful.

Pastor Burns wishes to invite the public to one or both of the performances of "For Unto Ya'll." The programs will be presented at the Church which is at 501 McClelland St. Admission is free.



CAST OF Robert Stirling's Christmas Musical entitled For Unto Ya'll.

Carol-Grams Planned

Call 2320 or leave a message at 3460 for a Card-Gram. They will sing Christmas Carols for the family or person of your choice. They will also deliver a fresh baked goody (ie, bread, cakes, pies, cookies, fudge, caramel corn, etc) and carol a few songs to shut-ins, elderly, friends, neighbors, or family. Donations for baked goods and carols will go to the Nazarene Youth. Please call soon for appointments on Saturday and Sunday evenings in December.

Cake Auction Set

There will be a Cake Auction, Sunday, December 11th at 2:30 p.m. at the College Auditorium. This is being sponsored by the High School Band. Proceeds will go towards their music festival trip in the spring.

Scholarship Deadline Announced

High School students with a grade point average of "B" or better and who are U.S. citizens interested in applying for \$1,000 college scholarship should request applications by December 15, 1994 from Educational Communications Scholarship Foundation, 721 N. McKinley Road, P.O. Box 5012, Lake Forest, IL 60045-5012. To receive an application, students should send a note stating their name, address, city, state, zip code, approximate grade point average and year of graduation. All requests for applications will be fulfilled on or about January 13, 1995. One hundred fifty winners will be selected on the basis of academic performance, involvement in extracurricular activities and some consideration for financial need. A total of \$150,000 will be awarded.

TxDOT Seeks Applications

The Texas Department of Transportation has issued a request for applications to nonprofit organizations which provide transportation services to elderly and/or disabled persons, or applications which might provide equipment for eligible transportation programs.

Applications are being requested for Section 16 grants which provide for eligible capital expenses to include the replacement of buses, vans, trolleys, and other vehicles used to transport elderly and/or disabled persons. Also included are the purchases of vehicles for service expansions, purchase of radio equipment and necessary auxiliary equipment. The funding is appropriated by the Federal Government under the Federal Transit Act.

To be eligible for consideration, each proposal must include a completed Section 16 grant application, successful completion of the pre-application interview and an on-site visit with the public transportation coordinator. Forms for organizations in the Childress District are available from Mrs. Tonya Cummins, 1700 Avenue F NW, Childress, Texas 79201-0900. She may be reached by telephone at (817) 937-2571.

Written proposals must be received in Mrs. Cummins's office on or before January 16, 1995.

MDA Announces Fill-The-Boot Proceeds

Thanks to the efforts of the area fire fighters, over \$20,000 was raised during this year's Fill-The-Boot campaign for the Muscular Dystrophy Association. 1994 is the 40th anniversary of the fire fighters involvement with the Muscular Dystrophy Association in the fight against neuromuscular disease. Over the history of this collaboration, fire fighters across the country have raised in excess of \$110,000,000. On this year's Jerry Lewis Labor Day Telethon, a check of over 7,000,000 was presented representing the 1993/1994 national campaign. These funds are collected pennies, dimes and dollars at a time by both union and non-union departments across the country. While collection campaigns can occur throughout the year, in the Amarillo area it has become a summer tradition with several being conducted on the Labor Day weekend.

In the Amarillo area, including the Oklahoma panhandle and eastern New Mexico, fire fighters donned their commemoration navy blue, MDA t-shirts and took to the corners once again. Most of the figures are in they were great! Listed by department, MDA received the following: Amarillo-\$4,327.28; Canadian-\$664.47; Friona-\$650.00; Dalhart-\$2,707.00; Dumas-\$528.50; Borger-\$561.92; Pampa-\$1,186.44; Childress-\$592.75; Clarendon-\$1,580.00; Tulia-\$1,300.00; Guymon-\$955.52; Osage-\$1,987.00; Clovis-\$2,653.37; Stinnet-\$500.00 for a total of \$20,000.

Each department organized its own effort, recruited volunteers from amongst its ranks, chose the target corner and then worked shifts for two hours or more requesting donations from passing cars and pedestrians. In many cities the local auxiliaries either joined the collection efforts or provided food, drink and encouragement or both.

Participation in this program is open to all fire fighters and can be structured to suit the requirements of each department.

Funds collected will help support program services such as monthly clinics, support groups and summer camp in the Amarillo area. MDA is a non-profit, independent, non-United Way health care agency which relies on private contributions to fund its programs and nationwide research efforts.

Physicians Assistants A Critical Link To Health Care

Houston-Whether in an inner city or a rural health clinic, physicians assistants are becoming a critical link in the delivery of primary health care.

"With increased competition between managed care plans, physician assistants are proving to be a cost-effective source of care for greater numbers of patients," said Carl Fasser, director of the Physician Assistant (PA) Program at Baylor College of Medicine in Houston.

Adding a physicians assistant to a practice, Fasser says, allows the physician to spend more time with problematic cases while shifting some of the patient care to the PA.

David Bartlett, a physician assistant at an occupational/family practice office in Corpus Christi, Texas, sees the diversity of his job as one of the best benefits.

Crafts For Christmas

Nazarene Youth Crafts sale has items to sell. They will be located in front of Eads Furniture Store on Thursday for late night shoppers.

GED Classes Held

GED Classes are being held Tuesdays 7-9 p.m. at Clarendon Elementary room 109. Practice tests are available and material to study. No fee.

Adult Basic Education classes are included with GED for adult needing help in areas of interest and need.

Put a Card in the Newspaper

For a great many years, many businesses and some individuals have put a Christmas greeting in Clarendon's newspaper. That tradition will continue this season.

Any business or family that would like such a greeting should notify the paper as soon as possible. If you or your organization wants a Christmas Card in The Clarendon News, please call Cassie at (806) 874-2259.

Early Deadline
The Clarendon News will be closed Friday, December 23 and Monday, December 26, 1994 for the Christmas Holidays. Deadline for the December 29th paper is Thursday, December 22, 1994.

VIRGINIA PATTON with Picture of Ostrich Congo and holding sample of vacuum packed Ostrich steak on sale at The Grocery Store.

Christmas Eve Services Set

Start planning now to attend Christmas Eve Services at the beautiful First Presbyterian Church of Clarendon.

Late Night Shopping Thursday

Special Nights
at
Howell's Chili House
HWY 287-Clarendon, Texas

Wednesday-Beef Stew & Cornpone
after 5:00 p.m.

Thursday-Gourmet Night
This week back by popular demand,
Prime Rib

While Supplies Last Both Nights

Osburn Appliance and
Rabbit's Appliance
Service



We service all types of appliances.
Rebuilt appliances for sale with one-year warranty

We buy used appliances.
Phone 874-3632
319 S. Kearney

B. B. "Rabbit" Osburn

Obituary

Elizabeth Morris Holloway

Memorial services for Mrs. Elizabeth Morris Holloway, age 91, were held at 1:30 p.m. on Sunday, December 4, 1994 in the first United Methodist Church in Claude with Rev. Buddy Payne, Pastor, officiating. Cremation took place on Saturday, December 3, 1994 at Memorial Park Crematory in Amarillo. Graveside services were held at 10:00 a.m. on Tuesday, December 6, 1994 at Citizens Cemetery in Clarendon with Rev. Terry Tamplen, Pastor of the First United Methodist Church in Clarendon, officiating. Arrangements were under the direction of Robertson Funeral Directors, Inc. of Clarendon.

Mrs. Holloway died at 11:08 a.m. on Friday, December 2, 1994 at St. Anthony's Hospice in Amarillo following a lengthy illness. She was born August 21, 1903 in Silverton and had been a resident of Sutter Creek, California before moving to Claude 3 years ago. She married Louis Edward Hollingsworth on November 29, 1929 at Clarendon and he preceded her in death on August 2, 1975. She was a volunteer at the

Armstrong County Historical Museum in Claude. She was a homemaker and a member of the Episcopal Church.

Survivors include four daughters, Gail Werner of Caledonia, Michigan, Betty Dykstra of Stanton, Michigan, Ruth Cornell of Pine Grove, California, Connie Field of Knoxville, Tennessee; two sisters, Eleanor Blasingame of Claude, Frances Curveya of Panhandle; 11 grandchildren; and 5 great grandchildren.

The family requests that memorials be to the Armstrong County Historical Museum; Claude, Texas 79019.

The Lions Tale

The Clarendon Lions Club held its regular meeting at noon on Tuesday, November 29, 1994 at the Lion Hall. Seventeen members, four guests and Lion Sweetheart Dee Williams were present. The meeting was called to order by Boss Lion Garland following the meal. After the regular opening ceremony, he introduced the following guests: Mark Mann, President, and Campbell Burgess, Vice-President of the First Bank and Trust of Clarendon who were the guests of Lion Garland and Russell Estlack who was the guest of Lion Allen Estlack. The club meetings are a little more lively now since Lion Tamplen has been reacquainting the members with the disciplinary powers that are available to the Tailwister through the levying of fines!

The club was privileged to have the second part of a slide program on Norway today. It was presented by Dr. Jim Howard who was in Oslo, Norway for six months serving as a visiting professor in the University School of Veterinary Medicine. Included in the presentation were pictures of Hamfest, Norway which is the northern most city in the world. Dr. Howard stated the Norwegians were a very hearty people. To illustrate this statement, he told the club about an 84 year old woman who told him that she had recently had a hip replacement. He asked her if the operation was made necessary by a fall or if it was just getting too hard for her to walk. She laughed and said, "I had it done so I would be able to keep skiing!" Following the very interesting and informative program, the meeting was adjourned.

**The best boot.
Bar none.**



You can't rustle up a tougher pair of boots. Red Wing Pull-On Pecos Boots. From the brand you trust.

**James Owens
Leather Goods**



Made in U.S.A.

Best trends your feet ever had.

**Chamberlain
Motor Company**

1985 - Buick Pk. Ave. - 4 Dr. - Champaigne Beige w/leather and all the great elec. options - Everything Works - No Blemishes. Really Nice Car
at an Econ. Price **\$3950.00**

1992 - Buick Century - 4 Dr. - One Owner - V6 - Ruby Red - P.W.-P.L. - Auto Trans. - Nice late Model Car that has been petted.- 72k
\$7950.00

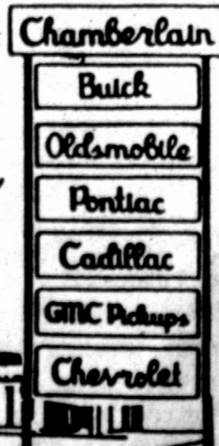
1992 - Nissan Ext. Cab. P.U. - Brt. Red - 5 Spd. - Air - Fold Down Rear Seat - A nice small well equipped P.U. at a Bargain Price -56k
\$8500.00

1989 - Mercury Sable - 4 Dr. - White w/Cloth - All the Electric Options-High Mileage - Nice transportation for Only **\$3500.00**

It's Down Hill
All The Way!

**Chamberlain
MOTOR COMPANY**

Clarendon: 874-3527
Amarillo: 376-9041
Elsewhere in Texas: 1-800-692-4088



**Look Who's
New**

Che and Linde Shadle proudly announce the arrival of their daughter Jentry Kathleen. Jentry was born October 29, 1994, weighing 5 pounds, 12 ounces, and was 19" long. Proud grandparents are Jim and Susie Shadle, Connie Bowling, and Carson Bowling.

Enough Time

by Mary Beth Nelson

Do you ever hear anyone say, "There just isn't enough time to do the things that need to be accomplished today,?" If you fit into this category, and many of us do, then you know it can lead to unwanted confusion and frustration. Several times, I've heard the remark, "I work so hard getting ready to enjoy the holidays that, by the time they are here, about the only thing I experience is tiredness. My main enjoyment is relief when they are over!"

Holiday time really is a time to which many look forward, but as you probably know, it is possible to deny some self-enjoyment by getting "too busy". When this happens to me, I need to remind myself that today is truly a gift from God. He has given me 24 hours in which to accomplish necessary things in an intelligent manner that is pleasing to Him. In order to do my best, he has even placed lovely resources all around me if I will only take time to enjoy them. If I think I'm too busy, then it is my loss.

The warmth of the sunshine; the melody of a bird; the twinkling stars in a black velvet sky; a tissue-paper moon still visible during a flaming morning sunrise; the sweet fragrance of spring flowers; the feel of a summer breeze; the change of fall colors; and the beauty of winter snowflakes are only a fraction of the many gifts which God provides each day. If I allow myself to acknowledge these refreshing pleasures during my daily routine, then, I'm able to look forward to the

**HOUSE OF SHADES &
LAMP REPAIR**
Shades Lamps Balbs
2613 Wolfila Ave.
Wolfila Village
Amarillo, Texas



Kevin Thompson, Agent
Clarendon Insurance Agency
"Personalized Service"

CROP INSURANCE

Serviced by
RAIN AND HAIL INSURANCE SERVICE, INC.

Box 988
Clarendon, Texas 79226
Bus: (806) 874-3506

NOW PLAYING

See the exciting movies
everyone's talking about...

Maverick
**Getting In
Window's Peak
Fortunes Of War**
**Sherlock The
Undercover Dog**

Stavenhagen Video
220 Kearney 874-5081

MEMBER
TA 1994
TEXAS PRESS
ASSOCIATION

Senior Citizens News

On Tuesday, November 29, 1994, the Donley County Senior Citizens Center had a combination November/December Birthday/Anniversary Supper. Sixty-one people attended. The evening was opened with prayer by Bill Hodges. Happy birthday was sung to Goldie Barbie, Hazel Guy, Marie Hill, Jack Davidson, Sybil Cash, Judy Hodges, Betty Thomas, and Mary Lee Longan. Four couples were recognized with November or December anniversaries. They were Jack and Ilene Davidson, Betty and Wesley Thomas, Lucile and Edwin Eanes, and Madelyn and Olace Hicks. Jim Holston, the director of the Crown of Texas Hospice in Amarillo, gave an informative program on the hospice program. Mrs. Willie Holston, Jim's mother, and Cheryl McFall, a nurse for the hospice program, accompanied Mr. Holston. Mrs. Joburta Helms brought eleven of her 3rd and 4th graders to sing and everyone enjoyed the children's program very much.

The Crown of Texas Hospice provided the beautiful basket of flowers for the door prize. It was won by Willie McCawley. The Dairy Queen provided four gift certificates for hunger buster combos. Winners were Wesley Thomas, Irene Jones, Hazel Guy, and Tom Stephens.

The Senior Citizens Center would like to tell Olsen Kimberly Quality Care how much they appreciated them for doing their November nutrition education program, blood pressure and blood sugar clinics, and for providing ham for the birthday/anniversary supper.

The center also appreciates Keith Hodo and Clarendon's Channel 11 news for the great coverage he has given the Center. The Donley County Senior Citizens Center will have a table set up at Stavenhagen's Radio Shack on December 8, and December 15th to sell TV tickets. The drawing will be at Stavenhagen's on Dec. 15, at 8 p.m.

Everyone at the Center wants to welcome newcomers Mrs. Betty Bell, guest of Onita Thomas, and Mrs. Dee Williams, guest of Dorothy White.

November Memorials: In memory of Dortha McNutt by Onita Thomas and Helena Catoe; In memory of Martin Allgren by Mr. and Mrs. Bill Meador; In memory of Claude Lamb by the Senior Citizens Dance Club.

Reminders: Monday, Dec. 12, Dance Club, 7 to 9 p.m.; Thursday, Dec. 15, Christmas meal served.

Senior Citizens Menu

Dec. 8 - Dec. 14
Thursday: King Ranch Chicken, Pinto Beans, Spanish Rice, Tossed Salad, Jello w/Mixed Fruit, Garlic Roll, Coffee, Tea, Milk
Friday: Meatloaf, Macaroni and Cheese, Green Beans, Pear Half w/Cottage Cheese, Chocolate Pudding w/Topping, Dinner Roll, Coffee, Tea, Milk
Monday: Sweet n Sour Pork Chops, Au Gratin Potatoes, Peas and Carrots, Waldorf Salad, Ice Cream w/Cookies, Dinner Roll, Coffee, Tea, Whole Milk
Tuesday: Honey Glazed Chicken Grill, Rice Pilaf, Cauliflower w/Cheese Sauce, Coleslaw, Orange Pineapple Delight, Wheat Roll, Coffee, Tea, Whole Milk
Wednesday: Beef Stew w/Potatoes, Tomatoes, Carrots, Celery, and Onion, Macaroni Salad, Tropical Fruit, Cornbread, Coffee, Tea, Whole Milk

Calendar of Events
Thursday: Exercise 10:45 a.m., Lunch 11:30 a.m., Games 12:30-3 p.m., Board of Director's Meeting 6:00 p.m., Nutrition Program 11:45 a.m.; **Friday:** Exercise 10:45 a.m., Lunch 11:30 a.m., Games 12:30-3 p.m.; **Monday:** Exercise 10:45 a.m., Lunch 11:30 a.m., Games 12:30-3 p.m.; **Tuesday:** Exercise 10:45 a.m., Lunch 11:30 a.m., Games 12:30-3 p.m.; **Wednesday:** Exercise 10:45 a.m., Lunch 11:30 a.m., Games 12:30-3 p.m.

Ambulance Report

12-1-94: E.W. Tyler, transported to V.A., medical
 12-3-94: Alyce R. Munden, transported to St. Anthony's Hospital, medical
 12-3-94: Jewel Morrow, transported to NWHT, medical
 12-4-94: Mary A. Johnson, transported to Hall Co. Hospital, medical

Weather

Day	Hl.	Lo	Pre.
Mon. 28	52	22	
Tue. 29	56	18	
Wed. 30	50	22	
Thur. 1	62	26	
Fri. 2	71	35	
Sat. 3	75	35	
Sun. 4	72	28	

Total for Mo. .00
 Total for Yr. 14.54

windbreak will negate these losses, keeping the topsoil for the crops.

Studies consistently have shown crop production increases of up to 44% in sheltered areas. These studies take into account the land taken up by the windbreaks and crop loss next to windbreaks. However, yields do increase. Crops subjected to hot winds will dry out, forcing plants to fight to survive. Sheltered crops are to survive and produce.

Windbreaks have a positive effect on livestock. Feedlot windbreaks increases temperatures during blizzards by insulating against the wind. Feed costs are reduced because animals do not use up so much energy maintaining body temperature.

For further information, please feel free to come by the Donley County Conservation Service at 4th & Sully, or give us a call at 874-3576.

Remember, the best time to plant a windbreak was 20 years ago - the next best time to begin is today!

Clarendon School Menu	
Dec. 12-16	
Breakfast	
Monday:	Hot Cereal, Toast, Juice, Milk
Tuesday:	Pancakes, Juice, Milk
Wednesday:	Eggs, Biscuits, Juice, Milk
Thursday:	Pancakes, Juice, Milk
Friday:	Cinnamon Rolls, Juice, Milk
Lunch	
Monday:	Pepperoni Pizza, Corn, Salad, Cookie, Milk
Tuesday:	Taco's w/Meat & Cheese, Rice, Salad, Fruit, Milk
Wednesday:	Salsberry Steak w/Brown Gravy, Hot Rolls, Cream Potatoes, Green Beans, Cake, Milk
Thursday:	Pigs In A Blanket, French Fries, Baked Beans, Fruit, Milk
Friday:	Hamburgers w/Cheese, Lettuce, Pickles, Onions, Tomatoes, French Fries, Fruit Cobbler, Milk



Kyle Allen Attorney At Law

Clarendon, Texas
874-3888

CELLULARONE®

Bag Phone

With 2 Year Activation

\$59.99

Thru December 24

At

STAVENHAGEN VIDEO

& RADIO SHACK DEALER
220 S. Kearney Clarendon, Tx
874-5081

Attention Farmers

A windbreak on your land will mean money in your pocket, not only with increased crop profits, but also higher livestock gains and lower home heating costs.

Studies have shown that with the loss of one ton of topsoil the producer loses \$6.00 of fertilizer in that topsoil. These losses add up over a period of time especially if producers lose 10-30 tons per acre per year. (The average annual erosion rate in Donley County is 26 tons per acre.) An effective

Open House

Community Bank

Hedley Branch

Welcomes You

To Their

OPEN HOUSE

Wednesday, December 14, 1994

* 9 a.m. to 3 p.m.

OPEN HOUSE

THELMA'S SHOPPE

LADIES READY-TO-WEAR JEWELRY

CHILDREN'S READY-TO-WEAR

GIFT ITEMS WATCHES

HAIR BOWS AND CLIPS

20-40% Off

928 W. 5TH
CLARENDON, TX
806-874-2649

OPEN 9:00 TO 5:30

SLIM SIDES

DOUBLE S TV & VCR REPAIR

P.O. Box 750 Clarendon, Tx. 79226
Ph. (806) 874-5081

With a busy schedule around the holidays, you don't always have time to do your clothes. Greenbelt Cleaners can help.

Jack Yohio

Because Farmers and Ag-Related Businesses are so important to Clarendon, they're important to us.



Farming and Ag-Related Businesses are a major part of the Donley County economy. Therefore they are important to the First Bank and Trust.

Over the years, the bank has made hundreds of loans to cattlemen, cotton growers, suppliers and other rural enterprises.

We are committed to the Clarendon area. We welcome area producers and business people to come by and visit. Together we can make this community grow.

FIRST BANK & TRUST OF CLARENDON



College Board Minutes

Regular Meeting October 13, 1994

The Board of Regents of Clarendon College met in regular session on Thursday, October 13, 1994 at 11:45 a.m. in the V.I.P. room of the Bairfield Activity Center at Clarendon College.

Members Present: Chairman-Bright Newhouse; Vice-Chairman-Dr. R.L. Gilkey; Secretary/Treasurer-Delbert Robertson; and members W.R. Christal, Kade Matthews, Douglas Lowe, Michael Butts, and Jiggs Mann.

Members Absent: Susie Shields

College Officials Present: Dr. Jerry Stockton, President; Kelvin Sharp, Dean of Instruction; and Darlene Spier.

Others Present: None
Board action that minutes of regular meeting on September 8, 1994 be approved.

Board action that the financial statements for the month of September 1994 and the agency funds financial statements for September 1994 be approved as stated.

Bills incurred by Clarendon College were presented. Motion

was made by W.R. Christal with a second by R.L. Gilkey that bills be allowed and ordered paid in the amounts of General Fund \$82,002.63 and State Appropriation \$77,919.74 and Carl Perkins Fund \$257.73. (7 in favor 1 (Mike Butts) abstained on Mike's Pharmacy bill). 7-0-1.

Motion by R.L. Gilkey with a second by Douglas Lowe to continue with the required 24 hours above a master's degree to maintain full time teaching status. Motion carried unanimously. 8-0-0.

Motion by Kade Matthews with a second by Jiggs Mann to name the new dorm building Southwest Hall. Motion Carried unanimously. 8-0-0.

Motion by Jiggs Mann with a second by Douglas Lowe to sponsor the National Men's Basketball Tournament. Motion Carried unanimously. 8-0-0.

Motion by Kade Matthews with a second by Jiggs Mann to adopt the Student Food Preparation Policy as follows:

Individuals or groups of unauthorized students may not cook food anywhere on campus at any time. Motion Carried unanimously. 8-0-0.

Motion by R. L. Gilkey with a second by Douglas Lowe to approve and adopt the new policies, revisions and updates to the Handbook, policies, rules and regula-

tions of the Board of Regents Clarendon College. Motion Carried unanimously. 8-0-0.

Motion by Douglas Lowe with a second by Jiggs Mann to accept low bid of \$20,594.00 from John Chandler Ford for 1995 Ford Van-15 passenger. Motion Carried unanimously. 8-0-0.

There being no further business, the meeting was adjourned at 2:09 p.m. subject to call of the Chairman or until the next regular meeting on November 10, 1994 at 11:45 a.m. in the V.I.P. room of the Bairfield Activity Center at Clarendon College.

Regular Meeting November 10, 1994

The Board of Regents of Clarendon College met in regular session on Thursday, November 10, 1994 at 11:45 a.m. in the V.I.P. room of the Bairfield Activity Center at Clarendon College.

Members Present: Chairman-Bright Newhouse; and Members-Kade Matthews, Douglas Lowe, Michael Butts, Susie Shields, and Jiggs Mann.

Members Absent: R.L. Gilkey, W.R. Christal, and Delbert Robertson.

College Officials Present: Dr. Jerry Stockton, President; Dr. Kelvin Sharp, Dean of Instruction; Tex Selvidge, Dean of Students; and Darlene Spier.

Others Present: Tom Grantham and Jennie Hon Auditors from Pampa; Hershel Sorrels and Donald Bland with West Texas Gas Company.

Board action that minutes of regular meeting on October 13, 1994 be approved.

Board action that the financial statements for the month of October 1994 and agency funds financial statements for the month of October 1994 be approved as stated.

Bills incurred by Clarendon College were presented. Motion was made by Susie Shields with a second by Douglas Lowe that bills be allowed and ordered paid in the amounts of General Fund \$60,812.18; State Appropriation Fund \$33,175.35, and Carl Perkins Fund \$3,052.99. Motion carried 5 in favor and 1 (Mike Butts) abstained on Mike's Pharmacy bill. 5-0-1.

Motion by Kade Matthews with a second by Douglas Lowe to accept proposal presented by Hershel Sorrels with West Texas Gas Company to furnish natural gas to the College Campus. Motion Carried unanimously. 6-0-0.

Motion by Mike Butts with a

second by Jiggs Mann to accept year end audit presented by auditor. Motion Carried unanimously. 6-0-0.

There being no further business, the meeting was adjourned at 3:12 p.m. subject to call of the Chairman or until the next regular meeting on December 8, 1994 at 11:45 a.m. in the V.I.P. room of the Bairfield Activity Center at Clarendon College.

Emergency Meeting November 22, 1994

The Board of Regents of Clarendon College met in emergency session on Tuesday, November 22, 1994 at 6:30 p.m. in the V.I.P. room of the Bairfield Activity Center at Clarendon College.

Members Present: Chairman-Bright Newhouse; Vice-Chairman-Dr. R.L. Gilkey; Secretary/Treasurer-Delbert Robertson; and Members Kade Matthews, Douglas Lowe, Michael Butts, Susie Shields, and Jiggs Mann.

Members Present: W.R. Christal.

College Officials Present: Dr. Jerry Stockton, President.

Others Present: Jim Stewart, Bill Stavenhagen, Jim Howard, Bob Williams, Carol Farris and Ken Wilson.

Motion by Kade Matthews with a second by R.L. Gilkey to form a search committee composed of 9 members to assist in the selection of a President for Clarendon College. Motion Carried unanimously. 8-0-0.

Motion by Douglas Lowe with a second by Kade Matthews to appoint three board members, Susie Shields, Mike Butts, and Bright Newhouse to serve on the Presidential Search Committee. Motion Carried unanimously. 8-0-0.

Board action that Terry Floyd, Darlene Spier, and the President of the Student Senate also be on the Presidential Search Committee along with three faculty members (one from Pampa Center, one from Vo/Tech, and one from Clarendon Campus from the academic area). Faculty member to be selected by the faculty.

There being no further business, the meeting was adjourned at 7:30 p.m. subject to call of the Chairman or until the next regular meeting on December 8, 1994 at 11:45 a.m. in the V.I.P. room of the Bairfield Activity Center at Clarendon College.

Public Notice

Anyone interested in the County erecting a War Memorial, should attend the meeting Thursday, December 8th, at 10:00 a.m. in the Judge's Office at the Courthouse Annex. This meeting is open to the public.



Season's Greeting's Friends And Neighbors

Mr. & Mrs. H.A. Green
Mr. & Mrs. C. Edwin Bills
Ruby Jewel Hardin
Berkeley Neece
Nelson & Virginia Christie
Connee McAnear
Herbert & Hazel Shields
Billie Shaffer
Wes & Beth Sharp
Mary & Jerry Green
Gladys & Charles Blackburn
Letha & Basil Smith
Cotton & Mary Beth Nelson
Mr. & Mrs. H. Loyd Benson

FRIENDS OF THE LIBRARY
1994 CHRISTMAS CARD FUND

Chamberlain MOTOR COMPANY

HIGHWAY 287 CLARENDON, TEXAS
BUICK - OLDSMOBILE - CHEVROLET - GEO
PONTIAC - CADILLAC - GMC TRUCKS

CLAUD ROBISON
HOME PHONE 806-874-2785

CHAMBERLAIN MOTOR CO. Clarendon (806)874-3527
Highway 287, East Amarillo 376-9041
Clarendon, Texas 79226 Texas WATS (800)692-4088

Furniture Stripping
Now Available
at
Betty's Antiques & Collectibles

222 South Kearney
Clarendon, Texas 79226

Phone (806) 874-3875

**Automobiles and Locomotives
Change, but PEOPLE are still
delicate!**

When you approach a Railroad Crossing every heartbeat may bring you nearer eternity - unless you Stop, Look & Listen!

The Best of the Season!

Ladies Dresses
25% Off
With Some Petite Sizes

Purses, Wallets & Accessories
20% Off

Christmas Apparel
20% Off
Sweaters, Blouses, Jewelry

Come In & Check the "Thursday Night Only" In Store Specials

The Nook
208 S. Kearney
Clarendon, Tx.
806-874-3335

204 S. Koogle Behind Allsup's Clarendon, Tx

The Hair Connection
June Hinojosa, Owner
Ph. 874-2212

Large Selections
Paul Mitchell Available

Open 9 to 6 Mon-Fri

Creative Catering of Clarendon
Don & Mary Berrig - Owners 874-2838

Let Us Make Your Holiday Entertaining More Enjoyable This Year

Complete Sit Down Meals, starting at \$3.95 per person, To Affordable Prime Rib! And We'll Furnish The Complete Meal!

We will again Be Preparing Our Party Trays. We Have A Large Variety Of Meats, Cheeses, Vegetables, Fruits & Relishes to Choose From Starting at \$5.00

Call Us Now To Order
Christmas Breads, Cookies & Candies
Cookies Starting at \$1.50 per Dozen - Candies \$3.00 pound, & 1# Christmas Breads \$1.50 Each.
We Offer A Chocolate Fruit Cake.

We Have Added Hot & Cold Appetizers To Our Menu This Year. Call us for Price's.

Bronco Basketball

Friday, Dec. 1
Third Annual Toot'N Totum Tip-Off Boys Tournament
 at Palo Duro High School
First Round
 Varsity boys
 Clarendon65
 Palo Duro74
 High Point Scorers were
 Corey Fields with 22 points, and
 Danny McCampbell with 16
 December 2, 1994
Second Round
 Clarendon57
 Tascosa86
 Corey Fields lead the scoring
 with 13 points, and Danny Mc-
 Campbell had 11 points
Third Round
 Clarendon74
 Caprock64
 Corey Fields had 23 points
 and Danny McCampbell 16 points
 to lead the scoring for the Broncos.
Fourth Round Losers
 Clarendon50
 Amarillo High56
 Corey Fiel 17 points and
 Danny McCampbell 11 points to
 lead the scoring for the Broncos
Seventh place
 Clarendon66
 Randall72
 Corey Fields had 17 points
 and Danny McCampbell had 13
 points
 Record: Clarendon 4-5

Tomahawk Classic
 at Miama High School
 Dec. 1, 1994
Boys
 Clarendon JV52
 Sunray62
 Leading the scoring for
 Clarendon were Jeffers with 19
 points and Gaines with 11 points.
Girls
 Clarendon32
 Sunray45
 Leading the scoring were
 Knorpp with 13 points and
 Ashcraft with 6 points.
 Dec. 2, 1994
Second Round
Boys
 Clarendon JV53
 McLean64
 Leading the scoring for the
 JV Broncos were Jeffers with 16
 points and Lejan with 13 points.
Girls
 Clarendon66
 McLean42
 Leading the scoring was Mc-
 Ancar with 21 points and Ashcraft
 with 13 points.
 Dec. 3, 1994
Consolation Bracket
Girls
 Clarendon58
 Wheeler JV33
 Lead scorer's for the Lady
 Broncos were Knorpp with 18
 points, and Ashcraft with 11 points.
Consolation Girls
 Clarendon63
 Spearman JV50
 Knorpp led the scoring with
 24 points, followed by Campbell
 and Laxson with 11 points each.



**Screening
 Clinic To Be
 Held**

The Women's Center of the Don and Sybil Harrington Cancer Center and High Plains Baptist Hospital will again conduct a Breast Cancer Screening at Clarendon Medical Center Clinic, Hwy. 70 North on December 14, 1994 from 10:30-3:00 p.m.
 Breast cancer affects one in nine women. The key to boosting your chances of winning the battle against cancer are early detection by having an annual breast exam, mammogram and performing breast self-exam each month.

Each participant at our screening will receive a breast exam and one-to-one instruction in breast self-examination by a registered nurse specially trained in breast cancer detection, and a mammogram by a mammography technician. Our mammography machine is certified by the American College of Radiology ensuring a quality film.

The American Cancer Society urges all women to have their first mammogram by the age of 40. Those who have close relatives with breast cancer or other risk factors may be asked by their doctor to have a mammogram at an earlier age.



Explorer Officers Elected

November 28, 1994 Post 2433, sponsored by the Clarendon Lions Club, elected the following officers: President, Lewis Ellerbrook; V-P, Admin., James Hoggat; V-P, Prog., Wade James; Sec., Jennifer Parker; Treasurer, Marci Moore; Parliamentarian, Scott Bivens. The Post currently has 23 members.
 The Post is planning for a Ski Trip to Red River during the February school break. Youth who become members now will have opportunity to work on fund raisers to go.
 Explorers next meeting will be January 9th, 7 p.m., at the Clarendon Lions Club.
 Exploring is a program for youth who have completed the 8th grade and are at least 14 years of ages and not yet 21. It is a part of the Boys Scouts of America.

New Arrivals
 10 % Off Reg. Price
Ladies Cross Roads
Wind Suits
 Small to 3 X Sizes
 Great Prices \$36.99 to \$46.99
 This Week Only 10% Off
Christmas Sweaters
 25% Off Reg. Price
A & J' S
FASHION APPAREL
 Downtown Clarendon
 215 S. Kearney 874-2178

Christmas Gifts FOR... EVERYONE

Millionaire Chocolates

1/2 Pound Free
 Reg. \$18.00

Special Price **\$13.95**



**Gift
 Wrap**

100 Sq. Ft. **\$1.99**

50 Gift Tags

69 ¢

Back Packs

Vinyl Adjustable Back Straps **\$5.99**



Amity Bill Folds

20% Off

Hefty Cups

16 Oz. - 16 Count

2/\$3.00

**All Timex and Lorus
 Watches 10% Off**



Let them know
 you cared enough
 to find that
 special card.



**Christmas
 Classics—**



**Boxed Cards
 by Hallmark.**

Our 1994 Hallmark Christmas cards are now on display in our store. Come select your favorites.

**Late Night
 Shopping**



**Downtown Clarendon
 Every Thursday Night
 Until Christmas**

Entertainment Each Thursday Night

Ferol Shelton Wagon Rides
 Train Rides - \$1.00 per person
 School Choir - Christmas Carols

**Bring the kids down
 to see SANTA CLAUS**



Sponsored by The Clarendon Merchants Association

Register for Trevor Bear



To Be Given Away Dec. 15

\$100.00 Value - Stuffed Bear

Bivens



Pharmacy

200 S. Kearney, Clarendon, Tx 79226 (806)874-5201

*Senior Citizen Discount * Health Mart is Health Smart

Open 8-6 Weekdays; 9-5 Saturdays (Pharmacy 9-2 Saturdays)



spotlight on health

Guidelines For Arthritis Patients Spell "Empower"

(NAPS)—More than 37 million Americans suffer from arthritis—the nation's No. 1 crippling disease. For many, the diagnosis is both physically and emotionally disabling. But now, a cadre of 500 of these individuals have joined together to show both physicians and fellow patients that with a little teamwork, it doesn't have to be that way. They have been "empowered" through a unique program called Searle Patient Partners in Arthritis™.

Trained to serve as educators, Patient Partners teach medical students how to perform a joint exam, speak to practicing physicians about effective doctor-patient communication, and reach out to others with arthritis through community forums and educational materials. And now, consumers across the country can learn more about how to become partners with their own physician by calling a toll-free hotline, 1-800-ARTH-INFO (1-800-278-

4463), funded by the program's sponsor, Searle pharmaceuticals.

Here are a few of the tips offered by Searle Patient Partners:

Education: Teach yourself about your disease by reading, attending seminars, asking your doctor questions and talking to others who also have your illness. Learning the basic medical terminology helps you communicate more effectively with your physician, enabling you to get the most out of visits to your doctor. Also, you'll learn about the pros and cons of the different treatments available.

Medication: Taking medication, as prescribed by your physician, is a vital part of your overall health care. Non-steroidal anti-inflammatory drugs, or NSAIDs, are the most common medications prescribed to treat arthritis symptoms such as pain and inflammation. It's important to be involved in decisions about your medications; ask your doctor and pharmacist about possible side effects, and potential interactions with other medica-

tions you may be taking. Many patients, including eight out of ten respondents in a recent Gallup survey, find that it's easier to follow their doctor's instructions if they can take their medication just once a day. Ask your doctor about once-a-day medications such as Daypro (oxaprozin).

Keep a log to record when you take your medication, note any unusual symptoms and monitor improvement.

Physician/Patient Communication: Be assertive. Open communication between patient and physician is critical. Lee S. Simon, M.D., assistant professor of medicine at Harvard Medical School and rheumatologist at Deaconess Hospital, Boston, says: "Two-way communication between doctor and patient is imperative. Doctors can prescribe specific medical treatments and can recommend exercise regimens, but our success will be limited if patients aren't equipped to build on these treatments by taking other steps to improve their health." You should be honest with your physician at all times about your pain, concerns and opinions on treatment options—and persist in asking any questions you may have until you feel well-informed.

Outlook: A positive attitude has a powerful effect and is essential to your overall well-being. Reach out to others who have your disease by joining local support groups. Reward yourself for the day's small successes rather than

focusing on what you couldn't accomplish.

Willingness: Acceptance of the disease is one of the most difficult obstacles for newly diagnosed arthritis patients to face. One of the keys to acceptance is recognizing that your life-style must be altered. Patient Partner Sharon Dickson explains: "Once I was willing to accept my condition, I started using devices designed specifically for people with arthritis, began to delegate house chores to members of my family, and sought out a rheumatologist. These things helped me take control of my disease and my life."

Exercise: Exercise is an excellent way to alleviate stress, improve your attitude and maintain your physical well-being. Exercise that doesn't place direct stress on joints, such as swimming, bicycling and walking, should be part of a complete, physician-coordinated treatment plan. A physical therapist can offer specifics if you need one-on-one instruction; ask your doctor for a referral. In addition, many hospitals offer special exercise programs for persons with arthritis.

Relaxation: Take time out for yourself. Find ways to conserve energy. Patient Partner Jennifer Finch offers a suggestion for saving time and energy: "I keep a wicker basket at the foot of the stairs. Throughout the day, I toss items in it that need to go upstairs so at the end of the day, I make only one trip."

By taking these steps—as well as others available in the brochure "Talking to Your Doctor About Arthritis," which you can receive by calling 1-800-ARTH-INFO (1-800-278-4463)—you can begin to take an active role in managing your disease and ensuring that you receive optimal care.

Postal Pointers

(NAPS)—'Tis the season—to mail early! Our postal workers handle billions of pieces of mail during this busy time of year—and your holiday cards, gifts and party invitations are more likely to get where they're going on time if you mail early, pack gifts safely and include the zip code when addressing the envelope or package.



True heroes of the holiday season, the members of the American Postal Workers Union (APWU) work long hours and extra shifts to speed your holiday mail to its destination. Even when it's not an especially heavy volume time of year, postal workers handle over 600 million letters a day, says APWU president Moe Biller.

APWU is the world's largest postal union, with more than 360,000 members nationwide. Need some advice on safely packing a holiday package? Just ask at the post office.

Stuart Messer
Announces the
Opening of the
Messer Law Firm
220 S. 10th
Memphis, Texas
806-259-3718

Red River Trip For Two
Ponderosa Lodge on
February 24th & 25th, 1995
Drawing will be on December 21, 1994
\$1.00 donation

May purchase tickets from any 5th-12th grade band student.

Deck The Halls

Give Clarendon for Christmas!

Is there someone you know who would like to keep up with what's going on in Clarendon? Why not send them the newspaper?

- In-County \$18.50
- In-County (Senior Citizen Discount) \$16.50
- Out-of-County \$22.50
- Out-of-County (Senior Citizen Discount) \$22.00

Name: _____
Address: _____
City: _____ State: _____ ZIP+Four: _____

The Clarendon News PO. Box 1110, Clarendon, TX 79226-1110



The Bargains Are Snowballing

ALLSUP'S

Prices Effective December 7-13, 1994
Clarendon, Texas

SAVE ON COCA-COLA
6 Pk
\$1.99

ALLSUP'S CANADIAN BACON, EGG & BISCUIT FOR ONLY **99¢**

SAVE ON ALL VARIETIES HOT POCKETS FOR ONLY **99¢**

ALLSUP'S SAUSAGE ON A STICK FOR ONLY **99¢**

NICE 'N SOFT BATHROOM TISSUE 4 ROLL PKG. **99¢**

DECKER MEAT BOLOGNA 12 OZ. PKG. **89¢**

ALLSUP'S 1.5 LB. LOAF SANDWICH BREAD 69¢ EACH OR **2 \$1 FOR**

"ALL PURPOSE" RUSSET POTATOES 10 LB. BAG **99¢**

SHURFINE FANCY CUT GREEN BEANS 16 OZ. **39¢**

SHURFINE FANCY SWEET PEAS 16 OZ. **39¢**

"ALL FLAVORS" ALLSUP'S ICE CREAM 1/2 GALLON **\$1.89**

VALLEY FARE TISSUE **79¢**

SHURFINE KETCHUP BOTTLE OR SQUEEZE BOTTLES **69¢**

SHURFINE NATURAL VEGETABLE OIL **\$1.99**

Christmas Trees
AS LOW AS \$10.99
• New Mexico Mountain Trees
"Fir, Balsam & White Fir"
• Northern Michigan
"Scotch Pine"

SAYES

ON CLARENDON'S MAIN STREET SINCE 1910

Have Yourself A Cowboy Christmas.

Wrangler
Cowboy Christmas

Wise Men Give Wrangler.

Suzy Bogguss, Billy Dean, Chris LeDoux, Tanya Tucker, Alabama, Merle Haggard, John Berry, Emilio Navaira and Lorrie Morgan.
The Wrangler Cowboy Christmas Cassette. With Purchase of Wrangler Western Wear.
*While supplies last.

Fa La La La Yippy-TO-KI-AV.

Economic Development: An Example in Action

From time to time The Clarendon News will be running articles on economic development. The purpose of these articles is not to copy what some other community has done, but to encourage each of us—as citizens of the Clarendon area—to try to consciously open our eyes to the economic opportunities around us.

This article was not originally intended for publication in The Clarendon News. It was submitted to The 7+ Narrow Gauge, a magazine for riding-scale railroaders. It is the story of some men who enjoyed building model locomotives and then discovered that their little trains attracted visitors. They and their community recognized the potential of that attraction and invested money, sweat and love into building a park where the modelers could enjoy their hobby while entertaining tourists from all over Europe (and eventually from all over the world).

This is not intended as a detailed pattern for Clarendon to copy. People in the hobby in the United States are very wary of lawsuits, a problem the civilized Swiss do not have. But even if a railroad park is not the right attraction in the Panhandle, there is probably something else that is attractive. That "something" may already be here right under our noses. We may see it every day, but not notice it.

No single project is likely to be a universal panacea that cures all the area's economic difficulties. In fact, it is probably wise to deliberately seek economic diversity. The Swiss Vapeur Park adds a small but significant contribution to the city of Le Bouveret. Why should folks in the Clarendon area develop a comparable asset? —Bob Williams



THE MECKLENBURG, a 7.25" gauge, live-steam locomotive pulls about 40 passengers on eight coaches at the Swiss Vapeur Parc in Le Bouveret, Switzerland. The park attracts thousands of visitors per month to the area, where they eat, buy souvenirs and rent lodging. The park brings in considerable revenue to the local economy. Clarendon may not be able to use this same idea, but perhaps Le Bouveret's example will prompt someone in Donley County to be inventive.

building 18 switches. This did not include several bridges, a large viaduct, two tunnels and further accessories needed to run a real little railroad.

In June, 1989, 10,000 visitors celebrated the inauguration of the expanded Swiss Vapeur Parc. The entrance fee was \$2, to pay for coal and water. The staff was overwhelmed with the onslaught, but in the following days, still more poured in.

Each year the park has more visitors, and the facility grows continuously. The number of buildings increases, with replicas of the Castle of Aigle, the Swiss House, the Church of Saanen, the Swiss Coffee House and the Swiss Bank Building.

As the park expanded, many of the country's narrow gauge railroads became enthusiastic about Swiss Vapeur Parc. The provided the promoters of the railroad with large models of their electric powered rolling stock. Today there are 3 self-propelled railcars in daily operation during the Spring/Summer/Fall season. As of 1994, there are 15 steam,

electric and "Diesel" (gasoline) locomotives pulling trains loaded with from 3 to 50 passengers on the tracks of the Swiss Vapeur Parc. There are even special cars built to haul the handicapped so that they do not have to leave their wheelchairs.

Just as with full-sized railroads, maintenance is vital. Everyone visiting the park can visit the repair shop to see the meticulous upkeep of all equipment, whether rolling or stationary. Some members of the Swiss Vapeur Parc work at their home during the dead season (October-March) repairing locomotives, taking them apart and completely overhauling them, getting ready for the next season.

Now an expansion program is underway for 1995, adding 7,000 square metres (75,000 square feet) more park area to the existing lot. The track system will be extended by 600 m. (1,960 feet). The club is planning a 1,000 square metre (10,800 square foot) lake for radio-controlled power boats and sailing vessels. Eventually there will be a railroad suspension bridge, three other bridges and two new tunnels.

"Great things are in the works," says Pierre Jaquero, "we think the future looks bright."

The Le Bouveret area is also a haven for railfans. The area includes narrow-gauge adhesion locomotives and rack operations ("cog railways" is U.S. vernacular-ed.). Seven famous tourist railroads operate in the region.

Yet the Swiss Vapeur Parc draws its share of visitors to Le Bouveret, and the town appreciates its contribution to the local economy.

Hans Fred Stauffer is a licensed professional engineer and a devoted riding-scale railroader who lives in Ittigen, Switzerland. He has built several 1/5th scale locomotives, and frequently attends train meets in the United States, including meets at Roy Pickard's track in Priddy, Texas. He is an associate member of Southwestern Live Steamers, the largest and oldest club in Texas.



Fred Stauffer pulls out of the engine house and heads for a waiting train. His little diesel switcher is modeled after The Golden Pass, a locomotive on the Montreux-Oberland Bernois. The locomotive will pull 18 adults. It is powered by a little air-cooled gasoline engine via hydraulic drive.

Visitors Flock to Le Bouveret's "Swiss Vapeur Parc"

by H. Fred Stauffer

They have names: "Pacific", "Mecklenburg, or "American-Genoa", and they spit their steam with uncontested pride. Everybody understands them, in spite of different world classifications. They are the miniature locomotives that haul 120,000 happy passengers per year at the Swiss Vapeur Parc on the shore of Lake Geneva. On a busy week-end, these little trains haul 3,000 passengers daily. Some are models of old American engines; many are models of Swiss narrow-gauges units that are still in operation.

The Swiss Vapeur Parc and its little trains are of prime importance to the town of Le Bouveret. The visitors always spend money on food and souvenirs. Children account for only 30 per cent of all passengers. Adults are an impressive 70 per cent. Retirees compose about 30 per cent of the adults.

These figures bring a happy smile to the face of Mr. Pierre Jacquard, President of the Administrative Council of Swiss Vapeur Parc.

It all started in 1979 with 350 m. (1,150 feet) of track, a turntable and a tunnel. The steam buffs operated four steam locomotives. People throughout Switzerland soon discovered the park. Their gatherings demonstrated their enthusiasm for live steam, the track and the Live Steamers. Soon fans were streaming in from all parts of Western Europe.

Encouraged by this success, the group decided to enlarge the facilities. The lot was expanded to 11,000 square meters (118,000 square feet). For those bitten by the model bug, a new era had begun.

The first task was the earth work to provide hills and flat areas. The goal was 1,000 m. (3,280 feet) of ballasted railroad. The track was laid out like a folded dog bone. There are several small creeks with flowing water, with a hill that dominates the center of the scene.

Alfred Grimm, a very able layman-architect designed the first buildings.

the Donut Stop

Open
6 a.m. to 12 p.m.
or
Until We Sell Out
Mon-Sat
Closed Sunday, but will take special orders
pick-up by 7 a.m.
We also sell
Breakfast Burritos & Sausage Biscuits

10% Discount
With This Ad!

10% Discount
With This Ad!

Thanks

WE, THE HIGH PLAINS SPORTS MEDICINE
CENTER STAFF, CONSIDERED IT A PRIVILEGE TO
PROVIDE OUR SERVICES ON THE BRONCO
SIDELINES THIS SEASON.
THANK YOU FOR THAT OPPORTUNITY.

HIGH PLAINS SPORTS MEDICINE CENTER
5111 CANYON DRIVE • AMARILLO, TEXAS 79110 • (806) 353-9675
A service & facility of High Plains Register Health Systems

Be an  and help fill

our  of  for 

and get Cable TV for small 

Donate a \$10 toy
and receive a *\$5 cable installation.
Toys will be donated locally.
Help support our **Toys for Tots Drive!**

Call  MISSION
CABLE **1-800-783-5708**

NOW!

*Current subscribers may upgrade services. Some restrictions apply. Some services not available in all areas. Offer good for a limited time. For more information call Mission Cable.



Tell Everyone Merry Christmas!

with an ad in The Clarendon News!

LATE NIGHT SHOPPING, in Clarendon, Thursday, December 8

THE MEAT MARKET

It is estimated that six million slaughter-age ostriches will be required to capture only one percent of the U.S. meat and poultry market and that it will be around the year 2000 when the supply meets the demand. Ostrich meat provides the most profit and is the largest potential profit center of ostrich by-products. Nutritional tests indicate the ostrich meat contains fewer calories and less cholesterol and fat than either beef or poultry. Even classics like Oreos and Ritz crackers, as well as other favorites made by Nabisco, are introducing new, low-fat variation of tried-and-true brand names. With one of the most popular cookies in the world heading down the health food route, it can be presumed that a legitimate, low-fat alternative to beef, that tastes like steak, but is good for you, has to be a winner! It's definitely the "meat of the future" for a health-conscious America!

OSTRICH MEAT COMPARISON

	3 OZ. SERVING	CALORIES	PROTEIN GRAMS	FAT GRAMS	SAT. FAT GRAMS	MONO-UNSAT. FAT GRAMS	POLY-UNSAT. FAT GRAMS	CHOLESTEROL mg	CARBOHY-DRATES GR.	CALCIUM mg
OSTRICH	3 OZ.	96.9	22	2.0	-	-	-	58.0	2.1	5.2
Chicken: <small>(skinned, back only)</small>	3 OZ.	140.0	27	3.0	.9	1.1	.7	73.0		13.0
Turkey: <small>(skinned, light meat, back only)</small>	3 OZ.	135.0	25	3.0	.9	0.5	.7	59.0		16.0
Beef: <small>(lean, ground, broiled)</small>	3 OZ.	230.0	21	16.0	6.2	6.9	.6	74.0		9.0
Beef: <small>(lean, broil, broiled)</small>	3 OZ.	240.0	23	15.0	6.4	6.9	.6	77.0		9.0
Lamb: <small>(lean, leg, roasted)</small>	3 OZ.	205.0	22	13.0	5.6	4.9	.8	78.0		8.0
Pork: <small>(lean, loin, broiled)</small>	3 OZ.	275.0	24	19.0	7.0	8.8	2.2	84.0		3.0

For Sale At The Grocery Store



HIP-O OSTRICH RANCH

Bob & Vera Andis
Ph. 806-874-2050

RR 1 Box 45
Clarendon, TX 79226

Minding Your Own Business

The 80-20 Rule

by Don Taylor

It was somewhere in the early part of my sales career that I first heard about the 80-20 sales rule. This rule theorizes that if you are a typical salesperson for an average company 80 percent of your sales will come from 20 percent of your customers.

I don't recall whether I heard about the rule in a sales seminar or read it in a book. I do remember going over my sales records to see if the rule was true for my company and customers. As I recall, my numbers were in the ballpark and certainly close enough to validate the 80-20 rule in my mind.

Over the years, I've discovered that the 80-20 sales rule is accurate for many businesses. I've observed it in many different industries and various sizes of businesses. I've worked with several clients who were amazed when it proved true for their firm.

For me, the awareness of this rule changed the way I thought about and reacted to my best customers. I raised the level of care I gave the 20 percent who created the bulk of my business. I worked hard to see that they received our best efforts. Above all else I wanted to ensure that this small but powerful group of customers was satisfied completely. I still think it is good business practice today.

Other 80-20 thoughts

Recently one of my clients observed that 80 percent of his problems came from 20 percent of his customers. He complained that this small group of customers was hard to please. "They are whiners," he said. "They demand added service, additional care and constant attention. I often wonder if they're worth the trouble."

Consider your own situation. Could it be that the 80-20 rule also applies to other areas in your business as well? What about profits? If the 80-20 rule is accurate for your sales, is it also true of your profits? Check it out. You may find that the 20 percent of customers who generate most of your sales demand special price concessions and other considerations that actually lower your profits significantly.

Is it possible that 80 percent of the important work accomplished by your company is done by 20 percent of your work force? Wouldn't you like to know which 20 percent and why they are more productive?

Is it conceivable that 20 percent of your advertising and promotion produces 80 percent of the results? If so, why is this promotion so effective and how can we improve the other 80 percent?

Can you trace 80 percent of your costs to only 20 percent of your expense items? Do you have a method of tracking this to see if it is true? What would you do differently if it was?

Are 80 percent of your slow accounts receivable traceable to 20 percent of your credit accounts? How can you improve your collection efforts?

Finally, would 80 percent of our success be attributable to only 20 percent of our efforts? How can we reduce or eliminate the non-productive effort?

Prove the theory

I don't know if the 80-20 rule applies to other areas of your business operation. I'll leave it to you to prove or disprove the theory.

However, I am certain of this: When you discover new ways to evaluate and analyze your business you often find methods to im-

prove it. The reason we started writing this column nearly five years ago was to help business owners and managers improve their operations. Perhaps you will create some new opportunities if you start thinking about how the 80-20 rules might apply to your business.

Don Taylor is the coauthor of *Up Against the Wal-Marts*. You may write to him in care of "Minding Your Own Business," PO Box 67, Amarillo, Texas 79105.

American Academy of Pediatrics



Take Charge Of TV

(NAPS)—American children and teens are being exposed to violence in TV, movies, video games and music. By age 18, young people will have viewed an estimated 200,000 acts of violence on TV alone. TV glamorizes guns and wrongly teaches youngsters that it's alright to use violence to resolve problems. It's not alright.

Every October the nation's pediatricians and the American Academy of Pediatrics call upon parents to think about preventive care. Join us during **Child Health Month** this year as we speak out against violence. Here are a few tips to help us place solutions before problems.

- **Limit media viewing.** Time spent watching TV or playing video games is time that could be spent on more productive activities. Limit TV viewing to 1 to 2 hours per day. Spend time talking, reading or playing with your children.

- **Monitor what your children see.** Watch TV and movies with your child and talk about what you see. Tell your child that gun violence on TV and in the movies is not real. Explain that in real life children are hurt and killed with guns.

- **Talk to your pediatrician about the effects of media on children.**

For a free brochure, send a stamped, self-addressed envelope to: *TV and the Family brochure*, Dept. C, American Academy of Pediatrics, P.O. Box 927, Elk Grove Village, IL 60009.



This Christmas, Make A Difference for Just \$99!

With The \$99 Difference Maker From Dobson Cellular, Security and Convenience Are All Wrapped Up!

Of all the reasons to have a cellular phone, Christmas reminds you of the best reasons: Your Spouse, Family and Friends! And now, real security and convenience come gift-wrapped with a \$99 Motorola® cellular phone (installed, transportable or hand-held) and dependable Dobson Cellular service!

For Just \$99, Ho, Ho, Ho, On The Go!

An affordable, \$99 phone is only half the Christmas story. Difference-making Dobson Cellular service is the other half, with unique features like:

- The **PerfectPlan™** or **PerfectPlan+™** airtime plans
- Money-saving **48-State Toll-Free Long Distance** service
- **AutoHelp™**, the 24-hour roadside assistance program
- **RoadRoamer™** Network's 150,000 square miles of Automatic Call Delivery convenience
- **FREE** Area Code (405) and (806) long-distance calls
- **Local** sales, service & on-site cellular technicians

'Ho, Ho, Ho On The Go' With The \$99 Difference Maker!

1-800-882-4154

DOBSON CELLULAR SYSTEMS



Airtime not included. Certain terms and conditions apply.

Authorized Agents:

The Classified Page

Classified ad rates are \$5.00 for 15 words or less, and 10 cents per word for each additional word. Special type or boxes extra. Thank you notes of average length are \$6.00. There will be an additional \$1.00 billing charge if it is necessary to send out a statement. Subscription rate in Donley County is \$18.50 per year; out-of-county are \$22.50. Payment is required at the time of placing a classified or display ad. Advertisers with established credit may be billed.

Report Errors

Check your ad the first day it runs to see if all the information is correct. Please call The Clarendon News office at 874-2259 the first day the ad runs to report the error. If not reported on the first day after the ad runs, The Clarendon News is not responsible.



SERVICES

CARPENTER SERVICES
Repairs, remodels, additions, complete home maintenance and repairs. Call 874-5051, Larry Christopher. 15-tfc

CARPENTER SERVICES
Building, remodeling, repairs, painting, concrete work. Free estimates. Call Dickie Bennett at 874-2362. 12-tfc



EMPLOYMENT

POSTAL POSITIONS
12.26 an hr. + Benefits. Carriers, Clerks, Sorters, & Maint. Jobs. For Exam info & Application call (708)264-1600 Ext. 5230. Also Open Evenings. 48-2tp

Thank You

I am using this method of saying Thank You to all my friends and relatives who showed such consideration to me while I was sick and in the hospital—for the food, cards, flowers and so many acts of kindness. Friendship is the most important thing to me and I appreciate all of you so very much.
Sincerely,
Sandra Mooring

MORROW DRILLING & WELL SERVICE

SALES & SERVICE
12 YEARS EXPERIENCE
• WATER WELL DRILLING • WINDMILLS
• COMPLETE TURKEY SYSTEMS
• GRUNDFOSS STAINLESS STEEL PUMPS
• SOLAR ENERGY PUMPS
874-2704

Public Notice

REQUEST FOR BIDS ON TEXAS HIGHWAY CONSTRUCTION

Scaled proposals for 140,010 miles of seal coat at various locations on SH 86, SH 207, US 62, FM 401, FM 1034, FM 1036, FM 3446, FM 1754, FM 1932, SH 256, BI 40-J, SH 152, FM 1065 AND FM 3517 covered by CPM 105-1-27, CPM 357-6-12, CPM 970-3-15, CPM 381-1-12, CPM 3259-1-5, CPM 1225-1-11, CPM 797-7-20, CPM 2165-2-2, CPM 1712-2-5, CPM 1818-1-11, CPM 105-2-16, CPM 541-2-21, CPM 275-19-3, CPM 397-2-29, CPM 740-3-12 and CPM 3581-1-2 In Hall, Briscoe, Childress, Collingsworth, Donley and Wheeler county, will be received at the Texas Department of Transportation, Austin, until 1:00 p.m., December 13, 1994, and then publicly opened and read.

Plans and specifications, including minimum wage rates as provided by Law, are available for inspection at the office of Daniel E. Brown Area Engineer, Wellington, Texas, and at the Texas Department of Transportation, Austin, Texas. Bidding proposals are to be requested from the Division of Construction and Contact Administration, D.C. Greer State Highway Building, 11th and Brazos Streets, Austin, Texas 78701. Plans are available through commercial printers in Austin, Texas, at the expense of the bidder.

The Texas Department of Transportation hereby notifies all bidders that it will insure that bidders will not be discriminated against on the ground of race, color, sex or national origin, in having full opportunity to submit bids in response to this invitation, and in consideration for an award.

Meetings

CLARENDON LODGE #700 AF/AM
Stated Meeting: 2nd Monday each month - 7:30 P.M.
Practice Sessions: 4th Monday
Jimmy Garland W.M.
Willard Skelton Secretary
Refreshments served at 6:30 P.M.

VFW POST 7782 AND AUXILIARY
First Tuesday 7:30 p.m.
Joint Meeting 3rd- Thursday

Kenny's Barber Shop
(next to Owens Boots)
We appreciate your business
110 S. Kearney
Clarendon, Texas



MISCELLANEOUS

FOR SALE: Round Bale Feeders & Feeding Troghs. 874-2471. 45-4tc

ROUND BALE OF HAY For Sale 874-2471. 45-4tc

FREE PUPPIES, gentle natured, Chow/Golden Retriever. 874-2624. 49-1tp

WANT MORE ENERGY? Lose weight and feel great, call 874-3381. All products are guaranteed to work or you get you money back. 49-1tp

For Sale: 30 Gal. Aquarium & Stand. 919 W. 5th, 874-3343 or 874-3837. 49-1tp



REAL ESTATE

FOR RENT: 3 Bedroom, 2 Bath, central heat & air, 514 Carhart. \$350.00 a month. Call 874-3905 after 6:00 p.m. 49-1tc

3 Bedroom Brick House For Sale, 1 3/4 Baths, Double car garage. 874-3472. 49-2tc

For Propane Hill Petroleum 874-3778 Day or Night



GARAGE SALES

CRAFT SALE: Mon-Thur 10:00 a.m. - 3:00 p.m. Items still available at Clarendon Mental Health Center, 111 Kearney. Lots of Christmas items, wreaths, ornaments and other items.

SALE IN MOBILE HOME, 706 E. 2nd, Friday, Dec. 9th, 7 a.m. til 7. 49-1tp

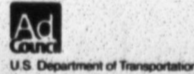
TUPPERWARE OPEN HOUSE, Saturday, December 10, 1-4 p.m. at 710 Goodnight. Instant delivery for Christmas gift giving. Hourly door prizes and refreshments. Chris Royal and Tammie McAnear. Call Tammie 874-2640 if you need more information. 49-1tp

NOT WEARING A SAFETY BELT CAN COST YOU AN ARM & A LEG.



It's against the law. So if you don't want a ticket, buckle up. Or, you could become broke in more ways than one.

YOU COULD LEARN A LOT FROM A DUMMY. BUCKLE YOUR SAFETY BELT.



FRED DAY PAINTING CONTRACTOR

Free Estimates
874-3890

Positive Feed Inc.
28% Protein
Danny Askew
874-5001 or 874-3844

FOR SALE
Corner lot, 3 bedroom, 1 3/4 baths, Living Room, Dining Room, Kitchen, One car garage.

2 Bedroom, 2 Bath, Brick Home, 9 1/3 Acres, fenced, pasture, Storage buildings.

3 Bedroom, 1 Bath House, 2 Car Garage, 3 Car Carport, Fenced pasture. \$39,500.

Lake Property: 2 Story, 3 Bedroom, 1 Bath, Carport & Storage Room.

3 Bedroom, 1 Bath, Shop Building, Cellar, Large Lot.

Corner Lot, 3 Bedroom, 2 Bath, 6 lots, basement & Cellar.

4 1/2 Acres, Water Well, 3 Bedroom, 1 3/4 Baths, Barns & Sheds, Celler.

Lelia Lake: 5 Acres, 3 Bedrooms, 1 3/4 Baths, 2 Car Garage.

Detail Shop Building 75' Lot, Hwy 287.

Howardwick, Split Level, 3 bedroom house with 2 car garage, Basement, 1 3/4 Baths, Fireplace, Central Heat & Air. 3 Lots.

Fish N' Pal, 1 Person fishing boats.

2 Bedroom Trailer, in Howardwick, fenced with lot and trees, \$6,500 cash

3 Bedroom Trailer in Howardwick, with Fruit trees and fenced

1 Bedroom, Living Room, Kitchen, Bath, \$7,000

Oneta Sanders Real Estate Office
720 S. McClelland
Clarendon 874-2533

Wreaths & Christmas Cards
Handcrafted by Susie

Christmas Arrangements
Group of Ladies
Jackets & Shirts
Country Craft Gifts

Paints Available for Christmas Projects

20% & 50% Off all Paints

Wood 'N Stuff
700 West 2nd - Hwy 287
Clarendon, Texas
874-2508

Morrow

Income Tax Service

Business * Farm * Individual

New Customers Welcome

316 S. Kearney Clarendon, Texas 874-2618

Bailey Estes & Son

Welding Fabrication & Steel Buildings-

Also Self Storage Units For Rent

\$25.00 a month



Estlack Electric

Electrical Contracting, Appliance Repair

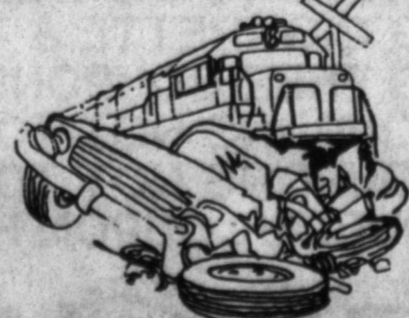
Janitrol, Carrier, & Trane

Heating & Air-Conditioning

Allen Estlack

874-3683

Texas Refrigeration License # TACLBO12144E



When it's a tie at the railroad crossing, you lose!

TERMITE PROBLEMS

Call For Best Termite Control Over 20 Years Experience Call Collect 383-7075

3608 N.E. 23rd Amarillo, TX 79107 State Lic. #1178

LEO RUSSELL



Loyd's Backhoe & Ditching Service

Septic Tank Units

State Certified.

New Chamber Leach Systems

All Types of Gas and Water Lines Installed

874-2287

Lloyd Ford

GENE MESSER

2501 Paramount
Amarillo, Texas 79109
(806) 358-8888 • 1-800-299-5566
Fax (806) 359-0473

STAN GARLAND
New/Used Sales Leasing

Cadillac — FORD — Jeep, Eagle

DONLEY COUNTY
Brick, Three Bedroom, 1 & 1/2 Bath, Central Heat & Air, Fireplace with Heatlator, All electric, Two car Garage, Cellar, Corner Lot. \$65,000.00
Office Building on main st. Stocking Building. \$20,000.00

DONLEY COUNTY
113.5 Acres Grass Land, Brick 4 Bedroom, 2 Bath, Cellar, Privacy Fence, Fireplace & Woos stove in den, Hot Tub, Lots of out buildings, Excellent Fence, 7 Wire, HWy 287 Frontage, Hedley, Texas \$135,000.00

Brick, Two Story, 5 Bedroom, 2 Baths, Basement, Central Heat & Air; Swimming Pool, 4 Car Garage, One Bedroom Garage Apartment. \$73,500.00

Brick Three Bedroom, One Bath, Two Car Garage with Small Apartment, Bed & 3/4 Bath. 1.2 Acres more or less with 768 Sq. Ft. shop insulated with air cond. & rest rooms. 480 Sq. Ft. Shed attached. Old shed & pens. \$45,000.00. Make Offer.

Corner Lot, Extra Nice Brick, 3 Bedroom, 1 1/2 Bath, 1 Car Garage, Central Heat, Window Refri A/C, Quality for FHA Financing or 1st time home owners program. \$49,500.00

Red Brick 3 Bedroom, 2 Bath, Central Heat/Air, 30'x 50' Barn House Well. 40 Acres w/Irrigation Well. \$96,000. Reduced to \$90,000.

5 Bedroom, 2 1/2 Baths, Central heat & air, 2 story Historical Home. Formerly "Mrs Bromleys". Excellent condition. \$74,500.00. \$64,500.00

GREENBELT LAKE
West Side Lake Property (lease), Nice 2 Bedroom, 2 Bath (sauna), Fireplace. C-H/A, 2 Carport, Boat Storage, Cellar with storage bid. on top. 18ft fibrg, I/O boat, cover & trailer. \$44,000.00

2, 3, 4 bedrooms, 1, 3/4, & 1/2 baths, Three lots. Brick, two story, two car garage, storage room, with cellar. Central heat & air. Two blocks to Carrol Creek Loading Ramp. \$61,000.00

Two Story, Two Bedroom, Two Bath, Furnished, Carport, three lots. Beautiful view. \$35,000.
Jimmy Garland Real Estate
874-3757
944-5458 Home
1-800-530-4396

HOLIDAY GREETINGS

Let Us Cater Your Party Trays of Cheez & Crackers or Fruit, Meat & Cheese or Cooked Meats

Blackburn Crystal White Syrup Quart Decantor **\$1.89**

Jif Peanut Butter 18 Oz. Jar **\$1.89**



Del Monte Pineapple 15 1/4 Oz. Can **59¢**

Shurfine Seedless Raisins 15 Oz. Pkg. **\$1.29**

Shurfine Tea 1/2 Lb. Box **\$1.49**

Hunts Tomato Ketchup Quart Bottle **\$1.39**

Bright Idea Coffee Filter 150 Cnt. Pkg. **59¢**

Miracle Whip Salad Dressing Quart Jar **\$2.29**



Crisco Shortening 3 Lb. Can **\$2.29**

Shurfine All Purpose Flour 5 Lb. Jar **79¢**



Regular Original Flavor Only Dr. Peppers 6 Pk. 12 Oz Cans **\$1.29**



Sunshine Krispy Saltine Crackers 1 Lb. Box **99¢**



Del Monte Pitted Prunes 24 Oz. Pkg. **\$2.49**

Ragu Spaghetti Sauce Quart Jar **\$1.79**

Vlassic Dill Spears 24 Oz. Jar **\$1.99**

Delicious Vanilla Wafers Box **99¢**

Folgers Coffee 13 Oz. Can **\$3.19**

Red Baron Pizza 21 Oz. **\$2.99**

Breaded Chicken Strips 3Lb. Bag **\$10.99**

Minute Maid Orange Juice 12 Oz. Can **99¢**



Baskets Full of Little Debbie Snack Cakes **2/\$1.00**

Dish Detergent Dawn Family Size 42 Oz. Bottle **\$2.29**

Laundry Detergent Ajax Liquid 50 Oz. Bottle Reg. \$2.99 Value **\$2.29**

Glass Cleaner Glass Plus 32 Oz. Refill Bottle **\$1.89**

Bath Tissue Charmin 4 Roll Pkg. **99¢**

Paper Towels Bounty Single Roll **89¢**

Party Cups Solo 20 Cnt. 16 Oz. Cups **99¢**



Boneless Stew Meat **\$1.99** Lb.

Preferred Trim Boneless Chuck Roast **\$1.49** Lb.

Boneless Arm Roast **\$1.79** Lb.



Boneless Top Sirloin Steak **\$1.99** Lb.

Boneless Packer Trim Beef Brisket **\$1.39** Lb.

Extra Lean Ground Fresh Daily Ground Chuck **\$1.39** Lb.

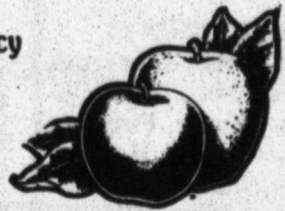
Boneless Ribeye Steaks **\$4.79** Lb.

Wrights Sliced Slab Bacon **\$1.19** Lb.



Fresh Tender Pork Spare Ribs **\$1.29** Lb.

Washington Red Delicious Extra Fancy Apples **39¢** Lb.



Premium Pack White Russett Potatoes **19¢** Lb.

California Carrots 3 1 Lb. Pkg. **\$1.00**



New Crop East Texas Pecans **\$1.99** Lb.

California Super Select Cucumbers **39¢** Lb.

Dole Coleslaw Mix **89¢** 1 Lb. Bag

US#1 New Crop Sweet Potatoes **49¢** Lb.



Ad Good Dec. 7-10

THE GROCERY STORE

874-2425 CLARENDON, TEXAS

OPEN MON.-SAT. 7 A.M.-7 P.M. CLOSED SUNDAY

HOME OWNED AND OPERATED BY JACK & SHIRLEY CLIFFORD BRIT & VIRGINIA PATTEN

DOUBLE COUPONS ON WED. & SAT. ONLY EXCLUDING CIGARETTE & TOBACCO COUPONS EXCLUDING FREE COUPONS DOUBLE COUPONS NOT TO EXCEED ITEMS VALUE DOUBLE COUPONS NOT TO EXCEED \$1.00 ONLY 1 DOUBLE COUPON HONORED ON MULTIPLE ITEMS