

# The Clarendon Enterprise

"A Paper Dedicated To Building A Better Future For Clarendon And All Of Donley County"

Third Series, Vol. VI, No. 37

E1.27

The combined publication of The Donley County Leader and The Clarendon News.

Thursday, September 12, 1996

50¢

## Broncos fall to Mustangs in first game of season

Kareem Abdullah rushed for 153 yards on 30 carries and scored 2 touchdowns as Clarendon narrowly missed a win in their season opener against Claude Sept. 6 in Claude.

A last-second botched punt by the Mustangs gave the Broncos 12 seconds to score; but Clarendon ran out of time, and Claude squeaked by with a 25-20 victory.

The Broncos record moves to 0-1 as Clarendon prepares to meet Boys Ranch Friday at Bronco Stadium. Kick-off is slated for 8 p.m.

The last time the two squads met, Clarendon rolled over the Roughriders, 24-7, in Boys Ranch Country.

The Roughriders return 10 starters, including three starters on both sides of the line who want to avenge last year's loss and improve on their 1995 1-8 season record.

"They've got one of the best teams they've had in the past few years," head coach Tooter Draper said. "They have an outstanding running back who rushed for 200 yards against White Deer. We'll have to set some

new standards to stop him." Defense was the difference in the Sept. 6 contest with Claude, Draper said. The team allowed 177 yards rushing in the first half compared to 62 yards total offense in the second half.

### Scoreboard

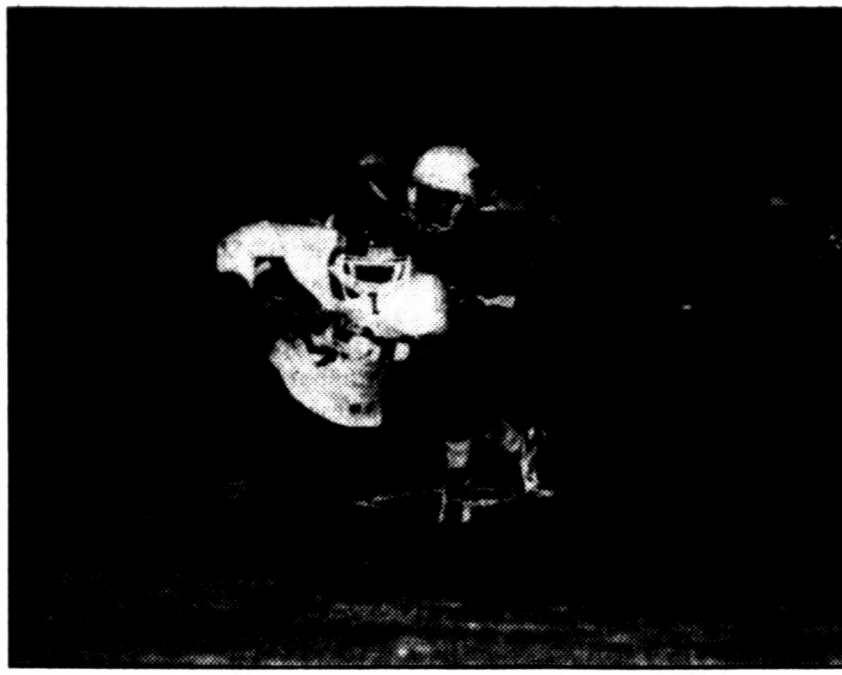
Clarendon, 20  
Claude, 25

"We made some adjustments at half to what they were doing," Draper said. "I think it was getting used to a new system. We're awful young, and we're also green as far as experience. You can't just make adjustments by yelling out to them on the field. We must make adjustments and show them how to make adjustments."

Both teams combined for an unusually high 20 fumbles. Clarendon lost the ball eight times during 11 fumbles, and Claude recorded nine fumbles, losing the ball six times.

Mustang running back Thomas Justiss opened up the game at the 5:02 mark with a 4-yard run, and the Mustangs led 6-0 heading into the second quarter.

Two more touchdowns by Claude - one by Justiss - made the score 18-9 with 4:33 left before the half.



Kareem Abdullah tries to break away from a Mustang Friday night.

"We got off to a poor start," Clarendon's first-year head coach said. Justiss, who rushed for 143 yards on 24 carries is one of the best backs the Broncos will face this year, Draper said.

Clarendon's workhorse Abdullah, who had been slugging across the field down after down, finally hit paydirt at the :22 mark in the second quarter on an 8-yard run for the Broncos first score.

The PAT was no good, and

Continued on page 6

## WTU customers meet in Abilene to discuss future electricity needs

ABILENE - Customers of West Texas Utilities Company want a mix of options to meet their future electricity needs, according to the results of the West Texas Town Meeting on Electricity Issues.

Customers also want WTU to include new alternatives for supplying electricity, and they are willing to pay more for these alternatives, especially energy efficiency programs and wind and solar generation.

The meeting was held Aug. 9-10 at Hardin-Simmons University in Abilene. The 253 participants represented a scientific random sample of the entire WTU service territory. The group participated in a "Deliberative Poll," a new process used to determine what the public would think about specific issues if given an opportunity to learn more about all sides of those issues. Participants were surveyed both at the time of recruitment and after the event.

WTU focused on the issue of how to meet the increasing demand for electricity in the future. WTU projects that the area will need an additional 150-250 megawatts of electricity sometime between the 1998 and 2001 time period. There are four basic options to meet this future need: 1)

increase efficiency of current energy resources through customer and company programs that would reduce the future need for additional electricity; 2) buy power and transport it into the area; 3) build a fossil fuel plant that uses natural gas or coal or 4) build renewable energy plants.

"We spent two full days in deep conversation with our customers," said WTU President Floyd Nickerson. "They learned a lot, but more important, we learned a lot about what values they place on the four options. We intend to incorporate our customers' views into the plan that we develop to meet our future electricity needs."

Participants in the town meeting discussed the advantages and disadvantages of each of these options in both large- and small-group

Continued on page two

## CC to host annual Professional Development Day for colleges

Clarendon College will host the annual Professional Development Day Saturday, Sept. 14, 1996, for the Higher Education Consortium of Texas and Oklahoma.

Members of the consortium include Amarillo College, Frank Phillips College, Oklahoma Panhandle State University, West Texas A&M University, Texas State Technical College, and Clarendon College.

Professional Development Day provides educational sessions for faculty, administration, and support staff. Subjects range from "The Virtual Classroom: Opening the Door to the Internet Classroom" to "Personal Characteristics of a Leader" to "Story Telling: A Tool for Teachers" to "Creative Computer Generated Presentation Graphics."

Staff from all consortium colleges and universities will be facilitating the 18 educational sessions, beginning at 10:45 a.m. in the CC Administration Building. Dr. Ken Jones, President of Lubbock Christian University will serve as keynote speaker.

For more information, call the college at 874-3571.

## Lions Club to hold Pancake Supper this Friday night

The Clarendon Lions Club will be holding its annual Pancake Supper next Friday, Sept. 13, at the Lions Hall beginning at 5 p.m., prior to the Broncos football game with Boys Ranch.

Tickets are \$4 for adults and \$3 for children 12 and under and can be gotten from any Lion, at the Enterprise, or at the door.



Tiger Cubs of Pack 437 had their first adventure session on Labor Day evening at Greenbelt Lake. The Tiger Cubs and their fathers who went canoeing were Christopher and Ron Herndon, Dalton and Danny Askew, and Nathan and Richard Gribble.

## Hedley CISD signs up for Internet service

Hedley CISD soon will be connecting to the Internet thanks to an agreement made by the board of trustees at a special meeting on Sept. 3, 1996.

The meeting was held at 7:30 p.m. in the Hedley School Cafeteria.

The contract with County Online of Memphis calls for the installation of two Internet connections for use by Hedley students. One line will be in the school library, and the other will be in the Computer Lab.

Hedley Superintendent Gene Sheets said, "There is an incredible amount of information and knowledge that the students will be able to access with this Internet connection."

# GTE to begin new phone services here next week

Effective Sept. 18, 1996, GTE will be bringing advanced technology phone service to Clarendon, making your telephone service more efficient, faster, and quieter.

Phone customers will hear a slightly different tone, and you'll have to dial all seven digits for local calls.

Unless you subscribe to GTE's optional Touch Call Service, pushbutton phones will place calls only if the phone's switch is on "pulse." Touch Call Service will allow you to place calls and use other optional services faster and easier.

GTE's new Calling Number ID (CNID) service is being offered in Clarendon along with a wide variety of other new services. CNID shows the incoming caller's number on a CNID unit — a phone or phone attachment with a display window — if the call originated in the local calling area. Certain phone attachments store the time, date, and phone numbers of calls.

CNID units are available at GTE Phone Marts and other stores specializing in communications equipment. An adjunct device which stores up to sixty calls can be rented from GTE. Customers may also purchase CNID units with varying storage capacities from GTE with prices ranging from \$44.95 to \$69.95.

"We're delighted to offer GTE customers these new services that deliver some of the most advanced technology of the modern telephone network into people's homes and small businesses," said Danny Ferguson, Area Manager - Customer Operations for GTE's Plains District. "We've found people appreciate having more control over their phone, such as knowing who's calling them before they answer the phone."

Other new services that will be available include:

Automatic Busy Redial: This service keeps trying a busy number and rings you back when your number and the called number are free.

Automatic Call Return: Stores the number of the last call you received and lets you return that call at your convenience even though the caller has hung up.

Call Block: Intercepts calls from up to twelve numbers you establish and informs those callers that their call is not being accepted.

Special Call Acceptance: Allows you to list up to twelve telephone numbers from which you want to receive calls. Other calls are routed to a recorded announcement that says you are not accepting calls.

Special Call Forwarding: Lets you decide which telephone numbers, up to twelve, get through to you when you are at another number.

VIP Alert: Identifies up to twelve important callers by the sound of the ring.

Call Tracing Service: Allows tracing of harassing, threatening, or obscene calls. By using the assigned code, the caller's number, as well as the date and time of the call, are sent automatically to GTE's Security Dept. in case further action is required.

The new services are in addition to SmartCall Services which include:

Call Waiting: Gives you a tone when a person is calling while you are on another call.

Cancel Call Waiting: Lets you cancel the call waiting feature any time you want to avoid call interruption.

Call Forwarding: Lets you forward your incoming calls to another local or long-distance number.

Speed Calling: Stores up to eight of the most often called or emergency numbers for quick dialing.

Three-Way Calling: Allows you to talk to two people in different locations at the same time — no matter who placed the call.

Another valuable service, named Anonymous Call Rejection, allows the customer to reject calls from any caller who

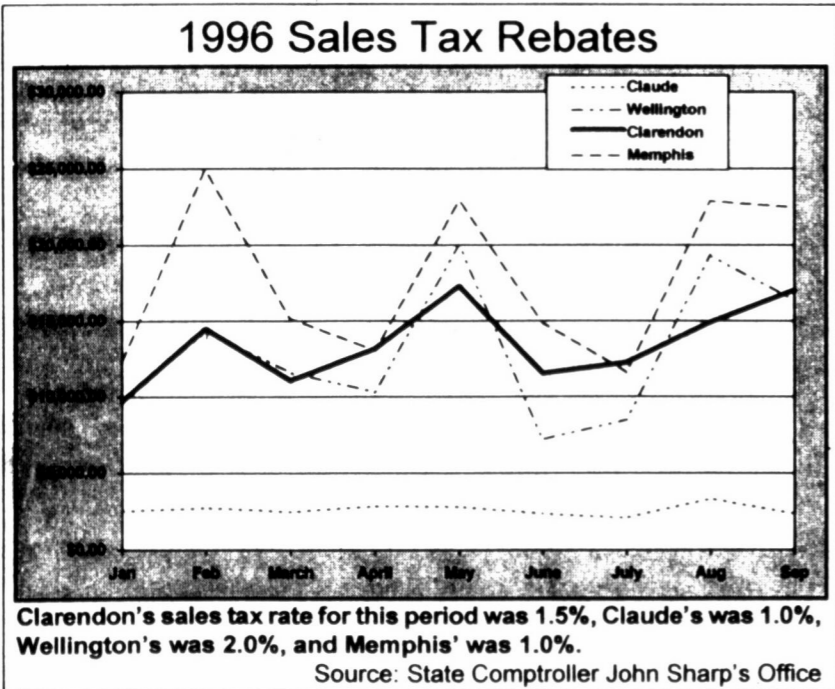
refuses to reveal their number and can be added to residence or business CNID for \$3.50 per month.

Per-call and per-line blocking options also are available.

SmartCall services are optional services available in most areas to most customers and will work on most calls to prefixes in your local calling area.

You will also be able to choose your long-distance provider for calls you make to locations outside of the GTE long-distance calling area. "1+" and "0+" calls made within your long-distance calling area are handled by GTE.

Residential customers with questions about these services should call toll-free to 1-800-483-4400, and business customers should call 1-800-483-5400.



## Sharp delivers sales tax rebates

AUSTIN — John Sharp, State Comptroller of Public Accounts, today issued a total of \$165.8 million in sales tax payments to 1,084 Texas cities and 114 counties and reported that the year-to-date returns are running about 9 percent ahead of the total for the first nine months of last year.

Local city sales tax rebates for September are \$150.8 million, 23.2 percent above the payments one year ago of \$122.4 million. Rebates of \$14.9 million to Texas counties reflect a 14.6 percent increase over the \$13 million payments of September 1995.

This month's payments include taxes collected on July sales and reported to the Comptroller in August by businesses filing monthly tax

returns. The city of Clarendon received a net payment of \$17,024.47 for this period, Hedley received \$399.53, and Howardwick received \$1,784.34.

Clarendon's rebate reflected a 117 percent increase over 1995's rebate, which is partly due to a ½-cent sales tax increase that went into effect last October.

Howardwick saw an increase of 4.74 percent, and Hedley's rebate increased 130.34 percent over this time in 1995.

Rebates in some nearby towns were as follows: Memphis, \$22,448.63; Wellington, \$16,352.04; and Claude, \$2,348.44.

Mon	2	77°	62°	-
Tues	3	87°	62°	0.01"
Wed	4	84°	63°	-
Thurs	5	84°	58°	-
Fri	6	84°	60°	-
Sat	7	86°	60°	0.73"
Sun	8	85°	60°	0.07"
Total Precipitation For August 0.81"				
Total Precipitation For Year 17.81"				

Off Campus	2
King Crossword	4
Community Menus	4
Southwest Outdoors	5
Classifieds	7
EIGHT PAGES OF LIVE LOCAL NEWS THAT AFFECTS YOU!	

## Girl Scout sign-up now under way

It's time for parents to re-register their daughters in Girl Scouts for the coming year. The cost is \$6.00 for national registration.

Girls won't want to miss out on the fun and activities, and Girl Scouting offers girls benefits that parents might not have even considered. In Girl Scouting, everything is directed toward stimulating the girl's interests and meeting her needs. Girl Scout activities help girls develop their fullest potential and become competent, resourceful women.

Parents are often curious why girls need an all girl organization. Many studies have shown that in mixed groups girls have fewer opportunities to participate and receive less adult attention than boys. Girl Scout program, on the other hand, is designed specifically for girls. Girls are encouraged to try new things, to become decision-makers and leaders.

## Locals do well at recent team sorting contest

Several current and past area residents traveled to Roaring Springs, Texas, to participate in the Roaring Springs Old Settlers Reunion Team Sorting contest on August 24.

There were 51 teams total with the top five teams going to the rodeo on Saturday night to find out who were the overall winners. The team of Linda Crump, Morris Crump, and Randy Crump placed first with the fastest time of the day of ten head out in 68.23 seconds in the first go and being the only team to sort one cow out in the second run.

The team of Marion Martino, Marty Martin, Randy Crump placed second with a time of 98.77 seconds on ten head. The team of Elwyn McCleskey, Morris Crump, Randy Crump, split third and fourth with the team of Shorly Martin, Bill Martin, and Ned Ward. These teams had eight head sorted in 120 seconds on first run only. Jill Elliott, Jack Funderburg, and Kelly Wayne Butler placed fifth with seven head sorted in 120 seconds on the first run only.

## Thunder Junction announces new hours

Officials with the Thunder Junction theme park announced new hours for the park this week. Chauncey Hommel says the Go-Kart track will be open from 10 a.m. to 10 p.m. on Saturdays and from 1 p.m. to 10 p.m. on Sundays. Groups and organizations can also reserve the park on weeknights.

They can take risks and learn from their mistakes in a supportive environment without the social pressures to conform to stereotyped expectations.

The Girl Scout program is developed around the needs and interests of girls, with these four program emphasis:

- Developing self potential
- Relating to others
- Developing values
- Contributing to society

To register for the coming year, contact your Girl Scout troop leader or call the council program center at 356-0096 or 1-800-687-4475.

All girls ages 5-17 are welcome. Fun, activities, new learning opportunities and much more await them.

## Cub Scouts holding bake sale for shirts

A bake sale will be held this Saturday, from 8 to 11 a.m. at B&R Thriftway to help raise money to purchase shirts for Clarendon's Cub Scouts.

Show your support for the Scouts by visiting this sale and buying something home-baked and delicious.

## Lady Broncos to travel to Plainview

The Lady Broncos Cross Country team will travel to Plainview Saturday for their first meet of the season. The varsity runners will race at 9 a.m. at the Kidsville Park in Plainview.

## Bronco Boosters to meet next Tuesday

The Bronco Boosters will meet next Tuesday, Sept. 17, 1996, at 7 p.m. in the field house at Bronco Stadium.

## Hedley Owls '96 football schedules

The 1996 football schedule for Hedley High School and Hedley Jr. High has been released.

Hedley High School			
Date	Team	Place	Time
9/13	Lefors	T	7:30
9/20	Miami	H	5:00
9/27	Patton Springs	T	7:30
10/4	Ft. Elliot	H	5:00
*****Homecoming*****			
*10/11	McLean	H	5:00*
10/18	Chillicothe	T	7:30
10/25	Vernon Northside	T	7:30
11/1	Harrold	T	7:30
11/8	Samnorwood	T	7:30
Hedley Junior High			
9/12	Lefors	H	6:00
9/19	Miami	T	6:00
9/27	Patton Springs	T	5:00
10/3	Samnorwood	T	5:00
10/10	McLean	T	6:00
10/17	Chillicothe	H	5:00
10/24	Vernon Northside	H	5:00
11/1	Harrold	T	5:00

## West Texas Utilities:

*Continued from page one*  
settings. They questioned experts representing differing viewpoints. One large group session included a discussion with representatives from the Public Utility Commission of Texas.

"The sample of customers was extremely representative of WTU's customer base," said Professor James Fishkin, chairman of the Government Department at the University of Texas at Austin and originator of the concept of the Deliberative Poll. "It was as if all of WTU's 187,000 customers were in the same room discussing these issues.

"The participants loved the process," Fishkin continued. "Seventy-one percent gave it a perfect 10 on a 10-point scale and another 22 percent gave it either a 9 or an 8. Only three people out of the 230 residential participants gave it a rating of 5 or less."

Participants indicated that WTU should select a mix of energy resources as the best approach to meet the future need rather than relying on a single option. Ninety percent of the respondents rated the importance of using a mix of resources as an 8, 9, or 10 on a 10-point scale.

"Customers in the residential sample clearly have multiple priorities," said Dr. Will Guild, research psychologist for the poll. "Before the Deliberative Poll," respondents tended to concentrate very strongly on meeting the need through renewable resources," Guild explained. "After the event, there was much more diversity about which options participants thought WTU should pursue. In particular, they placed increased emphasis on energy efficiency and buying wholesale power."

Support for wind and solar as a first-choice option went from 71 percent to 35 percent, while support for increased energy efficiency went up from 7 percent to 31 percent during the deliberations. Yet, Fishkin noted, support for wind and solar as one the top choices remained the highest of any option - 65 percent of the participants, after the deliberations, held this option as either their first or second choice. "These shifts are dramatic and statistically significant," Fishkin said. "The public thought about the issues, and they became more informed and more consistent in their views."

"Participants want WTU to explore alternative sources of electricity such as wind and solar power, and they are willing to pay more to have those resources as a part of the energy mix," Guild said. "For example, the average amount that participants were willing to pay was \$7.83 a month, and 50 percent said that they would be willing to pay at least \$5 or more."

The results of the Deliberative Poll will be evaluated as a part of the integrated resource plan that WTU plans to file with the Public Utility Commission of Texas this fall. While the ultimate responsibility for WTU's resource plan falls on the company, the results of the poll send some very clear signals regarding customer preferences, Nickerson said.

"Through this process we have reached a new level of partnership with our customers," Nickerson said. "We plan to continue the dialogue that has been established with these participants by communicating with them every step of the way throughout the filing of WTU's integrated resource plan."

## Hamburger feed set

The Al Morah Shrine Club will have a hamburger appreciation supper for those who helped with the July 4 BBQ next Monday at 7 p.m. at the Masonic Lodge Hall.



## ENRICH YOUR WORLD!



High School students from Europe, Scandinavia, Russia, Asia & So. America arriving in August. You provide a bed, food and love. Student has insurance spending money and a culture to share. All students and families fully supported by competent Area Representatives. CALL TODAY: 1-800-SIBLING American Intercultural Student Exchange

# Off Campus

By Scott Elliott

The day has come and gone, but the labor part asked.

As a crewcut kid, one of my favorite TV series was "The Dobbie Gillis Show," starring a kind of saucy young fellow named Dwayne Hickman. Dobbie's best friend was a beatnik named Maynard Krebs, played by Bob Denver, later of "Gilligan's Island" fame.

Two things stood out about black-clad Maynard. First was his gait - way ahead of its time. Second, every time the word "work" was mentioned, Maynard just about had a heart attack - started stuttering around, mumbling "wa-wa-work" in a panic-stricken, high-pitched voice.

Yeah, work can get to us sometimes, and the reality is that we spend more of our waking hours on the job than just about any other place. Work can be especially troublesome when we don't like what we're doing.

As a young journalist, I once interviewed a tall drink of water named Joe Dean, who is the athletic director at Louisiana State University and a former All-American basketball player for the Bayou Bengals. During our session, Dean expounded on his philosophies on work by telling me a story about a youngster who once attended his annual summer basketball camp.

Dean said the youngster just kind of moped around for a couple of days, not really participating in the drills or scrimmage games with any fervor. This kid was just about the worst ballplayer at camp. No, he was the worst. Finally, Dean put his arm around the runny-nosed boy, hauled him off to the side and said, "Johnny, what's the matter, son?"

After some coaxing, the boy admitted that he really didn't want to be at the camp, but had come because his father was obsessed with him becoming a star basketball player.

"Well, Johnny," Dean asked, "what do YOU really like to do?"

"Play the trumpet," the boy answered, enthusiastically.

"So, you really like to play the trumpet, huh?" Dean

asked.

"Yeah, I really do," the kid said, even more excitedly. "Well, Johnny," Dean countered, "there's nothing wrong with that. Nothing wrong with that at all. In fact, that's just wonderful. You go home and play the trumpet. Play in the school band. Play in concerts. Play in parades. Just remember one thing."

"What's that?" the boy quizzed.

"Be the dog gone best trumpet player you can possibly be," Dean said.

I guess we've all heard a similar version of that story. My father, for instance, told me the same thing with a little bit different spin. Dad used to say, "Be a ditch-digger if you want, just make sure to try to be the best ditch-digger in the world."

You know, leadership can be a lonely endeavor. One not only has the personal responsibility of being the best he or she can be, but is also accountable for promoting optimum productivity throughout the organization.

In the final analysis, though, productivity is something only the individual can achieve for him- or herself. Pride is very much an intrinsic quality. Perhaps we can be motivated by others. Heck, we can even be threatened by others. But we can only be true to ourselves.

Others may change our behaviors through rules, regulations, and policies, but the individual is the only person who can really change his or her attitude.

Labor Day annually provides us with special occasion to take self-inventory about our work. Because we invest so much of our time in work, it is one of our most prominent opportunities to make a statement about ourselves.

Personally, I think we approach self-actualization in our work when our greatest critic is the one in the mirror.

I know in my case that muffed guy is just on me all the dad gum time.

Dr. Scott Elliott is the president of Clarendon College.

## CC offering many continuing education classes

### Basic Photography

Learn to take better photographs with Clarendon College's Basic Photography Course. Offered as a Continuing Education course, the class only costs \$15 and will meet on Tuesdays from 7-9 p.m. in the Administration Building. Class starts on Sept. 17 and ends Oct. 15.

Christi Ross, CC Coordinator of Marketing and Public Information, will teach the course. Basic Photography is for people of all ages. Students are asked to provide a 35 mm camera and film.

### Old Testament Study

Clarendon College will offer Old Testament Bible Study as a continuing education course this semester. Taught by Bible scholar Don Stone, the class is offered at no cost.

The class will meet every Thursday afternoon from 4-5 p.m., beginning Thursday, Sept. 12, 1996. The first class will meet in the Learning Resources Center (library). Following classes will meet in room 106 of the CC Administration Building.

Open to the public, this informal

## College library has new name

Beginning this semester, the Clarendon College Library has a new name - The Learning Resource Center.

According to Jewel Austin, Director of the Learning Resource Center, the name change is welcomed with open arms. "With the addition of the Harrington inter-library loan and Internet services, we are much more than the stereotypical library," Austin said.

As a member of the Harrington Library System, students, faculty, and community members are able to request books from school and public libraries.

The CC Learning Resource Center is staffed by Austin, Jo Shaller, and Annis Stavenhagen and is open to the public. The Learning Resource Center is open Monday through Thursday, from 8 a.m. to 10 p.m., Friday from 8 a.m. to 4 p.m. and Saturday and Sunday from 1 to 5 p.m.

course is sponsored by the Learning Resource Center. The class will begin with the study of Psalms 107 and 29.

### King Arthur's Court Study

Let Merlin of Cornwall take you back in time to the mystical era of King Arthur's Camelot. This fun, in-depth study of King Arthur and his Knights of the Roundtable will begin

in Clarendon College's Learning Resource Center (library) on Thurs., Oct. 1, 1996, at 3 p.m.

This seven-week course ends November 12 and is free of charge to anyone who is interested in kings, knights, and knaves.

For more information about these continuing education courses, call the Clarendon College at 874-3571.

## Hartzog Angus Cattle

Registered Bulls      Registered Hftrs  
Yearlings & 2 Year Olds      Open & 1st Calf

Roy Hartzog  
Days: (806) 825-2711  
Nights: (806) 825-2700

## FIRST BANK & TRUST

OF CLARENDON

Proudly presents...

### Angela Hollowell's

# WESTERN PHOTOGRAPHY

Also featuring pictures of cowboys and Western images from other area ranches

Available for viewing all next week, Sept. 16-20, in the lobby of First Bank & Trust, your Full Service bank.

## The Clarendon Enterprise

Roger A. Estlack, Publisher & Editor  
Cheryl Johnson, Office Director

The Clarendon Enterprise (USPS 947040, ISSN 1088-8888) is published weekly by Roger A. Estlack at 105 S. Kearney, Clarendon, Texas 79226-1110. Periodicals postage paid at Clarendon, Texas 79226-1110.

This paper's first duty is to print all the news that is fit to print honestly and fairly to all unbiased by any consideration even including its own editorial opinion.

Any erroneous reflection upon the character, standing, or reputation of any person, firm, or corporation which may occur in the columns of The Clarendon Enterprise will be gladly corrected upon being brought to the attention of the management.

NOTICE: Open Display rates are \$4 per SAU column inch. Classified Ads are \$6 for the first 15 words and 10¢ per word for each additional word (Boxes or special typography are extra.). A charge of \$7 is made on Notes of Thanks of average length. Engagement, anniversary, and birth announcements are \$10 each. Pictures submitted for publication should be picked up within ten days after publication.

DEADLINE for news articles is Monday at noon. Pictures should be submitted by Friday noon. Deadlines may be altered for holidays and special issues.

SUBSCRIPTIONS are available for \$18.50 inside Donley County and \$22.50 out of county. POSTMASTER: Send address changes to The Clarendon Enterprise, P.O. Box 1110, Clarendon, TX 79226-1110.

The Clarendon Enterprise represents the combined publication of The Donley County Leader (est. 1929) and The Clarendon News (est. 1878, revived in 1909 and 1989) which were purchased in 1974 by The Clarendon Press (est. 1972).

**MEMBER 1996**

**TEXAS PRESS ASSOCIATION**

Panhandle Press Association Member

## Sheep referendum announced

On October 1, 1996, the Department of Agriculture will conduct a second referendum on the sheep and wool promotion, research, education, and information order. This referendum is being carried out under the authority of the sheep promotion, research, and information act of 1994. The order will go into effect if it is approved in this referendum by sheep producers and feeders and importers of sheep and sheep products. If the order is approved, it will become final and a nationwide program will go into effect to collect assessments from the sheep and wool industry to carry out research and promotion activities to benefit the industry. A referendum on this same issue was conducted on February 6, 1996, but the Secretary determined that the results were invalid because the procedures were applied incorrectly and inconsistently.

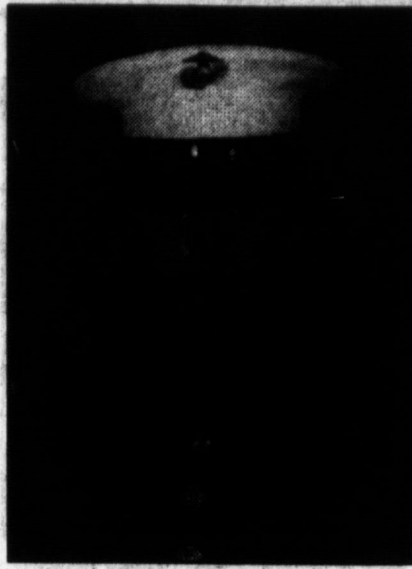
In-person voting will take place in the County CES Offices on October 1, 1996. Voters who wish to vote absentee may request an absentee ballot from the County CES Office that serves the voter's residence or, if the voter is a business entity, the office that serves the entity's main office or headquarters. Requests for absentee ballot from

the County CES Office that serves the voter's residence or, if the voter is a business entity, the office that serves the entity's main office or headquarters. Requests for absentee ballots may be made from August 26 through September 17, 1996. CES Offices will only fill requests from August 26 through September 17, 1996. Completed absentee ballots must be received in the County CES Office by close of business on September 27, 1996. Ballots will be counted on October 16, 1996.

To be eligible to vote in this referendum, you must have been a "person" engaged in the production, feeding, or importation of sheep or sheep products during calendar year 1994. In this referendum, the term "person" means an individual or a legal entity (for example, a corporation, partnership, estate, etc.), or a group of individuals with a joint ownership interest in sheep (for example, a family, a cooperative, an association, etc.)

If approved, the program would be funded by a mandatory assessment on domestic producers, feeders, and exporters of live sheep and greasy wool of 1 cent per pound on live sheep sold and 2 cents per pound on greasy wool sold. Importers would be assessed 1 cent per pound on live sheep, the equivalent of 1 cent per pound of live sheep for sheep products as well as 2 cents per pound of degreased wool or the equivalent of degreased wool for wool and wool products.

Questions about voting procedures should be made to the County CES Office. Any other questions about the referendum should be referred to Kenneth R. Payne at the Agricultural Marketing Service, Washington, D.C., at 1-888-265-8110.



PFC Aaron Shawn Moore

### S. Moore completes Marine basic training

PFC Shawn Moore has completed eleven weeks of Marine Boot Camp at San Diego, California and Camp Pendleton, California, where he earned the sharpshooter medal for his marksmanship ability. He is currently working out of the Amarillo and Dumas recruiting offices. He will report to Camp Pendleton on September 2 for an extensive 24 days of hard combat training.

Shawn is the son of former Clarendon residents, Sherry (Shaw) and Terry Moore now of Spearman. He is the grandson of H.C. and Joan Shaw, Jr., the late L.P. "Bud" Moore, both of Clarendon, and Mr. and Mrs. (Billie Jean) Ronald Roberts of Streetman, Texas. He has one sister, Billie Joanne (Moore) Pierson of Farwell, Texas.

Shawn is a 1995 graduate of Spearman High School where he was in the top 10 percent of his graduating class.

### The Lions Tale

By Gene Alderson

The Clarendon Lions Club held its regular meeting at noon on Tuesday, September 10, 1996. Twenty members, one guest, and pianist Clayton Farris enjoyed a delicious chicken fried steak dinner before the meeting was called to order by Boss Lion Morris. Following the regular opening ceremony, plans were finalized for the pancake supper on Friday at 5:00 p.m. at the Lions Hall.

Program Chairman Smith introduced Mary Green, who is the head librarian at Clarendon City/County Library. She brought an interesting and informative program which included a brief history of the library which has occupied six different locations during its existence.

Following the program, the meeting was adjourned.

**Saye's**  
On Clarendon's Main Street  
**Has Maroon Zip Ties**  
For \$13.95 plus tax

Several designs to choose from

ZIP TIE U.S.A. PARAMOUNT, CA

1. To open tie, grab center of loop with one hand & hold tie knot with other hand, then pull evenly until the tie is fully extended.
2. Place tie around neck. Hold the inner part firmly & slide tie knot upward until it is in place.

Go Colts!  
Go Broncos!

**PETTY'S TEXACO**  
is now putting on  
mufflers and  
exhaust systems

874-3964

**NORPP**  
Insurance Agency, Inc.

20% Homeowner Discount!  
15% Auto Insurance Discount!

**We Have A Policy That Will Fit Your Needs!**

Compare Our Prices To Your Current Rates!

Call Us Anytime! 874-3521

**Clarendon Lions Club Annual Pancake Supper**

Friday, Sept. 13, 1996, at the Lions Hall  
Serving starts at 5 p.m.

Children 12 & Under: \$3  
Adults: \$4

Tickets available from any Lion, at the *Enterprise*, or at the door.  
Proceeds go to Lions Sight First Campaign

**The Clarendon Outpost**

Try Our Delicious **DELI SPECIALS!**

FRIED CHICKEN AT ITS BEST

**HOMESTYLE FRIED CHICKEN**

**8 Piece \$6.99**  
Chicken Bucket  
2 wings, 2 breasts, 2 thighs, 2 legs

**SLUSH PUPPIE**  
9 oz Any Flavor  
**19¢**

**Root Beer Floats**  
Cokes, Dr Pepper, etc.  
**99¢**

MUST HAVE COUPON

Call 874-5203

**FREE CHOCOLATE SUNDAE!**  
WITH A \$2.99 DELI PURCHASE ON SUNDAY, SEPT. 15, 1996

MUST HAVE COUPON

**Outpost Movies** Featuring:

**Sgt. Bilko**

- "Wizard of Oz"
- "Halloween"
- "Up Close & Personal"
- "For the Moment"
- "The Truth About Cats and Dogs"
- "Soul of the Game"
- "Gator Face"
- August
- "Sometimes They Come Back Again"

Compare Health Mart Brand To The National Brand And Save!

**EXTRA STRENGTH PAIN RELIEVER**  
WITHOUT ASPIRIN  
CAPLETS, 500 MG EACH

Extra Strength Pain Reliever w/o Aspirin  
• 100s  
• Compare to Tylenol

**Ibuprofen TABLETS**  
UNCOATED TABLETS 200 MG EACH

**Ibuprofen Tablets**  
• 100s  
• Compare to Advil

**STACK UP THE SAVINGS!**  
**HEALTH MART BRAND BUY ONE GET ONE for a PENNY!**

**Oral Solution Anti-Diarrheal**  
• 4 oz  
• Compare to Imodium

**Antiseptic Mouthwash**  
• 32 oz  
• Compare to Listerine

**Ferrous Sulfate**  
• 100s  
• Compare and Save

**Suphedrine Tablets**  
• 100s  
• Compare to Sudafed

**Garlic Oil**  
• 100s  
• Compare and Save

**All-Purpose Multi-Vitamin & Mineral Tablets**  
• 100s  
• Compare and Save

Store Hours  
6 a.m. to 12 a.m.  
7 Days a Week

Pharmacy Hours:  
9 a.m. to 6 p.m. Weekdays  
9 a.m. to 1 p.m. Saturday

**PHARMACY 874-5202**

Health Mart is Health Smart!  
619 W. 2nd Street  
Radio Shack: 874-5081 (Hwy 287 & FM 2142)  
Senior Citizen Discount!

**• SATISFACTION GUARANTEED •**

**Obituaries**

Graveside service for Terry Lynn Bain, age 39, were held at 1:00 p.m. on Friday, August 30, 1996, in Citizens Cemetery with Rev. Clarence Jones, Pastor of Buchanan Street Chapel in Amarillo, officiating. Memorial services were held at 1:00 p.m. on Wednesday, August 28, 1996, in Griffin Chapel in Hobbs, New Mexico, with Rev. Clarence Jones, officiating. Interment was in Citizens Cemetery with arrangements under the direction of Robertson Funeral Directors, Inc.

Mr. Bain died on Monday morning, August 26, 1996, at his residence in Hobbs, New Mexico, following a sudden illness. He was born May 24, 1957, in Amarillo and was a graduate of Amarillo High School. He had been a resident of Odessa before moving to Hobbs seven years ago. He was the tool manager and a salesman for Republic Supply Company. He was a member of the Memorial Baptist Church in Dallas.

Survivors include his parents, Buster and Frankie Bain of Odessa; two sons, Jeremy Bain and Jerrod Bain both of May, Texas; one sister, Jacque Lopez of Duncanville; and two brothers, Phil Bain of Atlanta, Georgia, and Regan Bail of Arlington.

Casket bearers were Ricky Jones, Steve Croft, Bobby Johnson, Dewey Wilson, Barry Lopez, and Doug Sisk.

**Cub Scout meeting set for September 16**

The monthly pack meeting of Cub Scout Pack 437 will be held at the First United Methodist Church on Monday, September 16, at 7:00 p.m. All Cub Scouts, their parents, grandparents, and friends are invited and encouraged to attend.

The den with the most present will be awarded the attendance trophy. The den will keep the trophy for one month, and then at the next pack meeting they will bring it back for the den who has the most attendance at that time.

At this pack meeting, all Bobcats will have a special ceremony to receive their pins. The Webelos Den will have the opening ceremony.

**Clarendon PCS office to receive block grant funds**

Panhandle Community Services will be receiving Community Services block Grant Funds from the Texas Department of Housing and Community Affairs, Austin, Texas, beginning January 1, 1997.

A meeting will be held at Panhandle Community Services, 416 South Kearney, Clarendon, on Friday, September 20, 1996, beginning at 4:00 p.m.

Such meeting is to provide information regarding proposed services to provide through the use of such funds and seek community input.

The public is invited. Comments will be welcome.

Questions regarding this matter can be directed to: Robbie Hill or Carlene Hollar, Panhandle Community Services, Clarendon Center, 416 South Kearney, Clarendon, (806) 874-2573.

**Immunization Clinic offered in Clarendon**

An Immunization Clinic offering vaccines that give protection against several childhood diseases will be held September 17 at the Texas Department of Health office located in the Medical Center Nursing Home on Highway 70 North. The clinic will be offered from 10:00 until 12:00 a.m. and 1:00 until 4:00 p.m.

The Texas Department of Health is charging money to help with the cost of keeping the clinic open. The amount of money charged will be based on family income and size and the ability to pay.

**Ellis-Long announce engagement**

The parents of Shelli Kay Ellis and Robert Howard Long would like to announce the upcoming marriage of their children on October 5, 1996.

Shelli is the daughter of Frankie and Cindy Ellis of Claude and the granddaughter of Mr. and Mrs. E.W. Anglin and Mr. and Mrs. Bob Ellis, both of Clarendon.

Robert is the son of Roger Long of Raton, New Mexico, and Pattie Gilbert of Hedley and the grandson of Mr. and Mrs. Wilson Stevens of Hedley and Mr. and Mrs. C.H. Long of Raton, New Mexico.

Shelli graduated from West Texas A&M University in 1994 with a degree in Elementary Education; majoring in reading and minoring in health. Shelli is employed by Windham School System in Dalhart.

Robert attended Clarendon Col-



**Shelli Ellis and Robert Long** lege in the Ranch and Feedlot Operations. He is now employed by Texas Beef Producers in Dumas.

**Homemakers met recently**

The Extension Homemakers Club met on Wednesday afternoon the home of Anita Mooring. There were seven members and one guest present.

The roll was called and each one answered with a new recipe that they had tried this summer. A thank you note was read from Drew Jeffers for the scholarship he had received from the club.

Jeanene Sinclair gave a program on water conservation. She told of many ways to conserve water in the home. It reminded the club members of how precious our water really is.

The next meeting will be held in Evelyn Mann's home.

**Hedley Menus**

**Hedley School - Sept. 16-20**

**Breakfast**

Mon: Sausage and eggs, biscuits, cereal, milk/juice, graham crackers

Tues: Bacon, toast, cereal, graham crackers, milk/juice

Wed: Pancakes, bacon, cereal, milk/juice, graham crackers

Thur: Ham and egg burrito, cereal, graham crackers, milk/juice

Fri: Donuts, juice, cereal, milk, graham crackers

**Lunch**

Mon: Lasagna, creamed potatoes, mixed veggies, salad/fruit, cake, milk

Tues: Hamburger steak, oven fries, green beans, salad/fruit, rolls/Jell-O, milk

Wed: Beef enchiladas, Mexican rice, beans, salad/fruit, cookies, milk

Thur: Oven fried chicken, cheese potatoes, spinach, salad/fruit, rolls, milk

Fri: Frito chili pie, ranch beans, corn, salad/fruit, apple cobbles, milk

**Hedley Senior Citizens September 16-20**

Mon: Chicken and dumplings, steamed cabbage, apple slaw, cake, corn muffin, milk, tea, coffee

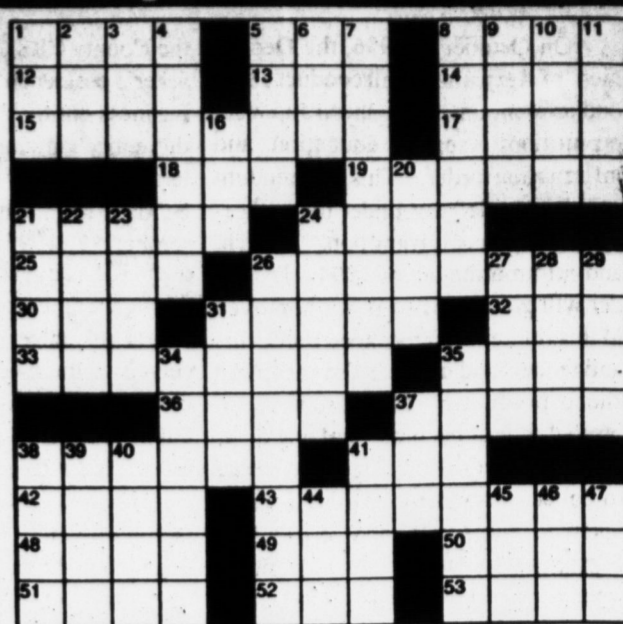
Tues: Beef stew with peas, carrots, tomatoes, potatoes, onions, celery, macaroni salad, sliced peaches, corn muffin, milk, tea, coffee

Wed: Steak and gravy, baked potato, green beans, orange Jell-O with carrots and pineapple, butterscotch pudding, roll, milk, tea, coffee

Thur: Pinto beans and ham, French fries, tossed salad, cherry cobbler, corn muffin, milk, tea, coffee

Fri: Turkey and dressing, giblet gravy, green beans, corn, fruit salad, cookies, roll, milk, tea, coffee

**King Crossword**



- ACROSS
- 1 Enthusiastic, plus
- 5 Cleo's slayer
- 8 Where the Vikings landed?
- 12 Office silhouette?
- 13 Kids' card game
- 14 Lotion additive
- 15 Fence stake
- 17 Arrive
- 18 Festive
- 19 Alphabetized, perhaps
- 21 House coat?
- 24 Nevada city
- 25 Automaker Ransom Eli
- 26 Honor with a song
- 30 Movie martial-arts maven
- 31 Ukrainians, e.g.
- 32 Screen cowboy Tom
- 33 Relief pitcher?
- 35 Musical Home
- 36 Near-black
- 37 Very close, as a friend
- 38 Cheese and cracker, e.g.
- 41 St. Bernard's burden
- 42 Eager
- 43 Traitor
- 48 Rock musician Townshend
- 49 Previous to
- 50 "— go brag!"
- 51 Juror.

- theoretically
- 10 Where all roads lead
- 11 Progeny
- 16 Perched
- 20 Wallet fill
- 21 Survey
- 22 Sheltered
- 23 Same as before
- 24 Rarin' to go
- 26 Drooled
- 27 Spy Aldrich
- 28 Pebbles' pet
- 29 Pre-diploma hurdle
- 31 Child's play
- 34 Ass
- 35 Lumberjack
- 37 Quilters' get-together
- 38 Yokum's creator
- 39 "The Morning Watch" writer
- 40 Pay heed
- 41 Recognized
- 44 Mound stat.
- 45 "You Lonesome Tonight?"
- 46 Cacophony
- 47 This clue, appropriately

**Clarendon Menus**

**Clarendon School September 16-20**

**Breakfast**

Monday: Hot oats, toast, juice, milk

Tuesday: Pancakes, juice, milk

Wednesday: Eggs, biscuits, juice, milk

Thursday: Pancakes, juice, milk

Friday: Cinnamon rolls, milk

**Lunch**

Mon: Pizza, corn, salad, fruit, milk

Tues: Tuna sandwiches, carrot sticks, fresh fruit, potato chips, milk

Wed: Steakfingers with gravy, hot rolls, green beans, cream potatoes, cake, milk

Thur: Turkey and noodles, hot rolls, green beans, fruit, fortune cookie, milk

Fri: Barbecue roast beef burgers, French fries, pickle spear, fruit cobbler, milk

**Donley County Senior Citizens September 16-20**

Mon: Charbroil steak with gravy, parsley potatoes, tosed salad, cantaloupe, dinner roll, coffee, tea, lowfat milk

Tues: Chicken and vegetable pie, fried squash, creamy apple salad, butterscotch pudding with topping, bread, coffee, tea, lowfat milk

Wed: Grilled chicken fried steak, black-eyed peas, carrot copper perniees, tropical apple crunch, wheat roll, coffee, tea, lowfat milk

Thur: Oven fried chicken, carrots, mixed fruit, coconut cream pie, bread, coffee, tea, lowfat milk

Fri: Butter beans with ham, potato wedges, spinach salad, peaches, combread, coffee, tea, lowfat milk

**Howells' Chili House**  
874-3391

**Vacation!!!**

We will be closed Friday  
Sept 13  
and will be back on Tuesday  
Sept 24

**Bronco Bucks**  
available for one day only at

*The Hook*

On Friday, September 13,  
everything you purchase  
will be discounted

10-50% with  
your draw of  
Bronco Bucks!



Offer void on in-house charges.

Downtown Clarendon • 874-3335  
Mon-Fri 9:00-5:30 and Sat 10:00-5:00 • Visa/MC/Discover

**BETTER SERVICE FOR YOUR HEARING AID...**



Gary Wormsbaker  
TX Lic #50247

...MEANS BETTER HEARING FOR YOU.

**Ask For Free Hearing Test**

Be sure to visit our next Service Center.

Donley County Senior Citizens  
104 E. 4th Street  
Clarendon  
September 19, 1996  
10:00 a.m. - 12:00 noon



27 B Medical Drive  
Amarillo, Texas  
1-800-281-8961  
352-8961

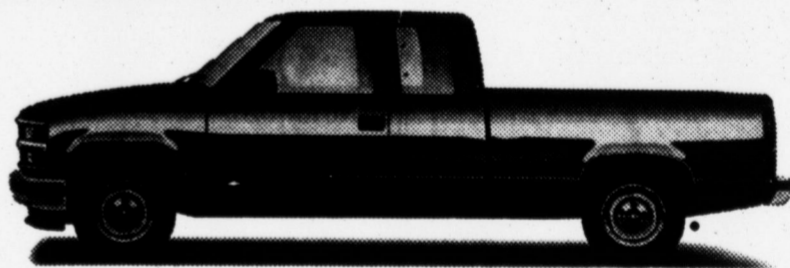
**UNBEATABLE VALUES**

We have a large selection of '96 vehicles still in stock for you to choose from including these unbeatable values...



Get  
\$1,000 Cash Back  
on this '96 Monte Carlo!!!

This is a great truck  
for the farm or  
for a night on the town.



Our '97 vehicles are arriving daily. Come by and see the new line of cars and trucks.

**Chamberlain**  
MOTOR COMPANY

Buick • Oldsmobile • Chevrolet • Geo • Cadillac • GMC Trucks  
874-3527 • 1-800-692-4088 HWY 287, East • Clarendon, TX

**Hungr-Buster Combo**

**\$2.59**

On Sale  
September 9-29, 1996.

Now for a limited time,  
get our delicious Hungr-Buster Combo  
for just \$2.59! That's our 1/4-lb. pure beef burger  
topped with the works, an order of crisp fries  
and cold soft drink. All for only \$2.59!



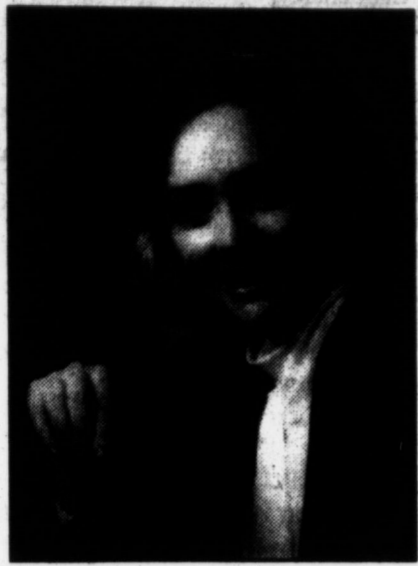
Offer good at participating Dairy Queen stores. ©Reg. U.S. Pat. & Tm Off. Am. D.Q. Corp. \*Tm. Tx. D.Q. Corp. †Pre-cooked weight.

## Coyote Den to host autograph party for noted romance author

Jodi Thomas, world famous romance writer, will be at the Coyote Den Bookstore on "lucky" Friday, September 13, to kick off the release of her latest book, *Texas Love Song*.

Jodi has been writing for over a decade, each of her books centering on history, romance, and men of honor. Two time Rita Award winner, Jodi is not stranger to Clarendon, having chosen "Old Saints' Roost" for the setting of her previous book, *Forever In Texas*.

Come out and meet Jodi from 4-6 p.m. on September 13, at the Coyote Den Bookstore on east Hwy. 287, Helen Randall, owner of the Den, will have *Texas Love Song* as well as many of Jodi's earlier books on hand.



Jodi Thomas

## Donley County Senior Citizen News

Plans are being made for the Seniors to take a van to the Tri-State Fair. Seniors interested in going with the group can call the Senior Citizens Center for more information.

The Amarillo Symphony Guild will present *Symphony Backstage* on Thursday, September 19, at the Amarillo Civic Center Auditorium. Dylana Jenson will be featured playing the violin. The *Symphony Backstage* is a chance to meet the music director and the musicians of the Amarillo Symphony. A member of the orchestra will demonstrate his instrument, and then the audience will be invited to attend an open *Symphony rehearsal*. Our Seniors plan to take the van to this event. There are still seats available on the van. Call the Donley County Senior Citizens Center at 874-2665 for more information. This event is free.

The Donley County Senior Citizens benefit garage sale will be held here at the Center on Saturday, October 5, from 8 a.m. until 4 p.m. The garage sale committee is still accepting donations of new and used items. Cash donations are greatly appreciated. Arrangements for pick up of garage sale items can be made by calling the Center. For more information or to donate garage sale items, call the Senior Citizens Center at 874-2665.

The Saints' Roost Jamboree will be held September 13, at the Bairfield Building. Make plans to attend to hear the great music and eat at the Senior Citizens Concession Stand.

The concession stand serves hot barbecue sandwiches, chips, homemade pie, and drinks. These concessions are available before the music starts and during the program. All proceeds from the concession stand benefit the nutrition program of the Donley County Senior Citizens.

### Reminders:

Mon., Sept. 16: Senior Citizens Dance Club, Line Dance Practice, 6 p.m. Dance Club, 7-9 p.m.  
 Tues., Sept. 17: Blood Pressure Clinic, 10:30-noon, by Panhandle Health of Clarendon  
 Thur., Sept. 19: Hearing Aid Clinic, 10:30-noon, by Golden Spread Hearing of Amarillo



Billie Shaffer and Helena Cateo are shown with the castle they built at the Senior Citizens from a 3-D puzzle.

Don't miss another exciting issue of *The Clarendon Enterprise*.  
 Subscribe today!

## Southwest Outdoors

by Mel Phillips

### "Boo of the Week"

PLAYA PETE says: "Why did the Texas Parks and Wildlife Department decide to lease 1,000,000 acres of land for the 1996 dove season without including the Texas Panhandle or South Plains?" According to the press release from TPW, all one-million acres are located downstate and not a single acre of newly leased land was provided for the hunters of our region.

The following statement by Kirby Brown, director of public hunts, rings a sour note when the kids in our region are again neglected by powerful bureaucrats of TP and W: "We want folks to be able to pick up their kids after school, have a good quality hunting experience and be home in time for supper—possibly bring home supper, in fact—and still have time to do homework."

### "Buzzin' the Bass at Lake Greenbelt!"

On a more pleasant note, congratulations to Jim Braswell who won last Saturday's Fun Fishing Tournament at Lake Greenbelt. Forty-two contestants from fourteen towns endured the heavy rain showers in pursuit of keeper largemouth bass.

Braswell bested the field with a three-bass limit that tipped the scales at 6.65 lbs. For his winning efforts he pocketed \$420 and a trophy sponsored by Parker Boats. His secret bait was a gold-bladed Hart Throb buzzbait worked on the inside edge of the flooded moss beds. "I caught my first two bass right at sunrise, and spent the next four hours working the shallow water before catching that last keeper," disclosed a happy Braswell.

Second place and \$210 went to Amarillo Fireman Mike Kelley, who retrieved a black buzzbait over the shallow moss and caught three bass that weighed 6.55 lbs. "The bass were shallow all day but my secret was making repeated casts, often six casts at the same pocket, until a bass would get mad enough to take my lure," confided Kelley during the weigh-in ceremonies.

Third place prize money of \$105 went to Johnny Littlejohn, president of the Golden Spread BassMasters, who collected a nice three-bass limit that weighed 5.92 lbs. Other top finishers included Jack Richardson, Ron Smyer of Amarillo, Borger's Jerry Chatwell, Tim Taylor and Don Midgett of Amarillo, and Bruce Britten of Groom. All bass were successfully released after the weigh-in.

### "New" Lake Meredith

The next and last "open" bass tournament of 1996 will be held at "new" Lake Meredith on Saturday morning, September 21. Official fishing hours are from 7:00 a.m. until 12 noon. Registration at Cedar Canyon opens at 6:00 a.m., and the entry fee is \$25.

Lake Meredith has risen another two feet since September 1st, (that's a total of nine feet since June) and the largemouth bass are busy chasing shad in this new water. Buzzbaits, spinnerbaits, and worms are excellent lures to use in the 4,000 acres of "new" Lake Meredith.

Till next week, Good Hunting and Good Fishing....

## Saints' Roost Jamboree set for this weekend

The Saints' Roost Jamboree will be held September 14, 1996, at the Bairfield Activity Center on the Clarendon College Campus in Clarendon. The program is scheduled

to begin at 7:00 p.m. and admission is free. The Jamboree, held the second Saturday of each month, provides musical entertainment by area and local musicians who play and sing gospel, blue grass, and country/western music.

The Jamboree is sponsored by the Clarendon Chamber of Commerce and is a family event. People of all ages are encouraged to attend.

Numerous door prizes will be awarded. Those who attend will receive a numbered ticket which will be randomly drawn throughout the evening to select prize winners.

If you like good music and fellowship, mark September 14 on your calendar. Come join the fun at the Saints' Roost Jamboree in Clarendon.

## Department of Health office still offering vaccines

The Texas Department of Health, located inside of the Medical Center Nursing Home, will continue to give immunization to any age children or adults. An Immunization Clinic will be held on September 17. For more information or to schedule an appointment, please call 874-3211.

**Chambless**  
**Heating & Air Conditioning**  
**856-5902**  
 TAGLBO161748

**Lucky Friday 13th**  
**Jodi Thomas will be in Clarendon for the first autograph party for her latest book, *Texas Love Song*.**  
**Come by and see her on Friday, Sept. 13, 1996, 4-6 p.m. at Coyote Den Bookstore**  
**401 E. Hwy 287**

## Furniture Junction

1410 West 15th Street, Amarillo • (806) 342-9035

New store in Amarillo owned by Rita Casteel, formerly of Clarendon

### Featuring:

Antiques, nice pre-owned furniture, collectibles, silk floral arrangements, and good prices!

## The Brass Lantern

Highway 70 North - 5 miles • 874-2838  
 Hours: Mon-Fri 5 pm - 10 pm • Sat. 7 am-2 pm & 5 pm-10 pm  
 Sun. 7 am-3 pm

### NEW

**THURSDAY NIGHT BUFFET:** This week featuring Italian food including assorted pasta and sauces, baked Florentine shells, ravioli, breadsticks, salad bar, and anti-pasto. \$6.95

### FRIDAY NIGHT BUFFET:

This Friday enjoy catfish and shrimp special.

Come out and join us for breakfast on Saturday and Sunday. We will serve our breakfast buffet filled with a variety of breakfast food, including our new addition of breakfast burritos and mini omelets, from 7:00-10:30 a.m.

Our Sunday Buffet is served from 11:00 a.m. until 2:30 p.m.

Remember, we will be closed on Mondays during the fall and winter months!

Be sure to watch this ad every week for our buffet specials!

## Even-Out Year-Round Bills.

**Try Our Average Monthly Payment Plan.**

Monthly electric bills. They go up; they go down — depending on the highs and lows of each month's weather. And that can upset almost any household budget. AMP — our Average Monthly Payment Plan — is the perfect solution.

With AMP, you pay about the same amount each month, all year, depending on your average monthly usage. That way, you always know in advance about how much you'll have to pay. And that makes budgeting a whole lot easier.

Best of all, AMP is free and almost any residential customer can qualify. So give yourself a break from the ups and downs of monthly electric bills. With Average Monthly Payment. To enroll, simply give us a call.

**WTU**  
 West Texas Utilities Company  
 A Central And South West Company

## New faculty working at Clarendon ISD

Seven new faculty members were added to the Clarendon ISD faculty during the 1996-97 school year. Four were profiled last week in *The Clarendon Enterprise*.

The remaining three are Terry Mulbery, Marva Pruitt, and Katie Vanzee.

Clarendon Boys Coach Terry Mulbery comes to Clarendon from Laverne, Okla., where his family owns and works a second generation wheat farm and ranch. His father, Kenneth, is in charge of the day-to-day duties at the ranch while his mother Mary Lu is a fifth grade teacher.

Laverne, which is at the beginning of the Oklahoma Panhandle close to the Texas border near Follett is a town of about 1,500 people. The ranching and farming community wasn't glamorous enough for Mulbery to stay and go into the family business.

"I worked a lot on the farm, but farming wasn't really my thing. I'm just not a farmer," he said.

The 1991 graduate was an honors graduate, an FFA ribbon winner, and played tackle for Laverne High School, which made the play-offs his senior year.

"I just always knew I wanted to be a coach," Mulbery said. "I just love sports."

Mulbery also played some basketball for the small Class A Oklahoma school before attending Southwestern Oklahoma State University, which is about 130 miles from Laverne. He graduated from the school which had a student population of 5,000 people in the Spring of 1996.

"I liked the campus, and my older brother, Keith, was going there. Now, he's a college professor at Utah Valley State where he teaches computer programming."

Mulbery is engaged to TeNille Mills, a junior at Oklahoma State University and a Laverne native. She is studying to be a physical education teacher, and the two will be married on June 7.

"I've really enjoyed the friendliness of the people in Clarendon," Mulbery said. "Laverne is about the same size as Clarendon, so it was easy to adjust. I just want to work hard this first year and teach my kids to compete. I also want to instill a strong work ethic in my sixth and 8th grade social studies classes and in my high school history class."

Girls Assistant Coach Katie Vanzee hopes to take her experience as a member of Tulia's 1991 Class 3A State Championship Basketball team and help the Lady Broncos realize their own dream of competing at the highest possible level.

The 1992 Tulia graduate also competed at the Class 3A State Track Meet for four years running on the 400M and 800M relays. Their only medal was during her junior year in the 800M relay where the team placed second.

"I guess one of the big things I can help with is the nerves and the mindset and the determination you have to have," Vanzee said. "I can help them a lot with the little things. I can show them the skills and the strategies you have to have to reach that level."

Vanzee knows plenty about nerves. She was fouled during the last 30 seconds of Tulia's regional final game with Canyon High School. She connected on both free throws.

"I got the nickname, 'Cool as a cucumber' after that," she said. "I knew everything rode on my shoulders. We said we were going to state all year, and it was on my shoulders. I just set up, and they went in."

"I found out several years later that my coach told his assistant that 'We'll see what kind of basketball player she is' when I shot the free throws."

Vanzee had planned to enter college as an accounting major, but her coach Dale Morris changed her mind.

"My coach affected me so much. He was kind of like my idol. We still

keep in touch. My dream is to coach with him before he retires."

She attended Angelo State and walked onto the track program. Vanzee transferred to Texas Tech for the next two years before graduating and then coaching at Trinity Christian School in Lubbock.

"I had intended on coaching there this year, but Steve (Schmidt, Clarendon's head coach and a former Tulia assistant) called, and I came to Clarendon."

"My goal is to get kids interested in science again and successfully master their test requirements," Vanzee said. "In athletics, I want to get kids to win state and have a good time. A lot of them think athletics is hard, but it can be fun if you work hard and win."

Vanzee will teach freshman physical science and anatomy and physiology in the high school. She will coach 7th grade and J.V. girls basketball and will assist in cross country and track.

Marva Pruitt joins the Clarendon staff as a math and computer programming teacher at the high school level.

Pruitt is a 1985 graduate of Mineral Wells High School - the product of educators. The family had moved around as her parents took a variety of jobs as superintendents and principals until their children entered elementary school and they settled down in her father's hometown.

She was in a number of clubs and the band and earned the school's valedictorian title. She entered Angelo State University and received her B.S. and bachelors in mathematics and

computer science.

"Numbers have always fascinated me," she said. "Since I was a young child, even before school started, just the manipulation of numbers was a fascinating business. I have never gotten over that fascination of how you can use multiple ways to get the answer to a problem."

After she graduated from Angelo State, Pruitt served as a department chair for a business college in Dallas for one year.

From there, she went to Coahoma for six years and earned her masters degree in computer education and cognitive systems during the summers at North Texas State University.

"I didn't want to be a professional programmer because I like people too much," Pruitt said. "I'm a born teacher. I couldn't get out of teaching if I wanted to. I love to teach. I will always teach. It is a God-given talent or curse."

Pruitt left Coahoma for Clarendon because she had accomplished her goals in Coahoma. "I had completely revamped their technology department. Clarendon has all this fabulous technology. It's like being a kid in a candy store. Hopefully, my skills will help the district. The district's got all the toys for me to play with."

Pruitt also teaches a Wednesday night computer class at Clarendon College.

Newly hired school aides for the high school are Claudia Elliott and Karen Foster. The new elementary school aides are Jana White, Kathy Benavidez, Robin Goodwin, and Allen Newsom

## The Clarendon Enterprise Deadlines

Articles: Monday, 12:00 noon  
Display and Classified Ads: Monday, 12:00 noon  
Pictures: Friday, 12:00 noon

## Mike's Pharmacy

Mike Wants To Be Your Pharmacist!



Mike Butts, Pharmacist

Call 874-3554  
or Toll Free  
800-766-2089

HWY 287 West

Valu-Rite

New For Fall!  
**olsen**  
COLLECTION



- Sportswear
- Vibrant Colors
- Made in Germany

Exclusively at...  
**j-winston**  
of amarillo  
women's fashion - gifts  
2701 paramount 358-2457  
10:00 a.m. - 5:30 p.m. Monday - Saturday

## Broncos: Claude Mustangs squeak by CHS in season opener

Continued from page one  
Claude entered the locker room with an 18-6 advantage.

"It was 18-6 before we ever looked up," Draper said. "We were in shock."

Justiss - on his third and final TD of the night - scored on a 29-yard run early in the third quarter, dampening the Broncos momentum that they had built right before half.

But Abdullah, who was filling in for an injured Roy Williams, saw daylight at the 2:31 mark in the third quarter and scored from 5 yards out. The PAT was no good, and Claude held onto a 25-12 lead.

"We never gave up, and that shows a lot," Draper said. "We felt like we could come back and beat them."

The Broncos recorded a safety with 2:28 left in the game, and senior quarterback Phillip Hearn, who rushed for 54 yards on 12 carries, scampered in from 16 yards out with 1:36 left in the contest.

Clarendon still wouldn't play dead; and when they recovered a botched Claude punt within scoring

range at the :12 mark, the clock was their enemy.

They ran out of time before they could score again.

"I'm proud of them for competing," Draper said. "There's a lot of good things that will happen when you compete."

Abdullah, who also caught four passes for 89 yards, had an outstanding game, Draper said. He also credited the offensive line for opening up the holes and giving Hearn a chance to work.

"We're fairly one-dimensional right now," Draper said.

"We'll move (Abdullah) to Z-back (when Williams gets back), and we'll have a threat throwing and running. It changes the whole philosophy of what we do. (Abdullah) is an excellent athlete, and we'll be able to give him the football on the pass."

Ronnie Tabor should be back for the Sept. 20 Spearman contest, while Blake Bass and Williams probably will return for the Sept. 27 Hart game,

Draper said.

	Clarendon	Claude
First downs	14	8
Yards rushing	211	223
Yards passing	87	16
Comp.-Att.-Int.	4-12-4	1-2
Punts-Avg.	3-29	2-33
Fumbles-Lost	11-8	9-6
Penalties-Yards	6-60	4-35

The Junior Varsity Broncos lost to Amarillo Highland Park, 46-6, Sept. 5, in Amarillo.

The Wellington Skyrockets travel to Bronco Stadium Thursday to meet the J.V. team. Kick-off is at 7:30 p.m.

Clarendon's 7th and 8th grade Colts suit up for their first contest of the season earlier in the afternoon. The seventh graders begin play at 4:30 while the 8th graders start at 6 p.m.

**POSITIVE FEED, INC.**  
Cow Tubs 80 and 225 lbs.  
Horse Tubs 40 and 80 lbs.  
**DANNY ASKEW**  
874-5005 or 874-2844

## Customer Appreciation Days

September 1-30, 1996

# 40<sup>th</sup> ALLSUP'S

1956 - 1996 Always

"ALL VARIETIES" **Doritos** \$1.49 BUY ONE GET ONE FREE!  
REG. \$2.09

"ALL PEPSI BRANDS" 6 PACK 12 OZ. CANS **PEPSI** \$1.29

MBO MEAL **KIB-B-QUE Sandwich** \$1.99  
**Potato Wedges** & Tallsup

MRS. FRESHLEY'S **Cinnamon Rolls** 8 CT. PKG. 11 OZ. **89¢**

"ALL VARIETIES" ALLSUP'S **Ice Cream** 1/2 GALLON \$1.59

SHURFINE #1 **Russet Potatoes** 10 LB. BAG **99¢**

"ALL FLAVORS" **Gatorade** 32 OZ. BTL. **99¢**

ALLSUP'S **Sandwich Bread** 1/2 LB. LOAF 69¢ OR 2 FOR \$1.00

ALLSUP'S **Sausage, Egg & Biscuit** EACH **99¢**

HORMEL LIGHT & LEAN **Ham or Turkey** 8 OZ. PKG. **\$1.69**

SHURFINE **Saltine Crackers** 16 OZ. BOX **85¢**

SHURFINE **Corn Flakes** 19 OZ. BOX **\$1.69**

LANCE **Cashews & Pistachios** 1 1/2 OZ. BAG **79¢**

## 40<sup>th</sup> ANNIVERSARY SPECIALS!

ALL VARIETIES **Sunny Cookies** REG. 2 FOR \$1.00 **40¢** EA.

FRITOS® LAYS® OR WAYS LAYS® **Grab Bags** REG. 79¢ **40¢**

VANILLA & VARIETIES **Champ! Cones** REG. 89¢ **40¢**

You'll find all this and more at your Allsup's store

ALLSUP'S **Fresh Coffee** 12 OZ. CUP **40¢**

OZARKA **Spring Water** 24 OZ. SPORT CAP BTL. **40¢**

MRS. FRESHLEY'S **Honey Buns** 3 OZ. PKG. **40¢**

Startlet Tuna 79¢ 6 oz. water

Valley Fare Paper Towels **50¢**

Valley Fare Toilet Paper **89¢**

Alpo Dog Food **79¢**

LOW PRICES, GREAT PRODUCTS 24 HOURS A DAY

**ALLSUP'S**  
Always

PRICES EFFECTIVE SEPTEMBER 8-14, 1996 OFFER GOOD WHILE SUPPLIES LAST

### Answers To Last Week's Crossword Puzzle

AGE BRAM THE  
FOO BELLA MOO  
YODERFUL BOO  
OVI BLEEDY  
WARMED BERT  
GAM NOV BEAU  
GAMA DIE OLE  
BOUCH BONNET  
PRINCE AMI  
BOO BLEVENDON  
ACH PLAIN ALE  
BET YODIO MEN

# Enterprise Classifieds

**CLASSIFIED AD RATES** are \$6.00 for the first 15 words and 10¢ for each additional word. Special typefaces or boxes are extra.  
**THANK YOU NOTES** of average length are \$7.00.  
**Prepayment is required on all ads except for customers with established accounts.**  
**ERRORS:** Check your ad the first time it comes out. Errors or mistakes that are not corrected after the first printing are the responsibility of the advertiser.

## Garage Sales

**GARAGE SALE:** Saturday, September 14 at Ashtola School, 8-2. 37-1tp

**YARD SALE:** Friday and Saturday, West Fourth and John. Lots of stuff. 37-1tp

**GARAGE SALE:** Ashcraft Lawnmower Shop, Hwy. 70 South. Saturday, September 14, 8 until 7. Five kittens to be given away. 37-1tp

**GARAGE SALE:** 207 West Fourth, across the street, south of Courthouse Annex. Saturday, 8-7. 37-1tc

## For Sale

**FOR SALE:** RV, 1978 35' Terry fifth wheel, excellent condition, new tires, cold air, \$6,500; 4x6 two wheel high side trailer, \$350. (806) 874-2452. 30-ctfc

**QUALITY WHEAT SEED FOR SALE:** Reasonable prices. We deliver bulk or bagged! Tam 101, 105, 107, 109, 200, 202, 2180, Ogalala, Weather-Master 135, Jenkins Triticals, Easy Drill Matua, Walken Oats, Maton Rye, Elbon Rye, Strain Crass Rye, TamBan Barley, Beardless Wheat, Russian Beardless, Grazing Blends. Registered and Certified Seed is available. Gayland Ward, 1-806-258-7394 or 1-800-299-9273, Hereford. 32-6tc

**HAY FOR SALE -** Red top cane hay for sale. You load. One dollar per bale. 874-3546. 37-1tc

**BOAT FOR SALE:** Volvo Pena, in-out, 4 cylinder. Good upholstery, walk through, trolling motor, hummingbird, Dilley trailer, boat cover. East 287, North of Yankies. 37-1tp

**CHAIRMAN (BRAND) HOME FITNESS SYSTEM,** with video and instruction. \$55.00. 874-2414 or 874-5443. 37-1tp

**SINGER 1996** New school models. Serge finish. Heavy duty. Sews silk, jeans, leather. Monograms, zigzags, buttonholes, etc. 10 year factory warranty. \$198 with ad; \$439 without ad. Singer 1800 S. Georgia, Amarillo. (806) 467-1771. 34-18tp

**DON'T FORGET!**

Deadline for copy to The Clarendon Enterprise is Monday, 12:00 noon



**Kenny's Barber Shop**

110 S. Kearney Clarendon

We Appreciate Your Business!

## Meetings

**Saints' Roost Museum**  
 Open Thursday, Friday, Saturday, and Sunday from 2 p.m. to 5 p.m.  
 Free admission

**Clarendon Lodge #700 AF&AM**

Stated meeting: Second Monday each month, 8:00 p.m.  
 Refreshments served at 7:00 p.m.  
 Practice sessions: Fourth Monday  
 Billy Powell - W.M.  
 Williard Skelton - Secretary

**AA - ALCOHOLICS ANONYMOUS** and Al-Anon meetings every Monday at 8:00 p.m. across from WTU. Phone 874-3457.

## Real Estate

**CLAUDE:** Minutes from Pantex, great schools. Two large bedrooms, one bath, completely remodeled, storm windows. Priced to sell, \$38,500. Call Melanie at 226-7000. CM Hutson Real Estate. 36-2tc

**FOR SALE** in Clarendon on Hwy. 287, R.V. Park and coin operated laundry, eight room and two bath house, two bedroom house, and a building (about 1,400 square feet) for a business. Selling because of health. 874-3234 37-1tp

**FOR SALE BY OWNER** two acres and two bedroom house, 1/2 miles east of Hedley on Railroad Street. 856-5329. 37-2tp

**GREENBELT LAKE:** Two story, 4 bedroom, 1 1/2 bath, central heat and air, storm cellar, two lots. For appointment (806) 874-2255 or (806) 874-3456. 35-3tp

**WANTED:** 80-160 acres of farmland. Some improvements. 874-5112. 37-2tp

## For Rent

**FOR RENT:** Two bedroom house with garage and game room. \$325 per month. Deposit required. 874-3687. 34-ctfc

Subscribe today to The Clarendon Enterprise!  
 Only \$18.50 in Donley County; \$22.50 out of county.  
 Senior citizen rates available.

**Morrow Drilling & Service**  
 Gravel Packed Wells • Turn Key Systems  
 Solar Pumping Systems  
**GRUNDFOS** Stainless Steel Pumps  
 Authorized Sales & Service AEROMOTOR WINDMILLS  
**(806) 874-2704**  
 Hwy 287 W • Clarendon, Texas

## Miscellaneous

**MARBLES, MARBLES,** Wanted old marbles. A few or many. Bought and/or appraised. Call (806) 669-0547 (CORRECTED PHONE NUMBER). 33-5tp

## Help Wanted

**IMMEDIATE OPENING** for Nurse Aides - both full time and part time. Apply at Medical Center Nursing Home, Hwy. 70 North, Clarendon, Texas. 31-ctfc

**STEEL BUILDING DEALERSHIP.** Manufacturer awarding dealership in select open markets. Advertising, engineering, training seminars. Discounted start up buildings. Big profit potential on sales and/or construction. (303) 758-4135, Ext. 4200. 36-2tp

**HELP WANTED** with handicapped and elderly. Call 1-806-372-8480. 37-2tc

**HELP WANTED:** Taylor's Food Mart. Full time, part time, all shifts. 37-2tc

## Services

**CERTIFIED CHILD CARE:** ABC's, 123's, and lots of fun activities. Nutritious meals and snacks. 721 W. 8th. 874-3967. 6 months-12 years, 7a.m.-6 p.m. 34-4tc

**IRISH FRESH,** purified drinking water. Bottled water with taste! Jack Hall, distributor. Hot and cold dispensers. \$12 per month. Home delivery or store purchase. (806) 874-3931 or (800) 407-4220. 36-4tc

**BACKHOE SERVICE AND** light concrete work. Call Dennis at 874-5033. 37-2tc

**NEED WORK:** Lawn maintenance of any kind. From mowing to edging. In the winter, shoveling snow. Please call Jeremy Hicks at 874-2512. 36-2tp

## TERMITE PROBLEMS?

Call For Best Termite Control 3608 NE 23rd  
 Over 20 Years Experience Amarillo, TX 79107  
 Call Collect 383-7075 State Lic. #1178

**LEO RUSSELL**

**Estlack Electric**  
 Electrical Contracting & Appliance Repair  
 Janitrol, Carrier, & Trane  
 Heating & Air-Conditioning  
 ALLEN ESTLACK 874-3683  
 Texas Refrigeration License #TACLB012144E

**Bailey Estes & Son**  
 Welding Fabrication & Steel Buildings  
 Also Self Storage Units For Rent  
 \$25.00 per month

**Chamberlain**  
 MOTOR COMPANY  
**FRED CLIFFORD**  
 Home Phone (806) 874-2415  
 Still selling cars!  
 Chamberlain Motor Co. Clarendon: (806) 874-3527  
 Hwy. 287, East Amarillo: (806) 376-9041  
 Clarendon, TX 79226 Texas WATS: (800) 692-4088

## Services

**-YES-**  
 We are still cleaning carpet and upholstery. Also repairing and/or reconditioning vacuum cleaners. McVicker's Kirby Service. 9-ctfc

## Notices

**BID NOTICE**  
 The Donley County Soil and Water Conservation District will be accepting bids on an 8 yard Johnson Elevating Scraper with hydraulic drive elevator, 1,000 RPM/PTO and a 14 ft. L&A Seeder with large seed box and a 20 ft. by 7 ft. Donahue trailer. Bids will be opened in the NRCS office on October 14, 1996, at 7:00 p.m. Closing date for accepting bids will be October 11, 1996, at 4:30 p.m. For bid specifications, contact Dana Monroe at (806) 874-3576. The Donley County SWCD reserves the right to accept or reject any or all bids. 36-1tc

**REQUEST FOR BIDS ON TEXAS HIGHWAY CONSTRUCTION**

Sealed proposals for 236.418 km of seal coat at various locations on US 83, US 287, FM 338, SH 86, SH 70, SH 256, FM 94 FM 453, FM 2103, FM 1906, and FM 657 covered by CPM 31-4-34, CPM 43-1-51, CPM 230-3-17, CPM 303-2-12, CPM 303-3-34, CPM 310-1-32, CPM 311-2-25, CPM 311-2-26, CPM 311-4-11, CPM 449-1-12, CPM 541-1-18, CPM 704-1-14, CPM 704-3-10, CPM 704-4-10, CPM 844-2-7, CPM 2037-1-10, CPM 2147-1-7, CPM 2319-1-16m and CPM 31-4-35 in Collingsworth, Childress, Briscoe, Donley, Hall, Cottle, and Wheeler Counties will be received at the Texas Department of Transportation, Austin, Texas, until 1:00 p.m., October 3, 1996, and then publicly opened and read.

Plans and specifications, including minimum wage rates as provided by Law, are available for inspection at the office of Daniel E.

**SUBSCRIBE NOW!**  
 874-2259

## Notices

Brown, Area Engineer, Wellington, Texas, and at the Texas Department of Transportation, Austin, Texas. Bidding proposals are to be requested from the Construction and Maintenance Division, 200 East Riverside Drive, Austin, Texas 78704-1205. Plans are available through commercial printers in Austin, Texas, at the expense of the bidder. The Texas Department of Transportation hereby notifies all bidders that it will insure that bidders will not be discriminated against on the ground of race, color, sex, or national origin, in having full opportunity to submit bids in response to this invitation, and in consideration for an award. Usual rights reserved. 25-D-1694 25-76-0031-04-034, Etc. 36-4tc

**NOTICE OF PUBLIC HEARING CITY OF HEDLEY TEXAS COMMUNITY DEVELOPMENT PROGRAM COMMUNITY DEVELOPMENT FUND PROJECT**

The City of Hedley is considering a proposed amendment to its approved 1995 Texas Community Development Program contract with the Texas Department of Housing and Community Affairs to include revisions begin made to the plans for the project. The improvements included in this contract amendment request are proposed to be made in the portion of the city south of Highway 287. These improvements will be in the general vicinity of other sewer system improvements that are already a part of the city's approved TCDP project.

A public hearing concerning the proposed amendment is scheduled to be held at 7:00 p.m. on

**DONLEY COUNTY**  
 ♦ 9 acres south of Clarendon, brick house, two bedroom, 1 & 1/2 bath, C/H&A, fireplace. Call on this one. \$58,500.  
 ♦ Brick, 3 bedroom, 1 1/2 baths, CH&A, 2 car garage, \$62,000 \$61,000  
 ♦ Brick, 3 bedroom, 1 and 1/2 baths, CH, 1 car garage, fenced, storage building. \$45,000 \$44,000.  
 ♦ Brick, 3 bedroom, 1 and 1/2 baths, CH&A, two car garage. \$55,000  
**GREENBELT LAKE**  
 ♦ West side lake property. Nice 2 bedroom, 2 bath (sauna), fireplace, CH/A, 2 carport, boat storage, cellar with storage building on top. \$80,000 \$24,000.  
 ♦ Howardwick: 6 lots, two bedroom, one bath, C/H&A, two car garage, clean and nice, \$45,250

**Jimmy Garland**  
 Real Estate  
 874-3757  
 944-5458 Home  
 (800)530-4396

## Notices

Tuesday, September 17, 1996, at the City Hall. The purpose of this public hearing will be to discuss the proposed amendment and solicit citizen input on the proposed change in the city's 1995 TCDP project.

All citizens are encouraged to attend this public hearing and present their views to the city. The City Hall is accessible to the disabled; disabled individuals who might have difficulty in attending this public hearing should contact Mayor Shauna Monroe's office to arrange for special assistance. If you cannot attend in person, written comments may be submitted and will be accepted by the city until this public hearing is conducted. For more information concerning the city's 1995 TCDP project and/or this proposed contract amendment, please contact Mayor Shauna Monroe, City of Hedley, at (806) 856-5241. 37-1tc

**NOTICE OF APPLICATION FOR ALCOHOLIC BEVERAGE PERMIT**

The Country Club of Clarendon has made application with the Texas Alcoholic Beverage Commission for a Private Club Registration Permit for the location of 108 Country Club Plaza, Howardwick, Donley County, Texas doing business as The Country Club of Clarendon; officers being: Leonard Selvidge, President; Tommy E. Duncan, Vice President; and Tashia Duncan, Secretary. 37-2tc

- LAKE PROPERTY: Two bedroom, one bath, furnished trailer with screened porch and one car garage added. \$10,000.
- 17.55 acres, home with two garages, basement. Trailer house, tractor, well, pecan and fruit trees. \$40,000
- Howardwick: Two bedroom trailer, added living room and bedroom, garage, cellar, \$25,000.
- Four bedrooms, one bath house with carport and storage room. Near school. \$32,000
- Three bedroom, one bath on 1/2 block of land. \$25,000
- LAKE PROPERTY: Two story, three bedroom, one bath, carport, and storage room. Reduced to \$39,500 from \$47,500.
- HOWARDWICK: Split-level, three bedroom house with two car garage, basement, 1 1/2 baths, fireplace, central heat and air, three lots. \$70,000
- One bedroom house, new roof, one bath. \$15,000.
- FISH 'N PAL, one person fishing boats.
- Three bedroom trailer in Howardwick with fruit trees and fenced. \$10,000
- Lot 1 Pueblo SS1X. \$1,800.

**Oneta Sanders**  
 Real Estate Office  
 720 S. McClelland  
 Box 756, Clarendon  
 (806) 874-2533

Kevin Thompson, Agent  
**Clarendon Insurance Agency**  
 "Personalized Service"  
 • Life  
 • Mortgage Protection  
 • IRA - Retirement  
 • Farm & Ranch  
 • Auto - Home  
 • Annuity  
 Box 988  
 Clarendon, Texas 79226  
 Bus: (806) 874-3506

# HARVEST VALUES

AD GOOD SEP. 11 THRU SEP. 14, 1996.

## Non-Grocery

- SHURFINE BATH TISSUE 99¢  
4 ROLL PKG
- SHURFINE PAPER TOWELS 59¢  
LARGE ROLL
- ULTRA CHEER LAUNDRY DETERGENT \$4.99  
87-92 OZ BOX



## Grocery

- RED BARRON PIZZAS \$3.39  
ASST.
- SHURFINE SWEET PEAS 2 CANS FOR 99¢
- CAMPBELLS TOMATO SOUP 2 CANS FOR 99¢
- HONEY BOY CHUM SALMON \$1.29  
TALL CAN
- BAKERS COCONUT \$1.49  
ANGEL FLAKE • 14 OZ PKG
- VAN CAMPS PORK & BEANS 3 FOR \$1  
#300 CANS
- SHURFINE FLOUR 99¢  
ALL PURPOSE • 5 LB BAG
- SUNSHINE TRU-BLUE COOKIES \$1.89  
SANDWICH • 24 OZ PKG
- SHURFINE CITRUS PUNCH 99¢  
½ GALLON
- ORE IDA CRINKLE CUT GOLDEN FRENCH FRIES OR TATER TOTS \$1.89  
2 LB BAG

- SHURFINE WHOLE PEELED TOMATOES 2 CANS FOR 99¢
- SHURFINE SWEET CORN 2 CANS FOR 89¢  
CREAM STYLE
- SHURFINE CUT GREEN BEANS 2 CANS FOR 89¢
- DUNCAN HINES LAYER CAKE MIXES 89¢ PKG  
ASSORTED FLAVORS
- CRISCO OIL \$2.49  
½ GALLON
- SUNSHINE CHEEZ-IT CRACKERS \$1.99  
1 LB BOX
- RAGU SPAGHETTI SAUCE \$1.89  
QUART JAR
- SHURFINE FROZEN ORANGE JUICE 69¢  
12 OZ CAN
- FOLGERS COFFEE \$5.99  
39 OZ CAN
- COCA COLA \$1.79  
6 PK 12 OZ CANS

## Meat

- PREFERRED TRIM BONELESS BEEF
- RIBEYE STEAKS \$4.49 LB.
- TOP SIRLOIN STEAK \$2.49 LB.
- PACKER TRIM BEEF BRISKETS 99¢ LB.  
IN THE BAG
- WRIGHTS BONE IN CURED HAM SHANK HALF \$1.69 LB.
- WHOLE OR BUTT HALF \$1.89 LB.
- OSCAR MAYER WIENERS \$1.99  
ALL MEAT • 1 LB PKG
- RED RIND LONGHORN CHEESE \$2.49 LB.  
MARKET CUT
- YOPLAT YOGURT 2 FOR \$1  
8 OZ TUB

## Fruits & Veg

- WASHINGTON RED DELICIOUS APPLES 59¢ LB.  
EXTRA FANCY
- CALIFORNIA SEEDLESS GRAPES 99¢ LB.
- CALIFORNIA FRESH CRISP GREEN ONIONS 2 BUNCHES 49¢
- NEW CROP EAST TEXAS SWEET POTATOES 59¢ LB.
- CALIFORNIA CARROTS 2 PKGS FOR 49¢
- SPANISH SWEET YELLOW ONIONS 25¢ LB.
- CALIFORNIA GREEN CABBAGE 29¢ LB.

# The Grocery Store

874-2425 • 118 S. Kearney • Clarendon, Texas

Home owned and operated by Jack & Shirley Clifford and Brit & Virginia Patton • Open Monday-Saturday, 7 a.m. to 7 p.m., Closed Sunday

Double coupons on Wednesday & Saturday Only (Excluding Cigarette & Tobacco Coupons)

Double coupons not to exceed their value • Double coupons not to exceed \$1.00 • Only one double coupon allowed on multiple purchase

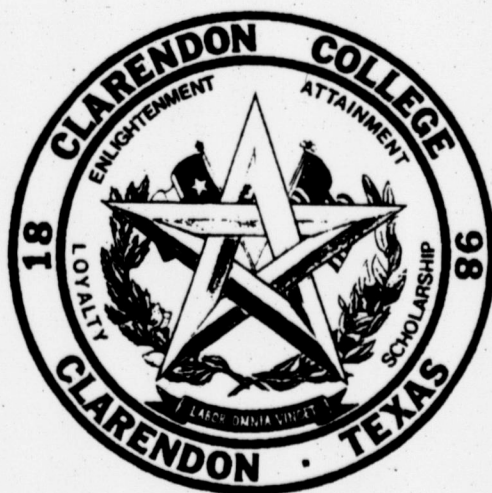


# CLARENDON COLLEGE



*Your Best Bet*

## Fall 1996 Class Schedule



### TABLE OF CONTENTS

Admission Checklist	p 3	CLARENDON	p 4	Drop/Add Policy	p 2	Mission Statement	p 2
Admission Policies	p 3	PAMPA	p 6	Financial Assistance	p 2	Open Records Act	p 2
Calendar	p 2	WELLINGTON	p 7	Financial Information	p 3	Phone /Address/Fax	p 8
Class Schedule...		Classification	p 2	General Information	p 2	Refund Policy	p 3
CHILDRESS	p 6	Continuing Education	p 7	Housing & Meal Plan	p 3	Senior Citizen Policy	p 2
						Transcripts	p 2

## Dear friends:

Please accept my personal encouragement to become a part of the Clarendon College family. If you haven't already finalized your plans for college this fall, please know that we, at Clarendon College, would be very excited to have you as a student.

Clarendon is the oldest higher education institution in the Texas Panhandle, and we're proud of that. Our college will celebrate its 100th birthday in 1998, and we've endured that long for one reason - we genuinely care about our students.

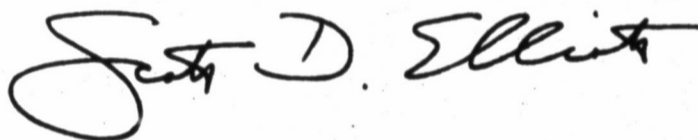
At Clarendon, I promise that you won't become a number in some computer. You won't get lost in the crowd. We feel strongly that the college's small size is one of its greatest strengths. Our students get a lot of individual attention from their teachers and our staff members. We will take a personal interest in your success.

I have two major goals for our students at Clarendon College. First, I want the college to be a place where students can get a first-rate education - a place where each individual can continue to develop to his or her fullest potential. Second, I want our college to be a fun place - a school where people can enjoy a lot of positive interaction.

So, as you look over our fall schedule and read some important things about our college, remember this above all else - students are our only business at Clarendon College. We call Clarendon "The College that Cares," and all of us work very hard to live up to that motto.

I really hope to see you in August!

Sincerely,



Scott D. Elliott, President



# CLARENDON COLLEGE CALENDAR

Fall 1996

Registration	August 23
Residence Hall Open	August 23
Freshman Orientation	August 26-27
College Opens	August 26
General Registration	August 26-27
Registration for Childress	August 26
Registration for Wellman	August 27
Classes Begin	August 28
Friday Day Holiday	September 2
Schedule Change	September 3
First Day to Register	September 3
Thanksgiving Holidays	September 25-29
College Closes	November 1
First Day to Drop	December 1
Pre-Registration for Spring 1997	December 3-5
Final Exams	December 11-13
End of Term	December 15

*Residence Hall's description found on page 10 of this calendar.*

## GENERAL INFORMATION

### ACCREDITATION

Clarendon College is approved and accredited by The Commission on Colleges of the Southern Association of Colleges and Schools Toward Associate in Arts, Associate in Science and Associate in Applied Science Degrees; The Texas Higher Education Coordinating Board; and The State Board of Vocational Nurse Examiners and appropriate professional accreditation. For a complete listing of affiliations, refer to *The Clarendon College Centennial Edition Catalog*.

### DROP/ADD POLICY

Students desiring to make schedule changes after their initial registration each semester must do so during the designated "Drop and Add" period as scheduled in the calendar of events in both this schedule and the college catalog. Students will be required to pay tuition and fees applicable to any class(es) added to the schedule, as well as a \$5 drop/add fee per schedule change.

A student who drops a course after the first 12 class days of instruction will receive a grade of W. No classes may be dropped after the 14th week of a Fall or Spring term. To drop a class, the student must obtain the written consent of the instructor. Drop forms are available in the Registrar's Office.

### CHILDRESS CENTER

Clarendon College offers academic classes and Licensed Vocational Nursing classes in Childress. Most classes are held at Childress High School.

### CLASSIFICATION INFORMATION

Students enrolled at Clarendon College may be classified in the following ways:

- FRESHMAN  
0-29 hours earned
- SOPHOMORE  
30 or more hours earned
- FULL-TIME  
Enrollment in 12 or more hours in a semester
- PART-TIME  
Enrollment of less than 12 hours in a semester

### COLLEGE BOOKSTORE

Located in the Bairfield Activity Center, the college bookstore is open during registration periods and at each semester's end for book buy-back. Textbooks are bought back at the Clarendon and Pampa Center only during the final exam week of each semester.

### EQUAL OPPORTUNITY INSTITUTION

Clarendon College offers all of its educational opportunities without regard to race, creed, color, national origin, sex, age or handicap, except where sex, age or handicap is a bona fide occupational qualification.

### FINAL EXAMINATIONS

A final examination is required for each course. Final examinations may not be given earlier than the time for which they have been officially scheduled. A final examination schedule is posted a minimum of three weeks in advance of the date of the first exam administered and/or announced by instructors administering the test.

### FINANCIAL ASSISTANCE

Clarendon College offers scholarships, grants and work-study opportunities. Low-interest student loans, such as the Federal Stafford Student Loan, requires a recommendation by the Financial Aid Officer and an application made to the student's lending institution.

To apply for financial assistance, request a free application for Federal Student Aid from Clarendon College. After completing the form, mail to the address listed on the envelope. In 4-6 weeks, a Student Aid Report (SAR) will be sent to you. Submit your SAR and a signed copy of your or your parents' most recent federal income tax return. Financial aid is distributed on an individual basis, with the highest priority being given to students with the greatest financial need.

Scholarship applications are available by contacting the Admissions Office. The deadline for scholarship applications is April 1. Please refer to the college catalog for a complete listing of available scholarships.

### LIBRARY

The library provides opportunities for study, research, recreational reading, listening and viewing educational materials. More than 20,000 books, as well as journals, magazines, microfiche and non-print items are available. Interlibrary loan is available to all patrons. The library is located in the Administration Building.

### MISSION STATEMENT

Clarendon College is a comprehensive community college committed to providing equal access to opportunities that assist in the holistic development of its constituents and community. In pursuit of that mission, the college provides academic transfer programs, workforce education courses, continuing education/community service courses, and diverse cultural enrichment opportunities.

### PAMPA CENTER

Clarendon College Pampa Center was established Dec. 1, 1978. The Center is housed in the former Houston Elementary School, located at 900 N. Frost in Pampa. In conjunction with the Pampa Center Foundation, Clarendon College is planning to open a new \$4.3 million Pampa Center before the year 2000. The new center will provide students with a modern, multi-purpose facility that will enable the college to offer greater education opportunities to its constituents. Plans call for the center to be owned by the Pampa Center Foundation and leased to the college on a long-term basis.

### SENIOR CITIZENS POLICY

Any Donley County residents who are 65 years or older, may audit classes without paying tuition. This does not exempt senior citizens from paying all usual and customary fees paid by all registered students attending Clarendon College. Tuition-exempt students may audit a class on a space available basis. Senior citizens who desire to earn transferable credit for courses must pay all regular tuition and fee changes and meet all admission requirements.

### SERVICEMEMBERS OPPORTUNITY

A member of the Servicemembers Opportunity Secondary Education, Clarendon College provides post-secondary education to members of the military throughout the world. Clarendon College recognizes the unique nature of the military lifestyle and is committed to easing the transfer of relevant course credits, providing flexible academic residency requirements and crediting learning from appropriate military training and experiences.

### STUDENT EDUCATION RECORDS

In compliance with the Texas "Open Records" Act and the Buckley Amendment (Public Law 93-579), Clarendon College will consider the following information to be "public or directory information" unless the individual student or employee advises the Dean of Instruction in writing that his/her name should not be included or released as public information:

Name, Date and Place of Birth, Major and Minor, Current Class Schedule, Number of Hours Enrolled for Current Semester, Classification, Marital Status, Dates of Attendance, Participation in Officially Recognized Activities and Sports, Weights and Heights of Members of Athletic Teams, Degrees and Awards Received, and All Previous Educational Agencies/Institutions Attended.

### STUDENT LOAD

The recommended regular load of a student is 15-18 credit hours. Any student desiring to take more than 18 credit hours in a Fall or Spring semester must receive written authorization from the Dean of Instruction.

### TRANSCRIPTS

A copy of the student's permanent record (transcript) is available from the Registrar's Office, only by written authorization by the student. Fee is \$2. All financial obligations to the college must be met in full before a transcript will be issued.



MEREDITH WAINSCOTT

Iowa Park, Texas

"I had taken classes at a university before attending Clarendon College. I felt like I was shuffled around, especially when it came to scheduling classes and working with an academic adviser. But at CC, it's right the opposite. The faculty and administration know you by your first name and will bend over backwards to help you. They really do care."

# Admission Policies

Clarendon College has an "open door" admissions policy, which means it accepts all applicants who can be expected to benefit from its programs.

As a comprehensive community college, Clarendon College offers many programs designed to meet the needs of students according to their backgrounds and interests. With limited exceptions, a student must be a graduate of an accredited high school or have a GED. Nongraduates who are at least 18 years old may be admitted on individual approval provided if it is determined through assessment that they have the ability to benefit from their program. Any individual admitted by individual approval by the Registrar will automatically be placed on academic probation, and must achieve a minimum grade point average of 2.0 in the first 12 credit hours of coursework to be eligible for continued enrollment.

Applicants for certain workforce programs may be required to submit to personal

interviews, and/or proficiency examinations and/or physical examinations as conditions for eligibility for admission to the respective program.

## Residency

Clarendon College is required by State Law to determine the residency status for tuition purposes of all students. All new students must provide substantiating documentation to affirm their residency and sign an Oath of Residency. Residency is determined either by a student's current address or the address of a parent or legal guardian if the student is being claimed as their dependent for federal income tax purposes. It is the responsibility of the student to register under the correct residence classification.

### 1. In-District Residence

A student who has been a legal resident of the State of Texas and has resided in Donley County six (6) months immediately preceding registration at Clarendon College.

A student who has moved to Texas from another state, but has been a documented

resident of Donley County for the 12 months immediately preceding registration at Clarendon College.

A student who can present to the college a copy of the receipt of payment of Donley County ad valorem taxes for the current or preceding tax year. In case of an independent student, the taxes must have been paid by the student. In the case of a dependent student, the applicant may use the tax receipt of a parent or guardian.

### 2. Out-of-District

A student who is a legal resident of Texas, but who resides outside the Clarendon College District. Students classified as out-of-district will continue to be so during the time they remain in school for consecutive academic years. However, any student who continuously resides in Donley County for a 12-month period without attending school may be reclassified by the Dean of Students as an in-district student.

### 3. Out-of-State Residence

A student less than 18-years of age or is a dependent and whose family resides in another state or has not resided in Texas for the 12 months immediately preceding registration.



**CASEY ELLIOTT**

Seymour, Texas

"Clarendon College has been a family affair for us - my two brothers and my older sister all attended CC. With the positive family-like atmosphere, I just knew Clarendon College was for me, too."

## Admission Checklist

1. Application for Admission
2. Certificate of Residence
3. Official transcripts from all high schools and colleges previously attended. (Copy of transcripts must be filed with the Registrar's Office at least 10 days prior to registration.)
4. ACT or SAT scores (Unless student is transferring 12 or more hours from another regionally-accredited institution.)
5. Copy of GED certificate, if not a high school graduate

## HOUSING AND MEAL PLAN REQUIREMENT

**COLLEGE HOUSING REQUIREMENT** — All students who are not residents of Donley County unless they are (a) 21 years or older; (b) married; or (c) living with nuclear family members (grandparents, parents and/or siblings) who are Donley County residents are required to live on-campus in the residence halls. Permission to live off campus must be approved by the Dean of Students.

Clarendon College operates four air-conditioned residence halls which will accommodate 218 residents.

**MEAL PLAN REQUIREMENT** — All students living in a residence hall must purchase the college meal plan. Food service is available (on a per meal or meal ticket basis) for students living off campus, and other constituents of the college.

The Clarendon College Cafeteria is open seven days a week during the Fall and Spring semesters. Breakfast, lunch and dinner are available Monday-Friday. Breakfast and lunch are both served on Saturdays, and lunch is the only meal served on Sundays.

Clarendon College's Dining Program offers a variety of food choices, including a buffet style salad bar and special dietary meals. Students are offered unlimited quantities of entrees, salads, vegetables, beverages and desserts. Special order cakes and cookies are also available through CC's Cafeteria.

## REFUND POLICY

Any student officially withdrawing during a semester through written request to the Dean of Students, or is withdrawn by the college because of failure to comply with a condition upon which the enrollment was approved, may receive a refund of all tuition and mandatory fees in accordance with the following schedule:

### FALL AND SPRING SEMESTERS

Prior to the first class day	100%
During the first five class days	80%
During the second five class days	70%
During the third five class days	50%
During the fourth five class days	25%
After the fourth five class days	NONE

**NOTE:** The count of class days begins on the first day that classes are held in the term and thereafter includes each calendar day on which classes are normally taught.

### REFUNDS ARE NOT AUTOMATIC!

A student eligible for any kind of refund should request it at the time of withdrawal or program change by filling out the proper forms. No refund can be made until the third week of classes, so to allow time for all checks to clear the banks. Some refunds may not be made until the end of the semester. Processing of all refunds for the Fall and Spring often requires as much as eight weeks. Refunds to students are reduced by any amount owed to the College. The college reserves the right to make no refunds to students suspended or expelled from the institution.

\*\*Tuition and fees paid directly to the institution by a sponsor, donor or scholarship shall be refunded to be source rather than directly to the student.

## FINANCIAL INFORMATION

### TUITION AND FEES

Tuition and fees include:

In-District	\$16/per credit hour (\$48 minimum)
Out-Of-District	\$18/per credit hour (\$54 minimum)
Out-of-State	\$200 plus \$20 per credit hour (above 11 hours)

### Required Fees - Clarendon Campus

Building Use Fee	\$40
Activity Fee	
(Fall & Spring semesters)	\$65
Library Fee	\$15
Technology Fee	\$2/per credit hour

### Required Fees - Pampa Center

Building Use Fee	\$40
Library Fee	\$15
Off-Campus Fee	\$35/per course
Technology Fee	\$2/per credit hour

### Required Fees - Other Off-Campus Sites

Off Campus Fee	\$50/per course
----------------	-----------------

Students taking courses at more than one campus/center must pay all fees associated with that site, per the above schedules, irrespective of the number of courses being taken at any given site. However, there will be no duplication of fees, i.e., building use fee, library fee.

All tuition, fees, charges for room and board, and other educational costs are due by the final day of general registration in each semester.

For payment of room and board, students may opt for a "payout" plan to be arranged through the Business Office. Students opting for the "payout" plan may elect to pay for their room and board charges on an installment basis, making a mandatory down payment of at least 1/3 of the total charges for their room and board by the final day of general registration, then paying out the balance owed. A 20 percent charge is assessed on the original balance owed.

## DUE DATES FOR INSTALLMENT PLAN PAYMENTS ON ROOM & BOARD CHARGES

### Fall Term

First Payment*	Last day of General Registration
Second Payment**	October 1
Final Payment**	December 1

\*At least 1/3 of total room & board charges must be remitted as "down" payment.

\*\*If listed due dates fall on a Saturday, Sunday or holiday, the deadline is the next working day for the college.



**SARAH JETT**

Quail, Texas

"It's not easy being a mom, wife and student. Clarendon College provides a great environment for continuing my education. Being affordable and close to home, doesn't hurt either."

# FALL CLASSES

## AUGUST 28-DECEMBER 13, 1996

### CLARENDON

ID#	TIME	DAY	DPT	NBR	SEC	CLASS DESCRIPTION	HRS	INSTRUCTOR	ROOM
1	9:30-10:45 AM	TTH	ACCT	2301	01	ACCOUNTING I	3	EWING	201
100	11:00-12:15 AM	MW	ACCT	2302	02	ACCOUNTING II	3	EWING	201
300	9:00- 9:50 AM	F	AGRI	1131	01	AG INDUSTRY	1	HAWKINS	107
400	11:00-11:50 AM	F	AGRI	1131	02	AG INDUSTRY	1	HAWKINS	107
500	9:00- 9:50 AM	MW	AGRI	1307	01	AGRONOMY	3	SCHAEFER	107
LAB	4:00- 6:00 W					AGRONOMY			207
600	11:00-11:50 AM	MW	AGRI	1319	01	ANIMAL SCIENCE	3	HAWKINS	107
LAB	3:00- 5:00 W					ANIMAL SCIENCE			107
700	8:00- 8:50 AM	MW	AGRI	1319	02	ANIMAL SCIENCE	3	HAWKINS	107
LAB	1:00- 3:00 W					ANIMAL SCIENCE			107
800	10:00-10:50 AM	MWF	AGRI	1329	01	FOOD TECHNOLOGY	3	HAWKINS	107
900	1:00- 1:50 PM	MWF	AGRI	1415	01	HORTICULTURE	4	SCHAEFER	106
LAB	4:00- 6:00 M					HORTICULTURE			107
1000	1:00- 2:00 PM	M	AGRI	2221	01	LIVESTOCK JUDGING	2	HAWKINS	107
LAB	2:00- 5:00 M					LIVESTOCK JUDGING			107
1100	9:30-10:45 AM	TTH	AGRI	2313	01	ENTOMOLOGY	4	SCHAEFER	107
LAB	4:00- 6:00 T					ENTOMOLOGY			207
1200	11:00-11:50 AM	MWF	AGRI	2317	01	AG ECONOMICS	3	SCHAEFER	102
1300	3:00- 6:00 PM	M	ARTS	1311	01	DESIGN I	3	SHELLEY	FA101
LAB	- TBA					DESIGN I			FA101
1400	3:00- 6:00 PM	M	ARTS	1312	01	DESIGN II	3	SHELLEY	FA101
LAB	- TBA					DESIGN II			FA101
1500	6:00- 9:00 PM	M	ARTS	1316	01	DRAWING I	3	SHELLEY	FA101
LAB	- TBA					DRAWING I			FA101
1600	6:00- 9:00 PM	M	ARTS	1317	01	DRAWING II	3	SHELLEY	FA101
LAB	- TBA					DRAWING II			FA101
1700	6:00- 9:00 PM	TH	ARTS	2316	01	INTRO TO OIL PAINT	3	SHELLEY	FA101
LAB	- TBA					INTRO TO OIL PAINT			FA101
1800	6:00- 9:00 PM	TH	ARTS	2317	01	OIL PAINTING	3	SHELLEY	FA101
LAB	- TBA					OIL PAINTING			FA101
2300	9:00- 9:50 AM	MWF	BIOL	1411	01	BOTANY	4	LOWRIE	207
LAB	1:00- 4:00 W					BOTANY			207
2400	10:00-10:50 AM	MWF	BIOL	1413	01	ZOOLOGY	4	LOWRIE	207
LAB	1:00- 4:00 M					ZOOLOGY			207
2500	11:00-12:15 AM	TTH	BIOL	1413	02	ZOOLOGY	4	LOWRIE	207
LAB	1:00- 4:00 T					ZOOLOGY			207
2600	9:30-10:45 AM	TTH	BIOL	2401	01	HUMAN A&P I	4	LOWRIE	207
LAB	1:00- 4:00 TH					HUMAN A&P I			207
3400	11:00-12:15 AM	TTH	BUSI	1301	01	INTRO TO BUSINESS	3	EWING	201
3700	9:00- 9:50 AM	MWF	CHEM	1411	01	COLLEGE CHEMISTRY I	4	WIGINTON	206
LAB	1:00- 4:00 M					COLLEGE CHEMISTRY I			206
LAB	4:00- 7:00 M					COLLEGE CHEMISTRY I			206
LAB	1:00- 4:00 W					COLLEGE CHEMISTRY I			206
LAB	4:00- 7:00 W					COLLEGE CHEMISTRY I			206
3800	1:00- 2:15 PM	TTH	CHEM	1411	02	COLLEGE CHEMISTRY I	4	WIGINTON	102
LAB	4:00- 7:00 M					COLLEGE CHEMISTRY I			206
LAB	1:00- 4:00 M					COLLEGE CHEMISTRY I			206
LAB	1:00- 4:00 W					COLLEGE CHEMISTRY I			206
LAB	4:00- 7:00 W					COLLEGE CHEMISTRY I			206
3900	9:30-10:45 AM	TTH	CHEM	1411	03	COLLEGE CHEMISTRY I	4	WIGINTON	206
LAB	1:00- 4:00 W					COLLEGE CHEMISTRY I			206
LAB	4:00- 7:00 W					COLLEGE CHEMISTRY I			206
LAB	1:00- 4:00 M					COLLEGE CHEMISTRY I			206
LAB	4:00- 7:00 M					COLLEGE CHEMISTRY I			206
4000	11:00-12:15 AM	TTH	CHEM	2423	01	ORGANIC CHEMISTRY I	4	WIGINTON	206
LAB	2:30- 5:30 TH					ORGANIC CHEMISTRY I			206
4200	8:00- 9:15 AM	TTH	COSC	1301	01	INTRO TO COMPUTERS	3	EWING	203
LAB	- TBA					INTRO TO COMPUTERS			203
4300	9:30-10:45 AM	TTH	COSC	1301	02	INTRO TO COMPUTERS	3	DENNEY	203
LAB	- TBA					INTRO TO COMPUTERS			203
4400	11:00-12:15 AM	TTH	COSC	1301	03	INTRO TO COMPUTERS	3	DENNEY	203
LAB	- TBA					INTRO TO COMPUTERS			203
4500	11:00-12:15 AM	MW	COSC	1301	04	INTRO TO COMPUTERS	3	DENNEY	203
LAB	- TBA					INTRO TO COMPUTERS			203
4600	6:00- 9:00 PM	T	COSC	1301	05	INTRO TO COMPUTERS	3	EWING	203
LAB	- TBA					INTRO TO COMPUTERS			203
4700	1:00- 2:15 PM	TTH	COSC	1301	06	INTRO TO COMPUTERS	3	DENNEY	203
LAB	- TBA					INTRO TO COMPUTERS			203
4800	6:00- 9:00 PM	W	COSC	1318	01	PROGRAMMING-PASCAL	3	STAFF	203
LAB	- TBA					PROGRAMMING-PASCAL			203
5100	9:00- 4:00 AM	DAILY	CPMT	1001	01	BASIC MICROCOMPUTERS	12	JACKSON	DTEC
LAB	9:00- 4:00 DAILY					BASIC MICROCOMPUTERS			DTEC
5200	9:00- 4:00 AM	DAILY	CPMT	2001	01	MICRO TROUBLESHOOT	12	JACKSON	DTEC
LAB	9:00- 4:00 DAILY					MICRO TROUBLESHOOT			DTEC
5301	6:00- 9:00 PM	M	CRIJ	1301	01	CRIMINAL JUSTICE	3	JEFFREY	106
5400	1:00- 1:50 PM	MWF	DRAM	1310	01	INTRO TO THEATER	3	WILSON	STAGE
LAB	- TBA					INTRO TO THEATER			STAGE
5500	2:00- 2:50 PM	MWF	DRAM	1323	01	THEATER PRACTICE	3	WILSON	STAGE
LAB	- TBA					THEATER PRACTICE			STAGE
5600	11:00-12:15 AM	TTH	DRAM	1330	01	STAGECRAFT	3	STEWART	STAGE
LAB	- TBA					STAGECRAFT			STAGE
5700	1:00- 2:15 PM	TTH	ECON	2301	01	MACROECONOMICS	3	SCHAEFER	107
5900	9:00- 4:00 AM	DAILY	ELEC	1001	01	DC ELECTRONICS	4	JACKSON	DTEC
LAB	- TBA					DC ELECTRONICS			DTEC
6000	9:00- 4:00 AM	DAILY	ELEC	1002	01	AC ELECTRONICS	4	JACKSON	DTEC
LAB	- TBA					AC ELECTRONICS			DTEC
6100	9:00- 4:00 AM	DAILY	ELEC	1003	01	SEMICONDUCTORS I	4	JACKSON	DTEC
LAB	- TBA					SEMICONDUCTORS I			DTEC

ID#	TIME	DAY	DPT	NBR	SEC	CLASS DESCRIPTION	HRS	INSTRUCTOR	ROOM
6200	9:00- 4:00 AM	DAILY	ELEC	1004	01	SEMICONDUCTORS II	4	JACKSON	DTEC
LAB	TBA	\$ 8.33				SEMICONDUCTORS II			DTEC
6300	9:00- 4:00 AM	DAILY	ELEC	2001	01	DIGITAL FUNDAMENTALS	4	JACKSON	DTEC
LAB	TBA	\$ 8.33				DIGITAL FUNDAMENTALS			DTEC
6400	9:00- 4:00 AM	DAILY	ELEC	2002	01	DIGITAL APPLICATIONS	4	JACKSON	DTEC
LAB	TBA	\$ 8.34				DIGITAL APPLICATIONS			DTEC
6800	6:00- 9:00 PM	T ENGL	0308	01	PREPARATORY ENGLISH	3	LAND	104	
LAB	TBA	\$ 15.00				PREPARATORY ENGLISH		104	
6900	9:00- 9:50 AM	MWF ENGL	1301	01	ENG COMP/RHETORIC I	3	ELLIOTT	105	
7000	10:00-10:50 AM	MWF ENGL	1301	02	ENG COMP/RHETORIC I	3	ELLIOTT	105	
7100	11:00-11:50 AM	MWF ENGL	1301	03	ENG COMP/RHETORIC I	3	SCOGGIN	105	
7200	8:00- 8:50 AM	MWF ENGL	1301	04	ENG COMP/RHETORIC I	3	ELLIOTT	105	
7300	11:00-12:15 AM	TTH ENGL	1301	05	ENG COMP/RHETORIC I	3	THOMPSON	104	
7400	8:00- 9:15 AM	TTH ENGL	1301	06	ENG COMP/RHETORIC I	3	WILSON	105	
7500	9:30-10:45 AM	TTH ENGL	1302	01	ENG COMP/RHETORIC II	3	THOMPSON	106	
7600	10:00-10:50 AM	MWF ENGL	1302	02	ENG COMP/RHETORIC II	3	WILSON	102	
7700	1:00- 2:15 PM	MW ENGL	1302	03	ENG COMP/RHETORIC II	3	SCOGGIN	105	
7800	10:00-10:50 AM	MWF ENGL	2332	01	WORLD LITERATURE I	3	SCOGGIN	104	
7900	1:00- 2:15 PM	TTH ENGL	2332	02	WORLD LITERATURE I	3	THOMPSON	105	
9400	9:00- 4:00 AM	DAILY	EOPA	1001	01	BASIC ORGAN	7	JACKSON	DTEC
LAB	9:00- 4:00	DAILY	\$ 12.50			BASIC ORGAN			DTEC
9500	9:00- 4:00 AM	DAILY	EOPA	1002	01	BASIC AMPLIFIERS	7	JACKSON	DTEC
LAB	9:00- 4:00	DAILY	\$ 12.50			BASIC AMPLIFIERS			DTEC
9600	9:00- 4:00 AM	DAILY	EOPA	2001	01	ORGAN ADVANCED	7	JACKSON	DTEC
LAB	9:00- 4:00	DAILY	\$ 12.50			ORGAN ADVANCED			DTEC
9700	9:00- 4:00 AM	DAILY	EOPA	2002	01	AMPLIFIERS ADVANCED	7	JACKSON	DTEC
LAB	9:00- 4:00	DAILY	\$ 12.50			AMPLIFIERS ADVANCED			DTEC
9800	9:00- 9:50 AM	MWF GOVT	2301	01	AMER CONSTITUTION	3	TIBBETS	106	
9900	11:00-11:50 AM	MWF GOVT	2301	02	AMER CONSTITUTION	3	TIBBETS	106	
10000	6:00- 9:00 PM	TH GOVT	2301	03	AMER CONSTITUTION	3	TIBBETS	106	
11000	8:00- 8:50 AM	MWF HIST	1301	01	U.S. HISTORY TO 1865	3	TAYLOR	103	
11100	10:00-10:50 AM	MWF HIST	1301	02	U.S. HISTORY TO 1865	3	TAYLOR	103	
11200	11:00-11:50 AM	MWF HIST	1301	03	U.S. HISTORY TO 1865	3	TAYLOR	103	
11300	9:30-10:45 AM	TTH HIST	1301	04	U.S. HISTORY TO 1865	3	TAYLOR	103	
11400	6:00- 9:00 PM	TU HIST	1301	05	U.S. HISTORY TO 1865	3	TAYLOR	103	
11500	11:00-12:15 AM	TTH HIST	2301	01	TEXAS HISTORY	3	TAYLOR	103	
12300	11:00-12:15 AM	TTH HUMA	1315	01	INTRO TO HUMANITIES	3	STEWART(B)	FA101	
12400	9:00- 9:50 AM	MWF HUMA	1315	02	INTRO TO HUMANITIES	3	WILSON	FA102	
12500	9:30-10:45 AM	TTH HUMA	1315	03	INTRO TO HUMANITIES	3	WILSON	FA102	
12800	6:00- 9:00 PM	W MATH	0308	01	INTERMEDIATE ALGEBRA	3	PERRYMAN	102	
12900	9:00- 9:50 AM	MWF MATH	1314	01	COLLEGE ALGEBRA	3	PERRYMAN	101	
13000	9:30-10:45 AM	TTH MATH	1314	02	COLLEGE ALGEBRA	3	PERRYMAN	101	
13100	1:00- 2:15 PM	MW MATH	1314	03	COLLEGE ALGEBRA	3	PERRYMAN	101	
13200	11:00-11:50 AM	MWF MATH	1324	01	FINITE MATHEMATICS	3	PERRYMAN	101	
14700	3:00- 4:15 PM	MW MUSI	1131	01	PEP/POP BAND	1	STEWART	STAGE	
14800	2:30- 3:45 PM	TTH MUSI	1132	01	JAZZ BAND	1	STEWART	STAGE	
14900	12:15-12:50 PM	M-F MUSI	1151	01	SHOW CHOIR	1	STEWART	STAGE	
15000	1:00- 2:15 PM	TTH MUSI	1181	01	INTRO TO PIANO	1	STEWART(B)	FA101	
15100	6:00- 9:00 PM	T MUSI	1192	01	INTRO TO GUITAR	1	WILSON	FA102	
15200	1:00- 2:15 PM	MW MUSI	1301	01	MUSIC FUNDAMENTALS	3	STEWART	FA101	
15300	10:00-10:50 AM	MWF MUSI	1306	01	MUSIC APPRECIATION	3	STEWART(B)	FA101	
15400	9:30-10:45 AM	TTH MUSI	1308	01	MUSIC LITERATURE I	3	STEWART	FA101	
15500	11:00-11:50 AM	MWF MUSI	1311	01	MUSIC THEORY I	4	STEWART	FA101	
LAB	TBA	\$ 10.00				MUSIC THEORY I			FA101
16000	10:00-10:50 AM	MWF OFAD	1311	01	BEGINNING KEYBOARD	3	DENNEY	203	
LAB	TBA	\$ 20.00				BEGINNING KEYBOARD			203
16100	9:00-10:00 AM	MWF OFAD	2304	01	INFORMATION PROCESS	3	DENNEY	203	
LAB	TBA	\$ 20.00				INFORMATION PROCESS			203
16500	11:00-12:15 AM	TTH PHED	1012	01	TENNIS/VOLLEYBALL	1	ZEHR	GYM	
16600	9:00- 9:50 AM	MWF PHED	1013	01	BADMINTON/VOLLEYBALL	1	MONDRAGON	GYM	
16700	10:00-10:50 AM	MWF PHED	1015	01	PHYSICAL FITNESS	1	MONDRAGON	GYM	
16800	11:00-11:50 AM	MWF PHED	1015	02	PHYSICAL FITNESS	1	ZEHR	GYM	
16900	1:00- 2:50 PM	DAILY PHED	1016	01	WOMEN'S VARSITY	1	ZEHR	GYM	
17000	3:00- 4:50 PM	DAILY PHED	1017	01	MEN'S VARSITY	1	MONDRAGON	GYM	
17100	2:20- 5:00 PM	TH PHED	1110	01	LIFETIME PHYSICAL	1	SCHAEFER	107	
17200	3:00- 6:00 PM	TU PHED	1261	01	MEN TIMED EVENTS	1	PERRYMAN	ARENA	
17300	3:00- 6:00 PM	TH PHED	1271	01	WOMEN TIMED EVENTS	1	PERRYMAN	ARENA	
17400	9:30-10:45 AM	TTH PHED	1301	01	FOUNDATIONS OF PE	3	ZEHR	GYM	
17500	10:00-10:50 AM	MWF PHED	1304	01	PRSNL/COMMUNITY HLTH	3	ZEHR	101	
17600	11:00-11:50 AM	MWF PHED	1308	01	OFFICIATING	3	MONDRAGON	GYM	
17700	9:30-10:45 AM	TTH PHED	1321	01	COACHING BASKETBALL	3	MONDRAGON	GYM	
17900	10:00-10:50 AM	MWF PHYS	1401	01	COLLEGE PHYSICS I	4	WIGINTON	206	
LAB	2:30- 5:30	T \$ 30.00				COLLEGE PHYSICS I			206
18000	8:00- 4:00 AM	2627 PSYC	0090	01	ORIENTATION	1	CHRISTIE	FA AUD	
18100	9:30-10:45 AM	TTH PSYC	2301	01	GENERAL PSYCHOLOGY	3	DENNEY	104	
18200	1:00- 2:15 PM	MW PSYC	2301	02	GENERAL PSYCHOLOGY	3	DENNEY	104	
18300	11:00-12:15 AM	TTH PSYC	2308	01	CHILD PSYCHOLOGY	3	DENNEY	106	
19200	9:00- 4:00 AM	DAILY RAFO	1101	01	BEEF CATTLE PROD	3	TUBBS	RFO	
LAB	9:00- 4:00	DAILY	\$ 10.00			BEEF CATTLE PROD			RFO
19300	9:00- 4:00 AM	DAILY RAFO	1103	01	RANCH FEEDYARD JOBS	3	GAGE	RFO	
LAB	9:00- 4:00	DAILY	\$ 10.00			RANCH FEEDYARD JOBS			RFO
19400	9:00- 4:00 AM	DAILY RAFO	1107	01	SOIL & WATER CONSER	3	GAGE	RFO	
LAB	9:00- 4:00	DAILY	\$ 10.00			SOIL & WATER CONSER			RFO
19500	9:00- 4:00 AM	DAILY RAFO	1108	01	RANGE MANAGEMENT	3	TUBBS	RFO	
LAB	9:00- 4:00	DAILY	\$ 10.00			RANGE MANAGEMENT			RFO
19600	9:00- 4:00 AM	DAILY RAFO	2105	01	ANIMAL HEALTH/REPROD	3	TUBBS	RFO	
LAB	9:00- 4:00	DAILY	\$ 10.00			ANIMAL HEALTH/REPROD			RFO
19700	9:00- 4:00 AM	DAILY RAFO	2109	01	AG RECORDS AND FIN	3	GAGE	RFO	
LAB	9:00- 4:00	DAILY	\$ 10.00			AG RECORDS AND FIN			RFO
19800	1:00- 3:00 PM	DAILY RAFO	2220	01	COMPUTERS IN AG	3	EWING	203	
LAB	TBA	\$ 10.00				COMPUTERS IN AG			203
19900	3:00- 5:00 PM	DAILY RAFO	2220	02	COMPUTERS IN AG	3	EWING	203	
LAB	TBA	\$ 10.00				COMPUTERS IN AG			203
20000	9:00- 4:00 AM	DAILY RATV	1001	01	BASIC RADIO	7	JACKSON	DTEC	
LAB	9:00- 4:00	DAILY	\$ 12.50			BASIC RADIO			DTEC
20100	9:00- 4:00 AM	DAILY RATV	1002	01	BASIC TV & RECEIVER	7	JACKSON	DTEC	
LAB	9:00- 4:00	DAILY	\$ 12.50			BASIC TV & RECEIVER			DTEC

ID#	TIME	DAY	DPT	NBR	SEC	CLASS DESCRIPTION	HRS	INSTRUCTOR	ROOM
20200	9:00-4:00 AM	DAILY	RATV	2001	01	COLOR TV	7	JACKSON	DTEC
LAB	9:00-4:00	DAILY				COLOR TV			DTEC
20300	9:00-4:00 AM	DAILY	RATV	2002	01	CUSTOMER RELATIONS	7	JACKSON	DTEC
LAB	9:00-4:00	DAILY				CUSTOMER RELATIONS			DTEC
20400	6:00-9:00 PM	M	READ	0308	01	EFFECTIVE READING	3	SHARP	104
LAB	-	TBA				EFFECTIVE READING			104
20800	1:00-2:15 PM	TTH	SOCI	1301	01	INTRO TO SOCIOLOGY	3	DENNEY	101
20900	11:00-11:50 AM	MWF	SOCI	2301	01	FAMILY IN SOCIETY	3	DENNEY	104
21400	6:00-10:00 PM	W	SPAN	1411	01	BEGINNING SPAN I	4	WILLIAMS	103
LAB	-	TBA				BEGINNING SPAN I			103
21500	10:00-10:50 AM	MWF	SPCH	1315	01	PUBLIC SPEAKING	3	CRUMP	FA102
21600	1:00-2:15 PM	MW	SPCH	1315	02	PUBLIC SPEAKING	3	CRUMP	FA102
21700	1:00-2:15 PM	TTH	SPCH	1315	03	PUBLIC SPEAKING	3	CRUMP	FA102
21800	6:00-9:00 PM	M	SPCH	1315	04	PUBLIC SPEAKING	3	CRUMP	FA102
21900	11:00-12:15 AM	TTH	SPCH	1318	01	INTERPERSONAL SPEECH	3	CRUMP	FA102
22000	11:00-11:50 AM	MWF	SPCH	1342	01	VOICE AND DICTION	3	CRUMP	FA102
22500	9:00-4:00 AM	DAILY	VITC	1001	01	BASIC VIDEO RECORD	7	JACKSON	DTEC
LAB	9:00-4:00	DAILY				BASIC VIDEO RECORD			DTEC
22600	9:00-4:00 AM	DAILY	VITC	1002	01	BASIC CAMCORDER SYS	7	JACKSON	DTEC
LAB	9:00-4:00	DAILY				BASIC CAMCORDER SYS			DTEC
22700	9:00-4:00 AM	DAILY	VITC	2001	01	ADVANCE VIDEO RECORD	7	JACKSON	DTEC
LAB	9:00-4:00	DAILY				ADVANCE VIDEO RECORD			DTEC
22800	9:00-4:00 AM	DAILY	VITC	2002	01	ADVANCED CAMCORDER	7	JACKSON	DTEC
LAB	9:00-4:00	DAILY				ADVANCED CAMCORDER			DTEC

## CHILDRESS

ID#	TIME	DAY	DPT	NBR	SEC	CLASS DESCRIPTION	HRS	INSTRUCTOR	ROOM
201	6:00-9:00 PM	T	ACCT	2301	01	ACCOUNTING I	3	SWINDEL	CH
3301	6:00-9:00 PM	M	BIOL	1411	01	BOTANY	4	LOWRIE	CH
LAB	-	TBA				BOTANY			CH
4900	6:00-9:00 PM	M	COSC	1301	01	INTRO TO COMPUTERS	3	EVANS	CH
LAB	-	TBA				INTRO TO COMPUTERS			CH
5300	6:00-9:00 PM	TH	CRIJ	1301	01	CRIMINAL JUSTICE	3	BUCKLEY	CH
5302	6:00-9:00 PM	T	CRIJ	1307	01	CRIME IN AMERICA	3	GRIFFIN	CH
5801	6:00-9:00 PM	M	ECON	2301	01	MACROECONOMICS	3	JONES	CH
8000	6:00-9:00 PM	TBA	ENGL	0308	01	PREPARATORY ENGLISH	3	ANGLIN	CH
LAB	-	TBA				PREPARATORY ENGLISH			CH
8100	6:00-9:00 PM	M	ENGL	1301	01	ENG COMP/RHETORIC I	3	SANDERS	CH
10100	6:00-9:00 PM	TH	GOVT	2301	01	AMER CONSTITUTION	3	NIPPERT	CH
11600	6:00-9:00 PM	T	HIST	1301	01	U.S. HISTORY TO 1865	3	CURRIE	CH
12600	6:00-9:00 PM	TH	HUMA	1315	01	INTRO TO HUMANITIES	3	ANGLIN	CH
13500	6:00-9:00 PM	TBA	MATH	0308	01	INTERMEDIATE ALGEBRA	3	ANGLIN	CH
LAB	-	TBA				INTERMEDIATE ALGEBRA			CH
13600	6:00-9:00 PM	W	MATH	1314	01	COLLEGE ALGEBRA	3	ANGLIN	CH
14501	6:00-9:00 PM	TH	MATH	1324	01	FINITE MATHEMATICS	3	ANGLIN	CH
18400	6:00-9:00 PM	W	PSYC	2308	01	CHILD PSYCHOLOGY	3	JONES	CH
20500	6:00-9:00 PM	TBA	READ	0308	01	EFFECTIVE READING	3	ANGLIN	CH
LAB	-	TBA				EFFECTIVE READING			CH
22100	6:00-9:00 PM	W	SPCH	1315	01	PUBLIC SPEAKING	3	ANGLIN	CH

## PAMPA

ID#	TIME	DAY	DPT	NBR	SEC	CLASS DESCRIPTION	HRS	INSTRUCTOR	ROOM
200	7:00-9:50 PM	T	ACCT	2301	01	ACCOUNTING I	3	HUBBARD	102
2100	6:00-9:00 PM	W	ARTS	1316	01	DRAWING I	3	SHELLEY	15
LAB	-	TBA				DRAWING I	TBA		
2200	6:00-9:00 PM	W	ARTS	1317	01	DRAWING II	3	SHELLEY	15
LAB	-	TBA				DRAWING II	TBA		
22801	1:00-3:50 PM	W	ARTS	2316	01	INTRO TO OIL PAINT	3	SHELLEY	15
LAB	-	TBA				INTRO TO OIL PAINT			
22803	6:00-9:50 PM	W	ARTS	2317	01	OIL PAINTING	3	SHELLEY	15
LAB	-	TBA				OIL PAINTING	TBA		
2800	7:00-9:50 PM	T	BIOL	1322	01	NUTRITION	3	SULLIVAN	TBA
2900	9:00-11:50 AM	M	BIOL	1413	01	ZOOLOGY	4	WINDHORST	1
LAB	9:00-11:50	W				ZOOLOGY	1		
3000	4:00-6:50 PM	W	BIOL	2401	01	HUMAN A&P I	4	WINDHORST	1
LAB	7:00-9:50	W				HUMAN A&P I	TBA		
3100	4:30-6:50 PM	T	BIOL	2420	01	MICROBIOLOGY	4	LOWRIE	102
LAB	7:00-9:50	T				MICROBIOLOGY	103		
22817	7:00-9:50 PM	T	BUSI	1304	01	BS COMMUNICATION	3	CROW	6
22818	1:00-2:30 PM	T/TH	BUSI	1304	02	BS COMMUNICATION	3	MCKNIGHT	1
5000	6:00-9:50 PM	M	COSC	1301	01	INTRO TO COMPUTERS	3	BUCKHAULTS	103
LAB	-	TBA				INTRO TO COMPUTERS	103		
22813	6:00-9:50 PM	TH	COSC	1301	02	INTRO TO COMPUTERS	3	REEVE	103
LAB	-	TBA				INTRO TO COMPUTERS	103		
5800	7:00-9:50 PM	M	ECON	2301	01	MACROECONOMICS	3	SCHAEFER	TBA
6500	6:00-9:50 PM	M/W	ELEC	1001	01	DC ELECTRONICS	4	FORD	104
6600	6:00-9:50 PM	T/TH	ELEC	1002	01	AC ELECTRONICS	4	STAFF	104
8400	7:00-9:50 PM	M	ENGL	0307	01	DEV WRITING	2	THORNTON	TBA
8500	9:00-10:20 AM	T/TH	ENGL	1301	01	ENG COMP/RHETORIC I	3	SCOGGIN	2
8600	7:00-9:50 PM	T	ENGL	1301	02	ENG COMP/RHETORIC I	3	THOMPSON	2
22805	10:00-10:50 AM	M/W/F	ENGL	1301	03	ENG COMP/RHETORIC I	3	THOMPSON	2
22806	9:00-9:50 AM	M/W/F	ENGL	1302	01	ENG COMP/RHETORIC II	3	THOMPSON	2
22807	7:00-9:50 PM	TH	ENGL	1302	02	ENG COMP/RHETORIC II	3	SCOGGIN	2
22809	11:00-11:50 AM	M/W/F	ENGL	2332	01	WORLD LITERATURE I	3	THOMPSON	2
22808	10:30-11:50 AM	T/TH	ENGL	2332	02	WORLD LITERATURE I	3	SCOGGIN	2
4501	1:30-2:50 PM	T/TH	ENGL	2332	03	WORLD LITERATURE I	3	SCOGGIN	2
22815	1:00-3:50 PM	M	ENGL	2333	01	WORLD LITERATURE II	3	THOMPSON	2
10400	1:00-2:20 PM	T/TH	GOVT	2301	01	AMER CONSTITUTION	3	TIBBETS	3
10600	6:00-8:50 PM	TH	GOVT	2301	03	AMER CONSTITUTION	3	TIBBETS	1
10700	7:00-9:50 PM	M	GOVT	2302	01	TEXAS GOVERNMENT	3	PEET	1
22812	10:30-11:50 AM	T/TH	GOVT	2302	02	TEXAS GOVERNMENT	3	TIBBETS	3
11900	7:00-9:50 PM	TH	HIST	1301	01	U.S. HISTORY TO 1865	3	RAPSTINE	3
12000	7:00-9:50 PM	T	HIST	1301	02	U.S. HISTORY TO 1865	3	RAPSTINE	3
12100	7:00-9:50 PM	W	HIST	1302	01	U.S. HIST TO PRESENT	3	DINSMORE	3
22802	7:00-9:50 PM	T	HIST	1302	02	U.S. HIST TO PRESENT	3	DINSMORE	3
12700	7:00-9:50 PM	M	HUMA	1315	01	INTRO TO HUMANITIES	3	JUENGERMAN	TBA

ID#	TIME	DAY	DPT	NBR	SEC
13900	7:00- 9:50 PM	TH	MATH	0307	02
14000	7:00- 9:50 PM	TH	MATH	0308	01
14100	7:00- 9:50 PM	M	MATH	1314	01
14200	7:00- 9:50 PM	T	MATH	1332	01
22816	12:00- 1:20 PM	M/W	MDT	123	01
15700	7:00- 9:50 PM	T	MUSI	1151	01
22814	7:00- 9:50 PM	TH	MUSI	1311	01
16200	10:30-11:50 AM	T/TH	OFAD	1311	01
LAB	TBA			\$ 20.00	
22811	7:00- 9:50 PM	T	OFAD	1311	02
LAB	TBA			\$ 20.00	
16300	9:00-10:20 AM	T/TH	OFAD	2304	01
LAB	TBA			\$ 20.00	
16400	6:00- 8:50 PM	W	OFAD	2304	02
LAB	TBA			\$ 20.00	
17800	6:00- 8:50 PM	TH	PHED	1012	01
LAB	TBA			\$ 10.00	
18600	6:00- 7:00 PM	M	PSYC	0090	01
22804	7:00- 9:50 PM	W	PSYC	2301	01
18800	7:00- 9:50 PM	T	PSYC	2301	02
22810	9:00-10:30 AM	T/TH	PSYC	2301	03
18900	7:00- 9:50 PM	TH	PSYC	2308	01
20600	7:00- 9:50 PM	M	READ	0307	01
21100	2:00- 4:50 PM	TH	SOCI	1301	01
22300	7:00- 9:50 PM	TH	SPCH	1315	01
22400	7:00- 9:50 PM	M	SPCH	1318	01

## WELLINGTON

ID#	TIME	DAY	DPT	NBR	SEC
3200	7:00-10:00 PM	W	BIOL	1322	01
3302	7:00-10:00 PM	W	BIOL	1411	01
LAB	TBA			\$ 30.00	
3300	7:00-10:00 PM	M	BIOL	2401	01
LAB	TBA			\$ 30.00	
22814	7:00-10:00 P.M.	M	COSC	1301	01
LAB	TBA			\$ 30.00	
9100	7:00-10:00 PM	TBA	ENGL	0308	01
LAB	TBA			\$ 15.00	
			WE		
9300	7:00-10:00 PM	M	ENGL	1301	01
22816	7:00-10:00 PM	TH	ENGL	2332	01
10800	7:00-10:00 PM	TU	GOVT	2301	01
12200	7:00-10:00 PM	TH	HIST	1301	01
12701	7:00-10:00 PM	TU	HUMA	1315	01
14400	7:00-10:00 PM	TBA	MATH	0308	01
LAB	TBA			\$ 15.00	
14502	7:00-10:00 PM	W	MATH	1314	01
19000	7:00-10:00 PM	TU	PSYC	2301	01
19100	7:00-10:00 PM	TH	PSYC	2308	01
20700	7:00-10:00 PM	TBA	READ	0308	01
LAB	TBA			\$ 15.00	
21101	7:00-10:00 PM	TU	SOCI	1301	01
21102	7:00-10:00 PM	TH	SOCI	1306	01
22401	7:00-10:00 PM	M	SPCH	1315	01

CLASS DESCRIPTION	HRS	INSTRUCTOR	ROOM
BEGINNING ALGEBRA	2	BAKER	14
INTERMEDIATE ALGEBRA	3	MCCULLOUGH	9
COLLEGE ALGEBRA	3	HOWARD	14
MODERN MATH I	3	BAKER	14
MEDICAL TERM. II	3	WINDHORST	1
SHOW CHOIR	1	JUENGERMAN	TBA
MUSIC THEORY I	4	JUENGERMAN	TBA
BEGINNING KEYBOARD	3	JOHNSON	16
BEGINNING KEYBOARD	3	JOHNSON	16
BEGINNING KEYBOARD	3	JOHNSON	16
INFORMATION PROCESS	3	JOHNSON	104
INFORMATION PROCESS	3	HAYNES	104
INFORMATION PROCESS	3	HAYNES	104
TENNIS/VOLLEYBALL	1	HAYNES	GYM
TENNIS/VOLLEYBALL	1	HAYNES	GYM
ORIENTATION	1	LANE	102
GENERAL PSYCHOLOGY	3	LANDWERTH	TBA
GENERAL PSYCHOLOGY	3	VINSON	TBA
GENERAL PSYCHOLOGY	3	LANDWERTH	TBA
CHILD PSYCHOLOGY	3	VINSON	TBA
DEV READING	2	STAFF	TBA
INTRO TO SOCIOLOGY	3	WILSON	3
PUBLIC SPEAKING	3	WILSON	5
INTERPERSONAL SPEECH	3	LANE	102

CLASS DESCRIPTION	HRS	INSTRUCTOR	ROOM
NUTRITION	3	DARTER	WE
BOTANY	4	NEEDHAM	WE
BOTANY	4	NEEDHAM	WE
HUMAN A&P I	4	NEEDHAM	WE
HUMAN A&P I	4	NEEDHAM	WE
INTRO TO COMPUTERS	3	SCHMIDT	WE
INTRO TO COMPUTERS	3	SCHMIDT	WE
PREPARATORY ENGLISH	3	STAFF	WE
PREPARATORY ENGLISH	3	STAFF	WE
ENG COMP/RHETORIC I	3	NORMAN	WE
WORLD LITERATURE I	3	NORMAN	WE
AMER CONSTITUTION	3	DAVIS	WE
U.S. HISTORY TO 1865	3	ROWE	WE
INTRO TO HUMANITIES	3	ROWE	WE
INTERMEDIATE ALGEBRA	3	STAFF	WE
INTERMEDIATE ALGEBRA	3	STAFF	WE
COLLEGE ALGEBRA	3	SCHMIDT	WE
GENERAL PSYCHOLOGY	3	KLINK	WE
CHILD PSYCHOLOGY	3	KLINK	WE
EFFECTIVE READING	3	STAFF	WE
EFFECTIVE READING	3	STAFF	WE
INTRO TO SOCIOLOGY	3	CARDWELL	WE
SOCIAL ISSUES	3	CARDWELL	WE
PUBLIC SPEAKING	3	ROWE	WE

## CONTINUING EDUCATION

### Basic Photography

Instructor: Christi Ross  
 Begin date: September 17  
 End date: October 15, 1996  
 Meeting dates: Sept. 17, 24,  
 Oct. 1, 8, 15  
 Time: 7-9 p.m.  
 Location: Clarendon College  
 Administration Building  
 Cost: \$15  
 Participants must furnish film  
 and 35 mm camera

### Cardio-Pulmonary Resuscitation (CPR)

Instructor: Ruth Petty  
 Begin date: October 8  
 End date: October 9, 1996  
 Meeting dates: October 8, 9  
 Time: 5-10 p.m.  
 Location: Clarendon College  
 Administration Building  
 Cost: \$15  
 Meets American Red Cross  
 requirements for basic certifi-  
 cation and recertification.

### Computer Skills for Seniors

Instructor: Frank Amon  
 Begin date: October 15  
 End date: October 24, 1996  
 Meeting dates: October 15, 17,  
 22, 24  
 Time: 7-9 p.m.  
 Location: Clarendon College  
 Administration Building  
 Cost: \$15

### Personal Financial Planning

Instructor: Mark Mann  
 Begin date: October 1  
 End date: October 10, 1996  
 Meeting dates: October 1, 3,  
 8, 10  
 Time: 7-9 p.m.  
 Location: Clarendon College  
 Administration Building  
 Cost: \$15

### Aerobics

Instructor: Michelle Schmidt  
 TBA

### Emergency Medical Technician - Basic

Instructor: Staff  
 TBA

### Windows 3.1

Instructor: Pamela Denney  
 Begin date: October 29  
 End date: November 12, 1996  
 Meeting dates: October 29,  
 November 5, 12  
 Time: 6-9:30 p.m.  
 Location: Clarendon College  
 Administration Building  
 Cost: \$15

### Bottom Line Farming

Instructor: Don Williams  
 TBA

Register for any of these classes by calling (806) 874-3571

Clarendon College's 1996 Fall Schedule was produced for distribution to area newspapers and CC campuses.

# Ask Those Who Know...

Faculty/Student Ratio - 17:1

Average Class Size - 22

*Small classes guarantee that we will know you by name rather than by your Social Security number.*

35 fields of study

*From agriculture and music to education and business, Clarendon College offers courses which are transferrable to four-year universities. We offer a good start whether you're right out of high school or a non-traditional student. With our evening classes, you're able to earn an education while earning a living.*

Workforce education programs in Ranch and Feedlot Management, Electronics Technology, Secretarial Science, Cosmetology and Vocational Nursing  
Enrollment: 400 on-campus and 450 off-campus: Clarendon College Pampa Center, Childress, Wellington, Memphis and Shamrock.

*Small classes at all locations, so you get plenty of one-on-one interaction with faculty.*

Estimated yearly cost including tuition\*, room and board: \$2,684 in-district, \$2,740 out-of-district and \$3,196 out-of-state  
(\*Based on 14 credit hours/per semester)

*Shop Around! Compare Clarendon College to Texas A&M, Texas Tech or West Texas A&M University...you'll see that we are an affordable choice.*

70% of students receive financial assistance

County-elected Board of Regents

Athletic Affiliations: National Small College Athletic Association and National Intercollegiate Rodeo Association

Intramural sports, student dances, theatre, musical ensembles and various sporting events.

*Clarendon College's student activities are top notch! There's something for everyone, so get involved! Plus, with the new Bairfield Activity Center, students can relax between and after classes by watching television, playing pool and much more.*

## SIGN UP TODAY FOR FALL 1996 CLASSES

**CLARENDON COLLEGE  
ADMISSIONS OFFICE**

**P.O. BOX 968**

**CLARENDON, TX 79226**

**806.874.3571**

**CLARENDON COLLEGE  
PAMPA CENTER**

**ADMISSIONS OFFICE**

**900 N. FROST**

**PAMPA, TX**

**806.665.8801**



**BRANDY THOMAS**

*Wellington, Texas*

"During the Fall and Spring, I take classes on the main campus, because I'm a member of the basketball team. In the summers, I take classes in my hometown. I really like the convenience of the off-campus classes."



**TIM LANDON**

*Clarendon, Texas*

"Being close to home has helped my pocketbook. Clarendon College has been an affordable and smart choice."



**ANGEL HARRIS**

*McLean, Texas*

"I was able to get involved in so many activities and organizations. Last year, I was a cheerleader, student aide and participated in intramurals, and oh yeah, I took 18 hours of classes. Who says there's nothing to do at Clarendon College?"



**DARRYL PERRYMAN**

*Clarendon College Math Dept.  
Chairperson & Instructor  
Clarendon College Alumnus*

"Students at Clarendon College excel because of the personalized instruction. The availability of assistance and the willingness of instructors to help, really makes us stand out from other schools."



**JODY BISHOP**

*Hardin, Montana*

"I had decided to attend Oklahoma State, but I changed my mind after several friends told me how they loved CC. After doing some research, I found nothing but positive comments about CC and its faculty and programs. I definitely made the right choice."



**PAUL MAYER**

*Guymon, Oklahoma*

Clarendon College's Ranch and Feedlot Operations Program has given me the ability and knowledge to successfully run our family ranch.