

| | HIGH | LOW |
|----------|------|-----|
| April 16 | 68 | 43 |
| April 15 | 56 | 45 |
| April 14 | 62 | 48 |

Precip. to date 3.11"



General Rain Enhances Crop Prospects

Local Bank Deposits Up \$7 Million

Economy Boosted By Area Rainfall

If you want to hear a definite sparkle in a banker's voice, just talk to him while his area is receiving a good rain. This was the case while checking with area banks Monday and a general rain, which totaled more than an inch in most cases, was

falling. With the quarterly bank call, Muleshoe's two banks and Savings and Loan headquarters reflect a healthy boost in deposits from the same time last year. Total deposits reported by the three institutions on March 31, 1977, reflect an increase of \$7,164,347.39 over the same time in 1976. Total deposits reported by the same three institutions on March 31 of this year were \$54,672,688.55 and on the same date last year, deposits were \$47,508,341.15.

Loans were also up by more than \$13 million, with the three local banks reporting loans of \$41,893,462.04 on March 31, compared to the March 31, 1976 total of \$28,449,716.98. This is a difference of \$13,443,745.06.

First National Bank reported deposits on March 31, 1977 of \$16,788,119.55, up \$353,119.55 from the \$16,435,000.00 at the same time last year. They also reported loans were up by \$3,659,850.95 on March 31, with \$10,766,850.95, compared to \$7,007,000.00 at the same time last year.

Muleshoe State Bank reported deposits were up by more than \$1 million on March 31 this year. Last year, on March 31, deposits were \$18,106,000.00 and were \$19,292,000.00 on March 31 this year, for a difference of \$1,186,000.00. Their loans had increased by \$3,402,000.00 with loans of \$8,302,000.00 on March 31, 1977.

Mrs. Leslie Lambert is in Lubbock Methodist Hospital. She underwent surgery and remained in intensive care for several days.

Mrs. Darel Turner is home from the Plainview Hospital where she had surgery.

T.R. White is home after surgery in Clovis Memorial Hospital.



Terry Hill of the ASCS office said disaster payments are 99 percent complete for 1976. The office has mailed 1981 checks in the amount of \$2,841,904.43.

Mr. and Mrs. E.J. Tapp and Mr. and Mrs. Joel Tapp of Gainsville, Ga., spent last week in the home of their cousins, Mr. and Mrs. Jerrell Ottwell. They also visited with Mr. and Mrs. Jerrell C. Ottwell and Mr. and Mrs. Jack Lee and Matt, all of Muleshoe.

Mr. and Mrs. Robert Ottwell of Houston visited with their parents, Mr. and Mrs. Elmer Davis and Mr. and Mrs. Jerrell Ottwell and other relatives for the Easter holidays in Muleshoe.

Mrs. Leslie Lambert is in Lubbock Methodist Hospital. She underwent surgery and remained in intensive care for several days.

Mrs. Darel Turner is home from the Plainview Hospital where she had surgery.

T.R. White is home after surgery in Clovis Memorial Hospital.

School Board Will Choose New Officers

One of the first items of business for the Muleshoe Independent School District Board of Trustees Monday night will be to have new members R.D. (Tub) Angeley and Ronnie Holt take the oath of office.

Following that an election will be conducted to choose a president, vice president and secretary for the board for the school year 1977-78.

Current financial reports will be heard, along with the tax report and consideration of a data processing system for handling the tax roll.

Several routine items will be considered, along with hearing resignations of school personnel.

The meeting will be at 8 p.m. in the school administration office.



BUILDING DEMOLITION UNDERWAY . . . Workmen began late last week demolishing several buildings in the 200 block of South First Street. The buildings formerly were occupied by a cotton buyer's office; the Alcoholics Anonymous meeting room; a small

office complex and Pay and Save Grocery. The buildings are being torn down and land cleared for a new facility proposed by the First National Bank of Muleshoe.

'Use Your Library' Theme For Texas Library Week

Do you "Use Your Library" and do you know that "Libraries Are Something Else?" Both are themes for this year's Texas Library Week. In Muleshoe, myriad activities will highlight the special week.

Anne Camp, Librarian, said emphasis will be placed on the facilities and services presently offered by the Muleshoe Area Public Library and additional facilities planned for the future.

She said, "We would like to sincerely invite everyone to come by the library, tour our facilities, drink coffee with us and utilize our facility. We will have a lot of interesting displays during the week, including both historical and scientific exhibits."

Schools and the Hobby Club will have displays during the special week which gets underway today (Sunday) and will conclude on April 23.

The librarian mentioned one specific display. It will be a replica of Judge Roy Bean's "Law West of the Pecos" headquarters, along with Lily Langtry, a famous English ac-

tress who was idolized by the famous judge. Although he never met the actress, Judge Bean was perhaps her greatest fan during his

lifetime. He had many pictures, pamphlets and all the literature he could find about her prominently displayed in his headquarters.

Also on display will be an actual umbrella carried by the actress while she was in the United States.

Mrs. Camp also commented, "We would like for the library to be considered as an information center, not just a place to keep books."

Available during the week will be film strips on the rear screen projector on the first floor, with children's films featured during the afternoon.

Library visitors will be invited to register all during the week for a poem book by Helen Steiner Rice which will be presented at 4 p.m. on Friday afternoon.

A special feature will be at 4:15 p.m. Thursday when the Library Family of the Year will be honored and receive a special gift from the Muleshoe Study Club.

The children's story hour for

Cont. on Page 3, Col. 4

BULLETIN

Friday afternoon at Olton, in girls' track, the 440-relay team qualified to participate in regional action. The 440-relay team brought home a first place win to be eligible. Their time during the relay was 50.3. Team members include Debra Washington, Evelyn Grace, Diane Medlock and Sheryl Stovall.

Also qualifying for regional competition was Shelly Dunham who had a first in shot put, with a distance of 36 feet, one inch.

Cont. on Page 3, Col. 4

Taxes, Water Both On Agenda For City Meet

Muleshoe City Council will meet in regular session Tuesday morning at 8:30 a.m. with several items on the agenda. Included will be an ordinance levying taxes for the year 1977-78 and another ordinance revising the charges for water service and declaring an effective date.

Also on the agenda will be an ordinance approving and adopting a budget for the fiscal year beginning April 1, 1977 and ending on March 31, 1978.

Another ordinance to be considered will be an ordinance prohibiting the parking of any vehicle within the right-of-way provided by U.S. 70, First Street, between Ash Avenue northeasterly to a point 275 feet northeasterly from the center line of Fir Avenue.

Several other items will be discussed during the morning.

Farmers Smiling As Rains Add Moisture

Farmers and ranchers are smiling and checking the calendar, realizing they may just have enough water to plant this year, especially in the dryland areas in the area. Rain, which generally deposited approximately an inch and a quarter of rain throughout the area, began with light rain Wednesday afternoon, continued at intervals through Wednesday night and Thursday.

Bailey County Extension Agent Spencer Tanksley said, "We could probably plant cotton now, but it would be marginal on totally dryland. There's no

Three Way Track Team Wins Honors

Three Way junior high and senior high school students participated in the Class 4-B district track meet at Sudan last week, with the junior high school placing fourth with 78 points and senior high school fifth with 49 points.

Junior high school results included Jan Simpson, fifth in 100-yard dash and in the long jump; Sheryl Waltrip, second in the 100-yard dash and long jump and third in triple jump; Renee Lowe, first in the 440-dash; Alicia Banda, seventh in 220-dash; Isidra Guillen, third in 80-yard hurdles and Gabriel Rodriguez, sixth in shot put.

The Junior relay teams were second in the 440 and first in the 880.

Members of the 440 team included Sheryl Waltrip, Renee Lowe, Alicia Banda and Jan Simpson and members of the 880 team were Sheryl Waltrip, Renee Lowe, Isidra Guillen and Jan Simpson.

Other junior high students participating included Kenna Warren, Karen Warren and Lori Latimer.

High school students placing included Lillie Nino, fifth in triple jump and sixth in long jump; Belinda Richardson, third, long jump; Pryncess Parkman, fourth in discus; Belinda Dolle, fifth, 440-dash; Jackie Carlisle, sixth, 80-yard hurdles and Mitzi Altman, seventh, 100-yard dash.

The 440-relay team was fourth and the 880-relay team was second in the competition. Members of the 440 team included Tammy Davis, Belinda Richardson, Pryncess Parkman and Lillie Nino.

Fourth in the mile relay was a time of Lillie Nino, Belinda Richardson, Belinda Dolle and Pryncess Parkman.

Other high school students participating included Shonnie Hodnett, in the 100 and 220 yard dash and Robin Rewes in the 440-yard dash.

Also last week, Lillie Nino and Ninfa Guillen were first in girls' doubles in the District 4-B tennis tournament at Levelland.

mistake about it, the moisture is welcome and it is beginning to look like farmers will be ready to start planting around the first of May, providing soil temperature is up, weather is good, and no high winds dry out our supply too fast."

Tanksley did add that the rain has been a big boost to dryland wheat which is ready to start jointing and heading. The boost of moisture right now should see wheat growers produce at least an average crop, he added.

"The moisture has been a total blessing to the irrigation man," he continued. "For him, this will supplement all his irrigation water, and it looks as good as it ever has for the irrigation farmer."

"Rain has helped the total agriculture picture in the county, and that is so good for the area, when we realize that agriculture plays such an important part in the economy of Bailey County," he concluded.

Muleshoe received an unofficial 1.31 inches of moisture in the city with slightly lesser amounts being reported from the Muleshoe National Wildlife Refuge. Bill Long said .70 had fallen by noon Thursday, with an additional .40 Thursday afternoon bringing their total to 1.04 for the two day period.

Mrs. Mickey Sowder, 30 miles southwest of Muleshoe, in Bailey County, reported 1.3 inches.

Coyote Feed Yard welcomed their 1.10 inches and hailed it as

Cont. on Page 3, Col. 1

Men's Softball League Meeting Planned Tuesday

Kerry Moore of the Men's Slow Pitch Softball League has reminded that the 1977 organizational meeting will be Tuesday, April 26, at 8 p.m. in the XIT Steakhouse.

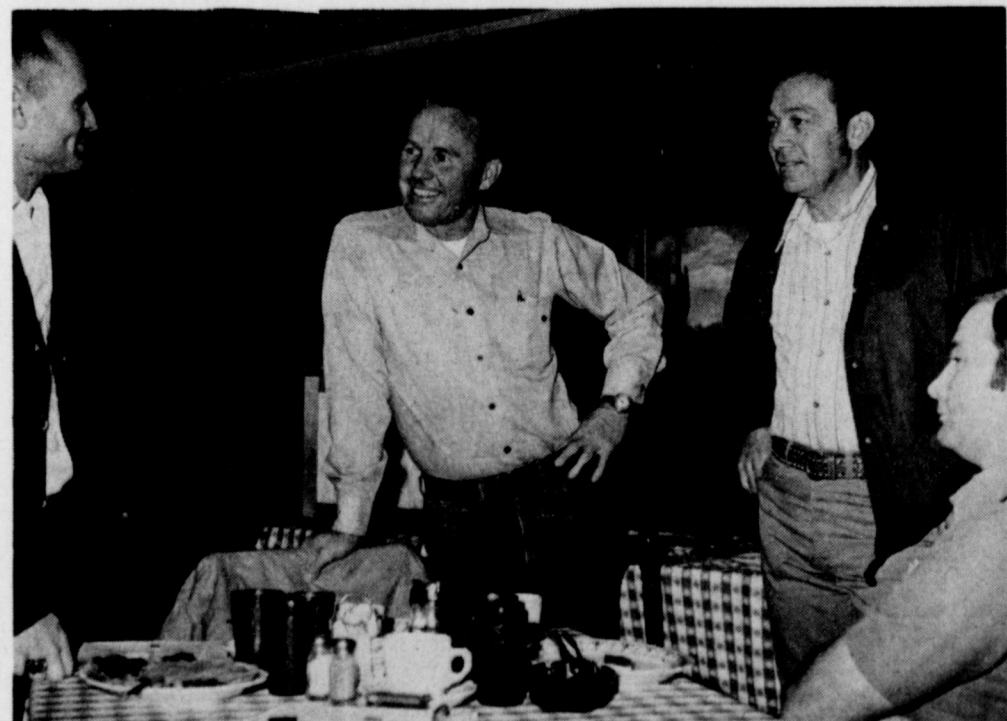
Last year's officers and team captains from each team especially need to be present at the meeting, urged Moore. He also said that anyone who plans to organize a new team be represented at the meeting.

Plant Dates Are Released By ASCS

Final planting dates have been established for the 1977 season, according to Terry Hill, County Executive Director of the USDA ASCS office in Muleshoe.

Included are cotton, May 31; peanuts, June 10; grain sorghum, June 20; and wheat, December 1.

He added that the crop must be planted any time the weather conditions are favorable during the planting period, stating, "If the weather conditions are unfavorable during the regular planting period, then you can plant later than these dates up to a reasonable date."



PHYSICAL FITNESS SPEAKER . . . Visiting the Muleshoe Kiwanis Club Friday morning as guest speaker was Major Don Watson, left, with the U.S. Army. He is talking following the meeting to three retired military men, including, from left, Howard Watson, Ray Lynk and Jerry Hicks. Watson spoke on the Army's physical fitness program, and marathon running training.



BOOSTING LIBRARY WEEK . . . Linda Lopez, left, and Shirley Burris, assistant librarians at the Muleshoe Area Public Library, show a book of poems by Helen Steiner Rice, which will be presented to some lucky winner during Texas Library Week, which starts today. They join librarian Anne Camp in urging everyone to carry out the theme "Use Your Library" and visit the library during the week to see some of the displays and join activities planned all week.

TFU Focuses On Better Understanding

Better understanding between farmers and consumers and the general image of farmers will be the focus of discussion in three regional Women's Conference planned by Texas Farmers Union this month in Waco, Lubbock and El Campo.

Coordinating the meetings, which are open to all women interested in farming, will be Linda Siderius, Assistant Director of Youth and Young Adults from Denver, Colo. The state office of Texas Farmers Union in Waco is handling the regional plans and encouraging its 8,000 plus member families as well as their guests to take part in the conferences.

The first conference is scheduled for Waco this Saturday, April 16, at Knight's Inn on Waco Drive. State Representative Betty Denton will join in discussions on how women can

become more politically active, and John Anduri from the National Farmers Union Insurance headquarters in Denver will discuss estate planning and inheritance laws. Registration for this all-day affair begins at 9:00 a.m. and there is a cost of five dollars.

The Women's Conference in the El Campo region follows on Tuesday, April 19. A Dutch-treat luncheon is planned as the farm women work together on how to build a more effective organization, put together a slide show, and find means to tell the farm story and the work of Farmers Union. This meeting will take place in the R.E.A. Building on Highway 39 in El Campo where registration begins at 9:00 a.m.

Dr. Waylon Bennett, Agricultural Economist from Texas Tech University, will be the

featured speaker at the Lubbock conference which runs for two days, April 22 and 23. Women in the Panhandle, South Plains, Southwest Texas, and Rolling Plains areas are invited to spend Friday night in Lubbock at the location of the conference, the Holiday Inn on Loop 289. Four meals and overnight accommodations are included in the \$25 registration costs. In addition to hearing from Bennett, the Women's Conference will explore the propaganda aspects of the food and fiber economy, the images of farmers and consumer education. A tour of the Texas Tech Textile Research labs is also scheduled as well as some entertainment and a jewelry-making session. Lubbock registration begins at 9:30 a.m. on Friday at the Holiday Inn.

"We think we have planned something for everyone," says Siderius, "and we are hoping all women active or interested in farming can come and be with us as we work together for agriculture and consumer awareness."

New Vegetable Grower Association To Start

Anyone in Bailey County involved in the vegetable industry is invited to join the newly formed Texas Vegetable Association, says Spencer Tanksley,

county agent with the Texas Agricultural Extension Service. The association has been formed to unify and coordinate the many and diverse activities of



JOINING THE FUN... Alan Finney, 10, left, son of Mr. and Mrs. Bob Finney, and Kacy Henry, 11, daughter of Marcia Henry, joined the Read-A-Thon and are preparing to turn in their kits following the Xi Omicron Xi program.

the widespread vegetable industry throughout Texas, points out Tanksley. Expanding interest in vegetable production and recent growth in the industry has brought about a need for a closer liaison and closer working relationships between all involved - producers, processors, researchers and educators.

Cash receipts from vegetables in Texas last year are estimated at more than \$200 million, so the industry contributes much to the state's economy. In Bailey County, vegetables account for about one million in cash receipts.

President of the new Texas Vegetable Association is Jack Smith with Amchem Products in Dallas. Other officers include Bob Keswick, Del Monte Corporation, Crystal City, vice president; Jan Hruska, Stauffer Chemicals, Weslaco, secretary; Joe Van De Walle, Van De Walle and Sons, Inc., San Antonio, treasurer; and Extension horticulturist Tom Longbrake and Extension plant pathologist Dr. Jerral Johnson, both of College

Station, executive secretaries. On the board of directors are Bart Wagner, Wagner Farms, Crystal City; Don Strack, Strack Farms, Houston; Kees Polharst, DuPont Co., Houston; Bill Lackey, Ferry Morse Seed Co., McAllen; Ray Caraveo, Zavala County Extension agent; and Sam Cotner, Extension horticulturist, College Station.

Anyone engaged in vegetable production, marketing, processing, Extension and research may join the association. Further information may be obtained by writing to the Texas Vegetable Association, P. O. Drawer B5, Aggeland Station, College Station, Texas 77843.

The nature of men is always the same; it is their habits that separate them.

-Confucius.

Life would be more simple if more people were willing to be themselves.

Social Security Recipients To Receive Raise

Once you start receiving your Social Security check, you can expect your payment amount to go up in future years.

There is a guarantee in the social security law that benefits will keep pace with increases in the cost of living.

When the cost of living rises three percent or more in a year, your social security check will increase automatically the next July, if an increase has not been granted by legislation.

You do not have to apply for this increase. It is made automatically.

If you have questions about your Social Security check, get in touch with your nearest Social Security office. The office here is located at the County Courthouse in Muleshoe.

Farm prices for raw products show rise.



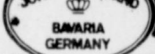
Prices good thru April 20, 1977. We reserve the right to limit quantities. None sold to dealers.

GRAVY BOAT

THIS WEEK'S FEATURED ITEM

\$3.00 off

WITH COUPON



VALUABLE COUPON WORTH \$3.00 TOWARD THE PURCHASE OF THIS WEEK'S FEATURED ITEM

GRAVY BOAT

Our Reg. Discount Price \$13.99
Coupon Savings 3.00
Your Price (with coupon) \$10.99

In the pattern of your choice

COUPON GOOD THRU

APRIL 23, 1977



DAIRY SPECIALS

Regular Quarters, Oleo

Blue Bonnet 1-lb. Pkg. **39¢**

Kraft's Velveeta 1-lb. Pkg. **99¢**

Piggy Wiggly Butter-milk 1/2-Gal. Ctn. **69¢**

PIGGY WIGGLY LOW FAT MILK GAL. **\$1.39**

PLAINES 8 oz. SOUR CREAM & DIPS **39¢**

BELL 1/2 gal. CARTON SHERBET **\$1.09**

SAVE MORE MONEY WITH THESE SUPER SPECIALS

McCall's Cookbooks

On Sale Today!

ON SALE THIS WEEK:

VOLUME 13

"FISH & FOUL"

Ea. **99¢**

Each of these advertised items is required to be readily available for sale at or below the advertised price in each store, except as specifically noted in this ad.



HEAVY AGED BEEF FULL CUT, BONE IN
ROUND STEAK
98¢



3-LBS. OR MORE FRESH
GROUND BEEF
68¢



Red Ripe
CALIFORNIA STRAWBERRIES
Pt. Bskt. **49¢**



TREESWEET FROZEN
ORANGE JUICE
4 6-OZ. CANS **\$1**

ALL VEGETABLE SHORTENING



CRISCO
\$1.29

3-LB. Can

LIMIT ONE (1) WITH \$7.50 PURCHASE OR MORE

32-OZ. BTL.



COCA COLA
99¢

6-BTL. CTN.

LIMIT ONE (1) 6 BTL. CTN. WITH \$7.50 PURCHASE OR MORE



Frontier
Paper Towels
2 125-ct. Rolls **79¢**



Piggy Wiggly
Tomato Catsup
Qt. Btl. **69¢**



Piggy Wiggly
Choice Cling Peaches
3 16-oz. Cans **\$1**



Cream or Whole Kernel
Del Monte Corn
3 17-oz. Cans **89¢**

VALUABLE COUPON

SAVE 25¢

When you buy one (1) 16-oz. Jar Heinz Onion or Onion/Smoke

Bar-B-Q Sauce

With this coupon.
Coupon expires April 23, 1977.

VALUABLE COUPON

SAVE 25¢

When you buy one (1) Qt. Btl. Heavy Duty Liquid

Wisk Detergent

With this coupon.
Coupon expires April 23, 1977.

VALUABLE COUPON

SAVE 25¢

When you buy two (2) 24-oz. Cans Kal-Kan Stew or Beef

Dog Food

With this coupon.
Coupon expires April 23, 1977.

VALUABLE COUPON

SAVE 25¢

When you buy two (2) 10-oz. Pkgs. Swanson's Chopped Sirloin, Fried Chicken, Meatloaf, Turkey, Western, or Salisbury Frozen

TV Dinners

With this coupon.
Coupon expires April 23, 1977.

VALUABLE COUPON

SAVE 50¢

When you buy one (1) Bulk Cannister Assorted Flavors Drink Mix

Kool-Aid

With this coupon.
Coupon expires April 23, 1977.

VALUABLE COUPON

SAVE 40¢

When you buy one (1) 9-ct. Pkg. Schick Super II

Shaving Cartridges

With this coupon.
Coupon expires April 23, 1977.

VALUABLE COUPON

SAVE 40¢

When you buy one (1) 40-ct. Box

Efferdent Tablets

With this coupon.
Coupon expires April 23, 1977.

VALUABLE COUPON

SAVE 50¢

When you buy one (1) 64-oz. Btl. Drain Cleaner

Liquid Plumber

With this coupon.
Coupon expires April 23, 1977.

Deposits...

Cont. from Page 1

874,000.00 being reported on March 31 last year, and on the same date this year, loans were reported at \$12,276,000.00. Tri-County Savings and Loan Association is headquartered in Muleshoe, with branch offices in Littlefield, Friona and Farwell. Their cumulative total at Muleshoe reflects the greatest increase locally. From the four locations, the cumulative total in Muleshoe is reported at deposits of \$18,592,568.99, up \$5,625,227.84 from the \$12,967,341.15 reported on March 31 last year. Loans reflect the same increase, with \$18,550,611.09 being reported on March 31 of this year, compared to the \$12,568,716.98 on the same date

Rain...

Cont. from Page 1

a "boone to their crops and grassland. At Lazbuddie, Foster Fertilizer reported 1.25 and said that some persons had reported up to an inch and a half during the two day period. Loyd Stephens, commissioner of Precinct Two, who drove throughout his precinct Friday morning, said that most people received a round an inch to an inch and a half. He said his gauge had 1.2 at his home in west Bailey County.

East of Muleshoe, Ike Wilcox, who lives 10 and a half miles from Muleshoe reported slightly under an inch and Lucky Spurlock commented, "It's wonderful. We love it", as he reported 1.25 at Protein Processors six miles southeast of Muleshoe.

Heavy clouds were drifting throughout the area again late Friday afternoon with a possibility of more rain in the late evening or nighttime hours. No severe weather accompanied the Wednesday or Thursday rain, although some sleet or hail was reported in various areas. The nearest sleet reported in this area was around Sudan, sometime Thursday afternoon.

National Weather Service at Lubbock indicated that the possibility of measurable precipitation would exist through today (Sunday) with another front approaching which could add to the moisture picture during the early to mid-part of the week. Temperatures are expected to range near normal for the area, with the probability of measurable precipitation 50 percent on Saturday and 40 percent today, dropping to 30 percent Sunday evening and night.

Mild weather was predicted to Monday, with possibility of thundershowers late Monday afternoon and again on Tuesday evening.

last year, reflecting an increase of \$6,291,994.11.

Muleshoe's total, when combined with several area banks, shows total deposits of \$129,477,168.80 and loans of \$85,294,033.40, for the nine banks checked.

Morton reported deposits of \$14,527,000.00 and loans of \$7,797,000.00, compared to deposits of \$13,871,000.00 and loans of \$8,033,000.00 on March 31 last year.

At the time of the call, around noon on Monday, Morton had received more than an inch of rain with good, steady rain still falling.

Billy Moore at Citizen's Bank in Earth reported March 31 deposits of \$8,535,892.89 and loans of \$6,677,774.48. At the same time last year, deposits were \$8,324,238.70 and loans were listed at \$6,029,637.87.

First State Bank, Bovina, reported March 31 deposits of \$6,501,016.94 and loans of \$4,718,342.92. Last year, on March 31, the bank reported their deposits at \$6,505,526.81 and loans were \$3,558,908.07.

In Friona, deposits on March 31, 1977 were \$23,275,350.18, compared to \$22,636,801.46 at the same time last year. During the same period of time, loans were \$14,062,574.60 on March 31 this year, compared to \$11,728,682.09 on the same date last year.

First National Bank at Sudan reported deposits of \$5,374,301.97 and loans of \$1,422,310.82 on March 31 this year.

At Farwell, President Bob Anderson of Security State Bank reported deposits on March 31 of \$16,590,918.28 and loans of \$8,722,568.54.

All the banks contacted said the moisture at this time enhances the crop picture for the entire area this year. They all reported measurements of one-half inch or above, with rain still falling.

Kiwanis...

Cont. from Page 1

Major Watson also told of entering a 16 mile marathon race and how he trained for that race.

He said he will continue with the program as he has improved in health and suggested a running program, even on a modified basis, for everyone, including older people.

Major Watson was introduced by his brother, Howard Watson, president of the Muleshoe Kiwanis Club. Other guests Friday morning included Dwayne Shafer, Joel Nowlin and Cleta Williams.

Tom Lobaugh presented the friendship coin to Merlyn Neel, "because he is always friendly."



POLICE CHASE ENDS IN WRECK . . . Four young Lubbock residents were jailed late Saturday night following a high speed police chase which resulted in the accident. The car shown ran into the back of a car driven by John Puckett in west Muleshoe. The Lubbock vehicle had been pursued to Muleshoe by the Sudan City Marshal who was still in pursuit at the time of the accident.

Library...

Cont. from Page 1

pre-schoolers will be from 10-11 a.m. on Wednesday in the basement of the library and the Study Club's popular annual book sale will be Thursday and Friday.

Pageant...

Cont. from Page 1

A first grade entry from Lazbuddie is Amanda Collins, seven, daughter of Mr. and Mrs. Johnny Collins.

The Clothes Horse at Earth is sponsoring Lacy Layman, daughter of Lavonne Layman. She is seven and a first grade student at Springlake-Earth School.

Tomorrow (Monday) is the deadline for entering the pageant, sponsored by the Muleshoe Jaycees. It will be Saturday, April 23, at 7:30 p.m. in the Muleshoe High School auditorium.

Johnny St. Clair is chairman of the Miss Tri-County portion of the pageant and Terry Gunter is co-chairman, handling the Little Miss Tri-County contestants.

Entertainment for the pageant will be provided by the Muleshoe High School stage band under direction of Tony Clines. Assisting with contestants will be Tu-Tu King, a gymnast and acrobatics instructor from Lubbock.

On display also will be the new copy machine which will copy both sides of the paper and the price is still 10 cents a sheet for copies.

For the information of persons not familiar with the library, it offers: a free library book card, which gives the holder access to all circulating material in the library; reference books to use in the library; records which circulate for two weeks, and available to adults and young people of junior high school age or older and books and other materials which circulate for two weeks, with the exception of very new and popular material which may be dated for return in one week.

Also, fines on overdue material are five cents per day, excluding days when the library is closed; children may check out eight books and adults are not limited; and students may use the young adult's and adult's collections when they reach the seventh grade, with parent's consent.

Under special services are: telephone requests filled; books and material may be renewed once by telephone; interlibrary loans through the Texas Library System, books and 16mm film; wide selection of current magazines with back issues on file; vertical file of pamphlets, pictures and other material; books held on request; storyhours for pre-school children; children may listen to records or see

sound-filmstrips on the main floor at any time upon request; summer reading program for boys and girls and book-mobile service to all rural areas of the county.

It's your Library. Use It!

Today's Lesson
All that a youngster wants out of school these days is himself.
-Record, Columbia, S.C.

Littlefield Beat Track Mules

Last Thursday, April 1, the Mules traveled to Littlefield for their third track meet of the year. They finished second behind Littlefield.

In the 440 relay, Ricky Medlock, Israel Orozco, Charles Walker, and Felix Norman, finished second with a time of 51.9. The second team 440 relay finished sixth with a time of 59.9. In the 880 run, Felix Reyes was third with a time of 2:28.6, and Ramon Guillen was sixth with a time of 2:34.8. In the 120 high hurdles, Charles Walker was third with a time of 18.6 and Clifford Watson was sixth with a time of 21.4. In the 880 medley relay, the first team, Ricky Medlock, Albert Lopez, Israel Orozco, and Bryce Kutzi, finished third with a time of 1:58.6, and the second team finished fifth with a 2:13.6. In the 100 yard dash, Albert Lopez was third with a time of 11.7 and Marvin Lewis was sixth with a 12.8. In the 440 yard dash, Bobby Perez was second with a time of 62.3 and Jim Overman was fourth with a time of 63.1.

In the 330 low hurdles, Felix Norman was first with a time of 47.0 and Charles Walker was fifth with a time of 51.7. In the 880 relay, the first team won first with a time of 1:53.8. The first team 880 relay is made up of Freddy Jaramillo, Gilbert Buenostro, Bobby Perez, and Richard Orozco. The second

Players Risking Injuries

Young baseball players, especially pitchers, may be risking permanent injury if they play too hard, the Texas Medical Association says.

An immature boy or girl who pitches too frequently runs the risk of doing lasting damage to his or her shoulder and elbow. The elbow joint is particularly vulnerable between the ages of nine and 16 since the growing ends of the long bones which meet at the elbow are still not completely fused to the bone shafts and cannot withstand the strenuous muscle pull involved in pitching. Any adult pitcher is likely to have a sore arm after a game, but such a disorder is essentially a muscle-tendon strain with no crippling implications.

If youngsters were left to themselves, they would probably regulate their play activity in a self-protective way. They would be unlikely to practice for hours on end to perfect their techniques, and they could be expected to quit when they were tired.

Ironically, it is some parents and coaches' activity in children's baseball that has increased the risks to young players. Some adults become so involved with winning games that they put pressure on the youngsters to practice endlessly and to aim for victory at all costs. In the face of this pressure, the young player tends to push him or herself beyond healthy levels of endurance and hesitates to complain of pain. The result is that bone disorders are neglected and some young

players end their careers with irreversible bone damage. To put the fun back in the game and decrease injuries some authorities suggest:

- Restricting the amount of pitching time per player to about two innings per week for Little and three for Pony League age players and discouraging excessive practicing;
- Encouraging pitchers to report shoulder or elbow pain

immediately. He or she should not throw if any pain is experienced.

-- Abolishing the curve ball (and the slider and screw ball). They take excessive throwing practice to perfect and place a lot of strain on the elbow;

-- Abolishing sliding into bases. Many playing fields are in poor condition, and youngsters often are not properly coached in sliding techniques so they break legs.



Two of the top men behind existing and potential government regulations that can be weighty factors in determining the future profitability of High Plains cotton operations will appear as speakers at the 20th Annual Meeting of Lubbock-based Plains Cotton Growers, Inc. The meeting begins at 1:30 p.m. April 14 in the Aztec Room of the Southpark Inn on South Loop 289, Lubbock.

Following the two "serious" speakers on the podium will be well-known humorist and inspirational lecturer Millard Townsend of Lubbock. There is no registration fee for the half-day affair and the public is invited.

An expected 500 or more High Plains cotton producers and agribusinessmen and their wives will also hear organizational reports from PCG President W.B. Criswell of Idalou and Executive Vice President Donald Johnson of Lubbock.

The government officials to address the meeting are Grover C. Wrenn, Deputy Director of Health Standards Programs for the Occupational Safety and Health Administration (OSHA) and Edwin L. Johnson, Deputy Assistant Administrator of Pesticide Programs for the Environmental Protection Agency (EPA).

"Both these men are destined to have a significant impact on our industry in the years ahead," commented Criswell, "and what they have to say should be of interest to everyone on the High Plains whose livelihood is even remotely connected to cotton."

As examples of the regulatory activities so important to cotton people, Criswell cited EPA's upcoming hearings that could lead to a ban on the widely used herbicide Treflan, and OSHA's proposed cotton dust standard "which if enforced as now written could close over half the gins on the High Plains and more than double what producers are now paying for ginning."

PCG's hope, according to Johnson, is that having EPA and OSHA officials on the program will open lines of communication and "assist in efforts to assure that regulations of the future from both agencies will be reasonable regulations, reasonably administered."

In addition to addressing the PCG membership meeting while in Lubbock, plans call for the two officials to visit typical cotton production and processing facilities in the area that will be most affected by regulations proposed by their respective agencies.

Following the membership meeting, slated to adjourn at 5:00 p.m., PCG's 50-man Board of Directors will meet to elect officers for the 1977-78 year. Current officers, each of whom has now served the maximum two years in his present office, are President Criswell, Vice President Lloyd Cline of Lamesa and Secretary-Treasurer Joe D. Unfred of New Home.

PCG represents cotton producers in a 25-county area surrounding Lubbock. Each county elects two directors to the research, market development and service organization.

Franklin Welding & Millwork

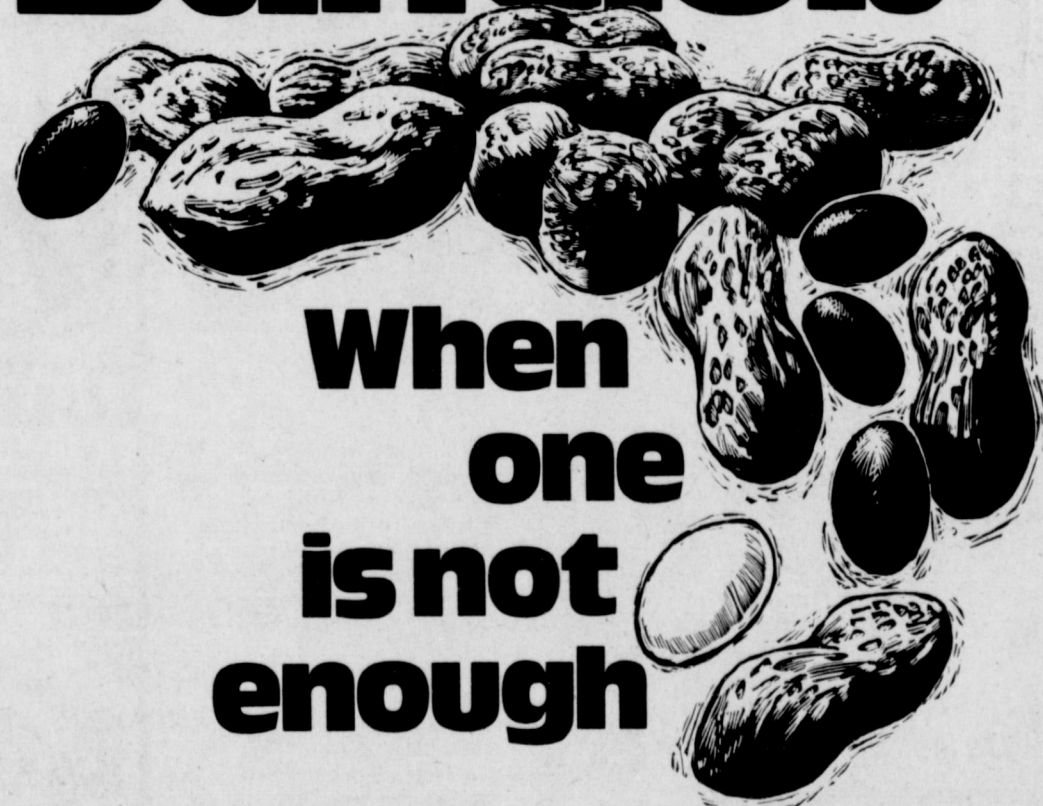
Friona Hwy.
Grain Bin & Dryer Setups
Elevator & Feedmill Repair

Custom Backhoe, Motor Crane,
Dragline, Wench Trucks & Welders

Office: 272-3280

Home: 272-4316

BanClub



When one is not enough

Just as difficult as it is to stop after one peanut, it's hard to limit the number of checks you write. One certainly wouldn't do for the entire month — but maybe twenty wouldn't either. Cancelled checks are one of the best bookkeeping aids available, so why not use them, especially when BanClub grants you unlimited check writing with no minimum balance and as many personalized checks as you need. That alone could be worth \$3.00 a month, but it's just the beginning. You also have BanClub CheCash — the privilege of cashing your personal check up to \$200 in any of 3,000 BanClub bank locations coast-to-coast. Then there's the \$10,000 accidental death insurance and the special discounts and travel services, and everything else listed in the BanClub magazine.

Unlimited check writing is just the beginning for our BanClub, but it's a good beginning — because it's hard to write just one.



First National Bank

Member FDIC

| | |
|--|--|
| Bailey County Journal | |
| Published March 31, 1977 | |
| Published by Muleshoe Publishing Co., Inc. | |
| Every Monday at 304 W. Street, Box 445 | |
| MULESHOE, TEXAS | |
| TEXAS PRESS ASSOCIATION I.R. Hall, President Lane Wood, Vice President Alice Williams, News Editor Nancy H. Ketchum, Secretary Ruth Duvall, Editor Herb Mithage, Advertising Boyd H. Hildt, Subscription | |
| SUBSCRIPTIONS: Muleshoe Journal, and Bailey County Journal Bailey and surrounding Counties \$1.50 Muleshoe Journal and Bailey County Journal Everywhere in Texas \$2.00 Muleshoe Journal, and Bailey County Journal Outside of Texas \$3.00 Monthly by carrier \$1.00 Monthly by mail \$1.00 Advertising rate card on application | |

Beware of the man who tells you what a Christian life he leads.

Never Give Up
Resisting temptation is easier when you think you'll probably get another chance later on.
-Free Press, Detroit.

The Trend
Today an old-fashioned couple isn't one that stays married, but one that gets married.
-Quote Magazine.



Good News Texas REVIVAL

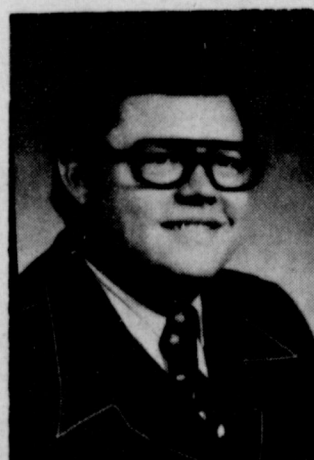
APRIL 17-24

Sunday Services
11:00 a.m. & 7:00 p.m.

Weekday Services
12:00 Noon Mon.-Fri.
7:30 p.m. Mon.-Sat.

Everyone Welcome

First Baptist Church
Muleshoe



Bill Sky-Eagle
Music Director



L.E. "Chief" Lawson
Evangelist



PREPARING FOR DOG SHOW . . . Mrs. Derrell Matthews prepares Miska, a Samoyd, for the E.S.A. sponsored Spring Dog Show to be held Saturday, April 23, at the ball diamond adjacent to K.M.U.L. Radio Station. The show will begin at 9:30 a.m. and run until all categories have been judged. There will be an adult and children's division.

YL 4-H Club Takes Field Trip

The YL 4-H Club met at the Courthouse Friday, April 8, for a field trip to Lubbock. The group was given a guided tour through the Coca-Cola Bottling Company and Mrs. Baird's Bakery. After the tour, the group was taken to Fun World at South Plains Mall.

Members attending the field trip were Tyri and Staci Vandiver, Kim Wilson, Courtney Brown, Vana and David Pruitt, Susan Whatley, Perry and Brenda Flowers, Trina and Danny Seales and Greg Williams. Sponsors were Mrs. Tom Flow-

ers, Mrs. Billy Seales, Mrs. Tommy Whatley and Mrs. Jarrell Pruitt.

Green peas are traditional for "special occasion" meals. Cook two packages of 5-minute cook frozen sweet green peas as directed on package. Drain; season with butter, salt and pepper. Add 1/2 cup light cream. Heat quickly and serve.

Coat chicken in a spicy all-purpose barbecue sauce and bake uncovered in a slow oven.

June Teague, Patrick Engagement 9th Announced

Mr. and Mrs. Jessie Gray of Muleshoe announce the engagement and approaching marriage of their daughter, Nyra June Teague, to D.W. (Pat) Patrick, Jr., son of Mr. and Mrs. W.J. Switzer of Midland. The bride-elect is presently

employed at Cannon Air Force Base, Clovis, N.M. The groom is a Staff Sergeant in the Air

Texas Tech Group Plans Spring Meet

The Texas Tech University Home Economics Alumni Association will hold a spring luncheon and business meeting at noon, April 23, in the Lubbock Women's Club, 2020 Broadway.

Kenneth Hobbs, Lubbock attorney and Texas Tech home economics instructor, will be guest speaker. Scholarships will be awarded to outstanding home economics majors.

Home economics students, faculty members and persons interested in this subject are invited to attend. Reservations must be received by Mary Francis Campbell, 2329 57th Street, Lubbock, 79412, by 8 p.m., Thursday (April 21). Tickets are \$4.

Annual dues of \$3 will be accepted at the luncheon. Others may mail their dues to Campbell.

BULLETIN

The Muleshoe PTA will meet in the Richland Hills Elementary cafeteria Monday, April 18, at 3:45. This meeting will be to elect and install officers for the coming year. A nursery will be provided and refreshments will be served.

Fashion
A white pique vest adds zip to the new suits.

Raglan sleeves are back in style on blouses and dresses.

Heels are definitely higher on the new shoes. Sandals are worn on every occasion.

A smart man figures out his excuse ahead of time.

Young Homemakers Craft Day Set For April 28

The Muleshoe Young Homemakers met Tuesday, April 12, at the Muleshoe High School Home Economics Department.

The program for the meeting was presented by Mrs. Johnnie Williams, a Young Homemaker member. She demonstrated a microwave oven from Williams Appliance, by preparing brownies.

The Young Homemakers will be helping with bingo at the Nursing Home on April 21. Punch and cookies are to be served. Mrs. Johnny Estep and Mrs. Lannie Knowles will be in charge of Story Hour at the Library on April 20. Craft Day has been set for Thursday, April 28. The project will be seed flowers.

A no-bake sale has been scheduled. The members will give the price of a cake.

The Mother-Daughter Banquet was held Thursday, April 14. A style show was sponsored by St. Clair's Department Store.

A garage sale has been planned for Saturday, May 14. Area activity day has been scheduled for Saturday, April 30, in Lubbock.

New officers will be elected next month. Members present were Mrs. Gaylon Bock, Mrs. Kenneth Carter, Mrs. Raymond Davenport, Mrs. Gary Elliott, Mrs. Johnny Estep, Mrs. John Jones, Mrs. Mac Hodges, Mrs. Terry Kemp, Mrs. Lannie Knowles, Mrs. Lionel Lane, Mrs. Sandy Noble, Mrs. Brian Noble, Mrs. Mike Richardson, Mrs. Rod Springfield, Mrs. Johnnie Williams and Mrs. Dorine Harbin.

Bill Durham Appearing In Tech Production

Bill Durham, sophomore Theatre Arts major at Texas Tech University, will be appearing in the University Theatre's production of "Oedipus the King" April 15 through 20. Durham will be seen as a chorus member, a servant and Tiresias' guide in this telling of the ancient Greek tragedy.

Durham, son of Mr. and Mrs. C.W. Durham of Muleshoe, has appeared in two previous Tech productions. He portrayed Rodas the tailor in "The Royal Hunt of the Sun" and a Protean in "A Funny Thing Happened on the Way to the Forum". He is a 1976 graduate of Muleshoe High School and is attending Tech on a University Interscholastic League scholarship.

Force and is presently stationed at Homestead AFB, Florida. The couple will be united in marriage at 7:00 p.m. on May 7, in the 21st Street Church of Christ, Clovis, N.M.

West Plains Medical Center Briefs

ADMISSIONS
April 11: Joe Hawkins
April 12: Oscar Rudd and Mrs. Liz Jesko.

April 13: Joe D. Lopez, John L. Moore and Mrs. Lottie Moss.
April 14: Thurlio Branscum.

DISMISSALS
April 12: John Street, Billy Williams and J.C. Gatewood.
April 13: Mrs. Liz Jesko.

Water Color Artist Plans Demonstration

Well-known water color painter Bud Shackelford, of El Cajon, Calif., will put on a demonstration in the Lubbock Christian College Mabee Auditorium at 2 p.m. April 27.

Shackelford's works appear in more than 600 private collections across the U.S. and he has won awards in many major competitions. The author of two books on painting with water colors, Shackelford was president of a California advertising art studio for 10 years and has done feature work for Walt Disney Productions.

The artist now travels throughout the U.S. and many foreign countries giving demonstration. The public is invited to attend this demonstration at LCC. There is no admission charge.

BIBLE VERSE

"I will put my spirit within you, and cause you to walk in my statutes, and ye shall keep my judgments, and do them."

1. Who was the author of the above statement?
2. Through whom was the statement made?
3. Was he classified as a major or minor prophet?
4. Where may this statement be found?

- Answers To Bible Verse**
1. Jehovah.
 2. Ezekiel.
 3. Major prophet.
 4. Ezekiel 36:27.

For those retired and living on reduced incomes, helpful information on planning menus for good nutrition is offered in the booklet, **Food Guide for Older Folks**, available for 40 cents from the Superintendent of Documents, Government Printing Office, Washington, D.C. 20402.

Miss Jana Oyler Initiated Into Delta Phi Alpha

Miss Jana Oyler, daughter of Mr. and Mrs. Milton R. Oyler of Muleshoe, and a 1975 graduate of Muleshoe High School, was initiated into Delta Phi Alpha, national German honorary, on April 6. The ceremony preceded the Awards Banquet for the Department of Germanic and Slavic Languages of Texas Tech University. Miss Oyler qualified for the honor by maintaining a 4.0 grade average in 18 hours of advanced German and a 4.0 average in other areas during her college career. She was featured recently in the German department's production of "der kaukasische Kreidekreis".

4-H And FFA Successful At Show

Bailey County was well represented at the recent Southwest Livestock Show in Lubbock by the 4-H and FFA members. As a result of the show, several had animals that made the sale. The youth who made the sale were well pleased and appreciative of the merchants who bid on their stock.

Those merchants and youth who made the sale a success are Sherri Bessire - United Foods; Robby Young - R.D. Young Seed Co.; Jacinda Gleason - Shop Rite Foods and United Super Market; Nicky Bamert - Hemphill-Wells (donated to Texas Tech Animal Science Department) and Farm Pac; Jerry Gleason - Hemphill Wells and Red Raider Club (donated to Red Raider Club) and Hi-Pro; Eddie Black - Furr's Cafeteria; Cody Crittenden - James Cruce Auctioneer of Plainview; Sherri Claunch - Lubbock National Bank; Starla Black - Dunlaps; Michael Davenport - Lubbock Cotton Oil Company and Canyon Gin; Preston Scoggins - West Camp Gin; Greg Harrison - Royal Gem Grocery; Joe Stroud - Muleshoe State Bank; Delia Shaw - West Camp Gin and Production Credit Association; Brad Morrison - Anderson Jewelers; Kay Lynn Prather - South Plains Fair; Darin Shaw - Royal Gem Grocery; Tori Hunt - West Camp Gin; Lavon Rhodes - Muleshoe State Bank; Curtis Hunt - Muleshoe State Bank; Jimmy Gleason - Hi-Pro; Jason Scoggins - J.C. Penny, Dunkin' Donut and Morrison Oil Company of Muleshoe.

A lot of hard work is displayed by the youth after the feeding of chosen stock, walking, washing, grooming, and finally the showing. When they make the sale, which 26 of the Bailey County animals did, this is the finale when the bidding starts.

GOLDEN GLEAMS
The wise man thinks of fame just enough to avoid being despised.
-Epicurus.

Fame due to the achievements of the mind never perishes.
-Propertius.

The desire for fame is the last weakness wise men put off.
-Tacitus.

The fame of men ought always to be estimated by the means used to acquire it.
-La Rochefoucauld.

All fame is dangerous: good bringeth envy; bad, shame.
-Thomas Fuller.

A good part of the fame of most celebrated men is due to the shortsightedness of their admirers.
-G.C. Lichtenberg.

Miss Oyler, a junior English major/specialist, has been invited into the membership of Sigma Tau Delta, national English honorary society. She qualified for membership by maintaining a 4.0 grade average throughout 27 hours of English

Leathercraft Project Gains New Members

The Progress 4-H Leathercraft group met Wednesday, April 6, at the West Camp community center. Adult leaders are Mr. and Mrs. Robert Hunt. Junior leaders are Greg Harrison, Sheila and Curtis Hunt.

The group has been working on billfolds, belts, purses, coasters and other small leather items. The members use the "Basic 7" tools to trace patterns on leather and then tool the item according to instructions.

Enrolled in the project are Tommy and Curtis Wheeler, Jason and Preston Scoggins, Johnny and Connie Puckett, Dana and Jim Holmes, Monty and Trent Hysinger, Betsey and Sally Lunsford, Paula Snell, Lavon Rhodes, Sharla Morrison, Keva Roming, Delia and Darin Shaw and Tori Hunt.

Family Egg Hunt Held By Redwines

The annual egg hunt held by the Redwine family was held Saturday, April 10, after church services.

Mr. and Mrs. J.C. Redwine, near Hub, hosted the Redwine family Easter Sunday lunch and egg hunt.

After a covered dish lunch, approximately 350 eggs were hunted by the grandchildren and great grandchildren of Mrs. Minnie Redwine.

Those attending were Mrs. Minnie Redwine, Mr. and Mrs. J.C. Redwine, Mr. and Mrs. Harrol Redwine, Russel and Susan; Mr. and Mrs. Carrol Redwine, Janet and Carolyn; Mr. and Mrs. D.L. Redwine and Lisa, Mr. and Mrs. Jerry Redwine and Jason, Mr. and Mrs. A.E. Redwine and Mr. and Mrs. Bobby Redwine and Jarah.

Also attending were Mr. and Mrs. Billy Boatman and Shelley, Mr. and Mrs. Robert Hunt, Sheila, Curtis and Tori; Mrs. Truman Brooks, Mrs. Elmer Downing and Twila, Mrs. Marcia Henry, Mike, Kristi and Kacy; and Miss Barbie Seaton. The next family gathering will be the annual summer reunion in July.

Child Birth Seminar Set At Amherst

Through knowledge, training and work, childbirth can be a participating experience for a man and a woman. Childbirth Without Pain Education League gives classes in the childbirth method developed by Dr. Fernand Lamaze. This preparation for childbirth is physical, intellectual and emotional training designed to make childbirth a more satisfying family experience.

The classes consist of a series of seven weekly meetings held informally and taught in the eighth and ninth months of pregnancy. Most women choose to have a coach attend classes, usually a husband or friend. The Lamaze method allows the mother and coach to work together with the doctor, preparing for a normal participating labor and birth.

The goal of these classes is to have the healthiest, happiest, safest, birth experience for mother, father and the baby.

A new series of classes will begin on Monday, April 18th at 7:30 p.m. in the library at South Plains Hospital and Clinic in Amherst, Texas. For further information, contact Miss Landers, Administrator of the hospital, at 246-3536.

and by displaying scholarship and leadership qualities in other areas.

She is also a German minor/specialist and will begin her senior year at Tech this May.

Tops Has Weekly Meeting

TOPS Club met Thursday, April 14, at the Bailey County Electric Cooperative meeting room. Twenty members weighed in. Mrs. J.O. Parker, leader, was in charge.

Queen for the week was Mrs. Dale Griswold. First runner-up was Mrs. Don Martin and second runner-up was Mrs. Jeff Peeler.

Mrs. Dan Vinson and Mrs. Ronnie Garner were given charms for their duties as officers for the past year.

Mrs. Harvey Whittenburg drew Can-Can.

The Fourteenth Anniversary of TOPS Club was celebrated with a banquet.

SPAG Approves New Color Lab For Area Usage

The South Plains Association of Governments has proposed to include a \$20,000 grant to Wayland Baptist College for a new color photo lab, in its 1978 agenda. The funds will not be available until October '77 and will not be put into use until January of '78.

According to Dorothy Miller of SPAG in Lubbock, the association is a regional planning agency which assists local governments (city and county) in getting funds which, as in her department of criminal justice, will implement programs to help cut down on crime.

Glenn Hunsucker, head of Wayland's Criminal Justice Department, said the color lab will be used on a regional basis for all area law enforcement personnel. "I see it as an aid in the increased prosecution of felony offenses by improving law enforcement photo capabilities through color presentations during trial."

Tips on how to plan menus and prepare foods for a low cholesterol or fat-controlled diet are available from the American Heart Association, which has chapters in every state and in some major cities. The Heart Association nutritionist can provide helpful hints on food preparation, how to read food labels and which foods to avoid when the type and amount of fat in the diet is a concern or for those individuals on a sodium restricted diet. This information should be used as a supplement to the recommendations of your personal physician.

Couple \$14 and up DALLAS

Air-conditioned rooms with combination tub/shower, radio and color TV. Swimming pool, Kitchensettes. Excellent food by Chef Wittlich, featuring East Texas cornbread made daily. Convenient to Love Field, Cowboy Stadium and all Freeways . . .

And remember, "Find wants to see you."

Anchor Motel

10230 Harry Hines Blvd (77 Business)
Dallas Texas 75220
Area Code 214 Fleetwood 8-3211

Dr. Jerry Don Gregory, Osteopathic Physician & Surgeon

Announces The Re-opening Of His Office For The Practice Of Medicine At The

West Plains Medical Center

708 South First
Office Hours:
Mon-Thurs 8-12, 1-5
Fri & Sat 8-12
Appointments Encouraged
Ph. 272-4524
Effective May 2, 1977

Meryl Watson

Bride-Elect Of **Dusty Davis**

Will Be Honored With A Bridal Shower April 24, In The Home Of Mrs. Dean Spraberry.

Miss Watson Has Made A Selection Of **Frankoma Pottery** at **Williams Bros. Office Supply**

322 Main 272-3113

ZENITH

WORN ALL IN EAR 30 Day Trial

For Personal Consultation, Come By Or Call **Richard R. Davila**

Western Drug
114 Main - Muleshoe
Wednesday - April 20
9:30 a.m. - 11:30 a.m.
Call 272-3106

"Try Before You Buy"

LIVINGSTON HEARING AID CENTER
762-2951 - Lubbock, Texas 79401 - 1913-A 19th St.
Serving Your Community 24 Years

Statement of Condition

ASSETS AND LIABILITIES

| Assets | March 28, 1977 |
|---------------------------------|-------------------------|
| First Mortgage Loans | \$ 13,465,062.00 |
| Loans on Savings Accounts | 408,095.87 |
| Other Loans | 4,551,521.13 |
| Stock in FHLB | 135,900.00 |
| Accrued Interest Receivable | 351,390.92 |
| Cash and U.S. Gov't Obligations | 2,379,538.84 |
| Land, Building and Equipment | 436,604.71 |
| Deferred Charges to Expense | 47,312.67 |
| Other Assets | 76,129.91 |
| Total Assets | \$ 21,851,556.05 |

| Liabilities & Capital | |
|--|-------------------------|
| Savings Capital | \$ 18,382,535.13 |
| Borrowed Money | 1,630,400.00 |
| Loans In Process | 73,300.95 |
| Borrowers' Trust Funds | 79,880.01 |
| Other Liabilities | 118,488.11 |
| Unearned Discounts | 328,006.86 |
| Reserve for Payment of Div-Savings | 291,631.22 |
| Capital, Surplus & Reserves | 947,313.77 |
| Total Liabilities & Capital | \$ 21,851,556.05 |

OFFICERS

| | |
|--|--|
| Donald W. Harmon President & Charman of Board | Alex H. Williams Vice-President & Treasurer |
| Wanda Harmon Vice-President & Assistant Secretary | Gerald Self Vice President |
| Andy Douglass, Vice President | Ron Lawlis, Vice-President |
| Lindal L. Murray, Secretary | Mike Jester, Assistant Secretary |

DIRECTORS

| | |
|------------------|---------------|
| Frank H. Ellis | Robert Hooten |
| Donald W. Harmon | Lindal Murray |
| Alex H. Williams | |

Tri-County SAVINGS AND LOAN ASSOCIATION
Offices in: MULESHOE / FARWELL / FRIONA / LITTLEFIELD

Trouble With The Spring Sun

Sunburn sneaks up on a lot of people this time of year. The sun can burn you painfully not only on bright, hot days but also on cloudy days, on the water and at high altitudes. The rays which cause the burn are the ultra-violet rays which are reflected by light surfaces, such as

sand, sails and snow, the Texas Medical Association says.

If someone is determined to get a tan, they should do it gradually. Start out with a ten-minute sunning at first and increase the exposure by a few minutes a day. The ultra-violet rays are most potent between 10 a.m. and 2 p.m., and this is the time to be most cautious. Fair-skinned persons should avoid exposure to the sun during those peak hours. Some people are so sensitive to the sun that they should wear a hat, long-sleeved shirt and full-length pants if they are required to go out in the sun during mid-day.

A number of lotions are available which screen out the burning rays and thus, to a degree, prevent sunburn. Sun screens containing para amino benzoic acid (PABA) are among the most effective. The protective lotion should be applied not only before you expose yourself to the sun but after you have been swimming or have sweated so much that you may have washed it off. Generally, it is a good idea to re-apply the lotion every two hours.

If sunburn does occur, the safest treatment is to apply cold compresses to the painful area. There are a number of soothing ointments available, but many doctors do not encourage patients to use them because the individual may develop an allergic reaction. If the sunburn is so severe that the skin blisters, it is wise to check with a doctor to prevent infection and get relief from excessive pain.

Some people who have had a severe sunburn may be highly sensitive to sunlight for many months. And if someone chronically gets sunburned, even mildly, the skin can develop a prematurely wrinkled and leathery appearance. For some persons chronic sunburn will increase the likelihood of developing skin cancer. Another problem for some people is that some medicines increase sensitivity to the sun. If in doubt, check with a doctor of pharmacist.



LIBRARY READERS . . . Wade King, nine, son of Mr. and Mrs. Joe King, and John Agee, 11, son of Mr. and Mrs. John Neil Agee, are two of the Mary DeShazo students in the Read-A-Thon program. The program was designed to help the Multiple Sclerosis Research fund.

Are You 'Hooked'? On Coffee-That Is

People are paying the continually rising price of coffee because many are hooked on it. The Texas Medical Association says medical researchers have identified several symptoms of "caffeinism" in people who drink too much coffee.

Caffeine is the "pick me up" stimulant in coffee, tea, chocolate and other substances. It affects heart rate, blood pressure, stomach acid amounts, moods and skills such as typing. In very large doses theoretically it could kill someone although there is no recorded case of this occurring -- mainly because a person would have to drink 70-100 cups of coffee to get the 10 theoretically fatal grams of caffeine.

However, Medical World News magazine reports that smaller doses can cause restlessness, insomnia, irritability, headache and nervousness. People have varying sensitivity to the caffeine in coffee but people who drink 12 or more cups daily may very well have many of these problems. Youngsters also can fall prey to caffeinism if they have too many soft drinks, hot chocolate, cocoa or chocolate bars. Caffeine also is added to many cold remedies and common medicines.

More than 60 percent of the people in one study said they feel the need for coffee in the morning. People who drank five cups a day felt less alert, less active, less content, more sleepy and more irritable before have their coffee. Another study re-

ports many people use coffee to fight off drowsiness, to help them think and to speed their reaction time.

Some doctors advise people with ulcers, heart disease, high blood pressure, diabetes or other problems to ease up on the amount of coffee consumed. A scientific panel told the Food and Drug Administration it had a divided opinion about caffeine in soft drinks hurting children and urged more study on the problem. Certainly people with symptoms of caffeinism should cut down consumption.

Many people have switched to tea but it has 30-60 milligrams of caffeine in instant form and bagged tea has 42-100 mg. The average cup of brewed coffee carries 80-120 mg; instant coffee has 66-100 mg. Soft drinks with caffeine pack 15-30 mg. of caffeine, the Medical World News article reports.

RECIPE

By Sarah Ann Sheridan

Salads now serve as a main dish for many meals.

Carrot Salad

- 3 c carrots, shredded
- ¼ c miniature marshmallows
- ¼ c crushed canned pineapple
- ½ c seedless raisins
- ¼ to ½ c shredded coconut
- ½ to ¾ c mayonnaise, according to taste
- 1 c non-dairy whipped topping, or whipped cream

Mix lightly all dry ingredients, then carefully fold in mayonnaise and cream, and serve on lettuce leaf.

Tomato Coleslaw

In large bowl, combine 4 cups finely shredded cabbage; ½ green pepper, chopped; 1 tablespoon chopped pimiento; 1 teaspoon grated onion; 3 tablespoons salad oil; ½ cup white vinegar; 2 tomatoes, quartered; 1 teaspoon salt; ¼ teaspoon pepper; ½ teaspoon dry mustard; 1 teaspoon celery salt and 2 tablespoons granulated sugar. Makes 4 servings.

Art Association Annual Membership Exhibit Set

The Muleshoe Art Association will present its Annual Membership Exhibit Thursday, April 28, through Saturday, May 7. The exhibit will be held at the Art Loft in Muleshoe.

The exhibits will be open to the public Friday, April 29, through Saturday, May 7, from 9:00 a.m. to 5:30 p.m. On Sunday, May 1, the exhibits will be open from 1:00 p.m. to 5:00 p.m. Presentation of awards will be held at 4:00 p.m. Sunday, May 1.

An entry fee of \$4.00 per entry is to be paid. For members of the Muleshoe Art Association, a \$2.00 entry fee is required.

Entries must be hand delivered to the Art Loft between 10:00 a.m. and 3:00 p.m. on Thursday, April 28. Entries must be original. All paintings must be framed and securely wired for hanging. Each entry must be tagged stating name and address of the artist, media, title and price, if for sale.

Judge for the exhibit will be Larry Hilburn, Hilburn Gallery, Taos, N.M.

Awards will be given for Best of Show, Muleshoe State Bank Purchase Prize, Tri-County Savings and Loan Purchase Prize and Mackey McCarty Purchase Prize.

The two categories for the exhibit are oil and water media. Money will be awarded to the first three winners in each category. Merchants awards will be given by St. Clair's, Lindsey's Jewelry, Art Loft, Higginbotham-Bartlett, Cobb's, First National Bank, Williams Brothers and Bobo Insurance.

Artists may receive only one cash award. They may receive additional Honorable Mention ribbons.

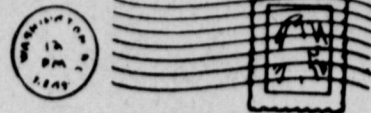
For more information, call Mrs. Jerry Wheatley, 965-2448 or Mrs. Blanche Lenderson, 272-3038.

Considerate

Nature very seldom brings the first worm out on the same day that the robin arrives.

-Dealer, Cleveland.

LOUISA'S LETTER



Dear Louisa,

We are having to move to another town as my husband is a manager of one of the chain stores. This is the first time we have had to move so I am concerned as to where we will live.

I know nothing about this new place but I would like to get in a neighborhood where there are children about the age of our two and also among people who belong to our church denomination. How do you think I should go about finding out these things?

Young Mother--Ky.
Answer:
The best plan is to get in touch with the Chamber of

Commerce in this new town and they will be glad to give you information concerning people and places which are available in the town. It will also be a good idea to have your present pastor or priest contact a man of the church in this other town and he could be helpful.

If your children are kindergarten or school age, make an effort to know the other students' parents. Never get too intimate until you know something about them but be friendly.

Louisa

Address letters: Louisa, Box 532, Orangeburg, S.C. 29115

You can judge the spirit of most industries by the profit thermometer.

When you leave details to others you must learn to forget them as fast as they do.

Three Way News

By Mrs. H.W. Garvin

Mr. and Mrs. George Tyson spent Friday night with their son and family, Troy Tyson, in Levelland.

H.W. Garvin was a patient in Cochran Memorial Hospital the past week.

W.E. Latimer was a medical patient in Cochran Memorial Hospital the past week.

Mrs. R.L. Reeves from Post is visiting her son, the Jack Reeves.

Mr. and Mrs. George Tyson spent Sunday with the D.A. Williams in Enochs.

Mr. and Mrs. T.D. Davis and Tammy and Blenda Richardson and Mr. and Mrs. Tommy Terrell and children spent the weekend at Lake Brownwood, attending a family reunion.

Mrs. Vernon Stephens underwent surgery in Methodist Hospital Monday.

Mr. and Mrs. Jack Furgeson spent the past week in Dallas visiting relatives.

Several families from the community spent the weekend fishing and camping.

ABOUT YOUR HOME

By April Rhodes

For an attractive appetizer, dip rims of glasses first into grapefruit juice, then into granulated sugar to frost. Fill with fresh fruit and quartered maraschino cherries.

Those who like to sew their own garments will find a trend to softer materials. Blouses of silk blends, and dresses of cotton blends are good for spring and summer.

Poison proof your homes--put all harmful cleaners and insect repellents where children can't reach them. Keep such products in original containers.

Check screens for tears and apply a patch of wire, weaving it into place with a strand of wire from unused wire, before insects enter your porch or home.

Welcome To Muleshoe



Mrs. W.C. Wilkerson

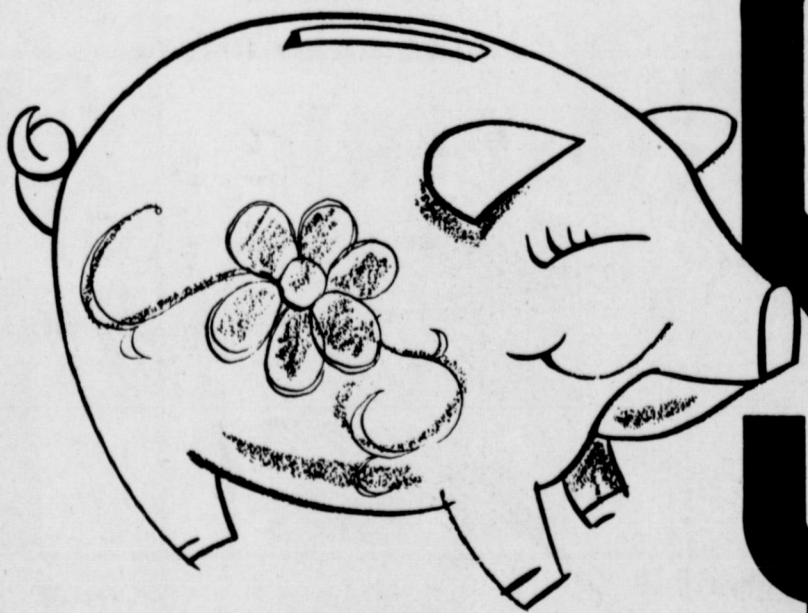
We would like to welcome Mrs. W.C. Wilkerson to Muleshoe. Mrs. Wilkerson is no stranger to the Muleshoe Area, she & her late husband ran the Syndicate Hotel in the Hub Area in 1924, which was later moved to Friona and is now the Public Library building. Mrs. Wilkerson has two sons, Bill who lives in Temple and Clarence who lives in Oklahoma city. She now resides at 206 E. 5th.

J & J Insurance
INSURANCE FOR EVERY NEED
232 MAIN TELEPHONE 272-4549
P.O. BOX 510
MULESHOE, TEXAS 79347

James Crane Tire Co.
GOOD YEAR

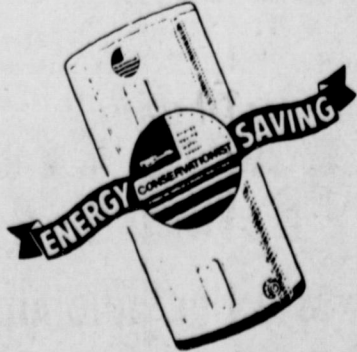
DAMRON DRUG CO.
REXALL
302 MAIN

Henry Insurance Agency
Box 569
Muleshoe, Texas - 79347



SAVE

energy with a conservationist electric water heater



Maximum efficiency in appliances is what we're all looking for . . . to save energy, save money.

That's why the CONSERVATIONIST ELECTRIC water heater is worth looking at. It saves 15% of the energy used in a like-sized regular electric water heater and delivers all the dependability of electric water heating. The Conservationist is heavily insulated on all sides so heat is retained inside the water heater . . . used for what you're paying for . . . to heat water.

And, you save on space above the heater because an electric water heater does not need a flue or vent.

Ask us about the Conservationist . . . the electric water heater designed to use energy wisely and save.

WE SELL 'EM . . . CALL US



EDITORIAL

Labor And Carter

One of the fears of many Americans, concerning President Carter, has been that he would do organized labor's bidding almost automatically, since the AFL-CIO spent so many millions and undoubtedly made the difference in certain key states in the November election.

That fear, while still somewhat prevalent, is subsiding. Carter has not been taking orders from George Meany. He refused to go along with several Meany suggestions on Cabinet appointments. Lately, he asked for only a modest increase in the minimum wage, angering Meany.

Just before that the House defeated organized labor's primary legislation hope this year—a bill which would have allowed any one involved union to strike an entire construction site, forcing all other unions' cooperation. Now accepted repeal of section 14-B of the Taft-Hartley labor law is impossible this year.

So, the verdict thus far is that President Carter is not taking orders from the AFL-CIO. True, he said he would sign a common-situs picketing bill and a repeal of right to work legislation if Congress passed them, and that dismayed many. Luckily for the President, they have not reached his desk; Congress hasn't passed them. Or is it all luck?

Trade Deficit Worsens

The bitterly cold winter in America considerably increased oil imports. Another heavy trade deficit in February heightens prospects of a huge trade deficit for the year.

The 1977 two-month deficit is over \$5 billion. That's about half the deficit for all of 1976. What makes prospects suspect is the fact that President Carter is pushing for a sharp decrease in arms sales, which would produce an even greater trade imbalance.

If, in addition, the nation's wheat farmers are not provided enough support to keep all of them in business, a major export earner might be partly negated. If the trade imbalance gets as bad as it appears it might, the effect on the dollar is going to be negative, perhaps sharply so.

Thus, Mr. Carter could soon be facing a crisis in the international trade outlook; his influence is limited to some extent by circumstances but he also might be compounding some adverse circumstances.

One of the major accomplishments of President Ford was to restore a trade balance, steady the dollar and reduce inflation—all related accomplishments. Yet Mr. Ford lost the 1976 election primarily on economic issues—unemployment, the recession and the stalling of the recovery in mid-1976.



WASHINGTON NEWS REPORT

Disarmament-Carter's Handicaps-Hanging Tough-The Russian Edge-

WASHINGTON, D.C. -- The serious trouble this country faces today in seeking to persuade Soviet leaders to agree to mutual reduction of nuclear arms cannot likely be overcome for some time, and may well require a immediate sharp increase in spending for sophisticated weapons.

The obstacles facing Carter are not all his own making, though one is. For many years the United States held a commanding nuclear arms lead. No major push developed here then for mutual reduction. Now the Soviets have significant numbers, throw-weight, and production lead we would like neutralized.

Looking at the U.S. defense budget, the Soviets know we can't suddenly begin to spend huge sums to catch up. We are squandering most of our defense money on the present-day, Vietnam-warborn all-volunteer system to obtain manpower for the armed services. That takes more than half our defense money and until we institute universal service for our young (civilian or military) for a brief period, this country will continue to fall behind in the arms race.

In short, the Russians have us and they know it. In addition, however, they resent very much Carter's slaps at their repression of dissidents (primarily Jews) inside Russia. Carter is, of course, theoretically, morally and idealistically right. But he can accomplish very little for the dissidents, and they are relatively few, while he compromises his chances of ending the arms race with this approach, with all its momentous consequences for Americans and the free world.

Some columnists, even James Reston, hastened into print immediately after the Carter rebuff in Moscow to insist Carter's human-freedom shots had nothing to do with the rebuff. They don't know, obviously, but Carter's preaching probably did have a negative effect, may have had quite an effect. The Soviets seeing this as interference in their internal affairs.

The Speaker Reports
by Bill Clayton

AUSTIN--If the stacks of letters received by my office during the past year are any indication, the people of Texas will be pleased that the 65th Legislature has acted favorably on the Highway Funding bill.

The compromise bill provides \$528 million in additional highway funds for the 1978-1979 biennium, including \$200 million to be appropriated from the General Revenue Fund to repair roads and bridges damaged by the severe winter weather. Over the next 20 years, the Highway Department should have sufficient funds to erase the present backlog of committed projects.

According to the provisions of this bill, funds for the construction of future highways will be allocated according to a highway cost index formula. The law sets the base amount and a Highway Cost Index Committee, composed of the Governor, the Lieutenant Governor and the Comptroller, will adjust the base amount according to the cost index formula.

Passage of the Highway Funding bill is a victory for all Texans because the benefits of a well-constructed and well-maintained high-

way system are equally distributed. Everyone in Texas benefits because everyone depends on the roads. Texas highways are an institution that affects the lives of all of us. Texans realize the benefits in having good roads to drive to good jobs,

to school and to recreation and good roads to ship medicine, food and clothing. Good highways mean dollars to the Texas economy. The fact is that we could not afford to ignore one of Texas' greatest revenue-producing agencies in its time of financial need.

A road system that is properly constructed and maintained saves lives, money, time, fuel and jobs. Texans want to prosper, attract new businesses and more tourists and realize we must have one of the finest highway systems in the land if we are to fulfill our potential.

In 1917, we planned for the future with the creation of the Texas Highway Department and thereby established a standard of excellence. Now that the future is here, the State of Texas cannot abandon a highway system that is the result of 60 years of care and foresight.

ATTENTION Boys & Girls
With Each \$5 Share You Accumulate At
MULESHOE FEDERAL CREDIT UNION,
You Will Receive One Free Ticket Towards
A Drawing For A 3 Speed Bicycle
To Be Given Away July 16
At The New Park At 6 p.m.
Refreshments Will Be Served.
The Bicycle Can Be Seen At
Western Auto.

Kirby Sales & Service
Fo Know The Person You Buy From!
For A Home Demonstration Call
Littlefield Texas Ph. 385-3357

HONEST MAN
KNOXVILLE, TENN. -- When Roger Oglesby, a city service department employe, began digging for his lost watch in a leaf dump, he found the timepiece and a billfold containing \$1,700 in cash and a \$20 gold certificate. The wallet belonged to his boss who gave Oglesby a \$100 reward.

neys for former President Richard M. Nixon won another day in court when the Supreme Court agreed to decide whether the 30 White House tape recordings played during the Watergate trial of Nixon's top advisers should be released to the public.

QUINLAN LIVES
MORRIS PLAINS, N.J. -- Karen Anne Quinlan, 23, whose "right to die" was established in a landmark state

court decision, continues to breathe after being weaned from a respirator last May.

MIREX AGAIN
WASHINGTON--The Agriculture Department and officials of five southern states are reviving, on a scaled down basis, a cooperative program using the pesticide mirex to control the fire ant, department spokesmen announced.

GIBSON'S DISCOUNT CENTER "WHERE YOU ALWAYS BUY THE BEST FOR LESS"

SAVINGS GALORE
PRICES EFFECTIVE MONDAY 18 THRU WEDNESDAY 20

| | | | |
|--|---|---|---|
| <p>STP OIL TREATMENT REG. 1.13 79¢</p> | <p>PRO BRUSH BOWL BRUSH ASST. COLORS REG. 39¢-47¢ 27¢</p> | <p>EVERAIN SPRINKLER DIAL-A-MATIC #850 REG. 6.97 \$5.19</p> | <p>EVERYDAY LOW PRICES 1/2 GAL. HOMO MILK 87¢ 1 GAL. HOMO MILK \$1.69 LARGE EGGS 77¢ 1 LB. COTTAGE CHEESE 69¢ 2 LB. COTTAGE CHEESE \$1.22 GIBSON BREAD 2/89¢</p> |
| <p>MISS CLAIROL HAIRCOLOR \$1.73</p> | <p>DAWN DISHWASHING DETERGENT 13¢ OFF REG. 76¢ 69¢</p> | <p>GARDEN SPRAYER REG. 14.97 16.97 \$12.99</p> | <p>TOP JOB 28 OZ. REG. 1.23 99¢</p> |
| <p>MISS CLAIROL SHAMPOO FORMULA REG. 1.97 1.73</p> | <p>ADMIRAL AM-FM TABLE RADIO REG. 13.97 \$9.99</p> | <p>COFFEE 1 LB. ADMIRATION REG. 3.19 \$2.69</p> | <p>PRESTONE ANTI FREEZE \$3.49</p> |
| <p>LOMA 3 PC. MIXING BOWL SET REG. 1.19 77¢</p> | <p>MISS CLAIROL HAIRCOLOR MISS CLAIROL CREME FORMULA 2 OZ. REG. 1.37 \$1.19</p> | <p>DIAL DEODORANT BATH SIZE SOAP REG. 35¢ 31¢</p> | |

Burning Rangeland Increases Production

Old ideas about fires are going up in smoke as research at Texas Tech University continues to indicate that, far from being the scourge it was once thought to be, fire is a valuable tool in range management.

Prescribed burning of rangeland can increase grass production, make forage more accessible to livestock, improve wildlife habitat, control undesirable shrubs, provide a mineral seedbed for establishment of commercial trees and control certain plant diseases, according to Dr. Henry A. Wright, Texas Tech professor of range and wildlife management.

"The real problem now," said Wright, "is that we need a transfer of technology from university to rancher. After 10 years of research we know alot that ranchers can use if we can get the information to them.

More students are studying fire ecology every year at Texas Tech. "It takes two or three years for a person to become a competent fire ecologist," Wright estimated. "In addition to training, he or she needs common sense and good judgment."

One needs knowledge of weather, fire behavior and plants," he said. "Inexperienced people have no idea how fierce fire can be at times and how docile at other times. They tend to be far too cautious or to have no fear at all. If you have no fear, it's dangerous. If you're at all. If you have no fear, it's dangerous. If you're overly cautious, you can't get the job done."

Wright emphasized marked differences between effects of a wildfire and a prescribed burn. A wildfire burns parts of two or three pastures. Livestock then concentrate on burned areas where grass is tender and contains more protein, and bur-

ned areas develop a bad appearance from overgrazing. Prescribed burning is done on a "manageable unit basis." Livestock then graze equally over the entire area and land appearance is entirely different.

Brush control by burning is cheaper than using chemicals which cost about \$7.50 an acre, while a prescription burn by Texas Tech costs about \$2 an acre in mesquite-tobosa country

and \$5 an acre in cedar country. Wright said a rancher could probably do the job for himself for 50 cents an acre but would need expert assistance with his first couple of burns.

If wildlife is part of the ranching program, about 20 per cent of the area should be left unburned because, while wildlife prefer to feed in burned areas, they also need cover. Protecting tall trees, islands of

trees, draws and steep slopes provides a mixed habitat. Wright said this is the best approach, since it provides shade for cattle and aesthetic satisfaction for people.

Wright said some impressive results have been demonstrated with prescription burning of rangeland. Grass production has at least doubled and grass utilization has increased after burns near Colorado City. Five

years after a burn in the Rolling Plains 25 per cent of the mesquite and 70 per cent of the prickly pear were dead and grass production increased. In a dense cedar area of the Edwards Plateau, on rancher was able to increase carrying capacity from 1 cow per 50 acres to 1 cow per 5 acres after bulldozing the cedar and broadcasting burning.

Planning for a prescription burn may begin two years in advance, according to Wright. In West Texas firelines are usually prepared in November before burning in February

when grasses are dormant and no harm will occur to nests or young animals. Livestock can usually graze the area four months after a burn, although in dry years the range may require eight months to be ready for grazing. In mesquite-tobosa country livestock can graze after two or three weeks. Range burning creates comparatively little pollution. The main pollutant is "particulate matter," the black material that goes up in the air. It falls to earth during the next rain, doing no har, said Wright.

"However, if there is a lot of dust in the air already, we hesitate to overload the air with particulate matter which might irritate allergies."

Cold Too
Modern Man's idea of roughing it is surviving through the night after the thermostat on his electric blanket conks out.
-Blade, Toledo.

Could it be that work is a device to make the weekends enjoyable?

Border research
AUSTIN, Texas (Spl.) — A new bi-national program to conduct research on problems of the Mexican-U.S. border has been established at The University of Texas. Studies to be made by the Mexican-U.S. Border Research Program will assess the impact on the border area of illegal migration and the devaluation of the peso, among other topics. Also to be examined are border problems that may have national and international implications.



321 MAIN

April Showers SALE

MONDAY TUESDAY WEDNESDAY OPEN 9a.m.-6p.m.

Lazbuddie School Menu

- April 18-22, 1977
- MONDAY**
Beef & Cheese Pizza
Buttered Corn
Green Salad
Yeast Biscuits
Jelly - Butter
½ pt. Choc. or white milk
- TUESDAY**
Fried Chicken
Creamed Potatoes
English Peas Salad
Hot Rolls - Butter
Pears
½ pt. Milk
Orange Juice
- WEDNESDAY**
Enchiladas
Hot Sauce
Pinto Beans
Vegetable Salad
Cornbread - Butter
Jell-O with Whipped Topping
½ pt. Milk
- THURSDAY**
Submarine Sandwiches
Pork & Beans
French Fries
Fruit Salad
½ pt. Choc. or white milk
- FRIDAY**
Weiners & Cheese
Blackeyed Peas
Spinach
Cornbread - Butter
Oatmeal Cookies
½ pt. Milk
Orange Juice



MEN'S VESTED SUITS

Smartly tailored vested suits. Careful tailoring in critical fit areas for superb fit, incredible good looks.
Colors: Blue and Camel. Sizes 36-46.
Regulars and Long Lengths.

THE WHY WEAR A GIRDLE PANTY HOSE

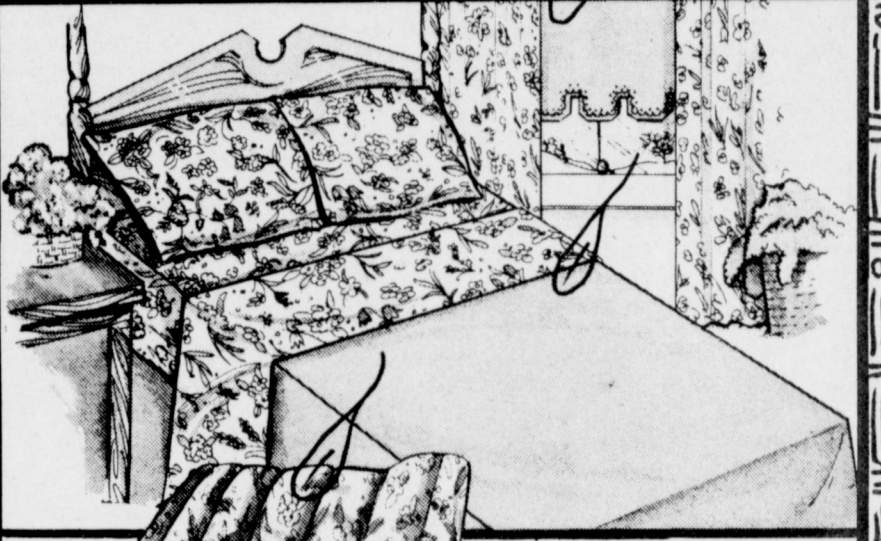
NEW FASHION SHAPE FOR SPRING '77



169
3 Prs.
\$4.

Now you can control the little bumps and bulges and still move as freely as if you were bare! A blend of nylon and spandex in the ribbed control panty gently molds and holds you as the luxuriously sheer legis cling to every curve. Color: Beige, Taupe, and Sunset. Sizes: Petite, Average and Tall.

Home Furnishings Sale



Dan River "Ingenu" Sheets

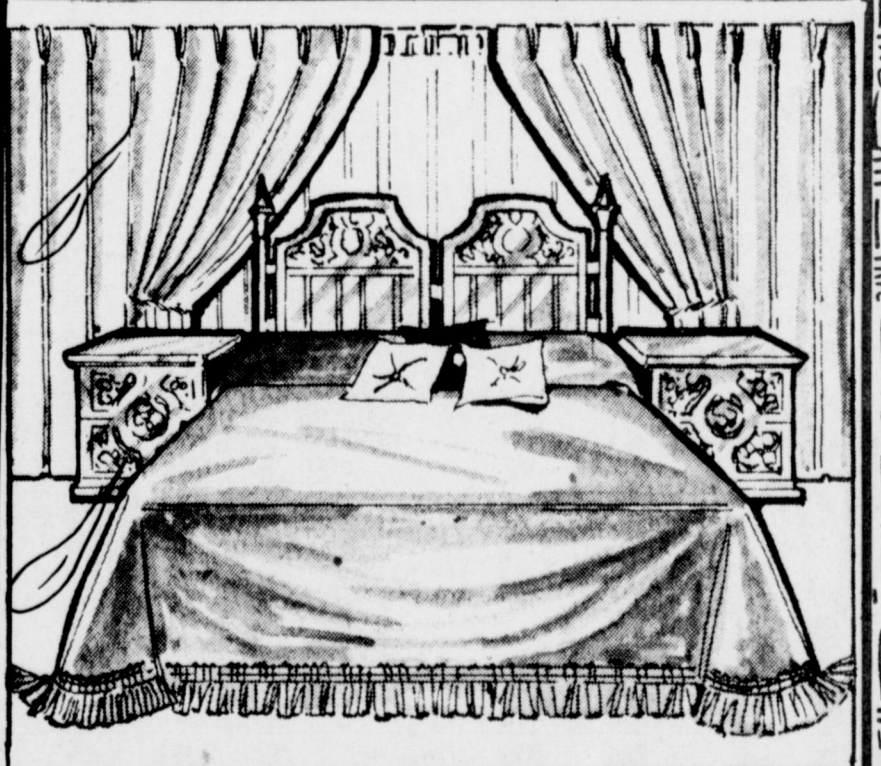
| | |
|--------------------------|----------------|
| Twin Reg. 3.99 | Full Reg. 4.99 |
| 2.87 | 3.87 |
| 2 for 5.50 | 2 for \$7 |
| Queen Reg. 8.99 | 6.47 2/\$12 |
| King Reg. 10.99 | 8.47 2/\$16 |
| Reg. Cases Reg. 3.49 Pr. | 2.75 Pr. |
| King Cases Reg. 3.99 Pr. | 3.25 Pr. |

Welcome to our garden — Just introduced . . . flowering "Ingenu" is already a favorite with decorators who like to see it repeated throughout a room: over windows; on pillows, and, of course, on the bed. It's a fresh happy pattern in carefree Celanese® Fortrel® polyester and cotton. Beautiful multiprint on beige ground. Flat and Fitted.

Dan River "Ingenu" Bedspreads & Drapes

Matching drapes and quilted throw style bedspread of 50% Celanese® Fortrel® polyester and 50% cotton. Machine washable. Permanent press.

| | | | |
|-----------------|------------------|--------------|---------------------|
| TWIN Reg. 19.99 | QUEEN Reg. 28.99 | 22.88 | DRAPES |
| 15.88 | | | 48" X 63" |
| FULL Reg. 22.99 | KING Reg. 32.99 | 26.88 | Reg. 10.99 8.88 pr. |
| 17.88 | | | 48" X 84" |
| | | | reg. 11.49 9.88 pr. |



Luxurious Velvet... Bedspreads and Drapes

Make your bedroom into an enchanting palace of Old World beauty. Solid all over flocked bedspread and matching drapes of 55% cotton, 45% rayon. Choose from Red, Blue, Avocado, Topaz, or Rose. Completely machine washable and dryable.

| | |
|------------------------|-------------|
| TWIN REG. 16.99 . . . | \$15 |
| FULL REG. 18.99 . . . | \$16 |
| QUEEN SIZE, Reg. 24.99 | \$21 |
| KING SIZE, Reg. 29.99 | \$26 |

ANTHONY'S HOME FURNISHING SALE NOW IN PROGRESS

48"x84" DRAPES, Reg. 17.99

\$16

CASH



REGULAR \$60 VALUE JUST IN TIME FOR GRADUATION \$39.88

Luxurious Soft Briefs
Reg. 1.35
6 for \$5.

100% Caprolan® nylon panties with 100% cotton lined seat in White and Blonde in sizes 4-7.

MEN'S AND BOYS' TUBE SOCKS
6 PAIRS FOR \$5.

- Stretch to fit comfortably
- All white or white with striped tops
- Boys' sizes 9 to 11.
- Men's sizes 10 to 13

THE ORGANIZER PURSE

- Desk flap
- Zipper Closure
- Credit Card File
- Multi-Compartment
- White, Bone, Tan, Brown

Just Arrived! Reg. \$12.99 **\$10.88**

Fashion Minded **KRINKLE CLOTH** \$1.37 Yd.

- Heavy Bottom Weights
- New Spring Colors
- Reg. to \$2.99

3 yds. ¼ **\$1**

NON-CURL ELASTIC 6 YDS. FOR **\$1**

FASTBAK SUEDE LEATHER ATHLETIC SHOE

- Racing side stripes
- Blue or Red
- Suede leather

| | |
|--------------|-----|
| Men's 6½-12 | 988 |
| Boys' 2½-6 | 888 |
| Youths' 11-2 | 788 |

\$3.99
3 pr \$10

SOFTIE OXFORDS

- 2 Eyelet
- 3 Colors
- Sizes 5 to 10

\$6.97
3 FOR \$18

LONG OR SHORT SLEEVE SHIRTS

100% POLYESTER DOUBLE KNIT PANTS

WASH 'N' WEAR

THE FIRST SIGN OF SPRING SPORTSWEAR BY PYKETTE® PANT & SHIRTS

YOU CAN BANK ON IT!

Bill Loyd, President Muleshoe State Bank

One of the most valuable assets any individual can have is good personal credit.

With the economic ups and downs of today's world a good credit rating is almost a necessity. Good bank credit is widely regarded as the most valuable of all business references. The essence of this credit is trust and confidence. In fact, the word credit comes from a Latin verb which meant to believe or trust.

In establishing good bank credit, you should keep several things in mind. Accurately describe what you need credit for purchasing, provide all financial information relevant to the loan and then make the payments as agreed. If something unavoidable happens that causes delay in payment, let your banker know in advance. We'll work with you every way we can. Good bank credit for you means a good customer for us.

Supplemental Water Study Near Completion

Water, Inc. President J.W. Buchanan has labeled as a major step toward bringing supplemental water to the High Plains the results of a jointly-sponsored Texas and Arkansas study showing the Ozark State to have 43 million acre feet of surplus surface water annually. "This is a breakthrough as far as we are concerned," Buchanan noted. "Other states are willing to work with us now. When we started pushing an import system in 1967, people in other states were laughing at us. Now we have tremendous numbers of people in Texas and other states saying this has got

to be done. Their whole viewpoint has changed since 1967." "We are making progress," Buchanan said. "Water, Inc. is the one organization over the past decade that has never let up pushing this idea. If it hadn't been for keeping this in front of them, we never would have gotten this far."

The study, funded by the Texas Water Development Board in conjunction with the Arkansas Soil and Water Conservation Committee, was com-

pleted by Stephens Consultants, Inc. of Little Rock after extensive analysis of the rivers flowing through Arkansas. About 43 million of the 76.5 million acre feet that flow through Arkansas rivers annually is excess water beyond the projected needs for Arkansas growth through 2020 and the flow requirements necessary to maintain water quality and the needs of states downstream.

The Stephens report states, "It has been estimated that six million acre feet of water annually would be adequate to maintain current irrigation levels in the High Plains of Texas. This quantity could be provided from 'excess and surplus' flows of the White, Arkansas, Ouachita and Little River systems in Arkansas. This represents less than 10 percent of the water leaving the State of Arkansas, not including the Mississippi. The actual export of water from Arkansas probably could be much greater and the State would still have adequate quantities of water remaining to satisfy all foreseeable needs."

"Nothing has been tied down yet on the actual amount of water," Buchanan said. "We are looking at six million acre feet. That's not as much as we would like, particularly if New Mexico joins in with us to get water, but that is still a lot of water to bring into the area and it would assure that we could at least maintain current irrigation

levels." The greatest volumes of water would be transported to Texas during the wet months in Arkansas. Volumes of 450,000 acre feet or more would be available in the months November through June with a peak amount of 875,000 acre feet being available in May. During the months July through October the flows would be drastically reduced with an August low point of 77,000 acre feet.

Of the surplus water allocable for transport, the Arkansas River would provide 48 percent, the White River, 28 percent and the Little and Ouachita Rivers 12 percent each. While water would be available from the Arkansas River year round, water from the other three rivers would not be available in the summer months. The individual needs within each river basin would have priority over water for transport. The report states, "There is no conflict of interest between the transport of these excess and surplus waters through the conveyance system and the normal utilization of water" within the basins. Both states would benefit from the project, the report notes. For Texas, High Plains irrigation could be maintained at present levels. Further, the conveyance system would be designed to meet all types of water needs along the route in both states. Both Texas and Arkansas would benefit from the employment of a large labor force and from equipment and supply purchases for construction, operation and maintenance of the project. In addition to assisting with flood control, the project's potential revenues from the sale of water to Texas could reduce or at least maintain



ROYALS READY TO PLAY... Today (Sunday) the Royals, a Muleshoe baseball team plans to open their season against Bovina, at Bovina. Pictured in new blue and white uniforms are from left, back row, Haynes Jackson, Ray Bara, Gerald Bara, Henry Toscano, Hector Bara, Jose Triana and Roman Reyna, coach. In the center row, from left, Jacinto Bara, team manager, Danny Ramirez, Fred Bara, Loy Dominguez, Ray Garcia, Tony Clines, Danny Rodriguez and Alex Garcia, coach. On the front row are, from left, Ernest Bara, Al Ontiveros, Reuben Flores, Narciso Guana and Rocky Flores, coach. Not pictured is Sammy Gonzales, player.

the current tax rate in Arkansas, the study reports. Buchanan envisions this study as the first step toward a regional water management system for Texas, New Mexico, Oklahoma and Arkansas.

Bula News

By Mrs. J. Blackman

WMU met Tuesday at 2:30 at the church building, with Miss Vina Tugman in charge of the lesson.

Mr. and Mrs. D.J. Cox attended the funeral at the First Methodist Church in Sudan for his cousin, Mrs. Bonnie Maxwell. The funeral was Tuesday.

A spring revival will begin at the Baptist Church Sunday, April 17, and will continue through Sunday, April 24, with services twice daily, 10:00 a.m. and 7:30 p.m.

F.L. Simmons has been a patient in the Medical Arts Hospital for several days.

Mr. and Mrs. Jake Bogard and children from Charlie, Tex. spent the Easter holidays with his parents, Mr. and Mrs. Tom Bogard.

Yvette Cox spent Tuesday until Monday, with her grandparents, Mr. and Mrs. Harvey Whittenburg of Oklahoma Lane.

Mr. and Mrs. Fred Locker have recently returned from a six weeks stay at their lake home at Zapata, on Falcon Lake. Their daughter and family spent a week with them.

Miss Kathrine Pierce and Miss Geniva Stewart of Lubbock, visited Friday afternoon with Kathrine's mother, Mrs. Ben Pierce, and son, Jack.

Mrs. Earl Shields and daughter from Lelia Lake, spent the past week with her mother, Mrs. Lorilla Jones.

Mr. and Mrs. J.D. Rowland spent the weekend visiting in Lovington, N.M. with her nephew, Mr. and Mrs. Wilber Clawson and daughter.

Jeff and Joey Carpenter of Muleshoe spent from Thursday until Monday with their grandparents, Mr. and Mrs. P.R. Pierce.

Mr. and Mrs. Warner DeSautell and boys of Slaton, spent the Easter holidays with her parents, the J.L. Lathams.

Word has been received of the death of Jess Richardson, of Austin. Burial was Thursday afternoon in the Austin Cemetery.

Mrs. Cecil Jones, Wanda Logan and Mrs. Pat Claunch attended the District "Sew it with Cotton Style Show", held in the library of the Wellman school, Saturday, April 2.

Mrs. Rodney Marshall and daughter from Rankins, spent the Easter weekend with her parents, Mr. and Mrs. Nolan Harlan.

Mr. and Mrs. J.C. Withrow had with them Sunday two daughters, Mr. and Mrs. Joe Price and son, Timmy, of Plains and Mr. and Mrs. Kenneth Johnson of Muleshoe.

Spending borrowed money is pleasant but don't let it fool you.

Three Way School Menu

- April 18-April 22, 1977
- MONDAY**
Meat Loaf with Catsup
Candied Yams
Lettuce With Dressing
Hot Rolls - Butter
Doughnuts
Orange Juice
Milk
- TUESDAY**
Fried Chicken with Gravy
English Peas
Creamed Potatoes
Biscuits - Butter
Plain Cake with Icing
Milk
- WEDNESDAY**
Macaroni and Cheese
Blackeyed Peas
Sliced Round Potatoes
Lettuce with Dressing
Hot Rolls - Butter
Apricot Cobbler
Milk
- THURSDAY**
Pinto Beans - Pepper Sauce
Spinach
Yellow Hominy
Corn Bread - Butter
Cinnamon Rolls
Orange Juice
Milk
- FRIDAY**
Roast Beef with Gravy
Green Beans
Celery Sticks
Oatmeal Raisin Cookies
Milk

WHO KNOWS?

1. Define conundrum.
 2. Who first flew in an airplane over Antarctica?
 3. Who discovered Newfoundland?
 4. When is Easter?
 5. What are the earliest and latest dates on which Easter can fall?
 6. What was the original indebtedness of Great Britain to the U.S. arising from World War I?
 7. Who was President Buchanan's wife?
- Answers To Who Knows**
1. A riddle whose answer depends on a pun or play on words.
 2. Hubert Wilkins.
 3. John Cabot, 1497.
 4. April 10th.
 5. March 22 and April 25.
 6. \$4,802,181,641.56.
 7. He was a bachelor.

ATTENTION MULESHOE AREA CATTLEMEN

... In regard to dead stock removal ... If you have a problem with service ... whether in the feed yard or on the farm ... Please give US a chance! Thank You.

YOUR LOCAL USED COW DEALER IN MULESHOE

Phone 965-2903
Mobile 965-2429

Muleshoe Bi-Products

1 out of 4 forest fires are started by trash fires.



Singleton-Ellis Funeral Home
24 Hour Ambulance Service
Ph. 272-4574 Muleshoe

Your Weathermaster Seed Dealer
Max Crim
Rt. 3
Muleshoe
965-2742

ATTEND THE CHURCH OF YOUR CHOICE

FIRST UNITED METHODIST CHURCH
Rev. Floyd Dunn
507 West Second, Muleshoe

UNITED PENTECOSTAL GOSPEL LIGHTHOUSE CHURCH
George Green, Pastor

ZION REST PRIMITIVE BAPTIST CHURCH
207 E. Ave. G
Glen Williams, Elder

PRIMITIVE BAPTIST CHURCH
621 South First
Elder Bernard Gowens

MULESHOE ASSEMBLY OF GOD
517 South First
Rev. Joe Stone

JEHOVAH'S WITNESS
Fiona Highway
Boyd Lowery, Minister

FIRST CHRISTIAN CHURCH
130 West Avenue G
Rev. Walter Bartholf
Sunday School 10:00 a.m.
Worship 11:00 a.m.

LATIN AMERICAN METHODIST MISSION
Avenue D & Fifth Street
R.Q. Chavez, Pastor

NORTHSIDE CHURCH OF CHRIST
117 E. Birch Street

CHURCH OF THE NAZARENE
Ninth & Avenue C
David Gray, Pastor

CALVARY BAPTIST CHURCH
1733 West Avenue C
James Williams, Pastor

TRINITY BAPTIST CHURCH
314 East Avenue B
Rev. David Evetts

RICHLAND HILLS BAPTIST CHURCH
17th and West Avenue D
Roy L. Sikes, Pastor

MEN WORKING

This is the sign that should be lifted high in our beloved country — "Men Working." Men working with all they have and are, for a country that must show the world how to live in brotherhood and love and peace under God.

Let us resolve to dedicate anew our lives and our talents to our country and our God when we attend church

MEN AND EQUIPMENT WORKING

The Church is God's appointed agency in this world for spreading the knowledge of His love for man and of His demand for man to respond to that love by loving his neighbor. Without this grounding in the love of God, no government or society or way of life will long persevere and the freedoms which we hold so dear will inevitably perish. Therefore, even from a selfish point of view, one should support the Church for the sake of the welfare of himself and his family. Beyond that, however, every person should uphold and participate in the Church because it tells the truth about man's life, death and destiny, the truth which alone will set him free to live as a child of God.

SPANISH BAPTIST MISSION
East Third and Ave. E
Rev. Ynes Aleman

PROGRESS SECOND BAPTIST CHURCH
Clifford Slay, Pastor
First and Third Sundays

MULESHOE BAPTIST CHURCH
8th Street and Ave. G
Bob Dodd, Pastor

ST. JOHN LUTHERAN
Lariat, Texas
Herman J. Schelter - Pastor
Sunday School Classes
9:30 a.m.
Worship Services
10:30 a.m.

FIRST BAPTIST CHURCH
220 W. Ave. E
Rev. J.E. Meeks

SPANISH ASSEMBLY OF GOD
East 6th and Ave. F
Rev. Hipolito Pecina

ST. MATTHEW BAPTIST CHURCH
W. Third
E. McFrazier, Pastor

PROGRESS BAPTIST CHURCH
Progress, Texas
Danny Curry, Past r

SIXTEENTH & AVENUE D CHURCH OF CHRIST
Sunday - 10:30 a.m.
Evening - 6 p.m.
Wednesday - 8 p.m.
Terry Bouchelle, Minister

IMMACULATE CONCEPTION CATHOLIC CHURCH
Father Timothy Schwertner
Northeast of City in Morrison Edition

MULESHOE CHURCH OF CHRIST
Clovis Highway
Royce Clay, Minister

Universal Treating Co., Inc.
Water Well Acidizing
No Job Too Small Or Too Large
Call Collect
Universal Treating Co., Inc.
Levelland, Texas
806-894-6125

| | |
|--|--|
| WATSON ALFALFA Alfalfa Hay 272-3552 272-4038 | |
| BEAVERS FLOWERLAND "Flowers for all occasions" 272-3024 or 272-3116 | Dairy Queen Margie Hawkins, Manager 272-3412 |
| WESTERN DRUG 114 Main | MULESHOE MACHINE & WELDING Gear Head Repair, Sales & Service 272-3145 123 Fir St. |
| Compliments of AVI, INC. Hwy. 84 W. 272-4266 | MULESHOE CO-OP GINS |
| WHITE'S CASHWAY GROCERY 402 Main "Where Friends Meet and Prices Talk" | MULESHOE PUBLISHING CO. |
| BRATCHER MOTOR SUPPLY 107 E. Ave. B. 272-4288 | ST. CLAIR'S 110 Main |
| WHITT-WATTS-REMPE IMPLEMENT CO. John Deere Dealer Muleshoe 272-4297 | WEST 6TH TEXACO 272-4633 Road Service W. 6th and W. American Blvd. |
| GIBSON'S DISCOUNT CENTER 1723 W. American Blvd. 272-4306 | Compliments of STATELINE IRRIGATION Littlefield-Muleshoe-Levelland |
| WRINKLE WELDING & MACHINE 909 W. American Blvd. 272-4486 | MAIN STREET BEAUTY SALON 115 Main 272-3448 |

Wanted Ads

OPEN RATES
1st insertion, per word - \$.09
2nd and add., per word - \$.06

NATIONAL RATES
1st insertion, per word - \$.11
2nd and add., per word - \$.07
Minimum Charge - \$.50
CARD OF THANKS - \$3.00
Classified Display - \$1.30 per column inch.

Double Rate for Blind Ads - DEADLINE FOR INSERTION 11:00 Tuesday for Thursday 11:00 Friday for Sunday

WE RESERVE THE RIGHT TO CLASSIFY, REVISE OR REJECT ANY AD.

NOT RESPONSIBLE FOR ANY ERROR AFTER AD HAS RUN ONCE.

1 Personal

EARN \$80 WEEKLY at home stuffing envelopes. Information: Rush \$50 cents and stamped self-addressed envelope:
FINANCIAL MIRACLES
P.O. BOX 15129
FORT WORTH, TEXAS 76119
1-15s-8tc

FOR YOUR Stanley Home Products, Jewel Broyles, call 965-2481.
1-16t-tfc

3 Help Wanted

Need operators at Main Street Beauty Shop. Call 272-3448.
3-12t-tfc

Sanitary Chemicals and Janitor supplies sales representative needed for expanding company. This position is permanent and full-time. Must have sales experience.
CRAINCHEM
P.O. DRAWER 20973
DALLAS, TEXAS 75220
3-16s-1tc

Experienced line mechanic five day work week, other fringe benefits. Town and Country Auto Muleshoe, Texas.
3-14s-tfc

Have a highly profitable and beautiful non-franchised Jean Shop of your own. Featuring the latest in jeans, denims, and sportswear. \$13,500 includes beginning inventory, fixtures, and training. Call anytime for Mr. Waters at 501-568-5125.
3-16s-1tp

8 Real Estate

FOR SALE: 180 acres for sale. Eight miles west of Muleshoe on south side of highway 84. Three irrigation wells. Smallwood Real Estate 116 E. Avenue C Muleshoe, Texas

Looking For Your Dream Home? Simple - where, when and why WHERE one mile south and 3/4 mile east of Lazbuddie. WHEN Now you may be wanting to retire - just raise your lovely family or you may just want to live in the country. WHY Cut your taxes, save on gas bill, this place has three lovely fire places. Save on your water bill, this place has its own water system. Save on groceries, raise your own. Lots of garden space. Save on high cost of butane, get about three years of increased prices off on this lovely home. These owners will carry some papers. You may be able to have your dream home at less cost than you think! By calling for an appointment and see this lovely home.

COWSERT REAL ESTATE OR CHARLES VAUGHN
EVENINGS 806-647-5449.
8-14t-tfc

2 bedroom house for sale; 1 bath, carpeted, garage. 1730 W. Ave. B. Call 272-4643.
8-14t-tfc

HOUSE FOR SALE: 2 bedroom, 1 bath, single garage. 1190 square feet. 614 West Avenue C. Call 272-4714.
8-12t-tfc

381 acres irrigated east of Muleshoe on Earth highway. *****
160 acres irrigated 2 miles north of Muleshoe on highway. *****
160 acres in alfalfa. Circle sprinkler. 4 miles SW of Muleshoe.
J.B. SUDDERTH REALTY INC.
BOX 627
FARWELL, TEXAS 481-3288
8-6s-tfc

FOR SALE: 2 bedroom house completely remodeled kitchen, new range and refrigerator. Washer and dryer. Carport, corner lot. Near school. Located at 723 West Seventh. Call 965-2767 for appointment.
8-16s-3tc

SALES, LOANS AND APPRAISALS
In Bailey County 30 Years
KREBBS
REAL ESTATE
122 W. Ave. C.

FOR SALE: 2 bedroom, fenced yard, carport. Phone 272-3616.
8-15t-tfc

FOR QUICK SALE: 2 bedroom, 1 1/2 bath, garage, tool shed. Price \$15,000. \$3,000 down will handle this.
Nice brick home, well located. Double car garage, tool shed, storm cellar and garage apt. Lots of storage space.
POOL REAL ESTATE
272-4716
8-13t-tfc

FOR SALE OR TRADE: 20 acres irrigated land. 2 miles from Muleshoe. Phone 272-5578 or after 6 phone 272-3658.
8-13t-tfc

HOUSES FOR SALE BY OWNER
Beautiful brick home, 4 large bedrooms, 2 baths, large living-din, corner fireplace, formal dining room, small office, sun room, walk-in utility room, 2 car garage, floored attic storage. Newly redecorated, excellent location. Children's playhouse.
272-3848.
8-16s-tfc

FOR SALE BY OWNER: Brick, 3 bedroom, 1 1/2 baths, single garage, storm cellar, fenced yard. Richland Hills 272-3345.
8-13t-tfc

FOR SALE: 3 bedroom house. 406 West Second. Call 272-4491 after 5 p.m.
8-8s-tfc

FOR SALE: Northside Texaco service station. Call 272-4814.
8-15s-8tp

9 Automobiles

FOR SALE: 1973 Ford Galaxie 500. 4 door, hard top. Two tone green with vinyl top. Loaded. Good condition. AM-FM radio, tape deck. 272-3540 after 5.
9-10s-tfc

1976 Camaro. Ask for Randy at 3319 or 4739.
9-15s-tfc

10 Farm Equipment

1959 Gleaner Combine. Good condition. 927-5423. Maple. R.R. Kindle.
10-16s-tfc

11 For Sale Or Trade

FOR SALE: 2 bedroom, 2 bath trailer house, with appliances. On fenced lot with storm cellar and storage house. Call 272-4118.
11-3t-tfp

FOR SALE: Double wide mobile home. 1140 square feet. Good condition. Reasonably priced. Call 825-3463 Oklahoma Lane.
11-8s-tfc

3 speed 26" men's bicycle. 3 speed 24" woman's bicycle. 40 gallon electric hot water heater.
Antique rolled edge bath tub.
Barbra Haley 965-2682.
11-15t-tfc

Kawasaki 500 good condition. 8,095 actual miles. Asking \$550. Call 4944 after 5 p.m. All day Saturday or Sunday. See at 921 West Avenue D.
11-15t-tfc

\$100 REWARD Offered for arrest and conviction of anyone doing damage to paper stands. Muleshoe Publishing Co. 272-4536.
11-15t-tfc

FOR SALE: Washer and Dryer. Copper-tone color. Come by Williams Bros. Office Supply or call 272-3113.
11-11s-tfc

MUST SELL: 1973 14 x 70 Graham mobile home. Two bedroom, 1 1/2 baths. Call 965-2496 after 6:30 p.m.
11-16s-tfp

15 Miscellaneous

PHILLIPS HOUSE OF MUSIC
118 MAIN CLOVIS, NEW MEXICO
Pianos, organs, band instruments, new and used. Professional repairs, sheet music, rentals, terms.
Phone: 505-763-5041.
15-30s-tfc

SPECIAL NOTICE: Little Tyke Furniture, apparel and accessories department store for little ones. 412 Mitchell, Clovis, N.M. Phone 762-6550.
15-12t-8tc

ROTOTILLING
272-4120
15-15s-8tc

To give away to loving home, female, spayed German Shepherd. 3 years old. Prefers adults. 272-3830.
15-16s-1tc

Public Notice
Public Notice Of The Commissioners Courts Intention To Re-Program The Use Of Revenue Sharing Funds Currently Held By Bailey County

Notice is hereby given, that there is approximately \$87,534.97 of Revenue Sharing Funds currently owned by Bailey County, and on deposit to the credit of Bailey County; these are the remaining balances from Entitlement Periods One through Seven, which embrace calendar years 1972 through 1976. Approximately \$985.01 of that amount is rents and revenues received from investments.

An itemized statement of the said funds, and the purposes for which they were originally programmed, is as follows:
1972
No programming necessary \$985.01
1973
No funds remaining 0.00
1973-1974
Programming Courthouse Expenditures \$125.95
Agricultural and Civic Center \$17,537.10
Road Equipment 0.00
Sheriff's Auto 0.00
Financial Administration \$6,000.00
Fund Balance \$23,663.05
1974-1975
Programming Health 0.00
Multi-Purpose \$552.07
Fund Balance \$552.07
1975-1976
Programming Financial Administration (Capital) \$12.49
Financial Administration (Operation/Maintenance) \$50,226.20
Fund Balance \$50,238.69
1976
Programming Equipment \$12,000.00
Multi-Purpose \$96.15
Fund Balance \$12,096.15
TOTAL FUND BALANCES \$87,534.97

Notice is also given that these funds are not now needed for the above stated purposes, and therefore it is the desire of the Commissioners Court to re-program and apply them to the cost of constructing an EXHIBITION CENTER AND COLISEUM to be used by the people of Bailey County.

Notice is also given that a public hearing will be held by the Commissioner's Court at their regular meeting place at the courthouse in Muleshoe, Texas on April 28, 1977 to consider the re-programming of said funds. The meeting will begin at 10:00 o'clock a.m., and continue until 5:00 o'clock p.m. The public is cordially invited to attend, and to be heard. The Court urges the participation of interested citizens, welcomes their suggestions, and will consider their requests. Final decisions will be made during or after the meeting.
Glen Williams
County Judge

15s-2stc

Card Of Thanks

I would like to wish God's richest blessings and sincere thanks to the friends and staff at the Muleshoe Nursing Home. A special thanks to the LVN's and RN's, Dr. Pummil and Mr. Cook for taking such loving care of Mrs. Katie Newton who was a resident of the Nursing Home for 14 years.
Family of Mrs. Katie Newton
16s-1tc

GLEN WATKINS
925-6743

FOR SALE
* OVER 60 MILES OF USED ALUMINUM PIPE
* BARN FULL OF NEW AND USED FITTINGS
* ALL BRANDS OF GASKETS * SPRINKLER HEADS
* SIDE ROLL SPRINKLERS
* PVC PLASTIC PIPE 1/2" TO 12" * TRANSITE PIPE
* WE BUY USED ALUMINUM PIPE AND FITTINGS
* WE LEASE OUR USED ALUMINUM PIPE BY THE MONTH

STATE LINE IRRIGATION CO., Inc.
LITTLEFIELD • MIDLAND • LIVINGSTON
385-4867 • 332-3150 • 879-1509

Public Notice
Notice Of A Public Hearing For The Purpose Of Programming Bailey County Revenue Sharing Fund

Notice is hereby given that Bailey County expects to receive approximately \$57,059.00 Revenue Sharing Funds during ENTITLEMENT PERIOD NO. EIGHT, which comprises the first nine months of calendar year 1977, and

The Commissioner's Court will hold a public hearing April 28, 1977 at their regular meeting place in the courthouse to consider the purposes for which the said funds will be used. The meeting will begin at 10:00 o'clock a.m. and continue until 5:00 o'clock p.m. The public is cordially invited to attend, and to be heard.

The Commissioner's Court invites the participation of all interested persons - including Senior Citizens and/or representatives of Senior Citizens groups - and welcomes all suggestions as to the use of said funds.

Pending further consideration, the Court intends to apply a portion of the said funds to the cost of construction of an Exhibition Center and Coliseum for Bailey County, and a portion to the purchase of road equipment. Final decisions will be made during or after the hearing.
Glen Williams
County Judge

Muleshoe School Lunch
April 18 - 22 - 1977

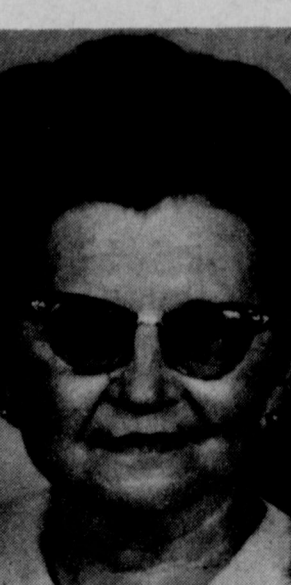
MONDAY
Milk
Steak - Gravy
Green Beans
Creamed Potatoes
Hot Rolls
Fruit
TUESDAY
Milk
Hamburgers
Lettuce and Tomato Salad
Pickles - Onions
Tater Tots
Cole Slaw
Cheese Stick
Frosted Brownies
Cranberry Sauce
WEDNESDAY
Milk
Chicken Pot Pie
Cobbler
THURSDAY
Milk
Hot Dogs - Chili Sauce
Vegetable Beef Soup
Crackers
Coney's
Fruit
FRIDAY
Fish Patties
Cream Potatoes
English Peas
Hot Rolls
Peanut Butter Honey Whip

Long Illness Claims Life Of Resident

Jewell Blackwell, 64, died Thursday afternoon at her home four miles northwest of Muleshoe following a lengthy illness. Funeral services were at 2 p.m. Saturday in Trinity Baptist Church with Rev. David Evetts, pastor, officiating. Assisting were Rev. B.C. Stonecipher, Baptist minister from Muleshoe and Rev. Ben Adkins, Baptist minister from Clayton, N.M. Burial was in Bailey County Memorial Park under direction of Singleton-Ellis Funeral Home.

Mrs. Blackwell had lived in Muleshoe since March, 1955, moving here from Cathedral City, Calif. She was born August 11, 1912 in Gorman, Tex. and married Sam Blackwell September 29, 1929 at Littlefield. On January 1, 1977 she retired as supervisor of the Muleshoe Schools' lunchrooms. She was a member of the Trinity Baptist Church; an associate member of TSTA and a member of Progressive Homes Club. Survivors include her husband, Sam; one daughter, Judy Gibbs, Tillie, Tex.; one sister, Mrs. Billie Smith, Abilene; seven brothers, Lonnie Caper, Gorman; Clyde Caper, Ranger; R.V. Caper, Breckenridge; S.T. Caper, Fort Stockton, Elzie Caper, Eastland; Aubrey Caper, Cisco and Preston Caper, Fort Worth; and four grandchildren.

ON WHEAT PRODUCTION
The Senate has passed a bill to encourage wheat farmers to convert part of their land to grazing or hay production this year. The measure is designed to cut back a mounting surplus of wheat.



JEWELL BLACKWELL
Ready For Lunch
"My word, Dick, you've got the latest thing in typists."
"She certainly that. She never gets here 'til eleven."



Johnson Furniture
Phone 272-4315
2104 American Blvd.
Muleshoe, Texas

Former Local Teacher Died At Hamilton

Christine Rutherford, 73, died April 11 in Hamilton County General Hospital in Hamilton, Tex. She was a former Muleshoe school teacher. Mrs. Rutherford was born September 27, 1904 in Nimrod, Tex. and was married to W.H. Rutherford on April 30, 1923. Her husband preceded her in death. Funeral services were at the Dark Heights Church of Christ in Hamilton on April 13 at 10

a.m. with graveside services at Granbury's Temple Hall cemetery.

Survivors include one son, Harry Marshall Rutherford, Round Rock; one daughter, Maxine Parkinson, Granbury; one brother, Brooks McDonald, Encinata, Calif.; three sisters, Faye Shelton, Hemitt, Calif.; Virginia Storey, Santa Anna, Calif.; and Marilyn Wobley, Kingsland; five grandchildren and two great-grandchildren.

Life can be enjoyed by all people who are willing to accept it patiently.

Register Now

TARA HEDGING AND FUTURES TRADING
SHORT COURSE

TARA is now accepting registration for a six-week short course to help you use the commodity futures market for hedging and trading intelligently and profitably.

Dr. Willard F. Williams, President of TARA, Inc., will conduct six two-hour sessions in Clovis, New Mexico, on Tuesday evenings beginning April 26 at 7:00 p.m. (New Mexico time) at the First Federal Savings and Loan Building, 801 Pile Street to help you earn more profit, regardless of your interest in the market! Advance registration is required prior to April 22. For more information on enrollment call:

Max Kelso
505/985-2231 or 505/762-5922

Kim Hutchins
505/456-2412

J.B. Sudderth
806/481-3288 or 806/481-9149

TARA Offices in Lubbock
806/792-6351

Report Of Condition Muleshoe State Bank

Form 44 (State) (3-76) PUBLISHER'S COPY State Bank No. 1631

Consolidated Report of Condition of "Muleshoe State Bank" of Muleshoe in the State of Texas and Domestic Subsidiaries at the close of business on March 31, 1977.

| BALANCE SHEET | | ASSETS | | Sch. | Item | Col. | Mill. | Thou. | |
|---------------|--|----------------|-----|-------|------|-------|-------|--------|-----|
| 1. | Cash and due from banks | C | 7 | | | | 2 | 602 | 1 |
| 2. | U.S. Treasury securities | B | 1 | E | | | 1 | 907 | 2 |
| 3. | Obligations of other U.S. Government agencies and corporations | B | 2 | E | | | 1 | 100 | 3 |
| 4. | Obligations of States and political subdivisions | B | 3 | E | | | 3 | 600 | 4 |
| 5. | Other bonds, notes, and debentures | B | 4 | E | | | | None | 5 |
| 6. | Corporate stock | | | | | | | None | 6 |
| 7. | Trading account securities | | | | | | | None | 7 |
| 8. | Federal funds sold and securities purchased under agreements to resell | D | 4 | | | | | None | 8 |
| 9. | a. Loans, Total (excluding unearned income) | A | 10 | | | | 12 | 518 | 9a |
| | b. Less: Reserve for possible loan losses | | | | | | | 242 | b |
| | c. Loans, Net | | | | | | 12 | 276 | c |
| 10. | Direct lease financing | | | | | | | None | 10 |
| 11. | Bank premises, furniture and fixtures, and other assets representing bank premises | | | | | | | 562 | 11 |
| 12. | Real estate owned other than bank premises | | | | | | | 94 | 12 |
| 13. | Investments in unconsolidated subsidiaries and associated companies | | | | | | | None | 13 |
| 14. | Customers' liability to this bank on acceptances outstanding | | | | | | | None | 14 |
| 15. | Other assets | G | 7 | | | | | 514 | 15 |
| 16. | TOTAL ASSETS (sum of items 1 thru 15) | | | | | | 22 | 655 | 16 |
| | | LIABILITIES | | Sch. | Item | Col. | Mill. | Thou. | |
| 17. | Demand deposits of individuals, partnerships, and corporations | F | 11 | A | | | 7 | 583 | 17 |
| 18. | Time and savings deposits of individuals, partnerships, and corporations | F | 11 | B+C | | | 10 | 076 | 18 |
| 19. | Deposits of United States Government | F | 2 | A+B+C | | | | 75 | 19 |
| 20. | Deposits of States and political subdivisions | F | 3 | A+B+C | | | | 1 | 473 |
| 21. | Deposits of foreign governments and official institutions | F | 4 | A+B+C | | | | None | 21 |
| 22. | Deposits of commercial banks | F | 5+6 | A+B+C | | | | None | 22 |
| 23. | Certified and officers' checks | F | 7 | A | | | | 85 | 23 |
| 24. | TOTAL DEPOSITS (sum of items 17 thru 23) | | | | | | 19 | 292 | 24 |
| | a. Total demand deposits | F | 8 | A | | | 8 | 051 | a |
| | b. Total time and savings deposits | F | 8 | B+C | | | 11 | 241 | b |
| 25. | Federal funds purchased and securities sold under agreements to repurchase | E | 4 | | | | | 850 | 25 |
| 26. | Other liabilities for borrowed money | | | | | | | None | 26 |
| 27. | Mortgage indebtedness | | | | | | | 53 | 27 |
| 28. | Acceptances executed by or for account of this bank and outstanding | | | | | | | None | 28 |
| 29. | Other liabilities | H | 9 | | | | | 514 | 29 |
| 30. | TOTAL LIABILITIES (excluding subordinated notes and debentures) | | | | | | 20 | 709 | 30 |
| 31. | Subordinated notes and debentures | | | | | | | None | 31 |
| | | EQUITY CAPITAL | | | | | Mill. | Thou. | |
| 32. | Preferred stock a. No. shares outstanding | | | | | | | None | 32 |
| 33. | Common stock a. No. shares authorized | | | | | | | 50,000 | 33 |
| | b. No. shares outstanding | | | | | 20.00 | | 1,000 | 34 |
| 34. | Surplus | | | | | | | 500 | 34 |
| 35. | Undivided profits | | | | | | | 446 | 35 |
| 36. | Reserve for contingencies and other capital reserves | | | | | | | None | 36 |
| 37. | TOTAL EQUITY CAPITAL (sum of items 32 thru 36) | | | | | | 1 | 946 | 37 |
| 38. | TOTAL LIABILITIES AND EQUITY CAPITAL (sum of items 30, 31, and 37) | | | | | | 22 | 655 | 38 |

MEMORANDA

1. Average for 15 or 30 calendar days ending with call date:
a. Cash and due from banks (corresponds to item 1 above) 2 179
b. Federal funds sold and securities purchased under agreements to resell (corresponds to item 8 above) 73
c. Total loans (corresponds to item 9a above) 12 321
d. Time deposits of \$100,000 or more (corresponds to Memoranda items 3a plus 3b below) 2 119
e. Total deposits (corresponds to item 24 above) 19 208
f. Federal funds purchased and securities sold under agreements to repurchase (corresponds to item 25 above) 383
g. Other liabilities for borrowed money (corresponds to item 26 above) None
2. Standby letters of credit outstanding None
3. Time deposits of \$100,000 or more: a. Time certificates of deposit in denominations of \$100,000 or more 1 717 b. Other time deposits in amounts of \$100,000 or more 402

I, Robert Montgomery, Cashier, of the above-named bank, do solemnly swear that this report of condition is true and correct, to the best of my knowledge and belief.

Correct-Attest: Charles L. Lenau, H.L. Griffiths, B.E. Loyd, Directors.

State of Texas, County of Bailey, Sworn to and subscribed before me this 14th day of April, 1977. My commission expires June 1, 1977.

Notary Public.



RAIN CREATES PATTERNS . . . Thursday afternoon, rain which deposited some one and one-quarter inches of rain in the area, creates a double vision pattern on a city street.

Clovis YMCA Drive Seeks Members

The Annual YMCA Membership Round-Up will kick-off at noon Monday, April 18, at the YMCA building.

Big Boss, Bill Hugg is ably assisted by Bill Kinyon on the East Range, Therman James on the West Range, and Harry Eastham on Advanced Gifts. Ken White Jr. is responsible for the public relations.

Bill Kinyon's East Range ranch foremen are Gerald Woods and Marvin Huguley of the Flying "Y" Ranch and the Box "M", respectively.

Therman James has two ranch foremen, they are Royce Neuman on the Circle "C" and Walter Baldock on the Running "A".

Some 100 riders, top hands, and range leaders will be involved in the effort. Report meetings are set for Noon on Monday, April 18; Friday, April 22; Wednesday, April 27; and on Monday, May 2; Wednesday, May 4; and Friday, May 6.

The Round-Up total goal is 2,300 members with a cash value of \$37,500.

GI Bill Payment Changes In June

A change in GI Bill payment procedures, effective June 1, 1977, will bring checks at the end of the month rather than at the beginning to 1.5 million veterans, dependents and service members enrolled in Veterans Administration education programs. These and other changes are explained in a "stuffer" to be sent with April and May checks, Jack Coker, Waco VA Regional Director, said today.

Another June 1 change, brought about by law, modifies an arrangement which in the past automatically gave trainees a two-month money advance at the start of school.

Ending of the prepayment system will have the most noticeable effect on veteran students continuously enrolled this summer. They will receive their last VA check under the prepayment system on May 1, covering enrollment for May.

The next check, covering June enrollment, will be issued July 1. Subsequent VA checks will follow each additional month of enrollment. A student whose enrollment ends in June will receive the payment for June on July 1.

The modified advance payment procedure permits advance payment at the beginning of a school term for the first month or partial month, plus the following month only if the student makes a written request

and the school agrees to process the advance payment. Prior to this new legislation, all students got advance payments automatically, Coker noted.

Students under the GI Bill or

Pharmacists Support New Laws

Drug product selection by pharmacists is supported by Texas Pharmaceutical Association, the state professional organization of pharmacists. Representative Tim Von Dohlen's (Dist. 39) committee substitute to Representative Mickey Leland's (Dist. 88) H.B. 10, passed by the Texas House, would give pharmacists authority to select an equivalent, less expensive brand of the same drug prescribed by the physician unless the drug is on a restricted list or unless the physician specifically instructs to dispense the brand written.

The bill is before Senator Chet Brook's (Dist. 11) Human Resources Committee for hearing on April 13.

The objective of the legislation is drug cost savings for consumers and government, especially the Medicaid Drug Program. Cost savings could range from \$1 million to \$11 million for the State and from \$7.8 million to \$86 million for private citizens of the State, dependent upon use of most conservative pharma-

the dependents educational assistance program who wish an advance payment should contact their school, because the student's written request for advance payment must be included on the school enrollment certification submitted to VA.

VA emphasized the enrollment certification containing the advance payment request must be received at least 30 days before the start of regular registration. Disabled veterans under VA rehabilitation programs should contact their VA rehabilitation

specialist for further information.

Eligible veteran students requesting advance payment for the fall school session should be aware that no additional check will be forthcoming from the VA for approximately three months, Coker said.

For example, a veteran receiving an advance payment check in September, covering September and October, would not receive an education payment for November until December 1, because of the elimination of the prepayment provision, Coker explained.

Students with questions concerning VA educational checks are urged to contact the veterans representative on campus or their local VA Regional Office.

chemical industry or more liberal federal government projections. Necessary safeguards have been incorporated in the legislation to assure quality of drug products dispensed and to prevent additional liability exposure for pharmacists.

A formulary commission of physicians and pharmacists would be created under the existing Board of Pharmacy to publish a list of manufacturers of acceptable quality to prevent selection of any sub-standard drugs. The commission would also publish a list of drugs with potential problems related to interchanging of brands. The pharmacists could not dispense a brand other than that prescribed by the physician if the drug appears on this list.

The Leland-Von Dohlen bill would provide a safe mechanism for offsetting the protective market for pharmaceutical manufacturers created by an antiquated restriction originally intended to protect Texans against counterfeit drugs no longer in existence.

Enochs News

By Mrs. J.D. Bayless

Some remodeling has been done on the Enochs Baptist Church kitchen. Johnny Cox did the work.

Mr. and Mrs. Dale Nichols were in Plainview to see their son, Donnie, Friday afternoon. Donnie was hurt playing basketball.

Mr. and Mrs. C.C. Snitker were guests in the home of their son, Mr. and Mrs. Curtis Snitker, at Hart Friday.

Mr. and Mrs. Raymond Cox of Fort Worth visited in the home of his brother, Mr. and Mrs. Johnny Cox, Sunday morning.

Mr. and Mrs. W.B. Peterson visited in the home of his brother, Mr. and Mrs. Alvis Peterson, at Muleshoe Sunday afternoon.

Mr. and Mrs. Claud Coffman of Muleshoe and Mrs. J.D. Bayless visited their brother, Mr. and Mrs. Clyde Coffman, at Morton Saturday afternoon.

The Good News Texas Revival dates are April 17 - 24 at the Enochs Baptist Church. Rev. Strauss Atkinson will be the evangelist and John Conlon will be in charge of the music.

Company in the home of Mr. and Mrs. C.C. Snitker Sunday afternoon was a son, Mr. and Mrs. Curtis Snitker and children of Hart.

Mrs. Ray Seagler spent Wednesday and Thursday with her

sister, Mr. and Mrs. Alton McCallister, at Idalou. They spent Friday night with a daughter, Mr. and Mrs. Wayne Herrington, at Lubbock and returned home Saturday.

Veterans Q & A

EDITOR'S NOTE: Following are representative questions answered daily by VA counselors. Full information is available at any VA office.

Q -- My brother recently passed away and at the burial ceremonies, the U.S. flag which draped the casket was presented to his wife. Why wasn't our mother entitled to this flag?

A -- One burial flag is presented to the next of kin in the following order: widow, children, father, mother, brothers, sisters, etc.

Q -- I am in the process of filing a claim with the VA and want representation by a service organization. May I have more than one service organization represent me at the same time?

A -- No. Only one service organization may represent you in filing a claim with the VA.

Q -- How much money may a veteran receive from VA for tutorial assistance?

A -- An eligible veteran may receive up to \$65 per month for 12 months, with a maximum total benefit of \$780.

Q -- Are VA benefits subject to federal income taxation?

A -- No, with one exception. Interest paid on accrued GI insurance dividends left on deposit is subject to taxation.

A forest fire is a shame.

Starting one is a crime.

A Public Service of This Newspaper & The Advertising Council

| | | | |
|--|---|---|--|
| EXTRA LEAN FOR STEW Beef Cubes LB. 99¢ | VAN CAMP Pork & Beans NO. 2 CAN 2 FOR 78¢ | ENRICHED FLOUR Gold Medal ALL PURPOSE ENRICHED FLOUR WITH FILLED DOUBLE BARRELED BOOKLET 5 LB. BAG REG. SALE PRICE 59¢ | Pay-n-Save AFFILIATED WE RESERVE THE RIGHT TO LIMIT PRICES EFFECTIVE APRIL 17-23, 1977 |
| BEEF Arm Roast LB. 89¢ | FAMILY SCOTT BATHROOM Tissue 4-ROLL PKG. 69¢ | Miracle Whip WITH FILLED DOUBLE BARRELED BOOKLET 32 OZ. JAR REG. SALE PRICE 99¢ | HEINZ WORCESTERSHIRE Sauce 10 OZ. BTL. 69¢ |
| BEEF Rib Steaks LB. 99¢ | KRAFT AMERICAN Cheese Singles 1 LB. PKG. \$1.49 | KRAFT SALAD DRESSING Miracle Whip WITH FILLED DOUBLE BARRELED BOOKLET 32 OZ. JAR REG. SALE PRICE 99¢ | BETTY CROCKER ASSORTED CAKE MIXES 18 OZ. BOXES 2 for 1.69¢ |
| BEEF Club Steaks LB. \$1.19 | GREEN GIANT BROCCOLI IN CHEESE/BROCCOLI SPEARS 10 OZ. PKG. 49¢ | REFRESHING Instant Nestea WITH FILLED DOUBLE BARRELED BOOKLET 3 OZ. JAR REG. SALE PRICE \$1.49 | LYSOL Liquid Cleaner 28 OZ. BTL. \$1.19 |
| SHURFRESH REGULAR OR ALL BEEF Franks 12 OZ. PKG. 69¢ | PILLSBURY Crescent Rolls 8 OZ. CAN 49¢ | HANDI-WIPES 10 CT. PKG. ASSORTED COLORS WITH FILLED DOUBLE BARRELED BOOKLET REG. SALE PRICE 59¢ | LYSOL Disinfectant Lysol Spray 14 OZ. CAN \$1.49 |
| BORDEN WISCONSIN RED RIND LONGHORN Cheese LB. \$1.59 | BREAKFAST CEREAL Cap 'n Crunch 12 OZ. BOX 79¢ | BUTTERMILK BORDEN'S 1/2 Gal. WITH FILLED DOUBLE BARRELED BOOKLET REG. SALE PRICE 69¢ | KRAFT ASSORTED Barbecue Sauce 18 OZ. BTL. 59¢ |
| WRIGHT'S HICKORY SMOKED Slab Bacon SLICED LB. \$1.09 | BAGGIES SAND WICH BAGS 80 CT. BOX 49¢ | BORDEN'S Ice Cream 1/2 GAL. ROUND CARTON \$1.19 | GREEN GIANT Green Peas 3 303 CANS \$1 |
| BEEF Chuck Roast BEEF CENTER CUT LB. 79¢ BEEF BLADE CUT LB. 69¢ | BEEF CHUCK STEAK LB. 89¢ | 8TH WEEK GOURMET COOKWARE 3 1/2 QT. COVERED CASSEROLE \$9.99 | WE GIVE DOUBLE GUNN BROS. STAMPS EVERY WED. & SAT. STORE HOURS: MON-SAT 8 am-9 pm SUNDAY 9 am-9 pm |