

The Clarendon Enterprise

"A Paper Dedicated To Building A Better Future For Clarendon And All Of Donley County"

Third Series, Vol. IX, No. 32 E322 The combined publication of The Donley County Leader and The Clarendon News. Thursday, August 6, 1998 50¢

City gives thumbs down to CC proposal

The Board of Aldermen of the City of Clarendon met in regular session on July 28, 1998, at 7 p.m. in the Board Room of City Hall.

Members present were Mayor Tex Selvidge, Aldermen James Owens, Billy Jack Land, and John Tom Morrow. Members absent were Aldermen James Kuhn and Mac Stavenhagen.

Representatives of the Little League and Clarendon College were present to discuss the proposed use of the senior league field for the college's new baseball program. Little League president Stan Shelton expressed some of the concerns of his organization.

Thad Anglin, Clarendon College Dean of Students, stated that Clarendon College should always be considered second to the interest of the Little League and agreed with Mayor Selvidge that kids of the community should always come first.

Both the Little League and the college expressed their willingness to work together to resolve any potential conflicts. Alderman Billy Jack Land said the plan would "never work" and made a motion to have the Little League field used only for the Little League. James Owens seconded the motion, and the motion carried unanimously.

Carol Thomas addressed the board concerning a problem she has experienced with her water line. When the city turns off the water to make repairs, the pressure causes pipes to break in the house when the water is turned back on. It was agreed that, when possible, the city would notify them that work is being done on that line.

Mayor Selvidge told the board that the radio system used by the county is approximately 20 years old and is having problems. The county is trying to upgrade this system by replacing the equipment and is asking the city and other entities to help with the cost. The board approved a motion to pledge \$2,500 for the new system.

The board denied a request from pilots at the airport for the purchase of a new combination lock on the activity building costing more than \$100.

Bids were opened for the chassis of a new trash truck. The board accepted the low bid of \$61,463 from Bruckner's Mack Truck.

In other city business, the aldermen voted to stop selling bricks that were removed from Second Street and appointed Alderman John Tom Morrow as the Fair Housing/Equal Opportunity Standards Officer.

Bronco Booster Club to meet Friday

The Bronco Booster Club will meet on Friday, August 7, at 7:00 p.m. at the Fieldhouse. Parents are encouraged to attend and meet the new coaches. Refreshments will be provided.

Inside

This Week's Jim Dandy Issue:

Letters	2
Church Directory	4
King Crossword	7
Big-E Classifieds	9

TEN PAGES OF LIVE LOCAL NEWS THAT AFFECTS YOU!

Local Weather Report

Day	Date	High	Low	Prec
Mon	27	103°	68°	0.03"
Tues	28	96°	66°	0.01"
Wed	29	101°	69°	-
Thurs	30	103°	73°	-
Fri	31	104°	68°	-
Sat	1	97°	65°	0.68"
Sun	2	95°	70°	-

Total Precipitation For August 0.68"
Total Precipitation For Year 9.73"

Total precipitation for August 1997 was 4.63" The YTD 1997 was 32.40"
Forty-four days this summer 100%+

Armed men rob Hedley bank

Theives threaten tellers with knife, 'bomb.' Authorities arrest suspects in two hours

The normally peaceful town of Hedley was rudely awakened Tuesday morning when two armed men robbed the Community Bank's branch office there.

Donley County Sheriff Jimmy Thompson said that two men robbed one teller at the bank between 9 and 9:30 a.m. They were armed with a knife and what appeared to be a bomb, he said. The duo fled with several thousand dollars in cash.

When questioned, bank employees said

they were under instructions from their home office not to comment.

The robbery was reported to authorities at 9:30 and within 20 minutes roadblocks had been set up between Donley County and Gray, Hall, and Briscoe counties, Thompson said.

Game Warden Gary Self of Childress stopped the suspects at about 11:30 a.m. on Oxbow Road near Lakeview. All the money and the men's weapons were recovered, Thompson said. The bomb was a fake.

Jeff Nickell, 31, and Chris Henson, 26, were arrested and taken into custody. Both were from Childress, but Thompson said Nickell previously had lived in Clarendon for a short time. Of the two, only Nickell had any prior arrests.

The suspects were taken to Amarillo by the FBI and were in federal custody at the Potter County Jail Tuesday night.

Thompson credited the officers involved for making the operation go so smoothly.

Involved were officers with the sheriff's department Jeff Menton, Steve Schoolcraft, Joe Shadle, Butch Blackburn, Jake Longan, Jim Mincey, Mike Spier, and Blackie Johnson; dispatcher Clyde Price; Game Wardens Gary Hunt and Gary Self; members of the Department of Public Safety; FBI Agent Scott Hendricks; and Texas Ranger Gary Henderson. Thompson also thanked the several local and area law enforcement agencies for their cooperation during the incident.



Should We Sell? Medical Center vote Aug. 8

Donley County voters will go to the polls this Saturday, August 8, to determine the fate of the Medical Center Nursing Home.

The hospital board voted earlier this year to sell the Medical Center facility because of the liability risks associated with the nursing home and the costs to the taxpayers of the district. Citizens stopped the sale, however, with a petition demanding that the issue be taken to the voters.

Proponents of the sale say that the nursing home is an unnecessary drain on the taxpayers of county and that selling the facility would bring a private enterprise onto the tax rolls of the county. Care would be just as good

under a private owner, those in favor of the sale say.

Opponents of the sale point out that county residents will still have to pay taxes for indigent care regardless of whether the nursing home is sold or not. The hospital district should keep control of the facility to insure that the quality of care remains high, they say.

The bonds, which were issued for the construction of the facility, will be paid off in February 1999. Supporters of the sale see this as an opportunity to sell the facility and get out from under the costs associated with running the nursing home. Opponents, however, say that taxes being used to

pay off the bonded indebtedness could be reduced or redirected to make needed improvements at the home.

Supporters also see selling the facility as the first step toward abolishing the hospital district altogether - which would require an act of the state legislature.

Regardless, county taxpayers will always be responsible for indigent care in the county - whether through the hospital district or through Donley County.

Both sides are encouraging everyone to cast their ballots this Saturday. Polling will be held at the Bairfield Activity Center, the Howardwick City Hall, and the Hedley Lions Hall.

Hospital District to receive \$65k from state's tobacco settlement

The Donley County Hospital District will receive \$65,103 from the state's victory in the lawsuit with the tobacco industry according to information from Texas House Speaker Pete Laney's office.

The payment will be made in January 1999 as part of \$300 million being allocated on a per capita basis to counties and hospital districts responsible for indigent care across the state.

An additional \$1.8 billion will be placed in a trust fund. The income from that fund will be distributed to the entities responsible for indigent care on a pro rata basis in proportion to indigent costs, according to Laney's office.

The money the hospital district will receive could reportedly be used to cover indigent costs, make capital improvements, or other ways that the district sees fit.

FSA now accepting applications for Emergency Farm Loans

Applications for emergency farm loans for damages and losses caused by drought temperature conditions that occurred from June 1, 1997, through July 8, 1998, and continuing are being accepted at the Farm Service Agency (FSA) office located in Clarendon, Larry Goetze said today.

All counties in Texas were recently named by Secretary of Agriculture Dan Glickman eligible for loans to cover part of actual production losses and physical losses resulting from the disaster.

Mr. Goetze said farmers may be

eligible for loans of up to 80 percent of their actual losses or the operating loan needed to continue in business or \$500,000, whichever is less. For farmers unable to obtain credit from private commercial lenders, the interest is 3.75 percent.

As a general rule, a farmer must have suffered at least a 30 percent loss to be eligible for an FSA emergency loan," Mr. Goetze said. Farmers participating in the PIK or Federal Crop Insurance program will have to figure in proceeds from those

Continued on page eight.

Drought relief measure clears House of Representatives

WASHINGTON, DC - The House of Representatives Monday unanimously approved legislation cosponsored by US Rep. Mac Thornberry that will provide farmers in the 13th Congressional District with some relief from the drought by making over \$111 million dollars available to them on October 1, 1998.

The legislation is called The Emergency Farm Financial Relief Act. Introduced on July 17 by Thornberry and other Housemembers from agricultural areas, the plan would let producers receive their federal transition

payments up to one year to help them cope with any cash shortage they may be experiencing due to the drought.

Farmers currently receive transition payments twice a year - in December or January and again in September - as part of the Agriculture Market Transition Act (AMTA).

The Emergency Farm Financial Relief Act would change that by letting farmers collect their 1999 transition payment in one lump sum as early as this October 1, which is also the beginning of the next fiscal year. For example,

a 1,000-acre wheat farm with a 30 bushel AMTA payment yield would have the option of getting the entire \$19,000 payment in October 1998, rather than waiting three months to get half of the AMTA payment (in this case, \$9,500), and a full 12 months to get the remaining half.

Thornberry noted that the advance payment is not mandatory, and that farmers would have the option of deciding based on their own personal circumstances whether they wanted to

receive it or not. A total of \$111,584,079 will be available to farmers in the 13th District if it is enacted. The President has expressed his support for the measure, and is expected to sign it into law.

"In my mind," Thornberry stated, "one of the big selling points of this plan is that it gets money into farmers' pockets quicker than any other proposal being discussed. For those being squeezed by the drought, cash is often the next best thing to rain, which is what this bill is intended to provide."

Tri-State Fair bus tour coming to Clarendon

AMARILLO - Reviving an old tradition, this year's Tri-State Fair will literally take its show on the road with five stops in the Texas Panhandle including a stop in Clarendon. The bus tour is scheduled to make its stop in Clarendon on Tuesday, August 11, from 3:30-4:30 p.m. at the Chamber of Commerce office.

The Fair is reviving this mid 1900's tradition as part of an outreach program with Amarillo and its sister communities of the Panhandle. By mission, the Fair's purpose is to encourage and develop the material welfare and upbuilding of the Texas Panhandle, eastern New Mexico, and Oklahoma Panhandle. Primary interests include agricultural, horticultural, and educational pursuits. A round table discussion has been set to allow community leaders the

opportunity to get acquainted, learn about the area's largest fair, and share ideas of concern and mutual benefit for this 75-year-old regional event.

Lots of fun has been scheduled into this bus tour for area residents. Entertainment will be provided by the Big Texas Opry Singers and country singer Ed Montana. In addition, community residents will be able to purchase advance tickets to fair entertainment. Tickets will be available for the Steve Warner concert (\$9.80 each); Wrestle Fest II - professional wrestling (\$50, \$20, \$15, \$10); Kevin Sharp concert (\$5 each); and Professional Rodeo (PRCA) (\$12, \$5). All tickets, when purchased in advance, include the price of the fair's gate admission.

Bus tour visitors will be able to

Continued on page two.

Clarendon CISD named 'exemplary'

Clarendon CISD has been notified by the Texas Education Agency that the district has been credited as "Exemplary" and the Clarendon Elementary School has been rated as "Exemplary" as well.

This is the first time either a campus or the district as a whole has earned the state's highest accreditation

rating. Clarendon Junior High earned the "Recognized" rating for the third year out of the last four years, and Clarendon High School received an "Acceptable" rating.

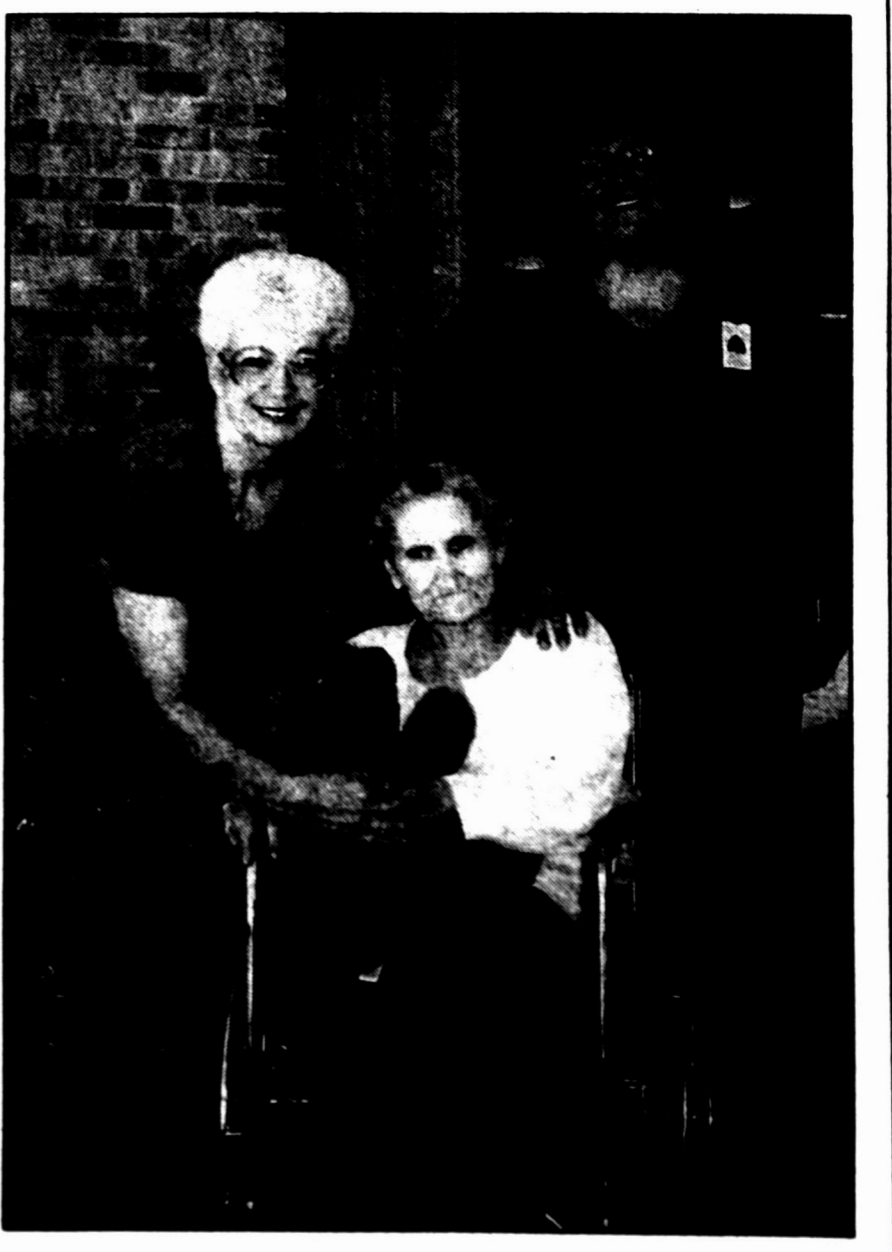
Complete information about the accreditation rating of the district and each campus will be presented later at a public hearing.

Hug from a Friend

Herring National Bank recently donated Spinoza® the bear to the Medical Center Nursing Home.

Spinoza® helps reduce agitation in Alzheimer's patients and his tapes help enhance self esteem, give positive reinforcement, and build trust. He is available daily to the residents of the Medical Center.

Cloe Ann Newhouse, Herring National Bank representative, presents Spinoza® to Marguerite Mays and Becky Allen.



Enterprise Photo.

OPINION PAGE

Reader calls firefighters 'finest people on Earth'

Dear Editor,
I realize that most people do not write letters to the editor unless they have something to complain about, however, let me thank you in advance for allowing me a forum to comment on something very positive within our community - our volunteer firefighters.

July was one of the busiest months the firefighters in this area have seen in quite some time for obvious reasons. Clarendon firefighters responded to countless numbers of fires, provided hundreds of man-hours of ground support for the Forest Service's air tankers on fires in nearby counties, and responded to various other structure fires, accidents, water rescue/recovery efforts, and other incidents that are a part of a firefighter's life. If the total number of man-hours spent in July were calculated, the number would be staggering.

These dedicated men left their jobs, their families, the air-conditioned comfort to work with little or no sleep, went hours between meals, and never got a hot meal, but rather a sandwich and a bottle of water on the run. Between calls, they spent a great amount of time repairing and maintaining equipment to be ready for the next inevitable call. Often times, some would have to leave one incident to respond to another, every time putting their lives and safety in harm's way. Three of our Captains, each gave up a week of their vacation time to drive to College Station to train at fire school in the searing heat of South Texas. All of these things were done without their receiving compensation, other than the self-satisfaction of a job well done. They received no pay, little or no recognition or thanks, and often were criticized for their efforts by those who did not have any grasp of the whole situation. Throughout it all, they did, however, earn the gratitude and respect of the air strike team, the Forest Service, and the countless numbers of others involved in the operations.

This was not an isolated situation. These are the men who are also involved in their churches, their community, their kids' school, and

many other activities that make their community a better place to live. You can find these men after work, on weekends, and on their days off at the fire station working to make their Department a better one. They do this not because they are required or expected to, but rather because they love it, as strange as that may sound in the face of today's selfish society. Firefighters are no different in other communities. They will respond at a moment's notice to help any other Department, and can expect the same from any other Department. If you understand what they do and why, no words are necessary; if not, no words are adequate.

These men are brothers to all other Firefighters in the world, sharing a bond that most people will never experience nor understand.

To my brother Firefighters, you are the finest people on Earth - I am honored and blessed to share in your lives, and I thank you for that privilege.

Patrick W. Robertson,
2nd Asst. Chief, Clarendon
Vol. Fire Dept.

Howardwick has some of the best people

Dear Editor,

I just recently sold my home here in Howardwick and am moving to Pampa. I have lived here 15 years, and I can truly say some of the best people on Earth live here. They really have hearts that care for you when you are sick or when you are well. I shall miss all these good people. But I have friends in Pampa, also.

The Lord said, "I was sick and ye visited me, hungry and ye fed me, naked and ye clothed me." These people have done this to me, and I will always love them. I hope they can say the same for me. I have been part of this community for 15 years and I pray that Howardwick can say of me "We were glad you lived here and helped to make it a better place."

I pray that God keeps these people in the shadow of His wings.

Nell Derr



Readers offer different views on Nursing Home

Dear Editor,

I would like to again take this opportunity to encourage the voters of Donley County to vote on August 8, 1998, concerning the sale of the Nursing Home.

On July 1, 1998, a new budget was adopted with no new taxes for the 1998-99 year. The taxes that will be collected in 1998 will be at the same rate as in 1997.

These tax dollars will be used to pay for indigent care, pay off the bonds issued in 1971, support the Associated Ambulance Authority, and buy insurance for the facility. If the vote is to sell the home, we will still have to pay taxes to support the

ambulance service and provide for indigent care, so we will not eliminate taxes. By selling the home, we would give up our right to control who owns the home and the quality of care that is given the residents.

So please consider these facts before voting.

J.D. Shanks,
Chairman, Donley County
Hospital Board

Dear Editor,

August 8th is the date on which votes will be cast to keep or sell the Medical Center Nursing Home. I am in favor of selling the home to a private

company. I do not believe the Hospital District was ever intended to subsidize a nursing home. However, the facility has been put to a very good use as a nursing home after the hospital failed. There are 135 hospital districts in the State of Texas. The Donley County Hospital District is one of only three whose sole function is to own and operate a nursing home. That fact alone should give us pause.

In February 1999, the bonds, which financed the building of the hospital, will be paid off. There is a great deal of repair needed at the facility. All three firms that have expressed an interest in purchasing the nursing home have indicated a need

for an additional ten to 20 beds to make it a cost-effective operation. I do not believe we should saddle the taxpayers with these additional obligations, plus the tax money that must continue to be used for operating expenses for many years to come.

The Medical Center Nursing Home under our current administrator, Mr. Graham, is once again something for our county to be proud of. I am confident that we will continue to be proud of it under private ownership.

Become informed and please vote!

Don Thornberry,
Vice-Chairman, Donley
County Hospital Board

Slain police officers were heroes who made ultimate sacrifice

I think it goes without saying that most Americans feel a tremendous sense of loss as a result of last week's shootings at the Capitol. These were clearly good men who were killed. They were heroes, who made the ultimate sacrifice by giving their lives to save others.

In the weeks ahead, some people will try to use this tragedy to push for their own favorite cause.



Issue
Update
with Mac Thornberry

I think we have to be careful. We live in a free and open society - few of us would have it any other way. And while there may be some structural changes that could be made at the Capitol to further improve the building's security, the fact remains that in a society such as ours there may always be dangerous people who pose a threat to others.

New laws will never completely eliminate this threat. Nor will more metal detectors in our doors. Which is why our last, best line of defense remains the men and women who protect us every day - the police.

It's easy to take them for granted, and it's easy

to forget that they're there. But day in and day out, they put their lives on the line making sure we're safe. Before last Friday, 79 police officers had been killed in the line of duty nationwide this year. Add the names of Officers Jacob Chestnut and John Gibson, and that number is now over 80.

For these fallen officers and the families they've left behind, we should all say a prayer. For those still in the line of fire - whether it's guarding our Capitol or patrolling our streets, we should ask God to watch over them, and give thanks that they are there.



Scotty Windham, VATAT President, and Jerry Hawkins

Texas Ag teachers recognize Hawkins

WICHITA FALLS — Jerry Hawkins was recently awarded the Vocational Agriculture Teachers Association of Texas Distinguished Service Award for his 40 years of membership in the organization.

This award is designed to commend individuals who are dedicated and supportive of agricultural education in Texas. Hawkins was presented his award during the Agriculture Teachers' Professional Development Conference on Wednesday, July 29, 1998, in Wichita Falls.

"This year's conference focused

on new and emerging technologies and helped teachers use this technology in their classroom," said Ben Shaw, state director of agriculture education. Shaw said that the conference draws agricultural science and technology teachers from around the state and provides teachers the opportunity to prepare for the school year ahead.

In Texas, there are over 109,000 students enrolled in agricultural science classes and over 950 agricultural science and technology programs in the state.

Training available to child care providers and parents

By Sue Church, County FCS Agent

An area-wide childcare conference and training session will be held September 19, 1998, 9:00 a.m. to 3:45 p.m. at the Exposition Center in Perryton.

This educational event, "Child Care Challenges," will provide training for workers in day care settings, mothers who provide in-home care for children and for parents.

It is co-sponsored by the Texas Agricultural Extension Service in Hemphill, Ochiltree, Gray, and Lipscomb Counties and Oklahoma Cooperative Extension Service in Beaver County. In addition to providing excellent training for all interested persons, certificates of training will be provided for 4.5 hours credit to those who need annual in-

service training to keep current certification.

The keynote address, "Have You Blown Up Lately?" by Dorothy James, Family Life Specialist with the Texas Agricultural Extension Service, will begin at 9:30 a.m. Participants will learn new skills to use personally aid in teaching children how to handle anger - conflict management. In the afternoon participants may attend two sessions, "Music Across the Curriculum" and "Easy Arts & Crafts." Each session will have handouts for participants to take home.

Pre-registration is encouraged. A \$5.00 registration fee is to be sent to Cynthia Shattles, County Extension

Agent - Family & Consumer Sciences, PO Box 647, Perryton, TX 79070. For more information contact Sue Church at the Donley County Extension office, 874-2141.

Fair: Continued from page one receive information on fair discounts, special community nights, educational activities, and competitive events.

Fair personnel will also be on hand to distribute premium catalogs, entry forms, and other fair information. Any fairgoer needing additional information or forms may contact the Fair Office at (806) 376-7767 or write Tri-State Fair, P.O. Box 31087, Amarillo, Texas 79120.

HELLO FROM HOUSTON!

This All-Star game has been amazing. It's been real cool to be associated with so many great athletes from around the state of Texas. Everything that a person could possibly want or need has been given to the players. It's been a really great experience.

Kareem Abdullah

American Heart Association
Preventing Heart Disease
and Stroke

**Choose Health
Choose Healthful Foods**

The Clarendon Enterprise

Roger A. Estlack, Publisher & Editor • Cheryl Schlabs, Office Director

105 S. Kearney St., PO Box 1110, Clarendon, Texas 79226

Phone: 874-2259 • Fax: 874-2423 • E-mail: Clar1701@aol.com

The Clarendon Enterprise (USPS 947040, ISSN 1088-9698) is published weekly by Roger A. Estlack at 105 S. Kearney, Clarendon, Texas 79226-1110. Periodicals postage paid at Clarendon, Texas 79226-1110. © 1998 All rights reserved.

This paper's first duty is to print all the news that is fit to print honestly and fairly to all unbiased by any consideration even including its own editorial opinion.

Any erroneous reflection upon the character, standing, or reputation of any person, firm, or corporation which may occur in the columns of The Clarendon Enterprise will be gladly corrected upon being brought to the attention of the management.

NOTICE: Open Display rates are \$4 per SAU column inch. Classified Ads are \$6 for the first 15 words and 10¢ per word for each additional word (Boxes or special typography are extra.). Thank You Notes are \$7 for the first 30 words and 10¢ per word for each additional word. Engagement, anniversary, and birth announcements are \$10 each. Pictures submitted for publication should be picked up within ten days after publication.

DEADLINE for news articles and pictures is Monday at noon. Advertising should be submitted by five o'clock Monday afternoon. Deadlines may be altered for holidays or special issues.

SUBSCRIPTIONS are available for \$18.50 inside Donley County, \$22.50 out of county, and \$35 in Canada. Sorry, we cannot accept credit cards at this time. POSTMASTER: Send address changes to The Clarendon Enterprise, P.O. Box 1110, Clarendon, TX 79226-1110.

LETTERS TO THE EDITOR are welcomed as a means of encouraging debate among varying public opinions. Views expressed in letters are those of the writers and do not necessarily reflect the views of the editor or staff of The Clarendon Enterprise. Submission of a letter does not guarantee publication of that letter. Letters may be edited for grammar, style, or length. All letters must be signed. Letters submitted via fax

machine or e-mail must include a telephone number for verification purposes. To improve your chances for publication, type and double space your letter, stick to one main topic, and keep it brief. Letters submitted to this newspaper become the property of the Enterprise and cannot be returned.

The Clarendon Enterprise represents the combined publication of The Donley County Leader (est. 1929) and The Clarendon News (est. 1878, revived in 1889 and 1980) which were acquired in 1974 by The Clarendon Press (est. 1972).

TEXAS PRESS ASSOCIATION

Classic Cable committed to the education of our children

Recently, Classic Cable announced their plans to donate money to local high schools with each new cable installation or upgrade.

The company continues to focus their efforts on community, commitment, and customer service. According to Jennifer Hauschild, Marketing Manager for Classic Cable the company has committed to donating five dollars to local high schools for each new installation or upgrade during the month of August, plus HBO will donate \$1 for each HBO sale.

"We offered a similar campaign

in 1997 and generated nearly \$15,000 for local high schools", stated Ms. Hauschild. "We have been working very hard this year on being good neighbors in the communities we provide with cable service and we firmly believe the education of our children is vitally important. This effort demonstrates our continued commitment to our customers, their communities and their children," added Hauschild.

Classic Cable currently provides all schools with free cable television service and has established a college scholarship fund for graduating se-

niors. In addition, the company makes donations to many community events and donates a large number of toys to needy children during the Holidays.

Individuals wishing to install with cable television during this month will not only have the five dollars donated to the local high school but will also receive 50 percent off the regular install fee. Existing customers wishing to assist with these efforts can do so by upgrading their existing cable service to include any premium service and the donation of \$5 will also be

made to the local high school. Again, they too, will receive 50 percent off the regular upgrade fee.

According to Ms. Hauschild, customers can either call 1-800-999-8876 or stop by their local office to get all the details.

"During the month of August everyone can win. Customers will have the best home entertainment value in town, the local high school will receive a donation and Classic Cable will have a valued customer," stated Ms. Hauschild.

Tolbert's Produce Stand

6 miles west of Clarendon on Hwy 287



Watermelons • Peas
Cantaloupes • Okra
and other vegetables

Propane ... The grill BIG EASY!

The Texas barbecue is almost a sacred tradition. But it's not always that easy to get a grill going. Usually, you need lots of charcoal, lighter fluid and patience!

But grilling with propane is less expensive, faster, healthier and much easier! With propane, food is cooked to perfection and your patience isn't.

Propane ...
it really is the
GRILL BIG EASY!



West Texas Gas, Inc.

715 E. 2nd St.
874-2151

Bottle Filling • Route Delivery • Tank Sales/Leasing • Tank Installation

Extension Service Update

by Leon J. Church, CEA-AG and
Sue P. Church, CEA-FCS

We have just returned from the 1998 NACAA Annual Meeting/Professional Improvement Conference which was hosted by the Texas County Agricultural Agents Association in San Antonio. Around 2,200 extension agents, family members and guests from across the country attended the conference, experiencing Texas hospitality at its finest.

Opening the session was Texas A&M Chancellor Barry Thompson who challenged us all to make a difference by getting involved and avoid being just a spectator. Other speakers gave motivational and industry related presentations. Family members were treated to workshops, tours, and other fun events for which San Antonio is best known. Next year's meeting will be in Omaha, Nebraska in September.

Momentum is really picking up on the 1998 Donley County 4-H Rockin' Lock-in which is to be held this coming Friday, August 7th. We're planning to start at the Bar H Dude Ranch at 7:00 p.m. for a hamburger fry, birthday cake, swimming, volleyball, horseshoes, and Smores. At 10:00 p.m. the party and sleepover will move to the First United Methodist Church in Clarendon. There we'll play games, make T-shirts, watch movies, and more. It's not too late to sign yourself, your family, and a friend up. We're going to "Rock 'Til We Drop!"

Quilters: There are two opportunities coming up in the near future which may be of interest to you.

1) Wednesday, August 19th, Sharon Heidingsfelder, an experienced quilter and author of quilting books, from Little Rock, Arkansas, will present a Quilting Seminar from 10:00 a.m. - 12:00 p.m. at the Texas Research and Extension Center at 6500 Amarillo Blvd., Amarillo. The cost will be \$5.00 with proceeds going to the Eveline Rivers Christmas Project. If you would like to join in on a carpool leaving the Donley County Courthouse that day for the seminar, call the Extension Office at 874-2141 to sign up.

2) Panhandle Piecemakers Quilt Guild of Pampa are sponsoring Quiltfest 98 on Saturday, September 19th at the MK. Brown Civic Center in Pampa. Admission will be \$1.00. Quilt entries are welcome for this event. There will be three ribbons awarded in ten categories. Entry forms are due by September 10th and quilts by September 15th.

The annual sew fair, "Sew Many Ideas," will be held Monday, August

10th, at the Texas A&M Research and Extension Center, 6500 Amarillo Blvd., Amarillo, with both an afternoon and evening session. Dr. Pamela Brown, Consumer Science Specialist of Lubbock, will give a presentation on "Fit for Fashion." She will discuss and illustrate the most becoming look for different figure types to help home seamstresses achieve their best look.

Other presentations will include embellishing ready-to-wear or home sewing to add creativity and wardrobe quality; using old men's ties to make vests; Victorian Ribbon Work; dressing up sweat shirts; gored broomstick skirts made without a pattern; and making gourmet soups. On site exhibits will be available for viewing at the Sew Fair. The admission to defray costs of the printed materials and participant packets will be \$5.00 for either session or \$7.50 for both, payable on site. Call the Donley County Extension Office if you would like to carpool.

You are cordially invited to the
Clarendon College
Centennial Celebration
September 5-6, 1998.

For more information or to order Centennial
Merchandise, please call 806/874-3571.



MOBILE BANKING

Exclusively for customers of
The Donley County State Bank.

Now that's convenient!

Enjoy the convenience of banking at home with our exclusive mobile banking service. Simply give us a ring at 898-8226 and we'll bring the bank to your home or business. Make deposits or withdrawals, invest in a Certificate of Deposit, open a new account, receive a loan application — All

from the comfort of your living room or office.

Other banks only talk about convenience, but only The Donley County State Bank will bring the bank to you. Mobile Banking — just another example of the service you can expect when you're a DCSB customer.

DCSB Home owned and operated since 1906.
The Donley County State Bank
201 S. Kearney • PO Box 967 • Clarendon, Texas 79226 • Ph. 806/874-3581
Member FDIC

Senior Citizen Menus

Aug 10-14

Hedley Senior Citizens

Mon: Catfish fillet, spinach, onion rings, cucumber-onion salad, sliced peaches, corn muffin, milk, tea, coffee

Tues: Steak and gravy, mashed potatoes, English peas, watermelon, pumpkin pie, roll, milk, tea, coffee

Wed: Baked ham, macaroni and cheese, sweet potatoes, Waldorf salad, apricot halves, roll, milk, tea, coffee

Thur: Roast beef, baked potato, green beans, watermelon, cake, roll, milk, tea, coffee

Fri: Chicken strips, potato soup, black-eyed peas, tossed salad, apple cobbler, corn muffin, milk, tea, coffee

Donley County Senior Citizens

Mon: Chicken fillet, rice pilaf, broccoli spears, pickled beets, cantaloupe, bread, coffee, tea, lowfat milk

Tues: Roast beef, yam patties, green peas, orange Jell-O with mandarin oranges, banana pudding, dinner roll, coffee, tea, lowfat milk

Wed: King Ranch chicken, corn, green beans, coleslaw, tropical apple crunch, garlic roll, coffee, tea, lowfat milk

Thur: Cheeseburger, potato wedges, watermelon, ice cream sundae, hamburger bun, coffee, tea, lowfat milk

Fri: Buffet ham, black-eyed peas, turnip greens, rosy applesauce, Rice Krispie treat, cornbread, coffee, tea, lowfat milk

Hunter Safety Course set for Aug. 15-16

A Hunter Safety Course will be held August 15-16 at Clarendon College. Persons interested in the course need to contact Gary Hunt at 874-2631.

Martin community reunion to be Aug. 8

The Martin Reunion will be at the Lions Hall on Saturday, August 8, 1998. Meat and drinks will be provided. Bring a covered dish and enjoy the day.

Sts. Roost Jamboree set for Saturday

By Patsy Hill

Saints' Roost Jamboree will start at 7:00 p.m., Saturday night, in the Harned Sisters Auditorium on the Clarendon College Campus.

The show will begin with Saints' Roost Showcase and the spotlight will be on Ken Wilson. Ken is an instructor at Clarendon College and teaches English and Speech, and also Psychology and Sociology at the Jordan Unit in Pampa Center.

Ken became interested in music at an early age and began playing piano at age eight. When he was twelve he was playing trumpet and

began playing the guitar when he was fifteen.

In the 60's, Ken was very interested in rock-and-roll and had a special interest in surfing songs. He has a true appreciation for a variety of music thus is very adaptable to any style.

Ken grew up in Hollis and later lived in Lubbock and Amarillo. He started teaching twenty-four years ago in Eldorado High School and later taught in the Plains School System. Ken came to Clarendon College eleven years ago.

Ken started helping with the Jamboree when it first started and then began performing after about four months. Ken's daughter Alissa has also performed on the Jamboree. Ken is a multi-talented musician who has added so much versatility to the show. If you want to hear some great songs done as only Ken can do them, plan on being at the Jamboree Saturday night. You will be in for a real treat.

Also appearing Saturday night will be the Half Price Band. This will be their second appreciate on the show.

Saints' Roost Band will be on stage doing some of everyone's favorites. Also scheduled to appear will be Ray David and Bill Scott.

If you enjoy good country and gospel music, plan on coming to the show. There is no admission charge

and door prizes will be awarded during the evening.

Complimentary refreshments will be in the lobby, and we extend a special invitation to everyone.

Edens family reunion held recently

A reunion was held on Sunday, August 2, 1998, of the descendants of Henry and Lela Edens. They met at the Senior Citizens Building in Clarendon. Tales were exchanged and pictures shown and taken. Too much food was consumed but, boy, was it good. This was approximately the 58th year that this reunion has been held on the first Sunday of August in Clarendon.

Those present were: Doyle and Rudy of Crowley, their daughter Darla Vail and granddaughters Cherika and Amber Edens of Ft. Worth; Nita Young and John of Ft. Worth; Weldon and Carolyn Edens of Burleson, their son Ray and Adrian of Ft. Worth; Bufford and Dortha Conn of Abernathy; Hazel Edens of Clarendon, her daughters Dorothy and

Jack McDaniels of Fritch and Bonnie and Glendon Cherry of Burnet, their granddaughter Zoe Smith of Round Rock; Grace Baker of Clovis, NM, her daughters Lela Callison of Houston and Ann Leslie of Quemado, NM; Janis Fox of Raeford, NC, her son Bobby Peterson, his daughter Michelle Bedell and son Zachary of NC; Sammie and Wayne Doering of Clarendon; Bill Edens of Clovis, NM, his son Benny and Anna Edens of Chickasha, OK and mother Delrea Scribner; Linda Guetierrez and daughter Desiree, Patricia and John Hollan of Clovis; Linda Barton, Sandra Yancey, and Dedra Cornish of Texas City; Stephen Edens of Albuquerque; and Boyce Edens of Peralta, NM; and friends of Bud and Betty White also attended.

DONT FORGET!
Deadlines for articles is Monday, at noon and for advertisements is Monday at 5:00 p.m.

Floyd's Fast Lube & Muffler Shop

Stop By and Register for a **FREE OIL CHANGE** each week during the month of August!



Lynn Floyd, owner
Hwy. 287 & Carhart
874-9107

Registered Childcare

Certified in CPR and First-Aid.

- Nutritious Meal Provided.
- Fun activities for all ages.
- References available.

Two openings now available for ages Newborn - 5 yrs. old

874-3193



Church Directory

Clarendon

First United Methodist Church
420 S. Jefferson • 874-3667
Pastor: Dr. James Bell
Sunday School: 9:45 a.m.
Sunday Service: 8:30 and 10:50 a.m.

First Baptist Church
300 Bugbee • 874-3833
Pastor: Truman Ledbetter
Music & Youth Director: Geary Martin
Sunday School: 9:45 a.m.
Sunday Service: 10:55 a.m.
Sunday Evening: 7:00 p.m.
Wednesday: 7:00 p.m.

Church of Christ
300 S. Carhart • 874-2495
Minister: Mike Suller
Youth Minister: Bruce Baird
Sunday Bible Class: 9:30 a.m.
Sunday Service: 10:30 a.m.
Sunday Evening: 6:00 p.m.
Wednesday: 7:30 p.m.

Calvary Baptist Church
HWY 287 • 874-3156
Sunday School: 10:00 a.m.
Sunday Service: 11:00 a.m.
Sunday Evening: 7:00 p.m.
Wednesday: 7:00 p.m.

First Christian Church
120 E. 3rd • 874-3212
Pastor: Everett Stevens
Sunday School: 9:45 a.m.
Sunday Service: 10:45 a.m.

St. John The Baptist Episcopal Church
874-2231
Sunday Service: 11:00 a.m.

St. Mary's Catholic Church
Corner of Montgomery & McClelland
Fr. Jose E. Gomez
Sunday Mass: 9:00 a.m.

True Church of God in Christ
300 N. Jefferson • Pastor: Roy Williams
Sunday School: 10:00-11:15
Sunday Service: 11:15 a.m.
Wednesday: 7:00 p.m.

Martin Baptist Church
874-2025 • Pastor: Bryan Knowles
Music Director: Winfred McQueen
Sunday School: 10:00 a.m.
Sunday Service: 11:00 a.m.
Evening Service: 6:00 p.m.
Food & Fellowship: 7:00 p.m.
Wednesday: 7:00 p.m.

United Methodist Church
Pastor: Ervin Emmert
Sunday School: 9:30 a.m.
Sunday Service: 10:30 a.m.

Howardwick First Baptist Church
874-3326 • Pastor: Jim Powell
Sunday School: 10:00 a.m.
Sunday Service: 11:00 a.m.
Sunday Evening: 6:00 p.m.
Wednesday: 7:00 p.m.

Brice Brice Deliverance Tabernacle
867-3029 or 867-2012
Pastor: Louis Bennett
Sunday Service: 9:45 a.m.
Sunday Evening: 6:00 p.m.
Wednesday: 6:00 p.m.

Church of Nazarene
209 S. Holly • 874-2321
Pastor: Grady Roundtree
Sunday School: 9:30 a.m.
Sunday Service: 10:30 p.m.
Sunday Evening: 6:00 p.m.
Wednesday: 7:00 p.m.

First Assembly of God
501 McClelland • 874-2195
Pastor: Jerry Pollard
Sunday School: 9:45 a.m.
Sunday Service: 10:50 a.m.
Sunday Evening: 6:00 p.m.
Wednesday: 7:00 p.m.

First Presbyterian Church
874-9269 • Pastor: Smiley Johnson
Every Sunday: 11:00 a.m.

Jesus Name Apostolic Church
Corner of Montgomery & Faler
Sunday Services: 3:00 p.m.
Wednesday: 7:30 p.m.

St. Stephens Baptist Church
300 N. Jefferson • Pastor: Melvin Brooks
Sunday School: 10:00 a.m.
Sunday Service: 11:15 a.m.
Wednesday: 7:00 p.m.
(weather permitting)

Deli Specials
TURKEY OR HAM SUB SANDWICH

with Swiss or American Cheese and choice of toppings

\$2.99

ROAST BEEF SUB SANDWICH

with Swiss or American Cheese with choice of toppings

\$3.29

Chicken Tender Basket
4 piece - \$3.99

Prices effective August 5 - August 11, 1998

OUTPOST DELI HOURS 6 A.M. TO 10 P.M.
CALL IN ORDERS WELCOME: **874-5203**
DRIVE-THRU FOR YOUR CONVENIENCE.

We're Back With Great

SCHOOL BUYS

FREE

school eraser with back to school purchase!

Everest Backpacks

starting at **\$8.88**



NEW RELEASES ON VIDEO

THE WEDDING SINGER

- The Black Cauldron
- Blues Brothers 2000
- Jackie Brown



What's slim, witty and easy to pick up? Besides me?

A Free Card!

Bring in this postcard and get a Shoebox card FREE when you buy any Hallmark card.

Offer ends September 30, 1998.

CLARENDON OUTPOST

SATISFACTION GUARANTEED!
STORE HOURS: 6 a.m. to 12 a.m. • 7 Days a Week
PHARMACY HOURS: 9 a.m. to 6 p.m. Weekdays • 9 a.m. to 1 p.m. Saturday
619 W. 2nd Street (Hwy 287 & FM 2142)

PHARMACY: **874-5202**
DELI: **874-5203**
RADIO SHACK: **874-5081**

The Church Directory is sponsored by:

- J&W Lumber • Don Stone Signs
- Community Bank
- Chamberlain Motor Company
- The Clarendon Enterprise

ASK ABOUT OUR SENIOR CITIZEN DISCOUNT!

Clarendon, Hedley school districts announce free/reduced meals plan

Clarendon CISD and Hedley CISD announced this week their policies for providing free and reduced price meals for children served under the National School Lunch Program, Commodity School Program, and School Breakfast Program. The School Administration Offices have a copy of the policy, which may be reviewed by any interested party.

The household size and income criteria identified below will be used to determine eligibility for free and reduced price benefits, children from households whose income is at or below the levels shown are eligible for benefits regardless of the income of the household with whom they reside. Eligibility for the foster child is based on the child's income.

Application forms are being distributed to all households with a letter informing households of the availability of free and reduced price meals for their children. Applications also are available at the Principal's office in each school. To apply for free and reduced price meals, households must fill out the application and return it to the school. Applications may be submitted anytime during the school year. The information households provide on the application will be used for the purpose of determining eligibility and verification of data. Applications may be verified by the school officials at anytime during the school year.

For school officials to determine August MIP classes offered in Clarendon

Clarendon College will offer August classes for youth that have been charged with alcohol possession, according to CC Dean of Students Thad Anglin.

August Minor In Possession classes will be offered in Clarendon and Pampa. Youth will be required to attend both three-hour sessions before receiving credit for the course.

The August MIP class for Clarendon is scheduled for Mon., August 10, and Tues., August 11, from 6-9 p.m., in room 105 of the CC Administration Bldg.

MIP Classes for Pampa are slated for Mon., August 17, and Tues., August 18, from 6-9 p.m., at the Clarendon College Pampa Center at 900 N. Frost.

To enroll in one of Clarendon College's MIP Classes, individuals must call Clarendon College's Counseling Center at (806) 874-3571 one week prior to the desired class date and request a class application. Cost of the class is \$40 and is payable at the first class meeting.

For more information about Clarendon College's MIP Classes, please call Thad Anglin, CC Dean of Students, Mon.-Thurs., from 8 a.m. to 5 p.m., at (806) 874-3571.

SUBSCRIBE NOW!
874-2259

Solution to Last Week's Puzzle

CAB	GUS	COMO
ASIOF	ART	ORAN
STAR	SIR	URGE
KARAT	SIGN	
NIL	POTATO	
TACKLED	ADLAI	
OBOE	GAG	RAIL
LIONS	DETAILS	
LESSON	MAC	
TWOS	JULEP	
JADE	MAP	LARA
ANDI	AGE	AVON
MIEN	DEW	ASS

eligibility for free and reduced price benefits, households receiving food stamps or AFDC case number and an adult household member must sign the application. Households who do not list a food stamp or AFDC case number must list the names of all household members, the amount and source of the income received by each household member, how often the person receives it and the social security number of either the primary wage earner responsible for the care of the child or the social security number of the adult household member who signs the application. If neither household member has a social security number, the household member must indicate that a social security number is not available. The application must be signed by an adult household member.

Under the provision of the free and reduced price meal policy the reviewing official will review applications and determine eligibility. Parents or guardians dissatisfied with the ruling of the official may wish to discuss the decision with the reviewing official on an informal basis. Parents

of Clarendon students wishing to make a formal appeal for a hearing on the decision may make a request either orally or in writing to Mike Word, phone (806) 874-3855. Parents of Hedley students wishing to make a formal appeal for a hearing on the decision may make a request either orally or in writing to superintendent Gene Sheets in the school administrative office or phone (806) 856-5323.

Household that list a food stamp or AFDC case number must report when the household no longer received these benefits. Other households approved for benefits based on income information must report increases in household income of over 50 percent per month or \$600 per year and decreases in household size. Also, if a household member becomes unemployed or if the household size increase, the household should contact the school. Such changes may make the children of the household eligible for benefits if the household's income falls at or below the levels shown above.

In the operation of child feeding

programs administered by the US Department of Agriculture, no child will be discriminated against because of race, color, sex, national origin, age, or handicap. If any member of a household believes they have been discriminated against, they should write immediately to the Secretary of Agriculture, Washington, DC 20250.

Current meal prices for Clarendon are: regular price lunch, grade K-5 - \$1.30; regular price lunch, grade 6-12 - \$1.40; regular price breakfast, grade K-5 - 90¢; regular price breakfast, grade 6-12 - \$1.00; regular adult breakfast - \$1.15; regular adult lunch - \$1.95; regular price visitors breakfast - \$1.65; regular price visitors lunch - \$2.75; reduced price breakfast - 30¢; reduced price lunch - 40¢.

Current meal prices for Hedley are: regular price lunch, grade K-5 - \$1.00; regular price lunch, grade 6-12 - \$1.25; regular price breakfast - \$1.00; regular adult/visitor lunch - \$3.25; reduced price breakfast - 35¢; reduced price lunch - 40¢.

TERRIFIC SAVINGS ON

Back To School SUPPLIES

We carry Reebok Notebooks, Coca-Cola Notebooks, 5 Star Spirals, Locker Organizers, Pencil Bags, plus all the supplies you need for back-to-school!

Clarendon Office Supply and Printing

Sample

SPECIAL ELECTION
(ELECCION ESPECIAL)
DONLEY COUNTY HOSPITAL DISTRICT
(CONDADO DE HOSPITAL DISTRITO)
(CONDADO DE) DONLEY COUNTY, TEXAS
AUGUST 8, 1998 (8 DE AGOSTO, 1998)

OFFICIAL BALLOT (BALOTA OFICIAL)

INSTRUCTION NOTE: (NOTA DE INSTRUCCION)

Place an "X" in the square beside the statement indicating the way you wish to vote. (Marque con una "X" el cuadrado al lado de la frase que indica la manera en que Usted quiere votar.)

PROPOSITION
(PROPOSICION)

"THE SALE OF THE MEDICAL CENTER NURSING HOME." ("LA VENTA DE MEDICAL CENTER NURSING HOME.")

FOR
(A FAVOR)

AGAINST
(EN CONTRA)

REMINDER TO VOTE ON AUGUST 8, 1998

The SPECIAL election called for Saturday, August 8, will give you the opportunity to cast your vote FOR or AGAINST selling Medical Center Nursing Home.

If you have not yet decided how you will vote, the following points might help answer some of your questions.

- All nursing homes must follow the same rules and regulations.
- Why would the "good" care being given by employees now change to "bad" care by the same employees if ownership changes? All businesses need to have satisfied customers to stay in business.
- The community will help keep the standard of care high by continuing to be involved with Medical Center Nursing Home. Visits by community members and residents' families remain the best way to insure a good facility.
- Last year 20% of the nursing home's \$1.166+ million income came from hospital district taxes. The balance of the income came from Medicaid and private pay sources. Year-end records show a deficit balance. (Open Records)
- \$48,448 of the above taxes were obligated to a bond payment. The last payment of \$53,600 is due this budget year.
- In December of '97, the hospital district directors heard informal presentations from interested buyers. All agreed that beds should be added to the facility in addition to general updating and replacement of heating and air-conditioning equipment.
- If the vote is to sell, indigent care responsibilities would become the responsibility of the county as they are in 142 other Texas counties.
- Sale of Medical Center Nursing Home would open the door to legislation to dissolve the hospital district therefore eliminating hospital district taxes from your tax bill.

IF YOU WANT TO HAVE A SAY ON THE ISSUE OF THE NURSING HOME SALE, MARK YOUR CALENDARS FOR AUGUST 8, 1998.

Vote at Clarendon College, Howardwick City Hall, or Hedley Lions Den.
Patsy Hill and Shirley Osburn

Pol. Ad. Paid for by Shirley Osburn, PO Box 874, Clarendon, TX 79226.

•Bailey Estes & Son•

Welding Fabrication & Steel Buildings
Also Self Storage Units For Rent
\$25.00 per month

Best TERMITE CONTROL

of Amarillo (formerly owned by Leo Russell)

MEMBER: Structural Pest Control • Texas Pest Control
State Licensed - Insured

Daniel Boyd (Owner)

P.O. Box 32173, Amarillo, TX 79120

622-2171



Countryside Deli

in Howardwick by City Hall • 874-3076

In addition to our bacon cheese burgers, sandwiches, and dinners, the Countryside Deli also has burritos, okra, fried mushrooms, and Frito chili pies.

Kevin Thompson, Agent

Clarendon Insurance Agency

"Personalized Service"



- Life
- Mortgage Protection
- IRA - Retirement
- Farm & Ranch
- Auto - Home
- Annuity

Box 988
Clarendon, Texas 79226
Bus: (806) 874-3506

POSITIVE FEED, INC.

Cow Tubs 80 and 225 lbs.
Horse Tubs 40 and 80 lbs.

DANNY ASKEW

874-5001 or 874-3844

DENTURES

\$400 FULL SET

Satisfaction Guaranteed • Closed Fridays

1-800-789-5331

Mangum, OK

Check Out The BIG E Classifieds For GREAT Bargains!!!



Chili House

874-3391 • Hwy. 287 East

Home of the
Rajin' Cajun, Big Honker,
Cow Fingers
and other favorites!

Open Monday through Friday, 11:00 - 8:30
Closed Saturday & Sunday



Repair. Remodel. Rejoice.

Announcing

our new home improvement loans. Whether you just want to repair or you're seeking a complete remodel your house, we can fund your dreams. We also offer small unsecured loans up to \$5,000 for home improvement projects.

Community Bank today, and tomorrow.

*Subject to credit approval.

Community Bank

123 E. 3rd • Phone 806-874-2080 • Clarendon, Texas
300 Main Street • Phone 806-856-5451 • Hedley, Texas
Member FDIC • Equal Housing Lender

Courteous • Capable • Committed • Competitive



New coaches at Clarendon Schools



Name: Mark Howard
Wife's Name: Elaine
Children? Names and Ages: Zach - 13 and Lynzi - 9
Subjects you will be teaching:

High School Health/PE
Coaching Duties: Athletic Director/Head Football Coach, Assistant Track Coach
Where did you graduate from college? Oklahoma State University
How long have you been coaching? I am beginning my 19th year.
Where were you coaching last? Mesquite Potect High School
What are your goals for the 1998-99 Broncos and yourself? My goals for our football team this year are to learn to play together as a "team" and for each athlete to become the best person they can possible be. We want to have a winning season and make the playoffs.



Name: Mike Ray
Wife's Name: Michele
Children? Names and Ages: Jeremy - 15, Sarah - 14, P.J. - 9, Rebekah - 7

Subjects you will be teaching: Health, Physical Education, Athletics
Coaching Duties: Head Track, J.V. Basketball, 7th Grade Football, 8th Grade Basketball, Head J.V. Football, Varsity Asst. Football
Where did you graduate from college? Sam Houston State University - Huntsville, Texas
How long have you been coaching? Starting 20th year
Where were you coaching last? McCamey, Texas
What are your goals for the 1998-99 Broncos and yourself? Playoffs - Have a great year, see improvement in all athletes and all team sports. Have fun and see the Fellowship of Christian Athletes do great things on the campus this year.



Name: Roger Hoeltzel
Wife's Name: Sherilyn
Children? Names and Ages: Todd - 14, Chelsea and Kelsea - 9, Charlea - 7, Kayca - 2

Subjects you will be teaching: Chemistry and Anatomy & Physiology
Coaching Duties: Assistant High School Football, Junior High Football and Basketball
Where did you graduate from college? Oklahoma State University
How long have you been coaching? 14 years
Where were you coaching last? Kingfisher, Oklahoma
What are your goals for the 1998-99 Broncos and yourself? Ultimately to win. But to be the best that we can be. As for myself, to impress on students/athletes that hard work and great attitude provide opportunities. If you are ready for these opportunities, great things can happen. Expect greatness and you will get greatness.



Name: Greg Mouser
Wife's Name: Amy
Children? Names and Ages: Subjects you will be teaching: High School Biology

Coaching Duties: Defensive Line, Offensive Line, Head Golf, Powerlifting
Where did you graduate from college? West Texas A&M
How long have you been coaching? Beginning 3rd year
Where were you coaching last? West Texas A&M Grad. Asst.
What are your goals for the 1998-99 Broncos and yourself? To win and compete. To be a quality coach and teacher.

A vote AGAINST selling Medical Center Nursing Home is a missed opportunity to reduce your tax bill.

A vote FOR selling Medical Center Nursing Home is an opportunity to have privately-owned nursing home become a taxpayer to the State, County, City, School, and College.

Jim and Tessie Robinson
Billie Shaffer
Cherry Massingill
Henry Massingill
 Pol. Ad Paid for by Tessie Robinson, PO Box 983, Clarendon, TX 79226 & Billie Shaffer, PO Box 923, Clarendon, TX 79226.

PCS offers assistance with energy bills

The Clinton Administration last Thursday authorized the release of \$100 million in funding to help low-income families pay for soaring home energy bills due to the extreme heat wave. This money came through the Texas Department of Housing and Community Affairs and for the Panhandle area will be administered by Panhandle Community Services.

Eligible low-income citizens include the elderly, disabled, families with very young children, and households with the lowest incomes and highest energy costs. Target population is households with incomes at or below 125 percent of the federal poverty guidelines. A family of four, for example, must have family income not exceeding \$20,563 to be eligible for payment assistance. An individual must have an income not exceeding \$10,063 to be eligible.



In addition to utility payment assistance, Panhandle Community Services will assess the need for an air conditioning unit. Families can contact their nearest Panhandle Community Services Office for further information.

For more information, please contact Panhandle Community Services at 806/874-2573 for an appointment.

Kenny's Barber Shop

will be closed

Friday & Saturday

August 7-8

204 S. Koogle, Clarendon

We appreciate your business!

1998 Property Tax Rates in City of Clarendon

This notice concerns 1998 property tax rates for City of Clarendon. It presents information about three tax rates. Last year's tax rate is the actual rate the taxing unit used to determine property taxes last year. This year's effective tax rate would impose the same total taxes as last year if you compare properties taxed in both years. This year's rollback tax rate is the highest tax rate the taxing unit can set before taxpayers can start tax rollback procedures. In each case these rates are found by dividing the total amount of taxes by the tax base (the total value of taxable property) with adjustments as required by state law. The rates are given per \$100 of property value.

Last year's tax rate:	
Last year's operating taxes	\$ 178,863
Last year's debt taxes	\$ 0
Last year's total taxes	\$ 178,863
Last year's tax base	\$ 39,675,928
Last year's total tax rate	\$ 4,5081 /\$100
This year's effective tax rate:	
Last year's adjusted taxes (after subtracting taxes on lost property)	\$ 178,757
+ This year's adjusted tax base (after subtracting value of new property)	\$ 40,644,865
- This year's effective tax rate	\$ 4,398 /\$100
This year's rollback tax rate:	
Last year's adjusted operating taxes (after subtracting taxes on lost property and adjusting for transferred function)	\$ 362,964
+ This year's adjusted tax base	\$ 40,644,865
+ This year's effective operating rate	\$ 89301 /\$100
x 1.08 - this year's maximum operating rate	\$ 96445 /\$100
- This year's debt rate	\$ 0 /\$100
- This year's rollback rate	\$ 96445 /\$100

A hospital district or city that collects the additional sales tax to reduce property taxes, including one that collects the tax for the first time this year, must insert the following lines:

- Sales tax adjustment rate	\$ 43434 /\$100
- Rollback tax rate	\$ 53010 /\$100

Mike's Pharmacy

Mike Wants To Be Your Pharmacist!

Mike Butts, Pharmacist

Call 874-3554 or Toll Free 800-766-2089

HWY 287 West

Valu-Rite

1998 Property Tax Rates in DONLEY COUNTY

This notice concerns 1998 property tax rates for Donley County. It presents information about three tax rates. Last year's tax rate is the actual rate the taxing unit used to determine property taxes last year. This year's effective tax rate would impose the same total taxes as last year if you compare properties taxed in both years. This year's rollback tax rate is the highest tax rate the taxing unit can set before taxpayers can start tax rollback procedures. In each case these rates are found by dividing the total amount of taxes by the tax base (the total value of taxable property) with adjustments as required by state law. The rates are given per \$100 of property value.

	General Fund	Farm to Market/ Flood Control Fund	Special Road/Bridge Fund
Last year's tax rate:			
Last year's operating taxes	\$ 229,034	\$ 121,540	\$ 0
Last year's debt taxes	\$ 0	\$ 0	\$ 0
Last year's total taxes	\$ 229,034	\$ 121,540	\$ 0
Last year's tax base	\$ 120,130,454	\$ 117,725,368	\$ 0
Last year's total tax rate	\$ 1,9059 /\$100	\$ 1,0324 /\$100	\$ 0 /\$100
This year's effective tax rate:			
Last year's adjusted taxes (after subtracting taxes on lost property)	\$ 228,821	\$ 121,269	\$ 0
+ This year's adjusted tax base (after subtracting value of new property)	\$ 130,137,709	\$ 127,302,709	\$ 0
- This year's effective tax rate for each fund	\$ 1,7582 /\$100	\$ 9526 /\$100	\$ 0 /\$100
Total effective tax rate			
\$ 1,7582 /\$100			
<i>In the first year a county collects the additional sales tax to reduce property taxes, it must insert the following lines unless its first adjustment was made last year:</i>			
- Sales tax adjustment rate	\$ 0 /\$100		
- Effective tax rate	\$ 0 /\$100		
This year's rollback tax rate:			
Last year's adjusted operating taxes (after subtracting taxes on lost property and including taxes for state criminal justice mandate)	\$ 318,155	\$ 160,601	\$ 0
+ This year's adjusted tax base	\$ 130,137,709	\$ 127,302,709	\$ 0
+ This year's effective operating rate	\$ 2,4487 /\$100	\$ 1,2615 /\$100	\$ 0 /\$100
x 1.08 - this year's maximum operating rate	\$ 2,6402 /\$100	\$ 1,3624 /\$100	\$ 0 /\$100
- This year's debt rate	\$ 0 /\$100	\$ 0 /\$100	\$ 0 /\$100
- This year's rollback rate for each fund	\$ 2,6402 /\$100	\$ 1,3624 /\$100	\$ 0 /\$100
- This year's total rollback rate	\$ 4,0026 /\$100		

Schedule A
Unencumbered Fund Balances

The following estimated balances will be left in the unit's property tax accounts at the end of the fiscal year. These balances are not encumbered by a corresponding debt obligation.

Type of Property Tax Fund	Balance
General Fund	\$0.00
Road & Bridge Fund	\$0.00

Schedule D
State Criminal Justice Mandate (For Counties)

The Donley County Treasurer certifies that Donley County has spent \$63,332 in the previous 12 months beginning October 1, 1997, for the maintenance and operation cost of keeping inmates sentenced to the Texas Department of Criminal Justice. Donley County Sheriff has provided information on these costs, minus the state revenues received for reimbursement of such costs.

This notice contains a summary of actual effective and rollback tax rate calculations. You can request a copy of the full calculations at the Donley Appraisal District office.

This notice prepared by Paula Lewis, Chief Appraiser, and Rebecca Jackson, County Treasurer
 Date prepared: August 1, 1998

Name: Ruben Osuna
Wife's Name: Pam
Children? Names and Ages: Kevin - 24, Brian - 22, Jason - 20
Subjects you will be teaching: World Geography, US History, World History
Coaching Duties: Varsity Boys Basketball, Football, Head Tennis
Where did you graduate from college? Texas Tech University
How long have you been coaching? 17 years
Where were you coaching last? Rotan
What are your goals for the 1998-99 Broncos and yourself? My goal for the Broncos is for us to be very competitive in every sport. I want our students to learn lessons that will help them be more prepared when they go out into the real world.

1998 Property Tax Rates

This notice concerns 1998 property tax rates for the following districts. It presents information about three tax rates. Last year's tax rate is the actual rate the taxing unit used to determine property taxes last year. This year's effective tax rate would impose the same total taxes as last year if you compare properties taxed in both years. This year's rollback tax rate is the highest tax rate the taxing unit can set before taxpayers can start tax rollback procedures. In each case these rates are found by dividing the total amount of taxes by the tax base (the total value of taxable property) with adjustments as required by state law. The rates are given per \$100 of property value.

	Helley ISD	Clarendon ISD
Last year's tax rate:		
Last year's operating taxes	\$ 304,771	\$ 1,042,725
Last year's debt taxes	\$ 0	\$ 87,353
Last year's total taxes	\$ 304,771	\$ 1,130,078
Last year's tax base	\$ 21,997,708	\$ 92,561,130
Last year's total tax rate	\$ 1.27 /\$100	\$ 1.20 /\$100
This year's effective tax rate:		
Last year's adjusted taxes (after subtracting taxes on lost property)	\$ 300,910	\$ 1,065,262
+ This year's adjusted tax base (after subtracting value of new property)	\$ 23,731,880	\$ 91,877,873
- This year's effective tax rate	\$ 1,2693 /\$100	\$ 1,1594 /\$100
This year's rollback tax rate:		
Amount of local taxes needed based on state funding formulas and 1998-99 student enrollment	\$ 256,993	\$ 1,011,242
+ This year's adjusted tax base	\$ 24,184,820	\$ 94,016,243
+ This year's local maintenance and operation rate OR adjusted 1998 maintenance and operation rate	\$ 1,0561 /\$100	\$ 1,0756 /\$100
- This year's maintenance and operation rate (see greater of 2 rates above)	\$ 1.25 /\$100	\$ 1,1131 /\$100
+ 50.08	\$ 1.37 /\$100	\$ 1,1331 /\$100
+ Rate increase adopted for 1997-98 school year	\$ 0 /\$100	\$ 0.075 /\$100
+ This year's debt rate	\$ 0 /\$100	\$ 0.0426 /\$100
+ Rate to account loss certified by commissioner of education	\$ 0 /\$100	\$ 0 /\$100
- This year's rollback rate	\$ 1.37 /\$100	\$ 1,19925 /\$100

Schedule A
The following estimated balances will be left in the unit's property tax accounts at the end of the fiscal year. These balances are not encumbered by a corresponding debt obligation.

Type of Property Tax Fund	Clarendon ISD	Helley ISD
Maintenance & Operations	\$57,205	\$360,900
Interest & Sinking	\$ 4,530	

Schedule B
1998 Debt Service
The unit plans to pay the following amounts for long-term debts that are secured by property taxes. These amounts will be paid from property tax revenues (or additional tax revenues, if applicable).

Clarendon ISD	Principal to be Paid	Interest to be Paid	Other	Total Payment
Capital Acquisition Bonds	\$60,000	\$ 16,242	\$600	\$67,142
Total Required for 1998 debt service	\$67,142			\$67,142
- Amount paid from funds listed in Schedule A	\$ 1,318			\$ 1,318
- Excess collections last year	\$ 3,304			\$ 3,304
- Total to be paid from taxes in 1998	\$62,520			\$62,520
+ Amount added in anticipation that the unit will collect only 100% of its taxes in 1998	\$60,000			\$60,000
- Total Debt Levy	\$62,520			\$62,520

This notice contains a summary of actual effective and rollback tax rate calculations. You can request a copy of the full calculations at the Donley Appraisal District.
 Prepared by Paula Lewis, Chief Appraiser Date prepared: August 1, 1998

1998 Property Tax Rates

This notice concerns 1998 property tax rates for the following districts. It presents information about three tax rates. Last year's tax rate is the actual rate the taxing unit used to determine property taxes last year. This year's effective tax rate would impose the same total taxes as last year if you compare properties taxed in both years. This year's rollback tax rate is the highest tax rate the taxing unit can set before taxpayers can start tax rollback procedures. In each case these rates are found by dividing the total amount of taxes by the tax base (the total value of taxable property) with adjustments as required by state law. The rates are given per \$100 of property value.

	CITY OF HELLEY	CITY OF HOWARDWICK	CLARENDON COLLEGE	DONLEY HOSPITAL
Last year's tax rate:				
Last year's operating taxes	\$ 12,206	\$ 28,910	\$ 237,343	\$ 184,802
Last year's debt taxes	\$ 0	\$ 0	\$ 0	\$ 87,246
Last year's total taxes	\$ 12,206	\$ 28,910	\$ 237,343	\$ 272,048
Last year's tax base	\$ 4,679,137	\$ 11,683,203	\$ 128,031,754	\$ 124,051,741
Last year's total tax rate	\$ 2,6132 /\$100	\$ 2,4751 /\$100	\$ 1,8532 /\$100	\$ 2,1912 /\$100
This year's effective tax rate:				
Last year's adjusted taxes (after subtracting taxes on lost property)	\$ 12,237	\$ 28,896	\$ 237,170	\$ 231,923
+ This year's adjusted tax base (after subtracting value of new property)	\$ 4,703,010	\$ 10,904,160	\$ 128,092,543	\$ 126,092,343
- This year's effective tax rate	\$ 2,603 /\$100	\$ 2,6499 /\$100	\$ 1,8809 /\$100	\$ 1,837 /\$100
This year's rollback tax rate:				
Last year's adjusted operating taxes (after subtracting taxes on lost property and adjusting for transferred function)	\$ 12,237	\$ 28,896	\$ 237,170	\$ 184,721
+ This year's adjusted tax base	\$ 4,703,010	\$ 10,904,160	\$ 128,092,543	\$ 126,092,343
+ This year's effective operating rate	\$ 2,603 /\$100	\$ 2,6499 /\$100	\$ 1,8809 /\$100	\$ 1,837 /\$100
x 1.08 - this year's maximum operating rate	\$ 2,8132 /\$100	\$ 2,8618 /\$100	\$ 2,0313 /\$100	\$ 1,984 /\$100
- This year's debt rate	\$ 0 /\$100	\$ 0 /\$100	\$ 0 /\$100	\$ 0.1281 /\$100
- This year's rollback rate	\$ 2,8132 /\$100	\$ 2,8618 /\$100	\$ 2,0313 /\$100	\$ 1,972 /\$100

Schedule A
The following estimated balances will be left in the unit's property tax accounts at the end of the fiscal year. These balances are not encumbered by a corresponding debt obligation.

	City of Helley	City of Howardwick	Clarendon College	Donley Hospital
Type of Property Tax Fund				
General	\$7000.00	\$0.00	\$200.00	Cash Mgt \$50,744.05
				I & S 2,509.97

Schedule B
1998 Debt Service
The unit plans to pay the following amounts for long-term debts that are secured by property taxes. These amounts will be paid from property tax revenues (or additional tax revenues, if applicable).

Donley County Hospital District	Principal to be Paid	Interest to be Paid	Other	Total Payment
Capital Acquisition Bonds	\$50,000	\$ 4,713	\$390	\$55,103
Total Required for 1998 debt service	\$55,003			\$55,003
- Excess collections last year	\$ 1,004			\$ 1,004
- Total to be paid from taxes in 1998	\$53,999			\$53,999
+ Amount added in anticipation that the unit will collect only 100% of its taxes in 1998	\$50,000			\$50,000
- Total Debt Levy	\$53,999			\$53,999

This notice contains a summary of actual effective and rollback tax rate calculations. You can request a copy of the full calculations at the Donley Appraisal District.
 Prepared by Paula Lewis, Chief Appraiser Date prepared: 8-1-98

KING CROSSWORD

ACROSS
 1 Long cut
 5 "Great Expectations" hero
 8 Food fish
 12 Burn aid
 13 Eventual
 14 Headlight?
 15 Solon
 17 Hodge-podge
 18 Stubborn sort
 19 "- Mis-erables"
 20 "Principle" author
 21 Bandleader
 22 Male Manx
 23 Chris O'Donnell role
 26 "Aida" hero
 30 Make
 31 Moonshine container
 32 Caffeine-rich nut
 33 Coerce
 35 Red head of yore
 36 Has potential
 37 "Le Coq -"
 38 Watertight canoe
 41 Old card game
 42 Despondent
 45 Frenzied
 46 Knockout punch
 48 Lump
 49 Have bills
 50 Paddock

DOWN
 1 Big bash
 2 "Oh, woe!"
 3 Emulates Johnny Applesseed
 4 Height of fashion
 5 Gumby's horse
 6 Currier's partner
 7 Standard
 8 Sole man?
 9 Sentry's cry
 10 Sam Shepard's "of the Mind"
 11 "Let's Make a Deal" option
 16 Astronaut Shepard
 20 Pea holder
 21 Influential pol
 22 Play-ground game
 23 Embarrassed
 24 Rowboat need
 25 Lingerie item
 26 Score at Shea
 27 Calendar abbr.
 28 Yale student
 29 - Antonio
 31 Rapture
 34 Erstwhile acorn
 35 Weaving apparatus
 37 Senior member
 38 Philosopher Immanuel
 39 Book after Joel
 40 Luke's mentor
 41 Tennis arena
 42 Excoriate
 43 Re planes
 44 Doodled
 46 Polloi lead-in

Donley County Senior Citizen News

By Sandra Minetrea
 On behalf of the Donley County Senior Citizens Board of Directors, membership, and staff, we want to express our appreciation to Helena Catoe. Helena is moving to Amarillo. She has volunteered for the Senior Citizens four hours per day, five days a week for nine years. We appreciate her dedication, commitment, and support of this fine organization. She will greatly miss. We wish her happiness in her new home.

The July Birthday/Anniversary Supper was held on July 28. The evening was opened with prayer by Wesley Thomas. Mary Johnson and Thelma Behrens were recognized for having July birthdays. John and Maxine McCrary celebrated a July anniversary. Door prizes donated by Maxine McCrary were won by L.A. Watson and Melville Mills. Bingo winners were D.W. Swain, Thelma Rudder, Thelma Behrens, Ellie Wilkinson, Lacy Noble, John McCrary, Vada Morrison, Sharon Thomas, Helena Catoe, Cennet Rhode, Leona Lingenfelter, Melville Mills, and black-out bingo winner, Rose Lee Watson. Those making up our great kitchen crew were Nita Meador, Opal Maxey, Wesley Thomas, and Don Smith.

Lance by Jean McAnear. In memory of Lee Shaller by Helena Catoe, Onita Thomas, Mr. and Mrs. Blaine Butts, Lucile P. Eanes, Cennet Rhodes, Mr. and Mrs. Bobby Cole, and Irene Jones. In memory of Inez Stone by Onita Thomas. In memory of Donnie Jacobs by Mr. and Mrs. Nelson Christie, Nita Meador, and Mr. and Mrs. Lacy Noble. In memory of Oma Jacobs by Nita Meador.

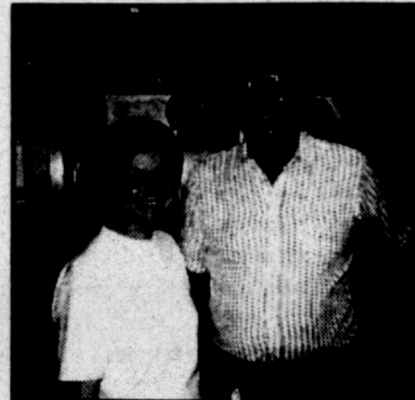
July Love Donations: Dolly Cole, Emma Shannon, Bernice O'Neal, Harold Wright, Cennet Rhode, and Boy Scout Troop 433.

July Facility Use: Short family reunion and Senior Citizens Dance Club.

Reminders: Thur., Aug. 6: Blood Pressure Clinic provided by the Medical Center, 10:30-noon.
 Thur., Aug. 20: Blood Pressure & Blood Sugar Clinic provided by Casha Health Services of Amarillo, 10:30-noon and Hearing Aid Clinic provided by Golden Spread Hearing of Amarillo, 10 a.m. until 11:30 a.m.
 Tues., Aug. 25: Birthday/Anniversary Supper, 6:00 p.m.



Mary Johnson and Thelma Behrens celebrated July birthdays at the Donley County Senior Citizens Birthday/Anniversary supper held recently.



Maxine and John McCrary celebrated their July anniversary at the Donley County Senior Citizens Birthday/Anniversary Supper recently.

Check Out The Big E Classifieds!

PHILLIPS 66 Farm Lubricants

PHILLIPS 66 Super HDII MOTOR OIL

PREMIUM QUALITY LUBRICANTS FOR FARM, HOME & INDUSTRY

HG Tractor Fluid
 A multi-functional fluid for tractors using a single fluid for the hydraulic system, transmission, differential and wet brakes.

Super HDII Motor Oil
 A specially formulated motor oil for fleet, farm and industrial vehicles.

Phillips 66 Lubricants meet or exceed most major manufacturer's performance requirements!

WEST TEXAS GAS, INC
 715 E. 2nd St. - Clarendon 874-2151

Obituaries

Jimmie Eldon Nance

Funeral services for Jimmie Eldon Nance, age 66, were held at 2:00 p.m. on Sunday, August 2, 1998, in the Martin Baptist Church with Rev. Bryan Knowles, Pastor, officiating. Interment was in Citizens Cemetery with arrangements under the direction of Robertson Funeral Directors, Inc.



Mr. Nance died at 1:18 p.m. on Friday, July 31, 1998, at Denton Regional Medical Center in Denton, Texas, following a sudden illness. He was born June 15, 1932, in Lockney to Wiley Nance and Lula Mercer Nance. He married Nelda Tims on August 23, 1958, in Lockney.

Mr. Nance was a Library Assistant at the Emily Fowler Public Library. He worked at the library, first as a volunteer, then as an employee, during the past 10 years. He had a 30 year teaching career, including Krum, Muenster, Clarendon, Kress, Stamford, and Floydada. He served in the

US Army. He received a bachelor's degree from Hardin Simmons University and a master's degree from West Texas State University. He was a member of the Krum Baptist Church. A memorial service will be held in Krum at a later date.

He was preceded in death by a sister, Marie Henderson in 1989.

Survivors include his wife, Nelda Nance of Krum; two daughters, Karla Burrow of Midland and Kay Nance of Eules; one son, Kelly Nance of Eules; two sisters, Mayme Harp of Livermore, California, and Bobbie Nance of Aurora, Colorado; four brothers, Wiley Nance of San Angelo, Tom Nance of Plainview, Joe Nance of Plainview, and Mike Nance of Midland; and three grandchildren, Nicole Nance, Nicholas Burrow, and Randy Burrow.

Casket bearers were Dale Robinson, Lloyd Burrow, Nicholas Burrow, Wiley Harp, Clint McConnell, and Joe Lovell.

The family requests that memorials be to the Denton Public Library System.

Do you have a closet full of junk?

That could be someone else's treasure! Just advertise it in the Big E Classifieds and make everyone happy! Call us today, 874-2259.

Ace Reid's "Cowpokes" is brought to you each week by:

THE HERRING NATIONAL BANK

P.O. Box 947 • Clarendon, TX 79226 • 806/874-3556
 Member FDIC • An Equal Housing Lender

COW POKES

By Ace Reid

http://www.cowpokes.com



"Here comes Wilbur, the Ex-smartest cow trader in this part of the country."

Worry-free Banking at Herring National. Let our loan officers help with your finances.

Back to School Sale

PRICES EFFECTIVE THRU AUGUST 4-11, 1998

9.99 Values Up To 17.99
 • 40-PC. POP TOP SET • 3 PC. FRY PAN SET
 • STAINLESS STEEL STOCK POTS, 8, 12, 16 or 20 quart. • 22-PC. KITCHEN KADDY
 • 24-PC. FLATWARE SET

7.99 Each Reg. 9.99
PENTAB SPECIALTY BINDERS.
 Reflex Big, Pro-Ball or Underwraps. Fun styles to keep you organized.

19.99 Each Reg. 24.99
 • DESK, #141 • 3-SHELF BOOKCASE, #134
 • PHONE STAND, #103 • MICROWAVE CART,
 • TV CART, #145 #149 (not shown)
 READY TO ASSEMBLE

YOUR CHOICE 3/2 Reg. 99¢ to 1.49 Ea.

89¢ Your Choice Pkg.
 • 2-ROLL PAPER TOWELS
 • 6-ROLL BATH TISSUES
 • 175 CT. KLEENEX TISSUES

4 OZ. ELMER'S GLUES.
 Glue-all or school glue.

LICENSED PORTFOLIOS.
 Protect special papers.

Mead 80 CT. NEATBOOKS.
 Wide or college ruled.

1.99 Pkg.
 • 16 OZ. M&M'S
 • NUTCRACKER MIXED NUTS OR CASHEW HALVES & PIECES

4.99 Each Reg. 6.99
JUMBO BATH SHEETS. 34" x 66" towels in fashion colors or stripes. Ideal for the dorm or sport activities.

9.99 Each Reg. 13.49 & 13.99
 • FIVE-STAR ZIPPER BINDER
 • FIVE-STAR BINDER ENSEMBLE
 • MEAD STUDENT DAY PLANNER

STORAGE BOXES
 • SHOE BOX, #7221-WH, Reg. 2.49 99¢
 • SWEATER BOX, #7822-WH, Reg. 4.49 2.99
 • UNDERBED SIZE, #6725-WH, Reg. 4.49 4.99
 • SET OF 2 JUMBO, #672825T, Reg. 12.99 9.99

Hwy. 287 Clarendon

DUCKWALL'S
 HOMETOWN VARIETY STORE

Daily: 9:00-7:00
 Sun: 12:30-5:30

BIG E

Classifieds

MEETINGS

Clarendon Lodge #700 AF&AM
Stated meeting: Second Monday each month, 8:00 p.m. Refreshments served at 7:00 p.m. Practice sessions: Fourth Monday Terry Ashcraft - W.M. Williard Skelton - Secretary

Saints' Roost Museum Summer Hours
Thursday - Sunday 2 to 5 p.m.

FOR RENT

HOMES FOR RENT: Clean 2 bedroom house; 2 bedroom duplex with central heat and air; efficiency apartment. Contact Don Co. Management. 874-3511 or 355-7177. 14-ctfc

OFFICE BUILDING FOR RENT on Hwy. 287 West. Close to downtown. 2300 sq. ft. Central heat and air. \$650.00 mo. Call 874-2425 or 874-2415. 22-ctfc

FOR RENT: Two and three bedroom house. Deposit required. 874-3818 or 874-2729, leave message. 31-4tp

FOR RENT: Two room furnished apartment. 874-3445. 32-1tp

HOUSES FOR RENT: Two bedroom and three bedroom. Call 874-3234. 32-1tp

HOUSE FOR RENT: Three miles south of Clarendon with horse pens. Deposit required. 867-2005 32-2tc

FOR RENT: 100 acres wheat land. 874-2277. 32-2tp

GARAGE SALES

TWO FAMILY GARAGE SALE: Clothes, furniture, toys, and misc. Aug. 7-8, 9:00-3:00. 377 Everett in Howardwick. 32-1tp

GARAGE SALE: 601 W. 7th (one block East of Patching Club House), Saturday, Aug. 8, 8:00 a.m. - 12:00 p.m. Resistance weight set, sofa bed, treadmill, kingsize waterbed with drawers and storage underneath, lots of misc. 32-1tc

Need To Sell It? Call Big-E Classifieds at 874-2259

Publisher's Notice: All real estate advertised in this newspaper is subject to the Fair Housing Act of 1968 which makes it illegal to advertise "any preference, limitation, or discrimination based on race, color, religion, sex, or national origin or any intention to make such a preference, limitation, or discrimination. This newspaper will not knowingly accept any advertising for real estate which is in violation of the law. Our readers are informed that the dwellings advertised in the newspaper are available on an equal opportunity level.

CLASSIFIED AD RATES are \$6.00 for the first 15 words and 10¢ for each additional word. Special typefaces or boxes are extra.

THANK YOU NOTES are \$7.00 for the first 30 words and 10¢ for each additional word. **DEADLINES** are 5 p.m. each Monday, subject to change for special editions and holidays. **Prepayment is required on all ads except for customers with established accounts.** **ERRORS:** Check your ad the first time it comes out. Errors or mistakes that are not corrected within Ten Days of the first printing are the responsibility of the advertiser.

GARAGE SALES

HUGE MULTI-FAMILY YARD SALE: Sat., Aug. 8, 8:30 a.m. We've cleaned out - something for everyone - you name it we probably have it. Nice clothes for everyone, nice sleeper coach, pickup tool box, and tons of misc. Don't miss this one. 509 E. Browning (Kidd's). 32-1tp

GARAGE SALE: 602 E. Browning. Saturday, Aug. 8, 8:00 to 5:00. 32-1tp

THREE FAMILY YARD SALE: Saturday morning, 8 a.m. Blue and white house behind rodeo arena. 32-1tp

GARAGE SALE: Hwy. 287 and Jefferson. August 7-8, 8:00-? TV, exercise equipment, computer, dryer, lots of clothes. 32-1tp

THREE FAMILY YARD SALE: Corner of Hwy. 287 & Hwy. 70. Friday and Saturday, 8-? 32-1tp

GARAGE SALE: Great school clothes, furniture, housewares, storm door, etc. Eads family, 600 S. Bond, Saturday, August 8, 7:00 a.m. - ? 32-1tp

GARAGE SALE: 1200 Hawley, 1/2 block North of Museum. Lots of assorted items. Saturday, 8:00-12:00. 32-1tp

MULTI-FAMILY GARAGE SALE: Saturday, Aug. 8th, 8:00-? 720 Burkhead (corner of Hwy. 70 S. and Burkhead). 32-1tp

GARAGE SALE: Aug. 7-8, 8:00-12:00. Three miles west on Hwy. 287. 32-1tp

THREE FAMILY GARAGE SALE: Friday, August 7, 7:30-1:30, 1002 E. 3rd. 32-1tp

FOR SALE

Winter Wheat and Fall Forage Seeds

For ALL varieties of Wheat, Rye • Barley • Triticale Grazing Blends • Oats

Call 1-800-299-9273
Gayland Ward Seed Co., Inc. Hereford, TX 79045
www.wtrt.net/~gws1998

Your choice of Registered, Certified, or Select Seed, Bagged or Bulk. Delivery Available.

FOR SALE: 1/4 mile siderow, 4 inch pipe, 5 inch wheels. Good condition. Call 874-9422 or 874-3285. 31-5tp

FOR SALE: 34 - F-1 Bratford heifers; 1 - Angus bull; 12 - Jersey bulls. Call 944-5441. 32-ctfc

COOK STOVE FOR SALE: Clean and good condition. 874-5043. 32-1tnc

FOR SALE: Snowcone/hamburger stand at Lake Greenbelt. Great extra summer income. \$17,000. Philip - 874-3184. 32-1tp

SERVICES

DICKIE BENNET CONSTRUCTION - Carpenter and concrete work. Large or small jobs. 874-2362. 25-ctfc

MISCELLANEOUS

PLEASE HELP ME LOCATE my cousin, Willie Mae who once married to Cone Johnson, moved from Clarendon to California and may now be back in Clarendon. Willie Mae if you read this and you remember me as the little girl at age 4 who fell on the stove and was burn very bad, please call my mother and I at 818-504-4346 or 504-2501, or 818-771-9175. 31-3tp

MISCELLANEOUS

ARTS, CRAFTS, ANTIQUES TO SELL??? Country Collection Mall will open for booth rental Aug. 7. Open to public Aug. 18th, hours, Tues-Fri, 10:00-5:30, Sat., 10:00-2:00. Located on Hwy. 287, between Clark's and "Sam Hill". 874-9566. 32-1tc

HELP WANTED

NEEDED ACTIVITIES DIRECTOR: Call Palo Duro Nursing Home, Claude, 226-5121. 31-2tc

EARN MONEY Reading books! \$30,000/yr income potential. Details. 1(800)513-4343 Ext. Y-1458. 29-4tp

EMPLOYMENT - Medical CASHA Resource Home Health Services is accepting applications for full and part-time RN in Clarendon and the surrounding area. Apply in person, 6900 I-40 West, Suite 240, Amarillo. 29-4tc

NEED A NEW JOB? Or a part-time job? Allsup's in Clarendon is now accepting applications. For first and second asst. managers and clerks. Weekly bonus plan, paid vacations, sick leave, insurance plan, profit sharing, employee purchase plan, career positions available, competitive wages. Please apply in person at Allsup's, 2nd and Koogle. 32-1tp

PANHANDLE COMMUNITY SERVICES D/B/A Panhandle Transit is now taking applications for a part-time driver. No phone calls please. You may pick up an application at 416 South Kearney, Clarendon, Texas. We are equal opportunity employers. Applications will be taken through August 14, 1998. A clean driving record is necessary. 32-2tc

THANK YOU

The family of Jim Nance sends a heartfelt "thank you" to the people of Clarendon who helped us say farewell to our loving husband, dad, and grandfather. After being away for so long, we appreciate being welcomed back as through we are still part of the community. A special thanks to Martin Baptist Church, Rev. Bryan Knowles and Pat and Dan Hall for providing a wonderful service. Thanks to the Martin Baptist ladies for providing lunch.

Nelda Nance
Karia, Lloyd, Nicholas, and Randy Burrow
Kay Nance and Nicole Kelly Nance

THANK YOU

The Girl Scouts of Clarendon want to extend their appreciation to all those individuals and businesses who helped with or donated to our Day Camp this year. Our thanks go out to: The Clarendon Enterprise for running our ad, Texas Highway Department and Senior Citizens for ice, Lake Patrol for camp security, Sheriff's Dept. for boundary tape and patrolling the camp, B&R Thriftway for donations and food storage, Panhandle Community Service, Clarendon Office Supply & Printing for donating permanent markers, Mike's Pharmacy for restocking our camp first aid kit, J&W Lumber for the donations, discounts, and for building our boat race gutters, Michael Klein - President US Toy, Sam's Club and Oriental Trading, Merle Kramer, Bobby and Anna Woods and TC Gardner. To those at Greenbelt Municipal and Industrial Water Authority, Bobby, Renee, Bud, Wes, Ken, and Ross for OK's, suggestions, moving and cleaning. To Cecil Burrow for his many hours, the Bennett kids - Paige and Jake, Steve, Branson and Bret Carter. To our Troop Leaders and all those volunteers who worked with the girls and Diane Wiggs, camp nurse.

The Girl Scouts of Clarendon are truly blessed to live in such a caring, generous community. Thank you to everyone.
Mindy Burrows, Camp Director
Janet Carter, Asst. Camp Director

Subscribe Today!
874-2259

LEGAL NOTICES

NOTICE OF BUDGET HEARING PANHANDLE GROUND WATER CONSERVATION DISTRICT NO. 3

The Board of Directors of Panhandle Ground Water Conservation District No. 3 will hold a budget hearing on the proposed 1998-99 budget at 8:00 p.m. on Wednesday, August 19, 1998, in the Water District office, 201 W. 3rd St., White Deer, Texas. 32-1tc

PUBLIC BUDGET HEARING CLARENDON COLLEGE

Clarendon College Board of Regents will hold a public hearing on the proposed budget for the 1998-99 fiscal year at 11:00 a.m. on Thursday, August 13, 1998, in the VIP Room of the Bairfield Activity Center, Clarendon College Campus, Clarendon, Texas. 32-1tc

NOTICE

The City of Clarendon is accepting Depository Bids for a two-year period, (October 1, 1998, through September 30, 2000). Bids need to be in Clarendon City Hall by 5:00 p.m. Tuesday, September 8, 1998. Bids will be reviewed at the regular City Council meeting, beginning at 7:00 p.m. this same evening. If more information is needed, call City Hall at 874-3438. 32-2tc

PUBLIC NOTICE

United States Government Property for Sale by Sealed Bid 160 acres, more or less, being the S/2 of the N/2 of Section 4, Block 2, T&P Ry Company Surveys, Hall County, TX, located 9 miles south of Lakeview, TX, 18 miles southwest from Memphis, TX, and two miles west of F.M. 657. Access on the south and west is by a county road. The property's highest and best use would be for livestock ranching and farming.

Sale for cash. All bids must be accompanied with a ten percent (10 percent) deposit in the form of a cashier's check, certified check, bank draft or money order, made payable to the Farm Service Agency. A Deed Without Warranty will be provided by the government with the buyer paying all other closing costs including attorney's fees, title search, filing fees, and all 1998 real estate taxes.

Inspection, bid forms, and addition information may be obtained by contacting Mollie F. Moffitt, Farm Loan Manager, Farm Service Agency, Ag. Bldg., 1002 West Noel St., Memphis, TX 79245, phone (806) 259-3666. Bids will be received until 4:00 p.m. on Wednesday, August 12, 1998, in the Farm Service Agency County office located at 1002 West Noel St., Memphis, TX.

The property will be sold without regard to race, color, religion, national origin, sex, marital status, handicap, or age. The Government reserves the right to reject any and all bids. 30-3tc

SERVICES

Estlack Electric

Electrical & Mechanical Contracting

Janitrol, Goodman, & Trane

Heating & Air-Conditioning

Allen Estlack
874-3683

Texas Refrigeration License TACL012134E

REAL ESTATE

LOTS 66, 76, 77 FOR SALE at Payton Place in Howardwick. Total price. \$500. (505) 762-5408. 6-p-otm.

HOUSE FOR SALE: Nice three bedroom, two bath, brick home with sprinkler system and large shop building. 503 Cottage. 874-5411. 51-1tp 52-ctfc

HOUSE WITH 3/4 LOTS for sale: 602 Leroy. Call Shirley 874-3632 or Irene 259-2310. 32-ctfc

TWO STORY HOUSE on large corner lot. Newly remodeled 3 1/2 bedroom, 2 bath. Located 3rd/Goodnight. Call 874-2022. 19-1tnc 20-ctfc

FOR SALE: My home at 411 E. 4th. Shown by appointment only. Irene Mann. 874-2601. 29-1tnc 30-3tp

FOR SALE

CLARENDON - HOUSE

Ready to move in, 3 bedroom, 1-1/2 bath, living, dining/den, kitchen, utility, storm doors & windows, unattached 1-car garage/shop, concrete cellar, 3 year old siding and roof on 6 lots, fenced at 702 S. Gorst. \$45,000.00.

Nice 3 bedroom, 1 and 3/4 bath, brick, central heat and air, fireplace, concrete cellar and patio in fenced backyard, 2 carport at 703 S. Carhart for \$55,000.00.

Two bedroom, 1 bath stucco with central heat and air plus 2 carport and shop on 3 lots. Additional efficiency apartment built over concrete cellar at 415 E. Burkhead for \$35,000.00.

Three bedroom, 2 bath brick with central heat and air, attached 2 car garage and fenced back yar. Quality built and well maintained at 318 S. Koogle for \$80,000.00.

Two bedroom, 1 bath, living, kitchen, utility, basement, and unattached garage at 802 Koogle St. \$21,500.00.

Joe T. Lovell Real Estate

Phil Fletcher - 874-3511
Joe Lovell - 874-9318

SERVICES

Loyd's Backhoe & Ditching Service



Septic Tank Units • Gas Lines • Water Lines
Irrigation & Trenching • Pump & Windmill Repairs

Loyd Ford, Owner
PO Box 149

Ph. (806) 874-2287
Clarendon, Texas 79226

John Earl Morrow Drilling & Service

Gravel Packed Wells • Windmills
Grundfos Stainless Steel Pumps

(806) 874-2704 • Hwy. 287 West, Clarendon

"Serving the area since 1981."

Chamberlain MOTOR COMPANY

in Clarendon Welcomes
Terry Davis-Floyd
to the Sales Department.

Come see her or call
874-3527 or 1-800-692-4088.





Amazing Savings

Prices effective August 5 thru August 8, 1998.

PEPSI-COLA or 7-Up



\$1.59

6 PK 12 OZ CANS



Meats & Dairy

SHURFINE HOMOGENIZED MILK **99¢**
..... 1/2 GALLON

SHURFINE MARGARINE 2 / **99¢**
PURE VEGETABLE..... 1 LB QTRS

FRESH GROUND BEEF
GROUND FRESH DAILY

HAMBURGER MEAT **99¢**
..... 3 LB OR LARGER PKG PER LB

SMALLER PKG PER LB **\$1.19**

GROUND ROUND **\$1.59**
..... LB

SHURFINE BACON **\$1.79**
..... 1 LB PKG

SHURFINE WIENERS **59¢**
..... 12 OZ PKG

PACKER TRIM BEEF BRISKETS **89¢**
IN THE BAG..... LB

PREFERRED TRIM BONELESS BEEF RIBEYE STEAKS **\$4.69**
..... LB

WRIGHT'S BONE-IN CURED HAMS **\$1.59**
SHANK HALF OR WHOLE..... LB

BUTT HALF PER LB **\$1.79**

SHURFINE TOASTER PASTRIES **89¢**
COMPARE TO POP TARTS..... PKG

SHURFINE PEANUT BUTTER **\$1.39**
..... 18 OZ JAR

SHURFINE SALTINE CRACKERS **79¢**
..... 1 LB BOX

SHURFINE RICE **69¢**
LONG GRAIN..... 2 LB BAG

CRISCO SHORTENING **\$2.29**
..... 3 LB CAN

BETTY CROCKER BROWNIE MIX **2 / 99¢**
..... POUCHES

BETTY CROCKER BLUEBERRY MUFFIN MIX **2 / 99¢**
..... POUCHES

BETTY CROCKER POPSECRET MICROWAVE POPCORN **\$1.49**
..... 3 BAG PKG

SHURFINE FLOUR **79¢**
ALL PURPOSE..... 5 LB BAG

SHURFINE APPLE JUICE **\$1.50**
..... 1/2 GALLON

SHURFINE GRAPE JUICE **\$1.99**
..... 48 OZ BOTTLE

SHURFINE CRANBERRY JUICE **\$2.50**
..... 1/2 GALLON

SHURFINE DILL PICKLES **\$1.79**
..... QUART JAR

INLAND VALLEY CURLY Q FRENCH FRIES **\$1.99**
..... 32 OZ BAG

CHICKEN FAJITA MEAT **\$6.99**
COOKED..... LB

Fresh Produce

CALIFORNIA PEACHES **69¢**
..... LB

CALIFORNIA NECTARINES **89¢**
..... LB

CLASSIC ICEBERG SALAD **99¢**
..... 1 LB PKG

SNOW WHITE CAULIFLOWER **99¢**
..... HEAD

WASHINGTON RED DELICIOUS APPLE **49¢**
EXTRA FANCY..... LB

COLORADO WHITE RUSSETT POTATOES **\$1.39**
..... 10 LB BAG

CALIFORNIA PASCAL CELERY **2 / 99¢**
..... LARGE CRISP STALKS

CALIFORNIA GREEN BELL PEPPERS **2 / 49¢**

Household Goods

SHURFINE STYROFOAM CUPS **89¢**
..... 20 • 15 OZ CUPS

SHURFINE FABRIC SOFTENER **\$1.19**
..... 40 SHEET BOX

SHURFINE CHARCOAL BRIQUETS **\$2.99**
..... 20 LB BAG

AJAX DISH DETERGENT **99¢**
..... 22 OZ BOTTLE

SHURFINE PAPER TOWELS **\$1.49**
..... 3 ROLL PKG

SHUR-SEVER BLEACH **79¢**
..... GALLON JUG

SHURFINE ULTRA LAUNDRY DETERGENT **\$4.49**
..... 92-103 OZ BOX

SHURFINE ULTRA DISPOSABLE DIAPERS **\$3.99**
..... PKG

874 - 2425
118 S. Kearney
Clarendon, Texas

The Grocery Store

Home owned and operated by
Jack & Shirley Clifford and Brit & Virginia Patten

OPEN MONDAY-SATURDAY, 7 A.M. TO 7 P.M.
CLOSED SUNDAY

Double Coupons on Wednesday & Saturday Only
(Excluding Cigarette & Tobacco Coupons)
Double coupons not to exceed item's value.
Double coupons not to exceed \$1.00.
Only one double coupon honored on multiple purchases.

join the
TRADITION

Prepare for your future with a degree from the Panhandle's premier college.



**CLARENDON
COLLEGE**

Quality Education Since 1898.

Fall 1998 Preview

August 31-December 16, 1998

Calendar of Events

August

- 20-22 CC Cheerleader Camp
- 22 Quick TASP testing, 8 a.m. - Counselor's Office BAC
- 25 Residence Halls Open
- 25 Quick TASP testing, 8 a.m. - Counselor's Office BAC
- 26 Dining Hall Opens
- 26 Faculty In-Service
- 27 Sophomore Registration - Clarendon
- 27 Childress Registration, 5 p.m.
- 27 Creative Dating Seminar - Bairfield Activity Center
- 27-28 Freshman Orientation - Clarendon
- 28 Yearbook Photos
- 28 Wellington Registration, 5 p.m.
- 29 Quick TASP testing, 8 a.m. - Counselor's Office BAC
- 31 Classes Begin
- 31 Welcome Back Dance - Bairfield Activity Center
- 31 Late Registration & Drop/Add Fees Begin

September

- 5-6 Clarendon College Centennial Celebration
- 7 Labor Day Holiday
- 7 Dining Hall Closed
- 8 Intramural Sand Volleyball Sign-Up Begins
- 10 Drive-In Movie Theater - BAC Lawn
- 11 Last Day to Register & Change Schedule
- 12 Quick TASP testing, 8 a.m. - Counselor's Office BAC
- 14-30 Intramural Sand Volleyball Competition

October

- 5-9 Intramural Sand Volleyball Competition
- 12 Intramural Flag Football Sign-Up Begins
- 13 CLEP Exam, 8 a.m. - Counselor's Office BAC
- 13 GED Exam, 8 a.m. - Counselor's Office BAC
- 16 Fourth Annual Clarendon College Sneak Peek - 9 a.m., BAC
- 16 Intramural Rodeo - Community Arena
- 19-30 Intramural Flag Football Competition
- 24 ACT Test, Administration Bldg., 8 a.m.
- 25 Daylight Savings Time Ends (Fall Back One Hour)
- 31 Halloween

November

- 1 Financial Aid Priority Deadline for Spring 1999
- 2-13 Intramural Flag Football Competition
- 9 Intramural Basketball Sign Up Begins
- 10 CLEP Exam, 8 a.m. - Counselor's Office BAC
- 10 GED Exam, 8 a.m. - Counselor's Office BAC
- 10 Cybervision Interactive Video
- 13-14 Lady Bulldog Classic - Bulldog Gym
- 14 TASP Test, Administration Bldg., 8 a.m.
- 16-30 Intramural Basketball Competition
- 20-21 Otero Classic, Lady Bulldogs - La Junta, CO
- 24 Last Day to Drop (Noon)
- 24 Lady Bulldogs vs. Southern Nazarene - Bethany, OK
- 26-29 Thanksgiving Holiday
- 27-28 Bulldog Thanksgiving Classic - Bulldog Gym
- 30 First Day of Spring 1999 Pre-Registration

December

- 1-4 Spring 1999 Pre-Registration
- 1-4 Intramural Basketball Competition
- 4-5 Bulldog Coca-Cola Classic - Bulldog Gym
- 8 CLEP Exam, 8 a.m. - Counselor's Office BAC
- 8 GED Exam, 8 a.m. - Counselor's Office BAC
- 8 Lady Bulldogs vs. Southern Nazarene - Bethany, OK
- 10 Lady Bulldogs vs. Redlands College - Bulldog Gym
- 10 Clarendon College Christmas Celebration - BAC
- 12 ACT Exam, Administration Bldg., 8 a.m.
- 14-16 Final Exams
- 16 End of Fall 1998 Term
- 25 Christmas

General Information

ACCREDITATION

Clarendon College is approved and accredited by The Commission on Colleges of the Southern Association of Colleges and Schools Toward Associate in Arts, Associate in Science and Associate in Applied Science Degrees; The Texas Higher Education Coordinating Board; The State Board of Vocational Nurse Examiners and appropriate professional accreditation. For a complete listing of affiliations, refer to *The Clarendon College Catalog*.

DROP/ADD POLICY

Students desiring to make schedule changes after their initial registration each semester must do so during the designated "Drop and Add" period as scheduled in the calendar of events in both this schedule and the college catalog. Students will be required to pay tuition and fees applicable to any class(es) added to the schedule, as well as a \$5 drop/add fee per schedule change.

A student who drops a course after the first 12 class days of instruction will receive a grade of W. No classes may be dropped after the 14th week of a Fall or Spring term. To drop a class, the student must obtain the written consent of the instructor. Drop forms are available in the Registrar's Office.

CLASSIFICATION INFORMATION

Students enrolled at Clarendon College may be classified in the following ways:

FRESHMAN	0-29 hours earned
SOPHOMORE	30 or more hours earned
FULL-TIME	Enrollment in 12 or more hours in a semester
PART-TIME	Enrollment of less than 12 hours in a semester

COLLEGE BOOKSTORE

Located in the Bairfield Activity Center, the college bookstore is open during registration periods and at each semester's end for book buy-back. Textbooks are bought back at the Clarendon and Pampa Center only during the final exam week of each semester.

EQUAL OPPORTUNITY INSTITUTION

Clarendon College offers all of its educational opportunities and extracurricular advantages to students without regard to race, creed, color, national origin, sex, age or handicap, except where sex, age or handicap is a bona fide occupational qualification.

FINAL EXAMINATIONS

A final examination is required for each course. Final examinations may not be given earlier than the time for which they have been officially scheduled. A final examination schedule is posted a minimum of three weeks in advance of the date of the first exam administered and/or announced by instructors administering the test.

FINANCIAL ASSISTANCE

Clarendon College offers scholarships, grants and work-study opportunities. Low-interest student loans, such as the Federal Stafford Student Loan, requires a recommendation by the Financial Aid Officer and an application made to the student's lending institution.

To apply for financial assistance, request a free application for Federal Student Aid from Clarendon College. After completing the form, mail to the address listed on the envelope. In 4-6 weeks, a Student Aid Report (SAR) will be sent to you. Submit your SAR and a signed copy of your or your parents' most recent federal income tax return. Financial aid is distributed on an individual basis, with the highest priority being given to students with the greatest financial need.

Scholarship applications are available by contacting the Admissions Office. The deadline for scholarship applications is May 1. Please refer to the college catalog for a complete listing of available scholarships.

LIBRARY

The library provides opportunities for study, research, recreational reading, listening and viewing educational materials. More than 20,000 books, as well as, journals, magazines, microfiche and non-print items are available. Five Internet-connected computers are available, as well. Interlibrary loan is available to all patrons. The library is located in the Administration Building.

MISSION STATEMENT

Clarendon College is a comprehensive community college committed to providing equal access to opportunities that assist in the holistic development of its constituents and community. In pursuit of that mission, the college provides academic transfer programs, workforce education courses, continuing education/community service courses, and diverse cultural enrichment opportunities.

PAMPA CENTER

Clarendon College Pampa Center was established Dec. 1, 1978. The Center is housed in the former Houston Elementary School, located at 900 N. Frost in Pampa. In conjunction with the Pampa Center Foundation, Clarendon College is planning to open a new \$4.3 million Pampa Center before the year 2000. The new center will provide students with a modern, multi-purpose facility that will enable the college to offer greater education opportunities to its constituents. Plans call for the center to be owned by the Pampa Center Foundation and is leased to the college on a long-term basis.

SENIOR CITIZENS POLICY

A Senior Citizen (persons 65 years of age and older) may audit credit classes without paying tuition and fees, contingent upon space availability. Senior citizens may take up to six hours for credit in any term without paying tuition but are subject to all fees excepting the student activity fee and building use fees.

SERVICEMEMBERS

OPPORTUNITY COLLEGE (SOC)

A member of the Servicemembers Opportunity Colleges (SOC), Clarendon College provides post-secondary education to members of the military throughout the world. Clarendon College recognizes the unique nature of the military lifestyle and is committed to easing the transfer of relevant course credits, providing flexible academic residency requirements and crediting learning from appropriate military training and experiences.

STUDENT EDUCATION

RECORDS

In compliance with the Texas "Open Records" Act and the Buckley Amendment (Public Law 93-579), Clarendon College will consider the following information to be "public or directory information" unless the individual student or employee advises the Dean of Instruction in writing that his/her name should not be included or released as public information: Name, Date and Place of Birth, Major and Minor, Current Class Schedule, Number of Hours Enrolled for Current Semester, Classification, Marital Status, Dates of Attendance, Participation in Officially Recognized Activities and Sports, Weights and Heights of Members of Athletic Teams, Degrees and Awards Received, and All Previous Educational Agencies/Institutions Attended.

STUDENT LOAD

The recommended regular load of a student is 15-18 credit hours. Any student desiring to take more than 18 credit hours in a Fall or Spring semester must receive written authorization from the Dean of Instruction.

TRANSCRIPTS

A copy of the student's permanent record (transcript) is available from the Registrar's Office, only by written authorization by the student. Fee is \$3. All financial obligations to the college must be met in full before a transcript will be issued.



Editor/Designer

Christi Ross

CC Foundation Director/
Marketing Coordinator

Special Thanks To:

The Clarendon Enterprise
Palo Duro Offset Printing

How To Enroll

Enrolling at Clarendon College is EASY! To apply for admissions, students must provide a high school transcript or GED certificate, all college transcripts and Clarendon College admissions forms. Students must provide TASP scores, and ACT scores if available. Enrollment for Wellington classes begins at 5 p.m., August 28, in the Wellington Junior High Annex. Registration for Childress classes begins at 5 p.m. on August 27, in the Childress High School Library. Books for Wellington and Childress classes may be purchased the first night of class.

Payment is expected at the time of class enrollment. Clarendon College accepts cash, checks and money orders. Credit cards are not accepted.

How May We Help You?

You've got to get a transcript for a scholarship application that's due today at 4 p.m.

Where do you go?

Maybe you need to add a class to your schedule. Where do you go?

Or, you need help with a situation involving your roommate. Who can help you with this one?

One stop in the Clarendon College Student Services Office will answer all your questions.

Located in the Administration Building, the Student Services Offices are home to the college's Deans, Admissions Office, Registrar Office and general business office. The Student Services Office is also the campus' lost and found department, in case you lose your student identification or backpack.

When you have a question dealing with academic issues, ask for Dr. Myrna Cassel, Dean of Instruction.

The Dean of Instruction will assist you with matters such as course grades, scholastic honors, academic probation and suspension and the academic appeals procedure.

Clarendon College's Dean of Students is Thad Anglin.

The Dean of Students helps students with questions dealing with campus life. Topics include campus housing, dining services, discipline, athletics, and student activities. All foreign students will work directly with the Dean of Students, also.

The Student Services area is also home to Clarendon College's Admissions and Recruiting Coordinator, Jaylia Bitner.

The Admissions Office coordinates all campus tours and visits, and assists

prospective students with completing the necessary Clarendon College application forms.

The Clarendon College Registrar is also located in the Student Services area.

Registrar Beth Johnston assists students with transcripts, class schedule changes and additions. She will help you register for your classes, and make sure you meet the requirements before graduating.

The Business Office staff will work with you on class payments, payment options and work study checks.

Remember, payment is expected at the time of registration! Other options are available, only with prior approval through the Clarendon College Business Office and Financial Aid Office.

Clarendon College's Business Office accepts your personal checks and money orders, but no credit cards!

Other services provided by the Student Services area includes faxing, mail drop-off and parcel pick-up.

On-campus students must make arrangements to receive mail at the downtown location. However, letters may be mailed through the Student Services Office. Packages via UPS or Federal Express may also be received in the Student Services Office. Moreover, a fax is available for students for a \$2 per page charge.

Students will also be available to find copies of the upcoming semester class offerings, drop/add forms, mock class schedules and more in the Student Services Office. Copies of *The Clarco*, the official alumni newsletter are available free of charge in this area.

The Student Services Office is open Monday through Friday, from 8 a.m. until 4:30 p.m.

Clarendon College's Student Services Team is always willing to lend a helping hand. Whether you need to enroll or just request a transcript, our team will provide fast and friendly service.

Pictured front (l-r) Nena Hunt - Office Assistant, Joyce Davis - Office Assistant, Wanda Smith - Business Office Assistant, Jaylia Bitner - Admissions and Recruiting Coordinator, and Barbara Ford - Business Office Assistant. Back row (l-r) Carlene Hollar - Office Assistant, Thad Anglin - Dean of Students, Darlene Spier - Assistant to the President, Beth Johnston - Registrar, Tom Fletcher - Business Manager, and Dr. Myrna Cassel - Dean of Instruction.

Admission Policies

Clarendon College has an "open door" admissions policy, which means it accepts all applicants who can be expected to benefit from its programs.

As a comprehensive community college, Clarendon College offers many programs designed to meet the needs of students according to their backgrounds and interests. With limited exceptions, a student must be a graduate of an accredited high school or have a GED. Nongraduates who are at least 18 years old may be admitted on individual approval provided if it is determined through assessment that they have the ability to benefit from their program. Any individual admitted by individual approval by the Registrar will automatically be placed on academic probation, and must achieve a minimum grade point average of 2.0 in the first 12 credit hours of coursework to be eligible for continued enrollment.

Applicants for certain workforce programs may be required to submit to personal interviews, and/or proficiency examinations and/or physical examinations as conditions for eligibility for admission to the respective program.

Residency

Clarendon College is required by State Law to determine the residency status for tuition purposes of all students. All new students must provide substantiating documentation to affirm their residence and sign an Oath of Residency. Residency is determined either by a student's current address or the address of a parent or legal guardian if the student is being claimed as their dependent for federal income tax purposes. It is the responsibility of the student to register under the correct residence classification.

1. In-District Residence

A student who has been a legal resident of the State of Texas and has resided in Donley County six (6) months immediately preceding registration at Clarendon College.

A student who has moved to Texas from another states, but has been a documented resident of Donley County for the 12 months immediately preceding registration at Clarendon College.

A student who can present to the college a copy of the receipt of payment of Donley County ad valorem taxes for the current or preceding tax year. In case of an independent student, the taxes must have been paid by the student. In the case of a dependent student, the applicant may use the tax receipt of a parent or guardian.

2. Out-of-District

A student who is a legal resident of Texas, but who resides outside the Clarendon College District. Students classified as out-of-district will continue to be so during the time they remain in school for consecutive academic years. However, any student who continuously resides in Donley County for a 12-month period without attending school may be reclassified by the Dean of Students as an in-district-student.

3. Out-of-State Residence

A student less than 18-years of age or is a dependent and whose family resides in another state or has not resided in Texas for the 12 months immediately preceding registration.

Tuition and Fees

In-District
\$16/per credit hour (\$48 minimum)
Out-Of-District
\$18/per credit hour (\$54 minimum)
Out-of-State
\$200 plus \$20 per credit hour (above 11 hours)

Required Fees - Clarendon Campus
Building Use Fee \$40
Activity Fee (Fall & Spring semesters) \$65
Library Fee \$15
Technology Fee \$3/per credit hour

Required Fees - Pampa Center
Building Use Fee \$40
Library Fee \$15
Off-Campus Fee \$35/per course
Technology Fee \$3/per credit hour

Required Fees - Other Off-Campus Sites
Off Campus Fee \$50/per course

Students taking courses at more than one campus/center must pay all fees associated with that site, per the above schedules, irrespective of the number of courses being taken at any given site. However, there will be no duplication of fees, i.e., building use fee, library fee.

All tuition, fees, charges for room and board, and other educational costs are due by the final day of general registration in each semester.

Refund Policy

Any student officially withdrawing during a semester through written request to the Dean of Students, or is withdrawn by the college because of failure to comply with a condition upon which the enrollment was approved, may receive a refund of all tuition and mandatory fees in accordance with the following schedule established by the State of Texas:

FALL AND SPRING SEMESTERS

Prior to the first class day	100%
During the first 15 class days	70%
During the 16-20th class days	25%
After the 20th class day	NONE

NOTE: The count of class days begins on the first day that classes are held in the term and thereafter includes each calendar day on which classes are normally taught.

REFUNDS ARE NOT AUTOMATIC!

A student eligible for any kind of refund should request it at the time of withdrawal or program change by filling out the proper forms. No refund can be made until the third week of classes, so to allow time for all checks to clear the banks. Some refunds may not be made until the end of the semester. Processing of all refunds for the Fall and Spring often requires as much as eight weeks. Refunds to students are reduced by any amount owed to the College. The college reserves the right to make no refunds to students suspended or expelled from the institution.

**Tuition and fees paid directly to the institution by a sponsor, donor or scholarship shall be refunded to be source rather than directly to the student.



Class Schedule

ID# / TIME / DAY / DPT / NBR / SEC / CLASS DESCRIPTION / HRS / INSTRUCTOR / ROOM

Agriculture

300	9-9:50A F	AGRI1131 01	AG INDUSTRY	1	SCHAEFER	107
400	8-8:50A F	AGRI1131 02	AG INDUSTRY	1	HAWKINS	107
500	9-9:50A MW	AGRI1307 01	AGRONOMY	3	SCHAEFER	107
LAB	4-6 W	\$15.00	AGRONOMY			207
6001	11-11:50A MW	AGRI1319 01	ANIMAL SCIENCE	3	HAWKINS	107
LAB	3-5 W	\$25.00	ANIMAL SCIENCE			107
700	8-8:50A MW	AGRI1319 02	ANIMAL SCIENCE	3	HAWKINS	107
LAB	1-3P W	\$25.00	ANIMAL SCIENCE			107
800	10-10:50A MW	AGRI1329 01	FOOD TECH	3	HAWKINS	107
900	12-2P M	AGRI2221 01	LSTOCKJUDGING	2	HAWKINS	107
LAB	2-5 M	\$30.00	LSTOCKJUDGING			107
1000	9:30-10:45A TTH	AGRI2313 01	ENTOMOLOGY	4	SCHAEFER	107
LAB	4-6 T	\$15.00	ENTOMOLOGY			207
1100	11-11:50AM MW	AGRI2317 01	AG ECONOMICS	3	SCHAEFER	102

Business/Computers

1	1-2:15P TTH	ACCT2301 01	ACCOUNTING I	3	EWING	202
3600	11-12:15A MW	BUSI1301 01	INTRO TO BUSIN	3	MURPHEY	202
3700	1-2:15P TTH	BUSI1304 01	BS COMMUN	3	MURPHEY	203
3800	1-3:45P M	BUSI2301 01	BUSINESS LAW	3	DORSEY	202
5200	11-12:15A MW	COSC1301 01	COMP CONCEPTS	3	DENNEY	203
LAB	TBA	\$30.00	COMP CONCEPTS			203
5300	8-9:15A TTH	COSC1301 02	COMP CONCEPTS	3	MURPHEY	203
LAB	TBA	\$30.00	COMP CONCEPTS			203
5400	9:30-10:45A TTH	COSC1301 03	COMP CONCEPTS	3	EWING	203
LAB	TBA	\$30.00	COMP CONCEPTS			203
5500	11-12:15A TTH	COSC1301 04	COMP CONCEPTS	3	DENNEY	203
LAB	TBA	\$30.00	COMP CONCEPTS			203
5600	2:30-3:45P TTH	COSC1301 05	COMP CONCEPTS	3	DENNEY	203
LAB	TBA	\$30.00	COMP CONCEPTS			203
5700	4-5:15P TTH	COSC1401 01	ADV COMP APPS	3	DENNEY	203
LAB	TBA	\$25.00	ADVCOMP APPS			203
6200	9:30-10:45A TTH	CPMT1301 01	COMP CAREERS	3	RIPPETOE	KEARNEY
6300	1-2:15P TTH	CPMT1302 01	PC ARCHTECT.	3	RIPPETOE	KEARNEY
6400	1-3:45P M	CPMT1305 01	ADV TROUBSHOT.	3	RIPPETOE	KEARNEY
6500	9:30-10:45A MW	CPMT2307 01	OPER. SYSTEMS	3	RIPPETOE	KEARNEY
6600	1-3:45P W	CPMT2301 01	INTERNET II	3	DENNEY	203
6700	2:30-3:45P TTH	CPMT2401 01	NETWORK ADMIN	4	RIPPETOE	KEARNEY
8100	11-12:15A TTH	ECOE2301 01	MACRO ECON.	3	SCHAEFER	107
LAB	10-10:50A MW	OFAD1311 01	BEG KEYBOARDING	3	DENNEY	203
LAB	TBA	\$20.00	BEG KEYBOARDING			203
18100	2:30-3:20P T	OFAD2307 01	TRANSCRIPTION (WF)	3	MURPHEY	202
LAB	TBA	\$20.00	TRANSCRIPTION(WF)			202
18200	11-12:15A TTH	OFAD2312 01	OFFICE PROCED.	3	MURPHEY	202
18300	5:30-8:15P M	OFAD2317 01	PROGRAM I (WF)	3	THOMAS	202

Fine Arts

1200	11-12:15AM TTH	ARTS1301 01	INTRO TO ART	3	SHELLEY	TBA
1300	2:30-5:30P T	ARTS1316 01	DRAWING I	3	SHELLEY	TBA
LAB	TBA	\$15.00	DRAWING I			TBA
1400	2:30-5:30P T	ARTS1317 01	DRAWING II	3	SHELLEY	TBA
LAB	TBA	\$15.00	DRAWING II			TBA
1500	2:30-5:30P TH	ARTS2316 01	INTRO TO OILPAINT	3	SHELLEY	TBA
LAB	TBA	\$15.00	INTRO TO OILPAINT			TBA
1600	2:30-5:30P TH	ARTS2317 01	OILPAINTING	3	SHELLEY	TBA
LAB	TBA	\$15.00	OILPAINTING			TBA
7600	1-2:15P TTH	DRAM1310 01	INTR. TO THEATER	3	STEWARTJ	FASTAGE
LAB	TBA	\$10.00	INTR. TO THEATER			FASTAGE
7700	TBA	DRAM1320 01	REH & PERFORM	3	STEWARTJ	FASTAGE
7800	6:30-9P TW	DRAM1323 01	THEAT. PRACTICE	3	MCMENAMY	FASTAGE
LAB	TBA	\$10.00	THEATERPRACTICE			FASTAGE
7900	TBA	DRAM1330 01	TECH. THEATER	3	STEWARTJ	FASTAGE
LAB	TBA	\$10.00	TECH. THEATER			FASTAGE
8000	6-9P M	DRAM1351 01	ACTING I	3	MCMENAMY	FASTAGE
LAB	TBA	\$10.00	ACTING I			FASTAGE
14600	11:00-12:15A TTH	HUMA1315 01	INT TO HUMANIT	3	STEWARTB	FA
14700	10:00-10:50A MW	HUMA1315 02	INT TO HUMANIT	3	STEWARTB	FA
14800	9:30-10:45A TTH	HUMA1315 03	INT TO HUMANIT	3	STEWARTB	FA
14900	11-11:50A MW	HUMA1315 04	INT TO HUMANIT	3	STEWARTJ	FA
15000	1-2:15P TTH	HUMA1315 05	INT TO HUMANIT	3	STEWARTB	FA
17300	TBA	MUSI1116 01	EAR TRAINING I	2	STEWARTJ	FA101
17400	TBA	MUSI1131 01	PEP BAND	2	STEWARTJ	FA101
17500	2:30-3:45P TTH	MUSI1132 01	JAZZ BAND	2	STEWARTJ	FA101
17600	12:15-12:50P M-F	MUSI1151 01	SHOW CHOIR	2	STEWARTJ	STAGE
17700	11-12:15P TTH	MUSI1306 01	MUSIC APPREC	3	STEWARTJ	FA101
17800	1-2:15P MW	MUSI1311 01	MUSIC THEORY I	3	STEWARTJ	FA101
23200	10-10:50A MW	SPCH1315 01	PUBLIC SPEAKING	3	CRUMP	TBA
23300	1-2:15P MW	SPCH1315 02	PUBLIC SPEAKING	3	CRUMP	TBA
23400	1-2:15P TTH	SPCH1315 03	PUBLIC SPEAKING	3	CRUMP	TBA
23500	11-12:15PM W	SPCH1315 04	PUBLIC SPEAKING	3	CRUMP	TBA
23600	9:30-10:45A TTH	SPCH1315 05	PUBLIC SPEAKING	3	CRUMP	TBA
23700	11-12:15A TTH	SPCH1318 01	INTERPERS SPEECH	3	CRUMP	TBA

English/Languages

8400	8-8:50A MW	ENGL0308 01	PREP. ENGLISH	3	ANGLIN	202
LAB	TBA	\$15.00	PREP. ENGLISH			TBA
1170	9:30-10:45A TTH	ENGL0308 02	PREP. ENGLISH	3	ANGLIN	202
LAB	TBA	\$15.00	PREP. ENGLISH			TBA
8500	9-9:50A MW	ENGL1301 01	ENG CMP/RHET I	3	ELLIOTT	105
8600	10-10:50A MW	ENGL1301 02	ENG CMP/RHET I	3	ELLIOTT	105
8700	11-11:50A MW	ENGL1301 03	ENG CMP/RHET I	3	SCOGGIN	105
8800	11-12:15A TTH	ENGL1301 04	ENG CMP/RHET I	3	WILSON	104
8900	1-2:15P TTH	ENGL1301 05	ENG CMP/RHET I	3	STAFF	104
9000	9:30-10:45A TTH	ENGL1302 01	ENG CMP/RHET II	3	STAFF	105
9100	1-2:15P MW	ENGL1302 02	ENG CMP/RHET II	3	STAFF	105
9200	11-12:15A MW	ENGL2311 01	TECH WRITING	3	ELLIOTT	TBA
9300	10-10:50A MW	ENGL2332 01	WORLD LIT I	3	SCOGGIN	104
9400	1-2:15P TTH	ENGL2332 02	WORLD LIT I	3	STAFF	105
22100	8-9:15A TTH	READ0308 01	EFF READING	3	ANGLIN	202
LAB	TBA	\$15.00	EFF READING			202
22401	9-9:50A MW	READ0308 02	EFF READING	3	ANGLIN	202
LAB	TBA	\$15.00	EFF READING			202
23000	6-10M W	SPAN141101	EFFECTIVE READING	3	WILLIAMS	103
LAB	TBA	\$10.00	BEGINNING SPAN I	4		103

Mathematics

15400	8-9:50A MW	MATH0308 01	INTER ALGEBRA	3	STAFF	102
LAB	TBA	\$15.00	INTER ALGEBRA			102
15500	6-9P M	MATH0308 02	INTER ALGEBRA	3	STAFF	101
LAB	TBA	\$15.00	INTER ALGEBRA			101
15600	9-9:50A MW	MATH1314 01	COLLEGE ALGEBRA	3	PERRYMAN	101
15700	9:30-10:45A TTH	MATH1314 02	COLLEGE ALGEBRA	3	PERRYMAN	101
17101	6-9P W	MATH1321 01	FINANCE MATH	3	PERRYMAN	101
15800	11-11:50A MW	MATH132 01	FINITE MATH	3	PERRYMAN	101
15900	8-9:15A TTH	MATH1332 01	MODERN MATH I	3	PERRYMAN	101
16000	10-10:50A MW	MATH1348 01	ANAL GEOMETRY	3	PERRYMAN	101
16100	11-12:15A TTH	MATH2313 01	CALCULUS I	3	PERRYMAN	101

Natural Science

2000	9-10A MW	BIOL1322 01	NUTRITION	3	ZEHR	102
2100	9-9:50A MW	BIOL1411 01	BOTANY	4	LOWRIE	207
LAB	1-4:00 W	\$30.00	BOTANY			207
2200	10-10:50A MW	BIOL1413 01	ZOOLOGY	4	LOWRIE	207
LAB	1-4P	\$30.00	ZOOLOGY			207
2300	11-12:15A TTH	BIOL1413 02	ZOOLOGY	4	LOWRIE	207
LAB	1-4P T	\$30.00	ZOOLOGY			207
2400	11-11:50A MW	BIOL2401 01	HUMAN ASP I	4	STAFF	207
LAB	3-6:00 W	\$30.00	HUMAN ASP I			207
2500	7-10P T	BIOL2402 01	HUMAN ASP II	4	NEEDHAM	207
LAB	7-10P TH	\$30.00	HUMAN ASP II			207
4000	2:30-5:30P T	CHEM1111 01	COLL CHEM I LAB	1	WIGINTON	\$30LAB
4100	4-7P M	CHEM1111 02	COLL CHEM I LAB	1	WIGINTON	\$30LAB
4200	1-4P W	CHEM1111 03	COLL CHEM I LAB	1	WIGINTON	\$30LAB
4300	4-7P W	CHEM1111 04	COLL CHEM I LAB	1	WIGINTON	\$30LAB
4400	9-9:50A MW	CHEM1311 01	COLLEGE CHEM I	3	WIGINTON	206
4500	9:30-10:45A TTH	CHEM1311 02	COLLEGE CHEM I	3	WIGINTON	206
4600	1-2:15P TTH	CHEM1311 03	COLLEGE CHEM I	3	WIGINTON	206
4700	2:30-3:30P TH	CHEM2223 01	ORG CHEM I LAB	2	WIGINTON	206
4800	11-12:15A TTH	CHEM2323 01	ORG CHEMISTRY I	3	WIGINTON	206
17200	9:30-10:45A TTH	MEDT1301 01	MEDICAL TERM. (WF)	3	LOWRIE	207
20000	11-12:15AM MW	PHYS1305 01	INTEG PHYSICS	3	WIGINTON	206
LAB	11-12:15A MW	\$30.00	INTEG PHYSICS			206
20100	10-10:50A MW	PHYS1401 01	COLLEGE PHYSICS I	4	WIGINTON	206
LAB	1-4 M	\$30.00	COLLEGE PHYSICS I			206
24900	1-3P W	VNSG1227 01	MEDICAL ADMIN	2	MOORE	COURSON
25002	1-3P M	VNSG1227 02	MEDICAL ADMIN	2	MOORE	COURSON
25000	9:30-12A MW	VNSG1323 01	BASIC NURS SKILLS	3	MOORE	COURSON
25001	12:30-3P TH	VNSG1323 02	BASIC NURS SKILLS	3	MOORE	COURSON

Physical Education

18800	11-12:15A TTH	PHED1012 01	TENNIS/VBALL	1	ZEHR	GYM
18700	9-9:50A MW	PHED1013 01	BADMINTON/VBALL	1	MONDRAGON	GYM
18800	10-10:50A MW	PHED1015 01	PHY FITNESS	1	MONDRAGON	GYM
18900	11-11:50A MW	PHED1015 02	PHY FITNESS	1	ZEHR	GYM
18900	1-2:50P DAILY	PHED1016 01	WOMEN'S VARSITY	1	ZEHR	GYM
19100	3-4:50P DAILY	PHED1017 01	MEN'S VARSITY	1	MONDRAGON	GYM
19200	2:20-5P TH	PHED1110 01	LIFE PHYSICAL	1	SCHAEFER	107
19300	TBA	PHED1110 02	LIFE PHYSICAL	1	STAFF	BAIR
19400	3-6P TU	PHED1281 01	WINTER TIMED EVNTS	1	PERRYMAN	ARENA
19500	3-6P TH	PHED1281 01	WINTER TIMED EVNTS	1	PERRYMAN	ARENA
19600	9:30-10:45A TTH	PHED1301 01	FOUND. OF PE	3	ZEHR	102
18700	10-10:50A MW	PHED1304 01	FRSNL/COM. HLTH	3	ZEHR	102
19800	11-11:50A MW	PHED1308 01	OFFICIATING	3	MONDRAGON	GYM
19900	9:30-10:45A TTH	PHED1321 01	COACH SBALL	3	MONDRAGON	GYM

Social & Behavioral Science

6800	6-9P M	CRJ1301 01	CRIMINAL JUSTICE	3	JEFFREY	106
8100	11-12:50A TTH	ECOE2301 01	MACROECONOM	3	SCHAEFER	107
11800	9-9:50A MW	GOVT2301 01	US&TXCONST	3	TIBBETS	106
11900	11-11:50A MW	GOVT2301 02	US&TXCONST	3	TIBBETS	106
12000	6-9P TH	GOVT2301 04	US&TXCONST	3	JEFFREY	106
12100	6-9P W	GOVT2303 01	INTERRELATIONS	3	TIBBETS	106
12800	6-8:50A MW	HST1301 01	U.S.HST TO 1866	3	TAYLOR	103
13000	10-10:50A MW	HST1301 02	U.S.HST TO 1866	3	TAYLOR	103
13100	11-11:50A MW	HST1301 03	U.S.HST TO 1866	3	TAYLOR	103
13200	9:30-10:45A TTH	HST1301 04	U.S.HST TO 1866	3	TAYLOR	103
13300	6-9P TU	HST1301 05	U.S.HST TO 1866	3	TAYLOR	103
13400	11:00-12:15A TTH	HST2301 01	TEXAS HIST	3	TAYLOR	103
13500	1:00-3:45P W	HST2321 01	MULTICULT ORIGIN	3	TIBBETS	106
20200	8-4A 2526	PSYC0080 01	ORIENTATION	1	STAFF	FAUD
20300	9:30-10:45A TTH	PSYC2301 01	GNRL PSYCHOLOGY	3	DENNEY	104
20400	1-2:15P MW	PSYC2301 02	GNRL PSYCHOLOGY	3	DENNEY	104
20500	11-12:15A TTH	PSYC2308 01	CHILD PSYCHOLOGY	3	DENNEY	106
22500	10-10:50A MW	SOCI130101	INTRO TO SOCIO	3	DENNEY	106
22600	9-9:50A MW	SOCI230101	FAMILY IN SOCIETY	3	DENNEY	104

ID# / TIME / DAY /

English/Languages

10300	6-7P M	ENGL030701	DEV WRITING	2	THOMPSON	TBA
LAB	TBA	\$15.00	DEV WRITING			TBA
11702	9-10:20A MW	ENGL1301 01	ENGCOMP/RHET I	3	THOMPSON	2
11703	9-10:20A TTH	ENGL1301 02	ENGCOMP/RHET I	3	THOMPSON	2
11704	7-9:50P T	ENGL1301 03	ENGCOMP/RHET I	3	LILES	2
11705	10:30-11:50A TTH	ENGL1302 01	ENGCOMP/RHET II	3	SCOGGIN	2
11706	7-9:50P W	ENGL1302 02	ENGCOMP/RHET II	3	LILES	2
11709	7-9:50P M	ENGL2307 01	CREATIVE WRITING	3	THOMPSON	2
11707	9-10:20A T/TH	ENGL2332 01	WORLD LIT I	3	SCOGGIN	2
11708	9-11:50A F	ENGL2333 01	WORLD LIT II	3	THOMPSON	2
22300	6-7P M	READ0307 01	DEV READING	2	THOMPSON	TBA
LAB	TBA	\$15.00	DEVREADING			TBA

Mathematics

16600	7-9:50P TH	MATH0307 02	BEG ALGEBRA	2	BAKER	14
LAB	TBA	\$15.00	BEG. ALGEBRA			14
16700	7-9:50P TH	MATH0308 01	INTER. ALGEBRA	3	MCCULLOUGH	9
LAB	TBA	\$15.00	INTER. ALGEBRA			TBA
16800	7-9:50P T	MATH1314 01	COLLEGE ALGEBRA	3	BAKER	14

Natural Science

2700	7-9:50P M	BIOL1322 01	NUTRITION	3	SULLIVAN	TBA
2800	9-11:50 TTH	BIOL1413 01	ZOOLOGY	4	WINDHORST	TBA
LAB	TH	\$30.00	ZOOLOGY			TBA
2900	6-8:50P W	BIOL2401 01	HUMAN A&P I	4	WINDHORST	1
LAB	6-8:50P M	\$30.00	HUMAN A&P I			TBA
3000	4:30-6:50P T	BIOL2420 01	MICROBIOLOGY	4	LOWRIE	102
LAB	7-9:50 T	\$30.00	MICROBIOLOGY			103
4800	6-8:50P M	CHEM1411 01	COLLEGE CHEM I	4	WINDHORST	TBA
LAB	6-8:50 T	\$30.00	COLLEGE CHEM. I		TBA	TBA
17201	12-1:20P TTH	MEDT1301 01	MEDICAL TERM	3	WINDHORST	TBA

Social/Behavioral Science

12300	1-3:50P T	GOVT2301 01	US & TX CONST	3	TIBBETS	3
12400	7-9:50P T	GOVT2301 02	US & TX CONST	3	TIBBETS	3
12500	10:30-11:50A TTH	GOVT2302 01	US & TX GOV	3	TIBBETS	3
12801	7-9:50P W	GOVT2302 02	US & TX GOVT	3	JEFFREY	TBA
12803	1-3:50P TTH	GOVT2303 01	INTER. RELATIONS	3	TIBBETS	TBA
14500	9-10:20A MW	HIST1301 01	U.S. HIST. TO 1865	3	WILLIAMS	TBA
14504	7-9:50P T	HIST1301 03	U.S. HIST. TO 1865	3	RAPSTINE	TBA
14505	7-9:50P TH	HIST1301 04	U.S. HIST. TO 1865	3	RAPSTINE	TBA
14502	10:30-11:50A MW	HIST1302 01	U.S. HIST. TO PRES	3	WILLIAMS	TBA
14200	1-3:50P TTH	HIST1302 02	U.S. HIST. TO PRES	3	WILLIAMS	3
20700	TBA	PSYC0080 01	ORIENTATION	1	STAFF	1
20800	7-9:50P T	PSYC2301 01	GEN PSYCH	3	DENNEY	TBA
20800	7-9:50P TH	PSYC2301 02	GEN PSYCH	3	WINSON	TBA
21000	7-9:50P W	PSYC2308 01	CHILD PSYCH	3	WINSON	TBA
21201	2-4:50P T	PSYC2308 02	CHILD PSYCH	3	STAFF	TBA
22700	2-4:50P W	SOCI1301 01	INTRO TO SOCIO	3	WILSON	TBA
22801	2-4:50P TTH	SOCI1308 01	SOCIAL ISSUES	3	WILSON	TBA
22802	2-4:50P T	SOCI2301 01	FAMILY IN SOCIETY	3	DENNEY	TBA
8801	2-4:50P W	CRJI1301 01	CRIMINAL JUSTICE	3	JEFFREY	TBA
8802	2-4:50P T	CRJI1307 01	CRIME IN AMERICA	3	JEFFREY	TBA
8202	7-9:50P M	ECON2301 01	MACROECONOMICS	3	STAFF	TBA

ID# / TIME / DAY / DPT / NBR / SEC / CLASS DESCRIPTION / HRS / INSTRUCTOR / ROOM

5800	6-8P T	COSC1301 01	COMP CONCEPTS	3	EVANS	134-00
LAB	TBA	\$30.00	COMP CONCEPTS			CH
8201	6-10P M	ECON2301 01	MACROECONOMICS	3	JONES	104-00
8500	6-8P T	ENGL0308 01	PREP ENGLISH	3	ANGLIN	119-00
LAB	TBA	\$15.00	PREP ENGLISH			119-00
8800	6-10P M	ENGL1301 01	ENG COMP/RHET I	3	SANDERS	104-00
8700	6-10P W	ENGL1302 01	ENG COMP/RHET II	3	SANDERS	104-00
12200	6-8P TH	GOVT2301 01	US&TXCONSTIT	3	HIPPERT	104-00
18200	6-8P T	MATH0308 01	INTER ALGEBRA	3	ANGLIN	119-00
LAB	TBA	\$15.00	INTER ALGEBRA			CH
18300	6-8P W	MATH1314 01	COLLEGE ALGEBRA	3	ANGLIN	104-00
18400	6-8P TH	MATH1324 01	FINITE MATH	3	ANGLIN	104-00
20800	6-8P M	PSYC2308 01	CHILD PSYCH	3	JONES	104-00
22200	6-8P T	READ0308 01	EFFEC READING	3	ANGLIN	119-00
LAB	TBA	\$15.00	EFFEC READING			CH
23800	6-8P W	SPCH1315 01	PUBLIC SPEAKING	3	ANGLIN	104-00
18503	6-8P M	OFAD 1311 01	BEG. KEYBOARDING	3	BENHAM	124-00

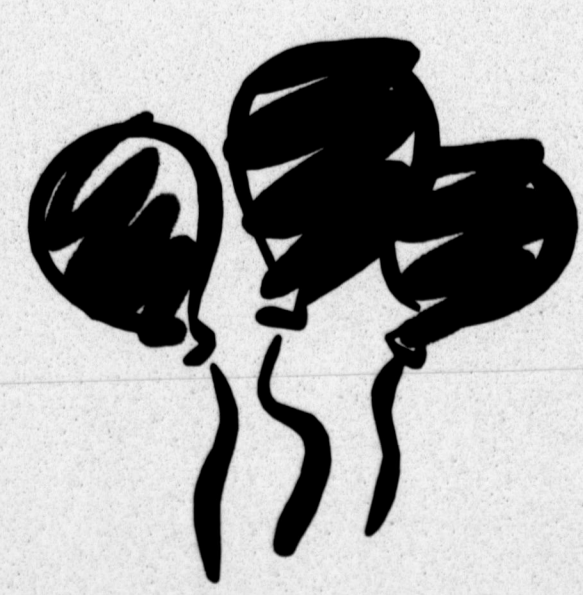
ID# / TIME / DAY / DPT / NBR / SEC / CLASS DESCRIPTION / HRS / INSTRUCTOR / ROOM

3	7-10P TH	PHIL1304 01	INT. WORLD RELIGION	3	MCLEOD	WE
3400	7-10P M	BIOL1413 01	ZOOLOGY	4	NEEDHAM	152-00
LAB	TBA	\$30.00	ZOOLOGY			WE
3500	7-10P W	BIOL2401 01	HUMAN A&P I	4	NEEDHAM	152-00
LAB	TBA	\$30.00	HUMAN A&P I			WE
6100	7-10P M	COSC1301 01	COMP CONCEPTS	3	SCHMIDT	134-00
LAB	TBA	\$30.00	COMP CONCEPTS			WE
6800	7-10 P TH	CRJI1307 01	CRIME IN AMERICA	3	KLINK	104-00
11400	7-10P TBA	ENGL0308 01	PREP ENGLISH	3	WILSON	119-00
LAB	TBA	\$15.00	PREP ENGLISH			119-00
11500	7-10P M	ENGL1301 01	ENG COMP/RHET I	3	LILES	104-00
11700	7-10P M	ENGL2332 01	WORLD LITER I	3	LILES	104-00
12800	7-10P TU	GOVT2302 01	US&TX GOV	3	KLINK	104-00
14500	7-10P TH	HIST1301 01	U.S. HIST. TO 1865	3	ROWE	104-00
17000	7-10 P TBA	MATH0308 01	INTERM. ALGEBRA	3	WILSON	119-00
LAB	TBA	\$15.00	INTERM. ALGEBRA			WE
17100	7-10P W	MATH1314 01	COLLEGE ALGEBRA	3	SCHMIDT	104-00
21100	7-10P TU	PSYC2301 01	GEN PSYCH	3	KLINK	104-00
21200	7-10P TH	PSYC2308 01	CHILD PSYCH	3	KLINK	104-00
22400	7-10P TBA	READ0308 01	EFFECT READING	3	WILSON	119-00
LAB	TBA	\$15.00	EFFECTIVE READING			WE
22800	7-10P TU	SOCI1301 01	INTRO TO SOCIO	3	CARDWELL	104-00
24200	7-10P M	SPCH1315 01	PUBLIC SPEAKING	3	ROWE	104-00

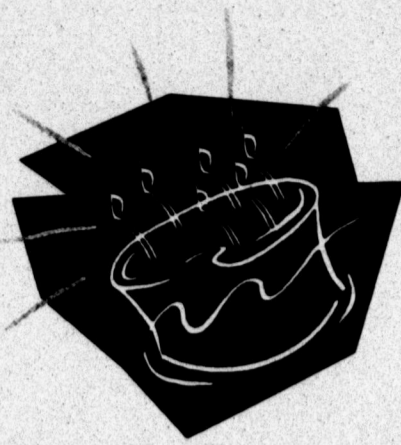
ID# / TIME / DAY / DPT / NBR / SEC / CLASS DESCRIPTION / HRS / INSTRUCTOR / ROOM

10100	5-8P W	ENGL1301 01	ENG COMP/RHET. I	3	HAYNES	104-00
-------	--------	-------------	------------------	---	--------	--------

Don't Miss Our 100th Birthday Party!!
Saturday September 5
Clarendon, Texas



Happy Birthday



Clarendon College

It's our birthday and we want you to help us celebrate! Clarendon College will turn 100 YEARS OLD on Saturday, September 5th, and you are invited to a one-of-a-kind birthday party.

Founded on September 5, 1898, Clarendon College began as a small Methodist college that was carved out of the tough and wild Texas plains.

According to *"Athens of the Panhandle - A History of Clarendon College"*, there was an urgent need for a school in the Panhandle where youth might have the opportunity to complete their high school work, go on to college, or where they might study music, art and expression.

Since that time, Clarendon College has evolved from a university training school to a four-year college and finally to a public community college.

Clarendon College's first home was a small campus located on 5th street in Clarendon. Today, this site is home to Clarendon High School. The original site was a ten-acre campus with an eight-room brick building.

As stated in *Athens of the Panhandle*, the campus was "275 miles from Fort Worth, our nearest school, and commands a patronizing territory larger than the entire state of Mississippi, and embraces a population of about one hundred thousand. The school has a faculty of four teachers and an enrollment of 75 pupils. Reverend J.W. Adkisson, A.M. has been chosen president."

The college's second year of service saw an increase of students. In 1899, Clarendon College boosted an enrollment of 171 students.

The first students came to the college from surrounding communities and neighboring states via train. The campus quickly became known as "College Hill" and students who walked from town to school were required to walk up the hill, according to *Athens Of The Panhandle*.

The panhandle's first football game was played by Clarendon College on February 21, 1903. Classes were dismissed for the day so that students could take the train to Goodnight to see Clarendon take on Goodnight College. Led by "Coach Yeargin Switzer", the Clarendon College team won 16-10.

Clarendon College became a junior college in 1903, when the school's trustees realized they were offering too many courses of study with the faculty and equipment they had. The decision was made to combine the freshman and sophomore years of high school with the college and offer only two years of college work. More emphasis was placed on liberal arts, music, art and expression.

This change seemed to only help the college, as enrollment nearly doubled. In 1924, the Methodist Conference allowed Clarendon College to become a senior university. However, it did not take long for the Northwest Texas Conference to begin debating on whether Clarendon was too small of a town to support a senior college. The conference soon suggested that Clarendon College be moved to Amarillo.

Feverish debate soon followed and the church voted to move the college to a larger town. The citizens of Clarendon did not want to lose their college. Therefore, they established the Clarendon Municipal Junior College and it officially opened in September 1928.

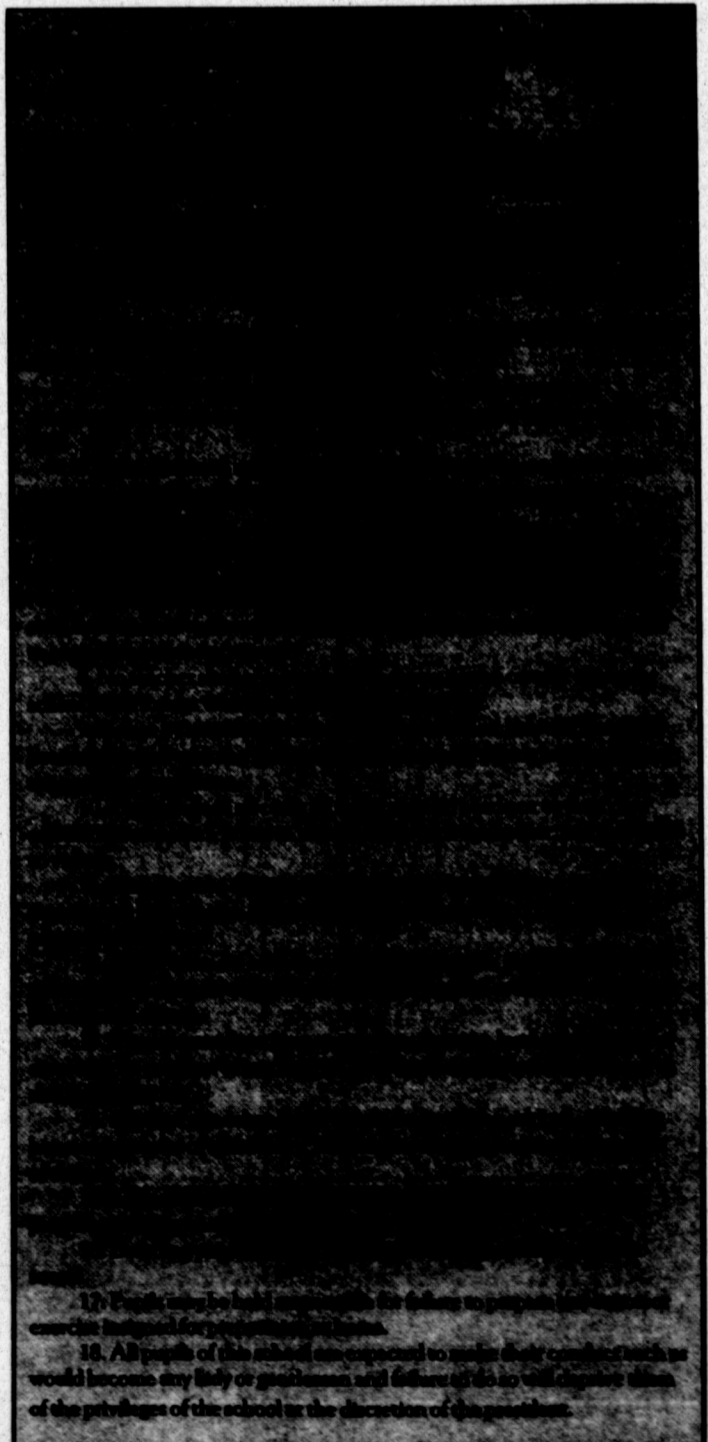
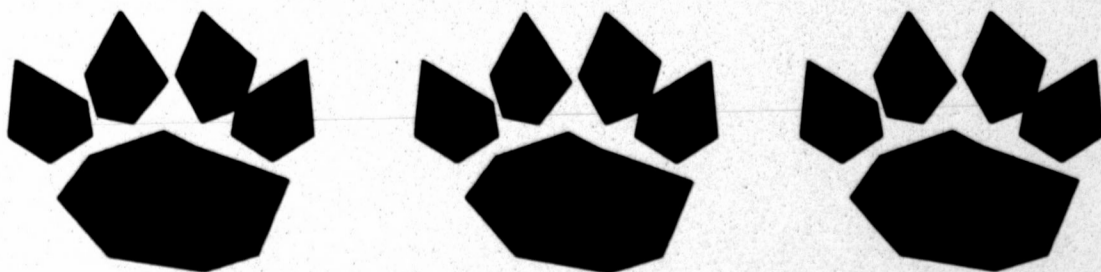
Much has changed since that time. Clarendon College is now home to a beautiful 30-acre campus, located just west of the city of Clarendon. Through a generous donation from the Harned Sisters, the college was able to construct a state-of-the-art campus, that has become home to thousands of students.

The next one hundred years looks to be just as rich for Clarendon College. Plans for a new Pampa educational center, a new Clarendon campus library and agricultural multi-center are underway. Other new additions include a new machinist workforce education program in Pampa and adding the sports of baseball and volleyball to the Clarendon campus.

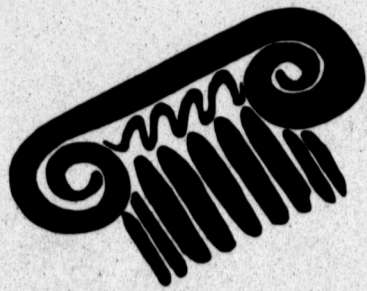
Please join us in celebrating our most special birthday. The Centennial Celebration is open to the public. Alumni are especially encouraged to "return home" to witness our progress and participate in a weekend of memorable activities. For more information about Clarendon College's Centennial Celebration, please call toll-free 1-800-687-9737, or (806) 874-3571.



Clarendon College's First Graduating Class (The class of 1904)
Seated: E. Rosemond Stanford, Maude McLean Standing: Effie Ferguson, Mary Peebles, Fletcher Isbell, W. Jesse Stanford



Centennial Celebration Activities



September 5-6
Clarendon, Texas



Come back home to Clarendon College to help us celebrate our 100th birthday! Our Centennial Celebration will begin Saturday, September 5, 1998, on the beautiful campus of Clarendon College.

Activities include class reunions, alumni BBQ dinner, historical re-enactments, dedication of Centennial monument, a 100th anniversary Alumni Photo, Centennial banquet and much, much more.

You and your family are cordially invited to attend this once-in-a-lifetime birthday party!

Clarendon College has changed and prospered since its founding in 1898. From our 5th street campus to our new campus on the hill, the college has been the educational home for thousands of students.

Clarendon College graduates are employed in all fields of work, around the world.

Mark your calendar now for this very special Centennial Celebration. For more information or for event tickets, please contact Clarendon College at 1-800-687-9737 or (806) 874-3571, or use the handy return card at the bottom of this page.



Saturday September 5

9 a.m.
Centennial Registration
Bairfield Activity Center

10:30 a.m. | 2 p.m. | 4 p.m.
Campus Tours
with
Student Ambassadors
Bairfield Activity Center

11 a.m.
Centennial Alumni Photo
All alumni and friends of the college are invited to sit for this once-in-a-lifetime photo!
Bulldog Gym

11:30 a.m. - Until Out of Food
Alumni BBQ Luncheon
Bairfield Activity Center
Sponsored by the CC Ex-Students Assoc.

3 p.m.
First CC Student Foot-Race
A re-creation of the famous 1898 race
Clarendon College Track
Sponsored by The Clarendon Enterprise

6:30 p.m.
Clarendon College Centennial Banquet
Featuring U.S. Representative Mac Thornberry
Dedication of Centennial Monument
Bairfield Activity Center
Sponsored by the CC Board of Regents

Sunday September 6

9:30 a.m.
Re-creation of College Marching to
First United Methodist Church
Meet at Clarendon High School on 5th Street



Show Your
Clarendon College Pride
With Our New Line
Of
College Clothing!

Yes, I Want To Be A Part Of Clarendon College's Centennial!

Please reserve me the following:

_____ Banquet Tickets @ \$10 per person (Steak/shrimp dinner. Seating limited to 300 persons)

_____ Saturday BBQ Tickets @ \$7 per plate

_____ Centennial Golf Shirt @ \$28 each Size: L XL 2XL 3XL
Quantity _____ Size _____ Total Cost _____

_____ Centennial T-Shirt @ \$10 per shirt (specify white or green) Size: M L XL 2XL
Quantity _____ Size _____ Total Cost _____

_____ Centennial Commemorative Coins @ \$10 each
Quantity _____ Total Cost _____

_____ Centennial ball caps @ \$12 each (Specify white/green low rise or green high rise cap)
Quantity _____ Style _____ Total Cost _____

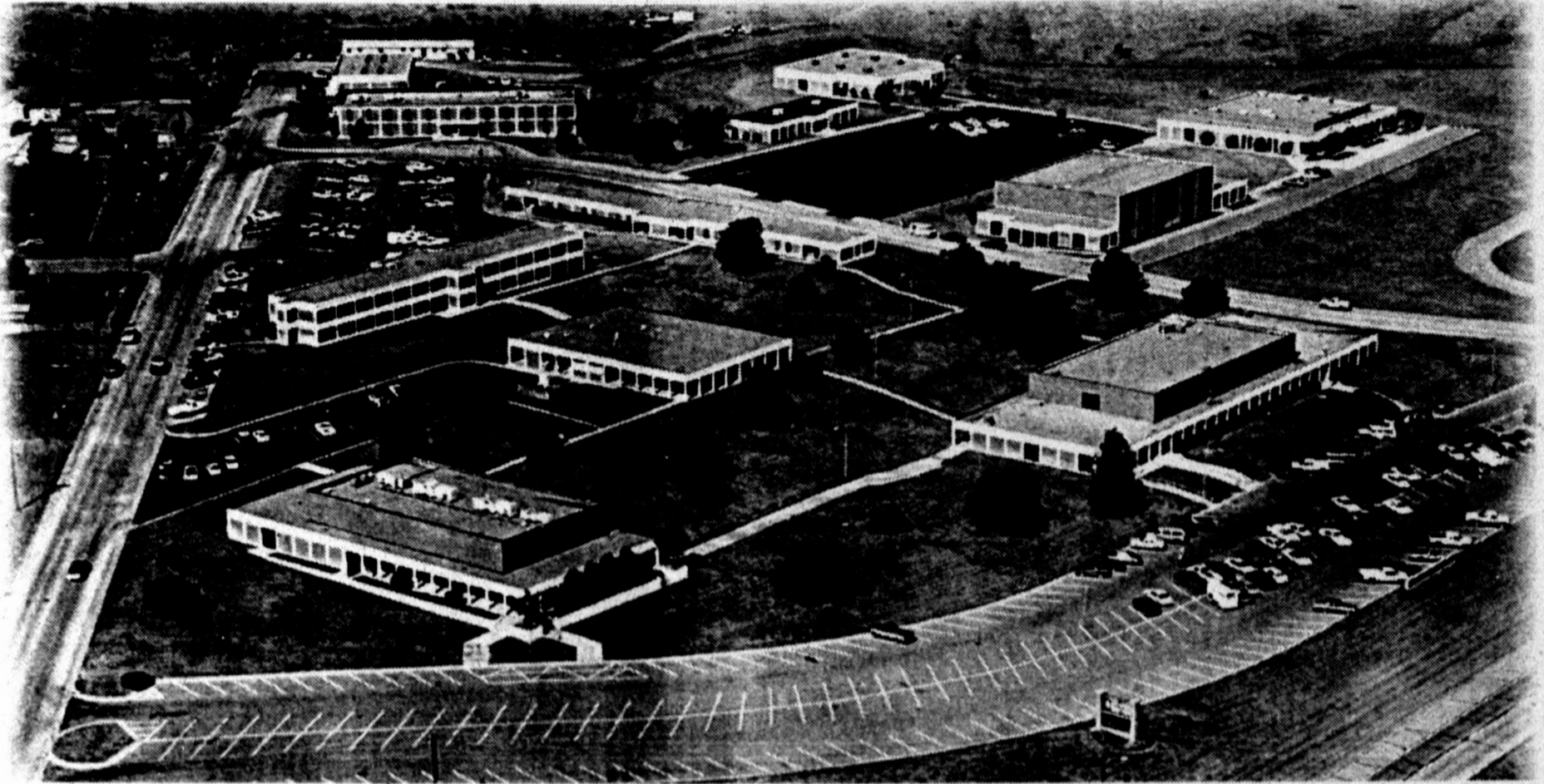
Total Amount Due: _____

Please mail your order to:
Clarendon College
Attr: Centennial
P.O. Box 968
Clarendon, TX 79226

Please
Print

Name: _____
Address: _____
City, State, Zip: _____
Home Phone: _____
Work Phone: _____

Clarendon College



As seen from the air, Clarendon College is proud of its beautiful campus. Situated on 30 acres, the college is home to students from more than 15 states and 14 countries. All classes are within five minutes walking distance from any of the four residence halls. The Clarendon College campus is easily accessed by U.S. Hwy. 287.

Campus TOURS

The best way to find out if a college is right for you is to visit the school! Take a day to check-out the campus, meet with faculty and visit with students. At Clarendon College we invite you to come spend the day with us!

When you call and schedule a Clarendon College visit, we can arrange for you to meet with Financial Aid staff. More than 70 percent of CC students receive some type of assistance, from scholarships and grants to loans. Remember, when meeting with Financial Aid about assistance, you need to bring copies of both you and your parent's 1997 federal income tax statements. A little prior planning will save you a lot of time later on!

Make plans now to visit Clarendon College. Through a campus visit you are able to meet instructors and students, check-out the classrooms and residence halls and see the sites of our beautiful campus. Plus, you will receive personal assistance when it comes to completing admissions, scholarship and financial aid applications.

By calling ahead, we can arrange for you to sit in on a class in your potential college major, tryout for choir, band, theatre and cheerleading scholarships, and even stay overnight in one of CC's residence halls. Plus, if you are interested in collegiate athletics we can arrange for you to meet with the CC coaching staff.

Scheduling a Clarendon College campus visit is easy. Just call the Admissions Office at 1-800-687-9737 and tell us the time and date of your arrival. This planning ahead will guarantee that we are able to meet your needs - whether it be arranging for you to sit in on a Fine Arts class, visit with one of our coaches or even to eat in our Dining Hall.

Students with reservations usually tour with one of Clarendon College's Student Ambassadors. These outstanding men and women represent a wide variety of backgrounds, organizations and clubs. By touring with an Ambassador, you'll find out about the college from a student's perspective. Ask the Ambassadors about campus food, residence hall life, academics and social activities. Remember, they've been here and done that!

1-800-687-9737

Toll Free

806/874-3571

Clarendon

806/665-8801

Pampa

