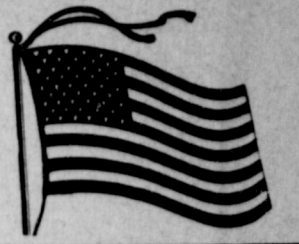


Weather

Table with 3 columns: Date, High, Low. Rows for January 15, 14, 13 and Precip. to date.

BAILEY COUNTY JOURNAL

'The Community of Opportunity-Where Water Makes the Difference'



Volume 15, Number 3

14 Pages

Published Every Sunday at Muleshoe, Bailey County, Texas 79347

10 Cents

Sunday, January 16, 1976

Local Bank Deposits Pass \$50 Million

Records Are Broken In Deposits, Loans

Did You Become A 1976 Statistic?

Chief of Police Buddy Black has released figures showing the total number of vehicle accidents, along with other factual figures, for the year 1976 in the city limits of Muleshoe.

Those were the most predominant in the figures compiled in the Muleshoe Police Department at the end of the year. According to the records, the days of the week and the number of accidents recorded were: Monday, 18; Tuesday, 13; Wednesday, 21; Thursday, 15; Friday, 18; Saturday, 38; and Sunday, 27.



NOTICE-PUBLIC: A public hearing is scheduled for 7 p.m. Tuesday, January 18, in the Muleshoe City Hall council chambers.

To be discussed will be proposed uses of Revenue Sharing Funds during fiscal year 1977-78. You are invited!

Jim Johnson, principal of Three Way High School, announces a Migrant and Title I Reading and Parental Advisory meeting on Wednesday, January 19, at 2:30 p.m. in the migrant room at the Three Way School.

Mrs. Oralia Bravo from the Education Service Center in Lubbock will present the program.

Susan Cardinal and Florene B. Platt, both of Muleshoe are among the 478 students named to the 1976 fall semester Dean's Honor Roll at Eastern New Mexico University, Portales, according to Dr. George Jones, vice president for Academic Affairs and Administration.

Cardinal is a junior majoring in elementary education, while Platt is a senior majoring in English.

Dr. Otis Gatewood was recently honored with the Distinguished Service Cross by Dr. Walter Scheel, president of West Germany. This award, given because Dr. Gatewood's work in Germany following World War II, is the highest civilian honor presented by Germany to foreigners.

Mrs. Beulah Gatewood is expected home from Temple by the weekend.

Mrs. Will Stacy, mother of LaNell STancell, has been released from the hospital at Kelleen.

Lions Club To Sponsor Handicapped

Lions Club President Bill Loyd announces that applications for a summer vacation full of fun for handicapped children in the Muleshoe area are now being accepted by members of the Muleshoe Lions Club.

Loyd said this unique Texas Lions Camp for Crippled Children at Kerrville will open its first two-weeks session Sunday, June 5, 1977. Four sessions will be held this summer for youngsters from seven through sixteen years of age.

The American Heart Association chapter in Bailey County will have Radio Day on KMUL in Muleshoe from 7 a.m. to 2 p.m. on Saturday, February 5.

According to a spokesman for the group, contributions of baked goods, handcrafts, paintings, pot plants, and other items will be more than welcome and appreciated.

Failure to yield right of way was the violation in 38 of the accidents; while close behind, backing without safety contributed to 26 accidents; following too closely was a contributor in 15 accidents; failure to control speed was a factor in 14 accidents; improper turn was the violation in 12 accidents; unsafe speed helped cause nine accidents; improper passing contributed to six accidents; changing lanes was a violation in five accidents; four accidents each were helped by persons charged with failure to control vehicle and driving while intoxicated, while 18 accidents were aided by miscellaneous offenses.

Would you believe that a whopping 125 accidents were when the weather was clear and the streets and highways dry? Only 12 accidents were checked on wet streets in cloudy weather and nine in cloudy weather on a dry street. Two were on ice, two in unknown conditions and one while it was snowing.

Only 17 of the 151 accidents were with injuries and no fatalities were recorded in the city limits of Muleshoe during 1976. Chief Black said the accidents were a 17 percent decrease over the 1975 figures. A total of 53 accidents were on American Blvd. with 10 being at the intersection of U.S. 70, Texas 214 and U.S. 84 (the Crossroads). Thirty-six accidents were on U.S. 70 and 84 west of the Crossroads and six on U.S. 84 east of the Crossroads. One of the accidents occurred at U.S. 84 and Main Street.

Twenty-five of the accidents occurred on Main Street in the 100 through 400 blocks; 15 on West Avenue B; six on West Avenue D; seven on South First Street; five on North First Street and five on East Third Street.

The chief said the problem area is still the four blocks of Main Street with 25 accidents on this four block section.

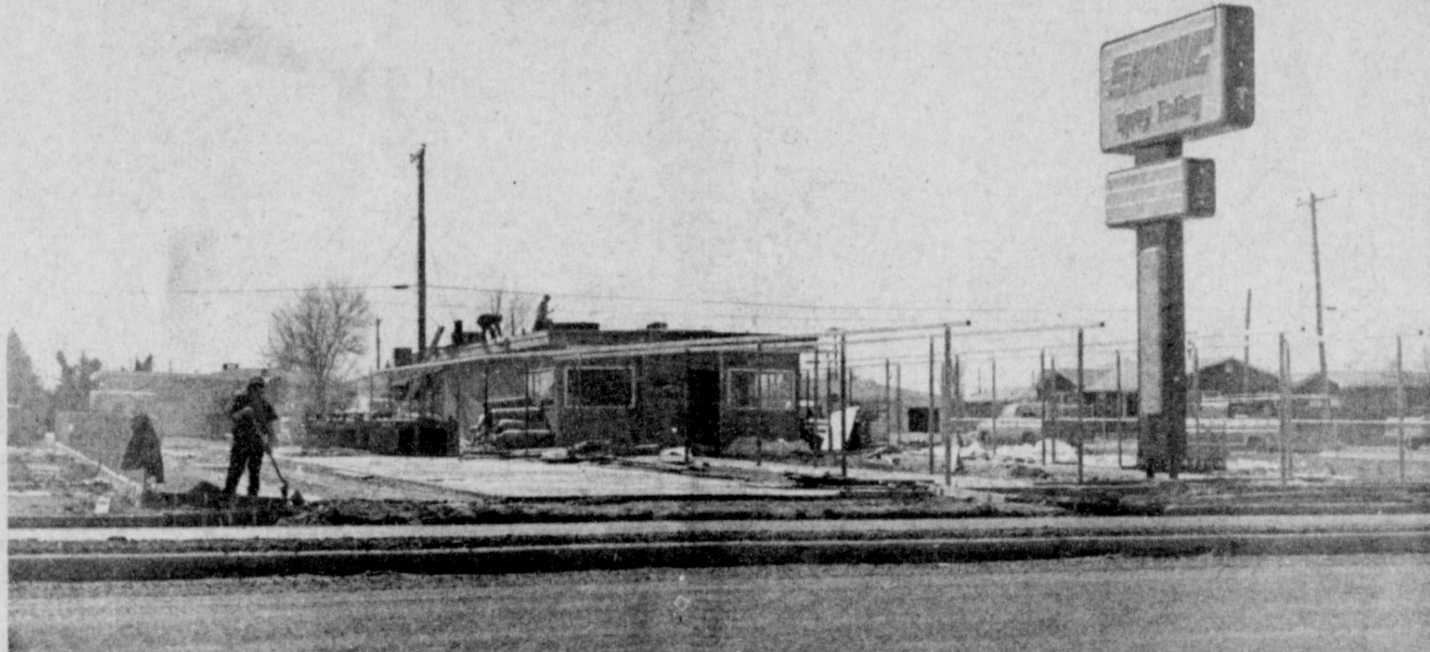
Heart Group To Have Auction On Radio Day

The American Heart Association chapter in Bailey County will have Radio Day on KMUL in Muleshoe from 7 a.m. to 2 p.m. on Saturday, February 5.

According to a spokesman for the group, contributions of baked goods, handcrafts, paintings, pot plants, and other items will be more than welcome and appreciated.

If you have items to contribute, call Diana Harrison at 272-5573 or leave items at Western Drug. To have items picked up, call Owen Jones at 272-3468.

All funds from Radio Day will be contributed to the American Heart Association.



THE SIGN OF HAPPY EATING . . . As workmen continue construction on the building and grounds for the new Sonic Drive In in Muleshoe, the sign which says "SONIC-Happy Eating" was put in place late last week.

West American Blvd. is expected to be opened for service in the near future. During the past week, a fence has been constructed and part of the concrete apron and driveways completed.

FIGHT CLOUD SEEDING

Weather Modification Opponents Organized

Because of intense opposition to proposed weather modification activities in the South Plains and High Plains, representatives from several counties met in Littlefield Monday night and organized "Citizens for Natural Weather".

The board members explained that the county representatives organized to discuss engaging legal counsel to file an injunction against the adjudicated hearing on weather modification scheduled to be heard in February and to prevent the issuing of weather modification permits.

A committee was appointed and was given the authority to engage legal counsel to protect the counties who are represented in Citizens for Natural Weather.

Other committee members named from Bailey County included Billy Marlow, M.L. Fine, Jack Schuster and J.R. Carter. Board members and others represented agreed that members needed to start collecting contributions for necessary legal fees to protect activities by weather modifiers. Farm owners are asked to contribute on the basis of ten cents per acre. No maximum limit for funds has been established.

First National Bank or in Muleshoe State Bank. Merlin Roberts, Cochran County Board member, said the people in the target area for suppressing hail contributed \$170,000 for the purpose of 'cloud seeding' last year. He explained the methods used by the weather modifiers included using silver iodide in small amounts to seed clouds for rain but that large amounts are used to suppress hail and therefore clouds that would hold moisture dissipate after the seeding is done with large amounts of silver iodide. He added that since most moisture moves into the area from a westerly direction, people on the west side of the target area are being dried out and kept dry.

The hearing before the Water Development Board for issuing a four-year permit for weather modification is scheduled February 16-18. This date is at least a month before a right-to-vote bill could be introduced in the state Legislature, so if the permit is granted, and the bill is subsequently passed, the bill would do no good until the weather modification permit expired in another four years.

A spokesman for the group said, "This is why we must organize immediately and raise the necessary funds to hire an able attorney and fight the Night School For Adults Is Underway"

Muleshoe Independent School District is offering a program of basic education for adults who have less than a high school education. Reading, writing, arithmetic, English, English-as-a-second language, and other subjects are taught, said Tom Jinks, director of special programs for the school district.

He said, "This program is designed to improve a person's ability to secure employment, qualify for a job promotion, achieve a certificate of high school equivalency, and to become a more effective consumer and a more active citizen."

Jinks added that the school is free and that classes meet from 7 p.m. to 9:30 p.m. Tuesdays and Thursdays in Rooms 21, 23 and 24 in the Junior high school building. Adults may also enroll and begin classes at any time during the school year.

Supplementary areas of instruction include consumer education, occupational opportunities and requirements, health education, citizenship, government, home and family life, science, history and literature. Special classes are also available for adults who cannot read, write or speak English. Jinks said for further information to contact him at 272-3911.



MARK E. HARBIN

Harbin Named Vice President Of Land Bank

Mark E. Harbin, son of Mrs. Dorine Harbin and the late Jay Harbin, has been promoted to Assistant Vice President of The Federal Land Bank of Houston, effective January 1, according to an announcement by George W. Cunningham, president.

Harbin, a native of Muleshoe, is a graduate of Muleshoe High School and attended South Plains College at Levelland. After serving in the U.S. Army, he attended Texas Tech University at Lubbock, where he graduated in 1971. Following a year as manager of a Colorado ranch, he became assistant manager of the FLBA at Dalhart; was assistant manager of the FLBA at Littlefield; and in June 1975 became manager of the Littlefield Association. He went to Houston as a loan and credit analyst in 1976. In his new position, he will serve as a credit officer and a credit reviewer.

The new assistant vice president is married to the former Mary Lynn Nixon of Floydada and they have a son, Jay Bradley, seven, and a daughter, Jeni D'Lyn, three.

New Member Is Installed For Rotary

Kerry Moore presented a film on what Rotary can do for community service as the program for the Muleshoe Rotary Club during their Thursday noon meeting. This was second of a series of films which are being shown to get acquainted with Rotary.

The film series is expected to be beneficial to new Rotarians and to visitors who can learn more about Rotary, explained a member of the local service organization.

Visitors at the meeting included Sherry Henry, Belinda Wheeler, Zane Lambert, Jack Young, Bill Denton, Bailey County Judge Glen Williams and student guest, Robert Barton.

Awards Set By Jaycees On Thursday

Muleshoe's Annual Bosses' Night Banquet is planned for Thursday, January 20, at 7 p.m. at the XII Restaurant, according to Lance Tucker, reporter for the host Muleshoe Jaycees.

Awards to be presented during the banquet include "Outstanding Young Farmer", "Merchant of the Year" and "Employer of the Year". The Jaycees also have an upcoming project, explained Tucker, which is Jaycees Radio Day at Radio Station KMUL on February 25. In conjunction with Radio Day will be the current flag project and the upcoming Miss Muleshoe pageant which will be in the spring, probably April or May.

Young Farmer Reorganization Slated Tuesday

Bill Bickel and Max Hyatt, agricultural instructors of Muleshoe High School have asked that all young farmers and persons interested in agriculture attend a special meeting this week.

A re-organizational meeting of Young Farmers will be at 7:30 p.m. Tuesday at the v.o.g. building at Muleshoe High School.

Formerly, a very active Young Farmers organization was in this county, however, as the former group became inactive, Bickel explained that the re-organization meeting will be to elect officers and schedule regular meetings for the educational group.

Smoking Film To Be Shown On January 17

Muleshoe's chapter of Smoker's Anonymous will meet at 8 p.m. on Monday, January 17, in the Tri-County Savings & Loan Association community room.

Headlining the program will be Tommy Black who will show a film and Howard Watson, who will narrate the film for the meeting.

Smokers who want to quit are especially invited to attend the meeting according to officers of the chapter. For further information, call Thresia Davis at 272-3467 or Paula Bruns at 272-3555.

Kiwanis Sees 'Smoking' Film During Meet

Back in full swing following Christmas holidays are the members of the Muleshoe Kiwanis Club, who had 20 members at their Friday morning meeting.

Featured was a new film by the American Cancer Society which showed the effects of smoking. Visitors at the meeting included Bob Wallace, who was a member of Kiwanis at Hurst, and who will transfer to the local Kiwanis; Jerry Hicks, who will be a new member, and Joe Neel, son of Kiwanian Merlyn Neel.

Gary Dale received the friendship dollar. Last week, special guest at Kiwanis was Dusty Davis, a college student, who was a guest of his fiancée, Kiwanis Sweetheart Merle Watson. She was presented the friendship dollar for bringing her special guest.

For apparently the first time in history, the banks in Muleshoe have passed the \$50 million mark with total deposits at the end of December 1976 at a whopping \$54,505,203.99. This is \$6,206,714.88 above the \$48,298,489.11 figure recorded by the banks at the end of December in 1975.

First National Bank showed deposits on December 31, 1976 at \$18,150,665.60, compared to \$17,254,606.22 at the end of 1975. During the same period of time, loans made by First National were \$9,481,111.62 in 1976, and \$6,552,886.64 at the end of December, 1975.

Muleshoe State Bank showed deposits on December 31, 1976, at \$20,267,000.00, compared to \$19,185,295.05 on the same date in 1975. Loans at the end of 1975 were \$10,773,000.00, up from the December, 1975 figure of \$9,129,787.05.

Tri-County Savings and Loan showed the greatest increase in deposits and loans during the year of 1976. Their deposits were \$16,087,531.39 at the end of 1976, compared to \$11,858,587.84 on December 31, 1975. During 1976, loans at the end of the year were \$17,141,125.74, compared to the end of 1975 figure of \$11,404,640.15 for an increase in loans of \$5,736,485.59 and an increase in deposits of

\$4,228,943.55. The increase is attributed partially to the other three area Tri-County Savings and Loan offices. In checking with six other banks in the area, total deposits for the Muleshoe banks and the other six banks show total deposits of \$135,302,717.04, which is an increase of \$8,700,294.15 over the December, 1975 figure of \$126,602,422.89 deposited in the nine banks. Muleshoe has recorded the majority of the increase with their \$6 million, plus deposits.

Citizens State Bank at Earth showed an increase in deposits during the past year of \$1,246,555.79 with \$8,963,000.00 in deposits on December 31 of 1976, as compared to \$7,716,444.21 on the same date last year. During the same period of time, their loans increased from \$5,080,405.44 to the December 31, 1976 total of \$6,471,000.00.

First National Bank at Sudan was down on deposits, but up slightly in loans at the end of 1976. On December 31, 1975, they showed deposits of \$5,649,328.49, down slightly to \$5,387,671.12, for a difference of \$261,657.37. During 1976, loans at First National Bank in Sudan increased from the December 1975 figure of \$1,289,273.62 to \$1,360,236.66, for an increase of \$70,963.04.

Security State Bank at Farwell was the only bank to show a decrease in both deposits and loans. Deposits on December 31, 1976 were \$2,178,782.74 less than the December 31, 1975 deposits of \$21,057,315.95 at a total figure of \$18,878,533.21. During the same period of time, loans were down in 1976 for a December 31 figure of \$4,890,728.79, which is \$4,688,282.03 less than the December 31, 1975 figure of \$9,579,010.82.

At Morton, First State Bank showed a slight increase in deposits, despite a drop in crop sales due to drought and a crippling hailstorm in the summer. Deposits on December 31, 1976 showed \$14,525,751.67, up a total of \$471,310.17 from the December 31, 1975 total of \$14,054,441.50. At the same time, loans were up \$1,311,779.60. The 1975 end of year figure was \$6,134,396.25 and the December 31, 1976 figure was \$7,446,175.85.

Friona State Bank was also up in both deposits and loans for 1976. On December 31, 1975, Friona State Bank recorded deposits of \$24,268,956.79. This figure was increased by \$1,532,043.21 to \$25,801,000.00. Loans on December 31, 1975 were \$14,099,511.40, up \$749,488.60 to \$14,849,000.00 at the end of 1976.

Bovina's First State Bank was up again in deposits at the end of 1976 after showing a slight decrease in the last bank call. They had increased for the year from \$6,557,446.84 on December 31, 1975 to \$7,241,564.05 at the close of business on December 31, 1976. This was an increase of \$684,117.21 for the year. Loans at the bank also were up slightly with \$4,405,922.57 being shown on December 31, 1976, compared to



FCU TO GIVE CB . . . Mrs. Owen Jones, who manages the local office of the Muleshoe Federal Credit Union, left, and Vic Benedict, show a CB Radio which will be given away by the FCU. A ticket is given for each \$5 share in the Credit Union during the time through March 11, when the radio will be presented during the FCU annual meeting.



it's Good!



# Country Basket SALE



A Great Country Meal and a Good Deal. You get both, with the 99c Country Basket Sale. The Country Basket, with chicken-fried meat strips, golden fries, Texas toast, and country gravy. If you like country cookin', you'll love The Country Basket. On Sale!

Tuesday through Sunday only - January 18-23

at participating stores.

## El Paso Conference To View Aggression

Seemingly more and more violence and aggression is noted each day in almost every facet of American life with many wondering if and when the spiral will stop.

In response to this buildup of both violence and aggression, the Texas Tech University School of Medicine (TTUSM) department of psychiatry, Office of Continuing Medical Education and the American Psychiatric Association are sponsoring a three-day conference entitled, "Violence and Aggression: A Perspective", in El Paso January 20-22 at the Hilton Inn.

Among the five-member faculty of the conference is psychiatrist Shervert H. Frazier Jr., M.D., with presentations on "The Murderer"; "Non-directed Violent Behavior"; and a two-part view of "Treatment Approaches".

Frazier, formerly of the Baylor College of Medicine department of psychiatry, is professor of psychiatry at Harvard University School of Medicine. He is probably best remembered for his examination of Charles Whitman, tower sniper at the University of Texas at Austin in 1966.

Also featured at the conference will be nationally known psychiatrist Louis Jolyon West, M.D., discussing "Behavioral Manifestation of Aggression"; "The Rapist"; "The Criminal"; and "Violence and Public Policy". The last topic has been added as a Thursday evening discussion. West was among the panel of

psychiatrists and psychologists appointed to examine Patricia Hearst after her arrest in 1975. He is professor and chairperson of the department of psychiatry and biobehavioral sciences at the University of California, Los Angeles.

According to James W. Larson, M.D., TTUSM psychiatry chairperson, the El Paso conference is designed to orient participants to different types of violent behavior. "It will explore different medical and sociological cause of violence," he said. "Treatment approaches and the effectiveness of treatment of various types of violent behavior also will be explored."

Other members of the conference faculty will be Alwyn Barr, Ph.D., professor of history at Texas Tech University presenting a "Historical Perspective: Violence in America"; Marvin E. Wolfgang, Ph.D., professor of sociology and law, University of Pennsylvania, with a "Sociological Perspective: Contributing Social Factors"; and Howard Gurevitz, M.D., assistant to the director, Department of Health and Welfare, San Mateo County, Calif., delivering "Legal Responsibilities and Implications for Psychiatrists". Dr. Wolfgang appeared on and was a technical advisor for the NBC television special "Violence in America" which aired January 5.

Approval of the conference for 16 hours of Continuing Education Credit in Category I of the American Psychiatric Association and the American Medical Association has been given. Elective credit of 16 hours has been accepted by the American Academy of Family Practice.

Registration fee for the meeting is \$165. Inquiries should be directed to the Office of Continuing Medical Education, Texas Tech University School of Medicine, Box 4569, Lubbock, Texas 79409. Tel. (806) 743-2929.

## Tax Form Due From Farmers

Farmers who have not filed their 1976 declaration of estimated Federal income tax must file and pay that tax by Monday, January 17. The sole exception to this rule is if they file their income tax return and pay the total tax due by March 1, the Internal Revenue Service said today.

Farmers are defined as those persons who earned at least two-thirds of their 1976 gross income from farming. "Farmer's Tax Guide", and 505, "Tax Withholding and Declaration of Estimated Tax", provide additional information and are available free at local IRS offices.

## New Victims Of Arthritis At 600,000

Over 600,000 men, women and children in the U.S. became new victims of arthritis in 1976, reports the West Texas Chapter of The Arthritis Foundation. More than 20 million Americans now have arthritis so seriously that they need medical care, including 125,000 right here in west Texas.

Some five million Americans have rheumatoid arthritis, the most crippling kind. This inflammatory disease usually strikes between the ages of 20 and 45, although it can even afflict children.

Osteoarthritis is the most common form. It is degenerative and usually much milder. Nearly everyone over the age of 60 has some degree of osteoarthritis.

Other types include bursitis, gout, scleroderma, ankylosing spondylitis, and systemic lupus erythematosus. The Arthritis Foundation says that arthritis, in all its forms, affects more people and causes more crippling than any other group of diseases.

To find out more, write for the free pamphlet "Arthritis - The Basic Facts". It's available from the agency's division office at P.O. Box 3335, Lubbock, Texas 79410.

Londonderry shopping area destroyed by fire bomb.

## Three Way School Menu

January 17 - 21 - 1977

- MONDAY**  
Roast Beef with Gravy  
Creamed Potatoes  
English Peas  
Hot Rolls - Butter  
Oatmeal Raisin Cookies  
Milk
- TUESDAY**  
Sloppy Joe on a Bun  
Sweet Potatoes  
Green Beans  
Bun  
Jelled Cranberry Sauce  
Pear Salad  
Milk
- WEDNESDAY**  
Pinto Beans  
Pepper Sauce  
Macaroni and Tomatoes  
Cabbage & Raisin Carrot Salad  
Cornbread  
Apple Cobbler  
Milk
- THURSDAY**  
Hamburger  
Catsup - Mustard  
French Fries  
Lettuce - Pickles  
Onions  
Bun  
Peach Half  
Milk
- FRIDAY**  
Chicken Salad  
New Potatoes  
Lettuce  
Carrot Sticks  
Hot Rolls  
Frosted Gingerbread  
Milk

## Belton Hearing Aids



KEN WADE

- \*Free Hearing Tests
- \*Clean And Adjust Hearing Aids
- \*Sell Fresh Batteries
- \*Clean And Service All Brands Hearing Aids

In Muleshoe the 2nd Wednesday of each month.

Highland Motel  
10:00 - 1:00  
2815 AVE. G  
LUBBOCK, TEXAS  
747-1675



# STOREWIDE STOCK REDUCTION sale

STARTS MONDAY 9A.M.

SAVE 25% TO 75%

LADIES & JUNIORS CORDINATES BY BRONSON PYKE ROYAL PACK STOCKTON SELECTED COLORS 1/2 PRICE

ENTIRE STOCK LADIES & JUNIORS WINTER COATS 75% OFF

BOYS & GIRLS SHIRTS TOPS SLEEPWEARS \$2 EA

MENS FASHION 3 PC. VESTED SUITS VAL. TO \$85.00 \$49

MENS 2 PC. KNIT CASUAL SUITS VAL. TO \$29 \$12.88 SUIT

MENS BLUE DENIM BIB OVERALLS \$8.88

LADIES FASHION LORRAINE LOUNGE & SLEEPWEAR 1/3 OFF

ENTIRE STOCK MENS BOYS GIRLS COATS 1/2 PRICE

MENS DRESS & SPORTS SHIRTS REG. VAL. \$8.00 \$3.22 EA.

LADIES & JUNIOR FASHION JEANS REGULAR \$13 TO \$20 \$7.88

SHOP HERE FOR MANY MORE FABULOUS SAVINGS MONDAY THRU SAT

GIRLS JEANS REG VAL TO \$8.95 \$3 GIRLS 3-6X 7 TO 14

PYKE PANTS & TOPS IRREGULAR OF REG. VALUE \$9 TO \$18 \$3

Deadline: January 15, 1977

SAVE UP TO 10%!

ON P-A-G SEED 5% CASH REBATE on certain size purchases of 11 or more bags when your signed order is on record by Jan. 15, 1977. 5% CASH DISCOUNT if you elect to pay for your P-A-G seed by Jan. 15, 1977. See your local P-A-G Dealer today.

P-A-G SX98 HYBRID FIELD CORN IS THE ONE TO PLANT FOR THIS AREA!

Yield/Acre at 15.5%*	% Head Smut	Tons/Acre Forage
210.68 bu.	0.5%	28.02

Results from Corn Disease Demonstration conducted by Dr. Robert W. Berry, Area Plant Pathologist, Texas Agricultural Extension Service, during 1976 on George Sides farm in Castro County. \*Complete results available upon request.

FOR MORE INFORMATION, CONTACT YOUR LOCAL P-A-G DEALER. P-A-G SEEDS, BOX 10303, LUBBOCK, TEXAS 79408







MR. AND MRS. A.T. PETERSON

**Get Invitation To Inauguration**

Although he regretfully said he and Mrs. Peterson would have to decline, A.T. Peterson was quite proud of an invitation they received in the mail a few days ago.

The Petersons received an invitation to attend and participate in the inauguration of Jimmy Carter as President of the United States of America and Walter Mondale as Vice President of the United States of America.

According to Peterson, the only reason he could think of that he would receive an invitation to the inauguration was because he sent the then-presidential candidate a letter during the debates preceding the election in November. He said that at the time he sent the letter, he received a card with President-elect Carter's picture.

The longtime area residents thus joined other area people who did not expect, but received, an invitation to the inauguration festivities in Washington, D.C. scheduled for later this week.

**Weather...**

Cont. from Page 1  
granted at this hearing, that we would also have sufficient funds to carry an appeal through the courts. In the meantime, we pray that the right-to-vote bill is passed," continued the spokesman.

"We decided in order to have the necessary funds, we will need from \$15,000 - \$25,000, so it was resolved by the group that the concerned people in the counties involved contribute 10 cents per acre of land, or in the case of other concerned persons not owning farm land, whatever they can spare. The money will be given in each county until needed, and with careful records kept so that unused funds could be returned to donors on a pro rata basis," he added.

The opponents of the weather modification groups have asked that everyone get involved and help protect the entire area and the economy of the area by helping stop the weather modification groups.

\*\*\*\*  
Never pay attention to those who say mean things about you; the probability is that the speakers reflect themselves.

**Heart Group**

**Will Obtain**

**Pressure Kits**

The Board of Directors for the American Heart Association met Friday, January 7, at the XII Steak House for a noon meeting. Those present were Sidney Baker, Regional Director, Lubbock; Mr. and Mrs. Don Seales, Bill Moore, Mrs. Boyd Magby, Mrs. John Watson, Paul Wilbanks, Joe Harbin, J.W. Coppedge and Mr. and Mrs. Owen Jones.

Mrs. Don Seales, president, discussed the obtaining of blood pressure kits to be obtained by the Association for local use. Bill Moore reported that John Blackwell and Jerry Mick had presented very good programs on the resuscitation and life saving to the Lions and Kiwanis clubs and a program is to be presented to the Girl Scouts very soon.

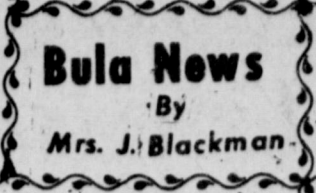
Campaign kick-off for the radiothon will be on Friday, February 4, and Radiothon Day will be February 5. Mrs. Sidney Baker, Regional Director, will be here to assist in the Radiothon.

**Deposits...**

Cont. from Page 1

\$3,879,104.56 on December 31, 1975 for a difference of \$526,818.01.

Bankers said the increased deposits were indicative of a 'tense' rather than a 'tight' economy and noted that as long as deposits and loans increased and stayed steady, it showed a fairly healthy economy throughout the area.



Mrs. Maggie Powell and daughter, Debra, of Denver City spent New Year's with Mrs. Quinell Young and her mother, Mrs. C.A. Williams.

\*\*\*\*  
Jeff and Jarrod Withrow accompanied a group of young people and their sponsors, from

the Sudan Church of Christ, on a snow retreat Wednesday until Friday, at Mayhill, near Cloudcroft.

\*\*\*\*  
Mr. and Mrs. Lewis Peacock and children, Elnora, Ruby, Lewis and Glenda, spent the holidays with relatives at Corpus Christi and Aransas Pass.

\*\*\*\*  
Visiting in the home of Chester Setliff over New Year's were his brother, Mr. and Mrs. Bennie Setliff and girls, Sandra and Melissa from Borger; Mrs. Daisy Rowland of Amarillo; Miss

Gladys Setliff of Hereford, and Mrs. Bernice Tarter and son, Jimmy, from Lubbock.

\*\*\*\*  
Mrs. John Hubbard spent New Year's day and Sunday visiting in the Bobby Hubbard home at Lake Ransom. She and her sister-in-law, Mrs. Billie Thompson, of Amarillo, spent Sunday night with Mrs. Laverne Hubbard in Lubbock.

\*\*\*\*  
Mr. and Mrs. Clyde Hogue spent New Year's day with their daughter and family, Ronnie and Arlene Fisher and children

of Littlefield. \*\*\*\*\*  
Mr. and Mrs. Nolan Harlan and son, John David, had New Year's supper at the home of their daughter, Rodney and Ann Marshall of Whitharral.

\*\*\*\*  
Mr. and Mrs. J.L. Cox and children, Jamie and Denene, did some deer hunting south of Sweetwater during the holidays.

\*\*\*\*  
Federal panel opposes system of identity cards.

**Bailey County Journal**  
Established March 16, 1923  
Published by Melvin W. Publishing Co., Inc.  
Every Sunday at 2:45 P.M. (except on 4th of July)  
MEMBER  
**TEXAS PRESS ASSOCIATION**  
J.R. Hall - President  
James Ward - Vice President  
C.L. Williams - News Editor  
Norman Blackburn - Secretary  
John H. Smith - Treasurer  
H.H. Moore - Advertising  
Spert H. Hall - Subscription  
SUBSCRIPTIONS:  
Monthly: \$3.00  
Quarterly: \$9.00  
Six Months: \$16.00  
Yearly: \$30.00  
Outside of Texas: \$35.00  
Single Copies: 10¢  
Member: 75¢  
Advertising rates on application

# WINTER CARNIVAL

## Pay-n-Save



**U.S.D.A. GRADE A COUNTRY PRIDE**

# Whole Fryers 43¢ LB.

U.S.D.A. GRADE A COUNTRY PRIDE <b>Cut-Up Fryers</b> LB. <b>49¢</b>	U.S.D.A. GRADE A <b>Fryer Breasts</b> LB. <b>99¢</b>	U.S.D.A. GRADE A FRYER <b>Thighs or Drumsticks</b> LB. <b>89¢</b>	(BACKS, NECKS, WINGS) <b>Dumpling or Stew Pack</b> LB. <b>29¢</b>
EXTRA LEAN <b>Ground Beef</b> LB. <b>98¢</b>	HORMEL <b>Little Sizzlers</b> 12 OZ. PKG. <b>89¢</b>	OLD FASHIONED MARKET CUT <b>Longhorn Cheese</b> LB. <b>\$1.59</b>	GOOCH <b>Hot Links</b> LB. <b>89¢</b>
<b>Grainery Specials</b>		EL JACALITO CORN <b>Tortillas</b> 40 CT PKG. <b>55¢</b>	FARM FRESH FROZEN <b>Catfish</b> LB. <b>\$1.59</b>
VAN CAMP <b>Pork &amp; Beans</b> 300 CANS <b>4 \$1</b>	GRANULATED <b>Shurfine Sugar</b> 5 LB. BAG <b>89¢</b>	<b>Shell Specials</b>	
DEL MONTE <b>Sweet Peas</b> 3 303 CANS <b>\$1</b>	SHURFINE <b>Chunk Tuna</b> 6 1/2 OZ. CANS <b>2 \$1</b>	<b>KRAFT Grape Jelly</b> 2 LB. JAR <b>89¢</b>	
HUNTS <b>Tomato Juice</b> 46 OZ. CAN <b>59¢</b>	SHURFINE CRUSHED OR SLICED <b>Pineapple</b> NO. 1 CAN <b>29¢</b>	<b>KRAFT 1000 ISLAND Dressing</b> 16 OZ. BTL. <b>98¢</b>	
DINTY MOORE <b>Beef Stew</b> 24 OZ. CAN <b>93¢</b>	DEL MONTE MANDARIN <b>Oranges</b> 11 OZ. CAN <b>39¢</b>	<b>JOLLY TIME Popcorn</b> 2 LB. BAG <b>59¢</b>	
<b>SHURFINE MACARONI &amp; CHEESE Dinners</b> 14 OZ. BOX 3 7 1/2 OZ. BOXES <b>\$1</b>		<b>PILLSBURY Figurines</b> 7 1/2 OZ. PKG. <b>\$1.29</b>	
<b>32oz. COKE ONLY 10¢ WITH PURCHASE OF A BROASTED CHICKEN</b>		<b>KRISPY Crackers</b> 16 OZ. BOX <b>2/\$1</b>	
<b>KRAFT DELUXE AMERICAN OR PIMENTO Cheese Slices</b> 12 OZ. PKG. <b>\$1.19</b>	<b>Breeze 10¢ OFF LABEL</b>	<b>COME TO PAY 'N' SAVE FOR YOUR W I C CARD PURCHASES</b>	
<b>PARKAY IN QUARTERS Margarine</b> 1 LB. PKG. <b>59¢</b>	<b>Breeze Detergent</b> GIANT SIZE BOX <b>\$1.29</b>		
<b>PLAIN OR JALAPENO Velveeta</b> 1 LB. BOX <b>\$1.29</b>	<b>ROXEY DRY Dog Food</b> 5 LB. BAG <b>89¢</b>	<b>WIN FREE CASH \$50.00 NEW EXCITING WEEKLY CONTEST</b>	
<b>MILD OR MELLOW CRACKER BARREL Cheese Sticks</b> 10 OZ. PKG. <b>\$1.19</b>	<b>PILLSBURY Biscuits</b> 3 8 OZ. CANS <b>47¢</b>		
<b>KRAFT STACK PACK AMERICAN Cheese Singles</b> 1 LB. PKG. <b>\$1.49</b>	<b>BIG JACKPOT DAY</b> GET YOUR JACKPOT DAY CARD PUNCHED		
<b>We Welcome USDA FOOD STAMP COUPONS</b>		<b>NOTHING TO BUY! YOU DO NOT HAVE TO BE PRESENT TO WIN! REGISTER JUST ONCE... AND GET YOUR JACKPOT CARD PUNCHED EACH WEEK AND YOU CAN WIN EXCITING CASH DOLLARS FREE! FREE! DRAWINGS</b>	
<b>POTATOES RULES</b>			
<b>ALL PURPOSE RUSSET 10 59¢ FREE CASH</b>			
<b>TEXAS RUBY RED Grapefruit</b> 6 FOR \$1	<b>SUPER SELECT Cucumbers</b> 4 FOR 49¢	<b>PAY &amp; SAVE</b>	
<b>CALIFORNIA GREEN Avocados</b> 5 FOR \$1	<b>CALIFORNIA ICEBERG Lettuce</b> 3 HEADS \$1		

**Farm-facts**  
A Weekly Report Of Agri-Business News  
Compiled From Sources Of The TEXAS DEPARTMENT OF AGRICULTURE  
John C. White, Commissioner

**Oink, Oink... Wheat Acres Decline... Crop Reports On The Way.**

Texas hog producers apparently see some dangers ahead in expanded pork production as they are planning to cut back on sow farrowings during the first half of this year.

The Texas Crop and Livestock Reporting Service notes that from now through May, Texas farmers intend to farrow 91,000 sows. This is two per cent less than the same period a year ago.

The December-February quarter is expected to show an increase of four per cent from a year ago, but the March-May quarter is expected to see a decline of nine per cent compared to a year ago.

Nationwide, by comparison, U.S. hog producers intend to farrow 6.1 million sows through May. This would be an increase of five per cent from a year ago.

As of Dec. 1, the inventory of all hogs and pigs in Texas was 850,000 head. This is nine per cent more than a year ago, but is ten per cent less than two years ago.

The number of market hogs totaled 731,000. This is 11 per cent more than a year ago. The breeding herd was 119,000 head. This is two per cent less than a year ago.

Across the nation, hog and pig numbers totaled 55,100,000. This is 11 per cent more than a year ago. The number kept for breeding, at 8,000,000, is five per cent more than a year ago.

The 1976 pig crop was 19 per cent higher than a year ago, which explains some of the reason for the drop in prices for hogs to producers.

**A STEADY SIX-YEAR INCREASE** in wheat acres nationwide has come to an end. But there still will be plenty of wheat.

The Texas winter wheat acreage expected for harvest in 1977 is now estimated at 6,150,000 acres. This is down five per cent from last year.

Based on Dec. 1 conditions, production is expected to total 98,400,000 bushels; this would be down five per cent from last year, but is still close to the 100 million bushel production for Texas that has been exceeded only twice since 1886.

Wheat seeding is complete in the state. Too much rain in some parts of the state prevented some farmers from completing planting. Cold weather has also reduced growth and has reduced the quantity of forage available for pasture.

Winter wheat acreage for the nation is set at 55,800,000 acres. This is a three per cent decline from last year. Based on Dec. 1 conditions, this would produce 1,438,000,000 bushels, which is about twice the amount that would normally be used in this nation.

**CROP REPORTS** coming out in the near future include the Jan. 17 annual crop summary. On Jan. 21, look for the prospective plantings for 1977 as of Jan. 1 intentions.

April 14 will be the date of the prospective plantings for 1977 based on April 1 intentions. May 10 is the date for the winter wheat production based on May 1 conditions. And June 8 is the date for the winter wheat production forecast based on June 1 conditions.





MR. AND MRS. THOMAS WILLIS

## Miss Seaton Becomes Bride Of Thomas Willis

In an afternoon ceremony, Miss Olena Ann Seaton and Thomas D. Willis of Lubbock, exchanged wedding vows. Rev. Frank Matthews officiated at the double-ring ceremony held Saturday, January 1, at the home of the bride.

Miss Seaton is the daughter of Mr. and Mrs. John L. Seaton of Lubbock. Mrs. Delena Willis of Dallas is the mother of the groom.

The altar was decorated with two seven branch candelabras with baskets of yellow and white daisies, spider mums and white carnations. Jim Johnson of Lubbock, brother-in-law of the bride, served as candlelighter.

The bride, escorted to the altar by her father, wore a gown of candlelight chiffon over taffeta with deep ruffles. A boat neckline was accented with double ruffles as were the long sleeves. Her bridal veil was of candlelight chiffon trimmed in lace extending to the floor with a headband of lace daisies and seed pearls. Her bouquet was of yellow and white daisies, baby's breath, mums and carnations with yellow streamers atop a white bible. The bride carried out the tradition of something old by carrying a bible, something new was her wedding dress, something borrowed was a pearl and diamond ring belonging to the groom's mother and something blue was her garter. The bride also wore pennies in her shoes minted in the date of their births.

Miss Connie McDonald of Lubbock served as maid of honor. She wore a floor length dress of floral dacron polyester with bell sleeves trimmed in lace. Miss McDonald carried a long stem-

med white carnation with yellow streamers.

The mother of the bride wore an aqua colored formal dress with matching jacket trimmed in lace. Her corsage was of white carnations. Mrs. Willis wore a beige dress and a corsage of white carnations.

Serving as best man was Ray Sellers of Seagraves, cousin of the groom.

Following the ceremony, a reception was held in the bride's home. A three-tiered wedding cake with a miniature bride and groom was trimmed with yellow and white roses and served with mints and nuts by Mrs. Jim Johnson and Mrs. James Ashley, both sisters of the bride. The bridal bouquet was used as

A match is a little thing but it can start a big fire.

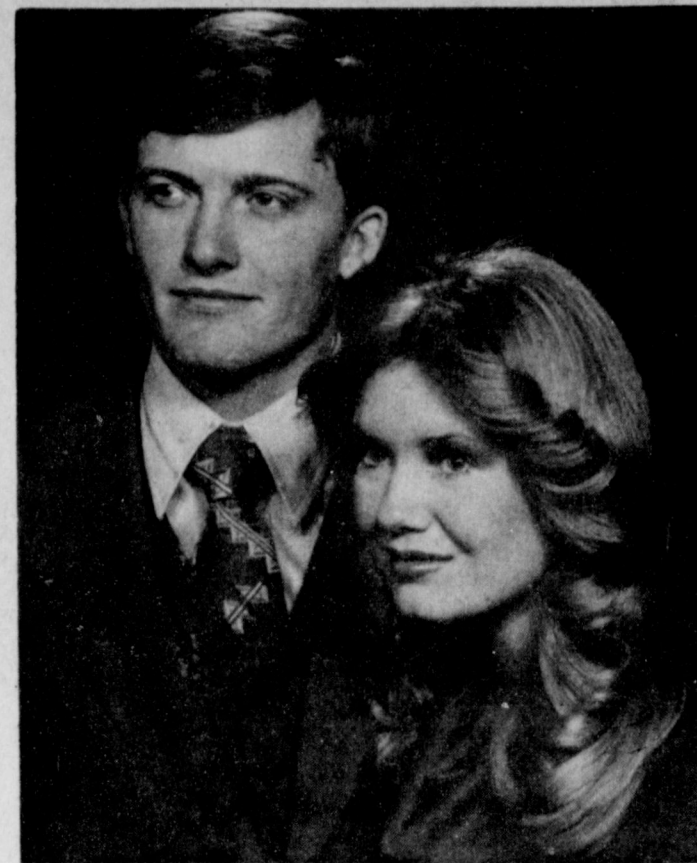
a centerpiece. The reception table held a single unity candle, lighted by the bride and groom.

Special guests at the wedding were Mrs. Delena Willis and Mary Tension of Dallas; Mr. and Mrs. H.A. Willis, grandparents of the groom; Mrs. Elmer Sellers and Mrs. Sarah Payne, grandmother of the bride.

The couple will be at home in Lubbock after a wedding trip to the Caribbean Islands.

The bride is a 1976 graduate of Lubbock High School and is presently attending South Plains College and majoring in Country and Western music.

The groom is a 1973 graduate of North Mesquite High School in Mesquite. He has attended Middle Tennessee State University and South Plains College majoring in business and computer science.



**SUMMER WEDDING PLANNED** . . . Mr. and Mrs. Kenneth Precure announce the engagement and approaching marriage of their daughter, Cassie, to Larry Shafer, son of Mr. and Mrs. Jim Shafer. Cassie is a 1973 graduate of Muleshoe High School and attended Howard Payne University in Brownwood. She is a senior at Eastern New Mexico University and will receive her degree in Psychology in May. Shafer attended West Texas State University and is now Cadet First Class at the United States Air Force Academy in Colorado Springs, Colo., where he will graduate with a degree in Financial Management in June, and will receive his commission into the Air Force. They will be married Sunday, June 5, at 3 p.m. at the First Baptist Church of Muleshoe.

### Consumer Food News

**COLLEGE STATION** -- After-holiday grocery buying reflects several "specials" in meat and produce departments of most stores across Texas.

Meat features are spotlighting fryer chickens and turkey, according to Mrs. Gwendolyn Clyatt, consumer marketing information specialist with the Texas Agricultural Extension Service, The Texas A&M University System.

"As economical pork cuts, consider Boston butt roast, end chops, shoulder steaks and liver."

"For beef economy, look for specials on chuck roasts and steaks, round steaks, ground beef and liver," she advised.

Along grocery store aisles, consumers can find specials on

canned vegetables, which are in heavy supply -- including lima beans, green peas, sweet corn, carrots and beets.

Also, in frozen food sections, look for lower prices on orange juice and a variety of vegetables.

Fresh fruit and vegetables in best supply at the most economical prices include apples-by-the-bag, bananas, oranges, grapefruit, tangerines and tangelos -- along with cabbage, carrots and potatoes, as well as dry yellow onions, turnips, rutabagas and hard-shell squash.

**CONSUMER WATCH-WORDS:** In buying fryers, it's more economical to buy the whole bird and cut it up at home -- if all parts are used.

Don't expect everyone to agree with you; variety of opinion is what makes the world interesting.

### Llano Estacado Chamber Banquet Feb. 1

The Llano Estacado Civic Club met Tuesday, January 11. The meeting was called to order by the president. The creed was read.

Mrs. Beulah Newton of Earth gave a demonstration on make-up. She is a representative of Mary Kay Cosmetics.

A letter requesting membership from Sandra Hopper was unanimously accepted.

Mrs. Jesse Bryant received an invitation to a luncheon at West Texas State University Saturday, April 23, for the presentation of the Texas Panhandle Awards to Distinguished Women.

The Chamber Banquet has

Getting along amicably in life is largely a problem of getting along with people just about as good as you are.

aid the elderly who need assistance in their own homes. This program is highly successful in Lubbock and is to be promoted in surrounding areas, including Muleshoe.

The Young Homemakers will help with a Valentine party at the Muleshoe Nursing Home on Friday, February 11, and on Tuesday, February 15, the Young Homemakers will have a birthday party. Each member is to bring a secret pal gift.

Mini-activity day is planned for Thursday, March 17. Area Young Homemaker clubs will be invited to Mini-activity day which consists of a luncheon and several programs.

On Tuesday, January 18, the Young Homemakers will be selling sandwiches, brownies, coffee and donuts at the Gene McGuire farm sale.

Those present were Mrs. Randal Copley, Mrs. Wayne Copley, Mrs. Raymond Davenport, Mrs. Gary Elliott, Mrs. Johnny Estep, Mrs. John Jones, Mrs. Lanny Knowles, Mrs. Lionel Lane, Mrs. Sandy Noble, Mrs. Brian Noble, Mrs. Mike Richardson, Mrs. Mac Hodges and Mrs. Rod Springfield.

Too much talk loses most arguments.

### TOPS Has Weekly Meeting

TOPS Club met Thursday, January 13, in the Bailey County Electric Cooperative meeting room. Twenty-four members were present for weigh-in, with a visitor, Mrs. Gladys McAlister from New Mexico.

Mrs. Ronnie Garner drew canon, but could not accept.

TOPS Queen of the Week was Mrs. Bill Snell. First runner-up was a tie between Mrs. Dale Griswold and Mrs. Harvey Whittenburg. Second runner-up was Mrs. Lauranette Mason.

### Frank Ford Speaker At United Methodist

The United Methodist Women will observe their annual call to Prayer Self-Denial Service, Monday, January 17, at 7:00 p.m. in the Fellowship Hall of the First United Methodist Church.

All women are encouraged to join in this self-denial meal.

A covered dish dinner and program has been set for Sunday, January 16, at 6:30 p.m. with Frank Ford of Herford as the guest speaker. Ford, a dedicated layman, is the owner of Arrowhead Mills.

The majority isn't necessarily right.

### Janet Miles Guest Of Young Homemakers

The Muleshoe Young Homemakers met Tuesday, January 11, at the Muleshoe State Bank Community Room.

The program was presented by Janet Miles of Texas Tech University. Ms. Miles is Assistant Director in charge of publicity for the Model Rural Project for Homemaker Service Aid Program to the elderly. The purpose of this program is to

**FREE Underpinning or Storage Building  
with any Purchase  
during January**

SAVE \$1,422.52  
on this 14 x 70, 3 bdrm, 2 bath  
WAS \$12,939.52.....NOW \$11,517.00  
(Masonite Siding)

SAVE \$1,794.28  
on this 14 x 80, 3 bdrm, 2 bath  
WAS \$13,820.28.....NOW \$12,026.00

SAVE \$1,193.00  
on a 14 x 60, 2 bdrm, 1 bath  
WAS \$8,595.00.....NOW \$7,402.00

PLAINS MOBILE HOMES  
3017 Dimmitt Hwy.  
Plainview, Texas 79072  
(806) 293-4346

Above Prices Include Delivery and  
Set Up Within 150 Miles of Plainview, Texas  
VA & FHA Loans

**FINAL CLEARANCE  
LADIES SHOES**

**DRESS or CASUAL**

**NO LAY-A-WAYS NO REFUNDS NO EXCHANGES**

**OPEN 8:30 A.M.**

**TOWN & COUNTRY  
CONNIE SCHOLL**

**ONE LOW PRICE  
VALUES TO \$24.00**

**\$ 9.95**

**St. Clair's**

110 MAIN

MULESHOE

PH. 272-4453

### YOU CAN BANK on It!

Bill Loyd, President  
Muleshoe State Bank

Commonly called the FDIC, the Federal Deposit Insurance Corporation was created by Congress in the Bank Act of 1933, and became effective on the first of January, 1934, during the depths of the Great Depression.

Deposits in virtually all banks in the country are insured up to \$40,000 by this agency of the federal government. Coverage extends to bank checking accounts, savings accounts and certificates of deposit.

Increases in the amount of the insurance stand as something of a yardstick to measure the affluence and savings habits of Americans. When the FDIC first began insuring accounts the limit was \$2,500. That amount has steadily increased up to the present level which went into effect on November 27, 1974.

Contrary to some misconceptions, this valuable service is not financed by the government, but rather by the banks themselves. Presently, banks are assessed one-half of one percent of their year-end deposits.

**NEW  
AT  
CHICK-A-DEE**

**SPECIAL GOOD JAN. 12-22**

**INTRODUCTORY OFFER**

**STEAK  
FINGERS**

Made From Batter Dipped

Tenderized Round Steak

Fried To Golden Brown.

REG. \$1.99 **\$1.49**

**SEA  
FOOD**

**10  
SHRIMP**

With Fries  
& Roll

REG. \$1.99

**DARK MEAT  
CHICKEN**

No. 4 3 Pcs.

REG. \$1.79

**\$1.49**

**Chick-A-Dee**

1522 W. Amer. Blvd.

Ph. 272-4323

**SIMPLICITY  
& McCALL'S PATTERNS**

**Entire Stock**

**1/2 Price**

**Entire Stock  
Sewing Notions**

**1/2 Price**

**St. Clair's**





MRS. JEAN LYLES

### Jean Lyles Guest Of Art Association

Jean Lyles of Hereford was guest artist for the Muleshoe Art Association Tuesday, January 11, in the Muleshoe State Bank community room.

Mrs. Lyles grew up in West Texas. Her paintings depict the skies and rugged mountains of New Mexico and the landscape of Texas Panhandle. Old houses

and windmills appear frequently in her work.

Mrs. Lyles studied at West Texas State University, Canyon, with noted artists Ronald Howerton, Marlin Enabnet, Stephan Kremer and Sinthia Guzevich.

Her art work hangs in Texas Galleries in Hereford. She also has a studio in Conquistador Gallery in Taos, N.M.

It's time to make plans for a summer vacation.

### Christian Women Fellowship Meet

The Christian Women's Fellowship of the First Christian Church met Tuesday, January 11, in the home of Mrs. Sylvan Robison.

Vice president Levina Pitts, called the meeting to order. Mrs. Bobby McGee, secretary-treasurer, read the minutes of the previous meeting and gave the financial report.

Mrs. McGee presented the program which was chapter three and four of the book of Acts. For the worship, she discussed the importance of harmony and some of the interruptions of harmony by war, evil tongues and writings.

**Hopeless**  
No matter how much you nurse a grudge, it won't get better.

-Journal, Petersburg.

**The Only Way**  
It takes hard work to make easy living.

-Globe, Boston.

**Sugar Coated**  
Darling, this cake is delicious. Did you buy it yourself?

The next meeting will be in the home of Mrs. T.R. White February 8, with Levina Pitts in charge of the program.

Those present were Mrs. Bobby McGee, Mrs. Levina Pitts, Mrs. Walter Bartholf, Sr., Mrs. Joe Costen and Mrs. Sylvan Robison.

### West Plains Medical Center Briefs

**ADMISSIONS**  
January 11 - Earlton Wall and Juanita Busby.  
January 12 - Betty Jennings, Maxine Smith and Goldie Dirickson.  
January 13 - Viola Layne, Robert L. Marshall, Lucille Scheller and Winnie O. Davis.  
January 14 - Robert Donaldson, Rhonda L. Bently, Cuca Cuevas, Lena Macey and A.P. Childers.

**DISMISSALS**  
January 12 - James Curtis, Wanda Gramling, Darla Stormes and Lucille Wills.  
January 13 - Maxine Smith and George Cabrera.  
January 14 - Holly Ann Mill-sap.



#### Kimberly Renee

Mr. and Mrs. Robert Redden of Amarillo are the proud parents of a new baby girl born January 4, at 10:53 p.m. in High Plains Baptist Hospital in Amarillo. The baby weighed seven pounds and eleven ounces and was named Kimberly Renee Redden.

She is the couple's second child.

Grandparents are Mrs. Aileen Sierwert of Muleshoe and Mrs. Mavis Orgain of Dickson, Tex. Great-grandparents are Mr. and Mrs. L.H. Welch of Tulla.

#### Freddy Dwayne

Mr. and Mrs. Dwayne Martin are the proud parents of a new baby boy born Tuesday, January 11, at Amherst. The baby weighed five pounds and eight ounces and was named Freddy Dwayne Martin.

Grandparents are Mr. and Mrs. Merle Barnhouse of Muleshoe.

White plastic furniture, tableware, stack-storage canisters and cookware for the kitchen is being shown.

### Tips On Cranberries

**COLLEGE STATION** -- Cranberries are one of the oldest fruits in America. Indians first used cranberries to make pemican -- a high-energy, food prepared from dried meat and fruit. Throughout the year, this native, traditional fruit has been served on American tables -- especially around holiday time.

Mrs. Sally Coble provided some consumer tips to buy and use cranberries. She is a foods and nutrition specialist with the Texas Agricultural Extension Service, The Texas A&M University System.

**How To Choose**  
Fresh cranberries -- look for plumpness, good color and uniformity in size. Don't buy cranberries that are crushed and leaky -- they may be off-flavor. Usually cranberries are packaged in one-pound film bags or in boxes with windows for viewing -- look through and choose well. You may even freeze your own because no processing is required. Put the original package in the freezer and enjoy them year around.

**Frozen cranberries** -- these are packaged in 12- or 16-ounce packages and are frozen with no sugar added, and, after defrosting, should be used exactly like fresh berries.

**Canned cranberry sauces** -- choose either jellied or whole berry styles, either should be firm enough to hold its form for serving. In whole-berry sauce, the skin particles and semi-jellied portions are reasonably tender and the fruit, seed, and skin particles dispersed uniformly.

**And How To Use**  
Cranberries may be used in turkey stuffing -- in a juice cocktail, spicy with cloves and cinnamon -- as a relish -- as ice cream or ices -- in fruit salads, fruit molds and in combinations with other fruits.

There's baked cranberry walnut relish, cranberry surprise salad, cranberry raisin sauce for baked meats, cranberry pink fluff, or how about cranberry wassail or cranberry bouillon.

**Cranberry Crunch**  
1 cup uncooked rolled oats  
1/2 cup flour  
1/2 cup brown sugar  
1/2 cup butter or margarine  
1 pound can cranberry sauce (whole or jellied)

Mix oats, flour and brown sugar. Cut in butter or margarine until crumbly. Place half of this mixture in an 8- by 8-inch greased baking dish. Cover with cranberry sauce. Top with balance of mixture. Bake 45 minutes at 350 degrees F. Serve hot in squares topped with scoops of vanilla ice cream. Serves six to eight.

#### Cranberry Apple Relish

1 large apple  
1/2 cup lemon (rind and pulp)  
1 can whole cranberry sauce  
Quarter and core apple; put apple and lemon through food chopper. Stir in cranberry sauce. Chill in refrigerator an hour or more. Makes about one pint.

#### Grilled Pork Chop Platter

5 pork chops  
5 slices canned pineapple  
1 tablespoon melted butter  
2 tablespoons brown sugar  
1/2 cup cranberry sauce, drained of juice  
Broil chops and season. Brush pineapple slices with melted butter; sprinkle with brown sugar and brown in broiler during last five minutes chops are cooking. Arrange chops and grilled pineapple slices on hot platter and fill centers of pineapple with drained cranberry sauce.

#### Cranberry Nut Bread

2 cups sifted flour

### For The Record

Tips On Choosing And Using Your Record Player

To be eligible for warranty service you are sometimes required to fill out and mail a warranty card that is packaged with the equipment. It's a good idea to do this as soon as you unpack the unit. Also, file the sale slip above should proof of the purchase date be required later, say the experts at the Electronic Industries Association.



If there's no power coming in to your stereo unit, before you call the repairman, check to see if your unit is plugged in. If it is, check the fuses in the rear of your receiver. If one has burnt out, it is very inexpensive to replace.

1/2 cup sugar  
3 teaspoons baking powder  
1 teaspoon salt  
1/4 teaspoon soda  
1 teaspoon cinnamon  
1/2 cup chopped walnuts  
1 egg, beaten  
1 cup drained, canned whole cranberry sauce  
1 teaspoon grated orange peel  
2 tablespoons shortening, melted  
Sift together dry ingredients; add nuts. Combine egg, cran-

berry sauce, orange peel, and shortening. Blend in dry ingredients and stir until just moistened. Mixture will be thick. Pour into greased 9- by 5- by 3-inch loaf pan. Bake in moderate oven (350 degrees F.) 45 to 50 minutes. Cool on rack.

\*\*\*\*  
Non-essentials take up too much time in life but why be different from those about you?

*Fashion*  
Raincoats are being shown with detachable hoods.

A combination of corduroy and leather is being used to fashion jackets worn with pants.

For dress-up occasions the silk outfit consisting of pants jacket and bodice is being shown in shops.

## Cobb's presents Hanes Winter Wonderful Sale

Start off your new year right with this bargain blizzard on famous Hanes® hosiery.



**Alive® PANTYHOSE**  
Regularly \$5.95  
**NOW ONLY 4.95**  
You save 1.00



**Ultra Sheer PANTYHOSE**  
Regularly \$3.00  
**NOW ONLY 2.50**  
You save .50



**Everyday® PANTYHOSE**  
Regularly \$1.95  
**NOW ONLY 1.60**  
You save .35

Get your Winter Hosiery Wardrobe Now. Sale lasts January 14 - 22 • In our Hosiery Department

### LOUISA'S LETTER



Dear Louisa,  
What do you do when your family gets so numerous that you can't get them into your house for a meal on special occasions?  
Since the children are married, with families of their own, and aunts and uncles are still living, it is impossible to leave anyone out as we have always celebrated the holidays at our house.  
I started one year to have the youngsters early in the day and the older ones later on but that didn't seem to work out. The older ones enjoyed seeing their children around the family tree.  
Have you any suggestions?

Puzzled-Kans.

Answer:

I think your best plan would be to have a buffet style dinner. Put your food in dishes on the table or side tables and let the folks serve themselves and also look after their own children.  
Small tables, cardtables or TV trays could be used in several rooms. Teenagers could help in serving drinks or hot rolls.  
If this is not feasible you might divide the families and have one group for Christmas and the other for New Years Day.

Louisa.  
Address letters: Louisa, Box 532, Orangeburg, S.C. 29115

Pictures Will Be Taken Jan. 21



**BIG 8x10 LIVING COLOR PORTRAIT**

AT **99¢**

Plus 76¢ for handling



Compare at \$25.00!

- GENUINE NATURAL COLOR PORTRAITS Not the old style tinted or painted Black & White photos.
- SELECTION OF PROOFS 4-6 Poses to choose from.
- FOR ALL AGES Babies, children, adults. Groups photographed at an additional small charge.
- FREE TO ALL SENIOR CITIZENS Free 8x10 living color portrait to all customers over 60 years of age.
- LIMITED OFFER! One per subject, one per family.
- Advertisers Special Head & Shoulders Only
- PHOTO CHARMS AVAILABLE TO CUSTOMERS

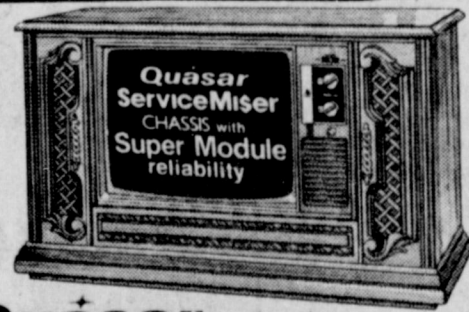
TELL YOUR FRIENDS ABOUT THIS SPECIAL OFFER

**Western** auto associate store the Family Store  
320 MAIN ST. MULESHOE, TEXAS 79347



**12" diagonal** Model WP3404NW.  
**Quasar PORTABLE COLOR TV**

Supracolor System... picture quality that challenges all others. In-Line Matrix Picture Tube with additional pre-focus lens. Weighs only 28 lbs. Low energy use.  
**\$268<sup>88</sup>**



**Quasar 25" WORKS IN A DRAWER. CONSOLE COLOR TV**  
100% Solid State "Service Miser" Chassis featuring the Super Module. "Super Insta-Matic" Color Tuning. Matrix Plus Picture Tube. Low energy use. 2-6" x 4" speakers. Pecan grain finish on hardboard and select hardwood solids with simulated wood material. Casters. Model WL9316NP.  
**\$699<sup>95</sup>**

One Year Free Service On All Console Models



**19" diagonal** Model WT 5800  
**Quasar Color TV**

Supracolor System... picture quality that will amaze you. Low energy use. In-Line Picture Tube. Automatic Fine Tuning.  
**\$368<sup>88</sup>**

you can depend on **Quasar**  
**HARVEY BASS**

# SUPER Clearance

One Table Printed Double Knit REMNANTS <b>\$1.00</b> Yd.	One Large Group DOUBLE KNITS Over 10,000 Yds. Malouf's Reg. Price \$2.97 Yd. <b>\$1.49</b> Yd.	Our Finest DOUBLE KNITS <b>\$2.97</b> Yd. Values To \$4.00	Flat Folded CORDUROY <b>\$1.00</b> Yd.
PILON For Linings And Interfacings 5 Yds. <b>\$1.00</b>	QUILTED POLYESTER Reg. \$2.49 Yd. <b>\$2.49</b> Yd.	CRUSHED VELOUR <b>\$1.97</b> Yd. Value	POLYESTER AND COTTON <b>\$1.49</b> Yd. Reg. \$1.98 Yd. Values
EYELET GINGHAM Yd. <b>\$2.49</b>	CRINKLE CALCUTTA 65% Polyester-35% Cotton Machine Washable <b>\$1.97</b> Yd. Value	Jersey Print REMNANTS 3 to 6 Yd. Pieces <b>59¢</b> Yd.	Flat Fold HERCULON UPHOLSTERY FABRIC <b>\$2.97</b> Yd.
LEVIS 501 Shrink To Fit <b>\$10.97</b> Value	TONY LAMA 1st. Quality BOOTS Your Choice Of 15 Styles All Sizes <b>\$49.93</b> Only	Men's Double Knit '24" Value Western Style Sizes 28 To 44 <b>\$10.97</b>	SADDLEMAN'S JEANS <b>\$11.99</b> Value
LEVIS 501 Shrink To Fit <b>\$10.97</b> Value	Men's Double Knit '24" Value Western Style Sizes 28 To 44 <b>\$10.97</b>	PANATELLA SLACKS <b>\$9.97</b> By LEVI '14" Value	500 Pairs of Men's Pants CORDUROY & BRUSHED DENIM Sizes 28-31 <b>\$3.97</b>
Cambridge Dress SHIRTS Value to \$18 <b>\$8.97</b> Value	Men's Double Knit '24" Value Western Style Sizes 28 To 44 <b>\$10.97</b>	Ladies Double Knit PANTS '19" Values <b>\$5.97</b>	Big Stock of MEN'S QUILTED NYLON JACKETS '19" Values <b>\$10.98</b>

DON'T MISS MALOUF'S BIG ANNUAL JANUARY CLEARANCE SALE. MANY MORE BARGAINS THROUGHOUT THE STORE.

**MALOUF SHOPPING CENTER**  
410 W. 12th FRIONA, TEXAS



## STATE CAPITAL Highlights AND Sidelights

by Lyndell Williams  
TEXAS PRESS ASSOCIATION

AUSTIN — A new \$1 million program designed to catch dope smugglers along the 800-mile Texas-Mexico border has been approved.

Gov. Dolph Briscoe's Criminal Justice Division authorized a grant for the Department of Public Safety project, which will include a helicopter patrol.

Atty. Gen. John Hill, who had been turned down on a smaller request to step up his investigation of the narcotics traffic in Starr County, applauded approval of the DPS grant and welcomed cooperative efforts of state and federal

agencies.

Smuggling of marijuana, heroin, automobiles, people and securities will be the target of the DPS special unit.

Undercover and un-informed agents and civilian back-up personnel will work with DPS officers already assigned to the South Texas area.

About four to five million pounds of marijuana

are distributed in Texas each year with an annual dollar volume of between \$360 million and \$675 million. Mexico has replaced Asia as the primary source of heroin in Texas.

Under the budget for the "South Texas Border Stepped-Up Law Enforcement Program" \$400,000 will go to purchase of evidence, surveillance, expenses and informer fees. Helicopter operations are

budgeted at \$135,000 and other transportation and office expenses for \$144,400.

Another \$94,242 will go to personnel, \$261,800 for travel, \$30,000 for upgrading radio communications equipment and \$9,838 for office equipment.

Implementation of the project by DPS began immediately.

**Briscoe Unhappy**

Gov. Dolph Briscoe frowned on proposed acquisition of "mitigation lands" to ease environmental impact of Palmetto Bend project on the Navidad River near Edna.

Briscoe expresses himself to the Department of Interior in response to an official inquiry as to his position on the issue.

The U.S. Fish and Wildlife Service and some environmental groups want to establish a 4,000 acre wildlife refuge to soften impact of destroying wildlife habitat by the 11,000-acre reservoir. That would add between \$3 and \$4 million to cost of the \$74.3 million Palmetto project.

"The overall project is over half complete, and the dam is one third constructed. Acquisition of mitigation properties at this late date is untimely, could severely delay the project and would adversely affect economic and financial arrangements already in place," Briscoe

wrote Acting Secretary of Interior Kent Frizzell.

**Tax Cut Sought**

A potentially-powerful lobbying group, the Texas Conservative Union, announced its formation last week and listed a one per cent cut in the state sales tax as its No. 1 goal.

The group, whose top officers and staff members, include key supporters of Ronald Reagan for president last year, is aiming to sign up 10,000 members by June. Its lobbying budget for the session is \$125,000, according to Executive Director Calvin Rucker of Cedar Park.

T.C.U. also seeks a ceiling on state taxes, is opposed to gun control and county ordinance-making powers. It further seeks federal constitutional amendments to ban forced school busing and to require a balanced U.S. budget.

**Courts Speak**

A U.S. district judge in Dallas held a television newsman must be allowed to film executions at the state prison.

The State Supreme Court upheld lower court rulings rejecting a \$160,000 malpractice suit against an Odessa neurosurgeon who left a small metal clip near a man's spinal canal to mark a disc operation.

The high court said five men who refused to come back to work during a strike after they had been laid off are eligible for unemployment pay.

The Supreme Court upheld a \$1.3 million royalty agreement breach award against a Houston corporation in favor of the inventor of a giant pipe bending machine.

Third Court of Civil Appeals upheld denial of an application by Jacksonville Building and Loan Association for a branch office in Longview.

**AG Opinions**

Atty. Gen. John Hill told municipalities they have had power to require regulated utilities to reimburse reasonable costs of rate experts in rate-making proceedings, since Sept. 1, 1975.

In other recent opinions, Hill concluded:

Non-current personnel files on dead persons transferred to the State Archives are public unless disclosure of information would be an unwarranted invasion of privacy of living individuals.

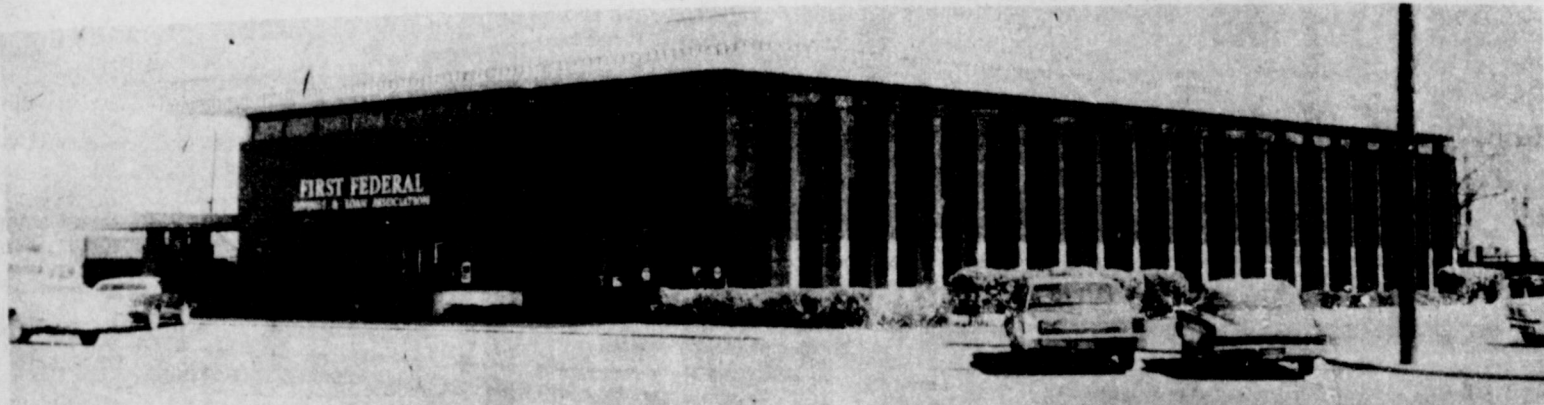
A school district should not contract with a company employing a member of the district's board of trustees in a managerial position.

Lamb County commissioners have legal authority to spend public funds for a feasibility study preparatory to its hospital authority's issuing revenue bonds.

# \$11.4 MILLION GROWTH FOR 1976 An All Time High

## ASSETS NOW EXCEED \$88 MILLION

### 85 TH. Semi-Annual Financial Statement



ASSETS	December 31, 1976		LIABILITIES	1975	
	1975	1976		1975	1976
First Mortgage Real Estate					
Loans	\$66,995,221.67	\$74,912,401.69	Capital (Savings Deposits)	\$68,941,142.84	\$79,597,398.22
Home Improvement Loans	132,222.38	267,469.59	Advances, Federal Home Loan Bank	300,000.00	300,000.00
Loans to Members, Secured by Their Savings Deposits	443,974.04	747,188.59	Loans in Process	740,259.46	364,219.42
Cash and U.S. Government Bonds	6,928,064.17	9,561,864.92	Payments by Borrowers for Taxes, Insurance, etc.	527,773.81	536,899.67
Stock in Federal Home Loan Bank	488,700.00	544,500.00	Other Liabilities	100,366.65	311,424.46
Office Sites and Buildings Net	749,020.57	816,868.16	Reserve for Unearned Discount	383,734.71	729,073.86
Furniture and Fixtures Net	311,683.59	285,831.91	Reserves and Surplus	5,606,115.37	6,225,871.90
Prepaid Federal Insurance Premium	462,791.44	449,363.32	TOTAL	\$76,599,392.84	\$88,064,887.53
Other Assets	87,714.98	479,399.35			
TOTAL	\$76,599,392.84	\$88,064,887.53			

SECOND LARGEST & ONE OF THE OLDEST FEDERALLY CHARTERED SAVINGS & LOANS IN NEW MEXICO

#### DIRECTORS

ARMAND SMITH, Chairman  
SCOTT McGEHEE, Vice-Chairman  
ROY KETTER  
DONALD BONNER  
E. C. KELSO  
Director Emeritus

K. BARNETT, Jr.

ERNEST WHEELER, Jr.

REESE CAGLE

LYNN L. MARTIN

DON WILLIAMS

ATTORNEY  
ESTHER SMITH VAN SOELEN

#### OFFICERS

REESE CAGLE  
President

ROY T. DEATON  
Controller

RUFUS FREEMAN  
Vice-President

BILL BOONE  
Vice-President (Branch Manager)

Faye Farrow  
Treasurer - Ass't Secretary

DWAYNE R. YOUNG  
Sr. Exec. Vice President

CALVIN RIPPEE  
Vice-President

GEORGE MILBURN  
Assistant Vice President

PATRICIA MASON  
Assistant Secretary

BRENDA SPANGLER  
Assistant Treasurer

LYNN L. MARTIN  
Sr. Vice President

DIXIE HOGG  
Secretary - Ass't Vice President

DOYLE HARMON  
Assistant Vice President

PAUL HUMBERT  
Assistant Vice President

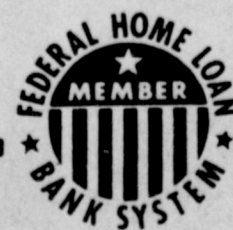
HAZEL B. TRAUGHBER  
Assistant Secretary



# FIRST FEDERAL SAVINGS & LOAN ASSOCIATION of CLOVIS

HOME OFFICE  
801 Pile St.  
CLOVIS, N. MEX.

BRANCH OFFICE  
2nd and Abilene St.  
PORTALES, N. MEX.



### Muleshoe School Lunch

January 17 - 21 - 1977

**MONDAY**  
Milk  
Roast Beef with Gravy  
Creamed Potatoes  
Green Beans  
Hot Rolls  
Ginger Bread

**TUESDAY**  
Milk  
Hamburger  
Pickles - Onions  
Lettuce and Tomato Salad  
Tater Tots  
Cherry Cobbler

**WEDNESDAY**  
Milk  
Spaghetti with Meat Sauce  
Corn  
Sweet Pickles  
Hot Rolls  
Jello

**THURSDAY**  
Milk  
Hot Dogs - Chili Sauce  
Vegetable Beef Soup  
Crackers  
California Sunshine Cookies  
Fruit

**FRIDAY**  
Milk  
Juicy Burger  
Pickles - Onions  
Lettuce and Tomato Salad  
Tater Tots  
Buns  
Pudding

### BIBLE VERSE

"Seek the Lord and his strength, seek his face continually."

1. Who was the author?
2. Upon what occasion?
3. What form of writing was it?
4. Where may this verse be found?

### Answers To Bible Verse

1. David.
2. When the Israelites placed the ark of the covenant in the city of David.
3. A Psalm.
4. I Chronicles 16:11.

### Lazbuddie School Menu

January 17 - 21 - 1977

**MONDAY**  
Beef and Cheese Pizza  
Blackeyed Peas  
Vegetable Salad  
Cornbread - Butter  
Butterscotch Pudding  
Milk

**TUESDAY**  
Chicken and Noodles  
Green Beans  
Sweet Potatoes  
Hot Rolls - Butter  
Pears  
Milk  
Orange Juice

**WEDNESDAY**  
Beef Burritos  
Hot Sauce  
Buttered Corn  
Green Salad  
Peanut Butter Cookies  
Milk

**THURSDAY**  
Sandwiches - Tuna and Pimento Cheese  
Potatoe Sticks  
Pork and Beans  
Peaches  
Milk

**FRIDAY**  
Beef Stew  
Crackers  
Buttered Rice  
Cheese Sticks  
Apple Sauce  
Cowboy Bread  
Milk  
Orange Juice

### Pro Auction Service

**AUCTIONEER:**  
Larry Potts, Friona  
Ph. 295-6633

**CLERK:**  
Leland Gustin, Friona  
Ph. 247-2146

"Large or Or Small We Work Them All!"

### Can You Get 8% Money From Your Bank

Have you decided that a center pivot sprinkler will help you do a better job with less labor, fuel, field work, etc.?

Have you decided to wait until next year to take advantage of all this?

**WHY?**

We will install a new Olson sprinkler on your farm now for no money down and give you a full year to make your first payment.

Complete turn key jobs can be put on our lease program.

Dimmitt - Ed Hunter - 647-3594  
Robert Daniel - 647-2372

Springlake - Ken Boone - 986-3544



601 SE 4th Dimmitt  
647-2666





# MULE'S TALE

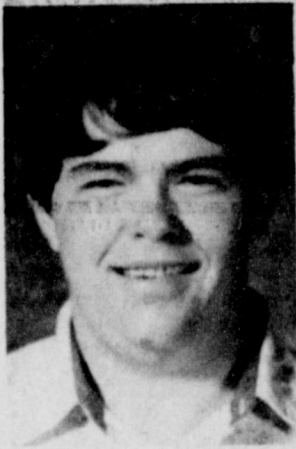


Official Publication of Muleshoe High School Written and Edited by Students of the Muleshoe Schools

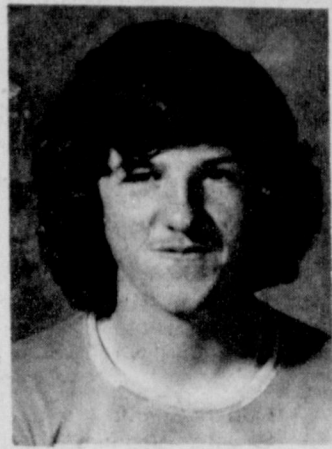
Vol. 12 No. 2

Editor, NANCY RAMM

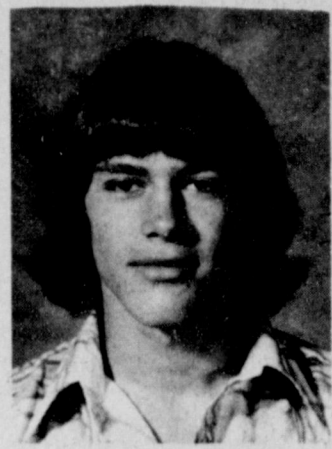
Sunday, January 16, 1977



KIM HELKER



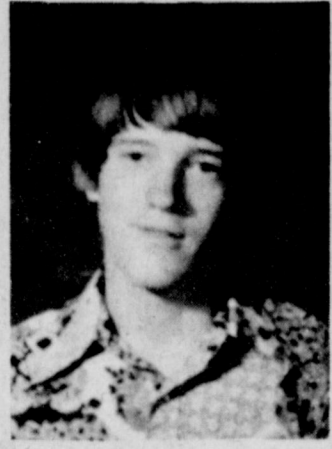
BILLY VINSON



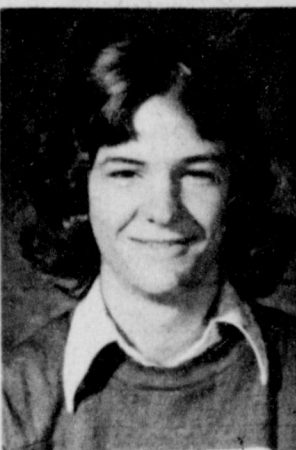
DEAN NORTHCUTT



BRAD BAKER



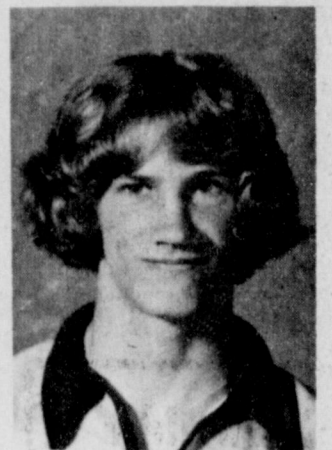
MARK WASHINGTON



MIKE WISIAN



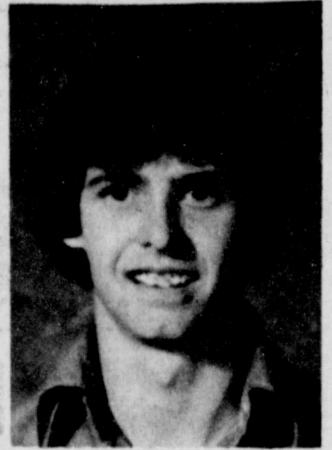
RICKY HAYES



MARCUS BEVERSDORF



CURTIS CARPENTER



RANDY WHALIN

## Freshmen Mules Win Tournament

The Freshman Mules traveled to Clovis, N.M. to play in the Gattis Tournament January 6, 7, and 8. Their first game was against Tucumcari. They won by a score of 68-50. The high scorer of that game was Zek Pecina. The next day, they played Marshall Jr. High of Clovis, winning by a score of 62-48. The Muleshoe played Saturday night against Gattis Junior High of Clovis for the championship. It was a very close game, and the Mules came out on top 49-45. High scorer in this game was Terry Burton with 13 points.

This was the first time that Muleshoe had won the Gattis Tournament. After their victory over Gattis, the Mules went to the Soda Straw and celebrated their championship.

The following Monday the Mules went to Friona to play the Cheifains. The Mules lost their first game of the year, 38-37, after playing a very close and exciting game. Scoring in this game were Mike Northcutt, 14 points; Mark Northcutt, seven points; Zek Pecina, six points; Sam Whalin and James Atwood, four points; and Cody Crittenden, two points.

## One Act Play Cast Named After Tryouts

The Drama Department had try outs for the 1977 UIL One Act Contest Play this past week. Cast and crew members are Royce Clay, Brad Baker, Joyce Patterson, Tom Pepper, Lavayne Lloyd, Ernie Vela, Amy Clark, Martin Nowlin, Vivian Briscoe, David White, Zeke Pecina, Fran Berryhill, Linda Nowling, Christine Vela, Connie Harmon, Brent Burrows, and Mark Harmon.

The play is Goldoni's "The Servant of Two Masters". Rehearsals will be on Mondays and Thursdays from 6:30 - 9:30 p.m. District competition will be held in Dimmitt, March 31.



JUDY PRECURE

## Thespian Of The Week

Thespians have chosen Judy Precure as student of the week. Judy is the daughter of Mr. and Mrs. Kenneth Precure and a senior of MHS. She is Band secretary, she has made All-Region Band for the past two years, and auditioned for All-Region for this year Saturday. She has qualified to audition for All-State, January 22, at Texas Tech.

Judy plays the french horn in Concert Band, the trombone in Marching Band and the piano in Stage Band. Judy plans to major in Music at Texas Tech. Thespians are very proud to honor such a dedicated and talented student as Judy. We can only hope that she sets an example for many others to follow.



Coach Comments

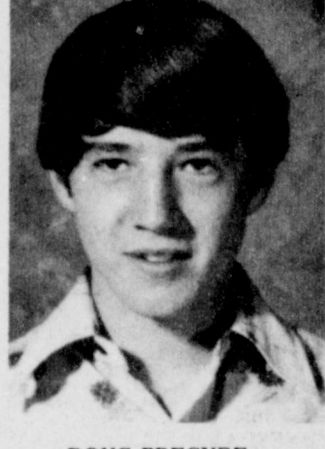
The Mules have finished their pre-District games with a record of 10 wins and 10 losses. At this point in the season, this is the best record the Mules have had in several years. Our goal is to finish the season with a winning record.

We are trying to gain more consistency in our overall play. Our shooting percentage from the field and free throw line needs to improve. Our rebounding has been real good at times, but we need to develop more consistency in that area.

The most consistent area of our game has been our defense. Although there have been times when we have not shot the ball well, we have still managed to stay within winning distance in the majority of our games.

## Calendar For The Week

MONDAY, JANUARY 17: Report cards are given out. 7:00 p.m. - Freshman basketball - Mullettes vs. Olton - there. Mules vs. Olton - here. TUESDAY, JANUARY 18: 8:00 a.m. - Student Council meeting. 5:00 p.m. - A&B basketball Muleshoe vs. Dimmitt - here - boys and girls. THURSDAY, JANUARY 20: FFA Young Farmers Convention - San Antonio. Dimmitt ninth grade tournament - boys and girls. FRIDAY, JANUARY 21: Basketball Homecoming. 5:00 - Muleshoe plays Littlefield A&B boys and girls. Dimmitt ninth grade tournament - boys and girls. SATURDAY, JANUARY 22: Dimmitt ninth grade tournament - boys and girls. All-State Band auditions - Texas Tech.



DOUG PRECURE

## Four Chosen Honor Group For January

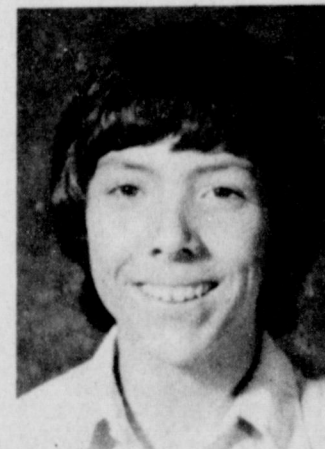
The Honor students selected for the month of January were Senior Nancy Ramm, Junior Kirk Lewis, Sophomore Dickey Sudduth and Freshman Lauri Burgess.

Nancy Ramm is the 17 year old daughter of Mr. and Mrs. Ernest Ramm. Her activities are F.T.A., basketball, Student Council Chaplain, Mule's Tail editor and National Honor Society secretary.

Kirk Lewis, the 17 year old son of Mr. and Mrs. Leon Lewis, is a member of F.T.A., F.F.A., and is the Junior Class Parliamentarian. Kirk's hobbies are water skiing and stock shows.

Dickey Sudduth, 16 year old son of Mr. and Mrs. Dave Sudduth, is a member of F.T.A. and participates in all sports. His hobby is golf.

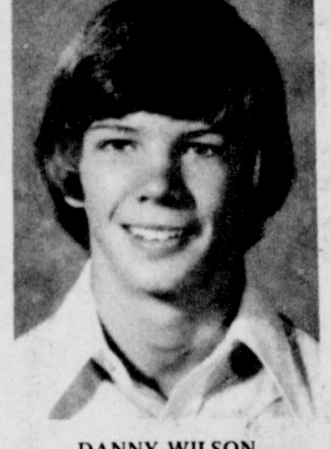
Lauri Burgess is the 15 year old daughter of Mr. and Mrs. Jimmy Burgess. Her activities



NANCY RAMM



LAURI BURGESS



DANNY WILSON

are F.T.A., Art Club, Student Council, cheerleader, basketball and Freshman class secretary.



JIMMY YBARRA

Lauri's hobby is reading. Congratulations to these students.

## Mulette Maneuvers

The Varsity Mullettes won their first district game against Friona 53-39. The girls used one of their better efforts of the year to defeat the Squaws. On Tuesday, they lost a close contest at Olton 39-41. The Mullettes will face their two toughest opponents at home this week when they face Dimmitt Tuesday night and Littlefield Friday night at Homecoming.

The Junior Varsity girls trounced Friona 41-26 in a district match. They participated in the Littlefield Tournament this past weekend. The J.V. will also have games with Dimmitt and Littlefield this week.

The Freshmen girls suffered only their second loss when they fell to Slaton 53-56 in the first game of the Levelland Tournament. They rebounded, however, to defeat Cooper in the

consolation finals of the tournament, 66-52. The Mullettes pushed their record to 8-2 with a win over Friona 59-45. The freshmen will play at Olton Monday and will participate in the Dimmitt Tournament January 20, 21, and 22.

## Speech Team Wins Second At Friona

Muleshoe High's Speech Contest Team competed in the tenth annual Friona Speech Tournament this past weekend. Muleshoe won second place toward the Sweepstakes Championship. Twenty-two speech teams competed in the tournament.

Ernie Vela won second place in poetry interpretation; Brad Baker placed third in persuasive speaking; Martin Nowlin won third in informative speaking; Scott Baker and Lamont Lewis placed second in debate; and Royce Clay and Tom Pepper won third in debate.

The Squad will be competing in the Midland Tall City Tournament the weekend of January 14-15.

## Happy Birthday

The Mule's Tale Staff extends greetings and salutations to the following students who are enjoying a birthday this week.

January 16 - Jane Green. January 17 - Randy Watkins and Lavayne Lloyd. January 18 - Beverly Biggerstaff and Connie Johnson. January 19 - Melissa Biggerstaff, Veronica Lopez, David Killough and Evelyn Grace. January 20 - Gaylon Strahan. January 21 - Rosa Guillen. The Staff would like to send belated salutations to Mrs. Gist and Mrs. Harbin who celebrated their birthdays recently.

## Fruit Sales Is Continuing By Ag

F.F.A. fruit sales continue. Oranges have been reduced to \$4.00 a crate and can be purchased by calling or coming by the Ag Department at Muleshoe High School.

# Mule's Tale Salutes Junior, Senior Mules

## NHS Plans To Initiate New Members

The National Honor Society met Thursday, January 6, from 6:00 until 7:00 p.m. The meeting was held at the XIT Restaurant. After the new business was discussed, the meal was served. Those attending were Sponsor Lucy Faye Smith, President Laura Beene, Vice President Tom Pepper, Chaplain Fran Dunbar, Secretary Nancy Ramm, Reporter Mitzi Mardis, and Student Council Representative Tammy Hicks.

The next meeting will be held at the Corral Restaurant February 3.

New members will be initiated into the National Honor Society after the second quarter. Members must be Juniors or Seniors; and they are selected by the faculty on the basis of leadership, scholarship, service, and character. For membership in the Muleshoe Chapter of NHS, students must have a 90 average in their academic subjects throughout high school figured on the basis of their quarterly grades. Members are received once each year, following the completion of the second quarter.

## DECA Members Are Preparing For Contest

From now until February 11, the students entered in the DECA Area VI contest to be held in Levelland at South Plains College will be working on their events.

These students are interested in entering these events: Job Interview - Lisa Mason, Betty Pedroza, and Mike Lopez; Sales Demonstration - Kim Helker, Mylinda Graves, Jana Jones, Jed Davis; Public Speaking - Lisa Mason, David Gutierrez, Linnie Davis, Mark Lovelady, and Kim Helker; Advertising - Monty Gartin and Mark Lovelady; Display - Joe Don Prather, Jed Davis and Linnie Davis; Food Marketing - Eddie Castorena, Mike Lopez, Robert Flores, Marvin Davenport, and Leon Phillips; Apparel and Accessories - Betty Pedroza, David Gutierrez, and Jed Davis; Petroleum - Joe Ruthardt; General - Mylinda Graves, Mike Silguero, and Vicky Gatewood; and Area of Distribution - Mylinda Graves.

Only one student in each event will be chosen to go to contest.

After the area contest, the winners will be sent to the statewide contest which is to be held in Dallas in March. Nationals will be held in California in May.

Distributive Education students are all working hard to be the best in their events. Good luck to each of them.

## Student Council Will Present A Soap Opera

The M.H.S. Student Council met Tuesday morning, January 11. After the President, Tom Pepper, called the meeting to order, Nancy Ramm began the meeting with an opening prayer.

The Student Council will be selling tickets for the Homecoming Basketball. The ball was painted by Randy Whalin. It has the names of all the Varsity Boys and Girls basketball players on it. The tickets will be sold at 25 cents each and can be purchased from any Student Council member.

The Council is planning to have a radio station, and it is going to feature a Soap Opera. The soap opera will come right after the morning watch. The Student Council hopes everyone will enjoy the radio station.

There will be an F.F.A. meeting Monday, January 17, at 8:00 p.m. All members are urged to attend.

## Varsity Players Show Improvement

The Mule's Tale staff would like to recognize the Senior and Junior Varsity Mules this week. The Mules have worked hard, along with the coaches, and have put out a tremendous effort to have a good season.

Coaching the varsity Mules for the 1976-1977 Basketball season is Coach Raymond Schroeder, with the assistance of Coach Rodney Murphy. These coaches have done a good job in pre-season play.

Jimmy Ybarra, a Senior Guard for the Varsity Mules, is a member of Art Club and played football. Jimmy says, "We have a good team this year. The effort of the team has been a tremendous one. With a little more hard work, our team is going to be successful."

An active Junior at MHS is Danny Wilson. He plays forward-guard for the Mules and is in FTA and Student Council. His parents are Mr. and Mrs. Gordon Wilson. Danny's comments were, "We're having a fine season this year; and with the experience we're getting this year, we should have a better season next year."

The Mules Senior Post player is Randy Whalin, son of Mr. and Mrs. Herbert Whalin. Randy is also an active participant in the Art Club, FTA, Student Council and Senior class. Randy comments, "We are much better as a team; and are looking forward to the rest of the season."

One of the Junior guards for the Mules this year is Curtis Carpenter. Curtis is the son of Mr. and Mrs. Jimmie Carpenter. He is active in Student Council, FFA, and FTA. Curtis has these words to say about this season: "This year has been lots of fun, and I hope that we can win the rest of the games."

One of the Mules Junior forwards is Mark Washington, the son of Mr. and Mrs. George Washington. Mark's comments about this season are, "We

## Mules Fall To Idalou

The Mules traveled to Idalou on January 12 to play the Idalou Wildcats. The Mules were behind by a wide margin at half time with the score being 12-27. The Mules lost to the Wildcats 41-54. High scorer for the Mules was Mike Wisian with 14. Others scoring were Brad Baker - 11, Danny Wilson - four, Doug Precure - four, Charles Briscoe - three, Billy Vinson - four, and Dean Northcutt with one.

Scientists attack red eye 40 as cancer risk.

## Junior Class Starts 1977 Banquet Plans

The Junior Class met Monday morning to begin plans for the Junior-Senior Banquet. The theme committee is composed of officers, Brent Gunter, Curtis Carpenter, Connie Harmon, Vicki Williams, Kirk Lewis, and volunteers Sharla Farmer, Cheryl Bryant, Dani Dunham, Stephanie Brantley, Jana Jones, Susan Crittenden, Shae Penna, Dwayne Shafer, Donnie Graves, Martin Nowlin, Mark Washington, Brent Maddox, Joe Ruthardt, Johnny Estep, Dean Northcutt, and Edwin Watson.

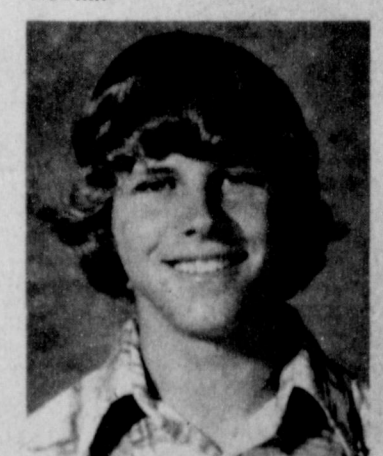
The class voted to let the Sophomores have the concession stand for the Stock Show. This is traditionally a Junior Project.

The class voted to sell mums for the basketball homecoming. The mum committee members are Sharla Farmer, Shae Penna, Janie Posados, Royce Clay, Cheryl Bryant, Dani Dunham, Stephanie Brantley, Dana Precure, Stephanie Brantley, Dwayne Shafer, and Dani Dunham.

Class Favorites for 1976-1977 were elected. They are Susan Crittenden and Martin Nowlin. Those nominated were Dani Dunham, Susan Crittenden, Danny Wilson, Douglass Precure, Johnny Estep, and Martin Nowlin.



SUSAN CRITTENDEN



MARTIN NOWLIN



## Texas Farmers Union Objects To Legislation

Representatives of a group of almost ten thousand farm families today expressed dissatisfaction and an inability to agree totally with any legislation currently pending in the 65th legislature which would attempt

to alleviate the inequitable burden of property taxes. A panel of a dozen members of the Texas Farmers Union has worked for months researching and gaining public input into the problem of ad valorem taxes.

"We have found some good joints to several bills," said chairman of the group and TFU Vice President Joe Rankin of Ralls. "We can support uniform assessment procedures, taxation of agricultural land by its productive value, and the state picking up the Minimum Foundation Program. But there are also portions of many of the pending bills which do less than they would have you think, and many of the proposals just don't scratch the surface of what must be done to lower ad valorem property taxes," continued Rankin.

The Texas Farmers Union President Jay Naman expressed his pleasure with the panel's findings and revealed that the group would present its own plan during a formal press conference at the State Capitol January 31, at 9:30 a.m. "At that time, the Texas Farmers Union

will release a plan which could cut property taxes by 75 percent or more while equalizing and increasing the quality of education in Texas. The plan leaves additional local enrichment in the hands of the districts.

"It's not the perfect plan," says Naman, "but it will make us the only group in the State which could cut property taxes by a significant amount and send \$1.25 billion to the state's coffers to make up the difference."

The Texas Farmers Union panel will meet one more time prior to the January 31 press conference when it gathers along with hundreds of delegates, and members of the organization for their annual state convention in Amarillo January 21-22. During that convention the 1977 policy statement for Texas Farmers Union will be

adopted, a policy that contains the organizational stand on not only property taxes but also on matters of agricultural prices, energy, government regulation, world food policy, and many other issues.

"We think it will be our biggest and best state convention ever," said Naman. "It is an important year with a farm bill being written in Washington and the 65th legislature meeting in Austin. It's time that farmers have a voice and our presentation on property taxes is only one of many crucial issues that lawmakers must act on if they wish to keep the food on their tables."

Robert Fulton, HEW's chief welfare administrator:

"The error reduction campaign saved federal and state welfare payments, from Jan. 1, 1974, to June 30, 1976, \$1.1 billion."

## Food Fiber Institute Seeks New Membership

A charter membership drive for the Food and Fiber National Institute of achievement is underway in Lubbock and surrounding counties, according to John Arnn, executive director. The membership drive, aimed at Lubbock businessmen and citizens, is being conducted to gather local support for the institute's goal.

The goal of Food and Fiber, a non-profit institute, is to help the American people better understand and appreciate how their lives are and have been influenced by changes in the production and processing of food and fiber.

Arnn said plans call for the expansion of the institute's activities on a state and national level. "If we are going to

expand, we need the support of Lubbock businessmen and citizens," he said.

Activities planned by Food and Fiber include: slide-cassette sets, films, booklets, brochures, etc. for elementary products and etc. for elementary products and college age students; mobile exhibits depicting food and fiber products and their development and impact on people; researching the impact of science and technology on food and fiber production; recognizing those whose achievements have exerted significant and continuing influence on agriculture and the American way of life; and providing a central research and information center on food and fiber for the American people. The institute currently has an

exhibit at The Museum of Texas Tech University and designed and built a mobile exhibit which appeared at the "Salute To The States" in Philadelphia and at the Texas State Fair in Dallas. Over two million people viewed the exhibits.

In order for Food and Fiber to continue the development of these activities, local support is needed.

Membership certificates identify the donor as a bicentennial charter member. Food and Fiber memberships range from \$12.50 to \$50 for individuals and from \$100 to \$1,000 for firms and organizations. The tax deductible memberships may be attained by calling 747-1649 or by writing the institute at P.O. Box 10436, Lubbock.

Pope Paul VI, Pontiff in Rome, on abortion:

"Human life is sacred from the first moment of its conception and until the last instant of its natural survival."

**Weather Master Seed Dealer Interstate Fertilizer Farwell, Texas**

AREA REPRESENTATIVES

MAX CRIM  
Clays Corner Hub  
Muleshoe  
965-2742

BETSY STONE  
Amherst  
Sudan  
Littlefield  
246-3616





Back by popular demand...

**BANK VAULT BINGO**

ALL NEW Series

**2**



Justin Long \$100.00 Winner

NEW CASH PRIZES TOTALING \$190,727

<p>Heavy Aged Beef, Blade Cut</p> <p><b>Chuck Roast</b></p> <p><b>78¢</b></p> <p>Lb.</p>	<p>HORMEL THICK SLICED</p> <p><b>Slab Bacon</b></p> <p><b>\$1.19</b></p> <p>Lb.</p>	<p>Piggly Wiggly</p> <p><b>Sugar</b></p> <p><b>79¢</b></p> <p>5-Lb. Bag</p> <p>Limit One (1)</p>	<p>Betty Crocker All Layer Varieties</p> <p><b>Cake Mix</b></p> <p><b>49¢</b></p> <p>18½-oz. Box</p>
--	---	--	--

<p><b>HAM &amp; CHEESE SPECIALS</b></p> <p>Fryers Breast or Leg Quarters 49¢ Lb.</p> <p>Tenderized Bottom Round Steak \$1.58 Lb.</p> <p>Breaded Pre Cooked Beef Fingers \$1.03 Lb.</p> <p>Piggly Wiggly Longhorn Cheese 89¢ 8-oz. Pkg.</p> <p>Kraft's Philadelphia Cream Cheese 59¢ 8-oz. Pkg.</p> <p>Buckboard Boneless Fully Cooked Ham \$1.89 Lb.</p>	<p><b>SEAFOOD SPECIALS</b></p> <p>Catfish Steaks \$1.39 Lb.</p> <p>Fresh Whole Skinned Catfish \$1.39 Lb.</p> <p>Tasty Salmon Steaks \$1.39 Lb.</p> <p>12-oz. Pkg. \$1.65</p> <p>Shrimpburgers \$1.00 2- 6 oz. Pkg.</p> <p>Fisher Boy Fishsticks \$1.59 Lb.</p> <p>Eckrich Heat &amp; Eat Smoked Sausage \$1.59 Lb.</p>	<p><b>EVERYDAY LOW PRICE</b></p> <p>Arm &amp; Hammer Laundry Detergent 99¢ 70-oz. Box</p> <p>Welch's Jam or Grape Jelly 99¢ 20-oz. Jar</p> <p>Piggly Wiggly Waffle &amp; Pancake Syrup 89¢ Qt. Jar</p> <p>Joan of Arc Green Peas \$1 17-oz. Cans</p> <p>4 \$1 16-oz. Cans</p> <p>Golden Corn \$1 16-oz. Cans</p>	<p><b>EVERYDAY LOW PRICE</b></p> <p>Austex Beef Stew 99¢ 24-oz. Can</p> <p>Plain, with Meat or Mushrooms Ragu Sauce \$1.25 Qt. Jar</p> <p>Quick Old Tyme Mixes 2 43¢ 3½-oz. Pkgs.</p> <p>Golden Best Tomatoes \$1 3 16-oz. Cans</p> <p>Husband Pleasin' Ranch Style Beans \$1 4 15-oz. Cans</p>
--	---	--	---

# PIGGLY WIGGLY Inaugural Specials!!

<p></p> <p>Texas Sweet Ruby Red</p> <p><b>Grapefruit</b></p> <p><b>4 \$1</b></p> <p>Lbs.</p>	<p><b>Frozen Foods</b></p> <p>In A Basket, Frozen Morton's Chicken \$1.99 2-Lb. Box</p> <p>Taker Tots &amp; Fries, Frozen Ore-Ida Potatoes 69¢ 2-Lb. Bag</p>	<p><b>Health &amp; Beauty Aids</b></p> <p>Children's Bayer Aspirin 39¢ 36-Ct. Btl.</p> <p>Tablets Vanquish 89¢ 30-Ct. Btl.</p> <p>Twin Blade Cartridges Schick Super II \$1.79 9-Ct. Pkg.</p> <p>Gillette Deodorant, Bronze Right Guard \$1.99 13-oz. Can</p>	<p>ALL GAME PIECES PRODUCED FOR OUR BANK VAULT BINGO PROGRAM #478 HAVE BEEN DISTRIBUTED AND THAT PROGRAM HAS OFFICIALLY TERMINATED IN ACCORDANCE WITH F.T.C. REGULATIONS. ALL PRIZE WINNING GAME PIECES FOR PROGRAM #478 MUST BE PRESENTED FOR PAYMENT BY JANUARY 30, 1977 AND NONE WILL BE ACCEPTED FOR PAYMENT AFTER THAT DATE.</p> <p><b>Paper Towels</b></p> <p><b>39¢</b></p> <p>1-Roll Pkg.</p>
<p>Crisp, Crunchy Carrots 35¢ 1-Lb. Bag</p> <p>Garden Fresh Cucumbers 39¢ Lb.</p> <p>CRISP GREEN HEADS CABBAGE 19¢ Lb.</p> <p>Golden Ripe Bananas \$1 5 Lbs.</p>	<p><b>Fresh Dairy</b></p> <p>Piggly Wiggly Low-Fat Milk 79¢ ½-Gal. Ctn.</p> <p>Piggly Wiggly Regular Quarters Fresh Margarine 3 \$1 1-Lb. Pkgs.</p> <p>Piggly Wiggly Ind. Wrapped American Cheese \$1.39 1 lb. pkg.</p>	<p><b>Special Buys</b></p> <p>Fast Acting Bayer Aspirin \$1.99 200-Ct. Btl.</p> <p>Regular or Mint Phillips Milk of Magnesia \$1.89 26-oz. Btl.</p> <p>Sinus Medicine Sine-Off \$1.09 24-Ct. Btl.</p> <p>Lotion Shampoo Head &amp; Shoulders \$1.99 11-oz. Btl.</p>	<p>Lady Scott Facial Tissue 59¢</p> <p>Lady Scott, Assorted Colors Bath Tissue 57¢</p> <p>Floor Polish, Regular, Lemon or Natural Wood Johnson's Pledge \$1.49 14-oz. Can</p> <p>Dry Dog Food Gravy Train \$7.98 50-Lb. Bag</p> <p>Instant Chocolate Drink Mix Nestle's Quik \$1.79 2-Lb. Can</p>



## No Lawyer Shortage Is Found In Texas

Students interested in a career in law should be aware that there is no shortage of lawyers in Texas and the job competition is tough, according to a new State Bar of Texas publication announced today by State Bar President Gibson Gayle, Jr. of Houston.

"Job hunting is very competitive because approximately 2,000 new lawyers are licensed in Texas each year," warns the brochure entitled "You, Your Career and the Legal Profession." It adds: "Law graduates should be ready to consider a full range of employment options if they are to be successful in their job search."

The brochure, prepared in cooperation with the University of Texas Law School Placement Office, was produced as a public service by the State Bar. Individual copies may be obtained free, and bulk orders may be made at a cost of \$4.00 per 100 plus shipping costs, from: Law

Pamphlet, State Bar of Texas, P.O. Box 12487, Austin, Texas 78711.

Gayle said the brochure was prepared to meet the growing interest in law careers.

"Intensified news media coverage of legal topics, along with increased emphasis on career education in public schools, have heightened student curiosity about the various types of careers in law," Gayle said.

The brochure outlines educational requirements for lawyers, cost of legal education, and the differing careers available to law graduates, including:

Private practice -- ranging from a one-person law office to associating with a firm of more than 100 lawyers, with practice opportunities including such office legal work as preparation of contracts and wills or court appearances to represent a client or argue an appeal.

Corporate law -- employment in the law department of a large

business, performing legal work as varied as the activities of the company.

Government employment -- including federal, state or local government jobs involving such activities as hearings conducted by a regulatory agency, prosecution of criminal defendants, representation of government agencies in court, drafting regulations or ordinances, and evaluating the legal aspects of policy decisions or other actions by a governing body or its administrator.

Alternative practice -- representation of individuals and groups generally not involved in the legal system, such as the poor, ethnic minorities, consumers and citizen environmental groups, through such organizations as legal services programs or public interest law practices.

Academic positions -- including law professors, law librarians, editors and administrators.

Military service -- legal offices of the armed services offer benefits which may be more appealing to new lawyers in a time when legal employment opportunities are limited.

Other opportunities -- including use of a law degree in other fields such as journalism, industry, advertising, banking, politics, administration or accounting.

The brochure also includes the names and addresses of all eight law schools in Texas and a list of books helpful in understanding the various types of legal careers.

### Similar

The biggest trouble with success these days is that the recipe is just about the same as that for a nervous breakdown.

-Pilot, Norfolk.

## On Wall Street By Bob Hill

President-elect Carter has made a favorable impression on just about all "power groups" with the cabinet appointments since his election. But, a major problem looms before Mr. Carter which could have the effect of sinking most of his legislative programs in the first year of his term and possibly the next two years. It is the Ford deficit.

The meeting of the cabinet appointees two weeks ago at Sea Island, Georgia, was really a briefing on the very grim budget outlook because the Carter administration will inherit a \$50 billion deficit. With even a very modest package of tax cuts and government work projects to reduce the number of unemployed, this deficit could easily balloon to \$75 billion.

The net result of such a huge deficit, no matter what the reason regardless of all the explanations by the Carter administration blaming it on the Ford administration, is serious embarrassment for Mr. Carter. It will also cripple Mr. Carter's ambitious legislative projects in the field of health care. There just isn't any way he can propose new spending legislation while the American people are looking a massive budget deficit right in the face.

One of the major worries of the American taxpayer is a return to a sharply higher inflation rate in coming years. Piling new spending programs on top of the \$75 billion deficit will make it almost impossible to balance the budget anytime during the Carter term of office unless tax increases are imposed.

The President-elect made a campaign commitment to begin

Kissinger bids farewell to European colleagues.

a national health-insurance program in 1977. The first phase of the program was to consist of catastrophic health insurance plus coverage on child and maternity claims. The new Health, Education & Welfare Secretary, Joseph Califano, has

already begun hinting that any health legislation in 1977 will be modest compared to the campaign promises of Mr. Carter. Mr. Carter's ambitious legislative programs for a "better America" may bear the epitaph "Torpedoed by a deficit".

### D.D.D. Now Available In All Exchanges

Direct Dialing in Bula Exchange was released about 11:30 on Friday, January 14, 1977. This completes all of the exchanges of our service area with single-party service and Direct Distance Dialing.

D.D.D. means that each telephone subscriber can place their own station-to-station long distance calls without operator assistance.

Our Area Code is 806. If you wish to place a call within your own Area Code, you would dial "1" plus the seven-digit number you wish to call. If your call is placed to another Area Code other than your own, then you dial "1", plus the distant Area Code, and then the seven-digit number you are dialing.

Let us emphasize that you can still call within your exchange or contiguous exchanges without using the "1" plus dialing. (It is for station-to-station long distance calls only, without operator assistance.)

FIVE AREA TELEPHONE COOPERATIVE, INC.

# Back by popular demand... at

# BANK VAULT BINGO



ALL NEW Games

ALL NEW Folders ...

ALL NEW Prizes!



# WIN UP TO \$1,000 IN CASH!

START WINNING THE ALL NEW CASH PRIZES TODAY!

- 96 - \$1000 Prizes
- 96 - \$100 Prizes
- 191 - \$50 Prizes
- 383 - \$20 Prizes
- 765 - \$10 Prizes
- 4,309 - \$5 Prizes
- 6,742 - \$2 Prizes
- 25,238 - \$1 Prizes

You have 96 DIFFERENT WAYS to WIN!

YOU CAN WIN up to \$1000 on your FIRST visit to our stores!

# WIN YOUR SHARE OF 37,820 CASH PRIZES TOTALING \$190,727



Get your FREE NEW Game Folder at our stores and start WINNING CASH today!



FREE • NO PURCHASE REQUIRED • ADULTS ONLY

GAME VALUE	NUMBER OF PRIZES	ODDS FOR ONE GAME PIECE	ODDS FOR 13 GAME PIECES	ODDS FOR 26 GAME PIECES
\$1,000	96	1 in 38,920	1 in 7,576	1 in 3,788
\$100	96	1 in 38,920	1 in 7,576	1 in 3,788
\$50	191	1 in 19,460	1 in 3,788	1 in 1,904
\$20	383	1 in 9,730	1 in 1,899	1 in 952
\$10	765	1 in 4,865	1 in 951	1 in 476
\$5	4,309	1 in 2,154	1 in 476	1 in 238
\$2	6,742	1 in 1,402	1 in 238	1 in 119
\$1	25,238	1 in 375	1 in 29	1 in 14
TOTAL	37,820	1 in 250	1 in 19	1 in 10

This Program is available at all Piggy Wiggly stores located in Texas, New Mexico and Oklahoma. Schedule your store date for this Program in April, 1977. But game sets are distributed with distribution of all game pieces. This program may be operated by other means.

Game pieces and game folders may be obtained free by writing Bank Vault Bingo, Program #483, P.O. Box 483, Dallas, TX 75202. Only one game piece and game folder may be requested per envelope and a self-addressed, stamped envelope must accompany each request.



## Researcher Looking For Practical Cure

Finding a practical cure for Shipping Fever and Rat Tail Syndrome in cattle is a big job. That is the assignment for Dr. Mike Irwin recently named Assistant Professor of Veterinary Pathology for the Texas Agricultural Experiment Station at

Bushland according to Dr. G.B. Thompson, Director. Dr. Irwin will conduct laboratory research at the new Texas A&M Research and Extension Center at Amarillo and field studies at the USDA Southwestern Great Plains Research Center at Bush-

land. In addition, he will cooperate with the Texas A&M Diagnostic Laboratory and other research institutions in the area. Dr. Irwin is a Rhodesian with a DVM from Onderstepoort in South Africa in 1968. He also earned a PhD in comparative pathology from the University of California at Davis in 1975. He worked at Texas A&M Diagnostic Laboratory at Amarillo as a pathologist for one year prior to transferring to the Experiment Station.

He is no stranger to West Texas or the livestock industry. He spent a year working in feedlots at Lubbock and Snyder to "learn the business" in 1968 after obtaining his veterinary medicine degree. Dr. Irwin is replacing Dr. Graham Wilcox who left the Bushland Center to return to Australia, his native country. In addition to other duties at the Diagnostic Laboratory, he investigated Rat Tail Syndrome. His research showed that Bovine Papular Stomatitis

virus plays an important role in causing the disease. Rat Tail Syndrome affected three percent of the cattle in certain feedlots in 1975. In 1976, incidence was not as high. Cattle infected with this profit robber go off feed and loose weight about 60 days after entering feedlots.

Painful sores on the tongue and mouth cause cattle to quit eating. In addition to other problems, infected cattle loose the long hair on their tail. Putting infected cattle on pasture or a low energy ration is the only known cure. "We are looking for a way to treat cattle that does not involve so much time and loss of money," Irwin said.

Shipping Fever is the number one disease problem in the feedlot industry. Past research by the Texas Agricultural Experiment Station at Bushland has shown that there are two major viruses associated with the disease. Vaccines are presently available, but are not always effective.

Dr. Irwin's research will be dove-tailed with Shipping Fever research being done by Dr. Andy Cole at the Bushland Center. Dr. Cole is part of a USDA research program involving Tennessee, Texas and Oklahoma. Cattle are purchased in Tennessee and given various treatments prior to shipment. After arriving at Bushland, cattle are given additional treatment to reduce stress of shipping and speed productive gains in feedlots. Others are shipped to El Reno, Oklahoma for grazing research. Dr. Irwin will conduct clinical and pathological studies on animals at Bushland. Dr. Irwin, his wife and two children live in Amarillo.

## Eldon Davis Final Rites Held Friday

Funeral services for Eldon L. Davis, 59, were conducted at 2 p.m. Friday in First Baptist Church with Rev. J.E. Meeks, pastor, officiating, assisted by Rev. Troy Walker. Burial was in Bailey County Memorial Park under direction of Singleton-Elis Funeral Home.

Davis died suddenly at Methodist Hospital in Lubbock on Wednesday, January 12, at 9:30 a.m. where he had been taken becoming ill at his home earlier that morning. A farmer, he was a retired Lt. Col. in the U.S. Air Force, having served both in World War II and the Korean War. He was a member of First Baptist Church, Muleshoe, where he served as a deacon.

Eldon Davis was born August 7, 1917 in Vernon and moved to this area in 1954 from Lubbock. He had married Elaine Murphy on November 1, 1941 in Las Vegas, Nev.

Survivors include his wife, Elaine; one son, Dr. David Davis, Houston; two daughters, Mrs. Susann Evans, Flint, Mich. and Jennifer Davis, Dallas; his mother, Mrs. Bess Davis, Lubbock; one sister, Mrs. Melvin Dutton, Petersburg and two grandchildren.

## The Sandhills Philosopher

Editor's note: The Sandhills Philosopher on his Johnson grass farm on Sandy Creek sends us a fashion note, we guess you could say.

Dear editor: For years, before women announced they have brains too, men have been poking fun at the vulnerability of women to fashion.

If some guy in Paris with a hard-to-pronounce name -- and the harder the more authoritative he is -- says women's skirts are to be short, women flock to the stores to buy short ones, excusing those who know how to use a pair of scissors. If the guy the next year says skirts are to be long, women rush to buy long ones, including those who find scissors won't work this time.

To a lot of men, this being a slave to fashion was hilarious. "Let some fop in Paris or New York tell women what to wear and they fall in line like sheep going over a cliff or swallows returning to Capistrano," they said.

The joke has now played out. On account of men's vests. A year ago a man was fully dressed, if he had on a two-piece suit. Then some fashion designer -- you reckon it was a woman with a wicked sense of humor? -- declared men will now wear vests. Like women and swallows returning to Capistrano, men complied. Even in the summer time.

I first noticed this when President Ford last year showed up at a press conference wearing a vest. At the moment I supposed

it was a bullet-proof thing, ordered by the Secret Service, but no. I was informed, a bullet-proof vest is worn under the shirt and has little chance of catching on generally, slaves to fashion or not. It can't be seen and besides it itches. What he was wearing was a genuine, fashionable vest, the kind you see the groom wearing in wedding pictures 50 years ago.

Well sir, it wasn't long before more and more vests started showing up, even on the hard-nosed reporters covering the President. Men everywhere rushed to get on the fashion bandwagon, you might say with woman-like obedience.

My only reaction to this is regret; regret that years ago, due to a lack of far-sightedness, I threw away a perfectly good vest. I've still got the pants and coat.

Yours faithfully,  
J.A.

Earnings gap between men, women doubles.

## ATTENTION MULESHOE AREA CATTLEMEN

...In regard to dead stock removal... If you have a problem with service... whether in the feed yard or on the farm... Please give US a chance! Thank You.

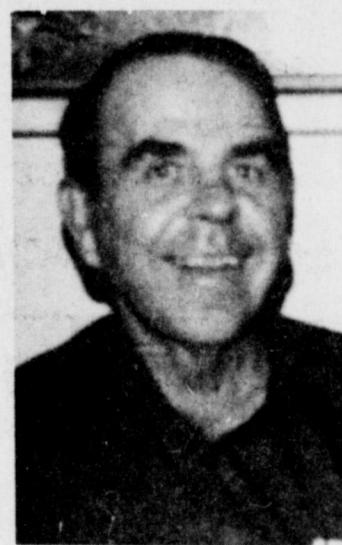
**YOUR LOCAL USED COW DEALER IN MULESHOE**  
Ph. 965-2903  
Mobil 965-2429  
Muleshoe  
BI-Products

## Kirby Buyers Beware

The Kirby General Service Insurance, coverage of loss by fire, and limited warranty described below are each null and void if [1] The Kirby was not purchased from an independent authorized Kirby distributor, area distributor, or dealer who signed page 31 of this warranty and instruction book and filled in the date and serial number; or if [2] the name plate or serial number of the Kirby has been defaced, removed, or changed [other than by fire or other casualty or accident, or in connection with factory authorized rebuild].

Protect your rights: Make sure you are [1] Purchasing from an independent authorized Kirby distributor, area distributor, or dealer; and [2] Page 31 is filled in and signed; and [3] The original name plate and serial number are intact.

**Lloyd White**  
Littlefield Texas  
Ph. 385-3357



ELDON L. DAVIS

Not New

Still, the idea of getting something for nothing isn't new. That's what discovered and settled our country.

-News, Buffalo.

## ONE MINUTE SPORTS QUIZ

- Who won the Mixed Team Golf Championship?
- "Mean" Joe Greene plays pro football for what team?
- Who won the Liberty Bowl?
- What teams meet in the Rose Bowl?
- In what sport is Judy Rankin known?

## Answers To Sports Quiz

- Washam and Rodriguez.
- Pittsburgh Steelers.
- Alabama 36, UCLA 6.
- USC-Michigan.
- Pro tennis.

## Singleton-Elis Funeral Home

24 Hour Ambulance Service

Ph. 272-4574

Muleshoe

## First National Bank

### REPORT OF CONDITION

Consolidating domestic subsidiaries of the

First National Bank of Muleshoe

In the state of Texas at the close of business on December 31st 1976 published in response to call made by Comptroller of the Currency, under title 12, United States Code, Section 161

Charter number 14745 National Bank Region Number 11

NAME OF BANK First National Bank of Muleshoe, Texas CHARTER NUMBER 14745

**BALANCE SHEET** at the close of business on December 31 1976

INFORMATION ABOVE LINE NOT TO BE PUBLISHED  
Statement of Resources and Liabilities

	Thousands of dollars
<b>ASSETS</b>	
Cash and due from banks	4,151,407.22
U.S. Treasury securities	1,050,104.66
Obligations of other U.S. Gov't. agencies and corps.	1,305,586.35
Obligations of States and political subdivisions	3,500,827.50
Other bonds, notes, and debentures	None
Federal Reserve stock and corporate stock	27,000.00
Trading account securities	None
Federal funds sold and securities purchased under agreements to resell	None
Loans, Total (excluding unearned income)	9,343,744.35
Less: Reserve for possible loan losses	89,021.41
Loans, Net	9,254,722.94
Direct lease financing	None
Bank premises, furniture and fixtures, and other assets representing bank premises	106,386.88
Real estate owned other than bank premises	172,893.24
Investments in unconsolidated subsidiaries and associated companies	None
Customers' liability to this bank on acceptances outstanding	None
Other assets	363,105.92
<b>TOTAL ASSETS</b>	<b>19,932,034.71</b>
Demand deposits of individuals, prtshps., and corps.	8,996,430.06
Time and savings deposits of individuals, prtshps., and corps.	7,922,739.90
Deposits of United States Government	20,537.67
Deposits of States and political subdivisions	927,482.08
Deposits of foreign govts. and official institutions	None
Deposits of commercial banks	25,000.00
Certified and officers' checks	258,475.89
<b>TOTAL DOMESTIC DEPOSITS</b>	<b>18,150,665.60</b>
Total demand deposits	9,674,284.88
Total time and savings deposits	8,476,380.72
Total deposits in foreign offices	None
<b>TOTAL DEPOSITS IN DOMESTIC AND FOREIGN OFFICES</b>	<b>None</b>
Federal funds purchased and securities sold under agreements to repurchase	None
Liabilities for borrowed money	None
Mortgage indebtedness	None
Acceptances executed by or for account of this bank and outstanding	None
Other liabilities	190,329.23
<b>TOTAL LIABILITIES (excluding subordinated notes and debentures)</b>	<b>18,340,994.83</b>
Subordinated notes and debentures	None
Preferred stock No. shares outstanding None (par value)	None
Common stock a. No. shares authorized 40,000	None
b. No. shares outstanding 40,000 (par value)	400,000.00
Surplus	500,000.00
Undivided profits	677,128.44
Reserve for contingencies and other capital reserves	13,911.44
<b>TOTAL EQUITY CAPITAL</b>	<b>1,591,039.88</b>
<b>TOTAL LIABILITIES AND EQUITY CAPITAL</b>	<b>19,932,034.71</b>
<b>MEMORANDA</b>	
Average for 15 or 30 calendar days ending with call date:	
Cash and due from banks	2,680,091.32
Fed. funds sold and securities purchased under agreements to resell	1,200,000.00
Total loans	9,405,092.05
Time deposits of \$100,000 or more in domestic offices	1,092,940.51
Total deposits	16,669,179.78
Fed. funds purchased and securities sold under agreements to repurchase	None
Liabilities for borrowed money	None
Standby letters of credit (outstanding as of report date)	None
Time deposits of \$100,000 or more (outstanding as of report date)	None
Time certificates of deposit in denominations of \$100,000 or more	None
Other time deposits in amounts of \$100,000 or more	1,092,940.51

I, Ted Barnhill  
Cashier

of the above-named bank do hereby declare that this Report of Condition is true and correct to the best of my knowledge and belief.

/s/ Ted Barnhill  
Signature  
January 14th, 1977  
Date

We, the undersigned directors attest the correctness of this statement of resources and liabilities. We declare that it has been examined by us, and to the best of our knowledge and belief is true and correct.

/s/ M. D. Gunstream

/s/ Frank Ellis

/s/ Paul Poynor

Directors

# BIG T PUMP CO.

FRIONA, TEXAS

"Come See Us For All Your Pump Needs"

**YOUR WELL DRILLING  
YOUR GEAR HEAD REPAIRS  
YOUR PUMP REPAIRS**

Contact:

S.D. Baize MGR.

OFFICE: 247-3311

HOME: 247-3752

## Big T Pump Co.

Box 785

FRIONA, TEXAS



# Flying Queens Will Host Champion Lady Statesmen

The five young ladies which made Cleveland, Miss., the capitol of women's basketball, will be in Plainview in less than two weeks. When they arrive, Saturday, January 22, cage fans will be blessed with the opportunity of

viewing what could be one of the biggest collegiate women's basketball encounters in 1977 -- the battle of the "biggies".

The site -- Hutcherson Physical Education Center on the Wayland College campus. The time -- 8 p.m. The matchup -- Delta State's two-time defending national champion Lady Statesmen and Wayland's number-one ranked Flying Queens.

The game sends the Lady Statesmen, winners of 64 of their last 67 games, against the Flying Queens, a longtime women's basketball power but somehow never a national AIAW collegiate champion. The Queens have, however, captured NWIT and AAU titles. Not only does the game bring together two of the finest teams anywhere, it also carried with it a strong note of reprisal.

Still fresh in the minds of players and fans alike is that last confrontation between the two schools in March, 1976, when the Lucy Harris Company came from behind to take a thrilling 61-60 victory in the semifinals of the AIAW National Tournament in University Park, Pa. A day later, the victors had successfully defended their national title while the Queens settled for third.

But that's all history now; all that remains is the memory that lingers -- and the fact that the trophy sits in Cleveland, Miss., and not Plainview, Texas.

The team that visits Hutcherson Center one week from Saturday will be the same one that put together back-to-back national titles and compiled a won-loss record of 61-1 in the process. Leading the Delta charge is Miss Harris, who also answers to the name of "Miss Everything".

The 6-3 Mississippi star was not only the leader for both national title holders, she was also the top scorer and leading rebounder for the U.S. women's basketball team which brought home the silver medal from the Montreal Olympics last summer.

But the young lady which did more damage to the Flying Queens in that semifinal match just happened to be the smallest girl on the court -- and in the entire tournament for that matter. She's 4-11 Debbie Brock, and she saved a total of four games last year with her clutch play.

It was the 85-pound Miss Brock

who calmly sank a pair of free throws with just five seconds remaining in the contest to seal the Lady Statesmen's one-point victory. She compounded that with five steals, including two late in the game, and sank a total of three charity tosses in the final 24 seconds. She finished with 17 points, 12 above her season average.

While Delta State will send the same team against the Queens as it did almost 10 months ago, they will face a Wayland crew which superficially appears similar in nature to last year's third place finishers. But close followers say that the teams are as different as night and day.

Leading the Wayland charge against the Lady Statesmen is another pair of All-Americans, senior Leann Shildknight and junior Breana Caldwell. Miss Shildknight is averaging better than eight points per game while shooting 50 percent from the field, and Miss Caldwell is the team's leading scorer with a 13-point average. Breana, whom Coach Dean Weese calls the best forward in the country, led the Queens in the semifinal match with 18 points last year and finished the season with 610. With two similar seasons, she could become the team's all-time scoring leader.

## Sudan News

By Mrs. Wayne Doty

Mr. and Mrs. John Williams and family visited in Quanah and Pampa during the holidays.

Mr. and Mrs. Steve Martin of Lubbock visited during the holidays with his parents, Mr. and Mrs. Adrian Martin.

Spending Christmas at the home of Mrs. Charlene Blume was her mother, Mrs. Agnes Phelps, Mrs. Pearl Harmon, and Roenne Weaver all of Amherst.

Johnnie and Donnie Nelson accompanied their grandparents, Mr. and Mrs. John T. Henderson of Whiteface, to Wilcox, Ariz. during the holidays.

Mr. and Mrs. Jim Baccus and children of Euleus visited during the holidays with their parents, Mr. and Mrs. Jack Engram.

Holiday guests in the home of Charles Logan were their children and their families.

Rev. Hazel House of Andres visited in Sudan this week.

Mr. and Mrs. Bob Nelson and family were in Whiteface and Levelland during the holidays to be with her parents, Mr. and Mrs. John T. Henderson.

Visitors during the holidays in the home of Mr. and Mrs. Arnold Beckett were their children.

Mr. and Mrs. Robert Earl Williamson and Dusty of Bernon visited during the New Years holidays in the home of his parents, Mr. and Mrs. D.W. Williamson.

Robbie Rudd of Lubbock visited during the holidays in the home of his grandmother, Mrs. Frances Enloe, of Amherst.

Visitors during the holidays in the Halbert Harvey home were Cheryl Harvey of Brownwood and Ryand Dale of San Angelo.

April Rudd of Lubbock visited during the Christmas week in the home of her grandparents, Mr. and Mrs. G.C. Ritchie and Steve.

Carter's help seen as key to saving cities.

## PLANT SUNFLOWERS IN 1977?

YOU BET!!!!

Sunflowers can provide more than twice the net income of dry land milo and can help spread the risk for these farmers who are afraid to plant "turn row to turnrow" cotton.

You are only considering sunflowers in event of a hail or late rain on dry land? We must establish a permanent annual base acreage for sunflowers in order to attract northern buyers. Northern growers receive as much as \$12.40 per hundred in the fall of 1976.

I am considering operating a facility to handle sunflowers with contracts with northern buyers located in either Sudan or Amherst. We can work together to receive the highest price possible for our sunseed. For additional information call:

**RICHARD E. BLACK, Route One,**

**Box 177, Sudan, Texas 806-933-4449**



304 Main ... Phone 272-5527

MULESHOE

SAVINGS AND LOAN ASSOCIATION

### Statement Of Condition

December 31, 1976

City Muleshoe			
Ass'n Name	Tri-County Savings & Loan Association	Charter Date	3-10-64
Street Address	304 Main Street	Date Insured	2-17-65
City	Muleshoe	State	Texas
County	Bailey	Zip	79347
Area Code & Phone No.	806-272-5527	No. Authorized Branches	3
President	* Donald W. Harmon	No. Operating Branches	3
Vice President	Alex H. Williams	No. Operating Agencies	-
		Executive Vice President	---
		Secretary	Lindal L. Murray

(Managing Officer designated by asterisk)

#### STATEMENT OF CONDITION — DECEMBER 31, 1976

##### ASSETS

First mortgage loans	01\$	11,993,442.64
All other loans	02	5,147,683.10
Real estate owned	03	-0-
Loans and contracts made to facilitate sale of real estate	04	-0-
Stock in Federal Home Loan Bank	05	135,900.00
Cash on hand and in banks	06	728,123.38
Investments and securities	07	775,827.68
Office building, less depreciation	08	352,901.67
Furniture, fixtures, equipment and leasehold improvements, less depreciation	09	90,323.33
Land purchased for development	10	-0-
Investment in subsidiaries	11	-0-
Deferred charges and other assets	12	105,371.93
<b>TOTAL ASSETS</b>	<b>13\$</b>	<b>19,329,573.73</b>

##### CAPITAL AND LIABILITIES

Savings Accounts	14\$	16,087,531.39
Advances from Federal Home Loan Bank of Little Rock	15	1,630,400.00
Other borrowed money	16	-0-
Loans in process	17	122,373.69
Other liabilities	18	502,967.68
Specific reserves	19	2,726.82
Permanent Reserve fund stock	20	349,662.50
General reserves:		
Legal reserve and/or Federal Insurance Reserve		284,053.07
Reserve for contingencies		219,257.50
Other reserves		45,000.00
Surplus or Undivided Profits	22	85,601.08
<b>TOTAL CAPITAL AND LIABILITIES</b>	<b>23\$</b>	<b>19,329,573.73</b>

Board of Directors (Chairman designated by asterisk)

* Donald W. Harmon	_____	_____
Frank H. Ellis	_____	_____
Robert I. Hooten	_____	_____
Lindal L. Murray	_____	_____
Alex H. Williams	_____	_____

Certified to be true and correct by Donald W. Harmon

Title President

### THP Investigates Six Accidents During December

The Texas Highway Patrol investigated six accidents on rural highways in Bailey County during the month of December, 1976, according to Sergeant Thurman Keffer, Highway Patrol supervisor of this area.

These crashes resulted in no persons killed and seven persons injured.

The rural traffic accident summary for this county during the first twelve months of 1976 shows a total of 48 accidents resulting in two persons killed and 36 persons injured.

The rural traffic accident summary for the 60 counties of the Lubbock Department of Public Safety Region for December, 1976, shows a total of 514 accidents resulting in 10 persons killed and 255 injured, as compared to December, 1975, with 534 accidents resulting in 22 persons killed and 325 injured. This was 20 less accidents, 12 less killed, and 70 less injured in 1976 at the same period of time.

The 10 traffic deaths for the month of December, 1976 occurred in the following counties:

Two each in Dickens, Deaf Smith; one each in Collingsworth, Hansford, Parmer, Swisher, Hockley and Montague.

#### ONE MINUTE SPORTS QUIZ

1. Name the winner of the 1976 Heisman Trophy.
2. Name the American League's top rookie.
3. Steve Shutt plays pro hockey for what team?
4. Who was named Sports-woman of the Year?
5. Bob McAdoo plays pro basketball for what team?

#### Answers To Sports Quiz

1. Tony Dorsett.
2. Mark Fidrych, Detroit.
3. Montreal Canadiens.
4. Chris Evert, tennis.
5. New York Knicks.

Maybe So  
"I'll have you know that I'm nobody's fool."  
"Cheer up, boy. Maybe someone will adopt you."

WHERE YOU ALWAYS BUY THE BEST FOR LESS

## GIBSON'S DISCOUNT CENTER

STORE HOURS 9 a.m. - 7 p.m.  
PRICES EFFECTIVE JAN. 16 - JAN. 19



**GIBSON TOOTHPASTE**  
7 OZ. FLOURIDE OR FLOURIDE MINT  
COMPARE TO THE OTHERS AT 99 EA.

2 FOR 99¢

**JEWEL SHORTENING** 42 oz. 

95¢ EA. OR 2/\$1.85

**POLIDENT TABLETS** 48 CT.

89¢

REG 1.17

**TEX SUN PINK GRAPEFRUIT JUICE** 46 oz. 

2/89¢

**LYSOL SPRAY DISINFECTANT** 14 oz.

\$1.19

REG 1.69

**SWIFT VIENNA SAUSAGES** 5 oz. 

3/\$1

**SPARKOMATIC FM CONVERTER** FM+0

\$18.95

REG 22.97

**"OUCHLESS" CURAD BANDAGES** 50 CT.

83¢

REG 1.09

**HOLLYWOOD SOCKET WRENCH SET** 29 PC. T-172

\$9.95

COMBINATION 3/8" & 1/4" DRIVE REG 13.97

**PLAYTEX DEODORANT TAMPONS** 16 REGULAR OR SUPER

93¢ EA. OR 2/\$1.80

**RIVAL ELECTRIC KNIFE** MODEL 1220

\$12.77

REG 15.99



## View From The Plain

by J.D. Peer  
I & E Field Officer

**"WANTED BY THE F.B.I." CLERICAL EMPLOYEES ATTENTION: HIGH SCHOOL GRADUATES, BUSINESS, JUNIOR AND SENIOR COLLEGE STUDENTS**

The Dallas Office of the FBI, through its Special Agent in Charge, Theodore L. Gunderson, has announced it is in need of clerical employees to fill the positions of Clerk, Typist, and Stenographer at Bureau Headquarters in Washington, D.C. These positions present an excellent opportunity for all young people, male or female, including minorities, who are at least 16 years of age, United States citizens, and have at least a high

school education, provided they can pass a rigid investigation of loyalty, reputation and character, and are in good physical condition. No previous experience is required.

The entrance salary for a Clerk is \$6,572 (GS-2) per year with a raise in thirty to ninety days to \$7,408 (GS-3) per year, if their work is satisfactory. A twenty word spelling test must be passed to qualify for the Clerk position.

A Typist starts at \$7,408 (GS-3) per year. Applicants for the Typist position must pass a five minute typing test at the rate of 40 words per minute and a twenty word spelling test.

As openings occur, applicants for the Clerk and Typist positions who are interested, are considered for the Fingerprint Clerk position which starts at \$7,408 (GS-3) per year. Successful candidates are considered for promotion to \$8,316 (GS-4) per year after six months; to \$9,303 (GS-5) per year after one year; and to \$10,370 (GS-6) per

year after two years experience in fingerprint work.

A Stenographer starts at \$8,316 (GS-4) per year. To qualify for the Stenographer position applicants must pass a three minute dictation test at the rate of eighty words per minute; pass a five minute typing test at the rate of forty words per minute; pass a twenty word spelling test; and a twenty word vocabulary test.

The FBI is only interested in above average young men and women. Many FBI clerical employees continue their college education on a part-time basis in the Washington, D.C. area, while working at these full time clerical jobs. Young men and women who possess a four year college degree from an accredited college and who have been employed in a clerical capacity with the FBI for three years and meet all other requirements may then be considered for the Special Agent position at a starting salary of \$15,524 (GS-10) plus overtime of \$3,881 per year.

The FBI provides counseling services to its new employees to assist them with housing, transportation, and other needs. If close friends or young married couples apply at the same time

and are found acceptable, every effort is made to afford them appointments on the same date.

The FBI does not come under Civil Service in that the FBI has its own application form, tests, investigates and hires its own employees rather than draw them from a Civil Service list or register.

An application and detailed information may be obtained by calling or writing the Special Agent in Charge, FBI, 200 Mercantile Continental Building, Dallas, Texas, 75201, telephone Area Code 214-741-1851, or by contacting the nearest FBI Office whose telephone number will be listed in the front of your telephone directory.

Completed applications should be sent to the above address as processing of such applications can be instituted as much as six months prior to an individual's availability. Upon receipt of a completed application, the interested applicant will be contacted and arrangements made for a personal interview and appropriate tests at a time and place convenient to the applicant.

Vacancies for the positions of Clerk, Typist and Stenographer frequently exist in the Dallas Office for which interested and qualified applicants may also be considered.

The many benefits of working for the FBI such as annual leave, sick leave, health and life insurance, and retirement benefits should be thoroughly considered when choosing a career. **ACT NOW!**

### Coming Your Way New Gospel Album

They're "Coming Your Way" with a new gospel album. The Southland Boys, including a former minister in Muleshoe, have just cut their second album of gospel music.



**THE SOUTHLAND BOYS** . . . The Southland Boys, a group of gospel singers, have just released their second album of gospel music, "Coming Your Way". Lead singer with the group is Mike Clark, seated, left, who is a former pastor of the Muleshoe Independent Baptist Church on West Eighth Street. He is also a

son-in-law of Mr. and Mrs. Bob Hardaway of Muleshoe. The Clarks reside at Seminary, Missouri, along with another daughter of Mr. and Mrs. Hardaway, Mr. and Mrs. Dwight Lewallen. Coming Your Way is available on both LP record and on tape.

Mike Clark, who formerly served as pastor of the Eighth Street Baptist Church, and is married to the former Rejanna Hardaway, is lead singer for the group. Mr. and Mrs. Bob Hardaway recently returned from Mississippi, where they visited their daughter and family, including one year old Gavin Ray.

The Hardaways also visited another daughter and family in Mississippi. Mr. and Mrs. Dwight Lewallen of Seminary, Miss., Hardaway said they brought back a good supply of the albums, which is the second for the group, and it is presently being played at Radio Station KMUL in Muleshoe.

The group, which has been recording and performing together for about two years now, is composed of Clark; Jerry Williamson, baritone; Wayne Thaxton, tenor; Wade Overby, bass and three musicians.

Their albums are on the Pyramid Label and are recorded at Soundtrack Studios, Nashville, Tenn. **True!** "What does your husband like for dinner?" asked the young bride, who was looking for advice. "The experienced housewife answered, 'Most anything I haven't got in the pantry.'"

## GIGANTIC NEW TOOL AUCTION

Friday, January 21, 1977

Complete selection of tools for the mechanic, welder, plumber, carpenter, electrician, trucker, farmer, contractor, and shop owners.

## W & J AUCTION

108 Pile

Clovis, N. Mex.

## HIGH UTILITY BILLS?

TEXAS INSULATION SYSTEMS Box 597  
Lockney, Texas 79241  
(806) 652-3348

ThermoCon Spray on for Metal Buildings & Shops  
ThermoCon Loose-fill for Residential Application  
"Insulation doesn't cost: it pays!"  
Please call for a free estimate without obligation.

## Report Of Condition Muleshoe State Bank

Form 44p (Rate) (3-76) PUBLISHER'S COPY State Bank No. 1631

Consolidated Report of Condition of "Muleshoe State Bank"

of Muleshoe in the State of Texas and Domestic Subsidiaries at the close of

business on December 31, 1976.

BALANCE SHEET		ASSETS		Sch.	Item	Col.	Mill.	Thou.		
1.	Cash and due from banks	C	7				4	444	1	
2.	U.S. Treasury securities	B	1	E			1	907	2	
3.	Obligations of other U.S. Government agencies and corporations	B	2	E				900	3	
4.	Obligations of States and political subdivisions	B	3	E			3	530	4	
5.	Other bonds, notes, and debentures	B	4	E				-0-	5	
6.	Corporate stock							NONE	6	
7.	Trading account securities							NONE	7	
8.	Federal funds sold and securities purchased under agreements to resell	D	4					NONE	8	
9.	a. Loans, Total (excluding unearned income)	A	10				10	983	9a	
	b. Less: Reserve for possible loan losses							210	b	
	c. Loans, Net							10	773	c
10.	Direct lease financing							NONE	10	
11.	Bank premises, furniture and fixtures, and other assets representing bank premises							570	11	
12.	Real estate owned other than bank premises							-0-	12	
13.	Investments in unconsolidated subsidiaries and associated companies							NONE	13	
14.	Customers' liability to this bank on acceptances outstanding							NONE	14	
15.	Other assets	G	7					668	15	
16.	TOTAL ASSETS (sum of items 1 thru 15)							22	792	16
		LIABILITIES		Sch.	Item	Col.	Mill.	Thou.		
17.	Demand deposits of individuals, partnerships, and corporations	F	1f	A			8	619	17	
18.	Time and savings deposits of individuals, partnerships, and corporations	F	1f	B+C			10	010	18	
19.	Deposits of United States Government	F	2	A+B+C				34	19	
20.	Deposits of States and political subdivisions	F	3	A+B+C			1	442	20	
21.	Deposits of foreign governments and official institutions	F	4	A+B+C				NONE	21	
22.	Deposits of commercial banks	F	5+6	A+B+C				NONE	22	
23.	Certified and officers' checks	F	7	A				162	23	
24.	TOTAL DEPOSITS (sum of items 17 thru 23)							20	267	24
	a. Total demand deposits	F	8	A			9	155	a	
	b. Total time and savings deposits	F	8	B+C			11	112	b	
25.	Federal funds purchased and securities sold under agreements to repurchase	E	4					NONE	25	
26.	Other liabilities for borrowed money							NONE	26	
27.	Mortgage indebtedness							NONE	27	
28.	Acceptances executed by or for account of this bank and outstanding							NONE	28	
29.	Other liabilities	H	9					632	29	
30.	TOTAL LIABILITIES (excluding subordinated notes and debentures)							20	899	30
31.	Subordinated notes and debentures							NONE	31	
		EQUITY CAPITAL					Mill.	Thou.		
32.	Preferred stock a. No. shares outstanding							NONE	32	
	b. No. shares authorized							20,000		
33.	Common stock a. No. shares authorized							20,000		
	b. No. shares outstanding						20.00	(Par value)	400	
34.	Surplus							500	34	
35.	Undivided profits							993	35	
36.	Reserve for contingencies and other capital reserves							NONE	36	
37.	TOTAL EQUITY CAPITAL (sum of items 32 thru 36)							1	893	37
38.	TOTAL LIABILITIES AND EQUITY CAPITAL (sum of items 30, 31, and 37)							22	792	38

### MEMORANDA

1.	Average for 15 or 30 calendar days ending with call date:						2	978	1a
	a. Cash and due from banks (corresponds to item 1 above)							365	b
	b. Federal funds sold and securities purchased under agreements to resell (corresponds to item 8 above)						11	557	c
	c. Total loans (corresponds to item 9a above)						2	459	d
	d. Time deposits of \$100,000 or more (corresponds to Memoranda items 3a plus 3b below)						19	602	e
	e. Total deposits (corresponds to item 24 above)							NONE	f
	f. Federal funds purchased and securities sold under agreements to repurchase (corresponds to item 25 above)							NONE	g
	g. Other liabilities for borrowed money (corresponds to item 26 above)							NONE	h
2.	Standby letters of credit outstanding							NONE	2
3.	Time deposits of \$100,000 or more:								
	a. Time certificates of deposit in denominations of \$100,000 or more						2	057	3a
	b. Other time deposits in amounts of \$100,000 or more							402	b

I, Robert E. Finney, of the above-named bank do solemnly [SWORN AFFIRM] that this report of condition is true and correct, to the best of my knowledge and belief.

Correct—Attest:

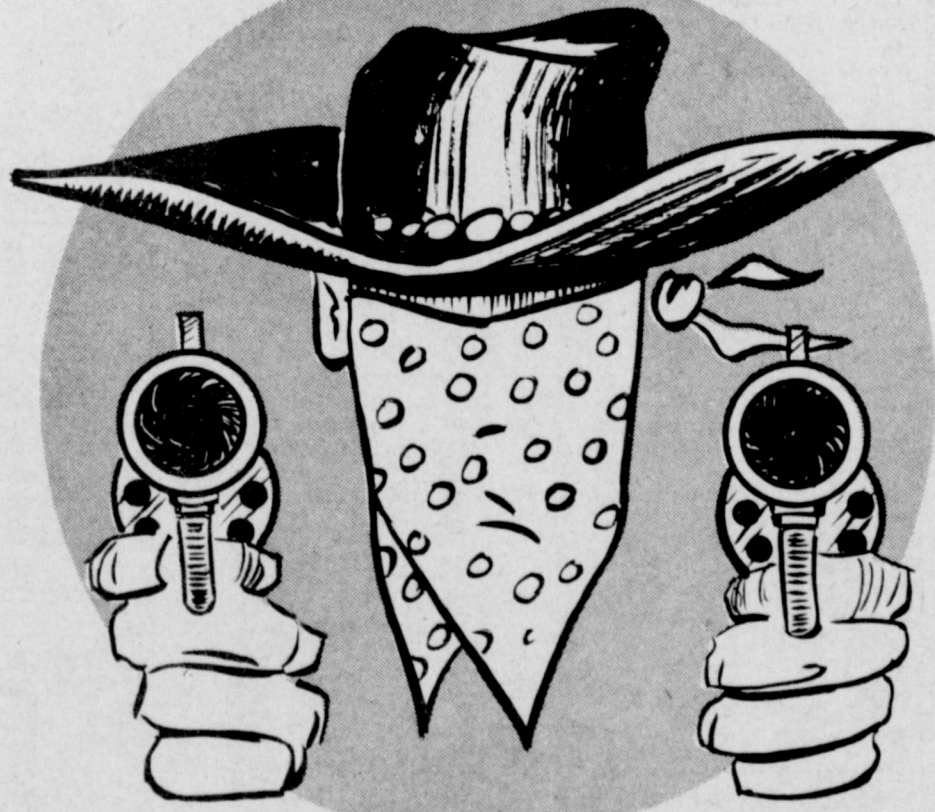
Directors.

State of Texas, County of Bailey

Sworn to and subscribed before me this 11th day of January, 1977, and I hereby certify that I am not an officer or director of this bank.

My commission expires June 19, 77.

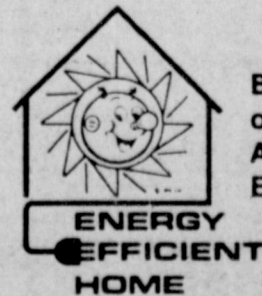
# LOST HEAT Hold Up Man



He's after your home heating dollar . . .

Don't let Lost Heat rob you of your home heating dollar. A new Energy Efficient Home saves the precious heat you pay for . . . it keeps it inside your home where warmth is needed. From the foundation up, the Energy Efficient Home is designed to retain heat and conserve energy, saving you money on electric heating bills.

If you're building or buying a new home, get the Energy Efficient Home specifications and find out how you can get the drop on Lost Heat and save money on electric heating bills.



Building or Buying? Ask us about EEH!



909.0003



# Wanted Ads

**OPEN RATES**  
1st insertion, per word - \$ .09  
2nd and add., per word - \$ .06

**NATIONAL RATES**  
1st insertion, per word - \$ .11  
2nd and add., per word - \$ .07

Minimum Charge - \$ .50  
CARD OF THANKS - \$3.00  
Classified Display - \$1.30 per column inch.

Double Rate for Blind Ads -  
**DEADLINE FOR INSERTION**  
11:00 Tuesday for Thursday  
11:00 Friday for Sunday

WE RESERVE THE RIGHT TO CLASSIFY, REVISE OR REJECT ANY AD.  
NOT RESPONSIBLE FOR ANY ERROR AFTER AD HAS RUN ONCE.

**1 Personal**

PTL (PRAISE THE LORD) Channels 28 and 3. 8:30 - 10:30 a.m. Mon lay through Friday. 1-12s-tfc

FOR YOUR Stanley Home Products, Jewel Broyles, all 965-2481. 1-16t-tfc

**3 Help Wanted**

**UN-EMPLOYED?**

Looking for an organization to grow into? Where you get some of the finest training in the nation? You'll find that no one offers better benefits than we do. Over \$374.40 a month starting salary with frequent pay raises. Medical and dental care plus food, housing and clothing. Opportunities in many locations throughout the world. Responsibility as soon as you complete training. The chance to serve your nation. Your local Air Force recruiter has all the details. Contact him today.

Air Force . . . A Great Way of Life

Sgt. Sonny Smith  
125 Main, Clovis  
Call Collect - 762-2000

**7 Wanted To Rent**

WANTED TO RENT: Land in West Camp or Needmore area. Phone 272-4441 or 946-3628. 7-1s-5tp

WANTED TO RENT: 2 bedroom home in or near Muleshoe. 272-3650. 7-2s-tfc

Responsible young couple needs an unfurnished house to rent. Excellent references. Take care of your house. Want to move to Muleshoe but can't find a house. Prefer a house outside of town. Call collect 806-799-3166. Lubbock. 7-2t-2tp

WISH TO RENT additional land in Lazbuddie or Hub area. Contact Jiggs or Jimmy Noland. 965-2738. 7-3s-tfc

**8 Real Estate**

FOR SALE OR TRADE: 20 acres irrigated land. 2 miles from Muleshoe. Phone 272-5578 or after 6 phone 272-3658. 8-38t-tfc

FOR SALE: Corner lot: 70' x 120' paved, lighted, ideal for car wash or Pizza Hut. Location: American Blvd. Call 272-4172. 8-2t-4tp

For Half Cash, Half Crop Lease: 1/2 Section, 3 wells, on pavement. Call 806-272-3066. 8-2t-tfc

NEEDED: Listings. 2 and 3 bedroom homes. Some small acreage.  
Holland Real Estate  
113 W. Ave. D  
272-3293  
8-2s-tfc

FOR SALE: 3 bedroom house, to be moved. Phone 257-3736 - Earth. 8-5t-tfc

**15 Miscellaneous**

Want to buy houses and buildings to be moved.  
J.V. Prietti & Son  
House Movers  
Phone 505-356-4990  
Portales, N.M.  
15-40t-tfc

WANTED: To keep a child in my home. 272-4777. 15-2s-3tc

WANTED: Land to lease or buy. Phone 965-2665. 15-47t-tfc

PHILLIPS HOUSE OF MUSIC  
118 MAIN  
CLOVIS, NEW MEXICO  
Pianos, organs, band instruments, new and used. Professional repairs, sheet music, rentals, terms.  
Phone: 505-763-5041.  
15-30s-tfc

Beautiful your home with decorating accessories sprayed on your ceiling. Free estimate. Call 272-3015 after 5:30 p.m. 15-3s-tfc

SALES, LOANS AND APPRAISALS  
In Bailey County 30 Years  
KREBBS  
REAL ESTATE  
122 W. Ave. C.

Good 3 bedroom house. Well located.  
Nine acres with house close in.  
Sec. of irrigated land near Friona.  
1/4 Sec. of land in Lamb County. Well irrigated.  
**POOL REAL ESTATE**  
214 E. AMER. BLVD.  
272-4716  
8-45s-tfc

FOR SALE: 160 acres: 11 miles west - 4 miles north of Portales; 4 irrigation wells. 70 acres alfalfa, hay shed, allotments: peanut, cotton, corn, 4 bedroom house, tenant house. Phone 505-356-8160. 8-41s-tfc

FOR SALE: 180 acres for sale. Eight miles west of Muleshoe on south side of highway 84. Three irrigation wells.  
**Smallwood Real Estate**  
116 E. Avenue C  
Muleshoe, Texas

FARM FOR SALE: 330 acres. 2 1/2 miles west of Goodland store. \$125 acre. 1/2 down. Terms on Balance. Mrs. O.A. Warren, 606 Elgin, Big Springs, Tex 79720. 915-263-0904. 8-51s-tfc

FOR SALE: 25 acres, 2 houses. 8" well. Contact 272-4017. 8-3s-2tp

**9 Automobiles**

FOR SALE: 1969 Chevrolet pickup. 350 engine, automatic transmission. 66,000 miles. See at 319 W. 9th or call 272-3885. 9-2t-6tc

FOR SALE: 1972 Chevrolet Blazer, low mileage, excellent condition. 272-3541. 9-1s-tfc

**10 Farm Equipment**

Your neighbors trade at STATE LINE IRRIGATION for all their irrigation needs. Why not you? Muleshoe, Littlefield, & Levelland. 10-45s-tfc

FOR SALE: 350 gallon butane tank, 500 gallon propane tank, 3/4 horse power submersible pump with 80 gallon pressure tank. 100 ft. 1 1/2" pipe. Billy Bounds 657-4507. 10-2s-8tp

MUST SELL: 1 1976 International 915 Combine. 24" grain head. 4 row corn head.  
1 1971 Chevrolet 2 1/2 ton tandem truck. Steel bed and lift.  
1 1974 Chevrolet 1 ton truck.  
1 new Wetmore grain cart. Phone 965-2767 after 6. 10-2s-4tp

FOR SALE: PVC pipe and fittings. 1/2 inch through 10 inch STATE LINE IRRIGATION - LEVELLAND, LITTLEFIELD AND MULESHOE. 11-41s-tfc

Complete Load Leveler Hitch. Call 272-4343 after 6. 11-1t-tfp

FOR SALE: New 14' Open top stock trailer, 6 ply tires. New Carl Darr Saddle, assorted tack. 272-3541. 11-1s-tfc

FOR SALE: CB 175 Motorcycle. \$200. 4611 or 3743. 11-2s-2tc

14. FARM PROP. FOR LEASE

FOR RENT: 160 acres for cotton. Call Joe Costen 925-6731. 14-2t-4tc

Interested in doing something just for yourself. Enroll in tote and decorative oil painting classes, at **Dood's Frame and Gallery, Sudan.**  
Beginners and advanced classes begin January 24th. Morning and night classes. Classes will be limited, deadline is January 20th. Call 227-2310 Sudan for registration and list of supplies. 15-2t-2tc

FOR SALE: 16" well casing, new steel 18" 2c a lb., 6" and 8" column pipe. 1/2 prices for junk iron.  
**FARWELL PIPE & IRON**  
601 AVENUE A  
FARWELL, TEXAS  
15-46t-tfc

Obliging  
Woman to husband as she arrives in auto with smashed front:  
"And the policeman was so nice about it. He asked if I'd like for the city to remove all the telephone polls."

Six engineers will probe Idaho disaster.

**Program among top five in U.S.**

AUSTIN, Texas (Sp.)—A University of Texas program that trains specialists who deal with problems of reading difficulties is among the top five in the U.S. and Canada, a survey shows.

The graduate reading program of UT's Department of Curriculum and Instruction is known for its pioneering work in bilingual education and for providing personnel who work with the public schools in regard to reading difficulties that may arise from learning disabilities or other reasons.

Master's and doctoral degrees in reading are offered, as is an undergraduate concentration for elementary and secondary education majors.

## TMA Says Doctors Cannot Cure Colds

People get an average of three colds per year and spend more than \$735 million trying to find relief, a federal report shows. Yet none of the 35,000 - 50,000 cold and cough preparations on the market actually can cure the common cold.

The Texas Medical Association (TMA) says a doctor cannot cure common colds and should be called mainly if there is a fever over 101 degrees for more than 24 hours, bloody discharge from nose or mouth, persistent chest pains, earache, severe or long-lasting sore throat or persistent cough. A doctor also should be contacted if a normally healthy person has a cold for more than a week or two. Of course people with other illnesses may need medical attention if they even get the sniffles since colds can complicate other illnesses.

The Food and Drug Administration (FDA) is working on a program to allow more cold and cough drugs to be sold without prescriptions and strengthen some ingredients already in over-the-counter drugs. Doing so may increase some of these drugs' abilities to relieve cold symptoms. However, people must be increasingly careful not to misuse these products.

The Texas Pharmaceutical Association says many cold medications can cause dizziness, drowsiness, hazy thinking and other side effects, especially if combined with alcoholic beverages. Allergies to certain drugs also cause reactions. People allergic to aspirin should be especially careful to read labels since many products contain the drug. In fact, reading labels and following directions is vitally important for all drugs.

Non-prescription drugs also can cause bad reactions if they interfere with prescription drugs. Advice should be sought about using both types of drugs together. People with heart disease, high blood pressure, thyroid disease, diabetes, glaucoma and several other conditions also need advice on non-prescription drugs.

Almost all drugs can be harmful if over-used but nose sprays and drops present particular

problems. The drugs can cause nasal congestion, the same problem they are designed to relieve, TMA says. Nasal membranes malfunction and swell when they are continuously chemically activated. People get "hooked" on the sprays and may have sinus headaches, loss of smell and taste, or high blood pressure, as well as nasal

problems. Many individuals have no lasting complications after they quit using the drugs for a few days.



... TO COME CHECK OUT OUR GREAT FURNITURE VALUES... YOU CAN SCORE LOTS OF POINTS!

**Johnson Furniture**  
Phone 272-4315  
2104 American Blvd.  
Muleshoe, Texas

### BARGAIN of the MONTH



Quantities Limited  
**now just 14<sup>88</sup>**

**DRIP COFFEEMAKER**  
Mirro-Matic drip coffeemaker brews 10 cups in just 8 1/2 min. Incl. 25 filters, teflon-coated warming plate, carafe. M0193-76

**Epy INC & COX**  
401 S. FIRST  
MULESHOE  
TEXAS 79347  
PH. 272-4511

# ATTEND THE CHURCH OF YOUR CHOICE

- FIRST UNITED METHODIST CHURCH  
Rev. Floyd Dunn  
507 West Second, Muleshoe
- MULESHOE ASSEMBLY OF GOD  
517 S. First  
H.D. Hunter, Pastor
- RICHARD HILLS BAPTIST CHURCH  
17th and West Ave. D  
Gerald Pepper, Pastor
- CHURCH OF THE NAZARENE  
Ninth & Ave. C  
David Gray, Pastor
- PRIMITIVE BAPTIST CHURCH  
621 South First  
Afton Richards, Elder
- FIRST CHRISTIAN CHURCH  
130 W. Avenue G  
Rev. Walter Bartholf  
Sunday School 10:00 a.m.  
Worship 11:00
- LATIN AMERICAN METHODIST MISSION  
Ave. D and Fifth Street  
R.Q. Chavez, Pastor
- FIRST PRESBYTERIAN  
Morton Highway  
Edwin L. Manning, Pastor  
Sunday Morning Service
- TEMPLO BAUTISTA  
Rev. Ynes Aleman  
Sunday School 9:45 a.m.  
Preaching Service 10:45 a.m.  
Training Hour 6:00 p.m.  
Preaching Service 7:00 p.m.  
Wednesday Prayer Meeting 8:00 p.m.
- CALVARY BAPTIST CHURCH  
1733 West Ave. C  
James Williams, Pastor
- TRINITY BAPTIST CHURCH  
314 E. Ave. B  
Rev. David Evetts
- PROGRESS SECOND BAPTIST CHURCH  
Clifford Slay, Pastor  
1st and 3rd Sundays



The Church is God's appointed agency in this world for spreading the knowledge of His love for man and of His demand for man to respond to that love by loving his neighbor. Without this grounding in the love of God, no government or society or way of life will long persevere and the freedoms which we hold so dear will inevitably perish. Therefore, even from a selfish point of view, one should support the Church for the sake of the welfare of himself and his family. Beyond that, however, every person should uphold and participate in the Church because it tells the truth about man's life, death and destiny, the truth which alone will set him free to live as a child of God.

### EMPTY BOWL

This little girl is holding a hollow, empty bowl. In the days when the Bible was being written, a bowl was also a large drinking cup, and many were the references to a cup full and running over, or a cup being empty, or the cup of God's wrath.

In speaking of the restoration of Israel, Zechariah prophesies, "The Lord of hosts shall defend them and they shall devour; and they shall drink, and make a noise as through wine; and they shall be filled like bowls and as the corners of the altar." Zech. 9:15.

He also promises, "In that day shall there be upon the bells of the horses, HOLINESS UNTO THE LORD; and the pots in the Lord's house shall be like the bowls before the altar."

And this day, if we follow Him, he promises that we will be filled like bowls with blessings and with His Spirit. We will also find that even a seemingly dry (and they never are, really) sermon heard in the house of the Lord, will bear fruit in us eventually, just as though it had been uttered from the very mouth of God in the Hallel of Hallel.

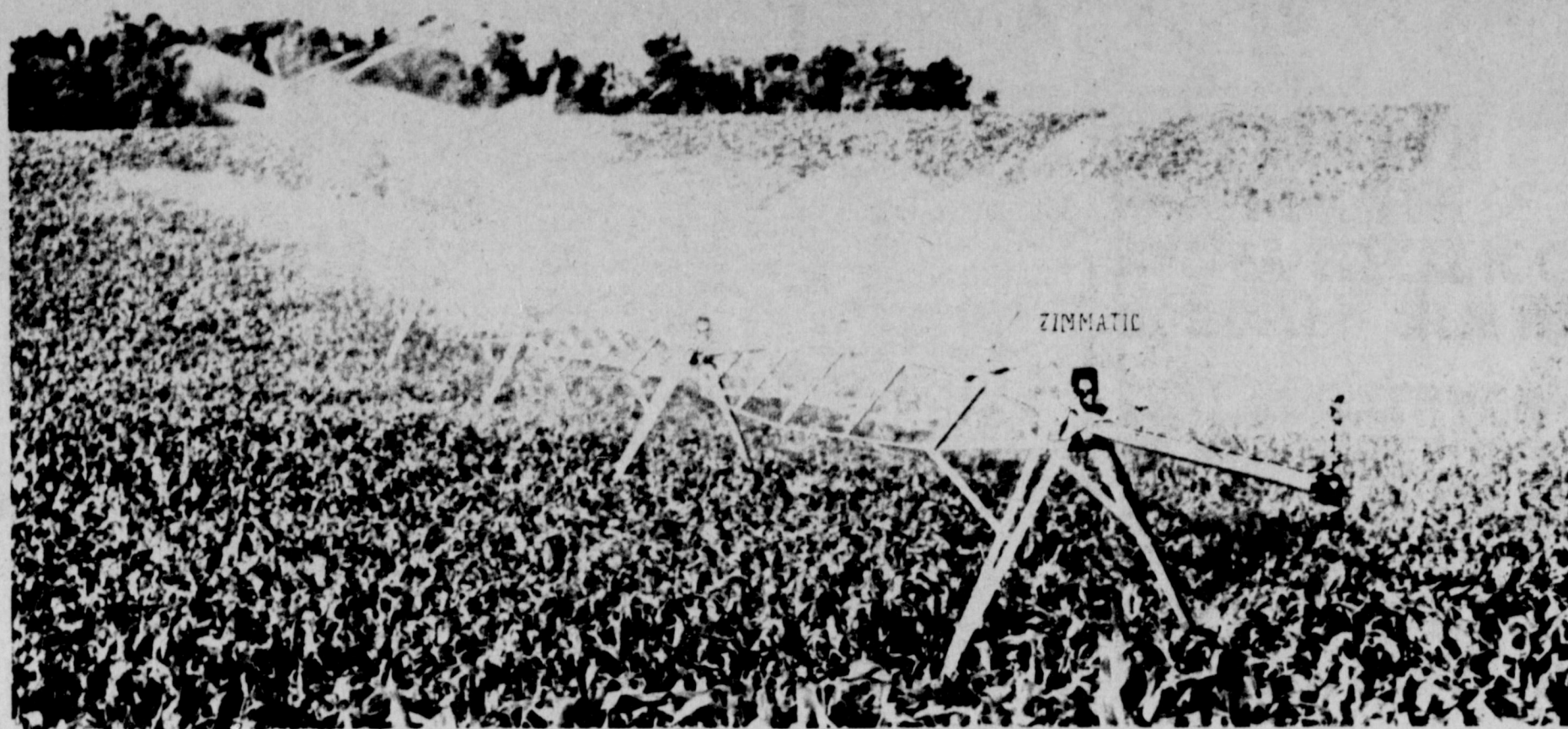
We earnestly invite you to attend church this week. A blessing full and wonderful awaits the seeking soul.



- UNITED PENTECOSTAL GOSPEL LIGHTHOUSE CHURCH  
207 E. Ave. G  
George Green, Pastor
- MULESHOE BAPTIST CHURCH  
8th Street and Ave. G  
Bob Dodd, Pastor
- ST. JOHN LUTHERAN  
Lariat, Texas  
Herman J. Schelter-Pastor  
Sunday School Classes 9:30 a.m.  
Worship Services 10:30 a.m.
- JEHOVAH'S WITNESS  
Friona Highway  
Boyd Lowery, Minister
- FIRST BAPTIST CHURCH  
220 West Ave. E  
Rev. J.E. Meeks
- SPANISH ASSEMBLY OF GOD  
East 6th and Ave. F  
Rev. Hipolito Pecina
- ST. MATTHEW BAPTIST CHURCH  
West Third  
E. McFrazier, Pastor
- NORTHSIDE CHURCH OF CHRIST  
117 E. Birch Street
- PROGRESS BAPTIST CHURCH  
Progress, Texas  
Dannv Curry, Pastor
- SIXTEENTH & AVENUE D CHURCH OF CHRIST  
Sunday - 10:30 a.m.  
Evening - 6 p.m.  
Wednesday - 8 p.m.  
Terry Bouchelle, Minister
- IMMACULATE CONCEPTION CATHOLIC CHURCH  
Father Timothy Schwertner  
Northeast of City in Morrison Edition  
MULESHOE CHURCH OF CHRIST  
Clovis Highway  
Royce Clay, Minister

<b>WESTERN DRUG</b> 114 Main	<b>WRINKLE WELDING &amp; MACHINE</b> 909 W. American Blvd. 272-4486
Compliments of <b>AVI, INC.</b> Hwy 84 W. 272-4266	<b>GIBSON'S DISCOUNT CENTER</b> 1723 West American Blvd. 272-4306
<b>BEAVERS FLOWERLAND</b> 'Flowers for all occasions' 272-3024 272-3116	<b>Cobb's</b> 218 Main
<b>BRATCHER MOTOR SUPPLY</b> 107 E. Ave. B. 272-4288	<b>WATSON ALFALFA</b> Alfalfa Hay 272-3552 272-4038
<b>Dairy Queen</b> Margie Hawkins, Manager 272-3412	Compliments of <b>STATE LINE IRRIGATION</b> Littlefield-Muleshoe-Levelland
<b>ST. CLAIRS</b> 110 Main	<b>Epy INC &amp; COX</b> 401 S. First MULESHOE ph. 272-4511
<b>BAILEY COUNTY MEMORIAL PARK</b> 'Every Service A Sacred Trust' 272-4383	<b>BLACK INSURANCE AGENCY</b> 105 W. Ave. D. 272-3292
<b>WHITES CASHWAY GROCERY</b> 402 Main 'Where Friends Meet and Prices Talk'	<b>BOB'S SAFETY CENTER</b> Wheel Aligning, Brakework Automotive Air Conditioning 272-3043
<b>WHITT-WATTS-REMPE IMPLEMENT CO.</b> John Deere Dealer 272-4297	<b>DARI-DELITE DRIVE IN</b> Take Out Orders 210 N. First 272-4482
<b>MULESHOE CO-OP GINS</b>	<b>FIRST NATIONAL BANK</b> 'Home Owned' 224 S. First
<b>MULESHOE PUBLISHING CO.</b>	<b>LAMBERT CLEANERS</b> Steam Carpet Cleaning Drapery Cleaning 123 Main St. 272-4746





# ZIMMATIC CENTER PIVOT SYSTEMS



**WESTERN  
SPRINKLERS  
INC.**

**Professionals-Over Seventy Years Of Combined Center Pivot Experience**

- \* TWO-WAY RADIO EQUIPPED
- \* LEASE AND FINANCE PLANS
- \* COMPLETE IRRIGATION
- \* SYSTEM INSTALLATION

**Western Sprinklers Inc. Sales And Service Centers**

**MULESHOE:806-272-4544  
KEITH PATE  
NICK IMMEL  
RAY AUTREY  
BRUCE PETERSON  
JIMMIE MOSIER**

**ARCH, NEW MEXICO:505-276-8368  
DAVID SANDERS**

**FARWELL:505-482-9949  
H.W. MOORE**

**SPADE:806-233-2473  
LARRY VRUBEL**

**CLOVIS, NEW MEXICO:505-763-4416  
ALBERTS IRRIGATION  
ALBERT MARTIN  
DICK MARTIN  
BEN JENNINGS**

**LITTLEFIELD:806-385-5123  
BIRKELBACH MACHINE & PUMP INC.  
W.W. BIRKELBACH  
RANDY BIRKELBACH  
KENNY BIRKELBACH  
EMIL BIRKELBACH**

**PORTALES, NEW MEXICO:  
VALLEY ELECTRIC CO. 505-356-8372  
ODIS NEWMAN  
GENE NEWMAN**

**"The Only Factory Authorized Sales-Service Lindsay Dealer For This Area"**