

Cross Plains Review

CROSS PLAINS' OLDEST BUSINESS INSTITUTION

THURSDAY, JULY 20, 1995

WEST CADDO PEAK

EAST CADDO PEAK
Price 50¢

87TH YEAR

NUMBER 16



CUB SCOUTS WIN 4TH PLACE—Kevin Wilson (back, from left), Chris Slinger, Chris Harris and A.J. Carouth; Marcus Williams (front, from left), Thomas Dimitri and James Purcell.

The Cub Scouts would like to thank everyone who helped them with the phone book recycling. They won the 4th place prize with 275 books.

The Scouts would like to give a special thanks to W.T.U. for letting them use

their office to drop off books and to Tim Dill and Leslie Reed for taking the books to Abilene. Keep saving the phone books as we will be doing it again next year!

BONEHEAD/KIWANIS CLUBS MEET

The Bonehead Club of Dallas will hold its annual "out-of-town" meeting with the Kiwanis Club of Cross Plains at high noon, local Dairy Queen, July 25. Members of the Bonehead Club have chosen Cross Plains as the site of this prestigious meeting for the last three years even though they have not been invited to do so. Knucklehead awards are usually presented to local citizens.

Purpose of the Bonehead Club, organized in 1919, is to have fun, poke fun, and insult each other, as well as guests,

provided such insults are not immoral or illegal. Membership is made up of 57 irresponsible individuals who automatically become Doctors of Nothing when they become members.

MOTTO OF THE CLUB—To Learn More and More About Less and Less Until eventually, we shall Know Everything about Nothing.

Anyone wishing to attend this meeting that is not a Bonehead or Kiwanian should contact Bob Pipes at 725-6117

Cross Plains Junior Rodeo July 27-29

The Cross Plains Roping Club will hold their annual Jr. Rodeo on July 27, 28 and 29. Nightly performances will begin at 7:30 p.m., admission is \$1 for ages 18 and under, \$3 for others. A dance will begin at 9:00 p.m. on Friday and Saturday featuring "Justin Taylor and Borderline". Dance admission is \$5 each.

Age categories and events are as follows: 10 and under - Barrels, Poles, Flags, Steers, and Breakaway. Entry fee is \$8 per event. 11-15 - Barrels, Poles, Flags, Steers, Breakaway, Ribbon and Tiedown. Entry fee is \$10 per event. 16-19 - Barrels, Poles, Flags, Bulls, Barebacks, Breakaway, Ribbon and Tiedown. Entry fee is \$15 per event. 21 and under - Team roping. Entry fee is \$30 per team, change end, enter twice. Buckles will be awarded to all around champions in each age group, boy and girl. The Shaun Odom memorial buckles will be awarded to the champion header and healer. This is an KXYL qualifying rodeo.

Books will open Thursday and Friday at 6:30 p.m. On Saturday, books for **steers only** will open at 5:30 p.m. All other events open at 6:30 p.m.

Colonial Oaks Services

Cornerstone Methodist will conduct worship services at Colonial Oaks Nursing Home on Sunday, July 23, commencing at 3:30 p.m.

Services For Ressa Glover Held July 14

Ressa Amadee Glover, 84, died Friday, July 14, 1995, in a Brownwood hospital.

Services were held at 3 p.m. Sunday in Higginbotham Funeral Home Chapel with Dr. Jim O'Dell officiating. Burial was in Cross Plains Cemetery.

Mrs. Glover was born in Cross Plains and was a homemaker. She was a member of First Baptist Church and was the widow of Chester Glover, whom she married in 1930. She was also preceded in death by a son, Benny Ray Glover, former Publisher and Editor of *The Cross Plains Review*.

Survivors include two granddaughters, Pam and Sheryl Glover and one daughter-in-law, Carolyn Glover Morgan all of Cross Plains.

Pallbearers were Alvin Hutchins, Charlie Grider, Dick Grider, Randy Foster, Kyle Foster and Blake Foster.

Memorials may be made to the Cross Plains Volunteer Fire Department or organization of your choice.

Art Classes Offered

The Cross Plains Paint and Pal Club will give Art Instructions to children ages 7 through 12 the week of July 24-29.

These classes will be held at the Multi-Purpose Room on East 8th St. in Cross Plains. Times scheduled 1:00 p.m. to 3:00 p.m. each day of week except Tuesday.

A fee of \$5 per child will be charged. For sign-ups and questions, please call Marlene at 725-7421 or Carolyn at 725-7334.

VARSITY CHEER CAMP '95 JULY 31-AUG. 4

The Cross Plains Varsity Cheerleaders will be having a camp for the potential cheerleaders in grades K-6, beginning July 31 and ending August 4.

These sessions will be held in the Cross Plains High School Gym each morning from 9 to 11. The cost is \$25 and includes a T-shirt.

For more information, contact head cheerleader, Misty Strickland, at (817) 725-6407.

Large Group Gathers To Discuss Birds

B.J. T. SMITH
Farm Editor
Abilene Reporter-News

A capacity crowd from a wide area of Texas turned out here at high noon Saturday for the North American Rhea Association's Zone 5 meeting.

Some Texas counties were represented in Zone 5. The gathering at Jean's Feed B'n restaurant also was in conjunction with the Texas Association of the North American Rhea Association.

And the meal was of course rhea meat. In it, rhea fajitas, sausages, ground steak and cut steak all were served. This farm writer can also attest that all four were tasty.

National Inc. marketing cooperatives provided the rhea meat.

The rhea (pronounced *reeuh*) is a member of the large, flightless birds known as ratites. Ratites also include the ostrich, largest of the birds, as well as the emu and cassowary.

Rolan Jones of Cross Plains is president of Zone 5 and also a member of the state board.

"The thing to remember about rhea (meat) is not to overcook it," Jones advised. "There's absolutely no fat in rhea meat."

As a result, there's virtually no shrinking in rhea meat.

Don't overfeed
Rheas should be fed one pound of feed ration daily for every 50 pounds of their body weight.

Jones challenged the rhea raisers to learn more about their birds.

He noted that Picd Piper Mills of Hamlin has provided them with data on different methods of feeding rheas.

Summer Library Programs In Full Swing

The summer activities at the Cross Plains Public Library are in full swing. The "Once Upon a Planet" group (grades K-6) had 27 participants on Wednesday, July 12 for "Live It." Betty Greenwood was the story teller for the week. Dressed in a colorful muu muu and holding an Aloha Bear, Betty read poems from Hawaii. The children were intrigued by "living it" in Hawaii.

Ila Gilliam exhibited numerous items collected in Scotland, discussing each item as it was displayed. Refreshments for the day were Scottish pancakes—tiny delicate pancakes, Scotland style. Needless to say, the day was a great success.

Fourteen of these students have read 54 books in one week!

Another program, "Read to Me," has thirteen children, infant-three years, who have had 325 books read to them this summer. What better way to instill in children the love of books!

Come join us!

Special thanks to the following people for being such a big help Monday, July 17: Peggy Purvis, Ashleigh Scott, Stephanie Childress, Brice Hail, Lori Hail, and Alicia Hail. We couldn't have done it without you.

Athletic Booster Club Meets July 31

The Cross Plains Athletic Booster Club will meet on Friday, July 21 at 6:30 p.m. at the City Hall to discuss the concession stand for the new gymnasium. Input on a design that will allow the most efficient operation of the facility is needed from participants who help run the concession stand. Everyone is encouraged to attend the meeting to express your desire for the proposed setup.

COTTONWOOD MUSICAL FRIDAY, JULY 21

The Cottonwood Quilting Club will hold its monthly country and western musical on Friday, July 21 at the Cottonwood Community Center. Emcee for the event is Smokey Callaway. All local and area musicians are welcomed. Quilting club members will be serving

homemade ice cream, sandwiches, desserts, coffee, tea or lemonade in the kitchen beginning at 5:30 p.m. Musical entertainment commences at 6:30 p.m.

There is no admission fee and everyone is invited to come out and enjoy the evening.

ATTENTION: C.P. Athletes

It is the time of year for Athletic physicals. If you are in grades 10, 11, or 12, and have a physical on file with the Cross Plains Athletic Department, **You do not need a physical!** The only exception to this rule is an athlete who was under a doctor's care within the last year.

For students entering grades 7, 8, and 9 (male and female) please pick up a physical form at the field house. The Cross Plains coaching staff appreciates Charles Stephenson and the Cross Plains Medical Center staff's hard work in this community service. The Cross Plains Staff would like to ask our students to get your physical early. We look forward to an excellent school year.

Immunization Clinic Date Set In Clyde July 26

The Texas Department of Health will be offering childhood immunizations at the Clyde field office of the Texas Department of Health on Wednesday, July 26.

The immunization clinic will be held from 8:30 a.m. until 11:30 a.m. at the Clyde field office at 111 Oak Street in Clyde.

DPT, Polio, MMR, HIB, Hepatitis B and TD will be offered. The fee for this service is on a sliding scale based on family size and income. No one will be denied services due to inability to pay.

For additional information about the immunization clinic call 893-2125.

CROSS CUT HOMECOMING CELEBRATED

The annual Cross Cut Homecoming was held in the Cross Plains Community Center on Sunday, July 16, 1995. Sixty-nine (69) former and present Cross Cut neighbors and friends gathered for an absolutely wonderful time. Those unable to attend this year's meeting missed a lot of fun, and were, themselves, sorely missed.

The festivities kicked off with everyone being greeted upon arrival by red and white balloons, crepe streamers and an opportunity to participate in some new activities.

Following a delicious covered dish meal, the group enjoyed a silent auction and took chances on items donated by various individuals. Several people purchased bricks donated by Scott Byrd from the recently demolished old school house. All proceeds were donated to the homecoming fund to help defray expenses. The silent auction brought in \$288.00; the 50¢ a Chance Table - \$58.50; Sketch of the School - \$50.81; Bricks - \$30.00; and a Ceramic School Vase won by Peggy Chambers was donated back, and auctioned off for \$76.00 to Laquita Morris who presented it to her mother, Maxine Lee. This was Maxine's 50 year anniversary, having graduated in 1945.

President Ellowayne Tatom then called the meeting to order.

Peggy Chambers, Secretary/Treasurer, read the minutes of last year's meeting and gave the financial report.

Ceramic replicas of the school house, made and donated by Peggy Chambers, were awarded to the following: Longest married couple - Willie Mae Gaines, who in turn passed the award to Annie Mae Wright; Youngest Alumni attend-

Ballots Have Been Distributed For Expanded Toll Free Calling Vote

By Vanda King
Editor

Our exchange has petitioned The Public Utility Commission of Texas (PUC) to expand its local calling area to Abilene, Baird, Brownwood, Coleman, Cisco, Clyde, Eastland, and Putnam exchanges and ballots have been mailed. The PUC has directed GTE to ballot all customers in this exchange.

Expanded Toll-Free Local Calling will allow customers to call and be called by requested exchanges on a local call basis (no toll charges). If one exchange or all are passed a total monthly per line charge of up to \$3.50 for residence and \$7.00 for business customers will be added.

Expanded toll-free local calling will be granted to each exchange with a "YES" vote of 70 percent of the people who actually return the ballot.

Remember to mark your ballot and sign your name before returning it. Your vote will not be counted without your signature and telephone number.

Expanded toll-free local calling would be beneficial to businesses and residents who communicate with area businesses, doctors, lawyers, and relatives. A "Yes" vote for all eight exchanges would connect our community to all the surrounding ones for a positive purpose.

ing - Russell Wright; Oldest Male Alumni attending - Edwin Gaines, 83; Oldest Female Alumni attending - Sara McCowan, 81 1/2; Most Family Attending - The Byrd Family - 9; Traveling the Farthest - Lena Teague, 2,000 miles.

A replica of the school was also presented to Marie Stanbaugh for all her work and contributions in previous years.

The only former teacher attending was Marie Stanbaugh. O.B. Byrd was the only former school board member in attendance.

Officers elected for the next term were: Charlie Mae Kizer, President; Raymond Hounshell, Vice-President; Russell and Betty Wright, Secretary/Treasurer.

O.B. Byrd, Blanche Byrd and Oneta Hubbard were re-elected as Board Members for the cemetery.

The fiftieth anniversary for the Class of 1945 was acknowledged by recognizing the two members of that graduating class in attendance: Maxine Lee and Billie Jo Chambers. Blanche Byrd shared a humorous reading regarding the way in which the definition of different words have changed over the past fifty years, e.g., "making out" used to mean "getting by financially", and "grass" was something in the front yard that you watered and mowed all summer.

The retiring officers wish to thank everyone who donated items and helped to make this event such a success.

The festivities ended at approximately 3:00 p.m. with everyone already making plans for next year. Hope to see all of you then!

COUNTY COURT
Bill Johnson presiding

Misdemeanor Filings

Charged with TPC (theft of property by check): James Fischer, D'Lynn Lee, Genevieve Lamoree, Frank Lassiter.
William C. Jones, DWI & deadly conduct.
Christene M. Franklin, unlawful carrying of a weapon.

Misdemeanor Minutes

Found guilty of TPC, fined \$10 each & \$173 court costs each: Joe Medley, Gary Moore, Cher L. Boyd.
Mack A. Henson, unlawful carrying of a weapon, \$200 fine \$160 court costs, 30 days in jail probated for 1 year.
Mack A. Henson, criminal trespass, \$100 fine \$160 court costs.
Joe Browning Evans, Jr., speeding, \$300 fine.
In the matter of Domingo Segura, Don L. Wilson allowed to withdraw as attorney of record.

CROSS PLAINS REVIEW

(USPS 138-660)
DON TABOR, PUBLISHER
CROSS PLAINS, REVIEW



(USPS 138-660) is published weekly on Thursday, for \$14.00 per year within Callahan County; \$17.00 per year elsewhere in Texas; \$20.00 per year out of state. (No foreign copies except APO or like address); by Review Publishing Co., 116 E. 8th St., Cross Plains, Texas 76443.

Second-Class postage paid at Cross Plains, Texas 76443.

POSTMASTER: Send address changes to Cross Plains Review, P.O. Box 519, Cross Plains, Texas 76443.
Telephone: 1 (817) 725-6111
FAX: 1 (817) 725-7225

In the matter of John Houston Herpeche, Speedy Bail Bonds allowed to withdraw as surety.

Stephen B. Chasteen, reckless conduct, order filed deferring judgment, \$1000 fine \$180 court costs, 1 year probation.

Probations discharged: Kathy Alice Carrillo, Christie J. Johnston, Eddie Dean Hedrick, Walter Johnson.

MARRIAGE LICENSE

Kathy Dyan Gann & Jerry Wayne Taylor of Abilene.

42nd DISTRICT COURT
John Weeks presiding

Civil Minutes

Greg D. Holland, found to be \$2133 in arrears on child support payments; new schedule of payments to begin 8-1-95.
Divorces granted:
Rutherford, Karin Elaine & Micky Dale.
Isbell, Roy Alvin & Gail Marie.

Felony Complaint & Information
David Anthony Breneman, sexual assault.

Felony Minutes

Lisa Kay Lee, forgery, \$500 fine, \$100 restitution, 2 years at TDC probated for 5 years.
Robert Thomas Harper, Jr., possession of marijuana, \$1700 fine, 2 years in jail probated for 5 years.
David Bruce Webster, unlawful carrying of firearm by a felon, sentenced to 6 years at TDC.

When you get there, there isn't any there there.
—Gertrude Stein

COPIES
MADE
at
THE
CROSS
PLAINS
REVIEW
(817) 725-6111

Delbert Lynn Biggs

Delbert Lynn Biggs, 43, died Monday, July 17, 1995, at an Abilene hospital. Services were held at 10 a.m. Wednesday at Higginbotham Funeral Home Chapel with Elvis Whaley officiating. Burial was in Cross Plains Cemetery.

Mr. Biggs was born in Plainview. He was a mortician and a Baptist. He was a member of Rising Star Masonic Lodge. He married Charlotte Kay Brown in 1986 in Cottonwood.

Survivors include his wife, of Cross Plains; two daughters, Holly Biggs of Stephenville and Hailey Biggs of Cross Plains; his mother, Estelle Biggs of Eastland; two brothers, Albert Biggs of Cranfills Gap and Clayton Biggs of Giddings; his grandmother, Gladys Biggs of Granbury; and numerous aunts and uncles.

Memorials may be made to the Abilene Area Dialysis Center Patient Emergency Fund, 1802 Pine, Abilene.

Wildea Tomlinson

Wildea Tomlinson, 75, of Burkett died Tuesday, July 11, 1995 at a Rising Star nursing home. Graveside funeral services were held at 11:00 a.m. Thursday at Burkett Cemetery with Dr. Travis L. Summerlin officiating. Services were under the direction of Stevens Funeral Home of Coleman.

Wildea Tomlinson was born January 4, 1920 in Coleman County, Texas, the daughter of the late Jessie James Harris and Mattie Calvin Harris. She lived in Coleman County most of her life. She was a cook at Odums Cafe in Cross Plains for 23 years. She was a long-time member of the Burkett United Methodist Church.

Survivors include one son and daughter-in-law, J.W. and Sandra Tomlinson of Crockett Mills, Tennessee; three grandchildren, Charles Wayne Tomlinson of Crockett Mills, Tennessee, Terry Diane Neves of Odessa and Julie Michelle Cooper of Baird; three great-grandchildren, Charles Jacob Tomlinson, Melanie Paige Cooper and Shelby Jean Neves; three step-grandchildren, Carol Castalaw and William Russell of Crockett Mills, Tennessee, and Terry Gaye Turnage of Alamo, Tennessee; five step-great-grandchildren, Katie Rae Castalaw, Amber Lynn Privette, Casey Joe Ward, Christina Russell and Tara Russell; one aunt, Birdie Helms of Burkett.

The family requests memorials be made to the Burkett United Methodist Church.

Wesley Webb

Wesley S. Webb, 92, of Schertz and formerly of Abilene, died Monday, July 10, 1995, in a San Antonio hospital.

Services were held at 2 p.m. Thursday in Allen-Korzenewski Funeral Home Chapel, 1443 N. 2nd, with the Revs. Bill Sheppard and Eugene Park officiating. Burial was in Burkett Cemetery in Coleman County.

Mr. Webb was born in Pioneer and farmed and ranched in Burkett until 1955. He moved to Abilene in 1980 from Cisco, and Schertz in 1994. He was a member of gospel Tabernacle Church and was the widower of Loraine Sheppard Webb, whom he married in 1935 in Coleman.

Survivors include one son, Tommy Ray Webb of Schertz; one sister, Zora Mae Bryant of Cross Plains; two brothers, Tommy Webb of Quitman and O.W. "Becco" Webb of Burkett; four grandchildren; and four great-grandchildren.

Kathy Raedell Wallace

Kathy Raedell Galloway Wallace, 48, specialist for Children's Protective Services, died Monday, July 14, 1995, at her home.

Memorial services were at 2 p.m. Wednesday at Elliott-Hamil Funeral Home Chapel of Memories, 542 Hickory, with Chaplain Mike Patrick officiating.

Ms. Wallace was born in Baird and graduated from Cooper High School in 1965. She graduated from the University of Texas-Permian Basin and Our Lady of the Lake in San Antonio. She worked for the Texas Department of Protective and Regulatory Services for 10 years as a CPS specialist and PAL coordinator. She was a member of Wylie Baptist Church.

Survivors include her mother, Frances (Pierce) Galloway of Abilene; two sisters, Rita McGee of Baird and Gay McKennon of Abilene; one niece, one nephew and several aunts and uncles.

Memorials may be made to Child Protective Services PAL Fund, P.O. Box 6635, Abilene 79608.

Lee Heathington

BAIRD—Lee Heathington, 71, died Friday, July 14, 1995, at his home.

Services were held at 3 p.m. Monday in Parker Funeral Home Chapel with James Radford officiating. Burial was in Ross Cemetery Annex.

Mr. Heathington was born in Electra and married Dorothy Lillian Melton in 1942 in Memphis, Texas. He was a U.S. Army veteran of World War II and worked as a self-employed oil field drillbit retipper. He moved to Baird two months ago from Zapata. He was a member Disabled American Veterans and Church of God.

Survivors include his wife, of Baird; two daughters, Patricia Lee Calk of Greenville and Oneda Yvette Burch of Cross Plains; one son, Arthur Lee Heathington, Jr. of Zapata; two sisters, Donia Duckett of Amarillo and Gladys Baker of Wichita Falls; nine grandchildren; two step-grandchildren; six great-grandchildren; and numerous nieces and nephews.

Eula Handy Pruett

Eula Handy Pruett, 78, died Thursday, July 13, 1995, in a local nursing home.

Services were held at 11 a.m. Saturday in Highland Church of Christ with Dr. Royce Money and James Voss officiating. Graveside services were at 10 a.m. Monday in Mission Park Cemetery South in San Antonio, directed by Elliott-Hamil Funeral Home, 542 Hickory.

Mrs. Pruett was born in Talpa and attended school in Coleman County. She worked in civil service in security at Kelly Air Force Base in San Antonio from 1952-75. She was a member of Highland Church of Christ and was the widow of James Handy, whom she married in 1938 in Cross Plains; and Harold Pruett, whom she married in 1975 in San Antonio.

Survivors include two daughters, Pam Money of Abilene and Darlene Voss of St. Petersburg, Florida; four stepsons, Bill Pruett of Pasadena, Gary Pruett of California, David Pruett of Houston and Randy Pruett of Abilene; one stepdaughter, Janice Beauchamp of California; two sisters, Grace Madison of San Antonio and Della Bull of San Angelo; one brother, Perry Bragg of Pecos; four grandchildren; seven step grandchildren; and several nieces and nephews.

Memorials may be sent to Lisa Pruett Memorial Scholarship Fund at Abilene Christian University, ACU Station, Box 7000, Abilene 79699; or Hospice of Abilene, P.O. Box 1922, Abilene 79604.

WHEN RENEWING YOUR SUBSCRIPTION TO THE CROSS PLAINS REVIEW PLEASE BRING THE RENEWAL CARD SENT TO YOU IN THE MAIL THANK YOU

Ft. Worth Man Found Guilty

A 42nd District Court jury found a Fort Worth man guilty of criminal trespass and not guilty of burglary after a three day trial June 19-21 at the Callahan County Courthouse in Baird, according to Callahan County Attorney Allen Wright.

Clay Canales of Fort Worth, formerly of Clyde, was found guilty of criminal trespass, fined \$500 and given six months probation involving an arrest on March 9, 1994.

Canales was arrested by county lawmen and charged with criminal trespass

Jaggars Booked Into Callahan County Jail

Richard Wayne Jaggars, 43, of Baird was booked into the Callahan County Jail Thursday, July 6, 1995, on charges of Deadly Conduct, Aggravated Assault with a Deadly Weapon and Violation of Probation. Jaggars had been hospitalized since June 24 for gunshot injuries he sustained as result of a shootout with Baird City Marshal Dale Coley. Bond was set at a total of \$155,000 on the three charges.

Jaggars was later charged on July 7 with Aggravated Assault on a Public Servant and Attempted Capital Murder. Both charges are first degree felonies. The Callahan County Attorney's Office asked that bail be denied on both charges and Jaggars was ordered held without bond.

OIL NEWS

Wildcat

Callahan
J.V. Rhyne, Cisco, will drill a wildcat, No. 1A Baum A, to 1,900 feet 3.5 miles west of Cross Plains on a 42-acre lease. Spots 1,683 FSL and 1,275 FWL, A. Montgomery No. 853, A-276.

Oil Completions

Callahan
J.V. Rhyne, Cisco, completed No. 2 Baum in the Regular 4.5 miles southwest of Cross Plains. Spots 1,087 FNL and 750 FWL, A. Montgomery No. 853, A-276.

Daily pumping potential was 22 bbls. of 40-gravity oil and 29 bbls. of water from perfs at 1,640-56. GOR: TSTM. Total depth 1,702; top of pay 1,640; 4 1/2-inch casing set at total depth. Treated with 110 sacks sand and 500 gals. mud acid.
Tops reported: Cross Plains Sand 1,640.
Contractor: M&M Drilling.

and burglary involving some horse tack items taken from the Iky Akers residence in Clyde. Some of the items reportedly taken were saddles, bridles horseshoeing tools and animal medicine.

Wright said Canales and Akers were ex-partners of Broken Arrow Cattle Company. The county attorney said Canales admitted to taking the property, but stated the items were assets of Broken Arrow, not property of Akers.

Wright went on to say he and Callahan County Sheriff Eddie Curtis warned Canales the day the items were taken to not go out to the Akers ranch, but should instead try to settle the case in civil court.

Wright said Akers did not testify during the trial, but his younger brother, Archie, did. Canales also took the stand in his defense.

The county attorney said the district court jury felt the horse tack items taken were not the property of Broken Arrow Cattle Company, but were instead owned by Akers himself.

Canales was represented by defense attorney Bob McCool at the trial.

This was the tenth jury trial for Wright since he took office. He said of those 10 jury trials, eight defendants were found guilty and two others found not guilty.

County Votes To Vacate Plat

Callahan County Commissioners, in a regular commissioners' court meeting Monday, July 10, voted to vacate a plat of land in the Cactus Hill subdivision northwest of Baird.

Commissioners met with K.D. Griffin requesting to vacate the plat of land. On a motion by Commissioner Tommy Holland and second by Commissioner Bryan Farmer, commissioners voted unanimously to grant the request.

Other agenda items brought before the county commissioners included:

—Commissioners approved the minutes of the previous meeting and voted to pay all approved bills.

—Commissioners agreed to set two dates for the county budget workshops for the 1995-96 fiscal year. The two budget workshops will be held Monday and Tuesday, July 24 and 25.

—Commissioners arranged for food commodity distribution in the county for Wednesday, July 12. Commissioner Bryan Farmer was to pick-up the food items to distribute in Baird, Clyde, Cross Plains and Putnam.

The next regularly scheduled meeting of the commissioners' court will be held Monday, July 24 at the county courthouse in Baird.

Punctuality is the thief of time.
—Oscar Wilde

CHURCH SERVICES

FIRST BAPTIST CHURCH

10TH & MAIN CROSS PLAINS (817) 725-7629
Sunday School 9:45 a.m.
Morning Worship 11:00 a.m.
Church Training 6:00 p.m.
Evening Worship 7:00 p.m.
Wed. Prayer Service 7:00 p.m.
Dr. Jim H. O'Dell - Pastor (817) 725-7556 Tony Appuglies - MY Min. (817) 725-6326

UNITED PRESBYTERIAN CHURCH

9TH & AVE. D CROSS PLAINS
WORSHIP SERVICE 9:30 A.M.
BIBLE CLASS 10:30 A.M.
Rev. Henry Grubbs, Pastor
Everyone Welcome

BELIEVER'S FELLOWSHIP

Inner-denominational — Evangelical
EAST HIGHWAY 36
Sunday School 9:30 a.m.
Morning Worship 10:45 a.m.
Evening Worship 7:00 p.m.
Wednesday Night Family Bible Study 7:00 p.m.
Bob Wallace, Pastor (817) 725-6607

Living Water Ministries Fellowship

Evangelical — Non-Denominational
Charismatic
Restoring And Equipping The Saints
New Location—Highway 36 West
Sunday Morning 10:00 a.m. Thursday Evening 7:00 p.m.
For Information Call (817) 725-6800
1-800-252-3629

TEMPLE BAPTIST CHURCH

8th & Ave. D - Cross Plains, Texas
Sunday School 10:00 a.m.
Sunday Morning Worship 11:00 a.m.
Sunday Evening 6:00 p.m.
Wednesday Prayer Meeting 7:00 p.m.
Bro. Max Martin, Pastor Phone 725-6574

Our Full Service Bank Can Help Your Business Grow. We can help you meet your profit goals with reasonably priced loan and financial services. Why not call today?

Real service from Real people!

CITIZENS STATE BANK

P.O. Box 699 · Cross Plains, Texas 76443
Phone (817) 725-6141 or 725-6142

MEMBER FDIC





HARRIS-BROWN REUNION

The Harris-Brown family reunion was held Sunday, July 9 at the Burkett Community Center. There were 54 family members and friends who attended. Officers for 1996 will be: President, Charles Hounshell; Vice President, Peggy Bradford; and Secretary-Treasurer, Helen Hounshell.

Attending from Burkett were: Birdie and Gill Helms, Vergie Adams, Christine and Leonard Long, Clairene Edgar, Virgil and Freeda Burkett, and Jack DeBusk. From Coleman: Vigil and Evelyn Adams, Lon and Lorene Gray, Sam and Mildred Hunter, J. C. and Erma Tomlinson, Charlene Cavaness, Carl Bludworth, and Jonathan Davis. From McCamey: A. B. Harris, Tenia, Shelby, and John Wright, and Howard Tarpley, Jr. From Houston: Patrick Adams, Verda Brown, and Zenobia Brown. From Eastland: Lillie Brown, L. C. and Joan Brown. From Cisco: Raymond and Helen Hounshell, and Janet Hounshell. From Ranger: Lowell and Carolyn Brown, and Mrs. H. C. Lange. From Monahans: Sharon, Ashley, and Justin Heath. From Odessa: Joetta Smith. From Cross Plains: Sarah McCowen. From Proctor: J. O. and Peggy Bradford. From Comanche: M. L. and Misty Bradford. From Archer City: Juanita Sheppard. From Lometa: Wayne Brown. From San Angelo: Bo and Marlene Brown. From Bangs: Homer Purcell. From Brownwood: Elmer Hounshell. From Stephenville: Charles and Judy Hounshell. The reunion will be held next year on June 30, at the VFW Hall in Coleman.

MATTHEW SCOTT WALDRAFF

Bradley Waldraff proudly announces the arrival of his baby brother, Matthew Scott Waldraff, born May 24, 1995. He weighed 9 pounds and 7 ounces and was 20 3/4 inches in length. Rick and Kristy Waldraff of Bedford are the parents. Grandparents are J.T. Jack of Roswell, New Mexico and Bill and Wanda Heatherly of Abilene. Reba Lane of Cross Plains is the great-grandmother.

CROSS PLAINS PUBLIC LIBRARY NEWS

JULY 10-14, 1995
 "A human mind, once stretched to a new idea, never returns to its former dimensions." (O. W. Holmes)
 Circulation: 261
 Memorials: Lois Garrett for Ressa Glover; Phyllis Taylor, Waldeine Foster, Ray and Azalea Womack for I. B. Loving.
 Keep Cool: Read a book.

VARSITY CHEER CAMP '95
 July 31-August 4
 9:00 a.m. - 11:00 a.m.
 At High School Gym
 Grades K - 6th
 Cost \$25
 (Includes T-shirt)
 Contact Head Cheerleader Misty Strickland for further information
 (817) 725-6407

Help for Heart Patients

People with no social and emotional support are one and a half times as likely to die following a heart attack as people with caring family and friends. Psychiatrist Thomas Oxmon of Dartmouth Medical School reports that those who said they gained comfort from religion were one and a half times as likely to be alive. Attending church per se didn't promote survival. "Just showing up won't do it. You have to get something out of attending. Religious belief and social participation give people a sense of comfort and belonging, a more positive mood."

Your better health is our concern.

NEAL DRUG
 PH. (817) 725-6424
 CROSS PLAINS, TEXAS

BREAKTHRU
 By Bob Pipes, preacher
 Cross Plains Church of Christ
 433 N. Main At 12th
 (817) 725-6117

Abraham Lincoln once said, "Sir, my concern is not whether God is on our side; my great concern is to be on God's side -- for God is always right." It seems what Mr. Lincoln was saying is that it's nice to have God on our side but the way to insure that is to be sure and be on God's side -- and at the same time one will be assured of being right. It doesn't matter whose side we're on if it's wrong for we're still in trouble no matter who or how many is/are on that side with us. God's "side" was established long ago and it's like a couple by the names of Peter and John said concerning it: "Whether it is right in the sight of God to listen to you more than to God, you judge, for we cannot but speak the things which we have seen and heard." Acts 4:19-20. The other apostles joined them later in saying it this way: "We must obey God rather than men," Acts 5:29. In most instances the laws of the land are an outgrowth of Biblical laws and principles. Sometimes, however, they are relaxed more than God allows or desires -- sometimes even disregarded! If we would follow God's law, which is the superior law, not only would that provide a BREAKTHRU to happier living, and better living, it would keep us within the tolerances of civil law -- and ON GOD'S SIDE. And that, my friend, is of utmost importance!

Come and let's learn God's law together. We really do care about you, too.

Sunday Morning Bible Class ... 9:45 a.m. Wed. Evening Bible Study 7:00 p
 Sunday Morning Worship 10:45 a.m. Sunday Evening Worship 6:00

Friends & Neighbors Caring In Jesus

BURKETT NEWS

By LOVERA STRICKLAND

This is the last list of donations received by the Burkett-Adams Cemetery Association. Linda Brady, Secretary-Treasurer reports that each and every donation is greatly appreciated. The latest donations are: Estelle Nielson (in memory of Patsy McFerrin Hicks, H. J. adn Edith McFerrin), \$25; Boyd and Liz Young, \$20; Mr. and Mrs. E. L. Slack, \$25; Virgil and Evelyn Adams, \$50; Kermit and Madeleine Diehl, \$25; Mrs. J. Melvin Jones, \$25; Mr. and Mrs. Al Godwin, \$25; Evelyn Cowan, \$10; Anita Jo Johnson and Bama (Reecie) Golden, \$35; Howett, Roylene, Don, Richard, and James Wilson, \$50; Bruce and Marsha Adams, \$25; Mildred Lowe, \$10; Mr. and Mrs. W. O. Russell, \$20; F. Jean Slaughter (in memory of Carl Dennis Boyle), \$25; Mrs. Christine Dempsey (in loving memory of Ray Dempsey and Martin Wright Family), \$25; Corene Adams, \$25; Joan Fisher, \$30; Roy Hollon, \$25; Mr. and Mrs. Richard Burns, \$30; Mrs. F. D. Belz, \$25; Gary Briggs, \$10; Peggy Golson, \$10; Donald Seltzer (in memory of Seth Burkett), \$25; J. W. and Martha Gains, \$25; Jerry and Sandra Biehl and Ruby Biehl, \$25; Mr. and Mrs. William Helton Jr., \$25; Jody and Eureka Whitley, \$25; Marty and Glenda Callaway, \$10; B. J. and Barbara Zirkle, \$25; Minnie Knight and Mrs. W. O. Russell, \$100; Sammie and Marjorie Porter, \$25; Emma Hill, \$25; Elmer Hounshell, \$25; Garvice and Jo Nell Boyle, \$20; and Mr. and Mrs. LeRoy Williams, \$25; Louise Howard, \$2.

Visiting Mike and Linda Brady July 4 week at Hords Creek Lake were Ben and Lucille Creek of Coleman, and Russell and Alisa Gould of Abilene. Mike and Linda's children, Tim, Melinda, and Stephanie Bledsoe of Valera, and Kim and Dawson Schnantz of Kyle also visited.

The Byers-Tabor Reunion was held this year on July 8, 1995, at Rose Park in Abilene.

Those attending and registering, were: Ray, Faye, Michael, and Christi Hagar of Abilene; Wayne and Laville Parson, of Temple; Charles and Norma Byers, Merkel; Dale, Patti, Mandy, and Cory Farmer of Tuscola; Vic and Marie Holladay, Abilene; Marion and Betty Byers, Burkett; Esther, Velma, and Dan Byers, Burkett; Myrl and Carolyn Driskill, Eros, Louisiana; Barbara Rowntree, Albany; Randy and Adriane Farmer, Tuscola; Bethany and Patrick Spencer, Fred, Don, Paula, and Stephen Robertson of Mesa, Arizona; Terry, Elizabeth, Darlene, and Matthew Burkley, Dallas; Danny, Jeannie, Tiffany, and Sarah Moore, Lueders; Les, Mandy, and Kayle Mims, Nugent; Gerry Baker, Munley; Cora B. Robertson, Robert Lee; Jeremy Moss, Abilene; Ruby Nell Jeanis Albany; Clint Byers, Nolan; Tracy Mirade, Nolan; Lane, Carla, Amber, Sarah, and Emily Byers of Cedar Hill; Lay, Esther, Shane, Amy, and Lyle Hal, Breckenridge; Sherry Ford, Snyder-Emma Polachek, Lueders; and Debbie Post of Merkel.

The Brown and Harris family reunion was held at the Burkett Community Center, Sunday, July 9. It was well attended by the two families and their friends. A delicious luncheon, as well as music and singing and lots of visiting, was enjoyed by everyone.

Budd and Nita Thate had as their recent guest, their son, Bill Slate of Oklahoma City. While here, he did a lot of work for them, including yard mowing and caring for their garden. He also helped their neighbor, Tom and Betty Byers, with a new drain line from their septic tank.

Funeral services for L. M. "Doc" Robertson, of Robert Lee, were held at Burkett Cemetery on July 15, 1995. Doc was the husband of Cora Byers Robertson, and the brother-in-law of Tom and Betty Byers, and Velma, Esther, and Dan Byers of Burkett.

Our sympathy is extended to the families of L. M. "Doc" Robertson, Boots McDowell, Wesley Webb, and Wilda Tomlinson. They passed away last week.

Churchwell Named WTU Vice President

T. D. "Pete" Churchwell was named Vice President of Operations and Engineering at West Texas Utilities Company, Glenn Files, WTU president and chief executive officer announced.

Churchwell, who begins the transition into his new position immediately, replace Don Welch, who announced he is retiring after 36 years of service at WTU. Churchwell joined WTU in late 1993 to assist in the management of WTU due to Files' then-heavy responsibilities overseeing the transition efforts of WTU parent Central and South West Corp's efforts to acquire El Paso Electric Company.

Churchwell joined the CSW system in 1978 as a manager of Personnel Resource at WTU's affiliate company, Public Service Company of Oklahoma (PSO) in Tulsa. He was named vice president of Human Resources at PSO in 1984 and PSO vice president of Corporate Services in 1987.

In 1989, he was transferred to affiliate Central Power and Light Company in Corpus Christi as Central Region general manager. He joined Central and South West Services, Inc. in Dallas in 1991 as vice president of Corporate Services.

"Pete is a strong leader with a keen grasp of the mission of WTU as it fits into the larger framework of the CSW Corporation," says Files. "We look forward to using his expertise as he takes over as WTU vice president of operations and engineering."

Churchwell is a graduate of the University of Tulsa and Harvard Advanced Management Program. He and his wife, Sandy, have three children, Kristi, Patrick, and Arlyn.

TSU Announce Honor Roll Students For Spring

STEPHENVILLE—The A and B Honor Roll and Distinguished Student List for the Spring 1995 semester has been announced at Tarleton State University.

Dr. Robert C. Fain, Provost and Vice President of Academic Affairs at the University, released the names of students honored during the spring semester which ended in May. Included on the list were 188 students making the A Honor Roll and 732 making the B Honor Roll. There were 826 Distinguished Students named.

Students listed on the A Honor Roll must have a 4.0 grade point ratio (GPR) on the 4.0 system and be taking a minimum of 12 hours. Students on the B Honor Roll must have a grade point ratio between 3.0 and 3.99 with no grade lower than B and taking a minimum of 12 hours.

Distinguished Students include freshmen and sophomore students who have a minimum GPR of 3.25 with no grade lower than C, and juniors and seniors who have a minimum GPR of 3.5 with no grade lower than C and are in good standing.

Local students who made these lists include: Doris D. Waggoner (B, D), Amy D. Welch (B, D), and Janet K. Walker (D), all from Baird; Valerie L. Cantrell (B, D), Nance D. Self (B, D), and James Dean Lane (B), all from Clyde; Joy I. Klingberg (B, D), Chad Bagley (B), and Shana D. Bagley (D), all from Cross Plains; Jeanette Tidwell (B, D) from May; Shannon O. Geye (B, D), Terry B. Geye (B, D), Janice M. Phillips (B, D), Derrick W. White (B), and Edward A. Anderson (D), from Rising Star; and Margie W. Young (B) from Sidney.

PRIVATE APPLICATOR LICENSE AUG. 4

A training for all agricultural producers who want to obtain a private applicator license is scheduled to be held on August 4. The training will be held in the County Courtroom, 2nd floor of Courthouse in Baird beginning at 8:30 a.m. The training will last about 3 1/2 hours. Testing of all applicants will be at 1:00 p.m. by a TDA representative.

Producers are asked to pre-register by calling the Callahan County Extension Office at 854-1518.

NOTICE: This training session is not for CEU hours, it is only for producers who want to obtain a private application license.

Subscribe To The Cross Plains Review

"Meet Me In St. Louis" Performing At CJC

"Meet Me In St. Louis" is scheduled as the third play this summer at the Cisco Junior College dinner theater. The show boasts such lively music as "Skip to My Lou", "Trolley Song", "Anything But a Girl", "Your are for Loving", and many more. The cast for this show includes many Cisco favorites such as Lloyd Parrish, Bill Austin, Jacque Childress, Sean Vernon, Mary McGrew, Angela Kennedy, Jammie Gentry, Shelley Porry, and Le Jones.

Don't miss the fun as a family with one son and four daughters finds fun, laughter, and love in St. Louis during the time of the World's Fair. Reservations are currently being made for the August 3-6 and August 10-13 showings by calling 442-2589.

WTU'S DON WELCH ANNOUNCES RETIREMENT

Don Welch, vice president of Operations and Engineering for West Texas Utilities Company since 1982, today announced he will retire on August 1.

Welch's distinguished career with WTU spans 36 years from the time he joined the utility as a lineman in Stamford and as he worked his way through the company in various operations and management positions.

Welch served as a local WTU Manager in Aspermont, Wellington, and Alpine from 1967 to 1976. He then was promoted to Assistant District Manager at Stamford and later served as District Manager at Stamford.

In 1982, he moved to WTU's General Office in Abilene and was named Executive Assistant. After a few months, he became Vice President of Operations and Engineering, presiding over the utility's operations for a service area that stretches across more than 53,000 miles in 52 West Texas counties.

During his career at WTU, he also served in many leadership capacities in civic and regional organizations. While in Stamford, he was a Director of the Rotary Club and was a Director of the Lion's Club in Alpine. In Wellington, he was President of the Kiwanis club.

Welch serves on the Board of Directors of the Fairway Oaks Country Club in Abilene; the West Texas Rehabilitation Center; the Ben Richey Boys Ranch and Texas Cowboy's Reunion at Stamford.

He also served on the Worker's Compensation Task Force of the Texas Chamber of Commerce.

Welch is known in West Texas as a strong advocate for the importance of enhancing and developing the West Texas agricultural economy, and his devotion to the region is seen in his approach to WTU business and providing superior customer service.

He once said in a presentation to employees that, "It comes as no surprise to any of you that our customers have pretty high expectations for electric service."

"What we have to do is match their expectations for service with our ability to provide service at a reasonable price," he added.

Welch has shown a keen sense of what the customer expects, and he also has recognized that WTU's employees are key to delivering service to meet those expectations.

"Communication is the key. When our customers come in contact with us, they are telling us that something is important to them and we better believe it," Welch told employees recently.

Glenn Files, WTU president and chief executive officer, said, "Don has made a significant contribution to WTU and to the communities where he has served WTU over the years."

"We wish him well in retirement," Files added.

C.P.I.S.D. Board of Trustees Met July 19

The Board of Trustees of the Cross Plains I.S.D. met Wednesday, July 19, and addressed the following agenda:

Prayer
 Minutes
 1. Open Forum
 2. Bids 95-96 School Year
 3. 95-96 Luncheon Prices
 4. Workers Compensation/ Unemployment
 5. Integrated Pest Management Co-Ordinator
 6. Financial Report/Accounts Payable
 7. Elementary Student Handbook
 8. Student Insurance
 9. Personnel
 A. Resignations/Releases-Special Education, Elementary Teacher, Cafeteria, Bus Drivers, Spanish Teacher
 B. Employment-Counselor, Spanish Teacher, Special Education, Teacher Aide Elementary teacher, Cafeteria and Bus Drivers.

NOTICE

T&K TIRE AND ALIGNMENT IS NOW A COOPER TIRE DEALER. IN ADDITION TO ALL OUR OTHER SERVICES, WE ARE NOW EQUIPPED TO DO 4-WHEEL AND THRUST ALIGNMENTS. CALL (817) 725-6223 FOR APPOINTMENT. 15-17C

METAL BUILDINGS

METAL BUILDING 30 FT X 40 FT
 T WALK DOOR
 I ROLL UP DOOR
 CONCRETE SLAB
 COMPLETE
 \$9,750.00

CONCRETE SLABS & WALKS
PATIO COVERS
METAL ROOFS
ADD-ONS & REMODELING

JACKIE JOY
 (915) 854-5930

BAIRD TEXAS

Selected Scriptures

...You will not abandon me to the grave, nor will you let your Holy One see decay. Psalm 16:10 (Also, Job 19:25)

...of first importance: that Christ died for our sins according to the Scriptures, that he was buried, that he was raised on the third day according to the Scriptures, and that he appeared to Peter, and then to the Twelve. After that, he appeared to more than five hundred of the brothers at the same time, most of whom are still living, though some have fallen asleep. Then he appeared to James, then to all the apostles... I Corinthians 15:3-7

Paid Advertising — Irma Miller



STATE SENATOR BILL SIMS RECOGNIZED—Texas and Southwestern Cattle Raisers Association has recognized State Senator Bill Sims, D-Point Rock, right, for legislative leadership and distinguished service to the Texas cattle industry. TSCRA President Chaunce Thompson, left, of

Breckenridge, Texas, presented Sims with a plaque during the Association's summer board meeting July 7-8 in Kerrville, Texas. Other legislators recognized were State Senator Teel Bivins, R-Amarillo, and State Representatives Susan Combs, R-Austin, Harvey Hilderbran, R-Kerrville, and Bob Turner, D-Voss.

COUNSELING RESIDENTS 60 AND OVER ON BENEFITS

If you are a Big Country resident sixty years or older and have a question about Medicare, Medicaid, private insurance, SSI, Social Security Disability, or legal issues concerning advance directives, the Area Agency on Aging can provide free confidential help. This program is called Benefits Counseling and it provides health information, counseling, and assistance for older Texans.

If you need help with your benefits of feel that you might be eligible for assistance but do not know how to apply, the Area Agency on Aging can put you in contact with a Volunteer Benefits Counselor in your area.

Volunteers are trained to assist individuals

sixty and over to better understand Medicare, Medicaid, explore Medicaid eligibility and apply for benefits. Volunteers are also trained to help individuals review and organize doctor and hospital bills, as well as provide information about advance directives such as the "Living Will" or "Durable Power of Attorney for Health Care."

If you need help with your benefits of feel that you might be eligible for assistance but do not know how to apply, the Area Agency on Aging can assist you. For more information about the program please contact Jena Price, Benefits Counselor, at 1-800-928-2262 or 915-672-8544.

COTTONWOOD NEWS

By BEVERLY BROWN

Friday, July 21, the Cottonwood Musical will be held in the local community center. Smokey Callaway is the country and western music emcee. All local and area musicians are welcomed. The quilting club members will be serving homemade ice cream, sandwiches, desserts, coffee, tea or lemonade in the kitchen area starting at 5:30 p.m. Musical entertainment will commence at 6:30 p.m.

The Cottonwood Quilting Club members are in need of items for the country store for the August Rehab Night Benefit. Anyone wishing to donate items may contact Ethel Champion, 725-6536 or Mary St. Peter, 725-6762, or bring them to the Cottonwood Community Center on Thursdays, when the members hold their quilting meetings.

Peggy Purvis is at her parents, John and Janet Purvis. She has been helping her father with chores around the place.

We had a great attendance at the Cottonwood Vacation Bible School last week. There was an enrollment of 57 with attendance of 46 to 48 young people, teachers, adults and helpers. A special feature this year was the coordination of snacks with the mission stories, countries, and groups. Snacks served were taquitos, gorditas, Amish monster cookies, red beans and cornbread, and on

Friday evening the all time favorite of the young people, peanut butter and jelly sandwiches and watermelon. Every year during Bible school we receive one good rain shower during the week. This 1995 session, the rain held off until Sunday. In the local vicinity we received only a sprinkle but areas west and south appeared to have a good down pour of rain.

On Sunday, members of the Cottonwood Baptist Church attend the worship services at the Cottonwood Church of Christ. Leaking propane fumes in the annex and church building prompted cancellation of morning services. Evening services were held in the church. The problem has been found and taken care of.

Mrs. Randy Trost of Lewisville was here on Friday and Saturday to pick up her daughters, Jami and Brandi, who have been visiting with their grandparents, Mr. and Mrs. Harold Strahan. Ashleigh is staying an extra week with her grandparents.

Rainfall reported was 1/2 inch at John Purvis, 1/2 inch at D.O. Williams, and 7/10 inch at R.T. Peevy in north and western sections of Cottonwood.

Visiting Bill and Billie Kelly were Irene Moen of Tehachapi, California and her son, Ross Moen of Los Angeles.

Preventing Food-borne Illnesses In The Summer

HOUSTON—To prevent food-borne illnesses from ruining picnics this summer, remember three simple rules: keep it clean, keep it cold, and keep it covered.

"Most cases of food poisoning are caused by careless food preparation, storage, and serving," said Dr. Corinne Montandon, a nutritionist at the USDA's Children's Nutrition Research Center and an assistant professor of pediatrics at Baylor College of Medicine.

Montandon believes that safe food handling begins with a clean work area and clean hands.

"As you prepare your family's picnic favorites, be sure that countertops, cutting boards, and all the utensils that touch the foods are clean," she said.

"Always wash hands with warm soapy water before preparing, packing, and serving foods, and take along disposable hand wipes in case there is no running water at the picnic site."

According to Montandon, bacteria multiplies quickly in foods left at room temperature so refrigerate foods soon after preparation.

Some foods are more susceptible to bacterial growth than others. Foods that require special attention include meat, poultry, fish, shellfish, meat-and-seafood salads, potato salad, milk products, eggs, cream pies, and custards.

To keep foods cold for the picnic, place them in an insulated cooler or ice chest

cooler as soon as possible.

Food-borne illnesses, such as salmonella, botulism, and clostridium perfringens, can range from mild to severe. They can be especially dangerous for young children, the elderly, pregnant women, and others with weakened immune systems who may suffer from complications caused by vomiting and diarrhea.

If someone becomes ill, give them plenty of fluids to prevent dehydration. If you suspect a food-borne illness, contact your physician as quickly as possible.

and cover with ice or commercial ice packets. If possible, travel with the cooler inside the car instead of the trunk. Once you reach the picnic site, place the cooler in the shade and only open it when necessary.

"Children love to make repeat visits to the ice chest for juice, sodas, or pieces of ice. It's a good idea to bring along an extra cooler just for drinks," Montandon said.

Before you spread the table cloth and set out the food, Montandon recommends an inspection of the area. Make sure the spot is not a haven for birds, squirrels, flies, or other unwanted guests that might contaminate the foods. As an extra precaution, cover foods with plastic wrap before and after they are served.

Perishable foods should not be left out for long. It is best to return leftovers to the

COLONIAL OAKS NURSING HOME NEWS

By LINDA EDINGTON
Activity Director

The residents with birthdays this month were honored with a party Tuesday night. The sound of gospel singers from Brownwood provided the music for us. Residents with birthdays were Julia Hedrick and Leila Montgomery. Employees with birthdays are Kay Bell, Celia Belw, Joyce Cottrell, Julia Ferbrache and LaTrisha Curry.

Julia Hedrick enjoyed a surprise visit from her grandchildren and great-grandson from Franklin.

Congratulations and best wishes to LaTrisha Curry on her wedding.

We would like to express our heartfelt sympathies and love to the family of Ressa Glover.

A warm welcome to our new resident Clara Nell Spencer.

Appreciation to Deborah Griswold for the wedding cake and to Pete Golson for the cookies.

Anita Shirley from Abilene, Kelley and Chad Howard from Odessa, Rusty Jackson from Winters, Brenda Alexander and Bonnie Alexander from Sweetwater, Willie and Glynda McBeth and Lynda Fulton from Franklin visited with Julia Hedrick.

Betty Montgomery and Ruth Bush from Midland visited with Leila Montgomery.

Coralea Kiefer from Northridge, California visited Nora Golson.

Billy Wright from Clyde visited

Everett Wright.

Teri Coburn from Dallas visited Clara Coburn.

Doc and Nelar Hounshell from Electra visited Tud Hounshell.

Arthur Carlton from California, Jewel Johnson, Bobby and Skeet Jeter from Lubbock, Julia Woodell from Arlington and Katie Hawkins from California visited with Nettie Roady.

Kate McCarty visited Gertrude Powell. Frances Tyson visited Clara Nell Spencer and Hub Freeman.

Toni Wyatt visited with several. Activities during the week:

Monday: Bingo winners were: Vera Belycu (3), Mary Keele, Suma Dill, Gertrude Powell and Midge McCall. Exercise class.

Tuesday: Art class. Popcorn and Skip-Bo games.

Wednesday: Sing-a-long with Bob Wallace. Exercise class. Skip-Bo games.

Thursday: Bingo winners were: Mildred Ford, Allie Dickson (2), Vera Belycu (3), Suma Dill, Gertrude Powell, Midge McCall (2), and Deen Haddox. Skip-Bo games.

Friday: Singing with Bob Wallace. Sit-down-basketball.

Sunday: Cornerstone Methodist. The best and most beautiful things in the world cannot be seen or touched, but are felt in the heart.

EARN 6.27 Percent

OUR CURRENT FLEX II ANNUITY INTEREST RATE.

Ron Bagley
(817) 725-6409

Guaranteed for one year upon issue, subject to change on policy anniversary date. The guaranteed rate is 4% for the life of the policy.

Your contributions, less any applicable maintenance fees and state taxes, accumulate wealth for the future. Surrender charges apply only during the first eight policy years.



HELPING YOU is what we do best.

Southwestern Farm Bureau Life Insurance Company

Take Back The Night!

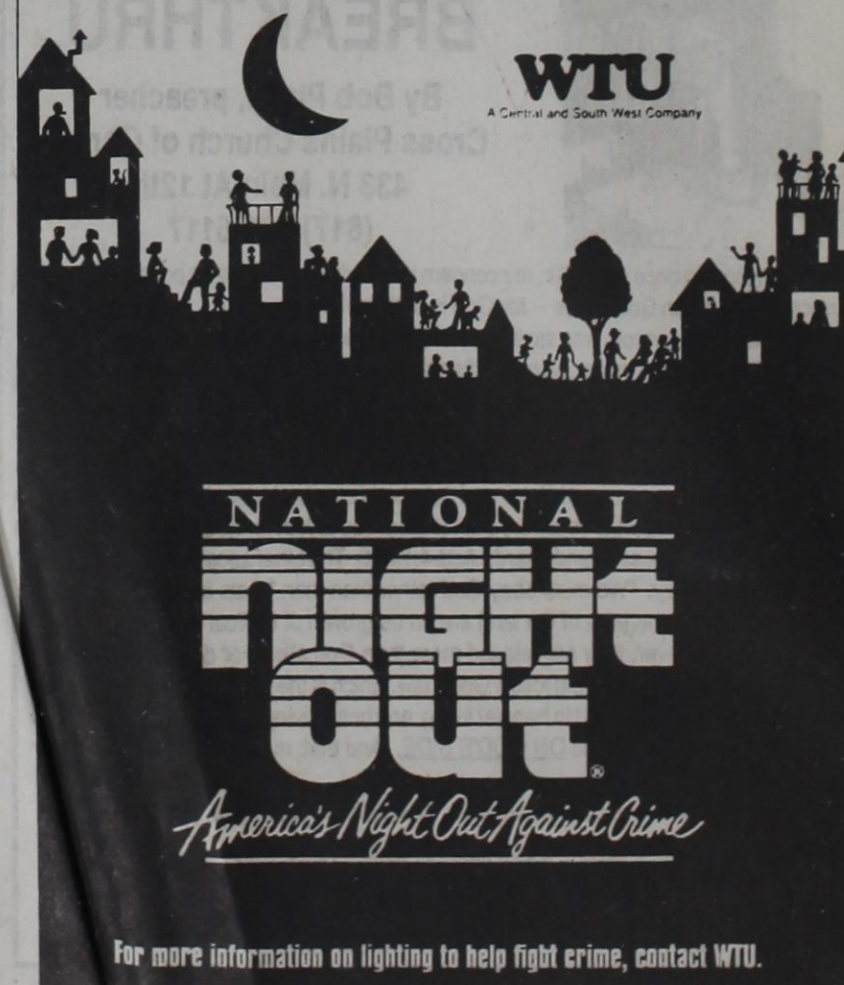
Take Part In America's Night Against Crime!

Tuesday, August first, Americans coast to coast will turn on their porch lights in recognition of National Night Out — a special night designed to raise awareness of crime prevention and take back the night. And you can join them.

Take the lead in your neighborhood. Organize a block party or barbecue. Encourage your neighbors to attend. It's a great chance to get to know them better.

Invite local police to come and talk about crime prevention and demonstrate safety procedures. Get your kids involved. Encourage them to make posters and yard signs.

Spend one night out for safety. You'll rest easier year-round.



For more information on lighting to help fight crime, contact WTO.

Bayer Motor Co. Cross Plains

201 N. Main St. - Cross Plains, Texas
Bus. (817) 725-6838 Res. (817) 725-6320
DALE BISHOP — MANAGER-SALESMAN

- 1993 Chevrolet Lumina—4dr\$10,250
- 1993 Mercury Sable—4dr\$13,000
- 1988 Dodge Caravan\$5,500
- 1987 Olds 98—4 dr\$3,750
- 1993 Chevrolet Astro Van\$14,500
- 1994 Chevrolet Cavalier—4 dr\$9,900
- 1991 Chev. Suburban Conversion\$16,500
- 1988 GMC Suburban\$10,500
- 1991 Ford Explorer\$14,750
- 1994 Buick LeSabre—4 dr\$17,000
- 1993 Chevrolet 3/4 HD 4x4\$17,500
- 1994 Chevrolet 1/2 ton SWB\$15,500
- 1993 Pontiac Bonneville—4 dr\$16,000

GMAC and Bank Finance available.
We have more Cars on our Comanche lot. If you don't see what you need, call and we can check over there.

10-TFC

The Burkett Store

Pecan Bayou Grocery
(915) 624-5463

COPENHAGEN \$1.99 each

Schlitz
Schaefer Light **\$8.29**
case of cans

Coors/Lt..... case of cans **\$14.98**

Coors Light **\$7.59**
Miller Lite 12 pack bottles

Miller HIGH LIFE.....quarts 98¢

****Open Till 9:00 p.m. Fridays****
****Open Till 9:30 p.m. Saturdays****

Don't Pay More Shop The Burkett Store
MANY OTHER ITEMS ON SALE

16-11c

PUT IT IN THE CROSS PLAINS REVIEW FOR RESULTS!

CLASSIFIED RATES:
\$3.00 For the first 20
words. Additional
words 20c each.

CLASSIFIED ADS (817) 725-6111

INSERTION
DEADLINES:
NOON
TUESDAY

ADVERTISE IN THE CROSS PLAINS REVIEW

BUSINESS SERVICES

CARPET CLEANED AND SOLD
Commercial/Residential. Free estimates. Scotch Guarding Available. Carpet sold, repaired, installed. New or used. **DUB MEADOR.** (817) 725-7720 18-TFC

MIDDLETON WATER WELL SERVICE
Complete Pump Service & Sales
Goulds Pumps
24 Hours Service
Rudolph (Rod) Middleton
(817) 643-3701 or (817) 725-6239
Mobile (817) 653-7667 42-43

BOB'S YARD SERVICES — Mowing, trimming and hauling, call Bob, (817) 725-6887. 50-51

ESTES SURVEYING — Diehl Estes Registered Professional Land Surveyor 116 Oak St. Clyde, Tx. 79510. (915) 893-2822. Boundary, Subdivisions and Construction Surveying. 52-TFC

SALES AND SERVICE—Pumps and controls, tanks, windmills, call Roger Crawford, (817) 725-7513. 12-TFC

FOR CUSTOM HAY BAILING—Call (817) 725-7568 or see Charles or Fred Waggoner. 13-14

BUSINESS OPPORTUNITIES

OWN YOUR OWN APPAREL OR SHOE STORE, Choose: Jean/Sportswear, Bridal, Lingerie, Westernwear, Ladies, Men's, Large Sizes, Infant/Pre-teen, Petite, Dancewear/Aerobic, Maternity, or Accessories Store. Over 2000 name brands. \$25,900 to \$37,900: Inventory, Training, Fixtures, Grand Opening, Etc., CAN OPEN 15 DAYS. **MR. LOUGHLIN,** (612) 888-6555. 16-17T

CARD OF THANKS

CARD OF THANKS
A special thank you to the Cross Plains and Cottonwood Fire Departments for responding so quickly to our call and helping put out the grass fires on the Tatom Farm. We really appreciate you.
R.N. Tatom Family

CARD OF THANKS

Thank you to everyone who expressed love and kindness to us during the loss of our loved one. The food, flowers, and especially the prayers were deeply appreciated and will be remembered for a long time. May God bless each of you.
Love In Christ
Pam and Sheryl Glover
Carolyn Glover Morgan

WHEN RENEWING YOUR SUBSCRIPTION TO THE CROSS PLAINS REVIEW PLEASE BRING THE RENEWAL CARD SENT TO YOU IN THE MAIL. THANK YOU

GARAGE SALES

2 FAMILY GARAGE SALE—Thursday only. Little bit of everything, 8:00 a.m. - 5:00 p.m. 124 12th Street, Peggy Bailey home. 16-17P

INSIDE GARAGE & BAKE SALE—Cross Plains Senior Citizens Building, 108 Main Street, Saturday, July 22 8:30 a.m. 16-18

MULTI-FAMILY YARD SALE—Thursday 8 a.m.-12 noon, Friday 8 a.m. - 1 p.m., and Saturday 8 a.m. - 2 p.m., 1/2 mile south of Cottonwood Post Office, look for signs. Robbie Wheeler home. 16-18

FOR SALE

FOR YOUR MARY KAY PRODUCTS — call Pauniece Oglesby, (817) 725-6772. Have all Mary Kay Cosmetics line in stock — ladies and men's skin care, body and fragrance items. Free delivery, Gift Wrapping. 11-TFC

MONUMENTS AND MEMORIALS — Cliff Kirkham is agent for Riley-Gardener Monument Service of Hamilton, Texas for the Cross Plains area. Contact Cliff Kirkham form complete information on quality monuments. Call (817) 725-6500. 50-TFC

FOR SALE—1976 Pontoon boat with trailer and motor. 1976 and 1980 Chevy Luv pickups. Call 725-7571 or after 5 725-7438. 9-11c

Barrels, Metal or Plastic \$5 each; 3.7 miles east of Cross Plains on Highway 36. (817) 725-6517. 15-20P

LITTLE GIRLS TENNIS SHOES—L.A. Lights, white with fuschia trim, size 10-4, \$29.99. Johnson's Dry Goods, Cross Plains, (817) 725-6211. 16-16D

FOR SALE—27 squares of shingles brown color and nails; also two wedding ring quilts (regular and king) Call (817) 725-6347. 16-21c

REGISTERED LABRADOR—Last litter of Bodacious Budweiser. Championship bloodlines, vaccinated, \$150. Call (817) 725-6836 16-11c

FOR SALE

Large window evaporative cooler; small window refrigerated air conditioner; 500 gallon fuel tank (817) 725-7259 16-11c

FOR SALE—12 venetian blinds at a bargain, call (817) 725-6225. 16-11c

Good used 40 gallon gas hot water heater \$40; Satellite dish and equipment \$400; and video camera \$100. Call (817) 725-6489. 16-11c

HELP WANTED

COLONIAL OAKS NURSING HOME — Is now taking applications for an R.N. Director of Nurses and a 7-3 weekend R.N. relief. Competitive wages will be offered. Contact Frances Wolf at (817) 725-6175. 20-11c

LIVESTOCK & PETS

RED BRANGUS 2 YEAR OLD BULLS
Don Johnson
(915) 646-1326 office
(915) 646-5707 evenings 2-11c

MIKE KNOTT CONSTRUCTION

Commercial and Residential Builder
New Construction — Remodels
(817) 725-7383 (817) 725-6716
1-800-394-5868 11-11c

Fairbanks Morse Water Systems

Complete Systems Sold And Installed
Buddy's Plumbing
Rising Star, Tx. 6-11c (817) 643-7312

EXPERT BODY WORK AND PAINTING BARRETT BODY SHOP

CLAUDE CHAMPION, OWNER
We Specialize In 915-677-2924
FOREIGN CARS & LUXURY CARS ABILENE, TX. 79603
24 HR. WRECKER SERVICE
214 N. LEGGETT 915-672-4064

MOBILE HOMES

Owner transferred must sell '95 singlewide 1-800-976-5341

DIVORCE causes custom ordered doublewide home to become available 1-800-976-5341.

Why are you still renting?? For what you're paying in rent let me put you into a brand new home. For FREE information call *Nationwide of Abilene* at 1-800-976-5341.

REAL ESTATE FOR RENT

Large 2 bedroom apartment for rent. Completely remodeled, furnished, call (817) 725-6347. 16-21c

LOST AND FOUND

FOUND—Women's Social Security Card, call and identify, pay for the classified ad at the Cross Plains Review (817) 725-6111.

If your dog is missing call (817) 725-7246. 16-17P

PUBLIC FAX AT THE CROSS PLAINS REVIEW

Cross Plains Business Service

- Income Tax Returns
- W-2 Forms • 1099's
- Typing • Bookkeeping
- Copies • Payroll

916 N. Main St.
Cross Plains (817) 725-7712
Julene Franke, Owner/Operator 46-47c

DORA SMITH

Real Estate Broker
(817) 725-6489
I NEED LISTINGS
To Sell Your Property Call Today

* 246 AC. RANCH, 2 brm., 1 bath house, garage, 10 water wells, orchards, barn and pens, mixture of cultivation, grass and light woods.
* OWNER FINANCING - REDUCED 101 acres, 3 brm. house, peanuts, West Highway 36.

* Various acreage with homes in the area. Call for details!
* 3 brdm, 1 1/2 bath, garage converted to apartment, corner, 1 block off Main, great buy.
* 2 city lots, \$1,000.

COMMERCIAL PROPERTIES

* OWNER FINANCING Convenience store, grocery/deli, former Bi-Rite, coolers, equipment, freezer, tables, counters, complete set-up, great location, N. Main

* Tire/auto service, 1 3/4 ac, metal building w/retail space, complete inventory of auto supplies, new and used tires, tire changer, welder, compressor, tools, office equipment, 1 3/4 miles east of Cross Plains, Highway 36. 5-11c

JONES REAL ESTATE

Nice vacant lot, corner of Avenue D and 13th.

HUD ASSISTED RENTAL PROPERTY 1205 sq. ft. frame home on 2 city lots currently rented and approved by HUD.

NEW LISTING 3 bedroom home on West Highway 36 inside city limits.

NEW LISTING Good metal work shop with 3 room house suitable for office space on 3 city lots on Avenue A.

NEW LISTING 12 1/2 acres east of town on paved highway. Good Buy!

Five room home on 4 lots with wood heater, carport with storage. Many fruit trees and berry vines, fenced areas with sheds and lots garden space located on Apple Street.

250 plus acres east of Cross Plains with a nice home, a beautiful place to retire.

Nice attractive 2 brdm home, fenced yard, double carport on North Main.

3 Bdrm., 1 1/2 bath with range and refrigerator, water well and new roof, N. Ave. A.

2 bedroom Stucco home, new roof, near school on N. Ave. D.

Spacious 2 bedroom house on South Main with potential rental income apartment on the property. Great buy. **REDUCED PRICE.**

JOHNNIE BLAND
(817) 725-6293

OR
FRANCIS BENNETT
(817) 725-7221
Cross Plains, Tx.

BUSINESS & PROFESSIONAL DIRECTORY

Ross L. Jones

Attorney At Law
Open Each Wed.
9 a.m. — Noon

9th & Main
(Old Dal-Mar Bldg.)
(817) 725-6747
Coleman: (915) 625-2146

CROSS PLAINS MEDICAL CENTER

902 N. MAIN
OPEN MONDAY-FRIDAY
8:30 A.M. — 5 P.M.

(817) 725-7106

D & D Jewelry

CUSTOM DESIGNS
Jewelry & Watch
Repair

757 South Main
Cross Plains, Texas
(817) 725-6668

Susan J. Schaefer

C.P.A.
Accounting &
Tax
Service

9th & Main
Cross Plains
Phone: 725-6747

RUSSELL-SURLES

TITLE, INC.
Prompt & Dependable
Title & Abstract Service
Tom Walker, Manager

Phone
(915) 854-1115

BUGBUSTER

Pest
Control
(817) 725-6740
1-800-605-PEST

TERRY HARRIS
HC 86, BOX 65
BAIRD, TX. 79504

New Tires Used Tires

T & K TIRE & ALIGNMENT
Highway 36 North
Cross Plains, Texas 76443
(817) 725-6223
Tractor or Truck Tires
Front-End Alignment
Brakes

REGISTERED PROFESSIONAL LAND SURVEYOR

JOHN D. BURLESON
P.O. BOX 365
CROSS PLAINS
(817) 725-6485

THIS SPACE AVAILABLE FOR YOUR BUSINESS AD COME BY OR CALL THE REVIEW (817) 725-6111

Windshield Replacement
CLIFF'S TEXACO
(817) 725-7445

A.C.-ELECTRIC
METER LOOPS
RESIDENTIAL
WIRING & REPAIRS
JOHN EPPARD
(817) 725-6329

DRAIN & SEWER REPAIR
PLUMBING REPAIR
C & C ENTERPRISE
BENNY CALLAWAY
(817) 725-8200 or
(817) 725-7545

ROBERT R. CARAWAY
Water Well Drilling

Air & Mud Rotary Drilling
Pressure Cementing
Gravel Packing
Well Services
Test Holes

Pt. 2, Box 10-9 License #4915
Cisco, Texas 76437 (817) 442-3537

JOHN DEERE TRACTORS

NEW AND USED
PEANUT EQUIPMENT
LILLISTON-KMC

PLANTERS-DISKS-DRILLS
ROLLING CULTIVATORS
CHISELS
SELL OR TRADE
CLARK TRACTOR & SUPPLY, INC.
DELEON — (817) 893-2061
COMANCHE — (915) 356-2593
WHERE YOUR BUSINESS IS APPRECIATED

RISING STAR NURSING CENTER

Has Vacancies Available For Both Male And Female Residents
Private Or Semi-Private Rooms Are Available
Call (817) 643-2691 Or Come By And Visit At 411 South Miller In Rising Star

Roofing & Roof Repair

Composition Built Up Wood Metal
Vent Instalment Decking
FREE ESTIMATES
Tommy Phillips, Jr.
(817) 725-7537

BI-RITE AUTO

PHONE (817) 725-7361 4 BLOCKS E. OF LIGHT
CROSS PLAINS, TEXAS 76443

AUTOMOBILES

- 1988 LINCOLN CONT. L3C MARK VII FULLY LOADED\$4,850
- 1977 MERCEDES 300 D DIESEL 4 DR. IN EXCELLENT CONDITION LOW MILES.....\$2,950
- 1985 LINCOLN TOWN CAR SIGNATURE SERIES EXCELLENT CONDITION LOW MILES\$3,250
- 1985 MERCURY GRAND MARQUIS 4 DR. BLUE AND BLUE IN EXCELLENT CONDITION WAS \$2,850 NOW ONLY \$2,450
- 1985 V.W. QUANTUM 4 DR TURBO DIESEL\$1,750
- 1984 CHEVY CITATION 4 DR. V8, COLD AIR, RUNS GOOD\$995
- 1987 SUBARU 4 DR SEDAN IN FAIR CONDITION\$895
- 1983 CADILLAC SEDAN DEVILLE D-ELEGANCE 4 DR. IN EXCELLENT CONDITION INSIDE AND OUT, LOW MILES ONLY \$1,850
- 1984 CADILLAC FLEETWOOD BRAUGHAM\$1,450

DIESEL, GAS & BUTANE PICKUPS

- 1983 FORD F250 XLT DIESEL, NEW 2 TONE PAINT, 4 SPEED ...\$2,850
- 1984 FORD F250 XL DIESEL SUPER CAB, 4 SPEED, RUNS VERY GOOD, BUCKET SEATS, SUPER CLEAN IN AND OUT\$3,950
- 1984 FORD F250 SUPER CAB, AUTOMATIC, 2 TONE PAINT, BUTANE AND GAS WAS \$1,950 NOW \$1,950
- 1985 FORD F350 CREW CAB, 460 V8, AUTOMATIC, CUSTOM BUILT STEEL BED, NEW 2 TONE PAINT, DUAL REARS, ETC\$3,550
- 1984 MAZDA LWB 4 CYLINDER, 5 SPEED PICKUP\$1,250
- 1986 DODGE RAM LWB 1/4 TON PICKUP, 4 CYLINDER, 5 SPEED\$1,650

PICKUPS & ETC.

- 1980 GMC 1 TON, 350 V8, 4 SPEED, WINCH, OIL FIELD RIG-UP BED WITH POLES, ROLLING TAIL, ETC\$2,250
- 1970 CHEVY 2 CAR HAULER, 2 WINCHES, RAMPS, ETC. 454 V8 NEW AUTOMATIC\$2,975
- TANDEM AXLE DUAL WHEEL GOOSENECK 20' DECK, 4 BE/ER TAIL WITH FOLD UP RAMPS, VACUUM OVER HYDROLIC BKS WAS 2,850 NOW \$2,450
- CABOVER PICKUP CAMPER IN GOOD COND. SLEEPS 4\$750

WE BUY GOOD CARS, PICKUPS, VANS, ETC. 16-17C

REAL ESTATE FOR SALE

FOR SALE—2 Bedroom Frame home at 300 Ave. C. Call First Baptist Church (817)725-7629 or 725-6230.

DO YOU SERIOUSLY WANT TO OWN YOUR OWN COUNTRY PLACE???

If you are willing to work hard to build some "sweat equity" by improving the land with things like a driveway, power pole, fences—maybe a septic system. If you are ready to move on to the property— I will sell you 7 to 30 acres with little or nothing down, no closing cost, and will finance for 15 to 20 years with no monthly payments until January 1996, and with no property tax payment due until January 1997 - YES 1997. The land is pretty, scattered to heavy woods, lots of deer, good paved road frontage, on co-op water and electric lines. Cross Plains schools and telephone. Of course, you will have to supply any materials or equipment you need to do the improvements and we will have to agree on a completion schedule. I will also consider a wide variety of financing terms with low down payments. Call (817) 653-8250.

Is Fund Accounting Dead?

New accounting regulations (FASB 116 and 117) that affect nonprofit organizations have been passed, and it is most important for area nonprofit organizations to learn about them! Will your nonprofit organization be able to implement these new procedures? Is fund accounting dead? The Abilene Center for Nonprofit Management, a program of the Community Foundation of Abilene, has the solution you need! Larry Dodson, CPA with 19 years of experience in public accounting (with much of that in nonprofit accounting assistance), of Condley & Company, L. L. P., will present a workshop to inform nonprofit organizations about the changes in these new regulations and their effect on your agencies. REGISTER NOW to attend this workshop on Thursday, July 20, 2:00 to 5:00 p.m. at the Junior League of Abilene, 774 Butternut St., Abilene. The Center recommends that each organization send at least two representatives, preferably a board member and a staff member, due to the important nature of this information. Cost for two participants is \$40 for nonprofits or \$32 for Center Partners. Scholarships for arts groups are available. To register, or for more information, call the Abilene Center for Nonprofit Management at (915) 677-8166. Registration deadline is July 18.

AG NEWS

CALLAHAN COUNTY AGRICULTURAL NEWSLETTER JULY 1995

'BOGUS CHEMICALS'
Producers in the area should be aware of "new" chemicals being sold over the telephone by salesmen. Many of these products are well known, commonly used chemicals that are diluted 25 to 50 times or more.
The bottom line is that you should purchase chemicals only from a reputable dealer. If you have questions regarding chemicals, contact the Texas Department of Agriculture in Austin.

'HOME STUDY COURSE'
We have recently bought a video tape that is a home study course for 5 CEU hours credit for private applicators. The video will be available as we receive the approved course number from TDA. After viewing the video, you will be required to fill out the paperwork that goes along with it. We will let you know more about this home study course as soon as we receive approval. This course will be offered to the general public in early December.

PRIVATE APPLICATOR TRAINING
A training for all agricultural producers who need a private applicator license will be held in early August. We will publicize the time and date as soon as we can arrange a date with TDA. Call if you are interested.

BLACKLEG DEATHS
I keep hearing reports of blackleg deaths in calves throughout the county. We've had a number of reports of this occurring in baby calves and up to 400-500 pounds. The vaccination cost for most of your 7 way vaccines is less than twenty-five cents per head so its good economics to vaccinate all calves. Some producers vaccinate cows also to transfer immunity to calves. You might want to visit with your veterinarian if you are having problems and losing calves.

Planning A Wedding?
...COME IN NOW AND SEE OUR PRETTY LINE OF...
WEDDING & ANNIVERSARY
INVITATIONS & ANNOUNCEMENTS
CROSS PLAINS REVIEW
(817) 725-6111

Tex SCAN
Statewide Classified Advertising Network
More than 300 Texas newspapers for \$250.
Call this newspaper for details.

REAL ESTATE
DEER HUNTER'S SPECIAL Burnet County five tracts only, 25 acres up, game, wooded, proven water, owner finance or Texas Veterans 1-800-725-3699.
37 ACRES, LOTS of oaks, deer and turkey. Access to water. South of Rocksprings. Only \$140/month, TEX VET (7.64% - 30yrs.) 210-257-5572.
SO. COLORADO LAND bargain. 160ac - \$39,900. Beautiful rolling meadows & woods, spectacular 360 degree views of Spanish peaks, Sangre De Cristo's, tons of wildlife including elk and big horn sheep, long county road frontage, owner terms. Call Majors Ranch 719-742-5207.
TIMESHARE UNITS and campground membership. Distress sales-cheap! Worldwide selections. Call Vacation Network U.S. and Canada 1-800-543-6173. Free rental information 305-563-5586.

FINANCIAL SERVICES
RECEIVING PAYMENTS ON property sold? We pay cash for real estate notes, deeds of trust, and land contracts... nationwide!! Highest prices paid. Texas based. 1-800-446-3690.
WE BUY NOTES Secured by real estate. Have you sold property and financed the sale for the buyer? Turn your note into cash. 1-800-969-1200.
AVOID THE MIDDLE man! Up to 95¢ on the dollar for owner-financed real estate notes! Sell now - prices never higher! FANC 1-800-501-3622.
TURN YOUR DEED of trust note into cash. We buy first second or partial notes. For information without obligation call 806-652-1106 or FAX 806-652-1107.
FREE DEBT CONSOLIDATION. Immediate relief! Too many debts? Overdue bills? Reduce monthly payments 30%-50%. Eliminate interest. Stop collection callers. Restore credit. NCCS, nonprofit. 1-800-955-0412.
\$10,000,000 INVESTMENT CAPITAL for corporate expansion, acquisitions, debt/equity financing, real estate. Business plan required. No start-ups. No advance fees. Sommerest Capital 214-373-2393 FAX: 214-713-4047.
EDUCATION
BECOME A PARALEGAL - accredited, attorney instructed diploma and degree home-study. Up to 50% credit awarded for academic and life/work experience. SCI-NIPAS free catalog. 1-800-669-2555.
FOR SALE
BOWHUNTING EQUIPMENT
BOWHUNTERS discount warehouse, America's largest archery supplier, stocks over 5,000 bowhunting items at 20-40% off retail. Call 1-800-735-2697 for free 160 page catalog. STOP YOUR EX-SPOUSE from complicating your life! How to eliminate anger, disagreements and arguments. Peace without conflict can be yours. New informational book. Free details, Advisory Enterprises, P.O. Box 723-T, Newark, TX 76071.
SUNQUEST WOLFF TANNING beds commercial-home units from \$199. Buy factory direct and save! Call today for new free color catalog 1-800-462-9197.
PRESSURE CLEANERS PSI 1760, \$199; 2000, \$399; 3000, \$699; 3500, \$899. Factory direct tax-free, prompt delivery. Since 1972. Call 24-hrs free catalog 1-800-333-WASH (9274).
DRIVERS WANTED
DRIVERS/OTR... \$1,000 sign-on bonus, new conventional equipment, great benefits, lease program. Earn up to 29 cents per mile. Students welcome. Call-Ark International. 1-800-950-TEAM, 1-800-889-1030.
TRUCK DRIVERS - YOU can be home every weekend operating only Southeast Region while earning up to 29¢ per mile. Call Beech Trucking 1-800-521-0649. EOE.
DRIVER- AVERAGE \$600+ a week! OTR/reefer, 2,500 mi/wk, regular home time, new equipment & top notch benefits. Burlington Motor Carriers: 1-800-JOHN-BMC. EOE.
DRIVERS: FLATBED 48 state OTR. Assigned new conventionals. Competitive pay, benefits. \$1,000 sign on bonus, nider program, flexible time off. Call Roadrunner Trucking 1-800-876-7784.
DRIVERS/OTR - LEASE program - no money down. Must meet company/DOT requirements. Late model walk-in conventionals. We're on the move! Call 1-800-927-0431.
ATTENTION DRIVER TEAMS, \$15,000 in bonus, paid monthly, quarterly & yearly, plus top mileage pay, 401(K) plan, \$500 sign-on bonus. Other paid benefits: *vacation *health & life *dead head *motel/lay-over *loading & unloading. Covenant Transport, solos and teams call 1-800-441-4394/ 915-852-3357, students and driving school grads., call 1-800-338-6428.
HEALTH
20/20 WITHOUT GLASSES! Safe, rapid, non-surgical, permanent restoration in 6-8 weeks. Airline pilot developed, doctor approved. Free information by mail: 1-800-422-7320, 406-961-5570, FAX 406-961-5577. Satisfaction guaranteed.
PSORIASIS! 1-800-747-6801 ELIMINATE itching, redness, flakes. New FDA approved spray. Clean, odorless, restores your skin to normal. No side effects! 100% guaranteed.

BRUSH CONTROL
1995 could be a good year to control mesquites due to a good wet Fall in 1994 and a favorable spring this year.
A number of different combinations of chemicals are available that do an excellent job of controlling small mesquites. One of the latest "recipes" that has worked real well in result demonstration is a mix of Reclaim and Remedy.
To mix a gallon of foliar solution, the mix would be 0.64 fluid ounces of Reclaim, 0.64 fluid ounces of Remedy, 0.32 ounces of commercial non-ionic surfactant and water to make a gallon. With water as the carrier, spray to thoroughly wet the foliage. An alternative mix would be to use the same herbicide concentration, 5% to 25% diesel fuel, the recommended amount of emulsifier, and water to make an oil-water emulsion. With the oil-water mix, spray until foliage glistens.
Basal applications usually cost more than hand-applied foliar applications -- as much as two times -- but they can be done almost anytime of year. The most dependable treatment is low-volume basal. It's effective on smooth barked mesquite up to 4 inches in diameter. The mix is 25% Remedy herbicide and 75% diesel. Spray the mix on the lower 12 to 18 inches of stem, applying only enough to wet the bark. Low-volume basal is effective anytime of year, even during the winter except when snow or water is on the ground around the stem.
If you have any questions, please contact the Extension Officer at 915-854-1518.

Sincerely,
Greg Gemross
County Extension Agent
Courthouse - 400 Market St.
Baird, Texas 79504

MISS TEXAS TEEN ALL AMERICAN PAGEANT
Contestants are now being accepted for the 1995 MISS TEXAS TEEN ALL AMERICAN PAGEANT to be staged October 21 and 22 at the Holiday Inn-Brook Hollow/Love Field in Dallas. The 1995 event is the Official Preliminary to MISS TEEN ALL AMERICAN, now in its 18th year, staged annually under the magnificent Florida sun!
All judging is on the basis of poise, personal interview and beauty of face and figure. Applicants who qualify must be ages 13 through 19 as of August 1, 1996; never married and a legal resident of the U. S. To apply, send a recent Photo along with your name, address, telephone number, and date of birth by FAX or mail to:
DEPT B-MISS TEXAS TEEN ALL AMERICAN
603 SCHRADER AVENUE
WHEELING, WV 26003-9619
FAX: 1-304-242-8341
PHONE: 1-304-242-4900
DEADLINE TO APPLY IS JULY 28, 1995.

HAPPY BIRTHDAY

- JULY 21
Mrs. Leonard Baum
James Merrill
Billy Spencer
Mrs. Jack Scott
Mike Merrill
Dana Purvis
Earl Gray
Marleane LaShelle Branham
C. B. Hutchins
Scott Nabers
Tina Morris Belick
Barbara Vest
- JULY 22
Thomas Markham
C. H. Rogers
Sarah Catherine Jordan
Mrs. Vera Ferrell
Kathleen Brown
Lorene Jennings
Lillian Long
Delesa Gilland
Sheri Steele
Leslie Cowan
Bill Holand
Travis Parson
Mrs. Kathryn Morris
Shelley Kay Hines
Annie Mae Wright
- JULY 23
Mrs. Rolan Bryan
Elaine Pancake
Joshua Goble
Bill Hester, Jr.
Myrl Willis
Clifford Hill
Max Haridin
Max Theiford
Ronald Chad Bagley
Jacqueline Denise Newman
- JULY 24
J. T. Walker
Beverly Foster
Cheryl Gray
Mrs. Carroll Gray
Matthew Wayne Hutchins
Michael James Hutchins
- Kathy Churchill
Sue (Alken) Strickland
Lance Stephens
- JULY 25
Coleman Pillans
Debra Green
Wendell Smith
Traci Dianne Woody
Sandra McKeenan
Mrs. Ross McGary
Billy E. Pope
Ronnie Edgington
Sheri Townson
Randy Montgomery
Martha Duncan
Roger Thate
Carlie Albrecht
R. E. Haris
Johnny Allen
Mrs. Cowan Hutton
- JULY 26
Maxine Kellar
Jerry Erwin
Mrs. Billy E. Pope
Oncilla Fortenberry
R. H. Wooten
Zachary Hinkle
Tammy (Guill) Brown
- JULY 27
Betsy Golson
Mrs. David Gray
Iris McKay
Neva Davis
Ronnie Smith
Mrs. Quinn Harris
James Montgomery
Beverly Hanner
John W. Wilson
Edie Ann Switzer

Callahan County 4-H Shooting Sports hosted a Fun Shoot, Saturday, July 8th for District 7 Shooting Sports members. Twenty-five 4-H members competed in five disciplines.
Those placing in the Smallbore Silhouette discipline were:
Sub-Juniors: 1st, Brian Robinson, Clyde; 2nd, Derric Nichols, Oplin; 3rd, Chad Franke, Baird; 4th, Jimmy Wilson, Baird; 5th, Andrew Pilgrim, Tuscola; 6th, John Kniffen, Clyde.
Juniors: 1st, Cathy Warrick, Clyde; 2nd, Chris Freuninger, Brownwood; 3rd, Jason Gemgross, Baird; 4th, Vesti Young, Clyde.
Seniors: 1st, James Tannison, Robert Lee; 2nd, Lee Anne Scott, Clyde.
Those placing in Compound Bow were:
Sub-Juniors: 1st, Justin Hollis, Clyde; 2nd, Christina Hollis, Clyde; 3rd, Jimmy Wilson, Baird; 4th, Doyle Wilson, Baird.
Juniors: 1st, Jason Gemgross, Baird. Light Rifle competitors were:
Sub-Juniors: 1st, Brian Robinson, Clyde; 2nd, Derric Nichols, Oplin; 3rd, participated.

Chad Franke, Baird; 4th, John Kniffen, Clyde; 5th, Jimmy Wilson, Baird; 6th, Lacy Dannheim, Clyde.
Juniors: 1st, Cathy Warrick, Clyde; 2nd, Chris Freuninger, Brownwood; 3rd, Jason Gemgross, Baird.
Seniors: 1st, James Tannison; 2nd, Lee Anne Scott, Clyde.
Placing in Skeet were:
Sub-Juniors: 1st, Brian Robinson, Clyde; 2nd, Andrew Pilgrim, Tuscola; 3rd, Cody Lawrence, Oplin; 4th, Chad Franke, Baird; 5th, Randy Linex, Buffalo Gap; 6th, Lucy Tyler, Oplin.
Juniors: 1st, Clint Watts, Clyde; 2nd, Dow Scott, Clyde; 3rd, Jacob Tatom, Clyde; 4th, Chris Cary, Cross Plains; 5th, Jason Gemgross, Baird.
Receiving awards in Sporting Clays were:
Sub-Juniors: 1st, Randy Linex, Buffalo Gap; 2nd, Andrew Pilgrim, Tuscola.
Juniors: 1st, Clint Watts, Clyde; 2nd, Dow Scott, Clyde; 3rd, Jacob Tatom, Clyde; 4th, Chris Cary, Cross Plains.
Congratulations to all who participated.

NOW OPEN
880 FARM STORE
(one mile east of Cottonwood on FM 880)
Mon. - Fri. 7 a.m. - 6 p.m.
Sat. 7 a.m. - 2 p.m.
Closed All Day Sunday
Farm Fresh Vegetables and Fruit, BBQ, Burgers, Snacks, Drinks, Coffee, and Homemade Burritos
Red Ripe Watermelons \$2.69 each
Fresh Shelled Blackeye Peas \$4.25-2 lb bag
Pecos Cantelopes
vine ripe tomatoes, peaches, cantalope, snap beans and more at **Low Prices**
We Guarantee Our Melons 15-lb

DirecTV®
Satellite System
EQUIPMENT OPTIONS
PURCHASE \$699 - \$799
LEASE \$16.50/Month
LOW PROGRAMMING COSTS!
ECONOMY BASIC \$15.95 18 CHANNELS
TOTAL CHOICE \$29.95 66 CHANNELS
PAY-PER-VIEW MOVIES \$2.99 EACH 40+ CHANNELS
SPORTS & EVENTS \$6.95 & UP 15-25 CHANNELS
INSTALLATION
PURCHASE FROM \$50
LEASE & MAINTENANCE FROM \$100
Santa Anna, TX
1-800-618-3951
Call Now!
DIRECTV and DISH are registered trademarks of DIRECTV, Inc., a unit of EMI Hughes Electronics.
Equipment and programming sold separately. © 1995 DISH

CROSS PLAINS JR. RODEO 1995
JULY 27, 28, 29
7:30 P.M.
Books Open 6:30
Thursday & Friday
6:30 Saturday For Steers
1 and under & 11-15
Age Groups 10 & under
11 - 15
16 - 19
Buckles Awarded To All Around Boy & Girl Each Age Group
Bulls, Barebacks, Steers, Flags, Barrels, Poles, Ribbon, Breakaway, Tiedown, Shaun Odom Team Roping
Buckles To Header/Heeler Fastest Time
Dance: 9:00 P.M. Friday & Saturday
Justin Taylor and Borderline"

ADVERTISE IN THE
CROSS PLAINS REVIEW

PUBLIC NOTICE

The Santa Anna exchange has petitioned for Expanded Toll-Free Local calling to the Coleman exchange.

Within the next 15 days, Coleman County Telephone Cooperative will mail ballots to all customers in the Santa Anna exchange. After marking the ballot, customers should sign their name and return the ballot in the stamped, self-addressed envelope to the Public Utility Commission of Texas that accompany the ballot.

Expanded Toll-Free Local Calling Service will allow you to call and be called by the Coleman exchange on a local call basis (no toll charges). All exchange(s) that pass the ballot will be added to your local calling area for a maximum monthly per line charge as follows:

First five exchanges: Up to \$3.50 for residence, \$7.00 for business

Each exchange over five exchanges: An extra \$1.50 per month, per exchange

Example: the following fees would apply if seven exchanges were approved:

	Residence	Business
First five exchanges	up to \$ 3.50	up to \$ 7.00
Exchange #6	extra \$ 1.50	extra \$ 1.50
Exchange #7	extra \$ 1.50	extra \$ 1.50
Maximum Monthly Fee	\$ 6.50	\$10.00

If five or fewer exchanges pass the ballot and are approved, the maximum monthly fee would be \$3.50 for residence lines and \$7.00 for business lines.

The fees associated with ELC are mandatory. If any exchanges pass the ballot, the fees will be paid by all subscribers in the petitioning exchange. The fees will be in addition to your local monthly telephone service charges, and will be in effect until your telephone company's next general rate case, at which time all rates are subject to change.

At least 70% of the subscribers who return their ballots must vote in favor of expanded local calling on a per exchange basis for it to be provided. If the ballot fails to all exchanges, your service will not change, and no fees will apply. Only exchanges that pass the ballot will be added to your local calling area. Note: If a requested exchange is in a different Local Access and Transport Area (LATA) from the petitioning exchange, it requires federal approval and may not be available for some time. You will be notified at the time of the ballot if such a condition exists, and what exchanges are affected. No fees for such inter-LATA exchanges will be charged until they are approved and provided (and they may not necessarily add to the fee), but all other approved exchanges will be billed according to the Rule. Inter-LATA exchanges are noted by an asterisk(*).

AVISO PUBLICO

El intercambio Santa Anna ha hecho demanda para el servicio de Expansión de Llamadas Con Tarifa Fija al intercambio de Coleman.

Dentro de quince días, Coleman County Telephone Cooperative enviara boletas por correo a todos los clientes del intercambio Santa Anna. Despues de marcar su boleta, clientes deben de firmar su nombre y regresarla ha el Comisión de Servicios Públicos de Texas, en le sobre incluido con estampilla y dirección de retorno.

El servicio de Expansión de Llamadas Locales Con Tarifa Fija le permitira llamar y ser llamado por el intercambio Coleman ha base de llamada local. Todos los intercambios que pasen la boleta seran añadidos ha la área de sus llamadas locales por una tarifa mensual maxima por linea, en la siguiente manera:

Los Cinco Primeros Intercambios: Hasta \$3.50 por cada linea, para servicio residencial; y \$7.00 por cada linea, para servicio comercial.

Cada intercambio adicional (ha los cinco primeros intercambios): \$1.50 extra, por mes, por intercambio.

Por ejemplo: Las siguientes tarifas no aplicaran si siete intercambios son aprobados:

	Residencial	Comercial
Cinco primeros intercambios	Hasta \$3.50	Hasta \$7.00
Intercambio #6	Extra \$1.50	Extra \$1.50
Intercambio #7	Extra \$1.50	Extra \$1.50
Tarifa Maxima mensual	\$6.50	\$10.00

En caso de que menos de cinco intercambios pasen la boleta y sean aprobados, la tarifa maxima mensual sera \$3.50 por cada linea de servicio residencial y \$7.00 por cada linea de servicio comercial.

Las tarifas asociadas con el servicio de expansión de llamadas locales sin cargo adicional, son mandatorias. Si cualquier de los intercambios pasa la boleta, las tarifas seran pagadas por todos los suscriptores en el intercambio de demanda. Las tarifas seran añadidas ha los cargos de su servicio telefónico mensual local, y estaran en efecto hasta que su compañía telefónica realice la próxima revision general de tarifas, ha la vez que todas las tarifas son sujetas ha modificación.

Por lo menos 70% de los suscriptores que regresen esta boleta deben votar ha favor del Servicio de Expansión de Llamadas, en base ha cada intercambio, para ser provisto. En caso de que la boleta falle ha todos los intercambios, su servicio no cambiara, y no se aplicara ninguna tarifa adicional. Solamente los intercambios que reciban suficientes votos ha favor, ha traves de la boleta incluida, seran añadidos dentro de su área de llamadas locales. Note: Si el intercambio requerido se encuentra en un Acceso Local y Área de Transporte (Local Access and Transport Area - LATA) diferente al intercambio requerido, dicho intercambio necesita aprobación federal y no sera disponible por un tiempo. Usted sera avisado ha tiempo de la boleta si dicha condición existe y cuales intercambios son afectados. Ninguna tarifa sera aplicada por los intercambios que estan en diferente LATA hasta que estos esten aprobados y disponibles (esto no necesariamente aumentara la tarifa). Los otros intercambios aprobados, seran facturados de acuerdo ha la regla de la Comisión. Los intercambios que estan en diferente LATA han sido señalados en la boleta con un asterisco(*).

PUBLIC NOTICE

The Valera exchange has petitioned for Expanded Toll-Free Local calling to the Coleman exchange.

Within the next 15 days, Coleman County Telephone Cooperative will mail ballots to all customers in the Valera exchange. After marking the ballot, customers should sign their name and return the ballot in the stamped, self-addressed envelope to the Public Utility Commission of Texas that accompany the ballot.

Expanded Toll-Free Local Calling Service will allow you to call and be called by the Coleman exchange on a local call basis (no toll charges). All exchange(s) that pass the ballot will be added to your local calling area for a maximum monthly per line charge as follows:

First five exchanges: Up to \$3.50 for residence, \$7.00 for business

Each exchange over five exchanges: An extra \$1.50 per month, per exchange

Example: the following fees would apply if seven exchanges were approved:

	Residence	Business
First five exchanges	up to \$ 3.50	up to \$ 7.00
Exchange #6	extra \$ 1.50	extra \$ 1.50
Exchange #7	extra \$ 1.50	extra \$ 1.50
Maximum Monthly Fee	\$ 6.50	\$10.00

If five or fewer exchanges pass the ballot and are approved, the maximum monthly fee would be \$3.50 for residence lines and \$7.00 for business lines.

The fees associated with ELC are mandatory. If any exchanges pass the ballot, the fees will be paid by all subscribers in the petitioning exchange. The fees will be in addition to your local monthly telephone service charges, and will be in effect until your telephone company's next general rate case, at which time all rates are subject to change.

At least 70% of the subscribers who return their ballots must vote in favor of expanded local calling on a per exchange basis for it to be provided. If the ballot fails to all exchanges, your service will not change, and no fees will apply. Only exchanges that pass the ballot will be added to your local calling area. Note: If a requested exchange is in a different Local Access and Transport Area (LATA) from the petitioning exchange, it requires federal approval and may not be available for some time. You will be notified at the time of the ballot if such a condition exists, and what exchanges are affected. No fees for such inter-LATA exchanges will be charged until they are approved and provided (and they may not necessarily add to the fee), but all other approved exchanges will be billed according to the Rule. Inter-LATA exchanges are noted by an asterisk(*).

AVISO PUBLICO

El intercambio Valera ha hecho demanda para el servicio de Expansión de Llamadas Con Tarifa Fija al intercambio de Coleman.

Dentro de quince días, Coleman County Telephone Cooperative enviara boletas por correo a todos los clientes del intercambio Valera. Despues de marcar su boleta, clientes deben de firmar su nombre y regresarla ha el Comisión de Servicios Públicos de Texas, en le sobre incluido con estampilla y dirección de retorno.

El servicio de Expansión de Llamadas Locales Con Tarifa Fija le permitira llamar y ser llamado por el intercambio Coleman ha base de llamada local. Todos los intercambios que pasen la boleta seran añadidos ha la área de sus llamadas locales por una tarifa mensual maxima por linea, en la siguiente manera:

Los Cinco Primeros Intercambios: Hasta \$3.50 por cada linea, para servicio residencial; y \$7.00 por cada linea, para servicio comercial.

Cada intercambio adicional (ha los cinco primeros intercambios): \$1.50 extra, por mes, por intercambio.

Por ejemplo: Las siguientes tarifas no aplicaran si siete intercambios son aprobados:

	Residencial	Comercial
Cinco primeros intercambios	Hasta \$3.50	Hasta \$7.00
Intercambio #6	Extra \$1.50	Extra \$1.50
Intercambio #7	Extra \$1.50	Extra \$1.50
Tarifa Maxima mensual	\$6.50	\$10.00

En caso de que menos de cinco intercambios pasen la boleta y sean aprobados, la tarifa maxima mensual sera \$3.50 por cada linea de servicio residencial y \$7.00 por cada linea de servicio comercial.

Las tarifas asociadas con el servicio de expansión de llamadas locales sin cargo adicional, son mandatorias. Si cualquier de los intercambios pasa la boleta, las tarifas seran pagadas por todos los suscriptores en el intercambio de demanda. Las tarifas seran añadidas ha los cargos de su servicio telefónico mensual local, y estaran en efecto hasta que su compañía telefónica realice la próxima revision general de tarifas, ha la vez que todas las tarifas son sujetas ha modificación.

Por lo menos 70% de los suscriptores que regresen esta boleta deben votar ha favor del Servicio de Expansión de Llamadas, en base ha cada intercambio, para ser provisto. En caso de que la boleta falle ha todos los intercambios, su servicio no cambiara, y no se aplicara ninguna tarifa adicional. Solamente los intercambios que reciban suficientes votos ha favor, ha traves de la boleta incluida, seran añadidos dentro de su área de llamadas locales. Note: Si el intercambio requerido se encuentra en un Acceso Local y Área de Transporte (Local Access and Transport Area - LATA) diferente al intercambio requerido, dicho intercambio necesita aprobación federal y no sera disponible por un tiempo. Usted sera avisado ha tiempo de la boleta si dicha condición existe y cuales intercambios son afectados. Ninguna tarifa sera aplicada por los intercambios que estan en diferente LATA hasta que estos esten aprobados y disponibles (esto no necesariamente aumentara la tarifa). Los otros intercambios aprobados, seran facturados de acuerdo ha la regla de la Comisión. Los intercambios que estan en diferente LATA han sido señalados en la boleta con un asterisco(*).

PUBLIC NOTICE

The Rockwood exchange has petitioned for Expanded Toll-Free Local calling to the Coleman exchange.

Within the next 15 days, Coleman County Telephone Cooperative will mail ballots to all customers in the Rockwood exchange. After marking the ballot, customers should sign their name and return the ballot in the stamped, self-addressed envelope to the Public Utility Commission of Texas that accompany the ballot.

Expanded Toll-Free Local Calling Service will allow you to call and be called by the Coleman exchange on a local call basis (no toll charges). All exchange(s) that pass the ballot will be added to your local calling area for a maximum monthly per line charge as follows:

First five exchanges: Up to \$3.50 for residence, \$7.00 for business

Each exchange over five exchanges: An extra \$1.50 per month, per exchange

Example: the following fees would apply if seven exchanges were approved:

	Residence	Business
First five exchanges	up to \$ 3.50	up to \$ 7.00
Exchange #6	extra \$ 1.50	extra \$ 1.50
Exchange #7	extra \$ 1.50	extra \$ 1.50
Maximum Monthly Fee	\$ 6.50	\$10.00

If five or fewer exchanges pass the ballot and are approved, the maximum monthly fee would be \$3.50 for residence lines and \$7.00 for business lines.

The fees associated with ELC are mandatory. If any exchanges pass the ballot, the fees will be paid by all subscribers in the petitioning exchange. The fees will be in addition to your local monthly telephone service charges, and will be in effect until your telephone company's next general rate case, at which time all rates are subject to change.

At least 70% of the subscribers who return their ballots must vote in favor of expanded local calling on a per exchange basis for it to be provided. If the ballot fails to all exchanges, your service will not change, and no fees will apply. Only exchanges that pass the ballot will be added to your local calling area. Note: If a requested exchange is in a different Local Access and Transport Area (LATA) from the petitioning exchange, it requires federal approval and may not be available for some time. You will be notified at the time of the ballot if such a condition exists, and what exchanges are affected. No fees for such inter-LATA exchanges will be charged until they are approved and provided (and they may not necessarily add to the fee), but all other approved exchanges will be billed according to the Rule. Inter-LATA exchanges are noted by an asterisk(*).

AVISO PUBLICO

El intercambio Rockwood ha hecho demanda para el servicio de Expansión de Llamadas Con Tarifa Fija al intercambio de Coleman.

Dentro de quince días, Coleman County Telephone Cooperative enviara boletas por correo ha todos los clientes del intercambio Rockwood. Despues de marcar su boleta, clientes deben de firmar su nombre y regresarla ha el Comisión de Servicios Públicos de Texas, en le sobre incluido con estampilla y dirección de retorno.

El servicio de Expansión de Llamadas Locales Con Tarifa Fija le permitira llamar y ser llamado por el intercambio Coleman ha base de llamada local. Todos los intercambios que pasen la boleta seran añadidos ha la área de sus llamadas locales por una tarifa mensual maxima por línea, en la siguiente manera:

Los Cinco Primeros Intercambios: Hasta \$3.50 por cada línea, para servicio residencial; y \$7.00 por cada línea, para servicio comercial.

Cada intercambio adicional (ha los cinco primeros intercambios): \$1.50 extra, por mes, por intercambio.

Por ejemplo: Las siguientes tarifas se aplicaran si siete intercambios son aprobados:

	Residencial	Comercial
Cinco primeros intercambios	Hasta \$3.50	Hasta \$ 7.00
Intercambio #6	Extra \$1.50	Extra \$ 1.50
Intercambio #7	Extra \$1.50	Extra \$ 1.50
Tarifa Maxima mensual	\$6.50	\$10.00

En caso de que menos de cinco intercambios pasen la boleta y sean aprobados, la tarifa maxima mensual sera \$3.50 por cada línea de servicio residencial y \$7.00 por cada línea de servicio comercial.

Las tarifas asociadas con el servicio de expansión de llamadas locales sin cargo adicional, son mandatorias. Si cualquier de los intercambios pasa la boleta, las tarifas seran pagadas por todos los suscriptores en el intercambio de demanda. Las tarifas seran añadidas ha los cargos de su servicio telefónico mensual local, y estaran en efecto hasta que su compañía telefónica realice la próxima revision general de tarifas, ha la vez que todas las tarifas son sujetas ha modificación.

Por lo menos 70% de los suscriptores que regresen esta boleta deben votar ha favor del Servicio de Expansión de Llamadas, en base ha cada intercambio, para ser provisto. En caso de que la boleta falle ha todos los intercambios, su servicio no cambiara, y no se aplicara ninguna tarifa adicional. Solamente los intercambios que reciban suficientes votos ha favor, ha traves de la boleta incluida, seran añadidos dentro de su área de llamadas locales. Note: Si el intercambio requerido se encuentra en un Acceso Local y Área de Transporte (Local Access and Transport Area - LATA) diferente al intercambio requerido, dicho intercambio necesita aprobación federal y no sera disponible por un tiempo. Usted sera avisado ha tiempo de la boleta si dicha condición existe y cuales intercambios son afectados. Ninguna tarifa sera aplicada por los intercambios que estan en diferente LATA hasta que estos esten aprobados y disponibles (esto no necesariamente aumentara la tarifa). Los otros intercambios aprobados, seran facturados de acuerdo ha la regla de la Comisión. Los intercambios que estan en diferente LATA han sido señalados en la boleta con un asterisco(*).

PUBLIC NOTICE

The Burkett exchange has petitioned for Expanded Toll-Free Local calling to the Coleman exchange.

Within the next 15 days, Coleman County Telephone Cooperative will mail ballots to all customers in the Burkett exchange. After marking the ballot, customers should sign their name and return the ballot in the stamped, self-addressed envelope to the Public Utility Commission of Texas that accompany the ballot.

Expanded Toll-Free Local Calling Service will allow you to call and be called by the Coleman exchange on a local call basis (no toll charges). All exchange(s) that pass the ballot will be added to your local calling area for a maximum monthly per line charge as follows:

First five exchanges: Up to \$3.50 for residence, \$7.00 for business

Each exchange over five exchanges: An extra \$1.50 per month, per exchange

Example: the following fees would apply if seven exchanges were approved:

	Residence	Business
First five exchanges	up to \$ 3.50	up to \$ 7.00
Exchange #6	extra \$ 1.50	extra \$ 1.50
Exchange #7	extra \$ 1.50	extra \$ 1.50
Maximum Monthly Fee	\$ 6.50	\$10.00

If five or fewer exchanges pass the ballot and are approved, the maximum monthly fee would be \$3.50 for residence lines and \$7.00 for business lines.

The fees associated with ELC are mandatory. If any exchanges pass the ballot, the fees will be paid by all subscribers in the petitioning exchange. The fees will be in addition to your local monthly telephone service charges, and will be in effect until your telephone company's next general rate case, at which time all rates are subject to change.

At least 70% of the subscribers who return their ballots must vote in favor of expanded local calling on a per exchange basis for it to be provided. If the ballot fails to all exchanges, your service will not change, and no fees will apply. Only exchanges that pass the ballot will be added to your local calling area. Note: If a requested exchange is in a different Local Access and Transport Area (LATA) from the petitioning exchange, it requires federal approval and may not be available for some time. You will be notified at the time of the ballot if such a condition exists, and what exchanges are affected. No fees for such inter-LATA exchanges will be charged until they are approved and provided (and they may not necessarily add to the fee), but all other approved exchanges will be billed according to the Rule. Inter-LATA exchanges are noted by an asterisk(*).

AVISO PUBLICO

El intercambio Burkett ha hecho demanda para el servicio de Expansión de Llamadas Con Tarifa Fija al intercambio de Coleman.

Dentro de quince días, Coleman County Telephone Cooperative enviara boletas por correo ha todos los clientes del intercambio Burkett. Despues de marcar su boleta, clientes deben de firmar su nombre y regresarla ha el Comisión de Servicios Públicos de Texas, en le sobre incluido con estampilla y dirección de retorno.

El servicio de Expansión de Llamadas Locales Con Tarifa Fija le permitira llamar y ser llamado por el intercambio Coleman ha base de llamada local. Todos los intercambios que pasen la boleta seran añadidos ha la área de sus llamadas locales por una tarifa mensual maxima por línea, en la siguiente manera:

Los Cinco Primeros Intercambios: Hasta \$3.50 por cada línea, para servicio residencial; y \$7.00 por cada línea, para servicio comercial.

Cada intercambio adicional (ha los cinco primeros intercambios): \$1.50 extra, por mes, por intercambio.

Por ejemplo: Las siguientes tarifas se aplicaran si siete intercambios son aprobados:

	Residencial	Comercial
Cinco primeros intercambios	Hasta \$3.50	Hasta \$ 7.00
Intercambio #6	Extra \$1.50	Extra \$ 1.50
Intercambio #7	Extra \$1.50	Extra \$ 1.50
Tarifa Maxima mensual	\$6.50	\$10.00

En caso de que menos de cinco intercambios pasen la boleta y sean aprobados, la tarifa maxima mensual sera \$3.50 por cada línea de servicio residencial y \$7.00 por cada línea de servicio comercial.

Las tarifas asociadas con el servicio de expansión de llamadas locales sin cargo adicional, son mandatorias. Si cualquier de los intercambios pasa la boleta, las tarifas seran pagadas por todos los suscriptores en el intercambio de demanda. Las tarifas seran añadidas ha los cargos de su servicio telefónico mensual local, y estaran en efecto hasta que su compañía telefónica realice la próxima revision general de tarifas, ha la vez que todas las tarifas son sujetas ha modificación.

Por lo menos 70% de los suscriptores que regresen esta boleta deben votar ha favor del Servicio de Expansión de Llamadas, en base ha cada intercambio, para ser provisto. En caso de que la boleta falle ha todos los intercambios, su servicio no cambiara, y no se aplicara ninguna tarifa adicional. Solamente los intercambios que reciban suficientes votos ha favor, ha traves de la boleta incluida, seran añadidos dentro de su área de llamadas locales. Note: Si el intercambio requerido se encuentra en un Acceso Local y Área de Transporte (Local Access and Transport Area - LATA) diferente al intercambio requerido, dicho intercambio necesita aprobación federal y no sera disponible por un tiempo. Usted sera avisado ha tiempo de la boleta si dicha condición existe y cuales intercambios son afectados. Ninguna tarifa sera aplicada por los intercambios que estan en diferente LATA hasta que estos esten aprobados y disponibles (esto no necesariamente aumentara la tarifa). Los otros intercambios aprobados, seran facturados de acuerdo ha la regla de la Comisión. Los intercambios que estan en diferente LATA han sido señalados en la boleta con un asterisco(*).

PUBLIC NOTICE

The Mozelle exchange has petitioned for Expanded Toll-Free Local calling to the Coleman exchange.

Within the next 15 days, Coleman County Telephone Cooperative will mail ballots to all customers in the Mozelle exchange. After marking the ballot, customers should sign their name and return the ballot in the stamped, self-addressed envelope to the Public Utility Commission of Texas that accompany the ballot.

Expanded Toll-Free Local Calling Service will allow you to call and be called by the Coleman exchange on a local call basis (no toll charges). All exchange(s) that pass the ballot will be added to your local calling area for a maximum monthly per line charge as follows:

First five exchanges: Up to \$3.50 for residence, \$7.00 for business

Each exchange over five exchanges: An extra \$1.50 per month, per exchange

Example: the following fees would apply if seven exchanges were approved:

	Residence	Business
First five exchanges	up to \$ 3.50	up to \$ 7.00
Exchange #6	extra \$ 1.50	extra \$ 1.50
Exchange #7	extra \$ 1.50	extra \$ 1.50
Maximum Monthly Fee	\$ 6.50	\$10.00

If five or fewer exchanges pass the ballot and are approved, the maximum monthly fee would be \$3.50 for residence lines and \$7.00 for business lines.

The fees associated with ELC are mandatory. If any exchanges pass the ballot, the fees will be paid by all subscribers in the petitioning exchange. The fees will be in addition to your local monthly telephone service charges, and will be in effect until your telephone company's next general rate case, at which time all rates are subject to change.

At least 70% of the subscribers who return their ballots must vote in favor of expanded local calling on a per exchange basis for it to be provided. If the ballot fails to all exchanges, your service will not change, and no fees will apply. Only exchanges that pass the ballot will be added to your local calling area. Note: If a requested exchange is in a different Local Access and Transport Area (LATA) from the petitioning exchange, it requires federal approval and may not be available for some time. You will be notified at the time of the ballot if such a condition exists, and what exchanges are affected. No fees for such inter-LATA exchanges will be charged until they are approved and provided (and they may not necessarily add to the fee), but all other approved exchanges will be billed according to the Rule. Inter-LATA exchanges are noted by an asterisk(*).

AVISO PUBLICO

El intercambio Mozelle ha hecho demanda para el servicio de Expansión de Llamadas Con Tarifa Fija al intercambio de Coleman.

Dentro de quince días, Coleman County Telephone Cooperative enviara boletas por correo a todos los clientes del intercambio Mozelle. Despues de marcar su boleta, clientes deben de firmar su nombre y regresarla ha el Comisión de Servicios Públicos de Texas, en le sobre incluido con estampilla y dirección de retorno.

El servicio de Expansión de Llamadas Locales Con Tarifa Fija le permitira llamar y ser llamado por el intercambio Coleman ha base de llamada local. Todos los intercambios que pasen la boleta seran añadidos ha la área de sus llamadas locales por una tarifa mensual maxima por línea, en la siguiente manera:

Los Cinco Primeros Intercambios: Hasta \$3.50 por cada línea, para servicio residencial; y \$7.00 por cada línea, para servicio comercial.

Cada intercambio adicional (ha los cinco primeros intercambios): \$1.50 extra, por mes, por intercambio.

Por ejemplo: Las siguientes tarifas no aplicaran si siete intercambios son aprobados:

	Residencial	Comercial
Cinco primeros intercambios	Hasta \$3.50	Hasta \$ 7.00
Intercambio #6	Extra \$1.50	Extra \$ 1.50
Intercambio #7	Extra \$1.50	Extra \$ 1.50
Tarifa Maxima mensual	\$6.50	\$10.00

En caso de que menos de cinco intercambios pasen la boleta y sean aprobados, la tarifa maxima mensual sera \$3.50 por cada línea de servicio residencial y \$7.00 por cada línea de servicio comercial.

Las tarifas asociadas con el servicio de expansión de llamadas locales sin cargo adicional, son mandatorias. Si cualquier de los intercambios pasa la boleta, las tarifas seran pagadas por todos los suscriptores en el intercambio de demanda. Las tarifas seran añadidas ha los cargos de su servicio telefónico mensual local, y estaran en efecto hasta que su compañía telefónica realice la próxima revision general de tarifas, ha la vez que todas las tarifas son sujetas ha modificación.

Por lo menos 70% de los suscriptores que regresen esta boleta deben votar ha favor del Servicio de Expansión de Llamadas, en base ha cada intercambio, para ser provisto. En caso de que la boleta falle ha todos los intercambios, su servicio no cambiara, y no se aplicara ninguna tarifa adicional. Solamente los intercambios que reciban suficientes votos ha favor, ha traves de la boleta incluida, seran añadidos dentro de su área de llamadas locales. Note: Si el intercambio requerido se encuentra en un Acceso Local y Área de Transporte (Local Access and Transport Area - LATA) diferente al intercambio requerido, dicho intercambio necesita aprobación federal y no sera disponible por un tiempo. Usted sera avisado ha tiempo de la boleta si dicha condición existe y cuales intercambios son afectados. Ninguna tarifa sera aplicada por los intercambios que estan en diferente LATA hasta que estos esten aprobados y disponibles (esto no necesariamente aumentara la tarifa). Los otros intercambios aprobados, seran facturados de acuerdo ha la regla de la Comisión. Los intercambios que estan en diferente LATA han sido señalados en la boleta con un asterisco(*).

PUBLIC NOTICE

The Lake Coleman exchange has petitioned for Expanded Toll-Free Local calling to the Coleman exchange.

Within the next 15 days, Coleman County Telephone Cooperative will mail ballots to all customers in the Lake Coleman exchange. After marking the ballot, customers should sign their name and return the ballot in the stamped, self-addressed envelope to the Public Utility Commission of Texas that accompany the ballot.

Expanded Toll-Free Local Calling Service will allow you to call and be called by the Coleman exchange on a local call basis (no toll charges). All exchange(s) that pass the ballot will be added to your local calling area for a maximum monthly per line charge as follows:

First five exchanges: Up to \$3.50 for residence, \$7.00 for business

Each exchange over five exchanges: An extra \$1.50 per month, per exchange

Example: the following fees would apply if seven exchanges were approved:

	Residence	Business
First five exchanges	up to \$ 3.50	up to \$ 7.00
Exchange #6	extra \$ 1.50	extra \$ 1.50
Exchange #7	extra \$ 1.50	extra \$ 1.50
Maximum Monthly Fee	\$ 6.50	\$10.00

If five or fewer exchanges pass the ballot and are approved, the maximum monthly fee would be \$3.50 for residence lines and \$7.00 for business lines.

The fees associated with ELC are mandatory. If any exchanges pass the ballot, the fees will be paid by all subscribers in the petitioning exchange. The fees will be in addition to your local monthly telephone service charges, and will be in effect until your telephone company's next general rate case, at which time all rates are subject to change.

At least 70% of the subscribers who return their ballots must vote in favor of expanded local calling on a per exchange basis for it to be provided. If the ballot fails to all exchanges, your service will not change, and no fees will apply. Only exchanges that pass the ballot will be added to your local calling area. Note: If a requested exchange is in a different Local Access and Transport Area (LATA) from the petitioning exchange, it requires federal approval and may not be available for some time. You will be notified at the time of the ballot if such a condition exists, and what exchanges are affected. No fees for such inter-LATA exchanges will be charged until they are approved and provided (and they may not necessarily add to the fee), but all other approved exchanges will be billed according to the Rule. Inter-LATA exchanges are noted by an asterisk(*).

AVISO PUBLICO

El intercambio Lake Coleman ha hecho demanda para el servicio de Expansión de Llamadas Con Tarifa Fija al intercambio de Coleman.

Dentro de quince días, Coleman County Telephone Cooperative enviara boletas por correo a todos los clientes del intercambio Lake Coleman. Despues de marcar su boleta, clientes deben de firmar su nombre y regresarla ha el Comisión de Servicios Públicos de Texas, en le sobre incluido con estampilla y dirección de retorno.

El servicio de Expansión de Llamadas Locales Con Tarifa Fija le permitira llamar y ser llamado por el intercambio Coleman ha base de llamada local. Todos los intercambios que pasen la boleta seran añadidos ha la área de sus llamadas locales por una tarifa mensual maxima por línea, en la siguiente manera:

Los Cinco Primeros Intercambios: Hasta \$3.50 por cada línea, para servicio residencial; y \$7.00 por cada línea, para servicio comercial.

Cada intercambio adicional (ha los cinco primeros intercambios): \$1.50 extra, por mes, por intercambio.

Por ejemplo: Las siguientes tarifas no aplicaran si siete intercambios son aprobados:

	Residencial	Comercial
Cinco primeros intercambios	Hasta \$3.50	Hasta \$ 7.00
Intercambio #6	Extra \$1.50	Extra \$ 1.50
Intercambio #7	Extra \$1.50	Extra \$ 1.50
Tarifa Maxima mensual	\$6.50	\$10.00

En caso de que menos de cinco intercambios pasen la boleta y sean aprobados, la tarifa maxima mensual sera \$3.50 por cada línea de servicio residencial y \$7.00 por cada línea de servicio comercial.

Las tarifas asociadas con el servicio de expansión de llamadas locales sin cargo adicional, son mandatorias. Si cualquier de los intercambios pasa la boleta, las tarifas seran pagadas por todos los suscriptores en el intercambio de demanda. Las tarifas seran añadidas ha los cargos de su servicio telefónico mensual local, y estaran en efecto hasta que su compañía telefónica realice la próxima revision general de tarifas, ha la vez que todas las tarifas son sujetas ha modificación.

Por lo menos 70% de los suscriptores que regresen esta boleta deben votar ha favor del Servicio de Expansión de Llamadas, en base ha cada intercambio, para ser provisto. En caso de que la boleta falle ha todos los intercambios, su servicio no cambiara, y no se aplicara ninguna tarifa adicional. Solamente los intercambios que reciban suficientes votos ha favor, ha traves de la boleta incluida, seran añadidos dentro de su área de llamadas locales. Note: Si el intercambio requerido se encuentra en un Acceso Local y Área de Transporte (Local Access and Transport Area - LATA) diferente al intercambio requerido, dicho intercambio necesita aprobación federal y no sera disponible por un tiempo. Usted sera avisado ha tiempo de la boleta si dicha condición existe y cuales intercambios son afectados. Ninguna tarifa sera aplicada por los intercambios que estan en diferente LATA hasta que estos esten aprobados y disponibles (esto no necesariamente aumentara la tarifa). Los otros intercambios aprobados, seran facturados de acuerdo ha la regla de la Comisión. Los intercambios que estan en diferente LATA han sido señalados en la boleta con un asterisco(*).

PERSONALS

Mark Mosley of Pflugerville and Austin, left Saturday after a visit with his parents, Marvin and Kay Mosley of Cross Plains.

The Mosley's recently returned from Lubbock where they attended the wedding of their niece, Belinda to Mr. Mel Maddox. Belinda is the daughter of Ann and Sonny Bounds of Crosbyton. Ann Bounds is the sister of Kay Mosley. The garden wedding was held at the Garden and Arts Center Tea Garden in Lubbock with the reception in the party room. Mr. and Mrs. Maddox now reside in Idalou after a wedding trip to Washington D.C., Jamestown, Virginia and Pennsylvania. Belinda is employed by Floydada I.S.D. and Mel owns A & M Plumbing. The

wedding was held June 24.

While in Lubbock, Kay and Marvin visited with their other three children, Rex and his roommate, Tom Jewett; Allison and fiancée Ralph Kleiber and Melody and her son Zachary. Zachary had just spent a month with grandparents, Kay and Marvin.

While in Lubbock, the Mosley's also visited with Jamey Mosley, son of Dorothy Mosley of this city and with Mr. and Mrs. Jerry Taylor, Carl and Jonathan.

On their 3 1/2 week visit, the Mosley's also visited with Ann and Sonny Bounds of Crosbyton and with Iris Dennis, Mrs. Mosley's mother also of Crosbyton.

Pillans Reunion Held July 15

The family of Ben and Nora Pillans met Saturday, July 15 at the community center for another great day. Over 100 people attended and about 50 went on a hay ride at the J.C. Pillans place. Coleman pulled 2 flatbed trailers hooked together with his tractor. One of the family had to get off at the windmill and get a drink out of a "dipper" hanging there.

A family quilt, embroidered by Connie Goble Griffith, was won by Jeremy Rice, Glenna Pillans Kirksam's grandson.

The eight living children were pre-

sented an old picture of their home, framed in wood from the old home. The snapshot was blown up to an 8x10. A precious treasure for each. Thanks to Reggie Pillans and Eddie Faye Dillard.

We played bingo, had an auction for kids then for grown-ups.

At lunch we held hands in a large circle and Benja Pillans give thanks to the Lord for such a wonderful and loving family.

Leonard Pillans treated us with watermelon, large peaches and tomatoes from his ranch near Fredricksburg.

MINUTE MUSINGS

By ESTHLOY S. DICKSON

Half of July has passed by - half of 1995 has gone by. But we don't mind, do we? We have so many pleasant things for which to be thankful. This will be a warm day, I'm sure. There will be a lot of warm days from now to September - so we take cool baths, turn up the fans and take whatever comes our way.

Betty Beggs looks just great. She has gained a little weight and that is becoming to her. Rex and family, also Rusty visited her recently. Mr. and Mrs. DeWayne Jones of Copperas Cove, also her brother, Floyd Russell of Fort Worth, visited recently. Ms. Ovella Barton of Pioneer joined them on Friday when they all attended a baseball game at Comanche.

Sally Roady didn't feel really well this morning; however, she helped me with this report. They talked with their

daughter, Cindy, who is in Missouri. They visited with Billie and H.A. Freeman who live south of Cross Plains. They talked to Bob and Sue McNeil at Baird. Bob visited often with his mother at the nursing home.

My good neighbor, Jewel Foster, was in Sunday school and church on Sunday. She is in excellent health for which we all are grateful. We are in the same Sunday school class. There were eight 'old ladies' present this Sunday.

Helen Tillotson is always a joy to talk to, although she did not have any special news. She helped me with some 'names' I could not recall. I saw John Bureson in church Sunday morning and just could not 'give' him a name. I'm so forgetful 'in my old age'.

I want my neighbors to help me with this weekly column.

"Little Bucks" Track Meet In Breckenridge

The Breckenridge Summer Track Club will be hosting a "Little Bucks" track meet on Monday, July 24 at the South Elementary track for children aged 3-5. Events at the meet will include the 50m dash, 75m dash, 100m dash, 4x100m relay, long jump, and softball throw. Entry fees for the meet will be \$3 per participant. Participants may enter any four events they choose.

The meet will be conducted by the members of the Breckenridge Summer Track Club that have qualified for the State Meet in Waco at Baylor University. All proceeds will go toward the expenses of the state meet. Entries will be made and paid for at the track on July 24. All events will begin at 8 p.m.

Further questions may be addressed by calling Van Grimes at (817) 559-8157.

TESTON FAMILY REUNION HELD JULY 8 AND 9

OUR PARENTS

The descendants of the late Elzie and Lila Teston met for their 15th reunion July 8 and 9 at the Cross Plains Community Center. They spent two nights at Odom's Motel.

The children, grandchildren, great, and great-great-grandchildren have missed only one year in the last 16 years.

Those present were: Jessie Carter, S. E. and Wanda Braly, Terry and Debra Adkinson and Kessi and Kerri, from Spur; Bo and Joann Braly and Nicky from Galena Park; Roy and Connie, Shaun and Traci from San Angelo; Jim and Lessie Baum, and Linda Pringle from Cross Plains; Kenneth and Gayle Lowry from Spring; Chris and Cathy Lowry from San Antonio; Oddie Kivlchen, Judy and Casey Harris, Mark and Shanda Harris, Justin and Jordan from Abilene; Joe and Linda Ates from Milton, Florida; David and Marsha Kivlchen and Jenney from Arlington.

The quilt designed by Oddie Kivlchen, Lessie Baum, Jessie Carter, and Judy Harris was won by S. E. Braly. He is the oldest grandson of Elzie and Lila Teston.

We had a nice family, loving parents and a good home.

There were 11 children, 10 lived to be grown.

Makes you sad to think 5 brothers are gone.

Our father was a farmer and a good man. It took all his time day and night

To put food on the table and clothes on our backs.

Our mother was a sweet mother; in fact, she was the very best.

Would see all her children were home before she lay down at night to rest.

Just think, 8 children at home at one time. No father or mother could have done better.

They were not only our parents but our best friends who were always together, through thick and through thin.

For over 63 years they were together when the Good Lord took our father to heaven.

Fourteen years later we lay mother by his side.

Our hearts were broken, but we were so thankful, the Good Lord let us keep them this long.

By Lessie Baum

THE TEMPERATURE'S RISING BUT OUR PRICES ARE FALLING!



'95 RANGER XLT #1224 MSRP \$13,953
*Sale Discs. -3,254
Air, Super Cooling, 60/40 Split Seat, Chrome Rear Bumper, Sliding Window.
#10,699



'95 AEROSTAR WAGON MSRP \$20,299
*Sale Discs. -2,304
#8565
XLT, 3.0 V6, Dual Air, Cassette, Power Group, Privacy Glass, Luggage Rack.
\$17,995



'95 EXPLORER SPORT MSRP \$21,325
*Sale Discs. -3,254
#6779
Air, Cassette, Trailer Towing Pkg., Luggage Rack, Captains Chairs, P235 Owl Tires.
\$18,995



'95 ESCORT LX 4 DR. MSRP \$14,000
*Sale Discs. -2,005
#3567
Automatic, Air, Cassette, Speed Control, Tilt Wheel, Clear Coat Paint.
\$11,995



'95 CONTOUR G.L. MSRP \$15,285
*Sale Discs. -1,290
#1108
Dual Air Bags, Cassette, Speed Control, Power Mirrors, Air.
\$13,995



'95 MUSTANG LX #2580 MSRP \$16,050
*Sale Discs. -2,055
Dual Air Bags, Air, Cassette, 3.8 V6.
\$13,995



'95 F150 SUPERCAB MSRP \$20,872
*Sale Discs. -4,882
#2058
XLT, Cab Steps, Two-Tone Paint, Air, Power Windows & Locks, Cassette, Speed Control & Tilt Wheel, Chrome Wheels.
\$15,990



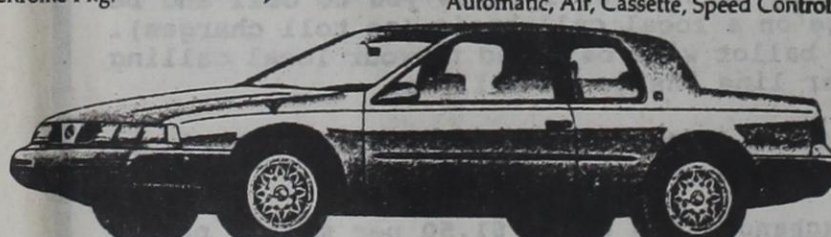
'95 F150 REG. CAB MSRP \$17,386
*Sale Discs. -4,391
#5749
Dual Air Bags, Air, Cassette, Speed Control, Tilt Wheel, Cloth Seat, Super Cooling, Full Chrome Pkg.
\$12,990



'95 TRACER 4 DR MSRP \$14,265
*Sale Discs. -2,275
#3825
Automatic, Air, Cassette, Speed Control, Tilt Wheel.
\$11,990



'95 GRAND MARQUIS MSRP \$22,790
*Sale Discs. -3,795
Dual Air Bags, Speed Control, Floor Mats, All Power Group, WSW Tires #0276
\$18,995



'95 COUGAR XR 7 #0806 MSRP \$20,085
*Sale Discs. -3,090
Keyless Remote-Entry, V8, All Power Group, Speed Control, Cassette-Tape, Full Cast Aluminum Wheels.
\$16,995

ASK ABOUT 2.9% APR ON SELECTED RANGERS!

Pre-Owned Program Cars

1994 Aspire, (2 to choose from), automatic, air, cassette
.....Only \$7,988

UP to 60 mos. with approved credit

1994 Mustang LX Convertible, (2 to choose from), automatic, V6, air, all power.....Only \$15,888

1994 Tempo GL, (2 to choose from), automatic, air, cassette all power, speed control, tilt wheel.....Only \$9,877

1994 Lincoln Town Car, (Signature Series), dual air bags, leather, keyless entry, low mileage.....Only \$23,996

1994 Lincoln Continental, (Signature Series), 6,000 miles, dual air bags, moon roof.....Only \$24,988
1995 Taurus GL, dual air bags, V6, all power, low mileage, (5 to choose from).....Only \$14,996
1995 Windstar, dual air, all power, dual air bags, speed control, low mileage.....Only \$18,996

Just Traded For

1994 Ranger STX Supercab, V6, automatic, all power, local, one owner.....Only \$12,788
1993 Dodge Dakota Extended Cab LE, package, automatic, one owner, extra nice.....Only \$10,995
1992 Dodge Dakota, V6, local owner, air, extra clean.....Only \$8,488



500 Fisk

1-800-284-4051 915-643-1651

Weatherby has been selling and servicing The Ford Family of Fine Cars & Trucks for over 83 years.

*Dealer Discount, Light Hall, & Factory Rebate