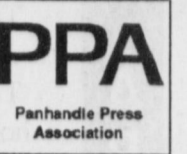




BAILEY COUNTY JOURNAL



Volume 36, No. 12

Published Every Sunday at Muleshoe, Bailey County, Texas 79347

Sunday, March 23, 1997

Muleshoe is gaining fame as ghost town

By RICK WHITE
Managing Editor

Bailey County Sheriff Jerry Hicks has booked more radio appearances this week than prisoners.

With the news of the Bailey County Jail being haunted spreading quicker than an off-color office joke, Muleshoe is becoming nationally known as the Texas town that plays host to a ghost.

The story first appeared in last weekend's Bailey County Journal and soon spread to newspapers and radio and television stations all over the state and across the country.

Hicks has been so busy fielding phone calls and doing interviews — seven Wednesday alone — he says he barely has had time to get any work done.

"It's been a zoo," Hicks said. "I thought local people would be interested in the story. I saw it in the Amarillo and Lubbock papers and I thought it was no big deal.

"It went ape from there." Inmates say they've seen and heard a ghost they believe is the spirit of a man who hung himself in the jail in 1979.

The ghost appears in the form of a shadow drifting along the cell block wall, inmates say. Several other say they've experienced the same dream in which an unknown force pulls their blankets so tight they can't move.

The national media blitz started Tuesday on the Paul Harvey radio show and it's been non-stop from there.

Hicks has since done live interviews on more than a half-dozen radio shows from places like Dallas, San Antonio, Oklahoma City... even Rochester, N.Y.

During one call, Hicks jokingly answered his phone "Ghostbusters are us" only to learn that he was live on the air in Boise, Idaho.

Call it a major boo-boo.

Even CBS television affiliates in New York and Chicago have called and carried the story.

"I've kind of enjoyed it because no one has taken it too seriously," Hicks said, who has got off a couple classic one-liners.

During the interview with the Rochester station, the sheriff was asked if he was related to the comedian Bill Hicks (which he's not).

Later in the interview he was asked that since Hicks is such a popular name, how many Hicks are there in Texas.

The Sheriff replied: "About half of us in Texas are Hicks."

"Hopefully this is about the end of it," said Hicks. "But it's nice to get some attention for the town."

The attention has literally turned Muleshoe into a ghost town.



JOURNAL PHOTO BY RICK WHITE

Sailor's salute

Joshua Toscano gives a sailor's salute Wednesday during a dress rehearsal of the Dillman Elementary School second-graders' musical "When I grow up." The students gave two performances for their parents Thursday. Joaquin Ruvalcaba is to Toscano's left.

Muleshoe man dies of gunshot wound

A Muleshoe funeral director was found dead Wednesday, apparently the victim of a self-inflicted gunshot wound.

Don Williams, 45, was found at about 7:40 a.m. in his home at 710 W. Ave. K with a single gunshot wound to the chest. He was pronounced dead by a justice of the peace at 8 a.m.

Muleshoe Police recovered a 9 millimeter hand gun near the body.

An autopsy was scheduled in Lubbock Friday afternoon.

Williams had worked for Ellis Funeral Home in Muleshoe for 13 years.

Muleshoe Police Chief Rick Henegar said Williams was apparently despondent about the death of his wife a year ago.

The 14-year-old daughter of Williams' live-in girl friend, was in the bathroom getting ready for school when she heard a gunshot and called 9-1-1, according to police reports. She was the only one awake at the time.

Henegar said the case is still under investigation.

Energas latest utility company to downsize

LUBBOCK—Energas announced Wednesday that several offices in Texas will be closed in the current move among utility companies to downsize in the name of deregulation.

Company officials said the consolidation would be similar to Southwestern Public Service's recent restructuring.

SPS has already announced its Muleshoe office will be among the 17 in West

Texas and New Mexico that will be closed.

Energas said it is going to close all its local offices to over the counter payments and walk-in customer transactions.

The company will create a network of payment centers beginning in early summer 1997. These centers will be located in local grocery stores, convenience stores and other locations in town with extended hours for customers to pay their bills.

Local offices will be refocused on field operations such as service calls, and construction and maintenance activities.

Energas will also open a central customer support center which customers can call toll-free for service 24 hours a day, seven days a week. The location of this center has not been determined.

Continued on page 2

World Lab provides hands-on learning approach

By RICK WHITE
Managing Editor

Gina Mardis and six other first-grade teachers at Dillman Elementary School are bringing a unit on birds to life.

The teachers are using real chicken eggs to teach the first-graders about the life cycle of birds in a class called World Lab.

Tuesday, the first of about 30 fertile eggs the students and teachers have been incubating in styrofoam containers hatched. By Friday morning, nearly a dozen baby chicks had been hatched.

"It's a good way to teach them about the process of life and about caring for animals," Mardis said. "And they also learn about disappointment, because not all the eggs will hatch."

After the chicks hatch, they will be raised on a local farm.

When the eggs arrived from Texas A&M three weeks ago, the classes used the old fashion method of holding the eggs up to a candle to check if they were fertile.

Mardis said the students were amazed when they saw the embryos move inside the shell and that they "could see their heartbeat."

"A lot of the parents have come up to us and

Continued on page 6



JOURNAL PHOTO BY RICK WHITE

My little chickadee

Courtney Mardis holds one of the chicks recently hatched by the first-grade class at Dillman Elementary School.

Kemp tosses four-hitter; leads Muleshoe to 8-3 win

AMARILLO — The Muleshoe baseball team has shown one thing this year. The ability to bounce back.

After losing its District 1-3A opener in a sloppily played game Saturday, Muleshoe regrouped and beat league favorite Perryton 8-3 Tuesday at Caprock High School.

Laye Kemp hurled a four-hitter and Jeffrey Wheeler and Michael Woodard sparked the offense as the Mules beat the team that knocked them out of

the bi-district playoffs last year.

"The kids have really shown the ability to put losses behind them," Muleshoe coach Brad Hill said. "This is a real confidence builder. By beating the team that's picked to win the district, the kids now know they're capable of beating anybody."

Muleshoe (5-5 overall, 1-1 in district) was coming off a 8-6 loss to River Road, a loss Hill

Continued on page 5

Multiple choice in school board races at Three Way, Lazbuddie

By SAMUEL VILLARREAL
Journal Staff Writer

While interest in the May 4 elections has been virtually non-existent in Muleshoe, school board elections outside of the city are drawing plenty of interest.

Incumbent candidates for mayor, two school board seats and two hospital board seats are running unopposed after the passing of the March 19 filing deadline.

Eight persons have filed for four at-large positions on the

Continued on page 3

AROUND MULESHOE

Muleshoe High School offering drivers ed

The Muleshoe Independent School District will offer three separate drivers education courses this spring. The first class will begin in April 1 and will meet before school from 7 - 8 a.m. Driving instruction, which will take place after school hours, will begin May 26. The second class will also begin April 1 and will meet 6 - 8 p.m. Driving instruction will begin May 1. The third class will begin June 2, and will meet from 9 - 11 a.m. Driving instruction will begin June 24.

Students must be 15 before beginning the driving phase. They must also complete the classroom portion of driver's education and obtain their "learner's permit" before they can start any part of the in-car instruction.

Steve Garvey baseball being raffled

Tickets are now on sale for a chance to win a baseball signed by Los Angeles Dodger and San Diego Padres All-star Steve Garvey.

Tickets are a dollar each, or six tickets for five dollars. The proceeds will go towards Project Graduation '97. Tickets may be purchased at Williams Athletics, or by calling Kay Elliot after 5 p.m. at 946-3481.

Churches holding special Easter services

Several Muleshoe churches will be hosting special events for Easter. The First United Methodist Church will host a daily lunch and service March 24 - 26 in their fellowship hall. Special groups, speakers and singers will be featured each day. The meal cost, received to offset meal preparation expenses, is by donation.

An Easter sunrise service will be held at 7 a.m. March 30 in the new city park across from the 16th and D Church of Christ. Coffee and donuts will be served in the fellowship

hall of 16th and D Church of Christ following the service.

The First Assembly of God will present a program and cantata, "Tree of Life," at 10:45 a.m. that same morning. The program will feature singers from several area churches.

MHS registration meeting March 31

Muleshoe High School will hold a meeting for all parents of 8th grade students March 31 at 7:30 in the MHS auditorium.

The meeting is designed to help parents and students smooth the transition between junior high and high school, while explaining the different graduation plans available.

Parents should bring their child's registration materials, which will be given to them prior to the March 31 meeting.

LOCAL WEATHER AT A GLANCE

	HIGH	LOW	PRECIP
3/18	81	38	—
3/19	67	34	—
3/20	74	33	—
3/21	83	35	—

Source: R.G. Bennett, Observer - National Weather Service

Extended Forecast

Mild weather through the weekend, with highs in the upper 60's to mid 70's and lows in the 30's. Cool and breezy weather early in the week, with a chance of rain Tuesday. Lows will be up in the 40's while highs dip to the 50's.

The Diamond Anniversary Necklace
1/2 Carat Diamond
\$999

LIFETIME DIAMOND GUARANTEE

30 MONTHS FINANCING TOOL

Holmberg Jewelry
1908 N. Prince-Clovis, NM 762-9376

Bailey County Journal USPS 040-200
Established March 31, 1963. Published by Triple S Publishing, Inc. Every Sunday at 304 W. Second, Box 449, Muleshoe, TX 79347.

Second Class Postage paid at Muleshoe, TX.
POSTMASTER: Send address changes to the Bailey County Journal, P.O. Box 449, Muleshoe, TX 79347.

WEST TEXAS PRESS ASSOCIATION
MEMBER 1997

PPA
Panhandle Press Association

TEXAS PRESS ASSOCIATION

Scot Stinnett, Publisher
Lisa Stinnett, Vice-President/Comptroller
Rick White, Editor
Jessica Orozco, Classifieds
Pat Durben, Advertising

© 1990

NNA NATIONAL NEWSPAPER ASSOCIATION

SUBSCRIPTIONS: Muleshoe Journal and Bailey County Journal By Carrier Yearly - \$22.00
Bailey and surrounding counties: by mail - \$24.00
Elsewhere - \$26.00
Advertising Rate Cards on Application

Advertisers should check their ad the first day of insertion. The Journals will not be liable for failure to publish an ad or for a typographical error or errors in publications except to the extent of the cost of the ad for the first day of insertion. Adjustment for errors will be limited to the cost of that portion of the ad where the error occurred.

NURSING HOME NEWS

By Joy Stancell

The New Covenant Church came Sunday for Church Services.

Friday morning being National Pig Day. We gave a tribute to the pig by remembering the animal by games and fun and pig artifacts. Pig trivia, stories, and hog killing time was a enjoyable topics of discussion. Refreshments of pigs in the blanket, that the residents made, and juice were served to all that attended. Nettie Quesenberry's sons and daughter-in-law also participated in the activity.

Pastor David McIntire, J.C. Shanks, and Clara Lou Jones directed our devotional time Thursday morning.

Monday morning the Laz-buddie young homemakers hosted a St. Pat's Day Party for the residents. Our favorite game, bingo was played and then the residents were served a wide variety of delectable foods.

Tuesday afternoon Claudine Embry, Lanell Stancell, Beverly Wagon, Chickie Herderlight shampooed and set the ladies hair.

Wednesday morning following Donut/Coffee time, Loyce Killingsworth, Anna B. Lane and Stacy Connor, pastor of the First Baptist Church lead our devotional/reflection time.

Wednesday afternoon Glenda Jennings came to di-

rect the weekly sing-a-long. Holly Millsap who was here visiting, also participated along with the residents.

We wish to express our sincere sympathy for families and friends of R.B. Cunningham and M.T. Hukill. They will be missed.

Grace Scarbrough treated us to ice cream cups and rice Krispies treats Monday. Gladys Wilson delivered the treats to us.

The Mary Martha Sunday school class of the First Baptist Church made a donation to the Care Center.

Mr. Arnold Price visited us this week and gave us a big carton of microwave popcorn.

Mr. Awbrey visited us Wednesday morning.

We are so thankful for each and every one of our "priceless" volunteers. You are a vital part of our Healthcare team!

Energas

Continued from page 1

"This is the way for us to compete in the future," said Junior Aston, a manager of public affairs based in Lubbock. He also admitted the move was to get the company ready for the expected deregulation of the natural gas industry.

Aston said Energas promised its employees it would announce office closings and job reductions by June 4.

Energas has 23 offices in the Panhandle-South Plains, including Littlefield, Levelland, Muleshoe, Springlake-Earth and Brownfield.

Energas provides natural gas service to approximately 311,000 customers in West Texas.

Atmos Energy Corp., Enegergas' parent company, which recently merged with a Tennessee company, said it will

close its 108 business offices in six states. After the consolidations, approximately 77 offices will remain open as field service centers.

Atmos provides natural gas service in Texas, Colorado, Kansas, Missouri, Louisiana and Kentucky.

The Angel Bow-tique
Cindy Magby 272-3617

For All Your Wedding Needs -
Wedding Rentals

- Candleabras • Floral Arrangements
- Personalized Unity Candles

Ask salesperson for more information or to schedule a consultation.

See Our Booth Displayed at
Treasures From The Heart
2104 W. American Blvd., Muleshoe

New Shipment of Easter Dresses

60% - 75% OFF

All Fall & Winter Merchandise

The Fig Tree

220 Main Muleshoe, TX
272-7561

OPEN 10 A.M.-5:30 P.M MONDAY-SATURDAY

GM Goodwrench Service Plus

Offers you MORE

GM Goodwrench Service Plus is more than just another way to service your vehicle - it's a better way. Because GM Goodwrench Service Plus has highly trained technicians who know your GM vehicle inside and out.

UP-FRONT COMPETITIVE PRICING
Which means no surprises when the bill comes.

COURTESY TRANSPORTATION
After you drop off your vehicle, we'll take you where you want to go.

LIFETIME SERVICE GUARANTEE
Parts and labor are covered for as long as you own your GM vehicle. See dealer for details of this limited warranty. Covered parts include:

- Air Conditioning Accumulator
- Air Conditioning Compressor
- Air Conditioning Condenser
- CV Joint/Boot Seal Kit
- Ignition Module
- Ignition Coils
- EGR Valve
- Fuel Injectors
- Fuel Pump
- Ignition Wire Set
- Individual Ignition Wires
- New/Remanufactured Generator
- New/Remanufactured Starter Motor
- Oxygen Sensor
- Shock Absorbers/Struts
- Throttle Body Injector
- Water Pump

FOR LESS.

Please present coupon prior to service

GM Goodwrench QUICK LUBE plus

Lube, Oil & Filter Change \$17

Complete chassis lube; AC oil filter; up to 5 quarts quality motor oil, plus 10-point maintenance check. Offer expires 4-30-97. Taxes not included. Applies to most GM vehicles. See dealer for details.

24-Point Maintenance Inspection FREE

Includes emission check, lights, engine, battery, brakes, cooling systems, general appearance, transmission operations, tires & steering. Needed repairs will be noted & a free written estimate will be provided. Offer expires 06-10-97. Applies to most GM vehicles. See dealer for details.

Tire Rotation \$18

Inspect for irregular tire wear. Check tire pressure. Rotate per manufacturer's specifications. Visual inspection of rims. Offer expires 4-30-97. Taxes not included. Applies to most GM vehicles. See dealer for details.

Radiator Service/Coolant \$25

Drain & flush cooling system. Replace coolant. Clean outside of radiator & air conditioning condenser. Pressure test entire system. Inspect condition of all hoses, clamps & belts. Offer expires 4-30-97. Taxes not included. Applies to most GM vehicles. See dealer for details.

Air Conditioning Service \$45

Adjust drive belts. Tighten fittings. Check operating pressure. Check for leaks. Clean condenser fins. Performance-test system (Freon extra). Offer expires 4-30-97. Taxes not included. Applies to most GM vehicles. See dealer for details.

Tire Rotation/Balance/Brake Inspection \$36

Inspect for irregular tire wear. Check tire pressure. Rotate per manufacturer's specifications. Inspect rims. Computer balance 4 wheels. Check brake linings, rotors, drums, hydraulic system & master cylinder. Offer expires 4-30-97. Taxes not included. Applies to most GM vehicles. See dealer for details.

BENDER

2500 Mabry Drive, Clovis, NM (505) 763-4465

Cadillac
Oldsmobile
Geo

A good argument for success

■ Debating improves public speaking skills

By **SAMUEL VILLARREAL**
Journal Staff Writer

Several Muleshoe High School students say it's not difficult to argue that participation in debate leads to success in the future.

MHS senior David Keller, who has been offered a debate scholarship by West Texas A&M University, said he plans to use the skills in college and beyond.

"Speech takes away from your fear of public speaking," Keller said. "You take it with you for the rest of your life."

After months of preparation and practice meets, Keller, along with 13 other MHS debate and speech students, will compete this weekend at the University Interscholastic League 1-3A competition.

With their eyes set for a moment on the present, Muleshoe High School debaters prepare for this year's competition.

Amidst a pile of paper and a flurry of point and counterpoint, competitors in the Lincoln-Douglas debate add final touches to their cases. In Lincoln-Douglas debate, students are given a subject and are asked to debate its moral value.

Debaters Marisa Buenrostro, Becky Flores and Steven Madrid have spent months compiling materials for this year's subject - gender equity in a legitimate democracy.

Although Lincoln-Douglas debaters compete individually, their preparations are done as a team.

"We trash each other's cases," Buenrostro said. "That way we know what to expect."

By "trashing" each other's cases, the three say they can find their weaknesses before a competition.

Another group of students is preparing for the emotional side of speech.

Students in poetry and prose interpretation refine the selections they will be reading for judges.

Poetry and prose interpretation students refine the selections they will be reading for judges. Through vocal and facial reactions, the readers hope to convey the emotions of their selections to their judges.

Students select two separate poetry or prose selections. The selections can be any piece of the student's choice, as long as the two have a similar theme.

The third group of speakers preparing for district competition are the extemporaneous speakers.

Extemporaneous speaking is divided into two categories, persuasive and informative.



PHOTO BY SAMUEL VILLARREAL

The search MHS students (from left) Darren Elliot, Damon Davenport and Mark McGuire search through their collection of newspaper clippings as they gather information for their latest speeches.

Speakers are given 30 minutes to prepare a seven-minute speech on a topic of the judges' choice.

Since most topics are chosen from current political and social events, speakers pore daily over the latest newspapers searching for any articles that they believe could be called upon in a competition.

Two large boxes of newspaper clippings accompany the team wherever they go.

The goal for informative speakers is to produce a speech that would explain what the topic is about.

"In your mind, the judge knows absolutely nothing about the topic," said informative speaker Darren Elliot.

"You have seven minutes to inform him as best as possible."

Persuasive speakers take political and social questions raised by current events and prepare speeches designed to persuade persons of one opinion to change to another.

Daily practice helps speakers keep their edge. They prepare two speeches each time their class meets.

Most speakers said they enjoy speech and debate because it gives them a chance to show their own individual talent. Even though they practice together, the true test comes when they hold the floor.

"There is no one else there," Buenrostro said. "It is just you and your opponent."

Elections

Continued from page 1

Lazbuddie Independent School District Board.

Incumbents Gail Morris and Thomas Martin will be joined on the May 4 ballot by Vernon Turner, Ricky Black, Donnie Coker, Garvin Thorn, Charleson Steinbock and Kyle Kimbrough.

Four persons have filed for three at-large positions on the Three Way ISD Board.

Incumbents Terry Pollard and James Kindle will be joined on the ballot by Johnny Furguson and Craig Kirby. Muleshoe Mayor Robert Montgomery is running unopposed. Montgomery has served as mayor since 1992.

City secretary Mary Hicks said a new law could allow the city council to declare Montgomery mayor without holding

a formal election. In past years, the city has had to hold an election even if the race was unopposed.

In the Muleshoe School Board election, Arnold Price and Curtis Shelburne are running unopposed.

MISD administrative secretary Jean Richardson said unopposed candidates can be declared winners without a for-

mal race, but any formal actions would not be decided until a future school board meeting.

As of the March 19 application deadline, elections for the Muleshoe Area Hospital District also appeared unopposed.

Incumbents Bob Finney and Buck Campbell are the only persons to have requested applications to be placed on the ballot.

Main Street Beauty Salon
would like to welcome
Pam Henegar
Specializing in
Hair Services - Manicures - Pedicures - Ear Piercing

MAIN STREET BEAUTY SALON
115 S. Main Muleshoe 272-3448

We Will Be Open Easter Sunday

NO RESERVATIONS

Turkey & Dressing & Lots More!

OPEN 6:30 a.m. - 2 p.m.

DINNER BELL RESTAURANT

2103 W. American Blvd. 272-4080
Muleshoe

Classifieds Sell!
Call The Journal Today
272-4536

Federal Land Bank Association
316 Main St., Muleshoe
806-272-3010

Long Term Financing for Farms, Ranches, Rural Housing, Operating and Improvements.

Current Variable Rate 7.95%.
Fixed rates are available.
Call for quote.
A Property Rights Advocate and Equal Opportunity Lender.

Have a nice day!

FARM AUCTION AMHERST, TEXAS

DATE: TUESDAY, MARCH 25, 1997 TIME: 9:30 A.M. (CST)
LOCATED: FROM THE INTERSECTION OF HWY 84 AND FM ROAD 37, GO 1 MILE SOUTH; 1 MILE SOUTH ON HWY 37, TO AUCTION SITE.
OWNER: BILL BRADLEY • PHONE (806) 246-3666 OR (806) 246-3220

THE FOLLOWING WILL BE SOLD AT PUBLIC AUCTION!

FARM EQUIPMENT

- 1-JOHN DEERE 737 D.T. SHREDDER
- 1-7 ROW SWEEP/OUT RIG, 4X4 BAR, 3 PT., G.W.
- 1-8 ROW BINGHAM BROS. ROTARY HOE, 3 PT., G.W.
- 1-11 SHANK HOME PLOW, 3 PT.
- 1-FORD 3 PT. 4 ROW CULTIVATOR
- 1-3 PT. ONEWAY PLOW
- 1-HAMBY 6 ROW BED SHAPER W/BARING OFF DISKS
- 1-6 ROW TRIP E BAR, TOOL BAR
- 1-6 ROW CAMEL BACK TOOL BAR
- 1-JOHN DEERE 6 ROW LISTER PLANTER, 3 PT., G.W.
- 1-JOHN DEERE 8 ROW, 71 FLEX PLANTER, W/TIME BOXES
- 1-7 ROW BED KNIFE
- 1-R & J 6 ROW CULTIPACKER, 3 PT.
- 1-8 ROW CAMEL BACK TOOL BAR
- 1-TRIPLE 4 X 4 TOOL BAR
- 1-JOHN DEERE 645 3 ROW ROTARY HOE
- 1-HAMBY 7 ROW DISK BEDDER, 3 PT., W/MARKERS
- 1-JOHN DEERE 6 ROW 400 ROTARY HOE
- 1-JOHN DEERE 645 3 ROW ROTARY HOE
- 1-JOHN DEERE 8 ROW 400 ROTARY HOE
- 1-A.C. 8 ROW CULTIVATOR, 3 PT.
- 1-JOHN DEERE 10 ROW CULTIVATOR, 3 PT.
- 1-ULLSTON 8 ROW ROLLING CULTIVATOR, 3 PT.
- 1-3 PT. 6 TANDEM DISK, D.T.
- 1-CALDWELL 2 ROW D.T. SHREDDER
- 1-HAMBY 3 PT. DITCH FILLER
- 1-GRAMHAM HOME - 16' 3 PT. PLOW
- 1-6 ROW BIG BAR ROTARY HOE, 3 PT.
- 1-BINGHAM BROS. SWEEP/OUT RIG, 3 PT., G.W.
- 1-KRAUSE 14' TANDEM DISK, D.T.
- 1-3 PT. GRUBBER PLOW
- 1-3 PT. POST HOLE DIGGER
- 1-3 PT. 2 ROW SHREDDER
- 1-6 ROW BED ROLLER
- 1-0 T. 2 ROW SHREDDER, G.W.
- 1-11 C. 3 BT. SPINNER BREAKING PLOW
- 1-JOHN DEERE 227 3 PT. SHREDDER
- 1-TERRY 8 PT. 3 BLADE
- 1-3 PT. 3 ROW KNIFING RIG
- 1-TYE 7 ROW DISK BEDDER, W/MARKER
- 1-4 C. 5 ROW ROLLING CULTIVATOR, BIG BAR
- 1-ULLSTON ROLLING CULTIVATOR, 4 ROW
- 1-8 ROW 3 PT. STALK CUTTER
- 1-3 PT. 3 DISK BORDER DISK
- 1-JOHN DEERE D.R. GRAM DRILL
- 1-NOBLE 8 ROW CULTIVATOR, BIG BAR, 3 PT.
- 1-6 ROW 3 PT. CRUSTBUSTER, 3 PT.
- 1-TEXAS PICKER UNITS
- 1-3 PT. 3 DISK REV. BREAKING PLOW
- 1-3 PT. STUBBLE MULCH PLOW
- 1-LOT OF CEMASTER PLANTER UNITS
- 1-3 PT. 8 BLADE
- 1-MODERN 3 PT. BOX BLADE
- 1-CRUSTBUSTER 32' FIELD CULTIVATOR
- 1-KRAUSE 18' OFFSET DISK, G.W., HYDRA
- 1-3 PT. SINGLE SHANK SUB SOLER
- 1-100 GAL. P.U. PROPANE TANK
- 1-10 T. 10' GRASS DRILL
- 1-3 PT. PLOW PACKER FOR BREAKING PLOW
- 1-3 PT. LIFT BOOM
- 20-SETS OF J.D. ROTARY HOE UNITS
- 1-12 SHANK GRAMHAM HOME PLOW, 3 PT.
- 1-8' 3 PT. ROTOVATOR
- 1-7 ROW RODWEEDER W/4X4 BAR, P.T.O.
- 8-ROWS UNDER COVERING DRAGS
- 8-JOHN DEERE DRAG, HARROW UNITS
- 1-2 ROW W.W. PEANUT DIGGER
- 1-7 SHANK FORD 2 ROW CULTIVATOR
- 1-3 PT. 2 ROW LISTER
- 1-JOHN DEERE 6 ROW ROTARY HOE, 3 PT.
- 1-7 ROW 3 PT. LISTER, 3 PT., D.T.B.
- 3-HARROW UNITS
- 1-3 PT. 8 GRAMHAM HOME PLOW
- 1-JOHN DEERE 14 TANDEM DISK, D.T.
- 1-3 PT. 2 BOTTOM BREAKING PLOW
- 1-JOHN DEERE 4 ROW FLEX PLANTER
- 1-6 ROW CARPET WICK
- 2-3 PT. ONEWAY PLOWS
- 1-JOHNSON 4 ROW FRAIL MOWER, D.T.
- 1-F & W FRAIL SHREDDER, D.T.
- 1-TYER 18' OFFSET DISK, G.W., D.D., 8' SPACING
- 1-TOWNER 4 BT. SPINNER BREAKING PLOW, 3 PT.
- 1-SCHAFFER 14' OFFSET DISK, G.W., HYDRA

TRACTOR - F.E. LOADER

- 1-1973 MD. 1 H.C. 1466 TRACTOR, CAB & AIR, D.H., 3 PT. WEIGHTS, 7A, 20.8 X 38 RUBBER
- 1-1963 MD. JOHN DEERE 4010 DIESEL TRACTOR, CAB, D.H., 3 PT. W.T. WEIGHTS, 18.4 X 38 RUBBER
- 1-JOHN DEERE 544-A ARTICULATING LOADER, CAB, DIESEL, SN1928301
- 1-CASE LOADER, OLDER MODEL LOADER, NO CAB, GAS

HAY EQUIPMENT - LIVESTOCK EQUIPMENT

- 1-JOHN DEERE 1380 HYDRA, SWING SWATH, W/CRIPPER
- 1-NEW HOLLAND 495 HAYBINE SWATH, D.T., P.T.O., W/CRIPPER
- 1-3 PT. 8 WHEEL HAY RAKE
- 1-JOHN DEERE 510 ROUND HAY BALE, P.T.O.
- 1-3 PT. HYDRA. BALE MOVER/LOADER
- 1-CATTLE SPRAY RIG
- 1-CATTLE HEAD GATE
- 1-5 ROUND BALE HAY TRAILERS
- 1-SEVERAL MILES OF ELECTRIC FENCE
- 3-WINDMILLS
- 1-E ZEE WIRE ROLLER
- 1-FENCE WIRE ROLLER ON TRAILER
- 1-ROUND BALE BUGGY
- 1-LIVESTOCK BURR TRAILER, D.T.
- 1-BIG BLUE 4 WHEEL BURR TRAILER
- 1-GRAVES BALE LOADER
- 1-JOHN DEERE 700 GRINDER MIXER W/HAY TABLE
- 1-H.C. SICKLE MOWER, 3 PT.
- 1-EXOTIC ANIMAL WORKING CHUTE
- 1-BEAR CAT GRINDER
- 1-LOT OF SUCKER ROGS
- 4-HOG FEEDERS
- 3-HAY RACK CATTLE FEEDERS
- 2-500 GAL. WATER TANKS
- 1-3/4" 500 GAL. WATER TRAILER
- 1-16' PORTABLE SELF FEEDER

TRUCKS - R.V.'S - VEHICLES

- 1-H.C. TRUCK W/22' END DUMP GRAVEL TRAILER
- 1-FORD GRAIN TRUCK W/16' METAL BED & HOIST
- 1-21' BUMPER PITCH R.V. TRAILER
- 1-28' 5TH WHEEL R.V. TRAILER
- 1-1978 MD. FORD PICKUP
- 1-1978 MD. CHEV. PICKUP
- 1-1980 MD. CHEV. 3/4 TON PICKUP
- 1-WILLYS JEEP
- 1-1979 MD. JEEP WAGNER
- 1-1980 MD. CHEV. SUBURBAN
- 1-HONDA CAR (2 DOOR)
- 1-FORD CAR (4 DOOR)
- 1-1983 MD. DODGE PICK UP
- 1-28' 5TH WHEEL R.V. TRAILER
- 1-BASS FISHING BOAT

SALV. VEHICLES - TRACTORS

- 1-CASE 430 TRACTOR
- 1-M-FARMHILL TRACTOR
- 1-CHEV. VEGA CAR
- 1-FORD 4 DOOR CAR
- 1-FORD 150 PICKUP
- 1-MAIL JEEP
- 1-DODGE TRUCK
- 1-CHEV. TRUCK
- 1-H.C. TRUCK W/METAL BED & HOIST
- 1-CHEV. STATION WAGON
- 1-CHRYSLER LEBARON
- 1-CHEV. CAMARO
- 1-CHEV. CHEVETTE
- 1-DATSUN CAR
- 1-DOODGE OMNI CAR
- 1-PONTIAC SUNBIRD
- 1-MERCURY CAR
- 2-CHEV. PICKUPS
- 4-FORD PICKUPS
- 1-CHEV. CAVALIER

SHOP EQUIPMENT

- 3-SHOP AIR COMPRESSORS
- 1-LOT OF FLOOR JACKS
- 1-LOT OF VAR. ELECTRIC TOOLS
- 1-METAL BAND SAW
- 1-10" 1" TO 3" ANGLE IRON
- 6-QUICK HITCHES (CAT II & CAT III)
- 1-LOT OF 45' METAL TRUSSES
- 1-LOT OF SHANKS, SWEEPS, & DISKS
- 1-TRANS. TYPE WINCH
- 10-10" METAL TRUSSES
- 5-SETS OF ROW MARKERS
- 1-LOT OF OAK TRAILER FLOORING
- 1-100 GAL. P.U. PROPANE TANK
- 8-5 GAL. TO 25 GAL. BUTANE TANKS
- 8-BARRING OFF DISKS
- 25-IMPLEMENT WHEELS & TIRES

WHEN ONLY THE BEST WILL DO CALL
Bill Johnston Auctioneers
WE ARE AGENTS AND AGENTS ONLY! MIKE ARCHIBEQUE - TX 11905
Office (505) 356-5982 / HOME (505) 356-4052 Portales, New Mexico 88130 • MIKE ARCHIBEQUE

NOW SCHEDULING FOR THE 1997 AUCTION SEASON!

Pa'nache North Plains Mall
Clovis, NM

SPRING SALE

20% OFF
Storewide

One week only, Mar. 22-29

30-75% off
rack has been added to!

New Spring Merchandise Arriving Daily!

'The Final Touch of Elegance Without the Expense'

Celebrate the joy of spring.

Easter is Sunday, March 30.

Enjoy the beauty and magic of spring with fresh flowers presented in this one-of-a-kind Teleflora keepsake. Crafted of fine French crystal, Teleflora's Crystal Tulip Centerpiece adds sparkle to any celebration. To send the Crystal Tulip Centerpiece anywhere in the U.S. or Canada, call or visit our shop.

Teleflora
DECORATORS Floral & Gifts
616 South First, Muleshoe 272-4340



BAILEY COUNTY JOURNAL



SPORTS EXTRA

Volume 36, No. 12

Published every Sunday at Muleshoe, Bailey County, Texas 79347

Sunday, March 23, 1997

Lopez made himself into all-district pick

Israel Lopez became an all-district player because he listened and learned.

The 6-3 Lazbuddie High School senior was one of 10 players named to the All-District 3-1A boys basketball team and the only Longhorn on the first team.

Senior wing Justin St. Clair and junior post Jason Thomas were named to the second team for the Longhorns, who finished the season 21-8.

Lopez averaged 13 points and eight rebounds for the bi-district champion Longhorns, who finished tied for second in the district behind state runner-up Nazareth.

But it was Lopez' dedication to fundamentals that earned him a spot on the team.

"He's one of the most coachable players I've ever had," said Lazbuddie coach Gary Grahn, who won his 100th game this year. "He listens and tries to do it right. That's why he is so fundamentally sound."

Lopez also played within himself, rarely shooting from beyond five feet of the basket and making a living offensive rebounding on the weakside block.

"He's the closest thing I have to a gym rat," Grahn said "He

BASKETBALL

Boys All-District 3-1A

FIRST TEAM

Nathan Hoelting, sr. Nazareth
 Bryan Braddock, sr. Nazareth
 Marc Lunsford, jr. Farwell
 Israel Lopez, sr. Lazbuddie
 Marcus Brockman, sr. Nazareth

SECOND TEAM

Justin St. Clair, sr., Lazbuddie;
 Logan Nichols, sr, Farwell; Jason Thomas, jr., Lazbuddie; John Mark Moudy, Happy, fr.; Rob Cook, jr., Vega

even gave up football this year so he could concentrate on basketball."

St. Clair averaged eight points and six rebounds a game while the 6-7 Thomas averaged 15 points and 10 rebounds.

District champion Nazareth placed three seniors on the first team.

Posts Nathan Hoelting and Marcus Brockman and point guard Bryan Braddock were selected from the Swifts.

Farwell junior Marc Lunsford rounded out the first team. Farwell finished tied for second with Lazbuddie.

Joining St. Clair and Thomas on the second team were Farwell senior Logan Nichols, Happy freshman John Mark Moudy and Vega junior Rob Cook.



All-District 3-1A

Lazbuddie senior Israel Lopez, shown scoring against three Farwell defenders, was named all-district.

Whitt, Lady Mules continue to lead 1-3A golf tournament

TULIA — Keisha Whitt and the Muleshoe the Lady Mules continue to lead the District 1-3A South Zone golf tournament after the second round.

In the boys tournament, Muleshoe is securely locked into second place behind Tulia.

Whitt, a junior, shot a 98 Tuesday at the Tule Lake Golf Club and holds a one-stroke lead over Goldie Harrison of Friona with a two-round total of 194.

Muleshoe holds a seven-stroke lead over Tulia (860-867) in the four-round tournament. One round is play on the home course of each of the zone's four teams.

The Muleshoe tournament is March 31.

Mule freshman Ryan Hodge fired a 76 in Tuesday's blustery wind conditions and moved into third place with a 36-hole total of 165. Muleshoe senior Kyle Embry is tied for fourth at 166 after shooting an 81.

Tulia's Cory Mahaney is the second-round lead at 145 after shooting a 73 Tuesday.

Tulia holds a 28-stroke lead over Muleshoe after shooting a 319 in the second round. Muleshoe shot a 328 for a two-round

Continued on page 5

GOLF

District 1-3A Tourney

SOUTH ZONE

Second round

at Tule Lake Golf Club, Tuesday

BOYS

Team totals — 1. Tulia 319-321 — 640, 2. Muleshoe 340-328 — 668; 3. Friona 367-370 — 727; 4. Dimmitt 376-398 — 776; 5. Tulia B 409-384 — 793.

Individual medalists — 1. Cory Mahaney, Tulia, 73-145; 2. Patrick Johnson, Tulia, 78-157; 3. Ryan Hodge, Muleshoe, 76-165; 4. (tie) Kyle Embry, Muleshoe, 81-166; Patrick Crow, Dimmitt, 84-166.

Other Muleshoe scores — Darren Box 83—168, Stefan Sutton 91 — 174, Damon Davenport 88—175.

GIRLS

Team totals — 1. Muleshoe 423-437 — 860, 2. Tulia 430-437 — 867, 3. Friona 438-452 — 890, 4. Tulia B 500-512 — 1,012.

Individual medalists — 1. Keisha Whitt, Muleshoe, 98 — 194; 2. Goldie Harrison, Friona, 98 — 194; 3. Darlin Kinser, Tulia, 105 — 204.

Other Muleshoe scores — Mikki Sutton 105 — 205, Katie Black 114 — 225, Kendra Kenmore 120 — 236, Brandi Harrison 246.

Note: The top two teams in each of the four-round North and South Zone tournaments will meet in a one-round tournament to determine the district champion.

Latham reaches semis at Plainview

PLAINVIEW

Muleshoe's Colby Latham advanced to the semifinals in singles and the quarterfinals in doubles last Saturday at the Plainview tennis tournament.

Aaron Faver and Cambri Lewis also won first round matches for Muleshoe.

Latham lost to No. 1 seed Caleb Ashley of Canadian in the semifinals 6-1, 3-6, 6-1.

In doubles, Latham teamed with freshman Jeff Bruns while reaching the quarterfinals.

In the consolation brackets, Amber Bruns and Rhonda Copley reached the semifinals in doubles play before losing to a team from Friona 8-3.

BOYS SINGLES

First round — Aaron Faver (MHS) def. Alex Hinojosa (Nazareth), 8-0; Matt Davis (Springlake-Earth) def. Chris Shelburne (MHS), 8-5; Colby Latham (MHS) def. Howard (Springlake-Earth), 8-4; Second round — Roy McDonald (Memphis) def. Faver; 2-6, 6-1, 7-5; Latham def. Rocky McAdams (Sudan), 6-1, 3-6, 6-1; third round — Caleb Ashley (Canadian) def. Latham, 4-6, 6-4, 6-4.

Consolation bracket

Second round — Matthew Kern (Nazareth) def. Chris Shelburne, 8-4;

BOYS DOUBLES

First round — Bruns/Henderson (MHS) def. Riggs/Flores (Dimmitt), 8-1; Aven/Martinez (Hart) def. Beall/Vaughn (MHS) 8-0; Brockman/Cannon (Nazareth) def. Posadas/Henderson (MHS), 8-2; second round — Salinas/Yannis (Memphis) def. Bruns/Latham, 6-3, 6-2;

Consolation bracket

Second round — Tyler/Schulte (Nazareth) def. Beall/Vaughn, 8-2; Rodrigues/Aronce (Friona) def. Posadas/Henderson, 8-5.

GIRLS SINGLES

Continued on page 5



For the green

Bill James of First Bank in Muleshoe chips onto the 12th green Sunday at the Muleshoe Country during the second round of the annual Running Water Draw golf challenge between Muleshoe and Friona Country Clubs.

Muleshoe wins 4th annual challenge cup golf match

Muleshoe Country Club won its third-straight Running Water Draw challenge cup golf tournament this weekend.

The tournament pits 12-member teams from Muleshoe and Friona CCs in a two-day tournament similar to the Ryder Cup.

Muleshoe beat Friona 7-5 in match play Sunday at Muleshoe CC to wrap up the title.

Saturday at Friona, Muleshoe won 9 of 12 matches play in a format that included a two-man scramble on the front 9 and alternate shot play on the back 9.



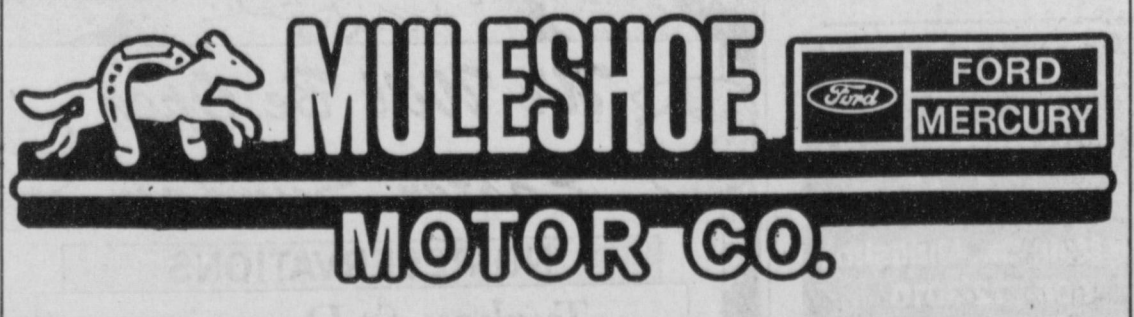
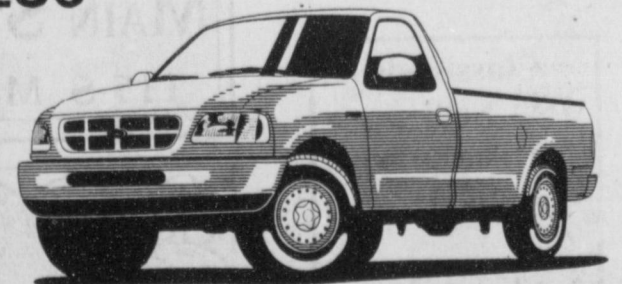
Muleshoe Motor Company

Your Ford Dealer for 70 Years

Come see us today and save!

1997 Ford F150

ONLY \$195 Down*
 and \$195 Month



Muleshoe Motor Co., Inc.

We Want To Be Your Car & Truck Dealer
 1225 W. Americana Blvd. Muleshoe, TX

272-4829 or
 1-800-432-7617



* 9.80% APR WAC; 24 Month RCO; Finance Amount \$14,265, MSRP \$17,705; 70% Residual; Balloon of \$12,393; Limit of 12,000 Miles Per Year, Plus T. T. & L. Dealer Keeps Rebates.



JOURNAL PHOTO BY LESLI RADFORD

Flags on sale

The Muleshoe Athletic Booster Club is currently selling black and silver Mule flags. The 3-foot by 5-foot flag costs \$35 (\$40 with the pole). Contact any Booster Club member or call Barry Cowart at 272-3061 to purchase a flag.

Tennis

Continued from page 4

First round — Tonya Powers (Dimmitt) def. Amanda Hahn (MHS), 9-7; Jamie Ward (Memphis) def. Ellen Wood (MHS) 8-1; Cambri Lewis (MHS) def. Sarah Olvera (Nazareth), (score unavailable); **second round** — Leslie Holton (Springlake-Earth) def. Lewis, 6-0, 6-0.

Consolation

Second round — Megan Karpel (Littlefield) def. Amanda Hahn, 8-0; Angelica Perales (Hart) def. Ellen Wood, 8-6.

GIRLS DOUBLES

First round — Hoelting/Wethington (Nazareth) def. Bruns/Copley (MHS), 9-7; Hamblin/McKinnin (Littlefield) def. Whitt/

Adrian (MHS) 8-4.

Second round — Bruns/Copley def. Smith/Cameron (Boys Ranch), 8-3; Lamb/Upchurch (Ralls) def. Whitt/Adrian, 8-4; **quarterfinals** — Bruns/Copley def. Fiero/Leal (Nazareth) 8-0; **semifinals** — Blackburn/Campbell (Friona) def. Bruns/Copley, 8-3.

Golf

Continued from page 4

total of 668. Friona is third at 727.

The top two teams after the four-round zone tournament will play a one-round tournament next month for the district title.

The top two teams at the district advance to regionals.

Perryton is the runaway boys leader in the north zone.

"One pretty good team is going to be left home," Muleshoe coach Ralph Mason said.

Mules

Continued from page 1

said his team handed to River Road. The Mules committed five fielding errors and several other mental blunders in the game.

Earlier this year, the Mules rebounded from an embarrassing 31-2 loss to Seminole by winning three of four games at the Frenship JV Tournament.

Hill said it has been a Jekyll and Hyde type of year.

"When we play bad, we play real bad," Hill said. "It seems like when we make one error, we make a bunch of errors."

"But when we play well, we play real well."

Trailing 2-1, Muleshoe scored six runs in the second inning.

Woodard delivered the big bow, a two-run triple down the right field linethat made it 7-2.

Wheeler added an RBI single in the rally that was aided by two walks, two hit batters and an error.

Wheeler's third single drove in Muleshoe's final run in the sixth. He finished 3 for 4 and scored a run.

Woodard finished 2 for 4.

Hill juggled the lineup Tuesday, moving Aaron Purdy to cleanup and dropping Jarrod Redwine and Matt McClanahan lower in the order.

"We weren't getting production in the middle of the lineup," Hill said. "Aaron's not a typical cleanup hitter. But he goes up there and battles and puts the ball in play."

Purdy's two-out single in the first gave Muleshoe a 1-0 lead.

Kemp was in control throughout.

All three runs Perryton scored off the junior right hander were unearned.

The Rangers (10-4, 1-1) scored twice in the second on Mike Castanon's two-out triple and a run in the sixth on a fielder's choice and two errors.

Kemp struck out six and

Perryton (10-4, 1-1)

	ab	r	h	bi
Madrid, 3b	3	0	1	0
Duke, cf	4	0	0	0
Sunday, ss	4	0	0	0
Dear, dh, p	2	0	0	0
Rennels, 2b	2	0	0	0
Pactzold, p, 1b	3	0	1	0
Alexander, c	3	2	0	0
Pinion, lf	3	1	0	0
Culwell, 1b, rf	3	0	1	0
Castanon, 2b, 1b	3	0	1	3
Balisan, rf	0	0	0	0
Totals	30	3	4	3

Muleshoe (5-5, 1-1)

Wheeler, ss	4	1	3	2
Kemp, p	4	1	0	0
Alanis, 3b	1	2	0	1
Purdy, rf	4	0	1	1
Woodard, c	4	0	2	2
Redwine, lf	3	1	1	0
McClanahan	2	1	0	0
Mason, 1b	4	1	0	0
Pineda, 2b	1	0	0	0
Totals	26	8	7	6

Perryton 020 001 0 3 4 5
Muleshoe 160 010 x 8 7 5

Pactzold, Dear (2), Castanon (4) and Alexander; Kemp and Woodard. WP—Kemp (2-3). LP—Pactzold. LOB—Perryton 8, Muleshoe 9. 2B—Madrid (P), Culwell (P). 3B—Woodard (M). SB—Pactzold (P), Alexander (P) 2., Mason (M).

Pitching summary

	ip	h	r	er	so	bb
Pactzold, L1	1/325	4	4	1	2	
Dear	2/3	2	3	2	0	1
Castanon	4	3	1	1	5	2
Muleshoe						
Kemp, W	7	4	3	0	6	2

walked one.

"He just threw strikes and kept them off balance," Hill said.

Muleshoe played Dalhart Saturday.

S *Infants*
T *Toddlers*
E *My home or yours*
P *Senior Adults*
S *Hospital or Home*

When you need someone to help call
806-272-3323
Dixie Jesko
(Wednesday is Mother's Day Out)
Serving Muleshoe, Farwell and Clovis

!!!! NOW HIRING !!!!
FOR NEW STORE TO OPEN

TOWN & COUNTRY FOOD STORES
Will be conducting walk-in interviews at:
TOWN & COUNTRY FOOD STORE #217
604 West 11th Street
Friona, Texas

March 23, 1997 — 2 p.m. to 5 p.m.
and
March 26, 1997 — 1 p.m. to 7 p.m.

Information flyers and applications are available at:
Friona Chamber of Commerce, 621 Main, Friona, Texas.

We will have a team of qualified interviewers from our management staff conducting the interviews.
We promise all applicants who show up an interview.

Please Attend A
Retirement Reception For
NELDA MERRIOTT
District Clerk - Bailey County
Saturday, March 29th 3-5 p.m.
Bailey County Coliseum
2200 W. American Blvd., US 84;
Muleshoe

Please write a letter or note about the past to be put in her book of memories being prepared.
Mail to Wannie Frazier,
P.O. Box 184, Muleshoe, TX.

Smith named teacher of year

AUSTIN — Celeste Smith, wife of Muleshoe native Gary Smith, received the "Crockett Teacher of the Year" award.

Celeste teaches world geography, is chair of social studies department and a member of technology committee.

The Austin Independent School District rewarded her with a lap-top computer.

Celeste is the daughter-in-law of John and Billie Joan Smith of Muleshoe.

Gary is a pharmacist in Austin. The couple has four sons.

Before Easter's Joy Comes "Good" Friday's Sacrifice

The week we're just beginning has been known to many Christians down through the centuries as Holy Week or Passion Week. In many ways, this week plus Easter Sunday form the highest and holiest time of the Christian year as we remember the last days of the Savior's life on earth, his crucifixion for our sins, and his glorious resurrection from the dead.



Focus On Faith
Curtis Shelburne

What a week that first Holy Week was! On Sunday Jesus entered Jerusalem triumphantly. On Monday he cleansed the temple of the greedy money-changers who had turned it into a den of thieves. On Tuesday he taught in the temple and then left it for the last time. On Thursday evening he celebrated the Passover meal with his disciples at that amazing "last supper." That evening, he wrestled alone in prayer in the Garden of Gethsemane and then was betrayed. On Friday he was nailed to the cross for the sins of the world. And then on Sunday, the first and most glorious Easter the world has ever known, Jesus broke the bonds of death forever and was raised to new life. Holy Week indeed!

I would not in the least take away

the joy that we will rightly feel as on Easter morning we praise the risen Lord. Joy, as one man has written, is "the serious business of heaven." I don't think God intends for us to wait to get to heaven to exult in his deep joy. But I would remind you that before Easter Sunday came the saddest of all days, the day that we, amazingly, call Good Friday. Before the glorious Easter morning of new life bursting forth from the tomb came a horribly dark day of death as heaven itself wept and the sky shed torrents of tears at the death of its Creator become man.

We wish it could have been different, that the price for our redemption could have been less than the death of God's own Son. But I'm convinced that the pattern seen so beautifully and poignantly illustrated in the life of Christ is as unchangeable as the seasons which themselves point to it. Before a resurrection comes a death. Before new plants grow, seeds must "die" by falling into the ground. Before the spring of new life comes the winter that snuffs out the old. And, dear friends, before a new birth comes a voluntary death in all of our lives if we would be Christ's people. In that sense, Good Friday always comes before Easter Sunday. The two are inextricably woven together.

Before new life bursts forth from the tomb comes a voluntary death. It was true in Christ's life. And it is true in ours.

Curtis Shelburne is minister of the 16th & D Church of Christ in Muleshoe.

PORTALES HOMES CAN CURE YOUR RENT WASTING BLUES.

Try out a new manufactured home with prices starting at **\$214¹⁸** a month.

Call Portales Homes today!

PORTALES HOMES

FLEETWOOD HOME CENTER

356-5639 or 1-800-867-5639
DL366

Home Folks Caring For Folks At Home.

MULESHOE AREA HOME HEALTH Agency

Featured Patient

Beatrice Vaughan has lived in Lazbudie since 1947. She is married to T.D. Vaughan. They have three children - Theron Vaughan Jr. of Georgetown, Shelia May of Amarillo and the late Larry Vaughn. They have four grandchildren and two great-grandsons.

The Vaughan's attend the Baptist Church. Mrs. Vaughan enjoys the girls from the Muleshoe Area Home Health Agency very much. They have been a great help.

To receive Home Health Services, talk with your physician or talk with hospital personnel when you are hospitalized.

24 Hour # 272-3346
Local Nurse on call 24 hours a day to offer prompt service.

We accept Medicare, Medicaid and Private Insurance
It Is Your Right To Choose The Home Health Agency You Prefer.

Affiliated with Lubbock Methodist Hospital Systems

New Out Of Hospital Advance Directives Now Available!

We care for you at home

HOSPITAL ADMISSIONS

The Muleshoe Area Medical Center has reported the following admissions:

March 14 — Ian Vidaurre, R.B. Cunningham, Luis Briseno, Reynaldo DelToro, Elmer Gross, Esperanza Guillen

March 15 — Ian Vidaurre, R.B. Cunningham, Luis Briseno, Whitt Barber

March 16 — Ian Vidaurre, Alexandria Eagle, Luis Briseno, Alma Castillo, Don Bruns, Antonio Romero, Lysie Black, Carolyn DePalma

March 17 — Sasha Quezada, Alexandria Eagle, Alma Castillo, Don Bruns, Antonio Romero, Albert Lee, Lysie Black, Carolyn DePalma, Whitt Barber

March 18 — Sasha Quezada, Alexandria Eagle, Cruz Castorena, Alma Castillo, Don Bruns, Antonio Romero, Albert Lee, Lysie Black, Vallie Kimbrough, Whitt Barber

March 19 — Cruz Castorena, Alma Castillo, Dustin Lennon, Don Bruns, Antonio Romero, Frank Lee, Manuel Dehoyos, Vallie Kimbrough, Aurelia Reyna

March 20 — Cruz Castorena, Alma Castillo, Dustin Lennon, Don Bruns, Antonio Romero, Frank Lee, Manuel Dehoyos, Vallie Kimbrough, Aurelia Reyna



PHOTO BY LESLI RADFORD

Banking on success

Employees (from left) Jackie Jean Whatley, Mary Jane Nunez, Dwayne Dale and Pam Helton recently earned promotions at the Muleshoe State Bank.

Four at Muleshoe State Bank promoted

Several employees at Muleshoe State Bank recently received promotions.

Dwayne Dale has been promoted to vice president in charge of technology.

He has been associated with the Muleshoe State Bank since 1984, holding the position of assistant cashier and bookkeeping supervisor. He attended Eastern New Mexico University and is a graduate of the Texas Tech Graduate School of Banking.

Dale and his wife, Susie, are the parents of a one-year old son Zachary. Dale's parents are Mr. and Mrs. C.W. Dale.

Jackie Jean Whatley was promoted to assistant cashier. Whatley has worked at the Muleshoe State Bank for a number of years, holding positions in bookkeeping, teller and the note window, where she now serves as supervisor of the note department.

Whatley is married to George Whatley. They

have one son, Kasey, and a grandson, Kyle. Jackie is the daughter of Jean Kemp and the late Jack Kemp.

Mary Jane Nunez has been promoted to banking officer and assistant head teller. She began her banking career in July 29, 1991, as a drive-in teller.

Nunez has an 8-year-old daughter, Veronica. Mary Jane is the daughter of Ramon Sanchez of Friona and Janie Garcia of Muleshoe.

Pam Helton was promoted to supervisor of bookkeeping. Helton is married to Justin Helton and is the daughter of James Williams of Midland and Gayle Sisemore of Robert Lee.

She began her banking career in 1993 as a drive-in window teller. She has also served in the proof department. Pam is a member of the Praise and Worship group at New Covenant Church of Muleshoe.



1993 Mercury Grand Marquis	\$8,900
1992 Ford Explorer (4 door)	\$10,900
1991 Ford Tempo	\$4,400
1995 Mercury Mystique	\$189 month*
1991 Oldsmobile Calais	\$95 month*

*WAC, cash or trade of \$2,000 plus T.T.&L.

1225 W. American Blvd. 806-272-4251 or 800-432-7617

BLANCA'S CRAFT & MORE

211 N. PRINCE CLOVIS, NM 505 762-0650

Open: Martes a Sábado 9-5



MY FIRST HOLY COMMUNION

Dresses, Hoops, Veils, Shirts, Ties, Bands, Gloves & Socks-- Candles, Bibles, Rosary Pin set for boys and Girls.

Communion gifts, Invitations, Book markers, Cake Decorating supplies for all occasions. Lay-aways Welcome

We accept: Visa, Mastercard, American Express

We wish to express our appreciation to the Muleshoe and Sudan Fire Departments and to the neighbors who brought their water tanks to help contain the fire at our home early Tuesday morning.

Sincere thanks,
Travis & Joyce Dyer

Lab

Continued from page 1

the chickens are all their kids talk about," Mardis said.

The Word Lab is a hands-on classroom approach to science and social studies.

Thursday, local ostrich rancher David Head brought in three of his birds to show the different stages of growth.

In the coming weeks, the

students will build feeders that will help them observe bird habits and food preferences, construct nests and learn why not all birds have the same kind of beaks.

In that experiment, the teachers will use kitchen utensils and tools to demonstrate how the birds use their beaks to feed.

Subscribe Today!
Call the Muleshoe Journal
272-4536

Before you start Spring planting, plant one of these for just \$199!

No Annual Programming Commitment!

- No annual programming purchase
- Crystal-clear digital picture, CD-quality sound
- 55 hit movies playing every night
- Up to 200 channels of quality entertainment

With all the plans you need to make to get ready for the spring planting season, don't forget to plan for the spring launch of Channel Earth™, a new channel devoted exclusively to agricultural news, weather, markets and more. Channel Earth, available only on DIRECTV® and the DSS® Digital Satellite System, will feature sunrise to sunset programming every Monday through Friday, plus morning to midday programming every weekend. Featuring the nation's most recognized agricultural broadcast team, Channel Earth is the first and only channel for America's farmers and ranchers. Call us today for complete details.

Offer ends April 15, 1997 or while supplies last
Programming sold separately
CALL US TODAY FOR DETAILS ON THIS SPECIAL OR OTHER OFFERS AVAILABLE.

Come by Digital Satellite Television,
4210 82nd Street in Lubbock, or call 785-0030 or 1-800-687-0030

Must reside in DSSV service area. \$199 offer valid on Thompson brand DSS Model # NS4121NA and Hughes Network Systems #HSN-A2231. May not be combined with any special DirectTV offer. Taxes not included. DirectTV, DSS, Total Choice and "DirectTV. Satellite TV at its best." are official trademarks of DirectTV, Inc. a unit of Hughes Electronics Corp. Not valid with any other offer. © 1997 NRC.

YOUR FARM & RANCH SAVINGS SOURCE!

PRICES GOOD THRU 3/31/97

Payless Cashways

PANELS & GATES

52"x16' Stock Panel
4-gauge steel. All galvanized, welded steel. (442226) **\$12.49**

52"x16' Combination Panel (159222) **16.49**

12' Utility Corral Panel
Diamond-Kote graphite gray finish lasts for years. With chain connectors. (472447) **\$52**

12' Brown Entrance Panel With Gate (479405) **\$95**

10' Utility Tube Gate
50" high. Includes chain latch, adjustable hinges and lag bolts. (470024) **\$46**

12' (471423) \$49 **14' (471458) \$58**
16' (472203) \$65

52"x10' Steel Panel Gate
Hardened 24-gauge galvanized spring steel. With chain latch, hinges and lag bolts. (159387) **\$39**

52"x12' (159395) ... \$43 **52"x16' (159415) ... \$57**
52"x14' (159407) ... \$48

WIRE FENCE

48"x100' Non-Climb Horse Fence
12 1/2-gauge galvanized wire. Stiff stay knots are smooth on both sides to prevent injury to animals. (159143) **\$79**

60"x100' (159151) \$95
72"x100' (159178) \$119

39"x330' High-Tensile Field Fence
14-gauge Class-3 galvanized wire. (340225) **\$67**

47"x330' (316852) \$75

32"x330' Hinge Joint Field Fence
14-gauge galvanized wire. (159021) **\$58**

39"x330' Square Deal®
12 1/2-gauge (959818) **\$74**
47"x330' Square Deal®
12 1/2-gauge (959883) **\$84**

FENCE CHARGERS

110v Electric Fence Charger
Charges up to 15 miles of fence. Built-in dual test lights and lightning arrestors. (180126) **\$58**

48" Electric Fence Post (180394) **88¢**

T-POSTS

5 1/2" Medium Duty T-Post **195**

Tough, resilient rail steel. Industrial quality baked-on finish. T-shape for added strength. #125 (159876)

6' (159884) 2.05
6 1/2' (159892) 2.25

STOCK TANKS

\$54

100-Gallon Poly Stock Tank
Contains UV inhibitors to prevent deterioration from sunlight. (642647)

150-Gallon (642698) \$84

BARBED WIRE

2-Point High-Tensile Barbed Wire **20⁷⁵**

Class 3 zinc coating for rust resistance. 80 rod roll. 15 1/2 gauge. (852522)

2 Point 12 1/2 gauge. (158686) 25.75

Cable Twist Wire **28⁷⁵**

12 1/2-gauge barbless cable. Galvanized Made in the USA. 80-rod roll. (473767)

LUBBOCK
5921 34th STREET
W. 34th St. & Loop 289
793-7451

LUBBOCK
102 E. 50th STREET
50th & Ave. A
763-4346

AMARILLO
5200 SOUTH WESTERN STREET
(806) 359-8501
(806) 359-5451 COMMERCIAL PHONE

BAILEY COUNTY DEVOTIONAL PAGE

Risinger Plumbing
Serving Muleshoe Area
All Plumbing Repairs
272-6772

El Jacalito
Tortilla Factory
516 North First Muleshoe
272-5556
Mon.-Wed.-Thurs. Alfredo & Mariann Anzaldúa

EASTER GRAIN, INC.
Easter 272-5255 Labuddie 965-2817

Triple S Publishing
304 W. 2nd 272-4536
Muleshoe, TX

ALEX'S TIRE SERVICE
302 E. American Blvd.
272-5012 Muleshoe

IRRIGATION PUMPS & POWER
ZIMMATIC CENTER-PIVOTS
W. Hwy. 84 272-4483

MAPLE COOP GIN
927-5501
Maple, Texas

Leal's Tortilla Factory, Inc.
"Serving West Texas since 1957"
107 E. Ash 272-5772 Muleshoe, TX

O & C OSONS
Erection Sprinkler Ser. Welding & Repair
Repair & Assemble 272-5018 909 W. American Blvd. 272-3475
Lupe Olivarez

Discount Computer & Repair Service
CompuTeK
206 Main 272-5404
1-800-687-3816

BOBO INSURANCE AGENCY
108 E. Ave. C 272-4264

Shipman's Body Shop
Auto Painting • Wrecker Service • Free Estimates
Tractor Glass & Windshields
410 N. 1st Muleshoe, TX
272-4408 FAX 272-3366

SAIN IRRIGATION & MACHINES
Complete Pump Service
W. American Blvd. 272-4397
Walt Sain Muleshoe, TX 272-4148

Bob STOVALL Printing
Quality -- Service
221 E. AVE. B 272-3373
C.R. & EVA NELL DALE MULESHOE

TERRA INTERNATIONAL, INC.
272-4203
Muleshoe, Texas

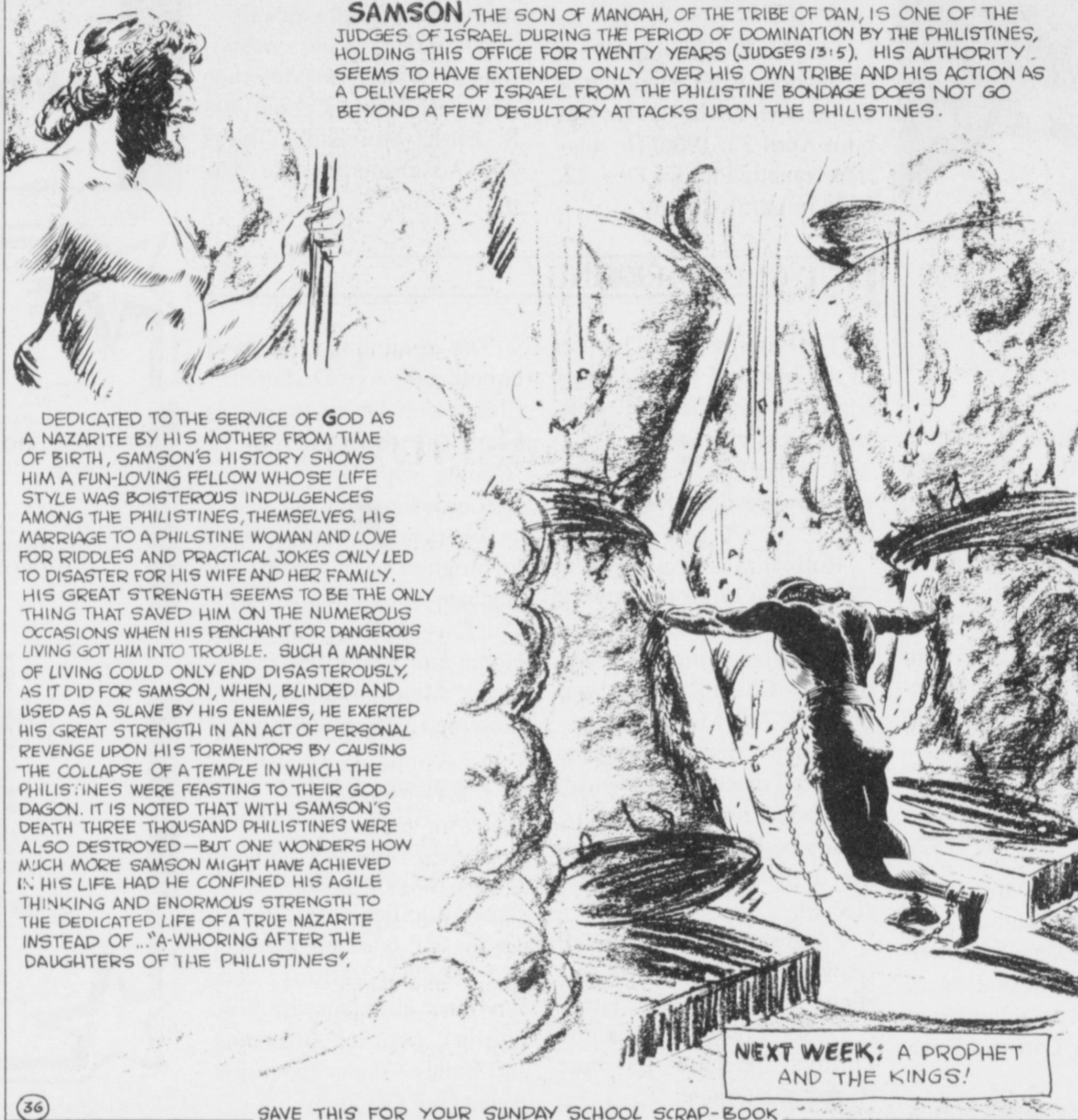
RONNIE HOLT INSURANCE AGENCY
Specializing in Crop, Life & Health Insurance
Western 66 Office Bldg.
272-4271 Muleshoe, TX

PACO FEED YARD, INC.
Commercial Cattle Feeders
P.O. Box 956 265-3281
Frona, TX
Feller Hughs-Mgr.

WESTERN '66' COMPANY

GOODYEAR JAMES CRANE TIRE CO., INC.
107 Main 272-4594
Mike Hahn Muleshoe, TX

Facts About The BIBLE BY JOHN LEHTI



DEDICATED TO THE SERVICE OF GOD AS A NAZARITE BY HIS MOTHER FROM TIME OF BIRTH, SAMSON'S HISTORY SHOWS HIM A FUN-LOVING FELLOW WHOSE LIFE STYLE WAS BOISTEROUS INDULGENCES AMONG THE PHILISTINES, THEMSELVES. HIS MARRIAGE TO A PHILISTINE WOMAN AND LOVE FOR RIDDLES AND PRACTICAL JOKES ONLY LED TO DISASTER FOR HIS WIFE AND HER FAMILY. HIS GREAT STRENGTH SEEMS TO BE THE ONLY THING THAT SAVED HIM ON THE NUMEROUS OCCASIONS WHEN HIS PENCHANT FOR DANGEROUS LIVING GOT HIM INTO TROUBLE. SUCH A MANNER OF LIVING COULD ONLY END DISASTEROUSLY, AS IT DID FOR SAMSON, WHEN, BLINDED AND USED AS A SLAVE BY HIS ENEMIES, HE EXERTED HIS GREAT STRENGTH IN AN ACT OF PERSONAL REVENGE UPON HIS TORMENTORS BY CAUSING THE COLLAPSE OF A TEMPLE IN WHICH THE PHILISTINES WERE FEASTING TO THEIR GOD, DAGON. IT IS NOTED THAT WITH SAMSON'S DEATH THREE THOUSAND PHILISTINES WERE ALSO DESTROYED—BUT ONE WONDERS HOW MUCH MORE SAMSON MIGHT HAVE ACHIEVED IN HIS LIFE HAD HE CONFINED HIS AGILE THINKING AND ENORMOUS STRENGTH TO THE DEDICATED LIFE OF A TRUE NAZARITE INSTEAD OF... "A-WHORING AFTER THE DAUGHTERS OF THE PHILISTINES".

SAVE THIS FOR YOUR SUNDAY SCHOOL SCRAP-BOOK

This devotional & directory is made possible by these businesses who encourage all of us to attend worship services.

ASSEMBLY OF GOD
FIRST ASSEMBLY OF GOD
521 South First Street • 272-3017
Jack Stone, Min. • 272-3984
S.S. 9:45 a.m., W.S. 11 a.m. & 6:30 p.m.,
Wed. 7:30 p.m.

BAPTIST
CALVARY BAPTIST
1733 W. Ave. C. Rev. Jeff Coffman
CIRCLE BACK BAPTIST
Intersection FM 3397 & FM 298
Jessie Shaver, Min • 946-3676

FIRST BAPTIST
220 West Ave. E.
Stacey Conner, Min.
FIRST BAPTIST
Lazbuddie • 965-2126

PRIMERA IGLESIA BAUTISTA
223 E. Ave. B Roy Martinez, Min.
PRIMITIVE BAPTIST
621 South First
Elder Cleveland Bass, Min.

PROGRESS BAPTIST
Progress, TX
PROGRESS SECOND BAPTIST
Arthur Hays, Min.
1st & 3rd Sundays

RICHLAND HILLS BAPTIST
17th & West Ave. D
Brad Gathright, Min.
ST. MATTHEWS BAPTIST
Corner of W. Boston & W. Birch
Floyd R. Monroe, Min.

THREE WAY BAPTIST
927-5467
James Sinclair, Pastor
TRINITY BAPTIST
314 E. Ave. B
Robert Brown, Min.

CATHOLIC
IMMACULATE CONCEPTION
CATHOLIC
805 E. Hickory
Joseph Augustine, Min.

CHRISTIAN
THE CHRISTIAN CENTER
Morton Hwy. • 272-5105
Reydon Stanford, Min.

CHURCH OF CHRIST
LARIAT CHURCH OF CHRIST
Sam Billingsley, Min.
S.S. 10 a.m.; W.S. 11 a.m. & 6 p.m.,
Wed. 7 p.m.

LAZBUDDIE CHURCH OF CHRIST
Nathan Crawford, Min.
S.S. 9:30 a.m.; W.S. 10:20 a.m. & 5 p.m.;
Wed. 7 p.m.

MULESHOE CHURCH OF CHRIST
22nd & W. American Blvd.
John Knox, Min.
S.S. 9:30 a.m.; W.S. 10:20 a.m. & 6 p.m.;
Wed. 7:30 p.m.

SIXTEENTH & AVE. D CHURCH OF CHRIST
Curtis Shelburne, Min. • 272-4619
W.S. 10:30 a.m. & 6 p.m.;
Wed. 7:30 p.m.

LUTHERAN
ST. JOHN LUTHERAN
Lariat, TX
Richard Greenhaner, Min.
S.S. 10:30 a.m.; W.S. 9:30 a.m.

METHODIST
FIRST UNITED METHODIST
HISPANIC MINISTRIES
E. 5th and E. Ave. D
Pastor Benito Cavazos

FIRST UNITED METHODIST
507 W. 2nd St.
Pastor John Wagoner
LAZBUDDIE METHODIST
965-2121

EL DEVINO SALVADOR
814 W. Ave. C, Muleshoe, TX
Guadalupe Ballinas, Min.

NAZARENE
NEW VISION CHURCH OF THE NAZARENE
814 W. Ave. C • 272-3622
David R. McIntire

PENTECOSTAL
IGLESIA PENTECOSTAL UNDA
207 East Ave. G • 272-3636
Wencelado Trevino, Min.

INTER DENOMINATIONAL NEW COVENANT
Plainview Hwy. Jimmy Low, Min.
S.S. 9:30 a.m.; W.S. 10:15 a.m.;
Wed. 7 p.m.

WINKLES TRUCKS, INC.
Box 757 (806) 247-2724
Frona, TX

Lowe's Pay-n-Save
MARKETPLACE
401 W. American Blvd.
Muleshoe 272-4585
515 W. American Blvd.
Muleshoe 272-4406

Decorators Floral & Gifts
616 South First 272-4340
Muleshoe, TX

SHERLEY-ANDERSON LAZBUDDIE ELEVATOR
965-2922 Lazbuddie, TX

1ST BANK MEMBER FDIC
202 South First 272-4515

WES-TEX FEED YARDS, INC.
Custom Cattle Feeding
272-7555 Muleshoe, TX

AMERICAN AVI VALLEY INC. West Hiway 84 272-4266 Muleshoe

BAILEY GIN COMPANY, INC.
946-3397
Sudan, TX
Peanut Hawkins, MGR

WESTERN DRUG
114 Main 272-3106 Muleshoe

Delton E. Wilhite & Associates
Home, Auto, Crop, Life & Health Insurance
1631 W. American Blvd., Muleshoe 272-3652

HERITAGE HOUSE INN
2301 W. American Blvd. 272-7575
Muleshoe, Texas
Clint & Evelyn Peat - Resident Owners
Reservations 1-800-253-5896

BRUCE, INC. AIR CONDITIONING
Hwy. 214 North 272-5114
Muleshoe, TX
TAEL-B003350C, LP08638

MULESHOE COOPERATIVE GINS
P.O. Box 569
272-4794 Muleshoe, TX

MULESHOE AREA HEALTHCARE Center
"Committed to Caring"
106 W. Ave. H Muleshoe 272-7578

MULESHOE MOTOR CO.
1225 W. American Blvd. 272-4251

"THE FIVE AREA TELEPHONE COOPERATIVE ORGANIZATION"
West Plains Telecommunications Co.
Five Area Systems, Inc., Plateau Cellular Network
Five Area Long Distance - Five Area Internet
302 Uvalde Muleshoe, USA (806)272-5533

WANDA BROWND INSURANCE AGENCY
118 E. Ave. C Muleshoe 272-7548

Since 1957 - The Original
Lal's Mexican Restaurant
1010 W. American Blvd. 272-3294
Muleshoe, TX Victor & Debbie Leal

Triple S Publishing
304 W. 2nd 272-4536
Publishers of the Muleshoe Journal and Bailey County Journals

BRIDAL SHOWER



Jennifer (Foster) Richardson

Jennifer Streich of Wylie, Texas bride-elect of James Foster of Richardson, Texas was honored with a bridal shower March 9 at the Muleshoe Church of Christ. Special guests were Linda King, aunt of the groom, and Chera Foster mother of the groom. Hostesses were Julie Broyles, Dianne Brown, Diane Saylor, Ann Favor, Linda Huckaby, Glenda Dale, Kerma McGuire, Druscilla Hutton, Doris Vandiver, Kay Lepard, Nancy Allison, Jean Allison, Johnette Marlow, Patty Kent, Gail Bruns, Johanna Wrinkle. Hostesses gift was a set of Revere Ware Cookware and Steamer.

ENOCHS NEWS

By Mrs. J.D. Bayless

Guests in the home of Mr. and Mrs. Craig Kirby and children were her parents, Mr. and Mrs. Goldman Stroud.

Katie McDonald of Pampa came last Thursday for a few days to visit. Other guests for the evening dinner were her daughter-in-law, Terry Blackstone and son's, Seth and Eathan all of Littlefield.

I wish to express my sympathy to the family and friends of Mrs. Mariera Crume of Temple a former resident of our area. Her graveside service were in the cemetery at Littlefield Monday.

Oneta Sanders of Lubbock visited Mrs. Inez Sanders Monday.

Olene Cunningham of Lubbock came last Wednesday afternoon and spent the night with her sister, Ellen Bayless.

We went to Muleshoe for Olene to take care of business

and also visited Mrs. Clara Coffman and ate lunch at Dairy Queen. Later Olene and Ellen drove to Lubbock and on to Lamesa and spent the night with a brother Carl and Rena Coffman.

Then went on to Big Spring to visit another brother Chester and Alene Coffman also visited in the home of a niece, Janet and Davis Higgins and their sons. That evening another niece, Barbara Bryant and granddaughter came over to visit her parents Chester and Alene and also to visit with Olene and I.

Mrs. Myrna Turney has been baby-sitting her great grandchildren of Mrs. Melinda Locke at Sudan.

Trueman Nix is a patient at Methodist Hospital. Mr. and Mrs. Dennis Turney have been visiting him often.

OBITUARY

Talmage Hukill

Funeral services for Talmage Hukill, 90, of Muleshoe were held March 19 at First United Methodist Church, Muleshoe with Rev. David McIntire and Rev. John Wag-ner, pastor officiating.

Burial followed in the Littlefield Memorial Park Cemetery, Littlefield under the direction of Ellis Funeral Home of Muleshoe.

Mr. Hukill died March 18 at Muleshoe Area Healthcare Center after an illness. He was born April 22, 1906. He married Jeanetta Phillips Dec. 22, 1928 in Lamb County.

Mr. Hukill had lived in Muleshoe since 1975. Moving from Hub, Texas. He was a member of the First United Methodist Church of Muleshoe. He was a retired farmer.

Survivors include his wife, Jeanetta; two daughters, Wanda Griffin of Muleshoe and Mary long of Fort Smith, Ark.; five grandchildren, eleven great-grandchildren, one great-great-grandchild.

The family suggests memorials to be made to Muleshoe Area Healthcare Center, 708 S. First, Muleshoe, Texas 79347 or to your favorite charity.

FCE CLUB MEETING

The Progress FCE Club met in the home of Robin Taylor March 18 with the Dusty Prairie Club as visitors.

The meeting was called to order by president Robin Taylor.

Roll call was answered with "What I do to protect myself and my property." Minutes of February meeting were approved. Council report was given by Ada Murrah.

Business discussion on the District II meeting to be held in Colorado City April 4. Registration begins at 9 a.m. meeting at 10. Delegates were elected.

Progress Club — Helen Redwine, FCE Chairman delegate; Fern Davis, alternate.

Dusty Prairie — Eulaine Phillips, delegate; Lavonne Hinkson, alternate.

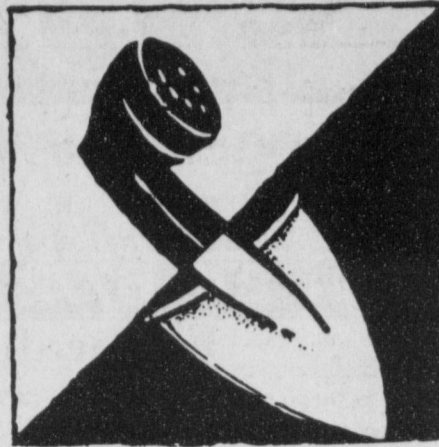
The meeting April 17 will be held at the Ave. D Church of Christ with Dusty Prairie as host. The program will be "Coping with Grief" with a Resource Person.

A very interesting and helpful program was given by Rick Henegar — Muleshoe Police Chief — on "Protecting your Home and Home Safety Devices." Many good ideas were presented with much discussion.

Members present were Louise Allen, Fern Davis, Eunice Crume, Ada Murrah, Helen Redwine, Elsie Williams, Lucille Gross, Robin Taylor and one new member Ruby Edler. Visitors were Lavonne Hinkson, Eulaine Phillips, Maurice Browning and Bailey County Extension Agent Gail Gladden.

Dial Before You Dig!

Call Energas Company 48 hours before you plan to dig in streets, alleys or easements. We will mark the location of all our pipelines free of charge. Be certain you're safe. Call Energas before you dig.



ENERGAS
1-800-692-4694

Classic CABLE

Subscribe to Cable Television and HBO today and receive HBO for only \$5.50 (½ price) per month for six months!

INSTALLATION ONLY \$9.95
(Total Savings of Over \$58)

If you are a current basic only customer, call today and upgrade to HBO and pay only \$5.50 per month for six months!

FREE UPGRADE!
(Total Savings of Over \$68)

INCREDIBLE SAVINGS, don't waste time,
CALL TODAY
1-800-999-8876
Equal 1-888-999-8875
*COMMUNITY*COMMITMENT*CUSTOMER SERVICE*
Offer expires April 15, 1997
<http://classic-cable.com>

Announcing:

New SPS Payment Centers

Now, there are new locations close to you that will accept in-person payments for your Southwestern Public Service Company electric bill.

These SPS Payment Centers* will provide you with a convenient way to make your monthly payments. Just drop off your payment along with your electric bill at any of these locations.

Close, quick and convenient. Just look for the SPS Payment Center sign.

Now Open In Muleshoe

Lowe's Marketplace at 401 W. American Blvd.
(7:30 a.m. to 8 p.m., Mon.-Sat. / 8 a.m. to 7 p.m., Sun.)

Pay-N-Save at 515 W. American Blvd
(7:30 a.m. to 8 p.m., Mon.-Sat. / 8 a.m. to 7 p.m., Sun.)

SOUTHWESTERN PUBLIC SERVICE COMPANY

*To ensure your payment is properly credited, always bring your bill with you to the Payment Center. For even more convenience, pay by mail or sign up to pay by automatic bank draft. Call your local SPS office for details.

©SPS 1997 SG

The Bailey County Ministerial Alliance invites you to participate in the . . .

HOLY WEEK SERVICES

Monday - Wednesday
March 24 - 26 at noon

FIRST UNITED METHODIST CHURCH

Features:
A great meal, singing, special presentations each day.

and the . . .

Resurrection Sunday
March 30 - 7:00 a.m.
Near the tennis courts
across from
16th & D Church of Christ

Sunrise Service
Music, Message, Fellowship

Donuts and coffee to follow at 16th & D Church of Christ

Journal Classifieds

Call 272-4536 Deadlines: For Thursday, 5 p.m. Monday; For Sunday, 5 p.m. Thursday Call 272-4536

ELECTION NOTICE

Notice is hereby given of a drawing to determine the order in which the names of candidates are to be printed on the ballot for the election to be held on May 3, 1997 in Muleshoe, Texas. The drawing will be held at 8:30 a.m. on March 20, 1997, at 514 West Avenue G, Muleshoe, Texas. William J. Moore, Officer Conducting Drawing.

Parish Council. The Church reserves the right to reject any or all bids.
Published in the Bailey County Journal March 23.

HELP WANTED

Plains Cotton Growers, Inc. Enhanced Boll Weevil Diapause Program
Now taking applications for seasonal employees. Jobs entail driving and map reading. Ability to keep records and work with numbers is essential. Call 1-800-866-6388 for application. 11s-6tc

AVISO DE ELECCION

Por lo presente se da aviso que habra un sorteo para determinar la orden en que apareceran los nombres de los candidatos en la boleta para la eleccion que se celebrara el Mayo 3, 1997 en Muleshoe, Texas. El sorteo tendra lugar a las 8:30 a.m. el Marzo 20, 1997 a 514 West Avenue G, Muleshoe, Texas. William J. Moore, oficial Manejando el Sorteo.



Now Hiring Restaurant Managers.
Texas largest Dairy Queen franchise is looking for experienced restaurant managers or assistant manager ready to move up to run own operation. Complete training to our system salary based on experience. Vacation after 1st year, sick days, personal days, half price meals. Call James Nisbet 1-800-460-6353 pager number 8821 to leave name and phone number on voice mail. 12s-3tc

PUBLIC NOTICE

The Muleshoe Independent School District is accepting bids for custodial/janitorial, and maintenance supplies. Bid lists may be picked up at the school business office, 514 W. Ave. G, Muleshoe, Texas 79347 or by calling 806/272-3911. All bids are due no later than 5 p.m., April 15, 1997. Muleshoe ISD has the right to accept or reject any or all bids subject to the best interest of the district.

"Avon & Avon Outlet" Representatives needed now! No inventory required, IND/SALES/REP, 800-236-0041. 12t-4tpd

Conservation Careers
Forrest Rangers, game warden, maintenance, etc. No experience necessary. Now hiring. For Info Call 1-800-280-9769 ext. 9689, 8 a.m. to 10 p.m. 7 days. 12s-2sunpd

RN - Part-time Clinic position 10 a.m. - 3 p.m. five days a week in Bovina, Texas. Women and children's health experience necessary. Clinic and bilingual skills preferred. Interested applicants by call Denise Taylor, 806-345-4586, applications will be accepted until March 31, 1997. EOE. 12s-3suncc

First United Methodist Church is taking applications for the job of secretary. Come by the church, 507 W. 2nd, for an application form. 13s-6tc

Morton Manor needs a full time LVN. Contact Brien at 806-266-8866. 13s-1sunfc

NOTICE OF SALE

Immaculate Conception Catholic Church will sell to the highest bidder five acres of land on Hwy 84 (with well and two metal sheds). Sealed bids will be accepted until 5:00 p.m. March 31, 1997. No bid below \$17,000 will be considered. Mail or deliver bids to Rt. 3, Box 247 (805 E. Hickory), Muleshoe, TX. Bids will be opened and considered at the April 2nd meeting of the

HELP WANTED

Needed: Nursery attendant for church. Call 272-3017. 13s-4tc

Help Wanted: NEW OWNERSHIP taking over Tino's Restaurant on Main Street. Need experienced cooks and waitress' to come and apply. Tuesday, March 25 thru Friday, March 28, from 9:30 a.m. to 11:30 a.m. 13s-1tc

REAL ESTATE

For Sale: Custom Brick Home, 401 Boesen St., Sudan. 5 rooms plus kitchen, laundry, 2 bath, 2 car garage. Double Lot. Central air/heat. Must sell. Estate. Make Offer. Call Collect: Mr. or Mrs. Clifford Kerr, (707) 446-0762. 10t-8tpd

BRICK-3 bdrm, 1 1/4 bath, family room, fireplace, kitchen w/ built-ins, dining, utility, garage, central heat/air, fenced corner lot. 1815 W. Ave I. Joann Chester Realty 806-227-2368. 1815 W. Ave I 11s-4suncc

For Sale: 3bdrm House, 1 bath, Extra clean 116 W. Ave. E. \$14,000. 965-2864. 13s-4tc

AUTOMOBILE

'94 Z71 Chevy Silverado extended cab, 4x4, 6.5 turbo diesel, loaded, sharp, \$18,995, (505)359-1775 Portales

'93 Dodge Dakota extended cab, loaded, 49,000 miles, red and silver, \$8,995., (505)359-0947, Portales

'94 GMC Suburban, white, loaded, 4x2, front/rear air, \$18,995., (505)359-1775, Portales

AUTOMOBILE

'94 Ford Ranger XLT, extended cab, all power, purple, \$10,995., (505)359-0947, Portales

'91 Chevy extended cab, 4x4, silverado, red, new tires, all power, \$13,500., (505)359-1775, Portales

FOR SALE

For Sale: Total electric Brick home - 3 bdrm, 2 bath, fireplace, 1 car garage, storage bldg. Call 806-272-3196. 11t-8tpd

Prom dress - size 5/6. Includes accessories. Beautiful, worn one time. Paid \$600, come see and make offer. 946-3309. 12s-4tpd

GIANT Easter Eggs for Sale: Undecorated, empty ostrich eggs. Excellent for decorations, prizes, crafts. \$7 each. Call 965-2755. 13s-3tc

Fine Quality Alfalfa For Sale (Inside a Barn) 272-5012 11t-4suncc

HAY FOR SALE

Haygrazer and large round bales. Delivery available. Discounts on quantity. Call (505) 276-7522, 477-2220, 359-0947, 276-7527 4t-1tc

WANTED

\$\$\$WANTED\$\$\$
We buy used mobile homes. We pay top dollar, any year, any condition. We need your used mobile home. Please call 1-800-404-1321. 7t-1tc

WANTED

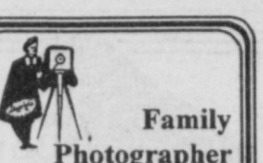
We buy used mobile homes. We pay top dollar, any year, any condition. We need your used mobile home. Please call 1-800-404-1321. 7t-1tc

FARMS & RANCHES

LET'S LOOK
240 acres between Muleshoe and the state line, on pavement, two good houses, sprinkler, 3 irr. wells & domestic well, good barns, shop, boxcar & steel pens, poss. of lease on 2 - 1/4's with sprinklers with purchase of 240 acres. **OWNERS WOULD CONSIDER SELLING 80 ACRES SEPARATELY.**
207 acres - Hub area - choice land, irr. well on electricity, 700 GPM sprinkler, good allotments, adjoining 348 acres with sprinkler for sale also if larger unit desired.

WE HAVE
other farms (both larger & smaller), most with sprinklers, some row-watered, some dryland, RANCHES - 5 1/2 sections, on pavement, west of Lubbock - Irrigation potential, 5055 acres east of Muleshoe (good fences, well watered, on pavement, good pens) and a good 48 section N.M. ranch approx. 32% deeded, balance leased, good home, on pavement. In coop with N.M. broker.

SCOTT LAND CO.
Ben G. Scott
(806) 647-4375 D/N



Family Photographer Wanted in Your Area
(no experience necessary)
A: Do you like being around children?
B: Traveling close to your home town?

We provide:
1. 4 weeks paid training
2. All photographic equipment
3. Weekly guarantee pay
4. Commissions
5. Incentive Pay
6. Vacation Pay
7. Family Health Insurance
8. Life Insurance
9. Profit Sharing Plan

APPLICATIONS WILL BE ACCEPTED 9 TO 4 (C.S.T.)
Monday through Friday

at Corporate offices & processing lab location
Shugart Studios, Inc.
812 College Ave.
(P.O. Box 1629)
Levelland, TX 79336
or call 1-800-888-4322
equal opportunity employer

HANDYMAN!
No Job too Small. Repairs, improvements, all types. Free estimates. Call Mick 272-6791



#300727 4500 E. Mabry Drive Clovis, NM
505-762-1211 FAX 505-762-6232

A Division of Clayton Homes
"THE NATIONS LARGEST RETAILER"
• NYSE Company
• A large selection of single, double and triple section homes available
• 3 bedroom homes with payments starting at \$170* per month.
*Based on \$896 Down and 240 payments at 11% VPR

PRIMESTAR
Call Gabriel Today and Save Over \$100
272-3072 or 1-800-815-2358
pin 9240
7s-suncc

Wanted Cash Lease
160 acres with center pivot irrigation systems. Minimum of 700 gallons per minute water well required. Call 806-785-0082 or 806-797-5913 after 7:30 p.m. 10t-5suncc

James F. Hayes & Co. AGRICULTURAL REAL ESTATE SERVICES

656 Acres of C.R.P. - Clays Corner Hub Area. Two years left on contract. 3 irrigation wells, 1 domestic well. 90% lays good with good soils. Will be productive farm when it comes out of C.R.P.

640 Acres Oklahoma Land - 2 Sprinklers, 4 irrigation wells, 115 Acres of pasture, modest home, 2 domestic wells

317 Acres in Lamb County on Bailey County line. 3 wells, 1 sprinkler, lays good. Call for details!

654 Acres in southern Bailey County. Grain sorghum & wheat allotment. Signed up program.

320 Acres - Lazbuddie - 3 wells, 1 sprinkler, 60 acres of C.R.P. Good Soil

640 Acres of New Mexico State Lease Land. Half mile Center Pivot Sprinkler, 3 irrigation wells, Barns, Pens.*

240 Acres in Northwestern Lamb County near Bailey County line. Good Soil, Lays good, 3 wells.

Oklahoma Lane - 650 acres with small home. 3 irrigation wells, 1 quarter section ready. Good soil and lays good.

Vic Coker, Agent
310 Main St. Suite 103 Muleshoe
Office 272-3100 Home 965-2468
WHEN LAND INVOLVES COWS AND PLOWS
* in cooperation with a New Mexico Broker

BETTER LIVING MOBILE HOMES
We Have A Good Selection of 4 Bedroom Mobile Homes
Single Wide 4 Bedrooms starting at \$26,000. YOUR PAYMENTS WOULD BE LESS THAN RENT!
- Doublewide, tape & texture, over 2000 square feet - nicest home on the market
- WE EVEN HAVE 5 BEDROOMS AVAILABLE!
1-800-404-1321 Portales, NM (505)356-5448
Lic. # D00681 'Se Habla Espanol'

AUCTION Tuesday, March 25, 1997 Sale Time: 9:37 A.M.

LOCATED: Earth, TX 5 miles North on FM Hwy 1055; or from Dimmitt, TX. 6 miles West on Texas Hwy 86, then 17 miles South on FM Hwy 1055; or from Lazbuddie, TX. 11 miles East on FM Hwy 145, then 6 miles South on FM Hwy 1055.

H. D. Jones & Others Owners
I am Retiring From Farming and the following will be sold at Public Auction.
For More Information, Call: 806-986-4381 or Cruce & Fletcher Auctioneers: 806-296-5050 or 806-866-4201

- TRACTORS - DUALS:**
1-1988 John Deere 4450 Diesel Tractor, MFWD, SG Cab, A/C, Htr, Radio, DH, PS Trans, 18.4 x 38 Rubber, 5750 Hrs.
1-1984 Case IH 2394 Diesel Tractor, Cab, A/C, Htr, Radio, WF, Wts, DH, 20.8 x 42 Rubber, Duals, 6200 Hrs. (SN 9942366)
1-1981 John Deere 4840 Diesel Tractor, SG Cab, A/C, Htr, Radio, WF, Wts, DH, P/S Trans, 18.4 x 42 Rubber, Duals
1-1977 John Deere 4630 Diesel Tractor, SG Cab, A/C, Htr, Radio, WF, Wts, DH, P/S Trans, 18.4 x 38 Rubber
1-1974 John Deere 4030 Diesel Tractor, SG Cab, A/C, Htr, Radio, WF, Wts, DH, S/R Trans, 18.4 x 34 Rubber, (New Block 1995)
1-1967 John Deere 4020 Diesel Tractor, Cab, WF, Wts, DH, 18.4 x 38 Rubber, S/R Trans.
1-Set John Deere 18.4 x 38 Axle Duals, 4450 Hubs
1-1958 Ford 850 Gas Tractor, WF, 3 pt, 13.6 x 38 Rubber
1-1955 John Deere 70, LPG Tractor, SF, 15.5 x 38 Rubber
1-1951 John Deere Model A, Gas Tractor, Roll-over-matic Front, 3 pt, 12.4 x 38 Rubber, Elec Start
1-1952 Ford 8N Gas Tractor, WF, 3 pt, 12.4 x 28 Rubber
1-1949 Ford 8N Gas Tractor, WF, 3 pt, 11.2 x 28 Rubber
- COMBINES - CORNHEDS - HEADERS:**
1-1986 John Deere 106 Gas Combine, Cab, Shredded
1-John Deere 435 W 4 Row Cornhead
1-John Deere 20 ft Combine Grain Platform P/U Reel
1-John Deere 14 ft Combine Grain Platform P/U Reel
1-1993 Chev Silverado 10 PU, 350 Eng, A/T, R. H. A.C. LWB, 89,000 miles
1-1981 Chevrolet 10 Pickup, V8, A/T, R. H. A/T LPG
1-1962 Chevrolet 60 SA Grain Truck, 6 Cyl Engine, 4 sp 2 sp, 18 ft Bed
1-1977 GMC 6000 S.A. Winch Truck, 350 Eng, 4 sp, w/Winch & Gin Poles
1-Big 12 400 Bushel Grain Kart
1-Big 12 Model 1500, TA Boll Buggy
1-Caldwell Model X, TA Boll Buggy
2-JD 283 2 Row Brush Strippers, Baskets, Shredded
2-Big 12 8' x 24' Metal, 4 Wheel Cotton Trailers
3-Cobey 8' x 9' x 24' Metal, 4 Wheel Cotton Trailers
2-LMC 8' x 9' x 24' Metal, 4 Wheel Cotton Trailers
2-Ranger 8' x 9' x 20' Metal, 4 Wheel Cotton Trailers
1-John Deere 8' x 9' x 24' Metal, Cotton Trailers
- EQUIPMENT:**
1-RAC, 3 pt, 8 Row Dual Fertilizer Applicator Liquid, A.A. GWD Pump, Manifold, TA
1-RAC 30 ft Chisel Sweep Plow, DT, TSB
1-John Deere 230, 25' Tandem Disc Plow, Hyd F/W
1-Krause 18 ft Offset Disc
2-Lilliston 8 Row Rolling Cultivators, BB/SB
1-Lilliston 6 Row Rolling Cultivator, S/B
1-RAC 8 Row, 3 pt, 11 Shank Ripper Plow AA Tubes, Knives, Hyd Cont, TP, D/GW
1-International 145, 4x18 Spinner Moldboard Plow
1-Schlaas 4/B Oldubster Packer
1-Big Ox 9 Shank, 3 pt, V Ripper Plow, G/W
1-John Deere 400, 28 Ft Rotary Hoop
2-John Deere 400, 21 Ft Rotary Hoop
1-John Deere 2100 Max-Emerge Planter, 6 Row, Plate
1-John Deere 6 Row Lister, DTB, GW
1-John Deere 6 Row Monitor Cultivator
1-Krause 14 ft Offset Disc Plow
1-Krause 14 ft Tandem Disc Plow
10-John Deere 71 Flex Planter Units, DD, 1-Hamby 21 ft, 3 pt Chisel-Sweep Plow, TSB, LTM, 1-Bigham Bros 21 ft, 3 pt Chisel-Sweep Plow, TSB, 1-Notle 8 Row, 3 pt, row-turner Cultivator, 1-9 Row 3 pt Knitting Rig, 4' x 7' Bar, GW, Herb Att 2-8 Row Rodweeder, Hyd Driven, DSB, LTM, GW 1-Tye 6 row disc Bedder, Double Square Bar 1-John Deere 4 Row Lister Planter, DTB, GWD 1-John Deere 110, 14 ft Tandem Disc Plow 1-John Deere RW, 14 ft Tandem Disc Plow
- EQUIPMENT CONT:**
1-Graham Hoome 8' 3 pt Chisel Sweep Plow
1-Graham Hoome 8' DT Chisel Sweep Plow
1-Eversman 10' Camel Back Float
1-Phares Wilkins 6 Row 3 pt Stalkcutter
1-SM 12' x 40' Land Plane
1-John Deere 12 Shank Orchard Plow, DTB, GW
1-John Deere 3 pt, 5 Shank Subsoil Plow
1-Graham Hoome 3 pt Chisel Sweep Plow, 10 Shank
1-Hamby 3 pt, 6 Row S/S Cultivators, GW
1-Hamby 3 pt Disc Ditch Filer
1-Servis 3 pt 6 ft Blade
1-Servis Super Rhino, 3 pt, 8 ft Blade
1-John Deere Van Brunt 16 x 10-Grain Drill, SO Lever
1-Cobey 3 pt, 6 ft Tandem Disc Plow
1-Ford 2 Row 3 pt Cultivator
1-Ford 2 Row 3 pt Blade
1-Deardon 2 Row 3 pt Planter
1-Mohawk 3 pt 2 row Shredder
1-Ford 3 Pt Dirt Scoop
1-Deardon 6 ft 3 pt Blade
1-Hale 5' x 14' TA, Stock Trailer, 3 pt Flex Gang Rotary Hoe
1-Ferguson 4 Section Spike Tooth Harrow
1-Ford 3 pt PTO Posthole Digger
1-Wingover 4 Section DT Rotary Hoe
1-6 Row DT Stalkcutter
1-Eversman 6 ft V Ditcher, DT
1-John Deere 3 Section Spike Tooth Harrow
1-Tumble Bug Fresno Dirt Mover
2-4 Row Rubber Tire Seed Packers
2-12 Row DT Sandfighters
1-9 Row DT Sandfighters
TRAILERS - TANKS - LIVESTOCK EQUIPMENT:
1-WW, 6' x 16' Stock Trailer, FMC, TA, BP Good
1-Parkhurst Gooseneck 8' x 16' Grain Box Bed Dump Trailer, TA, Shredded
1-Hale 5' x 14' TA, Stock Trailer, 1/4 Metal Cover
1-WW Cattle Squeeze Chute
10-5' x 20' Metal Livestock Panels
1-8 ft Stock Water Tub
1-4 ft Stock Water Tub
1-3 Round Hay Bale Fender Rings
1-Whitwind Mineral Feeder
2-3 pt, 2 Prong Round Hay Bale Forks, 1-Hyd
1-1000 Gallon Water Nurse Tank on 4 Wheel Trailer
1-500 Gallon Fuel Nurse Tank on 4 Wheel, 12 V Pump
1-500 Gallon Propane Tank on 2 Wheel Trailer
1-500 Gallon Propane Tank
1-15 ft Tilt Bed Implement Trailer, DW
2-2 Wheel Pickup Bed Trailer
2-JD 4 Wheel Flatbed Trailer
1-JD 4 Wheel Trailer Chassis
4-Cobey 4 Wheel Trailer Chassis
- HAY EQUIPMENT - SPRAYERS:**
1-Case 950 S/P Gas Hay Swather, 14' Cut Canvas
1-Ford 14-171 Hay Baler, WT w/Wisconsin Engine
1-Ford 503, 3 pt Side Delivery Hay Rake
1-Humphrey 4 Wheel Spot Sprayer, 2 Cyl, 3 Seats
1-PAC, 8 Row, FM Ropewick Applicator
1-Bronx 200 TT Sprayer w/Booms
1-200 Gallon, Poly, 3 pt Sprayer
IRRIGATION:
1-Moline HD 800 RR Engine
2-Moline 800 RR Engine
1-Moline 605 RR Engine
1-Moline 405 RR Engine
2-Chrysler 413 RR Engines, Good
1-Chrysler 413 RR Engine, Salvage
1-Chevrolet 350 RR Engine, Salvage
1-Chevrolet 292 RR Engine (Not Run Since Overhaul)
100-Joints 7' x 20' Aluminum Gated Pipe, 40" Rows
52-Joints 7' x 20' Aluminum Gated Pipe, 40" Rows
35-Joints 6' x 20" P/C Pipe, 40" Rows
60-Joints 8' x 20' Aluminum Gated Pipe, 40" Rows
4-Smar-tee Surge Valves
1-Large Lot Hydrants, V/S, Fittings
1-Lot Irrigation Material
1-2 Wheel Pipe Trailer
1-Lot Water Furrow Covers
1-Lot Irrigation Tubs, 1", 1 1/2", 2", 3"
1-Lot Alfalfa Valve Lids, 12"
TRACTOR & TOOL MAKEUPS:
2-Lee CAT II, 3 pt Hitch
1-John Deere 21 ft, 3 pt Tool Carrier, 4' x 7' Bar
5-Sam Stevens Row Dikers
8-Lilliston Barring Off/Beet Knife Row Units
16-John Deere Rotary Fenders
1-Lot Hydraulic Cylinders
1-Set Rear Tractor Crop Shields
1-6 Row Spray Boom
1-John Deere 283 Cotton Stripper Suction
1-RAC Toolbar Stabilizer Coupler
1-Ace Pump
1-Sprayer 2 Wheel Sprayer Chassis
1-John Deere Single Front Wheel
1-50 ft Endless Belt
1-Lot Scrap Aluminum
1-Lot Scrap Iron
1-Lot Items Too Numerous To List
Announcements Made Sale Day Take Precedence

Nieman Realty
116 E. Ave. C George Nieman, Broker 272-5285 or 272-5286

RICHLAND HILLS - PARKRIDGE AREA
NICE 3-3-1 Brick, cent. Heat, Evap. Air, built-ins, 2000' + lv. area, fenced yd., stor. bldg., MORE !! \$60K !!! RH-2
NICE 3-2-2 Brick, cent. A&H, built-ins, FP, approx. 2150' lv. area, fenced yd., MORE!!! \$69K!!! RH-7
VERY NICE 3-2-1 Brick, Cent. A&H, built-ins, fans, new paint, carpet, & drapes, fenced yd. \$60K!!! RH-1
NICE 3-2-2- Brick, Cent. A&H, built-ins, FP, cov. patio, fenced yd. \$50's!!!

HIGHLAND AREA
2 Bdrm, 1 bath home, fenced yard. \$16,500!!! HL-4
VERY NICE 3-2-2 Brick, Cent. A&H, built-ins, fenced yd., spktr. sys., MUCH MORE!!! \$60's !!! HL-1
NICE 3-2 Home, Heat Pump, FP, fenced yd., stor. bldg. \$30's!!! HL-3
NICELY REMODELED 3-2-1 Brick, Cent. A&H, built-ins, FP, nice carpet & tile, fenced yard, storage building, MORE!!! \$60's!!! HL-8

BUSINESS FOR SALE-SNACK SHACK - Lot, Buildings, furniture, and fixtures!!!!

RURAL HOMES
2-2-1 carport Mobile, Home on .665 acres on pavement close to town, Cent. heat, evap., air, DW, large barn, stor. bldg. and MORE!! \$25K!! HR-5
VERY NICE 3-11/2-1 Home on 8 acres, on pavement close to town, Cent. A&H, built-ins, sun room, concrete cellar, storage bldgs., fenced yd., RV cover, mobile home hookups, stock pens, fenced acreage, & MORE!! \$50's!! HR-6

LENAU - COUNTRY CLUB AREA
VERY NICE 4 bdrm, 2 1/2 bath double wide, corner lot, built-ins, heat pump, FP, MUCH MORE !!! \$50's!!! CC-2
NICE 2-2-2 Brick, on corner lot, heat pump, fenced yard, storage bldg., MORE!! \$40's !!! L-1
2-1-1 Carport Home, wall furnace, nice carpet, storm shelter, stor. bldg., fenced yd. \$20's!!! CC-3
NICELY REMODELED 3-1 1/2-1+ 2 Carport Home, Cent. A&H, DW, Stor-wkshp., More !!! \$30's !!! L-2

HIGH SCHOOL
VERY NICE 3-2 Home, Cent. A&H, built-ins, fans, fenced yd., stor. bldg., MUCH MORE!!!! \$30's!!! HS-5
VERY NICE 3-2-1 Home on corner lot, Cent. A&H, built-ins, ceiling fans, fenced yd., stor. bldg.!! \$30's!!! HS-3
NICE 2-1-1 Brick, Heat Pump, nice carpets, well insulated, storm windows & doors. \$30's!!! HS6

ASK ABOUT OUR COMMERCIAL LISTINGS!!!
160 acre tract, 8" well, circle spktr. w/drops, fully allotted!!

JAMES G. CRUCE
Plainview, TX
(806) 296-5050
Lic # 6704

Cruce & Fletcher
Auctioneers & Real Estate Brokers
PO BOX 609 -- WOLFFORTH, TX 79382

BOBBY FLETCHER
Wolfforth, TX
(806) 866-4201
Lic # 7131

NATIONAL BRANDS SALE

Customer Appreciation
SWEEPSTAKES

**\$15,000
DOLLARS
CASH**

**SEE
STORE FOR
DETAILS!**



All Types
**Dr. Pepper,
Coke & Sprite**
6 pack, 12 oz. cans
\$1.69

MEAT

Preferred Trim Boneless
Pork Sirloin Chops
lb. **\$2.19**



Preferred Trim
**Boneless Beef
Round Steak**
lb. **\$1.39**

- Bar S, Fully Cooked, 5 lb. net wt. **\$1.39**
- Whole Hams** lb. **\$1.59**
- Bar S, Fully Cooked, 2 1/2 lb. avg. **\$1.59**
- Half Hams** lb. **\$1.99**
- Preferred Trim Boneless Beef **\$1.99**
- Rump Roast** lb. **\$1.59**
- Preferred Trim Tenderized Beef **\$1.59**
- Round Steak** lb. **\$1.59**
- Preferred Trim Boneless Beef **\$2.29**
- Sirloin Tip Steak** .. lb. **\$2.29**
- Tenderized Beef **\$2.39**
- Cube Steak** lb. **\$2.39**
- Fresh **\$1.89**
- Ground Round** lb. **\$1.89**
- Mama Rosa's, Pepperoni or Deluxe **\$3.99**
- Pizzas** 2 ct., 48 oz. pkg.
- Mama Rosa's, 15.4 oz. Cheeseburger or 17 oz. Pepperoni
- Kid's Pack**
- Pizza** 4 ct. pkgs. **2/\$5**
- Wright Brand Slab **\$1.79**
- Sliced Bacon** lb. **\$1.79**

- Decker, 12 oz. pkg., Meat Salami, Jala. Loaf, Reg. or Thick Sliced **99¢**
 - Meat Bologna** **99¢**
 - Decker, 12 oz. pkg. **69¢**
 - Meat Franks** **69¢**
 - Decker All Beef, 12 oz. pkg. **\$1.39**
 - Salami or Bologna**
 - 24 oz. bag, Wisconsin Premium Cheddar/Mozz. or Colby Jack **\$3.99**
 - Shredded Cheese**
 - Farm Raised Breaded **\$1.99**
 - Catfish Nuggets** lb. **\$1.99**
 - Owens Regular or Hot Breakfast **\$3.89**
 - Sausage** 2 lb. roll **\$3.89**
 - Owens Reg./Hot/Mild or Sage **\$1.99**
 - Sausage** 1 lb. roll **\$1.99**
- ADVANCED**
- Grilled Fajitas or Grilled, 12 oz. pkg. **\$2.49**
 - Chicken Breasts**
 - Breaded Strips/Patties or **Chicken** **\$1.79**
 - Nuggets** 12 oz. pkg. **\$1.79**

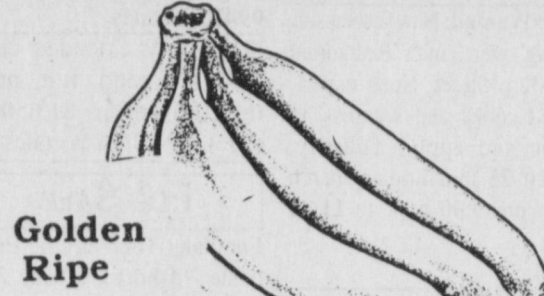
- Post Fruity or Cocoa, 13 oz. boxes **2/\$4**
- Pebbles Cereal** **2/\$4**
- Del Monte Assorted, 3.5 oz. **99¢**
- Pudding Cups** 4 pack **99¢**
- Regular/Light/Free, 40 oz. bonus jar **\$2.29**
- Kraft Mayonnaise**
- Kraft 5.5-7.25 oz. boxes, Assorted Shapes, Thick and Creamy or Regular Dinners **3/\$2**
- Mac & Cheese** **3/\$2**
- Kraft Assorted Regular, 16 oz. btl. **\$1.99**
- Salad Dressing**
- Kraft Assorted, 8 oz. pkg. **\$1.79**
- Shredded Cheese**
- 12 oz. pkg. American/Pimento/Swiss/2% Milk or Mild Mexican **\$1.99**
- Kraft Singles** **\$1.99**
- Regular or 1/3 Less Fat Kraft Philadelphia **\$1.19**
- Cream Cheese** 8 oz. brick
- Regular or Light Kraft **\$2.99**
- Cheez Whiz** 16 oz. pkg.
- 10 oz. pkg., Kraft Colby/Colby Jack or Cheddar Longhorn **\$1.79**
- Halfmoon Cheese**

- Oscar Mayer Meat Cotto Salami or Red Rind **\$1.39**
- Meat Bologna** 1 lb. pkg.
- Oscar Mayer 1 lb. pkg., Roasted White Turkey/Chopped Ham/Ham & Cheese Loaf **\$1.99**
- Luncheon Meat**
- Louis Rich Assorted Lunch Meat **\$1.99**
- Variety Packs** ..9-12 oz. pkg.
- Oscar Mayer **\$3.49**
- Cooked Ham** 1 lb. pkg. **\$3.49**
- Oscar Mayer Reg./Light or Bun Length **2/\$3**
- Meat Weiners** ..1 lb. pkgs.
- Oscar Mayer, 4.15-4.5 oz. pkg. Regular Assorted Varieties **89¢**
- Lunchables** **89¢**
- Assorted, \$2.19 size bags **2/\$3**
- Doritos® Chips**
- Assorted Varieties **\$1.99**
- Wesson Oil** 48 oz. btl. **\$1.99**
- Hunt's 18 oz. btl., Original/Hickory or Brown Sugar-Hickory **99¢**
- Barbecue Sauce**
- Asstd. Peanut Butter Creamy or Crunchy **\$1.89**
- Peter Pan** 17.6-18 oz. jar

- Tropicana Reg. or Homestyle **Orange Juice**
- 12 oz. can **79¢**
- All Purpose Gold Medal **Flour**
- 5 lb. bag **69¢**
- Assorted Citrus Punch **Sunny Delight**
- 64 oz. btl. **\$1.19**

- Diced/Stewed/Wedges or Pasta Style Chunk **5/\$4**
- Del Monte Tomatoes**...14.5 oz. cans **5/\$4**
- *Reg./Lite/Nat. Fruit Cocktail *Very Cherry Mixed Fruit *Reg./Lite/Nat. Chunky Fruit *Reg./Lite YC Peach Halves or Slices *Reg./Lite/Rasp. YC Peach Slices *Natural YC Peach Slices *Reg./Lite/Nat. Pear Halves *Lite Pear Slices-Quality **89¢**
- Del Monte Fruits** 15-15.2 oz. cans **89¢**
- Del Monte Original or Hickory, 15 oz. can **89¢**
- Sloppy Joe Sauce**
- Del Monte Squeeze **89¢**
- Tomato Ketchup** 28 oz. btl. **89¢**
- Del Monte **6/\$1**
- Tomato Sauce** 8 oz. cans **6/\$1**
- 11-15.2 oz. cans, Regular or No Salt *Cut/French Sliced Green Beans *Sweet Peas *CS/WK Golden Corn *Summer Crisp WK Vac. Pack **5/\$2**
- Del Monte Vegetables**

PRODUCE



Golden Ripe
Bananas
3 lbs. \$1

- Crisp **Celery** stalks **2/\$1**
- U.S. No. 1, 5 lb. bags **2/\$1**
- Russet Potatoes**
- Tangy Jewel **10/\$1**
- Green Limes**
- Crisp Green **3/\$1**
- Bell Peppers**
- New Crop **4/\$1**
- Yellow Onions** lbs.
- Spinach Bacon **\$1.79**
- Dole Salad** pkg.

Red Seedless
Grapes
lbs. **99¢**

- 6 oz. can, Vlasic Early California Small/Medium/Large **\$1.19**
- Pitted Ripe Olives**
- Green Giant, 15 oz. cans **5/\$2**
- Pinto Beans or Blackeye Peas**
- Schilling Mix, 1.5 oz. **99¢**
- Enchilada Sauce**
- Schilling Mix, 1.62 oz. **99¢**
- Burrito Seasoning**
- Schilling Mix, 1.25-1.5 oz. Reg./Mild Extra Spicy/Less Salt **2/\$1**
- Taco Seasoning**
- Schilling, 3.12 oz. **\$2.69**
- Garlic Powder**
- Schilling Pure, 2 oz. btl. **\$3.69**
- Vanilla Extract**
- Assorted Thick & Chunky **\$1.99**
- Pace Salsa** 16 oz. jar **\$1.99**
- Assorted 6 Pack, 5.5-6 oz. cans **\$2.29**
- V8 Juice Cocktail**
- Campbell's, 10.7 oz. cans **5/\$3**
- Tomato Soup**
- Welch's Assorted Flavors, 11.5 oz. can **\$1.19**
- Juice Makers**
- Assorted Squeeze, 16 oz. btl. **3/\$1**
- Big Juicy Drinks**

- Betty Crocker, 3-9.25 oz. boxes Assorted Hamburger/Tuna **4/\$5**
- Regular or Reduced Fat **\$2.29**
- Bisquick** 40 oz. box
- Gold Medal Corn **4/\$1**
- Muffin Mix** ... 6.5 oz. pkgs.
- Betty Crocker Select Group Specialty **\$1.19**
- Potatoes** 5-5.6 oz. box
- Betty Crocker Asstd. Microwave Popcorn **3/\$5**
- Pop-Secret** 3 ct. packs
- General Mills Reg./Frosted Cheerios, Trix or Cinnamon Toast Crunch **2/\$5**
- Cereals** 12-15 oz. boxes
- Betty Crocker 18-18.25 oz. box, Asstd. Supermoist or Sweet Rewards Layer **78¢**
- Cake Mixes**
- Betty Crocker Asstd., 12-18 oz. can Whipped or Creamy Deluxe **\$1.39**
- RTS Frostings**
- Old El Paso Traditional, 31 oz. cans **2/\$3**
- Refried Beans**
- Old El Paso, Yellow Corn **\$1.99**
- Taco Shells** 18 ct. pack **\$1.19**
- Old El Paso Chopped **\$1.19**
- Green Chilies** 7 oz. can
- Prego Asstd., 27.7-28 oz. jar Reg./Supreme or Chunky **\$1.59**
- Spaghetti Sauce**

- Assorted Gel or Paste, 6.4 oz. tube **\$1.89**
- Crest Toothpaste**
- Assorted Varieties Medium or Soft Crest **2/\$3**
- Toothbrushes**
- 14.7 oz. btl., Dawn Ultra Anti-Bacterial/Lemon or Regular **\$1.39**
- Liquid Detergent**
- Lemon Liquid-Gel, Reg. or Lemon Powder Cascade **\$2.99**
- Detergent** 65 oz. btl./box
- 5 oz. Regular or White Water Fresh Zest **2/\$3**
- Bath Bar** 3 bar packs

- 4.5 oz. Soap, 4 bar pack **\$1.29**
- Ivory Bath Bar**
- 100 oz. btl., Regular or W/Bleach Laundry Detergent Ultra **\$5.99**
- Ultra Tide Liquid**
- Regular/Free or W/Bleach Powder **\$5.99**
- Ultra 2 Tide** 92-103 oz. box
- Regular/Free/Mnt. Spr./Sunrinse, 20 oz. btl. **\$1.99**
- Downy Ultra**
- Assorted Shampoo or Conditioner, 13 oz. btl. **\$2.89**
- Pantene Pro-V**

- Sizes 1-2-3-4-5 Unisex, 22-40 ct. pkg. **\$5.99**
- Pampers Diapers**
- Collated/Plus/Extra Strength Facial, 144-250 ct. boxes **2/\$3**
- Puffs Tissue**
- Always, Assorted All Day **\$1.99**
- Pantliners** 28-38 ct. pkg.
- Always, Assorted Varieties **\$2.99**
- Maxi-Pads** 16-24 ct. pkg.
- Original or Peppermint, 36 oz. btl. **\$3.69**
- Scope Mouthwash**
- Hi-Dri Rolls **2/\$1**
- Paper Towels**
- Ultra/Baking Soda Kleenex Cottonelle **99¢**
- Bath Tissue** 4 roll pkg.
- Diamond Large Wooden, 18 ct. pack **99¢**
- Clothespins**
- Diamond Large Wooden, 50 ct. bag **\$2.29**
- Clothespins**
- Forster Cotton, 50 ft. cord **\$1.69**
- Clothesline**
- Pretty Boy, 10 lb. bag **\$1.99**
- Wild Bird Seed**

- Assorted Varieties, 13.2 oz. cans **2/\$1**
- Alpo Dog Food**
- Purina T Bonz, 10 oz. pkg. **\$1.99**
- Dog Snacks**
- Purina Dog Snacks Reg./Turkey Bacon **\$1.39**
- Beggin' Strips** 3 oz. pkg.
- Purina, Hi-Pro **\$6.99**
- Dog Food** 20 lb. bag
- 72 oz. pkg., Purina Unopped Burger or Chopped Cheeseburger **\$3.59**
- Moist & Meaty**
- 5.5 oz. cans, Assorted **5/\$1**
- Purina Cat Food**
- Purina Regular or Special Care **\$3.19**
- Cat Chow** 3.5 lb. bag
- Assorted Cat Litter **\$2.99**
- Tidy Scoop** 7 lb. jug
- Reg./Lite/Smoked or With Less Salt **\$1.89**
- Spam® Meat** 12 oz. can
- Reg./Hot No Beans or With Beans **99¢**
- Hormel Chili** 15 oz. can **99¢**
- Hormel Regular or Chicken Vienna **2/\$1**
- Sausages** 5 oz. cans **\$1.99**
- Dinty Moore **\$1.99**
- Beef Stew** 24 oz. can **\$1.99**
- Hormel Assorted Microwave Meals **89¢**
- Kid's Kitchen** 7.5 oz. cups

- Butterfinger B.B.'s • Nestle Buncha Crunch • Baby Ruth
- Butterfinger • Nestle Milk Chocolate • Nestle 100 Grand Bar
- Nestle Crunch • Oh Henry! • Original Chunky
- Nestle Candies** single bars or pkg. **5/\$2**

Frozen & Dairy

- Banquet Assorted **Fried Chicken** 19-25 oz. box **\$2.99**
- Banquet Mozzarella Cheese Nuggets, Patties/Tenders 10.5-13.5 oz. boxes **2/\$5**
- Chicken Nuggets**
- Banquet Assorted **Cream Pies** 14 oz. box **99¢**
- Morton **99¢**
- Honey Buns** 9 oz. box **99¢**
- Patco Assorted **Mexican Dinners** 12-13 oz. box **99¢**
- Chun King Assorted **Egg Rolls** 6 oz. box **99¢**



Pure Premium Chilled
Original/Homestyle/Grovestand
**Tropicana
Orange Juice**
64 oz. ctn. **\$2.19**

- Assorted Varieties, 1/2 gal. sq. ctrs. **2/\$5**
- Blue Bunny Ice Cream**
- Blue Bunny Vanilla/Neapolitan **\$2.89**
- Ice Cream Sandwiches** 12 ct. box
- Blueberry Muffins or Sausage Biscuits, 3-5 oz. pkgs. **2/\$3**
- Weight Watchers Breakfast**
- Assorted Varieties, 3.7-6.4 oz. pkg. **\$1.69**
- Weight Watchers Desserts**

Extended Relief Caplets,
Extra-Strength Gelscaps,
Geltabs, Caplets
**Tylenol
Pain Reliever**
24 ct. btl.
\$2.69

- ### Health & Beauty Aids
- Allergy Nighttime Caplets, Max. Str. Gelscaps, Tablets, Caplets or Regular Str. Allergy Caplets **\$3.99**
 - Tylenol Sinus** 20-24 ct. pkg.
 - Extra Strength Geltabs, Gelscaps or Caplets **\$4.99**
 - Tylenol PM** 50 ct. btl.
 - Children's Bubble Gum/Fruit/Grape **\$2.49**
 - Tylenol Chewable Tablets** ... 30 ct. btl.
 - Assorted Deodorant Powder, 8 oz. **\$1.99**
 - Shower to Shower**
 - Johnson's Creamy Oil, Lotion, Corn Starch or Reg. Powder or Bath **\$1.69**
 - Baby Products** 8-9 oz. **\$1.69**
 - Acid Controller **\$5.49**
 - Pepcid Tablets** 18 ct.
 - Sylvania Soft White, 60/75/100 Watt **99¢**
 - Light Bulbs** 2 ct. pack

WESTERN MONEY UNION TRANSFER™
"The fastest way to send money"

Lowe's

MARKETPLACE

401 W. American Blvd.
Muleshoe 272-4585

PRICES EFFECTIVE MARCH 19-25, 1997
OPEN MONDAY-SATURDAY 7:30 A.M. - 8:00 P.M., SUNDAY 8:00 A.M. - 7:00 P.M.

515 W. American Blvd.
Muleshoe
272-4406

WE RESERVE THE RIGHT TO LIMIT QUANTITIES IN TEXAS