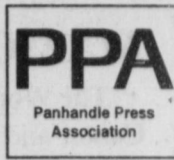




BAILEY COUNTY JOURNAL



Volume 35, No. 34

Published Every Sunday at Muleshoe, Bailey County, Texas 79347

Sunday, August 16, 1998

United Supermarkets coming to Muleshoe

By RICK WHITE
Managing Editor

Rumor became fact Friday when United Supermarkets announced it is building a store in Muleshoe.

The Lubbock-based company plans to build a 22,000 square-foot store on land just purchased at the southwest cor-

ner of U.S. Highway 84 and 9th Street, according to a company press release.

United plans to begin construction soon, anticipating a late fall groundbreaking and a summer of 1999 opening date.

The store will create approximately 50 new jobs in Muleshoe, according to com-

pany officials.

The company has been working on plans for the new store for several months, according to chief executive officer Kent Moore.

"We're excited about our entry into Muleshoe," Moore said. "It's a community that we've wanted to be a part of for

several years now. We are anxious to build a store that meets the unique needs of this community and offers the latest conveniences available in the grocery industry."

Company officials have also pledged to be active in the community.

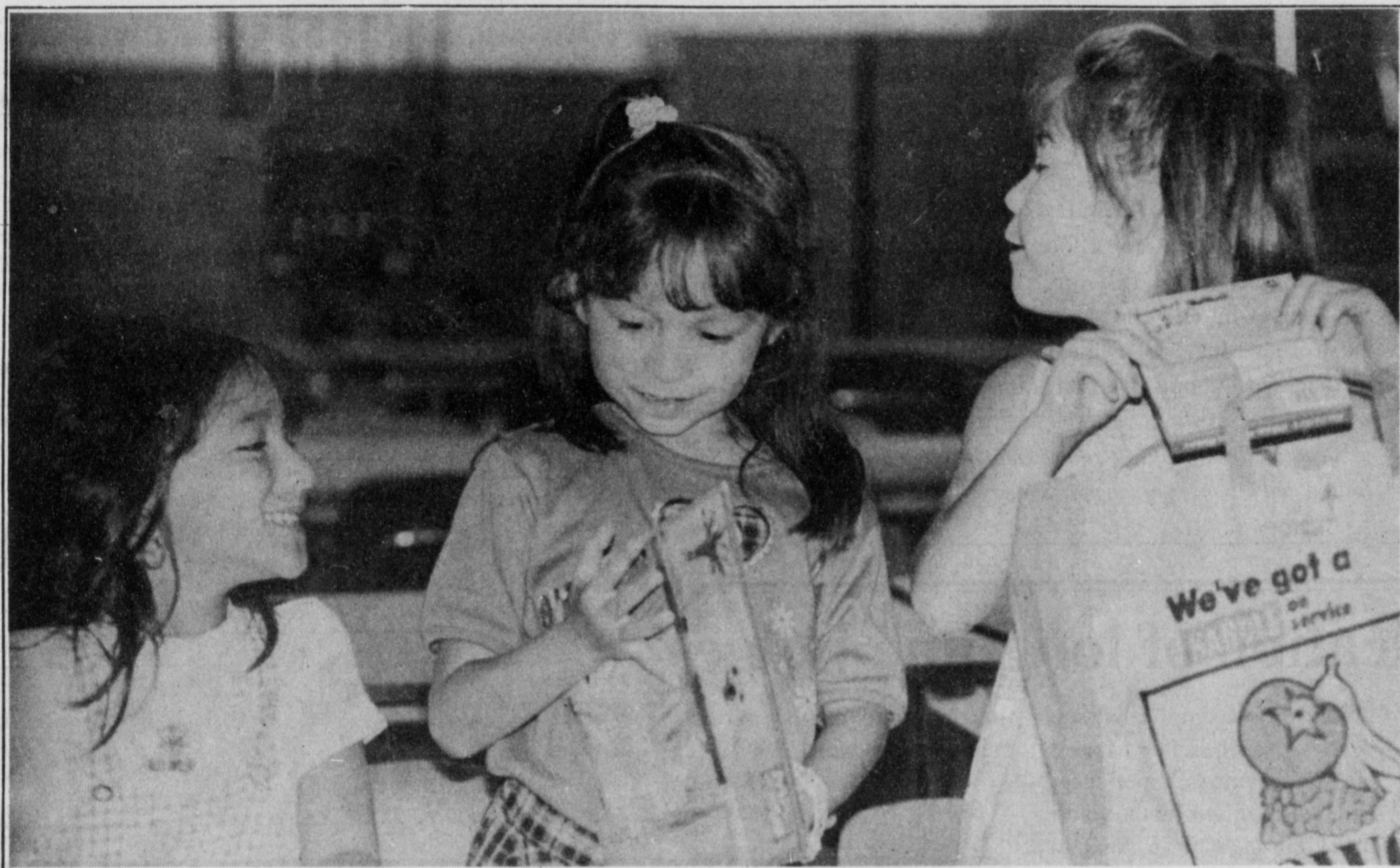
In addition to a wide variety

of groceries, fresh produce and meats, preliminary plans call for the store to include a bakery, hot and cold deli, floral department, drive-through pharmacy and customer service center money transfer, postage stamps, FAX services, photo finishing and other customer conveniences.

The Muleshoe store will be the grocery chain's 40th store and 24th Texas city in which a store is located.

United Supermarkets was founded 82 years ago in Sayre, Okla. by H.D. Snell.

Muleshoe currently has two grocery stores, Lowe's Marketplace and Pay-N-Save.



Cool, school supplies

Jackie Bryant (right) shows her new school supplies to friends Monica Vera (middle) and Mayra Cervantes Friday during the first day of school at Lazbuddie. The three girls are all in first grade.

Lazbuddie students return to school

LAZBUDDIE — Lazbuddie superintendent Hardy Carlyle stood at the front entrance of school Friday welcoming students.

Carlyle said even though it's the first day of school, it is an easy adjustment for the students to fit in because they already know their teachers and classmates.

Promoted from principal to superintendent last spring, Carlyle said it was a quiet summer without students roaming

the halls.

"It's good to have the kids back," he said. "That's the reason why we're here. For the kids."

Meanwhile, inside the school cafeteria, first-grader Jackie Bryant was showing friends her new school supplies.

Monica Vera was happy to see her best friend.

"We sat together in kindergarten last year, and I hope we can sit together again this year,"

Vera said.

Muleshoe starts school on Wednesday.

At DeShazo Elementary, the school had a major makeover.

The main office, which has been in the same spot since the school was built in 1964, was moved across the hall and modernized. And all the classrooms were painted and carpeted.

"We're just thrilled with the way it looks," said longtime secretary Mary Janice Brantley.

At the high school, students

will start class a half hour later this year, at 8:30 a.m., and will also have to adjust to a new schedule.

The experimental schedule features some classes that meet daily for 45-minute periods while others meet every two days for an hour and a half.

The high school will have an assembly at 8 a.m. on Wednesday.

School starts at 8 a.m. at DeShazo, Dillman Elementary and Watson Junior High.

Carpenter's murder trial set for Oct. 12

■ Motion to suppress alleged confession overruled by judge

By RICK WHITE
Managing Editor

The murder trial of Joseph Doyle Carpenter of Muleshoe is scheduled to begin Oct. 12 in 287th District Court.

District Court Judge Jack D. Young Wednesday set aside three weeks on the court calendar for the jury trial during docket call. A pre-trial hearing was set for Sept. 24.

Carpenter is charged with the April 13, 1997 beating death of his neighbor, 20-year-old Faviola Mendoza of Muleshoe. Her body was discovered in the West 20th Street home she shared with her husband and three others.

Carpenter was arrested three days later and charged with capital murder after allegedly making a partial confession to police. He was not originally considered a suspect.

Judge Young ruled May 20 against the defense attorney's motion to suppress alleged confessions made by the defendant to Muleshoe police and to

the Texas Rangers.

Defense attorney Daniel W. Hurley of Lubbock contended in a pre-trial motion filed Oct. 21, 1997 that any alleged statements Carpenter made to police were not true and made after a request for council was denied.

According to the court document, law enforcement in Muleshoe alleged that the defendant admitted to having sex with Mendoza and that he struck her in the head with a stick.

Young ruled that separate statements made to then Muleshoe Police Chief Rick Henegar and Department of Public Safety Sgt. Gus Trevino were admissible.

He ruled the statements were not coerced and were made before the defendant's arrest. The court also ruled that prior to his arrest, Carpenter was given his Miranda rights twice.

Carpenter, who remains free on \$100,000 bond, attended Wednesday's court proceedings.

Judge Young also set a trial

see TRIAL on page 3

PAGE ONE

A QUICK READ OF THE NEWS

Five reasons to be a nurse

- Fashionable shoes & sexy white uniforms.
- Needles: It's better to give than to receive.
- Reassure your patients that all bleeding stops . . . eventually.
- Interesting aromas.
- Take comfort that most of your patients survive no matter what you do to them.

Source: Reality Check, the Muleshoe Area Hospital District's monthly newsletter.

LOCAL WEATHER

	High	low	Pre.
Tuesday	87	65	.37
Wednesday	89	65	.04
Thursday	85	61	—
Total to date	5.75 inches		

EXTENDED FORECAST

Partly cloudy for most of the week with a chance of isolated afternoon and evening showers. Highs in the 90s with lows in the 60s.

Hospital board learns building nursing home on-site is viable option

By RICK WHITE
Managing Editor

Muleshoe hospital district administrator Jim Bone marveled at the conceptual drawings that showed what a new 100-bed nursing home might look like if it was built on site.

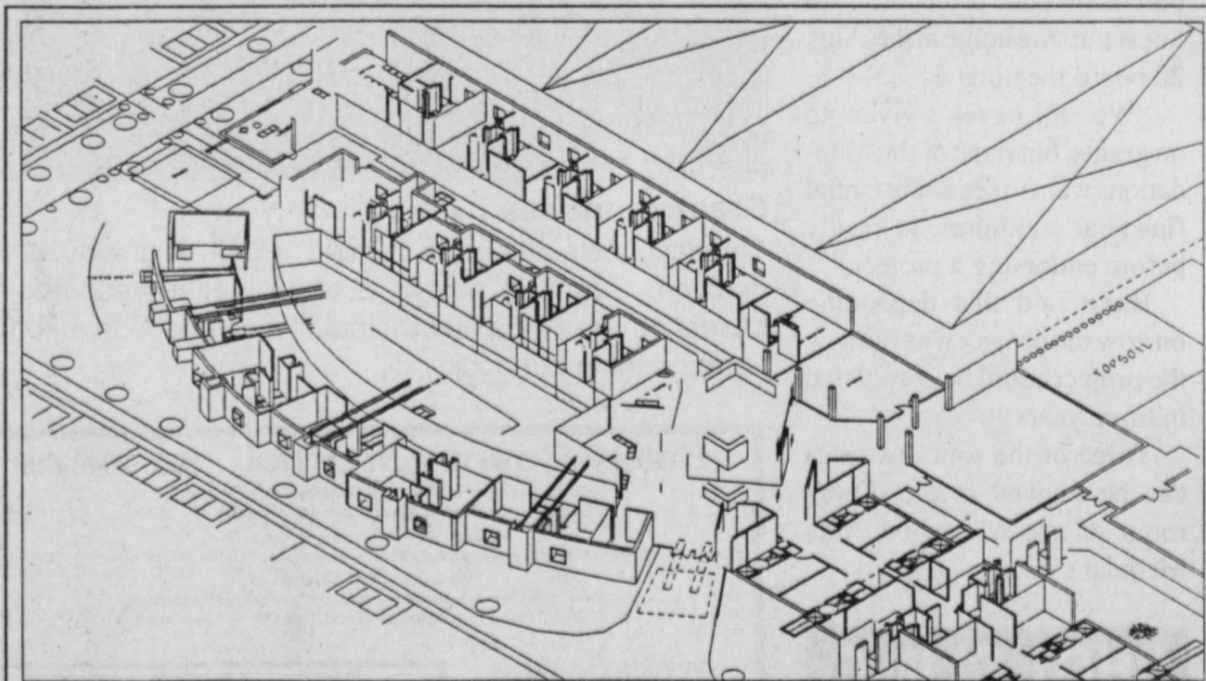
The detailed drawings, done for the hospital district by Texas Tech graduate students as part of a feasibility study, were viewed Tuesday during a special meeting of the Muleshoe Area Hospital District Board.

"One of the issues raised during discussions was keeping the nursing home next to the hospital," Bone said. "Now we know it is a viable option. They have shown it is possible to build something that can be both a comfortable fit and attractive."

The proposed site is behind the hospital stretching north to Avenue F, which would require some land acquisition, Bone said.

Building the nursing home on a separate piece of property remains an option. The City of Muleshoe and J.K. Adams have offered to donate land for the proposed \$3 million facility that would include a separate Alzheimer unit.

The next step for the hospital district is to set



One of four conceptual drawings of how a new on-site nursing home might look

a timetable, Bone said.

"One of the things the board has been adamant about is having community input and letting them know what is going on," Bone said. "It's important that we have the support of the community."

The district is exploring its financing options, according to Bone.

It was hoped the project could be funded in a large part by foundation grants, which is starting to look unrealistic.

Bone said the district is now exploring ways of raising the necessary funding by raising tax rates.

One way is through certificates of obligation, which enable taxing districts to borrow money without having to hold an election.

The district can earmark a small percentage of tax revenue toward repaying the debt and would also agree to make repayment of the note

see HOME on page 2

AROUND MULESHOE

MAMC holding blood drive Sept. 14

The Women's Center of the Don and Sybil Harrington Cancer Center and Baptist/St. Anthony's Health System will conduct a Breast Cancer Screening Clinic at Muleshoe Area Medical Center, 708 S. First Street, Muleshoe, on Sept. 14, 1998.

Breast cancer affects one in eight women. The key to winning the battle against cancer is early detection by having an annual breast exam, mammogram and performing a breast self-exam each month.

Participants will receive a low-cost screening that includes a mammogram and instruction in self-examination by a registered nurse. The total cost is \$75. A minimum of fifteen women need to register in order for the mobile mammography clinic to come to area towns. Funding is available through the Texas Department of Health for Texas residents who qualify for assistance. All exams are done by appointment only. Call (806)356-1905 or 1(800) 377-4673 for more information.

ENMU sets fall registration

Eastern New Mexico University in Portales has set fall registration for Wed., Aug. 19. Instruction begins the next day.

Late registration will continue through Aug. 26. Orientation for transfer students will be Aug. 18. The semester ends on Dec. 11.

Students may enroll in classes from 43 undergraduate and 15 graduate majors.

For more information, call the Registrar's Office at (505)562-2175. ENMU can be found on the Internet at www.enmu.edu.

Extension Service hosting crop tours

Parmer and Bailey counties are hosting Crop Tours 1998. Registration is at 8 a.m. at Muleshoe Co-op Gin and the tour starts at 8:30 and will go until noon. Lunch will be served at Friona Community Center.

Topics that will be discussed are narrow row cotton, cotton growth regulators, and cotton variety trials just to name a few. There will be six speakers from TAES and Zeneca Ag Products.

CEU's will be given!

For more information, please contact the Parmer or Bailey County extension office at (806)481-3619 or (806)272-4583.

PTA hosting 'Meet The Teachers'

All Dillman and DeShazo students and their parents are invited to a "Meet the Teachers" night at 5:30 p.m. Monday, Aug. 17 in the Dillman Elementary School gym. Refreshments will be served.

"Meet the Teachers" night is sponsored by the Muleshoe Elementary PTA.

Project graduation ice cream social

A homemade ice cream social to raise money for Muleshoe "Project Graduation '99" is being held from 10 a.m. to 3 p.m. Monday, Aug. 17 at Muleshoe State Bank.

Ice cream is free but free-will donations will be accepted. The event is sponsored by Muleshoe State Bank.

Old fashioned church services set

An "Old Fashioned Sunday Go To Meetin'" service will be held Aug. 16 at First Assembly of God Church in Muleshoe.

There will be a dinner on the ground, afternoon singing from 2-6 p.m. with "Living Proof" from Lubbock being the featured artists, plus lots of local talent. Sunday school starts at 9:45 a.m. and activities last throughout the day.

Pastor Jack Stone will be "Preachin' in his overalls" this day. Ladies, wear your bonnets.

Methodist Church hosts a blood drive

The Coffee Memorial Blood Center of Amarillo will hold a blood drive from 11 a.m. to 2 p.m. Aug. 17 at the Lazbuddie Methodist Church Fellowship Hall. For more information call the Coffee Memorial Blood Center at (806)358-4563 or the Lazbuddie Methodist Church at 965-2121.

Deadline for Around Muleshoe items is 5 p.m. Monday for Thursday's edition and 5 p.m. Thursday for Sunday's edition.

The Worst Lies May Be the Ones We Tell Ourselves

Among the worst lies are the ones we tell ourselves. Author Keith Miller was right on target when he wrote, "Honesty may not be the doorway into the kingdom of Heaven, but it is the latchstring to every door in the house." Lots of doors slam shut without it.

Sometimes, though, it is harder to be honest with ourselves than it is to be honest with others. Lies

don't think now is a good time."

"Yes, I know that by pushing for this divorce I am breaking every vow that I once held dear, but I have very good reasons, you see, and I can do it with no permanent damage to myself or my kids. I need it to be happy."

"If I just work a little harder, a little longer, make a little more money, or finish one more big project, then I'll take time to slow down and spend time with my family, but until then, little pieces of 'quality time' are good enough."

And maybe the most dangerous lie of all: "I'm too strong, too good, to ever tell myself the lies listed above or any of the million and one others like them. I just wouldn't make that mistake."

When God came on the scene back in Genesis 3 and found Father Adam & Mother Eve with forbidden fruit juice still trickling down their mouths, the Bible says that they stood lying to their God and suddenly realized that they were naked, and they were ashamed.

Strange. The only way that we their children can be healed and whole and unashamed is to once again stand naked before Him, laying aside the shabby rags of our self-deception, opening ourselves to be clothed in the pure white robes of His truth, His light, His Son, honestly opening all of our sin and our deep need before the One in whom there is no falsehood at all.

Curtis Shelburne is minister of the 16th & D Church of Christ in Muleshoe.



Focus On Faith
Curtis Shelburne

easily become the cancer that eats away at our souls. Healing comes only when we expose them to the light and deal with them as the lies they are. But that is not easy.

Ironically, most people who are in the midst of deluding themselves most seriously do it because they are really too honest and decent to be comfortable pursuing their present course without first lying to themselves about its morality or its consequences.

"I know Bob [or Joe or Jim] doesn't seem to care about his relationship with God now, but once we're married, he'll change and become the spiritual leader of our home."

"Yes, of course, drunkenness is a bad thing, but I really don't have an alcohol problem. I can quit drinking whenever I choose. I just

LETTER TO THE EDITOR

Reader appreciates dedication of longtime judge

To the editor

I would like to take this opportunity to express my appreciation to Linda Huckaby for the many years of service and dedication which she has given to the City of Muleshoe, and its young citizens, as Municipal Court Judge.

I firmly believe Linda was not in the position for the money but, rather, to help sway the youth of Muleshoe away from those things which would handicap them in their future toward better choices and bet-

ter opportunities. It takes a person who can discipline with a firm hand, but who has some compassion when the circumstance is right, to influence young people. Linda is the type of person who could do that. Her long years of experience and the knowledge she had gained enhanced her ability to make good decisions for young people who were brought before her court, and, with their families. That does not mean that those choices were always graciously accepted by those

involved, but simply that she dealt with each situation based on fact, previous experience, and future outlook for the youth in as fair a way as the law allowed. I believe she was respected for that more often than not.

It takes a person with special qualities to be responsible for handling such a profound position and giving the time it requires to make a difference in a person's life. I think it will be difficult for the City to find someone who can replace this

fine lady and do the job as precisely as she did.

Mrs. Pat Moore
811 W. 3rd St., Muleshoe

HOME

From page 1

its first financial priority.

Any project funded by certificates of obligation would have to be approved by the state.

The district's accounting firm is expected to give a report on revenue projections for a new nursing home at the Aug. 20 board meeting.

"We still haven't given up on grants, but most of the foundations want to see a substantial financial commitment locally before endorsing a project."

Bone said that depending on how the project was funded, the project could be completed in three years.

Three of the four drawings can be viewed in the dining room of the Muleshoe Area Medical Center.



Practice makes . . .

Teresa Garcia attempts to field a ball Thursday during practice. Garcia is part of a team that represented the Muleshoe Area Hospital District this weekend in a softball tournament in Lubbock.

Bailey County Journal USPS 040-200

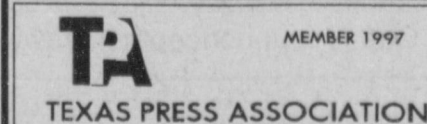
Established March 31, 1963. Published by Triple S Publishing, Inc. Every Sunday at 304 W. Second. Box 449, Muleshoe, TX 79347.

Second Class Postage paid at Muleshoe, TX.

POSTMASTER: Send address changes to the Bailey County Journal, P.O. Box 449, Muleshoe, TX 79347.

We are qualified members of:
Panhandle Press Association, National Newspaper Association,
West Texas Press Association and Texas Press Association

WEST TEXAS PRESS ASSOCIATION



PPA
Panhandle Press Association

Scot Stinnett, Publisher
Lisa Stinnett, Vice-President/Comptroller
Rick White, Editor
Mary Ann Dominguez, Classifieds
Leah Bell, Advertising

© 1990

SUBSCRIPTIONS: Muleshoe Journal and Bailey County Journal
By Carrier Yearly - \$22.00
Bailey County - by mail - \$24.00
Elsewhere - \$26.00
Advertising Rate Cards on Application

Advertisers should check their ad the first day of insertion. The Journals will not be liable for failure to publish an ad or for a typographical error or errors in publications except to the extent of the cost of the ad for the first day of insertion. Adjustment for errors will be limited to the cost of that portion of the ad where the error occurred.

SHOT CLINIC

for all Muleshoe students
August 17, 1998

at Muleshoe High School Cafeteria
two sessions:

10 a.m. to noon
3 p.m. to 6 p.m.

\$5 per shot

Conducted by MISD in partnership with Outpatient Services Clinic

Have A Great Day!



Don't Miss This One Of A Kind Magic Show!

Sebastian is coming!

The Magic of Sebastian
Saturday, August 29
at 7:30 p.m.
Muleshoe High School Auditorium

• ADVANCE TICKETS \$4
• AT THE DOOR \$5

Sponsored by Bailey County Sheriff's Office

For Advance Tickets, call 272-4268 (Sheriff's Office)

Begin year with good homework habits

HOUSTON — A structured environment can turn homework woes into successes.

"If doing homework has been a problem in the past, use the new school year as a time to implement change," said Dr. Florence Eddins, a child psychiatrist at Baylor College of Medicine in Houston. "Work with your child to settle key homework issues of where, when and the surroundings.

One homework essential is adequate study space with good lighting and few distractions.

"Desks in rooms can be fine if they aren't covered with clothes or other belongings," Eddins said. "However, the dining room or kitchen table often works well and make parental supervision a little easier."

For young children, Eddins encourages parents to sit nearby with work of their own.

However, parents should pull back as soon as possible, so the child can learn to work independently. Check in periodically on older children rather than hovering over them.

To establish a homework time, talk with your children about the time of day that works best for them.

"Many children prefer 'time off' for play or for an after-school snack, but others will do best completing assignments before television time or engaging in other activities," she said.

Flexibility is another key ingredient to creating the right homework environment. Eddins cautions parents to remember that what works for them may not be right for their child.

"You may need uninterrupted quiet to get work done, but your child may like music in the background," she said. "The important thing is to experiment and learn what works best for your child."

Homework success also depends on good communication between the parents and teacher. Parents should learn what the school expects of the child and of the parents.

If remembering homework has been a problem in the past, ask the teacher to send home written notices of homework assignments. This system allows parents to monitor assignments and reward their child for completing assigned work.

"A minimal reward for remembering assignments four nights out of five puts the focus on the positive, not the negative," Eddins said. "Taking time to notice your child's efforts can make a big difference."

TRIAL

From page 1

date for another high-profile case Wednesday involving the so-called "gypsies," who are being held in connection with the robbery of a Muleshoe grocery store last year.

Only five of the seven suspects are in custody. The two others are fighting extradition in Illinois.

The judge scheduled the trial for Aug. 24.

MISD school calendar

AUGUST		
Monday, Aug. 17 Staff development day PTA "Meet the Teachers night" Shot clinic, high school cafeteria, 10 a.m. to noon, 3 p.m. to 6 p.m.	Thursday, Sept. 3 7 & 8 football at Portales 5 & 6:30 9 & JV football vs. Portales, 5 & 7:30 p.m., here	Tuesday, Sept. 15 South Plains School Board Assn. @ ESC 6:30
Tuesday, Aug. 18 Teacher prep day Hamburger feed at Muleshoe Motor, at 6 p.m.	Friday, Sept. 4 Varsity football at Portales, 8 p.m. (CDT)	Thursday, Sept. 17 7 & 8 FB at Brownfield 5:30 & 7 9 & JV FB vs. Brownfield here at 5:30 & 7 p.m.
Wednesday, Aug. 19 First day for students	Monday, Sept. 7 Labor Day holiday	Friday, Sept. 18 Varsity FB at Brownfield 8
Friday, Aug. 21 Football scrimmage at Seminole for 9th, JV and varsity, 5, 6, 7:30 p.m.	Tuesday, Sept. 8 Level II Board Training in Muleshoe 6:00 to 9:00 p.m. in the Board room	Thursday, Sept. 24 JH Pep rally @ 3 7th & 8th football vs. Tulia 5:30 & 7, here
Monday, Aug. 24 School Board Meeting at 7:00 p.m.	Thursday, Sept. 10 JH Pep Rally @ 3 7,8 vs. Denver City, 5:30, 7 9 & JV at Denver City 5:30 & 7	Friday, Sept. 25 End of First Six Weeks for HS & JH
Tuesday, Aug. 25 Meet the Mules (tentative)	Friday, Sept. 11 TIF Board Meeting in HS Auditorium - TBA	Saturday, Sept. 26 HS All-region choir auditions in Lubbock
Thursday, Aug. 27 Scrimmage for 9th, JV & varsity vs. Palo Duro, here 5, 6 & 7:30 p.m.	Saturday, Sept. 12 Farm Bureau Annual meeting in HS facilities	Monday, Sept. 28 School Board Meeting @ 7
Tuesday, Sept. 1 Band Spirit Concert @ 7 p.m. in band hall	Monday, Sept. 14 School Board Meeting @ 7 p.m.	Tuesday, Sept. 29 College Night in high school cafeteria, 5:30-7:30 p.m.

Muleshoe murder suspect moved to Lubbock

Muleshoe murder suspect Gilberto "Tito" Reyes was quietly moved to a Lubbock jail last month for unspecified reasons.

Reyes, 24, of Muleshoe was transferred to the Lubbock County Jail after being arraigned July 27 in the 287th District Court on a charge of capital murder and three other charges.

Bailey County Sheriff Coy Plott would not comment on the reason Reyes was moved or if his life had been threatened.

"He's being housed in Lubbock," was Plott's official comment.

Reyes is being held without bond while awaiting trial in connection with the March beating death of 19-year-old Yvette Barraz of Muleshoe.

Reyes was captured June 7 at a Portales, N.M. hotel. After

spending more than a month in a Portales correctional facility fighting extradition, Reyes was returned to Muleshoe July 23.

He was held in isolation while being housed at the Bailey County Jail, Plott said.

Chamber hopes to establish hunter hotline

The Muleshoe Chamber of Commerce & Agriculture has been fielding several calls recently inquiring about leasing land for hunting and about local guides.

Most of the calls have been about pheasant season. The Chamber would like to compile a list of area residents interested in leasing land or serving as guides to better serve out-of-town hunters.

Anyone interested in leasing land or being a guide should contact Chamber director Laura Precure at 272-4248.

HEADQUARTERS RESTAURANT

2400 W. American Blvd. • Take out orders 272-6740

All You Can Eat Lunch Buffet

MONDAY LUNCH

Chicken Fried Steak
Served with salad, mashed potatoes, fried potatoes, corn, cream gravy, brown gravy, dinner roll and choice of peach or cherry cobbler.
\$5.75

TUESDAY LUNCH

Hamburger Steak and Meatloaf
Served with mashed potatoes, fried potatoes, green beans, sauteed onions, sauteed bell pepper, brown gravy, dinner roll and choice of peach or cherry cobbler.
\$5.75

WEDNESDAY LUNCH

BBQ Brisket, Smoked Sausage and Hot Wings
Served with salad, beans, corn bread, coleslaw, potato salad and choice of peach or cherry cobbler.
\$5.75

THURSDAY LUNCH

Green Chili Chicken Enchiladas or Chili Verde
Served with beans, Spanish rice, flour tortillas, sopapillas and cinnamon crisps.
\$5.75

FRIDAY LUNCH

Baked Catfish, Fried Catfish, Pollock, and Popcorn Shrimp
Served with hush puppies, corn on the cob, rice pilaf, California blend vegetables, coleslaw, dinner roll and choice of peach or cherry cobbler.
\$5.75

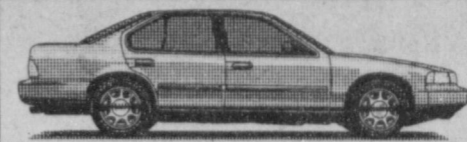
OPEN:

Mon. - Fri. 11 am to 9 pm
Sat. - 6 am to 9 pm

BUFFET SERVED 11 AM - 2 PM

NIGHTLY SPECIAL

16 oz. T-Bone Steak Dinner
Served with choice of potato, salad and dinner roll
\$12.99
While supplies last!



Come Check Our Rates!

WE HAVE MONTHLY AUTO INSURANCE

Delton E. Wilhite & Associates
INSURANCE AND FINANCIAL SERVICES

1631 West American Blvd. • 272-3652 or 272-5988

Note These Back To School Specials

- Shoes **15% Off**
- Athletic Bags & Backpacks..... **20% Off**
- Athletic Bras by Champion and Nike... **20% Off**
- Windwear (jacket & pant sets) ... **20% Off**
- Shorts, T-Shirts, & Golf Shirts... **15% Off**

Good thru August 19

2C-2Y Girl's Size
CHEERLEADING SHOES
reg. \$45.00
\$36.00



Take An Extra 10% Off On Already Marked Down Prices!

(Includes Shoes, Clothing & Socks)

Williams Athletics



(806) 272-MULE (6853) • Fax (806) 272-4615 • 322 Main Street • Muleshoe, TX 79347

Home Folks Caring For Folks At Home.



MULESHOE AREA HOME HEALTH Agency

Featured Patient

Imogene Tabor was born November 19, 1922. Born in the "middle of the pack," Imogene and her nine siblings grew up in Alma, Arkansas. Miss Tabor received her high school diploma from Alma and then chose to further her education by attending Hill Crest Hospital's School of Nursing. Imogene eventually became a Registered Nurse. She has practiced nursing in several different towns and states including: Alaska, Clovis and Amherst. But to many of us, Imogene is most remembered and loved for her many years as Muleshoe's elementary school nurse. She was the individual who could nurse your "boo-boos" and your moods with just her gentle hand and a warm smile. Imogene retired in 1984.

Imogene Tabor married Gordon Tiller who passed away in 1969. In December of 1984, she wed Homer Cole.

Mr. and Mrs. Cole live on Lake Eufaula in Oklahoma. While recovering from a stroke, Imogene is staying with her daughter Kay Swint of Muleshoe. Mrs. Cole also has another daughter, Brenda Dirks, of San Antonio. Imogene has 5 grandchildren and is hoping to someday have great-grandchildren to boast about. Her "fingers are crossed!"

Mrs. Cole enjoys crocheting, reading fictional novels and playing bridge. She jokes that her husband, Homer, is probably spending every minute fishing while she is gone. She looks forward to joining him soon.

Imogene is a member of the Oakridge Baptist Church of Lake Eufaula.

About M.A.H.H.A., Mrs. Cole smiles a very familiar smile and says that the staff has "treated me great, both at home and while working with the Speech Therapy department."



Imogene Cole

Home Care



Home is where the heart is

Affiliated with Lubbock Methodist Hospital Systems

Out-Of-Hospital Do Not Resuscitate Packets/ Bracelets Now Available. Call us at 272-3346 or come by 623 W. 2nd for information.

24 Hour # 272-3346
Local Nurse on call 24 hours a day to offer prompt service.

We accept Medicare, Medicaid and Private Insurance
It Is Your Right To Choose The Home Health Agency You Prefer.

To receive Home Health Services, talk with your physician or talk with hospital personnel when you are hospitalized.



The chase is on

Judd Glover closes in on running back Chris Vela Thursday during a Muleshoe High School football practice. The Mules held an intrasquad scrimmage Saturday.

Doves probably not affected by drought

AUSTIN — Water and seeds; hunters who find this basic combination will likely be into birds during dove hunting season, according to state wildlife officials, who suggest the drought may have little impact on harvest success.

"Our surveys this past spring indicated dove breeding populations remained similar to last year," explained Jay Roberson, dove program leader with Texas Parks and Wildlife (TPW).

Dove season runs Sept. 1-

Oct. 30 in the North Zone; Sept. 1-Oct. 18, Dec. 26-Jan. 6 in the Central Zone; and Sept. 25-Nov. 8, Dec. 26-Jan. 9 in the South Zone (the season ends Jan. 4 in the special white-winged dove area). The daily bag limit is 15 mourning, white-winged and white-tipped doves in the aggregate, including no more than two white-tipped doves. Possession limit is twice the daily bag and hunters are reminded that they cannot legally take more than one daily bag limit in one day.

The white-winged dove season is Sept. 5, 6, 12, and 13 in the Special White-winged Dove Area of South Texas. Bag and possession limits are 10 white-winged, mourning and white-tipped doves in the aggregate, including no more than five mourning doves and two white-tipped doves per day. Shooting hours will be noon to sunset.

Hunters are also reminded to renew their hunting licenses, which expire Aug. 31, before heading out on opening day.

MHS season tickets on sale Aug. 31

Muleshoe High School reserved seat season ticket holders may pick up their options Aug. 12-28 at the MISD business office.

Ticket holders may pickup their options in person, by mail with a season ticket holder's personal check or by third party, if tickets are purchased with ticket holder's personal check.

All remaining reserved seat season tickets will go on sale Aug. 31 and can be purchased at the business office weekdays from 8:30 a.m. to 5 p.m.

MISD is offering three types of ticket packages:

- Reserved seat tickets (for varsity games) for \$17.50.
- Student season tickets (for

all games) for \$15.

■ Adult general admission tickets (for junior high, freshman and junior varsity games) for \$7.50.

Any remaining reserved seats will be available for \$4

per game and may be purchased at the business office the day of the game.

For more information, contact Dana Rasco at the business office at 272-3911.

TERMS: CASH, CHECK, MASTERCARD & VISA

ESTATE Auction
Of Helen Lambirth

SATURDAY, AUG. 22, 1998 • 9 AM & SUN. 2PM IF NEEDED

607 BELMONT, ELIDA, NM & RANCH SOUTH OF ELIDA, NM 114 TO RR. AG. TO WHITE GATE RR AF RIGHT TRAIL

Most of this furniture is like brand new, the appliances all work.
LIVING ROOM • DINING ROOM • KITCHEN • BEDROOM
• COLLECTIBLES • ANTIQUES • MISC. • LINENS, ETC.
 Viewing on Friday 9 until 5

James Priest & Associates W & J Auction
 "OUR KNOWLEDGE IS YOUR SECURITY"
 AUCTIONEERS: James Priest, Butch Priest, Gid Priest
 4205 South Prince Clovis, New Mexico
 Las Vegas NM (505) 454-8026 TX LIC. # 11077 & 9474 Clovis NM (505) 763-7311 1-800-822-1243

NOTICE TO BAILEY COUNTY TAXPAYERS

Bailey County is not increasing the tax rate.

The tax rate will be the same as last year.

Bailey County is not increasing the tax rate.

The "Notice of Public Hearing on Tax Increase" - the adjoining ad - is a new requirement of state law when the total of property value in the County increases, but the tax rate remains the same.

Bailey County is not increasing the tax rate.

The wording comes from the state and the County can only fill in the blanks.

Bailey County is not increasing the tax rate.

A slight increase in tax revenue is expected from the increased appraised value of the County.

Bailey County is not increasing the tax rate.

There will be a public hearing on keeping the same tax rate as last year at the court house at 10:00 A.M. on August 26, 1998

Bailey County is not increasing the tax rate.

Notice of Public Hearing on Tax Increase

The Bailey County Commissioners Court will hold a public hearing on a proposal to increase total tax revenues from properties on the tax roll by 2.0 percent. Your individual taxes may increase or decrease, depending on the change in the taxable value of your property in relation to the change in taxable value of all other property and the tax rate that is adopted.

The public hearing will be held on
August 26, 1998 at 10:00 a.m.
 at the Commissioners Court Room,
Bailey County Courthouse
 300 S. First Street, Muleshoe, TX

FOR the proposal: Butch Vandiver, C.E. Grant, Joey Kindle, Bennie Claunch

AGAINST the proposal:
PRESENT and not voting:
ABSENT:

The following table compares taxes on an average home in this taxing unit last year to taxes proposed on the average home this year. Again, your individual taxes may be higher or lower, depending on the taxable value of your property.

	Last Year	This Year
Average residence homestead value	\$50,000	\$50,000
General exemptions available (amount available on the average homestead, not including senior citizen's or disabled person's exemption)	\$3,000	\$3,000
Average taxable value	\$47,000	\$47,000
Tax rate - Farm/Market Road	.0812/\$100	.0812/\$100
Tax - Farm/Market Road	\$38.16	\$38.16

Under this proposal, taxes on the average homestead would remain the same compared with last year's taxes. Comparing tax rates without adjusting for changes in property value, the tax rate would remain the same per \$100 of taxable value compared to last year's tax rate. These tax rate figures are not adjusted for changes in the taxable value of property.

Notice of Public Hearing on Tax Increase

The Bailey County Commissioners Court will hold a public hearing on a proposal to increase total tax revenues from properties on the tax roll by 1.9 percent. Your individual taxes may increase or decrease, depending on the change in the taxable value of your property in relation to the change in taxable value of all other property and the tax rate that is adopted.

The public hearing will be held on
August 26, 1998 at 10:00 a.m.
 at the Commissioners Court Room,
Bailey County Courthouse
 300 S. First Street, Muleshoe, TX

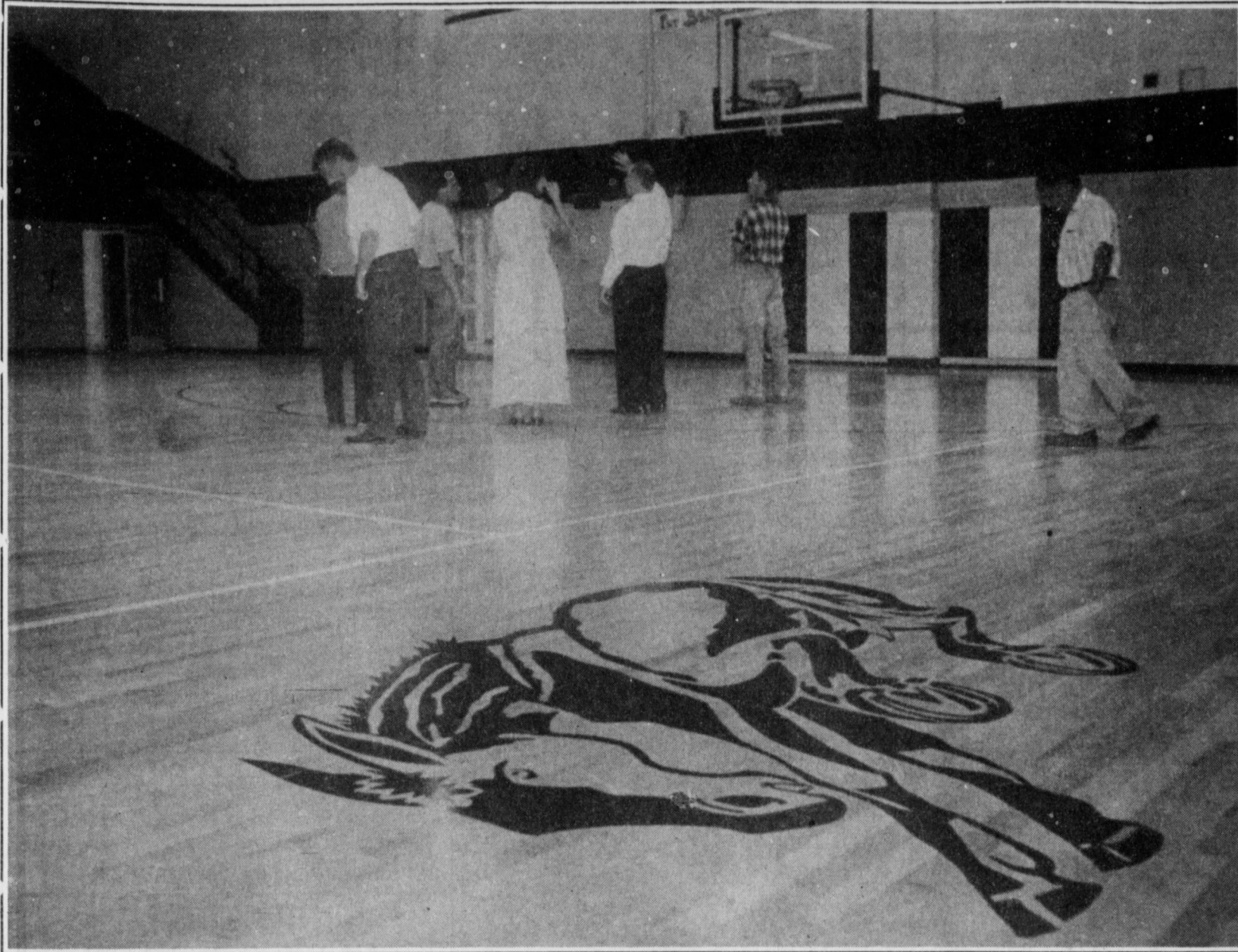
FOR the proposal: Butch Vandiver, C.E. Grant, Joey Kindle, Bennie Claunch

AGAINST the proposal:
PRESENT and not voting:
ABSENT:

The following table compares taxes on an average home in this taxing unit last year to taxes proposed on the average home this year. Again, your individual taxes may be higher or lower, depending on the taxable value of your property.

	Last Year	This Year
Average residence homestead value	\$50,000	\$50,000
General exemptions available (amount available on the average homestead, not including senior citizen's or disabled person's exemption)	\$ -0-	\$ -0-
Average taxable value	\$50,000	\$50,000
Tax rate - General Fund	.3785/\$100	.3785/\$100
Tax - General Fund	\$189.25	\$189.25

Under this proposal, taxes on the average homestead would remain the same compared with last year's taxes. Comparing tax rates without adjusting for changes in property value, the tax rate would remain the same per \$100 of taxable value compared to last year's tax rate. These tax rate figures are not adjusted for changes in the taxable value of property.



New look

Muleshoe school board members look at the new gymnasium floor last week at Watson Junior High School. The school board also viewed school district projects at DeShazo Elementary and the high school.

NURSING HOME NEWS

Kathrine Rogers celebrated her birthday Tuesday, Aug. 11. She received gifts, cards, visits and a host of good wishes.

Wednesday afternoon the ladies and some men gathered in the day room for a pea shelling marathon. A bushel of fresh picked black eyed peas were ready to be cooked or canned in no time at all. The conversation, laughs and smiles that were being seen and heard sounded like they were all enjoying their work. Lewis Wayne and Wanda Shafer picked and brought us the peas.

Mrs. Damron, Anna B. Lane, Michell & Tiffany visited Mrs. Quesenberry on Tuesday.

Webb Watts was visited by W.E. Meyers and his family this week.

Maxine Donaldson visits her dad, Arnold Beckett every week day morning.

Winnie Orcutt had several members of her family visiting her over the weekend.

Wednesday morning Jane Reeder, Ozell Cherry, Kimberly Dickerson served coffee, juice and donuts to a cheerful group of residents. Steve Claybrook directed our singspiration time.

Wednesday afternoon Glenda Jennings entertained us with a sing-a-long and puppet

show. Ruth Clements and Jean O'Brien joined us for the singing.

Tuesday afternoon Duane and Linda White came to visit us and brought gifts of home grown, sweet and delicious cantaloupes.

Friday afternoon Alene Locke, Nettie Quesenberry, Grace Scarbrough, Mattie Grimsley and Jackie Davenport peeled peaches brought to us by Lewis Wayne and Wanda Shafer. Alene Locke sent Melvin Griffin to the grocery store to purchase pie crust for the peach cobbler that she was putting together. The cobbler was served later and it was mighty tasty.

Harold and Avis Carpenter came Friday afternoon to entertain and lead us in a sing-a-long and reminiscing time. Jean O'Brien helped with the singing.

Muleshoe school menus

Week of Aug 19-21

HIGH SCHOOL AND JR. HIGH

Wednesday — Breakfast: cereal and toast; fruit or juice; milk. Lunch: burrito; chili; Mexican corn; sliced peaches; milk.

Thursday — Breakfast: pancakes; fruit or juice; milk. Lunch: corn dog; pork & beans; tator tots; apple slices; milk.

Friday — Breakfast: breakfast hotpocket; fruit or juice; milk. Lunch: breaded chicken patty; lettuce & to-

Gerardo Loya, Texas' best clarinet player, conducted a concert for the residents Friday afternoon. Following Gerardo, Billie Downing played several songs on the piano. Refreshments of watermelon was served.

Saturday morning, Buster Kittrell came to give the men shaves and hair cuts.

Melvin and Wanda Griffin directed the bingo bonanza Saturday afternoon.

Sunday afternoon the Muleshoe Singers came to sing and play gospel songs. Charles and Ann Miranda are from Earth, never the less they too are Muleshoe Singers.

Monday, Clara Lou Jones directed the reading group.

Tuesday afternoon Pat Kirk, Pat Watson, Claudine Embry, Beverly Wagnon, Nettie Wausen, Ozell Cherry, Karen Cook, Kimberly Dickerson and

Joy Stansell shampooed and set the ladies hair and gave nail care. Velta Fyie came by for a visit. At the close of the beauty shop, watermelon was served.

Bailey County FSA starting hay hotline

Kim Hanlin, CED Bailey County Farm Service Agency announces a new effort to match farmers and ranchers suffering from hay shortages with producers having hay surpluses.

"Some areas have surpluses, and some have severe shortages," said Hanlin. "This is a new and exciting way to get producers in both situations in touch with each other."

Hay Net is a national clearinghouse for producers with shortages or surpluses of hay. Farmers and ranchers are encouraged to sign up and register their hay situation at the Bailey County FSA Office. FSA will use its nationwide computer network to share the information. Producers in need of hay

will be provided with lists of the closest producers with hay to spare, and vice versa, allowing them to contact each other and make arrangements.

"I am very pleased to be a part of this effort," Hanlin said. "It's a great tool for getting badly needed hay to people who need it as quickly and efficiently as possible. I encourage everybody to participate who can, and to come in as soon as possible. The more people sign up, the better the system will work."

Hay Net will remain in operation for six months. Further information on Hay Net is available at the Bailey County FSA Office, 111 E. Ave. D, Muleshoe, Texas 79347, (806) 272-4538.

D.C. DRILLING & PUMPS
Larry Jones
 Sales & Service
 Submersible Pumps & Turbines
WELL DRILLING
 House • Irrigation
 Steel & PVC
 Licensed & Bonded
 3209 N. Prince PO Box 1757 Clovis, NM 88101
 Bus: (505) 762-0831
 Evenings: (505) 763-1347

Win the phone.

And we'll throw in the carrying case.

Register today to win a new Beetle® with a Nokia 252 phone!

First Prize
 Hewlett Packard Pavilion Computer
\$25 GIFT CERTIFICATE
 when you buy a NOKIA 252 phone!
 Good at any of these stores:
 Foot Locker, Office DEPOT, Eddie Bauer, sam goody

It's a win-win situation from Plateau Wireless and Nokia! For a limited time, you can register to win lots of great prizes — including the grand prize of a new Beetle® equipped with a Nokia 252 car phone! It's a cool way to go back to school or just a great way to go anywhere. But the first place you must go is to Plateau Wireless and register, so hurry in today!

Call toll-free: 1-877-PLATEAU (752-8328)

COOL SCHOOL

PLATEAU Wireless

PEOPLE YOU KNOW, COMMUNICATIONS YOU TRUST.

ACROSPIRITS
TUMBLING & TRAMPOLINE
 of SUDAN

★ Ages 2 and up
 ★ Beginner - Advanced Levels
 ★ Recreation & Competitive

USATT CERTIFIED STAFF
 Will Green • Mindy Gore • Brittany Gore

Class Day Available: Tuesday
 Call For More Information: Will (806) 897-1054
 Sherry (806) 894-1846 • (806) 894-7275 • (806) 638-1761

BAILEY COUNTY DEVOTIONAL PAGE

1315 W. American Blvd.
272-3333
Muleshoe, TX 


Decorators Floral & Gifts
616 South First 272-4340
Muleshoe, TX

◆◆◆ **TINO'S** ◆◆◆
104 W. American Blvd.
272-7528 • Muleshoe, TX
Daily Specials Owners: Tino & Linda Campoya

MULESHOE AREA HEALTHCARE Center
"Committed to Caring"
106 W. Ave. H Muleshoe 272-7578

SHERLEY-ANDERSON LAZBUDDIE ELEVATOR
965-2922 Lazbuddie, TX

Leal's Tortilla Factory, Inc.
"Serving West Texas since 1957"
107 E. Ash 272-5772 Muleshoe, TX


TERRA DISTRIBUTION
Hwy. 84 • 272-4203
Muleshoe, Texas 
Bruce Bruns - Mgr.


MULESHOE FEED BARN
311 W. American Blvd.
Muleshoe, TX 272-5626 


Shipman's Body Shop
Auto Painting • Wrecker Service • Free Estimates
Tractor Glass & Windshields
410 N. 1st Muleshoe, TX
272-4408 FAX 272-3366

MAPLE COOP GIN
927-5501
Maple, Texas

—Two locations to serve you—
1900 W. American Blvd. 272-5337  107 E. American Blvd. 272-3978
Muleshoe, TX

Christian Center Church
Morton Hwy. South 272-3877
Senior Pastor  Sun. 10:00 AM
Reydon Stanford Wed. 7:00 PM

WEST CAMP GIN, INC.
Better Ginning & Courteous Service
 Route 2 Box 1000 • 925-6681
James Shepard / Phyllis Shepard Muleshoe, TX

PINNACLE THERAPY SERVICES
 Speech/Language, Physical & Occupational Therapies
305 5th St. • Farwell, TX • (806) 481-CARE


BRUCE, INC. 
AIR CONDITIONING
Hwy. 214 North 272-5114
Muleshoe, TX TAOL-B003350C, LP08638

BAILEY GIN COMPANY, INC.
946-3397
Sudan, TX
Peanut Hawkins, MGR

Henry Insurance Agency, Inc.
"Serving You Since 1964"
 111 West Avenue B 272-4581
Muleshoe, TX

DALE OIL COMPANY, INC.
413 W. American Blvd.
272-5576 
Muleshoe, TX

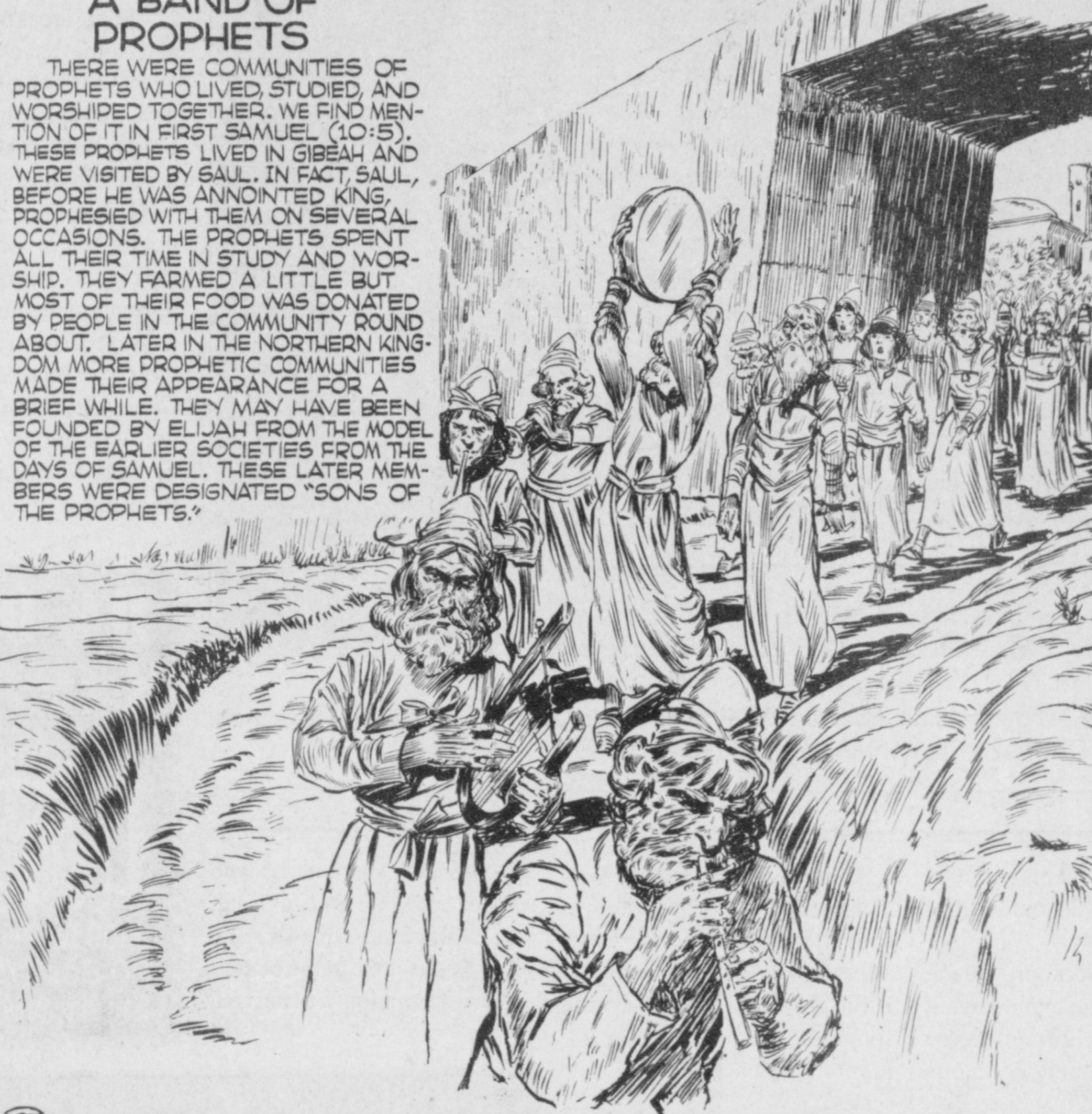
WINKLES TRUCKS, INC. 
Box 757 (806) 247-2724
Frona, TX

WESTERN DRUG 
114 Main 272-3106 Muleshoe

Facts About The BIBLE BY JOHN LEHTI

A BAND OF PROPHETS

THERE WERE COMMUNITIES OF PROPHETS WHO LIVED, STUDIED, AND WORSHIPED TOGETHER. WE FIND MENTION OF IT IN FIRST SAMUEL (10:5). THESE PROPHETS LIVED IN GIBEAH AND WERE VISITED BY SAUL. IN FACT, SAUL, BEFORE HE WAS ANNOINTED KING, PROPHESED WITH THEM ON SEVERAL OCCASIONS. THE PROPHETS SPENT ALL THEIR TIME IN STUDY AND WORSHIP. THEY FARMED A LITTLE BUT MOST OF THEIR FOOD WAS DONATED BY PEOPLE IN THE COMMUNITY ROUND ABOUT. LATER IN THE NORTHERN KINGDOM MORE PROPHECIC COMMUNITIES MADE THEIR APPEARANCE FOR A BRIEF WHILE. THEY MAY HAVE BEEN FOUNDED BY ELIJAH FROM THE MODEL OF THE EARLIER SOCIETIES FROM THE DAYS OF SAMUEL. THESE LATER MEMBERS WERE DESIGNATED "SONS OF THE PROPHETS."



SAVE THIS FOR YOUR SUNDAY SCHOOL SCRAPBOOK
This devotional & directory is made possible by these businesses who encourage all of us to attend worship services.

ASSEMBLY OF GOD
FIRST ASSEMBLY OF GOD
521 South First Street • 272-3017
Jack Stone, Min. • 272-3984
S.S. 9:45 a.m., W.S. 11 a.m. & 6:30 p.m., Wed. 7:30 p.m.

BAPTIST
CALVARY BAPTIST
1733 W. Ave. C. Rev. Jeff Coffman
CIRCLE BACK BAPTIST
Intersection FM 3397 & FM 298
Jessie Shaver, Min • 946-3676

FIRST BAPTIST
220 West Ave. E.
Stacey Conner, Min.
FIRST BAPTIST
Lazbuddie • 965-2126
PRIMERA IGLESIA BAUTISTA
223 E. Ave. E., Rev. Greg Guzman

PRIMITIVE BAPTIST
621 South First
Elder Cleveland Bass, Min.
PROGRESS BAPTIST
Progress, TX
PROGRESS SECOND BAPTIST
Arthur Hays, Min.
1st & 3rd Sundays

RICHLAND HILLS BAPTIST
17th & West Ave. D
George Malis, Pastor
ST. MATTHEWS BAPTIST
Corner of W. Boston & W. Birch
Floyd R. Monroe, Min.

THREE WAY BAPTIST
927-5467
James Sinclair, Pastor
TRINITY BAPTIST
314 E. Ave. B
Robert Brown, Min.

CATHOLIC
IMMACULATE CONCEPTION
CATHOLIC
805 E. Hickory
Joseph Augustine, Min.
CHRISTIAN
THE CHRISTIAN CENTER
Morton Hwy. • 272-5105
Reydon Stanford, Min.

CHURCH OF CHRIST
LARIAT CHURCH OF CHRIST
Sam Billingsley, Min.
S.S. 10 a.m.; W.S. 11 a.m. & 6 p.m., Wed. 7 p.m.
LAZBUDDIE CHURCH OF CHRIST
Nathan Crawford, Min.
S.S. 9:30 a.m.; W.S. 10:20 a.m. & 5 p.m.; Wed. 7 p.m.

CHURCH OF CHRIST
LARIAT CHURCH OF CHRIST
Sam Billingsley, Min.
S.S. 10 a.m.; W.S. 11 a.m. & 6 p.m., Wed. 7 p.m.
LAZBUDDIE CHURCH OF CHRIST
Nathan Crawford, Min.
S.S. 9:30 a.m.; W.S. 10:20 a.m. & 5 p.m.; Wed. 7 p.m.

SAIN IRRIGATION & MACHINES
Complete Pump Service
W. American Blvd. 272-4397
Walt Sain Muleshoe, TX 272-4148

Springlake Potatoes, Inc.
P.O. Box 280 • Springlake, TX
262-5542

MULESHOE CHURCH OF CHRIST
22nd & W. American Blvd.
John Knox, Min.
S.S. 9:30 a.m.; W.S. 10:20 a.m. & 6 p.m.;
Wed. 7:30 p.m.

16th & AVE. D
CHURCH OF CHRIST
Curtis Shelburne, Min. • 272-4619
W.S. 10:30 a.m. & 1:30 p.m.;
Wed. 7:00 p.m.

LUTHERAN
ST. JOHN LUTHERAN
Lariat, TX
Richard Greenhaner, Min.
S.S. 10:30 a.m.; W.S. 9:30 a.m.

METHODIST
FIRST UNITED METHODIST
HISPANIC MINISTRIES
E. 5th and E. Ave. D
Pastor Benito Cavazos
FIRST UNITED METHODIST
507 W. 2nd St.
Pastor Brad Reeves

LAZBUDDIE METHODIST
965-2121
EL DEVINO SALVADOR
814 W. Ave. C, Muleshoe, TX
Guadalupe Ballinas, Min.

NAZARENE
NEW VISION CHURCH OF
THE NAZARENE
814 W. Ave. C • 272-3622
David R. McIntire

PENTECOSTAL
UNITED PENTECOSTAL LIGHTHOUSE
207 East Ave. G • 1-800-454-6051
Pastor McKibben, 10 am Sunday Service
Thursday, 7 pm Bible study

INTER DENOMINATIONAL
NEW COVENANT
Plainview Hwy. Jimmy Low, Min.
Steve Claybrook, Assoc. Pastor
W.S. 10 a.m.; Wed. 7 p.m.

SIMNACHER NATIVE GRASSES
Darwin Simnacher Vince Simnacher
(505) 762-7817 (806) 946-3461
Thomas Simnacher
(806) 285-2491

MENDOZA IRRIGATION SERVICE
 272-5511
Sprinkler Erect, Repair & Move Muleshoe, TX

LEO'S BLACKSMITH & MACHINE SHOP
310 W. AMERICAN BLVD.
272-4418
MULESHOE, TX 

Lowe's 
MARKETPLACE 515 W. American Blvd.
401 W. American Blvd. Muleshoe
Muleshoe 272-4585 Muleshoe 272-4406

WES-TEX FEED YARDS, INC.
Custom Cattle Feeding
272-7555 Muleshoe, TX

Muleshoe Area Medical Center
"Your Hospital"
708 S. First St. • 272-4524
Muleshoe, TX

"THE FIVE AREA TELEPHONE COOPERATIVE ORGANIZATION"
West Plains Telecommunications Co.
Five Area Systems, Inc., Plateau Cellular Network
Five Area Long Distance - Five Area Internet
302 Uvalde Muleshoe, USA (806)272-5533

JAMES CRANE TIRE CO., INC.
 107 Main 272-4594
Mike Hahn Muleshoe, TX

IRRIGATION PUMPS & POWER
ZIMMATIC CENTER-PIVOTS
W. Hwy. 84 272-4483

O & C OSONS
Erection Sprinkler Ser. Welding & Repair
Repair & Assemble 909 W. American Blvd.
Lupe Olivarez 272-5018 272-3475

AMERICAN AVI  West
ALLEY VALVE INC. Hiway 84
272-4266
Muleshoe

1ST BANK MEMBER FDIC
202 South First 272-4515


BOBO INSURANCE AGENCY
108 E. Ave. C 272-4264

FIRST TEXAS FLBA MULESHOE
"Serving Farmer & Bailey Counties"
272-3010 • Fax 272-5388
316 Main • P.O. Box 424 • Muleshoe, TX

PACO FEED YARD, INC.
Commercial Cattle Feeders
P.O. Box 956 265-3281
Frona, TX
Feller Hughes-Mgr.

NEEDMORE Co-op Gin Company
946-3361 • Sudan, TX

Silver Screen Video 
VCR, PSX, N-64 & Camcorder Rentals
803 W. American Blvd. • 272-5540 • Muleshoe, TX


MULESHOE PEA & BEAN, INC.
 RR 2 Box 297 272-5589
Muleshoe, TX

DAMRON DRUG, INC.
308 Main St. 272-4210
Muleshoe, TX

MULESHOE LIVESTOCK AUCTION
Muleshoe, TX • Sale Every Saturday
Clayton Myers • 272-4201

Risinger Plumbing
Serving Muleshoe Area
All Plumbing Repairs
272-6772

FARWELL CONVALESCENT CENTER
"In Christ's Love, Everyone Is Someone Special"
305 5th St.
481-9027 • FARWELL, TX 

MULESHOE MOTOR CO.
1225 W. American Blvd. 272-4251 

Library holding 'paint-a-thon'

The Friends of the Library have a wonderful project in mind that will greatly benefit the Muleshoe Area Public Library. This project is called a "Paint-a-thon."

This "Paint-a-thon" is on the same line as the local "Bike-a-thon." The Friends of the Library will be asking the community to help sponsor them by donating a certain amount of money per hour. This project will help the library get a much needed paint job as well as help the Friends of the Library organization raise funds. Proceeds from this project will go to make needed renovations in the library. Donations of any amount will be greatly appreciated.



By Dyan Shipley

Bookmarks

An interesting color scheme has been suggested. Instead of plain white walls, it has been suggested the library have darker colors for each section. This will also make it easier to explain which section the patron needs to go to find their book.

The "Paint-a-thon" has been scheduled for Friday,

Aug. 28, starting at 10 a.m., and Saturday, Aug. 29, starting at 9 a.m. It has been requested that the library be closed on these two days, so that our full efforts can be devoted to the job at hand without interruptions.

If you would be interested in helping with this project please call the Muleshoe Area Public Library (272-4707) or any member of the Friends of the Library for more information. Your sponsorship would be greatly appreciated.

We hope this project will be a great success. With your help it can be.

(Dyan Shipley is the librarian at the Muleshoe Public Library.)

HOSPITAL ADMISSIONS

The Muleshoe Area Medical Center has reported admitting the following patients.

Aug. 6 — Gumercindo Aguirre, Priscilla Aguirre, Boy Garcia, Lorena Garcia, Geneva Lemons, Ruthie Lindley, Stella Smith

Aug. 7 — Miguel Acevedo, Gumercindo Aguirre, Priscilla Aguirre, Ray Gross, Antonia Guzman, Geneva Lemons, Ruthie Lindley, Yolanda Martinez, Joan Rempe

Aug. 8 — Miguel Acevedo, Gumercindo Aguirre, Priscilla Aguirre, Amanda Garcia, Ray Gross, Antonia Guzman, Geneva Lemons, Yolanda Martinez,

Abbie Overstreet, Greg Pena, Joan Rempe, Delfina Ruvalcaba, Thomas Withrow

Aug. 9 — Miguel Acevedo, Gumercindo Aguirre, Girl Apadoca, Stormy Apadoca, George Beck, Amanda Garcia, Antonia Guzman, Geneva Lemons, Leiford Lewis, Yolanda Martinez, Jewell Morrison, Abbie Overstreet, Greg Pena, Delfina Ruvalcaba, Thomas Withrow

Aug. 10 — Miguel Acevedo, Gumercindo Aguirre, Girl Apadoca, Stormy Apadoca, Amanda Garcia, Antonia Guzman, Geneva Lemons, Leiford Lewis, Jewell Morrison, Abbie

Overstreet

Aug. 11 — Gumercindo Aguirre, Alexis Apadoca, Stormy Apadoca, Antonia Guzman, Barbara Hall, Bennie Hamilton, Geneva Lemons, Leiford Lewis, Jewell Morrison, Abbie Overstreet

Aug. 12 — Emma Armstrong, Elaine Damron, Antonia Guzman, Anita Johnson, Berta Kitchens, Geneva Lemons, Leiford Lewis, Jewell Morrison, Abbie Overstreet

Aug. 13 — Emma Armstrong, Elaine Damron, Ania Johnson, Berta Kitchens, Geneva Lemons, Leiford Lewis, Jewell Morrison, Abbie Overstreet

Notice of Vote on Tax Rate

The Board of Directors of Muleshoe Area Hospital District conducted a public hearing on a proposal to increase the total tax revenues of the Muleshoe Area Hospital District by 1.9 percent on August 11, 1998.

The Board of Directors of Muleshoe Area Hospital District is scheduled to vote on the tax rate that will result in that tax increase at a public meeting to be held on

**August 20, 1998
at 7:00 p.m.**

at the Muleshoe Area
Medical Center Dining Room
708 S. First Street
Muleshoe, TX.

during *Trader Horn's*
INVENTORY REDUCTION SALE

1996 Nissan King Cab 4x4 ... was \$14,995	NOW \$12,995
1993 GMC C1500 - V-6, automatic ... was \$9,595	NOW \$7,995
1992 GMC Sierra - 4x4, short bed ... was \$9,995	NOW \$7,995
1994 Dodge Ram - 3/4 ton, 4x4, Cummins, automatic ... was \$19,995	NOW \$19,500
1995 Ford F-150 S/C Travel Time Conversion ... was \$18,995	NOW \$16,995
1990 Ford F-250 S/C - fully loaded, nice one ... was \$9,995	NOW \$7,995
1995 Dodge Dakota S/C - 318 V-8, automatic with matching camper shell ... was \$14,995	NOW \$12,995
1992 Ford Explorer - automatic, 4x4 ... was \$11,995	NOW \$9,995
1986 Ford S/C - automatic, V-8 ... was \$3,500	NOW \$2,500
1987 Ford S/C - automatic, with propane system ... was \$4,995	NOW \$3,500

TRADER HORN MOTOR COMPANY

Portales' Premier Pre-Owned Vehicle Headquarters
620 S. Ave. C • Portales, NM • (505) 359-0947 or (505) 359-1775

Notice of Vote on Tax Rate

The Board of Trustees of the Muleshoe I.S.D. conducted a public hearing on a proposal to increase the total tax revenues of the Muleshoe Independent School District by 2.4 percent on August 10, 1998.

The Board of Trustees of the Muleshoe Independent School District is scheduled to vote on the tax rate that will result in that tax increase at a public meeting to be held on

**August 24, 1998
at 7:00 p.m.**

at the
**School Administration Building
514 W. Ave. G • Muleshoe, TX.**

You can't fit a round peg in a square hole.



Tara Cox, bride-elect of Greg Young, at wedding shower
Cox honored with wedding shower

Tara Cox, bride-elect of Greg Young, was honored with a wedding shower on Aug. 1 in the home of Kristine Isaacson.

Tara is the daughter of Mr. and Mrs. Terry Cox of White Deer and Greg is the son of Mr. and Mrs. Jim Young of Muleshoe. The couple plans to be wed Aug. 15 in White Deer.

Special guests were Jan Cox, mother of the bride, Terry

Young, mother of the groom, Marilyn Young, aunt of the groom, and Debbie Young, cousin of the groom.

Hostesses were Robin Welch, Shelli Stegall, Kristine Isaacson, Shanna Glover, Rachelle King and Valinda Miller.

The Hostesses gift was a wrought iron plate rack and picnic rack.

BIRTHS

DIEGO GARCIA

Lorena Garcia of Farwell announces the birth of a son, Diego Garcia.

Diego was born at 5:21 p.m. on Aug. 5, 1998 at Muleshoe Area Medical Center. He weighed 7 lbs., 12 oz.

Grandparents are Mr. and Mrs. Juan Garcia of Farwell.

KENDAL STANCELL

Carey and Kathy Stancell of the West Camp Community announce the birth of a daughter, Kendal Pentroella Stancell.

Kendal was born at 8:44

a.m. on Aug. 9, 1998 at Methodist Hospital in Lubbock. She weighed 7 lbs., 8 oz. and was 19 inches long.

She has two brothers, Zacarey, age 5, and Bretton, age 3, and one sister, Taylor, who is 2.

Grandparents are Bennie and Carolyn Stancell of West Camp, John and Jodi Thomas of Summerfield, Texas and Jerry Grantham of Wichita Falls. Great grandparents are Rebecca Grantham of Childress and Jessie and Lois Stancell of West Camp.

OBITUARIES

LENNA HILL

Lenna R. (Groom) Hill, 91, died Aug. 11, 1998 at Lamb Health Care Center in Littlefield. Services were held Aug. 14, 1998 at First Baptist Church of Sudan with Rev. Cliff Hargrove and Tom Graham officiating. Burial followed in the Sudan Cemetery under the direction of Ellis Funeral Home in Sudan.

Hill was born July 18, 1907 in Buckner, Texas. She married Jack Hill in Lipan, Texas on Dec. 24, 1925. He died Feb. 15, 1975.

She had been a resident of Sudan since 1926, moving from Lipan. She was a member of the First Baptist Church of Sudan and was a homemaker.

Hill was preceded in death by one son, Donald Hill in 198, and one grandson, Brian Burns in 1991.

Hill is survived by three sons, Theron Hill and Orville Hill, both of Sudan, and Dale Hill of Littlefield; two daughters, Wanda Thompson and Lynette Burns of Sudan; one sister, Jewell McCracken of Amherst; 10 grandchildren and 22 great grandchildren.

The grandsons will serve as pallbearers.

The family suggests that memorials be sent to Sudan EMS of the Sudan Fire Department.

ELMER WOLFE

RALLS—Elmer Wolfe, 72, of Ralls died Aug. 11, 1998 in Crosbyton, Texas. Services were Aug. 13, 1998 at Adams Funeral Home in Ralls with the Rev. Gary Hubbard, pastor of First United Methodist Church of Ralls officiating. Burial will be in Muleshoe Memorial Park Cemetery under the direction of Adams Funeral Home of Ralls.

Wolfe was born Feb. 1, 1926 in Crestone, Colo. He married Elberta May Thompson on May 25, 1947 in Salida Colo. He formerly worked as a heavy equipment for J.C. Mills in Abernathy for nine years. He was a veteran of WWII, serving in the Marine Corps. He was a member of VFW Post 1580. He moved to Ralls in Sept. 1991 from Cannon City, Colo.

Wolfe was preceded in death by a son, Paul Edward Wolfe on Dec. 2, 1970 and on daugh-

ter, Lydia May Carvalho on May 3, 1994.

He is survived by his wife, Elberta Wolfe of Ralls; one son and daughter-in-law, Harry and Sharon Wolfe of Ralls; three sisters, Florence Fitch of Maxwell, NB, Eldora Ladd of Ft. Lupton, Co, and Beulah Sampson of Pahrump, NV; two brothers, Joy B. Wolfe of Bryan, Texas and Ernest L. Wolfe of Peoria, AZ; and two grandchildren, Paul Wolfe of Ralls and Trisha Loftin of Temple.

Health Coverage Without All The Worry.



(Hawaiian shirt not included.)

Delton E. Wilhite & Associates INSURANCE & FINANCIAL SERVICES

P.O. Box 567 • 1631 West American Blvd.
Muleshoe, TX 79347
806/272-3652 • 800/658-3292 • FAX: 806/272-3292

With HMO Blue, you get comprehensive coverage that's affordable.

Sure, running a business can be one never-ending worry. But, by choosing HMO Blue, West Texas, at least your worries about finding health care coverage for your employees could be over. With HMO Blue, you get the coverage you need with rates everyone can live with. And, if you're looking for affordable group life insurance and disability coverage, we can help you get it through Group Life and Health Insurance Co. Give me a call today, and I'll be happy to give you a quote.

Authorized Agent For



ALCO CUSTOMERS

Due to manufacturer shipping problems the Misses' B.U.M. Equipment Sleepwear shown on page 4 of this week's circular will not be available.

We regret any inconvenience.
ALCO STORES, INC.

1998 Property Tax Rates in LAZBUDDIE I.S.D.

This notice concerns 1998 property tax rates for LAZBUDDIE I.S.D. It presents information about three tax rates. Last year's tax rate is the actual rate the school district used to determine property taxes last year. This year's effective tax rate would impose the same total taxes as last year if you compare properties taxed in both years. This year's rollback tax rate is the highest tax rate the school district can set before it must hold a rollback election. In each case these rates are found by dividing the total amount of taxes by the tax base (the total value of taxable property) with adjustments as required by state law. The rates are given per \$100 of property value.

Last year's tax rate:	
Last year's operating taxes	\$667,764
Last year's debt taxes	\$60,494
Last year's total taxes	\$728,258
Last year's tax base	\$48,550,530
Last year's total tax rate	1.5000/\$100
This year's effective tax rate:	
Last year's adjusted taxes	
(after subtracting taxes on lost property)	\$719,350
/ This year's adjusted tax base	\$47,242,029
(after subtracting value of new property)	
= This year's effective tax rate	1.5226/\$100
This year's rollback tax rate:	
Amount of local taxes needed based on state funding formulas and 1998-99 student enrollment	\$670,846
/ This year's adjusted tax base	\$47,357,597
= This year's local maintenance and operation rate OR adopted 1996 maintenance and operation rate	1.4165/\$100
= This year's maintenance and operation rate (use greater of 2 rates above)	1.4165/\$100
+ \$0.08	1.4965/\$100
+ Rate increase adopted for 1997-98 school year	0.0251/\$100
+ This year's debt rate	0.0841/\$100
+ Rate to recoup loss certified by commissioner of education	0.0000/\$100
= This year's rollback rate	1.6057/\$100

Schedule A: Unencumbered Fund Balances

The following estimated balances will be left in the unit's property tax accounts at the end of the fiscal year. These balances are not encumbered by a corresponding debt obligation.

Type of Property Tax Fund	Balance
Unencumbered Funds	\$200,000

Schedule B: 1998 Debt Service

The unit plans to pay the following amounts for long-term debts that are secured by property taxes. These amounts will be paid from property tax revenues (or additional sales tax revenues, if applicable).

Description of Dept	Principal or Contract Payment to be Paid from Property Taxes	Interest to be Paid from Property Taxes	Other Amount to be Paid	Total Payment
Capital Acquisition	\$50,000	\$6,653	\$0	\$56,653
				\$56,653
- Total required for 1998 debt service				\$56,653
- Amount (if any) paid from funds listed in Schedule A				\$0
- Excess collections last year				\$18,000
- State aid for facilities				\$0
= Total to be paid from taxes in 1998				\$38,653
+ Amount added in anticipation that the unit will collect only 97.00% of its taxes in 1998				\$1,195
= Total debt levy				\$39,848

This notice contains a summary actual effective and rollback tax rates' calculations. You can inspect a copy of the full calculations at 305 3rd St., Bovina, TX 79009.

Name of person preparing this notice: RONALD E. PROCTER
Title: CHIEF APPRAISER, PARMER C. A. D.

Date prepared: 8/7/98

PUBLIC NOTICE

The Board of Trustees of the
Muleshoe Independent School District
will meet

**Monday
August 24, 1998**

for the purpose of adopting a budget
for the 1998-99 school year.

The meeting will begin at

7:00 p.m.

in the

**School Administration
Building
514 W. Ave G**

Any taxpayer of the district may be
present and participate in the hearing.

Back To School SAVINGS Sale

At Lowe's...

We help your school year budget!

PRICES EFFECTIVE AUGUST 12-18, 1998

MEAT

- VALUE PACK
GROUND BEEF.....LB **79¢**
 SMALL PACK
GROUND BEEF.....LB **99¢**
 LONESTAR PRIDE BEEF BONELESS
 SOLD ONLY IN 3.5 LB. BOXES OF (8)
 7 OZ. STEAKS FOR \$11.99
RIBEYE STEAKS.....PER STEAK **\$1.50**
 LONESTAR PRIDE BEEF BONELESS
 SOLD ONLY IN 3.75 LB. BOXES OF (6)
 10 OZ. STEAKS FOR \$11.99
T-BONE STEAKS.....PER STEAK **\$2.00**
 VALUE PACK
BEEF FAJITAS.....LB **\$2.59**
 FARM RAISED
WHOLE CATFISH.....LB **\$2.29**
 VALUE PACK - MARKET MADE
HAMBURGER PATTIES.....LB **\$1.39**
 BONE-IN
PORK BUTT ROAST.....LB **99¢**
 VALUE PACK - BONELESS SKINLESS
CHICKEN BREAST.....LB **\$1.99**
 OLD MILL
HOT LINKS.....LB **\$1.59**
 DECKER SPICED
LUNCH MEAT.....5 LB **\$5.99**
 DECKER 4X6
CHOPPED HAM.....10 OZ. **2/\$3**
 DECKER
JUMBO MEAT FRANKS
OR MEAT BOLOGNA.....1 LB PKG. **79¢**

12 PACK-12 OZ. CANS OR
 6 PACK-24 OZ. BTL.

PEPSI.....YOUR CHOICE **2/\$5**

6 PACK-12 OZ. CANS

DR. PEPPER, BIG RED
OR CANADA DRY..YOUR CHOICE **\$1.68**

3 LITER BTL.

DR. PEPPER, BIG RED
OR CANADA DRY..YOUR CHOICE **\$1.88**

- NABISCO ASSORTED
NILLA WAFERS.....11 TO 12 OZ. PKG. **\$2.39**
 ORIGINAL, CARAMEL OR OAT RAISIN
SNACKWELL'S
GRANOLA BARS.....8 OZ. PKG. **\$2.29**
 PERFECT BALANCE, ORIGINAL,
 100% COLOMBIAN OR FRENCH ROAST
HILLS BROS.
COFFEE.....11.5 TO 13 OZ. CAN **\$2.31**
 ASSORTED BETTY CROCKER
HAMBURGER OR
TUNA HELPERS.....3 TO 9.25 OZ. PKG. **\$1.39**



Mfr. coupon expires Sept. 12, 1998

Save 40¢

32 Fl. Oz. Best Maid
 Hamburger Slices



Consumer: Only one coupon per purchase and only for this product. RETAILER: Best Maid Products will reimburse you for the face value of this coupon plus 8 cents if submitted in compliance with our redemption policy. Copies available upon request. Void if copied, prohibited or regulated. Cash value 1/100 cent. Send to: Best Maid Products, ATTN: Patricia Dalton, P.O. Box 1809, Fort Worth, Texas 76101

- BEST MAID
 SAVE 40¢ WITH COUPON
HAMBURGER
SLICED DILLS.....32 OZ. JAR **\$1.68**

PRODUCE

- RUSSET
POTATOES.....10 LB. BAG **\$1.34**
 GREEN LEAF OR ROMAINE
LETTUCE.....EA. **56¢**
 CELLO PACK
TOMATOES.....4 PACK **99¢**
 JUMBO ITALIAN
SWEET RED ONIONS.....LB **52¢**
 CALIFORNIA
BARTLETT PEARS.....LB **72¢**
 CALIFORNIA
PLUMS.....LB **84¢**
 CALIFORNIA
ZUCCHINI SQUASH.....LB **76¢**
 LARGE
BELL PEPPERS..... **4/\$1**

FROZEN & DAIRY

- ASSORTED FAMILY SIZE
RED BARON
12" PIZZA.....21 TO 24.2 OZ. PKG **\$2.99**
 ASSORTED ECKRICH
LUNCH MAKERS.....2.6 TO 2.8 OZ. PKG **2/\$1**
 MUISTEN
CHEESE.....LB **\$1.99**
 DECKER MEAT OR BEEF
CORN DOGS.....1 LB **2/\$3**
 ASSORTED
SUNNY DELIGHT DRINKS..16 OZ. BTL. **2/\$1**
 ASSORTED
SHEDD'S SPREAD
COUNTRY CROCK.....48 OZ. TUB **\$1.99**
 16 OZ. FISH STICKS, 12 OZ. FISH RINGS
 OR 9 OZ. SHRIMP RINGS
FISHER BOY.....YOUR CHOICE **\$1.99**
 YOGURT OR DIET/LIGHT OR ASSORTED RIMS
 BLUE BUNNY 1/2 GAL. ROUND WHERE
 BLUE BELL NOT AVAILABLE
BLUE BELL
ICE CREAM.....1/2 GALLON **\$2.99**
 MINUTE MAID
ORANGE JUICE.....16 OZ. FROZEN CAN **\$1.74**
 STEAK N MACARONI, WESTERN
 CHARBROIL, STEAK N TATERS
 OR STEAK N CORN
NIGHT HAWK
DINNERS.....6 TO 8 OZ. PKG. **\$1.76**
 BLUE BELL VARIETY/VANILLA
MINI COUNTRY CONES.....10 PACK **2/\$5**



HEALTH & BEAUTY

- ASSORTED
ALBERTO V05
SHAMPOO OR
CONDITIONER.....15 OZ. BTL. **88¢**
 UNSCENTED OR REGULAR
 ANTI-PERSPIRANT & DEODORANT
MITCHUM ROLL-ON.....1.5 OZ. PKG. **\$2.62**



- JIF
PEANUT BUTTER.....18 OZ. **\$1.51**
 NABISCO ASSORTED
PREMIUM CRACKERS.....16 OZ. PKG. **88¢**
 • SMALL 34 CT. • EX. LARGE NITE 18 CT.
 • MEDIUM 26 CT. • LARGE 18 CT. • SUP.
 MEDIUM 20 CT. • SUP. LARGE 16 CT.
FITTI DIAPERS.....YOUR CHOICE **\$3.99**
 YOUR CHOICE
 • 13.75 OZ. WAFFLE CRISP OR 18 OZ.
 GOLDEN CRISP • 13 OZ. COCOA OR
 FRUITY PEBBLES
POST CEREAL.....13 TO 18 OZ. BOX **\$2.11**
 FRITO LAY®
FLAVOR OR LUNCH
VARIETY PACK.....9.5 OZ.-REG. \$2.99 **2/\$4**
 TOSTITOS®
CON QUESO DIP.....REG. \$2.39-11 OZ. **\$1.69**
 LIBBY'S CHICKEN OR ORIGINAL
VIENNA SAUSAGE.....5 OZ. CAN **2/84¢**
 LIBBY'S
POTTED MEAT.....3 OZ. CAN **4/\$1**
 HUNT'S
TOMATO KETCHUP.....24 OZ. BTL. **99¢**
 GRAPE, RED PLUM OR APPLE
BLACKBURN'S JELLY.....18 OZ. JAR **99¢**
 LOG CABIN LITE, ORIGINAL OR BUTTER
COUNTRY KITCHEN SYRUP.....24 OZ. **\$1.87**
 HUNT'S ASSORTED
SNACK PACK
PUDDING.....3.2 TO 5 OZ.-4 PACK **96¢**
 BETTY CROCKER ASSORTED
FRUIT ROLL-UPS.....5 OZ. **\$1.89**
 WHITE/PASTEL ASSORTED
ANGEL SOFT
BATH TISSUE.....4 ROLL PKG. **88¢**
 REGULAR OR W/BLEACH POWDER
 REG. \$2.99
CLASSIC XTRA
DETERGENT.....6.4 TO 7 LB. BOX **2/\$5**
 REGULAR OR W/BLEACH
 REG. \$2.99
XTRA LIQUID
DETERGENT.....128 OZ. JUG **2/\$5**
 ASSORTED
FRISKIES CAT FOOD.....5.5 OZ. CAN **2/62¢**
 BEEF FLAVOR DINNER
ALPO DOG FOOD.....20 LB **\$6.66**
 REGULAR OR LEMON
CRYSTAL WHITE
OCTAGON DISH LIQUID.....40 OZ. BTL. **\$1.24**
 ORIGINAL
NIAGARA SIZING.....20 OZ. **94¢**
 4 PACK
FRAPPACCINO.....9.5 OZ. BTL. **\$2.99**

WESTERN MONEY
 UNION TRANSFER®
 "The fastest way to send money"

Lowe's
 MARKETPLACE

401 W. American Blvd.
 Muleshoe 272-4585



515 W.
 American Blvd.

WE RESERVE THE RIGHT
 TO LIMIT QUANTITIES
 IN TEXAS

Muleshoe
 272-4406

See ya at
LOWE'S