

News File
HCH5m Box 201
Dart k, AR 72852-9501

CXW 17

Member
TPA
1997
TEXAS PRESS
ASSOCIATION

BAILEY COUNTY JOURNAL

PPA
Panhandle Press
Association

Volume 37, No. 4

Published Every Sunday at Muleshoe, Bailey County, Texas 79347

Sunday, January 25, 1998

School, hospital districts big losers in abolishing tax

By **TERESA STONE**
Journal staff writer

The movement to abolish the City of Muleshoe's personal vehicle tax could have serious implications for the local school and hospital districts.

With citizens expressing discontent to Muleshoe's City Council concerning the annual tax on vehicles, problems may be ahead for Muleshoe ISD and Muleshoe Area Hospital District, which also impose a personal auto tax.

The issue of revoking the current personal tax on vehicles was discussed before the City Council Tuesday by numerous concerned taxpayers.

The city stands to lose approximately \$80,000 of 1997 tax revenue if the vehicle tax is repealed. However, the city could recoup the loss by raising taxes on homes.

Muleshoe ISD stands to gain approximately \$243,434 from taxes on vehicles from 1997, according to Bailey County Appraisal District.

School superintendent Bill Moore said that the revenue generated from the tax is vital, but he can't speak for the Trustees, who would have the final say on whether or not to discontinue the tax.

If the tariff is revoked and

the district decides it needs to recover the loss, Moore said the district may be forced to raise property taxes 13 to 15 cents to approximately \$1.40, which is still below the state average.

As of Thursday afternoon, Moore was unaware of any citizen requesting to speak in front of the board, or requesting that the board examine the tax issue.

A third entity in town which taxes personal autos is Muleshoe Area Hospital District, which could possibly have the most to lose if the tax is revoked.

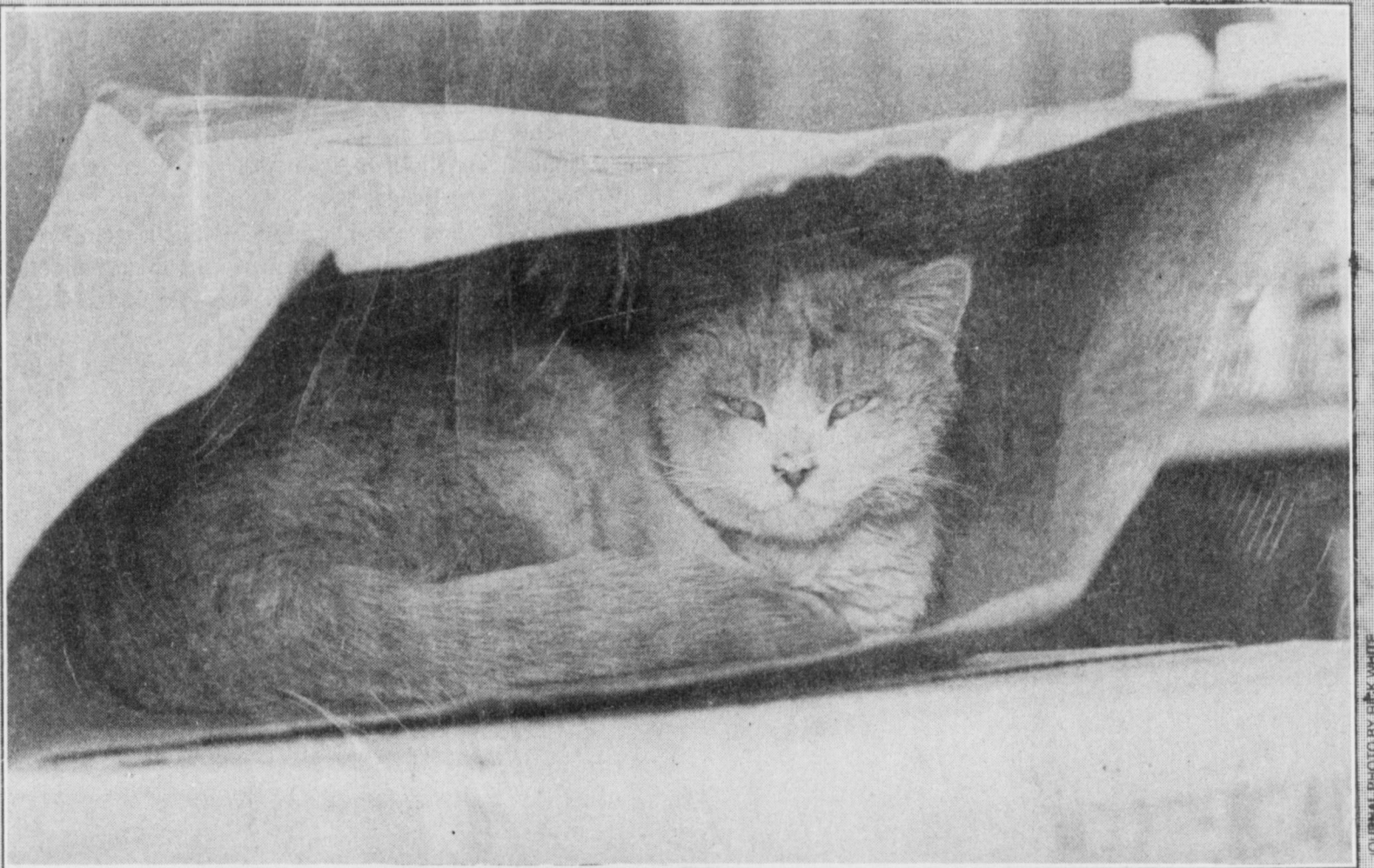
The hospital stands to gain approximately \$42,392 from 1997 taxes on personal vehicles. According to hospital district director Jim Bone, if the district was to lose the revenue, it have no way to regain the funds since there is a cap on tax rates for homes.

As with the school district, as of Thursday no citizen had contacted hospital officials to speak in front of the board about revoking the tax.

When the Bailey County Appraisal District sends out bills for the tax, all three entities make up the total due. As

see **TAX** on page 3

CAT NAP



Muffin, a mixed bred cat, can often be found napping in a Lowe's grocery bag at Wiedebush & Company

JOURNAL PHOTO BY RICK WHITE

Muleshoe schools battling with flu

By **TERESA STONE**
Journal staff writer

The flu has made its mark, putting hundreds of Muleshoe residents out of commission this week.

People around town have been fighting influenza, or the flu as it is more commonly called, with an upswing in the number of infections popping up throughout last week. The flu is affecting people

of all ages, but students have been hit hard, causing an increase in absences campus-wide in the Muleshoe schools.

According to MISD Superintendent Bill Moore, the school was experiencing a 10 percent increase in absences earlier this week, peaking Tuesday with 270 of the districts 1,440 students out of school. But on Thursday Moore said

that it looked like things were turning around with 228 on Wednesday and 217 Thursday.

Moore is hoping that the three-day weekend will help stop the spread of the virus, giving both students and faculty a chance to recuperate.

With an increased number of students returning on Wednesday and the long week-

see **FLU** on page 3

Chase ends in crash

A high-speed chase that started near Plainview ended shortly after midnight Friday when a Wyoming man crashed a stolen pickup into a fire hydrant on a downtown Muleshoe street.

Ray Pena, who allegedly assaulted his live-in girlfriend in Lockney and later stole a truck, frequently drove at speeds of more than 100 miles per hour along U.S. Highway 70 with several police officers in pursuit.

Local police placed metal spikes across the road near the YL Highway in an attempt to stop Pena, but the 38-year-old suspect continued more than three miles on the truck's tire rims before running into a fire hydrant at the corner of First Street and Avenue C about 12:30 p.m.

The unemployed Cheyenne, Wyo. man then fled on foot before being captured a short time later in an alley behind the Muleshoe City Hall.

"We're lucky nobody was hurt," Bailey County Sheriff Coy Plott said. "I knew he wasn't going to stop until he crashed or ran out of gas."

Pena was arraigned in district court Friday morning on two counts of fleeing, aggravated assault and unauthorized use of a motor vehicle. He was being held on \$14,000 bail at the Bailey County Jail.

The chase started in Hale County near Plainview, where the suspect also allegedly stole a tank of gas from a convenience store.

PAGE ONE

A QUICK READ OF THE NEWS

Local woman wins contest

A Muleshoe couple will be attending this year's American Music Awards courtesy of a Lubbock radio station.

An avid listener of KZ102, Lucy Posadas won a all-expenses paid trip for two to the awards to be held Monday evening in Los Angeles.

Two weeks ago, Posadas was the 10th caller in a radio contest that made her eligible for the drawing of the tickets.

Monday, the station held the drawing and the first person they chose happened to be Posadas, who was listening to the program with her children at home.

If Posadas hadn't been listening or she didn't call in the station back in the given time allotment, the radio station would have chosen another name.

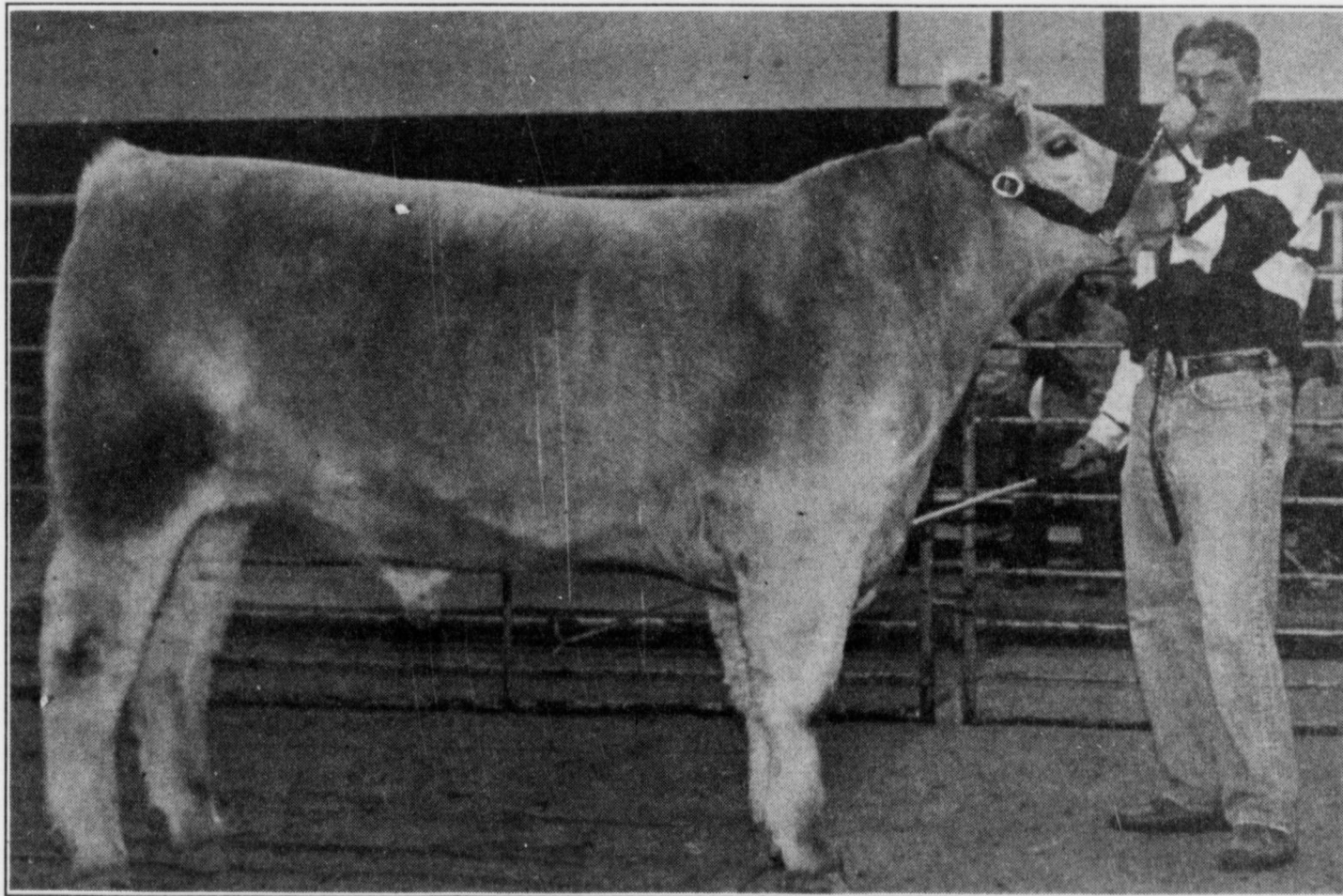
Posadas and her family left today and plan on spending the entire week in California. Her husband Hector will be accompanying her to the music awards.

LOCAL WEATHER

	High	low	Pre.
Tuesday	59	26	—
Wednesday	44	24	—
Thursday	55	25	—
Total to date	.12 inches		

EXTENDED FORECAST

Partly cloudy Sunday through Tuesday. Highs in the 60s. Lows in the 30s.



Grand Champion steer

Seth Black shows off his Charolais steer that was named grand champion at the annual Lazbuddie Junior Livestock Show Wednesday at the County Barn in Friona.

BLACK, MORRIS, SEATON SHOW GRANDS AT LAZ SHOW

FRIONA — Gearing up for the Parmer County Junior Livestock Show Jan. 23-24, Lazbuddie 4-H and FFA members put their entries through their paces here Wednesday in the annual Lazbuddie Junior Livestock Show.

While the local show is a preliminary to the Parmer County Show, it gives Lazbuddie exhibitors a chance to see how their livestock projects stack up with their neighbors and

gives the young show persons experience.

It also gives the Lazbuddie youth a chance to collect some nice hardware, including jackets from Joe's Boot Shop for grand champions and buckles for grand, reserve grand and showmanship from Sherley-Anderson Elevators. Ribbons were donated by the North Lazbuddie Gin.

Over a six-hour span, judge Ronny Dennis of Olton gave the Lazbuddie

entries the once over. Dennis, a retired ag teacher with 34 years experience, moved steadily and methodically through the steers, lambs, goats and swine. There were 15 steers entered, followed by 19 lambs, 5 goats and 55 barrows.

Seth Black's 1,235-pound Charolais steer was chosen the grand champion, while a Red Angus steer

see **STOCK SHOWS** on page 2

AROUND MULESHOE

Jarman awarded academic scholarship

Gina Lynn Jarman, the daughter of Gene Paul and Coralynn of Lazbuddie, was awarded a scholarship from Texas Tech University College of Human Sciences.

Jarman, a 1994 graduate of Lazbuddie High School, is a senior at Texas Tech University majoring in Dietetics.

Bailey County EMS Ride-A-Long

Bailey County EMS has a new program for students that are in grade 12 or will be 18 years old by July.

This program is for young adults interested in the medical field. It will help students gain a better aspect of the EMS field.

Each student will be interviewed and chosen by Jackie Wayne Burris, Director of Bailey County EMS.

If interested, contact Bailey County EMS, 8 a.m.- 5 p.m., Mon-Fri. at 806-272-4390. Anyone interested in taking an EMS class please contact the EMS office.

Order Valentine cookies today

This Valentine's Day tell your sweetheart you love them with a giant, personalized cookie delivered right to them.

Calvary Baptist Church of Muleshoe is sponsoring the sell

of their 9 inch decorated Valentine cookies for \$5 each. The cookies will be boxed. Delivery, only available within Muleshoe city limits, will be Feb 13th and 14th.

To place an order call 272-4012 or contact a member of Calvary Baptist Church. Last date for orders is Feb. 5. All proceeds go to benefit the Calvary Baptist Church Youth Group.

Emergency Care attendant course

An emergency care attendant course will be offered by the Lazbuddie Emergency Medical Service at the Lazbuddie School.

The course is open to anyone 18 years of age or older. The course is excellent training for all young parents or anyone interested in basic training for medical emergencies.

The course will begin Feb., 17, 1998 at 6 p.m. and will meet two nights a week for about nine weeks.

The time of the classes is 6 p.m. until 10 p.m. upon satisfactory completion of the class the students will receive Emergency Care Attendant certification from the Texas Department of Health.

The cost for the course will be \$150. Mr. Joe Haseloff will be teaching the course. For more information or to enroll, contact Glenn Lust 806-965-2828, Connie Barnes 806-965-2118.

Thank You doesn't seem to say enough to those who have called, visited and remembered our family in their prayers during my recovery from a recent accident. Your many acts of kindness are deeply cherished and will not soon be forgotten. The people in this community are truly unbelievable. May the blessings of God be with you always.

*Daniel and Mary Jo Schacher & Family
Gene and Vernie Schacher & Family*

SIMNACHER NATIVE GRASSES

Experts in the sowing and harvesting of native grasses of the Great Plains

Most native grass seeds available at wholesale prices when purchased with turnkey sowing jobs.

We also provide lifetime care for your CRP Government contract. All work done in compliance with Government specifications.

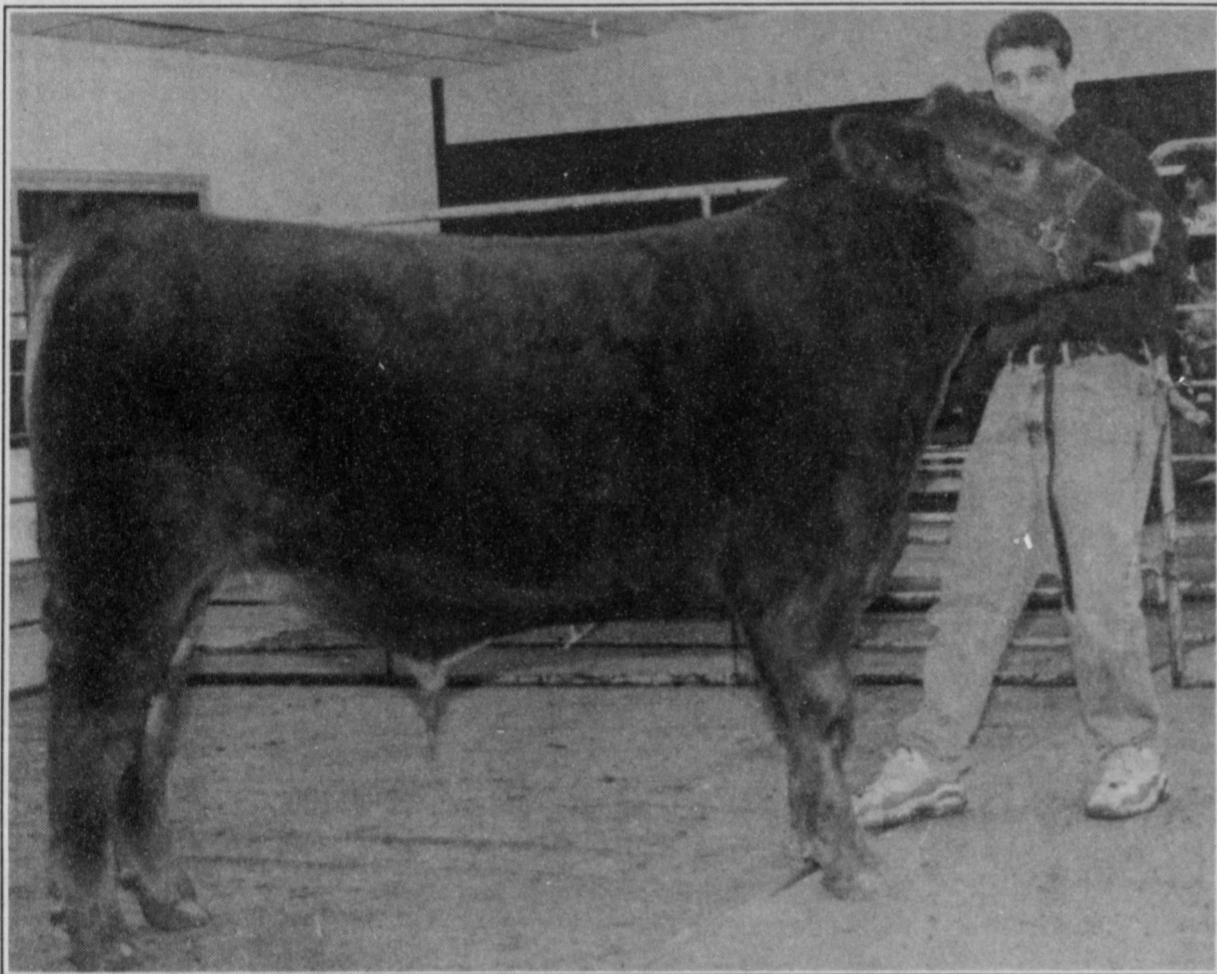
Please call:

Darwin Simnacher
(505) 762-7817
Fax (505) 763-9115

Vince Simnacher
(806) 946-3461
Fax (806) 946-3604

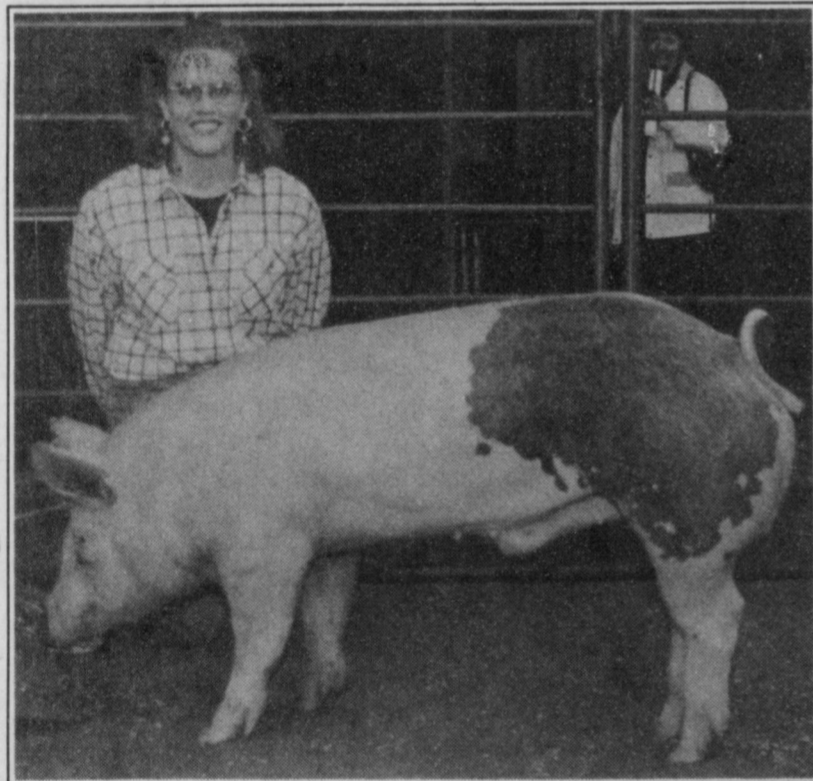
or
Thomas Simnacher
(806) 285-2491

References provided upon request.



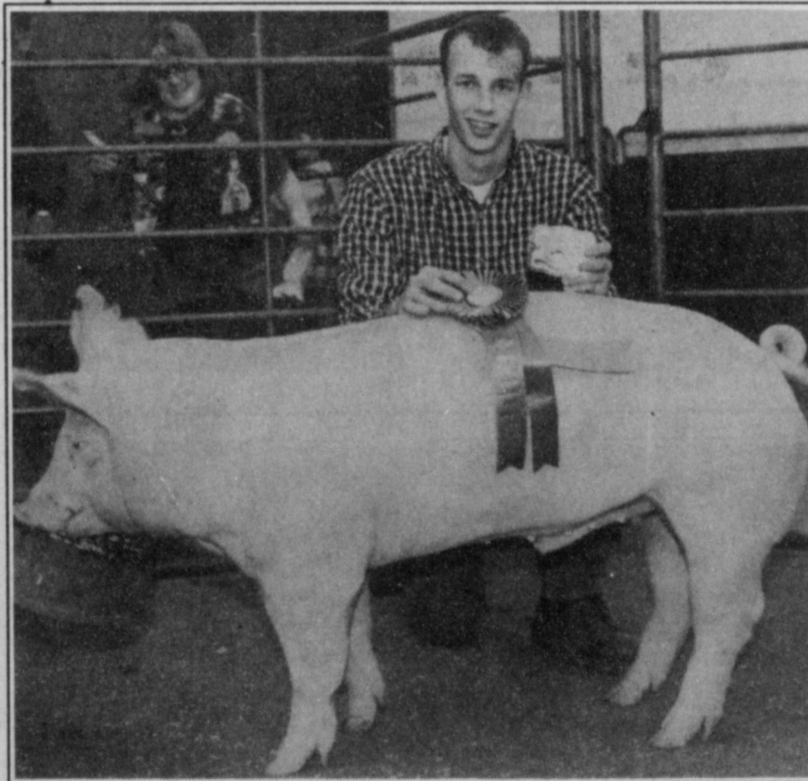
Reserve Grand

Jason Jesko's Red Angus steer was judged the reserve grand champion at the Lazbuddie Junior Livestock show Jan. 21. The steer was also the champion English breed.



Grand champion Barrow

Shena Seaton had the grand champion junior market barrow at the Lazbuddie Junior Livestock Show.



Reserve Grand Champion Barrow

Cade Morris shows his sister Kia's reserve grand champion junior market barrow at the Lazbuddie Livestock Show.

"Why I Do Not Attend Movies"

Actually, I do. Attend movies, that is. But a friend found the following and passed it along, and I thought you might enjoy it.

As the story goes, two ministers, having heard just about all of the excuses people give for not going to church, put together this list of reasons for not attend-

ing—I can't sit still for a couple of hours or longer.

7) I don't always agree with what I see and hear.

8) I don't think that they have very good music.

9) The thermostat is always too high or too low, and the lighting is terrible.

10) The shows are usually in the evenings, and that's the only time I am able to be home with my family.

And we might add a few more.

11) Crowds really bother me.

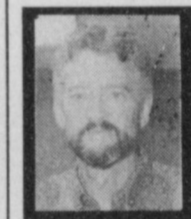
12) I went once and the lady who sat next to me was really unfriendly.

13) I just hardly ever get out—except to go to the store, the club, the hair dresser, my friend's house, the coffee shop, the . . .

14) Family dropped in and I just wouldn't dream of asking them to go with me.

15) One time, back in 1946, an usher at a picture show really offended me.

Ah, well, I suppose I could go on in this vein, but I'm sort of sleepy. You see, I, uh, well, I sort of got caught up in a three-hour-long movie last night.



Focus On Faith
Curtis Shelburne

ing. Not attending the movies, that is. Here's what they came up with:

1) The manager of the theater never called on me.

2) I did go a few times, but no one spoke to me.

3) Every time I go they ask me for money—they mention it even before I get in.

4) Many of the folks who attend do not live up to the moral standards of the films. [I'm sort of wondering where they found many moral standards in many films!]

5) I went so much as a child that I've had all the entertainment I need.

6) The performance lasts too

Curtis Shelburne is minister of the 16th & D Church of Christ in Muleshoe.

STOCK SHOW

From page 1

exhibited by Jason Jesko was the reserve grand.

Seth's entry was also the champion Exotic steer. Savannah Black had the reserve champion Exotic. Jason's steer also stood as the champion English steer. Triston Thorn had the reserve champion.

Showmanship honors went to Wayne Terry in the Junior Division and Brice Redwine in the Senior Division.

In the lamb show, Cade Morris and Suzanne Aragon stood atop the show with their champion and reserve champion medium wools. Cade's 120-pounder was the grand champion, while Suzanne's 107-pounder was the reserve grand.

Other breed champions and reserve champions included Savannah Black and Shonah Black in the Finewools; Jake Louder and Kia Morris in the Finewool Crosses; and Aragon and Amanda Martinez in the

Southdowns.

Cade Morris and Savannah Black were the top sheep showpersons.

Kolby Wilkerson had the market cornered in the meat goat show, winning both grand and reserve grand champion.

In the swine show, Shena Seaton's powerful Cross was judged the grand champion, while a Yorkshire exhibited by Cade and Kia Morris was the reserve grand champion. Other breed champions and reserve champions included Trey Nickels and Kelly Harris in the Berkshires; Seaton and Jeffrey Phillips in the Chesters; Wayne Terry and Seaton in the Durocs; Cade Morris and Shannon Redwine in the Hampshires; Suzanne Aragon, who won both holes in the Spots; and Tobin Redwine and Shonah Black in the Polands.

Nickels had the reserve York behind Morris and Aragon had the reserve cross behind Seaton.

Tobin Redwine and Nickels were the top showmen.

Here are results:

Lazbuddie Junior Livestock Show

January 21

Parmer County Barn

JUNIOR MARKET STEER SHOW

English

Lightweight (996-1066 lbs.)—1. Triston Thorn; 2. Andy Martinez.

Heavyweight (1235-1385 lbs.)—1. Jason Jesko; 2. Wayne Terry.

Champion English

Jason Jesko

1st, Heavyweight

Reserve Champion English

Triston Thorn

1st, Lightweight

Exotics

Lightweight (1090-1120 lbs.)—1. Tobin Redwine; 2. Michael Martinez; 3. Brice Redwine.

Mediumweight (1145-1195 lbs.)—1. Jeffrey Seaton; 2. Tray Thorn; 3. Jason Jesko; 4. Brice Redwine.

Heavyweight (1235-1500 lbs.)—1. Seth Black; 2. Savannah Black; 3. Shonah Black; 4. Jeffrey Seaton.

Champion Exotic

Seth Black

1st, Heavyweight

Reserve Champion Exotic

Savannah Black

2nd Heavyweight

GRAND CHAMPION

JUNIOR MARKET STEER

Seth Black

Champion Exotic

RESERVE GRAND CHAMPION

JUNIOR MARKET STEER

SHOWMANSHIP

Junior

Wayne Terry

Senior

Brice Redwine

JUNIOR MARKET LAMB SHOW

see STOCK SHOW on page 9

In honour of the 1948 50th Anniversary 1998

*Fiftieth Wedding Anniversary of
Joe & Claudine Embry
Their Children and Grandchildren
request the pleasure of your company
at their Anniversary Reception
on Saturday, January 31, 1998
from 3:00 to 5:00 P.M.
in the Family Room of the
Muleshoe Church of Christ
2201 W. American Boulevard
Muleshoe, Texas*

*Your presence is a treasured gift.
We request no other.*

No local invitations are being sent.

Cotton growers hold elections

A meeting to elect a business director to Plains Cotton Grower, Inc. will be held at 7 p.m. Feb. 9 at the Bailey County Coliseum.

The new business director will be elected by Bailey County cotton producers and agribusiness members.

James L. Brown of Muleshoe is currently the Bailey County producer director to the 25-county cotton organization and Marvin McCaul of Maple is the current business director.

Each of the counties in PCG territory has two directors, one business representative and the other a cotton producer. They are elected on alternate years for two-year terms. Each is eligible for re-election every second year.

All producers and business are invited to the meeting. However, only current dues-paying members of PCG will be eligible to be elected or to vote in the election.

A PCG representative will conduct the election, and review and answer any questions.

TAX

From page 1

an example, on a \$20,000 vehicle the owner would pay a total tax of \$436.82. Of that \$254.08 goes to MISD, \$132.74 goes to the City of Muleshoe, and \$50 goes to the hospital district.



Reserve Grand Champion Lamb

Suzanne Aragon had the reserve grand champion junior market lamb at the Lazbuddie Junior Livestock Show Jan. 21, in Friona.

FLU

From page 1

end already scheduled, Moore said that the district was not faced with the decision of closing the schools. If the absent rate would have continued to increase however, Moore said that they would have been forced to seriously consider the drastic option.

Last week, Perryton ISD did close its schools for two and a

half days. The school system had more than 300 students and a number of staff out due to the flu, according to the Amarillo Daily News.

Pep's annual Homecoming

The Pep Ex-Students Association 38th Annual Homecoming will be held Saturday, January 31st 1998 at the Pep Parish Hall.

The Ex-Students Assn. extends a cordial invitation to all former students, teachers, patrons and friends to attend. Classes to host reunions will be years ending in 1,2,3,4, and 5. There will be classrooms available for reunions.

Registration begins at 5:30 pm. The banquet will begin at 7 p.m. Price for registration and banquet is \$10 for adults, and \$5 for children 12 and under.

SALE

Starts Monday

**January 26th
10 A.M.**

NEW TY
Beanie Babies
are here!

Store Hours:
Monday - Saturday
10 A.M. to 5:30 P.M.

The Country House

Collectables & Fine Gifts
123 Marshall Howard Blvd • Hwy. 84 by pass
Littlefield, TX • (806) 385-3245

CRP GRASS SEED

- ★ SIDE OATS
 - ★ SWITCHGRASS
 - ★ BLUEGRAMA
 - ★ BUFFALOGRASS
 - ★ BLUESTEMS
 - ★ INDIANGRASS
- AND MANY OTHERS

LET US PUT OUR 40 YEARS OF EXPERIENCE AND COMMITMENT TO WORK FOR YOUR CRP ACRES TODAY!

MOST SEED ARE PRODUCED AND PROCESSED ON OUR FARM.

Bamert Seed Company
Ph. 806-272-5506 or 800-262-9892
Muleshoe, TX 79347

For a Journal subscription call 272-4536

YEAR END CLEARANCE

1996 Chevy Corsica

4 to choose from!

\$179⁰⁰ Down
\$179⁰⁰ Mo.

Sale price \$8,624. 9.9% APR for 60 mos.

1996 Olds Cutlass

2 to choose from!

\$225⁰⁰ Down
\$199⁰⁰ Mo.

Sale price \$8,624. 9.9% APR for 60 mos.

1997 Chevy Cavalier

8 to choose from!

\$199⁰⁰ Down
\$199⁰⁰ Mo.

Sale price \$9,995. 9.9% APR for 66 mos.

91 Chevy Cavalier #76037A. \$130⁰⁰ DOWN \$130²⁷ MO. <small>Sale price \$4,995. 12.9% APR for 48 mos.</small>	94 Pontiac Sunbird #5141A. \$169⁰⁰ DOWN \$169⁰⁰ MO. <small>Sale price \$7,209. 11.9% APR for 54 mos.</small>	SOLD SOLD SOLD \$135⁰⁰ DOWN \$135⁰⁰ MO. <small>Sale price \$7,209. 11.9% APR for 54 mos.</small>	90 Chrysler 5th Avenue #71358C. \$149⁰⁰ DOWN \$149⁰⁰ MO. <small>Sale price \$5,713. 12.9% APR for 60 mos.</small>	93 Ford Tempo #72162C. \$149⁰⁰ DOWN \$149⁰⁰ MO. <small>Sale price \$6,197. 12.9% APR for 54 mos.</small>	96 Geo Metro #5231. \$166⁰⁰ DOWN \$166⁰⁰ MO. <small>Sale price \$7,997. 9.9% APR for 60 mos.</small>
96 Olds Cutlass Supreme #5116. \$225⁰⁰ DOWN \$225⁰⁰ MO. <small>Sale price \$10,839. 9.9% APR for 60 mos.</small>	95 Buick Regal #5130. \$249⁰⁰ DOWN \$249⁰⁰ MO. <small>Sale price \$11,468. 11.9% APR for 60 mos.</small>	92 Buick LeSabre #5001. \$199⁰⁰ DOWN \$199⁰² MO. <small>Sale price \$8,320. 12.9% APR for 54 mos.</small>	97 Pontiac Sunfire 2 to choose from! \$220⁰⁰ DOWN \$220⁰⁰ MO. <small>Sale price \$10,534. 9.9% APR for 60 mos.</small>	95 Chevy Lumina #5110. \$225⁰⁰ DOWN \$225⁰⁰ MO. <small>Sale price \$10,597. 10.9% APR for 60 mos.</small>	96 Chevy Tahoe #5208. \$750⁰⁰ DOWN \$441²⁵ MO. <small>Sale price \$23,995. 10.9% APR for 72 mos.</small>
96 Chevy Suburban #86070A. \$750⁰⁰ DOWN \$459⁷⁹ MO. <small>Sale price \$23,500. 10.9% APR for 66 mos.</small>	96 Chevy Suburban #5234. \$750⁰⁰ DOWN \$479²² MO. <small>Sale price \$25,995. 10.9% APR for 72 mos.</small>	95 GMC Suburban #76340A. \$750⁰⁰ DOWN \$459⁷⁹ MO. <small>Sale price \$23,500. 10.9% APR for 66 mos.</small>	97 Chevy Suburban #86090A. \$1,690⁰⁰ DOWN \$499³⁴ MO. <small>Sale price \$27,995. 10.9% APR for 72 mos.</small>	96 Chevy 1/2 Ton Pickup Ext. Cab #76384D. Reg. \$18,995. SALE \$17,500	97 Chevy 3/4 Ton Pickup Ext. Cab 2WD #5259. Reg. \$23,995. SALE \$22,995
96 Chevy 1/2 Ton Pickup Ext. Cab 3 Door #86036A. Reg. \$19,995. SALE \$17,995	97 Chevy 1/2 Ton Pickup Ext. Cab 3 Door #5245. Reg. \$24,995. SALE \$22,500	97 Chevy 1/2 Ton Pickup Reg. Cab #76028A. Reg. \$17,995. SALE \$16,500	97 Chevy 1/2 Ton Pickup Ext. Cab 3 Door 4x4 #8607A. Reg. \$25,995. SALE \$24,500	96 Chevy 3/4 Ton Pickup Reg. Cab 2WD #5171A. Reg. \$18,995. SALE \$17,500	95 Chevy Pickup Reg. Cab #76385D. Reg. \$11,995. SALE \$9,995
96 Chevy 1/2 Ton Pickup Ext. Cab #76384A. Reg. \$18,995. SALE \$17,500	97 Chevy 1/2 Ton Pickup Ext. Cab 2WD #86042A. Reg. \$22,995. SALE \$21,500	95 Chevy 1/2 Ton Pickup Ext. Cab 4x4 #76116A. Reg. \$20,995. SALE \$18,995	96 GMC 1/2 Ton Pickup Reg. Cab #76050B. Reg. \$16,995. SALE \$15,500	96 GMC 1/2 Ton Pickup Ext. Cab #76076A. Reg. \$18,995. SALE \$17,500	95 Chevy 1/2 Ton Pickup Ext. Cab 4x4 #86018A. Reg. \$18,995. SALE \$17,500
93 GMC 1/2 Ton Pickup Ext. Cab 4x4 #76426A. Reg. \$12,995. SALE \$11,500	93 Chevy 1/2 Ton Pickup #86105A. SALE \$7,995	95 Chevy S-10 Pickup #76385A. SALE \$9,995	93 Nissan Pickup #76296A. SALE \$9,995	94 Nissan Pickup Reg. Cab 4x4 #76209B. Reg. \$12,995. SALE \$9,995	94 Chevy 1/2 Ton Pickup #76297A. SALE \$10,995

Congratulations
to all the winners of
the Lazbuddie Livestock
Show. You're all stars!

SWINE SHOWMANSHIP
(left) Tobin Redwine, Jr. & (right) Trey Nickels,
Sr. - (center) Judge Ronnie Dennis

MULESHOE PEA & BEAN
Railroad Avenue • 272-5589
(west of Muleshoe)

Bailey County Journal USPS 040-200
Established March 31, 1963. Published by Triple S Publishing, Inc. Every Sunday at 304 W. Second. Box 449, Muleshoe, TX 79347. Second Class Postage paid at Muleshoe, TX. POSTMASTER: Send address changes to the Bailey County Journal, P.O. Box 449, Muleshoe, TX 79347. We are qualified members of: Panhandle Press Association, National Newspaper Association, West Texas Press Association and Texas Press Association.

WEST TEXAS PRESS ASSOCIATION

PPA

Panhandle Press Association

TA

MEMBER 1997

TEXAS PRESS ASSOCIATION

Scot Stinnett, Publisher
Lisa Stinnett, Vice-President/Comptroller
Rick White, Editor
Mary Ann Dominguez, Classifieds
Leah Bell, Advertising

© 1990
SUBSCRIPTIONS: Muleshoe Journal and Bailey County Journal
By Carrier Yearly - \$22.00
Bailey County — by mail - \$24.00
Elsewhere - \$26.00
Advertising Rate Cards on Application

Advertisers should check their ad the first day of insertion. The Journals will not be liable for failure to publish an ad or for a typographical error or errors in publications except to the extent of the cost of the ad for the first day of insertion. Adjustment for errors will be limited to the cost of that portion of the ad where the error occurred.

BENDER

Chevrolet Oldsmobile Cadillac

Bender's Family of Dealerships - You're Going To Like Our Family

CHEVROLET - OLDSMOBILE - CADILLAC 2500 Mabry Drive • (505) 763-4465

The road has been unkind to Muleshoe

The road to the playoffs has been bumpy so far for the Muleshoe Mules.

Muleshoe is looking up in the District 1-3A standings at district co-leaders Tulia and Dimmitt after losing its second-straight road game.

Top-ranked and unbeaten Tulia drilled Muleshoe 63-44 Tuesday, using a trapping 2-3 zone to harrass the Mules into their worst shooting game of the season.

Coupled with a last-second loss at Dimmitt last week, the Mules (16-7 overall, 3-2 in district) find themselves tied for third with Friona and two games out of first place.

Next Tuesday's home game against the Chieftains (16-4) looms just as large for the Mules.

"Every Tuesday night is a big game," Muleshoe coach Ralph Mason said. "If we hope to win the district we're going to have to win out."

The Mules shot a dismal 28 percent from the field against Tulia while absorbing its worst loss of the season.

"Tulia just never allowed us to get into a flow," Mason, after the Mules were surprised

DISTRICT 1-3A

Boys

	Dist	All
Tulia	5-0	22-0
Dimmitt	5-0	16-6
Friona	3-2	16-4
Muleshoe	3-2	16-7
Dalhart	2-3	11-9
Sanford-Fritch	2-3	6-15
Perryton	0-5	5-13
River Road	0-5	0-12

Tuesday's results

Tulia 63, Muleshoe 44
Dimmitt 57, Friona 53
Sanford-Fritch 54, River Road 46
Dalhart 63, Perryton 47

Friday's games

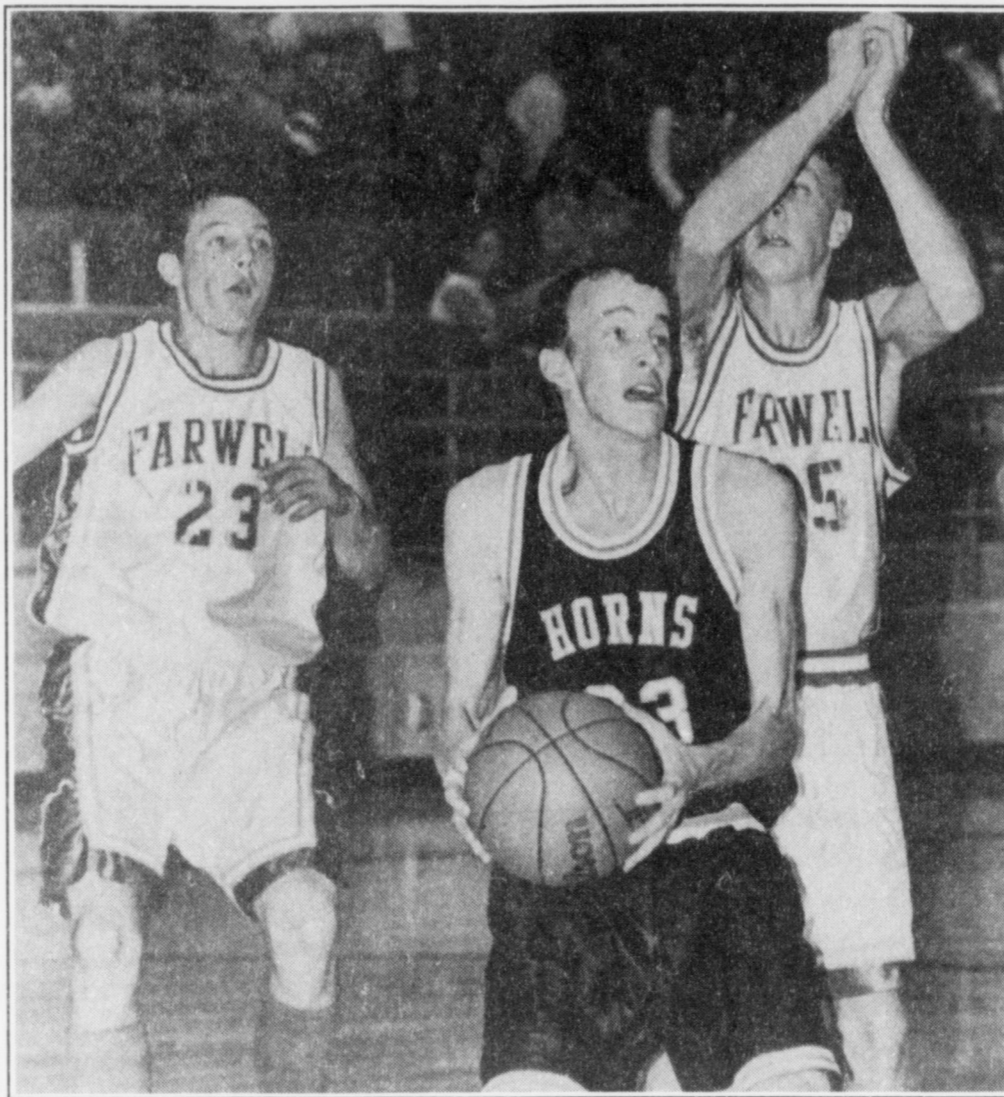
Muleshoe at Sanford-Fritch
Friona at Dalhart
Dimmitt at Perryton
Tulia at River Road

by the Hornets aggressive defensive approach.

Tulia normally plays a passive 1-3-1 zone, but trapped Muleshoe hard when the ball went into the corners. The Hornets were determined to take away Muleshoe's 3-point threats.

Muleshoe hit eight 3-pointers during a 62-60 overtime loss to the Hornets in December, but were just 2 of 17 from behind the arc Tuesday.

see MULES on page 5



Strong to the hoop

Lazbuddie's Cade Morris blows by a Farwell defender Tuesday during a District 3-1A game at Farwell. The Steers upset Lazbuddie 71-58.

Starting times for Tuesday's games changed

The starting times for Muleshoe High School's Tuesday, Jan. 27 home game against Friona have been changed according to school officials.

The boys and girls junior varsity games will both start at 5 p.m.

The girls varsity game will begin at approximately 6:30 p.m. in the Watson Junior High School gym. The boys varsity game will follow about 20 minutes after the conclusion of the girls contest

Lady Mules maintain composure down stretch in 34-33 win

TULIA — Lindsey Field scored 17 points and Muleshoe ended a five-game losing streak at Tulia Tuesday with a come-from-behind 34-33 win in a District 1-3A girls basketball game.

Improved execution down the stretch at both ends of the floor was the difference, according to Muleshoe coach Jim Gruhlkey.

"We had some good defensive stops late and did a good job of taking care of the ball," Gruhlkey said.

Posting up against Tulia's 2-3 zone, Field scored 11 points in the fourth quarter to help the Lady Mules (12-10 overall, 3-4 in district) overcome a two-point deficit.

Down 22-14, Muleshoe outscored Tulia 7-1 to draw within two at the end of the third quarter. Erin Wilhite's three-point play started the rally, which also included Mandy Myers' baseline jumper and a pair of Field free throws.

DISTRICT 1-3A

Girls

	Dist	All
Friona	5-2	15-8
Dimmitt	6-1	13-10
River Road	5-2	13-7
Perryton	5-2	16-6
Muleshoe	3-4	12-10
Tulia	2-5	7-16
Dalhart	1-6	9-15
Sanford-Fritch	1-6	1-20

Tuesday's games

Muleshoe 34, Tulia 33
Dimmitt 50, Friona 43
Perryton 67, Dalhart 46
River Road 55, Sanford-Fritch 46

Friday's games

Muleshoe at Sanford-Fritch
Friona at Dalhart
Dimmitt at Perryton
Tulia at River Road

see LADY MULES on page 5

Steers gore Lazbuddie 71-58

FARWELL — Farwell yanked Lazbuddie back to the pack Tuesday, outthrusting and outplaying the Longhorns en route to a 71-58 District 3-1A win that created a four-way tie for first place.

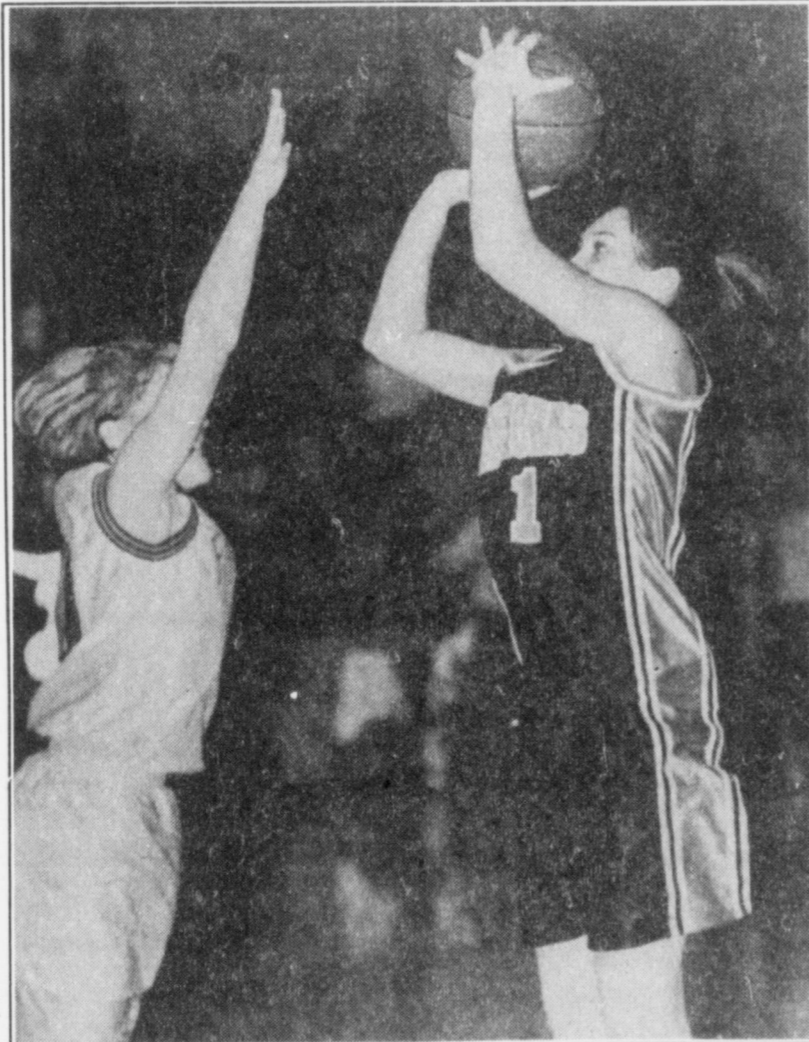
Farwell jumped on Lazbuddie from the outset, and except for a few brief spurts, maintained a comfortable lead the rest of the way in a battle between Parmer County rivals.

"It just wasn't a good effort," Lazbuddie coach Phil Warren said. "We lost our composure and got caught up playing their kind of game."

Chris Smith and Cade Morris led Lazbuddie (11-3 overall, 2-1 in district) with 14 points apiece.

Mark Lunsford poured in a game-high 24 points, mostly in the paint, Brett Curtis added 15 points and Clint Corn had three back-breaking 3-pointers and 13 points as the Steers (12-11, 2-1) beat Lazbuddie for the sec-

see 'HORNS on page 5



Pull-up jumper

Lazbuddie's Roxann Warren shoots over Megan Miller of Tuesday during a District 3-1A game at Farwell.

Farwell fends off Lady 'Horns in OT

FARWELL — Lazbuddie put a major scare into Farwell Tuesday, taking the eight-ranked Lady Blue into overtime before dropping 64-57 decision in a District 3-1A girls basketball game.

Chelsi Wood's 3-pointer midway through the four-minute overtime gave Farwell the lead for good, and the Lady Blue sealed the win by making 8 of 8 free throws in the final minute.

"We played our tails off," Lazbuddie coach Carey Sudduth said. "One of these nights we're going to win these.

DISTRICT 3-1A

Girls

	Dist	All
Nazareth	3-0	18-5
Farwell	2-1	19-4
Vega	2-2	12-10
Happy	1-2	13-9
Lazbuddie	0-3	13-9

Tuesday's results

Farwell 64, Lazbuddie 57 OT
Vega 48, Happy 29

Friday's games

Nazareth at Lazbuddie, Farwell at Happy, Vega at Cotton Center

We just ran out of gas in overtime."

Holly Engelking and Laura

Jo Via scored 12 points each for Lazbuddie (13-9 overall, 0-3 in district), which has lost 11-straight district games over the last two seasons.

Chelsi Katwasser paced Farwell (19-4, 2-1) with 15 points and Ashley Crawford added 14.

Farwell sent the game into overtime tied at 50 when Shiloh Robert's took a pass from Crawford and scored with three seconds left.

Lazbuddie 8 11 13 18 7 57
Farwell 6 14 6 24 14 64

Leading scorers — Lazbuddie: Engelking 12, Via 12; Farwell: Kaltwasser 15, Crawford 14.

Home Folks Caring For Folks At Home.

MULESHOE AREA HOME HEALTH Agency

Featured Patient

Fannie Mae Black was born June 25, 1910 in her parent's home in Hale County near the Abbott community. She moved around several times during her childhood years, but spent most of her high school years in Groom, TX. Fannie Mae married Burrell Black on January 21, 1934. She and Burrell moved to Muleshoe on their wedding day. Mr. Black passed away in 1988.

Fannie Mae worked as a housewife on the farm for many years. Mr. Black had promised her that taking care of their home and children would be enough work, and Fannie Mae agreed.

She had three children: Jimmy Black, who passed away in 1972, Darlene Henry and Marlene Martin, both of Muleshoe. Ms. Black has 6 living grandchildren and one deceased grandson, Robert Martin, who passed away in 1997 while working to help stop drug trafficking in Colombia. Fannie Mae also has 7 great-grandchildren.

Ms. Black has always enjoyed gardening. She especially enjoys growing tomatoes and peaches. She is a member of the First Baptist Church of Muleshoe and served as a volunteer in the church nursery for 40 years.

Fannie Mae enjoys visiting with the girls from M.A.H.H.A. and appreciates all their hard work.



Fannie Mae Black

Home Care



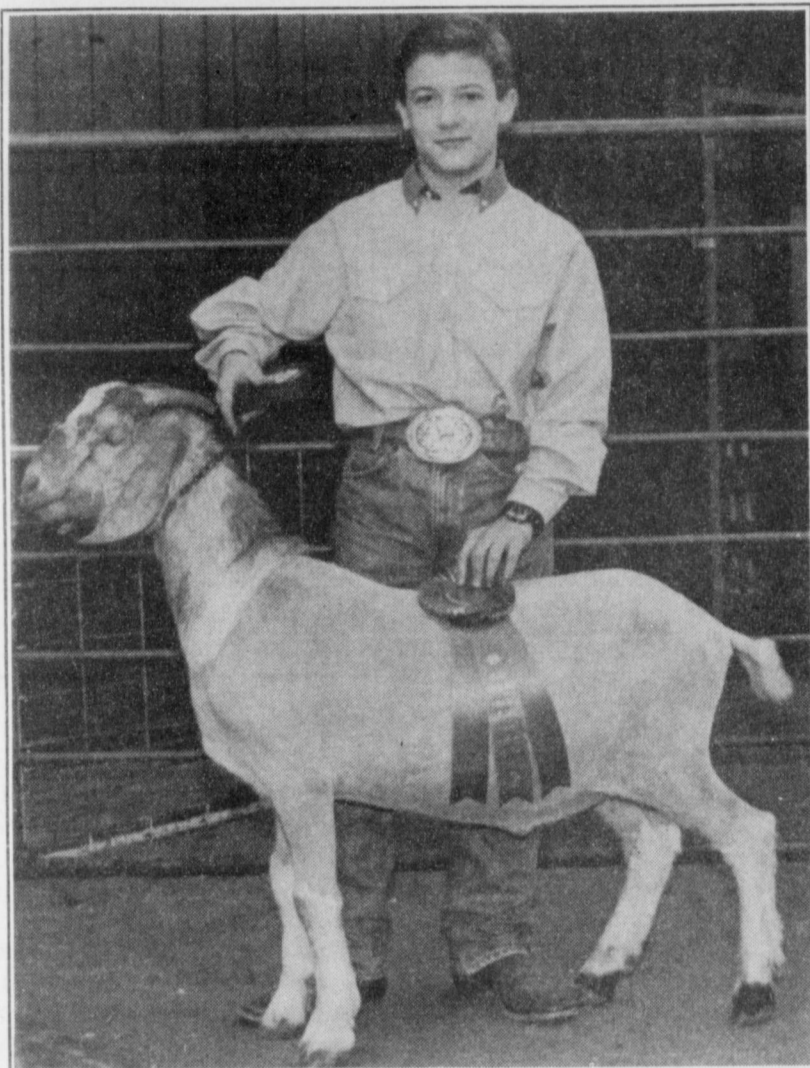
Home is where the heart is

Affiliated with Lubbock Methodist Hospital Systems

To receive Home Health Services, talk with your physician or talk with hospital personnel when you are hospitalized.

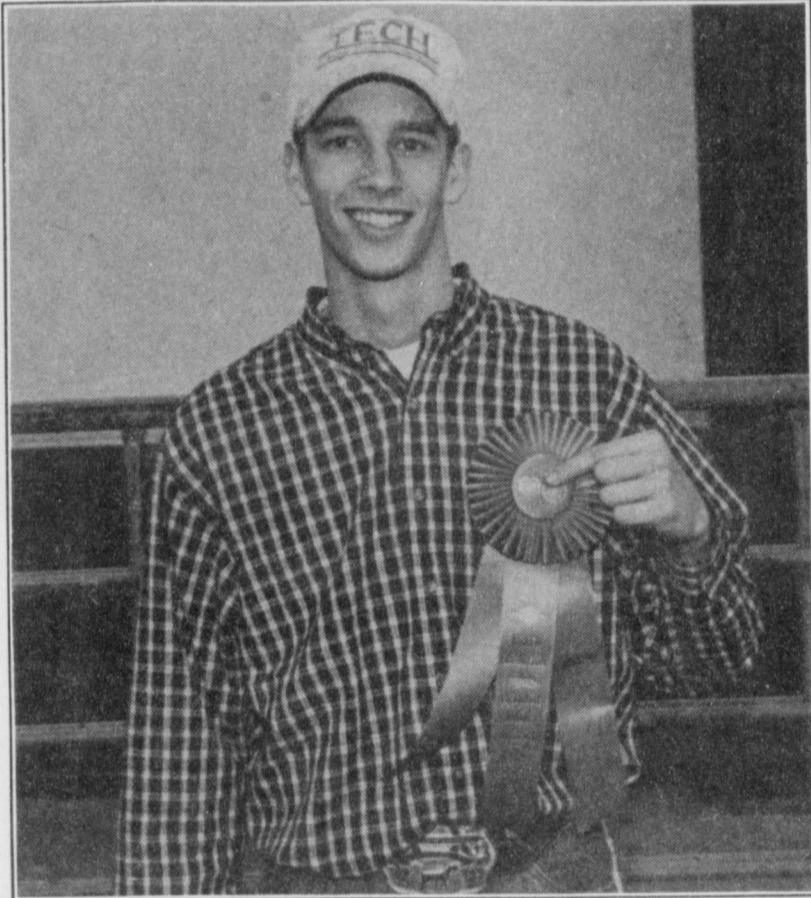
**We accept Medicare, Medicaid and Private Insurance
It Is Your Right To Choose The Home Health Agency You Prefer.**

**24 Hour # 272-3346
Local Nurse on call 24 hours a day to offer prompt service.**



Grand Champion Meat Goat

Kolby Wilkerson had the grand champion meat goat at the Lazbuddie Junior Livestock Show. He also exhibited the reserve grand champion.



Grand Champion Market lamb

Cade Morris had the grand champion junior market lamb and the champion Hampshire swine at the Lazbuddie Junior Livestock Show.

Levelland JH Tournament (Jan. 15-17)

GIRLS

FRESHMEN

First round

Muleshoe 0, Dimmitt 49 OT

Muleshoe	9	11	7	19	5	50
Dimmitt	12	14	11	8	4	49

Leading scorers — Muleshoe: Heathington 13, Hernandez 7, Alanis 7; Dimmitt: Black 16, Casas 9, 3-point FG: Muleshoe 2 (Flores, Heathington); Dimmitt 1 (Webb).

Semifinals

Levelland 33, Muleshoe 23

Muleshoe	8	8	6	1	23
Levelland	8	4	8	13	33

Leading scorers — Muleshoe: Heathington 9, Hernandez 8, Levelland: Arant 17, Robertson 7, 3-point FG: Muleshoe 1 (Heathington).

Third place game

Muleshoe 49, Marshall 41

Muleshoe	15	5	9	20	49
Marshall	9	9	7	16	41

Leading scorers — Muleshoe: Heathington 16, Torres 12, Alanis 7, Tipps 7, Marshall: Brownlow 16, Taylor 6, 3-point FG: Muleshoe 2 (Torres, Heathington); Marshall 4 (Brownlow 3, Maez).

8TH GRADE

First round

Levelland 61, WJHS 35

WJHS	11	12	4	8	35
Levelland	10	19	13	19	61

Leading scorers — WJHS: Hodge 26, Carpenter 4, Gartin 4; Levelland: Munoz 24, Huckaby 12, 3-point FG: none.

Consolation semifinal

WJHS 50, Cooper 30

WJHS	13	13	12	12	50
Cooper	3	3	14	10	30

Leading scorers — WJHS: Carpenter 18, Gartin 13, Hodge 7; Cooper: Mabery 9, Jones 7, 3-point FG: WJHS 2 (Barrett, Carpenter).

Consolation final

WJHS 8th 50, Dimmitt 33

WJHS 8th	11	12	12	15	50
Dimmitt	11	12	6	6	33

Leading scorers — WJHS: Hodge 15, Carpenter 9, Hutto 8, Gartin 8; Dimmitt: Kenworthy 16, Cartwright 8, Welch 8, 3-point FG: Dimmitt 3 (Cartwright 2, Kenworthy).

BOYS

FRESHMEN

First round

Dimmitt 64, Muleshoe 45

Muleshoe	8	16	6	15	45
Dimmitt	17	15	13	19	64

Leading scorers — Muleshoe: Williams 13, Vela 12; Dimmitt: Proffitt 16, Hill 13, 3-point FG: Muleshoe 2 (Williams 2); Dimmitt 7 (Proffitt 3, Harkins 2, Hill, Martinez).

Consolation semifinals

Muleshoe 54, Littlefield 39

Muleshoe	8	20	12	14	54
Littlefield	15	5	8	11	39

Leading scorers — Muleshoe: Shelburne 26, Woodard 8, Williams 6, 3-point FG: Muleshoe 1 (Broyles).

Consolation finals

Lubbock Evans 77, Muleshoe 47

Muleshoe	15	9	10	13	47
Evans	18	20	16	23	77

Leading scorers — Shelburne 19, Vela 12, Williams 9, 3-point FG: Muleshoe 1 (Shelburne).

BOYS

8TH GRADE

First round

Levelland 66, WJHS 46

WJHS	9	10	6	21	46
Levelland	24	23	13	6	66

Leading scorers — WJHS: Johnson 13, Norman 10, Riley 9; Levelland: Dent 14, Boggs 14, 3-point FG: Levelland 6 (Dent 2, Boogs 2, Fortner, Garza).

Consolation semifinals

WJHS 46, Lubbock Wilson 45

WJHS	17	4	19	6	46
Wilson	8	17	2	18	45

Leading scorers — WJHS: Atwood 16, Riley 12, Norman 11; Wilson: Bain 17, Campbell 15, 3-point FG: WJHS 3 (Atwood 2, Norman), Wilson 3 (Barrera, Salazar, Campbell).

Consolation finals

Dimmitt 48, WJHS 45

WJHS	6	12	12	15	45
Dimmitt	5	11	10	22	48

Leading scorers — WJHS: Riley 22, Norman 8, Johnson 7; Dimmitt: Newland 24, Weaver 7, 3-point FG: WJHS 1 (Atwood); Dimmitt 6 (Newland 5, Laurent).

MHS frosh win

Myndi Heathington scored 18 points and Muleshoe beat Dimmitt for the second time in three tries 58-43 Monday in a freshman girls basketball game at WJHS.

Melissa Flores added 14 points for the Lady Mules (11-3) and Chyla Torres finished with 11.

Clinging to a two-point lead, Muleshoe (11-3) outscored Dimmitt 22-9 in the fourth quarter.

Muleshoe (58) — Tipps 7, Alanis 14, Flores 2, Torres 11, Heathington 18, Garcia 2, Scott 2, Hernandez 2, Gonazles.

Dimmitt	9	15	10	9	43
Muleshoe	13	13	10	22	58

WILSON APPLIANCE
117 Main St. • Muleshoe, TX
272-5531

CONGRATULATIONS
to all Lazbuddie Livestock
Show Winners!



CHAMPION CHESTER
Shena Seaton

CONGRATULATIONS
to the winners and
participants of
the Lazbuddie
Livestock Show!




CHAMPION BERKSHIRE
Trey Nickels

THE MULESHOE JOURNAL
304 W. 2nd • 272-4536

To the Winners of the
Lazbuddie Livestock Show
WAY TO GO!



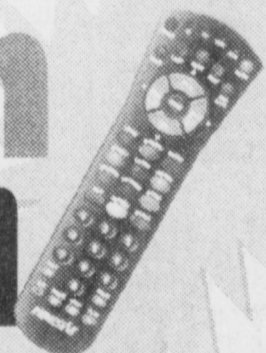
CHAMPION SPOT
Suzanne Agagon

did somebody say ?

1301 W. American Blvd. • Muleshoe • 272-3333

THE BEST VALUE IN SATELLITE TV

**installation
celebration**



PRIMESTAR
By **COX**

\$99 Installed.
\$0 everything else.

Check this out: free lifetime maintenance, 12 free monthly program guides, no equipment to buy, a free month of our PRIMEValue programming package, plus our free revolutionary PRIMEFINDER™ remote. (It helps you find whatever program you're looking for by type of show.) You get your choice of 160 channels, clear digital picture and sound. It's the best deal in satellite TV, but it won't last. Visit an authorized dealer or call our 800 number. Heck, even that's free.

\$99 installed*

Plus a **FREE** month of programming

Call Today!
1-800-658-6858

Or visit our showroom at
6909-B Indiana in Lubbock.



*May assume S.R.P. installation price of \$149 and use of \$50 rebate coupon. Offer good at participating authorized PRIMESTAR dealers, retailers and distributors. Offer good for new residential subscribers only who subscribe between January 1 and March 31, 1998. Offer expires March 31, 1998 and is subject to change or cancellation without notice. After first month of free service, the subscriber will be billed \$32.99 per month for the PRIMEValue package. Allow 8-10 weeks from installation date to receive rebate check once coupon is returned with proof of purchase. PRIMESTAR is a registered service mark and PRIMEFINDER is a registered trademark of PRIMESTAR Partners, L.P.

SCHOOL MENUS

Jan. 26 - 31

MULESHOE HIGH & JR. HIGH

Breakfast
Monday — french toast, fruit or juice, milk. **Tuesday** — sausage biscuit, fruit or juice, milk. **Wednesday** — breakfast burrito, fruit or juice, milk. **Thursday** — pancakes, fruit or juice, milk. **Friday** — cinnamon roll, fruit or juice, milk.

Lunch
Monday — sloppy joe, tator tots, mixed vegetables, peanut butter cookie, milk. **Tuesday** — BBQ chicken, potato salad, sliced carrots, hot roll, milk. **Wednesday** — szechuan chicken, white rice, broccoli with cheese, egg roll, milk. **Thursday** — grilled cheese, vegetable beef soup, cinnamon roll, sliced peaches, milk. **Friday** — fish filet, macaroni and cheese, green beans, hot roll, milk.

DILLMAN & DESHAZO
Breakfast
Monday — french toast, fruit or juice, milk. **Tuesday** — sausage biscuit, fruit or juice, milk. **Wednesday** — breakfast burrito, fruit or juice, milk. **Thursday** — pancakes, fruit or juice, milk. **Friday** — cinnamon roll, fruit or juice, milk.

Lunch
Monday — soft taco, lettuce and tomatoes, ranch beans, peanut butter cookie, milk. **Tuesday** — cheeseburger, french fries, lettuce and tomatoes, sliced apples, milk. **Wednesday** — lasagne, Italian vegetables, apricots, Italian bread, milk. **Thursday** — grilled cheese, vegetable soup, cinnamon roll, sliced peaches, milk. **Friday** — fish nuggets, macaroni and cheese, green beans, hot roll, milk.

THREE WAY

Breakfast
Monday — pancakes, Lucky Charms, fruit juice, graham crackers milk. **Tuesday** — biscuit, gravy, Trix, fruit juice, graham crackers, milk. **Wednesday** — Malt o Meal, assorted cereal, toast, graham crackers, fruit juice, milk. **Thursday** — cinnamon roll, Frosted Cheerios, graham crackers, fruit juice, milk. **Friday** — breakfast pockets, Cocoa Puffs, graham crackers, fruit juice, milk.

Lunch
Monday — hot dog, baked potato, green beans, pickle spears, peaches, milk. **Tuesday** — fajitas, salad, refried beans, tortillas, apricot cobbler, milk. **Wednesday** — hamburger, fries, orange, milk. **Thursday** — fish, slaw, tator tots, cornbread, crackers, applesauce, milk. **Friday** — pizza, salad, macaroni and cheese, corn, oatmeal cookies, milk.



First Birthday

Daniela Diaz celebrated her first birthday on Jan. 26. She is the daughter of Kit and Beto Diaz. Grandparents are Sylvia and Norberto Diaz and Aliesa Gonzales.

MHS students successful at Friona Speech Tournament

Four Muleshoe High School students successfully competed against students from 26 other schools last weekend in the Friona Speech Tournament.

Steven Madrid, the son of Steven and Rhonda Smith, placed second in the Lincoln Douglas Debate.

Teammates Scotty Mills, son of Jimmy and Jeane Mills, and Westin Price, son of Arnold

and Kristy Price, placed third in the cross examine debate. The two have been to three tournaments this year and have advanced in each one.

Cameron Nix, the son of Joan and Tim Nix, succeeded to the finals in extemporaneous speech — informative.

The students attributed their success to their teacher Dr. Kerry Moore.

LADIES GOLF ASSOCIATION NEWS

The Muleshoe Country Club Ladies Golf Association began a new season Wed. Jan 21, with a luncheon and a short business meeting held at the Country Club.

The Ladies Association are members of the Women's West Texas Golf Association and the High Plains Golf Association. High Plains includes the cities of Dimmitt, Hereford, Tulia, Clovis, Farwell, and Muleshoe.

Beautification and improvements of the Country Club are goals set and attained each year due to efforts of the members helping to earn money through various fund raising activities throughout the season.

The Jennyslipper Tournament,

held every year in August and the Ladies Memorial Tournament, played in October are also hosted by the Ladies Association.

Installing a memory garden in a designated area on the golf course of the Muleshoe Country Club and receiving new members into the association are two of the objectives the ladies will be working toward during the 1998 season.

Anyone interested in becoming a member of the Muleshoe Country Club and having the opportunity to be involved with the Ladies Golf Association, please feel free to contact Jeff or Cindy Baker at 272-4250 or 272-4004.

Officers for the upcoming year

include: Cindy Baker, President; Sheryl Engelking, Vice President; Yolonda Phillips, Secretary; Laverne Winn, Tournament Chairman; Anita Allgood and Claudine Elliot, Playday Co-chairman; Linda Elder, High Plains Chairman.

Those attending the meeting were: Anita Allgood, Cindy Baker, Cookie Bamert, Linda Elder, Sheryl Engelking, Claudine Elliot, Laverne Winn, Judy Wilbanks, Tammy Black, Lynn Campbell, Neats Foster, Analita Haley, Darlene Henry, Anita Mitchell, Yolonda Phillips, Jeanetta Precure, Heather Shipman, Dorothy St. Clair, Helen Templeton, Elinor Yerby.

Orders for Valentine's Day need to be in by January 28th

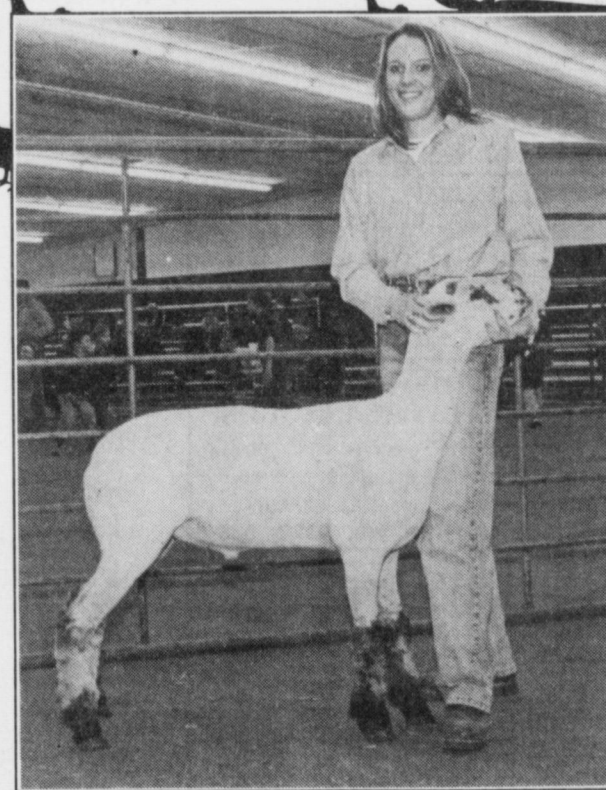
Brighton Treasures

Rip's in Texico
 314 Wheeler, Texico
 482-3363 or 800-748-2459
 9 a.m. - 7:30 p.m. cst Monday - Saturday
 1 to 6 p.m. cst on Sundays

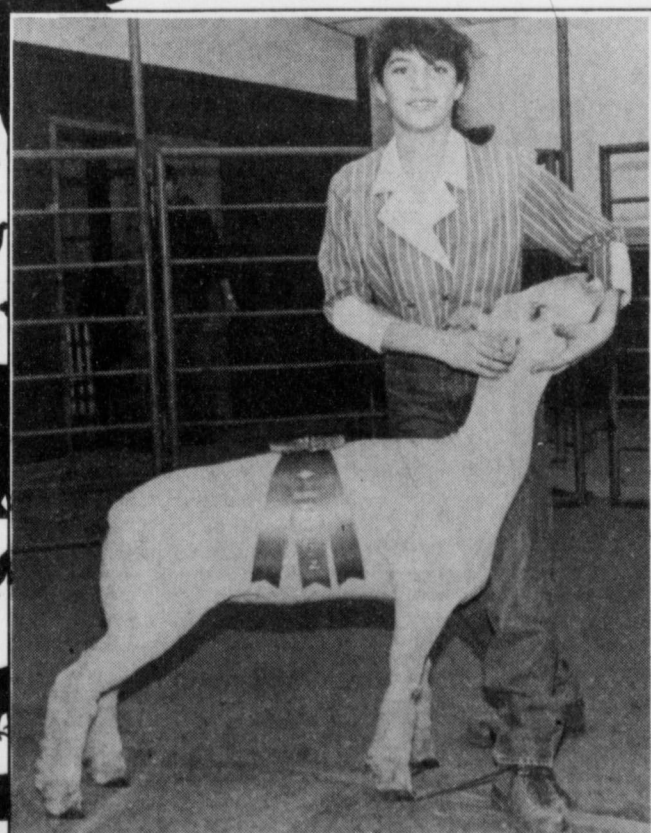
CONGRATULATIONS TO THE WINNERS OF THE LAZBUDDIE LIVESTOCK SHOW We're Proud of You!



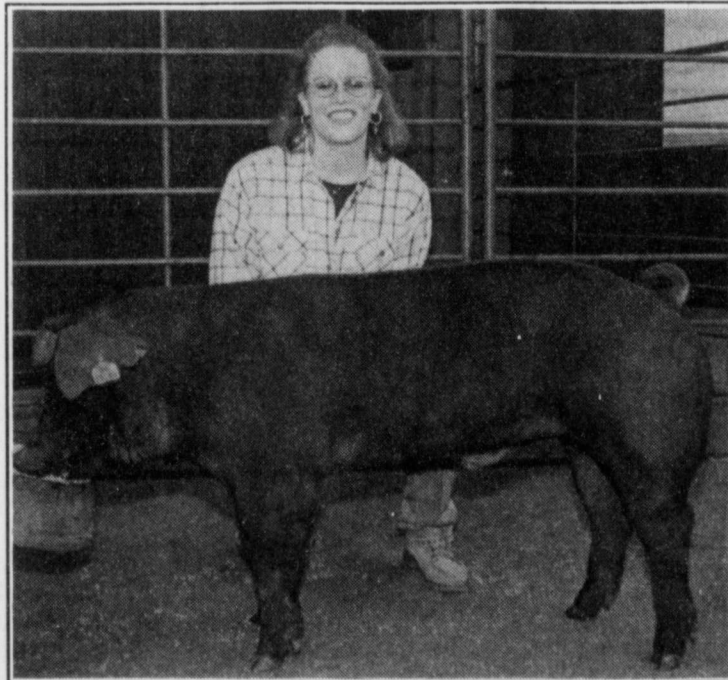
RESERVE CHAMPION HAMPSHIRE
Shannon Redwine



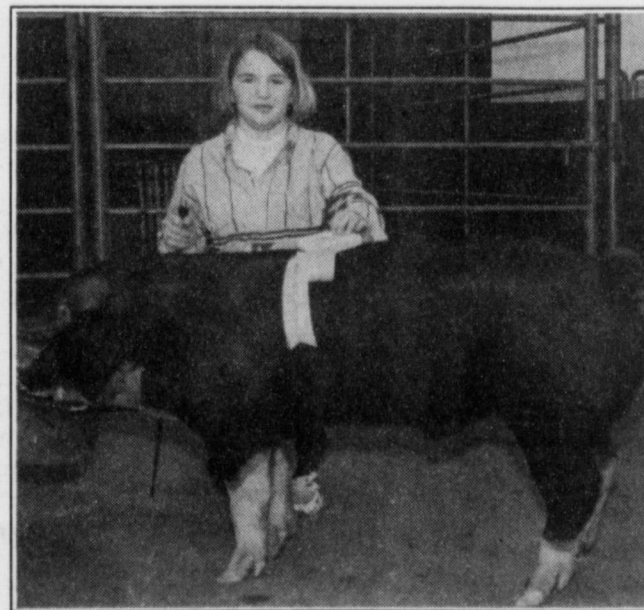
RESERVE CHAMPION FINEWOOL CROSS
Kia Morris



CHAMPION SOUTHDOWN
Suzanne Aragon



RESERVE CHAMPION DUROC
Shena Seaton



RESERVE CHAMPION POLAND
Shonah Black

WESTERN MONEY UNION TRANSFERSM
 "The fastest way to send money"

Lowe's MARKETPLACE

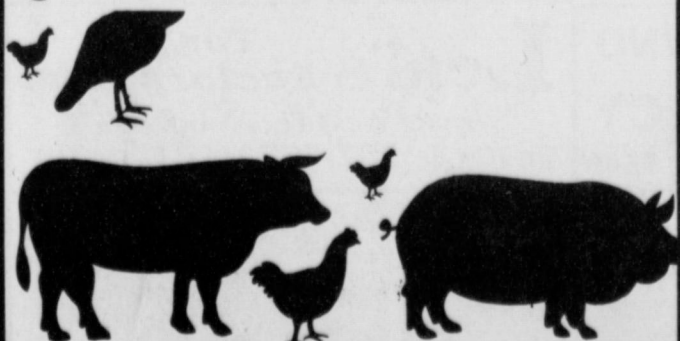
401 W. American Blvd.
 Muleshoe 272-4585

WE RESERVE THE RIGHT TO LIMIT QUANTITIES IN TEXAS



515 W. American Blvd.

Muleshoe 272-4406



BAILEY COUNTY DEVOTIONAL PAGE

WES-TEX FEED YARDS, INC.
 Custom Cattle Feeding
 272-7555 Muleshoe, TX

FARWELL CONVALESCENT CENTER
"In Christ's Love, Everyone Is Someone Special"
 305 5th St.
 481-9027 • FARWELL, TX

OEZIA SUSAN'S PHOTOGRAPHY
 Rt. 1 Box 120 • 2 Mi. N. Hwy. 214
 Susan Kerby
 (806) 272-5153
 Muleshoe, TX (806) 946-9524 mobile

MULESHOE COOPERATIVE
GINS
 P.O. Box 569
 272-4794 Muleshoe, TX

Risinger Plumbing
 Serving Muleshoe Area
 All Plumbing Repairs
272-6772

FIRST TEXAS FLBA MULESHOE
"Serving Farmer & Bailey Counties"
 272-3010 • Fax 272-5388
 316 Main • P.O. Box 424 • Muleshoe, TX

1315 W. American Blvd.
 272-3333
 Muleshoe, TX

SIMNACHER NATIVE GRASSES
 Darwin Simmacher Vince Simmacher
 (505) 762-7817 (806) 946-3461
 Thomas Simmacher
 (806) 285-2491

PACO FEED YARD, INC.
 Commercial Cattle Feeders
 P.O. Box 956 265-3281
 Friona, TX
 Feller Hughes-Mgr.

MULESHOE AREA HEALTHCARE
 Center
"Committed to Caring"
 106 W. Ave. H Muleshoe 272-7578

MULESHOE LIVESTOCK AUCTION
 Muleshoe, TX • Sale Every Saturday
 Clayton Myers • 272-4201

"THE FIVE AREA TELEPHONE COOPERATIVE ORGANIZATION"
 West Plains Telecommunications Co.
 Five Area Systems, Inc., Plateau Cellular Network
 Five Area Long Distance - Five Area Internet
 302 Uvalde Muleshoe, USA (806)272-5533

MULESHOE MOTOR CO.
 1225 W. American Blvd. 272-4251

BAILEY COUNTY ELECTRIC COOPERATIVE ASSOCIATION
"Serving Our Members Is Our Main Priority"
 1-800-869-7049
 Muleshoe 272-4504 Morton 266-8600

BRUCE, INC.
 AIR CONDITIONING
 Hwy. 214 North 272-5114
 Muleshoe, TX

BAILEY GIN COMPANY, INC.
 946-3397
 Sudan, TX
 Peanut Hawkins, MGR

Muleshoe Area Medical Center
"Your Hospital"
 708 S. First St. • 272-4524
 Muleshoe, TX

Lowe's MARKETPLACE
 515 W. American Blvd.
 Muleshoe 272-4585

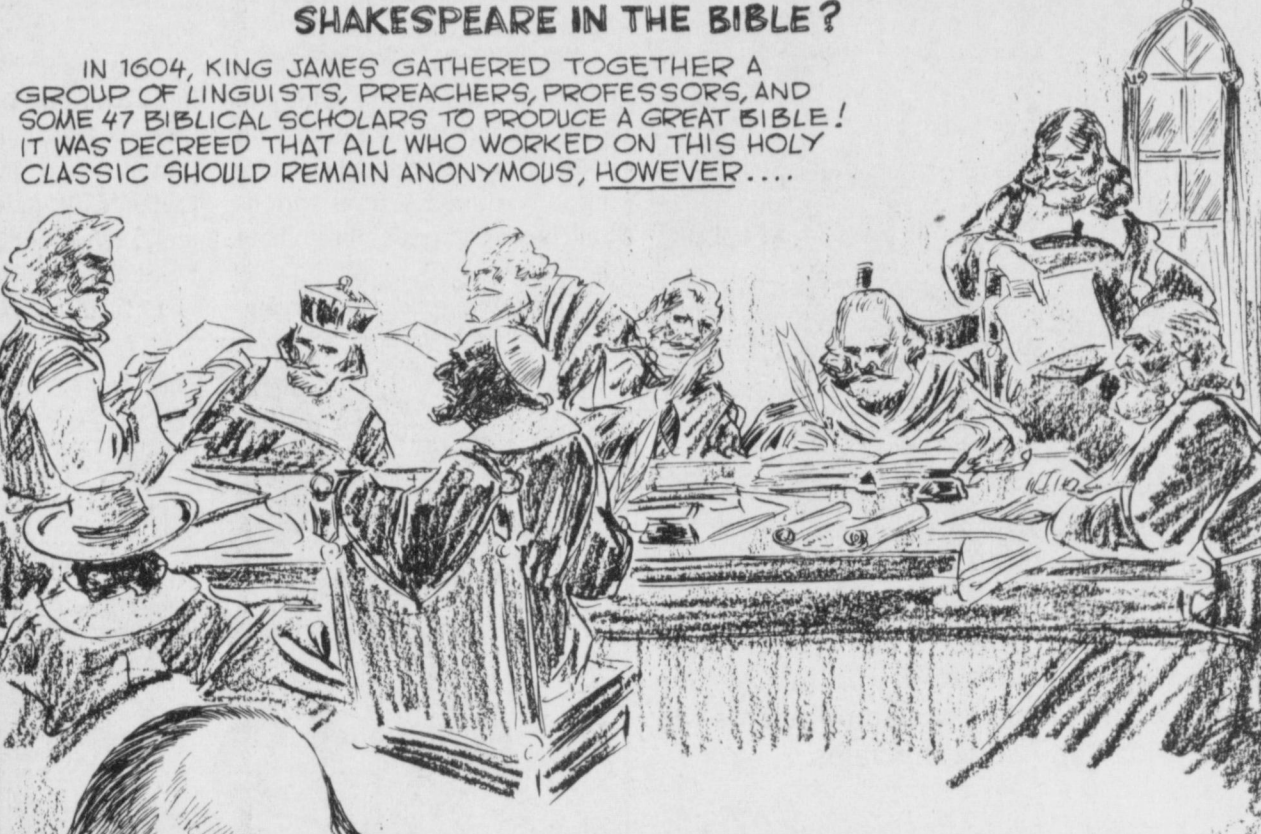
AMERICAN AVIATION INC.
 West Hiway 84
 272-4266
 Muleshoe

SHERLEY-ANDERSON LAZBUDDIE ELEVATOR
 965-2922 Lazbuddie, TX

Facts About The BIBLE BY JOHN LEHTI

SHAKESPEARE IN THE BIBLE?

IN 1604, KING JAMES GATHERED TOGETHER A GROUP OF LINGUISTS, PREACHERS, PROFESSORS, AND SOME 47 BIBLICAL SCHOLARS TO PRODUCE A GREAT BIBLE! IT WAS DECREED THAT ALL WHO WORKED ON THIS HOLY CLASSIC SHOULD REMAIN ANONYMOUS, HOWEVER....



...SEVEN YEARS LATER, WHEN THIS GREAT VERSION OF THE BIBLE WAS PUBLISHED (1611), SOME AUTHORITIES INSISTED THAT SHAKESPEARE WAS ONE OF THE UNSUNG WRITERS AND HAD LEFT SOME CLUES TO PROVE THIS VERY FACT!

CLUES
 IN 1605 SHAKESPEARE WAS 46 YEARS OLD. TURN TO PSALM 46. COUNT TO THE 46TH WORD: SHAKE NOW COUNT BACKWARDS FROM THE END OF THE PSALM ANOTHER 46 WORDS: SPEAR PUT THEM TOGETHER: SHAKESPEAR!

WHETHER THIS LEGEND IS TRUE OR FALSE, IT'S NOT TOO HARD TO BELIEVE THAT SHAKESPEARE'S TALENT CONTRIBUTED TO THE RICH POETRY AND PROSE THAT WE FIND IN THE KING JAMES BIBLE!

NEXT WEEK: PROMISES!
 SAVE THIS FOR YOUR SUNDAY SCHOOL SCRAPBOOK

This devotional & directory is made possible by these businesses who encourage all of us to attend worship services.

- | | |
|--|---|
| <p>ASSEMBLY OF GOD
 FIRST ASSEMBLY OF GOD
 521 South First Street • 272-3017
 Jack Stone, Min. • 272-3984
 S.S. 9:45 a.m., W.S. 11 a.m. & 6:30 p.m.,
 Wed. 7:30 p.m.</p> | <p>LAZBUDDIE CHURCH OF CHRIST
 Nathan Crawford, Min.
 S.S. 9:30 a.m.; W.S. 10:20 a.m. & 5 p.m.;
 Wed. 7 p.m.</p> |
| <p>BAPTIST
 CALVARY BAPTIST
 1733 W. Ave. C. Rev. Jeff Coffman
 CIRCLE BACK BAPTIST
 Intersection FM 3397 & FM 298
 Jessie Shaver, Min • 946-3676
 FIRST BAPTIST
 220 West Ave. E.
 Stacey Conner, Min.
 FIRST BAPTIST
 Lazbuddie • 965-2126
 PRIMERA IGLESIA BAUTISTA
 223 E. Ave. B Roy Martinez, Min.
 PRIMITIVE BAPTIST
 621 South First
 Elder Cleveland Bass, Min.
 PROGRESS BAPTIST
 Progress, TX
 PROGRESS SECOND BAPTIST
 Arthur Hays, Min.
 1st & 3rd Sundays
 RICHLAND HILLS BAPTIST
 17th & West Ave. D
 George Malis, Pastor
 ST. MATTHEWS BAPTIST
 Corner of W. Boston & W. Birch
 Floyd R. Monroe, Min.
 THREE WAY BAPTIST
 927-5467
 James Sinclair, Pastor
 TRINITY BAPTIST
 314 E. Ave. B
 Robert Brown, Min.</p> | <p>MULESHOE CHURCH OF CHRIST
 John Knox, Min.
 S.S. 9:30 a.m.; W.S. 10:20 a.m. & 6 p.m.;
 Wed. 7:30 p.m.</p> <p>SIXTEENTH & AVE. D CHURCH OF CHRIST
 Curtis Shelburne, Min. • 272-4619
 W.S. 10:30 a.m. & 6 p.m.;
 Wed. 7:30 p.m.</p> <p>LUTHERAN
 ST. JOHN LUTHERAN
 Lariat, TX
 Richard Greenethaner, Min.
 S.S. 10:30 a.m.; W.S. 9:30 a.m.</p> <p>METHODIST
 FIRST UNITED METHODIST HISPANIC MINISTRIES
 E. 5th and E. Ave. D
 Pastor Benito Cavazos
 FIRST UNITED METHODIST
 507 W. 2nd St.
 Pastor Brad Reeves
 LAZBUDDIE METHODIST
 965-2121
 EL DEVINO SALVADOR
 814 W. Ave. C, Muleshoe, TX
 Guadalupe Ballinas, Min.</p> <p>NAZARENE
 NEW VISION CHURCH OF THE NAZARENE
 814 W. Ave. C • 272-3622
 David R. McIntire</p> <p>PENTECOSTAL
 UNITED PENTECOSTAL CHURCH
 207 East Ave. G • 1-800-454-6051
 Pastor McKibben, 3 pm Sunday Service</p> <p>INTER DENOMINATIONAL NEW COVENANT
 Plainview Hwy. Jimmy Low, Min.
 S.S. 9:30 a.m.; W.S. 10:15 a.m.;
 Wed. 7 p.m.</p> |
| <p>CATHOLIC
 IMMACULATE CONCEPTION CATHOLIC
 805 E. Hickory
 Joseph Agustine, Min.
 CHRISTIAN
 THE CHRISTIAN CENTER
 Morton Hwy. • 272-5105
 Reydon Stanford, Min.</p> <p>CHURCH OF CHRIST
 LARIAT CHURCH OF CHRIST
 Sam Billingsley, Min.
 S.S. 10 a.m.; W.S. 11 a.m. & 6 p.m.,
 Wed. 7 p.m.</p> | |

MOHAWK AUTO PARTS
 1701 W. American Blvd.
 272-4425 Muleshoe, TX

Bob STOVALL Printing
 The Wells & Janet Hall Family
 221 E. AVE. B • MULESHOE, TX
 (806) 272-3373

WESTERN DRUG
 114 Main 272-3106 Muleshoe

Henry Insurance Agency, Inc.
"Serving You Since 1964"
 111 West Avenue B 272-4581
 Muleshoe, TX

JAMES CRANE TIRE CO., INC.
 107 Main 272-4594
 Mike Hahn Muleshoe, TX

WINKLES TRUCKS, INC.
 Box 757 (806) 247-2724
 Friona, TX

Springlake Potatoes, Inc.
 P.O. Box 280 • Springlake, TX
 262-5542

Since 1957 - The Original
Leal's Mexican Restaurant
 1010 W. American Blvd. 272-3294
 Muleshoe, TX Victor & Debbie Leal

RONNIE HOLT INSURANCE AGENCY
 Specializing in Crop, Life & Health Insurance
 Western 66 Office Bldg.
 272-3614 Muleshoe, TX

TERRA DISTRIBUTION
 Hwy. 84 • 272-4203
 Muleshoe, Texas

SAIN IRRIGATION & MACHINES
 Complete Pump Service
 W. American Blvd. 272-4397
 Walt Sain Muleshoe, TX 272-4148

TIRO'S
 104 W. American Blvd.
 272-7528 • Muleshoe, TX
 Daily Specials

Shipman's Body Shop
 Auto Painting • Wrecker Service • Free Estimates
 Tractor Glass & Windshields
 410 N. 1st Muleshoe, TX
 272-4408 FAX 272-3366

BOBO INSURANCE AGENCY
 108 E. Ave. C 272-4264

MAPLE COOP GIN
 927-5501
 Maple, Texas

B/S & More Family Fun Center
 123 Main • Muleshoe • 272-3828

O & C OSONS
 Erection Sprinkler Ser. Welding & Repair
 Repair & Assemble Repair
 272-5018 909 W. American Blvd.
 Lupe Olivarez 272-3475

EASTER GRAIN, INC.
 Easter 276-5255 Labuddie 965-2817

Leal's Tortilla Factory, Inc.
"Serving West Texas since 1957"
 107 E. Ash 272-5772 Muleshoe, TX

Decorators Floral & Gifts
 616 South First 272-4340
 Muleshoe, TX

WANDA BROWND INSURANCE AGENCY
 118 E. Ave. C Muleshoe 272-7548

IRRIGATION PUMPS & POWER
ZIMMATIC CENTER-PIVOTS
 W. Hwy. 84 272-4483

MULESHOE FEED BARN
 311 W. American Blvd.
 Muleshoe, TX
 272-5626

1ST BANK MEMBER FDIC
 202 South First 272-4515

STOCK SHOW

From page 2

Finewool
One class only (108-138 lbs.) — 1. Savannah Black; 2. Shannah Black; 3. Jake Loudder.

Champion Finewool
 Savannah Black

Reserve Champion Finewool
 Shannah Black

Finewool Cross
Lightweight (116-119 lbs.) — 1. Kia Morris; 2. Wayne Terry.

Heavyweight (135-151 lbs.) — 1. Jake Loudder; 2. Laramie Wood; 3. Laramie Wood.

Champion Finewool Cross
 Jake Loudder

1st Heavyweight
Reserve Champion Finewool Cross
 Kia Morris

1st Lightweight
Mediumwool
Lightweight (107-110 lbs.) — 1. Suzanne Aragon; 2. Lacey Loudder; 3. Wayne Terry.

Heavyweight (113-120 lbs.) — 1. Cade Morris; 2. Seth Black; 3. Seth Black; 4. Amanda Martinez.

Champion Mediumwool
 Cade Morris

1st Heavyweight
Reserve Champion Mediumwool
 Suzanne Aragon

1st Lightweight
Southdowns
One class only (90-94 lbs.) — 1. Suzanne Aragon; 2. Amanda Martinez; 3. Shannah Black; 4. Savannah Black.

Champion Southdown
 Suzanne Aragon

Reserve Champion Southdown
 Amanda Martinez

GRAND CHAMPION JUNIOR MARKET LAMB
 Cade Morris

Champion Mediumwool
RESERVE GRAND CHAMPION JUNIOR MARKET LAMB
 Suzanne Aragon

Reserve Champion Mediumwool
SHOWMANSHIP

Junior
 Savannah Black

Senior
 Cade Morris

JUNIOR MEAT GOAT SHOW
Lightweight (60-77 lbs.) — 1. Kolby Wilkerson; 2. Kolby Wilkerson; 3. Kolby Wilkerson.

Heavyweight (86-109 lbs.) — 1. Kolby Wilkerson; 2. Kolby Wilkerson.

GRAND CHAMPION JUNIOR MEAT GOAT
 Kolby Wilkerson

RESERVE GRAND CHAMPION JUNIOR MEAT GOAT
 Kolby Wilkerson

JUNIOR MARKET SWINE SHOW
Berkshires
One class only (173-255 lbs.) — 1. Trey Nickels; 2. Kelly Harris; 3. Kayla Parham.

Champion Berkshire
 Trey Nickels

Reserve Champion Berkshire
 Kelly Harris

Chesters
One class only (205-235 lbs.) — 1. Shena Seaton; 2. Jeffrey Phillips.

Champion Chester
 Shena Seaton

Reserve Champion Chester
 Jeffrey Phillips

Durocs
Lightweight (188-219 lbs.) — 1. Shena Seaton; 2. Kayla Parham; 3. Chelsea Nichols; 4. Michelle Puckett.

Heavyweight (230-254 lbs.) — 1. Wayne Terry; 2. Landon Parham; 3. Cole St. Clair; 4. Laramie Wood; 5. Savannah Black.

Champion Duroc
 Wayne Terry

1st Heavyweight
Reserve Champion Duroc
 Shena Seaton

1st Lightweight
Hampshires
Lightweight (165-195 lbs.) — 1. Shannon Redwine; 2. Jay Seaton; 3. Michelle Puckett; 4. Cory Puckett; 5. Landon Parham; 6. Kirby Kimbrough.

Mediumweight (214-226 lbs.) — 1. Trey Nickels; 2. Brandon Randolph; 3. Shondee Nichols; 4. Kasey Frazier.

Heavyweight (239-252 lbs.) — 1. Cade Morris; 2. Wayne Terry; 3. Kyra Kimbrough.

Champion Hampshire
 Cade Morris

1st Heavyweight
Reserve Champion Hampshire
 Shannon Redwine

1st Lightweight
Spots
Lightweight (160-182 lbs.) — 1. Shannah Black; 2. Shannon Redwine; 3. Cory Puckett.

Heavyweight (216-219 lbs.) — 1. Suzanne Aragon; 2. Suzanne Aragon.

Champion Spot
 Suzanne Aragon

1st Heavyweight
Reserve Champion Spot
 Suzanne Aragon

2nd Heavyweight
Polands
Lightweight (150-185 lbs.) — 1. Shannah Black; 2. Seth Black; 3. Clifton Harris.

Heavyweight (200-235 lbs.) — 1. Tobia Redwine; 2. Cade Morris; 3. Shondee Nichols.

Champion Poland
 Tobia Redwine

1st Heavyweight
Reserve Champion Poland
 Shannah Black

1st Lightweight
Yorkshires
Lightweight (173-200 lbs.) — 1. Tobin Redwine; 2. Jay Seaton; 3. Michelle Puckett.

Heavyweight (223-247 lbs.) — 1. Kia Morris; 2. Trey Nickels; 3. Cole St. Clair; 4. Jeffrey Phillips.

Champion Yorkshire
 Kia Morris

1st Heavyweight
Reserve Champion Yorkshire
 Trey Nickels

2nd Heavyweight
Crosses
Lightweight (185-197 lbs.) — 1. Wayne Terry; 2. Melanie Winders; 3. Cory Puckett.

Mediumweight (200-209 lbs.) — 1. Jay Seaton; 2. Kyra Kimbrough; 3. Kasey Frazier.

Heavyweight (213-245 lbs.) — 1. Shena Seaton; 2. Suzanne Aragon; 3. Melanie Winders; 4. Laramie Wood.

Champion Cross
 Shena Seaton

1st Heavyweight

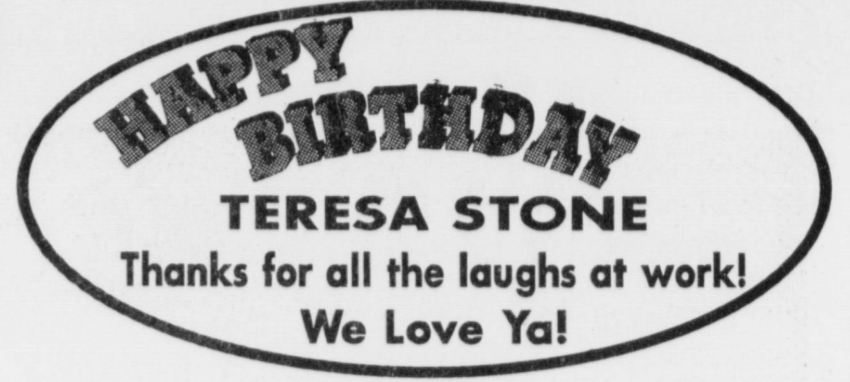
Reserve Champion Cross
 Suzanne Aragon

2nd Heavyweight
GRAND CHAMPION JUNIOR MARKET SWINE
 Shena Seaton

Champion Cross
RESERVE GRAND CHAMPION JUNIOR MARKET LAMB
 Kia Morris

Champion Yorkshire
SHOWMANSHIP
Junior
 Tobin Redwine

Senior
 Trey Nickels



JOE SHIPMAN & SON
BODY SHOP
 410 N. 1st • Muleshoe, TX • 272-4408

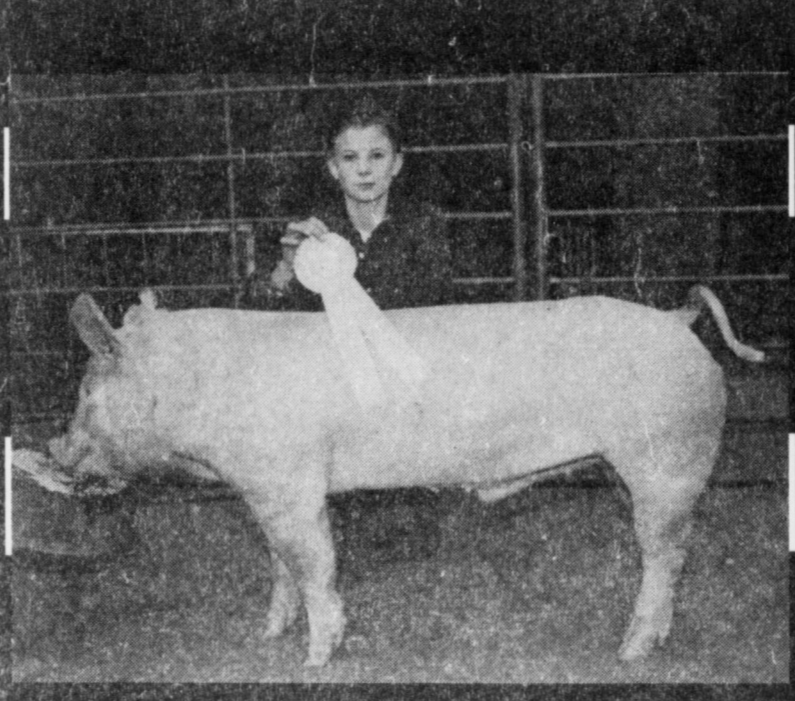


CHAMPION POLAND
 Tobin Redwine

A Special SALUTE
 to the Winners
 of the Lazbuddie
 Livestock Show!

Journal Classifieds 272-4536

CONGRATULATIONS
 to the Lazbuddie Livestock
 Show Winners

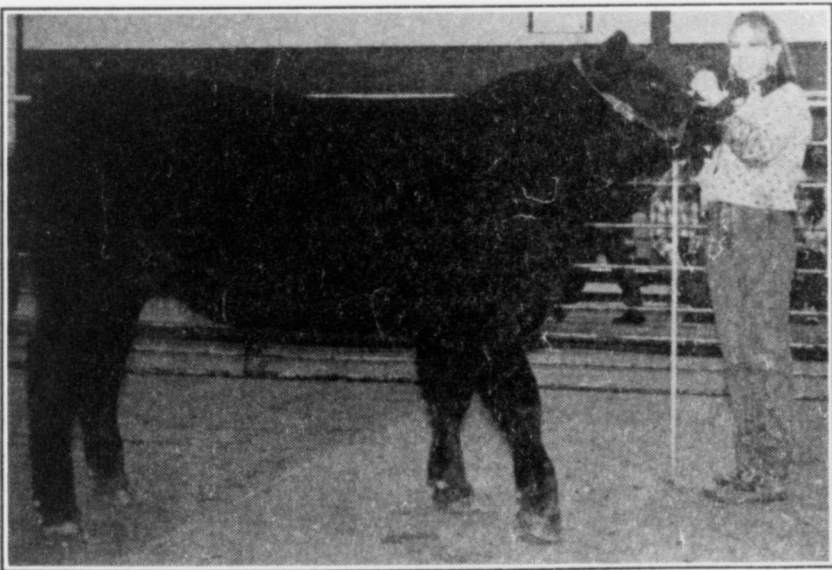


RESERVE CHAMPION YORKSHIRE
 Trey Nickels

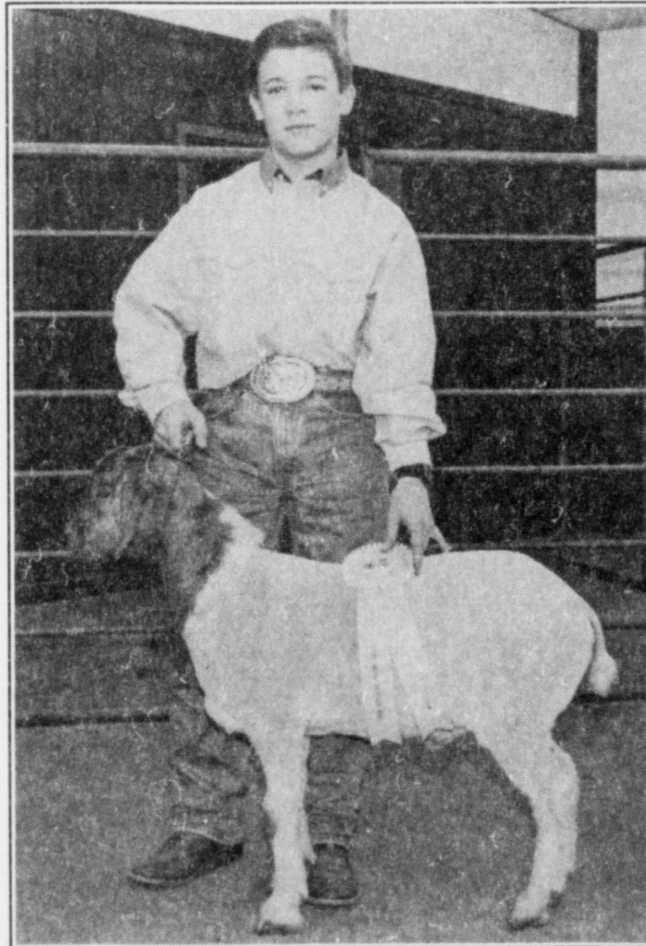
Ronnie Holt Insurance
 Earth Highway • Muleshoe
 272-4271

CONGRATULATIONS

to the winners of the Lazbuddie Livestock Show



RESERVE CHAMPION EXOTIC STEER
 Savannah Black



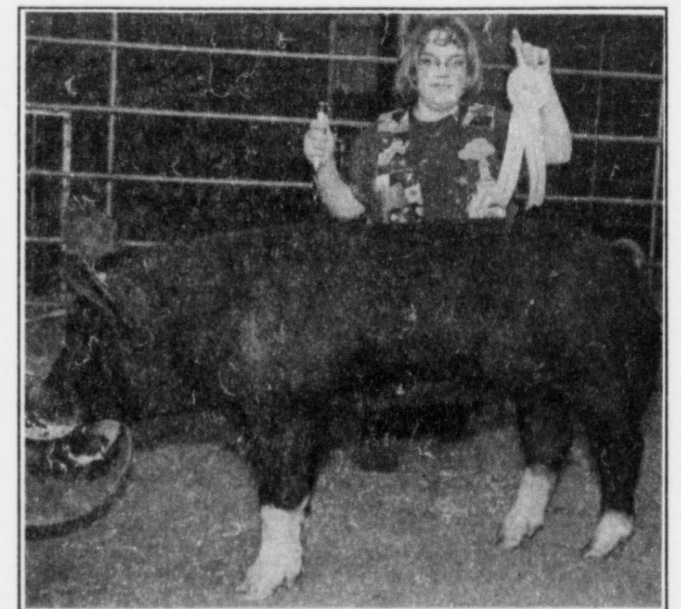
RESERVE CHAMPION MEAT GOAT
 Kolby Wilkerson



LAMB SHOWMANSHIP
 (left) Cade Morris, Sr. & (right) Savannah Black, Jr. - (center) Judge Ronnie Dennis



CHAMPION FINEWool CROSS
 Jake Loudden



RESERVE CHAMPION BERKSHIRE
 Kelly Harris

SHERLEY-ANDERSON
LAZBUDDIE ELEVATOR
 965-2922

OBITUARIES

The obituary for Mickey Max Pierce is being reprinted due to omissions in the first run.

MICKEY MAX PIERCE

Mickey Max Pierce, 57, of Muleshoe died Sunday Jan. 18, 1998 at University Medical Center in Lubbock.

Pierce was born Feb. 17, 1940 in Muleshoe and married Jacqueline Ervin on Nov. 19, 1988 in Eagle Point, Ore.

Pierce had lived in Muleshoe since 1995 moving from Lake Creek, Ore. He was a member of the Church of Christ. He was a mechanic and a veteran in the U.S. Air Force.

Survivors include wife, Jacqueline of Muleshoe; sons Mickey Gene Pierce of Norman, Okla., Max Ray Pierce of Norman, Okla., John Meister of Phoenix; daughters, Mitzi Springs of Norman, Okla., Lisa Hamilton of Lexington, Okla., Jill Kerofsky of Chesapeake, Va.; mother, Gladys Pierce of Muleshoe; sisters, Pat Hughes of Lubbock, Betty Blair of Noble, Okla., Cherry Estep of Muleshoe; brothers, Bill Pierce of Everett, Wash., Sam Pierce of Medford, Ore., Tony Pierce of Medford, Ore.; Dick Pierce of Val Mora, NM, Neal Pierce of North Carolina, Gerry Pierce of Muleshoe; 10 grandchildren.

The family requests memorials be sent to University Medical Center, P.O. Box 5980, Lubbock, TX. 79408-5980.

BESS HOBBS

Bess Hobbs, 101, of Muleshoe died Monday, Jan. 19, 1998 at New Hope Manor Nursing Home in Austin.

Memorial services were held Jan. 24, 1998 at First United Methodist Church of Muleshoe with Rev. Brad Reeves officiating.

Burial was held in Muleshoe Memorial Park Cemetery under the direction of Ellis Funeral Home.

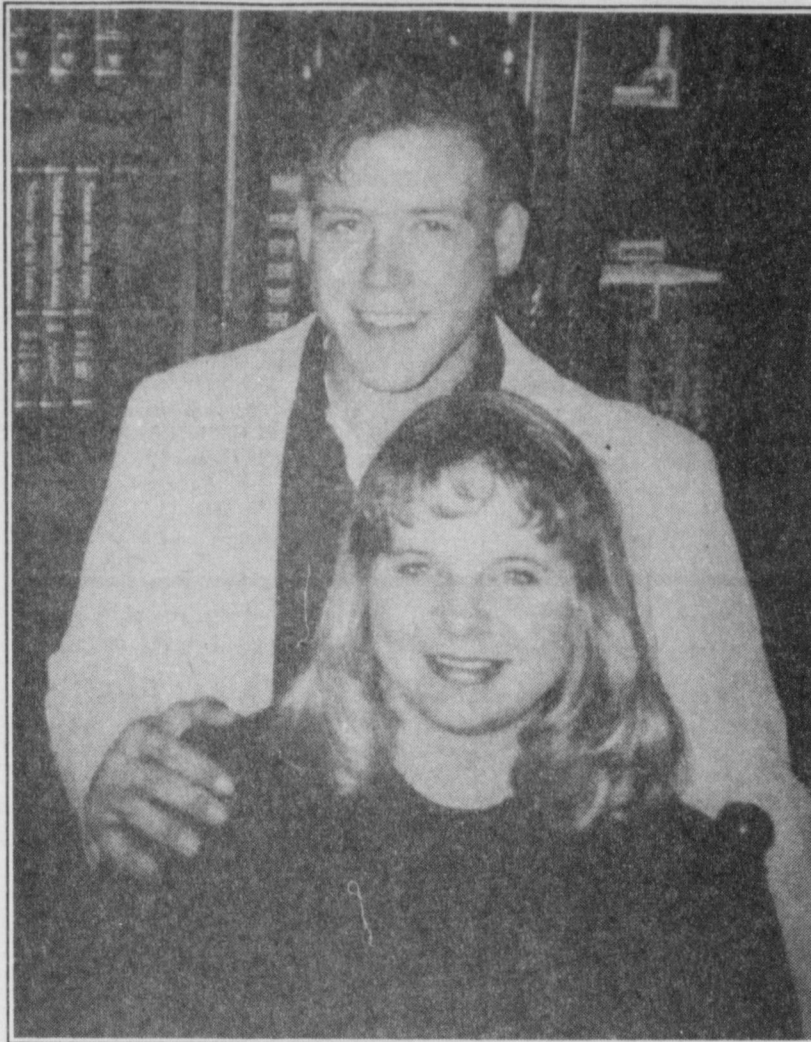
Hobbs was born Nov. 23, 1896 in Shelby County, Tex. and married Robert Leonard Hobbs on June 2, 1912 in Parker County, Tex. He died on Dec. 4, 1976.

Hobbs moved to Bailey County in 1927 from Paducah. She was a homemaker and a member of First United Methodist Church of Muleshoe. She is survived by six generations of her family.

Casket bearers were great children Mark Davis, Scott McCarver, Tony Scarmardo, James Miller, James Newsom, Robert Hobbs, and David White.

Survivors include her daughter, Katherine Duke of Austin; three grandchildren, 12 great-grandchildren, 14 great-grandchildren, 3 great-great-grandchildren.

The family request memorials be sent to First United Methodist Church, 507 W. 2nd, Muleshoe, Tex. 79347.



Settle-Gore

Stephanie Gore and Shannon Settle were united in marriage on Jan 2, 1998 in Clovis. Stephanie is the daughter of Billy W. and Karen Gore of Sudan. Shannon is the son of Barbara Settle of Amarillo and Jerry Settle of Wellington. The bride attended WTAMU and is employed at Shipman's Body Shop in Muleshoe. The groom is employed by C&H Equipment in Muleshoe. They will reside in Muleshoe.

HOSPITAL ADMISSIONS

Muleshoe Area Medical Center reported admitting the following patients.

Jan 16 — Frankie Daniel, April Cook, Virginia Estrada, Leola Stroud, Wanda Baker, Stephanie Gore, Maria Rodriguez, Erin Settle.

Jan. 17 — Frankie Daniel, Virginia Estrada, Armando Flores, Leola Stroud, Eula Dale, Wanda Baker.

Jan. 18 — Frankie Daniel, Armando Flores, Leola Stroud, Wanda Baker.

Jan. 19 — Frankie Daniel, Rita Navarro, Yolanda Vila, Armando Flores, Leola Stroud, Kline Buhrman, Wanda Baker, Dorothy Spencer, Mary Rosas.

Jan. 20 — Frankie Daniel, Rita Navarro, Yolanda Vila, Armando Flores, Leola Stroud, Kline Buhrman, Mark Schwertner, Gerogia Pena,

Dorothy Spencer, Mary Rosas.
Jan. 21 — Frankie Daniel, Rita Navarro, Yolanda Vila, Armando Flores, Leola Stroud, Kline Buhrman, William Lambert, Gerogia Pena, Dorothy Spencer, Mary Rosas.

POLICE LOG

MULESHOE PD
Jan. 4 — Amador Mendoza Jr., 25, warrant from Hockley County.
Jan 5 — Ramirez Aguero, 22, warrant for speeding DPS.

BAILEY COUNTY SO
Jan 11 — Michael Paul Medrano, 19, aggravated assault.
Jan. 15 — Terry Jason Obenhaus, 26, violation of probation.

MULESHOE AREA RETIRED TEACHERS

Muleshoe Area Retired Teachers met Jan. 16, 1998 at the 16th and Ave. D Church of Christ with Maxine Ragsdale as hostess.

The minutes of the last meeting were read by Elizabeth Watson. Letha Patterson gave the treasurer's report.

Joyline Costen, Legislative Chairman, gave a report on the "Texas Retired Teacher's Association (TRTA) Legislative Priorities for the 76th Legislature."

One new member, Mr. Bill Taylor, was reported by the

membership chairman.

In absence of a speaker, the group filled "diddi" bags to be distributed at the upcoming TRTA State Convention to be held in Lubbock, April 21-24.

Members present were Mary Nell Bleeker, Elizabeth Watson, Joyline Costen, Alene Bryant, Mary Crane, Maxine Ragsdale, Margie Moore, Pauline Guinn, Letha Patterson, June Arnold, Norma Prather, Lucy Faye Smith, Beulah Mimms, and Wilma Smith!

If You Can't Come To Miracle-Ear,® Then We'll Come To You.

Our Hearing Aid Service Center is coming to a convenient location near you. Complimentary Hearing Evaluations. We value your hearing as much as you do... Ask about our low monthly payments

Miracle-Ear®
Hearing Systems by Bausch & Lomb

Call 806/355-9957 or 800/687-7690

Wed. January 28th, 9 a.m. - Noon
Muleshoe Medical Center - 708 S. 1st
Noon - 4 p.m. / In Home Visits

S & W IRRIGATION
All types irrigation service
RAINCAT SALES

Special:
\$18⁰⁰ per drive unit

- Water drained
- Pivot greased
- Tire pressure checked
- Visual Inspection

Call Today!

Kasey Whatley
Mobile: 806-647-7891
Home: 806-647-4826

Dwayne Smith
Mobile: 806-647-7172
Home: 806-647-5349

CONGRATULATIONS
Lazbuddie Livestock Show Winners.
We're Proud of You!

RESERVE CHAMPION SOUTHDOWN
Amanda Martinez

HIGGINBOTHAM-BARTLETT CO.
215 MAIN ST. • MULESHOE • 272-3351

CONGRATULATIONS
to the Lazbuddie Livestock Show Winners

RESERVE CHAMPION SPOT
Suzanne Aragon

Lazbuddie Garage & Supply
PO Box 100 • Lazbuddie • 965-2188

CONGRATULATIONS TO THE WINNERS OF THE LAZBUDDIE LIVESTOCK SHOW. WE'RE PROUD OF YOU!

RESERVE CHAMPION CHESTER
Jeffrey Phillips

CHAMPION DUROC
Wayne Terry

RESERVE CHAMPION CROSS
Suzanne Aragon

CHAMPION FINEWOOL LAMB
Savannah Black

EASTER GRAIN INC.
Lazbuddie, TX • 965-2817

Subscribe Today
272-4536

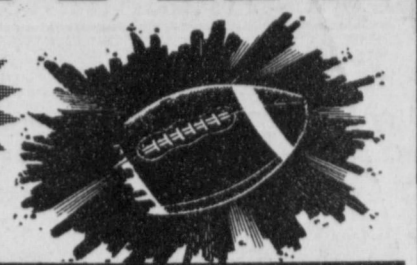
THIS

Dig Up Some Yummy

SUPERBOWL



Snack Foods



PRICES EFFECTIVE JANUARY 21-27, 1998

MEAT

- FAMILY PACK
DRUMSTICKS.....LB **39¢**
 U.S.D.A. SELECT BEEF
TOP SIRLOIN STEAKS.....LB **\$1.77**
 FAMILY PACK
CHICKEN THIGHS.....LB **69¢**
 BONELESS
PORK SIRLOIN CHOPS.....LB **\$1.49**
 WHOLE SLAB
PORK SPARE RIBS.....LB **\$1.27**
 APPROX. 93% LEAN ULTRA
GROUND BEEF.....LB **\$1.99**
 BONE-IN
PORK BUTT ROAST.....LB **\$1.19**
 CHUCK
TENDER STEAK.....LB **\$1.89**
 CHUCK
TENDER ROAST.....LB **\$1.69**
 RAW
CATFISH NUGGETS.....LB **\$1.69**
 ORIGINAL OR BEEF STATE FAIR
CORN DOGS.....1 LB. PKG **\$1.99**
 PILGRIM'S PRIDE
BUFFALO WINGS.....2 LB. PKG **\$3.99**
 LAND O' FROST PREMIUM HONEY HAM,
 SMOKED HAM OR TURKEY BREAST
WAFER THIN MEATS.....1 LB. PKG **\$3.19**
 PEYTON'S
COOKED HAM.....10 OZ. PKG **\$2.69**
 PEYTON'S
CHOPPED HAM.....10 OZ. PKG **\$1.79**
 PEYTON'S REGULAR OR POLISH
SMOKED SAUSAGE.....14 OZ. PKG **\$1.19**
 PEYTON'S
CHORIZO.....8 OZ. PKG **\$1.19**
 PEYTON'S
MEAT FRANKS.....12 OZ. PKG **75¢**
 PEYTON'S
MEAT BOLOGNA.....12 OZ. PKG **95¢**

- PRICE'S PIMENTO REGULAR
CHEESE SPREAD.....7.5 OZ. TUB **\$1.39**
 ROASTED OR ROASTED & SALTED
BORDEN'S PEANUTS.....1 LB. PKG **\$1.29**
 SHURSAVING ASSORTED
SALTINE CRACKERS.....1 LB. BOX **69¢**
 MILD, MEDIUM OR HOT
PACE PICANTE SAUCE.....16 OZ. JAR **2/\$3**
 CAMPBELL'S
CHICKEN NOODLE SOUP.....10.7 OZ. CANS **2/88¢**
 TOSTITOS® SALSA CON QUESO
 OR MILD/MEDIUM/HOT
SALSA.....10.75-11.5 OZ. **2/\$3**
 ASSORTED LAY'S® OR WAVY LAY'S®
 REG. \$2.99 SIZE
POTATO CHIPS.....13.25-11 OZ. BAG **3/\$5**
 ASSORTED
LOWE'S DRINKS.....3 LITER BTL **88¢**
 NO BEANS
WOLF BRAND CHILI.....19 OZ. CAN **99¢**
 SHURFINE
CHEESE SPREAD.....2 LB. BOX **\$2.99**
 SHURFINE
DICED TOMATOES & GREEN CHILIES.....14.5 OZ. CAN **2/\$1**
 TEXSUN
PINK GRAPEFRUIT JUICE.....46 OZ. CAN **69¢**
 TEXSUN
ORANGE OR PINEAPPLE JUICE.....46 OZ. CAN **\$1.39**
 NEW! BLAST O BUTTER OR BUTTER MICROWAVE
JOLLY TIME POPCORN.....3 CT. BOX **\$1.19**
 VLASIC ASSORTED
SANDWICH STACKERS.....16 OZ. JAR **\$1.99**
 PREGO ASSORTED
 * CHUNKY TOMATOES & ONION, MUSHROOM GREEN PEPPER,
 MUSHROOM & ONIONS * SUPREME EXTRA MUSHROOM
 VEGETABLES * REGULAR, MUSHROOM, MEAT
SPAGHETTI SAUCE.....27.7-28 OZ. JAR **2/\$3**
 CAMPBELL'S ASSORTED
CHUNKY SOUPS.....19 OZ. CAN **2/\$3**
 FRANCO AMERICAN SPAGHETTI O'S,
 SPAGHETTI, TEDDY O'S, GARFIELD PIZZA O'S
PLAIN PASTAS.....14.7-15.3 OZ. CAN **59¢**
 REGULAR, LIGHT & TANGY OR PICANTE
V8 JUICE.....46 OZ. CAN **2/\$3**

PRODUCE

- TANGY
LEMONS..... **20/\$1**
 JEWEL GREEN
LIMES..... **20/\$1**
 HASS
AVOCADOS..... **5/\$1**
 COLORADO BAKING
POTATOES.....LBS **4/\$1**
 RED RIPE
TOMATOES.....LB **88¢**
 MINI PEELED
CARROTS.....1 LB. PKG **99¢**
 DOLE
AMERICAN BLEND SALAD..10 OZ. PKG **\$1.77**

FROZEN & DAIRY

- LOWE'S HOMOGENIZED/SHURFINE
 LOW FAT PREMIUM QUALITY ALL VARIETIES
LOWE'S MILK.....GAL. JUG **\$1.97**
 ASSORTED
HOT POCKETS, LEAN POCKETS OR CROISSANT.....9-11.5 OZ. PKG **\$1.89**
 BEEF, CHICKEN, OR TURKEY
SWANSON POT PIES.....7 OZ. PKG **59¢**
 CHICKEN, MEAT & SHRIMP OR SHRIMP
CHUN KING MINI EGG ROLLS.....6 OZ. PKG **\$1.19**
 ASSORTED BANQUET
VALUE MENU DINNERS OR PASTA FAVORITES.....9-11 OZ. PKG **99¢**
 REGULAR, NO FAT OR LIGHT
DAISY SOUR CREAM.....16 OZ. TUB **99¢**
 24 OZ. COUNTRY STYLE DINNER,
 2 LB. GOLDEN OR CRINKLE CUT
ORE-IDA FRIES.....YOUR CHOICE **2/\$4**
 KRAFT COLBY/JACK, LONGHORN
 CHEDDAR OR COLBY
HALFMOON CHEESE.....10 OZ. PKG **\$1.69**
 AMERICAN, PIMENTO, SWISS,
 2% MILK, MILD MEXICAN, SUPER
 SLICE AMERICAN OR PIZZA FLAVOR
KRAFT SINGLES.....12 OZ. PKG **\$1.99**
 KRAFT ASSORTED REGULAR ONLY
 (FAT FREE NOT INCLUDED)
SHREDDED CHEESE.....8 OZ. PKG **\$1.79**
 PEPPERONI OR DELUXE
MAMA ROSA'S PIZZA.....2 PK. 48 OZ **\$3.99**
 REGULAR, SPICY HOT, LOW SODIUM
 OR HEALTHY REQUEST
V8 JUICE.....6 PACK, 5.6 OZ. CANS **2/\$4**
 CHICKEN W/RICE, CHICKEN W/ALPHABETS, CHICKEN
 NOODLE O'S, CHICKEN W/STARS OR DOUBLE NOODLE
CAMPBELL'S SOUPS.....10-11 OZ. CAN **88¢**
 ALL TYPES
COCA-COLA OR DR. PEPPER.....6 PK. 20 OZ. BTL **\$2.89**
 ALL TYPES
COCA-COLA OR DR. PEPPER.....6 PACK 12 OZ. CANS **\$1.59**
 ALL TYPES
COCA-COLA OR DR. PEPPER.....3 LITER BTL **\$1.59**



HEALTH & BEAUTY

- PANTENE PRO-V ASSORTED
SHAMPOO OR CONDITIONER.....10.2-13 OZ. BTL **\$2.79**
 VLASIC KOSHER, ORIGINAL OR ZESTY CRUNCHY
WHOLE DILLS.....46 OZ. JAR **\$1.99**
 REDUCED FAT REGULAR,
 REGULAR OR DOUBLE STUF
OREO COOKIES.....20 OZ. PKG **\$1.99**
 ASSORTED
 10 OZ. OAT THINS * 9 OZ. REDUCED FAT WHEAT THINS,
 10 OZ. ORIGINAL WHEAT THINS, 10 OZ. LOW SALT WHEAT
 THINS, 9.5 OZ. MULTI GRAIN WHEAT THINS * 8 OZ. SOCIABLES
 * 8 OZ. CHICKEN IN A BISQUIT * 8.5 OZ. TRISCUIT THIN
 CRISPS FRENCH ONION, 9.5 OZ. RYE TRISCUITS WAFERS,
 9.5 OZ. GARDEN HERB TRISCUIT, 8.5 OZ. REDUCED FAT
 TRISCUIT, 9.5 OZ. TRISCUIT WAFERS, 9.5 OZ. TRISCUIT
 LOW SALT WAFER, 8.5 OZ. TRISCUIT THIN CRISPS ORIGINAL
 * 7.5 OZ. POTATO AIR CRISP ORIGINAL/BBO, 8 OZ. RITZ
 AIR CRISPS, 7 OZ. CHEESE NIPS AIR CRISPS, 7.5 OZ. PRETZEL
 AIR CRISPS, 8.5 OZ. RITZ SOUR CREAM & ONION AIR CRISPS,
 7.5 OZ. WHEAT THIN AIR CRISP, 8 OZ. WHEAT THINS RANCH
 AIR CRISPS * 8 OZ. HONEY MAID CRISPS HONEY/CINNAMON
NABISCO SNACK CRACKERS.....YOUR CHOICE **2/\$3**
 ASSORTED UNSWEETENED
KOOL-AID.....MAKES 2 QTS. **7/\$1**
 TRADITIONAL, CHEDDAR, BOLD ZESTY OR HOT & SPICY
CHEX MIX.....7.75-8 OZ. PKG **99¢**
 20 OZ. HONEY NUT, 17.2 OZ. SPOON
 SIZE OR 19 OZ. FROSTED
POST SHREDDED WHEAT.....YOUR CHOICE **2/\$4**
 FAC LITE, FRENCH ROAST FAC, ITALIAN
 ESPRESSO, REGULAR FAC OR COLOMBIAN SUPREME
MAXWELL HOUSE COFFEE.....11-13 OZ. CAN **\$2.59**
 SMALL BOX ONLY
 .3 OZ. SUGAR FREE OR 3 OZ. REGULAR
JELL-O GELATIN.....YOUR CHOICE **2/88¢**
 JELL-O ASSORTED
GELATIN OR PUDDING.....6 PACK **2/\$4**
 KRAFT REGULAR OR LIGHT
VELVEETA SPREAD.....32 OZ. BOX **\$3.99**
 KRAFT
VELVEETA SHELLS & CHEESE.....24 OZ. BOX **\$3.99**
 KRAFT DELUXE
MACARONI & CHEESE.....28 OZ. BOX **\$3.99**
 REGULAR OR LIGHT
CHEESE WHIZ.....16 OZ. JAR **\$2.99**
 KRAFT REGULAR/FAT FREE, PARMESAN &
 ROMANO, HEARTY ITALIAN, OR RED PEPPER ITALIAN
100% GRATED PARMESAN CHEESE.....8 OZ. JAR **\$2.99**
 KRAFT REGULAR ONLY
SALAD DRESSING.....16 OZ. BTL. **2/\$3**
 KRAFT/DEL MONTE REGULAR OR FAT FREE
PUDDING CUPS.....4 PACK, 3.5 OZ **99¢**
 SOLO
 20 CT. 16 OZ. CUPS * 15 CT. 9" PLATES
PARTY CUPS OR PLATES..YOUR CHOICE **99¢**
 HIDDEN VALLEY RANCH FIESTA RANCH,
 GARDEN VEGETABLE OR ORIGINAL
PARTY DIP MIX.....1-1.1 OZ. PKG **89¢**
 OLD EL PASO REGULAR OR FAT FREE
REFRIED BEANS.....16 OZ. CAN **69¢**
 OLD EL PASO CHOPPED
GREEN CHILIES.....4 OZ. CAN **79¢**
 OLD EL PASO
TACO SEASONING MIX.....1.2 OZ. PKG **59¢**
 REGULAR OR MESQUITE
KINGSFORD CHARCOAL.....10 LB. BAG **\$3.59**
 ANGEL SOFT
BATH TISSUE.....4 ROLL PKG **99¢**
 CORONET
PAPER TOWELS.....PRINT ROLL **69¢**
 ASSORTED DYNA BITES, CHEESE BITES OR
BAGEL BITES.....7-7.5 OZ. PKGS **3/\$3**
 CHEDDAR/CREAM CHEESE HOT
 BITES OR CHEDDAR/CREAM CHEESE
EXTRA HOT BITES.....8 OZ. PKG **\$1.39**
 KC MASTERPIECE ORIGINAL OR HICKORY
BBQ SAUCE.....18 OZ. JAR **\$1.39**
 GRAPE, RASPBERRY OR CRANBERRY
OCEAN SPRAY DRINKS...64 OZ. BTL. **2/\$5**
 SQUEEZE
HEINZ KETCHUP.....28 OZ. BTL **\$1.99**
 RUBY RED & TANGERINE, PINK OR RUBY RED
OCEAN SPRAY GRAPEFRUIT JUICES.....64 OZ. BTL **\$2.79**
 EARLY CALIFORNIA
SPANISH OLIVES.....5.75 OZ. CAN **99¢**

WESTERN MONEY
 UNION TRANSFERSM
 "The fastest way to send money"

Pay-n-Save
 ONLY AT LOWE'S

Lowe's MARKETPLACE

515 W. American Blvd.
 Muleshoe 272-4406

401 W. American Blvd.
 Muleshoe 272-4585

WE RESERVE THE RIGHT TO LIMIT QUANTITIES IN TEXAS