

Cloud seeding area expanded to over 9.8 million acres

Beginning July 1, the High Plains Underground Water Conservation District No. 1 precipitation enhancement program target area was expanded to include Curry and southwestern Quay Counties of New Mexico.

Roosevelt County, New Mexico has been included in the cloud seeding target area since operations began May 31.

"Adding this extra area in New Mexico increases the precipitation enhancement target area from 8,440,790 acres to 9,818,500 acres," said A. Wayne Wyatt, High Plains Water District manager. "Residents in Curry County will benefit from any additional rainfall generated as a result of the precipitation enhancement program. Seeding clouds in New Mexico will benefit producers within the High Plains Water District whose farms are close to the Texas-New Mexico line."

Participants pay a pro-rata share of the fixed and reimbursable program costs, based upon total acreage. The High Plains Water District will pay

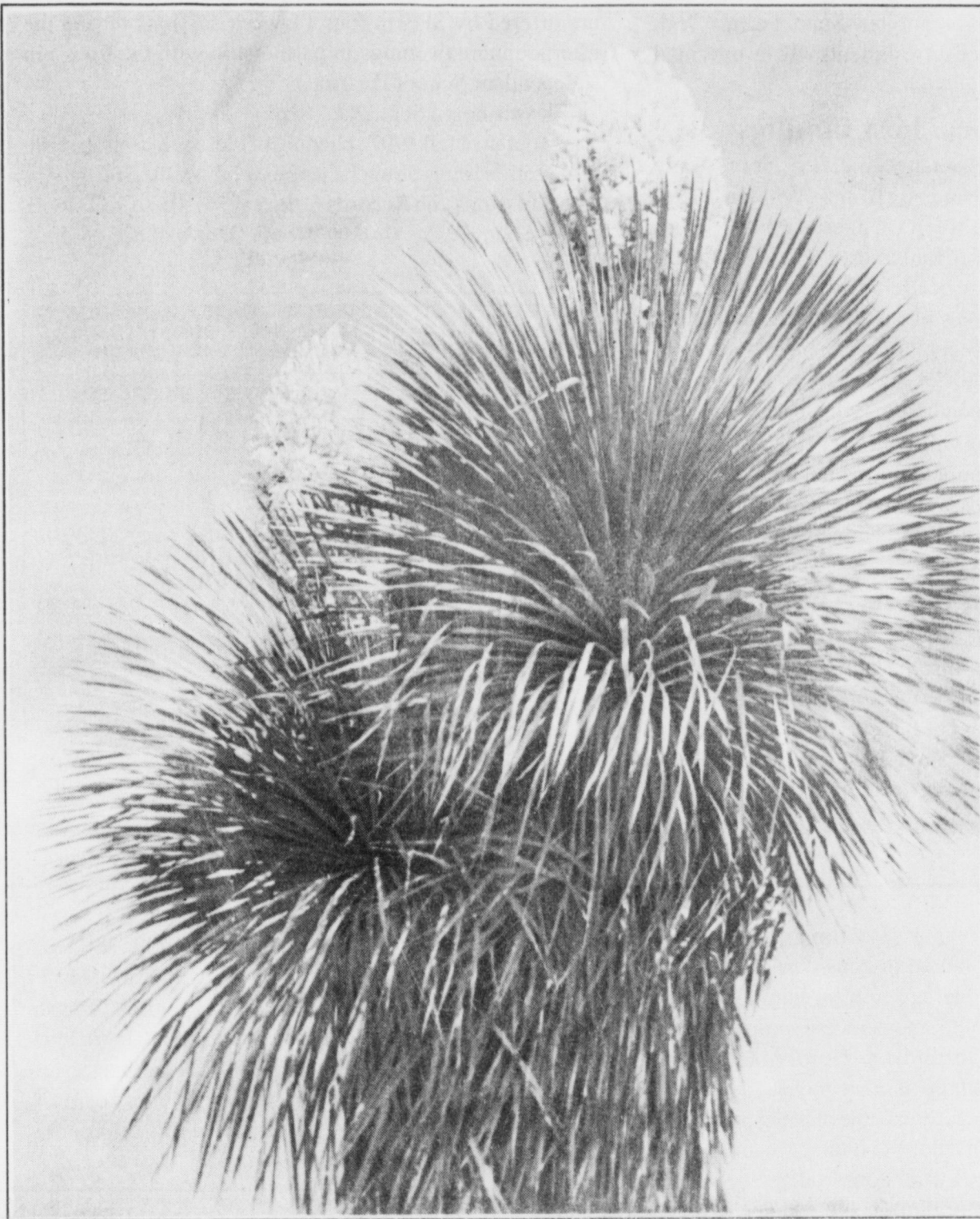
70 percent of the program cost for its 6,869,910 acre service area. Roosevelt County will pay 16 percent of the cost for its 1,570,800 acre area; Curry County will pay nine percent of the cost for its 897,760 acres; and southwestern Quay County will pay five percent of the cost for its 479,950 acres.

The 75th Texas Legislature provided cost-share funding for precipitation enhancement within the state for the next biennium. As a result, it appears that the High Plains Water District will not have to raise taxes to fund the precipitation enhancement program for the next two years. "The Water District's current tax rate is \$.0084 per \$100 valuation. There should be very little variation between the current tax rate and the proposed 1998 tax rate to be set by the Board of Directors in August," said Wyatt.

The Water District is paying for the program's first year with operating fund reserves.

As of July 9, Weather Modification Inc. pilots have flown

Continued on page 3



Towering blooms

A Spanish dagger sends blooms skyward into the West Texas sky. The plant, located at the west entrance to Muleshoe State Bank, has enjoyed good moisture and steamy temperatures to tower above the parking lot entrance.

San Antonio readies for Folklife Festival



SAN ANTONIO — The Texas Folklife Festival, presented by the Institute of Texan Cultures, celebrates Texans

from all ethnic groups, both yesterday & today. The 26th annual event is set for July 31-August 3 at the Institute in downtown San Antonio.

Folklife takes on new meaning at this year's Texas Folklife Festival, with both an international flare and a glimpse of "future folklife" — their music, dances, crafts, foods, and stories.

The Festival proudly serves as one of the state's and the city's premier events. For over a quarter century the Festival has exemplified the statewide mission of the Institute of Texan Cultures by bringing the diverse peoples of Texas together in an educational and entertaining event.

Simultaneously, it has assisted the individual ethnic and cultural organizations in maintaining their identity and perpetuating their own programs and projects with funds raised at the Festival. More than \$500,000 goes back into the community with these groups each year.

This year the Festival salutes San Antonio's sister city, Kwangju City, South Korea, with a special performance Friday night of the Kwangju Municipal Traditional Arts Troupe, hosted by the City of San Antonio and with involvement by the Korean community.

You'll watch in awe as members of this talented group display their physical dexterity, emotional control, instrumental genius, and elegant creativity in a series of dances representative of several regions in

Continued on page 5

Severe weather season exceeds 1996

The 1997 High Plains severe weather season has been more active than 1996, with numerous severe thunderstorm and tornado warnings in the 24 counties surrounding Lubbock.

In April, May, and June, the NWS in Lubbock issued 261 severe thunderstorm or tornado warnings within the county warning area (i.e., in 24 counties surrounding Lubbock). By comparison, 162 warnings were issued for the same area April-June 1996.

Forty percent of this season's warnings occurred on just three days: April 10 (49 warnings), June 14 (33), and May 29 (22). Severe Thunderstorm and/or

Tornado Warnings were issued on 28 different days between April 1 and June 30.

The weather has resulted in precipitation totals almost three times higher than 1996. In the Muleshoe reporting area, the 11.28 inches reported is more than double the 4.90 inches recorded by this time last year.

Worst Day: April 10, 1997. The season started with a bang on this day. A strong cold front and advancing dryline combined with other atmospheric ingredients to create widespread severe weather from late afternoon well into the night.

A particularly strong, long-lived storm caused large hail

and tornadoes from Lynn County across northwest Garza County, into Crosby, Dickens, and Cottle Counties. It caused several tornadoes, one of which struck a mobile home (killing one person and injuring another) one mile west of White River Lake in southeast Crosby County.

At virtually the exact time of the fatality, another storm was damaging Liberty Acres, a small community four miles east of Lubbock International Airport. This weak tornado and/or strong downburst caused light to moderate damage to many of that community's structures. This

night's storms dumped large hail (the size of golf balls or larger) near Hart (Castro County), New Moore and Tahoka (Lynn Co.), and in north and west parts of Lubbock. In Lubbock alone, damage to roofs, cars, etc. likely exceeded 30 million dollars.

Other Active Days: Severe weather was also widespread on June 14. Most of the damage was due to very strong winds. We received many reports of 60-75 MPH winds. Power poles were snapped, trees damaged or uprooted, and

Continued on page 3

Station	January-June Precipitation Totals	
	1996	1997
Abernathy	8.68	14.33
Brownfield	7.71	13.66
Crosbyton	5.00	20.77
Dimmitt	4.11	11.79
Floydada	11.24	16.72
Jayton	7.43	15.30
Levelland	7.80	14.88
Littlefield	4.98	11.47
Locketville	6.99	11.10
Lubbock	6.01	13.63
Morton	5.77	8.12
Muleshoe	4.90	11.28
Muleshoe Refuge	4.76	9.88
Olton	3.69	12.25
Paducah	5.73	19.38
Plaview	3.34	10.25
Post	5.21	15.15
Seminole	6.99	9.38
Silverton	4.27	17.16
Snyder	5.07	19.42
Spur	3.28	15.90
Tahoka	5.58	18.28
Tulia	4.00	15.63
Average	5.60	14.10

VS virus found in NM; quarantine policy limited

It's back! After a summer off, the Vesicular Stomatitis (VS) virus has cropped up again, affecting a handful of horses in New Mexico and Arizona. Texas livestock health officials are watching here for signs of the painful blistering disease and are working to inform producers about interstate and international movement restrictions.

"As of June 23, Texas has not detected any VS cases, but because of our common border with New Mexico, we come under some restrictions for interstate movement of livestock," reported Dr. Terry Beals, executive director of the Texas Animal Health Commission (TAHC). "Anyone planning to move animals to another state should ask their veterinarian to call ahead for the latest information on testing requirements or restrictions."

After the VS outbreak in 1995, the Western States Livestock Health Association (WSLHA) determined 10-mile circle quarantines around an infected animal are ineffective in preventing the spread of VS. Therefore, the TAHC will follow the recom-

Continued on page 2

Spring seeded crop reports due July 15

The final date to report spring seeded crops is July 15. Certification is voluntary, with the exception of fruits, vegetables, peanuts and crops that are insured through the FSA office. Crops must be reported

to be eligible for NAP (Non-insured) Assistance Program), for history purposes, and conservation compliance requirements.

A majority of the native pasture in Bailey County is

grazed or hayed year round and we are encouraging producers to certify this acreage by July 15.

Acreage reports for fruits and vegetables must be accurate, and it is strongly recom-

mended that producers request measuring service on these crops. If you have crops that have failed, please remember to certify all crop acreages prior

Continued on page 2

Old crop wheat stocks hit 22-year low

AUSTIN — Texas stocks of old crop wheat in all storage positions were at the lowest June level in 22 years.

According to figures released by the Texas Agricultural Statistics Service, total stocks of old crop wheat in all storage positions were down 44 percent from last year, to 16.6 million bushels, the low-

est since June 1, 1975. Farm stocks totaled 600,000 bushels, down 100,000 bushels from last year.

Total sorghum stocks were 13.0 million hundredweight (cwt) on June 1, up 91 percent from the record low inventories last year. Both on-farm and commercial storage were almost double last year's level.

Total corn stocks on June 1 were up 9 percent to 37.1 million bushels. Farm stocks were 4.5 million bushels accounting for only 12 percent of the total stocks.

Total stocks of corn in the United States were 2.5 million bushels, up 45 percent from the June 1, 1996 level. All old crop wheat stocks, at 444 million

bushels, were up 18 percent from the low June level of 375 million bushels a year earlier.

U.S. stocks of sorghum totaled 65.7 million cwt, up 67 percent from last year. Barley storage was 110.0 million bushels and oats on hand were 66.6 million bushels, both slightly above June 1996.

A R O U N D M U L E S H O E

MISD school board meeting July 14

The Muleshoe ISD school board will meet July 14 at 7 p.m. at 514 West Ave. G.

Items on the agenda include a discussion of the food service budget, TAAS results, 1997-98 budget and to appoint a trustee and alternative for the TASB Delegate Assembly.

State Farm to host anniversary open house

State Farm Insurance of Muleshoe and agent Mark Morton will host an open house from 4-6 p.m. Thursday, July 17 at the office at 101 Main Street.

The open house commemorates State Farm's 75th anniversary of service. Free refreshments will be provided and door prizes will be awarded.

ISE looking for local host families

International Student Exchange, Inc. (ISE) is presently seeking host families for students from seventeen different countries. Students between the ages of 15 and 18 are carefully screened by ISE for suitability. They bring their own spending money and are covered by health insurance.

While living with you, a student attends the local high school and is expected to bear his or her share of household responsibilities. The length of stay can range from six months to a full year, depending on your wishes.

An ISE representative will help you select a student from numerous student applications which include family photos and biographical essays. For more information on being and ISE host family or on becoming a representative, call ISE at 1-800-233-4678.

TSTC registration begins Aug. 4

WACO— Texas State Technical College will have early registration on Aug. 4 from 8 a.m. - 6 p.m. and from 8 a.m. - 5 p.m. Tuesday - Friday, Aug. 5-8.

Regular registration for the fall quarter classes is from 8 a.m. - 6 p.m. Wednesday, Sept. 3 in the Student Center. Classes begin Sept. 4. Late registration is from 8 a.m. - 5

p.m. on Sept. 4

New students should contact College Relations for application packets. Returning students report to their technology departments. For more information call 1-800-792-8784 or (817) 867-3371.

SPC registration scheduled Aug. 28

South Plains College's fall 1997 registration is scheduled Aug. 28 on the Levelland campus. Enrollment at SPC Lubbock is Aug. 27 for returning students and Aug. 28 for new students.

Registration at the Reese Center is Aug. 25-26. Courses are offered by SPC in four 11-week sessions during the afternoon and evenings in partnership with the Frenship Independent School District.

Classes begin Sept. 2.

To obtain a fall 1997 schedule of classes listing specific registration times on each campus, contact the SPC Office of Admissions and Records Office at 747-0576, ext. 4660, or the South Plains College Reese Center at 885-3048.

LOCAL WEATHER AT A GLANCE

DATE	HIGH	LOW	PRECIP
7/9	91	63	—
7/10	90	64	—
7/11	90	65	.36
Year to date			13.5 inches

SOURCE: R.G. BENNETT, LOCAL NATIONAL WEATHER SERVICE OBSERVER
ALL TEMPERATURES AND PRECIPITATION READINGS ARE FOR THE PREVIOUS 24 HOURS.

EXTENDED FORECAST

Partly cloudy through Tuesday with a 20-30 percent chance of rain. Highs in the lower 90s and lows in the upper 60s.

Bovina Rural Health Clinic

Will CLOSE Effective July 18, 1997

Copies of medical records may be obtained by contacting the Bovina Rural Health Clinic at (806) 238-1260 or in person at 509 Ave. I in Bovina until July 18. After July 18, medical records will be located at the Friona Medical Clinic in Friona (see address below.)

The following clinics are accepting new patients:

Friona Medical Clinic

1307 Cleveland • Friona, TX 79035 • (806) 247-2781

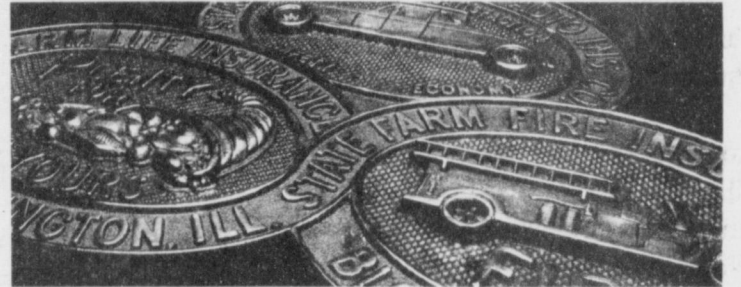
Hereford Women & Children's Health Clinic

205 W. 4th Street • Hereford, Tx 79045 • (806) 364-2401

OB & Children Services



STATE FARM THANKS YOU FOR 75 YEARS



I'm proud to be your good neighbor agent:

MARK MORTON
101 S. Main • Muleshoe
272-7519 • 1-800-867-9178



Like a good neighbor, State Farm is there.
State Farm Mutual Automobile Insurance Company
Home Offices: Bloomington, Illinois

HELP US CELEBRATE OUR 75TH ANNIVERSARY!

Thursday, July 17 • 4-6 p.m.

State Farm Insurance • 101 Main Street • Muleshoe

FREE REFRESHMENTS & DOOR PRIZES!

Reporting

Continued from page 1

to destroying evidence of the crop. You will need to contact this office, and also your insurance agent, prior to destroying the crop. If insured with this office, you need to report the loss within 72 hours of the damage, but no later than 15 days after the end of the insurance period, by unit, for each insured crop. You will need to leave samples intact for each field of the damaged unit, and protect the crop from further damage by providing sufficient care.

CRP

Acceptance letters have been sent to all producers accepted in the CRP Program. This is a reminder that these letters must be signed and returned to the Bailey County FSA Office. If you have not already returned your signed letter in, please do so at this time. Producers with contracts that are expiring and chose not to rebid this farm into the CRP program, may begin preparing the land for the 1998 crop year after July 1, 1997, if you intend to plant a spring seeded crop.

If you are planning to plant a spring seeded crop you may apply chemicals beginning July 1. All producers are reminded to contact the Bailey County NRCS office to update their conservation plan.

Continuous CRP Sign-Up

Continuous sign-up provides management flexibility to farmers and ranchers to implement certain high-priority conservation practices on eligible land. Offers are automatically accepted, provided the acreage and producer meet certain eligibility requirements. The per-acre rental rate may not exceed the CCC's maximum payment amount. While acceptance is not determined by a competitive bidding process, producers may elect to receive an amount less than the maximum payment rate.

To be eligible under continuous sign-up, land must first meet the basic CRP eligibility requirement, which is the fol-

lowing: (1) Cropland that was planted or considered planted to an agricultural commodity 2 of 5 most recent crop years (including field margins) which is also physically and legally capable of being planted in a normal manner to an agricultural commodity; or (2) Marginal pasture land that is suitable for use as a riparian buffer to be planted to trees. The acreage must also be determined by the NRCS to be eligible and suitable for any of the following practices: Riparian buffers; Filter strips; Grass waterways; Shelter belts; Field windbreaks; Living snow fences; Contour grass strips; Salt tolerant vegetation; or Shallow water areas for wildlife. Also eligible is acreage within an Environmental Protection Agency designated wellhead protection area. Land must have been owned or operated for at least 12 months prior to close of the sign-up period unless: The new owner acquired the land as a result of death of the previous owner; The only ownership change occurred due to foreclosure where the owner exercised a timely right of redemption in accordance with State law; or the circumstances of the acquisition present adequate assurance to CCC that the new owner did not acquire the land for the purpose of placing it in CRP. If you would like more information please contact this office.

CAT Insurance

If you have a CAT policy with this office, please remember that July 15, is the final date to pay your premium. If premiums are not paid, your insurance will be canceled, and the crop or crops will not be insured. Beginning in the 1998 crop year, crop insurance will be available exclusively through private crop insurance agents. The transfer will begin immediately. This will apply to the 1998 wheat crop. Producers may select their provider prior to the sales closing date for the applicable crop.

Loans

The FSA Office can make and guarantee loans to socially disadvantaged applicants to buy and operate family-size farms and ranches. Direct loans are made to applicants by FSA and include both farm operating and farm ownership loans. Guaranteed loans also may be made for ownership or operating purposes, and may be made by any lending institution subject to Federal or State supervision.

To be eligible, an applicant must, among other requirements: Have a satisfactory history of meeting credit obligations; Have sufficient education, training, or at least 1 year's experience in managing or operating a farm or ranch within the last 5 years for a operating loan, or, for an ownership loan, have 3 years experience in operating a farm or ranch; be a citizen of the United States (or legal resident alien); Be unable to obtain credit elsewhere at reasonable rates and terms to meet actual needs; Possess the legal capacity to incur the obligations of the loan. Contact this office for more information if you are interested.

Loan Rates

The 1997 loan rates for small grains are:
Wheat\$2.65 bu.
Barley\$1.82 bu.
Oats\$1.19 bu.

Direct deposit

This is a reminder that after

VS

Continued from page 1

mendations of the WSLHA, and will restrict only livestock from affected and exposed premises. As a precaution, checks of incoming livestock shipments also will be stepped up in West Texas.

Information regarding international livestock shipments can be obtained from the U.S. Department of Agriculture's Veterinary Services in Austin at 512/916-5555.

January 1, 1999, all federal payments will be made by EFT (Electronic Funds Transfer). Producers must complete an SF-1199A to authorize direct deposit. These forms are available at this office.
Holiday

Goodwrench Service Plus

Offers you MORE

GM Goodwrench Service Plus is more than just another way to service your vehicle - it's a better way. Because GM Goodwrench Service Plus has highly trained technicians who know your GM vehicle inside and out.

UP-FRONT COMPETITIVE PRICING

Which means no surprises when the bill comes.

COURTESY TRANSPORTATION

After you drop off your vehicle, we'll take you where you want to go.

LIFETIME SERVICE GUARANTEE

Parts and labor are covered for as long as you own your GM vehicle. See dealer for details of this limited warranty. Covered parts include:

- Air Conditioning Accumulator
- Air Conditioning Compressor
- Air Conditioning Condenser
- CV Joint/Boot Seal Kit
- Ignition Module
- Ignition Coils

- EGR Valve
- Fuel Injectors
- Fuel Pump
- Ignition Wire Set
- Individual Ignition Wires
- New/Remanufactured Generator

- New/Remanufactured Starter Motor
- Oxygen Sensor
- Shock Absorbers/Struts
- Throttle Body Injector
- Water Pump

FOR LESS.

Please present coupon prior to service

Prices Good July 1-31, 1997

QUICK LUBE^{plus}
Lube, Oil & Filter Change
Complete chassis lube, AC oil filter, up to 5 quarts quality motor oil, plus 10 point maintenance check
\$14⁰⁰
Expires July 31

Air Conditioning Service
Adjust drive belts. Tighten fittings. Check operating pressure. Check for leaks. Clean condenser fins. Performance-test system. Includes 1 lb. Freon.
\$58⁰⁰
Expires July 31

Tire Rotation/ Balance/ Brake Inspection
Inspect for irregular tire wear. Check tire pressure. Rotate per manufacturer's specifications. Inspect rims. Computer balance 4 wheels. Check brake linings, rotors, drums, hydraulic system & master cylinder.
\$36⁰⁰
Expires July 31

Radiator Service/ Coolant
Drain & flush cooling system. Replace coolant. Clean outside of radiator & air conditioning condenser. pressure test entire system. Inspect condition of all hoses, clamps & belts.
\$31⁰⁰
Expires July 31

Engine Maintenance Service
Replace spark plugs. Set timing & adjust idle. Inspect air filter. Check ignition timing, hoses, PCV valve. (Price for 6 and 8 cylinder slightly higher, 4 cylinder slightly lower).
\$67⁵⁰
Expires July 31

Off Any Mechanical Service Repair
This coupon may be redeemed for \$20.00 off any mechanical service repair of \$100.00 or more. May not be applied with any other service coupon offers.
\$20⁰⁰
Expires July 31
See Dealer For Details

BENDER

2500 Mabry Drive, Clovis, NM (505) 763-4465

NURSING HOME NEWS

We at the Healthcare Center had a very enjoyable and safe July 4th holiday. We hope you did, too.

My thanks to the residents, volunteers and Care Center staff for keeping things going and running smoothly while I was on vacation. Each one of you are priceless.

The Followers S.S. class of the First Baptist Church gave a donation to the Care Center. Clark Price baked and brought a large batch of homemade cookies and a bouquet of flowers to the Care Center Wednesday morning. Grace Scarbrough had the Schwan's man deliver us ice cream cups on Tuesday morning.

Sunday afternoon the Calvary Baptist Church came for church services.

Buster and Wanda Kittrell, Loyce Killingsworth and Jim Claunch hosted coffee/ donut time and our singspiration Wednesday morning.

Claudine Embry, Lanell Stancell, Pat Watson, Kimberly Dickerson, Jolene Espinosa, and the activity department shampooed and cut the ladies hair and gave manicures Tuesday. Jolene Espinosa served the residents ice cream during and after the beauty shop visit.

Pastor David McIntire, Clara Lou Jones and Glenda Jennings directed the memorial service for Kenneth Everett



Staff and patients of the Muleshoe Area Healthcare Center enjoyed a visit from country music star Johnny Rodriguez on July 3

Thursday morning.

Nancy Lemons directed ceramic painting class for the residents Thursday morning.

Maxine Kimbrough visited her mother Vera Dowling this week. Maxine has been visiting her children in San Antonio, TX.

Guy Kendall was visited by his son Terry and his wife from Houston over the 4th holidays. Guy went out to his house to visit and have dinner Sunday.

Mrs. Gibbs' son Boyde, from Lubbock visited her Wednesday and took her out to eat.

Winnie Orcutt enjoyed going out to watch the fire works display with her family on the 4th.

Congratulations to Ruby Wilson upon receiving a visit and a chat from Johnny Rodriguez.

D. and Ruth Clements had a family train in the parade on Friday, the 4th.

Happy July birthday to Helen Tinskey, July 23rd and also, Cardie Claunch.

The Mennonite Church of Farwell will be sang for us on July 11th at 6 p.m. Everyone was invited.

We wish to make welcome our new residents, they are Peggy Dodd, born August 8 in Aquilla, TX, she is a member of the First Baptist Church. Sam White, born in Texas on September 26, 1905, he is a retired farmer and a member of the Lariat Church of Christ. Vera Calson was born in Tennessee on October 17, 1896, she is a member of the Muleshoe Church of Christ. Welcome to the Healthcare Center "family!"

Portales Open Tennis set July 19-20

The annual Portales Open Tennis Tournament is scheduled for July 18-20, with the entry deadline set for July 16.

Events are planned for men, women and children of all ages and trophies will be awarded for first and second place winner in all divisions. Winners of consolation brackets will be awarded trophies as well.

Entrants are limited to three events. Juniors who play in adult events will be eligible for three events in addition to junior events. Draws will be combined as necessary. Those who

do not wish to moved to another division should indicate so.

All junior events will be played Friday, July 18, beginning at 8 a.m. Adult events will begin Saturday, July 19, at 8 a.m.

For information, contact Bill or Shirley Wahlman, (505) 356-6747 or Beverly Johnson (505) 276-8227.

Events include:
Men: Open singles, 35-over singles, open doubles, 35-over doubles, mixed doubles.
Women: Open singles, 35-over singles, open doubles, 35-over doubles, mixed doubles.
Boys: 16-under singles and doubles; 14-under singles and doubles; 12-under singles; 10-under singles, 16-under mixed doubles, 12-under mixed doubles.
Boys: 16-under singles and doubles; 14-under singles and doubles; 12-under singles; 10-under singles, 16-under mixed doubles, 12-under mixed doubles.
Girls: 16-under singles and doubles; 14-under singles and doubles; 12-under singles; 10-under singles, 16-under mixed doubles, 12-under mixed doubles.
 Starting times will not be available until 9 p.m. Thursday, July 17.

The Biggest Tests of Character May Be the Little Ones

The terrorists have won. I've long thought so, but now I'm sure. It is not necessary, you see, that airline passengers be blown up, hijacked to Iraq, or have guns stuck in their faces, for terrorists to win. All terrorists need to do is just what they've done—make sure to make life difficult for everyone who flies.

Today no terrorist need even board the plane or be within 1,000 miles of the aircraft; he is still present at every commercial airport in the land. He's the reason you need to chip the fillings out of your teeth to get through the metal detectors. He's the reason you need a family photo, a family tree, and a DNA test to fly these days. He's the reason every airline employee you meet asks you the same stupid questions *ad nauseum*. He may not be there, but he is there. His presence is felt everywhere, which, I'm sorry to say, means that he has won.

On a recent Friday afternoon I was trying to load myself and two boys onto a plane to return from a youth leadership camp in Dallas. We were a bit late heading to the airport. We were more than a bit hot. The air conditioner on the church's van was broken. The driver was a nice man who would've parked and helped carry our luggage if we'd asked, but we thought we could handle it. And we could. Barely. By the time we lugged the luggage up the ramp and, finally, to the baggage check-in counter, I was rolling in sweat.

Baggage handled, we raced for the gate. To save time, I didn't even wait to be beeped before I tossed all my metal—change, pocket knife, watch, ring, and gun (just kidding)—everything *except* my dental work, into the plastic bucket and ducked through the metal detector. Then I grabbed the handle of my already-xrayed computer briefcase and was set to sprint to the gate, just like O.J. used to do before he was arraigned. Until I heard a polite but gruff no-nonsense voice from a woman in uniform (SS, I think) who looked like the lady cop from "Night Court" (but who lacked her sense of humor).
 "Do you mind opening that?"
 "No, but I'm kinda in a rush."
 "Would you take the computer out?"
 "I'm really in a hurry." My teeth were clenched.
 "Would you turn it on, please?"
 "Are you kidding?" She wasn't.
 Did I mention the camp we were returning from was a Christian camp? Did I mention this particular Christian would've cheerfully bit that woman's head off?
 I wouldn't have her job on a platter. Just her head.
 The biggest tests of faith and character may be the little tests that don't happen in church. My computer passed the test. I didn't.

Curtis Shelburne is minister of the 16th & D Church of Christ in Muleshoe.



Focus On Faith
Curtis Shelburne

Seeding

Continued from page 1

23 cloud seeding missions in an attempt to increase precipitation with in the target area.

One aircraft based in Amarillo and two in Lubbock dropped a total of 237 silver iodide flares into cloud systems within the target area from May 30 to July 9.

These aircraft have flown 16 days as of July 9; however there were 24 days when flight operation were suspended due to severe weather outbreaks of lack of seeding targets in the area.

As of July 10, the High Plains Water District has revised its "no-seed order" to include the south half and northeast quarter of Lynn County; the southeastern three quarters of the eastern portion of Lubbock contained all of Crosby County.

"The no-seed order is based upon a 10-day moving precipitation average. If an area received two or more inches of precipitation during the 10-day period, it is added to the no-seed order," said Wyatt. Areas receiving less than one-half inch of rain are priority areas. County Committee members in each of the 15 counties within the Water District also provide "seed or no-seed" advice for their respective precincts.

He added that cloud seeding operations do not take place whenever the National Weather Service issues a severe weather bulletin, such as a severe thunderstorm warning, flash flood warning or tornado warning.

Christmas In July
You'll Always GET THE BEST VALUES IN OUR STORE!!!

1/4 CARAT \$99
of diamonds
LAYAWAY FOR CHRISTMAS
 ALL THIS AND FREE FINANCING TOO! **15 MONTHS**
NO MONEY DOWN!
 Celebrating 56 years
HOLMBERG JEWELRY
 1908 N. Prince • 505-762-9376 • Clovis, NM

Bailey County Journal USPS 040-200
 Established March 31, 1963. Published by Triple S Publishing, Inc. Every Sunday at 304 W. Second, Box 449, Muleshoe, TX 79347.
 Second Class Postage paid at Muleshoe, TX.
 POSTMASTER: Send address changes to the Bailey County Journal, P.O. Box 449, Muleshoe, TX 79347.
 We are qualified members of:
 Panhandle Press Association, National Newspaper Association, West Texas Press Association and Texas Press Association
WEST TEXAS PRESS ASSOCIATION
PPA
 Panhandle Press Association
TEXAS PRESS ASSOCIATION MEMBER 1997
 Scot Stinnett, Publisher
 Lisa Stinnett, Vice-President/Comptroller
 Rick White, Editor
 Jessica Orozco, Classifieds
 Pat Durben, Advertising
 © 1990
 SUBSCRIPTIONS: Muleshoe Journal and Bailey County Journal
 By Carrier Yearly - \$22.00
 Bailey County — by mail - \$24.00
 Elsewhere - \$26.00
 Advertising Rate Cards on Application
 Advertisers should check their ad the first day of insertion. The Journals will not be liable for failure to publish an ad or for a typographical error or errors in publications except to the extent of the cost of the ad for the first day of insertion. Adjustment for errors will be limited to the cost of that portion of the ad where the error occurred.

Weather

Continued from page 1

sheds were damaged in several areas, including near Denver City, Levelland, South Plains (Floyd County), Vigo Park (Swisher Co.), and Silverton (Briscoe Co.). On May 29, severe storms struck parts of the northern South Plains and extreme southern panhandle. Hail reports varied from the size of nickels to as large as ping-pong balls. Hardest hit areas included Plainview and Petersburg (Hale County), Happy and Tulia (Swisher Co.), and near Ralls (Crosby Co.).

Federal Land Bank Association
 316 Main St., Muleshoe
 806-272-3010
 Long Term Financing for Farms, Ranches, Rural Housing, Operating and Improvements.
Current Variable Rate 7.95%.
 Fixed rates are available.
 Call for quote.
 A Property Rights Advocate and Equal Opportunity Lender.

Home Folks Caring For Folks At Home.

MULESHOE AREA HOME HEALTH Agency

Featured Patient
 Mrs. Lena Ruthardt has lived in Muleshoe for about forty years. Mrs. Ruthardt was married to the late F.B. Ruthardt. She has 4 children, 10 grandchildren, and 15 great-grandchildren. Mrs. Ruthardt worked at the public library for nine years, she also was a house wife. She enjoyed quilting when she had extra time. She is a member of the Assembly of God Church in Muleshoe. She says that the girls at Muleshoe Area Home Health Agency are great!

To receive Home Health Services, talk with your physician or talk with hospital personnel when you are hospitalized.

24 Hour # 272-3346
 Local Nurse on call 24 hours a day to offer prompt service.

We accept Medicare, Medicaid and Private Insurance
It Is Your Right To Choose The Home Health Agency You Prefer.

New Out Of Hospital Advance Directives Now Available!

We care for you at home

Affiliated with Lubbock Methodist Hospital Systems

BAILEY COUNTY DEVOTIONAL PAGE

Risinger Plumbing
Serving Muleshoe Area
All Plumbing Repairs
272-6772

Springlake Potatoes, Inc.
P.O. Box 280 • Springlake, TX
262-5542

EASTER GRAIN, INC.
Easter 276-5255 Labuddie 965-2817

WEST CAMP GIN, INC.
Route 2 Box 1000
Muleshoe, TX • 925-6681
James Sheppard • Phyllis Sheppard

LLD LANDMARK LABEL & DESIGN
Landmark Label & Design is committed to providing superior customer service and value through the timely delivery of products and quality at a competitive price.
218 Main Street • Muleshoe, TX • 272-6767

IRRIGATION PUMPS & POWER
ZIMMATIC CENTER-PIVOTS
W. Hwy. 84 272-4483

MAPLE COOP GIN
927-5501
Maple, Texas

Leal's Tortilla Factory, Inc.
"Serving West Texas since 1957"
107 E. Ash 272-5772 Muleshoe, TX

O & C OSONS
Erection Sprinkler Ser. Welding & Repair
Lupe Olivarez 272-5018 909 W. American Blvd. 272-3475

Discount Computer & Repair Service
CompuTeK
206 Main 272-5404
1-800-687-3816

BOBO INSURANCE AGENCY
108 E. Ave. C 272-4264

Shipman's Body Shop
Auto Painting • Wrecker Service • Free Estimates
Tractor Glass & Windshields
410 N. 1st Muleshoe, TX
272-4408 FAX 272-3366

SAIN IRRIGATION & MACHINES
Complete Pump Service
W. American Blvd. 272-4397
Walt Sain Muleshoe, TX 272-4148

Bob STOVALL Printing
Quality -- Service
221 E. AVE. B 272-3373
C.R. & EVA NELL DALE MULESHOE

TERRA INTERNATIONAL, INC.
272-4203
Muleshoe, Texas

RONNIE HOLT INSURANCE AGENCY
Specializing in Crop, Life & Health Insurance
Western 66 Office Bldg.
272-4271 Muleshoe, TX

PACO FEED YARD, INC.
Commercial Cattle Feeders
P.O. Box 956 265-3281
Friona, TX
Feller Hughes-Mgr.

Jarman Seed
801 W. American Blvd.
Muleshoe, TX • 272-5985

GOOD YEAR JAMES CRANE TIRE CO., INC.
107 Main 272-4594
Mike Hahn Muleshoe, TX

Facts About The BIBLE BY JOHN LEHTI

THE MAN WHO EXPERIENCED BOTH ASPECTS OF "STONING"
AS SAUL OF TARSUS, HE HEARTILY APPROVED OF THE STONING TO DEATH OF STEPHEN, THE FIRST CHRISTIAN MARTYR, AND IN FACT STOOD GUARD OVER THE GARMENTS OF THE MEN WHO KILLED STEPHEN. LATER, AS PAUL, NOW ENGAGED IN SPREADING THE WORD OF CHRISTIANITY, HE WAS STONED HIMSELF BY AN INFURIATED MOB AT LYSTRA AND LEFT FOR DEAD ON THE OUTSKIRTS OF THE CITY, BUT



...UNLIKE STEPHEN, PAUL DID NOT DIE. HE AROSE FROM THE ROCKPILE, UNDAUNTED, TO CONTINUE HIS GREAT MISSIONARY WORK IN SPREADING THE GOOD NEWS OF JESUS TO THE GENTILES!

(52)

This devotional & directory is made possible by these businesses who encourage all of us to attend worship services.

ASSEMBLY OF GOD
FIRST ASSEMBLY OF GOD
521 South First Street • 272-3017
Jack Stone, Min. • 272-3984
S.S. 9:45 a.m., W.S. 11 a.m. & 6:30 p.m.,
Wed. 7:30 p.m.

BAPTIST CALVARY BAPTIST
1733 W. Ave. C. Rev. Jeff Coffman
CIRCLE BACK BAPTIST
Intersection FM 3397 & FM 298
Jessie Shaver, Min • 946-3676

FIRST BAPTIST
220 West Ave. E.
Stacey Conner, Min.
FIRST BAPTIST
Lazbuddie • 965-2126

PRIMERA IGLESIA BAUTISTA
223 E. Ave. B Roy Martinez, Min.
PRIMITIVE BAPTIST
621 South First

Elder Cleveland Bass, Min.
PROGRESS BAPTIST
Progress, TX

PROGRESS SECOND BAPTIST
Arthur Hays, Min.
1st & 3rd Sundays

RICHLAND HILLS BAPTIST
17th & West Ave. D
Brad Gathright, Min.

ST. MATTHEWS BAPTIST
Corner of W. Boston & W. Birch
Floyd R. Monroe, Min.

THREE WAY BAPTIST
927-5467

James Sinclair, Pastor
TRINITY BAPTIST
314 E. Ave. B
Robert Brown, Min.

CATHOLIC IMMACULATE CONCEPTION CATHOLIC
805 E. Hickory
Joseph Augustine, Min.

CHRISTIAN THE CHRISTIAN CENTER
Morton Hwy. • 272-5105
Reydon Stanford, Min.

CHURCH OF CHRIST LARIAT CHURCH OF CHRIST
Sam Billingsley, Min.
S.S. 10 a.m.; W.S. 11 a.m. & 6 p.m.,
Wed. 7 p.m.

LAZBUDDIE CHURCH OF CHRIST
Nathan Crawford, Min.
S.S. 9:30 a.m.; W.S. 10:20 a.m. & 5 p.m.;
Wed. 7 p.m.

MULESHOE CHURCH OF CHRIST
22nd & W. American Blvd.
John Knox, Min.
S.S. 9:30 a.m.; W.S. 10:20 a.m. & 6 p.m.;
Wed. 7:30 p.m.

SIXTEENTH & AVE. D CHURCH OF CHRIST
Curtis Shelburne, Min. • 272-4619
W.S. 10:30 a.m. & 6 p.m.;
Wed. 7:30 p.m.

LUTHERAN ST. JOHN LUTHERAN
Lariat, TX
Richard Greenhaner, Min.
S.S. 10:30 a.m.; W.S. 9:30 a.m.

METHODIST FIRST UNITED METHODIST HISPANIC MINISTRIES
E. 5th and E. Ave. D
Pastor Benito Cavazos
FIRST UNITED METHODIST
507 W. 2nd St.

Pastor John Wagoner
LAZBUDDIE METHODIST
965-2121

EL DEVINO SALVADOR
814 W. Ave. C, Muleshoe, TX
Guadalupe Ballinas, Min.

NAZARENE NEW VISION CHURCH OF THE NAZARENE
814 W. Ave. C • 272-3622
David R. McIntire

PENTECOSTAL IGLESIA PENTECOSTAL UNDA
207 East Ave. G • 272-3636
Wencelado Trevino, Min.

INTER DENOMINATIONAL NEW COVENANT
Plainview Hwy. Jimmy Low, Min.
S.S. 9:30 a.m.; W.S. 10:15 a.m.;
Wed. 7 p.m.

WINKLES TRUCKS, INC.
Box 757 (806) 247-2724
Friona, TX

Lowe's MARKETPLACE
401 W. American Blvd.
Muleshoe 272-4585
515 W. American Blvd.
Muleshoe 272-4406

Decorators Floral & Gifts
616 South First 272-4340
Muleshoe, TX

SHERLEY-ANDERSON LAZBUDDIE ELEVATOR
965-2922 Lazbuddie, TX

1ST BANK MEMBER FDIC
202 South First 272-4515

WES-TEX FEED YARDS, INC.
Custom Cattle Feeding
272-7555 Muleshoe, TX

AMERICAN AVI West Hwy 84 272-4266 Muleshoe

BAILEY GIN COMPANY, INC.
946-3397
Sudan, TX
Peanut Hawkins, MGR

WESTERN DRUG
114 Main 272-3106 Muleshoe

B/S & More Family Fun Center
123 Main • Muleshoe • 272-3828

HERITAGE HOUSE INN
2301 W. American Blvd. 272-7575
Muleshoe, Texas
Clint & Evelyn Peat - Resident Owners
Reservations 1-800-253-5896

BRUCE, INC. AIR CONDITIONING
Hwy. 214 North 272-5114
Muleshoe, TX
TAEL-B003350C, LP08638

MULESHOE COOPERATIVE GINS
P.O. Box 569
272-4794 Muleshoe, TX

MULESHOE AREA HEALTHCARE Center
"Committed to Caring"
106 W. Ave. H Muleshoe 272-7578

MULESHOE MOTOR CO.
1225 W. American Blvd. 272-4251

"THE FIVE AREA TELEPHONE COOPERATIVE ORGANIZATION"
West Plains Telecommunications Co.
Five Area Systems, Inc., Plateau Cellular Network
Five Area Long Distance - Five Area Internet
302 Uvalde Muleshoe, USA (806)272-5533

WANDA BROWND INSURANCE AGENCY
118 E. Ave. C Muleshoe 272-7548

Since 1957 - The Original
Leal's Mexican Restaurant
1010 W. American Blvd. 272-3294
Muleshoe, TX Victor & Debbie Leal

FIRST TEXAS FLBA MULESHOE
"Serving Farmer & Bailey Counties"
272-3010 • Fax 272-5388
316 Main • P.O. Box 424 • Muleshoe, TX

KATS KORRAL Family Restaurant
"Home Cooking"
121 Main • Muleshoe, TX • 272-5563

MULESHOE LIVESTOCK AUCTION
Muleshoe, TX • Sale Every Saturday
Clayton Myers • 272-4201

Editor's note: This is the sixth chapter of Hank the Cowdog, a book about the adventures of Hank, who is head of ranch security; Drover, his mutt sidekick; Slim a ranch hand; and Loper and Sally May, who own the ranch



Hank the Cowdog
CHAPTER 6

THE CASE OF THE DANCING COWBOY

Miss Viola and the smell of sardines

By John R. Erickson

(In the previous chapter, Hank the Cowdog chases after a mouse at the house where Slim, the ranch hand lives but has no luck catching it. Slim gives Hank a can of sardines, as promised. Only Hank's luck turns a little bad because the sardines turn out have turned bad themselves. But Hank wolfs down the slightly spoiled sardines. After his meal, there is a knock at the door.)

I told you you'd never guess who it was. You guessed Loper, right? Not even close. See, it was a woman's voice, therefore the person was a ... well, a woman, of course.

So your next guess was Sally May, right? Wrong again. Sally May was a woman, all right, but not the one at the door.

Give up?
OK. The voice at the door belonged to a woman, and the woman just happened to be one of my all-time true loves. No, not Beulah or Miss Camper or Missy Coyote, the lovely princess, or...

By George, that's a pretty impressive list, isn't it? You bet it is, and without seeming to brag or boast, I could say that the list goes on and on.

It was Miss Viola, my lady friend... OK, Slim's and my lady friend who lived down the creek several miles—the very lady about who or whom we had been discussing that very day.

Quiet a coincidence, huh?
She liked dogs, but the dog in particular she liked the most was me. I mean, here was a lady who would smile when she saw me, and she would call me over and scratch me behind the ears and pull stickers out of my coat and let me stay inside the house and sleep at her feet.

Yes, she was my kind of lady and here she was, standing at the door of Slim's house. I went straight to her, gave her a big cowdog smile, and accepted a nice scratch behind the ears.

"Well, hello, Hank. Is Slim around?"
Yes, but he was busy cleaning up garbage off the kitchen floor and we didn't need him hanging around and trying to steal the attention from my lady friend, so, uh, it would be OK with me if...

Rats. He heard her voice and come into the living room, wiping his hands on his jeans. I gave him a dark scowl but he didn't seem to notice.

"Well, I'll be darned. Morning, Viola, won't you come in and sit."

She continued to stand in the door, clutching her handbag in both hands. "Well, I didn't want to bother you."

"You ain't, believe me. Will you have a cup of coffee?"

"Oh... Well, I really shouldn't, but if it's already made..."

"Yes, it's made. It's been made for three years. Here, sit yourself down."

He pointed to the big rocking chair beside the woodstove, but before she could sit, he had to clear out a saddle and a pair of chaps.

She sat down on the edge of the chair and continued to hold her handbag, as though she might run away at any moment. She seemed a bit uneasy about being there. Maybe it was the clutter of the place that made her uncomfortable.

While Slim was banging around the kitchen, I noticed her eyes moving around the house. She saw the trail of dirty socks leading to the back bedroom. She saw the two holes in the sheetrock, the pile of livestock papers on the floor, the dead flies on the window sill, and the empty Vienna sausage cans scattered around the room.

I happened to be watching her when she peeked into a coffee cup that was sitting on the table. Her eyes widened when she saw that the coffee was covered with a skim of white mold.

I was embarrassed. I mean, Slim was a terrible housekeeper and a lady of her quality had no business wasting her time with him. On the other hand...

Burp.
Miss Viola wrinkled her nose. "Hank, have you been eating sardines?"

Who me? On no, not me. I, uh, never ate such things, or very seldom. In other words, Slim's house always smelled of sardines.

I slid my head onto her lap and looked up at her with eyes full of adoration.

She reached out a soft rose-petal hand and began scratching me behind the ears.

Ah, sweet lovely lady. By George, if Slim was too thick-headed to take this fine lady to the dance, I just might do it myself.

He came out of the kitchen with a cup of coffee in each hand. He gave her a cup. "You want anything in your coffee?"

"Oh, if the cream and sugar is handy..."

"Sure, you bet. Sit right there." He trotted back into the kitchen. "Viola, mind if there's a few ants in your sugar?"

"No ants thank you. Cream will be fine."

The ice box door opened an shut. Then we heard Slim say, "I don't know how long this milk's been in here."

"Oh, don't bother. I usually take my coffee clank anyway."

He brought the carton out and set it out on the coffee table. Then he flopped down in the chair across from Viola. She studied the date stamped on the top of the milk carton and I saw her left eyebrow jump, ever so slightly.

I wondered what she had seen.

Three Way reunion draws more over 50

The Three Way School class of 1953 held a reunion May 2 at the Barcelona Courts in Lubbock, with approximately 50 persons attending.

Former Maple resident Jerry Watson, now of Elm Mott, TX wanted to see some of his old Three Way classmates and decided to call for the reunion. Not wanting to limit the gathering to just the class of 1953, it was decided to invite many others who had attended school there, although they have graduated elsewhere. Former students attended from the late 1940s to the early 1950s.

Jerry contacted Nelda (Brashear) Stafford, Anita (Gibson) Clements and many others for assistance. Nelda made hotel arrangements, while Anita searched for ex-classmates and teachers. Jerry began a newsletter to keep all informed and the work eventually produced a 1997 calendar bearing a group photo taken in 1948.

Name tags provided immediate relief for the classmates, as many names and faces had changed over the years. Each classmate was given the time to tell something about themselves and what paths they had pursued since their days at Three Way.

Continued on page 7

Sarah's



Catering to Ladies Plus & Hard To Fit Sizes 14 & Up
1520 Pile St. • Clovis, NM 88101 • (505) 762-1520

A new way to pay your Energas bill.

Beginning July 7 you may pay your gas bill at the following locations in Muleshoe:

Lowe's Marketplace
401 W. American Blvd.

Pay-N-Save
515 W. American Blvd.

To ensure your payment is properly credited, please bring your gas bill with you.

Remember you may still continue to pay by mail or sign up for convenient automatic bank draft.

For emergency service, billing inquires, or service call
(806) 272-4284



"Striving To Serve You Better."

BUY IT SELL IT FIND IT IN THE CLASSIFIEDS

ADMIT ONE
to Vacation Bible School

You're invited for
Toe-tappin' music! • Fun-to-make crafts! • Great new games!
Exciting Bible stories you'll remember forever!

WILD FRONTIER BIBLE

Where Jesus is the Main Attraction!

FIRST UNITED METHODIST CHURCH
507 WEST 2ND
9:30 A.M. - 4 P.M.
SUNDAY, JULY 13TH

Festival

Continued from page 1

the country.
The 1997 Festival will be a study in contrasts, focusing on both the folklife of yesterday and the folklife of tomorrow, folklife that seems modern and high-tech today. You can search the origins of your family name by browsing through traditional books and materials with Dr. Fred Tarpley, then complete an electronic search for statewide historical sites using the Texas Historic Sites Atlas provided by the Texas historical Commission.

Festival hours are Thursday and Friday, July 31 and August 1, 5-11 p.m.; Saturday, August 2, noon-11 p.m.; and Sunday, August 3, noon-6 p.m.

The Texas Folklife Festival is presented by the University of Texas Institute of Texas Cultures at San Antonio as an extension of its role as a state-wide educational center. For more information about the Festival or to order advance tickets, write the Texas Folklife Festival, 801 S. Bowie St., San Antonio, TX 78205-3296 or call 210/458-2390. For updated Festival information, a complete participants list, and photos of Festival posters, visit our World Wide Web site at <http://www.utsa.edu/its/>

folklife.htm.

Thursday is seniors' night at the Festival, when seniors 55 and over are admitted for \$4 at the gate only (not available in advance).



TOWN & COUNTRY FOOD STORES
is looking for a few good people to manage our stores.

If you like a great working environment, working in a progressive company with positive people, if you like a better than average paycheck, great benefits, if you want to be on the cutting edge with a fast growing exciting company, then you need to apply with us.

We need **MANAGER TRAINEES** with experience in either convenience stores or in fast food, both would be a definite plus. A degree in marketing or in Business Management will get you **TOP DOLLAR.**

We offer a salary commensurate with education and experience up to \$20,000 per year. Health, dental, life insurance, retirement & profit sharing are some of the benefits available to you and your families.

If you want to work for the best, send your resume, along with your salary requirements to:

Town & Country Food Stores #135
Attn: Bryant Hance
700 Thornton
Clovis, NM 88101

GOOD VALUE GREAT PEOPLE!

MORTON INSURANCE

Experience • Versatile • More Options • More Companies

W.C. Eubanks • Agent

CROP HAIL OPTIONS

XS10IP • DXS 15 • DXS 30 • DXS 5/15
Production Guarantee Add Ons - Crop Hail
Many More Crop Hail Plans Available!

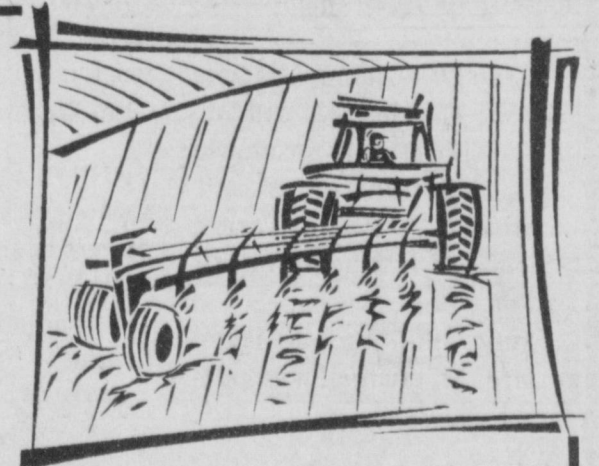
REPRESENTING

RCIS • IGF • Rain & Hail

**Stepladder Policies 25% effective June 5
Additional 5% per day until 100% in effect.**

Companies Who Provide New & Innovative Products
Your Full Service Insurance Needs

HOME • AUTO • LIFE • CROP • LIFE & HEALTH



P.O. Box 954
Morton, TX
(806) 266-5561
Fax: (806) 266-8944



ENGAGEMENTS

Isaac, Montague to wed October 25 in Grapevine

Charles and Georgette Isaac of Muleshoe announce the engagement and approaching marriage of their daughter, Elizabeth, to Kevin Scott Montague, son of Dona Holt of Irving, and James Montague of Ft. Worth.

Elizabeth is a graduate of Muleshoe High School and of Texas Tech University. She is presently employed

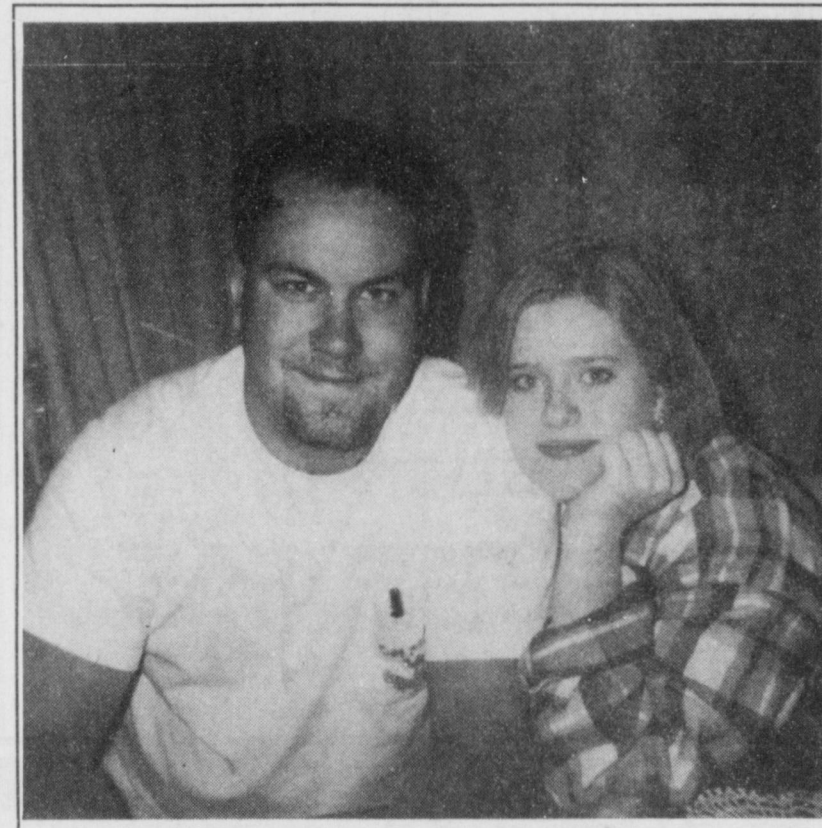
by Cracker Barrel restaurant and is an independent beauty consultant in Lewisville, Tex.

Kevin is a graduate of Halton City High School. He spent four years in the Navy and is presently employed by Dallas Bulk Mail Center.

The couple plan to wed October 25 at St. Francis Catholic Church in Grapevine, Tex.



Elizabeth Isaac and Kevin Scott Montague



Jessica Munselle and John Wauson

Munselle, Wauson ceremony set for August 16

John and Marianne Munselle of Amarillo announce the engagement of their daughter Jessica Munselle to Steven Wauson, the son of Wayne and Mary Wauson of Muleshoe.

The couple will marry August 16 at the Covenant of Joy Christian Church in Amarillo.

Jessica is a 1994 graduate of Randall High School and is attending West Texas A&M University in agriculture.

Steven is currently employed at the Ramada Inn West in Amarillo. The couple will make their home in Amarillo.



Road maps for automobile travel came into use about 1910.

Muleshoe Journal

To Subscribe, call 272-4536

Nothing like starting the day with some good news

55¢ Breakfast Sandwiches when you buy a My Size Meal.™

Just buy any size drink and hashbrowns, and get an Egg McMuffin® Sandwich, Sausage McMuffin with Egg® Sandwich, Bacon Egg and Cheese Biscuit or Sausage Biscuit with Egg for 55¢. Now that's news you can use.

McDonald's Restaurant
1301 W. American Blvd. • Muleshoe • 272-3333

PUBLIC RECORD

POLICE LOG

Police Report

June 17— Ruben Joe Garcia, 33, charged with DPS outstanding warrants

June 20— Eustolia Guerrero Rank, 38, charged with no seat belt and failure to appear

June 22— Stanley Charles Collins, 23, charged with no drivers license and failed to maintain proof of financial responsibility

June 29— Jaime Vindana Maese, 22, charged with no drivers license, no insurance and fleeing from officer

June 29— Hilario Torres, 35, charged with public intoxication

June 29— Agapito Pedro Valero, 38, charged with public intoxication

June 29— Yaisa Luera Hernandez, 37, charged with fleeing from officer

July 1— Salomon Rangel Esparza, 32, charged with assault on a family member

Sheriff's Report

June 21— Mario Gomez, Jr., 41, charged with Class A assault

June 21— Gavina M. Gomez, 30, charged with Class A assault

June 23— San Juanan Ramos, 43, charged with forgery

June 26— Armando c. rodriguez, 31, charged with driving while intoxicated

June 30— Maximiliano Sanchez, 33, charged with driving while intoxicated

July 2— John Lee Foster, 30, charged with aggravated assault with a vehicle

July 3— Roy Keith Kincaid, 33, charged with possession of marijuana and a controlled substance

July 3— Ferna Leigh Goins, 30, charged with possession of marijuana and a controlled substance

July 5— Gregory B. Donohew, 21, charged with no drivers license and speeding

July 6— Refugio J. Rocha, 19, charged with no drivers license

July 7— Moises Nieto Govea, 24, charged with public intoxication and failure to identify

July 7— Jose Angel N. Flores, 32, charged with driving while intoxicated, no drivers license, no insurance and failure to identify

HOSPITAL ADMISSIONS

The Muleshoe Area Medical Center has reported the following admissions:

July 3 — Alonso Garcia, Elizabeth Galvan.

July 4 — Alonso Garcia, Elizabeth Galvan.

July 5 — Alonso Garcia.

July 6 — Arlene Brozek.

July 7 — Beau Henry, Cathy Gable, Lillie Wuerflein, John Seaton, Virginia Ortiz.

July 8 — Beau Henry, Cathy Gable, Lillie Wuerflein, John Seaton, Virginia Ortiz, Casey Russell, Karen Harris.

July 9— Beau Henry, Lillie Wuerflein, John Seaton, Carla Muniz, Sherri Gibbs, Elizabeth Galvan, Virginia Ortiz, Sharon Menning, Karen Harris.

July 10 — Beau Henry, Lillie Wuerflein, John Seaton, Carla Muniz, Sherri Gibbs, Elizabeth Galvan, Virginia Ortiz, Sharon Menning, Karen Harris.

BIRTH

Justin and Arlene Brozek of Bovina, TX announce the birth of a son, Justus Seth Brozek.

Justus was born July 6, 1997 at Muleshoe Area Medical Center. He weighed 7 lbs., 8 oz. Justus has one older brother, Jake.

Grandparents include Suezy and Billy Smith of Bovina and Paula and Weldon Brozek of Great Bend, KS.

Great grandparents are Heman Estes of Bovina, Elsie Smith of Farwell, and Paul and Mary Hipsher of Longmont, CO.

Dehydration dangerous in weight loss

The average adult has between 10 and 12 gallons of water in his or her body — accounting for 50 percent of body weight.

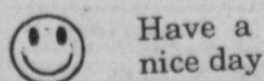
"Water is needed by virtually every muscle or tissue cell", said David Brennan, an exercise physiologist at Baylor college of Medicine in Hous-

ton. "Regulating body temperature is one of the most important roles water plays in the body. Without a maintaining a normal temperature."

To guard against dehydration, drink up.

"Drinking eight to 12 cups of water a day should keep you well hydrated," said Brennan.

"Water is best for fluid replacement, but sports drinks and juices are also good options." Brennan suggests limiting consumption of beverages containing alcohol and caffeine—they cause water loss.



Have a nice day

THE CLASSIFIEDS
★ ALWAYS A BEST SELLER ★

ALLSUP'S ALLWAYS Low Prices

<p>COMBO MEAL DEAL</p> <p>Golden Chicken Nuggets, Potato Wedges & a Tallsup \$1.99</p>		<p>BREAKFAST COMBO</p> <p>Sausage or Canadian Bacon, Egg & Biscuit, Hashbrown w/22 oz. Fountain Drink or 16 oz. Coffee \$1.89</p>	
<p>ALL FLAVORS Coca-Cola 6 pack, 12 oz. cans \$1.59 3 liter \$1.79</p>	<p>PALMOLIVE Dish Detergent 14.7 OZ. \$1.39</p>	<p>ALLSUP'S SANDWICH Bread 1.5 LB. LOAF 2 \$1.29 79¢ EACH OR</p>	
<p>ALL VARIETIES Frito's 89¢ REG. 99¢</p>	<p>BAR S Chopped Ham 10 OZ. PKG. \$1.39</p>	<p>BEEF & SALSA Burritos EACH 99¢</p>	<p>BLUE BUNNY ALL AMERICAN Chiller or Cool Tubes 3 \$1.00 FOR YOUR CHOICE</p>
<p>MONDO Moon Pies 4 \$1.00 FOR YOUR CHOICE</p>	<p>Q&Q Vermicelli 5 OZ. BOX 3 \$1.00 FOR</p>	<p>WESTERN FAMILY Chip-A-Riffic 18 OZ. PKG. \$2.99</p>	<p>EXTRA STRENGTH TYLENOL 24 CT. \$3.29</p>
<p>SPAM 12 oz. can \$2.39</p>	<p>ALLSUPS ICE 8 lb. bag \$1.09</p>	<p>FITTI DIAPERS \$5.19</p>	<p>SHURFINE FLOUR 5 lb. bag \$1.19</p>

CHECK YOUR FRIENDLY ALLSUP'S STORE FOR ADDITIONAL MARKDOWN SPECIALS! Store #34 • 318 W. American Blvd • 272-4862 • MULESHOE

ALLWAYS OPEN • ALLWAYS FAST

PRICES EFFECTIVE JULY 13-19, 1997 OFFER GOOD WHILE SUPPLIES LAST

Reunion

Continued from page 5

After lunch, the classmates shared memories. A catered meal followed, with entertainment provided by Elvis Fleming's cowboy symposium. More memories were a must and cameras were kept busy.

People from all walks of life attended, including missionaries, college professors, farmers, secretaries, plant operators and retirees. One of the former students, Don Maynard, went on to play wide receiver for the New York Jets and wore

his lucky #13 jersey as one of the stars of historic Super Bowl III. He went on to be selected for the Pro Football Hall of Fame and his #13 was retired by the Jets.

The reunion was also privileged to have five ex-teachers present.

All enjoyed the time they shared and showed appreciation to Jerry Watson, Nelda Stafford, Anita Clements and all the others for all the hard

work in organizing the event. The class voted to have another reunion at the turn of the century — in the year 2000.



Different breeds of cattle produce milk with differing amounts of fat.

CENTERLINE ROOFING AND CONSTRUCTION

Serving Eastern New Mexico & West Texas
FULLY INSURED

Jeff Reed • Owner
License #53818 • 505-762-4892 • Clovis

The family of Rudy Valenzuela wishes to express our gratitude for all of the loving and sympathetic acts during our time of loss. We want to thank everyone for the beautiful floral arrangements, lovely cards and delicious food, all the phone calls and visits, and most of all for everyone's prayers.

Thank you to Ellis Funeral Home, the nurses and physicians at Methodist Hospital. To all of Rudy's co-workers at St. Mary's and at Eddie Bauer for always being there for him.

Thank you Immaculate Conception Church for the comforting service. Thank you for all of the donations.

May God Bless You All,
Rosendo & Isabel Valenzuela

BUY IT • SELL IT • FIND IT IN THE CLASSIFIEDS

Journal classifieds

REAL ESTATE
AUTOMOBILES
HELP WANTED
GARAGE SALES

STOP & SHOP

Deadlines are 5 p.m. Monday and Thursday

Call 272-4536

Deadlines are 5 p.m. Monday and Thursday

LEGALS

Notice to Creditors
Notice is hereby given that original Letters of Administration for the Estate of Earnest Allen Logan, Deceased, were issued on June 3, in Cause No. 2118, pending in the County Court of Bailey County, Texas, to: Blanca Irene Logan.
The residence of the Administratrix is Muleshoe, Bailey County, Texas; the post office address is:
c/o: Johnny Actkinson Attorney at Law P.O. Box 286 Farwell, Texas 79325-0286

All persons having claims against this Estate which is currently being administered are required to present them within the time and in the manner prescribed by law.

Published in the Muleshoe Journal July 13.

OFFICE SPACE

Office space for rent or lease. Contact at 272-3332 on Mondays & Tuesdays. Call 946-3696 all other days. 28t-4tc

STORAGE

Opening Soon
Sudan storage, 8 x 10; 10 x 12 space available. Call Jan or Shirley (806)933-4347, or at The Oak Tree Antique (806)227-2325. 28t-4tc

MISCELLANEOUS

Bad credit? Erase bad credit, stop creditor harassment, lower monthly payments, eliminate interest. Send \$1 and SASE to: **JC and Associates, P.O. Box 967, Lamesa, Texas 79331** 23s-tfc

Roundup Applications
Pipe-Wick mounted on high-boy. 30" or 4" rows. Cotton, Milo, Soy Beans and Corn. Call Roy OBryan, **806-265-3247**. 25t-tfc

Need your house painted? Inside or Outside. Call Raul's Painting, **1-505-763-5773**. Clovis. Free Estimates. 26t-8tpd

FOR SALE

Customs Swathing & Baling
\$12 a bale. David Schulte. 965-2489 or 647-7740. 16s-50tpd
For Sale, '87 fifth wheel R.V. one owner, nice & clean. Call (806) 272-4908. 29s-6tc.

FARMS & RANCHES

For Sale: 80 acres of grass-land 3 miles North of Muleshoe. Reasonably Priced. Call HCR Real Estate, **806-364-4670**. 26t-10tc

MOBILE HOMES

Better Living Homes
1997 Singlewide Mobile Home \$19,000. Please Call **(505)356-5448**. 17t-tfc

REAL ESTATE

For sale: 7 acres, six miles from town. Partially fenced. Cash or owner financed. **(806)272-4975**. 23t-tfc

FOR SALE: 3bdm, 2 bath double car garage. Sites on 6 acres. Location 7 miles North East of Muleshoe. Call **965-2795** Leave message. 27t-7tc

House for Sale or Rent with reduced Price or Rent. 3bdm, 2 bath, 1750 sq. ft. (Assumable note with small down payment.) 612 W. Ave F. **806-265-3413**. 24t-tfc

For Sale by Owner: 1912 W Ave H, 3 bdrm, 2 bath, 2 car garage, brick, new roof. Inside: new paint, remodeled, great location. **806-481-3872**. 25t-tfc

House for rent: 3bdm, 2 bath, 1 car garage, fireplace, ceiling fans, fenced back yard. Call **272-3767**. 29s-2tc

For Sale by Owner: 3-1/2-2-1, 1900 square foot living area with fireplace, storage building, fenced yard and heat pump. Call **272-4833** or **272-4464**. 28s-8tc

Excellent price, Excellent location, Excellent condition: 3-1^{3/4}-2, brick, central A&H (heat pump), fans, FP, fenced yard, storage building, sprinkler system. 1806 W. Ave E. Call **272-5940**. 28t-5tpd

For Sale Brick 2-2-1, 2 living area, fans, fireplace and storm celler. Located in Earth, Texas. (806)562-3961, or (806)272-5865. 29s-1tc

For Sale Lease or Rent, 3-13/2-2- on 2 1/2 acres 7

miles from Muleshoe, assumable note with small down payment. **925-6751**. 28s5tc

AUTOMOBILE

'96 Chevy, 1500 Z71, 4x4, extended cab, \$22,500, Portales, N.M., (505)359-1775.

'94 Chevy 1500 Z 71, extended cab, white, \$17,995., Portales, N.M., (505)359-0947.

'89 Chevy Conversion Van, extra clean, loaded, \$7,495., Portales, N.M., (505)359-1775.

'91 Suzuki Sidekick, 4x4, 5 speed, \$6,995, Portales, N.M. (505)359-0947.

'91 Lincoln Town Car, signature series, \$7,495., Portales, N.M. (505)359-1775.

'96 Heavy duty, 34x miles, \$25,000 or assume note. Linda 272-4524 after 5 p.m, Richard 927-5109 after 7 p.m. 28t-2tpd

'88 Delta 88 Oldmobile for sale, good work car, Contact at 272-3332 or 946-3696. 28t-2tc

Seized Cars from \$175. Porsches, Cadillacs, Chevys, BMW's, Corvettes.

Also Jeeps, 4WD's. Your Area. Toll Free **1-800-218-9000 Ext. A-10574** for current listings. 28t-4tpd

HELP WANTED

Jobs! Jobs! Jobs!
Texas Sesame now hiring for all operation at elevator. **Great Pay! Apply Today!** 1600 Railroad Ave. 272-4231. No appointment needed. **Open 8-5, M-F.** 29s-2tc

The City of Muleshoe is accepting applications for the position of police department dispatcher. Applicants should have a minimum of a high school diploma or equivalent and become certified as a dispatcher within 6 months of employment for more information and an application, contact **Rick**

Henejer, Chief of Police, 215 East. Ave. B, Muleshoe 79347, (806)272-4569. Position is open until filled. Upon employment, subject will be required to pass a drug test. The City of Muleshoe is equal opportunity employer. 29s-2tc

Now Hiring: waitress, waiters, please apply in person (2p.m-3p.m), on Tuesday-Friday at Leal's Restaurant. 28t-4tc

V and H Lawn Mowing: trash hauling, odd jobs. Call 925-6692. 29s-2tpd

General office, casiering and computer entry. Muleshoe. No fee. Call Rhonda career center staffing service **(806) 797-5765 3305 81st, Lubbock.** 29s-1tc

Classifieds sell

Jo Ann Chester Realty

806-227-2368

BRICK — 3 bedroom, 1 3/4 bath, family room, w/fireplace, kitchen w/built-ins, dining, utility, double garage, central heat/air, fenced corner lot. **1815 W Ave I.**

BRICK — 3-1-1, 1200 sq. ft. with 300 sq. ft. Garage, dual fuel heat pump, storm windows, patio, fenced yard, near school. **318 W Ave. K.**

LOST DOG

31/2 lb. Blond/ Redish hair Pomeranian.
Lost July 4th. She needs medical attention. There is a reward. Call Maria Hall 272-5638 or 272-4086. 28s-4tc



Schwan's Home Food Service

is expanding route sales in the Plainview, Texas area.
We are looking for 2 Clean cut, high energy individuals who would like to be a part of the exciting expansion with Schwan's of Plainview, no experience necessary, excellent benefits, minimum starting of \$500 per week. E.O.E.
For personal interview call;
1-800-437-2068.
Interviews will be held in Muleshoe July 15-16, 1997.

Auction

SATURDAY, JULY 19, 1997 • 10 A.M.

1725 N. NASHVILLE, LUBBOCK, TX
BRICK OFFICE BUILDING, 2,862 SQ. FT.
COMMERCIAL STEEL BUILDING, 6,000 SQ. FT.
EQUIPMENT: 10" Delta Contractor Table Saw, 10" Delta Unisaw w/ Besenmeyer Fence, 10" Dewalt Radial Arm Saw w/ Table, 10" Rockwell Radial Arm Saw, Craftsman Band Saw, Craftsman Router with Table, Bosch 3" Belt Sander, Bosch 4" Belt Sander, 10" Porter Cable Miter Saw w/ Table, 10" Black & Decker Miter Saw w/ Table, 7 1/4" Skill Saw, Skill 12-V Top Gun Cordless Drill, 2-3/8" Chicago Pneumatic Air Drills, Blue Point Air Chisel, Tool Box of Assorted Sockets, Wrenches, Miller Wire Welder, Assorted Floor Stands, Two 2-Ton Floor Jacks, One 4-Ton Floor Jack, Approx. 45' Warehouse Shelving for Pallets, Heavy Wood Workbenches with Electric Plugs, 26' Goose Neck Stock Trailer, 16' Shelby Cargo Trailer, 18' Flat Bed Tandem Utility Trailer, Pick Up Truck Tool Box, Portable Dishwasher, Work Bench With Drawers, Refrigeration Gauges, Electrical Fittings, Assorted Hand Tools, Walnut Game Table, 6 Game Chairs, Misc. Office Furniture, Portable Air Compressor, Truck Wheels 24.5, Assorted Wood Lots in Assorted Wood Varieties, Assorted Carpet in Assorted Sizes, Metal Shelving, Assorted Paints, Assorted Engine Oils & Lubricants, Assorted Metal Cabinets, Golf Clubs, Stereo, Electronics, Cassette, Tuners, Televisions, Speakers, Assorted Designer Material Remnants, Sawin Fax Machine, Assorted Formica Remnants, Childrens Bicycle, Brass Chandeliers, Wrought Iron Chandelier, Ezgo Golf Cart, Assorted Hardware Items, New and Used Truck Snow Chains, Antique Oak Screen/ Shutter Window Coverings, Assorted RV Cabinets, Assorted RV Furniture, 7x15 Storage Shed Building, Black & Decker Coffee Pots, Several microwaves, Refrigerator, Triple Stainless Sink (Restaurant Style), Assorted Extension Cords, Drop Lights. **REAL ESTATE TERMS:** \$15,000 Cashier's Check to be placed in Escrow Day of Sale. Sign a Sales Contract. Closing to be in 30 days. Existing Loan is Assumable with Lender Approval. The owner reserves the right to accept or reject any or all bids on real estate. **TERMS AND CONDITIONS OF AUCTION:** Payment for all purchases must be in cash or cashier's check. If you are not known by Auctioneers, you must furnish an irrevocable Bank letter of Guarantee and proof of identity with personal or company check. Everything sells **AS-IS, WHERE-IS,** without warranty. Payment for all purchases must be made day of sale. All sales subject to state sales tax laws. All announcements made at auction supersede any printed or oral statements made prior. Auc. Lic. No. 69133. Real Estate License No. 0210942-14 ft. Southern Express Line Cargo Trailer.

Jack Faulks Auctioneers
"There is a Difference in Auctioneers"
(806) 792-3135 • Mobile 789-1866 • P.O. Box 5701, Lubbock, TX 79408

Nieman Realty

116 E. Ave. C George Nieman, Broker 272-5285 or 272-5286

RICHLAND HILLS - PARKRIDGE AREA

NICE 3-3-1 Brick, cent. Heat, Evap. Air, built-ins, 2000' + lv. area, fenced yd., stor. bldg. MORE!! \$60K !!! RH-2

VERY NICE 3-2-1 Brick, Cent. A&H, built-ins, fans, new paint, carpet, & drapes, fenced yd. \$60K!!! RH-1

NICE 3-2-2-Brick, Cent. A&H, built-ins, FP, cov. patio, fenced yd. \$50's!!!

NICE 3-2-2 Brick, Cent. A&H, built-ins, FP, corner lot!! \$50's!!!! RH-3

HIGHLAND AREA

JUST LISTED-NICE 3-2-2 Brick, Cent. A&H, built-ins, gas log FP, fenced yd., stor. bldg., MORE!! \$60K!!! HL-5

2-1-1 Home, vinyl siding, wall furnace heat, fenced yd. \$17,000!!! HL-1

BUSINESS FOR SALE-SNACK SHACK - Lot, Buildings, furniture, and fixtures!!!!

Commercial Bldg. & Lot, Approx. 1790' area, Numerous uses!! \$22K!!!
10,000+ sq. ft. bldg., approx. 105'x140' paved parking lot on U.S. 84 & 70!!

RURAL HOMES

2-2-1 carport Mobile Home on .665 acres on pavement close to town, Cent. heat, evap., air, DW, large barn, stor. bldg. and MORE!! \$25K!! HR-5

W. of SUDAN-NICE 3-3-2 Brick Home, 5 acre tract on Hwy. 298, Cent. Air & Heat, built-ins, large Quonset Barn, MORE!!!! \$95K!!!

ASK ABOUT OUR COMMERCIAL LISTINGS!!!

BETTER LIVING MOBILE HOMES

Summer Blowout!!

Save As Much As \$6,500⁰⁰

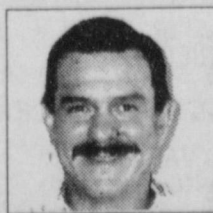
On Selected Homes

- SATURNS, Including a 2,100 Sq. Ft. 4 Bdrm. Tape & Texture.
- PATRIOTS, Including a 2,100 Sq. Ft. 5 Bdrm, 3 Bath Home.

Don't Miss Out!

All Sales Are Limited To Homes on Sales Lot. No Trade-Ins on Any Homes On Sale.

Come See Nick & Sherry Today!



Located 1/2 Mile North of Portales on U.S. 70
1-800-404-1321 Portales, NM (505)356-5448
Lic. # D00681 'Se Habla Espanol'

PAY LESS TO FILL YOUR LIST

OUR PRICES ARE JUST LIKE OUR NAME!



ALL TYPES
Coca-Cola, Sprite or
DR. PEPPER

\$1.29
6PACK
12 OZ. CANS

ASSORTED
POWERADE
64 OZ.
2/\$3



MEAT

- PREMIUM GOLD ANGUS BEEF BONELESS
CHUCK STEAKSLB. **\$1.36**
- PREMIUM GOLD ANGUS BEEF BONELESS
CHARCOAL STEAKS ...LB. **\$1.29**
- JUMBO PACK FRESH FRYER THIGHS OR
DRUMSTICKSLB. **68¢**
- PREMIUM GOLD ANGUS BEEF
CALIFORNIA ROAST ...LB. **\$1.89**
- BONE-IN
PORK STEAKLB. **\$1.79**
- COUNTRY STYLE BONE-IN SMALL PACK
PORK RIBSLB. **\$1.39**
- PREMIUM GOLD ANGUS BEEF BONELESS
CHUCK ROASTLB. **\$1.69**
- PREMIUM GOLD ANGUS BEEF BONELESS
SHORT RIBSLB. **\$1.99**
- PREMIUM GOLD ANGUS BEEF
GROUND CHUCK.....LB. **\$1.99**
- PREMIUM GOLD ANGUS BEEF
STEW MEATLB. **\$2.29**
- PREMIUM GOLD ANGUS BEEF
CHUCK EYE STEAK ...LB. **\$3.99**
- BONE IN PORK
BUTT ROASTLB. **\$1.59**
- BONELESS COUNTRY STYLE
PORK RIBSLB. **\$1.48**
- BAR S
MEAT FRANKS ...12 OZ. PKG. **79¢**
- BAR S
BEEF FRANKS ..12 OZ. PKG. **\$1.39**
- BAR S
MEAT FRANKS ...2 LB. PKG. **\$2.79**
- BAR S
SMOKED SAUSAGE...1 LB. PKG. **\$1.49**
- BAR S EXTRA LEAN
COOKED HAM ..10 OZ. PKG. **\$2.09**
- BAR S
CHOPPED HAM...10 OZ. PKG. **\$1.69**
- BAR S GARLIC OR MEAT
BOLOGNA12 OZ. PKG. **89¢**
- BAR S HICKORY 2 LB. SMOKED OR 1.5 LB. SLICED
EXTRA LEAN HAM ..YOUR CHOICE **\$5.99**

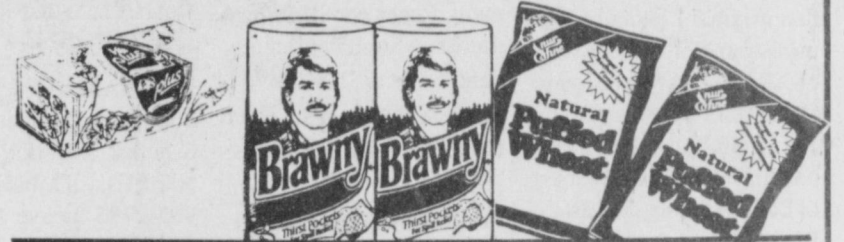
PRODUCE

- LARGE
BELL PEPPERS 6/**\$1**
- GREEN ONIONS**..... 6/**\$1**
- SWEET & JUICY
CANTALOUPE EA. **67¢**
- CAULIFLOWER** EA. **99¢**
- MINI PEELED
CARROTS 1 LB. PKG. **99¢**
- GARDEN FRESH
ZUCCHINI 2 LBS./**\$1**
- YELLOW
SQUASH..... 2 LBS./**\$1**

- IMPERIAL PURE CANE
SUGAR 4 LB. BAG **\$1.39**
- DOUBLESTUFF, REDUCED FAT OR ORIGINAL
OREO COOKIES ... 20 OZ. PKG. **\$1.99**
- NESTLE BUTTERFINGER BB'S, BUNCHA CRUNCH,
BABY RUTH, BUTTERFINGER, MILK CHOCOLATE,
100 GRAND, CRUNCH, WHITE CRUNCH,
ORIGINAL CHUNKY OR OH HENRY!
CANDY BARS SINGLE BARS **3/\$1**
- PEDIGREE SELECTED VARIETIES
DOG FOOD ... 13.2 OZ. CANS **2/\$1**
- ANGEL SOFT BATH
TISSUE 4 CT. PKG. **99¢**



- NABISCO SELECTED VARIETIES
• WHEAT THINS • OAT THINS • BETTER CHEDDARS
• SWISS CHEESE • BACON FLAVORED • TWIGS SESAME
• SOCIABLES • CHICKEN IN A BISKIT • VEGETABLE THINS
• TRISCUIT • HONEY MAID CRISP
SNACK CRACKERS. 6.75-10 OZ. BOXES **2/\$3**
- PACE MEDIUM, MILD, OR HOT
PICANTE SAUCE ... 24 OZ. JARS **2/\$5**
- NESTEA ORIGINAL OR DECAFFEINATED
100% TEA MIX . 3 OZ. JAR **\$2.39**
- ASSORTED TOASTETTES
TARTS 13 OZ. 8 PACK **\$1.49**
- NABISCO ORIGINAL, CHEESE NIPS, FAT FREE PRETZELS, OR
SOUR CREAM/ ONION
RITZ AIR CRISPS ... 7-8.5 OZ. PKG. **2/\$3**



- PUFFS 250 CT. COLLATED, 144 CT. PLUS,
OR 144 CT. EXTRA STRENGTH
FACIAL TISSUE .. YOUR CHOICE **2/\$3**
- BRAWNY REGULAR OR DESIGNER
PAPER TOWELS ROLL **79¢**
- SHURFINE CEREAL
PUFFED WHEAT ... 6 OZ. BAGS **2/\$1**
- WHISKAS SELECTED VARIETIES
CAT FOOD 5.5 OZ. CANS **3/\$1**
- WISHBONE SELECTED VARIETIES
SALAD DRESSING . 8 OZ. BTL. **\$1.19**
- PIONEER WHITE WINGS FLOUR
TORTILLA MIX.. 20 LB. BAG **\$8.99**
- CASA FIESTA
TACO SHELLS.. 12 CT. 4.5 OZ. PKG. **99¢**
- CASA FIESTA
REFRIED BEANS ... 12 OZ. CAN **69¢**
- CASA FIESTA DICED
GREEN CHILIES . 4 OZ. CAN **69¢**

Deli Lunchmeat

- TURKEY BREAST**lb. **\$2.79**
- JALAPENO LOAF**lb. **\$1.79**
- COOKED HAM**lb. **\$2.79**
- CHOPPED HAM**lb. **\$1.79**
- HAM & CHEESE LOAF** ...lb. **\$2.99**
- SALAMI**lb. **\$1.79**
- BOLOGNA**lb. **\$1.79**

Ask Market Personnel

DAIRY & FROZEN

- ASSORTED BLUE BUNNY
ICE CREAM..... 5 QT. PAIL **\$3.99**
- WEIGHT WATCHERS SELECTED VARIETIES ULTIMATE
90 YOGURT 6 OZ. TUBS **2/\$1**
- SHURFINE TROPICAL OR
CITRUS PUNCH .. 16 OZ. BTL. **3/\$1**
- SHURFINE
COTTAGE CHEESE .. 24 OZ. CTN. **\$1.89**



- BEST MAID WHOLE
SWEET PICKLES ... 16 OZ. JAR **\$1.99**
- BEST MAID SWEET
RELISH..... 22 OZ. JAR **\$1.79**
- BEST MAID HAMBURGER
DILL SLICES 32 OZ. JAR **\$1.99**
- BEST MAID HAMBURGER
DILL SLICES 32 OZ. JAR **\$1.99**
- BEST MAID BREAD-N-BUTTER, WHOLE DILL,
OR HAMBURGER DILL SLICES
PICKLES..... 16 OZ. JAR **\$1.79**



CHIVALRY COLLECTION by Libbey

This Week's Feature
12 Oz. Goblet
Each **\$1.19**

- BLUE BUNNY VANILLA OR NEAPOLITAN ICE CREAM
SANDWICHES . 12 CT. PKG. **\$2.79**
- NESTLE BUTTERFINGER
ICE CREAM BARS ... 6 CT. PKG. **\$1.99**
- NESTLE ORIGINAL OR REDUCED FAT
CRUNCH BARS. 6 CT. PKG. **\$1.99**

- BANQUET ASSORTED FRIED
CHICKEN 19-25 OZ. PKG. **\$2.99**
- TOMBSTONE SELECTED VARIETIES
12" PIZZA 19.4-23.6 OZ. PKG. **2/\$6**
- SHURFINE BUTTERMILK OR SWEETMILK
BISCUITS 7.5 OZ. 10 CT. **5/\$1**



- 8 CT. ACTID REDUCER TABLETS
- 12 OZ. LIQUID COOL MINT OR CHERRY ANTACID
MYLANTA..... YOUR CHOICE **\$2.99**
- ASSORTED DEODORANT BODY POWDER
SHOWER TO SHOWER 8 OZ. BTL. **\$1.99**



WESTERN UNION MONEY TRANSFER™
"The fastest way to send money"

Lowe's MARKETPLACE

401 W. American Blvd.
Muleshoe 272-4585

515 W. American Blvd.
Muleshoe 272-4406

Pay-n-Save

WE RESERVE THE RIGHT TO LIMIT QUANTITIES IN TEXAS